



**AgEcon** SEARCH  
RESEARCH IN AGRICULTURAL & APPLIED ECONOMICS

*The World's Largest Open Access Agricultural & Applied Economics Digital Library*

**This document is discoverable and free to researchers across the globe due to the work of AgEcon Search.**

**Help ensure our sustainability.**

Give to AgEcon Search

AgEcon Search

<http://ageconsearch.umn.edu>

[aesearch@umn.edu](mailto:aesearch@umn.edu)

*Papers downloaded from **AgEcon Search** may be used for non-commercial purposes and personal study only. No other use, including posting to another Internet site, is permitted without permission from the copyright owner (not AgEcon Search), or as allowed under the provisions of Fair Use, U.S. Copyright Act, Title 17 U.S.C.*

SB 401 (1962)

USDA STATISTICAL BULLETINS

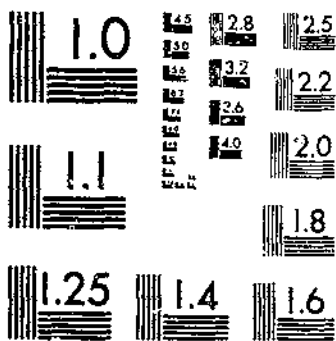
UPDATA

MACHINES AND EQUIPMENT ON FARMS WITH RELATED DATA, 1964 AND 1959

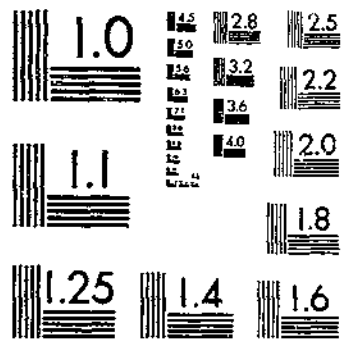
STRICKLER, P. E.

1 OF 1

# START



MICROCOPY RESOLUTION TEST CHART  
NATIONAL BUREAU OF STANDARDS-1963-A



MICROCOPY RESOLUTION TEST CHART  
NATIONAL BUREAU OF STANDARDS-1963-A

REFERENCE  
DO NOT LOAN

Los Angeles Public Library  
JUN 1 1967

**MACHINES AND EQUIPMENT  
ON FARMS  
WITH RELATED DATA  
1964 AND 1959**



## CONTENTS

	<u>Page</u>
Introduction -----	1
Number of machines and related data -----	1
Use of petroleum fuels and oils -----	3

Washington, D. C.

May 1967

## LIST OF TABLES

<u>Table</u>	<u>Page</u>
1. Number of farms, average size of farm and cropland harvested, by State and region, 1964 and 1959 -----	5
2. Tractors, wheel and crawler: Farms reporting and number reported, by State and region, 1964 and 1959-----	6
3. Tractors, other than garden and motortillers, and garden tractors and motortillers: Farms reporting and number reported, by State and region, 1964 and 1959 -----	7
4. Automobiles and motortrucks: Farms reporting and number reported, by State and region, 1964 and 1959-----	8
5. Grain and bean combines: Farms reporting and number reported, by State and region, 1964 and 1959 -----	9
6. Self-propelled combines and cornpickers: Farms reporting and number reported, by State and region, 1964 and 1959-----	10
7. Pickup balers and field forage harvesters: Farms reporting and number reported, by State and region, 1964 and 1959-----	11
8. Field forage harvesters: Cylinder or fly-wheel type and flail type, farms reporting and number reported, by State and region, 1964-----	12
9. Hay conditioners and crop driers: Farms reporting and number of hay conditioners reported, 1964, and farms reporting crop driers, by State and region, 1964 and 1959 -----	13
10. Farms reporting milking machines, 1964 and 1959, and bulk milk tanks, 1964, by State and region -----	14
11. Machine hire, custom and contract work: Farms reporting and dollar expenditures, by State and region, 1964 and 1959-----	15
12. Expenditures for gasoline and other petroleum fuel and oil for the farm business, by State and region, 1954, 1959, and 1964-----	16
13. Gasoline and other petroleum fuel and oil for the farm business: Farms reporting and dollar expenditures, by State and region, 1964 and 1959 -----	17
14. Gasoline and diesel oil: Farms reporting and dollar expenditures, by State and region, 1964-----	18
15. LP gas (butane and propane) and other petroleum fuels and products: Farms reporting and dollar expenditures, by State and region, 1964-----	19

MACHINES AND EQUIPMENT ON FARMS  
WITH RELATED DATA  
1964 and 1959

by

Paul E. Strickler, Agricultural Economist  
Farm Production Economics Division  
Economic Research Service

INTRODUCTION

Tables in this report were prepared from preliminary reports of the 1964 Census of Agriculture showing numbers of farms using specified machines and numbers of those machines on farms. Wherever possible, information from the 1964 census is compared with data from the 1959 census. These tables also include related information such as the total number of farms, average size of farm, acreage of cropland harvested, expenditures for machine hire, custom and contract work, and expenditures for petroleum fuel and oil for the farm business. Summaries of census materials in tabular form will serve as a convenient reference to people interested in farm mechanization.

The number of machines on farms in 1964 was not quite comparable with that reported for 1959 because the criteria for counting machines differed in the two censuses. In the 1964 census, a machine was counted only if it had been used in 1963 or 1964. In the 1959 census, a machine was counted if it was on the farm at the time of enumeration, regardless of whether it had been used in 1958 or 1959 or even whether it had been temporarily out of order. No doubt some machines included in 1959 had not been used in 1958 or 1959. Because of this difference in enumeration, increases in numbers between the 1959 and 1964 censuses are actually larger than stated and decreases are smaller.

In some instances, slight differences occur between the summation of preliminary data by States and for the United States. Totals in this report are summations of the preliminary State data.

NUMBER OF MACHINES AND RELATED DATA

About 15 percent fewer farms reported in the 1964 census than in 1959, while the average size of farm during the period increased from 303 acres to 352 acres. Total cropland harvested in 1964 declined by 25 million acres, or about 8 percent.

Changes in machine numbers from 1959 to 1964 ranged from a 10-percent increase for balers to a 13-percent decrease for cornpickers and combines.



Numbers of wheel tractors continued to increase in 33 of the 50 States from 1959 through 1964, despite relatively low shipments and sales for farm use. Total inventory gain on farms was 112,000 units, an increase of about 2.5 percent. A gain of this size resulting from relatively low shipments of new units indicates a substantial flow of used tractors from dealer's stocks after 1959. Additional work will need to be done to determine the approximate extent of this movement.

The number of crawler tractors on farms declined slightly from 199,000 in 1959 to about 186,000 in 1964. The increasing size of wheel tractors, along with the use of high flotation tires or dual tires, 4-wheel drive, and tandem hitching, likely were the main factors causing the decline.

Motortillers on farms were enumerated for the first time in 1964, and included with garden tractors. In 1959, 424,790 farms reported 450,428 garden tractors. In 1964, with motortillers included, 643,270 farms reported 698,902 units, an increase of 249,000 units over 1959. The gain in number of garden tractors on farms from 1954 to 1959 was only 104,000. Since motortillers were not counted in 1959, the change in the combined number of units between 1959 and 1964 was less than the data indicate.

The number of motortrucks on farms increased from 2,833,000 in 1959 to 3,030,000 in 1964, an increase of nearly 7 percent, compared with an increase of 4.5 percent from 1954 to 1959. A higher level of gross farm income, as well as the fact that pickups perform the functions of trucks and automobiles on many farms, likely had some influence on the increasingly upward trend in motortruck numbers. Numbers of automobiles on farms declined slightly between 1959 and 1964--from 3,636,000 to 3,593,000, or about 1 percent.

The decline in numbers of grain and bean combines from 1,042,000 in 1959 to 910,000 in 1964 may be attributed, in part, to the fact that only those combines used in 1963 or 1964 were enumerated. Also, by 1964, discards of old combines should have reached a high level because average annual shipments of new units from 1960 to 1964 were less than half the average annual number shipped during 1940-49. <sup>1/</sup> Over 80 percent of the combines shipped in recent years have been self-propelled units. These units are generally larger than the pull-type and harvest more acreage in a season. Custom-operated combines may be used by some farmers, even though old but usable pull-type combines are retained.

The decrease in number of cornpickers and pickershellers (from 792,000 in 1959 to 690,000 in 1964) is attributable to the number of serviceable cornpickers that have been made obsolete by the rapid surge in field shelling of corn. This decrease occurred in several forms. Some were still on farms but not used in 1963 or 1964, others moved into the dealer's stocks of used machines, and many older ones were junked.

The number of pickup balers and field forage harvesters continued to increase. However, half of the States showed a decline in the number of field forage harvesters

---

<sup>1/</sup> U.S. Department of Commerce, Bureau of the Census. Current Industrial Reports, Series M35A.

on farms in 1964 compared with 1959, probably because many machines on farms had not been used in the 2 years before the census was taken. Most of the gain in number of field forage harvesters (from 291, 000 to 316, 000) occurred in the Lake States and Pennsylvania; most other States showed only a very moderate gain or a loss.

The number of hay conditioners, counted for the first time in 1964, had reached about 190, 000 by that year.

In 1964, 76, 000 farms reported use of crop driers, an increase of 25, 000 from 1959. Drying of corn after field shelling was an increasing practice.

Farms reporting milking machines continued to decline in number and by 1964 were down to 500, 000 from a peak of over 700, 000 in 1955, and 666, 000 in 1959. This decline reflected fewer dairy farms but larger herds. The number of farms with bulk milk tanks continued to increase and reached 200, 000 at the end of 1964. Comparable figures for earlier years were not available from the census. However, a 1959 report from the Dairy and Food Industries Supply Association indicated about 140, 000 installations at that time.

In 1964, farmers spent \$869 million for machine hire, custom and contract work, compared with \$805 million in 1959, an increase of 8 percent. This work was done on 1, 642, 595 farms in 1964, about 17 percent fewer farms than reported in 1959. However, expenditures per farm reporting machines hired increased over 30 percent-- from \$405 in 1959 to \$530 in 1964.

#### USE OF PETROLEUM FUELS AND OILS

Expenditures for gasoline and other petroleum fuel and oil used in farming indicate the extent to which petroleum-powered equipment is used. Whereas the rate of increase in fuel expenditures declined from 1949 to 1959, it increased rather sharply from 1959 to 1964. This happened despite a decline in crop acreage from 1959 to 1964. Much of the fuel consumption was for field work. Expenditures for gasoline and other petroleum fuels and oils used on farms in specified years are shown as follows:

Year	Amount of expenditure		Percentage increase from previous census
	Current dollar value <u>1/</u>	1957-59 dollars <u>2/</u>	
	<u>1,000 dollars</u>	<u>1,000 dollars</u>	<u>Percent</u>
1964-----	1,786,667	1,768,977	13.8
1959-----	1,554,305	1,554,305	<u>3/6.6</u>
1954-----	1,366,273	1,453,482	9.0
1949-----	1,133,708	1,333,774	143.4
1939-----	323,239	547,863	---

1/ U.S. Census of Agriculture.

2/ Current dollar values divided by the index of prices paid by farmers for motor supplies: 1939=59, 1949=85, 1954=94, 1959=100, and 1964=101.

3/ Percentage change excludes Alaska and Hawaii.

Factors contributing to increased fuel consumption in this period included an increase of nearly 200,000 motortrucks on farms; increased crop drying, especially corn; increase in size of tractors, perhaps without a comparable increase in the average load pulled; and expansion of operations such as pest control and irrigation. While numbers of tractors increased, acres of cropland declined and average use in field work per tractor may have declined from 1959 to 1964.

Table 1.—Number of farms, average size of farm and cropland harvested, by State and region, 1964 and 1959

State and region	Total farms		Average size of farm		Cropland harvested	
	1964	1959	1964	1959	1964	1959
	Number	Number	Acres	Acres	1,000 acres	1,000 acres
Maine	12,875	17,360	201	178	594	698
New Hampshire	4,648	6,542	194	172	168	206
Vermont	9,247	12,099	273	243	657	743
Massachusetts	8,019	11,179	112	102	234	291
Rhode Island	1,115	1,395	94	99	29	34
Connecticut	6,068	8,292	119	107	206	238
New York	66,510	82,356	185	164	4,743	5,033
New Jersey	10,641	15,459	109	89	560	658
Pennsylvania	83,086	100,052	130	119	4,534	4,854
Delaware	4,401	5,208	163	146	419	416
Maryland	20,760	25,122	153	138	1,421	1,456
Northeast	227,370	285,064	158	141	13,565	14,627
Michigan	93,504	111,817	145	132	6,738	7,155
Wisconsin	118,816	131,215	172	161	9,038	9,599
Minnesota	131,163	145,662	235	211	17,515	18,918
Lake States	343,483	388,694	189	172	33,291	35,672
Ohio	120,381	140,353	146	132	9,276	9,744
Indiana	108,082	128,160	166	145	10,299	11,147
Illinois	132,821	154,644	226	196	20,058	20,968
Iowa	154,162	174,707	219	194	19,952	22,873
Missouri	147,315	168,672	222	197	11,069	12,178
Corn Belt	662,761	766,536	199	175	70,654	76,910
North Dakota	48,836	54,928	875	755	17,695	19,358
South Dakota	49,702	55,727	917	805	14,445	14,236
Nebraska	80,163	90,475	596	528	15,229	18,057
Kansas	92,439	104,347	544	481	18,160	20,528
Northern Plains	271,140	305,477	687	603	65,529	72,179
Virginia	80,354	97,623	149	134	2,566	2,858
West Virginia	34,504	44,011	153	138	734	832
North Carolina	148,202	190,567	97	83	3,986	4,746
Kentucky	133,038	150,986	122	113	3,473	4,013
Tennessee	133,445	157,688	114	102	3,618	4,116
Appalachian	529,543	640,875	119	106	14,377	16,565
South Carolina	56,248	78,172	144	117	2,263	2,694
Georgia	83,366	106,350	215	185	3,950	4,918
Florida	40,541	45,100	380	338	2,204	1,882
Alabama	92,530	115,788	164	143	2,990	3,715
Southeast	272,685	345,410	208	175	11,407	13,209
Mississippi	109,141	138,142	163	135	4,400	4,564
Arkansas	79,898	95,007	207	173	6,088	5,324
Louisiana	62,466	74,438	167	139	2,673	2,426
Delta States	251,505	307,587	178	148	13,161	12,314
Oklahoma	88,726	94,676	407	378	8,345	8,975
Texas	205,109	227,071	691	621	19,408	22,236
Southern Plains	293,835	321,747	605	556	27,753	31,211
Montana	27,020	28,959	2,436	2,213	7,813	8,159
Idaho	29,661	33,670	516	452	3,934	3,832
Wyoming	9,038	9,744	4,074	3,715	1,702	1,679
Colorado	29,797	33,390	1,284	1,162	4,726	5,879
New Mexico	14,206	15,919	3,354	2,908	906	1,077
Arizona	6,477	7,233	6,262	5,558	1,026	1,019
Utah	15,759	17,811	825	712	1,040	1,062
Nevada	2,156	2,354	4,862	4,649	507	338
Mountain	134,114	149,080	1,998	1,774	21,654	23,045
Washington	45,574	51,577	418	363	4,423	4,413
Oregon	39,757	42,573	516	499	3,050	3,119
California	80,846	99,274	458	372	7,817	8,022
Hawaii	4,864	6,242	484	394	168	176
Alaska	382	367	5,129	2,420	16	14
Pacific	171,423	200,033	472	401	15,494	15,744
United States	3,157,859	3,710,503	352	303	286,885	311,476

Table 2.--Tractors, wheel and crawler: Farms reporting and number reported, by State and region, 1964 and 1959

State and region	Wheel tractors				Crawler tractors			
	Farms reporting		Number		Farms reporting		Number	
	1964	1959	1964	1959	1964	1959	1964	1959
	Number	Number	Number	Number	Number	Number	Number	Number
Maine-----	9,023	10,766	15,006	16,313	1,186	1,348	1,284	1,504
New Hampshire-----	3,338	4,075	5,695	6,196	502	398	538	409
Vermont-----	7,801	9,440	15,081	15,424	1,153	1,191	1,252	1,250
Massachusetts-----	5,628	6,647	10,744	11,222	732	774	831	842
Rhode Island-----	771	912	1,571	1,584	78	55	96	66
Connecticut-----	4,440	5,508	9,307	10,455	571	636	656	719
New York-----	59,707	69,501	128,785	131,158	6,711	6,719	7,519	7,521
New Jersey-----	8,357	10,617	21,223	23,581	688	915	819	1,152
Pennsylvania-----	71,899	81,642	137,550	138,702	5,897	5,575	6,599	6,071
Delaware-----	3,477	4,016	7,865	8,122	105	125	127	137
Maryland-----	17,582	19,811	36,338	36,246	780	842	865	943
Northeast-----	192,023	222,935	389,165	399,005	18,403	18,578	20,606	20,614
Michigan-----	85,994	99,151	165,502	165,682	3,939	3,700	4,418	4,160
Wisconsin-----	110,666	119,636	242,756	230,305	4,079	3,524	4,671	4,117
Minnesota-----	123,372	132,104	279,615	266,888	4,589	7,782	5,272	9,002
Lake States-----	320,032	350,891	687,873	662,875	12,607	15,006	14,361	17,279
Ohio-----	103,949	114,677	195,747	199,947	3,564	4,286	3,947	4,734
Indiana-----	93,912	105,119	178,426	182,670	2,385	3,706	2,660	4,197
Illinois-----	121,980	135,579	283,158	285,151	3,771	4,364	4,322	4,846
Iowa-----	143,082	156,955	326,514	322,906	2,366	4,427	2,658	4,974
Missouri-----	118,475	123,347	194,027	186,927	3,670	4,207	4,068	4,662
Corn Belt-----	581,398	635,677	1,177,872	1,177,601	15,756	20,990	17,655	23,393
North Dakota-----	46,452	51,639	119,811	118,092	1,971	2,542	2,245	2,978
South Dakota-----	46,450	50,572	118,730	113,677	1,279	1,804	1,370	1,974
Nebraska-----	74,022	81,172	177,686	172,051	2,359	2,753	2,737	3,191
Kansas-----	83,344	91,122	171,023	170,142	2,732	3,048	3,162	3,511
Northern Plains-----	250,268	274,505	587,250	573,962	8,341	10,147	9,514	11,604
Virginia-----	49,608	49,887	76,565	72,891	2,152	2,084	2,424	2,282
West Virginia-----	18,000	17,381	22,788	21,024	1,056	905	1,138	971
North Carolina-----	95,986	101,962	147,330	137,262	2,176	3,037	2,520	3,385
Kentucky-----	82,288	76,740	115,938	100,960	2,242	2,229	2,466	2,464
Tennessee-----	76,946	73,292	105,532	95,007	2,544	2,590	2,787	2,794
Appalachian-----	322,828	319,262	468,153	427,144	10,170	10,845	11,335	11,896
South Carolina-----	31,383	33,597	49,979	47,650	806	811	952	986
Georgia-----	55,754	60,397	87,291	87,753	1,521	1,415	1,758	1,673
Florida-----	22,414	20,630	38,832	33,470	1,424	1,365	2,463	2,344
Alabama-----	50,918	51,618	70,216	66,254	1,693	1,146	1,709	1,295
Southeast-----	160,469	166,242	246,318	235,127	5,244	4,737	6,882	6,298
Mississippi-----	51,264	51,054	88,131	82,535	1,796	1,529	2,216	1,764
Arkansas-----	49,203	47,558	88,913	81,923	1,773	1,686	2,080	1,904
Louisiana-----	34,052	32,150	59,006	52,016	1,274	1,043	1,612	1,213
Delta States-----	134,519	130,762	236,050	216,472	4,843	4,258	5,908	4,881
Oklahoma-----	62,122	64,371	99,436	99,527	1,865	2,495	2,169	2,788
Texas-----	146,757	152,374	263,386	262,294	4,958	4,823	6,133	5,881
Southern Plains-----	208,879	216,745	362,822	361,821	6,823	7,318	8,302	8,669
Montana-----	23,928	25,137	55,971	53,562	4,908	5,022	5,861	5,947
Idaho-----	25,018	26,543	50,651	48,529	6,080	6,324	7,956	8,037
Wyoming-----	7,782	8,148	19,999	19,288	1,425	1,287	1,597	1,466
Colorado-----	25,735	27,623	60,525	60,230	2,932	3,295	3,381	3,811
New Mexico-----	8,937	8,938	17,092	16,265	664	684	827	871
Arizona-----	4,114	4,378	11,799	11,411	1,375	1,430	1,948	2,032
Utah-----	12,600	13,445	20,895	20,323	1,151	1,287	1,361	1,479
Nevada-----	1,818	1,813	4,848	4,589	526	529	709	708
Mountain-----	109,932	116,025	241,780	234,597	19,061	19,858	23,640	24,351
Washington-----	33,517	35,167	51,566	48,991	10,653	10,970	14,247	14,153
Oregon-----	28,598	29,653	46,985	45,291	9,671	9,443	11,756	11,456
California-----	52,087	57,552	103,240	104,595	25,035	28,381	39,572	42,803
Hawaii-----	1,160	1,018	1,582	1,430	422	431	1,676	1,693
Alaska-----	307	240	516	380	130	120	158	138
Pacific-----	115,669	123,630	203,889	200,687	45,911	49,345	67,409	70,243
United States-----	2,396,017	2,556,674	4,601,172	4,489,291	147,159	161,082	185,612	199,228

Table 3.-- Tractors, other than garden and motortillers, and garden tractors and motortillers: Farms reporting and number reported, by State and region, 1964 and 1959

State and region	Tractors, other than garden and motortillers				Garden tractors and motortillers	
	Farms reporting		Number		Farms reporting	Number
	1964	1959	1964	1959	1964	1964
	Number	Number	Number	Number	Number	Number
Maine-----	9,165	11,086	16,290	17,817	3,316	3,613
New Hampshire-----	3,365	4,140	6,253	6,605	1,391	1,577
Vermont-----	7,861	9,596	16,333	16,674	2,072	2,278
Massachusetts-----	5,732	6,783	11,575	12,064	2,332	2,893
Rhode Island-----	786	917	1,667	1,850	316	450
Connecticut-----	4,480	5,559	9,963	11,174	2,105	2,623
New York-----	60,059	70,215	136,304	138,679	18,100	21,140
New Jersey-----	8,429	10,731	22,042	24,735	3,099	3,841
Pennsylvania-----	72,641	82,499	144,149	144,773	25,478	29,088
Delaware-----	3,489	4,041	7,992	8,259	1,372	1,525
Maryland-----	17,633	19,919	37,203	37,189	6,507	7,550
Northeast-----	193,640	225,486	409,771	419,619	66,108	76,578
Michigan-----	86,322	99,421	169,920	169,842	30,621	33,857
Wisconsin-----	110,870	119,928	247,427	234,422	35,124	37,666
Minnesota-----	123,561	133,047	284,887	275,890	21,817	22,935
Lake States-----	320,753	352,396	702,234	680,154	87,562	94,458
Ohio-----	104,308	115,327	199,694	204,681	44,204	49,076
Indiana-----	94,155	105,689	181,086	186,867	45,278	49,953
Illinois-----	122,147	135,976	287,480	289,997	42,456	47,121
Iowa-----	143,210	157,368	329,172	327,880	22,037	23,295
Missouri-----	118,838	123,993	198,095	191,569	54,657	57,709
Corn Belt-----	582,658	638,353	1,195,527	1,200,994	208,632	227,154
North Dakota-----	46,488	51,781	122,056	121,020	7,557	8,026
South Dakota-----	46,500	50,774	120,100	115,651	4,708	4,909
Nebraska-----	74,114	81,437	180,423	175,242	8,879	9,266
Kansas-----	83,469	91,355	174,185	173,653	18,716	20,012
Northern Plains-----	250,571	275,347	596,764	585,566	39,862	42,213
Virginia-----	50,008	50,322	78,989	75,173	22,190	24,354
West Virginia-----	18,322	17,660	23,926	21,995	14,397	15,556
North Carolina-----	96,549	102,732	149,850	140,647	13,667	14,414
Kentucky-----	82,835	77,347	118,404	103,424	24,507	25,706
Tennessee-----	77,700	74,087	108,319	97,801	27,944	29,447
Appalachian-----	325,414	322,148	479,488	439,040	102,705	109,477
South Carolina-----	31,543	33,767	50,931	48,636	3,360	3,561
Georgia-----	56,079	60,711	89,049	89,426	7,090	7,453
Florida-----	22,583	20,813	41,295	35,814	3,501	4,241
Alabama-----	51,330	51,900	71,925	67,549	6,749	7,094
Southeast-----	161,535	167,191	253,200	241,425	20,700	22,349
Mississippi-----	51,740	51,348	90,347	84,299	4,624	4,810
Arkansas-----	49,474	47,920	90,993	83,827	12,985	13,566
Louisiana-----	34,535	32,387	60,618	53,227	3,648	3,902
Delta States-----	135,749	131,655	241,958	221,353	21,257	22,278
Oklahoma-----	62,430	64,825	101,605	102,315	14,094	14,723
Texas-----	147,758	153,147	269,519	268,175	14,223	15,016
Southern Plains-----	210,188	217,972	371,124	370,490	28,317	29,739
Montana-----	24,216	25,623	61,832	59,509	7,042	7,599
Idaho-----	25,945	27,922	58,607	56,966	6,411	6,900
Wyoming-----	7,839	8,234	21,596	20,754	1,356	1,457
Colorado-----	25,920	27,955	63,906	64,041	3,411	3,765
New Mexico-----	9,086	9,080	17,919	17,136	846	931
Arizona-----	4,257	4,549	13,747	13,443	513	586
Utah-----	12,731	13,641	22,256	21,802	2,537	2,678
Nevada-----	1,829	1,834	5,557	5,297	224	237
Mountain-----	111,823	118,838	265,420	258,948	22,340	24,153
Washington-----	35,883	38,542	65,813	63,144	15,935	17,369
Oregon-----	30,707	31,976	58,741	56,747	15,972	17,517
California-----	58,252	65,606	142,817	147,398	13,175	14,726
Hawaii-----	1,371	1,226	3,258	3,123	597	779
Alaska-----	314	278	674	518	108	112
Pacific-----	126,527	137,628	271,303	270,930	45,787	50,503
United States-----	2,418,858	2,587,014	4,786,789	4,688,519	643,270	698,902

Table 4.--Automobiles and mototrucks: Farms reporting and number reported, by State and region, 1964 and 1959

State and region	Automobiles				Mototrucks			
	Farms reporting		Number		Farms reporting		Number	
	1964	1959	1964	1959	1964	1959	1964	1959
	Number	Number	Number	Number	Number	Number	Number	Number
Maine	11,336	14,364	14,975	17,217	9,232	11,617	14,753	17,312
New Hampshire	4,152	5,400	5,911	6,790	3,355	4,607	5,556	6,801
Vermont	8,241	10,480	11,568	13,156	5,976	7,625	8,114	9,987
Massachusetts	7,107	9,348	10,278	12,267	5,799	7,242	10,603	12,338
Rhode Island	991	1,217	1,630	1,637	873	1,084	1,779	1,913
Connecticut	5,575	7,206	9,176	10,452	4,723	6,049	9,928	10,986
New York	60,816	73,173	84,442	93,160	42,667	47,589	62,893	66,505
New Jersey	9,663	13,446	15,081	18,572	8,603	11,552	17,323	20,934
Pennsylvania	74,508	86,381	109,701	113,237	53,646	57,714	69,503	71,393
Delaware	3,984	4,630	5,681	5,995	3,250	3,523	5,216	5,309
Maryland	18,473	21,538	27,557	28,387	14,405	15,528	21,264	21,215
Northeast	204,846	247,183	296,000	320,870	152,529	174,130	226,932	244,693
Michigan	87,598	102,265	122,118	130,727	63,127	63,644	80,489	75,730
Wisconsin	112,875	122,579	154,439	153,260	82,026	80,578	97,015	90,625
Minnesota	126,067	135,668	174,615	171,058	90,745	87,413	112,509	103,452
Lake States	326,540	360,512	451,172	455,045	235,898	231,635	290,013	269,807
Ohio	110,929	125,191	159,705	161,605	73,571	69,877	91,388	81,518
Indiana	99,491	113,840	137,098	140,275	77,710	76,147	99,003	88,122
Illinois	124,960	141,898	166,026	172,551	98,681	99,599	120,903	113,470
Iowa	148,999	165,676	201,142	205,285	96,987	97,436	106,699	99,514
Missouri	123,580	133,805	150,336	151,059	99,672	95,471	123,002	109,709
Corn Belt	607,959	680,410	814,307	830,775	446,621	433,530	540,995	492,333
North Dakota	46,481	51,387	65,151	66,655	44,557	48,366	81,570	75,424
South Dakota	47,187	51,759	65,567	66,539	39,197	39,087	56,517	52,284
Nebraska	76,570	85,093	105,870	110,324	64,014	63,933	93,123	83,437
Kansas	85,823	94,926	114,670	118,566	79,545	83,330	133,983	122,302
Northern Plains	256,061	283,165	351,258	362,084	227,313	234,716	365,193	333,447
Virginia	59,240	65,048	77,827	77,955	46,461	47,868	59,234	58,015
West Virginia	23,776	27,045	28,947	30,649	20,292	21,265	24,129	24,699
North Carolina	115,818	134,084	151,234	153,994	84,014	81,093	101,073	91,068
Kentucky	101,754	102,000	130,609	116,654	74,198	65,878	90,478	74,962
Tennessee	96,749	100,902	122,444	114,484	73,598	68,981	86,281	76,839
Appalachian	397,337	429,079	511,061	493,736	298,563	285,085	361,195	325,583
South Carolina	43,925	55,813	58,307	65,571	29,913	32,626	38,965	39,102
Georgia	67,280	75,743	89,848	88,313	57,158	60,623	76,625	72,795
Florida	30,888	32,928	42,889	41,817	21,983	23,449	40,554	36,343
Alabama	64,710	67,136	82,133	75,935	55,970	55,267	69,515	63,411
Southeast	206,403	231,620	273,177	271,636	167,024	171,965	225,659	211,651
Mississippi	71,102	72,867	88,037	81,814	60,583	61,475	75,089	71,338
Arkansas	52,768	51,962	64,982	58,231	59,715	59,337	80,581	73,171
Louisiana	46,102	48,179	56,454	54,741	39,691	38,803	51,295	47,153
Delta States	169,972	173,008	209,473	194,786	159,989	159,615	206,965	191,662
Oklahoma	71,067	71,578	86,757	82,558	73,158	70,487	105,096	92,641
Texas	162,992	176,715	204,569	210,793	152,046	149,821	211,041	197,812
Southern Plains	234,059	248,293	291,326	293,351	225,204	220,303	316,137	290,453
Montana	24,513	25,775	35,081	34,858	25,212	25,948	58,214	52,793
Idaho	27,226	30,236	36,935	38,268	25,859	27,100	48,326	43,983
Wyoming	8,029	8,427	11,495	11,491	8,330	8,720	17,737	16,239
Colorado	27,121	29,568	38,674	39,851	27,136	28,728	55,862	51,699
New Mexico	10,671	10,735	14,928	13,939	12,179	12,486	23,436	20,263
Arizona	5,193	5,861	10,925	9,685	5,326	5,638	17,174	16,798
Utah	13,934	15,728	19,178	19,960	13,122	13,556	20,316	18,823
Nevada	1,794	1,875	2,722	2,949	1,952	2,009	4,478	4,511
Mountain	118,481	128,205	169,938	171,001	119,126	124,185	245,543	225,109
Washington	41,783	46,262	59,763	61,108	36,438	37,222	64,154	60,220
Oregon	35,849	37,258	49,430	47,381	31,906	30,375	53,598	48,930
California	71,508	87,543	110,160	127,126	63,674	70,505	126,119	131,019
Hawaii	3,822	4,464	5,994	6,402	2,831	3,380	7,012	7,754
Alaska	298	254	411	338	332	281	609	516
Pacific	153,260	175,781	223,758	242,355	133,181	141,763	251,492	248,439
United States	2,674,918	2,957,256	3,593,470	3,635,639	2,167,448	2,176,932	3,030,124	2,833,177

Table 5.--Grain and bean combines: Farms reporting and number reported, by State and region, 1964 and 1959

State and region	Grain and bean combines				Pull type 1/	
	Farms reporting		Number		Farms reporting	Number
	1964	1959	1964	1959	1964	1964
	Number	Number	Number	Number	Number	Number
Moine-----	839	1,058	875	1,062	730	747
New Hampshire-----	23	34	27	39	23	23
Vermont-----	323	413	344	431	263	282
Massachusetts-----	70	98	70	98	59	59
Rhode Island-----	19	23	20	24	16	17
Connecticut-----	75	105	77	112	47	48
New York-----	15,083	18,038	16,536	18,702	12,594	13,241
New Jersey-----	1,633	2,173	1,726	2,239	1,214	1,240
Pennsylvania-----	23,146	26,092	23,939	26,436	18,710	18,892
Delaware-----	1,539	1,776	1,780	1,903	1,016	1,145
Maryland-----	4,823	5,661	5,237	5,934	3,255	3,373
Northeast-----	47,573	55,471	50,631	56,980	37,927	39,067
Michigan-----	38,851	44,375	41,360	45,804	31,227	32,529
Wisconsin-----	44,449	44,381	45,516	44,992	39,397	39,809
Minnesota-----	68,248	70,595	71,748	73,288	54,731	56,226
Lake States-----	151,548	159,351	158,624	164,084	125,355	128,564
Ohio-----	47,999	55,369	50,291	57,070	37,393	38,463
Indiana-----	44,318	52,715	46,395	54,277	31,217	31,922
Illinois-----	75,604	89,861	80,857	93,361	48,006	49,611
Iowa-----	83,738	97,992	86,178	99,654	72,887	74,136
Missouri-----	41,450	49,845	44,535	52,002	27,496	28,259
Corn Belt-----	293,109	345,776	308,256	356,364	216,999	222,391
North Dakota-----	36,440	43,396	41,782	48,726	16,350	17,524
South Dakota-----	26,659	31,599	28,289	33,206	17,965	18,475
Nebraska-----	40,205	50,701	43,205	53,341	21,663	22,086
Kansas-----	52,897	64,890	59,813	72,115	18,478	19,229
Northern Plains-----	156,201	190,586	173,089	207,388	74,456	77,314
Virginia-----	8,640	9,751	9,281	10,128	6,845	7,011
West Virginia-----	954	923	1,020	951	701	716
North Carolina-----	13,572	16,565	14,847	17,338	10,082	10,375
Kentucky-----	8,824	9,998	9,737	10,617	6,841	7,198
Tennessee-----	10,447	12,074	11,537	13,003	8,264	8,607
Appalachian-----	42,437	49,411	46,422	52,037	32,733	33,907
South Carolina-----	6,326	7,800	7,085	8,595	4,468	4,632
Georgia-----	7,613	9,285	9,177	10,340	5,806	6,562
Florida-----	1,016	908	1,230	1,045	548	592
Alabama-----	4,180	4,608	4,806	5,116	3,048	3,281
Southeast-----	19,135	22,601	22,298	25,096	13,870	15,087
Mississippi-----	4,532	6,024	6,099	7,369	1,455	1,608
Arkansas-----	9,954	11,467	13,086	13,755	2,524	2,669
Louisiana-----	3,953	4,096	5,145	5,078	1,292	1,436
Delta States-----	18,439	21,587	24,330	26,202	5,271	5,713
Oklahoma-----	18,796	24,340	21,668	27,037	7,407	7,771
Texas-----	26,386	35,513	31,355	40,699	13,601	14,455
Southern Plains-----	45,182	59,853	53,023	67,736	21,008	22,226
Montana-----	12,912	14,934	16,011	18,063	3,559	3,745
Idaho-----	9,337	11,021	11,330	12,703	3,665	3,933
Wyoming-----	2,682	3,385	2,962	3,764	1,734	1,801
Colorado-----	9,161	11,563	11,062	13,794	3,700	3,919
New Mexico-----	1,534	2,025	1,898	2,358	890	965
Arizona-----	442	559	559	829	110	133
Utah-----	2,184	2,945	2,421	3,136	1,101	1,128
Nevada-----	248	366	277	402	162	173
Mountain-----	38,500	46,798	46,520	55,049	14,921	15,797
Washington-----	7,119	8,452	9,706	10,799	2,759	3,101
Oregon-----	6,861	9,112	8,372	10,592	3,093	3,317
California-----	4,959	5,830	8,364	9,178	1,917	2,330
Hawaii-----	---	---	---	---	---	---
Alaska-----	47	25	52	26	26	27
Pacific-----	18,986	23,419	26,494	30,595	7,795	8,775
United States-----	831,110	974,853	909,687	1,041,531	550,335	568,841

1/ Not reported for 1959.



Table 6.--Self-propelled combines and cornpickers: Farms reporting and number reported, by State and region, 1964 and 1959

State and region	Self-propelled combines 1/		Cornpickers			
	Farms reporting	Number	Farms reporting		Number	
	1964	1964	1964	1959	1964	1959
	Number	Number	Number	Number	Number	Number
Maine-----	125	128	41	48	44	48
New Hampshire-----	4	4	14	25	14	25
Vermont-----	61	62	55	73	55	73
Massachusetts-----	11	11	72	100	73	100
Rhode Island-----	3	3	15	51	16	51
Connecticut-----	29	29	63	81	63	81
New York-----	3,135	3,295	6,346	6,636	6,600	6,819
New Jersey-----	459	486	1,921	2,101	2,029	2,179
Pennsylvania-----	4,860	5,047	21,349	21,642	21,757	22,074
Delaware-----	575	635	1,560	1,898	1,682	2,006
Maryland-----	1,771	1,864	4,849	5,483	5,155	5,716
Northeast-----	11,033	11,564	36,285	38,138	37,488	39,172
Michigan-----	8,643	8,831	30,285	30,822	31,036	31,294
Wisconsin-----	5,558	5,707	36,127	34,533	36,934	35,184
Minnesota-----	14,751	15,522	62,830	70,813	64,726	73,035
Lake States-----	28,952	30,060	129,242	136,168	132,696	139,513
Ohio-----	11,548	11,828	50,914	58,367	52,684	59,843
Indiana-----	13,990	14,473	52,078	65,215	54,876	67,285
Illinois-----	30,108	31,246	84,122	100,168	92,109	105,542
Iowa-----	11,731	12,042	99,660	121,598	102,803	125,254
Missouri-----	15,307	16,276	38,321	44,762	40,415	46,265
Corn Belt-----	82,684	85,865	325,095	390,110	342,887	404,129
North Dakota-----	21,738	24,258	4,799	6,698	4,940	6,850
South Dakota-----	9,224	9,814	25,460	31,327	26,332	32,234
Nebraska-----	19,891	21,119	42,411	56,183	44,152	58,542
Kansas-----	36,882	40,584	16,245	21,454	16,862	21,982
Northern Plains-----	87,735	95,775	88,915	115,662	92,286	119,608
Virginia-----	2,107	2,270	6,503	7,647	6,803	7,914
West Virginia-----	287	304	1,034	1,143	1,068	1,177
North Carolina-----	4,010	4,472	9,139	10,175	9,620	10,494
Kentucky-----	2,308	2,539	15,726	16,336	16,291	16,697
Tennessee-----	2,609	2,930	9,229	8,344	9,500	8,538
Appalachian-----	11,321	12,515	41,631	43,645	43,282	44,820
South Carolina-----	2,061	2,453	1,815	1,688	1,941	1,771
Georgia-----	2,282	2,595	8,981	9,410	9,422	9,702
Florida-----	535	638	1,962	1,846	2,070	1,903
Alabama-----	1,368	1,525	6,333	5,474	6,558	5,612
Southeast-----	6,246	7,211	19,091	18,418	19,991	18,988
Mississippi-----	3,218	4,491	3,229	3,386	3,346	3,584
Arkansas-----	7,691	10,417	1,129	1,580	1,183	1,660
Louisiana-----	2,829	3,709	1,163	1,300	1,228	1,359
Delta States-----	13,738	18,617	5,521	6,266	5,757	6,603
Oklahoma-----	12,095	13,897	1,703	2,362	1,723	2,426
Texas-----	13,862	16,900	7,425	9,584	7,654	9,900
Southern Plains-----	25,957	30,797	9,128	11,946	9,377	12,326
Montana-----	9,953	12,266	176	226	180	228
Idaho-----	6,553	7,397	518	467	556	475
Wyoming-----	1,051	1,161	330	281	336	287
Colorado-----	6,003	7,143	3,024	3,768	3,157	3,954
New Mexico-----	776	933	144	122	157	125
Arizona-----	344	526	45	92	48	102
Utah-----	1,193	1,293	113	102	118	103
Nevada-----	96	104	18	13	18	14
Mountain-----	25,969	30,723	4,368	5,071	4,570	5,288
Washington-----	5,309	6,605	353	402	380	423
Oregon-----	4,190	5,055	379	430	390	442
California-----	3,670	6,036	543	749	694	995
Hawaii-----	---	---	---	---	---	---
Alaska-----	21	25	---	---	---	---
Pacific-----	13,190	17,721	1,275	1,581	1,464	1,860
United States-----	306,825	340,848	660,551	767,005	689,798	792,307

1/ Not reported in 1959.

Table 7.—Pickup balers and field forage harvesters: Farms reporting and number reported, by State and region, 1964 and 1959

State and region	Pickup balers				Field forage harvesters			
	Farms reporting		Number		Farms reporting		Number	
	1964	1959	1964	1959	1964	1959	1964	1959
	Number	Number	Number	Number	Number	Number	Number	Number
Maine	3,268	3,089	3,335	3,137	816	805	998	837
New Hampshire	1,653	1,664	1,681	1,678	616	757	747	799
Vermont	5,625	5,145	5,796	5,210	2,064	1,945	2,358	2,080
Massachusetts	2,268	2,315	2,343	2,384	1,159	1,357	1,412	1,479
Rhode Island	239	242	244	247	166	181	232	197
Connecticut	1,926	2,057	1,971	2,110	1,267	1,579	1,561	1,667
New York	36,992	36,054	38,107	36,724	17,542	17,128	20,710	18,094
New Jersey	2,983	3,149	3,073	3,258	1,734	1,918	2,181	2,109
Pennsylvania	41,361	38,128	41,873	38,496	17,290	14,179	20,794	14,995
Delaware	660	843	664	856	372	320	475	362
Maryland	6,725	6,497	6,845	6,599	3,063	2,430	3,961	2,635
Northeast	103,700	99,183	105,936	100,699	46,089	42,599	55,429	45,254
Michigan	31,196	28,240	31,502	28,424	12,402	11,483	15,077	12,201
Wisconsin	63,505	53,661	63,921	53,851	39,313	36,046	48,149	37,994
Minnesota	55,634	45,370	55,896	45,578	23,372	22,128	26,024	22,860
Lake States	150,335	127,271	151,319	127,853	75,087	69,657	89,250	73,055
Ohio	43,340	41,492	43,607	41,804	10,069	9,645	11,759	10,161
Indiana	25,226	25,659	25,459	25,839	6,788	7,962	7,523	8,244
Illinois	37,800	38,471	38,163	38,797	14,200	14,869	16,295	15,513
Iowa	59,684	58,194	60,111	58,563	18,905	18,429	20,937	19,031
Missouri	35,569	31,332	36,265	31,702	8,761	9,940	9,315	10,282
Corn Belt	201,619	195,148	203,605	196,705	58,723	60,845	65,829	63,231
North Dakota	15,681	13,699	15,823	13,899	9,314	9,946	9,555	10,234
South Dakota	14,277	12,981	14,441	13,117	10,537	9,999	10,810	10,195
Nebraska	19,598	18,414	19,907	18,684	12,519	10,898	13,268	11,239
Kansas	27,607	24,198	28,086	24,595	15,752	16,799	17,035	17,610
Northern Plains	77,163	69,292	78,257	70,295	48,122	47,642	50,668	49,278
Virginia	15,759	14,148	16,105	14,419	4,040	3,657	4,450	3,863
West Virginia	7,279	5,368	7,362	5,459	1,020	1,036	1,155	1,065
North Carolina	10,194	9,942	10,322	10,087	3,046	3,144	3,365	3,405
Kentucky	21,126	18,155	21,476	18,397	2,874	2,999	3,157	3,144
Tennessee	14,917	12,836	15,234	13,102	2,725	2,895	3,002	2,999
Appalachian	69,275	60,449	70,499	61,464	13,705	13,731	15,129	14,476
South Carolina	4,382	4,212	4,468	4,325	963	1,246	1,139	1,313
Georgia	6,752	5,742	6,917	5,875	1,438	1,489	1,696	1,651
Florida	1,370	986	1,419	1,031	426	552	543	695
Alabama	6,050	4,220	6,231	4,365	1,070	1,006	1,233	1,097
Southeast	18,554	15,160	19,035	15,596	3,877	4,293	4,611	4,756
Mississippi	6,353	5,853	6,618	6,060	1,482	1,922	1,697	2,121
Arkansas	6,341	6,086	6,456	6,206	1,033	1,410	1,181	1,554
Louisiana	4,834	3,824	5,064	3,987	650	600	775	923
Delta States	17,528	15,763	18,138	16,253	3,165	4,132	3,653	4,598
Oklahoma	12,511	10,998	12,965	11,352	2,614	3,751	2,820	4,034
Texas	14,961	12,932	15,737	13,589	3,975	5,726	4,643	6,357
Southern Plains	27,472	23,930	28,702	24,941	6,589	9,477	7,463	10,391
Montana	10,968	8,884	11,458	9,212	1,621	1,898	1,736	2,094
Idaho	12,739	11,089	13,072	11,313	2,509	2,793	2,696	2,963
Wyoming	4,077	3,319	4,259	3,500	970	890	1,086	996
Colorado	9,249	7,822	9,600	8,090	4,531	4,937	5,252	5,426
New Mexico	2,076	1,994	2,340	2,150	428	612	560	728
Arizona	899	858	1,001	995	398	594	556	784
Utah	6,243	5,777	6,389	5,891	1,765	2,119	1,989	2,252
Nevada	1,092	949	1,264	1,116	229	255	291	313
Mountain	47,363	40,693	49,383	42,267	12,451	14,098	14,166	15,566
Washington	9,510	7,945	9,759	8,096	3,164	3,410	3,734	3,729
Oregon	7,750	6,315	8,007	6,483	2,088	2,286	2,419	2,490
California	7,640	8,284	8,389	9,168	2,342	3,179	3,189	3,984
Hawaii	17	9	18	22	29	62	39	94
Alaska	102	---	103	---	138	86	169	109
Pacific	25,019	22,553	26,276	23,769	7,761	9,023	9,550	10,406
United States	738,028	669,442	751,150	679,842	275,569	275,497	315,748	291,011

Table 8.—Field forage harvesters: Cylinder or fly-wheel type and flail type, farms reporting and number reported, by State and region, 1964 <sup>1/</sup>

State and region	Cylinder or fly-wheel type		Flail type	
	Farms reporting	Number	Farms reporting	Number
	1964	1964	1964	1964
	Number	Number	Number	Number
Maine	655	667	326	331
New Hampshire	521	544	199	203
Vermont	1,865	1,902	445	456
Massachusetts	1,041	1,096	311	316
Rhode Island	159	199	27	33
Connecticut	1,202	1,271	287	290
New York	16,194	16,820	3,845	3,890
New Jersey	1,656	1,811	370	370
Pennsylvania	13,964	14,422	6,342	6,372
Delaware	316	320	154	155
Maryland	2,615	2,723	1,227	1,238
Northeast	40,128	41,775	13,533	13,654
Michigan	10,520	10,846	4,197	4,231
Wisconsin	34,520	35,534	12,521	12,615
Minnesota	20,356	20,637	5,338	5,387
Lake States	65,396	67,017	22,056	22,233
Ohio	8,184	8,402	3,329	335
Indiana	6,023	6,206	1,298	1,317
Illinois	12,430	12,789	3,485	3,506
Iowa	15,746	15,954	4,956	4,983
Missouri	8,279	8,436	862	879
Corn Belt	50,662	51,787	13,930	14,042
North Dakota	8,890	8,987	565	568
South Dakota	10,091	10,172	630	638
Nebraska	11,750	11,988	1,265	1,280
Kansas	14,789	15,256	1,755	1,779
Northern Plains	45,520	46,403	4,215	4,265
Virginia	3,789	3,944	488	506
West Virginia	927	976	166	179
North Carolina	2,816	2,955	403	410
Kentucky	2,690	2,802	349	355
Tennessee	2,486	2,573	405	429
Appalachian	12,708	13,250	1,811	1,879
South Carolina	858	952	180	187
Georgia	1,227	1,361	310	335
Florida	322	367	145	176
Alabama	925	1,019	207	214
Southeast	3,332	3,699	842	912
Mississippi	1,307	1,427	258	270
Arkansas	893	1,001	170	180
Louisiana	566	644	120	131
Delta States	2,766	3,072	548	581
Oklahoma	2,246	2,336	477	484
Texas	3,269	3,630	929	1,013
Southern Plains	5,515	5,966	1,406	1,497
Montana	1,386	1,452	278	284
Idaho	2,182	2,245	436	451
Wyoming	856	902	179	184
Colorado	4,146	4,419	823	833
New Mexico	363	435	111	125
Arizona	294	366	156	190
Utah	1,608	1,663	318	326
Nevada	193	213	75	78
Mountain	11,028	11,695	2,376	2,471
Washington	2,106	2,242	1,455	1,492
Oregon	1,521	1,658	730	761
California	1,544	1,901	1,197	1,288
Hawaii	17	25	13	14
Alaska	19	46	113	123
Pacific	5,227	5,872	3,508	3,676
United States	242,282	250,536	64,225	65,212

<sup>1/</sup> Not reported in 1959.

Table 9.--Hay conditioners and crop driers: Farms reporting and number of hay conditioners reported, 1964, and farms reporting crop driers, by State and region, 1964 and 1959

State and region	Hay conditioners 1/		Crop driers	
	Farms reporting	Number	Farms reporting	
	1964	1964	1964	1959
	<u>Number</u>	<u>Number</u>	<u>Number</u>	<u>Number</u>
Maine-----	1,218	1,233	259	273
New Hampshire-----	731	751	106	133
Vermont-----	3,103	3,146	428	457
Massachusetts-----	1,025	1,048	217	213
Rhode Island-----	74	74	17	25
Connecticut-----	998	1,012	116	257
New York-----	19,277	19,534	2,578	2,485
New Jersey-----	1,468	1,487	197	157
Pennsylvania-----	18,741	18,938	3,423	3,446
Delaware-----	214	215	111	106
Maryland-----	2,865	2,911	420	331
Northeast-----	49,714	50,349	7,872	7,883
Michigan-----	10,409	10,454	2,283	1,375
Wisconsin-----	32,306	32,375	2,804	2,761
Minnesota-----	14,205	14,236	6,484	3,877
Lake States-----	56,920	57,065	11,571	8,013
Ohio-----	12,503	12,556	4,453	3,344
Indiana-----	5,180	5,190	5,761	2,634
Illinois-----	8,560	8,593	9,452	3,292
Iowa-----	8,161	8,196	3,165	3,813
Missouri-----	3,451	3,487	3,419	1,975
Corn Belt-----	37,855	38,022	31,050	15,058
North Dakota-----	549	697	772	511
South Dakota-----	670	690	2,065	768
Nebraska-----	1,447	1,509	6,880	3,634
Kansas-----	2,258	2,288	2,456	1,739
Northern Plains-----	4,924	5,184	12,173	6,652
Virginia-----	4,339	4,422	1,385	858
West Virginia-----	1,558	1,572	164	210
North Carolina-----	2,138	2,170	2,057	984
Kentucky-----	3,413	3,478	1,346	681
Tennessee-----	2,720	2,743	750	598
Appalachian-----	14,168	14,385	5,702	3,331
South Carolina-----	629	662	229	316
Georgia-----	831	857	1,207	831
Florida-----	262	270	297	475
Alabama-----	1,205	1,233	594	410
Southeast-----	2,927	3,022	2,327	2,032
Mississippi-----	1,365	1,390	459	521
Arkansas-----	979	997	523	1,039
Louisiana-----	1,164	1,204	337	287
Delta States-----	3,508	3,591	1,319	1,847
Oklahoma-----	1,820	1,875	251	241
Texas-----	4,493	4,666	851	1,460
Southern Plains-----	6,313	6,541	1,102	1,701
Montana-----	907	925	112	162
Idaho-----	1,361	1,407	90	112
Wyoming-----	409	424	31	32
Colorado-----	986	1,018	392	327
New Mexico-----	600	626	27	34
Arizona-----	344	393	7	71
Utah-----	746	765	41	43
Nevada-----	219	233	1	5
Mountain-----	5,572	5,791	701	786
Washington-----	1,577	1,636	257	421
Oregon-----	1,189	1,238	163	397
California-----	2,015	2,221	1,912	2,588
Hawaii-----	2	3	31	519
Alaska-----	44	44	30	15
Pacific-----	4,827	5,142	2,393	3,940
United States-----	186,728	189,092	76,210	51,243

1/ Not reported in 1959.

Table 10.--Farms reporting milking machines, 1964 and 1959, and bulk milk tanks, 1964, by State and region

State and region	Milking machines		Bulk milk tanks <sup>1/</sup>
	Farms reporting		Farms reporting
	1964	1959	1964
	Number	Number	Number
Maine-----	2,999	4,307	2,085
New Hampshire-----	1,691	2,427	1,048
Vermont-----	6,561	8,840	4,698
Massachusetts-----	2,408	3,241	1,702
Rhode Island-----	297	428	235
Connecticut-----	2,034	2,810	1,531
New York-----	33,390	45,074	10,917
New Jersey-----	1,982	3,008	1,365
Pennsylvania-----	28,669	37,045	12,324
Delaware-----	551	980	312
Maryland-----	4,166	5,697	3,215
Northeast-----	84,748	113,857	39,432
Michigan-----	24,541	37,718	11,884
Wisconsin-----	80,875	94,133	29,919
Minnesota-----	61,453	71,760	18,065
Lake States-----	166,869	203,611	59,848
Ohio-----	22,390	35,402	11,118
Indiana-----	13,245	24,339	6,383
Illinois-----	16,478	26,362	8,213
Iowa-----	38,939	46,967	10,855
Missouri-----	18,295	23,637	4,148
Corn Belt-----	109,347	156,707	40,717
North Dakota-----	12,329	14,952	1,635
South Dakota-----	10,230	11,301	4,256
Nebraska-----	11,919	15,513	4,417
Kansas-----	9,931	16,416	3,162
Northern Plains-----	44,409	58,182	13,470
Virginia-----	5,587	6,455	2,695
West Virginia-----	2,385	2,835	1,093
North Carolina-----	3,817	5,270	2,699
Kentucky-----	12,972	12,924	4,473
Tennessee-----	9,823	11,028	3,363
Appalachian-----	34,584	38,512	14,323
South Carolina-----	1,062	1,724	765
Georgia-----	2,011	2,733	1,685
Florida-----	634	832	550
Alabama-----	1,666	2,250	1,148
Southeast-----	5,373	7,539	4,148
Mississippi-----	4,307	5,843	2,379
Arkansas-----	3,474	4,907	1,107
Louisiana-----	2,485	2,936	2,302
Delta States-----	10,266	13,680	5,788
Oklahoma-----	4,587	8,230	2,658
Texas-----	5,089	7,967	4,549
Southern Plains-----	9,676	16,197	7,207
Montana-----	2,273	3,405	466
Idaho-----	8,717	13,479	1,451
Wyoming-----	597	1,022	147
Colorado-----	2,401	4,542	1,233
New Mexico-----	316	611	215
Arizona-----	345	498	262
Utah-----	2,817	4,120	1,220
Nevada-----	204	366	130
Mountain-----	17,670	28,043	5,124
Washington-----	5,918	10,272	3,788
Oregon-----	4,736	8,035	1,259
California-----	6,476	11,448	4,288
Hawaii-----	63	75	50
Alaska-----	85	85	61
Pacific-----	17,278	29,915	9,446
United States-----	500,220	666,243	199,503

<sup>1/</sup> Comparable data not reported in 1959.

Table 11.- Machine hire, custom and contract work: Farms reporting and dollar expenditures, by State and region, 1964 and 1959

State and region	Farms reporting		Expenditures	
	1964	1959	1964	1959
	Number	Number	1,000 dollars	1,000 dollars
Maine-----	4,437	5,407	1,285	1,133
New Hampshire-----	1,225	1,765	320	329
Vermont-----	3,329	4,992	853	1,097
Massachusetts-----	2,438	2,999	900	779
Rhode Island-----	275	363	80	130
Connecticut-----	1,860	2,337	774	743
New York-----	31,109	39,563	10,852	8,855
New Jersey-----	3,687	4,833	2,433	1,638
Pennsylvania-----	44,362	51,364	11,261	10,213
Delaware-----	2,266	2,689	1,093	870
Maryland-----	10,612	12,209	3,690	3,271
Northeast-----	105,600	128,521	33,541	29,058
Michigan-----	53,124	61,052	15,661	13,954
Wisconsin-----	74,686	85,577	16,579	17,043
Minnesota-----	84,575	90,825	24,080	21,941
Lake States-----	212,385	237,454	56,320	52,938
Ohio-----	66,489	71,011	16,943	14,039
Indiana-----	64,845	64,615	19,152	14,321
Illinois-----	87,750	82,931	35,011	24,540
Iowa-----	109,283	105,239	37,345	28,898
Missouri-----	82,996	88,834	28,423	31,062
Corn Belt-----	411,353	412,630	136,874	112,860
North Dakota-----	27,317	25,879	12,539	8,305
South Dakota-----	33,672	31,261	14,724	9,427
Nebraska-----	52,990	54,882	23,226	20,404
Kansas-----	58,732	61,824	30,187	29,790
Northern Plains-----	172,711	173,846	80,676	67,926
Virginia-----	35,685	43,532	8,532	7,541
West Virginia-----	10,770	12,998	1,436	1,507
North Carolina-----	77,947	113,050	20,275	17,793
Kentucky-----	59,254	61,552	12,284	10,362
Tennessee-----	60,276	82,487	15,449	17,249
Appalachian-----	243,932	313,619	57,976	54,452
South Carolina-----	22,468	55,953	7,407	10,631
Georgia-----	35,431	58,139	16,750	17,145
Florida-----	19,231	19,564	62,053	23,278
Alabama-----	31,180	73,216	11,777	15,288
Southeast-----	108,310	206,872	97,987	66,342
Mississippi-----	38,640	92,416	18,418	33,033
Arkansas-----	31,114	49,393	19,563	35,983
Louisiana-----	17,661	32,832	11,177	13,013
Delta States-----	87,415	174,641	49,158	82,029
Oklahoma-----	42,464	46,128	24,395	25,434
Texas-----	107,203	130,845	81,095	126,531
Southern Plains-----	149,667	176,973	105,490	151,965
Montana-----	12,795	12,624	9,368	7,975
Idaho-----	11,486	20,068	13,095	11,433
Wyoming-----	4,327	4,084	3,276	2,388
Colorado-----	16,681	17,970	13,026	13,181
New Mexico-----	5,694	6,134	4,460	7,257
Arizona-----	3,164	3,832	15,908	18,810
Utah-----	9,574	10,431	3,284	3,591
Nevada-----	976	961	1,663	1,141
Mountain-----	71,697	76,104	64,080	65,776
Washington-----	19,356	22,522	12,121	11,048
Oregon-----	17,021	17,632	10,290	8,548
California-----	42,122	46,494	161,470	99,472
Hawaii-----	870	1,240	3,018	2,158
Alaska-----	146	119	67	46
Pacific-----	79,515	88,007	186,966	121,252
United States-----	1,642,595	1,988,667	869,068	804,598

Table 12.--Expenditures for gasoline and other petroleum fuel and oil for the farm business, by State and region, 1954, 1959, and 1964

State and region	Current dollars <sup>1/</sup>			1957-59 dollars <sup>2/</sup>			Change from--	
	1954	1959	1964	1954	1959	1964	1954 to 1959 <sup>3/</sup>	1959 to 1964
	Thous.	Thous.	Thous.	Thous.	Thous.	Thous.	Percent	Percent
Maine-----	5,329	5,584	6,098	5,669	5,584	6,038	- 1.5	8.1
New Hampshire-----	1,713	1,754	1,611	1,822	1,754	1,595	- 3.7	- 9.1
Vermont-----	4,070	4,318	4,394	4,330	4,318	4,350	- .3	.7
Massachusetts-----	4,415	4,609	5,078	4,697	4,609	5,028	- 1.9	9.1
Rhode Island-----	536	696	732	570	696	725	22.1	4.2
Connecticut-----	3,290	3,738	4,855	3,500	3,738	4,807	6.8	28.6
New York-----	31,995	36,908	36,479	34,037	36,908	36,118	8.4	- 2.1
New Jersey-----	8,841	9,184	9,002	9,405	9,184	8,913	- 2.3	- 3.0
Pennsylvania-----	31,412	34,037	35,610	33,417	34,037	35,257	1.9	3.6
Delaware-----	2,560	2,442	3,560	2,442	2,442	3,525	-10.4	44.3
Maryland-----	10,022	10,688	12,169	10,662	10,688	12,048	.2	12.7
Northeast-----	104,183	113,958	119,588	110,833	113,958	118,404	2.8	3.9
Michigan-----	36,601	39,959	41,977	38,937	39,959	41,561	2.6	4.0
Wisconsin-----	49,895	55,293	59,724	53,080	55,293	59,133	4.2	6.9
Minnesota-----	73,707	78,586	87,998	78,412	78,586	87,127	.2	10.9
Lake States-----	160,203	173,838	189,699	170,429	173,838	187,821	2.0	8.0
Ohio-----	47,226	50,544	56,505	50,240	50,544	55,946	.6	10.7
Indiana-----	47,251	53,156	58,497	50,267	53,156	57,918	5.7	9.0
Illinois-----	86,485	98,698	111,964	91,973	98,698	110,856	7.3	12.3
Iowa-----	84,263	97,187	106,960	89,641	97,187	105,901	8.4	9.0
Missouri-----	44,825	53,861	61,422	47,686	53,861	60,815	12.9	12.9
Corn Belt-----	310,050	353,446	395,348	329,807	353,446	391,436	7.2	10.7
North Dakota-----	49,927	53,007	56,414	53,114	53,007	55,855	-.2	5.4
South Dakota-----	40,893	43,804	51,078	43,503	43,804	50,572	.7	15.4
Nebraska-----	55,384	63,532	70,935	58,919	63,532	70,233	7.9	10.5
Kansas-----	58,286	65,798	72,104	62,006	65,798	71,389	6.1	8.5
Northern Plains-----	204,490	226,141	250,531	217,542	226,141	248,049	4.0	9.7
Virginia-----	17,110	20,561	24,009	18,202	20,561	23,771	13.0	15.6
West Virginia-----	3,639	4,736	4,954	3,871	4,736	4,905	22.3	3.6
North Carolina-----	39,742	46,168	65,293	42,279	46,168	64,646	9.2	40.0
Kentucky-----	19,128	23,240	27,954	20,349	23,240	27,678	14.2	19.1
Tennessee-----	18,749	22,825	27,245	19,946	22,825	26,975	14.4	18.2
Appalachian-----	98,368	117,530	149,455	104,647	117,530	147,975	12.3	25.9
South Carolina-----	15,948	19,254	23,134	16,966	19,254	22,905	13.5	19.0
Georgia-----	27,520	31,604	38,285	29,277	31,604	37,906	8.1	19.9
Florida-----	15,073	18,915	26,856	16,035	18,915	26,590	17.9	40.6
Alabama-----	15,783	19,427	24,070	16,790	19,427	23,832	15.7	22.7
Southeast-----	74,324	89,200	112,345	79,068	89,200	111,233	12.8	24.7
Mississippi-----	23,511	29,669	36,105	25,012	29,669	35,747	18.6	20.5
Arkansas-----	27,131	33,601	45,494	28,863	33,601	45,044	16.4	34.1
Louisiana-----	17,762	19,537	24,673	18,896	19,537	24,429	3.4	25.0
Delta States-----	68,404	82,807	106,272	72,771	82,807	105,220	13.8	27.1
Oklahoma-----	27,776	30,138	36,214	29,549	30,138	35,855	2.0	19.0
Texas-----	105,823	116,568	143,099	112,578	116,568	141,682	3.5	21.5
Southern Plains-----	133,599	146,706	179,313	142,127	146,706	177,537	3.2	21.0
Montana-----	24,880	27,429	31,230	26,468	27,429	30,921	3.6	12.7
Idaho-----	19,087	23,316	26,321	20,305	23,316	26,060	14.8	11.8
Wyoming-----	7,739	8,508	10,034	8,233	8,508	9,935	3.3	16.8
Colorado-----	23,897	26,671	31,203	25,422	26,671	30,894	4.9	15.8
New Mexico-----	8,950	9,755	13,615	9,521	9,755	13,479	2.5	38.2
Arizona-----	10,684	13,413	16,650	11,366	13,413	16,485	18.0	22.9
Utah-----	7,539	8,400	8,774	8,020	8,400	8,687	4.7	3.4
Nevada-----	2,091	2,765	3,219	2,225	2,765	3,187	24.3	15.3
Mountain-----	104,867	120,257	141,046	111,560	120,257	139,648	7.8	16.1
Washington-----	20,619	24,489	27,223	21,935	24,489	26,953	11.6	10.1
Oregon-----	17,704	19,980	20,391	18,834	19,980	20,189	6.1	1.1
California-----	69,462	80,671	89,242	73,896	80,671	88,358	9.2	9.5
Hawaii-----	---	5,092	5,963	---	5,092	5,905	---	16.0
Alaska-----	---	190	251	---	190	249	---	31.1
Pacific-----	107,785	130,422	143,070	114,665	130,422	141,654	13.7	8.0
United States-----	1,366,273	1,554,305	1,786,667	1,453,449	1,554,305	1,768,977	6.6	13.8

<sup>1/</sup> U. S. Census of Agriculture.

<sup>2/</sup> Current dollar values divided by the index of prices paid by farmers for motor supplies: Agricultural Prices, 1965 annual summary, Statistical Reporting Service, USDA.

<sup>3/</sup> Percentage change excludes Alaska and Hawaii.

Table 13.--Gasoline and other petroleum fuel and oil for the farm business: Farms reporting and dollar expenditures, by State and region, 1964 and 1959

State and region	1964		1959	
	Farms reporting	Expenditures	Farms reporting	Expenditures
	Number	1,000 dollars	Number	1,000 dollars
Maine-----	11,151	6,098	15,105	5,584
New Hampshire-----	4,034	1,611	5,937	1,754
Vermont-----	8,433	4,394	11,202	4,318
Massachusetts-----	7,397	5,078	10,130	4,609
Rhode Island-----	976	732	1,288	696
Connecticut-----	5,586	4,855	7,532	3,738
New York-----	63,091	36,479	78,736	36,908
New Jersey-----	10,131	9,002	15,133	9,184
Pennsylvania-----	77,608	35,610	96,589	34,037
Delaware-----	4,235	3,560	5,098	2,442
Maryland-----	19,381	12,169	24,282	10,688
Northeast-----	212,023	119,588	271,052	113,958
Michigan-----	89,342	41,977	110,038	39,959
Wisconsin-----	115,612	59,724	127,836	55,293
Minnesota-----	128,336	87,998	141,166	78,586
Lake States-----	333,290	189,699	379,040	173,838
Ohio-----	111,415	56,505	134,840	50,544
Indiana-----	99,786	58,497	122,663	53,156
Illinois-----	127,055	111,964	150,308	98,698
Iowa-----	149,045	106,960	170,638	97,188
Missouri-----	129,121	61,422	159,988	53,861
Corn Belt-----	616,422	395,348	738,437	353,447
North Dakota-----	48,167	56,414	53,518	53,007
South Dakota-----	48,702	51,078	53,872	43,804
Nebraska-----	77,684	70,935	88,646	63,532
Kansas-----	87,963	72,104	102,122	65,798
Northern Plains-----	262,516	250,531	298,158	226,141
Virginia-----	62,135	24,009	83,988	20,561
West Virginia-----	24,041	4,954	36,709	4,736
North Carolina-----	126,525	65,293	174,380	46,168
Kentucky-----	105,375	27,954	127,429	23,240
Tennessee-----	100,463	27,245	136,196	22,825
Appalachian-----	418,539	149,455	558,702	117,530
South Carolina-----	43,450	23,134	70,292	19,254
Georgia-----	68,415	38,285	98,181	31,604
Florida-----	50,535	26,856	39,896	18,915
Alabama-----	65,798	26,070	99,227	19,427
Southeast-----	228,198	112,345	307,596	89,200
Mississippi-----	75,511	36,105	117,535	29,669
Arkansas-----	62,117	45,494	86,153	33,601
Louisiana-----	43,674	24,673	67,046	19,537
Delta States-----	181,302	106,272	270,734	82,807
Oklahoma-----	73,830	36,214	90,692	30,138
Texas-----	173,894	143,099	214,646	116,568
Southern Plains-----	247,724	179,313	305,338	146,706
Montana-----	26,170	31,230	27,896	27,429
Idaho-----	27,724	26,321	32,267	23,316
Wyoming-----	8,751	10,034	9,305	8,508
Colorado-----	28,323	31,203	31,956	26,671
New Mexico-----	12,730	13,615	14,812	9,754
Arizona-----	5,715	16,650	6,932	13,413
Utah-----	14,725	8,774	17,248	8,400
Nevada-----	2,046	3,219	2,170	2,764
Mountain-----	126,184	141,046	142,586	120,255
Washington-----	39,246	27,223	49,547	24,489
Oregon-----	33,672	20,391	40,405	19,980
California-----	71,587	89,242	96,079	80,672
Hawaii-----	4,029	5,963	5,490	5,092
Alaska-----	346	251	350	190
Pacific-----	148,880	143,070	191,871	130,423
United States-----	2,775,078	1,786,667	3,463,514	1,554,305



Table 14.--Gasoline and diesel oil: Farms reporting and dollar expenditures, by State and region, 1964

State and region	Gasoline		Diesel oil	
	Farms reporting	Expenditures	Farms reporting	Expenditures
	Number	1,000 dollars	Number	1,000 dollars
Maine-----	10,964	4,120	810	205
New Hampshire-----	4,002	1,175	259	43
Vermont-----	8,334	3,369	1,550	245
Massachusetts-----	7,229	2,851	450	128
Rhode Island-----	967	474	54	21
Connecticut-----	5,426	2,565	426	102
New York-----	62,433	27,923	7,421	1,684
New Jersey-----	9,960	6,177	1,073	402
Pennsylvania-----	76,486	27,836	7,913	1,520
Delaware-----	4,049	2,391	527	271
Maryland-----	19,055	8,793	2,405	811
Northeast-----	208,905	87,674	22,888	5,432
Michigan-----	88,149	33,137	11,725	2,677
Wisconsin-----	114,534	47,946	12,858	2,522
Minnesota-----	127,121	66,003	25,206	7,985
Lake States-----	329,804	147,086	49,789	13,184
Ohio-----	109,964	43,833	15,299	3,693
Indiana-----	98,235	45,244	12,879	4,190
Illinois-----	125,937	86,315	23,767	9,003
Iowa-----	147,687	82,913	22,707	6,629
Missouri-----	126,379	47,131	11,415	3,616
Corn Belt-----	608,202	305,436	86,067	27,131
North Dakota-----	47,713	37,436	24,587	11,871
South Dakota-----	48,193	38,289	13,167	5,612
Nebraska-----	75,812	46,602	22,494	8,262
Kansas-----	85,835	46,601	21,823	8,877
Northern Plains-----	257,553	168,928	82,071	34,622
Virginia-----	60,636	16,653	6,318	1,296
West Virginia-----	23,359	3,765	1,384	191
North Carolina-----	120,485	32,446	12,415	2,587
Kentucky-----	102,795	21,949	7,773	1,330
Tennessee-----	97,701	20,390	9,074	1,894
Appalachian-----	404,976	95,203	36,964	7,298
South Carolina-----	40,887	13,870	4,835	1,813
Georgia-----	64,282	21,910	13,506	4,740
Florida-----	29,098	15,590	7,455	5,257
Alabama-----	61,476	15,138	9,177	2,440
Southeast-----	195,743	66,508	34,973	14,250
Mississippi-----	70,884	20,449	7,976	4,334
Arkansas-----	58,040	21,473	9,293	6,430
Louisiana-----	41,219	13,089	6,243	3,385
Delta States-----	170,143	55,011	23,512	14,149
Oklahoma-----	66,903	18,780	13,491	4,183
Texas-----	161,839	64,572	26,273	14,276
Southern Plains-----	228,742	83,352	39,764	18,459
Montana-----	25,835	20,906	11,875	6,110
Idaho-----	27,438	18,434	10,132	4,642
Wyoming-----	8,607	7,332	2,608	1,005
Colorado-----	27,762	20,543	9,121	4,132
New Mexico-----	12,228	6,840	2,300	1,267
Arizona-----	5,524	8,348	1,999	2,991
Utah-----	14,517	6,487	4,056	1,093
Nevada-----	2,011	2,129	798	570
Mountain-----	123,922	91,019	42,889	21,810
Washington-----	38,661	17,845	11,187	5,320
Oregon-----	33,058	14,156	9,107	3,380
California-----	69,878	49,649	25,373	19,940
Hawaii-----	3,989	3,007	687	1,726
Alaska-----	1,341	172	128	39
Pacific-----	145,927	84,829	46,482	30,405
United States-----	2,673,917	1,185,046	465,399	186,740

Table 15.--LP gas (butane and propane) and other petroleum fuels and products: Farms reporting and dollar expenditures, by State and region, 1964

State and region	LP gas, butane, propane, etc.		Other petroleum fuels and products	
	Farms reporting	Expenditures	Farms reporting	Expenditures
	Number	1,000 dollars	Number	1,000 dollars
Maine-----	1,140	191	10,548	1,581
New Hampshire-----	571	91	3,746	302
Vermont-----	1,149	137	8,074	643
Massachusetts-----	954	457	7,068	1,643
Rhode Island-----	151	45	896	192
Connecticut-----	953	956	5,412	1,232
New York-----	4,774	679	61,389	6,193
New Jersey-----	1,834	434	9,899	1,989
Pennsylvania-----	5,720	751	75,517	5,502
Delaware-----	568	331	4,147	567
Maryland-----	1,948	427	18,794	2,138
Northeast-----	19,762	4,499	205,490	21,982
Michigan-----	6,147	955	87,643	5,208
Wisconsin-----	14,329	1,915	114,301	7,341
Minnesota-----	13,736	2,966	127,152	11,043
Lake States-----	34,212	5,836	329,096	23,592
Ohio-----	7,467	1,169	107,523	7,810
Indiana-----	10,125	2,267	96,404	6,795
Illinois-----	21,814	4,414	124,692	12,233
Iowa-----	31,155	4,141	147,540	13,277
Missouri-----	20,291	3,317	120,640	7,259
Corn Belt-----	90,852	15,308	596,799	47,474
North Dakota-----	6,353	1,381	48,026	5,726
South Dakota-----	7,897	1,458	48,438	5,719
Nebraska-----	20,346	5,414	76,595	10,656
Kansas-----	24,133	7,175	86,065	9,480
Northern Plains-----	58,729	15,428	259,124	31,551
Virginia-----	3,236	707	53,778	5,352
West Virginia-----	1,404	130	19,960	868
North Carolina-----	19,793	5,450	116,318	24,811
Kentucky-----	8,154	845	91,407	3,831
Tennessee-----	4,336	805	83,813	4,156
Appalachian-----	36,923	7,937	365,276	39,018
South Carolina-----	6,614	1,806	37,120	5,645
Georgia-----	17,862	6,005	60,145	5,630
Florida-----	4,505	2,370	26,771	3,638
Alabama-----	9,035	2,711	52,855	3,782
Southeast-----	38,016	12,892	177,891	18,695
Mississippi-----	15,760	6,809	61,931	4,512
Arkansas-----	19,048	10,831	53,179	6,759
Louisiana-----	9,145	4,139	35,251	4,060
Delta States-----	43,953	21,779	150,361	15,331
Oklahoma-----	30,274	8,725	67,136	4,526
Texas-----	63,663	35,152	161,508	29,099
Southern Plains-----	93,937	43,877	228,644	33,625
Montana-----	4,859	1,046	25,919	3,168
Idaho-----	4,649	592	26,866	2,654
Wyoming-----	2,639	721	8,617	977
Colorado-----	8,698	2,855	27,884	3,674
New Mexico-----	5,437	2,980	12,259	2,528
Arizona-----	2,276	1,512	5,419	3,800
Utah-----	1,773	291	14,334	902
Nevada-----	597	202	2,000	319
Mountain-----	30,928	10,199	123,298	18,022
Washington-----	2,312	557	36,770	3,501
Oregon-----	2,148	482	31,266	2,373
California-----	14,611	7,426	67,392	12,227
Hawaii-----	131	76	3,481	1,153
Alaska-----	74	7	343	34
Pacific-----	19,276	8,548	139,252	19,288
United States-----	466,588	146,303	2,575,231	268,578

**END**