



AgEcon SEARCH
RESEARCH IN AGRICULTURAL & APPLIED ECONOMICS

The World's Largest Open Access Agricultural & Applied Economics Digital Library

This document is discoverable and free to researchers across the globe due to the work of AgEcon Search.

Help ensure our sustainability.

Give to AgEcon Search

AgEcon Search
<http://ageconsearch.umn.edu>
aesearch@umn.edu

*Papers downloaded from **AgEcon Search** may be used for non-commercial purposes and personal study only. No other use, including posting to another Internet site, is permitted without permission from the copyright owner (not AgEcon Search), or as allowed under the provisions of Fair Use, U.S. Copyright Act, Title 17 U.S.C.*

SB 390 (1967)

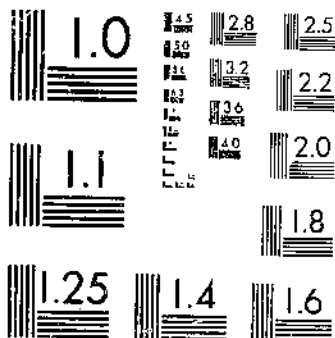
USDA STATISTICAL BULLETINS

•UPDATA

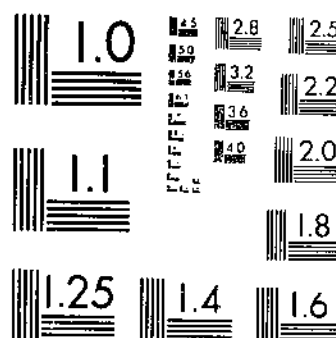
MILK, CONS ON FARMS, PRODUCTION PER COW, AND TOTAL PRODUCTION . . . 1960-64

1 OF 1

START



MICROCOPY RESOLUTION TEST CHART
NATIONAL BUREAU OF STANDARDS-1963-A



MICROCOPY RESOLUTION TEST CHART
NATIONAL BUREAU OF STANDARDS-1963-A

REFERENCE
DO NOT LOAN

R
630.5
453-13
#390

MILK

COWS ON FARMS, PRODUCTION PER COW, and TOTAL PRODUCTION

**By Months and
By States, 1960-64**

Revised Estimates

U. S. Department of Agriculture
Statistical Reporting Service
Crop Reporting Board
Washington, D. C.

LIBRARY
MAR 8 - 1967
Los Angeles Public Library

Statistical Bulletin No. 390

February 1967

CONTENTS

	<u>Page</u>
Comments	3
Tables:	
1. Milk : Number of milk cows on farms, milk per cow and milk production, United States, by months, 1960-64	4
2. Milk : Number of milk cows on farms, milk per cow, and milk production, by States, 1960-64	5
3. Milk : Number of milk cows on farms, milk per cow and milk production, by months and by States, 1960-64	7

For sale by the Superintendent of Documents, U.S. Government Printing Office, Washington, D.C. 20402

MILK

Cows on Farms, Production Per Cow, and Total Production, by Months, and by States, 1960-64, Revised Estimates

This report presents a record of revised estimates of the Crop Reporting Board of the Statistical Reporting Service relating to milk cows on farms, milk per cow, and milk production by months for 1960-64. It continues the official series of comparable estimates which begins with 1930 for most States as shown in "Milk Cows on Farms, Production per Cow, and Total Production, 1930-59," Statistical Bulletin No. 289. ^{1/} Monthly estimates are not available prior to 1960 for 14 States: Maine, New Hampshire, Vermont, Massachusetts, Rhode Island, Connecticut, Delaware, Florida, Louisiana, New Mexico, Arizona, Nevada, Alaska, and Hawaii.

Estimates have been released currently in a monthly report entitled "Milk Production." The February issue of this report includes estimates by months for the 2 preceding years.

Current monthly estimates of milk cows on farms, milk per cow, and milk production are based primarily on survey returns from producers. The revised estimates in this report are based on a thorough review of the original estimates taking into consideration the 1964 Census of Agriculture and other information, such as State Farm Census data, records of plant receipts of milk, and current survey data collected during the period.

Milk Cows on Farms

Estimates of the number of milk cows on farms represent cows that are kept primarily for milk production. Cows kept primarily to nurse calves are not included. The estimates include milk cows during dry periods between lactations, but heifers are not counted as milk cows until they have calved for the first time.

Milk Production

For purposes of estimating milk production, monthly and annual rates per cow are based on all milk cows on farms, in milk or dry. Estimates of milk production for each State are the product of estimated numbers of milk cows times estimated rates per cow.

Current estimates of monthly milk output per cow are based mainly on mail reports from a sample of farmers who report the number of milk cows and total milk production on their farms for one day near the first of each month. The mean of reported daily rates per cow at the beginning and end of each month provides an indication of the average rate for the month for the farmers reporting. Current monthly production estimates also consider the latest available data on plant receipts of milk and production of manufactured dairy products, compared with a year earlier. When complete data become available from plants on monthly receipts of milk and cream from producers, milk production estimates are revised, if necessary.

^{1/} U. S. Department of Agriculture, Statistical Reporting Service. Milk Cows on Farms, Production per Cow and Total Production, by Months, 1930-59. U. S. Dept. of Agr., Statistical Bulletin 289, 61 pp., June 1961.

Table 1.--Milk: Number of milk cows on farms, milk per cow and milk production, United States, by months, 1960-64

Month	Number of milk cows ^{1/}					Milk production per cow ^{2/}				
	1960	1961	1962	1963	1964	1960	1961	1962	1963	1964
	1,000	1,000	1,000	1,000	1,000	Pounds	Pounds	Pounds	Pounds	Pounds
	head	head	head	head	head					
January ..	17,645	17,382	17,077	16,552	15,942	560	571	601	613	645
February :	17,619	17,358	17,039	16,497	15,891	549	543	568	576	634
March	17,595	17,332	16,996	16,443	15,842	608	635	650	663	706
April	17,569	17,302	16,951	16,386	15,794	629	646	665	685	719
May	17,542	17,272	16,912	16,333	15,746	697	714	736	753	786
June	17,519	17,247	16,870	16,279	15,702	667	698	705	725	750
July	17,496	17,223	16,823	16,229	15,658	612	639	647	668	690
August ...	17,479	17,205	16,777	16,174	15,608	571	596	607	629	654
September :	17,463	17,177	16,739	16,129	15,557	533	559	572	592	619
October ..	17,442	17,156	16,691	16,084	15,510	538	568	586	600	625
November :	17,424	17,136	16,650	16,034	15,462	515	544	563	579	610
December :	17,404	17,111	16,603	15,990	15,411	548	579	593	614	657
Year .. ^{1/}	17,515	17,243	16,842	16,260	15,677	7,029	7,290	7,496	7,700	8,099
Total Milk Production ^{2/}										
	1960	1961	1962	1963	1964					
	Million	Million	Million	Million	Million					
	pounds	pounds	pounds	pounds	pounds					
January ..	9,876	9,920	10,258	10,153	10,287					
February :	9,665	9,431	9,685	9,498	10,070					
March	10,706	10,998	11,044	10,906	11,186					
April	11,057	11,175	11,280	11,220	11,363					
May	12,232	12,326	12,449	12,297	12,380					
June	11,681	12,038	11,986	11,809	11,782					
July	10,716	11,001	10,884	10,848	10,810					
August ...	9,978	10,248	10,184	10,172	10,207					
September :	9,304	9,595	9,573	9,548	9,623					
October ..	9,385	9,746	9,782	9,648	9,698					
November :	8,969	9,325	9,379	9,279	9,430					
December :	9,540	9,904	9,847	9,824	10,131					
Year	123,109	125,707	126,251	125,202	126,967					

^{1/} Number milk cows is average number on farms during year.

^{2/} Excludes milk sucked by calves.

Table 2.--Milk: Number of milk cows on farms, milk per cow, and milk production, by States, 1960-64

State and division	Milk cows on farms 1/					Milk production per cow 2/				
	1960	1961	1962	1963	1964	1960	1961	1962	1963	1964
	Thou.	Thou.	Thou.	Thou.	Thou.	Pounds	Pounds	Pounds	Pounds	Pounds
Maine	94	93	90	86	82	7,450	7,600	7,760	7,970	8,240
New Hampshire	51	52	52	49	46	7,660	7,870	8,120	8,430	8,700
Vermont	258	260	256	250	243	7,270	7,550	7,720	7,990	8,300
Massachusetts	95	94	91	87	84	8,250	8,620	8,970	9,230	9,520
Rhode Island	14.0	13.2	12.5	11.9	11.1	8,640	8,790	9,040	9,250	9,550
Connecticut	88	85	82	78	75	8,340	8,560	8,790	9,100	9,410
New York	1,248	1,253	1,253	1,217	1,196	8,150	8,450	8,530	8,880	9,160
New Jersey	132	128	125	117	110	9,010	9,110	9,240	9,600	9,760
Pennsylvania	864	886	876	859	837	7,780	7,970	8,210	8,470	8,700
North Atlantic	2,864	2,864	2,838	2,755	2,684	7,976	8,222	8,379	8,684	8,948
Ohio	687	670	647	622	591	7,460	8,040	8,410	8,690	9,130
Indiana	426	407	391	375	356	7,460	8,010	8,140	8,450	8,920
Illinois	570	555	526	493	457	7,420	7,770	8,070	8,430	8,750
Michigan	641	639	637	628	610	8,070	8,290	8,800	8,900	9,440
Wisconsin	2,150	2,150	2,150	2,145	2,139	8,270	8,340	8,650	8,670	9,050
E. N. Central	4,474	4,421	4,351	4,263	4,153	7,931	8,185	8,521	8,660	9,075
Minnesota	1,265	1,278	1,278	1,270	1,259	8,120	8,270	8,200	8,240	8,790
Iowa	851	846	825	797	770	6,980	7,230	7,510	7,900	8,580
Missouri	651	635	602	551	508	5,660	5,900	6,020	6,300	6,670
North Dakota	277	271	264	255	243	6,250	6,350	6,480	6,490	6,680
South Dakota	248	244	240	236	233	5,900	6,250	6,210	6,240	6,690
Nebraska	327	317	301	283	267	6,140	6,450	6,660	6,800	7,270
Kansas	332	320	300	277	262	5,790	6,110	6,240	6,535	6,930
W. N. Central	3,951	3,911	3,810	3,669	3,552	6,839	7,077	7,186	7,385	7,908
Delaware	26	25	23	22	20	7,350	7,320	7,610	8,000	8,250
Maryland	216	212	210	204	194	7,090	7,280	7,370	7,620	8,070
Virginia	335	321	305	291	274	5,900	6,060	6,240	6,320	6,660
West Virginia	130	124	114	105	95	5,070	5,160	5,110	5,190	5,430
North Carolina	270	259	249	238	226	5,700	5,980	6,120	6,270	6,560
South Carolina	108	104	99	94	87	4,920	5,190	5,380	5,570	5,920
Georgia	213	204	193	182	170	4,790	5,070	5,180	5,310	5,600
Florida	194	189	180	177	178	6,730	6,910	7,270	7,500	7,600
South Atlantic	1,492	1,438	1,373	1,313	1,244	5,867	6,078	6,245	6,416	6,732
Kentucky	504	500	493	476	447	4,950	5,210	5,320	5,530	5,750
Tennessee	477	461	448	426	409	4,600	4,940	5,050	5,100	5,150
Alabama	239	223	210	195	182	3,970	4,130	4,230	4,310	4,550
Mississippi	366	351	329	301	278	3,390	3,680	3,720	3,770	3,990
Arkansas	217	213	199	172	148	4,250	4,370	4,400	4,570	5,000
Louisiana	234	231	226	219	213	3,670	3,940	4,090	4,270	4,510
Oklahoma	256	246	229	212	193	5,550	6,050	6,250	6,300	6,670
Texas	575	553	542	512	467	5,100	5,480	5,610	5,730	6,320
South Central	2,868	2,778	2,676	2,513	2,337	4,537	4,843	4,959	5,082	5,371
Montana	77	72	67	63	60	5,990	6,210	6,330	6,440	6,600
Idaho	202	200	197	188	179	8,090	8,230	8,160	8,380	8,380
Wyoming	31.0	28.4	26.3	25.5	25.0	6,190	6,480	6,840	6,980	7,200
Colorado	124	119	116	112	107	6,980	7,130	7,300	7,590	8,060
New Mexico	42	40	39	39	39	6,020	6,170	6,560	7,020	7,280
Arizona	50	50	50	51	52	9,220	9,360	9,550	9,900	10,000
Utah	94	92	89	86	83	8,130	8,360	8,520	8,760	8,800
Nevada	16	15	15	14.6	14.0	7,440	7,530	7,800	8,360	9,220
Washington	228	228	220	212	207	8,380	8,420	8,780	9,060	9,375
Oregon	162	157	153	141	134	6,980	7,010	7,300	7,380	7,540
California	824	813	805	798	790	9,780	10,100	10,320	10,400	10,810
Western	1,850	1,814	1,777	1,730	1,690	8,568	8,795	9,018	9,205	9,522
Alaska	2.5	2.8	2.8	2.6	2.5	8,160	8,140	8,210	8,770	9,080
Hawaii	13.9	13.8	14.1	14.1	14.1	8,750	8,880	9,010	8,840	9,100
United States	17,515	17,243	16,842	16,260	15,677	7,029	7,290	7,496	7,700	8,099

Table 2.--Milk: Number of milk cows on farms, milk per cow and milk production, by States, 1960-64--Continued

State and division	Total milk production 2/				
	1960	1961	1962	1963	1964
	Mil. pounds	Mil. pounds	Mil. pounds	Mil. pounds	Mil. pounds
Maine	700	707	698	685	676
New Hampshire	391	409	422	413	400
Vermont	1,876	1,963	1,976	1,998	2,017
Massachusetts	784	810	816	803	800
Rhode Island	121	116	113	110	106
Connecticut	734	728	721	710	706
New York	10,171	10,588	10,688	10,807	10,955
New Jersey	1,189	1,166	1,155	1,123	1,074
Pennsylvania	6,878	7,061	7,192	7,276	7,282
North Atlantic	22,844	23,548	23,781	23,925	24,016
Ohio	5,125	5,387	5,441	5,405	5,396
Indiana	3,178	3,260	3,183	3,169	3,176
Illinois	4,229	4,312	4,245	4,156	3,999
Michigan	5,173	5,297	5,606	5,589	5,758
Wisconsin	17,760	17,931	18,598	18,597	19,358
East North Central	35,485	36,187	37,073	36,916	37,687
Minnesota	10,272	10,569	10,480	10,465	11,155
Iowa	5,940	6,117	6,196	6,296	6,607
Missouri	3,685	3,746	3,624	3,471	3,388
North Dakota	1,731	1,721	1,711	1,655	1,623
South Dakota	1,463	1,525	1,490	1,473	1,559
Nebraska	2,008	2,045	2,005	1,924	1,941
Kansas	1,922	1,955	1,872	1,810	1,816
West North Central	27,021	27,678	27,378	27,094	28,089
Delaware	191	183	175	176	165
Maryland	1,531	1,543	1,548	1,554	1,566
Virginia	1,976	1,945	1,903	1,839	1,825
West Virginia	659	640	583	545	516
North Carolina	1,539	1,549	1,524	1,492	1,483
South Carolina	531	540	533	524	515
Georgia	1,020	1,034	1,000	966	952
Florida	1,306	1,306	1,309	1,328	1,353
South Atlantic	8,753	8,740	8,575	8,424	8,375
Kentucky	2,495	2,605	2,623	2,632	2,570
Tennessee	2,194	2,277	2,262	2,173	2,106
Alabama	949	921	888	840	828
Mississippi	1,241	1,292	1,224	1,135	1,109
Arkansas	922	931	876	786	740
Louisiana	859	910	924	935	961
Oklahoma	1,421	1,488	1,431	1,336	1,287
Texas	2,932	3,030	3,041	2,934	2,951
South Central	13,013	13,454	13,269	12,771	12,552
Montana	461	447	424	406	396
Idaho	1,634	1,646	1,608	1,575	1,500
Wyoming	192	184	180	178	180
Colorado	866	848	847	850	862
New Mexico	253	247	256	274	284
Arizona	461	468	478	505	520
Utah	764	769	758	753	730
Nevada	119	113	117	122	129
Washington	1,911	1,920	1,932	1,921	1,941
Oregon	1,131	1,101	1,117	1,041	1,010
California	8,059	8,211	8,308	8,299	8,540
Western	15,851	15,954	16,025	15,924	16,092
Alaska	20.4	22.8	23.0	22.8	22.7
Hawaii	122	123	127	125	133
United States	123,109	125,707	126,251	125,202	126,967

1/ Average number on farms during year, excluding heifers not yet fresh.

2/ Excludes milk sucked by calves.

Table 3.--Milk: Number of milk cows on farms, milk per cow, and milk production, by months and by States, 1960-64

Year	Jan.	Feb.	Mar.	Apr.	May	June	July	Aug.	Sept.	Oct.	Nov.	Dec.	Annual 1/
MAINE:													
<u>Milk cows on farms (thousands)</u>													
1960	94	94	94	94	94	94	94	94	94	94	94	94	94
1961	94	93	93	93	93	93	93	93	93	93	92	92	93
1962	92	91	91	91	90	90	90	89	89	89	88	88	90
1963	88	87	87	87	87	87	86	85	85	85	85	85	86
1964	84	84	83	83	83	83	82	81	81	80	80	80	82
<u>Milk production per cow (pounds) 2/</u>													
1960	575	540	585	625	680	700	680	655	625	605	575	590	7,450
1961	585	550	600	635	690	710	695	675	645	625	590	605	7,600
1962	600	565	615	650	700	720	705	685	660	645	610	620	7,760
1963	620	570	630	665	715	735	720	695	675	660	625	635	7,970
1964	645	605	660	695	745	760	745	725	690	670	640	655	8,240
<u>Total milk production (million pounds) 2/</u>													
1960	54	51	55	59	64	66	64	62	59	57	54	55	700
1961	55	51	56	59	64	66	65	63	60	58	54	56	707
1962	55	51	56	59	63	65	63	61	59	57	54	55	698
1963	55	50	55	58	62	64	62	59	57	56	53	54	685
1964	54	51	55	58	62	63	61	59	56	54	51	52	676
NEW HAMPSHIRE:													
<u>Milk cows on farms (thousands)</u>													
1960	51	51	51	51	51	51	51	51	51	51	51	51	51
1961	51	52	52	52	52	52	52	52	52	52	52	52	52
1962	53	53	53	52	52	52	52	52	51	51	51	51	52
1963	50	50	50	50	50	50	49	49	48	48	48	47	49
1964	47	47	47	46	46	46	46	45	45	45	45	45	46
<u>Milk production per cow (pounds) 2/</u>													
1960	630	570	660	690	730	695	640	610	620	605	580	630	7,660
1961	645	585	670	700	740	720	665	635	640	630	610	650	7,870
1962	675	620	695	720	755	730	675	655	660	650	630	665	8,120
1963	700	640	715	745	780	760	715	675	685	675	645	685	8,430
1964	725	680	745	770	805	785	740	705	710	695	675	710	8,700
<u>Total milk production (million pounds) 2/</u>													
1960	32	29	34	35	37	35	33	31	32	31	30	32	391
1961	33	30	35	36	38	37	35	33	33	33	32	34	409
1962	36	33	37	37	39	38	35	34	34	33	32	34	422
1963	35	32	36	37	39	38	35	33	33	32	31	32	413
1964	34	32	35	35	37	36	34	32	32	31	30	32	400
VERMONT:													
<u>Milk cows on farms (thousands)</u>													
1960	257	257	258	258	258	258	258	258	259	259	259	259	258
1961	259	259	260	260	260	260	260	260	260	260	259	259	260
1962	258	258	258	257	257	257	256	256	256	255	254	254	256
1963	253	253	253	252	252	252	250	248	247	246	245	245	250
1964	245	245	245	244	244	243	243	243	241	241	240	238	243
<u>Milk production per cow (pounds) 2/</u>													
1960	570	545	635	665	750	700	610	565	550	565	535	575	7,270
1961	580	535	650	675	755	755	655	595	590	625	555	590	7,550
1962	610	545	665	695	750	750	640	615	610	620	585	620	7,720
1963	645	575	680	715	785	780	670	630	630	640	605	645	7,990
1964	655	630	720	740	820	795	695	660	645	655	625	675	8,300
<u>Total milk production (million pounds) 2/</u>													
1960	146	140	164	172	194	181	157	146	146	146	139	149	1,876
1961	150	139	169	176	196	196	170	155	153	162	144	153	1,963
1962	157	141	172	179	193	193	164	157	156	158	149	157	1,976
1963	163	145	172	180	198	197	168	156	156	157	148	158	1,998
1964	160	154	176	181	200	193	169	160	155	158	150	161	2,017

Table 3.--Milk: Number of milk cows on farms, milk per cow, and milk production, by months and by States, 1960-64--Continued

Year	Jan.	Feb.	Mar.	Apr.	May	June	July	Aug.	Sept.	Oct.	Nov.	Dec.	Annual 1/
MASSACHUSETTS:													
<u>Milk cows on farms (thousands)</u>													
1960	94	94	95	95	95	95	95	95	95	95	95	95	95
1961	95	95	95	95	94	94	94	94	93	93	93	93	94
1962	92	92	92	91	91	91	91	91	91	90	90	90	91
1963	90	89	88	88	88	88	88	86	86	85	85	85	87
1964	86	86	86	85	85	85	84	83	83	82	82	82	84
<u>Milk production per cow (pounds) 2/</u>													
1960	690	660	720	705	760	705	675	685	655	685	650	685	8,250
1961	720	665	745	730	795	755	705	715	690	720	680	715	8,620
1962	745	690	780	770	820	780	730	740	715	740	710	740	8,970
1963	765	710	805	790	850	790	750	755	735	745	730	760	9,230
1964	790	740	815	810	860	810	770	785	760	780	765	815	9,520
<u>Total milk production (million pounds) 2/</u>													
1960	65	62	68	67	72	67	64	65	62	65	62	65	784
1961	68	63	71	69	75	71	66	67	64	67	63	66	810
1962	69	63	72	70	75	71	66	67	65	67	64	67	816
1963	69	63	71	70	75	70	66	65	63	64	62	65	803
1964	68	64	70	69	73	69	65	65	63	64	63	67	800
RHODE ISLAND:													
<u>Milk cows on farms (thousands)</u>													
1960	14.8	14.6	14.4	14.2	14.0	13.8	13.7	13.7	13.7	13.7	13.7	13.7	14.0
1961	13.7	13.6	13.5	13.4	13.3	13.2	13.1	13.0	13.0	13.0	13.0	13.0	13.2
1962	13.0	12.9	12.8	12.7	12.6	12.5	12.4	12.3	12.3	12.3	12.3	12.3	12.5
1963	12.3	12.2	12.1	12.0	11.9	11.9	11.9	11.8	11.8	11.7	11.6	11.5	11.9
1964	11.5	11.4	11.3	11.2	11.1	11.1	11.1	11.0	10.9	10.9	10.8	10.8	11.1
<u>Milk production per cow (pounds) 2/</u>													
1960	705	670	755	740	805	750	725	715	685	700	670	715	8,640
1961	725	685	770	755	820	760	740	725	695	700	680	725	8,790
1962	735	695	780	775	845	785	760	745	715	730	700	745	9,040
1963	765	720	810	795	865	800	780	765	730	745	715	765	9,250
1964	790	735	840	820	890	830	805	790	755	770	740	790	9,550
<u>Total milk production (million pounds) 2/</u>													
1960	10.4	9.8	10.9	10.5	11.3	10.4	9.9	9.8	9.4	9.6	9.2	9.8	121
1961	9.9	9.3	10.4	10.1	10.9	10.0	9.7	9.4	9.0	9.1	8.8	9.4	116
1962	9.6	9.0	10.0	9.8	10.6	9.8	9.4	9.2	8.8	9.0	8.6	9.2	113
1963	9.4	8.8	9.8	9.5	10.3	9.5	9.3	9.0	8.6	8.7	8.3	8.8	110
1964	9.1	8.4	9.5	9.2	9.9	9.2	8.9	8.7	8.2	8.4	8.0	8.5	106
CONNECTICUT:													
<u>Milk cows on farms (thousands)</u>													
1960	89	89	88	88	88	88	88	88	88	88	88	88	88
1961	87	87	86	86	86	86	85	85	85	84	83	83	85
1962	83	83	83	82	82	82	82	82	82	82	81	80	82
1963	80	79	79	79	78	78	78	78	78	77	77	77	78
1964	76	75	75	75	75	75	75	75	75	75	75	75	75
<u>Milk production per cow (pounds) 2/</u>													
1960	695	655	730	710	760	690	670	680	670	690	665	700	8,340
1961	710	670	745	725	780	720	690	700	685	710	685	710	8,560
1962	735	690	770	750	805	735	705	715	705	730	700	735	8,790
1963	760	710	790	770	830	765	735	745	735	755	730	765	9,100
1964	785	735	815	795	865	790	760	770	755	775	755	790	9,410
<u>Total milk production (million pounds) 2/</u>													
1960	62	58	64	62	67	61	59	60	59	61	59	62	734
1961	62	58	64	62	67	62	59	60	58	60	57	59	728
1962	61	57	64	62	66	60	58	59	58	60	57	59	721
1963	61	56	62	61	65	60	57	58	57	58	56	59	710
1964	60	55	61	60	65	59	57	58	57	58	57	59	706

Table 3.--Milk: Number of milk cows on farms, milk per cow, and milk production, by months and by States, 1960-64--Continued

Year	Jan.	Feb.	Mar.	Apr.	May	June	July	Aug.	Sept.	Oct.	Nov.	Dec.	Annual 1/
NEW YORK:													
<u>Milk cows on farms (thousands)</u>													
1960	1,239	1,240	1,242	1,244	1,246	1,248	1,249	1,250	1,252	1,253	1,255	1,255	1,248
1961	1,255	1,254	1,253	1,252	1,251	1,250	1,251	1,251	1,252	1,254	1,256	1,256	1,253
1962	1,256	1,256	1,256	1,256	1,256	1,256	1,255	1,253	1,251	1,248	1,246	1,244	1,253
1963	1,240	1,235	1,231	1,226	1,220	1,216	1,211	1,208	1,206	1,204	1,202	1,201	1,217
1964	1,201	1,200	1,199	1,198	1,197	1,196	1,195	1,194	1,193	1,192	1,191	1,190	1,196
<u>Milk production per cow (pounds) 2/</u>													
1960	658	637	730	756	836	772	662	608	598	637	607	652	8,150
1961	678	631	757	771	839	828	699	636	632	683	625	673	8,450
1962	705	654	769	781	851	795	661	630	642	674	655	714	8,530
1963	746	683	796	812	881	850	715	666	664	684	663	716	8,880
1964	750	722	820	834	914	859	725	684	681	706	701	767	9,160
<u>Total milk production (million pounds) 2/</u>													
1960	815	790	907	940	1,042	963	827	760	749	798	762	818	10,171
1961	851	791	949	965	1,050	1,035	874	796	791	856	785	845	10,588
1962	885	821	966	981	1,069	999	830	789	803	841	816	888	10,688
1963	925	844	980	996	1,075	1,034	866	805	801	824	797	860	10,807
1964	901	866	983	999	1,094	1,027	866	817	812	842	835	913	10,955
NEW JERSEY:													
<u>Milk cows on farms (thousands)</u>													
1960	132	132	132	132	132	132	132	132	132	132	132	131	132
1961	130	130	129	128	128	128	128	128	128	128	128	128	128
1962	127	127	126	125	125	124	124	124	124	123	123	123	125
1963	122	121	120	118	117	117	117	116	116	115	115	114	117
1964	113	113	112	112	111	110	110	109	108	108	108	107	110
<u>Milk production per cow (pounds) 2/</u>													
1960	750	730	805	795	870	760	720	725	710	720	690	740	9,010
1961	745	700	815	800	890	800	735	740	710	715	690	745	9,110
1962	760	715	825	825	880	775	740	745	735	755	735	780	9,240
1963	795	745	850	850	935	820	760	770	750	765	745	790	9,600
1964	825	775	885	865	930	830	785	790	750	760	750	815	9,760
<u>Total milk production (million pounds) 2/</u>													
1960	99	96	106	105	115	100	95	96	94	95	91	97	1,189
1961	97	91	105	102	114	102	94	95	91	92	88	95	1,166
1962	97	91	104	103	110	96	92	92	91	93	90	96	1,155
1963	97	90	102	100	109	96	89	89	87	88	86	90	1,123
1964	93	88	99	97	103	91	86	86	81	82	81	87	1,074
PENNSYLVANIA:													
<u>Milk cows on farms (thousands)</u>													
1960	880	880	881	882	884	884	885	885	886	887	888	888	884
1961	888	888	887	887	886	886	885	885	884	884	883	883	886
1962	882	881	880	879	878	877	876	875	874	873	872	870	876
1963	868	866	864	862	861	860	859	858	856	854	852	850	859
1964	848	846	844	842	841	839	837	835	833	831	828	825	837
<u>Milk production per cow (pounds) 2/</u>													
1960	630	595	695	695	785	705	630	630	610	614	590	600	7,780
1961	625	580	710	710	800	745	660	650	625	635	605	630	7,970
1962	670	620	725	730	800	730	660	655	640	660	640	677	8,210
1963	705	645	765	760	850	770	685	680	650	655	640	664	8,470
1964	705	690	780	780	855	780	710	710	665	670	655	693	8,700
<u>Total milk production (million pounds) 2/</u>													
1960	554	524	612	613	694	623	558	558	540	545	524	533	6,878
1961	555	515	630	630	709	660	584	575	552	561	534	556	7,061
1962	591	546	638	642	702	640	578	573	559	576	558	589	7,192
1963	612	559	661	655	732	662	588	583	556	559	545	564	7,276
1964	598	584	658	657	719	654	594	593	554	557	542	572	7,282

Table 3.--Milk: Number of milk cows on farms, milk per cow, and milk production, by months and by States, 1960-64--Continued

Year	Jan.	Feb.	Mar.	Apr.	May	June	July	Aug.	Sept.	Oct.	Nov.	Dec.	Annual 1/
OHIO:													
<u>Milk cows on farms (thousands)</u>													
1960	690	689	689	688	688	687	687	686	686	685	685	684	687
1961	683	681	678	675	672	670	668	666	664	662	662	662	670
1962	660	657	654	651	648	645	644	643	642	641	640	639	647
1963	636	633	630	627	623	619	619	618	617	616	615	615	622
1964	611	606	601	596	591	587	585	584	583	582	581	580	591
<u>Milk production per cow (pounds) 2/</u>													
1960	600	570	610	625	730	680	640	615	600	615	575	600	7,460
1961	620	575	660	660	770	750	710	675	655	680	630	655	8,040
1962	670	620	700	710	820	761	715	690	675	705	665	680	8,410
1963	695	645	720	745	850	795	755	735	690	685	670	701	8,690
1964	720	700	770	780	880	835	805	765	725	726	695	735	9,130
<u>Total milk production (million pounds) 2/</u>													
1960	414	393	420	430	502	467	440	422	412	421	394	410	5,125
1961	423	392	447	446	517	502	474	450	435	450	417	434	5,387
1962	442	407	458	462	531	491	460	444	433	452	426	435	5,441
1963	442	408	454	467	530	492	467	454	426	422	412	431	5,405
1964	440	424	463	465	520	490	471	447	423	423	404	426	5,396
INDIANA:													
<u>Milk cows on farms (thousands)</u>													
1960	434	432	431	430	428	427	426	425	423	422	421	419	426
1961	417	415	414	412	409	407	405	404	403	402	401	400	407
1962	398	397	396	395	394	392	390	388	387	385	384	383	391
1963	382	380	378	377	376	375	374	373	372	371	370	369	375
1964	367	365	363	361	359	357	355	353	351	349	347	345	356
<u>Milk production per cow (pounds) 2/</u>													
1960	575	570	620	625	745	710	650	635	615	605	550	550	7,460
1961	570	560	660	680	770	760	705	685	670	680	630	635	8,010
1962	600	570	680	695	795	775	720	680	655	690	640	645	8,140
1963	650	610	695	730	815	790	745	725	685	685	650	680	8,450
1964	705	690	745	760	840	800	775	755	720	715	695	715	8,920
<u>Total milk production (million pounds) 2/</u>													
1960	250	246	267	269	319	303	277	270	260	255	232	230	3,178
1961	238	232	273	280	315	309	286	277	270	273	253	254	3,260
1962	239	226	269	275	313	304	281	264	253	266	246	247	3,183
1963	248	232	263	275	306	296	279	270	255	254	240	251	3,169
1964	259	252	270	274	302	286	275	267	253	250	241	247	3,176
ILLINOIS:													
<u>Milk cows on farms (thousands)</u>													
1960	575	574	573	572	571	570	569	569	568	568	567	566	570
1961	565	564	562	560	558	556	554	552	550	548	546	544	555
1962	542	540	537	534	531	528	525	522	520	516	513	510	526
1963	508	506	504	501	498	495	492	489	486	484	480	477	493
1964	474	471	468	465	462	459	456	453	450	447	443	440	457
<u>Milk production per cow (pounds) 2/</u>													
1960	580	580	630	650	740	700	665	645	590	560	525	550	7,420
1961	580	565	645	675	785	750	700	670	615	610	585	590	7,770
1962	620	615	675	700	810	765	715	685	630	625	600	620	8,070
1963	670	625	700	720	830	805	765	710	645	650	630	675	8,430
1964	700	690	760	775	855	810	765	710	665	660	655	690	8,750
<u>Total milk production (million pounds) 2/</u>													
1960	334	333	361	372	423	399	378	367	335	318	298	311	4,229
1961	328	319	362	378	438	417	388	370	338	334	319	321	4,312
1962	336	332	362	374	430	404	375	358	328	322	308	316	4,245
1963	340	316	353	361	413	398	376	347	313	315	302	322	4,156
1964	332	325	356	360	395	372	349	322	299	295	290	304	3,999

Table 3.--Milk: Number of milk cows on farms, milk per cow, and milk production, by months and by States, 1960-64--Continued

Year	Jan.	Feb.	Mar.	Apr.	May	June	July	Aug.	Sept.	Oct.	Nov.	Dec.	Annual 1/
MICHIGAN:													
<u>Milk cows on farms (thousands)</u>													
1960	647	646	644	643	642	640	639	639	638	638	638	638	641
1961	638	638	638	638	638	638	638	639	639	640	640	640	639
1962	640	640	639	638	638	637	637	636	636	635	635	635	637
1963	633	632	631	630	629	628	627	626	625	624	623	622	628
1964	620	618	616	614	612	612	610	608	606	604	602	600	610
<u>Milk production per cow (pounds) 2/</u>													
1960	635	600	680	700	770	760	700	680	650	650	605	640	8,070
1961	645	595	690	690	760	780	710	700	685	700	655	683	8,290
1962	715	660	745	760	835	795	730	735	705	725	690	705	8,800
1963	715	655	730	745	815	790	750	760	720	761	720	745	8,900
1964	750	725	795	795	870	820	785	795	790	780	745	789	9,440
<u>Total milk production (million pounds) 2/</u>													
1960	411	388	438	450	494	486	447	435	415	415	386	408	5,173
1961	412	380	440	440	485	498	453	447	438	448	419	437	5,297
1962	458	422	476	485	533	506	465	467	448	460	438	448	5,606
1963	453	414	461	469	513	496	470	476	450	475	449	463	5,589
1964	465	448	490	488	532	502	479	483	479	471	448	473	5,758
WISCONSIN:													
<u>Milk cows on farms (thousands)</u>													
1960	2,149	2,150	2,150	2,150	2,150	2,150	2,150	2,150	2,150	2,150	2,150	2,150	2,150
1961	2,150	2,150	2,150	2,150	2,150	2,150	2,150	2,150	2,150	2,150	2,150	2,150	2,150
1962	2,150	2,150	2,150	2,150	2,150	2,150	2,150	2,150	2,150	2,150	2,150	2,150	2,150
1963	2,150	2,150	2,148	2,147	2,146	2,145	2,144	2,143	2,143	2,142	2,141	2,140	2,145
1964	2,140	2,140	2,140	2,140	2,140	2,140	2,139	2,138	2,138	2,138	2,137	2,135	2,139
<u>Milk production per cow (pounds) 2/</u>													
1960	680	675	765	785	855	845	720	620	560	585	555	625	8,270
1961	671	639	760	760	825	855	725	630	575	615	610	675	8,340
1962	720	680	785	795	875	870	740	650	605	645	614	671	8,650
1963	700	665	775	795	880	875	735	660	610	650	630	695	8,670
1964	750	745	840	840	920	885	740	665	620	660	650	735	9,050
<u>Total milk production (million pounds) 2/</u>													
1960	1,461	1,451	1,645	1,688	1,838	1,817	1,548	1,333	1,204	1,258	1,193	1,344	17,780
1961	1,443	1,374	1,634	1,634	1,774	1,838	1,559	1,354	1,236	1,322	1,312	1,451	17,931
1962	1,548	1,462	1,688	1,709	1,881	1,870	1,591	1,398	1,301	1,387	1,320	1,443	18,598
1963	1,505	1,430	1,665	1,707	1,888	1,877	1,576	1,414	1,307	1,392	1,349	1,487	18,597
1964	1,605	1,594	1,798	1,798	1,969	1,894	1,583	1,422	1,326	1,411	1,389	1,569	19,358
MINNESOTA:													
<u>Milk cows on farms (thousands)</u>													
1960	1,261	1,262	1,263	1,264	1,265	1,265	1,265	1,266	1,267	1,268	1,269	1,270	1,265
1961	1,271	1,272	1,273	1,274	1,275	1,278	1,280	1,281	1,282	1,283	1,284	1,285	1,278
1962	1,284	1,283	1,281	1,280	1,279	1,278	1,277	1,276	1,275	1,274	1,272	1,271	1,278
1963	1,270	1,270	1,270	1,270	1,270	1,270	1,270	1,270	1,270	1,270	1,270	1,270	1,270
1964	1,270	1,270	1,270	1,270	1,270	1,270	1,270	1,270	1,270	1,269	1,267	1,265	1,269
<u>Milk production per cow (pounds) 2/</u>													
1960	765	780	845	815	840	795	650	490	425	480	550	685	8,120
1961	780	755	860	825	855	815	660	515	439	495	565	710	8,270
1962	795	760	855	824	875	800	645	510	435	485	550	665	8,200
1963	760	730	835	825	870	810	660	520	460	510	565	695	8,240
1964	810	815	895	865	905	845	677	555	490	545	620	765	8,790
<u>Total milk production (million pounds) 2/</u>													
1960	965	984	1,067	1,030	1,063	1,006	822	620	538	609	698	870	10,272
1961	991	960	1,095	1,051	1,090	1,042	845	660	563	635	725	912	10,569
1962	1,021	975	1,095	1,055	1,119	1,022	824	651	555	618	700	845	10,480
1963	965	927	1,060	1,048	1,105	1,029	838	660	584	648	718	883	10,465
1964	1,029	1,035	1,137	1,099	1,149	1,073	860	705	622	692	786	968	11,155

Table 3.--Milk: Number of milk cows on farms, milk per cow and milk production, by months and by States, 1960-64--Continued

Year	Jan.	Feb.	Mar.	Apr.	May	June	July	Aug.	Sept.	Oct.	Nov.	Dec.	Annual 1/
<u>Milk cows on farms (thousands)</u>													
IOWA:													
1960	854	853	852	851	850	850	850	850	850	850	850	850	851
1961	850	849	848	847	847	846	846	845	844	843	842	840	846
1962	838	836	834	832	830	828	825	822	819	816	813	810	825
1963	808	806	804	802	800	798	796	794	792	790	788	785	797
1964	782	780	778	776	774	772	770	767	764	761	758	755	770
<u>Milk production per cow (pounds) 2/</u>													
1960	540	560	605	615	710	710	635	575	515	510	480	525	6,980
1961	580	560	625	620	725	740	665	595	525	530	515	552	7,230
1962	590	570	635	650	760	753	695	620	565	560	540	565	7,510
1963	610	599	665	690	785	775	725	655	600	605	575	615	7,900
1964	675	685	745	760	840	824	755	690	645	650	630	680	8,580
<u>Total milk production (million pounds) 2/</u>													
1960	461	478	515	523	604	604	540	489	438	434	408	446	5,940
1961	493	475	530	525	614	626	563	503	443	447	434	464	6,117
1962	494	477	530	541	631	623	573	510	463	457	439	458	6,196
1963	493	483	535	553	628	618	577	520	475	478	453	483	6,296
1964	528	534	580	590	650	636	581	529	493	495	478	513	6,607
<u>Milk cows on farms (thousands)</u>													
MISSOURI:													
1960	662	659	658	656	653	652	650	648	646	644	642	640	651
1961	640	639	638	638	637	636	635	634	633	632	631	630	635
1962	626	622	617	612	608	604	600	596	592	588	584	580	602
1963	576	570	565	561	556	552	548	545	541	537	533	530	551
1964	527	523	519	516	513	510	507	504	501	497	493	490	508
<u>Milk production per cow (pounds) 2/</u>													
1960	415	415	435	500	585	575	560	535	470	420	375	375	5,660
1961	415	410	495	525	600	590	575	545	495	450	405	390	5,900
1962	415	410	455	525	635	630	615	555	475	470	430	400	6,020
1963	425	415	485	555	645	660	630	580	535	490	450	430	6,300
1964	440	470	530	580	680	695	675	620	565	525	450	435	6,670
<u>Total milk production (million pounds) 2/</u>													
1960	275	273	286	328	382	375	364	347	304	270	241	240	3,685
1961	266	262	316	335	382	375	365	346	313	284	256	246	3,746
1962	260	255	281	321	386	381	369	331	281	276	251	232	3,624
1963	245	237	274	311	359	364	345	316	289	263	240	228	3,471
1964	232	246	275	299	349	354	342	312	283	261	222	213	3,388
<u>Milk cows on farms (thousands)</u>													
NORTH DAKOTA:													
1960	279	279	279	278	278	277	277	277	276	275	274	273	277
1961	273	272	272	272	272	271	270	270	270	270	270	269	271
1962	269	268	268	267	266	265	264	263	262	261	261	260	264
1963	260	259	258	257	257	256	255	254	253	252	250	249	255
1964	248	247	246	245	244	244	243	242	241	240	239	238	243
<u>Milk production per cow (pounds) 2/</u>													
1960	500	495	560	570	670	680	615	515	415	400	380	450	6,250
1961	495	495	570	585	675	680	620	535	445	410	380	460	6,350
1962	515	505	570	575	710	730	660	545	440	415	375	425	6,480
1963	490	475	565	605	700	710	665	555	450	420	395	450	6,490
1964	505	525	610	620	705	710	670	580	465	430	395	460	6,680
<u>Total milk production (million pounds) 2/</u>													
1960	140	138	156	158	186	188	170	143	115	110	104	123	1,731
1961	135	135	155	159	184	184	167	144	120	111	103	124	1,721
1962	139	135	153	154	189	193	174	143	115	108	98	110	1,711
1963	127	123	146	155	180	182	170	141	114	106	99	112	1,655
1964	125	130	150	152	172	173	163	140	112	103	94	109	1,623

Table 3.--Milk: Number of milk cows on farms, milk per cow and milk production, by months and by States, 1960-64--Continued

Year	Jan.	Feb.	Mar.	Apr.	May	June	July	Aug.	Sept.	Oct.	Nov.	Dec.	Annual 1/
SOUTH DAKOTA:													
<u>Milk cows on farms (thousands)</u>													
1960	252	252	251	250	250	249	248	247	246	246	245	245	248
1961	245	245	245	244	244	244	244	243	243	243	242	242	244
1962	242	242	241	240	240	240	239	239	239	238	238	238	240
1963	237	237	237	236	236	236	236	236	235	235	235	235	236
1964	235	234	234	234	233	233	233	233	232	232	231	231	233
<u>Milk production per cow (pounds) 2/</u>													
1960	475	480	530	555	630	625	550	450	395	390	375	425	5,900
1961	475	485	575	580	660	672	600	505	435	415	405	445	6,250
1962	495	500	585	580	675	670	580	500	420	405	375	430	6,210
1963	460	475	550	560	625	635	600	520	450	455	430	480	6,240
1964	545	560	615	610	670	670	595	535	455	435	460	535	6,690
<u>Total milk production (million pounds) 2/</u>													
1960	120	121	133	139	158	156	136	111	97	96	92	104	1,463
1961	116	119	141	142	161	164	146	123	106	101	98	108	1,525
1962	120	121	141	139	162	161	139	120	100	96	89	102	1,490
1963	109	113	130	132	147	150	142	123	106	107	101	113	1,473
1964	128	131	144	143	156	156	139	125	106	101	106	124	1,559
NEBRASKA:													
<u>Milk cows on farms (thousands)</u>													
1960	332	331	330	329	328	327	326	326	325	324	323	323	327
1961	323	322	321	320	319	318	317	316	315	313	312	311	317
1962	310	308	306	305	304	303	300	298	297	296	294	292	301
1963	290	288	287	286	285	284	283	281	279	278	276	274	283
1964	272	271	271	270	270	269	268	267	265	264	262	260	267
<u>Milk production per cow (pounds) 2/</u>													
1960	460	460	500	540	640	635	600	525	455	440	415	465	6,140
1961	480	475	545	560	670	655	590	565	500	475	455	470	6,450
1962	535	505	580	580	665	640	610	590	500	485	465	495	6,660
1963	500	470	560	600	680	655	610	590	545	530	510	555	6,800
1964	575	545	615	640	690	685	645	605	580	555	525	590	7,270
<u>Total milk production (million pounds) 2/</u>													
1960	153	152	165	178	210	208	196	171	148	143	134	150	2,008
1961	155	153	175	179	214	208	187	179	158	149	142	146	2,045
1962	166	156	177	177	202	194	183	176	148	144	137	145	2,005
1963	145	135	161	172	194	186	173	166	152	147	141	152	1,924
1964	156	148	167	173	186	184	173	162	154	147	138	153	1,941
KANSAS:													
<u>Milk cows on farms (thousands)</u>													
1960	338	337	336	335	334	333	332	330	328	327	326	325	332
1961	325	324	323	322	321	320	319	318	317	317	316	315	320
1962	313	311	309	307	305	302	300	297	294	291	288	286	300
1963	285	283	282	281	279	278	277	275	274	272	271	270	277
1964	268	267	266	265	264	263	262	260	258	257	256	255	262
<u>Milk production per cow (pounds) 2/</u>													
1960	455	445	474	500	580	534	490	470	454	445	460	480	5,790
1961	465	455	530	550	600	555	515	490	480	495	485	495	6,110
1962	490	455	505	520	600	565	530	505	515	520	520	510	6,240
1963	500	465	550	570	610	560	555	530	540	540	550	560	6,535
1964	560	545	585	595	640	600	580	560	555	565	570	575	6,930
<u>Total milk production (million pounds) 2/</u>													
1960	154	150	159	168	194	178	163	155	149	146	150	156	1,922
1961	151	147	171	177	193	178	164	156	152	157	153	156	1,955
1962	153	142	156	160	183	171	159	150	151	151	150	146	1,872
1963	142	132	155	160	170	156	154	146	148	147	149	151	1,810
1964	150	146	156	158	169	158	152	146	143	145	146	147	1,816

Table 3.--Milk: Number of milk cows on farms, milk per cow, and milk production, by months and by States, 1960-64--Continued

Year	Jan.	Feb.	Mar.	Apr.	May	June	July	Aug.	Sept.	Oct.	Nov.	Dec.	Annual 1/
DELAWARE:													
<u>Milk cows on farms (thousands)</u>													
1960	27	27	27	27	27	27	26	26	26	26	26	26	26
1961	25	25	25	25	25	25	25	24	24	24	24	24	25
1962	24	24	24	23	23	23	23	23	23	23	22	22	23
1963	22	22	22	22	22	22	22	21	21	21	21	21	22
1964	21	21	20	20	20	20	20	19	19	19	19	19	20
<u>Milk production per cow (pounds) 2/</u>													
1960	565	555	595	615	705	605	600	610	590	600	565	600	7,350
1961	585	565	615	650	740	640	625	630	600	605	590	600	7,320
1962	570	540	630	685	770	670	635	635	625	625	590	605	7,610
1963	645	590	690	735	810	695	685	700	670	655	620	650	8,000
1964	650	625	720	760	830	710	700	710	680	670	630	675	8,250
<u>Total milk production (million pounds) 2/</u>													
1960	15.3	15.0	16.1	16.6	19.0	16.3	15.6	15.9	15.3	15.6	14.7	15.6	191
1961	14.6	14.1	15.4	16.2	18.5	16.0	15.6	15.1	14.4	14.5	14.2	14.4	183
1962	13.7	13.0	15.1	15.8	17.7	15.4	14.6	14.6	14.4	14.4	13.0	13.3	175
1963	14.2	13.0	15.2	16.2	17.8	15.3	15.1	14.7	14.1	13.8	13.0	13.6	176
1964	13.6	13.1	14.4	15.2	16.6	14.2	14.0	13.5	12.9	12.7	12.0	12.8	165
MARYLAND:													
<u>Milk cows on farms (thousands)</u>													
1960	217	217	217	217	216	216	216	216	216	216	215	215	216
1961	214	214	214	213	213	213	212	212	211	211	210	210	212
1962	210	210	210	210	210	210	210	210	210	210	210	210	210
1963	209	208	207	206	205	205	204	203	202	201	200	200	204
1964	199	198	197	196	195	195	194	193	192	191	190	189	194
<u>Milk production per cow (pounds) 2/</u>													
1960	570	550	585	585	670	585	590	625	600	615	560	550	7,090
1961	560	540	585	595	700	640	625	640	620	615	560	585	7,280
1962	610	570	630	615	685	610	610	620	615	640	585	585	7,370
1963	605	565	630	630	710	640	630	665	650	645	610	630	7,620
1964	655	635	680	665	750	655	650	705	675	670	655	675	8,070
<u>Total milk production (million pounds) 2/</u>													
1960	124	119	127	127	145	126	127	135	130	133	120	118	1,531
1961	120	116	125	127	149	136	132	136	131	130	118	123	1,543
1962	128	120	132	129	144	128	128	130	129	134	123	123	1,548
1963	126	118	130	130	146	131	129	135	131	130	122	126	1,554
1964	130	126	134	130	146	128	126	136	130	128	124	128	1,566
VIRGINIA:													
<u>Milk cows on farms (thousands)</u>													
1960	340	339	337	337	337	337	336	335	334	332	330	328	335
1961	327	326	325	324	323	322	321	320	319	318	316	314	321
1962	312	310	309	308	308	306	304	303	302	301	300	299	305
1963	298	297	296	295	294	292	290	289	288	287	286	285	291
1964	283	281	279	277	275	274	273	272	271	269	267	265	274
<u>Milk production per cow (pounds) 2/</u>													
1960	435	410	420	455	555	550	555	555	535	510	465	455	5,900
1961	440	410	460	450	575	560	565	565	540	520	470	460	6,060
1962	455	430	480	500	585	560	570	580	560	540	500	480	6,240
1963	475	440	490	515	585	560	570	575	555	545	510	490	6,320
1964	505	475	505	540	620	580	600	615	580	580	545	525	6,660
<u>Total milk production (million pounds) 2/</u>													
1960	148	139	142	153	187	185	186	186	179	169	153	149	1,976
1961	144	134	150	159	186	180	181	181	172	165	149	144	1,945
1962	142	133	148	154	180	171	173	176	169	163	150	144	1,903
1963	142	131	145	152	172	164	165	166	160	156	146	140	1,839
1964	143	133	141	150	170	159	164	167	157	156	146	139	1,825

Table 3.--Milk: Number of milk cows on farms, milk per cow, and milk production, by months and by States, 1960-64--Continued

Year	Jan.	Feb.	Mar.	Apr.	May	June	July	Aug.	Sept.	Oct.	Nov.	Dec.	Annual ^{1/}
WEST VIRGINIA:													
<u>Milk cows on farms (thousands)</u>													
1960	133	133	132	132	131	131	130	129	129	129	128	128	130
1961	128	127	126	126	125	124	124	123	122	121	121	120	124
1962	119	118	117	116	115	114	113	112	112	111	110	109	114
1963	108	108	107	106	106	105	105	104	103	102	101	100	105
1964	100	99	98	97	96	95	94	93	92	91	90	90	95
<u>Milk production per cow (pounds) ^{2/}</u>													
1960	385	360	400	425	485	480	465	435	430	435	400	360	5,070
1961	373	345	405	430	490	500	500	465	440	435	395	380	5,160
1962	385	370	415	420	475	490	475	435	415	430	400	390	5,110
1963	400	360	410	420	485	495	490	450	440	445	415	410	5,190
1964	410	400	425	440	495	490	500	470	455	460	440	440	5,430
<u>Total milk production (million pounds) ^{2/}</u>													
1960	51	48	53	56	64	63	60	56	55	56	51	46	659
1961	48	44	51	54	61	62	62	57	54	53	48	46	640
1962	46	44	49	49	55	56	54	49	46	48	44	43	583
1963	43	39	44	45	51	52	51	47	45	45	42	41	545
1964	41	40	42	43	48	47	47	44	42	42	40	40	516
NORTH CAROLINA:													
<u>Milk cows on farms (thousands)</u>													
1960	277	276	275	273	271	269	268	267	266	265	264	263	270
1961	263	262	262	260	260	259	259	258	258	257	256	255	259
1962	254	254	253	252	251	250	249	248	247	246	245	243	249
1963	243	242	241	240	239	238	238	237	236	235	234	233	238
1964	232	231	230	229	228	227	226	225	224	223	222	221	226
<u>Milk production per cow (pounds) ^{2/}</u>													
1960	430	425	440	465	530	505	495	500	505	495	460	465	5,700
1961	450	435	470	505	550	520	520	515	515	502	490	510	5,980
1962	485	455	505	510	530	520	540	510	515	520	505	520	6,120
1963	485	455	510	520	555	540	550	550	535	525	515	530	6,270
1964	490	485	535	555	585	555	565	575	570	550	530	550	6,560
<u>Total milk production (million pounds) ^{2/}</u>													
1960	119	117	121	127	144	136	133	134	134	131	121	122	1,539
1961	118	114	123	131	143	135	135	133	133	129	125	130	1,549
1962	123	116	128	129	133	130	134	126	127	128	124	126	1,524
1963	118	110	123	125	133	129	131	130	126	123	121	123	1,492
1964	114	112	123	127	133	126	128	129	128	123	118	122	1,483
SOUTH CAROLINA:													
<u>Milk cows on farms (thousands)</u>													
1960	110	109	109	108	108	108	107	107	107	106	106	106	108
1961	105	105	105	105	104	104	103	103	103	102	102	102	104
1962	101	101	100	100	99	99	98	98	97	97	97	96	99
1963	96	96	95	95	94	94	93	93	92	92	91	91	94
1964	90	89	89	88	88	87	87	86	86	85	85	85	87
<u>Milk production per cow (pounds) ^{2/}</u>													
1960	390	355	365	440	445	380	390	430	430	440	415	440	4,920
1961	410	370	450	435	455	420	435	445	425	440	430	490	5,190
1962	455	420	455	460	460	410	435	445	445	470	460	470	5,380
1963	465	405	465	495	490	435	465	460	465	485	480	480	5,570
1964	485	450	505	510	515	475	495	505	490	510	475	520	5,920
<u>Total milk production (million pounds) ^{2/}</u>													
1960	43	39	40	48	48	41	42	46	46	47	44	47	531
1961	43	39	47	46	47	44	45	46	44	45	44	50	540
1962	46	42	46	46	46	41	43	44	43	46	45	45	533
1963	45	39	44	47	46	41	43	43	43	45	44	44	524
1964	44	40	45	45	45	41	43	43	42	43	40	44	515

Table 3.--Milk: Number of milk cows on farms, milk per cow, and milk production, by months and by States, 1960-64--Continued

Year	Jan.	Feb.	Mar.	Apr.	May	June	July	Aug.	Sept.	Oct.	Nov.	Dec.	Annual 1/
GEORGIA:													
<u>Milk cows on farms (thousands)</u>													
1960	218	217	216	215	214	214	213	212	211	210	209	209	213
1961	208	207	207	206	205	205	204	203	202	201	200	199	204
1962	198	198	197	196	195	194	193	192	191	190	189	188	193
1963	187	186	185	184	183	182	181	180	179	178	177	176	182
1964	175	174	173	172	171	170	169	168	167	166	165	164	170
<u>Milk production per cow (pounds) 2/</u>													
1960	390	365	380	410	415	390	385	400	410	415	410	415	4,790
1961	415	385	440	440	450	420	420	425	430	425	405	415	5,070
1962	415	390	450	460	460	425	425	440	430	430	415	435	5,180
1963	425	385	435	475	480	455	465	445	440	450	435	435	5,310
1964	440	430	480	485	490	465	480	480	460	455	460	490	5,600
<u>Total milk production (million pounds) 2/</u>													
1960	85	79	82	88	89	83	82	85	87	87	86	87	1,020
1961	86	80	91	91	92	86	86	86	87	85	81	83	1,034
1962	82	77	89	90	90	82	82	84	82	82	78	82	1,000
1963	79	72	80	87	88	83	84	80	79	80	77	77	966
1964	77	72	83	83	84	79	81	81	77	76	76	80	952
FLORIDA:													
<u>Milk cows on farms (thousands)</u>													
1960	194	194	194	194	194	194	194	194	195	194	194	193	194
1961	193	193	192	191	190	189	188	187	187	186	186	185	189
1962	185	184	183	181	180	179	178	177	177	178	179	180	180
1963	179	178	178	177	176	176	176	175	177	178	179	179	177
1964	180	180	179	178	177	177	177	176	176	177	178	179	178
<u>Milk production per cow (pounds) 2/</u>													
1960	600	565	600	575	565	530	520	520	520	555	570	605	6,730
1961	600	555	625	585	580	545	530	535	545	550	590	625	6,910
1962	625	590	660	635	630	585	560	570	560	605	605	635	7,270
1963	650	600	670	660	655	600	590	585	590	625	620	650	7,500
1964	650	625	685	670	665	610	610	595	595	625	620	655	7,600
<u>Total milk production (million pounds) 2/</u>													
1960	116	110	116	112	110	103	101	101	101	108	111	117	1,306
1961	116	107	120	112	110	103	100	100	102	110	110	116	1,306
1962	116	109	121	115	113	105	100	101	99	108	108	114	1,309
1963	116	107	119	117	115	106	104	102	104	111	111	116	1,328
1964	117	112	123	119	118	108	108	105	105	111	110	117	1,353
KENTUCKY:													
<u>Milk cows on farms (thousands)</u>													
1960	505	505	505	505	504	504	504	504	503	503	503	503	504
1961	503	502	502	501	501	500	499	499	499	498	498	497	500
1962	497	496	496	496	495	494	493	492	491	490	489	489	493
1963	487	485	483	481	479	477	475	473	471	468	465	462	476
1964	459	456	454	452	450	448	446	444	442	440	438	435	447
<u>Milk production per cow (pounds) 2/</u>													
1960	325	320	370	425	500	480	496	505	435	395	355	340	4,950
1961	325	315	395	440	530	525	520	535	480	430	370	350	5,210
1962	330	325	400	445	525	520	530	540	485	455	390	375	5,320
1963	350	340	405	460	560	555	555	575	515	450	390	380	5,530
1964	365	355	440	495	580	585	570	585	515	464	400	395	5,750
<u>Total milk production (million pounds) 2/</u>													
1960	164	162	187	215	252	242	250	255	219	159	179	171	2,495
1961	163	158	198	220	266	262	259	267	240	214	184	174	2,605
1962	164	161	198	221	260	257	261	266	238	223	191	183	2,623
1963	170	165	196	221	268	265	264	272	243	211	181	176	2,632
1964	168	162	200	224	261	262	254	260	228	204	175	172	2,570

Table 3.--Milk: Number of milk cows on farms, milk per cow, and milk production, by months and by States, 1960-64--Continued

Year	Jan.	Feb.	Mar.	Apr.	May	June	July	Aug.	Sept.	Oct.	Nov.	Dec.	Annual 1/
TENNESSEE:													
<u>Milk cows on farms (thousands)</u>													
1960	489	486	483	481	479	477	475	474	472	471	470	469	477
1961	468	467	465	463	462	461	460	459	458	457	456	456	461
1962	455	454	453	452	451	451	450	448	445	443	441	438	448
1963	436	433	431	429	427	425	424	423	422	421	420	420	426
1964	419	417	415	414	412	410	409	407	405	403	402	400	409
<u>Milk production per cow (pounds) 2/</u>													
1960	300	280	320	380	460	450	470	470	430	382	340	318	4,600
1961	295	285	360	430	510	495	515	520	465	410	330	330	4,940
1962	325	315	370	435	500	485	515	505	445	435	365	345	5,050
1963	340	310	370	450	510	505	525	520	475	415	350	335	5,100
1964	335	325	375	425	500	490	505	520	490	430	380	370	5,150
<u>Total milk production (million pounds) 2/</u>													
1960	147	136	155	183	220	215	223	223	203	180	160	149	2,194
1961	138	133	167	199	236	228	237	239	213	187	150	150	2,277
1962	148	143	168	197	226	219	232	226	198	193	161	151	2,262
1963	148	134	159	193	218	215	223	220	200	175	147	141	2,173
1964	140	136	156	176	206	201	207	212	198	173	153	148	2,106
ALABAMA:													
<u>Milk cows on farms (thousands)</u>													
1960	246	245	244	242	241	239	238	236	235	234	233	232	239
1961	230	229	228	227	226	224	222	221	220	219	218	217	223
1962	216	215	214	213	212	211	209	208	207	206	205	204	210
1963	202	201	200	199	198	196	194	193	192	191	190	189	195
1964	188	187	186	185	184	183	181	179	178	177	176	175	182
<u>Milk production per cow (pounds) 2/</u>													
1960	320	310	315	345	335	305	305	325	345	355	350	360	3,970
1961	320	310	360	350	355	325	325	335	355	360	355	380	4,130
1962	340	330	365	360	360	325	330	340	360	375	360	380	4,230
1963	355	325	360	360	360	335	345	350	375	380	370	380	4,310
1964	360	360	370	375	380	350	360	375	405	400	405	430	4,550
<u>Total milk production (million pounds) 2/</u>													
1960	79	76	77	83	81	73	73	77	81	83	82	84	949
1961	74	71	82	79	80	73	72	74	78	79	77	82	921
1962	73	71	78	77	76	69	69	71	75	77	74	78	888
1963	72	65	72	72	71	66	67	68	72	73	70	72	840
1964	68	67	69	69	70	64	65	67	72	71	71	75	828
MISSISSIPPI:													
<u>Milk cows on farms (thousands)</u>													
1960	372	370	369	368	368	367	366	365	364	363	362	360	366
1961	358	357	356	355	353	352	350	349	347	345	344	342	351
1962	340	338	336	334	332	330	328	326	324	322	320	318	329
1963	315	313	310	308	306	303	300	297	294	292	290	288	301
1964	287	286	285	283	281	278	276	274	272	271	270	269	278
<u>Milk production per cow (pounds) 2/</u>													
1960	240	230	250	295	330	320	310	315	305	285	255	260	3,390
1961	255	245	295	315	355	340	350	345	325	305	275	285	3,680
1962	265	255	290	325	355	345	345	345	325	315	275	285	3,720
1963	275	245	285	320	350	340	365	360	340	315	285	285	3,770
1964	285	275	310	340	365	365	370	370	360	330	310	320	3,990
<u>Total milk production (million pounds) 2/</u>													
1960	89	85	92	109	121	117	113	115	111	103	92	94	1,241
1961	91	87	105	112	125	120	122	120	113	105	95	97	1,292
1962	90	86	97	109	118	114	113	112	105	101	88	91	1,224
1963	87	77	88	99	107	103	110	107	100	92	83	82	1,135
1964	82	79	88	96	103	101	102	101	98	89	84	86	1,109

Table 3.--Milk: Number of milk cows on farms, milk per cow, and milk production, by months and by States, 1960-64--Continued

Year	Jan.	Feb.	Mar.	Apr.	May	June	July	Aug.	Sept.	Oct.	Nov.	Dec.	Annual 1/
ARKANSAS:													
<u>Milk cows on farms (thousands)</u>													
1960	219	219	218	218	217	216	216	216	216	216	216	216	217
1961	216	215	215	214	214	213	213	212	211	210	210	209	213
1962	208	206	205	203	202	200	198	197	196	194	193	191	199
1963	188	186	183	180	177	174	171	168	165	162	159	156	172
1964	155	154	152	151	150	149	147	146	145	143	142	140	148
<u>Milk production per cow (pounds) 2/</u>													
1960	280	270	305	355	440	425	420	415	380	355	315	295	4,250
1961	285	270	315	370	445	430	425	430	400	370	330	305	4,370
1962	275	265	315	370	445	440	430	425	405	375	330	320	4,400
1963	290	275	330	395	465	455	450	440	415	380	345	335	4,570
1964	325	325	360	425	500	480	470	470	455	420	395	385	5,000
<u>Total milk production (million pounds) 2/</u>													
1960	61	59	66	77	95	92	91	90	82	77	68	64	922
1961	62	58	68	79	95	92	91	91	84	78	69	64	931
1962	57	55	65	75	90	88	85	84	79	73	64	61	876
1963	55	51	60	71	82	79	77	74	68	62	55	52	786
1964	50	50	55	64	75	72	69	69	66	60	56	54	740
LOUISIANA:													
<u>Milk cows on farms (thousands)</u>													
1960	236	236	235	235	235	234	234	234	234	233	233	232	234
1961	232	232	232	232	231	231	231	231	230	230	230	230	231
1962	229	229	228	228	227	227	226	225	225	224	224	224	226
1963	223	222	222	221	220	220	219	218	218	217	217	216	219
1964	216	215	215	215	214	214	213	213	212	211	211	210	213
<u>Milk production per cow (pounds) 2/</u>													
1960	300	280	305	325	315	275	280	295	320	325	315	330	3,670
1961	330	295	350	345	355	305	310	325	335	335	315	345	3,940
1962	315	295	345	350	360	325	330	330	350	365	345	365	4,090
1963	345	300	345	370	360	320	350	365	380	390	360	370	4,270
1964	365	345	380	395	390	345	350	370	390	380	385	410	4,510
<u>Total milk production (million pounds) 2/</u>													
1960	71	66	72	76	74	64	66	69	75	76	73	77	859
1961	77	68	81	80	82	70	72	75	77	77	72	79	910
1962	72	68	79	80	82	74	75	74	79	82	77	82	924
1963	77	67	77	82	79	70	77	80	83	85	78	80	935
1964	79	74	82	85	83	74	75	79	83	80	81	86	961
OKLAHOMA:													
<u>Milk cows on farms (thousands)</u>													
1960	262	261	260	259	258	257	255	254	253	252	251	250	256
1961	249	249	249	248	248	248	247	246	244	243	242	241	246
1962	240	238	236	234	232	230	228	226	224	222	220	220	229
1963	219	218	217	216	215	213	211	210	209	207	205	203	212
1964	201	199	198	197	195	193	192	191	188	187	186	185	193
<u>Milk production per cow (pounds) 2/</u>													
1960	405	430	460	490	540	505	500	465	430	440	440	445	5,550
1961	430	430	455	540	580	550	565	525	495	500	485	490	6,050
1962	455	460	480	545	585	565	565	520	530	535	505	500	6,250
1963	475	460	520	550	585	575	560	545	525	515	495	500	6,300
1964	515	510	545	580	620	590	585	555	555	545	535	545	6,670
<u>Total milk production (million pounds) 2/</u>													
1960	106	112	120	127	139	130	128	118	109	111	110	111	1,421
1961	107	107	113	134	144	136	140	129	121	122	117	118	1,488
1962	109	109	113	128	136	130	129	118	119	119	111	110	1,431
1963	104	100	113	119	126	122	118	114	110	107	101	102	1,336
1964	104	101	108	114	121	114	112	106	104	102	100	101	1,287

Table 3.--Milk: Number of milk cows on farms, milk per cow, and milk production, by months and by States, 1960-64--Continued

Year	Jan.	Feb.	Mar.	Apr.	May	June	July	Aug.	Sept.	Oct.	Nov.	Dec.	Annual 1/
TEXAS:													
<u>Milk cows on farms (thousands)</u>													
1960	590	587	585	583	580	577	574	571	568	565	562	560	575
1961	559	558	557	556	555	553	552	551	550	549	548	547	553
1962	547	546	545	545	544	543	542	541	540	539	538	535	542
1963	533	529	525	521	517	514	510	506	502	500	497	492	512
1964	488	484	480	477	472	469	465	461	457	453	449	445	467
<u>Milk production per cow (pounds) 2/</u>													
1960	410	400	440	448	455	435	430	430	410	415	410	415	5,100
1961	425	395	475	480	490	455	465	465	455	465	445	465	5,480
1962	455	430	490	495	510	470	475	470	455	465	440	455	5,610
1963	460	420	490	510	510	480	485	480	475	480	460	480	5,730
1964	495	475	540	555	565	525	530	530	525	540	515	530	6,320
<u>Total milk production (million pounds) 2/</u>													
1960	242	235	257	261	264	251	247	246	233	234	230	232	2,932
1961	238	220	265	267	272	252	257	256	250	255	244	254	3,030
1962	249	235	267	270	277	255	257	254	246	251	237	243	3,041
1963	245	222	257	266	264	247	247	243	238	240	229	236	2,934
1964	242	230	259	265	267	246	246	244	240	245	231	236	2,951
MONTANA:													
<u>Milk cows on farms (thousands)</u>													
1960	80	79	79	79	78	77	76	76	76	75	75	74	77
1961	74	74	73	73	73	72	72	72	71	71	71	70	72
1962	70	69	69	68	68	67	66	66	66	65	65	64	67
1963	64	64	64	64	64	63	63	63	63	63	62	62	63
1964	61	61	61	61	61	61	60	60	60	60	60	60	60
<u>Milk production per cow (pounds) 2/</u>													
1960	430	420	460	490	625	630	585	520	475	465	445	445	5,990
1961	435	415	480	515	645	645	600	540	490	480	480	475	6,210
1962	440	435	490	515	645	655	620	575	500	490	475	485	6,330
1963	485	455	515	530	670	665	635	555	490	475	470	465	6,440
1964	485	490	525	535	665	680	650	570	505	495	475	465	6,600
<u>Total milk production (million pounds) 2/</u>													
1960	34	33	36	39	49	49	44	40	36	35	33	33	461
1961	32	31	35	38	47	46	43	39	35	34	34	33	447
1962	31	30	34	35	44	44	41	38	33	32	31	31	424
1963	31	29	33	34	43	42	40	35	31	30	29	29	406
1964	30	30	32	33	41	41	39	34	30	30	28	28	396
IDAHO:													
<u>Milk cows on farms (thousands)</u>													
1960	204	204	204	203	202	202	201	201	201	200	200	200	202
1961	200	200	200	200	200	200	200	200	199	199	199	199	200
1962	199	199	199	199	199	199	198	196	195	194	193	193	197
1963	192	192	191	190	189	188	187	186	185	184	183	183	188
1964	183	182	182	181	181	180	180	179	178	176	175	174	179
<u>Milk production per cow (pounds) 2/</u>													
1960	605	580	670	720	800	800	765	710	630	615	580	615	8,090
1961	625	600	700	730	825	830	765	715	670	605	570	615	8,230
1962	610	595	690	695	780	780	755	720	665	635	605	645	8,160
1963	650	615	725	740	825	820	755	710	670	650	600	635	8,380
1964	640	615	690	720	800	820	785	730	665	635	610	650	8,380
<u>Total milk production (million pounds) 2/</u>													
1960	123	118	137	146	162	162	154	143	127	123	116	123	1,634
1961	125	120	140	146	165	166	153	143	133	120	113	122	1,646
1962	121	118	137	138	155	155	149	141	130	123	117	124	1,608
1963	125	118	138	141	156	154	141	132	124	120	110	116	1,575
1964	117	112	126	130	145	148	141	131	118	112	107	113	1,500

Table 3.--Milk: Number of milk cows on farms, milk per cow, and milk production, by months and by States, 1960-64--Continued

Year	Jan.	Feb.	Mar.	Apr.	May	June	July	Aug.	Sept.	Oct.	Nov.	Dec.	Annual 1/
WYOMING:													
<u>Milk cows on farms (thousands)</u>													
1960	31.5	31.5	31.5	31.3	31.2	31.0	31.0	31.0	30.8	30.5	30.2	30.0	31.0
1961	29.8	29.5	29.2	28.9	28.7	28.5	28.4	28.2	27.9	27.5	27.1	27.0	28.4
1962	26.9	26.8	26.7	26.6	26.5	26.5	26.4	26.3	26.0	25.9	25.6	25.5	26.3
1963	25.5	25.5	25.5	25.5	25.5	25.5	25.5	25.5	25.5	25.5	25.5	25.5	25.5
1964	25.4	25.3	25.2	25.1	25.0	25.0	25.0	24.9	24.9	24.7	24.6	24.5	25.0
<u>Milk production per cow (pounds) 2/</u>													
1960	450	440	480	520	617	650	618	547	495	475	435	465	6,190
1961	490	490	535	545	615	640	595	565	515	510	475	500	6,480
1962	525	500	565	570	650	680	650	595	535	535	500	535	6,840
1963	550	500	550	570	650	685	660	625	555	565	520	550	6,980
1964	570	545	595	620	665	715	665	615	560	565	530	565	7,200
<u>Total milk production (million pounds) 2/</u>													
1960	14.2	13.9	15.1	16.3	19.3	20.2	19.2	17.0	15.2	14.5	13.1	14.0	192
1961	14.6	14.5	15.6	15.8	17.7	18.2	16.9	15.9	14.4	14.0	12.9	13.5	184
1962	14.1	13.4	15.1	15.2	17.2	18.0	17.2	15.6	13.9	13.9	12.8	13.6	180
1963	14.0	12.8	14.0	14.5	16.6	17.5	16.8	15.9	14.2	14.4	13.3	14.0	178
1964	14.5	13.8	15.0	15.6	16.6	17.9	16.6	15.3	13.9	14.0	13.0	13.8	180
COLORADO:													
<u>Milk cows on farms (thousands)</u>													
1960	126	126	126	125	125	125	124	124	123	122	121	121	124
1961	120	120	120	120	119	119	119	119	118	118	118	117	119
1962	117	117	117	116	116	116	116	115	115	115	115	114	116
1963	114	114	114	113	113	113	112	112	111	111	110	110	112
1964	109	109	108	108	108	107	107	107	106	106	106	105	107
<u>Milk production per cow (pounds) 2/</u>													
1960	555	540	570	585	640	635	630	600	545	560	550	575	6,980
1961	575	560	610	625	655	635	650	600	560	565	545	555	7,130
1962	580	545	595	620	670	665	655	615	585	590	575	610	7,300
1963	605	570	625	655	690	675	665	655	605	610	610	620	7,590
1964	640	625	675	675	720	700	690	680	660	650	640	675	8,060
<u>Total milk production (million pounds) 2/</u>													
1960	70	68	72	73	80	79	78	74	67	68	67	70	866
1961	69	67	73	75	78	76	77	71	66	67	64	65	848
1962	68	64	70	72	78	77	76	71	67	68	66	70	847
1963	69	65	71	74	78	76	74	73	67	68	67	68	850
1964	70	68	73	73	78	75	74	73	70	69	68	71	862
NEW MEXICO:													
<u>Milk cows on farms (thousands)</u>													
1960	42	42	42	42	42	42	42	42	42	42	42	42	42
1961	41	41	41	41	41	40	40	40	40	40	40	39	40
1962	39	39	39	39	39	39	39	39	39	39	39	39	39
1963	39	39	39	39	39	39	39	39	39	39	39	39	39
1964	39	39	39	39	39	39	39	39	39	39	39	39	39
<u>Milk production per cow (pounds) 2/</u>													
1960	475	430	500	525	525	525	525	500	500	525	475	525	6,020
1961	490	440	510	535	535	530	530	500	500	530	500	540	6,170
1962	515	485	540	565	590	565	565	540	540	565	540	565	6,560
1963	540	515	565	590	640	615	615	590	565	615	590	590	7,020
1964	590	565	615	615	640	615	615	615	590	615	590	615	7,280
<u>Total milk production (million pounds) 2/</u>													
1960	20	18	21	22	22	22	22	21	21	22	20	22	253
1961	20	18	21	22	22	21	21	20	20	21	20	21	247
1962	20	19	21	22	23	22	22	21	21	22	21	22	256
1963	21	20	22	23	25	24	24	23	22	24	23	23	274
1964	23	22	24	24	25	24	24	24	23	24	23	24	284

Table 3.--Milk: Number of milk cows on farms, milk per cow, and milk production, by months and by States, 1960-64--Continued

Year	Jan.	Feb.	Mar.	Apr.	May	June	July	Aug.	Sept.	Oct.	Nov.	Dec.	Annual 1/
ARIZONA:													
<u>Milk cows on farms (thousands)</u>													
1960	50	50	50	50	50	49	49	49	50	50	50	50	50
1961	50	50	50	50	50	49	49	50	50	50	50	50	50
1962	50	50	50	50	50	50	50	50	50	50	50	50	50
1963	51	51	50	50	51	51	51	51	52	52	52	52	51
1964	52	52	52	52	52	52	52	52	52	52	52	52	52
<u>Milk production per cow (pounds) 2/</u>													
1960	800	760	840	800	780	715	735	735	740	800	760	800	9,220
1961	780	740	860	820	820	755	735	740	760	800	780	800	9,360
1962	820	760	860	825	825	770	770	750	750	815	800	820	9,550
1963	825	785	900	900	900	845	800	780	750	810	770	810	9,900
1964	830	810	885	885	900	850	795	795	815	830	815	830	10,000
<u>Total milk production (million pounds) 2/</u>													
1960	40	38	42	40	39	35	36	36	37	40	38	40	461
1961	39	37	43	41	41	37	36	37	38	40	39	40	468
1962	41	38	43	41	41	38	38	38	38	41	40	41	478
1963	42	40	45	45	46	43	41	40	39	42	40	42	505
1964	43	42	46	46	47	44	41	41	42	43	42	43	520
UTAH:													
<u>Milk cows on farms (thousands)</u>													
1960	95	94	94	94	94	94	94	94	94	94	94	93	94
1961	93	93	93	93	93	93	92	92	91	91	90	90	92
1962	90	90	90	90	90	89	89	89	88	88	88	87	89
1963	87	87	87	87	87	87	86	86	85	85	84	84	86
1964	84	84	84	84	84	84	83	83	82	82	81	81	83
<u>Milk production per cow (pounds) 2/</u>													
1960	660	640	710	720	770	735	700	670	630	650	610	635	8,130
1961	680	630	720	720	760	740	730	700	660	670	660	690	8,360
1962	700	650	720	735	780	740	740	710	680	695	670	700	8,520
1963	710	660	750	760	800	760	760	730	710	720	690	710	8,760
1964	700	670	730	740	785	770	760	750	720	730	715	730	8,800
<u>Total milk production (million pounds) 2/</u>													
1960	63	60	67	68	72	69	66	63	59	61	57	59	764
1961	63	59	67	67	71	69	67	64	60	61	59	62	769
1962	63	58	65	66	70	66	66	63	60	61	59	61	758
1963	62	57	65	66	70	66	65	63	60	61	58	60	753
1964	59	56	61	62	66	65	63	62	59	60	58	59	730
NEVADA:													
<u>Milk cows on farms (thousands)</u>													
1960	16	16	16	16	16	16	16	16	16	16	16	16	16
1961	15	15	15	15	15	15	15	15	15	15	15	15	15
1962	15	15	15	15	15	15	15	15	15	15	15	15	15
1963	15.0	15.0	15.0	15.0	15.0	15.0	15.0	14.0	14.0	14.0	14.0	14.0	14.6
1964	14.0	14.0	14.0	14.0	14.0	14.0	14.0	14.0	14.0	14.0	14.0	14.0	14.0
<u>Milk production per cow (pounds) 2/</u>													
1960	580	570	640	650	670	660	660	640	600	600	570	600	7,440
1961	640	600	670	690	700	660	645	620	595	585	560	565	7,530
1962	580	530	600	625	680	680	715	710	680	680	660	660	7,800
1963	645	615	680	695	725	705	725	760	720	720	685	690	8,360
1964	685	670	745	760	815	800	815	790	780	810	765	785	9,220
<u>Total milk production (million pounds) 2/</u>													
1960	9.3	9.1	10.2	10.4	10.7	10.6	10.6	10.2	9.6	9.6	9.1	9.6	119
1961	9.6	9.0	10.0	10.4	10.5	9.9	9.7	9.3	8.9	8.8	8.4	8.5	113
1962	8.7	8.0	9.0	9.4	10.2	10.2	10.7	10.6	10.2	10.2	9.9	9.9	117
1963	9.7	9.2	10.2	10.4	10.9	10.6	10.9	10.6	10.1	10.1	9.6	9.7	122
1964	9.6	9.4	10.4	10.6	11.4	11.2	11.4	11.1	10.9	11.3	10.7	11.0	129

Table 3.--Milk: Number of milk cows on farms, milk per cow, and milk production, by months and by States, 1960-64--Continued

Year	Jan.	Feb.	Mar.	Apr.	May	June	July	Aug.	Sept.	Oct.	Nov.	Dec.	Annual 1/
WASHINGTON:													
<u>Milk cows on farms (thousands)</u>													
1960	232	231	230	228	226	225	226	226	226	227	228	231	228
1961	231	231	230	229	227	227	227	227	226	226	226	225	228
1962	225	225	224	223	220	218	218	217	217	216	216	215	220
1963	215	215	214	213	212	212	212	212	212	211	211	210	212
1964	210	210	209	208	207	206	206	206	206	206	206	205	207
<u>Milk production per cow (pounds) 2/</u>													
1960	610	615	670	720	855	800	750	720	685	695	640	625	8,380
1961	615	605	680	740	860	800	750	730	685	690	640	640	8,420
1962	640	630	695	760	900	835	755	760	745	710	690	685	8,780
1963	670	625	715	780	890	835	815	800	750	745	710	710	9,060
1964	700	665	700	805	950	875	850	815	770	790	725	730	9,375
<u>Total milk production (million pounds) 2/</u>													
1960	142	142	154	164	193	180	170	163	155	158	146	144	1,911
1961	142	140	156	169	195	182	170	166	155	156	145	144	1,920
1962	144	142	156	169	198	182	165	165	162	153	149	147	1,932
1963	144	134	153	166	189	177	173	170	159	157	150	149	1,921
1964	147	140	146	167	197	180	175	168	159	163	149	150	1,941
OREGON:													
<u>Milk cows on farms (thousands)</u>													
1960	164	164	163	163	162	162	162	162	162	161	161	160	162
1961	160	159	158	158	158	158	157	157	156	156	156	156	157
1962	155	155	155	155	155	154	154	153	153	152	150	148	153
1963	146	145	144	143	142	141	141	140	139	139	138	137	141
1964	137	137	136	136	135	134	134	134	133	133	132	132	134
<u>Milk production per cow (pounds) 2/</u>													
1960	470	470	550	650	745	705	685	625	560	540	485	485	6,980
1961	480	460	565	670	755	710	685	625	565	520	480	480	7,010
1962	505	480	575	670	775	730	710	665	580	560	520	520	7,300
1963	515	490	605	670	780	745	725	650	605	575	510	505	7,380
1964	505	490	575	675	785	755	740	685	625	600	540	545	7,540
<u>Total milk production (million pounds) 2/</u>													
1960	77	77	90	106	121	114	111	101	91	87	78	78	1,131
1961	77	73	89	106	119	112	108	98	88	81	75	75	1,101
1962	78	74	89	104	120	112	109	102	89	85	78	77	1,117
1963	75	71	87	96	111	105	102	91	84	80	70	69	1,041
1964	69	67	78	92	106	101	99	92	83	80	71	72	1,010
CALIFORNIA:													
<u>Milk cows on farms (thousands)</u>													
1960	829	829	826	824	822	822	822	822	822	822	822	822	824
1961	820	818	816	814	811	811	811	811	811	811	811	811	813
1962	810	807	804	804	804	804	804	804	804	804	804	804	805
1963	803	803	803	800	800	796	796	796	795	795	793	793	798
1964	792	791	791	791	791	791	791	790	790	789	789	789	790
<u>Milk production per cow (pounds) 2/</u>													
1960	770	740	840	855	890	850	860	845	795	805	759	775	9,780
1961	785	740	865	875	925	880	895	870	825	830	800	810	10,100
1962	815	750	865	890	930	900	920	900	845	855	825	830	10,320
1963	830	775	905	900	945	905	925	905	845	855	805	810	10,400
1964	825	800	895	920	980	945	965	945	895	905	850	880	10,810
<u>Total milk production (million pounds) 2/</u>													
1960	638	613	694	705	732	699	707	695	653	662	624	637	8,059
1961	644	605	706	712	750	714	726	706	669	673	649	657	8,211
1962	660	605	695	716	748	724	740	724	679	687	663	667	8,308
1963	666	622	727	720	756	720	736	720	672	680	638	642	8,299
1964	653	633	708	728	775	747	763	747	707	714	671	694	8,540

Table 3.--Milk: Number of milk cows on farms, milk per cow, and milk production, by months and by States, 1960-64--Continued

Year	Jan.	Feb.	Mar.	Apr.	May	June	July	Aug.	Sept.	Oct.	Nov.	Dec.	Annual ^{1/}
ALASKA:													
<u>Milk cows on farms (thousands)</u>													
1960	2.3	2.3	2.4	2.4	2.4	2.5	2.6	2.6	2.7	2.6	2.6	2.6	2.5
1961	2.6	2.6	2.7	2.7	2.8	2.8	2.8	2.9	2.9	2.9	2.9	2.9	2.8
1962	2.9	2.9	2.9	2.9	2.9	2.9	2.8	2.7	2.6	2.7	2.7	2.7	2.8
1963	2.7	2.7	2.7	2.7	2.6	2.6	2.6	2.6	2.6	2.6	2.6	2.6	2.6
1964	2.6	2.6	2.6	2.6	2.6	2.5	2.5	2.5	2.5	2.4	2.4	2.4	2.5
<u>Milk production per cow (pounds) ^{2/}</u>													
1960	650	640	670	660	700	720	720	710	690	670	655	670	8,160
1961	690	655	705	690	705	750	730	700	680	630	605	640	8,140
1962	670	620	670	650	670	720	785	775	720	640	615	690	8,210
1963	685	645	695	680	730	780	825	785	740	705	665	730	8,770
1964	755	695	710	695	730	825	810	785	770	770	710	775	9,080
<u>Total milk production (million pounds) ^{2/}</u>													
1960	1.50	1.47	1.61	1.58	1.68	1.80	1.87	1.85	1.86	1.74	1.70	1.74	20.4
1961	1.79	1.70	1.90	1.86	1.97	2.10	2.04	2.03	1.97	1.83	1.75	1.86	22.8
1962	1.94	1.80	1.94	1.88	1.94	2.09	2.20	2.09	1.87	1.73	1.66	1.86	23.0
1963	1.85	1.74	1.88	1.84	1.90	2.03	2.14	2.04	1.92	1.83	1.73	1.90	22.8
1964	1.96	1.81	1.85	1.81	1.90	2.06	2.02	1.96	1.92	1.85	1.70	1.86	22.7
HAWAII:													
<u>Milk cows on farms (thousands)</u>													
1960	13.6	14.0	14.0	14.0	13.0	13.7	13.9	13.8	14.1	14.3	14.5	14.3	13.9
1961	14.4	14.3	13.8	13.7	13.5	13.4	13.6	13.8	13.8	13.8	14.0	14.0	13.8
1962	13.7	13.7	13.7	13.7	13.9	13.9	13.9	14.2	14.4	14.7	14.8	14.5	14.1
1963	14.5	14.4	14.3	14.0	14.0	14.0	14.0	13.9	14.0	14.1	14.2	14.0	14.1
1964	14.0	14.1	14.0	13.8	13.8	13.9	14.2	14.3	14.4	14.5	14.4	14.2	14.1
<u>Milk production per cow (pounds) ^{2/}</u>													
1960	735	700	720	715	725	670	705	740	735	760	760	785	8,750
1961	765	730	780	765	780	725	705	700	710	740	730	755	8,880
1962	775	730	760	745	770	735	740	730	730	760	755	780	9,010
1963	785	710	775	735	755	705	705	710	715	750	730	765	8,840
1964	765	715	785	775	825	790	810	800	775	795	770	800	9,400
<u>Total milk production (million pounds) ^{2/}</u>													
1960	10.0	9.8	10.1	10.0	9.4	9.2	9.8	10.2	10.4	10.9	11.0	11.2	122
1961	11.0	10.4	10.8	10.5	10.5	9.7	9.6	9.7	9.8	10.2	10.2	10.6	123
1962	10.6	10.0	10.4	10.2	10.7	10.2	10.3	10.4	10.5	11.2	11.2	11.3	127
1963	11.4	10.2	11.1	10.3	10.6	9.9	9.9	9.9	10.0	10.6	10.4	10.7	125
1964	10.7	10.1	11.0	10.7	11.4	11.0	11.5	11.4	11.2	11.5	11.1	11.4	133

^{1/} Number of milk cows is average number on farms during year.

^{2/} Excludes milk sucked by calves.

UNITED STATES DEPARTMENT OF AGRICULTURE
STATISTICAL REPORTING SERVICE
WASHINGTON, D. C. 20250

POSTAGE AND FEES PAID
U. S. DEPARTMENT OF AGRICULTURE

OFFICIAL BUSINESS

*U. S. GOVERNMENT PRINTING OFFICE: 1967 251756 (SRS-119)

END