



AgEcon SEARCH
RESEARCH IN AGRICULTURAL & APPLIED ECONOMICS

The World's Largest Open Access Agricultural & Applied Economics Digital Library

This document is discoverable and free to researchers across the globe due to the work of AgEcon Search.

Help ensure our sustainability.

Give to AgEcon Search

AgEcon Search

<http://ageconsearch.umn.edu>

aesearch@umn.edu

*Papers downloaded from **AgEcon Search** may be used for non-commercial purposes and personal study only. No other use, including posting to another Internet site, is permitted without permission from the copyright owner (not AgEcon Search), or as allowed under the provisions of Fair Use, U.S. Copyright Act, Title 17 U.S.C.*

SB 389 (1967)

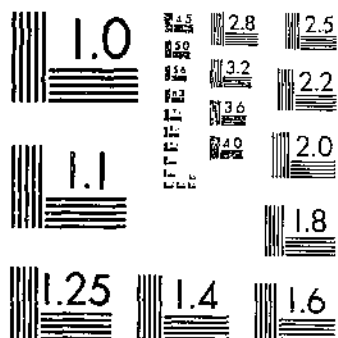
USDA STATISTICAL BULLETINS

UPDATA

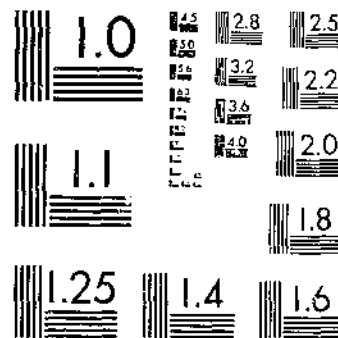
LIVESTOCK AND POULTRY INVENTORY, JANUARY 1, . . . REVISED ESTIMATES 1961-65

- 1 OF 1

START



MICROCOPY RESOLUTION TEST CHART
NATIONAL BUREAU OF STANDARDS-1963-A



MICROCOPY RESOLUTION TEST CHART
NATIONAL BUREAU OF STANDARDS-1963-A

R 630.5 453-13
389

REFERENCE
DO NOT LOAN

LIVESTOCK and POULTRY INVENTORY, January 1

**Number,
Value,
and
Classes-
By
States**

REVISED ESTIMATES

1961-65

PROPERTY

MAR 2 1967

Los Angeles Public Library

U.S. DEPARTMENT OF AGRICULTURE
Statistical Reporting Service Crop Reporting Board
Washington, D.C. February 1967
Statistical Bulletin No. 389

CONTENTS

	<u>Page</u>
Comments	3
 Tables:	
1. All cattle and calves: Number on farms, value per head, total value, and classes, January 1, 1961-65, United States	4
2. All hogs and pigs: Number on farms, value per head, total value, and classes, January 1, 1961-65, United States	4
3. All sheep and lambs: Number on farms, value per head, total value, and classes, January 1, 1961-65, United States	5
4. All chickens: Number on farms, value per head, total value, and classes, January 1, 1961-65, United States	5
5. All turkeys: Number on farms, value per head, total value, and classes, January 1, 1961-65, United States	5
6. All cattle and calves: Number on farms, by States, January 1, 1961-65	6
7. All cattle and calves: Number on farms, by classes, by States, January 1, 1961-65	7
8. All cattle and calves: Average value per head and total value, by States, January 1, 1961-65	12
9. Cows and heifers, 2 years old and older, kept for milk: Average value per head and total value, by States, January 1, 1961-65	13
10. All hogs and pigs: Number on farms, by States, January 1, 1961-65	14
11. All hogs and pigs: Number on farms by age groups, by States, January 1, 1961-63 ..	15
12. All hogs and pigs: Average value per head and total value, by States, January 1, 1961-65	16
13. All sheep and lambs: Number on farms and value, by States, January 1, 1961-65 ...	17
14. Sheep and lambs: Number on farms, by classes, by States, January 1, 1961-65	18
15. Stock sheep and lambs: Value per head and total value by States, January 1, 1961-65	22
16. All chickens: Number on farms, by States, January 1, 1961-65	23
17. All chickens: Number on farms, by classes, by States, January 1, 1961-65	24
18. All chickens: Average value per head and total value, by States, January 1, 1961-65 .	26
19. Turkeys: Number of all turkeys and breeder hens on farms, by States, January 1, 1961-65	27
20. All turkeys: Number on farms by breed classification, by States, January 1, 1961-65	28
21. Turkey breeder hens: Number by breed classification, by States, January 1, 1961-65	29
22. All turkeys: Average value per head and total value by States, January 1, 1961-65 ..	30
23. All goats: Number on farms, average value per head and total value, Texas, January 1, 1961-65	31
24. Cattle and calves: Number by classes, Southern and Central Plains wheat pasture area, January 1, 1961-65	31

LIVESTOCK AND POULTRY INVENTORY, JANUARY 1, 1961-65

Number, Value, and Classes, by States

This publication presents a record of the revised estimates of the Crop Reporting Board of the Statistical Reporting Service relating to livestock and poultry inventories on farms and ranches as of January 1 for 1961-65. It continues the official series on numbers, value per head, and total value of livestock as shown in "Livestock on Farms, January 1, 1867-1935" 1/, "Livestock on Farms and Ranches on January 1, Number, Value, and Classes, 1920-39," 2/ and "Livestock and Poultry Inventory, January 1, Number, Value, and Classes, 1940-54, Statistical Bulletin 177," 3/ and "Livestock and Poultry Inventory, January 1, Number, Value, and Classes, 1955-60, Statistical Bulletin 278." 6/ It also continues the official series on numbers, value per head, and total value of chickens as shown in "Farm Production, Disposition and Income from Chickens and Eggs, 1909-44," 4/ Statistical Bulletin No. 133, and for turkeys in "Farm Production, Disposition and Income from Turkeys, 1929-44." 5/ Estimates of chickens and turkeys for 1940-60 are shown in Statistical Bulletins No. 177 and 278. Estimates of livestock and poultry inventories for the period have been released currently in annual reports and other publications.

The annual estimates of numbers on farms are based primarily on survey returns from livestock and poultry producers. These revised State and United States series are based on a thorough review of the original estimates taking into consideration the 1964 Census of Agriculture and other information such as year to year changes in numbers assessed for taxation. For livestock, consideration was also given to records relating to market receipts of livestock and livestock products, and estimates of commercial and farm slaughter. For poultry, consideration was given to chick and poult hatchery production, chickens and turkeys tested for pullorum disease, and records relating to processing and inspection of poultry. These inventory estimates relate to January 1 of each year. In 1959 and 1964, the Census of Agriculture was enumerated during November and December, and farmers were asked to report inventories on the date of enumeration. In using Census data to review and revise the inventory estimates, it was necessary to adjust from the average date of enumeration to January 1.

The estimates of average value per head are based on crop and livestock reporters' estimates of average price per head in their localities, about January 1, each year. These farm and ranch operators report the value per head by age, sex, and use classes of livestock and poultry. Values per head, by classes for each State, for a given species are weighted together by the estimated number in each class. The weighted average so computed is the basis for the estimated value per head for the species.

In the case of estimates for the United States, the total value is the sum of the State estimates; and value per head is derived by dividing the total value by the number of head for the United States.

1/ U. S. Bureau of Agricultural Economics, Livestock on Farms, January 1, 1867-1935, Revised Estimates, Number, Value Per Head, Total Value by States and Divisions. 137 pp., illus. 1938.

2/ U. S. Department of Agriculture, Bureau of Agricultural Economics, Livestock on Farms and Ranches on January 1, Number, Value, and Classes, 1920-39, by States, Statistical Bulletin No. 88, 103 pages, 1950.

3/ U. S. Department of Agriculture, Agricultural Marketing Service, Livestock and Poultry Inventory, January 1, Number, Value, and Classes, 1940-54, by States, Statistical Bulletin No. 177, 117 pages, June 1956.

4/ U. S. Department of Agriculture, Bureau of Agricultural Economics, Farm Production, Disposition and Income From Chickens and Eggs, 1909-44, by States, Statistical Bulletin No. 133, 98 pages, July 1953.

5/ U. S. Department of Agriculture, Bureau of Agricultural Economics, Farm Production, Disposition and Income From Turkeys, 1929-44, by States, June 1953, 59 pages.

6/ U. S. Department of Agriculture, Agricultural Marketing Service, Livestock and Poultry Inventory, January 1, Number, Value, and Classes, 1955-60, by States, Statistical Bulletin No. 278, 48 pages, February 1961.

Table 1.--Cattle and calves: Number on farms, value per head, total value and classes, Jan. 1, 1961-65

United States									
Year	All cattle and calves			Cows and heifers 2 years old and over for milk					
	Number	Farm value		Number	Per head	Total	Per head	Total	Total
		Per head	Total						
	1,000 head	Dollars	1,000 dollars	1,000 head	Dollars	1,000 dollars			
1961	97,700	134.00	13,124,434	19,271	208.00	4,004,567			
1962	100,369	140.00	14,013,086	18,963	212.00	4,017,194			
1963	104,488	142.00	14,820,708	18,379	206.00	3,784,498			
1964	107,903	127.00	13,687,672	17,647	194.00	3,424,731			
1965	109,000	113.00	12,359,756	16,981	188.00	3,186,783			

Year	Kept for milk			Other					
	Heifers 1-2 yrs. old	Heifer calves	Total	Cows and heifers 2 yrs. old and over	Heifers 1-2 yrs. old	Calves	Steers 1 yr. old and over	Bulls 1 yr. old and over	Total
1961	5,016	5,446	29,733	27,327	7,115	20,814	10,997	1,714	67,967
1962	4,887	5,264	29,114	28,691	7,446	22,300	11,103	1,715	71,255
1963	4,708	4,935	28,022	30,589	8,108	23,747	12,251	1,771	76,466
1964	4,395	4,692	26,734	32,794	8,612	25,243	12,669	1,851	81,169
1965	4,149	4,420	25,550	34,238	8,989	26,181	12,134	1,908	83,450

Table 2.--All hogs and pigs: Number on farms, value per head, total value, and classes, Jan. 1, 1961-65

United States							
Year	All hogs and pigs			Under 6 months	6 months +		
	Number	Farm value			Sows and gilts	Other	
		Per head	Total				
	1,000 head	Dollars	1,000 dollars	1,000 head	1,000 head	1,000 head	
1961	55,560	27.20	1,513,978	37,221	7,793	10,546	
1962	56,619	27.50	1,556,386	37,641	7,788	11,190	
1963	57,993	27.50	1,576,048	39,274	7,813	10,906	
1964	56,757	23.40	1,328,238	1/	---	---	
1965	50,792	24.50	1,243,712	1/	---	---	

1/ Data on classes discontinued after 1963.

Table 3.--All sheep and lambs: Number on farms, value per head, total value, and classes, Jan. 1, 1961-65, United States

Year	All stock sheep and lambs											
	All sheep and lambs	Total value	Sheep and lambs on feed	Number	Farm value		Lambs			1 year and over		
					Per head	Total	Ewe	Wether and ram	Ewes	Rams	Wethers	
												head
1961	32,725	476,619	4,405	28,320	14.60	413,321	4,079	887	22,199	918	237	
1962	30,969	400,589	4,250	26,719	12.90	344,215	3,520	855	21,252	868	224	
1963	29,176	424,960	4,054	25,122	14.40	362,186	3,319	762	20,028	808	205	
1964	27,116	382,614	3,661	23,455	14.00	327,798	3,089	714	18,723	754	175	
1965	25,127	401,044	3,284	21,843	15.80	346,079	2,801	650	17,502	722	168	

Table 4.--All chickens: Number on farms, value per head, total value, and classes, Jan. 1, 1961-65, United States

Year	All chickens				Hens and pullets			Other
	Number	Farm value		Hens	Pullets	Total		
		Per head	Total					
							head	
1961	366,082	1.25	458,205	133,423	214,479	347,902	18,180	
1962	377,392	1.15	433,615	131,783	227,009	358,792	18,600	
1963	375,575	1.16	437,246	136,163	221,139	357,302	18,273	
1964	382,262	1.16	443,384	137,172	226,388	363,560	18,702	
1965	394,118	1.17	461,515	136,543	238,768	375,311	18,807	

Table 5.--All turkeys: Number on farms, value per head, total value, and breed classification, Jan. 1, 1961-65, United States

Year	All turkeys			Farm value		Breeder hens		
	Number			Per head	Total	Heavy	Light	Total
	Heavy	Light	Total					
	head	head	head	Dollars	dollars	head	head	head
1961	6,366	642	7,008	4.91	34,370	3,871	445	4,316
1962	5,938	485	6,423	3.79	24,349	3,506	317	3,823
1963	5,834	540	6,374	4.40	28,020	3,406	371	3,777
1964	5,387	609	5,996	4.28	25,669	3,231	405	3,636
1965	5,486	614	6,100	4.40	26,813	3,147	408	3,555

Table 6.--All cattle and calves: Number on farms, by States,
Jan. 1, 1961-65

State	All cattle and calves				
	1961	1962	1963	1964	1965
	1,000	1,000	1,000	1,000	1,000
	<u>head</u>	<u>head</u>	<u>head</u>	<u>head</u>	<u>head</u>
Maine	200	198	190	177	165
New Hampshire	100	100	96	90	86
Vermont	436	436	423	402	386
Massachusetts	156	154	148	141	135
Rhode Island	20	19	18	17	17
Connecticut	150	146	140	134	130
New York	2,152	2,174	2,131	2,067	2,026
New Jersey	198	196	190	180	166
Pennsylvania	1,951	1,971	1,951	1,912	1,874
Ohio	2,272	2,272	2,295	2,272	2,204
Indiana	2,103	2,103	2,145	2,145	2,102
Illinois	3,901	3,862	3,978	3,938	3,859
Michigan	1,735	1,787	1,787	1,787	1,769
Wisconsin	4,296	4,339	4,382	4,470	4,515
Minnesota	4,094	4,258	4,386	4,518	4,518
Iowa	6,460	6,654	7,053	7,194	7,482
Missouri	4,099	4,263	4,306	4,478	4,657
North Dakota	1,881	1,881	2,088	2,318	2,411
South Dakota	3,327	3,493	3,738	4,074	4,196
Nebraska	5,134	5,434	5,773	6,048	6,077
Kansas	4,562	4,973	5,222	5,431	5,214
Delaware	53	52	48	43	39
Maryland	503	483	478	449	431
Virginia	1,408	1,436	1,450	1,363	1,377
West Virginia	535	530	514	504	494
North Carolina	916	925	934	962	952
South Carolina	542	553	570	581	593
Georgia	1,481	1,570	1,633	1,764	1,852
Florida	1,626	1,837	1,730	1,829	1,892
Kentucky	2,115	2,242	2,354	2,495	2,470
Tennessee	1,914	1,991	2,051	2,154	2,240
Alabama	1,656	1,689	1,757	1,862	1,955
Mississippi	2,149	2,213	2,257	2,370	2,465
Arkansas	1,388	1,388	1,457	1,559	1,621
Louisiana	1,818	1,854	1,854	1,947	1,986
Oklahoma	3,513	3,654	3,837	4,106	4,352
Texas	9,379	9,660	10,240	10,342	10,239
Montana	2,155	2,133	2,325	2,627	2,758
Idaho	1,401	1,429	1,515	1,621	1,621
Wyoming	1,104	1,115	1,193	1,300	1,352
Colorado	2,282	2,394	2,590	2,616	2,600
New Mexico	1,198	1,258	1,271	1,322	1,269
Arizona	1,047	1,056	1,130	1,100	1,140
Utah	698	705	712	733	755
Nevada	527	516	526	558	586
Washington	1,208	1,280	1,344	1,384	1,412
Oregon	1,435	1,435	1,492	1,611	1,659
California	4,207	4,238	4,562	4,682	4,670
48 States	97,485	100,149	104,264	107,677	108,769
Alaska	7.3	7.9	8.0	8.4	8.3
Hawaii	208	212	216	218	223
United States	97,700	100,369	104,488	107,903	109,000

Table 7.--All cattle and calves: Number on farms by classes, by States,
Jan. 1, 1961-65

State	Cows and heifers 2 years old and older kept for milk					Heifers 1-2 years old kept for milk				
	1961	1962	1963	1964	1965	1961	1962	1963	1964	1965
	1,000	1,000	1,000	1,000	1,000	1,000	1,000	1,000	1,000	1,000
	head	head	head	head	head	head	head	head	head	head
Maine	106	106	103	96	90	31	32	30	28	25
New Hampshire	59	59	57	53	51	16	16	16	15	14
Vermont	288	288	282	271	266	60	64	61	57	50
Massachusetts	103	100	97	93	89	20	21	20	19	17
Rhode Island	15	14	13	12	12	2	2	2	2	1
Connecticut	96	92	88	85	83	21	21	20	19	17
New York	1,393	1,393	1,379	1,338	1,311	308	311	314	292	285
New Jersey	139	136	132	124	114	22	22	21	19	17
Pennsylvania	988	988	978	958	929	252	255	252	234	223
Ohio	757	742	705	670	630	188	184	174	158	147
Indiana	464	450	432	415	386	122	116	111	103	91
Illinois	635	610	573	533	490	182	181	163	138	119
Michigan	701	708	694	673	653	210	207	204	197	186
Wisconsin	2,402	2,402	2,402	2,378	2,378	658	671	671	655	635
Minnesota	1,421	1,435	1,421	1,421	1,393	422	422	417	416	405
Iowa	934	925	888	861	827	245	226	226	216	217
Missouri	701	694	632	575	529	168	158	142	125	111
North Dakota	296	296	287	276	262	64	62	61	57	53
South Dakota	273	270	256	256	256	56	55	55	52	50
Nebraska	350	340	316	294	280	85	74	70	63	60
Kansas	374	355	327	301	280	96	90	84	76	68
Delaware	29	28	26	23	21	7	7	6	5	4
Maryland	232	223	221	210	200	56	56	53	47	41
Virginia	371	356	338	324	301	94	88	85	76	71
West Virginia	141	133	120	110	99	31	28	26	22	20
North Carolina	296	284	270	259	246	83	77	75	72	64
South Carolina	116	111	105	99	93	30	29	27	25	21
Georgia	230	218	205	195	183	59	57	54	51	46
Florida	213	194	188	184	184	40	30	27	21	23
Kentucky	555	549	544	517	486	138	137	127	120	108
Tennessee	505	495	475	451	437	115	103	102	88	86
Alabama	256	246	231	210	200	76	70	68	60	57
Mississippi	404	376	350	318	299	113	107	99	83	79
Arkansas	236	231	210	172	153	58	60	48	37	34
Louisiana	269	264	256	246	236	68	60	59	57	57
Oklahoma	275	264	243	224	204	75	72	64	55	47
Texas	610	604	592	539	490	160	157	136	120	98
Montana	80	75	69	66	64	17	16	14	13	13
Idaho	223	221	214	201	191	78	73	69	66	67
Wyoming	32	29	27	27	26	8	7	6	6	6
Colorado	132	127	124	119	114	41	32	33	31	29
New Mexico	45	43	41	42	42	11	11	11	11	10
Arizona	54	54	54	56	56	15	14	13	12	13
Utah	103	100	96	92	89	30	27	27	24	24
Nevada	18	17	17	16	16	7	6	6	5	5
Washington	256	248	238	228	223	75	70	64	62	59
Oregon	177	170	163	150	142	50	48	45	42	39
California	899	881	881	867	858	249	250	245	239	232
48 States	19,252	18,944	18,360	17,628	16,962	5,012	4,882	4,703	4,391	4,144
Alaska	2.8	3.2	2.9	2.8	2.6	.6	.6	.6	.6	.7
Hawaii	16	16	16	16	16	3	4	4	4	4
United States	19,271	18,963	18,379	17,647	16,981	5,016	4,887	4,708	4,395	4,149

Table 7.-- All cattle and calves: Number on farms by classes,
by States, Jan. 1, 1961-65--Continued

State	Heifer calves kept for milk					Total cows and heifers kept for milk				
	1961	1962	1963	1964	1965	1961	1962	1963	1964	1965
	head	head	head	head	head	head	head	head	head	head
	1,000	1,000	1,000	1,000	1,000	1,000	1,000	1,000	1,000	1,000
Maine	34	33	30	27	25	171	171	161	151	140
New Hampshire ..	17	17	16	15	14	92	92	89	83	79
Vermont	70	67	63	57	53	418	419	406	385	369
Massachusetts ..	22	22	20	18	17	145	143	137	130	123
Rhode Island ...	2	2	2	2	2	19	18	17	16	15
Connecticut	22	22	21	19	18	139	135	129	123	118
New York	313	322	298	289	278	2,014	2,026	1,991	1,919	1,874
New Jersey	23	23	22	20	18	184	181	175	163	149
Pennsylvania ...	283	280	263	255	243	1,523	1,523	1,493	1,447	1,395
Ohio	198	191	175	161	150	1,143	1,117	1,054	989	927
Indiana	127	122	118	105	97	713	688	661	623	574
Illinois	222	206	179	158	146	1,039	997	915	829	755
Michigan	231	225	216	208	189	1,142	1,140	1,114	1,078	1,028
Wisconsin	697	697	687	668	654	3,757	3,770	3,760	3,701	3,667
Minnesota	446	439	430	424	402	2,289	2,296	2,268	2,261	2,214
Iowa	245	246	233	237	210	1,424	1,397	1,347	1,314	1,254
Missouri	192	171	151	134	120	1,061	1,023	925	834	760
North Dakota ...	74	72	67	62	54	434	430	415	395	369
South Dakota ...	84	82	80	80	71	413	407	391	388	377
Nebraska	87	84	74	70	66	522	498	460	427	406
Kansas	100	94	84	76	64	570	539	495	453	412
Delaware	7	6	5	5	4	43	41	37	33	29
Maryland	58	54	48	42	41	346	333	322	299	282
Virginia	103	100	92	88	83	568	544	515	488	455
West Virginia ..	31	29	25	23	20	203	190	171	155	139
North Carolina ..	90	86	82	73	67	469	447	427	404	377
South Carolina ..	34	32	29	25	22	180	172	161	149	136
Georgia	67	64	59	55	52	356	339	318	301	281
Florida	45	35	31	23	24	298	259	246	228	231
Kentucky	146	135	129	117	115	839	821	800	754	709
Tennessee	115	114	99	97	92	735	712	676	636	615
Alabama	79	78	69	65	61	411	394	368	335	318
Mississippi	125	117	102	97	91	642	600	551	498	469
Arkansas	64	55	45	42	36	358	346	303	251	223
Louisiana	71	70	69	69	64	408	394	384	372	357
Oklahoma	89	82	74	66	65	439	418	381	345	316
Texas	186	165	150	132	123	956	926	878	791	711
Montana	25	21	20	20	19	122	112	103	99	96
Idaho	87	85	81	79	74	388	379	364	346	332
Wyoming	9	8	7	7	6	49	44	40	40	38
Colorado	43	45	42	40	38	216	204	199	190	181
New Mexico	12	12	12	11	11	68	66	64	64	63
Arizona	16	15	14	15	14	85	83	81	83	83
Utah	31	31	28	28	28	164	158	151	144	141
Nevada	7	7	6	6	6	32	30	29	27	27
Washington	80	73	71	68	65	411	391	373	358	347
Oregon	62	60	58	54	53	289	278	266	246	234
California	272	265	256	256	252	1,420	1,396	1,382	1,362	1,342
48 States	5,443	5,261	4,932	4,688	4,417	29,707	29,087	27,995	26,707	25,537
Alaska6	.6	.6	.7	.5	4.0	4.4	4.1	4.1	3.8
Hawaii	3	3	3	3	3	22	23	23	23	23
United States :	5,446	5,264	4,935	4,692	4,420	29,733	29,114	28,022	26,734	25,564

Table 7.--All cattle and calves: Number on farms, by classes, by States, Jan. 1, 1961-65--Continued

State	Other cows and heifers 2 years old and older					Other heifers 1-2 years old				
	1961	1962	1963	1964	1965	1961	1962	1963	1964	1965
	1,000 head	1,000 head	1,000 head	1,000 head	1,000 head	1,000 head	1,000 head	1,000 head	1,000 head	1,000 head
Maine	9	9	9	9	9	4	4	4	4	3
New Hampshire	2	2	2	2	2	1	1	1	1	1
Vermont	3	3	3	4	4	2	2	2	2	2
Massachusetts	3	3	3	3	4	2	2	2	2	2
Rhode Island	---	---	---	---	1	---	---	---	---	---
Connecticut	3	4	4	4	4	1	1	1	1	1
New York	40	46	46	51	54	14	15	16	18	19
New Jersey	4	5	5	6	6	2	2	2	3	3
Pennsylvania	94	100	98	101	104	33	35	37	41	42
Ohio	273	281	292	301	304	111	115	121	130	113
Indiana	355	369	376	391	422	143	168	191	208	204
Illinois	681	708	743	773	796	258	301	311	339	316
Michigan	116	118	123	128	136	69	68	73	71	78
Wisconsin	123	135	146	164	183	94	108	112	126	130
Minnesota	356	383	417	450	477	196	215	232	253	245
Iowa	995	1,028	1,079	1,172	1,287	543	532	578	633	666
Missouri	1,169	1,239	1,388	1,485	1,634	283	320	323	340	382
North Dakota	667	693	760	851	953	119	126	157	216	224
South Dakota	1,288	1,327	1,399	1,521	1,643	263	306	346	388	399
Nebraska	1,535	1,579	1,622	1,801	1,853	531	549	673	683	710
Kansas	1,266	1,406	1,532	1,575	1,611	398	433	439	467	459
Delaware	4	4	5	4	4	1	2	2	2	2
Maryland	50	51	53	50	52	20	19	21	19	19
Virginia	396	432	466	457	455	89	99	100	81	87
West Virginia	159	171	177	186	193	35	37	35	33	33
North Carolina	214	227	238	264	277	63	69	71	74	79
South Carolina	179	193	207	219	226	42	42	47	51	53
Georgia	526	579	620	688	750	138	152	163	183	198
Florida	772	786	807	862	900	110	115	138	159	171
Kentucky	556	628	697	795	843	154	162	187	200	202
Tennessee	541	612	678	759	820	142	156	171	182	202
Alabama	675	705	759	806	848	109	114	136	167	193
Mississippi	832	899	980	1,057	1,111	157	172	178	197	229
Arkansas	567	580	647	731	784	101	100	118	136	141
Louisiana	847	880	899	976	980	167	183	187	188	209
Oklahoma	1,490	1,622	1,736	1,892	1,963	273	297	303	312	348
Texas	4,374	4,496	4,917	5,187	5,202	788	840	879	883	907
Montana	1,136	1,150	1,224	1,310	1,415	198	202	228	286	298
Idaho	385	420	447	487	521	100	101	115	130	144
Wyoming	550	561	595	649	662	102	93	110	110	126
Colorado	795	815	867	888	911	360	344	380	356	372
New Mexico	644	689	710	738	708	115	116	119	123	114
Arizona	337	366	373	378	388	105	85	96	96	83
Utah	256	272	271	282	301	62	57	62	64	72
Nevada	272	275	272	292	312	59	49	54	57	56
Washington	308	336	356	374	389	90	104	112	118	122
Oregon	555	572	610	663	693	132	135	136	154	166
California	851	858	854	927	956	314	273	314	299	339
48 States	27,253	28,617	30,512	32,713	34,151	7,093	7,421	8,083	8,586	8,964
Alaska	1.4	1.4	1.6	1.8	2.0	.4	.5	.4	.6	.5
Hawaii	73	73	75	79	85	22	24	25	26	25
United States	27,327	28,691	30,589	32,794	34,238	7,115	7,446	8,108	8,612	8,989

Table 7.--All cattle and calves: Number on farms, by classes, by States, Jan. 1, 1961-65--Continued

State	Other calves					Steers 1 year old and older				
	1961	1962	1963	1964	1965	1961	1962	1963	1964	1965
	1,000 head	1,000 head	1,000 head	1,000 head	1,000 head	1,000 head	1,000 head	1,000 head	1,000 head	1,000 head
Maine	8	7	7	7	7	4	4	4	3	3
New Hampshire	2	2	2	2	2	1	1	1	1	1
Vermont	4	4	4	4	4	2	2	2	2	2
Massachusetts	2	2	2	2	2	2	2	2	2	2
Rhode Island	---	---	1	1	1	---	---	---	---	---
Connecticut	2	2	2	2	3	2	2	2	2	2
New York	27	28	26	26	29	29	32	28	30	27
New Jersey	3	3	3	3	3	3	3	3	3	3
Pennsylvania	60	70	70	73	83	208	211	221	218	217
Ohio	398	412	425	448	483	318	318	374	375	347
Indiana	500	504	538	556	555	371	353	358	346	326
Illinois	899	883	952	1,000	1,099	978	929	1,013	953	849
Michigan	203	239	261	282	304	184	202	196	208	204
Wisconsin	128	141	165	219	247	146	139	153	214	243
Minnesota	680	779	829	854	932	524	538	592	650	614
Iowa	1,919	2,134	2,313	2,367	2,618	1,505	1,490	1,663	1,633	1,579
Missouri	963	1,040	1,050	1,133	1,211	545	559	534	596	577
North Dakota	517	498	601	670	697	105	94	115	144	125
South Dakota	993	1,031	1,105	1,233	1,294	298	353	424	463	395
Nebraska	1,539	1,730	1,811	1,897	1,913	932	1,003	1,129	1,155	1,102
Kansas	1,574	1,768	1,879	2,001	1,851	692	761	806	864	808
Delaware	1	2	2	2	2	3	2	1	1	1
Maryland	36	33	34	36	33	42	39	41	38	38
Virginia	227	243	246	228	252	106	97	101	89	107
West Virginia	87	83	84	83	83	41	39	37	37	36
North Carolina	103	114	124	135	139	49	50	55	65	60
South Carolina	95	101	107	114	127	28	28	30	29	31
Georgia	306	336	363	399	423	118	126	128	147	152
Florida	218	243	278	330	356	182	188	213	200	184
Kentucky	333	396	438	484	486	199	201	197	225	192
Tennessee	362	376	391	435	454	100	101	100	105	112
Alabama	339	358	375	411	438	93	89	91	112	125
Mississippi	370	394	404	469	483	107	106	99	102	121
Arkansas	271	276	291	343	363	61	55	66	64	74
Louisiana	305	304	293	319	340	55	56	54	53	62
Oklahoma	948	973	1,052	1,154	1,298	300	280	300	333	353
Texas	2,475	2,648	2,766	2,672	2,665	553	513	551	551	496
Montana	569	550	639	780	798	82	68	76	92	85
Idaho	338	344	397	445	425	166	161	167	187	170
Wyoming	315	328	357	398	431	63	63	62	73	63
Colorado	576	650	695	739	710	284	334	397	390	372
New Mexico	288	302	287	304	297	58	59	64	65	60
Arizona	245	266	244	252	281	254	235	314	268	283
Utah	148	151	166	182	172	59	58	53	51	57
Nevada	120	122	132	140	146	32	28	27	29	32
Washington	260	306	312	314	323	116	119	165	192	203
Oregon	325	319	340	382	403	100	97	105	126	121
California	680	750	829	860	861	862	881	1,102	1,150	1,086
48 States	20,761	22,245	23,692	25,190	26,127	10,962	11,069	12,216	12,636	12,102
Alaska7	.7	1.0	1.0	1.1	.6	.7	.7	.7	.7
Hawaii	52	54	54	52	53	34	33	34	32	31
United States	20,814	22,300	23,747	25,243	26,181	10,997	11,103	12,251	12,669	12,134

Table 7.--All cattle and calves: Number on farms, by classes,
by States, Jan. 1, 1961-65--Continued

State	Bulls 1 year old and older					Total other cattle				
	1961	1962	1963	1964	1965	1961	1962	1963	1964	1965
	1,000 head	1,000 head	1,000 head	1,000 head	1,000 head	1,000 head	1,000 head	1,000 head	1,000 head	1,000 head
Maine	4	3	3	3	3	29	27	27	26	25
New Hampshire	2	2	1	1	1	8	8	7	7	7
Vermont	7	6	6	5	5	18	17	17	17	17
Massachusetts	2	2	2	2	2	11	11	11	11	12
Rhode Island	1	1	---	---	---	1	1	1	1	2
Connecticut	3	2	2	2	2	11	11	11	11	12
New York	28	27	24	23	23	138	148	140	148	152
New Jersey	2	2	2	2	2	14	15	15	17	17
Pennsylvania	33	32	32	32	33	428	448	458	465	479
Ohio	29	29	29	29	30	1,129	1,155	1,241	1,283	1,277
Indiana	21	21	21	21	21	1,390	1,415	1,484	1,522	1,528
Illinois	46	44	44	44	44	2,862	2,865	3,063	3,109	3,104
Michigan	21	20	20	20	19	593	647	673	709	741
Wisconsin	48	46	46	46	45	539	569	622	769	848
Minnesota	49	47	48	50	50	1,805	1,962	2,118	2,257	2,304
Iowa	74	73	73	75	78	5,036	5,257	5,706	5,880	6,228
Missouri	78	82	86	90	93	3,038	3,240	3,381	3,644	3,897
North Dakota	39	40	40	42	43	1,447	1,451	1,673	1,923	2,042
South Dakota	72	69	73	81	88	2,914	3,086	3,347	3,686	3,819
Nebraska	75	75	78	85	93	4,612	4,936	5,313	5,621	5,671
Kansas	62	66	71	71	73	3,992	4,434	4,727	4,978	4,802
Delaware	1	1	1	1	1	10	11	11	10	10
Maryland	9	8	7	7	7	157	150	156	150	149
Virginia	22	21	22	20	21	840	892	935	875	922
West Virginia	10	10	10	10	10	332	340	343	349	355
North Carolina	18	18	19	20	20	447	478	507	558	575
South Carolina	18	17	18	19	20	362	381	409	432	457
Georgia	37	38	41	46	48	1,125	1,231	1,315	1,463	1,571
Florida	46	46	48	50	50	1,328	1,378	1,484	1,601	1,661
Kentucky	34	34	35	37	38	1,276	1,421	1,554	1,741	1,761
Tennessee	34	34	35	37	37	1,179	1,279	1,375	1,518	1,625
Alabama	29	29	28	31	33	1,245	1,295	1,389	1,527	1,637
Mississippi	41	42	45	47	52	1,507	1,613	1,706	1,872	1,996
Arkansas	30	31	32	34	36	1,030	1,042	1,154	1,308	1,398
Louisiana	36	37	37	39	38	1,410	1,460	1,470	1,575	1,629
Oklahoma	63	64	65	70	74	3,074	3,236	3,456	3,761	4,036
Texas	233	237	249	258	258	8,423	8,734	9,362	9,551	9,528
Montana	48	51	55	60	66	2,033	2,021	2,222	2,528	2,662
Idaho	24	24	25	26	29	1,013	1,050	1,151	1,275	1,289
Wyoming	25	26	29	30	32	1,055	1,071	1,153	1,260	1,314
Colorado	51	47	52	53	54	2,066	2,190	2,391	2,426	2,419
New Mexico	25	26	27	28	27	1,130	1,192	1,207	1,258	1,206
Arizona	21	21	22	23	22	962	973	1,049	1,017	1,057
Utah	9	9	9	10	12	534	547	561	589	614
Nevada	12	12	12	13	13	495	486	497	531	559
Washington	23	24	26	28	28	797	889	971	1,026	1,065
Oregon	34	34	35	40	42	1,146	1,157	1,226	1,365	1,425
California	80	80	81	84	86	2,787	2,842	3,180	3,320	3,328
48 States	1,709	1,710	1,766	1,845	1,902	67,778	71,062	76,269	80,970	83,232
Alaska2	.2	.2	.2	.2	3.3	3.5	3.9	4.3	4.5
Hawaii	5	5	5	6	6	186	189	193	195	200
United States ...	1,714	1,715	1,771	1,851	1,908	67,967	71,255	76,466	81,169	83,436

Table 8.--All cattle and calves: Average value per head and total value by States, Jan. 1, 1961-65

State	Average value per head					Total value				
	1961	1962	1963	1964	1965	1961	1962	1963	1964	1965
	Dols.	Dols.	Dols.	Dols.	Dols.	1,000 dollars	1,000 dollars	1,000 dollars	1,000 dollars	1,000 dollars
Maine	158	158	153	153	147	31,600	31,284	29,070	27,081	24,255
New Hampshire	181	183	165	161	156	18,100	18,300	15,840	14,490	13,416
Vermont	184	180	166	168	166	80,224	78,480	70,218	67,536	64,076
Massachusetts	230	222	210	204	198	35,880	34,188	31,080	28,764	26,730
Rhode Island	258	251	226	208	207	5,160	4,769	4,068	3,536	3,519
Connecticut	227	219	205	205	194	34,050	31,974	28,700	27,470	25,220
New York	211	201	184	184	181	454,072	436,974	392,104	380,328	366,706
New Jersey	262	248	236	234	232	51,876	48,608	44,840	42,120	38,512
Pennsylvania	195	194	184	181	179	380,445	382,374	358,984	346,072	335,446
Ohio	143	143	144	133	127	324,896	324,896	330,480	302,176	279,908
Indiana	133	138	138	129	119	279,699	290,214	296,010	276,705	250,138
Illinois	135	139	143	129	118	526,635	536,818	568,854	508,002	455,362
Michigan	161	164	160	151	142	279,335	293,068	285,920	269,837	251,198
Wisconsin	174	175	167	155	152	747,504	759,325	731,794	692,850	686,280
Minnesota	143	148	147	130	118	585,442	630,184	644,742	587,340	533,124
Iowa	138	140	142	123	116	891,480	931,560	1,001,526	884,862	867,912
Missouri	125	136	138	123	108	512,375	579,768	594,228	550,794	502,956
North Dakota	148	152	162	140	117	278,388	285,912	338,256	324,520	282,087
South Dakota	146	152	161	137	119	485,742	530,936	601,818	558,138	499,324
Nebraska	136	145	155	131	116	698,224	787,930	894,815	792,288	704,932
Kansas	125	132	137	117	105	570,250	656,436	715,414	635,427	547,470
Delaware	160	161	148	140	137	8,480	8,372	7,104	6,020	5,343
Maryland	159	160	149	142	138	79,977	77,280	71,222	63,758	59,478
Virginia	130	131	132	115	107	183,040	188,116	191,400	156,745	147,339
West Virginia	118	122	123	110	99	63,130	64,660	63,222	55,440	48,906
North Carolina	107	109	111	102	95	98,012	100,825	103,674	98,124	90,440
South Carolina	102	104	106	100	91	55,284	57,512	60,420	58,100	53,963
Georgia	95	101	103	100	81	140,695	158,570	168,199	176,400	150,012
Florida	101	107	120	113	92	164,226	175,159	207,600	206,677	174,064
Kentucky	123	127	129	121	104	260,145	284,734	303,666	301,895	256,880
Tennessee	109	119	119	113	96	208,626	236,929	244,069	243,402	215,040
Alabama	94	101	102	93	76	155,664	170,589	179,214	173,166	148,580
Mississippi	89	105	109	98	81	191,261	232,365	246,013	232,260	199,665
Arkansas	98	112	112	102	82	136,024	155,456	163,184	159,018	132,922
Louisiana	98	107	110	101	82	178,164	198,378	203,940	196,647	162,852
Oklahoma	116	127	129	111	97	407,508	464,058	494,973	455,766	422,144
Texas	115	123	124	107	93	1,078,585	1,188,180	1,269,760	1,106,594	952,227
Montana	146	154	173	146	121	314,630	328,482	402,225	383,542	333,718
Idaho	130	139	148	126	111	182,130	198,631	224,220	204,246	179,931
Wyoming	142	157	165	137	118	156,768	175,055	196,845	178,100	159,536
Colorado	135	144	147	125	109	308,070	344,736	380,730	327,000	283,400
New Mexico	128	134	137	125	100	153,344	168,572	174,127	165,250	126,900
Arizona	125	129	141	126	114	130,875	136,224	159,330	138,600	129,960
Utah	134	138	148	128	116	93,532	97,290	105,376	93,824	87,580
Nevada	140	145	155	132	116	73,780	74,820	81,530	73,656	67,976
Washington	139	141	148	133	118	167,912	180,480	198,912	184,072	166,616
Oregon	130	131	135	124	102	186,550	187,985	201,420	199,764	169,218
California	152	153	154	148	137	639,464	648,414	702,548	692,936	639,790
48 States	134	140	142	127	113	13,087,253	13,975,870	14,783,684	13,651,338	12,323,051
Alaska	278	283	254	251	231	2,029	2,236	2,032	2,108	1,917
Hawaii	169	165	162	157	156	35,152	34,980	34,992	34,226	34,788
United States	134	140	142	127	113	13,124,434	14,013,086	14,820,708	13,687,672	12,359,756

Table 9.--Cows and heifers 2 years old and older kept for milk: Average value per head and total value by States, Jan. 1, 1961-65

State	Average value per head					Total value				
	1961	1962	1963	1964	1965	1961	1962	1963	1964	1965
	Dols.	Dols.	Dols.	Dols.	Dols.	1,000 dollars	1,000 dollars	1,000 dollars	1,000 dollars	1,000 dollars
Maine	220	220	215	215	205	23,320	23,320	22,145	20,640	18,450
New Hampshire	245	250	225	220	210	14,455	14,750	12,825	11,660	10,710
Vermont	240	235	215	215	210	69,120	67,680	60,630	58,265	55,860
Massachusetts	300	292	275	265	255	30,900	29,200	26,675	24,645	22,695
Rhode Island	310	305	285	265	260	4,650	4,270	3,705	3,180	3,120
Connecticut	300	292	272	270	255	28,800	26,664	23,936	22,950	21,165
New York	272	259	234	234	231	378,896	360,787	322,686	313,092	302,841
New Jersey	325	310	290	290	290	45,175	42,160	38,280	35,960	33,060
Pennsylvania	270	272	252	250	250	266,760	268,736	246,456	239,500	232,250
Ohio	214	214	210	196	194	161,998	158,788	148,050	131,320	122,220
Indiana	206	214	211	201	192	95,584	96,300	91,152	83,415	74,112
Illinois	210	214	214	196	196	133,350	130,540	122,622	104,468	96,040
Michigan	245	249	240	230	220	171,745	176,292	166,560	154,790	143,660
Wisconsin	230	230	220	205	205	552,460	552,460	528,440	487,490	487,490
Minnesota	210	220	215	193	184	298,410	315,700	305,515	274,253	256,312
Iowa	205	215	204	187	187	191,470	198,875	181,152	161,007	154,649
Missouri	167	179	173	158	150	117,067	124,226	109,336	90,850	79,350
North Dakota	206	211	218	191	166	60,976	62,456	62,566	52,716	43,492
South Dakota	204	212	211	188	174	55,692	57,240	54,016	48,128	44,544
Nebraska	198	211	211	186	183	69,300	71,740	66,676	54,684	51,240
Kansas	195	204	200	178	171	72,930	72,420	65,400	53,578	47,880
Delaware	205	205	185	175	175	5,945	5,740	4,810	4,025	3,675
Maryland	215	215	195	185	185	49,880	47,945	43,095	38,850	37,000
Virginia	169	172	169	144	144	62,699	61,232	57,122	46,656	43,344
West Virginia	145	145	145	134	125	20,445	19,285	17,400	14,740	12,375
North Carolina	142	145	145	133	129	42,032	41,180	39,150	34,447	31,734
South Carolina	145	145	142	138	125	16,820	16,095	14,910	13,662	11,625
Georgia	139	140	142	139	125	31,970	30,520	29,110	27,105	22,875
Florida	155	155	175	170	170	33,015	30,070	32,900	31,280	31,280
Kentucky	167	172	166	158	146	92,665	94,428	90,304	81,686	70,956
Tennessee	144	154	149	144	129	72,720	76,230	70,775	64,944	56,373
Alabama	128	140	132	124	108	32,768	34,440	30,492	26,040	21,600
Mississippi	119	131	138	122	105	48,076	49,256	48,300	38,796	31,395
Arkansas	130	145	142	127	110	30,680	33,495	29,820	21,844	16,830
Louisiana	141	150	154	147	132	37,929	39,600	39,424	36,162	31,152
Oklahoma	168	172	171	149	137	46,200	45,408	41,553	33,376	27,948
Texas	160	169	171	149	137	97,600	102,076	101,232	80,311	67,130
Montana	197	204	219	199	174	15,760	15,300	15,111	13,134	11,136
Idaho	192	205	210	190	180	42,816	45,305	44,940	38,190	34,380
Wyoming	195	210	220	195	184	6,240	6,090	5,940	5,265	4,784
Colorado	197	206	207	190	168	26,004	26,162	25,668	22,610	19,152
New Mexico	190	195	190	185	165	8,550	8,385	7,790	7,770	6,930
Arizona	220	225	240	220	220	11,880	12,150	12,960	12,320	12,320
Utah	198	201	209	201	190	20,394	20,100	20,064	18,492	16,910
Nevada	210	220	230	210	200	3,780	3,740	3,910	3,360	3,200
Washington	204	204	209	190	185	52,224	50,592	49,742	43,320	41,255
Oregon	169	171	167	160	142	29,913	29,070	27,221	24,000	20,164
California	240	240	244	241	222	215,760	211,440	214,964	208,947	190,476
48 States	208	212	206	194	187	3,997,843	4,010,138	3,777,530	3,417,923	3,179,139
Alaska	430	430	400	420	380	1,204	1,376	1,160	1,176	988
Hawaii	345	355	363	352	416	5,520	5,680	5,808	5,632	6,656
United States	208	212	206	194	188	4,004,567	4,017,194	3,784,498	3,424,731	3,186,783

Table 10.--All hogs and pigs: Number on farms, by States, Jan. 1, 1961-65

State	All hogs and pigs				
	1961	1962	1963	1964	1965
	1,000	1,000	1,000	1,000	1,000
	head	head	head	head	head
Maine	21	19	17	15	11
New Hampshire ...:	12	12	12	12	13
Vermont	10	9.0	9.0	8.0	7.8
Massachusetts ...:	117	111	105	112	95
Rhode Island ...:	10	10	10	10	9.4
Connecticut ...:	19	18	15	15	13
New York	110	97	95	89	81
New Jersey ...:	160	165	160	150	132
Pennsylvania ...:	525	483	497	457	402
Ohio	2,599	2,651	2,757	2,619	2,331
Indiana	4,850	5,044	5,195	5,091	4,429
Illinois	7,096	7,522	7,748	7,748	6,896
Michigan	741	778	832	757	636
Wisconsin	1,786	1,843	1,898	1,860	1,544
Minnesota	3,522	3,628	3,773	3,622	3,115
Iowa	12,433	12,930	13,318	13,318	12,785
Missouri	3,893	3,932	4,129	4,088	3,638
North Dakota ...:	248	275	267	302	272
South Dakota ...:	1,315	1,433	1,548	1,594	1,514
Nebraska	2,527	2,704	2,758	2,868	2,696
Kansas	1,142	1,302	1,393	1,365	1,215
Delaware	35	37	36	35	33
Maryland	171	176	165	158	139
Virginia	634	583	600	516	439
West Virginia ...:	95	83	82	73	62
North Carolina ...:	1,246	1,171	1,194	1,146	1,054
South Carolina ...:	457	420	420	424	365
Georgia	1,566	1,519	1,580	1,485	1,262
Florida	385	377	358	340	303
Kentucky	1,400	1,330	1,330	1,317	1,067
Tennessee	1,308	1,216	1,204	1,072	922
Alabama	972	894	867	850	706
Mississippi	636	541	503	448	376
Arkansas	416	374	314	257	208
Louisiana	279	229	197	195	174
Oklahoma	404	428	407	293	240
Texas	1,037	975	994	885	602
Montana	151	148	154	171	150
Idaho	140	127	116	119	98
Wyoming	29	28	21	31	28
Colorado	199	187	193	197	171
New Mexico	54	53	53	41	39
Arizona	28	30	30	28	26
Utah	68	60	52	46	35
Nevada	10	10	9.0	9.0	7.5
Washington	135	132	114	100	93
Oregon	177	168	151	125	108
California	328	298	253	235	183
48 States	55,496	56,560	57,933	56,696	50,726
Alaska	1.0	1.0	1.0	.9	1.4
Hawaii	63	58	59	60	65
United States ...:	55,560	56,619	57,993	56,757	50,792

Table 11.--All hogs and pigs: Number on farms, by age groups, by States
Jan. 1, 1961-63 1/

State	Under 6 months			6 months and older					
				Sows and gilts			Other		
	1961	1962	1963	1961	1962	1963	1961	1962	1963
1,000	1,000	1,000	1,000	1,000	1,000	1,000	1,000	1,000	1,000
head	head	head	head	head	head	head	head	head	head
Maine	12	12	10	3	2	2	6	5	5
New Hampshire ...	7	7	7	2	2	2	3	3	3
Vermont	6	6.0	6.0	2	1.2	1.2	2	1.8	1.8
Massachusetts ...	59	55	51	13	12	11	45	44	43
Rhode Island	6	6	6	1	1	1	3	3	3
Connecticut	11	10	9	2	2	2	6	6	4
New York	77	64	65	16	14	14	17	19	16
New Jersey	83	88	85	14	12	12	63	65	63
Pennsylvania	368	335	348	65	64	64	92	84	85
Ohio	2,085	2,112	2,193	350	345	340	164	194	224
Indiana	3,686	3,833	3,985	605	605	611	559	606	599
Illinois	4,850	5,150	5,400	1,020	1,045	1,055	1,226	1,327	1,293
Michigan	565	581	627	91	91	93	85	106	112
Wisconsin	1,240	1,314	1,375	306	286	293	240	243	230
Minnesota	2,380	2,395	2,570	557	563	552	585	670	651
Iowa	7,360	7,530	7,906	1,778	1,776	1,802	3,295	3,624	3,610
Missouri	2,891	2,806	3,100	517	520	525	485	606	504
North Dakota	107	125	119	70	62	63	71	88	85
South Dakota	680	690	780	280	295	305	355	448	463
Nebraska	1,534	1,663	1,738	405	420	440	588	621	580
Kansas	841	917	999	166	179	187	135	206	207
Delaware	24	25	25	4	4	4	7	8	7
Maryland	124	130	120	18	21	23	29	25	22
Virginia	460	427	446	74	75	72	100	81	82
West Virginia ...	64	58	59	13	11	10	18	14	13
North Carolina ...	830	800	840	176	172	170	240	199	184
South Carolina ...	270	270	273	62	58	57	125	92	90
Georgia	1,075	1,041	1,096	195	188	191	296	290	293
Florida	250	255	230	40	41	39	95	81	89
Kentucky	1,033	970	920	175	175	180	192	185	230
Tennessee	840	800	810	170	165	168	298	251	226
Alabama	635	585	574	117	115	104	220	194	189
Mississippi	383	310	310	70	64	56	183	167	137
Arkansas	296	279	230	48	44	40	72	51	44
Louisiana	150	125	118	27	23	21	102	81	58
Oklahoma	295	310	305	53	52	46	56	66	56
Texas	721	685	719	121	121	106	195	169	169
Montana	102	93	103	21	21	21	28	34	30
Idaho	103	92	85	16	16	16	21	19	15
Wyoming	17	17	13	4	3	3	8	8	5
Colorado	138	138	140	21	24	27	40	25	26
New Mexico	34	33	30	6	6	6	14	14	17
Arizona	16	16	16	3	3	3	9	11	11
Utah	42	43	39	7	7	6	19	10	7
Nevada	6	6	5.4	2	2	1.6	2	2	2.0
Washington	108	101	90	15	14	14	12	17	10
Oregon	136	125	117	19	18	16	22	25	18
California	184	170	145	45	40	29	99	88	79
48 States	37,184	37,603	39,237	7,785	7,780	7,805	10,527	11,177	10,891
Alaska4	.6	.5	.2	.2	.2	.4	.2	.3
Hawaii	36	37	36	8	8	8	19	13	15
United States ...	37,221	37,641	39,274	7,793	7,788	7,813	10,546	11,190	10,906

1/ Estimates by age groups discontinued after 1963.

Table 12.--All hogs and pigs: Average value per head and total value by States, Jan. 1, 1961-65

State	Average value per head					Total value				
	1961	1962	1963	1964	1965	1961	1962	1963	1964	1965
	Dols.	Dols.	Dols.	Dols.	Dols.	1,000 dollars	1,000 dollars	1,000 dollars	1,000 dollars	1,000 dollars
Maine	30.60	27.30	26.60	27.70	27.70	643	519	452	416	305
New Hampshire	30.30	27.50	27.90	27.30	27.60	364	330	335	328	359
Vermont	30.80	26.70	27.10	26.10	26.80	308	240	244	209	209
Massachusetts	30.00	29.10	28.50	29.00	28.30	3,510	3,230	2,992	3,248	2,688
Rhode Island	30.10	29.30	27.90	30.00	30.60	301	293	279	300	288
Connecticut	31.30	29.30	28.00	28.30	27.20	595	527	420	424	354
New York	24.70	25.40	25.60	24.00	23.60	2,717	2,464	2,432	2,136	1,912
New Jersey	32.20	31.30	32.70	30.40	29.50	5,152	5,164	5,232	4,560	3,894
Pennsylvania	27.30	28.00	28.40	25.80	26.60	14,323	13,524	14,115	11,791	10,693
Ohio	24.60	24.40	25.50	22.40	22.90	63,935	64,684	70,304	58,666	53,380
Indiana	26.70	27.20	27.20	22.60	23.80	129,495	137,197	141,304	115,057	105,410
Illinois	28.70	28.30	28.30	23.70	25.00	203,655	212,873	219,268	183,628	172,400
Michigan	26.80	28.00	28.80	25.00	25.20	19,859	21,784	23,962	18,925	16,027
Wisconsin	28.60	28.60	27.90	22.80	24.20	51,080	52,710	52,954	42,408	37,365
Minnesota	29.70	29.80	29.30	24.30	25.30	104,603	108,114	110,549	88,015	78,810
Iowa	31.30	30.60	30.20	25.60	27.10	389,153	395,658	402,204	340,941	346,474
Missouri	24.10	25.60	25.00	20.70	21.70	93,821	100,659	103,225	84,622	78,945
North Dakota	31.90	29.40	32.10	25.80	26.70	7,911	8,085	8,571	7,792	7,262
South Dakota	32.50	32.00	32.00	26.40	27.30	42,738	45,856	49,536	42,082	41,332
Nebraska	29.60	28.90	28.80	24.40	25.40	74,799	78,146	79,430	69,979	68,478
Kansas	24.20	24.70	25.10	21.20	21.80	27,636	32,159	34,964	28,938	26,487
Delaware	25.00	26.30	26.80	25.60	23.30	875	973	965	896	769
Maryland	25.10	24.90	25.70	22.80	22.30	4,292	4,382	4,240	3,602	3,100
Virginia	23.10	24.40	23.30	21.10	22.00	14,645	14,225	13,980	10,888	9,658
West Virginia	22.50	23.70	22.70	21.10	20.40	2,138	1,967	1,861	1,540	1,265
North Carolina	24.30	24.90	24.50	21.40	21.90	30,278	29,158	29,253	24,524	23,083
South Carolina	24.40	24.20	23.00	21.00	21.40	11,151	10,164	9,660	8,904	7,811
Georgia	21.40	23.00	23.90	21.70	21.20	33,512	34,937	37,762	32,224	26,754
Florida	20.50	21.70	23.90	23.00	22.10	7,892	8,181	8,556	7,820	6,696
Kentucky	23.80	24.30	25.20	20.80	21.50	33,320	32,319	33,516	27,394	22,940
Tennessee	23.80	25.20	25.00	21.50	21.70	31,130	30,643	30,100	23,048	20,007
Alabama	21.00	23.00	23.50	20.00	20.20	20,412	20,562	20,374	17,000	14,261
Mississippi	17.90	20.00	20.00	19.40	19.00	11,384	10,820	10,060	8,691	7,144
Arkansas	19.30	18.50	20.20	16.00	16.20	8,029	6,919	6,343	4,112	3,370
Louisiana	18.40	19.50	20.00	17.70	18.50	5,134	4,466	3,940	3,452	3,219
Oklahoma	19.80	21.00	21.70	18.50	19.20	7,999	8,988	8,832	5,420	4,608
Texas	20.30	21.30	22.30	20.00	19.50	21,051	20,768	22,166	17,700	11,739
Montana	26.70	26.80	27.50	24.00	24.50	4,032	3,966	4,235	4,104	3,675
Idaho	22.30	23.60	25.00	20.20	19.80	3,122	2,997	2,900	2,404	1,940
Wyoming	25.50	26.70	27.00	22.20	22.70	740	748	567	688	636
Colorado	21.70	22.30	22.80	19.10	20.60	4,318	4,170	4,400	3,763	3,523
New Mexico	21.80	22.70	25.80	21.10	20.90	1,177	1,203	1,367	865	815
Arizona	23.50	24.40	25.50	21.10	20.20	658	732	765	591	525
Utah	24.00	23.90	24.40	20.10	20.20	1,632	1,434	1,269	925	707
Nevada	23.80	23.40	24.90	20.90	21.50	238	234	224	188	161
Washington	23.50	25.00	25.20	21.80	23.00	3,172	3,300	2,873	2,180	2,139
Oregon	23.30	24.50	23.80	19.00	20.60	4,124	4,116	3,594	2,375	2,225
California	24.70	24.00	26.00	23.10	25.90	8,102	7,152	6,578	5,428	4,740
48 States	27.20	27.50	27.50	23.40	24.50	1,511,164	1,553,740	1,593,152	1,325,191	1,240,582
Alaska	61.00	53.00	58.00	52.10	44.00	61	53	58	47	62
Hawaii	43.70	44.70	48.10	50.00	47.20	2,753	2,593	2,838	3,000	3,068
United States	27.20	27.50	27.50	23.40	24.50	1,513,978	1,556,386	1,596,048	1,328,238	1,243,712

Table 13.--All sheep and lambs: Number on farms and total value, by States, Jan. 1, 1961-65

State	Number					Total value				
	1961	1962	1963	1964	1965	1961	1962	1963	1964	1965
	1,000 head	1,000 head	1,000 head	1,000 head	1,000 head	1,000 dollars	1,000 dollars	1,000 dollars	1,000 dollars	1,000 dollars
Maine	36	35	35	30	24	490	476	444	354	300
New Hampshire ..	7.7	7.7	6.8	6.2	6.0	116	109	95	80	82
Vermont	11	10	10	8.7	8.3	168	148	139	113	119
Massachusetts ..	12	12	12	11	10	185	178	173	143	144
Rhode Island ...	2.3	2.4	2.4	2.6	2.2	38	36	35	34	32
Connecticut	7.2	7.3	7.3	6.4	5.4	116	108	106	85	78
New York	154	149	135	131	121	2,350	2,227	2,101	1,956	1,925
New Jersey	16	15	13	12	10	254	224	209	199	170
Pennsylvania	235	228	203	189	189	3,537	2,850	2,781	2,759	2,778
Ohio	1,052	988	899	815	798	15,643	13,279	13,221	12,036	12,305
Indiana	507	483	414	352	355	7,346	6,170	5,687	4,819	5,215
Illinois	717	700	615	559	497	9,756	9,048	8,618	7,492	7,129
Michigan	382	373	343	321	314	6,260	5,740	5,729	5,014	4,999
Wisconsin	267	246	229	212	198	3,864	3,189	3,044	2,782	2,692
Minnesota	1,068	1,024	886	766	713	16,265	13,870	12,406	10,583	10,620
Iowa	1,685	1,538	1,364	1,293	1,280	23,814	20,207	19,083	17,485	19,145
Missouri	749	674	530	471	426	9,427	7,809	6,420	5,732	5,784
North Dakota ...	726	681	662	597	527	11,136	9,250	9,836	8,460	8,009
South Dakota ...	1,834	1,702	1,700	1,595	1,478	27,982	22,961	26,482	23,264	24,509
Nebraska	811	723	671	634	585	11,796	9,537	10,188	8,791	9,247
Kansas	814	848	731	665	525	11,129	10,810	9,861	8,605	7,010
Delaware	4.2	4.0	3.4	2.7	2.7	62	55	48	38	38
Maryland	35	29	27	24	23	518	394	378	334	324
Virginia	316	291	265	238	228	5,246	4,831	4,452	3,975	3,876
West Virginia ...	275	256	241	214	205	4,208	3,430	3,494	3,103	2,972
North Carolina ..	54	48	38	31	26	821	658	555	450	385
South Carolina ..	10.0	9.0	6.5	5.9	4.9	144	131	93	84	70
Georgia	21	18	14	10	7.6	315	266	196	135	105
Florida	8.0	7.8	8.0	7.9	8.1	97	88	95	89	91
Kentucky	475	380	296	234	185	7,315	5,510	4,292	3,393	2,849
Tennessee	208	181	154	111	95	3,141	2,244	1,940	1,410	1,216
Alabama	31	22	18	14	12	474	328	239	172	148
Mississippi	62	48	45	33	27	719	509	540	353	316
Arkansas	44	35	26	20	15	541	399	304	210	160
Louisiana	97	74	67	56	46	902	614	603	504	429
Oklahoma	301	232	209	177	149	3,826	2,569	2,501	2,114	1,993
Texas	6,140	5,854	5,538	5,185	4,539	72,859	58,300	55,175	47,668	50,811
Montana	1,768	1,560	1,581	1,553	1,503	26,745	20,719	27,473	25,432	29,118
Idaho	1,096	1,041	1,005	937	908	16,847	14,101	17,445	15,520	17,487
Wyoming	2,254	2,198	2,198	2,178	2,092	34,119	31,086	38,203	37,334	40,441
Colorado	1,990	1,919	1,895	1,665	1,510	31,554	27,271	32,733	28,008	28,558
New Mexico	1,192	1,191	1,145	1,089	969	16,987	14,468	15,321	14,579	14,035
Arizona	496	516	533	560	605	7,710	7,016	8,369	8,824	10,779
Utah	1,277	1,258	1,246	1,150	1,092	20,834	18,200	20,712	18,833	20,440
Nevada	303	312	287	275	254	5,054	4,542	4,784	4,321	4,560
Washington	321	302	279	247	213	5,336	4,146	4,570	3,908	3,688
Oregon	906	842	777	740	690	14,834	11,257	11,945	10,831	11,480
California	1,933	1,880	1,790	1,663	1,626	33,558	28,845	31,292	29,693	31,859
48 States	32,710	30,954	29,160	27,098	25,107	476,238	400,203	424,510	382,101	400,514
Alaska	15	15	16	18	20	381	386	450	513	530
Hawaii	---	---	---	---	---	---	---	---	---	---
United States ..	32,725	30,969	29,176	27,116	25,127	476,619	400,589	424,960	382,614	401,044

Table 14.--Sheep and lambs: Number on farms, by classes, by States, Jan. 1, 1961-65

State	Sheep and lambs on feed					Total stock sheep				
	1961	1962	1963	1964	1965	1961	1962	1963	1964	1965
	1,000 head	1,000 head	1,000 head	1,000 head	1,000 head	1,000 head	1,000 head	1,000 head	1,000 head	1,000 head
Maine	---	---	---	---	---	36	35	35	30	24
New Hampshire	---	---	---	---	---	7.7	7.7	6.8	6.2	6.0
Vermont	---	---	---	---	---	11	10	10	8.7	8.3
Massachusetts	---	---	---	---	---	12	12	12	11	10
Rhode Island	---	---	---	---	---	2.3	2.4	2.4	2.6	2.2
Connecticut	---	---	---	---	---	7.2	7.3	7.3	6.4	5.4
New York	22	21	17	14	11	132	128	118	117	110
New Jersey	---	---	---	---	---	16	15	13	12	10
Pennsylvania	---	---	---	---	---	235	228	203	189	189
Ohio	220	198	172	146	136	832	790	727	669	662
Indiana	75	60	65	45	45	432	423	349	307	310
Illinois	152	163	148	134	123	565	537	467	425	374
Michigan	87	84	89	77	72	295	289	254	244	242
Wisconsin	63	50	43	39	34	204	196	186	173	164
Minnesota	251	248	206	161	150	817	776	680	605	563
Iowa	565	474	446	412	390	1,120	1,064	918	881	890
Missouri	129	116	95	79	65	620	558	435	392	361
North Dakota	110	113	122	122	95	616	568	540	475	432
South Dakota	260	257	265	273	244	1,574	1,445	1,435	1,322	1,234
Nebraska	443	377	363	351	302	368	346	308	283	283
Kansas	280	314	229	223	132	534	534	502	442	393
Delaware	---	---	---	---	---	4.2	4.0	3.4	2.7	2.7
Maryland	---	---	---	---	---	35	29	27	24	23
Virginia	---	---	---	---	---	316	291	265	238	228
West Virginia	---	---	---	---	---	275	256	241	214	205
North Carolina	---	---	---	---	---	54	48	38	31	26
South Carolina	---	---	---	---	---	10.0	9.0	6.5	5.9	4.9
Georgia	---	---	---	---	---	21	18	14	10	7.6
Florida	---	---	---	---	---	8.0	7.8	8.0	7.9	8.1
Kentucky	---	---	---	---	---	475	380	296	234	185
Tennessee	---	---	---	---	---	208	181	154	111	95
Alabama	---	---	---	---	---	31	22	18	14	12
Mississippi	---	---	---	---	---	62	48	45	33	27
Arkansas	---	---	---	---	---	44	35	26	20	15
Louisiana	---	---	---	---	---	97	74	67	56	46
Oklahoma	83	53	43	33	28	218	179	166	144	121
Texas	230	240	205	172	128	5,910	5,614	5,333	5,013	4,411
Montana	107	98	90	92	100	1,661	1,462	1,491	1,461	1,403
Idaho	79	95	106	119	123	1,017	946	899	818	785
Wyoming	118	105	105	106	103	2,136	2,093	2,093	2,072	1,989
Colorado	570	570	600	525	450	1,420	1,349	1,295	1,140	1,060
New Mexico	45	52	55	34	31	1,147	1,139	1,090	1,055	938
Arizona	46	76	66	89	111	450	440	467	471	494
Utah	78	82	70	68	64	1,199	1,176	1,176	1,082	1,028
Nevada	8	8	13	12	12	295	304	274	263	242
Washington	35	30	34	27	24	286	272	245	220	189
Oregon	60	64	53	67	64	846	778	724	673	626
California	289	302	354	241	247	1,644	1,578	1,436	1,422	1,379
48 States	4,405	4,250	4,054	3,661	3,284	28,305	26,704	25,106	23,437	21,823
Alaska	---	---	---	---	---	15	15	16	18	20
Hawaii	---	---	---	---	---	---	---	---	---	---
United States	4,405	4,250	4,054	3,661	3,284	28,320	26,719	25,122	23,455	21,843

Table 14.--Sheep and lambs: Number on farms by classes, by States
Jan. 1, 1961-65--Continued

State	Ewes 1 year old and older				
	1961	1962	1963	1964	1965
	1,000 head	1,000 head	1,000 head	1,000 head	1,000 head
Maine	24	24	25	22	17
New Hampshire	5.0	5.0	4.5	4.2	4.0
Vermont	8	7	7	6.1	6.0
Massachusetts	8	8	8	8	7
Rhode Island	1.7	1.7	1.7	1.8	1.5
Connecticut	5.0	5.0	5.3	4.5	3.8
New York	102	99	94	93	87
New Jersey	11	10	9	8	7
Pennsylvania	162	156	144	132	133
Ohio	689	641	590	543	538
Indiana	343	333	281	247	247
Illinois	437	415	361	329	293
Michigan	237	232	209	199	195
Wisconsin	163	160	152	138	130
Minnesota	651	638	564	497	466
Iowa	894	858	757	727	743
Missouri	497	437	358	329	303
North Dakota	490	470	442	398	354
South Dakota	1,286	1,191	1,154	1,061	1,007
Nebraska	295	283	255	237	242
Kansas	447	447	420	374	333
Delaware	3.1	3.0	2.5	2.0	2.0
Maryland	27	23	21	19	18
Virginia	249	232	211	192	180
West Virginia	222	204	192	173	163
North Carolina	42	37	30	24	20
South Carolina	7.0	6.4	4.5	4.0	3.3
Georgia	15	12	10	7	5.3
Florida	5.2	4.9	5.3	5.2	5.5
Kentucky	361	303	236	194	151
Tennessee	168	150	123	91	78
Alabama	21	14	12	9	8
Mississippi	40	29	30	22	18
Arkansas	32	25	19	15	11
Louisiana	57	47	43	36	30
Oklahoma	163	134	125	111	92
Texas	4,100	4,059	3,978	3,739	3,290
Montana	1,291	1,162	1,116	1,127	1,093
Idaho	884	813	780	686	665
Wyoming	1,738	1,703	1,652	1,652	1,602
Colorado	1,164	1,141	1,095	964	906
New Mexico	914	890	867	816	744
Arizona	342	331	349	351	356
Utah	1,033	1,012	1,002	942	876
Nevada	247	249	232	220	202
Washington	225	216	190	167	147
Oregon	699	636	591	550	512
California	1,388	1,388	1,263	1,238	1,188
48 States	22,193	21,245	20,021	18,715	17,493
Alaska	6	7	7	8	9
Hawaii	---	---	---	---	---
United States	22,199	21,252	20,028	18,723	17,502

Table 14.--Sheep and lambs: Number on farms by classes, by States
Jan. 1, 1961-65--Continued

State	Stock sheep									
	Ewe lambs					Wether and ram lambs				
	1961	1962	1963	1964	1965	1961	1962	1963	1964	1965
1,000 head	1,000 head	1,000 head	1,000 head	1,000 head	1,000 head	1,000 head	1,000 head	1,000 head	1,000 head	1,000 head
Maine	8	7	6	5	4	2	2	2	1	1
New Hampshire ..	1.5	1.5	1.2	1.1	1.1	.4	.4	.4	.3	.3
Vermont	2	2	2	1.5	1.4	---	---	---	.4	.3
Massachusetts ..	2	2	2	2	2	1	1	1	---	---
Rhode Island3	.4	.4	.5	.4	.1	.1	.1	.1	.1
Connecticut	1.1	1.2	.9	.9	.7	.4	.4	.4	.4	.3
New York	22	21	16	16	15	3	3	3	3	3
New Jersey	3	3	2	2	1	1	1	1	1	1
Pennsylvania	33	32	25	26	25	15	15	13	12	12
Ohio	91	96	87	79	77	15	17	16	15	15
Indiana	57	57	43	37	38	17	20	13	12	13
Illinois	90	86	72	66	55	11	11	10	9	7
Michigan	43	42	32	33	34	3	3	3	3	4
Wisconsin	30	26	24	25	24	2	1	1	1	2
Minnesota	130	105	88	84	77	8	7	5	4	2
Iowa	178	160	122	116	109	13	12	9	9	9
Missouri	82	82	47	35	32	15	17	12	11	10
North Dakota	92	69	70	52	53	13	11	12	10	11
South Dakota	213	186	216	200	171	20	18	17	16	13
Nebraska	53	44	36	30	25	8	7	6	6	6
Kansas	54	53	48	41	35	14	14	16	10	8
Delaware8	.7	.6	.5	.5	.1	.1	.1	.1	.1
Maryland	5	4	4	3	3	1	1	1	1	1
Virginia	46	40	36	31	33	8	7	6	4	4
West Virginia ...	35	34	33	26	28	3	4	4	4	4
North Carolina ..	7	7	5	4	3	1	1	1	1	1
South Carolina ..	1.0	1.2	.9	.9	.8	1.0	.5	.4	.4	.3
Georgia	2	2	1	1	.8	2	2	1	1	.4
Florida	1.3	1.4	1.3	1.3	1.2	.5	.5	.4	.4	.4
Kentucky	63	37	29	21	18	31	23	18	9	7
Tennessee	24	19	20	11	9	4	3	3	2	2
Alabama	5	4	3	2	2	2	2	1	2	1
Mississippi	12	10	7	5	4	6	6	5	3	2
Arkansas	6	5	3	2	2	2	2	1	1	1
Louisiana	18	13	11	9	6	14	6	5	4	3
Oklahoma	39	31	29	23	20	6	5	5	4	3
Texas	1,015	777	649	622	534	498	491	437	420	369
Montana	287	225	306	267	248	20	18	17	17	16
Idaho	96	97	89	106	95	5	6	4	3	3
Wyoming	319	312	364	341	311	12	12	12	14	14
Colorado	185	143	140	122	106	24	22	20	18	15
New Mexico	159	175	156	169	124	21	21	18	23	23
Arizona	74	75	81	82	88	15	15	16	16	16
Utah	128	128	138	107	119	6	5	6	5	6
Nevada	34	40	29	32	30	2	2	2	2	2
Washington	44	41	41	40	33	3	2	2	2	1
Oregon	108	108	96	91	79	10	9	11	8	9
California	177	112	104	114	120	26	26	22	23	26
48 States	4,077	3,518	3,317	3,087	2,799	885	853	760	712	648
Alaska	2	2	2	2	2	2	2	2	2	2
Hawaii	---	---	---	---	---	---	---	---	---	---
United States ..	4,079	3,520	3,319	3,089	2,801	887	855	762	714	650

Table 14.--Sheep and lambs: Number on farms, by classes, by States,
Jan. 1, 1961-65 -- Continued

State	Stock sheep									
	Rams 1 year old and older					Wethers 1 year old and older				
	1961	1962	1963	1964	1965	1961	1962	1963	1964	1965
1,000 head	1,000 head	1,000 head	1,000 head	1,000 head	1,000 head	1,000 head	1,000 head	1,000 head	1,000 head	1,000 head
Maine	2	2	2	2	2	---	---	---	---	---
New Hampshire	.8	.8	.7	.6	.6	---	---	---	---	---
Vermont	1	1	1	.7	.6	---	---	---	---	---
Massachusetts	1	1	1	1	1	---	---	---	---	---
Rhode Island	.2	.2	.2	.2	.2	---	---	---	---	---
Connecticut	.7	.7	.7	.6	.6	---	---	---	---	---
New York	5	5	5	5	5	---	---	---	---	---
New Jersey	1	1	1	1	1	---	---	---	---	---
Pennsylvania	7	7	6	6	6	18	18	15	13	13
Ohio	22	21	20	19	19	15	15	14	13	13
Indiana	15	13	12	11	12	---	---	---	---	---
Illinois	26	24	23	20	18	1	1	1	1	1
Michigan	11	11	9	8	8	1	1	1	1	1
Wisconsin	8	8	8	8	7	1	1	1	1	1
Minnesota	27	25	22	19	17	1	1	1	1	1
Iowa	34	33	29	28	28	1	1	1	1	1
Missouri	24	21	17	16	15	2	1	1	1	1
North Dakota	20	17	15	14	13	1	1	1	1	1
South Dakota	53	48	46	43	41	2	2	2	2	2
Nebraska	12	12	11	10	10	---	---	---	---	---
Kansas	17	18	16	15	15	2	2	2	2	2
Delaware	.2	.2	.2	.1	.1	---	---	---	---	---
Maryland	2	1	1	1	1	---	---	---	---	---
Virginia	12	11	11	10	10	1	1	1	1	1
West Virginia	12	11	10	9	8	3	3	2	2	2
North Carolina	3	3	2	2	2	1	---	---	---	---
South Carolina	1.0	.9	.7	.6	.5	---	---	---	---	---
Georgia	1	1	1	1	1.1	1	1	1	---	---
Florida	1.0	1.0	1.0	1.0	1.0	---	---	---	---	---
Kentucky	17	15	12	9	8	3	2	1	1	1
Tennessee	10	8	7	6	5	2	1	1	1	1
Alabama	2	1	1	1	1	1	1	1	---	---
Mississippi	2	2	2	2	2	2	1	1	1	1
Arkansas	3	2	2	1	1	1	1	1	1	---
Louisiana	4	4	4	4	4	4	4	4	3	3
Oklahoma	8	7	5	4	4	2	2	2	2	2
Texas	159	156	151	138	130	138	131	118	94	88
Montana	61	55	50	48	45	2	2	2	2	1
Idaho	30	28	24	21	20	2	2	2	2	2
Wyoming	66	65	64	64	61	1	1	1	1	1
Colorado	42	39	36	33	30	5	4	4	3	3
New Mexico	47	46	43	41	41	6	7	6	6	6
Arizona	16	16	17	18	20	3	3	4	4	4
Utah	31	30	29	27	26	1	1	1	1	1
Nevada	11	12	10	8	7	1	1	1	1	1
Washington	13	12	11	10	7	1	1	1	1	1
Oregon	27	23	24	22	24	2	2	2	2	2
California	48	47	43	43	41	5	5	4	4	4
48 States	917	867	807	753	721	233	221	201	170	162
Alaska	1	1	1	1	1	4	3	4	5	6
Hawaii	---	---	---	---	---	---	---	---	---	---
United States	918	868	808	754	722	237	224	205	175	168

Table 15.--Stock sheep and lambs: Value per head and total value, by States,
Jan. 1, 1961-65

State	Value per head					Total value				
	1961	1962	1963	1964	1965	1961	1962	1963	1964	1965
	Dollars	Dollars	Dollars	Dollars	Dollars	1,000 dollars	1,000 dollars	1,000 dollars	1,000 dollars	1,000 dollars
Maine	13.60	13.60	12.70	11.80	12.50	490	476	444	354	300
New Hampshire ..	15.10	14.20	14.00	12.90	13.70	116	109	95	80	82
Vermont	15.30	14.80	13.90	13.00	14.30	168	148	139	113	119
Massachusetts ..	15.40	14.80	14.40	13.00	14.40	185	178	173	143	144
Rhode Island ...	16.50	15.00	14.60	13.00	14.60	38	36	35	34	32
Connecticut	16.10	14.80	14.50	13.30	14.40	116	108	106	85	78
New York	15.30	15.10	15.50	14.80	15.80	2,020	1,933	1,829	1,732	1,738
New Jersey	15.90	14.90	16.10	16.60	17.00	254	224	209	199	170
Pennsylvania ...	14.20	12.50	13.70	14.60	14.70	3,337	2,850	2,781	2,759	2,778
Ohio	15.10	13.30	14.40	14.50	15.30	12,563	10,507	10,469	9,700	10,129
Indiana	14.40	12.60	13.50	13.50	14.50	6,221	5,330	4,712	4,144	4,495
Illinois	13.50	12.60	13.70	12.90	13.80	7,628	6,766	6,398	5,482	5,161
Michigan	16.50	15.50	16.60	15.50	15.60	4,868	4,480	4,216	3,782	3,775
Wisconsin	14.00	12.70	12.90	12.70	13.10	2,856	2,489	2,399	2,197	2,148
Minnesota	15.30	13.40	13.70	13.50	14.60	12,500	10,398	9,316	8,168	8,220
Iowa	14.20	13.20	13.50	13.30	14.50	15,904	10,045	12,393	11,717	12,905
Missouri	12.50	11.50	11.70	11.80	13.50	7,750	6,417	5,090	4,626	4,874
North Dakota ...	15.40	13.50	14.60	13.70	14.80	9,486	7,668	7,884	6,508	6,394
South Dakota ...	15.30	13.40	15.50	14.50	16.50	24,082	19,363	22,242	19,169	20,361
Nebraska	15.20	13.40	15.40	13.70	15.60	5,594	4,636	4,743	3,877	4,415
Kansas	13.50	12.60	12.80	11.90	12.80	7,209	6,728	6,426	5,260	5,030
Delaware	14.80	13.80	14.10	14.00	14.10	62	55	48	38	38
Maryland	14.80	13.60	14.00	13.90	14.10	518	394	378	334	324
Virginia	16.60	16.60	16.80	16.70	17.00	5,246	4,831	4,452	3,975	3,876
West Virginia ..	15.30	13.40	14.50	14.50	14.50	4,208	3,430	3,494	3,103	2,972
North Carolina ..	15.20	13.70	14.60	14.50	14.80	821	658	555	450	385
South Carolina ..	14.40	14.60	14.30	14.20	14.30	144	131	93	84	70
Georgia	15.00	14.80	14.00	13.50	13.80	315	266	196	135	105
Florida	12.10	11.30	11.90	11.30	11.20	97	88	95	89	91
Kentucky	15.40	14.50	14.50	14.50	15.40	7,315	5,510	4,292	3,393	2,849
Tennessee	15.10	12.40	12.60	12.70	12.80	3,141	2,244	1,940	1,410	1,216
Alabama	15.30	14.90	13.30	12.30	12.30	474	328	239	172	148
Mississippi	11.60	10.60	12.00	10.70	11.70	719	509	540	353	316
Arkansas	12.30	11.40	11.70	10.50	10.70	541	399	304	210	160
Louisiana	9.30	8.30	9.00	9.00	9.20	902	614	603	504	423
Oklahoma	12.60	10.80	11.70	11.70	13.00	2,747	1,933	1,942	1,685	1,573
Texas	11.90	10.00	10.00	9.20	11.20	70,329	56,140	53,330	46,120	49,403
Montana	15.20	13.30	17.40	16.40	19.40	25,247	19,445	25,943	23,960	27,218
Idaho	15.40	13.50	17.40	16.50	19.30	15,662	12,771	15,643	13,497	15,150
Wyoming	15.20	14.20	17.40	17.20	19.40	32,467	29,721	36,418	35,638	38,587
Colorado	16.20	14.30	17.40	17.20	19.30	23,004	19,291	22,533	19,608	20,458
New Mexico	14.30	12.20	13.40	13.40	14.50	16,402	13,896	14,606	14,137	13,601
Arizona	15.60	13.70	15.80	15.90	18.00	7,020	6,028	7,379	7,489	8,892
Utah	16.40	14.50	16.60	16.40	18.70	19,664	17,052	19,522	17,745	19,224
Nevada	16.70	14.60	16.70	15.70	17.90	4,926	4,438	4,576	4,129	4,332
Washington	16.70	13.70	16.70	15.80	17.10	4,776	3,726	4,092	3,476	3,232
Oregon	16.40	13.40	15.40	14.60	16.60	13,874	10,425	11,150	9,826	10,392
California	17.60	15.60	17.60	18.00	19.70	28,934	24,617	25,274	25,596	27,166
48 States	14.60	12.90	14.40	14.00	15.80	412,940	343,829	361,736	327,285	345,549
Alaska	25.40	25.70	28.10	28.50	26.50	381	386	450	513	530
Hawaii	---	---	---	---	---	---	---	---	---	---
United States ..	14.60	12.90	14.40	14.00	15.80	413,321	344,215	362,186	327,798	346,079

Table 16.--All chickens: Number on farms, by States, Jan. 1, 1961-65

State	All chickens				
	1961	1962	1963	1964	1965
	1,000	1,000	1,000	1,000	1,000
	head	head	head	head	head
Maine	4,740	5,071	5,314	5,454	5,653
New Hampshire ...	2,143	2,195	2,163	2,242	2,205
Vermont	811	851	795	799	744
Massachusetts ...	3,634	3,365	3,307	3,369	3,198
Rhode Island	426	428	453	462	481
Connecticut	3,867	4,225	4,476	4,824	4,853
New York	10,342	10,639	11,265	12,212	13,067
New Jersey	11,492	10,691	10,175	9,356	8,139
Pennsylvania	20,709	20,088	19,299	18,757	19,576
Ohio	13,115	13,147	13,224	13,621	14,233
Indiana	13,963	14,046	14,532	14,153	15,123
Illinois	12,426	12,014	11,297	10,706	10,338
Michigan	7,855	7,915	7,530	8,063	8,554
Wisconsin	10,645	10,211	9,539	8,713	8,336
Minnesota	18,942	17,927	16,326	15,158	14,334
Iowa	25,001	23,985	21,057	20,169	19,959
Missouri	10,671	11,013	9,588	8,220	7,724
North Dakota	2,652	2,705	2,355	2,129	1,914
South Dakota	8,283	8,584	8,196	7,731	7,597
Nebraska	9,938	9,224	8,117	7,952	7,532
Kansas	7,204	6,778	5,974	5,543	5,404
Delaware	846	853	825	841	837
Maryland	2,003	2,051	2,057	2,152	2,161
Virginia	6,797	6,777	6,914	6,844	6,676
West Virginia ...	2,118	2,021	1,946	1,902	1,869
North Carolina ..	14,437	15,247	15,684	16,261	17,450
South Carolina ..	5,253	5,584	5,644	5,926	5,864
Georgia	14,287	16,603	20,246	24,126	26,833
Florida	6,545	7,048	8,141	9,686	10,772
Kentucky	5,855	5,333	4,892	4,404	4,109
Tennessee	6,529	6,462	6,097	5,977	6,078
Alabama	9,027	11,750	12,667	13,756	15,140
Mississippi	8,168	8,981	10,296	11,529	13,176
Arkansas	6,730	9,720	10,472	12,711	15,165
Louisiana	4,090	4,089	3,885	4,061	4,421
Oklahoma	3,528	3,481	3,261	3,269	3,300
Texas	16,156	17,773	17,063	17,407	17,195
Montana	1,170	1,163	1,129	1,052	1,042
Idaho	1,414	1,373	1,429	1,311	1,183
Wyoming	327	313	283	280	269
Colorado	1,546	1,614	1,498	1,371	1,377
New Mexico	877	925	912	894	810
Arizona	1,012	1,064	1,173	1,361	1,301
Utah	1,602	1,511	1,493	1,457	1,384
Nevada	81	73	66	59	58
Washington	5,816	5,917	6,082	6,195	6,565
Oregon	3,332	3,213	3,159	3,127	3,077
California	36,568	40,267	42,071	43,444	45,740
48 States	364,973	376,308	374,367	381,036	392,816
Alaska	42	35	37	34	39
Hawaii	1,067	1,049	1,171	1,192	1,263
United States ..	366,082	377,392	375,575	382,262	394,118

Table 17.--All chickens: Number on farms, by classes, by States,
Jan. 1, 1961-65

State	Hens					Pullets				
	1961	1962	1963	1964	1965	1961	1962	1963	1964	1965
	1,000	1,000	1,000	1,000	1,000	1,000	1,000	1,000	1,000	1,000
	head	head	head	head	head	head	head	head	head	head
Maine	986	1,006	1,247	1,284	1,387	3,516	3,832	3,832	3,947	4,065
New Hampshire	380	429	395	415	440	1,647	1,598	1,566	1,597	1,501
Vermont	227	222	198	190	173	551	595	541	568	534
Massachusetts	950	950	940	931	950	2,470	2,248	2,203	2,269	2,087
Rhode Island	102	116	109	121	145	307	295	330	323	317
Connecticut	1,158	1,355	1,477	1,447	1,476	2,514	2,615	2,772	3,132	3,132
New York	4,130	3,841	4,187	4,899	5,242	5,903	6,375	6,630	6,829	7,307
New Jersey	4,967	4,719	4,389	4,213	3,665	6,144	5,652	5,482	4,769	4,149
Pennsylvania	7,058	6,846	6,778	6,778	7,117	12,613	12,235	11,746	11,041	11,483
Ohio	5,043	4,791	5,126	5,434	5,488	7,791	8,103	7,860	7,939	8,495
Indiana	4,445	4,756	4,946	4,748	4,701	9,140	8,957	9,226	9,041	10,036
Illinois	4,930	4,289	4,503	4,143	3,729	7,296	7,515	6,613	6,348	6,411
Michigan	3,303	3,270	3,499	3,394	3,428	4,297	4,426	3,851	4,467	4,914
Wisconsin	4,284	3,984	4,104	3,612	3,395	6,060	5,878	5,173	4,863	4,717
Minnesota	6,532	5,879	5,820	5,238	4,557	12,198	11,832	10,294	9,676	9,579
Iowa	7,376	6,565	6,762	5,883	5,707	17,333	17,160	14,071	14,071	14,071
Missouri	3,473	3,299	3,530	2,895	2,692	6,846	7,394	5,767	5,075	4,872
North Dakota	952	838	1,006	845	752	1,588	1,763	1,269	1,218	1,108
South Dakota	2,814	2,701	2,890	2,630	2,577	5,276	5,698	5,128	4,923	4,874
Nebraska	3,269	2,844	2,844	2,759	2,566	6,364	6,173	5,124	5,022	4,821
Kansas	2,738	2,327	2,304	2,189	2,101	4,208	4,208	3,493	3,248	3,248
Delaware	251	241	251	281	284	555	566	532	521	516
Maryland	738	642	616	678	671	1,204	1,348	1,388	1,416	1,430
Virginia	2,406	2,310	2,194	2,194	2,062	3,964	4,083	4,328	4,285	4,242
West Virginia	984	925	879	879	844	1,058	1,026	995	955	955
North Carolina	5,155	4,949	5,493	5,383	5,437	8,098	9,232	9,232	10,063	11,271
South Carolina	2,061	2,246	2,156	2,134	2,134	2,959	3,077	3,292	3,588	3,516
Georgia	4,481	5,198	6,290	7,737	8,665	9,304	10,793	13,167	15,537	17,401
Florida	2,823	3,077	3,262	3,392	2,781	3,122	3,341	3,909	5,043	6,102
Kentucky	2,603	2,369	2,108	1,876	1,726	2,899	2,696	2,588	2,381	2,262
Tennessee	3,054	2,932	2,932	2,697	2,724	3,020	3,111	2,800	3,024	3,175
Alabama	3,713	4,456	5,080	5,334	5,494	4,851	6,743	7,080	7,930	9,120
Mississippi	3,939	3,781	3,857	4,436	4,613	3,816	4,808	6,106	6,717	8,195
Arkansas	2,807	3,509	3,825	4,284	4,755	3,636	5,890	6,243	7,991	9,909
Louisiana	1,681	1,647	1,565	1,643	1,709	1,875	1,988	1,889	1,965	2,259
Oklahoma	1,936	1,704	1,517	1,441	1,282	1,502	1,697	1,680	1,764	1,958
Texas	7,089	7,302	6,499	6,109	5,498	8,399	9,743	9,938	10,634	11,166
Montana	407	379	447	380	369	724	753	648	642	655
Idaho	452	466	485	461	447	912	866	901	811	706
Wyoming	144	131	144	124	113	174	174	132	149	150
Colorado	800	680	734	653	633	713	884	734	690	724
New Mexico	395	399	427	409	364	465	507	466	466	429
Arizona	392	388	481	572	486	560	627	652	769	807
Utah	637	599	575	564	525	895	841	858	849	824
Nevada	32	29	26	24	24	45	40	37	32	33
Washington	2,107	2,191	2,366	2,413	2,461	3,490	3,525	3,525	3,631	3,994
Oregon	1,365	1,324	1,258	1,233	1,208	1,843	1,769	1,787	1,787	1,769
California	11,627	12,673	13,433	15,582	16,673	19,651	21,616	22,481	21,582	22,661
48 States	133,196	131,574	135,954	136,961	136,270	213,796	226,296	220,359	225,588	237,950
Alaska	26	17	15	15	10	15	17	21	18	28
Hawaii	201	192	194	196	263	668	696	759	782	790
United States	133,423	131,783	136,163	137,172	136,543	214,479	227,009	221,139	226,388	238,768

Table 17.--All chickens: Number on farms, by classes, by States.
Jan. 1, 1961-65--Continued

State	Hens and pullets					Other chickens				
	1961	1962	1963	1964	1965	1961	1962	1963	1964	1965
	head	head	head	head	head	head	head	head	head	head
Maine	4,502	4,838	5,079	5,231	5,452	238	233	235	223	201
New Hampshire	2,027	2,027	1,961	2,012	1,941	116	168	202	230	264
Vermont	778	817	739	758	707	33	34	56	41	37
Massachusetts	3,420	3,198	3,143	3,200	3,037	214	167	164	169	161
Rhode Island	409	411	439	444	462	17	17	14	18	19
Connecticut	3,672	3,970	4,249	4,579	4,608	195	255	227	245	245
New York	10,033	10,216	10,817	11,728	12,549	309	423	448	484	518
New Jersey	11,111	10,371	9,871	8,982	7,814	381	320	304	374	325
Pennsylvania	19,671	19,081	18,524	17,819	18,600	1,038	1,007	775	938	976
Ohio	12,834	12,894	12,986	13,373	13,983	281	253	238	248	250
Indiana	13,585	13,713	14,172	13,789	14,737	378	333	350	364	386
Illinois	12,226	11,804	11,116	10,491	10,140	200	210	181	215	198
Michigan	7,600	7,696	7,350	7,861	8,342	255	219	180	202	212
Wisconsin	10,344	9,862	9,277	8,475	8,112	301	349	262	238	224
Minnesota	18,730	17,711	16,114	14,914	14,136	212	216	212	244	198
Iowa	24,709	23,725	20,833	19,954	19,778	292	260	224	215	181
Missouri	10,319	10,693	9,297	7,970	7,564	352	320	291	250	160
North Dakota	2,540	2,601	2,275	2,063	1,860	112	104	80	66	54
South Dakota	8,090	8,399	8,018	7,553	7,451	193	185	178	178	146
Nebraska	9,633	9,017	7,968	7,781	7,387	305	207	149	171	145
Kansas	6,946	6,535	5,797	5,437	5,349	258	243	177	106	55
Delaware	806	807	783	802	800	40	46	42	39	37
Maryland	1,942	1,990	2,004	2,094	2,101	61	61	53	58	60
Virginia	6,370	6,393	6,522	6,479	6,304	427	384	392	365	372
West Virginia	2,042	1,951	1,874	1,834	1,799	76	70	72	68	70
North Carolina	13,253	14,181	14,725	15,446	16,708	1,184	1,066	959	815	742
South Carolina	5,020	5,323	5,448	5,722	5,650	233	261	196	204	214
Georgia	13,785	15,991	19,457	23,274	26,066	502	612	789	852	767
Florida	5,945	6,418	7,171	8,435	8,883	600	630	970	1,251	1,889
Kentucky	5,502	5,065	4,696	4,257	3,988	353	268	196	147	121
Tennessee	6,074	6,043	5,732	5,721	5,899	455	419	365	256	179
Alabama	8,564	11,199	12,160	13,264	14,614	463	551	507	492	526
Mississippi	7,755	8,589	9,963	12,153	12,808	413	392	333	376	368
Arkansas	6,443	9,399	10,068	12,275	14,664	287	321	404	436	501
Louisiana	3,556	3,635	3,454	3,608	3,968	534	454	431	453	453
Oklahoma	3,438	3,401	3,197	3,205	3,240	90	80	64	64	60
Texas	15,488	17,045	16,437	16,743	16,664	668	728	626	664	531
Montana	1,131	1,132	1,095	1,022	1,024	39	31	34	30	18
Idaho	1,364	1,332	1,386	1,272	1,153	50	41	43	39	30
Wyoming	318	305	276	273	263	9	8	7	7	6
Colorado	1,513	1,564	1,468	1,343	1,357	33	50	30	28	20
New Mexico	860	906	893	875	793	17	19	19	19	17
Arizona	952	1,015	1,133	1,341	1,293	60	49	40	20	8
Utah	1,532	1,440	1,433	1,413	1,349	70	71	60	44	35
Nevada	77	69	63	56	57	4	4	3	3	1
Washington	5,597	5,716	5,891	6,044	6,455	219	201	191	151	110
Oregon	3,208	3,093	3,045	3,020	2,977	124	120	114	107	100
California	31,278	34,289	35,914	37,164	39,334	5,290	5,978	6,157	6,280	6,406
48 States	346,992	357,870	356,313	362,549	374,220	17,981	18,438	18,054	18,487	18,556
Alaska	41	34	36	33	38	1	1	1	1	1
Hawaii	869	888	953	978	1,053	198	161	218	214	210
United States	347,902	358,792	357,302	363,560	375,311	18,180	18,600	18,273	18,702	18,807

Table 18.--All chickens: Average value per head and total value, by States, Jan. 1, 1961-65

State	Average value per head					Total value				
	1961	1962	1963	1964	1965	1961	1962	1963	1964	1965
	Dollars	Dollars	Dollars	Dollars	Dollars	1,000 dollars	1,000 dollars	1,000 dollars	1,000 dollars	1,000 dollars
Maine	1.80	1.75	1.65	1.60	1.60	8,532	8,874	8,768	8,726	9,045
New Hampshire	1.80	1.75	1.70	1.65	1.60	3,857	3,841	3,677	3,699	3,528
Vermont	1.95	1.70	1.70	1.70	1.65	1,581	1,447	1,352	1,358	1,228
Massachusetts	1.95	1.80	1.75	1.70	1.65	7,086	6,057	5,787	5,727	5,277
Rhode Island	1.95	1.85	1.80	1.75	1.65	831	792	815	808	794
Connecticut	1.90	1.85	1.85	1.80	1.75	7,347	7,816	8,280	8,683	8,493
New York	1.65	1.60	1.60	1.60	1.65	17,064	17,022	18,024	19,539	21,561
New Jersey	1.60	1.50	1.50	1.40	1.40	18,387	16,036	15,262	13,098	11,395
Pennsylvania	1.55	1.50	1.40	1.45	1.50	32,099	30,132	27,019	27,198	29,364
Ohio	1.30	1.20	1.20	1.20	1.20	17,050	15,776	15,669	16,345	17,080
Indiana	1.20	1.10	1.10	1.15	1.15	16,756	15,451	15,985	16,276	17,391
Illinois	1.15	.99	1.05	1.00	1.05	14,290	11,894	11,862	10,706	10,855
Michigan	1.40	1.30	1.45	1.40	1.40	10,997	10,290	10,918	11,288	11,976
Wisconsin	1.20	1.15	1.15	1.10	1.20	12,774	11,743	10,970	9,584	10,003
Minnesota	1.25	1.10	1.10	1.05	1.10	23,678	19,720	17,959	15,916	15,767
Iowa	1.30	1.05	1.15	1.10	1.20	32,501	25,184	24,216	22,186	23,951
Missouri	.96	.79	.84	.80	.82	10,244	8,700	8,054	6,576	6,334
North Dakota	.95	.87	.93	.90	.92	2,519	2,353	2,190	1,916	1,761
South Dakota	1.10	.97	.95	.99	1.05	9,111	8,326	7,786	7,654	7,977
Nebraska	1.05	.81	.80	.85	.86	10,435	7,471	6,494	6,759	6,478
Kansas	.94	.82	.77	.76	.80	6,772	5,558	4,600	4,213	4,323
Delaware	1.35	1.25	1.30	1.25	1.25	1,142	1,066	1,072	1,051	1,046
Maryland	1.35	1.30	1.40	1.30	1.35	2,704	2,666	2,880	2,798	2,917
Virginia	1.10	1.05	1.10	1.10	1.10	7,477	7,116	7,605	7,528	7,344
West Virginia	1.10	1.05	1.05	1.05	.98	2,330	2,122	2,043	1,997	1,832
North Carolina	1.10	1.00	1.05	1.05	1.00	15,881	15,247	16,468	17,074	17,450
South Carolina	1.25	1.25	1.15	1.20	1.15	6,566	6,980	6,490	7,111	6,744
Georgia	1.20	1.15	1.15	1.20	1.15	17,144	19,093	23,283	28,951	30,858
Florida	1.20	1.20	1.30	1.30	1.25	7,854	8,458	10,583	12,592	13,465
Kentucky	.87	.78	.86	.85	.84	5,096	4,160	4,207	3,743	3,452
Tennessee	.86	.88	.88	.88	.84	5,615	5,687	5,365	5,260	5,106
Alabama	1.10	1.10	1.05	.99	1.05	9,930	12,925	13,300	13,618	15,897
Mississippi	1.10	1.05	1.10	1.04	1.10	8,985	9,430	11,326	11,990	14,494
Arkansas	.96	.97	.98	.93	.94	6,461	9,428	10,263	11,821	14,255
Louisiana	1.15	1.15	1.20	1.12	1.10	4,704	4,702	4,662	4,548	4,863
Oklahoma	.92	.85	.83	.82	.78	3,246	2,959	2,707	2,681	2,574
Texas	1.05	.98	.96	.94	.91	16,964	17,418	16,380	13,363	15,647
Montana	1.25	1.20	1.25	1.15	1.10	1,462	1,396	1,411	1,210	1,146
Idaho	1.20	1.15	1.20	1.15	1.05	1,697	1,579	1,715	1,508	1,242
Wyoming	1.30	1.30	1.25	1.20	1.20	425	407	354	336	323
Colorado	1.05	.99	.99	.99	.94	1,623	1,598	1,483	1,357	1,294
New Mexico	1.15	1.10	1.05	.95	.99	1,009	1,018	958	849	802
Arizona	1.25	1.15	1.15	1.15	1.20	1,265	1,224	1,349	1,565	1,561
Utah	1.20	1.10	1.15	1.05	1.10	1,922	1,662	1,717	1,530	1,522
Nevada	1.35	1.20	1.35	1.30	1.25	109	88	89	77	72
Washington	1.40	1.35	1.45	1.40	1.35	8,142	7,988	8,819	8,673	8,863
Oregon	1.40	1.25	1.20	1.30	1.35	4,565	4,016	3,791	4,065	4,154
California	1.30	1.15	1.15	1.20	1.20	47,538	46,307	48,382	52,133	54,888
48 States	1.25	1.15	1.16	1.16	1.17	455,867	431,223	434,589	440,684	458,392
Alaska	2.30	2.40	2.20	2.30	2.35	97	84	81	78	92
Hawaii	2.10	2.20	2.20	2.20	2.40	2,241	2,308	2,576	2,622	3,031
United States	1.25	1.15	1.16	1.16	1.17	458,205	433,615	437,246	443,384	461,515

Table 19.--Turkeys: Number all turkeys and number breeder hens on farms, by States, Jan. 1, 1961-65

State	All turkeys					Breeder hens				
	1961	1962	1963	1964	1965	1961	1962	1963	1964	1965
	1,000 head	1,000 head	1,000 head	1,000 head	1,000 head	1,000 head	1,000 head	1,000 head	1,000 head	1,000 head
Maine	3	1	1	1	1	1	0	0	0	0
New Hampshire	23	22	17	26	16	16	11	9	16	9
Vermont	5	4	4	3.1	1.7	2	2	1	1	0.6
Massachusetts	62	53	44	41	33	25	23	18	14	13
Rhode Island	3	2	2	2	1	1	0	0	0	0
Connecticut	30	33	23	22	16	19	13	12	11	3
New York	42	44	29	34	29	30	28	19	15	13
New Jersey	18	28	22	14	17	10	11	12	6	3
Pennsylvania	150	140	130	141	147	42	45	43	46	39
Ohio	285	253	279	265	238	174	172	191	185	190
Indiana	76	62	71	100	61	40	40	52	76	38
Illinois	68	68	74	63	61	35	34	36	29	28
Michigan	124	96	110	98	109	92	80	91	78	84
Wisconsin	260	238	240	215	230	135	137	121	135	123
Minnesota	850	664	723	658	728	620	534	536	493	481
Iowa	438	327	350	340	309	240	217	227	229	210
Missouri	284	242	235	272	253	196	163	172	190	191
North Dakota	56	65	40	39	58	43	52	31	31	47
South Dakota	44	34	19	19	17	19	12	13	14	15
Nebraska	79	60	50	42	47	40	36	28	27	29
Kansas	114	83	72	69	57	64	55	45	44	36
Delaware	8	8	8	9	12	2	2	2	0	0
Maryland	16	17	19	22	19	9	10	12	12	10
Virginia	245	180	208	226	192	194	141	136	144	143
West Virginia	54	53	56	54	52	28	29	27	24	20
North Carolina ...	211	214	230	265	347	122	113	118	151	160
South Carolina ...	70	67	59	77	117	44	40	38	46	49
Georgia	47	61	49	65	55	24	22	24	39	36
Florida	28	29	27	24	20	20	19	18	14	12
Kentucky	69	66	58	49	50	53	42	44	37	38
Tennessee	27	24	19	21	19	14	14	13	14	14
Alabama	80	32	31	34	25	25	23	21	21	12
Mississippi	43	34	28	18	15	21	19	16	12	10
Arkansas	130	111	127	118	132	75	66	77	64	69
Louisiana	19	17	15	13	12	14	12	11	9	8
Oklahoma	124	94	79	82	69	61	57	52	50	51
Texas	430	353	371	401	352	279	198	218	223	222
Montana & Idaho 1/	13	19	18	10.1	7.2	10	16	13	5.0	4.1
Wyoming	5	4	2	2	2.2	2	2	1	1	1.2
Colorado	49	53	33	30	39	15	24	18	18	24
New Mexico	12	6	4	2.2	2.5	8	4	3	2.0	1.5
Arizona	13	12	13	18	12	7	8	10	13	11
Utah	132	86	80	110	86	57	42	39	39	44
Nevada	0	0	0	0	0	0	0	0	0	0
Washington	52	35	27	23	30	24	22	18	16	22
Oregon	274	254	268	253	241	231	211	226	199	200
California	1,843	2,075	2,010	1,606	1,762	1,133	1,022	965	843	840
48 States	7,008	6,423	6,374	5,996	6,100	4,316	3,823	3,777	3,636	3,555
Alaska	---	---	---	---	---	---	---	---	---	---
Hawaii	---	---	---	---	---	---	---	---	---	---
United States ...	7,008	6,423	6,374	5,996	6,100	4,316	3,823	3,777	3,636	3,555

1/ Montana & Idaho combined to avoid disclosing individual operations.

Table 20.--All turkeys: Number on farms, by breed classification, by States, Jan. 1, 1961-65

State	Heavy breeds					Light breeds				
	1961	1962	1963	1964	1965	1961	1962	1963	1963	1965
	1,000 head	1,000 head	1,000 head	1,000 head	1,000 head	1,000 head	1,000 head	1,000 head	1,000 head	1,000 head
Maine	3	1	1	1	1	0	0	0	0	0
New Hampshire ...:	23	22	17	26	15	0	0	0	0	0
Vermont	5	4	4	3.1	1.7	0	0	0	0	0
Massachusetts .. :	62	53	43	39	32	0	0	1	2	1
Rhode Island	3	2	2	2	1	0	0	0	0	0
Connecticut	29	33	21	22	16	1	0	2	0	0
New York	42	44	29	34	29	0	0	0	0	0
New Jersey	16	26	21	13	16	2	2	1	1	1
Pennsylvania	134	125	106	124	122	16	15	24	17	25
Ohio	209	201	219	208	186	76	52	70	57	52
Indiana	69	56	65	93	54	7	6	6	7	7
Illinois	63	64	71	60	58	5	4	3	3	3
Michigan	112	86	100	86	100	12	10	10	12	9
Wisconsin	254	232	232	205	191	6	6	8	10	39
Minnesota	750	595	621	562	620	100	69	102	96	108
Iowa	384	292	314	262	254	54	35	36	78	55
Missouri	252	210	195	214	225	32	32	40	58	28
North Dakota	55	64	40	39	58	1	1	0	0	0
South Dakota	42	19	12	10	10	2	15	7	9	7
Nebraska	78	59	49	42	47	1	1	1	0	0
Kansas	112	80	70	68	56	2	3	2	1	1
Delaware	7	7	7	7	9	1	1	1	2	3
Maryland	15	16	18	21	18	1	1	1	1	1
Virginia	120	105	125	119	85	125	75	83	107	107
West Virginia	12	11	14	18	20	42	42	42	36	32
North Carolina ...:	211	214	230	256	336	0	0	0	9	11
South Carolina ...:	68	64	58	73	113	2	3	1	4	4
Georgia	37	47	39	63	52	10	14	10	2	3
Florida	15	15	14	12	8	13	14	13	12	12
Kentucky	69	66	57	44	44	0	0	1	5	6
Tennessee	27	24	19	21	19	0	0	0	0	0
Alabama	74	29	26	29	23	6	3	5	5	2
Mississippi	41	33	28	18	15	2	1	0	0	0
Arkansas	118	101	115	105	110	12	10	12	13	22
Louisiana	19	17	15	13	12	0	0	0	0	0
Oklahoma	114	90	74	76	57	10	4	5	6	12
Texas	388	339	361	398	349	42	14	10	3	3
Mont. & Idaho ...:	12	18	17	9.0	6.7	1	1	1	1.1	1.1
Wyoming	3	3	2	2	2.2	2	1	0	0	0
Colorado	47	51	31	30	39	2	2	2	0	0
New Mexico	12	6	4	2.2	2.5	0	0	0	0	0
Arizona	13	12	13	18	12	0	0	0	0	0
Utah	125	84	80	110	86	7	2	0	0	0
Nevada	0	0	0	0	0	0	0	0	0	0
Washington	52	35	27	23	30	0	0	0	0	0
Oregon	240	221	228	210	189	34	33	40	43	52
California	1,830	2,062	2,000	1,597	1,756	13	13	10	9	6
48 States	6,366	5,938	5,834	5,387	5,486	642	485	540	609	614
Alaska	---	---	---	---	---	---	---	---	---	---
Hawaii	---	---	---	---	---	---	---	---	---	---
United States ...:	6,366	5,938	5,834	5,387	5,486	642	485	540	609	614

Table 21.--Turkey breeder hens: Number on farms, by breed classification, by States
Jan. 1, 1961-65

State	Heavy breeds					Light breeds				
	1961	1962	1963	1964	1965	1961	1962	1963	1964	1965
	1,000 head	1,000 head	1,000 head	1,000 head	1,000 head	1,000 head	1,000 head	1,000 head	1,000 head	1,000 head
Maine	1	0	0	0	0	0	0	0	0	0
New Hampshire	16	11	9	16	8	0	0	0	0	1
Vermont	2	2	1	1	0.6	0	0	0	0	0
Massachusetts	25	23	18	14	13	0	0	0	0	0
Rhode Island	1	0	0	0	0	0	0	0	0	0
Connecticut	18	13	10	11	3	1	0	2	0	0
New York	30	28	19	15	13	0	0	0	0	0
New Jersey	10	11	11	6	3	0	0	1	0	0
Pennsylvania	38	41	30	36	33	4	4	13	10	6
Ohio	116	131	147	146	145	58	41	44	39	45
Indiana	36	36	48	71	33	4	4	4	5	5
Illinois	33	32	35	28	27	2	2	1	1	1
Michigan	85	73	84	70	79	7	7	7	8	5
Wisconsin	133	136	120	127	115	2	1	1	8	8
Minnesota	535	475	453	415	393	85	59	83	78	88
Iowa	210	192	201	208	197	30	25	26	21	13
Missouri	172	137	147	145	169	24	26	25	45	22
North Dakota	43	52	31	31	47	0	0	0	0	0
South Dakota	18	12	7	6	9	1	0	6	8	6
Nebraska	39	35	28	27	29	1	1	0	0	0
Kansas	62	53	44	43	35	2	2	1	1	1
Delaware	2	2	2	0	0	0	0	0	0	0
Maryland	9	10	11	11	10	0	0	1	1	0
Virginia	90	82	68	57	50	104	59	68	87	93
West Virginia	7	8	7	5	6	21	21	20	19	14
North Carolina	122	113	118	143	150	0	0	0	8	10
South Carolina	43	38	37	43	46	1	2	1	3	3
Georgia	21	20	22	38	34	3	2	2	1	2
Florida	9	10	10	8	6	11	9	8	6	6
Kentucky	53	42	43	33	33	0	0	1	4	5
Tennessee	14	14	13	14	14	0	0	0	0	0
Alabama	22	21	18	18	10	3	2	3	3	2
Mississippi	19	18	16	12	10	2	1	0	0	0
Arkansas	70	62	70	58	58	5	4	7	6	11
Louisiana	14	12	11	9	8	0	0	0	0	0
Oklahoma	56	54	48	45	41	5	3	4	5	10
Texas	250	195	216	222	220	29	3	2	1	2
Montana & Idaho 1/2	9	15	12	4.0	3.7	1	1	1	1.0	1.0
Wyoming	2	2	1	1	1.2	0	0	0	0	0
Colorado	14	23	17	18	24	1	1	1	0	0
New Mexico	8	4	3	2.0	1.5	0	0	0	0	0
Arizona	7	8	10	13	11	0	0	0	0	0
Utah	54	40	39	39	44	3	2	0	0	0
Nevada	0	0	0	0	0	0	0	0	0	0
Washington	24	22	18	16	22	0	0	0	0	0
Oregon	208	186	196	170	157	23	25	30	29	43
California	1,121	1,012	957	836	835	12	10	8	7	5
48 States	3,871	3,506	3,406	3,231	3,147	445	317	371	405	408
Alaska	---	---	---	---	---	---	---	---	---	---
Hawaii	---	---	---	---	---	---	---	---	---	---
United States	3,871	3,506	3,406	3,231	3,147	445	317	371	405	408

1/ Montana & Idaho combined to avoid disclosing individual operations.

Table 22.--All turkeys: Average value per head and total value, by States, Jan. 1, 1961-65

State	Average value per head					Total value				
	1961	1962	1963	1964	1965	1961	1962	1963	1964	1965
	Dollars	Dollars	Dollars	Dollars	Dollars	1,000 dollars	1,000 dollars	1,000 dollars	1,000 dollars	1,000 dollars
Maine	6.30	4.60	5.00	5.00	5.00	19	5	5	5	5
New Hampshire ...	6.30	4.90	5.50	5.50	5.40	145	108	94	143	86
Vermont	6.30	4.90	5.50	5.50	5.40	32	20	22	17	9
Massachusetts ...	6.20	4.80	5.50	5.50	5.40	384	254	242	226	178
Rhode Island	6.30	4.90	5.50	5.50	5.40	19	10	11	11	5
Connecticut	6.30	4.90	5.50	5.50	5.40	189	162	126	121	86
New York	5.60	5.00	5.30	5.10	5.20	235	220	154	173	151
New Jersey	6.00	4.70	5.00	4.80	4.85	108	132	110	67	82
Pennsylvania	6.00	4.50	5.20	5.20	5.10	900	630	676	733	750
Ohio	4.85	3.60	4.60	4.45	4.75	1,382	911	1,283	1,179	1,130
Indiana	4.40	3.20	4.50	4.35	4.60	334	198	320	435	281
Illinois	4.90	3.90	4.30	4.10	4.35	333	265	318	258	265
Michigan	5.00	4.00	4.30	4.00	4.45	620	384	473	392	485
Wisconsin	5.10	3.85	4.25	4.10	4.20	1,326	916	1,020	882	966
Minnesota	4.50	3.30	4.20	3.80	4.10	3,825	2,191	3,037	2,500	2,985
Iowa	4.75	3.55	4.10	4.10	4.50	2,080	1,161	1,435	1,394	1,390
Missouri	4.50	3.35	4.10	3.90	4.00	1,278	811	964	1,061	1,012
North Dakota	4.35	3.55	3.90	3.90	4.30	244	231	156	152	249
South Dakota	4.20	3.20	3.60	3.60	3.65	185	109	68	68	62
Nebraska	4.80	3.55	4.00	4.00	4.20	379	213	200	168	197
Kansas	4.60	3.60	4.10	3.75	4.00	524	299	295	259	228
Delaware	5.50	4.80	4.80	4.90	5.00	44	38	38	44	60
Maryland	5.70	4.80	4.80	4.90	5.30	91	82	91	108	101
Virginia	4.30	3.40	4.10	4.10	4.05	1,054	612	853	927	778
West Virginia ...	4.70	3.90	4.35	4.50	4.35	254	207	244	243	226
North Carolina ...	4.50	3.75	3.85	4.10	4.10	950	802	886	1,086	1,423
South Carolina ...	4.90	4.15	4.25	4.40	4.40	343	278	251	339	515
Georgia	4.60	4.15	4.25	4.35	4.35	216	253	208	283	239
Florida	4.80	4.30	4.30	4.50	4.55	134	125	116	108	91
Kentucky	4.40	3.70	4.20	4.10	4.10	304	244	244	201	205
Tennessee	3.95	3.70	4.00	3.75	3.75	107	89	76	79	71
Alabama	4.30	3.60	4.00	3.95	4.05	344	115	124	134	101
Mississippi	4.25	3.90	4.10	4.10	4.15	183	133	115	74	62
Arkansas	4.00	4.00	4.15	3.90	3.95	520	444	527	460	521
Louisiana	4.60	4.25	4.25	4.15	4.25	87	72	64	54	51
Oklahoma	4.50	3.45	3.75	3.70	3.85	558	324	296	303	266
Texas	4.25	3.55	3.75	4.00	4.25	1,828	1,253	1,391	1,604	1,496
Montana & Idaho 1/:	5.08	4.11	5.00	4.65	4.62	66	78	90	47	36
Wyoming	5.10	4.45	5.00	4.60	4.55	26	18	10	9	10
Colorado	5.00	4.15	4.65	4.20	4.40	245	220	153	126	172
New Mexico	4.80	4.10	4.20	4.00	4.15	58	24	17	9	10
Arizona	5.00	4.50	4.95	4.50	4.50	65	54	64	81	54
Utah	5.20	4.60	4.60	4.80	4.70	686	396	368	528	404
Nevada	---	---	---	---	---	---	---	---	---	---
Washington	5.40	4.30	4.90	4.45	4.75	281	150	132	102	142
Oregon	5.90	4.00	4.50	4.30	4.45	1,617	1,016	1,206	1,088	1,072
California	5.30	3.90	4.70	4.60	4.60	9,768	8,092	9,447	7,388	8,105
48 States	4.91	3.79	4.40	4.28	4.40	34,370	24,349	28,020	25,669	26,813
Alaska	---	---	---	---	---	---	---	---	---	---
Hawaii	---	---	---	---	---	---	---	---	---	---
United States ...	4.91	3.79	4.40	4.28	4.40	34,370	24,349	28,020	25,669	26,813

1/ Montana and Idaho combined to avoid disclosing individual operations.

Table 23.--All Goats: Number on farms, average value per head and total value, Texas, Jan. 1, 1961-65

Year	Number	Value	
		Per head	Total
	1,000 head	Dollars	1,000 dollars
1961	3,473	8.50	29,520
1962	3,647	8.30	30,270
1963	3,683	7.00	25,781
1964	3,904	7.50	29,280
1965	4,060	7.00	28,420

Table 24.--Cattle and Calves: Number on farms, by classes, in the Southern and Central Plains wheat pasture area, Jan. 1, 1961-65

Class	1961	1962	1963	1964	1965
	1,000 head	1,000 head	1,000 head	1,000 head	1,000 head
All cattle and calves	6,222	6,672	7,234	7,415	7,254
Kept for milk					
Cows 2 yrs. and older	346	335	315	287	257
Heifers 1 to 2 yrs.	97	87	79	71	65
Heifer calves	109	102	91	81	73
Other cattle					
Cows 2 yrs. and older	2,120	2,281	2,497	2,553	2,624
Heifers 1 to 2 yrs.	559	596	635	656	666
Calves	2,053	2,342	2,534	2,711	2,600
Steers 1 yr. and older	830	815	959	931	842
Bulls 1 yr. and older	108	114	124	125	127

UNITED STATES DEPARTMENT OF AGRICULTURE
STATISTICAL REPORTING SERVICE
WASHINGTON, D. C. 20250

POSTAGE AND FEES PAID
U.S. DEPARTMENT OF AGRICULTURE

OFFICIAL BUSINESS

END