



**AgEcon** SEARCH  
RESEARCH IN AGRICULTURAL & APPLIED ECONOMICS

*The World's Largest Open Access Agricultural & Applied Economics Digital Library*

**This document is discoverable and free to researchers across the globe due to the work of AgEcon Search.**

**Help ensure our sustainability.**

Give to AgEcon Search

AgEcon Search

<http://ageconsearch.umn.edu>

[aesearch@umn.edu](mailto:aesearch@umn.edu)

*Papers downloaded from **AgEcon Search** may be used for non-commercial purposes and personal study only. No other use, including posting to another Internet site, is permitted without permission from the copyright owner (not AgEcon Search), or as allowed under the provisions of Fair Use, U.S. Copyright Act, Title 17 U.S.C.*

SB 388 (1967)

USDA STATISTICAL BULLETINS

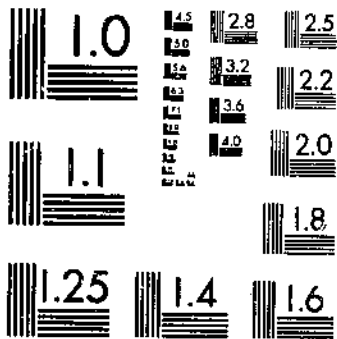
UPDATA

HONEY AND BEESWAX; NUMBER COLONIES, YIELD PER COLONY.

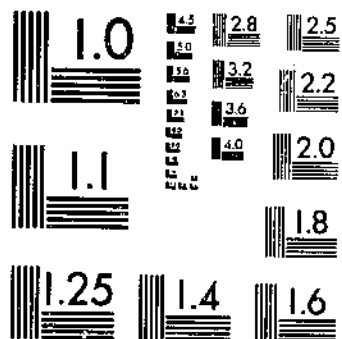
1955-64

1 OF 1

# START



MICROCOPY RESOLUTION TEST CHART  
NATIONAL BUREAU OF STANDARDS-1963-A



MICROCOPY RESOLUTION TEST CHART  
NATIONAL BUREAU OF STANDARDS-1963-A

R 630.5

U 53-13

#388

# HONEY and BEESWAX

NUMBER COLONIES

REFERENCE  
DO NOT LOAN

YIELD PER COLONY

PRODUCTION

PRICE PER POUND

VALUE OF PRODUCTION

BY STATES 1955-64

REVISED ESTIMATES

UNITED STATES DEPARTMENT OF AGRICULTURE  
Statistical Reporting Service  
Statistical Bulletin No. 388

● WASHINGTON, D.C. —  
Crop Reporting Board  
January 1967

FEB 17 1967

## CONTENTS

	<u>Page</u>
Comments .....	3
Tables:	
1. Honey and beeswax: Number of colonies, production, stocks, and value, United States, 1955-64 .....	4
2. Bees: Number of colonies, by States, 1955-64 .....	5
3. Honey: Yield of honey per colony, by States, 1955-64 ...	6
4. Honey: Production, by States, 1955-64 .....	7
5. Honey: Price per pound, by States, 1955-64 .....	8
6. Honey: Value of production, by States, 1955-64 .....	9
7. Honey: Stocks on hand for sale, September 15, by States, 1955-64 .....	10
8. Honey: Stocks on hand for sale, December 15, by States, 1955-64 .....	11
9. Beeswax: Production, by States, 1955-64 .....	12
10. Beeswax: Price per pound, by States, 1955-64 .....	13
11. Beeswax: Value of production, by States, 1955-64 .....	14

## Honey and Beeswax

### Number Colonies, Yield per Colony, Production, Price per Pound, and Value of Production, by States, 1955-64

This publication presents a record of the revised estimates of the Crop Reporting Board of the Statistical Reporting Service relating to honey and beeswax for 1955-64.

The annual estimates of numbers of colonies on hand and production are based primarily on survey returns from producers. The revised estimates are based on a thorough review of the original estimates, taking into consideration the current survey data collected during the period and other information, such as State inspection records, estimates by State apiary inspectors and entomologists, and reports from commercial honey buyers and packers.

Estimates of the number of colonies of bees represent all colonies that are on hand during the year. They include colonies that were lost during the year, as well as new colonies. Small operations of one or more colonies are included as well as commercial operations.

The yield per colony is based mainly on mail reports from producers giving both the number of colonies and the total pounds taken from the hives. Estimates of total production for a State are the product of the estimated number of colonies times the average yield per colony.

Stocks of honey on hand September 15 and December 15 represent stocks of honey for sale that are in producers' hands on those dates. The estimates are based on reports which give both the production of honey and the supplies on hand for the particular date.

The production of beeswax is determined by the same procedure as total honey production.

The price of honey and beeswax is the price received by producers for all honey sold. Prices are based on mailed reports from producers giving prices by various size containers. This includes retail sales as well as wholesale.

Table 1.--Honey and beeswax: Number of colonies, production, stocks, and value, United States, 1955-64

Year	Number colonies	Honey			
		Yield per colony	Production	Price per pound	Value
		1,000 colonies	1,000 pounds	Cents	1,000 dollars
1955	5,252	48.6	255,222	17.8	45,424
1956	5,195	41.2	214,035	19.0	40,621
1957	5,199	46.4	241,218	18.7	45,049
1958	5,152	50.6	260,522	17.4	45,216
1959	5,109	46.3	236,578	17.0	40,137
1960	5,005	48.5	242,802	17.9	43,500
1961	4,992	51.3	255,868	18.0	46,072
1962	4,900	50.9	249,608	17.4	43,494
1963	4,849	55.0	266,778	18.0	48,096
1964	4,840	51.9	251,188	18.6	46,638
Honey stocks on hand for sale <sup>1/</sup>					
	Sept. 15 <sup>2/</sup>	Dec. 15	Production	Price per pound	Value
	1,000 pounds	1,000 pounds	1,000 pounds	Cents	1,000 dollars
1955	98,301	<sup>1/</sup> 56,618	4,620	51.2	2,367
1956	84,285	<sup>1/</sup> 49,489	4,096	54.6	2,237
1957	102,709	64,024	4,452	57.0	2,537
1958	111,734	71,084	4,695	46.0	2,159
1959	97,603	59,969	4,215	44.4	1,872
1960	88,014	52,206	4,372	44.0	1,922
1961	97,422	68,119	4,720	44.1	2,080
1962	92,829	55,933	4,805	44.1	2,117
1963	93,298	55,082	4,828	44.2	2,133
1964	92,458	65,776	4,672	44.3	2,070
Beeswax					

<sup>1/</sup> Stocks that are in hands of producers.

<sup>2/</sup> Excludes Hawaii.

Table 2.--Bees: Number of colonies, by States, 1955-64

State	1955	1956	1957	1958	1959	1960	1961	1962	1963	1964
	1,000	1,000	1,000	1,000	1,000	1,000	1,000	1,000	1,000	1,000
	col.	col.	col.	col.	col.	col.	col.	col.	col.	col.
Maine	6	6	6	7	6	6	6	6	5	5
N. H.	8	8	8	9	8	8	7	6	5	5
Vt.	10	10	11	11	11	11	10	9	9	9
Mass.	20	19	18	19	18	18	14	12	12	11
R. I.	2	2	2	2	2	2	2	2	2	2
Conn.	14	14	14	15	13	14	12	12	12	11
N. Y.	199	191	189	197	187	187	185	178	178	182
N. J.	30	29	30	31	33	34	33	34	35	36
Pa.	148	147	135	143	140	146	137	129	124	124
Ohio	277	263	258	245	206	200	196	188	165	165
Ind.	173	168	158	147	134	127	122	110	101	103
Ill.	151	143	143	140	126	117	119	112	101	101
Mich.	185	157	126	116	108	104	109	104	105	117
Wis.	204	188	180	175	166	151	157	143	137	142
Minn.	236	224	222	211	215	202	208	191	195	203
Iowa	165	155	158	164	154	148	144	141	138	141
Mo.	119	111	117	122	126	125	124	110	102	102
N. Dak.	13	18	24	28	32	33	36	35	38	39
S. Dak.	35	36	40	49	59	67	74	86	89	94
Nebr.	47	52	57	63	61	65	72	78	83	92
Kans.	43	42	40	43	43	44	43	43	45	46
Del.	3	3	3	3	3	3	4	4	5	5
Md.	26	28	29	29	30	30	31	32	33	33
Va.	143	143	146	139	135	126	123	123	122	118
W. Va.	113	113	108	103	103	109	98	98	98	103
N. C.	183	176	187	183	196	186	197	199	209	205
S. C.	50	52	57	58	59	55	57	56	58	57
Ga.	201	207	211	203	197	185	185	183	179	170
Fla.	238	248	263	274	277	277	283	297	294	297
Ky.	132	136	136	118	118	112	101	99	95	95
Tenn.	162	167	170	155	160	152	152	149	158	155
Ala.	171	174	165	155	147	141	139	127	121	109
Miss.	73	73	71	64	67	67	69	68	70	67
Ark.	91	98	88	88	86	80	78	78	80	81
La.	93	91	89	84	86	83	87	87	89	85
Okla.	48	46	43	46	45	49	49	52	53	48
Texas	274	271	266	261	269	274	274	274	252	232
Mont.	68	69	74	78	82	83	79	77	77	78
Idaho	177	177	182	186	195	201	205	201	201	205
Wyo.	33	35	37	37	37	38	35	34	34	34
Colo.	65	66	67	67	68	65	60	62	58	54
N. Mex.	9	9	10	11	11	11	10	10	11	12
Ariz.	81	83	87	93	95	97	94	98	100	94
Utah	49	51	53	54	54	52	50	51	52	51
Nev.	7	7	8	9	9	9	8	7	8	8
Wash.	82	82	92	97	100	98	98	95	92	92
Oreg.	50	51	54	53	55	53	56	56	59	62
Calif.	537	548	559	559	570	553	553	547	553	553
48 States	5,244	5,187	5,191	5,144	5,102	4,998	4,985	4,893	4,842	4,833
Hawaii	8	8	8	8	7	7	7	7	7	7
U. S.	5,252	5,195	5,199	5,152	5,109	5,005	4,992	4,900	4,849	4,840



Table 3.--Honey: Yield of honey per colony, by States, 1955-64

State	1955	1956	1957	1958	1959	1960	1961	1962	1963	1964
	<u>Pounds</u>	<u>Pounds</u>	<u>Pounds</u>	<u>Pounds</u>	<u>Pounds</u>	<u>Pounds</u>	<u>Pounds</u>	<u>Pounds</u>	<u>Pounds</u>	<u>Pounds</u>
Maine .....	30	20	32	18	17	21	25	19	29	19
N. H. ....	40	33	47	30	33	32	34	23	43	38
Vt. ....	41	40	55	37	52	44	49	27	53	55
Mass. ....	18	19	18	16	19	16	18	19	23	18
R. I. ....	19	25	19	18	21	19	22	25	28	24
Conn. ....	16	23	18	19	25	16	22	25	29	23
N. Y. ....	50	30	61	44	52	64	46	53	73	59
N. J. ....	22	30	18	26	30	33	41	33	30	36
Pa. ....	33	17	27	24	35	29	28	38	39	42
Ohio .....	40	13	30	20	50	47	40	42	43	64
Ind. ....	49	31	35	28	56	52	43	55	54	58
Ill. ....	52	40	50	37	54	54	65	59	72	59
Mich. ....	50	40	71	58	84	72	61	78	85	85
Wis. ....	105	55	87	98	105	102	115	94	120	105
Minn. ....	100	80	84	110	110	102	104	79	99	95
Iowa ....	115	80	76	64	97	60	84	68	85	85
Mo. ....	32	33	32	47	36	27	33	33	51	27
N. Dak. ....	130	84	110	108	93	94	104	103	128	92
S. Dak. ....	110	112	145	165	85	110	145	83	125	88
Nebr. ....	104	82	70	90	96	64	110	82	90	87
Kans. ....	35	31	33	41	45	42	46	53	53	49
Del. ....	26	26	25	26	27	27	33	29	35	40
Md. ....	28	26	25	26	27	27	38	37	24	44
Va. ....	25	27	24	21	22	25	29	28	13	29
W. Va. ....	18	16	14	16	18	24	17	30	14	28
N. C. ....	19	28	20	14	19	27	23	25	11	30
S. C. ....	19	20	26	24	19	24	19	20	17	22
Ge. ....	12	30	35	31	25	34	35	38	42	29
Fla. ....	55	70	72	57	51	70	69	70	71	68
Ky. ....	22	22	14	24	15	16	22	19	13	25
Tenn. ....	19	20	14	19	16	17	21	18	17	17
Ala. ....	22	20	15	20	16	22	22	23	29	20
Miss. ....	18	30	20	22	28	40	36	29	22	24
Ark. ....	25	22	20	22	22	24	28	33	25	21
La. ....	22	28	23	29	24	35	34	40	21	32
Okla. ....	30	24	19	35	22	45	35	36	36	36
Texas ....	43	23	45	50	52	51	50	44	44	48
Mont. ....	91	86	105	80	90	71	73	64	125	63
Idaho ....	40	50	73	62	44	40	62	36	71	52
Wyo. ....	95	110	85	97	67	60	92	52	100	46
Colo. ....	85	62	62	72	51	47	76	78	80	80
N. Mex. ....	60	45	80	95	64	48	70	72	70	75
Ariz. ....	75	67	63	75	70	74	66	65	74	55
Utah ....	60	60	65	50	33	34	57	55	84	54
Nev. ....	55	90	95	63	40	46	89	42	73	90
Wash. ....	35	44	49	53	44	44	47	38	42	44
Oreg. ....	35	39	42	34	33	30	33	40	41	38
Calif. ....	56	53	40	80	25	44	36	68	47	45
48 States ....	48.6	41.2	46.4	50.6	46.3	48.5	51.3	51.0	55.0	51.9
Hawaii .....	37	35	54	52	47	40	43	40	44	45
U. S. ....	48.6	41.2	46.4	50.6	46.3	48.5	51.3	50.9	55.0	51.9

Table 4.--Honey: Production, by States, 1955-64

State	1955	1956	1957	1958	1959	1960	1961	1962	1963	1964
	1,000 pounds	1,000 pounds	1,000 pounds	1,000 pounds	1,000 pounds	1,000 pounds	1,000 pounds	1,000 pounds	1,000 pounds	1,000 pounds
Maine	180	120	192	126	102	126	150	114	145	95
N. H.	320	264	376	270	264	256	238	138	215	190
Vt.	410	400	605	407	572	484	490	243	477	495
Mass.	360	361	324	304	342	288	252	228	276	198
R. I.	38	50	38	36	42	38	44	50	56	48
Conn.	224	322	252	235	325	224	264	300	348	253
N. Y.	9,950	5,730	11,529	8,668	9,724	11,968	8,510	9,434	12,994	10,738
N. J.	660	870	540	806	990	1,122	1,353	1,122	1,050	1,296
Pa.	4,884	2,499	3,645	3,432	4,900	4,234	3,836	4,902	4,836	5,208
Ohio	11,080	3,419	7,740	4,900	10,300	9,400	7,840	7,896	7,095	10,560
Ind.	8,477	5,208	5,530	4,116	7,504	6,604	5,246	6,050	5,454	5,974
Ill.	7,852	5,720	7,150	5,180	6,804	6,318	7,735	6,608	7,272	5,959
Mich.	9,250	6,280	8,946	6,728	9,072	7,488	6,649	8,112	8,925	9,945
Wis.	21,420	10,340	15,660	17,150	17,430	15,402	18,055	13,442	16,440	14,910
Minn.	23,600	17,920	18,648	23,210	23,650	20,604	21,632	15,089	19,305	19,285
Iowa	18,975	12,400	12,008	10,496	14,938	8,880	12,096	9,588	11,730	11,985
Mo.	3,808	3,663	3,744	5,734	4,536	3,375	4,092	3,630	5,202	2,754
N. Dak.	1,690	1,512	2,640	3,024	2,976	3,102	3,744	3,605	4,864	3,588
S. Dak.	3,850	4,032	5,800	8,085	5,015	7,370	10,730	7,138	11,125	8,272
Nebr.	4,888	4,264	3,990	5,670	5,856	4,160	7,920	6,396	7,470	8,004
Kans.	1,505	1,302	1,320	1,763	1,935	1,848	1,978	2,279	2,385	2,254
Del.	78	78	75	78	81	81	132	116	175	200
Md.	728	728	725	754	810	810	1,178	1,184	792	1,452
Va.	3,575	3,861	3,504	2,919	2,970	3,150	3,567	3,444	1,586	3,422
W. Va.	2,034	1,808	1,512	1,648	1,854	2,616	1,666	2,940	1,372	2,884
N. C.	3,477	4,928	3,740	2,562	3,724	5,022	4,531	4,975	2,299	6,150
S. C.	950	1,040	1,482	1,392	1,121	1,320	1,083	1,120	986	1,254
Ga.	2,412	6,210	7,385	6,293	4,925	6,290	6,475	6,954	7,515	4,930
Fla.	13,090	17,360	18,936	15,618	14,127	19,390	19,527	20,790	20,874	20,196
Ky.	2,904	2,992	1,904	2,832	1,770	1,792	2,222	1,881	1,235	2,375
Tenn.	3,078	3,340	2,380	2,945	2,560	2,584	3,192	2,682	2,686	2,635
Ala.	3,762	3,480	2,475	3,100	2,352	3,102	3,014	2,921	3,509	2,180
Miss.	1,314	2,190	1,420	1,408	1,876	2,680	2,484	1,972	1,540	1,608
Ark.	2,275	2,156	1,760	1,936	1,892	1,920	2,184	2,574	2,000	1,701
La.	2,046	2,548	2,047	2,436	2,064	2,905	2,958	3,480	1,869	2,720
Okla.	1,440	1,104	817	1,610	990	2,205	1,715	1,872	1,908	1,728
Texas	11,782	6,233	11,970	13,050	13,988	13,974	13,700	12,056	11,088	11,136
Mont.	6,188	5,934	7,770	6,240	7,380	5,893	5,767	4,928	9,625	4,914
Idaho	7,080	8,850	13,286	11,532	8,580	8,040	12,710	7,236	14,271	10,660
Wyo.	3,135	3,850	3,145	3,589	2,479	2,280	3,220	1,768	3,400	1,564
Colo.	5,525	4,092	4,154	4,824	3,468	3,055	4,560	4,836	4,640	4,320
N. Mex.	540	405	800	1,045	704	528	700	720	770	900
Ariz.	6,075	5,561	5,481	6,975	6,650	7,178	6,204	6,370	7,400	5,170
Utah	2,940	3,060	3,445	2,700	1,782	1,768	2,850	2,805	4,368	2,754
Nev.	385	630	760	557	360	414	712	294	624	720
Wash.	2,870	3,608	4,508	5,141	4,400	4,312	4,606	3,610	3,864	4,048
Oreg.	1,750	1,989	2,268	1,802	1,815	1,590	1,848	2,240	2,419	2,356
Calif.	30,072	29,044	22,360	44,720	14,250	24,332	19,908	37,196	25,991	24,885
48 States	254,926	213,755	240,786	260,106	236,249	242,522	255,567	249,328	266,470	250,873
Hawaii	296	280	432	416	329	280	301	280	308	315
U. S.	255,222	214,035	241,218	260,522	236,578	242,802	255,868	249,608	266,778	251,188

Table 5.--Honey: Price per pound, by States, 1955-64

State	1955	1956	1957	1958	1959	1960	1961	1962	1963	1964
	<u>Cents</u>	<u>Cents</u>	<u>Cents</u>	<u>Cents</u>	<u>Cents</u>	<u>Cents</u>	<u>Cents</u>	<u>Cents</u>	<u>Cents</u>	<u>Cents</u>
Maine .....	36.0	37.6	40.0	39.9	41.4	43.1	43.5	41.6	42.4	42.3
N. H. ....	32.9	34.3	35.8	36.0	36.8	39.2	39.7	37.8	39.0	39.6
Vt. ....	29.9	30.6	32.3	32.2	31.5	34.2	33.7	33.0	33.7	34.3
Mass. ....	33.3	34.9	36.8	37.5	36.2	38.6	38.7	37.6	38.5	38.5
R. I. ....	32.3	34.2	35.8	36.4	35.1	37.4	37.5	37.2	37.6	38.4
Conn. ....	33.2	34.7	36.3	36.7	36.0	38.9	38.9	38.3	38.9	39.2
N. Y. ....	16.2	17.5	17.7	17.2	16.3	16.5	16.9	16.4	16.9	17.1
N. J. ....	30.3	30.8	31.3	31.9	29.3	30.9	30.0	30.9	32.2	32.7
Pa. ....	23.3	23.6	25.9	25.4	21.9	22.1	22.7	20.8	21.8	21.5
Ohio .....	18.4	19.5	19.7	19.4	18.8	18.4	19.3	18.5	19.0	19.0
Ind. ....	21.6	22.5	23.6	23.3	18.0	18.4	20.3	19.2	20.1	20.0
Ill. ....	21.0	21.3	21.5	22.2	20.8	21.8	21.6	20.6	20.9	21.4
Mich. ....	17.1	17.9	18.1	17.1	14.8	16.3	16.5	16.5	17.4	16.8
Wis. ....	16.5	17.4	17.0	16.3	15.9	17.0	17.1	15.6	16.7	16.9
Minn. ....	15.4	16.4	16.6	15.9	15.2	16.1	16.1	15.2	16.3	16.1
Iowa .....	15.4	16.3	16.5	15.8	15.8	16.4	16.3	15.7	17.4	17.1
Mo. ....	20.3	20.7	20.8	20.6	21.2	22.5	23.1	22.4	22.8	23.1
N. Dak. ....	14.5	15.4	16.4	15.5	13.4	15.4	15.1	13.7	14.5	14.8
S. Dak. ....	15.1	16.0	16.0	15.2	14.2	15.1	15.1	14.2	15.8	14.9
Nebr. ....	14.4	15.3	15.4	14.6	14.1	14.6	14.7	15.4	16.0	16.0
Kans. ....	17.7	18.1	18.5	18.5	18.0	19.5	19.9	19.2	19.7	19.4
Del. ....	29.3	29.8	30.9	29.8	30.1	30.8	31.9	33.1	34.8	34.1
Md. ....	26.6	27.5	28.2	27.2	25.3	26.1	26.0	28.3	29.6	28.8
Va. ....	30.6	31.1	31.1	30.8	29.0	30.7	30.4	29.6	31.0	30.6
W. Va. ....	30.6	30.9	33.3	31.8	32.0	32.7	32.6	32.5	34.6	33.2
N. C. ....	33.6	33.7	32.7	33.2	32.5	35.0	34.2	32.5	33.4	37.7
S. C. ....	32.4	31.6	31.6	30.1	27.4	29.7	29.5	29.4	30.7	31.6
Ge. ....	27.2	27.8	26.3	24.0	20.8	21.3	20.4	20.7	21.1	20.6
Fla. ....	18.3	19.0	18.9	18.9	16.8	17.4	17.6	17.5	18.4	18.6
Ky. ....	31.0	31.1	32.1	32.1	30.8	31.8	32.5	32.7	33.7	34.2
Tenn. ....	28.2	28.8	29.1	29.5	29.1	30.6	30.0	29.0	29.5	31.0
Ala. ....	26.5	26.5	28.3	28.1	25.6	26.4	26.3	25.0	25.5	26.3
Miss. ....	24.4	24.4	24.4	24.4	22.1	22.1	22.8	22.0	22.4	22.8
Ark. ....	22.1	23.0	22.4	22.0	20.8	21.2	22.0	22.9	23.1	22.7
La. ....	17.5	17.7	18.8	17.6	15.8	16.6	17.8	15.8	16.8	17.0
Okla. ....	23.7	24.3	24.8	24.7	24.4	24.4	24.0	23.1	24.4	24.3
Texas .....	16.1	16.6	16.6	15.9	13.6	14.6	15.2	15.2	16.2	15.6
Mont. ....	16.6	16.7	16.0	14.5	15.1	16.7	17.0	16.0	17.2	16.3
Idaho .....	15.6	16.0	16.0	14.5	13.7	15.6	15.8	15.0	15.7	14.1
Wyo. ....	14.5	14.6	14.6	13.1	13.4	15.2	14.7	14.6	15.3	15.2
Colo. ....	16.0	17.0	16.4	15.9	15.7	17.2	17.1	16.3	17.2	17.2
N. Mex. ....	14.4	14.7	15.1	13.3	13.4	14.3	14.3	14.2	15.3	15.6
Ariz. ....	11.6	12.6	11.7	10.8	10.6	10.6	11.5	11.5	13.4	12.6
Utah .....	14.5	15.2	15.2	13.8	13.6	15.6	15.5	14.6	16.5	15.5
Nev. ....	15.6	16.0	15.6	13.9	12.3	14.2	14.2	14.2	15.9	15.1
Wash. ....	14.7	15.8	15.9	14.4	14.6	15.4	15.6	14.6	15.3	14.6
Oreg. ....	18.0	19.2	18.8	18.4	16.7	17.5	17.8	17.2	18.1	18.2
Calif. ....	13.4	14.5	13.8	12.8	11.2	12.5	12.1	12.7	14.3	14.5
48 States ..	17.8	19.0	18.7	17.4	17.0	17.9	18.0	17.4	18.0	18.6
Hawaii .....	11.2	11.5	10.8	10.1	11.3	11.4	14.7	12.8	12.6	15.8
U. S. ....	17.8	19.0	18.7	17.4	17.0	17.9	18.0	17.4	18.0	18.6

Table 6.-- Honey: Value of production, by States, 1955-64

State	1955	1956	1957	1958	1959	1960	1961	1962	1963	1964
	1,000 dollars	1,000 dollars	1,000 dollars	1,000 dollars	1,000 dollars	1,000 dollars	1,000 dollars	1,000 dollars	1,000 dollars	1,000 dollars
Maine .....	65	45	77	50	42	54	65	47	61	40
N. H. ....	105	91	135	97	97	100	94	52	84	75
Vt. ....	123	122	195	131	180	166	165	80	161	170
Mass. ....	120	126	119	114	124	111	98	86	106	76
R. I. ....	12	17	14	13	15	14	16	19	21	18
Conn. ....	74	112	91	105	117	87	103	115	135	99
N. Y. ....	1,612	1,003	2,041	1,491	1,585	1,975	1,438	1,547	2,196	1,836
N. J. ....	200	268	169	257	290	347	406	347	338	424
Pa. ....	1,138	590	944	872	1,073	936	871	1,020	1,054	1,120
Ohio ....	2,039	667	1,525	951	1,936	1,730	1,513	1,461	1,348	2,006
Ind. ....	1,831	1,172	1,305	959	1,351	1,215	1,065	1,162	1,096	1,195
Ill. ....	1,649	1,218	1,537	1,150	1,415	1,377	1,671	1,361	1,520	1,275
Mich. ....	1,582	1,124	1,619	1,150	1,343	1,221	1,097	1,347	1,553	1,671
Wis. ....	3,534	1,799	2,662	2,795	2,771	2,618	3,087	2,097	2,745	2,520
Minn. ....	3,634	2,939	3,096	3,690	3,595	3,317	3,483	2,294	3,147	3,105
Iowa ....	2,922	2,021	1,981	1,658	2,360	1,456	1,972	1,505	2,041	2,049
Mo. ....	773	758	779	1,181	962	759	945	813	1,186	636
N. Dak. ....	245	233	433	469	399	478	565	494	705	531
S. Dak. ....	581	645	928	1,229	712	1,113	1,620	1,014	1,758	1,233
Nebr. ....	704	652	614	828	826	607	1,164	985	1,195	1,281
Kans. ....	266	236	244	326	348	360	394	438	470	437
Del. ....	23	23	23	23	24	25	42	38	61	68
Md. ....	194	200	204	205	205	211	306	335	234	418
Va. ....	1,094	1,201	1,090	899	861	967	1,084	1,019	492	1,047
W. Va. ....	622	559	503	524	593	855	543	956	475	957
N. C. ....	1,168	1,661	1,223	851	1,210	1,758	1,550	1,617	768	2,319
S. C. ....	308	329	468	419	307	392	319	329	303	396
Ge. ....	656	1,726	1,942	1,510	1,024	1,340	1,321	1,439	1,586	1,016
Fla. ....	2,395	3,298	3,579	2,952	2,373	3,374	3,437	3,638	3,841	3,756
Ky. ....	900	931	611	909	545	570	722	615	416	812
Tenn. ....	899	962	693	869	745	791	958	778	792	817
Ala. ....	997	922	700	871	602	819	793	730	895	573
Miss. ....	321	534	346	344	415	592	566	434	345	367
Ark. ....	503	496	394	426	394	407	480	589	462	386
La. ....	358	451	385	429	326	482	527	550	314	462
Okla. ....	341	268	203	398	242	538	412	432	466	420
Texas ....	1,897	1,035	1,987	2,075	1,902	2,040	2,082	1,833	1,796	1,737
Mont. ....	1,027	991	1,243	905	1,114	984	980	788	1,656	801
Idaho ....	1,104	1,416	2,126	1,672	1,175	1,254	2,008	1,085	2,241	1,503
Wyo. ....	455	562	459	470	332	347	473	258	520	238
Colo. ....	884	696	681	767	544	525	780	788	798	743
N. Mex. ....	78	60	121	139	94	76	100	102	118	140
Ariz. ....	705	701	641	753	705	761	713	733	992	651
Utah ....	426	465	524	373	242	276	442	410	721	427
Nev. ....	60	101	119	79	44	59	101	42	99	109
Wash. ....	422	570	717	740	642	664	719	527	591	591
Oreg. ....	315	382	426	332	303	278	329	385	438	429
Calif. ....	4,030	4,211	3,086	5,724	1,596	3,042	2,409	4,724	3,717	3,608
48 States ..	45,391	40,589	45,002	45,174	40,100	43,468	46,028	43,458	48,057	46,588
Hawaii .....	33	32	47	42	37	32	44	36	39	50
U. S. ....	45,424	40,621	45,049	45,216	40,137	43,500	46,072	43,494	48,096	46,638

Table 7.--Honey: Stocks on hand for sale, September 15, by States, 1955-64 1/

State	1955	1956	1957	1958	1959	1960	1961	1962	1963	1964
	1,000 pounds	1,000 pounds	1,000 pounds	1,000 pounds	1,000 pounds	1,000 pounds	1,000 pounds	1,000 pounds	1,000 pounds	1,000 pounds
Maine	50	46	48	35	31	49	43	35	42	35
N. H.	192	158	150	122	79	107	55	54	88	66
Vt.	266	120	242	98	217	160	230	44	167	267
Mass.	137	122	100	70	86	75	82	57	88	71
R. I.	11	25	11	8	13	12	12	13	22	18
Conn.	72	155	81	100	68	74	82	84	139	94
N. Y.	3,682	1,604	4,381	3,727	3,306	4,308	3,659	3,302	3,378	3,221
N. J.	396	583	383	177	647	428	686	550	333	1,043
Pa.	1,612	850	1,276	1,030	1,715	1,355	1,151	1,471	1,548	1,979
Ohio	4,100	889	2,090	1,764	5,150	3,572	3,606	3,395	2,625	5,174
Ind.	4,154	1,979	3,097	1,564	2,927	2,510	1,836	1,815	1,909	2,091
Ill.	3,455	2,002	3,932	2,331	3,674	2,654	4,022	3,965	3,927	3,099
Mich.	4,532	2,700	3,757	3,028	4,990	4,568	3,856	3,245	3,927	4,972
Wis.	12,209	5,480	9,083	9,947	10,981	7,701	10,111	7,662	9,864	7,604
Miss.	9,204	9,139	7,832	10,677	9,933	8,860	8,220	6,337	6,757	5,593
Iowa	7,021	4,340	5,764	4,408	6,025	3,197	5,076	4,124	3,871	4,075
Mo.	419	440	562	1,548	1,361	878	1,146	1,343	1,717	1,019
N. Dak.	760	605	1,399	1,361	912	938	985	577	1,568	1,488
S. Dak.	1,309	927	1,740	1,213	1,168	1,802	2,131	1,784	2,866	1,903
Nebr.	2,102	1,620	1,317	1,474	1,825	704	3,560	2,746	2,285	2,801
Kans.	542	456	343	617	618	618	506	661	620	789
Del.	31	31	30	23	25	32	59	46	70	84
Md.	328	349	362	392	275	364	565	474	396	581
Va.	1,358	1,351	1,261	847	1,040	945	1,355	1,205	523	1,061
W. Va.	508	362	318	214	445	549	350	823	412	808
N. C.	1,008	1,183	1,234	640	1,478	1,257	936	1,463	598	1,794
S. C.	238	229	267	251	238	272	288	269	148	276
Ga.	434	1,366	1,846	1,322	1,379	1,321	1,360	1,878	1,729	1,085
Fla.	3,927	5,208	5,681	5,466	5,534	5,302	6,028	5,373	5,010	6,059
Ky.	726	658	362	623	336	358	622	433	210	499
Tenn.	708	835	524	442	601	465	766	617	645	711
Ala.	564	800	644	558	564	869	693	730	1,193	850
Miss.	486	810	454	422	488	831	720	710	400	322
Ark.	455	431	299	310	378	422	328	515	300	357
La.	512	637	819	974	888	988	1,006	905	318	571
Okla.	432	243	245	564	286	750	292	374	534	311
Texas	2,356	1,808	3,591	4,959	4,033	3,503	2,367	3,759	2,661	3,229
Mont.	3,156	3,442	5,128	3,869	1,838	2,723	3,315	2,316	5,582	1,130
Idaho	2,549	4,602	9,433	7,150	5,130	4,981	5,753	4,305	7,136	5,010
Wyo.	1,035	2,310	1,918	2,153	372	1,414	1,610	1,043	1,292	500
Colo.	2,707	2,414	2,534	3,280	1,846	1,755	2,280	3,143	2,181	2,462
N. Mex.	292	150	488	606	341	169	280	198	262	423
Ariz.	2,005	2,113	1,864	3,836	3,325	2,297	1,985	2,421	962	2,016
Utah	1,588	1,591	2,343	2,025	1,306	707	1,404	1,448	2,501	1,888
Nev.	270	422	433	454	239	315	509	122	454	418
Wash.	947	1,624	1,938	1,902	1,892	1,294	1,566	1,119	1,275	1,052
Oreg.	525	716	1,043	793	902	562	573	857	968	1,107
Calif.	12,931	13,360	10,062	22,360	6,698	9,003	9,357	13,019	7,797	10,452
48 States	98,301	84,285	102,709	111,734	97,603	88,014	97,422	92,829	93,298	92,458
Hawaii 2/										
U. S.	98,301	84,285	102,709	111,734	97,603	88,014	97,422	92,829	93,298	92,458

1/ Stocks that are in hands of producers.

2/ Not available.

Table 8.-- Honey: Stocks on hand for sale, December 15, by States, 1955-64 1/

State	1955	1956	1957	1958	1959	1960	1961	1962	1963	1964
	1,000	1,000	1,000	1,000	1,000	1,000	1,000	1,000	1,000	1,000
	pounds	pounds	pounds	pounds	pounds	pounds	pounds	pounds	pounds	pounds
Maine .....	61	30	38	32	27	37	45	40	54	39
N. H. ....	128	103	132	70	74	84	60	58	92	70
Vt. ....	82	80	157	81	143	145	191	68	167	218
Mass. ....	130	170	87	64	103	69	68	68	97	75
R. I. ....	17	22	9	9	15	11	12	18	22	22
Conn. ....	94	135	66	97	98	60	92	105	157	94
N. Y. ....	1,990	1,203	2,767	1,734	2,528	3,351	1,872	2,453	2,859	2,899
N. J. ....	317	383	227	202	416	449	609	550	462	609
Pa. ....	1,123	550	875	858	1,372	1,270	997	1,569	1,257	1,771
Ohio ....	3,213	855	1,935	980	3,090	2,256	2,509	2,369	1,419	4,330
Ind. ....	2,797	1,823	1,991	1,317	1,951	1,717	1,469	1,089	1,364	1,494
Ill. ....	2,591	1,830	2,145	1,761	2,750	2,969	2,398	2,313	2,036	2,026
Mich. ....	4,718	2,449	3,131	3,028	2,954	3,145	2,660	2,920	3,838	3,978
Wis. ....	7,497	4,756	7,204	7,718	7,844	7,393	7,764	4,974	4,768	5,069
Minn. ....	7,552	5,018	5,594	6,499	8,041	6,181	7,788	4,828	5,019	5,014
Iowa ....	4,934	2,604	3,482	4,198	4,183	2,398	4,113	2,589	3,167	2,757
Mo. ....	1,142	733	487	1,204	680	540	1,023	835	780	468
N. Dak. ....	592	302	132	544	357	248	599	216	146	323
S. Dak. ....	385	242	812	1,374	502	663	1,824	500	1,446	993
Nebr. ....	1,222	895	1,117	850	1,405	749	1,742	640	1,046	1,201
Kans. ....	301	182	264	494	522	462	435	638	429	541
Del. ....	21	21	19	20	16	18	40	35	52	64
Md. ....	189	182	181	188	170	178	448	379	214	392
Va. ....	786	579	841	438	555	598	856	930	349	890
W. Va. ....	447	344	333	280	408	471	250	735	274	606
N. C. ....	556	739	673	333	708	703	906	647	322	1,230
S. C. ....	133	135	222	139	112	198	141	146	99	176
Ge. ....	241	932	1,108	692	492	692	648	765	827	592
Fla. ....	1,964	3,125	3,787	4,685	1,695	2,908	4,686	2,911	4,175	5,049
Ky. ....	319	688	305	510	266	287	378	263	198	309
Tenn. ....	369	635	405	324	358	362	383	402	510	632
Ala. ....	414	452	297	465	306	434	422	438	632	458
Miss. ....	210	416	213	239	300	456	497	394	154	129
Ark. ....	341	367	370	213	189	230	262	386	460	255
La. ....	205	561	614	365	248	581	710	974	243	218
Okla. ....	288	364	196	435	218	441	257	281	382	311
Texas ....	1,414	561	1,317	2,610	2,378	1,258	1,781	2,170	2,218	2,561
Mont. ....	928	1,780	3,885	1,872	1,402	766	2,307	936	3,272	983
Idaho ....	1,062	2,212	5,049	3,229	3,003	1,688	4,067	2,026	2,283	3,518
Wyo. ....	219	693	535	718	74	160	869	194	646	94
Colo. ....	1,436	1,309	1,163	1,930	1,248	916	1,687	1,934	1,392	1,814
N. Mex. ....	81	122	240	303	204	132	126	245	146	198
Ariz. ....	547	1,112	1,096	2,790	1,396	431	434	382	296	1,034
Utah ....	147	398	1,240	1,242	927	177	712	645	699	1,129
Nev. ....	89	63	266	232	54	228	150	82	120	230
Wash. ....	1,119	1,299	1,352	1,542	792	819	1,152	578	618	486
Oreg. ....	298	517	590	378	363	382	444	717	677	848
Calif. ....	3,909	5,518	4,919	11,627	2,850	2,433	5,176	7,439	3,119	7,466
48 States ...	58,618	49,489	63,868	70,913	59,847	52,144	68,059	55,874	55,002	65,663
Hawaii 2/ ...	1/	1/	156	171	122	62	60	59	80	113
U. S. ....	58,618	49,489	64,024	71,084	59,969	52,206	68,119	55,933	55,082	65,776

1/ Stocks that are in hands of producers.

2/ Not available.

Table 9.--Beeswax: Production, by States, 1955-64

State	1955	1956	1957	1958	1959	1960	1961	1962	1963	1964
	1,000 pounds	1,000 pounds	1,000 pounds	1,000 pounds	1,000 pounds	1,000 pounds	1,000 pounds	1,000 pounds	1,000 pounds	1,000 pounds
Maine .....	3	2	4	3	2	2	3	2	2	2
N. H. ....	5	4	6	6	5	4	4	2	3	4
Vt. ....	8	6	9	8	10	8	8	4	6	5
Mass. ....	6	7	6	7	8	6	6	5	4	4
R. I. ....	1	1	1	1	1	1	1	1	1	1
Conn. ....	6	8	6	5	7	5	5	5	6	5
N. Y. ....	149	97	173	139	156	203	136	142	208	193
N. J. ....	16	25	13	20	22	25	30	22	23	19
Pa. ....	117	58	80	65	98	102	92	118	111	94
Ohio .....	222	92	170	108	237	197	149	166	163	158
Ind. ....	159	141	111	78	143	112	89	109	98	143
Ill. ....	126	120	136	114	136	120	147	126	138	155
Mich. ....	157	132	170	114	127	112	106	122	125	129
Wis. ....	343	165	251	257	279	216	307	229	263	253
Minn. ....	425	323	317	371	402	371	433	287	328	347
Iowa ....	323	223	216	178	239	160	218	182	235	228
Mo. ....	76	73	56	75	64	51	65	69	104	50
N. Dak. ....	32	29	48	54	51	50	60	65	83	65
S. Dak. ....	65	69	99	121	80	125	161	121	189	141
Nebr. ....	78	77	72	96	100	79	135	109	134	144
Kans. ....	29	26	29	32	33	30	36	41	48	50
Del. ....	2	2	2	2	2	2	3	2	3	3
Md. ....	17	13	14	16	16	16	24	26	16	29
Va. ....	68	66	56	50	48	57	61	62	27	55
W. Va. ....	47	36	32	36	33	52	32	50	27	58
N. C. ....	87	103	82	59	86	110	104	119	53	135
S. C. ....	23	24	28	29	24	28	24	25	20	30
Ge. ....	55	112	126	94	87	113	117	125	128	94
Fla. ....	223	330	436	312	268	349	351	353	313	384
Ky. ....	44	51	42	31	30	29	36	38	25	48
Tenn. ....	62	67	38	68	49	52	64	54	54	53
Ala. ....	75	56	50	71	54	65	69	61	81	41
Miss. ....	20	31	23	15	24	40	37	30	38	40
Ark. ....	36	39	33	29	34	36	41	54	50	43
La. ....	33	46	39	37	41	58	53	66	36	49
Okla. ....	29	25	17	26	20	40	31	34	36	31
Texas .....	189	125	180	209	224	224	206	205	211	200
Mont. ....	105	95	140	106	133	106	115	94	173	93
Idaho ....	135	168	252	196	172	145	254	152	228	203
Wyo. ....	53	69	63	65	40	41	58	32	68	31
Colo. ....	110	82	79	92	66	61	87	97	93	86
N. Mex. ....	8	7	14	15	13	10	14	14	12	12
Ariz. ....	91	83	88	98	86	100	93	102	118	78
Utah ....	62	55	65	51	39	35	60	53	79	50
Nev. ....	8	15	13	11	8	8	14	5	9	13
Wash. ....	55	72	77	98	79	73	88	54	89	81
Oreg. ....	28	30	34	36	34	27	30	36	44	40
Calif. ....	601	610	447	984	299	511	458	930	520	498
48 States ...	4,612	4,090	4,443	4,688	4,209	4,367	4,715	4,800	4,823	4,668
Hawaii .....	8	6	9	7	6	5	5	5	5	4
U. S. ....	4,620	4,096	4,452	4,695	4,215	4,372	4,720	4,805	4,828	4,672

Table 10.-- Beeswax: Price per pound, by States, 1955-64

State	1955	1956	1957	1958	1959	1960	1961	1962	1963	1964
	<u>Cents</u>	<u>Cents</u>	<u>Cents</u>	<u>Cents</u>	<u>Cents</u>	<u>Cents</u>	<u>Cents</u>	<u>Cents</u>	<u>Cents</u>	<u>Cents</u>
Maine .....	49	52	57	46	46	47	45	46	47	47
N. H. ....	50	54	57	46	46	47	46	47	47	47
Vt. ....	51	54	57	46	46	46	45	46	45	44
Mass. ....	50	53	57	46	46	47	46	47	47	47
R. I. ....	51	54	56	46	46	46	45	47	47	46
Conn. ....	51	54	56	46	46	46	45	46	46	45
N. Y. ....	53	56	59	48	47	45	45	46	46	46
N. J. ....	53	56	56	49	48	46	47	49	48	49
Pa. ....	52	57	57	51	51	49	51	49	49	50
Ohio .....	50	53	58	45	44	43	44	43	46	45
Ind. ....	53	56	58	48	44	46	44	44	46	45
Ill. ....	51	55	58	46	45	46	44	45	46	44
Mich. ....	52	56	58	47	44	43	44	45	46	46
Wis. ....	52	54	59	46	45	43	43	43	44	44
Minn. ....	51	53	55	46	44	43	44	44	44	44
Iowa .....	52	55	57	46	44	44	44	44	44	45
Mo. ....	52	55	57	46	44	44	46	44	44	45
N. Dak. ....	51	55	58	48	46	45	46	46	47	47
S. Dak. ....	52	55	58	46	46	46	47	47	47	47
Nebr. ....	53	57	57	48	44	44	44	44	44	44
Kans. ....	48	56	56	45	44	43	43	42	43	42
Del. ....	50	54	55	50	48	46	45	44	46	45
Md. ....	50	54	55	50	48	46	45	44	46	45
Va. ....	49	51	53	48	43	44	43	42	44	43
W. Va. ....	49	51	56	48	44	45	45	44	46	45
N. C. ....	49	51	54	47	45	46	44	46	44	44
S. C. ....	49	51	55	49	46	46	45	45	45	45
Ga. ....	51	54	55	49	45	46	45	47	44	45
Fla. ....	51	54	57	47	44	43	42	45	44	44
Ky. ....	44	49	54	45	45	44	43	44	44	43
Tenn. ....	45	51	54	47	45	44	44	44	45	45
Ala. ....	49	51	56	47	45	44	46	46	48	46
Miss. ....	49	51	56	47	46	46	46	44	46	44
Ark. ....	47	49	55	48	44	43	45	44	44	44
La. ....	49	52	59	46	44	43	42	44	47	45
Okla. ....	48	51	55	46	45	45	43	42	43	45
Texas ....	51	53	59	46	43	44	44	44	44	45
Mont. ....	53	58	58	45	44	43	44	43	43	44
Idaho ....	52	57	57	45	42	42	43	43	43	43
Wyo. ....	54	58	59	45	43	43	43	44	45	44
Colo. ....	53	56	58	47	42	42	42	42	43	45
N. Mex. ....	50	54	58	45	43	42	42	42	43	44
Ariz. ....	50	55	55	45	43	42	42	42	42	43
Utah ....	50	56	56	45	43	42	42	44	42	42
Nev. ....	50	56	56	44	42	42	43	43	42	42
Wash. ....	53	57	57	48	44	46	43	44	45	44
Oreg. ....	50	54	55	46	43	42	42	41	41	40
Calif. ....	52	56	57	44	44	43	45	43	41	42
48 States ...	51.2	54.6	57.0	46.0	44.4	44.0	44.1	44.1	44.2	44.3
Hawaii .....	46	53	59	46	41	44	42	42	42	40
U. S. ....	51.2	54.6	57.0	46.0	44.4	44.0	44.1	44.1	44.2	44.3



Table 11.--Beeswax: Value of production, by States, 1955-64

State	1955	1956	1957	1958	1959	1960	1961	1962	1963	1964
	1,000 dollars	1,000 dollars	1,000 dollars	1,000 dollars	1,000 dollars	1,000 dollars	1,000 dollars	1,000 dollars	1,000 dollars	1,000 dollars
Maine	1	1	2	1	1	1	1	1	1	1
N. H.	2	2	3	3	2	2	2	1	1	2
Vt.	4	3	5	4	5	4	4	2	3	2
Mass.	3	4	3	3	4	3	3	2	2	2
R. I.	1	1	1	1	1	1	1	1	1	1
Conn.	3	4	3	2	3	2	2	2	3	2
N. Y.	79	54	102	67	73	91	61	65	96	89
N. J.	8	14	7	10	11	12	14	11	11	9
Pa.	61	33	46	33	50	50	47	58	54	47
Ohio	111	49	99	49	104	85	66	71	75	71
Ind.	84	79	64	37	63	52	39	48	45	64
Ill.	64	66	79	52	61	55	65	57	63	68
Mich.	82	74	99	54	56	48	47	55	58	59
Wis.	178	89	148	118	126	93	132	98	116	111
Minn.	217	171	174	171	177	160	191	126	144	153
Iowa	153	123	123	82	105	70	96	80	103	103
Mo.	40	40	32	34	28	22	30	30	46	22
N. Dak.	16	16	28	26	23	22	28	30	39	31
S. Dak.	34	38	57	56	37	58	76	57	89	66
Nebr.	41	44	41	46	44	35	59	48	59	63
Kans.	14	15	16	14	15	13	15	17	21	21
Del.	1	1	1	1	1	1	1	1	1	1
Md.	8	7	8	8	8	7	11	11	7	13
Va.	33	34	30	24	21	25	26	26	12	24
W. Va.	23	18	18	17	15	23	14	22	12	26
N. C.	43	53	44	28	39	51	46	55	23	59
S. C.	11	12	15	14	11	13	11	11	9	14
Ge.	28	60	69	46	39	52	53	59	56	42
Fla.	114	178	249	147	118	150	147	159	138	169
Ky.	19	25	23	14	14	13	15	17	11	21
Tenn.	28	34	21	32	22	23	28	24	24	24
Ala.	37	29	28	33	24	29	32	28	39	19
Miss.	10	16	13	7	11	18	17	13	17	18
Ark.	17	19	18	14	15	15	18	24	22	19
La.	16	24	23	17	18	25	22	29	17	22
Okla.	14	13	9	12	9	18	13	14	15	14
Texas	96	66	106	96	96	99	91	90	93	90
Mont.	56	55	81	48	59	46	51	40	74	41
Idaho	70	96	144	88	72	61	109	65	98	87
Wyo.	29	40	37	29	17	18	25	14	31	14
Colo.	58	46	46	43	28	26	37	41	40	39
N. Mex.	4	4	8	7	6	4	6	6	5	5
Ariz.	46	46	48	44	37	42	39	43	50	34
Utah	31	31	36	23	17	15	25	23	33	21
Nev.	4	8	7	5	3	3	6	2	4	5
Wash.	29	41	44	47	35	34	38	24	40	36
Oreg.	14	16	19	17	15	11	13	15	18	16
Calif.	313	342	255	433	132	220	206	400	213	209
48 States	2,363	2,234	2,532	2,156	1,870	1,920	2,078	2,115	2,131	2,068
Hawaii	4	3	5	3	2	2	2	2	2	2
U. S.	2,367	2,237	2,537	2,159	1,872	1,922	2,080	2,117	2,133	2,070

UNITED STATES DEPARTMENT OF AGRICULTURE  
STATISTICAL REPORTING SERVICE  
WASHINGTON, D. C. 20250

POSTAGE AND FEES PAID  
U. S. DEPARTMENT OF AGRICULTURE

OFFICIAL BUSINESS

Hny 1-1 (67)

U. S. GOVERNMENT PRINTING OFFICE: 1967 251-755 (SAS-100)

**END**