



**AgEcon** SEARCH  
RESEARCH IN AGRICULTURAL & APPLIED ECONOMICS

*The World's Largest Open Access Agricultural & Applied Economics Digital Library*

**This document is discoverable and free to researchers across the globe due to the work of AgEcon Search.**

**Help ensure our sustainability.**

Give to AgEcon Search

AgEcon Search

<http://ageconsearch.umn.edu>

[aesearch@umn.edu](mailto:aesearch@umn.edu)

*Papers downloaded from **AgEcon Search** may be used for non-commercial purposes and personal study only. No other use, including posting to another Internet site, is permitted without permission from the copyright owner (not AgEcon Search), or as allowed under the provisions of Fair Use, U.S. Copyright Act, Title 17 U.S.C.*

SB 386 (1967)

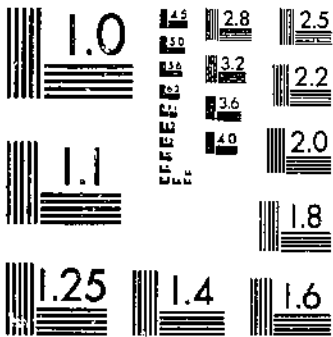
USDA STATISTICAL BULLETINS

UPDATA

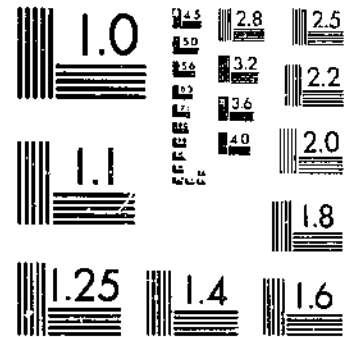
FIELD SEEDS, SUPPLY AND DISAPPEARANCE UNITED STATES CROP YEARS 1959-64

1 OF 1

# START



MICROCOPY RESOLUTION TEST CHART  
NATIONAL BUREAU OF STANDARDS-1963-A



MICROCOPY RESOLUTION TEST CHART  
NATIONAL BUREAU OF STANDARDS-1963-A



## FIELD SEEDS

### Supply and Disappearance

The following tables present the United States totals of acreage, yield, production, carryover, imports, total supply, total disappearance, and exports for all legume, grass, and cover-crop seeds estimated by the Crop Reporting Board of the United States Department of Agriculture. The statistics include the revised estimates for the years 1959 to 1964 and supersede estimates previously issued for the years shown.

Imports shown in the tables include only those quantities of seed which have been permitted entry under the Federal Seed Act administered by the Grain Division, Consumer and Marketing Service. Export data are compiled by the Economic Research Service from records of the U. S. Department of Commerce. Export statistics are available for only 8 specific kinds of seed -- alfalfa, alsike clover, Ladino clover, bentgrass, redtop, timothy, orchardgrass, and Kentucky bluegrass. Exports of all other kinds are not available as they are included in group totals of "other clovers," and "other grasses" not elsewhere classified. The imports and exports are for a 12-month period beginning July 1 of the year of crop harvest and ending June 30 the following year.

Estimates of acreage harvested, yield per acre, production, and carryover are compiled by the Statistical Reporting Service. Total supply is computed by adding production, carryover, and imports. Total disappearance is computed by subtracting from the total supply the carryover the following year.

**For sale by the Superintendent of Documents, U.S. Government Printing Office  
Washington, D.C., 20402**

FIELD SEEDS: Acreage, yield, production, carryover, imports, total supply, total disappearance, and exports, United States 1959-64

Crop year	Acres harvested	Yield per acre	Production	Carryover			Production plus carryover	Imports 1/	Total supply	Total disappearance	Exports 1/
				Farm	Dealer & Gov't.	Total					
		Acres	Pounds	Thousand pounds of clean seed							
<u>ALFALFA SEED</u>											
1959	723,800	175	126,594	17,000	37,090	54,090	180,684	400	181,084	139,205	9,334
1960	712,400	192	136,658	8,052	33,827	41,879	178,537	1,757	180,294	141,853	9,280
1961	634,800	198	125,909	9,821	28,620	38,441	164,350	1,940	166,290	136,653	6,814
1962	608,100	197	119,868	5,206	24,431	29,637	149,505	6,565	156,070	127,790	5,252
1963	937,000	170	159,196	4,722	23,558	28,280	187,476	786	188,262	145,208	7,206
1964	695,500	201	140,142	12,502	30,552	43,054	183,196	413	183,609	136,489	9,262
<u>ALSIKE CLOVER SEED</u>											
1959	32,600	181	5,903	2,866	4,491	7,357	13,260	1,366	14,626	8,338	388
1960	22,200	213	4,732	1,820	4,468	6,288	11,020	3,220	14,240	7,557	110
1961	9,900	199	1,966	1,576	5,107	6,683	8,649	5,945	14,594	8,546	79
1962	5,000	169	844	1,059	4,989	6,048	6,892	5,248	12,140	7,208	327
1963	3,400	120	408	204	4,728	4,932	5,340	4,668	10,008	2/	403
1964	Estimates Discontinued										
<u>RED CLOVER SEED</u>											
1959	1,160,600	76	88,378	11,694	10,675	22,369	110,747	2,810	113,557	82,777	2/
1960	1,028,100	87	89,509	16,030	14,750	30,780	120,289	4,967	125,256	91,482	2/
1961	822,700	80	65,694	18,795	14,979	33,774	99,468	9,488	108,956	87,090	2/
1962	903,800	78	70,819	10,263	11,603	21,866	92,685	3,687	96,372	75,627	2/
1963	895,800	84	75,132	9,621	11,124	20,745	95,877	1,932	97,809	74,896	2/
1964	837,200	96	80,755	10,676	12,237	22,913	103,668	1,285	104,953	71,755	2/

See footnotes on page 21.

FIELD SEEDS: Acreage, yield, production, carryover, imports, total supply, total disappearance, and exports, United States 1959-64

Crop year	Acres harvested	Yield per acre	Production	Carryover			Production plus carryover	Imports 1/	Total supply	Total disappearance	Exports 1/
				Farm	Dealer & Gov't.	Total					
		Acres	Pounds	Thousand pounds of clean seed							
<u>WHITE CLOVER SEED</u>											
1959	28,600	171	4,879	393	1,313	1,706	6,585	225	6,810	5,410	2/
1960	30,550	131	4,014	121	1,279	1,400	5,414	66	5,480	4,350	2/
1961	32,500	183	5,956	230	900	1,130	7,086	81	7,167	4,396	2/
1962	23,900	158	3,784	839	1,932	2,771	6,555	107	6,662	5,037	2/
1963	31,300	241	7,528	571	1,054	1,625	9,153	382	9,535	5,917	2/
1964	27,100	207	5,602	1,179	2,439	3,618	9,220	327	9,547	4,762	2/
<u>LADINO CLOVER SEED</u>											
1959	17,400	250	4,356	32	2,420	2,452	6,808	0	6,808	4,914	1,801
1960	22,000	203	4,455	25	1,869	1,894	6,349	0	6,349	4,852	1,955
1961	20,800	250	5,204	4	1,493	1,497	6,701	0	6,701	4,953	1,888
1962	18,500	305	5,642	0	1,748	1,748	7,390	0	7,390	4,966	2,448
1963	17,000	365	6,205	0	2,424	2,424	8,629	11	8,640	6,427	3,575
1964	16,000	320	5,120	6	2,207	2,213	7,333	3/	7,333	4,793	2,570
<u>SWEETCLOVER SEED</u>											
1959	136,400	202	27,562	4,569	10,270	14,839	42,401	10,053	52,454	33,659	2/
1960	130,500	211	27,499	5,651	13,144	18,795	46,294	10,393	56,687	47,222	2/
1961	93,500	193	18,067	4,301	5,164	9,465	27,532	15,745	43,277	37,515	2/
1962	110,500	185	20,395	1,917	3,845	5,762	26,157	10,436	36,593	28,440	2/
1963	137,200	200	27,507	3,092	5,061	8,153	35,660	12,993	48,653	36,552	2/
1964	120,800	203	24,575	4,727	7,374	12,101	36,676	8,940	45,616	32,089	2/

See footnotes on page 11.

FIELD SEEDS: Acreage, yield, production, carryover, imports, total supply,  
total disappearance, and exports, United States 1959-64

Crop Year	Acres harvested	Yield per acre	Production	Carryover			Production plus carryover	Imports 1/	Total supply	Total disappearance	Exports 1/
				Farm	Dealer & Gov't. July 1	Total					
<u>LESPEDEZA SEED</u>											
1959	493,000	222	109,450	8,338	5,852	14,190	123,640	0	123,640	112,621	2/
1960	360,000	202	72,735	4,696	6,323	11,019	83,754	0	83,754	77,583	2/
1961	395,000	206	81,270	3,828	2,343	6,171	87,441	0	87,441	80,870	2/
1962	321,500	229	73,525	2,913	3,658	6,571	80,096	0	80,096	72,437	2/
1963	289,500	198	57,255	2,388	5,271	7,659	64,914	0	64,914	59,998	2/
1964	283,500	196	55,600	1,754	3,162	4,916	60,516	0	60,516	56,136	2/
<u>BENTGRASS SEED</u>											
1959	24,000	282	6,765	249	3,085	3,334	10,099	14	10,113	7,888	4,879
1960	22,500	226	5,092	68	2,157	2,225	7,317	3	7,320	5,779	3,141
1961	23,500	251	5,897	187	1,354	1,541	7,438	6	7,444	6,281	4,793
1962	23,400	267	6,254	88	1,075	1,163	7,417	8	7,425	6,166	4,129
1963	27,550	287	7,918	62	1,197	1,259	9,177	35	9,212	6,752	4,877
1964	31,700	305	9,673	259	2,201	2,460	12,133	16	12,149	9,223	7,187
<u>MERION KENTUCKY BLUEGRASS SEED</u>											
1959	12,930	247	3,197	13	571	584	3,781	0	3,781	2,647	2/
1960	15,070	209	3,148	235	899	1,134	4,282	0	4,282	2,670	2/
1961	15,810	219	3,455	164	1,448	1,612	5,067	0	5,067	3,045	2/
1962	15,290	266	4,072	209	1,813	2,022	6,094	1,115	7,210	5,287	2/
1963	11,320	294	3,333	180	1,743	1,923	5,256	827	6,083	4,622	2/
1964	10,400	319	3,317	37	1,424	1,461	4,778	950	5,728	4,044	2/

See footnotes on page 11.



FIELD SEEDS: Acreage, yield, production, carryover, imports, total supply, total disappearance, and exports, United States 1959-64

Crop year	Acres harvested	Yield per acre	Production	Carryover			Production plus carryover	Imports 1/	Total supply	Total disappearance	Exports 1/
				Farm	Dealer & Gov't.	Total					
		Acres	Pounds	Thousand pounds of clean seed							
<u>KENTUCKY BLUEGRASS SEED OTHER THAN MERION 4/</u>											
1959	2/	2/	3,550	2/	19,127	19,127	22,677	7,739	30,416	21,386	943
1960	2/	2/	29,400	2/	9,030	9,030	38,430	4,224	42,654	23,898	1,576
1961	2/	2/	5,560	2/	18,756	18,756	24,316	9,379	33,695	21,528	784
1962	2/	2/	9,300	2/	12,167	12,167	21,467	10,965	32,432	20,947	612
1963	2/	2/	14,058	2/	11,485	11,485	25,543	16,514	42,057	32,327	1,015
1964	2/	2/	19,238	2/	9,730	9,730	28,968	13,107	42,075	34,545	1,196
<u>SMOOTH BROMEGRASS SEED</u>											
1959	39,700	125	4,943	4,164	7,921	12,085	17,028	8,150	25,178	19,763	2/
1960	76,000	173	13,115	1,479	3,936	5,415	18,530	5,414	23,944	16,325	2/
1961	62,500	206	12,880	2,424	5,195	7,619	20,499	475	20,974	11,994	2/
1962	31,500	132	4,173	2,281	6,699	8,980	13,153	3,683	16,836	11,886	2/
1963	38,600	149	5,745	1,140	3,810	4,950	10,695	4,283	14,978	11,801	2/
1964	70,800	186	13,194	1,027	2,150	3,177	16,371	1,923	18,294	2/	2/
<u>CHEWINGS FESCUE SEED</u>											
1959	24,000	440	10,560	59	1,840	1,899	12,459	19	12,478	8,499	2/
1960	25,000	440	11,000	950	3,029	3,979	14,979	5	14,984	7,088	2/
1961	25,000	300	7,500	990	6,906	7,896	15,396	217	15,613	9,195	2/
1962	20,000	450	9,000	750	5,668	6,418	15,418	196	15,614	9,254	2/
1963	17,000	370	6,290	1,350	5,010	6,360	12,650	31	12,681	9,773	2/
1964	16,500	480	7,920	314	2,594	2,908	10,828	0	10,828	8,987	2/

See footnotes on page 11.

FIELD SEEDS: Acreage, yield, production, carryover, imports, total supply, total disappearance, and exports, United States 1959-64

Crop year	Acres harvested	Yield per acre	Production	Carryover			Production plus carryover	Imports 1/	Total supply	Total disappearance	Exports 1/
				Farm	Dealer & Gov't.	Total					
		Acres	Pounds	Thousand pounds of clean seed							
<u>RED FESCUE SEED</u>											
1959	13,500	421	5,679	285	3,965	4,250	9,929	15,936	25,865	19,080	2/
1960	14,400	400	5,758	978	5,807	6,785	12,543	15,100	27,643	16,054	2/
1961	13,400	364	4,878	1,046	10,543	11,589	16,467	9,996	26,463	17,860	2/
1962	11,900	427	5,078	1,153	7,450	8,603	13,681	12,526	26,207	21,511	2/
1963	10,150	375	3,810	253	4,443	4,696	8,506	9,146	17,652	13,989	2/
1964	10,150	523	5,310	19	3,644	3,663	8,973	7,432	16,405	13,704	2/
<u>TALL FESCUE SEED</u>											
1959	134,600	212	28,594	911	5,258	6,169	34,763	41	34,804	32,620	2/
1960	185,400	220	40,780	515	1,669	2,184	42,964	0	42,964	32,778	2/
1961	167,000	221	36,984	2,585	7,601	10,186	47,170	0	47,170	41,239	2/
1962	153,600	204	31,299	1,216	4,715	5,931	37,230	111	37,341	34,504	2/
1963	227,800	206	46,910	479	2,358	2,837	49,747	1	49,748	40,296	2/
1964	292,400	212	61,941	1,750	7,702	9,452	71,393	7	71,400	56,893	2/
<u>ORCHARDGRASS SEED</u>											
1959	52,000	192	9,980	611	3,780	4,391	14,371	9,138	23,509	19,638	160
1960	59,000	226	13,320	178	3,693	3,871	17,191	4,965	22,156	18,941	199
1961	58,000	224	13,020	197	3,018	3,215	16,235	7,072	23,307	19,761	182
1962	66,000	240	15,865	334	3,212	3,546	19,411	5,165	24,576	20,442	110
1963	51,000	170	8,680	184	3,950	4,134	12,814	7,467	20,281	17,435	37
1964	68,000	220	14,940	264	2,582	2,846	17,786	5,406	23,192	18,143	2/

See footnotes on page 11.

FIELD SEEDS: Acreage, yield, production, carryover, imports, total supply,  
total disappearance, and exports, United States 1959-64

Crop year	Acres harvested	Yield per acre	Production	Carryover			Production plus carryover	Imports 1/	Total supply	Total Disappearance	Exports 1/
				Farm	Dealer & Gov't.	Total					
		Acres	Pounds	Thousand pounds of clean seed							
<u>REDTOP SEED</u>											
1959	62,000	88	5,485	73	1,337	1,410	6,895	0	6,895	4,708	494
1960	58,000	87	5,020	71	2,132	2,187	7,207	0	7,207	4,196	1,572
1961	45,000	94	4,240	261	2,726	3,011	7,251	0	7,251	4,481	1,615
1962	39,000	85	3,330	131	2,633	2,770	6,100	0	6,100	4,608	1,083
1963	34,000	77	2,630	27	1,465	1,492	4,122	22	4,144	3,278	388
1964	33,000	98	3,240	26	840	866	4,106	0	4,106	2/	2/
<u>SUDANGRASS SEED</u>											
1959	75,500	574	43,338	21,319	11,303	32,622	75,960	0	75,960	61,418	2/
1960	78,500	605	47,526	6,769	7,773	14,542	62,068	0	62,068	51,301	2/
1961	93,200	707	65,869	6,211	4,556	10,767	76,636	0	76,636	67,978	2/
1962	88,100	698	61,495	4,145	4,513	8,658	70,153	6,083	76,236	60,021	2/
1963	83,200	704	58,556	4,758	11,457	16,215	74,771	33	74,804	46,382	2/
1964	47,500	849	40,305	20,352	8,070	28,422	68,727	2	68,729	2/	2/
<u>TIMOTHY SEED</u>											
1959	317,500	148	47,143	1,602	1,708	3,310	50,453	1,149	51,602	37,981	3,448
1960	288,000	160	45,975	3,695	9,926	13,621	59,596	994	60,590	34,143	3,736
1961	164,000	148	24,317	9,243	17,204	26,447	50,754	702	51,466	37,516	3,843
1962	156,500	141	21,998	3,594	10,356	13,950	35,948	1,480	37,428	30,901	4,999
1963	161,000	130	20,998	1,295	5,232	6,527	27,525	1,746	29,271	25,047	3,444
1964	202,500	145	29,313	1,129	3,095	4,224	33,537	409	33,946	27,306	4,816

See footnotes on page 11.

FIELD SEEDS: Acreage, yield, production, carryover, imports, total supply, total disappearance, and exports, United States 1959-64

Crop year	Acres harvested	Yield per acre	Production	Carryover			Production plus carryover	Imports 1/	Total supply	Total disappearance	Exports 1/
				Farm	Dealer & Gov't. July 1	Total					
	<u>Acres</u>	<u>Pounds</u>					<u>Thousand pounds of clean seed</u>				
<u>CRESTED WHEATGRASS SEED</u>											
1959	38,500	73	2,795	1,480	1,708	3,188	5,983	1,535	7,518	5,547	2/
1960	32,200	79	2,547	531	1,440	1,971	4,518	1,239	5,757	2,374	2/
1961	28,300	71	2,015	973	2,410	3,383	5,398	534	5,932	3,143	2/
1962	39,500	84	3,330	740	2,049	2,789	6,119	575	6,694	2,393	2/
1963	25,200	83	2,099	1,546	2,755	4,301	6,400	1,588	7,988	4,508	2/
1964	19,800	78	1,536	1,422	2,058	3,480	5,016	973	5,989	2/	2/
<u>LUPINE SEED</u>											
1959	14,000	673	9,420	384	249	633	10,053	2,982	13,035	10,557	2/
1960	10,600	756	8,015	381	2,097	2,478	10,493	44	10,537	9,800	2/
1961	7,700	845	6,510	450	287	737	7,247	1	7,248	6,422	2/
1962	8,500	663	5,635	465	361	826	6,461	0	6,461	6,266	2/
1963	3,600	514	1,850	56	139	195	2,045	805	2,850	2,745	2/
1964	4,100	739	3,030	15	90	105	3,135	0	3,135	2/	2/
<u>GRIMSON CLOVER SEED</u>											
1959	62,200	192	11,964	512	1,691	2,203	14,167	2,516	16,683	14,370	2/
1960	72,700	226	16,398	165	2,148	2,313	18,711	0	18,711	16,724	2/
1961	58,800	217	12,736	235	1,752	1,987	14,723	331	15,054	12,141	2/
1962	53,500	245	13,105	311	2,402	2,913	16,018	0	16,018	13,503	2/
1963	42,500	250	10,616	425	2,090	2,515	13,131	44	13,175	10,556	2/
1964	43,700	291	12,699	205	2,414	2,619	15,318	0	15,318	11,718	2/

See footnotes on page 11.

FIELD SEEDS: Acreage, yield, production, carryover, imports, total supply, total disappearance, and exports, United States 1959-64

Crop year	Acres harvested	Yield per acre	Production	Carryover			Production plus carryover	Imports 1/	Total supply	Total disappearance	Exports 1/
				Farm	Dealer & Gov't. July 1	Total					
	<u>Acres</u>	<u>Pounds</u>					<u>Thousand pounds of clean seed</u>				
<u>AUSTRIAN WINTER PEAS</u>											
1959	36,500	1,327	48,425	147	1,777	1,924	50,349	0	50,349	46,222	2/
1960	40,100	1,096	43,935	336	3,791	4,127	48,062	0	48,062	45,997	2/
1961	51,000	1,338	68,250	145	1,920	2,065	70,315	0	70,315	67,770	2/
1962	45,000	1,360	61,200	934	1,611	2,545	63,745	0	63,745	62,138	2/
1963	37,500	1,719	64,470	121	1,486	1,607	66,077	0	66,077	62,872	2/
1964	54,000	1,652	89,200	86	3,119	3,205	92,405	0	92,405	2/	2/
<u>ALL RYEGRASS SEED</u>											
1959	170,000	1,068	181,480	2,767	20,334	23,101	204,581	1,223	205,804	135,766	2/
1960	163,000	920	149,960	24,137	45,901	70,038	219,998	108	220,106	163,462	2/
1961	142,000	960	136,320	17,245	39,399	56,644	192,964	45	193,009	141,792	2/
1962	152,000	1,190	180,880	9,542	41,675	51,217	232,097	66	232,163	185,616	2/
1963	145,000	1,005	145,725	5,607	40,940	46,547	192,272	91	192,363	142,684	2/
1964	151,000	1,190	179,690	7,286	42,393	49,679	229,369	211	229,580	176,556	2/
<u>COMMON VETCH</u>											
1959	9,000	487	4,380	54	1,282	1,336	5,716	0	5,716	4,773	2/
1960	10,000	562	5,620	82	861	943	6,563	1	6,564	5,910	2/
1961	9,500	551	5,230	54	600	654	5,884	0	5,884	5,578	2/
1962	8,600	550	4,730	25	281	306	5,036	3/	5,036	4,558	2/
1963	9,000	672	6,050	47	431	478	6,528	143	6,671	4,368	2/
1964	8,800	736	6,477	182	2,121	2,303	8,780	0	8,780	2/	2/

See footnotes on page 11.

FIELD SEEDS: Acreage, yield, production, carryover, imports, total supply, total disappearance, and exports, United States 1959-64

Crop year	Acres harvested	Yield per acre	Production	Carryover			Production plus carryover	Imports <sup>1/</sup>	Total supply	Total disappearance	Exports <sup>1/</sup>
				Farm	Dealer & Gov't.	Total					
		Acres	Pounds	Thousand pounds of clean seed							
<u>HAIRY VETCH SEED</u>											
1959	125,000	194	24,280	1,083	4,416	5,499	29,779	0	29,779	25,274	<u>2/</u>
1960	128,000	221	28,260	1,148	3,357	4,505	32,765	26	32,791	26,628	<u>2/</u>
1961	98,500	187	18,460	1,323	4,840	6,163	24,623	27	24,650	22,361	<u>2/</u>
1962	97,000	230	22,300	1,217	1,072	2,289	24,589	902	25,491	21,249	<u>2/</u>
1963	110,000	280	30,835	843	3,399	4,242	35,077	13	35,090	30,960	<u>2/</u>
1964	120,500	226	27,212	1,063	3,067	4,130	31,342	0	31,342	28,996	<u>2/</u>
<u>PURPLE VETCH</u>											
1959	45,000	180	8,100	660	605	1,265	9,365	0	9,365	8,261	<u>2/</u>
1960	26,000	150	3,900	648	456	1,104	5,004	0	5,004	4,074	<u>2/</u>
1961	34,000	305	10,370	312	618	930	11,300	0	11,300	10,340	<u>2/</u>
1962	30,000	255	7,650	518	442	960	8,610	0	8,610	5,608	<u>2/</u>
1963	16,500	350	5,775	994	2,008	3,002	8,777	0	8,777	7,175	<u>2/</u>
1964	13,000	265	3,445	346	1,256	1,602	5,047	0	5,047	<u>2/</u>	<u>2/</u>

<sup>1/</sup> Beginning July 1 of year of crop harvest.

<sup>2/</sup> Data not available.

<sup>3/</sup> Less than 500 pounds.

<sup>4/</sup> Estimates beginning with 1963 include all varieties -- common and "improved" -- other than Merion -- in all areas. Estimates For years prior to 1963 cover only common or naturally grown Kentucky bluegrass seed in the North Central and Kentucky Districts.

UNITED STATES DEPARTMENT OF AGRICULTURE  
STATISTICAL REPORTING SERVICE  
WASHINGTON, D. C. 20250

POSTAGE AND FEES PAID  
U.S. DEPARTMENT OF AGRICULTURE

OFFICIAL BUSINESS

SeHy 1-2(67)

**END**