



AgEcon SEARCH
RESEARCH IN AGRICULTURAL & APPLIED ECONOMICS

The World's Largest Open Access Agricultural & Applied Economics Digital Library

This document is discoverable and free to researchers across the globe due to the work of AgEcon Search.

Help ensure our sustainability.

Give to AgEcon Search

AgEcon Search

<http://ageconsearch.umn.edu>

aesearch@umn.edu

*Papers downloaded from **AgEcon Search** may be used for non-commercial purposes and personal study only. No other use, including posting to another Internet site, is permitted without permission from the copyright owner (not AgEcon Search), or as allowed under the provisions of Fair Use, U.S. Copyright Act, Title 17 U.S.C.*

SB 379 (1966)

USDA STATISTICAL BULLETINS

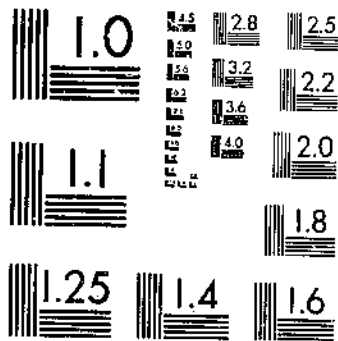
UPDATA

FEEB CONSUMED BY VARIOUS CLASSES OF LIVESTOCK, BY STATES, 1949-50 AND

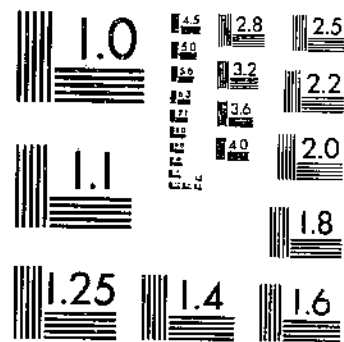
ALLEN, G. C. HODGES, E. F.

1 OF 1

START



MICROCOPY RESOLUTION TEST CHART
NATIONAL BUREAU OF STANDARDS-1963-A



MICROCOPY RESOLUTION TEST CHART
NATIONAL BUREAU OF STANDARDS-1963-A

REFERENCE
DO NOT LOAN

Los Angeles Public Library

FOOD

CONSUMED BY VARIOUS CLASSES OF LIVESTOCK, BY STATES, 1949-50 and 1959-60

with 1964-65 National Estimates and Comparisons

U.S. DEPARTMENT OF AGRICULTURE
ECONOMIC RESEARCH SERVICE

CONTENTS

	<u>Page</u>
HIGHLIGHTS-----	iv
INTRODUCTION-----	1
FEEDS CONSUMED BY DIFFERENT KINDS OF LIVESTOCK-----	2
Milk Cows-----	2
Other Dairy Cattle-----	4
Cattle on Feed-----	4
Other Beef Cattle-----	5
Stock Sheep-----	5
Sheep on Feed-----	5
Hogs-----	6
Horses and Mules-----	6
Laying Hens and Replacements-----	6
Broilers-----	7
Turkeys-----	7
ALL FEED GRAINS FED-----	7
CONCENTRATES FED TO MILK COWS-----	9
EGG PRODUCTION BY STATES-----	9
MARKET WEIGHTS FOR SLAUGHTER HOGS-----	9
HAY PRODUCTION FOR 1959-----	13
ALL FEEDSTUFFS CONSUMED BY LIVESTOCK-----	13

HIGHLIGHTS

Consumption of harvested feedstuffs increased 35 percent between the feeding years 1949-50 and 1959-60. This increase continued during the next 5 years, but at only half the rate of the earlier period. Between 1949-50 and 1959-60, silage consumption increased 82 percent; hay, 27 percent; other harvested roughages, 72 percent; and concentrates, 21 percent.

Actual tonnage of harvested feedstuffs (concentrates and roughages, excluding all pasture) consumed in 1959-60 was up 96 million tons from 1949-50--from 272 million to 367 million tons. Preliminary estimates for 1964-65 show an increase of 28 million tons over 1959-60.

Consumption of all concentrates (feed grains, high protein, and other concentrates) has continued to increase from 1949-50 levels for milk cows and cattle and calves on feed.

With over 30 percent of all concentrates fed, hogs were the largest consumers of concentrates in each of the 3 feeding years compared.

Dairy cattle consumed nearly 20 percent of all concentrates fed during each of the 3 feeding years, although numbers of milk cows declined 25 percent during the 15-year period, 1949-50 to 1964-65.

The number of beef cattle on hand January 1 increased 73 percent from 1949-50 to 1959-60. This trend has continued into the sixties, with an increase of 22 percent from 1959-60 to 1964-65. Although, during the 15-year period, the number of beef cattle nearly doubled, the rate of consumption of all harvested feedstuffs by beef cattle increased only 30 percent.

Concentrates fed to cattle and calves on feed in 1959-60 were more than double the amount fed 10 years earlier. Numbers of cattle fed for slaughter also doubled during these years and concentrates fed per head increased 12 percent over 1949-50 levels. There was a large increase in silage fed per head.

Concentrates fed to poultry showed a 5-percent decline in 1959-60 from 1949-50 levels. However, preliminary estimates for 1964-65 show an upward trend exceeding 1949-50 levels.

FEED CONSUMED BY VARIOUS CLASSES OF LIVESTOCK, BY STATES, 1949-50 AND
1959-60, WITH 1964-65 NATIONAL ESTIMATES AND COMPARISONS

By

George C. Allen and Earl F. Hodges, Agricultural Economists
and Margaret Devers, Statistical Assistant,
Farm Production Economics Division

INTRODUCTION

In this country, a wide variety of feeds are converted into livestock and livestock products. Feeds for livestock include corn and other grains which can be, and often are, used directly as human foods. In addition, they include grass and other roughages. Only about 40 percent of the feed consumed by livestock is edible for humans. Much of this is not essential for livestock production, but is used to make meat produced on roughages more palatable.

Although much of the grain is fed on farms where it is produced, about 60 percent of all concentrates fed moves through commercial market channels. In some areas of the country, particularly the Northeast, Southeast, and California, most of the concentrates are imported from surplus feed-producing areas, such as the Corn Belt. Thus, the feeding of the country's livestock involves a complex system of grain and feed dealers, feed manufacturers, byproduct feed producers, grain merchants, equipment manufacturers and dealers, railroads, trucking interests, and water transportation lines as well as the feedlots, farms, and ranches where the livestock are actually produced. Because of this complex system, information on use of feed is important to a large segment of agricultural and industrial interests.

This report shows the overall amount of concentrates, feed grains, hay, silage, and other harvested forage consumed by the various classes of livestock during the feeding years beginning October 1, 1949 and October 1, 1959. The 1959-60 feeding year is the most recent for which the revised published figures for livestock numbers and feed production and disappearance are available. The feeding rates given for 1959-60 are those for the base period 1959-60 to 1960-61. Feeding rates for the 1949-50 period were previously published in 1954.^{1/} They are repeated here to afford information on trends.

The data in this report are shown in tons, or in hundreds of pounds. No attempt was made to show relative feed values in terms of feed units. No estimates of feed from pasture are included.

^{1/} Jennings, R. D. Feed Consumed by Livestock and Supply and Disposition of Feeds, by States, 1949-50. U.S. Dept. Agr. Statis. Bul. 145, June 1954.

Personnel of agricultural experiment stations in 39 States were consulted to obtain data or estimates on 1959-60 feeding rates at the farm level for the various classes of livestock within the respective States. The feeding rates contained in this publication were estimated largely on the basis of this information. The possibility of error in the estimates within the various State tables is of course conceded. The first estimates when totaled for 48 States came within 1 percent of the total estimated disappearance of concentrates in 1959-60.^{2/} The estimates were then adjusted proportionally to this total.

FEEDS CONSUMED BY DIFFERENT KINDS OF LIVESTOCK

Total amount of feedstuffs fed to livestock, including poultry, was slightly more than a third greater in 1959-60 than in 1949-50.

Feedstuffs other than pasture consumed by major classes of livestock for the 2 years and for 1964-65 are compared in table 1. Table 2 lists, by class of livestock, the percentage share of harvested feedstuffs fed in the 3 feeding years.

About 30 percent of all concentrates fed in 1959-60 and 1964-65 were consumed by hogs. In 1949-50, with about the same number of hogs fed, nearly 40 percent of the concentrates went to hogs. Consumption of concentrates by poultry accounted for 22 percent of the total in 1964-65 and 1959-60, and 26 percent in 1949-50. Dairy cattle consumed nearly 20 percent of all concentrates each year. The share of all concentrates consumed by beef cattle increased from 9 percent in 1949-50 to over 20 percent in 1964-65. Concentrates fed to sheep and horses and mules made up an insignificant share of total concentrates fed in all 3 years.

A comparison of the different kinds of harvested feedstuffs in actual tons consumed by type and class of livestock for the feeding years 1949-50 and 1959-60 is shown in table 3. Concentrates fed per head and by units of production for the same 2 years are listed in table 4. Concentrates fed per units of production reflect the added emphasis of concentrates and the relative declining importance of roughages in production of livestock and livestock products during this 10-year period.

Milk Cows

On January 1, 1960, there were 19.5 million milk cows reported on farms, compared with 23.9 million on January 1, 1950. During the feeding year 1959-60, milk cows consumed 127.9 million tons of harvested feedstuffs compared with 99.8 million tons consumed during 1949-50. Concentrates fed per milk cow averaged 2,495 pounds during 1959-60, nearly 1,000 pounds more than in 1949-50 (table 5). Other harvested feedstuffs showed an increase from 1949-50 levels of nearly 2 tons per cow. These increased feeding rates reflect the increased use of larger breeds of milk cows and the economic need to maximize milk production per cow. Also, they indicate that dairymen have reduced their reliance on pasture feeding.

^{2/} Supplement for 1964 to Grain and Feed Statistics, U.S. Dept. Agr. Statist. Bul. 159, Mar. 1965.

Table 1.--Comparison of major categories of harvested feedstuffs fed to farm animals, feed years 1949-50, 1959-60, and 1964-65

Feedstuff	1949-50	1959-60	Percentage change, 1949-50 to 1959-60	1964-65 ^{1/}	Percentage change, 1959-60 to 1964-65
	Million tons	Million tons	Percent	Million tons	Percent
Concentrates-----	120.8	146.6	21	155.2	6
Hay-----	94.4	119.4	26	116.2	-3
Silage-----	45.2	82.3	82	102.2	24
Other harvested roughages-----	11.1	19.1	72	22.4	17
Total-----	271.5	367.4	35	396.0	8

^{1/} Preliminary estimates.

Table 2.--Percentages of concentrates fed to different kinds of livestock for 1949-50, 1959-60, and 1964-65

Class of livestock	1949-50	1959-60	1964-65 ^{1/}
	Percent	Percent	Percent
Dairy cattle-----	18	19	18
Beef cattle-----	9	16	21
Hogs-----	39	30	31
Sheep-----	1	1	1
Hens and pullets-----	14	12	9
Chickens raised-----	7	3	3
Broilers-----	3	5	7
Turkeys-----	2	2	3
Horses and mules-----	4	1	1
Other livestock-----	3	4	6
Unallocated-----	0	7	0
Total-----	100	100	100

^{1/} Preliminary estimates.

Average milk production per cow on farms January 1 was 4,892 pounds in 1949-50 compared with 6,269 pounds in 1959-60. For each pound of milk produced in 1949-50, 1.7 pounds of harvested feedstuffs were fed. This compares with an average of 2.1 pounds fed per pound of milk in 1959-60. Average amounts of concentrates fed per hundredweight of milk produced increased from 32 pounds in 1949-50 to 40 pounds in 1959-60.

Among the various States, the average rate of feeding concentrates to milk cows in 1959-60 varied from 1,444 pounds per head in Alabama to 3,286 pounds in New Jersey and 5,014 pounds in Florida (where citrus pulp is included in the concentrate ration) (table 5).

Other Dairy Cattle

"Other dairy cattle," which include 1- to 2-year-old heifers, heifer calves, and bulls, totaled 11.1 million head on January 1, 1960. This was 1.5 million less than the number reported on farms for January 1, 1950 (table 6).

Harvested feedstuffs fed to other dairy cattle totaled 28.8 million tons during 1959-60, up nearly 10.5 million tons from 1949-50. Average consumption of all harvested feeds increased from about 1.5 tons per head in 1949-50 to about 2.6 tons per head in 1959-60. Average consumption of feed concentrates increased about 170 pounds during the 10-year period. In 1959-60, consumption of concentrates varied from about 200 pounds in California to over 500 pounds in most of the Northern Plains and the Corn Belt, and to well over 800 pounds in parts of the Lake States, the Northeast, and the Southeast.

Cattle on Feed

Cattle and calves on feed for the slaughter market consumed 18.3 million tons of concentrates--including 15.5 million tons of feed grains--during the 1959-60 feeding year (table 7). Hay consumption totaled 9.7 million tons, silage 8.8 million tons, and other harvested roughage--such as straw and corn stover--175,000 tons. This compares with 1949-50 totals of 7.6 million tons of concentrates, nearly 5 million tons of hay, 3 million tons of silage, and 135,000 tons of other harvested roughage. Total quantity of feeds fed to cattle and calves on feed increased about 134 percent while the total number fed increased 116 percent. Total concentrates fed, including feed grains, increased about 142 percent. Hay and silage consumption increased 128 percent, with silage making up the largest share of the increase. Consumption of other harvested roughages was relatively unchanged.

Twelve percent more concentrates were fed per head in 1959-60 than in 1949-50. Several factors helped to account for this modest increase: wide usage of diethylstilbestrol, a hormone growth stimulant; heavier average marketing weights for slaughter cattle; and improved feeding practices with reduced death losses. During 1959-60, an average of 2,624 pounds of concentrates was fed, ranging from 1,756 pounds per head in California to more than 3,700 pounds in Michigan

and Minnesota. The average amount of concentrates fed in 1949-50 was 2,339 pounds per head. Most variations in amounts fed per head from one area to another are caused by the different feeding systems employed and the amount of gain sought.

Other Beef Cattle

"Other beef cattle" on farms January 1, 1960, that is, excluding cattle and calves on feed, totaled 58.1 million head. This compares with 35.1 million head on farms on January 1, 1950 (table 8). The average feeding rate of concentrates was estimated at 195 pounds per head in 1959-60, 10 pounds more than in 1949-50. Consumption of all harvested feedstuffs by other beef cattle averaged 2,336 pounds per head in 1959-60 compared with 1,938 pounds in 1949-50. Average feeding rates by States ranged from 32 pounds of concentrates per head in Idaho to nearly 600 pounds in Wisconsin. Since beef cattle in this category, like stock sheep, receive the major share of their nutrient requirements from pasture, yearly consumption of harvested feeds varies with pasture supply which in turn depends upon the weather. The importance of pasture is reflected in the proportion of grains fed to total concentrates fed. Forty percent of all concentrates fed to other beef cattle consisted of high protein and mineral supplements in 1959-60.

Stock Sheep

There were 28.8 million stock sheep on farms on January 1, 1960, compared with 26.2 million head 10 years earlier (table 9). Consumption of all harvested feeds in 1959-60 was about 4.1 million tons compared with 3.7 million tons in 1949-50. Feeding rates of all harvested feeds averaged about 282 pounds per head in 1959-60 compared with 280 pounds in 1949-50. Concentrate feeding rates averaged 66 pounds per head in 1959-60, compared with 24 pounds in 1949-50. In the various States the 1959-60 average feeding rate ranged from a low of 19 pounds per head in Oregon to a high of 175 pounds in Wisconsin. During 1949-50, the feeding rates of concentrates averaged 12 and 62 pounds, respectively, for these two States. Although harvested feedstuffs and concentrates fed increased during this 10-year period, stock sheep still received the major share of their nutrient requirements from pasture. Weather and pasture conditions determine, in large measure, the feeding rates of harvested feedstuffs.

Sheep on Feed

On January 1, 1960, 4.3 million head of sheep and lambs were on feed for the slaughter market, compared with 3.6 million head on January 1, 1950. These sheep were fed 298,000 tons of concentrates in 1959-60 compared with 260,000 tons in 1949-50 (table 10). Feeding rates for concentrates during 1959-60 varied from 87 pounds in New York to 171 pounds in Idaho. In 1949-50, feeding rates ranged from 100 pounds in New York to a high of 200 pounds in Arizona, with Idaho estimated at 133 pounds. The U.S. average showed little change during the 10 years.

Data on feed fed to all sheep are summarized in table 11. During 1959-60, 1.7 million tons of hay, 610,000 tons of silage, and 1.7 million tons of other roughage were fed to sheep. This compares with 2.8 million tons of hay, 554,000 tons of silage, and 885,000 tons of other harvested roughage fed during 1949-50. With each 100 pounds liveweight

of sheep and lambs produced, about 18 pounds of wool were produced. Generally, about a third of the feed consumed by sheep and lambs is used for wool production.

Hogs

During the 1959-60 feeding year 93.4 million hogs were fed, compared with 93.7 million during 1949-50. Average amount of concentrates fed per head was 956 pounds in 1959-60. This was nearly 40 pounds less than the average in 1949-50. During 1959-60, 442 pounds of concentrates were fed for each 100 pounds of hogs produced, which was 27 pounds or 6 percent less than the amount fed during 1949-50 (table 12). Average 1959-60 feeding rates within the States varied from 340 pounds in Massachusetts to 1,233 pounds in Montana. The various State feeding rates 10 years earlier ranged from 360 pounds in Florida to 1,150 pounds in Nebraska.

In some of the States, a low feeding rate per head reflected the large number of garbage-fed hogs. Since 1960, many States have adopted stringent regulations concerning this practice which reduced garbage-fed-hog production--relatively few hogs are now garbage fed.

In the five Corn Belt States, which have more than half of the total U.S. hog production, about 420 pounds of concentrates were fed for each 100 pounds produced during 1959-60. In these same States during 1949-50 about 470 pounds of concentrates for each 100 pounds of production were fed.

Horses and Mules

On January 1, 1960, 2.9 million horses and mules and 206,000 colts were on farms.^{3/} This compares with 7.4 million horses and mules and 366,000 colts for the same date 10 years earlier (table 13). During 1959-60, 1.5 million tons of concentrates were consumed by horses and mules (excluding colts), compared with 5.3 million tons in 1949-50. Consumption of hay and other harvested roughage declined from 9.9 million tons in 1949-50 to 6.1 million tons in 1959-60. Concentrates fed per head also declined, from 1,443 pounds to 1,050 pounds. The feeding rates for concentrates in the various States in 1949-50 ranged from 3,384 pounds in South Carolina to a low of 167 pounds in Nevada. The average quantity of concentrates fed per head in 1959-60 varied from 220 pounds in California to over 1,800 pounds in Arizona, with most States averaging about 1,000 pounds.

Laying Hens and Replacements

On January 1, 1960, there were 351.8 million hens and pullets on farms; these consumed 15.9 million tons of concentrates during the 1959-60 feeding year, an average of slightly less than 90 pounds per head (table 14). This compared with an average of 85 pounds per head fed to laying hens 10 years earlier. While the consumption by laying hens increased,

^{3/} This number excludes horses and mules kept "off farms." For the purpose of this study, horses which are kept mainly for pleasure purposes--riding, racing, and so on--are included in "other livestock."

average consumption of concentrates by chickens raised for replacements declined from 27 to 23 pounds (table 15). Total consumption of concentrates by layer replacements totaled 3.8 million tons in 1959-60. Much of the increase in consumption of feed by hens and pullets between 1949-50 and 1959-60 can be attributed to total confinement and to cage layers, while the reduced consumption by chickens raised is due to the increased use of early-maturing breeds in commercial laying flocks.

Broilers

During the feeding year 1959-60, 1,795 million broilers were fed 7.5 million tons of concentrates, an average of 8.3 pounds per broiler (table 16). Ten years earlier, 1949-50, 631 million broilers were raised on a total feed concentrate consumption of 3.2 million tons or an average feed consumption of 10.3 pounds per broiler. Average live-weight of broilers has tended to increase in recent years without a corresponding increase in average feed consumption. Increased production efficiencies in the form of improved flock management and the use of various feed additives have reduced mortality and flock grow-out time.

Turkeys

Turkey production was nearly twice as large in 1959-60 as in 1949-50 (table 17). Turkey production, particularly with turkeys grown under feed financing programs making up a major share of total production, has had wide yearly changes largely determined by the previous season's profits.

In 1949-50, turkey feed concentrate consumption totaled 2.1 million tons or 95 pounds per bird. Feed concentrate consumption in 1959-60 totaled 3.3 million tons or 77 pounds per bird. Much of the reduction in feed concentrates per bird is attributable to improved breeds and better feeding programs. Also, feed additives have reduced death losses and increased feed conversion efficiencies. In 1949-50, the average liveweight of turkeys was 18.4 pounds; by 1959-60 the average had declined 0.8 of a pound, to 17.6 pounds.

ALL FEED GRAINS FED

Figure 1 shows the amount of feed grains fed, by States, in 1959-60. Comparing totals for 1949-50 and 1959-60 is not possible since grain totals were not listed separately for the feeding year 1949-50. During 1959-60, Iowa, Illinois, and Minnesota fed nearly 30 percent of all feed grains fed in the United States. The amount of feed grains fed on farms where produced is shown in figure 2. Of the total feed grains fed during 1959-60, 67 percent were fed on the grain-producing farms. The following lists the various grains fed on farms where produced:

<u>Grain</u>	<u>1,000 tons</u>	<u>Percent of total</u>
Corn	60,042	74.5
Sorghum	3,990	5.0
Oats	12,354	15.3
Barley	3,216	4.0
Wheat and rye	<u>1,001</u>	<u>1.2</u>
Total	80,603	100.0

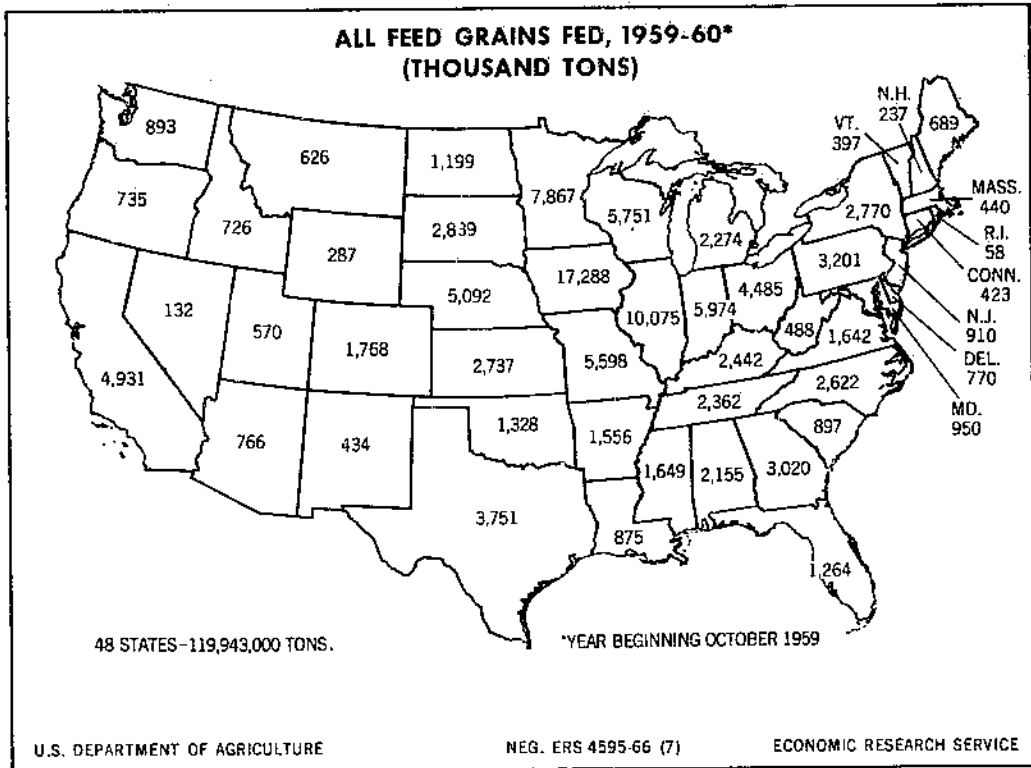


Figure 1

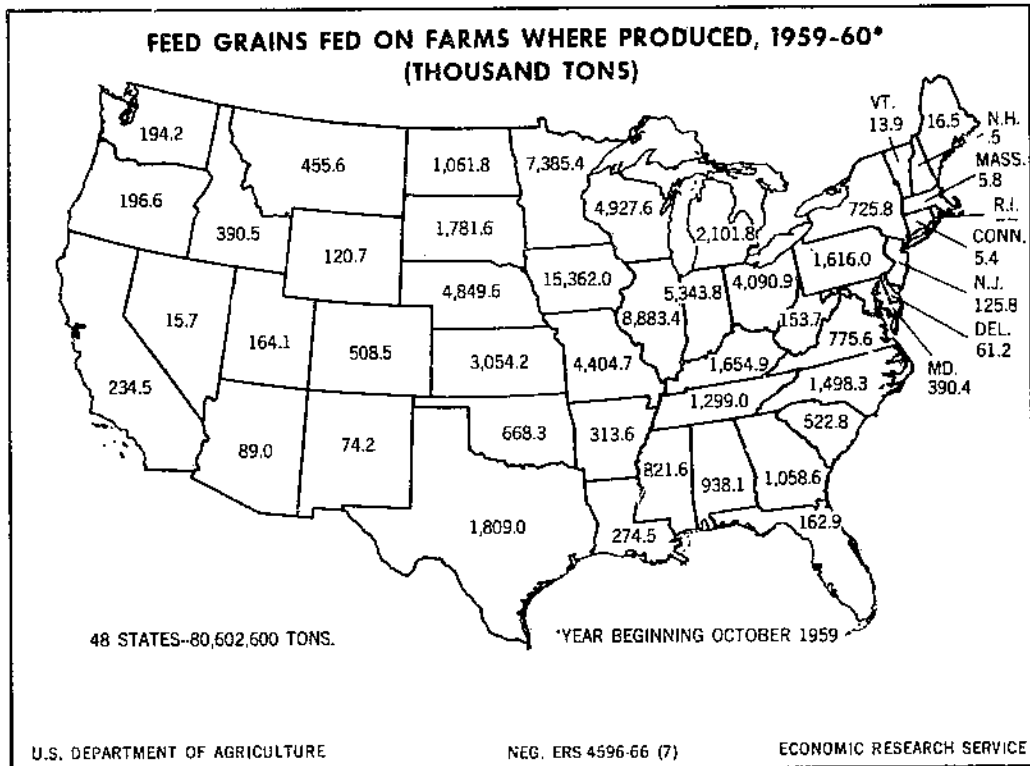


Figure 2

In addition to feed grains used in livestock production, nearly 2.6 million tons of barley, oats, sorghum grains, and corn were used for seed in the feeding year 1959-60 (fig. 3). A considerable share of barley and most of the wheat harvested, as well as some corn and oats are not marketed through livestock.

Figure 4 lists wheat and rye fed on the producing farms in 1958-59. A relatively small amount was fed in the three leading feed grain States of Iowa, Illinois, and Minnesota.

CONCENTRATES FED TO MILK COWS

For several years, the Dairy Herd Improvement Association has compiled feeding rates for dairy cows and individual herds on test. During 1958-59, averages for 41 States were compiled. Data on average amounts of concentrates fed to DHIA cows are shown in figure 5. Data on amounts of concentrates fed in calendar year 1960 to milk cows on farms where milk or cream was sold are shown in figure 6. A comparison of State DHIA concentrate feeding rates with the data in figure 6 shows that the DHIA rate was nearly 900 pounds per cow higher. Figure 6 also lists each State's average concentrate feeding rates as a percentage of the national average.

Average milk production per cow, by States, is shown in figure 7. The relationship of the average production in each State to the national average is also given. Average milk production per cow is highest in California, followed by Arizona and New Jersey.

EGG PRODUCTION BY STATES

Figure 8 gives the average laying hen production for each State during the feeding year 1959-60. Rate of lay for the entire 48 States averaged 208 eggs per layer. Twenty-two States exceeded the average rate of lay, while 24 States were below the Nation's average. Two States, Illinois and Georgia, had State averages equal to the overall average. Geographically, the various State production averages reflect the type of laying flock operations most prevalent in each particular State. They also reflect, but to a lesser extent, the marketing channels used by commercial egg producers.

MARKET WEIGHTS FOR SLAUGHTER HOGS

Figure 9 shows the average weight of hogs marketed, including sows and boars, by States, for the calendar year 1960. The average weight for all States was 233 pounds per head. For 34 of the States, the averages were below the national average. In the other States, including most of the major hog-producing States, the averages were well above the national average.

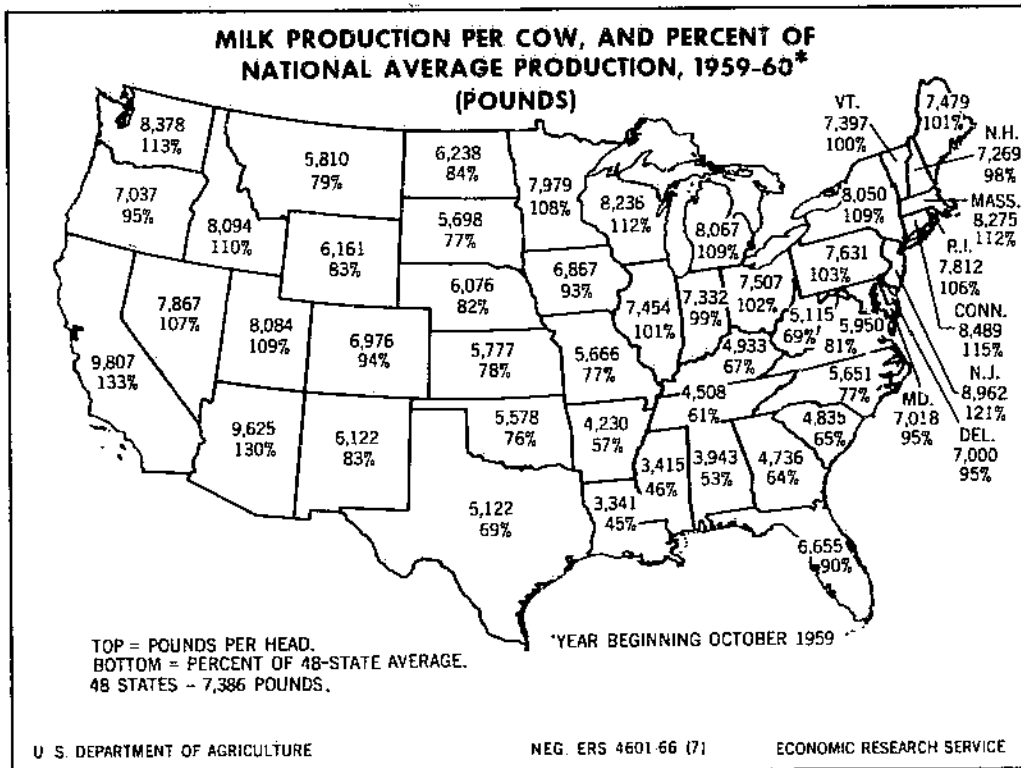


Figure 7

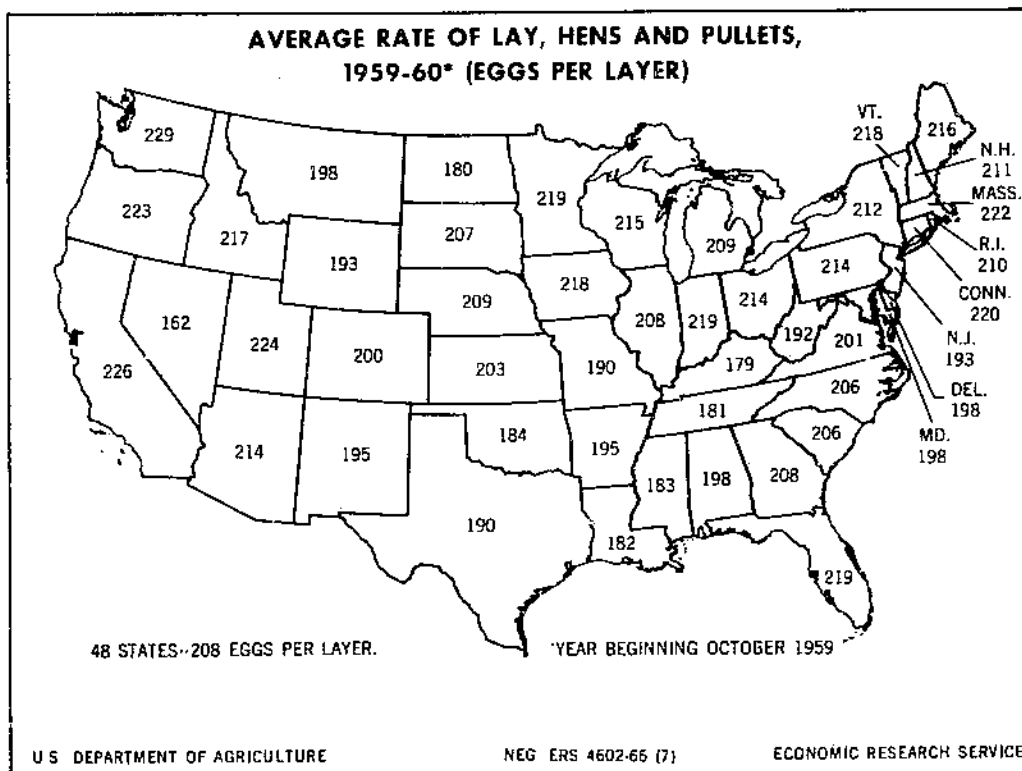


Figure 8

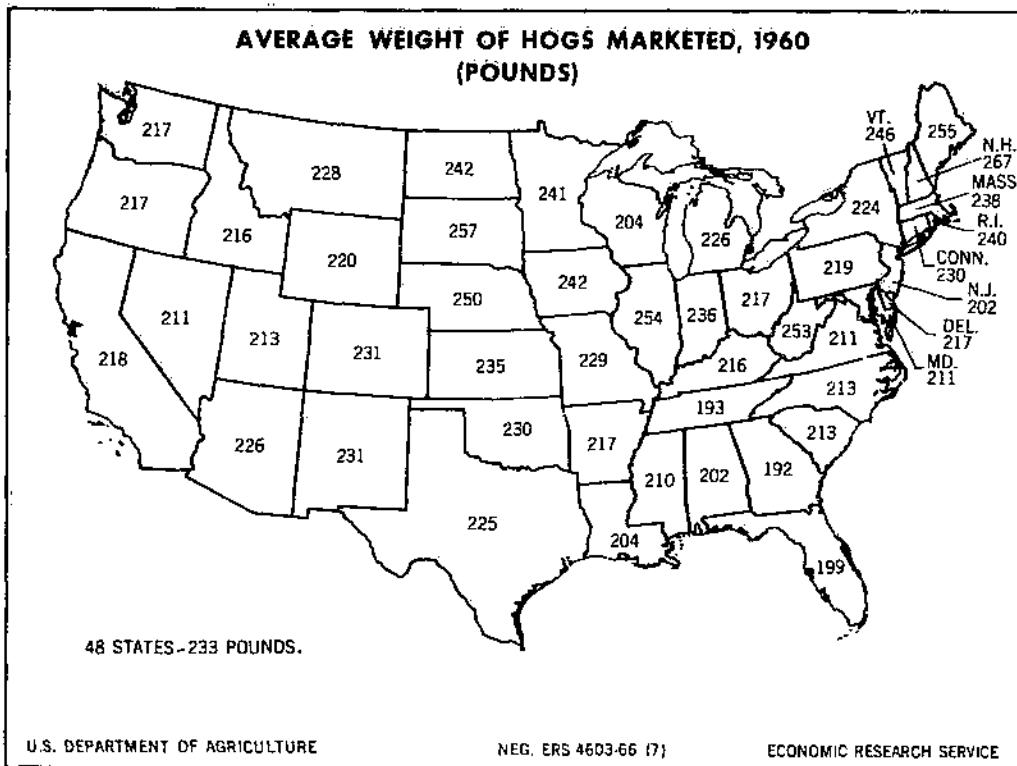


Figure 9

HAY PRODUCTION FOR 1959

Hay continues to be our most important harvested roughage. In 1959, 113.7 million tons of hay were harvested. Figure 10 lists hay production by individual States in calendar year 1959. Wisconsin, Iowa, and California were the leading hay producers during that year. Since hay production fluctuates with weather conditions, considerable changes in production in individual States often occur.

ALL FEEDSTUFFS CONSUMED BY LIVESTOCK

All concentrates, silage, hay, and other harvested roughages fed to different classes of livestock are shown in tables 18 through 21. Table 22 shows feedstuffs fed to "other livestock"--miscellaneous livestock on farms and all livestock not on farms.

Table 3.--Feeds fed to different classes of livestock, 48 States, 1949-50 and 1959-60

Type of livestock	Year beginning October 1, 1949 ^{1/}						Other harvested roughage fed ^{4/}
	Number of livestock	Feed grains fed ^{2/}	Concentrates fed	Hay fed	Silage fed ^{3/}		
	1,000 head	1,000 tons	1,000 tons	1,000 tons	1,000 tons	1,000 tons	
Milk cows ^{5/} -----	23,853	---	18,577	45,794	32,500	2,921	
Other dairy cattle ^{5/} -----	12,572	---	2,879	10,527	4,291	655	
Cattle on feed (during year) ^{6/} -----	6,467	---	7,563	4,958	3,125	135	
Other beef cattle ^{5/} -----	35,071	---	3,241	21,161	4,766	4,809	
Sheep on feed ^{5/} -----	3,644	---	260	328	554	---	
Stock sheep ^{7/} -----	26,182	---	314	2,465	---	885	
Hens and pullets ^{5/} -----	423,773	---	18,068	---	---	---	
Chickens raised ^{7/} -----	635,130	---	8,523	---	---	---	
Broilers ^{7/} -----	630,816	---	5,242	---	---	---	
Turkeys ^{7/} -----	43,792	---	2,088	---	---	---	
Hogs ^{6/} -----	93,741	---	46,632	---	---	---	
Horses and mules ^{8/} -----	8,905	---	5,349	8,209	---	1,685	
Other livestock-----	---	---	4,044	944	---	---	
Unallocated feed-----	---	---	---	---	---	---	
All livestock-----	---	---	120,780	94,386	45,236	11,090	

Type of livestock	Year beginning October 1, 1959						
	Number of livestock	Feed grains fed ^{2/}	Other concentrates fed	All concentrates fed	Hay fed	Silage fed ^{3/}	Other harvested roughage fed ^{4/}
	1,000 head	1,000 tons	1,000 tons	1,000 tons	1,000 tons	1,000 tons	1,000 tons
Milk cows ^{5/} -----	19,527	18,391	5,969	24,360	48,817	52,722	1,953
Other dairy cattle ^{5/} -----	11,073	2,425	1,054	3,479	15,174	6,395	750
Cattle on feed (during year) ^{6/} -----	13,940	15,473	2,814	18,287	9,700	8,758	175
Other beef cattle ^{5/} -----	58,101	3,395	2,274	5,669	36,794	13,811	11,595
Sheep on feed ^{5/} -----	4,321	260	38	298	300	610	---
Stock sheep ^{7/} -----	28,849	695	256	951	1,442	---	1,672
Hens and pullets ^{5/} -----	351,766	11,041	4,812	15,853	---	---	---
Chickens raised ^{7/} -----	331,754	3,046	752	3,798	---	---	---
Broilers ^{7/} -----	1,794,966	4,462	3,022	7,484	---	---	---
Turkeys ^{7/} -----	84,724	2,313	956	3,269	---	---	---
Hogs ^{6/} -----	93,394	41,073	3,576	44,649	---	---	---
Horses and mules ^{8/} -----	2,883	1,396	118	1,514	3,200	---	2,940
Other livestock-----	---	5,168	1,063	6,231	991	---	---
Unallocated feed-----	---	10,805	---	10,805	---	---	---
All livestock-----	---	119,943	26,704	146,647	119,418	82,296	19,085

^{1/} Jennings, R. D. Feed Consumed by Livestock and Supply and Disposition of Feeds, by States, 1949-50. U.S. Dept. Agr. Statist. Bul. 145, June 1954.

^{2/} Includes corn, oats, barley, grain sorghums, and wheat and rye used for feed. This information not given for 1949-50.

^{3/} Includes corn silage, sorghum silage, and wet beet pulp.

^{4/} Includes corn stover, sorghum forage, and straw.

^{5/} On farms January 1.

^{6/} Fed during year.

^{7/} Produced during calendar years 1950 and 1960.

^{8/} 2 years old and over.

Table 4.--Average livestock feeding rates, all concentrates, 48 States, 1949-50 and 1959-60

Type of livestock	Year beginning October 1, 1949 ^{1/}				
	Concentrates fed				
	Per head	Per 100 pounds produced	Per dozen eggs produced	Per 100 eggs produced	Per 1,000 pounds of milk produced
	Pounds	Pounds	Pounds	Pounds	Pounds
Milk cows-----	1,558	31.8	---	---	318
Other dairy cattle-----	458	---	---	---	---
Cattle on feed (during year)-----	2,339	---	---	---	---
Other beef cattle-----	185	---	---	---	---
Sheep on feed-----	143	---	---	---	---
Stock sheep-----	24	---	---	---	---
All sheep-----	39	---	---	---	---
Hens and pullets-----	85	---	7.4	62	---
Chickens raised-----	27	597	---	---	---
Broilers-----	10.3	335	---	---	---
Turkeys-----	95	517	---	---	---
Hogs-----	995	---	---	---	---
Horses and mules ^{2/} -----	1,443	---	---	---	---
Year beginning October 1, 1959					
Milk cows-----	2,495	39.8	---	---	398
Other dairy cattle-----	628	---	---	---	---
Cattle on feed (during year)-----	2,624	561	---	---	---
Other beef cattle-----	195	---	---	---	---
Sheep on feed-----	138	---	---	---	---
Stock sheep-----	66	---	---	---	---
All sheep-----	75	150	---	---	---
Hens and pullets-----	90	---	6.1	51	---
Chickens raised-----	23	450	---	---	---
Broilers-----	8.3	249	---	---	---
Turkeys-----	77	438	---	---	---
Hogs-----	956	442	---	---	---
Horses and mules ^{2/} -----	1,050	---	---	---	---

^{1/} Jennings. See footnote 1, table 1.
^{2/} 2 years old and over.

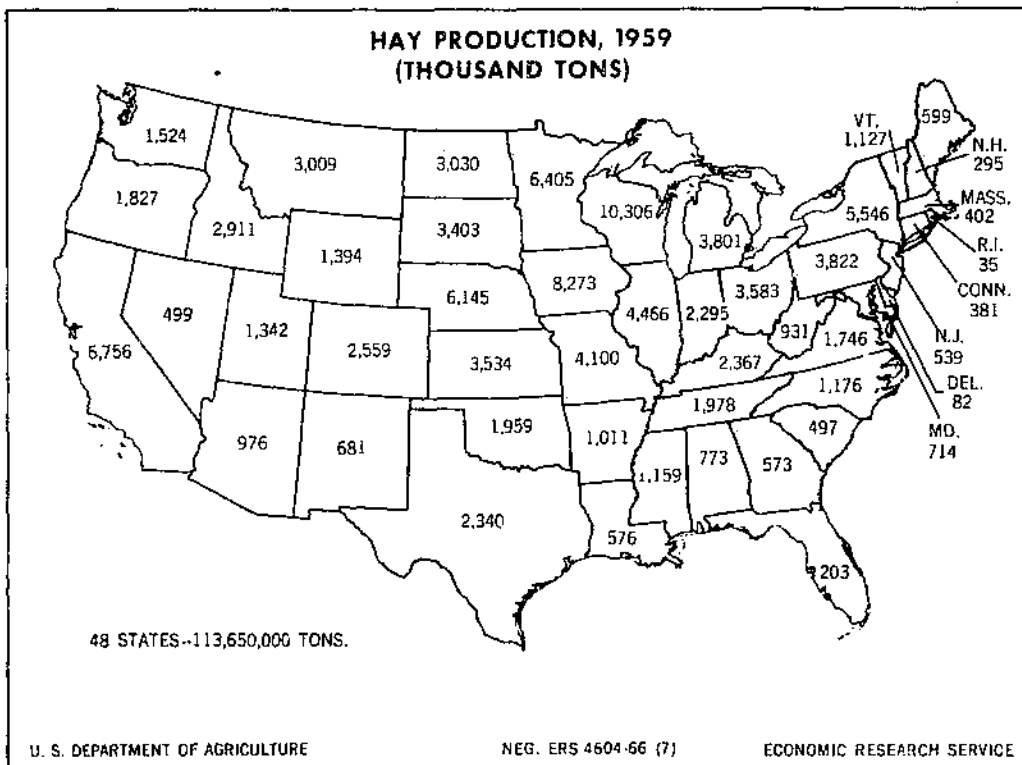


Figure 10

Table 5.--Milk cows: Number, production,

State and region	Year beginning October 1, 1949 1/							
	Number	Milk	All	Hay	Silage	Other	Concentrates fed	
	on farms Jan. 1, 1950	production	concentrates fed	fed	fed	harvested roughage fed	Per head	Per 1,000 pounds milk produced
	1,000 head	Million pounds	1,000 tons	1,000 tons	1,000 tons	1,000 tons	Pounds	Pounds
Northeast:								
1 Maine-----	120	618	99	433	92	---	1,650	320
2 New Hampshire-----	70	342	51	224	84	---	1,457	298
3 Vermont-----	287	1,521	233	894	484	---	1,624	306
4 Massachusetts-----	129	775	118	414	230	---	1,829	305
5 Rhode Island-----	20	137	19	34	45	---	1,900	277
6 Connecticut-----	118	695	109	302	279	---	1,847	314
7 New York-----	1,411	8,777	1,352	3,476	3,992	15	1,916	308
8 New Jersey-----	155	1,149	180	325	395	5	2,323	313
9 Pennsylvania-----	970	5,696	1,056	2,092	2,096	69	2,177	371
10 Delaware-----	37	184	31	59	36	15	1,676	137
11 Maryland-----	236	1,245	217	394	354	40	1,839	349
Lake States:								
12 Michigan-----	945	5,450	830	2,220	1,751	150	1,757	305
13 Wisconsin-----	2,383	14,856	2,024	4,366	9,157	144	1,699	272
14 Minnesota-----	1,470	8,148	1,157	3,274	4,210	63	1,574	284
Corn Belt:								
15 Ohio-----	1,029	5,283	880	1,954	1,122	106	1,710	333
16 Indiana-----	720	3,694	587	1,318	533	20	1,631	318
17 Illinois-----	1,001	5,235	908	1,814	1,176	33	1,814	347
18 Iowa-----	1,194	6,142	1,079	2,034	1,058	30	1,807	351
19 Missouri-----	975	4,111	727	2,030	318	97	1,491	354
Northern Plains:								
20 North Dakota-----	427	1,690	268	1,470	435	10	1,255	317
21 South Dakota-----	379	1,399	215	685	441	36	1,135	307
22 Nebraska-----	493	2,248	369	1,020	177	110	1,497	328
23 Kansas-----	604	2,538	383	1,078	559	300	1,268	302
Appalachian:								
24 Virginia-----	479	1,966	328	888	488	64	1,370	334
25 West Virginia-----	231	839	124	410	100	37	1,074	296
26 North Carolina-----	361	1,548	270	590	159	169	1,496	349
27 Kentucky-----	661	2,414	460	1,040	188	118	1,392	381
28 Tennessee-----	668	2,326	428	956	149	130	1,281	368
Southeast:								
29 South Carolina-----	158	553	109	170	97	38	1,380	394
30 Georgia-----	364	1,166	232	400	69	63	1,275	398
31 Florida-----	143	593	204	34	28	---	2,853	688
32 Alabama-----	395	1,292	277	400	74	57	1,403	429
Delta States:								
33 Mississippi-----	559	1,426	285	555	106	39	1,020	400
34 Arkansas-----	440	1,292	237	670	48	81	1,077	367
35 Louisiana-----	308	719	138	225	26	5	896	384
Southern Plains:								
36 Oklahoma-----	600	2,013	324	986	177	248	1,080	322
37 Texas-----	1,121	3,456	720	821	205	515	1,285	417
Mountain:								
38 Montana-----	128	569	60	360	22	---	938	211
39 Idaho-----	218	1,194	124	676	190	---	1,138	208
40 Wyoming-----	53	240	29	130	36	---	1,094	242
41 Colorado-----	192	917	152	428	457	40	1,583	332
42 New Mexico-----	57	216	27	130	48	34	947	250
43 Arizona-----	46	269	24	130	77	20	980	178
44 Utah-----	108	655	70	300	170	---	1,296	214
45 Nevada-----	18	91	8	50	11	---	889	176
Pacific:								
46 Washington-----	296	1,758	226	681	75	---	1,527	257
47 Oregon-----	233	1,263	173	524	92	---	1,485	274
48 California-----	840	5,986	656	2,330	384	20	1,562	219
48 States-----	23,853	116,694	18,577	45,794	32,500	2,921	1,558	318

1/ Jennings. See footnote 1, table 1.

and feeds fed, by States, 1949-50 and 1959-60

Year beginning October 1, 1959									
Number on farms Jan. 1, 1960	Milk production	All concentrates fed	Feed grains fed	Hay fed	Silage fed	Other harvested roughage fed	Concentrates fed		
							Per head	Per 1,000 pounds milk produced	
1,000 head	Million pounds	1,000 tons	1,000 tons	1,000 tons	1,000 tons	1,000 tons	Pounds	Pounds	
105	703	155	113	307	113	10	2,952	441	1
58	378	75	55	170	102	5	2,586	397	2
285	1,901	329	240	835	423	22	2,309	346	3
101	753	157	115	260	249	8	3,109	417	4
16	125	25	18	41	39	2	3,125	400	5
97	747	139	101	250	322	7	2,866	372	6
1,366	10,047	2,085	1,523	3,764	3,375	101	3,053	415	7
140	1,183	230	168	299	380	11	3,286	389	8
978	6,746	1,351	986	2,607	2,469	76	2,763	401	9
30	189	39	28	67	51	3	2,600	413	10
230	1,523	306	223	511	582	18	2,661	402	11
715	5,171	859	618	2,097	2,095	67	2,403	332	12
2,402	17,634	2,983	2,148	6,191	7,138	215	2,484	338	13
1,407	10,093	1,800	1,296	4,252	5,392	167	2,559	357	14
765	5,165	1,115	892	1,700	1,690	70	2,915	432	15
478	3,160	592	474	1,147	1,135	43	2,477	375	16
648	4,249	893	714	1,843	2,179	63	2,756	420	17
943	5,844	1,391	1,113	2,431	2,988	86	2,950	476	18
723	3,728	803	642	1,542	1,381	64	2,221	431	19
305	1,728	284	236	1,247	1,275	44	1,862	329	20
281	1,413	258	214	874	2,484	41	1,836	365	21
356	1,987	447	371	886	1,406	58	2,511	450	22
390	1,947	461	383	797	3,811	59	2,364	474	23
382	2,005	456	365	747	798	21	2,387	455	24
148	665	119	95	342	177	17	1,608	358	25
305	1,554	325	260	651	572	19	2,131	415	26
561	2,486	606	485	1,146	406	32	2,160	488	27
532	2,191	626	501	756	394	31	2,353	571	28
122	527	127	89	152	179	15	2,082	282	29
240	1,023	248	174	299	265	30	2,067	485	30
213	1,291	534	374	---	119	27	5,014	827	31
270	962	195	136	324	169	29	1,444	405	32
425	1,250	353	247	378	294	43	1,661	565	33
241	918	234	164	514	196	22	1,942	510	34
277	842	255	179	370	86	24	1,841	606	35
289	1,428	401	289	745	573	44	2,775	562	36
649	2,945	777	559	1,153	1,224	97	2,394	528	37
87	459	58	48	340	326	11	1,333	253	38
228	1,635	194	162	993	677	27	1,702	237	39
25	191	25	21	146	198	4	1,429	262	40
139	865	186	154	519	1,502	19	2,676	430	41
46	251	43	36	163	191	7	1,870	343	42
53	462	77	64	---	383	10	2,906	333	43
108	766	107	89	480	433	14	1,981	279	44
17	118	14	12	---	36	4	1,647	237	45
261	1,952	243	182	742	695	32	1,862	249	46
181	1,140	236	177	483	410	22	2,608	414	47
1099	8,081	1,144	858	3,196	1,340	112	2,545	283	48
19,527	122,423	24,360	18,391	48,817	52,722	1,953	2,495	398	

Table 6.--Other dairy cattle: Number and

State and region	Year beginning October 1, 1949 1/					
	Number on farms Jan. 1, 1950 2/	Concentrates fed	Hay fed	Silage fed	Other harvested roughage fed	Concentrates fed per head
	1,000 head	1,000 tons	1,000 tons	1,000 tons	1,000 tons	Pounds
Northeast:						
1 Maine-----	77	18	144	12	---	468
2 New Hampshire-----	40	10	87	11	---	500
3 Vermont-----	134	40	263	67	---	597
4 Massachusetts-----	50	14	102	37	---	360
5 Rhode Island-----	6	2	7	7	---	667
6 Connecticut-----	51	14	84	38	---	349
7 New York-----	644	178	859	526	5	553
8 New Jersey-----	55	17	79	53	---	618
9 Pennsylvania-----	537	206	560	300	50	767
10 Delaware-----	19	5	16	6	5	526
11 Maryland-----	121	37	100	45	15	612
Lake States:						
12 Michigan-----	541	165	490	200	35	610
13 Wisconsin-----	1,132	314	920	1,250	30	555
14 Minnesota-----	831	211	650	725	15	508
Corn Belt:						
15 Ohio-----	569	180	480	152	30	633
16 Indiana-----	352	97	300	72	7	551
17 Illinois-----	634	198	504	160	12	625
18 Iowa-----	623	170	445	144	13	546
19 Missouri-----	446	95	400	40	20	426
Northern Plains:						
20 North Dakota-----	227	48	270	59	4	423
21 South Dakota-----	258	49	270	60	10	380
22 Nebraska-----	275	69	266	23	30	502
23 Kansas-----	327	59	220	90	70	361
Appalachian:						
24 Virginia-----	214	52	180	60	15	486
25 West Virginia-----	98	18	100	14	10	367
26 North Carolina-----	170	27	140	---	40	318
27 Kentucky-----	232	58	200	25	20	500
28 Tennessee-----	283	55	230	20	25	389
Southeast:						
29 South Carolina-----	90	15	50	---	7	333
30 Georgia-----	228	35	100	---	10	307
31 Florida-----	107	26	8	---	---	486
32 Alabama-----	289	42	---	---	10	291
Delta States:						
33 Mississippi-----	258	28	---	---	7	217
34 Arkansas-----	246	27	160	---	15	220
35 Louisiana-----	164	14	---	---	---	171
Southern Plains:						
36 Oklahoma-----	386	44	260	---	50	228
37 Texas-----	575	78	50	---	75	271
Mountain:						
38 Montana-----	70	7	125	---	---	200
39 Idaho-----	143	13	230	15	---	182
40 Wyoming-----	31	6	30	---	---	387
41 Colorado-----	116	19	108	30	10	328
42 New Mexico-----	29	3	20	---	10	207
43 Arizona-----	26	3	30	---	---	231
44 Utah-----	61	8	90	20	---	262
45 Nevada-----	17	1	20	---	---	118
Pacific:						
46 Washington-----	169	24	180	---	---	284
47 Oregon-----	143	18	130	---	---	252
48 California-----	478	62	570	30	---	259
48 States-----	12,572	2,879	10,527	4,291	655	458

1/ Jennings. See footnote 1, table 1.

2/ Includes 970,000 dairy bulls.

3/ Includes 419,000 dairy bulls (calculated for this study).

feeds fed, by States, 1949-50 and 1959-60

Year beginning October 1, 1959							
Number on farms Jan. 1, 1960 ^{3/}	Concentrates fed	Feed grains fed	Hay fed	Silage fed	Other harvested roughage fed	Concentrates fed per head	
1,000 head	1,000 tons	1,000 tons	1,000 tons	1,000 tons	1,000 tons	Pounds	
64	23	16	105	14	3	719	1
34	12	8	56	12	1	706	2
126	43	30	206	51	8	683	3
41	15	11	67	30	3	732	4
5	2	1	8	5	1	800	5
45	17	12	74	39	3	756	6
624	134	94	1,021	410	36	429	7
47	32	22	77	46	3	1,362	8
525	249	175	859	299	23	949	9
14	5	4	23	6	1	714	10
116	44	31	190	71	6	759	11
444	164	115	763	254	25	739	12
1,333	444	312	2,223	866	91	666	13
867	364	256	1,418	654	66	840	14
399	110	77	653	205	23	551	15
270	74	52	442	138	18	548	16
424	113	79	694	264	19	533	17
534	143	101	874	363	34	536	18
408	77	54	668	167	25	377	19
149	39	27	244	155	18	523	20
156	38	27	255	301	16	487	21
207	53	37	339	170	23	512	22
229	63	44	375	462	23	550	23
208	101	71	340	97	8	971	24
66	26	18	108	21	7	788	25
187	80	56	306	70	7	856	26
293	67	47	479	49	13	457	27
158	116	82	422	48	12	899	28
69	28	20	113	22	6	812	29
138	38	27	226	32	12	551	30
139	172	103	227	14	11	2,475	31
169	50	35	276	21	12	592	32
253	72	51	414	36	17	569	33
132	41	29	216	24	9	621	34
151	39	27	247	10	9	517	35
187	50	35	306	69	17	535	36
411	114	80	672	149	38	555	37
57	5	4	93	40	5	175	38
175	49	34	286	82	10	560	39
24	2	1	39	24	1	167	40
103	26	18	168	182	7	505	41
29	7	5	47	23	3	483	42
35	9	6	57	46	4	514	43
68	16	11	111	53	6	471	44
18	4	3	29	4	1	444	45
163	28	20	267	85	13	344	46
124	25	18	203	50	9	403	47
555	56	39	908	162	44	202	48
11,073	3,479	2,425	18,174	6,395	750	628	

Table 7.--Cattle on feed: Number, production,

State and region	Year beginning October 1, 1949 1/							
	Number on feed Jan. 1, 1950	Number put on feed, year beginning Oct. 1, 1949	Concentrates fed	Hay fed	Silage fed	Other harvested roughage fed	Concentrates fed per head	
	1,000 head	1,000 head	1,000 cons	1,000 tons	1,000 tons	1,000 cons	Pounds	
Northeast:								
1 Maine-----	---	---	---	---	---	---	---	
2 New Hampshire-----	---	---	---	---	---	---	---	
3 Vermont-----	---	---	---	---	---	---	---	
4 Massachusetts-----	---	---	---	---	---	---	---	
5 Rhode Island-----	---	---	---	---	---	---	---	
6 Connecticut-----	---	---	---	---	---	---	---	
7 New York-----	---	---	---	---	---	---	---	
8 New Jersey-----	---	---	---	---	---	---	---	
9 Pennsylvania-----	88	98	179	70	45	---	3,653	
10 Delaware-----	---	---	---	---	---	---	---	
11 Maryland-----	---	---	---	---	---	---	---	
Lake States:								
12 Michigan-----	90	98	130	78	50	---	2,653	
13 Wisconsin-----	87	112	146	80	60	---	2,607	
14 Minnesota-----	294	359	473	267	150	---	2,635	
Corn Belt:								
15 Ohio-----	125	158	243	116	80	---	3,076	
16 Indiana-----	185	244	329	155	120	---	2,697	
17 Illinois-----	489	739	1,070	491	370	---	2,896	
18 Iowa-----	955	1,526	1,885	890	710	---	2,471	
19 Missouri-----	315	445	554	326	220	---	2,490	
Northern Plains:								
20 North Dakota-----	57	57	74	45	20	---	2,596	
21 South Dakota-----	180	218	298	154	90	---	2,734	
22 Nebraska-----	420	756	1,064	565	200	---	2,815	
23 Kansas-----	252	336	313	239	300	50	1,863	
Appalachian:								
24 Virginia-----	---	---	---	---	---	---	---	
25 West Virginia-----	---	---	---	---	---	---	---	
26 North Carolina-----	---	---	---	---	---	---	---	
27 Kentucky-----	---	---	---	---	---	---	---	
28 Tennessee-----	---	---	---	---	---	---	---	
Southeast:								
29 South Carolina-----	---	---	---	---	---	---	---	
30 Georgia-----	---	---	---	---	---	---	---	
31 Florida-----	---	---	---	---	---	---	---	
32 Alabama-----	---	---	---	---	---	---	---	
Delta States:								
33 Mississippi-----	---	---	---	---	---	---	---	
34 Arkansas-----	---	---	---	---	---	---	---	
35 Louisiana-----	---	---	---	---	---	---	---	
Southern Plains:								
36 Oklahoma-----	55	66	42	40	20	10	1,273	
37 Texas-----	161	217	158	69	70	20	1,456	
Mountain:								
38 Montana-----	25	32	19	50	25	---	1,188	
39 Idaho-----	78	113	65	160	78	---	1,150	
40 Wyoming-----	15	15	13	30	15	---	1,733	
41 Colorado-----	206	309	216	318	300	25	1,398	
42 New Mexico-----	17	17	8	35	17	10	941	
43 Arizona-----	59	83	61	140	30	---	1,470	
44 Utah-----	40	52	21	80	20	---	808	
45 Nevada-----	22	26	12	40	10	---	923	
Pacific:								
46 Washington-----	22	29	14	40	10	---	966	
47 Oregon-----	30	39	19	60	15	---	974	
48 California-----	196	323	157	420	100	20	972	
48 States-----	4,463	6,467	7,563	4,958	3,125	135	2,339	

1/ Jennings. See footnote 1, table 1.

2/ Calculated for this study.

and feeds fed, by States, 1949-50 and 1959-60

Year beginning October 1, 1959										
Number on feed : :Jan. 1, 1960	Number put on feed : : year beginning : :Oct. 1, 1959	Production : : 2/	Concentrates : : fed	Feed : : grains : : fed	Hay : : fed	Silage : : fed	Other : : harvested : : roughage : : Fed	Concentrates fed		
								Per head : : on feed : : during year	Per 100 : : pounds : : produced	
1,000 head	1,000 head	Million pounds	1,000 tons	1,000 tons	1,000 tons	1,000 tons	1,000 tons	Pounds	Pounds	
---	---	---	---	---	---	---	---	---	---	1
---	---	---	---	---	---	---	---	---	---	2
---	---	---	---	---	---	---	---	---	---	3
---	---	---	---	---	---	---	---	---	---	4
---	---	---	---	---	---	---	---	---	---	5
---	---	---	---	---	---	---	---	---	---	6
---	---	---	---	---	---	---	---	---	---	7
---	---	---	---	---	---	---	---	---	---	8
83	146	39	168	142	102	460	5	2,301	862	9
---	---	---	---	---	---	---	---	---	---	10
---	---	---	---	---	---	---	---	---	---	11
133	179	102	337	285	125	389	4	3,765	661	12
121	181	103	299	253	126	1,334	4	3,304	581	13
416	611	348	1,148	971	425	1,008	5	3,758	660	14
209	286	157	451	382	199	316	6	3,154	575	15
189	292	161	421	356	203	212	6	2,884	523	16
688	1,284	706	1,920	1,624	893	407	9	2,991	544	17
1,510	2,665	1,466	4,112	3,479	1,854	558	12	3,081	561	18
270	453	249	641	542	315	257	9	2,830	515	19
125	185	87	223	189	129	238	6	2,411	513	20
247	366	172	466	394	255	465	9	2,546	542	21
665	1,435	674	1,581	1,338	999	262	12	2,203	469	22
275	548	258	645	546	381	711	6	2,354	500	23
23	42	13	57	48	29	149	2	2,714	877	24
---	---	---	---	---	---	---	---	---	---	25
26	48	14	61	52	33	107	3	2,542	871	26
50	92	28	121	102	64	75	4	2,630	864	27
42	78	23	99	84	54	74	3	2,538	861	28
16	30	9	39	33	21	34	2	2,600	867	29
55	102	31	132	112	71	49	2	2,588	852	30
46	85	26	104	88	59	22	2	2,447	800	31
36	67	20	68	58	47	31	2	2,030	680	32
25	46	14	45	38	32	55	2	1,957	643	33
23	42	13	37	31	29	37	2	1,762	569	34
20	37	11	35	30	26	16	2	1,892	636	35
69	143	57	162	137	99	107	2	2,266	568	36
248	484	194	665	563	337	230	6	2,748	686	37
70	122	49	156	132	85	61	4	2,557	637	38
138	232	93	278	235	161	126	7	2,397	598	39
55	87	35	113	96	60	37	2	2,598	646	40
404	799	360	1,139	964	556	280	6	2,851	633	41
54	113	34	116	98	79	36	1	2,053	682	42
265	464	159	467	395	323	72	2	2,013	672	43
61	123	33	120	102	86	81	1	1,951	727	44
32	43	12	44	37	30	7	1	2,047	733	45
115	234	63	226	191	163	130	7	1,932	717	46
66	119	32	119	101	83	76	4	2,000	744	47
665	1,677	453	1,472	1,245	1,167	249	13	1,756	650	48
7,535	13,940	6,278	18,287	15,473	9,700	8,758	175	2,624	583	

Table 8.--Other beef cattle: Number, production,

State and region	Year beginning October 1, 1949 ^{1/}					
	Number	Concentrates	Hay	Silage	Other	Concentrates
	on farms Jan. 1, 1950 2/	fed	fed	fed	harvested roughage fed	fed per head
	1,000 head	1,000 tons	1,000 tons	1,000 tons	1,000 tons	Pounds
Northeast:						
1 Maine-----	15	3	35	---	---	400
2 New Hampshire-----	5	---	16	---	---	---
3 Vermont-----	7	---	11	---	---	---
4 Massachusetts-----	5	---	12	---	---	---
5 Rhode Island-----	---	---	---	---	---	---
6 Connecticut-----	4	---	7	---	---	---
7 New York-----	61	8	96	---	---	262
8 New Jersey-----	5	---	9	---	---	---
9 Pennsylvania-----	99	25	114	10	20	505
10 Delaware-----	5	---	4	---	2	---
11 Maryland-----	75	10	61	---	20	267
Lake States:						
12 Michigan-----	197	49	195	190	25	497
13 Wisconsin-----	100	18	95	100	30	360
14 Minnesota-----	582	144	660	840	20	495
Corn Belt:						
15 Ohio-----	351	84	266	36	115	479
16 Indiana-----	444	105	336	54	70	473
17 Illinois-----	849	237	700	154	70	558
18 Iowa-----	1,515	407	1,000	300	80	537
19 Missouri-----	1,241	244	1,180	94	120	393
Northern Plains:						
20 North Dakota-----	784	71	1,064	60	30	181
21 South Dakota-----	1,599	136	1,793	130	120	170
22 Nebraska-----	2,319	217	2,350	180	370	187
23 Kansas-----	2,321	130	1,050	1,500	725	112
Appalachian:						
24 Virginia-----	436	39	450	30	160	179
25 West Virginia-----	225	20	405	16	45	178
26 North Carolina-----	139	12	130	10	60	173
27 Kentucky-----	655	66	681	50	90	202
28 Tennessee-----	539	45	410	40	80	167
Southeast:						
29 South Carolina-----	105	9	64	---	30	171
30 Georgia-----	448	36	40	---	100	161
31 Florida-----	1,000	85	---	---	---	170
32 Alabama-----	555	41	---	---	60	148
Delta States:						
33 Mississippi-----	684	38	---	---	80	111
34 Arkansas-----	456	49	245	---	50	215
35 Louisiana-----	813	28	---	---	40	69
Southern Plains:						
36 Oklahoma-----	1,528	76	200	60	440	99
37 Texas-----	6,203	428	200	100	1,453	138
Mountain:						
38 Montana-----	1,496	39	1,470	86	---	52
39 Idaho-----	465	17	730	61	---	73
40 Wyoming-----	892	36	685	85	---	81
41 Colorado-----	1,183	48	912	321	180	81
42 New Mexico-----	1,075	59	159	---	85	110
43 Arizona-----	660	71	174	42	---	215
44 Utah-----	367	13	449	117	---	71
45 Nevada-----	469	22	292	---	---	94
Pacific:						
46 Washington-----	357	9	450	---	---	50
47 Oregon-----	670	25	680	---	---	75
48 California-----	1,068	42	1,280	100	39	79
48 States-----	35,071	3,241	21,161	4,766	4,809	185

^{1/} Jennings. See footnote 1, table 1.

^{2/} Includes 720,000 beef bulls.

^{3/} Includes 1,257,000 beef bulls (calculated for this study).

^{4/} Calculated for this study.

and feeds fed, by States, 1949-50 and 1959-60

Year beginning October 1, 1959							
Number on farms Jan. 1, 1960 3/	Production 4/	Concentrates fed	Feed grains fed	Hay fed	Silage fed	Other harvested ³ roughage fed	Concentrates fed per head
1,000 head	Million pounds	1,000 tons	1,000 tons	1,000 tons	1,000 tons	1,000 tons	Pounds
25	36	5	3	54	29	9	400
6	16	1	---	35	27	5	333
16	64	4	2	11	111	11	500
9	28	2	1	23	65	5	444
---	4	---	---	---	11	---	---
8	31	2	1	15	85	5	500
141	395	32	19	198	884	87	454
13	44	3	2	22	99	9	462
327	372	59	35	389	647	81	361
12	12	2	1	9	13	---	333
147	125	29	17	111	153	28	395
409	338	50	30	388	549	24	244
397	832	115	69	321	1,870	23	579
1,285	1,023	152	91	1,387	1,412	97	237
877	436	105	63	663	443	144	239
1,125	480	116	69	850	297	210	206
2,221	698	235	141	1,679	571	485	212
3,673	961	448	268	2,775	783	504	244
2,579	1,010	84	50	2,227	362	515	65
1,179	477	195	117	1,273	334	112	332
2,578	987	297	178	2,783	651	442	230
3,844	1,024	446	267	3,319	368	762	232
3,535	1,212	340	204	1,909	998	1,532	192
781	350	48	29	590	209	242	123
326	128	44	26	352	46	69	270
389	179	51	31	294	150	108	262
1,149	500	144	86	1,116	106	336	251
1,026	444	130	78	886	103	235	253
330	107	45	27	178	47	38	273
991	290	173	104	107	69	341	349
1,231	289	108	65	133	31	204	175
1,181	438	216	129	127	45	194	366
1,404	506	234	140	151	77	214	333
978	338	165	99	422	52	161	337
1,317	392	215	129	569	22	220	326
2,833	1,035	202	121	918	150	526	143
7,798	2,468	250	150	842	321	1,043	64
2,031	727	195	117	1,754	86	418	192
874	354	14	8	1,037	177	160	32
1,061	344	62	37	802	52	208	117
1,621	464	104	62	1,225	393	422	128
1,069	349	123	74	347	50	251	230
666	136	77	46	216	100	172	231
482	180	56	34	469	113	149	232
482	145	56	34	260	9	121	232
623	279	45	27	605	183	97	144
1,350	383	31	19	793	107	203	59
2,002	903	158	95	2,160	351	373	158
58,101	22,333	5,669	3,395	36,794	13,811	11,595	195

Table 9.--Stock sheep: Number, and feeds

State and region	Year beginning October 1, 1949 1/				
	Number on farms Jan. 1, 1950	Concentrates fed	Hay fed	Other harvested roughage fed	Concentrates fed per head
	1,000 head	1,000 tons	1,000 tons	1,000 tons	Pounds
Northeast:					
1 Maine-----	19	---	5	---	---
2 New Hampshire-----	7	---	2	---	---
3 Vermont-----	10	---	2	---	---
4 Massachusetts-----	8	---	2	---	---
5 Rhode Island-----	2	---	---	---	---
6 Connecticut-----	7	---	2	---	---
7 New York-----	124	2	25	---	32
8 New Jersey-----	12	---	3	---	---
9 Pennsylvania-----	214	4	34	10	37
10 Delaware-----	2	---	---	---	---
11 Maryland-----	38	1	7	---	53
Lake States:					
12 Michigan-----	336	10	44	20	60
13 Wisconsin-----	192	6	28	10	62
14 Minnesota-----	571	18	103	10	63
Corn Belt:					
15 Ohio-----	940	32	105	100	68
16 Indiana-----	348	10	57	10	57
17 Illinois-----	396	13	69	7	66
18 Iowa-----	668	20	117	13	60
19 Missouri-----	838	25	120	40	60
Northern Plains:					
20 North Dakota-----	346	7	77	3	40
21 South Dakota-----	739	16	135	15	43
22 Nebraska-----	168	3	22	10	36
23 Kansas-----	342	5	25	30	29
Appalachian:					
24 Virginia-----	288	6	33	30	42
25 West Virginia-----	296	6	34	30	41
26 North Carolina-----	35	---	5	7	---
27 Kentucky-----	631	14	86	40	44
28 Tennessee-----	251	5	25	15	40
Southeast:					
29 South Carolina-----	3	---	---	---	---
30 Georgia-----	9	---	---	---	---
31 Florida-----	3	---	---	---	---
32 Alabama-----	18	---	---	---	---
Delta States:					
33 Mississippi-----	66	1	---	---	30
34 Arkansas-----	37	2	2	---	54
35 Louisiana-----	98	1	6	---	41
Southern Plains:					
36 Oklahoma-----	105	1	14	15	19
37 Texas-----	6,487	33	30	400	10
Mountain:					
38 Montana-----	1,464	7	300	---	10
39 Idaho-----	990	5	253	---	10
40 Wyoming-----	1,841	16	160	---	17
41 Colorado-----	1,237	10	114	50	16
42 New Mexico-----	1,343	8	22	---	12
43 Arizona-----	413	3	10	---	15
44 Utah-----	1,269	7	60	---	11
45 Nevada-----	440	3	22	---	14
Pacific:					
46 Washington-----	271	1	65	---	7
47 Oregon-----	671	4	80	---	12
48 California-----	1,589	9	160	20	11
48 States	26,182	314	2,465	685	24

1/ Jennings. See footnote 1, table 1.

fed, by States, 1949-50 and 1959-60

Year beginning October 1, 1959						
Number on farms Jan. 1, 1960	Concentrates fed	Feed grains fed	Hay fed	Other harvested roughage fed	Concentrates fed per head	
1,000 head	1,000 tons	1,000 tons	1,000 tons	1,000 tons	Pounds	
36	2	1	2	3	111	1
8	---	---	---	1	---	2
12	1	1	1	1	167	3
12	1	1	1	1	167	4
3	---	---	---	---	---	5
7	---	---	---	1	---	6
150	8	6	8	26	107	7
16	1	1	1	1	125	8
250	12	9	12	39	96	9
5	---	---	---	1	---	10
38	2	1	2	4	105	11
320	25	18	16	54	156	12
206	18	13	10	40	175	13
771	62	45	39	32	161	14
924	60	44	46	80	130	15
441	20	15	22	39	91	16
565	29	21	28	44	103	17
1,143	67	49	57	83	117	18
674	37	27	34	53	110	19
592	11	8	29	93	37	20
1,521	22	16	76	124	29	21
375	6	4	19	32	32	22
494	36	26	25	35	146	23
326	12	9	16	1	74	24
283	21	15	14	3	148	25
55	4	3	3	1	145	26
566	42	31	28	3	148	27
245	9	7	12	1	73	28
11	1	1	1	---	182	29
27	1	1	1	1	74	30
8	---	---	---	---	---	31
36	2	1	2	1	111	32
74	4	3	4	1	108	33
48	2	1	2	---	83	34
93	4	3	5	1	86	35
222	11	8	11	23	99	36
5,738	73	54	287	169	25	37
1,767	32	23	88	123	16	38
1,071	---	---	54	85	---	39
2,248	38	28	112	138	14	40
1,434	16	12	72	45	22	41
1,127	54	40	56	32	96	42
454	22	16	23	21	97	43
1,249	60	44	62	18	96	44
335	17	12	17	4	101	45
295	6	4	15	30	41	46
863	8	6	43	58	19	47
1,712	92	67	86	126	107	48
28,849	951	695	1,442	1,672	66	

Table 10.--Sheep on feed: Number, and feeds

State and region	Year beginning October 1, 1949 1/				
	Number on feed Jan. 1, 1950	Concentrates fed	Silage fed	Hay fed	Concentrates fed per head
	1,000 head	1,000 tons	1,000 tons	1,000 tons	Pounds
Northeast:					
1 Maine-----	---	---	---	---	---
2 New Hampshire-----	---	---	---	---	---
3 Vermont-----	---	---	---	---	---
4 Massachusetts-----	---	---	---	---	---
5 Rhode Island-----	---	---	---	---	---
6 Connecticut-----	---	---	---	---	---
7 New York-----	20	1	2	2	100
8 New Jersey-----	---	---	---	---	---
9 Pennsylvania-----	---	---	---	---	---
10 Delaware-----	---	---	---	---	---
11 Maryland-----	---	---	---	---	---
Lake States:					
12 Michigan-----	89	7	9	9	157
13 Wisconsin-----	60	4	6	6	133
14 Minnesota-----	165	12	15	16	145
Corn Belt:					
15 Ohio-----	210	17	20	21	162
16 Indiana-----	84	6	8	8	143
17 Illinois-----	186	13	18	18	144
18 Iowa-----	344	26	30	34	151
19 Missouri-----	130	10	10	13	154
Northern Plains:					
20 North Dakota-----	52	4	7	5	154
21 South Dakota-----	130	10	20	13	154
22 Nebraska-----	420	32	60	17	152
23 Kansas-----	460	25	70	46	109
Appalachian:					
24 Virginia-----	---	---	---	---	---
25 West Virginia-----	---	---	---	---	---
26 North Carolina-----	---	---	---	---	---
27 Kentucky-----	---	---	---	---	---
28 Tennessee-----	---	---	---	---	---
Southeast:					
29 South Carolina-----	---	---	---	---	---
30 Georgia-----	---	---	---	---	---
31 Florida-----	---	---	---	---	---
32 Alabama-----	---	---	---	---	---
Delta States:					
33 Mississippi-----	---	---	---	---	---
34 Arkansas-----	---	---	---	---	---
35 Louisiana-----	---	---	---	---	---
Southern Plains:					
36 Oklahoma-----	40	3	4	4	150
37 Texas-----	118	9	10	12	153
Mountain:					
38 Montana-----	120	8	25	12	133
39 Idaho-----	75	5	15	8	133
40 Wyoming-----	83	6	18	8	145
41 Colorado-----	545	40	120	43	147
42 New Mexico-----	28	2	5	3	143
43 Arizona-----	10	1	2	1	200
44 Utah-----	60	4	10	6	133
45 Nevada-----	8	---	---	1	---
Pacific:					
46 Washington-----	28	2	9	3	143
47 Oregon-----	18	1	6	2	111
48 California-----	167	12	55	17	144
48 States-----	3,644	260	554	328	143

See footnote 1, table 1.

fed by States, 1949-50 and 1959-60

Year beginning October 1, 1959						
Number On feed Jan. 1, 1960	Concentrates fed	Feed grains fed	Silage fed	Hay fed	Concentrates fed per head	
1,000 head	1,000 tons	1,000 tons	1,000 tons	1,000 tons	Pounds	
---	---	---	---	---	---	1
---	---	---	---	---	---	2
---	---	---	---	---	---	3
---	---	---	---	---	---	4
---	---	---	---	---	---	5
---	---	---	---	---	---	6
23	1	1	46	2	87	7
---	---	---	---	---	---	8
---	---	---	---	---	---	9
---	---	---	---	---	---	10
---	---	---	---	---	---	11
87	6	5	29	6	138	12
60	5	4	99	4	167	13
228	15	13	74	16	132	14
239	20	18	23	16	167	15
74	5	4	15	5	135	16
157	9	8	30	11	115	17
520	33	30	42	36	127	18
129	9	8	19	9	140	19
100	7	6	18	7	140	20
235	15	13	35	16	128	21
461	32	29	19	32	139	22
262	18	16	52	18	137	23
---	---	---	---	---	---	24
---	---	---	---	---	---	25
---	---	---	---	---	---	26
---	---	---	---	---	---	27
---	---	---	---	---	---	28
---	---	---	---	---	---	29
---	---	---	---	---	---	30
---	---	---	---	---	---	31
---	---	---	---	---	---	32
---	---	---	---	---	---	33
---	---	---	---	---	---	34
---	---	---	---	---	---	35
52	4	3	8	4	154	36
200	17	15	17	14	170	37
105	6	5	5	7	114	38
82	7	6	10	6	171	39
112	8	7	2	8	143	40
555	38	34	20	39	137	41
58	4	3	2	4	138	42
34	2	1	6	2	118	43
87	6	5	6	6	138	44
12	1	1	---	1	167	45
35	2	1	9	2	114	46
53	4	3	6	4	151	47
361	24	21	18	25	133	48
4,321	298	260	610	300	138	

Table 11.--All sheep: Number, production, and feeds

State and region	Year beginning October 1, 1949 1/					
	Number on farms Jan. 1, 1950	Concentrates fed	Hay fed	Silage fed	Other harvested roughage fed	Concentrates fed per head
	1,000 head	1,000 tons	1,000 tons	1,000 tons	1,000 tons	Pounds
Northeast:						
1 Maine-----	19	---	5	---	---	---
2 New Hampshire-----	7	---	2	---	---	---
3 Vermont-----	10	---	2	---	---	---
4 Massachusetts-----	8	---	2	---	---	---
5 Rhode Island-----	2	---	---	---	---	---
6 Connecticut-----	7	---	2	---	---	---
7 New York-----	144	3	27	2	---	42
8 New Jersey-----	12	---	3	---	---	---
9 Pennsylvania-----	214	4	34	---	10	37
10 Delaware-----	2	---	---	---	---	---
11 Maryland-----	38	1	7	---	---	53
Lake States:						
12 Michigan-----	425	17	53	9	20	80
13 Wisconsin-----	252	10	34	6	10	79
14 Minnesota-----	736	30	119	15	10	82
Corn Belt:						
15 Ohio-----	1,150	49	126	20	100	85
16 Indiana-----	432	16	65	8	10	74
17 Illinois-----	576	26	87	18	7	90
18 Iowa-----	1,012	46	151	30	13	91
19 Missouri-----	968	35	133	10	40	72
Northern Plains:						
20 North Dakota-----	398	11	82	7	3	55
21 South Dakota-----	869	26	148	20	15	60
22 Nebraska-----	588	35	39	60	10	119
23 Kansas-----	802	30	71	70	30	75
Appalachian:						
24 Virginia-----	288	6	33	---	30	42
25 West Virginia-----	296	6	34	---	30	41
26 North Carolina-----	35	---	5	---	7	---
27 Kentucky-----	631	14	86	---	40	44
28 Tennessee-----	251	5	25	---	15	40
Southeast:						
29 South Carolina-----	3	---	---	---	---	---
30 Georgia-----	9	---	---	---	---	---
31 Florida-----	3	---	---	---	---	---
32 Alabama-----	18	---	---	---	---	---
Delta States:						
33 Mississippi-----	66	1	---	---	---	30
34 Arkansas-----	37	1	2	---	---	54
35 Louisiana-----	98	2	6	---	---	41
Southern Plains:						
36 Oklahoma-----	145	4	18	4	15	55
37 Texas-----	6,605	42	42	10	400	13
Mountain:						
38 Montana-----	1,584	15	312	25	---	19
39 Idaho-----	1,065	10	261	15	---	19
40 Wyoming-----	1,924	22	168	18	---	23
41 Colorado-----	1,782	50	157	120	50	56
42 New Mexico-----	1,371	10	25	5	---	15
43 Arizona-----	423	4	11	2	---	19
44 Utah-----	1,329	11	66	10	---	17
45 Nevada-----	448	3	23	---	---	13
Pacific:						
46 Washington-----	299	3	68	9	---	20
47 Oregon-----	589	5	82	6	---	15
48 California-----	1,756	21	177	55	20	24
48 States-----	29,826	574	2,793	554	885	39

See footnote 1, table 1.
this study.

fed, by States, 1949-50 and 1959-60

Year beginning October 1, 1959

Number on farms Jan. 1, 1960	Production 2/	Concentrates fed	Feed grains fed	Hay fed	Silage fed	Other harvested roughage fed	Concentrates fed		
							Per head	Per 100 pounds produced	
1,000 head	1,000 pounds	1,000 tons	1,000 tons	1,000 tons	1,000 tons	1,000 tons	Pounds	Pounds	
36	1,888	2	1	2	1	3	111	212	1
8	320	---	---	---	1	1	---	---	2
12	537	1	1	1	5	1	167	372	3
12	600	1	1	1	3	1	167	333	4
2	166	---	---	---	1	---	---	---	5
7	332	---	---	---	4	1	---	---	6
173	8,202	9	7	10	39	26	104	219	7
16	870	---	1	1	4	1	125	230	8
250	10,610	12	9	12	28	39	96	226	9
5	373	---	---	---	1	1	---	---	10
38	2,072	2	1	2	7	4	105	193	11
407	21,218	31	23	22	24	54	152	292	12
266	15,631	23	17	14	83	40	173	294	13
999	75,632	77	58	55	62	32	154	204	14
1,163	52,452	80	62	62	19	80	138	305	15
515	31,587	25	19	27	13	39	97	158	16
722	42,352	38	29	39	25	44	105	179	17
1,663	102,614	100	79	93	35	83	120	195	18
803	47,930	46	35	43	16	53	115	192	19
692	45,113	18	14	36	15	93	52	80	20
1,756	98,001	37	29	92	29	124	42	76	21
836	45,466	38	33	51	16	32	91	167	22
756	41,291	54	42	43	44	35	143	262	23
326	19,792	12	9	16	9	1	74	121	24
283	16,855	21	15	14	2	3	148	249	25
55	2,466	4	3	3	7	1	145	324	26
566	35,228	42	31	28	5	3	148	238	27
245	12,703	9	7	12	4	1	73	142	28
11	380	1	1	1	2	---	182	526	29
27	892	1	1	1	3	1	74	224	30
8	310	---	---	---	2	---	---	---	31
36	1,354	2	1	2	2	1	111	295	32
74	1,806	4	3	4	4	1	108	443	33
48	1,830	2	1	2	2	---	83	219	34
93	1,870	4	3	5	1	1	86	428	35
274	14,460	15	11	15	7	23	109	207	36
5,938	184,771	90	69	301	14	169	30	97	37
1,872	88,560	38	28	95	4	123	41	86	38
1,153	90,356	7	6	60	8	85	12	15	39
2,360	108,665	46	35	120	2	138	39	85	40
1,989	108,594	54	46	111	17	45	54	99	41
1,185	43,301	58	43	60	2	32	98	268	42
488	19,852	24	17	25	5	21	98	242	43
1,336	65,591	66	49	68	5	18	99	201	44
347	15,668	18	13	18	---	4	104	230	45
330	21,088	8	5	17	8	30	48	76	46
916	51,992	12	9	47	5	58	26	46	47
2,073	114,005	116	88	111	15	126	112	204	48
33,170	1,667,646	1,249	955	1,742	610	1,672	75	150	

Table 12.--Hogs: Number, production, and

State and region	Year beginning October 1, 1949 ^{1/}				
	Number fed during year	Production	Concentrates Fed	Concentrates Fed	
				Per head	Per 100 pounds produced
	1,000 head	1,000 pounds	1,000 tons	Pounds	Pounds
Northeast:					
1 Maine-----	57	10,800	24	842	444
2 New Hampshire-----	22	5,400	12	1,091	480
3 Vermont-----	26	5,000	13	1,000	481
4 Massachusetts-----	127	23,800	53	835	445
5 Rhode Island-----	9	1,700	4	889	471
6 Connecticut-----	44	9,200	21	955	457
7 New York-----	350	61,700	145	829	470
8 New Jersey-----	169	30,300	67	793	442
9 Pennsylvania-----	1,059	204,000	514	971	504
10 Delaware-----	55	10,900	23	836	460
11 Maryland-----	410	71,500	177	863	495
Lake States:					
12 Michigan-----	1,480	291,000	698	943	480
13 Wisconsin-----	3,354	724,000	1,683	1,004	465
14 Minnesota-----	6,155	1,405,000	3,200	1,040	456
Corn Belt:					
15 Ohio-----	5,463	1,076,000	2,581	945	480
16 Indiana-----	7,564	1,673,000	3,934	1,040	470
17 Illinois-----	10,109	2,214,000	5,177	1,024	468
18 Iowa-----	18,982	4,443,000	10,412	1,097	469
19 Missouri-----	6,740	1,430,000	3,334	989	466
Northern Plains:					
20 North Dakota-----	727	150,000	367	1,017	489
21 South Dakota-----	2,407	547,000	1,342	1,115	491
22 Nebraska-----	4,063	943,000	2,334	1,149	492
23 Kansas-----	1,995	441,000	1,042	1,045	473
Appalachian:					
24 Virginia-----	1,172	236,000	586	1,000	497
25 West Virginia-----	325	70,300	171	1,052	486
26 North Carolina-----	1,628	309,000	784	963	507
27 Kentucky-----	2,294	417,000	1,003	874	481
28 Tennessee-----	1,987	393,000	934	940	473
Southeast:					
29 South Carolina-----	921	133,000	388	843	507
30 Georgia-----	2,213	365,000	759	686	416
31 Florida-----	737	85,000	133	351	313
32 Alabama-----	1,678	295,000	679	609	460
Delta States:					
33 Mississippi-----	1,014	131,000	447	882	494
34 Arkansas-----	1,254	225,000	506	807	450
35 Louisiana-----	971	136,000	304	626	447
Southern Plains:					
36 Oklahoma-----	1,256	258,000	579	922	449
37 Texas-----	2,150	424,000	965	898	455
Mountain:					
38 Montana-----	262	50,300	114	870	453
39 Idaho-----	303	58,800	133	878	452
40 Wyoming-----	122	21,400	51	836	477
41 Colorado-----	476	99,900	249	1,046	498
42 New Mexico-----	107	21,600	49	916	454
43 Arizona-----	33	7,100	16	970	451
44 Utah-----	133	24,200	53	797	438
45 Nevada-----	35	5,800	12	686	414
Pacific:					
46 Washington-----	228	45,200	101	886	447
47 Oregon-----	270	54,600	123	911	451
48 California-----	810	151,000	336	830	445
48 States-----	93,741	19,864,600	46,632	995	469

^{1/} Jennings. See footnote 1, table 1.^{2/} Calculated for this study.

Feeds fed, by States, 1949-50 and 1959-60

Year beginning October 1, 1959						
Number fed during year	Production 2/	Concentrates fed	Feed grains fed	Concentrates fed		
				Per head	Per 100 pounds produced	
1,000 head	1,000 pounds	1,000 tons	1,000 tons	Pounds	Pounds	
33	6,793	9	8	545	265	1
17	4,094	10	9	1,176	489	2
17	3,504	9	8	1,059	514	3
147	29,930	25	22	340	167	4
12	2,466	3	3	500	243	5
26	5,137	6	5	462	234	6
226	45,016	109	98	965	484	7
154	27,562	44	40	571	319	8
845	169,415	406	365	961	479	9
49	9,768	25	23	1,020	512	10
276	54,347	88	79	638	324	11
1,318	264,655	618	556	938	467	12
3,791	738,598	1,829	1,646	965	495	13
6,496	1,457,719	3,401	3,061	1,047	467	14
4,569	921,273	1,825	1,720	799	396	15
7,786	1,786,825	3,764	3,495	967	421	16
11,872	2,828,677	6,056	5,623	1,020	428	17
13,835	4,576,622	9,386	8,746	946	410	18
6,628	1,387,166	3,138	2,926	947	452	19
715	145,198	338	304	945	466	20
2,704	629,257	1,467	1,320	1,085	466	21
4,169	948,516	2,204	1,984	1,057	465	22
1,822	410,198	947	852	1,040	462	23
1,016	204,543	472	429	929	462	24
161	36,570	93	87	1,155	509	25
2,239	423,284	1,000	912	893	472	26
2,272	466,415	1,139	1,038	1,003	488	27
2,161	411,278	1,002	909	927	467	28
824	151,952	344	316	835	453	29
2,602	439,308	1,044	947	802	475	30
578	94,196	225	204	779	478	31
1,656	293,487	741	680	895	505	32
913	156,104	366	346	802	469	33
695	131,138	294	274	846	448	34
398	62,662	138	134	693	440	35
719	149,811	338	304	940	451	36
1,608	308,394	737	663	917	478	37
227	51,634	140	133	1,233	542	38
230	46,064	108	103	939	469	39
54	10,738	26	25	963	484	40
329	65,269	160	152	973	490	41
76	16,883	41	39	1,079	486	42
38	7,857	19	18	1,000	484	43
96	18,594	42	40	875	452	44
15	2,995	7	7	933	467	45
223	48,595	113	102	1,013	465	46
279	57,895	131	118	939	453	47
478	91,598	222	200	929	485	48
93,394	20,200,000	44,649	41,073	956	442	

Table 13.--Horses and mules: Number, and feeds

State and region	Year beginning October 1, 1949 1/					
	Number on farms		Concentrates fed	Hay fed	Other harvested roughage fed	Concentrates fed per head 2/
	January 1, 1950					
	2 years old and over	Colts				
	1,000 head	1,000 head	1,000 tons	1,000 tons	1,000 tons	Pounds
Northeast:						
1 Maine-----	23	---	19	92	---	1,652
2 New Hampshire-----	9	---	8	31	---	1,778
3 Vermont-----	27	---	21	103	---	1,556
4 Massachusetts-----	11	---	10	54	1	1,818
5 Rhode Island-----	1	---	---	2	---	---
6 Connecticut-----	8	---	7	29	---	1,750
7 New York-----	145	2	99	448	11	1,366
8 New Jersey-----	13	---	10	27	9	1,538
9 Pennsylvania-----	130	2	122	256	20	1,877
10 Delaware-----	8	---	7	15	3	1,750
11 Maryland-----	48	2	33	96	15	1,375
Lake States:						
12 Michigan-----	110	2	66	120	20	1,200
13 Wisconsin-----	222	4	131	245	45	1,180
14 Minnesota-----	263	4	162	316	20	1,232
Corn Belt:						
15 Ohio-----	149	4	81	225	60	1,087
16 Indiana-----	124	6	64	128	20	1,032
17 Illinois-----	214	8	106	224	17	991
18 Iowa-----	252	10	124	185	20	984
19 Missouri-----	376	19	181	379	80	963
Northern Plains:						
20 North Dakota-----	145	9	58	206	5	800
21 South Dakota-----	164	18	54	205	20	659
22 Nebraska-----	215	14	85	206	50	791
23 Kansas-----	194	14	60	200	80	619
Appalachian:						
24 Virginia-----	197	6	166	200	80	1,685
25 West Virginia-----	91	2	63	110	35	1,385
26 North Carolina-----	349	4	480	429	200	2,751
27 Kentucky-----	343	16	292	324	80	1,763
28 Tennessee-----	359	14	365	338	80	2,033
Southeast:						
29 South Carolina-----	172	2	291	170	50	3,384
30 Georgia-----	253	4	417	208	75	3,296
31 Florida-----	48	4	58	40	6	2,417
32 Alabama-----	285	6	358	259	40	2,512
Delta States:						
33 Mississippi-----	386	13	378	345	70	1,959
34 Arkansas-----	277	10	220	302	70	1,588
35 Louisiana-----	228	8	176	122	15	1,544
Southern Plains:						
36 Oklahoma-----	218	21	74	200	120	679
37 Texas-----	496	31	308	100	180	2,452
Mountain:						
38 Montana-----	129	22	26	170	2	403
39 Idaho-----	85	8	10	92	2	235
40 Wyoming-----	74	11	18	81	4	486
41 Colorado-----	114	11	47	104	30	825
42 New Mexico-----	80	10	35	29	15	875
43 Arizona-----	63	10	7	66	24	222
44 Utah-----	50	7	9	95	---	360
45 Nevada-----	24	7	2	53	---	167
Pacific:						
46 Washington-----	60	5	14	112	---	467
47 Oregon-----	68	7	16	109	1	471
48 California-----	115	9	11	359	10	191
48 States-----	7,415	366	5,349	8,209	1,685	1,443

See footnote 1, table 1.
and over.

fed, by States, 1949-50 and 1959-60

Year beginning October 1, 1959							
Number on farms January 1, 1960		Concentrates fed	Feed grains fed	Hay fed	Other harvested roughage fed	Concentrates fed per head $\frac{2}{}$	
2 years old and over	Colts						
1,000 head	1,000 tons	1,000 tons	1,000 tons	1,000 tons	1,000 tons	Pounds	
8	---	2	2	9	6	500	1
4	---	1	1	4	3	500	2
10	---	2	2	11	14	400	3
5	---	---	---	6	5	---	4
1	---	---	---	1	1	---	5
4	---	1	1	4	5	500	6
44	4	9	8	49	68	409	7
7	1	1	1	8	7	286	8
57	1	31	29	63	56	1,088	9
3	---	1	1	3	2	667	10
15	1	4	4	17	14	533	11
32	5	16	15	36	48	1,000	12
56	4	28	26	62	130	1,000	13
57	4	28	26	63	111	982	14
72	2	40	37	80	69	1,111	15
45	8	23	21	50	60	1,022	16
66	8	30	28	73	107	909	17
82	6	39	36	91	132	951	18
101	7	56	52	112	116	1,109	19
57	4	27	25	63	55	947	20
56	6	30	28	62	104	1,071	21
64	6	34	31	71	145	1,062	22
66	6	12	11	73	248	364	23
88	2	28	26	98	45	636	24
38	2	20	18	42	19	1,053	25
151	4	79	73	168	26	1,046	26
147	8	82	76	163	65	1,116	27
140	6	46	42	155	50	657	28
70	2	42	39	78	14	1,200	29
72	2	47	43	80	64	1,306	30
26	2	16	15	29	43	1,231	31
97	3	81	75	108	43	1,670	32
141	6	114	105	156	53	1,617	33
76	6	59	54	84	35	1,553	34
87	4	66	61	97	44	1,517	35
82	9	45	41	91	99	1,098	36
231	12	117	108	256	221	1,013	37
81	10	43	40	90	82	1,062	38
44	8	23	21	49	51	1,045	39
46	6	24	22	51	51	1,043	40
64	6	21	19	71	77	656	41
52	5	47	43	58	43	1,808	42
48	6	44	41	53	33	1,833	43
28	4	20	18	31	31	1,429	44
16	4	10	9	18	19	1,250	45
32	6	8	7	36	38	500	46
41	4	9	8	46	50	439	47
73	6	8	7	81	138	219	48
2,883	206	1,514	1,396	3,200	2,940	1,050	

Table 14.--Hens and pullets: Number, production,

State and region	Year beginning October 1, 1949 1/					
	Number on farms Jan. 1, 1950	Production	Concentrates fed	Concentrates fed		
				Per head	Per 1,000 eggs produced	Per dozen eggs produced
	1,000 head	Million eggs	1,000 tons	Pounds	Pounds	Pounds
Northeast:						
1 Maine-----	3,303	545	153	93	561	6.8
2 New Hampshire-----	2,746	444	126	92	568	6.8
3 Vermont-----	1,057	178	48	91	539	6.5
4 Massachusetts-----	5,485	938	254	93	542	6.5
5 Rhode Island-----	602	102	26	86	510	6.1
6 Connecticut-----	3,816	622	164	86	527	6.3
7 New York-----	14,089	2,125	621	88	584	7.0
8 New Jersey-----	11,787	2,043	589	100	577	7.0
9 Pennsylvania-----	22,035	3,136	1,014	92	647	7.8
10 Delaware-----	999	148	49	98	662	8.0
11 Maryland-----	3,842	528	167	87	633	7.6
Lake States:						
12 Michigan-----	10,884	1,593	494	91	620	7.5
13 Wisconsin-----	14,848	2,246	656	88	584	7.0
14 Minnesota-----	25,242	3,761	1,027	81	546	6.6
Corn Belt:						
15 Ohio-----	17,393	2,557	813	93	636	7.7
16 Indiana-----	16,925	2,501	783	93	626	7.5
17 Illinois-----	21,528	3,019	930	86	616	7.4
18 Iowa-----	30,966	4,584	1,266	82	552	6.6
19 Missouri-----	20,605	2,808	856	83	610	7.3
Northern Plains:						
20 North Dakota-----	4,162	513	166	80	647	7.8
21 South Dakota-----	8,663	1,151	366	84	636	7.7
22 Nebraska-----	12,895	1,775	553	86	623	7.5
23 Kansas-----	13,792	1,955	568	82	581	7.0
Appalachian:						
24 Virginia-----	8,411	1,170	382	91	653	7.9
25 West Virginia-----	3,991	532	178	89	669	8.1
26 North Carolina-----	10,568	1,267	454	86	717	8.6
27 Kentucky-----	10,742	1,279	461	86	721	8.7
28 Tennessee-----	9,975	1,027	362	73	705	8.5
Southeast:						
29 South Carolina-----	4,290	429	171	80	797	9.6
30 Georgia-----	6,741	694	270	80	778	9.4
31 Florida-----	2,986	340	113	76	665	6.0
32 Alabama-----	6,814	696	302	89	868	10.4
Delta States:						
33 Mississippi-----	6,776	684	277	82	810	9.8
34 Arkansas-----	6,912	701	274	79	782	9.4
35 Louisiana-----	4,169	385	140	67	727	8.8
Southern Plains:						
36 Oklahoma-----	9,435	1,203	379	80	630	7.6
37 Texas-----	22,553	2,811	921	82	655	7.9
Mountain:						
38 Montana-----	1,832	242	73	80	603	7.3
39 Idaho-----	1,854	272	76	82	559	6.7
40 Wyoming-----	726	100	31	85	620	7.5
41 Colorado-----	3,052	429	138	90	643	7.7
42 New Mexico-----	1,028	124	40	78	645	7.8
43 Arizona-----	611	74	23	75	622	7.5
44 Utah-----	2,871	440	109	76	495	6.0
45 Nevada-----	189	27	8	85	593	7.1
Pacific:						
46 Washington-----	4,597	593	184	80	531	6.4
47 Oregon-----	3,445	519	147	85	566	6.8
48 California-----	21,541	3,311	865	80	523	6.3
48 States-----	423,773	58,721	18,068	95	615	7.4

1/ Jennings. See footnote 1, table 1.

and feeds fed, by States, 1949-50 and 1959-60

Year beginning October 1, 1959								
Number on farms Jan. 1, 1960	Production	Concentrates fed	Feed grains fed	Concentrates fed			Per dozen eggs produced	
				Per head	Per 1,000 eggs produced	Per dozen eggs produced		
1,000 head	Million eggs	1,000 tons	1,000 tons	Pounds	Pounds	Pounds		
4,410	758	252	167	114	665	8.0	1	
1,969	331	99	66	101	598	7.2	2	
828	164	41	27	99	500	6.0	3	
3,531	677	183	122	104	541	6.5	4	
430	77	23	15	107	597	7.2	5	
3,554	666	188	125	106	565	6.7	6	
10,238	1,900	478	317	93	503	6.0	7	
12,195	2,122	605	402	99	570	6.9	8	
20,097	3,533	934	620	93	529	6.4	9	
763	133	38	309	100	571	6.9	10	
2,106	340	100	66	95	588	7.1	11	
8,172	1,472	373	248	91	507	6.1	12	
10,566	2,013	474	315	90	471	5.7	13	
19,693	3,664	896	595	91	489	5.9	14	
13,090	2,492	628	417	96	504	6.0	15	
13,637	2,542	599	398	88	471	5.7	16	
13,179	2,437	599	398	91	492	5.9	17	
25,517	4,831	1,219	809	96	505	6.0	18	
11,065	1,717	498	331	90	580	7.0	19	
2,755	420	131	87	95	624	7.5	20	
8,534	1,486	328	218	77	441	5.3	21	
10,126	1,867	441	293	87	472	5.7	22	
7,664	1,371	351	233	92	512	6.1	23	
6,600	1,112	287	191	87	516	6.3	24	
2,279	384	103	68	90	536	6.5	25	
12,669	2,044	575	382	91	563	6.7	26	
6,444	906	274	182	85	605	7.2	27	
6,734	982	293	195	87	597	7.2	28	
4,656	795	210	139	90	528	6.4	29	
12,461	2,191	555	369	89	507	6.1	30	
5,379	1,026	229	152	85	446	5.4	31	
7,962	1,284	318	211	80	495	6.0	32	
7,684	1,149	292	194	76	508	6.1	33	
5,746	919	299	199	104	651	7.8	34	
3,481	511	163	108	94	638	7.7	35	
4,214	646	181	120	86	560	6.7	36	
16,372	2,465	604	604	74	490	5.9	37	
1,194	206	49	33	82	476	5.8	38	
1,417	266	65	43	92	489	5.9	39	
354	58	16	11	90	552	6.6	40	
1,675	289	73	73	87	505	6.1	41	
811	136	34	23	84	500	6.0	42	
940	163	40	27	85	491	5.9	43	
1,691	315	71	47	84	453	5.4	44	
85	12	3	2	71	500	6.0	45	
5,353	1,045	234	155	87	448	5.4	46	
3,228	597	141	94	87	472	5.7	47	
24,218	5,555	1,266	641	90	436	5.5	48	
331,766	62,069	1,853	11,041	90	511	6.1		

Table 15.--Chickens raised: Number, production,

State and region	Year beginning October 1, 1949 ^{1/}				
	Number raised during year	Production	Concentrates fed	Concentrates fed	
				Per head	Per 100 pounds produced
	1,000 head	Million pounds	1,000 tons	Pounds	Pounds
Northeast:					
1 Maine-----	5,883	32	92	31	575
2 New Hampshire-----	5,370	30	91	34	607
3 Vermont-----	1,618	9	27	33	600
4 Massachusetts-----	8,623	47	140	32	596
5 Rhode Island-----	1,046	5	15	29	600
6 Connecticut-----	5,984	29	95	32	655
7 New York-----	19,447	95	287	30	604
8 New Jersey-----	14,656	69	208	28	603
9 Pennsylvania-----	33,379	160	510	31	638
10 Delaware-----	1,640	7	23	29	657
11 Maryland-----	5,539	26	76	27	585
Lake States:					
12 Michigan-----	18,690	92	285	30	620
13 Wisconsin-----	21,458	97	284	26	586
14 Minnesota-----	30,124	139	421	28	606
Corn Belt:					
15 Ohio-----	26,483	127	386	29	608
16 Indiana-----	28,002	132	399	28	605
17 Illinois-----	29,671	136	430	29	632
18 Iowa-----	45,719	220	638	28	580
19 Missouri-----	29,234	134	399	27	596
Northern Plains:					
20 North Dakota-----	6,142	28	88	29	629
21 South Dakota-----	12,988	61	188	29	616
22 Nebraska-----	22,249	100	315	28	630
23 Kansas-----	21,729	93	261	24	561
Appalachian:					
24 Virginia-----	10,758	53	171	32	645
25 West Virginia-----	4,678	22	69	30	627
26 North Carolina-----	17,549	79	246	26	623
27 Kentucky-----	16,839	77	244	29	634
28 Tennessee-----	15,640	65	184	24	566
Southeast:					
29 South Carolina-----	7,824	34	106	27	624
30 Georgia-----	12,440	49	143	23	584
31 Florida-----	5,149	18	51	20	567
32 Alabama-----	12,600	50	154	24	616
Delta States:					
33 Mississippi-----	11,468	41	120	21	585
34 Arkansas-----	11,665	48	141	24	588
35 Louisiana-----	8,253	33	88	21	533
Southern Plains:					
36 Oklahoma-----	14,550	58	155	21	534
37 Texas-----	31,292	113	309	20	547
Mountain:					
38 Montana-----	3,360	14	40	24	571
39 Idaho-----	3,238	14	37	23	529
40 Wyoming-----	1,227	5	15	24	600
41 Colorado-----	5,115	21	68	27	648
42 New Mexico-----	1,535	6	16	21	533
43 Arizona-----	994	4	10	20	500
44 Utah-----	3,986	16	40	20	500
45 Nevada-----	344	1	4	23	800
Pacific:					
46 Washington-----	7,862	35	100	25	571
47 Oregon-----	5,463	25	74	27	592
48 California-----	25,627	105	280	22	533
48 States-----	635,130	2,854	8,523	27	597

See footnote 1, table 1.
for this study.

and feeds fed by States, 1949-50 and 1959-60

Year beginning October 1, 1959							
Number raised during year	Production 2/	Concentrates fed	Feed grains fed	Concentrates fed			
				Per head	Per 100 pounds produced		
1,000 head	Million pounds	1,000 tons	1,000 tons	Pounds	Pounds		
6,099	32	76	61	25	475	1	
2,622	13	40	32	31	615	2	
979	5	14	11	29	560	3	
3,907	20	57	46	29	570	4	
492	2	6	5	24	600	5	
4,166	21	54	43	26	574	6	
7,328	37	87	70	24	470	7	
7,460	35	90	72	24	514	8	
16,670	63	192	154	23	463	9	
1,045	5	15	12	29	600	10	
1,867	9	24	19	26	533	11	
5,704	28	74	59	26	529	12	
7,537	37	72	58	19	389	13	
17,707	78	221	177	25	567	14	
9,816	50	128	103	26	512	15	
13,089	64	155	124	24	484	16	
10,821	52	120	96	22	462	17	
26,308	118	269	215	20	456	18	
11,096	58	111	89	20	383	19	
3,413	15	44	35	26	587	20	
7,712	34	89	71	23	524	21	
9,418	44	109	88	23	495	22	
8,348	37	93	75	22	503	23	
6,225	34	84	67	27	494	24	
1,817	10	25	20	28	500	25	
13,957	79	147	118	21	372	26	
6,212	31	75	60	24	484	27	
5,950	30	83	67	28	553	28	
7,229	33	83	67	23	503	29	
12,909	64	128	103	20	400	30	
4,857	23	49	39	20	426	31	
7,956	39	88	71	22	451	32	
6,258	32	66	53	21	412	33	
6,191	30	90	72	29	600	34	
4,295	21	51	41	24	486	35	
3,369	17	35	28	21	412	36	
14,134	68	160	128	23	471	37	
1,640	7	14	11	17	400	38	
1,725	7	18	14	21	514	39	
317	1	3	2	19	600	40	
1,342	6	15	12	22	500	41	
658	3	7	6	21	467	42	
902	4	10	8	22	500	43	
1,412	6	15	12	21	500	44	
97	1	1	1	21	200	45	
4,190	20	46	37	22	460	46	
3,347	14	39	31	23	557	47	
31,161	127	326	262	21	513	48	
331,754	1,584	3,798	3,046	23	480		

Table 16.--Broilers: Number, production, and feeds

State and region	Year beginning October 1, 1949				
	Number produced in year	Production	Concentrates fed	Concentrates fed	
				Per head	Per 100 pounds produced
	1,000 head	Million pounds	1,000 Cons	Pounds	Pounds
Northeast:					
1 Maine-----	16,916	74.4	136	16.1	366
2 New Hampshire-----	4,034	15.3	26	12.9	340
3 Vermont-----	462	1.8	3	13.0	333
4 Massachusetts-----	11,943	47.8	85	14.2	356
5 Rhode Island-----	770	2.8	5	13.0	357
6 Connecticut-----	13,982	54.5	95	13.6	349
7 New York-----	7,714	27.8	51	13.2	367
8 New Jersey-----	7,538	27.9	48	12.7	344
9 Pennsylvania-----	13,562	47.5	88	13.0	371
10 Delaware-----	80,922	242.8	414	10.2	341
11 Maryland-----	54,596	163.8	269	9.9	328
Lake States:					
12 Michigan-----	2,180	7.2	12	11.0	333
13 Wisconsin-----	6,607	19.8	35	10.6	354
14 Minnesota-----	2,193	6.6	12	10.9	364
Corn Belt:					
15 Ohio-----	5,823	18.6	31	10.6	333
16 Indiana-----	27,880	89.2	152	10.9	341
1 Illinois-----	14,610	42.4	69	9.4	325
18 Iowa-----	6,007	19.8	33	11.0	333
19 Missouri-----	14,288	42.9	67	9.4	312
Northern Plains:					
20 North Dakota-----	---	---	---	---	---
21 South Dakota-----	---	---	---	---	---
22 Nebraska-----	3,720	10.8	19	10.2	352
23 Kansas-----	2,094	5.9	11	10.5	373
Appalachian:					
24 Virginia-----	40,033	124.1	202	10.1	326
25 West Virginia-----	15,079	48.3	80	10.6	331
26 North Carolina-----	28,109	78.7	131	9.3	333
27 Kentucky-----	1,702	4.9	9	10.6	367
28 Tennessee-----	3,894	10.9	17	8.7	312
Southeast:					
29 South Carolina-----	8,871	23.8	38	8.6	319
30 Georgia-----	62,892	176.1	278	8.8	316
31 Florida-----	9,001	26.1	40	8.9	307
32 Alabama-----	13,114	35.4	61	9.3	345
Delta States:					
33 Mississippi-----	17,010	47.6	78	9.2	328
34 Arkansas-----	49,179	137.7	220	8.9	320
35 Louisiana-----	2,146	5.8	10	9.3	345
Southern Plains:					
36 Oklahoma-----	2,909	7.9	15	10.3	380
37 Texas-----	33,383	90.1	152	9.1	337
Mountain:					
38 Montana-----	---	---	---	---	---
39 Idaho-----	750	2.0	4	10.7	400
40 Wyoming-----	---	---	---	---	---
41 Colorado-----	1,638	4.8	9	11.0	375
42 New Mexico-----	---	---	---	---	---
43 Arizona-----	1,048	3.0	5	9.5	333
44 Utah-----	700	2.0	4	11.4	400
45 Nevada-----	---	---	---	---	---
Pacific:					
46 Washington-----	4,646	14.4	23	9.9	319
47 Oregon-----	4,336	13.9	22	10.1	317
48 California-----	32,605	110.9	193	11.2	330
48 States-----	656,816	1,938.0	3,242	10.3	335

See footnote 1, table 1.

fed, by States, 1949-50 and 1959-60

Year beginning October 1, 1959						
Number produced in year	Production	Concentrates fed	Feed grains fed	Concentrates fed		
				Per head	Per 100 pounds produced	
1,000 head	Million pounds	1,000 tons	1,000 tons	Pounds	Pounds	
54,148	211	301	179	11.1	285	1
5,615	21	28	17	10.0	267	2
507	2	2	1	7.9	200	3
9,500	36	47	28	9.9	261	4
1,550	5	7	4	9.0	280	5
22,184	75	89	53	8.0	237	6
10,328	43	53	32	10.3	247	7
5,500	28	38	23	13.8	271	8
37,725	140	189	113	10.0	270	9
91,343	338	465	277	10.2	275	10
102,812	380	506	302	9.8	266	11
3,200	16	23	14	14.4	288	12
20,666	72	121	72	11.7	336	13
6,619	23	33	20	10.0	287	14
14,017	49	64	38	9.1	261	15
36,102	123	145	86	8.0	236	16
5,487	17	21	13	7.7	247	17
3,522	15	21	13	11.2	280	18
31,750	102	129	77	8.1	253	19
---	---	---	---	---	---	20
---	---	---	---	---	---	21
2,175	7	9	5	8.3	257	22
1,891	6	8	5	8.5	267	23
54,511	169	205	122	7.5	243	24
24,772	82	107	64	8.6	261	25
156,600	517	593	353	7.6	229	26
16,520	55	65	39	7.9	236	27
33,340	110	136	81	8.2	247	28
17,480	58	72	43	8.2	248	29
320,250	1,058	1,271	758	7.9	246	30
10,101	32	40	24	7.9	250	31
176,654	565	791	471	9.0	280	32
115,900	371	425	253	7.3	229	33
180,397	559	610	364	6.8	218	34
20,250	65	77	46	7.6	237	35
6,711	21	33	20	9.8	314	36
105,203	337	384	229	7.3	228	37
---	---	---	---	---	---	38
3,850	12	14	8	7.3	213	39
---	---	---	---	---	---	40
1,183	4	5	3	8.5	250	41
---	---	---	---	---	---	42
697	2	2	1	5.7	200	43
1,846	6	8	5	8.7	267	44
---	---	---	---	---	---	45
15,505	53	61	36	7.9	230	46
11,738	40	46	27	7.8	230	47
54,817	192	240	143	8.8	250	48
1,794,966	6,017	7,484	4,462	8.3	249	

Table 17.--Turkeys: Number, production, and

State and region	Year beginning October 1, 1949 ^{1/}					
	Number raised in year	Production	Concentrates fed	Concentrates fed		
				Per head	Per 100 pounds produced	
	1,000 head	Million pounds	1,000 tons	Pounds	Pounds	
Northeast:						
1 Maine-----	74	1,310	3	81	458	
2 New Hampshire-----	120	2,160	5	83	463	
3 Vermont-----	120	2,197	5	83	455	
4 Massachusetts-----	447	7,565	18	81	476	
5 Rhode Island-----	47	813	2	85	492	
6 Connecticut-----	269	4,717	12	89	509	
7 New York-----	808	13,926	34	84	488	
8 New Jersey-----	332	5,708	14	84	491	
9 Pennsylvania-----	1,682	29,110	71	84	488	
10 Delaware-----	124	2,176	5	81	460	
11 Maryland-----	438	7,330	20	91	511	
Lake States:						
12 Michigan-----	916	16,107	40	87	497	
13 Wisconsin-----	977	18,740	47	96	502	
14 Minnesota-----	4,146	78,584	198	96	504	
Corn Belt:						
15 Ohio-----	1,361	24,084	61	90	507	
16 Indiana-----	1,249	23,175	58	93	501	
17 Illinois-----	865	16,378	41	95	501	
18 Iowa-----	2,956	59,529	157	106	527	
19 Missouri-----	1,681	29,857	79	94	529	
Northern Plains:						
20 North Dakota-----	495	8,381	20	81	477	
21 South Dakota-----	320	5,247	12	75	457	
22 Nebraska-----	784	14,877	37	94	497	
23 Kansas-----	713	12,548	33	93	526	
Appalachian:						
24 Virginia-----	2,294	37,461	68	59	419	
25 West Virginia-----	887	13,629	29	65	426	
26 North Carolina-----	559	9,302	21	75	452	
27 Kentucky-----	314	3,580	15	96	538	
28 Tennessee-----	186	3,054	8	86	524	
Southeast:						
29 South Carolina-----	771	17,788	35	91	508	
30 Georgia-----	316	5,384	14	89	520	
31 Florida-----	131	2,115	6	92	567	
32 Alabama-----	152	2,249	5	66	445	
Delta States:						
33 Mississippi-----	113	1,679	4	71	476	
34 Arkansas-----	427	7,208	16	75	444	
35 Louisiana-----	85	1,229	3	71	488	
Southern Plains:						
36 Oklahoma-----	545	8,988	23	84	512	
37 Texas-----	2,927	51,171	137	94	535	
Mountain:						
38 Montana-----	130	2,193	5	77	456	
39 Idaho-----	247	4,728	13	105	550	
40 Wyoming-----	117	2,018	5	85	496	
41 Colorado-----	723	13,536	34	94	502	
42 New Mexico-----	64	1,134	3	94	529	
43 Arizona-----	85	1,664	5	118	601	
44 Utah-----	1,673	34,589	92	110	532	
45 Nevada-----	26	520	1	77	385	
Pacific:						
46 Washington-----	909	17,229	47	103	546	
47 Oregon-----	1,985	38,494	104	105	540	
48 California-----	7,202	143,149	423	117	571	
48 States-----	43,792	807,110	2,088	95	517	

^{1/} Jennings. See footnote 1, table 1.

Feeds fed, by States, 1949-50 and 1959-60

Year beginning October 1, 1959						
Number raised in year	Production	Concentrates fed	Feed grains fed	Concentrates fed		
				Per head	Per 100 pounds produced	
1,000 head	Million pounds	1,000 tons	1,000 tons	Pounds	Pounds	
80	1,440	3	2	75	417	1
108	1,980	4	3	74	404	2
28	532	1	1	71	376	3
362	6,607	14	10	77	424	4
24	468	1	1	83	427	5
235	4,423	10	7	85	452	6
722	13,968	28	20	78	401	7
166	3,238	6	4	72	371	8
1,605	30,136	61	43	76	405	9
280	4,004	8	6	57	400	10
170	3,025	7	5	82	463	11
1,258	23,705	45	32	72	380	12
4,079	61,532	116	82	57	377	13
14,541	227,917	568	387	75	461	14
3,148	52,090	109	77	69	419	15
3,092	50,407	113	80	73	387	16
1,037	20,474	40	28	77	391	17
7,675	137,952	280	198	73	406	18
4,285	81,322	170	120	79	418	19
827	16,005	35	25	85	437	20
855	12,298	35	25	82	569	21
1,115	22,482	53	37	95	471	22
865	16,224	38	27	88	468	23
4,654	49,691	101	71	43	407	24
923	11,881	22	16	48	370	25
1,800	37,992	76	54	64	447	26
358	6,994	16	11	89	458	27
129	2,470	5	4	78	405	28
626	12,332	29	21	92	470	29
430	8,323	17	12	79	409	30
206	2,337	5	4	49	428	31
300	6,050	14	10	93	463	32
144	2,788	7	5	97	502	33
2,132	41,748	88	62	83	422	34
58	1,064	3	2	103	564	35
1,265	24,211	54	38	85	446	36
3,940	74,258	148	105	75	399	37
8	152	---	---	85	---	38
252	4,360	9	6	71	413	39
13	224	---	---	---	---	40
1,479	23,560	57	40	77	386	41
73	1,321	3	2	82	454	42
97	1,862	5	4	103	537	43
2,801	56,799	133	94	95	468	44
1	20	---	---	---	---	45
525	10,879	25	18	95	460	46
1,415	26,714	54	38	76	404	47
14,536	281,125	673	476	93	479	48
84,724	1,491,384	3,269	2,313	77	438	

Table 18.--Concentrates fed, by different

State and region	Year beginning October 1, 1949 ^{1/}								Total
	Dairy cattle	Beef cattle	Sheep	Horses and mules	Hogs	Poultry	Other livestock		
	1,000 tons	1,000 tons	1,000 tons	1,000 tons	1,000 tons	1,000 tons	1,000 tons	1,000 tons	
Northeast:									
1 Maine-----	117	3	---	19	24	384	25	572	
2 New Hampshire-----	61	---	---	8	12	248	15	344	
3 Vermont-----	273	---	---	21	13	83	9	399	
4 Massachusetts-----	132	---	---	10	53	497	143	835	
5 Rhode Island-----	21	---	---	---	4	48	31	104	
6 Connecticut-----	123	---	---	7	21	366	57	574	
7 New York-----	1,530	8	3	99	145	993	505	3,283	
8 New Jersey-----	197	---	---	10	67	859	146	1,279	
9 Pennsylvania-----	1,262	204	4	122	514	1,683	269	4,058	
10 Delaware-----	36	---	---	7	23	491	10	567	
11 Maryland-----	254	10	1	33	177	532	76	1,083	
Lake States:									
12 Michigan-----	995	179	17	66	698	831	176	2,962	
13 Wisconsin-----	2,338	164	10	131	1,683	1,022	95	5,443	
14 Minnesota-----	1,368	617	30	162	3,200	1,658	66	7,101	
Corn Belt:									
15 Ohio-----	1,060	327	49	81	2,581	1,291	219	5,608	
16 Indiana-----	684	434	16	64	3,934	1,392	110	6,634	
17 Illinois-----	1,106	1,307	26	106	5,177	1,470	243	9,435	
18 Iowa-----	1,249	2,292	46	124	10,412	2,094	63	16,280	
19 Missouri-----	822	798	35	181	3,334	1,401	89	6,660	
Northern Plains:									
20 North Dakota-----	316	145	11	58	367	274	9	1,180	
21 South Dakota-----	264	434	26	54	1,342	566	11	2,697	
22 Nebraska-----	438	1,281	35	85	2,334	924	30	5,127	
23 Kansas-----	442	443	30	60	1,042	873	48	2,938	
Appalachian:									
24 Virginia-----	380	39	6	166	586	823	86	2,086	
25 West Virginia-----	142	20	6	63	171	356	48	806	
26 North Carolina-----	297	12	---	480	784	852	84	2,509	
27 Kentucky-----	518	66	14	292	1,003	729	64	2,686	
28 Tennessee-----	483	45	5	365	934	571	73	2,476	
Southeast:									
29 South Carolina-----	124	9	---	291	388	350	46	1,208	
30 Georgia-----	267	36	---	417	759	705	81	2,265	
31 Florida-----	230	85	---	58	133	210	86	802	
32 Alabama-----	319	41	---	358	679	522	69	1,988	
Delta States:									
33 Mississippi-----	313	38	1	378	447	479	35	1,691	
34 Arkansas-----	264	28	1	220	506	651	35	1,705	
35 Louisiana-----	152	49	2	176	304	241	72	996	
Southern Plains:									
36 Oklahoma-----	368	118	4	74	579	572	54	1,769	
37 Texas-----	798	586	42	308	965	1,519	220	4,438	
Mountain:									
38 Montana-----	67	58	15	26	114	118	14	412	
39 Idaho-----	137	82	10	10	133	130	13	515	
40 Wyoming-----	35	49	22	18	51	51	8	234	
41 Colorado-----	171	264	50	47	249	249	38	1,068	
42 New Mexico-----	30	67	10	35	49	59	17	267	
43 Arizona-----	27	132	4	7	16	43	21	250	
44 Utah-----	78	34	11	9	53	245	19	449	
45 Nevada-----	9	34	3	2	12	13	4	77	
Pacific:									
46 Washington-----	250	23	3	14	101	354	70	815	
47 Oregon-----	191	44	5	16	123	347	40	766	
48 California-----	718	199	21	11	336	1,752	302	3,339	
48 States-----	21,456	10,804	574	5,349	46,632	31,921	4,044	120,780	

^{1/} Jennings. See footnote 1, table 1.

^{2/} Miscellaneous livestock on farms and all livestock not on farms.

classes of livestock, 1949-50 and 1959-60

Year beginning October 1, 1959							
Dairy cattle	Beef cattle	Sheep	Horses and mules	Hogs	Poultry	Other livestock	Total
1,000 tons	1,000 tons	1,000 tons	1,000 tons	1,000 tons	1,000 tons	1,000 tons	1,000 tons
178	5	?	2	9	632	79	907
87	1	---	1	10	171	26	296
372	4	1	2	9	58	42	488
172	2	1	---	25	301	48	549
27	---	---	---	3	37	6	73
156	2	---	1	6	341	38	544
2,219	32	9	9	109	646	388	3,412
262	3	1	1	44	739	100	1,150
1,600	227	12	31	406	1,376	273	3,925
44	2	---	1	25	526	68	666
350	29	2	4	88	637	127	1,237
1,023	387	31	16	618	515	113	2,703
3,427	414	23	28	1,829	783	290	6,794
2,164	1,300	77	28	3,401	1,698	375	9,043
1,225	556	80	40	1,825	929	215	4,970
666	537	25	23	3,764	1,012	277	6,304
1,006	2,155	38	30	6,056	780	465	10,530
1,534	4,560	100	39	9,386	1,789	803	18,211
880	725	46	56	3,138	908	190	5,943
323	419	18	27	338	210	44	1,379
296	763	37	30	1,467	452	115	3,160
500	2,027	38	34	2,204	612	234	5,649
524	985	54	12	967	490	120	3,132
557	105	12	28	472	677	75	1,926
145	44	21	20	93	257	16	596
405	112	4	79	1,000	1,391	96	3,087
673	265	42	82	1,139	430	84	2,715
742	229	9	46	1,002	517	117	2,662
155	84	1	42	344	394	23	1,043
286	305	1	47	1,044	1,971	109	3,763
706	212	---	16	225	323	93	1,575
245	284	2	81	741	1,211	82	2,646
425	279	4	114	366	790	64	2,042
275	202	2	59	294	1,087	61	1,980
294	250	4	66	138	294	34	1,080
451	364	15	45	338	303	68	1,584
891	915	90	117	737	1,296	184	4,230
63	351	38	43	140	63	26	724
243	292	7	23	108	106	26	805
27	175	46	24	26	19	13	330
212	1,243	54	21	160	150	81	1,921
50	239	58	47	41	44	18	497
86	544	24	44	19	57	34	808
123	176	66	20	42	227	27	681
18	100	18	10	7	4	7	164
271	271	8	8	113	366	48	1,085
261	150	12	9	131	280	36	879
1,200	1,630	116	8	222	2,505	373	6,054
27,839	23,956	1,249	1,514	44,649	30,404	6,231	135,842

Table 19.--Silage fed, by different classes

State and region	Year beginning October 1, 1949 ^{2/}						Total
	Milk cows	Other dairy cattle	Cattle on feed	Other beef cattle	Sheep		
	1,000 tons	1,000 tons	1,000 tons	1,000 tons	1,000 tons	1,000 tons	1,000 tons
Northeast:							
1 Maine-----	92	12	---	---	---	---	104
2 New Hampshire-----	84	11	---	---	---	---	95
3 Vermont-----	484	67	---	---	---	---	551
4 Massachusetts-----	230	37	---	---	---	---	267
5 Rhode Island-----	45	7	---	---	---	---	52
6 Connecticut-----	279	38	---	---	---	---	317
7 New York-----	3,992	526	---	---	2	---	4,520
8 New Jersey-----	395	53	---	---	---	---	448
9 Pennsylvania-----	2,096	300	45	10	---	---	2,451
10 Delaware-----	36	6	---	---	---	---	42
11 Maryland-----	354	45	---	---	---	---	399
Lake States:							
12 Michigan-----	1,751	200	50	190	9	---	2,200
13 Wisconsin-----	9,157	1,250	60	100	6	---	10,573
14 Minnesota-----	4,210	725	150	840	15	---	5,940
Corn Belt:							
15 Ohio-----	1,122	152	80	36	20	---	1,410
16 Indiana-----	523	72	120	54	8	---	787
17 Illinois-----	1,176	160	370	154	18	---	1,878
18 Iowa-----	1,058	144	710	300	30	---	2,242
19 Missouri-----	318	40	220	94	10	---	682
Northern Plains:							
20 North Dakota-----	435	59	20	60	7	---	581
21 South Dakota-----	441	60	90	130	20	---	741
22 Nebraska-----	177	23	200	180	60	---	640
23 Kansas-----	559	90	300	1,500	70	---	2,519
Appalachian:							
24 Virginia-----	488	60	---	30	---	---	578
25 West Virginia-----	100	14	---	16	---	---	130
26 North Carolina-----	159	---	---	10	---	---	169
27 Kentucky-----	188	25	---	30	---	---	263
28 Tennessee-----	149	20	---	40	---	---	209
Southeast:							
29 South Carolina-----	97	---	---	---	---	---	97
30 Georgia-----	69	---	---	---	---	---	69
31 Florida-----	28	---	---	---	---	---	28
32 Alabama-----	74	---	---	---	---	---	74
Delta States:							
33 Mississippi-----	106	---	---	---	---	---	106
34 Arkansas-----	48	---	---	---	---	---	48
35 Louisiana-----	26	---	---	---	---	---	26
Southern Plains:							
36 Oklahoma-----	177	---	20	60	4	---	261
37 Texas-----	205	---	70	100	10	---	385
Mountain:							
38 Montana-----	22	---	25	86	25	---	158
39 Idaho-----	190	15	78	61	15	---	359
40 Wyoming-----	36	---	15	85	18	---	154
41 Colorado-----	457	30	300	321	120	---	1,228
42 New Mexico-----	48	---	17	---	5	---	70
43 Arizona-----	77	---	30	42	2	---	151
44 Utah-----	170	20	20	117	10	---	337
45 Nevada-----	11	---	10	---	---	---	21
Pacific:							
46 Washington-----	75	---	10	---	9	---	94
47 Oregon-----	92	---	15	---	6	---	113
48 California-----	384	30	100	100	55	---	669
48 States-----	32,500	4,291	3,125	4,766	554	---	45,236

^{1/} Includes corn, silage, sorghum silage, and wet beer pulp.
^{2/} Jennings. See footnote 1, table 1.

of livestock, 1949-50 and 1959-60 1/

Year beginning October 1, 1959						
Milk cows	Other dairy cattle	Cattle on feed	Other beef cattle	Sheep	Total	
1,000 tons	1,000 tons	1,000 tons	1,000 tons	1,000 tons	1,000 tons	1,000 tons
113	14	---	29	---	156	1
102	12	---	27	---	141	2
423	51	---	111	---	585	3
249	30	---	65	---	344	4
39	5	---	11	---	55	5
322	39	---	85	---	446	6
3,375	410	---	884	46	4,715	7
380	46	---	99	---	525	8
2,469	299	460	647	---	3,875	9
51	6	---	13	---	70	10
582	71	---	153	---	806	11
2,095	254	389	549	29	3,316	12
7,138	866	1,334	1,870	99	11,307	13
5,392	654	1,008	1,412	74	8,540	14
1,690	205	316	443	23	2,677	15
1,135	138	212	297	15	1,797	16
2,179	264	407	571	30	3,451	17
2,988	363	558	783	42	4,734	18
1,381	167	257	362	19	2,186	19
1,275	155	238	334	18	2,020	20
2,484	301	465	651	35	3,936	21
1,406	170	262	368	19	2,225	22
3,611	462	711	998	52	6,034	23
798	97	149	209	---	1,253	24
177	21	---	46	---	244	25
572	70	107	150	---	899	26
466	49	75	106	---	636	27
394	48	74	103	---	619	28
179	22	34	47	---	282	29
265	32	49	69	---	415	30
119	14	22	31	---	186	31
169	21	31	45	---	266	32
294	36	55	77	---	462	33
196	24	37	52	---	309	34
86	10	16	22	---	134	35
573	69	107	150	8	907	36
1,224	149	230	321	17	1,941	37
326	40	61	86	5	518	38
677	82	126	177	10	1,072	39
198	24	37	52	2	313	40
1,502	182	280	393	20	2,377	41
191	23	36	50	2	302	42
383	46	72	100	6	607	43
433	53	81	113	6	686	44
36	4	7	9	---	56	45
695	85	130	183	9	1,102	46
410	50	76	107	6	649	47
1,340	162	249	351	18	2,120	48
52,722	6,395	8,758	13,811	610	82,296	

Table 20.--Hay fed, by different classes

State and region	Year beginning October 1, 1949 ^{1/}								
	Milk cows	Other dairy cattle	Cattle on feed	Other beef cattle	Stock sheep	Sheep on feed	Horses and mules	Other livestock ^{2/}	Total
	1,000 tons	1,000 tons	1,000 tons	1,000 tons	1,000 tons	1,000 tons	1,000 tons	1,000 tons	1,000 tons
Northeast:									
1 Maine-----	433	144	---	35	5	---	92	7	716
2 New Hampshire-----	224	87	---	11	2	---	31	5	360
3 Vermont-----	894	263	---	16	2	---	103	4	1,282
4 Massachusetts-----	414	102	---	12	2	---	54	21	605
5 Rhode Island-----	34	7	---	---	---	---	2	1	44
6 Connecticut-----	302	84	---	7	2	---	29	2	426
7 New York-----	3,476	859	---	96	25	2	448	26	4,932
8 New Jersey-----	325	79	---	9	3	---	27	7	450
9 Pennsylvania-----	2,092	560	70	114	34	---	256	76	3,202
10 Delaware-----	59	16	---	4	---	---	15	1	95
11 Maryland-----	394	100	---	61	7	---	96	5	663
Lake States:									
12 Michigan-----	2,220	490	78	195	44	9	120	8	3,164
13 Wisconsin-----	4,366	920	80	95	28	6	245	15	5,755
14 Minnesota-----	3,274	650	267	650	103	16	316	26	5,312
Corn Belt:									
15 Ohio-----	1,954	480	116	266	105	21	225	50	3,217
16 Indiana-----	1,318	300	155	336	57	8	128	40	2,342
17 Illinois-----	1,814	504	491	700	69	18	224	64	3,884
18 Iowa-----	2,034	445	890	1,000	117	34	185	40	4,745
19 Missouri-----	2,030	400	326	1,180	120	13	379	84	4,532
Northern Plains:									
20 North Dakota-----	1,470	270	45	1,064	77	5	206	12	3,149
21 South Dakota-----	685	270	154	1,793	135	13	205	12	3,267
22 Nebraska-----	1,020	266	565	2,350	22	17	206	17	4,463
23 Kansas-----	1,078	220	239	1,050	25	46	200	38	2,896
Appalachian:									
24 Virginia-----	888	180	---	450	33	---	200	25	1,776
25 West Virginia-----	410	100	---	405	34	---	110	10	1,069
26 North Carolina-----	590	140	---	130	5	---	429	8	1,302
27 Kentucky-----	1,040	200	---	681	86	---	324	18	2,349
28 Tennessee-----	956	230	---	410	25	---	338	37	1,996
Southeast:									
29 South Carolina-----	170	50	---	64	---	---	170	---	454
30 Georgia-----	400	100	---	40	---	---	208	5	753
31 Florida-----	34	8	---	---	---	---	40	5	87
32 Alabama-----	400	---	---	---	---	---	259	38	697
Delta States:									
33 Mississippi-----	555	---	---	---	---	---	345	---	900
34 Arkansas-----	670	160	---	245	2	---	302	15	1,394
35 Louisiana-----	225	---	---	---	6	---	122	---	353
Southern Plains:									
36 Oklahoma-----	986	260	40	200	14	4	200	28	1,732
37 Texas-----	821	50	69	200	30	12	100	85	1,367
Mountain:									
38 Montana-----	360	125	50	1,470	300	12	170	7	2,494
39 Idaho-----	676	230	160	730	253	8	92	22	2,171
40 Wyoming-----	130	30	30	686	160	8	81	3	1,128
41 Colorado-----	428	108	318	912	114	43	104	16	2,043
42 New Mexico-----	130	20	35	159	22	3	29	7	405
43 Arizona-----	130	30	140	174	10	1	66	3	554
44 Utah-----	300	90	80	449	60	6	95	6	1,086
45 Nevada-----	50	20	40	292	22	1	53	---	478
Pacific:									
46 Washington-----	681	180	40	450	65	3	112	12	1,543
47 Oregon-----	524	130	60	680	80	2	109	18	1,603
48 California-----	2,330	570	420	1,280	160	17	359	15	5,151
48 States-----	45,794	10,527	4,958	21,161	2,465	328	8,209	944	94,386

^{1/} Jennings. See footnote 1, table 1.^{2/} Miscellaneous livestock on farms and all livestock not on farms.

of livestock, 1949-50 and 1959-60

Year beginning October 1, 1959									
Milk cows	Other dairy cattle	Cattle on feed	Other beef cattle	Stock sheep	Sheep on feed	Horses and mules	Other livestock 2/	Total	
1,000 tons	1,000 tons	1,000 tons	1,000 tons	1,000 tons	1,000 tons	1,000 tons	1,000 tons	1,000 tons	1,000 tons
307	105	---	54	2	---	9	8	485	1
170	56	---	35	---	---	4	4	269	2
835	206	---	11	1	---	11	5	1,069	3
260	67	---	23	1	---	6	22	379	4
41	8	---	---	---	---	1	1	51	5
250	74	---	15	---	---	4	2	345	6
3,764	1,021	---	198	8	2	49	27	5,069	7
299	77	---	22	1	---	8	7	414	8
2,607	859	102	389	12	---	63	80	4,112	9
67	23	---	9	---	---	3	1	103	10
511	190	---	111	2	---	17	5	836	11
2,097	743	125	388	16	6	36	8	3,419	12
6,191	2,223	126	321	10	4	62	16	8,953	13
4,252	1,418	425	1,387	39	16	63	27	7,627	14
1,700	653	199	663	46	16	80	53	3,410	15
1,147	442	203	850	22	5	50	42	2,761	16
1,843	694	893	1,679	28	11	73	67	5,288	17
2,431	874	1,854	2,775	57	36	91	42	8,160	18
1,542	668	315	2,227	34	9	112	88	4,995	19
1,247	244	129	1,273	29	7	63	13	3,005	20
874	255	255	2,783	76	16	62	13	4,334	21
886	339	999	3,319	19	32	71	18	5,683	22
797	375	381	1,909	25	18	73	40	3,618	23
747	340	29	590	16	---	98	26	1,846	24
342	108	---	352	14	---	42	11	869	25
651	306	33	294	3	---	168	8	1,463	26
1,146	479	64	1,116	28	---	163	19	3,015	27
756	422	54	886	12	---	155	39	2,324	28
152	113	21	178	1	---	78	---	543	29
299	226	71	107	1	---	80	5	789	30
---	227	59	133	---	---	29	5	453	31
384	276	47	127	2	---	108	40	984	32
378	414	32	151	4	---	156	---	1,135	33
514	216	29	422	2	---	84	---	1,267	34
370	247	26	569	5	---	97	16	1,330	35
745	306	99	918	11	4	91	30	2,204	36
1,153	672	337	842	287	14	256	89	3,650	37
340	93	85	1,754	88	7	90	7	2,464	38
993	286	161	1,037	54	6	49	23	2,609	39
146	39	60	802	112	8	51	3	1,221	40
519	168	556	1,225	72	39	71	17	2,667	41
163	47	79	347	56	4	58	7	761	42
---	57	323	216	23	2	53	3	677	43
480	111	86	469	62	6	31	6	1,251	44
---	29	30	260	17	1	18	---	355	45
742	267	163	605	15	2	36	13	1,843	46
483	203	83	793	43	4	46	19	1,674	47
3,196	908	1,167	2,160	86	25	81	16	7,639	48
48,817	18,174	9,700	36,794	1,442	300	3,200	991	119,418	

Table 21.--Other harvested roughage fed,

State and region	Year beginning October 1, 1949 ^{2/}						
	Milk cows	Other dairy cattle	Cattle on feed	Other beef cattle	Stock sheep	Horses and mules	Total
	1,000 tons	1,000 tons	1,000 tons	1,000 tons	1,000 tons	1,000 tons	1,000 tons
Northeast:							
1 Maine-----	---	---	---	---	---	---	---
2 New Hampshire-----	---	---	---	---	---	---	---
3 Vermont-----	---	---	---	---	---	---	---
4 Massachusetts-----	---	---	---	---	---	---	---
5 Rhode Island-----	---	---	---	---	---	1	1
6 Connecticut-----	---	---	---	---	---	---	---
7 New York-----	15	5	---	---	---	11	31
8 New Jersey-----	5	---	---	---	---	9	14
9 Pennsylvania-----	69	50	---	20	10	20	169
10 Delaware-----	15	5	---	2	---	3	25
11 Maryland-----	40	15	---	20	---	15	90
Lake States:							
12 Michigan-----	150	35	---	25	20	20	250
13 Wisconsin-----	144	30	---	30	10	45	259
14 Minnesota-----	63	15	---	20	10	20	128
Corn Belt:							
15 Ohio-----	106	30	---	115	100	60	411
16 Indiana-----	20	7	---	70	10	20	127
17 Illinois-----	33	12	---	70	7	17	139
18 Iowa-----	30	13	---	80	13	20	156
19 Missouri-----	97	20	---	120	40	80	357
Northern Plains:							
20 North Dakota-----	10	4	---	30	3	5	52
21 South Dakota-----	36	10	---	120	15	20	201
22 Nebraska-----	110	30	---	370	10	50	570
23 Kansas-----	300	70	50	725	30	80	1,255
Appalachian:							
24 Virginia-----	64	15	---	160	30	80	349
25 West Virginia-----	37	10	---	45	30	35	157
26 North Carolina-----	169	40	---	60	7	200	476
27 Kentucky-----	118	20	---	90	40	80	348
28 Tennessee-----	130	25	---	80	15	80	330
Southeast:							
29 South Carolina-----	38	7	---	30	---	50	123
30 Georgia-----	63	10	---	100	---	75	248
31 Florida-----	---	---	---	---	---	6	6
32 Alabama-----	57	10	---	60	---	40	167
Delta States:							
33 Mississippi-----	39	7	---	80	---	70	196
34 Arkansas-----	81	15	---	50	---	70	216
35 Louisiana-----	5	---	---	40	---	15	60
Southern Plains:							
36 Oklahoma-----	248	50	10	440	15	120	883
37 Texas-----	515	75	20	1,453	400	180	2,643
Mountain:							
38 Montana-----	---	---	---	---	---	2	2
39 Idaho-----	---	---	---	---	---	2	2
40 Wyoming-----	---	---	---	---	---	4	4
41 Colorado-----	40	10	25	180	50	30	335
42 New Mexico-----	34	10	10	85	---	15	154
43 Arizona-----	20	---	---	---	---	24	44
44 Utah-----	---	---	---	---	---	---	---
45 Nevada-----	---	---	---	---	---	---	---
Pacific:							
46 Washington-----	---	---	---	---	---	---	---
47 Oregon-----	---	---	---	---	---	1	1
48 California-----	20	---	20	39	20	10	109
48 States-----	2,921	655	135	4,809	885	1,685	11,090

1/ Corn stover, sorghum forage, and straw.

2/ Jennings. See footnote 1, table 1.

By classes of livestock, 1949-50 and 1959-60 1/

Year beginning October 1, 1959								
Milk cows	Other dairy cattle	Cattle on feed	Other beef cattle	Stock sheep	Horses and mules	Total		
1,000 tons	1,000 tons	1,000 tons	1,000 tons	1,000 tons	1,000 tons	1,000 tons		
10	3	---	9	3	6	31	1	
5	1	---	5	1	3	15	2	
22	8	---	11	1	14	56	3	
8	3	---	5	1	5	22	4	
2	1	---	---	---	1	4	5	
7	3	---	5	1	5	21	6	
101	36	---	87	26	68	318	7	
11	3	---	9	1	7	31	8	
76	23	---	81	39	56	275	9	
3	1	5	---	1	2	12	10	
18	6	---	28	4	14	70	11	
67	25	4	24	54	48	222	12	
215	91	4	23	40	130	503	13	
167	66	5	97	32	111	478	14	
70	23	6	144	80	69	392	15	
43	18	6	210	39	60	376	16	
63	19	9	485	44	107	727	17	
86	34	12	504	83	132	851	18	
64	25	9	515	53	116	782	19	
44	18	6	112	93	55	328	20	
41	16	9	442	124	104	736	21	
58	23	12	762	32	145	1,032	22	
59	23	6	1,532	35	248	1,903	23	
21	8	2	242	1	45	319	24	
17	7	---	69	3	19	115	25	
19	7	3	108	1	26	164	26	
32	13	4	336	3	65	453	27	
31	12	3	235	1	50	332	28	
15	6	2	38	---	14	75	29	
30	12	2	341	1	64	450	30	
27	11	2	204	---	43	287	31	
29	12	2	194	1	43	281	32	
43	17	2	214	1	53	330	33	
22	9	2	161	---	35	229	34	
24	9	2	220	1	44	300	35	
44	17	2	526	23	99	711	36	
97	38	6	1,043	169	221	1,574	37	
11	5	4	418	123	82	643	38	
27	10	7	160	85	51	360	39	
4	1	2	208	138	51	404	40	
19	7	6	422	45	77	576	41	
7	3	1	251	32	43	337	42	
10	4	2	172	21	33	242	43	
14	6	1	149	18	31	219	44	
4	1	1	121	4	19	150	45	
32	13	7	97	30	38	217	46	
22	9	4	203	58	50	346	47	
112	44	13	373	126	138	806	48	
1,953	750	175	11,595	1,672	2,940	19,085		

Table 22.--Other livestock: Feeds fed, by States, 1949-50 and 1959-60

State and region	Year beginning October 1, 1949 1/		Year beginning October 1, 1959		
	Concentrates fed	Hay fed	Concentrates fed	Feed grains fed	Hay fed
	1,000 tons	1,000 tons	1,000 tons	1,000 tons	1,000 tons
Northeast:					
Maine-----	25	7	79	65	8
New Hampshire-----	15	4	26	22	4
Vermont-----	9	5	42	35	5
Massachusetts-----	143	21	48	40	22
Rhode Island-----	31	1	6	5	1
Connecticut-----	57	2	38	32	2
New York-----	505	26	388	311	27
New Jersey-----	146	7	100	83	7
Pennsylvania-----	269	76	273	226	80
Delaware-----	10	1	68	56	1
Maryland-----	76	5	127	105	5
Lake States:					
Michigan-----	176	8	113	94	8
Wisconsin-----	95	15	290	240	16
Minnesota-----	66	26	375	311	27
Corn Belt:					
Ohio-----	219	50	215	178	53
Indiana-----	110	40	277	230	42
Illinois-----	243	64	465	385	67
Iowa-----	63	40	803	679	42
Missouri-----	89	84	190	158	88
Northern Plains:					
North Dakota-----	9	12	44	36	13
South Dakota-----	11	12	115	95	13
Nebraska-----	30	17	234	194	18
Kansas-----	48	38	120	99	40
Appalachian:					
Virginia-----	86	25	75	62	26
West Virginia-----	48	10	16	13	11
North Carolina-----	84	8	96	80	8
Kentucky-----	64	18	84	70	19
Tennessee-----	73	37	117	97	39
Southeast:					
South Carolina-----	46	---	23	19	---
Georgia-----	81	5	109	90	5
Florida-----	86	5	93	77	5
Alabama-----	69	38	82	68	40
Delta States:					
Mississippi-----	35	---	64	53	---
Arkansas-----	35	15	61	51	---
Louisiana-----	72	---	34	28	16
Southern Plains:					
Oklahoma-----	54	28	68	56	30
Texas-----	220	85	184	153	89
Mountain:					
Montana-----	14	7	26	22	7
Idaho-----	13	22	26	22	23
Wyoming-----	8	3	13	11	3
Colorado-----	38	16	81	67	17
New Mexico-----	17	7	18	15	7
Arizona-----	21	3	34	28	3
Utah-----	19	6	27	22	6
Nevada-----	4	---	7	6	---
Pacific:					
Washington-----	70	12	48	40	13
Oregon-----	40	18	36	30	19
California-----	302	15	373	309	16
48 States-----	4,044	944	6,231	5,168	991

See footnote 1, table 1.

U. S. Department of Agriculture
Washington, D. C. 20250

POSTAGE AND FEES PAID
U.S. Department of Agriculture

OFFICIAL BUSINESS

18657 42 0

R

END