



**AgEcon** SEARCH  
RESEARCH IN AGRICULTURAL & APPLIED ECONOMICS

*The World's Largest Open Access Agricultural & Applied Economics Digital Library*

**This document is discoverable and free to researchers across the globe due to the work of AgEcon Search.**

**Help ensure our sustainability.**

Give to AgEcon Search

AgEcon Search

<http://ageconsearch.umn.edu>

[aesearch@umn.edu](mailto:aesearch@umn.edu)

*Papers downloaded from **AgEcon Search** may be used for non-commercial purposes and personal study only. No other use, including posting to another Internet site, is permitted without permission from the copyright owner (not AgEcon Search), or as allowed under the provisions of Fair Use, U.S. Copyright Act, Title 17 U.S.C.*

SB 151 (1964)

USDA STATISTICAL BULLETINS

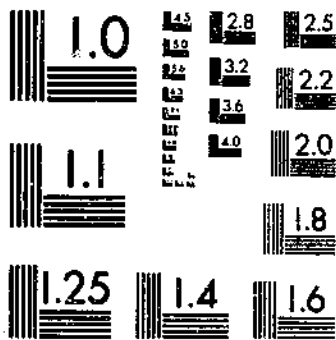
UPDATED

THE GRAIN INVENTORY ECONOMY OF THE EUROPEAN ECONOMIC COMMUNITY

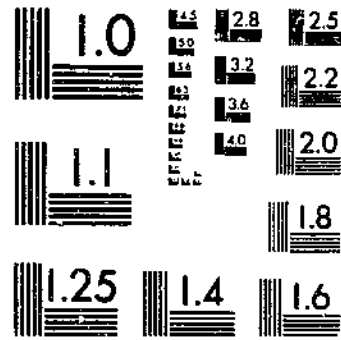
O'DONNELL, P. E. ET AL.

1 OF 1

# START



MICROCOPY RESOLUTION TEST CHART  
NATIONAL BUREAU OF STANDARDS-1963-A



MICROCOPY RESOLUTION TEST CHART  
NATIONAL BUREAU OF STANDARDS-1963-A

R  
630.5  
U53-13

Statistical Bulletin No. 351

# 351

**The Grain-Livestock Economy  
of the  
European Economic Community:**  
*A Compendium of Basic Statistics*

DEPOSITORY

1984

Library of Congress Public Library

U. S. DEPARTMENT OF AGRICULTURE - ECONOMIC RESEARCH SERVICE

© UPDATA 1981

## PREFACE

This report is a product of the Task Force set up under Economic Research Service General Memorandum No. 20, August 1963. Its terms of reference were:

"(1) To develop country impact studies which will show the expected effects for selected countries of impacts on their commodity trade balances and internal economic conditions in agriculture arising from reduction in tariffs and other impediments to agricultural product imports and

(2) To establish the general framework within which commodity analyses are accomplished; to provide for consistency as between commodity analyses; and to make overall assessments of the policy position that emerge."

The work was conducted by personnel drawn from several divisions of the Economic Research Service:

P. E. O'Donnell, Development and Trade Analysis Division, chairman;  
M. E. Abel, Economic and Statistical Analysis Division, vice-chairman;  
O. P. Blaich, Marketing Economics Division;  
R. N. Brown, Development and Trade Analysis Division.

Helen Clifton, Development and Trade Analysis Division, assisted with the statistical compilation and computation.

The assistance and comments of a number of individuals in Foreign Agricultural Service, and Economic Research Service are gratefully acknowledged.

November 1964

## CONTENTS

	<u>Page</u>
Introduction . . . . .	1
Section 1.00: Population and income . . . . .	3
Section 2.00: Prices received by farmers . . . . .	6
Section 3.00: Production-utilization of grains . . . . .	12
Section 4.00: Land utilization and crop production . . . . .	19
Section 5.00: Supply and distribution of meats . . . . .	48
Section 6.00: Livestock numbers and slaughterings . . . . .	76

## LIST OF TABLES

<u>Table</u>	<u>Page</u>
1.01 Total population, by country, EEC, 1950-60, and projections to 1970 . . . . .	4
1.02 Total population, by country, EEC, July 1, 1956-61 . . . . .	4
1.03 Total private consumption expenditures, by country, EEC, 1950-60 and projections to 1970 . . . . .	5
1.04 Per capita private consumption expenditures, by country, EEC, 1950-60 and projections to 1970 . . . . .	5
2.01 Prices received by farmers for selected crops, France, 1951-61 . . . . .	7
2.02 Prices received by farmers for selected crops, Germany, 1951-62 . . . . .	7
2.03 Prices received by farmers for selected crops, Italy, 1951-62 . . . . .	8
2.04 Prices received by farmers for selected crops, Netherlands, 1951-61 . . . . .	8
2.05 Prices received by farmers for selected crops, Belgium, 1951-62 . . . . .	9
2.06 Prices received by farmers for selected livestock and livestock products, France, 1951-62 . . . . .	9
2.07 Prices received by farmers for selected livestock and livestock products, Germany, 1951-62 . . . . .	10
2.08 Prices received by farmers for selected livestock and livestock products, Italy, 1951-62 . . . . .	10
2.09 Prices received by farmers for selected livestock and livestock products, Netherlands, 1951-63 . . . . .	11
2.10 Prices received by farmers for selected livestock and livestock products, Belgium, 1951-62 . . . . .	11
3.01 Production-utilization of wheat and wheat flour, EEC, 1956-62 . . . . .	13
3.02 Production-utilization of wheat and wheat flour, France, 1956-62 . . . . .	13
3.03 Production-utilization of wheat and wheat flour, Germany, 1956-62 . . . . .	14
3.04 Production-utilization of wheat and wheat flour, Italy, 1956-62 . . . . .	14
3.05 Production-utilization of wheat and wheat flour, Netherlands, 1956-62 . . . . .	15
3.06 Production-utilization of wheat and wheat flour, Belgium-Luxembourg, 1956-62 . . . . .	15
3.07 Production-utilization of coarse grain, EEC, 1956-62 . . . . .	16
3.08 Production-utilization of coarse grain, France, 1956-62 . . . . .	16
3.09 Production-utilization of coarse grain, Germany, 1956-62 . . . . .	17
3.10 Production-utilization of coarse grain, Italy, 1956-62 . . . . .	17
3.11 Production-utilization of coarse grain, the Netherlands, 1956-62 . . . . .	18
3.12 Production-utilization of coarse grain, Belgium-Luxembourg 1956-62 . . . . .	18
4.01 Land use pattern EEC, 1951-63 . . . . .	20
4.02 Land use pattern, France, 1951-63 . . . . .	20
4.03 Land use pattern, Germany, 1951-63 . . . . .	21
4.04 Land use pattern, Italy, 1951-63 . . . . .	21
4.05 Land use pattern, Netherlands, 1951-63 . . . . .	22
4.06 Land use pattern, Belgium-Luxembourg, 1951-63 . . . . .	22
4.07 Area of grains harvested, EEC, 1951-63 . . . . .	23
4.08 Area of grains harvested, France, 1951-63 . . . . .	23
4.09 Area of grains harvested, Germany, 1951-63 . . . . .	24
4.10 Area of grains harvested, Italy, 1951-63 . . . . .	24
4.11 Area of grains harvested, Netherlands, 1951-63 . . . . .	25
4.12 Area of grains harvested, Belgium-Luxembourg, 1951-63 . . . . .	25
4.13 Average yield of grains, EEC, 1951-63 . . . . .	26
4.14 Average yield of grains, France, 1951-63 . . . . .	26
4.15 Average yield of grains, Germany, 1951-63 . . . . .	27
4.16 Average yield of grains, Italy, 1951-63 . . . . .	27
4.17 Average yield of grains, Netherlands, 1951-63 . . . . .	28

4.18	Average yield of grains, Belgium-Luxembourg, 1951-63 . . . . .	28
4.19	Production of grains, EEC, 1951-63 . . . . .	29
4.20	Production of grains, France, 1951-63 . . . . .	29
4.21	Production of grains, Germany, 1951-63 . . . . .	30
4.22	Production of grains, Italy, 1951-63 . . . . .	30
4.23	Production of grains, Netherlands, 1951-63 . . . . .	31
4.24	Production of grains, Belgium-Luxembourg 1951-63 . . . . .	31
4.25	Area of hay and silage harvested, by country, EEC, 1951-63 . . . . .	32
4.26	Average yield (dry-weight basis) of hay and silage, by country, EEC, 1951-63 . . . . .	32
4.27	Production (dry-weight basis) of hay and silage, by country, EEC, 1951-58	33
4.28	Area in permanent pasture, by country, EEC, 1951-58 . . . . .	33
4.29	Average yield (dry-weight basis) of permanent pasture, by country, EEC, 1951-58 . . . . .	34
4.30	Production of forage from permanent pasture, by country, EEC, 1951-58 .	34
4.31	Area in cultivated hay, clover and alfalfa, by country, EEC, 1951-62 . . .	35
4.32	Average yields (dry-weight basis) of cultivated hay, clover and alfalfa crops, by country, EEC, 1951-62 . . . . .	35
4.33	Production (dry-weight basis) of cultivated hay, clover, and alfalfa crops, by country, EEC, 1951-62 . . . . .	36
4.34	Area in permanent meadows, by country, EEC, 1951-62 . . . . .	36
4.35	Yields (dry-weight basis) from permanent meadows, by country, EEC, 1951-62 . . . . .	37
4.36	Production (dry-weight basis) from permanent meadows, by country, EEC, 1951-62 . . . . .	37
4.37	Area in pulses, by country, EEC, 1951-63 . . . . .	38
4.38	Average yield of pulses, by country, EEC, 1951-63 . . . . .	38
4.39	Production of pulses, by country, EEC, 1951-63 . . . . .	39
4.40	Area in industrial crops, by country, EEC, 1951-62 . . . . .	39
4.41	Area in potatoes, by country, EEC, 1951-63 . . . . .	40
4.42	Average yield of potatoes, by country, EEC, 1951-63 . . . . .	40
4.43	Production of potatoes, by country, EEC, 1951-63 . . . . .	41
4.44	Area in sugarbeets used for sugar, by country, EEC, 1951-63 . . . . .	41
4.45	Average yield of sugarbeets for sugar, by country, EEC, 1951-63 . . . . .	42
4.46	Production of sugarbeets for sugar, by country, EEC, 1951-63 . . . . .	42
4.47	Area in sugarbeets for fodder, by country, EEC, 1951-63 . . . . .	43
4.48	Average yield of sugarbeets for fodder, by country, EEC, 1951-63 . . . . .	43
4.49	Production of sugarbeets for fodder, by country, EEC, 1951-63 . . . . .	44
4.50	Area in other root and fodder crops, by country, EEC, 1951-62 . . . . .	44
4.51	Average yield of other root and fodder crops, by country, EEC, 1951-62 . .	45
4.52	Production of other root and fodder crops, by country, EEC, 1951-62 . . .	45
4.53	Area in edible oilseeds, by country, EEC, 1951-63 . . . . .	46
4.54	Yield of edible oilseeds, by country, EEC, 1951-63 . . . . .	46
4.55	Production of edible oilseed crops, by country, EEC, 1951-63 . . . . .	47
5.01	Supply-distribution of total meat, EEC, 1956-61 . . . . .	49
5.02	Supply-distribution of total meat, France, 1956-61 . . . . .	49
5.03	Supply-distribution of total meat, Germany, 1956-61 . . . . .	50
5.04	Supply-distribution of total meat, Italy, 1956-61 . . . . .	50
5.05	Supply-distribution of total meat, Netherlands, 1956-61 . . . . .	51
5.06	Supply-distribution of total meat, Belgium-Luxembourg, 1956-61 . . . . .	51
5.07	Supply-distribution of beef, EEC, 1956-61 . . . . .	52
5.08	Supply-distribution of beef, France, 1956-61 . . . . .	52
5.09	Supply-distribution of beef, Germany, 1956-61 . . . . .	53
5.10	Supply-distribution of beef, Italy, 1956-61 . . . . .	53
5.11	Supply-distribution of beef, Netherlands, 1956-61 . . . . .	54



5.12	Supply-distribution of beef, Belgium-Luxembourg . . . . .	54
5.13	Supply-distribution of veal, EEC, 1956-61 . . . . .	55
5.14	Supply-distribution of veal, France, 1956-61 . . . . .	55
5.15	Supply-distribution of veal, Germany, 1956-61 . . . . .	56
5.16	Supply-distribution of veal, Italy, 1956-61 . . . . .	56
5.17	Supply-distribution of veal, Netherlands, 1956-61 . . . . .	57
5.18	Supply-distribution of veal, Belgium-Luxembourg, 1956-61 . . . . .	57
5.19	Supply-distribution of pork, EEC, 1956-61 . . . . .	58
5.20	Supply-distribution of pork, France, 1956-61 . . . . .	58
5.21	Supply-distribution of pork, Germany, 1956-61 . . . . .	59
5.22	Supply-distribution of pork, Italy, 1956-61 . . . . .	59
5.23	Supply-distribution of pork, Netherlands, 1956-61 . . . . .	60
5.24	Supply-distribution of pork, Belgium-Luxembourg, 1956-61 . . . . .	60
5.25	Supply-distribution of sheep and goat meat, EEC, 1956-61 . . . . .	61
5.26	Supply-distribution of sheep and goat meat, France, 1956-61 . . . . .	61
5.27	Supply-distribution of sheep and goat meat, Germany, 1956-61 . . . . .	62
5.28	Supply-distribution of sheep and goat meat, Italy, 1956-61 . . . . .	62
5.29	Supply-distribution of sheep and goat meat, Netherlands, 1956-61 . . . . .	63
5.30	Supply-distribution of sheep and goat meat, Belgium-Luxembourg, 1956-61 . . . . .	63
5.31	Supply-distribution of horsemeat, EEC, 1956-61 . . . . .	64
5.32	Supply-distribution of horsemeat, France, 1956-61 . . . . .	64
5.33	Supply-distribution of horsemeat, Germany, 1956-61 . . . . .	65
5.34	Supply-distribution of horsemeat, Italy, 1956-61 . . . . .	65
5.35	Supply-distribution of horsemeat, Netherlands, 1956-61 . . . . .	66
5.36	Supply-distribution of horsemeat, Belgium-Luxembourg, 1956-61 . . . . .	66
5.37	Supply-distribution of poultry meat, EEC, 1956-61 . . . . .	67
5.38	Supply-distribution of poultry meat, France, 1956-61 . . . . .	67
5.39	Supply-distribution of poultry meat, Germany, 1956-61 . . . . .	68
5.40	Supply-distribution of poultry meat, Italy, 1956-61 . . . . .	68
5.41	Supply-distribution of poultry meat, Netherlands, 1956-61 . . . . .	69
5.42	Supply-distribution of poultry meat, Belgium-Luxembourg, 1956-61 . . . . .	69
5.43	Supply-distribution of other meats, EEC, 1956-61 . . . . .	70
5.44	Supply-distribution of other meats, France, 1956-61 . . . . .	70
5.45	Supply-distribution of other meats, Germany, 1956-61 . . . . .	71
5.46	Supply-distribution of other meats, Italy, 1956-61 . . . . .	71
5.47	Supply-distribution of other meats, Netherlands, 1956-61 . . . . .	72
5.48	Supply-distribution of other meats, Belgium-Luxembourg, 1956-61 . . . . .	72
5.49	Supply-distribution of edible offals, EEC, 1956-61 . . . . .	73
5.50	Supply-distribution of edible offals, France, 1956-61 . . . . .	73
5.51	Supply-distribution of edible offals, Germany, 1956-61 . . . . .	74
5.52	Supply-distribution of edible offals, Italy, 1956-61 . . . . .	74
5.53	Supply-distribution of edible offals, Netherlands, 1956-61 . . . . .	75
5.54	Supply-distribution of edible offals, Belgium-Luxembourg, 1956-61 . . . . .	75
6.01	Livestock inventory numbers, EEC, 1952-62 . . . . .	77
6.02	Livestock inventory numbers, France, 1952-62 . . . . .	77
6.03	Livestock inventory numbers, West Germany, 1952-62 . . . . .	78
6.04	Livestock inventory numbers, Italy, 1952-62 . . . . .	78
6.05	Livestock inventory numbers, Netherlands, 1952-62 . . . . .	79
6.06	Livestock inventory numbers, Belgium-Luxembourg, 1952-62 . . . . .	79
6.07	Livestock slaughter numbers, EEC, 1952-62 . . . . .	80
6.08	Livestock slaughter numbers, France, 1952-62 . . . . .	80
6.09	Livestock slaughter numbers, Germany, 1952-62 . . . . .	81
6.10	Livestock slaughter numbers, Italy, 1952-62 . . . . .	81
6.11	Livestock slaughter numbers, Netherlands, 1952-62 . . . . .	82
6.12	Livestock slaughter numbers, Belgium-Luxembourg, 1952-62 . . . . .	82

6.13	Meat production, EEC, 1952-62 . . . . .	83
6.14	Meat production, France, 1952-62 . . . . .	83
6.15	Meat production, Germany, 1952-62 . . . . .	84
6.16	Meat production, Italy, 1952-62 . . . . .	84
6.17	Meat production, Netherlands, 1952-62 . . . . .	85
6.18	Meat production, Belgium-Luxembourg, 1952-62 . . . . .	85
6.19	Carcass weight by type of meat, EEC, 1952-62 . . . . .	86
6.20	Carcass weight by type of meat, France, 1952-62 . . . . .	86
6.21	Carcass weight by type of meat, Germany, 1952-62 . . . . .	87
6.22	Carcass weight by type of meat, Italy, 1952-62 . . . . .	87
6.23	Carcass weight by type of meat, Netherlands, 1952-62 . . . . .	88
6.24	Carcass weight by type of meat, Belgium-Luxembourg, 1952-63 . . . . .	88

# THE GRAIN-LIVESTOCK ECONOMY OF THE EUROPEAN ECONOMIC COMMUNITY: A COMPENDIUM OF BASIC STATISTICS

Development and Trade Analysis Division  
Economic Research Service

## INTRODUCTION

The six countries of the European Economic Community (EEC) comprise an important market for a large number of products produced on American farms; chief among these are feed grains and wheat. <sup>1/</sup> In the 1960-62 period, the United States shipped annually an average of 5.9 million metric tons of grain to EEC countries. This amounted to almost 40 percent of all U.S. commercial grain exports.

A market of this magnitude holds widespread interest in the United States, and its involvements are of particular concern to the major grain suppliers. Currently the interest and concern about the future of this market has heightened. This was brought about by two significant developments that threaten to alter its structure and dimensions: (1) A proposed merging of the agricultural policies and programs of the six member countries; and, (2) a possible restructuring of tariffs and conditions of access.

The merging of the agricultural price policies and programs of the EEC countries is in accordance with one of the major objectives set out in the Treaty of Rome. <sup>2/</sup> This process is expected to have a particularly important impact upon the grain-livestock segment of the agricultural economy.

At present grain and livestock prices vary widely from country to country within the EEC. These will have to be harmonized to achieve complete unification of farm price programs. Given this situation, it means that some countries will be forced to adjust their farm commodity prices to a considerable degree. The amount and incidence of adjustment will depend upon the level of prices chosen by common agreement. The level chosen in turn is expected to have an important impact upon the supply and demand for domestic grains and thus upon the amount of grain imported from the United States.

A restructuring of tariffs and the conditions of access for foreign suppliers of grain to the EEC is one of the likely outcomes of the negotiations soon to take place under the auspices of the General Agreement on Trade and Tariffs (GATT). The United States has requested this particular round of negotiations with a proposal that tariffs on many commodities be reduced multilaterally by as much as 50 percent. Since these tariff negotiations are to include the grains and livestock products, it is quite possible that the cost of access to these markets may change considerably for United States and other world suppliers.

The foregoing impending events are raising a number of complex questions that have attracted the attention of analysts throughout the United States. Although each analyst is likely to employ different techniques and different approaches to the resolution of the questions, each will have to restrict his analysis to the facts.

<sup>1/</sup> The six countries are: France, Germany, Italy, Netherlands, Belgium, and Luxembourg.

<sup>2/</sup> The Treaty of Rome is the basis for the economic integration of the six member countries. It was signed by them in 1957.

This leads to the purpose of this report. It is to provide analysts and others who are seriously concerned with the problems of agricultural trade, a compendium of historic data relating to the factors affecting the demand for, and the supply of, grain and livestock products in the countries of the European Economic Community. Though this report may not provide all of the data needed, it will provide a background of some of the more pertinent facts. These data include population, consumer expenditures, area, yield and production of crops, livestock numbers and slaughter, and supply and distribution (consumption and trade) of livestock products.

The data have been compiled so that they are comparable and consistent in most of their essential aspects. However, perfect comparability cannot be expected because of the divergent conditions under which the data were generated. Most of the data in this report are official statistics of the European Economic Community. They, in turn, are based on official data of member countries. However, the data from each country have been adjusted by the EEC to achieve intercountry comparability. <sup>3/</sup> Thus, the data contained in this report differ in varying degrees from those in Statistics on the European Economic Community; Vol. 2, Agricultural Production and Consumption, ERS-Foreign 46, U.S. Department of Agriculture, which, although also based on official data, have not been adjusted necessarily by the same criteria used by the EEC.

The numbers presented in this report are annual time series covering the period 1951-63; some pertain to calendar years, others to crop years, July 1 to June 30. Unfortunately, it was not possible to present a full series in all instances. For example, reliable data on the supply and distribution of grains were available only for the years 1956-62; for meats only for the years 1956-61. In the case of forage, the series is also short. Data on area, yield, and production for all forage and pasture cover only the years 1951-58. The full period is available only for some of the forage components for some of the countries.

This report is intended to be a working document. For this reason space is left at the end of each table so that new data can be entered as they become available.

<sup>3/</sup> Agrarstatistik, Europäische Wirtschaftsgemeinschafts, Brussels, No. 6, 1959, pp. 5-6.

## SECTION 1.00: POPULATION AND INCOME

The data on population and income were available from a number of sources. Wherever possible, the sources were tested and found to be consistent.

Two sets of population data are presented; one for the count on January 1, and the other for July 1. Both are reported so that the analyst may use the appropriate series when calculating per capita rates for data relating either to the crop year (July 1 to June 30) or to the calendar year.

One of the measures used in European national accounts is Total Private Consumption Expenditure. This is similar to Disposable Income, the measure used in U.S. national account procedures. The essential difference between the two is that the U.S. measure includes savings whereas the European measure does not. The European measure is presented in both its aggregate as well as its per capita forms.

The following tables also include estimates of population and income projected to the year 1970. While only a single estimate is available for each country's population, two estimates are reported for income--a "high" and a "low". The respective growth rates are defined in appropriate footnotes.

Table 1.01.--Total population, by country, EEC, January 1, 1950-60, and projection to 1970

Year	EEC	France	Germany 1/	Italy	Netherlands	Bel-Lux 2/
-----Millions-----						
1950	157.3	41.7	50.0	46.6	10.1	8.9
1951	158.9	42.1	50.5	47.0	10.3	9.0
1952	159.9	42.4	50.8	47.3	10.4	9.0
1953	161.2	42.7	51.4	47.5	10.5	9.1
1954	162.4	43.0	51.9	47.8	10.6	9.1
1955	162.8	43.3	52.4	48.1	10.8	9.2
1956	165.0	43.6	53.0	48.3	10.9	9.2
1957	166.6	44.1	53.7	48.5	11.0	9.3
1958	168.3	44.6	54.4	48.7	11.2	9.4
1959	169.7	45.1	55.0	48.9	11.3	9.4
1960	171.4	45.5	55.6	49.3	11.5	9.5
1970	183.8	49.2	59.2	52.7	12.7	10.0

1/ Includes Saar and West Berlin. 2/ Belgium and Luxemburg combined.

Sources: OEEC, Twelfth Annual Economic Review, 1961, and Manpower Statistics, 1950-60, U.N. Demographic Yearbook, various issues and Etudes 10, Perspectives 1970, EEC, Brussels, 1962, and H. B. Krohn, "Vorausschau auf die Versorgungslage der Europäischen Wirtschaftsgemeinschaft um 1970," Agrarwirtschaft, November 1962.

Table 1.02.--Total population, by country, EEC, July 1, 1956-61

Year	EEC	France 1/	Germany 2/	Italy	Netherlands	Bel-Lux
-----Millions-----						
1956	164.4	44.4	51.7	48.2	10.8	9.2
1957	165.8	44.8	52.3	48.4	11.0	9.3
1958	167.4	45.3	53.0	48.6	11.1	9.3
1959	169.1	45.9	53.7	48.9	11.3	9.4
1960	170.9	45.4	55.3	49.2	11.4	9.5
1961	172.3	45.7	56.0	49.5	11.6	9.5

1/ Includes Saar in years prior to 1959. 2/ Includes West Berlin; includes Saar from 1959.

Source: Agrarstatistik, Europäischen Wirtschaftsgemeinschafts, Brussels, November 1963.

Table 1.03.--Total private consumption expenditure <sup>1/</sup> in constant U.S. dollars by country, EEC, 1950-60 and projections to 1970

Calendar year	EEC	France	Germany	Italy	Netherlands	Bel-Lux
-----Million dollars - 1960 exchange rate-----						
1950	67,705	24,721	19,164	12,693	4,454	6,673
1951	71,335	26,612	20,444	13,291	4,330	6,756
1952	74,295	27,418	21,960	13,821	4,357	6,739
1953	79,364	28,614	24,425	14,883	4,611	6,831
1954	82,517	29,643	25,708	15,210	4,923	7,033
1955	87,926	31,339	28,118	15,784	5,284	7,401
1956	93,550	33,202	30,611	16,401	5,747	7,589
1957	98,074	35,009	32,448	17,058	5,753	7,806
1958	100,080	35,232	33,966	17,491	5,744	7,647
1959	104,166	35,844	35,888	18,438	5,931	8,065
1960	110,551	37,762	38,456	19,640	6,328	8,365
1970 <sup>2/</sup>	184,430	63,435	62,142	36,359	10,371	12,123
1970 <sup>3/</sup>	178,240	61,159	60,705	34,609	10,050	11,717

<sup>1/</sup> Total private consumption expenditure excludes savings and direct taxes. See Dewhurst, J.F., et al Europe's Needs and Resources, 20th Century Fund, New York 1961, footnote 3, p. 145. <sup>2/</sup> Assumes a high rate of economic growth - EEC at 5.25 percent per annum; France, 5.30; Germany, 4.90; Italy, 6.35; Netherlands, 5.05; Belgium, 3.80. <sup>3/</sup> Assumes a low rate of economic growth - EEC at 4.90 percent per annum; France, 4.95; Germany, 4.65; Italy, 5.80; Netherlands, 4.70; Belgium, 3.40.

Source: Rapport Sur Les Perspectives de Developpement Economique Dans La C.E.E. de 1960 a 1970, Brussels, 1962.

Table 1.04.--Per capita private consumption expenditure <sup>1/</sup> in constant U.S. dollars by country, EEC, 1950-60 and projections to 1970

Calendar year	EEC	France	Germany	Italy	Netherlands	Bel-Lux
-----Million dollars - 1960 exchange rate-----						
1950	430	593	383	272	441	750
1951	449	632	405	283	420	751
1952	465	647	432	292	419	749
1953	492	670	475	313	439	751
1954	508	689	495	318	464	773
1955	540	741	537	323	489	804
1956	567	762	578	340	527	825
1957	589	794	604	352	523	839
1958	595	790	624	359	513	814
1959	614	795	653	377	525	858
1960	645	830	692	398	550	881
1970 <sup>2/</sup>	1,003	1,289	1,050	690	817	1,212
1970 <sup>3/</sup>	970	1,243	1,025	657	791	1,172

<sup>1/</sup> See table 1.03. <sup>2/</sup> Assumes a high rate of economic growth - EEC at 4.90 percent per annum; France, 4.4; Germany, 4.8; Italy, 5.1; Netherlands, 4.9; Belgium, 3.1. <sup>3/</sup> Assumes a low rate of economic growth - EEC at 4.00 percent per annum; France, 3.6; Germany, 4.0; Italy, 4.4; Netherlands, 4.1; Belgium, 2.0.

Source: Computed from data in tables 1.01 and 1.03.

## SECTION 2.00: PRICES RECEIVED BY FARMERS

Perhaps the most difficult area in which to obtain full comparability and consistency between countries is that of prices. This problem arises because of different currencies used and the different exchange ratios encountered in each economy. The problem is further complicated by the fact that the concepts of grade, quality, and packaging vary from country to country as do their respective marketing systems and the time, place, level, and aggregate for which prices are reported. These difficulties have not been resolved. However, as a practical matter, compromises have been made so that acceptable intercountry comparability is possible.

The aim in each case was to report prices that represented as nearly as possible the average value that was received by the farmers at the first point of sale. However, in some cases it represented only an average of certain prices given by the first receiver; in others a price for the model quantity; in still others the simple average of prices quoted in a select number of central markets; and so on and on.

The prices are stated in terms of United States' dollars per unit of weight or measure, even though the sources stated them in terms of the respective indigenous currencies. The conversions were made using the following rates published in EEC Regulation No. 113, July 24, 1962:

France:	.2025 U.S. dollars per new franc
Germany:	.2500 U.S. dollars per mark
Italy:	.0016 U.S. dollars per lire
Netherlands:	.2762 U.S. dollars per guilder
Belgium:	.0200 U.S. dollars per franc





Table 2.03.--Prices received per metric ton by farmers for selected crops, Italy, 1951-62

Crop year ending June 30	Wheat <u>1/</u>	Oats	Barley	Rye	Corn	Hay
U.S. dollars						
1951	105.30	63.30	75.90	80.70	97.60	--
1952	105.40	86.40	89.00	91.60	87.30	--
1953	117.80	87.90	98.60	101.50	96.60	--
1954	113.60	64.60	69.20	78.30	71.80	--
1955	117.10	76.20	74.90	76.50	79.60	--
1956	111.90	90.30	90.50	87.40	82.70	--
1957	110.40	79.70	88.80	91.40	77.90	--
1958	112.00	62.70	70.80	85.70	69.00	--
1959	100.00	65.50	73.50	81.30	69.40	--
1960	104.10	76.70	78.60	79.30	67.10	--
1961	109.50	78.00	79.30	83.30	66.60	--
1962	106.40	62.40	73.90	82.50	68.30	--

1/ Bread type wheats only.

Source: Same as in table 2.01.

Table 2.04.--Prices received per metric ton by farmers for selected crops, Netherlands, 1951-61

Calendar year	Wheat <u>1/</u>	Oats <u>2/</u>	Barley <u>3/</u>	Rye <u>4/</u>	Hay <u>5/</u>
U.S. dollars					
1951	64.40	83.30	93.50	90.30	29.30
1952	69.60	75.30	89.70	76.90	30.30
1953	70.40	58.70	63.40	58.20	23.10
1954	69.80	70.50	70.10	59.80	32.60
1955	68.90	64.30	66.80	58.70	26.80
1956	71.90	66.10	66.90	64.10	32.30
1957	75.00	67.60	71.90	56.50	27.00
1958	79.20	68.30	71.80	58.40	24.00
1959	83.90	71.00	74.80	62.00	38.10
1960	83.50	62.70	72.40	57.30	28.20
1961	83.10	69.60	75.40	65.10	--

1/ Weighted average for clean, dry, grain of all qualities and grades; maximum moisture 17%; Red wheat only 1950-59, White wheat included 1960-61. 2/ Maximum moisture 15%. 3/ Summer barley only. Winter barley generally 100-200 guilders per 100 kg. higher than summer barley prices. 4/ Maximum moisture, 17%. Red clover hay, unweighted average.

Source: Same as in table 2.01.

Table 2.05.--Prices received per metric ton by farmers for selected crops, 1/ Belgium, 1951-62

Calendar year	Wheat	Oats	Barley <u>2/</u>	Rye	Hay <u>3/</u>
-----U.S. dollars-----					
1951	89.10	79.10	91.30	87.40	33.50
1952	94.50	75.30	94.90	87.80	31.30
1953	95.00	59.40	70.20	67.30	33.70
1954	94.20	39.70	61.50	53.70	32.50
1955	90.70	63.50	67.20	56.50	31.20
1956	91.90	62.20	67.40	65.20	30.20
1957	93.30	54.00	57.60	57.00	32.50
1958	94.40	64.10	67.80	65.70	30.00
1959	93.40	74.70	74.10	69.00	34.00
1960	93.50	73.30	71.00	67.50	36.00
1961	93.90	64.50	73.70	72.10	28.80
1962	94.50	76.20	80.70	75.90	36.20

1/ Based on quotations at Brussels, Antwerp, Charleroi, Luttish, and Namur. 2/ Summer barley only. 3/ Clover hay only.

Source: Same as in table 2.01.

Table 2.06.--Prices received per metric ton by farmers for selected livestock and livestock products, 1/ France, 1951-62

Crop year ending June 30	Cattle <u>2/</u>	Hogs <u>3/</u>	Sheep <u>4/</u>	Poultry <u>5/</u>	Milk <u>6/ 7/</u>	Eggs <u>6/</u>
-----U.S. dollars-----						
1951	312.00	414.30	294.10	664.00	50.10	404.20
1952	256.30	407.20	302.60	754.30	53.80	461.40
1953	251.00	376.40	305.00	725.10	52.70	474.90
1954	282.50	445.50	317.80	728.00	47.70	427.60
1955	299.70	407.20	355.90	728.00	48.30	447.80
1956	351.60	386.10	355.70	751.40	52.30	513.80
1957	351.60	456.70	419.20	727.40	52.50	491.80
1958	429.50	485.20	469.70	779.00	56.30	567.80
1959	426.20	452.70	332.00	730.20	64.80	507.00
1960	449.50	508.30	388.80	745.20	67.80	538.70
1961	441.50	540.70	441.50	698.70	66.80	554.20
1962	492.10	481.90	--	729.00	70.70	566.30

1/ All livestock prices on a live basis. 2/ Steers, 1st quality. 3/ Average quotations for hogs in the Brittany markets. 4/ Includes lambs. 5/ Average of 40 Departments to 1961; after that only 25 Departments. 6/ Milk prices are converted from U.S. dollars per 100 litres to U.S. dollars per metric ton by multiplying by the factor 9.7. Egg prices are converted from U.S. dollars per 100 eggs to U.S. dollars per metric ton by using the factor 170.0. 7/ All milk.

Source: Same as in table 2.01.

Table 2.07.--Prices received per metric ton by farmers for selected livestock and livestock products, 1/ Germany, 1951-62

Crop year ending June 30	Cattle <u>2/</u>	Hogs <u>3/</u>	Sheep <u>4/</u>	Poultry <u>5/</u>	Milk <u>6/ 7/</u>	Eggs <u>6/</u>
	-----U.S. dollars-----					
1951	409.20	654.30	307.90	600.00	57.90	772.50
1952	507.70	631.70	380.80	650.00	62.00	864.50
1953	455.60	594.10	352.70	625.00	64.20	864.50
1954	457.30	669.40	350.70	615.10	61.40	796.30
1955	498.00	598.00	397.70	620.00	65.10	819.00
1956	527.30	620.60	420.80	650.00	69.20	885.70
1957	535.20	633.40	431.90	657.50	75.10	810.80
1958	532.40	584.50	406.70	647.50	80.20	844.50
1959	576.70	656.20	431.40	622.50	76.70	805.00
1960	580.00	640.50	422.90	590.00	76.90	770.00
1961	583.50	646.00	446.00	597.50	75.20	827.00
1962	587.50	632.00	471.50	617.30	--	766.30

1/ Live basis. 2/ Commercial Grade A, steers. 3/ Commercial Grade C. 4/ Commercial Grade B. 5/ Average value of farm production. 6/ See footnote 6, table 2.06. 7/ Prices for manufacturing milk only.

Source: Same as in table 2.01.

Table 2.08.--Prices received per metric ton by farmers for selected livestock and livestock products, 1/ Italy, 1951-62

Crop year ending June 30	Cattle <u>2/</u>	Hogs <u>3/</u>	Sheep <u>4/</u>	Poultry	Milk <u>5/ 6/</u>	Eggs <u>5/</u>
	-----U.S. dollars-----					
1951	446.60	622.20	312.00	986.40	54.70	751.40
1952	510.40	611.40	307.20	1,091.80	59.50	780.30
1953	450.90	468.60	283.20	1,089.60	71.30	824.50
1954	436.80	548.50	289.60	1,081.60	72.00	785.40
1955	464.00	637.10	298.10	1,038.40	62.30	744.60
1956	480.00	564.80	315.00	1,022.00	58.60	799.00
1957	528.00	554.70	328.00	1,033.60	60.80	756.50
1958	524.80	535.60	337.60	1,040.00	65.80	751.40
1959	486.00	547.10	321.40	1,012.80	68.00	737.80
1960	519.20	511.20	324.40	1,027.40	71.60	723.80
1961	516.70	499.60	317.60	1,081.40	65.60	741.30
1962	516.30	567.20	323.20	1,108.50	68.90	717.10

1/ Live basis. 2/ 1st quality steers. 3/ Finished hogs, weighted average all classes. 4/ Weighted average all classes. 5/ See footnote 6, table 2.06. 6/ Manufacturing milk only.

Source: Same as in table 2.01

Table 2.09.--Prices received per metric ton by farmers for selected livestock and livestock products, 1/ Netherlands, 1951-63

Calendar year	Cattle <u>2/</u>	Hogs <u>3/</u>	Sheep <u>4/</u>	Poultry	Milk <u>5/</u> <u>6/</u>	Eggs <u>5/</u>
-----U.S. dollars-----						
1951	411.50	508.20	482.10	--	48.40	604.80
1952	437.20	559.00	417.20	--	55.30	709.80
1953	413.20	497.00	324.70	--	59.20	660.10
1954	424.40	503.70	353.70	--	60.80	604.80
1955	413.20	472.80	374.40	--	63.50	640.80
1956	475.70	490.50	388.20	--	78.50	615.90
1957	467.60	472.80	332.90	--	79.80	599.30
1958	467.60	488.20	284.60	--	79.80	588.30
1959	488.50	494.80	320.50	--	79.80	513.70
1960	469.40	441.90	331.50	--	79.80	538.60
1961	482.20	499.30	395.00	--	78.70	508.20
1962	462.90	466.30	342.50	--	77.60	447.40
1963					74.60	

1/ Live basis. 2/ Prices at market for 2nd quality slaughter cattle. Converted from dressed basis assuming 58% dressing percentage. 3/ All slaughter hogs, approximately 110 kg. dressed weight (includes bacon classes). Prices converted from dressed basis assuming 80% dress. 4/ Slaughter sheep (excludes lambs). Prices converted from dressed basis assuming 50% dress. 5/ See footnote 6, table 2.06. 6/ Support price paid to farmers for 3.5% b.f. milk. (1953, 1954, 1962 and 1963, 3.7% b.f.).

Source: Same as in table 2.01.

Table 2.10.--Prices received per metric ton by farmers for selected livestock and livestock products, 1/ Belgium, 1951-62

Calendar year	Cattle <u>2/</u>	Hogs <u>3/</u>	Sheep <u>4/</u>	Poultry	Milk <u>5/</u> <u>6/</u>	Eggs <u>5/</u>
-----U.S. dollars-----						
1951	508.40	625.80	272.40	--	62.80	812.60
1952	513.80	525.60	279.40	--	66.40	870.40
1953	469.40	528.60	245.40	--	66.00	768.40
1954	470.40	574.60	279.80	--	61.40	741.20
1955	474.80	479.20	344.00	--	61.00	758.20
1956	516.80	446.60	323.20	--	61.60	703.80
1957	493.40	495.20	315.80	--	66.60	632.40
1958	464.80	481.00	272.40	--	62.40	642.60
1959	494.60	528.60	298.00	--	67.40	646.00
1960	498.60	462.40	280.40	--	66.70	642.60
1961	528.60	554.60	341.60	--	66.00	629.00
1962	530.80	476.20	348.20	--	66.00	625.60

1/ Live basis. 2/ Steers averaging 55% dress. 3/ Meaty. 4/ Average of all classes. 5/ See footnote 6, table 2.06. 6/ Support price basis 3.0% b.f. (part of 1958 3.3%).

Source: Same as in table 2.01.

### SECTION 3.00: PRODUCTION-UTILIZATION OF GRAINS

Grain production-utilization data for wheat and wheat flour and coarse grains are presented for the EEC and its member countries. This information is reproduced from Common Market Grain Production and Trade Statistics, 1950-51 through 1961-62, Foreign Agricultural Service, U.S. Department of Agriculture, March 1963, which in turn is based on official EEC statistics. Therefore, the production data in these tables are consistent with the data presented in section 4.00. They differ, however, in that the grain production data in section 3.00 are net of harvesting and other on-farm losses, whereas the production data in section 4.00 include these losses.

The import and export data for wheat and wheat flour in table 3.01 for the EEC exclude intra-EEC trade. Therefore, sum of the individual country exports and imports, which include intra-EEC trade, exceeds the total reported for the EEC. The difference is the amount of intra-Community trade. On the other hand, the import and export data for coarse grains for the EEC include intra-EEC trade and the sum of the individual country data on imports and exports equals the EEC total.

Total consumption of grain is broken down into food, feed, and other uses. This breakdown gives some idea of the relative importance of the different uses of wheat and coarse grains on a country basis.

Table 3.01.--Production-utilization of wheat and wheat flour, EEC, 1956-62

Year ending June 30	Production	Change in stocks	Exports <u>1/</u>	Imports <u>1/</u>	Available supply or total consumption	Food consumption	Feed consumption	Other uses <u>2/</u>
-----1,000 metric tons-----								
1956 ...	24,328	+750	3,198	5,426	25,806	20,128	3,350	2,328
1957 ...	18,730	+672	1,525	7,220	23,753	19,661	1,935	2,157
1958 ...	24,559	-844	4,074	4,821	26,150	20,018	3,594	2,178
1959 ...	24,316	-258	2,735	4,782	26,621	20,045	4,454	2,122
1960 ...	25,814	-660	3,117	4,208	27,565	19,835	5,472	2,258
1961 ...	24,137	+1,097	2,491	6,580	27,129	20,123	4,886	2,120
1962 ...	23,060	-193	2,323	5,868	26,798	20,184	4,481	2,133

1/ Excludes intra-EEC trade. 2/ Includes industrial uses, seed, and waste.

Source: Common Market Grain Production and Trade Statistics, 1950-51 through 1961-62, Foreign Agricultural Service, U.S. Dept. of Agriculture, March 1963.

Table 3.02.--Production-utilization of wheat and wheat flour, France, 1956-62

Year ending June 30	Production	Change in stocks	Exports	Imports	Available supply or total consumption	Food consumption	Feed consumption	Other uses <u>1/</u>
-----1,000 metric tons-----								
1956 ...	10,388	-448	2,583	777	9,030	5,939	2,024	1,067
1957 ...	5,687	- 5	417	1,749	7,024	5,555	590	879
1958 ...	11,108	+200	2,379	399	8,928	5,930	2,113	885
1959 ...	9,628	-138	1,030	676	9,412	6,068	2,485	859
1960 ...	11,544	+254	1,748	425	9,967	5,858	3,276	833
1961 ...	11,014	+474	1,557	513	9,496	5,998	2,715	783
1962 ...	9,573	-656	1,817	444	8,856	5,918	2,046	892

1/ See footnote 2, table 3.01.

Source: Same as in table 3.01.

Table 3.03.--Production-utilization of wheat and wheat flour, Germany, 1956-62

Year ending June 30	Production	Change in stocks	Exports	Imports	Available supply or total consumption	Food consumption	Feed consumption	Other uses
-----1,000 metric tons-----								
1956 ...	3,278	- 77	337	2,554	5,572	4,156	1,134	282
1957 ...	3,381	+829	308	3,290	5,534	4,108	1,142	284
1958 ...	3,728	- 6	596	2,623	5,761	4,056	1,385	320
1959 ...	3,582	-150	603	2,471	5,600	3,975	1,329	296
1960 ...	4,386	+ 98	718	2,209	5,779	3,946	1,517	316
1961 ...	4,815	+415	754	2,214	5,860	3,940	1,603	317
1962 ...	3,917	+282	1,083	3,520	6,072	3,876	1,835	361

1/ See footnote 2, table 3.01.

Source: Same as in table 3.01.

Table 3.04.--Production-utilization of wheat and wheat flour, Italy, 1956-62

Year ending June 30	Production	Change in stocks	Exports	Imports	Available supply or total consumption	Food consumption	Feed consumption	Other uses
-----1,000 metric tons-----								
1956 ...	9,504	+1,317	143	698	8,742	7,779	66	897
1957 ...	8,684	- 103	747	746	8,786	7,818	60	908
1958 ...	8,478	-1,044	1,027	280	8,775	7,826	67	882
1959 ...	9,815	- 48	954	70	8,979	7,845	255	879
1960 ...	8,471	- 951	452	86	9,056	7,901	136	1,019
1961 ...	6,794	+ 140	97	2,445	9,002	7,950	120	932
1962 ...	8,301	+ 60	159	955	9,037	8,175	70	792

1/ See footnote 2, table 3.01.

Source: Same as in table 3.01.



Table 3.05.--Production-utilization of wheat and wheat flour, Netherlands, 1956-62

Year ending June 30	Production	Change in stocks	Exports	Imports	Available supply or total consumption	Food consumption	Feed consumption	Other uses
-----1,000 metric tons-----								
1956 ...	350	- 48	103	910	1,205	1,104	66	35
1957 ...	309	- 29	33	922	1,227	1,098	95	34
1958 ...	393	+ 8	29	1,062	1,418	1,114	269	35
1959 ...	402	+ 29	41	1,059	1,391	1,087	267	37
1960 ...	514	- 6	38	1,063	1,545	1,060	446	39
1961 ...	608	+ 2	44	906	1,468	1,072	358	38
1962 ...	482	+129	48	1,310	1,615	1,100	476	39

1/ See footnote 2, table 3.01.

Source: Same as in table 3.01.

Table 3.06.--Production-utilization of wheat and wheat flour, Belgium-Luxemburg, 1956-62

Year ending June 30	Production	Change in stocks	Exports	Imports	Available supply or total consumption	Food consumption	Feed consumption	Other uses
-----1,000 metric tons-----								
1956 ...	808	+ 6	32	487	1,257	1,150	60	47
1957 ...	669	-20	20	513	1,182	1,082	48	52
1958 ...	852	- 2	43	457	1,268	1,092	120	56
1959 ...	889	+49	107	506	1,239	1,070	118	51
1960 ...	899	-55	161	425	1,218	1,070	97	51
1961 ...	906	+66	39	502	1,303	1,163	90	50
1962 ...	787	- 8	82	505	1,218	1,115	54	49

1/ See footnote 2, table 3.01.

Source: Same as in table 3.01.

Table 3.07.--Production-utilization of coarse grain 1/, EEC, 1956-62

Year ending June 30	Production	Change in stocks	Exports <u>2/</u>	Imports <u>2/</u>	Available supply or total consumption	Food consumption	Feed consumption	Other uses <u>3/</u>
-----1,000 metric tons-----								
1956 ...	23,649	- 185	1,081	6,925	29,678	3,033	22,590	4,055
1957 ...	29,777	+1,268	2,494	8,031	34,046	2,966	27,102	3,978
1958 ...	24,623	-1,056	1,261	7,627	32,045	2,872	25,092	4,081
1959 ...	25,130	+ 448	919	8,460	32,223	2,773	25,239	4,211
1960 ...	26,887	+1,380	1,404	10,317	34,420	2,686	27,277	4,457
1961 ...	29,206	+ 72	2,928	9,267	35,473	2,608	28,338	4,527
1962 ...	26,495	- 865	3,034	12,740	37,066	2,505	29,801	4,760

1/ Includes oats, barley, rye, corn, sorghum and other nonwheat type cereals.

2/ Includes intra-EEC trade. 3/ See footnote 2, table 3.01.

Source: Same as in table 3.01.

Table 3.08.--Production-utilization of coarse grain 1/, France, 1956-62

Year ending June 30	Production	Change in stocks	Exports	Imports	Available supply or total consumption	Food consumption	Feed consumption	Other uses <u>2/</u>
-----1,000 metric tons-----								
1956 ...	8,150	+ 2	45	746	8,849	129	7,405	1,315
1957 ...	13,661	+ 897	1,836	225	11,153	127	9,936	1,090
1958 ...	8,323	- 769	517	432	9,066	130	7,810	1,126
1959 ...	8,977	+ 298	111	472	9,040	139	7,705	1,196
1960 ...	10,301	+ 633	657	203	9,214	97	7,903	1,214
1961 ...	11,953	+ 533	2,013	250	9,657	88	8,427	1,142
1962 ...	11,086	-1,096	2,069	562	10,675	82	9,419	1,174

1/ See footnote 1, table 3.07. 2/ See footnote 2, table 3.01.

Source: Same as in table 3.01.

Table 3.09.--Production-utilization of coarse grain 1/, Germany, 1956-62

Year ending June 30	Production	Change in stocks	Exports	Imports	Available supply or total consumption	Food consumption	Feed consumption	Other uses <u>2/</u>
-----1,000 metric tons-----								
1956 ..	8,831	-386	536	2,241	10,922	2,021	7,034	1,867
1957 ..	9,358	+419	311	3,038	11,666	2,014	7,684	1,968
1958 ..	9,352	-138	335	2,533	11,688	1,938	7,691	2,059
1959 ..	9,108	+107	434	2,882	11,449	1,838	7,479	2,132
1960 ..	9,587	+381	222	3,397	12,381	1,797	8,306	2,278
1961 ..	10,248	-198	556	2,136	12,026	1,760	7,951	2,315
1962 ..	8,122	+ 22	389	4,877	12,588	1,671	8,426	2,491

1/ See footnote 1, table 3.07. 2/ See footnote 2, table 3.01.

Source: Same as in table 3.01.

Table 3.10.--Production-utilization of coarse grain 1/, Italy, 1956-62

Year ending June 30	Production	Change in stocks	Exports	Imports	Available supply or total consumption	Food consumption	Feed consumption	Other uses <u>2/</u>
-----1,000 metric tons-----								
1956 ..	4,172	+159	13	637	4,637	636	3,618	383
1957 ..	4,328	- 48	18	749	5,107	607	4,102	398
1958 ..	4,496	-124	8	975	5,587	593	4,585	409
1959 ..	4,669	+ 26	13	1,156	5,786	593	4,799	394
1960 ..	4,840	+262	8	2,134	6,704	595	5,666	443
1961 ..	4,610	-105	7	2,499	7,207	622	6,106	479
1962 ..	4,933	+ 70	5	2,740	7,598	601	6,488	509

1/ See footnote 1, table 3.07. 2/ See footnote 2, table 3.01.

Source: Same as in table 3.01.

Table 3.11.--Production-utilization of coarse grain 1/, Netherlands, 1956-62

Year ending June 30	Production	Changes in stocks	Exports	Imports	Available supply or total consumption	Food consumption	Feed consumption	Other uses <u>2/</u>
-----1,000 metric tons-----								
1956 ..	1,429	+ 40	317	1,953	3,025	149	2,701	175
1957 ..	1,358	0	193	2,386	3,551	148	3,209	194
1958 ..	1,370	- 25	269	2,087	3,213	141	2,879	193
1959 ..	1,329	+ 17	244	2,413	3,481	143	3,142	196
1960 ..	1,068	+104	381	2,941	3,524	138	3,170	216
1961 ..	1,274	-158	248	2,922	4,106	119	3,755	232
1962 ..	1,280	+139	425	2,970	3,686	131	3,334	221

1/ See footnote 1, table 3.07. 2/ See footnote 2, table 3.01.

Source: Same as in table 3.01.

Table 3.12.--Production-utilization of coarse grain 1/, Belgium-Luxembourg, 1956-62

Year ending June 30	Production	Change in stocks	Exports	Imports	Available supply or total consumption	Food consumption	Feed consumption	Other uses <u>2/</u>
-----1,000 metric tons-----								
1956 ..	1,067	--	170	1,348	2,245	98	1,882	265
1957 ..	1,072	--	136	1,633	2,569	70	2,171	328
1958 ..	1,023	--	132	1,600	2,491	70	2,127	294
1959 ..	1,047	--	117	1,537	2,467	60	2,114	293
1960 ..	1,091	--	136	1,642	2,597	59	2,232	306
1961 ..	1,121	--	104	1,460	2,477	19	2,089	369
1962 ..	1,074	--	146	1,591	2,519	20	2,134	365

1/ See footnote 1, table 3.07. 2/ See footnote 2, table 3.01.

Source: Same as in table 3.01.

## SECTION 4.00: LAND UTILIZATION AND CROP PRODUCTION

The data contained in this section pertain to land utilization patterns and crop areas, yields, and production.

A complete breakdown of total agricultural land into its major uses is presented for the period 1951-58. Complete area data for more recent years are available only for grains, pulses, root crops, and industrial crops. Data on the area in hay and silage, permanent pasture and meadows, fruits, vegetables, tree nuts, and miscellaneous uses are not available beyond 1958. However, a full-time series is presented for some of the major components of the hay and silage group as permanent pasture categories. The EEC is in the process of revising its data on forage area, yield, and production. Up-to-date data on these components are all that are currently available. These more up-to-date series do not enable one to determine total forage area and production, but may be useful indicators of the relative changes that have occurred since 1958.

Root crops are also an important source of forage. Where forage uses are specified, this breakdown was carried through. But in the case of potatoes, for example, data on separate uses are not available even though potatoes are an important forage root crop.

Table 4.01.--Land use pattern, EEC, 1951-63

Calendar year	Total agricultural area	Pulses, root and industrial crops 1/	All grains 2/	Hay and silage	Permanent pasture and meadows	All other agricultural land 3/
-----1,000 hectares-----						
1951	79,638	8,114	21,025	12,108	23,968	14,423
1952	79,623	7,990	21,421	12,015	23,958	14,239
1953	79,512	7,897	21,628	12,079	23,976	13,932
1954	79,504	7,928	21,827	12,096	23,979	13,674
1955	79,445	7,827	21,945	12,210	24,024	13,439
1956	79,418	7,844	21,592	12,454	25,064	12,464
1957	79,241	7,601	22,048	12,678	24,982	11,932
1958	79,157	7,542	22,009	12,960	24,866	11,780
1959	--	7,416	21,923	--	--	--
1960	--	7,378	21,749	--	--	--
1961	--	7,049	21,515	--	--	--
1962	--	6,940	21,855	--	--	--
1963	--	--	21,303	--	--	--

1/ Includes all pulses, all potatoes and other tubers, sugar beets, fodder roots, turnips, cabbage, oilseeds, flax, hemp, cotton, tobacco, hops, and chickory. 2/ Includes rice. 3/ Includes areas in fruits, vegetables, tree nuts, and miscellaneous uses.

Source: *Agrarstatistik*, Europäische Wirtschaftsgemeinschaft, Brussels, 1959-No. 6, 1961-No. 1, 1962-No. 2, 1963-No. 2; and EEC General Statistical Bulletin, No. 2, 1964, 17-21 pp.

Table 4.02.--Land use pattern, France, 1951-63

Calendar year	Total agricultural area	Pulses, root and industrial crops 1/	All grains 2/	Hay and silage	Permanent pasture and meadows	All other agricultural land 3/
-----1,000 hectares-----						
1951	38,973	3,270	8,629	5,143	12,275	9,656
1952	38,910	3,198	8,695	5,164	12,312	9,541
1953	38,892	3,177	8,741	5,204	12,347	9,423
1954	38,863	3,128	8,937	5,273	12,346	9,137
1955	38,852	3,118	9,017	5,322	12,340	9,055
1956	38,760	3,202	8,600	5,575	13,330	8,053
1957	38,650	3,055	9,037	5,658	13,242	7,658
1958	38,613	3,050	9,045	5,826	13,177	7,515
1959	--	2,927	9,173	--	--	--
1960	--	2,959	9,196	--	--	--
1961	--	2,873	9,135	--	--	--
1962	--	2,828	9,406	--	--	--
1963	--	--	9,046	--	--	--

1/ 2/ 3/ Same as in table 4.01.

Source: Same as in table 4.01.

Table 4.03.--Land use pattern, Germany, 1951-63

Calendar year	Total agricultural area	Legume, root and industrial crops 1/	All grains 2/	Hay and silage	Permanent pasture and meadows	All other agricultural land 3/
-----1,000 hectares-----						
1951	14,259	2,157	4,406	1,860	5,526	310
1952	14,340	2,097	4,698	1,751	5,498	296
1953	14,331	2,085	4,775	1,732	5,482	257
1954	14,402	2,125	4,808	1,636	5,488	345
1955	14,390	2,050	4,839	1,615	5,539	347
1956	14,424	2,054	4,905	1,543	5,578	344
1957	14,394	2,016	4,910	1,594	5,573	301
1958	14,364	1,983	4,950	1,588	5,573	270
1959	--	1,949	4,965	--	--	--
1960	--	1,934	4,899	--	--	--
1961	--	1,830	4,904	--	--	--
1962	--	1,848	4,897	--	--	--
1963	--	--	4,928	--	--	--

1/ 2/ 3/ Same as in table 4.01.

Source: Same as in table 4.01.

Table 4.04.--Land use pattern, Italy, 1951-63

Calendar year	Total agricultural area	Pulses, root and industrial crops 1/	All grains 2/	Hay and silage	Permanent pasture and meadows	All other agricultural land 3/
-----1,000 hectares-----						
1951	22,150	2,013	6,960	4,417	5,077	3,683
1952	22,131	2,042	6,941	4,427	5,069	3,650
1953	22,076	2,000	7,018	4,461	5,090	3,507
1954	22,030	2,005	7,010	4,517	5,105	3,393
1955	22,017	2,024	7,016	4,598	5,088	3,291
1956	22,051	1,956	7,003	4,675	5,112	3,305
1957	22,026	1,941	7,008	4,754	5,120	3,203
1958	22,007	1,931	6,908	4,873	5,057	3,238
1959	--	1,959	6,708	--	--	--
1960	--	1,896	6,572	--	--	--
1961	--	1,805	6,385	--	--	--
1962	--	1,751	6,484	--	--	--
1963	--	--	6,295	--	--	--

1/ 2/ 3/ Same as in table 4.01.

Source: Same as in table 4.01.

Table 4.05.--Land use pattern, Netherlands, 1951-63

Calendar year	Total agricultural area	Legume, root and industrial crops 1/	All grains 2/	Hay and silage	Permanent pasture and meadows	All other agricultural land 3/
-----1,000 hectares-----						
1951 .....	2,332	381	481	570	855	45
1952 .....	2,342	372	521	565	848	36
1953 .....	2,318	356	528	566	848	20
1954 .....	2,325	388	517	557	836	27
1955 .....	2,314	363	519	564	847	21
1956 .....	2,312	353	521	559	838	41
1957 .....	2,312	329	526	565	847	45
1958 .....	2,311	329	518	571	857	36
1959 .....	--	342	505	--	--	--
1960 .....	--	343	506	--	--	--
1961 .....	--	308	521	--	--	--
1962 .....	--	286	507	--	--	--
1963 .....	--	--	487	--	--	--

1/ 2/ 3/ Same as in table 4.01.

Source: Same as in table 4.01.

Table 4.06.--Land use pattern, Belgium-Luxembourg, 1951-63

Calendar year	Total agricultural area	Pulses, root and industrial crops 1/	All grains 2/	Hay and silage	Permanent pasture and meadows	All other agricultural land 3/
-----1,000 hectares-----						
1951 .....	1,924	293	549	118	235	729
1952 .....	1,900	280	566	108	231	715
1953 .....	1,895	279	566	116	209	725
1954 .....	1,884	282	555	113	204	730
1955 .....	1,872	273	554	111	210	724
1956 .....	1,871	278	562	102	206	723
1957 .....	1,859	260	566	107	200	726
1958 .....	1,862	255	588	102	202	715
1959 .....	--	243	572	--	--	--
1960 .....	--	249	576	--	--	--
1961 .....	--	233	568	--	--	--
1962 .....	--	227	561	--	--	--
1963 .....	--	--	549	--	--	--

1/ 2/ 3/ Same as in table 4.01.

Source: Same as in table 4.01.



Table 4.07.-- Area of grains harvested, EEC, 1951-63

Calendar year	Wheat	Rye	Barley	Oats	Grain mixtures	Corn	Rice
-----1,000 hectares-----							
1951	10,272	2,107	2,074	4,216	546	1,636	174
1952	10,455	2,165	2,204	4,202	555	1,644	196
1953	10,413	2,163	2,447	4,133	611	1,666	195
1954	10,697	2,286	2,359	3,874	706	1,707	198
1955	10,891	2,184	2,498	3,832	646	1,705	189
1956	9,069	2,177	3,554	3,999	712	1,920	161
1957	11,144	2,136	2,913	3,269	629	1,804	153
1958	11,127	2,135	3,070	3,034	667	1,813	163
1959	10,792	2,028	3,350	3,010	671	1,904	168
1960	10,664	1,897	3,466	2,855	686	2,019	162
1961	10,094	1,750	3,829	2,868	719	2,181	156
1962	10,810	1,606	3,761	<u>1/3,528</u>		2,000	150
1963	9,886	1,650	4,118	<u>1/3,399</u>		2,105	145

1/ Total of oats and grain mixtures combined for 1962 and 1963.

Source: Same as in table 4.01.

Table 4.08.--Area of grains harvested, France, 1951-63

Calendar year	Wheat	Rye	Barley	Oats	Grain mixtures	Corn	Rice
-----1,000 hectares-----							
1951	4,250	461	1,019	2,272	260	349	18
1952	4,297	431	1,075	2,275	246	349	22
1953	4,219	408	1,203	2,270	247	375	19
1954	4,491	405	1,231	2,154	225	411	20
1955	4,554	387	1,313	2,077	213	453	20
1956	2,745	371	2,283	2,277	248	653	23
1957	4,668	364	1,643	1,608	183	544	27
1958	4,615	347	1,782	1,487	195	590	29
1959	4,439	328	1,989	1,504	177	704	32
1960	4,358	299	2,089	1,427	166	824	33
1961	3,997	276	2,259	1,442	168	975	33
1962	4,571	254	2,177	<u>1/1,507</u>		866	31
1963	3,761	250	2,527	<u>1/1,501</u>		977	30

1/ Same as in table 4.07.

Source: Same as in table 4.01.

Table 4.09.--Area of grains harvested, Germany, 1951-63

Calendar year	Wheat	Rye	Barley	Oats	Grain mixtures	Corn
-----1,000 hectares-----						
1951 .....	1,037	1,302	646	1,145	268	8
1952 .....	1,203	1,367	710	1,124	287	7
1953 .....	1,165	1,404	792	1,068	339	7
1954 .....	1,117	1,541	736	955	451	8
1955 .....	1,181	1,485	782	981	403	7
1956 .....	1,155	1,490	859	968	426	7
1957 .....	1,231	1,474	876	917	406	6
1958 .....	1,314	1,502	881	837	412	4
1959 .....	1,341	1,425	951	812	431	5
1960 .....	1,396	1,316	980	747	454	6
1961 .....	1,397	1,246	1,120	723	474	8
1962 .....	1,319	1,147	1,138		1/1,280	13
1963 .....	1,382	1,197	1,144		1/1,192	13

1/ Same as in table 4.07.

Source: Same as in table 4.01.

Table 4.10.--Area of grains harvested, Italy, 1951-63

Calendar year	Wheat	Rye	Barley	Oats	Grain mixtures	Corn	Rice
-----1,000 hectares-----							
1951 .....	4,728	96	251	462	--	1,267	156
1952 .....	4,682	94	253	465	--	1,273	174
1953 .....	4,770	93	250	457	--	1,272	176
1954 .....	4,769	86	248	452	--	1,277	178
1955 .....	4,852	80	244	434	--	1,237	169
1956 .....	4,877	73	238	423	--	1,254	138
1957 .....	4,911	71	229	420	--	1,251	126
1958 .....	4,838	68	224	414	13	1,217	134
1959 .....	4,665	68	221	411	14	1,193	136
1960 .....	4,553	63	216	409	14	1,188	129
1961 .....	4,345	60	220	428	16	1,197	123
1962 .....	4,556	56	209		1/424	1,120	119
1963 .....	4,394	52	204		1/413	1,115	115

1/ Same as in table 4.07.

Source: Same as in table 4.01.

Table 4.11.--Area of grains harvested, Netherlands, 1951-63

Calendar year	Wheat	Rye	Barley	Oats	Grain mixtures	Corn
-----1,000 hectares-----						
1951 .....	75	160	65	153	17	11
1952 .....	82	184	70	152	19	14
1953 .....	65	171	103	156	23	10
1954 .....	110	166	63	142	27	9
1955 .....	89	154	70	171	29	6
1956 .....	86	171	74	153	33	4
1957 .....	99	157	72	159	37	2
1958 .....	111	145	82	138	41	1
1959 .....	120	144	72	125	43	1
1960 .....	126	152	69	114	45	--
1961 .....	123	120	102	123	53	--
1962 .....	133	107	100	<u>1/167</u>		--
1963 .....	126	106	101	<u>1/154</u>		--

1/ Same as in table 4.07.

Source: Same as in table 4.01.

Table 4.12.--Area of grains harvested, Belgium-Luxembourg, 1951-63

Calendar year	Wheat	Rye	Barley	Oats	Grain mixtures	Corn
-----1,000 hectares-----						
1951 .....	182	88	93	184	1	1
1952 .....	191	89	96	186	3	1
1953 .....	194	87	99	182	2	2
1954 .....	210	88	81	171	3	2
1955 .....	215	78	89	169	1	2
1956 .....	206	72	100	178	4	2
1957 .....	235	70	93	165	2	1
1958 .....	249	73	101	158	6	1
1959 .....	227	63	117	158	6	1
1960 .....	231	67	112	158	7	1
1961 .....	232	48	128	152	8	1
1962 .....	231	42	137	<u>1/150</u>		1
1963 .....	223	45	142	<u>1/139</u>		-

1/ Same as in table 4.07.

Source: Same as in table 4.01.

Table 4.13.--Average yield per hectare of grains, EEC, 1951-63

Calendar year	Wheat	Rye	Barley	Oats	Grain mixtures	Corn	Rice
-----100 kilograms-----							
1951 .....	17.4	20.6	19.9	19.2	18.1	21.4	46.6
1952 .....	19.7	20.7	19.4	17.8	18.5	18.0	52.0
1953 .....	21.2	21.0	21.3	18.9	20.0	24.5	51.4
1954 .....	20.9	24.2	22.0	19.5	22.1	23.3	46.5
1955 .....	22.4	21.9	22.5	20.3	21.4	25.5	50.8
1956 .....	20.7	23.1	27.0	21.5	22.7	27.0	47.3
1957 .....	22.1	23.7	24.2	19.6	23.0	27.2	49.1
1958 .....	21.9	23.0	23.6	20.8	23.2	29.6	53.9
1959 .....	24.0	24.8	26.1	20.5	22.6	30.0	43.9
1960 .....	22.7	26.2	28.5	21.8	26.4	32.9	37.2
1961 .....	23.0	20.3	24.1	20.9	23.6	29.5	42.2
1962 .....	27.4	25.3	29.2		<u>1/23.7</u>	25.9	41.2
1963 .....	24.2	26.2	29.2		<u>1/24.6</u>	35.7	38.3

1/ Same as in table 4.07.

Source: Same as in table 4.01.

Table 4.14.--Average yield per hectare of grains, France, 1951-63

Calendar year	Wheat	Rye	Barley	Oats	Grain mixtures	Corn	Rice
-----100 kilograms-----							
1951 .....	16.7	10.6	16.3	16.2	10.8	19.8	33.9
1952 .....	19.6	11.2	16.1	14.7	11.4	13.9	40.5
1953 .....	21.3	11.4	18.6	16.1	12.3	21.4	35.8
1954 .....	23.5	12.7	20.5	16.6	12.5	23.2	26.7
1955 .....	22.8	11.4	20.3	17.5	11.7	24.0	41.3
1956 .....	20.5	12.7	28.1	20.2	14.8	26.6	42.5
1957 .....	23.7	13.2	22.1	16.0	13.5	25.6	42.0
1958 .....	20.8	12.4	21.8	17.7	14.3	28.4	48.2
1959 .....	26.0	14.3	24.8	18.7	14.7	25.9	29.3
1960 .....	25.3	14.0	27.4	19.2	16.3	34.1	22.7
1961 .....	24.0	13.4	24.0	18.0	15.8	25.3	30.0
1962 .....	30.7	14.8	26.7		<u>1/19.1</u>	21.5	31.0
1963 .....	25.4	15.4	28.8		<u>1/21.3</u>	38.0	28.1

1/ Same as in table 4.07.

Source: Same as in table 4.01.

Table 4.15.--Average yield per hectare of grains, Germany, 1951-63

Calendar year	Wheat	Rye	Barley	Oats	Grain mixtures	Corn
-----100 kilograms-----						
1951	28.6	23.5	26.2	25.0	24.3	27.9
1952	27.5	23.0	24.8	23.5	23.9	22.2
1953	27.4	23.5	26.2	24.2	25.0	28.9
1954	26.1	26.7	26.2	26.2	26.4	27.0
1955	28.8	23.7	26.7	25.5	25.7	29.8
1956	30.2	25.2	27.1	25.7	26.7	28.4
1957	31.4	26.0	28.7	24.5	26.6	28.3
1958	28.3	25.0	27.5	25.9	26.4	29.3
1959	33.7	27.3	29.9	25.1	25.6	27.8
1960	35.6	28.8	32.9	29.1	29.7	31.3
1961	28.9	21.4	24.3	26.5	25.4	30.7
1962	34.8	27.2	32.9		1/29.1	33.6
1963	35.1	28.5	31.1		1/29.8	36.4

1/ Same as in table 4.07.

Source: Same as in table 4.01.

Table 4.16.--Average yield per hectare of grains, Italy, 1951-63

Calendar year	Wheat	Rye	Barley	Oats	Grain mixtures	Corn	Rice
-----100 kilograms-----							
1951	14.7	12.7	10.8	11.0	--	21.7	48.0
1952	16.8	13.4	10.5	10.9	--	18.8	53.4
1953	19.0	14.0	12.5	13.2	--	25.3	53.2
1954	15.3	13.3	11.2	12.1	--	23.2	48.8
1955	19.6	15.3	12.0	12.1	--	25.9	52.2
1956	17.8	14.4	11.6	12.0	--	27.2	48.1
1957	17.3	12.9	12.9	13.9	--	27.9	50.6
1958	20.3	15.6	13.2	13.7	23.1	30.1	54.8
1959	18.2	15.5	12.6	13.1	25.7	32.5	47.3
1960	14.9	14.9	10.7	10.5	22.1	32.1	40.9
1961	19.1	16.1	12.7	13.7	27.5	32.9	45.5
1962	20.9	16.6	13.6		1/14.7	29.1	43.9
1963	18.5	14.6	13.7		1/14.1	33.6	41.0

1/ Same as in table 4.07.

Source: Same as in table 4.01.

Table 4.17.--Average yield per hectare of grains, Netherlands, 1951-63

Calendar year	Wheat	Rye	Barley	Oats	Grain mixtures	Corn
-----100 kilograms-----						
1951	35.8	28.5	32.1	32.0	29.4	34.1
1952	39.9	27.0	34.2	31.6	28.9	36.9
1953	38.3	25.1	27.0	31.0	27.8	39.2
1954	36.0	30.9	32.9	32.7	31.1	33.6
1955	39.3	30.2	37.7	34.1	32.8	37.8
1956	36.0	28.8	37.0	31.6	31.2	25.1
1957	39.7	29.1	40.4	31.8	30.0	32.9
1958	36.2	29.6	38.5	32.4	33.2	40.7
1959	41.0	26.8	37.1	25.5	21.9	23.4
1960	46.6	30.3	42.3	33.9	30.0	38.1
1961	39.3	25.2	37.6	35.1	30.6	39.0
1962	45.5	31.8	43.0		<u>1/37.8</u>	38.0
1963	42.0	29.7	38.4		<u>1/37.0</u>	42.6

1/ Same as in table 4.07.

Source: Same as in table 4.01.

Table 4.18.--Average yield per hectare of grains, Belgium-Luxembourg, 1951-63

Calendar year	Wheat	Rye	Barley	Oats	Grain mixtures	Corn
-----100 kilograms-----						
1951	30.9	24.4	29.9	27.8	--	37.3
1952	32.2	25.7	29.5	26.9	--	40.6
1953	31.4	25.5	31.0	27.6	--	50.7
1954	30.0	29.1	31.7	28.4	--	47.9
1955	35.8	29.2	33.3	31.0	--	49.5
1956	30.8	28.3	30.7	29.6	--	42.8
1957	34.4	28.3	33.3	29.3	--	48.0
1958	33.7	28.5	32.9	30.2	--	46.0
1959	37.6	29.2	35.5	29.1	--	43.1
1960	36.3	29.3	35.7	30.9	--	41.6
1961	33.7	26.9	33.4	31.8	--	45.2
1962	38.4	30.5	38.1		<u>1/32.7</u>	43.9
1963	36.5	29.1	35.4		<u>1/32.7</u>	43.3

1/ Same as in table 4.07.

Source: Same as in table 4.01.

Table 4.19.--Production of grains, EEC, 1951-63

Calendar year	Wheat	Rye	Barley	Oats	Grain mixtures	Corn	Rice
-----1,000 metric tons-----							
1951 .....	17,876	4,344	4,117	8,074	986	3,500	811
1952 .....	20,552	4,476	4,282	7,485	1,028	2,955	1,019
1953 .....	22,094	4,547	5,216	7,830	1,222	4,089	1,003
1954 .....	21,789	5,522	5,194	7,571	1,561	3,977	921
1955 .....	24,389	4,773	5,609	7,773	1,384	4,346	961
1956 .....	18,801	5,020	9,595	8,605	1,615	5,184	762
1957 .....	24,632	5,067	7,037	6,400	1,445	4,913	751
1958 .....	24,379	4,918	7,258	6,301	1,548	5,363	878
1959 .....	25,885	5,030	8,736	6,173	1,514	5,720	737
1960 .....	24,201	4,962	9,860	6,221	1,809	6,649	603
1961 .....	23,176	3,558	9,227	6,004	1,699	6,433	659
1962 .....	29,656	4,061	10,985		<u>1/8,348</u>	5,173	618
1963 .....	23,898	4,320	12,012		<u>1/8,357</u>	7,516	555

1/ Same as in table 4.07.

Source: Same as in table 4.01.

Table 4.20.--Production of grains, France, 1951-63

Calendar year	Wheat	Rye	Barley	Oats	Grain mixtures	Corn	Rice
-----1,000 metric tons-----							
1951 .....	7,116	490	1,664	3,698	280	690	61
1952 .....	8,421	482	1,729	3,355	281	485	89
1953 .....	8,981	467	2,239	3,663	303	803	69
1954 .....	10,566	514	2,525	3,574	281	955	52
1955 .....	10,365	440	2,671	3,640	249	1,091	81
1956 .....	5,683	471	6,413	4,604	367	1,738	99
1957 .....	11,082	481	3,626	2,579	247	1,392	114
1958 .....	9,601	429	3,892	2,638	279	1,673	141
1959 .....	11,544	470	4,931	2,815	260	1,825	94
1960 .....	11,014	418	5,716	2,735	271	2,813	75
1961 .....	9,573	370	5,413	2,591	265	2,470	99
1962 .....	14,054	375	6,003		<u>1/2,877</u>	1,864	96
1963 .....	9,571	385	7,281		<u>1/3,197</u>	3,715	83

1/ Same as in table 4.07.

Source: Same as in table 4.01.

Table 4.21.--Production of grains, Germany, 1951-63

Calendar year	Wheat	Rye	Barley	Oats	Grain mixtures	Corn
-----1,000 metric tons-----						
1951	2,965	3,058	1,695	2,863	650	21
1952	3,313	3,141	1,763	2,639	687	16
1953	3,197	3,297	2,078	2,578	849	20
1954	2,914	4,122	1,926	2,498	1,190	20
1955	3,401	3,517	2,086	2,504	1,034	20
1956	3,490	3,748	2,326	2,485	1,136	20
1957	3,870	3,838	2,513	2,250	1,081	16
1958	3,721	3,748	2,423	2,172	1,089	13
1959	4,522	3,885	2,843	2,039	1,104	13
1960	4,965	3,794	3,221	2,179	1,349	20
1961	4,038	2,662	2,722	1,913	1,203	23
1962	4,591	3,126	3,744			43
1963	4,856	3,415	3,561			48
				<u>1/3,723</u>		
				<u>1/3,551</u>		

1/ Same as in table 4.07.

Source: Same as in table 4.01.

Table 4.22.--Production of grains, Italy, 1951-63

Calendar year	Wheat	Rye	Barley	Oats	Grain mixtures	Corn	Rice
-----1,000 metric tons-----							
1951	6,962	123	270	510	--	2,749	750
1952	7,876	127	267	508	--	2,395	930
1953	9,057	130	313	603	--	3,214	934
1954	7,283	115	278	546	--	2,963	869
1955	9,504	123	292	523	--	3,204	880
1956	8,684	105	276	507	--	3,410	663
1957	8,478	92	296	582	--	3,496	637
1958	9,815	105	296	568	30	3,670	737
1959	8,471	105	279	541	36	3,879	643
1960	6,794	93	232	431	31	3,813	528
1961	8,301	92	279	585	44	3,936	560
1962	9,521	93	285		<u>1/633</u>	3,262	522
1963	8,127	76	281		<u>1/576</u>	3,751	472

1/ Same as in table 4.07.

Source: Same as in table 4.01.



Table 4.23.--Production of grains, Netherlands, 1951-63

Calendar year	Wheat	Rye	Barley	Oats	Grain mixtures	Corn
-----1,000 metric tons-----						
1951	270	458	210	491	50	38
1952	327	497	240	483	55	52
1953	249	431	279	484	64	40
1954	397	515	208	467	84	28
1955	350	465	264	582	95	23
1956	309	492	273	483	103	9
1957	393	458	292	505	111	5
1958	402	428	315	446	136	4
1959	494	386	268	319	94	1
1960	590	460	291	387	135	1
1961	482	301	385	431	162	1
1962	603	339	431		<u>1/632</u>	--
1963	530	313	387		<u>1/570</u>	--

1/ Same as in table 4.07.

Source: Same as in table 4.01.

Table 4.24.--Production of grains, Belgium-Luxembourg, 1951-63

Calendar year	Wheat	Rye	Barley	Oats	Grain mixtures	Corn
-----1,000 metric tons-----						
1951	563	215	278	512	6	2
1952	615	229	283	500	5	7
1953	610	222	307	502	6	12
1954	629	256	257	486	6	11
1955	769	228	296	524	6	8
1956	635	204	307	526	9	7
1957	809	198	310	484	6	4
1958	840	208	332	477	14	3
1959	854	184	415	459	20	2
1960	838	197	400	489	23	2
1961	782	129	428	484	25	3
1962	887	128	522		<u>1/491</u>	4
1963	814	131	502		<u>1/455</u>	2

1/ Same as in table 4.07.

Source: Same as in table 4.01.

Table 4.25.--Area of hay and silage harvested, by country, EEC, 1951-58

Calendar year	EEC	France	Germany	Italy	Netherlands	Bel-Lux
					<u>1/</u>	<u>1/</u>
-----1,000 hectares-----						
1951	12,108	5,143	1,860	4,417	1,425	353
1952	12,015	5,164	1,751	4,427	1,413	339
1953	12,079	5,204	1,732	4,461	1,414	325
1954	12,096	5,273	1,636	4,517	1,393	317
1955	12,210	5,322	1,615	4,598	1,411	321
1956	12,454	<u>2/5,575</u>	1,543	4,675	1,397	308
1957	12,678	5,658	1,594	4,754	1,412	307
1958	12,960	5,826	1,588	4,873	1,428	304

1/ Includes permanent pasture. 2/ Definition was changed in 1956 to include a larger area than before.

Source: Agrarstatistik, Europäische Wirtschaftsgemeinschaft, Brussels, No. 6, 1959.

Table 4.26.--Average yield per hectare of hay and silage, (dry-weight basis), by country, EEC, 1951-58

Calendar year	EEC	France	Germany	Italy	Netherlands	Bel-Lux
					<u>1/</u>	<u>1/</u>
-----100 kilograms-----						
1951	52.8	46.3	56.3	58.8	52.6	46.9
1952	44.2	37.1	46.5	50.2	52.6	40.1
1953	51.0	42.8	51.7	60.0	53.3	42.9
1954	50.7	42.9	51.0	59.3	52.7	39.7
1955	50.4	40.7	55.7	58.9	54.5	46.8
1956	49.1	<u>2/41.8</u>	51.0	56.6	52.5	41.7
1957	52.0	46.4	51.4	58.6	52.1	44.8
1958	55.6	53.3	54.3	58.5	55.6	48.5

1/ Includes permanent pasture. 2/ Reflects the effect of the definitional change in area in 1956.

Source: Same as in table 4.25.

Table 4.27.--Production of hay and silage (dry-weight basis),  
by country, EEC, 1951-58

Calendar year	EEC	France	Germany	Italy	Netherlands 1/	Bel-Lux 1/
-----1,000 metric tons-----						
1951 .....	63,958	23,807	10,490	25,995	7,500	1,655
1952 .....	53,111	19,167	8,140	22,228	7,435	1,361
1953 .....	61,609	22,258	8,955	26,754	7,540	1,395
1954 .....	61,367	22,606	8,351	26,792	7,340	1,258
1955 .....	61,534	21,682	8,991	27,076	7,680	1,502
1956 .....	61,160	<u>2/23,281</u>	7,867	26,480	7,330	1,283
1957 .....	65,875	26,232	8,194	27,842	7,364	1,376
1958 .....	72,059	31,053	8,626	28,548	7,930	1,473

1/ Includes production from permanent pasture area. 2/ Reflects the effect of the definitional change in area in 1956.

Source: Same as in table 4.25.

Table 4.28.--Area in permanent pasture, by country, EEC, 1951-58

Calendar year	EEC	France	Germany	Italy	Netherlands 1/	Bel-Lux 1/
-----1,000 hectares-----						
1951 .....	23,968	12,275	5,526	5,077	--	--
1952 .....	23,958	12,312	5,498	5,069	--	--
1953 .....	23,976	12,347	5,482	5,090	--	--
1954 .....	23,979	12,346	5,488	5,105	--	--
1955 .....	24,024	12,340	5,539	5,088	--	--
1956 .....	25,064	<u>2/13,330</u>	5,578	5,112	--	--
1957 .....	24,982	13,242	5,573	5,120	--	--
1958 .....	24,866	13,177	5,573	5,057	--	--

1/ These areas are included with hay and silage estimates presented in table 4.25.  
2/ Definition was changed in 1956 to include a larger area than before.

Source: Same as in table 4.25.

Table 4.29.--Average yield per hectare of permanent pasture  
(dry-weight basis), by country, EEC, 1951-58

Calendar year	EEC	France	Germany	Italy	Netherlands 1/	Bel-Lux 1/
-----100 kilograms-----						
1951 .....	35.2	33.0	55.6	15.3	--	--
1952 .....	29.7	26.0	49.5	13.1	--	--
1953 .....	33.3	29.1	56.8	14.6	--	--
1954 .....	32.5	29.1	56.8	15.7	--	--
1955 .....	32.7	27.4	52.7	14.6	--	--
1956 .....	32.4	2/27.7	57.7	15.0	--	--
1957 .....	33.5	29.5	57.4	14.7	--	--
1958 .....	36.4	31.9	62.7	15.7	--	--

1/ The yield of permanent pasture is included with that of hay and silage as presented in table 4.26. 2/ Reflects the effect of the definitional change in area in 1956.

Source: Same as in table 4.25.

Table 4.30.--Production of forage from permanent pasture (dry-weight basis),  
by country, EEC, 1951-58

Calendar year	EEC	France	Germany	Italy	Netherlands 1/	Bel-Lux 1/
-----1,000 metric tons-----						
1951 .....	84,481	40,505	30,699	7,788	--	--
1952 .....	71,129	32,048	27,214	6,647	--	--
1953 .....	79,862	35,990	31,139	7,440	--	--
1954 .....	77,834	35,875	28,948	8,031	--	--
1955 .....	78,547	33,767	31,957	7,426	--	--
1956 .....	81,212	2/36,810	31,647	7,674	--	--
1957 .....	83,764	39,085	31,996	7,550	--	--
1958 .....	90,592	42,137	34,970	7,915	--	--

1/ The production of forage from permanent pasture is included with the totals for hay and silage as presented in table 4.27. 2/ Reflects the effect of the definitional change in area in 1956.

Source: Same as in table 4.25.

Table 4.31.--Area in cultivated hay, clover, and alfalfa, by country, EEC, 1951-62

Calendar	EEC 1/	France	Germany	Italy 1/	Netherlands 2/	Bel-Lux 3/
-----1,000 hectares-----						
1951	--	3,763	1,103	--	--	112
1952	--	3,778	1,011	--	--	101
1953	--	3,818	933	--	--	109
1954	--	3,899	938	--	--	105
1955	7,714	3,938	922	2,730	18	106
1956	7,552	3,840	836	2,769	12	95
1957	7,800	4,031	851	2,799	17	102
1958	8,008	4,213	827	2,856	15	97
1959	8,216	4,338	831	2,955	12	80
1960	8,289	4,397	767	3,042	10	73
1961	8,603	4,574	823	3,108	13	85
1962	8,479	4,574	744	3,076	12	73

1/ Consistent data are not available for 1951-54. 2/ Data not available for 1951-54; only clover and alfalfa data available for 1955-62. 3/ Includes only clover and alfalfa crops for 1951-54; beginning with 1955 includes cultivated hay for Belgium plus clover and alfalfa for both Belgium and Luxembourg.

Source: Agrarstatistik, Europäische Wirtschaftsgemeinschaft, Brussels, 1959-No. 6, 1964-No. 1.

Table 4.32.--Average yield per hectare of cultivated hay, clover, and alfalfa crops (dry-weight basis), by country, EEC, 1951-62

Calendar year	EEC 1/	France	Germany	Italy 1/	Netherlands 2/	Bel-Lux 3/
-----100 kilograms-----						
1951	--	46.9	69.9	--	--	32.1
1952	--	37.8	57.0	--	--	29.0
1953	--	43.9	65.9	--	--	23.3
1954	--	43.4	64.1	--	--	27.4
1955	49.6	41.6	70.3	54.6	76.7	33.0
1956	50.1	43.6	65.3	53.6	73.3	71.7
1957	53.3	49.1	66.2	54.6	83.5	75.8
1958	56.6	54.7	71.2	54.3	80.0	80.8
1959	54.8	46.9	60.4	64.3	80.0	73.9
1960	63.0	58.9	70.7	66.4	89.0	84.1
1961	59.9	56.6	73.4	60.1	84.6	96.0
1962	49.2	45.3	62.1	51.4	69.2	70.3

1/ 2/ 3/ Same as in table 4.31.

Source: Same as in table 4.31.

Table 4.33.--Production of cultivated hay, clover, and alfalfa crops  
(dry-weight basis), by country, EEC, 1951-62

Calendar year	EEC <u>1/</u>	France	Germany	Italy <u>1/</u>	Netherlands <u>2/</u>	Bel-Lux <u>3/</u>
-----1,000 metric tons-----						
1951	--	17,640	7,714	--	--	360
1952	--	14,276	5,763	--	--	293
1953	--	16,764	6,152	--	--	254
1954	--	16,919	6,010	--	--	288
1955	38,266	16,393	6,483	14,902	138	350
1956	37,847	16,772	5,456	14,845	88	681
1957	41,611	19,780	5,632	15,286	142	771
1958	45,338	23,050	5,887	15,497	120	784
1959	45,054	20,360	5,019	18,988	96	591
1960	52,231	25,902	5,426	20,200	89	614
1961	51,534	25,870	6,044	18,694	110	816
1962	41,737	20,711	4,619	15,811	83	513

1/ 2/ 3/ Same as in table 4.31.

Source: Same as in table 4.31.

Table 4.34.--Area in permanent meadows, by country, EEC, 1951-62

Calendar year	EEC <u>1/</u>	France	Germany	Italy	Netherlands <u>2/</u>	Bel-Lux <u>1/</u>
-----1,000 hectares-----						
1951	--	5,241	3,568	1,159	--	--
1952	--	5,254	3,525	1,162	--	--
1953	--	5,292	3,514	1,167	--	--
1954	--	5,285	3,520	1,179	--	--
1955	--	5,279	3,555	1,164	--	--
1956	10,168	5,231	3,564	1,167	--	206
1957	10,125	5,200	3,559	1,166	--	200
1958	10,078	5,153	3,552	1,171	--	202
1959	10,027	5,091	3,550	1,165	--	221
1960	9,975	5,027	3,558	1,166	--	224
1961	9,957	5,015	3,539	1,180	--	223
1962	9,864	4,958	3,525	1,177	--	204

1/ Consistent data not available for 1951-55. 2/ Data not reported.

Source: Same as in table 4.31.

Table 4.35.--Yield per hectare from permanent meadows (dry-weight basis),  
by country, EEC, 1951-62

Calendar year	EEC <u>1/</u>	France	Germany	Italy	Netherlands	Bel-Lux <u>1/</u>
-----100 kilograms-----						
1951	--	39.2	55.4	44.0	--	--
1952	--	30.8	46.4	38.6	--	--
1953	--	33.7	54.0	42.4	--	--
1954	--	33.8	51.9	46.6	--	--
1955	--	31.3	56.8	45.1	--	--
1956	42.4	32.0	55.7	44.6	--	64.6
1957	43.6	34.8	55.6	42.9	--	65.8
1958	47.4	38.1	60.1	46.1	--	71.6
1959	42.1	33.3	50.6	51.1	--	63.5
1960	49.1	40.2	58.9	51.4	--	79.7
1961	50.1	39.6	62.9	48.9	--	87.3
1962	41.1	29.6	55.5	42.7	--	59.5

1/ Same as in table 4.34.

Source: Same as in table 4.31.

Table 4.36.--Production from permanent meadows (dry-weight basis),  
by country, EEC, 1951-62

Calendar year	EEC <u>1/</u>	France	Germany	Italy	Netherlands	Bel-Lux <u>1/</u>
-----1,000 metric tons-----						
1951	--	20,543	19,749	5,101	--	--
1952	--	16,160	16,340	4,489	--	--
1953	--	17,865	18,984	4,951	--	--
1954	--	17,880	18,278	5,494	--	--
1955	--	16,533	20,187	5,249	--	--
1956	43,114	16,760	19,820	5,203	--	1,331
1957	44,188	18,111	19,760	5,002	--	1,315
1958	47,804	19,624	21,329	5,405	--	1,446
1959	42,249	16,968	17,926	5,952	--	1,403
1960	48,937	20,210	20,952	5,990	--	1,785
1961	49,861	19,883	22,266	5,765	--	1,947
1962	40,500	14,682	19,575	5,030	--	1,213

1/ Same as in table 4.34.

Source: Same as in table 4.31.

Table 4.37.--Area in pulses, by country, EEC, 1951-63

Calendar year	EEC	France	Germany	Italy	Netherlands	Bel-Lux
-----1,000 hectares-----						
1951	1,596	231	71	1,250	36	8
1952	1,557	226	59	1,229	35	8
1953	1,566	233	55	1,228	38	12
1954	1,557	234	52	1,227	41	13
1955	1,533	226	44	1,206	44	13
1956	1,496	217	42	1,180	42	15
1957	1,492	211	37	1,192	39	13
1958	1,443	198	35	1,165	33	12
1959	1,431	193	34	1,155	37	12
1960	1,412	188	28	1,150	35	12
1961	1,304	142	32	1,089	29	12
1962	1,250	126	40	1,053	20	12
1963	1,196	124	40	996	24	12

Source: Same as in table 4.01.

Table 4.38.--Average yield per hectare of pulses, by country, EEC, 1951-63

Calendar year	EEC	France	Germany	Italy	Netherlands	Bel-Lux
-----100 kilograms-----						
1951	7.7	8.9	19.0	6.2	27.6	26.6
1952	6.3	7.1	17.8	4.8	29.8	26.3
1953	8.5	9.9	20.3	7.0	25.3	24.0
1954	8.5	10.3	18.5	6.9	25.9	30.6
1955	8.3	10.4	21.9	6.2	32.9	30.7
1956	6.7	10.8	21.1	4.8	20.7	25.5
1957	9.1	10.8	21.5	7.4	32.1	28.8
1958	8.7	10.9	21.6	7.1	31.0	27.1
1959	8.5	10.1	18.2	7.0	32.7	26.4
1960	8.6	12.2	23.6	6.5	36.6	31.1
1961	8.3	11.9	23.9	6.5	33.3	33.4
1962	8.7	11.6	25.4	6.8	39.6	35.8
1963	10.0	12.3	25.2	8.3	30.4	29.7

Source: Same as in table 4.01.



Table 4.39.--Production of pulses, by country, EEC, 1951-63

Calendar year	EEC	France	Germany	Italy	Netherlands	Bel-Lux
-----1,000 metric tons-----						
1951	1,231	205	134	771	99	22
1952	979	160	105	589	103	22
1953	1,324	231	112	858	95	28
1954	1,322	231	96	850	106	39
1955	1,269	236	96	752	146	39
1956	1,009	235	89	561	87	37
1957	1,355	228	80	883	126	38
1958	1,257	217	75	830	103	32
1959	1,217	195	62	809	120	32
1960	1,208	230	66	748	129	36
1961	1,084	168	77	702	98	39
1962	1,086	146	101	721	80	39
1963	1,194	156	101	829	75	33

Source: Same as in table 4.01.

Table 4.40.--Area in industrial crops, by country, EEC, 1951-62 <sup>1/</sup>

Calendar year	EEC	France	Germany	Italy	Netherlands	Bel-Lux
-----1,000 hectares-----						
1951	429	142	38	171	38	40
1952	436	141	32	191	36	35
1953	367	115	26	163	28	35
1954	362	114	26	152	33	37
1955	389	127	25	164	35	39
1956	402	146	24	158	36	37
1957	352	127	20	148	28	29
1958	312	115	19	129	23	27
1959	387	98	18	126	21	24
1960	300	116	16	109	26	33
1961	292	125	14	101	22	30
1962	235	84	12	80	24	35

<sup>1/</sup> Includes flax, hemp, cotton, tobacco, hops, and chicory.

Source: Same as in table 4.01.

Table 4.41.--Area in potatoes, by country, EEC, 1951-63

Calendar year	EEC	France	Germany	Italy	Netherlands	Bel-Lux
-----1,000 hectares-----						
1951 .....	2,754	974	1,130	387	165	98
1952 .....	2,756	938	1,161	393	170	94
1953 .....	2,774	950	1,177	393	158	96
1954 .....	2,827	955	1,204	397	171	100
1955 .....	2,715	938	1,142	391	153	91
1956 .....	2,734	962	1,148	387	144	93
1957 .....	2,644	897	1,132	386	141	88
1958 .....	2,568	884	1,073	384	140	87
1959 .....	2,556	887	1,053	386	145	85
1960 .....	2,530	880	1,041	378	146	85
1961 .....	2,443	878	976	379	133	77
1962 .....	2,395	852	963	377	130	73
1963 .....	2,382	864	925	386	133	74

Source: Same as in table 4.01.

Table 4.42.--Average yield per hectare of potatoes, by country, EEC, 1951-63

Calendar year	EEC	France	Germany	Italy	Netherlands	Bel-Lux
-----100 kilograms-----						
1951 .....	165	124	215	74	239	219
1952 .....	162	118	207	69	266	241
1953 .....	171	144	210	80	243	213
1954 .....	188	166	225	81	245	278
1955 .....	172	147	202	87	268	255
1956 .....	195	175	235	88	237	232
1957 .....	188	155	234	82	277	247
1958 .....	176	144	213	95	272	231
1959 .....	171	138	216	103	229	173
1960 .....	195	169	263	101	286	235
1961 .....	185	162	220	104	280	245
1962 .....	200	156	261	94	305	273
1963 .....	217	184	279	114	290	225

Source: Same as in table 4.01.

Table 4.43.--Production of potatoes, by country, EEC, 1951-63

Calendar year	EEC	France	Germany	Italy	Netherlands	Bel-Lux
-----1,000 metric tons-----						
1951	45,325	12,074	24,319	2,858	3,932	2,142
1952	44,643	11,072	24,059	2,717	4,528	2,267
1953	47,444	13,644	24,774	3,132	3,845	2,049
1954	53,080	15,864	27,050	3,202	4,183	2,781
1955	46,613	13,750	23,081	3,382	4,083	2,317
1956	52,816	16,847	26,999	3,414	3,402	2,154
1957	49,643	13,904	26,488	3,157	3,917	2,177
1958	45,076	12,746	22,855	3,668	3,799	2,008
1959	43,683	12,212	22,708	3,979	3,315	1,469
1960	49,427	14,894	24,545	3,818	4,173	1,997
1961	45,233	14,189	21,504	3,932	3,720	1,888
1962	47,848	13,256	25,091	3,557	3,953	1,991
1963	51,582	15,908	25,801	4,384	3,854	1,635

Source: Same as in table 4.01.

Table 4.44.--Area in sugarbeets used for sugar, by country, EEC, 1951-63

Calendar year	EEC	France	Germany	Italy	Netherlands	Bel-Lux
-----1,000 hectares-----						
1951	960	407	223	198	67	65
1952	995	424	222	222	63	64
1953	974	413	224	210	68	59
1954	994	380	254	224	79	57
1955	1,018	374	262	258	67	57
1956	1,002	376	269	226	69	62
1957	943	347	259	210	65	62
1958	1,043	365	284	247	81	66
1959	1,108	387	287	287	93	64
1960	1,125	428	294	247	93	63
1961	993	359	260	227	85	62
1962	1,001	352	290	225	77	57
1963	1,023	372	301	224	69	57

Source: Same as in table 4.01.

Table 4.45.--Average yield per hectare of sugarbeets for sugar, by country, EEC, 1951-63

Calendar year	EEC	France	Germany	Italy	Netherlands	Bel-Lux
-----100 kilograms-----						
1951 .....	306	291	327	301	368	284
1952 .....	274	224	308	266	441	343
1953 .....	334	304	376	296	438	406
1954 .....	327	307	355	294	387	376
1955 .....	338	293	341	357	447	391
1956 .....	309	290	310	311	367	358
1957 .....	342	324	374	294	417	398
1958 .....	369	353	396	311	479	429
1959 .....	286	200	285	400	333	231
1960 .....	417	445	420	316	505	487
1961 .....	364	368	356	312	455	434
1962 .....	332	328	338	317	379	354
1963 .....	368	345	416	335	389	375

Source: Same as in table 4.01.

Table 4.46.--Production of sugarbeets for sugar, by country, EEC, 1951-63

Calendar year	EEC	France	Germany	Italy	Netherlands	Bel-Lux
-----1,000 metric tons-----						
1951 .....	29,395	11,832	7,293	5,961	2,451	1,858
1952 .....	27,231	9,504	6,847	5,897	2,789	2,194
1953 .....	32,553	12,537	8,425	6,231	2,971	2,389
1954 .....	32,458	11,657	9,015	6,592	3,062	2,132
1955 .....	34,354	10,978	8,938	9,208	2,984	2,246
1956 .....	30,996	10,885	8,348	7,034	2,525	2,204
1957 .....	32,291	11,248	9,692	6,176	2,689	2,486
1958 .....	38,513	12,885	11,237	7,681	3,878	2,832
1959 .....	31,960	7,760	8,169	11,459	3,098	1,474
1960 .....	46,903	19,021	12,325	7,818	4,676	3,063
1961 .....	36,117	13,236	9,253	7,071	3,854	2,703
1962 .....	33,190	11,565	9,525	7,147	2,934	2,019
1963 .....	37,637	12,818	12,493	7,500	2,691	2,135

Source: Same as in table 4.01.

Table 4.47.--Area in sugarbeets for fodder, by country, EEC, 1951-63

Calendar year	EEC	France	Germany	Italy	Netherlands	Bel-Lux
-----1,000 hectares-----						
1951 .....	1,557	849	567	--	62	79
1952 .....	1,460	808	516	--	60	76
1953 .....	1,484	846	507	--	57	74
1954 .....	1,470	837	505	--	56	72
1955 .....	1,455	840	490	--	55	70
1956 .....	1,462	865	479	--	50	68
1957 .....	1,389	814	462	--	48	65
1958 .....	1,355	794	453	--	47	61
1959 .....	1,306	763	444	--	42	57
1960 .....	1,305	766	446	--	39	54
1961 .....	1,304	776	444	--	34	50
1962 .....	1,276	757	439	--	31	49
1963 .....	1,244	761	409	--	28	46

Source: Same as in table 4.01.

Table 4.48.--Average yield per hectare of sugarbeets for fodder, by country, EEC, 1951-63

Calendar year	EEC	France	Germany	Italy	Netherlands	Bel-Lux
-----100 kilograms-----						
1951 .....	428	416	420	--	518	540
1952 .....	380	348	361	--	624	651
1953 .....	466	425	465	--	657	789
1954 .....	485	471	456	--	611	755
1955 .....	460	396	496	--	710	783
1956 .....	483	484	437	--	566	721
1957 .....	510	490	485	--	702	793
1958 .....	563	546	531	--	814	836
1959 .....	340	334	339	--	382	402
1960 .....	615	611	567	--	850	902
1961 .....	503	477	493	--	759	841
1962 .....	442	416	441	--	621	755
1963 .....	476	411	549	--	689	785

Source: Same as in table 4.01.

Table 4.49.--Production of sugarbeets for fodder, by country, EEC, 1951-63

Calendar year	EEC	France	Germany	Italy	Netherlands	Bel-Lux
-----1,000 metric tons-----						
1951	66,564	35,315	23,758	--	3,228	4,263
1952	55,405	28,104	18,622	--	3,732	4,947
1953	69,156	35,989	23,567	--	3,759	5,841
1954	71,354	39,440	23,054	--	3,424	5,436
1955	66,938	33,264	24,313	--	3,878	5,483
1956	70,553	41,870	20,953	--	2,829	4,901
1957	70,879	39,927	22,422	--	3,374	5,156
1958	76,351	43,346	24,078	--	3,828	5,099
1959	44,412	25,482	15,033	--	1,604	2,293
1960	80,257	46,780	25,288	--	3,316	4,873
1961	65,630	36,955	21,883	--	2,588	4,204
1962	56,447	31,484	19,336	--	1,926	3,701
1963	59,275	31,318	22,431	--	1,915	3,611

Source: Same as in table 4.01.

Table 4.50.--Area in other root and fodder crops, by country, EEC, 1951-62

Calendar year	EEC	France	Germany	Italy	Netherlands	Bel-Lux
-----1,000 hectares-----						
1951	637	552	82	1	1	1
1952	611	531	77	0	2	1
1953	632	549	79	0	2	2
1954	642	562	76	0	2	2
1955	629	549	76	0	2	2
1956	666	586	76	0	2	2
1957	641	559	78	0	2	2
1958	627	553	73	0	0	1
1959	593	517	75	0	0	1
1960	598	531	66	0	0	1
1961	605	547	57	0	0	1
1962	572	515	56	0	0	1

Source: Same as in table 4.01.

Table 4.51.--Average yield per hectare of other root and fodder crops,  
by country, EEC, 1951-62

Calendar year	EEC	France	Germany	Italy 1/	Netherlands 1/	Bel-Lux 1/
-----100 kilograms-----						
1951	320	317	362	--	--	--
1952	292	281	354	--	--	--
1953	325	309	433	--	--	--
1954	340	340	338	--	--	--
1955	297	281	407	--	--	--
1956	257	352	393	--	--	--
1957	359	349	434	--	--	--
1958	383	374	448	--	--	--
1959	292	295	265	--	--	--
1960	398	401	362	--	--	--
1961	362	352	458	--	--	--
1962	324	313	415	--	--	--

1/ Area and production are too small to compute accurate yields.

Source: Same as in table 4.01.

Table 4.52.--Production of other root and fodder crops, by country, EEC, 1951-62

Calendar year	EEC	France	Germany	Italy	Netherlands	Bel-Lux
-----1,000 metric tons-----						
1951	20,430	17,485	2,965	--	73	60
1952	17,815	14,945	2,730	--	74	66
1953	20,555	16,974	3,423	--	75	83
1954	21,796	19,087	2,570	--	62	77
1955	18,697	15,453	3,096	--	77	71
1956	23,768	20,661	2,985	--	48	74
1957	23,035	19,522	3,389	--	53	71
1958	24,042	20,700	3,270	--	--	72
1959	17,308	15,258	1,991	--	13	46
1960	23,812	21,312	2,390	--	27	83
1961	21,935	19,235	2,612	--	13	75
1962	18,525	16,117	2,325	--	9	74

Source: Same as in table 4.01.

Table 4.53.--Area in edible oilseeds, by country, EEC, 1951-63 <sup>1/</sup>

Calendar year	EEC	France	Germany	Italy	Netherlands	Bel-Lux
-----1,000 hectares-----						
1951 .....	267	168	56	22	19	2
1952 .....	239	172	36	22	7	2
1953 .....	153	103	21	22	6	1
1954 .....	121	87	10	16	7	1
1955 .....	135	94	13	17	10	1
1956 .....	154	102	19	18	15	1
1957 .....	206	144	31	19	12	1
1958 .....	245	180	34	19	11	1
1959 .....	171	117	28	18	8	-
1960 .....	148	91	32	19	5	-
1961 .....	173	115	37	17	4	-
1962 .....	209	139	48	17	4	-
1963 .....	206	131	46	15	4	-

<sup>1/</sup> Includes winter rape, summer rape, mustard seed, sesame seed, poppy seed, sunflower, peanut, castor beans and soybeans.

Source: Same as in table 4.01.

Table 4.54.--Yield per hectare of edible oilseeds, by country, EEC, 1951-63 <sup>1/</sup>

Calendar year	EEC	France	Germany	Italy	Netherlands	Bel-Lux
-----100 kilograms-----						
1951 .....	13.1	11.7	16.5	12.5	15.3	20.8
1952 .....	14.9	14.5	16.5	13.1	22.9	23.1
1953 .....	12.4	11.2	16.1	13.1	18.3	22.4
1954 .....	14.0	12.4	16.2	13.4	27.1	21.6
1955 .....	14.9	13.8	17.2	15.3	22.1	21.0
1956 .....	15.1	13.5	21.3	13.3	19.3	20.7
1957 .....	15.5	13.9	22.0	14.8	18.7	20.4
1958 .....	13.6	12.7	17.3	15.6	13.8	19.3
1959 .....	15.0	13.4	21.3	15.5	14.6	22.3
1960 .....	15.9	13.6	21.5	16.2	19.8	20.5
1961 .....	15.9	14.0	20.5	17.2	23.2	13.0
1962 .....	18.1	16.0	24.1	16.8	24.6	13.5
1963 .....	16.1	15.1	21.2	17.3	25.0	16.8

<sup>1/</sup> Same as in table 4.53.

Source: Same as in table 4.01.



Table 4.55.--Production of edible oilseed crops, by country, EEC, 1951-63 1/

Calendar year	EEC	France	Germany	Italy	Netherlands	Bel-Lux
-----1,000 metric tons-----						
1951 .....	351	196	93	28	29	5
1952 .....	357	249	59	30	16	3
1953 .....	190	115	34	28	11	2
1954 .....	169	108	18	23	19	1
1955 .....	201	130	22	26	22	1
1956 .....	232	138	40	23	29	2
1957 .....	320	200	69	28	22	2
1958 .....	334	230	59	29	15	2
1959 .....	256	157	59	28	12	-
1960 .....	235	124	70	31	10	-
1961 .....	276	161	75	30	11	-
1962 .....	377	222	116	28	10	-
1963 .....	331	198	96	26	10	-

1/ Same as in table 4.53.

Source: Same as in table 4.01.

## SECTION 5.00: SUPPLY AND DISTRIBUTION OF MEATS

The following section provides a balance sheet accounting for the supply and distribution of all meats as well as some of the more important subcategories. It includes production, net movements from stocks and imports on the supply side and exports, net movements into stocks, and domestic consumption on the side of distribution. In every case, the EEC imports and exports are reported net of intra-EEC movements.

The figures on "production" are defined as follows: The total weight of all slaughterings minus the weight of slaughter from animals imported live, minus the trim fat, plus the edible offals.

Table 5.01.--Supply-distribution of total meat, EEC, 1956-61 <sup>1/</sup>

Year ending June 30	Production	Change in stocks	Exports <u>2/</u>	Imports <u>2/</u>	Domestic consumption	
					Total	Per capita
-----1,000 metric tons-----					Kilograms	
1956 .....	7,379	+15	216	394	7,542	45.9
1957 .....	7,455	- 8	168	596	7,891	47.5
1958 .....	7,760	- 6	175	569	8,160	48.7
1959 .....	7,944	+25	173	608	8,354	49.4
1960 .....	8,387	+23	207	673	8,830	51.7
1961 .....	8,906	+21	235	641	9,291	53.9

<sup>1/</sup> Excludes trim fat, but includes edible offals.

<sup>2/</sup> Excludes intra-EEC trade.

Source: Agrarstatistik, Europäische Wirtschaftsgemeinschaft, Brussels, No. 1, 1963

Table 5.02.-- Supply-distribution of total meat, France, 1956-61 <sup>1/</sup>

Year ending June 30	Production	Change in stocks	Exports	Imports	Domestic consumption	
					Total	Per capita
-----1,000 metric tons-----					Kilograms	
1956 .....	3,032	- 1	72	49	3,010	67.7
1957 .....	3,019	-16	45	120	3,110	69.3
1958 .....	3,065		49	85	3,101	68.4
1959 .....	3,141	+11	65	78	3,143	68.5
1960 .....	3,309	+20	105	87	3,271	72.1
1961 .....	3,513	+22	155	142	3,478	76.1

<sup>1/</sup> Same as in table 5.01

Source: Same as in table 5.01.

Table 5.03.--Supply-distribution of total meats, Germany, 1956-61 1/

Year ending June 30	Production	Change in stocks	Exports	Imports	Domestic consumption	
					Total	Per capita
			-----1,000 metric tons-----			Kilograms
1956 .....	2,397	+16	22	249	2,608	50.4
1957 .....	2,450	+ 8	28	332	2,746	52.4
1958 .....	2,672	- 6	34	281	2,925	55.1
1959 .....	2,643	+14	34	398	2,993	55.8
1960 .....	2,758	+ 3	46	464	3,173	57.4
1961 .....	2,850	- 1	33	518	3,336	59.6

1/ Same as in table 5.01

Source: Same as in table 5.01.

Table 5.04.--Supply-distribution of total meat, Italy, 1956-61 1/

Year ending June 30	Production	Change in stocks	Exports	Imports	Domestic consumption	
					Total	Per capita
			-----1,000 metric tons-----			Kilograms
1956 .....	900	---	3	108	1,005	20.8
1957 .....	958	---	5	143	1,096	22.7
1958 .....	945	---	7	227	1,165	23.9
1959 .....	1,049	---	6	201	1,244	25.4
1960 .....	1,074	---	10	299	1,363	27.7
1961 .....	1,213	---	18	220	1,415	28.6

1/ Same as in table 5.01

Source: Same as in table 5.01.

Table 5.05.--Supply-distribution of total meat, Netherlands, 1956-61 1/

Year ending June 30	Production	Change in stocks	Exports	Imports	Domestic consumption	
					Total	Per capita
-----1,000 metric tons-----					<u>Kilograms</u>	
1956 .....	556	---	168	39	427	39.5
1957 .....	542	---	169	60	433	39.5
1958 .....	581	---	178	49	452	40.7
1959 .....	575	---	174	47	448	39.8
1960 .....	655	---	223	54	486	42.6
1961 .....	708	---	242	48	514	44.5

1/ Same as in table 5.01.

Source: Same as in table 5.01.

Table 5.06.--Supply-distribution of total meat, Belgium-Luxembourg, 1956-61 1/

Year ending June 30	Production	Change in stocks	Exports	Imports	Domestic consumption	
					Total	Per capita
-----1,000 metric tons-----					<u>Kilograms</u>	
1956 .....	467	---	8	33	492	53.4
1957 .....	471	---	6	41	506	54.6
1958 .....	477	---	5	45	517	55.3
1959 .....	510	---	17	33	526	56.0
1960 .....	516	---	16	37	537	56.8
1961 .....	532	---	22	38	548	57.7

1/ Same as in table 5.01.

Source: Same as in table 5.01

Table 5.07.--Supply-distribution of beef, EEC, 1956-61 1/

Year ending June 30	Production	Change in stocks	Exports <u>2/</u>	Imports <u>2/</u>	Domestic consumption	
					Total	Per capita
-----1,000 metric tons-----					Kilograms	
1956 .....	2,267	-15	61	206	2,427	14.8
1957 .....	2,225	- 4	40	369	2,558	15.4
1958 .....	2,359	- 1	45	319	2,634	15.7
1959 .....	2,414	+ 8	53	307	2,660	15.7
1960 .....	2,556	+24	53	322	2,801	16.4
1961 .....	2,804	+40	71	279	2,972	17.2

1/ Same as in table 5.01.

2/ Same as in table 5.01.

Source: Same as in table 5.01.

Table 5.08.--Supply-distribution of beef, France, 1956-61 1/

Year ending June 30	Production	Change in stocks	Exports	Imports	Domestic consumption	
					Total	Per capita
-----1,000 metric tons-----					Kilograms	
1956 .....	966	-17	47	10	946	21.3
1957 .....	915	0	19	69	965	21.5
1958 .....	941	0	25	30	946	20.8
1959 .....	928	0	32	33	929	20.2
1960 .....	990	+15	62	36	949	20.9
1961 .....	1,146	+39	102	16	1,021	22.3

1/ Same as in table 5.01.

Source: Same as in table 5.01.

Table 5.09.--Supply-distribution of beef, Germany, 1956-61 1/

Year ending June 30	Production	Change in stocks	Exports	Imports	Domestic consumption	
					Total	Per capita
			-----1,000 metric tons-----			Kilograms
1956	641	+ 2	11	135	763	14.7
1957	678	- 4	19	168	831	15.9
1958	768	- 1	26	121	864	16.3
1959	747	+ 8	25	162	876	16.3
1960	815	+ 9	38	155	923	16.7
1961	836	+ 1	20	175	990	17.7

1/ Same as in table 5.01.

Source: Same as in table 5.01.

Table 5.10.--Supply-distribution of beef, Italy, 1956-61 1/

Year ending June 30	Production	Change in stocks	Exports	Imports	Domestic consumption	
					Total	Per capita
			-----1,000 metric tons-----			Kilograms
1956	325	---	1	70	394	8.2
1957	327	---	0	106	433	9.0
1958	326	---	1	161	486	10.0
1959	387	---	1	122	508	10.4
1960	372	---	2	201	571	11.6
1961	429	---	7	157	579	11.7

1/ Same as in table 5.01.

Source: Same as in table 5.01.

Table 5.11.--Supply-distribution of beef, Netherlands, 1956-61 1/

Year ending June 30	Production	Change in stocks	Exports	Imports	Domestic consumption	
					Total	Per capita
			-----1,000 metric tons-----			Kilograms
1956 .....	165	---	24	18	159	14.7
1957 .....	148	---	27	37	158	14.4
1958 .....	161	---	27	30	164	14.8
1959 .....	167	---	26	28	169	15.0
1960 .....	179	---	32	30	177	15.5
1961 .....	191	---	23	29	197	17.0
:	:	:	:	:	:	:
:	:	:	:	:	:	:
:	:	:	:	:	:	:

1/ Same as in table 5.01.

Source: Same as in table 5.01.

Table 5.12.--Supply-distribution of beef, Belgium-Luxembourg, 1956-61 1/

Year ending June 30	Production	Change in stocks	Exports	Imports	Domestic consumption	
					Total	Per capita
			-----1,000 metric tons-----			Kilograms
1956 .....	157	---	3	11	165	17.9
1957 .....	153	---	2	20	171	18.5
1958 .....	159	---	2	17	174	18.6
1959 .....	179	---	12	11	178	19.0
1960 .....	176	---	8	13	181	19.2
1961 .....	176	---	3	12	185	19.5
:	:	:	:	:	:	:
:	:	:	:	:	:	:
:	:	:	:	:	:	:

1/ Same as in table 5.01.

Source: Same as in table 5.01.



Table 5.13.--Supply-distribution of veal, EEC, 1956-61 1/

Year ending June 30	Production	Change in stocks	Exports <u>2/</u>	Imports <u>2/</u>	Domestic consumption	
					Total	Per capita
-----1,000 metric tons-----					Kilograms	
1956 .....	569	---	5	1	565	3.4
1957 .....	561	---	10		551	3.3
1958 .....	545	---	12		533	3.2
1959 .....	545	---	12	2	535	3.2
1960 .....	580	---	19	6	567	3.3
1961 .....	619	---	16	14	617	3.6

1/ Same as in table 5.01.

2/ Same as in table 5.01.

Source: Same as in table 5.01.

Table 5.14.--Supply-distribution of veal, France, 1956-61 1/

Year ending June 30	Production	Change in stocks	Exports	Imports	Domestic consumption	
					Total	Per capita
-----1,000 metric tons-----					Kilograms	
1956 .....	356	---	---	---	356	8.0
1957 .....	346	---	---	---	346	7.7
1958 .....	334	---	---	---	334	7.4
1959 .....	331	---	---	---	331	7.2
1960 .....	353	---	---	---	353	7.8
1961 .....	396	---	---	---	396	8.7

1/ Same as in table 5.01

Source: Same as in table 5.01.

Table 5.15.--Supply-distribution of veal, Germany, 1956-61 1/

Year ending June 30	Production	Change in stocks	Exports	Imports	Domestic consumption	
					Total	Per capita
-----1,000 metric tons-----					Kilograms	
1956 .....	92	---	---	0	92	1.8
1957 .....	96	---	---	0	96	1.8
1958 .....	94	---	---	0	94	1.8
1959 .....	87	---	---	2	89	1.7
1960 .....	93	---	---	5	98	1.8
1961 .....	93	---	---	8	101	1.8

1/ Same as in table 5.01.

Source: Same as in table 5.01.

Table 5.16.--Supply-distribution of veal, Italy, 1956-61 1/

Year ending June 30	Production	Change in stocks	Exports	Imports	Domestic consumption	
					Total	Per capita
-----1,000 metric tons-----					Kilograms	
1956 .....	72	---	---	1	73	1.5
1957 .....	70	---	---	0	70	1.4
1958 .....	64	---	---	0	64	1.3
1959 .....	74	---	---	1	75	1.5
1960 .....	70	---	---	4	74	1.5
1961 .....	64	---	---	18	82	1.7

1/ Same as in table 5.01.

Source: Same as in table 5.01.

Table 5.17.--Supply-distribution of veal, Netherlands, 1956-61 1/

Year ending June 30	Production	Change in stocks	Exports	Imports	Domestic consumption	
					Total	Per capita
			-----1,000 metric tons-----		Kilograms	
1956 .....	29	---	5	---	24	2.2
1957 .....	30	---	10	---	20	1.8
1958 .....	34	---	12	---	22	2.0
1959 .....	31	---	12	---	19	1.7
1960 .....	38	---	19	---	19	1.7
1961 .....	35	---	17	---	18	1.6
:						
:						
:						

1/ Same as in table 5.01.

Source: Same as in table 5.01.

Table 5.18.--Supply-distribution of veal, Belgium-Luxembourg, 1956-61 1/

Year ending June 30	Production	Change in stocks	Exports	Imports	Domestic consumption	
					Total	Per capita
			-----1,000 metric tons-----		Kilograms	
1956 .....	20	---	---	---	20	2.2
1957 .....	19	---	---	---	19	2.0
1958 .....	19	---	---	---	19	2.0
1959 .....	21	---	---	---	21	2.2
1960 .....	23	---	---	---	23	2.4
1961 .....	20	---	---	---	20	2.1
:						
:						
:						

1/ Same as in table 5.01.

Source: Same as in table 5.01.

Table 5.19.--Supply-distribution of pork, EEC, 1956-61 1/

Year ending June 30	Production	Change in stocks	Exports <u>2/</u>	Imports <u>2/</u>	Domestic consumption	
					Total	Per capita
-----1,000 metric tons-----					Kilograms	
1956 .....	2,951	+31	121	43	2,842	17.3
1957 .....	3,025	- 3	115	74	2,987	18.0
1958 .....	3,129	- 6	111	101	3,125	18.7
1959 .....	3,159	+17	94	112	3,160	18.7
1960 .....	3,288	- 1	117	113	3,285	19.3
1961 .....	3,377	-19	123	96	3,369	19.5

1/ Same as in table 5.01.2/ Same as in table 5.01.

Source: Same as in table 5.01.

Table 5.20.--Supply-distribution of pork, France, 1956-61 1/

Year ending June 30	Production	Change in stocks	Exports	Imports	Domestic consumption	
					Total	Per capita
-----1,000 metric tons-----					Kilograms	
1956 .....	824	+16	21	16	803	18.0
1957 .....	853	-16	23	8	854	19.1
1958 .....	852	0	20	29	861	19.0
1959 .....	911	+11	24	9	885	19.3
1960 .....	946	+ 5	32	7	916	20.2
1961 .....	888	-17	39	74	940	20.5

1/ Same as in table 5.01.

Source: Same as in table 5.01.

Table 5.21.--Supply-distribution of pork, Germany, 1956-61 1/

Year ending June 30	Production	Change in stocks	Exports	Imports	Domestic consumption	
					Total	Per capita
			-----1,000 metric tons-----			Kilograms
1956 .....	1,375	+15	10	45	1,395	27.0
1957 .....	1,380	+13	7	81	1,441	27.5
1958 .....	1,489	- 6	7	64	1,552	29.3
1959 .....	1,480	+ 6	7	105	1,572	29.3
1960 .....	1,502	- 6	6	117	1,619	29.3
1961 .....	1,566	- 2	10	126	1,684	30.1

1/ Same as in table 5.01.

Source: Same as in table 5.01.

Table 5.22.--Supply-distribution of pork, Italy, 1956-61 1/

Year ending June 30	Production	Change in stocks	Exports	Imports	Domestic consumption	
					Total	Per capita
			-----1,000 metric tons-----			Kilograms
1956 .....	258	---	2	12	268	5.6
1957 .....	303	---	5	8	306	6.3
1958 .....	287	---	6	30	311	6.4
1959 .....	289	---	5	35	319	6.5
1960 .....	306	---	7	48	347	7.0
1961 .....	345	---	10	3	338	6.8

1/ Same as in table 5.01.

Source: Same as in table 5.01.

Table 5.23.--Supply-distribution of pork, Netherlands, 1956-61 1/

Year ending June 30	Production	Change in stocks	Exports	Imports	Domestic consumption		
					Total	Per capita	
			-----1,000 metric tons-----			Kilograms	
1956 .....	291	---	108	0	183	16.9	
1957 .....	285	---	100	0	185	16.9	
1958 .....	301	---	101	0	200	18.0	
1959 .....	281	---	93	0	188	16.7	
1960 .....	323	---	115	1	209	18.3	
1961 .....	351	---	136	1	216	18.7	

1/ Same as in table 5.01.

Source: Same as in table 5.01.

Table 5.24.--Supply-distribution of pork, Belgium-Luxembourg, 1956-61 1/

Year ending June 30	Production	Change in stocks	Exports	Imports	Domestic consumption		
					Total	Per capita	
			-----1,000 metric tons-----			Kilograms	
1956 .....	195	---	5	3	193	21.0	
1957 .....	201	---	4	4	201	21.7	
1958 .....	195	---	2	8	201	21.5	
1959 .....	196	---	4	4	196	20.9	
1960 .....	195	---	5	4	194	20.5	
1961 .....	203	---	16	4	191	20.1	

1/ Same as in table 5.01.

Source: Same as in table 5.01.

Table 5.25.--Supply-distribution of sheep and goat meat, EEC, 1956-61

Year ending June 30	Production	Change in stocks	Exports <u>2/</u>	Imports <u>2/</u>	Domestic consumption	
					Total	Per capita
-----1,000 metric tons-----					Kilograms	
1956 .....	172	- 1	1	8	180	1.1
1957 .....	174	- 1	1	9	183	1.1
1958 .....	179	+ 1	1	5	182	1.1
1959 .....	178	0	0	6	184	1.1
1960 .....	192	0	1	4	195	1.1
1961 .....	196	0	2	6	200	1.2

1/ Same as in table 5.01.

2/ Same as in table 5.01.

Source: Same as in table 5.01.

Table 5.26.--Supply-distribution of sheep and goat meat, France, 1956-61 1/

Year ending June 30	Production	Change in stocks	Exports	Imports	Domestic consumption	
					Total	Per capita
-----1,000 metric tons-----					Kilograms	
1956 .....	109	---	0	11	120	2.7
1957 .....	113	---	0	11	124	2.8
1958 .....	116	---	0	7	123	2.7
1959 .....	114	---	0	7	121	2.6
1960 .....	125	---	1	5	129	2.8
1961 .....	132	---	2	6	136	3.0

1/ Same as in table 5.01.

Source: Same as in table 5.01.

Table 5.27.--Supply-distribution of sheep and goat meat, Germany, 1956-61 <sup>1/</sup>

Year ending June 30	Production	Change in stocks	Exports	Imports	Domestic consumption	
					Total	Per capita
	-----1,000 metric tons-----				Kilograms	
1956 .....	16	- 1	1	1	17	0.3
1957 .....	14	- 1	1	1	15	0.3
1958 .....	15	+ 1	1	1	14	0.3
1959 .....	15	0	0	0	15	0.3
1960 .....	16	0	0	1	17	0.3
1961 .....	16	0	0	1	17	0.3

<sup>1/</sup> Same as in table 5.01.

Source: Same as in table 5.01.

Table 5.28.--Supply-distribution of sheep and goat meat, Italy, 1956-61 <sup>1/</sup>

Year ending June 30	Production	Change in stocks	Exports	Imports	Domestic consumption	
					Total	Per capita
	-----1,000 metric tons-----				Kilograms	
1956 .....	40	---	---	0	40	0.8
1957 .....	39	---	---	0	39	0.8
1958 .....	38	---	---	0	38	0.8
1959 .....	37	---	---	1	38	0.8
1960 .....	38	---	---	2	40	0.8
1961 .....	38	---	---	2	40	0.8

<sup>1/</sup> Same as in table 5.01.

Source: Same as in table 5.01.



Table 5.29.--Supply-distribution of sheep and goat meat, Netherlands, 1956-61 1/

Year ending June 30	Production	Change in stocks	Exports	Imports	Domestic consumption	
					Total	Per capita
-----1,000 metric tons-----					<u>Kilograms</u>	
1956	5	---	4	---	1	0.1
1957	6	---	4	---	2	0.2
1958	8	---	5	---	3	0.3
1959	10	---	4	---	6	0.5
1960	11	---	6	---	5	0.4
1961	8	---	5	---	3	0.3

1/ Same as in table 5.01.

Source: Same as in table 5.01.

Table 5.30.--Supply-distribution of sheep and goat meat, Belgium-Luxembourg, 1956-61 1/

Year ending June 30	Production	Change in stocks	Exports	Imports	Domestic consumption	
					Total	Per capita
-----1,000 metric tons-----					<u>Kilograms</u>	
1956	2	---	---	---	2	0.2
1957	2	---	---	1	3	0.3
1958	2	---	---	2	4	0.4
1959	2	---	---	2	4	0.4
1960	2	---	---	2	4	0.4
1961	2	---	---	2	4	0.4

1/ Same as in table 5.01.

Source: Same as in table 5.01.

Table 5.31.--Supply-distribution of horsemeat, EEC, 1956-61 1/

Year ending June 30	Production	Change in stocks	Exports <u>2/</u>	Imports <u>2/</u>	Domestic consumption	
					Total	Per capita
			-----1,000 metric tons-----		Kilograms	
1956 .....	154	---	0	28	182	1.1
1957 .....	151	---	0	36	187	1.1
1958 .....	140	---	0	32	172	1.0
1959 .....	150	---	0	40	190	1.1
1960 .....	153	---	2	54	205	1.2
1961 .....	153	---	1	62	214	1.2

1/ Same as in table 5.01.

2/ Same as in table 5.01.

Source: Same as in table 5.01.

Table 5.32.--Supply-distribution of horsemeat, France, 1956-61 1/

Year ending June 30	Production	Change in stocks	Exports	Imports	Domestic consumption	
					Total	Per capita
			-----1,000 metric tons-----		Kilograms	
1956 .....	87	---	---	2	89	2.0
1957 .....	79	---	---	12	91	2.0
1958 .....	82	---	---	3	85	1.9
1959 .....	85	---	---	12	97	2.2
1960 .....	74	---	---	26	100	2.2
1961 .....	76	---	---	27	103	2.3

1/ Same as in table 5.01.

Source: Same as in table 5.01.

Table 5.33.--Supply-distribution of horsemeat, Germany, 1956-61 1/

Year ending June 30	Production	Change in stocks	Exports	Imports	Domestic consumption	
					Total	Per capita
			-----1,000 metric tons-----			Kilograms
1956 .....	24	---	---	---	24	0.5
1957 .....	22	---	---	---	22	0.4
1958 .....	18	---	---	---	18	0.3
1959 .....	20	---	---	---	20	0.4
1960 .....	22	---	---	---	22	0.4
1961 .....	20	---	---	---	20	0.3

1/ Same as in table 5.01.

Source: Same as in table 5.01.

Table 5.34.--Supply-distribution of horsemeat, Italy, 1956-61 1/

Year ending June 30	Production	Change in stocks	Exports	Imports	Domestic consumption	
					Total	Per capita
			-----1,000 metric tons-----			Kilograms
1956 .....	24	---	0	7	31	0.6
1957 .....	23	---	0	9	32	0.7
1958 .....	18	---	0	14	32	0.6
1959 .....	18	---	0	15	33	0.7
1960 .....	17	---	1	22	38	0.8
1961 .....	24	---	1	21	44	0.9

1/ Same as in table 5.01.

Source: Same as in table 5.01.

Table 5.35.--Supply-distribution of horsemeat, Netherlands, 1956-61 1/

Year ending June 30	Production	Change in stocks	Exports	Imports	Domestic consumption	
					Total	Per capita
			-----1,000 metric tons-----			Kilograms
1956 .....	10	---	0	5	15	1.4
1957 .....	12	---	0	8	20	1.8
1958 .....	8	---	0	7	15	1.3
1959 .....	8	---	2	9	17	1.5
1960 .....	10	---	0	12	20	1.8
1961 .....	11	---	1	9	20	1.7

1/ Same as in table 5.01.

Source: Same as in table 5.01.

Table 5.36.--Supply-distribution of horsemeat, Belgium-Luxembourg, 1956-61 1/

Year ending June 30	Production	Change in stocks	Exports	Imports	Domestic consumption	
					Total	Per capita
			-----1,000 metric tons-----			Kilograms
1956 .....	6	---	0	17	23	2.5
1957 .....	7	---	0	15	22	2.4
1958 .....	7	---	0	15	22	2.4
1959 .....	9	---	0	14	23	2.4
1960 .....	10	---	1	16	25	2.7
1961 .....	8	---	0	19	27	2.8

1/ Same as in table 5.01.

Source: Same as in table 5.01.

Table 5.37.--Supply-distribution of poultry meat, BEC, 1956-61 1/

Year ending June 30	Production	Change in stocks	Exports <u>2/</u>	Imports <u>2/</u>	Domestic consumption	
					Total	Per capita
-----1,000 metric tons-----					Kilograms	
1956	504	---	18	39	525	3.2
1957	548	---	0	30	578	3.5
1958	609	---	5	31	635	3.8
1959	678	---	7	49	720	4.3
1960	754	---	6	86	834	4.9
1961	844	---	10	100	934	5.4

1/ Same as in table 5.01.

2/ Same as in table 5.01.

Source: Same as in table 5.01.

Table 5.38.--Supply-distribution of poultry meat, France, 1956-61 1/

Year ending June 30	Production	Change in stocks	Exports	Imports	Domestic consumption	
					Total	Per capita
-----1,000 metric tons-----					Kilograms	
1956	310	---	0		310	7.0
1957	325	---	1	1	325	7.2
1958	340	---	2	0	338	7.5
1959	360	---	4	1	357	7.8
1960	382	---	4	2	380	8.4
1961	407	---	6	1	402	8.8

1/ Same as in table 5.01.

Source: Same as in table 5.01.

Table 5.39.--Supply-distribution of poultry meat, Germany, 1956-61 1/

Year ending June 30	Production	Change in stocks	Exports	Imports	Domestic consumption	
					Total	Per capita
			1,000 metric tons		Kilograms	
1956 .....	60	---	---	29	89	1.7
1957 .....	66	---	---	40	106	2.0
1958 .....	80	---	---	50	130	2.4
1959 .....	90	---	---	74	164	3.0
1960 .....	97	---	---	120	217	3.9
1961 .....	101	---	---	144	245	4.4
:						
:						
:						

1/ Same as in table 5.01.

Source: Same as in table 5.01.

Table 5.40.--Supply-distribution of poultry meat, Italy, 1956-61 1/

Year ending June 30	Production	Change in stocks	Exports	Imports	Domestic consumption	
					Total	Per capita
			1,000 metric tons		Kilograms	
1956 .....	72	---	---	9	81	1.7
1957 .....	85	---	---	11	96	2.0
1958 .....	104	---	---	7	111	2.3
1959 .....	126	---	---	10	136	2.8
1960 .....	152	---	---	10	162	3.3
1961 .....	185	---	---	9	194	3.9
:						
:						
:						

1/ Same as in table 5.01.

Source: Same as in table 5.01.

Table 5.41.--Supply-distribution of poultry meat, Netherlands, 1956-61 1/

Year ending June 30	Production	Change in stocks	Exports	Imports	Domestic consumption	
					Total	Per capita
			-----1,000 metric tons-----			<u>Kilograms</u>
1956 .....	23	---	18	0	5	0.5
1957 .....	29	---	21	0	8	0.7
1958 .....	35	---	26	0	9	0.8
1959 .....	44	---	31	0	13	1.2
1960 .....	56	---	39	1	18	1.6
1961 .....	72	---	50	1	23	2.0

1/ Same as in table 5.01.

Source: Same as in table 5.01.

Table 5.42.--Supply-distribution of poultry meat, Belgium-Luxembourg, 1956-61 1/

Year ending June 30	Production	Change in stocks	Exports	Imports	Domestic consumption	
					Total	Per capita
			-----1,000 metric tons-----			<u>Kilograms</u>
1956 .....	39	---	0	1	40	4.3
1957 .....	43	---	0	0	43	4.6
1958 .....	47	---	1	1	47	5.0
1959 .....	51	---	1	0	50	5.3
1960 .....	59	---	2	0	57	6.0
1961 .....	72	---	2	0	70	7.4

1/ Same as in table 5.01.

Source: Same as in table 5.01.

Table 5.43.--Supply-distribution of other meats, EEC, 1956-61 1/

Year ending June 30	Production	Change in stocks	Exports <u>2/</u>	Imports <u>2/</u>	Domestic consumption	
					Total	Per capita
			-----1,000 metric tons-----			Kilograms
1956 .....	158	---	2	3	159	1.0
1957 .....	166	---	1	3	168	1.0
1958 .....	177	---	0	7	184	1.1
1959 .....	186	---	2	9	193	1.1
1960 .....	197	---	1	9	205	1.2
1961 .....	209	---	1	8	216	1.3

1/ Same as in table 5.01.

2/ Same as in table 5.01.

Source: Same as in table 5.01.

Table 5.44.--Supply-distribution of other meats, France, 1956-61 1/

Year ending June 30	Production	Change in stocks	Exports	Imports	Domestic consumption	
					Total	Per capita
			-----1,000 metric tons-----			Kilograms
1956 .....	80	---	2	1	79	1.8
1957 .....	90	---	0	0	90	2.0
1958 .....	100	---	0	0	100	2.2
1959 .....	105	---	1	1	105	2.3
1960 .....	116	---	0	0	116	2.6
1961 .....	128	---	0	0	128	2.8

1/ Same as in table 5.01.

Source: Same as in table 5.01.



Table 5.45.--Supply-distribution of other meats, Germany, 1956-61 <sup>1/</sup>

Year ending June 30	Production	Change in stocks	Exports	Imports	Domestic consumption	
					Total	Per capita
					-----1,000 metric tons-----	
1956	27	---	0	2	29	0.6
1957	28	---	1	3	30	0.6
1958	28	---	0	5	33	0.6
1959	28	---	1	6	33	0.6
1960	28	---	1	7	34	0.6
1961	28	---	1	7	34	0.6
					-----Kilograms-----	

<sup>1/</sup> Same as in table 5.01.

Source: Same as in table 5.01.

Table 5.46.--Supply-distribution of other meats, Italy, 1956-61 <sup>1/</sup>

Year ending June 30	Production	Change in stocks	Exports	Imports	Domestic consumption	
					Total	Per capita
					-----1,000 metric tons-----	
1956	40	---	---	0	40	0.8
1957	39	---	---	0	39	0.8
1958	38	---	---	1	39	0.8
1959	41	---	---	1	42	0.8
1960	42	---	---	1	43	0.9
1961	42	---	---	1	43	0.9
					-----Kilograms-----	

<sup>1/</sup> Same as in table 5.01.

Source: Same as in table 5.01.

Table 5.47.--Supply-distribution of other meats, Netherlands, 1956-61

(Information not available)

Table 5.48.--Supply-distribution of other meats, Belgium-Luxembourg, 1956-61 <sup>1/</sup>

Year ending June 30	Production	Change in stocks	Exports	Imports	Domestic consumption	
					Total	Per capita
-----1,000 metric tons-----					Kilograms	
1956	11	---	0	0	11	1.2
1957	9	---	0	0	9	1.0
1958	11	---	0	1	12	1.3
1959	12	---	0	1	13	1.4
1960	11	---	0	1	12	1.3
1961	11	---	1	1	11	1.2
:						
:						
:						
:						

<sup>1/</sup> Same as in table 5.01.

Source: Same as in table 5.01.

Table 5.49.--Supply-distribution of edible offals, EEC, 1956-61

Year ending June 30	Production	Change in stocks	Exports <u>1/</u>	Imports <u>1/</u>	Domestic consumption	
					Total	Per capita
-----1,000 metric tons-----					Kilograms	
1956 .....	604	---	8	66	662	4.0
1957 .....	605	---	1	75	679	4.1
1958 .....	622	---	1	74	695	4.1
1959 .....	634	---	5	83	712	4.2
1960 .....	667	---	8	79	738	4.3
1961 .....	704	---	11	76	769	4.5
:	:	:	:	:	:	:
:	:	:	:	:	:	:
:	:	:	:	:	:	:

1/ See footnote 2 table 5.01.

Source: Same as in table 5.01.

Table 5.50.--Supply-distribution of edible offals, France, 1956-61

Year ending June 30	Production	Change in stocks	Exports	Imports	Domestic consumption	
					Total	Per capita
-----1,000 metric tons-----					Kilograms	
1956 .....	300	---	2	9	307	6.9
1957 .....	298	---	2	19	315	7.0
1958 .....	300	---	2	16	314	6.9
1959 .....	307	---	4	15	318	6.9
1960 .....	323	---	6	11	328	7.2
1961 .....	340	---	6	18	352	7.7
:	:	:	:	:	:	:
:	:	:	:	:	:	:
:	:	:	:	:	:	:

Source: Same as in table 5.01.

Table 5.51.--Supply-distribution of edible offals, Germany, 1956-61

Year ending June 30	Production	Change in stocks	Exports	Imports	Domestic consumption	
					Total	Per capita
					Kilograms	
			1,000 metric tons			
1956 .....	162	---	0	37	199	3.8
1957 .....	166	---	0	39	205	3.9
1958 .....	180	---	0	40	220	4.1
1959 .....	176	---	1	49	224	4.2
1960 .....	185	---	1	59	243	4.4
1961 .....	190	---	2	57	245	4.4

Source: Same as in table 5.01.

Table 5.52.--Supply-distribution of edible offals, Italy, 1956-61

Year ending June 30	Production	Change in stocks	Exports	Imports	Domestic consumption	
					Total	Per capita
					Kilograms	
			1,000 metric tons			
1956 .....	69	---	---	9	78	1.6
1957 .....	72	---	---	9	81	1.7
1958 .....	70	---	---	14	84	1.7
1959 .....	77	---	---	16	93	1.9
1960 .....	77	---	---	11	88	1.8
1961 .....	86	---	---	9	95	1.9

Source: Same as in table 5.01.

Table 5.53.--Supply-distribution of edible offals, Netherlands, 1956-61

Year ending June 30	Production	Change in stocks	Exports	Imports	Domestic consumption	
					Total	Per capita
1,000 metric tons					Kilograms	
1956	33	---	9	16	40	3.7
1957	32	---	7	15	40	3.7
1958	34	---	7	12	39	3.5
1959	34	---	8	10	36	3.2
1960	38	---	10	10	38	3.3
1961	40	---	11	8	37	3.2

Source: Same as in table 5.01.

Table 5.54.--Supply-distribution of edible offals, Belgium-Luxembourg, 1956-61

Year ending June 30	Production	Change in stocks	Exports	Imports	Domestic consumption	
					Total	Per capita
1,000 metric tons					Kilograms	
1956	37	---	---	1	38	4.1
1957	37	---	---	1	38	4.1
1958	37	---	---	1	38	4.1
1959	40	---	---	1	41	4.4
1960	40	---	---	1	41	4.3
1961	40	---	---	0	40	4.2

Source: Same as in table 5.01.

## SECTION 6.00: LIVESTOCK NUMBERS AND SLAUGHTERINGS

The following section presents a number of series that relate to livestock and meat production. It covers most of the important classes for the six countries in question. However, it does not cover all of the components that are included in "production" in section 5.00. The categories omitted here include game, rabbits, and other minor meat sources.

The data on domestic slaughtering and carcass weight cover the calendar year rather than the crop year as in section 5.00. This presents a problem in consistency. However, these data provide information that is not obtainable on a crop-year basis.

Table 6.01.--Livestock inventory numbers, EEC, 1952-62

On January 1	Milk cows 1/	Other cattle 2/	Hogs	Sheep and goats	Horses, mules, and donkeys	Poultry
-----1,000 head-----						
1952	21,132	21,059	27,903	24,168	6,224	252,254
1953	21,691	21,132	26,835	23,404	6,027	264,033
1954	21,990	21,108	29,265	22,794	5,689	273,176
1955	22,047	21,083	30,118	22,296	5,406	271,952
1956	22,100	21,432	30,033	22,257	5,096	286,933
1957	22,260	22,021	31,475	22,343	4,900	291,728
1958	22,551	23,043	30,978	22,134	4,686	298,952
1959	22,926	23,875	31,513	22,126	4,455	308,617
1960	23,698	24,851	33,520	21,882	4,174	309,196
1961	24,296	25,881	35,711	21,401	3,930	334,561
1962	24,592	25,483	35,762	21,354	3,727	333,922

1/ Milk cows of both dairy and beef breeds; also draft cows in Italy. 2/ Includes steers, bulls, and animals under 2 years of age of both dairy and beef breeds.

Source: *Agrarstatistik*, Europäische Wirtschaftsgemeinschaft, Brussels, No. 4, 1963.

Table 6.02.--Livestock inventory numbers, France, 1952-62

On January 1	Milk cows 1/	Other cattle 2/	Hogs	Sheep and goats	Horses, mules, and donkeys	Poultry
-----1,000 head-----						
1952	8,553	7,723	7,179	8,965	2,531	85,000
1953	8,946	7,965	7,287	9,116	2,470	87,000
1954	9,204	8,119	7,570	9,270	2,395	90,000
1955	9,376	8,196	7,729	9,496	2,335	90,000
1956	9,497	8,196	7,759	9,673	2,229	97,000
1957	9,675	8,249	8,131	9,773	2,143	99,000
1958	9,858	8,608	8,469	9,948	2,057	102,000
1959	9,929	8,806	8,357	10,106	1,978	103,000
1960	10,262	9,240	8,603	10,235	1,872	103,000
1961	10,695	9,888	9,217	10,062	1,745	108,000
1962	10,882	9,383	9,080	10,069	1,646	108,000

1/ 2/ Same as in table 6.01.

Source: Same as in table 6.01.

Table 6.03.--Livestock inventory numbers, Germany, 1952-62

On January 1	Milk cows 1/	Other cattle 2/	Hogs	Sheep and goats	Horses, mules, and donkeys	Poultry
	-----1,000 head-----					
1952	5,868	5,847	13,058	2,767	1,370	52,018
1953	5,910	5,803	12,511	2,434	1,281	56,069
1954	5,823	5,765	14,599	2,164	1,181	55,793
1955	5,703	5,914	14,673	1,992	1,107	52,997
1956	5,684	6,194	14,489	1,838	1,033	54,573
1957	5,611	6,398	15,495	1,722	974	50,749
1958	5,599	6,529	14,726	1,611	913	58,133
1959	5,670	6,811	14,876	1,498	814	60,011
1960	5,797	7,070	15,776	1,387	710	60,034
1961	5,895	7,382	17,207	1,302	634	65,838
1962	5,919	7,432	16,858	1,215	559	66,037

1/ 2/ Same as in table 6.01.

Source: Same as in table 6.01.

Table 6.04.--Livestock inventory numbers, Italy, 1952-62

On January 1	Milk cows 1/	Other cattle 2/	Hogs	Sheep and goats	Horses, mules, and donkeys	Poultry
	-----1,000 head-----					
1952	4,253	4,741	4,368	11,873	1,842	77,000
1953	4,329	4,488	3,745	11,250	1,795	78,000
1954	4,399	4,271	3,760	10,773	1,652	80,000
1955	4,430	4,010	3,863	10,247	1,538	82,500
1956	4,415	4,061	3,921	10,133	1,427	83,000
1957	4,469	4,180	3,900	10,175	1,393	83,500
1958	4,539	4,523	3,845	9,864	1,338	83,700
1959	4,695	4,704	4,142	9,783	1,290	85,000
1960	4,944	4,901	4,335	9,612	1,240	88,000
1961	4,950	4,677	4,514	9,414	1,227	90,000
1962	4,935	4,716	4,855	9,401	1,215	98,000

1/ 2/ Same as in table 6.01.

Source: Same as in table 6.01.



Table 6.05.--Livestock inventory numbers, Netherlands, 1952-62

On January 1	Milk cows 1/	Other cattle 2/	Hogs	Sheep and goats	Horses, mules, and donkeys	Poultry
-----1,000 head-----						
1952	1,483	1,375	1,843	383	244	23,803
1953	1,504	1,426	1,964	424	248	27,531
1954	1,548	1,478	1,975	407	242	31,951
1955	1,510	1,485	2,378	381	222	30,673
1956	1,490	1,472	2,332	433	210	35,557
1957	1,493	1,612	2,529	496	201	35,154
1958	1,525	1,679	2,472	543	195	37,797
1959	1,565	1,831	2,590	522	196	43,197
1960	1,628	1,879	2,955	456	187	42,410
1961	1,676	1,947	2,860	438	171	49,917
1962	1,751	2,066	2,800	482	162	45,890

1/ 2/ Same as in table 6.01.

Source: Same as in table 6.01.

Table 6.06.--Livestock inventory numbers, Belgium-Luxembourg, 1952-62

On January 1	Milk cows 1/	Other cattle 2/	Hogs	Sheep and goats	Horses, mules, and donkeys	Poultry
-----1,000 head-----						
1952	975	1,368	1,455	180	237	14,433
1953	1,002	1,450	1,328	180	233	15,433
1954	1,016	1,475	1,361	180	219	15,432
1955	1,028	1,478	1,475	180	204	15,782
1956	1,014	1,509	1,532	180	197	16,803
1957	1,012	1,582	1,420	177	189	17,325
1958	1,030	1,677	1,466	168	183	17,322
1959	1,067	1,723	1,548	217	177	17,409
1960	1,078	1,768	1,851	192	165	15,752
1961	1,080	1,801	1,872	185	153	17,806
1962	1,105	1,886	2,169	187	142	15,995

1/ 2/ Same as in table 6.01.

Source: Same as in table 6.01.

Table 6.07.--Livestock slaughter numbers 1/, EEC, 1952-62

Calendar year	Beef	Veal	Pork	Sheep and goats	Horses, mules, and donkeys
-----1,000 head-----					
1952 .....	6,938	9,232	34,041	12,589	597
1953 .....	7,935	10,621	35,422	13,153	591
1954 .....	9,009	11,372	34,313	12,899	686
1955 .....	8,986	11,103	38,212	12,459	627
1956 .....	8,864	10,505	41,249	12,007	582
1957 .....	9,052	9,892	42,832	12,223	521
1958 .....	9,224	9,238	43,474	11,801	536
1959 .....	9,751	9,537	44,789	12,785	495
1960 .....	10,266	10,079	47,216	13,395	468
1961 .....	11,468	9,789	48,081	14,089	497
1962 .....	12,088	10,499	51,316	13,216	447

1/ Domestic production adjusted to include home slaughterings; calculated by dividing the reported net indigenous production (which includes home slaughtered meats) by the reported carcass weight. Both values include trim fat and offals.

Source: Agrarstatistik, Europäische Wirtschaftsgemeinschaft, Brussels, No. 3-1963; No. 4-1963.

Table 6.08.--Livestock slaughter numbers 1/, France, 1952-62

Calendar year	Beef	Veal	Pork	Sheep and goats	Horses, mules, and donkeys
-----1,000 head-----					
1952 .....	2,793	4,909	10,935	6,563	275
1953 .....	3,108	5,714	11,831	6,875	271
1954 .....	3,641	6,412	11,436	6,875	301
1955 .....	3,635	6,362	11,937	7,188	292
1956 .....	3,504	6,102	13,641	6,875	273
1957 .....	3,388	5,597	13,747	7,375	263
1958 .....	3,291	5,156	13,747	6,875	297
1959 .....	3,571	5,453	15,256	7,625	240
1960 .....	3,930	5,969	14,808	8,312	208
1961 .....	4,335	6,138	14,923	8,867	231
1962 .....	4,592	6,258	16,372	8,188	213

1/ Same as in table 6.07.

Source: Same as in table 6.07

Table 6.09.--Livestock slaughter numbers 1/, Germany, 1952-62

Calendar year	Beef	Veal	Pork	Sheep and goats	Horses, mules, and donkeys
-----1,000 head-----					
1952	2,062	2,398	14,091	677	138
1953	2,465	2,733	14,365	797	127
1954	2,664	2,674	14,347	690	122
1955	2,595	2,466	17,149	594	94
1956	2,611	2,303	17,213	547	91
1957	2,942	2,332	18,526	598	73
1958	3,038	2,112	19,539	580	68
1959	3,064	1,992	19,176	616	79
1960	3,219	2,058	20,211	604	79
1961	3,326	1,898	21,528	564	62
1962	3,648	2,039	22,933	496	51

1/ Same as in table 6.07.

Source: Same as in table 6.07.

Table 6.10.--Livestock slaughter numbers 1/, Italy, 1952-62

Calendar year	Beef	Veal	Pork	Sheep and goats	Horses, mules, and donkeys
-----1,000 head-----					
1952	1,014	912	3,768	5,080	124
1953	1,282	1,118	3,547	5,108	127
1954	1,517	1,143	2,816	4,947	171
1955	1,472	1,102	2,832	4,364	174
1956	1,581	1,059	3,670	4,289	166
1957	1,534	995	3,594	3,918	133
1958	1,621	988	3,363	3,919	119
1959	1,793	1,108	3,515	4,075	110
1960	1,721	1,000	3,990	4,035	114
1961	2,447	881	3,873	4,312	146
1962	2,347	1,171	3,689	4,109	139

1/ Same as in table 6.07.

Source: Same as in table 6.07.

Table 6.11.--Livestock slaughter numbers 1/, Netherlands, 1952-62

Calendar year	Beef	Veal	Pork	Sheep and goats	Horses, mules, and donkeys
-----1,000 head-----					
1952	498	720	2,667	172	27
1953	498	742	3,086	267	27
1954	554	808	3,158	272	44
1955	623	827	3,689	212	35
1956	533	745	3,898	200	29
1957	559	704	4,125	245	26
1958	585	693	4,023	330	25
1959	611	672	3,956	366	30
1960	681	735	5,118	340	36
1961	662	594	4,706	260	31
1962	769	725	4,976	327	23

1/ Same as in table 6.07.

Source: Same as in table 6.07.

Table 6.12.--Livestock slaughter numbers 1/, Belgium-Luxembourg, 1952-62

Calendar year	Beef	Veal	Pork	Sheep and goats	Horses, mules, and donkeys
-----1,000 head-----					
1952	571	293	2,580	97	33
1953	582	314	2,593	106	39
1954	633	335	2,556	115	48
1955	661	346	2,605	101	32
1956	635	296	2,827	96	23
1957	629	264	2,840	87	26
1958	689	289	2,802	97	27
1959	714	312	2,886	103	36
1960	715	317	3,089	104	31
1961	698	278	3,051	86	27
1962	732	306	3,346	96	21

1/ Same as in table 6.07.

Source: Same as in table 6.07.

Table 6.13.--Meat production 1/, EEC, 1952-62

Calendar year	Beef	Veal	Pork	Sheep and goats	Horses, mules, and donkeys	Poultry
-----1,000 metric tons-----						
1952	1,743	466	2,505	171	148	402
1953	1,969	538	2,554	182	146	435
1954	2,240	574	2,525	175	171	472
1955	2,251	580	2,777	175	157	490
1956	2,209	564	2,967	165	147	530
1957	2,302	554	3,087	174	138	576
1958	2,364	533	3,105	166	146	649
1959	2,467	562	3,180	181	132	711
1960	2,601	600	3,334	190	135	803
1961	2,923	586	3,376	189	129	886
1962	3,070	661	3,592	187	116	921

1/ Dressed basis; less trim fat and offals.

Source: Same as in table 6.07.

Table 6.14.--Meat production 1/, France, 1952-62

Calendar year	Beef	Veal	Pork	Sheep and goats	Horses, mules, and donkeys	Poultry
-----1,000 metric tons-----						
1952	742	265	662	103	77	250
1953	816	314	719	108	77	270
1954	963	352	704	108	87	290
1955	965	362	744	113	87	300
1956	927	353	839	108	83	320
1957	933	340	857	116	82	330
1958	909	323	857	108	92	350
1959	962	342	939	120	73	370
1960	1,052	374	911	130	74	394
1961	1,181	391	918	130	70	420
1962	1,224	405	1,007	128	66	430

1/ Same as in table 6.13.

Source: Same as in table 6.07.

Table 6.15.--Meat production 1/, Germany, 1952-62

Calendar year	Beef	Veal	Pork	Sheep and goats	Horses, mules, and donkeys	Poultry
-----1,000 metric tons-----						
1952	518	91	1,173	20	34	56
1953	610	101	1,161	21	31	61
1954	664	102	1,185	18	32	64
1955	650	97	1,359	17	25	66
1956	654	94	1,365	14	24	72
1957	736	97	1,454	15	20	82
1958	769	92	1,501	14	19	85
1959	775	89	1,473	15	22	96
1960	815	94	1,536	15	22	100
1961	865	90	1,619	15	18	109
1962	949	100	1,725	13	15	113

1/ Same as in table 6.13.

Source: Same as in table 6.07.

Table 6.16.--Meat production 1/, Italy, 1952-62

Calendar year	Beef	Veal	Pork	Sheep and goats	Horses, mules, and donkeys	Poultry
-----1,000 metric tons-----						
1952	212	70	290	41	19	60
1953	266	81	272	42	19	62
1954	311	73	224	39	25	69
1955	306	72	230	36	25	70
1956	330	71	298	35	24	73
1957	326	67	294	34	20	90
1958	352	68	278	33	19	119
1959	386	77	294	34	18	133
1960	371	70	336	34	19	173
1961	520	64	320	35	24	198
1962	506	85	308	35	22	205

1/ Same as in table 6.13.

Source: Same as in table 6.07.

Table 6.17.--Meat production 1/, Netherlands, 1952-62

Calendar year	Beef	Veal	Pork	Sheep and goats	Horses, mules, and donkeys	Poultry
-----1,000 metric tons-----						
1952	140	23	208	5	9	13
1953	141	24	231	3	8	17
1954	153	27	244	7	13	24
1955	172	28	270	6	11	29
1956	148	28	279	6	9	35
1957	157	33	295	7	8	42
1958	164	31	284	9	8	47
1959	169	33	289	10	9	59
1960	188	41	353	9	11	74
1961	184	32	325	7	9	80
1962	210	49	339	9	7	94

1/ Same as in table 6.13.

Source: Same as in table 6.07.

Table 6.18.--Meat production 1/, Belgium-Luxembourg, 1952-62

Calendar year	Beef	Veal	Pork	Sheep and goats	Horses, mules, and donkeys	Poultry
-----1,000 metric tons-----						
1952	131	17	170	2	9	23
1953	136	18	171	3	11	25
1954	149	20	168	3	14	25
1955	158	21	172	3	9	25
1956	150	18	186	2	7	30
1957	150	17	187	2	8	32
1958	170	19	185	2	8	48
1959	175	21	185	2	10	53
1960	175	21	198	2	9	62
1961	173	19	198	2	8	79
1962	181	22	213	2	6	79

1/ Same as in table 6.13.

Source: Same as in table 6.07.

Table 6.19.--Carcass weight by type of meat 1/, EEC, 1952-62

Calendar year	Beef	Veal	Pork	Sheep and goats	Horses, mules, and donkeys
-----Kilograms-----					
1952	251	51	74	14	248
1953	248	51	72	14	247
1954	249	51	74	14	249
1955	251	53	73	14	250
1956	250	54	72	14	253
1957	255	56	72	14	265
1958	257	58	71	14	272
1959	254	59	71	14	267
1960	254	60	71	14	288
1961	255	60	70	13	260
1962	254	63	70	14	260

1/ Less trim fat and offals. Derived by dividing the numbers in tables 6.13 to 6.18 by the corresponding numbers in tables 6.07 to 6.12.

Source: Same as in table 6.07.

Table 6.20.--Carcass weight by type of meat 1/, France, 1952-62

Calendar year	Beef	Veal	Pork	Sheep and goats	Horses, mules, and donkeys
-----Kilograms-----					
1952	266	54	61	16	280
1953	263	55	61	16	284
1954	264	55	62	16	289
1955	265	57	62	16	298
1956	265	58	62	16	304
1957	275	61	62	16	312
1958	276	63	62	16	310
1959	269	63	62	16	304
1960	268	63	62	16	356
1961	272	64	62	15	303
1962	267	65	62	16	310

1/ Same as in table 6.19.

Source: Same as in table 6.07.



Table 6.21.--Carcass weight by type of meat 1/, Germany, 1952-62

Calendar year	Beef	Veal	Pork	Sheep and goats	Horses, mules, and donkeys
-----Kilograms-----					
1952	251	38	83	25	250
1953	247	37	81	26	246
1954	249	38	83	25	263
1955	250	39	79	25	268
1956	250	41	79	25	265
1957	250	42	78	25	268
1958	253	44	77	25	271
1959	253	45	77	25	273
1960	253	46	76	25	277
1961	260	47	75	26	290
1962	260	49	75	26	294

1/ Same as in table 6.19.

Source: Same as in table 6.07.

Table 6.22.--Carcass weight by type of meat 1/, Italy, 1952-62

Calendar year	Beef	Veal	Pork	Sheep and goats	Horses, mules, and donkeys
-----Kilograms-----					
1952	209	77	77	9	153
1953	207	72	77	8	150
1954	205	64	79	8	146
1955	208	65	82	9	144
1956	209	67	81	9	145
1957	213	67	82	9	150
1958	217	67	82	9	160
1959	215	69	83	8	163
1960	216	70	84	8	167
1961	210	73	83	8	164
1962	216	73	83	9	158

1/ Same as in table 6.19.

Source: Same as in table 6.07.

Table 6.23.--Carcass weight by type of meat 1/, Netherlands, 1952-62

Calendar year	Beef	Veal	Pork	Sheep and goats	Horses, mules, and donkeys
-----Kilograms-----					
1952	281	32	78	29	333
1953	283	32	75	28	296
1954	276	33	77	26	295
1955	276	34	73	27	314
1956	278	38	72	29	310
1957	281	47	72	29	308
1958	280	45	71	29	320
1959	277	49	73	29	300
1960	276	56	69	28	306
1961	278	54	69	29	290
1962	273	68	68	28	304

1/ Same as in table 6.19.

Source: Same as in table 6.07.

Table 6.24.--Carcass weight by type of meat 1/, Belgium-Luxembourg, 1952-62

Calendar year	Beef	Veal	Pork	Sheep and goats	Horses, mules, and donkeys
-----Kilograms-----					
1952	229	58	66	24	273
1953	234	57	66	24	282
1954	235	60	66	24	292
1955	239	61	66	25	281
1956	236	61	66	24	304
1957	238	64	66	23	308
1958	247	66	66	22	296
1959	245	67	64	22	278
1960	245	66	64	22	290
1961	248	68	65	22	296
1962	247	72	64	21	286

1/ Same as in table 6.19.

Source: Same as in table 6.07.

**END**