



**AgEcon** SEARCH  
RESEARCH IN AGRICULTURAL & APPLIED ECONOMICS

*The World's Largest Open Access Agricultural & Applied Economics Digital Library*

**This document is discoverable and free to researchers across the globe due to the work of AgEcon Search.**

**Help ensure our sustainability.**

Give to AgEcon Search

AgEcon Search  
<http://ageconsearch.umn.edu>  
[aesearch@umn.edu](mailto:aesearch@umn.edu)

*Papers downloaded from **AgEcon Search** may be used for non-commercial purposes and personal study only. No other use, including posting to another Internet site, is permitted without permission from the copyright owner (not AgEcon Search), or as allowed under the provisions of Fair Use, U.S. Copyright Act, Title 17 U.S.C.*

SSB 334 (1963)

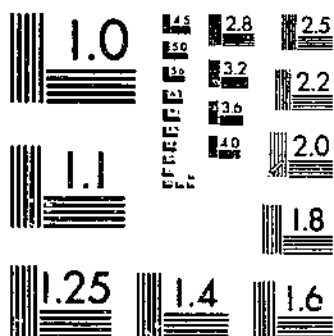
USDA STATISTICAL BULLETINS

UP DATA

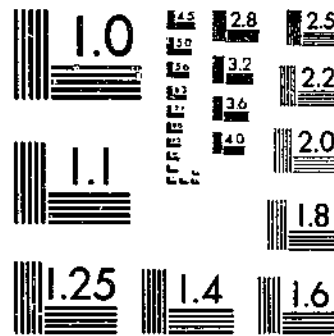
FARM EMPLOYMENT, FAMILY AND HIRED WORKERS, ANNUAL AVERAGES, STATES

1-05-1

# START



MICROCOPY RESOLUTION TEST CHART  
NATIONAL BUREAU OF STANDARDS-1963-A



MICROCOPY RESOLUTION TEST CHART  
NATIONAL BUREAU OF STANDARDS-1963-A

© UPDATA 1981

324

REFERENCE  
DO NOT LOAN

# FARM EMPLOYMENT



Los Angeles Public Library

SEP 6 1961

**Family and Hired Workers,  
Annual Averages :**

**States, 1950-59  
United States, 1910-59**

**Statistical Bulletin No. 334**

UNITED STATES DEPARTMENT OF AGRICULTURE    Statistical Reporting Service    Crop Reporting Board

© UPDATA 1981

Washington, D.C.

## C O N T E N T S

	<u>Page</u>
Introduction . . . . .	3
Definitions for the SRS Employment Estimates . . . . .	3
Basis and Extent of Revisions . . . . .	5
Number of Farm Workers:	
Annual Averages and Indexes, United States, 1910-59. . .	7
Total . . . . .	8
Family . . . . .	10
Hired . . . . .	12

## FARM EMPLOYMENT

Family and Hired Workers, Annual Averages  
States, 1950-59; United States, 1910-59

### INTRODUCTION

This publication includes revised estimates, by States, of farm employment in the years 1954-59. It also includes estimates by States for the years 1950-53, and national estimates from 1910, the beginning of the series, through 1959. State estimates are not available prior to 1950.

The revisions result primarily from comparisons with published reports of the 1959 Census of Agriculture. The extent of revision varies considerably by States, but, in general, is small except for 1959.

For the years 1959-62, revised monthly estimates by States were published in the March 1963 issue of FARM LABOR. These revisions showed the relationships between the estimates for those years and the continuing State estimates for 1963 which were made on the revised basis. The present publication includes the revised annual averages, by States, for 1959 which were presented in the March 1963 FARM LABOR report. The annual data for the United States for 1910-57 and annual averages, by States, for 1950-57 were formerly published in Statistical Bulletin 236, September 1958. The revised data for 1954-57 in the present publication replace those carried in the above bulletin.

The estimates, which are designated "annual averages" of family, hired, and total farmworkers for each specified year, are the averages of estimates for 12 designated survey weeks in each year. Although the monthly estimates can be made available, the annual averages are usually sufficient, and are usually to be preferred for comparisons involving earlier years.

### DEFINITIONS FOR THE SRS EMPLOYMENT ESTIMATES

The Statistical Reporting Service estimates of farm employment provide measures of the number of persons who are working on farms during stated periods. The basic data have been obtained from questionnaires which have not been sufficiently detailed to show precisely the total labor input on farms.

## Family Workers

Farm operators who work on their farms 1 hour or more during survey weeks make up the largest segment of family workers. Farm operators who report no farm work are excluded. Their number is significant in certain seasons and varies considerably by States.

Other members of the farm operator's household are counted as family farmworkers if they work 15 hours or more at farmwork during the survey week without receiving cash wages. No age specification is made, nor is a level of cash wages prescribed. Housework is excluded from consideration as farmwork, either for family workers or hired workers.

The requirement of 15 hours of work per week doubtless excludes many farm children doing 2 hours or less per day of chore-type farmwork.

## Hired Workers

Any person who works for pay at farmwork during designated survey weeks is considered a hired worker. Even a small amount of work (as little as an hour, by definition) qualifies one for consideration as a hired worker. However, it is doubtful that many workers are reported who meet merely this minimum specified amount, either in benchmark statistics or in current monthly reports. Farm family members who receive cash wages for any farmwork during the week are considered as hired workers, and not as unpaid family workers, even though they do some work for which they are not paid.

Farmwork includes the tilling of fields, planting and harvesting of crops, and similar activities, and also the care and feeding of livestock and poultry--chores which have long been an almost inescapable part of farm living. Farmwork also includes the repair and maintenance of farm machines and equipment, but excludes work on new capital improvements, such as building construction by persons not doing farmwork. Workers performing such recurring operations as plowing, hay baling, spraying, etc., with machines on a custom basis are considered farmworkers. Time spent in housekeeping and homemaking activities is not counted as farmwork.

Instructions to reporters specify that time spent in marketing, record-keeping, and other phases of farm business management should be included as farmwork.

## BASIS AND EXTENT OF REVISIONS

Farm employment estimates have been revised periodically, primarily on the basis of quinquennial Censuses of Agriculture. The 1959 Census provides a major source of data for the current revisions. Other data have also been utilized, as described below.

The 1959 Census of Agriculture gave results of an enumerative survey of about 20 percent of all farms in the United States during the late fall of 1959, using definitions of farmworkers and farmwork virtually identical with those used in the SRS series. The Census enumeration gave by States and counties, for this 20 percent sample, the number of family workers and hired workers employed on farms the week before the enumeration.

The applicability of the Census data for revision of monthly estimates is limited by a number of factors. First, the coverage of farms in the Census is not complete, and the degree of incompleteness is not determined by States. For the United States as a whole, the Bureau of the Census estimated that about 9.5 percent of the farms were missed by the enumeration. <sup>1/</sup> Second, the week covered by the Census report varied from farm to farm and area to area. Finally, the date of the Census enumeration, planned to secure final crop production data insofar as possible, occurred after most crop harvesting and other fieldwork was completed in many areas. Consequently, the number of workers, especially short-term or seasonal hired workers, was small in the comparison with the number in more active weeks. Even if the enumeration were made at a busier season, data from the quinquennial Censuses of Agriculture would represent only one somewhat indefinite week in a 5-year period.

Despite these limitations it appears that the Census data for family workers on a per-farm basis are highly useful, and they have been given considerable weight in the revisions. However, the applicability of the Census "benchmark" for a given week to other periods of the year is limited.

---

<sup>1/</sup> U. S. Bureau of the Census. Census of Agriculture, 1959, General Report, vol. 2, p. XLI.

Additional data for the current revisions were provided by the June enumerative area surveys made by SRS in recent years. These surveys have supplied considerable evidence on the size of the farm working force in 28 States, located principally in the South and the North-Central Regions. They cover the same week in May that is covered by the regular SRS mail survey. The farms enumerated are selected on the basis of area probability samples. The enumerations report the number of farm family members working without receiving cash wages and the number of hired workers. Definitions are the same as used in the published series. The sample was on a pilot basis in most States prior to 1961, and gave an insufficient basis for State estimates, but was expanded to give more reliable estimates in 1961, the latest year for which these data were available at the time of making the current revisions. They provide a useful comparison for a spring period as contrasted with the Census late fall data.

Another source of data was the State Employment Security agencies which provided estimates of the number of seasonal hired workers for specified periods. In States where the number of seasonal farmworkers is a large part of the total, these Employment Security data are highly significant.

As a result of the large seasonal differences in number of farmworkers, which are not reflected in Census figures, and because of possible differences between years not covered by Census data, the revisions made were somewhat limited in number and extent. The most extensive revisions were in the estimates (presented in the March 1963 issue of FARM LABOR) for 1959 and later years, and for the fall survey weeks nearest the date of the Census enumeration.

The revisions in the national estimates were relatively small. Estimates of total workers were changed less than 1 percent for all years in the 1954-62 period except 1961, for which the revision amounted to 1 percent. Family worker totals were revised downward slightly for most years, but for only 2 years, 1960 and 1961, did revisions amount to as much as 1.5 percent. The estimates of total hired workers were increased slightly for all years with a maximum increase of 1.6 percent. The State-by-State review of monthly estimates for the 9-year period, however, produced changes in slightly over a tenth of the monthly estimates, of which a majority were for the years 1959-62. For hired workers, changes were made in a fifth of the monthly estimates, nearly two-thirds of which were for the years 1959-62.

Table 1.--Annual averages and indexes of total, family, and hired farm workers, United States, 1910-1959

Year	Total workers		Family workers		Hired workers	
	Average number of persons	Index 1957-59=100	Average number of persons	Index 1957-59=100	Average number of persons	Index 1957-59=100
	Thousands		Thousands		Thousands	
1910 .....	13,555	181	10,174	184	3,381	173
1911 .....	13,539	181	10,169	184	3,370	172
1912 .....	13,559	181	10,162	184	3,397	173
1913 .....	13,572	181	10,158	184	3,414	174
1914 .....	13,580	182	10,147	184	3,433	175
1915 .....	13,592	182	10,140	184	3,452	176
1916 .....	13,632	182	10,144	184	3,488	178
1917 .....	13,568	181	10,121	183	3,447	176
1918 .....	13,391	179	10,053	182	3,338	170
1919 .....	13,243	177	9,968	100	3,275	167
1920 .....	13,432	180	10,041	182	3,391	173
1921 .....	13,398	179	10,001	181	3,397	173
1922 .....	13,337	178	9,936	180	3,401	174
1923 .....	13,162	176	9,798	177	3,364	172
1924 .....	13,031	174	9,705	176	3,326	170
1925 .....	13,036	174	9,715	176	3,321	170
1926 .....	12,976	173	9,526	172	3,450	176
1927 .....	12,642	169	9,278	168	3,364	172
1928 .....	12,691	170	9,340	169	3,351	171
1929 .....	12,763	171	9,360	169	3,403	174
1930 .....	12,497	167	9,307	168	3,190	163
1931 .....	12,745	170	9,642	175	3,103	158
1932 .....	12,816	171	9,922	180	2,894	148
1933 .....	12,739	170	9,874	179	2,865	146
1934 .....	12,627	169	9,765	177	2,862	146
1935 .....	12,733	170	9,855	178	2,878	147
1936 .....	12,331	165	9,350	169	2,981	152
1937 .....	11,979	160	9,054	164	2,924	149
1938 .....	11,622	155	8,815	160	2,807	143
1939 .....	11,338	152	8,611	156	2,727	139
1940 .....	10,979	147	8,300	150	2,679	137
1941 .....	10,669	143	8,017	145	2,652	135
1942 .....	10,504	140	7,949	144	2,555	130
1943 .....	10,446	140	8,010	145	2,436	124
1944 .....	10,219	137	7,988	145	2,231	114
1945 .....	10,000	134	7,881	143	2,119	108
1946 .....	10,295	138	8,106	147	2,189	112
1947 .....	10,382	139	8,115	147	2,267	116
1948 .....	10,363	139	8,026	145	2,337	119
1949 .....	9,964	133	7,712	140	2,252	115
1950 .....	9,926	133	7,597	138	2,329	119
1951 .....	9,546	128	7,310	132	2,236	114
1952 .....	9,149	122	7,005	127	2,144	109
1953 .....	8,864	118	6,775	123	2,089	107
1954 .....	8,651	116	6,570	119	2,081	106
1955 .....	8,381	112	6,345	115	2,036	104
1956 .....	7,852	105	5,900	107	1,952	100
1957 .....	7,600	102	5,660	102	1,940	99
1958 .....	7,503	100	5,521	100	1,982	101
1959 .....	7,342	98	5,390	98	1,952	100

Table 2.—Annual average number of total workers on farms, by States, 1950-59 1/

(Thousands of persons)

State and division	1950	1951	1952	1953	1954
Maine .....	58	58	54	57	56
New Hampshire .....	22	21	20	19	19
Vermont .....	43	42	42	41	39
Massachusetts .....	58	57	56	54	50
Rhode Island .....	4	4	4	4	5
Connecticut .....	34	34	31	32	33
New England .....	219	216	207	207	202
New York .....	248	241	232	221	213
New Jersey .....	66	65	61	58	59
Pennsylvania .....	302	289	281	270	261
Middle Atlantic .....	616	595	574	549	533
Ohio .....	320	317	308	305	298
Indiana .....	291	287	279	271	271
Illinois .....	340	331	327	317	307
Michigan .....	271	265	269	261	260
Wisconsin .....	346	338	338	333	329
E. North Central .....	1,568	1,542	1,521	1,487	1,465
Minnesota .....	364	350	340	332	331
Iowa .....	346	336	330	336	327
Missouri .....	397	372	350	338	326
North Dakota .....	128	125	121	119	117
South Dakota .....	124	122	117	113	110
Nebraska .....	198	188	182	179	173
Kansas .....	222	212	206	199	194
W. North Central .....	1,279	1,205	1,166	1,116	1,078
Delaware .....	19	17	16	15	14
Maryland .....	82	79	74	73	68
Virginia .....	283	264	258	242	240
West Virginia .....	120	117	111	103	100
North Carolina .....	590	580	558	532	530
South Carolina .....	291	277	258	248	230
Georgia .....	320	299	281	260	248
Florida .....	107	105	106	108	119
South Atlantic .....	1,812	1,738	1,662	1,581	1,549
Kentucky .....	333	319	301	288	284
Tennessee .....	363	333	315	301	297
Alabama .....	277	253	236	224	211
Mississippi .....	459	424	389	373	354
E. South Central .....	1,432	1,329	1,241	1,186	1,146
Arkansas .....	356	343	310	287	278
Louisiana .....	213	200	196	194	189
Oklahoma .....	255	247	235	231	207
Texas .....	583	567	515	509	504
W. South Central .....	1,407	1,357	1,256	1,221	1,178
Montana .....	64	62	61	60	60
Idaho .....	81	78	75	71	71
Wyoming .....	26	26	25	25	23
Colorado .....	92	86	82	80	76
New Mexico .....	59	53	56	52	47
Arizona .....	47	47	50	49	50
Utah .....	43	42	41	41	40
Nevada .....	6	6	6	6	6
Mountain .....	418	400	396	384	373
Washington .....	143	141	135	133	135
Oregon .....	119	113	112	108	106
California .....	413	410	399	392	386
Pacific .....	675	664	646	633	627
United States .....	9,926	9,546	9,149	8,864	8,651

1/ Average number of persons employed in one survey week each month - the last full calendar week ending at least one day before the end of the month.

Table 2.--Annual average number of total workers on farms, by States, 1950-59 1/-Continued  
(Thousands of persons)

State and division	1955	1956	1957	1958	1959
Maine .....	51	48	48	49	34
New Hampshire .....	17	16	16	16	13
Vermont .....	35	36	34	33	30
Massachusetts .....	48	44	42	42	38
Rhode Island .....	5	4	4	4	4
Connecticut .....	32	31	29	28	26
New England .....	188	179	173	172	145
New York .....	200	185	179	181	172
New Jersey .....	58	53	51	50	45
Pennsylvania .....	244	226	214	213	205
Middle Atlantic .....	502	464	444	444	422
Ohio .....	289	275	264	252	246
Indiana .....	264	249	237	232	227
Illinois .....	293	277	266	263	254
Michigan .....	252	239	234	232	228
Wisconsin .....	326	319	306	309	298
E. North Central .....	1,424	1,359	1,307	1,288	1,253
Minnesota .....	326	298	285	282	279
Iowa .....	316	295	296	297	295
Missouri .....	323	302	293	295	280
North Dakota .....	110	106	100	100	95
South Dakota .....	106	100	100	98	95
Nebraska .....	171	161	159	158	160
Kansas .....	185	170	166	171	169
W. North Central .....	1,537	1,432	1,399	1,401	1,373
Delaware .....	13	13	13	13	12
Maryland .....	65	62	63	60	59
Virginia .....	232	216	210	203	194
West Virginia .....	92	81	77	76	75
North Carolina .....	519	476	455	438	436
South Carolina .....	235	222	216	204	201
Georgia .....	234	212	208	197	197
Florida .....	119	118	130	131	127
South Atlantic .....	1,509	1,400	1,372	1,322	1,301
Kentucky .....	275	250	248	248	243
Tennessee .....	283	271	266	259	264
Alabama .....	200	176	167	164	165
Mississippi .....	340	323	294	274	266
E. South Central .....	1,098	1,020	975	945	938
Arkansas .....	275	245	225	232	220
Louisiana .....	182	162	156	157	162
Oklahoma .....	198	182	166	169	165
Texas .....	491	445	444	429	431
W. South Central .....	1,146	1,034	991	987	978
Montana .....	57	57	54	54	51
Idaho .....	70	69	68	69	68
Wyoming .....	22	22	21	22	21
Colorado .....	74	71	70	68	66
New Mexico .....	47	47	43	44	42
Arizona .....	50	52	51	54	49
Utah .....	39	37	36	37	35
Nevada .....	6	6	6	5	5
Mountain .....	365	361	349	353	337
Washington .....	128	123	120	123	120
Oregon .....	103	100	97	95	96
California .....	381	380	373	373	379
Pacific .....	612	603	590	591	595
United States .....	8,381	7,852	7,600	7,503	7,342

1/ Average number of persons employed in one survey week each month - the last full calendar week ending at least one day before the end of the month.

Table 3.--Annual average number of family workers on farms, by States, 1950-59 <sup>1/</sup>

(Thousands of persons)

State and division	1950	1951	1952	1953	1954
Maine .....	35	34	32	32	31
New Hampshire .....	17	15	14	14	14
Vermont .....	32	30	30	29	28
Massachusetts .....	36	34	33	33	30
Rhode Island .....	3	3	3	3	4
Connecticut .....	25	25	24	24	23
New England .....	149	141	136	135	130
New York .....	159	155	149	145	142
New Jersey .....	37	37	36	34	35
Pennsylvania .....	235	226	220	211	206
Middle Atlantic .....	431	418	405	390	383
Ohio .....	274	271	265	261	254
Indiana .....	258	253	247	240	239
Illinois .....	273	264	265	261	249
Michigan .....	224	222	221	217	216
Wisconsin .....	302	296	297	295	292
E. North Central .....	1,331	1,306	1,295	1,274	1,250
Minnesota .....	310	298	291	285	284
Iowa .....	298	291	287	291	284
Missouri .....	329	309	295	288	276
North Dakota .....	99	98	97	96	93
South Dakota .....	108	107	103	98	96
Nebraska .....	170	162	158	155	150
Kansas .....	190	183	176	171	167
W. North Central .....	1,504	1,448	1,407	1,384	1,350
Delaware .....	10	10	10	9	8
Maryland .....	54	52	49	49	44
Virginia .....	214	200	195	183	180
West Virginia .....	101	96	93	87	84
North Carolina .....	485	477	458	432	424
South Carolina .....	216	204	189	182	171
Georgia .....	251	233	215	198	189
Florida .....	64	59	58	57	56
South Atlantic .....	1,395	1,331	1,267	1,197	1,156
Kentucky .....	277	266	248	239	233
Tennessee .....	298	275	260	244	237
Alabama .....	236	213	196	182	170
Mississippi .....	381	354	318	300	284
E. South Central .....	1,192	1,108	1,022	965	924
Arkansas .....	242	232	213	195	186
Louisiana .....	145	141	133	130	125
Oklahoma .....	205	201	192	189	171
Texas .....	392	388	356	348	339
W. South Central .....	984	962	894	862	821
Montana .....	48	45	45	45	43
Idaho .....	55	54	53	52	51
Wyoming .....	17	17	17	17	16
Colorado .....	66	62	60	61	56
New Mexico .....	32	29	29	29	28
Arizona .....	14	14	13	12	12
Utah .....	31	31	30	29	29
Nevada .....	4	4	4	4	4
Mountain .....	267	256	251	249	239
Washington .....	97	97	92	91	92
Oregon .....	82	79	79	77	75
California .....	166	164	157	151	150
Pacific .....	345	340	328	319	317
United States .....	7,597	7,310	7,005	6,775	6,570

<sup>1/</sup> Average number of persons employed in one survey week each month - the last full calendar week ending at least one day before the end of the month.

Table 3.--Annual average number of family workers on farms, by States, 1950-59 1/-Continued  
(Thousands of persons)

State and division	1955	1956	1957	1958	1959
Maine .....	27	26	24	24	22
New Hampshire .....	12	12	11	11	10
Vermont .....	25	25	24	23	22
Massachusetts .....	29	27	26	26	23
Rhode Island .....	4	3	3	3	3
Connecticut .....	22	21	19	19	17
New England .....	119	114	107	106	97
New York .....	136	123	116	116	112
New Jersey .....	24	31	31	28	25
Pennsylvania .....	195	182	174	172	166
Middle Atlantic .....	265	236	221	216	203
Ohio .....	246	234	226	212	209
Indiana .....	234	220	209	203	200
Illinois .....	237	225	214	211	205
Michigan .....	210	199	192	190	184
Wisconsin .....	291	285	274	277	268
E. North Central .....	1,218	1,163	1,115	1,093	1,066
Minnesota .....	282	254	245	243	239
Iowa .....	275	258	256	257	256
Missouri .....	274	259	250	248	238
North Dakota .....	88	84	79	78	75
South Dakota .....	93	88	86	85	83
Nebraska .....	149	140	136	134	136
Kansas .....	160	148	143	144	143
W. North Central .....	1,321	1,231	1,195	1,189	1,170
Delaware .....	8	8	8	8	7
Maryland .....	41	40	41	39	39
Virginia .....	174	161	156	146	138
West Virginia .....	77	67	64	63	62
North Carolina .....	414	370	348	329	328
South Carolina .....	169	155	150	137	135
Georgia .....	176	155	156	145	143
Florida .....	55	55	56	55	50
South Atlantic .....	1,114	1,011	979	922	902
Kentucky .....	227	203	200	199	196
Tennessee .....	224	214	209	202	204
Alabama .....	158	138	133	129	126
Mississippi .....	273	257	231	211	196
E. South Central .....	882	812	773	741	722
Arkansas .....	179	156	145	139	130
Louisiana .....	121	101	97	96	98
Oklahoma .....	161	150	138	134	132
Texas .....	323	293	281	275	269
W. South Central .....	784	700	661	644	629
Montana .....	41	42	39	39	38
Idaho .....	50	49	47	48	47
Wyoming .....	15	15	14	15	14
Colorado .....	54	54	51	50	49
New Mexico .....	26	27	24	24	22
Arizona .....	12	11	10	11	11
Utah .....	29	27	26	26	25
Nevada .....	4	4	4	3	3
Mountain .....	231	229	215	216	209
Washington .....	88	85	80	82	79
Oregon .....	73	71	67	66	66
California .....	150	148	147	146	147
Pacific .....	311	304	294	294	292
United States .....	6,345	5,980	5,660	5,521	5,390

1/ Average number of persons employed in one survey week each month - the last full calendar week ending at least one day before the end of the month.

Table 4.--Annual average number of hired workers on farms, by States, 1950-59 <sup>1/</sup>  
(Thousands of persons)

State and division	1950	1951	1952	1953	1954
Maine .....	23	24	22	25	25
New Hampshire .....	5	6	6	5	5
Vermont .....	11	12	12	12	11
Massachusetts .....	22	23	23	21	20
Rhode Island .....	1	1	1	1	1
Connecticut .....	9	9	7	8	10
New England .....	71	75	71	72	72
New York .....	89	86	83	76	71
New Jersey .....	29	28	25	24	24
Pennsylvania .....	67	63	61	59	55
Middle Atlantic .....	185	177	169	159	150
Ohio .....	46	46	43	44	44
Indiana .....	33	34	32	31	32
Illinois .....	67	67	62	56	58
Michigan .....	47	47	48	44	44
Wisconsin .....	44	42	41	38	37
E. North Central .....	237	236	226	213	215
Minnesota .....	54	52	49	47	47
Iowa .....	48	45	43	45	43
Missouri .....	68	63	55	50	50
North Dakota .....	29	27	24	23	24
South Dakota .....	16	15	14	15	14
Nebraska .....	28	26	24	24	23
Kansas .....	32	29	30	28	27
W. North Central .....	275	257	239	232	228
Delaware .....	9	7	6	6	6
Maryland .....	28	27	25	24	24
Virginia .....	69	64	63	59	60
West Virginia .....	19	21	18	16	16
North Carolina .....	105	103	100	100	106
South Carolina .....	75	73	69	66	59
Georgia .....	69	66	66	62	59
Florida .....	43	46	48	51	63
South Atlantic .....	417	407	395	384	393
Kentucky .....	56	53	53	49	51
Tennessee .....	65	58	55	57	60
Alabama .....	41	40	40	42	41
Mississippi .....	78	70	71	73	70
E. South Central .....	240	221	219	221	222
Arkansas .....	114	111	97	92	92
Louisiana .....	68	59	63	64	64
Oklahoma .....	50	46	43	42	36
Texas .....	191	179	159	161	165
W. South Central .....	423	395	362	359	357
Montana .....	16	17	16	15	17
Idaho .....	26	24	22	19	20
Wyoming .....	9	9	8	8	7
Colorado .....	26	24	22	19	20
New Mexico .....	27	24	27	23	19
Arizona .....	33	33	37	37	38
Utah .....	12	11	11	12	11
Nevada .....	2	2	2	2	2
Mountain .....	151	144	145	135	134
Washington .....	46	44	43	42	43
Oregon .....	37	34	33	31	31
California .....	247	246	242	241	236
Pacific .....	330	324	318	314	310
United States .....	2,329	2,236	2,144	2,089	2,081

<sup>1/</sup> Average number of persons employed in one survey week each month - the last full calendar week ending at least one day before the end of the month.

Table 4.--Annual average number of hired workers on farms, by States, 1950-59 1/-Continued  
(Thousands of persons)

State and division	1955	1956	1957	1958	1959
Maine .....	24	22	24	25	12
New Hampshire .....	5	4	5	5	3
Vermont .....	10	11	10	10	8
Massachusetts .....	19	17	16	16	15
Rhode Island .....	1	1	1	1	1
Connecticut .....	10	10	10	9	9
New England .....	69	65	66	66	48
New York .....	64	62	63	65	60
New Jersey .....	24	22	20	22	20
Pennsylvania .....	49	44	40	41	39
Middle Atlantic .....	137	128	123	128	119
Ohio .....	43	41	38	40	37
Indiana .....	30	29	28	29	27
Illinois .....	56	52	52	52	49
Michigan .....	42	40	42	42	44
Wisconsin .....	35	34	32	32	30
E. North Central .....	206	196	192	195	187
Minnesota .....	44	44	40	39	40
Iowa .....	41	37	40	40	39
Missouri .....	49	43	43	47	42
North Dakota .....	22	22	21	22	20
South Dakota .....	13	12	14	13	12
Nebraska .....	22	21	23	24	24
Kansas .....	25	22	23	27	26
W. North Central .....	216	201	204	212	203
Delaware .....	5	5	5	5	5
Maryland .....	24	22	22	21	20
Virginia .....	58	55	54	57	56
West Virginia .....	15	14	13	13	13
North Carolina .....	105	106	107	109	108
South Carolina .....	66	67	66	67	66
Georgia .....	58	57	52	52	54
Florida .....	64	63	74	76	77
South Atlantic .....	395	389	393	400	399
Kentucky .....	48	47	48	49	47
Tennessee .....	59	57	57	57	60
Alabama .....	42	38	34	35	39
Mississippi .....	67	66	63	63	70
E. South Central .....	216	208	202	204	216
Arkansas .....	96	89	80	93	90
Louisiana .....	61	61	59	61	64
Oklahoma .....	37	32	28	35	33
Texas .....	168	152	163	154	162
W. South Central .....	362	334	330	343	349
Montana .....	16	15	15	15	13
Idaho .....	20	20	21	21	21
Wyoming .....	7	7	7	7	7
Colorado .....	20	17	19	18	17
New Mexico .....	21	20	19	20	20
Arizona .....	38	41	41	43	38
Utah .....	10	10	10	11	10
Nevada .....	2	2	2	2	2
Mountain .....	134	132	134	137	128
Washington .....	40	38	40	41	41
Oregon .....	30	29	30	29	30
California .....	231	232	226	227	232
Pacific .....	301	299	296	297	303
United States .....	2,036	1,952	1,940	1,982	1,952

1/ Average number of persons employed in one survey week each month - the last full calendar week ending at least one day before the end of the month.

END