



**AgEcon** SEARCH  
RESEARCH IN AGRICULTURAL & APPLIED ECONOMICS

*The World's Largest Open Access Agricultural & Applied Economics Digital Library*

**This document is discoverable and free to researchers across the globe due to the work of AgEcon Search.**

**Help ensure our sustainability.**

Give to AgEcon Search

AgEcon Search  
<http://ageconsearch.umn.edu>  
[aesearch@umn.edu](mailto:aesearch@umn.edu)

*Papers downloaded from **AgEcon Search** may be used for non-commercial purposes and personal study only. No other use, including posting to another Internet site, is permitted without permission from the copyright owner (not AgEcon Search), or as allowed under the provisions of Fair Use, U.S. Copyright Act, Title 17 U.S.C.*

SB-10 (1962)

USDA STATISTICAL BULLETINS

UP DATA

POTATOES 1959

CROP CENSUS

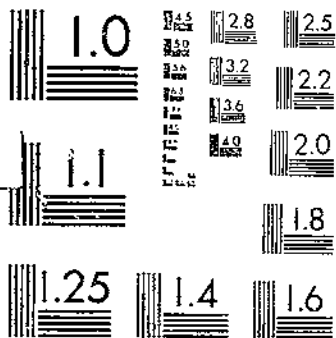
NUMBER OF FARMS

ACREAGE

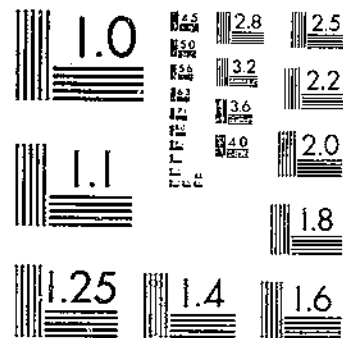
QUANTITY HARVESTED

1 OF 1

# START



MICROCOPY RESOLUTION TEST CHART  
NATIONAL BUREAU OF STANDARDS-1963-A



MICROCOPY RESOLUTION TEST CHART  
NATIONAL BUREAU OF STANDARDS 1963-A

R. 63075  
US3-13

# 310

PROPERTY  
DO NOT LOAN.



# POTATOES

## 1959 CROP CENSUS

- Number of farms
- Acreage
- Quantity harvested
- Comparisons with 1954 and 1949

## BY STATES

Statistical Bulletin No. 310

DEPOSITORY

JUN 19 1962

Los Angeles Public Library

UNITED STATES DEPARTMENT OF AGRICULTURE • AGRICULTURAL MARKETING SERVICE • MAY 1962

## CONTENTS

	<u>Page</u>		<u>Page</u>
Summary:		States with 100 or more farms, with 50 acres or more . . . . .	13
Number of farms, acres and quantity harvested, yield, performance on large farms . . . . .	5	Number of farms grouped by acreage per farm, by States . . . . .	14
U. S. summary, 1949, 1954, 1959. . . . .	7	Totals for geographic divisions. . . . .	16
Major counties in production . . . . .	11	Yield per acre by size of farm . . . . .	17

## INDEX OF STATE TABLES

	<u>Page</u>		<u>Page</u>		<u>Page</u>
Alabama . . . . .	18	Louisiana . . . . .	34	Ohio . . . . .	51
Alaska . . . . .	19	Maine . . . . .	35	Oklahoma . . . . .	52
Arizona . . . . .	20	Maryland . . . . .	36	Oregon . . . . .	53
Arkansas . . . . .	21	Massachusetts . . . . .	37	Pennsylvania . . . . .	54
California . . . . .	22	Michigan . . . . .	38	Rhode Island . . . . .	55
Colorado . . . . .	23	Minnesota . . . . .	39	South Carolina . . . . .	56
Connecticut . . . . .	24	Mississippi . . . . .	40	South Dakota . . . . .	57
Delaware . . . . .	25	Missouri . . . . .	41	Tennessee . . . . .	58
Florida . . . . .	26	Montana . . . . .	42	Texas . . . . .	59
Georgia . . . . .	27	Nebraska . . . . .	43	Utah . . . . .	60
Hawaii . . . . .	19	Nevada . . . . .	44	Vermont . . . . .	61
Idaho . . . . .	28	New Hampshire . . . . .	45	Virginia . . . . .	62
Illinois . . . . .	29	New Jersey . . . . .	46	Washington . . . . .	63
Indiana . . . . .	30	New Mexico . . . . .	47	West Virginia . . . . .	64
Iowa . . . . .	31	New York . . . . .	48	Wisconsin . . . . .	65
Kansas . . . . .	32	North Carolina . . . . .	49	Wyoming . . . . .	66
Kentucky . . . . .	33	North Dakota . . . . .	50		

# POTATOES: SUMMARY OF 1959 CROP CENSUS WITH COMPARISONS

## INTRODUCTION

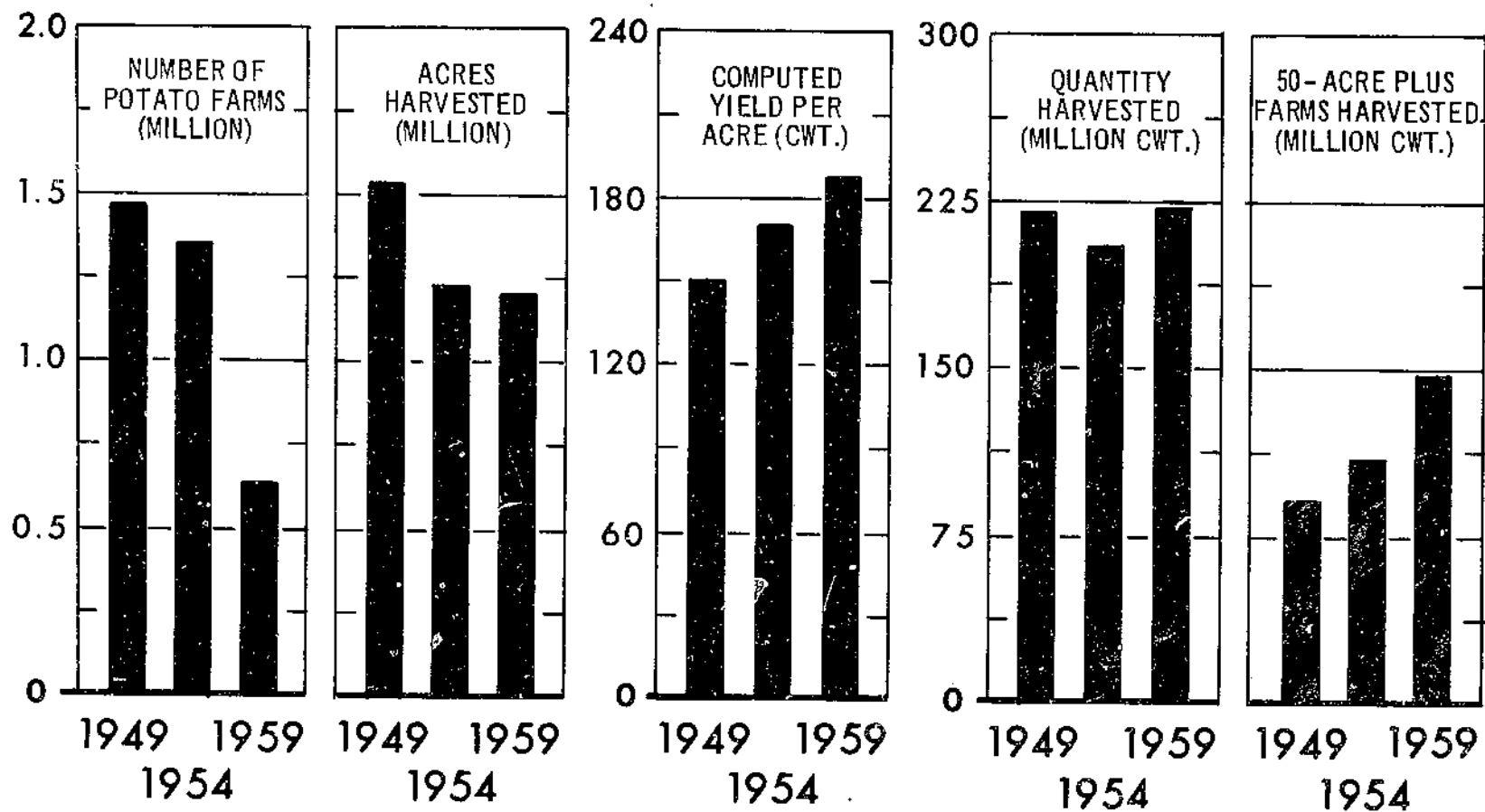
This publication is a summary of information on potatoes obtained in the 1959, 1954 and 1949 crop censuses, conducted by the Bureau of the Census, U. S. Department of Commerce. Numbers of farms producing potatoes, acres harvested, and quantity harvested are shown for the U. S. and for individual States. Data obtained in the successive censuses of agriculture are not strictly comparable for all items because of differences in time of enumeration, wording of questions, and changes in the definition of a farm. A part of the decline in the number of potato farms reported in successive censuses is due to changes in the definition of a farm.

In the 1959 census, the total quantity of Irish potatoes harvested was to be reported, whether harvested for home use, for sale, or for live-

stock feed. Essentially the same procedure was followed in 1954 and 1949. Acreage harvested was reported only where the quantities harvested amounted to 20 bushels or more or 10 hundredweight or more. In 27 States, the census questionnaire provided a choice for reporting either bushels or 100-pound bags (and in Maine, barrels). For this census summary, bushels and barrels were converted to hundredweight equivalents by multiplying by 0.6 and 1.65, respectively.

This publication, the third in the series on potato census information, replaces Statistical Bulletin No. 198, issued November 1956, and the 1949 summary, issued October 1952. Prepared in the Vegetable Branch, Fruit and Vegetable Division, Agricultural Marketing Service.

# CENSUS BUREAU REPORTS FEWER POTATO FARMS; YIELDS INCREASE AND LARGER QUANTITY HARVESTED ON LARGE FARMS



SOURCE: 1949, 1954, 1959 CENSUSES OF AGRICULTURE, U. S. BUREAU OF THE CENSUS.

U. S. DEPARTMENT OF AGRICULTURE

NEG. AMS 220-62 (3) AGRICULTURAL MARKETING SERVICE

## SUMMARY

Number of potato farms: The Bureau of the Census reported that 684,853 farms harvested potatoes in 1959. This compared with 1,432,466 farms in 1954 and 1,649,906 farms in 1949. From 1949 to 1959, the number of potato farms decreased 58 percent, and from 1954 to 1959, 52 percent. The successive censuses show a continuing decline in the number of farms, acreage and quantity harvested in the various farm acreage classifications up to 49.9 acres. But in the farm acreage classification of 50 acres or more, the number of farms, acreage and quantity harvested showed increases in the successive censuses.

In 1959, 6,492 potato farms, each growing 50 acres or more of potatoes, accounted for 0.9 percent of total farms reporting potato production. These farms harvested 64 percent of the total acreage reported and 66.2 percent of the total quantity harvested. In the 1949 census, there were only 5,078 farms which cultivated 50 acres or more of potatoes, and these largest farms accounted for 0.3 percent of total potato farms reporting, 35.5 percent of the acreage harvested and 42.2 percent of the total potato tonnage. From 1949 to 1959, the number of 50-acre or more farms increased 28 percent. The acreage on these largest farms increased 43 percent and the quantity harvested increased 60 percent.

Idaho, Maine, North Dakota, New York, and Minnesota, in that order, had the most farms growing 50 acres or more of potatoes. Idaho,

Maine, and Colorado, in that order had the most farms growing 25.0 to 49.9 acres of potatoes. Kentucky, North Carolina, Tennessee, Missouri, Arkansas, and Mississippi, in that order, led in the number of farms reporting less than one acre of potatoes. From 1949 to 1959, the number of farms with less than one acre of potatoes decreased 57 percent, the number of farms with 1.0 to 9.9 acres decreased 78 percent, and the number of farms with 10.0 to 49.9 acres of potatoes decreased 48 percent. Almost 93 percent of the total number of farms reporting potato production in 1959 had less than one acre of potatoes; another 4.3 percent had from 1.0 to 9.9 acres. Only 2.9 percent of the farms had 10 acres or more of potatoes. The decline in number of potato farms has paralleled the long-term decline in total number of U. S. farms.

Yield per acre: Yield per acre of potatoes was not reported in the censuses. However, the computed yield per acre on all sizes of potato farms increased in the successive censuses. Yield on farms with one acre or more of potatoes increased from 151 hundredweight in 1949 to 188 hundredweight in 1959, an increase of almost 25 percent. From 1949 to 1959, yield per acre on farms with 50 or more acres of potatoes increased 12 percent. The upward trend in potato yield per acre is the result of decline in marginal acreage or lands poorly suited for growing potatoes, shift to and increase in acreages in high-yield areas, shift to high-yield varieties, increase in potato lands under



irrigation, widespread use of fertilizer and insecticides, and increased use of specialized machinery and equipment. It is likely that the U. S. potato yield per acre will continue to trend upward. The rate of increase in yield, however, may not be as pronounced as some of the recent advances.

Acres harvested: U. S. potato acreage reported in the 1959 crop census amounted to 1,200,431 acres. This compared with 1,210,872 acres in the 1954 crop census and 1,514,094 acres in the 1949 crop census. Compared with 1949 census data, acreage on farms growing fewer than 50 acres of potatoes showed successive declines in the 1954 and 1959 censuses. But acreage on farms growing 50 acres or more of potatoes showed successive increases in 1954 and 1959. Sixty-four percent of the 1959 crop potato acreage originated on farms growing 50 acres or more of potatoes. The 50-acre or more potato farms accounted for 49 percent of the total acreage reported for the 1954 crop, and 35.5 percent of the total acreage reported for the 1949 crop. Idaho, Maine, North Dakota, Minnesota, California and New York, in that order, led in potato acreage. The six states' combined acreage accounted for 57.4 percent of the 1959 crop census acreage.

Quantity harvested: Potato production reported in the 1959 crop census amounted to 224.1 million hundredweight. This was almost 10 percent more than was reported in 1954 and 2 percent more than was reported in 1949. A total of 6,492 farms, each raising 50 acres or more of potatoes, accounted for 66.2 percent of the 1959 census production. The 50-acre or

larger potato farms accounted for only 42.2 percent of the 1949 production. Farms growing fewer than 50 acres of potatoes accounted for 57.8 percent of the 1949 census production but only 33.8 percent of the 1959 census production.

Idaho, Maine, California, New York, North Dakota, and Minnesota, in that order, led in quantity harvested in the 1959 census. The six-states' combined harvest accounted for 60.1 percent of the 1959 potato production. Forty-seven counties scattered throughout the United States each reported more than one million hundredweight of potatoes harvested in 1959 (see chart page 10). Aroostook County, Maine, led all counties in potato production, reporting 30.1 million hundredweight. Kern County, California, reported 11.4 million hundredweight. Bingham County, Idaho; Suffolk County, Long Island; and Minidoka County, Idaho, ranked third, fourth and fifth, respectively, in county potato production.

Performance on large potato farms: In the 1949 potato census, the acreage on a farm with 50 acres or more of potatoes averaged 106 acres. In 1954, the average increased to 108 acres and in 1959, to 118 acres. Quantity harvested on the 50-acre or more potato farms averaged 18,290 hundredweight in 1949, increased to 19,597 hundredweight in 1954, and to 22,842 hundredweight in 1959. The average large potato farm in 1959 produced enough potatoes to supply the annual needs of more than 200 persons. In 1959, the quantity of potatoes harvested on potato farms with 25.0 acres to 49.9 acres averaged 6,890 hundredweight. This compared with 5,795 hundredweight in 1949.

Table 1

Potatoes, United States: Number of farms, acreage and production, with percentage comparisons; censuses of 1949, 1954 and 1959 crops

Potato acreage per farm	Farms reporting			Acres harvested 1/			Quantity harvested		
	1949	1954	1959 3/	1949	1954	1959 3/	1949	1954	1959 3/
	- Number -			- Acres -			- 1,000 cwt. -		
<b>Acre(s):</b>									
Under one	1,486,215	1,347,894	635,383	148,303	64,514	38,232	13,696	10,515	5,625
1.0 - 1.9	80,697	36,307	17,419	84,938	38,032	18,378	4,174	2,009	1,108
2.0 - 2.9	20,590	8,436	4,119	42,840	17,696	8,492	2,831	1,327	748
3.0 - 9.9	31,615	15,155	7,944	158,823	79,069	41,121	17,863	10,102	5,775
3.0 - 4.9	2/	6,755	3,578	2/	23,455	12,278	2/	2,396	1,418
5.0 - 9.9	2/	8,400	4,366	2/	55,614	28,843	2/	7,706	4,357
10.0-24.9	17,710	12,359	7,668	271,449	188,801	120,746	42,109	31,954	22,437
25.0-49.9	8,001	6,805	5,828	271,446	229,877	205,765	46,363	40,224	40,157
50 or more	5,078	5,510	6,492	536,295	592,883	767,697	92,881	107,982	148,290
<b>Total</b>	<b>1,649,906</b>	<b>1,432,466</b>	<b>684,853</b>	<b>1,514,094</b>	<b>1,210,872</b>	<b>1,200,431</b>	<b>219,917</b>	<b>204,113</b>	<b>224,140</b>

Potato acreage per farm	Percent of total farms reporting			Percent of total acres harvested			Percent of total quantity harvested		
	1949	1954	1959	1949	1954	1959	1949	1954	1959
	- - - - - Percent - - - - -								
<b>Acre(s):</b>									
Under one	90.1	94.0	92.8	9.8	5.3	3.2	6.2	5.2	2.5
1.0 - 1.9	4.9	2.5	2.5	5.6	3.1	1.5	1.9	1.0	.5
2.0 - 2.9	1.2	.6	.6	2.8	1.5	.7	1.3	.6	.3
3.0 - 9.9	1.9	1.1	1.2	10.5	6.5	3.4	8.1	4.9	2.6
3.0 - 4.9	-	.5	.5	-	1.9	1.0	-	1.2	.6
5.0 - 9.9	-	.6	.7	-	4.6	2.4	-	3.7	2.0
10.0-24.9	1.1	.9	1.1	17.9	15.6	10.1	19.2	15.7	10.0
25.0-49.9	.5	.5	.9	17.9	19.0	17.1	21.1	19.7	17.9
50 or more	.3	.4	.9	35.5	49.0	64.0	42.2	52.9	66.2

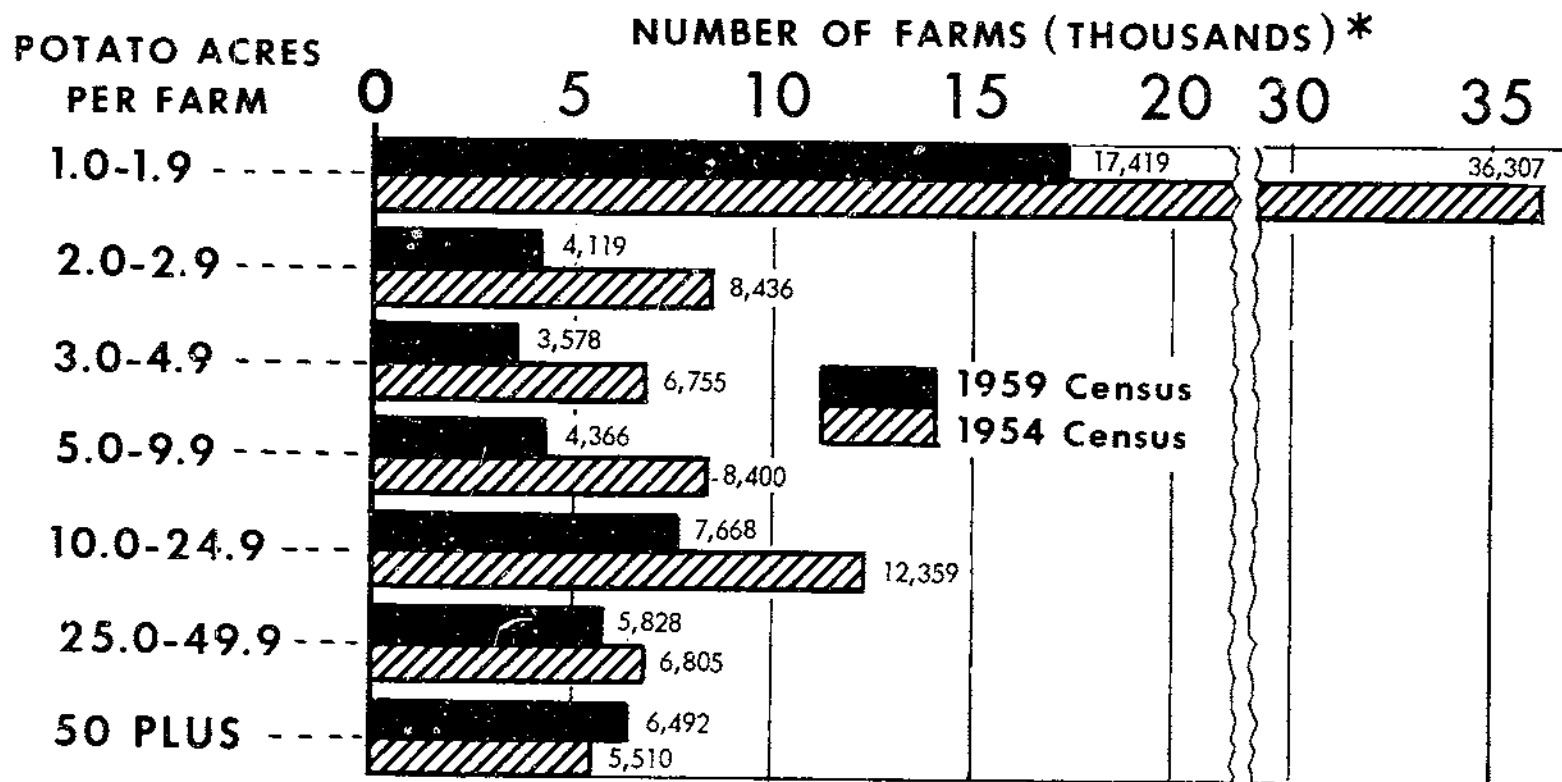
1/ Does not include acreage for farms with less than 20 bushels harvested.

2/ Not reported.

3/ Includes Alaska and Hawaii.

Source: 1949, 1954, and 1959 Censuses of Agriculture, U. S. Bureau of the Census.

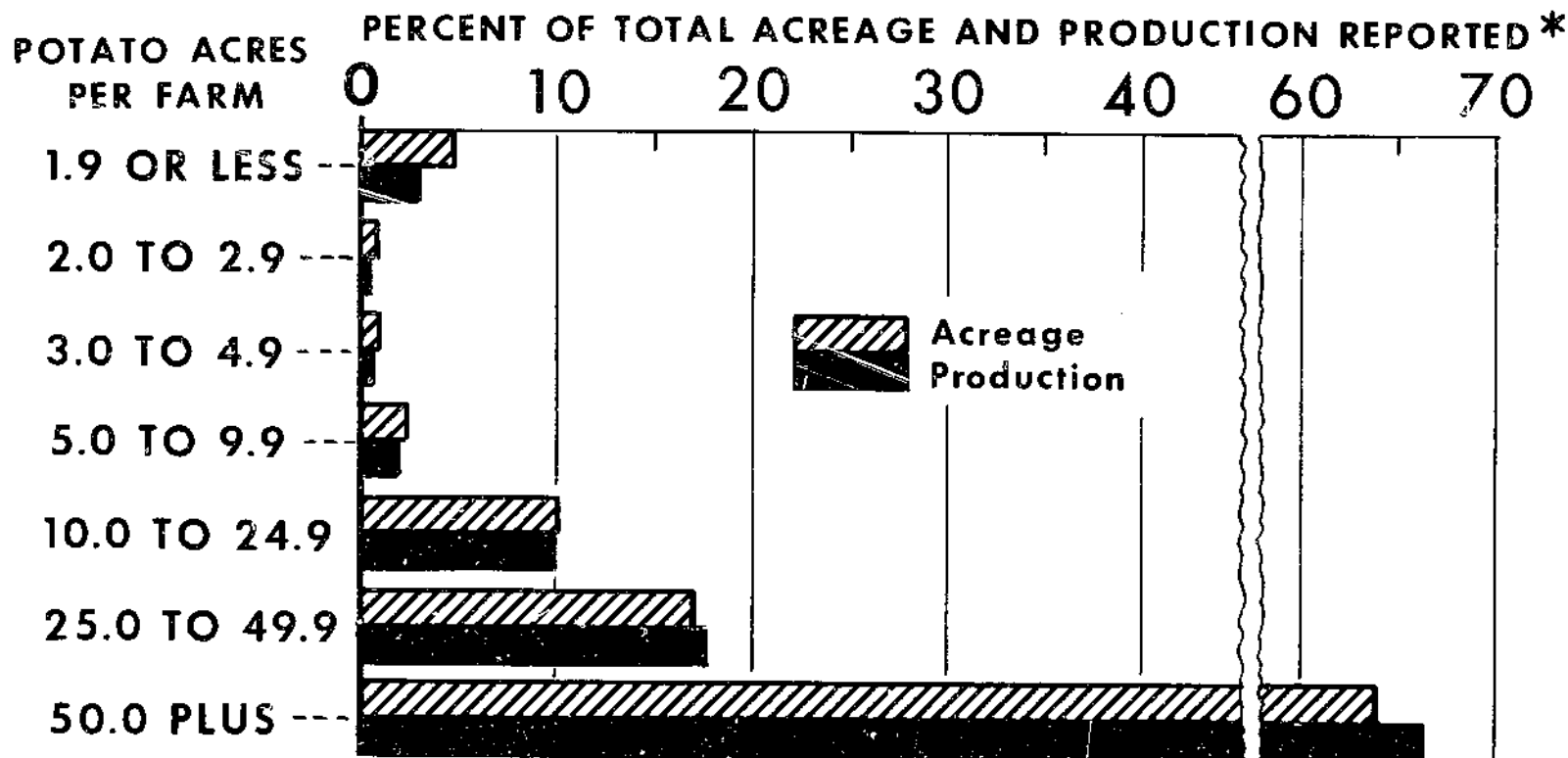
# NUMBER OF 50-ACRE PLUS POTATO FARMS UP 18%; FARMS 49.9 ACRES OR LESS 52% FEWER IN 1959



\* 684,853 FARMS (635,383 UNDER ONE ACRE) REPORTED IN 1959; 1,432,466 FARMS (1,347,894 UNDER ONE ACRE) IN 1954.

SOURCE: 1954 AND 1959 CENSUSES OF AGRICULTURE, U. S. BUREAU OF THE CENSUS.

# 50-ACRE PLUS POTATO FARMS HARVESTED TWO-THIRDS OF 1959 CROP



\* TOTAL ACRES HARVESTED, 1,200,431; TOTAL PRODUCTION, 224.1 MILLION HUNDREDWEIGHT.

SOURCE: 1959 CENSUS OF AGRICULTURE, U. S. BUREAU OF THE CENSUS.

# COUNTIES WHICH PRODUCED ONE MILLION CWT. OR MORE OF POTATOES; CENSUS OF 1959 CROP



SOURCE: 1959 CENSUS OF AGRICULTURE, U. S. BUREAU OF THE CENSUS.

U. S. DEPARTMENT OF AGRICULTURE

AMS 223-62 (3) AGRICULTURAL MARKETING SERVICE

Table 2

Potatoes: List of counties which produced one million hundredweight or more of potatoes; census of 1959 crop

State	County	Number of farms	Acres harvested	Quantity harvested	County rank in quantity harvested
Alabama	Baldwin	191	9,000	1,094	44
California	Fresno	32	4,601	1,027	47
California	Kern	341	39,832	11,360	2
California	Modoc	112	5,275	1,590	28
California	Riverside	57	10,949	3,080	15
California	San Joaquin	24	5,515	1,423	29
California	Siskiyou	76	4,101	1,108	40
Colorado	Rio Grande	308	18,052	3,988	8
Colorado	Weld	470	12,635	2,564	17
Delaware	Kent	121	5,862	1,168	37
Florida	St. Johns	124	11,102	1,285	31
Idaho	Bingham	1,051	44,591	8,515	3
Idaho	Booneville	644	25,099	4,371	6
Idaho	Canyon	299	6,321	1,834	25
Idaho	Cassia	131	15,975	3,562	12
Idaho	Freemont	371	12,980	2,356	20
Idaho	Jefferson	491	18,409	3,509	13
Idaho	Jerome	316	9,834	2,425	18
Idaho	Madison	381	11,261	1,887	24
Idaho	Minidoka	462	22,107	4,902	5
Idaho	Twin Falls	348	9,034	2,266	22
Maine	Aroostook	2,519	125,126	30,111	1
Maine	Penobscot	242	4,196	1,034	46
Michigan	Montcalm	255	6,003	1,246	33

(Continued)

Table 2 (Cont'd)  
 Potatoes: List of counties which produced one million  
 hundredweight or more of potatoes; census of 1959 crop (continued)

State	County	Number of farms	Acres harvested 1/	Quantity harvested	County rank in quantity harvested
		<u>Number</u>	<u>Acres</u>	<u>1,000 cwt.</u>	
Minnesota	Clay	252	14,450	1,644	27
Minnesota	Freeborn	107	5,396	1,189	36
Minnesota	Marshall	257	11,082	1,236	34
Minnesota	Polk	408	29,179	3,632	10
Nebraska	Scotts Bluff	287	5,286	1,104	41
New Jersey	Middlesex	71	4,947	1,144	38
New Jersey	Monmouth	94	5,587	1,207	35
New York	Steuben	377	11,910	2,363	19
New York	Suffolk	606	42,699	8,405	4
North Dakota	Grand Forks	228	22,804	3,114	14
North Dakota	Pembina	257	29,578	3,778	9
North Dakota	Walsh	343	34,667	4,052	7
Oregon	Jefferson	158	5,659	1,687	26
Oregon	Klamath	197	8,032	2,255	23
Oregon	Malheur	335	12,334	2,926	16
Pennsylvania	Lehigh	387	5,682	1,099	43
Virginia	Accomack	164	9,941	1,249	32
Virginia	North Hampton	174	9,120	1,082	45
Texas	Deaf Smith	109	6,521	1,102	42
Washington	Grant	223	11,248	3,564	11
Washington	Yakima	170	4,505	1,134	39
Wisconsin	Langlade	295	12,700	2,309	21
Wisconsin	Portage	684	8,001	1,422	30
	47 counties	15,549	749,188	150,402	

1/ Does not include acreage for farms with less than 20 bushels or 10 hundredweight harvested.

10

Table 3

Potatoes: States which reported 100 or more farms growing  
50 or more acres of potatoes; census of 1959 crop

State	Number of farms with 50 acres or more of potatoes
Idaho	1,046
Maine	973
North Dakota	580
New York	549
Minnesota	493
California	379
Colorado	333
Wisconsin	188
Oregon	184
Michigan	183
Washington	178
Florida	158
Pennsylvania	150
New Jersey	147
Virginia	138
Other States	813
<u>Total, U. S.</u>	<u>6,492</u>



Table 4

Potatoes: Number of farms grouped by acres of  
potatoes grown; census of 1959 crop

State, geographic division	: Under : one : acre	: 1.0 to : 1.9 : acres	: 2.0 to : 2.9 : acres	: 3.0 to : 4.9 : acres	: 5.0 to : 9.9 : acres	: 10.0 to : 24.9 : acres	: 25.0 to : 49.9 : acres	: 50 : acres : or : more	: Total : number : of : farms
----- Number of farms -----									
Maine	2,815	207	81	93	136	562	951	973	5,818
New Hampshire	1,312	110	40	21	17	12	7	7	1,526
Vermont	2,530	191	34	11	13	9	5	8	2,801
Massachusetts	781	140	66	85	79	62	18	39	1,270
Rhode Island	67	17	6	8	9	8	13	24	152
Connecticut	817	85	31	28	26	23	21	38	1,069
New York	5,844	939	336	281	296	292	303	549	8,840
New Jersey	173	69	38	46	59	87	73	147	692
Pennsylvania	9,773	1,197	487	528	545	528	177	150	13,385
North Atlantic	24,112	2,955	1,119	1,101	1,180	1,583	1,568	1,935	35,553
Ohio	10,815	314	117	103	110	108	83	78	11,728
Indiana	13,520	139	39	35	38	34	29	20	13,854
Illinois	21,535	148	24	8	11	9	4	4	21,743
Michigan	8,185	1,338	477	490	583	642	285	183	12,183
Wisconsin	17,257	981	316	273	321	354	163	188	19,853
East North Central	71,312	2,920	973	909	1,063	1,147	564	473	79,361
Minnesota	18,866	876	265	198	179	291	303	493	21,471
Iowa	17,899	157	32	38	27	7	3	7	18,170
Missouri	51,318	273	32	18	11	13	4	2	51,671
North Dakota	5,543	197	52	47	47	110	225	580	6,801
South Dakota	1,657	111	39	29	37	42	14	31	1,960
Nebraska	7,487	157	31	23	69	252	114	54	8,187
Kansas	13,424	100	24	38	11	5	4	4	13,610
West North Central	116,194	1,871	475	391	381	720	667	1,171	121,870
Delaware	588	19	9	5	4	5	7	57	694
Maryland	3,715	243	34	27	12	27	13	20	4,091
Virginia	45,980	724	69	31	37	116	95	138	47,190
West Virginia	25,659	1,553	113	26	9	5	4	1	27,370
North Carolina	70,335	1,494	245	167	133	158	95	85	72,712
South Carolina	5,233	128	25	20	9	7	9	30	5,461
Georgia	9,439	209	35	22	9	5	1	-	9,720
Florida	887	28	17	12	11	39	51	158	1,203
South Atlantic	161,836	4,398	547	310	224	362	275	489	168,441

(Continued)

Table 4 (Cont'd)

Potatoes: Number of farms grouped by acres of potatoes grown; census of 1959 crop (continued)

State, geographic division	Under one acre	1.0 to 1.9 acres	2.0 to 2.9 acres	3.0 to 4.9 acres	5.0 to 9.9 acres	10.0 to 24.9 acres	25.0 to 49.9 acres	50 acres or more	Total number of farms
	Number of farms								
Kentucky	72,855	848	72	24	24	25	1	2	73,851
Tennessee	63,889	867	104	48	16	11	3	1	64,939
Alabama	20,122	492	143	119	83	108	59	73	21,199
Mississippi	27,475	332	25	13	9	2	-	1	27,857
Arkansas	27,553	939	124	80	29	7	2	1	28,735
Louisiana	8,634	445	80	58	42	38	7	6	9,310
Oklahoma	13,487	216	13	8	4	2	5	-	13,735
Texas	17,833	397	72	45	37	115	107	81	18,687
South Central	251,848	4,536	633	395	244	308	184	165	258,313
Montana	3,226	153	48	36	53	75	60	35	3,686
Idaho	972	89	57	133	602	1,962	1,400	1,046	6,261
Wyoming	132	16	11	11	30	51	24	24	299
Colorado	257	71	32	50	148	455	366	333	1,712
New Mexico	20	15	6	2	5	11	9	9	77
Arizona	18	1	2	3	3	10	14	36	87
Utah	902	124	78	107	160	132	37	28	1,568
Nevada	70	11	3	7	7	17	13	5	133
Washington	2,831	98	40	38	79	238	179	178	3,681
Oregon	1,282	111	64	59	135	349	248	184	2,432
California	239	23	14	15	35	233	213	379	1,151
West	9,949	712	355	461	1,257	3,533	2,563	2,257	21,087
U. S. (48 states)	635,251	17,392	4,102	3,567	4,349	7,653	5,821	6,490	684,625
Alaska	76	21	8	7	13	15	7	2	149
Hawaii	56*	6*	9*	4*	4*	-	-	-	79
U. S. (50 states)	635,383	17,419	4,119	3,578	4,366	7,668	5,828	6,492	684,853

\* Interpolated.

Source: 1959 Census of Agriculture, U. S. Bureau of the Census.

Table 5

Potatoes: Production and percentage originating in  
geographic divisions; censuses of 1954 and 1959 crops

Geographic division	Production		Percentage of total	
	1954	1959	1954	1959
	Million cwt.	Million cwt.	Percent	Percent
New England	32.2	36.1	15.8	16.1
Middle Atlantic	28.1	27.3	13.8	12.2
East N. Central	18.7	19.3	9.2	8.6
West N. Central	26.7	27.4	13.1	12.2
South Atlantic	14.0	12.1	6.9	5.4
East S. Central	4.7	3.4	2.3	1.5
West S. Central	2.4	3.1	1.2	1.4
Mountain	40.4	55.6	19.7	24.9
Pacific	36.9	39.7	18.0	17.7
Alaska-Hawaii	1/	.1	1/	2/
United States	204.1	224.1	100.0	100.0

1/ Not reported. 2/ Less than one-tenth of one percent.

Potatoes: Acreage and percentage originating in  
geographic divisions; censuses of 1954 and 1959 crops

Geographic division	Acres harvested		Percentage of total	
	1954	1959	1954	1959
	1,000 acres	1,000 acres	Percent	Percent
New England	152.2	153.2	11.5	12.8
Middle Atlantic	164.9	138.7	12.5	11.6
East N. Central	138.2	116.0	10.5	9.7
West N. Central	230.5	213.8	17.4	17.8
South Atlantic	135.2	96.9	10.2	8.1
East S. Central	71.1	27.2	5.4	2.3
West S. Central	43.1	24.5	3.3	2.0
Mountain	230.1	279.0	17.4	23.2
Pacific	156.4	150.3	11.8	12.5
Alaska-Hawaii	1/	.8	1/	2/
United States	1,321.7	1,200.4	100.0	100.0

1/ Not reported. 2/ Less than one-tenth of one percent.

Table 6

Potatoes, United States: Computed yield per acre by  
size of farm; censuses of 1949, 1954 and 1959 crops

Potato acreage : per farm	Yield per acre		
	1949	1954	1959
	<u>Hundredweight</u>		
<u>Acres</u>			
50 or more	173	182	193
25.0 - 49.9	171	175	195
10.0 - 24.9	155	169	186
5.0 - 9.9	Not available	139	151
3.0 - 4.9	Not available	102	115
3.0 - 9.9	112	128	140
2.0 - 2.9	66	75	88
1.0 - 1.9	49	53	60
One or more	151	169	188

Table 7

Potatoes, Alabama: Number of farms, acreage and production with percentage comparisons; censuses of 1949, 1954 and 1959 crops

Potato acreage per farm	Farms Reporting			Acres harvested 1/			Quantity harvested		
	1949	1954	1959	1949	1954	1959	1949	1954	1959
	-Number-			-Acres-			-1,000 cwt.-		
<b>Acre(s):</b>									
Under one	77,872	59,100	20,122	4,119	1,771	881	448	363	139
1.0 - 1.9	2,359	1,440	492	2,460	1,494	514	85	55	27
2.0 - 2.9	729	337	143	1,482	681	295	57	32	20
3.0 - 9.9	661	264	202	2,922	1,216	934	130	75	80
3.0 - 4.9	2/	150	119	2/	507	405	2/	26	31
5.0 - 9.9	2/	114	83	2/	709	529	2/	49	49
10.0-24.9	209	134	108	3,030	2,029	1,568	210	181	184
25.0-49.9	87	102	59	2,959	3,423	1,956	205	358	250
50 or more	60	94	73	5,057	9,987	7,913	378	1,070	937
Total	81,977	61,471	21,199	22,029	20,598	14,061	1,513	2,134	1,632

Potato acreage per farm	Percent of total farms reporting			Percent of total acres harvested			Percent of total quantity harvested		
	1949	1954	1959	1949	1954	1959	1949	1954	1959
	-----Percent-----								
<b>Acre(s):</b>									
Under one	95.0	96.2	94.9	18.7	8.6	6.3	29.6	17.0	8.5
1.0 - 1.9	2.9	2.3	2.3	11.2	7.3	3.7	5.6	2.6	1.7
2.0 - 2.9	.9	.5	.7	6.7	3.3	2.1	3.8	1.5	1.2
3.0 - 9.9	.8	.4	1.0	13.3	5.9	6.6	8.6	3.5	4.9
3.0 - 4.9	-	.2	.6	-	2.5	2.9	-	1.2	1.9
5.0 - 9.9	-	.2	.4	-	3.4	3.7	-	2.3	3.0
10.0-24.9	.2	.2	.5	13.8	9.8	11.1	1.39	8.5	11.3
25.0-49.9	.1	.2	.3	13.4	16.6	13.9	13.5	16.8	15.3
50 or more	.1	.2	.3	22.9	48.5	56.3	25.0	50.1	57.1

1/ Does not include acreage for farms with than 20 bushels harvested.

2/ Not reported.

Source: 1949, 1954, and 1959 Censuses of Agriculture, U. S. Bureau of the Census.

Table 8

Potatoes, Alaska: Number of farms, acreage, and production;  
census of 1959 crop

Potato acreage : per farm :	Farms : reporting :	Acres : harvested 1/ :	Quantity : harvested
<u>Acre(s)</u>	<u>Number</u>	<u>Acres</u>	<u>1,000 cwt.</u>
Under one	76	20	2
1.0 - 1.9	21	22	3
2.0 - 2.9	8	18	3
3.0 - 4.9	7	24	2
5.0 - 9.9	13	86	19
10.0 - 24.9	15	224	41
25.0 - 49.9	7	196	30
50 or more	2	128	13
Total	149	718	113

1/ Does not include acreage for farms with less than 20 bushels harvested.

Table 9.--Potatoes, Hawaii: Number of farms, acreage, and  
production; census of 1959 crop

Hawaii :	Farms : reporting :	Acres : harvested 1/ :	Quantity : harvested
	<u>Number</u>	<u>Acres</u>	<u>1,000 cwt.</u>
All farms	79	84	5

1/ Does not include acreage for farms with less than 20 bushels harvested.

Table 10

Potatoes, Arizona: Number of farms, acreage and production, with percentage comparisons; censuses of 1949, 1954 and 1959 crops

Potato acreage : per farm	Farms reporting			Acres harvested 1/			Quantity harvested		
	1949	1954	1959	1949	1954	1959	1949	1954	1959
	-Number-			-Acres-			-1,000 cwt.-		
<b>Acre(s):</b>									
Under one	103	35	18	11	3	1	.9	.5	.3
1.0-1.9	15	6	1	15	6	1	.7	.5	.2
2.0-2.9	4	4	2	8	9	4	.4	.3	.5
3.0-9.9	7	4	6	28	21	31	1.2	1.2	3.8
3.0-4.9	2/	2	3	2/	7	11	2/	.1	2.3
5.0-9.9	2/	2	3	2/	14	20	2/	1.1	1.6
10.0-24.9	9	9	10	164	157	175	23.0	16.4	28.6
25.0-49.9	16	13	14	593	423	477	98.0	84.3	98.3
50 or more	23	24	36	2,497	2,866	5,186	475.0	693.2	1,218.0
<b>Total</b>	<b>177</b>	<b>95</b>	<b>87</b>	<b>3,316</b>	<b>3,485</b>	<b>5,875</b>	<b>599.2</b>	<b>796.4</b>	<b>1,349.7</b>

Potato acreage : per farm	Percent of total farms reporting			Percent of total acres harvested			Percent of total quantity harvested		
	1949	1954	1959	1949	1954	1959	1949	1954	1959
	----- Percent -----								
<b>Acre(s):</b>									
Under one	58.2	36.8	20.7	.3	.1	3/	.2	.1	3/
1.0-1.9	8.5	6.3	1.1	.5	.2	3/	.1	.1	3/
2.0-2.9	2.2	4.2	2.3	.2	.3	.1	.1	3/	3/
3.0-9.9	4.0	4.2	6.9	.9	.6	.5	.2	.1	.3
3.0-4.9	-	2.1	3.4	-	.2	.2	-	3/	.2
5.0-9.9	-	2.1	3.5	-	.4	.3	-	.1	.1
10.0-24.9	5.1	9.5	11.5	4.9	4.5	3.0	3.8	2.1	2.1
25.0-49.9	9.0	13.7	16.1	17.9	12.1	8.1	16.3	10.6	7.3
50 or more	13.0	25.3	41.4	75.3	82.2	88.3	79.3	87.0	90.3

1/ Does not include acreage for farms with less than 20 bushels harvested.

2/ Not reported.

3/ Less than one-tenth of one percent.

Source: 1949, 1954, and 1959 Censuses of Agriculture, U. S. Bureau of the Census.

Table 11

Potatoes, Arkansas: Number of farms, acreage and production with percentage comparisons; censuses of 1949, 1954 and 1959 crops

Potato acreage per farm	Farms reporting			Acres harvested 1/			Quantity harvested		
	1949	1954	1959	1949	1954	1959	1949	1954	1959
	- Number -			- Acres -			- 1,000 cwt. -		
<u>Acre(s):</u>									
Under one	70,062	61,875	27,553	7,625	3,017	2,022	704	501	280
1.0 - 1.9	3,817	1,742	939	3,973	1,789	990	164	64	43
2.0 - 2.9	910	245	124	1,851	503	251	73	16	15
3.0 - 9.9	572	111	109	2,278	452	448	89	19	27
3.0 - 4.9	2/	72	80	2/	238	268	2/	9	15
5.0 - 9.9	2/	39	29	2/	214	180	2/	10	12
10.0-24.9	29	11	7	360	145	81	16	9	8
25.0-49.9	2	0	2	65	0	50	3	0	3
50 or more	2	2	1	114	150	60	7	4	1
Total	75,394	63,986	28,735	16,266	6,056	3,902	1,056	613	377

Potato acreage per farm	Percent of total farms reporting			Percent of total acres harvested			Percent of total quantity harvested		
	1949	1954	1959	1949	1954	1959	1949	1954	1959
	- - - - - Percent - - - - -								
<u>Acre(s):</u>									
Under one	92.9	96.7	95.8	46.9	49.8	51.8	66.6	81.6	74.3
1.0 - 1.9	5.1	2.7	3.3	24.4	29.5	25.4	15.6	10.4	11.4
2.0 - 2.9	1.2	.4	.5	11.4	8.3	6.4	6.9	2.6	4.0
3.0 - 9.9	.8	.2	.4	14.0	7.5	11.5	8.5	3.2	7.2
3.0 - 4.9	-	.1	.3	-	3.9	6.9	-	1.5	4.0
5.0 - 9.9	-	.1	.1	-	3.6	4.6	-	1.7	3.2
10.0-24.9	3/	3/	3/	2.2	2.4	2.1	1.5	1.5	2.1
25.0-49.9	3/	0	3/	.4	0	1.3	.3	0	.8
50 or more	3/	3/	3/	.7	2.5	1.5	.6	.7	.2

1/ Does not include acreage for farms with less than 20 bushels harvested.

2/ Not reported.

3/ Less than one-tenth of one percent.

Source: 1949, 1954, and 1959 Censuses of Agriculture, U. S. Bureau of the Census.



Table 12

Potatoes, California: Number of farms, acreage and production with percentage comparisons; censuses of 1949, 1954 and 1959 crops

Potato acreage per farm	Farms reporting			Acres harvested 1/			Quantity harvested		
	1949	1954	1959	1949	1954	1959	1949	1954	1959
	- Number -			- Acres -			- 1,000 cwt. -		
<u>Acre(s):</u>									
Under one	2,133	1,375	239	145	52	27	20	9	4
1.0 - 1.9	129	47	23	141	53	26	13	5	5
2.0 - 2.9	69	30	14	145	62	29	14	7	3
3.0 - 9.9	233	135	50	1,376	809	303	314	164	79
3.0 - 4.9	2/	35	15	2/	128	56	2/	24	11
5.0 - 9.9	2/	100	35	2/	681	247	2/	140	68
10.0-24.9	502	382	233	8,070	6,325	3,966	1,955	1,343	1,109
25.0-49.9	344	251	213	11,998	8,726	7,443	2,762	1,979	1,972
50 or more	457	429	379	78,379	77,603	74,028	18,505	18,962	19,930
Total	3,867	2,649	1,151	100,254	93,630	85,822	23,583	22,469	23,102

Potato acreage per farm	Percent of total farms reporting			Percent of total acres harvested			Percent of total quantity harvested		
	1949	1954	1959	1949	1954	1959	1949	1954	1959
	- - - - - Percent - - - - -								
<u>Acre(s):</u>									
Under one	55.2	51.9	20.8	.1	.1	3/	.1	3/	3/
1.0 - 1.9	3.3	1.8	2.0	.1	.1	3/	.1	3/	3/
2.0 - 2.9	1.8	1.1	1.2	.1	.1	3/	.1	3/	3/
3.0 - 9.9	6.0	5.1	4.4	1.4	.8	.4	1.3	.7	.4
3.0 - 4.9	-	1.3	1.3	-	.1	.1	-	.1	.1
5.0 - 9.9	-	3.8	3.1	-	.7	.3	-	.6	.3
10.0-24.9	13.0	14.4	20.2	8.1	6.8	4.6	8.3	6.0	4.8
25.0-49.9	8.9	9.5	18.5	12.0	9.3	8.7	11.7	8.8	8.5
50 or more	11.8	16.2	32.9	78.2	82.8	86.3	78.4	84.5	86.3

1/ Does not include acreage for farms with less than 20 bushels harvested.

2/ Not reported.

3/ Less than one-tenth of one percent.

Source: 1949, 1954, and 1959 Censuses of Agriculture, U. S. Bureau of the Census

Table 13

Potatoes, Colorado: Number of farms, acreage and production, with percentage comparisons; censuses of 1949, 1954 and 1959 crops

Potato acreage : per farm	Farms reporting :			Acres harvested 1/ :			Quantity harvested		
	1949	1954	1959	1949	1954	1959	1949	1954	1959
Acres	Number			Acres			1,000 cwt.		
Under one	1,375	1,260	257	221	155	52	21	20	6
1.0 - 1.9	309	176	71	336	190	78	26	17	7
2.0 - 2.9	152	84	32	314	170	66	39	17	9
3.0 - 9.9	906	462	198	5,386	2,869	1,198	829	488	199
3.0 - 4.9	2/	135	50	2/	486	175	2/	65	30
5.0 - 9.9	2/	327	148	2/	2,383	1,023	2/	423	169
10.0 - 24.9	1,007	635	455	15,363	9,658	7,233	2,665	1,870	1,520
25.0 - 49.9	430	409	366	14,551	13,641	12,366	2,818	2,614	2,503
50 or more	251	309	333	19,897	24,498	30,048	4,462	4,991	6,249
Total	4,430	3,335	1,712	56,068	51,181	51,041	10,860	10,017	10,493

Potato acreage : per farm	Percent of total :			Percent of total :			Percent of total		
	1949	1954	1959	1949	1954	1959	1949	1954	1959
	farms reporting			acres harvested			quantity harvested		
Acres	Percent								
Under one	31.0	37.8	15.0	.4	.3	.1	.2	.2	.1
1.0 - 1.9	7.0	5.3	4.1	.6	.4	.2	.2	.2	.1
2.0 - 2.9	3.4	2.5	1.9	.6	.3	.1	.4	.2	.1
3.0 - 9.9	20.5	13.8	11.5	9.6	5.6	2.3	7.6	4.9	1.9
3.0 - 4.9	-	4.0	2.9	-	.9	.3	-	.7	.3
5.0 - 9.9	-	9.8	8.6	-	4.7	2.0	-	4.2	1.6
10.0 - 24.9	22.7	19.0	26.6	27.4	18.9	14.2	24.5	18.7	14.5
25.0 - 49.9	9.7	12.3	21.4	25.9	26.6	24.2	26.0	26.0	23.8
50 or more	5.7	9.3	19.5	35.5	47.9	58.9	41.1	49.8	59.5

1/ Does not include acreage for farms with less than 20 bushels harvested.

2/ Not reported.

Source: 1949, 1954, and 1959 Censuses of Agriculture, U. S. Bureau of the Census.

Table 14

Potatoes, Connecticut: Number of farms, acreage and production, with percentage comparisons; censuses of 1949, 1954 and 1959 crops

Potato acreage : per farm	Farms reporting :			Acres harvested 1/ :			Quantity harvested		
	1949	1954	1959	1949	1954	1959	1949	1954	1959
<u>Acre(s)</u>		<u>Number</u>			<u>Acres</u>			<u>1,000 cwt.</u>	
Under one	2,872	2,024	817	559	241	110	48	31	13
1.0 - 1.9	356	166	85	381	178	90	26	15	10
2.0 - 2.9	132	81	31	276	206	65	28	30	7
3.0 - 9.9	181	54	54	880	287	262	117	53	42
3.0 - 4.9	2/	21	28	2/	72	95	2/	11	14
5.0 - 9.9	2/	33	26	2/	215	167	2/	42	28
10.0 - 24.9	78	44	23	1,180	680	372	175	137	73
25.0 - 49.9	47	46	21	1,648	1,583	665	233	358	142
50 or more	42	33	38	3,870	3,117	3,942	638	737	958
Total	3,708	2,448	1,069	8,794	6,292	5,506	1,265	1,361	1,245

Potato acreage : per farm	Percent of total :			Percent of total :			Percent of total		
	1949	1954	1959	1949	1954	1959	1949	1954	1959
		<u>farms reporting</u>			<u>acres harvested</u>			<u>quantity harvested</u>	
<u>Acre(s)</u>					<u>Percent</u>				
Under one	77.4	82.7	76.4	6.4	3.8	2.0	3.8	2.3	1.0
1.0 - 1.9	9.6	6.8	8.0	4.3	2.8	1.6	2.0	1.1	.8
2.0 - 2.9	3.6	3.3	2.9	3.1	3.3	1.2	2.2	2.2	.6
3.0 - 9.9	4.9	2.2	5.0	10.0	4.5	4.7	9.3	3.9	3.4
3.0 - 4.9	-	.9	2.6	-	1.1	1.7	-	.8	1.1
5.0 - 9.9	-	1.3	2.4	-	3.4	3.0	-	3.1	2.3
10.0 - 24.9	2.1	1.8	2.2	13.4	10.8	6.8	13.8	10.1	5.9
25.0 - 49.9	1.3	1.9	2.0	18.7	25.2	12.1	18.4	26.3	11.4
50 or more	1.1	1.3	3.5	44.1	49.6	71.6	50.5	54.1	76.9

1/ Does not include acreage for farms with less than 20 bushels harvested.

2/ Not reported.

Source: 1949, 1954, and 1959 Censuses of Agriculture, U. S. Bureau of the Census.

Table 15

Potatoes, Delaware: Number of farms, acreage and production, with percentage comparisons; censuses of 1949, 1954 and 1959 crops

Potato acreage per farm	Farms reporting			Acres harvested 1/			Quantity harvested		
	1949	1954	1959	1949	1954	1959	1949	1954	1959
	- Number -			- Acres -			- 1,000 cwt. -		
<b>Acres):</b>									
Under one	2,037	1,454	588	312	74	33	25	10	5
1.0 - 1.9	186	43	19	197	53	20	10	4	2
2.0 - 2.9	56	5	9	116	10	19	7	1	2
3.0 - 9.9	44	18	9	190	74	46	13	8	4
3.0 - 4.9	2/	11	5	2/	36	19	2/	4	1
5.0 - 9.9	2/	7	4	2/	38	27	2/	4	3
10.0-24.9	9	5	5	118	74	96	8	8	12
25.0-49.9	0	9	7	0	343	273	0	44	54
50 or more	10	46	57	1,060	5,495	7,569	121	752	1,532
<b>Total</b>	<b>2,342</b>	<b>1,585</b>	<b>694</b>	<b>1,993</b>	<b>6,123</b>	<b>8,056</b>	<b>184</b>	<b>827</b>	<b>1,611</b>

Potato acreage per farm	Percent of total farms reporting			Percent of total acres harvested			Percent of total quantity harvested		
	1949	1954	1959	1949	1954	1959	1949	1954	1959
	- - - - - Percent - - - - -								
<b>Acres):</b>									
Under one	87.0	91.8	84.7	15.7	1.2	.4	13.6	1.2	.3
1.0 - 1.9	7.9	3.0	2.8	9.9	.9	.2	5.4	.5	.1
2.0 - 2.9	2.4	.3	1.3	5.8	.2	.2	3.8	.1	.1
3.0 - 9.9	1.9	1.1	1.3	9.5	1.2	.6	7.1	1.0	.3
3.0 - 4.9	-	.7	.7	-	.6	.2	-	.5	.1
5.0 - 9.9	-	.4	.6	-	.6	.4	-	.5	.2
10.0-24.9	.4	.3	.7	5.9	1.2	1.2	4.3	1.0	.7
25.0-49.9	0	.6	1.0	0	5.6	3.4	0	5.3	3.4
50 or more	.4	2.9	8.2	53.2	89.7	94.0	65.8	90.9	95.1

1/ Does not include acreage for farms with less than 20 bushels harvested.

2/ Not reported.

Source: 1949, 1954, and 1959 Censuses of Agriculture, U. S. Bureau of the Census.

Table 16

Potatoes, Florida: Number of farms, acreage and production with percentage comparisons; censuses of 1949, 1954 and 1959 crops

Potato acreage per farm	Farms reporting			Acres harvested 1/			Quantity harvested		
	1949	1954	1959	1949	1954	1959	1949	1954	1959
	- Number -			- Acres -			- 1,000 cwt. -		
<u>Acre(s):</u>									
Under one	4,656	4,941	887	347	107	35	29	22	5
1.0 - 1.9	274	93	28	291	100	31	16	8	3
2.0 - 2.9	115	41	17	236	84	36	15	7	2
3.0 - 9.9	143	81	23	684	376	119	52	43	10
3.0 - 4.9	2/	45	12	2/	156	40	2/	17	4
5.0 - 9.9	2/	36	11	2/	220	79	2/	26	6
10.0-24.9	64	72	39	1,024	1,182	628	94	179	62
25.0-49.9	66	57	51	2,213	1,984	1,805	284	342	198
50 or more	117	182	158	16,180	28,410	24,600	2,203	4,874	3,038
Total	5,435	5,467	1,203	20,975	32,243	27,254	2,693	5,475	3,318

Potato acreage per farm	Percent of total farms reporting			Percent of total acres harvested			Percent of total quantity harvested		
	1949	1954	1959	1949	1954	1959	1949	1954	1959
	- - - - - Percent - - - - -								
<u>Acre(s):</u>									
Under one	85.7	90.5	73.8	1.7	.3	.1	1.1	.4	.1
1.0 - 1.9	5.0	1.7	2.3	1.4	.3	.1	.6	.1	.1
2.0 - 2.9	2.1	.7	1.4	1.1	.2	.1	.6	.1	.1
3.0 - 9.9	2.6	1.5	1.9	3.3	1.2	.5	1.9	.8	.3
3.0 - 4.9	-	.8	1.0	-	.5	.2	-	.3	.1
5.0 - 9.9	-	.7	.9	-	.7	.3	-	.5	.2
10.0-24.9	1.2	1.3	3.2	4.9	3.7	2.3	3.5	3.3	1.9
25.0-49.9	1.2	1.0	4.2	10.5	6.2	6.6	10.5	6.2	6.0
50 or more	2.2	3.3	13.2	77.1	88.1	90.3	81.8	89.1	91.5

1/ Does not include acreage for farms with less than 20 bushels harvested.

2/ Not reported.

Source: 1949, 1954, and 1959 Censuses of Agriculture, U. S. Bureau of the Census.

Table 17

Potatoes, Georgia: Number of farms, acreage and production with percentage comparisons; censuses of 1949, 1954 and 1959 crops

Potato acreage per farm	Farms reporting			Acres harvested 1/			Quantity harvested		
	1949	1954	1959	1949	1954	1959	1949	1954	1959
	- Number -			- Acres -			- 1,000 cwt. -		
<b>Acres):</b>									
Under one	48,378	42,130	9,439	2,333	813	481	244	182	61
1.0 - 1.9	982	653	209	1,034	668	217	40	22	10
2.0 - 2.9	216	132	35	449	268	71	23	13	4
3.0 - 9.9	207	76	31	875	294	123	58	15	8
3.0 - 4.9	2/	55	22	2/	178	72	2/	8	4
5.0 - 9.9	2/	21	9	2/	116	51	2/	7	4
10.0-24.9	19	11	5	244	136	67	19	11	4
25.0-49.9	1	1	1	35	30	35	2	2	2
50 or more	0	2	0	0	100	0	0	12	0
<b>Total</b>	<b>49,803</b>	<b>43,005</b>	<b>9,720</b>	<b>4,970</b>	<b>2,309</b>	<b>994</b>	<b>386</b>	<b>257</b>	<b>89</b>

Potato acreage per farm	Percent of total farms reporting			Percent of total acres harvested			Percent of total quantity harvested		
	1949	1954	1959	1949	1954	1959	1949	1954	1959
	- - - - - Percent - - - - -								
<b>Acres):</b>									
Under one	97.1	98.0	97.1	47.0	35.2	48.4	63.2	70.8	68.6
1.0 - 1.9	2.0	1.5	2.2	20.8	29.0	21.8	10.4	8.6	11.2
2.0 - 2.9	.5	.3	.4	9.0	11.6	7.1	6.0	5.1	4.5
3.0 - 9.9	.4	.2	.3	17.6	12.7	12.4	15.0	5.8	9.0
3.0 - 4.9	-	.1	.2	-	7.7	7.3	-	3.1	4.5
5.0 - 9.9	-	.1	.1	-	5.0	5.1	-	2.7	4.5
10.0-24.9	3/	3/	3/	4.9	5.9	6.8	4.9	4.3	4.5
25.0-49.9	3/	3/	3/	.7	1.3	3.5	.5	.8	2.2
50 or more	0	3/	0	0	4.3	0	0	4.7	0

1/ Does not include acreage for farms with less than 20 bushels harvested.

2/ Not reported.

3/ Less than one-tenth of one percent.

Source: 1949, 1954, and 1959 Censuses of Agriculture, U. S. Bureau of the Census.

Table 18

Potatoes, Idaho: Number of farms, acreage and production, with percentage comparisons; censuses of 1949, 1954 and 1959 crops

Potato acreage : per farm	Farms reporting :			Acres harvested 1/ :			Quantity harvested		
	1949	1954	1959	1949	1954	1959	1949	1954	1959
<u>Acre(s)</u>		<u>Number</u>			<u>Acres</u>			<u>1,000 cwt.</u>	
Under one	3,378	4,404	972	407	290	86	54	50	12
1.0 - 1.9	339	221	89	383	244	96	43	27	12
2.0 - 2.9	242	139	57	525	349	123	78	48	17
3.0 - 9.9	2,748	1,774	735	17,203	11,241	4,724	2,604	1,885	883
3.0 - 4.9	2/	356	133	2/	1,298	495	2/	210	86
5.0 - 9.9	2/	1,418	602	2/	9,943	4,229	2/	1,675	797
10.0 - 24.9	3,775	3,112	1,962	58,799	47,917	31,423	8,645	8,502	6,176
25.0 - 49.9	1,223	1,200	1,400	40,051	38,960	47,465	5,900	6,649	9,658
50 or more	343	559	1,046	27,155	51,150	115,724	3,996	8,575	23,373
Total	12,048	11,409	6,261	144,523	150,151	199,641	21,320	25,736	40,131

Potato acreage : per farm	Percent of total farms reporting :			Percent of total acres harvested :			Percent of total quantity harvested		
	1949	1954	1959	1949	1954	1959	1949	1954	1959
<u>Acre(s)</u>									
Under one	28.0	38.7	15.5	.3	.2	3/	.3	.2	3/
1.0 - 1.9	2.8	1.9	1.4	.3	.2	3/	.2	.1	3/
2.0 - 2.9	2.0	1.2	.9	.4	.2	.1	.4	.2	3/
3.0 - 9.9	22.8	15.5	11.7	11.9	7.5	2.4	12.2	7.3	2.2
3.0 - 4.9	-	3.1	2.1	-	.9	.3	-	.8	.2
5.0 - 9.9	-	12.4	9.6	-	6.6	2.1	-	6.5	2.0
10.0 - 24.9	31.3	27.3	31.4	40.6	31.9	15.7	40.5	33.0	15.4
25.0 - 49.9	10.2	10.5	22.4	27.7	25.9	23.8	27.7	25.8	24.1
50 or more	2.9	4.9	16.7	18.8	34.1	58.0	18.7	33.4	58.3

Acre(s)

1/ Does not include acreage for farms with less than 20 bushels harvested.

2/ Not reported.

3/ Less than one-tenth of one percent.

Source: 1949, 1954, and 1959 Censuses of Agriculture, U. S. Bureau of the Census.

Table 19

Potatoes, Illinois: Number of farms, acreage and production, with percentage comparisons; censuses of 1949, 1954 and 1959 crops

Potato acreage : per farm :	Farms reporting :			Acres harvested 1/ :			Quantity harvested		
	1949 :	1954 :	1959 :	1949 :	1954 :	1959 :	1949 :	1954 :	1959 :
Acres)		Number		Acres			1,000 cwt.		
Under one	48,140	25,414	21,535	3,188	468	468	378	140	122
1.0 - 1.9	713	231	148	745	242	149	36	10	8
2.0 - 2.9	117	59	24	241	120	48	15	8	3
3.0 - 9.9	85	60	19	396	275	90	32	23	10
3.0 - 4.9	2/	34	8	2/	117	30	2/	9	3
5.0 - 9.9	2/	26	11	2/	158	60	2/	14	7
10.0 - 24.9	16	19	9	208	224	111	18	22	14
25.0 - 49.9	7	5	4	205	175	148	20	11	28
50 or more	6	2	4	495	100	530	67	14	81
Total	49,084	25,790	21,743	5,478	1,604	1,544	566	228	266

Potato acreage : per farm :	Percent of total farms reporting :			Percent of total acres harvested :			Percent of total quantity harvested		
	1949 :	1954 :	1959 :	1949 :	1954 :	1959 :	1949 :	1954 :	1959 :

Acres)									
Under one	98.1	98.6	99.0	58.2	29.2	30.3	66.7	61.4	45.9
1.0 - 1.9	1.5	.9	.7	13.6	15.1	9.7	6.4	4.4	3.0
2.0 - 2.9	.2	.2	.1	4.4	7.5	3.1	2.6	3.5	1.1
3.0 - 9.9	.2	.2	.1	7.2	17.1	5.8	5.6	10.1	3.7
3.0 - 4.9	-	.1	3/	-	7.3	1.9	-	3.9	1.1
5.0 - 9.9	-	.1	.1	-	9.8	3.9	-	6.2	2.6
10.0 - 24.9	3/	.1	3/	3.8	14.0	7.2	3.2	9.6	5.3
25.0 - 49.9	3/	3/	3/	3.8	10.9	9.6	3.6	4.8	10.5
50 or more	3/	3/	3/	9.0	6.2	34.3	11.9	6.2	30.5

1/ Does not include acreage for farms with less than 20 bushels harvested.

2/ Not reported.

3/ Less than one-tenth of one percent.

Source: 1949, 1954, and 1959 Censuses of Agriculture, U. S. Bureau of the Census.



Table 20

Potatoes, Indiana: Number of farms, acreage and production, with percentage comparisons; censuses of 1949, 1954 and 1959 crops

Potato acreage : per farm	Farms reporting			Acres harvested 1/			Quantity harvested		
	1949	1954	1959	1949	1954	1959	1949	1954	1959
<u>Acres(s)</u>		<u>Number</u>			<u>Acres</u>			<u>1,000 cwt.</u>	
Under one	32,938	28,311	13,520	2,275	662	549	269	174	106
1.0 - 1.9	778	280	139	835	292	148	40	16	9
2.0 - 2.9	177	85	39	363	174	81	23	12	5
3.0 - 9.9	295	151	73	1,348	724	366	117	89	42
3.0 - 4.9	2/	78	35	2/	263	119	2/	27	12
5.0 - 9.9	2/	73	38	2/	461	247	2/	62	30
10.0 - 24.9	89	66	34	1,326	918	535	173	144	94
25.0 - 49.9	41	26	29	1,492	928	955	211	166	180
50 or more	19	16	20	4,044	3,779	4,030	760	1,146	1,150
Total	34,337	28,935	13,854	11,683	7,477	6,664	1,593	1,747	1,586

Potato acreage : per farm	Percent of total farms reporting			Percent of total acres harvested			Percent of total quantity harvested		
	1949	1954	1959	1949	1954	1959	1949	1954	1959
<u>Acres(s)</u>									
Under one	95.9	97.8	97.6	19.5	8.9	8.3	16.9	10.0	6.7
1.0 - 1.9	2.3	1.0	1.0	7.1	3.9	2.2	2.5	.9	.6
2.0 - 2.9	.5	.3	.3	3.1	2.3	1.2	1.5	.7	.3
3.0 - 9.9	.9	.6	.5	11.5	9.7	5.5	7.3	5.1	2.7
3.0 - 4.9	-	.3	.2	-	3.5	1.8	-	1.6	.8
5.0 - 9.9	-	.3	.3	-	6.2	3.7	-	3.5	1.9
10.0 - 24.9	.3	.2	.3	11.4	12.3	8.0	10.9	8.2	5.9
25.0 - 49.9	.1	.1	.2	12.8	12.4	14.3	13.2	9.5	11.3
50 or more	3/	3/	.1	34.6	50.5	60.5	47.7	65.6	72.5

1/ Does not include acreage for farms with less than 20 bushels harvested.

2/ Not reported.

3/ Less than one-tenth of one percent.

Source: 1949, 1954, and 1959 Censuses of Agriculture, U. S. Bureau of the Census.

Table 21

Potatoes, Iowa: Number of farms, acreage and production, with percentage comparisons; censuses of 1949, 1954 and 1959 crops

Potato acreage : per farm	Farms reporting			Acres harvested 1/			Quantity harvested		
	1949	1954	1959	1949	1954	1959	1949	1954	1959
<u>Acre(s)</u>		<u>Number</u>		<u>Acres</u>				<u>1,000 cwt.</u>	
Under one	50,261	35,210	17,899	4,309	901	577	428	215	119
1.0 - 1.9	1,034	329	157	1,061	343	170	34	14	12
2.0 - 2.9	85	57	32	175	116	67	5	6	8
3.0 - 9.9	115	55	65	495	248	296	29	18	30
3.0 - 4.9	2/	32	38	2/	109	131	2/	5	15
5.0 - 9.9	2/	23	27	2/	139	165	2/	13	15
10.0 - 24.9	25	27	7	359	374	94	37	29	10
25.0 - 49.9	9	2	3	285	65	89	38	4	5
50 or more	10	8	7	1,340	1,144	1,355	220	179	277
Total	51,539	35,688	18,170	8,024	3,191	2,648	791	465	461

Potato acreage : per farm	Percent of total farms reporting			Percent of total acres harvested			Percent of total quantity harvested		
	1949	1954	1959	1949	1954	1959	1949	1954	1959
	----- Percent -----								
<u>Acre(s)</u>									
Under one	97.5	98.6	98.5	53.7	28.2	21.8	54.1	46.2	25.8
1.0 - 1.9	2.0	.9	.9	13.2	10.8	6.4	4.3	3.0	2.6
2.0 - 2.9	.2	.2	.2	2.2	3.6	2.5	.6	1.3	1.7
3.0 - 9.9	.2	.2	.4	6.2	7.8	11.2	3.7	3.9	6.5
3.0 - 4.9	-	.1	.2	-	3.4	5.0	-	1.1	3.2
5.0 - 9.9	-	.1	.2	-	4.4	6.2	-	2.8	3.3
10.0 - 24.9	.1	.1	3/	4.5	11.7	3.5	4.7	6.2	2.2
25.0 - 49.9	3/	3/	3/	3.5	2.0	3.4	4.8	.9	1.1
50 or more	3/	3/	3/	16.7	35.9	51.2	27.8	38.5	60.1

1/ Does not include acreage for farms with less than 20 bushels harvested.

2/ Not reported.

3/ Less than one-tenth of one percent.

Source: 1949, 1954, and 1959 Censuses of Agriculture, U. S. Bureau of the Census.

Table 22

Potatoes, Kansas: Number of farms, acreage and production with percentage comparisons; censuses of 1949, 1954 and 1959 crops

Potato acreage per farm	Farms reporting			Acres harvested 1/			Quantity harvested		
	1949	1954	1959	1949	1954	1959	1949	1954	1959
	- Number -			- Acres -			- 1,000 cwt. -		
<u>Acre(s):</u>									
Under one	31,441	19,796	13,424	2,104	456	415	231	116	86
1.0 - 1.9	318	118	100	331	128	89	10	4	4
2.0 - 2.9	40	21	24	82	43	49	2	1	3
3.0 - 9.9	35	18	49	170	77	107	9	5	12
3.0 - 4.9	2/	12	38	2/	39	27	2/	3	2
5.0 - 9.9	2/	6	11	2/	38	80	2/	2	10
10.0-24.9	14	6	5	185	76	74	15	5	12
25.0-49.9	18	4	4	601	139	155	50	11	17
50 or more	13	5	4	1,372	348	270	143	22	23
Total	31,879	19,968	13,610	4,845	1,267	1,159	460	164	157

Potato acreage per farm	Percent of total farms reporting			Percent of total acres harvested			Percent of total quantity harvested		
	1949	1954	1959	1949	1954	1959	1949	1954	1959
	- - - - - Percent - - - - -								
<u>Acre(s):</u>									
Under one	98.6	99.2	98.7	43.4	35.9	35.8	50.2	70.8	54.8
1.0 - 1.9	1.0	.6	.7	6.9	10.1	7.7	2.1	2.5	2.5
2.0 - 2.9	.2	.1	.2	1.7	3.4	4.2	.4	.6	1.9
3.0 - 9.9	.1	.1	.4	3.5	6.1	9.2	2.0	3.0	7.7
3.0 - 4.9	-	.1	.3	-	3.1	2.3	-	1.8	1.3
5.0 - 9.9	-	3/	.1	-	3.0	6.9	-	1.2	6.4
10.0-24.9	3/	3/	3/	3.8	6.0	6.4	3.3	3.0	7.6
25.0-49.9	.1	3/	3/	12.4	11.0	13.4	10.9	6.7	10.8
50 or more	3/	3/	3/	28.3	27.5	23.3	31.1	13.4	14.7

1/ Does not include acreage for farms with less than 20 bushels harvested.

2/ Not reported.

3/ Less than one-tenth of one percent.

Source: 1949, 1954, and 1959 Censuses of Agriculture, U. S. Bureau of the Census.

Table 23

Potatoes, Kentucky: Number of farms, acreage and production with percentage comparisons; censuses of 1949, 1954 and 1959 crops

Potato acreage per farm	Farms reporting			Acres harvested 1/			Quantity harvested		
	1949	1954	1959	1949	1954	1959	1949	1954	1959
	- Number -			- Acres -			- 1,000 cwt. -		
<b>Acre(s):</b>									
Under one	108,731	110,632	72,855	8,129	3,816	3,900	862	832	659
1.0 - 1.9	2,360	1,453	848	2,429	1,479	887	72	44	35
2.0 - 2.9	241	110	72	490	225	148	23	10	7
3.0 - 9.9	157	61	48	756	287	243	52	19	21
3.0 - 4.9	2/	32	24	2/	104	81	2/	7	5
5.0 - 9.9	2/	29	24	2/	183	162	2/	12	16
10.0-24.9	76	33	25	1,059	479	354	69	28	28
25.0-49.9	24	6	1	813	201	32	59	13	3
50 or more	2	2	2	110	175	165	8	9	20
<b>Total</b>	<b>111,591</b>	<b>112,297</b>	<b>73,851</b>	<b>13,786</b>	<b>6,662</b>	<b>5,729</b>	<b>1,145</b>	<b>955</b>	<b>773</b>

Potato acreage per farm	Percent of total farms reporting			Percent of total acres harvested			Percent of total quantity harvested		
	1949	1954	1959	1949	1954	1959	1949	1954	1959
	- - - - - Percent - - - - -								
<b>Acre(s):</b>									
Under one	97.5	98.5	98.7	59.0	57.3	68.1	75.3	87.1	85.3
1.0 - 1.9	2.1	1.3	1.1	17.6	22.2	15.5	6.3	4.6	4.5
2.0 - 2.9	.2	.1	.1	3.5	3.4	2.6	2.0	1.0	.9
3.0 - 9.9	.1	.1	.1	5.5	4.3	4.2	4.5	2.0	2.7
3.0 - 4.9	-	3/	3/	-	1.6	1.4	-	.7	.6
5.0 - 9.9	-	3/	3/	-	2.7	2.8	-	1.3	2.1
10.0-24.9	.1	3/	3/	7.7	7.2	6.2	6.0	2.9	3.6
25.0-49.9	3/	3/	3/	5.9	3.0	.5	5.2	1.4	.4
50 or more	3/	3/	3/	.8	2.6	2.9	.7	1.0	2.6

1/ Does not include acreage for farms with less than 20 bushels harvested.

2/ Not reported.

3/ Less than one-tenth of one percent.

Source: 1949, 1954, and 1959 Censuses of Agriculture, U. S. Bureau of the Census.

Table 24

Potatoes, Louisiana: Number of farms, acreage and production, with percentage comparisons; censuses of 1949, 1954 and 1959 crops

Potato acreage per farm	Farms reporting			Acres harvested 1/			Quantity harvested		
	1949	1954	1959	1949	1954	1959	1949	1954	1959
	- Number -			- Acres -			- 1,000 cwt. -		
<b>Acre(s):</b>									
Under one	23,421	25,341	8,634	2,613	1,340	669	184	191	71
1.0 - 1.9	1,842	1,248	445	1,909	1,296	461	60	46	16
2.0 - 2.9	395	241	80	804	487	162	23	18	7
3.0 - 9.9	401	273	100	1,696	1,226	442	52	53	19
3.0 - 4.9	2/	162	58	2/	538	191	2/	23	8
5.0 - 9.9	2/	111	42	2/	688	251	2/	30	11
10.0-24.9	49	70	38	664	964	551	22	46	27
25.0-49.9	12	18	7	376	582	230	12	31	14
50 or more	9	8	6	983	1,077	697	47	73	41
<b>Total</b>	<b>26,129</b>	<b>27,199</b>	<b>9,310</b>	<b>9,045</b>	<b>6,972</b>	<b>3,212</b>	<b>400</b>	<b>458</b>	<b>195</b>

Potato acreage per farm	Percent of total farms reporting			Percent of total acres harvested			Percent of total quantity harvested		
	1949	1954	1959	1949	1954	1959	1949	1954	1959
	- - - - - Percent - - - - -								
<b>Acre(s):</b>									
Under one	89.7	93.1	92.7	28.9	19.2	20.8	46.0	41.7	36.4
1.0 - 1.9	7.0	4.0	4.8	21.1	18.6	14.3	15.0	10.0	8.2
2.0 - 2.9	1.5	.9	.9	8.9	7.0	5.0	5.8	4.0	3.6
3.0 - 9.9	1.5	1.0	1.0	18.8	17.6	13.8	13.8	13.0	9.7
3.0 - 4.9	-	.6	.6	-	7.7	6.0	-	5.0	4.1
5.0 - 9.9	-	.4	.4	-	9.9	7.8	-	6.6	5.6
10.0-24.9	.2	.3	.4	7.3	13.8	17.2	5.5	10.0	13.9
25.0-49.9	.1	.1	.1	4.1	8.4	7.2	3.0	6.8	7.2
50 or more	3/	3/	.1	10.9	15.4	21.7	11.7	15.9	21.0

1/ Does not include acreage for farms with less than 20 bushels harvested.

2/ Not reported.

3/ Less than one-tenth of one percent.

Source: 1949, 1954, and 1959 Censuses of Agriculture, U. S. Bureau of the Census.

Table 25

Potatoes, Maine: Number of farms, acreage and production, with percentage comparisons; censuses of 1949, 1954 and 1959 crops

Potato acreage : per farm	Farms reporting			Acres harvested <sup>1/</sup>			Quantity harvested		
	1949	1954	1959	1949	1954	1959	1949	1954	1959
Acre(s)	Number			Acres			1,000 cwt.		
Under one	9,105	5,084	2,815	1,512	560	258	163	68	44
1.0 - 1.9	794	372	207	856	396	227	86	34	23
2.0 - 2.9	346	122	81	786	259	166	153	29	20
3.0 - 9.9	906	442	229	4,957	2,481	1,199	1,127	334	256
3.0 - 4.9	2/	154	93	2/	524	319	2/	74	53
5.0 - 9.9	2/	288	136	2/	1,957	880	2/	260	203
10.0 - 24.9	1,668	1,147	562	28,172	19,316	9,507	7,199	3,976	2,216
25.0 - 49.9	1,408	1,322	951	48,545	45,237	34,055	13,631	9,877	8,128
50 or more	677	734	973	58,563	62,054	87,937	17,136	13,955	21,282
Total	14,904	9,223	5,818	143,391	130,303	133,349	39,495	28,273	31,969
Potato acreage : per farm	Percent of total farms reporting			Percent of total acres harvested			Percent of total quantity harvested		
	1949	1954	1959	1949	1954	1959	1949	1954	1959
Acre(s)	Percent								
Under one	61.1	55.1	48.4	1.1	.4	.2	.4	.2	.1
1.0 - 1.9	5.3	4.0	3.5	.6	.3	.2	.2	.1	.1
2.0 - 2.9	2.3	1.3	1.4	.5	.2	.1	.4	.1	.1
3.0 - 9.9	6.1	4.8	3.9	3.5	1.9	.9	2.9	1.2	.8
3.0 - 4.9	-	1.7	1.6	-	.4	.2	-	.3	.2
5.0 - 9.9	-	3.1	2.3	-	1.5	.7	-	.9	.6
10.0 - 24.9	11.2	12.4	9.7	19.6	14.8	7.1	18.2	14.1	6.9
25.0 - 49.9	9.4	14.4	16.3	33.9	34.7	25.5	34.5	34.9	25.4
50 or more	4.6	8.0	16.7	40.8	47.7	66.0	43.4	49.4	66.6

<sup>1/</sup> Does not include acreage for farms with less than 20 bushels harvested.

<sup>2/</sup> Not reported.

Source: 1949, 1954, and 1959 Censuses of Agriculture, U. S. Bureau of the Census.

Table 26

Potatoes, Maryland: Number of farms, acreage and production, with percentage comparisons; censuses of 1949, 1954 and 1959 crops

Potato acreage per farm	Farms reporting			Acres harvested 1/			Quantity harvested		
	1949	1954	1959	1949	1954	1959	1949	1954	1959
	-Number-			-Acres-			-1,000 cwt.-		
<b>Acres):</b>									
Under one	10,639	9,551	3,715	1,669	620	411	137	86	45
1.0 - 1.9	1,629	435	243	1,319	468	253	77	23	14
2.0 - 2.9	235	63	34	493	127	71	26	6	5
3.0 - 9.9	258	73	39	1,286	354	173	100	30	17
3.0 - 4.9	2/	40	27	2/	134	95	2/	9	8
5.0 - 9.9	2/	33	12	2/	220	78	2/	21	9
10.0-24.9	111	38	27	1,694	578	460	181	50	50
25.0-49.9	52	30	13	1,694	975	435	181	79	54
50 or more	17	17	20	1,104	1,458	1,967	101	174	306
<b>Total</b>	<b>12,941</b>	<b>10,207</b>	<b>4,091</b>	<b>9,259</b>	<b>4,580</b>	<b>3,770</b>	<b>803</b>	<b>448</b>	<b>491</b>

Potato acreage per farm	Percent of total farms reporting			Percent of total acres harvested			Percent of total quantity harvested		
	1949	1954	1959	1949	1954	1959	1949	1954	1959
	-Percent-								
<b>Acres):</b>									
Under one	82.2	93.5	90.8	18.0	13.5	10.9	17.1	19.2	9.2
1.0 - 1.9	12.6	4.3	5.9	14.3	10.2	6.7	9.6	5.1	2.8
2.0 - 2.9	1.8	.6	.8	5.3	2.8	1.9	3.2	1.3	1.0
3.0 - 9.9	2.0	.7	1.0	13.9	7.7	4.6	12.5	6.7	3.5
3.0 - 4.9	-	.4	.7	-	2.9	2.5	-	2.0	1.6
5.0 - 9.9	-	.3	.3	-	4.8	2.1	-	4.7	1.9
10.0-24.9	.9	.4	.7	18.3	12.6	12.2	22.5	11.2	10.2
25.0-49.9	.4	.3	.3	18.3	21.3	11.5	22.5	17.6	11.0
50 or more	.1	.2	.5	11.9	31.9	52.2	12.6	38.9	62.3

1/ Does not include acreage for farms with less than 20 bushels harvested.

2/ Not reported.

Source: 1949, 1954, and 1959 Censuses of Agriculture, U. S. Bureau of the Census.

Table 27

Potatoes, Massachusetts: Number of farms, acreage and production, with percentage comparisons; censuses of 1949, 1954 and 1959 crops

Potato acreage : per farm	Farms reporting			Acres harvested 1/			Quantity harvested		
	1949	1954	1959	1949	1954	1959	1949	1954	1959
<u>Acre(s)</u>	<u>Number</u>			<u>Acres</u>			<u>1,000 cwt.</u>		
Under one	3,557	2,195	781	663	300	118	61	34	15
1.0 - 1.9	611	193	140	666	220	152	55	23	16
2.0 - 2.9	184	177	66	384	593	135	35	91	19
3.0 - 9.9	384	152	164	1,806	736	797	220	112	148
3.0 - 4.9	2/	75	85	2/	267	295	2/	40	43
5.0 - 9.9	2/	77	79	2/	469	502	2/	72	105
10.0 - 24.9	129	88	62	1,857	1,321	900	282	216	157
25.0 - 49.9	35	32	18	1,172	1,276	636	182	232	122
50 or more	32	14	39	3,022	1,670	3,281	535	306	725
Total	4,932	2,851	1,270	9,570	6,116	6,019	1,370	1,014	1,202

Potato acreage : per farm	Percent of total farms reporting			Percent of total acres harvested			Percent of total quantity harvested		
	1949	1954	1959	1949	1954	1959	1949	1954	1959
<u>Acre(s)</u>	Percent								
Under one	72.1	77.0	61.5	6.9	4.9	2.0	4.5	3.4	1.2
1.0 - 1.9	12.4	6.8	11.0	7.0	3.6	2.5	4.0	2.3	1.3
2.0 - 2.9	3.7	6.2	5.2	4.0	9.7	2.2	2.5	8.9	1.6
3.0 - 9.9	7.8	5.3	12.9	18.9	12.0	13.2	16.1	11.0	12.3
3.0 - 4.9	-	2.6	6.7	-	4.3	4.9	-	3.9	3.6
5.0 - 9.9	-	2.7	6.2	-	7.7	8.3	-	7.1	8.7
10.0 - 24.9	2.6	3.1	4.9	19.4	21.6	15.0	20.6	21.3	13.1
25.0 - 49.9	.7	1.1	1.4	12.2	20.9	10.6	13.2	22.9	10.2
50 or more	.7	.5	3.1	31.6	27.3	54.5	39.1	30.2	60.3

1/ Does not include acreage for farms with less than 20 bushels harvested.

2/ Not reported.

Source: 1949, 1954, and 1959 Censuses of Agriculture, U. S. Bureau of the Census.



Table 28

Potatoes, Michigan: Number of farms, acreage and production, with percentage comparisons; censuses of 1949, 1954 and 1959 crops

Potato acreage per farm	Farms reporting			Acres harvested 1/			Quantity harvested		
	1949	1954	1959	1949	1954	1959	1949	1954	1959
	-Number-			-Acres-			-1,000 cwt.-		
<b>Acre(s):</b>									
Under one	33,346	26,703	8,185	7,060	2,794	1,164	560	311	114
2.0 - 1.9	7,431	2,920	1,338	7,988	3,135	1,463	454	191	91
2.0 - 2.9	2,431	1,022	477	5,051	2,118	982	334	158	74
3.0 - 9.9	4,464	2,152	1,073	22,298	11,072	5,542	2,085	1,172	627
3.0 - 4.9	2/	1,004	490	2/	3,477	1,719	2/	313	170
5.0 - 9.9	2/	1,148	583	2/	7,595	3,823	2/	859	457
10.0-24.9	1,479	967	642	21,172	14,085	9,678	2,409	1,835	1,351
25.0-49.9	331	282	285	10,795	9,243	9,708	1,299	1,252	1,484
50 or more	123	125	183	9,778	10,775	17,385	1,383	1,847	3,185
<b>Total</b>	<b>49,605</b>	<b>34,171</b>	<b>12,183</b>	<b>84,142</b>	<b>53,222</b>	<b>45,922</b>	<b>8,524</b>	<b>6,766</b>	<b>6,926</b>

Potato acreage: per farm	Percent of total farms reporting			Percent of total acres harvested			Percent of total quantity harvested		
	1949	1954	1959	1949	1954	1959	1949	1954	1959
	-percent-								
<b>Acre(s):</b>									
Under one	67.2	78.2	67.2	8.4	5.2	2.5	6.6	4.6	1.6
1.0 - 1.9	15.0	8.5	11.0	9.5	5.9	3.2	5.3	2.8	1.3
2.0 - 2.9	4.9	3.0	3.9	6.0	4.0	2.1	3.9	2.3	1.1
3.0 - 9.9	9.0	6.3	8.8	26.5	20.8	12.1	24.5	17.3	9.1
3.0 - 4.9	-	2.9	4.0	-	6.5	3.8	-	4.6	2.5
5.0 - 9.9	-	3.4	4.8	-	14.3	8.3	-	12.7	6.6
10.0-24.9	3.0	2.8	5.3	25.2	26.5	21.1	28.3	27.1	19.5
25.0-49.9	.7	.8	2.3	12.8	17.4	21.1	15.2	18.5	21.4
50 or more	.2	.4	1.5	11.6	20.2	37.9	16.2	27.4	46.0

1/ Does not include acreage for farms with less than 20 bushels harvested.

2/ Not Reported.

Source: 1949, 1954, and 1959 Censuses of Agriculture, U. S. Bureau of the Census.

Table 29

Potatoes, Minnesota: Number of farms, acreage and production, with percentage comparisons; censuses of 1949, 1954 and 1959 crops

Potato acreage : per farm	Farms reporting			Acres harvested 1/			Quantity harvested		
	1949	1954	1959	1949	1954	1959	1949	1954	1959
Acre(s)		Number			Acres			1,000 cwt.	
Under one	44,578	43,225	18,866	8,347	4,298	1,598	567	486	187
1.0 - 1.9	6,369	2,382	876	6,723	2,506	935	271	134	49
2.0 - 2.9	1,217	512	265	2,505	1,054	554	113	62	38
3.0 - 9.9	1,334	671	377	6,339	3,335	1,809	422	315	178
3.0 - 4.9	2/	353	198	2/	1,171	663	2/	86	61
5.0 - 9.9	2/	318	179	2/	2,164	1,146	2/	229	117
10.0 - 24.9	602	508	291	9,380	7,929	4,570	936	940	532
25.0 - 49.9	441	414	303	15,375	14,160	11,388	1,619	1,789	1,391
50 or more	387	429	493	39,570	47,017	67,217	4,761	6,684	8,894
Total	54,928	48,141	21,471	88,239	80,299	88,071	8,689	10,410	11,269

Potato acreage : per farm	Percent of total farms reporting			Percent of total acres harvested			Percent of total quantity harvested		
	1949	1954	1959	1949	1954	1959	1949	1954	1959
Acre(s)									
Under one	81.2	89.7	87.9	9.5	5.4	1.8	6.5	4.7	1.7
1.0 - 1.9	11.6	4.9	4.1	7.6	3.1	1.1	3.1	1.3	.4
2.0 - 2.9	2.2	1.1	1.2	2.8	1.3	.6	1.3	.6	.3
3.0 - 9.9	2.4	1.4	1.7	7.2	4.1	2.1	4.9	3.0	1.6
3.0 - 4.9	-	.7	.9	-	1.4	.8	-	.8	.5
5.0 - 9.9	-	.7	.8	-	2.7	1.3	-	2.2	1.1
10.0 - 24.9	1.1	1.1	1.4	10.6	9.9	5.2	10.8	9.0	4.7
25.0 - 49.9	.8	.9	1.4	17.4	17.6	12.9	18.6	17.2	12.4
50 or more	.7	.9	2.3	44.9	58.6	76.3	54.8	64.2	78.9

1/ Does not include acreage for farms with less than 20 bushels harvested.

2/ Not reported.

Source: 1949, 1954, and 1959 Censuses of Agriculture, U. S. Bureau of the Census.

Table 30

Potatoes, Mississippi: Number of farms, acreage and production, with percentage comparisons; censuses of 1949, 1954 and 1959 crops

Potato acreage per farm	Farms reporting			Acres harvested 1/			Quantity harvested		
	1949	1954	1959	1949	1954	1959	1949	1954	1959
	- Number -			- Acres -			- 1,000 cwt. -		
<b>Acre(s):</b>									
Under one	72,668	75,335	27,475	3,532	2,099	945	375	433	160
1.0 - 1.9	1,533	854	332	1,571	872	343	50	32	14
2.0 - 2.9	166	89	25	346	183	51	12	8	2
3.0 - 9.9	69	36	22	273	141	99	8	7	7
3.0 - 4.9	2/	26	13	2/	87	47	2/	4	3
5.0 - 9.9	2/	10	9	2/	54	52	2/	3	4
10.0-24.9	8	4	2	90	60	20	3	6	2
25.0-49.9	0	1	0	0	40	0	0	2	0
50 or more	1	1	1	70	68	86	3	5	4
<b>Total</b>	<b>74,445</b>	<b>76,320</b>	<b>27,857</b>	<b>5,882</b>	<b>3,463</b>	<b>1,544</b>	<b>451</b>	<b>493</b>	<b>189</b>

Potato acreage per farm	Percent of total farms reporting			Percent of total acres harvested			Percent of total quantity harvested		
	1949	1954	1959	1949	1954	1959	1949	1954	1959
	- - - - - Percent - - - - -								
<b>Acre(s):</b>									
Under one	97.6	98.8	98.6	60.0	60.5	61.2	83.1	87.9	84.6
1.0 - 1.9	2.1	1.1	1.2	26.7	25.2	22.2	11.1	6.5	7.4
2.0 - 2.9	.2	.1	.1	5.9	5.3	3.3	2.6	1.6	1.1
3.0 - 9.9	.1	3/	.1	4.7	4.1	6.4	1.8	1.4	3.7
3.0 - 4.9	-	3/	.1	-	2.5	3.0	-	.8	1.6
5.0 - 9.9	-	3/	3/	-	1.6	3.4	-	.6	2.1
10.0-24.9	3/	3/	3/	1.5	1.7	1.3	.7	1.2	1.1
25.0-49.9	3/	3/	0	0	1.2	0	0	.4	0
50 or more	3/	3/	3/	1.2	2.0	5.6	.7	1.0	2.1

1/ Does not include acreage for farms with less than 20 bushels harvested.

2/ Not reported.

3/ Less than one-tenth of one percent.

Source: 1949, 1954, and 1959 Censuses of Agriculture, U. S. Bureau of the Census.

Table 31

Potatoes, Missouri: Number of farms, acreage and production, with percentage comparisons; censuses of 1949, 1954 and 1959 crops

Potato acreage : per farm	Farms reporting :			Acres harvested 1/ :			Quantity harvested		
	1949	1954	1959	1949	1954	1959	1949	1954	1959
<u>Acre(s)</u>		<u>Number</u>			<u>Acres</u>			<u>1,000 cwt.</u>	
Under one	104,135	77,995	51,318	7,455	1,075	1,604	883	414	365
1.0 - 1.9	1,018	342	273	1,065	353	290	37	18	18
2.0 - 2.9	135	50	32	273	100	65	13	5	6
3.0 - 9.9	95	71	29	386	330	147	24	21	18
3.0 - 4.9	2/	32	18	2/	110	65	2/	6	9
5.0 - 9.9	2/	39	11	2/	220	82	2/	15	9
10.0 - 24.9	32	21	13	479	269	211	37	18	22
25.0 - 49.9	12	8	4	400	286	133	29	20	13
50 or more	15	6	2	1,326	510	200	88	41	32
Total	105,442	78,493	51,671	11,384	2,923	2,650	1,111	537	474

Potato acreage : per farm	Percent of total :			Percent of total :			Percent of total		
	1949	1954	1959	1949	1954	1959	1949	1954	1959
		<u>farms reporting</u>			<u>acres harvested</u>			<u>quantity harvested</u>	
									Percent

<u>Acre(s)</u>									
Under one	98.8	99.4	99.3	65.5	36.8	60.5	79.5	77.1	77.0
1.0 - 1.9	1.0	.4	.5	9.4	12.1	10.9	3.3	3.4	3.8
2.0 - 2.9	.1	.1	.1	2.4	3.4	2.5	1.2	.9	1.3
3.0 - 9.9	.1	.1	.1	3.4	11.3	5.5	2.2	3.9	3.8
3.0 - 4.9	-	3/	3/	-	3.8	2.4	-	1.1	1.9
5.0 - 9.9	-	3/	3/	-	7.5	3.1	-	2.8	1.9
10.0 - 24.9	3/	3/	3/	4.2	9.2	8.0	3.3	3.4	4.6
25.0 - 49.9	3/	3/	3/	3.5	9.8	5.0	2.6	3.7	2.7
50 or more	3/	3/	3/	11.6	17.4	7.6	7.9	7.6	6.8

1/ Does not include acreage for farms with less than 20 bushels harvested.

2/ Not reported.

3/ Less than one-tenth of one percent.

Source: 1949, 1954, and 1959 Censuses of Agriculture, U. S. Bureau of the Census.

Table 32

Potatoes, Montana: Number of farms, acreage and production, with percentage comparisons; censuses of 1949, 1954 and 1959 crops

Potato acreage per farm	Farms reporting			Acres harvested 1/			Quantity harvested		
	1949	1954	1959	1949	1954	1959	1949	1954	1959
	- Number -			- Acres -			- 1,000 cwt. -		
<u>Acre(s):</u>									
Under one	6,282	8,174	3,226	758	665	280	81	89	32
1.0 - 1.9	497	360	153	536	382	142	31	30	11
2.0 - 2.9	167	89	48	356	186	100	27	16	8
3.0 - 9.9	296	150	89	1,663	720	463	160	83	55
3.0 - 4.9	2/	81	36	2/	280	119	2/	26	12
5.0 - 9.9	2/	69	53	2/	440	344	2/	57	43
10.0-24.9	131	108	75	1,912	1,913	1,266	223	307	212
25.0-49.9	72	52	60	2,552	1,639	2,282	341	259	366
50 or more	44	28	35	4,212	2,277	2,891	574	367	464
Total	7,489	8,961	3,686	11,989	7,782	7,424	1,437	1,151	1,148

Potato acreage per farm	Percent of total farms reporting			Percent of total acres harvested			Percent of total quantity harvested		
	1949	1954	1959	1949	1954	1959	1949	1954	1959
	- - - - - Percent - - - - -								
<u>Acre(s):</u>									
Under one	83.9	91.2	87.5	6.3	8.5	3.8	5.6	7.7	2.8
1.0 - 1.9	6.6	4.0	4.2	4.5	4.9	1.9	2.2	2.6	1.0
2.0 - 2.9	2.2	1.0	1.3	3.0	2.4	1.4	1.9	1.4	.7
3.0 - 9.9	3.9	1.7	2.4	13.9	9.2	6.2	11.1	7.2	4.8
3.0 - 4.9	-	.9	1.0	-	3.6	1.6	-	2.3	1.0
5.0 - 9.9	-	.8	1.4	-	5.6	4.6	-	4.9	3.8
10.0-24.9	1.8	1.2	2.0	15.9	24.6	17.1	15.5	26.7	18.4
25.0-49.9	1.0	.6	1.6	21.3	21.1	30.7	23.7	22.5	31.9
50 or more	.6	.3	1.0	35.1	29.3	38.9	40.0	31.9	40.4

1/ Does not include acreage for farms with less than 20 bushels harvested.

2/ Not reported.

Source: 1949, 1954, and 1959 Censuses of Agriculture, U. S. Bureau of the Census.

Table 33

Potatoes, Nebraska: Number of farms, acreage and production, with percentage comparisons; censuses of 1949, 1954 and 1959 crops

Potato acreage per farm	Farms reporting			Acres Harvested 1/			Quantity harvested		
	1949	1954	1959	1949	1954	1959	1949	1954	1959
	- Number -			- Acres -			- 1,000 cwt. -		
<b>Acres(s):</b>									
Under one	21,085	17,147	7,487	2,131	850	541	172	125	70
1.0 - 1.9	539	303	157	566	316	167	20	13	10
2.0 - 2.9	107	58	31	220	116	63	9	5	1
3.0 - 9.9	389	244	92	2,384	1,519	566	313	211	75
3.0 - 4.9	2/	59	23	2/	204	83	2/	15	8
5.0 - 9.9	2/	185	69	2/	1,315	483	2/	196	67
10.0-24.9	811	458	252	12,594	6,924	3,909	1,925	1,137	802
25.0-49.9	308	139	114	10,037	4,496	3,849	1,478	713	673
50 or more	84	60	54	7,577	4,857	4,353	935	561	748
Total	23,323	18,409	8,187	35,509	19,078	13,448	4,852	2,765	2,379

Potato acreage per farm	Percent of total farms reporting			Percent of total acres harvested			Percent of total quantity harvested		
	1949	1954	1959	1949	1954	1959	1949	1954	1959
	- - - - - Percent - - - - -								
<b>Acres(s):</b>									
Under one	90.4	93.2	91.4	6.0	4.4	4.0	3.5	4.5	2.9
1.0 - 1.9	2.3	1.6	1.9	1.6	1.7	1.2	.4	.5	.4
2.0 - 2.9	.4	.3	.4	.6	.6	.5	.2	.2	3/
3.0 - 9.9	1.7	1.3	1.1	6.7	8.0	4.2	6.4	7.6	3.2
3.0 - 4.9	-	.3	.3	-	1.1	.6	-	.5	.4
5.0 - 9.9	-	1.0	.8	-	6.9	3.6	-	7.1	2.8
10.0-24.9	3.5	2.5	3.1	35.5	36.3	29.1	39.7	41.1	33.7
25.0-49.9	1.3	.8	1.4	28.3	23.6	28.6	30.5	25.8	28.3
50 or more	.4	.3	.7	21.3	25.5	32.4	19.3	20.3	31.5

1/ Does not include acreage for farms with less than 20 bushels harvested.

2/ Not reported.

3/ Less than one-tenth of one percent.

Source: 1949, 1954, and 1959 Censuses of Agriculture, U. S. Bureau of the Census.

Table 34

Potatoes, Nevada: Number of farms, acreage and production, with percentage comparisons; censuses of 1949, 1954 and 1959 crops

Potato acreage : per farm	Farms reporting			Acres harvested 1/			Quantity harvested		
	1949	1954	1959	1949	1954	1959	1949	1954	1959
<u>Acre(s)</u>		<u>Number</u>			<u>Acres</u>			<u>1,000 cwt.</u>	
Under one	296	195	70	51	32	10	6	3	1
1.0 - 1.9	83	32	11	87	34	12	9	3	1
2.0 - 2.9	34	11	3	70	22	6	5	2	1
3.0 - 9.9	69	35	14	354	211	75	49	36	9
3.0 - 4.9	2/	12	7	2/	43	25	2/	7	3
5.0 - 9.9	2/	23	7	2/	168	50	2/	29	6
10.0 - 24.9	27	31	17	399	486	237	59	101	51
25.0 - 49.9	9	11	13	269	340	438	42	69	103
50 or more	3	4	5	151	310	451	23	83	100
Total	521	319	133	1,381	1,435	1,229	193	297	266

Potato acreage : per farm	Percent of total farms reporting			Percent of total acres harvested			Percent of total quantity harvested		
	1949	1954	1959	1949	1954	1959	1949	1954	1959
<u>Acre(s)</u>									
Under one	56.8	61.2	52.6	3.7	2.2	.8	3.1	1.0	.4
1.0 - 1.9	15.9	10.0	8.3	6.3	2.4	1.0	4.7	1.0	.4
2.0 - 2.9	6.5	3.4	2.3	5.1	1.5	.5	2.6	.7	.4
3.0 - 9.9	13.3	11.0	10.6	25.6	14.7	6.1	25.4	12.1	3.3
3.0 - 4.9	-	3.8	5.3	-	3.0	2.0	-	2.4	1.1
5.0 - 9.9	-	7.2	5.3	-	11.7	4.1	-	9.7	2.2
10.0 - 24.9	5.2	9.7	12.8	28.9	33.9	19.3	30.5	34.0	19.2
25.0 - 49.9	1.7	3.4	9.7	19.5	23.7	35.6	21.8	23.2	38.7
50 or more	.6	1.3	3.7	10.9	21.6	36.7	11.9	28.0	37.6

1/ Does not include acreage for farms with less than 20 bushels harvested.  
2/ Not reported.

Source: 1949, 1954, and 1959 Censuses of Agriculture, U. S. Bureau of the Census.

Table 35

Potatoes, New Hampshire: Number of farms, acreage and production, with percentage comparisons; censuses of 1949, 1954 and 1959 crops

Potato acreage : per farm	Farms reporting :			Acres harvested 1/ :			Quantity harvested		
	1949	1954	1959	1949	1954	1959	1949	1954	1959
Acres	Number			Acres			1,000 cwt.		
Under one	4,358	2,511	1,312	835	330	194	85	35	22
1.0 - 1.9	487	219	110	527	232	115	49	16	10
2.0 - 2.9	123	52	40	258	109	84	31	10	9
3.0 - 9.9	129	87	38	606	370	169	102	50	25
3.0 - 4.9	2/	60	21	2/	192	72	2/	24	12
5.0 - 9.9	2/	27	17	2/	178	97	2/	26	13
10.0 - 24.9	41	27	12	643	369	178	109	70	33
25.0 - 49.9	15	11	7	531	388	234	114	75	41
50 or more	8	9	7	814	468	506	185	112	132
Total	5,161	2,916	1,526	4,214	2,266	1,480	675	368	272

Potato acreage : per farm	Percent of total :			Percent of total :			Percent of total		
	farms reporting			acres harvested			quantity harvested		
1949	1954	1959	1949	1954	1959	1949	1954	1959	
Acres	Percent								
Under one	84.4	86.1	85.9	19.8	14.6	13.1	12.5	9.5	8.1
1.0 - 1.9	9.4	7.5	7.2	12.5	10.2	7.8	7.3	4.3	3.7
2.0 - 2.9	2.4	1.8	2.6	6.1	4.8	5.7	4.6	2.7	3.3
3.0 - 9.9	2.5	3.0	2.5	14.4	16.4	11.4	15.1	13.6	9.2
3.0 - 4.9	-	2.1	1.4	-	8.5	4.9	-	6.5	4.4
5.0 - 9.9	-	.9	1.1	-	7.9	6.5	-	7.1	4.8
10.0 - 24.9	.8	.9	.8	15.3	16.3	12.0	16.1	19.1	12.1
25.0 - 49.9	.3	.4	.5	12.6	17.1	15.8	16.9	20.4	15.1
50 or more	.2	.3	.5	19.3	20.6	34.2	27.5	30.4	48.5

1/ Does not include acreage for farms with less than 20 bushels harvested.

2/ Not reported.

Source: 1949, 1954, and 1959 Censuses of Agriculture, U. S. Bureau of the Census.





Table 37

Potatoes, New Mexico: Number of farms, acreage and production with percentage comparisons; censuses of 1949, 1954 and 1959 crops

Potato acreage per farm	Farms reporting			Acres harvested 1/			Quantity harvested		
	1949	1954	1959	1949	1954	1959	1949	1954	1959
	- Number -			- Acres -			- 1,000 cwt. -		
<u>Acre(s):</u>									
Under one	249	293	20	29	17	2	3	2	1
1.0 - 1.9	78	53	15	91	56	15	4	3	3
2.0 - 2.9	45	13	6	92	26	12	4	1	2
3.0 - 9.9	67	19	7	338	103	35	27	9	4
3.0 - 4.9	2/	7	2	2/	28	7	2/	2	1
5.0 - 9.9	2/	12	5	2/	75	28	2/	7	3
10.0-24.9	24	11	11	333	193	165	35	22	28
25.0-49.9	5	6	9	142	201	291	13	28	45
50 or more	3	2	9	176	163	1,497	14	15	245
Total	471	397	77	1,201	759	2,017	100	80	328

Potato acreage per farm	Percent of total farms reporting			Percent of total acres harvested			Percent of total quantity harvested		
	1949	1954	1959	1949	1954	1959	1949	1954	1959
	- - - - - Percent - - - - -								
<u>Acre(s):</u>									
Under one	52.9	73.8	25.9	2.4	2.2	.1	3.0	2.5	.3
1.0 - 1.9	16.6	13.3	19.5	7.6	7.4	.8	4.0	3.8	.9
2.0 - 2.9	9.5	3.3	7.8	7.7	3.4	.6	4.0	1.2	.6
3.0 - 9.9	14.2	4.8	9.1	28.1	13.6	1.7	27.0	11.2	1.2
3.0 - 4.9	-	1.8	2.6	-	3.7	.3	-	2.5	.3
5.0 - 9.9	-	3.0	6.5	-	9.9	1.4	-	8.7	.9
10.0-24.9	5.1	2.8	14.3	27.7	25.4	8.2	35.0	27.5	8.6
25.0-49.9	1.1	1.5	11.7	11.8	26.5	14.4	13.0	35.0	13.7
50 or more	.6	.5	11.7	14.7	21.5	74.2	14.0	18.8	74.7

1/ Does not include acreage for farms with less than 20 bushels harvested.

2/ Not reported.

Source: 1949, 1954, and 1959 Censuses of Agriculture, U. S. Bureau of the Census.

Table 38

Potatoes, New York: Number of farms, acreage and production, with percentage comparisons; censuses of 1949, 1954 and 1959 crops

Potato acreage : per farm	Farms reporting :			Acres harvested 1/ :			Quantity harvested		
	1949	1954	1959	1949	1954	1959	1949	1954	1959
<u>Acre(s)</u>		<u>Number</u>			<u>Acres</u>			<u>1,000 cwt.</u>	
Under one	25,762	18,029	5,844	5,154	2,175	940	442	240	101
1.0 - 1.9	5,347	2,237	939	5,703	2,482	1,006	358	171	86
2.0 - 2.9	1,823	608	336	3,810	1,258	694	326	111	79
3.0 - 9.9	2,821	1,235	577	13,594	6,013	2,920	1,853	864	463
3.0 - 4.9	2/	660	281	2/	2,280	968	2/	271	144
5.0 - 9.9	2/	575	296	2/	3,733	1,952	2/	593	319
10.0 - 24.9	1,085	507	292	16,689	7,593	4,433	2,826	1,377	817
25.0 - 49.9	614	399	303	21,255	13,845	12,649	3,331	2,822	2,657
50 or more	486	543	549	45,623	54,360	59,566	7,458	11,232	11,831
Total	37,938	23,558	8,840	111,828	87,726	82,208	16,594	16,817	16,034

Potato acreage : per farm	Percent of total farms reporting :			Percent of total acres harvested :			Percent of total quantity harvested		
	1949	1954	1959	1949	1954	1959	1949	1954	1959
<u>Acre(s)</u>									
Under one	67.9	76.5	66.2	4.6	2.5	1.1	2.7	1.4	.6
1.0 - 1.9	14.1	9.5	10.6	5.1	2.8	1.2	2.2	1.0	.5
2.0 - 2.9	4.8	2.6	3.8	3.4	1.4	.8	1.9	.7	.5
3.0 - 9.9	7.4	5.2	6.5	12.2	6.9	3.6	11.2	5.1	2.9
3.0 - 4.9	-	2.8	3.2	-	2.6	1.2	-	1.6	.9
5.0 - 9.9	-	2.4	3.3	-	4.3	2.4	-	3.5	2.0
10.0 - 24.9	2.9	2.2	3.3	14.9	8.7	5.4	17.0	8.2	5.1
25.0 - 49.9	1.6	1.7	3.4	19.0	15.8	15.4	20.1	16.8	16.6
50 or more	1.3	2.3	6.2	40.8	61.9	72.5	44.9	66.8	73.8

1/ Does not include acreage for farms with less than 20 bushels harvested.

2/ Not reported.

Source: 1949, 1954, and 1959 Censuses of Agriculture, U. S. Bureau of the Census.

Table 39

Potatoes, North Carolina: Number of farms, acreage and production, with percentage comparisons; censuses of 1949, 1954 and 1959 crops

Potato acreage per farm	Farms reporting			Acres harvested 1/			Quantity harvested		
	1949	1954	1959	1949	1954	1959	1949	1954	1959
	- Number -			- Acres -			- 1,000 cwt. -		
<b>Acre(s):</b>									
Under one	110,635	128,575	70,335	9,452	4,629	3,644	898	876	574
1.0 - 1.9	5,801	2,607	1,494	6,159	2,744	1,563	273	149	86
2.0 - 2.9	1,923	499	245	4,074	1,014	500	224	69	39
3.0 - 9.9	2,033	519	300	9,241	2,383	1,423	763	255	151
3.0 - 4.9	2/	309	167	2/	1,060	565	2/	98	50
5.0 - 9.9	2/	210	133	2/	1,323	858	2/	157	101
10.0-24.9	409	221	158	5,983	3,154	2,373	630	422	283
25.0-49.9	110	90	95	3,565	3,053	3,191	393	404	427
50 or more	53	64	85	5,301	6,436	9,810	580	748	1,182
<b>Total</b>	<b>120,964</b>	<b>132,575</b>	<b>72,712</b>	<b>43,775</b>	<b>23,413</b>	<b>22,504</b>	<b>3,761</b>	<b>2,923</b>	<b>2,742</b>

Potato acreage per farm	Percent of total farms reporting			Percent of total acres harvested			Percent of total quantity harvested		
	1949	1954	1959	1949	1954	1959	1949	1954	1959
	- - - - - Percent - - - - -								
<b>Acre(s):</b>									
Under one	91.5	96.9	96.8	21.6	19.8	16.2	23.9	30.0	21.0
1.0 - 1.9	4.8	2.0	2.1	14.1	11.7	6.9	7.3	5.1	3.1
2.0 - 2.9	1.6	.4	.3	9.3	4.3	2.2	5.9	2.4	1.4
3.0 - 9.9	1.7	.4	.4	21.1	10.2	6.3	20.3	8.7	5.5
3.0 - 4.9	-	.2	.2	-	4.5	2.5	-	3.3	1.8
5.0 - 9.9	-	.2	.2	-	5.7	3.8	-	5.4	3.7
10.0-24.9	.3	.2	.2	13.7	13.5	10.6	16.8	14.4	10.3
25.0-49.9	.1	.1	.1	8.1	13.0	14.2	10.4	13.8	15.6
50 or more	3/	3/	.1	12.1	27.5	43.6	15.4	25.6	43.1

1/ Does not include acreage for farms with less than 20 bushels harvested.

2/ Not reported.

Source: 1949, 1954, and 1959 Censuses of Agriculture, U. S. Bureau of the Census.

Table 40

Potatoes, North Dakota: Number of farms, acreage and production, with percentage comparisons; censuses of 1949, 1954 and 1959 crops

Potato acreage : per farm	Farms reporting :			Acres harvested 1/ :			Quantity harvested		
	1949	1954	1959	1949	1954	1959	1949	1954	1959
<u>Acre(s)</u>	<u>Number</u>			<u>Acres</u>			<u>1,000 cwt.</u>		
Under one	21,195	24,372	5,543	3,489	2,773	387	233	268	45
1.0 - 1.9	1,291	750	197	1,348	813	208	43	34	8
2.0 - 2.9	237	122	52	483	255	108	16	12	5
3.0 - 9.9	252	180	94	1,174	879	469	89	67	31
3.0 - 4.9	2/	91	47	2/	312	159	2/	26	10
5.0 - 9.9	2/	89	47	2/	567	310	2/	41	21
10.0 - 24.9	231	206	110	3,822	3,476	1,847	438	400	178
25.0 - 49.9	346	309	225	12,463	10,800	8,174	1,304	1,097	927
50 or more	618	596	580	78,930	75,513	88,872	8,798	9,698	11,011
Total	24,170	26,535	6,801	101,709	94,509	100,065	10,921	11,576	12,205
<u>Potato acreage : per farm</u>	<u>Percent of total farms reporting :</u>			<u>Percent of total acres harvested :</u>			<u>Percent of total quantity harvested</u>		
	1949	1954	1959	1949	1954	1959	1949	1954	1959
<u>Acre(s)</u>	<u>Percent</u>								
Under one	87.7	91.9	81.5	3.4	2.9	.4	2.1	2.3	.4
1.0 - 1.9	5.3	2.8	2.9	1.3	.9	.2	.4	.3	.1
2.0 - 2.9	1.0	1.5	.8	.5	.3	.1	.1	.1	3/
3.0 - 9.9	1.0	.6	1.4	1.2	.9	.5	.8	.6	.3
3.0 - 4.9	-	.3	.7	-	.3	.2	-	.2	.1
5.0 - 9.9	-	.3	.7	-	.6	.3	-	.4	.2
10.0 - 24.9	1.0	.8	1.6	3.8	3.7	1.8	4.0	3.5	1.4
25.0 - 49.9	1.4	1.2	3.3	12.2	11.4	8.2	12.0	9.5	7.6
50 or more	2.6	2.2	8.5	77.6	79.9	88.8	80.6	83.7	90.2

1/ Does not include acreage for farms with less than 20 bushels harvested.

2/ Not reported.

3/ Less than one-tenth of one percent.

Source: 1949, 1954, and 1959 Censuses of Agriculture, U. S. Bureau of the Census.

Table 41

Potatoes, Ohio: Number of farms, acreage and production, with percentage comparisons; censuses of 1949, 1954 and 1959 crops

Potato acreage per farm	Farms reporting			Acres harvested 1/			Quantity harvested		
	1949	1954	1959	1949	1954	1959	1949	1954	1959
	- Number -			- Acres -			- 1,000 cwt. -		
<b>Acre(s):</b>									
Under one	39,550	33,443	10,815	3,715	1,168	597	369	248	95
1.0 - 1.9	1,669	740	314	1,789	804	336	106	54	29
2.0 - 2.9	534	245	117	1,119	508	242	85	46	26
3.0 - 9.9	704	410	213	3,339	2,028	1,061	352	242	136
3.0 - 4.9	2/	200	103	2/	688	355	2/	72	40
5.0 - 9.9	2/	210	110	2/	1,340	706	2/	170	96
10.0-24.9	288	193	108	4,296	2,771	1,677	587	448	266
25.0-49.9	103	99	83	3,424	3,342	2,871	530	556	516
50 or more	91	99	78	8,407	9,355	7,770	1,485	1,770	1,549
<b>Total</b>	<b>42,939</b>	<b>35,229</b>	<b>11,728</b>	<b>26,089</b>	<b>19,976</b>	<b>14,554</b>	<b>3,514</b>	<b>3,364</b>	<b>2,617</b>

Potato acreage per farm	Percent of total farms reporting			Percent of total acres harvested			Percent of total quantity harvested		
	1949	1954	1959	1949	1954	1959	1949	1954	1959
	----- Percent -----								
<b>Acre(s):</b>									
Under one	92.1	94.9	92.2	14.2	5.8	4.1	10.5	7.4	3.6
1.0 - 1.9	3.9	2.1	2.7	6.9	4.0	2.3	3.0	1.6	1.1
2.0 - 2.9	1.3	.7	1.0	4.3	2.5	1.7	2.4	1.4	1.0
3.0 - 9.9	1.6	1.2	1.8	12.8	10.2	7.3	10.0	7.1	5.2
3.0 - 4.9	-	.6	.9	-	3.4	2.4	-	2.1	1.5
5.0 - 9.9	-	.6	.9	-	6.8	4.9	-	5.0	3.7
10.0-24.9	.7	.5	.9	16.5	13.9	11.5	16.7	13.3	10.2
25.0-49.9	.2	.3	.7	13.1	16.7	19.7	15.1	16.5	19.7
50 or more	.2	.3	.7	32.2	46.9	53.4	42.3	52.7	59.2

1/ Does not include acreage for farms with less than 20 bushels harvested.

2/ Not reported.

Source: 1949, 1954, and 1959 Censuses of Agriculture, U. S. Bureau of the Census.

Table 42

Potatoes, Oklahoma: Number of farms, acreage and production with percentage comparisons; censuses of 1949, 1954 and 1959 crops

Potato acreage per farm	Farms reporting			Acres harvested 1/			Quantity harvested		
	1949	1954	1959	1949	1954	1959	1949	1954	1959
	- Number -			- Acres -			- 1,000 cwt. -		
<u>Acre(s):</u>									
Under one	37,041	28,503	13,487	2,631	824	561	267	182	99
1.0 - 1.9	854	356	216	880	363	224	29	11	8
2.0 - 2.9	112	55	13	229	114	27	9	4	2
3.0 - 9.9	79	29	12	325	125	46	13	7	3
3.0 - 4.9	2/	19	8	2/	62	26	2/	3	2
5.0 - 9.9	2/	10	4	2/	63	20	2/	4	1
10.0-24.9	15	20	2	187	290	24	11	31	2
25.0-49.9	2	1	5	78	25	165	8	1	14
50 or more	5	2	0	411	130	0	44	27	0
Total	38,108	28,966	13,735	4,741	1,871	1,047	381	263	128

Potato acreage per farm	Percent of total farms reporting			Percent of total acres harvested			Percent of total quantity harvested		
	1949	1954	1959	1949	1954	1959	1949	1954	1959
	- - - - - Percent - - - - -								
<u>Acre(s):</u>									
Under one	97.2	98.4	98.2	55.5	44.0	53.6	70.1	69.2	77.3
1.0 - 1.9	2.3	1.2	1.6	18.6	19.4	21.4	7.6	4.2	6.2
2.0 - 2.9	.3	.2	.1	4.8	6.1	2.6	2.4	1.5	1.6
3.0 - 9.9	.2	.1	.1	6.8	6.7	4.4	3.4	2.6	2.4
3.0 - 4.9	-	.1	.1	-	3.3	2.5	-	1.1	1.6
5.0 - 9.9	-	3/	3/	-	3.4	1.9	-	1.5	.8
10.0-24.9	3/	3/	3/	3.9	15.5	2.3	2.9	11.8	1.6
25.0-49.9	3/	3/	3/	1.7	1.3	15.7	2.1	.4	10.9
50 or more	3/	3/	0	8.7	7.0	0	11.5	10.3	0

1/ Does not include acreage for farms with less than 20 bushels harvested.

2/ Not reported.

3/ Less than one-tenth of one percent.

Source: 1949, 1954, and 1959 Censuses of Agriculture, U. S. Bureau of the Census.

Table 43

Potatoes, Oregon: Number of farms, acreage and production, with percentage comparisons; censuses of 1949, 1954 and 1959 crops

Potato acreage : per farm	Farms reporting :			Acres harvested 1/ :			Quantity harvested		
	1949	1954	1959	1949	1954	1959	1949	1954	1959
<u>Acre(s)</u>		<u>Number</u>			<u>Acres</u>			<u>1,000 cwt.</u>	
Under one	7,359	7,569	1,282	579	287	103	74	55	20
1.0 - 1.9	505	263	111	550	288	125	36	23	16
2.0 - 2.9	182	106	64	381	220	131	31	19	20
3.0 - 9.9	641	474	194	3,590	2,731	1,114	522	462	217
3.0 - 4.9	2/	163	59	2/	587	207	2/	77	30
5.0 - 9.9	2/	311	135	2/	2,144	907	2/	385	187
10.0 - 24.9	629	603	349	9,672	9,488	5,458	1,687	2,130	1,441
25.0 - 49.9	283	286	248	9,414	9,715	8,723	1,748	2,095	2,102
50 or more	131	160	184	12,045	14,006	18,535	2,386	3,275	4,605
Total	2,730	9,461	2,432	36,231	36,735	34,189	6,484	8,059	8,421

Potato acreage : per farm	Percent of total farms reporting :			Percent of total acres harvested :			Percent of total quantity harvested		
	1949	1954	1959	1949	1954	1959	1949	1954	1959
<u>Acre(s)</u>									
Under one	75.7	80.0	52.7	1.6	.8	.3	1.1	.7	.2
1.0 - 1.9	5.2	2.8	4.6	1.5	.8	.4	.6	.3	.2
2.0 - 2.9	1.9	1.1	2.6	1.1	.6	.4	.5	.2	.2
3.0 - 9.9	6.6	5.0	8.0	9.9	7.4	3.3	8.0	5.8	2.6
3.0 - 4.9	-	1.7	2.4	-	1.6	.6	-	1.0	.4
5.0 - 9.9	-	3.3	5.6	-	5.8	2.7	-	4.8	2.2
10.0 - 24.9	6.4	6.4	14.3	26.7	25.8	15.9	26.0	26.4	17.1
25.0 - 49.9	2.9	3.0	10.2	26.0	26.5	25.5	27.0	26.0	25.0
50 or more	1.3	1.7	7.6	33.2	38.1	54.2	36.8	40.6	54.7

1/ Does not include acreage for farms with less than 20 bushels harvested.

2/ Not reported.

Source: 1949, 1954, and 1959 Censuses of Agriculture, U. S. Bureau of the Census.



Table 44

Potatoes, Pennsylvania: Number of farms, acreage and production, with percentage comparisons; censuses of 1949, 1954 and 1959 crops

Potato acreage per farm	Farms reporting			Acres harvested 1/			Quantity harvested		
	1949	1954	1959	1949	1954	1959	1949	1954	1959
	- Number -			- Acres -			- 1,000 cwt. -		
<b>Acre(s):</b>									
Under one	31,630	25,295	9,773	6,461	2,281	1,257	517	289	140
1.0 - 1.9	6,165	2,775	1,197	6,575	2,710	1,294	432	187	113
2.0 - 2.9	2,052	1,035	487	4,258	2,087	1,011	384	199	120
3.0 - 9.9	3,832	1,959	1,073	18,827	9,831	5,396	2,400	1,376	854
3.0 - 4.9	2/	941	528	2/	3,341	1,853	2/	416	266
5.0 - 9.9	2/	1,018	545	2/	6,490	3,543	2/	960	588
10.0-24.9	1,395	839	528	20,462	12,155	8,044	3,233	1,918	1,550
25.0-49.9	360	302	177	11,649	9,681	6,190	2,059	1,711	1,262
50 or more	170	154	150	14,526	14,094	14,520	2,780	2,524	3,121
<b>Total</b>	<b>45,604</b>	<b>32,359</b>	<b>13,385</b>	<b>82,758</b>	<b>52,839</b>	<b>37,712</b>	<b>11,805</b>	<b>8,204</b>	<b>7,160</b>

Potato acreage per farm	Percent of total farms reporting			Percent of total acres harvested			Percent of total quantity harvested		
	1949	1954	1959	1949	1954	1959	1949	1954	1959
	- - - - - Percent - - - - -								
<b>Acre(s):</b>									
Under one	69.4	78.2	73.0	7.8	4.3	3.3	4.4	3.5	2.0
1.0 - 1.9	13.5	8.6	9.0	7.9	5.1	3.4	3.7	2.3	1.6
2.0 - 2.9	4.5	3.2	3.6	5.1	4.0	2.7	3.3	2.4	1.7
3.0 - 9.9	8.4	6.0	8.0	22.8	18.6	14.3	20.3	16.8	11.9
3.0 - 4.9	-	2.9	3.9	-	6.3	4.9	-	5.1	3.7
5.0 - 9.9	-	3.1	4.1	-	12.3	9.4	-	11.7	8.2
10.0-24.9	3.0	2.6	4.0	24.7	23.0	21.4	27.4	23.4	21.6
25.0-49.9	.8	.9	1.3	14.1	18.3	16.4	17.4	20.8	17.6
50 or more	.4	.5	1.1	17.6	26.7	38.5	23.5	30.8	43.6

1/ Does not include acreage for farms with less than 20 bushels harvested.

2/ Not reported.

Source: 1949, 1954, and 1959 Censuses of Agriculture, U. S. Bureau of the Census.

Table 45

Potatoes, Rhode Island: Number of farms, acreage and production, with percentage comparisons; censuses of 1949, 1954 and 1959 crops

Potato acreage : per farm	Farms reporting			Acres harvested 1/			Quantity harvested		
	1949	1954	1959	1949	1954	1959	1949	1954	1959
Acre(s)		Number		Acres			1,000 cwt.		
Under one	354	188	67	52	18	14	5	2	2
1.0 - 1.9	83	20	17	87	22	21	6	2	2
2.0 - 2.9	23	14	6	46	30	13	4	3	2
3.0 - 9.9	49	27	17	232	137	89	23	19	11
3.0 - 4.9	2/	12	8	2/	43	28	2/	6	3
5.0 - 9.9	2/	15	9	2/	94	61	2/	13	8
10.0 - 24.9	50	25	8	794	373	132	94	70	22
25.0 - 49.9	30	15	13	1,070	518	467	143	79	82
50 or more	23	24	24	2,145	2,708	4,159	389	565	935
Total	612	313	152	4,426	3,806	4,895	664	740	1,056

Potato acreage : per farm	Percent of total farms reporting			Percent of total acres harvested			Percent of total quantity harvested		
	1949	1954	1959	1949	1954	1959	1949	1954	1959
Acre(s)				Percent					
Under one	57.7	60.0	44.0	1.2	.5	.3	.8	.4	.2
1.0 - 1.9	13.6	6.4	11.2	2.0	.6	.4	.9	.3	.2
2.0 - 2.9	3.8	4.5	3.9	1.0	.8	.3	.5	.4	.2
3.0 - 9.9	8.0	8.6	11.2	5.2	3.6	1.8	3.5	2.5	1.0
3.0 - 4.9	-	3.8	5.3	-	1.1	.6	-	.8	.3
5.0 - 9.9	-	4.6	5.9	-	2.5	1.2	-	1.7	.7
10.0 - 24.9	8.2	8.0	5.3	17.9	9.8	2.7	14.1	9.4	2.1
25.0 - 49.9	4.9	4.8	8.6	24.2	13.6	9.5	21.5	10.7	7.8
50 or more	3.8	7.7	15.8	48.5	71.1	85.0	58.7	76.3	88.5

1/ Does not include acreage for farms with less than 20 bushels harvested.

2/ Not reported.

Source: 1949, 1954, and 1959 Censuses of Agriculture, U. S. Bureau of the Census

Table 46

Potatoes, South Carolina: Number of farms, acreage and production with percentage comparisons; censuses of 1949, 1954 and 1959 crops

Potato acreage per farm	Farms reporting			Acres harvested 1/			Quantity harvested		
	1949	1954	1959	1949	1954	1959	1949	1954	1959
	- Number -			- Acres -			- 1,000 cwt. -		
<u>Acres(s):</u>									
Under one	29,896	26,094	5,233	1,540	457	290	156	111	34
1.0 - 1.9	1,445	454	128	1,542	472	132	67	19	6
2.0 - 2.9	460	130	25	953	264	51	41	14	4
3.0 - 9.9	291	85	29	1,163	381	123	61	30	9
3.0 - 4.9	2/	50	20	2/	168	67	2/	11	4
5.0 - 9.9	2/	35	9	2/	213	56	2/	19	5
10.0-24.9	34	23	7	476	334	102	37	34	12
25.0-49.9	25	17	9	865	578	325	106	65	30
50 or more	27	31	30	2,892	3,916	3,167	328	454	329
Total	32,178	26,834	5,461	9,431	6,402	4,190	796	727	424

Potato acreage per farm	Percent of total farms reporting			Percent of total acres harvested			Percent of total Quantity harvested		
	1949	1954	1959	1949	1954	1959	1949	1954	1959
	- - - - - Percent - - - - -								
<u>Acres(s):</u>									
Under one	92.9	97.2	95.8	16.3	7.2	6.9	19.6	15.3	8.0
1.0 - 1.9	4.5	1.7	2.3	16.4	7.4	3.2	8.4	2.6	1.4
2.0 - 2.9	1.4	.5	.5	10.1	4.1	1.2	5.2	1.9	.9
3.0 - 9.9	.9	.3	.5	12.3	5.9	2.9	7.7	4.1	2.1
3.0 - 4.9	-	.2	.3	-	2.6	1.6	-	1.5	.9
5.0 - 9.9	-	.1	.2	-	3.3	1.3	-	2.6	1.2
10.0-24.9	.1	.1	.1	5.0	5.2	2.4	4.6	4.7	2.9
25.0-49.9	.1	.1	.2	9.2	9.0	7.8	13.3	8.9	7.1
50 or more	.1	.1	.6	30.7	61.2	75.6	41.2	62.5	77.6

1/ Does not include acreage for farms with less than 20 bushels harvested.

2/ Not reported.

Source: 1949, 1954, and 1959 Censuses of Agriculture, U. S. Bureau of the Census.

Table 47

Potatoes, South Dakota: Number of farms, acreage and production, with percentage comparisons; censuses of 1949, 1954 and 1959 crops

Potato acreage : per farm	Farms reporting			Acres harvested 1/			Quantity harvested		
	1949	1954	1959	1949	1954	1959	1949	1954	1959
Acres	Number			Acres			1,000 cwt.		
Under one	10,977	13,623	1,657	1,090	1,052	112	85	119	13
1.0 - 1.9	805	454	111	846	488	115	22	19	4
2.0 - 2.9	191	114	39	390	232	79	13	10	4
3.0 - 9.9	195	108	66	872	499	335	26	27	17
3.0 - 4.9	2/	62	29	2/	217	102	2/	10	4
5.0 - 9.9	2/	46	37	2/	282	233	2/	17	13
10.0 - 24.9	67	59	42	1,006	788	641	44	67	36
25.0 - 49.9	56	29	14	1,824	1,010	420	91	91	33
50 or more	48	32	31	5,713	5,283	4,019	382	477	306
Total	12,339	14,419	1,960	11,741	9,352	5,721	663	810	413

Potato acreage : per farm	Percent of total farms reporting			Percent of total acres harvested			Percent of total quantity harvested		
	1949	1954	1959	1949	1954	1959	1949	1954	1959
Acres	Percent								
Under one	89.0	94.5	84.5	9.3	11.3	2.0	12.7	14.7	3.1
1.0 - 1.9	6.5	3.2	5.7	7.2	5.2	2.0	3.4	2.3	1.0
2.0 - 2.9	1.5	.8	2.0	3.3	2.5	1.4	2.0	1.3	1.0
3.0 - 9.9	1.6	.7	3.4	7.4	5.3	5.9	3.9	3.4	4.1
3.0 - 4.9	-	.4	1.5	-	2.3	1.8	-	1.3	1.0
5.0 - 9.9	-	.3	1.9	-	3.0	4.1	-	2.1	3.1
10.0 - 24.9	.5	.4	2.1	8.6	8.4	11.2	6.6	8.3	8.7
25.0 - 49.9	.5	.2	.7	15.5	10.8	7.3	13.8	11.3	8.0
50 or more	.4	.2	1.6	48.7	56.5	70.2	57.6	58.7	74.1

1/ Does not include acreage for farms with less than 20 bushels harvested.

2/ Not reported.

Source: 1949, 1954, and 1959 Censuses of Agriculture, U. S. Bureau of the Census.

Table 48

Potatoes, Tennessee: Number of farms, acreage and production, with percentage comparisons; censuses of 1949, 1954 and 1959 crops

Potato acreage per farm	Farms reporting			Acres harvested 1/			Quantity harvested		
	1949	1954	1959	1949	1954	1959	1949	1954	1959
	- Number -			- Acres -			- 1,000 cwt. -		
<u>Acre(s):</u>									
Under one	112,997	108,443	63,889	9,167	4,620	3,963	933	863	613
1.0 - 1.9	3,250	1,461	867	3,408	1,498	903	155	64	46
2.0 - 2.9	623	185	104	1,283	377	210	58	17	12
3.0 - 9.9	654	127	64	2,912	566	266	148	40	22
3.0 - 4.9	2/	75	48	2/	228	164	2/	16	13
5.0 - 9.9	2/	52	16	2/	338	102	2/	24	9
10.0-24.9	69	28	11	905	350	156	50	24	11
25.0-49.9	8	3	3	223	96	90	11	6	8
50 or more	2	4	1	246	676	250	48	73	58
Total	117,603	110,251	64,939	18,144	8,183	5,838	1,403	1,087	770

Potato acreage per farm	Percent of total farms reporting			Percent of total acres harvested			Percent of total quantity harvested		
	1949	1954	1959	1949	1954	1959	1949	1954	1959
	- - - - - Percent - - - - -								
<u>Acre(s):</u>									
Under one	96.1	98.4	98.4	50.5	56.4	67.9	66.5	79.4	79.6
1.0 - 1.9	2.8	1.3	1.3	18.8	18.3	15.5	11.0	5.9	6.0
2.0 - 2.9	.5	.2	.2	7.1	4.6	3.6	4.1	1.6	1.6
3.0 - 9.9	.6	.1	.1	16.0	6.9	4.5	10.6	3.7	2.9
3.0 - 4.9	-	.1	.1	-	2.8	2.8	-	1.5	1.7
5.0 - 9.9	-	3/	3/	-	4.1	1.7	-	2.2	1.2
10.0-24.9	3/	3/	3/	5.0	4.3	2.7	3.6	2.2	1.4
25.0-49.9	3/	3/	3/	1.2	1.2	1.5	.8	.5	1.0
50 or more	3/	3/	3/	1.4	8.3	4.3	3.4	6.7	7.5

1/ Does not include acreage for farms with less than 20 bushels harvested.

2/ Not reported.

3/ Less than one-tenth of one percent.

Source: 1949, 1954, and 1959 Censuses of Agriculture, U. S. Bureau of the Census.

Table 49

Potatoes, Texas: Number of farms, acreage and production, with percentage comparisons; censuses of 1949, 1954 and 1959 crops

Potato acreage per farm	Farms reporting			Acres harvested 1/			Quantity harvested		
	1949	1954	1959	1949	1954	1959	1949	1954	1959
	- Number -			- Acres -			- 1,000 cwt. -		
<u>Acre(s):</u>									
Under one	48,372	51,661	17,833	3,318	1,726	673	309	315	114
1.0 - 1.9	2,072	1,115	397	2,158	1,132	407	73	40	17
2.0 - 2.9	359	178	72	745	352	149	28	14	8
3.0 - 9.9	311	178	82	1,365	779	398	61	42	30
3.0 - 4.9	2/	102	45	2/	337	150	2/	16	9
5.0 - 9.9	2/	76	37	2/	442	248	2/	26	21
10.0-24.9	107	65	115	1,679	1,011	1,903	101	71	283
25.0-49.9	88	87	107	3,074	2,906	3,812	195	268	525
50 or more	80	52	81	13,197	4,774	9,037	792	351	1,380
Total	51,389	53,336	18,687	25,536	12,680	16,379	1,559	1,101	2,357

Potato acreage Per farm	Percent of total farms reporting			Percent of total acres harvested			Percent of total quantity harvested		
	1949	1954	1959	1949	1954	1959	1949	1954	1959
	- Percent -								
<u>Acre(s):</u>									
Under one	94.1	96.9	95.5	13.0	13.6	4.1	19.8	28.6	4.8
1.0 - 1.9	4.0	2.1	2.1	8.4	8.9	2.5	4.7	3.6	.7
2.0 - 2.9	.7	.3	.4	2.9	2.8	.9	1.8	1.3	.3
3.0 - 9.9	.6	.3	.4	5.4	6.1	2.4	3.9	3.8	1.3
3.0 - 4.9	-	.2	.2	-	2.6	.9	-	1.4	.4
5.0 - 9.9	-	.1	.2	-	3.5	1.5	-	2.4	.9
10.0-24.9	.2	.1	.6	6.6	8.0	11.6	6.5	6.4	12.0
25.0-49.9	.2	.2	.6	12.0	22.9	23.3	12.5	24.4	22.3
50 or more	.2	.1	.4	51.7	37.7	55.2	50.8	31.9	58.6

1/ Does not include acreage for farms with less than 20 bushels harvested.

2/ Not reported.

Source: 1949, 1954, and 1959 Censuses of Agriculture, U. S. Bureau of the Census.

Table 50

Potatoes, Utah: Number of farms, acreage and production, with percentage comparisons; censuses of 1949, 1954 and 1959 crops

Potato acreage : per farm	Farms reporting			Acres harvested 1/			Quantity harvested		
	1949	1954	1959	1949	1954	1959	1949	1954	1959
<u>Acre(s)</u>		<u>Number</u>			<u>Acres</u>			<u>1,000 cwt.</u>	
Under one	2,699	2,199	902	514	283	130	69	40	19
1.0 - 1.9	537	287	124	595	308	135	61	35	18
2.0 - 2.9	324	156	78	702	332	163	86	40	25
3.0 - 9.9	807	396	267	4,150	2,014	1,407	551	277	230
3.0 - 4.9	2/	186	107	2/	655	376	2/	84	58
5.0 - 9.9	2/	210	160	2/	1,359	1,031	2/	193	172
10.0 - 24.9	279	200	132	3,965	2,868	1,960	503	409	311
25.0 - 49.9	58	35	37	1,847	1,140	1,222	242	175	181
50 or more	15	12	28	1,882	2,197	2,794	453	482	592
Total	4,719	3,285	1,568	13,655	9,142	7,811	1,965	1,458	1,376

Potato acreage : per farm	Percent of total farms reporting			Percent of total acres harvested			Percent of total quantity harvested		
	1949	1954	1959	1949	1954	1959	1949	1954	1959
<u>Acre(s)</u>									
Under one	57.2	66.9	57.5	3.8	3.1	1.7	3.5	2.8	1.4
1.0 - 1.9	11.4	8.7	7.9	4.4	3.4	1.7	3.1	2.4	1.3
2.0 - 2.9	6.9	4.7	5.0	5.1	3.6	2.1	4.4	2.7	1.8
3.0 - 9.9	17.1	12.1	17.0	30.4	22.0	18.0	28.1	19.1	16.7
3.0 - 4.9	-	5.7	6.8	-	7.1	4.8	-	5.8	4.2
5.0 - 9.9	-	6.4	10.2	-	14.9	13.2	-	13.3	12.5
10.0 - 24.9	5.9	6.1	8.4	29.0	31.4	25.1	25.6	28.0	22.6
25.0 - 49.9	1.2	1.1	2.4	13.5	12.5	15.6	12.3	12.0	13.2
50 or more	.3	.4	1.8	13.8	24.0	35.8	23.0	33.0	43.0

1/ Does not include acreage for farms with less than 20 bushels harvested.

2/ Not reported.

Source: 1949, 1954, and 1959 Censuses of Agriculture, U. S. Bureau of the Census.

Table 51

Potatoes, Vermont: Number of farms, acreage and production, with percentage comparisons; censuses of 1949, 1954 and 1959 crops

Potato acreage : per farm	Farms reporting :			Acres harvested 1/ :			Quantity harvested		
	1949	1954	1959	1949	1954	1959	1949	1954	1959
<u>Acre(s)</u>		<u>Number</u>			<u>Acres</u>			<u>1,000 cwt.</u>	
Under one	6,415	4,671	2,530	1,639	718	416	159	87	45
1.0 - 1.9	728	301	191	779	318	200	65	22	15
2.0 - 2.9	135	52	34	283	109	70	25	10	6
3.0 - 9.9	116	52	24	550	238	116	75	40	14
3.0 - 4.9	2/	29	11	2/	93	34	2/	12	4
5.0 - 9.9	2/	23	13	2/	145	82	2/	28	10
10.0 - 24.9	41	24	9	594	308	117	99	56	23
25.0 - 49.9	9	11	5	324	594	181	62	134	34
50 or more	11	6	8	926	391	849	202	89	209
	7,455	5,117	2,801	5,095	2,676	1,949	687	438	346

Potato acreage : per farm	Percent of total :			Percent of total :			Percent of total		
	1949	1954	1959	1949	1954	1959	1949	1954	1959
<u>Acre(s)</u>									
Under one	86.1	91.3	90.3	32.2	26.8	21.3	23.2	19.9	13.0
1.0 - 1.9	9.8	5.9	6.8	15.3	11.9	10.3	9.4	4.9	4.3
2.0 - 2.9	1.8	1.0	1.2	5.6	4.1	3.6	3.6	2.2	1.7
3.0 - 9.9	1.6	1.0	.9	10.8	8.9	5.9	10.9	9.0	4.1
3.0 - 4.9	-	.6	.4	-	3.5	1.7	-	2.7	1.2
5.0 - 9.9	-	.4	.5	-	5.4	4.2	-	6.3	2.9
10.0 - 24.9	.5	.5	.3	11.6	11.5	6.0	14.4	12.9	6.6
25.0 - 49.9	.1	.2	.2	6.4	22.2	9.3	9.1	30.7	9.8
50 or more	.1	.1	.3	18.1	14.6	43.6	29.4	20.4	60.5

1/ Does not include acreage for farms with less than 20 bushels harvested.

2/ Not reported.

Source: 1949, 1954, and 1959 Censuses of Agriculture, U. S. Bureau of the Census.



Table 52

Potatoes, Virginia: Number of farms, acreage and production, with percentage comparisons; censuses of 1949, 1954 and 1959 crops

Potato acreage per farm	Farms reporting			Acres harvested 1/			Quantity harvested		
	1949	1954	1959	1949	1954	1959	1949	1954	1959
	- Number -			- Acres -			- 1,000 cwt. -		
<b>Acres):</b>									
Under one	80,404	84,845	45,980	7,321	3,402	2,197	721	661	372
1.0 - 1.9	2,220	1,145	724	2,339	1,187	752	100	49	31
2.0 - 2.9	367	130	69	780	268	140	59	13	7
3.0 - 9.9	667	189	68	3,615	994	351	353	71	31
3.0 - 4.9	2/	74	31	2/	253	104	2/	14	8
5.0 - 9.9	2/	115	37	2/	741	247	2/	57	23
10.0-24.9	495	244	116	7,454	3,721	1,786	875	301	189
25.0-49.9	208	142	95	7,000	5,379	3,249	824	454	394
50 or more	84	111	138	8,780	9,555	15,858	1,044	925	1,903
<b>Total</b>	<b>84,445</b>	<b>86,806</b>	<b>47,190</b>	<b>37,289</b>	<b>24,506</b>	<b>24,333</b>	<b>3,976</b>	<b>2,474</b>	<b>2,927</b>

Potato acreage per farm	Percent of total farms reporting			Percent of total acres harvested			Percent of total quantity harvested		
	1949	1954	1959	1949	1954	1959	1949	1954	1959
	- - - - - Percent - - - - -								
<b>Acres):</b>									
Under one	95.3	97.8	97.4	19.6	13.9	9.0	18.1	26.7	12.7
1.0 - 1.9	2.6	1.3	1.5	6.3	4.8	3.1	2.5	2.0	1.1
2.0 - 2.9	.4	.1	.2	2.1	1.1	.6	1.5	.5	.2
3.0 - 9.9	.8	.2	.2	9.7	4.1	1.4	8.9	2.9	1.1
3.0 - 4.9	-	.1	.1	-	1.1	.4	-	.6	.3
5.0 - 9.9	-	.1	.1	-	3.0	1.0	-	2.3	.8
10.0-24.9	.6	.3	.2	20.0	15.2	7.3	22.0	12.2	6.4
25.0-49.9	.2	.2	.2	18.8	21.9	13.4	20.7	18.3	13.5
50 or more	.1	.1	.3	23.5	39.0	65.2	26.3	37.4	65.0

1/ Does not include acreage for farms with less than 20 bushels harvested.

2/ Not reported.

Source: 1949, 1954, and 1959 Censuses of Agriculture, U. S. Bureau of the Census.

Table 53

Potatoes, Washington: Number of farms, acreage and production, with percentage comparisons; censuses of 1949, 1954 and 1959 crops

Potato acreage : per farm	Farms reporting			Acres harvested 1/			Quantity harvested		
	1949	1954	1959	1949	1954	1959	1949	1954	1959
<u>Acre(s)</u>		<u>Number</u>			<u>Acres</u>			<u>1,000 cwt.</u>	
Under one	7,327	10,078	2,831	601	432	150	81	84	26
1.0 - 1.9	380	274	98	428	305	106	38	30	11
2.0 - 2.9	133	76	40	279	164	83	34	21	15
3.0 - 9.9	387	210	117	2,104	1,195	673	391	281	122
3.0 - 4.9	2/	65	38	2/	225	138	2/	34	17
5.0 - 9.9	2/	145	79	2/	970	535	2/	247	105
10.0 - 24.9	391	309	238	6,224	4,374	3,663	1,480	1,333	907
25.0 - 49.9	184	200	179	6,321	6,755	6,213	1,400	1,686	1,656
50 or more	111	115	178	11,180	11,481	19,406	2,767	2,889	5,414
Total	8,913	11,262	3,681	27,137	24,706	30,294	6,191	6,324	8,151

Potato acreage : per farm	Percent of total farms reporting			Percent of total acres harvested			Percent of total quantity harvested		
	1949	1954	1959	1949	1954	1959	1949	1954	1959
<u>Acre(s)</u>									
Under one	82.2	89.5	76.9	2.2	1.7	.5	1.3	1.3	.3
1.0 - 1.9	4.3	2.4	2.7	1.6	1.2	.3	.6	.5	.1
2.0 - 2.9	1.5	.7	1.1	1.0	.7	.3	.6	.3	.2
3.0 - 9.9	4.3	1.9	3.1	7.8	4.8	2.2	6.3	4.4	1.5
3.0 - 4.9	-	.6	1.0	-	.9	.5	-	.5	.2
5.0 - 9.9	-	1.3	2.1	-	3.9	1.7	-	3.9	1.3
10.0 - 24.9	4.4	2.7	6.5	22.9	17.7	12.1	23.9	21.1	11.1
25.0 - 49.9	2.1	1.8	4.9	23.3	27.4	20.5	22.6	26.7	20.3
50 or more	1.2	1.0	4.8	41.2	46.5	64.1	44.7	45.7	66.5

1/ Does not include acreage for farms with less than 20 bushels harvested.

2/ Not reported.

Source: 1949, 1954, and 1959 Censuses of Agriculture, U. S. Bureau of the Census.

Table 54

Potatoes, West Virginia: Number of farms, acreage and production, with percentage comparisons; censuses of 1949, 1954 and 1959 crops

Potato acreage per farm	Farms reporting			Acres harvested 1/			Quantity harvested		
	1949	1954	1959	1949	1954	1959	1949	1954	1959
	- Number -			- Acres -			- 1,000 cwt. -		
<b>Acres):</b>									
Under one	48,301	50,485	25,659	8,985	6,197	3,619	656	706	364
1.0 - 1.9	3,431	2,131	1,553	3,536	2,182	1,599	148	98	72
2.0 - 2.9	345	189	113	701	381	229	29	19	14
3.0 - 9.9	152	92	35	640	385	143	47	32	17
3.0 - 4.9	2/	61	26	2/	202	83	2/	14	8
5.0 - 9.9	2/	31	9	2/	183	60	2/	18	9
10.0-24.9	15	19	5	198	333	65	21	53	5
25.0-49.9	4	1	4	141	40	128	18	4	22
50 or more	2	0	1	142	0	50	24	0	8
<b>Total</b>	<b>52,250</b>	<b>52,917</b>	<b>27,370</b>	<b>14,343</b>	<b>9,518</b>	<b>5,833</b>	<b>943</b>	<b>912</b>	<b>502</b>

Potato acreage per farm	Percent of total farms reporting			Percent of total acres harvested			Percent of total quantity harvested		
	1949	1954	1959	1949	1954	1959	1949	1954	1959
	- - - - - Percent - - - - -								
<b>Acres):</b>									
Under one	92.4	95.4	93.8	62.6	65.2	62.1	69.6	77.4	72.5
1.0 - 1.9	6.6	4.0	5.7	24.6	22.9	27.4	15.7	10.8	14.3
2.0 - 2.9	.7	.4	.4	4.9	4.0	3.9	3.1	2.1	2.8
3.0 - 9.9	.3	.2	.1	4.5	4.0	2.4	5.0	3.5	3.4
3.0 - 4.9	-	.1	.1	-	2.1	1.4	-	1.5	1.6
5.0 - 9.9	-	.1	3/	-	1.9	1.0	-	2.0	1.8
10.0-24.9	3/	3/	3/	1.4	3.5	1.1	2.2	5.8	1.0
25.0-49.9	3/	3/	3/	1.0	.4	2.2	1.9	.4	4.4
50 or more	3/	0	3/	1.0	0	.9	2.5	0	1.6

1/ Does not include acreage for farms with less than 20 bushels harvested.

2/ Not reported.

3/ Less than one-tenth of one percent.

Source: 1949, 1954, and 1959 Censuses of Agriculture, U. S. Bureau of the Census.

Table 55

Potatoes, Wisconsin: Number of farms, acreage and production, with percentage comparisons; censuses of 1949, 1954 and 1959 crops

Potato acreage : per farm	Farms reporting :			Acres harvested 1/ :			Quantity harvested		
	1949 :	1954 :	1959 :	1949 :	1954 :	1959 :	1949 :	1954 :	1959
<u>Acre(s)</u>		<u>Number</u>			<u>Acres</u>			<u>1,000 cwt.</u>	
Under one	45,225	36,606	17,257	9,566	3,550	1,664	663	414	193
1.0 - 1.9	6,822	2,053	981	7,256	2,210	1,045	321	122	60
2.0 - 2.9	1,714	525	316	3,549	1,151	652	172	70	46
3.0 - 9.9	1,909	953	594	9,213	4,977	3,075	737	523	385
3.0 - 4.9	2/	429	273	2/	1,591	947	2/	133	95
5.0 - 9.9	2/	524	321	2/	3,386	2,128	2/	390	290
10.0 - 24.9	624	499	354	8,896	6,969	5,250	986	1,027	773
25.0 - 49.9	141	142	163	4,791	4,766	6,526	839	713	953
50 or more	108	162	188	13,989	21,114	29,114	2,662	3,725	5,532
Total	56,543	40,940	19,853	57,260	44,737	47,326	6,380	6,594	7,942

Potato acreage : per farm	Percent of total farms reporting :			Percent of total acres harvested :			Percent of total quantity harvested		
	1949 :	1954 :	1959 :	1949 :	1954 :	1959 :	1949 :	1954 :	1959
<u>Acre(s)</u>									
Under one	80.0	89.5	86.9	16.7	7.9	3.5	10.4	6.2	2.4
1.0 - 1.9	12.1	5.0	4.9	12.7	4.9	2.2	5.0	1.9	.8
2.0 - 2.9	3.0	1.3	1.6	6.2	2.6	1.4	2.7	1.1	.6
3.0 - 9.9	3.4	2.3	3.0	16.1	11.1	6.5	11.5	7.9	4.8
3.0 - 4.9	-	1.0	1.4	-	3.6	2.0	-	2.0	1.2
5.0 - 9.9	-	1.3	1.6	-	7.5	4.5	-	5.9	3.6
10.0 - 24.9	1.1	1.2	1.8	15.5	15.6	11.1	15.5	15.6	9.7
25.0 - 49.9	.2	.3	.8	8.4	10.7	13.8	13.1	10.8	12.0
50 or more	.2	.4	1.0	24.4	47.2	61.5	41.8	56.5	69.7

1/ Does not include acreage for farms with less than 20 bushels harvested.

2/ Not reported.

Source: 1949, 1954, and 1959 Censuses of Agriculture, U. S. Bureau of the Census.

Table 56

Potatoes, Wyoming: Number of farms, acreage and production, with percentage comparisons; censuses of 1949, 1954 and 1959 crops

Potato acreage : per farm	Farms reporting :			Acres harvested 1/ :			Quantity harvested		
	1949	1954	1959	1949	1954	1959	1949	1954	1959
<u>Acre(s)</u>		<u>Number</u>			<u>Acres</u>			<u>1,000 cwt.</u>	
Under one	843	735	132	106	56	14	11	8	2
1.0 - 1.9	113	61	16	121	64	17	6	4	1
2.0 - 2.9	36	20	11	75	41	23	5	4	3
3.0 - 9.9	125	72	41	728	397	236	90	53	33
3.0 - 4.9	2/	25	11	2/	87	38	2/	9	5
5.0 - 9.9	2/	47	30	2/	310	198	2/	44	28
10.0 - 24.9	166	101	51	2,545	1,528	893	324	295	142
25.0 - 49.9	46	34	24	1,509	1,038	775	166	200	146
50 or more	24	22	24	1,878	1,751	1,965	206	269	289
Total	1,353	1,045	299	6,962	4,875	3,923	808	833	616

Potato acreage : per farm	Percent of total farms reporting :			Percent of total acres harvested :			Percent of total quantity harvested			
	1949	1954	1959	1949	1954	1959	1949	1954	1959	
<u>Acre(s)</u>				<u>Percent</u>						
Under one	62.2	70.3	44.1	1.5	1.2	.4	1.4	1.0	.3	
1.0 - 1.9	8.4	5.8	5.4	1.7	1.3	.4	.7	.4	.2	
2.0 - 2.9	2.7	1.9	3.7	1.1	.9	.6	.6	.4	.5	
3.0 - 9.9	9.2	6.9	13.7	10.4	8.1	6.0	11.1	6.4	5.4	
3.0 - 4.9	-	2.4	3.7	-	1.8	1.0	-	1.1	.8	
5.0 - 9.9	-	4.5	10.0	-	6.3	5.0	-	5.3	4.6	
10.0 - 24.9	12.3	9.7	17.1	36.6	31.3	22.8	40.1	35.5	23.0	
25.0 - 49.9	3.4	3.3	8.0	21.7	21.3	19.8	20.6	24.0	23.7	
50 or more	1.8	2.1	8.0	27.0	35.9	50.0	25.5	32.3	46.9	

1/ Does not include acreage for farms with less than 20 bushels harvested.

2/ Not reported.

Source: 1949, 1954, and 1959 Censuses of Agriculture, U. S. Bureau of the Census.



Growth Through Agricultural Progress

END

© UPDATA 1981