



**AgEcon** SEARCH  
RESEARCH IN AGRICULTURAL & APPLIED ECONOMICS

*The World's Largest Open Access Agricultural & Applied Economics Digital Library*

**This document is discoverable and free to researchers across the globe due to the work of AgEcon Search.**

**Help ensure our sustainability.**

Give to AgEcon Search

AgEcon Search  
<http://ageconsearch.umn.edu>  
[aesearch@umn.edu](mailto:aesearch@umn.edu)

*Papers downloaded from **AgEcon Search** may be used for non-commercial purposes and personal study only. No other use, including posting to another Internet site, is permitted without permission from the copyright owner (not AgEcon Search), or as allowed under the provisions of Fair Use, U.S. Copyright Act, Title 17 U.S.C.*

STAT 208 (1960)

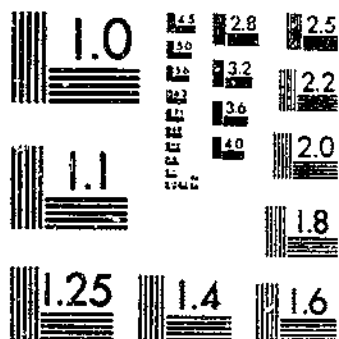
USDA STATISTICAL BULLETINS

UPDATA

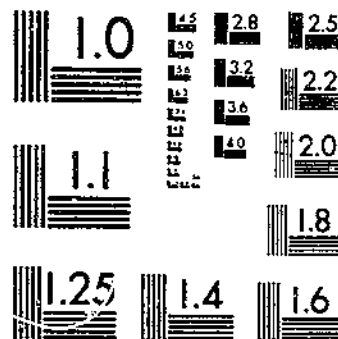
FIELD SEEDS, SUPPLY AND DISAPPEARANCE, UNITED STATES - CROP YEARS 1939-1959

1961

# START



MICROCOPY RESOLUTION TEST CHART  
NATIONAL BUREAU OF STANDARDS-1563-A



MICROCOPY RESOLUTION TEST CHART  
NATIONAL BUREAU OF STANDARDS-1563-A

# FIELD SEEDS

## supply and disappearance

### UNITED STATES CROP YEARS 1939-1959

- Acreage
- Yield
- Production
- Carryover
- Imports
- Exports
- Total Supply
- Total Disappearance

UNITED STATES DEPARTMENT OF AGRICULTURE  
Statistical Reporting Service      Crop Reporting Board  
Washington, D.C.

## FIELD SEEDS

### Supply and Disappearance

The following tables present the United States totals of acreage, yield, production, carryover, imports, total supply, total disappearance and exports for all legume, grass and cover-crop seeds estimated by the Crop Reporting Board of the United States Department of Agriculture. The statistics include the revised estimates for the years 1939 to 1959. They supersede those published in reports previously issued for the years shown.

Imports shown in the tables include only those quantities of seed which have been permitted entry under the Federal Seed Act administered by the Grain Division, Agricultural Marketing Service. Export data are compiled by the Foreign Agricultural Service from records of the U. S. Department of Commerce. Export statistics are available for only 8 specific kinds of seed -- alfalfa, alsike clover, Ladino clover, bentgrass, redtop, timothy, orchardgrass, and Kentucky bluegrass. Exports of all other kinds are not available as they are included in group totals of "other clovers," and "other grasses" not elsewhere classified. The imports and exports are for a 12-month period beginning July 1 of the year of crop harvest and ending June 30 the following year.

Estimates of acreage harvested, yield per acre, production, and carryover are compiled by the Agricultural Estimates Division, Statistical Reporting Service. Total supply is computed by adding production, carryover, and imports. Total disappearance is computed by subtracting from the total supply the carryover the following year.

Table 1.--ALFALFA SEED: Acreage, Yield, Production, Carryover, Imports, Total Supply, Total Disappearance and Exports, United States 1939-59

Crop year	Acres harvested	Yield per acre	Production	Carryover			Production plus carryover	Imports 1/	Total Supply	Total Disappearance	Exports 1/
				Farm	Dealer & Gov't. July 1	Total					
	Acres	Pounds	Thousand pounds of clean seed								
1939...	1,013,200	74	75,250	1,977	3,429	5,406	80,656	3,376	84,032	68,231	515
1940...	965,700	80	77,150	3,697	12,104	15,801	92,951	1,523	94,474	77,601	958
1941...	803,200	66	53,390	5,132	11,741	16,873	70,263	11,508	81,771	68,407	964
1942...	603,700	87	52,660	2,728	10,636	13,364	66,024	1,992	68,016	62,695	1,642
1943...	779,300	82	64,258	1,500	3,821	5,321	69,579	2,812	72,391	66,068	401
1944...	982,000	59	58,030	1,593	4,730	6,323	64,353	10,331	74,684	67,678	253
1945...	880,600	71	62,120	2,916	4,090	7,006	69,126	6,466	75,592	69,392	2,246
1946...	1,182,200	89	104,850	1,530	4,670	6,200	111,050	9,259	120,309	101,216	1,282
1947...	1,014,700	94	94,900	3,451	15,642	19,093	113,993	7,552	121,545	104,452	1,159
1948...	644,900	88	56,790	4,121	12,972	17,093	73,883	20,268	94,151	88,477	1,196
1949...	1,103,400	106	117,355	1,497	4,177	5,674	123,029	7,788	130,817	114,959	1,696
1950...	936,600	116	108,339	3,185	12,673	15,858	124,197	12,755	136,952	107,470	3,258
1951...	909,000	120	109,164	5,653	23,829	29,482	138,646	5,794	144,440	117,924	1,859
1952...	1,361,000	137	185,928	6,283	20,233	26,516	212,444	8,717	221,161	144,880	1,457
1953...	950,200	147	140,058	19,247	57,034	76,281	216,339	6,269	222,608	162,351	9,354
1954...	1,048,500	156	163,949	11,399	48,858	60,257	224,206	632	224,838	168,156	10,605
1955...	1,392,500	153	212,390	12,069	44,613	56,682	269,072	359	269,431	194,327	14,065
1956...	921,500	180	165,840	29,971	45,133	75,104	240,944	81	241,025	181,241	17,059
1957...	890,800	181	161,050	13,624	46,160	59,784	220,834	93	220,927	159,295	18,578
1958...	844,700	179	151,100	20,578	41,054	61,632	212,732	331	213,063	158,973	10,502
1959...	723,800	175	126,594	17,000	37,090	54,090	180,684	400	181,084	139,197	9,334

1/ Beginning July 1 of year of crop harvest.

Table 2--ALSIKE CLOVER SEED: Acreage, Yield, Production, Carry-over, Imports, Total Supply, Total Disappearance and Exports, United States 1939-59

Crop year	Acres harvested	Yield per acre	Production	Carryover			Production plus carryover	Imports <sup>1/</sup>	Total Supply	Total disappearance	Exports <sup>1/</sup>
				Farm	Dealer & Gov't. July 1	Total					
	Acres	Pounds	Thousand pounds of clean seed								
1939...	135,400	114	15,378	2,274	1,626	3,900	19,278	440	19,718	15,176	500
1940...	165,100	117	19,286	1,110	3,432	4,542	23,828	2/	23,828	17,592	2,334
1941...	119,700	135	16,160	1,739	4,497	6,236	22,396	0	22,396	16,473	2,873
1942...	89,400	137	12,244	890	5,033	5,923	18,167	0	18,167	15,401	4,052
1943...	103,900	112	11,590	487	2,279	2,766	14,356	0	14,356	12,962	680
1944...	125,000	96	12,022	344	1,050	1,394	13,416	2/	13,416	12,690	99
1945...	142,500	117	16,676	267	459	726	17,402	0	17,402	16,431	611
1946...	153,800	131	20,196	375	596	971	21,167	0	21,167	18,844	3,789
1947...	124,700	131	16,304	548	1,775	2,323	18,627	1,157	19,784	16,562	1,975
1948...	128,700	130	16,764	642	2,580	3,222	19,986	4,183	24,169	19,271	3,625
1949...	89,000	112	9,930	746	4,152	4,898	14,828	1,511	16,339	14,330	215
1950...	95,400	148	14,096	262	1,747	2,009	16,105	354	16,459	14,110	665
1951...	90,500	154	13,944	486	1,863	2,349	16,293	93	16,386	13,652	558
1952...	68,300	191	13,014	390	2,344	2,734	15,748	4,144	19,892	12,510	714
1953...	59,000	199	11,730	804	6,578	7,382	19,112	5,260	24,372	16,592	2,723
1954...	47,500	199	9,438	657	7,123	7,780	17,218	2,412	19,630	14,853	539
1955...	53,800	183	9,854	331	4,446	4,777	14,631	3,475	18,106	11,954	119
1956...	47,200	226	10,655	789	5,363	6,152	16,807	252	17,059	10,974	737
1957...	50,700	226	11,454	1,152	4,933	6,085	17,539	251	17,790	10,481	862
1958...	37,200	240	8,940	3,555	3,754	7,309	16,249	2,591	18,840	11,483	412
1959...	32,600	181	5,903	2,866	4,491	7,357	13,260	1,366	14,626	8,338	388

<sup>1/</sup> Beginning July 1 of year of crop harvest.

<sup>2/</sup> Less than 500 pounds.

Table 3.--RED CLOVER SEED: Acreage, Yield, Production, Carryover, Imports, Total Supply, Total Disappearance and Exports, United States 1939-59

Crop year	Acres harvested	Yield per acre	Production	Carryover			Production plus carryover	Imports <sup>1/</sup>	Total Supply	Total Disappearance	Exports <sup>1/</sup>
				Farm	Dealer & Gov't. July 1	Total					
	<u>Acres</u>	<u>Pounds</u>	<u>Thousand pounds of clean seed</u>								
1939...	1,350,300	62	83,896	17,096	6,479	23,575	107,471	138	107,609	68,833	390
1940...	2,046,700	50	101,413	21,284	17,492	38,776	140,189	1	140,190	97,608	790
1941...	1,408,000	54	76,220	29,988	12,594	42,582	118,802	2	118,804	78,431	7,580
1942...	1,181,900	48	57,150	20,181	20,192	40,373	97,523	<sup>2/</sup>	97,523	72,126	4,238
1943...	1,389,100	47	65,520	14,527	10,870	25,397	90,917	<sup>4/</sup>	90,961	79,630	55
1944...	2,411,800	44	107,020	7,953	3,378	11,331	118,351	4	118,355	104,350	1,039
1945...	2,162,500	43	93,520	11,330	2,675	14,005	107,525	20	107,545	99,491	1,155
1946...	2,581,000	45	115,730	6,581	1,473	8,054	123,784	73	123,857	107,744	6,112
1947...	1,432,600	48	68,670	12,116	3,997	16,113	84,783	2,572	87,355	76,844	426
1948...	1,822,500	56	101,280	6,032	4,479	10,511	111,791	4,326	116,117	95,572	608
1949...	1,360,500	58	78,804	13,010	7,535	20,545	99,349	4,826	104,175	91,271	162
1950...	2,564,300	58	149,074	6,265	6,639	12,904	161,978	1,645	163,623	113,090	500
1951...	1,473,050	59	87,539	28,381	22,152	50,533	138,072	5,740	143,812	109,945	400
1952...	1,707,700	58	99,431	15,729	18,138	33,867	133,298	4,934	138,232	98,637	300
1953...	1,449,300	60	86,382	18,038	21,557	39,595	125,977	5,940	131,917	96,602	4,600
1954...	900,130	62	55,827	18,589	16,726	35,315	91,142	224	91,366	75,242	9,000
1955...	1,319,000	62	81,402	8,129	7,995	16,124	97,526	6,064	103,590	77,217	2,500
1956...	1,003,600	77	77,627	14,907	11,466	26,373	104,000	264	104,264	75,074	<sup>3/</sup> 3,000
1957...	966,200	76	73,046	16,340	12,850	29,190	102,236	4,142	106,378	82,642	<sup>3/</sup> 760
1958...	1,054,200	70	73,463	14,490	9,246	23,736	97,199	1,918	99,117	76,748	<sup>4/</sup>
1959...	1,160,600	76	88,378	11,694	10,675	22,369	110,747	2,810	113,557	82,777	<sup>4/</sup>

<sup>1/</sup> Beginning July 1 of year of crop harvest.

<sup>2/</sup> Less than 500 pounds.

<sup>3/</sup> Estimated.

<sup>4/</sup> Data not available.



Table 4.--SWEETCLOVER SEED: Acreage, Yield, Production, Carryover, Imports, Total Supply, Total Disappearance and Exports, United States 1939- 59

Crop year	Acres harvested	Yield per acre	Production	Carryover			Production plus carryover	Imports <sup>1/</sup>	Total Supply	Total Disappearance	Exports <sup>1/</sup>
				Farm	Dealer & Gov't. July 1	Total					
	<u>Acres</u>	<u>Pounds</u>		<u>Thousand pounds of clean seed</u>							
1939...	557,300	129	71,740	3,566	6,375	9,941	81,681	3,604	85,285	63,779	<u>2/</u>
1940...	351,400	140	49,210	6,969	14,537	21,506	70,716	500	71,216	56,239	<u>2/</u>
1941...	350,600	114	40,090	6,836	8,141	14,977	55,067	897	55,964	43,715	2
1942...	230,100	144	33,090	3,253	8,996	12,249	45,339	2,193	47,532	38,914	39
1943...	183,100	131	23,920	2,656	5,962	8,618	32,538	4,416	36,954	31,945	178
1944...	292,200	131	38,200	2,069	2,940	5,009	43,209	9,029	52,238	43,955	2
1945...	248,200	129	32,120	2,742	5,541	8,283	40,403	11,048	51,451	45,562	970
1946...	245,200	148	36,260	1,615	4,274	5,889	42,149	10,370	52,519	47,765	50
1947...	229,100	145	33,260	1,630	3,124	4,754	38,014	12,999	51,013	47,066	106
1948...	208,800	165	34,370	1,330	2,617	3,947	38,317	27,332	65,649	61,189	13
1949...	357,800	156	55,735	1,388	3,072	4,460	60,195	20,508	80,703	73,070	33
1950...	550,200	153	84,451	2,269	5,364	7,633	92,084	18,250	110,334	76,633	79
1951...	303,900	157	47,578	12,543	21,158	33,701	81,279	12,739	94,018	70,812	10
1952...	270,300	159	43,015	6,932	16,274	23,206	66,221	15,263	81,484	65,288	45
1953...	221,300	163	36,024	5,748	10,448	16,196	52,220	10,937	63,157	50,108	15
1954...	266,100	171	45,505	6,020	7,029	13,049	58,554	10,901	69,455	58,205	<u>2/</u>
1955...	254,300	190	48,292	4,524	6,726	11,250	59,542	12,700	72,242	49,324	<u>2/</u>
1956...	220,000	166	36,570	8,554	14,364	22,918	59,488	10,456	69,944	50,112	<u>3/100</u>
1957...	187,600	164	30,705	10,270	9,562	19,832	50,537	18,819	69,356	50,039	0
1958...	149,100	174	25,991	8,285	11,032	19,317	45,308	10,358	55,666	40,827	<u>2/</u>
1959...	136,400	204	27,807	4,569	10,270	14,839	42,646	10,053	52,699	33,818	<u>2/</u>

<sup>1/</sup> Beginning July 1 of year of crop harvest.  
<sup>2/</sup> Data not available.  
<sup>3/</sup> Estimated.

Table 5.--WHITE CLOVER SEED: Acreage, Yield, Production, Carryover, Imports, Total Supply, Total Disappearance and Exports, United States 1939- 59

Crop year	Acres harvested	Yield per acre	Production	Carryover			Production plus carryover	Imports 1/	Total Supply	Total Disappearance	Exports 1/
				Farm	Dealer & Gov't. July 1	Total					
	Acres	Pounds	Thousand pounds of clean seed								
1939...	9,825	68	669	4/	610	610	1,279	752	2,031	1,458	320
1940...	11,950	70	835	4/	573	573	1,408	81	1,489	1,134	240
1941...	16,400	83	1,360	4/	355	355	1,715	319	2,034	1,143	440
1942...	21,700	88	1,920	30	861	891	2,811	2/	2,811	2,217	970
1943...	23,100	102	2,360	25	569	594	2,954	584	3,538	2,941	410
1944...	23,000	74	1,695	12	585	597	2,292	882	3,174	2,847	520
1945...	23,500	97	2,280	9	318	327	2,607	248	2,855	2,496	770
1946...	30,600	133	4,060	20	339	359	4,419	473	4,892	3,888	780
1947...	34,300	103	3,530	150	854	1,004	4,534	159	4,693	4,093	610
1948...	35,000	110	3,860	54	546	600	4,460	184	4,644	4,125	1,710
1949...	31,600	80	2,540	25	494	519	3,059	2,322	5,381	4,401	170
1950...	41,200	96	3,945	8	972	980	4,925	1,594	6,519	5,332	280
1951...	59,200	106	6,251	97	1,090	1,187	7,438	1,237	8,675	7,048	90
1952...	54,800	101	5,525	240	1,387	1,627	7,152	3,076	10,228	8,460	50
1953...	28,700	91	2,609	257	1,511	1,768	4,377	255	4,632	3,832	120
1954...	22,400	105	2,362	134	666	800	3,162	1,390	4,552	3,707	4/
1955...	31,900	151	4,827	37	808	845	5,672	1,455	7,127	5,262	4/
1956...	26,800	174	4,651	105	1,760	1,865	6,516	133	6,649	4,443	3/700
1957...	35,200	179	6,317	357	1,849	2,206	8,523	298	8,821	4,634	3/440
1958...	23,600	142	3,353	909	3,278	4,187	7,540	174	7,714	6,008	4/
1959...	28,600	171	4,879	393	1,313	1,706	6,585	225	6,810	5,410	4/

1/ Beginning July 1 of year of crop harvest.  
 2/ Less than 500 pounds.  
 3/ Estimated.  
 4/ Data not available.

Table 6.--LADINO CLOVER SEED: Acreage, Yield, Production, Carryover, Imports, Total Supply, Total Disappearance and Exports, United States 1939-59

Crop year	Acres harvested	Yield per acre	Production	Carryover			Production plus carryover	Imports <sup>1/</sup>	Total Supply	Total Disappearance	Exports <sup>1/</sup>
				Farm	Dealer & Gov't. July 1	Total					
	Acres	Pounds		Thousand pounds of clean seed							
1939...	5,000	96	480	<sup>4/</sup>	<sup>4/</sup>	<sup>4/</sup>	480	0	480	480	<sup>4/</sup>
1940...	7,000	80	560	<sup>4/</sup>	<sup>4/</sup>	<sup>4/</sup>	560	0	560	528	<sup>4/</sup>
1941...	7,200	71	510	<sup>4/</sup>	32	32	542	0	542	336	<sup>4/</sup>
1942...	5,700	66	375	<sup>4/</sup>	206	206	581	0	581	517	<sup>4/</sup>
1943...	5,100	76	390	<sup>4/</sup>	64	64	454	0	454	395	<sup>4/</sup>
1944...	12,400	59	730	<sup>4/</sup>	59	59	789	<sup>2/</sup>	789	580	<sup>4/</sup>
1945...	16,800	60	1,010	<sup>4/</sup>	209	209	1,219	0	1,219	882	<sup>4/</sup>
1946...	13,600	76	1,030	<sup>4/</sup>	337	337	1,367	3	1,370	1,180	<sup>4/</sup> 5
1947...	13,200	70	920	<sup>4/</sup>	190	190	1,110	441	1,551	1,125	<sup>4/</sup>
1948...	19,000	103	1,950	8	418	426	2,376	370	2,746	2,009	<sup>4/</sup> 20
1949...	25,400	150	3,805	9	728	737	4,542	109	4,651	4,076	70
1950...	58,760	138	8,126	22	553	575	8,701	1,969	10,670	7,337	120
1951...	75,900	157	11,937	114	3,219	3,333	15,270	290	15,560	3,021	220
1952...	71,200	172	12,251	189	12,350	12,539	24,790	0	24,790	6,406	170
1953...	33,900	211	7,142	110	18,274	18,384	25,526	0	25,526	9,286	2,300
1954...	15,640	238	3,717	45	16,195	16,240	19,957	0	19,957	7,837	800
1955...	18,800	257	4,828	35	12,085	12,120	16,948	22	16,970	6,488	1,750
1956...	20,000	298	5,950	35	10,447	10,482	16,432	0	16,432	8,113	<sup>3/2</sup> , 500
1957...	12,900	225	2,906	46	8,273	8,319	11,225	0	11,225	6,510	<sup>3/2</sup> , 250
1958...	14,000	302	4,235	32	4,683	4,715	8,950	58	9,008	6,556	1,570
1959...	17,400	250	4,356	32	2,420	2,452	6,808	0	6,808	4,914	1,801

<sup>1/</sup> Beginning July 1 of year of crop harvest.

<sup>2/</sup> Less than 500 pounds.

<sup>3/</sup> Estimated.

<sup>4/</sup> Data not available.

C UPDATA 1981

Table 7.--LESPEDEZA SEED: Acreage, Yield, Production, Carryover, Imports, Total Supply, Total Disappearance and Exports, United States 1939-59

Crop year	Acres harvested	Yield per acre	Production	Carryover			Production plus carryover	Imports <sup>1/</sup>	Total Supply	Total Disappearance	Exports <sup>1/</sup>
				Farm	Dealer & Gov't. July 1	Total					
	Acres	Pounds	Thousand pounds of clean seed								
1939...	627,400	147	92,250	11,546	16,443	27,989	120,239	0	120,239	107,904	2/
1940...	705,200	158	111,540	1,960	10,375	12,335	123,875	0	123,875	119,879	2/
1941...	813,000	178	145,100	1,633	2,363	3,996	149,096	0	149,096	130,012	2/
1942...	747,400	185	138,290	6,609	12,475	19,084	157,374	0	157,374	148,434	2/
1943...	808,000	172	138,770	4,528	4,412	8,940	147,710	0	147,710	141,674	2/
1944...	1,196,600	194	232,100	3,658	2,378	6,036	238,136	0	238,136	192,535	2/
1945...	951,900	177	168,600	23,535	22,066	45,601	214,201	0	214,201	184,046	2/
1946...	966,100	197	190,800	11,632	18,523	30,155	220,955	0	220,955	205,995	2/
1947...	767,000	179	137,200	9,086	5,874	14,960	152,160	0	152,160	145,880	2/
1948...	948,100	219	207,360	3,707	2,573	6,280	213,640	0	213,640	188,816	2/
1949...	1,060,500	227	240,750	8,037	16,787	24,824	265,574	0	265,574	211,633	2/
1950...	747,600	199	148,540	15,108	38,833	53,941	202,481	0	202,481	188,977	12
1951...	648,800	208	134,705	5,333	8,171	13,504	148,209	0	148,209	146,385	15
1952...	673,000	200	134,610	1,728	96	1,824	136,434	0	136,434	120,695	2/
1953...	502,000	151	75,645	3,554	12,185	15,739	91,384	0	91,384	88,938	0
1954...	561,500	161	90,545	1,845	601	2,446	92,991	0	92,991	86,262	2/
1955...	833,500	203	169,370	2,685	4,044	6,729	176,099	0	176,099	152,264	2/
1956...	670,000	195	130,660	8,711	15,124	23,835	154,495	0	154,495	135,241	2/
1957...	608,000	209	127,350	6,988	12,266	19,254	146,604	0	146,604	133,334	2/
1958...	595,000	223	132,755	6,404	6,866	13,270	146,025	0	146,025	131,835	2/
1959...	493,000	222	109,450	8,338	5,852	14,190	123,640	0	123,640	112,621	2/

1/ Beginning July 1 of year of crop harvest.

2/ Data not available.

(C) UPDATE 1981

Table 8.--TIMOTHY SEED: Acreage, Yield, Production, Carryover, Imports, Total Supply, Total Disappearance and Exports, United States 1939- 59

Crop year	Acres harvested	Yield per acre	Production	Carryover			Production plus carryover	Imports 1/	Total Supply	Total Disappearance	Exports 1/
				Farm	Dealer & Gov't. July 1	Total					
	Acres	Pounds	Thousand pounds of clean seed								
1939...	490,200	121	59,200	5,258	30,272	35,530	94,730	16	94,746	65,538	10,673
1940...	397,900	127	50,490	4,688	24,520	29,208	79,698	1	79,699	60,304	7,841
1941...	375,300	140	52,370	3,702	15,693	19,395	71,765	2/	71,765	56,145	11,978
1942...	442,400	159	70,500	3,562	12,058	15,620	86,120	2/	86,120	51,737	8,197
1943...	429,000	164	70,340	8,018	26,365	34,383	104,723	2/	104,723	63,813	7,527
1944...	364,400	154	56,260	4,098	36,812	40,910	97,170	2/	97,170	68,866	9,927
1945...	364,200	156	56,940	3,167	25,137	28,304	85,244	2/	85,244	65,001	11,231
1946...	368,300	154	56,740	2,420	17,823	20,243	76,983	2	76,985	58,507	6,967
1947...	411,300	169	69,580	2,320	16,158	18,478	88,058	1	88,059	62,030	13,387
1948...	132,800	132	17,500	3,373	22,656	26,029	43,529	43	43,572	41,353	6,575
1949...	326,000	123	40,090	1,022	1,197	2,219	42,309	1,489	43,798	41,694	5,029
1950...	445,000	144	63,915	1,123	981	2,104	66,019	32	66,051	41,541	6,131
1951...	294,500	137	40,297	5,430	19,080	24,510	64,807	19	64,826	48,744	6,127
1952...	245,800	136	33,404	3,477	12,605	16,082	49,486	1,468	50,954	39,355	743
1953...	235,500	137	32,335	2,854	8,745	11,599	43,934	12,875	56,809	47,466	512
1954...	251,000	149	37,435	2,113	7,230	9,343	46,778	5,879	52,657	45,568	1,748
1955...	318,500	157	49,952	1,323	5,766	7,089	57,041	3,274	60,315	43,804	750
1956...	206,500	135	27,805	4,694	11,817	16,511	44,316	2,564	46,880	35,996	1,098
1957...	277,000	148	40,860	2,473	8,411	10,884	51,744	466	52,210	40,116	3,142
1958...	191,500	134	25,690	5,193	6,901	12,094	37,784	716	38,500	35,190	3,046
1959...	317,500	148	47,003	1,602	1,708	3,310	50,313	1,149	51,462	37,785	3,448

1/ Beginning July 1 of year of crop harvest.  
 2/ Less than 500 pounds.

Table 9.--ORCHARDGRASS SEED: Acreage, Yield, Production, Carryover, Imports, Total Supply, Total Disappearance and Exports, United States 1939-59

Crop year	Acres harvested	Yield per acre	Production	Carryover			Production plus carryover	Imports <sup>1/</sup>	Total Supply	Total Disappearance	Exports <sup>1/</sup>
				Farm	Dealer & Gov't. July 1	Total					
	Acres	Pounds	Thousand pounds of clean seed								
1939...	29,600	144	4,270	2/	900	900	5,170	288	5,458	4,126	1,000
1940...	32,600	135	4,410	2/	1,332	1,332	5,742	1	5,743	5,370	2,500
1941...	42,500	135	5,720	2/	373	373	6,093	0	6,093	5,549	1,004
1942...	48,200	129	6,200	140	404	544	6,744	0	6,744	6,471	4,389
1943...	46,600	129	6,030	17	256	273	6,303	0	6,303	5,732	3,948
1944...	52,000	137	7,140	115	456	571	7,711	0	7,711	7,215	5,596
1945...	44,000	127	5,600	104	392	496	6,096	207	6,303	5,708	1,980
1946...	50,700	161	8,170	45	550	595	8,765	32	8,797	6,659	765
1947...	41,000	171	7,000	210	1,928	2,138	9,138	37	9,175	4,551	425
1948...	38,000	168	6,400	546	4,078	4,624	11,024	1	11,025	10,854	2,100
1949...	59,000	168	9,900	20	151	171	10,071	830	10,901	9,542	394
1950...	70,000	201	14,050	27	1,332	1,359	15,409	512	15,921	12,265	564
1951...	79,000	177	14,020	681	2,975	3,656	17,676	5,372	23,048	19,523	235
1952...	70,000	200	13,990	127	3,398	3,525	17,515	5,662	23,177	16,871	53
1953...	58,000	190	11,025	289	6,017	6,306	17,331	3,473	20,804	14,903	276
1954...	33,500	192	6,425	533	5,368	5,901	12,326	3,629	15,955	13,261	262
1955...	51,000	201	10,240	196	2,498	2,694	12,934	7,227	20,161	15,151	79
1956...	55,000	188	10,350	563	4,447	5,010	15,360	4,333	19,693	15,518	217
1957...	73,000	218	15,950	316	3,859	4,175	20,125	4,095	24,220	19,681	253
1958...	62,500	258	16,130	618	3,921	4,539	20,669	4,266	24,935	20,544	384
1959...	52,000	192	9,980	611	3,780	4,391	14,371	9,138	23,509	19,638	160

<sup>1/</sup> Beginning July 1 of year of crop harvest.  
<sup>2/</sup> Data not available.

Table 10.--REDTOP SEED: Acreage, Yield, Production, Carryover, Imports, Total Supply, Total Disappearance and Exports, United States 1939-59

Crop year	Acres harvested	Yield per acre	Production	Carryover			Production plus carryover	Imports <sup>1/</sup>	Total Supply	Total Disappearance	Exports <sup>1/</sup>
				Farm	Dealer & Gov't. July 1	Total					
	Acres	Pounds	Thousand pounds of clean seed								
1939...	285,000	62	17,700	3/	6,910	6,910	24,610	0	24,610	16,456	310
1940...	305,000	60	18,300	3/	8,154	8,154	26,454	0	26,454	14,142	800
1941...	281,000	66	18,500	3/	12,312	12,312	30,812	0	30,812	16,975	1,210
1942...	256,000	65	16,600	3/	13,837	13,837	30,437	0	30,437	16,822	1,140
1943...	184,000	58	10,700	120	13,495	13,615	24,315	0	24,315	14,590	1,000
1944...	263,000	68	17,800	150	9,575	9,725	27,525	0	27,525	20,073	1,400
1945...	274,000	81	22,300	90	7,362	7,452	29,752	0	29,752	17,970	2,368
1946...	239,000	63	15,000	450	11,332	11,782	26,782	0	26,782	20,984	2,284
1947...	202,000	72	14,500	65	5,733	5,798	20,298	19	20,317	16,901	1,103
1948...	74,000	53	3,900	120	3,296	3,416	7,316	62	7,378	6,736	535
1949...	128,000	63	8,100	26	616	642	8,742	2/	8,742	7,520	326
1950...	164,000	77	12,600	61	1,161	1,222	13,822	3	13,825	7,839	1,727
1951...	110,000	66	7,300	126	5,860	5,986	13,286	1	13,287	7,960	1,638
1952...	81,000	53	4,300	93	5,234	5,327	9,627	0	9,627	8,806	658
1953...	67,000	58	3,860	67	754	821	4,681	2	4,683	3,621	367
1954...	54,000	57	3,072	45	1,017	1,062	4,134	2/	4,134	3,474	421
1955...	53,000	80	4,240	35	625	660	4,900	1	4,901	2,830	773
1956...	50,000	77	3,840	22	2,049	2,071	5,911	0	5,911	4,181	624
1957...	45,000	75	3,375	46	1,684	1,730	5,105	5	5,110	3,715	711
1958...	42,000	75	3,155	84	1,311	1,395	4,550	0	4,550	3,140	425
1959...	62,000	88	5,485	73	1,337	1,410	6,895	0	6,895	4,708	494

- 12 -

<sup>1/</sup> Beginning July 1 of year of crop harvest.  
<sup>2/</sup> Less than 500 pounds.  
<sup>3/</sup> Data not available.

Table 11.--KENTUCKY BLUEGRASS SEED: Acreage, Yield, Production, Carryover, Imports, Total Supply, Total Disappearance and Exports, United States 1939-59

Crop year	Acres harvested	Yield per acre	Production	Carryover			Production plus carryover	Imports 1/	Total Supply	Total Disappearance	Exports 1/
				Farm	Dealer & Gov't. July 1	Total					
	Acres	Pounds	Thousand pounds of clean seed								
1939...	2/	2/	9,205	2/	10,856	10,856	20,061	0	20,061	14,525	465
1940...	2/	2/	22,694	2/	5,536	5,536	28,230	3/	28,230	19,150	1,100
1941...	2/	2/	24,717	2/	9,080	9,080	33,797	0	33,797	23,532	2,367
1942...	2/	2/	33,161	2/	10,265	10,265	43,426	0	43,426	23,960	1,400
1943...	2/	2/	10,585	2/	19,466	19,466	30,051	0	30,051	18,500	1,704
1944...	2/	2/	10,694	2/	11,551	11,551	22,245	0	22,245	18,013	1,969
1945...	2/	2/	13,862	2/	4,232	4,232	18,094	3/	18,094	15,968	839
1946...	2/	2/	7,666	2/	2,126	2,126	9,792	5	9,797	8,519	312
1947...	2/	2/	30,235	2/	1,278	1,278	31,513	19	31,532	24,468	2,140
1948...	2/	2/	14,239	2/	7,064	7,064	21,303	42	21,345	19,148	1,543
1949...	2/	2/	23,550	2/	2,197	2,197	25,747	0	25,747	22,904	2,031
1950...	2/	2/	28,938	2/	2,843	2,843	31,781	929	32,710	22,782	2,186
1951...	2/	2/	18,099	2/	9,928	9,928	28,027	22	28,049	20,334	1,948
1952...	2/	2/	18,400	2/	7,715	7,715	26,115	22	26,137	23,848	1,555
1953...	2/	2/	7,970	2/	2,289	2,289	10,259	529	10,788	9,069	270
1954...	2/	2/	19,500	2/	1,719	1,719	21,219	1,092	22,311	15,814	1,031
1955...	2/	2/	23,450	2/	6,497	6,497	29,947	961	30,908	19,390	660
1956...	2/	2/	9,163	2/	11,518	11,518	20,681	450	21,131	17,515	962
1957...	2/	2/	24,550	2/	3,616	3,616	28,166	843	29,009	16,776	1,127
1958...	2/	2/	28,610	2/	12,233	12,233	40,843	1,968	42,811	23,684	2,203
1959...	2/	2/	3,550	2/	19,127	19,127	22,677	7,739	30,416	21,386	943

1/ Beginning July 1 of year of crop harvest.

2/ Data not available.

3/ Less than 500 pounds.



Table 12.--MERION KENTUCKY BLUEGRASS SEED: Acreage, Yield, Production, Carryover, Imports, Total Supply, Total Disappearance and Exports, United States 1939-59

Crop year	Acres harvested	Yield per acre	Production	Carryover			Production plus carryover	Imports <sup>1/</sup>	Total Supply	Total Disappearance	Exports <sup>1/</sup>
				Farm	Dealer & Gov't. July 1	Total					
	<u>Acres</u>	<u>Pounds</u>	<u>Thousand pounds of clean seed</u>								
1939...											
1940...											
1941...											
1942...											
1943...											
1944...											
1945...											
1946...											
1947...											
1948...											
1949...											
1950...											
1951...											
1952...	900	174	157	0	No data	---	157	0	157	157	No data
1953...	2,100	225	472	0	No data	---	472	0	472	472	No data
1954...	4,200	205	861	0	No data	---	861	0	861	714	No data
1955...	6,700	136	912	0	147	147	1,059	0	1,059	898	No data
1956...	9,920	185	1,831	0	161	161	1,992	0	1,992	1,305	No data
1957...	11,860	197	2,332	157	530	687	3,019	0	3,019	2,600	No data
1958...	10,350	164	1,699	20	399	419	2,118	0	2,118	1,534	No data
1959...	12,930	247	3,197	13	571	584	3,781	0	3,781	2,647	No data

<sup>1/</sup> Beginning July 1 of year of crop harvest.

UPDATA 1981

74

Table 13.--CHEWINGS FESCUE SEED: Acreage, Yield, Production, Carryover, Imports, Total Supply, Total Disappearance and Exports, United States 1939-59

Crop year	Acres harvested	Yield per acre	Production	Carryover			Production plus carryover	Imports 1/	Total Supply	Total Disappearance	Exports 1/
				Farm	Dealer & Gov't. July 1	Total					
	<u>Acres</u>	<u>Pounds</u>		<u>Thousand pounds of clean seed</u>							
1939...	925	200	186	2/	2/	2/	186	1,052	1,238	1,238	2/
1940...	2,200	180	393	2/	2/	2/	393	1,531	1,924	1,924	2/
1941...	3,750	215	800	2/	2/	2/	800	1,035	1,835	1,835	2/
1942...	4,000	240	960	2/	2/	2/	960	858	1,818	1,260	2/
1943...	4,200	215	900	2/	558	558	1,458	901	2,359	1,842	2/
1944...	5,300	195	1,000	2/	517	517	1,517	774	2,291	1,769	2/
1945...	6,000	220	1,300	2/	522	522	1,822	1,247	3,069	2,322	2/
1946...	10,000	280	2,800	2/	747	747	3,547	576	4,123	2,971	2/
1947...	12,000	240	2,900	2/	1,152	1,152	4,052	0	4,052	2,971	2/
1948...	13,000	245	3,200	2/	1,081	1,081	4,281	49	4,330	2,653	2/
1949...	12,300	201	2,475	320	1,357	1,677	4,152	1,616	5,768	5,059	2/
1950...	13,400	271	3,630	73	636	709	4,339	1,198	5,537	4,867	2/
1951...	15,500	141	2,190	36	634	670	2,860	1,049	3,909	3,167	2/
1952...	17,000	298	5,060	64	678	742	5,802	449	6,251	3,593	2/
1953...	17,000	260	4,420	498	2,160	2,658	7,078	600	7,678	4,264	2/
1954...	20,000	340	6,800	133	3,281	3,414	10,214	64	10,278	6,537	2/
1955...	21,000	380	7,980	360	3,381	3,741	11,721	112	11,833	7,116	2/
1956...	17,000	300	5,100	319	4,398	4,717	9,817	132	9,949	6,728	3/- 750
1957...	20,000	390	7,800	510	2,711	3,221	11,021	40	11,061	9,204	3/1,650
1958...	21,000	280	5,880	39	1,818	1,857	7,737	6	7,743	5,844	3/1,478
1959...	24,000	440	10,560	59	1,840	1,899	12,459	19	12,478	8,499	2/

1/ Beginning July 1 of year of crop harvest.

2/ Data not available.

3/ Estimated.

Table 14.--RED FESCUE SEED: Acreage, Yield, Production, Carryover, Imports, Total Supply, Total Disappearance and Exports, United States 1939-59

Crop year	Acres harvested	Yield per acre	Production	Carryover			Production plus carryover	Imports <sup>1/</sup>	Total Supply	Total Disappearance	Exports <sup>1/</sup>
				Farm	Dealer & Gov't. July 1	Total					
	Acres	Pounds	Thousand pounds of clean seed								
1939...	<sup>2/</sup>	<sup>2/</sup>	<sup>2/</sup>	<sup>2/</sup>	<sup>2/</sup>	<sup>2/</sup>	<sup>2/</sup>	135	<sup>2/</sup>	<sup>2/</sup>	<sup>2/</sup>
1940...	100	200	20	<sup>2/</sup>	<sup>2/</sup>	<sup>2/</sup>	20	10	30	30	<sup>2/</sup>
1941...	200	200	40	<sup>2/</sup>	<sup>2/</sup>	<sup>2/</sup>	40	10	50	50	<sup>2/</sup>
1942...	350	215	75	<sup>2/</sup>	<sup>2/</sup>	<sup>2/</sup>	75	83	158	158	<sup>2/</sup>
1943...	500	300	150	<sup>2/</sup>	<sup>2/</sup>	<sup>2/</sup>	150	65	215	215	<sup>2/</sup>
1944...	800	300	240	<sup>2/</sup>	<sup>2/</sup>	<sup>2/</sup>	240	96	336	336	<sup>2/</sup>
1945...	1,000	350	350	<sup>2/</sup>	<sup>2/</sup>	<sup>2/</sup>	350	275	625	625	<sup>2/</sup>
1946...	2,500	440	1,100	<sup>2/</sup>	<sup>2/</sup>	<sup>2/</sup>	1,100	88	1,188	1,188	<sup>2/</sup>
1947...	4,000	350	1,400	<sup>2/</sup>	<sup>2/</sup>	<sup>2/</sup>	1,400	88	1,488	1,488	<sup>2/</sup>
1948...	5,300	377	2,000	<sup>2/</sup>	<sup>2/</sup>	<sup>2/</sup>	2,000	888	2,888	1,817	<sup>2/</sup>
1949...	4,500	193	870	62	1,009	1,071	1,941	746	2,687	2,273	<sup>2/</sup>
1950...	5,150	357	1,837	13	401	414	2,251	484	2,735	2,283	<sup>2/</sup>
1951...	6,000	197	1,180	18	434	452	1,632	2,472	4,104	3,355	<sup>2/</sup>
1952...	6,750	318	2,145	11	738	749	2,894	3,657	6,551	4,362	<sup>2/</sup>
1953...	8,100	335	2,712	271	1,918	2,189	4,901	7,873	12,774	8,774	<sup>2/</sup>
1954...	10,000	469	4,692	63	3,937	4,000	8,692	7,429	16,121	10,714	<sup>2/</sup>
1955...	8,800	235	2,072	457	4,950	5,407	7,479	8,795	16,274	11,886	<sup>2/</sup>
1956...	7,100	290	2,056	111	4,277	4,388	6,444	5,438	11,882	9,511	<sup>3/</sup> 1,000
1957...	7,000	451	3,160	408	1,963	2,371	5,531	7,869	13,400	10,367	<sup>3/</sup> 850
1958...	8,500	318	2,706	36	2,997	3,033	5,739	12,160	17,899	13,649	<sup>3/</sup> 14
1959...	13,500	421	5,679	285	3,965	4,250	9,929	15,936	25,865	19,080	<sup>2/</sup>

<sup>1/</sup> Beginning July 1 of year of crop harvest.

<sup>2/</sup> Data not available.

<sup>3/</sup> Estimated.

Table 15.--TALL FESCUE (ALTA & KY. 31) SEED: Acreage, Yield, Production, Carryover, Imports, Total Supply, Total Disappearance and Exports, United States 1939-59

Crop year	Acres harvested	Yield per acre	Production	Carryover			Production plus carryover	Imports 1/	Total Supply	Total Disappearance	Exports 1/
				Farm	Dealer & Gov't. July 1	Total					
	<u>Acres</u>	<u>Pounds</u>		<u>Thousand pounds of clean seed</u>							
1939...	150	155	24	2/	2/	2/	24	2/	24	24	2/
1940...	750	320	240	2/	2/	2/	240	2/	240	240	2/
1941...	1,250	185	232	2/	2/	2/	232	2/	232	232	2/
1942...	1,500	180	270	2/	2/	2/	270	2/	270	270	20
1943...	2,100	240	500	2/	2/	2/	500	2/	500	500	2/
1944...	3,800	180	680	2/	2/	2/	680	2/	680	680	100
1945...	5,000	200	1,000	2/	2/	2/	1,000	2/	1,000	1,000	2/
1946...	7,000	230	1,600	2/	2/	2/	1,600	2/	1,600	1,600	1
1947...	10,000	200	2,000	2/	2/	2/	2,000	2/	2,000	2,000	1
1948...	27,200	235	6,400	2/	2/	2/	6,400	2/	6,400	5,347	2/
1949...	45,130	202	9,126	110	943	1,053	10,179	2/	10,179	9,507	1
1950...	94,900	216	20,539	81	591	672	21,211	2/	21,211	19,822	9
1951...	141,500	174	24,655	273	1,116	1,389	26,044	2/	26,044	23,347	2/
1952...	247,600	224	55,532	962	1,735	2,697	58,229	2/	58,229	31,671	181
1953...	145,100	224	32,482	8,769	17,789	26,558	59,040	2/	59,040	37,296	500
1954...	125,500	235	29,470	3,262	18,482	21,744	51,214	2/	51,214	28,785	2/
1955...	117,100	245	28,647	3,279	19,150	22,429	51,076	2/	51,076	30,493	3,329
1956...	103,800	242	25,140	5,199	15,384	20,583	45,723	2/	45,723	34,228	3/ 750
1957...	112,900	231	26,124	3,447	8,048	11,495	37,619	2/	37,619	32,091	3/ 1,000
1958...	133,500	229	30,558	1,375	4,153	5,528	36,086	30	36,116	29,947	2/
1959...	134,600	212	28,594	911	5,258	6,169	34,763	41	34,804	32,620	2/

1/ Beginning July 1 of year of crop harvest.  
 2/ Data not available.  
 3/ Estimated.

Table 16.--BERMUGRASS SEED: Acreage, Yield, Production, Carryover, Imports, Total Supply, Total Disappearance and Exports, United States 1939-59

Crop year	Acres harvested	Yield per acre	Production	Carryover			Production plus carryover	Imports <sup>1/</sup>	Total Supply	Total Disappearance	Exports <sup>1/</sup>
				Farm	Dealer & Gov't. July 1	Total					
	Acres	Pounds	Thousand pounds of clean seed								
1939...	4,500	140	632	2/	2/	2/	632	155	787	363	2/
1940...	5,750	130	752	2/	424	424	1,176	17	1,193	816	2/
1941...	6,250	140	875	2/	377	377	1,252	39	1,291	937	2/
1942...	6,400	125	800	2/	354	354	1,154	0	1,154	633	2/
1943...	6,600	100	660	2/	521	521	1,181	0	1,181	720	2/
1944...	7,000	130	910	2/	461	461	1,371	0	1,371	1,024	2/
1945...	7,000	145	1,000	2/	347	347	1,347	367	1,714	1,306	2/
1946...	9,000	120	1,100	2/	408	408	1,508	314	1,822	1,192	2/
1947...	11,000	135	1,500	2/	630	630	2,130	96	2,226	1,573	2/
1948...	12,000	125	1,500	2/	653	653	2,153	84	2,237	1,210	2/
1949...	15,500	102	1,580	90	937	1,027	2,607	62	2,669	2,101	2/
1950...	16,500	148	2,440	30	538	568	3,008	14	3,022	2,138	2/
1951...	16,500	112	1,840	24	860	884	2,724	316	3,040	2,240	2/
1952...	17,500	141	2,475	52	748	800	3,275	178	3,453	2,320	2/
1953...	18,400	179	3,287	24	1,109	1,133	4,420	90	4,510	2,600	2/
1954...	19,300	173	3,339	168	1,742	1,910	5,249	37	5,286	3,742	2/
1955...	22,000	209	4,600	68	1,476	1,544	6,144	76	6,220	4,242	2/
1956...	25,000	227	5,670	50	1,928	1,978	7,648	11	7,659	4,647	3/ 500
1957...	28,200	284	8,020	669	2,343	3,012	11,032	8	11,040	6,569	3/ 700
1958...	25,900	238	6,152	405	4,066	4,471	10,623	3	10,626	7,292	3/ 712
1959...	24,000	282	6,765	249	3,085	3,334	10,099	14	10,113	7,888	4,879

1/ Beginning July 1 of year of crop harvest.  
 2/ Data not available.  
 3/ Estimated.

Table 17.--SMOOTH BROMEGRASS SEED: Acreage, Yield, Production, Carryover, Imports, Total Supply, Total Disappearance and Exports, United States 1939-59

Crop year	Acres harvested	Yield per acre	Production	Carryover			Production plus carryover	Imports 1/	Total Supply	Total Disappearance	Exports 1/
				Farm	Dealer & Gov't. July 1	Total					
	Acres	Pounds	Thousand pounds of clean seed								
1939...	2/	2/	2/	2/	2/	2/	2/	3,868	3,868	3,206	2/
1940...	2/	2/	2/	2/	662	662	662	3,011	3,673	3,454	2/
1941...	2/	2/	2/	2/	219	219	219	4,501	4,720	2,561	2/
1942...	48,700	186	9,080	2/	2,159	2,159	11,239	6,732	17,971	13,824	1,400
1943...	48,000	176	8,470	2/	4,147	4,147	12,617	5,979	18,596	15,233	2/
1944...	85,300	172	14,660	2/	3,363	3,363	18,023	6,183	24,206	21,669	224
1945...	64,000	170	10,894	2/	2,537	2,537	13,431	8,198	21,629	17,744	286
1946...	33,100	136	4,512	2/	3,885	3,885	8,397	6,402	14,799	12,706	77
1947...	72,600	177	12,820	2/	2,093	2,093	14,913	4,554	19,467	17,714	2/
1948...	27,500	143	3,920	2/	1,753	1,753	5,673	6,721	12,394	11,762	2/
1949...	81,800	137	11,240	228	404	632	11,872	5,856	17,728	15,769	2/
1950...	133,500	196	26,194	652	1,307	1,959	28,153	9,913	38,066	26,941	2/
1951...	70,600	166	11,728	4,001	7,124	11,125	22,853	6,581	29,434	22,421	2/
1952...	53,750	132	7,161	1,352	5,661	7,013	14,174	12,495	26,669	20,680	2/
1953...	82,000	164	13,415	635	5,354	5,989	19,404	9,646	29,050	20,913	2/
1954...	79,200	186	14,763	1,598	6,539	8,137	22,900	5,357	28,257	18,201	2/
1955...	51,400	131	6,732	2,418	7,638	10,056	16,788	6,692	23,480	17,858	2/
1956...	52,000	118	6,118	883	4,739	5,622	11,740	3,746	15,486	13,480	3/ 100
1957...	156,600	225	35,172	429	1,577	2,006	37,178	352	37,530	13,920	3/1,660
1958...	60,500	147	8,885	9,161	14,449	23,610	32,495	2,052	34,547	22,462	2/
1959...	39,700	125	4,943	4,164	7,921	12,085	17,028	8,150	25,178	19,763	2/

1/ Beginning July 1 of year of crop harvest.

2/ Data not available.

3/ Estimated.

Table 18.--CRESTED WHEATGRASS SEED: Acreage, Yield, Production, Carryover, Imports, Total Supply, Total Disappearance and Exports, United States 1939-59

Crop year	Acres harvested	Yield per acre	Production	Carryover			Production plus carryover	Imports <sup>1/</sup>	Total Supply	Total Disappearance	Exports <sup>1/</sup>		
				Farm	Dealer & Gov't. July 1	Total							
	Acres	Pounds	Thousand pounds of clean seed										
1939...	2,000	130	260	2/	2/	2/	260	1,454	1,714	1,620	2/		
1940...	6,300	79	500	2/	2/	2/	594	1,029	1,623	1,100	2/		
1941...	2,800	89	250	2/	2/	2/	773	639	1,412	425	2/		
1942...	92,600	133	12,310	2/	2/	2/	987	987	13,297	1,010	14,307	13,444	1,076
1943...	81,300	98	7,930	2/	2/	2/	863	863	8,793	1,613	10,406	8,575	0
1944...	166,000	104	17,280	2/	2/	2/	1,831	1,831	19,111	611	19,722	16,055	45
1945...	46,000	102	4,694	2/	2/	2/	3,667	3,667	8,361	746	9,107	8,370	1,960
1946...	22,700	89	2,012	2/	2/	2/	737	737	2,749	135	2,884	2,736	1,816
1947...	29,200	115	3,350	2/	2/	2/	148	148	3,498	70	3,568	3,339	1
1948...	26,500	78	2,080	2/	2/	2/	229	229	2,309	111	2,420	2,176	0
1949...	59,500	99	5,865	60	184	244	6,109	44	6,153	4,469	4,469	0	
1950...	69,400	84	5,850	445	1,239	1,684	7,534	76	7,610	5,464	5,464	4	
1951...	27,100	74	2,018	1,034	1,112	2,146	4,164	366	4,530	3,891	3,891	0	
1952...	19,700	78	1,542	127	512	639	2,181	429	2,610	2,224	2,224	2/	
1953...	32,600	83	2,720	112	274	386	3,106	35	3,141	1,104	1,104	2/	
1954...	16,200	89	1,438	948	1,089	2,037	3,475	37	3,512	2,304	2,304	2/	
1955...	23,600	93	2,190	722	486	1,208	3,398	119	3,517	2,404	2,404	2/	
1956...	36,900	75	2,761	413	700	1,113	3,874	18	3,892	3,138	3,138	3/200	
1957...	100,000	104	10,360	370	384	754	11,114	33	11,147	3,778	3,778	3/650	
1958...	23,200	83	1,925	4,119	3,250	7,369	9,294	81	9,375	6,187	6,187	2/	
1959...	38,500	73	2,795	1,480	1,708	3,188	5,983	1,535	7,518	5,547	5,547	2/	

<sup>1/</sup> Beginning July 1 of year of crop harvest.

<sup>2/</sup> Data not available.

<sup>3/</sup> Estimated.

Table 19.--SUDANGRASS SEED: Acreage, Yield, Production, Carryover, Imports, Total Supply, Total Disappearance and Exports, United States 1939-59

Crop year	Acres harvested	Yield per acre	Production	Carryover			Production plus carryover	Imports <sup>1/</sup>	Total Supply	Total Disappearance	Exports <sup>1/</sup>
				Farm	Dealer & Gov't. July 1	Total					
	Acres	Pounds	Thousand pounds of clean seed								
1939...	184,100	412	75,860	1,500	6,657	8,157	84,017	0	84,017	59,964	2/
1940...	171,600	284	48,800	15,000	9,053	24,053	72,853	0	72,853	52,277	90
1941...	221,800	371	82,220	6,000	14,576	20,576	102,796	0	102,796	77,144	343
1942...	102,800	393	40,450	7,000	18,652	25,652	66,102	0	66,102	57,592	435
1943...	90,500	362	32,800	600	7,910	8,510	41,310	1,926	43,236	34,004	163
1944...	161,600	402	65,000	500	8,732	9,232	74,232	90	74,322	29,673	2,438
1945...	83,900	352	29,500	3,970	40,679	44,649	74,149	727	74,876	49,117	5,057
1946...	74,000	336	24,900	1,500	24,259	25,759	50,659	1,037	51,696	33,907	112
1947...	67,000	432	28,940	1,290	16,499	17,789	46,729	47	46,776	32,615	92
1948...	67,000	434	29,100	1,420	12,741	14,161	43,261	0	43,261	37,648	186
1949...	100,600	506	50,900	1,024	4,589	5,613	56,513	0	56,513	48,341	786
1950...	79,900	441	35,260	1,038	7,134	8,172	43,432	137	43,569	35,910	369
1951...	86,500	455	39,380	743	6,916	7,659	47,039	225	47,264	41,303	77
1952...	77,400	426	32,966	684	5,277	5,961	38,927	384	39,311	36,208	53
1953...	134,300	479	64,298	304	2,799	3,103	67,401	0	67,401	56,119	60
1954...	104,500	405	42,325	1,428	9,854	11,282	53,607	2	53,609	47,900	2/
1955...	166,500	534	88,970	621	5,088	5,709	94,679	0	94,679	67,018	2/
1956...	102,500	536	54,975	10,594	17,067	27,661	82,636	0	82,636	60,175	3/ 500
1957...	192,100	545	104,705	5,111	17,350	22,461	127,166	0	127,166	70,743	3/ 1,750
1958...	69,700	490	34,168	37,266	19,157	56,423	90,591	0	90,591	57,969	2/
1959...	75,500	574	43,338	21,319	11,303	32,622	75,960	0	75,960	61,418	2/

<sup>1/</sup> Beginning July 1 of year of crop harvest.

<sup>2/</sup> Data not available.

<sup>3/</sup> Estimated.



Table 20.--AUSTRIAN WINTER PEAS SEED: Acreage, Yield, Production, Carryover, Imports, Total Supply, Total Disappearance and Exports, United States 1939-59

Crop year	Acres harvested	Yield per acre	Production	Carryover			Production plus carryover	Imports <sup>1/</sup>	Total Supply	Total Disappearance	Exports <sup>1/</sup>
				Farm	Dealer & Gov't. July 1	Total					
	Acres	Pounds	Thousand pounds of clean seed								
1939...	41,800	712	29,770	2/	2/	2/	29,770	0	29,770	26,635	0
1940...	74,900	718	53,750	2/	3,135	3,135	56,885	0	56,885	56,195	0
1941...	56,500	657	37,100	2/	690	690	37,790	0	37,790	36,147	0
1942...	135,400	984	133,300	2/	1,643	1,643	134,943	0	134,943	73,850	5,000
1943...	155,300	969	150,500	2/	61,093	61,093	211,593	0	211,593	83,536	5,214
1944...	40,100	1,000	40,100	2/	128,057	128,057	168,157	0	168,157	70,427	4,480
1945...	42,000	905	38,000	2/	97,730	97,730	135,730	0	135,730	101,489	36,911
1946...	44,000	1,241	54,600	2/	34,241	34,241	88,841	0	88,841	86,446	5,000
1947...	48,000	1,174	56,350	2/	2,395	2,395	58,745	0	58,745	58,209	8,203
1948...	57,400	1,024	58,760	2/	536	536	59,296	0	59,296	55,356	0
1949...	94,500	863	81,600	464	3,476	3,940	85,540	0	85,540	68,910	0
1950...	195,700	1,377	269,460	536	16,094	16,630	286,090	0	286,090	49,868	3,500
1951...	33,500	978	32,750	1,334	234,888	236,222	268,972	0	268,972	45,252	4,200
1952...	39,000	1,360	53,050	527	223,193	223,720	276,770	0	276,770	226,180	13,500
1953...	28,500	1,211	34,525	610	49,980	50,590	85,115	0	85,115	81,325	3,200
1954...	36,700	1,079	39,605	2,235	1,555	3,790	43,395	0	43,395	40,615	2/
1955...	37,100	1,294	48,000	664	2,116	2,780	50,780	0	50,780	39,713	2/
1956...	32,800	996	32,685	785	10,282	11,067	43,752	0	43,752	30,272	2/
1957...	31,100	1,095	34,060	3,503	9,977	13,480	47,540	0	47,540	43,156	2/
1958...	29,300	1,017	29,800	1,114	3,270	4,384	34,184	0	34,184	32,260	2/
1959...	36,500	1,327	48,425	147	1,777	1,924	50,349	0	50,349	46,222	2/

<sup>1/</sup> Beginning July 1 of year of crop harvest.

<sup>2/</sup> Data not available.

(C) UPDATA 1981

Table 21.--CRIMSON CLOVER SEED: Acreage, Yield; Production, Carryover, Imports, Total Supply, Total Disappearance and Exports, United States 1939-59

Crop year	Acres harvested	Yield per acre	Production	Carryover			Production plus carryover	Imports 1/	Total Supply	Total Disappearance	Exports 1/
				Farm	Dealer & Gov't. July 1	Total					
	Acres	Pounds	Thousand pounds of clean seed								
1939...	23,600	235	5,560	2/	1,020	1,020	6,580	5,446	12,026	9,712	2/
1940...	26,700	226	6,040	100	2,214	2,314	8,354	0	8,354	6,068	51
1941...	40,700	230	9,380	95	2,191	2,286	11,666	0	11,666	7,852	160
1942...	54,700	312	17,080	250	3,564	3,814	20,894	0	20,894	14,452	200
1943...	52,800	263	13,880	140	6,302	6,442	20,322	0	20,322	18,475	120
1944...	65,000	235	15,270	210	1,637	1,847	17,117	0	17,117	16,707	200
1945...	64,400	223	14,350	150	260	410	14,760	0	14,760	13,969	280
1946...	64,800	231	14,960	145	646	791	15,751	283	16,034	15,816	30
1947...	73,800	181	13,360	75	143	218	13,578	606	14,184	13,741	1
1948...	78,000	201	15,710	165	278	443	16,153	789	16,942	16,121	400
1949...	124,900	168	20,942	222	599	821	21,763	0	21,763	21,512	2
1950...	163,780	116	19,080	112	139	251	19,331	13,350	32,681	31,012	1
1951...	171,400	158	27,040	324	1,345	1,669	28,709	13,938	42,647	37,812	0
1952...	170,300	167	28,373	859	3,976	4,835	33,208	8,414	41,622	36,668	0
1953...	150,500	178	26,775	968	3,986	4,954	31,729	348	32,077	24,283	0
1954...	105,200	137	14,412	981	6,813	7,794	22,206	2,952	25,158	23,160	2/
1955...	68,000	141	9,570	372	1,626	1,998	11,568	5,171	16,739	15,412	2/
1956...	90,500	164	14,865	278	1,049	1,327	16,192	0	16,192	14,805	3/ 300
1957...	89,000	154	13,693	396	991	1,387	15,080	2,548	17,628	16,202	2/
1958...	96,000	166	15,960	455	971	1,426	17,386	2,954	20,340	18,137	2/
1959...	62,200	192	11,964	512	1,691	2,203	14,167	2,516	16,683	14,370	2/

1/ Beginning July 1 of year of crop harvest.

2/ Data not available.

3/ Estimated.

Table 22.--LUPINE SEED: Acreage, Yield, Production, Carryover, Imports, Total Supply, Total Disappearance and Exports, United States 1939-59

Crop year	Acres harvested	Yield per acre	Production	Carryover			Production plus carryover	Imports 1/	Total Supply	Total Disappearance	Exports 1/
				Farm	Dealer & Gov't. July 1	Total					
	Acres	Pounds	Thousand pounds of clean seed								
1939...	2/	2/	2/	2/	2/	2/	2/	2/	2/	2/	2/
1940...	2/	2/	2/	2/	2/	2/	2/	667	2/	2/	2/
1941...	2/	2/	2/	2/	2/	2/	2/	246	2/	2/	2/
1942...	2/	2/	2/	2/	2/	2/	2/	0	2/	2/	2/
1943...	5,200	981	5,100	2/	2/	2/	5,100	0	5,100	4,133	0
1944...	7,900	899	7,100	127	840	967	8,067	3	8,070	7,746	0
1945...	16,500	879	14,500	40	284	324	14,824	0	14,824	14,823	0
1946...	41,000	1,029	42,200	0	1	1	42,201	0	42,201	40,413	0
1947...	69,000	797	55,000	1,100	688	1,788	56,788	0	56,788	39,249	0
1948...	50,000	624	31,200	1,050	16,489	17,539	48,739	0	48,739	48,411	269
1949...	93,000	806	75,000	291	37	328	75,328	1	75,329	73,579	0
1950...	234,000	863	201,900	677	1,073	1,750	203,650	1,522	205,172	61,955	0
1951...	49,200	545	26,800	5,567	137,650	143,217	170,017	20	170,037	55,169	0
1952...	44,000	906	39,850	556	114,312	114,868	154,718	13	154,731	97,685	1,066
1953...	30,900	756	23,365	1,020	56,026	57,046	80,411	2	80,413	79,157	3,034
1954...	23,900	676	16,152	1,247	9	1,256	17,408	74	17,482	15,710	2/
1955...	30,700	666	20,432	1,157	615	1,772	22,204	6	22,210	18,699	2/
1956...	25,900	595	15,412	2,098	1,413	3,511	18,923	7	18,930	17,566	2/
1957...	27,200	758	20,610	1,094	270	1,364	21,974	0	21,974	20,520	2/
1958...	15,500	664	10,295	1,188	266	1,454	11,749	2,242	13,991	13,358	2/
1959...	14,000	673	9,420	384	249	633	10,053	2,982	13,035	10,557	2/

1/ Beginning July 1 of year of crop harvest.  
 2/ Data not available.

24

Table 23.--HAIRY VETCH SEED: Acreage, Yield, Production, Carryover, Imports, Total Supply, Total Disappearance and Exports, United States 1939-59

Crop year	Acres harvested	Yield per acre	Production	Carryover			Production plus carryover	Imports 1/	Total Supply	Total Disappearance	Exports 1/
				Farm	Dealer & Gov't. July 1	Total					
	Acres	Pounds				Thousand pounds of clean seed					
1939...	42,100	255	10,750	2/	1,178	1,178	11,928	2,752	14,680	13,784	0
1940...	91,500	285	26,100	2/	896	896	26,996	27	27,023	23,977	0
1941...	136,300	201	27,390	2/	3,046	3,046	30,436	0	30,436	27,596	0
1942...	138,400	231	32,020	2/	2,840	2,840	34,860	0	34,860	23,658	1,036
1943...	92,800	264	24,480	2/	11,202	11,202	35,682	3	35,685	28,820	0
1944...	87,300	235	20,530	2/	6,865	6,865	27,395	0	27,395	18,877	0
1945...	60,400	232	14,010	2/	8,513	8,513	22,528	4	22,532	16,861	220
1946...	56,400	218	12,290	2/	5,671	5,671	17,961	199	18,160	16,173	62
1947...	95,200	207	19,690	2/	1,987	1,987	21,677	181	21,858	19,076	900
1948...	94,500	213	20,120	2/	2,782	2,782	22,902	23	22,925	19,941	2,454
1949...	212,000	176	37,300	201	2,783	2,984	40,284	48	40,332	37,738	0
1950...	273,000	186	50,820	608	1,986	2,594	53,414	26	53,440	42,659	50
1951...	236,500	178	42,100	733	10,048	10,781	52,881	39	52,920	40,083	100
1952...	359,000	191	68,735	1,682	11,155	12,837	81,572	1,885	83,457	50,401	25
1953...	211,700	186	39,334	2,414	30,642	33,056	72,390	109	72,499	37,140	50
1954...	206,500	152	31,395	1,513	33,846	35,359	66,754	33	66,787	38,849	2/
1955...	140,000	203	28,470	1,381	26,557	27,938	56,408	410	56,818	48,260	2/
1956...	123,000	213	26,185	978	7,580	8,558	34,743	16	34,759	23,431	2/
1957...	107,000	211	22,555	1,654	9,674	11,328	33,883	1,095	34,978	26,034	2/
1958...	141,000	151	21,305	1,608	7,336	8,944	30,249	0	30,249	24,750	2/
1959...	125,000	194	24,280	1,083	4,416	5,499	29,779	0	29,779	25,274	2/

1/ Beginning July 1 of year of crop harvest.

2/ Data not available.

Table 24.--COMMON VETCH SEED: Acreage, Yield, Production, Carryover, Imports, Total Supply, Total Disappearance and Exports, United States 1939-59

Crop year	Acres harvested	Yield per acre	Production	Carryover			Production plus carryover	Imports 1/	Total Supply	Total Disappearance	Exports 1/
				Farm	Dealer & Gov't. July 1	Total					
	Acres	Pounds		Thousand pounds of clean seed							
1939...	19,500	397	7,750	2/	2/	2/	7,750	249	7,999	7,999	0
1940...	38,850	441	17,140	2/	2/	2/	17,140	0	17,140	16,740	1,000
1941...	58,500	293	17,120	2/	400	400	17,520	0	17,520	15,420	3,300
1942...	65,100	384	25,000	2/	2,100	2,100	27,100	0	27,100	15,772	1,000
1943...	49,000	527	25,800	2/	11,328	11,328	37,128	0	37,128	23,825	2,740
1944...	71,000	507	36,000	2/	13,303	13,303	49,303	0	49,303	36,802	11,560
1945...	97,000	528	51,200	2/	12,501	12,501	63,701	0	63,701	61,104	21,000
1946...	104,000	437	45,400	2/	2,597	2,597	47,997	0	47,997	46,472	7,698
1947...	83,500	417	34,800	2/	1,525	1,525	36,325	0	36,325	35,843	10,000
1948...	58,600	480	28,100	2/	482	482	28,582	143	28,725	25,521	0
1949...	76,300	202	15,420	141	3,063	3,204	18,624	7,744	26,368	21,749	0
1950...	82,300	533	43,860	154	4,465	4,619	48,479	2	48,481	25,197	2,868
1951...	26,800	172	4,620	434	22,850	23,284	27,904	168	28,072	13,568	1,300
1952...	35,600	557	19,830	83	14,421	14,504	34,334	2,918	37,252	12,386	20,460
1953...	26,300	709	18,640	575	24,291	24,866	43,506	0	43,506	36,380	2/
1954...	14,300	608	8,690	634	6,492	7,126	15,816	3/	15,816	12,242	2/
1955...	15,400	763	11,745	108	3,466	3,574	15,319	619	15,938	13,973	2/
1956...	8,600	316	2,720	116	1,849	1,965	4,685	1,418	6,103	3,973	2/
1957...	18,000	396	7,130	99	2,031	2,130	9,260	0	9,260	6,751	2/
1958...	15,000	358	5,370	249	2,260	2,509	7,879	4	7,883	6,547	2/
1959...	9,000	487	4,380	54	1,282	1,336	5,716	0	5,716	4,773	2/

1/ Beginning July 1 of year of crop harvest.

2/ Data not available.

3/ Less than 500 pounds.

Table 25.--PURPLE VETCH SEED: Acreage, Yield, Production, Carryover, Imports, Total Supply, Total Disappearance and Exports, United States 1939- 59

Crop year	Acres harvested	Yield per acre	Production	Carryover			Production plus carryover	Imports 1/	Total Supply	Total Disappearance	Exports 1/
				Farm	Dealer & Gov't. July 1	Total					
	Acres	Pounds	Thousand pounds of clean seed								
1939...	9,000	500	4,500	2/	2/	2/	4,500	1	4,501	4,501	0
1940...	15,000	380	5,700	2/	2/	2/	5,700	0	5,700	5,640	0
1941...	15,400	280	4,310	2/	60	60	4,370	0	4,370	4,290	0
1942...	20,500	461	9,460	2/	80	80	9,540	0	9,540	6,940	0
1943...	20,700	408	8,450	2/	2,600	2,600	11,050	0	11,050	8,650	0
1944...	30,000	397	11,900	2/	2,400	2,400	14,300	0	14,300	12,500	0
1945...	36,100	300	10,840	2/	1,800	1,800	12,640	0	12,640	12,090	0
1946...	36,700	343	12,580	2/	550	550	13,130	0	13,130	12,730	0
1947...	29,500	149	4,400	2/	400	400	4,800	0	4,800	4,600	330
1948...	33,500	243	8,150	2/	200	200	8,350	0	8,350	7,439	1,550
1949...	27,800	245	6,820	11	900	911	7,731	0	7,731	5,822	2,200
1950...	37,200	249	9,270	9	1,900	1,909	11,179	0	11,179	9,498	2,200
1951...	9,000	390	3,500	29	1,652	1,681	5,181	0	5,181	3,934	2/
1952...	14,000	520	7,300	7	1,240	1,247	8,547	0	8,547	6,982	2/
1953...	20,000	450	9,000	15	1,550	1,565	10,565	0	10,565	7,322	2/
1954...	22,000	360	7,920	45	3,198	3,243	11,163	0	11,163	9,071	2/
1955...	20,000	275	5,500	198	1,894	2,092	7,592	0	7,592	6,193	2/
1956...	34,000	400	13,600	0	1,399	1,399	14,999	0	14,999	12,911	2/
1957...	36,000	260	9,360	1,000	1,088	2,088	11,448	0	11,448	8,476	2/
1958...	30,000	220	6,600	500	2,472	2,972	9,572	0	9,572	8,307	2/
1959...	45,000	180	8,100	660	605	1,265	9,365	0	9,365	8,261	2/

1/ Beginning July 1 of year of crop harvest.

2/ Data not available.

Table 26.--COMMON RYEGRASS SEED: Acreage, Yield, Production, Carryover, Imports, Total Supply, Total Disappearance and Exports, United States 1939-59

Crop year	Acres harvested	Yield per acre	Production	Carryover			Production plus carryover	Imports <sup>1/</sup>	Total Supply	Total Disappearance	Exports <sup>1/</sup>
				Farm	Dealer & Gov't. July 1	Total					
	Acres	Pounds	Thousand pounds of clean seed								
1939...	55,000	500	30,500	2/	2/	2/	30,500	292	30,792	24,704	500
1940...	65,000	360	27,500	2/	6,088	6,088	33,588	1	33,589	25,127	1,000
1941...	70,000	300	24,000	2/	8,462	8,462	32,462	348	32,810	24,041	1,500
1942...	84,000	320	30,000	2/	8,769	8,769	38,769	3	38,772	29,305	2/
1943...	60,000	340	23,000	2/	9,467	9,467	32,467	156	32,623	23,269	284
1944...	72,000	370	31,000	2/	9,354	9,354	40,354	39	40,393	28,954	2,000
1945...	80,000	450	39,500	2/	11,439	11,439	50,939	0	50,939	42,711	3,000
1946...	92,000	510	51,000	2/	8,228	8,228	59,228	15	59,243	34,832	500
1947...	87,000	500	47,500	2/	24,411	24,411	71,911	3	71,914	45,564	500
1948...	73,000	400	32,700	2/	26,350	26,350	59,050	23	59,073	52,981	2,000
1949...	86,000	450	42,200	490	5,602	6,092	48,292	838	49,130	41,618	400
1950...	115,000	630	72,450	844	6,668	7,512	79,962	3	79,965	66,880	200
1951...	100,000	660	66,000	1,087	11,998	13,085	79,085	415	79,500	65,302	100
1952...	113,000	800	90,400	2,640	11,558	14,198	104,598	261	104,859	91,630	2/
1953...	100,000	660	66,000	452	12,777	13,229	79,229	69	79,298	70,675	2/
1954...	115,000	920	105,800	528	8,095	8,623	114,423	100	114,523	93,277	20,500
1955...	124,000	980	121,520	4,761	16,485	21,246	142,766	434	143,200	99,494	4,000
1956...	89,000	1,000	89,000	19,443	24,263	43,706	132,706	56	132,762	91,358	3/6,000
1957...	72,000	930	66,960	10,680	30,724	41,404	108,364	64	108,428	87,119	3/4,500
1958...	72,000	880	63,360	2,678	18,631	21,309	84,669	4/	84,669	71,208	2/
1959...	124,000	1,100	136,400	1,267	12,194	13,461	149,861	1,215	151,076	93,555	2/

<sup>1/</sup> Beginning July 1 of year of crop harvest.

<sup>2/</sup> Data not available.

<sup>3/</sup> Estimated.

<sup>4/</sup> Less than 500 pounds.

Table 27.--PERENNIAL RYEGRASS SEED: Acreage, Yield, Production, Carryover, Imports, Total Supply, Total Disappearance and Exports, United States 1939-59

Crop year	Acres harvested	Yield per acre	Production	Carryover			Production plus carryover	Imports 1/	Total Supply	Total Disappearance	Exports 1/
				Farm	Dealer & Gov't. July 1	Total					
	Acres	Pounds	Thousand pounds of clean seed								
1939...	7,000	193	1,350	2/	2/	2/	1,350	661	2,011	2,011	0
1940...	9,500	181	1,720	2/	2/	2/	1,720	294	2,014	2,014	350
1941...	12,500	184	2,300	2/	2/	2/	2,300	271	2,571	2,571	354
1942...	13,200	250	3,300	2/	2/	2/	3,300	41	3,341	3,341	910
1943...	14,500	220	3,200	2/	2/	2/	3,200	342	3,542	3,542	10
1944...	16,500	280	4,600	2/	2/	2/	4,600	0	4,600	4,600	1,600
1945...	15,000	300	4,500	2/	2/	2/	4,500	3/	4,500	4,500	1,400
1946...	17,000	330	5,600	2/	2/	2/	5,600	1	5,601	5,601	800
1947...	18,000	340	6,100	2/	2/	2/	6,100	11	6,111	6,111	500
1948...	17,000	380	6,500	2/	2/	2/	6,500	39	6,539	6,474	2,600
1949...	14,000	400	5,600	65	2/	65	5,665	1,542	7,207	5,027	500
1950...	14,000	500	7,000	112	2,068	2,180	9,180	1,511	10,691	8,148	300
1951...	15,000	530	7,950	105	2,438	2,543	10,493	4,298	14,791	12,187	150
1952...	17,000	710	12,070	318	2,286	2,604	14,674	6,030	20,704	16,810	100
1953...	20,000	830	16,600	0	3,894	3,894	20,494	5,183	25,677	22,233	2/
1954...	27,000	830	22,410	83	3,361	3,444	25,854	235	26,089	24,144	2,500
1955...	33,000	950	31,350	0	1,945	1,945	33,295	25	33,320	24,953	1,500
1956...	41,000	1,050	43,050	2,508	5,859	8,367	51,417	33	51,450	35,920	4/4,000
1957...	39,000	910	35,490	3,874	11,656	15,530	51,020	1	51,021	34,845	4/4,100
1958...	36,000	780	28,080	3,549	12,627	16,176	44,256	176	44,432	34,792	2/
1959...	46,000	980	45,080	1,500	8,140	9,640	54,720	8	54,728	42,282	2/

1/ Beginning July 1 of year of crop harvest.

2/ Data not available.

3/ Less than 500 pounds.

4/ Estimated.





Growth Through Agricultural Progress

**SeHy 1-2 (61)**

**END**