



AgEcon SEARCH
RESEARCH IN AGRICULTURAL & APPLIED ECONOMICS

The World's Largest Open Access Agricultural & Applied Economics Digital Library

This document is discoverable and free to researchers across the globe due to the work of AgEcon Search.

Help ensure our sustainability.

Give to AgEcon Search

AgEcon Search
<http://ageconsearch.umn.edu>
aesearch@umn.edu

*Papers downloaded from **AgEcon Search** may be used for non-commercial purposes and personal study only. No other use, including posting to another Internet site, is permitted without permission from the copyright owner (not AgEcon Search), or as allowed under the provisions of Fair Use, U.S. Copyright Act, Title 17 U.S.C.*

SB 287 (1961)

CHICKENS AND EGGS

USDA STATISTICAL BULLETIN

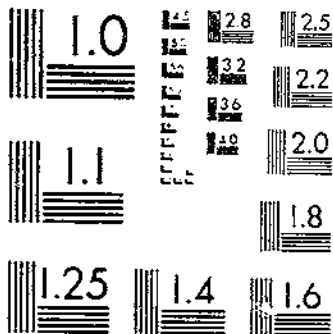
FARM PRODUCTION AND DISPOSITION

SUPPLEMENTAL DATA

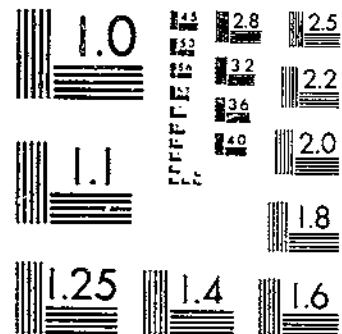
COMMERCIAL BROILERS

1 OF 1

START



MICROCOPY RESOLUTION TEST CHART
NATIONAL BUREAU OF STANDARDS 1964 A



MICROCOPY RESOLUTION TEST CHART
NATIONAL BUREAU OF STANDARDS 1964 A

R
620.5
183-13

REFERENCE
DO NOT LOAN

51
Chickens and Eggs

**FARM PRODUCTION
DISPOSITION
CASH RECEIPTS
GROSS INCOME**

Commercial Broilers

**PRODUCTION
GROSS INCOME**

Revised Estimates - By States
1955-59

Including Numbers on Farms
January 1, 1956-60

Statistical Bulletin No. 287

UNITED STATES DEPARTMENT OF AGRICULTURE
STATISTICAL REPORTING SERVICE
CROP REPORTING BOARD

Washington, D.C.

June 1961

Indexed by subject
in master index

CONTENTS

	<u>Page</u>
Comments	3
 CHICKENS:	
Table 1.--Farm production and disposition, by States, 1955-59	5
Table 2.--Prices and value of production, by States, 1955-59	9
Table 3.--Value of birds consumed in farm household and cash receipts, by States, 1955-59	10
Table 4.--Gross income, by States, 1955-59	11
 EGGS:	
Table 5.--Farm production and disposition, by States, 1955-59	13
Table 6.--Prices and cash receipts, by States, 1955-59 ...	15
Table 7.--Value of eggs consumed in farm household and gross income, by States, 1955-59	16
 COMMERCIAL BROILERS:	
Table 8.--Production, by States, 1955-59	17
Table 9.--Prices and gross income, by States, 1955-59	19
 FARM CHICKENS AND COMMERCIAL BROILERS:	
Table 10.--Total sales, by States, 1955-59	20
Table 11.--Prices and cash receipts, by States, 1955-59...	21
 INVENTORY:	
Table 12.--Number on farms, by classes, by States, January 1, 1956-60	22
Table 13.--Value per head and total value, by States, January 1, 1956-60	25

For earlier years in the series covered in this report see bulletins with similar title for
 1950-54 Statistical Bulletin No. 183
 Published June 1956
 1945-49 Published June 1952
 1909-44 Statistical Bulletin No. 133
 Published July 1953

CHICKENS AND EGGS, Farm Production, Disposition,
Cash Receipts, Gross Income
COMMERCIAL BROILERS, Production, Gross Income

Revised Estimates, by States, 1955-59
Including Numbers on Farms January 1, 1956-60

Revised estimates of farm production, disposition and income from chickens and eggs are presented in this report for 1955-59. These revisions resulted from a review and analysis of the 1959 Census of Agriculture covering chickens and eggs and of other available data relating to the production, disposition and prices of chickens and eggs. Revised estimates of numbers of chickens on farms January 1, 1956-60 also appear in this bulletin. A summary of the estimates of commercial broilers produced and gross income from broiler production for 1955-59 is shown in this publication.

Farm Chickens Raised: The estimates of numbers of chickens raised are based primarily on the number of egg-type chicks produced by commercial hatcheries and the proportions of these bought (excluding cockerels destroyed) for poultry production and on assessor's enumerations where available. Another indication of chickens raised is the relation of numbers of young chickens on hand in sample flocks on June 1 (plus prior disposals and later hatchings) to inventory numbers of layers on hand June 1 multiplied by the estimated number of June layers.

Chickens Produced: The estimate of the number produced is the net annual farm production of chickens, equivalent to the number raised during the year less death loss of chickens that were on hand at the beginning of the year. Young chickens of the current year's hatchings that die are not included in the number of chickens raised. The number produced also equals the number sold, plus those consumed on farms, plus or minus the change in inventory. The estimate of pounds produced (live weight) represents the pounds of chickens sold, plus the pounds consumed on producing farms, plus or minus the change in inventory live weight during the year.

Death Loss of Layers: The annual death loss of chickens on hand at the beginning of the year is estimated from quarterly returns from crop reporters showing the number of layers per flock which died during the preceding month. The annual percentage death loss, computed from these quarterly returns, is applied to numbers of chickens on hand at the beginning of the year to get the total number which died during the year.

Annual Rate of Lay: The annual rate of lay as presented in this publication is the rate based on the average number of hens and pullets of laying age on hand during the year. Average rates are obtained by dividing total

egg production for the year by the average number of hens and pullets of laying age on hand during the year. The average number of layers on hand during the year is a simple average of the 12 monthly estimates of layers on hand during the month. Estimates of laying rates were reviewed and revised where necessary for this report, giving consideration to current data and using flock size group data from the Census to determine trends in numbers and kinds of farms keeping chickens.

Eggs Produced: Annual egg production is the sum of the production in the 12 months. Estimates of monthly egg production and rate of lay are based on returns from about 27,000 crop correspondents who report for the first day of each month the number of layers on hand and the number of eggs produced "yesterday". In addition, reports are received each month from about 7,500 commercial egg producers covering their operations. The numbers of layers on farms January 1 serves as the starting point for the monthly estimates of layers. The change in numbers from month to month is estimated from the changes shown by reports from these sample farms. From the computed rate of lay per bird at the beginning and end of the month, the monthly production per layer is derived. Total monthly egg production is obtained by multiplying the average number of layers by the monthly egg production per layer.

Revisions in the monthly average number of layers and total egg production are made at the end of the year if the results from the annual survey with about 160,000 returns, differ significantly from the estimates made during the year based on the monthly samples.

Farm Consumption of Chickens and Eggs: The annual farm consumption of chickens and eggs is estimated from quarterly returns from crop reporters, showing the consumption in their households of chickens during the preceding month and of eggs during the preceding week. Average consumption per farm is multiplied by the number of farms on which chickens and eggs were produced.

Sales: Sales of chickens and eggs are computed by subtracting farm utilization from estimated production. These estimates of chickens sold are checked so far as possible against the available data of commercial slaughter of mature chickens.

Commercial Broilers: Commercial broilers include all young chickens of the heavy or cross-breeds raised for meat from which pullets as well as cockerels are sold as broilers. Commercial broiler production is not included in the estimated production of farm chickens.

Prices: The average annual prices per pound of chickens and broilers and per dozen of eggs sold are computed from the monthly prices received by

(Continued on page 26)

Table 1.--Farm chickens: Production and disposition, by States, 1955-59 1/

State and division	Number raised 2/					Number lost 3/				
	1955	1956	1957	1958	1959	1955	1956	1957	1958	1959
	Thou.	Thou.	Thou.	Thou.	Thou.	Thou.	Thou.	Thou.	Thou.	Thou.
Maine	7,220	6,354	6,227	6,352	6,288	809	829	844	897	893
N.H.	4,034	3,916	3,407	3,032	2,789	569	545	536	477	359
Vt.	2,029	1,745	1,361	1,198	1,042	190	196	184	152	158
Mass.	6,689	5,686	4,947	5,046	4,440	1,047	1,004	942	923	826
R.I.	804	675	580	615	547	105	99	86	93	79
Conn.	6,636	5,309	4,831	4,976	4,578	730	673	666	597	661
N.Y.	13,209	13,341	10,539	11,171	8,937	2,625	2,357	2,473	2,366	2,256
N.J.	12,804	13,060	11,101	11,101	9,325	3,226	3,515	3,368	2,826	2,443
Pa.	23,199	24,127	20,025	21,627	20,329	5,595	6,266	6,112	5,470	4,999
N.A.	77,424	74,213	63,016	65,118	58,275	14,896	15,484	15,213	13,801	12,674
Ohio	15,929	16,885	13,339	14,866	12,585	2,653	2,574	2,776	2,472	2,532
Ind.	19,250	20,212	15,563	16,341	14,543	2,568	2,665	2,426	2,523	2,475
Ill.	21,731	20,644	16,102	16,102	13,526	3,711	3,341	3,194	2,967	2,754
Mich.	13,207	13,339	10,004	10,704	7,814	2,320	2,496	2,547	1,928	1,866
Wis.	16,350	15,696	12,400	13,888	9,305	2,469	2,261	2,520	2,448	2,365
E.N.C.	86,467	86,776	67,408	71,841	57,773	13,721	13,337	13,463	12,338	11,992
Minn.	24,500	26,705	20,830	23,954	21,080	4,730	4,907	4,691	4,060	3,890
Iowa	34,601	36,331	30,155	32,869	28,596	4,951	4,489	4,591	4,681	4,514
Mo.	20,087	21,493	15,905	15,746	12,754	3,036	3,348	3,322	2,901	2,917
N.Dak.	5,632	5,801	4,873	5,019	4,266	955	936	892	755	724
S.Dak.	10,389	10,701	9,310	10,427	8,967	1,770	1,662	1,713	1,528	1,800
Nebr.	15,500	16,585	12,107	12,591	11,080	2,659	2,345	2,323	2,179	2,209
Kans.	14,602	15,478	11,299	11,977	9,821	2,382	2,302	2,396	2,013	2,017
W.N.C.	125,311	133,094	104,479	112,583	96,564	20,483	19,989	19,928	18,117	18,073
Del.	1,163	1,105	1,017	1,058	995	173	180	194	196	150
Md.	3,611	3,214	2,668	2,721	2,394	556	514	502	485	486
Va.	7,280	7,717	6,251	7,251	7,324	1,556	1,397	1,436	1,300	1,434
W.Va.	2,834	2,749	2,364	2,459	2,189	581	629	579	519	464
N.C.	14,967	16,015	16,816	17,489	16,615	2,478	2,755	2,863	2,995	2,896
S.C.	5,268	5,900	5,605	6,558	6,951	1,098	1,045	1,026	985	1,037
Ge.	11,167	13,065	13,588	15,762	16,550	2,133	2,222	2,054	2,124	2,409
Fla.	4,938	4,691	4,316	4,748	5,223	771	1,027	1,013	1,171	1,276
S.A.	51,228	54,456	52,625	58,046	58,241	9,346	9,769	9,667	9,675	10,152
Ky.	10,518	11,359	8,519	8,349	7,765	1,848	1,753	1,924	1,547	1,328
Tenn.	10,413	10,517	8,624	8,624	7,934	2,012	1,861	1,887	1,580	1,612
Ala.	7,216	7,793	7,403	8,958	9,585	1,466	1,531	1,352	1,735	1,799
Miss.	6,424	6,236	6,422	7,450	8,940	1,384	1,371	1,351	1,281	1,296
Ark.	5,396	5,666	4,646	6,504	7,284	847	915	878	808	1,045
La.	4,717	5,425	5,371	4,673	4,720	949	812	853	748	740
Okla.	6,688	6,621	5,098	4,894	3,964	1,434	1,448	1,521	1,094	971
Texas	15,709	18,537	14,830	16,906	16,061	4,235	4,294	4,383	3,353	3,285
S.C.	67,081	72,214	60,913	66,358	66,253	14,175	13,985	14,149	12,146	12,076
Mont.	2,876	2,675	2,354	2,354	1,930	409	427	358	314	313
Idaho	2,484	2,335	2,218	2,063	1,960	363	351	357	349	331
Wyo.	680	646	510	510	434	117	108	108	89	92
Colo.	2,998	3,148	2,298	2,137	1,838	464	433	440	384	368
N.Mex.	781	797	693	693	693	183	189	170	184	160
Ariz.	791	854	837	988	1,037	133	140	158	153	184
Utah	2,011	1,910	1,700	1,615	1,518	467	581	473	420	387
Nev.	149	136	124	115	105	39	32	26	24	22
Wash.	5,768	5,191	4,412	4,500	4,275	965	1,025	1,162	1,096	996
Oreg.	4,489	4,579	4,396	3,912	3,638	993	978	903	835	699
Calif.	28,888	28,021	25,779	28,615	31,476	7,404	8,428	7,248	7,026	6,272
West.	51,915	50,292	45,321	47,502	48,904	11,537	12,692	11,403	10,874	9,831
U.S.	459,426	471,045	393,764	421,448	386,010	84,158	85,256	83,823	76,951	74,798

1/ Does not include commercial broilers.

2/ Does not include young chickens lost.

3/ Loss during the year of chickens on hand January 1.

Table 1.--Farm chickens: Production and disposition, by States, 1955-59--Continued 1/

State and division	Number produced 2/					Pounds produced 2/				
	1955	1956	1957	1958	1959	1955	1956	1957	1958	1959
	Thou.	Thou.	Thou.	Thou.	Thou.	1,000 pounds	1,000 pounds	1,000 pounds	1,000 pounds	1,000 pounds
Maine	6,411	5,525	5,383	5,455	5,395	33,418	28,200	28,033	26,796	28,074
N.H.	4,265	3,371	2,871	2,555	2,430	20,912	16,868	15,242	13,508	13,374
Vt.	1,839	1,549	1,177	1,046	884	8,735	7,661	6,092	5,213	4,381
Mass.	5,642	4,682	4,005	4,123	3,614	26,690	23,435	20,849	21,852	19,456
R.I.	699	576	494	522	468	3,310	2,837	2,543	2,710	2,530
Conn.	5,906	4,636	4,163	4,379	3,917	27,295	23,775	21,672	22,415	21,170
N.Y.	10,584	10,984	8,066	8,805	6,681	51,862	50,971	37,379	40,021	32,500
N.J.	9,578	9,545	7,733	8,275	6,882	47,627	45,675	39,029	40,350	32,304
Pa.	17,604	17,861	13,913	16,157	15,330	91,005	90,812	72,929	83,243	77,548
N.A.	62,528	58,729	47,805	51,317	45,601	310,854	290,234	243,728	256,108	231,337
Ohio	13,276	14,311	10,563	12,334	10,053	66,264	68,593	52,838	61,761	48,425
Ind.	16,682	17,547	13,137	13,818	12,068	77,156	62,174	62,433	64,928	56,333
Ill.	18,020	17,303	12,908	13,135	10,772	81,583	75,349	59,084	61,375	48,400
Mich.	10,887	10,843	7,477	8,776	5,948	54,435	50,486	35,240	41,930	28,625
Wis.	13,881	13,435	9,880	11,440	6,940	62,800	61,465	44,819	52,015	31,407
E.N.C.	72,746	73,439	53,945	59,503	45,781	342,238	333,067	254,414	282,009	213,190
Minn.	19,770	21,798	16,139	19,894	17,190	89,737	97,231	73,066	88,398	73,918
Iowa	29,650	31,842	25,564	28,188	24,082	138,507	143,854	116,537	128,214	105,775
Mo.	17,051	18,145	12,583	12,845	9,837	71,204	75,447	54,573	55,190	41,143
N.Dak.	4,677	4,865	3,981	4,264	3,542	19,954	20,918	17,316	17,882	14,675
S.Dak.	8,619	9,039	7,597	8,899	7,165	37,994	39,243	33,392	37,788	30,070
Nebr.	12,841	14,240	9,784	10,412	8,871	53,458	58,571	42,233	44,702	36,486
Kans.	12,220	13,176	8,903	9,964	7,804	48,062	51,142	35,285	39,296	31,004
W.N.C.	104,828	113,105	84,551	94,466	78,491	458,916	486,406	372,402	411,470	333,071
Del.	990	925	823	862	845	4,564	4,222	3,868	3,949	3,993
Md.	3,055	2,700	2,166	2,236	1,908	13,712	12,476	9,999	10,357	8,723
Va.	5,724	6,320	4,815	5,951	5,890	22,618	25,144	20,381	25,095	25,838
W.Va.	2,253	2,120	1,785	1,940	1,725	9,757	9,372	7,642	8,422	7,828
N.C.	12,489	13,260	13,953	14,594	13,719	50,510	54,898	59,866	60,186	60,547
S.C.	4,170	4,855	4,579	5,573	5,914	14,432	17,037	15,543	19,512	22,062
Ga.	9,034	10,843	11,534	13,638	14,141	32,519	39,827	41,816	50,194	58,097
Fla.	4,167	3,664	3,303	3,577	3,947	14,821	13,293	13,183	14,010	16,121
S.A.	41,882	44,687	42,958	48,371	48,089	162,933	176,269	172,298	191,725	203,209
Ky.	8,670	9,606	6,595	6,802	6,437	33,020	35,494	22,252	24,429	23,248
Tenn.	8,401	8,656	6,737	7,044	6,322	29,933	30,431	22,286	24,272	22,802
Ala.	5,750	6,262	6,051	7,223	7,786	18,147	20,209	21,204	26,038	29,273
Miss.	5,040	4,925	5,071	6,169	7,644	16,755	15,183	15,799	22,660	29,787
Ark.	4,549	4,751	3,768	5,696	6,239	16,364	17,688	12,915	21,038	23,806
La.	3,768	4,613	4,518	3,925	3,980	12,589	15,076	15,282	13,535	14,483
Okla.	5,254	5,173	3,577	3,800	2,993	17,840	17,211	10,933	12,611	9,665
Texas	11,474	14,243	10,447	13,553	12,776	36,876	48,226	34,994	50,508	49,240
S.C.	52,906	58,229	46,764	54,212	54,177	181,524	199,518	155,665	195,091	202,304
Mont.	2,467	2,248	1,996	2,040	1,617	10,526	9,075	7,750	7,837	6,236
Idaho	2,121	1,984	1,861	1,714	1,629	8,700	7,893	7,494	6,921	6,681
Wyo.	563	538	402	421	342	2,167	1,977	1,487	1,591	1,275
Colo.	2,534	2,715	1,858	1,753	1,470	9,811	10,340	7,129	6,848	6,028
N.Mex.	598	608	523	509	533	2,028	2,021	1,719	1,709	1,893
Ariz.	658	714	679	835	853	2,392	2,690	2,610	3,408	3,537
Utah	1,544	1,329	1,227	1,195	1,131	6,141	5,183	4,732	4,881	4,585
Nev.	110	104	98	91	83	405	384	378	309	295
Wash.	4,803	4,166	3,250	3,404	3,279	22,938	18,393	14,782	15,822	15,102
Oreg.	3,496	3,601	3,493	3,077	2,939	15,837	15,315	15,031	12,527	11,976
Calif.	21,484	19,593	18,531	21,589	25,197	85,767	79,794	77,472	92,008	105,083
West.	40,378	37,600	33,918	36,628	39,073	166,712	153,065	140,584	153,861	162,691
U.S.	375,268	385,789	309,941	344,497	311,212	1,623,177	1,638,559	1,339,091	1,490,264	1,345,802

1/ Does not include commercial broilers.

2/ Production is the number (or pounds) available for utilization during the year, i.e., sales plus home consumption plus or minus the change in inventory. Production also equals the number (or pounds) raised minus death loss of birds on hand January 1.

Table 1.--Farm chickens: Production and disposition, by States, 1955-59--Continued 1/

State and division	Number consumed in farm household					Pounds consumed in farm household				
	1955	1956	1957	1958	1959	1955	1956	1957	1958	1959
	Thou.	Thou.	Thou.	Thou.	Thou.	1,000 pounds	1,000 pounds	1,000 pounds	1,000 pounds	1,000 pounds
Maine	204	224	204	220	199	1,142	1,165	1,162	1,144	1,055
N.H.	136	132	128	111	86	680	673	704	555	482
Vt.	183	178	166	174	164	952	943	896	940	853
Mass.	247	247	230	210	195	1,334	1,260	1,219	1,113	994
R.I.	49	49	46	40	30	255	255	258	204	165
Conn.	254	264	243	205	181	1,295	1,478	1,288	1,128	996
N.Y.	1,559	1,481	1,377	1,328	1,182	7,639	7,257	6,610	6,374	5,555
N.J.	658	704	683	495	421	3,027	3,238	3,074	2,228	1,937
Pa.	2,677	2,784	2,700	2,580	2,114	13,385	13,920	13,500	12,642	10,147
N.A.	5,967	6,063	5,777	5,363	4,572	29,709	30,189	28,651	26,328	22,184
Ohio	3,611	3,828	3,483	3,394	3,066	16,972	17,226	16,022	15,273	13,490
Ind.	3,647	3,574	3,252	3,089	2,800	14,588	14,296	13,008	12,356	10,920
Ill.	5,186	5,030	4,628	4,300	3,673	21,263	20,120	18,512	17,200	14,325
Mich.	2,114	2,029	1,928	1,950	1,736	10,570	9,942	9,254	9,165	7,986
Wis.	3,352	3,353	3,149	3,041	2,585	15,419	15,088	13,856	13,380	11,374
E.N.C.	17,910	17,814	16,440	15,774	13,860	78,812	76,672	70,652	67,374	58,095
Minn.	4,017	4,298	3,911	3,750	3,373	17,273	18,481	16,817	15,750	14,504
Iowa	6,356	6,547	6,023	6,100	5,188	26,695	27,497	24,694	24,400	20,752
Mo.	6,025	6,206	5,647	5,647	5,026	20,485	21,721	19,200	19,200	17,088
N.Dak.	1,564	1,627	1,497	1,512	1,391	6,256	6,671	6,138	6,048	5,425
S.Dak.	2,363	2,387	2,220	2,280	1,849	9,216	9,309	8,658	8,664	7,211
Nebr.	4,348	4,435	4,169	3,850	3,182	16,088	16,410	15,842	13,860	11,455
Kans.	4,660	4,800	4,320	3,943	3,333	16,310	16,800	15,120	13,406	11,332
W.N.C.	29,333	30,300	27,787	27,082	23,342	112,323	116,889	106,469	101,328	87,767
Del.	178	167	164	146	126	748	735	705	584	542
Md.	924	942	923	873	743	3,696	3,862	3,784	3,405	2,898
Va.	4,204	3,994	2,810	3,091	2,661	14,714	13,979	9,554	10,509	9,047
W.Va.	1,283	1,309	1,283	1,205	952	5,004	5,236	5,132	4,820	3,808
N.C.	7,324	7,690	7,613	7,520	6,445	24,169	25,377	24,362	24,816	21,268
S.C.	3,490	3,490	3,455	3,475	3,046	11,168	11,168	10,710	11,120	9,443
Ga.	4,821	5,255	5,097	4,842	3,956	13,981	15,240	14,781	15,010	12,264
Fla.	898	880	862	820	774	3,053	2,992	2,931	2,706	2,477
S.A.	23,122	23,727	22,207	21,972	18,703	76,533	78,509	71,959	72,970	61,747
Ky.	5,914	6,210	5,775	5,150	4,671	19,516	19,872	18,480	16,995	14,947
Tenn.	4,864	5,059	5,008	4,608	4,033	15,078	15,683	15,024	14,285	12,502
Ala.	4,932	4,685	4,020	3,908	3,561	14,303	13,586	11,658	12,115	10,683
Miss.	4,078	4,282	4,130	3,726	3,634	12,234	12,418	11,564	11,178	10,539
Ark.	2,951	3,010	2,920	3,095	2,805	8,853	9,331	8,760	9,594	8,696
La.	3,177	3,504	3,241	2,841	2,393	10,166	10,862	10,047	9,091	7,658
Okla.	3,529	3,705	3,409	3,045	2,695	10,940	11,486	10,227	9,440	8,354
Texas	7,872	7,951	7,315	6,550	5,605	22,829	23,058	21,214	18,995	16,254
S.C.	37,317	38,406	35,818	32,923	29,397	113,919	116,296	106,974	101,693	89,633
Mont.	822	830	830	847	711	3,452	3,403	3,320	3,303	2,702
Idaho	839	805	805	748	647	3,188	3,059	3,059	2,768	2,459
Wyo.	282	302	302	270	245	1,015	1,057	1,087	972	858
Colo.	1,083	1,040	918	985	734	4,007	3,640	3,521	3,546	2,716
N.Mex.	405	413	396	390	325	1,256	1,280	1,148	1,209	1,040
Ariz.	181	188	177	152	109	579	639	602	471	338
Utah	315	299	293	290	207	1,102	1,166	996	899	704
Nev.	88	92	88	79	59	308	331	334	261	189
Wash.	1,193	1,181	1,169	1,089	910	5,249	4,960	4,793	4,247	3,731
Oreg.	819	844	844	886	744	3,522	3,460	3,376	3,544	2,976
Calif.	1,690	1,791	1,791	1,650	1,490	6,591	6,806	7,164	6,270	5,513
West.	7,717	7,785	7,673	7,386	6,181	30,269	29,801	29,400	27,490	23,226
U.S.	121,366	124,095	115,702	110,500	96,055	441,565	448,436	414,105	397,183	342,652

1/ Does not include commercial broilers.

Table 1.--Farm chickens: Production and disposition, by States, 1955-59--Continued 1/

State and division	Number sold					Pounds sold				
	1955	1956	1957	1958	1959	1955	1956	1957	1958	1959
	Thou.	Thou.	Thou.	Thou.	Thou.	1,000 pounds	1,000 pounds	1,000 pounds	1,000 pounds	1,000 pounds
Maine	6,110	5,028	4,913	5,023	5,235	31,772	25,643	25,548	24,613	27,222
N.H.	4,112	3,414	2,907	2,534	2,511	20,149	17,070	15,407	13,695	17,810
Vt.	1,683	1,379	1,143	891	784	7,910	6,757	5,829	4,366	3,842
Miss.	5,400	4,338	3,859	3,981	3,873	25,380	21,690	20,067	21,099	20,914
R.I.	656	521	460	482	461	3,083	2,553	2,346	2,506	2,489
Conn.	5,536	4,401	4,116	4,015	3,933	25,466	22,445	21,403	20,476	21,238
N.Y.	9,122	9,543	7,224	7,455	6,814	44,698	43,898	33,230	33,458	33,389
N.J.	8,303	6,782	8,213	8,284	8,236	41,515	42,154	41,886	40,592	38,709
Pa.	15,032	14,775	12,841	13,723	13,773	78,166	75,352	68,057	71,360	70,242
N.A.	55,954	52,181	45,676	46,418	45,620	278,139	257,562	233,773	232,165	231,855
Ohio	10,107	10,169	7,957	8,011	7,731	51,546	49,828	41,376	44,777	38,655
Ind.	13,275	13,725	10,144	10,182	9,839	63,720	61,762	50,720	49,892	48,211
Ill.	13,805	13,042	9,478	9,149	9,021	64,884	58,689	46,442	45,745	43,301
Mich.	8,917	8,604	7,379	6,260	5,097	44,585	39,578	34,681	30,048	24,975
Wis.	10,943	10,118	7,113	8,832	5,900	49,244	46,543	32,720	40,627	27,140
E.N.C.	57,047	55,658	42,071	43,034	37,588	273,979	256,400	205,939	211,089	182,282
Minn.	17,280	17,415	14,312	15,900	15,525	79,488	78,368	65,835	71,550	66,758
Iowa	24,362	24,657	20,700	21,411	21,264	116,938	113,422	97,290	100,632	95,688
Mo.	11,649	11,395	8,222	7,750	6,655	53,585	51,278	41,932	38,750	33,275
N.Dak.	3,349	3,263	2,768	2,093	2,606	14,736	14,357	12,456	12,440	11,206
S.Dak.	6,375	6,396	5,454	6,100	5,611	29,325	28,782	25,088	26,840	24,127
Nebr.	8,889	9,357	6,334	6,411	6,311	39,112	40,235	29,770	30,132	27,768
Kans.	7,925	7,948	5,408	6,481	6,120	33,285	32,587	23,795	27,868	26,928
W.N.C.	79,829	80,431	63,198	60,915	64,092	366,469	359,029	296,166	308,212	285,750
Del.	855	768	619	775	709	4,018	3,533	2,971	3,642	3,403
Md.	2,205	1,825	1,331	1,356	1,547	10,364	8,942	6,655	6,916	7,735
Va.	1,653	1,837	2,347	2,186	3,378	8,596	8,818	12,674	11,149	17,566
W.Va.	1,137	1,030	761	672	734	5,571	5,253	3,805	3,293	3,817
N.C.	5,031	5,079	5,566	6,381	7,853	25,658	26,919	31,170	31,905	42,406
S.C.	1,033	958	1,295	1,490	2,635	4,958	4,119	5,568	5,960	11,594
Ge.	4,514	5,260	5,761	5,561	8,754	19,862	23,144	24,196	26,244	39,393
Fla.	2,667	2,067	1,942	2,230	3,094	9,601	7,648	8,156	9,348	13,304
S.A.	19,095	18,824	19,622	21,701	28,704	88,628	88,376	95,195	98,457	139,218
Ky.	3,209	3,000	2,199	2,023	1,865	15,724	13,800	10,115	9,126	8,766
Tenn.	3,830	3,481	2,411	2,263	2,752	16,086	14,272	10,126	9,364	12,384
Ala.	809	1,196	1,250	2,230	4,360	3,802	5,023	5,875	9,618	19,219
Miss.	1,016	726	1,003	1,533	2,369	4,775	3,122	4,514	7,205	11,371
Ark.	1,728	1,697	980	1,591	2,905	8,122	8,146	4,802	7,000	12,782
La.	551	921	1,594	944	1,365	2,259	3,500	6,535	3,870	5,870
Okla.	1,890	1,189	1,044	619	1,086	7,560	4,637	4,385	2,600	4,778
Texas	4,555	4,768	4,026	4,717	8,414	17,764	19,072	17,714	21,226	38,704
S.C.	17,588	10,978	14,507	16,306	25,124	76,092	71,572	64,066	70,009	113,874
Mont.	1,745	1,460	1,233	1,196	1,032	7,504	5,840	4,685	4,545	4,025
Idaho	1,418	1,222	1,090	978	1,018	6,097	5,010	4,578	4,205	4,377
Wyo.	321	255	127	172	133	1,316	994	508	705	572
Colo.	1,600	1,736	1,051	757	861	6,400	6,944	4,309	3,255	3,874
N.Mex.	200	173	102	111	216	800	657	459	466	886
Ariz.	442	506	417	465	754	1,680	1,973	1,668	2,000	3,242
Utah	1,330	1,114	1,083	1,061	1,009	5,453	4,345	4,332	4,668	4,238
Nev.	37	27	25	24	32	163	119	110	96	141
Wash.	3,564	2,830	1,881	2,260	2,316	17,464	12,735	9,029	11,300	11,117
Oreg.	2,596	2,755	2,781	2,328	2,328	11,942	11,846	12,236	9,545	9,545
Calif.	18,154	17,871	16,457	17,819	21,848	72,616	73,271	69,119	76,622	91,762
West.	31,407	29,949	26,247	27,171	31,547	131,435	123,734	111,033	117,407	133,779
	260,920		211,321		232,675		1,156,673		1,037,339	
U.S.		25,021		221,276		1,214,742		1,006,172		1,086,758

1/ Does not include commercial broilers.

Table 2.--Farm chickens: Prices and value of production, by States, 1955-59 1/

State and division	Average annual price per pound 2/					Value of production				
	1955	1956	1957	1958	1959	1955	1956	1957	1958	1959
	Cents	Cents	Cents	Cents	Cents	1,000 dollars	1,000 dollars	1,000 dollars	1,000 dollars	1,000 dollars
Maine	21.7	17.1	15.6	17.3	15.0	7,252	4,822	4,373	4,636	4,211
N.H.	21.7	17.4	15.8	16.4	14.2	4,538	2,935	2,408	2,215	1,899
Vt.	21.6	18.8	16.0	17.5	14.6	1,887	1,440	968	912	640
Mass.	21.6	18.6	15.5	16.7	14.2	5,765	4,359	3,232	3,649	2,763
R.I.	22.0	18.7	15.7	16.8	14.5	728	531	399	455	367
Conn.	22.2	18.9	15.9	17.4	14.3	6,032	4,493	3,446	3,900	3,027
N.Y.	22.3	20.2	16.8	16.9	13.8	11,565	10,296	6,280	6,764	4,485
N.J.	23.0	19.9	17.4	17.8	13.1	10,954	9,089	6,791	7,182	4,232
Pa.	22.4	19.6	17.4	17.3	14.8	20,385	17,799	12,690	14,401	11,477
N.A.	22.2	19.2	16.7	17.2	14.3	69,106	55,764	40,587	44,114	33,101
Ohio	18.9	16.6	14.1	14.6	11.5	12,524	11,386	7,450	9,017	5,369
Ind.	18.6	16.1	13.8	14.3	10.8	14,351	12,425	8,616	9,285	6,084
Ill.	17.9	15.0	12.3	13.2	9.7	14,603	11,302	7,267	8,102	4,695
Mich.	20.7	19.6	14.9	14.4	10.3	11,268	9,895	5,251	6,038	2,948
Wis.	17.8	15.2	12.7	13.5	10.4	11,178	9,343	5,692	7,022	3,266
E.N.C.	18.7	16.3	13.5	14.0	10.6	63,924	54,351	34,276	39,464	22,562
Minn.	15.4	12.3	9.9	10.6	6.8	13,819	11,959	7,234	9,370	5,026
Iowa	15.5	12.3	10.2	10.7	6.9	21,469	17,694	11,887	13,719	7,298
Mo.	16.2	13.8	11.5	11.8	8.9	11,535	10,412	6,276	6,512	3,662
N.Dak.	14.2	10.7	9.7	9.7	6.6	2,833	2,238	1,680	1,735	969
S.Dak.	15.7	10.8	9.8	9.7	6.3	5,965	4,238	3,272	3,665	1,894
Nebr.	14.8	12.5	9.7	10.0	6.8	7,912	7,321	4,097	4,470	2,481
Kans.	13.6	11.7	9.2	10.3	7.2	6,536	5,984	3,246	4,047	2,232
W.N.C.	15.3	12.3	10.1	10.6	7.1	70,069	59,846	37,692	43,518	23,562
Del.	23.7	21.2	18.4	16.7	14.1	1,082	895	712	659	563
Md.	23.7	21.3	17.9	17.1	14.2	3,250	2,657	1,790	1,771	1,239
Va.	20.3	18.5	16.9	16.0	13.8	4,591	4,652	3,444	4,015	3,566
W.Va.	20.0	17.9	16.7	16.2	14.0	1,951	1,678	1,276	1,364	1,096
N.C.	20.6	19.0	16.6	16.6	14.1	10,405	10,431	9,938	9,991	8,537
S.C.	22.3	20.3	18.1	17.5	14.3	3,218	3,459	2,813	3,415	3,155
Ga.	21.0	19.6	17.0	16.1	14.0	6,829	7,806	7,109	8,081	8,134
Fla.	22.2	20.1	18.4	16.4	13.7	3,290	2,672	2,426	2,298	2,209
S.A.	21.4	19.5	17.1	16.5	14.0	34,616	34,250	29,508	31,594	28,499
Ky.	17.7	16.8	13.8	14.1	11.6	5,845	5,963	3,071	3,444	2,697
Tenn.	17.2	16.0	13.9	13.9	11.6	5,148	4,869	3,098	3,374	2,645
Ala.	20.0	18.5	16.3	14.5	12.3	3,629	3,739	3,456	3,776	3,601
Miss.	21.0	19.0	16.8	16.2	13.7	3,519	2,885	2,654	3,671	4,081
Ark.	17.7	15.6	13.5	13.5	11.3	2,896	2,759	1,744	2,840	2,690
La.	24.5	22.8	21.2	19.5	15.4	3,084	3,437	3,240	2,639	2,230
Okla.	14.2	13.0	10.5	11.6	9.0	2,533	2,237	1,148	1,463	870
Texas	17.8	16.2	13.6	13.4	11.0	6,564	7,813	4,759	6,768	5,416
S.C.	17.8	16.6	14.6	14.3	11.8	33,218	33,702	23,170	27,975	24,230
Mont.	23.9	21.8	18.0	15.2	14.0	2,516	1,978	1,395	1,191	873
Idaho	18.1	16.0	13.7	13.8	10.6	1,575	1,263	1,027	955	708
Wyo.	21.3	22.0	18.8	17.6	15.5	462	435	280	280	198
Colo.	15.5	16.0	13.1	13.5	11.1	1,521	1,654	934	924	669
N.Mex.	17.1	17.9	15.7	14.8	14.0	347	362	270	253	265
Ariz.	19.1	17.9	15.9	15.7	13.7	457	482	415	535	485
Utah	14.7	13.7	12.8	12.3	9.2	903	710	606	600	422
Nev.	16.1	16.0	15.5	14.6	11.0	65	61	59	45	32
Wash.	18.7	17.1	13.5	14.6	11.1	4,289	3,145	1,996	2,310	1,676
Oreg.	18.7	17.1	14.0	14.5	9.8	2,962	2,619	2,104	1,816	1,174
Calif.	18.1	15.7	13.4	14.0	10.4	15,524	12,528	10,381	12,881	10,929
West.	18.3	16.3	13.7	14.1	10.6	30,621	25,237	19,467	21,790	17,431
U.S.	18.6	16.0	13.7	14.0	11.0	301,554	263,150	184,700	208,455	149,385

1/ Does not include commercial broilers.

2/ Weighted average of monthly prices per pound received by farmers.

Table 3.--Farm chickens: Value of birds consumed in farm household and cash receipts from sales, by States, 1955-59 1/

State and division	Value of chickens consumed in farm household					Cash receipts from sales				
	1955	1956	1957	1958	1959	1955	1956	1957	1958	1959
	1,000 dollars	1,000 dollars	1,000 dollars	1,000 dollars	1,000 dollars	1,000 dollars	1,000 dollars	1,000 dollars	1,000 dollars	1,000 dollars
Maine	248	199	172	198	158	6,895	4,385	3,985	4,258	4,083
N.H.	148	117	111	91	68	4,372	2,970	2,434	2,246	1,961
Vt.	206	177	143	164	125	1,709	1,270	933	764	561
Mass.	288	234	189	186	141	5,482	4,034	3,110	3,524	2,970
R.I.	56	48	41	34	24	678	477	368	421	361
Conn.	286	279	205	196	142	5,628	4,242	3,403	3,563	3,037
N.Y.	1,703	1,466	1,110	1,077	767	9,968	8,867	5,583	5,654	4,608
N.J.	696	644	535	397	254	9,548	8,389	7,288	7,225	5,071
Pa.	2,998	2,728	2,349	2,187	1,502	17,509	14,769	11,842	12,345	10,396
N.A.	6,629	5,892	4,855	4,530	3,181	61,789	49,403	38,946	40,000	33,648
Ohio	3,208	2,860	2,259	2,230	1,551	9,742	8,271	5,834	6,537	4,445
Ind.	2,713	2,302	1,795	1,767	1,179	11,852	9,944	6,999	7,135	5,207
Ill.	3,806	3,018	2,277	2,270	1,390	11,614	8,803	5,712	6,038	4,200
Mich.	2,188	1,949	1,379	1,320	823	9,229	7,757	5,167	4,327	2,572
Wis.	2,745	2,293	1,760	1,806	1,183	8,765	7,075	4,155	5,485	2,823
E.N.C.	14,660	12,422	9,470	9,393	6,126	51,202	41,850	27,867	29,522	19,247
Minn.	2,660	2,273	1,665	1,670	986	12,241	9,639	6,518	7,584	4,540
Iowa	4,138	3,382	2,519	2,611	1,432	18,125	13,951	9,924	10,768	6,602
Mo.	3,319	2,997	2,208	2,266	1,521	8,681	7,076	4,822	4,572	2,961
N.Dak.	888	714	595	587	358	2,093	1,536	1,208	1,207	740
S.Dak.	1,447	1,005	848	840	454	4,604	3,108	2,459	2,603	1,520
Nebr.	2,381	2,051	1,537	1,386	779	5,789	5,029	2,888	3,013	1,888
Kans.	2,218	1,966	1,391	1,381	816	4,527	3,813	2,189	2,870	1,939
W.N.C.	17,051	14,388	10,763	10,741	6,346	56,060	44,152	30,008	32,617	20,190
Del.	177	156	130	98	76	952	749	547	608	480
Md.	876	823	677	582	412	2,456	1,905	1,191	1,183	1,098
Va.	2,987	2,586	1,615	1,681	1,248	1,745	1,631	2,142	1,784	2,424
W.Va.	1,001	937	857	781	533	1,114	940	635	533	534
N.C.	4,979	4,822	4,044	4,119	2,999	5,286	5,115	5,174	5,296	5,979
S.C.	2,490	2,267	1,939	1,946	1,350	1,106	836	1,008	1,043	1,658
Ga.	2,936	2,987	2,513	2,417	1,717	4,171	4,536	4,113	4,225	5,515
Fla.	678	601	539	444	339	2,131	1,537	1,501	1,533	1,823
S.A.	16,124	15,179	12,314	12,068	8,674	16,961	17,249	16,311	16,205	19,511
Ky.	3,454	3,338	2,550	2,396	1,734	2,783	2,318	1,396	1,287	1,017
Tenn.	2,593	2,509	2,088	1,586	1,450	2,767	2,284	1,408	1,302	1,437
Ala.	2,861	2,513	1,900	1,757	1,314	760	929	958	1,395	2,364
Miss.	2,569	2,359	1,943	1,811	1,444	1,003	593	758	1,167	1,558
Ark.	1,567	1,456	1,183	1,295	983	1,438	1,271	648	945	1,444
La.	2,491	2,477	2,130	1,773	1,179	553	798	1,385	755	904
Okla.	1,553	1,493	1,074	1,095	752	1,074	603	460	302	430
Texas	4,064	3,735	2,885	2,545	1,788	3,162	3,090	2,409	2,844	4,257
S.C.	21,152	19,880	15,753	14,658	10,644	13,540	11,886	9,422	9,997	13,411
Mont.	825	742	598	502	378	1,793	1,273	843	691	564
Idaho	577	489	419	382	261	1,104	802	627	580	464
Wyo.	216	233	204	171	133	280	219	96	124	89
Colo.	621	582	461	479	301	992	1,111	564	439	430
N.Mex.	215	229	180	179	146	137	118	72	69	124
Ariz.	111	114	96	74	46	321	353	265	314	441
Utah	162	160	127	111	65	802	595	554	574	390
Nev.	50	53	52	38	21	26	19	17	14	16
Wash.	982	848	647	620	474	3,266	2,178	1,219	1,650	1,234
Oreg.	659	592	473	514	292	2,233	2,026	1,713	1,384	935
Calif.	1,193	1,069	960	878	573	13,143	11,504	9,262	10,727	9,543
West.	5,611	5,111	4,217	3,948	2,630	24,097	20,198	15,232	16,566	14,233
U.S.	81,227	72,872	57,372	55,338	37,601	225,649	184,738	137,786	144,907	119,640

1/ Does not include commercial broilers.

Table 4.--Farm chickens: Gross income from farm production, by States, 1955-59 1/

State and division	Gross income				
	1955	1956	1957	1958	1959
	1,000	1,000	1,000	1,000	1,000
	dollars	dollars	dollars	dollars	dollars
Maine	7,143	4,584	4,157	4,456	4,241
N.H.	4,520	3,087	2,545	2,337	2,029
Vt.	1,915	1,447	1,076	928	686
Mass.	5,770	4,268	3,299	3,710	3,111
R.I.	734	525	409	455	385
Conn.	5,914	4,521	3,608	3,759	3,179
N.Y.	11,671	10,333	6,693	6,731	5,375
N.J.	10,244	9,033	7,823	7,622	5,325
Pa.	20,507	17,497	14,191	14,532	11,898
N.A.	68,418	55,295	43,801	44,530	36,229
Ohio	12,950	11,131	8,093	8,767	5,996
Ind.	14,565	12,246	8,794	8,902	6,386
Ill.	15,420	11,821	7,989	8,308	5,590
Mich.	11,417	9,706	6,546	5,647	3,395
Wis.	11,510	9,368	5,915	7,291	4,006
E.N.C. ...	65,862	54,272	37,337	38,915	25,373
Minn.	14,901	11,912	8,183	9,254	5,526
Iowa	22,263	17,333	12,443	13,379	8,034
Mo.	12,000	10,073	7,030	6,838	4,482
N.Dak.	2,981	2,250	1,803	1,794	1,098
S.Dak.	6,051	4,113	3,307	3,443	1,974
Nebr.	8,170	7,080	4,425	4,399	2,667
Kans.	6,745	5,779	3,580	4,251	2,755
W.N.C. ...	73,111	58,540	40,771	43,358	26,536
Del.	1,129	905	677	706	556
Md.	3,332	2,728	1,868	1,765	1,510
Va.	4,732	4,217	3,757	3,465	3,672
W.Va.	2,115	1,877	1,492	1,314	1,067
N.C.	10,265	9,937	9,218	9,415	8,978
S.C.	3,596	3,103	2,947	2,989	3,008
Ge.	7,107	7,523	6,626	6,642	7,232
Fla.	2,809	2,138	2,040	1,977	2,162
S.A.	35,085	32,428	28,625	28,273	28,185
Ky.	6,237	5,656	3,946	3,683	2,751
Tenn.	5,360	4,793	3,496	3,288	2,887
Ala.	3,621	3,442	2,858	3,152	3,678
Miss.	3,572	2,952	2,701	2,978	3,002
Ark.	3,005	2,727	1,831	2,240	2,427
La.	3,044	3,275	3,515	2,528	2,083
Okla.	2,627	2,096	1,534	1,397	1,182
Texas	7,226	6,825	5,294	5,389	6,045
S.C.	34,692	31,766	25,175	24,655	24,055
Mont.	2,618	2,015	1,441	1,193	942
Idaho	1,681	1,291	1,046	962	725
Wyo.	496	452	300	295	222
Colo.	1,613	1,693	1,025	918	731
N.Mex.	352	347	252	248	270
Ariz.	432	467	361	388	490
Utah	584	755	681	685	455
Nev.	76	72	69	52	37
Wash.	4,248	3,026	1,866	2,270	1,648
Oreg.	2,892	2,618	2,186	1,898	1,227
Calif.	14,336	12,573	10,222	11,605	10,116
West.	29,708	25,309	19,449	20,514	16,863
U.S.	306,876	257,610	195,158	200,245	157,241

1/ Does not include commercial broilers.

Table 5.--Eggs: Farm production and disposition, by States, 1955-59

State and division	Average number layers during the year				
	1955	1956	1957	1958	1959
	Thou.	Thou.	Thou.	Thou.	Thou.
Maine	3,303	3,412	3,492	3,607	3,622
N.H.	2,123	2,155	1,983	1,849	1,712
Vt.	956	935	915	825	770
Mass.	3,366	3,607	3,514	3,457	3,334
R.I.	385	397	393	387	389
Conn.	3,267	3,369	3,290	3,187	3,201
N.Y.	10,513	10,546	10,248	10,032	9,379
N.J.	12,899	13,712	13,068	12,532	12,101
Pa.	18,418	17,936	17,460	17,321	17,141
N.A.	55,230	56,069	54,363	53,197	51,649
Ohio	12,180	12,484	11,608	11,521	11,681
Ind.	11,654	12,252	11,584	12,219	11,935
Ill.	15,733	14,881	14,329	13,607	12,678
Mich.	8,698	8,537	8,289	7,744	7,570
Wis.	11,638	11,702	11,153	11,146	10,044
E.N.C. ...	59,903	59,856	56,963	56,237	53,908
Minn.	21,289	20,307	19,469	18,249	17,606
Iowa	23,426	23,776	23,432	23,586	23,357
Mo.	11,678	10,985	10,914	10,514	9,940
N.Dak.	3,151	3,073	2,957	2,777	2,528
S.Dak.	6,689	6,745	7,096	7,253	7,352
Nebr.	9,239	9,279	9,603	9,061	9,025
Kans.	8,909	8,653	8,742	8,297	7,554
W.N.C. ...	84,381	82,818	82,213	79,737	77,362
Del.	671	686	655	658	648
Md.	2,246	2,283	2,039	2,016	1,903
Va.	4,869	4,927	5,234	4,974	5,553
W.Va.	2,252	2,089	1,876	1,858	1,841
N.C.	8,143	8,899	9,405	9,797	10,137
S.C.	2,852	2,883	3,028	2,986	3,551
Ga.	6,325	6,282	6,789	7,508	9,322
Fla.	2,793	3,410	3,835	4,212	4,484
S.A.	30,151	31,459	32,861	34,009	37,439
Ky.	6,276	6,258	6,233	5,434	5,215
Tenn.	6,016	5,988	5,959	5,665	5,634
Ala.	4,566	4,853	5,266	6,069	6,530
Miss.	3,754	4,043	4,051	4,281	5,865
Ark.	3,401	3,559	3,555	3,859	4,455
La.	2,358	2,481	2,533	2,482	2,520
Okla.	4,707	4,809	4,621	4,112	4,029
Texas	12,972	13,161	12,837	13,365	13,881
S.C.	44,050	45,152	45,055	45,267	48,129
Mont.	1,196	1,182	1,150	1,128	1,096
Idaho	1,376	1,339	1,306	1,274	1,248
Wyo.	409	373	371	330	296
Colo.	1,819	1,757	1,629	1,539	1,533
N.Mex.	624	628	651	700	682
Ariz.	474	484	542	629	756
Utah	1,882	1,736	1,627	1,540	1,461
Nev.	110	105	93	85	78
Wash.	3,905	4,149	4,242	4,431	4,505
Oreg.	2,940	2,957	2,849	2,714	2,694
Calif.	20,847	20,608	20,761	21,624	22,884
West.	35,582	35,318	35,221	35,994	37,233
U.S.	309,297	310,672	306,676	304,441	305,720

Table 5.--Eggs: Farm production and disposition, by States, 1955-59--Continued

State and division	Eggs laid annually per hen and pullet of laying age on farms during year 1/					Eggs produced				
	1955	1956	1957	1958	1959	1955	1956	1957	1958	1959
	Number	Number	Number	Number	Number	Millions	Millions	Millions	Millions	Millions
Maine	211	212	211	208	213	697	725	736	750	773
N.H.	202	206	203	203	210	429	444	403	376	360
Vt.	210	215	210	208	210	201	201	192	172	162
Mass.	209	212	214	213	215	704	767	751	737	716
R.I.	208	222	204	209	208	80	88	80	81	81
Conn.	206	213	207	215	209	672	716	681	684	669
N.Y.	202	201	205	209	215	2,123	2,125	2,103	2,099	2,012
N.J.	189	192	195	194	196	2,433	2,629	2,553	2,433	2,377
Pa.	198	202	205	207	211	3,654	3,629	3,586	3,579	3,625
N.A.	199	202	204	205	209	10,993	11,319	11,085	10,911	10,775
Ohio	194	202	202	205	213	2,366	2,516	2,342	2,365	2,486
Ind.	196	202	204	210	215	2,289	2,474	2,367	2,571	2,567
Ill.	193	197	198	201	207	3,035	2,935	2,830	2,738	2,626
Mich.	194	195	198	202	207	1,690	1,666	1,638	1,566	1,570
Wis.	199	201	205	208	214	2,311	2,354	2,281	2,321	2,151
E.N.C.	195	200	201	206	211	11,591	11,945	11,458	11,561	11,400
Minn.	201	205	207	212	217	4,287	4,169	4,024	3,874	3,824
Iowa	207	209	212	216	216	4,859	4,961	4,960	5,084	5,054
Mo.	183	183	183	187	192	3,132	2,009	1,998	1,971	1,905
N.Dak.	177	178	180	182	184	559	546	532	505	465
S.Dak.	184	191	198	202	206	1,234	1,286	1,403	1,466	1,515
Nebr.	194	198	200	203	207	1,790	1,836	1,925	1,836	1,867
Kans.	193	193	196	201	204	1,723	1,673	1,712	1,670	1,542
W.N.C.	197	199	201	206	209	16,584	16,480	16,554	16,406	16,172
Del.	188	190	179	185	194	126	130	117	122	126
Md.	180	185	182	186	191	404	423	372	374	364
Va.	177	183	185	190	201	860	902	970	947	1,116
W.Va.	176	180	180	181	190	396	375	337	337	349
N.C.	180	189	195	196	203	1,469	1,681	1,830	1,922	2,061
S.C.	179	185	187	190	201	510	534	567	568	715
Ga.	192	197	198	199	206	1,213	1,235	1,345	1,495	1,918
Fla.	203	208	207	209	216	568	709	793	881	968
S.A.	184	190	193	195	203	5,546	5,989	6,331	6,646	7,617
Ky.	164	169	174	170	179	1,029	1,060	1,084	923	931
Tenn.	159	167	169	171	181	958	1,002	1,006	971	1,017
Ala.	173	181	184	189	195	789	876	967	1,149	1,273
Miss.	156	168	167	172	183	585	679	676	738	1,075
Ark.	160	173	177	179	194	544	617	628	692	866
La.	154	163	167	170	183	364	405	422	422	461
Okla.	176	177	181	182	188	829	851	836	748	756
Texas	173	179	185	189	190	2,249	2,358	2,376	2,525	2,636
S.C.	167	174	177	180	187	7,347	7,848	7,995	8,168	9,015
Mont.	188	189	192	197	200	225	223	221	222	219
Idaho	201	207	211	214	220	277	277	275	273	274
Wyo.	191	190	191	191	193	78	71	71	63	57
Colo.	185	191	191	196	196	336	335	311	301	301
N.Mex.	183	182	186	189	196	114	114	121	132	134
Ariz.	184	200	197	210	218	87	97	107	132	165
Utah	202	200	199	208	223	380	347	324	320	326
Nev.	182	190	161	165	154	20	20	15	14	12
Wash.	212	219	220	222	229	828	908	935	873	1,030
Oreg.	210	216	218	223	223	616	640	620	604	602
Calif.	211	218	222	225	229	4,404	4,500	4,603	4,871	5,236
West.	207	213	216	220	224	7,365	7,532	7,603	7,915	8,356
U.S.	192	197	199	202	207	59,526	61,113	61,026	61,607	63,335

1/ Number of eggs produced during the year divided by the average number of hens and pullets of laying age on hand during the year.

Table 5.--Eggs: Farm production and disposition, by States, 1955-59--Continued

State and division	Eggs consumed in farm household					Eggs sold				
	1955	1956	1957	1958	1959	1955	1956	1957	1958	1959
	Millions	Millions	Millions	Millions	Millions	Millions	Millions	Millions	Millions	Millions
Maine	21	17	13	12	11	676	708	723	738	762
N.H.	12	9	7	6	5	417	435	396	370	355
Vt.	19	15	12	11	10	182	186	180	161	152
Mass.	16	14	11	9	9	688	749	740	728	707
R.I.	2	1	1	1	1	78	87	79	80	80
Conn.	17	13	10	9	8	655	703	671	675	661
N.Y.	112	97	85	79	70	2,011	2,027	2,018	2,020	1,942
N.J.	27	22	20	17	15	2,406	2,607	2,533	2,416	2,362
Pa.	175	148	139	125	121	3,479	3,481	3,447	3,454	3,504
N.A.	401	336	298	269	250	10,592	10,983	10,787	10,642	10,525
Ohio	195	180	173	158	159	2,171	2,336	2,169	2,207	2,327
Ind.	166	145	130	120	117	2,123	2,329	2,237	2,451	2,450
Ill.	216	198	180	164	146	2,819	2,737	2,650	2,574	2,480
Mich.	145	129	119	107	99	1,545	1,537	1,519	1,459	1,471
Wis.	197	196	175	165	155	2,114	2,158	2,106	2,156	1,996
E.N.C.	919	848	777	714	676	10,772	11,097	10,681	10,847	10,724
Minn.	237	222	206	192	183	4,050	3,947	3,818	3,682	3,641
Iowa	309	286	276	261	249	4,550	4,675	4,684	4,823	4,805
Mo.	260	244	219	208	204	1,872	1,765	1,779	1,763	1,701
N.Dak.	86	76	72	67	62	473	470	460	438	403
S.Dak.	91	91	88	85	84	1,137	1,195	1,315	1,381	1,431
Nebr.	166	156	148	138	135	1,624	1,680	1,777	1,698	1,732
Kans.	196	173	163	154	147	1,527	1,500	1,549	1,516	1,395
W.N.C.	1,351	1,248	1,172	1,105	1,064	15,233	15,232	15,382	15,301	15,108
Del.	8	5	4	4	4	118	125	113	118	122
Md.	37	36	32	27	25	367	387	340	347	339
Va.	163	159	145	134	127	697	743	825	813	989
W.Va.	77	67	59	54	51	319	308	278	283	298
N.C.	263	270	274	260	252	1,206	1,411	1,556	1,662	1,809
S.C.	115	118	114	109	94	395	416	453	459	621
Ga.	155	157	150	130	116	1,058	1,078	1,195	1,365	1,802
Fla.	42	39	34	30	28	526	670	759	851	940
S.A.	850	851	812	748	697	4,686	5,138	5,519	5,898	6,920
Ky.	250	226	210	208	206	779	834	874	715	725
Tenn.	241	234	218	215	213	717	768	788	756	804
Ala.	177	174	166	153	137	612	702	801	996	1,136
Miss.	141	147	150	148	135	444	532	526	590	940
Ark.	143	145	144	126	115	401	472	484	566	751
La.	100	100	99	91	85	264	305	323	331	376
Okla.	157	149	137	124	114	672	702	699	624	642
Texas	318	324	298	260	236	1,931	2,034	2,078	2,265	2,400
S.C.	1,527	1,499	1,422	1,325	1,241	5,820	6,349	6,573	6,843	7,774
Mont.	52	44	40	37	34	173	179	181	185	185
Idaho	42	41	38	35	33	235	236	237	238	241
Wyo.	17	15	14	13	12	61	56	57	50	45
Colo.	53	50	47	45	43	283	285	264	256	258
N.Mex.	27	20	19	17	15	87	94	102	115	119
Ariz.	7	7	6	6	5	80	90	101	126	160
Utah	24	22	17	15	14	356	325	307	305	312
Nev.	6	4	4	3	3	14	16	11	11	9
Wash.	69	63	58	56	54	759	845	877	927	976
Oreg.	61	53	45	39	39	555	587	575	565	563
Calif.	95	88	84	80	76	4,309	4,412	4,519	4,791	5,160
West.	453	407	372	346	328	6,912	7,125	7,231	7,569	8,028
U.S.	5,511	5,189	4,853	4,507	4,256	54,015	55,924	56,173	57,100	59,079

Table 6.--Eggs: Prices and cash receipts, by States, 1955-59

State and division	Price per dozen $\frac{1}{2}$					Cash receipts from sales				
	1955	1956	1957	1958	1959	1955	1956	1957	1958	1959
	Cents	Cents	Cents	Cents	Cents	1,000 dollars	1,000 dollars	1,000 dollars	1,000 dollars	1,000 dollars
Maine	58.8	55.1	53.6	58.6	48.8	33,124	32,509	32,294	36,039	30,988
N.H.	59.2	54.7	52.2	54.9	45.3	20,572	19,829	17,226	16,928	13,401
Vt.	55.1	50.6	47.8	50.8	41.5	8,357	7,843	7,170	6,816	5,257
Mass.	59.4	55.1	52.6	55.6	45.8	34,056	34,392	32,437	33,731	26,984
R.I.	58.7	54.2	51.7	54.9	45.1	3,816	3,930	3,404	3,660	3,007
Conn.	58.3	53.7	51.3	54.4	44.3	31,822	31,459	28,685	30,600	24,402
N.Y.	48.5	48.6	45.1	45.3	36.8	81,278	82,094	75,843	76,255	59,555
N.J.	49.1	46.4	43.7	45.0	36.7	98,446	100,804	92,244	90,600	72,238
Pa.	46.0	45.4	42.0	44.1	36.1	133,362	131,698	120,645	126,934	105,412
N.A.	50.4	48.6	45.6	47.5	38.9	444,833	444,558	409,948	421,563	341,244
Ohio	38.7	38.7	34.7	37.3	29.0	70,015	75,315	62,720	68,601	56,236
Ind.	35.5	36.6	32.9	35.5	27.9	62,805	71,034	61,331	72,509	56,962
Ill.	32.0	32.9	29.2	32.5	26.0	75,173	75,040	64,483	69,712	53,733
Mich.	37.7	38.7	34.7	35.6	27.9	48,539	49,568	43,924	43,284	34,201
Wis.	36.8	36.6	32.6	34.8	27.5	64,829	65,819	57,213	62,524	45,742
E.N.C.	35.8	36.4	32.5	35.0	27.6	321,361	336,797	289,671	316,630	246,874
Minn.	32.6	31.9	28.3	29.6	22.9	110,025	104,924	90,041	90,823	69,482
Iowa	31.9	31.9	28.1	30.3	23.3	120,954	124,277	109,684	121,781	93,297
Mo.	30.5	33.2	29.3	33.2	26.9	47,580	48,832	43,437	48,776	38,131
N.Dak.	28.5	29.7	24.8	28.0	22.2	11,234	11,632	9,507	10,220	7,456
S.Dak.	29.7	30.0	25.7	28.6	22.4	28,141	29,875	28,163	32,914	26,712
Nebr.	29.0	29.8	25.8	29.3	23.1	39,247	41,720	38,206	41,460	33,341
Kans.	30.7	30.7	26.8	30.1	23.6	39,066	38,375	34,554	38,026	27,435
W.N.C.	31.2	31.5	27.6	30.1	23.5	396,247	399,635	353,632	384,000	295,854
Del.	50.4	48.6	48.0	52.9	43.3	4,956	5,062	4,520	5,202	4,402
Md.	42.8	43.0	40.0	43.9	36.7	13,090	13,867	11,333	12,694	10,368
Va.	45.8	46.5	42.4	46.4	37.1	26,602	28,791	29,150	31,436	30,577
W.Va.	42.3	44.6	40.7	44.2	37.1	11,245	11,447	9,429	10,424	9,213
N.C.	45.2	44.2	42.8	46.8	37.7	45,426	51,972	55,497	64,818	56,833
S.C.	48.2	47.1	44.6	48.2	40.2	15,866	16,328	16,837	18,437	20,804
Ga.	52.2	52.9	47.7	52.3	41.4	46,023	47,522	47,501	59,491	62,159
Fla.	48.5	48.6	46.5	45.5	39.1	21,259	27,135	29,411	32,267	30,628
S.A.	47.2	47.2	44.3	47.8	39.0	184,467	202,124	203,678	234,769	224,994
Ky.	34.3	35.9	31.6	36.0	29.4	22,266	24,951	23,015	21,450	17,762
Tenn.	38.0	40.6	36.1	41.2	33.5	22,705	25,984	23,706	25,956	22,445
Ala.	45.0	46.9	43.8	46.6	38.4	22,950	27,436	29,236	38,678	36,352
Miss.	43.4	44.4	42.3	47.3	38.5	16,058	19,684	23,542	23,256	30,158
Ark.	41.6	41.5	39.4	42.7	35.5	13,901	16,323	15,891	20,140	22,217
La.	43.3	46.4	44.0	47.8	39.7	9,526	11,793	11,843	13,185	12,439
Okla.	32.6	33.3	29.3	32.8	27.2	18,256	19,480	17,067	17,056	14,552
Texas	38.1	37.9	34.2	37.0	30.9	61,309	64,240	59,223	69,837	61,800
S.C.	38.6	39.7	36.2	40.3	33.6	186,971	209,891	198,523	229,558	217,725
Mont.	38.1	40.2	35.8	36.9	35.3	5,493	5,996	5,400	5,689	5,442
Idaho	39.3	37.7	36.2	37.5	33.4	7,696	7,414	7,150	7,438	6,708
Wyo.	40.3	41.9	38.4	39.0	36.3	2,049	1,955	1,824	1,625	1,361
Colo.	38.3	38.3	34.5	37.3	31.7	9,032	9,096	7,590	7,957	6,816
N.Mex.	41.2	43.3	40.3	40.2	38.3	2,987	3,392	3,425	3,852	3,798
Ariz.	51.2	52.4	50.7	50.3	41.5	3,413	3,930	4,267	5,282	5,533
Utah	39.4	36.8	34.5	35.6	30.3	11,689	9,967	8,826	9,048	7,878
Nev.	41.4	42.9	38.4	39.7	34.9	483	572	352	364	262
Wash.	45.6	43.6	41.1	39.4	34.1	28,842	30,702	30,037	30,436	27,735
Oreg.	47.1	45.0	39.8	41.6	36.8	21,784	22,012	19,071	19,587	17,265
Calif.	41.7	39.6	36.9	38.9	31.5	149,738	145,596	138,959	155,308	135,450
West.	42.2	40.5	37.7	39.1	32.6	243,206	240,632	226,901	246,586	218,248
U.S.	39.5	39.3	35.9	38.5	31.4	1,777,085	1,833,637	1,682,353	1,833,106	1,544,939

1/ Average of all eggs sold by farmers including hatching eggs and eggs sold retail by farmers.

Table 7.--Eggs: Value of eggs consumed in farm household and gross income, by States, 1955-59

State and division	Value of eggs consumed in farm household ^{1/2}					Gross income				
	1955	1956	1957	1958	1959	1955	1956	1957	1958	1959
	1,000 dollars	1,000 dollars	1,000 dollars	1,000 dollars	1,000 dollars	1,000 dollars	1,000 dollars	1,000 dollars	1,000 dollars	1,000 dollars
Maine	1,029	781	581	586	447	34,153	33,290	32,875	36,625	31,435
N.H.	592	410	304	274	189	21,164	20,239	17,530	17,202	13,590
Vt.	872	633	478	466	346	9,229	8,476	7,648	7,282	5,603
Mass.	792	643	482	417	344	34,848	35,035	32,919	34,148	27,328
R.I.	98	45	43	46	38	3,914	3,975	3,447	3,706	3,045
Conn.	826	582	428	408	295	32,648	32,041	29,113	31,008	24,697
N.Y.	4,527	3,928	3,195	2,982	2,147	85,805	86,022	79,038	79,237	61,702
N.J.	1,105	851	728	638	459	99,551	101,655	92,972	91,238	72,697
Pa.	6,708	5,599	4,865	4,594	3,640	140,070	137,297	125,510	131,528	109,052
N.A.	16,549	13,472	11,104	10,411	7,905	461,382	458,030	421,052	431,974	349,149
Ohio	6,289	5,805	5,003	4,911	3,843	76,304	81,141	67,723	73,512	60,079
Ind.	4,911	4,422	3,564	3,550	2,720	67,716	75,456	64,895	76,059	59,632
Ill.	5,760	5,429	4,380	4,442	3,163	80,933	80,469	68,863	74,154	56,896
Mich.	4,555	4,160	3,441	3,174	2,302	53,094	53,728	47,365	46,458	36,503
Wis.	6,041	5,978	4,754	4,785	3,552	70,870	71,797	61,967	67,309	49,294
W.N.C.	27,556	25,794	21,142	20,862	15,580	348,917	362,591	310,813	337,492	262,454
Minn.	6,439	5,901	4,858	4,736	3,492	116,464	110,825	94,899	95,559	72,974
Iowa	8,214	7,603	6,463	6,590	4,835	129,168	131,880	116,147	128,371	98,132
Mo.	6,608	6,751	5,347	5,755	4,573	54,188	55,583	48,784	54,531	42,704
N.Dak.	2,042	1,881	1,488	1,563	1,147	13,276	13,513	10,995	11,783	8,603
S.Dak.	2,401	2,275	1,885	2,026	1,568	30,542	32,150	30,048	34,940	28,280
Nebr.	4,012	3,874	3,182	3,370	2,599	43,259	45,594	41,388	44,830	35,940
Kans.	5,014	4,426	3,640	3,863	2,891	44,080	42,801	38,234	41,889	30,326
W.N.C.	34,730	32,711	26,863	27,903	21,105	430,977	432,346	380,495	411,903	316,959
Del.	336	202	160	176	144	5,292	5,264	4,680	5,378	4,546
Md.	1,320	1,290	1,067	988	765	14,410	15,157	12,400	13,682	11,133
Va.	6,221	6,161	5,123	5,181	3,926	32,823	34,952	34,273	36,617	34,503
W.Va.	2,714	2,490	2,001	1,989	1,577	13,959	13,937	11,430	12,413	10,790
N.C.	9,906	9,945	9,773	10,140	7,917	55,332	61,917	65,270	74,958	64,750
S.C.	4,619	4,632	4,237	4,378	3,149	20,485	20,960	21,074	22,815	23,953
Ga.	6,742	6,921	5,962	5,666	4,002	52,765	54,443	53,463	65,157	66,171
Fla.	1,698	1,580	1,318	1,138	912	22,957	28,715	30,729	33,405	31,540
S.A.	33,556	33,221	29,641	29,656	22,392	218,023	235,345	233,319	264,425	247,386
Ky.	7,146	6,761	5,530	6,240	5,047	29,412	31,712	28,545	27,690	22,809
Tenn.	7,632	7,917	6,558	7,382	5,946	30,337	33,901	30,264	33,338	28,391
Ala.	6,638	6,800	6,059	5,941	4,384	29,588	34,236	35,295	44,619	40,736
Miss.	5,100	5,439	5,288	5,834	4,331	21,158	25,123	23,830	29,090	34,489
Ark.	4,957	5,015	4,728	4,483	3,402	18,858	21,338	20,619	24,623	25,619
La.	3,608	3,867	3,630	3,625	2,812	13,134	15,660	15,473	16,810	15,251
Okla.	4,265	4,135	3,345	3,389	2,584	22,521	23,615	20,412	20,445	17,136
Texas	10,096	10,233	8,493	8,017	6,077	71,405	74,473	67,716	77,854	67,877
S.C.	49,442	50,167	43,631	44,911	34,583	236,413	260,058	242,154	274,469	252,308
Mont.	1,651	1,474	1,193	1,138	1,000	7,144	7,470	6,593	6,827	6,442
Idaho	1,376	1,288	1,146	1,094	918	9,072	8,702	8,296	8,532	7,626
Wyo.	571	524	448	422	363	2,620	2,479	2,272	2,047	1,724
Colo.	1,692	1,596	1,351	1,399	1,136	10,724	10,692	8,941	9,356	7,952
N.Mex.	927	722	638	570	479	3,914	4,114	4,063	4,422	4,277
Ariz.	299	306	254	252	173	3,712	4,236	4,521	5,534	5,706
Utah	788	675	489	445	354	12,477	10,642	9,315	9,493	8,232
Nev.	207	143	128	99	87	690	715	480	463	349
Wash.	2,622	2,289	1,986	1,839	1,535	31,464	32,991	32,023	32,275	29,270
Oreg.	2,394	1,988	1,493	1,352	1,196	24,178	24,000	20,564	20,939	18,461
Calif.	3,301	2,904	2,583	2,593	1,995	153,039	148,500	141,542	157,901	137,445
West.	15,828	13,909	11,709	11,203	9,236	259,034	254,541	238,610	257,789	227,484
U.S.	177,661	169,274	144,090	144,946	110,801	1,954,746	2,002,911	1,826,443	1,978,052	1,655,740

^{1/2} Eggs consumed are valued at same price per dozen as eggs sold.

Table 8.--Commercial broilers: Production, by States, 1955-59

State and division	Number produced				
	1955	1956	1957	1958	1959
	Thou.	Thou.	Thou.	Thou.	Thou.
Maine	33,438	43,469	50,424	56,475	58,169
N.H.	7,627	8,390	7,635	7,864	6,606
Vt.	966	918	835	977	889
Mass.	17,071	18,437	14,565	13,982	11,046
R.I.	1,375	1,581	1,360	1,700	1,649
Conn.	25,852	30,505	28,370	30,356	26,713
N.Y.	13,052	14,618	14,326	12,893	11,604
N.J.	9,384	10,670	7,000	6,800	5,800
Pa.	30,318	36,382	35,291	42,349	40,449
N.A.	139,083	164,970	159,806	173,396	162,925
Ohio	17,181	19,500	17,600	17,575	15,993
Ind.	32,368	38,518	42,370	44,912	39,523
Ill.	8,691	9,126	8,337	8,419	7,064
Mich.	4,252	4,900	4,300	4,700	3,600
Wis.	13,805	16,566	17,394	19,482	19,682
E.N.C. ...	76,297	88,610	90,001	95,088	85,862
Minn.	2,463	2,709	2,926	3,950	4,977
Iowa	4,740	4,635	4,460	4,192	3,354
Mo.	25,767	31,700	28,200	33,900	39,200
Nebr.	3,577	3,040	2,280	2,280	2,620
Kans.	1,734	1,907	1,716	1,991	1,991
W.N.C. ...	38,281	43,991	39,582	46,313	52,142
Del.	69,820	65,669	93,537	94,539	85,127
Md.	58,367	67,033	74,288	87,318	93,289
Va.	55,179	62,904	61,646	63,495	53,971
W.Va.	21,873	24,279	25,233	27,252	27,525
N.C.	72,936	94,087	106,352	134,600	137,400
S.C.	10,053	15,359	15,690	17,561	16,996
Ga.	177,642	222,780	261,000	292,119	303,031
Fla.	9,389	11,830	10,884	11,319	10,413
S.A.	475,259	581,941	648,630	728,203	727,752
Ky.	9,540	12,211	14,409	18,500	17,575
Tenn.	13,225	17,854	21,068	29,074	32,686
Ala.	57,764	82,473	103,875	131,640	158,248
Miss.	37,486	52,855	66,597	85,424	107,629
Ark.	76,954	99,271	110,191	133,331	163,997
La.	11,666	15,716	17,428	20,479	21,647
Okla.	6,436	5,824	6,523	5,479	7,457
Texas	79,687	100,116	100,826	114,855	115,193
S.C.	292,758	386,320	440,917	578,782	624,432
Idaho	1,292	1,705	2,182	2,837	3,348
Colo.	1,945	1,459	1,097	1,163	1,245
Ariz.	562	461	539	588	704
Utah	1,776	2,309	1,916	2,031	2,051
Wash.	9,782	11,115	11,671	14,939	15,985
Oreg.	6,133	8,382	7,697	8,340	10,723
Calif.	48,516	52,397	43,490	47,839	49,753
West.	70,006	77,828	68,592	77,737	83,809
U.S.	1,091,684	1,343,660	1,447,528	1,659,519	1,736,922

Table 6.--Commercial broilers: Production, by States, 1955-59--Cont.

State and division	Pounds produced				
	1955	1956	1957	1958	1959
	1,000 pounds	1,000 pounds	1,000 pounds	1,000 pounds	1,000 pounds
Maine	120,377	156,488	191,611	214,605	221,042
N.H.	27,457	31,043	27,486	28,310	24,442
Vt.	3,284	3,121	2,922	3,420	3,023
Mass.	58,041	64,530	50,978	50,335	41,975
R.I.	4,812	5,692	4,896	6,290	5,772
Conn.	90,482	109,818	99,295	103,210	90,824
N.Y.	50,903	58,472	58,737	54,151	47,576
N.J.	35,659	43,747	35,700	34,000	29,000
Pa.	100,049	123,699	123,518	148,222	145,616
N.A.	491,064	596,610	595,143	642,543	609,270
Ohio	56,697	66,300	59,840	59,755	54,376
Ind.	103,578	127,109	139,821	152,701	134,378
Ill.	26,073	28,291	26,678	26,941	22,605
Mich.	14,032	16,660	19,350	24,440	17,280
Wis.	44,176	54,668	57,400	64,291	66,919
E.N.C.	244,556	293,028	303,089	328,128	295,558
Minn.	7,389	8,127	9,656	13,430	16,424
Iowa	15,642	14,832	15,610	17,606	14,758
Mo.	77,301	98,270	84,600	105,090	125,440
Nebr.	10,731	9,120	7,068	7,296	8,908
Kans.	5,029	5,721	5,148	5,973	6,172
W.N.C.	116,092	136,070	122,082	149,395	171,702
Del.	216,442	282,708	318,026	330,886	297,944
Md.	180,938	321,209	252,579	296,881	326,512
Va.	171,055	201,293	191,103	196,834	167,310
W.Va.	69,994	80,121	83,269	89,932	93,585
N.C.	218,808	291,670	329,691	444,180	453,420
S.C.	29,154	38,741	50,208	57,951	54,387
Ga.	515,162	690,618	835,200	934,781	1,000,002
Fla.	27,228	35,490	33,740	35,089	33,322
S.A.	1,428,781	1,841,850	2,093,816	2,386,534	2,426,482
Ky.	29,574	39,075	46,109	61,050	57,998
Tenn.	38,352	53,562	67,418	95,944	104,595
Ala.	179,068	255,666	332,400	421,248	522,218
Miss.	104,961	153,280	206,451	264,814	333,650
Ark.	215,471	277,959	319,554	399,993	508,391
La.	34,998	48,720	52,284	63,485	69,270
Okla.	18,664	16,890	20,221	16,985	23,862
Texas	231,092	300,348	302,478	344,565	357,098
S.C.	852,180	1,145,500	1,346,915	1,668,084	1,977,082
Idaho	3,747	5,626	6,764	8,511	10,714
Colo.	6,030	4,523	3,510	3,722	4,233
Ariz.	1,686	1,383	1,617	1,705	2,042
Utah	5,683	7,389	6,323	6,702	6,973
Wash.	30,324	37,791	39,681	50,793	54,349
Oreg.	19,012	26,822	24,630	26,688	35,386
Calif.	150,400	172,910	139,168	157,869	169,160
West.	216,882	256,444	221,693	255,990	282,857
U.S.	3,349,555	4,269,502	4,682,738	5,430,674	5,762,951

Table 9.--Commercial broilers: Prices and gross income, by States, 1955-59

State and division	Average annual price per pound					Gross income ^{1/}				
	1955	1956	1957	1958	1959	1955	1956	1957	1958	1959
	Cents	Cents	Cents	Cents	Cents	1,000 dollars	1,000 dollars	1,000 dollars	1,000 dollars	1,000 dollars
Maine	24.4	19.3	19.5	19.4	17.4	29,372	30,202	37,364	41,633	38,461
N.H.	24.9	19.5	19.5	18.9	16.8	6,837	6,053	5,360	5,351	4,106
Vt.	25.0	20.4	19.3	18.9	17.2	821	637	564	646	520
Mass.	25.5	20.0	19.2	18.9	17.2	14,800	12,906	9,788	9,513	7,220
R.I.	25.8	19.8	20.4	19.1	17.7	1,241	1,127	999	1,201	1,022
Conn.	26.5	20.2	20.4	19.8	17.4	23,978	22,183	20,256	20,436	15,803
N.Y.	28.0	24.1	22.5	23.1	21.0	14,253	14,092	13,216	12,509	9,991
N.J.	29.5	23.6	25.8	24.6	23.9	10,519	10,324	9,211	8,364	6,931
Pa.	26.1	20.5	20.5	20.4	19.3	26,113	25,358	25,321	30,237	28,104
N.A.	26.1	20.6	20.5	20.2	18.4	127,934	122,832	122,079	129,890	112,158
Ohio	25.2	19.8	19.5	19.0	16.5	14,288	13,127	11,669	11,353	8,972
Ind.	25.4	20.1	19.2	18.8	16.0	26,309	25,549	26,846	28,708	21,500
Ill.	25.2	20.1	18.7	18.3	15.9	6,570	5,686	4,989	4,930	3,594
Mich.	26.3	22.9	22.6	22.0	20.5	3,690	3,815	4,373	5,377	3,542
Wis.	25.1	21.1	20.0	19.6	16.6	11,088	11,535	11,480	12,601	11,109
E.N.C.	25.3	20.4	19.6	19.2	16.5	61,945	59,712	59,357	62,969	48,717
Minn.	25.3	21.2	19.1	18.1	17.8	1,869	1,723	1,844	2,431	2,923
Iowa	24.5	19.0	19.3	18.8	16.8	3,832	2,818	3,013	3,310	2,479
Mo.	24.3	19.0	18.1	17.8	15.0	18,784	18,671	15,313	18,706	18,816
Nebr.	25.0	21.2	19.0	18.3	15.9	2,683	1,933	1,343	1,335	1,416
Kans.	26.5	22.5	19.8	19.5	16.6	1,333	1,287	1,019	1,165	1,025
W.N.C.	24.6	19.4	18.5	18.0	15.5	28,501	26,432	22,532	26,947	26,659
Del.	25.7	19.9	19.4	19.0	17.0	55,626	56,259	61,697	62,868	50,650
Md.	25.7	19.9	19.4	19.0	17.0	46,501	44,021	49,000	56,407	55,507
Va.	24.6	19.4	18.5	18.3	16.1	42,080	39,051	35,354	36,021	26,937
W.Va.	24.8	19.4	19.1	18.8	16.9	17,359	15,543	15,904	16,907	15,816
N.C.	24.2	18.9	17.9	17.6	15.2	52,952	55,126	59,015	78,176	68,920
S.C.	24.5	19.3	18.5	18.0	15.5	7,143	7,477	9,288	10,431	8,430
Ga.	24.4	18.8	18.0	17.6	15.3	125,700	129,836	150,336	164,521	153,000
Fla.	26.2	20.6	19.3	18.3	16.1	7,134	7,311	6,512	6,421	5,365
S.A.	24.8	19.3	18.5	18.1	15.9	354,495	354,624	387,106	431,752	384,625
Ky.	24.5	18.8	17.8	17.6	15.3	7,246	7,346	8,207	10,745	8,874
Tenn.	24.3	18.8	18.1	17.5	15.2	9,320	10,070	12,203	16,790	15,898
Ala.	24.5	18.7	18.0	17.6	15.1	43,872	47,810	59,832	74,140	78,855
Miss.	24.5	18.6	18.3	17.7	15.2	25,715	28,510	37,781	46,872	50,715
Ark.	24.4	18.6	18.2	17.6	15.0	52,575	51,700	58,159	70,399	76,259
La.	25.3	19.6	18.8	18.0	15.5	8,854	9,549	9,829	11,427	10,737
Okla.	25.4	19.5	18.3	17.9	15.1	4,741	3,294	3,700	3,040	3,603
Texas	25.5	19.7	18.9	18.5	15.5	58,928	59,169	57,168	63,745	55,350
S.C.	24.8	19.0	18.3	17.8	15.2	211,251	217,448	246,879	297,158	300,291
Idaho	28.4	24.8	22.2	21.5	18.6	1,064	1,395	1,502	1,830	1,993
Colo.	29.0	25.0	20.7	20.3	18.0	1,749	1,131	727	756	762
Ariz.	29.6	26.0	23.9	22.5	21.0	499	360	386	384	429
Utah	26.7	23.0	21.5	21.0	20.0	1,517	1,699	1,359	1,407	1,395
Wash.	26.5	23.0	22.0	20.7	18.6	8,036	8,692	8,730	10,514	10,109
Oreg.	26.3	22.5	21.7	19.6	17.8	5,000	6,035	5,345	5,231	6,299
Calif.	27.9	22.0	21.6	21.0	18.9	41,962	38,040	30,060	33,152	31,971
West.	27.6	22.4	21.7	20.8	18.7	59,827	57,352	48,109	53,274	52,958
U.S.	25.2	19.6	18.9	18.5	16.1	843,953	838,450	886,062	1,001,990	925,408

^{1/} Includes consumption in households of producers which is less than 1 percent of total production.

Table 10.--Farm chickens and commercial broilers combined: Total pounds sold, by States, 1955-59

State and division	Pounds sold				
	1955	1956	1957	1958	1959
	1,000	1,000	1,000	1,000	1,000
	pounds	pounds	pounds	pounds	pounds
Maine	152,149	182,131	217,159	239,218	248,264
N.H.	47,606	48,113	42,893	42,005	38,252
Vt.	11,194	9,878	8,751	7,786	6,865
Mass.	83,421	86,220	71,045	71,434	62,889
R.I.	7,895	8,245	7,242	8,796	8,261
Conn.	115,948	132,263	120,698	123,686	112,062
N.Y.	95,601	102,370	91,967	87,609	80,965
N.J.	77,174	85,901	77,586	74,592	67,709
Pa.	178,215	199,051	191,575	219,582	215,858
N.A.	769,203	854,172	825,916	874,708	841,125
Ohio	168,243	116,128	101,216	104,532	93,031
Ind.	167,298	188,871	190,541	202,593	182,589
Ill.	90,957	86,980	73,120	72,686	55,906
Mich.	58,617	56,238	54,031	54,488	42,255
Wis.	93,420	101,211	90,120	104,918	94,059
E.N.C.	518,535	549,428	509,028	539,217	477,840
Minn.	86,877	86,495	75,491	84,980	83,182
Iowa	132,580	128,254	112,900	118,238	110,446
Mo.	130,885	149,548	126,532	143,840	158,715
N.Dak.	14,736	14,357	12,456	12,440	11,206
S.Dak.	29,325	28,782	25,088	26,840	24,127
Nebr.	49,843	49,355	36,838	37,428	36,676
Kans.	38,314	38,308	28,943	33,841	33,100
W.N.C.	482,561	495,099	418,248	457,607	457,452
Del.	220,460	286,241	320,997	314,528	301,347
Md.	191,302	230,151	259,234	303,797	334,247
Va.	179,651	210,111	203,777	207,983	184,876
W.Va.	75,565	85,374	87,074	93,225	97,402
N.C.	244,456	318,589	360,861	476,085	495,826
S.C.	34,112	42,860	55,776	63,911	65,981
Ga.	535,024	713,762	859,396	961,025	1,039,395
Fla.	36,829	43,138	41,896	44,437	46,626
S.A.	1,517,409	1,930,226	2,189,011	2,484,991	2,565,700
Ky.	45,298	52,875	56,224	70,176	66,764
Tenn.	54,438	67,834	77,544	105,308	116,979
Ala.	182,370	260,609	338,275	430,866	541,437
Miss.	109,736	156,402	210,965	272,019	345,021
Ark.	223,593	286,105	324,356	406,993	521,173
La.	37,257	52,220	58,819	67,355	75,140
Okla.	26,224	21,527	24,606	19,585	28,640
Texas	248,856	319,420	320,192	365,791	395,802
S.C.	928,272	1,217,072	1,410,981	1,738,093	2,090,956
Mont.	7,504	5,840	4,685	4,545	4,025
Idaho	9,844	10,636	11,342	12,716	15,091
Wyo.	1,316	994	508	705	572
Colo.	12,430	11,467	7,819	6,977	8,107
N.Mex.	800	657	459	466	886
Ariz.	3,366	3,356	3,285	3,705	5,284
Utah	11,136	11,734	10,655	11,370	11,211
Nev.	163	119	110	96	141
Wash.	47,788	50,526	48,710	62,093	65,466
Oreg.	30,954	38,668	36,866	36,233	44,931
Calif.	223,016	246,181	208,287	234,491	260,922
West.	348,317	380,178	332,726	373,397	416,636
U.S.	4,564,297	5,426,175	5,688,910	6,468,013	6,849,709

Table 11.--Farm chickens and commercial broilers combined: Prices and cash receipts, by States, 1955-59

State and division	Average annual price per pound 1/					Cash receipts				
	1955	1956	1957	1958	1959	1955	1956	1957	1958	1959
	Cents	Cents	Cents	Cents	Cents	dollars	dollars	dollars	dollars	dollars
Maine	23.8	19.0	19.0	19.2	17.1	1,000	1,000	1,000	1,000	1,000
N.H.	23.5	18.8	18.2	18.1	15.9	36,267	34,587	41,349	45,891	42,544
Vt.	22.6	19.3	17.1	18.1	15.7	2,530	1,907	1,497	1,410	1,081
Mass.	24.3	19.6	18.2	18.2	16.2	20,282	16,940	12,898	13,037	10,190
R.I.	24.3	19.5	18.9	18.4	16.7	1,919	1,604	1,367	1,622	1,383
Conn.	25.5	20.0	19.6	19.4	16.8	29,606	26,425	23,659	23,999	18,840
N.Y.	25.3	22.4	20.4	20.7	18.0	24,221	22,959	18,799	18,163	14,599
N.J.	26.0	21.8	21.3	20.9	17.7	20,067	18,713	16,499	15,589	12,002
Pa.	24.5	20.2	19.4	19.4	17.8	43,622	40,127	37,163	42,582	38,500
N.A.	24.7	20.2	19.4	19.4	17.3	189,723	172,285	161,025	169,890	145,206
Ohio	22.2	18.4	17.3	17.1	14.4	24,030	21,398	17,503	17,890	13,417
Ind.	22.8	18.8	17.8	17.7	14.6	38,161	35,493	33,845	35,843	26,707
Ill.	20.0	16.7	14.6	15.1	11.8	18,184	14,489	10,701	10,968	7,794
Mich.	22.0	20.6	17.7	17.8	14.5	12,919	11,572	9,540	9,704	6,114
Wis.	21.3	18.4	17.3	17.2	14.8	19,853	18,610	15,635	18,086	13,932
E.N.C.	21.8	18.5	17.1	17.2	14.2	113,147	101,562	87,224	92,491	67,964
Minn.	16.2	13.1	11.1	11.8	9.0	14,110	11,362	8,362	10,015	7,463
Iowa	16.6	13.1	11.5	11.9	8.2	21,957	16,769	12,937	14,078	9,081
Mo.	21.0	17.2	15.9	16.2	13.7	27,465	25,747	20,135	23,278	21,777
N.Dak.	14.2	10.7	9.7	9.7	6.6	2,093	1,536	1,208	1,207	740
S.Dak.	15.7	10.8	9.8	9.7	6.3	4,604	3,108	2,459	2,603	1,520
Hebr.	17.0	14.1	11.5	11.6	9.0	8,472	6,962	4,231	4,348	3,304
Kans.	15.3	13.3	11.1	11.9	9.0	5,860	5,100	3,208	4,035	2,964
W.N.C.	17.5	14.3	12.6	13.0	10.2	84,561	70,584	52,540	59,564	46,849
Del.	25.7	19.9	19.4	19.0	17.0	56,578	57,008	62,244	63,476	51,130
Md.	25.6	20.0	19.4	19.0	16.9	48,957	45,926	50,191	57,590	56,605
Va.	24.4	19.4	18.4	18.2	15.9	43,825	40,682	37,496	37,805	29,361
W.Va.	24.4	19.3	19.0	18.7	16.8	18,473	16,483	16,539	17,440	16,350
N.C.	23.8	18.9	17.8	17.5	15.1	58,238	60,241	64,189	83,472	74,899
S.C.	24.2	19.4	18.5	18.0	15.3	8,249	8,313	10,296	11,474	10,088
Ge.	24.3	18.8	18.0	17.6	15.3	129,871	134,372	154,449	168,746	158,515
Fla.	25.2	20.5	19.1	17.9	15.4	9,265	8,848	8,013	7,954	7,188
S.A.	24.6	19.3	18.4	18.0	15.8	373,456	371,873	403,417	447,957	404,136
Ky.	22.1	18.3	17.1	17.1	14.8	10,029	9,664	9,603	12,032	9,891
Tenn.	22.2	18.2	17.6	17.2	14.8	12,087	12,354	13,611	18,092	17,335
Ala.	24.4	18.7	18.0	17.5	15.0	44,632	48,739	60,790	75,535	81,219
Miss.	24.3	18.6	18.3	17.7	15.2	26,718	29,103	38,539	48,039	52,273
Ark.	24.2	18.5	18.1	17.5	14.9	54,013	52,971	58,807	71,344	77,703
La.	25.2	19.8	19.1	18.1	15.5	9,407	10,347	11,214	12,182	11,641
Okla.	22.2	18.1	16.9	17.1	14.1	5,815	3,897	4,160	3,342	4,033
Texas	25.0	19.5	18.6	18.2	15.1	62,090	62,259	59,577	66,589	59,607
S.C.	24.2	18.8	18.2	17.7	15.0	224,791	229,334	256,301	307,155	313,702
Mont.	23.9	21.8	18.0	15.2	14.0	1,793	1,273	843	691	564
Idaho	22.0	20.7	18.8	19.0	16.3	2,168	2,197	2,129	2,410	2,457
Wyo.	21.3	22.0	18.8	17.6	15.5	280	219	96	124	89
Colo.	22.1	19.6	16.5	17.1	14.7	2,741	2,242	1,291	1,195	1,192
N.Mex.	17.1	17.9	15.7	14.8	14.0	137	118	72	69	124
Ariz.	24.4	21.2	19.8	18.8	16.5	820	713	651	698	873
Utah	20.8	19.6	18.0	17.4	15.9	2,319	2,294	1,913	1,981	1,785
Nev.	16.1	16.0	15.5	14.6	11.0	26	19	17	14	16
Wash.	23.6	21.5	20.4	19.6	17.3	11,302	10,870	9,949	12,164	11,343
Oreg.	23.4	20.8	19.1	18.3	16.1	7,233	8,061	7,058	6,615	7,234
Calif.	24.7	20.1	18.9	18.7	15.9	55,105	49,544	39,322	43,879	41,514
West.	24.1	20.4	19.0	18.7	16.1	83,924	77,550	63,341	69,840	67,191
U.S.	23.4	18.9	18.0	17.7	15.3	1,069,602	1,023,188	1,023,848	1,146,897	1,045,048

1/ Price obtained by dividing cash receipts by pounds sold.

Table 12.--Farm Chickens: Number on farms, by classes, by States, January 1, 1956-60

State and division	Hens					Pullets 1/				
	1956	1957	1958	1959	1960	1956	1957	1958	1959	1960
	Thou.	Thou.	Thou.	Thou.	Thou.	Thou.	Thou.	Thou.	Thou.	Thou.
Maine	765	849	917	1,027	822	3,067	3,190	3,350	3,417	3,588
N.H.	506	516	485	398	322	2,090	1,902	1,769	1,716	1,647
Vt.	196	178	185	222	242	863	872	732	673	586
Mass.	993	1,102	1,124	1,012	931	3,079	3,048	2,926	2,955	2,600
R.I.	122	131	132	116	117	337	334	321	337	313
Conn.	1,114	1,181	1,216	1,265	1,113	2,742	2,632	2,395	2,491	2,441
N.Y.	4,351	4,482	4,885	4,543	4,089	7,553	7,477	6,580	6,909	6,149
N.J.	4,623	4,623	5,039	4,686	4,967	10,623	10,623	9,242	9,150	7,228
Pa.	6,833	6,696	6,964	6,407	6,535	14,633	15,072	13,716	14,127	13,562
N.A.	19,503	19,758	20,947	19,676	19,138	44,987	45,150	41,031	41,775	38,114
Ohio	4,517	4,427	4,914	4,324	4,713	9,282	9,746	8,479	9,412	8,377
Ind.	3,830	3,638	3,929	3,811	4,116	9,696	10,181	9,672	10,349	9,521
Ill.	5,117	4,554	5,055	4,347	4,695	12,007	12,007	10,326	10,739	8,484
Mich.	3,273	3,273	3,273	3,208	3,176	6,669	6,736	5,187	5,809	4,996
Wis.	4,634	4,310	4,913	4,078	4,119	8,269	8,517	7,580	7,959	6,447
E.N.C.	21,371	20,202	22,084	19,768	20,819	45,923	47,187	41,244	44,268	37,825
Minn.	6,644	5,847	7,133	5,350	5,832	16,432	17,253	13,975	15,932	13,861
Iowa	6,751	6,211	7,267	6,104	6,470	20,586	21,821	19,857	21,644	19,047
Mo.	4,207	4,081	4,203	3,783	3,859	9,566	10,236	9,008	9,008	7,206
N.Dak.	1,284	1,143	1,223	991	971	2,315	2,431	2,091	2,175	1,784
S.Dak.	2,440	2,416	2,609	2,348	2,606	5,609	5,889	5,653	6,444	5,928
Nebr.	2,900	2,697	3,209	2,728	3,055	7,776	8,476	7,289	7,945	7,071
Kans.	3,194	2,938	3,761	2,971	2,882	6,767	7,511	5,859	6,211	4,782
W.N.C.	27,420	25,333	29,405	24,275	25,675	69,051	73,617	63,732	69,359	59,679
Del.	282	265	276	254	244	506	516	531	499	519
Md.	811	803	883	812	690	1,763	1,728	1,572	1,666	1,416
Va.	1,967	2,183	2,292	2,246	2,291	3,866	4,175	3,758	4,397	4,309
W.Va.	1,105	1,017	966	956	1,004	1,505	1,400	1,204	1,288	1,275
N.C.	4,492	4,537	4,718	4,860	4,957	6,574	7,166	7,667	8,204	7,712
S.C.	1,478	1,478	1,508	1,644	1,891	2,082	2,353	2,259	2,711	2,765
Ga.	3,141	2,890	3,063	3,676	4,227	4,492	5,256	5,887	7,418	8,234
Fla.	1,763	2,045	2,127	2,233	2,434	2,023	2,407	2,768	3,100	2,945
S.A.	15,039	15,218	15,833	16,681	17,738	22,811	25,001	25,646	29,283	29,175
Ky.	2,908	2,966	3,025	2,480	2,629	4,861	5,153	3,865	4,058	3,815
Tenn.	3,450	3,312	3,279	3,213	3,181	4,002	4,282	3,725	3,948	3,553
Ala.	2,602	2,732	3,005	3,155	3,470	3,315	3,547	4,079	4,936	4,492
Miss.	2,562	2,485	2,460	2,534	3,396	2,589	2,589	2,641	3,486	4,288
Ark.	1,832	1,759	1,847	2,069	2,441	2,338	2,455	2,332	3,148	3,305
La.	1,311	1,377	1,308	1,295	1,528	1,848	1,922	1,807	1,915	1,953
Okla.	2,646	2,540	2,515	2,339	2,128	2,748	3,160	2,307	2,607	2,086
Texas	7,113	7,255	7,690	7,459	8,056	7,474	8,819	7,584	9,783	8,316
S.C.	24,424	24,426	25,129	24,544	26,829	29,175	31,927	28,340	33,881	31,208
Mont.	439	417	417	438	407	979	969	901	874	787
Idaho	453	444	448	448	457	1,096	1,052	1,010	1,000	960
Wyo.	185	181	183	154	171	270	256	228	235	183
Colo.	826	760	836	719	784	1,161	1,173	950	1,074	891
N.Mex.	380	391	407	407	403	370	388	400	412	408
Ariz.	272	275	300	381	396	367	382	432	549	544
Utah	1,012	901	865	761	685	1,129	1,152	1,048	1,006	1,006
Nev.	48	46	39	38	36	79	68	62	54	49
Wash.	1,594	1,722	1,843	1,898	1,898	3,257	3,257	3,387	3,387	3,455
Oreg.	1,232	1,257	1,219	1,182	1,288	2,339	2,316	2,247	2,180	1,940
Calif.	7,797	8,187	9,006	9,456	10,023	16,069	16,390	15,898	16,693	18,195
West.	14,238	14,581	15,563	15,882	16,548	27,116	27,403	26,563	27,464	28,418
U.S.	121,995	119,518	128,961	120,826	126,747	239,063	250,285	226,556	246,030	225,019

1/ Includes pullets not of laying age.

Table 12.--Farm Chickens: Number on farms, by classes, by States, January 1, 1956-60--Continued

State and division	Hens and pullets 1/					Other chickens 2/				
	1956	1957	1958	1959	1960	1956	1957	1958	1959	1960
	Thou.	Thou.	Thou.	Thou.	Thou.	Thou.	Thou.	Thou.	Thou.	Thou.
Maine	3,832	4,039	4,267	4,444	4,410	116	182	220	255	250
N.H.	2,596	2,418	2,254	2,114	1,969	129	132	132	132	110
Vt.	1,059	1,050	917	895	828	32	33	34	37	40
Mass.	4,072	4,150	4,050	3,967	3,531	111	130	146	161	143
R.I.	459	465	453	453	430	13	13	13	13	13
Conn.	3,856	3,813	3,611	3,756	3,554	100	114	120	134	139
N.Y.	11,904	11,959	11,465	11,452	10,238	501	406	365	420	319
N.J.	15,246	15,246	14,281	13,836	12,195	733	792	594	535	401
Pa.	21,466	21,768	20,680	20,534	20,097	1,741	1,741	1,201	1,201	1,081
N.A.	64,490	64,908	61,978	61,451	57,252	3,476	3,543	2,825	2,838	2,496
Ohio	13,799	14,173	13,393	13,736	13,090	499	439	342	328	230
Ind.	13,526	13,819	13,601	14,160	13,637	499	454	413	401	353
Ill.	17,124	16,561	15,381	15,086	13,179	458	252	234	215	200
Mich.	9,942	10,009	8,460	9,017	8,172	460	603	302	311	271
Wis.	12,903	12,827	12,493	12,037	10,566	397	437	389	412	338
E.N.C.	67,294	67,389	63,328	64,036	58,644	2,313	2,185	1,680	1,667	1,392
Minn.	23,076	23,100	21,108	21,282	19,693	292	353	261	331	212
Iowa	27,337	28,032	27,124	27,748	25,517	718	661	410	463	324
Mo.	13,773	14,317	13,211	12,791	11,065	782	782	602	470	352
N.Dak.	3,599	3,574	3,314	3,166	2,755	144	144	120	127	83
S.Dak.	8,049	8,305	8,262	8,792	8,534	261	261	227	216	179
Nebr.	10,676	11,173	10,498	10,673	10,126	491	442	398	374	299
Kans.	9,961	10,449	9,620	9,182	7,664	502	442	446	424	293
W.N.C.	96,471	98,950	93,137	93,634	85,354	3,190	3,085	2,464	2,405	1,742
Del.	788	781	807	753	763	32	29	43	38	38
Md.	2,574	2,531	2,455	2,478	2,106	133	109	97	81	71
Va.	5,833	6,358	6,050	6,643	6,600	518	482	448	529	423
W.Va.	2,610	2,417	2,170	2,244	2,279	126	100	88	77	81
N.C.	11,066	11,703	12,385	13,064	12,669	1,457	1,311	1,403	1,417	1,233
S.C.	3,560	3,831	3,767	4,355	4,656	310	446	339	359	291
Ga.	7,633	8,146	8,950	11,094	12,461	598	413	285	376	440
Fla.	3,786	4,452	4,895	5,333	5,379	321	372	428	467	500
S.A.	37,650	40,219	41,479	45,964	46,913	3,495	3,262	3,131	3,344	3,077
Ky.	7,769	8,119	8,890	8,538	8,444	580	626	476	452	447
Tenn.	7,452	7,594	7,004	7,161	6,734	638	612	520	515	479
Ala.	5,917	6,279	7,084	8,091	7,962	464	483	459	477	463
Miss.	5,151	5,074	5,101	6,020	7,684	562	556	467	458	435
Ark.	4,170	4,214	4,179	5,217	5,746	406	406	309	281	281
La.	3,159	3,299	3,115	3,210	3,481	530	578	445	490	441
Okla.	5,394	5,700	4,822	4,946	4,214	177	150	152	164	108
Texas	14,587	16,074	15,274	17,242	16,372	748	785	691	1,009	636
S.C.	53,599	56,353	53,469	58,425	58,637	4,105	4,196	3,519	3,846	3,290
Mont.	1,418	1,306	1,318	1,312	1,194	55	45	46	49	41
Idaho	1,549	1,496	1,458	1,448	1,417	45	55	59	57	52
Wyo.	455	437	411	389	354	13	12	11	12	11
Colo.	1,987	1,933	1,786	1,793	1,675	74	67	43	47	40
N.Mex.	750	779	807	819	811	39	32	29	25	25
Ariz.	639	657	732	930	940	61	63	73	93	73
Utah	2,141	2,053	1,913	1,767	1,691	93	97	88	78	69
Nev.	127	114	101	92	85	13	11	9	6	5
Wash.	4,851	4,979	5,230	5,285	5,353	274	301	250	250	235
Oreg.	3,571	3,573	3,466	3,362	3,228	189	189	164	131	132
Calif.	23,866	24,577	24,904	26,149	28,218	5,197	4,417	4,373	5,248	5,038
West.	41,354	41,984	42,126	43,346	44,966	6,053	5,289	5,145	5,996	5,721
U.S.	361,058	369,803	355,517	366,856	351,766	22,632	21,560	18,764	20,146	17,718

1/ Includes pullets not of laying age.

2/ Does not include commercial broilers.

Table 12.--Farm Chickens: Number on farms, by classes, by States, January 1, 1956-60--Continued

State and division	All chickens ^{1/}				
	1956	1957	1958	1959	1960
	Thou.	Thou.	Thou.	Thou.	Thou.
Maine	3,948	4,221	4,487	4,699	4,660
N.H.	2,725	2,550	2,386	2,246	2,079
Vt.	1,091	1,083	951	932	868
Mass.	4,183	4,280	4,196	4,128	3,674
R.I.	472	478	466	466	443
Conn.	3,956	3,927	3,731	3,890	3,693
N.Y.	12,405	12,365	11,830	11,872	10,557
N.J.	15,979	16,038	14,875	14,371	12,596
Pa.	23,207	23,509	21,881	21,735	21,178
N.A.	67,966	68,451	64,803	64,339	59,748
Ohio	14,298	14,612	13,735	14,064	13,320
Ind.	14,025	14,273	14,014	14,561	13,990
Ill.	17,582	16,813	15,615	15,301	13,379
Mich.	10,402	10,612	8,762	9,328	8,443
Wis.	13,300	13,264	12,882	12,449	10,904
E.N.C. ...	69,607	69,574	65,008	65,703	60,036
Minn.	23,368	23,453	21,369	21,613	19,905
Iowa	28,055	28,693	27,534	28,211	25,841
Mo.	14,555	15,099	13,813	13,261	11,417
N.Dak.	3,743	3,718	3,434	3,293	2,838
S.Dak.	8,310	8,566	8,489	9,008	8,713
Nebr.	11,167	11,615	10,896	11,047	10,425
Kans.	10,463	10,891	10,066	9,606	7,957
W.N.C. ...	99,661	102,035	95,601	96,039	87,096
Del.	820	810	850	791	801
Md.	2,707	2,640	2,552	2,559	2,177
Va.	6,351	6,840	6,498	7,172	7,023
W.Va.	2,736	2,517	2,258	2,321	2,360
N.C.	12,523	13,014	13,788	14,481	13,902
S.C.	3,870	4,277	4,106	4,714	4,947
Ga.	8,231	8,559	9,235	11,470	12,901
Fla.	4,107	4,824	5,323	5,800	5,879
S.A.	41,345	43,481	44,610	49,308	49,990
Ky.	8,349	8,745	7,366	6,990	6,891
Tenn.	8,090	8,206	7,524	7,676	7,213
Ala.	6,381	6,762	7,543	8,568	8,425
Miss.	5,713	5,630	5,568	6,478	8,119
Ark.	4,576	4,620	4,488	5,498	6,027
La.	3,689	3,877	3,560	3,700	3,922
Okla.	5,571	5,850	4,974	5,110	4,322
Texas	15,335	16,859	15,965	18,251	17,008
S.C.	57,704	60,549	56,968	62,271	61,927
Mont.	1,473	1,431	1,364	1,361	1,235
Idaho	1,594	1,551	1,517	1,505	1,469
Wyo.	468	449	422	401	365
Colo.	2,061	2,000	1,829	1,840	1,715
N.Mex.	789	811	836	844	836
Ariz.	700	720	805	1,023	1,013
Utah	2,234	2,150	2,001	1,845	1,760
Nev.	140	125	110	98	90
Wash.	5,125	5,280	5,480	5,535	5,588
Oreg.	3,760	3,762	3,630	3,493	3,360
Calif.	29,063	28,994	29,277	31,397	33,256
West.	47,407	47,273	47,271	49,342	50,687
U.S.	383,690	391,363	374,281	387,002	369,484

^{1/} Does not include commercial broilers.

Table 13.--Farm chickens: Value per head and total value, by States, January 1, 1956-60

State and division	Value per head ^{1/}					Total value				
	1956	1957	1958	1959	1960	1956	1957	1958	1959	1960
	Dollars	Dollars	Dollars	Dollars	Dollars	1,000 dollars	1,000 dollars	1,000 dollars	1,000 dollars	1,000 dollars
Maine	1.95	1.70	1.70	1.75	1.60	7,699	7,176	7,628	8,223	7,456
N.H.	1.90	1.75	1.75	1.80	1.65	5,178	4,462	4,176	4,043	3,430
Vt.	1.85	1.75	1.80	1.85	1.70	2,018	1,895	1,712	1,724	1,476
Mass.	1.85	1.65	1.80	1.85	1.80	7,739	7,062	7,553	7,637	6,613
R.I.	1.90	1.70	1.85	1.85	1.80	897	813	862	862	797
Conn.	1.90	1.75	1.85	1.85	1.75	7,516	6,872	6,902	7,196	6,463
N.Y.	1.65	1.60	1.70	1.65	1.50	20,468	19,784	20,111	19,589	15,836
N.J.	1.65	1.50	1.60	1.60	1.45	26,365	24,057	23,800	22,994	18,264
Pa.	1.50	1.45	1.50	1.55	1.40	34,810	34,088	32,822	33,689	29,649
N.A.	1.65	1.55	1.63	1.65	1.51	112,690	106,209	105,566	105,957	89,984
Ohio	1.30	1.25	1.30	1.30	1.10	18,587	18,265	17,856	18,283	14,652
Ind.	1.25	1.25	1.20	1.25	.99	17,531	17,841	16,817	18,201	13,850
Ill.	1.10	1.10	1.15	1.15	.87	19,340	18,494	17,957	17,596	11,640
Mich.	1.40	1.30	1.45	1.40	1.20	14,563	13,796	12,705	13,059	10,132
Wis.	1.30	1.20	1.30	1.25	.96	17,290	15,917	16,747	15,561	10,468
E.N.C.	1.25	1.21	1.26	1.26	1.01	87,311	84,313	82,082	82,700	60,742
Minn.	1.20	1.05	1.25	1.25	.88	28,042	24,626	26,711	27,016	17,516
Iowa	1.25	1.15	1.35	1.30	.87	35,069	32,997	37,171	36,674	22,482
Mo.	1.00	.90	.95	.94	.75	14,555	13,589	13,122	12,465	8,563
N.Dak.	.95	.85	1.00	.99	.77	3,556	3,160	3,434	3,260	2,185
S.Dak.	1.10	1.00	1.10	1.10	.79	9,141	8,566	9,338	9,909	6,883
Nebr.	1.05	.95	1.15	.98	.67	11,725	11,034	12,530	10,826	6,985
Kans.	.95	.85	.95	.95	.70	9,940	9,257	9,563	9,126	5,570
W.H.C.	1.12	1.01	1.17	1.14	.81	112,028	103,229	111,869	109,276	70,184
Del.	1.30	1.25	1.25	1.30	1.20	1,066	1,012	1,062	1,028	961
Md.	1.35	1.30	1.30	1.35	1.20	3,654	3,432	3,318	3,455	2,612
Va.	1.15	1.10	1.10	1.10	1.05	7,304	7,524	7,148	7,889	7,374
W.Va.	1.15	1.10	1.10	1.20	1.05	3,146	2,769	2,484	2,785	2,478
N.C.	1.15	1.05	1.10	1.10	.97	14,401	13,665	15,167	15,929	13,485
S.C.	1.30	1.15	1.25	1.25	1.15	5,031	4,919	5,132	5,892	5,689
Ga.	1.15	1.10	1.20	1.25	1.10	9,466	9,415	11,082	14,338	14,191
Fla.	1.30	1.25	1.30	1.30	1.10	5,339	6,030	6,920	7,540	6,467
S.A.	1.19	1.12	1.17	1.19	1.07	49,407	48,766	52,313	58,856	53,257
Ky.	1.00	.90	.90	.92	.79	8,349	7,870	6,629	6,431	5,444
Tenn.	.95	.90	.90	.91	.79	7,686	7,385	6,772	6,985	5,698
Ala.	1.05	1.00	1.10	1.15	1.00	6,700	6,762	8,297	9,853	8,425
Miss.	1.05	1.05	1.10	1.10	1.00	5,999	5,912	6,125	7,126	8,119
Ark.	.95	.90	.90	.96	.84	4,347	4,158	4,039	5,278	5,063
La.	1.25	1.15	1.20	1.25	1.15	4,611	4,459	4,272	4,625	4,510
Okla.	.90	.85	.90	.94	.79	5,014	4,972	4,477	4,803	3,414
Texas	1.00	1.00	1.10	1.10	.97	15,335	16,859	17,562	20,076	16,498
S.C.	1.01	.96	1.02	1.05	.92	58,041	58,377	58,173	65,177	57,171
Mont.	1.25	1.25	1.25	1.25	1.15	1,841	1,789	1,705	1,701	1,420
Idaho	1.15	1.20	1.30	1.25	1.05	1,833	1,861	1,972	1,881	1,542
Wyo.	1.20	1.25	1.25	1.25	1.20	562	561	528	501	438
Colo.	1.05	1.05	1.05	1.05	.94	2,164	2,100	1,920	1,932	1,612
N.Mex.	1.20	1.10	1.20	1.30	1.10	947	892	1,003	1,097	920
Ariz.	1.40	1.25	1.35	1.35	1.25	980	900	1,087	1,381	1,266
Utah	1.10	1.15	1.20	1.30	.94	2,457	2,472	2,401	2,398	1,654
Nev.	1.20	1.15	1.25	1.35	1.20	168	144	138	132	108
Wash.	1.45	1.40	1.50	1.50	1.40	7,431	7,392	8,220	8,302	7,823
Oreg.	1.40	1.30	1.40	1.40	1.30	5,264	4,891	5,082	4,890	4,368
Calif.	1.35	1.20	1.30	1.30	1.15	39,235	34,793	38,060	40,816	38,244
West.	1.33	1.22	1.31	1.32	1.17	62,882	57,795	62,116	65,031	59,395
U.S.	1.26	1.17	1.26	1.26	1.06	482,359	458,689	472,119	486,997	390,733

^{1/} Average reported annually by crop correspondents.

farmers weighted by the estimated quantities sold each month. Prices of eggs are for all egg sales from farms including hatching eggs and eggs sold at retail by farmers.

Income: Cash receipts from marketings of farm chickens are computed by multiplying the pounds of chickens sold by the average price per pound. Cash receipts from marketings of eggs are derived by multiplying the dozens of eggs sold by the annual average price per dozen. Gross income from farm chickens is the total of cash receipts plus the value of chickens consumed in farm households. Gross income from eggs is the total of cash receipts plus the value of eggs consumed in farm households.

Gross income from commercial broilers is derived by multiplying the pounds produced by the price per pound. It includes consumption in households of broiler producers, which is less than 1 percent of the total production for the United States.

Inventory Numbers: The annual estimates of numbers on farms are based primarily on survey returns from about 160,000 livestock and poultry producers, obtained in cooperation with the Post Office Department through rural mail carriers. These revised State and United States series are based on a thorough review of the data available currently each year taking into consideration the 1959 Census of Agriculture and other information such as year to year changes in numbers assessed for taxation. Consideration was given to chick and poult hatchery production, chickens tested for pullorum disease, and records relating to processing and inspection of poultry. These inventory estimates relate to January 1 of each year.

Value Per Head: The estimates of average value per head are based on reports from crop and livestock reporters and the average price per head in their localities, about January 1, each year. Values per head, by classes for each State, for a given species are weighted together by the estimated number in each class. The weighted average so computed is the basis for the estimated value per head for the species. In the case of estimates for regions and the United States, the total value is the sum of the State estimates; and value per head is derived by dividing the total value by the number of head for the respective region and for the United States.

* * * * *

END