



**AgEcon** SEARCH  
RESEARCH IN AGRICULTURAL & APPLIED ECONOMICS

*The World's Largest Open Access Agricultural & Applied Economics Digital Library*

**This document is discoverable and free to researchers across the globe due to the work of AgEcon Search.**

**Help ensure our sustainability.**

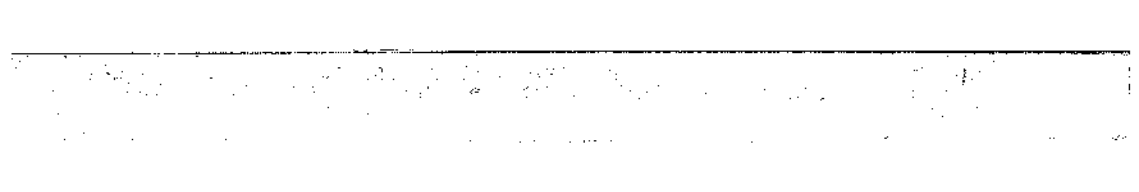
Give to AgEcon Search

AgEcon Search

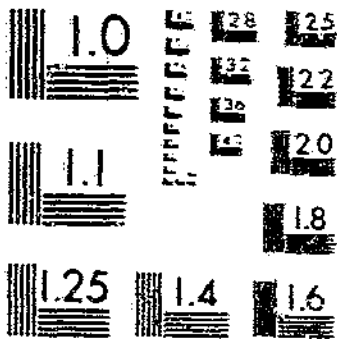
<http://ageconsearch.umn.edu>

[aesearch@umn.edu](mailto:aesearch@umn.edu)

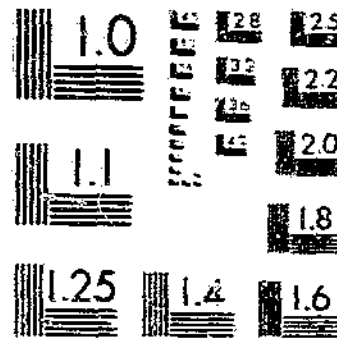
*Papers downloaded from **AgEcon Search** may be used for non-commercial purposes and personal study only. No other use, including posting to another Internet site, is permitted without permission from the copyright owner (not AgEcon Search), or as allowed under the provisions of Fair Use, U.S. Copyright Act, Title 17 U.S.C.*



# START



MICROCOPY RESOLUTION TEST CHART  
NATIONAL BUREAU OF STANDARDS-1963-A



MICROCOPY RESOLUTION TEST CHART  
NATIONAL BUREAU OF STANDARDS-1963-A

REFS  
403-13  
282

EDUCATION

# MILK

## PRODUCTION, DISPOSITION, and INCOME

REVISED ESTIMATES  
1955-59

U.S. DEPARTMENT OF AGRICULTURE  
STATISTICAL REPORTING SERVICE  
CROP REPORTING BOARD

Washington, D.C. April 1961

STATISTICAL BULLETIN NO. 282

Indexed by ...  
In ...

## CONTENTS

	Page
Comments.....	1
Tables:	
Annual production, disposition and income	
United States, 1924-59.....	2
By States:	
1955.....	6
1956.....	10
1957.....	14
1958.....	18
1959.....	22
Number of farms, by States, 1954 and 1959.....	26
Utilization of milk, U. S. 1955-59.....	28

## MILK

### Production, Disposition, and Income, Revised Estimates for 1955-59 <sup>1/</sup>

Revised estimates for 1955-59 in this report supersede those published annually in reports bearing the same title. Preliminary annual estimates of milk production were based primarily on reports from a sample of farmers. These reporters supply current information on milk cow numbers, milk production, use of milk on farms for home consumption and farm-churned butter, and milk fed to calves. Reports from dairy plants on receipts of milk and cream from producers provide a more complete check on sales by farmers for the annual disposition estimates.

#### Basis for revisions

The Census of Agriculture, which is taken at five-year intervals by the Bureau of the Census, U. S. Department of Commerce, is an enumeration of all farms, providing data on milk cow numbers, milk production, and sales of milk and cream. As soon as the Census data become available, the annual estimates for the Census year and the intervening years are reviewed and revised, where necessary. Allowances are made for some incompleteness in coverage and reporting of information in the Census enumeration. The revised estimates also give consideration to any additional data from other sources which have become available since the original estimates were made.

Sharp changes have occurred in recent years in the number of farms keeping milk cows and in milk cow numbers. Compared with the preceding Census in 1954, the 1959 Census of Agriculture showed a drop of 39 percent in the number of farms with milk cows, while the number of milk cows dropped 18 percent. Only 48 percent of all farms enumerated in 1959 kept milk cows, compared with 61 percent in 1954. (See Tables 25 and 26). Sample data available for the annual estimates did not fully measure the extent of this trend.

#### Extent of revisions

Based on the Census data, the estimated average number of milk cows for 1959 was revised down 7 percent from the preliminary annual estimate for the United States, with considerably larger downward revisions in some States. Smaller revisions were made for earlier years back through 1955. A large part of these downward revisions in milk cow numbers was offset by upward revisions in milk production per cow. For 1959, the estimated annual rate per cow was raised 6 percent to 6,815 pounds for the United States. Smaller downward revisions were required in estimates of total milk production; 1.9 percent for 1959, 1.3 percent for 1958, 1.0 percent for 1957, 0.5 percent for 1956, and 0.1 percent for 1955.

For the United States, revised estimates of whole milk sold to plants and dealers do not depart more than 0.2 percent from the annual estimates for any of the years 1955-59. The original estimates for this item were well substantiated by plant receipts data. Annual check data are not as complete for sales of farm-separated cream, which declined sharply during the 1955-59 period. Based partly on cream sales reported in the 1959 Census, estimated milkfat sold as cream in 1959 was revised down 8 percent from the preliminary estimate. The revised milk equivalent of cream sales accounted for only 8 percent of total milk and cream sold to plants and dealers in 1959, compared with 14 percent in 1955.

The 1959 Census showed a sharper decline in number of farms keeping milk cows than the annual estimates based on sample surveys. Consequently, substantial revisions were required in estimates of farm uses of milk. Home consumption of milk and cream on farms where produced was lowered 15 percent from the preliminary estimate for 1959, and milk used for farm-churned butter was revised down 24 percent. A smaller downward revision was made in milk fed to calves. For the United States, the revised estimates of these farm uses accounted for only 8 percent of all milk produced in 1959, compared with 12 percent in 1955.

Revised estimates of cash receipts from milk and cream for 1955-59 show little change from the estimates made annually. Very few revisions were made in annual average prices received by farmers. However, estimates of gross farm income from dairy products (including milk used on farms) and farm value of all milk produced were lowered about 2 percent for 1959.

<sup>1/</sup> This report was prepared by L. G. Butler and J. W. LeGrande, Agricultural Statisticians, under the direction of I. E. Wissinger, Chief, Dairy Statistics Branch, Agricultural Estimates Division, Statistical Reporting Service.

Table 1.-Milk cows and production of milk, milkfat, and butter on farms, United States, 1924-59

Year	Number of milk cows on farms 1/	Production of milk and milkfat 2/					Butter churned on farms
		Per milk cow		Percentage of fat in all milk produced	Total		
		Milk	Milkfat		Milk	Milkfat	
	Thousands	Pounds	Pounds	Percent	Mil. lb.	Mil. lb.	1,000 lb.
1924...	21,417	4,167	163	3.92	89,240	3,495	642,803
1925...	21,503	4,218	165	3.92	90,699	3,551	618,730
1926...	21,312	4,379	172	3.92	93,325	3,659	620,320
1927...	21,191	4,491	176	3.92	95,172	3,734	607,245
1928...	21,223	4,516	177	3.93	95,843	3,762	577,040
1929...	21,618	4,579	180	3.92	98,988	3,884	542,064
1930...	22,218	4,908	177	3.92	100,158	3,929	523,235
1931...	23,108	4,452	175	3.93	103,029	4,045	544,395
1932...	24,105	4,307	169	3.93	103,810	4,079	581,450
1933...	25,062	4,180	164	3.93	104,762	4,114	579,845
1934...	25,198	4,033	159	3.94	101,621	3,999	558,649
1935...	24,167	4,184	165	3.95	101,205	4,000	539,110
1936...	23,727	4,316	170	3.95	102,410	4,041	501,900
1937...	23,340	4,356	172	3.95	101,908	4,025	472,270
1938...	23,215	4,558	180	3.95	105,507	4,180	453,990
1939...	23,273	4,539	181	3.95	106,792	4,223	428,689
1940...	23,671	4,622	183	3.97	109,412	4,343	402,690
1941...	24,268	4,758	188	3.97	115,088	4,571	395,476
1942...	25,027	4,736	158	3.97	118,533	4,704	366,370
1943...	25,451	4,598	183	3.97	117,017	4,651	341,620
1944...	25,597	4,572	182	3.98	117,023	4,657	329,848
1945...	25,033	4,787	190	3.98	119,828	4,764	335,690
1946...	24,089	4,886	194	3.97	117,697	4,677	330,650
1947...	23,329	4,907	199	3.97	116,614	4,639	311,050
1948...	22,335	5,044	200	3.97	112,671	4,478	293,290
1949...	22,024	5,282	209	3.96	116,103	4,595	275,780
1950...	21,344	5,314	210	3.94	116,602	4,618	261,520
1951...	21,505	5,333	210	3.93	114,681	4,509	240,350
1952...	21,338	5,374	210	3.90	114,671	4,476	213,520
1953...	21,691	5,442	215	3.87	120,221	4,655	194,770
1954...	21,531	5,657	213	3.86	122,094	4,717	178,990
1955 3/	21,044	5,842	226	3.84	122,945	4,726	162,070
1956 3/	20,501	6,090	232	3.82	124,860	4,773	139,810
1957 3/	19,774	6,303	240	3.81	124,628	4,744	119,354
1958 3/	18,711	6,535	249	3.73	123,220	4,658	96,123
1959 3/	17,301	6,815	256	3.76	121,989	4,558	76,307

1/ Average number on farms during year, excluding heifers not yet fresh.

2/ Excludes milk sucked by calves.

3/ Revised on basis of 1959 Census of Agriculture and other data now available.

Table 2.-Milk used and marketed by farmers, United States, 1924-59

[In millions of pounds]

Year	Milk used on farms where produced				Milk marketed by farmers			
	Fed to calves	Consumed as fluid milk or cream	Used for farm-churned butter	Total	Sold to plants and dealers		Retailled by farmers as milk and cream <sup>1/</sup>	Total
					As whole milk	As farm-skimmed cream		
1924...	2,742	11,841	13,245	27,828	25,907	29,366	6,139	61,412
1925...	2,784	11,662	12,736	27,182	26,830	30,417	6,270	63,517
1926...	2,858	11,506	12,734	27,098	27,707	32,123	6,397	66,227
1927...	2,901	11,315	12,436	26,652	28,600	33,356	6,564	68,520
1928...	2,944	11,207	11,793	25,944	30,367	32,814	6,718	69,899
1929...	3,012	10,932	11,046	24,990	33,347	33,808	6,843	73,998
1930...	2,986	11,207	10,647	24,840	34,497	33,974	6,847	75,318
1931...	2,997	11,913	11,061	25,971	34,614	35,468	6,976	77,058
1932...	2,859	12,507	11,820	27,186	33,501	36,095	7,028	76,624
1933...	2,878	12,784	11,798	27,460	33,703	36,524	7,073	77,302
1934...	2,683	12,773	11,343	26,804	33,869	33,867	7,081	74,617
1935...	2,676	12,410	10,931	26,017	35,647	32,564	6,977	75,188
1936...	2,755	12,077	10,163	24,995	38,777	31,904	6,734	77,415
1937...	2,724	11,955	9,548	24,227	40,470	30,644	6,567	77,681
1938...	2,350	11,950	9,173	23,973	42,657	32,723	6,449	81,834
1939...	2,967	12,167	8,653	23,787	43,801	32,987	6,217	83,005
1940...	2,394	12,063	8,129	23,186	47,152	32,963	6,105	86,226
1941...	3,124	12,020	7,367	23,111	52,362	33,967	5,943	91,977
1942...	3,294	11,856	7,368	22,518	59,076	31,080	5,562	96,018
1943...	3,276	11,615	6,860	21,751	59,656	29,871	5,739	95,266
1944...	3,251	11,688	6,621	21,560	63,680	28,026	5,750	95,456
1945...	3,290	11,451	6,714	21,455	63,329	23,868	5,576	98,373
1946...	3,228	11,562	6,557	21,347	69,619	21,379	5,352	96,350
1947...	3,144	11,048	6,194	20,386	70,559	20,952	4,907	96,418
1948...	3,064	10,805	5,808	19,677	69,610	19,712	4,872	93,294
1949...	3,163	11,027	5,440	19,630	73,290	19,949	4,234	97,473
1950...	3,234	9,503	5,160	17,894	74,205	20,208	3,935	98,348
1951...	3,449	9,738	4,746	17,933	74,480	18,530	3,738	96,748
1952...	3,348	9,436	4,215	16,999	77,301	16,853	3,513	97,672
1953...	3,334	9,970	3,876	17,180	84,567	16,334	3,208	104,109
1954...	3,346	8,474	3,562	15,380	87,674	15,910	2,930	106,714
1955 <sup>2/</sup>	3,266	8,114	3,245	14,625	90,960	14,688	2,672	108,320
1956 <sup>2/</sup>	3,119	7,874	2,814	13,807	95,521	13,264	2,448	111,233
1957 <sup>2/</sup>	2,910	7,003	2,428	12,341	98,284	11,669	2,294	112,247
1958 <sup>2/</sup>	2,767	6,343	1,987	11,147	99,626	10,280	2,167	112,073
1959 <sup>2/</sup>	2,658	5,776	1,602	10,036	100,809	9,073	2,071	111,953

<sup>1/</sup> Approximations based on information on sales by producer-distributors and other farmers on own routes or at farm.

<sup>2/</sup> Revised on basis of 1959 Census of Agriculture and other data now available.



Table 3.-Milk and cream marketed by farmers: Quantity, price, and cash receipts, United States, 1924-59

Year	Milk sold to plants and dealers			Cream sold to plants and dealers			Milk and cream retailed by farmers		
	Quantity	Price per 100 pounds	Cash receipts	Quantity milkfat	Price per pound fat	Cash receipts	Quantity, milk equiv.	Price per quart	Cash receipts
	Mill. lb.	Dol.	1,000 dol.	1,000 lb.	Ct.	1,000 dol.	Mill. qt.	Ct.	1,000 dol.
1924...	25,907	2.22	573,997	1,102,700	40.4	445,124	2,858	11.1	316,934
1925...	26,830	2.38	638,137	1,141,700	42.4	483,821	2,914	11.2	325,651
1926...	27,707	2.38	660,730	1,207,400	41.6	502,578	2,975	11.3	336,600
1927...	28,600	2.51	717,841	1,255,010	44.5	559,005	3,053	11.3	343,781
1928...	30,367	2.52	766,410	1,233,730	46.1	569,341	3,123	11.5	358,224
1929...	33,347	2.53	842,182	1,271,120	45.2	574,259	3,188	11.5	365,056
1930...	34,497	2.21	764,095	1,275,870	34.5	440,152	3,189	11.3	359,075
1931...	34,614	1.69	584,483	1,332,560	24.8	329,863	3,244	10.1	329,063
1932...	33,501	1.28	427,334	1,356,200	17.9	242,708	3,269	8.9	289,607
1933...	33,705	1.30	439,179	1,371,050	18.8	257,549	3,288	8.6	282,945
1934...	33,865	1.55	523,497	1,272,220	22.7	288,951	3,293	9.4	308,433
1935...	35,647	1.71	607,946	1,223,560	28.1	343,457	3,243	9.8	318,030
1936...	38,777	1.87	725,375	1,197,170	32.2	385,927	3,135	10.1	316,685
1937...	40,470	1.97	796,068	1,151,270	33.3	382,801	3,056	10.5	320,354
1938...	42,657	1.72	733,221	1,229,860	26.3	322,892	2,997	10.3	309,811
1939...	43,801	1.68	734,703	1,237,940	23.9	295,456	2,890	10.3	296,250
1940...	47,152	1.82	858,445	1,247,130	28.0	349,733	2,845	10.3	294,317
1941...	52,062	2.19	1,145,628	1,284,890	34.2	439,769	2,768	10.8	298,754
1942...	59,076	2.58	1,521,246	1,173,950	39.6	464,975	2,728	11.8	322,015
1943...	59,656	3.12	1,859,540	1,127,200	49.9	562,028	2,669	12.7	340,266
1944...	63,680	3.21	2,044,059	983,370	50.3	494,755	2,676	13.2	353,802
1945...	68,929	3.19	2,195,915	903,020	50.3	453,942	2,595	13.4	347,408
1946...	69,619	3.99	2,780,034	806,070	64.3	518,133	2,493	15.2	319,580
1947...	70,559	4.27	3,014,759	791,730	71.8	568,620	2,285	17.5	399,022
1948...	69,010	4.88	3,354,385	744,220	79.9	594,475	2,130	18.8	401,291
1949...	73,290	3.95	2,895,535	752,830	61.6	463,965	1,971	18.6	365,717
1950...	74,205	3.89	2,886,436	762,030	62.0	472,226	1,832	18.5	339,372
1951...	74,480	4.58	3,412,603	696,930	71.2	496,036	1,736	19.9	345,799
1952...	77,301	4.85	3,752,084	632,900	75.0	474,797	1,638	20.8	340,241
1953...	84,567	4.32	3,650,749	605,520	66.5	402,826	1,496	20.9	312,255
1954...	87,874	3.97	3,457,085	589,700	58.7	346,355	1,365	20.6	280,666
1955 1/	90,960	4.01	3,643,878	544,680	57.8	314,848	1,245	20.8	258,407
1956 1/	95,521	4.14	3,953,802	492,300	59.4	292,658	1,139	21.0	239,030
1957 1/	98,284	4.21	4,137,026	434,890	60.6	263,573	1,066	21.3	227,438
1958 1/	99,626	4.13	4,114,048	382,340	59.3	226,917	1,011	21.3	215,541
1959 1/	100,809	4.16	4,195,492	335,560	60.1	201,769	961	21.5	206,242

1/ Revised on basis of 1959 Census of Agriculture and other data now available.

Table 4.—Farm marketings, income, and value of dairy products,  
United States, 1924-59

Year	Combined marketings of milk and cream 1/				Used for milk, cream and butter on farms where produced 3/		Gross farm income from dairy products 5/	Farm value of milk produced 6/
	Milk utilized	Average returns 2/		Cash receipts from marketings	Milk utilized	Value 4/		
		Per 100 pounds milk	Per pound milkfat					
	Mil. lb.	Dol.	Dol.	1,000 dol.	Mil. lb.	1,000 dol.	1,000 dol.	1,000 dol.
1924...	65,095	2.16	.55	1,405,662	21,403	502,766	1,908,423	1,968,182
1925...	66,975	2.26	.58	1,514,725	20,940	506,402	2,021,127	2,082,839
1926...	69,591	2.25	.57	1,566,098	20,876	497,934	2,064,032	2,127,075
1927...	71,742	2.35	.60	1,685,156	20,529	500,133	2,185,294	2,253,251
1928...	72,893	2.41	.61	1,755,727	20,006	505,991	2,261,712	2,332,245
1929...	76,771	2.39	.61	1,838,489	19,205	485,312	2,323,801	2,395,563
1930...	77,615	2.07	.53	1,607,441	19,357	435,403	2,042,844	2,104,126
1931...	73,565	1.60	.41	1,276,735	20,467	366,216	1,642,951	1,690,064
1932...	73,264	1.24	.32	986,370	21,687	300,060	1,286,430	1,320,559
1933...	79,807	1.26	.32	1,004,206	22,077	305,292	1,309,493	1,344,965
1934...	77,040	1.49	.38	1,145,517	21,893	352,924	1,498,441	1,537,645
1935...	77,512	1.68	.43	1,297,199	21,217	385,266	1,682,465	1,725,353
1936...	79,322	1.83	.46	1,455,039	20,333	398,836	1,853,875	1,901,712
1937...	79,434	1.92	.49	1,524,771	19,750	406,214	1,930,985	1,982,911
1938...	83,513	1.66	.42	1,387,226	19,444	353,452	1,741,373	1,786,961
1939...	84,596	1.59	.40	1,345,522	19,269	341,302	1,666,824	1,732,211
1940...	87,667	1.74	.44	1,521,352	18,751	358,835	1,880,237	1,930,935
1941...	93,357	2.04	.51	1,899,536	18,607	404,088	2,303,924	2,364,931
1942...	97,296	2.46	.60	2,329,751	17,983	459,952	2,789,703	2,867,340
1943...	96,249	2.89	.73	2,785,193	17,352	543,723	3,328,916	3,464,864
1944...	96,493	3.02	.76	2,915,119	17,272	556,697	3,471,816	3,567,852
1945...	99,442	3.04	.76	3,021,266	17,056	554,095	3,575,361	3,673,034
1946...	97,421	3.81	.96	3,708,992	17,048	683,667	4,392,659	4,512,653
1947...	97,365	4.12	1.04	4,012,554	16,255	725,608	4,738,162	4,866,195
1948...	94,165	4.66	1.17	4,389,357	15,442	766,101	5,155,458	5,295,194
1949...	98,263	3.81	.96	3,748,325	14,677	621,225	4,369,550	4,488,255
1950...	93,066	3.75	.95	3,718,685	14,250	593,644	4,312,329	4,431,995
1951...	96,748	4.43	1.12	4,254,438	14,484	707,064	4,961,562	5,108,110
1952...	97,672	4.68	1.20	4,567,122	13,691	706,473	5,273,995	5,425,543
1953...	104,109	4.19	1.08	4,365,830	12,778	599,755	4,965,585	5,101,819
1954...	106,714	3.86	1.00	4,114,106	12,034	518,103	4,632,209	4,757,279
1955 7/	108,320	5.09	1.31	5,217,133	11,399	494,808	4,711,341	4,834,842
1956 7/	111,233	4.03	1.07	4,435,490	10,508	468,451	4,353,341	4,475,318
1957 7/	112,247	4.12	1.08	4,623,042	9,431	422,524	4,050,566	4,166,860
1958 7/	112,073	4.07	1.08	4,556,506	8,350	373,267	4,189,773	4,337,729
1959 7/	111,353	4.11	1.09	4,603,503	7,373	328,718	4,332,221	4,437,223

1/ For 1950 and earlier years includes also farm-churned butter sold. In 1950 receipts from farm-churned butter totaled 20,591 thousand dollars, about one-half of 1 percent of cash receipts from combined sales of milk, cream, and farm butter.

2/ Cash receipts divided by milk or milkfat represented in combined marketings.

3/ For 1950 and earlier years excludes milk equivalent of farm butter sold.

4/ Computed at average returns per 100 pounds for milk in products marketed.

5/ Cash receipts from marketings of milk and cream plus value of milk used for home consumption and farm-churned butter.

6/ Milk produced on farms valued at average returns per 100 pounds for milk in products marketed. Includes value of milk fed to calves in addition to gross farm income.

7/ Revised on basis of 1959 Census of Agriculture and other data now available.

Table 5.-Milk cows and production of milk, milkfat, and butter on farms, by States, 1931<sup>1</sup>

State and division	Number of milk cows on farms <sup>2</sup>	Production of milk and milkfat <sup>3</sup>					Butter churned on farms
		Per milk cow		Percentage of fat in all milk produced	Total		
		Milk	Milkfat		Milk	Milkfat	
Thousands	Pounds	Pounds	Percent	Mil. lb.	Mil. lb.	1,000 lb.	
Mo.	112	6,090	250	4.10	682	27	2,100
N. H.	62	6,310	246	3.90	391	15	340
Vt.	293	6,100	244	4.00	1,725	69	340
Mass.	115	7,040	268	3.80	817	31	150
R. I.	18	7,690	292	3.80	133	5	10
Conn.	109	6,850	257	3.75	748	29	170
N. Y.	1,372	7,160	258	3.61	9,824	355	1,410
N. J.	151	7,800	292	3.75	1,178	44	140
Pa.	940	6,820	259	3.80	6,411	244	2,900
N. Atl.	3,163	6,929	259	3.74	21,915	819	7,520
Ohio	834	6,830	268	3.90	5,738	224	2,400
Ind.	579	6,640	266	4.00	3,845	154	1,400
Ill.	788	6,530	239	3.75	5,027	189	1,900
Mich.	809	6,670	250	3.75	5,396	202	1,400
Wis.	2,302	7,160	261	3.65	16,482	602	420
E. N. Cent.	5,312	6,869	258	3.76	35,483	1,371	7,520
Miss.	1,378	6,410	233	3.55	8,033	314	700
Iowa	1,022	5,830	216	3.70	5,958	220	1,750
Mo.	853	4,830	203	4.20	4,120	173	5,900
N. Dak.	358	4,850	179	3.70	1,785	66	3,400
S. Dak.	302	4,530	161	3.55	1,363	49	2,000
Nebr.	423	5,370	199	3.70	2,298	85	3,000
Kans.	468	5,030	194	3.65	2,354	91	2,450
H. N. Cent.	4,019	5,544	207	3.74	28,715	998	14,200
Del.	35	5,700	217	3.85	200	8	70
Md.	237	4,250	238	3.80	1,434	56	590
Va.	328	5,090	206	4.10	2,002	82	4,500
N. Va.	188	4,380	180	4.10	815	33	4,300
N. C.	346	4,500	202	4.20	1,661	70	15,000
S. C.	150	3,440	165	4.20	591	25	4,300
Ge.	304	3,780	159	4.20	1,149	48	11,000
Fla.	175	3,050	210	4.15	884	37	870
S. Atl.	1,631	4,738	196	4.09	6,706	277	45,790
Ky.	505	4,200	193	4.30	2,406	107	6,000
Tenn.	621	3,820	168	4.40	2,372	104	11,800
Ala.	347	3,470	151	4.35	1,204	52	15,000
Miss.	315	2,910	124	4.40	1,447	54	11,400
Ark.	351	3,550	156	4.35	1,257	55	8,200
La.	304	2,640	115	4.35	603	35	2,400
Okla.	408	4,190	168	4.00	1,710	68	4,600
Tex.	774	3,250	193	4.10	2,988	123	10,400
S. Cent.	3,905	3,654	156	4.26	14,257	608	73,300
Mont.	90	7,240	190	3.75	514	19	1,150
Idaho	216	7,030	271	3.85	1,513	58	600
Wyo.	40	5,290	183	3.65	212	8	510
Colo.	144	4,900	233	3.50	909	34	350
N. Mex.	47	4,600	179	3.70	216	8	430
Ariz.	47	7,100	275	3.70	312	13	110
Utah	99	7,040	257	3.65	697	28	340
Nev.	14	6,240	225	3.60	87	3	100
Wash.	261	6,970	269	4.15	1,819	75	1,350
Oreg.	198	6,100	268	4.40	1,208	53	1,000
Calif.	810	8,420	328	3.80	7,241	277	1,100
West.	2,014	7,335	284	3.87	14,773	571	7,670
U. S.	21,044	5,842	225	3.84	122,945	4,726	142,070

<sup>1</sup> Revised.

<sup>2</sup> Average number on farms during year excluding heifers not yet fresh.

<sup>3</sup> Excludes milk sucked by calves.

Table 6. Milk used and marketed by farmers, by States, 1955 1/  
 [In millions of pounds]

State and Division	Milk used on farms where produced				Milk marketed by farmers			
	Fed to calves	Used as fluid milk or cream	Used for farm-processed butter	Total	Sold to plants and dealers		Retailed by farmers as milk and cream 2/	Total
					As whole milk	As farm-skimmed cream		
Ala.	10	10	4	24	20	4	55	79
Ark.	10	10	4	24	20	4	55	79
Cal.	10	10	4	24	20	4	55	79
Col.	10	10	4	24	20	4	55	79
Conn.	10	10	4	24	20	4	55	79
Del.	10	10	4	24	20	4	55	79
Fla.	10	10	4	24	20	4	55	79
Ill.	10	10	4	24	20	4	55	79
Ind.	10	10	4	24	20	4	55	79
Iowa	10	10	4	24	20	4	55	79
Kent.	10	10	4	24	20	4	55	79
La.	10	10	4	24	20	4	55	79
Maine	10	10	4	24	20	4	55	79
Mass.	10	10	4	24	20	4	55	79
Mich.	10	10	4	24	20	4	55	79
Minn.	10	10	4	24	20	4	55	79
Miss.	10	10	4	24	20	4	55	79
Mo.	10	10	4	24	20	4	55	79
Mont.	10	10	4	24	20	4	55	79
Nebr.	10	10	4	24	20	4	55	79
Nev.	10	10	4	24	20	4	55	79
N.H.	10	10	4	24	20	4	55	79
N.J.	10	10	4	24	20	4	55	79
N.M.	10	10	4	24	20	4	55	79
N.Y.	10	10	4	24	20	4	55	79
Ohio	10	10	4	24	20	4	55	79
Ore.	10	10	4	24	20	4	55	79
Penn.	10	10	4	24	20	4	55	79
R.I.	10	10	4	24	20	4	55	79
S. Dak.	10	10	4	24	20	4	55	79
Tenn.	10	10	4	24	20	4	55	79
Tex.	10	10	4	24	20	4	55	79
Va.	10	10	4	24	20	4	55	79
Wash.	10	10	4	24	20	4	55	79
W. Va.	10	10	4	24	20	4	55	79
Wis.	10	10	4	24	20	4	55	79
Wyo.	10	10	4	24	20	4	55	79
U. S.	3,286	8,114	3,285	14,685	12,025	2,653	2,672	16,320

1/ Revised.  
 2/ Approximations based on information on sales by producer-distributors and other farmers to own routes or at farm.

Table 7.-Milk and cream marketed by farmers: Quantity, price, and cash receipts, by States, 1955 1

State and division	Milk sold to plants and dealers			Cream sold to plants and dealers			Milk and cream retailed by farmers		
	Quantity	Price per 100 lb.	Cash receipts	Quantity milkfat	Price per lb. fat	Cash receipts	Quantity, milk equiv.	Price per quart	Cash receipts
	Mill. lb.	Dol.	1,000 dol.	1,000 lb.	Ct.	1,000 dol.	Mill. qt.	Ct.	1,000 dol.
Me. ....	520	5.05	26,260	100	63	131	26	21.8	7,663
N. H. ....	328	5.23	17,160	-	-	-	14	23.0	3,220
Vt. ....	1,613	4.57	73,714	120	63	76	13	20.3	2,439
Mass. ....	640	5.62	35,978	-	-	-	40	23.4	9,360
R. I. ....	120	5.18	7,416	-	-	-	6	24.0	1,440
Conn. ....	691	5.83	37,953	-	-	-	26	24.2	6,292
N. Y. ....	9,079	4.12	374,055	1,920	50	960	80	17.3	15,440
N. J. ....	1,054	5.12	53,965	-	-	-	35	23.5	8,225
Pa. ....	5,660	4.50	254,700	5,390	48	2,587	56	21.5	12,040
N. Atl. ....	19,712	4.48	881,001	7,590	49.1	3,724	296	21.7	64,324
Ohio.....	4,975	3.97	197,010	8,410	48	4,037	22	20.5	4,510
Ind. ....	3,190	3.69	117,711	12,120	50	6,060	11	20.3	2,233
Ill. ....	4,042	3.40	137,811	15,590	50	7,795	32	18.4	5,838
Mich. ....	4,424	3.74	165,206	16,170	60	9,702	14	14.1	3,014
Wis. ....	15,244	3.23	493,286	4,300	62	2,676	14	18.9	3,024
E. N. C. ....	31,336	3.54	1,117,734	57,090	51.5	29,570	37	14.3	18,711
Minn. ....	5,807	3.12	181,116	67,540	63	53,690	15	17.8	2,570
Iowa.....	1,968	3.40	67,312	123,600	63	61,018	21	14.8	3,348
Mo. ....	2,321	3.70	103,077	22,510	49	11,030	23	17.5	4,300
S. Dak. ....	147	3.79	5,571	49,970	60	29,982	8	19.1	1,448
S. Dak. ....	145	3.73	5,424	33,790	58	19,598	8	18.8	1,480
Nebr. ....	473	4.01	18,967	53,930	56	30,005	16	14.3	3,068
Kans. ....	1,251	3.74	47,161	25,200	52	13,156	29	19.0	5,310
W. N. C. ....	12,670	3.41	431,673	342,290	59.6	238,679	126	18.4	23,044
Del. ....	174	5.40	7,876	-	-	-	3	21.5	645
Md. ....	1,328	4.67	61,924	130	47	59	22	21.6	4,796
Va. ....	1,273	4.91	63,261	5,740	44	2,526	23	21.6	4,948
W. Va. ....	350	4.51	15,735	3,690	46	1,697	30	20.2	6,060
N. C. ....	874	5.46	47,738	340	49	167	40	21.7	8,680
S. C. ....	321	5.56	17,848	40	52	21	14	21.2	2,968
Ge. ....	630	5.62	35,366	60	52	42	33	23.1	7,623
Fla. ....	771	6.70	51,657	-	-	-	27	23.0	6,210
S. Atl. ....	5,711	5.23	297,713	10,060	45.1	4,542	197	21.6	43,030
Ky. ....	1,531	3.74	57,129	9,790	44	4,300	37	15.6	5,862
Tenn. ....	1,630	3.48	56,874	2,120	48	1,018	26	18.7	4,676
Ala. ....	426	5.10	21,745	340	52	177	25	19.8	4,950
Miss. ....	563	4.39	24,566	210	46	97	14	20.4	2,856
Ark. ....	712	4.17	29,690	5,310	49	2,602	23	18.3	4,209
La. ....	553	5.63	31,246	40	51	20	12	22.3	2,736
Okla. ....	642	4.47	28,637	18,630	52	9,668	26	20.0	5,200
Tex. ....	2,139	5.24	112,040	2,940	49	1,441	53	21.6	11,395
S. Cent. ....	8,847	4.62	408,297	39,330	49.1	19,351	215	20.0	42,903
Mont. ....	211	4.31	9,221	6,770	60	4,062	9	20.9	1,861
Idaho.....	1,279	3.36	42,974	2,740	55	1,507	10	19.1	1,910
Wyo. ....	106	3.83	4,060	1,950	58	1,131	3	19.4	597
Colo. ....	548	5.64	30,927	7,240	57	4,127	13	23.0	2,990
N. Mex. ....	136	5.47	7,439	390	56	218	10	22.5	2,230
Ariz. ....	298	5.37	16,003	40	57	23	11	19.6	2,173
Utah.....	597	4.00	23,880	740	56	414	1	17.2	516
Nev. ....	63	4.87	3,068	430	61	262	1	19.3	193
Wash. ....	1,458	4.25	61,965	4,080	54	2,203	24	21.2	5,300
Oreg. ....	889	4.40	39,116	5,200	58	3,016	20	20.4	4,080
Calif. ....	6,440	4.15	267,260	1,670	61	1,019	210	21.2	44,520
West. ....	12,025	4.16	500,413	31,250	57.5	17,982	315	21.1	66,395
U. S. ....	90,960	4.01	3,643,878	544,680	57.8	314,848	1,245	20.8	253,407

1/ Revised.

Table 2.—Farm marketings, income, and value of dairy products, by States, 1955 <sup>1/</sup>

State and division	Combined marketings of milk and cream				Used for milk cream and butter on farms where produced		Gross farm income from dairy products <sup>4/</sup>	Farm value of milk produced <sup>5/</sup>
	Milk utilized	Average returns <sup>2/</sup>		Cash receipts from marketings	Milk utilized	Value <sup>3/</sup>		
		Per 100 pounds milk	Per pound milkfat				1,000 dol.	1,000 dol.
Me.	579	5.53	1.35	32,029	91	5,032	37,061	37,715
N. H.	335	5.74	1.47	20,380	29	1,665	22,045	22,443
Vt.	1,945	4.69	1.16	76,429	48	2,232	78,661	80,259
Mass.	777	6.21	1.63	48,138	29	1,801	49,939	50,736
R. I.	132	6.71	1.77	8,846	4	268	9,114	9,260
Conn.	706	6.27	1.67	44,245	23	1,776	46,021	46,900
N. Y.	9,732	4.20	1.16	396,456	286	12,012	402,467	412,668
N. J.	1,130	5.50	1.47	62,430	30	1,650	63,840	64,730
Pa.	5,425	4.56	1.25	249,397	359	16,334	265,661	291,700
N. Atl.	20,549	4.61	1.24	952,049	904	42,750	994,799	1,016,411
Ohio	7,257	3.73	1.01	269,557	357	14,030	219,587	225,503
Ind.	3,523	3.68	.90	128,004	246	8,807	134,811	137,651
Ill.	4,580	3.42	.91	156,494	342	11,696	168,190	171,923
Mich.	4,409	3.64	.97	178,964	291	10,622	189,586	196,954
Wis.	15,459	3.23	.88	499,996	397	12,823	512,819	532,359
E. N. Cent.	23,733	3.46	.92	1,167,015	1,633	59,978	1,224,993	1,264,400
Miss.	6,221	2.97	.91	237,876	331	9,500	247,376	253,507
Iowa	5,393	2.74	.74	148,473	375	10,312	158,785	163,845
Mo.	3,430	3.51	.84	124,007	487	17,094	141,101	144,612
K. Dak.	1,534	2.91	.65	37,001	189	4,555	41,556	43,018
S. Dak.	1,172	2.42	.68	28,352	148	3,382	31,934	33,106
Nebr.	1,387	2.52	.71	52,060	233	6,101	58,165	60,208
Kans.	2,004	3.23	.85	65,827	251	8,233	74,060	77,211
W. N. Cent.	23,906	2.90	.73	693,401	2,614	59,381	752,782	775,507
Del.	139	4.61	1.20	5,321	12	553	9,074	9,220
Md.	1,373	4.84	1.23	66,809	82	3,977	70,786	71,974
Va.	1,472	4.36	1.17	71,835	160	22,356	94,191	97,297
W. Va.	501	4.66	1.14	23,442	282	13,141	36,683	37,979
N. C.	444	4.96	1.40	55,535	680	39,848	95,433	97,335
S. C.	352	4.42	1.41	20,837	229	13,557	34,394	34,987
Ge.	754	6.30	1.50	44,331	427	25,901	71,232	72,357
Fla.	888	6.34	1.68	56,867	49	3,425	61,292	61,792
S. Atl.	9,397	5.43	1.34	392,397	2,221	123,758	473,055	482,971
Ky.	1,944	3.77	.86	70,317	342	20,108	90,427	92,231
Tenn.	1,733	4.97	.92	79,567	530	24,379	94,946	96,540
Ala.	586	4.52	1.27	32,322	539	33,065	65,387	66,461
Miss.	368	4.95	1.63	46,839	527	23,978	64,817	65,838
Ark.	687	4.12	.74	36,501	354	14,585	51,086	51,788
La.	661	4.35	1.14	34,002	213	12,460	46,462	46,976
Ga.	1,357	3.57	.97	52,525	307	11,881	64,406	66,177
Tex.	2,324	5.74	1.40	133,476	617	35,416	168,892	171,511
S. Cent.	10,260	4.59	1.08	470,551	3,758	175,872	646,423	657,522
Mont.	423	3.07	.96	15,254	69	3,009	18,173	18,864
Idaho	1,154	3.33	.82	46,332	111	3,143	49,534	51,308
Wyo.	166	3.44	.98	6,758	49	1,361	7,149	7,399
Colo.	444	4.20	1.14	30,544	96	4,032	36,576	38,178
N. Mex.	143	4.20	1.41	9,807	41	2,415	12,302	12,722
Ariz.	322	5.65	1.53	18,284	21	1,186	19,390	19,888
Utah	624	3.98	1.09	24,810	51	2,030	26,840	27,741
Nev.	73	4.52	1.26	3,323	6	271	3,794	3,932
Wash.	1,611	4.31	1.04	59,460	143	6,163	75,621	78,399
Oreg.	1,042	4.39	1.00	46,212	119	4,829	51,041	53,031
Calif.	6,935	4.51	1.13	312,799	147	6,630	319,429	326,469
West.	13,513	4.33	1.12	584,790	829	35,069	619,859	638,931
U. S.	108,320	3.69	1.01	4,237,133	11,359	494,808	4,711,941	4,834,842

<sup>1/</sup> Revised. <sup>2/</sup> Cash receipts divided by milk or milkfat represented in combined marketings.

<sup>3/</sup> Computed at average returns per 100 pounds for milk in products marketed. <sup>4/</sup> Cash receipts from marketings of milk and cream, plus value of milk used for home consumption and farm-churned butter.

<sup>5/</sup> Milk produced on farms valued at average returns per 100 pounds for milk in products marketed. Includes value of milk fed to calves in addition to gross farm income.

Table 9.—Milk cows and production of milk, milkfat, and butter on farms, by States, 1956 <sup>1/2</sup>

State and division	Number of milk cows on farms <sup>2/</sup>	Production of milk and milkfat <sup>3/</sup>				Butter churned on farms	
		Per milk cow		Percentage of fat in all milk produced	Total		
		Milk	Milkfat		Milk		Milkfat
Thousands	Pounds	Pounds	Percent	Mil. lb.	Mil. lb.	1,000 lb.	
W. Va.	111	6,468	280	4.65	713	29	1,900
N. H.	65	6,340	247	3.90	707	18	340
Vt.	88	6,270	251	4.00	1,760	70	300
Mass.	150	7,120	276	3.80	738	30	150
R. I.	110	7,150	291	4.15	132	5	10
Conn.	111	7,080	283	4.15	751	23	160
N. Y.	1,054	7,160	286	3.60	10,020	361	1,200
N. J.	145	7,910	297	3.75	1,155	43	130
Pa.	330	6,920	283	3.60	6,450	226	2,600
N. Atl.	3,125	7,101	285	3.73	22,200	827	6,700
Ohio	82	6,990	285	3.85	5,620	216	2,200
Ind.	120	6,720	285	3.95	3,630	145	1,200
Ill.	121	6,680	251	3.75	5,138	193	1,600
Mich.	120	6,670	258	3.75	5,365	201	1,300
Wis.	2,033	7,380	289	3.68	16,822	618	400
S. S. Cent.	5,19	7,071	271	3.74	36,728	1,373	6,700
Minn.	1,385	6,730	280	3.55	9,369	333	630
Iowa	1,004	6,700	230	3.70	6,305	233	1,700
Mo.	806	5,120	215	4.20	4,127	173	2,800
N. Dak.	339	4,990	186	3.60	1,791	64	3,100
S. Dak.	289	4,720	168	3.55	1,411	50	1,650
Nebr.	450	5,460	200	3.65	2,291	84	2,700
Kans.	413	5,220	198	3.80	2,312	88	2,200
N. W. Cent.	4,715	5,555	217	3.71	21,808	1,223	15,700
Del.	20	6,200	239	3.85	63	0	80
Md.	21	6,500	247	3.80	1,302	51	460
Va.	181	9,320	215	4.05	2,027	80	8,600
N. Va.	151	4,530	183	4.05	757	28	4,300
N. C.	1,224	5,160	212	4.15	1,672	68	13,000
S. C.	114	4,350	191	4.15	626	24	4,100
Ge.	21	4,220	173	4.10	1,186	47	9,200
Fla.	1,123	5,600	236	4.20	1,002	41	700
S. Atl.	1,747	5,152	228	4.05	6,000	362	40,200
Ky.	180	4,490	191	4.20	2,513	111	7,000
Tenn.	180	4,110	181	4.20	2,445	108	10,000
Ala.	180	3,660	168	4.20	1,170	47	19,600
Miss.	195	3,000	132	4.20	1,165	50	13,700
Ark.	121	3,720	166	4.20	1,226	48	6,900
La.	286	2,800	120	4.20	829	30	2,100
Okla.	113	4,480	171	4.20	1,573	58	3,900
Tex.	180	4,020	164	4.20	3,570	124	7,900
S. Cent.	3,726	3,674	161	4.20	16,511	613	62,100
Mont.	31	5,160	193	3.71	80	13	1,000
Idaho	20	4,200	160	3.85	4,510	160	570
Wyo.	10	4,470	174	3.85	208	7	430
Colo.	1,200	6,000	220	3.70	833	33	980
N. Mex.	1,000	4,900	199	3.85	205	8	380
Ariz.	1,700	7,700	231	3.65	170	7	270
Utah	1,200	7,300	217	3.65	711	27	310
Nev.	1,450	6,450	220	3.60	90	0	80
Nash.	1,100	7,100	237	4.10	1,928	70	1,150
Oreg.	1,000	6,300	214	3.35	1,166	43	950
O Calif.	824	9,700	321	3.60	7,343	279	1,000
West.	1,980	7,430	239	3.66	14,835	573	6,900
U. S.	29,501	6,090	233	3.82	124,860	4,773	139,810

<sup>1/2</sup> Revised.

<sup>2/</sup> Average number on farms during year, excluding heifers not yet fresh.

<sup>3/</sup> Includes milk sucked by calves.

Table 10.-Milk used and marketed by farmers, by States, 1956 1/

(In millions of pounds)

State and division	Milk used on farms where produced				Milk marketed by farmers			
	Fed to calves	Consumed as fluid milk or cream	Used for farm-churned butter	Total	Sold to plants and dealers		Retailled by farmers as milk and cream 2/	Total
					As whole milk	As farm-skimmed cream		
Me. ....	11	46	39	96	560	4	53	617
N. H. ....	6	20	7	33	325	-	29	354
Vt. ....	32	40	6	78	1,653	3	23	1,684
Mass. ....	11	24	3	38	680	-	80	760
R. I. ....	2	3	-	5	116	-	11	127
Conn. ....	14	24	3	41	656	-	54	710
N. Y. ....	221	233	27	490	9,319	46	165	9,530
N. J. ....	17	27	3	46	1,040	-	69	1,109
Pa. ....	117	298	57	462	5,766	125	115	6,020
N. Atl. ....	435	709	145	1,289	20,129	178	604	20,911
Ohio ....	134	268	45	447	4,955	175	43	5,173
Ind. ....	71	196	25	292	3,170	200	21	3,391
Ill. ....	95	264	36	415	4,313	360	50	4,723
Mich. ....	180	239	29	448	4,525	360	32	4,917
Wis. ....	626	379	9	1,014	15,773	100	35	15,908
E. N. Cent. ....	1,126	1,366	144	2,616	32,736	1,195	161	34,112
Minn. ....	204	257	14	486	6,526	2,007	30	8,563
Iowa ....	189	312	33	539	2,468	3,278	40	5,766
Mo. ....	95	316	26	447	3,000	523	52	3,580
N. Dak. ....	63	101	73	234	157	1,335	15	1,557
S. Dak. ....	44	100	38	187	259	950	15	1,224
Nebr. ....	78	149	61	286	530	1,450	25	2,005
Kans. ....	57	133	47	214	1,337	600	56	1,993
W. N. Cent. ....	753	1,468	367	2,618	14,557	10,198	233	24,988
Del. ....	3	9	1	13	180	-	5	185
Md. ....	24	69	15	103	1,359	5	35	1,399
Va. ....	51	240	172	463	1,351	123	55	1,564
W. Va. ....	25	174	56	290	371	21	55	507
N. C. ....	33	379	256	668	937	7	60	1,004
S. C. ....	9	133	51	223	384	1	18	403
Ga. ....	17	208	179	404	680	2	70	752
Fla. ....	7	31	14	52	897	-	53	950
S. Atl. ....	164	1,258	794	2,216	6,189	224	351	6,764
Ky. ....	50	374	134	562	1,831	145	75	2,051
Tenn. ....	39	196	193	538	1,770	42	45	1,857
Ala. ....	14	302	253	579	544	7	48	599
Miss. ....	21	299	204	524	234	3	24	961
Ark. ....	17	174	141	332	758	86	40	884
La. ....	9	160	41	210	600	1	18	619
Calif. ....	41	200	30	321	894	413	45	1,354
Tex. ....	44	383	156	583	2,327	60	100	2,487
S. Cent. ....	240	2,248	1,211	3,699	9,658	759	395	10,812
Mont. ....	13	24	23	55	222	166	17	405
Idaho ....	50	75	12	137	1,292	60	21	1,373
Wyo. ....	7	27	10	44	108	51	5	164
Colo. ....	34	68	20	124	550	190	24	764
N. Mex. ....	7	30	8	45	155	8	17	180
Ariz. ....	9	17	3	29	330	1	10	341
Utah ....	21	44	7	72	624	17	4	645
Nev. ....	3	4	2	9	68	11	2	81
Wash. ....	50	105	21	188	1,510	75	45	1,630
Oreg. ....	43	92	13	153	883	95	35	1,013
Calif. ....	152	119	22	293	6,513	36	504	7,050
West. ....	406	635	148	1,189	12,252	710	684	13,646
U. S. ....	3,117	7,694	2,814	13,627	95,521	13,264	2,448	111,233

1/ Revised.

2/ Approximations based on information on sales by producer-distributors and other farmers on own routes or at farm.



Table 11.-Milk and cream marketed by farmers: Quantity, price, and cash receipts, by States, 1956 1/

State and division	Milk sold to plants and dealers			Cream sold to plants and dealers			Milk and cream retailed by farmers		
	Quantity	Price per 100 lb.	Cash receipts	Quantity milkfat	Price per lb. fat	Cash receipts	Quantity, milk equiv.	Price per quart	Cash receipts
	Mil. lb.	Dol.	1,000 dol.	1,000 lb.	Ct.	1,000 dol.	Mil. qt.	Ct.	1,000 dol.
Me.	560	5.07	28,392	160	63	101	25	22.1	5,525
N. H.	325	5.26	17,095	-	-	-	13	23.2	3,016
Vt.	1,653	4.62	76,369	120	63	76	13	20.8	2,704
Mass.	680	5.64	38,352	-	-	-	37	23.1	8,547
R. I.	116	6.19	7,180	-	-	-	5	24.2	1,210
Conn.	656	5.90	38,704	-	-	-	25	24.9	6,225
N. Y.	9,319	4.22	393,262	1,720	53	912	77	19.5	15,015
N. J.	1,040	4.20	54,080	-	-	-	32	23.7	7,584
Pa.	5,780	4.61	256,458	4,650	52	2,418	53	21.4	11,342
N. Atl.	20,129	4.57	919,832	5,650	52.7	3,507	260	21.8	61,168
Ohio	4,955	4.27	211,578	6,840	51	3,488	20	21.4	4,280
Ind.	3,170	3.98	126,156	7,820	51	3,988	10	20.7	2,070
Ill.	4,313	3.64	156,993	13,390	52	6,963	23	19.7	4,531
Mich.	4,525	4.06	183,715	13,540	62	8,395	15	20.4	3,060
Wis.	15,773	3.36	529,973	3,690	61	2,251	16	19.8	3,168
E. N. Cent.	32,736	3.69	1,208,425	45,280	55.4	25,085	84	20.4	17,109
Minn.	6,826	3.19	217,749	70,240	64	44,954	14	18.2	2,548
Iowa	2,448	3.43	83,966	120,960	64	77,414	19	19.2	3,648
Mo.	3,000	3.83	114,900	21,910	51	11,174	24	18.1	4,344
N. Dak.	157	3.72	5,840	50,550	62	31,341	7	18.0	1,260
S. Dak.	259	3.80	9,842	33,440	60	20,064	7	19.1	1,337
Nebr.	690	4.20	28,260	52,490	58	30,444	12	20.0	2,400
Kans.	1,337	3.83	51,207	22,800	53	12,084	26	19.2	4,992
W. N. Cent.	14,557	3.47	505,764	372,390	61.1	227,475	109	18.8	20,529
Del.	180	4.55	8,190	-	-	-	2	22.0	440
Md.	1,359	4.71	64,009	190	47	89	16	22.2	3,552
Va.	1,381	4.98	68,774	5,310	46	2,443	26	21.7	5,642
W. Va.	371	4.79	17,771	3,360	48	1,613	26	20.7	5,322
N. C.	937	5.52	51,722	300	51	153	23	21.4	5,992
S. C.	384	5.47	21,005	40	52	21	8	21.5	1,720
Ga.	680	5.88	39,984	90	52	47	33	23.5	7,755
Via.	897	6.68	59,920	-	-	-	25	24.3	5,575
S. Atl.	6,189	5.35	331,375	9,290	47.0	4,366	164	22.0	36,058
Ky.	1,631	3.67	70,860	6,160	45	2,772	35	19.9	6,985
Tenn.	1,770	4.07	72,039	1,830	46	842	11	18.6	3,906
Ala.	944	5.36	50,158	300	51	153	22	19.7	4,334
Miss.	934	4.47	41,750	130	47	61	11	20.7	2,277
Ark.	758	4.26	32,292	3,660	50	1,830	19	18.9	3,591
La.	600	5.71	34,260	40	51	20	8	22.7	1,816
Okla.	894	4.55	40,677	16,810	53	8,909	4	20.0	4,200
Tex.	2,327	5.75	133,802	2,550	50	1,275	47	22.0	10,340
S. Cent.	9,659	4.71	454,837	31,480	50.4	15,862	184	20.3	37,429
Mont.	222	4.37	9,701	6,180	63	3,593	8	21.0	1,680
Idaho	1,292	3.52	45,349	2,260	57	1,288	10	18.5	1,850
Wyo.	108	3.96	4,277	1,840	62	1,141	2	22.1	402
Colo.	550	4.69	25,795	6,940	59	4,095	11	23.3	2,542
N. Mex.	155	5.52	8,556	310	57	177	8	23.1	1,848
Ariz.	330	5.59	18,447	40	53	23	5	21.2	1,060
Utah	624	4.11	25,646	630	58	365	2	18.3	36
Nev.	68	4.85	3,298	390	64	250	1	19.0	19
Wash.	1,510	4.62	69,762	3,110	56	1,742	21	22.4	4,704
Oreg.	883	4.62	40,795	4,110	61	2,507	16	22.1	3,534
Calif.	6,510	4.33	281,883	1,420	63	882	24	20.7	48,438
West.	12,252	4.35	533,509	27,210	60.1	16,363	318	21.0	66,737
U. S.	95,521	4.14	3,953,802	492,300	57.4	292,658	1,139	21.0	239,030

1/ Revised.

Table 12.—Farm marketings, income, and value of dairy products, by States, 1956 1/

State and division	Combined marketings of milk and cream				Used for milk, cream and butter on farms where produced		Gross farm income from dairy products 4/	Farm value of milk produced 5/
	Milk utilized	Average returns 2/		Cash receipts from marketings	Milk utilized	Value 3/		
		Per 100 pounds milk	Per pound milkfat				1,000 dol.	1,000 dol.
Me.	617	5.51	1.36	34,018	85	4,681	38,702	22,256
N. H.	354	5.68	1.46	20,111	27	1,534	21,645	21,732
Vt.	1,684	4.70	1.18	79,147	46	2,342	82,311	22,824
Mass.	760	6.17	1.62	46,899	27	1,666	48,565	47,237
R. I.	127	6.61	1.76	8,390	3	198	8,588	8,724
Conn.	710	6.33	1.69	44,922	27	1,700	46,622	47,136
N. Y.	9,550	4.29	1.19	409,189	265	11,368	420,557	424,858
N. J.	1,109	5.56	1.48	61,664	29	1,612	63,276	64,238
Pa.	6,020	4.65	1.22	280,218	345	16,042	296,260	321,613
N. Atl.	20,911	4.71	1.26	984,567	854	40,577	1,025,142	1,245,371
D. C.	5,173	4.24	1.10	219,346	313	13,271	232,617	235,250
Del.	3,391	3.90	.99	132,224	221	8,619	140,843	143,757
Ill.	4,723	3.57	.95	168,487	320	11,424	179,911	183,427
Mich.	4,517	3.97	1.06	195,179	268	10,640	205,819	212,930
Wis.	15,908	3.37	.92	535,392	338	13,074	548,466	570,271
E. N. Cent.	34,112	3.67	.98	1,250,619	1,510	57,030	1,307,649	1,348,613
Miss.	8,663	2.09	.84	285,251	302	9,030	294,281	290,133
Iowa	5,766	2.86	.77	165,028	350	10,010	175,038	160,323
Mo.	3,580	3.64	.87	130,418	452	16,453	146,871	150,223
N. Dak.	1,557	2.47	.69	39,441	171	4,324	42,665	44,238
S. Dak.	1,224	2.55	.72	31,243	138	3,519	34,762	35,980
Nebr.	1,005	2.75	.75	55,104	210	5,775	60,879	63,002
Kans.	1,173	3.43	.90	68,283	232	7,958	76,241	79,302
W. K. Cent.	24,734	3.02	.81	753,768	1,855	68,969	810,737	833,201
Del.	105	4.66	1.21	8,630	19	464	9,094	9,227
Md.	1,378	4.84	1.27	67,659	75	3,324	71,474	72,437
Va.	1,764	4.51	1.21	79,859	612	20,229	80,088	80,526
W. Va.	667	4.88	1.20	24,766	264	12,932	27,698	28,334
N. C.	1,004	5.76	1.40	57,867	635	36,576	64,443	64,307
S. C.	403	5.64	1.36	22,746	214	12,070	24,816	25,306
Ge.	752	6.35	1.55	47,736	387	24,574	72,360	73,406
Fla.	950	6.89	1.68	65,495	45	3,109	68,595	69,033
S. Atl.	6,764	5.50	1.36	371,793	2,047	113,771	485,563	494,401
Ky.	2,051	3.93	.92	80,597	512	20,122	100,719	102,691
Tenn.	1,877	4.14	.91	76,787	549	22,729	99,516	101,223
Ala.	599	5.62	1.31	33,645	340	31,472	65,117	66,204
Miss.	961	4.57	1.04	44,058	593	23,088	67,176	68,162
Ark.	894	4.27	.99	37,712	315	13,450	51,162	51,923
La.	619	5.83	1.36	36,096	201	11,718	47,814	48,331
Okla.	1,354	3.97	1.01	53,786	280	11,116	64,902	65,438
Tex.	2,487	5.85	1.44	145,417	532	31,532	176,949	177,595
S. Cent.	10,812	4.70	1.11	508,128	3,459	165,227	673,355	684,627
Mont.	405	3.77	1.02	15,274	77	2,903	18,177	18,550
Idaho	1,373	3.54	.92	48,587	87	3,080	51,667	53,454
Wyo.	154	3.55	1.00	5,820	37	1,314	7,134	7,384
Colo.	764	4.25	1.15	32,453	88	3,740	36,193	37,740
N. Mex.	180	5.88	1.53	10,581	33	2,234	12,815	13,230
Ariz.	341	5.73	1.57	19,530	20	1,146	20,676	21,201
Utah	645	4.09	1.12	26,377	51	2,086	28,463	29,325
Nev.	81	4.61	1.28	3,738	6	277	4,015	4,149
Wash.	1,630	4.68	1.14	76,208	123	5,990	82,198	85,082
Oreg.	1,013	4.62	1.06	46,638	110	5,082	51,920	53,869
Calif.	7,080	4.70	1.24	330,223	141	6,627	337,830	345,121
West.	13,646	4.52	1.17	616,609	733	32,479	651,088	669,405
U. S.	111,233	4.03	1.05	4,455,490	10,503	408,451	4,863,941	5,075,316

1/ Revised. 2/ Cash receipts divided by milk or milkfat represented in combined marketings.

3/ Computed at average returns per 100 pounds for milk in products marketed. 4/ Cash receipts from marketings of milk and cream, plus value of milk used for home consumption and farm-churned butter.

5/ Milk produced on farms valued at average returns per 100 pounds for milk in products marketed. Includes value of milk fed to calves in addition to gross farm income.

Table 13.-Milk cows and production of milk, milkfat, and butter on farms, by State, 1957 1/2

State and division	Number of milk cows on farms Thousands	Production of milk and milkfat 3/				Butter cleared on farms 1,000 lb.	
		Per milk cow		Percentage of fat in all milk produced	Total		
		Milk Pounds	Milkfat Pounds		Milk Mil. lb.		Milkfat Mil. lb.
W. Va.	125	6,900	276	4.00	1,080	1,700	
W. H.	57	6,810	288	4.20	980	310	
Pa.	211	6,650	263	3.90	1,900	270	
Mass.	124	6,580	258	3.88	1,250	150	
R. I.	16	6,000	288	4.78	120	9	
Conn.	118	6,080	258	4.25	860	150	
N. Y.	113	6,000	288	4.75	9,115	1,000	
N. J.	120	6,000	288	4.75	1,110	180	
N. C.	219	6,000	288	4.35	6,000	2,400	
N. Atl.	3,083	7,203	288	3.92	21,788	6,054	
Ohio	174	6,240	287	4.55	5,570	1,900	
Ind.	174	6,240	287	4.55	3,980	1,000	
Ill.	174	6,240	287	4.55	6,820	1,350	
Mich.	170	6,150	286	4.65	5,820	1,050	
Wis.	170	6,150	286	4.65	11,430	380	
E. W. Cent.	5,029	7,216	287	4.51	30,219	5,680	
Minn.	183	6,950	286	4.15	9,980	1,580	
Iowa	183	6,950	286	4.15	6,370	1,650	
Mo.	183	6,950	286	4.15	3,980	1,000	
K. Ent.	135	6,200	285	4.55	1,170	2,800	
S. Dak.	135	6,200	285	4.55	1,490	1,450	
Nebr.	135	6,200	285	4.55	2,250	2,300	
Kans.	111	6,110	280	4.50	2,120	2,000	
W. W. Cent.	1,559	6,070	280	3.70	27,520	12,450	
Del.	12	6,100	280	4.50	1,190	50	
Md.	228	6,100	280	4.25	1,080	1,100	
Va.	167	5,600	280	4.00	2,055	1,400	
N. Va.	163	5,590	281	3.95	760	3,500	
N. C.	112	5,400	279	4.05	1,685	10,900	
S. C.	141	5,410	281	4.10	622	3,500	
Ge.	265	5,200	280	4.10	1,137	1,650	
Fla.	188	5,880	281	4.10	1,088	550	
S. Atl.	1,692	5,353	280	4.00	9,092	33,980	
Ky.	170	6,200	280	4.50	2,617	3,900	
Tenn.	170	6,200	280	4.50	2,400	8,400	
Ala.	153	6,080	280	4.00	1,155	10,200	
Miss.	153	6,080	280	4.00	1,777	9,000	
Ark.	127	6,080	280	4.25	1,156	5,850	
La.	233	6,080	280	4.25	816	1,900	
Okla.	137	6,110	280	4.20	1,087	3,400	
Tex.	118	6,080	280	4.05	3,659	6,100	
S. Cent.	3,529	7,029	280	4.19	12,289	50,750	
Mont.	108	6,300	280	3.70	1,009	970	
Idaho	200	7,000	280	3.80	1,007	550	
Wyo.	100	6,600	280	3.55	203	450	
Colo.	143	6,100	280	3.70	663	630	
N. Mex.	100	6,150	280	3.85	271	350	
Ariz.	100	6,200	280	3.65	84	100	
Utah	97	6,000	280	3.65	71	200	
Nev.	100	6,600	280	3.65	88	60	
Wash.	205	7,490	307	4.10	1,935	1,000	
Oreg.	117	6,450	281	4.35	1,135	60	
Calif.	87	7,060	280	3.75	1,701	80	
West	1,990	7,809	280	3.82	15,228	6,420	
U. S.	19,774	6,303	280	3.81	124,688	119,354	

1/ Revised.

2/ Average number on farms during year, excluding heifers not yet fresh.

3/ Excludes milk sucked by calves.

Table 14.—Milk used and marketed by farmers, by States, 1957 <sup>1/</sup>

(In millions of pounds)

State and division	Milk used on farms where produced				Milk marketed by farmers			
	Fed to calves	Consumed as fluid milk or cream	Used for manufactured butter	Total	Sold to plants and dealers		Retailled by farmers as milk and cream <sup>2/</sup>	Total
					As whole milk	As farm-skimmed cream		
N.C.	11	44	35	90	580	4	70	674
N. H.	6	19	6	30	30	-	23	358
Vt.	10	26	6	42	1,700	2	27	1,729
Mass.	10	28	2	40	670	-	75	745
R. I.	1	5	-	6	114	-	10	124
Conn.	13	22	3	38	647	-	21	668
N. Y.	22	28	23	73	9,070	36	163	9,271
N. J.	16	24	2	42	1,020	-	65	1,085
Pa.	12	23	53	88	5,740	103	110	5,953
W. Vir.	10	62	17	89	10,871	160	279	20,599
Ohio	12	29	19	60	4,295	160	66	4,521
Ind.	8	18	20	46	3,135	100	16	3,333
Ill.	10	26	20	56	4,297	220	45	4,632
Mich.	10	27	23	60	4,556	110	20	4,686
Wis.	8	35	0	43	16,345	90	20	16,455
E. N. Cent.	1,042	1,250	121	2,413	33,128	1,020	162	34,310
Miss.	19	28	15	62	7,500	1,525	23	9,130
Iowa	18	28	37	83	2,950	2,875	35	5,860
Mo.	10	23	80	113	2,900	141	44	3,475
N. Dak.	1	83	63	147	175	1,360	12	1,547
S. Dak.	1	83	27	111	345	925	14	1,274
Nebr.	8	17	52	77	860	1,574	28	1,974
Kans.	16	35	44	95	1,320	320	26	1,666
W. N. Cent.	27	1,355	116	2,498	15,940	9,020	200	25,158
Del.	1	0	1	2	119	-	-	123
Md.	1	6	9	16	1,097	-	-	1,113
Va.	1	23	12	36	1,470	120	60	1,630
N. Va.	1	17	11	29	1,390	60	50	1,510
N. C.	1	17	23	41	1,020	-	55	1,075
S. C.	1	20	155	176	510	-	66	576
Ge.	1	28	11	40	214	-	48	262
Fla.	1	28	11	40	214	-	48	262
S. Atl.	160	1,110	287	2,557	5,585	201	206	7,092
Ky.	1	41	115	157	1,911	120	70	2,101
Tenn.	1	16	162	179	1,800	30	35	1,897
Ala.	1	26	238	265	861	-	45	906
Miss.	1	28	174	203	990	3	22	1,017
Ark.	1	17	114	132	353	23	10	385
La.	1	13	37	51	103	643	13	657
Okla.	1	19	71	91	273	330	37	1,292
Tex.	1	16	123	140	2,477	6	27	2,554
S. Cent.	223	2,074	1,030	3,327	9,067	666	211	10,994
Mont.	1	16	21	38	230	120	24	400
Idaho	1	12	12	25	1,304	20	20	1,395
Wyo.	1	10	10	21	108	60	5	161
Colo.	1	10	10	21	774	170	22	767
N. Mex.	1	10	10	21	108	60	15	183
Ariz.	1	10	10	21	338	-	-	359
Utah	1	10	10	21	655	16	-	671
Nev.	1	10	10	21	12	20	-	33
Wash.	1	10	21	32	1,300	61	13	1,374
Greg.	1	10	16	27	585	83	30	1,000
Calif.	1	10	16	27	6,204	20	52	7,416
West.	24	36	136	196	12,773	633	706	14,112
U. S.	2,950	7,003	2,428	12,381	98,294	11,669	2,294	112,247

<sup>1/</sup> Revised.

<sup>2/</sup> Approximations based on information on sales by producer-distributors and other farmers on own routes or at farm.

Table 15.—Milk and cream marketed by farmers: Quantity, price, and cash receipts, by States, 1957 1/

State and division	Milk sold to plants and dealers			Cream sold to plants and dealers			Milk and cream retailed by farmers		
	Quantity	Price per 100 lb.	Cash receipts	Quantity milkfat	Price per 7lb. fat	Cash receipts	Quantity, milk equiv.	Price per quart	Cash receipts
	Mil. lb.	Dol.	1,000 dol.	1,000 lb.	Ct.	1,000 dol.	Mil. qt.	Ct.	1,000 dol.
Ala.	1,000	1.00	1,000	100	60	600	100	20.0	2,000
Ark.	1,000	1.00	1,000	100	60	600	100	20.0	2,000
Calif.	1,000	1.00	1,000	100	60	600	100	20.0	2,000
Conn.	1,000	1.00	1,000	100	60	600	100	20.0	2,000
Del.	1,000	1.00	1,000	100	60	600	100	20.0	2,000
Fla.	1,000	1.00	1,000	100	60	600	100	20.0	2,000
Ill.	1,000	1.00	1,000	100	60	600	100	20.0	2,000
Ind.	1,000	1.00	1,000	100	60	600	100	20.0	2,000
Iowa	1,000	1.00	1,000	100	60	600	100	20.0	2,000
Kent.	1,000	1.00	1,000	100	60	600	100	20.0	2,000
Mich.	1,000	1.00	1,000	100	60	600	100	20.0	2,000
Miss.	1,000	1.00	1,000	100	60	600	100	20.0	2,000
Mo.	1,000	1.00	1,000	100	60	600	100	20.0	2,000
Mont.	1,000	1.00	1,000	100	60	600	100	20.0	2,000
N. Dak.	1,000	1.00	1,000	100	60	600	100	20.0	2,000
N. Mex.	1,000	1.00	1,000	100	60	600	100	20.0	2,000
N. Y.	1,000	1.00	1,000	100	60	600	100	20.0	2,000
Ohio	1,000	1.00	1,000	100	60	600	100	20.0	2,000
Ore.	1,000	1.00	1,000	100	60	600	100	20.0	2,000
S. Dak.	1,000	1.00	1,000	100	60	600	100	20.0	2,000
Tenn.	1,000	1.00	1,000	100	60	600	100	20.0	2,000
Tex.	1,000	1.00	1,000	100	60	600	100	20.0	2,000
Utah	1,000	1.00	1,000	100	60	600	100	20.0	2,000
Wash.	1,000	1.00	1,000	100	60	600	100	20.0	2,000
W. Va.	1,000	1.00	1,000	100	60	600	100	20.0	2,000
Wis.	1,000	1.00	1,000	100	60	600	100	20.0	2,000
Wyo.	1,000	1.00	1,000	100	60	600	100	20.0	2,000
West.	12,773	2.43	366,428	24,370	60.8	14,746	327	21.3	69,589
U. S.	98,284	2.21	2,137,025	434,830	60.6	263,578	1,066	21.3	227,438

1/ Revised.

Table 16.—Farm marketings, income, and value of dairy products, by States, 1957 <sup>1/</sup>

State and division	Combined marketings of milk and cream				Used for milk, cream and butter on farms where produced		Gross farm income from dairy products <sup>4/</sup>	Farm value of milk produced <sup>5/</sup>
	Milk utilized	Average returns <sup>2/</sup>		Cash receipts from marketings	Milk utilized	Value <sup>3/</sup>		
		Per 100 pounds milk	Per pound milkfat				1,000 dol.	Mil. lb.
Me.	69	\$1.17	1.24	80,280	79	4,559	41,119	41,775
N. H.	158	1.03	1.55	161,573	24	1,447	23,020	23,395
Vt.	1,739	1.13	1.97	1,970,243	45	2,132	22,933	20,260
Mass.	72	1.15	1.77	82,628	2	1,428	49,482	50,246
R. I.	124	1.17	1.94	144,663	3	204	8,627	20,759
Conn.	698	1.13	1.76	789,280	23	1,623	47,630	49,502
N. Y.	9,271	1.03	1.89	9,592,738	281	11,271	140,953	140,551
N. J.	1,022	1.12	1.69	1,143,274	25	1,537	65,493	65,708
Pa.	5,355	1.04	1.72	5,561,242	303	16,021	211,619	216,755
N. Atl.	28,599	1.03	1.55	2,937,655	789	40,324	1,077,279	1,026,502
Ohio	4,975	1.24	1.91	6,169,200	274	11,939	227,229	230,454
Ind.	3,333	1.14	1.91	3,797,971	200	7,660	135,651	138,163
Ill.	4,332	1.14	1.98	5,012,135	258	10,528	178,836	180,358
Mich.	4,834	1.14	1.98	5,532,263	230	9,212	203,090	209,524
Wis.	16,465	1.12	1.93	1,847,423	374	12,346	369,763	372,979
E. N. Cent.	34,300	1.17	1.98	4,018,707	1,371	51,735	1,310,574	1,342,523
Miss.	2,130	1.07	1.92	2,272,211	271	6,328	226,531	244,659
Iowa	4,366	1.10	1.92	4,771,245	385	9,750	185,455	191,100
Mo.	3,475	1.10	1.91	3,832,255	503	14,508	139,783	142,536
N. Dak.	1,247	1.13	1.92	1,407,477	156	3,584	42,331	43,874
S. Dak.	1,274	1.13	1.92	1,437,569	115	3,024	36,533	37,767
Nebr.	1,274	1.13	1.92	1,437,569	159	3,945	61,269	63,307
Kans.	1,240	1.12	1.93	1,381,553	212	7,462	74,020	76,806
W. N. Cent.	25,140	1.08	1.83	2,703,663	1,671	32,227	827,922	850,109
Del.	183	1.08	1.82	1,974,123	9	48	9,523	9,711
Md.	1,434	1.08	1.82	1,547,243	51	3,544	75,513	77,226
Va.	1,020	1.08	1.83	1,102,244	375	18,450	68,654	70,106
N. Va.	1,021	1.08	1.82	1,103,460	225	10,930	35,110	36,502
N. C.	1,222	1.08	1.80	1,317,432	572	22,420	93,932	95,728
S. C.	445	1.08	1.80	479,433	172	9,701	34,641	36,021
Ge.	1,110	1.08	1.80	1,192,244	343	21,375	70,523	71,517
Fla.	1,022	1.08	1.79	1,117,244	79	2,738	75,527	76,373
S. Atl.	7,922	1.08	1.79	8,537,377	1,026	32,920	44,325	46,729
Ky.	2,138	1.08	1.79	2,307,244	422	17,472	37,328	38,521
Tenn.	1,971	1.08	1.79	2,127,244	459	19,922	47,171	48,575
Ala.	1,111	1.08	1.79	1,201,244	551	22,234	64,493	65,420
Miss.	1,111	1.08	1.79	1,201,244	450	20,240	61,004	62,942
Ark.	860	1.08	1.79	924,244	271	12,918	48,642	49,725
La.	621	1.08	1.79	671,244	150	10,222	47,909	48,321
Okla.	1,222	1.08	1.79	1,321,244	258	10,316	42,122	43,639
Tex.	2,124	1.08	1.79	2,291,244	465	20,272	170,592	172,834
S. Cent.	10,924	1.08	1.79	11,921,244	1,072	45,000	657,321	671,377
Mont.	420	1.08	1.74	451,244	71	2,719	18,032	18,229
Idaho	1,130	1.08	1.73	1,216,244	82	2,911	12,477	12,208
Wyo.	161	1.08	1.73	1,714,244	35	1,260	7,054	7,363
Calif.	727	1.14	1.74	8,273,244	62	3,616	37,460	38,254
N. Mex.	126	1.09	1.73	1,360,244	34	2,003	12,963	13,370
Ariz.	368	1.14	1.70	4,222,244	14	1,239	21,021	21,522
Utah	674	1.14	1.73	7,739,244	46	1,904	29,773	30,577
Nev.	53	1.12	1.71	5,874,244	7	277	4,221	4,250
Wash.	1,024	1.13	1.73	1,161,244	114	5,025	62,325	63,993
Greg.	1,000	1.13	1.73	1,130,244	4	1,541	13,817	13,686
Calif.	1,126	1.13	1.73	1,277,244	135	6,446	21,473	22,873
West.	14,112	1.11	1.71	15,073,244	722	32,322	693,125	700,640
U. S.	212,247	1.12	1.98	2,623,042	9,431	422,524	5,050,566	5,166,660

<sup>1/</sup> Revised. <sup>2/</sup> Cash receipts divided by milk or milkfat represented in combined marketings. <sup>3/</sup> Computed at average returns per 100 pounds for milk in products marketed. <sup>4/</sup> Cash receipts from marketings of milk and cream, plus value of milk used for home consumption and farm-churned butter. <sup>5/</sup> Milk produced on farms valued at average returns per 100 pounds for milk in products marketed. Includes value of milk fed to calves in addition to gross farm income.

Table 17.-Milk cows and production of milk, milkfat, and butter on farms, by States, 1953 <sup>1/</sup>

State and division	Number of milk cows on farms <sup>2/</sup>	Production of milk and milkfat <sup>3/</sup>					Butter churned on farms
		Per milk cow		Percentage of fat in all milk produced	Total		
		Milk	Milkfat		Milk	Milkfat	
Thousands	Pounds	Pounds	Percent	Mil. lb.	Mil. lb.	1,000 lb.	
Me.	98	7,200	291	4.00	713	29	1,600
N. H.	233	7,200	286	4.95	334	15	250
Vt.	233	7,200	284	3.95	1,894	75	210
Mass.	323	7,520	297	3.80	766	29	110
R. I.	16	8,150	302	3.70	130	5	8
Conn.	94	7,930	287	3.75	745	23	120
N. Y.	1,271	7,730	273	3.60	9,285	354	500
N. J.	154	8,570	314	3.75	1,122	40	75
Pa.	899	7,260	272	3.75	6,509	244	2,100
<b>E. Atl.</b>	<b>2,926</b>	<b>7,549</b>	<b>281</b>	<b>3.72</b>	<b>22,068</b>	<b>821</b>	<b>5,343</b>
Ohio	720	7,200	280	3.65	5,242	202	1,550
Ind.	480	7,300	274	4.20	3,374	132	500
Ill.	683	7,390	282	3.70	4,665	173	1,100
Mich.	680	7,670	294	3.70	5,216	193	900
Wis.	2,274	7,110	286	3.65	17,956	655	300
<b>E. N. Cent.</b>	<b>4,730</b>	<b>7,671</b>	<b>285</b>	<b>3.72</b>	<b>36,453</b>	<b>1,355</b>	<b>4,650</b>
Minn.	1,113	7,400	259	3.50	9,753	371	450
Iowa	822	6,500	243	3.65	6,270	229	1,500
Mo.	717	5,260	222	4.15	3,720	157	3,600
N. Dak.	311	5,700	200	3.50	1,713	62	1,250
S. Dak.	275	5,100	182	3.50	1,427	56	750
Wabr.	308	5,730	209	3.65	2,091	78	1,750
Nebr.	371	5,320	204	3.60	2,312	78	1,800
<b>E. N. Cent.</b>	<b>4,272</b>	<b>6,247</b>	<b>232</b>	<b>3.65</b>	<b>27,116</b>	<b>991</b>	<b>11,830</b>
Del.	30	6,500	247	3.50	195	7	40
Md.	222	6,370	226	3.75	1,513	57	300
W. Va.	345	5,730	225	3.95	1,904	73	6,200
N. Va.	145	4,500	193	3.95	722	29	3,000
N. C.	292	5,400	221	4.15	1,574	65	8,950
S. C.	120	4,500	123	4.15	576	23	2,650
Ge.	247	4,370	171	4.15	1,081	41	6,000
Fla.	199	5,910	282	4.10	1,117	46	400
<b>S. Atl.</b>	<b>1,206</b>	<b>5,471</b>	<b>217</b>	<b>3.97</b>	<b>8,767</b>	<b>343</b>	<b>27,620</b>
Ny.	533	4,730	196	4.15	2,521	105	4,700
Tenn.	530	4,300	185	4.10	2,279	92	6,700
Ala.	273	3,700	153	4.10	1,634	62	9,200
Miss.	120	3,140	137	4.35	1,333	52	7,000
Ark.	260	3,980	167	4.20	1,055	43	4,400
La.	200	3,150	153	4.20	820	35	1,700
Okla.	302	5,090	199	3.90	1,537	60	2,700
Tex.	661	4,560	182	4.00	3,074	121	4,550
<b>S. Cent.</b>	<b>3,250</b>	<b>4,173</b>	<b>173</b>	<b>4.14</b>	<b>13,580</b>	<b>522</b>	<b>40,950</b>
Mont.	88	5,510	204	3.70	465	18	920
Idaho	204	7,600	289	3.60	1,550	59	460
Wyo.	33	5,970	209	3.50	197	7	350
Colo.	135	6,320	231	3.65	953	31	770
N. Mex.	43	5,500	206	3.75	236	9	300
Ariz.	45	8,600	310	3.60	421	15	100
Utah	96	7,730	282	3.65	742	27	250
Nev.	12	6,850	250	3.65	96	4	70
Wash.	239	7,070	313	4.05	1,874	76	990
Oreg.	168	6,700	288	4.30	1,126	48	720
Calif.	836	9,110	342	3.75	7,616	286	800
<b>West.</b>	<b>1,905</b>	<b>7,977</b>	<b>304</b>	<b>3.62</b>	<b>15,196</b>	<b>580</b>	<b>5,730</b>
<b>U. S.</b>	<b>18,711</b>	<b>6,585</b>	<b>247</b>	<b>3.78</b>	<b>123,220</b>	<b>4,658</b>	<b>96,123</b>

<sup>1/</sup> Revised.

<sup>2/</sup> Average number on farms during year, excluding heifers not yet fresh.

<sup>3/</sup> Excludes milk sucked by calves.

Table 10. Milk used and marketed by farmers, by States, 1958 1/

(In millions of pounds)

State and Division	Milk used on farms where produced				Milk marketed by farmers			Total
	Fed to calves	Consumed as fluid milk or cream	Used for manufactured butter	Total	Sold to plants and dealers		Retailled by farmers as milk and cream 2/	
					As whole milk	As farm-skimmed cream		
Ala.	10	10	10	10	10	10	10	10
Ark.	10	10	10	10	10	10	10	10
Calif.	15	15	15	15	15	15	15	15
Colo.	10	10	10	10	10	10	10	10
Conn.	10	10	10	10	10	10	10	10
Del.	10	10	10	10	10	10	10	10
D.C.	10	10	10	10	10	10	10	10
Fla.	10	10	10	10	10	10	10	10
Ga.	10	10	10	10	10	10	10	10
Ill.	10	10	10	10	10	10	10	10
Ind.	10	10	10	10	10	10	10	10
Iowa	10	10	10	10	10	10	10	10
Kent.	10	10	10	10	10	10	10	10
La.	10	10	10	10	10	10	10	10
Maine	10	10	10	10	10	10	10	10
Maryl.	10	10	10	10	10	10	10	10
Mass.	10	10	10	10	10	10	10	10
Mich.	10	10	10	10	10	10	10	10
Minn.	10	10	10	10	10	10	10	10
Miss.	10	10	10	10	10	10	10	10
Mont.	10	10	10	10	10	10	10	10
Nebr.	10	10	10	10	10	10	10	10
Neb.	10	10	10	10	10	10	10	10
N.H.	10	10	10	10	10	10	10	10
N.J.	10	10	10	10	10	10	10	10
N.M.	10	10	10	10	10	10	10	10
N.Y.	10	10	10	10	10	10	10	10
N.C.	10	10	10	10	10	10	10	10
N.D.	10	10	10	10	10	10	10	10
Ohio	10	10	10	10	10	10	10	10
Ore.	10	10	10	10	10	10	10	10
Penn.	10	10	10	10	10	10	10	10
R.I.	10	10	10	10	10	10	10	10
S. Car.	10	10	10	10	10	10	10	10
S. Dak.	10	10	10	10	10	10	10	10
Tenn.	10	10	10	10	10	10	10	10
Tex.	10	10	10	10	10	10	10	10
Utah	10	10	10	10	10	10	10	10
Verm.	10	10	10	10	10	10	10	10
Virg.	10	10	10	10	10	10	10	10
Wash.	10	10	10	10	10	10	10	10
W. Car.	10	10	10	10	10	10	10	10
W. Dak.	10	10	10	10	10	10	10	10
Wis.	10	10	10	10	10	10	10	10
Wyo.	10	10	10	10	10	10	10	10
U. S.	2,077	6,393	1,427	11,147	39,626	10,220	2,167	112,073

1/ Revised.

2/ Approximations based on information on sales by producer-distributors and other farmers on own routes or at farm.



Table 19.—Milk and cream marketed by farmers: Quantity, price, and cash receipts, by States, 1953 1/

State and District	Milk sold to plants and dealers			Cream sold to plants and dealers			Milk and cream retailed by farmers		
	Quantity	Price per 100 lbs.	Cash receipts	Quantity marketed	Price per lb. fat	Cash receipts	Quantity, milk equiv.	Price per quart	Cash receipts
	1,000 lbs.	Doll.	1,000 dol.	1,000 lbs.	Ct.	1,000 dol.	Mill. qt.	Cent.	1,000 dol.
Ala.	12	20.0	240	12	40	48	22	23.1	5,082
Ariz.	1	20.0	20	1	40	40	1	23.5	2,350
Ark.	1	20.0	20	1	40	40	1	23.5	2,350
Calif.	1,000	20.0	20,000	1,000	40	40,000	1,000	23.5	23,500
Colo.	1	20.0	20	1	40	40	1	23.5	2,350
Conn.	1	20.0	20	1	40	40	1	23.5	2,350
Del.	1	20.0	20	1	40	40	1	23.5	2,350
D.C.	1	20.0	20	1	40	40	1	23.5	2,350
Fla.	1	20.0	20	1	40	40	1	23.5	2,350
Ill.	1	20.0	20	1	40	40	1	23.5	2,350
Ind.	1	20.0	20	1	40	40	1	23.5	2,350
Iowa	1	20.0	20	1	40	40	1	23.5	2,350
Kent.	1	20.0	20	1	40	40	1	23.5	2,350
La.	1	20.0	20	1	40	40	1	23.5	2,350
Maine	1	20.0	20	1	40	40	1	23.5	2,350
Maryland	1	20.0	20	1	40	40	1	23.5	2,350
Mass.	1	20.0	20	1	40	40	1	23.5	2,350
Mich.	1	20.0	20	1	40	40	1	23.5	2,350
Minn.	1	20.0	20	1	40	40	1	23.5	2,350
Miss.	1	20.0	20	1	40	40	1	23.5	2,350
Mont.	1	20.0	20	1	40	40	1	23.5	2,350
Nebr.	1	20.0	20	1	40	40	1	23.5	2,350
Nev.	1	20.0	20	1	40	40	1	23.5	2,350
N.H.	1	20.0	20	1	40	40	1	23.5	2,350
N.J.	1	20.0	20	1	40	40	1	23.5	2,350
N.M.	1	20.0	20	1	40	40	1	23.5	2,350
N.Y.	1	20.0	20	1	40	40	1	23.5	2,350
Ohio	1	20.0	20	1	40	40	1	23.5	2,350
Ore.	1	20.0	20	1	40	40	1	23.5	2,350
Penn.	1	20.0	20	1	40	40	1	23.5	2,350
R.I.	1	20.0	20	1	40	40	1	23.5	2,350
S. Dak.	1	20.0	20	1	40	40	1	23.5	2,350
Tenn.	1	20.0	20	1	40	40	1	23.5	2,350
Texas	1	20.0	20	1	40	40	1	23.5	2,350
Va.	1	20.0	20	1	40	40	1	23.5	2,350
W. Va.	1	20.0	20	1	40	40	1	23.5	2,350
Wash.	1	20.0	20	1	40	40	1	23.5	2,350
Wisc.	1	20.0	20	1	40	40	1	23.5	2,350
Wyo.	1	20.0	20	1	40	40	1	23.5	2,350
West.	12,545	20.3	254,741	22,420	40.4	90,692	937	23.1	21,740
U. S.	99,628	20.3	2,021,048	152,340	40.3	615,917	1,011	23.3	235,541

1/ Revised.

Table 20.—Farm marketings, income, and value of dairy products, by States, 1958<sup>1</sup>

State and division	Combined marketings of milk and cream				Used for milk, cream and butter on farms where produced		Gross farm income from dairy products <sup>5</sup>	Farm value of milk produced <sup>6</sup>
	Milk utilized	Average returns <sup>2</sup>		Cash receipts from marketings	Milk utilized	Value <sup>3</sup>		
		Per 100 pounds milk	Per pound milkfat					
	Mill. lb.	Dol.	Dol.	1,000 dol.	Mill. lb.	1,000 dol.	1,000 dol.	1,000 dol.
Me.	638	3.65	1.25	233,878	10	4,154	39,830	40,624
N. H.	386	2.33	1.00	89,828	11	1,821	28,115	29,747
Vt.	511	2.21	1.00	112,868	11	1,821	28,115	29,747
Mass.	1,074	2.11	1.00	226,574	24	3,824	46,128	47,722
R. I.	128	2.00	1.00	25,600	5	1,000	9,500	9,750
Conn.	1,115	2.00	1.00	223,000	23	3,690	45,180	46,650
N. Y.	2,025	2.00	1.00	405,000	33	5,250	64,500	66,375
N. J.	1,028	2.00	1.00	205,600	20	3,000	37,500	38,750
Pa.	1,115	2.00	1.00	223,000	23	3,690	45,180	46,650
N. Atl.	20,974	2.97	1.24	623,041	719	38,532	1,388,453	1,438,453
Ohio	1,483	2.13	1.00	316,988	26	4,221	52,655	54,175
Ind.	1,142	2.13	1.00	242,338	21	3,464	42,794	44,331
Ill.	1,525	2.09	1.00	318,725	25	3,750	46,875	48,425
Mich.	1,655	2.00	1.00	331,000	21	3,200	39,600	40,800
Wis.	17,088	2.00	1.00	341,760	158	2,370	29,625	30,525
E. N. Cent.	34,216	2.58	1.27	882,780	1,293	65,660	2,284,780	2,359,921
Miss.	9,304	2.90	1.09	270,012	89	1,715	20,220	20,859
Iowa	1,504	2.97	1.27	446,911	120	3,630	101,571	104,129
Mo.	1,376	2.88	1.27	394,352	126	3,558	101,374	104,129
N. Dak.	1,000	2.81	1.09	280,000	133	3,205	41,266	42,729
S. Dak.	1,281	2.80	1.24	362,880	128	3,632	45,632	47,127
Nebr.	1,154	2.81	1.27	328,274	167	4,743	57,390	59,334
Kans.	1,160	3.54	1.33	410,800	164	5,724	68,817	71,229
W. N. Cent.	28,939	3.04	1.33	879,554	1,513	47,044	1,644,554	1,699,211
Del.	189	2.65	1.22	500,224	9	233	23,881	24,328
Md.	1,478	2.94	1.22	434,612	61	1,823	73,910	74,939
Va.	1,597	2.93	1.22	468,114	39	1,173	95,457	97,121
N. Va.	1,495	2.90	1.22	433,750	37	1,110	33,075	34,156
N. C.	1,555	2.95	1.24	457,125	78	2,318	91,475	93,241
S. C.	126	2.93	1.25	370,180	143	4,180	33,721	34,691
Ga.	1,112	2.97	1.27	330,264	25	752	57,965	58,820
Fla.	1,075	2.00	1.00	215,000	35	542	75,417	78,660
S. Atl.	7,039	2.61	1.21	183,724	1,597	41,576	154,290	158,330
Nc.	2,087	3.91	1.34	81,652	103	15,953	96,805	98,571
Tenn.	1,814	2.10	1.00	380,988	121	17,671	72,653	75,429
Ala.	68	2.85	1.25	192,880	109	23,845	59,331	60,882
Miss.	954	2.67	1.27	255,416	167	17,139	61,635	62,785
Ark.	780	2.27	1.22	175,136	232	9,906	43,412	44,194
La.	824	2.97	1.25	244,796	169	9,582	46,073	47,627
Okla.	1,281	2.10	1.00	269,575	225	9,225	61,600	63,017
Tex.	2,571	2.55	1.29	655,921	500	22,200	165,121	167,277
S. Cent.	17,736	2.67	1.23	473,964	2,641	125,521	626,485	639,672
Mont.	1,399	3.77	1.32	52,689	89	2,601	17,690	18,294
Idaho	1,428	3.50	1.32	50,174	79	2,755	20,469	21,250
Wyo.	158	3.80	1.33	60,024	32	1,152	6,843	7,092
Colo.	752	2.97	1.25	223,300	71	3,103	35,483	37,216
N. Mex.	198	2.75	1.23	54,450	32	1,820	13,233	13,570
Ariz.	295	2.13	1.00	62,935	17	903	21,683	22,355
Utah	678	2.00	1.00	135,600	43	1,720	28,935	29,680
Nev.	87	2.86	1.33	247,231	6	292	4,523	4,666
Wash.	1,715	2.51	1.21	430,351	128	4,781	82,132	84,517
Oreg.	1,002	2.57	1.27	257,514	86	3,947	49,974	51,683
Calif.	7,185	2.77	1.27	199,074	125	3,420	38,081	39,283
West.	14,169	2.53	1.19	358,393	667	29,114	669,507	686,656
U. S.	112,073	2.57	1.28	2,526,506	8,380	373,257	4,929,773	5,037,729

1. Revised. 2. Cash receipts divided by milk or milkfat represented in utilized marketings.  
 3. Computed at average returns per 100 pounds for milk in products marketed. 4. Cash receipts from marketings of milk and cream plus value of milk used for home consumption and farm-churned butter.  
 5. Milk produced on farms valued at average returns per 100 pounds for milk in products marketed. Includes value of milk fed to calves in addition to gross farm income.  
 6. Includes value of milk fed to calves in addition to gross farm income.

Table 21.-Milk cows and production of milk, milkfat, and butter on farms, by States, 1959 <sup>1</sup>

State and division	Number of milk cows on farms <sup>2</sup>	Production of milk and milkfat <sup>3</sup>					Butter churned on farms <sup>3</sup>
		Per milk cow		Percentage of fat in all milk produced	Total		
		Milk	Milkfat		Milk	Milkfat	
Thousands	Pounds	Pounds	Percent	Mill. lb.	Mill. lb.	100. lb.	
Me.	95	7,380	295	4.00	701	23	1,500
N. H.	31	7,400	292	3.95	377	15	270
Vt.	253	7,200	281	3.95	1,853	75	200
Mass.	95	7,090	300	3.96	730	23	110
R. I.	15	8,450	317	3.75	127	5	7
Conn.	90	8,220	303	3.75	747	23	137
N. Y.	1,245	7,840	282	3.60	9,761	391	660
N. J.	132	7,710	313	3.65	1,190	42	60
Pa.	503	7,400	290	3.75	1,587	247	1,730
N. Atl.	2,337	7,599	292	3.71	22,051	917	4,547
Ohio	692	7,390	281	3.80	5,214	184	1,200
Ind.	446	7,230	282	3.90	3,225	125	550
Ill.	603	7,180	286	3.73	4,330	150	600
Mich.	650	7,630	290	3.70	5,990	183	1,270
Wis.	2,152	8,240	301	3.65	17,815	551	2,610
E. N. Cent.	4,553	7,813	289	3.70	35,574	1,313	3,980
Miss.	1,270	7,850	275	3.50	4,970	149	470
Iowa	671	6,820	249	3.65	5,240	177	1,250
Mo.	676	5,470	224	4.10	3,698	150	1,100
N. Dak.	239	6,080	233	3.50	1,757	61	450
S. Dak.	259	5,610	176	3.50	1,453	51	300
Nebr.	340	5,950	217	3.65	2,103	74	1,300
Kans.	340	5,580	208	3.75	1,940	73	1,250
W. N. Cent.	4,354	6,606	241	3.65	26,731	977	9,730
Del.	23	6,950	261	3.75	193	7	20
Md.	213	6,980	261	3.75	1,217	57	300
Va.	337	5,330	209	3.90	1,960	77	5,000
W. Va.	158	4,930	194	3.90	667	27	200
N. C.	279	5,640	201	4.00	1,574	63	1,300
S. C.	115	4,750	190	4.00	526	22	2,200
Ge.	230	4,570	185	4.05	1,051	43	4,600
Fla.	192	6,460	265	4.10	1,240	51	300
S. Atl.	1,537	5,720	226	3.95	3,792	147	22,620
Ky.	511	4,900	211	4.10	2,504	103	3,800
Tenn.	320	4,400	187	4.25	2,200	84	5,000
Ala.	256	3,900	153	4.05	998	40	7,000
Miss.	368	3,320	123	4.37	1,283	55	5,500
Ark.	232	4,150	170	4.15	963	40	3,550
La.	240	3,410	122	4.15	813	34	1,400
Okl.	274	5,300	204	3.85	1,452	58	2,000
Tex.	612	4,850	172	3.95	2,962	117	3,700
S. Cent.	3,013	4,373	179	4.09	13,191	539	31,450
Mont.	84	5,600	207	3.70	470	17	850
Idaho	204	7,800	296	3.80	1,571	60	400
Kyo.	32	6,120	217	3.55	196	7	340
Colo.	123	6,650	243	3.65	851	31	660
N. Mex.	43	5,620	211	3.75	242	9	240
Ariz.	50	9,220	332	3.60	461	17	90
Utah	96	7,930	299	3.65	767	28	260
Nev.	15	7,330	268	3.65	110	4	60
Wash.	254	7,970	303	4.05	1,865	76	850
Oreg.	184	6,770	288	4.25	1,110	47	680
Calif.	830	9,570	354	3.70	7,943	294	600
West.	1,680	8,298	314	3.73	15,600	590	5,030
U. S.	17,901	6,815	256	3.76	121,989	4,568	76,307

1/ Revised.

2/ Average number on farms during year, excluding heifers not yet fresh.

3/ Excludes milk sucked by calves.

Table 22. Milk used and marketed by farmers, by States, 1959<sup>1/2</sup>  
 (In millions of pounds)

State and division	Milk used on farms where produced				Milk marketed by farmers			Total
	Total milk on farms	Used for manufacturing butter	Total	Milk to plants and dealers		Retailed by farmers as milk and cream		
				As milk	As farm-stripped cream			
Ala.	1,000	100	1,000	100	100	100	1,000	
Ariz.	100	10	100	100	100	100	100	
Ark.	1,000	100	1,000	100	100	100	1,000	
Calif.	10,000	1,000	10,000	10,000	10,000	10,000	10,000	
Colo.	1,000	100	1,000	100	100	100	1,000	
Conn.	1,000	100	1,000	100	100	100	1,000	
Del.	100	10	100	100	100	100	100	
D.C.	100	10	100	100	100	100	100	
Fla.	1,000	100	1,000	100	100	100	1,000	
Ill.	1,000	100	1,000	100	100	100	1,000	
Ind.	1,000	100	1,000	100	100	100	1,000	
Iowa	1,000	100	1,000	100	100	100	1,000	
Kent.	1,000	100	1,000	100	100	100	1,000	
La.	1,000	100	1,000	100	100	100	1,000	
Mass.	1,000	100	1,000	100	100	100	1,000	
Mich.	1,000	100	1,000	100	100	100	1,000	
Minn.	1,000	100	1,000	100	100	100	1,000	
Miss.	1,000	100	1,000	100	100	100	1,000	
Mo.	1,000	100	1,000	100	100	100	1,000	
Mont.	1,000	100	1,000	100	100	100	1,000	
N. Dak.	1,000	100	1,000	100	100	100	1,000	
N. H.	1,000	100	1,000	100	100	100	1,000	
N. J.	1,000	100	1,000	100	100	100	1,000	
N. C.	1,000	100	1,000	100	100	100	1,000	
N. Va.	1,000	100	1,000	100	100	100	1,000	
N. Y.	1,000	100	1,000	100	100	100	1,000	
Ohio	1,000	100	1,000	100	100	100	1,000	
Ore.	1,000	100	1,000	100	100	100	1,000	
Penn.	1,000	100	1,000	100	100	100	1,000	
R.I.	100	10	100	100	100	100	100	
S. Dak.	1,000	100	1,000	100	100	100	1,000	
Tenn.	1,000	100	1,000	100	100	100	1,000	
Texas	1,000	100	1,000	100	100	100	1,000	
Utah	1,000	100	1,000	100	100	100	1,000	
Va.	1,000	100	1,000	100	100	100	1,000	
Wash.	1,000	100	1,000	100	100	100	1,000	
West.	1,000	100	1,000	100	100	100	1,000	
W. Va.	1,000	100	1,000	100	100	100	1,000	
Wis.	1,000	100	1,000	100	100	100	1,000	
Wyo.	1,000	100	1,000	100	100	100	1,000	
U. S.	2,669	6,177	1,562	10,336	100,839	2,973	2,071	111,952

<sup>1/2</sup> Revised.  
<sup>2/</sup> Approximations based on information on sales by producer-distributors and other farmers on own routes or at farms.

Table 17.—Milk and cream marketed by farmers: Quantity, price, and cash receipts, by States, 1959 1/2

State and division	Milk sold to plants and dealers			Cream sold to plants and dealers			Milk and cream retailed by farmers		
	Quantity	Price per 100 lb.	Cash receipts	Quantity milkfat	Price per lb. fat	Cash receipts	Quantity milk equiv.	Price per quart	Cash receipts
	Mil. lb.	Dol.	1,000 dol.	1,000 lb.	Ct.	1,000 dol.	Mil. qt.	Ct.	1,000 dol.
Ala.	580	5.43	31,424	5	81	24	20	23.6	4,720
Ariz.	1,112	5.63	62,610	5	—	—	11	25.1	2,761
Ark.	1,122	5.88	65,975	5	61	21	11	22.0	2,420
Calif.	2,611	5.51	14,372	—	—	—	29	24.5	7,125
Conn.	1,111	5.12	5,677	—	—	—	4	25.3	1,012
Del.	330	5.90	1,940	—	—	—	22	25.6	5,632
D.C.	46	5.68	2,613	1,100	32	372	69	13.7	12,903
Fla.	1,111	5.49	6,052	—	—	—	27	25.5	6,966
Ill.	2,202	5.91	13,022	3,990	32.9	2,109	44	25.9	9,196
Ind.	1,111	5.22	5,804	—	—	—	18	21.9	3,942
Iowa	1,111	5.63	6,233	3,200	49	1,568	7	25.3	1,748
Kent.	1,111	5.25	5,825	5,200	31	2,613	—	—	—
Mich.	1,111	5.23	5,813	8,700	21	1,824	9	20.7	1,863
Miss.	1,111	5.28	5,858	1,850	28	1,241	14	20.5	2,820
Mo. Cent.	1,111	5.20	5,793	2,200	55.0	12,333	65	20.9	13,615
Mont.	1,111	5.21	5,791	2,000	4	80	5	15.3	1,480
Nebr.	1,111	5.20	5,791	1,100	44	484	15	19.6	2,940
Neb.	1,111	5.20	5,791	1,100	44	484	15	17.4	2,724
N.J.	1,111	5.20	5,791	1,100	44	484	15	15.1	2,244
N.M.	1,111	5.20	5,791	1,100	44	484	15	20.2	3,024
N.Y.	1,111	5.20	5,791	1,100	44	484	15	20.5	3,075
Pa.	1,111	5.20	5,791	1,100	44	484	15	19.8	3,780
R.I.	1,111	5.20	5,791	1,100	44	484	15	19.7	3,817
S.C.	1,111	5.20	5,791	1,100	44	484	15	22.6	4,880
S.D.	1,111	5.20	5,791	1,100	44	484	15	23.2	5,380
Tenn.	1,111	5.20	5,791	1,100	44	484	15	21.4	4,420
Tex.	1,111	5.20	5,791	1,100	44	484	15	20.4	4,180
Utah	1,111	5.20	5,791	1,100	44	484	15	23.2	5,380
Va.	1,111	5.20	5,791	1,100	44	484	15	22.4	4,980
W. Dak.	1,111	5.20	5,791	1,100	44	484	15	23.4	5,424
W. Va.	1,111	5.20	5,791	1,100	44	484	15	23.7	5,712
Wis.	1,111	5.20	5,791	1,100	44	484	15	23.0	5,060
Wyo.	1,111	5.20	5,791	1,100	44	484	15	23.0	5,060
Wash.	1,111	5.20	5,791	1,100	44	484	15	21.4	4,520
Mont.	1,111	5.20	5,791	1,100	44	484	15	23.3	5,430
Idaho	1,111	5.20	5,791	1,100	44	484	15	23.3	5,430
Calif.	1,111	5.20	5,791	1,100	44	484	15	23.3	5,430
Ariz.	1,111	5.20	5,791	1,100	44	484	15	23.3	5,430
N.M.	1,111	5.20	5,791	1,100	44	484	15	23.3	5,430
Utah	1,111	5.20	5,791	1,100	44	484	15	23.3	5,430
Wyo.	1,111	5.20	5,791	1,100	44	484	15	23.3	5,430
Mont.	1,111	5.20	5,791	1,100	44	484	15	23.3	5,430
Idaho	1,111	5.20	5,791	1,100	44	484	15	23.3	5,430
Calif.	1,111	5.20	5,791	1,100	44	484	15	23.3	5,430
Ariz.	1,111	5.20	5,791	1,100	44	484	15	23.3	5,430
N.M.	1,111	5.20	5,791	1,100	44	484	15	23.3	5,430
Utah	1,111	5.20	5,791	1,100	44	484	15	23.3	5,430
Wyo.	1,111	5.20	5,791	1,100	44	484	15	23.3	5,430
Mont.	1,111	5.20	5,791	1,100	44	484	15	23.3	5,430
Idaho	1,111	5.20	5,791	1,100	44	484	15	23.3	5,430
Calif.	1,111	5.20	5,791	1,100	44	484	15	23.3	5,430
Ariz.	1,111	5.20	5,791	1,100	44	484	15	23.3	5,430
N.M.	1,111	5.20	5,791	1,100	44	484	15	23.3	5,430
Utah	1,111	5.20	5,791	1,100	44	484	15	23.3	5,430
Wyo.	1,111	5.20	5,791	1,100	44	484	15	23.3	5,430
Mont.	1,111	5.20	5,791	1,100	44	484	15	23.3	5,430
Idaho	1,111	5.20	5,791	1,100	44	484	15	23.3	5,430
Calif.	1,111	5.20	5,791	1,100	44	484	15	23.3	5,430
Ariz.	1,111	5.20	5,791	1,100	44	484	15	23.3	5,430
N.M.	1,111	5.20	5,791	1,100	44	484	15	23.3	5,430
Utah	1,111	5.20	5,791	1,100	44	484	15	23.3	5,430
Wyo.	1,111	5.20	5,791	1,100	44	484	15	23.3	5,430
Mont.	1,111	5.20	5,791	1,100	44	484	15	23.3	5,430
Idaho	1,111	5.20	5,791	1,100	44	484	15	23.3	5,430
Calif.	1,111	5.20	5,791	1,100	44	484	15	23.3	5,430
Ariz.	1,111	5.20	5,791	1,100	44	484	15	23.3	5,430
N.M.	1,111	5.20	5,791	1,100	44	484	15	23.3	5,430
Utah	1,111	5.20	5,791	1,100	44	484	15	23.3	5,430
Wyo.	1,111	5.20	5,791	1,100	44	484	15	23.3	5,430
Mont.	1,111	5.20	5,791	1,100	44	484	15	23.3	5,430
Idaho	1,111	5.20	5,791	1,100	44	484	15	23.3	5,430
Calif.	1,111	5.20	5,791	1,100	44	484	15	23.3	5,430
Ariz.	1,111	5.20	5,791	1,100	44	484	15	23.3	5,430
N.M.	1,111	5.20	5,791	1,100	44	484	15	23.3	5,430
Utah	1,111	5.20	5,791	1,100	44	484	15	23.3	5,430
Wyo.	1,111	5.20	5,791	1,100	44	484	15	23.3	5,430
Mont.	1,111	5.20	5,791	1,100	44	484	15	23.3	5,430
Idaho	1,111	5.20	5,791	1,100	44	484	15	23.3	5,430
Calif.	1,111	5.20	5,791	1,100	44	484	15	23.3	5,430
Ariz.	1,111	5.20	5,791	1,100	44	484	15	23.3	5,430
N.M.	1,111	5.20	5,791	1,100	44	484	15	23.3	5,430
Utah	1,111	5.20	5,791	1,100	44	484	15	23.3	5,430
Wyo.	1,111	5.20	5,791	1,100	44	484	15	23.3	5,430
Mont.	1,111	5.20	5,791	1,100	44	484	15	23.3	5,430
Idaho	1,111	5.20	5,791	1,100	44	484	15	23.3	5,430
Calif.	1,111	5.20	5,791	1,100	44	484	15	23.3	5,430
Ariz.	1,111	5.20	5,791	1,100	44	484	15	23.3	5,430
N.M.	1,111	5.20	5,791	1,100	44	484	15	23.3	5,430
Utah	1,111	5.20	5,791	1,100	44	484	15	23.3	5,430
Wyo.	1,111	5.20	5,791	1,100	44	484	15	23.3	5,430
Mont.	1,111	5.20	5,791	1,100	44	484	15	23.3	5,430
Idaho	1,111	5.20	5,791	1,100	44	484	15	23.3	5,430
Calif.	1,111	5.20	5,791	1,100	44	484	15	23.3	5,430
Ariz.	1,111	5.20	5,791	1,100	44	484	15	23.3	5,430
N.M.	1,111	5.20	5,791	1,100	44	484	15	23.3	5,430
Utah	1,111	5.20	5,791	1,100	44	484	15	23.3	5,430
Wyo.	1,111	5.20	5,791	1,100	44	484	15	23.3	5,430
Mont.	1,111	5.20	5,791	1,100	44	484	15	23.3	5,430
Idaho	1,111	5.20	5,791	1,100	44	484	15	23.3	5,430
Calif.	1,111	5.20	5,791	1,100	44	484	15	23.3	5,430
Ariz.	1,111	5.20	5,791	1,100	44	484	15	23.3	5,430
N.M.	1,111	5.20	5,791	1,100	44	484	15	23.3	5,430
Utah	1,111	5.20	5,791	1,100	44	484	15	23.3	5,430
Wyo.	1,111	5.20	5,791	1,100	44	484	15	23.3	5,430
Mont.	1,111	5.20	5,791	1,100	44	484	15	23.3	5,430
Idaho	1,111	5.20	5,791	1,100	44	484	15	23.3	5,430
Calif.	1,111	5.20	5,791	1,100	44	484	15	23.3	5,430
Ariz.	1,111	5.20	5,791	1,100	44	484	15	23.3	5,430
N.M.	1,111	5.20	5,791	1,100	44	484	15	23.3	5,430
Utah	1,111	5.20	5,791	1,100	44	484	15	23.3	5,430
Wyo.	1,111	5.20	5,791	1,100	44	484	15	23.3	5,430
Mont.	1,111	5.20	5,791	1,100	44	484	15	23.3	5,430
Idaho	1,111	5.20	5,791	1,100	44	484	15	23.3	5,430
Calif.	1,111	5.20	5,791	1,100	44	484	15	23.3	5,430
Ariz.	1,111	5.20	5,791	1,100	44	484	15	23.3	5,430
N.M.	1,111	5.20	5,791	1,100	44	484	15	23.3	5,430
Utah	1,111	5.20	5,791	1,100	44	484	15	23.3	5,430
Wyo.	1,111	5.20	5,791	1,100	44	484	15	23.3	5,430
Mont.	1,111	5.20	5,791	1,100	44	484	15	23.3	5,430
Idaho	1,111	5.20	5,791	1,100	44	484	15	23.3	5,430
Calif.	1,111	5.20	5,791	1,100	44	484	15	23.3	5,430
Ariz.	1,111	5.20	5,791	1,100	44	484	15	23.3	5,430
N.M.	1,111	5.20	5,791	1,100	44	484	15	23.3	5,430
Utah	1,111	5.20	5,791	1,100	44	484	15	23.3	5,430
Wyo.	1,111	5.20	5,791	1,100	44	484	15	23.3	5,430
Mont.	1,111	5.20	5,791	1,100	44	484	15	23.3	5,430
Idaho	1,111	5.20	5,791	1,100	44	484	15	23.3	5,430
Calif.	1,111	5.20	5,791	1,100	44	484	15	23.3	5,430
Ariz.	1,111	5.20	5,791	1,100	44	484	15	23.3	5,430
N.M.	1,111	5.20	5,791	1,100	44	484	15	23.3	5,430
Utah	1,111	5.20	5,791	1,100	44	484	15	23.3	5,430
Wyo.	1,111	5.20	5,791	1,100	44	484	15		

Table 24.—Farm marketings, income, and value of dairy products, by States, 1939 <sup>1/2</sup>

State and division	Combined marketings of milk and cream				Used for milk, cream and butter on farms where produced		Gross farm income from dairy products <sup>4/</sup>	Farm value of milk produced <sup>5/</sup>
	Milk utilized	Average returns <sup>2/</sup>		Cash receipts from marketings	Milk utilized	Value <sup>3/</sup>		
		Per 100 pounds milk	Per pound milkfat				1,000 dol.	Mil. lb.
Me.	825	5.80	1.45	36,238	66	3,668	41,082	40,658
N. H.	351	6.03	1.53	21,171	26	1,206	22,377	22,733
Vt.	1,795	5.15	1.30	92,350	54	2,751	94,101	95,687
Mass.	722	6.35	1.67	45,647	19	1,206	47,053	47,625
R. I.	123	6.50	1.73	7,959	2	130	8,119	8,255
Conn.	708	6.30	1.68	44,572	20	1,260	45,832	46,620
N. Y.	9,372	4.68	1.30	438,233	205	9,594	447,852	456,815
N. J.	1,113	5.79	1.59	64,412	22	1,274	65,686	66,585
Pa.	6,213	4.93	1.31	302,237	274	13,508	319,745	324,739
N. Atl.	21,022	5.03	1.36	1,057,024	962	39,757	1,090,781	1,109,717
Ohio.	4,788	4.23	1.11	202,582	224	9,475	212,059	216,322
Ind.	3,018	3.89	1.00	117,220	145	5,640	122,860	125,452
Ill.	5,045	3.60	.97	185,798	207	7,452	193,250	195,880
Mich.	4,714	3.89	1.05	184,630	200	7,730	192,400	198,001
Wis.	16,897	3.29	.90	555,615	341	11,219	566,834	586,114
W. N. Cent.	33,492	3.60	.97	1,205,097	1,117	41,560	1,247,463	1,261,763
Miss.	9,540	3.01	.86	287,174	230	7,224	294,398	300,097
Iowa.	5,513	3.04	.83	167,620	270	8,208	175,828	180,576
Mo.	3,293	3.67	.90	121,095	330	12,111	133,206	135,717
S. Dak.	1,593	2.41	.69	38,470	114	2,747	41,217	42,344
S. Dak.	1,323	2.65	.76	35,255	36	2,279	37,534	38,504
W. Dak.	1,509	2.93	.80	53,329	143	4,336	57,365	59,274
Kans.	1,715	3.28	.95	61,317	165	5,874	66,891	69,064
W. N. Cent.	28,801	3.08	.84	763,660	1,353	42,779	806,439	825,576
Del.	153	4.39	1.33	9,136	9	449	9,585	9,750
Md.	1,441	4.86	1.30	70,397	55	2,673	72,770	73,726
Va.	1,632	4.38	1.25	71,696	304	14,835	94,531	96,722
W. Va.	690	4.39	1.25	23,975	179	8,753	32,728	33,594
N. C.	1,104	5.83	1.46	64,366	440	25,652	90,018	91,764
S. C.	419	5.86	1.46	24,507	120	7,032	31,539	31,996
Ga.	797	6.24	1.54	49,774	241	15,033	64,772	65,532
Fla.	1,203	6.94	1.73	83,914	29	2,024	85,940	86,552
S. Atl.	7,289	5.52	1.41	405,467	1,377	76,456	481,943	489,666
Ky.	2,385	3.93	.96	81,917	370	14,777	96,694	98,407
Tenn.	1,662	4.26	.99	75,722	365	15,330	91,092	92,400
Ala.	621	5.56	1.45	37,531	340	20,041	57,572	58,483
Miss.	970	4.78	1.11	46,369	303	14,433	60,852	61,566
Ark.	762	4.30	1.04	32,733	189	8,127	40,860	41,409
La.	655	5.05	1.36	36,901	154	8,701	45,682	46,217
Oklia.	1,237	4.27	1.08	51,623	156	7,756	59,374	60,548
Tex.	2,591	5.34	1.35	138,927	310	18,156	156,743	158,491
S. Cent.	19,745	4.67	1.14	901,908	2,255	107,371	600,879	617,521
Mont.	307	3.81	1.03	14,762	67	2,533	17,314	17,907
Idaho.	1,469	3.47	.91	51,016	73	2,533	53,549	55,208
Wyo.	159	3.63	1.02	5,773	31	1,135	6,908	7,115
Colo.	753	4.35	1.19	32,523	96	2,955	35,793	37,104
N. Mex.	208	5.55	1.48	11,533	23	1,554	13,092	13,431
Ariz.	436	5.13	1.42	22,357	16	621	23,173	23,649
Utah.	702	4.00	1.06	23,069	17	1,560	29,629	30,440
Nev.	102	4.85	1.33	4,945	9	282	5,127	5,335
Wash.	1,717	4.48	1.11	76,973	96	4,390	81,363	83,552
Oreg.	996	6.65	1.69	66,351	77	3,530	69,931	71,615
Calif.	7,695	4.68	1.32	372,279	112	5,466	380,745	387,618
West.	14,624	4.58	1.21	669,837	614	26,769	696,676	712,974
U. S.	111,953	4.11	1.09	4,603,503	7,378	323,713	4,932,221	5,037,223

<sup>1/2</sup> Revised. <sup>2/</sup> Cash receipts divided by milk or milkfat represented in combined marketings. <sup>3/</sup> Computed at average returns per 100 pounds for milk in products marketed. <sup>4/</sup> Cash receipts from marketings of milk and cream, plus value of milk used for home consumption and farm-burned butter. <sup>5/</sup> Milk produced on farms valued at average returns per 100 pounds for milk in products marketed. Includes value of milk fed to calves in addition to gross farm income.

Table 25.—Number of farms reporting selected items, 1954 Census of Agriculture

State and division	All farms 1/	Farms reporting milk cows	Farms reporting dairy products sold in 1954		Dairy farms 2/	Farms reporting milking machines
			Milk	Cream		
Me.	23,368	14,820	5,823	1,279	4,578	5,091
N. H.	10,411	6,089	3,172	253	2,512	2,664
Vt.	15,981	13,227	10,696	289	9,930	9,813
Mass.	17,361	7,750	4,391	114	3,926	4,104
R. I.	2,004	927	588	6	489	481
Conn.	12,753	6,873	3,759	58	3,236	3,464
N. Y.	105,714	71,765	54,629	2,734	49,782	51,243
N. J.	22,686	7,101	3,982	41	3,643	3,804
Pa.	128,876	82,708	46,971	6,691	38,295	39,749
N. Atl.	339,154	211,260	134,011	11,405	115,791	120,013
Ohio	177,074	107,955	64,756	12,331	25,811	41,895
Ind.	153,593	88,097	50,171	11,679	12,115	30,198
Ill.	175,543	103,187	49,073	19,002	13,302	32,252
Mich.	153,922	82,534	52,135	16,274	37,562	46,462
Wis.	153,558	128,797	121,711	1,929	107,350	100,761
E. W. Cent.	793,690	510,573	337,846	61,215	196,140	251,569
Minn.	165,225	122,415	60,607	54,414	49,812	73,959
Iowa	192,933	135,142	24,323	85,613	8,540	48,432
Mo.	201,614	144,879	52,035	29,911	27,506	19,773
N. Dak.	41,943	42,686	1,822	35,918	3,185	11,881
S. Dak.	42,520	42,136	2,321	30,799	1,518	8,876
Nebr.	100,946	71,718	5,827	11,153	2,839	13,913
Kans.	120,147	77,982	15,437	34,020	8,177	17,445
W. W. Cent.	407,248	237,359	107,576	324,825	101,577	194,309
Del.	4,297	2,822	1,450	25	921	1,129
Md.	32,500	17,152	7,452	1,234	4,182	6,375
Va.	131,421	92,861	17,621	13,309	7,735	5,101
N. Va.	68,483	42,921	4,734	10,742	4,723	3,124
N. C.	277,402	134,801	17,298	5,149	4,190	5,432
S. C.	128,203	4,490	4,411	1,628	1,814	1,718
Ge.	104,523	80,348	6,487	2,930	3,099	3,424
Fla.	47,543	16,738	1,307	212	940	1,111
S. Atl.	465,712	460,741	53,344	35,274	31,613	27,426
Ky.	193,487	137,099	37,444	19,942	8,139	9,097
Tenn.	203,149	138,860	49,221	6,165	15,057	7,823
Ala.	170,936	110,285	10,313	7,410	2,585	2,538
Miss.	214,214	122,867	14,723	2,205	4,642	5,047
Ark.	145,024	87,302	14,641	7,351	7,471	4,347
La.	111,127	64,473	4,146	477	3,231	2,235
Okla.	118,771	78,014	12,004	12,378	7,130	8,868
Tex.	292,947	161,296	14,123	4,278	8,378	10,033
S. Cent.	1,477,433	900,390	157,839	68,203	48,668	51,013
Mont.	33,011	19,930	2,214	4,250	1,681	3,047
Idaho	35,769	27,014	16,164	3,532	6,620	14,317
Wyo.	11,402	7,774	1,014	2,841	771	1,121
Colo.	62,744	24,217	4,724	8,879	3,477	5,320
N. Mex.	21,070	4,635	1,211	54	794	634
Ariz.	9,321	3,720	404	13	444	800
Utah	22,824	14,159	2,644	41	3,444	4,312
Nev.	2,877	1,914	274	272	250	333
Wash.	4,174	34,792	13,471	5,404	4,146	11,275
Oreg.	46,441	33,170	3,900	2,470	4,686	4,817
Calif.	123,075	34,031	15,311	1,308	12,452	15,704
West.	422,717	212,919	71,704	40,541	44,374	67,642
U. S.	4,742,411	2,935,812	1,341,143	940,588	548,713	712,022

1/ Farming units of 3 or more acres on which the value of farm products produced in 1954 totaled \$150 or more, plus units of less than 3 acres from which the value of farm products sold in 1954 totaled \$150 or more.

2/ Farms from which sales of dairy products accounted for 50 percent or more of the total value of all farm products sold, plus farms which met the following three requirements -- (a) sales of dairy products accounted for 30 percent or more of total sales, (b) milk cows represented 50 percent or more of total cows, and (c) combined sales of dairy products, cattle and calves accounted for 50 percent or more of total sales.

U. S. Department of Commerce, Bureau of the Census.

Table 26.-Number of farms reporting selected items, 1959 Census of Agriculture

State and division	All farms 1/	Farms reporting milk cows	Farms reporting milk and/or cream sold in 1959 2/	Dairy farms 3/	Farms reporting milking machines	Farms reporting electric milk coolers
Me.	17,360	8,925	4,889	3,257	4,307	4,325
N. H.	6,542	3,587	2,533	1,798	2,427	2,398
Vt.	12,099	9,695	8,848	7,928	8,827	9,051
Mass.	11,178	4,436	3,222	2,808	3,237	3,275
R. I.	1,395	580	486	420	428	437
Conn.	8,292	4,114	2,802	2,416	2,814	2,801
N. Y.	82,355	52,650	44,965	39,039	45,074	43,710
N. J.	15,458	4,320	3,140	2,738	3,002	3,013
Pa.	100,051	59,101	42,735	31,826	37,045	36,947
E. Atl.	254,730	147,408	113,621	92,230	107,161	105,967
Ohio	150,353	95,434	49,942	22,196	35,402	30,568
Ind.	128,160	48,149	35,430	10,866	24,339	18,242
Ill.	154,640	57,000	37,431	11,217	26,362	18,964
Mich.	111,617	50,587	43,110	14,673	37,713	25,849
Wis.	131,215	103,146	101,840	86,338	94,133	38,908
E. N. Cent.	666,185	324,366	257,513	155,290	217,949	133,531
Minn.	145,662	90,518	65,702	43,225	71,650	27,095
Iowa	174,707	92,730	76,313	11,353	46,967	23,261
Mo.	168,673	94,273	54,294	16,524	23,637	15,344
N. Dak.	54,928	30,483	27,303	2,294	14,702	1,290
S. Dak.	55,726	31,327	24,452	2,617	11,291	3,576
Nebr.	90,475	48,725	39,200	2,350	15,513	3,950
Kans.	104,345	46,889	32,024	5,201	16,416	8,614
W. N. Cent.	794,516	434,949	339,288	83,574	200,176	83,353
Del.	5,207	1,727	1,384	723	930	994
Md.	25,121	11,093	6,990	5,070	5,697	5,604
Va.	97,623	56,101	23,858	6,256	6,755	7,054
W. Va.	46,011	29,130	10,557	2,705	2,835	2,696
N. C.	190,567	70,848	15,092	4,437	5,270	5,449
S. C.	78,171	24,743	3,863	1,459	1,724	1,629
Ge.	106,347	42,352	5,308	2,314	3,533	2,716
Fla.	45,098	8,460	1,160	767	848	829
S. Atl.	592,145	244,454	68,012	23,737	27,642	26,971
Ky.	150,934	88,293	44,224	8,174	12,924	12,796
Tenn.	157,638	84,847	38,211	9,647	11,008	12,177
Ala.	115,610	56,248	7,614	1,700	2,246	2,002
Miss.	138,142	65,378	15,262	5,495	5,843	5,025
Ark.	95,009	44,073	13,134	4,276	4,907	2,944
La.	74,438	39,963	3,513	2,630	2,930	2,931
Okla.	24,675	11,062	14,302	4,676	8,230	6,037
Tex.	227,054	82,750	13,935	6,523	7,467	7,234
S. Cent.	1,053,600	592,614	152,245	63,141	55,555	51,166
Mont.	28,957	14,575	7,577	1,111	3,405	1,211
Idaho	33,667	20,973	16,394	5,521	13,473	4,413
Wyo.	4,743	1,521	2,418	411	1,067	351
Colo.	33,399	15,466	7,355	2,142	4,496	2,925
N. Mex.	15,019	5,715	1,010	393	611	476
Ariz.	7,219	2,117	537	371	513	439
Utah	17,811	9,699	5,894	2,665	4,120	2,574
Nev.	2,350	1,151	337	159	346	202
Wash.	51,575	23,304	12,431	5,933	10,272	6,059
Oreg.	42,573	19,755	10,222	3,439	8,035	3,083
Calif.	99,250	19,507	10,866	8,045	11,443	5,307
West.	342,464	137,752	75,941	30,190	57,807	27,043
U. S.	3,793,642	1,714,539	1,316,871	428,262	666,590	428,041

1/ Farming units of 10 or more acres from which sales of farm products in 1959 totaled \$50 or more, plus units of less than 10 acres from which sales totaled \$250 or more.

2/ Separate counts of farms reporting milk sold and farms reporting cream sold not yet available.

3/ See footnote 2, Table 25.

U. S. Department of Commerce, Bureau of the Census



Table 27.—Production and utilization of milk, United States, 1955-59 1/  
[In millions of pounds]

Source and use	1955	1956	1957	1958	1959
Milk production 2/	122,945	124,860	124,628	123,220	121,939
Utilization (milk equivalent):					
Manufactured in plants:					
Creamery butter, total.....	28,951	29,686	29,951	30,651	29,554
From whey cream.....	228	967	1,001	1,027	1,020
Net.....	28,003	28,699	28,950	29,624	28,534
Cheese:					
American.....	10,073	9,936	9,274	9,524	9,203
Other.....	3,450	3,777	3,468	3,250	3,397
Canned milk:					
Evaporated.....	1,490	5,397	5,200	4,521	4,579
Sweetened condensed.....	73	164	146	125	133
Bulk condensed milk:					
Unsweetened.....	614	710	756	786	849
Sweetened.....	93	104	108	113	115
Dry whole milk.....	822	941	788	687	712
Frozen dairy products:					
Ice cream and other frozen products 3/	9,651	10,013	10,215	10,499	11,211
Duplication of fat from butter and condensed milk 4/.....	1,480	1,510	1,637	1,727	1,854
Net from milk and cream.....	8,171	8,503	8,578	8,772	9,357
Other factory products 5/.....	1,176	1,255	1,230	1,274	1,365
Total factory products 6/.....	58,027	59,406	59,212	58,746	58,217
Farm butter.....	3,245	2,814	2,425	1,987	1,602
Fluid consumption: Farm 7/.....	19,000	9,600	9,100	8,500	8,000
Nonfarm.....	47,800	47,400	50,200	50,400	50,500
Fed to calves.....	3,266	3,119	2,950	2,767	2,658
Exports and storage 8/.....	26	-4	65	-62	13
Other 9/.....	582	925	673	882	639

1/ Revised. Estimates for 1924-54 are shown in Statistical Bulletin No. 175. 2/ Does not include a small quantity of milk produced by cows not on farms. 3/ Includes milk sherbet, ice milk and miscellaneous minor frozen products. 4/ Milk equivalent of butter and condensed milk used in ice cream. 5/ Includes dry cream, malted milk powder, dry part-skin milk, dry ice cream mix, cottage cheese, and other products using milkfat. 6/ Includes net milk equivalents of butter and frozen dairy products to avoid double counting of milk from which fat was reused in making a second dairy product. 7/ Includes an allowance for fluid consumption on farms not producing milk in addition to the consumption on farms where milk is produced shown in Table 2. 8/ Net movement of whole milk or cream into export or storage channels. A negative figure represents net out-of-storage movement during the year. 9/ Residual, including miscellaneous minor uses and any inaccuracies of independently determined production and use items.

Table 28.—Percentage utilization of milk produced, United States, 1955-59  
[Percent]

Utilization	1955	1956	1957	1958	1959
Creamery butter, net.....	22.8	23.0	23.2	24.1	23.7
Cheese.....	11.0	11.0	10.8	10.4	10.3
Evaporated, condensed, and dry whole milk..	1.8	1.8	1.6	1.1	1.2
Frozen dairy products, net.....	6.6	6.8	6.9	7.1	7.7
Other manufactured products.....	1.0	1.0	1.0	1.0	1.1
Total factory products.....	47.2	47.6	47.5	47.7	47.7
Farm butter.....	2.6	2.2	1.9	1.6	1.3
Fluid consumption:					
Farm.....	8.1	7.7	7.3	6.9	6.6
Nonfarm.....	38.9	39.6	40.3	40.9	41.6
Fed to calves.....	2.7	2.5	2.4	2.2	2.2
Other uses.....	0.5	0.4	0.6	0.7	0.6



Growth Through Agricultural Progress

**END**