



AgEcon SEARCH
RESEARCH IN AGRICULTURAL & APPLIED ECONOMICS

The World's Largest Open Access Agricultural & Applied Economics Digital Library

This document is discoverable and free to researchers across the globe due to the work of AgEcon Search.

Help ensure our sustainability.

Give to AgEcon Search

AgEcon Search

<http://ageconsearch.umn.edu>

aesearch@umn.edu

*Papers downloaded from **AgEcon Search** may be used for non-commercial purposes and personal study only. No other use, including posting to another Internet site, is permitted without permission from the copyright owner (not AgEcon Search), or as allowed under the provisions of Fair Use, U.S. Copyright Act, Title 17 U.S.C.*

SB 278 (1961)

USDA STATISTICAL BULLETINS

UPDATES

LIVESTOCK AND

POULTRY INVENTORY

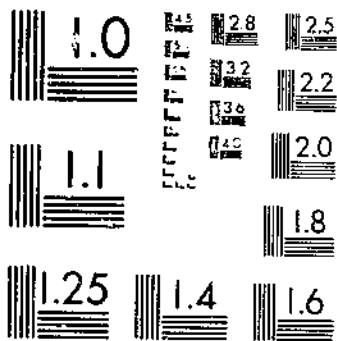
JANUARY 1,

1955-60

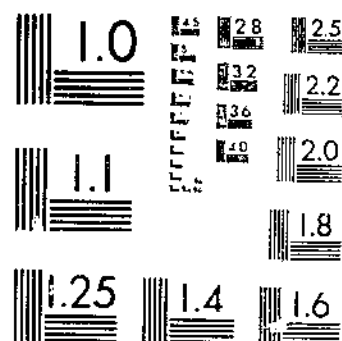
NUMBERS VALUE

1-1-61

START



MICROCOPY RESOLUTION TEST CHART
NATIONAL BUREAU OF STANDARDS-1975-A



MICROCOPY RESOLUTION TEST CHART
NATIONAL BUREAU OF STANDARDS-1975-A

R 63
4-13-13

REFERENCE
DIVISION

1955-60

LIVESTOCK and POULTRY INVENTORY, January 1

**Number,
Value,
and
Classes-
By
States**

1955 NATIONAL LIVESTOCK INVENTORY

U.S. DEPARTMENT OF AGRICULTURE

Agricultural Marketing Service • Crop Reporting Board

Washington, D.C.

February 1961

Statistical Bulletin No. 278

CONTENTS

	Page
Comments	3
Tables:	
1. Cattle and calves, number and value, United States	4
2. Cattle and calves, by classes, United States	4
3. Hogs and pigs, number, value, and classes, United States	4
4. Sheep and lambs, number, value, and classes, United States ...	4
5. Horses and mules, number, value, and classes, United States..	5
6. Chickens, number, value, and classes, United States	5
7. Turkeys, number, value, and classes, United States	5
8. Cattle and calves, number and value, by States	6
9. Cows and heifers for milk, number and value, by States	8
10. Cattle and calves by classes, by States,	10
11. Hogs and pigs, number and value by States	16
12. Hogs and pigs by classes, by States	18
13. All sheep and lambs, number and value, by States	21
14. Stock sheep, number and value, by States	23
15. Sheep and lambs by classes, by States	25
16. Horses and mules, number and value, by States	31
17. Horses and mules, by classes, by States	33
18. Chickens, number and value, by States	35
19. Chickens, by classes, by States	37
20. Turkeys, number and value, by States	41
21. All turkeys, by States	43
22. Turkey breeder hens, by States	45

For sale by the Superintendent of Documents, U. S. Government Printing Office
Washington 25, D. C.

LIVESTOCK AND POULTRY INVENTORY, JANUARY 1, 1955-60

Number, Value, and Classes, by States

This publication presents a record of the revised estimates of the Crop Reporting Board of the Agricultural Marketing Service relating to livestock and poultry inventories on farms and ranches as of January 1 for 1955-60. It continues the official series on numbers, value per head, and total value of livestock as shown in "Livestock on Farms, January 1, 1867-1935" ^{1/}, "Livestock on Farms and Ranches on January 1, Number, Value, and Classes, 1920-39," ^{2/} and "Livestock and Poultry Inventory, January 1, Number, Value, and Classes, 1940-54," ^{3/} It also continues the official series on numbers, value per head, and total value of chickens as shown in "Farm Production, Disposition and Income from Chickens and Eggs, 1909-44," ^{4/} Statistical Bulletin No. 133, and for turkeys in "Farm Production, Disposition and Income from Turkeys, 1929-44," ^{5/} Estimates of chickens and turkeys for 1945-54 are shown in Statistical Bulletin No. 177. Estimates of livestock and poultry inventories for the period have been released currently in annual reports and other publications.

The annual estimates of numbers on farms are based primarily on survey returns from livestock and poultry producers, obtained mostly in cooperation with the Post Office Department through rural mail carriers. These revised State and United States series are based on a thorough review of the original estimates taking into consideration the 1959 Census of Agriculture and other information such as year to year changes in numbers assessed for taxation. For livestock, consideration was also given to records relating to market receipts of livestock and livestock products, and estimates of commercial and farm slaughter. For poultry, consideration was given to chick and poult hatchery production, chickens and turkeys tested for pullorum disease, and records relating to processing and inspection of poultry. These inventory estimates relate to January 1 of each year. In 1954 and 1959 the Census of Agriculture was enumerated during October, November, and December, and farmers were asked to report inventories on the date of enumeration. In using Census data to review and revise the inventory estimates, it was necessary to adjust from the average date of enumeration to January 1.

The estimates of average value per head are based on crop and livestock reporters' estimates of average price per head in their localities, about January 1, each year. These farm and ranch operators report the value per head by age, sex, and use classes of livestock and poultry. Values per head, by classes for each State, for a given species are weighted together by the estimated number in each class. The weighted average so computed is the basis for the estimated value per head for the species.

In the case of estimates for regions and the United States, the total value is the sum of the State estimates; and value per head is derived by dividing the total value by the number of head for the respective region and for the United States.

^{1/} United States Bureau of Agricultural Economics, LIVESTOCK ON FARMS, JANUARY 1, 1867-1935, REVISED ESTIMATES, NUMBER, VALUE PER HEAD, TOTAL VALUE BY STATES AND DIVISIONS. 137 pp., illus. 1938.

^{2/} United States Department of Agriculture, Bureau of Agricultural Economics, LIVESTOCK ON FARMS AND RANCHES ON JANUARY 1, NUMBER, VALUE, AND CLASSES, 1920-39, BY STATES, Statistical Bulletin No. 88, 103 pages, 1950.

^{3/} United States Department of Agriculture, Agricultural Marketing Service, Livestock and Poultry Inventory, January 1, Number, Value, and Classes, 1940-54, by States, Statistical Bulletin No. 177, 117 pages, June 1956.

^{4/} United States Department of Agriculture, Bureau of Agricultural Economics, FARM PRODUCTION, DISPOSITION AND INCOME FROM CHICKENS AND EGGS, 1909-44, BY STATES, Statistical Bulletin No. 133, 98 pages, July 1953.

^{5/} United States Department of Agriculture, Bureau of Agricultural Economics, FARM PRODUCTION, DISPOSITION, AND INCOME FROM TURKEYS, 1929-44, BY STATES, June 1953, 59 pages.

Table 1.--CATTLE AND CALVES: Number on farms, value per head, total value, January 1, 1955-60

United States						
Year	All cattle and calves			Cows and heifers 2 years old and over for milk		
	Number	Farm value		Number	Per head	Total
		Per head	Total			
	1,000 head	Dollars	1,000 dollars	1,000 head	Dollars	1,000 dollars
1955	96,592	88.20	8,517,027	23,462	134.00	3,148,392
1956	95,900	88.10	8,445,718	22,912	139.00	3,185,041
1957	92,860	91.60	8,509,481	22,325	147.00	3,291,347
1958	91,176	120.00	10,913,416	21,265	177.00	3,760,830
1959	93,322	153.00	14,299,985	20,132	221.00	4,451,485
1960	96,236	137.00	13,149,812	19,527	210.00	4,102,483

Table 2.--CATTLE AND CALVES: Number on farms, and classes, January 1, 1955-60

United States								
Year	Kept for milk				Other			
	Cows & heifers 2 yrs. old and over	Heifers 1-2 yrs.	Heifer calves	Cows and heifers 2 yrs. old and over	Heifers 1-2 yrs. old	Calves	Steers 1 yr. old and over	Bulls 1 yr. old and over
	Number	head	head	head	head	head	head	head
1955	23,462	5,786	6,094	25,659	6,514	18,804	8,444	1,829
1956	22,912	5,407	5,890	25,371	6,206	18,869	9,483	1,762
1957	22,325	5,267	5,699	24,534	5,926	18,405	8,991	1,713
1958	21,265	5,126	5,571	24,165	5,903	18,275	9,252	1,619
1959	20,132	5,050	5,526	25,112	6,557	19,407	9,931	1,607
1960	19,527	5,079	5,575	26,344	7,036	20,425	10,574	1,676

Table 3.--HOGS AND PIGS: Number on farms, value per head, total value, and classes, January 1, 1955-60

United States						
Year	All hogs and pigs			Under 6 months	6 months +	
	Number	Farm value			Sows and gilts	Other
		Per head	Total			
	1,000 head	Dollars	1,000 dollars	1,000 head	1,000 head	1,000 head
1955	50,474	30.60	1,542,285	29,906	9,063	11,505
1956	55,354	17.70	981,115	33,960	8,506	12,888
1957	51,897	24.70	1,279,895	32,754	8,064	11,079
1958	51,517	30.20	1,558,363	32,732	8,103	10,682
1959	58,045	32.00	1,858,798	38,236	8,819	10,990
1960	59,026	18.50	1,091,896	38,747	7,531	12,748

Table 4.--SHEEP AND LAMBS: Number on farms, value per head, total value, and classes, January 1, 1955-60, United States

Year	All stock sheep and lambs										
	All sheep and lambs	Total value	Sheep and lambs on feed	Farm value						1 year and over	
				Number	Lambs		Ewe and ram		Ewes	Rams	Wethers
					Per head	Total	Ewe	Wether and ram			
	1,000 head	1,000 dollars	1,000 head	1,000 head	1,000 dollars	1,000 head	1,000 head	1,000 head	1,000 head	1,000 head	
1955	31,582	471,490	4,445	27,137	14.90	403,524	3,982	740	21,321	860	234
1956	31,157	443,878	4,267	26,890	14.30	383,271	3,819	687	21,323	851	210
1957	30,654	458,581	4,306	26,348	14.90	393,264	3,709	634	20,976	840	189
1958	31,217	600,445	4,050	27,167	19.40	526,475	4,289	625	21,208	864	181
1959	32,606	654,852	4,498	28,108	20.30	570,865	4,549	647	21,832	893	187
1960	33,170	545,684	4,321	28,849	16.50	477,350	4,562	721	22,406	927	233

Table 5.--HORSES AND MULES: Number on farms, value per head, total value, and classes, January 1, 1955-60, United States

Year	All horses and mules			2 years and older	1-2 years	Under 1 year
	Number	Farm value				
		Per head	Total			
1,000 head	Dollars	1,000 dollars	1,000 head	1,000 head	1,000 head	
1955	4,309	56.20	242,104	4,101	107	101
1956	3,958	62.60	247,919	3,757	99	102
1957	3,632	71.80	260,756	3,436	99	97
1958	3,415	84.40	288,060	3,220	95	100
1959	3,189	102.00	326,230	2,988	98	103
1960	3,089	113.00	347,689	2,883	100	106

Table 6.--CHICKENS: Number on farms, value per head, total value, and classes, January 1, 1955-60, United States

Year	All chickens			Hens	Pullets	Other
	Number	Farm value				
		Per head	Total			
1,000 head	Dollars	1,000 dollars	1,000 head	1,000 head	1,000 head	
1955	390,708	1.05	410,741	111,376	257,219	22,113
1956	383,690	1.26	482,359	121,995	239,063	22,632
1957	391,363	1.17	458,689	119,518	250,285	21,560
1958	374,281	1.26	472,119	128,961	226,556	18,764
1959	387,002	1.26	486,997	120,826	246,030	20,146
1960	369,484	1.06	390,733	126,747	225,019	17,718

Table 7.--TURKEYS: Number on farms, value per head, total value, and classes, January 1, 1955-60, United States

Year	All turkeys			Breeder hens
	Number	Farm value		
		Per head	Total	
1,000 head	Dollars	1,000 dollars	1,000 head	
1955	4,917	5.33	26,185	3,012
1956	4,937	5.50	27,162	3,181
1957	5,828	5.05	29,452	3,605
1958	5,612	4.67	26,189	3,336
1959	6,105	4.65	28,399	3,662
1960	5,633	4.89	27,547	3,327

Table 8.--All Cattle and Calves: Number on farms, value per head, and total value, by States, January 1, 1955-60

State and division	1955			1956			1957		
	Number	Value	Total	Number	Value	Total	Number	Value	Total
	per head	per head:	value	per head:	per head:	value	per head:	per head:	value
	1,000	1,000	1,000	1,000	1,000	1,000	1,000	1,000	1,000
	head	Dollars	dollars	head	Dollars	dollars	head	Dollars	dollars
Maine	233	91	21,203	224	104	23,296	213	100	21,300
New Hampshire	118	116	13,688	117	127	14,859	111	121	13,431
Vermont	474	117	55,458	474	130	61,620	455	124	56,420
Massachusetts	188	151	28,388	180	159	28,620	171	159	27,189
Rhode Island	26	160	4,160	25	183	4,575	24	176	4,224
Connecticut	181	152	27,512	174	169	29,406	167	163	27,221
New York	2,311	129	298,119	2,265	137	310,305	2,220	144	319,680
New Jersey	228	180	41,040	226	184	41,584	221	184	40,664
Pennsylvania	1,935	129	249,615	1,896	136	257,856	1,896	146	276,816
North Atlantic	5,694	130	739,183	5,581	138	772,121	5,478	144	786,945
Ohio	2,369	103	244,007	2,393	105	251,265	2,345	110	257,950
Indiana	2,175	96	208,800	2,218	97	215,146	2,196	102	223,992
Illinois	3,911	95	371,545	3,989	96	382,944	4,149	103	427,347
Michigan	1,943	108	209,844	1,885	107	201,695	1,791	120	214,920
Wisconsin	4,341	122	529,602	4,341	130	564,330	4,298	131	563,038
East North Central	14,739	106	1,563,798	14,826	109	1,615,380	14,779	114	1,687,247
Minnesota	3,939	98	386,022	3,939	101	397,839	3,939	102	401,778
Iowa	6,161	96	591,456	6,099	90	548,910	6,099	94	573,306
Missouri	3,910	83	324,530	3,949	84	331,716	3,949	90	355,410
North Dakota	1,973	102	201,246	2,072	89	184,408	1,948	93	181,164
South Dakota	3,301	93	306,993	3,334	83	276,722	3,167	91	288,197
Nebraska	5,065	93	471,045	4,759	82	390,238	4,455	88	392,040
Kansas	4,341	87	377,667	4,167	81	337,527	3,459	83	287,097
West North Central	28,690	92.7	2,658,959	28,319	87.1	2,467,360	27,016	91.8	2,478,992
Delaware	70	105	7,350	68	109	7,412	63	116	7,308
Maryland	540	102	55,080	518	111	57,498	508	119	60,452
Virginia	1,382	81	111,942	1,382	85	117,470	1,368	90	123,120
West Virginia	593	72	42,696	587	80	46,960	569	80	45,520
North Carolina	985	64	63,040	955	70	66,850	926	76	70,376
South Carolina	646	56	36,176	633	65	41,145	620	68	42,160
Georgia	1,627	50	81,350	1,546	57	88,122	1,515	62	93,930
Florida	1,737	54	93,798	1,702	59	100,418	1,753	62	108,686
South Atlantic	7,580	64.8	491,432	7,391	71.2	525,875	7,322	75.3	551,552
Kentucky	1,773	76	134,748	1,862	81	150,822	1,936	89	172,304
Tennessee	1,771	66	116,886	1,753	71	124,463	1,771	79	139,909
Alabama	1,835	47	86,245	1,743	52	90,636	1,726	56	96,656
Mississippi	2,369	48	113,712	2,393	54	129,222	2,417	59	142,603
Arkansas	1,556	51	79,356	1,572	62	97,464	1,588	61	96,868
Louisiana	1,904	53	100,912	1,923	62	119,226	1,942	61	118,462
Oklahoma	3,277	66	216,282	3,146	73	229,658	2,957	71	209,947
Texas	8,501	66	561,066	8,501	71	603,571	7,736	66	510,576
South Central	22,986	61.3	1,409,207	22,893	67.5	1,545,062	22,073	67.4	1,487,325
Montana	2,395	100	239,500	2,443	87	212,541	2,223	87	193,401
Idaho	1,362	98	133,476	1,389	85	118,065	1,347	92	123,924
Wyoming	1,096	93	101,928	1,118	84	93,912	1,140	86	98,040
Colorado	2,054	88	180,752	2,027	84	170,268	1,971	82	161,622
New Mexico	1,164	76	88,464	1,222	77	94,094	1,112	72	80,064
Arizona	983	93	91,419	1,010	84	84,840	947	86	81,442
Utah	749	93	69,657	712	88	62,656	705	91	64,155
Nevada	591	91	53,781	585	86	50,310	573	92	52,716
Washington	1,160	100	116,000	1,160	87	100,920	1,044	95	99,180
Oregon	1,486	91	135,226	1,427	83	118,441	1,327	86	114,122
California	3,863	115	444,245	3,797	109	413,873	3,803	118	448,754
West	16,903	97.9	1,654,448	16,890	90.0	1,519,920	16,192	93.7	1,517,420
United States	96,592	88.2	8,517,027	95,900	88.1	8,445,718	92,860	91.6	8,509,481

Table 8.--All Cattle and Calves: Number on farms, value per head, and total value, by States, January 1, 1955-60--Continued

State and division	1958			1959			1960		
	Number	Value	Total	Number	Value	Total	Number	Value	Total
	1,000 head	per head: Dollars	1,000 dollars	1,000 head	per head: Dollars	1,000 dollars	1,000 head	per head: Dollars	1,000 dollars
Maine	200	125	25,000	192	163	31,296	194	159	30,846
New Hampshire	102	144	14,688	98	189	18,522	98	183	17,934
Vermont	432	154	66,528	423	185	78,255	427	186	79,422
Massachusetts	159	183	29,097	151	232	35,032	151	226	34,126
Rhode Island	23	204	4,692	22	263	5,786	21	256	5,376
Connecticut	159	191	30,369	153	237	36,261	150	228	34,200
New York	2,153	175	376,775	2,110	213	449,430	2,131	218	464,558
New Jersey	212	207	43,884	206	263	54,178	200	264	52,800
Pennsylvania	1,839	169	310,791	1,839	211	388,029	1,913	204	390,252
North Atlantic	5,279	171	901,824	5,194	211	1,096,789	5,285	210	1,109,514
Ohio	2,251	127	285,877	2,228	157	349,796	2,250	148	333,000
Indiana	2,064	118	243,552	2,002	151	302,302	2,062	139	286,618
Illinois	3,942	117	461,214	3,903	147	573,741	3,981	136	541,416
Michigan	1,684	141	237,444	1,684	172	289,648	1,701	164	278,964
Wisconsin	4,212	156	657,072	4,170	194	808,980	4,253	178	757,034
East North Central	14,153	133	1,885,159	13,987	166	2,324,467	14,247	154	2,197,032
Minnesota	3,821	130	496,730	3,859	160	617,440	3,975	142	564,450
Iowa	6,099	124	756,276	6,404	157	1,005,428	6,660	134	892,440
Missouri	3,752	115	431,480	3,902	147	573,594	3,980	129	513,420
North Dakota	1,831	128	234,368	1,794	165	296,010	1,758	144	253,152
South Dakota	3,199	132	422,268	3,295	171	563,445	3,262	139	453,418
Nebraska	4,533	128	580,224	4,886	167	815,962	5,072	131	664,432
Kansas	3,874	119	461,006	4,300	150	645,000	4,429	124	549,196
West North Central	27,109	125	3,382,352	28,440	159	4,516,879	29,136	134	3,890,508
Delaware	62	134	8,308	57	170	9,690	56	169	9,464
Maryland	498	138	68,724	498	171	85,158	493	173	85,289
Virginia	1,327	109	144,643	1,340	140	187,600	1,394	134	186,796
West Virginia	535	97	51,895	524	135	70,740	540	126	68,040
North Carolina	907	90	81,530	889	116	103,124	907	116	105,212
South Carolina	583	82	47,806	542	104	56,368	537	106	56,922
Georgia	1,485	77	114,345	1,396	100	139,600	1,424	96	136,704
Florida	1,771	79	139,909	1,629	106	172,674	1,629	105	171,045
South Atlantic	7,168	91.7	657,260	6,875	120	824,954	6,980	117	819,472
Kentucky	1,917	105	201,285	1,955	138	269,790	2,053	129	264,837
Tennessee	1,736	97	168,392	1,736	128	222,208	1,858	118	219,244
Alabama	1,691	72	121,752	1,640	105	172,200	1,656	98	162,288
Mississippi	2,296	75	172,200	2,066	108	223,128	2,107	98	206,486
Arkansas	1,477	80	118,160	1,388	113	156,844	1,374	106	145,614
Louisiana	1,825	83	151,475	1,697	118	200,246	1,765	108	190,620
Oklahoma	2,898	108	312,984	3,217	142	456,814	3,378	119	401,982
Texas	7,736	105	812,280	8,432	137	1,155,184	9,106	124	1,129,144
South Central	21,576	95.4	2,058,528	22,131	129	2,856,414	23,297	117	2,720,245
Montana	2,179	131	285,449	2,201	172	378,572	2,245	141	316,545
Idaho	1,334	125	166,750	1,401	161	225,561	1,415	132	186,780
Wyoming	1,140	129	147,060	1,163	171	198,873	1,175	141	165,675
Colorado	2,021	123	248,583	2,164	158	341,912	2,267	131	296,977
New Mexico	1,056	110	116,160	1,130	152	171,760	1,198	133	159,334
Arizona	922	110	101,420	949	137	130,013	1,019	125	127,375
Utah	691	121	83,611	705	156	109,980	719	136	97,784
Nevada	544	126	68,544	549	156	85,644	549	138	75,762
Washington	1,044	128	133,632	1,107	157	173,799	1,162	143	166,166
Oregon	1,327	116	153,932	1,393	149	207,557	1,421	128	181,888
California	3,633	144	523,152	3,933	167	656,811	4,121	155	638,755
West	15,891	128	2,028,293	16,695	161	2,680,482	17,291	140	2,413,041
United States	91,176	120	10,913,416	93,322	153	14,299,985	96,236	137	13,149,812

Table 9.--Cows and heifers 2 years old and over kept for milk: Number on farms, value per head and total value, by States, January 1, 1955-60

State and division	1955			1956			1957		
	Number	Value	Total	Number	Value	Total	Number	Value	Total
	: per head:	: per head:	: value :	: per head:	: per head:	: value :	: per head:	: per head:	: value :
	1,000		1,000	1,000		1,000	1,000		1,000
	: head	Dollars	dollars	head	Dollars	dollars	head	Dollars	dollars
Maine	123	132	16,236	123	145	17,835	118	140	16,520
New Hampshire	71	163	11,573	71	178	12,638	67	165	11,055
Vermont	320	154	49,280	323	168	54,264	310	160	49,600
Massachusetts	126	199	25,074	123	206	25,338	116	205	23,780
Rhode Island	19	200	3,800	19	220	4,180	18	215	3,870
Connecticut	120	204	24,480	118	221	26,078	113	210	23,730
New York	1,497	168	251,496	1,497	174	260,478	1,467	183	268,461
New Jersey	158	225	35,550	156	230	35,880	153	230	35,190
Pennsylvania	1,029	178	183,162	1,039	184	191,176	1,029	198	203,742
North Atlantic	3,463	173	600,651	3,469	181	627,867	3,391	188	635,948
Ohio	939	144	135,216	892	150	133,800	874	159	138,966
Indiana	631	133	83,923	599	146	87,454	569	157	89,333
Illinois	875	141	123,375	858	148	126,984	841	165	138,765
Michigan	907	155	140,585	889	151	134,239	853	173	147,569
Wisconsin	2,578	160	412,480	2,578	170	438,260	2,552	170	433,840
East North Central	5,930	151	895,579	5,816	158	920,737	5,689	167	948,473
Minnesota	1,527	145	221,415	1,542	150	231,300	1,542	152	234,384
Iowa	1,122	141	158,202	1,100	145	159,500	1,089	157	170,973
Missouri	955	107	102,185	898	115	103,270	853	124	105,772
North Dakota	410	154	63,140	406	139	56,434	378	143	54,054
South Dakota	332	140	46,480	332	129	42,828	325	143	46,475
Nebraska	458	146	65,868	446	141	62,886	446	151	67,346
Kansas	535	138	73,830	508	134	68,072	483	140	67,620
West North Central	5,339	137	732,120	5,232	138	724,290	5,116	146	746,624
Delaware	37	140	5,180	36	142	5,112	33	150	4,950
Maryland	256	137	35,072	246	145	35,670	244	160	39,040
Virginia	450	100	45,000	436	105	45,780	419	116	48,604
West Virginia	211	86	18,146	200	97	19,400	188	97	18,236
North Carolina	391	83	32,453	356	90	32,040	345	101	34,845
South Carolina	175	81	14,175	163	95	15,485	160	100	16,000
Georgia	346	73	25,258	308	80	24,640	296	90	26,640
Florida	187	96	17,952	191	100	19,100	199	105	20,895
South Atlantic	2,053	94.1	193,236	1,936	102	197,227	1,884	111	209,210
Kentucky	654	95	62,130	647	105	67,935	641	117	74,997
Tennessee	695	84	58,380	653	90	58,770	640	104	66,560
Alabama	409	64	26,176	380	69	26,220	346	77	26,642
Mississippi	587	66	38,742	581	74	42,994	546	83	45,318
Arkansas	405	69	27,945	377	82	30,914	351	85	29,835
Louisiana	352	90	31,680	348	96	33,408	338	102	34,476
Oklahoma	469	92	43,148	427	105	44,835	393	105	41,265
Texas	884	94	83,096	849	100	84,900	824	98	80,752
South Central	4,455	83.3	371,297	4,262	91.5	389,976	4,079	98.0	399,845
Montana	108	156	16,848	105	147	15,435	100	150	15,000
Idaho	245	158	38,710	238	138	32,844	228	153	34,884
Wyoming	46	150	6,900	44	138	6,072	41	139	5,699
Colorado	164	140	23,520	163	138	22,494	161	137	22,057
New Mexico	50	140	7,000	51	140	7,140	50	135	6,750
Arizona	49	174	8,526	50	170	8,500	52	175	9,100
Utah	108	147	15,876	109	143	15,587	110	153	16,830
Nevada	17	155	2,635	16	155	2,480	16	165	2,640
Washington	289	148	42,772	289	126	36,414	280	138	38,640
Oregon	233	121	28,193	214	111	23,754	201	117	23,517
California	909	181	164,529	918	168	154,224	927	190	176,130
West	2,222	160	355,509	2,197	148	321,944	2,166	162	351,247
United States	23,462	134	3,148,392	22,912	139	3,185,041	22,325	147	3,291,347

Table 9.--Cows and heifers 2 years old and over kept for milk: Number on farms, value per head and total value, by States, January 1, 1955-60 --Continued

State and division	1958			1959			1960		
	Number	Value	Total	Number	Value	Total	Number	Value	Total
	per head	per head	value	per head	per head	value	per head	per head	value
	1,000		1,000	1,000		1,000	1,000		1,000
	head	Dollars	dollars	head	Dollars	dollars	head	Dollars	dollars
Maine	110	172	18,920	106	224	23,744	105	222	23,310
New Hampshire	62	195	12,090	59	254	14,986	58	248	14,384
Vermont	294	197	57,918	288	236	67,968	285	242	68,970
Massachusetts	108	236	25,488	102	296	30,192	101	292	29,492
Rhode Island	17	250	4,250	17	310	5,270	16	305	4,880
Connecticut	107	245	26,215	101	306	30,906	97	300	29,100
New York	1,423	223	317,329	1,380	269	371,220	1,366	281	383,846
New Jersey	147	260	38,220	143	330	47,190	140	330	46,200
Pennsylvania	1,008	226	227,808	988	283	279,604	978	283	276,774
North Atlantic	3,276	222	728,238	3,184	274	871,080	3,146	279	876,956
Ohio	822	184	151,248	773	229	177,017	765	221	169,065
Indiana	535	177	94,695	503	219	110,157	478	209	99,902
Illinois	765	178	136,170	704	219	154,176	648	205	132,840
Michigan	785	200	157,000	722	246	177,612	715	239	170,885
Wisconsin	2,475	200	495,000	2,426	250	606,500	2,402	235	564,470
East North Central	5,382	192	1,034,113	5,128	239	1,225,462	5,008	227	1,137,162
Minnesota	1,496	187	279,752	1,421	231	328,251	1,407	210	295,470
Iowa	1,045	188	196,460	982	233	228,806	943	197	185,771
Missouri	793	148	117,364	753	185	139,305	723	167	120,741
North Dakota	348	178	61,944	324	223	72,252	305	201	61,305
South Dakota	318	181	57,558	293	225	65,925	281	196	55,076
Nebraska	412	183	75,396	377	230	86,710	356	190	67,640
Kansas	447	185	82,695	411	226	92,886	390	195	76,050
West North Central	4,859	179	871,169	4,561	222	1,014,135	4,405	196	862,053
Delaware	33	175	5,775	31	215	6,665	30	215	6,450
Maryland	239	185	44,215	232	225	52,200	230	235	54,050
Virginia	402	134	53,868	378	172	65,016	382	168	64,176
West Virginia	173	119	20,587	157	159	24,963	148	154	22,792
North Carolina	331	118	39,058	308	149	45,892	305	153	46,665
South Carolina	155	115	17,825	135	140	18,900	122	145	17,690
Georgia	284	110	31,240	267	137	36,579	240	136	32,640
Florida	207	130	26,910	209	155	32,395	213	160	34,080
South Atlantic	1,824	131	239,478	1,717	165	282,610	1,670	167	278,543
Kentucky	615	137	84,255	584	177	103,368	561	171	95,931
Tennessee	602	124	74,648	554	160	88,640	532	151	80,332
Alabama	318	94	29,892	293	131	38,383	270	128	34,560
Mississippi	508	100	50,800	457	135	61,695	425	132	56,100
Arkansas	305	104	31,720	268	145	38,860	241	135	32,535
Louisiana	321	119	38,199	289	158	45,662	277	155	42,935
Oklahoma	350	146	51,100	318	190	60,420	289	170	49,130
Texas	775	140	108,500	698	180	125,640	649	171	110,979
South Central	3,794	124	469,114	3,461	163	562,668	3,244	155	502,502
Montana	97	182	17,654	92	231	21,252	87	197	17,139
Idaho	228	195	44,460	228	240	54,720	228	199	45,372
Wyoming	38	188	7,144	36	233	8,388	35	210	7,350
Colorado	153	183	27,999	145	231	33,495	139	198	27,522
New Mexico	47	150	7,050	47	215	10,105	46	190	8,740
Arizona	52	210	10,920	53	240	12,720	53	210	11,130
Utah	109	186	20,274	108	232	25,056	108	209	22,572
Nevada	16	200	3,200	17	245	4,165	17	220	3,740
Washington	272	190	51,680	264	224	59,136	261	210	54,810
Oregon	191	132	29,032	183	191	34,953	181	172	31,132
California	927	215	199,305	908	255	231,540	899	240	215,760
West	2,130	197	418,718	2,081	238	495,530	2,054	217	445,267
United States	21,265	177	3,760,830	20,132	221	4,451,485	19,527	210	4,102,483

Table 10.--CATTLE AND CALVES: Number on farms, by classes, by States, January 1, 1955-60

State and division	1955								
	Total	Kept for milk					Other		
		Cows 2 yrs. and older	Heifers 1-2 yrs.	Heifers	Cows 2 yrs. and older	Heifers 1-2 yrs.	Calves	Steers 1 yr. and older	Bulls 1 yr. and older
head	head	head	head	head	head	head	head	head	
Maine	233	123	41	39	9	3	7	6	5
New Hampshire	118	71	20	19	2	1	2	1	2
Vermont	474	320	71	63	3	1	3	3	10
Massachusetts	108	126	26	24	2	2	2	2	4
Rhode Island	26	19	3	3	---	---	---	---	1
Connecticut	181	120	25	25	2	1	2	2	4
New York	2,311	1,497	350	327	30	6	31	32	38
New Jersey	228	158	20	25	3	2	3	5	4
Pennsylvania	1,935	1,029	277	265	85	42	57	147	33
North Atlantic	5,694	3,463	841	790	136	58	107	198	101
Ohio	2,369	939	235	230	234	99	364	230	38
Indiana	2,175	631	152	155	369	141	471	228	28
Illinois	3,911	875	250	285	641	215	913	681	51
Michigan	1,943	907	255	258	91	70	181	152	29
Wisconsin	4,341	2,578	661	662	87	56	93	139	65
East North Central	14,739	5,930	1,553	1,590	1,422	581	2,022	1,430	211
Minnesota	3,939	1,527	446	457	303	157	604	382	63
Iowa	6,161	1,122	265	276	1,018	413	1,884	1,097	86
Missouri	3,910	955	201	216	1,056	217	862	324	79
North Dakota	1,973	410	95	118	574	160	477	97	42
South Dakota	3,301	332	82	120	1,255	282	911	247	72
Nebraska	5,065	458	106	118	1,578	436	1,586	702	81
Kansas	4,341	535	117	125	1,402	322	1,376	399	65
West North Central	28,690	5,339	1,312	1,430	7,186	1,937	7,700	3,248	488
Delaware	70	37	9	9	8	1	2	2	2
Maryland	540	256	63	57	55	22	36	39	12
Virginia	1,302	450	92	101	353	83	174	103	26
West Virginia	593	211	42	38	130	38	81	44	9
North Carolina	985	391	88	87	185	73	107	33	21
South Carolina	646	175	40	43	170	66	100	32	20
Georgia	1,627	346	94	97	518	163	274	94	41
Florida	1,737	187	63	75	814	153	207	191	47
South Atlantic	7,580	4,053	491	507	2,233	599	981	538	178
Kentucky	1,773	654	117	129	341	103	287	113	29
Tennessee	1,771	695	129	138	351	115	235	76	32
Alabama	1,835	409	125	132	642	136	265	95	31
Mississippi	2,369	587	142	149	821	201	303	126	40
Arkansas	1,556	405	87	113	485	112	245	78	31
Louisiana	1,904	352	91	87	812	193	252	79	38
Oklahoma	3,277	469	105	132	1,300	239	773	200	59
Texas	8,501	884	187	221	3,944	595	1,938	502	230
South Central	22,986	4,455	983	1,301	8,696	1,694	4,298	1,269	490
Montana	2,395	108	24	34	1,106	247	721	105	50
Idaho	1,362	245	76	86	357	95	323	156	24
Wyoming	1,096	46	12	13	522	89	327	63	24
Colorado	2,054	168	43	55	752	236	524	229	47
New Mexico	1,164	50	10	12	639	101	269	61	22
Arizona	983	49	13	14	428	105	166	187	21
Utah	749	108	28	32	256	74	165	73	13
Nevada	591	17	7	8	300	61	136	49	13
Washington	1,160	289	72	85	271	86	235	99	23
Oregon	1,486	233	61	72	495	138	339	114	34
California	3,863	909	260	265	860	363	491	625	90
West	16,903	2,222	606	676	5,986	1,595	3,696	1,761	361
United States	96,592	23,462	5,786	6,094	25,659	6,514	18,804	8,444	1,829

Table 10.--CATTLE AND CALVES: Number on farms, by classes, by States, January 1, 1955-60--Continued

State and division	1956									
	Total	Kept for milk				Other				
		Cows 2 yrs. and older	Heifers 1-2 yrs.	Heifers calves	Heifer calves	Cows 2 yrs. and older	Heifers 1-2 yrs.	Calves	Steers 1 yr. and older	Bulls 1 yr. and older
head	head	head	head	head	head	head	head	head	head	
Maine	224	123	37	35	9	3	7	5	5	
New Hampshire	117	71	18	19	3	1	2	1	2	
Vermont	474	323	63	66	4	2	4	3	9	
Massachusetts	180	123	24	22	2	2	2	2	3	
Rhode Island	25	19	3	2	---	---	---	---	1	
Connecticut	174	118	23	23	2	1	2	2	3	
New York	2,265	1,497	317	315	35	6	30	29	36	
New Jersey	226	156	25	25	5	2	4	5	4	
Pennsylvania	1,896	1,039	248	256	82	38	47	155	31	
North Atlantic	5,581	3,469	758	763	142	55	98	202	94	
Ohio	2,393	892	206	227	258	108	383	283	36	
Indiana	2,218	599	139	143	365	139	508	298	27	
Illinois	3,989	858	226	282	616	229	921	808	49	
Michigan	1,885	889	231	250	96	69	163	160	27	
Wisconsin	4,341	2,578	640	655	98	66	95	145	64	
East North Central	14,826	5,816	1,442	1,557	1,433	611	2,070	1,694	203	
Minnesota	3,939	1,542	433	441	303	161	590	410	59	
Iowa	6,099	1,100	261	270	964	409	1,884	1,130	81	
Missouri	3,949	898	185	209	1,039	217	858	466	77	
North Dakota	2,072	406	89	109	620	162	519	125	42	
South Dakota	3,334	332	77	117	1,307	243	905	280	73	
Nebraska	4,759	446	99	116	1,455	383	1,458	726	76	
Kansas	4,167	508	109	118	1,286	300	1,291	492	63	
West North Central	28,319	5,232	1,253	1,380	6,974	1,375	7,505	3,629	471	
Delaware	68	36	8	8	7	1	3	3	2	
Maryland	518	246	56	58	52	18	32	44	12	
Virginia	1,382	436	88	102	343	76	185	127	25	
West Virginia	537	200	35	37	138	35	84	49	9	
North Carolina	955	356	77	85	217	65	100	35	20	
South Carolina	633	163	38	41	179	52	108	32	20	
Georgia	1,546	308	84	89	517	141	266	102	39	
Florida	1,702	191	61	72	798	138	192	202	48	
South Atlantic	7,391	1,936	447	492	2,251	526	970	594	175	
Kentucky	1,862	647	121	134	358	104	302	166	30	
Tennessee	1,753	653	118	127	379	109	254	82	31	
Alabama	1,743	380	111	115	622	111	284	91	29	
Mississippi	2,393	581	134	140	820	206	348	126	38	
Arkansas	1,572	377	87	108	501	95	278	94	32	
Louisiana	1,923	348	75	88	858	175	263	77	39	
Oklahoma	3,146	427	94	123	1,255	204	759	227	57	
Texas	8,501	849	187	213	3,879	561	2,004	595	213	
South Central	22,893	4,262	927	1,048	8,672	1,565	4,492	1,458	469	
Montana	2,443	105	24	32	1,129	261	704	137	51	
Idaho	1,389	238	70	87	350	101	330	191	22	
Wyoming	1,118	44	11	13	509	89	351	78	23	
Colorado	2,027	163	44	47	710	244	541	234	44	
New Mexico	1,222	51	10	11	671	98	296	62	23	
Arizona	1,010	50	13	15	404	102	205	200	21	
Utah	712	109	27	35	248	65	147	69	12	
Nevada	585	16	6	7	290	58	141	54	13	
Washington	1,160	289	72	81	266	85	231	113	23	
Oregon	1,427	214	58	67	495	116	318	128	31	
California	3,797	918	245	255	827	355	470	640	87	
West	16,890	2,197	580	650	5,899	1,574	3,734	1,906	350	
United States	95,900	22,912	5,407	5,890	25,371	6,206	18,869	9,483	1,762	

Table 10.--CATTLE AND CALVES: Number on farms, by classes, by States,
January 1, 1955-60--Continued

State and division	1957								
	Total	Kept for milk				Other			
		Cows 2 yrs. and older	Heifers: 1-2 yrs.	Heifer: calves	Heifer: and older	Cows 2 yrs. and older	Heifers: 1-2 yrs.	Calves	Steers 1 yr. and older
1,000 head	1,000 head	1,000 head	1,000 head	1,000 head	1,000 head	1,000 head	1,000 head	1,000 head	1,000 head
Maine	213	118	33	36	8	3	6	4	5
New Hampshire	111	67	17	18	3	1	2	1	2
Vermont	455	310	61	63	4	2	4	2	9
Massachusetts	171	116	22	22	2	2	2	2	3
Rhode Island	24	18	2	3	---	---	---	---	1
Connecticut	167	113	22	22	2	1	2	2	3
New York	2,220	1,467	306	305	39	7	31	31	34
New Jersey	221	153	24	25	4	2	4	5	4
Pennsylvania	1,896	1,029	246	254	82	38	48	169	30
North Atlantic	5,478	3,391	733	748	144	56	99	216	91
Ohio	2,345	874	204	211	261	103	373	286	33
Indiana	2,196	569	128	142	343	149	509	330	26
Illinois	4,149	841	222	252	620	242	1,021	905	46
Michigan	1,791	853	229	230	103	63	144	144	25
Wisconsin	4,298	2,552	637	652	92	59	96	150	60
East North Central	14,779	5,689	1,420	1,487	1,419	616	2,143	1,815	190
Minnesota	3,939	1,542	421	453	305	142	589	432	55
Iowa	6,099	1,089	246	259	909	384	1,997	1,135	80
Missouri	3,949	853	187	200	1,027	209	893	505	75
North Dakota	1,948	378	86	96	606	141	491	109	41
South Dakota	3,167	325	73	105	1,200	219	880	295	70
Nebraska	4,455	446	98	114	1,364	418	1,345	599	71
Kansas	3,459	483	105	114	1,060	241	1,060	339	57
West North Central	27,016	5,116	1,216	1,341	6,471	1,754	7,255	3,414	449
Delaware	63	33	8	7	6	1	3	3	2
Maryland	508	244	55	55	44	17	39	44	10
Virginia	1,368	419	87	102	343	77	203	114	23
West Virginia	569	188	34	35	138	36	75	54	9
North Carolina	926	345	79	89	206	56	96	35	20
South Carolina	620	160	36	38	181	50	107	29	19
Georgia	1,515	296	75	83	512	130	279	102	38
Florida	1,753	199	60	68	830	122	245	180	49
South Atlantic	7,322	1,884	434	477	2,260	489	1,047	561	170
Kentucky	1,936	641	124	143	384	108	310	195	31
Tennessee	1,771	640	114	133	389	110	260	85	32
Alabama	1,726	346	101	102	625	102	308	112	30
Mississippi	2,417	546	125	138	858	190	375	145	40
Arkansas	1,588	351	86	95	518	102	300	105	31
Louisiana	1,942	338	78	82	847	194	289	75	39
Oklahoma	2,957	393	90	105	1,233	198	696	186	56
Texas	7,736	824	186	209	3,675	511	1,790	340	201
South Central	22,073	4,079	904	1,007	8,529	1,515	4,336	1,243	460
Montana	2,223	100	22	29	1,078	194	649	100	51
Idaho	1,347	228	73	82	372	104	296	170	22
Wyoming	1,140	41	11	12	517	97	360	78	24
Colorado	1,971	161	38	47	695	274	515	197	44
New Mexico	1,112	50	9	11	593	100	262	63	24
Arizona	947	52	14	16	375	91	176	203	20
Utah	705	110	30	33	240	65	143	72	12
Nevada	573	16	6	7	285	52	142	52	13
Washington	1,044	280	70	75	247	72	188	90	22
Oregon	1,327	201	54	64	472	115	288	102	31
California	3,803	927	233	263	837	332	506	615	90
West	46,192	2,166	560	639	5,711	1,496	3,525	1,742	353
United States	82,860	22,325	5,267	5,699	24,534	5,926	18,405	8,991	1,713

Table 10.--CATTLE AND CALVES: Number on farms, by classes, by States,
January 1, 1955-60--Continued

State and division	1958								
	Total	Kept for milk				Other			
		Cows 2 yrs. and older	Heifers 1-2 yrs.	Heifer calves	Heifer and older	Cows 2 yrs. and older	Heifers 1-2 yrs.	Calves	Steers 1 yr. and older
1,000 head	1,000 head	1,000 head	1,000 head	1,000 head	1,000 head	1,000 head	1,000 head	1,000 head	1,000 head
Maine	200	110	33	32	8	3	6	4	4
New Hampshire	102	62	16	16	2	1	2	1	2
Vermont	432	294	57	61	4	2	4	2	8
Massachusetts	159	108	20	21	2	2	2	2	2
Rhode Island	23	17	2	3	---	---	---	---	1
Connecticut	159	107	22	20	2	1	2	2	3
New York	2,153	1,423	299	302	35	7	26	30	31
New Jersey	212	147	23	23	4	2	5	4	4
Pennsylvania	1,839	1,008	230	257	79	29	46	164	26
North Atlantic	5,279	3,276	702	735	136	47	93	209	81
Ohio	2,251	822	193	212	261	96	366	269	32
Indiana	2,064	535	126	138	333	141	473	295	23
Illinois	3,942	765	207	250	622	235	919	900	44
Michigan	1,684	785	210	234	94	66	135	138	22
Wisconsin	4,212	2,475	630	650	96	64	87	154	56
East North Central	14,153	5,382	1,366	1,484	1,406	602	1,980	1,756	177
Minnesota	3,821	1,496	432	428	285	143	590	397	50
Iowa	6,099	1,045	239	264	870	438	1,920	1,248	75
Missouri	3,752	793	180	208	971	210	845	476	69
North Dakota	1,831	348	81	87	606	110	469	92	38
South Dakota	3,199	318	67	90	1,183	227	930	314	70
Nebraska	4,533	412	100	106	1,353	413	1,408	672	69
Kansas	3,874	447	102	110	1,038	289	1,249	581	58
West North Central	27,109	4,859	1,201	1,293	6,306	1,830	7,411	3,780	429
Delaware	62	33	7	7	6	1	3	3	2
Maryland	498	239	53	56	48	18	36	38	10
Virginia	1,327	402	87	100	336	74	188	119	21
West Virginia	535	173	32	34	138	32	70	47	9
North Carolina	907	331	81	91	200	55	98	32	19
South Carolina	583	155	34	34	170	42	103	26	19
Georgia	1,485	284	74	79	503	123	282	104	36
Florida	1,771	207	58	67	813	137	245	196	48
South Atlantic	7,168	1,824	426	468	2,214	482	1,025	565	164
Kentucky	1,917	615	135	148	399	111	285	193	31
Tennessee	1,736	602	119	124	401	109	267	85	29
Alabama	1,691	318	89	97	634	96	319	110	28
Mississippi	2,296	508	124	129	849	156	381	110	39
Arkansas	1,477	305	75	81	544	94	270	77	31
Louisiana	1,825	321	74	76	836	163	268	51	36
Oklahoma	2,898	350	81	102	1,205	200	697	210	53
Texas	7,736	775	180	198	3,628	541	1,729	492	193
South Central	21,576	3,794	877	955	8,496	1,470	4,216	1,328	440
Montana	2,179	97	20	29	1,078	180	615	110	50
Idaho	1,334	228	68	82	355	108	305	167	21
Wyoming	1,140	38	10	11	514	93	370	80	24
Colorado	2,021	153	38	47	713	304	538	187	41
New Mexico	1,056	47	9	12	581	88	258	39	22
Arizona	922	52	14	16	355	93	184	189	19
Utah	691	109	29	33	240	61	141	68	10
Nevada	544	16	6	8	264	56	154	28	12
Washington	1,044	272	66	75	242	70	214	85	20
Oregon	1,327	191	53	63	475	118	280	117	30
California	3,633	927	241	260	790	301	491	544	79
West	15,891	2,130	554	636	5,607	1,472	3,550	1,614	328
United States	91,176	21,265	5,126	5,571	24,165	5,903	18,275	9,252	1,619

Table 10.--CATTLE AND CALVES: Number on farms, by classes, by States,
January 1, 1955-60--Continued

State and division	1 9 5 9								
	Total	Kept for milk				Other			
		Cows 2 yrs. and older	Heifers 1-2 yrs.	Heifer calves	Cows 2 yrs. and older	Heifers 1-2 yrs.	Calves	Steers 1 yr. and older	Bulls 1 yr. and older
head	head	head	head	head	head	head	head	head	
Maine	192	106	30	31	8	3	6	4	4
New Hampshire	98	59	15	16	2	1	2	1	2
Vermont	423	288	55	62	3	2	4	2	7
Massachusetts	151	102	19	20	2	2	2	2	2
Rhode Island	22	17	2	2	---	---	---	---	1
Connecticut	153	101	20	22	2	1	2	2	3
New York	2,110	1,380	292	307	37	10	27	28	29
New Jersey	206	143	23	24	4	2	4	3	3
Pennsylvania	1,839	988	234	252	86	33	42	173	31
North Atlantic	5,194	3,184	690	736	144	54	89	215	82
Ohio	2,228	773	187	203	266	113	368	289	29
Indiana	2,002	503	122	141	336	155	441	284	20
Illinois	3,903	704	208	230	617	253	919	930	42
Michigan	1,684	722	213	232	103	67	160	167	20
Wisconsin	4,170	2,426	630	665	106	81	95	116	51
East North Central	13,987	5,128	1,360	1,471	1,428	669	1,983	1,786	162
Minnesota	3,859	1,421	412	430	319	170	651	413	43
Iowa	6,404	982	248	268	954	490	2,041	1,349	72
Missouri	3,902	753	193	197	1,073	258	879	476	73
North Dakota	1,794	324	76	75	628	120	448	85	38
South Dakota	3,295	293	63	79	1,236	267	962	325	70
Nebraska	4,886	377	94	102	1,444	457	1,522	817	73
Kansas	4,300	411	98	112	1,100	366	1,455	698	60
West North Central	28,440	4,561	1,184	1,263	6,754	2,128	7,958	4,163	429
Delaware	57	31	7	7	5	1	2	3	1
Maryland	498	232	54	58	48	20	32	45	9
Virginia	1,340	378	88	102	343	71	211	126	21
West Virginia	524	157	32	33	142	31	73	47	9
North Carolina	889	308	84	94	204	55	90	36	18
South Carolina	542	135	30	34	161	45	94	26	17
Georgia	1,396	267	70	71	488	120	255	92	33
Florida	1,629	209	59	67	753	120	210	167	44
South Atlantic	6,875	1,717	424	466	2,144	463	967	542	152
Kentucky	1,955	584	140	148	461	137	275	179	31
Tennessee	1,736	554	113	125	431	123	278	83	29
Alabama	1,640	293	86	87	641	102	310	93	28
Mississippi	2,066	457	113	128	787	141	314	89	37
Arkansas	1,388	268	68	68	523	102	261	68	30
Louisiana	1,697	289	68	74	800	152	231	49	34
Oklahoma	3,217	318	81	98	1,279	248	852	283	58
Texas	8,432	698	172	195	3,938	683	2,038	506	202
South Central	22,131	3,461	841	923	8,860	1,688	4,559	1,390	449
Montana	2,201	92	20	26	1,089	202	621	104	47
Idaho	1,401	228	68	90	374	112	322	185	22
Wyoming	1,163	36	9	10	536	102	361	85	24
Colorado	2,164	145	38	50	741	321	562	262	45
New Mexico	1,130	47	10	12	602	104	278	54	23
Arizona	949	53	14	16	333	80	245	189	19
Utah	705	108	29	34	243	66	145	70	10
Nevada	549	17	7	8	261	56	149	39	12
Washington	1,107	264	66	82	260	70	240	105	20
Oregon	1,393	183	52	62	519	124	322	99	32
California	3,933	908	238	277	824	318	606	683	79
West	16,695	2,081	551	667	5,782	1,555	3,851	1,875	333
United States	93,322	20,132	5,050	5,526	25,112	6,557	19,407	9,931	1,607

Table 10.--CATTLE AND CALVES: Number on farms, by classes, by States,
January 1, 1955-60--Continued

State and division	1960									
	Kept for milk						Other			
	Total	Cows 2 yrs. and older	Heifers 1-2 yrs.	Heifer calves	Cows 2 yrs. and older	Heifers 1-2 yrs.	Calves	Steers 1 yr. and older	Bulls 1 yr. and older	
1,000 head	1,000 head	1,000 head	1,000 head	1,000 head	1,000 head	1,000 head	1,000 head	1,000 head	1,000 head	
Maine	194	105	31	32	8	3	7	4	4	
New Hampshire.....	98	58	15	17	2	1	2	1	2	
Vermont	427	285	59	65	3	2	4	2	7	
Massachusetts	151	101	19	20	3	2	2	2	2	
Rhode Island	21	16	2	2	---	---	---	---	1	
Connecticut	150	97	21	21	3	1	2	2	3	
New York	2,131	1,366	307	311	43	15	30	29	30	
New Jersey	200	140	22	24	4	2	3	3	2	
Pennsylvania	1,913	978	242	278	90	35	61	195	34	
North Atlantic	5,285	3,146	718	770	156	61	111	238	85	
Ohio	2,250	765	191	201	260	115	376	313	29	
Indiana	2,062	478	127	138	347	149	495	308	20	
Illinois	3,981	648	190	222	668	298	900	1,008	47	
Michigan	1,701	715	211	228	109	66	179	173	20	
Wisconsin	4,253	2,402	645	676	123	90	123	144	50	
East North Central	14,247	5,008	1,364	1,465	1,507	718	2,073	1,946	166	
Minnesota	3,975	1,407	418	437	334	195	656	479	48	
Iowa	6,660	943	255	261	993	585	2,050	1,500	73	
Missouri	3,980	723	187	202	1,135	270	918	470	75	
North Dakota	1,758	305	65	74	648	107	441	79	39	
South Dakota	3,262	281	55	83	1,250	261	973	287	72	
Nebraska	5,072	356	91	98	1,499	529	1,525	901	73	
Kansas	4,429	390	101	112	1,195	410	1,483	676	62	
West North Central	29,136	4,405	1,172	1,267	7,055	2,357	8,046	4,392	442	
Delaware	56	30	7	7	5	1	2	3	1	
Maryland	493	230	56	58	49	18	34	39	9	
Virginia	1,394	382	96	106	371	82	232	103	22	
West Virginia	540	148	30	34	152	36	85	45	10	
North Carolina	907	305	88	95	202	55	98	46	18	
South Carolina	537	122	30	35	177	40	91	24	18	
Georgia	1,424	240	62	68	508	129	280	103	34	
Florida	1,629	213	59	68	741	106	212	184	46	
South Atlantic	6,980	1,670	428	471	2,205	467	1,034	547	158	
Kentucky	2,053	561	139	146	515	144	318	197	33	
Tennessee	1,858	532	117	133	492	128	331	93	32	
Alabama	1,656	270	78	84	669	105	330	91	29	
Mississippi	2,107	425	113	130	808	142	356	95	38	
Arkansas	1,374	241	59	65	554	98	268	59	30	
Louisiana	1,765	277	66	77	804	166	284	57	34	
Oklahoma	3,378	289	79	93	1,390	265	882	320	60	
Texas	9,106	649	165	190	4,206	758	2,375	537	226	
South Central	23,297	3,244	816	918	9,438	1,806	5,144	1,449	482	
Montana	2,245	87	18	27	1,114	202	649	101	47	
Idaho	1,415	228	78	91	385	105	338	166	24	
Wyoming	1,175	35	8	10	550	102	363	82	25	
Colorado	2,267	139	41	50	761	327	592	310	47	
New Mexico	1,198	46	10	13	625	109	313	58	24	
Arizona	1,019	53	14	16	343	86	257	231	19	
Utah	719	108	31	35	252	65	154	65	9	
Nevada	549	17	7	8	264	64	144	33	12	
Washington	1,162	261	72	85	283	82	254	103	22	
Oregon	1,421	181	52	64	553	127	323	86	33	
California	4,121	899	250	285	853	358	630	765	81	
West	17,291	2,054	581	684	5,983	1,627	4,017	2,002	343	
United States	96,236	19,527	5,079	5,575	26,344	7,036	20,425	10,574	1,676	

Table 11.--HOGS AND PIGS: Number on farms, value per head and total value, by States, January 1, 1955-60

State and division	1955			1956			1957		
	Number	Value per head	Total value	Number	Value per head	Total value	Number	Value per head	Total value
	1,000 head	Dollars	1,000 dollars	1,000 head	Dollars	1,000 dollars	1,000 head	Dollars	1,000 dollars
Maine	23	25.80	593	24	21.50	516	21	23.10	485
New Hampshire	13	24.80	322	13	20.60	253	12	21.90	263
Vermont	12	24.40	293	13	18.60	242	12	21.20	254
Massachusetts	152	27.60	4,195	160	20.20	3,232	150	22.30	3,345
Rhode Island	11	27.60	304	12	20.20	242	11	22.30	245
Connecticut	23	27.40	630	26	21.10	549	24	23.20	557
New York	145	26.90	3,900	157	17.20	2,700	146	21.00	3,066
New Jersey	226	31.40	7,096	244	21.60	5,270	207	25.90	5,361
Pennsylvania	584	28.40	16,586	642	20.80	13,354	603	23.90	14,412
North Atlantic	1,139	28.50	33,919	1,291	20.40	26,373	1,186	23.60	27,988
Ohio	2,578	28.10	72,442	2,836	17.40	49,346	2,666	21.50	57,319
Indiana	4,182	29.80	124,624	4,610	18.20	83,902	4,661	23.00	107,203
Illinois	5,653	32.10	181,943	6,348	18.70	118,708	6,285	25.80	162,153
Michigan	693	30.00	20,790	783	18.80	14,720	736	24.70	18,179
Wisconsin	1,727	32.10	55,437	1,865	17.40	32,451	1,753	25.60	44,877
East North Central	14,843	30.70	455,236	16,442	18.20	299,127	16,101	24.20	389,731
Minnesota	3,531	34.70	122,526	3,637	18.40	66,921	3,201	29.10	93,149
Iowa	11,156	35.20	392,691	11,602	18.80	218,113	10,442	29.40	306,995
Missouri	3,130	28.40	88,892	3,819	16.10	61,486	3,628	23.30	84,532
North Dakota	351	37.80	13,263	421	20.10	8,432	337	31.20	10,514
South Dakota	1,437	39.10	56,187	1,494	19.50	29,133	1,195	32.20	38,479
Nebraska	2,308	36.10	83,319	2,423	17.50	42,402	1,841	28.70	52,837
Kansas	815	29.00	23,535	929	15.10	14,028	836	22.80	19,061
West North Central	22,723	34.30	780,518	24,325	18.10	440,550	21,480	28.20	605,567
Delaware	37	24.70	914	40	18.20	728	37	21.00	777
Maryland	206	24.50	5,047	220	17.00	3,740	196	19.00	3,724
Virginia	658	24.00	15,792	678	17.40	11,797	705	20.70	14,594
West Virginia	142	23.80	3,380	170	16.30	2,771	129	19.20	2,477
North Carolina	1,276	25.30	32,283	1,276	18.30	23,351	1,314	22.20	29,171
South Carolina	510	20.60	10,505	581	17.50	10,163	593	20.00	11,860
Georgia	1,472	20.70	30,470	1,663	16.30	27,107	1,730	19.30	33,389
Florida	435	22.20	9,679	427	16.60	7,088	465	18.10	8,416
South Atlantic	4,737	22.80	108,071	5,055	17.20	86,750	5,169	20.20	104,408
Kentucky	986	26.50	26,129	1,242	16.30	20,245	1,292	20.90	27,003
Tennessee	970	25.70	24,920	1,183	16.50	19,520	1,218	19.80	24,116
Alabama	547	20.20	19,129	1,061	15.40	16,339	1,029	18.70	19,242
Mississippi	531	21.40	13,503	808	14.00	11,312	840	17.20	14,448
Arkansas	426	20.70	8,818	545	13.50	7,358	518	17.10	8,858
Louisiana	388	18.70	7,256	466	15.20	7,083	494	16.50	8,151
Oklahoma	373	22.10	8,243	463	13.80	6,389	394	17.30	6,816
Texas	982	21.70	21,309	1,100	14.60	16,060	924	16.50	15,246
South Central	5,703	22.60	129,316	6,868	15.20	104,306	6,709	18.50	123,880
Montana	112	30.40	3,405	141	18.60	2,623	113	24.00	2,712
Idaho	105	28.10	2,950	120	16.20	1,944	103	22.00	2,266
Wyoming	34	26.60	904	33	16.50	544	33	21.50	710
Colorado	131	26.00	4,704	186	15.50	2,883	166	20.40	3,386
New Mexico	42	23.70	995	48	16.50	792	50	19.50	975
Arizona	24	25.40	610	26	18.10	471	27	21.60	583
Utah	56	27.40	1,534	61	16.20	988	65	20.70	1,346
Nevada	17	30.40	517	19	16.50	314	15	22.50	338
Washington	110	29.50	3,245	130	15.80	2,054	110	23.70	2,607
Oregon	127	27.90	3,543	157	17.60	2,763	135	23.20	3,132
California	461	27.80	12,816	452	19.10	8,633	435	23.60	10,266
West	1,269	27.80	35,225	1,373	17.50	24,009	1,252	22.60	28,321
United States	50,474	30.60	1,542,285	55,354	17.70	981,115	51,897	24.70	1,279,895

Table 11.--HOGS AND PIGS: Number on farms, value per head and total value, by States, January 1, 1955-60--Continued

State and division	1958			1959			1960		
	Number	Value	Total	Number	Value	Total	Number	Value	Total
	: per head:	: value:	: value:	: per head:	: value:	: value:	: per head:	: value:	: value:
	1,000 head	Dollars	1,000 dollars	1,000 head	Dollars	1,000 dollars	1,000 head	Dollars	1,000 dollars
Maine	19	24.40	464	20	25.50	510	22	22.60	497
New Hampshire	12	23.80	286	13	25.30	329	13	23.00	299
Vermont	11	24.10	265	11	24.80	273	11	24.10	265
Massachusetts	142	23.40	3,323	146	26.50	3,869	135	23.10	3,118
Rhode Island	11	23.80	262	11	26.70	294	10	22.60	226
Connecticut	21	24.30	510	21	26.20	550	21	24.90	523
New York	126	24.50	3,087	129	27.20	3,509	133	22.80	3,032
New Jersey	192	26.70	5,126	177	33.90	6,000	172	24.00	4,128
Pennsylvania	513	27.40	14,056	503	32.90	16,549	558	22.10	12,332
North Atlantic	1,047	26.10	27,379	1,031	30.90	31,883	1,075	22.70	24,420
Ohio	2,479	26.00	64,454	2,603	27.50	71,582	2,707	18.70	50,621
Indiana	4,469	29.30	130,942	5,050	31.30	158,065	4,949	18.00	89,082
Illinois	6,474	31.00	200,694	7,251	32.90	238,558	7,469	18.80	140,417
Michigan	692	29.60	20,483	789	30.90	24,380	797	20.50	16,338
Wisconsin	1,723	32.60	58,289	2,003	34.80	69,704	1,963	20.50	40,242
East North Central	15,902	29.90	474,862	17,696	31.80	562,289	17,885	18.80	336,700
Minnesota	3,233	34.50	111,538	3,783	35.00	132,405	3,594	19.80	71,161
Iowa	11,069	35.40	391,843	12,951	36.20	468,826	12,951	20.00	259,020
Missouri	3,374	29.20	98,521	3,813	31.00	118,203	4,232	16.50	69,828
North Dakota	340	37.30	12,682	384	37.40	14,362	288	21.00	6,048
South Dakota	1,255	38.30	48,066	1,619	37.00	59,903	1,328	20.70	27,490
Nebraska	2,080	34.60	71,968	2,579	35.50	91,554	2,502	19.20	48,038
Kansas	886	28.90	25,605	1,143	29.80	34,061	1,177	17.30	20,362
West North Central	22,237	34.20	760,223	26,272	35.00	919,314	26,072	19.30	501,947
Delaware	34	24.20	823	33	28.00	924	35	19.20	672
Maryland	192	24.20	4,646	190	28.20	5,358	186	19.20	3,571
Virginia	677	23.30	15,774	650	25.80	16,770	689	18.00	12,402
West Virginia	98	22.50	2,205	101	25.60	2,586	109	19.00	2,071
North Carolina	1,406	24.80	34,869	1,476	28.20	41,623	1,520	18.00	27,360
South Carolina	534	22.60	12,068	555	27.30	15,152	594	16.60	9,860
Georgia	1,678	23.50	39,433	1,728	25.90	44,755	1,780	16.30	29,014
Florida	381	22.40	8,534	427	23.30	9,949	401	16.70	6,697
South Atlantic	5,000	23.70	118,352	5,160	26.60	137,117	5,314	17.20	91,647
Kentucky	1,253	25.10	31,450	1,316	27.80	36,585	1,474	16.90	24,911
Tennessee	1,206	24.90	30,029	1,242	28.10	34,900	1,453	16.20	23,539
Alabama	988	21.20	20,946	978	24.80	24,254	1,144	14.70	16,817
Mississippi	714	21.50	15,351	685	25.30	17,330	775	14.20	11,005
Arkansas	404	22.10	8,928	416	24.00	9,984	478	13.60	6,501
Louisiana	356	20.90	7,440	324	24.30	7,873	340	15.40	5,236
Oklahoma	347	23.70	8,224	444	25.50	11,322	475	13.70	6,508
Texas	832	25.30	21,050	1,115	24.00	26,760	1,115	14.90	16,614
South Central	6,100	23.50	143,418	6,520	25.90	169,008	7,254	15.30	111,131
Montana	113	28.90	3,266	147	31.10	4,572	151	18.80	2,839
Idaho	103	28.20	2,905	130	29.10	3,783	150	18.10	2,715
Wyoming	31	28.90	896	38	28.30	1,075	35	17.30	606
Colorado	159	27.00	4,293	192	29.80	5,722	219	16.30	3,570
New Mexico	50	24.40	1,220	55	25.50	1,402	56	17.40	974
Arizona	28	27.20	762	29	28.70	832	32	18.30	586
Utah	70	25.70	1,799	64	29.70	1,901	68	16.20	1,102
Nevada	10	28.00	280	11	27.50	302	10	18.80	188
Washington	116	28.40	3,294	140	28.90	4,046	144	19.20	2,765
Oregon	135	24.20	3,267	177	24.90	4,407	184	16.80	3,091
California	416	29.20	12,147	383	29.10	11,145	377	20.20	7,615
West	1,231	27.70	34,129	1,366	28.70	39,187	1,426	18.30	26,051
United States	51,517	30.20	1,558,363	58,045	32.00	1,858,798	59,026	18.50	1,091,896

Table 12.--HOGS AND PIGS: Number on farms, by classes, by States, January 1, 1955-60

State and division	1955				1956			
	Total	Under 6 months and older			Total	Under 6 months and older		
	1,000 head	1,000 head	Sows & gilts	Other	1,000 head	1,000 head	Sows & gilts	Other
Maine	23	13	4	6	24	13	4	7
New Hampshire	13	8	2	3	13	8	2	3
Vermont	12	7	2	3	13	8	2	3
Massachusetts	152	79	17	56	160	77	16	67
Rhode Island	11	6	1	4	12	7	1	4
Connecticut	23	13	3	7	26	15	3	8
New York	145	97	23	25	157	103	24	30
New Jersey	226	110	21	95	244	117	20	107
Pennsylvania	584	385	86	113	642	425	88	129
North Atlantic	1,189	718	159	312	1,291	773	160	358
Ohio	2,578	1,985	412	181	2,836	2,210	420	206
Indiana	4,182	3,136	620	426	4,610	3,410	670	530
Illinois	5,668	3,571	1,037	1,060	6,348	4,190	1,022	1,136
Michigan	693	485	122	86	783	543	116	124
Wisconsin	1,727	1,053	395	279	1,865	1,220	328	317
East North Central	14,848	10,230	2,586	2,032	16,442	11,573	2,556	2,313
Minnesota	3,531	1,770	704	1,057	3,637	2,000	611	1,026
Iowa	11,156	5,680	2,123	3,353	11,602	6,255	1,889	3,458
Missouri	3,130	2,100	530	500	3,819	2,635	554	630
North Dakota	351	64	114	173	421	75	95	251
South Dakota	1,437	390	385	662	1,494	421	300	773
Nebraska	2,308	992	535	781	2,423	1,130	388	905
Kansas	815	522	147	146	929	619	143	167
West North Central	22,728	11,518	4,538	6,672	24,325	13,135	3,980	7,210
Delaware	37	24	5	8	40	25	5	10
Maryland	206	144	32	30	220	153	30	37
Virginia	658	432	90	136	678	445	88	145
West Virginia	142	94	21	27	170	120	20	30
North Carolina	1,276	791	188	297	1,276	750	190	336
South Carolina	510	322	68	120	581	350	72	159
Georgia	1,472	971	223	278	1,663	1,069	236	358
Florida	436	250	76	110	427	253	75	99
South Atlantic	4,737	3,028	703	1,006	5,055	3,165	716	1,174
Kentucky	986	670	150	166	1,242	847	166	229
Tennessee	970	633	157	180	1,183	800	175	208
Alabama	947	634	135	178	1,061	711	130	220
Mississippi	631	337	90	204	808	421	98	289
Arkansas	426	250	70	106	545	345	75	125
Louisiana	388	233	70	85	466	280	64	122
Oklahoma	373	266	70	37	463	340	68	55
Texas	982	648	140	194	1,100	735	140	225
South Central	5,703	3,671	882	1,150	6,868	4,479	916	1,473
Montana	112	65	23	24	141	80	20	41
Idaho	105	71	16	18	120	82	16	22
Wyoming	34	16	5	13	33	17	5	11
Colorado	181	103	25	53	186	110	25	51
New Mexico	42	26	6	10	48	32	7	9
Arizona	24	13	3	8	26	14	3	9
Utah	56	34	8	14	61	38	7	16
Nevada	17	8	2	7	19	11	2	6
Washington	110	79	18	13	130	95	17	18
Oregon	127	88	22	17	157	111	20	26
California	461	238	67	156	452	245	56	151
West	1,269	741	195	333	1,373	835	178	360
United States	50,474	29,906	9,063	11,505	55,354	33,960	8,506	12,888

Table 12.--HOGS AND PIGS: Number on farms, by classes, by States, January 1, 1955-60--Continued

State and division	1 9 5 7				1 9 5 8			
	Total	Under : 6 months	: 6 months & older		Total	Under : 6 months	: 6 months & older	
	head	Sows & gilts	head	head	head	Sows & gilts	head	head
Maine	21	12	3	6	19	11	3	5
New Hampshire	12	7	2	3	12	7	2	3
Vermont	12	7	2	3	11	6	2	3
Massachusetts	150	68	14	68	142	70	14	58
Rhode Island	11	6	1	4	11	6	1	4
Connecticut	24	13	3	8	21	12	2	7
New York	146	98	21	27	126	85	19	22
New Jersey	207	100	19	88	192	100	19	73
Pennsylvania	603	402	75	126	513	346	66	101
North Atlantic	1,186	713	140	333	1,047	643	128	276
Ohio	2,666	2,088	385	193	2,479	1,942	360	177
Indiana	4,661	3,528	635	498	4,469	3,277	610	582
Illinois	6,285	4,292	1,002	991	6,474	4,378	1,012	1,084
Michigan	736	514	105	117	692	493	95	104
Wisconsin	1,753	1,105	325	323	1,788	1,122	331	335
East North Central	16,101	11,527	2,452	2,122	15,902	11,212	2,408	2,282
Minnesota	3,201	1,750	599	852	3,233	1,800	618	815
Iowa	10,442	5,952	1,765	2,725	11,069	6,485	1,805	2,779
Missouri	3,628	2,557	530	541	3,374	2,396	536	442
North Dakota	337	75	92	170	340	80	98	162
South Dakota	1,195	370	285	540	1,255	427	318	510
Nebraska	1,841	940	355	546	2,080	1,144	405	531
Kansas	836	565	130	141	886	590	140	156
West North Central	21,480	12,209	3,756	5,515	22,237	12,922	3,920	5,395
Delaware	37	24	5	8	34	24	4	6
Maryland	196	143	25	28	192	137	23	32
Virginia	705	467	85	153	677	466	82	129
West Virginia	129	80	20	29	98	59	15	24
North Carolina	1,314	802	198	314	1,406	914	200	292
South Carolina	593	362	73	158	534	318	70	146
Georgia	1,730	1,110	225	395	1,678	1,090	230	358
Florida	465	270	68	127	381	232	57	92
South Atlantic	5,169	3,258	699	1,212	5,000	3,240	681	1,079
Kentucky	1,292	889	171	232	1,253	902	168	183
Tennessee	1,218	855	174	189	1,206	823	166	217
Alabama	1,029	680	120	229	988	650	118	220
Mississippi	840	414	100	326	714	361	83	270
Arkansas	518	324	67	127	404	256	55	93
Louisiana	494	278	55	161	356	185	36	135
Oklahoma	394	280	53	61	347	253	53	41
Texas	924	592	112	220	832	546	118	168
South Central	6,709	4,312	852	1,545	6,100	3,976	797	1,327
Montana	113	67	18	28	113	66	20	27
Idaho	103	68	15	20	103	66	16	21
Wyoming	33	18	4	11	31	17	4	10
Colorado	166	98	22	46	159	98	23	38
New Mexico	50	33	7	10	50	32	6	12
Arizona	27	15	3	9	28	16	3	9
Utah	65	42	8	15	70	47	8	15
Nevada	15	8	3	4	10	6	2	2
Washington	110	79	16	15	116	86	16	14
Oregon	135	92	19	24	135	98	19	18
California	435	215	50	170	416	207	52	157
West	1,252	735	165	352	1,231	739	169	323
United States	51,897	32,754	8,064	11,079	51,517	32,732	8,103	10,682

Table 12.--HOGS AND PIGS: Number on farms, by classes, by States, January 1, 1955-60--Continued

State and division	1959				1960			
	Total	Under 6 months	6 months & older		Total	Under 6 months	6 months & older	
	1,000 head	1,000 head	1,000 head	1,000 head	1,000 head	1,000 head	1,000 head	1,000 head
			Sows & gilts	Other			Sows & gilts	Other
Maine	20	12	3	5	22	14	3	5
New Hampshire	13	8	2	3	13	8	2	3
Vermont	11	7	2	2	11	7	2	2
Massachusetts	146	72	13	61	135	66	13	56
Rhode Island	11	6	1	4	10	6	1	3
Connecticut	21	13	2	6	21	11	2	8
New York	129	90	19	20	133	90	20	23
New Jersey	177	92	16	69	172	88	14	70
Pennsylvania	503	352	65	86	558	383	68	107
North Atlantic	1,031	652	123	256	1,075	673	125	277
Ohio	2,603	2,039	385	179	2,707	2,101	353	253
Indiana	5,090	3,757	640	653	4,949	3,723	590	636
Illinois	7,251	5,020	1,093	1,138	7,469	5,120	975	1,374
Michigan	789	600	108	81	797	606	93	98
Wisconsin	2,003	1,350	353	300	1,963	1,347	305	311
East North Central	17,696	12,766	2,579	2,351	17,885	12,897	2,316	2,672
Minnesota	3,783	2,425	660	698	3,594	2,316	530	748
Iowa	12,951	7,690	1,960	3,301	12,951	7,486	1,668	3,797
Missouri	3,813	2,785	570	458	4,232	3,043	483	706
North Dakota	384	128	104	152	288	106	63	119
South Dakota	1,619	685	350	584	1,328	573	235	520
Nebraska	2,579	1,519	455	605	2,502	1,457	341	704
Kansas	1,143	780	165	198	1,177	807	142	228
West North Central	26,272	16,012	4,264	5,996	26,072	15,788	3,462	6,822
Delaware	33	23	4	6	35	24	4	7
Maryland	190	133	24	33	186	128	22	36
Virginia	650	464	84	102	689	497	78	114
West Virginia	101	68	13	20	109	77	14	18
North Carolina	1,476	980	232	264	1,520	990	198	332
South Carolina	555	350	82	123	594	384	68	142
Georgia	1,728	1,175	250	303	1,780	1,190	207	383
Florida	427	264	58	105	401	255	45	101
South Atlantic	5,160	3,457	747	956	5,314	3,545	636	1,133
Kentucky	1,316	965	188	163	1,474	1,076	179	219
Tennessee	1,242	860	198	184	1,453	1,026	182	245
Alabama	978	675	121	182	1,144	759	127	258
Mississippi	685	390	92	203	775	435	75	265
Arkansas	416	279	61	76	478	315	55	108
Louisiana	324	183	40	101	340	190	34	116
Oklahoma	444	333	63	48	475	350	50	75
Texas	1,115	784	154	177	1,115	755	125	235
South Central	6,520	4,469	917	1,134	7,254	4,906	827	1,521
Montana	147	91	22	34	151	93	17	41
Idaho	130	92	20	18	150	110	16	24
Wyoming	38	24	5	9	35	20	4	11
Colorado	192	120	29	43	219	146	23	50
New Mexico	55	37	7	11	56	36	7	13
Arizona	29	17	3	9	32	19	3	10
Utah	64	42	8	14	68	47	8	13
Nevada	11	7	2	2	10	6	2	2
Washington	140	105	18	17	144	112	15	17
Oregon	177	136	24	17	184	142	18	24
California	383	209	51	123	377	207	52	118
West	1,366	880	189	297	1,426	938	165	323
United States	58,045	38,236	8,819	10,990	59,026	38,747	7,531	12,748

Table 13.--ALL SHEEP AND LAMBS: Number on farms and total value, by States,
January 1, 1955-60

State and division	1955		1956		1957	
	Number	Total value	Number	Total value	Number	Total value
	1,000 head	1,000 dollars	1,000 head	1,000 dollars	1,000 head	1,000 dollars
Maine	32	426	33	426	34	476
New Hampshire	10	149	10	137	10	145
Vermont	12	158	13	166	12	163
Massachusetts	13	185	13	176	13	195
Rhode Island	2	28	2	28	2	30
Connecticut	9	136	9	140	9	148
New York	174	2,707	174	2,764	183	2,961
New Jersey	17	284	16	275	16	250
Pennsylvania	251	3,414	259	3,496	256	3,482
North Atlantic	520	7,487	529	7,608	535	7,850
Ohio	1,257	18,123	1,247	17,562	1,241	18,410
Indiana	519	7,685	541	7,478	547	8,070
Illinois	717	10,249	708	9,888	730	11,366
Michigan	424	6,507	405	6,011	404	6,307
Wisconsin	286	4,307	276	3,689	273	3,626
East North Central	3,203	46,871	3,181	44,628	3,195	47,779
Minnesota	975	13,575	938	12,772	942	13,773
Iowa	1,326	19,977	1,277	17,265	1,390	20,288
Missouri	811	10,945	861	11,605	924	13,593
North Dakota	559	8,114	644	8,459	661	9,381
South Dakota	1,288	21,473	1,329	19,380	1,417	23,370
Nebraska	849	13,219	695	9,391	780	11,318
Kansas	634	8,957	583	7,325	594	7,650
West North Central	6,442	96,260	6,327	86,197	6,708	99,373
Delaware	4	54	4	53	4	54
Maryland	45	621	47	724	47	724
Virginia	327	5,690	337	5,864	330	6,006
West Virginia	311	4,416	314	4,741	301	4,605
North Carolina	51	826	51	821	52	874
South Carolina	5	66	8	124	11	179
Georgia	21	256	37	518	50	755
Florida	4	36	5	45	7	70
South Atlantic	768	11,965	803	12,890	802	13,267
Kentucky	581	10,574	604	10,872	622	11,942
Tennessee	286	4,376	289	4,364	303	4,878
Alabama	55	764	110	1,442	85	1,225
Mississippi	91	1,192	95	1,054	97	1,271
Arkansas	55	632	67	824	69	787
Louisiana	115	1,012	113	1,006	108	961
Oklahoma	229	2,969	264	3,310	245	3,063
Texas	5,659	57,125	5,376	58,337	4,749	46,769
South Central	7,071	78,644	6,918	81,209	6,278	70,896
Montana	1,756	30,023	1,773	28,344	1,650	28,250
Idaho	1,125	19,640	1,094	16,909	1,119	18,623
Wyoming	2,036	34,860	2,071	33,394	2,095	35,896
Colorado	1,783	28,234	1,726	25,282	1,766	27,648
New Mexico	1,278	16,794	1,208	15,860	1,121	15,891
Arizona	477	7,355	476	6,729	472	6,725
Utah	1,481	26,877	1,458	25,019	1,395	24,272
Nevada	468	8,539	424	6,935	394	6,925
Washington	315	5,266	297	4,725	275	4,675
Oregon	847	14,703	852	13,109	865	14,172
California	2,012	37,972	2,020	35,040	1,984	36,339
West	13,578	230,263	13,399	211,346	13,136	219,416
United States	31,582	471,490	31,157	443,878	30,654	458,581

Table 13.--ALL SHEEP AND LAMBS: Number on farms and total value, by States,
January 1, 1955-60--Continued

State and division	1958		1959		1960	
	Number	Total value	Number	Total value	Number	Total value
	1,000 head	1,000 dollars	1,000 head	1,000 dollars	1,000 head	1,000 dollars
Maine	35	500	35	518	36	522
New Hampshire	9	139	8	130	8	129
Vermont	12	174	12	181	12	187
Massachusetts	12	194	12	198	12	194
Rhode Island	2	32	2	34	2	34
Connecticut	8	140	7	130	7	124
New York	179	3,059	179	3,090	173	2,708
New Jersey	15	249	16	298	16	277
Pennsylvania	251	3,840	248	4,266	250	3,800
North Atlantic	523	8,327	519	8,845	516	7,975
Ohio	1,247	20,893	1,194	21,174	1,163	17,630
Indiana	552	9,477	525	9,017	515	7,460
Illinois	740	12,300	751	12,482	722	10,491
Michigan	399	7,058	415	7,635	407	6,608
Wisconsin	279	4,740	277	4,900	266	4,009
East North Central	3,217	54,468	3,162	55,208	3,073	46,198
Minnesota	924	15,922	956	18,107	999	15,216
Iowa	1,554	28,295	1,632	31,527	1,663	25,288
Missouri	860	14,769	851	14,467	803	10,641
North Dakota	696	12,235	709	13,487	692	10,776
South Dakota	1,604	32,095	1,732	35,714	1,756	29,769
Nebraska	759	13,785	813	15,634	836	12,653
Kansas	700	11,757	864	15,317	756	11,488
West North Central	7,097	128,858	7,557	144,253	7,505	115,831
Delaware	5	81	5	90	5	76
Maryland	46	805	39	749	38	623
Virginia	333	6,494	333	6,727	326	5,738
West Virginia	295	4,808	289	5,289	283	4,358
North Carolina	53	996	55	1,034	55	896
South Carolina	14	228	13	198	11	168
Georgia	44	801	36	569	27	413
Florida	8	96	8	112	8	98
South Atlantic	798	14,309	778	14,768	753	12,370
Kentucky	634	12,743	596	12,039	566	9,735
Tennessee	306	5,569	278	5,338	245	3,944
Alabama	53	908	39	682	36	544
Mississippi	98	1,607	84	1,277	74	910
Arkansas	64	909	55	742	48	672
Louisiana	105	1,218	98	1,166	93	967
Oklahoma	248	3,761	281	4,459	274	3,629
Texas	4,891	85,306	5,364	93,508	5,938	85,801
South Central	6,399	112,021	6,795	119,211	7,274	106,202
Montana	1,722	37,370	1,840	42,415	1,872	33,663
Idaho	1,109	23,906	1,170	27,330	1,153	21,208
Wyoming	2,194	50,263	2,276	54,219	2,360	43,042
Colorado	1,769	38,794	1,919	44,149	1,989	36,519
New Mexico	1,147	23,119	1,215	25,357	1,185	20,312
Arizona	443	7,270	462	9,269	488	8,932
Utah	1,354	28,817	1,382	32,144	1,336	24,461
Nevada	379	8,072	372	8,738	347	6,134
Washington	285	6,193	306	7,061	330	6,176
Oregon	890	18,689	935	19,845	916	16,608
California	1,891	39,969	1,918	42,040	2,073	40,053
West	13,183	282,462	13,795	312,567	14,049	257,108
United States	31,217	600,445	32,606	654,852	33,170	545,684

Table 14--STOCK SHEEP AND LAMBS: Number on farms, value per head, and total value, by States, January 1, 1955-60

State and division	1955			1956			1957		
	Number	Value	Total	Number	Value	Total	Number	Value	Total
	per head:	per head:	value	per head:	per head:	value	per head:	per head:	value
	1,000	Dollars	1,000	1,000	Dollars	1,000	1,000	Dollars	1,000
	head	dollars	dollars	head	dollars	dollars	head	dollars	dollars
Maine	32	13.30	426	33	12.90	426	34	14.00	476
New Hampshire	10	14.90	149	16	13.70	137	10	14.50	145
Vermont	12	13.20	158	13	12.80	166	12	13.60	163
Massachusetts	13	14.20	185	13	13.50	176	13	15.00	195
Rhode Island	2	14.00	28	2	14.00	28	2	15.00	30
Connecticut	9	15.10	136	9	15.50	140	9	16.40	148
New York	154	15.50	2,387	154	16.00	2,464	163	16.20	2,641
New Jersey	17	16.70	284	16	17.20	275	16	15.60	250
Pennsylvania	251	13.60	3,424	259	13.50	3,496	256	13.60	3,482
North Atlantic	500	14.30	7,167	509	14.40	7,308	515	14.60	7,530
Ohio	1,046	14.30	14,958	1,036	14.10	14,608	1,036	15.00	15,540
Indiana	442	14.60	6,453	455	13.60	6,188	455	14.50	6,598
Illinois	556	13.80	7,673	523	13.60	7,113	523	15.40	8,054
Michigan	334	14.90	4,977	311	14.60	4,541	314	15.50	4,867
Wisconsin	224	14.80	3,315	215	12.90	2,774	213	12.80	2,726
East North Central	2,602	14.40	37,376	2,540	13.90	35,224	2,541	14.90	37,785
Minnesota	750	13.30	9,975	720	13.50	9,720	713	14.50	10,338
Iowa	885	14.60	12,921	876	13.30	11,651	937	14.40	13,493
Missouri	681	13.40	9,125	749	13.40	10,037	794	14.50	11,513
North Dakota	479	14.10	6,754	522	12.70	6,629	543	13.80	7,493
South Dakota	1,058	16.60	17,563	1,111	14.50	16,110	1,199	16.40	19,664
Nebraska	261	14.60	3,811	242	12.60	3,049	273	13.60	3,713
Kansas	395	13.60	5,372	423	12.40	5,245	444	12.50	5,550
West North Central	4,509	14.50	65,521	4,643	13.40	62,441	4,903	14.60	71,764
Delaware	4	13.50	54	4	13.30	53	4	13.50	54
Maryland	45	13.80	621	47	15.40	724	47	15.40	724
Virginia	327	17.40	5,690	337	17.40	5,864	330	18.20	6,006
West Virginia	311	14.20	4,416	314	15.10	4,741	301	15.30	4,605
North Carolina	51	16.20	826	51	16.10	821	52	16.80	874
South Carolina	5	13.20	66	8	15.50	124	11	16.30	179
Georgia	21	12.20	256	37	14.00	518	50	15.10	755
Florida	4	9.00	36	5	9.00	45	7	10.00	70
South Atlantic	768	15.60	11,965	803	16.10	12,890	802	16.50	13,267
Kentucky	581	18.20	10,574	604	18.00	10,872	622	19.20	11,942
Tennessee	286	15.30	4,376	289	15.10	4,364	303	16.10	4,878
Alabama	55	13.90	764	68	13.80	938	62	15.30	949
Mississippi	91	13.10	1,192	95	11.10	1,054	97	13.10	1,271
Arkansas	55	11.50	632	67	12.30	824	69	11.40	787
Louisiana	115	8.80	1,012	113	8.90	1,006	108	8.90	961
Oklahoma	169	12.60	2,129	203	12.40	2,517	203	12.40	2,517
Texas	5,354	10.10	54,075	5,086	10.90	55,437	4,476	9.90	44,312
South Central	6,706	11.10	74,754	6,525	11.80	77,012	5,940	11.40	67,617
Montana	1,606	17.20	27,623	1,590	16.10	25,599	1,542	17.20	26,522
Idaho	1,030	17.50	18,025	999	15.50	15,484	999	16.60	16,583
Wyoming	1,903	17.20	32,732	1,941	16.20	31,444	1,980	17.20	34,056
Colorado	1,241	16.20	20,104	1,216	14.50	17,632	1,216	15.50	18,848
New Mexico	1,215	13.20	16,038	1,137	13.20	15,008	1,098	14.20	15,592
Arizona	412	15.80	6,510	416	14.30	5,949	421	14.40	6,062
Utah	1,383	18.30	25,309	1,369	17.30	23,684	1,301	17.50	22,768
Nevada	457	18.30	8,363	411	16.40	6,740	378	17.60	6,653
Washington	283	16.80	4,754	269	15.90	4,277	250	17.00	4,250
Oregon	822	17.40	14,303	822	15.40	12,659	830	16.40	13,612
California	1,700	19.40	32,980	1,700	17.60	29,920	1,632	18.60	30,355
West	12,052	17.20	206,741	11,870	15.90	188,396	11,647	16.80	195,301
United States	27,137	14.90	403,524	26,890	14.30	383,271	26,348	14.90	393,264

Table 14.--STOCK SHEEP AND LAMBS: Number on farms, value per head, and total value, by States, January 1, 1955-60--Continued

State and division	1958			1959			1960		
	Number	Value	Total	Number	Value	Total	Number	Value	Total
	: per head:	: per head:	: value:	: per head:	: per head:	: value:	: per head:	: per head:	: value:
	1,000		1,000	1,000		1,000	1,000		1,000
	: head	Dollars	dollars	head	Dollars	dollars	head	Dollars	dollars
Maine	35	14.30	500	35	14.80	518	36	14.50	522
New Hampshire	9	15.40	139	8	16.20	130	8	16.10	129
Vermont	12	14.50	174	12	15.10	181	12	15.60	187
Massachusetts	12	16.20	194	12	16.50	198	12	16.20	194
Rhode Island	2	16.00	32	2	17.00	34	2	17.00	34
Connecticut	8	17.50	140	7	18.60	130	7	17.70	124
New York	158	17.10	2,702	156	17.30	2,699	150	15.60	2,340
New Jersey	15	16.60	249	16	18.60	298	16	17.30	277
Pennsylvania	251	15.30	3,840	248	17.20	4,266	250	15.20	3,800
North Atlantic	502	15.90	7,970	496	17.00	8,454	493	15.40	7,607
Ohio	1,046	16.90	17,677	973	17.90	17,417	924	15.20	14,045
Indiana	464	17.20	7,981	459	17.20	7,895	441	14.40	6,350
Illinois	560	16.50	9,240	571	16.50	9,422	565	14.40	8,136
Michigan	311	17.60	5,474	330	18.50	6,105	320	16.30	5,216
Wisconsin	217	16.70	3,624	215	17.60	3,784	206	14.80	3,049
East North Central	2,598	16.90	43,996	2,548	17.50	44,623	2,456	15.00	36,796
Minnesota	713	17.30	12,335	749	19.20	14,381	771	15.30	11,796
Iowa	1,078	18.30	19,727	1,132	19.90	22,527	1,143	15.30	17,488
Missouri	746	17.20	12,831	709	17.20	12,195	674	13.30	8,964
North Dakota	586	17.50	10,255	604	19.20	11,597	592	15.50	9,176
South Dakota	1,349	20.20	27,250	1,477	20.90	30,869	1,521	17.10	26,009
Nebraska	308	18.40	5,667	357	20.80	7,426	375	15.30	5,738
Kansas	475	16.70	7,932	484	18.30	8,857	494	15.30	7,558
West North Central	5,255	18.30	95,997	5,512	19.60	107,852	5,570	15.60	86,729
Delaware	5	16.20	81	5	18.00	90	5	15.30	76
Maryland	46	17.50	805	39	19.20	749	38	16.40	623
Virginia	333	19.50	6,494	333	20.20	6,727	326	17.60	5,738
West Virginia	295	16.30	4,808	289	18.30	5,289	283	15.40	4,358
North Carolina	53	18.80	996	55	18.80	1,034	55	16.30	896
South Carolina	14	16.30	228	13	15.20	198	11	15.30	168
Georgia	44	18.20	801	36	15.80	569	27	15.30	413
Florida	8	12.00	96	8	14.00	112	8	12.20	98
South Atlantic	798	17.90	14,309	778	19.00	14,768	753	16.40	12,370
Kentucky	634	20.10	12,743	596	20.20	12,039	566	17.20	9,735
Tennessee	306	18.20	5,569	278	19.20	5,338	245	16.10	3,944
Alabama	47	17.40	818	39	17.50	682	36	15.10	544
Mississippi	98	16.40	1,607	84	15.20	1,277	74	12.30	910
Arkansas	64	14.20	909	55	13.50	742	48	14.00	672
Louisiana	105	11.60	1,218	98	11.90	1,166	93	10.40	967
Oklahoma	207	15.20	3,146	222	16.10	3,574	222	13.30	2,953
Texas	4,700	17.50	82,250	5,123	17.50	89,652	5,738	14.50	83,201
South Central	6,161	17.60	108,260	6,495	17.60	114,470	7,022	14.70	102,926
Montana	1,604	21.90	35,128	1,716	23.20	39,811	1,767	18.10	31,983
Idaho	1,029	21.60	22,226	1,060	23.50	24,910	1,071	18.50	19,814
Wyoming	2,059	23.10	47,563	2,141	24.00	51,384	2,248	18.30	41,138
Colorado	1,265	22.30	28,210	1,379	23.40	32,269	1,434	18.50	26,529
New Mexico	1,105	20.20	22,321	1,136	21.00	23,856	1,127	17.20	19,384
Arizona	417	16.50	6,880	433	20.20	8,747	454	18.40	8,354
Utah	1,288	21.40	27,563	1,301	23.40	30,443	1,249	18.40	22,982
Nevada	363	21.40	7,768	356	23.60	8,402	335	17.70	5,930
Washington	260	21.80	5,668	276	23.30	6,431	295	18.80	5,546
Oregon	847	21.10	17,872	881	21.30	18,765	863	18.20	15,707
California	1,616	21.50	34,744	1,600	22.30	35,680	1,712	19.60	33,555
West	11,853	21.60	255,943	12,279	22.90	280,698	12,555	18.40	230,922
United States	27,167	19.40	526,475	28,108	20.30	570,865	28,849	16.50	477,350

Table 15.--SHEEP AND LAMBS: Number on farms, by classes, January 1, 1955-60

State and division	1 9 5 5							
	All sheep	On feed	Total	Stock Sheep				
				Lambs		One year and over		
				Ewe	Wether & Ram	Ewes	Rams	
head	head	head	head	head	head	head	head	
Maine	32	---	32	7	1	23	1	---
New Hampshire	10	---	10	3	---	6	1	---
Vermont	12	---	12	2	---	9	1	---
Massachusetts	13	---	13	2	1	9	1	---
Rhode Island	2	---	2	---	---	2	---	---
Connecticut	9	---	9	1	1	7	---	---
New York	174	20	154	31	3	114	5	1
New Jersey	17	---	17	3	1	12	1	---
Pennsylvania	251	---	251	42	19	160	8	22
North Atlantic	520	20	500	91	26	342	18	23
Ohio	1,257	211	1,046	152	21	821	25	27
Indiana	519	77	442	62	15	349	14	2
Illinois	717	161	556	86	9	431	28	2
Michigan	424	90	334	49	2	270	12	1
Wisconsin	286	62	224	36	3	176	7	2
East North Central	3,203	601	2,602	385	50	2,047	86	34
Minnesota	975	225	750	116	11	597	24	2
Iowa	1,326	441	885	121	7	730	26	1
Missouri	811	130	681	74	13	569	23	2
North Dakota	559	80	479	63	9	392	13	2
South Dakota	1,288	230	1,058	178	8	835	35	2
Nebraska	849	588	261	34	5	214	7	1
Kansas	634	239	395	36	9	336	12	2
West North Central	6,442	1,933	4,509	622	62	3,673	140	12
Delaware	4	---	4	1	---	3	---	---
Maryland	45	---	45	7	1	35	2	---
Virginia	327	---	327	41	4	268	13	1
West Virginia	311	---	311	38	3	251	16	3
North Carolina	51	---	51	8	1	38	3	1
South Carolina	5	---	5	1	---	4	---	---
Georgia	21	---	21	5	1	13	1	1
Florida	4	---	4	1	---	3	---	---
South Atlantic	768	---	768	102	10	615	35	6
Kentucky	581	---	581	65	13	480	20	3
Tennessee	286	---	286	39	8	224	13	2
Alabama	55	---	55	8	2	40	4	1
Mississippi	91	---	91	15	6	60	4	6
Arkansas	55	---	55	7	3	41	3	1
Louisiana	115	---	115	18	10	74	5	8
Oklahoma	229	60	169	31	5	128	4	1
Texas	5,659	305	5,354	963	419	3,704	161	107
South Central	7,071	365	6,706	1,146	466	4,751	214	129
Montana	1,756	150	1,606	279	13	1,259	52	3
Idaho	1,125	95	1,030	116	14	865	32	3
Wyoming	2,036	133	1,903	247	10	1,583	61	2
Colorado	1,783	542	1,241	131	10	1,063	34	3
New Mexico	1,278	63	1,215	186	21	958	44	6
Arizona	477	65	412	79	11	306	13	3
Utah	1,481	98	1,383	155	5	1,187	35	1
Nevada	468	11	457	68	2	374	12	1
Washington	315	32	283	44	2	225	10	2
Oregon	847	25	822	93	11	693	23	2
California	2,012	312	1,700	238	27	1,380	51	4
West	13,578	1,526	12,052	1,636	126	9,893	367	30
United States	31,582	4,445	27,137	3,982	740	21,321	860	234

Table 15.--SHEEP AND LAMBS: Number on farms, by classes, January 1, 1955-60--Continued

State and division	1 9 5 6							
	All sheep	On feed	Total	Stock Sheep				
				Lambs		One year and over		
				Ewe	Wether & Ram	Ewes	Rams	Wethers
1,000 head	1,000 head	1,000 head	1,000 head	1,000 head	1,000 head	1,000 head	1,000 head	
Maine	33	---	33	7	1	24	1	---
New Hampshire	10	---	10	2	---	7	1	---
Vermont	13	---	13	2	---	10	1	---
Massachusetts	13	---	13	2	1	9	1	---
Rhode Island	2	---	2	---	---	2	---	---
Connecticut	9	---	9	1	---	7	1	---
New York	174	20	154	31	3	114	5	1
New Jersey	16	---	16	3	1	11	1	---
Pennsylvania	259	---	259	42	21	165	8	23
North Atlantic	529	20	509	90	27	349	19	24
Ohio	1,247	211	1,036	144	20	821	23	26
Indiana	541	86	455	65	17	356	16	1
Illinois	708	185	523	80	7	409	26	1
Michigan	409	98	311	49	2	248	11	1
Wisconsin	276	61	215	33	2	171	7	2
East North Central	3,181	641	2,540	371	48	2,005	85	31
Minnesota	938	218	720	115	9	573	22	1
Iowa	1,277	401	876	98	6	745	26	1
Missouri	861	112	749	76	15	632	24	2
North Dakota	644	122	522	61	11	435	13	2
South Dakota	1,329	218	1,111	170	9	894	36	2
Nebraska	695	453	242	27	4	203	7	1
Kansas	583	160	423	38	10	360	13	2
West North Central	6,327	1,684	4,643	585	64	3,842	141	11
Delaware	4	---	4	1	---	3	---	---
Maryland	47	---	47	8	1	36	2	---
Virginia	337	---	337	46	4	273	13	1
West Virginia	314	---	314	40	4	251	16	3
North Carolina	51	---	51	7	1	39	3	1
South Carolina	8	---	8	1	---	6	1	---
Georgia	37	---	37	5	6	23	2	1
Florida	5	---	5	1	---	4	---	---
South Atlantic	803	---	803	109	16	635	37	6
Kentucky	604	---	604	77	24	480	20	3
Tennessee	289	---	289	36	7	231	13	2
Alabama	110	42	68	10	3	50	4	1
Mississippi	95	---	95	17	9	60	4	5
Arkansas	67	---	67	9	4	50	3	1
Louisiana	113	---	113	18	10	74	5	6
Oklahoma	264	61	203	36	5	156	5	1
Texas	5,376	290	5,086	865	346	3,631	153	91
South Central	6,918	393	6,525	1,068	408	4,732	207	110
Montana	1,773	183	1,590	271	19	1,246	51	3
Idaho	1,094	95	999	105	11	848	32	3
Wyoming	2,071	130	1,941	307	8	1,567	58	1
Colorado	1,726	510	1,216	134	9	1,038	32	3
New Mexico	1,208	71	1,137	166	19	903	44	5
Arizona	476	60	416	77	13	309	14	3
Utah	1,458	89	1,369	150	5	1,179	34	1
Nevada	424	13	411	56	2	340	12	1
Washington	297	28	269	46	2	209	10	2
Oregon	852	30	822	87	10	700	23	2
California	2,020	320	1,700	197	26	1,421	52	4
West	13,399	1,529	11,870	1,596	124	9,760	362	28
United States	31,157	4,267	26,890	3,819	687	21,323	851	210

Table 15.--SHEEP AND LAMBS: Number on farms, by classes, January 1, 1955-60--Continued

State and division	1 9 5 7							
	All sheep	On feed	Total	Stock Sheep				
				Lamba		One year and over		
				Ewe	Wether & Ram	Ewes	Rams	Wethers
1,000 head	1,000 head	1,000 head	1,000 head	1,000 head	1,000 head	1,000 head	1,000 head	
Maine	34	---	34	7	1	24	2	---
New Hampshire	10	---	10	2	---	7	1	---
Vermont	12	---	12	2	---	9	1	---
Massachusetts	13	---	13	2	1	9	1	---
Rhode Island	2	---	2	---	---	2	---	---
Connecticut	9	---	9	1	---	7	1	---
New York	183	20	163	30	3	123	6	1
New Jersey	16	---	16	3	1	11	1	---
Pennsylvania	256	---	256	36	20	168	9	23
North Atlantic	535	20	515	83	26	360	22	24
Ohio	1,241	205	1,036	156	19	813	25	23
Indiana	547	92	455	57	11	370	17	---
Illinois	730	207	523	83	9	405	25	1
Michigan	404	90	314	56	3	243	11	1
Wisconsin	273	66	213	30	2	172	7	2
East North Central	3,195	654	2,541	382	44	2,003	85	27
Minnesota	942	229	713	101	9	579	23	1
Iowa	1,390	453	937	109	7	790	30	1
Missouri	924	130	794	93	15	657	27	2
North Dakota	661	118	543	74	13	440	14	2
South Dakota	1,417	218	1,199	199	8	951	39	2
Nebraska	780	507	273	33	4	227	8	1
Kansas	594	150	444	36	10	382	14	2
West North Central	6,708	1,805	4,903	645	66	4,026	155	11
Delaware	4	---	4	1	---	3	---	---
Maryland	47	---	47	7	1	37	2	---
Virginia	330	---	330	48	5	263	13	1
West Virginia	301	---	301	36	3	243	16	3
North Carolina	52	---	52	7	1	40	3	1
South Carolina	11	---	11	1	1	8	1	---
Georgia	50	---	50	4	16	27	2	1
Florida	7	---	7	1	---	6	---	---
South Atlantic	802	---	802	105	27	627	37	6
Kentucky	622	---	622	93	19	485	21	4
Tennessee	303	---	303	42	7	238	14	2
Alabama	85	23	62	10	4	43	4	1
Mississippi	97	---	97	20	10	59	4	4
Arkansas	69	---	69	10	5	50	3	1
Louisiana	108	---	108	17	8	73	5	5
Oklahoma	245	42	203	35	4	158	5	1
Texas	4,749	273	4,476	672	291	3,312	125	76
South Central	6,278	338	5,940	899	348	4,418	181	94
Montana	1,650	108	1,542	252	18	1,221	49	2
Idaho	1,119	120	999	123	8	834	31	3
Wyoming	2,095	115	1,980	328	9	1,583	59	1
Colorado	1,766	550	1,216	144	9	1,028	32	3
New Mexico	1,121	23	1,098	148	18	884	44	4
Arizona	472	51	421	65	13	325	15	3
Utah	1,395	94	1,301	141	6	1,120	33	1
Nevada	394	16	378	50	2	313	12	1
Washington	275	25	250	52	2	184	10	2
Oregon	865	35	830	95	10	700	23	2
California	1,984	352	1,632	197	28	1,350	52	5
West	13,136	1,489	11,647	1,595	123	9,542	360	27
United States	30,654	4,306	26,348	3,709	634	20,976	840	189

Table 15.--SHEEP AND LAMBS: Number on farms, by classes, January 1, 1955-60--Continued

State and division	1958							
	All sheep	On feed	Total	Stock Sheep				
				Lambs		One year and over		
				Ewe	Wether & Ram	Ewes	Rams	Wethers
head	head	head	head	head	head	head	head	
Maine	35	---	35	7	1	25	2	---
New Hampshire	9	---	9	2	---	6	1	---
Vermont	12	---	12	2	---	9	1	---
Massachusetts	12	---	12	2	1	8	1	---
Rhode Island	2	---	2	---	---	2	---	---
Connecticut	8	---	8	1	---	6	1	---
New York	179	21	158	30	2	119	6	1
New Jersey	15	---	15	3	1	10	1	---
Pennsylvania	251	---	251	34	16	171	9	21
North Atlantic	523	21	502	81	21	356	22	22
Ohio	1,247	201	1,046	162	18	821	25	20
Indiana	552	88	464	75	16	357	16	---
Illinois	740	180	560	87	9	437	26	1
Michigan	399	88	311	52	3	243	12	1
Wisconsin	279	62	217	31	2	174	9	1
East North Central	3,217	619	2,598	407	48	2,032	88	23
Minnesota	924	211	713	110	6	573	23	1
Iowa	1,554	476	1,078	174	9	861	33	1
Missouri	860	114	746	103	16	598	27	2
North Dakota	696	110	586	94	13	462	16	1
South Dakota	1,604	255	1,349	258	14	1,032	43	2
Nebraska	759	451	308	46	5	247	9	1
Kansas	700	225	475	52	16	390	15	2
West North Central	7,097	1,842	5,255	837	79	4,163	166	10
Delaware	5	---	5	1	---	4	---	---
Maryland	46	---	46	7	1	36	2	---
Virginia	333	---	333	46	5	268	13	1
West Virginia	295	---	295	37	3	237	15	3
North Carolina	53	---	53	7	1	41	3	1
South Carolina	14	---	14	2	1	10	1	---
Georgia	44	---	44	4	5	32	2	1
Florida	8	---	8	2	---	5	1	---
South Atlantic	798	---	798	106	16	633	37	6
Kentucky	634	---	634	91	27	490	22	4
Tennessee	306	---	306	45	7	238	14	2
Alabama	53	6	47	8	3	32	3	1
Mississippi	98	---	98	19	9	62	4	4
Arkansas	64	---	64	10	4	46	3	1
Louisiana	105	---	105	16	7	72	5	5
Oklahoma	248	41	207	40	5	155	6	1
Texas	4,891	191	4,700	871	282	3,345	127	75
South Central	6,399	238	6,161	1,100	344	4,440	184	93
Montana	1,722	118	1,604	321	18	1,209	54	2
Idaho	1,109	80	1,029	119	8	867	32	3
Wyoming	2,194	135	2,059	354	10	1,633	61	1
Colorado	1,769	504	1,265	172	7	1,049	33	4
New Mexico	1,147	42	1,105	185	20	851	44	5
Arizona	443	26	417	66	14	320	14	3
Utah	1,354	66	1,288	150	6	1,098	33	1
Nevada	379	16	363	54	2	294	12	1
Washington	285	25	260	48	2	199	10	1
Oregon	890	43	847	97	11	714	23	2
California	1,891	275	1,616	192	19	1,350	51	4
West	13,183	1,330	11,853	1,758	117	9,584	367	27
United States	31,217	4,050	27,167	4,289	625	21,208	864	181

Table 15.--SHEEP AND LAMBS: Number on farms, by classes, January 1, 1955-60--Continued

State and division	1 9 5 9								
	All sheep	On feed	Total	Stock Sheep					
				Lambs		One year and over			
				Ewe	Wether & Ram	Ewes	Rams	Wethers	
1,000 head	1,000 head	1,000 head	1,000 head	1,000 head	1,000 head	1,000 head	1,000 head	1,000 head	
Maine	35	---	35	7	1	25	2	---	
New Hampshire	8	---	8	2	---	5	1	---	
Vermont	12	---	12	2	---	9	1	---	
Massachusetts	12	---	12	2	1	8	1	---	
Rhode Island	2	---	2	---	---	2	---	---	
Connecticut	7	---	7	1	---	5	1	---	
New York	179	23	156	26	2	121	6	1	
New Jersey	16	---	16	3	1	11	1	---	
Pennsylvania	248	---	248	35	16	169	8	20	
North Atlantic	519	23	496	78	21	355	21	21	
Ohio	1,194	221	973	134	17	780	24	18	
Indiana	525	66	459	68	18	357	16	---	
Illinois	751	180	571	88	10	446	26	1	
Michigan	415	85	330	55	3	258	13	1	
Wisconsin	277	62	215	31	2	172	9	1	
East North Central	3,162	614	2,548	376	50	2,013	88	21	
Minnesota	956	207	749	128	6	590	24	1	
Iowa	1,632	500	1,132	176	6	913	36	1	
Missouri	851	142	709	97	16	568	26	2	
North Dakota	709	105	604	88	12	485	18	1	
South Dakota	1,732	255	1,477	279	15	1,134	47	2	
Nebraska	813	456	357	55	7	284	11	---	
Kansas	864	380	484	49	15	402	16	2	
West North Central	7,557	2,045	5,512	872	77	4,376	178	9	
Delaware	5	---	5	1	---	4	---	---	
Maryland	39	---	39	5	1	31	2	---	
Virginia	333	---	333	49	5	265	13	1	
West Virginia	289	---	289	36	3	232	15	3	
North Carolina	55	---	55	7	1	43	3	1	
South Carolina	13	---	13	2	1	9	1	---	
Georgia	36	---	36	4	4	25	2	1	
Florida	8	---	8	2	---	5	1	---	
South Atlantic	778	---	778	106	15	614	37	6	
Kentucky	596	---	596	87	28	456	21	4	
Tennessee	278	---	278	38	6	219	13	2	
Alabama	39	---	39	7	2	27	2	1	
Mississippi	84	---	84	15	7	55	3	4	
Arkansas	55	---	55	8	3	40	3	1	
Louisiana	98	---	98	15	6	67	5	5	
Oklahoma	281	59	222	41	7	166	7	1	
Texas	5,364	241	5,123	987	302	3,613	136	85	
South Central	6,795	300	6,495	1,198	361	4,643	190	103	
Montana	1,840	124	1,716	359	19	1,278	58	2	
Idaho	1,170	110	1,060	131	9	884	33	3	
Wyoming	2,276	135	2,141	417	11	1,651	61	1	
Colorado	1,919	540	1,379	186	10	1,143	37	3	
New Mexico	1,215	79	1,136	182	22	881	45	6	
Arizona	462	29	433	69	14	332	15	3	
Utah	1,382	81	1,301	152	6	1,109	33	1	
Nevada	372	16	356	50	2	291	12	1	
Washington	306	30	276	50	2	211	12	1	
Oregon	935	54	881	116	11	728	24	2	
California	1,918	318	1,600	207	17	1,323	49	4	
West	13,795	1,516	12,279	1,919	123	9,831	379	27	
United States	32,606	4,498	28,108	4,549	647	21,832	893	187	

Table 15.--SHEEP AND LAMBS: Number on farms, by classes, January 1, 1955-60--Continued

State and division	1 9 6 0							
	All sheep	On Feed	Total	Stock Sheep				
				Lambs		One year and over		
				Ewe	Wether & Ram	Ewes	Rams	Wethers
1,000 head	1,000 head	1,000 head	1,000 head	1,000 head	1,000 head	1,000 head	1,000 head	
Maine	36	---	36	7	1	26	2	---
New Hampshire	8	---	8	2	---	5	1	---
Vermont	12	---	12	2	---	9	1	---
Massachusetts	12	---	12	2	1	8	1	---
Rhode Island	2	---	2	---	---	2	---	---
Connecticut	7	---	7	1	---	5	1	---
New York	173	23	150	24	3	116	6	1
New Jersey	16	---	16	3	1	11	1	---
Pennsylvania	250	---	250	37	16	169	8	20
North Atlantic	516	23	493	78	22	351	21	21
Ohio	1,163	239	924	111	16	757	23	17
Indiana	515	74	441	61	15	350	15	---
Illinois	722	157	565	90	10	437	27	1
Michigan	407	87	320	46	3	258	12	1
Wisconsin	266	60	206	30	2	165	8	1
East North Central	3,073	617	2,456	338	46	1,967	85	20
Minnesota	999	228	771	125	6	614	25	1
Iowa	1,663	520	1,143	174	9	922	37	1
Missouri	803	129	674	90	16	540	26	2
North Dakota	692	100	592	82	11	480	18	1
South Dakota	1,756	235	1,521	245	17	1,207	50	2
Nebraska	836	461	375	59	8	295	13	---
Kansas	756	262	494	42	11	422	17	2
West North Central	7,505	1,935	5,570	817	78	4,480	186	9
Delaware	5	---	5	1	---	4	---	---
Maryland	38	---	38	5	1	30	2	---
Virginia	326	---	326	49	6	257	13	1
West Virginia	283	---	283	37	3	227	13	3
North Carolina	55	---	55	8	1	42	3	1
South Carolina	11	---	11	1	1	8	1	---
Georgia	27	---	27	3	2	19	2	1
Florida	8	---	8	2	---	5	1	---
South Atlantic	753	---	753	106	14	592	35	6
Kentucky	566	---	566	86	35	420	20	5
Tennessee	245	---	245	27	5	199	12	2
Alabama	36	---	36	6	2	25	2	1
Mississippi	74	---	74	12	7	49	3	3
Arkansas	48	---	48	6	3	35	3	1
Louisiana	93	---	93	13	5	65	5	5
Oklahoma	274	52	222	41	6	166	8	1
Texas	5,938	200	5,738	1,157	357	3,942	152	130
South Central	7,274	252	7,022	1,348	420	4,901	205	148
Montana	1,872	105	1,767	352	21	1,331	61	2
Idaho	1,153	82	1,071	124	8	902	34	3
Wyoming	2,360	112	2,248	396	12	1,773	66	1
Colorado	1,989	555	1,434	177	16	1,200	38	3
New Mexico	1,185	58	1,127	176	24	874	46	7
Arizona	488	34	454	73	15	347	16	3
Utah	1,336	87	1,249	144	6	1,065	33	1
Nevada	347	12	335	46	2	274	12	1
Washington	330	35	295	45	2	234	13	1
Oregon	916	53	863	125	11	699	26	2
California	2,073	361	1,712	217	24	1,416	50	5
West	14,049	1,494	12,555	1,875	141	10,115	395	29
United States	33,170	4,321	28,849	4,562	721	22,406	927	233

Table 16.--HORSES AND MULES: Number on farms, value per head, and total value, by States, January 1, 1955-60

State and division	1955			1956			1957		
	Number	Value	Total	Number	Value	Total	Number	Value	Total
	1,000 head	per head: Dollars	1,000 dollars	1,000 head	per head: Dollars	1,000 dollars	1,000 head	per head: Dollars	1,000 dollars
Maine	13	107	1,391	12	120	1,440	11	130	1,430
New Hampshire	5	90	450	5	103	515	5	110	550
Vermont	16	88	1,408	14	96	1,344	13	99	1,287
Massachusetts	7	95	665	7	105	735	7	110	770
Rhode Island	1	95	95	1	105	105	1	110	110
Connecticut	5	100	500	5	112	560	5	112	560
New York	69	74	5,106	64	85	5,440	58	99	5,742
New Jersey	12	79	948	12	85	1,020	11	90	990
Pennsylvania	68	77	5,236	63	71	4,473	60	88	5,280
North Atlantic	196	80.6	15,799	183	85.4	15,632	171	97.8	16,719
Ohio	81	58	4,698	79	68	5,372	77	82	6,314
Indiana	58	57	3,306	54	64	3,456	52	77	4,004
Illinois	85	47	3,995	80	58	4,640	76	65	4,940
Michigan	45	64	2,880	40	68	2,720	39	80	3,120
Wisconsin	102	77	7,854	84	88	7,392	71	101	7,100
East North Central	371	61.3	22,733	337	70.0	23,580	315	80.9	25,478
Minnesota	109	62	6,758	90	68	6,120	76	82	6,232
Iowa	98	57	5,586	88	63	5,544	80	80	6,400
Missouri	159	50	7,950	135	60	8,100	120	70	8,400
North Dakota	90	53	4,770	79	64	5,056	73	78	5,694
South Dakota	88	44	3,872	79	52	4,108	70	62	4,340
Nebraska	101	46	4,646	85	48	4,080	77	64	4,928
Kansas	91	46	4,186	80	50	4,000	70	59	4,130
West North Central	736	51.3	37,768	636	58.2	37,008	566	70.9	40,124
Delaware	4	60	240	3	68	204	3	68	204
Maryland	23	57	1,311	20	68	1,360	19	68	1,292
Virginia	128	73	9,344	118	78	9,204	107	82	8,774
West Virginia	62	66	4,092	57	71	4,047	52	80	4,160
North Carolina	248	92	22,816	231	90	20,790	213	90	19,170
South Carolina	119	96	11,424	114	91	10,374	105	96	10,080
Georgia	150	58	8,700	135	60	8,100	119	62	7,378
Florida	36	56	2,016	35	57	1,995	34	62	2,108
South Atlantic	770	77.8	59,943	713	78.6	56,074	652	81.5	53,166
Kentucky	221	55	12,155	208	64	13,312	193	73	14,089
Tennessee	221	56	12,376	210	65	13,650	191	74	14,134
Alabama	174	45	7,830	157	47	7,379	137	59	8,083
Mississippi	255	40	10,200	242	47	11,374	213	54	11,502
Arkansas	135	37	4,995	123	50	6,150	111	58	6,438
Louisiana	152	34	5,168	138	41	5,658	123	52	6,396
Oklahoma	110	40	4,400	99	46	4,554	92	51	4,692
Texas	314	39	12,246	289	45	13,005	269	54	14,526
South Central	1,582	43.8	69,370	1,466	51.2	75,082	1,329	60.1	79,860
Montana	98	48	4,704	92	54	4,968	89	63	5,607
Idaho	57	56	3,192	52	67	3,484	50	76	3,800
Wyoming	58	42	2,436	56	52	2,912	53	61	3,233
Colorado	75	42	3,150	72	50	3,600	70	60	4,200
New Mexico	69	38	2,622	65	47	3,055	60	56	3,360
Arizona	62	74	4,588	60	83	4,980	58	95	5,510
Utah	38	62	2,356	36	68	2,448	34	84	2,856
Nevada	23	61	1,403	22	68	1,496	21	83	1,743
Washington	40	50	2,000	37	66	2,442	35	75	2,625
Oregon	50	58	2,900	48	63	3,024	47	77	3,619
California	84	85	7,140	83	98	8,134	82	108	8,856
West	654	55.8	36,491	623	65.1	40,543	599	75.8	45,409
United States	4,309	56.2	242,104	3,958	62.6	247,919	3,632	71.8	260,756

Table 16.--HORSES AND MULES: Number on farms, value per head, and total value, by States, January 1, 1955-60--Continued

State and division	1958			1959			1960		
	Number 1,000 head	Value per head: Dollars	Total value: dollars	Number 1,000 head	Value per head: Dollars	Total value: dollars	Number 1,000 head	Value per head: Dollars	Total value: dollars
Maine	10	134	1,340	9	142	1,278	8	145	1,160
New Hampshire	5	115	575	5	135	675	4	140	560
Vermont	12	110	1,320	11	128	1,408	10	148	1,480
Massachusetts	6	118	708	6	140	840	5	150	750
Rhode Island	1	118	118	1	140	140	1	150	150
Connecticut	4	118	472	4	140	560	4	150	600
New York	53	108	5,724	50	129	6,450	48	137	6,576
New Jersey	10	100	1,000	9	115	1,035	8	130	1,040
Pennsylvania	59	99	5,841	58	120	6,960	58	122	7,076
North Atlantic	160	107	17,098	153	126	19,346	146	133	19,392
Ohio	76	99	7,524	74	120	8,880	74	122	9,028
Indiana	51	97	4,947	52	113	5,876	53	129	6,837
Illinois	73	80	5,840	71	92	6,532	74	95	7,030
Michigan	37	89	3,293	35	109	3,815	37	121	4,477
Wisconsin	65	117	7,605	60	137	8,220	60	136	8,160
East North Central	302	96.7	29,209	292	114	33,323	298	119	35,532
Minnesota	68	90	6,120	63	108	6,804	61	114	6,954
Iowa	79	89	7,031	83	106	8,798	88	107	9,416
Missouri	113	83	9,379	106	98	10,388	108	99	10,692
North Dakota	68	85	5,780	63	96	6,048	61	97	5,917
South Dakota	67	74	4,958	64	90	5,760	62	90	5,580
Nebraska	73	84	6,132	70	106	7,420	70	106	7,420
Kansas	68	77	5,236	68	97	6,596	72	110	7,920
West North Central	536	83.3	44,636	517	100	51,814	522	103	53,899
Delaware	3	85	255	3	93	279	3	93	279
Maryland	18	85	1,530	17	95	1,615	16	95	1,520
Virginia	102	97	9,894	94	115	10,810	90	121	10,890
West Virginia	48	90	4,320	42	112	4,704	40	114	4,560
North Carolina	192	93	17,856	169	102	17,238	155	122	18,910
South Carolina	93	98	9,114	80	106	8,480	72	116	8,352
Georgia	105	67	7,035	78	75	5,850	74	90	6,660
Florida	33	70	2,310	30	84	2,520	28	97	2,716
South Atlantic	594	88.1	52,314	513	100	51,496	478	113	53,887
Kentucky	183	85	15,555	167	101	16,867	155	105	16,275
Tennessee	180	81	14,580	160	95	15,200	146	112	16,352
Alabama	122	63	7,686	110	71	7,810	100	85	8,500
Mississippi	190	60	11,400	162	74	11,988	147	84	12,348
Arkansas	100	68	6,800	88	81	7,128	82	87	7,134
Louisiana	109	60	6,540	98	71	6,958	91	84	7,644
Oklahoma	88	73	6,424	88	94	8,272	91	103	9,373
Texas	261	79	20,619	253	106	26,818	243	126	30,618
South Central	1,233	72.7	89,604	1,126	89.7	101,041	1,055	103	108,244
Montana	88	82	7,216	89	100	8,900	91	112	10,192
Idaho	50	97	4,850	51	114	5,814	52	125	6,500
Wyoming	52	85	4,420	52	114	5,928	52	123	6,396
Colorado	69	76	5,244	69	106	7,314	70	122	8,540
New Mexico	57	69	3,933	57	94	5,358	57	102	5,814
Arizona	56	114	6,384	55	133	7,315	54	153	8,262
Utah	34	100	3,400	33	115	3,795	32	127	4,064
Nevada	20	101	2,020	20	126	2,520	20	133	2,660
Washington	37	95	3,515	37	128	4,736	38	132	5,016
Oregon	46	96	4,416	45	114	5,130	45	132	5,940
California	81	121	9,801	80	155	12,400	79	169	13,351
West	590	93.6	55,199	588	118	69,210	590	130	76,735
United States	3,415	84.4	288,060	3,189	102	326,230	3,089	113	347,689

Table 17.--HORSES AND MULES: Number on farms, by classes, by States, January 1, 1955-60

State and division	1955			1956			1957		
	Under 2 years old:	2 years old:	Total	Under 2 years old:	2 years old:	Total	Under 2 years old:	2 years old:	Total
	years old:	and over		years old:	and over		years old:	and over	
	1,000 head	1,000 head	1,000 head	1,000 head	1,000 head	1,000 head	1,000 head	1,000 head	1,000 head
Maine	---	13	13	---	12	12	---	11	11
New Hampshire	---	5	5	---	5	5	---	5	5
Vermont	---	16	16	---	14	14	---	13	13
Massachusetts	---	7	7	---	7	7	---	7	7
Rhode Island	---	1	1	---	1	1	---	1	1
Connecticut	---	5	5	---	5	5	---	5	5
New York	2	67	69	2	62	64	2	56	58
New Jersey	1	11	12	1	11	12	1	10	11
Pennsylvania	1	67	68	1	62	63	1	59	60
North Atlantic	4	192	196	4	179	183	4	167	171
Ohio	2	79	81	2	77	79	2	75	77
Indiana	2	56	58	3	51	54	4	48	52
Illinois	4	81	85	4	76	80	4	72	76
Michigan	2	43	45	3	37	40	3	36	39
Wisconsin	4	98	102	4	80	84	4	67	71
East North Central	14	357	371	16	321	337	17	298	313
Minnesota	4	105	109	4	86	90	4	72	76
Iowa	6	92	98	6	82	88	5	75	80
Missouri	9	150	159	8	127	135	8	112	120
North Dakota	4	86	90	4	75	79	4	69	73
South Dakota	9	79	88	7	72	79	7	63	70
Nebraska	7	94	101	6	79	85	6	71	77
Kansas	5	86	91	4	76	80	4	66	70
West North Central	44	692	736	39	597	636	38	528	566
Delaware	---	4	4	---	3	3	---	3	3
Maryland	1	22	23	1	19	20	1	18	19
Virginia	2	126	128	2	116	118	2	105	107
West Virginia	2	60	62	2	55	57	2	50	52
North Carolina	4	244	248	4	227	231	4	209	213
South Carolina	2	117	119	2	112	114	2	103	105
Georgia	2	148	150	2	133	135	2	117	119
Florida	4	32	36	3	32	35	3	31	34
South Atlantic	17	753	770	16	697	713	16	636	652
Kentucky	8	213	221	8	200	208	7	186	193
Tennessee	8	213	221	8	202	210	7	184	191
Alabama	3	171	174	3	154	157	3	134	137
Mississippi	8	247	255	8	234	242	8	205	213
Arkansas	6	129	135	6	117	123	6	105	111
Louisiana	6	146	152	6	132	138	7	116	123
Oklahoma	9	101	110	8	91	99	8	84	92
Texas	15	299	314	14	275	289	13	256	269
South Central	63	1,519	1,582	61	1,405	1,466	59	1,270	1,329
Montana	10	80	98	9	83	92	9	80	89
Idaho	6	51	57	6	46	52	6	44	50
Wyoming	8	50	58	8	48	56	7	46	53
Colorado	6	69	75	6	66	72	6	64	70
New Mexico	6	63	69	6	59	65	5	55	60
Arizona	6	56	62	6	54	60	6	52	58
Utah	4	34	38	4	32	36	4	30	34
Nevada	4	19	23	4	18	22	4	17	21
Washington	4	36	40	4	33	37	4	31	35
Oregon	4	46	50	4	44	48	4	43	47
California	8	76	84	8	75	83	7	75	82
West	66	588	654	65	558	623	62	537	599
United States	208	4,101	4,309	201	3,757	3,958	196	3,436	3,632

Table 17.--HORSES AND MULES: Number on farms, by classes, by States, January 1, 1955-60--Continued

State and division	1958			1959			1960		
	Under 2 years old:	:2 years old:	Total	Under 2 years old:	:2 years old:	Total	Under 2 years old:	:2 years old:	Total
	years old: and over:	years old: and over:	head	years old: and over:	years old: and over:	head	years old: and over:	years old: and over:	head
	1,000 head	1,000 head	1,000 head	1,000 head	1,000 head	1,000 head	1,000 head	1,000 head	1,000 head
Maine	---	10	10	---	9	9	---	8	8
New Hampshire	---	5	5	---	5	5	---	4	4
Vermont	---	12	12	---	11	11	---	10	10
Massachusetts	---	6	6	---	6	6	---	5	5
Rhode Island	---	1	1	---	1	1	---	1	1
Connecticut	---	4	4	---	4	4	---	4	4
New York	2	51	53	3	47	50	4	44	48
New Jersey	1	9	10	1	8	9	1	7	8
Pennsylvania	1	58	59	1	57	58	1	57	58
North Atlantic	4	156	160	5	148	153	6	140	146
Ohio	2	74	76	2	72	74	2	72	74
Indiana	5	46	51	7	45	52	8	45	53
Illinois	5	68	73	7	64	71	8	66	74
Michigan	3	34	37	4	31	35	5	32	37
Wisconsin	4	61	65	4	56	60	4	56	60
East North Central	19	283	302	24	268	292	27	271	298
Minnesota	4	64	68	4	59	63	4	57	61
Iowa	5	74	79	6	77	83	6	82	88
Missouri	8	105	113	7	99	106	7	101	108
North Dakota	4	64	68	4	59	63	4	57	61
South Dakota	6	61	67	6	58	64	6	56	62
Nebraska	6	67	73	6	64	70	6	64	70
Kansas	4	64	68	5	63	68	6	66	72
West North Central	37	499	536	38	479	517	39	483	522
Delaware	---	3	3	---	3	3	---	3	3
Maryland	1	17	18	1	16	17	1	15	16
Virginia	2	100	102	2	92	94	2	88	90
West Virginia	2	46	48	2	40	42	2	38	40
North Carolina	4	188	192	4	165	169	4	151	155
South Carolina	2	91	93	2	78	80	2	70	72
Georgia	2	103	105	2	76	78	2	72	74
Florida	3	30	33	2	28	30	2	26	28
South Atlantic	16	578	594	15	498	513	15	463	478
Kentucky	8	175	183	8	159	167	8	147	155
Tennessee	6	174	180	6	154	160	6	140	146
Alabama	3	119	122	3	107	110	3	97	100
Mississippi	8	182	190	7	155	162	6	141	147
Arkansas	6	94	100	6	82	88	6	76	82
Louisiana	7	102	109	6	92	98	4	87	91
Oklahoma	8	80	88	8	80	88	9	82	91
Texas	12	249	261	12	241	253	12	231	243
South Central	58	1,175	1,233	56	1,070	1,126	54	1,001	1,055
Montana	9	79	88	9	80	89	10	81	91
Idaho	6	44	50	7	44	51	8	44	52
Wyoming	6	46	52	6	46	52	6	46	52
Colorado	6	63	69	6	63	69	6	64	70
New Mexico	5	52	57	5	52	57	5	52	57
Arizona	6	50	56	6	49	55	6	48	54
Utah	4	30	34	4	29	33	4	28	32
Nevada	4	16	20	4	16	20	4	16	20
Washington	5	32	37	6	31	37	6	32	38
Oregon	4	42	46	4	41	45	4	41	45
California	6	75	81	6	74	80	6	73	79
West	61	529	590	63	525	588	65	525	590
United States	195	3,220	3,415	201	2,988	3,189	206	2,883	3,089

Table 18.--ALL CHICKENS: Number on farms, value per head and total value, by States, January 1, 1955-60

State and division	1955			1956			1957		
	Number	Price : per head:	Total : value	Number	Price : per head:	Total : value	Number	Price : per head:	Total : value
	1,000	Dollars	dollars	1,000	Dollars	dollars	1,000	Dollars	dollars
Maine	3,851	1.70	6,547	3,948	1.95	7,699	4,221	1.70	7,176
New Hampshire	2,708	1.65	4,468	2,725	1.90	5,178	2,550	1.75	4,462
Vermont	1,118	1.65	1,845	1,091	1.85	2,018	1,083	1.75	1,895
Massachusetts	4,188	1.75	7,329	4,183	1.85	7,739	4,280	1.65	7,062
Rhode Island	478	1.70	813	472	1.90	897	478	1.70	813
Connecticut	3,840	1.65	6,336	3,956	1.90	7,516	3,927	1.75	6,872
New York	12,502	1.35	16,878	12,405	1.65	20,468	12,365	1.60	19,784
New Jersey	15,362	1.50	23,043	15,979	1.65	26,365	16,038	1.50	24,057
Pennsylvania	23,312	1.30	30,306	23,207	1.50	34,810	23,509	1.45	34,088
North Atlantic	67,359	1.45	97,565	67,966	1.66	112,690	68,451	1.55	106,209
Ohio	14,740	1.15	16,951	14,298	1.30	18,587	14,612	1.25	18,265
Indiana	14,265	.95	13,552	14,025	1.25	17,531	14,273	1.25	17,841
Illinois	18,553	.90	16,698	17,582	1.10	19,340	16,813	1.10	18,494
Michigan	10,546	1.15	12,128	10,402	1.40	14,563	10,612	1.30	13,796
Wisconsin	13,714	1.05	14,400	13,300	1.30	17,290	13,264	1.20	15,917
East North Central	71,818	1.03	73,729	69,607	1.25	87,311	69,574	1.21	84,313
Minnesota	24,895	.85	21,161	23,368	1.20	28,042	23,453	1.05	24,626
Iowa	29,123	.90	26,211	28,055	1.25	35,069	28,693	1.15	32,997
Missouri	15,178	.75	11,384	14,555	1.00	14,555	15,099	.90	13,589
North Dakota	3,979	.80	3,183	3,743	.95	3,556	3,718	.85	3,160
South Dakota	8,429	.85	7,165	8,310	1.10	9,141	8,566	1.00	8,566
Nebraska	11,563	.80	9,250	11,167	1.05	11,725	11,615	.95	11,034
Kansas	10,828	.75	8,121	10,463	.95	9,940	10,891	.85	9,257
West North Central	103,995	.83	86,475	99,661	1.12	112,028	102,035	1.01	103,229
Delaware	863	1.15	992	820	1.30	1,066	810	1.25	1,012
Maryland	2,781	1.15	3,198	2,707	1.35	3,654	2,640	1.30	3,432
Virginia	6,484	1.05	6,808	6,351	1.15	7,304	6,840	1.10	7,524
West Virginia	2,903	1.05	3,048	2,736	1.15	3,146	2,517	1.10	2,769
North Carolina	12,389	1.00	12,389	12,523	1.15	14,401	13,014	1.05	13,665
South Carolina	4,223	1.15	4,856	3,870	1.30	5,031	4,277	1.15	4,919
Georgia	8,532	1.00	8,532	8,231	1.15	9,466	8,559	1.10	9,415
Florida	3,505	1.15	4,031	4,107	1.30	5,339	4,824	1.25	6,030
South Atlantic	41,680	1.05	43,854	41,345	1.19	49,407	43,481	1.12	48,766
Kentucky	8,802	.85	7,482	8,349	1.00	8,349	8,745	.90	7,870
Tennessee	8,383	.80	6,706	8,090	.95	7,686	8,206	.90	7,385
Alabama	6,372	.95	6,053	6,381	1.05	6,700	6,762	1.00	6,762
Mississippi	5,767	1.00	5,767	5,713	1.05	5,999	5,630	1.05	5,912
Arkansas	4,706	.85	4,000	4,576	.95	4,347	4,620	.90	4,158
Louisiana	3,649	1.20	4,379	3,689	1.25	4,611	3,877	1.15	4,459
Oklahoma	5,736	.75	4,302	5,571	.90	5,014	5,850	.85	4,972
Texas	16,288	.90	14,659	15,335	1.00	15,335	16,859	1.00	16,859
South Central	59,703	.89	53,348	57,704	1.01	58,041	60,549	.96	58,377
Montana	1,573	1.25	1,966	1,473	1.25	1,841	1,431	1.25	1,789
Idaho	1,730	1.10	1,903	1,594	1.15	1,833	1,551	1.20	1,861
Wyoming	508	1.20	610	468	1.20	562	449	1.25	561
Colorado	2,210	1.00	2,210	2,061	1.05	2,164	2,000	1.05	2,100
New Mexico	796	1.15	915	789	1.20	947	811	1.10	892
Arizona	665	1.30	864	700	1.40	980	720	1.25	900
Utah	2,335	1.00	2,335	2,234	1.10	2,457	2,150	1.15	2,472
Nevada	155	1.15	178	140	1.20	168	125	1.15	144
Washington	5,079	1.20	6,095	5,125	1.45	7,431	5,280	1.40	7,392
Oregon	3,679	1.20	4,415	3,760	1.40	5,264	3,762	1.30	4,891
California	27,423	1.25	34,279	29,063	1.35	39,235	28,994	1.20	34,793
West	46,153	1.21	55,770	47,407	1.33	62,882	47,273	1.22	57,795
United States	390,708	1.05	410,741	383,690	1.26	482,359	391,363	1.17	458,689

Table 18.--ALL CHICKENS: Number on farms, value per head and total value, by States, January 1, 1955-60--Continued

State and division	1958			1959			1960		
	Number	Value	Total	Number	Value	Total	Number	Value	Total
	head	per head:	value	head	per head:	value	head	per head:	value
	1,000		1,000	1,000		1,000	1,000		1,000
	head	Dollars	dollars	head	Dollars	dollars	head	Dollars	dollars
Maine	4,487	1.70	7,628	4,699	1.75	8,223	4,660	1.60	7,456
New Hampshire	2,386	1.75	4,176	2,246	1.80	4,043	2,079	1.65	3,430
Vermont	951	1.80	1,712	932	1.85	1,724	868	1.70	1,476
Massachusetts	4,196	1.80	7,553	4,128	1.85	7,637	3,674	1.80	6,613
Rhode Island	466	1.85	862	466	1.85	862	443	1.80	797
Connecticut	3,731	1.85	6,902	3,890	1.85	7,196	3,693	1.75	6,463
New York	11,830	1.70	20,111	11,872	1.65	19,589	10,557	1.50	15,836
New Jersey	14,875	1.60	23,800	14,371	1.60	22,994	12,596	1.45	18,264
Pennsylvania	21,881	1.50	32,822	21,735	1.55	33,689	21,178	1.40	29,649
North Atlantic	64,803	1.63	105,566	64,339	1.65	105,957	59,748	1.51	89,984
Ohio	13,735	1.30	17,856	14,064	1.30	18,283	13,320	1.10	14,652
Indiana	14,014	1.20	16,817	14,561	1.25	18,201	13,990	.99	13,850
Illinois	15,615	1.15	17,957	15,301	1.15	17,596	13,379	.87	11,640
Michigan	8,762	1.45	12,705	9,328	1.40	13,059	8,443	1.20	10,132
Wisconsin	12,882	1.30	16,747	12,449	1.25	15,561	10,904	.96	10,468
East North Central	65,008	1.26	82,082	65,703	1.26	82,700	60,036	1.01	60,742
Minnesota	21,369	1.25	26,711	21,613	1.25	27,016	19,905	.88	17,516
Iowa	27,534	1.35	37,171	28,211	1.30	36,674	25,841	.87	22,482
Missouri	13,813	.95	13,122	13,261	.94	12,465	11,417	.75	8,563
North Dakota	3,434	1.00	3,434	3,293	.99	3,260	2,838	.77	2,185
South Dakota	8,489	1.10	9,338	9,008	1.10	9,909	8,713	.79	6,883
Nebraska	10,896	1.15	12,530	11,047	.98	10,826	10,425	.67	6,985
Kansas	10,066	.95	9,563	9,606	.95	9,126	7,957	.70	5,570
West North Central	95,601	1.17	111,869	96,039	1.14	109,276	87,096	.81	70,184
Delaware	850	1.25	1,062	791	1.30	1,028	801	1.20	961
Maryland	2,552	1.30	3,318	2,559	1.35	3,455	2,177	1.20	2,612
Virginia	6,498	1.10	7,148	7,172	1.10	7,889	7,023	1.05	7,374
West Virginia	2,258	1.10	2,484	2,321	1.20	2,785	2,360	1.05	2,478
North Carolina	13,788	1.10	15,167	14,481	1.10	15,929	13,902	.97	13,485
South Carolina	4,106	1.25	5,132	4,714	1.25	5,892	4,947	1.15	5,689
Georgia	9,235	1.20	11,082	11,470	1.25	14,338	12,901	1.10	14,191
Florida	5,323	1.30	6,920	5,800	1.30	7,540	5,879	1.10	6,467
South Atlantic	44,610	1.17	52,313	49,308	1.19	58,856	49,990	1.07	53,257
Kentucky	7,366	.90	6,629	6,990	.92	6,431	6,891	.79	5,444
Tennessee	7,524	.90	6,772	7,676	.91	6,985	7,213	.79	5,698
Alabama	7,543	1.10	8,297	8,568	1.15	9,853	8,425	1.00	8,425
Mississippi	5,568	1.10	6,125	6,478	1.10	7,126	8,119	1.00	8,119
Arkansas	4,488	.90	4,039	5,498	.96	5,278	6,027	.84	5,063
Louisiana	3,560	1.20	4,272	3,700	1.25	4,625	3,922	1.15	4,510
Oklahoma	4,974	.90	4,477	5,110	.94	4,803	4,322	.79	3,414
Texas	15,965	1.10	17,562	18,251	1.10	20,076	17,008	.97	16,498
South Central	56,988	1.02	58,173	62,271	1.05	65,177	61,927	.92	57,171
Montana	1,364	1.25	1,705	1,361	1.25	1,701	1,235	1.15	1,420
Idaho	1,517	1.30	1,972	1,505	1.25	1,881	1,469	1.05	1,542
Wyoming	422	1.25	528	401	1.25	501	365	1.20	438
Colorado	1,829	1.05	1,920	1,840	1.05	1,932	1,715	.94	1,612
New Mexico	836	1.20	1,003	844	1.30	1,097	836	1.10	920
Arizona	805	1.35	1,087	1,023	1.35	1,381	1,013	1.25	1,266
Utah	2,001	1.20	2,401	1,845	1.30	2,398	1,760	.94	1,654
Nevada	110	1.25	138	98	1.35	132	90	1.20	108
Washington	5,480	1.50	8,220	5,535	1.50	8,302	5,588	1.40	7,823
Oregon	3,630	1.40	5,082	3,493	1.40	4,890	3,360	1.30	4,368
California	29,277	1.30	38,060	31,397	1.30	40,816	33,256	1.15	38,244
West	47,271	1.31	62,116	49,342	1.32	65,031	50,687	1.17	59,395
United States	374,281	1.26	472,119	387,002	1.26	486,997	369,484	1.06	390,733

Table 19.--Chickens on farms by States, January 1, 1955-60

State and division	Hens					
	1955	1956	1957	1958	1959	1960
	1,000	1,000	1,000	1,000	1,000	1,000
	head	head	head	head	head	head
Maine	781	765	849	917	1,027	822
New Hampshire	452	506	516	485	398	322
Vermont	206	196	178	185	222	242
Massachusetts	964	993	1,102	1,124	1,012	931
Rhode Island	117	122	131	132	116	117
Connecticut	1,137	1,114	1,181	1,216	1,265	1,113
New York.....	4,029	4,351	4,482	4,885	4,543	4,089
New Jersey	4,020	4,623	4,623	5,039	4,686	4,967
Pennsylvania	6,508	6,833	6,696	6,964	6,407	6,535
North Atlantic	18,214	19,503	19,758	20,947	19,676	19,138
Ohio	3,928	4,517	4,427	4,914	4,324	4,713
Indiana	3,302	3,830	3,638	3,929	3,811	4,116
Illinois	4,411	5,117	4,554	5,055	4,347	4,695
Michigan	3,088	3,273	3,273	3,273	3,208	3,176
Wisconsin	4,588	4,634	4,310	4,913	4,078	4,119
East North Central	19,317	21,371	20,202	22,084	19,768	20,819
Minnesota	5,358	6,644	5,847	7,133	5,350	5,832
Iowa	5,316	6,751	6,211	7,267	6,104	6,470
Missouri	3,790	4,207	4,081	4,203	3,783	3,859
North Dakota	1,088	1,284	1,143	1,223	991	971
South Dakota	2,140	2,440	2,416	2,609	2,348	2,606
Nebraska	2,358	2,900	2,697	3,209	2,728	3,055
Kansas	2,852	3,19	2,938	3,761	2,971	2,882
West North Central	22,902	27,420	25,333	29,405	24,275	25,675
Delaware	261	282	265	276	254	244
Maryland	780	811	803	883	812	690
Virginia	1,948	1,967	2,183	2,292	2,246	2,291
West Virginia	1,094	1,105	1,017	956	956	1,004
North Carolina	4,361	4,492	4,537	4,718	4,860	4,957
South Carolina	1,606	1,478	1,478	1,508	1,644	1,891
Georgia	2,830	3,141	2,890	3,063	3,676	4,227
Florida	1,399	1,763	2,045	2,127	2,233	2,434
South Atlantic	14,279	15,039	15,218	15,833	16,681	17,738
Kentucky	2,668	2,908	2,966	3,025	2,480	2,629
Tennessee	3,317	3,450	3,312	3,279	3,213	3,181
Alabama	2,551	2,602	2,732	3,005	3,155	3,470
Mississippi	2,463	2,562	2,485	2,460	2,534	3,396
Arkansas	1,681	1,832	1,759	1,847	2,069	2,441
Louisiana	1,192	1,311	1,377	1,308	1,295	1,528
Oklahoma	2,281	2,646	2,540	2,515	2,339	2,128
Texas	7,113	7,113	7,255	7,690	7,459	8,056
South Central	23,266	24,424	24,426	25,129	24,544	26,829
Montana	443	439	417	417	438	407
Idaho	416	453	444	448	448	457
Wyoming	185	185	181	183	154	171
Colorado	779	826	760	836	719	784
New Mexico	376	380	391	407	407	403
Arizona	259	272	275	300	381	396
Utah	904	1,012	901	865	761	685
Nevada	56	48	46	39	38	36
Washington	1,504	1,594	1,722	1,843	1,898	1,898
Oregon	1,120	1,232	1,257	1,219	1,182	1,288
California	7,356	7,797	8,187	9,006	9,456	10,023
West	13,398	14,238	14,581	15,563	15,882	16,548
United States	111,376	121,995	119,518	128,961	120,826	126,747

Table 19.--Chickens on farms, by States, January 1, 1955-60--Continued

State and division	Pullets					
	1955	1956	1957	1958	1959	1960
	1,000	1,000	1,000	1,000	1,000	1,000
	head	head	head	head	head	head
Maine	2,978	3,067	3,190	3,350	3,417	3,588
New Hampshire	2,133	2,090	1,902	1,769	1,716	1,647
Vermont	881	863	872	732	673	586
Massachusetts	3,110	3,079	3,048	2,926	2,955	2,600
Rhode Island	347	337	334	321	337	313
Connecticut	2,611	2,742	2,632	2,395	2,491	2,441
New York	7,951	7,553	7,477	6,580	6,909	6,149
New Jersey	10,623	10,623	10,623	9,242	9,150	7,228
Pennsylvania	14,932	14,633	15,072	13,716	14,127	13,562
North Atlantic	45,566	44,987	45,150	41,031	41,775	38,114
Ohio	10,313	9,282	9,746	8,479	9,412	8,377
Indiana	10,426	9,696	10,181	9,672	10,349	9,521
Illinois	13,644	12,007	12,007	10,326	10,739	8,484
Michigan	7,020	6,669	6,736	5,187	5,809	4,996
Wisconsin	8,704	8,269	8,517	7,580	7,959	6,447
East North Central	50,107	45,923	47,187	41,244	44,268	37,825
Minnesota	19,107	16,432	17,253	13,975	15,932	13,861
Iowa	23,130	20,586	21,821	19,857	21,644	19,047
Missouri	10,629	9,566	10,236	9,008	9,008	7,206
North Dakota	2,724	2,315	2,431	2,091	2,175	1,784
South Dakota	5,967	5,609	5,889	5,653	6,444	5,928
Nebraska	8,737	7,776	8,476	7,289	7,945	7,071
Kansas	7,436	6,767	7,511	5,859	6,211	4,782
West North Central	77,730	69,051	73,617	63,732	69,359	59,679
Delaware	569	506	516	531	499	519
Maryland	1,856	1,763	1,728	1,572	1,666	1,416
Virginia	4,069	3,866	4,175	3,758	4,397	4,309
West Virginia	1,654	1,505	1,400	1,204	1,288	1,275
North Carolina	6,640	6,574	7,166	7,667	8,204	7,712
South Carolina	2,192	2,082	2,353	2,259	2,711	2,765
Georgia	5,104	4,492	5,256	5,887	7,410	8,234
Florida	1,806	2,023	2,407	2,768	3,100	2,945
South Atlantic	23,890	22,811	25,001	25,646	29,283	29,175
Kentucky	5,524	4,861	5,153	3,865	4,058	3,815
Tennessee	4,447	4,002	4,282	3,725	3,948	3,553
Alabama	3,348	3,315	3,547	4,079	4,936	4,492
Mississippi	2,725	2,589	2,589	2,641	3,486	4,288
Arkansas	2,598	2,338	2,455	2,332	3,148	3,305
Louisiana	1,848	1,848	1,922	1,807	1,915	1,953
Oklahoma	3,271	2,748	3,160	2,307	2,607	2,086
Texas	8,305	7,474	8,819	7,584	9,783	8,316
South Central	32,066	29,175	31,927	28,340	33,881	31,808
Montana	1,064	979	969	901	874	787
Idaho	1,260	1,096	1,052	1,010	1,000	960
Wyoming	310	270	256	228	235	183
Colorado	1,350	1,161	1,173	950	1,074	891
New Mexico	374	370	388	400	412	408
Arizona	346	367	382	432	549	544
Utah	1,328	1,129	1,152	1,048	1,006	1,006
Nevada	82	79	68	62	54	49
Washington	3,290	3,257	3,257	3,387	3,387	3,455
Oregon	2,387	2,339	2,316	2,247	2,180	1,940
California	16,069	16,069	16,390	15,898	16,693	18,195
West	27,860	27,116	27,403	26,563	27,464	28,418
United States	257,219	239,063	250,285	226,556	246,030	225,019

Table 19.--Chickens on farms, by States, January 1, 1955-60--Continued

State and division	Hens and pullets ^{1/}					
	1955	1956	1957	1958	1959	1960
	1,000	1,000	1,000	1,000	1,000	1,000
	<u>head</u>	<u>head</u>	<u>head</u>	<u>head</u>	<u>head</u>	<u>head</u>
Maine	3,759	3,832	4,039	4,267	4,444	4,410
New Hampshire	2,585	2,596	2,418	2,254	2,114	1,969
Vermont	1,087	1,059	1,050	917	895	820
Massachusetts	4,074	4,070	4,150	4,050	3,967	3,531
Rhode Island	464	459	465	453	453	430
Connecticut	3,748	3,856	3,813	3,611	3,756	3,554
New York	11,980	11,904	11,959	11,465	11,452	10,238
New Jersey	14,643	15,246	15,246	14,281	13,836	12,195
Pennsylvania	21,440	21,466	21,768	20,680	20,534	20,097
North Atlantic	63,780	64,490	64,908	61,978	61,451	57,252
Ohio	14,241	13,799	14,173	13,393	13,736	13,090
Indiana	13,728	13,526	13,819	13,601	14,160	13,637
Illinois	18,055	17,124	16,561	15,381	15,086	13,179
Michigan	10,108	9,942	10,009	8,460	9,017	8,172
Wisconsin	13,292	12,903	12,827	12,493	12,037	10,566
East North Central	69,424	67,294	67,389	63,328	64,036	58,644
Minnesota	24,465	23,076	23,100	21,108	21,282	19,693
Iowa	28,446	27,337	28,032	27,124	27,748	25,517
Missouri	14,419	13,773	14,317	13,211	12,791	11,065
North Dakota	3,812	3,599	3,574	3,314	3,166	2,755
South Dakota	8,107	8,049	8,305	8,262	8,792	8,534
Nebraska	11,095	10,676	11,173	10,498	10,673	10,126
Kansas	10,288	9,961	10,449	9,620	9,182	7,664
West North Central	100,632	96,471	98,950	93,137	93,634	85,354
Delaware	830	789	781	807	753	763
Maryland	2,636	2,574	2,531	2,455	2,478	2,106
Virginia	6,017	5,833	6,358	6,050	6,643	6,600
West Virginia	2,748	2,610	2,417	2,170	2,244	2,279
North Carolina	11,001	11,066	11,703	12,385	13,064	12,669
South Carolina	3,798	3,560	3,831	3,767	4,355	4,656
Georgia	7,934	7,633	8,146	8,950	11,094	12,461
Florida	3,205	3,786	4,452	4,895	5,333	5,379
South Atlantic	38,169	37,850	40,219	41,479	45,964	46,913
Kentucky	8,192	7,769	8,119	6,890	6,538	6,444
Tennessee	7,764	7,452	7,594	7,004	7,161	6,734
Alabama	5,899	5,917	6,279	7,084	8,091	7,962
Mississippi	5,188	5,151	5,074	5,101	6,020	7,684
Arkansas	4,279	4,170	4,214	4,179	3,217	5,746
Louisiana	3,040	3,159	3,299	3,115	3,210	3,481
Oklahoma	5,552	5,394	5,700	4,822	4,946	4,214
Texas	15,418	14,587	16,074	15,274	17,242	16,372
South Central	55,332	53,599	56,353	53,469	58,425	58,637
Montana	1,507	1,418	1,386	1,318	1,312	1,194
Idaho	1,676	1,549	1,496	1,458	1,448	1,417
Wyoming	495	455	437	411	389	354
Colorado	2,129	1,987	1,933	1,786	1,793	1,675
New Mexico	750	750	779	807	819	811
Arizona	605	639	657	732	930	940
Utah	2,232	2,141	2,053	1,913	1,767	1,691
Nevada	138	127	114	101	92	85
Washington	4,794	4,851	4,979	5,230	5,285	5,353
Oregon	3,507	3,571	3,573	3,466	3,362	3,228
California	23,425	23,866	24,577	24,904	26,149	28,218
West	41,258	41,354	41,984	42,126	43,346	44,966
United States	368,595	361,058	369,803	355,517	366,856	351,766

^{1/} All potential layers including pullets not of laying age.

Table 19--Chickens on farms, by States, January 1, 1955-60--Continued

State and division	Other chickens 1/					
	1955	1956	1957	1958	1959	1960
	1,000 head	1,000 head	1,000 head	1,000 head	1,000 head	1,000 head
Maine	92	116	182	220	255	250
New Hampshire	123	129	132	132	132	110
Vermont	31	32	33	34	37	40
Massachusetts	114	111	130	146	161	143
Rhode Island	14	13	13	13	13	13
Connecticut	92	100	114	120	134	139
New York	522	501	406	365	420	319
New Jersey	719	733	792	594	535	401
Pennsylvania	1,872	1,741	1,741	1,201	1,201	1,081
North Atlantic	3,579	3,476	3,543	2,825	2,888	2,496
Ohio	499	499	439	342	328	230
Indiana	537	499	454	413	401	353
Illinois	498	458	252	234	215	200
Michigan	438	460	603	302	311	271
Wisconsin	422	397	437	389	412	338
East North Central	2,394	2,313	2,185	1,680	1,667	1,392
Minnesota	430	292	353	261	331	212
Iowa	677	718	661	410	463	324
Missouri	759	782	782	602	470	352
North Dakota	167	144	144	120	127	83
South Dakota	322	261	261	227	216	179
Nebraska	468	491	442	398	374	299
Kansas	540	502	442	446	424	293
West North Central	3,363	3,190	3,085	2,464	2,405	1,742
Delaware	33	32	29	43	38	38
Maryland	145	133	109	97	81	71
Virginia	467	518	482	448	529	423
West Virginia	155	126	100	88	77	81
North Carolina	1,388	1,457	1,311	1,403	1,417	1,233
South Carolina	425	310	446	339	359	291
Georgia	598	598	413	285	376	440
Florida	300	321	372	428	467	500
South Atlantic	3,511	3,495	3,262	3,131	3,344	3,077
Kentucky	610	580	626	476	452	447
Tennessee	619	638	612	520	515	479
Alabama	473	464	483	459	477	463
Mississippi	579	562	556	467	458	435
Arkansas	427	406	406	309	281	281
Louisiana	609	530	578	445	490	441
Oklahoma	184	177	150	152	164	108
Texas	870	748	785	691	1,009	636
South Central	4,371	4,105	4,196	3,519	3,846	3,290
Montana	66	55	45	46	49	41
Idaho	54	45	55	59	57	52
Wyoming	13	13	12	11	12	11
Colorado	81	74	67	43	47	40
New Mexico	46	39	32	29	25	25
Arizona	60	61	63	73	93	73
Utah	103	93	97	88	78	69
Nevada	17	13	11	9	6	5
Washington	285	274	301	250	250	235
Oregon	172	189	189	164	131	132
California	3,998	5,197	4,417	4,373	5,248	5,038
West	4,895	6,053	5,289	5,145	5,996	5,721
United States	22,113	22,632	21,560	18,764	20,146	17,718

1/ Does not include commercial broilers.

- 40 -

Table 20.--All Turkeys: Number on farms, value per head, and total value, by States, January 1, 1955-60

State and division	1955			1956			1957		
	All turkeys:	Price per head:	Total value:	All turkeys:	Price per head:	Total value:	All turkeys:	Price per head:	Total value:
	Jan. 1:			Jan. 1:			Jan. 1:		
	1,000 head	Dollars	1,000 dollars	1,000 head	Dollars	1,000 dollars	1,000 head	Dollars	1,000 dollars
Maine	21	6.50	136	16	6.80	109	14	6.10	85
New Hampshire	22	6.90	152	22	7.00	154	21	6.50	136
Vermont	12	6.90	83	9	7.00	63	10	6.50	65
Massachusetts	57	6.90	393	57	7.00	399	57	6.50	370
Rhode Island	5	6.90	34	4	7.00	28	4	6.50	26
Connecticut	33	6.90	228	27	7.00	189	25	6.50	162
New York	108	6.70	724	76	6.70	509	80	6.70	536
New Jersey	29	7.20	209	17	7.00	119	16	6.70	107
Pennsylvania	184	5.90	1,086	172	6.30	1,084	170	6.00	1,020
North Atlantic	471	6.46	3,045	400	6.64	2,654	397	6.31	2,507
Ohio	192	5.40	1,037	200	5.50	1,100	215	4.65	1,000
Indiana	57	5.50	314	42	5.40	227	46	4.90	225
Illinois	60	5.10	306	60	5.60	336	63	5.20	328
Michigan	114	5.10	581	100	5.40	540	93	4.65	432
Wisconsin	90	6.00	540	120	5.40	648	194	5.20	1,009
East North Central	513	5.42	2,778	522	5.46	2,851	611	4.90	2,994
Minnesota	299	5.00	1,495	350	4.80	1,680	390	4.60	1,794
Iowa	141	5.30	747	154	5.40	832	177	4.50	796
Missouri	260	4.60	1,196	247	4.75	1,173	274	4.60	1,260
North Dakota	32	4.60	147	34	4.75	162	32	4.70	150
South Dakota	41	4.20	172	38	4.40	167	39	4.30	168
Nebraska	31	5.40	167	36	5.40	194	49	5.10	250
Kansas	62	5.10	316	59	4.70	277	69	4.60	317
West North Central	866	4.90	4,240	918	4.89	4,485	1,030	4.60	4,735
Delaware	9	5.90	53	9	6.25	56	8	6.00	48
Maryland	33	5.90	195	26	6.50	169	29	6.20	180
Virginia	248	4.20	1,042	228	4.45	1,015	295	4.20	1,239
West Virginia	68	4.80	326	71	4.50	320	74	4.50	333
North Carolina	64	5.30	339	65	5.30	344	87	4.75	413
South Carolina	90	5.30	477	77	5.50	424	75	5.00	375
Georgia	61	5.00	305	63	5.00	315	66	4.75	314
Florida	26	5.60	146	27	5.50	148	35	5.30	186
South Atlantic	599	4.81	2,883	566	4.93	2,791	669	4.62	3,088
Kentucky	64	4.70	301	68	4.80	326	70	4.40	308
Tennessee	37	4.50	166	35	4.45	156	33	4.20	139
Alabama	40	4.40	176	40	4.30	172	42	4.10	172
Mississippi	52	4.35	226	54	4.50	243	56	4.50	252
Arkansas	94	4.55	428	118	4.50	531	130	4.05	526
Louisiana	37	5.30	196	39	5.30	207	41	4.50	184
Oklahoma	70	4.60	322	74	4.40	326	99	4.00	396
Texas	375	4.50	1,688	375	4.60	1,725	431	4.10	1,767
South Central	769	4.56	3,503	803	4.59	3,686	902	4.15	3,744
Montana	9	6.20	56	7	6.30	44	7	6.00	42
Idaho	11	5.80	64	11	5.70	63	12	5.90	71
Wyoming	6	5.20	31	7	4.80	34	5	5.20	26
Colorado	40	5.50	220	20	5.60	112	27	5.30	143
New Mexico	7	5.00	35	7	5.20	36	7	4.90	34
Arizona	10	5.50	55	15	5.50	82	14	5.60	78
Utah	55	6.00	330	60	6.00	360	115	5.50	632
Nevada	---	---	---	---	---	---	---	---	---
Washington	124	5.60	694	118	6.00	708	125	6.00	750
Oregon	278	5.50	1,529	289	6.00	1,734	298	5.90	1,758
California	1,159	5.80	6,722	1,194	6.30	7,522	1,609	5.50	8,850
West	1,699	5.73	9,736	1,728	6.19	10,695	2,219	5.58	12,384
United States	4,917	5.33	26,185	4,937	5.50	27,162	5,828	5.05	29,452

Table 20.--All Turkeys: Number on farms, value per head, and total value, by States, January 1, 1955-60
--Continued

State and division	1958			1959			1960		
	All turkeys: Jan. 1	Price per head:	Total value	All turkeys: Jan. 1	Price per head:	Total value	All turkeys: Jan. 1	Price per head:	Total value
	1,000 head	Dollars	1,000 dollars	1,000 head	Dollars	1,000 dollars	1,000 head	Dollars	1,000 dollars
Maine	11	6.10	67	9	6.00	54	5	6.30	32
New Hampshire	20	6.50	130	23	6.00	138	23	6.30	145
Vermont "	9	6.50	58	8	6.00	48	6	6.30	38
Massachusetts	51	6.50	332	54	6.20	335	57	6.50	370
Rhode Island	3	6.50	20	3	6.30	19	3	6.60	20
Connecticut	25	6.50	162	30	6.30	189	36	6.60	238
New York	70	6.00	420	59	6.00	354	39	5.50	214
New Jersey	12	6.20	74	11	6.20	68	13	6.50	84
Pennsylvania	156	5.70	889	152	5.20	790	144	5.60	806
North Atlantic	357	6.03	2,152	349	5.72	1,995	326	5.97	1,947
Ohio	221	4.65	1,028	246	4.55	1,119	211	4.40	928
Indiana	55	4.60	253	58	4.40	255	49	4.30	211
Illinois	65	4.70	306	66	4.65	307	66	4.50	297
Michigan	86	4.65	400	98	4.75	466	82	4.70	385
Wisconsin	211	5.00	1,055	361	4.95	1,787	220	4.40	968
East North Central	638	4.77	3,042	829	4.75	3,934	628	4.44	2,789
Minnesota	440	4.40	1,936	575	4.55	2,616	575	4.20	2,415
Iowa	196	4.50	882	281	4.50	1,264	309	4.50	1,390
Missouri	226	4.40	994	226	4.30	972	200	4.40	880
North Dakota	38	4.30	163	44	4.30	189	40	4.00	160
South Dakota	56	4.20	235	75	3.90	292	29	3.75	109
Nebraska	60	4.90	294	67	4.60	308	52	4.40	229
Kansas	47	4.30	202	52	4.00	208	53	4.00	212
West North Central	1,063	4.43	4,706	1,320	4.43	5,849	1,258	4.29	5,395
Delaware	4	5.70	23	3	5.00	15	5	5.30	26
Maryland	20	5.90	118	18	5.20	94	14	5.50	77
Virginia	298	4.15	1,237	293	4.15	1,216	198	4.30	851
West Virginia	53	4.10	217	60	3.90	234	52	4.30	224
North Carolina	103	4.30	443	111	4.20	466	116	4.40	510
South Carolina	70	4.80	336	65	4.55	296	68	4.60	313
Georgia	37	4.45	165	36	4.45	160	43	4.25	183
Florida	50	4.80	240	57	4.80	274	34	4.60	156
South Atlantic	635	4.38	2,779	643	4.28	2,755	530	4.42	2,340
Kentucky	64	4.20	269	62	4.25	264	60	4.30	258
Tennessee	28	4.20	118	22	4.00	88	23	3.80	87
Alabama	40	3.95	158	30	4.10	123	31	4.00	124
Mississippi	51	4.50	230	50	4.20	210	47	4.20	197
Arkansas	130	4.25	552	129	4.20	542	103	4.00	412
Louisiana	31	4.50	140	23	4.50	104	20	4.50	90
Oklahoma	103	4.00	412	104	4.10	426	87	3.90	339
Texas	397	3.90	1,548	515	4.10	2,112	391	4.20	1,642
South Central	844	4.06	3,427	935	4.14	3,869	762	4.13	3,149
Montana	6	5.80	35	4	5.50	22	3	5.20	16
Idaho	7	5.10	36	8	4.80	38	11	4.60	51
Wyoming	5	5.20	26	5	5.00	25	5	4.60	23
Colorado	24	5.20	125	30	5.00	150	30	4.50	135
New Mexico	6	4.50	27	8	4.70	38	9	4.70	42
Arizona	13	5.00	65	12	5.00	60	15	4.80	72
Utah	100	4.90	490	69	5.00	345	118	5.50	649
Nevada	---	---	---	---	---	---	---	---	---
Washington	95	5.20	494	80	5.10	408	56	5.20	291
Oregon	271	5.00	1,355	273	5.00	1,365	267	5.40	1,442
California	1,548	4.80	7,430	1,540	4.90	7,546	1,615	5.70	9,206
West	2,075	4.86	10,083	2,029	4.93	9,997	2,129	5.60	11,927
United States	5,612	4.67	26,189	6,105	4.65	28,399	5,633	4.89	27,547

Table 21.--All turkeys on farms, by States, January 1, 1955-60

State and division	Heavy breeds 1/					
	1955	1956	1957	1958	1959	1960
	1,000 head	1,000 head	1,000 head	1,000 head	1,000 head	1,000 head
Maine	9	11	12	10	9	5
New Hampshire	20	21	20	19	23	23
Vermont	11	9	10	9	8	6
Massachusetts	55	55	56	51	54	57
Rhode Island ^a	5	4	4	3	3	3
Connecticut	30	22	23	24	30	35
New York	105	74	77	68	57	38
New Jersey	24	14	14	11	10	12
Pennsylvania	145	144	144	138	135	128
North Atlantic	404	354	360	333	329	307
Ohio	132	141	160	147	162	145
Indiana	38	39	43	51	53	43
Illinois	53	54	59	59	60	61
Michigan	100	92	88	78	89	77
Wisconsin	72	99	177	194	349	214
East North Central	395	425	527	529	713	540
Minnesota	241	290	300	345	460	475
Iowa	135	145	167	186	246	275
Missouri	202	191	228	205	205	182
North Dakota	29	31	31	37	43	39
South Dakota	37	35	29	54	69	28
Nebraska	29	34	47	58	65	51
Kansas	56	53	65	43	46	49
West North Central	729	779	867	928	1,134	1,099
Delaware	7	7	7	4	3	5
Maryland	30	18	21	18	17	13
Virginia	80	83	128	119	86	68
West Virginia	36	31	30	18	18	12
North Carolina	57	55	83	97	111	116
South Carolina	74	71	71	66	62	66
Georgia	61	63	66	37	36	37
Florida	21	21	24	27	26	22
South Atlantic	366	349	430	386	359	339
Kentucky	61	67	69	63	62	60
Tennessee	33	32	30	27	21	23
Alabama	28	28	27	22	21	25
Mississippi	47	50	52	47	44	43
Arkansas	45	59	80	90	95	86
Louisiana	34	35	37	27	23	20
Oklahoma	62	65	90	88	88	82
Texas	311	321	377	348	420	335
South Central	621	657	762	712	774	674
Montana	8	6	6	6	4	3
Idaho	9	9	10	7	6	8
Wyoming	6	6	4	5	5	5
Colorado	37	19	25	22	28	28
New Mexico	7	7	7	6	8	9
Arizona	10	14	13	13	12	15
Utah	39	45	111	94	67	118
Nevada	0	0	0	0	0	0
Washington	111	107	121	95	80	56
Oregon	247	258	267	245	236	238
California	1,103	1,150	1,558	1,530	1,511	1,587
West	1,577	1,621	2,122	2,023	1,997	2,067
United States	4,092	4,185	5,068	4,911	5,266	5,026

1/ Does not include turkey fryers.

- 43 -

Table 21.--All turkeys on farms, by States, January 1, 1955-60--Continued

State and division	Light breeds 1/					
	1955	1956	1957	1958	1959	1960
	1,000 head	1,000 head	1,000 head	1,000 head	1,000 head	1,000 head
Maine	12	5	2	1	0	0
New Hampshire	2	1	1	1	0	0
Vermont	1	0	0	0	0	0
Massachusetts	2	2	1	0	0	0
Rhode Island	0	0	0	0	0	0
Connecticut	3	5	2	1	0	1
New York	3	2	3	2	2	1
New Jersey	5	3	2	1	1	1
Pennsylvania	39	28	26	18	17	16
North Atlantic	67	46	37	24	20	19
Ohio	60	59	55	74	84	66
Indiana	19	3	3	4	5	6
Illinois	7	6	4	6	6	5
Michigan	14	8	5	8	9	5
Wisconsin	18	21	17	17	12	6
East North Central	118	97	84	109	116	88
Minnesota	58	60	90	95	115	100
Iowa	6	9	10	10	35	34
Missouri	58	56	46	21	21	18
North Dakota	3	3	1	1	1	1
South Dakota	4	3	10	2	6	1
Nebraska	2	2	2	2	2	1
Kansas	6	6	4	4	6	4
West North Central	137	139	163	135	186	159
Delaware	2	2	1	0	0	0
Maryland	3	8	8	2	1	1
Virginia	168	145	167	179	207	130
West Virginia	32	40	44	35	42	40
North Carolina	7	10	4	6	0	0
South Carolina	16	6	4	4	3	2
Georgia	0	0	0	0	0	6
Florida	5	6	11	23	31	12
South Atlantic	233	217	239	249	284	191
Kentucky	3	1	1	1	0	0
Tennessee	4	3	3	1	1	0
Alabama	12	12	15	18	9	6
Mississippi	5	4	4	4	6	4
Arkansas	49	59	50	40	34	17
Louisiana	3	4	4	4	0	0
Oklahoma	8	9	9	15	16	5
Texas	64	54	54	49	95	56
South Central	148	146	140	132	161	88
Montana	1	1	1	0	0	0
Idaho	2	2	2	0	2	3
Wyoming	0	1	1	0	0	0
Colorado	3	1	2	2	2	2
New Mexico	0	0	0	0	0	0
Arizona	0	1	1	0	0	0
Utah	16	15	4	6	2	0
Nevada	0	0	0	0	0	0
Washington	13	11	4	0	0	0
Oregon	31	31	31	26	37	29
California	56	44	51	18	29	28
West	122	107	97	52	72	62
United States	825	752	760	701	839	607

1/ Does not include turkey fryers.

Table 22.--Turkey breeder hens on farms, by States, January 1, 1955-60

State and division	Turkey breeder hens					
	1955	1956	1957	1958	1959	1960
	1,000 head	1,000 head	1,000 head	1,000 head	1,000 head	1,000 head
Maine	16	12	9	6	4	2
New Hampshire	11	11	10	11	16	16
Vermont	6	6	7	6	5	3
Massachusetts	28	32	26	19	21	22
Rhode Island	3	2	2	1	1	1
Connecticut	12	12	13	15	19	22
New York	47	42	42	40	41	28
New Jersey	10	8	8	5	6	7
Pennsylvania	68	62	60	49	44	40
North Atlantic	201	187	177	152	157	141
Ohio	139	148	154	161	177	147
Indiana	20	24	21	24	29	27
Illinois	31	33	29	29	35	35
Michigan	73	66	65	56	76	67
Wisconsin	56	62	72	70	96	86
East North Central	319	333	341	340	413	362
Minnesota	255	285	320	330	430	445
Iowa	90	100	125	140	179	197
Missouri	165	182	200	158	166	141
North Dakota	18	22	17	21	28	28
South Dakota	12	11	11	9	15	18
Nebraska	24	26	35	35	39	28
Kansas	42	38	48	32	38	36
West North Central	606	664	756	725	895	893
Delaware	4	4	3	1	1	1
Maryland	25	19	20	13	13	8
Virginia	155	160	215	228	227	153
West Virginia	35	37	37	27	31	27
North Carolina	40	41	45	54	62	65
South Carolina	71	67	60	53	45	38
Georgia	29	31	34	23	21	23
Florida	16	18	25	21	22	21
South Atlantic	375	377	439	420	422	336
Kentucky	42	48	52	50	49	48
Tennessee	22	24	20	17	15	15
Alabama	29	32	27	25	20	21
Mississippi	30	28	26	22	22	22
Arkansas	45	56	62	64	70	54
Louisiana	22	25	26	21	15	14
Oklahoma	50	52	70	67	71	57
Texas	278	295	342	265	384	253
South Central	518	560	625	531	646	484
Montana	4	3	3	3	3	2
Idaho	4	4	5	4	6	9
Wyoming	3	3	2	2	2	2
Colorado	12	8	10	9	10	11
New Mexico	4	4	4	4	6	7
Arizona	5	5	5	6	7	9
Utah	34	30	37	41	33	46
Nevada	0	0	0	0	0	0
Washington	77	78	82	55	43	30
Oregon	210	215	230	202	202	170
California	640	710	889	842	817	825
West	993	1,060	1,267	1,168	1,129	1,111
United States	3,012	3,181	3,605	3,336	3,662	3,327

Table 22.--Turkey breeder hens on farms, by States, January 1, 1955-60--Continued

State and division	Heavy breeds					
	1955	1956	1957	1958	1959	1960
	1,000 head	1,000 head	1,000 head	1,000 head	1,000 head	1,000 head
Maine	8	9	8	5	4	2
New Hampshire	10	10	9	10	16	16
Vermont	6	6	7	6	5	3
Massachusetts	27	31	25	19	21	22
Rhode Island	3	2	2	1	1	1
Connecticut	11	11	13	14	19	21
New York	46	41	41	39	40	28
New Jersey	7	6	7	5	6	7
Pennsylvania	49	53	53	45	40	37
North Atlantic	167	169	165	144	152	137
Ohio	100	109	116	104	112	99
Indiana	16	21	20	23	27	24
Illinois	27	30	27	26	31	32
Michigan	65	63	63	52	73	64
Wisconsin	49	56	69	66	94	84
East North Central	257	279	295	271	337	303
Minnesota	205	235	245	250	335	360
Iowa	85	96	121	134	158	177
Missouri	122	144	164	140	148	126
North Dakota	15	20	17	21	28	28
South Dakota	10	10	10	8	13	17
Nebraska	23	25	34	34	38	27
Kansas	38	36	45	29	33	35
West North Central	499	566	636	616	753	770
Delaware	3	3	3	1	1	1
Maryland	22	14	16	12	13	8
Virginia	57	62	102	90	65	54
West Virginia	20	13	13	9	9	6
North Carolina	37	38	43	52	62	65
South Carolina	59	63	57	50	43	37
Georgia	29	31	34	23	21	22
Florida	13	13	15	17	15	12
South Atlantic	240	237	283	254	229	205
Kentucky	41	47	51	49	49	48
Tennessee	19	22	18	16	14	15
Alabama	20	22	20	17	15	18
Mississippi	26	25	23	19	17	19
Arkansas	22	25	39	47	56	47
Louisiana	20	22	23	19	15	14
Oklahoma	44	45	63	54	57	53
Texas	224	260	307	235	306	211
South Central	416	468	544	456	529	425
Montana	4	3	3	3	3	2
Idaho	3	3	4	4	4	6
Wyoming	3	3	2	2	2	2
Colorado	11	8	10	9	10	10
New Mexico	4	4	4	4	6	7
Arizona	5	5	5	6	7	9
Utah	20	24	37	36	31	46
Nevada	0	0	0	0	0	0
Washington	67	73	79	55	43	30
Oregon	187	198	212	186	170	147
California	596	675	847	827	795	805
West	900	996	1,203	1,132	1,071	1,064
United States	2,479	2,715	3,126	2,873	3,071	2,904

Table 22.--Turkey breeder hens on farms, by States, January 1, 1955-60--Continued

State and division	Light breeds					
	1955	1956	1957	1958	1959	1960
	1,000 head	1,000 head	1,000 head	1,000 head	1,000 head	1,000 head
Maine	8	3	1	1	0	0
New Hampshire	1	1	1	1	0	0
Vermont	0	0	0	0	0	0
Massachusetts	1	1	1	0	0	0
Rhode Island	0	0	0	0	0	0
Connecticut	1	1	0	1	0	1
New York	1	1	1	1	1	0
New Jersey	3	2	1	0	0	0
Pennsylvania	19	9	7	4	4	3
North Atlantic	34	18	12	8	5	4
Ohio	39	39	38	57	65	48
Indiana	4	3	1	1	2	3
Illinois	4	3	2	3	4	3
Michigan	8	3	2	4	3	3
Wisconsin	7	6	3	4	2	2
East North Central	62	54	46	69	76	59
Minnesota	50	50	75	80	95	85
Iowa	4	4	4	6	21	20
Missouri	43	38	36	18	18	15
North Dakota	3	2	0	0	0	0
South Dakota	2	1	1	1	2	1
Nebraska	1	1	1	1	1	1
Kansas	4	2	3	3	5	1
West North Central	107	98	120	109	142	123
Delaware	1	1	0	0	0	0
Maryland	3	5	4	1	0	0
Virginia	98	98	113	138	162	99
West Virginia	15	24	24	18	22	21
North Carolina	3	3	2	2	0	0
South Carolina	12	4	3	3	2	1
Georgia	0	0	0	0	0	1
Florida	3	5	10	4	7	9
South Atlantic	135	140	156	166	193	131
Kentucky	1	1	1	1	0	0
Tennessee	3	2	2	1	1	0
Alabama	9	10	7	8	5	3
Mississippi	4	3	3	3	5	3
Arkansas	23	31	23	17	14	7
Louisiana	2	3	3	2	0	0
Oklahoma	6	7	7	13	14	4
Texas	54	35	35	30	78	42
South Central	102	92	81	75	117	59
Montana	0	0	0	0	0	0
Idaho	1	1	1	0	2	3
Wyoming	0	0	0	0	0	0
Colorado	1	0	0	0	0	1
New Mexico	0	0	0	0	0	0
Arizona	0	0	0	0	0	0
Utah	14	6	0	5	2	0
Nevada	0	0	0	0	0	0
Washington	10	5	3	0	0	0
Oregon	23	17	18	16	32	23
California	44	35	42	15	22	20
West	93	64	64	36	58	47
United States	533	466	479	463	591	423



Growth Through Agricultural Progress

END