



**AgEcon** SEARCH  
RESEARCH IN AGRICULTURAL & APPLIED ECONOMICS

*The World's Largest Open Access Agricultural & Applied Economics Digital Library*

**This document is discoverable and free to researchers across the globe due to the work of AgEcon Search.**

**Help ensure our sustainability.**

Give to AgEcon Search

AgEcon Search  
<http://ageconsearch.umn.edu>  
[aesearch@umn.edu](mailto:aesearch@umn.edu)

*Papers downloaded from **AgEcon Search** may be used for non-commercial purposes and personal study only. No other use, including posting to another Internet site, is permitted without permission from the copyright owner (not AgEcon Search), or as allowed under the provisions of Fair Use, U.S. Copyright Act, Title 17 U.S.C.*

FSB 276 (1961)

USDA STATISTICAL BULLETIN

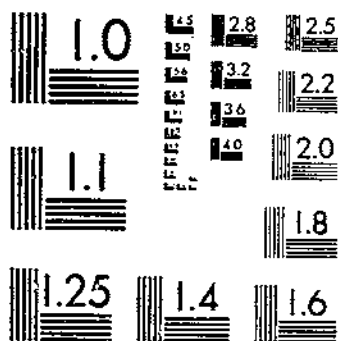
UPDATE

PIG CROPS BY STATES, 1955-59

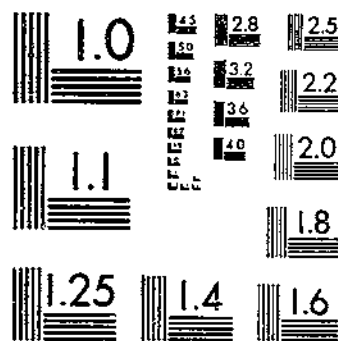
SOWS FARRROWING PIGS PER LITER

OF L

# START



MICROCOPY RESOLUTION TEST CHART  
NATIONAL BUREAU OF STANDARDS-1963-A



MICROCOPY RESOLUTION TEST CHART  
NATIONAL BUREAU OF STANDARDS-1963-A

TR 630.5

253-13

# 276

REFERENCE  
DO NOT LOAN

# PIG CROPS

## By States, 1955-59

- Sows Farrowing
- Pigs per Litter
- Pigs Saved

DEPOSITORY

JAN 24 1961

Los Angeles Public Library

## Selected States, 1954-59

- Inventory Numbers by Quarters

*Revised Estimates*

U.S. DEPARTMENT OF AGRICULTURE  
Agricultural Marketing Service Crop Reporting Board  
Washington, D.C. January 1961

Statistical Bulletin No. 276

## CONTENTS

|   | Page |
|---|------|
| Comments .....  | 3    |
| Tables:   |      |
| 1. Annual sows farrowing, pigs per litter,<br>and pigs saved by States, 1955-59.....        | 4    |
| 2. Spring sows farrowing, pigs per litter,<br>and pigs saved by States, 1955-59 .....       | 6    |
| 3. Fall sows farrowing, pigs per litter,<br>and pigs saved by States, 1955-59 .....         | 8    |
| 4. Spring sows farrowing by months, by States, 1955-59..                                    | 10   |
| 5. Fall sows farrowing by months, by States, 1955-59 ...                                    | 15   |
| 6. Sows farrowing by quarters, selected States .....  | 20   |
| 7. All hogs and pigs, number on farms by quarters,<br>selected States .....                 | 21   |
| 8. Pigs under 3 months old, number on farms<br>by quarters, selected States .....           | 22   |
| 9. Hogs and Pigs 3 to 6 months old, number on farms<br>by quarters, selected States .....   | 23   |
| 10. Hogs and Pigs under 6 months old, number on farms<br>by quarters, selected States ..... | 24   |
| 11. Hogs over 6 months old, number on farms<br>by quarters, selected States .....           | 25   |

## PIG CROPS

By States, 1955-59

### Sows Farrowing, Pigs per Litter, Pigs Saved Selected States, 1954-59, Inventory Numbers by Quarters Revised Estimates

This publication presents a record of the revised estimates of the Crop Reporting Board of the Agricultural Marketing Service relating to sows farrowing, pigs per litter, and pigs saved for the spring and fall crops. It continues the official series on sows farrowing and pigs saved as shown in Statistical Bulletin 187, Pig Crops by States 1930-54. <sup>1/</sup> It also contains the official estimates of monthly distribution of sows farrowing. These estimates of sows farrowing, pigs per litter, pigs saved, and the monthly distribution of sows farrowing have been released currently in semiannual reports and other publications.

Revised estimates of inventories of hogs on farms by quarters are also included for 10 States for which data are available. Estimates of inventory numbers by quarters were started in March 1954 in 6 States, Indiana, Illinois, Wisconsin, Minnesota, Iowa, and Kansas. In 1956, 3 States were added-- Ohio, Missouri, and South Dakota, and in 1957 Nebraska started the quarterly program. Missouri was not included for the last 2 quarters of 1958 and the first 2 quarters of 1959.

These revised State and United States series result from the new 1959 benchmarks obtained from an analysis of the 1959 Census enumeration and of other information such as State Farm Census data, records relating to market receipts of hogs, commercial and farm slaughter and current survey data collected during the period.

In 1954, the Census included for the first time a question on the number of sows farrowing or to farrow from June 1 to December 1. It also included a question asking for the number of sows farrowing the previous spring (December 1, 1958 - May 31, 1959). The Census of 1959 asked similar questions on both spring and fall litters.

The semiannual estimates of sows farrowed, pigs per litter and pigs saved currently are based primarily on survey returns from hog producers, obtained mostly in cooperation with the Post Office Department through the rural mail carriers.

<sup>1/</sup> U.S.D.A. Agricultural Marketing Service. Pig Crops, by States 1930-54. Statistical Bulletin 187, July 1956.

TABLE 1. Annual sows farrowing, pigs per litter, and pigs saved, 1955-59 1/2

| State and region         | 1955                |                    |               | 1956                |                    |               | 1957                |                    |               |
|--------------------------|---------------------|--------------------|---------------|---------------------|--------------------|---------------|---------------------|--------------------|---------------|
|                          | Sows farrow-<br>ing | Pigs per<br>litter | Pigs saved    | Sows farrow-<br>ing | Pigs per<br>litter | Pigs saved    | Sows farrow-<br>ing | Pigs per<br>litter | Pigs saved    |
|                          | 1,000<br>head       | Number             | 1,000<br>head | 1,000<br>head       | Number             | 1,000<br>head | 1,000<br>head       | Number             | 1,000<br>head |
| Maine .....              | 5                   | 6.5                | 31            | 5                   | 6.5                | 31            | 4                   | 6.6                | 31            |
| New Hampshire .....      | 2                   | 7.5                | 18            | 2                   | 6.5                | 15            | 2                   | 7.1                | 15            |
| Vermont .....            | 2                   | 6.7                | 18            | 3                   | 6.7                | 18            | 2                   | 7.0                | 16            |
| Massachusetts .....      | 29                  | 5.7                | 166           | 6                   | 5.7                | 147           | 26                  | 5.8                | 151           |
| Rhode Island .....       | 2                   | 6.0                | 12            | 2                   | 6.1                | 11            | 2                   | 6.5                | 13            |
| Connecticut .....        | 4                   | 7.2                | 33            | 4                   | 6.6                | 29            | 4                   | 6.2                | 26            |
| New York .....           | 37                  | 7.2                | 268           | 35                  | 7.3                | 255           | 30                  | 7.5                | 224           |
| New Jersey .....         | 34                  | 5.6                | 192           | 33                  | 5.7                | 188           | 30                  | 5.9                | 176           |
| Pennsylvania .....       | 143                 | 7.0                | 1,008         | 137                 | 7.0                | 935           | 114                 | 7.2                | 825           |
| North Atlantic .....     | 258                 | 6.73               | 1,740         | 247                 | 6.68               | 1,649         | 214                 | 6.86               | 1,478         |
| Ohio .....               | 736                 | 6.91               | 5,086         | 705                 | 6.93               | 4,885         | 657                 | 7.06               | 4,627         |
| Indiana .....            | 1,140               | 6.22               | 7,879         | 1,153               | 7.03               | 8,107         | 1,083               | 7.05               | 7,638         |
| Illinois .....           | 1,656               | 6.84               | 11,325        | 1,603               | 7.00               | 11,218        | 1,573               | 7.14               | 11,236        |
| Michigan .....           | 205                 | 7.05               | 1,445         | 180                 | 7.09               | 1,340         | 167                 | 7.24               | 1,209         |
| Wisconsin .....          | 560                 | 7.03               | 3,938         | 482                 | 7.07               | 3,409         | 487                 | 7.28               | 3,547         |
| East North Central ..... | 4,297               | 6.91               | 29,673        | 4,132               | 7.01               | 28,999        | 3,967               | 7.13               | 28,267        |
| Minnesota .....          | 1,015               | 6.86               | 6,966         | 840                 | 6.97               | 5,853         | 835                 | 7.17               | 5,984         |
| Iowa .....               | 3,040               | 7.02               | 21,326        | 2,657               | 7.19               | 19,116        | 2,548               | 7.39               | 18,812        |
| Missouri .....           | 944                 | 6.92               | 6,532         | 919                 | 7.11               | 6,531         | 869                 | 7.11               | 6,175         |
| North Dakota .....       | 115                 | 6.90               | 793           | 96                  | 6.71               | 644           | 97                  | 6.94               | 673           |
| South Dakota .....       | 443                 | 6.69               | 2,962         | 337                 | 6.85               | 2,309         | 335                 | 6.96               | 2,330         |
| Nebraska .....           | 680                 | 6.80               | 4,625         | 497                 | 7.01               | 3,483         | 490                 | 7.22               | 3,537         |
| Kansas .....             | 235                 | 6.91               | 1,625         | 208                 | 6.95               | 1,445         | 203                 | 7.09               | 1,439         |
| West North Central ..... | 6,472               | 6.93               | 44,829        | 5,554               | 7.09               | 39,381        | 5,377               | 7.25               | 38,957        |
| Delaware .....           | 9                   | 6.6                | 58            | 9                   | 6.5                | 54            | 8                   | 7.0                | 57            |
| Maryland .....           | 54                  | 6.9                | 371           | 48                  | 7.0                | 337           | 43                  | 7.1                | 307           |
| Virginia .....           | 144                 | 6.9                | 992           | 146                 | 6.9                | 1,006         | 142                 | 7.0                | 1,001         |
| West Virginia .....      | 34                  | 7.4                | 250           | 29                  | 7.1                | 206           | 21                  | 7.3                | 154           |
| North Carolina .....     | 279                 | 6.7                | 1,862         | 279                 | 6.8                | 1,893         | 296                 | 7.0                | 2,059         |
| South Carolina .....     | 116                 | 6.6                | 760           | 123                 | 6.4                | 786           | 120                 | 6.5                | 782           |
| Georgia .....            | 360                 | 6.6                | 2,373         | 375                 | 6.8                | 2,533         | 369                 | 6.7                | 2,476         |
| Florida .....            | 104                 | 6.1                | 635           | 109                 | 6.3                | 682           | 100                 | 6.0                | 598           |
| South Atlantic .....     | 1,100               | 6.64               | 7,301         | 1,118               | 6.71               | 7,497         | 1,099               | 6.76               | 7,434         |
| Kentucky .....           | 271                 | 7.0                | 1,897         | 293                 | 7.0                | 2,048         | 295                 | 7.0                | 2,079         |
| Tennessee .....          | 266                 | 6.3                | 1,807         | 281                 | 6.9                | 1,936         | 278                 | 7.0                | 1,946         |
| Alabama .....            | 236                 | 6.9                | 1,628         | 233                 | 6.8                | 1,584         | 225                 | 6.8                | 1,521         |
| Mississippi .....        | 145                 | 6.0                | 877           | 157                 | 5.7                | 902           | 140                 | 6.1                | 860           |
| Arkansas .....           | 108                 | 6.9                | 740           | 110                 | 6.9                | 758           | 93                  | 6.8                | 632           |
| Louisiana .....          | 100                 | 6.2                | 621           | 105                 | 6.1                | 641           | 84                  | 6.1                | 509           |
| Oklahoma .....           | 127                 | 6.8                | 864           | 112                 | 6.8                | 756           | 92                  | 6.8                | 626           |
| Texas .....              | 260                 | 6.6                | 1,717         | 223                 | 6.8                | 1,516         | 188                 | 6.9                | 1,297         |
| South Central .....      | 1,513               | 6.71               | 10,151        | 1,514               | 6.70               | 10,141        | 1,395               | 6.79               | 9,470         |
| Montana .....            | 34                  | 6.9                | 235           | 27                  | 7.2                | 195           | 26                  | 7.2                | 188           |
| Idaho .....              | 27                  | 6.8                | 183           | 26                  | 7.0                | 181           | 25                  | 7.2                | 180           |
| Wyoming .....            | 8                   | 6.4                | 49            | 8                   | 6.7                | 52            | 6                   | 6.6                | 44            |
| Colorado .....           | 39                  | 6.7                | 261           | 39                  | 6.4                | 249           | 35                  | 6.3                | 238           |
| New Mexico .....         | 11                  | 6.9                | 75            | 11                  | 6.6                | 77            | 11                  | 6.7                | 77            |
| Arizona .....            | 5                   | 6.4                | 32            | 5                   | 6.3                | 33            | 5                   | 7.0                | 35            |
| Utah .....               | 13                  | 6.4                | 85            | 14                  | 6.4                | 88            | 14                  | 7.0                | 93            |
| Nevada .....             | 4                   | 6.1                | 22            | 3                   | 5.9                | 19            | 2                   | 6.4                | 16            |
| Washington .....         | 32                  | 7.2                | 232           | 27                  | 7.1                | 193           | 26                  | 7.2                | 183           |
| Oregon .....             | 37                  | 7.2                | 268           | 32                  | 7.2                | 230           | 32                  | 7.3                | 234           |
| California .....         | 96                  | 6.1                | 587           | 79                  | 6.1                | 482           | 72                  | 6.4                | 453           |
| West .....               | 306                 | 6.64               | 2,029         | 271                 | 6.63               | 1,799         | 254                 | 6.86               | 1,756         |
| United States .....      | 13,946              | 6.86               | 95,729        | 12,836              | 6.97               | 89,426        | 12,306              | 7.10               | 87,362        |

1/2 Sum of sows farrowing and pigs saved in Spring (December through May) and sows farrowing and pigs saved in Fall (June through November).

TABLE 1.--Annual sows farrowing, pigs per litter, and pigs saved, 1955-59 <sup>1/2</sup>-Con.

| State and Region         | 1958                |                    |               | 1959                |                    |               |
|--------------------------|---------------------|--------------------|---------------|---------------------|--------------------|---------------|
|                          | Sows farrow-<br>ing | Pigs per<br>litter | Pigs<br>saved | Sows farrow-<br>ing | Pigs per<br>litter | Pigs<br>saved |
|                          | 1,000<br>head       | Number             | 1,000<br>head | 1,000<br>head       | Number             | 1,000<br>head |
| Maine .....              | 4                   | 6.4                | 29            | 5                   | 6.6                | 33            |
| New Hampshire .....      | 2                   | 7.2                | 18            | 2                   | 6.5                | 17            |
| Vermont .....            | 2                   | 7.2                | 18            | 2                   | 7.2                | 18            |
| Massachusetts .....      | 26                  | 6.0                | 157           | 24                  | 6.1                | 146           |
| Rhode Island .....       | 2                   | 6.1                | 11            | 2                   | 6.0                | 12            |
| Connecticut .....        | 4                   | 6.8                | 27            | 4                   | 6.7                | 26            |
| New York .....           | 28                  | 7.6                | 214           | 30                  | 7.4                | 223           |
| New Jersey .....         | 30                  | 6.0                | 179           | 26                  | 6.2                | 160           |
| Pennsylvania .....       | 106                 | 7.2                | 758           | 118                 | 7.2                | 844           |
| North Atlantic .....     | 204                 | 6.87               | 1,411         | 213                 | 6.91               | 1,479         |
| Ohio .....               | 641                 | 7.04               | 4,512         | 683                 | 7.02               | 4,794         |
| Indiana .....            | 2,106               | 7.09               | 7,845         | 1,145               | 7.10               | 8,132         |
| Illinois .....           | 1,677               | 7.12               | 11,937        | 1,780               | 7.05               | 12,549        |
| Michigan .....           | 178                 | 7.35               | 1,308         | 197                 | 7.03               | 1,384         |
| Wisconsin .....          | 535                 | 7.50               | 4,013         | 558                 | 7.24               | 4,040         |
| East North Central ..... | 4,137               | 7.16               | 29,615        | 4,363               | 7.08               | 30,899        |
| Minnesota .....          | 931                 | 7.25               | 6,747         | 983                 | 7.12               | 6,999         |
| Iowa .....               | 2,798               | 7.25               | 20,277        | 2,968               | 7.10               | 21,072        |
| Missouri .....           | 930                 | 7.12               | 6,623         | 1,009               | 7.08               | 7,145         |
| North Dakota .....       | 113                 | 7.27               | 821           | 117                 | 7.04               | 824           |
| South Dakota .....       | 415                 | 7.07               | 2,935         | 432                 | 7.07               | 3,056         |
| Nebraska .....           | 600                 | 7.05               | 4,229         | 649                 | 7.04               | 4,566         |
| Kansas .....             | 247                 | 7.14               | 1,735         | 276                 | 7.04               | 1,942         |
| West North Central ..... | 6,030               | 7.19               | 43,369        | 6,434               | 7.09               | 45,604        |
| Delaware .....           | 8                   | 7.2                | 51            | 8                   | 6.9                | 50            |
| Maryland .....           | 40                  | 7.2                | 288           | 42                  | 7.0                | 296           |
| Virginia .....           | 140                 | 7.0                | 985           | 146                 | 7.0                | 1,029         |
| West Virginia .....      | 20                  | 7.6                | 152           | 23                  | 7.3                | 168           |
| North Carolina .....     | 302                 | 7.0                | 2,124         | 337                 | 7.1                | 2,392         |
| South Carolina .....     | 122                 | 6.4                | 780           | 135                 | 6.4                | 870           |
| Georgia .....            | 380                 | 6.7                | 2,543         | 407                 | 6.8                | 2,771         |
| Florida .....            | 97                  | 6.4                | 616           | 91                  | 6.9                | 627           |
| South Atlantic .....     | 1,109               | 6.80               | 7,539         | 1,189               | 6.90               | 8,203         |
| Kentucky .....           | 299                 | 6.9                | 2,076         | 335                 | 7.1                | 2,362         |
| Tennessee .....          | 279                 | 6.9                | 1,938         | 330                 | 6.9                | 2,275         |
| Alabama .....            | 227                 | 6.8                | 1,541         | 251                 | 7.0                | 1,745         |
| Mississippi .....        | 131                 | 6.3                | 825           | 152                 | 6.4                | 973           |
| Arkansas .....           | 84                  | 7.1                | 597           | 105                 | 6.8                | 715           |
| Louisiana .....          | 63                  | 6.3                | 400           | 69                  | 6.1                | 424           |
| Oklahoma .....           | 103                 | 6.9                | 706           | 115                 | 6.9                | 793           |
| Texas .....              | 220                 | 7.0                | 1,551         | 254                 | 6.9                | 1,741         |
| South Central .....      | 1,406               | 6.85               | 9,634         | 1,611               | 6.85               | 11,028        |
| Montana .....            | 32                  | 7.5                | 241           | 35                  | 7.3                | 256           |
| Idaho .....              | 29                  | 7.3                | 213           | 34                  | 7.3                | 249           |
| Wyoming .....            | 8                   | 7.2                | 58            | 9                   | 6.9                | 61            |
| Colorado .....           | 39                  | 6.8                | 267           | 51                  | 6.8                | 347           |
| New Mexico .....         | 11                  | 7.0                | 76            | 12                  | 6.7                | 78            |
| Arizona .....            | 5                   | 7.1                | 36            | 6                   | 7.2                | 38            |
| Utah .....               | 14                  | 6.7                | 94            | 15                  | 6.8                | 100           |
| Nevada .....             | 3                   | 6.4                | 18            | 2                   | 6.7                | 16            |
| Washington .....         | 29                  | 7.4                | 216           | 32                  | 7.7                | 247           |
| Oregon .....             | 35                  | 7.6                | 266           | 41                  | 7.6                | 313           |
| California .....         | 77                  | 6.2                | 480           | 77                  | 6.2                | 477           |
| West .....               | 282                 | 6.97               | 1,965         | 314                 | 6.98               | 2,182         |
| United States .....      | 13,168              | 7.10               | 93,533        | 14,124              | 7.04               | 99,395        |

<sup>1/2</sup> Sum of sows farrowing and pigs saved in Spring (December through May) and sows farrowing and pigs saved in Fall (June through November).



TABLE 2.--Spring sows farrowing, pigs per litter, and pigs saved, 1955-59 1/

| State and region         | 1955                |                    |               | 1956                |                    |               | 1957                |                    |               |
|--------------------------|---------------------|--------------------|---------------|---------------------|--------------------|---------------|---------------------|--------------------|---------------|
|                          | Sows farrow-<br>ing | Pigs per<br>litter | Pigs saved    | Sows farrow-<br>ing | Pigs per<br>litter | Pigs saved    | Sows farrow-<br>ing | Pigs per<br>litter | Pigs saved    |
|                          | 1,000<br>head       | Number             | 1,000<br>head | 1,000<br>head       | Number             | 1,000<br>head | 1,000<br>head       | Number             | 1,000<br>head |
| Maine .....              | 2                   | 6.6                | 16            | 3                   | 6.9                | 18            | 2                   | 7.0                | 18            |
| New Hampshire .....      | 1                   | 7.3                | 9             | 1                   | 6.4                | 8             | 1                   | 7.2                | 8             |
| Vermont .....            | 1                   | 6.4                | 9             | 2                   | 6.9                | 10            | 1                   | 6.7                | 9             |
| Massachusetts .....      | 15                  | 5.7                | 86            | 14                  | 5.4                | 76            | 13                  | 5.7                | 74            |
| Rhode Island .....       | 1                   | 5.5                | 6             | 1                   | 5.7                | 5             | 1                   | 6.3                | 6             |
| Connecticut .....        | 2                   | 7.2                | 17            | 2                   | 6.3                | 14            | 2                   | 6.3                | 13            |
| New York .....           | 21                  | 7.2                | 151           | 20                  | 7.2                | 144           | 17                  | 7.4                | 126           |
| New Jersey .....         | 19                  | 5.5                | 104           | 18                  | 5.9                | 106           | 17                  | 6.1                | 104           |
| Pennsylvania .....       | 77                  | 7.0                | 539           | 78                  | 6.8                | 530           | 64                  | 7.2                | 461           |
| North Atlantic .....     | 139                 | 6.68               | 937           | 139                 | 6.58               | 911           | 118                 | 6.88               | 819           |
| Ohio .....               | 385                 | 6.89               | 2,660         | 390                 | 6.80               | 2,652         | 355                 | 7.04               | 2,499         |
| Indiana .....            | 583                 | 6.99               | 4,075         | 624                 | 6.99               | 4,362         | 580                 | 7.09               | 4,112         |
| Illinois .....           | 969                 | 6.86               | 6,647         | 930                 | 6.96               | 6,473         | 893                 | 7.13               | 6,367         |
| Michigan .....           | 111                 | 7.14               | 793           | 104                 | 7.08               | 736           | 90                  | 7.25               | 652           |
| Wisconsin .....          | 355                 | 7.05               | 2,503         | 295                 | 7.06               | 2,083         | 289                 | 7.32               | 2,115         |
| East North Central ..... | 2,404               | 6.94               | 16,678        | 2,343               | 6.96               | 16,306        | 2,207               | 7.13               | 15,745        |
| Minnesota .....          | 676                 | 6.94               | 4,691         | 548                 | 6.94               | 3,803         | 537                 | 7.23               | 3,883         |
| Iowa .....               | 2,001               | 7.07               | 14,147        | 1,701               | 7.22               | 12,281        | 1,582               | 7.42               | 11,738        |
| Missouri .....           | 493                 | 7.01               | 3,456         | 513                 | 7.04               | 3,612         | 487                 | 7.08               | 3,448         |
| North Dakota .....       | 97                  | 6.93               | 672           | 80                  | 6.65               | 532           | 79                  | 6.95               | 549           |
| South Dakota .....       | 358                 | 6.74               | 2,413         | 265                 | 6.84               | 1,813         | 254                 | 6.97               | 1,770         |
| Nebraska .....           | 486                 | 6.79               | 3,300         | 340                 | 6.98               | 2,373         | 316                 | 7.18               | 2,269         |
| Kansas .....             | 136                 | 6.99               | 951           | 125                 | 6.92               | 865           | 116                 | 7.14               | 828           |
| West North Central ..... | 4,247               | 6.98               | 29,630        | 3,572               | 7.08               | 25,279        | 3,371               | 7.26               | 24,485        |
| Delaware .....           | 5                   | 6.7                | 32            | 5                   | 6.4                | 31            | 4                   | 6.9                | 30            |
| Maryland .....           | 29                  | 7.0                | 203           | 27                  | 6.8                | 184           | 23                  | 7.0                | 161           |
| Virginia .....           | 77                  | 6.7                | 516           | 78                  | 6.7                | 523           | 76                  | 7.0                | 532           |
| West Virginia .....      | 17                  | 7.3                | 124           | 17                  | 6.9                | 117           | 12                  | 7.2                | 86            |
| North Carolina .....     | 162                 | 6.8                | 1,102         | 160                 | 6.7                | 1,072         | 165                 | 7.0                | 1,155         |
| South Carolina .....     | 58                  | 6.5                | 377           | 65                  | 6.2                | 403           | 66                  | 6.6                | 436           |
| Georgia .....            | 196                 | 6.5                | 1,274         | 208                 | 6.8                | 1,414         | 202                 | 6.8                | 1,374         |
| Florida .....            | 62                  | 6.3                | 391           | 63                  | 6.3                | 397           | 59                  | 6.1                | 360           |
| South Atlantic .....     | 606                 | 6.63               | 4,019         | 623                 | 6.65               | 4,141         | 607                 | 6.81               | 4,134         |
| Kentucky .....           | 139                 | 7.0                | 973           | 158                 | 6.9                | 1,090         | 156                 | 7.0                | 1,092         |
| Tennessee .....          | 143                 | 6.7                | 958           | 156                 | 6.8                | 1,061         | 154                 | 7.0                | 1,078         |
| Alabama .....            | 120                 | 6.8                | 816           | 125                 | 6.8                | 850           | 121                 | 6.9                | 835           |
| Mississippi .....        | 73                  | 5.9                | 431           | 85                  | 5.7                | 484           | 78                  | 6.1                | 476           |
| Arkansas .....           | 53                  | 5.7                | 355           | 57                  | 6.7                | 382           | 51                  | 6.7                | 342           |
| Louisiana .....          | 54                  | 6.3                | 340           | 58                  | 6.1                | 354           | 50                  | 6.1                | 305           |
| Oklahoma .....           | 67                  | 6.8                | 456           | 63                  | 6.8                | 428           | 49                  | 6.9                | 338           |
| Texas .....              | 131                 | 6.8                | 891           | 124                 | 6.8                | 843           | 95                  | 7.0                | 665           |
| South Central .....      | 780                 | 6.69               | 5,220         | 826                 | 6.65               | 5,492         | 754                 | 6.81               | 5,131         |
| Montana .....            | 21                  | 6.8                | 143           | 17                  | 7.0                | 119           | 15                  | 7.3                | 110           |
| Idaho .....              | 15                  | 6.7                | 100           | 15                  | 7.0                | 105           | 14                  | 7.3                | 102           |
| Wyoming .....            | 5                   | 6.3                | 28            | 4                   | 6.5                | 28            | 3                   | 6.7                | 23            |
| Colorado .....           | 22                  | 6.7                | 147           | 23                  | 6.3                | 145           | 20                  | 6.7                | 134           |
| New Mexico .....         | 6                   | 6.8                | 38            | 6                   | 6.4                | 41            | 6                   | 6.9                | 43            |
| Arizona .....            | 3                   | 6.6                | 18            | 3                   | 6.2                | 17            | 2                   | 7.0                | 17            |
| Utah .....               | 7                   | 6.4                | 46            | 7                   | 6.3                | 42            | 7                   | 7.0                | 47            |
| Nevada .....             | 2                   | 6.0                | 11            | 2                   | 6.0                | 11            | 1                   | 6.1                | 9             |
| Washington .....         | 17                  | 7.2                | 122           | 15                  | 7.0                | 105           | 13                  | 7.1                | 92            |
| Oregon .....             | 20                  | 7.2                | 144           | 18                  | 7.0                | 126           | 17                  | 7.2                | 122           |
| California .....         | 53                  | 6.2                | 329           | 42                  | 6.1                | 256           | 39                  | 6.4                | 250           |
| West .....               | 171                 | 6.63               | 1,126         | 152                 | 6.55               | 995           | 137                 | 6.87               | 949           |
| United States .....      | 8,347               | 6.90               | 57,610        | 7,655               | 6.94               | 53,124        | 7,194               | 7.12               | 51,263        |

1/ Sows farrowing and pigs saved (December through May).

TABLE 2.--Spring sows farrowing, pigs per litter, and pigs saved, 1955-59 1/ --Con.

| State and region         | 1958           |               |               | 1959           |               |               |
|--------------------------|----------------|---------------|---------------|----------------|---------------|---------------|
|                          | Sows           | Pigs          | Pigs          | Sows           | Pigs          | Pigs          |
|                          | farrow-<br>ing | per<br>litter | saved         | farrow-<br>ing | per<br>litter | saved         |
|                          | 1,000<br>head  | Number        | 1,000<br>head | 1,000<br>head  | Number        | 1,000<br>head |
| Maine .....              | 2              | 6.6           | 15            | 3              | 6.6           | 17            |
| New Hampshire .....      | 1              | 6.9           | 9             | 1              | 6.3           | 9             |
| Vermont .....            | 1              | 7.0           | 10            | 1              | 7.0           | 10            |
| Massachusetts .....      | 13             | 6.1           | 79            | 12             | 6.2           | 74            |
| Rhode Island .....       | 1              | 6.0           | 5             | 1              | 6.1           | 6             |
| Connecticut .....        | 2              | 6.7           | 13            | 2              | 7.2           | 14            |
| New York .....           | 15             | 7.6           | 114           | 16             | 7.4           | 118           |
| New Jersey .....         | 17             | 6.4           | 109           | 14             | 6.0           | 84            |
| Pennsylvania .....       | 54             | 7.0           | 378           | 60             | 7.2           | 432           |
| North Atlantic .....     | 106            | 6.85          | 732           | 110            | 6.92          | 764           |
| Ohio .....               | 330            | 6.87          | 2,267         | 353            | 7.00          | 2,471         |
| Indiana .....            | 563            | 6.98          | 3,930         | 591            | 7.17          | 4,237         |
| Illinois .....           | 902            | 7.03          | 6,341         | 974            | 7.05          | 6,867         |
| Michigan .....           | 84             | 7.30          | 613           | 98             | 7.03          | 689           |
| Wisconsin .....          | 301            | 7.50          | 2,258         | 319            | 7.30          | 2,329         |
| East North Central ..... | 2,180          | 7.07          | 15,409        | 2,335          | 7.11          | 16,593        |
| Minnesota .....          | 553            | 7.27          | 4,020         | 597            | 7.25          | 4,328         |
| Iowa .....               | 1,629          | 7.23          | 11,778        | 1,776          | 7.18          | 12,752        |
| Missouri .....           | 487            | 7.06          | 3,438         | 526            | 7.10          | 3,735         |
| North Dakota .....       | 87             | 7.24          | 630           | 92             | 7.07          | 650           |
| South Dakota .....       | 292            | 7.09          | 2,070         | 321            | 7.14          | 2,292         |
| Nebraska .....           | 360            | 7.08          | 2,549         | 414            | 7.06          | 2,923         |
| Kansas .....             | 129            | 7.08          | 913           | 155            | 6.96          | 1,079         |
| West North Central ..... | 3,537          | 7.18          | 25,398        | 3,881          | 7.15          | 27,759        |
| Delaware .....           | 4              | 7.1           | 26            | 4              | 7.1           | 26            |
| Maryland .....           | 21             | 7.2           | 151           | 22             | 7.2           | 158           |
| Virginia .....           | 73             | 6.8           | 496           | 75             | 6.9           | 518           |
| West Virginia .....      | 10             | 7.4           | 74            | 11             | 7.5           | 82            |
| North Carolina .....     | 167            | 6.9           | 1,152         | 195            | 7.1           | 1,384         |
| South Carolina .....     | 64             | 6.3           | 403           | 75             | 6.4           | 480           |
| Georgia .....            | 208            | 6.6           | 1,373         | 225            | 6.9           | 1,552         |
| Florida .....            | 50             | 6.2           | 310           | 52             | 6.8           | 354           |
| South Atlantic .....     | 597            | 6.68          | 3,985         | 659            | 6.91          | 4,554         |
| Kentucky .....           | 153            | 6.7           | 1,025         | 171            | 7.1           | 1,214         |
| Tennessee .....          | 143            | 6.8           | 972           | 174            | 6.8           | 1,183         |
| Alabama .....            | 122            | 6.7           | 817           | 135            | 7.0           | 945           |
| Mississippi .....        | 68             | 6.2           | 422           | 77             | 6.4           | 493           |
| Arkansas .....           | 40             | 7.0           | 280           | 54             | 6.9           | 373           |
| Louisiana .....          | 33             | 6.2           | 205           | 36             | 6.2           | 223           |
| Oklahoma .....           | 49             | 6.8           | 333           | 58             | 6.9           | 400           |
| Texas .....              | 105            | 7.1           | 746           | 138            | 6.9           | 952           |
| South Central .....      | 713            | 6.73          | 4,800         | 843            | 6.86          | 5,783         |
| Montana .....            | 18             | 7.5           | 135           | 20             | 7.2           | 144           |
| Idaho .....              | 15             | 7.4           | 111           | 18             | 7.3           | 131           |
| Wyoming .....            | 4              | 7.2           | 29            | 5              | 7.2           | 36            |
| Colorado .....           | 21             | 6.8           | 143           | 27             | 6.7           | 181           |
| New Mexico .....         | 5              | 7.0           | 38            | 6              | 6.7           | 40            |
| Arizona .....            | 2              | 7.5           | 18            | 3              | 7.2           | 19            |
| Utah .....               | 7              | 6.8           | 47            | 7              | 7.1           | 50            |
| Nevada .....             | 2              | 6.5           | 10            | 1              | 6.8           | 10            |
| Washington .....         | 14             | 7.4           | 104           | 17             | 7.6           | 129           |
| Oregon .....             | 17             | 7.8           | 133           | 22             | 7.6           | 167           |
| California .....         | 43             | 6.1           | 262           | 42             | 6.2           | 260           |
| West .....               | 148            | 6.95          | 1,030         | 168            | 6.94          | 1,167         |
| United States .....      | 7,281          | 7.05          | 51,354        | 7,996          | 7.08          | 56,620        |

1/ Sows farrowing and pigs saved (December through May).

TABLE 3.--Fall sows farrowing, pigs per litter, and pigs saved, 1955-59 1/

| State and Region         | 1955                |                    |               | 1956                |                    |               | 1957                |                    |               |
|--------------------------|---------------------|--------------------|---------------|---------------------|--------------------|---------------|---------------------|--------------------|---------------|
|                          | Sows farrow-<br>ing | Pigs per<br>litter | Pigs saved    | Sows farrow-<br>ing | Pigs per<br>litter | Pigs saved    | Sows farrow-<br>ing | Pigs per<br>litter | Pigs saved    |
|                          | 1,000<br>head       | Number             | 1,000<br>head | 1,000<br>head       | Number             | 1,000<br>head | 1,000<br>head       | Number             | 1,000<br>head |
| Maine .....              | 3                   | 6.3                | 15            | 2                   | 6.1                | 13            | 2                   | 6.0                | 13            |
| New Hampshire .....      | 1                   | 7.4                | 9             | 1                   | 6.8                | 7             | 1                   | 7.2                | 7             |
| Vermont .....            | 1                   | 7.3                | 9             | 1                   | 6.4                | 8             | 1                   | 7.2                | 7             |
| Massachusetts .....      | 14                  | 5.7                | 80            | 12                  | 5.9                | 71            | 13                  | 5.9                | 77            |
| Rhode Island .....       | 1                   | 6.0                | 6             | 1                   | 6.4                | 6             | 1                   | 6.6                | 7             |
| Connecticut .....        | 2                   | 6.8                | 16            | 2                   | 6.9                | 15            | 2                   | 6.4                | 13            |
| New York .....           | 16                  | 7.3                | 117           | 15                  | 7.4                | 111           | 13                  | 7.5                | 98            |
| New Jersey .....         | 15                  | 5.9                | 88            | 15                  | 5.5                | 82            | 13                  | 5.5                | 72            |
| Pennsylvania .....       | 66                  | 7.1                | 469           | 59                  | 7.2                | 425           | 50                  | 7.3                | 365           |
| North Atlantic .....     | 119                 | 6.78               | 809           | 108                 | 6.80               | 738           | 96                  | 6.84               | 659           |
| Ohio .....               | 350                 | 6.93               | 2,426         | 315                 | 7.09               | 2,233         | 302                 | 7.08               | 2,138         |
| Indiana .....            | 557                 | 6.83               | 3,804         | 529                 | 7.08               | 3,745         | 503                 | 7.01               | 3,526         |
| Illinois .....           | 687                 | 6.81               | 4,678         | 673                 | 7.05               | 4,745         | 680                 | 7.16               | 4,869         |
| Michigan .....           | 94                  | 6.94               | 652           | 85                  | 7.10               | 604           | 77                  | 7.24               | 557           |
| Wisconsin .....          | 205                 | 7.00               | 1,435         | 187                 | 7.09               | 1,326         | 198                 | 7.23               | 1,432         |
| East North Central ..... | 1,893               | 6.86               | 12,995        | 1,789               | 7.07               | 12,653        | 1,760               | 7.11               | 12,522        |
| Minnesota .....          | 339                 | 6.71               | 2,275         | 292                 | 7.02               | 2,050         | 298                 | 7.05               | 2,101         |
| Iowa .....               | 1,039               | 6.91               | 7,179         | 956                 | 7.15               | 6,835         | 966                 | 7.33               | 7,081         |
| Missouri .....           | 451                 | 6.82               | 3,076         | 406                 | 7.19               | 2,919         | 382                 | 7.14               | 2,727         |
| North Dakota .....       | 18                  | 6.71               | 121           | 16                  | 6.97               | 112           | 18                  | 6.89               | 124           |
| South Dakota .....       | 85                  | 6.46               | 549           | 72                  | 6.89               | 496           | 81                  | 6.91               | 560           |
| Nebraska .....           | 194                 | 6.83               | 1,325         | 157                 | 7.07               | 1,110         | 174                 | 7.29               | 1,268         |
| Kansas .....             | 99                  | 6.81               | 674           | 83                  | 6.99               | 580           | 87                  | 7.02               | 611           |
| West North Central ..... | 2,225               | 6.83               | 15,199        | 1,982               | 7.12               | 14,102        | 2,006               | 7.21               | 14,472        |
| Delaware .....           | 4                   | 6.6                | 26            | 4                   | 6.6                | 23            | 4                   | 7.2                | 27            |
| Maryland .....           | 25                  | 6.7                | 168           | 21                  | 7.3                | 153           | 20                  | 7.3                | 146           |
| Virginia .....           | 67                  | 7.1                | 476           | 68                  | 7.1                | 483           | 66                  | 7.1                | 469           |
| West Virginia .....      | 17                  | 7.4                | 126           | 12                  | 7.4                | 89            | 9                   | 7.6                | 68            |
| North Carolina .....     | 117                 | 6.5                | 760           | 119                 | 6.9                | 821           | 131                 | 6.9                | 904           |
| South Carolina .....     | 58                  | 6.6                | 383           | 58                  | 6.6                | 383           | 54                  | 6.4                | 346           |
| Georgia .....            | 164                 | 6.7                | 1,099         | 167                 | 6.7                | 1,119         | 167                 | 6.6                | 1,102         |
| Florida .....            | 42                  | 5.8                | 244           | 46                  | 6.2                | 285           | 41                  | 5.8                | 238           |
| South Atlantic .....     | 494                 | 6.64               | 3,282         | 495                 | 6.79               | 3,356         | 492                 | 6.71               | 3,300         |
| Kentucky .....           | 132                 | 7.0                | 924           | 135                 | 7.1                | 958           | 139                 | 7.1                | 987           |
| Tennessee .....          | 123                 | 6.9                | 849           | 125                 | 7.0                | 875           | 124                 | 7.0                | 868           |
| Alabama .....            | 116                 | 7.0                | 812           | 108                 | 6.8                | 734           | 104                 | 6.6                | 686           |
| Mississippi .....        | 72                  | 6.2                | 446           | 72                  | 5.8                | 418           | 62                  | 6.2                | 384           |
| Arkansas .....           | 55                  | 7.0                | 385           | 53                  | 7.1                | 376           | 42                  | 6.9                | 290           |
| Louisiana .....          | 46                  | 6.1                | 281           | 47                  | 6.1                | 287           | 34                  | 6.0                | 204           |
| Oklahoma .....           | 60                  | 6.8                | 408           | 49                  | 6.7                | 328           | 43                  | 6.7                | 288           |
| Texas .....              | 129                 | 6.4                | 826           | 99                  | 6.8                | 673           | 93                  | 6.8                | 632           |
| South Central .....      | 733                 | 6.73               | 4,931         | 688                 | 6.76               | 4,649         | 641                 | 6.77               | 4,339         |
| Montana .....            | 13                  | 7.1                | 92            | 10                  | 7.6                | 76            | 11                  | 7.1                | 78            |
| Idaho .....              | 12                  | 6.9                | 83            | 11                  | 6.9                | 76            | 11                  | 7.1                | 78            |
| Wyoming .....            | 3                   | 6.5                | 21            | 4                   | 6.9                | 24            | 3                   | 6.3                | 21            |
| Colorado .....           | 17                  | 6.7                | 114           | 16                  | 6.5                | 104           | 15                  | 6.9                | 104           |
| New Mexico .....         | 5                   | 7.0                | 37            | 5                   | 7.0                | 36            | 5                   | 6.5                | 34            |
| Arizona .....            | 2                   | 6.0                | 14            | 2                   | 6.5                | 16            | 3                   | 7.0                | 18            |
| Utah .....               | 6                   | 6.4                | 39            | 7                   | 6.5                | 46            | 7                   | 6.9                | 51            |
| Nevada .....             | 2                   | 6.3                | 11            | 1                   | 6.5                | 8             | 1                   | 6.5                | 7             |
| Washington .....         | 15                  | 7.3                | 110           | 12                  | 7.3                | 88            | 13                  | 7.4                | 96            |
| Oregon .....             | 17                  | 7.3                | 124           | 14                  | 7.4                | 104           | 15                  | 7.5                | 112           |
| California .....         | 43                  | 6.0                | 258           | 37                  | 6.1                | 226           | 33                  | 6.3                | 208           |
| West .....               | 135                 | 6.66               | 903           | 119                 | 6.72               | 804           | 117                 | 6.86               | 807           |
| United States .....      | 5,599               | 6.81               | 38,119        | 5,181               | 7.01               | 36,302        | 5,112               | 7.06               | 36,099        |

1/ Sows farrowing and pigs saved (June through November).

TABLE 3.--Fall sows farrowing, pigs per litter, and pigs saved, 1955-59 1/2 --Con.

| State and region   | 1958                         |                           |                          | 1959                         |                           |                          |
|--------------------|------------------------------|---------------------------|--------------------------|------------------------------|---------------------------|--------------------------|
|                    | Sows farrowing<br>1,000 head | Pigs per litter<br>Number | Pigs saved<br>1,000 head | Sows farrowing<br>1,000 head | Pigs per litter<br>Number | Pigs saved<br>1,000 head |
| Maine              | 2                            | 6.4                       | 14                       | 2                            | 6.5                       | 16                       |
| New Hampshire      | 1                            | 7.2                       | 9                        | 1                            | 6.8                       | 8                        |
| Vermont            | 1                            | 7.2                       | 8                        | 1                            | 6.9                       | 8                        |
| Massachusetts      | 13                           | 6.0                       | 78                       | 12                           | 6.0                       | 72                       |
| Rhode Island       | 1                            | 6.2                       | 6                        | 1                            | 6.5                       | 6                        |
| Connecticut        | 2                            | 6.8                       | 14                       | 2                            | 6.5                       | 12                       |
| New York           | 13                           | 7.7                       | 100                      | 14                           | 7.5                       | 105                      |
| New Jersey         | 13                           | 5.4                       | 70                       | 12                           | 6.3                       | 76                       |
| Pennsylvania       | 52                           | 7.3                       | 380                      | 58                           | 7.1                       | 412                      |
| North Atlantic     | 98                           | 6.90                      | 679                      | 103                          | 6.90                      | 715                      |
| Ohio               | 311                          | 7.22                      | 2,245                    | 330                          | 7.04                      | 2,323                    |
| Indiana            | 543                          | 7.21                      | 3,915                    | 554                          | 7.03                      | 3,895                    |
| Illinois           | 775                          | 7.22                      | 5,596                    | 806                          | 7.05                      | 5,682                    |
| Michigan           | 94                           | 7.39                      | 695                      | 99                           | 7.02                      | 695                      |
| Wisconsin          | 234                          | 7.50                      | 1,755                    | 239                          | 7.16                      | 1,711                    |
| East North Central | 1,957                        | 7.26                      | 14,206                   | 2,028                        | 7.05                      | 14,306                   |
| Minnesota          | 378                          | 7.22                      | 2,729                    | 386                          | 6.92                      | 2,671                    |
| Iowa               | 1,169                        | 7.27                      | 8,499                    | 1,192                        | 6.98                      | 8,320                    |
| Missouri           | 443                          | 7.19                      | 3,185                    | 483                          | 7.06                      | 3,410                    |
| North Dakota       | 26                           | 7.35                      | 191                      | 25                           | 6.98                      | 174                      |
| South Dakota       | 123                          | 7.03                      | 865                      | 111                          | 6.88                      | 764                      |
| Nebraska           | 240                          | 7.00                      | 1,680                    | 235                          | 6.99                      | 1,643                    |
| Kansas             | 114                          | 7.21                      | 822                      | 121                          | 7.13                      | 863                      |
| West North Central | 2,493                        | 7.21                      | 17,971                   | 2,553                        | 6.99                      | 17,845                   |
| Delaware           | 4                            | 7.1                       | 25                       | 4                            | 6.7                       | 24                       |
| Maryland           | 19                           | 7.2                       | 137                      | 20                           | 6.9                       | 138                      |
| Virginia           | 67                           | 7.3                       | 489                      | 71                           | 7.2                       | 511                      |
| West Virginia      | 10                           | 7.8                       | 78                       | 12                           | 7.2                       | 86                       |
| North Carolina     | 135                          | 7.2                       | 972                      | 142                          | 7.1                       | 1,008                    |
| South Carolina     | 58                           | 6.5                       | 377                      | 60                           | 6.5                       | 390                      |
| Georgia            | 172                          | 6.8                       | 1,170                    | 182                          | 6.7                       | 1,219                    |
| Florida            | 47                           | 6.5                       | 306                      | 39                           | 7.0                       | 273                      |
| South Atlantic     | 512                          | 6.95                      | 3,554                    | 530                          | 6.89                      | 3,649                    |
| Kentucky           | 146                          | 7.2                       | 1,051                    | 164                          | 7.0                       | 1,148                    |
| Tennessee          | 136                          | 7.1                       | 966                      | 156                          | 7.0                       | 1,092                    |
| Alabama            | 105                          | 6.9                       | 724                      | 116                          | 6.9                       | 800                      |
| Mississippi        | 63                           | 6.4                       | 403                      | 75                           | 6.4                       | 480                      |
| Arkansas           | 44                           | 7.2                       | 317                      | 51                           | 6.7                       | 342                      |
| Louisiana          | 30                           | 6.5                       | 195                      | 33                           | 6.1                       | 201                      |
| Oklahoma           | 54                           | 6.9                       | 373                      | 57                           | 6.9                       | 393                      |
| Texas              | 115                          | 7.0                       | 805                      | 116                          | 6.8                       | 789                      |
| South Central      | 693                          | 6.98                      | 4,834                    | 768                          | 6.83                      | 5,245                    |
| Montana            | 14                           | 7.6                       | 106                      | 15                           | 7.5                       | 112                      |
| Idaho              | 14                           | 7.3                       | 102                      | 16                           | 7.4                       | 118                      |
| Wyoming            | 4                            | 7.0                       | 29                       | 4                            | 6.6                       | 25                       |
| Colorado           | 18                           | 6.9                       | 124                      | 24                           | 6.9                       | 166                      |
| New Mexico         | 6                            | 7.0                       | 38                       | 6                            | 6.7                       | 38                       |
| Arizona            | 3                            | 6.5                       | 18                       | 3                            | 7.0                       | 19                       |
| Utah               | 7                            | 6.6                       | 47                       | 8                            | 6.7                       | 50                       |
| Nevada             | 1                            | 6.9                       | 8                        | 1                            | 6.5                       | 6                        |
| Washington         | 15                           | 7.5                       | 112                      | 15                           | 7.9                       | 118                      |
| Oregon             | 18                           | 7.4                       | 133                      | 19                           | 7.7                       | 146                      |
| California         | 34                           | 6.4                       | 218                      | 35                           | 6.2                       | 217                      |
| West               | 134                          | 7.00                      | 935                      | 146                          | 7.02                      | 1,015                    |
| United States      | 5,887                        | 7.17                      | 42,179                   | 6,128                        | 6.98                      | 42,775                   |

1/ Sows farrowing and pigs saved (June through November).

TABLE 4.--Spring sows farrowing, by months, by States, 1955 1/

| State, region<br>and year | Number        |               |               |               |               |               |               | Percentage of total |      |      |      |      |      |
|---------------------------|---------------|---------------|---------------|---------------|---------------|---------------|---------------|---------------------|------|------|------|------|------|
|                           | Total         | Dec.          | Jan.          | Feb.          | Mar.          | Apr.          | May           | Dec.                | Jan. | Feb. | Mar. | Apr. | May  |
|                           | 1,000<br>head | 1,000<br>head | 1,000<br>head | 1,000<br>head | 1,000<br>head | 1,000<br>head | 1,000<br>head | Pct.                | Pct. | Pct. | Pct. | Pct. | Pct. |
| New York .....            | 21            | 1             | 2             | 3             | 5             | 6             | 4             | 5.4                 | 8.3  | 16.8 | 23.3 | 27.1 | 19.1 |
| Pennsylvania .....        | 77            | 4             | 9             | 15            | 22            | 16            | 11            | 5.6                 | 11.2 | 19.8 | 28.3 | 21.4 | 13.7 |
| Other N. Atlan. 2/ ..     | 41            | 1             | 4             | 7             | 10            | 12            | 7             | 2.4                 | 9.8  | 17.1 | 24.4 | 29.2 | 17.1 |
| North Atlantic ...        | 139           | 6             | 15            | 25            | 37            | 34            | 22            | 4.3                 | 10.8 | 18.0 | 26.6 | 24.5 | 15.8 |
| Ohio .....                | 386           | 18            | 44            | 93            | 123           | 76            | 32            | 4.7                 | 11.3 | 24.1 | 31.9 | 19.6 | 8.4  |
| Indiana .....             | 583           | 27            | 94            | 176           | 150           | 82            | 54            | 4.6                 | 16.1 | 30.2 | 25.7 | 14.1 | 9.3  |
| Illinois .....            | 969           | 24            | 61            | 178           | 309           | 274           | 123           | 2.5                 | 6.3  | 18.3 | 31.9 | 28.3 | 12.7 |
| Michigan .....            | 111           | 3             | 6             | 18            | 32            | 30            | 22            | 2.8                 | 5.7  | 16.2 | 28.6 | 27.1 | 19.6 |
| Wisconsin .....           | 355           | 7             | 20            | 61            | 103           | 113           | 51            | 1.9                 | 5.7  | 17.2 | 29.0 | 31.7 | 14.5 |
| East N. Central ...       | 2,404         | 79            | 225           | 526           | 717           | 575           | 282           | 3.3                 | 9.4  | 21.9 | 29.8 | 23.9 | 11.7 |
| Minnesota .....           | 676           | 10            | 26            | 94            | 185           | 216           | 145           | 1.4                 | 3.9  | 13.9 | 27.3 | 32.0 | 21.5 |
| Iowa .....                | 2,001         | 30            | 100           | 280           | 550           | 671           | 370           | 1.5                 | 5.0  | 14.0 | 27.5 | 33.5 | 18.5 |
| Missouri .....            | 493           | 22            | 40            | 102           | 146           | 116           | 67            | 4.5                 | 8.2  | 20.6 | 29.7 | 23.5 | 13.5 |
| North Dakota .....        | 97            | ---           | 1             | 6             | 20            | 43            | 27            | 0.4                 | 0.8  | 5.9  | 21.3 | 44.0 | 27.6 |
| South Dakota .....        | 358           | 2             | 6             | 26            | 80            | 148           | 96            | 0.5                 | 1.6  | 7.4  | 22.3 | 41.4 | 26.8 |
| Nebraska .....            | 486           | 6             | 17            | 61            | 144           | 167           | 91            | 1.3                 | 3.5  | 12.5 | 29.6 | 34.4 | 18.7 |
| Kansas .....              | 136           | 6             | 9             | 27            | 43            | 33            | 18            | 4.2                 | 6.9  | 19.7 | 31.5 | 24.4 | 13.3 |
| West N. Central ...       | 4,247         | 76            | 199           | 596           | 1,168         | 1,394         | 814           | 1.8                 | 4.7  | 14.0 | 27.5 | 32.8 | 19.2 |
| Delaware-Md. 3/ ...       | 34            | 2             | 6             | 7             | 9             | 6             | 4             | 5.9                 | 17.6 | 20.6 | 26.5 | 17.6 | 11.8 |
| Virginia .....            | 77            | 6             | 11            | 20            | 20            | 13            | 7             | 8.4                 | 14.5 | 25.3 | 26.3 | 16.7 | 8.8  |
| West Virginia .....       | 17            | 1             | 1             | 3             | 6             | 4             | 2             | 4.5                 | 9.0  | 16.2 | 33.3 | 25.5 | 11.5 |
| North Carolina .....      | 162           | 17            | 27            | 39            | 38            | 24            | 17            | 10.6                | 16.6 | 24.0 | 23.6 | 15.0 | 10.2 |
| South Carolina .....      | 58            | 7             | 10            | 13            | 13            | 8             | 7             | 11.5                | 16.5 | 22.9 | 23.0 | 14.5 | 11.6 |
| Georgia .....             | 196           | 19            | 32            | 56            | 43            | 27            | 19            | 9.6                 | 16.3 | 28.3 | 22.3 | 13.7 | 9.8  |
| Florida .....             | 62            | 8             | 12            | 14            | 13            | 9             | 6             | 13.2                | 19.0 | 22.2 | 21.3 | 14.6 | 9.7  |
| South Atlantic ...        | 606           | 60            | 99            | 152           | 142           | 91            | 62            | 10.0                | 16.3 | 25.1 | 23.4 | 15.0 | 10.2 |
| Kentucky .....            | 139           | 8             | 16            | 35            | 43            | 23            | 14            | 5.6                 | 11.9 | 24.9 | 31.3 | 16.4 | 9.9  |
| Tennessee .....           | 143           | 15            | 20            | 33            | 36            | 24            | 15            | 10.6                | 14.2 | 23.0 | 25.0 | 16.6 | 10.6 |
| Alabama .....             | 120           | 15            | 21            | 28            | 28            | 16            | 12            | 12.4                | 17.8 | 23.7 | 23.3 | 12.9 | 9.9  |
| Mississippi .....         | 73            | 7             | 12            | 18            | 16            | 11            | 9             | 9.6                 | 16.4 | 24.2 | 21.8 | 15.4 | 12.6 |
| Arkansas .....            | 53            | 4             | 9             | 11            | 12            | 10            | 7             | 8.4                 | 16.9 | 21.4 | 22.9 | 18.0 | 12.4 |
| Louisiana .....           | 54            | 6             | 10            | 14            | 12            | 7             | 5             | 11.3                | 18.0 | 25.1 | 22.5 | 13.1 | 10.0 |
| Oklahoma .....            | 67            | 5             | 8             | 15            | 20            | 11            | 8             | 7.7                 | 12.4 | 22.1 | 29.6 | 15.9 | 12.3 |
| Texas .....               | 131           | 14            | 20            | 29            | 30            | 22            | 16            | 10.6                | 15.2 | 21.8 | 23.1 | 17.2 | 12.1 |
| South Central ...         | 780           | 74            | 116           | 183           | 197           | 124           | 86            | 9.4                 | 14.9 | 23.5 | 25.3 | 15.9 | 11.0 |
| Colorado .....            | 22            | 1             | 3             | 5             | 5             | 5             | 3             | 4.6                 | 11.5 | 23.5 | 22.8 | 21.8 | 15.8 |
| Washington .....          | 17            | 1             | 2             | 3             | 6             | 3             | 2             | 5.6                 | 10.4 | 17.7 | 36.8 | 19.5 | 10.0 |
| Oregon .....              | 20            | 1             | 3             | 5             | 6             | 3             | 2             | 6.9                 | 14.0 | 24.5 | 29.0 | 14.8 | 10.8 |
| California .....          | 53            | 6             | 8             | 12            | 12            | 10            | 5             | 11.5                | 14.8 | 21.8 | 23.6 | 18.4 | 9.9  |
| Other Western 4/ ...      | 59            | 1             | 5             | 10            | 16            | 15            | 12            | 1.7                 | 8.5  | 17.0 | 27.1 | 25.4 | 20.3 |
| West .....                | 171           | 10            | 21            | 35            | 45            | 36            | 24            | 5.9                 | 12.3 | 20.5 | 26.3 | 21.0 | 14.0 |
| United States .....       | 8,347         | 305           | 675           | 1,517         | 2,306         | 2,254         | 1,290         | 3.7                 | 8.1  | 18.2 | 27.6 | 27.0 | 15.4 |

1/ Sows farrowing December through May.

2/ Monthly data not shown separately for Maine, New Hampshire, Vermont, Massachusetts, Rhode Island, Connecticut, and New Jersey.

3/ Monthly data not shown separately for Delaware and Maryland.

4/ Monthly data not shown separately for Montana, Idaho, Wyoming, New Mexico, Arizona, Utah, and Nevada.

TABLE 4.--Spring sows farrowing, by months, by States, 1956 1/--Con.

| State, region<br>and year | Number        |               |               |               |               |               |               | Percentage of total |      |      |      |      |      |
|---------------------------|---------------|---------------|---------------|---------------|---------------|---------------|---------------|---------------------|------|------|------|------|------|
|                           | Total         | Dec.          | Jan.          | Feb.          | Mar.          | Apr.          | May           | Dec.                | Jan. | Feb. | Mar. | Apr. | May  |
|                           | 1,000<br>head | 1,000<br>head | 1,000<br>head | 1,000<br>head | 1,000<br>head | 1,000<br>head | 1,000<br>head | Pct.                | Pct. | Pct. | Pct. | Pct. | Pct. |
| New York .....            | 20            | 1             | 2             | 4             | 4             | 6             | 3             | 6.0                 | 7.9  | 17.6 | 20.6 | 30.5 | 17.4 |
| Pennsylvania .....        | 78            | 6             | 8             | 15            | 22            | 17            | 10            | 7.7                 | 10.9 | 19.5 | 28.0 | 21.4 | 12.5 |
| Other N. Atlan. 2/ .....  | 41            | 2             | 4             | 6             | 10            | 11            | 8             | 4.9                 | 9.8  | 14.6 | 24.4 | 26.8 | 19.5 |
| North Atlantic ...        | 139           | 9             | 14            | 25            | 36            | 34            | 21            | 6.5                 | 10.1 | 18.0 | 25.9 | 24.4 | 15.1 |
| Ohio .....                | 390           | 23            | 47            | 87            | 124           | 76            | 33            | 5.8                 | 12.0 | 22.4 | 31.7 | 19.5 | 8.6  |
| Indiana .....             | 624           | 33            | 102           | 172           | 180           | 88            | 49            | 5.2                 | 16.4 | 27.6 | 28.8 | 14.1 | 7.9  |
| Illinois .....            | 930           | 35            | 74            | 171           | 296           | 247           | 107           | 3.8                 | 7.9  | 18.4 | 31.8 | 26.6 | 11.5 |
| Michigan .....            | 104           | 4             | 7             | 17            | 31            | 29            | 16            | 3.6                 | 6.7  | 16.9 | 29.6 | 27.8 | 15.4 |
| Wisconsin .....           | 295           | 12            | 20            | 57            | 89            | 79            | 38            | 4.1                 | 6.8  | 19.3 | 30.3 | 26.6 | 12.9 |
| East N. Central ...       | 2,343         | 107           | 250           | 504           | 720           | 519           | 243           | 4.6                 | 10.7 | 21.4 | 30.7 | 22.1 | 10.4 |
| Minnesota .....           | 548           | 12            | 32            | 75            | 158           | 167           | 104           | 2.2                 | 5.9  | 13.7 | 28.8 | 30.5 | 18.9 |
| Iowa .....                | 1,701         | 51            | 102           | 238           | 476           | 545           | 289           | 3.0                 | 6.0  | 14.0 | 28.0 | 32.0 | 17.0 |
| Missouri .....            | 513           | 33            | 55            | 105           | 144           | 118           | 58            | 6.5                 | 10.7 | 20.5 | 28.1 | 22.9 | 11.3 |
| North Dakota .....        | 80            | ---           | 1             | 4             | 16            | 36            | 23            | .3                  | 1.5  | 5.2  | 20.0 | 44.7 | 28.3 |
| South Dakota .....        | 265           | 2             | 4             | 19            | 69            | 103           | 68            | .7                  | 1.7  | 7.1  | 25.9 | 38.9 | 25.7 |
| Nebraska .....            | 340           | 6             | 18            | 43            | 107           | 105           | 60            | 1.6                 | 5.3  | 12.7 | 31.4 | 31.3 | 17.7 |
| Kansas .....              | 125           | 10            | 10            | 27            | 36            | 27            | 15            | 7.9                 | 8.3  | 21.5 | 28.8 | 21.5 | 12.0 |
| West N. Central ...       | 3,572         | 114           | 222           | 511           | 1,006         | 1,102         | 617           | 3.2                 | 6.2  | 14.3 | 28.2 | 30.8 | 17.3 |
| Delaware-Md. 3/ .....     | 32            | 3             | 4             | 7             | 9             | 6             | 3             | 9.4                 | 12.5 | 21.9 | 28.1 | 18.7 | 9.4  |
| Virginia .....            | 78            | 6             | 10            | 20            | 24            | 11            | 7             | 8.1                 | 13.2 | 25.1 | 30.3 | 14.6 | 8.7  |
| West Virginia .....       | 17            | 1             | 1             | 3             | 6             | 4             | 2             | 6.3                 | 7.4  | 15.6 | 35.2 | 24.8 | 10.7 |
| North Carolina .....      | 160           | 16            | 26            | 38            | 37            | 27            | 16            | 10.2                | 16.7 | 23.5 | 22.9 | 16.7 | 10.0 |
| South Carolina .....      | 65            | 9             | 9             | 16            | 15            | 9             | 7             | 13.3                | 14.7 | 24.4 | 22.7 | 13.8 | 11.1 |
| Georgia .....             | 208           | 24            | 33            | 52            | 44            | 30            | 25            | 11.5                | 16.1 | 25.0 | 21.2 | 14.4 | 11.8 |
| Florida .....             | 63            | 8             | 10            | 17            | 13            | 9             | 6             | 12.8                | 16.6 | 26.6 | 21.2 | 13.9 | 8.9  |
| South Atlantic ...        | 623           | 67            | 93            | 153           | 148           | 96            | 66            | 10.8                | 14.9 | 24.5 | 23.8 | 15.4 | 10.6 |
| Kentucky .....            | 158           | 12            | 21            | 38            | 41            | 27            | 13            | 7.5                 | 13.2 | 24.2 | 29.8 | 16.8 | 8.5  |
| Tennessee .....           | 156           | 15            | 23            | 35            | 41            | 27            | 15            | 9.3                 | 14.5 | 22.7 | 26.6 | 17.3 | 9.6  |
| Alabama .....             | 125           | 16            | 23            | 30            | 28            | 17            | 11            | 12.5                | 18.6 | 23.9 | 22.3 | 14.0 | 8.7  |
| Mississippi .....         | 85            | 10            | 15            | 19            | 17            | 14            | 10            | 12.0                | 17.2 | 22.1 | 20.2 | 17.0 | 11.5 |
| Arkansas .....            | 57            | 5             | 10            | 13            | 15            | 9             | 5             | 9.7                 | 17.0 | 22.2 | 25.5 | 16.7 | 8.9  |
| Louisiana .....           | 58            | 7             | 9             | 16            | 12            | 8             | 6             | 12.7                | 15.9 | 26.6 | 21.3 | 13.5 | 10.0 |
| Oklahoma .....            | 63            | 5             | 8             | 16            | 18            | 10            | 6             | 8.0                 | 12.2 | 25.5 | 28.1 | 16.5 | 9.7  |
| Texas .....               | 124           | 17            | 19            | 28            | 28            | 18            | 14            | 13.7                | 15.2 | 22.5 | 22.6 | 14.9 | 11.1 |
| South Central ...         | 826           | 87            | 128           | 195           | 206           | 130           | 80            | 10.5                | 15.5 | 23.6 | 25.0 | 15.7 | 9.7  |
| Colorado .....            | 23            | 1             | 2             | 4             | 7             | 6             | 3             | 6.3                 | 8.5  | 17.9 | 29.6 | 25.4 | 12.3 |
| Washington .....          | 15            | 1             | 1             | 3             | 5             | 3             | 2             | 3.3                 | 7.1  | 23.3 | 36.3 | 20.1 | 9.9  |
| Oregon .....              | 18            | 1             | 3             | 5             | 5             | 3             | 1             | 8.5                 | 15.1 | 25.4 | 26.2 | 17.3 | 7.5  |
| California .....          | 42            | 6             | 6             | 11            | 9             | 6             | 4             | 15.1                | 14.4 | 24.7 | 22.2 | 14.4 | 9.2  |
| Other Western 4/ .....    | 54            | 2             | 5             | 9             | 14            | 15            | 9             | 3.7                 | 9.2  | 16.7 | 25.9 | 27.8 | 16.7 |
| West .....                | 152           | 11            | 17            | 32            | 40            | 33            | 19            | 7.2                 | 11.2 | 21.1 | 26.3 | 21.7 | 12.5 |
| United States .....       | 7,655         | 395           | 724           | 1,420         | 2,156         | 1,914         | 1,046         | 5.2                 | 9.4  | 18.5 | 28.2 | 25.0 | 13.7 |

1/ Sows farrowing December through May.

2/ Monthly data not shown separately for Maine, New Hampshire, Vermont, Massachusetts, Rhode Island, Connecticut, and New Jersey.

3/ Monthly data not shown separately for Delaware and Maryland.

4/ Monthly data not shown separately for Montana, Idaho, Wyoming, New Mexico, Arizona, Utah, and Nevada.

TABLE 4.--Spring sows farrowing, by months, by States, 1957 1/--Con.

| State, region<br>and year | Number                 |                        |                        |                        |                        |                        |                       | Percentage of total |               |               |               |               |              |
|---------------------------|------------------------|------------------------|------------------------|------------------------|------------------------|------------------------|-----------------------|---------------------|---------------|---------------|---------------|---------------|--------------|
|                           | Total<br>1,000<br>head | Dec.:<br>1,000<br>head | Jan.:<br>1,000<br>head | Feb.:<br>1,000<br>head | Mar.:<br>1,000<br>head | Apr.:<br>1,000<br>head | May:<br>1,000<br>head | Dec.:<br>Pct.       | Jan.:<br>Pct. | Feb.:<br>Pct. | Mar.:<br>Pct. | Apr.:<br>Pct. | May:<br>Pct. |
| New York .....            | 17                     | 1                      | 2                      | 3                      | 4                      | 5                      | 2                     | 7.2                 | 8.7           | 17.0          | 24.0          | 29.6          | 13.5         |
| Pennsylvania .....        | 64                     | 5                      | 7                      | 13                     | 17                     | 14                     | 8                     | 8.3                 | 11.2          | 19.6          | 26.1          | 22.3          | 12.5         |
| Other N. Atlan. 2/ .....  | 37                     | 2                      | 3                      | 5                      | 8                      | 10                     | 9                     | 5.4                 | 8.1           | 13.5          | 21.6          | 27.0          | 24.4         |
| North Atlantic ...:       | 118                    | 8                      | 12                     | 21                     | 29                     | 29                     | 19                    | 6.8                 | 10.2          | 17.8          | 24.6          | 24.5          | 16.1         |
| Ohio .....                | 355                    | 20                     | 43                     | 77                     | 112                    | 72                     | 31                    | 5.6                 | 12.1          | 21.6          | 31.7          | 20.3          | 8.7          |
| Indiana .....             | 580                    | 42                     | 93                     | 165                    | 156                    | 78                     | 46                    | 7.3                 | 16.1          | 28.4          | 26.9          | 13.4          | 7.9          |
| Illinois .....            | 893                    | 38                     | 75                     | 170                    | 287                    | 220                    | 103                   | 4.3                 | 8.4           | 19.0          | 32.1          | 24.7          | 11.5         |
| Michigan .....            | 90                     | 4                      | 6                      | 15                     | 24                     | 26                     | 15                    | 4.1                 | 6.9           | 16.2          | 27.2          | 28.6          | 17.0         |
| Wisconsin .....           | 289                    | 10                     | 21                     | 51                     | 83                     | 82                     | 42                    | 3.5                 | 7.4           | 17.6          | 28.8          | 28.3          | 14.4         |
| East N. Central ...:      | 2,207                  | 114                    | 238                    | 478                    | 662                    | 478                    | 237                   | 5.2                 | 10.8          | 21.7          | 30.0          | 21.7          | 10.6         |
| Minnesota .....           | 537                    | 8                      | 25                     | 69                     | 151                    | 176                    | 108                   | 1.5                 | 4.7           | 12.8          | 28.1          | 32.8          | 20.1         |
| Iowa .....                | 1,582                  | 47                     | 95                     | 214                    | 451                    | 506                    | 269                   | 3.0                 | 6.0           | 13.5          | 28.5          | 32.0          | 17.0         |
| Missouri .....            | 487                    | 34                     | 52                     | 99                     | 140                    | 106                    | 56                    | 7.1                 | 10.6          | 20.3          | 28.8          | 21.7          | 11.5         |
| North Dakota .....        | 79                     | ---                    | 1                      | 4                      | 15                     | 34                     | 24                    | 0.4                 | 1.5           | 5.3           | 20.6          | 42.6          | 29.6         |
| South Dakota .....        | 254                    | 2                      | 4                      | 16                     | 58                     | 108                    | 66                    | 0.7                 | 1.4           | 6.5           | 22.7          | 42.6          | 26.1         |
| Nebraska .....            | 316                    | 8                      | 14                     | 41                     | 85                     | 105                    | 63                    | 2.4                 | 4.6           | 12.9          | 26.8          | 33.2          | 20.1         |
| Kansas .....              | 116                    | 8                      | 11                     | 19                     | 34                     | 26                     | 18                    | 6.6                 | 9.5           | 16.5          | 29.1          | 22.9          | 15.4         |
| West N. Central ...:      | 3,371                  | 107                    | 202                    | 462                    | 935                    | 1,061                  | 604                   | 3.2                 | 6.0           | 13.7          | 27.7          | 31.5          | 17.9         |
| Delaware-Md. 3/ ...:      | 27                     | 2                      | 4                      | 7                      | 6                      | 6                      | 2                     | 7.4                 | 14.8          | 26.0          | 22.2          | 22.2          | 7.4          |
| Virginia .....            | 76                     | 6                      | 12                     | 18                     | 19                     | 13                     | 8                     | 7.9                 | 15.5          | 23.1          | 25.5          | 17.8          | 10.2         |
| West Virginia .....       | 12                     | 1                      | 1                      | 2                      | 4                      | 3                      | 1                     | 5.2                 | 7.0           | 14.5          | 34.7          | 27.1          | 11.5         |
| North Carolina .....      | 165                    | 17                     | 30                     | 35                     | 39                     | 26                     | 18                    | 10.4                | 18.2          | 21.0          | 23.6          | 15.9          | 10.9         |
| South Carolina .....      | 66                     | 9                      | 11                     | 16                     | 13                     | 10                     | 7                     | 13.5                | 16.7          | 24.6          | 20.6          | 14.6          | 10.0         |
| Georgia .....             | 202                    | 20                     | 38                     | 51                     | 44                     | 29                     | 20                    | 9.9                 | 18.7          | 25.4          | 21.6          | 14.3          | 10.1         |
| Florida .....             | 59                     | 9                      | 9                      | 15                     | 12                     | 8                      | 6                     | 14.8                | 15.0          | 25.5          | 20.6          | 14.1          | 10.0         |
| South Atlantic ...:       | 607                    | 64                     | 105                    | 144                    | 137                    | 95                     | 62                    | 10.5                | 17.3          | 23.7          | 22.6          | 15.7          | 10.2         |
| Kentucky .....            | 156                    | 12                     | 19                     | 40                     | 44                     | 26                     | 15                    | 7.6                 | 12.2          | 25.9          | 28.1          | 16.6          | 9.6          |
| Tennessee .....           | 154                    | 16                     | 25                     | 33                     | 40                     | 24                     | 16                    | 10.7                | 16.1          | 21.4          | 25.8          | 15.9          | 10.1         |
| Alabama .....             | 121                    | 14                     | 28                     | 28                     | 24                     | 17                     | 10                    | 12.3                | 23.0          | 22.8          | 19.9          | 13.9          | 8.1          |
| Mississippi .....         | 78                     | 9                      | 13                     | 20                     | 18                     | 11                     | 7                     | 11.2                | 16.4          | 24.9          | 23.1          | 14.6          | 9.8          |
| Arkansas .....            | 51                     | 6                      | 8                      | 12                     | 12                     | 8                      | 5                     | 12.1                | 15.8          | 23.6          | 24.1          | 14.6          | 9.8          |
| Louisiana .....           | 50                     | 7                      | 11                     | 12                     | 10                     | 7                      | 3                     | 13.6                | 22.5          | 23.7          | 19.1          | 14.4          | 6.7          |
| Oklahoma .....            | 49                     | 4                      | 6                      | 11                     | 15                     | 8                      | 5                     | 7.8                 | 12.4          | 21.9          | 31.4          | 17.2          | 9.3          |
| Texas .....               | 95                     | 11                     | 13                     | 24                     | 23                     | 16                     | 8                     | 11.4                | 14.1          | 25.0          | 24.0          | 16.5          | 9.0          |
| South Central ...:        | 754                    | 79                     | 123                    | 180                    | 186                    | 117                    | 69                    | 10.4                | 16.3          | 23.9          | 24.7          | 15.6          | 9.1          |
| Colorado .....            | 20                     | 1                      | 2                      | 3                      | 5                      | 6                      | 3                     | 6.1                 | 8.8           | 17.0          | 24.4          | 28.4          | 15.3         |
| Washington .....          | 13                     | 1                      | 1                      | 2                      | 5                      | 3                      | 1                     | 3.8                 | 9.5           | 17.1          | 34.9          | 26.2          | 8.5          |
| Oregon .....              | 17                     | 2                      | 2                      | 4                      | 5                      | 3                      | 1                     | 10.0                | 13.8          | 21.8          | 31.2          | 15.4          | 7.8          |
| California .....          | 39                     | 4                      | 6                      | 9                      | 9                      | 6                      | 5                     | 10.7                | 15.7          | 22.5          | 23.5          | 15.6          | 12.0         |
| Other Western 4/ ...:     | 48                     | 2                      | 4                      | 7                      | 13                     | 13                     | 9                     | 4.2                 | 8.3           | 14.6          | 27.1          | 27.1          | 18.7         |
| West .....                | 137                    | 10                     | 15                     | 25                     | 37                     | 31                     | 19                    | 7.3                 | 11.0          | 18.2          | 27.0          | 22.6          | 13.9         |
| United States .....       | 7,194                  | 382                    | 695                    | 1,310                  | 1,986                  | 1,811                  | 1,010                 | 5.3                 | 9.7           | 18.2          | 27.6          | 25.2          | 14.0         |

1/ Sows farrowing December through May.

2/ Monthly data not shown separately for Maine, New Hampshire, Vermont, Massachusetts, Rhode Island, Connecticut, and New Jersey.

3/ Monthly data not shown separately for Delaware and Maryland.

4/ Monthly data not shown separately for Montana, Idaho, Wyoming, New Mexico, Arizona, Utah, and Nevada.

TABLE 4.--Spring sows farrowing, by months, by States, 1958 1/--Con.

| State, region<br>and year | Number        |               |               |               |               |               | Percentage of total |      |      |      |      |      |      |
|---------------------------|---------------|---------------|---------------|---------------|---------------|---------------|---------------------|------|------|------|------|------|------|
|                           | Total         | Dec.          | Jan.          | Feb.          | Mar.          | Apr.          | May                 | Dec. | Jan. | Feb. | Mar. | Apr. | May  |
|                           | 1,000<br>head | 1,000<br>head | 1,000<br>head | 1,000<br>head | 1,000<br>head | 1,000<br>head | 1,000<br>head       | Pct. | Pct. | Pct. | Pct. | Pct. | Pct. |
| New York .....            | 15            | 1             | 1             | 2             | 4             | 5             | 2                   | 5.8  | 9.4  | 14.0 | 26.0 | 30.2 | 14.6 |
| Pennsylvania .....        | 54            | 5             | 6             | 11            | 15            | 11            | 6                   | 8.3  | 11.8 | 19.7 | 27.4 | 21.2 | 11.6 |
| Other N. Atlan. 2/ :      | 37            | 2             | 3             | 4             | 8             | 10            | 10                  | 5.4  | 8.1  | 10.8 | 21.7 | 27.0 | 27.0 |
| North Atlantic ....:      | 106           | 8             | 10            | 17            | 27            | 26            | 18                  | 7.6  | 9.4  | 16.0 | 25.5 | 24.5 | 17.0 |
| Ohio .....                | 330           | 19            | 37            | 82            | 99            | 62            | 31                  | 5.7  | 11.3 | 24.7 | 30.1 | 18.8 | 9.4  |
| Indiana .....             | 563           | 50            | 102           | 164           | 131           | 67            | 49                  | 8.9  | 18.1 | 29.1 | 23.3 | 11.9 | 8.7  |
| Illinois .....            | 902           | 40            | 90            | 195           | 260           | 213           | 104                 | 4.5  | 10.0 | 21.6 | 28.9 | 23.6 | 11.4 |
| Michigan .....            | 84            | 4             | 7             | 13            | 23            | 22            | 15                  | 5.2  | 7.9  | 15.9 | 27.5 | 25.8 | 17.7 |
| Wisconsin .....           | 301           | 9             | 24            | 63            | 84            | 74            | 47                  | 3.0  | 7.9  | 20.9 | 27.8 | 24.7 | 15.7 |
| East N. Central ...:      | 2,180         | 122           | 260           | 517           | 597           | 438           | 246                 | 5.6  | 11.9 | 23.7 | 27.4 | 20.1 | 11.3 |
| Minnesota .....           | 553           | 12            | 37            | 90            | 143           | 155           | 116                 | 2.1  | 6.7  | 16.3 | 25.8 | 28.1 | 21.0 |
| Iowa .....                | 1,629         | 70            | 116           | 274           | 433           | 466           | 270                 | 4.3  | 7.1  | 16.8 | 26.6 | 28.6 | 16.6 |
| Missouri .....            | 487           | 25            | 62            | 109           | 126           | 109           | 56                  | 5.1  | 12.8 | 22.5 | 25.8 | 22.3 | 11.5 |
| North Dakota .....        | 87            | ---           | 2             | 6             | 21            | 36            | 22                  | 0.6  | 2.0  | 7.0  | 23.7 | 41.6 | 25.1 |
| South Dakota .....        | 292           | 4             | 7             | 29            | 69            | 117           | 66                  | 1.2  | 2.5  | 9.9  | 23.7 | 40.2 | 22.5 |
| Nebraska .....            | 360           | 11            | 26            | 58            | 97            | 103           | 65                  | 3.1  | 7.1  | 16.2 | 27.0 | 28.6 | 18.0 |
| Kansas .....              | 129           | 9             | 16            | 28            | 33            | 28            | 15                  | 7.3  | 12.2 | 21.8 | 25.7 | 21.5 | 11.5 |
| West N. Central ...:      | 3,537         | 131           | 266           | 594           | 922           | 1,014         | 610                 | 3.7  | 7.5  | 16.8 | 26.1 | 28.7 | 17.2 |
| Delaware-Md. 3/ ...:      | 25            | 2             | 4             | 7             | 6             | 4             | 2                   | 8.0  | 16.0 | 28.0 | 24.0 | 16.0 | 8.0  |
| Virginia .....            | 73            | 7             | 13            | 18            | 19            | 10            | 6                   | 9.1  | 17.4 | 25.2 | 25.5 | 14.0 | 8.8  |
| West Virginia .....       | 10            | ---           | 1             | 2             | 3             | 3             | 1                   | 3.1  | 8.5  | 14.5 | 32.5 | 29.4 | 12.0 |
| North Carolina .....      | 167           | 20            | 36            | 39            | 32            | 23            | 17                  | 11.9 | 21.5 | 23.3 | 19.2 | 13.8 | 10.3 |
| South Carolina .....      | 64            | 8             | 12            | 16            | 11            | 10            | 7                   | 13.1 | 19.1 | 24.6 | 17.5 | 14.7 | 11.0 |
| Georgia .....             | 208           | 21            | 39            | 56            | 40            | 28            | 24                  | 10.3 | 18.5 | 27.0 | 19.3 | 13.2 | 11.7 |
| Florida .....             | 50            | 6             | 10            | 13            | 12            | 5             | 4                   | 12.2 | 21.1 | 25.8 | 23.5 | 9.9  | 7.5  |
| South Atlantic ....:      | 597           | 64            | 115           | 151           | 123           | 83            | 61                  | 10.7 | 19.3 | 25.3 | 20.6 | 13.9 | 10.2 |
| Kentucky .....            | 153           | 13            | 23            | 38            | 39            | 25            | 15                  | 8.5  | 14.9 | 24.9 | 25.9 | 16.2 | 9.6  |
| Tennessee .....           | 143           | 15            | 26            | 34            | 31            | 22            | 15                  | 10.7 | 17.7 | 23.9 | 21.9 | 15.6 | 10.2 |
| Alabama .....             | 122           | 16            | 24            | 34            | 23            | 16            | 9                   | 13.5 | 19.5 | 28.0 | 18.6 | 13.2 | 7.2  |
| Mississippi .....         | 68            | 8             | 12            | 13            | 15            | 12            | 8                   | 11.1 | 17.5 | 19.7 | 22.3 | 17.2 | 12.2 |
| Arkansas .....            | 40            | 4             | 6             | 11            | 9             | 6             | 4                   | 9.6  | 15.8 | 26.7 | 22.1 | 15.7 | 10.1 |
| Louisiana .....           | 33            | 4             | 6             | 7             | 8             | 5             | 3                   | 12.2 | 17.4 | 23.3 | 23.6 | 15.3 | 8.2  |
| Oklahoma .....            | 49            | 4             | 8             | 12            | 12            | 9             | 4                   | 9.0  | 15.4 | 24.0 | 25.5 | 17.4 | 8.7  |
| Texas .....               | 105           | 11            | 16            | 24            | 26            | 16            | 12                  | 10.0 | 15.6 | 22.9 | 24.5 | 15.6 | 11.4 |
| South Central ....:       | 713           | 75            | 121           | 173           | 163           | 111           | 70                  | 10.5 | 17.0 | 24.3 | 22.8 | 15.6 | 9.8  |
| Colorado .....            | 21            | 1             | 2             | 4             | 6             | 5             | 3                   | 5.4  | 9.6  | 18.3 | 29.0 | 23.6 | 14.1 |
| Washington .....          | 14            | 1             | 2             | 3             | 4             | 3             | 1                   | 9.4  | 12.1 | 19.4 | 26.9 | 21.1 | 11.1 |
| Oregon .....              | 17            | 2             | 2             | 4             | 5             | 3             | 1                   | 10.2 | 15.1 | 22.2 | 27.8 | 15.5 | 9.2  |
| California .....          | 43            | 4             | 8             | 9             | 9             | 7             | 6                   | 10.5 | 18.0 | 20.8 | 21.8 | 16.1 | 12.8 |
| Other Western 4/ ...:     | 53            | 2             | 4             | 8             | 13            | 16            | 10                  | 3.8  | 7.6  | 15.1 | 24.5 | 30.1 | 18.9 |
| West .....                | 148           | 10            | 18            | 28            | 37            | 34            | 21                  | 6.7  | 12.2 | 18.9 | 25.0 | 23.0 | 14.2 |
| United States .....       | 7,281         | 410           | 790           | 1,480         | 1,869         | 1,706         | 1,026               | 5.6  | 10.9 | 20.3 | 25.7 | 23.4 | 14.1 |

1/ Sows farrowing December through May.

2/ Monthly data not shown separately for Maine, New Hampshire, Vermont, Massachusetts, Rhode Island, Connecticut, and New Jersey.

3/ Monthly data not shown separately for Delaware and Maryland.

4/ Monthly data not shown separately for Montana, Idaho, Wyoming, New Mexico, Arizona, Utah, and Nevada.



TABLE 4.--Spring sows farrowing, by months, by States, 1959 1/--Con.

| State, region<br>and year | Number                 |                       |                       |                       |                       |                       |                      | Percentage of total |              |              |              |              |             |
|---------------------------|------------------------|-----------------------|-----------------------|-----------------------|-----------------------|-----------------------|----------------------|---------------------|--------------|--------------|--------------|--------------|-------------|
|                           | Total<br>1,000<br>head | Dec.<br>1,000<br>head | Jan.<br>1,000<br>head | Feb.<br>1,000<br>head | Mar.<br>1,000<br>head | Apr.<br>1,000<br>head | May<br>1,000<br>head | Dec.<br>Pct.        | Jan.<br>Pct. | Feb.<br>Pct. | Mar.<br>Pct. | Apr.<br>Pct. | May<br>Pct. |
| New York .....            | 16                     | 1                     | 1                     | 2                     | 4                     | 5                     | 3                    | 5.4                 | 8.1          | 15.7         | 25.3         | 29.3         | 16.2        |
| Pennsylvania .....        | 60                     | 4                     | 7                     | 12                    | 16                    | 13                    | 8                    | 7.4                 | 12.3         | 19.5         | 26.2         | 20.9         | 13.7        |
| Other N. Atlan. 2/ :      | 34                     | 2                     | 2                     | 4                     | 8                     | 11                    | 7                    | 5.9                 | 5.9          | 11.8         | 23.5         | 32.3         | 20.6        |
| North Atlantic ....:      | 110                    | 7                     | 10                    | 18                    | 28                    | 29                    | 18                   | 6.4                 | 9.1          | 16.4         | 25.4         | 26.4         | 16.3        |
| Ohio .....                | 353                    | 21                    | 53                    | 80                    | 102                   | 63                    | 34                   | 5.8                 | 15.0         | 22.7         | 28.9         | 17.9         | 9.7         |
| Indiana .....             | 591                    | 52                    | 115                   | 154                   | 139                   | 77                    | 54                   | 8.7                 | 19.5         | 26.1         | 23.5         | 13.0         | 9.2         |
| Illinois .....            | 974                    | 58                    | 118                   | 187                   | 270                   | 233                   | 108                  | 6.0                 | 12.1         | 19.2         | 27.7         | 23.9         | 11.1        |
| Michigan .....            | 98                     | 7                     | 10                    | 16                    | 26                    | 24                    | 15                   | 7.1                 | 10.7         | 15.8         | 26.6         | 24.3         | 15.5        |
| Wisconsin .....           | 319                    | 17                    | 37                    | 67                    | 82                    | 77                    | 39                   | 5.2                 | 11.5         | 21.0         | 25.7         | 24.2         | 12.4        |
| East N. Central ...:      | 2,335                  | 155                   | 333                   | 504                   | 619                   | 474                   | 250                  | 6.6                 | 14.3         | 21.6         | 26.5         | 20.3         | 10.7        |
| Minnesota .....           | 597                    | 25                    | 56                    | 104                   | 155                   | 157                   | 100                  | 4.2                 | 9.4          | 17.3         | 26.0         | 26.3         | 16.8        |
| Iowa .....                | 1,776                  | 107                   | 155                   | 275                   | 469                   | 495                   | 275                  | 6.0                 | 8.7          | 15.5         | 26.4         | 27.9         | 15.5        |
| Missouri .....            | 526                    | 35                    | 68                    | 106                   | 137                   | 119                   | 61                   | 6.6                 | 12.9         | 20.2         | 26.1         | 22.7         | 11.5        |
| North Dakota .....        | 92                     | 2                     | 3                     | 9                     | 23                    | 36                    | 19                   | 1.9                 | 3.4          | 10.3         | 24.9         | 39.4         | 20.4        |
| South Dakota .....        | 321                    | 5                     | 16                    | 32                    | 85                    | 115                   | 68                   | 1.6                 | 5.1          | 9.9          | 26.5         | 35.8         | 21.1        |
| Nebraska .....            | 414                    | 18                    | 44                    | 62                    | 102                   | 124                   | 64                   | 4.4                 | 10.6         | 14.8         | 24.7         | 30.0         | 15.5        |
| Kansas .....              | 155                    | 12                    | 21                    | 30                    | 41                    | 33                    | 18                   | 8.1                 | 13.6         | 19.4         | 26.2         | 21.3         | 11.4        |
| West N. Central ...:      | 3,881                  | 204                   | 363                   | 618                   | 1,012                 | 1,079                 | 605                  | 5.3                 | 9.4          | 15.9         | 26.0         | 27.8         | 15.6        |
| Delaware-Md. 3/ ....:     | 26                     | 2                     | 4                     | 6                     | 7                     | 5                     | 2                    | 7.7                 | 15.4         | 23.1         | 26.9         | 19.2         | 7.7         |
| Virginia .....            | 75                     | 8                     | 12                    | 18                    | 19                    | 12                    | 6                    | 10.1                | 16.4         | 23.5         | 26.0         | 15.5         | 8.5         |
| West Virginia .....       | 11                     | ---                   | 1                     | 2                     | 3                     | 3                     | 2                    | 4.3                 | 7.9          | 13.8         | 31.6         | 29.3         | 13.1        |
| North Carolina .....      | 195                    | 20                    | 36                    | 43                    | 45                    | 30                    | 21                   | 10.1                | 18.5         | 22.0         | 23.2         | 15.3         | 10.9        |
| South Carolina .....      | 75                     | 8                     | 14                    | 18                    | 16                    | 11                    | 8                    | 11.1                | 18.4         | 24.0         | 21.7         | 14.1         | 10.7        |
| Georgia .....             | 225                    | 23                    | 41                    | 61                    | 45                    | 32                    | 23                   | 10.5                | 18.1         | 27.0         | 20.0         | 14.2         | 10.2        |
| Florida .....             | 52                     | 7                     | 9                     | 12                    | 11                    | 8                     | 5                    | 14.0                | 16.4         | 23.8         | 22.1         | 15.1         | 8.6         |
| South Atlantic ....:      | 659                    | 68                    | 117                   | 160                   | 146                   | 101                   | 67                   | 10.3                | 17.8         | 24.3         | 22.2         | 15.3         | 10.1        |
| Kentucky .....            | 171                    | 14                    | 27                    | 40                    | 48                    | 28                    | 14                   | 8.0                 | 15.8         | 23.4         | 28.3         | 16.4         | 8.1         |
| Tennessee .....           | 174                    | 17                    | 29                    | 41                    | 41                    | 28                    | 18                   | 9.6                 | 16.6         | 23.8         | 23.6         | 15.9         | 10.5        |
| Alabama .....             | 135                    | 20                    | 25                    | 34                    | 28                    | 17                    | 11                   | 14.7                | 18.5         | 25.0         | 21.0         | 12.7         | 8.1         |
| Mississippi .....         | 77                     | 10                    | 13                    | 17                    | 16                    | 12                    | 9                    | 13.0                | 17.5         | 21.5         | 20.5         | 15.0         | 12.5        |
| Arkansas .....            | 54                     | 6                     | 9                     | 11                    | 12                    | 11                    | 5                    | 10.9                | 17.3         | 19.6         | 22.1         | 19.8         | 10.3        |
| Louisiana .....           | 36                     | 3                     | 6                     | 10                    | 9                     | 4                     | 4                    | 9.5                 | 16.6         | 27.1         | 24.0         | 12.6         | 10.2        |
| Oklahoma .....            | 58                     | 5                     | 9                     | 15                    | 15                    | 9                     | 5                    | 7.9                 | 16.3         | 25.4         | 26.6         | 14.8         | 9.0         |
| Texas .....               | 138                    | 16                    | 23                    | 28                    | 32                    | 25                    | 14                   | 11.8                | 16.4         | 20.7         | 23.0         | 18.1         | 10.0        |
| South Central ....:       | 843                    | 91                    | 141                   | 196                   | 201                   | 134                   | 80                   | 10.8                | 16.7         | 23.3         | 23.8         | 15.9         | 9.5         |
| Colorado .....            | 27                     | 2                     | 4                     | 5                     | 7                     | 5                     | 4                    | 7.5                 | 13.0         | 18.3         | 26.8         | 18.9         | 15.5        |
| Washington .....          | 17                     | 1                     | 2                     | 4                     | 5                     | 4                     | 1                    | 6.3                 | 12.0         | 23.0         | 29.6         | 21.4         | 7.7         |
| Oregon .....              | 22                     | 2                     | 3                     | 5                     | 6                     | 4                     | 2                    | 10.3                | 15.5         | 22.1         | 25.0         | 17.3         | 9.8         |
| California .....          | 42                     | 5                     | 6                     | 9                     | 10                    | 8                     | 4                    | 11.5                | 15.0         | 20.6         | 23.8         | 18.2         | 10.9        |
| Other Western 4/....:     | 60                     | 4                     | 6                     | 10                    | 14                    | 15                    | 11                   | 6.7                 | 10.0         | 16.7         | 23.3         | 25.0         | 18.3        |
| West .....                | 168                    | 14                    | 21                    | 33                    | 42                    | 36                    | 22                   | 8.3                 | 12.5         | 19.7         | 25.0         | 21.4         | 13.1        |
| United States .....       | 7,996                  | 539                   | 985                   | 1,529                 | 2,048                 | 1,853                 | 1,042                | 6.8                 | 12.3         | 19.1         | 25.6         | 23.2         | 13.0        |

1/ Sows farrowing December through May.

2/ Monthly data not shown separately for Maine, New Hampshire, Vermont, Massachusetts, Rhode Island, Connecticut, and New Jersey.

3/ Monthly data not shown separately for Delaware and Maryland.

4/ Monthly data not shown separately for Montana, Idaho, Wyoming, New Mexico, Arizona, Utah, and Nevada.

TABLE 5.--Fall sows farrowing, by months, by States, 1955 <sup>1/</sup>

| State, region<br>and year           | Number        |               |               |               |               |               |               | Percentage of total |      |      |       |      |      |
|-------------------------------------|---------------|---------------|---------------|---------------|---------------|---------------|---------------|---------------------|------|------|-------|------|------|
|                                     | Total         | June          | July          | Aug.          | Sept.         | Oct.          | Nov.          | June                | July | Aug. | Sept. | Oct. | Nov. |
|                                     | 1,000<br>head | 1,000<br>head | 1,000<br>head | 1,000<br>head | 1,000<br>head | 1,000<br>head | 1,000<br>head | Pct.                | Pct. | Pct. | Pct.  | Pct. | Pct. |
| New York .....                      | 16            | 2             | 2             | 3             | 4             | 3             | 2             | 11.3                | 14.3 | 18.2 | 26.5  | 21.0 | 8.7  |
| Pennsylvania .....                  | 66            | 7             | 9             | 15            | 19            | 11            | 5             | 10.8                | 13.4 | 22.6 | 28.0  | 17.2 | 8.0  |
| Other N. Atlan. <sup>2/</sup> ..... | 37            | 4             | 5             | 8             | 13            | 5             | 2             | 10.8                | 13.5 | 21.6 | 35.2  | 13.5 | 5.4  |
| North Atlantic .....                | 119           | 13            | 16            | 26            | 36            | 19            | 9             | 10.9                | 13.4 | 21.8 | 30.3  | 16.0 | 7.6  |
| Ohio .....                          | 350           | 26            | 49            | 101           | 96            | 55            | 23            | 7.4                 | 14.0 | 28.8 | 27.4  | 15.7 | 6.7  |
| Indiana .....                       | 557           | 76            | 115           | 170           | 124           | 47            | 25            | 13.7                | 20.6 | 30.5 | 22.3  | 8.4  | 4.5  |
| Illinois .....                      | 687           | 74            | 88            | 184           | 203           | 101           | 37            | 10.8                | 12.8 | 26.8 | 29.5  | 14.7 | 5.4  |
| Michigan .....                      | 94            | 18            | 11            | 24            | 24            | 11            | 6             | 19.5                | 12.1 | 25.1 | 25.0  | 12.1 | 6.2  |
| Wisconsin .....                     | 205           | 31            | 30            | 50            | 50            | 30            | 14            | 15.2                | 14.5 | 24.5 | 24.5  | 14.8 | 6.5  |
| East N. Central .....               | 1,893         | 225           | 293           | 529           | 497           | 244           | 105           | 11.9                | 15.5 | 27.9 | 26.2  | 12.9 | 5.6  |
| Minnesota .....                     | 339           | 63            | 59            | 80            | 82            | 43            | 12            | 18.6                | 17.4 | 23.6 | 24.1  | 12.7 | 3.6  |
| Iowa .....                          | 1,039         | 182           | 145           | 254           | 291           | 127           | 40            | 17.5                | 14.0 | 24.4 | 28.0  | 12.2 | 3.9  |
| Missouri .....                      | 451           | 51            | 65            | 108           | 121           | 72            | 34            | 11.4                | 14.3 | 24.0 | 26.8  | 15.9 | 7.6  |
| North Dakota .....                  | 18            | 7             | 2             | 3             | 4             | 2             | ---           | 40.2                | 13.5 | 15.2 | 20.2  | 8.3  | 2.6  |
| South Dakota .....                  | 85            | 24            | 9             | 16            | 23            | 11            | 2             | 28.0                | 11.0 | 19.1 | 26.9  | 12.2 | 2.8  |
| Nebraska .....                      | 194           | 28            | 21            | 42            | 63            | 30            | 10            | 14.2                | 11.0 | 21.8 | 32.6  | 15.2 | 5.2  |
| Kansas .....                        | 99            | 21            | 12            | 21            | 30            | 17            | 8             | 10.6                | 12.2 | 20.9 | 30.7  | 17.3 | 8.3  |
| West N. Central .....               | 2,225         | 366           | 313           | 524           | 614           | 302           | 106           | 16.4                | 14.1 | 23.5 | 27.6  | 13.6 | 4.8  |
| Delaware-Md. <sup>3/</sup> .....    | 29            | 2             | 6             | 6             | 8             | 5             | 2             | 6.9                 | 20.7 | 20.7 | 27.6  | 17.2 | 6.9  |
| Virginia .....                      | 67            | 7             | 10            | 17            | 18            | 10            | 5             | 11.0                | 14.9 | 24.8 | 26.9  | 14.2 | 3.2  |
| West Virginia .....                 | 17            | 1             | 2             | 4             | 6             | 3             | 1             | 5.2                 | 12.6 | 21.1 | 34.7  | 19.7 | 6.7  |
| North Carolina .....                | 117           | 14            | 18            | 25            | 29            | 19            | 12            | 12.2                | 15.7 | 21.1 | 24.7  | 16.2 | 10.1 |
| South Carolina .....                | 58            | 6             | 9             | 13            | 14            | 9             | 7             | 11.2                | 15.6 | 22.3 | 23.8  | 15.6 | 11.5 |
| Georgia .....                       | 164           | 19            | 27            | 32            | 34            | 32            | 20            | 11.7                | 16.3 | 19.6 | 20.8  | 19.6 | 12.0 |
| Florida .....                       | 42            | 4             | 4             | 9             | 11            | 8             | 6             | 9.1                 | 9.4  | 20.4 | 26.0  | 20.4 | 14.7 |
| South Atlantic .....                | 494           | 53            | 76            | 106           | 120           | 86            | 53            | 10.7                | 15.4 | 21.5 | 24.3  | 17.4 | 10.7 |
| Kentucky .....                      | 132           | 12            | 17            | 34            | 38            | 21            | 10            | 9.0                 | 12.9 | 25.6 | 28.6  | 15.8 | 8.1  |
| Tennessee .....                     | 123           | 14            | 20            | 26            | 29            | 21            | 13            | 11.6                | 16.2 | 21.6 | 23.5  | 16.8 | 10.3 |
| Alabama .....                       | 116           | 13            | 22            | 27            | 27            | 17            | 10            | 11.5                | 18.4 | 23.1 | 23.4  | 14.9 | 8.7  |
| Mississippi .....                   | 72            | 7             | 11            | 15            | 16            | 16            | 7             | 10.5                | 15.0 | 20.2 | 22.3  | 22.7 | 9.3  |
| Arkansas .....                      | 55            | 8             | 10            | 12            | 12            | 8             | 5             | 15.0                | 17.9 | 21.5 | 22.5  | 14.9 | 8.2  |
| Louisiana .....                     | 46            | 5             | 8             | 9             | 10            | 9             | 5             | 10.7                | 16.5 | 20.1 | 21.1  | 15.8 | 15.8 |
| Oklahoma .....                      | 60            | 7             | 8             | 12            | 19            | 8             | 6             | 10.7                | 13.3 | 20.0 | 31.9  | 13.7 | 10.4 |
| Texas .....                         | 129           | 14            | 19            | 29            | 29            | 22            | 16            | 10.6                | 14.5 | 22.3 | 22.8  | 17.3 | 12.5 |
| South Central .....                 | 733           | 80            | 115           | 164           | 180           | 122           | 72            | 10.9                | 15.7 | 22.4 | 24.6  | 16.6 | 9.8  |
| Colorado .....                      | 17            | 2             | 2             | 4             | 4             | 3             | 2             | 12.1                | 13.5 | 21.3 | 26.0  | 17.5 | 9.6  |
| Washington .....                    | 15            | 1             | 2             | 4             | 4             | 3             | 1             | 6.3                 | 12.6 | 23.0 | 29.0  | 21.7 | 7.4  |
| Oregon .....                        | 17            | 2             | 3             | 4             | 4             | 2             | 2             | 9.6                 | 16.7 | 24.0 | 25.9  | 14.4 | 9.4  |
| California .....                    | 43            | 5             | 6             | 7             | 10            | 9             | 6             | 12.6                | 14.8 | 16.0 | 22.7  | 20.8 | 13.1 |
| Other Western <sup>4/</sup> .....   | 43            | 8             | 6             | 10            | 10            | 6             | 3             | 18.6                | 14.0 | 23.2 | 23.2  | 14.0 | 7.0  |
| West .....                          | 135           | 18            | 19            | 29            | 32            | 23            | 14            | 13.3                | 14.1 | 21.5 | 23.7  | 17.0 | 10.4 |
| United States .....                 | 5,599         | 755           | 832           | 1,378         | 1,479         | 796           | 359           | 13.5                | 14.9 | 24.6 | 26.4  | 14.2 | 6.4  |

<sup>1/</sup> Sows farrowing June through November.

<sup>2/</sup> Monthly data not shown separately for Maine, New Hampshire, Vermont, Massachusetts, Rhode Island, Connecticut, and New Jersey.

<sup>3/</sup> Monthly data not shown separately for Delaware and Maryland.

<sup>4/</sup> Monthly data not shown separately for Montana, Idaho, Wyoming, New Mexico, Arizona, Utah, and Nevada.

TABLE 5.--Fall sows farrowing, by months, by States, 1956 1/--Con.

| State, region<br>and year | Number        |               |               |               |               |               |               | Percentage of total |      |      |       |      |      |
|---------------------------|---------------|---------------|---------------|---------------|---------------|---------------|---------------|---------------------|------|------|-------|------|------|
|                           | Total         | June          | July          | Aug.          | Sept.         | Oct.          | Nov.          | June                | July | Aug. | Sept. | Oct. | Nov. |
|                           | 1,000<br>head | 1,000<br>head | 1,000<br>head | 1,000<br>head | 1,000<br>head | 1,000<br>head | 1,000<br>head | Pct.                | Pct. | Pct. | Pct.  | Pct. | Pct. |
| New York .....            | 15            | 2             | 2             | 3             | 4             | 3             | 1             | 10.6                | 12.5 | 21.6 | 25.5  | 20.3 | 9.5  |
| Pennsylvania .....        | 59            | 7             | 8             | 13            | 16            | 10            | 5             | 11.6                | 14.0 | 21.4 | 26.9  | 17.1 | 9.0  |
| Other N. Atlan. 2/ :      | 34            | 5             | 5             | 7             | 8             | 6             | 3             | 14.7                | 14.7 | 20.6 | 23.5  | 17.7 | 8.8  |
| North Atlantic ....:      | 108           | 14            | 15            | 23            | 28            | 19            | 9             | 13.0                | 13.9 | 21.3 | 25.9  | 17.6 | 8.3  |
| Ohio .....                | 315           | 28            | 41            | 86            | 91            | 49            | 20            | 8.7                 | 13.1 | 27.2 | 29.0  | 15.6 | 6.4  |
| Indiana .....             | 529           | 62            | 91            | 169           | 123           | 59            | 25            | 11.7                | 17.2 | 31.9 | 23.3  | 11.2 | 4.7  |
| Illinois .....            | 673           | 70            | 89            | 168           | 207           | 99            | 40            | 10.4                | 13.2 | 25.0 | 30.8  | 14.7 | 5.9  |
| Michigan .....            | 85            | 13            | 10            | 21            | 24            | 12            | 5             | 15.8                | 12.0 | 24.5 | 28.6  | 13.6 | 5.5  |
| Wisconsin .....           | 187           | 22            | 28            | 50            | 51            | 23            | 13            | 11.9                | 15.1 | 26.8 | 27.1  | 12.2 | 6.9  |
| East N. Central ...:      | 1,739         | 195           | 259           | 494           | 496           | 242           | 103           | 10.9                | 14.5 | 27.6 | 27.7  | 13.5 | 5.8  |
| Minnesota .....           | 292           | 51            | 41            | 70            | 76            | 40            | 14            | 17.5                | 14.2 | 23.8 | 25.9  | 13.8 | 4.8  |
| Iowa .....                | 956           | 156           | 118           | 231           | 286           | 120           | 45            | 16.3                | 12.3 | 24.2 | 29.9  | 12.6 | 4.7  |
| Missouri .....            | 406           | 41            | 52            | 97            | 112           | 69            | 35            | 10.2                | 12.8 | 24.0 | 27.6  | 16.9 | 8.5  |
| North Dakota .....        | 16            | 6             | 3             | 3             | 3             | 1             | ---           | 34.6                | 17.4 | 17.0 | 20.8  | 9.1  | 1.1  |
| South Dakota .....        | 72            | 21            | 7             | 12            | 20            | 9             | 3             | 28.7                | 9.7  | 16.0 | 28.0  | 12.8 | 4.8  |
| Nebraska .....            | 157           | 22            | 17            | 30            | 49            | 29            | 10            | 13.8                | 10.7 | 19.0 | 31.5  | 18.6 | 6.4  |
| Kansas .....              | 83            | 8             | 9             | 19            | 26            | 13            | 8             | 9.6                 | 11.2 | 23.4 | 31.3  | 15.5 | 9.0  |
| West N. Central ...:      | 1,982         | 305           | 247           | 462           | 572           | 281           | 115           | 15.4                | 12.5 | 23.3 | 28.8  | 14.2 | 5.8  |
| Delaware-Md. 3/ ...:      | 25            | 3             | 4             | 6             | 6             | 4             | 2             | 12.0                | 16.0 | 24.0 | 24.0  | 16.0 | 8.0  |
| Virginia .....            | 68            | 7             | 10            | 16            | 18            | 11            | 6             | 9.7                 | 14.4 | 23.6 | 27.3  | 15.8 | 9.2  |
| West Virginia .....       | 12            | 1             | 1             | 3             | 4             | 2             | 1             | 6.6                 | 8.7  | 22.5 | 37.0  | 18.7 | 6.5  |
| North Carolina .....      | 119           | 15            | 16            | 25            | 29            | 20            | 14            | 12.5                | 13.8 | 20.8 | 24.0  | 17.1 | 11.8 |
| South Carolina .....      | 58            | 7             | 8             | 11            | 13            | 11            | 8             | 11.7                | 14.4 | 19.5 | 22.2  | 18.9 | 13.3 |
| Georgia .....             | 167           | 19            | 24            | 33            | 36            | 32            | 23            | 11.3                | 14.7 | 20.0 | 21.3  | 19.2 | 13.5 |
| Florida .....             | 46            | 4             | 5             | 10            | 12            | 10            | 5             | 9.4                 | 10.7 | 20.8 | 26.8  | 20.6 | 11.7 |
| South Atlantic ....:      | 495           | 56            | 68            | 104           | 118           | 90            | 59            | 11.3                | 13.7 | 21.0 | 23.9  | 18.2 | 11.9 |
| Kentucky .....            | 135           | 13            | 17            | 35            | 37            | 20            | 13            | 9.2                 | 12.6 | 26.1 | 27.4  | 14.8 | 9.9  |
| Tennessee .....           | 125           | 13            | 18            | 27            | 31            | 21            | 15            | 10.2                | 14.6 | 22.0 | 24.5  | 17.0 | 11.7 |
| Alabama .....             | 108           | 15            | 18            | 24            | 23            | 17            | 11            | 14.4                | 16.5 | 22.3 | 21.0  | 15.9 | 9.9  |
| Mississippi .....         | 72            | 9             | 11            | 17            | 14            | 12            | 9             | 12.7                | 15.1 | 23.5 | 19.2  | 16.3 | 13.2 |
| Arkansas .....            | 53            | 6             | 10            | 11            | 13            | 10            | 3             | 11.5                | 18.1 | 20.6 | 25.0  | 18.5 | 6.3  |
| Louisiana .....           | 47            | 6             | 7             | 10            | 12            | 7             | 5             | 12.6                | 14.8 | 21.2 | 26.3  | 13.9 | 11.2 |
| Oklahoma .....            | 49            | 5             | 6             | 12            | 14            | 8             | 4             | 9.8                 | 12.9 | 24.7 | 28.6  | 15.7 | 8.3  |
| Texas .....               | 99            | 14            | 18            | 20            | 23            | 14            | 10            | 14.3                | 17.8 | 19.9 | 23.7  | 13.9 | 10.4 |
| South Central ....:       | 688           | 81            | 105           | 156           | 167           | 109           | 70            | 11.8                | 15.3 | 22.7 | 24.3  | 15.8 | 10.1 |
| Colorado .....            | 16            | 2             | 2             | 3             | 4             | 3             | 2             | 13.7                | 14.2 | 16.7 | 27.6  | 18.7 | 9.1  |
| Washington .....          | 12            | 1             | 1             | 2             | 4             | 3             | 1             | 6.0                 | 12.1 | 19.7 | 30.3  | 23.2 | 8.7  |
| Oregon .....              | 14            | 1             | 2             | 4             | 4             | 2             | 1             | 8.5                 | 16.2 | 24.3 | 26.2  | 16.5 | 8.3  |
| California .....          | 37            | 5             | 6             | 7             | 9             | 6             | 4             | 13.9                | 15.7 | 17.6 | 25.4  | 17.5 | 9.9  |
| Other Western 4/....:     | 40            | 6             | 6             | 9             | 9             | 7             | 3             | 15.0                | 15.0 | 22.5 | 22.5  | 17.5 | 7.5  |
| West .....                | 119           | 15            | 17            | 25            | 30            | 21            | 11            | 12.6                | 14.3 | 21.0 | 25.2  | 17.6 | 9.3  |
| United States .....       | 5,181         | 666           | 711           | 1,264         | 1,411         | 762           | 367           | 12.9                | 13.7 | 24.4 | 27.2  | 14.7 | 7.1  |

1/ Sows farrowing June through November.

2/ Monthly data not shown separately for Maine, New Hampshire, Vermont, Massachusetts, Rhode Island, Connecticut, and New Jersey.

3/ Monthly data not shown separately for Delaware and Maryland.

4/ Monthly data not shown separately for Montana, Idaho, Wyoming, New Mexico, Arizona, Utah, and Nevada.

TABLE 5.--Fall sows farrowing, by months, by States, 1957 1/--Com.

| State, region<br>and year | Number        |               |               |               |               |               |               | Percentage of total |      |      |       |      |      |
|---------------------------|---------------|---------------|---------------|---------------|---------------|---------------|---------------|---------------------|------|------|-------|------|------|
|                           | Total         | June          | July          | Aug.          | Sept.         | Oct.          | Nov.          | June                | July | Aug. | Sept. | Oct. | Nov. |
|                           | 1,000<br>head | 1,000<br>head | 1,000<br>head | 1,000<br>head | 1,000<br>head | 1,000<br>head | 1,000<br>head | Pct.                | Pct. | Pct. | Pct.  | Pct. | Pct. |
| New York .....            | 13            | 2             | 2             | 3             | 3             | 2             | 1             | 12.4                | 14.2 | 21.9 | 27.5  | 15.4 | 8.6  |
| Pennsylvania .....        | 50            | 5             | 6             | 11            | 14            | 9             | 5             | 8.9                 | 12.7 | 22.1 | 27.3  | 18.7 | 10.3 |
| Other N. Atlan. 2/ ..     | 33            | 5             | 6             | 7             | 7             | 5             | 3             | 15.1                | 18.2 | 21.2 | 21.2  | 15.2 | 9.1  |
| North Atlantic ....       | 96            | 12            | 14            | 21            | 24            | 16            | 9             | 12.5                | 14.5 | 21.9 | 25.0  | 16.7 | 9.4  |
| Ohio .....                | 302           | 29            | 45            | 81            | 88            | 43            | 16            | 9.4                 | 14.9 | 26.8 | 29.2  | 14.3 | 5.4  |
| Indiana .....             | 503           | 76            | 109           | 144           | 105           | 44            | 25            | 15.2                | 21.6 | 28.6 | 20.9  | 8.7  | 5.0  |
| Illinois .....            | 680           | 87            | 88            | 175           | 194           | 94            | 42            | 12.7                | 12.9 | 25.8 | 23.6  | 13.8 | 6.2  |
| Michigan .....            | 77            | 11            | 11            | 18            | 20            | 12            | 5             | 14.9                | 14.0 | 22.8 | 26.5  | 15.9 | 5.9  |
| Wisconsin .....           | 198           | 30            | 34            | 44            | 54            | 26            | 10            | 15.1                | 17.2 | 22.2 | 27.1  | 13.0 | 5.4  |
| East N. Central ...       | 1,760         | 233           | 287           | 462           | 461           | 219           | 98            | 13.2                | 16.3 | 26.3 | 26.2  | 12.4 | 5.6  |
| Minnesota .....           | 298           | 56            | 48            | 72            | 72            | 39            | 11            | 18.9                | 15.9 | 24.2 | 24.2  | 13.0 | 3.8  |
| Iowa .....                | 966           | 170           | 119           | 210           | 276           | 137           | 54            | 17.6                | 12.3 | 21.7 | 28.6  | 14.2 | 5.6  |
| Missouri .....            | 382           | 49            | 56            | 84            | 100           | 61            | 32            | 12.8                | 14.6 | 22.1 | 26.1  | 16.0 | 8.4  |
| North Dakota .....        | 18            | 7             | 2             | 3             | 3             | 2             | 1             | 37.1                | 13.5 | 18.2 | 17.8  | 10.5 | 2.9  |
| South Dakota .....        | 81            | 24            | 8             | 12            | 19            | 15            | 3             | 29.8                | 10.1 | 14.6 | 23.5  | 18.0 | 4.0  |
| Nebraska .....            | 174           | 25            | 18            | 30            | 50            | 34            | 17            | 14.2                | 10.1 | 17.5 | 28.7  | 19.8 | 9.7  |
| Kansas .....              | 87            | 10            | 11            | 16            | 28            | 14            | 8             | 11.5                | 12.2 | 19.0 | 32.8  | 15.7 | 8.8  |
| West N. Central ...       | 2,006         | 341           | 262           | 427           | 548           | 302           | 126           | 17.0                | 13.1 | 21.3 | 27.3  | 15.0 | 6.3  |
| Delaware-Md. 3/ ...       | 24            | 2             | 4             | 5             | 6             | 5             | 2             | 8.3                 | 16.7 | 20.8 | 25.0  | 20.8 | 8.4  |
| Virginia .....            | 66            | 6             | 8             | 17            | 19            | 10            | 6             | 9.6                 | 11.5 | 26.5 | 29.3  | 14.5 | 8.6  |
| West Virginia .....       | 9             | 1             | 1             | 2             | 2             | 2             | 1             | 7.2                 | 11.2 | 19.3 | 27.8  | 25.8 | 8.7  |
| North Carolina .....      | 131           | 15            | 20            | 30            | 30            | 21            | 15            | 11.9                | 15.2 | 22.8 | 23.0  | 15.8 | 11.3 |
| South Carolina .....      | 54            | 8             | 10            | 11            | 11            | 8             | 6             | 14.4                | 18.3 | 20.8 | 19.9  | 15.8 | 10.8 |
| Georgia .....             | 167           | 19            | 27            | 36            | 35            | 30            | 20            | 11.5                | 16.3 | 21.3 | 20.7  | 18.1 | 12.1 |
| Florida .....             | 41            | 4             | 5             | 9             | 10            | 8             | 5             | 10.3                | 12.1 | 21.9 | 24.6  | 18.8 | 12.3 |
| South Atlantic ...        | 492           | 55            | 75            | 110           | 113           | 84            | 55            | 11.2                | 15.2 | 22.3 | 23.0  | 17.1 | 11.2 |
| Kentucky .....            | 139           | 15            | 20            | 30            | 42            | 21            | 11            | 10.8                | 14.0 | 21.6 | 30.2  | 15.3 | 8.1  |
| Tennessee .....           | 124           | 16            | 20            | 28            | 28            | 20            | 12            | 13.3                | 16.0 | 22.7 | 22.4  | 16.1 | 9.5  |
| Alabama .....             | 104           | 12            | 20            | 22            | 22            | 17            | 11            | 12.0                | 19.3 | 21.0 | 20.7  | 16.5 | 10.5 |
| Mississippi .....         | 62            | 10            | 9             | 12            | 12            | 10            | 9             | 15.7                | 14.5 | 20.1 | 19.4  | 16.4 | 13.9 |
| Arkansas .....            | 42            | 7             | 7             | 10            | 9             | 6             | 3             | 17.7                | 15.8 | 22.9 | 21.7  | 14.9 | 7.0  |
| Louisiana .....           | 34            | 5             | 7             | 6             | 7             | 5             | 4             | 15.9                | 18.7 | 17.4 | 21.4  | 15.4 | 11.2 |
| Oklahoma .....            | 43            | 4             | 5             | 10            | 13            | 7             | 4             | 8.7                 | 12.8 | 23.7 | 30.9  | 15.7 | 8.2  |
| Texas .....               | 93            | 10            | 15            | 22            | 22            | 16            | 8             | 11.2                | 16.4 | 23.1 | 23.1  | 17.6 | 8.6  |
| South Central ....        | 641           | 79            | 103           | 140           | 155           | 102           | 62            | 12.3                | 16.1 | 21.8 | 24.2  | 15.9 | 9.7  |
| Colorado .....            | 15            | 2             | 2             | 3             | 4             | 3             | 1             | 11.3                | 15.1 | 20.0 | 27.1  | 19.1 | 7.4  |
| Washington .....          | 13            | 1             | 2             | 3             | 4             | 2             | 1             | 8.4                 | 12.3 | 20.2 | 29.2  | 18.0 | 11.9 |
| Oregon .....              | 15            | 2             | 2             | 3             | 4             | 3             | 1             | 12.5                | 14.1 | 22.7 | 26.0  | 16.7 | 8.0  |
| California .....          | 33            | 4             | 5             | 6             | 8             | 6             | 4             | 11.0                | 14.9 | 20.0 | 23.5  | 18.9 | 11.7 |
| Other Western 4/ ...      | 41            | 6             | 7             | 8             | 9             | 7             | 4             | 14.6                | 17.1 | 19.5 | 22.0  | 17.1 | 9.7  |
| West .....                | 117           | 15            | 16            | 23            | 29            | 21            | 11            | 12.8                | 15.4 | 19.7 | 24.8  | 17.9 | 9.4  |
| United States .....       | 5,112         | 735           | 759           | 1,183         | 1,330         | 744           | 361           | 14.4                | 14.8 | 23.1 | 26.0  | 14.6 | 7.1  |

1/ Sows farrowing June through November.

2/ Monthly data not shown separately for Maine, New Hampshire, Vermont, Massachusetts, Rhode Island, Connecticut, and New Jersey.

3/ Monthly data not shown separately for Delaware and Maryland.

4/ Monthly data not shown separately for Montana, Idaho, Wyoming, New Mexico, Arizona, Utah, and Nevada.

TABLE 5.--Fall sows farrowing, by months, by States<sup>1</sup> 1958 1/4--Con.

| State, region<br>and year | Number        |               |               |               |               |               |               |      |      |      |       | Percentage of total |      |      |      |      |      |      |
|---------------------------|---------------|---------------|---------------|---------------|---------------|---------------|---------------|------|------|------|-------|---------------------|------|------|------|------|------|------|
|                           | Total         | June          | July          | Aug.          | Sept.         | Oct.          | Nov.          | June | July | Aug. | Sept. | Oct.                | Nov. | Pct. | Pct. | Pct. | Pct. | Pct. |
|                           | 1,000<br>head | 1,000<br>head | 1,000<br>head | 1,000<br>head | 1,000<br>head | 1,000<br>head | 1,000<br>head | Pct. | Pct. | Pct. | Pct.  | Pct.                | Pct. |      |      |      |      |      |
| New York .....            | 13            | 1             | 2             | 3             | 4             | 2             | 1             | 8.7  | 11.7 | 20.0 | 31.7  | 17.7                | 10.2 |      |      |      |      |      |
| Pennsylvania .....        | 52            | 5             | 7             | 10            | 16            | 9             | 5             | 9.7  | 13.5 | 20.0 | 29.9  | 16.7                | 10.2 |      |      |      |      |      |
| Other N. Atlan. 2/ .....  | 33            | 5             | 5             | 7             | 8             | 5             | 3             | 15.2 | 15.2 | 21.2 | 24.2  | 15.1                | 9.1  |      |      |      |      |      |
| North Atlantic ...:       | 98            | 11            | 14            | 20            | 28            | 16            | 9             | 11.2 | 14.3 | 20.4 | 28.6  | 16.3                | 9.2  |      |      |      |      |      |
| Ohio .....                | 311           | 29            | 45            | 86            | 91            | 39            | 21            | 9.4  | 14.6 | 27.5 | 29.2  | 12.7                | 6.6  |      |      |      |      |      |
| Indiana .....             | 543           | 85            | 112           | 155           | 109           | 48            | 34            | 15.6 | 20.7 | 28.5 | 20.0  | 8.9                 | 6.3  |      |      |      |      |      |
| Illinois .....            | 775           | 101           | 119           | 194           | 214           | 105           | 42            | 13.0 | 15.4 | 25.1 | 27.6  | 13.5                | 5.4  |      |      |      |      |      |
| Michigan .....            | 94            | 16            | 16            | 20            | 22            | 14            | 6             | 17.5 | 16.9 | 21.1 | 22.9  | 14.9                | 6.7  |      |      |      |      |      |
| Wisconsin .....           | 234           | 32            | 43            | 64            | 50            | 28            | 17            | 13.8 | 18.1 | 27.4 | 21.4  | 11.9                | 7.4  |      |      |      |      |      |
| East N. Central ...:      | 1,957         | 263           | 335           | 519           | 486           | 234           | 120           | 13.4 | 17.1 | 26.5 | 24.8  | 12.0                | 6.2  |      |      |      |      |      |
| Minnesota .....           | 378           | 63            | 63            | 92            | 92            | 48            | 20            | 16.8 | 16.6 | 24.3 | 24.3  | 12.6                | 5.4  |      |      |      |      |      |
| Iowa .....                | 1,169         | 198           | 152           | 259           | 337           | 158           | 65            | 16.9 | 13.0 | 22.2 | 28.8  | 13.5                | 5.6  |      |      |      |      |      |
| Missouri .....            | 443           | 46            | 66            | 109           | 121           | 70            | 31            | 10.4 | 14.8 | 24.7 | 27.2  | 15.8                | 7.1  |      |      |      |      |      |
| North Dakota .....        | 26            | 8             | 5             | 4             | 5             | 3             | 1             | 32.4 | 17.5 | 17.2 | 19.1  | 10.6                | 3.2  |      |      |      |      |      |
| South Dakota .....        | 123           | 33            | 12            | 20            | 34            | 17            | 7             | 26.7 | 10.0 | 16.4 | 27.5  | 14.1                | 5.3  |      |      |      |      |      |
| Nebraska .....            | 240           | 34            | 26            | 50            | 73            | 36            | 21            | 14.2 | 11.1 | 20.8 | 30.3  | 14.9                | 8.7  |      |      |      |      |      |
| Kansas .....              | 114           | 14            | 14            | 28            | 29            | 17            | 12            | 12.6 | 12.2 | 24.4 | 25.7  | 14.9                | 10.2 |      |      |      |      |      |
| West N. Central ...:      | 2,493         | 396           | 338           | 562           | 691           | 349           | 157           | 15.9 | 13.6 | 22.5 | 27.7  | 14.0                | 6.3  |      |      |      |      |      |
| Delaware-Md. 3/ ...:      | 23            | 2             | 4             | 6             | 6             | 4             | 1             | 8.7  | 17.4 | 26.1 | 26.1  | 17.4                | 4.3  |      |      |      |      |      |
| Virginia .....            | 67            | 7             | 10            | 15            | 19            | 10            | 6             | 10.3 | 14.9 | 22.0 | 28.5  | 15.0                | 9.3  |      |      |      |      |      |
| West Virginia .....       | 10            | 1             | 1             | 2             | 3             | 2             | 1             | 8.1  | 9.6  | 20.3 | 33.9  | 18.5                | 9.6  |      |      |      |      |      |
| North Carolina .....      | 135           | 14            | 25            | 31            | 29            | 23            | 13            | 10.4 | 18.4 | 22.9 | 21.6  | 17.2                | 9.5  |      |      |      |      |      |
| South Carolina .....      | 58            | 8             | 8             | 13            | 12            | 9             | 8             | 13.3 | 14.2 | 23.2 | 19.9  | 16.3                | 13.1 |      |      |      |      |      |
| Georgia .....             | 172           | 18            | 26            | 39            | 33            | 34            | 22            | 10.3 | 15.0 | 23.1 | 19.3  | 19.5                | 12.8 |      |      |      |      |      |
| Florida .....             | 47            | 6             | 7             | 9             | 11            | 10            | 4             | 12.4 | 13.7 | 19.7 | 24.4  | 20.5                | 9.3  |      |      |      |      |      |
| South Atlantic ...:       | 512           | 56            | 81            | 115           | 113           | 92            | 55            | 10.9 | 15.8 | 22.5 | 22.1  | 18.0                | 10.7 |      |      |      |      |      |
| Kentucky .....            | 146           | 16            | 26            | 35            | 36            | 21            | 12            | 10.7 | 17.9 | 24.3 | 24.8  | 14.4                | 7.9  |      |      |      |      |      |
| Tennessee .....           | 136           | 18            | 25            | 31            | 29            | 20            | 13            | 13.4 | 18.3 | 23.2 | 21.0  | 14.4                | 9.7  |      |      |      |      |      |
| Alabama .....             | 105           | 16            | 21            | 22            | 22            | 14            | 10            | 14.9 | 19.9 | 20.7 | 21.3  | 13.3                | 9.9  |      |      |      |      |      |
| Mississippi .....         | 63            | 9             | 11            | 12            | 13            | 11            | 7             | 14.0 | 16.8 | 20.0 | 20.9  | 17.6                | 10.7 |      |      |      |      |      |
| Arkansas .....            | 44            | 6             | 8             | 11            | 8             | 7             | 4             | 13.9 | 17.5 | 26.2 | 17.2  | 16.9                | 8.3  |      |      |      |      |      |
| Louisiana .....           | 30            | 3             | 5             | 6             | 6             | 6             | 4             | 11.7 | 15.9 | 18.6 | 19.8  | 20.3                | 13.7 |      |      |      |      |      |
| Oklahoma .....            | 54            | 6             | 6             | 13            | 14            | 10            | 5             | 10.1 | 11.9 | 24.2 | 26.5  | 17.9                | 9.4  |      |      |      |      |      |
| Texas .....               | 115           | 11            | 21            | 24            | 28            | 18            | 13            | 9.6  | 17.9 | 20.9 | 24.6  | 15.9                | 11.1 |      |      |      |      |      |
| South Central ...:        | 693           | 85            | 123           | 154           | 156           | 107           | 63            | 12.3 | 17.7 | 22.2 | 22.5  | 15.5                | 9.8  |      |      |      |      |      |
| Colorado .....            | 18            | 2             | 3             | 4             | 4             | 3             | 2             | 14.1 | 14.6 | 20.1 | 24.5  | 17.5                | 9.2  |      |      |      |      |      |
| Washington .....          | 15            | 1             | 3             | 3             | 4             | 3             | 1             | 9.6  | 17.1 | 21.3 | 24.6  | 19.0                | 8.4  |      |      |      |      |      |
| Oregon .....              | 18            | 2             | 3             | 5             | 4             | 2             | 2             | 12.8 | 15.7 | 25.9 | 23.4  | 13.0                | 9.2  |      |      |      |      |      |
| California .....          | 34            | 5             | 5             | 7             | 7             | 6             | 4             | 14.5 | 14.7 | 21.3 | 22.1  | 16.7                | 10.7 |      |      |      |      |      |
| Other Western 4/ ...:     | 49            | 8             | 7             | 11            | 11            | 8             | 4             | 16.3 | 14.3 | 22.5 | 22.4  | 16.3                | 8.2  |      |      |      |      |      |
| West .....                | 134           | 13            | 21            | 30            | 30            | 22            | 13            | 13.4 | 15.7 | 22.4 | 22.4  | 16.4                | 9.7  |      |      |      |      |      |
| United States .....       | 5,887         | 829           | 912           | 1,400         | 1,504         | 820           | 422           | 14.1 | 15.5 | 23.8 | 25.5  | 13.9                | 7.2  |      |      |      |      |      |

1/ Sows farrowing June through November.

2/ Monthly data not shown separately for Maine, New Hampshire, Vermont, Massachusetts, Rhode Island, Connecticut, and New Jersey.

3/ Monthly data not shown separately for Delaware and Maryland.

4/ Monthly data not shown separately for Montana, Idaho, Wyoming, New Mexico, Arizona, Utah, and Nevada.

TABLE 5.--Fall sows farrowing, by months, by States, 1959 1/--Con.

| State, region<br>and year | Number        |               |               |               |               |               | Percentage of total |      |      |      |       |      |      |
|---------------------------|---------------|---------------|---------------|---------------|---------------|---------------|---------------------|------|------|------|-------|------|------|
|                           | Total         | June          | July          | Aug.          | Sept.         | Oct.          | Nov.                | June | July | Aug. | Sept. | Oct. | Nov. |
|                           | 1,000<br>head | 1,000<br>head | 1,000<br>head | 1,000<br>head | 1,000<br>head | 1,000<br>head | 1,000<br>head       | Pct. | Pct. | Pct. | Pct.  | Pct. | Pct. |
| New York .....            | 14            | 2             | 2             | 3             | 3             | 3             | 1                   | 12.4 | 12.9 | 21.7 | 25.0  | 20.0 | 8.0  |
| Pennsylvania .....        | 58            | 6             | 9             | 14            | 15            | 9             | 5                   | 10.6 | 14.7 | 23.7 | 26.5  | 15.6 | 8.9  |
| Other N. Atlan. 2/ .....  | 31            | 5             | 5             | 6             | 8             | 5             | 2                   | 16.1 | 16.1 | 19.4 | 25.8  | 16.1 | 6.5  |
| North Atlantic .....      | 103           | 13            | 16            | 23            | 26            | 17            | 8                   | 12.6 | 15.5 | 22.4 | 25.2  | 16.5 | 7.3  |
| Ohio .....                | 330           | 36            | 51            | 91            | 86            | 42            | 24                  | 10.8 | 15.5 | 27.7 | 26.0  | 12.6 | 7.4  |
| Indiana .....             | 554           | 85            | 104           | 144           | 125           | 58            | 38                  | 15.3 | 18.8 | 26.0 | 22.6  | 10.5 | 6.8  |
| Illinois .....            | 806           | 115           | 128           | 192           | 223           | 96            | 52                  | 14.3 | 15.9 | 23.8 | 27.6  | 11.9 | 6.5  |
| Michigan .....            | 99            | 17            | 17            | 23            | 22            | 14            | 6                   | 17.3 | 17.0 | 23.4 | 22.4  | 13.5 | 6.4  |
| Wisconsin .....           | 239           | 34            | 42            | 60            | 59            | 33            | 11                  | 14.2 | 17.4 | 25.2 | 24.6  | 14.0 | 4.6  |
| East N. Central .....     | 2,028         | 287           | 342           | 510           | 515           | 243           | 131                 | 14.1 | 16.9 | 25.1 | 25.4  | 12.0 | 6.5  |
| Minnesota .....           | 386           | 72            | 68            | 97            | 95            | 38            | 16                  | 18.8 | 17.5 | 25.2 | 24.5  | 9.8  | 4.2  |
| Iowa .....                | 1,192         | 235           | 162           | 249           | 327           | 151           | 68                  | 19.7 | 13.6 | 20.9 | 27.4  | 12.7 | 5.7  |
| Missouri .....            | 483           | 60            | 75            | 106           | 128           | 76            | 38                  | 12.4 | 15.6 | 22.0 | 26.4  | 15.7 | 7.9  |
| North Dakota .....        | 25            | 9             | 4             | 5             | 5             | 1             | 1                   | 35.3 | 16.2 | 18.7 | 19.8  | 6.7  | 3.3  |
| South Dakota .....        | 111           | 31            | 14            | 19            | 31            | 12            | 4                   | 27.9 | 12.5 | 17.4 | 27.6  | 11.0 | 3.6  |
| Nebraska .....            | 235           | 35            | 31            | 47            | 70            | 34            | 18                  | 15.0 | 13.4 | 20.1 | 29.7  | 14.3 | 7.5  |
| Kansas .....              | 121           | 18            | 16            | 26            | 33            | 20            | 8                   | 15.1 | 13.3 | 21.2 | 27.5  | 16.8 | 6.1  |
| West N. Central .....     | 2,553         | 460           | 370           | 549           | 689           | 332           | 153                 | 18.0 | 14.5 | 21.5 | 27.0  | 13.0 | 6.0  |
| Delaware-Md. 3/ .....     | 24            | 4             | 4             | 6             | 5             | 4             | 1                   | 16.7 | 16.7 | 25.0 | 20.8  | 16.7 | 4.1  |
| Virginia .....            | 71            | 7             | 12            | 17            | 19            | 10            | 6                   | 10.3 | 16.8 | 24.3 | 26.8  | 13.2 | 8.6  |
| West Virginia .....       | 12            | 1             | 1             | 3             | 4             | 2             | 1                   | 7.6  | 8.6  | 21.0 | 34.0  | 19.9 | 8.9  |
| North Carolina .....      | 142           | 18            | 26            | 35            | 32            | 21            | 10                  | 12.4 | 18.0 | 24.9 | 22.7  | 14.7 | 7.3  |
| South Carolina .....      | 60            | 7             | 11            | 14            | 13            | 9             | 6                   | 12.3 | 17.8 | 23.9 | 21.3  | 15.2 | 9.5  |
| Georgia .....             | 182           | 25            | 32            | 40            | 38            | 29            | 18                  | 14.0 | 17.4 | 21.9 | 20.8  | 15.9 | 10.0 |
| Florida .....             | 39            | 5             | 5             | 7             | 10            | 8             | 4                   | 13.7 | 13.7 | 16.9 | 24.2  | 20.9 | 10.6 |
| South Atlantic .....      | 530           | 67            | 91            | 122           | 121           | 83            | 46                  | 12.6 | 17.2 | 23.0 | 22.8  | 15.7 | 8.7  |
| Kentucky .....            | 164           | 19            | 28            | 40            | 42            | 22            | 13                  | 11.7 | 16.8 | 24.4 | 25.9  | 13.3 | 7.9  |
| Tennessee .....           | 156           | 21            | 29            | 37            | 35            | 20            | 14                  | 13.4 | 18.5 | 23.8 | 22.6  | 12.8 | 8.9  |
| Alabama .....             | 116           | 15            | 23            | 27            | 24            | 16            | 11                  | 13.0 | 19.8 | 23.5 | 20.2  | 13.7 | 9.8  |
| Mississippi .....         | 75            | 13            | 14            | 16            | 16            | 10            | 6                   | 17.0 | 18.2 | 21.6 | 22.0  | 13.6 | 7.6  |
| Arkansas .....            | 51            | 8             | 8             | 12            | 11            | 9             | 3                   | 15.1 | 16.2 | 24.5 | 21.4  | 16.9 | 5.9  |
| Louisiana .....           | 33            | 4             | 6             | 7             | 7             | 5             | 4                   | 11.0 | 19.9 | 20.4 | 20.7  | 16.6 | 11.4 |
| Oklahoma .....            | 57            | 7             | 8             | 14            | 15            | 9             | 4                   | 11.9 | 14.4 | 24.6 | 27.0  | 15.6 | 6.5  |
| Texas .....               | 116           | 16            | 20            | 28            | 24            | 18            | 10                  | 14.1 | 17.1 | 24.4 | 20.5  | 15.1 | 8.8  |
| South Central .....       | 768           | 103           | 136           | 181           | 174           | 109           | 65                  | 13.4 | 17.7 | 23.6 | 22.6  | 14.2 | 8.5  |
| Colorado .....            | 24            | 4             | 3             | 4             | 6             | 5             | 2                   | 16.9 | 14.2 | 16.1 | 26.3  | 20.2 | 6.3  |
| Washington .....          | 15            | 2             | 3             | 3             | 4             | 2             | 1                   | 11.7 | 18.0 | 21.3 | 26.9  | 14.8 | 7.3  |
| Oregon .....              | 19            | 3             | 3             | 4             | 4             | 3             | 2                   | 14.5 | 17.2 | 24.3 | 19.8  | 15.3 | 8.9  |
| California .....          | 35            | 6             | 5             | 7             | 8             | 6             | 3                   | 15.2 | 14.2 | 20.7 | 23.5  | 17.0 | 9.4  |
| Other Western 4/ .....    | 53            | 9             | 9             | 11            | 12            | 8             | 4                   | 17.0 | 17.0 | 20.7 | 22.6  | 15.1 | 7.6  |
| West .....                | 146           | 24            | 23            | 29            | 34            | 24            | 12                  | 16.4 | 15.8 | 19.9 | 23.3  | 16.4 | 8.2  |
| United States .....       | 6,128         | 954           | 978           | 1,414         | 1,559         | 808           | 415                 | 15.5 | 16.0 | 23.1 | 25.4  | 13.2 | 6.8  |

1/ Sows farrowing June through November.

2/ Monthly data not shown separately for Maine, New Hampshire, Vermont, Massachusetts, Rhode Island, Connecticut, and New Jersey.

3/ Monthly data not shown separately for Delaware and Maryland.

4/ Monthly data not shown separately for Montana, Idaho, Wyoming, New Mexico, Arizona, Utah, and Nevada.

TABLE 6: Sows farrowing: Number farrowed, by quarters, selected states, 1955-59

| State     | December 1/ through February |            |            |            |            | March through May |            |            |            |            |
|-----------|------------------------------|------------|------------|------------|------------|-------------------|------------|------------|------------|------------|
|           | 1955                         | 1956       | 1957       | 1958       | 1959       | 1955              | 1956       | 1957       | 1958       | 1959       |
|           | 1,000 head                   | 1,000 head | 1,000 head | 1,000 head | 1,000 head | 1,000 head        | 1,000 head | 1,000 head | 1,000 head | 1,000 head |
| Ohio ..:  | 155                          | 157        | 140        | 138        | 154        | 231               | 233        | 215        | 192        | 199        |
| Ind. ...: | 297                          | 307        | 300        | 316        | 321        | 286               | 317        | 280        | 247        | 270        |
| Ill. ...: | 263                          | 280        | 283        | 325        | 363        | 706               | 650        | 610        | 577        | 611        |
| Wis. ...: | 88                           | 89         | 82         | 96         | 121        | 267               | 206        | 207        | 205        | 198        |
| Minn...:  | 130                          | 119        | 102        | 139        | 185        | 546               | 429        | 435        | 414        | 412        |
| Iowa ...: | 410                          | 391        | 356        | 460        | 537        | 1,591             | 1,310      | 1,226      | 1,169      | 1,239      |
| Mo. ....: | 164                          | 193        | 185        | 196        | 209        | 329               | 320        | 302        | 291        | 317        |
| S.Dak...: | 34                           | 25         | 22         | 40         | 53         | 324               | 240        | 232        | 252        | 268        |
| Nebr...:  | 84                           | 67         | 63         | 95         | 124        | 402               | 273        | 253        | 265        | 290        |
| Kans...:  | 42                           | 47         | 38         | 53         | 63         | 94                | 78         | 78         | 76         | 92         |
| Total     | 1,667                        | 1,675      | 1,571      | 1,858      | 2,130      | 4,776             | 4,056      | 3,838      | 3,688      | 3,896      |

| State     | June through August |            |            |            |            | September through November |            |            |            |            |
|-----------|---------------------|------------|------------|------------|------------|----------------------------|------------|------------|------------|------------|
|           | 1955                | 1956       | 1957       | 1958       | 1959       | 1955                       | 1956       | 1957       | 1958       | 1959       |
|           | 1,000 head          | 1,000 head | 1,000 head | 1,000 head | 1,000 head | 1,000 head                 | 1,000 head | 1,000 head | 1,000 head | 1,000 head |
| Ohio...:  | 176                 | 155        | 155        | 160        | 178        | 174                        | 160        | 147        | 151        | 152        |
| Ind....:  | 361                 | 322        | 329        | 352        | 333        | 196                        | 207        | 174        | 191        | 221        |
| Ill.....: | 346                 | 327        | 350        | 414        | 435        | 341                        | 346        | 330        | 361        | 371        |
| Wis.....: | 111                 | 100        | 108        | 139        | 136        | 94                         | 87         | 90         | 95         | 103        |
| Minn...:  | 202                 | 162        | 176        | 218        | 237        | 137                        | 130        | 122        | 160        | 149        |
| Iowa...:  | 581                 | 505        | 499        | 609        | 646        | 458                        | 451        | 467        | 560        | 546        |
| Mo.....:  | 224                 | 190        | 189        | 221        | 241        | 227                        | 216        | 193        | 222        | 242        |
| S.Dak...: | 49                  | 40         | 44         | 65         | 64         | 36                         | 32         | 37         | 58         | 47         |
| Nebr...:  | 91                  | 69         | 73         | 110        | 113        | 103                        | 88         | 101        | 130        | 122        |
| Kans...:  | 44                  | 36         | 37         | 56         | 60         | 55                         | 47         | 50         | 58         | 61         |
| Total     | 2,185               | 1,906      | 1,960      | 2,344      | 2,443      | 1,821                      | 1,764      | 1,711      | 1,986      | 2,014      |

1/ December preceding year.

TABLE 7.--All hogs and pigs: Number on farms by quarters, selected States, 1954-59

| State      | March 1 |        |        |        |        |        | June 1 |        |        |        |        |        |
|------------|---------|--------|--------|--------|--------|--------|--------|--------|--------|--------|--------|--------|
|            | 1954    | 1955   | 1956   | 1957   | 1958   | 1959   | 1954   | 1955   | 1956   | 1957   | 1958   | 1959   |
|            | 1,000   | 1,000  | 1,000  | 1,000  | 1,000  | 1,000  | 1,000  | 1,000  | 1,000  | 1,000  | 1,000  | 1,000  |
|            | head    | head   | head   | head   | head   | head   | head   | head   | head   | head   | head   | head   |
| Ohio.....  | ---     | ---    | 2,865  | 2,636  | 2,478  | 2,701  | ---    | 3,254  | 3,254  | 3,091  | 2,813  | 3,038  |
| Ind.....   | 4,405   | 4,785  | 5,125  | 5,210  | 5,080  | 5,380  | 4,842  | 5,090  | 5,440  | 5,250  | 5,070  | 5,490  |
| Ill.....   | 5,200   | 5,610  | 6,263  | 6,355  | 6,625  | 7,544  | 7,451  | 7,973  | 7,814  | 7,736  | 7,736  | 8,510  |
| Wis.....   | 1,473   | 1,679  | 1,713  | 1,696  | 1,798  | 2,034  | 2,636  | 2,873  | 2,356  | 2,427  | 2,548  | 2,523  |
| Minn.....  | 2,381   | 3,071  | 2,856  | 2,770  | 3,102  | 3,722  | 5,066  | 5,421  | 4,499  | 4,544  | 4,680  | 5,054  |
| Iowa.....  | 8,800   | 9,944  | 9,944  | 9,646  | 10,996 | 12,425 | 15,989 | 17,108 | 14,884 | 14,586 | 15,169 | 16,383 |
| Mo.....    | ---     | ---    | 3,767  | 3,616  | 3,579  | ---    | ---    | 4,161  | 4,327  | 4,154  | 4,112  | ---    |
| S.Dak..... | ---     | ---    | 980    | 941    | 1,082  | 1,407  | ---    | 2,776  | 2,143  | 2,079  | 2,391  | 2,630  |
| Nebr.....  | ---     | ---    | ---    | ---    | 2,098  | 2,560  | ---    | ---    | ---    | ---    | 3,147  | 3,619  |
| Kans.....  | 740     | 784    | 878    | 781    | 920    | 1,132  | 1,027  | 1,130  | 1,062  | 1,009  | 1,120  | 1,355  |
| Total 6    |         |        |        |        |        |        |        |        |        |        |        |        |
| States..   | 22,999  | 25,873 | 26,779 | 26,458 | 28,521 | 32,217 | 37,011 | 39,595 | 36,055 | 35,552 | 36,323 | 39,315 |
| Total 9 :  |         |        |        |        |        |        |        |        |        |        |        |        |
| States :   | 1/      | 1/     | 34,391 | 33,651 | 35,660 | 38,885 | 1/     | 49,786 | 45,779 | 44,876 | 45,639 | 48,602 |
| Total 10:  |         |        |        |        |        |        |        |        |        |        |        |        |
| States :   | 1/      | 1/     | 1/     | 1/     | 37,758 | 1/     | 1/     | 1/     | 1/     | 1/     | 48,786 | 1/     |

| State      | September 1 |        |        |        |        |        | December 1 |        |        |        |        |        |
|------------|-------------|--------|--------|--------|--------|--------|------------|--------|--------|--------|--------|--------|
|            | 1954        | 1955   | 1956   | 1957   | 1958   | 1959   | 1954       | 1955   | 1956   | 1957   | 1958   | 1959   |
|            | 1,000       | 1,000  | 1,000  | 1,000  | 1,000  | 1,000  | 1,000      | 1,000  | 1,000  | 1,000  | 1,000  | 1,000  |
|            | head        | head   | head   | head   | head   | head   | head       | head   | head   | head   | head   | head   |
| Ohio.....  | ---         | 3,341  | 3,207  | 3,079  | 3,048  | 3,200  | 2,900      | 3,190  | 2,999  | 2,819  | 2,904  | 3,049  |
| Ind.....   | 5,600       | 6,005  | 6,030  | 5,710  | 5,950  | 5,950  | 4,609      | 5,160  | 5,093  | 4,790  | 5,329  | 5,300  |
| Ill.....   | 7,575       | 8,105  | 7,781  | 7,859  | 8,346  | 8,850  | 6,585      | 7,405  | 7,275  | 7,245  | 7,975  | 8,300  |
| Wis.....   | 2,811       | 3,008  | 2,497  | 2,622  | 2,858  | 2,744  | 2,060      | 2,225  | 2,069  | 2,110  | 2,321  | 2,298  |
| Minn.....  | 5,109       | 5,518  | 4,414  | 4,546  | 4,909  | 5,204  | 4,141      | 4,348  | 3,739  | 3,814  | 4,348  | 4,261  |
| Iowa.....  | 15,900      | 17,172 | 14,596 | 14,450 | 15,317 | 16,542 | 13,180     | 13,971 | 12,294 | 12,417 | 14,155 | 14,438 |
| Mo.....    | ---         | 4,500  | 4,185  | 3,976  | ---    | 4,832  | 3,610      | 4,339  | 4,032  | 3,790  | ---    | 4,780  |
| S.Dak..... | ---         | 2,550  | 1,989  | 1,969  | 2,323  | 2,462  | 1,745      | 1,920  | 1,498  | 1,588  | 1,969  | 1,693  |
| Nebr.....  | ---         | ---    | ---    | 2,643  | 3,119  | 3,400  | ---        | ---    | ---    | 2,442  | 2,931  | 2,960  |
| Kans.....  | 1,010       | 1,121  | 975    | 965    | 1,187  | 1,401  | 905        | 1,041  | 916    | 953    | 1,229  | 1,315  |
| Total 6    |             |        |        |        |        |        |            |        |        |        |        |        |
| States     | 38,005      | 40,929 | 36,293 | 36,152 | 38,567 | 40,691 | 31,480     | 34,150 | 31,386 | 31,329 | 35,357 | 35,912 |
| Total 9 :  |             |        |        |        |        |        |            |        |        |        |        |        |
| States :   | 1/          | 51,320 | 45,674 | 45,176 | 47,057 | 51,185 | 39,735     | 43,599 | 39,915 | 39,526 | 43,161 | 45,434 |
| Total 10:  |             |        |        |        |        |        |            |        |        |        |        |        |
| States :   | 1/          | 1/     | 1/     | 47,819 | 1/     | 54,585 | 1/         | 1/     | 1/     | 41,968 | 1/     | 48,394 |

1/ Not available.



TABLE 8.--Pigs under 3 months old: Number on farms by quarters, selected States, 1954-59

| State           | March 1 |       |        |        |        |        | June 1 |        |        |        |        |        |
|-----------------|---------|-------|--------|--------|--------|--------|--------|--------|--------|--------|--------|--------|
|                 | 1954    | 1955  | 1956   | 1957   | 1958   | 1959   | 1954   | 1955   | 1956   | 1957   | 1958   | 1959   |
|                 | 1,000   | 1,000 | 1,000  | 1,000  | 1,000  | 1,000  | 1,000  | 1,000  | 1,000  | 1,000  | 1,000  | 1,000  |
|                 | head    | head  | head   | head   | head   | head   | head   | head   | head   | head   | head   | head   |
| Ohio.....       | ---     | ---   | 1,045  | 973    | 908    | 1,051  | ---    | 1,585  | 1,595  | 1,510  | 1,340  | 1,405  |
| Ind.....        | 1,870   | 2,015 | 2,180  | 2,165  | 2,215  | 2,315  | 1,970  | 2,050  | 2,190  | 1,970  | 1,770  | 1,960  |
| Ill.....        | 1,455   | 1,720 | 1,940  | 2,015  | 2,240  | 2,550  | 4,660  | 4,880  | 4,520  | 4,340  | 4,080  | 4,295  |
| Wis.....        | 492     | 611   | 588    | 593    | 698    | 839    | 1,712  | 1,799  | 1,393  | 1,431  | 1,446  | 1,347  |
| Minn.....       | 620     | 872   | 803    | 728    | 1,013  | 1,322  | 3,665  | 3,775  | 2,970  | 3,111  | 2,940  | 2,932  |
| Iowa.....       | 2,360   | 2,770 | 2,800  | 2,700  | 3,370  | 3,815  | 10,750 | 11,320 | 9,430  | 9,069  | 8,454  | 8,930  |
| Mo.....         | ---     | ---   | 1,330  | 1,275  | 1,358  | ---    | ---    | 2,300  | 2,230  | 2,145  | 2,052  | ---    |
| S.Dak.....      | ---     | ---   | 160    | 147    | 280    | 377    | ---    | 2,150  | 1,635  | 1,610  | 1,760  | 1,890  |
| Nebr.....       | ---     | ---   | ---    | ---    | 670    | 840    | ---    | ---    | ---    | ---    | 1,870  | 2,060  |
| Kans.....       | 240     | 285   | 315    | 255    | 360    | 425    | 585    | 655    | 538    | 562    | 540    | 641    |
| Total 6 States  | 7,037   | 8,273 | 8,626  | 8,456  | 9,896  | 11,266 | 23,342 | 24,479 | 21,041 | 20,483 | 19,230 | 20,105 |
| Total 9 States  | 1/      | 1/    | 11,161 | 10,851 | 12,442 | 13,534 | 1/     | 30,514 | 26,501 | 25,748 | 24,382 | 25,460 |
| Total 10 States | 1/      | 1/    | 1/     | 1/     | 13,112 | 1/     | 1/     | 1/     | 1/     | 1/     | 26,252 | 1/     |

| State           | September 1 |        |        |        |        |        | December 1 |        |        |        |        |        |
|-----------------|-------------|--------|--------|--------|--------|--------|------------|--------|--------|--------|--------|--------|
|                 | 1954        | 1955   | 1956   | 1957   | 1958   | 1959   | 1954       | 1955   | 1956   | 1957   | 1958   | 1959   |
|                 | 1,000       | 1,000  | 1,000  | 1,000  | 1,000  | 1,000  | 1,000      | 1,000  | 1,000  | 1,000  | 1,000  | 1,000  |
|                 | head        | head   | head   | head   | head   | head   | head       | head   | head   | head   | head   | head   |
| Ohio.....       | ---         | 1,200  | 1,086  | 1,030  | 1,138  | 1,246  | 1,080      | 1,210  | 1,130  | 1,042  | 1,091  | 1,061  |
| Ind.....        | 2,240       | 2,425  | 2,300  | 2,275  | 2,550  | 2,360  | 1,215      | 1,365  | 1,440  | 1,250  | 1,410  | 1,560  |
| Ill.....        | 1,990       | 2,300  | 2,285  | 2,490  | 2,985  | 3,050  | 2,030      | 2,360  | 2,445  | 2,365  | 2,590  | 2,615  |
| Wis.....        | 702         | 738    | 659    | 723    | 945    | 904    | 466        | 610    | 578    | 600    | 663    | 700    |
| Minn.....       | 1,301       | 1,325  | 1,102  | 1,208  | 1,515  | 1,613  | 760        | 903    | 907    | 850    | 1,140  | 982    |
| Iowa.....       | 3,690       | 3,930  | 3,589  | 3,639  | 4,440  | 4,642  | 2,800      | 3,220  | 3,291  | 3,484  | 4,100  | 3,820  |
| Mo.....         | ---         | 1,482  | 1,343  | 1,290  | ---    | 1,680  | 1,188      | 1,560  | 1,541  | 1,405  | ---    | 1,692  |
| S.Dak.....      | ---         | 312    | 265    | 289    | 445    | 440    | 220        | 232    | 228    | 267    | 413    | 319    |
| Nebr.....       | ---         | ---    | ---    | 518    | 748    | 768    | ---        | ---    | ---    | 734    | 900    | 851    |
| Kans.....       | 282         | 290    | 248    | 247    | 393    | 418    | 275        | 370    | 326    | 353    | 418    | 433    |
| Total 6 States  | 10,205      | 11,008 | 10,183 | 10,582 | 12,828 | 12,987 | 7,546      | 8,828  | 8,987  | 8,902  | 10,321 | 10,110 |
| Total 9 States  | 1/          | 14,002 | 12,877 | 13,241 | 15,159 | 16,353 | 10,034     | 11,830 | 11,886 | 11,616 | 12,725 | 13,182 |
| Total 10 States | 1/          | 1/     | 1/     | 13,759 | 1/     | 17,121 | 1/         | 1/     | 1/     | 12,350 | 1/     | 14,033 |

1/ Not available.

TABLE 9.--Hogs and pigs 3 to 6 months old: Number on farms by quarters, selected States, 1954-59

| State             | March 1 |       |        |        |        |        | June 1 |        |        |        |        |        |
|-------------------|---------|-------|--------|--------|--------|--------|--------|--------|--------|--------|--------|--------|
|                   | 1954    | 1955  | 1956   | 1957   | 1958   | 1959   | 1954   | 1955   | 1956   | 1957   | 1958   | 1959   |
|                   | 1,000   | 1,000 | 1,000  | 1,000  | 1,000  | 1,000  | 1,000  | 1,000  | 1,000  | 1,000  | 1,000  | 1,000  |
|                   | head    | head  | head   | head   | head   | head   | head   | head   | head   | head   | head   | head   |
| Ohio.....         | ---     | ---   | 1,125  | 1,030  | 950    | 980    | ---    | 1,000  | 990    | 920    | 860    | 995    |
| Ind.....          | 1,085   | 1,180 | 1,345  | 1,425  | 1,235  | 1,425  | 1,820  | 1,930  | 2,075  | 2,080  | 2,190  | 2,320  |
| Ill.....          | 1,845   | 1,990 | 2,263  | 2,370  | 2,285  | 2,500  | 1,345  | 1,630  | 1,790  | 1,885  | 2,104  | 2,450  |
| Wis.....          | 381     | 420   | 553    | 518    | 512    | 532    | 434    | 551    | 515    | 554    | 633    | 717    |
| Minn.....         | 625     | 715   | 830    | 841    | 770    | 1,040  | 590    | 825    | 780    | 680    | 939    | 1,240  |
| Iowa.....         | 2,320   | 2,670 | 3,120  | 3,180  | 3,420  | 3,860  | 2,250  | 2,670  | 2,650  | 2,661  | 3,320  | 3,780  |
| Mo.....           | ---     | ---   | 1,404  | 1,392  | 1,285  | ---    | ---    | 1,040  | 1,190  | 1,145  | 1,240  | ---    |
| S.Dak.....        | ---     | ---   | 220    | 217    | 245    | 376    | ---    | 195    | 145    | 135    | 255    | 350    |
| Nebr.....         | ---     | ---   | ---    | ---    | 690    | 847    | ---    | ---    | ---    | ---    | 630    | 800    |
| Kans.....         | 285     | 263   | 350    | 310    | 335    | 408    | 225    | 245    | 296    | 238    | 342    | 403    |
| Total 6 States..  | 6,541   | 7,238 | 8,461  | 8,644  | 8,557  | 9,765  | 6,664  | 7,851  | 8,106  | 8,098  | 9,528  | 10,910 |
| Total 9 States..  | 1/      | 1/    | 11,210 | 11,283 | 11,037 | 11,968 | 1/     | 10,086 | 10,431 | 10,298 | 11,883 | 13,055 |
| Total 10 States.. | 1/      | 1/    | 1/     | 1/     | 11,727 | 1/     | 1/     | 1/     | 1/     | 1/     | 12,513 | 1/     |

| State             | September 1 |        |        |        |        |        | December 1 |        |        |        |        |        |
|-------------------|-------------|--------|--------|--------|--------|--------|------------|--------|--------|--------|--------|--------|
|                   | 1954        | 1955   | 1956   | 1957   | 1958   | 1959   | 1954       | 1955   | 1956   | 1957   | 1958   | 1959   |
|                   | 1,000       | 1,000  | 1,000  | 1,000  | 1,000  | 1,000  | 1,000      | 1,000  | 1,000  | 1,000  | 1,000  | 1,000  |
|                   | head        | head   | head   | head   | head   | head   | head       | head   | head   | head   | head   | head   |
| Ohio.....         | ---         | 1,419  | 1,434  | 1,348  | 1,210  | 1,256  | 1,007      | 1,095  | 1,010  | 1,012  | 1,068  | 1,178  |
| Ind.....          | 1,820       | 1,875  | 1,990  | 1,830  | 1,705  | 1,835  | 2,082      | 2,257  | 2,147  | 2,121  | 2,468  | 2,214  |
| Ill.....          | 4,155       | 4,355  | 4,035  | 3,880  | 3,650  | 3,830  | 1,789      | 2,065  | 2,080  | 2,250  | 2,710  | 2,780  |
| Wis.....          | 1,600       | 1,720  | 1,320  | 1,350  | 1,315  | 1,211  | 643        | 671    | 576    | 651    | 790    | 806    |
| Minn.....         | 3,144       | 3,282  | 2,596  | 2,723  | 2,570  | 2,615  | 1,290      | 1,337  | 1,070  | 1,167  | 1,465  | 1,539  |
| Iowa.....         | 10,170      | 10,784 | 8,967  | 8,607  | 8,104  | 8,565  | 3,460      | 3,696  | 3,390  | 3,491  | 4,310  | 4,600  |
| Mo.....           | ---         | 1,970  | 1,950  | 1,846  | ---    | 2,056  | 1,122      | 1,340  | 1,215  | 1,176  | ---    | 1,560  |
| S.Dak.....        | ---         | 1,940  | 1,464  | 1,450  | 1,595  | 1,700  | 269        | 308    | 255    | 282    | 439    | 433    |
| Nebr.....         | ---         | ---    | ---    | 1,720  | 1,790  | 1,980  | ---        | ---    | ---    | 480    | 710    | 728    |
| Kans.....         | 518         | 575    | 501    | 518    | 514    | 600    | 268        | 263    | 227    | 225    | 363    | 400    |
| Total 6 States..  | 21,407      | 22,591 | 19,409 | 18,908 | 17,858 | 18,656 | 9,532      | 10,289 | 9,490  | 9,905  | 12,106 | 12,339 |
| Total 9 States..  | 1/          | 27,920 | 24,257 | 23,552 | 22,453 | 23,668 | 11,930     | 13,032 | 11,970 | 12,375 | 14,323 | 15,510 |
| Total 10 States.. | 1/          | 1/     | 1/     | 25,272 | 1/     | 25,648 | 1/         | 1/     | 1/     | 12,855 | 1/     | 16,238 |

1/ Not available.

TABLE 10.--Hogs and pigs under 6 months old: Number on farms by quarters, selected States, 1954-59

| State      | March 1 |        |        |        |        |        | June 1 |        |        |        |        |        |
|------------|---------|--------|--------|--------|--------|--------|--------|--------|--------|--------|--------|--------|
|            | 1954    | 1955   | 1956   | 1957   | 1958   | 1959   | 1954   | 1955   | 1956   | 1957   | 1958   | 1959   |
|            | 1,000   | 1,000  | 1,000  | 1,000  | 1,000  | 1,000  | 1,000  | 1,000  | 1,000  | 1,000  | 1,000  | 1,000  |
|            | head    | head   | head   | head   | head   | head   | head   | head   | head   | head   | head   | head   |
| Ohio.....  | ---     | ---    | 2,170  | 2,003  | 1,858  | 2,031  | ---    | 2,585  | 2,585  | 2,430  | 2,200  | 2,400  |
| Ind.....   | 2,955   | 3,195  | 3,525  | 3,590  | 3,450  | 3,740  | 3,790  | 3,980  | 4,265  | 4,050  | 3,960  | 4,280  |
| Ill.....   | 3,300   | 3,710  | 4,203  | 4,385  | 4,525  | 5,050  | 6,005  | 6,510  | 6,310  | 6,225  | 6,184  | 6,745  |
| Wis.....   | 873     | 1,031  | 1,141  | 1,111  | 1,210  | 1,371  | 2,146  | 2,350  | 1,908  | 1,985  | 2,079  | 2,064  |
| Minn.....  | 1,245   | 1,587  | 1,633  | 1,569  | 1,783  | 2,362  | 4,255  | 4,600  | 3,750  | 3,791  | 3,879  | 4,172  |
| Iowa.....  | 4,680   | 5,440  | 5,920  | 5,880  | 6,790  | 7,675  | 13,000 | 13,990 | 12,080 | 11,730 | 11,774 | 12,710 |
| Mo.....    | ---     | ---    | 2,734  | 2,667  | 2,643  | ---    | ---    | 3,340  | 3,420  | 3,290  | 3,292  | ---    |
| S.Dak..... | ---     | ---    | 380    | 364    | 525    | 753    | ---    | 2,345  | 1,780  | 1,745  | 2,015  | 2,240  |
| Nebr.....  | ---     | ---    | ---    | ---    | 1,360  | 1,687  | ---    | ---    | ---    | ---    | 2,500  | 2,860  |
| Kans.....  | 525     | 548    | 665    | 565    | 695    | 833    | 810    | 900    | 834    | 800    | 882    | 1,044  |
| Total 6 :  |         |        |        |        |        |        |        |        |        |        |        |        |
| States...  | 13,578  | 15,511 | 17,087 | 17,100 | 18,453 | 21,031 | 30,006 | 32,330 | 29,147 | 28,581 | 28,758 | 31,015 |
| Total 9 :  |         |        |        |        |        |        |        |        |        |        |        |        |
| States...  | 1/      | 1/     | 22,371 | 22,134 | 23,479 | 25,502 | 1/     | 40,600 | 36,932 | 36,046 | 36,265 | 38,515 |
| Total 10 : |         |        |        |        |        |        |        |        |        |        |        |        |
| States...  | 1/      | 1/     | 1/     | 1/     | 24,839 | 1/     | 1/     | 1/     | 1/     | 1/     | 38,765 | 1/     |

| State      | September 1 |        |        |        |        |        | December 1 |        |        |        |        |        |
|------------|-------------|--------|--------|--------|--------|--------|------------|--------|--------|--------|--------|--------|
|            | 1954        | 1955   | 1956   | 1957   | 1958   | 1959   | 1954       | 1955   | 1956   | 1957   | 1958   | 1959   |
|            | 1,000       | 1,000  | 1,000  | 1,000  | 1,000  | 1,000  | 1,000      | 1,000  | 1,000  | 1,000  | 1,000  | 1,000  |
|            | head        | head   | head   | head   | head   | head   | head       | head   | head   | head   | head   | head   |
| Ohio.....  | ---         | 2,619  | 2,520  | 2,428  | 2,348  | 2,502  | 2,087      | 2,305  | 2,140  | 2,054  | 2,159  | 2,239  |
| Ind.....   | 4,060       | 4,300  | 4,290  | 4,105  | 4,255  | 4,195  | 3,297      | 3,622  | 3,587  | 3,371  | 3,878  | 3,774  |
| Ill.....   | 6,145       | 6,655  | 6,320  | 6,370  | 6,635  | 6,880  | 3,819      | 4,425  | 4,525  | 4,615  | 5,300  | 5,395  |
| Wis.....   | 2,302       | 2,458  | 1,979  | 2,073  | 2,260  | 2,115  | 1,109      | 1,281  | 1,154  | 1,251  | 1,453  | 1,506  |
| Minn.....  | 4,445       | 4,607  | 3,698  | 3,931  | 4,085  | 4,228  | 2,050      | 2,240  | 1,977  | 2,017  | 2,605  | 2,521  |
| Iowa.....  | 13,860      | 14,714 | 12,556 | 12,246 | 12,544 | 13,207 | 6,260      | 6,916  | 6,681  | 6,975  | 8,410  | 8,420  |
| Mo.....    | ---         | 3,452  | 3,293  | 3,136  | ---    | 3,736  | 2,310      | 2,900  | 2,756  | 2,581  | ---    | 3,252  |
| S.Dak..... | ---         | 2,252  | 1,729  | 1,739  | 2,040  | 2,140  | 489        | 540    | 483    | 549    | 852    | 752    |
| Nebr.....  | ---         | ---    | ---    | 2,238  | 2,538  | 2,748  | ---        | ---    | ---    | 1,214  | 1,610  | 1,579  |
| Kans.....  | 800         | 865    | 749    | 765    | 907    | 1,018  | 543        | 633    | 553    | 578    | 781    | 833    |
| Total 6 :  |             |        |        |        |        |        |            |        |        |        |        |        |
| States...  | 31,612      | 33,599 | 29,592 | 29,490 | 30,686 | 31,643 | 17,078     | 19,117 | 18,477 | 18,807 | 22,427 | 22,449 |
| Total 9 :  |             |        |        |        |        |        |            |        |        |        |        |        |
| States...  | 1/          | 41,922 | 37,134 | 36,793 | 37,612 | 40,021 | 21,964     | 24,862 | 23,856 | 23,991 | 27,048 | 28,692 |
| Total 10 : |             |        |        |        |        |        |            |        |        |        |        |        |
| States...  | 1/          | 1/     | 1/     | 39,031 | 1/     | 42,769 | 1/         | 1/     | 1/     | 25,205 | 1/     | 30,271 |

1/ Not available.

TABLE 11.--Hogs over 6 months old: Number on farms, by quarters, selected States, 1954-59

| State           | March 1 |        |        |        |        |        | June 1 |       |       |       |        |        |
|-----------------|---------|--------|--------|--------|--------|--------|--------|-------|-------|-------|--------|--------|
|                 | 1954    | 1955   | 1956   | 1957   | 1958   | 1959   | 1954   | 1955  | 1956  | 1957  | 1958   | 1959   |
|                 | head    | head   | head   | head   | head   | head   | head   | head  | head  | head  | head   | head   |
| Ohio.....       | ---     | ---    | 695    | 633    | 620    | 670    | ---    | 669   | 669   | 661   | 613    | 638    |
| Ind.....        | 1,450   | 1,590  | 1,600  | 1,620  | 1,630  | 1,640  | 1,052  | 1,110 | 1,175 | 1,200 | 1,110  | 1,210  |
| Ill.....        | 1,900   | 1,900  | 2,060  | 1,970  | 2,100  | 2,494  | 1,446  | 1,463 | 1,504 | 1,511 | 1,552  | 1,765  |
| Wis.....        | 600     | 648    | 572    | 585    | 538    | 643    | 490    | 523   | 448   | 442   | 469    | 459    |
| Minn.....       | 1,136   | 1,484  | 1,223  | 1,201  | 1,319  | 1,360  | 811    | 821   | 749   | 753   | 801    | 882    |
| Iowa.....       | 4,120   | 4,504  | 4,024  | 3,766  | 4,206  | 4,750  | 2,989  | 3,118 | 2,804 | 2,856 | 3,395  | 3,673  |
| Mo.....         | ---     | ---    | 1,033  | 949    | 936    | ---    | ---    | 821   | 907   | 864   | 820    | ---    |
| S.Dak.....      | ---     | ---    | 600    | 577    | 557    | 654    | ---    | 431   | 363   | 334   | 376    | 390    |
| Nebr.....       | ---     | ---    | ---    | ---    | 738    | 873    | ---    | ---   | ---   | ---   | 647    | 759    |
| Kans.....       | 215     | 236    | 213    | 216    | 225    | 299    | 217    | 230   | 228   | 209   | 238    | 311    |
| Total 6 States  | 9,421   | 10,362 | 9,692  | 9,358  | 10,068 | 11,186 | 7,705  | 7,265 | 6,908 | 6,971 | 7,565  | 8,300  |
| Total 9 States  | 1/      | 1/     | 12,020 | 11,517 | 12,181 | 13,383 | 1/     | 1/    | 8,847 | 8,830 | 9,374  | 10,087 |
| Total 10 States | 1/      | 1/     | 1/     | 1/     | 12,919 | 1/     | 1/     | 1/    | 1/    | 1/    | 10,021 | 1/     |

| State           | September 1 |       |       |       |       |        | December 1 |        |        |        |        |        |
|-----------------|-------------|-------|-------|-------|-------|--------|------------|--------|--------|--------|--------|--------|
|                 | 1954        | 1955  | 1956  | 1957  | 1958  | 1959   | 1954       | 1955   | 1956   | 1957   | 1958   | 1959   |
|                 | head        | head  | head  | head  | head  | head   | head       | head   | head   | head   | head   | head   |
| Ohio.....       | ---         | 722   | 687   | 651   | 700   | 698    | 813        | 885    | 859    | 765    | 745    | 810    |
| Ind.....        | 1,540       | 1,705 | 1,740 | 1,605 | 1,695 | 1,755  | 1,312      | 1,538  | 1,506  | 1,419  | 1,451  | 1,526  |
| Ill.....        | 1,430       | 1,450 | 1,461 | 1,489 | 1,711 | 1,970  | 2,766      | 2,980  | 2,750  | 2,630  | 2,675  | 2,905  |
| Wis.....        | 509         | 550   | 518   | 549   | 598   | 629    | 951        | 944    | 915    | 859    | 868    | 792    |
| Minn.....       | 664         | 911   | 716   | 615   | 824   | 976    | 2,091      | 2,108  | 1,762  | 1,797  | 1,743  | 1,740  |
| Iowa.....       | 2,040       | 2,458 | 2,040 | 2,204 | 2,773 | 3,335  | 6,920      | 7,055  | 5,613  | 5,442  | 5,745  | 6,018  |
| Mo.....         | ---         | 1,048 | 892   | 840   | ---   | 1,096  | 1,300      | 1,439  | 1,276  | 1,209  | ---    | 1,528  |
| S.Dak.....      | ---         | 298   | 260   | 230   | 283   | 322    | 1,256      | 1,380  | 1,015  | 1,039  | 1,117  | 941    |
| Nebr.....       | ---         | ---   | ---   | 405   | 581   | 652    | ---        | ---    | ---    | 1,228  | 1,221  | 1,381  |
| Kans.....       | 210         | 256   | 226   | 200   | 280   | 383    | 362        | 408    | 363    | 375    | 448    | 482    |
| Total 6 States  | 6,393       | 7,330 | 6,701 | 6,662 | 7,881 | 9,048  | 14,402     | 15,033 | 12,909 | 12,522 | 12,930 | 13,463 |
| Total 9 States  | 1/          | 9,398 | 8,540 | 8,383 | 9,445 | 11,164 | 17,771     | 18,737 | 16,059 | 15,535 | 16,113 | 16,742 |
| Total 10 States | 1/          | 1/    | 1/    | 8,788 | 1/    | 11,816 | 1/         | 1/     | 1/     | 16,763 | 1/     | 18,123 |

1/ Not available.

**END**