



**AgEcon** SEARCH  
RESEARCH IN AGRICULTURAL & APPLIED ECONOMICS

*The World's Largest Open Access Agricultural & Applied Economics Digital Library*

**This document is discoverable and free to researchers across the globe due to the work of AgEcon Search.**

**Help ensure our sustainability.**

Give to AgEcon Search

AgEcon Search

<http://ageconsearch.umn.edu>

[aesearch@umn.edu](mailto:aesearch@umn.edu)

*Papers downloaded from **AgEcon Search** may be used for non-commercial purposes and personal study only. No other use, including posting to another Internet site, is permitted without permission from the copyright owner (not AgEcon Search), or as allowed under the provisions of Fair Use, U.S. Copyright Act, Title 17 U.S.C.*

58-275 (1960)

USDA STATISTICAL BULLETINS

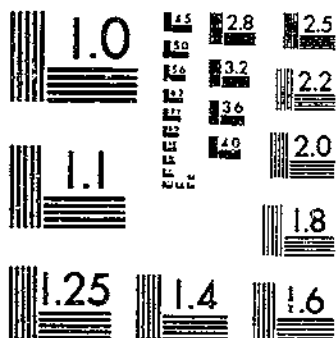
UPDATES

LIVESTOCK-PRODUCTION UNITS, 1940-1958, AND CONSUMPTION OF FEED, 1955-58

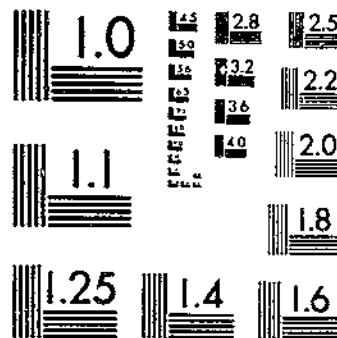
HODGES, E. F.

1 OF 1

# START



MICROCOPY RESOLUTION TEST CHART  
NATIONAL BUREAU OF STANDARDS-1963-A



MICROCOPY RESOLUTION TEST CHART  
NATIONAL BUREAU OF STANDARDS-1963-A

R 6,30.5

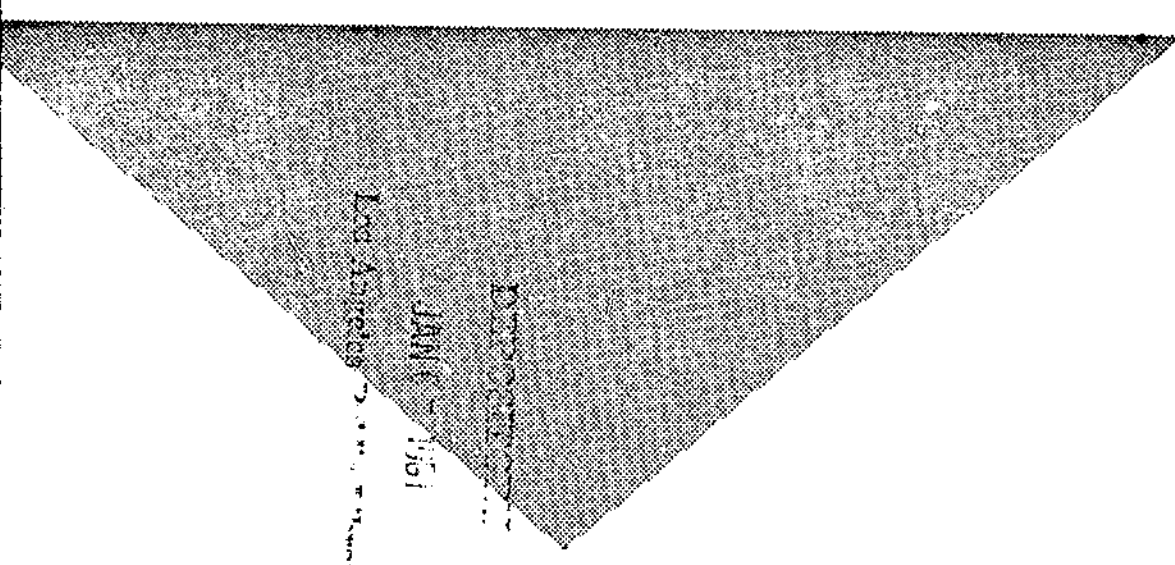
U 53-13

# 275

RECEIVED  
F. B. I.

# LIVESTOCK-PRODUCTION UNITS 1910-1958

and Consumption of Feed by Livestock 1955-1958



Statistical Bulletin No. 275

UNITED STATES DEPARTMENT OF AGRICULTURE  
Agricultural Research Service

# CONTENTS

	Page
LIVESTOCK PRODUCTION UNITS - - - - -	3
Calculation of Livestock-Production Units - - - - -	4
Adjustment of Calendar-Year Production Data to Feeding Year - - - -	5
Cattle - - - - -	5
Hogs - - - - -	5
Poultry - - - - -	5
Sheep and lambs - - - - -	5
Horses and mules - - - - -	6
Goats - - - - -	6
Livestock-Production Units Based on Concentrates - - - - -	6
Livestock-Production Units Based on All Feed - - - - -	6
Comparison of Livestock-Production Unit Series With Other Livestock and Feed Series - - - - -	7
FEED FED TO LIVESTOCK - - - - -	7
Total Quantities Fed - - - - -	7
Feed Fed Per Unit of Livestock Production - - - - -	9

Washington, D. C.

December 1960

For sale by the Superintendent of Documents, U. S. Government Printing Office  
Washington 25, D. C.

LIVESTOCK-PRODUCTION UNITS, 1910-1958, AND CONSUMPTION OF FEED  
BY LIVESTOCK, 1955-1958 1/

By Earl F. Hodges, Agricultural Economist  
Farm Economics Research Division  
Agricultural Research Service

LIVESTOCK-PRODUCTION UNITS

The balance between livestock production and the feed supply is of national concern during periods of both feed surpluses and feed shortages. Livestock-production units provide a basis for estimating the approximate amount of feed that may be needed at any one time. In the index series on livestock-production units, the annual production of the principal livestock products is weighted by the feed consumed per unit of production divided by the feed consumed by one milk cow. 2/ These units have followed even more closely than animal units 3/ the trends in feed consumption over past periods of time (fig. 1). What producers have actually done by way of variations in feed efficiency, substitution of feed for other farm resources, delayed feeding, inventory changes, and feeding of livestock to heavier or lighter weights is accounted for directly in the production obtained. As annual data are available from 1910 through 1958, historical trends in feed-livestock-production relationships can be studied.

Two series of livestock-production units have been developed. Annual figures for the first series are determined by multiplying the units of production 4/ of that kind of livestock by a factor obtained by dividing the amount of concentrates consumed per unit of production of that kind of livestock by the amount of concentrates consumed by one milk cow during the period 1940-45. In the second series, the factor used is all feed including roughages and pasture consumed by that kind of livestock per unit of production divided by the amount of all feed including roughages and pasture consumed by one milk cow during the base period 1940-45<sup>1</sup>. The same livestock production is used in both series. The difference results from the weighting of the first series by concentrates only and the weighting of the second series by all feed including roughages and pasture. 5/ The factors used for each kind of livestock and the feed-consumption data used in calculating the factors are given in table 1.

---

1/ This report revises and brings to date, through the feeding year 1958, U. S. Agr. Res. Serv. ARS 43-103, Livestock-Production Units, Annual 1910-1957, and adds certain data on consumption of feed by livestock for the feeding years 1955-58.

2/ Feed consumption during the base period 1940-45 was used for all livestock except broilers, for which the period 1950-53 was used.

3/ See Animal Units of Livestock Fed Annually, 1909-1959, U. S. Dept. Agr. Statist. Bul. 271.

4/ A unit of production is 100 pounds live weight of meat-producing livestock or poultry; 1,000 pounds of milk; 1,000 eggs; 1 goat clipped; or, for horses and mules, 1 head.

5/ Data on feed fed per head and per unit of product during the base period is given in U. S. Dept. Agr. Prod. Res. Rpt. 21, Consumption of Feed by Livestock, 1909-56.

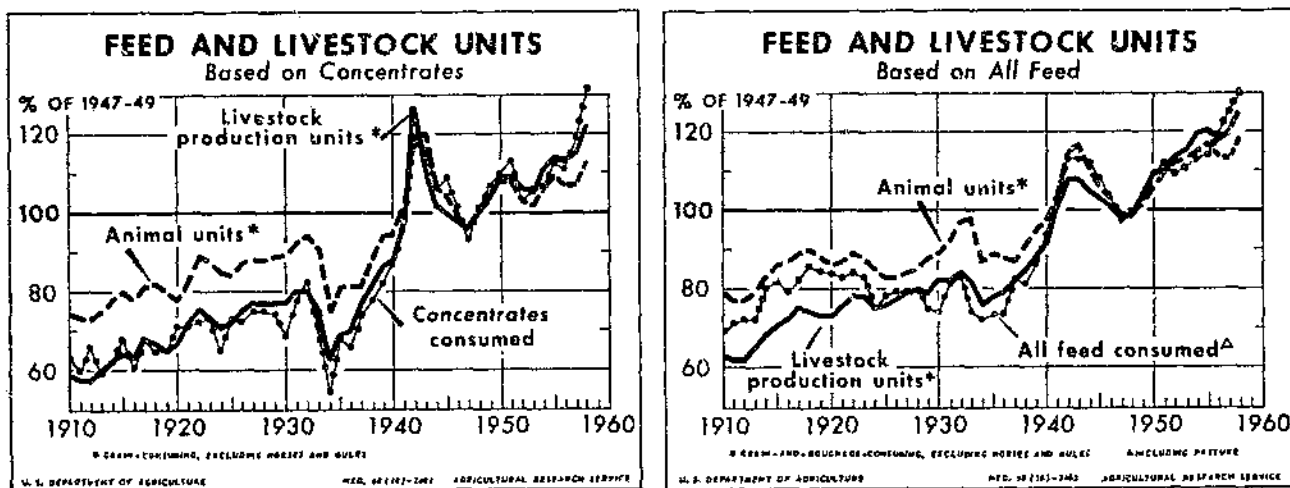


Figure 1

Calculation of Livestock-Production Units

The preliminary step in calculating the livestock-production unit series is the calculation of factors to be applied to the annual production figures. These factors are the ratios between the feed consumed by each type of livestock per unit of production and the feed consumed by one milk cow during the base period.

As an example of the method of calculation, the factor for milk production based on concentrates is determined as follows. During the period 1940-45, the average milk cow consumed 1,342 pounds of concentrates and produced 4,380 pounds of milk annually, or 306 pounds of concentrates per unit (1,000 pounds) of milk production. Dividing 306 by 1,342 equals 0.23. Multiplying the units of production of milk for a particular year by the factor 0.23 gives the number of livestock-production units of milk based on concentrates for that year.

To develop a factor based on all feed, feed consumption is measured in feed units. <sup>6/</sup> In the base period, an average dairy cow consumed 4,981 feed units per year, or 1,137 feed units per 1,000 pounds of milk. Dividing 1,137 by 4,981 gives the factor 0.23. Multiplying the units of milk production by this factor gives the number of livestock-production units of milk based on all feed for a particular year.

The factors in both series are held constant for each kind of livestock, the variable in each series being the annual production of each livestock product.

As livestock-production units are compared with the national supply and consumption of feed, both of which are based on the feeding year, <sup>7/</sup> this series is also based on the feeding year. The calendar year estimates of the Department of Agriculture of annual production of milk and eggs; annual live-weight production of hogs, cattle, sheep, chickens, broilers, and turkeys; numbers of horses and mules on farms on January 1; and number of goats clipped during the year were converted to the feeding year basis as set forth below. Production data for the various kinds of livestock converted to a feeding-year basis are given for the years 1910-58 in table 2.

<sup>6/</sup> A feed unit is the equivalent in feeding value of 1 pound of corn.

<sup>7/</sup> The feeding year extends from October 1 to September 30, the period during which crop production from the current growing season would normally be fed.

## Adjustment of Calendar-Year Production Data to Feeding Year

**Cattle.**- Cattle production is divided into two groups, "grain-fattened" and "other," by the following calculation. To estimate the number of cattle put on feed during the calendar year, the number of cattle on feed January 1 was multiplied by factors ranging from 1.3 to 1.5 before 1945 and up to 1.85 in 1958. The number put on feed during the year multiplied by the gain per head, estimated to increase gradually from 325 pounds per head in 1930 to 445 pounds in 1958, equals the total gain of grain-fattened cattle. The difference between the gain of grain-fattened cattle and live-weight production of "all" cattle and calves is used for the production of "other" cattle. A different factor is used for each of these two classes of cattle to determine livestock-production units. The calendar-year production data for these two groups of cattle were converted to the feeding year by adding 25 percent of the production in one calendar year to 75 percent of the production in the succeeding calendar year.

**Hogs.**- Data on live-weight production of hogs on a feed-year basis are obtained by first distributing production for the calendar years into quarters (as shown for 1959 in table 3), and then totaling the production for the four quarters of the feeding year.

In estimating quarterly production, the number of hogs on farms January 1, the pig crop, and the death loss are used. The production from each group of hogs is distributed among the different quarters of the year in accordance with the gain in weight during each quarter by means of the percentages shown in table 4. The gain in weight made after January 1 by the spring pigs on hand on that date is credited to the first quarter of the year, when these pigs are marketed. The gain in weight made after January 1 by the fall pigs on hand on that date is distributed among quarters thus — 55 percent to the first, 35 percent to the second, and 10 percent to the third, in accordance with the estimated gain of these pigs during each quarter. Sows and gilts on farms on January 1 (two-thirds of which are assumed to be gilts) are assumed to gain 125 pounds each during the ensuing year. Gilts held over another year (listed as sows December 31) gain another 25 pounds after the other gilts go to market. The gain in weight is credited to the respective quarters in accordance with the estimated gains during the quarter.

In the same way, estimates are made of the gain in each quarter by the spring and fall pigs farrowed during the calendar year. More than half of the calendar-year pig crop is still "on farms, December 31." The rest have been marketed or are included in the death loss (table 3).

The percentages shown in table 4 have been used since 1952. From 1938 to 1952, production was concentrated more in the October to December quarter and a different set of percentages was used. Before 1938, concentration of production in the October to December quarter was even greater, and a still different set of percentages was used. A similar change appeared over the years in the quarterly disappearance of concentrate feeds available for hogs, after reasonable allowance had been made for feed for each of the other kinds of livestock.

**Poultry.**- Production data for the calendar year following the beginning of the feeding year were used for poultry, without adjustment for the feeding year. The number of chickens raised in the calendar year, multiplied by the average weight of all chickens sold, was used for production of farm chickens. (Chickens raised on farm chickens are mainly for replacements in laying flocks.)

**Sheep and lambs.**- The calendar-year production of sheep and lambs was converted to the feeding year by adding 25 percent of the production in one year to 75 percent of the production in the succeeding year. For each 100 pounds of live weight produced, about 19 pounds of wool are produced. No adjustment was made for feed required to produce the wool.



Horses and mules.- Because no data are available with which to evaluate work done by horses and mules, the number of head on farms January 1 following the beginning of the feeding year was used for the production of this kind of livestock. Different factors are used to weight the number of colts and the numbers of horses and mules 2 years old and over.

Goats.- Numbers of goats clipped during the calendar year (following the beginning of the feeding year) are those raised for production of mohair. In 1959, 95 percent of the number reported were in Texas. Because goats are raised almost entirely on pasture, their production is included only in the livestock-production units based on all feed including pasture. The number of goats clipped is used rather than the amount of mohair produced.

#### Livestock-Production Units Based on Concentrates

Livestock-production units based on concentrates during the last five decades have increased from 117.6 million to 192.2 million, about 63 percent (table 5). Excluding those from horses and mules, the number has more than doubled during that time.

Since 1950, hogs have accounted for approximately 40 percent of the livestock-production units, milk production for 16 percent, eggs for 15 percent, cattle and calves (live weight) for 13 percent, broilers and chickens for 5 percent each, and sheep and lambs for less than 1 percent. Poultry accounted for about 28 percent of all livestock-production units.

Several important changes have occurred in the composition of the livestock population during the nearly 50 years represented in this series (table 6). The most obvious change is the decrease in livestock-production units from horses and mules — from 25 percent in 1910-19 to 3 percent in the 1950's. Most of the decrease is offset by the 10-percent increase in units from grain-fattened cattle and the 8-percent increase in units from broilers and turkeys. The percentage of units from other cattle increased slightly during the 1950's, increasing steadily numerically from 1936 to 1953. Broiler and turkey production developed in scale nationally from the 1930's on. Grain-fattened cattle (cattle on feed) were first reported separately in 1929 (table 2). Since then, the units from grain-fattened cattle have increased to almost a fourfold level. Nearly 10 percent of all concentrates fed to livestock in 1958 were fed to this group of cattle.

The highest percentages of total livestock-production units from horses and mules and from "other" cattle came before 1920, from milk cows and from sheep and lambs during the 1930's, from hogs during the 1940's, and from grain-fattened cattle and poultry during the 1950's (table 6).

#### Livestock-Production Units Based on All Feed

Livestock-production units based on all feed, including pasture, have increased from 84.3 million in 1910 to 122.7 million in 1958, an increase of about 45 percent (table 7). Excluding those from horses and mules, the number nearly doubled during that time. Since 1950, the approximate percentages from the different kinds of livestock have been 35 percent from cattle (other than milk cows), 24 percent from milk cows, 18 percent from hogs, 7 percent from eggs, 6 percent from sheep and goats, 4 percent from horses, 2 percent each from farm chickens and broilers, and 1 percent from turkeys. Nearly a fifth of the units from cattle came from grain-fattened cattle. Only about 12 percent came from all poultry.

Weighting livestock production by all feed instead of concentrates alone presents a different composite of the livestock population. The heavy roughage consumers, cattle, are a more important part of this series and the heavy concentrate consumers, poultry, a less important part. In this series, units from horses and mules decreased nearly 24 percent, from 28 percent of the total in the period 1910-19 to 4 percent in the 1950's (table 8). Cattle other than milk cows increased from 26 percent in the period 1910-19 to 35 percent in the 1950's. During this period, units from milk cows increased 6 percent, from hogs less than 3 percent, and from eggs and broilers 2 percent each. The importance of the cattle production is further indicated in that about 42 percent of all feed fed to livestock is fed for live-weight cattle production (excluding milk cows).

#### Comparison of Livestock-Production Unit Series With Other Livestock and Feed Series

During nearly five decades, the number of livestock-production units has increased a great deal more than has the number of animal units <sup>8/</sup> and somewhat more than the total quantity of feed consumed (table 9). Using the years 1947-49 as 100, livestock-production units increased about 50 percent more than animal units and about 10 percent more than all feed consumed by livestock. However, consumption of concentrates increased about 3 percent more than livestock-production units based on concentrates. The percentage of concentrates in all feed fed to livestock increased from 38 percent in the period 1915-24 to 44 percent in the period 1955-58. <sup>9/</sup>

Before World War II, concentrates fed per livestock-production unit varied from a high of 0.90 ton in 1912 to a low of 0.59 ton in 1936 (table 10) mainly according to variations in the supplies available. From 1940 to date, the amount fed has averaged 0.74 ton, varying from 0.70 ton in 1947 to 0.80 ton in 1958.

Although technical methods and knowledge are available to increase the efficiency of feed conversion into livestock products, such efficiency is not sought consistently by livestock producers over an extended period of time. All feed consumed per livestock-production unit (table 11) varied from a high of 3.32 tons in 1919 to a low of 2.38 tons in 1933. During both the World War I and World War II periods and during the last 2 years, the rate of feeding was high. In drought periods such as the 1930's, the rate declined. The rate of feeding has varied over a range of 40 percent from low to high during the entire period and more than 15 percent since the middle thirties (fig. 2).

#### FEED FED TO LIVESTOCK <sup>10/</sup>

##### Total Quantities Fed

During the period 1955-58, the amount of feed fed to livestock increased about 10 percent. The amount of concentrates fed increased about 16 percent, and the amount of harvested roughages increased about 6 percent. Feed units from

---

<sup>8/</sup> The animal unit series are based on numbers of livestock rather than production. (See footnote 3.)

<sup>9/</sup> For feed consumption data before 1955, see Prod. Res. Rpt. 21, table 64. For data 1955-58, see table 12, page 22 of this report.

<sup>10/</sup> In Prod. Res. Rpt. 21, the amount of feed fed to various kinds of livestock from 1909 to 1956 is given. The estimates for 1955 and 1956 have been revised and, along with estimates for 1957 and 1958, are included herein — on a per ton basis in table 11, and on a feed-unit basis in table 12.

pasture increased about 12 percent (table 12). During these years, grain-consuming animal units increased about 3 percent, roughage-consuming animal units decreased about 1 percent, and grain-and-roughage-consuming animal units increased less than 1 percent. <sup>11/</sup> Livestock-production units based on grain and other concentrates increased about 7 percent, while livestock-production units based on all feed increased about 3 percent. (See tables 5 and 7.) These percentages indicate that the increase in feeding of concentrates during these years (17 percent) was several times greater than the increase in animal numbers as measured by animal units, or than the increase in livestock production as measured by livestock-production units.

The quantities of all feed fed to the different kinds of livestock continued to increase. Of particular significance was the large increase in consumption of sorghum grains since 1957. The amount fed almost doubled between 1955 and 1958, with most of the increase occurring in 1957. About 1 ton of sorghum grains was fed for each 10 tons of corn (excluding both sorghum and corn silage) in 1957 and 1958. Hens and pullets continue to consume the largest quantity of sorghum grains. However, the amount fed to cattle on feed increased from 100,000 tons in 1955 to 1,700,000 tons in 1958. The amount fed to hogs doubled in the same period of time.

Because the feeding value of feeds varies, the feed consumed by livestock was also calculated in terms of feed units (table 13). <sup>12/</sup> The feed unit gives the protein of a feed a greater weight. The substitution value of a feed for corn varies also with the kind of livestock to which it is fed and the proportion it represents in the total ration. High-protein feeds fed to livestock are worth about 75 percent more in terms of feed units than in terms of actual weight; and harvested roughages are worth about 50 to 60 percent less. In terms of feed units, feeds fed to milk cows are only 47 percent of actual weight, whereas feeds fed to broilers are 116 percent, and feeds fed to hogs are 107 percent of actual weight.

To provide additional means of comparison, feeds fed to livestock (table 12) were converted to total digestible nutrients (table 14). <sup>13/</sup> For milk cows, the

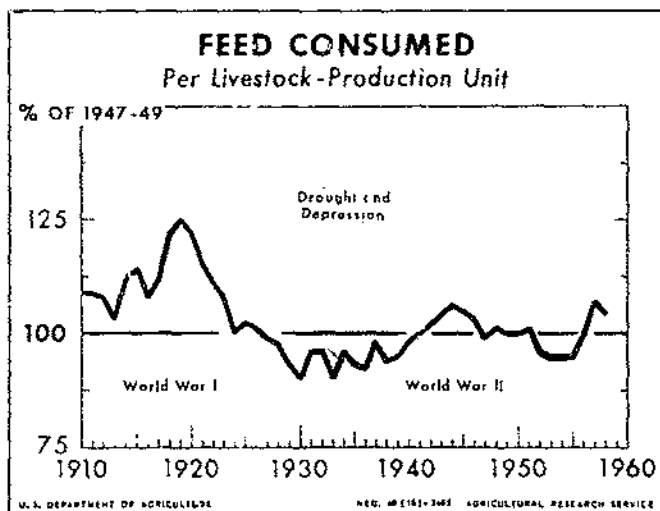


Figure 2

<sup>11/</sup> See table 1, Statis. Bul. 271.

<sup>12/</sup> Feed unit values are given in Prod. Res. Rpt. 21, table 26.

<sup>13/</sup> Total digestible nutrients represent the energy value of feed available for digestion, maintenance, and production of milk or eggs, or gain in weight. However, stating the value of feeds in terms of total digestible nutrients tends to put too high a value on hay and other roughages and too low a value on such protein feeds as tankage and cottonseed meal.

total digestible nutrients are about 47 percent of the actual weight of the feeds, for cattle on feed 56 percent, for sheep 65 percent, and for all poultry and hogs about 77 percent.

### Feed Fed Per Unit of Livestock Production

The amount of feed consumed per unit of production by all kinds of livestock except cattle on feed and broilers increased from 1955 to 1958 inclusive. (See tables 15 and 16.) For most kinds of livestock, the increase varied from 5 to 15 percent. For both cattle on feed and broilers, the decrease was about 5 percent.

Even allowing for some arbitrary decision in allocating feeds to the various kinds of livestock and for the possibility of error, the rate of feeding to most classes of livestock is surprisingly high. Feed disappearance as reported in official estimates of the Department of Agriculture is a residual figure, remaining after all known uses are subtracted. Assuming that estimates of feed disappearance and animal numbers and production are relatively accurate, feed fed per head or per unit of production must be at a high level for most livestock.

The decrease in feed consumed by broilers per pound of live weight produced is merely the continuation of a long-time trend. The decrease in the amount of feed consumed by cattle on feed may be due partly to an increasing number of short-fed cattle marketed.

Table 1.- Factors for computing livestock-production units

Item	Unit of pro- duction	Concentrates fed per unit of production	Factor based on concen- trates	All feed consumed per unit of production	Factor based on all feed
		<u>Pounds</u> <sup>1/</sup>		<u>units</u> <sup>1/</sup>	
On farm Jan. 1:					
Milk cows <sup>2/</sup> -----	Head	1,342	1.0	4,981	1.0
Horses and mules 2 years old and over-----	do.	1,707	1.27	5,130	1.03
Colts-----	do.	345	.26	3,478	.70
Goats clipped-----	do.	---	---	765	.15
Live weight produced:					
Grain-fattened cattle-----	Cwt.	567	.42	914	.18
Other cattle-----	do.	33	.025	732	.15
Sheep and lambs-----	do.	113	.08	1,969	.39
Hogs-----	do.	477	.36	545	.11
Chickens raised-----	do.	519	.39	568	.11
Broilers-----	do.	316	.23	362	.07
Turkeys-----	do.	579	.43	677	.13
Milk-----	1,000 pounds:	306	.23	1,138	.23
Eggs-----	1,000 eggs :	601	.45	633	.13

<sup>1/</sup> The average feed consumption of the years 1940-45 was taken as the base period except that 1950-53 was taken for broilers. These are the same periods used in Animal Units of Livestock Fed Annually, 1909 to 1959, Statis. Bul. 271. <sup>2/</sup> The average annual milk production per cow on farms Jan. 1 for 1940-45 was 4,380 pounds.

Table 2. - Data for computing annual livestock-production units, 1910-58

Year begin- ning Oct. 1	Live-weight production								Other production		Horses and mules Jan. 1 2/		Goats clip- ped 1/
	Hogs	Cattle			Sheep and lambs	Poultry 1/			Milk	Eggs	2 years old and over	Colts	
		Grain- fatted cattle	Other cattle	Total		Farm chick- ens	Broil- ers	Turkeys					
	: Million	: Million	: Million	: Million	: Million	: Million	: Million	: Million	: Million	: Million	1,000	1,000	1,000
	: pounds	: pounds	: pounds	: pounds	: pounds	: pounds	: pounds	: pounds	: pounds	: eggs	head	head	head
1910	12,400	---	---	12,608	1,134	2,240	---	---	65,700	29,100	20,301	4,546	---
1911	12,100	---	---	13,502	1,238	2,220	---	---	66,400	28,400	20,569	4,708	---
1912	12,200	---	---	14,601	1,209	2,230	---	---	67,500	28,100	20,846	4,845	---
1913	12,500	---	---	15,388	1,250	2,300	---	---	69,200	27,900	21,247	4,931	---
1914	13,600	---	---	15,242	1,258	2,230	---	---	70,700	29,700	21,562	4,931	---
1915	13,700	---	---	15,734	1,152	2,170	---	---	72,000	28,900	21,694	4,840	---
1916	13,100	---	---	16,556	1,124	2,200	---	---	73,200	27,800	22,003	4,656	---
1917	14,300	---	---	15,934	1,210	2,350	---	---	73,800	28,000	22,370	4,353	---
1918	14,200	---	---	13,955	1,167	2,280	---	---	73,800	30,200	22,576	3,914	---
1919	13,600	---	---	12,649	980	2,230	---	---	75,400	29,800	22,386	3,356	2,367
1920	14,000	---	---	12,714	1,091	2,400	---	---	77,600	30,700	22,348	2,789	2,528
1921	15,900	---	---	13,093	1,096	2,530	---	---	80,600	32,700	22,271	2,317	2,254
1922	16,900	---	---	13,177	1,210	2,640	---	---	83,300	34,800	22,050	1,968	2,307
1923	15,800	---	---	13,345	1,408	2,516	---	---	88,200	34,600	21,578	1,707	2,548
1924	14,600	---	---	13,065	1,496	2,579	---	---	90,400	34,900	21,038	1,531	2,565
1925	14,600	---	---	12,692	1,584	2,729	---	---	92,700	36,984	20,491	1,495	3,124
1926	15,400	---	---	12,205	1,650	2,852	---	---	94,710	38,475	19,765	1,427	3,265
1927	16,500	---	---	12,263	1,746	2,660	---	---	95,675	38,339	19,120	1,328	3,716
1928	16,000	---	---	12,647	1,810	2,854	---	---	239 98,201	38,148	18,514	1,230	3,873
1929	15,300	1,416	11,720	13,136	1,930	2,875	---	---	228 99,463	38,818	17,981	1,143	4,241
1930	15,600	1,376	11,979	13,355	2,030	2,696	---	---	244 102,097	38,209	17,375	1,093	4,457
1931	16,500	1,350	12,671	14,021	1,885	2,868	---	---	303 103,789	37,101	16,822	990	4,201
1932	16,800	1,445	13,667	15,112	1,852	2,850	---	---	319 104,657	35,516	16,404	933	4,092
1933	15,000	1,396	13,359	14,755	1,898	2,449	97	---	300 102,453	34,450	15,984	1,013	3,916
1934	10,600	1,070	12,802	13,872	1,854	2,568	123	---	298 101,468	33,190	15,473	1,210	3,565
1935	12,000	1,591	12,650	14,241	1,848	2,789	152	---	405 101,505	34,343	14,839	1,387	3,715
1936	12,800	1,371	12,548	13,919	1,912	2,405	196	---	376 102,711	37,202	14,330	1,472	3,774
1937	15,100	1,705	12,267	13,972	2,012	2,538	239	---	395 104,781	36,970	13,690	1,555	3,913
1938	15,900	1,808	13,087	14,895	2,031	2,717	306	---	494 106,764	38,441	13,273	1,519	4,068

UPDATA 1981

1939	17,600	2,044	13,527	15,571	2,083	2,598	413	502	109,081	39,494	13,000	1,478	4,297
1940	16,900	2,134	14,564	16,698	2,214	3,054	559	512	113,888	40,951	12,651	1,453	4,542
1941	19,400	2,256	15,927	18,183	2,298	3,546	674	522	118,565	47,498	12,346	1,309	4,322
1942	24,100	2,225	16,787	19,012	2,159	4,206	833	509	117,754	53,880	12,117	1,114	4,276
1943	23,600	2,062	17,509	19,571	1,980	3,578	818	584	116,238	57,850	11,668	945	4,109
1944	18,800	2,265	17,300	19,565	1,918	3,829	1,107	740	120,141	56,276	11,116	834	4,291
1945	18,900	2,387	16,741	19,128	1,800	3,246	884	714	117,661	55,468	10,434	674	3,939
1946	18,300	2,451	16,646	19,097	1,616	3,165	936	611	117,785	55,085	9,578	551	3,672
1947	18,400	2,379	16,205	18,584	1,429	2,768	1,127	574	112,593	54,281	8,800	479	3,164
1948	18,600	2,638	16,418	19,056	1,304	3,102	1,570	769	115,025	54,803	8,074	424	2,558
1949	19,800	2,766	17,942	20,708	1,322	2,789	1,945	817	116,694	58,720	7,415	366	2,530
1950	21,100	2,890	19,649	22,539	1,363	2,803	2,415	950	115,476	57,721	6,732	304	2,472
1951	20,600	3,413	21,034	24,447	1,446	2,524	2,624	1,049	113,507	57,809	5,887	263	2,287
1952	18,600	3,509	23,278	26,787	1,521	2,573	2,904	1,008	118,987	57,436	5,166	237	2,337
1953	17,400	3,780	23,756	27,536	1,590	2,430	3,236	1,161	122,018	58,382	4,572	219	2,618
1954	19,400	4,328	23,634	27,962	1,614	2,171	3,350	1,090	122,316	59,603	4,101	208	2,983
1955	19,500	4,398	23,373	27,771	1,579	2,176	4,270	1,274	125,092	60,281	3,728	200	3,164
1956	18,600	4,538	22,484	27,022	1,533	1,882	4,683	1,351	125,840	61,073	3,380	194	3,244
1957	19,000	4,700	22,011	26,711	1,597	2,011	5,431	1,334	124,576	59,927	3,165	189	3,437
1958	20,900	5,456	23,373	28,829	1,663	1,823	5,743	1,389	124,346	62,615	2,952	190	3,776

1/ Production for the calendar year following Oct. 1.

2/ On Jan. 1 following Oct. 1.

Table 3.- Estimating the live-weight production of hogs by quarters, 1959

Item	Number of hogs	Weight per head				Total live weight produced				
		Beginning of year	When slaughtered	End of year	Gain in weight	Calendar year	January to March	April to June	July to September	October to December
	Million head	Pounds	Pounds	Pounds	Pounds	Million pounds	Million pounds	Million pounds	Million pounds	Million pounds
Hogs on farms Jan. 1, 1959:										
Spring pigs-----	9.9	200	1/ 233	---	33	327	327	---	---	---
Fall pigs-----	37.7	65	2/ 224	---	159	5,994	3,297	2,098	599	---
Sows-----	3.1	---	---	---	125	388	175	136	58	19
Gilts 3/-----	6.2	---	---	---	125	775	349	271	116	39
Hogs on farms Dec. 31, 1959, from current pig crop:										
Spring pigs-----	11.5	---	---	200	200	2,300	---	230	805	1,265
Fall pigs-----	38.7	---	---	65	65	2,516	---	126	503	1,887
Gilts 3/-----	5.5	---	---	200	200	1,100	---	110	385	605
Deaths in year-----	11.1	---	---	---	---	---	---	---	---	---
Hogs sold-----	34.6	---	4/ 227	---	---	7,854	393	1,571	2,749	3,141
Sows on farms Dec. 31, 1959----	2.7	---	---	25	25	68	---	7	24	37
Live weight produced as calculated-----						21,322	4,541	4,549	5,239	6,993
Live weight produced as reported by AMS-----						21,442	---	---	---	---
Live weight produced by quarters adjusted to AMS estimate-----						21,442	4,567	4,575	5,268	7,032

- 1/ Average weight of barrows and gilts at 8 markets, January through March.  
 2/ Average weight of barrows and gilts at 8 markets, April through September.  
 3/ 2/3 of sows and gilts were assumed to be gilts.  
 4/ Average weight of barrows and gilts at 8 markets, October through December.

Table 4.- Estimating quarterly distribution of annual production of hogs

Item	January to March	April to June	July to September	October to December
	<u>Percent</u>	<u>Percent</u>	<u>Percent</u>	<u>Percent</u>
Hogs on farms Jan. 1:				
Spring pigs-----	100	---	---	---
Fall pigs-----	55	35	10	---
Sows and gilts-----	45	35	15	5
Current pig crop, on farms Dec. 31:				
Spring pigs-----	---	10	35	55
Fall pigs-----	---	5	20	75
Gilts-----	---	10	35	55
Sows on farms Dec. 31 -----	---	10	35	55
Hogs sold-----	5	20	35	40



Table 5. - Livestock-production units based on concentrates, 1910-58

Year beginning Oct. 1	Milk	Grain-fattened cattle	Other cattle 1/	Sheep and lambs	Hogs	Eggs	Farm chickens	Broilers	Turkeys	Horses and mules		Total	
										2 years old and over	Colts	All livestock	Excluding horses and mules
	1,000 units	1,000 units	1,000 units	1,000 units	1,000 units	1,000 units	1,000 units	1,000 units	1,000 units	1,000 units	1,000 units	1,000 units	1,000 units
1910-----	15,111	---	8,195	907	44,640	13,095	8,736	---	---	25,782	1,182	117,648	90,684
1911-----	15,272	---	8,776	990	43,560	12,780	8,658	---	---	26,123	1,224	117,383	90,036
1912-----	15,525	---	9,491	967	43,920	12,645	8,697	---	---	26,474	1,260	118,979	91,245
1913-----	15,916	---	10,002	1,000	45,000	12,555	8,970	---	---	26,984	1,282	121,709	93,443
1914-----	16,261	---	9,907	1,006	48,960	13,365	8,697	---	---	27,384	1,282	126,862	98,196
1915-----	16,560	---	10,227	922	49,320	13,005	8,463	---	---	27,551	1,258	127,306	98,497
1916-----	16,836	---	10,761	899	47,160	12,510	8,580	---	---	27,944	1,211	125,901	96,746
1917-----	16,974	---	10,357	968	51,480	12,600	9,165	---	---	28,410	1,132	131,086	101,544
1918-----	16,974	---	9,071	934	51,120	13,590	8,892	---	---	28,672	1,018	130,271	100,581
1919-----	17,342	---	8,222	784	48,960	13,410	8,697	---	---	28,430	873	126,718	97,415
1920-----	17,848	---	8,264	873	50,400	13,815	9,360	---	---	28,382	725	129,667	100,560
1921-----	18,538	---	8,510	877	57,240	14,715	9,867	---	---	28,284	602	138,633	109,747
1922-----	19,159	---	8,565	968	60,840	15,660	10,296	---	---	28,004	512	144,004	115,488
1923-----	20,286	---	8,674	1,126	56,880	15,570	9,812	---	---	27,404	444	140,196	112,348
1924-----	20,792	---	8,492	1,197	52,560	15,705	10,058	---	---	26,718	398	135,920	108,804
1925-----	21,321	---	8,250	1,267	52,560	16,643	10,643	---	---	26,024	389	137,097	110,684
1926-----	21,783	---	7,933	1,320	55,440	17,314	11,123	---	---	25,102	371	140,386	114,913
1927-----	22,005	---	7,971	1,397	59,400	17,253	10,374	---	---	24,282	345	143,027	118,400
1928-----	22,586	---	8,221	1,448	57,600	17,167	11,131	---	1,028	23,513	320	143,014	119,181
1929-----	22,876	5,947	2,930	1,544	55,080	17,468	11,212	---	980	22,836	297	141,170	118,037
1930-----	23,482	5,779	2,995	1,624	56,160	17,194	10,514	---	1,049	22,066	284	141,147	118,797
1931-----	23,871	5,670	3,168	1,508	59,400	16,695	11,185	---	1,303	21,364	257	144,421	122,800
1932-----	24,071	6,069	3,417	1,482	60,480	15,982	11,115	---	1,372	20,833	243	145,064	123,988
1933-----	23,564	5,863	3,340	1,518	54,000	15,502	9,551	223	1,290	20,300	263	135,414	114,851
1934-----	23,338	4,494	3,200	1,483	38,160	14,936	10,015	283	1,281	19,651	315	117,156	97,190
1935-----	23,346	6,682	3,162	1,478	43,200	15,454	10,877	350	1,742	18,846	361	125,498	106,291
1936-----	23,624	5,758	3,137	1,530	46,080	16,741	9,380	451	1,617	18,199	383	126,900	108,318
1937-----	24,100	7,161	3,067	1,610	54,360	16,636	9,898	550	1,698	17,386	404	136,870	119,080
1938-----	24,556	7,594	3,272	1,625	57,240	17,298	10,596	704	2,124	16,857	395	142,261	125,009
1939-----	25,089	8,585	3,382	1,666	63,360	17,772	10,132	950	2,159	16,510	384	149,989	133,095

UPDATA 1981

1940-----	26,194	8,963	3,641	1,771	60,840	18,428	11,911	1,286	2,202	16,067	378	151,681	135,236
1941-----	27,270	9,475	3,982	1,838	69,840	21,374	13,829	1,550	2,245	15,679	340	167,422	151,403
1942-----	27,083	9,345	4,197	1,727	86,760	24,246	16,403	1,916	2,189	15,389	290	189,545	173,866
1943-----	26,735	8,660	4,377	1,584	84,960	26,032	13,954	1,881	2,511	14,818	246	185,758	170,694
1944-----	27,632	9,513	4,325	1,534	67,680	25,324	14,933	2,546	3,182	14,117	217	171,003	156,669
1945-----	27,062	10,025	4,185	1,440	68,040	24,961	12,659	2,033	3,070	13,251	175	166,901	153,475
1946-----	27,091	10,294	4,162	1,293	65,880	24,788	12,344	2,153	2,627	12,164	143	162,939	150,632
1947-----	25,896	9,992	4,051	1,143	66,240	24,426	10,795	2,592	2,468	11,176	125	158,904	147,603
1948-----	26,456	11,080	4,104	1,043	66,960	24,661	12,098	3,611	3,307	10,254	110	163,684	153,320
1949-----	26,840	11,617	4,486	1,058	71,280	26,424	10,877	4,474	3,513	9,417	95	170,081	160,569
1950-----	26,559	12,138	4,912	1,090	75,960	25,974	10,932	5,554	4,085	8,550	79	175,833	167,204
1951-----	26,107	14,335	5,258	1,157	74,160	26,014	9,844	6,035	4,511	7,476	68	174,965	167,421
1952-----	27,367	14,738	5,820	1,217	66,960	25,846	10,035	6,679	4,334	6,561	62	169,619	162,996
1953-----	28,064	15,876	5,939	1,272	62,640	26,272	9,477	7,443	4,992	5,806	57	167,838	161,975
1954-----	28,133	18,178	5,908	1,291	69,840	26,821	8,467	7,705	4,687	5,208	54	176,292	171,030
1955-----	28,771	18,472	5,843	1,263	70,200	27,126	8,486	9,821	5,478	4,735	52	180,247	175,460
1956-----	28,943	19,060	5,621	1,226	66,960	27,483	7,340	10,771	5,809	4,293	50	177,556	173,213
1957-----	28,652	19,740	5,503	1,278	68,400	26,967	7,843	12,491	5,736	4,020	49	180,679	176,610
1958-----	28,600	22,915	5,843	1,330	75,240	28,177	7,110	13,209	5,973	3,749	49	192,195	188,397

1/ Includes grain-fattened cattle 1910 to 1928. The same relation was assumed between live-weight production of all cattle and calves, except milk cows, and production units 1910 to 1928 as existed in 1929-33.

Table 6.- Percentage of livestock-production units based on concentrates, various types of livestock production, specified periods, 1910-58 1/

Period	Milk	Grain-fattened cattle	Other cattle	Sheep and lambs	Hogs	Eggs	Farm chickens	Broilers	Turkeys	Horses and mules	Total
	Percent	Percent	Percent	Percent	Percent	Percent	Percent	Percent	Percent	Percent	Percent
1910-19-----	13.1	---	7.6	0.8	38.1	10.4	7.0	---	---	23.0	100
1920-29-----	14.9	0.4	5.6	.9	40.0	11.6	7.5	---	0.1	19.0	100
1930-39-----	17.5	4.7	2.4	1.1	39.0	12.0	7.6	0.3	1.1	14.3	100
1940-49-----	15.9	5.9	2.4	.9	42.0	14.2	7.7	1.4	1.6	8.0	100
1950-58-----	15.7	9.7	3.2	.7	39.5	15.1	5.0	5.0	2.9	3.2	100

1/ Computed from table 5.

Table 7. - Livestock-production units based on all feed, 1910-58

Year begin- ning Oct. 1:	Grain:	Other:	Sheep:	Goats:	Hogs:	Eggs:	Farm:	Broil-:	Tur-:	Horses and		Total		
	Milk fat- ten- ed cattle:	cattle: 1/	and lambs:	:	:	:	chick- ens raised:	ers:	keys:	2 years old and over:	Colts:	All live- stock:	Excluding horses and mules:	
	1,000 units	1,000 units	1,000 units	1,000 units	1,000 units	1,000 units	1,000 units	1,000 units	1,000 units	1,000 units	1,000 units	1,000 units	1,000 units	1,000 units
1910	15,111	---	20,803	4,423	---	13,640	3,783	2,464	---	---	20,910	3,182	84,316	60,224
1911	15,272	---	22,278	4,828	---	13,310	3,692	2,442	---	---	21,186	3,296	86,304	61,822
1912	15,525	---	24,092	4,715	---	13,420	3,653	2,453	---	---	21,471	3,392	88,721	63,858
1913	15,916	---	25,390	4,875	---	13,750	3,627	2,530	---	---	21,884	3,452	91,424	66,088
1914	16,261	---	25,149	4,906	---	14,960	3,861	2,453	---	---	22,209	3,452	93,251	67,590
1915	16,560	---	25,961	4,493	---	15,070	3,757	2,387	---	---	22,345	3,388	93,961	68,228
1916	16,836	---	27,317	4,384	---	14,410	3,614	2,420	---	---	22,663	3,259	94,903	68,981
1917	16,974	---	26,291	4,719	---	15,730	3,640	2,585	---	---	23,041	3,047	96,027	69,939
1918	16,974	---	23,026	4,551	---	15,620	3,926	2,508	---	---	23,253	2,740	92,598	66,605
1919	17,342	---	20,871	3,822	355	14,960	3,874	2,453	---	---	23,058	2,349	89,084	63,677
1920	17,848	---	20,978	4,255	379	15,400	3,991	2,640	---	---	23,018	1,952	90,461	65,491
1921	18,538	---	21,603	4,274	338	17,490	4,251	2,783	---	---	22,939	1,622	93,838	69,277
1922	19,159	---	21,742	4,719	346	18,590	4,524	2,904	---	---	22,712	1,378	96,074	71,984
1923	20,286	---	22,019	5,491	382	17,380	4,498	2,768	---	---	22,225	1,195	96,244	72,824
1924	20,792	---	21,557	5,834	385	16,060	4,537	2,837	---	---	21,669	1,072	94,743	72,002
1925	21,321	---	20,942	6,178	469	16,060	4,808	3,002	---	---	21,106	1,046	94,932	72,780
1926	21,783	---	20,138	6,435	490	16,940	5,002	3,137	---	---	20,358	999	95,282	73,925
1927	22,005	---	20,234	6,809	557	18,150	4,984	2,926	---	---	19,694	930	96,289	75,665
1928	22,586	---	20,868	7,059	581	17,600	4,959	3,139	---	311	19,069	861	97,033	77,103
1929	22,876	2,549	17,580	7,527	636	16,830	5,046	3,162	---	296	18,520	800	95,822	76,502
1930	23,482	2,477	17,968	7,917	669	17,160	4,967	2,966	---	317	17,896	765	96,584	77,923
1931	23,871	2,430	19,006	7,352	630	18,150	4,823	3,155	---	394	17,327	693	97,831	79,811
1932	24,071	2,601	20,500	7,223	614	18,480	4,617	3,135	---	415	16,896	653	99,205	81,656
1933	23,564	2,513	20,038	7,402	587	16,500	4,478	2,694	68	390	16,464	709	95,407	78,234
1934	23,338	1,926	19,203	7,231	535	11,660	4,315	2,825	86	387	15,937	847	88,290	71,506
1935	23,346	2,864	18,975	7,207	557	13,200	4,465	3,068	106	526	15,284	971	90,569	74,314
1936	23,624	2,468	18,822	7,457	566	14,080	4,836	2,646	137	489	14,760	1,030	90,915	75,125
1937	24,100	3,069	18,400	7,847	588	16,610	4,806	2,792	167	514	14,101	1,088	94,082	78,893
1938	24,556	3,254	19,630	7,921	610	17,490	4,997	2,989	214	642	13,671	1,063	97,037	82,303
1939	25,089	3,679	20,290	8,124	645	19,360	5,134	2,858	289	653	13,390	1,035	100,546	86,121

C UPDATA 1981

1940---	26,194	3,841	21,846	8,635	681	18,590	5,324	3,359	391	666	13,031	1,017	103,575	89,527
1941---	27,270	4,061	23,890	8,962	648	21,340	6,175	3,901	472	679	12,716	916	111,030	97,398
1942---	27,083	4,005	25,180	8,420	641	26,510	7,004	4,627	583	662	12,481	780	117,976	104,715
1943---	26,735	3,712	26,264	7,722	616	25,960	7,520	3,936	573	759	12,018	662	116,477	103,797
1944---	27,632	4,077	25,950	7,480	644	20,680	7,316	4,212	775	962	11,449	584	111,761	99,728
1945---	27,062	4,297	25,112	7,020	591	20,790	7,211	3,571	619	928	10,747	472	108,420	97,201
1946---	27,091	4,412	24,969	6,302	551	20,130	7,161	3,482	655	794	9,865	386	105,798	95,547
1947---	25,896	4,282	24,308	5,573	475	20,240	7,057	3,045	789	746	9,064	335	101,810	92,411
1948---	26,456	4,748	24,627	5,086	384	20,460	7,124	3,412	1,099	1,000	8,316	297	103,009	94,396
1949---	26,840	4,979	26,913	5,156	380	21,780	7,634	3,068	1,362	1,062	7,637	256	107,067	99,174
1950---	26,559	5,202	29,473	5,316	371	23,210	7,504	3,083	1,690	1,235	6,934	213	110,790	103,643
1951---	26,107	6,143	31,551	5,639	343	22,660	7,515	2,776	1,837	1,364	6,064	184	112,183	105,935
1952---	27,367	6,316	34,917	5,932	351	20,460	7,467	2,830	2,033	1,310	5,321	166	114,470	108,983
1953---	28,064	6,804	35,634	6,201	393	19,140	7,590	2,673	2,265	1,509	4,709	153	115,135	110,273
1954---	28,133	7,790	35,451	6,295	447	21,340	7,748	2,388	2,345	1,417	4,224	146	117,724	113,354
1955---	28,771	7,916	35,060	6,158	475	21,450	7,837	2,394	2,989	1,656	3,840	140	118,686	114,706
1956---	28,943	8,168	33,726	5,979	487	20,460	7,939	2,070	3,278	1,756	3,481	136	116,423	112,806
1957---	28,652	8,460	33,016	6,228	516	20,900	7,791	2,212	3,802	1,734	3,260	132	116,703	113,311
1958---	28,600	9,821	35,060	6,486	566	22,990	8,140	2,005	4,020	1,806	3,041	133	122,668	119,494

1/ Includes grain-fattened cattle 1910 to 1928. The same relation was assumed between live-weight production of all cattle and calves, except milk cows, and production units from 1910 to 1928 as existed in 1929-33.

17

Table 8.- Percentage of livestock-production units based on all feed, various types of livestock production, specified periods, 1910-58 1/

Period	Milk	Grain-fattened cattle	Other cattle	Sheep and lambs	Goats	Hogs	Eggs	Farm chickens	Broilers	Turkeys	Horses and mules	Total
	Percent	Percent	Percent	Percent	Percent	Percent	Percent	Percent	Percent	Percent	Percent	Percent
1910-19-----	17.9	---	26.5	5.0	---	15.9	4.1	2.7	---	---	27.9	100
1920-29-----	21.8	0.3	21.8	6.2	0.5	17.9	4.9	3.1	---	0.1	23.4	100
1930-39-----	25.1	2.9	20.3	8.0	.6	17.1	5.0	3.1	0.1	.5	17.3	100
1940-49-----	24.7	3.9	22.9	6.5	.5	19.9	6.4	3.4	.7	.7	10.4	100
1950-58-----	24.0	6.4	29.1	5.2	.4	18.4	6.7	2.1	2.3	1.3	4.1	100

1/ Computed from table 7.

Table 9.- Index numbers of livestock-production units, production of all livestock and livestock products, animal units fed, and feed consumed for all livestock except horses and mules, 1910-58 1/

Year beginning Oct. 1	Livestock-production units 1947-49 = 100		All livestock and livestock products 4/ 1946-48 = 100	Animal units fed 1947-49 = 100		Feed consumed 1947-49 = 100	
	Based on concentrates 2/	Based on all feed 3/		Grain- consuming	Grain-and- roughage- consuming	Grain and concen- trates	All feed including pasture
1910-----	59	63	61	74	79	63	69
1911-----	59	65	61	73	77	59	71
1912-----	59	67	63	73	77	66	72
1913-----	61	69	64	75	79	59	72
1914-----	64	71	67	78	83	62	80
1915-----	64	72	66	80	86	67	82
1916-----	63	72	67	78	87	60	79
1917-----	66	73	68	81	89	68	82
1918-----	65	70	66	82	90	65	86
1919-----	63	67	64	80	88	65	84
1920-----	65	69	66	78	86	70	84
1921-----	71	73	71	82	87	71	83
1922-----	75	76	74	89	89	72	84
1923-----	73	76	73	88	88	73	82
1924-----	71	76	71	85	85	65	75
1925-----	72	76	74	84	83	72	78
1926-----	75	78	76	87	83	72	79
1927-----	77	79	76	88	84	75	79
1928-----	77	81	77	88	85	75	80
1929-----	77	80	78	89	88	74	75
1930-----	77	82	80	89	89	69	74
1931-----	80	84	81	92	92	78	81
1932-----	81	86	82	94	97	82	82
1933-----	75	82	75	91	98	71	74
1934-----	63	75	72	75	87	54	72
1935-----	69	78	77	81	89	68	73
1936-----	70	79	76	81	88	60	73
1937-----	77	83	79	81	87	74	82
1938-----	81	86	85	89	91	78	81
1939-----	87	90	87	94	95	82	86
1940-----	88	94	92	94	97	87	92
1941-----	98	102	102	102	104	97	102

1942-----:	113	110	111	116	114	118	113	
1943-----:	111	109	105	120	117	116	113	
1944-----:	102	105	104	107	110	107	112	
1945-----:	100	102	101	104	107	109	108	
1946-----:	98	100	100	99	103	101	104	
1947-----:	96	97	97	96	99	92	96	
1948-----:	100	99	103	100	99	101	100	
1949-----:	104	104	107	104	102	107	104	
1950-----:	109	109	112	108	106	111	109	
1951-----:	109	111	112	108	110	113	112	
1952-----:	106	114	114	103	112	104	109	
1953-----:	105	116	117	102	113	106	111	
1954-----:	111	119	120	106	115	106	113	
1955-----:	114	120	122	109	116	113	115	
1956-----:	113	118	121	107	114	112	119	
1957-----:	115	119	124	107	113	120	125	
1958-----:	122	125	130	113	118	132	130	
: : : : :								
			Percent Increase in Index Numbers					
1910 to 1958-----:	207	198	213	153	149	210	188	
: :								

69

- 1/ See figure 1.
- 2/ Weighted by grain and other concentrates consumed.
- 3/ Weighted by total feed consumed.
- 4/ Weighted by the value of production. For calendar year beginning Jan. 1 after year indicated in stub. See Changes in Farm Production and Efficiency, U. S. Dept. Agr. Statis. Bul. 233, table 1.

Table 10.- Supply of concentrates and amount fed per livestock-production unit, 1910-58

Year beginning Oct. 1	Supply of concentrates available	Total concentrates fed 1/	Livestock production units based on concentrates	Concentrates fed per unit	Year beginning Oct. 1	Supply of concentrates available	Total concentrates fed 1/	Livestock production units based on concentrates	Concentrates fed per unit
	Million tons	Million tons	Million units	Tons		Million tons	Million tons	Million units	Tons
1910-----	2/	101.4	117.6	0.86	::1934-----	82.6	71.4	117.2	0.61
1911-----	2/	92.2	117.4	.79	::1935-----	114.3	94.1	125.5	.75
1912-----	2/	107.4	119.0	.90	::1936-----	89.9	75.5	126.9	.59
1913-----	2/	91.0	121.7	.75	::1937-----	123.0	97.0	136.9	.71
1914-----	2/	93.6	126.9	.74	::1938-----	130.3	99.0	142.3	.70
1915-----	2/	108.3	127.3	.85	::1939-----	136.1	102.2	150.0	.68
1916-----	2/	92.5	125.9	.73	::1940-----	140.5	108.0	151.7	.71
1917-----	2/	107.6	131.1	.82	::1941-----	150.9	118.7	167.4	.71
1918-----	2/	102.0	130.3	.78	::1942-----	172.5	142.1	189.6	.75
1919-----	2/	101.7	126.7	.80	::1943-----	164.8	139.0	185.8	.75
1920-----	2/	110.5	129.7	.85	::1944-----	158.2	128.9	171.0	.75
1921-----	2/	107.9	138.6	.78	::1945-----	154.4	132.5	166.9	.79
1922-----	2/	106.2	144.0	.74	::1946-----	157.6	122.7	162.9	.75
1923-----	2/	111.2	140.2	.79	::1947-----	132.8	110.6	158.9	.70
1924-----	2/	96.8	135.9	.71	::1948-----	167.0	120.1	163.7	.73
1925-----	2/	106.9	137.1	.78	::1949-----	175.5	126.5	170.1	.74
1926-----	123.2	103.4	140.4	.74	::1950-----	178.8	130.4	175.8	.74
1927-----	123.0	107.7	143.0	.75	::1951-----	169.2	132.4	175.0	.76
1928-----	126.2	107.2	143.0	.75	::1952-----	167.7	122.7	169.6	.72
1929-----	121.6	104.9	141.2	.74	::1953-----	172.2	125.7	167.8	.75
1930-----	113.0	95.6	141.1	.68	::1954-----	181.8	126.1	175.3	.72
1931-----	122.7	103.7	144.4	.72	::1955-----	196.9	132.2	180.2	.73
1932-----	137.7	111.1	145.1	.77	::1956-----	200.5	130.6	177.6	.74
1933-----	115.5	91.9	135.4	.68	::1957-----	220.3	139.8	180.7	.77
					::1958-----	246.5	153.6	192.2	.80

1/ Includes corn in silage and skim milk fed as a liquid as reported by the Agricultural Marketing Service in Grain and Feed Statistics, U. S. Dept. Agr. Statis. Bul. 159 and Supplement.

2/ Not available.

Table 11.- Feed consumed per livestock-production unit, excluding horses and mules

Year beginning Oct. 1	All feed consumed	Livestock- production units	Feed per livestock-production unit	
			Quantity	Index no. (1947-49=100)
	<u>Mil. tons</u>	<u>Mil. units</u>	<u>Tons</u>	
1910-----	173.7	60.2	2.89	109
1911-----	178.9	61.8	2.89	109
1912-----	182.4	63.9	2.85	108
1913-----	181.1	66.1	2.74	103
1914-----	201.0	67.6	2.97	112
1915-----	206.2	68.2	3.02	114
1916-----	198.0	69.0	2.87	108
1917-----	207.2	69.9	2.96	112
1918-----	215.8	66.6	3.24	122
1919-----	211.3	63.7	3.32	125
1920-----	211.5	65.5	3.23	122
1921-----	210.4	69.3	3.04	115
1922-----	211.0	72.0	2.93	111
1923-----	207.5	72.8	2.85	108
1924-----	190.0	72.0	2.64	100
1925-----	197.4	72.8	2.71	102
1926-----	198.1	73.9	2.68	101
1927-----	198.8	75.7	2.63	99
1928-----	200.7	77.1	2.60	98
1929-----	188.2	76.5	2.46	93
1930-----	186.2	77.9	2.39	90
1931-----	203.5	79.8	2.55	96
1932-----	207.9	81.7	2.54	96
1933-----	185.9	78.2	2.38	90
1934-----	182.2	71.5	2.55	96
1935-----	183.5	74.3	2.47	93
1936-----	183.0	75.1	2.44	92
1937-----	205.5	78.9	2.60	98
1938-----	204.2	82.3	2.48	94
1939-----	217.0	86.1	2.52	95
1940-----	232.6	89.5	2.60	98
1941-----	258.3	97.4	2.65	100
1942-----	284.0	104.7	2.71	102
1943-----	285.7	103.8	2.75	104
1944-----	281.3	99.7	2.82	106
1945-----	271.2	97.2	2.79	105
1946-----	260.9	95.5	2.73	103
1947-----	243.0	92.4	2.63	99
1948-----	252.0	94.4	2.67	101
1949-----	261.0	99.2	2.64	100
1950-----	274.4	103.6	2.65	100
1951-----	282.0	105.9	2.66	100
1952-----	275.4	109.0	2.53	95
1953-----	279.8	110.3	2.54	96
1954-----	284.9	113.4	2.51	95
1955-----	289.2	114.7	2.52	95
1956-----	299.8	112.8	2.66	100
1957-----	316.0	113.3	2.79	105
1958-----	328.9	119.5	2.75	104



Table 12.- Consumption of feed measured in tons, by kinds of livestock, 1955-58

Year beginning Oct. 1	ALL LIVESTOCK <sup>1/</sup>						ALL LIVESTOCK <sup>1/</sup>			All feed
	Concentrates						Roughages			
	Corn	Sorghum grains	Other grains <sup>2/</sup>	High protein <sup>3/</sup>	Other concentrates <sup>4/</sup>	Total	Hay	Other forage <sup>5/</sup>	Pasture <sup>6/</sup>	
	tons	tons	tons	tons	tons	tons	tons	tons	tons	tons
1955-----	69,207	4,458	27,238	12,952	11,555	125,410 <sup>H</sup>	111,499	95,606	106,700	439,215
1956-----	69,644	4,856	23,831	13,594	11,468	123,393	107,525	95,926	119,810	446,654
1957-----	74,186	7,430	24,817	14,234	11,929	132,596	112,291	102,820	124,020	471,727
1958-----	82,460	8,357	27,574	15,497	11,847	145,735	22,321	97,267	119,478	484,801
MILK COWS										
1955-----	7,208	380	6,379	2,624	3,141	19,732	51,068	52,942	16,714	140,456
1956-----	8,485	410	5,484	2,717	2,936	20,032	50,415	54,483	18,390	143,320
1957-----	9,504	646	5,685	2,776	3,241	21,852	53,359	60,837	18,342	154,390
1958-----	10,286	650	5,825	2,725	3,280	22,766	49,422	57,894	16,599	146,681
OTHER DAIRY CATTLE										
1955-----	1,968	65	927	160	798	3,918	12,600	7,190	12,825	36,533
1956-----	2,060	70	795	150	785	3,860	12,500	7,100	14,084	37,544
1957-----	2,100	110	795	150	719	3,874	13,500	7,523	14,218	39,115
1958-----	2,243	115	825	170	690	4,043	16,800	8,156	13,351	42,350
CATTLE ON FEED										
1955-----	8,265	100	490	950	895	10,700	7,800	7,009	1,637	27,146
1956-----	7,945	110	440	1,080	925	10,500	8,000	6,752	1,980	27,232
1957-----	7,527	953	440	1,141	1,100	11,161	7,700	7,002	2,008	27,871
1958-----	8,521	1,675	640	1,165	1,100	12,901	8,650	8,050	2,100	31,701
OTHER BEEF CATTLE										
1955-----	2,680	80	1,110	1,085	775	5,730	30,591	23,365	59,703	119,389
1956-----	2,625	90	940	1,095	835	5,585	27,685	23,415	67,453	124,138
1957-----	2,745	150	940	1,165	770	5,770	29,292	22,540	70,695	128,297
1958-----	2,840	170	1,100	1,548	840	6,298	38,574	18,832	69,400	133,104
SHEEP										
1955-----	415	---	250	75	90	830	3,700	1,660	8,271	14,461
1956-----	425	---	230	70	90	815	3,700	1,596	9,562	15,673

1957-----:	225	350	265	70	90	1,000	3,640	2,123	10,193	16,956
1958-----:	220	390	270	80	90	1,050	4,340	1,980	9,915	17,285

HENS AND PULLETS

1955-----:	6,347	1,716	4,565	1,448	2,194	16,270	---	---	235	16,505
1956-----:	7,043	2,046	3,727	1,709	2,223	16,748	---	---	283	17,031
1957-----:	6,949	2,279	3,877	1,646	2,465	17,216	---	---	284	17,500
1958-----:	7,739	2,330	4,120	1,747	2,436	18,372	---	---	270	18,642

CHICKENS RAISED

1955-----:	1,650	830	1,710	710	1,031	5,931	---	---	252	6,183
1956-----:	1,362	610	1,281	598	984	4,835	---	---	246	5,081
1957-----:	1,979	961	1,265	590	930	5,725	---	---	280	6,005
1958-----:	2,074	900	1,550	665	930	6,119	---	---	241	6,360

BROILERS <sup>1/</sup>

1955-----:	3,424	390	70	1,660	310	5,854	---	---	---	5,854
1956-----:	3,580	450	60	1,848	320	6,258	---	---	---	6,258
1957-----:	4,275	460	60	1,910	310	7,015	---	---	---	7,015
1958-----:	4,480	486	60	2,140	310	7,476	---	---	---	7,476

TURKEYS

1955-----:	1,320	240	570	705	260	3,095	---	---	151	3,246
1956-----:	1,520	260	510	760	260	3,310	---	---	187	3,497
1957-----:	1,560	300	490	760	260	3,370	---	---	188	3,558
1958-----:	1,638	350	515	717	260	3,480	---	---	183	3,663

HUGS

1955-----:	31,666	532	9,337	2,983	1,231	45,749	---	---	2,265	48,014
1956-----:	30,216	675	8,854	3,017	1,315	44,077	---	---	2,531	46,608
1957-----:	32,628	1,026	9,375	3,474	1,324	47,827	---	---	2,641	50,468
1958-----:	37,858	1,071	11,019	4,170	1,336	55,454	---	---	2,733	58,187

<sup>1/</sup> Feed fed to horses and mules and other livestock (mostly miscellaneous) are included in total but not shown separately.  
<sup>2/</sup> Includes oats, barley, wheat, and rye. <sup>3/</sup> Includes oilseed meals, animal proteins, and grain proteins. <sup>4/</sup> Includes wheat and rice millfeeds, seeds, skim milk, hominy, and other concentrates. <sup>5/</sup> Includes straw, silage, and beet pulp.  
<sup>6/</sup> Measured in feed units. <sup>7/</sup> Fats fed to broilers were converted to corn equivalents and added to corn.

For data before 1955, see Prod. Res. Rpt. 21.

Table 13.- Consumption of feed in feed units, by kinds of livestock, 1955-58 1/

Year beginning Oct. 1	ALL LIVESTOCK						ALL LIVESTOCK			All feed
	Concentrates					Total	Roughages			
	Corn	Sorghum grains	Other grains	High protein	Other concentrates		Hay	Other forage	Pasture	
tons	tons	tons	tons	tons	tons	tons	tons	tons	tons	
1955-----	68,867	4,231	24,850	22,923	11,819	132,690	45,586	18,986	106,700	303,962
1956-----	69,145	4,606	21,762	23,967	11,960	131,440	43,951	18,896	119,810	314,097
1957-----	73,481	7,041	22,662	25,178	12,379	140,741	45,897	19,927	124,020	330,585
1958-----	81,844	7,902	25,239	27,526	12,132	154,643	50,076	18,336	119,478	342,533
MILK COWS										
1955-----	7,208	380	5,855	3,812	2,728	19,983	20,683	8,646	16,714	66,026
1956-----	8,485	410	5,055	3,976	2,597	20,523	20,418	8,897	18,390	68,228
1957-----	9,504	646	5,235	4,069	2,803	22,257	21,610	9,926	18,342	72,135
1958-----	10,286	650	5,352	3,991	2,840	23,119	20,016	9,452	16,599	69,186
OTHER DAIRY CATTLE										
1955-----	1,968	65	850	200	1,296	4,379	5,103	1,165	12,825	23,472
1956-----	2,060	70	730	188	1,251	4,299	5,062	1,152	14,084	24,597
1957-----	2,100	110	730	186	1,153	4,281	5,468	1,227	14,218	25,194
1958-----	2,243	115	758	212	1,106	4,434	6,804	1,327	13,351	25,916
CATTLE ON FEED										
1955-----	8,265	92	430	2,340	764	11,891	3,237	1,127	1,637	17,892
1956-----	7,945	101	386	2,665	790	11,887	3,320	1,088	1,980	18,275
1957-----	7,527	877	386	2,818	939	12,547	3,196	1,126	2,008	18,877
1958-----	8,321	1,541	562	2,878	940	14,242	3,590	1,295	2,100	21,227
OTHER BEEF CATTLE										
1955-----	2,680	80	1,110	1,623	676	6,169	12,695	6,493	59,703	85,060
1956-----	2,625	90	940	1,637	749	6,041	11,489	6,514	67,453	91,497
1957-----	2,745	150	940	1,743	659	6,237	12,156	6,212	70,695	95,300
1958-----	2,840	170	1,100	2,017	746	6,873	16,008	5,003	69,400	97,284
SHEEP										
1955-----	415	---	209	158	75	857	1,572	317	8,271	11,017

1956-----:	425	---	193	147	75	840	1,572	313	9,562	12,287
1957-----:	225	350	221	147	75	1,018	1,547	418	10,193	13,176
1958-----:	220	390	225	168	75	1,078	1,844	397	9,915	13,234

HENS AND PULLETS

1955-----:	6,347	1,630	4,178	2,299	2,010	16,464	---	---	235	16,699
1956-----:	7,043	1,944	3,403	2,718	2,040	17,148	---	---	283	17,431
1957-----:	6,949	2,165	3,543	2,583	2,247	17,487	---	---	284	17,771
1958-----:	7,739	2,214	3,776	2,724	2,217	18,670	---	---	270	18,940

CHICKENS RAISED

1955-----:	1,650	788	1,559	1,127	943	6,067	---	---	252	6,319
1956-----:	1,362	580	1,177	947	900	4,966	---	---	246	5,212
1957-----:	1,979	913	1,160	935	853	5,840	---	---	280	6,120
1958-----:	2,074	855	1,455	1,048	853	6,285	---	---	241	6,526

BROILERS 2/

1955-----:	3,424	370	74	2,640	272	6,780	---	---	---	6,780
1956-----:	3,580	428	63	2,971	281	7,323	---	---	---	7,323
1957-----:	4,275	437	63	3,025	272	8,072	---	---	---	8,072
1958-----:	4,480	462	63	3,401	272	8,678	---	---	---	8,678

TURKEYS

1955-----:	1,320	228	522	1,118	229	3,417	---	---	151	3,568
1956-----:	1,520	247	472	1,190	229	3,658	---	---	187	3,845
1957-----:	1,560	285	450	1,190	229	3,714	---	---	188	3,902
1958-----:	1,638	332	475	1,130	229	3,804	---	---	183	3,987

HOGS

1955-----:	31,666	479	8,428	6,736	1,758	49,067	---	---	2,265	51,332
1956-----:	30,216	608	7,994	6,668	1,834	47,320	---	---	2,531	49,851
1957-----:	32,628	923	8,477	7,617	1,811	51,456	---	---	2,641	54,097
1958-----:	37,858	964	9,994	9,067	1,736	59,619	---	---	2,733	62,352

1/ See footnotes 1, 2, 3 and 4, table 12, for feeds included.  
 2/ See footnote 6, table 12.

For data before 1955, see Prod. Res. Rpt. 21.

Table 14.- Total digestible nutrients fed to various kinds of livestock, 1955-58  $\frac{1}{2}$  /  $\frac{2}{2}$ 

Year beginning Oct. 1	MILK COWS						Roughages			All feed
	Concentrates						Hay	Other forage	Pasture	
	Corn	Sorghum grains	Other grains	High protein	Other concentrates	Total				
1,000 tons	1,000 tons	1,000 tons	1,000 tons	1,000 tons	1,000 tons	1,000 tons	1,000 tons	1,000 tons	1,000 tons	
1955-----	5,665	304	4,561	2,091	2,356	14,977	25,534	13,236	13,137	66,884
1956-----	6,669	328	3,921	2,165	2,202	15,285	25,208	13,621	14,455	68,569
1957-----	7,470	516	4,065	2,212	2,431	16,694	26,680	15,209	14,417	73,000
1958-----	8,085	519	4,165	2,172	2,460	17,401	24,711	14,474	13,047	69,633
OTHER DAIRY CATTLE										
1955-----	1,547	52	662	123	259	2,643	6,300	1,798	10,080	20,821
1956-----	1,619	56	568	116	255	2,614	6,250	1,775	11,070	21,709
1957-----	1,651	88	568	116	234	2,657	6,750	1,881	11,175	22,463
1958-----	1,763	92	589	131	224	2,799	8,400	2,039	10,493	23,731
CATTLE ON FEED										
1955-----	6,496	80	371	714	669	8,330	3,900	1,752	1,287	15,269
1956-----	6,245	88	333	812	691	8,169	4,000	1,688	1,556	15,413
1957-----	5,916	761	333	858	822	8,690	3,850	1,750	1,578	15,868
1958-----	6,540	1,338	484	876	822	10,060	4,325	2,012	1,651	18,048
OTHER BEEF CATTLE										
1955-----	2,106	64	788	816	563	4,337	15,296	5,841	46,927	72,401
1956-----	2,063	72	667	823	606	4,231	13,842	5,854	53,018	76,945
1957-----	2,158	120	667	876	559	4,380	14,646	5,635	55,566	80,227
1958-----	2,232	136	781	1,014	610	4,773	19,287	4,708	54,548	83,316
SHEEP										
1955-----	326	---	185	55	63	629	1,850	415	6,501	9,395
1956-----	334	---	170	51	63	618	1,850	399	7,516	10,383
1957-----	177	280	196	51	63	767	1,820	531	8,012	11,130
1958-----	173	312	200	59	63	807	2,170	495	7,793	11,265
HENS AND PULLETS										
1955-----	4,989	1,371	3,332	1,122	1,536	12,350	---	---	185	12,535

1956-----	5,536	1,635	2,721	1,324	1,556	12,772	---	---	222	12,994
1957-----	5,462	1,821	2,830	1,276	1,726	13,115	---	---	223	13,338
1958-----	6,083	1,862	3,008	1,354	1,705	14,012	---	---	212	14,224

CHICKENS RAISED

1955-----	1,530	663	1,259	525	758	4,735	---	---	198	4,933
1956-----	1,071	487	943	443	723	3,667	---	---	193	3,860
1957-----	1,555	768	931	437	684	4,375	---	---	220	4,595
1958-----	1,630	719	1,141	492	684	4,666	---	---	189	4,855

BROILERS <sup>3/</sup>

1955-----	2,691	312	55	1,217	237	4,512	---	---	---	4,512
1956-----	2,814	360	47	1,355	244	4,820	---	---	---	4,820
1957-----	3,360	368	47	1,400	237	5,412	---	---	---	5,412
1958-----	3,521	388	47	1,569	237	5,762	---	---	---	5,762

TURKEYS

1955-----	1,038	192	420	517	194	2,361	---	---	119	2,480
1956-----	1,195	208	375	558	194	2,530	---	---	147	2,677
1957-----	1,226	240	361	558	194	2,579	---	---	148	2,727
1958-----	1,287	280	379	526	194	2,666	---	---	144	2,810

HOGS

1955-----	24,889	425	6,844	2,118	923	35,199	---	---	1,780	36,979
1956-----	23,750	539	6,490	2,142	986	33,907	---	---	1,989	35,896
1957-----	25,646	820	6,872	2,467	993	36,798	---	---	2,076	38,874
1958-----	29,901	856	8,077	2,961	1,002	42,797	---	---	2,148	44,945

1/ Calculated from values in Prod. Res. Rpt. 21, table 25.

2/ See footnotes 1, 2, 3 and 4, table 12, for feeds included.

3/ See footnote 6, table 12.

Table 15.- Feed fed per unit of livestock production, excluding pasture, 1955-58 1/2

Year beginning Oct. 1	MILK COWS 2/								Roughages		All feed
	Concentrates								Hay	Other harvested forage	
	Corn	Sorghum grains	Oats	Barley	Oilseed meal	Other protein	Other concentrates	Total			
Pounds	Pounds	Pounds	Pounds	Pounds	Pounds	Pounds	Pounds	Pounds	Pounds	Pounds	
1955-----	115	6	84	16	24	18	52	315	816	846	1,977
1956-----	135	7	68	18	26	17	48	319	801	866	1,986
1957-----	153	10	72	18	27	17	53	350	857	977	2,184
1958-----	165	10	76	17	27	17	54	366	795	931	2,092
CATTLE ON FEED 3/											
1955-----	376	5	6	16	42	1	42	488	355	319	1,162
1956-----	350	5	5	14	46	1	42	463	353	298	1,114
1957-----	320	41	4	13	47	1	48	474	328	298	1,100
1958-----	305	61	4	18	42	1	41	472	317	295	1,084
OTHER CATTLE											
1955-----	40	1	15	2	9	2	14	83	370	261	714
1956-----	42	1	13	2	10	2	15	85	357	271	713
1957-----	44	2	13	2	10	2	14	87	389	275	749
1958-----	43	2	14	2	11	2	13	87	474	231	792
SHEEP AND LAMBS											
1955-----	53	--	15	17	9	--	11	105	469	210	784
1956-----	55	--	13	17	9	--	12	106	483	208	797
1957-----	28	44	16	17	9	--	11	125	456	266	847
1958-----	26	47	17	16	10	--	11	127	522	238	887
FARM CHICKENS											
1955-----	152	76	95	30	45	20	127	545	---	---	545
1956-----	145	65	93	16	44	20	132	515	---	---	515
1957-----	197	96	87	15	41	18	116	570	---	---	570
1958-----	228	99	99	16	53	20	157	672	---	---	672
BROILERS											
1955-----	147	18	--	--	64	14	23	266	---	---	266
1956-----	135	19	--	--	62	17	23	256	---	---	256

1957-----:	137	17	--	--	59	12	21	246	---	---	246
1958-----:	137	17	--	--	62	12	20	248	---	---	248

TURKEYS

1955-----:	207	38	49	19	92	19	63	487	---	---	487
1956-----:	225	38	38	15	98	15	61	490	---	---	490
1957-----:	234	45	39	15	99	15	58	505	---	---	505
1958-----:	236	50	42	13	87	16	57	501	---	---	501

HENS AND PULLETS <sup>4/</sup>

1955-----:	211	57	96	24	35	13	104	540	---	---	540
1956-----:	231	67	80	19	41	15	96	549	---	---	549
1957-----:	232	76	86	19	42	13	107	575	---	---	575
1958-----:	247	74	86	19	44	12	105	587	---	---	587

HOGS

1955-----:	325	5	73	21	17	13	15	469	---	---	469
1956-----:	325	7	66	27	21	11	16	473	---	---	473
1957-----:	343	11	67	29	25	12	17	504	---	---	504
1958-----:	364	10	74	26	27	13	18	532	---	---	532

29

- 1/ Measured in actual pounds, not feed units.
- 2/ Per 1,000 pounds of milk produced.
- 3/ Per 100 pounds for all meat-producing livestock.
- 4/ Per 1,000 eggs produced.

For data before 1955, see Prod. Res. Rpt. 21.



Table 16.- Feed fed per unit of livestock production, including pasture, 1955-58 1/

## MILK COWS 2/

Year beginning Oct. 1	Concentrates							Total	Roughages			All feed
	Corn	Sorghum grains	Oats	Barley	Oilseed meal	Other protein	Other concentrates		Hay	Other harvested forage	Pasture	
	Pounds	Pounds	Pounds	Pounds	Pounds	Pounds	Pounds	Pounds	Pounds	Pounds	Pounds	Pounds
1955-----	115	6	75	16	39	22	45	318	331	138	267	1,054
1956-----	135	7	61	18	42	21	42	326	324	141	292	1,083
1957-----	153	10	65	18	44	21	46	357	347	159	294	1,157
1958-----	165	10	68	17	43	21	46	370	322	152	267	1,111

## CATTLE ON FEED 3/

1955-----	376	4	5	14	105	2	36	542	147	51	74	814
1956-----	350	4	4	12	116	2	36	524	146	48	87	805
1957-----	320	37	4	12	118	2	41	534	136	48	85	803
1958-----	305	56	4	15	104	1	35	521	132	47	77	777

## OTHER CATTLE

1955-----	40	1	14	2	14	2	17	90	152	66	621	929
1956-----	42	1	13	2	14	2	18	92	147	68	725	1,032
1957-----	44	2	13	2	16	2	17	96	160	68	772	1,096
1958-----	43	2	14	2	17	2	16	96	195	54	708	1,053

## SHEEP AND LAMBS

1955-----	53	--	12	15	20	--	10	110	199	40	1,048	1,397
1956-----	55	--	10	15	19	--	10	109	205	41	1,247	1,602
1957-----	28	44	13	15	18	--	9	127	194	52	1,277	1,650
1958-----	26	47	13	14	20	--	9	129	222	48	1,192	1,591

## FARM CHICKENS

1955-----	152	72	85	24	68	36	120	557	---	---	23	580
1956-----	145	62	84	13	65	35	124	528	---	---	26	554
1957-----	197	91	78	12	61	32	110	581	---	---	28	609
1958-----	228	94	89	13	80	35	151	690	---	---	26	716

## BROILERS

1955-----	147	17	--	--	96	28	30	318	---	---	---	318
1956-----	135	18	--	--	93	34	32	312	---	---	---	312

1957-----:	137	16	--	--	88	24	32	297	---	---	---	297
1958-----:	137	16	--	--	94	24	31	302	---	---	---	302

TURKEYS

1955-----:	207	36	44	15	138	38	59	537	---	---	24	561
1956-----:	225	37	35	12	147	30	57	543	---	---	28	571
1957-----:	234	43	35	12	148	30	55	557	---	---	28	585
1958-----:	236	48	38	10	131	32	53	548	---	---	26	574

HENS AND PULLETS 4/

1955-----:	211	54	86	19	52	24	100	546	---	---	8	554
1956-----:	231	64	72	15	61	28	91	562	---	---	9	571
1957-----:	232	72	77	15	64	23	101	584	---	---	9	593
1958-----:	247	71	78	15	66	21	99	597	---	---	9	606

HOGS

1955-----:	325	5	66	19	35	34	20	504	---	---	23	527
1956-----:	325	7	60	24	42	30	22	510	---	---	27	537
1957-----:	343	10	60	26	50	31	22	542	---	---	28	570
1958-----:	364	9	67	23	54	33	23	573	---	---	26	599

- 1/ Measured in feed units.
- 2/ Per 1,000 pounds of milk produced.
- 3/ Per 100 pounds live weight for all meat-producing livestock.
- 4/ Per 1,000 eggs produced.

For data before 1955, see Prod. Res. Rpt. 21.

END