



AgEcon SEARCH
RESEARCH IN AGRICULTURAL & APPLIED ECONOMICS

The World's Largest Open Access Agricultural & Applied Economics Digital Library

This document is discoverable and free to researchers across the globe due to the work of AgEcon Search.

Help ensure our sustainability.

Give to AgEcon Search

AgEcon Search

<http://ageconsearch.umn.edu>

aesearch@umn.edu

*Papers downloaded from **AgEcon Search** may be used for non-commercial purposes and personal study only. No other use, including posting to another Internet site, is permitted without permission from the copyright owner (not AgEcon Search), or as allowed under the provisions of Fair Use, U.S. Copyright Act, Title 17 U.S.C.*

SB 215 (1957)

ANNUAL UNITS OF LIVESTOCK-FED ANNUALLY, 1909 TO 1956

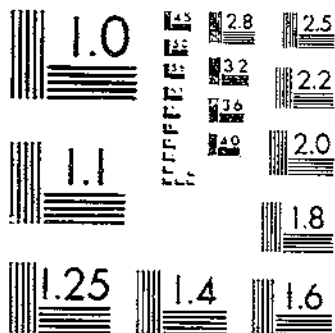
JENNINGS, R. D.

USDA STATISTICAL BULLETINS

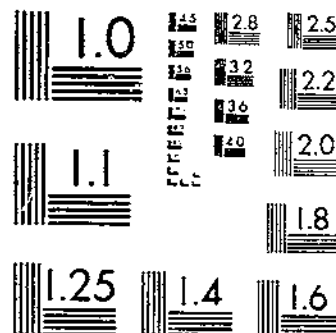
OF DATA

1-10-51

START



MICROCOPY RESOLUTION TEST CHART
NATIONAL BUREAU OF STANDARDS 1963-A



MICROCOPY RESOLUTION TEST CHART
NATIONAL BUREAU OF STANDARDS 1963-A

© UPDATA 1981

R 630 5
71 53 13
215

REFERENCE
DO NOT LOAN

ANIMAL UNITS

of livestock fed and
1909 to

Statistical Bulletin No. 215 *Supersize*
#23

U. S. DEPARTMENT OF AGRICULTURE
AGRICULTURAL RESEARCH SERVICE

ANIMAL UNITS OF LIVESTOCK FED ANNUALLY

1909 to 1956

by

R. D. Jennings, Agricultural Economist
Farm Economics Research Division
Agricultural Research Service

This report brings to date the number of animal units fed annually, a detailed explanation of which may be found in Statistical Bulletin 194.

Three sets of animal units are presented in this report: (1) Grain-consuming livestock; (2) roughage-consuming livestock; and (3) grain-and-roughage consuming livestock. When converted into animal units, numbers of livestock provide statistics for comparing livestock numbers with the feed supply. A unit is considered as one milk cow or its equivalent as measured by average rates of feed consumption. Each kind of livestock and poultry is converted into the standard animal unit according to the proportion its consumption of feed bears to the consumption by one milk cow. Calculations of each of the three kinds of animal units were made separately. Thus we have grain-consuming animal units, for which livestock and poultry numbers are combined by a set of factor weights that represent consumption of concentrate feeds. For roughage-consuming animal units, numbers are combined by a set of weights that represents consumption of hay, pasture, and other forage. A third set of weights is used to combine numbers of livestock and numbers of poultry on the basis of total feed of all kinds used. This results in the third set of animal units, the grain-and-roughage consuming animal units.

Animal units are designed to take into account all livestock and poultry fed on farms during a year, not merely those on hand on January 1. They represent the total size of livestock operations over a year, using the statistics reported by the Department of Agriculture on the numbers of livestock and poultry of different kinds on farms January 1 and the number raised during the year.

The animal units were computed by multiplying the numbers of different classes of cattle, sheep, horses and mules, and hens and pullets, on farms on January 1 in each State, by factors that reflect the consumption of feed by these classes of livestock for a year. In addition, the number of pigs saved and the number of chickens and turkeys raised are multiplied by factors that represent their consumption of feed in a year. Thus the total for a given kind of livestock or of all livestock gives the animal units fed in a year.

In calculating animal units for 1956-57, the number of broilers to be raised in 1957 was assumed to be 105 percent of 1956. The corresponding figure for chickens raised was 86 percent. The number of turkeys to be raised was that reported in the 1957 Intentions report of January 16, 1957.

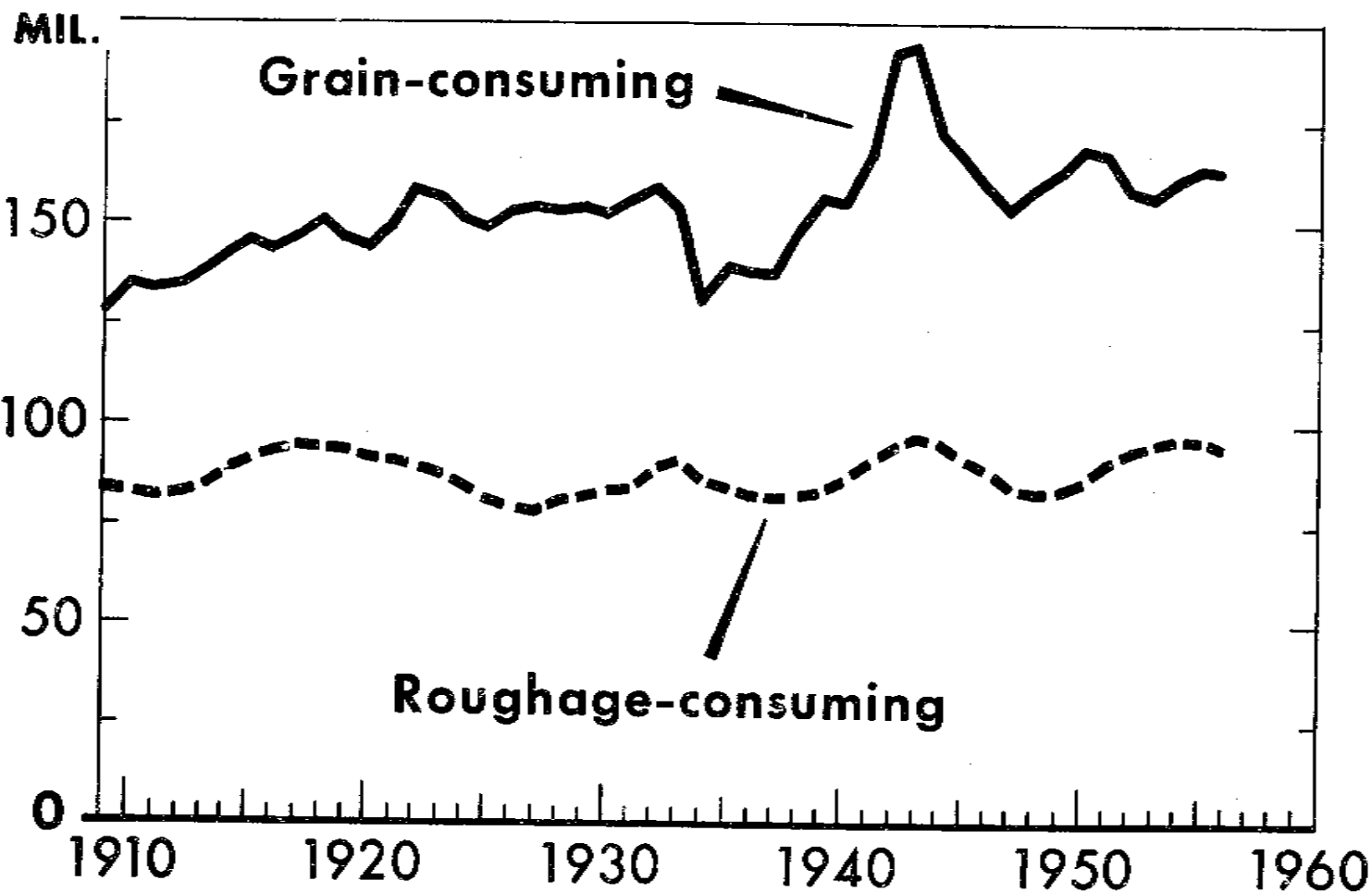
The number of grain-consuming animal units for the year beginning October 1, 1956, decreased about 1½ percent chiefly because of a decrease in number of hogs. The fall pig crop of 1956 was smaller than that of 1955, and the spring crop of 1957 is expected to be smaller than in 1956. The number of farm chickens raised in 1957 is expected to be down sharply, but this is more than offset by more hens and pullets on hand on January 1, 1957, and by more broilers and turkeys expected to be raised in 1957 than in 1956.

The number of roughage-consuming animal units in 1956-57 decreased about 2 percent largely because of a decrease in beef cattle. Small increases occurred in the Corn Belt and the South, but there were substantial decreases in several Western States, especially those in which drought was severe. A decrease of 13 percent from a year earlier was shown for Kansas, 9 percent for Texas, and 6 percent each for Oklahoma, New Mexico, and Montana.

The cycle in numbers of roughage-consuming animals reached the high level of about 96 million units in 1954 and 1955, increasing from a low point of 82 million in the feeding year 1948-49. Previous high points were 97 million in 1943-44, 92 million in 1933-34, and 95 million in 1917-18. Low points before the 82 million in 1948-49 were 81 million in 1937-38, 79 million in 1927-28, and 81 million in 1911-12. High points in 1933-34 and 1955-56 coincided with extensive droughts, which may have helped to prevent numbers from going still higher. The decline in numbers in this downturn of the cycle may not go as far as it has done in previous times.

The projected animal units of livestock for 1957-58 shown in table 8 are based on assumed numbers of livestock and poultry that may or may not materialize. The numbers of roughage-consuming livestock are down 2 percent from 1956-57 but numbers of grain-consuming livestock have changed very little. However, many things can happen to change the picture in the next 12 months.

ANIMAL UNITS OF LIVESTOCK, U. S.



U. S. DEPARTMENT OF AGRICULTURE

NEG. 56 (9)-2183 AGRICULTURAL RESEARCH SERVICE

Figure 1

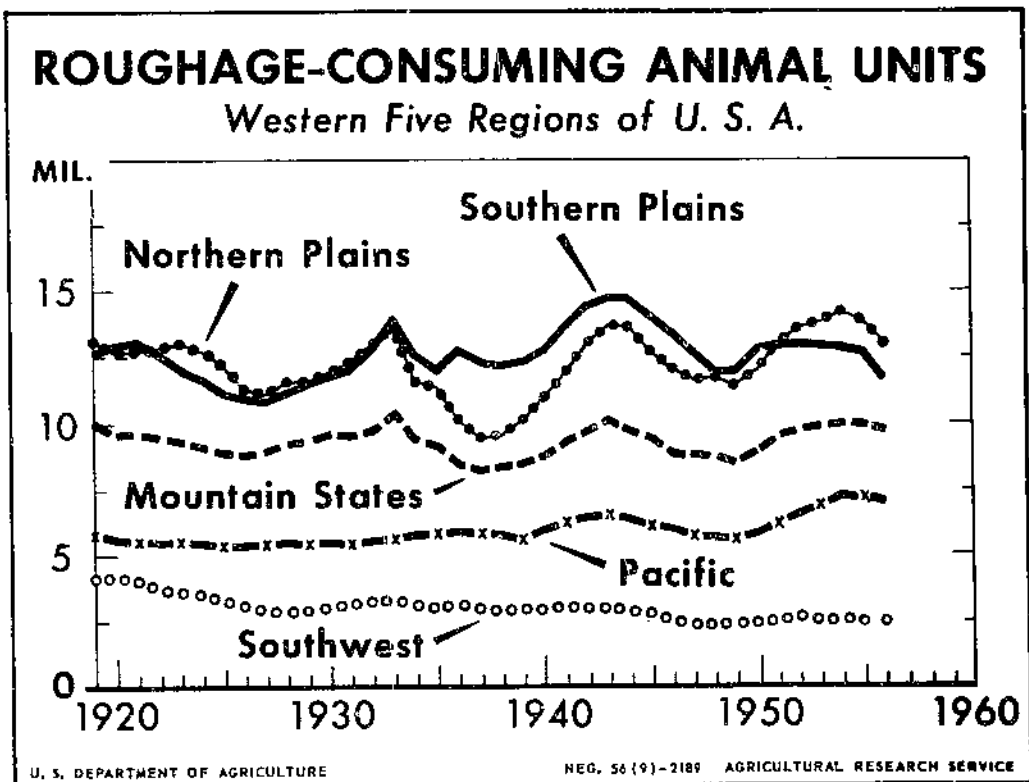
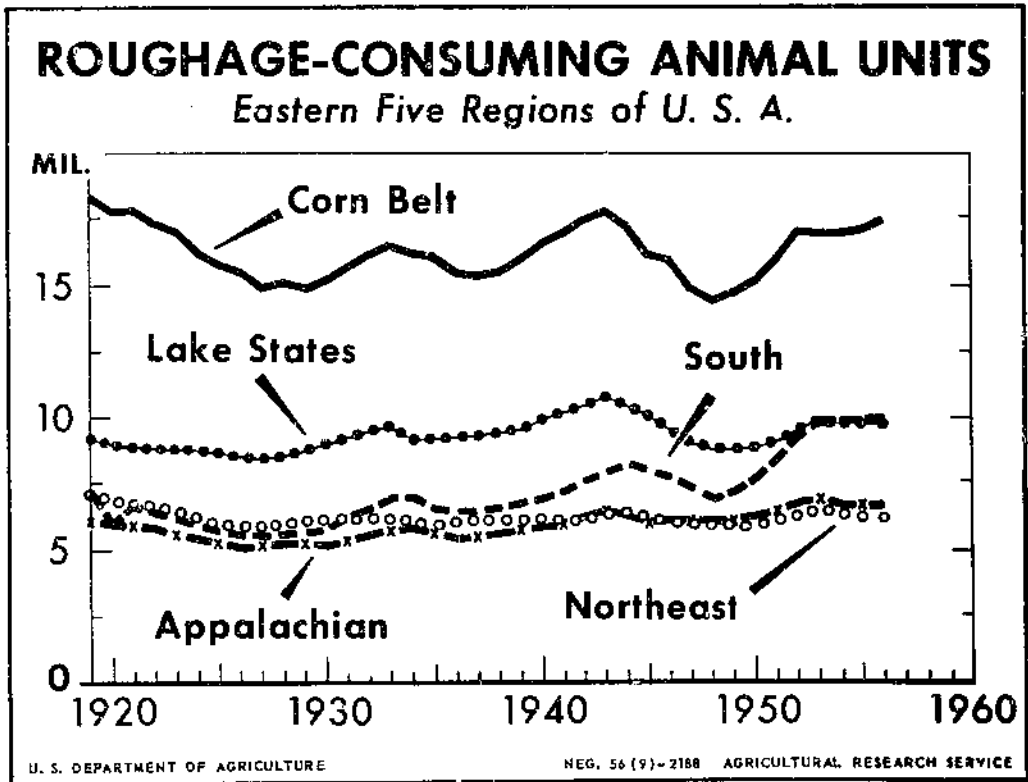


Figure 2

Table 1.- Animal units of livestock fed annually, by kinds, United States, 1909-56

Year beginning October 1	Grain- consuming	Roughage- consuming	Grain-roughage consuming
	1,000 units	1,000 units	1,000 units
1909	127,779	83,377	92,582
1910	134,910	82,688	94,091
1911	133,315	81,362	92,810
1912	134,913	81,697	93,452
1913	137,661	83,982	95,738
1914	142,222	87,242	99,107
1915	146,483	90,128	102,204
1916	143,431	92,885	103,152
1917	147,355	94,962	105,573
1918	150,305	94,750	106,157
1919	145,859	93,638	104,194
1920	144,001	91,208	102,112
1921	149,472	90,970	102,993
1922	158,170	89,078	104,191
1923	157,379	87,281	102,587
1924	151,201	84,610	99,126
1925	149,439	81,951	96,890
1926	153,071	79,634	96,409
1927	153,691	78,856	96,194
1928	153,159	80,251	96,897
1929	154,070	81,199	98,570
1930	152,753	82,776	99,496
1931	156,436	84,795	101,912
1932	159,736	88,206	105,614
1933	153,946	91,932	106,142
1934	131,194	86,082	96,225
1935	138,656	84,604	97,097
1936	137,827	82,741	95,835
1937	137,812	81,145	94,694
1938	148,777	81,603	98,006
1939	156,143	83,472	101,051
1940	155,753	86,414	102,919
1941	167,119	90,350	109,285
1942	192,227	94,512	118,232
1943	193,054	97,209	120,160
1944	172,568	95,631	113,917
1945	167,259	91,386	109,489
1946	159,600	88,077	105,230
1947	153,098	83,977	100,662
1948	158,597	82,096	100,660
1949	163,844	82,381	102,291
1950	168,095	85,592	105,629
1951	167,349	90,175	108,598
1952	158,815	94,567	109,621
1953	156,741	95,664	110,024
1954	161,458	96,153	111,671
1955	165,630	96,034	112,734
1956 1/	163,077	93,971	110,675

1/ Preliminary.

Table 2.- Grain-consuming livestock: Animal units fed annually, by kinds of livestock, United States, 1946-56

Year beginning October 1	Dairy cattle	Beef cattle	Sheep	Hogs	Poultry	Horses and mules	Total
	1,000 units	1,000 units	1,000 units	1,000 units	1,000 units	1,000 units	1,000 units
1946	30,122	14,772	1,368	58,177	42,577	12,650	159,600
1947	28,890	13,214	1,213	57,897	40,090	11,694	153,098
1948	28,132	14,677	1,057	61,306	42,633	10,792	158,597
1949	28,152	14,812	997	65,178	43,728	9,937	163,844
1950	27,989	15,630	992	70,102	44,337	9,045	168,095
1951	27,622	17,296	1,090	69,051	44,363	7,927	167,349
1952	28,714	20,204	1,134	59,720	42,572	6,971	158,815
1953	28,566	19,502	1,122	57,817	43,577	6,157	156,741
1954	28,014	20,447	1,140	64,123	42,223	5,511	161,458
1955	27,646	20,634	1,108	65,525	45,296	5,021	165,630
1956 1/	27,455	21,072	1,132	63,119	45,781	4,518	163,077

1/ Preliminary.

Table 3.- Roughage-consuming livestock: Animal units fed annually, by kinds of livestock, United States, 1946-56

Year beginning October 1	Dairy cattle	Beef cattle	Sheep and goats	Hogs and poultry	Horses and mules	Total
	1,000 units	1,000 units	1,000 units	1,000 units	1,000 units	1,000 units
1946	34,711	36,980	7,425	1,203	7,758	88,077
1947	33,300	35,641	6,811	1,152	7,073	83,977
1948	32,485	35,252	6,130	1,178	6,451	82,096
1949	32,600	36,707	5,955	1,237	5,882	82,381
1950	32,478	40,426	6,141	1,260	5,287	85,592
1951	32,269	45,738	6,282	1,274	4,612	90,175
1952	32,523	50,717	6,240	1,138	4,049	94,567
1953	33,233	51,560	6,186	1,090	3,595	95,664
1954	32,551	52,960	6,279	1,130	3,233	96,153
1955	32,037	53,574	6,285	1,189	2,949	96,034
1956 1/	31,785	52,135	6,189	1,189	2,673	93,971

1/ Preliminary.

Table 4.- Grain-and-roughage consuming livestock: Animal units fed annually, by kinds of livestock, United States, 1946-56

Year beginning October 1	Dairy cattle	Beef cattle	Sheep and goats	Hogs	Poultry	Horses and mules	Total
	1,000 units	1,000 units	1,000 units	1,000 units	1,000 units	1,000 units	1,000 units
1946	33,675	29,690	5,757	15,977	11,351	8,780	105,230
1947	32,293	28,368	5,265	15,936	10,747	8,053	100,662
1948	31,484	28,896	4,731	16,844	11,326	7,379	100,660
1949	31,565	29,521	4,585	18,185	11,680	6,755	102,291
1950	31,416	32,343	4,715	19,247	11,798	6,110	105,629
1951	31,147	36,504	4,848	18,940	11,821	5,338	108,598
1952	31,780	40,449	4,818	16,359	11,521	4,694	109,621
1953	32,107	41,327	4,780	15,832	11,816	4,162	110,024
1954	31,475	42,575	4,860	17,566	11,461	3,734	111,671
1955	31,018	43,037	4,990	18,083	12,204	3,402	112,734
1956 1/	30,784	42,132	4,948	17,355	12,381	3,075	110,675

1/ Preliminary.

Table 5.- Grain-consuming livestock: Animal units fed annually, by States, 1946-56

State	Year beginning October 1											
	1946	1947	1948	1949	1950	1951	1952	1953	1954	1955	1956 1/	
	units	units	units	units	units	units	units	units	units	units	units	units
Maine	559	594	676	730	760	831	869	893	907	929	980	980
New Hampshire	402	390	419	443	431	456	465	480	468	489	479	479
Vermont	581	550	551	547	528	541	568	587	581	579	559	559
Massachusetts	885	858	886	957	923	931	899	902	885	900	887	887
Rhode Island	97	94	97	100	99	99	98	97	94	97	95	95
Connecticut	630	639	670	717	744	793	823	820	815	873	948	948
New York	4,016	3,939	3,250	3,322	3,827	3,856	3,807	3,743	3,728	3,730	3,600	3,600
New Jersey	1,387	1,370	1,483	1,556	1,637	1,690	1,740	1,732	1,738	1,808	1,804	1,804
Pennsylvania	5,146	4,998	5,161	5,169	5,148	5,205	5,211	5,134	5,030	5,119	5,050	5,050
Delaware	647	629	775	848	886	738	762	787	764	889	922	922
Maryland	1,359	1,369	1,433	1,505	1,503	1,471	1,470	1,412	1,386	1,446	1,447	1,447
Ohio	7,758	7,475	7,687	7,765	7,791	7,543	7,045	6,966	7,130	7,333	7,101	7,101
Indiana	8,446	8,120	8,619	9,032	9,402	9,253	8,686	8,669	8,924	9,137	9,374	9,374
Illinois	12,505	12,082	12,424	13,442	13,572	13,395	12,875	12,302	13,403	13,999	14,135	14,135
Iowa	20,743	19,458	20,842	22,353	23,545	23,446	23,027	22,359	23,784	23,689	23,126	23,126
Missouri	8,546	8,229	8,662	9,069	9,363	8,670	7,995	7,924	8,066	8,738	8,729	8,729
Michigan	3,574	3,436	3,518	3,675	3,646	3,597	3,491	3,489	3,464	3,498	3,389	3,389
Wisconsin	7,040	6,817	6,911	7,039	7,203	7,234	7,030	7,226	7,482	7,485	7,307	7,307
Minnesota	9,365	8,681	9,008	9,472	9,824	9,650	9,212	9,434	9,945	9,967	9,632	9,632
North Dakota	1,961	1,738	1,683	1,652	1,645	1,659	1,576	1,586	1,662	1,711	1,596	1,596
South Dakota	3,909	3,580	3,642	3,738	3,835	3,923	3,693	3,691	4,029	3,977	3,589	3,589
Nebraska	7,138	6,671	7,006	7,137	7,704	7,899	7,744	9,342	7,792	7,666	6,661	6,661
Kansas	4,523	4,090	4,286	4,342	4,496	4,302	3,597	3,436	3,461	3,269	3,125	3,125
West Virginia	1,010	1,015	1,053	1,074	1,063	1,057	963	970	926	972	932	932
Kentucky	3,345	3,477	3,503	3,635	3,451	3,222	2,886	2,822	2,913	3,085	3,132	3,132
Tennessee	3,281	3,250	3,287	3,435	3,396	3,315	2,951	2,841	2,919	3,073	3,091	3,091
Virginia	2,587	2,562	2,691	2,755	2,871	3,042	2,730	2,633	2,551	2,625	2,717	2,717
North Carolina	3,195	3,190	3,249	3,324	3,415	3,563	3,599	3,590	3,675	3,926	4,030	4,030
South Carolina	1,599	1,605	1,586	1,567	1,545	1,619	1,534	1,305	1,348	1,412	1,413	1,413
Georgia	3,212	3,107	3,098	3,322	3,653	3,929	3,781	3,932	4,215	4,626	4,757	4,757
Florida	1,156	1,142	1,138	1,103	1,100	1,201	1,219	1,183	1,157	1,203	1,257	1,257
Alabama	2,647	2,526	2,576	2,749	2,758	2,795	2,565	2,652	2,766	2,984	2,934	2,934
Mississippi	2,564	2,486	2,477	2,513	2,468	2,454	2,390	2,312	2,272	2,473	2,447	2,447
Louisiana	1,610	1,528	1,500	1,483	1,437	1,396	1,314	1,215	1,200	1,260	1,242	1,242
Arkansas	2,320	2,204	2,327	2,445	2,517	2,366	2,200	2,121	2,032	2,309	2,328	2,328
Oklahoma	2,834	2,657	2,654	2,630	2,604	2,472	1,982	1,904	1,890	1,898	1,765	1,765
Texas	6,745	6,383	6,298	6,215	6,274	6,115	5,421	5,045	5,172	5,435	5,267	5,267
Montana	763	720	734	667	672	751	657	650	667	695	650	650
Idaho	680	688	700	671	649	699	646	635	660	687	653	653
Wyoming	372	361	342	330	321	336	314	298	281	276	277	277
Colorado	1,226	1,248	1,284	1,287	1,257	1,303	1,179	1,086	1,104	1,076	1,081	1,081
New Mexico	311	319	320	304	295	292	261	246	247	262	242	242
Arizona	171	188	178	180	204	209	204	215	253	282	292	292
Utah	579	590	649	597	598	589	527	572	567	575	581	581
Nevada	84	85	86	77	70	69	67	67	69	67	64	64
Washington	1,183	1,123	1,125	1,086	1,089	1,105	1,050	1,067	1,101	1,127	1,108	1,108
Oregon	1,011	1,001	1,049	1,063	1,074	1,026	992	971	1,015	1,039	1,017	1,017
California	3,698	3,805	4,214	4,421	4,775	5,026	4,719	4,788	4,921	5,194	5,226	5,226
United States	159,600	153,098	158,557	163,844	169,095	167,349	158,815	156,741	161,458	165,630	163,077	163,077

1/ Preliminary.

Table 6.- Roughage-consuming livestock: Animal units fed annually, by States, 1946-56

State	Year beginning October 1										
	1946	1947	1948	1949	1950	1951	1952	1953	1954	1955	1956
	1,000 units	1,000 units	1,000 units	1,000 units	1,000 units	1,000 units	1,000 units	1,000 units	1,000 units	1,000 units	1,000 units
Maine	256	242	234	234	226	239	258	260	247	239	235
New Hampshire	135	130	126	124	119	122	128	130	124	124	123
Vermont	480	454	456	453	440	455	488	498	490	490	484
Massachusetts	217	209	201	205	199	200	211	210	205	196	194
Rhode Island	31	30	29	29	29	30	30	30	29	28	27
Connecticut	192	187	184	188	188	190	192	193	192	187	184
New York	2,301	2,275	2,276	2,275	2,257	2,334	2,402	2,422	2,400	2,382	2,331
New Jersey	243	244	242	247	249	253	261	264	262	261	259
Pennsylvania	1,746	1,728	1,723	1,706	1,703	1,748	1,832	1,870	1,863	1,831	1,842
Delaware	65	65	61	60	60	66	69	71	67	65	65
Maryland	412	416	415	418	433	448	481	509	488	479	473
Ohio	2,394	2,331	2,269	2,241	2,272	2,317	2,401	2,442	2,402	2,424	2,411
Indiana	1,921	1,917	1,759	1,761	1,826	1,879	2,039	2,066	2,035	2,080	2,066
Illinois	2,201	2,282	2,289	3,020	3,054	3,222	3,436	3,488	3,459	3,526	3,622
Iowa	4,868	4,807	4,324	4,388	4,541	4,893	5,262	5,121	5,308	5,303	5,355
Missouri	3,410	3,273	3,186	3,221	3,460	3,630	3,867	3,851	3,773	3,841	3,829
Michigan	1,871	1,766	1,733	1,744	1,746	1,770	1,857	1,840	1,803	1,781	1,747
Wisconsin	4,221	4,027	3,971	3,907	3,946	4,050	4,279	4,348	4,365	4,353	4,347
Minnesota	3,573	3,252	3,175	3,164	3,186	3,300	3,512	3,612	3,635	3,644	3,658
North Dakota	1,802	1,709	1,621	1,580	1,562	1,662	1,772	1,938	1,998	2,075	2,046
South Dakota	2,756	2,665	2,660	2,544	2,562	2,890	3,070	3,225	3,325	3,266	3,204
Nebraska	3,884	3,765	3,732	3,707	3,936	4,328	4,594	4,419	4,696	4,416	4,230
Kansas	3,640	3,389	3,594	3,569	3,846	4,208	4,162	4,169	4,185	4,066	3,558
West Virginia	692	671	664	664	672	686	704	699	680	679	661
Kentucky	1,759	1,945	1,900	1,903	1,890	1,902	1,954	1,949	1,901	1,945	1,969
Tennessee	1,539	1,491	1,441	1,507	1,555	1,592	1,654	1,692	1,624	1,608	1,610
Virginia	1,264	1,240	1,260	1,304	1,360	1,433	1,529	1,535	1,500	1,494	1,487
North Carolina	790	773	759	768	812	848	949	981	961	929	929
South Carolina	399	384	362	371	410	452	517	557	561	551	553
Georgia	1,054	1,012	939	969	1,015	1,101	1,217	1,204	1,246	1,300	1,282
Florida	1,065	1,064	1,031	1,108	1,197	1,413	1,517	1,527	1,525	1,537	1,613
Alabama	1,215	1,142	1,097	1,166	1,266	1,336	1,522	1,652	1,586	1,553	1,558
Mississippi	1,509	1,419	1,366	1,418	1,478	1,571	1,762	1,885	1,987	2,033	2,095
Louisiana	1,286	1,137	1,095	1,133	1,235	1,312	1,520	1,594	1,560	1,570	1,588
Arkansas	1,201	1,063	1,046	1,094	1,143	1,242	1,336	1,386	1,299	1,315	1,320
Oklahoma	2,667	2,444	2,388	2,472	2,646	2,929	3,058	3,146	3,083	3,028	2,848
Texas	10,773	10,163	9,401	9,525	10,138	9,961	9,907	9,707	9,713	9,658	8,821
Montana	2,274	2,336	2,391	2,137	2,298	2,488	2,546	2,672	2,759	2,840	2,681
Idaho	1,282	1,285	1,268	1,245	1,296	1,411	1,474	1,533	1,611	1,645	1,624
Wyoming	1,589	1,562	1,461	1,409	1,478	1,598	1,617	1,603	1,504	1,527	1,559
Colorado	2,080	2,122	2,089	2,082	2,148	2,241	2,388	2,235	2,267	2,264	2,228
Utah	921	905	913	907	936	1,010	1,057	1,056	1,063	1,039	1,038
Nevada	625	631	635	637	650	677	681	689	691	695	706
New Mexico	1,478	1,435	1,450	1,441	1,475	1,484	1,474	1,414	1,388	1,432	1,342
Arizona	1,012	949	901	905	923	991	1,032	1,007	1,038	1,067	1,059
Washington	1,063	1,011	1,015	988	1,017	1,074	1,162	1,209	1,257	1,291	1,227
Oregon	1,284	1,247	1,305	1,276	1,276	1,421	1,548	1,618	1,660	1,634	1,581
California	3,488	3,282	3,215	3,206	3,429	3,668	3,839	3,932	4,238	4,243	4,232
United States	88,077	83,977	82,096	82,381	85,592	90,175	94,567	95,664	96,153	96,034	93,971

1/ Preliminary.

Table 7.- Grain-and-roughage consuming livestock: Animal units fed annually, by States, 1946-56

State	Year beginning October 1										
	1946	1947	1948	1949	1950	1951	1952	1953	1954	1955	1956
	units	units	units	units	units	units	units	units	units	units	units
Maine	334	333	348	361	361	389	411	420	412	426	422
New Hampshire	204	197	203	207	200	207	214	218	213	218	215
Vermont	503	475	477	472	458	471	502	517	508	508	499
Massachusetts	396	380	381	403	389	392	396	394	385	384	380
Rhode Island	49	48	48	50	49	49	50	49	48	47	46
Connecticut	312	310	315	328	336	349	359	358	359	366	364
New York	2,786	2,716	2,716	2,738	2,698	2,762	2,798	2,796	2,778	2,768	2,697
New Jersey	538	535	559	583	605	620	641	638	642	656	654
Pennsylvania	2,629	2,578	2,613	2,608	2,600	2,652	2,725	2,743	2,716	2,714	2,706
Delaware	214	209	242	259	271	235	251	264	252	283	289
Maryland	665	671	684	704	712	717	745	753	731	735	733
Ohio	3,792	3,675	3,692	3,693	3,716	3,677	3,604	3,613	3,633	3,699	3,625
Indiana	3,650	3,492	3,587	3,699	3,840	3,825	3,771	3,787	3,828	3,900	3,954
Illinois	5,464	5,216	5,230	5,500	5,626	5,670	5,668	5,686	5,813	5,998	6,149
Iowa	8,651	8,019	8,316	8,755	9,162	9,359	9,489	9,247	9,730	9,692	9,600
Missouri	4,657	4,483	4,535	4,710	4,894	4,826	4,794	4,774	4,765	4,983	4,977
Michigan	2,389	2,245	2,239	2,289	2,286	2,313	2,319	2,308	2,277	2,269	2,214
Wisconsin	4,964	4,763	4,698	4,733	4,810	4,885	4,995	5,098	5,193	5,177	5,124
Minnesota	5,057	4,650	4,675	4,786	4,890	4,928	4,994	5,139	5,221	5,428	5,365
North Dakota	1,771	1,653	1,578	1,542	1,529	1,607	1,666	1,785	1,849	1,918	1,870
South Dakota	2,952	2,806	2,814	2,765	2,803	3,050	3,133	3,246	3,402	3,420	3,208
Nebraska	4,495	4,289	4,349	4,364	4,663	4,980	5,134	4,925	5,226	4,897	4,625
Kansas	3,799	3,488	3,674	3,681	3,926	4,135	3,917	3,895	3,916	3,803	3,380
West Virginia	750	737	740	747	752	758	756	755	731	741	717
Kentucky	2,208	2,277	2,287	2,304	2,310	2,249	2,193	2,177	2,170	2,248	2,279
Tennessee	2,029	1,994	1,958	2,057	2,084	2,092	2,033	2,032	2,012	2,044	2,050
Virginia	1,551	1,529	1,575	1,626	1,695	1,792	1,812	1,789	1,750	1,768	1,792
North Carolina	1,449	1,440	1,442	1,471	1,529	1,627	1,679	1,702	1,720	1,758	1,788
South Carolina	727	719	702	697	724	779	814	810	799	807	811
Georgia	1,669	1,608	1,546	1,631	1,758	1,900	1,952	2,063	2,174	2,239	2,265
Florida	1,031	1,027	1,000	1,051	1,111	1,279	1,361	1,371	1,362	1,344	1,449
Alabama	1,575	1,491	1,466	1,571	1,651	1,710	1,787	1,906	1,897	1,931	1,922
Mississippi	1,792	1,712	1,668	1,720	1,757	1,828	1,959	2,038	2,112	2,196	2,239
Louisiana	1,463	1,313	1,277	1,303	1,372	1,420	1,564	1,597	1,569	1,597	1,605
Arkansas	1,520	1,388	1,408	1,478	1,532	1,564	1,593	1,609	1,522	1,609	1,614
Oklahoma	2,610	2,413	2,369	2,425	2,531	2,681	2,638	2,676	2,627	2,591	2,433
Texas	9,322	8,804	8,235	8,298	8,723	8,547	8,311	8,061	8,107	8,135	7,519
Montana	1,092	1,862	1,903	1,708	1,826	1,981	2,000	2,091	2,155	2,221	2,100
Idaho	1,109	1,113	1,107	1,079	1,111	1,204	1,241	1,285	1,349	1,379	1,356
Wyoming	1,254	1,231	1,150	1,110	1,157	1,247	1,252	1,240	1,167	1,177	1,203
Colorado	1,827	1,866	1,848	1,843	1,886	2,037	2,041	1,979	1,936	1,922	1,896
Utah	840	830	852	831	856	907	930	942	917	928	927
Nevada	483	488	489	489	500	518	520	526	529	531	536
New Mexico	1,155	1,126	1,137	1,122	1,145	1,152	1,138	1,089	1,071	1,107	1,039
Arizona	802	754	720	723	747	797	829	815	857	886	887
Washington	1,092	1,042	1,038	1,010	1,031	1,073	1,127	1,164	1,203	1,234	1,186
Oregon	1,188	1,154	1,208	1,191	1,196	1,299	1,374	1,422	1,461	1,447	1,403
California	3,611	3,483	3,532	3,576	3,821	4,059	4,141	4,232	4,487	4,566	4,561
United States	105,230	100,662	100,660	102,291	105,629	108,598	109,621	110,024	111,671	112,734	110,675

1/ Preliminary.

Table 8.- Calculation of animal units, United States, for the year beginning October 1, 1957

© UPDATA 1981

Assumed number of livestock	Number	Animal units					
		Grain-consuming		Roughage-consuming		Grain-and-roughage consuming	
		Factor	Number	Factor	Number	Factor	Number
	1,000 <u>units</u>		1,000 <u>units</u>		1,000 <u>units</u>		1,000 <u>units</u>
On farms January 1, 1958:							
Cattle:							
Milk cows -----	22,900	1.02	23,358	0.99	22,671	1.00	22,900
Milk heifers and heifer calves -----	11,300	.344	3,887	.782	8,837	.63	7,119
Beef cows -----	24,400	.167	4,075	.975	23,790	.76	18,544
Cattle on feed -----	6,000	2.00	12,000	.483	2,898	.86	5,160
Other cattle -----	28,400	.154	4,374	.844	23,970	.61	17,324
Stock sheep -----	26,200	.022	576	.20	5,240	.15	3,930
Sheep and lambs on feed -----	4,300	.12	516	.058	249	.074	318
Horses and mules:							
2 years old and over -----	3,050	1.34	4,087	.737	2,246	.88	2,684
Colts -----	188	.35	28	1.0	188	.6	113
Hens and pullets -----	340,000	.0577	19,618	.0012	408	.0154	5,236
Hogs -----	54,500	---	---	.01	545	---	---
Raised or fed during 1958:							
Commercial broilers -----	1,450,000	.008	11,600	---	---	.002	2,900
Chickens -----	450,000	.018	8,100	---	---	.0043	1,935
Turkeys, large -----	65,000	.07	4,550	.0024	156	.02	1,300
Turkeys, small -----	14,000	.03	420	.0024	34	.02	280
Goats clipped -----	3,300	---	---	.2	660	.15	495
Hogs fed in year -----	1/ 92,100	.712	65,575	---	---	.195	17,960
Total -----	---	---	162,764	---	91,894	---	108,198

1/ Calculated as follows:

Spring pigs 1957, (35% of 52,000) -----	18,200
Fall pigs 1957, (100% of 37,500) -----	37,500
Spring pigs 1958, (65% of 56,000) -----	36,400
Hogs fed in year beginning October 1, 1957 -----	92,100

Table 9.- Feed fed per animal unit, United States, 1926-56 ^{1/}

Year beginning October 1	Concentrates	Hay	Year beginning October 1	Concentrates	Hay
	Tons	Tons		Tons	Tons
1926	0.68	0.96	1941	0.71	1.07
1927	.70	1.17	1942	.74	1.11
1928	.70	1.11	1943	.72	1.09
1929	.68	1.07	1944	.75	1.05
1930	.53	.92	1945	.79	1.13
1931	.66	.88	1946	.77	1.18
1932	.70	.92	1947	.72	1.21
1933	.60	.85	1948	.76	1.17
1934	.54	.73	1949	.77	1.15
1935	.68	.96	1950	.77	1.20
1936	.55	.94	1951	.79	1.21
1937	.70	.94	1952	.77	1.13
1938	.66	1.10	1953	.80	1.13
1939	.65	1.09	1954	.77	1.12
1940	.69	1.08	1955	.80	1.16
			1956 ^{2/}	.80	

^{1/} Concentrates per grain-consuming animal unit and hay per roughage-consuming animal unit.

^{2/} Preliminary estimate.

END