



AgEcon SEARCH
RESEARCH IN AGRICULTURAL & APPLIED ECONOMICS

The World's Largest Open Access Agricultural & Applied Economics Digital Library

This document is discoverable and free to researchers across the globe due to the work of AgEcon Search.

Help ensure our sustainability.

Give to AgEcon Search

AgEcon Search

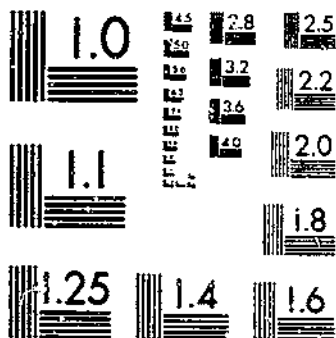
<http://ageconsearch.umn.edu>

aesearch@umn.edu

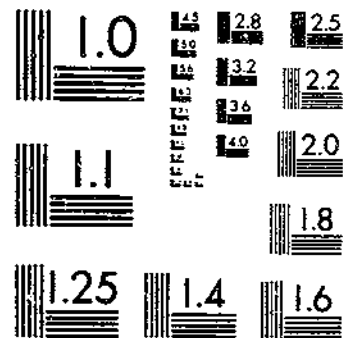
*Papers downloaded from **AgEcon Search** may be used for non-commercial purposes and personal study only. No other use, including posting to another Internet site, is permitted without permission from the copyright owner (not AgEcon Search), or as allowed under the provisions of Fair Use, U.S. Copyright Act, Title 17 U.S.C.*

SI 24 (1957) - USDA STATISTICAL BULLETIN 52 - UPDATE
DRY BEANS AND DRY PEAS - ACREAGE - YIELD - PRODUCTION - BY STATES - 1909-53
BURKHARD, C. E. GURTZ, RAY, KIRKBRIDE, W. 1 OF 1

START



MICROCOPY RESOLUTION TEST CHART
NATIONAL BUREAU OF STANDARDS-1963-A



MICROCOPY RESOLUTION TEST CHART
NATIONAL BUREAU OF STANDARDS-1963-A

12630.5

213

Dry Beans and Dry Peas

- Acreage
- Yield
- Production—total and by classes
- Price
- Value

REFERENCE
DO NOT LOAN

Handwritten notes:
1909-53
1957

By States, 1909-53

STATISTICS

LOS ANGELES COUNTY
JUL 19 1957

R 231.5 163-13 11 213-226

STATISTICAL BULLETIN NO. 213

UNITED STATES DEPARTMENT OF AGRICULTURE

Washington, D. C.

Agricultural Marketing Service

June 1957

Crop Reporting Board

© UPDATA 1981

NOV 18 1957

INDEX

	Page	Page
Comments.....	1	
Dry Edible Beans: Acreage, Yield, Production, and Value		
United States, 1909-53.....	2	
Dry Edible Beans: Acreage, Yield, Production, and Value, by States		
Arizona.....	16	
California	19	
Colorado	14	
Idaho	12	
Kansas	10	
Maine	3	
Michigan	6	
Minnesota	8	
Montana	11	
Nebraska	9	
New Mexico.....	15	
New York	5	
North Dakota.....	9	
Oregon	18	
South Dakota	9	
Texas	10	
Utah	17	
Vermont.....	4	
Washington	17	
Wisconsin	7	
Wyoming	13	
Dry Edible Beans: Production by Commercial Classes		
United States, 1919-53.....	20	
Dry Edible Beans: Production by Commercial Classes, by States		
California.....	30	
Colorado	25	
Idaho.....	25	
Michigan	20	
Montana	25	
Nebraska	25	
New Mexico.....	30	
New York.....	20	
Other States	30	
Washington.....	32	
Wyoming	25	
Dry Field Peas: Acreage, Yield, Production, and Value		
United States, 1928-53.....	35	
Dry Field Peas: Acreage, Yield, Production, and Value, by States		
California.....	42	
Colorado	40	
Idaho	39	
Michigan	36	
Minnesota	37	
Montana.....	38	
North Dakota	37	
Oregon	41	
Washington	41	
Wisconsin	36	
Wyoming	40	
Dry Field Peas: Production by Commercial Classes		
United States, 1942-53.....	43	
Dry Field Peas: Production by Commercial Classes, by States		
California.....	43	
Colorado	43	
Idaho	43	
Montana	43	
Oregon.....	43	
Other States.....	43	
Washington	43	

DRY BEANS AND DRY PEAS

Acreage, Yield, Production-Total and by Classes

Price and Value by States, 1909-53

Presented in this report are estimates of acreage planted and harvested, yield per harvested acre, production, season average price per 100 pounds received by farmers, and value of production for dry edible beans and dry field peas by States, 1909-53. Also included are tables showing production by commercial classes by States. Dry bean and dry pea prices by States are the estimated mid-month prices received by farmers weighted by estimated percentages sold in each month of the crop marketing season with the exception of dry pea prices prior to 1940 which were based on a December 1 price. United States prices are obtained by weighting State prices by quantities produced. Value of production is obtained by applying the average prices to the cleaned production for both dry beans and dry peas with the exception of years prior to 1941 for dry peas when value of production was based on the total uncleaned production.

Revised estimates for 1949-54, except price and value, are contained in Statistical Bulletin No. 185, "Field Crops", issued in June 1956. Acreage, yield, and production estimates since 1954 are presented in the Annual Summary of Crop Production published in December of each year.

Prepared by Charles E. Burkhead, John W. Kirkbride and Robert F. Gurtz, Field Crop Statistics Branch, Agricultural Estimates Division. Primary data were provided by State Statisticians' offices.

Table 1.--DRY EDIBLE BEANS: Acreage, yield, production, and value, United States, 1909-53

Year	Acreage planted	Acreage harvested	Yield per harvested acre (uncleaned)	Production		Price per 100 pounds	Value of production
				Uncleaned	Cleaned		
	1,000 acres	1,000 acres	Pounds	1,000 bags 1/	1,000 bags 1/	Dollars	1,000 dollars
1909.....	768	764	888	6,781	6,430	3.30	21,248
1910.....	809	800	817	6,539	6,079	3.44	20,892
1911.....	1,010	931	799	7,442	6,659	3.57	23,772
1912.....	992	954	785	7,485	6,736	3.44	23,140
1913.....	981	953	681	6,486	6,057	3.39	20,525
1914.....	986	963	812	7,823	7,208	4.00	28,835
1915.....	1,156	1,085	743	8,066	7,251	4.88	35,374
1916.....	1,349	1,173	611	7,170	6,450	9.31	60,041
1917.....	2,108	1,832	552	10,112	9,036	10.05	90,781
1918.....	1,787	1,625	639	10,388	9,281	7.30	67,742
1919.....	1,127	1,089	751	8,175	7,799	7.17	55,930
1920.....	964	926	663	6,140	5,809	4.23	24,576
1921.....	975	875	707	6,184	5,772	4.78	27,578
1922.....	1,254	1,138	700	7,964	7,324	5.99	43,883
1923.....	1,387	1,330	729	9,691	8,955	5.51	49,326
1924.....	1,802	1,584	574	9,084	8,410	6.04	50,784
1925.....	1,859	1,615	732	11,821	10,755	4.98	53,537
1926.....	2,121	1,740	634	11,036	9,669	4.70	45,470
1927.....	1,747	1,612	605	9,749	9,108	5.77	52,590
1928.....	1,874	1,651	640	10,571	9,900	7.72	76,436
1929.....	1,924	1,845	666	12,289	11,561	6.82	78,790
1930.....	2,266	2,100	664	14,341	13,540	4.03	54,605
1931.....	2,145	1,947	662	12,884	11,970	2.07	24,799
1932.....	1,625	1,431	766	10,961	10,410	1.97	20,533
1933.....	1,895	1,729	738	12,760	12,065	2.77	33,479
1934.....	1,985	1,461	780	11,399	10,656	3.52	37,526
1935.....	2,087	1,865	769	14,335	13,333	2.95	39,293
1936.....	1,950	1,626	727	11,821	10,767	5.37	57,835
1937.....	1,911	1,695	934	15,830	14,940	3.10	46,240
1938.....	1,759	1,643	956	15,704	14,717	2.56	37,657
1939.....	1,876	1,679	896	15,045	14,254	3.25	46,265
1940.....	2,079	1,903	890	16,945	15,790	3.18	50,185
1941.....	2,250	2,019	919	18,556	17,100	4.55	77,727
1942.....	2,102	1,925	986	18,987	17,568	5.16	90,670
1943.....	2,599	2,362	889	21,002	19,435	6.05	117,493
1944.....	2,155	1,996	809	16,147	15,044	6.28	94,418
1945.....	1,659	1,487	880	13,091	11,950	6.55	78,317
1946.....	1,704	1,622	977	15,840	14,702	10.60	156,289
1947.....	1,856	1,778	971	17,268	15,829	11.60	184,019
1948.....	1,996	1,938	1,074	20,816	19,384	7.86	152,443
1949.....	1,936	1,885	1,134	21,379	19,863	6.59	130,979
1950.....	1,655	1,511	1,117	16,880	15,123	7.40	111,861
1951.....	1,513	1,403	1,231	17,275	15,828	7.90	125,115
1952.....	1,299	1,253	1,288	16,133	14,917	3.67	129,308
1953.....	1,418	1,379	1,293	17,828	16,498	8.16	134,603

1/ Bags of 100 pounds each.

Table 2.--DRY EDIBLE BEANS: Acreage, yield, production, and value, Maine, 1909-53

Year	Acreage planted	Acreage harvested	Yield per harvested acre (uncleaned)	Production		Price per 100 pounds	Value of production
				Uncleaned	Cleaned		
	1,000 acres	1,000 acres	Pounds	1,000 bags 1/	1,000 bags 1/	Dollars	1,000 dollars
1909.....	11	11	480	53	49	4.90	240
1910.....	10	10	540	54	50	4.30	215
1911.....	8	8	540	43	40	4.35	174
1912.....	7	7	520	36	33	4.75	157
1913.....	6	6	480	29	27	4.75	128
1914.....	6	6	550	33	30	5.60	168
1915.....	6	6	345	21	19	7.00	133
1916.....	6	6	520	31	29	11.80	342
1917.....	10	10	520	52	49	15.00	735
1918.....	7	7	540	38	34	11.60	394
1919.....	6	6	590	35	32	10.00	320
1920.....	5	5	640	32	29	8.90	258
1921.....	6	6	610	37	34	8.40	286
1922.....	5	5	580	29	27	9.40	254
1923.....	4	4	620	25	23	8.70	200
1924.....	4	4	660	26	24	8.60	206
1925.....	5	5	720	36	33	7.80	257
1926.....	6	6	800	48	45	8.00	360
1927.....	7	7	790	55	49	8.70	426
1928.....	7	7	750	52	47	9.30	437
1929.....	7	7	755	53	49	8.40	412
1930.....	8	8	860	69	67	6.90	462
1931.....	9	9	840	76	68	4.20	286
1932.....	7	7	800	56	52	3.65	190
1933.....	8	8	900	72	64	5.10	326
1934.....	7	7	850	60	52	5.40	281
1935.....	7	7	890	62	56	5.10	286
1936.....	8	8	950	76	69	7.20	497
1937.....	9	9	1,050	94	89	5.30	472
1938.....	11	11	1,190	131	111	4.85	538
1939.....	10	10	1,170	117	109	4.80	523
1940.....	8	8	960	77	69	4.70	324
1941.....	9	9	1,140	103	95	6.60	627
1942.....	9	8	1,040	83	77	7.50	578
1943.....	9	6	1,080	65	51	8.00	408
1944.....	5	5	695	35	32	8.70	278
1945.....	4	4	820	33	29	9.50	276
1946.....	6	6	980	59	53	18.50	980
1947.....	7	7	1,100	77	72	19.00	1,368
1948.....	9	9	900	81	76	13.90	1,056
1949.....	8	8	925	74	66	10.40	686
1950.....	6	6	950	57	51	11.20	571
1951.....	7	7	1,000	70	64	14.70	941
1952.....	7	7	730	51	48	16.60	797
1953.....	7	7	1,100	77	72	10.70	770

1/ Bags of 100 pounds each.

Table 3.--DRY EDIBLE BEANS: Acreage, yield, production, and value, Vermont, 1909-53

Year	Acreage planted	Acreage harvested	Yield per harvested acre (uncleaned)	Production		Price per 100 pounds	Value of production
				Uncleaned	Cleaned		
	1,000 acres	1,000 acres	Pounds	1,000 bags 1/	1,000 bags 1/	Dollars	1,000 dollars
1909.....	3	3	550	16	15	4.40	66
1910.....	3	3	660	20	19	4.00	76
1911.....	3	3	650	20	19	4.25	81
1912.....	3	3	600	18	16	4.40	70
1913.....	2	2	630	13	12	4.20	50
1914.....	3	3	670	20	19	5.10	97
1915.....	3	3	600	18	16	6.10	98
1916.....	3	3	600	18	12	11.40	137
1917.....	6	6	600	36	30	13.20	396
1918.....	5	5	560	28	20	9.00	180
1919.....	4	4	685	27	25	8.10	202
1920.....	4	4	770	31	29	7.00	203
1921.....	4	4	760	30	28	7.10	199
1922.....	4	4	670	27	25	7.60	190
1923.....	4	4	600	24	22	7.00	154
1924.....	4	4	620	25	23	7.00	161
1925.....	4	4	550	22	17	6.80	116
1926.....	4	4	660	26	21	7.20	151
1927.....	4	4	680	27	24	8.00	192
1928.....	3	3	640	19	17	9.70	165
1929.....	3	3	540	16	15	8.70	130
1930.....	3	3	600	18	17	7.20	122
1931.....	4	4	660	26	23	4.10	94
1932.....	3	3	600	18	16	3.35	54
1933.....	3	3	540	16	14	4.95	69
1934.....	3	3	630	19	17	5.30	90
1935.....	3	3	600	18	16	4.90	78
1936.....	3	3	600	18	16	7.20	115
1937.....	3	3	650	20	19	5.30	101
1938.....	3	3	630	19	17	4.95	84
1939.....	2	2	600	12	11	4.85	53
1940.....	2	2	600	12	11	4.95	54
1941.....	2	2	720	14	13	7.00	91
1942.....	2	2	620	12	11	8.00	88
1943.....	2	2	650	13	12	8.20	98
1944.....	1	1	626	6	5	8.70	44

Discontinued

1/ Bags of 100 pounds each.

Table 4.--DRY EDIBLE BEANS: Acreage, yield, production, and value, New York, 1909-53

Year	Acreage planted	Acreage harvested	Yield per harvested acre (uncleaned)	Production		Price per 100 pounds	Value of production
				Uncleaned	Cleaned		
	1,000 acres	1,000 acres	Pounds	1,000 bags 1/	1,000 bags 1/	Dollars	1,000 dollars
1909.....	116	116	870	1,009	969	3.10	3,004
1910.....	112	111	936	1,039	987	2.90	2,862
1911.....	110	107	840	899	854	3.15	2,690
1912.....	130	121	810	980	911	3.05	2,779
1913.....	132	120	660	792	721	3.05	2,199
1914.....	124	118	839	990	950	3.70	3,515
1915.....	141	130	690	897	825	4.95	4,084
1916.....	328	190	360	684	479	8.70	4,167
1917.....	329	230	450	1,125	956	10.10	9,656
1918.....	312	200	498	996	737	7.10	5,233
1919.....	47	46	900	414	393	6.60	2,594
1920.....	56	54	900	486	468	4.60	2,153
1921.....	67	67	960	643	611	4.20	2,566
1922.....	108	108	840	907	844	5.40	4,558
1923.....	137	130	780	1,014	933	4.95	4,618
1924.....	208	158	780	1,232	1,109	5.20	5,767
1925.....	154	120	648	778	617	5.60	3,455
1926.....	110	71	660	469	334	5.30	1,770
1927.....	77	76	720	547	512	6.50	3,328
1928.....	81	78	790	616	596	8.60	5,126
1929.....	109	103	720	742	709	7.40	5,247
1930.....	135	132	570	752	722	5.30	3,827
1931.....	133	132	930	1,228	1,179	2.30	2,712
1932.....	128	126	750	945	917	1.90	1,742
1933.....	164	147	720	1,058	973	3.10	3,016
1934.....	152	147	820	1,205	1,133	3.40	3,852
1935.....	168	152	740	1,125	1,046	3.00	3,138
1936.....	152	142	630	895	832	6.40	5,325
1937.....	161	156	880	1,373	1,291	3.30	4,260
1938.....	161	159	1,000	1,590	1,495	2.60	3,887
1939.....	138	136	930	1,265	1,202	3.45	4,147
1940.....	149	122	760	927	816	4.25	3,468
1941.....	170	167	930	1,553	1,475	5.40	7,965
1942.....	158	145	1,050	1,522	1,431	5.10	7,298
1943.....	128	110	1,050	1,155	1,074	6.10	6,551
1944.....	120	113	790	893	826	6.50	5,369
1945.....	101	84	850	714	650	7.10	4,615
1946.....	128	124	1,200	1,488	1,421	11.10	15,773
1947.....	138	130	1,070	1,391	1,321	11.90	15,720
1948.....	181	179	1,230	2,202	2,070	7.80	16,146
1949.....	176	170	1,000	1,700	1,572	6.90	10,847
1950.....	153	148	970	1,436	1,322	7.90	10,444
1951.....	142	139	1,100	1,529	1,442	9.50	13,699
1952.....	152	150	1,100	1,650	1,548	8.80	13,622
1953.....	132	129	1,120	1,445	1,351	8.40	11,348

1/ Bags of 100 pounds each.

Table 5.--DRY EDIBLE BEANS: Acreage, yield, production, and value, Michigan, 1909-53

Year	Acreage planted	Acreage harvested	Yield per harvested acre (uncleaned)	Production		Price per 100 pounds	Value of production
				Uncleaned	Cleaned		
	1,000 acres	1,000 acres	Pounds	1,000 bags 1/	1,000 bags 1/	Dollars	1,000 dollars
1909.....	404	404	786	3,175	3,064	3.10	9,498
1910.....	420	420	750	3,150	2,945	2.95	8,688
1911.....	540	475	720	3,420	2,907	3.45	10,029
1912.....	534	513	780	4,001	3,541	3.20	11,331
1913.....	510	510	690	3,519	3,325	2.85	9,476
1914.....	500	490	672	3,293	2,990	3.90	11,661
1915.....	556	506	504	2,550	2,099	5.50	11,544
1916.....	485	470	396	1,861	1,656	10.50	17,388
1917.....	639	537	408	2,191	1,696	11.40	19,334
1918.....	500	500	540	2,700	2,484	7.60	18,878
1919.....	315	315	828	2,608	2,491	6.70	16,690
1920.....	334	334	786	2,625	2,533	3.50	8,866
1921.....	314	314	702	2,204	2,050	4.55	9,328
1922.....	509	458	660	3,023	2,766	6.10	16,873
1923.....	536	536	720	3,859	3,550	4.80	17,040
1924.....	679	625	660	4,125	3,857	5.20	20,056
1925.....	739	650	810	5,265	4,702	4.15	19,513
1926.....	838	637	720	4,586	3,765	4.35	16,378
1927.....	603	567	540	3,062	2,848	5.90	16,803
1928.....	592	521	660	3,439	3,250	8.00	26,000
1929.....	575	575	560	3,220	3,140	6.70	21,038
1930.....	734	690	420	2,898	2,826	4.35	12,293
1931.....	690	635	560	3,556	3,378	1.80	6,080
1932.....	569	552	920	5,078	4,900	1.50	7,350
1933.....	573	567	730	4,139	3,994	2.25	8,986
1934.....	665	632	661	4,178	3,898	2.75	10,720
1935.....	565	530	890	4,717	4,528	2.25	10,188
1936.....	576	480	570	2,736	2,353	6.00	14,118
1937.....	472	450	910	4,095	3,972	2.55	10,129
1938.....	477	466	980	4,567	4,407	1.85	8,153
1939.....	499	492	988	4,861	4,764	2.80	13,339
1940.....	618	570	760	4,332	4,029	3.50	14,102
1941.....	791	684	770	5,267	4,793	4.55	21,808
1942.....	593	513	1,030	5,284	4,808	4.80	23,078
1943.....	655	617	870	5,368	5,073	5.90	29,931
1944.....	701	660	690	4,554	4,304	6.00	25,824
1945.....	435	363	820	2,977	2,650	6.20	16,430
1946.....	531	519	740	3,841	3,668	9.60	35,213
1947.....	494	467	670	3,129	2,847	12.40	35,303
1948.....	514	504	880	4,435	4,258	7.20	30,658
1949.....	529	519	1,100	5,709	5,502	5.90	32,462
1950.....	503	420	950	3,990	3,312	6.70	22,190
1951.....	392	378	1,120	4,234	4,022	6.90	27,752
1952.....	349	329	1,120	3,685	3,474	7.70	26,750
1953.....	384	372	1,050	3,906	3,750	7.90	29,625

1/ Bags of 100 pounds each.

Table 6.--DRY EDIBLE BEANS: Acreage, yield, production, and value, Wisconsin, 1909-53

Year	Acreage planted	Acreage harvested	Yield per harvested acre (uncleaned)	Production		Price per 100 pounds	Value of production
				Uncleaned	Cleaned		
	1,000 acres	1,000 acres	Pounds	1,000 bags 1/	1,000 bags 1/	Dollars	1,000 dollars
1909.....	15	15	636	95	91	3.60	328
1910.....	15	15	618	93	87	3.65	318
1911.....	25	20	540	108	92	3.90	359
1912.....	20	20	648	130	114	3.90	445
1913.....	24	21	642	135	127	3.50	444
1914.....	21	21	612	129	117	4.40	515
1915.....	19	19	540	103	84	6.20 ¹	521
1916.....	22	18	480	86	77	12.00	924
1917.....	33	27	360	97	76	13.30	1,011
1918.....	20	20	600	120	110	7.80	858
1919.....	15	12	540	65	60	7.10	426
1920.....	9	9	510	46	43	5.20	224
1921.....	5	5	480	24	22	5.60	123
1922.....	8	8	570	46	42	6.80	286
1923.....	10	10	540	54	50	6.40	320
1924.....	10	10	510	51	48	6.10	293
1925.....	13	13	660	86	77	5.40	416
1926.....	9	9	450	40	33	5.30	175
1927.....	6	5	402	20	19	6.50	124
1928.....	6	6	510	31	29	8.70	252
1929.....	8	7	430	30	29	7.40	215
1930.....	8	8	402	32	30	5.00	150
1931.....	8	7	240	17	14	2.90	41
1932.....	6	6	390	23	21	2.10	44
1933.....	5	5	390	20	18	2.95	53
1934.....	7	7	370	26	23	3.25	75
1935.....	6	6	480	29	26	2.70	70
1936.....	3	3	390	12	8	6.30	50
1937.....	5	4	370	15	14	3.25	46
1938.....	2	2	420	8	7	2.65	19
1939.....	1	1	630	6	6	3.20	19
1940.....	2	2	600	12	11	3.30	36
1941.....	5	5	630	32	26	4.70	122
1942.....	3	3	630	19	15	4.90	74
1943.....	5	5	600	30	27	5.90	159
1944.....	2	2	430	9	8	6.20	50
1945.....	1	1	560	6	5	6.40	32

D i s c o n t i n u e d

1/ Bags of 100 pounds each.

Table 7.--DRY EDIBLE BEANS: Acreage, yield, production, and value, Minnesota, 1909-53

Year	Acreage planted	Acreage harvested	Yield per harvested acre (uncleaned)	Production		Price per 100 pounds	Value of production
				Uncleaned	Cleaned		
	1,000 acres	1,000 acres	Pounds	1,000 bags 1/	1,000 bags 1/	Dollars	1,000 dollars
1909.....	5	5	760	38	36	3.75	135
1910.....	4	4	670	27	26	4.00	104
1911.....	6	5	700	35	33	3.95	130
1912.....	5	5	780	39	37	3.90	144
1913.....	5	5	760	38	36	3.55	128
1914.....	5	5	740	37	35	4.05	142
1915.....	5	5	640	32	30	5.40	162
1916.....	7	6	500	30	28	9.90	277
1917.....	10	6	500	30	26	13.40	348
1918.....	7	7	560	39	37	9.10	337
1919.....	5	5	600	30	28	7.70	216
1920.....	5	5	480	24	23	5.90	136
1921.....	5	5	420	21	20	5.50	110
1922.....	7	7	720	50	48	6.20	298
1923.....	11	11	660	73	69	6.10	421
1924.....	10	10	600	60	57	6.10	348
1925.....	8	8	780	62	57	5.90	336
1926.....	7	7	720	50	45	5.60	252
1927.....	5	5	660	33	31	6.20	192
1928.....	5	5	540	27	26	8.20	213
1929.....	5	5	320	16	15	8.50	128
1930.....	6	6	330	20	19	6.40	122
1931.....	7	7	330	23	22	3.60	79
1932.....	7	7	300	21	20	2.55	51
1933.....	8	7	300	21	20	3.55	71
1934.....	8	7	190	13	12	3.95	47
1935.....	6	6	300	18	17	3.35	57
1936.....	3	2	200	4	3	6.60	20
1937.....	3	3	520	16	15	4.05	61
1938.....	3	3	570	17	15	3.20	48
1939.....	2	2	588	12	11	3.75	41
1940.....	4	4	546	22	19	3.85	73
1941.....	4	4	560	22	18	5.20	94
1942.....	5	5	570	28	21	5.60	118
1943.....	8	8	630	50	42	6.30	265
1944.....	6	5	476	24	21	6.30	132
1945.....	4	4	600	24	22	6.50	143
1946.....	3	3	500	15	14	10.40	146
1947.....	2	1	350	4	3	11.00	33
1948.....	1	1	650	6	5	7.00	35
1949.....	1	1	650	6	6	6.00	36

Discontinued

1/ Bags of 100 pounds each.

Table 8.--DRY EDIBLE BEANS: Acreage, yield, production, and value, North Dakota, 1943-47

Year	Acreage planted	Acreage harvested	Yield per harvested acre (uncleaned)	Production		Price per 100 pounds	Value of production
				Uncleaned	Cleaned		
	1,000 acres	1,000 acres	Pounds	1,000 bags 1/	1,000 bags 1/	Dollars	1,000 dollars
1943....	4	2	800	16	15	6.90	104
1944....	2	1	730	7	6	6.90	41
1945....	1	1	700	7	6	6.80	41
1946....	1	1	600	6	4	8.30	33
1947....	1	1	850	8	6	11.40	68

Discontinued

1/ Bags of 100 pounds each.

Table 9.--DRY EDIBLE BEANS: Acreage, yield, production, and value, South Dakota, 1943

Year	Acreage planted	Acreage harvested	Yield per harvested acre (uncleaned)	Production		Price per 100 pounds	Value of production
				Uncleaned	Cleaned		
	1,000 acres	1,000 acres	Pounds	1,000 bags 1/	1,000 bags 1/	Dollars	1,000 dollars
1943....	5	1	275	3	2	6.60	13

Discontinued

1/ Bags of 100 pounds each.

Table 10.--DRY EDIBLE BEANS: Acreage, yield, production, and value, Nebraska, 1919-53

Year	Acreage planted	Acreage harvested	Yield per harvested acre (uncleaned)	Production		Price per 100 pounds	Value of production
				Uncleaned	Cleaned		
	1,000 acres	1,000 acres	Pounds	1,000 bags 1/	1,000 bags 1/	Dollars	1,000 dollars
1919....	2	2	360	7	6	8.50	51
1920....	2	2	510	10	10	6.70	67
1921....	1	1	462	5	5	5.80	29
1922....	1	1	510	5	5	6.40	32
1923....	2	2	570	11	10	7.00	70
1924....	3	3	570	17	16	7.00	112
1925....	2	2	510	10	10	6.30	63
1926....	5	4	480	19	18	6.00	108
1927....	6	5	690	34	32	6.40	205
1928....	10	9	540	49	47	7.30	343
1929....	10	9	450	40	37	7.30	270
1930....	11	10	690	69	65	4.95	322
1931....	17	14	450	63	59	3.15	186
1932....	15	12	670	80	76	2.30	175
1933....	15	13	720	94	89	2.95	263
1934....	23	11	450	50	48	4.25	204
1935....	20	16	650	104	99	3.35	332
1936....	17	12	1,000	120	110	4.65	512
1937....	25	22	1,050	231	208	3.20	666
1938....	23	20	1,250	250	200	2.70	540
1939....	17	15	1,515	227	216	3.35	724
1940....	24	21	1,520	319	297	2.65	787
1941....	29	27	1,640	443	426	3.80	1,581
1942....	38	35	1,660	581	540	4.80	2,592
1943....	97	84	1,220	1,025	974	5.70	5,552
1944....	60	49	1,260	617	571	5.90	3,369
1945....	53	48	1,520	730	690	6.10	4,209
1946....	64	62	1,650	1,023	987	8.70	8,587
1947....	80	76	1,425	1,083	1,029	9.30	9,570
1948....	85	83	1,725	1,432	1,368	7.00	9,576
1949....	90	85	1,530	1,301	1,191	5.80	6,908
1950....	68	62	1,575	976	862	6.40	5,517
1951....	78	67	1,250	838	730	7.30	5,329
1952....	58	56	2,000	1,120	1,063	7.70	8,185
1953....	66	64	1,800	1,152	1,088	7.60	8,269

1/ Bags of 100 pounds each.

Table 11.--DRY EDIBLE BEANS: Acreage, yield, production, and value, Kansas, 1928-43

Year	Acreage planted	Acreage harvested	Yield per harvested acre (uncleaned)	Production		Price per 100 pounds	Value of production
				Uncleaned	Cleaned		
	1,000 acres	1,000 acres	Pounds	1,000 bags 1/	1,000 bags 1/	Dollars	1,000 dollars
1928.....	6	6	360	22	21	7.20	151
1929.....	23	22	285	63	59	6.50	384
1930.....	15	13	720	94	88	4.55	400
1931.....	10	9	330	30	28	2.80	78
1932.....	8	7	360	25	24	2.00	48
1933.....	14	13	360	47	44	2.90	128
1934.....	14	0	--	--	--	--	--
1935.....	11	7	300	21	20	2.90	58
1936.....	11	4	180	7	7	4.40	31
1937.....	2	0	--	--	--	--	--
1940.....	1	1	350	4	4	3.00	12
1941.....	1	1	350	4	4	3.75	15
1942.....	1	1	480	5	5	4.70	24
1943.....	6	1	240	2	2	5.70	11

D i s c o n t i n u e d

1/ Bags of 100 pounds each.

Table 12.--DRY EDIBLE BEANS: Acreage, yield, production, and value, Texas, 1943-44

Year	Acreage planted	Acreage harvested	Yield per harvested acre (uncleaned)	Production		Price per 100 pounds	Value of production
				Uncleaned	Cleaned		
	1,000 acres	1,000 acres	Pounds	1,000 bags 1/	1,000 bags 1/	Dollars	1,000 dollars
1943.....	14	7	200	14	11	5.50	60
1944.....	2	1	200	2	2	5.50	11

D i s c o n t i n u e d

1/ Bags of 100 pounds each.

Table 13.--DRY EDIBLE BEANS: Acreage, yield, production, and value, Montana, 1916-53

Year	Acreage planted	Acreage harvested	Yield per harvested acre (uncleaned)	Production		Price per 100 pounds	Value of production
				Uncleaned	Cleaned		
	1,000 acres	1,000 acres	Pounds	1,000 bags 1/	1,000 bags 1/	Dollars	1,000 dollars
1916.....	2	2	990	20	18	10.80	194
1917.....	3	3	750	22	21	13.80	290
1918.....	8	7	900	63	59	9.50	560
1919.....	6	2	755	15	14	8.60	120
1920.....	5	4	870	35	32	5.50	176
1921.....	5	4	810	32	29	5.10	148
1922.....	5	4	960	38	35	5.60	196
1923.....	24	23	900	207	145	6.00	870
1924.....	25	23	750	172	160	5.90	944
1925.....	26	25	900	235	205	5.60	1,148
1926.....	33	30	900	270	243	5.00	1,215
1927.....	29	28	1,140	319	287	5.30	1,521
1928.....	41	40	990	396	352	6.60	2,323
1929.....	48	47	960	451	383	6.90	2,643
1930.....	42	41	1,080	443	399	4.90	1,955
1931.....	33	29	960	278	250	1.85	462
1932.....	21	20	1,080	216	197	1.70	335
1933.....	30	28	900	252	232	2.35	545
1934.....	18	15	1,100	165	153	3.25	497
1935.....	31	26	1,080	281	256	2.75	704
1936.....	18	14	1,200	168	148	4.70	696
1937.....	22	21	1,200	252	227	2.70	613
1938.....	18	17	1,350	230	202	2.05	414
1939.....	16	15	1,350	202	178	2.85	507
1940.....	18	18	1,280	230	214	2.70	578
1941.....	22	21	1,350	284	199	3.65	726
1942.....	27	26	1,250	325	296	4.70	1,391
1943.....	74	65	900	585	521	5.70	2,970
1944.....	25	23	1,083	249	217	6.10	1,324
1945.....	20	18	1,300	234	206	6.20	1,277
1946.....	18	17	1,590	270	248	8.70	2,158
1947.....	21	20	1,450	290	267	9.20	2,456
1948.....	22	21	1,470	309	284	7.40	2,102
1949.....	19	18	1,470	265	233	5.80	1,351
1950.....	11	11	1,460	161	140	6.20	868
1951.....	9	9	1,570	141	123	6.40	787
1952.....	7	7	1,670	117	105	7.30	766
1953.....	10	10	1,880	188	169	7.00	1,183

1/ Bags of 100 pounds each.

Table 14.--DRY EDIBLE BEANS: Acreage, yield, production, and value, Idaho, 1909-53

Year	Acreage planted	Acreage harvested	Yield per harvested acre (uncleaned)	Production		Price per 100 pounds	Value of production
				Uncleaned	Cleaned		
	1,000 acres	1,000 acres	Pounds	1,000 bags 1/	1,000 bags 1/	Dollars	1,000 dollars
1909.....	2	2	1,074	21	20	4.75	95
1910.....	3	3	1,020	31	29	4.60	133
1911.....	3	3	1,300	39	37	4.40	163
1912.....	4	4	1,440	58	55	4.50	248
1913.....	5	5	1,440	72	68	4.35	296
1914.....	10	10	840	84	79	4.65	367
1915.....	12	12	1,200	144	135	5.30	716
1916.....	17	17	1,080	184	173	8.30	1,436
1917.....	30	29	780	226	206	11.10	2,287
1918.....	39	39	1,200	468	440	8.90	3,916
1919.....	35	34	630	214	201	6.60	1,327
1920.....	24	24	810	194	182	4.50	819
1921.....	17	17	840	143	134	4.95	663
1922.....	24	24	990	238	224	5.50	1,232
1923.....	43	42	1,080	454	427	5.80	2,477
1924.....	66	65	960	624	587	5.80	3,405
1925.....	73	72	1,080	778	731	4.80	3,509
1926.....	80	72	1,050	756	707	4.60	3,252
1927.....	101	95	1,110	1,054	972	4.95	4,811
1928.....	116	114	1,020	1,163	1,096	6.30	6,905
1929.....	137	134	1,200	1,608	1,470	6.10	8,967
1930.....	171	168	1,140	1,915	1,762	3.80	6,696
1931.....	180	176	1,150	2,024	1,872	1.70	3,182
1932.....	77	75	1,360	1,020	949	1.50	1,424
1933.....	103	102	1,380	1,408	1,309	2.20	2,880
1934.....	95	92	1,310	1,205	1,121	3.15	3,531
1935.....	120	110	1,175	1,292	1,189	2.55	3,032
1936.....	107	104	1,415	1,472	1,325	4.75	6,294
1937.....	125	124	1,460	1,810	1,665	2.45	4,079
1938.....	101	100	1,570	1,570	1,429	1.80	2,572
1939.....	103	102	1,500	1,530	1,408	2.60	3,661
1940.....	117	107	1,600	1,712	1,575	2.40	3,780
1941.....	131	114	1,620	1,847	1,681	3.60	6,052
1942.....	153	145	1,530	2,218	1,974	4.75	9,376
1943.....	165	161	1,600	2,576	2,318	5.60	12,981
1944.....	148	145	1,550	2,248	2,068	5.80	11,994
1945.....	117	115	1,500	1,725	1,570	6.20	9,734
1946.....	131	128	1,700	2,176	1,958	10.20	19,972
1947.....	159	154	1,540	2,372	2,087	9.20	19,200
1948.....	150	148	1,800	2,664	2,424	6.90	16,726
1949.....	149	147	1,830	2,690	2,421	5.90	14,284
1950.....	133	131	1,900	2,489	2,265	7.00	15,855
1951.....	141	139	1,800	2,502	2,227	7.60	16,925
1952.....	119	118	1,900	2,242	2,018	8.70	17,557
1953.....	150	148	1,900	2,812	2,480	7.50	18,600

1/ Bags of 100 pounds each.

Table 15.--DRY EDIBLE BEANS: Acreage, yield, production, and value, Wyoming, 1919-53

Year	Acreage planted	Acreage harvested	Yield per harvested acre (uncleaned)	Production		Price per 100 pounds	Value of production
				Uncleaned	Cleaned		
	1,000 acres	1,000 acres	Pounds	1,000 bags 1/	1,000 bags 1/	Dollars	1,000 dollars
1919.....	1	1	282	3	3	6.20	19
1920.....	1	1	900	9	8	5.60	45
1921.....	1	1	720	7	7	4.20	29
1922.....	2	2	720	14	13	5.00	65
1923.....	5	5	540	27	25	4.85	121
1924.....	8	8	630	50	46	5.40	248
1925.....	11	10	780	78	74	5.50	407
1926.....	16	15	750	112	95	5.20	494
1927.....	19	18	900	162	149	5.50	820
1928.....	24	23	960	221	199	6.10	1,214
1929.....	30	29	960	278	264	7.00	1,848
1930.....	38	36	1,200	432	393	4.30	1,690
1931.....	42	40	1,020	408	367	1.75	642
1932.....	22	20	950	190	173	1.80	311
1933.....	36	33	1,080	356	328	2.55	836
1934.....	37	32	940	301	283	3.70	1,047
1935.....	49	46	1,050	483	444	2.85	1,265
1936.....	46	43	1,180	507	487	5.00	2,435
1937.....	67	62	1,300	806	725	2.75	1,994
1938.....	55	51	1,300	663	583	2.10	1,224
1939.....	53	49	1,224	600	534	3.00	1,602
1940.....	61	58	1,240	719	640	2.40	1,536
1941.....	62	60	1,400	840	764	3.70	2,827
1942.....	80	77	1,330	1,024	922	4.60	4,241
1943.....	122	112	1,200	1,344	1,223	5.70	6,971
1944.....	90	86	1,240	1,066	970	6.00	5,820
1945.....	90	86	1,250	1,075	946	6.10	5,771
1946.....	93	90	1,450	1,305	1,214	8.80	10,683
1947.....	112	107	1,350	1,444	1,328	9.30	12,350
1948.....	98	95	1,370	1,302	1,197	7.00	8,379
1949.....	83	81	1,520	1,231	1,108	5.80	6,426
1950.....	67	65	1,350	878	787	6.20	4,879
1951.....	56	52	1,400	728	626	7.00	4,382
1952.....	49	48	1,520	730	664	7.60	5,046
1953.....	56	55	1,550	852	799	7.30	5,833

1/ Bags of 100 pounds each.

Table 16.--DRY EDIBLE BEANS: Acreage, yield, production, and value, Colorado, 1909-53

Year	Acreage planted	Acreage harvested	Yield per harvested acre (uncleaned)	Production		Price per 100 pounds	Value of production
				Uncleaned	Cleaned		
	1,000 acres	1,000 acres	Pounds	1,000 bags 1/	1,000 bags 1/	Dollars	1,000 dollars
1909.....	5	5	648	32	29	3.60	104
1910.....	8	7	570	40	35	3.75	135
1911.....	10	9	585	53	48	3.85	185
1912.....	12	11	735	81	75	2.75	206
1913.....	17	16	630	101	93	3.15	293
1914.....	21	19	780	148	141	3.15	444
1915.....	30	28	660	185	172	3.55	611
1916.....	57	52	600	312	287	6.10	1,751
1917.....	212	180	540	972	855	6.80	5,814
1918.....	103	91	450	410	369	5.40	1,993
1919.....	76	66	388	256	233	4.85	1,130
1920.....	60	52	480	250	232	3.40	789
1921.....	52	45	480	216	207	3.80	787
1922.....	123	106	300	318	283	5.40	1,528
1923.....	185	159	480	763	710	4.55	3,230
1924.....	358	286	204	583	542	4.60	2,493
1925.....	415	332	420	1,394	1,324	3.85	5,097
1926.....	485	398	216	860	774	4.80	3,715
1927.....	379	322	330	1,063	989	5.20	5,143
1928.....	468	374	270	1,010	963	5.50	5,296
1929.....	422	376	350	1,316	1,224	4.90	5,998
1930.....	483	450	594	2,673	2,510	2.80	7,028
1931.....	468	351	251	881	811	1.40	1,135
1932.....	362	221	187	413	384	2.20	845
1933.....	462	365	327	1,194	1,110	2.90	3,219
1934.....	527	174	216	376	342	5.50	1,881
1935.....	543	435	364	1,583	1,472	2.75	4,048
1936.....	428	287	421	1,208	1,136	4.45	5,055
1937.....	394	244	410	1,000	910	3.80	3,458
1938.....	335	293	555	1,626	1,496	3.30	4,937
1939.....	430	284	559	1,588	1,493	3.40	5,076
1940.....	391	332	592	1,965	1,827	2.45	4,476
1941.....	340	279	581	1,621	1,491	3.40	5,069
1942.....	350	307	590	1,811	1,702	4.65	7,914
1943.....	539	460	565	2,599	2,417	5.70	13,777
1944.....	350	327	540	1,766	1,660	5.90	9,794
1945.....	290	271	580	1,572	1,493	5.50	8,212
1946.....	276	249	650	1,618	1,448	11.90	17,231
1947.....	331	321	800	2,568	2,396	10.10	24,200
1948.....	341	324	720	2,333	2,146	7.10	15,237
1949.....	307	295	820	2,419	2,274	6.50	14,781
1950.....	261	239	760	1,816	1,741	6.40	11,142
1951.....	230	203	770	1,563	1,469	6.70	9,842
1952.....	184	175	1,040	1,820	1,747	8.20	14,325
1953.....	234	224	1,030	2,307	2,192	7.10	15,563

1/ Bags of 100 pounds each.

Table 17.--DRY EDIBLE BEANS: Acreage, yield, production, and value, New Mexico, 1909-53

Year	Acreage planted	Acreage harvested	Yield per harvested acre (uncleaned)	Production		Price per 100 pounds	Value of production
				Uncleaned	Cleaned		
	1,000 acres	1,000 acres	Pounds	1,000 bags 1/	1,000 bags 1/	Dollars	1,000 dollars
1909.....	23	19	270	51	48	3.60	173
1910.....	31	24	200	48	45	4.15	187
1911.....	26	22	375	82	77	3.20	246
1912.....	39	32	350	112	105	2.45	257
1913.....	56	44	230	101	95	3.05	290
1914.....	37	32	509	163	153	3.05	467
1915.....	54	46	480	221	208	3.10	645
1916.....	77	64	398	255	222	5.50	1,221
1917.....	259	207	198	410	369	6.80	2,509
1918.....	178	141	240	338	318	5.40	1,717
1919.....	134	115	450	518	487	4.65	2,265
1920.....	152	125	450	562	528	3.45	1,822
1921.....	148	126	480	605	560	3.45	1,932
1922.....	127	80	192	154	145	6.00	870
1923.....	121	99	420	416	391	4.80	1,877
1924.....	215	176	300	528	491	4.70	2,308
1925.....	160	125	300	375	356	4.50	1,602
1926.....	216	175	258	452	407	4.80	1,954
1927.....	206	175	300	525	488	5.10	2,489
1928.....	200	150	240	360	342	5.40	1,847
1929.....	189	170	594	1,010	960	4.80	4,608
1930.....	237	220	270	594	570	3.05	1,738
1931.....	200	190	400	760	699	1.65	1,153
1932.....	165	140	250	350	329	2.05	674
1933.....	191	155	340	527	490	2.90	1,421
1934.....	120	25	280	70	64	5.60	358
1935.....	208	171	340	581	540	2.90	1,566
1936.....	218	164	270	443	405	4.55	1,843
1937.....	221	195	340	663	623	3.85	2,399
1938.....	196	145	220	319	287	3.65	1,048
1939.....	238	205	253	519	467	3.60	1,681
1940.....	265	239	410	980	931	2.40	2,234
1941.....	270	234	528	1,236	1,162	3.50	4,067
1942.....	275	251	410	1,029	978	4.90	4,792
1943.....	300	256	300	768	722	5.70	4,115
1944.....	267	230	302	695	660	5.90	3,894
1945.....	203	161	180	290	276	5.60	1,546
1946.....	142	114	225	256	243	11.40	2,770
1947.....	155	140	237	332	315	9.10	2,866
1948.....	191	172	250	430	408	7.20	2,938
1949.....	181	169	350	592	560	6.40	3,584
1950.....	98	83	250	208	197	6.50	1,280
1951.....	74	30	400	120	114	6.80	775
1952.....	56	45	340	153	145	7.80	1,131
1953.....	58	50	310	155	148	7.60	1,125

1/ Bags of 100 pounds each.

Table 18.--DRY EDIBLE BEANS: Acreage, yield, production, and value, Arizona, 1909-53

Year	Acreage planted	Acreage harvested	Yield per harvested acre (uncleaned)	Production		Price per 100 pounds	Value of production
				Uncleaned	Cleaned		
	1,000 acres	1,000 acres	Pounds	1,000 bags 1/	1,000 bags 1/	Dollars	1,000 dollars
1909.....	2	2	530	11	11	4.75	52
1910.....	3	3	410	12	12	5.40	65
1911.....	4	4	450	18	18	4.80	86
1912.....	3	3	575	17	17	4.90	83
1913.....	4	4	530	21	21	4.60	97
1914.....	4	4	530	21	21	4.70	99
1915.....	5	5	540	27	27	4.95	134
1916.....	5	5	580	29	29	7.30	212
1917.....	19	19	479	91	86	9.40	808
1918.....	16	16	238	38	38	8.00	304
1919.....	9	9	522	47	47	7.20	338
1920.....	7	7	510	36	36	6.70	241
1921.....	8	8	510	41	41	6.00	246
1922.....	7	7	210	15	15	6.90	104
1923.....	6	6	390	23	23	6.40	147
1924.....	6	6	360	22	22	7.40	163
1925.....	9	9	498	45	45	7.10	320
1926.....	7	7	480	34	34	6.50	221
1927.....	9	9	480	43	43	6.50	280
1928.....	8	8	420	34	34	6.90	235
1929.....	6	6	433	26	26	6.90	179
1930.....	7	7	480	34	32	4.90	157
1931.....	9	9	440	40	38	3.20	122
1932.....	9	9	400	36	36	3.10	112
1933.....	7	7	430	30	30	3.55	106
1934.....	8	8	426	34	34	4.90	167
1935.....	9	9	500	45	45	3.45	155
1936.....	10	10	510	51	51	4.55	232
1937.....	10	10	460	46	44	4.55	200
1938.....	13	13	480	62	57	3.95	225
1939.....	16	15	281	42	38	4.30	163
1940.....	15	15	420	63	59	3.50	206
1941.....	15	13	425	55	47	4.00	188
1942.....	14	13	475	62	58	5.20	302
1943.....	14	13	585	76	71	6.30	447
1944.....	15	14	395	55	51	6.30	321
1945.....	14	13	515	67	62	6.10	378
1946.....	14	13	900	117	108	11.80	1,274
1947.....	15	14	430	60	54	12.00	648
1948.....	14	14	475	66	61	7.80	476
1949.....	12	12	500	60	54	6.90	373
1950.....	12	12	500	60	55	6.80	374
1951.....	9	8	370	30	27	7.10	192
1952.....	8	8	380	30	27	8.40	227
1953.....	8	8	525	42	39	7.70	300

1/ Bags of 100 pounds each.

Table 19.-- DRY EDIBLE BEANS: Acreage, yield, production, and value, Utah, 1934-53

Year	Acreage planted	Acreage harvested	Yield per harvested acre (uncleaned)	Production		Price per 100 pounds	Value of production
				Uncleaned	Cleaned		
	1,000 acres	1,000 acres	Pounds	1,000 bags 1/	1,000 bags 1/	Dollars	1,000 dollars
1934.....	1	1	495	5	5	4.90	24
1935.....	1	1	400	4	4	4.35	17
1936.....	2	2	840	17	16	5.50	88
1937.....	3	3	480	14	13	4.65	60
1938.....	6	6	800	48	44	4.40	194
1939.....	7	7	580	41	38	4.35	165
1940.....	9	9	500	45	40	3.55	142
1941.....	5	5	760	38	35	4.40	154
1942.....	6	6	600	36	33	5.40	178
1943.....	6	6	1,000	60	53	6.00	318
1944.....	8	7	480	34	29	6.20	180
1945.....	8	7	400	28	26	6.10	159
1946.....	10	9	400	36	33	9.40	310
1947.....	14	13	760	99	91	10.50	956
1948.....	17	15	400	60	58	7.40	429
1949.....	15	14	500	70	66	6.30	416
1950.....	12	11	280	31	27	6.40	173
1951.....	11	7	110	8	7	6.50	46
1952.....	4	4	700	28	28	7.50	210
1953.....	8	7	600	42	41	7.30	299

1/ Bags of 100 pounds each.

Table 20.-- DRY EDIBLE BEANS: Acreage, yield, production, and value, Washington, 1929-53

Year	Acreage planted	Acreage harvested	Yield per harvested acre (uncleaned)	Production		Price per 100 pounds	Value of production
				Uncleaned	Cleaned		
	1,000 acres	1,000 acres	Pounds	1,000 bags 1/	1,000 bags 1/	Dollars	1,000 dollars
1929.....	5	5	240	12	11	8.40	92
1930.....	1	1	900	9	8	5.60	45
1937.....	1	1	1,200	12	11	4.15	46
1938.....	2	2	950	19	17	3.50	60
1939.....	2	2	960	19	17	4.30	73
1940.....	3	3	1,050	32	29	3.80	110
1941.....	4	4	1,200	48	42	5.00	210
1942.....	3	3	1,000	30	28	5.60	157
1943.....	4	4	1,100	44	39	5.90	230
1944.....	3	3	1,030	31	28	6.00	168
1945.....	4	4	1,250	50	45	6.30	284
1946.....	4	4	1,075	43	39	9.20	359
1947.....	4	4	1,200	48	43	12.20	525
1948.....	5	5	1,500	75	69	8.30	573
1949.....	8	8	1,490	119	114	6.90	787
1950.....	12	12	2,050	246	226	7.70	1,740
1951.....	14	14	2,000	280	268	7.70	2,064
1952.....	11	11	1,750	192	177	8.90	1,575
1953.....	22	22	1,910	420	384	7.90	3,034

1/ Bags of 100 pounds each.

- 17 -

Table 21.--DRY EDIBLE BEANS: Acreage, yield, production, and value, Oregon, 1929-44

Year	Acreage planted	Acreage harvested	Yield per harvested acre (uncleaned)	Production		Price per 100 pounds	Value of production
				Uncleaned	Cleaned		
	1,000 acres	1,000 acres	Pounds	1,000 bags 1/	1,000 bags 1/	Dollars	1,000 dollars
1929.....	8	8	230	18	17	8.60	146
1930.....	4	4	610	24	23	6.90	159
1931.....	1	1	720	7	7	4.20	29
1932.....	1	1	560	6	6	2.90	17
1933.....	1	1	600	6	6	3.85	23
1934.....	1	1	750	8	8	4.20	34
1935.....	1	1	600	6	6	3.90	23
1936.....	1	1	600	6	6	5.20	31
1937.....	2	2	700	14	13	4.50	58
1938.....	4	3	790	24	17	3.85	65
1939.....	2	2	650	13	10	4.60	46
1940.....	1	1	420	4	3	3.65	11
1941.....	1	1	1,020	10	8	5.50	44
1942.....	2	2	1,200	24	20	5.50	110
1943.....	3	3	1,320	40	33	6.00	198
1944.....	1	1	1,322	13	12	6.00	72

D i s c o n t i n u e d

1/ Bags of 100 pounds each.

Table 22.--DRY EDIBLE BEANS: Acreage, yield, production, and value, California, 1909-53

Year	Acreage planted	Acreage harvested	Yield per harvested acre (uncleaned)	Production		Price per 100 pounds	Value of production
				Uncleaned	Cleaned		
	1,000 acres	1,000 acres	Pounds	1,000 bags 1/	1,000 bags 1/	Dollars	1,000 dollars
1909.....	182	182	1,253	2,280	2,098	3.60	7,553
1910.....	200	200	1,012	2,025	1,843	4.40	8,109
1911.....	275	275	991	2,725	2,534	3.80	9,629
1912.....	235	235	857	2,013	1,832	4.05	7,420
1913.....	220	220	757	1,665	1,532	4.65	7,124
1914.....	255	255	1,139	2,905	2,673	4.25	11,360
1915.....	325	325	1,190	3,868	3,636	4.60	16,726
1916.....	340	340	1,076	3,660	3,440	9.30	31,992
1917.....	558	558	871	4,860	4,666	10.20	47,593
1918.....	592	592	870	5,150	4,635	7.20	33,372
1919.....	472	472	834	3,936	3,779	8.00	30,232
1920.....	300	300	600	1,800	1,656	5.30	8,777
1921.....	272	272	800	2,176	2,024	5.50	11,132
1922.....	324	324	957	3,100	2,852	6.10	17,397
1923.....	299	299	917	2,741	2,577	6.90	17,781
1924.....	206	206	762	1,569	1,428	10.00	14,280
1925.....	240	240	1,111	2,667	2,507	6.90	17,298
1926.....	305	305	1,087	3,314	3,148	4.90	15,425
1927.....	296	296	948	2,805	2,665	6.10	16,256
1928.....	307	307	1,020	3,132	2,881	9.00	25,929
1929.....	339	339	1,000	3,390	3,153	8.40	26,485
1930.....	363	363	1,175	4,265	4,009	4.35	17,439
1931.....	334	334	1,038	3,467	3,155	2.70	8,518
1932.....	225	225	1,104	2,484	2,310	3.10	7,161
1933.....	275	275	1,280	3,520	3,344	3.45	11,537
1934.....	299	299	1,232	3,684	3,463	4.25	14,718
1935.....	339	339	1,170	3,966	3,569	4.00	14,276
1936.....	347	347	1,176	4,081	3,795	5.40	20,493
1937.....	386	386	1,391	5,369	5,101	3.45	17,598
1938.....	349	349	1,307	4,561	4,333	3.15	13,649
1939.....	340	340	1,174	3,991	3,752	3.85	14,445
1940.....	391	391	1,404	5,490	5,216	3.50	18,256
1941.....	389	389	1,321	5,139	4,831	5.40	26,087
1942.....	383	383	1,278	4,894	4,649	6.10	28,359
1943.....	439	439	1,177	5,169	4,755	6.80	32,334
1944.....	349	323	1,190	3,843	3,574	7.20	25,733
1945.....	314	307	1,159	3,559	3,274	7.70	25,210
1946.....	283	283	1,267	3,587	3,264	12.50	40,800
1947.....	323	323	1,351	4,363	3,970	14.80	58,756
1948.....	368	368	1,473	5,421	4,960	9.70	48,112
1949.....	358	358	1,437	5,143	4,696	8.10	38,038
1950.....	319	311	1,457	4,532	4,138	8.90	36,828
1951.....	350	350	1,455	5,232	4,709	9.00	42,381
1952.....	295	295	1,463	4,315	3,873	10.10	39,117
1953.....	283	283	1,565	4,430	3,985	9.70	38,654

1/ Bags of 100 pounds each.

Table 23.--DRY EDIBLE BEANS: Production by commercial classes, 1919-53 1/

(Thousands of 100-pound bags)

State and class	Uncleaned basis							
	1919	1920	1921	1922	1923	1924	1925	1926
UNITED STATES								
Pea (navy) 2/.....	2,805	2,776	2,294	3,244	4,129	4,120	4,943	4,317
Great Northern.....	10	23	21	33	216	585	745	940
Small white.....	760	160	120	325	360	77	200	180
White marrow.....	69	76	107	85	94	176	198	62
White kidney.....	15	42	55	66	74	77	50	62
Pinto.....	617	713	742	352	1,079	1,034	1,703	1,287
Red kidney.....	227	219	399	514	649	880	861	697
Pink.....	745	232	560	661	670	282	655	599
Small red.....	75	30	120	75	60	73	163	113
Cranberry.....	90	25	40	75	143	70	60	73
Yelloweye.....	106	111	132	144	155	169	102	95
Large lima.....	1,265	845	675	1,368	830	480	800	1,250
Baby lima.....	175	255	150	140	220	225	300	580
Calif. blackeye....	230	190	380	250	275	277	450	450
Other.....	986	443	389	632	737	559	591	331
TOTAL.....	8,175	6,140	6,184	7,964	9,691	9,084	11,821	11,036
NEW YORK								
Pea (navy).....	174	165	193	309	345	345	233	145
White marrow.....	66	73	103	82	91	173	195	56
White kidney.....	12	39	51	63	71	74	46	56
Red kidney.....	58	78	167	299	335	444	195	141
Yelloweye.....	79	83	103	118	132	147	78	61
Other.....	25	48	26	36	40	49	31	10
TOTAL.....	414	486	643	907	1,014	1,232	778	469
MICHIGAN								
Pea (navy).....	2,478	2,494	2,006	2,781	3,550	3,631	4,530	4,036
Red kidney.....	104	105	178	151	270	412	630	505
Other.....	26	26	20	91	39	82	105	45
TOTAL.....	2,608	2,625	2,204	3,023	3,859	4,125	5,265	4,586

See footnotes page 34.

Table 23.--DRY EDIBLE BEANS: Production by commercial classes, 1919-53 1/--Continued

(Thousands of 100-pound bags)

State and class	Uncleaned basis							
	1927	1928	1929	1930	1931	1932	1933	1934
UNITED STATES								
Pea (navy) 2/.....	3,030	3,357	3,354	3,143	3,850	5,396	4,385	4,389
Great Northern.....	1,224	1,387	1,749	2,019	1,958	994	1,442	1,087
Small white.....	280	424	415	489	429	226	417	402
White marrow.....	81	103	135	178	201	102	129	140
White kidney.....	49	29	42	41	111	58	80	142
Pinto.....	1,597	1,402	2,320	3,280	1,661	819	1,818	586
Red kidney.....	490	642	443	378	653	467	575	559
Pink.....	553	575	619	625	435	515	595	485
Small red.....	220	282	396	524	479	254	283	272
Cranberry.....	110	106	113	128	159	94	151	242
Yelloweye.....	105	93	100	82	139	79	107	176
Large lima.....	1,010	890	987	1,102	1,064	872	943	1,072
Baby lima.....	310	401	486	696	663	322	630	708
Calif. blackeye....	300	428	514	852	459	275	587	525
Other.....	390	452	616	804	623	488	618	614
TOTAL.....	9,749	10,571	12,289	14,341	12,884	10,961	12,760	11,399
NEW YORK								
Pea (navy).....	196	233	306	310	506	566	443	456
White marrow.....	74	98	131	173	197	99	127	138
White kidney.....	42	24	37	36	107	55	78	141
Red kidney.....	148	180	198	155	313	169	337	327
Yelloweye.....	70	64	63	41	90	43	63	132
Other.....	17	17	7	37	15	13	10	11
TOTAL.....	547	616	742	752	1,228	945	1,058	1,205
MICHIGAN								
Pea (navy).....	2,726	2,935	2,905	2,613	3,208	4,723	3,803	3,819
Red kidney.....	275	303	189	133	198	255	191	153
Cranberry.....	--	--	6	8	12	23	54	120
Other.....	61	121	120	144	138	77	91	86
TOTAL.....	3,062	3,439	3,220	2,898	3,556	5,078	4,139	4,178

See footnotes page 34.

Table 23.--DRY EDIBLE BEANS: Production by commercial classes, 1919-53 1/--Continued

(Thousands of 100-pound bags)

State and class	Uncleaned basis								
	1935	1936	1937	1938	1939	1940	1941	1942	1943
UNITED STATES									
Pea (navy)2/.....	4,700	2,664	4,270	4,717	4,402	4,291	5,357	5,393	5,568
Great Northern.....	1,528	1,603	2,310	1,909	1,703	1,900	2,358	3,096	4,048
Small white.....	351	502	1,031	552	428	666	972	815	678
White marrow.....	112	82	138	161	166	117	156	169	88
White kidney.....	109	46	113	69	60	43	49	54	29
Pinto.....	2,477	1,850	1,911	2,339	2,742	3,628	3,306	3,324	4,084
Red kidney.....	620	697	839	992	869	699	1,243	924	690
Pink.....	844	448	454	637	457	875	586	572	530
Small red.....	298	252	263	295	310	374	389	361	402
Cranberry.....	394	228	192	274	671	280	255	299	288
Yelloweye.....	148	114	168	191	156	102	106	146	161
Large lima.....	989	1,119	1,419	1,395	1,139	1,290	1,326	1,355	1,335
Baby lima.....	536	876	1,142	918	685	875	915	825	1,128
Calif. blackeye...	615	765	857	512	573	1,154	704	733	896
Garbanzo.....	--	--	10	19	46	34	42	45	51
Other.....	614	575	713	724	638	617	792	876	1,026
TOTAL.....	14,335	11,821	15,830	15,704	15,045	16,945	18,556	18,987	21,002
NEW YORK									
Pea (navy).....	358	259	495	588	405	315	420	476	431
White marrow.....	109	81	137	159	165	116	155	169	88
White kidney.....	108	45	110	64	57	42	47	53	28
Red kidney.....	381	429	508	628	531	394	855	730	534
Yelloweye.....	108	63	96	95	63	37	38	52	29
Other.....	61	18	27	56	44	23	38	42	45
TOTAL.....	1,125	895	1,373	1,590	1,265	927	1,553	1,522	1,155
MICHIGAN									
Pea (navy).....	4,226	2,315	3,665	4,024	3,923	3,843	4,817	4,836	4,951
Red kidney.....	156	172	213	242	258	186	183	68	59
Cranberry.....	255	175	135	199	583	260	209	253	252
Yelloweye.....	--	--	--	--	--	--	--	37	71
Other.....	80	74	82	102	97	43	58	90	35
TOTAL.....	4,717	2,736	4,095	4,567	4,861	4,332	5,267	5,284	5,368

See footnotes page 34.

Table 23.--DRY EDIBLE BEANS: Production by commercial classes, 1919-53 1/--Continued

(Thousands of 100-pound bags)

State and class	1944		1945		1946		1947		1948	
	Un-cleaned	Cleaned	Un-cleaned	Cleaned	Un-cleaned	Cleaned	Un-cleaned	Cleaned	Un-cleaned	Cleaned
UNITED STATES										
Pea (navy) 2/	4,691	4,422	3,033	2,687	3,999	3,814	3,372	3,074	4,676	4,476
Great Northern	2,699	2,477	2,726	2,481	3,697	3,440	3,886	3,554	4,346	4,039
Small white...	499	464	424	390	391	360	553	514	798	734
White marrow...	54	50	56	46	48	45	58	55	156	146
White kidney..	15	13	6	5	10	9	10	10	12	11
Pinto.....	3,079	2,892	2,186	2,063	2,321	2,105	3,532	3,278	3,347	3,091
Red kidney....	613	570	593	555	1,291	1,231	1,173	1,111	1,849	1,742
Pink.....	299	281	299	269	378	333	515	453	625	556
Small red.....	318	296	249	229	338	307	535	473	542	496
Cranberry.....	125	118	107	102	80	76	78	72	142	135
Yelloweye.....	119	111	76	70	94	87	95	89	135	128
Large lima....	1,191	1,096	979	910	841	782	919	855	1,243	1,144
Baby lima.....	1,012	961	1,083	1,007	1,159	1,055	1,176	1,058	1,081	984
Calif. blackeye	444	404	452	407	436	392	694	638	1,175	1,087
Garbanzo.....	30	28	38	34	39	35	31	28	2	2
Other.....	959	861	784	695	718	631	641	567	687	613
TOTAL.....	16,147	15,044	13,091	11,950	15,840	14,702	17,268	15,829	20,816	19,384
NEW YORK										
Pea (navy)....	246	225	135	115	262	249	307	289	380	354
White marrow..	54	50	56	46	48	45	58	55	156	146
White kidney..	15	13	6	5	10	9	10	10	12	11
Red kidney....	531	493	495	464	1,138	1,090	997	948	1,608	1,516
Yelloweye.....	24	23	8	7	10	9	10	10	34	32
Other.....	23	22	14	13	20	19	9	9	12	11
TOTAL.....	893	826	714	650	1,488	1,421	1,391	1,321	2,202	2,070
MICHIGAN										
Pea (navy)....	4,334	4,096	2,811	2,492	3,687	3,519	3,008	2,735	4,246	4,076
Red kidney....	26	25	16	15	36	35	36	34	41	40
Cranberry.....	105	99	91	87	72	69	60	55	116	111
Yelloweye.....	64	60	44	42	39	38	21	19	32	31
Other.....	25	24	15	14	7	7	4	4	--	--
TOTAL.....	4,554	4,304	2,977	2,650	3,841	3,668	3,129	2,847	4,435	4,258

See footnotes page 34.

Table 23.--DRY EDIBLE BEANS; Production by commercial classes, 1919-53 1/--Continued

(Thousands of 100-pound bags)

State and class	1949		1950		1951		1952		1953	
	Un-cleaned	Cleaned	Un-cleaned	Cleaned	Un-cleaned	Cleaned	Un-cleaned	Cleaned	Un-cleaned	Cleaned
UNITED STATES										
Pea (navy) 2/	5,558	5,334	4,036	3,356	4,292	4,072	3,624	3,412	3,759	3,601
Great Northern	3,540	3,204	1,936	1,720	1,684	1,469	2,024	1,872	1,859	1,707
Small white....	679	625	512	466	813	736	593	540	615	560
White marrow...	80	75	106	96	108	101	150	136	99	91
White kidney...	10	9	17	16	18	17	20	19	23	21
Pinto.....	4,142	3,857	3,882	3,630	3,251	2,980	3,338	3,143	5,156	4,782
Red kidney.....	1,503	1,392	1,211	1,123	1,444	1,344	1,527	1,421	1,342	1,249
Pink.....	705	634	377	336	606	534	450	393	511	450
Small red.....	719	654	532	486	838	768	670	605	744	666
Cranberry.....	380	371	155	133	90	65	116	108	171	163
Yelloweye.....	178	166	132	119	146	138	182	171	189	179
Black turtle soup	--	--	--	--	--	--	--	--	46	43
Large lima.....	1,504	1,376	1,331	1,225	1,276	1,168	1,503	1,360	1,263	1,137
Baby lima.....	1,390	1,272	1,230	1,132	872	798	478	430	702	639
Calif. blackeye	346	318	668	611	1,032	918	711	647	843	767
Garbanzo.....	27	24	67	61	6	5	49	44	10	8
Other.....	618	552	688	613	799	695	698	616	496	435
TOTAL.....	21,379	19,863	16,880	15,123	17,275	15,828	16,133	14,917	17,828	16,498
NEW YORK										
Pea (navy).....	313	291	249	218	255	242	163	152	163	151
White marrow...	80	75	106	96	108	101	150	136	99	91
White kidney...	10	9	16	15	17	16	19	18	22	20
Red kidney.....	1,221	1,125	1,010	942	1,087	1,024	1,221	1,151	1,088	1,021
Yelloweye.....	38	36	38	35	24	23	38	35	27	25
Black turtle soup	--	--	--	--	--	--	--	--	46	43
Other.....	38	36	17	16	38	36	59	56	--	--
TOTAL.....	1,700	1,572	1,436	1,322	1,529	1,442	1,650	1,548	1,445	1,351
MICHIGAN										
Pea (navy).....	5,187	4,990	3,713	3,069	3,984	3,782	3,398	3,202	3,573	3,428
Pinto.....	--	--	--	--	--	--	--	--	10	10
Red kidney.....	110	108	90	81	113	108	97	92	90	87
Cranberry.....	336	331	141	121	75	72	90	85	140	135
Yelloweye.....	76	73	46	41	62	60	100	95	93	90
TOTAL.....	5,709	5,502	3,990	3,312	4,234	4,022	3,685	3,474	3,906	3,750

See footnotes page 34.

Table 23.--DRY EDIBLE BEANS: Production by commercial classes, 1919-53 1/--Continued

(Thousands of 100-pound bags)

State and class	Uncleaned basis							
	1919	1920	1921	1922	1923	1924	1925	1926
NEBRASKA								
Pinto.....	--	--	--	--	--	11	6	12
Other.....	7	10	5	5	11	6	4	7
TOTAL.....	7	10	5	5	11	17	10	19
MONTANA								
Great Northern.....	10	23	21	23	191	163	198	265
Other.....	5	12	11	15	16	9	27	5
TOTAL.....	15	35	32	38	207	172	225	270
IDAHO								
Pea (navy) 2/.....	30	25	29	36	86	25	23	26
Great Northern.....	--	--	--	--	--	374	490	575
Small red.....	--	--	--	--	--	13	31	33
Other.....	184	169	114	202	368	212	234	122
TOTAL.....	214	194	143	238	454	624	778	756
WYOMING								
Great Northern.....	--	--	--	10	25	48	57	91
Pinto.....	--	--	--	--	--	--	6	12
Other.....	3	9	7	4	2	2	15	9
TOTAL.....	3	9	7	14	27	50	78	112
COLORADO								
Pea (navy).....	20	12	9	13	15	--	--	9
Great Northern.....	--	--	--	--	--	--	--	9
Pinto.....	136	190	157	205	691	521	1,324	816
Other.....	100	48	50	100	57	62	70	26
TOTAL.....	256	250	216	318	763	583	1,394	860

See footnotes page 34.

- 25 -

Table 23.--DRY EDIBLE BEANS: Production by commercial classes, 1919-53 1/--Continued

(Thousands of 100-pound bags)

State and class	Uncleaned basis							
	1927	1928	1929	1930	1931	1932	1933	1934
NEBRASKA								
Great Northern.....	--	15	25	40	50	75	87	48
Pinto.....	20	24	13	25	10	3	4	1
Other.....	14	10	2	4	3	2	3	1
TOTAL.....	34	49	40	69	63	80	94	50
MONTANA								
Pea (navy).....	--	13	11	10	6	4	5	9
Great Northern.....	303	359	406	394	242	192	239	124
Pinto.....	--	--	1	1	1	1	1	2
Red kidney.....	--	--	1	1	2	3	2	6
Other.....	16	24	32	37	27	16	5	24
TOTAL.....	319	396	451	443	278	216	252	165
IDAHO								
Pea (navy) 2/.....	42	109	56	125	81	51	84	60
Great Northern.....	801	783	1,061	1,149	1,255	612	817	655
Small red.....	95	147	311	448	465	204	267	238
Other.....	116	124	180	193	223	153	240	252
TOTAL.....	1,054	1,163	1,608	1,915	2,024	1,020	1,408	1,205
WYOMING								
Great Northern.....	113	189	235	360	392	108	285	253
Pinto.....	32	7	8	26	5	1	--	--
Other.....	17	25	35	46	11	81	71	48
TOTAL.....	162	221	278	432	408	190	356	301
COLORADO								
Great Northern.....	7	41	20	73	17	5	12	4
Pinto.....	1,031	946	1,204	2,469	833	401	1,168	367
Other.....	25	23	92	131	31	7	14	5
TOTAL.....	1,063	1,010	1,316	2,673	881	413	1,194	376

See footnotes page 34.

Table 23.--DRY EDIBLE BEANS: Production by commercial classes, 1919-53 1/--Continued

(Thousands of 100-pound bags)

State and class	Uncleaned basis								
	1935	1936	1937	1938	1939	1940	1941	1942	1943
NEBRASKA									
Great Northern...	90	116	222	237	191	285	403	540	964
Pinto.....	10	3	8	12	34	31	36	41	61
Other.....	4	1	1	1	2	3	4	--	--
TOTAL.....	104	120	231	250	227	319	443	581	1,025
MONTANA									
Pea (navy).....	5	3	1	1	2	5	14	4	--
Great Northern...	225	146	194	162	147	177	222	296	552
Pinto.....	5	5	10	10	14	23	17	7	17
Red kidney.....	2	4	2	2	2	5	3	2	--
Other.....	44	10	45	55	37	20	28	16	16
TOTAL.....	281	168	252	230	202	230	284	325	585
IDAHO									
Pea (navy) 2/....	55	60	71	73	47	90	40	31	107
Great Northern...	769	974	1,356	1,018	920	974	1,095	1,435	1,540
Pinto.....	--	--	--	--	55	79	37	66	132
Small red.....	252	222	220	237	267	317	327	331	336
Other.....	216	216	163	242	241	252	348	355	461
TOTAL.....	1,292	1,472	1,810	1,570	1,530	1,712	1,847	2,218	2,576
WYOMING									
Great Northern...	411	355	514	470	420	431	612	768	949
Pinto.....	24	76	153	93	144	201	143	174	276
Other.....	48	76	139	100	36	87	85	82	119
TOTAL.....	483	507	806	663	600	719	840	1,024	1,344
COLORADO									
Great Northern...	31	8	20	16	16	20	16	48	16
Pinto.....	1,528	1,140	880	1,529	1,524	1,886	1,556	1,703	2,508
Baby Lima.....	--	--	--	54	32	39	16	--	--
Other.....	24	60	100	27	16	20	33	60	75
TOTAL.....	1,583	1,208	1,000	1,626	1,588	1,965	1,621	1,811	2,599

See footnotes page 34.

Table 23.--DRY EDIBLE BEANS: Production by commercial classes, 1919-53 1/--Continued

(Thousands of 100-pound bags)

State and class	1944		1945		1946		1947		1948	
	Un-cleaned	Cleaned	Un-cleaned	Cleaned	Un-cleaned	Cleaned	Un-cleaned	Cleaned	Un-cleaned	Cleaned
NEBRASKA										
Great Northern Pinto.....	586	542	703	664	993	958	1,051	998	1,402	1,339
	31	29	27	26	30	29	32	31	30	29
TOTAL.....	617	571	730	690	1,023	987	1,083	1,029	1,432	1,368
MONTANA										
Pea (navy).....	6	6	13	12	--	--	--	--	--	--
Great Northern Pinto.....	218	188	199	173	256	235	278	256	296	272
Other.....	2	2	1	1	--	--	--	--	--	--
	23	21	21	20	14	13	12	11	13	12
TOTAL.....	249	217	234	206	270	248	290	267	309	284
IDAHO										
Pea (navy) 2/..	54	50	18	17	20	18	25	22	27	25
Great Northern Pinto.....	1,162	1,081	936	861	1,373	1,249	1,321	1,165	1,487	1,360
Small red.....	182	169	90	83	90	82	232	205	286	261
Other.....	292	272	232	213	320	291	493	435	524	479
	558	496	449	396	373	318	301	260	340	299
TOTAL.....	2,248	2,068	1,725	1,570	2,176	1,958	2,372	2,087	2,664	2,424
WYOMING										
Great Northern Pinto.....	713	649	862	759	1,069	994	1,228	1,129	1,161	1,068
Other.....	270	246	131	115	135	126	166	153	120	110
	83	75	82	72	101	94	50	46	21	19
TOTAL.....	1,066	970	1,075	946	1,305	1,214	1,444	1,328	1,302	1,197
COLORADO										
Great Northern Pinto.....	9	8	19	18	--	--	--	--	--	--
Other.....	1,696	1,595	1,512	1,436	1,586	1,419	2,480	2,315	2,239	2,060
	61	57	41	39	32	29	88	81	94	86
TOTAL.....	1,766	1,660	1,572	1,493	1,618	1,448	2,568	2,396	2,333	2,146

See footnotes page 34.

Table 23.--DRY EDIBLE BEANS: Production by commercial classes, 1919-53 1/--Continued

(Thousands of 100-pound bags)

State and class	1949		1950		1951		1952		1953	
	Un-cleaned	Cleaned	Un-cleaned	Cleaned	Un-cleaned	Cleaned	Un-cleaned	Cleaned	Un-cleaned	Cleaned
NEBRASKA										
Great Northern	1,268	1,160	789	686	659	564	896	849	801	754
Pinto.....	33	31	187	176	179	166	224	214	351	334
TOTAL.....	1,301	1,191	976	862	838	730	1,120	1,063	1,152	1,088
MONTANA										
Great Northern	265	233	116	100	70	60	52	46	56	50
Pinto.....	--	--	45	40	71	63	65	59	132	119
TOTAL.....	265	233	161	140	141	123	117	105	188	169
IDAHO										
Pea (navy) 2/	39	35	38	35	36	32	48	44	9	9
Great Northern	1,106	999	513	470	612	550	604	548	588	518
Pinto.....	620	560	1,152	1,056	902	809	740	671	1,570	1,388
Small red.....	587	530	335	307	476	427	418	379	341	300
Other.....	338	297	451	397	476	409	432	376	304	265
TOTAL.....	2,690	2,421	2,489	2,265	2,502	2,227	2,242	2,018	2,812	2,480
WYOMING										
Great Northern	895	806	517	463	343	295	472	429	414	385
Pinto.....	310	279	349	313	373	321	248	226	423	400
Other.....	26	23	12	11	12	10	10	9	15	14
TOTAL.....	1,231	1,108	878	787	728	626	730	664	852	799
COLORADO										
Great Northern	2,342	2,202	1,760	1,687	1,521	1,430	1,820	1,747	2,307	2,192
Other.....	77	72	56	54	42	39	--	--	--	--
TOTAL.....	2,419	2,274	1,816	1,741	1,563	1,469	1,820	1,747	2,307	2,192

See footnotes page 34.

Table 23.--DRY EDIBLE BEANS: Production by commercial classes, 1919-53 1/--Continued

(Thousands of 100-pound bags)

State and class	Uncleaned basis							
	1919	1920	1921	1922	1923	1924	1925	1926
NEW MEXICO								
Pinto.....	476	516	575	143	382	496	352	434
Pink.....	--	12	12	3	8	10	7	4
Other.....	42	34	18	8	26	22	16	14
TOTAL.....	518	562	605	154	416	528	375	452
CALIFORNIA								
Small white.....	760	160	120	325	360	77	200	180
Red kidney.....	60	32	50	60	40	20	30	45
Pink.....	720	200	525	650	650	260	625	580
Small red.....	75	30	120	75	60	60	132	80
Cranberry.....	90	25	40	75	143	70	60	73
Large lima.....	1,265	845	675	1,368	830	480	800	1,250
Baby lima.....	175	255	150	140	220	225	300	580
Calif. blackeye...	230	190	380	250	275	277	450	450
Other.....	561	63	116	157	163	100	70	76
TOTAL.....	3,936	1,800	2,176	3,100	2,741	1,569	2,667	3,314
OTHER STATES 3/								
Pea (navy).....	103	80	57	105	133	119	157	101
White marrow.....	3	3	4	3	3	3	3	6
White kidney.....	3	3	4	3	3	3	4	6
Pinto.....	5	7	10	4	6	6	15	13
Red kidney.....	5	4	4	4	4	4	6	6
Pink.....	25	20	23	8	12	12	23	15
Yelloweye.....	27	28	29	26	23	22	24	34
Other.....	33	24	22	14	15	15	19	17
TOTAL.....	204	169	153	167	199	184	251	198

See footnotes page 34.

Table 23.--DRY EDIBLE BEANS: Production by commercial classes, 1919-53 1/--Continued

(Thousands of 100-pound bags)

State and class	Uncleaned basis							
	1927	1928	1929	1930	1931	1932	1933	1934
NEW MEXICO								
Pinto.....	494	337	968	576	745	343	518	69
Pink.....	16	14	15	6	--	--	--	--
Other.....	15	9	27	12	15	7	9	1
TOTAL.....	525	360	1,010	594	760	350	527	70
CALIFORNIA								
Small white.....	280	424	415	489	429	226	417	402
Pinto.....	--	51	51	72	15	24	52	121
Red kidney.....	60	69	47	76	119	28	32	61
Pink.....	520	547	594	607	423	505	587	478
Small red.....	125	135	82	72	9	46	12	29
Cranberry.....	110	106	107	120	147	71	97	122
Large lima.....	1,010	890	987	1,102	1,064	872	943	1,072
Baby lima.....	310	401	486	696	663	322	630	708
Calif. blackeye....	300	428	514	852	459	275	587	525
Other.....	90	81	107	179	139	115	153	166
TOTAL.....	2,805	3,132	3,390	4,265	3,467	2,484	3,520	3,684
OTHER STATES 3/								
Pea (navy).....	66	67	76	85	49	52	50	45
Great Northern....	--	--	2	3	2	2	2	3
White marrow.....	7	5	4	5	4	3	2	2
White kidney.....	7	5	5	5	4	3	2	1
Pinto.....	20	37	75	111	52	46	65	26
Red kidney.....	7	10	8	13	21	12	13	12
Pink.....	17	14	10	12	12	10	8	7
Small red.....	--	--	3	4	5	4	4	5
Yelloweye.....	35	29	37	41	49	36	44	44
Other.....	19	18	14	21	21	17	22	20
TOTAL.....	178	185	234	300	219	185	212	165

See footnotes page 34.

Table 23.--DRY EDIBLE BEANS: Production by commercial classes, 1919-53 1/2--Continued

(Thousands of 100-pound bags)

State and class	Uncleaned basis								
	1935	1936	1937	1938	1939	1940	1941	1942	1943
NEW MEXICO									
Pinto.....	569	434	649	312	514	969	1,224	1,021	762
Other.....	12	9	14	7	5	11	12	8	6
TOTAL.....	581	443	663	319	519	980	1,236	1,029	768
WASHINGTON									
Pea (navy).....	--	--	--	--	2	4	16	--	--
Great Northern.....	--	--	--	1	4	6	6	--	--
Small white.....	--	--	7	12	8	15	6	16	30
Other.....	--	--	5	6	5	7	20	14	14
TOTAL.....	--	--	12	19	19	32	48	30	44
CALIFORNIA									
Small white.....	351	502	1,024	540	420	651	966	799	648
Pinto.....	285	130	160	283	386	342	206	224	193
Red kidney.....	71	76	99	95	59	103	180	116	93
Pink.....	835	442	452	637	457	875	586	572	530
Small red.....	42	26	39	55	39	56	57	17	39
Cranberry.....	139	53	57	75	88	20	46	46	36
Large lima.....	989	1,119	1,419	1,395	1,139	1,290	1,326	1,355	1,335
Baby lima.....	536	876	1,142	864	653	836	899	825	1,128
Calif. blackeye....	615	765	857	512	573	1,154	704	733	896
Garbanzo.....	--	--	10	19	46	34	42	45	51
Other.....	103	92	110	86	131	129	127	162	220
TOTAL.....	3,966	4,081	5,369	4,561	3,991	5,490	5,139	4,894	5,169
OTHER STATES 3/									
Pea (navy).....	56	27	38	31	23	34	50	46	79
Great Northern.....	2	4	4	5	5	7	4	9	27
White marrow.....	3	1	1	2	1	1	1	--	--
White kidney.....	1	1	3	5	3	1	2	1	1
Pinto.....	56	62	51	100	71	97	87	88	135
Red kidney.....	10	16	17	25	19	11	22	8	4
Pink.....	9	6	2	--	--	--	--	--	--
Small red.....	4	4	4	3	4	1	5	13	27
Yelloweye.....	40	51	72	96	93	65	68	57	61
Other.....	22	19	27	42	24	22	39	47	35
TOTAL.....	203	191	219	309	243	239	278	269	369

See footnotes page 34.

Table 23.--DRY EDIBLE BEANS: Production by commercial classes, 1919-53 1/--Continued

(Thousands of 100-pound bags)

State and class	1944		1945		1946		1947		1948	
	Un-cleaned	Cleaned	Un-cleaned	Cleaned	Un-cleaned	Cleaned	Un-cleaned	Cleaned	Un-cleaned	Cleaned
NEW MEXICO										
Pinto.....	688	653	287	273	253	240	329	312	427	405
Other.....	7	7	3	3	3	3	3	3	3	3
TOTAL.....	695	660	290	276	256	243	332	315	430	408
WASHINGTON										
Pea (navy)....	16	14	25	23	13	12	27	24	16	15
Other.....	15	14	25	22	30	27	21	19	59	54
TOTAL.....	31	28	50	45	43	39	48	43	75	69
CALIFORNIA										
Small white....	499	464	424	390	391	360	553	514	798	734
Pinto.....	136	131	54	50	90	82	148	129	124	112
Red kidney.....	54	50	79	73	113	102	135	124	196	182
Pink.....	299	281	299	269	378	333	515	453	625	556
Small red.....	16	15	17	16	18	16	42	38	18	17
Cranberry.....	20	19	16	15	8	7	18	17	26	24
Large lima.....	1,191	1,096	979	910	841	782	919	855	1,243	1,144
Baby lima.....	1,012	961	1,083	1,007	1,159	1,055	1,176	1,058	1,081	984
Calif. blackeye	444	404	452	407	436	392	694	638	1,175	1,087
Garbanzo.....	30	28	38	34	39	35	31	28	2	2
Other.....	142	125	118	103	114	100	132	116	133	118
TOTAL.....	3,843	3,574	3,559	3,274	3,587	3,264	4,363	3,970	5,421	4,960
OTHER STATES										
Pea (navy)....	35	31	31	28	17	16	5	4	7	6
Great Northern	11	9	7	6	6	4	8	6	--	--
Pinto.....	74	67	84	79	137	127	145	133	121	114
Red kidney.....	2	2	3	3	4	4	5	5	4	4
Small red.....	10	9	--	--	--	--	--	--	--	--
Yelloweye.....	31	28	24	21	45	40	64	60	69	65
Other.....	22	20	16	13	24	21	21	18	12	11
TOTAL.....	185	166	165	150	233	212	248	226	213	200

See footnotes page 34.

Table 23.--DRY EDIBLE BEANS: Production by commercial classes, 1919-53 1/--Continued

(Thousands of 100-pound bags)

State and class	1949		1950		1951		1952		1953	
	Un-cleaned	Cleaned	Un-cleaned	Cleaned	Un-cleaned	Cleaned	Un-cleaned	Cleaned	Un-cleaned	Cleaned
NEW MEXICO										
Pinto.....	592	560	208	197	120	114	153	145	155	148
TOTAL.....	592	560	208	197	120	114	153	145	155	148
WASHINGTON										
Pea (navy)....	12	11	35	33	16	15	14	13	13	12
Great Northern	6	6	1	1	--	--	--	--	--	--
Pinto.....	11	11	22	20	10	10	5	5	74	68
Pink.....	--	--	2	2	18	17	16	15	13	12
Small red.....	89	85	170	155	226	217	152	139	315	287
Other.....	1	1	16	15	10	9	5	5	5	5
TOTAL.....	119	114	246	226	280	268	192	177	420	384
CALIFORNIA										
Small white....	679	625	512	466	813	736	593	540	615	560
Pinto.....	112	101	76	66	38	34	32	28	57	50
Red kidney....	168	155	109	98	242	210	207	176	161	138
Pink.....	705	634	375	334	588	517	434	378	498	438
Small red.....	43	39	27	24	136	124	100	87	88	79
Cranberry.....	44	40	14	12	15	13	26	23	31	28
Large lima....	1,504	1,376	1,331	1,225	1,276	1,168	1,503	1,360	1,263	1,137
Baby lima....	1,390	1,272	1,230	1,132	872	798	478	430	702	639
Calif. blackeye	346	318	668	611	1,032	918	711	647	843	767
Garbanzo.....	27	24	67	61	6	5	49	44	10	8
Other.....	125	112	123	109	214	186	182	160	162	141
TOTAL.....	5,143	4,696	4,532	4,138	5,232	4,709	4,315	3,873	4,430	3,985
OTHER STATES 3/										
Pea (navy)....	7	7	1	1	1	1	1	1	1	1
White kidney...	--	--	1	1	1	1	1	1	1	1
Pinto.....	122	113	83	75	37	33	51	48	77	73
Red kidney....	4	4	2	2	2	2	2	2	3	3
Yelloweye.....	64	57	48	43	60	55	44	41	69	64
Other.....	13	11	13	11	7	6	10	10	10	10
TOTAL.....	210	192	148	133	108	98	109	103	161	152

1/ Uncleaned production 1919-43; cleaned production not estimated before 1944.

2/ Includes small flat white beans beginning 1944.

3/ Maine, Vermont, Wisconsin, Minnesota, North Dakota, South Dakota, Kansas, Texas, Arizona, Utah, Oregon.

Table 24.--DRY FIELD PEAS: Acreage, yield, production, and value, United States, 1928-53

Year	Acreage planted	Acreage harvested	Yield per harvested acre (uncleaned)	Production		Price per 100 pounds	Value of production
				Uncleaned	Cleaned		
	1,000 acres	1,000 acres	Pounds	1,000 bags 1/	1,000 bags 1/	Dollars	1,000 dollars
1928.....	--	185	1,006	1,861	--	--	--
1929.....	250	192	935	1,795	--	--	--
1930.....	295	229	923	2,114	--	--	--
1931.....	312	241	914	2,202	--	--	--
1932.....	257	219	956	2,094	--	--	--
1933.....	294	258	1,004	2,591	--	2.49	6,449
1934.....	330	277	1,032	2,859	--	2.67	7,632
1935.....	370	320	1,058	3,385	--	2.17	7,352
1936.....	296	236	1,136	2,682	--	2.27	6,088
1937.....	276	227	1,363	3,095	--	1.72	5,327
1938.....	225	165	1,078	1,778	--	1.85	3,293
1939.....	238	169	1,130	1,909	--	2.52	4,805
1940.....	314	247	887	2,192	--	3.15	6,906
1941.....	379	291	1,352	3,934	3,462	3.47	12,006
1942.....	518	493	1,501	7,402	6,756	4.48	30,278
1943.....	825	795	1,371	10,903	10,025	4.91	49,265
1944.....	752	719	1,237	8,894	8,020	4.97	39,871
1945.....	549	518	1,142	5,915	5,365	4.20	22,519
1946.....	515	492	1,358	6,679	6,074	4.89	29,700
1947.....	544	513	1,232	6,322	5,795	5.36	31,083
1948.....	315	298	1,221	3,640	3,298	4.93	16,273
1949.....	383	354	907	3,212	2,920	3.50	10,228
1950.....	261	238	1,404	3,341	3,072	3.56	10,951
1951.....	333	300	1,275	3,824	3,530	4.13	14,570
1952.....	224	208	1,301	2,707	2,463	5.25	12,939
1953.....	277	258	1,332	3,437	3,052	5.12	15,620

1/ Bags of 100 pounds each.

Table 25.--DRY FIELD PEAS: Acreage, yield, production, and value, Michigan, 1928-44

Year	Acreage planted	Acreage harvested	Yield per harvested acre (uncleaned)	Production		Price per 100 pounds	Value of production
				Uncleaned	Cleaned		
	1,000 acres	1,000 acres	Pounds	1,000 bags 1/	1,000 bags 1/	Dollars	1,000 dollars
1928.....	22	22	810	178	--	--	--
1929.....	29	25	780	195	--	--	--
1930.....	30	26	630	164	--	--	--
1931.....	30	15	540	81	--	--	--
1932.....	23	17	630	107	--	--	--
1933.....	21	17	600	102	--	2.15	219
1934.....	15	13	636	83	--	2.25	187
1935.....	13	11	900	99	--	2.00	198
1936.....	12	9	540	49	--	2.65	130
1937.....	11	8	630	50	--	2.50	125
1938.....	7	6	900	54	--	2.50	135
1939.....	5	4	830	33	--	2.50	82
1940.....	5	4	750	30	--	2.50	75
1941.....	5	5	750	38	--	3.30	119
1942.....	2	2	800	16	15	4.90	74
1943.....	2	1	650	6	6	4.80	29
1944.....	1	1	770	8	8	4.75	38

D i s c o n t i n u e d

1/ Bags of 100 pounds each.

Table 26.--DRY FIELD PEAS: Acreage, yield, production, and value, Wisconsin, 1928-47

Year	Acreage planted	Acreage harvested	Yield per harvested acre (uncleaned)	Production		Price per 100 pounds	Value of production
				Uncleaned	Cleaned		
	1,000 acres	1,000 acres	Pounds	1,000 bags 1/	1,000 bags 1/	Dollars	1,000 dollars
1928.....	--	29	1,228	356	--	--	--
1929.....	31	30	840	252	--	--	--
1930.....	31	30	840	252	--	--	--
1931.....	26	25	600	150	--	--	--
1932.....	19	18	720	130	--	--	--
1933.....	20	20	930	186	--	2.15	400
1934.....	30	28	540	151	--	2.25	340
1935.....	12	12	750	90	--	2.50	225
1936.....	6	6	570	34	--	3.50	119
1937.....	4	4	750	30	--	3.35	100
1938.....	5	5	870	44	--	2.80	123
1939.....	3	3	940	28	--	3.50	98
1940.....	8	8	1,010	81	--	4.00	324
1941.....	12	12	820	98	88	3.80	334
1942.....	5	5	880	44	40	4.55	182
1943.....	6	6	1,060	64	60	4.60	276
1944.....	3	3	970	29	26	4.85	126
1945.....	2	2	950	19	18	4.65	84
1946.....	1	1	1,100	11	10	4.95	50
1947.....	1	1	1,050	10	9	5.00	45

D i s c o n t i n u e d

1/ Bags of 100 pounds each.

Table 27.--DRY FIELD PEAS: Acreage, yield, production, and value, Minnesota, 1943-53

Year	Acreage planted	Acreage harvested	Yield per harvested acre (uncleaned)	Production		Price per 100 pounds	Value of production
				Uncleaned	Cleaned		
	1,000 acres	1,000 acres	Pounds	1,000 bags 1/	1,000 bags 1/	Dollars	1,000 dollars
1943.....	3	3	1,100	33	30	3.50	105
1944.....	4	4	820	33	30	4.00	120
1945.....	4	4	950	38	34	4.50	153
1946.....	6	6	800	48	43	5.50	236
1947.....	8	7	600	42	38	4.60	175
1948.....	3	3	900	27	24	6.55	157
1949.....	7	7	950	66	59	5.40	319
1950.....	4	3	1,100	33	30	3.60	108
1951.....	3	3	1,150	34	29	4.30	125
1952.....	3	3	1,200	36	31	4.65	144
1953.....	5	4	1,150	46	41	3.40	139

1/ Bags of 100 pounds each.

Table 28.--DRY FIELD PEAS: Acreage, yield, production, and value, North Dakota, 1943-53

Year	Acreage planted	Acreage harvested	Yield per harvested acre (uncleaned)	Production		Price per 100 pounds	Value of production
				Uncleaned	Cleaned		
	1,000 acres	1,000 acres	Pounds	1,000 bags 1/	1,000 bags 1/	Dollars	1,000 dollars
1943.....	14	13	950	124	110	4.90	539
1944.....	14	13	1,060	138	119	4.30	512
1945.....	13	12	1,200	144	130	3.80	494
1946.....	15	15	1,350	202	184	4.75	874
1947.....	20	18	1,080	194	175	4.55	796
1948.....	7	6	1,200	72	61	4.70	287
1949.....	5	5	1,000	50	40	3.25	130
1950.....	4	4	900	36	33	3.80	125
1951.....	5	3	800	24	20	4.00	80
1952.....	3	3	700	21	17	4.50	76
1953.....	6	5	1,400	70	61	3.60	220

1/ Bags of 100 pounds each.

Table 29.--DRY FIELD PEAS: Acreage, yield, production, and value, Montana, 1928-53

Year	Acreage planted	Acreage harvested	Yield per harvested acre (uncleaned)	Production		Price per 100 pounds	Value of production
				Uncleaned	Cleaned		
	1,000 acres	1,000 acres	Pounds	1,000 bags 1/	1,000 bags 1/	Dollars	1,000 dollars
1928.....	19	19	1,047	199	--	--	--
1929.....	23	23	960	221	--	--	--
1930.....	27	27	1,050	284	--	--	--
1931.....	32	29	810	235	--	--	--
1932.....	26	24	780	187	--	--	--
1933.....	21	20	840	168	--	2.80	470
1934.....	28	28	1,040	291	--	2.90	844
1935.....	36	36	1,020	367	--	2.85	1,046
1935.....	26	26	960	250	--	3.00	750
1937.....	20	20	1,140	228	--	2.70	616
1938.....	19	19	1,080	205	--	2.75	564
1939.....	18	18	1,260	227	--	2.65	602
1940.....	27	27	1,140	308	--	2.58	795
1941.....	32	32	1,260	403	383	3.50	1,340
1942.....	44	43	1,230	529	476	3.75	1,785
1943.....	62	60	1,120	672	605	5.10	3,086
1944.....	42	40	1,103	441	370	5.20	1,924
1945.....	32	30	1,200	360	306	4.95	1,515
1946.....	24	23	1,170	269	229	5.60	1,282
1947.....	17	16	1,100	176	151	5.95	898
1948.....	8	8	1,160	93	80	5.80	464
1949.....	7	6	1,130	68	59	5.30	313
1950.....	6	6	1,400	84	73	4.05	296
1951.....	5	5	1,390	70	62	5.20	322
1952.....	5	5	1,400	70	61	5.30	323
1953.....	6	6	1,120	67	54	5.30	286

1/ Bags of 100 pounds each.

Table 30.--DRY FIELD PEAS: Acreage, yield, production, and value, Idaho, 1928-53

Year	Acreage planted	Acreage harvested	Yield per harvested acre (uncleaned)	Production		Price per 100 pounds	Value of production
				Uncleaned	Cleaned		
	1,000 acres	1,000 acres	Pounds	1,000 bags 1/	1,000 bags 1/	Dollars	1,000 dollars
1928.....	56	55	1,200	660	--	--	--
1929.....	58	56	1,200	672	--	--	--
1930.....	80	78	1,080	842	--	--	--
1931.....	89	86	1,140	980	--	--	--
1932.....	71	69	1,140	787	--	--	--
1933.....	84	82	1,080	886	--	2.75	2,436
1934.....	92	89	1,110	988	--	2.85	2,816
1935.....	105	102	1,080	1,102	--	2.25	2,480
1936.....	78	76	1,020	775	--	2.35	1,821
1937.....	60	59	1,260	743	--	2.25	1,672
1938.....	53	49	1,140	559	--	2.00	1,118
1939.....	53	49	1,104	541	--	2.70	1,461
1940.....	66	65	900	585	--	3.00	1,755
1941.....	104	78	1,320	1,030	906	3.50	3,171
1942.....	143	142	1,250	1,775	1,598	4.70	7,511
1943.....	250	241	1,380	3,326	3,027	5.10	15,438
1944.....	225	219	1,275	2,792	2,513	5.10	12,816
1945.....	155	153	1,200	1,836	1,616	4.20	6,787
1946.....	161	156	1,350	2,106	1,916	4.95	9,484
1947.....	153	150	1,320	1,980	1,782	5.20	9,266
1948.....	72	68	1,220	830	722	5.15	3,718
1949.....	99	89	1,120	997	887	3.55	3,149
1950.....	67	66	1,570	1,036	943	3.50	3,300
1951.....	90	86	1,300	1,118	1,017	4.50	4,576
1952.....	71	69	1,500	1,035	932	5.30	4,940
1953.....	104	101	1,350	1,364	1,228	5.30	6,508

1/ Bags of 100 pounds each.

Table 31.--DRY FIELD PEAS: Acreage, yield, production, and value, Wyoming, 1942-53

Year	Acreage planted	Acreage harvested	Yield per harvested acre (uncleaned)	Production		Price per 100 pounds	Value of production
				Uncleaned	Cleaned		
	1,000 acres	1,000 acres	Pounds	1,000 bags 1/	1,000 bags 1/	Dollars	1,000 dollars
1942.....	2	2	1,140	23	21	4.70	99
1943.....	2	2	1,000	20	18	6.20	112
1944.....	2	2	920	18	17	6.20	105
1945.....	2	2	1,200	24	22	6.00	132
1946.....	3	3	1,250	38	34	7.00	238
1947.....	2	2	1,200	24	21	6.65	140
1948.....	2	2	1,200	24	21	6.00	126
1949.....	2	2	1,210	24	22	4.50	99
1950.....	4	4	1,250	50	42	5.00	210
1951.....	7	7	1,200	84	76	5.10	388
1952.....	7	7	2,130	149	132	5.50	726
1953.....	6	6	1,600	96	85	5.30	450

1/ Bags of 100 pounds each.

Table 32.--DRY FIELD PEAS: Acreage, yield, production, and value, Colorado, 1928-53

Year	Acreage planted	Acreage harvested	Yield per harvested acre (uncleaned)	Production		Price per 100 pounds	Value of production
				Uncleaned	Cleaned		
	1,000 acres	1,000 acres	Pounds	1,000 bags 1/	1,000 bags 1/	Dollars	1,000 dollars
1928.....	--	60	780	468	--	--	--
1929.....	64	16	780	125	--	--	--
1930.....	64	11	690	76	--	--	--
1931.....	60	18	570	103	--	--	--
1932.....	53	30	810	243	--	--	--
1933.....	48	24	690	166	--	1.30	216
1934.....	54	13	540	70	--	1.75	122
1935.....	50	17	600	102	--	1.50	153
1936.....	48	12	840	101	--	1.65	167
1937.....	40	10	840	84	--	2.00	168
1938.....	32	6	780	47	--	1.90	89
1939.....	38	12	900	108	--	2.10	227
1940.....	48	20	780	156	--	2.25	351
1941.....	62	24	900	216	184	3.00	552
1942.....	46	27	950	256	233	3.85	897
1943.....	38	26	800	208	187	4.15	776
1944.....	33	22	860	189	168	4.40	739
1945.....	33	23	900	207	186	3.55	660
1946.....	23	16	750	120	101	5.20	525
1947.....	35	21	900	189	165	4.65	767
1948.....	24	19	1,000	190	169	4.00	676
1949.....	19	16	1,220	195	176	2.35	414
1950.....	15	5	950	48	43	3.45	148
1951.....	18	4	750	30	27	5.00	135
1952.....	15	8	1,000	80	74	4.50	333
1953.....	14	6	1,100	66	61	3.05	186

1/ Bags of 100 pounds each.

Table 33.--DRY FIELD PEAS: Acreage, yield, production, and value, Washington, 1929-53

Year	Acreage planted	Acreage harvested	Yield per harvested acre (uncleaned)	Production		Price per 100 pounds	Value of production
				Uncleaned	Cleaned		
	1,000 acres	1,000 acres	Pounds	1,000 bags 1/	1,000 bags 1/	Dollars	1,000 dollars
1929.....	45	42	786	330	--	--	--
1930.....	63	57	870	496	--	--	--
1931.....	75	68	960	653	--	--	--
1932.....	65	61	1,050	640	--	--	--
1933.....	100	95	1,140	1,083	--	2.50	2,708
1934.....	108	103	1,225	1,262	--	2.60	3,281
1935.....	150	138	1,140	1,573	--	2.00	3,146
1936.....	124	105	1,380	1,449	--	2.10	3,043
1937.....	140	125	1,560	1,950	--	1.35	2,632
1938.....	105	76	1,080	821	--	1.45	1,190
1939.....	119	81	1,170	948	--	2.40	2,275
1940.....	157	120	840	1,008	--	3.50	3,528
1941.....	154	130	1,500	1,950	1,716	3.50	6,006
1942.....	251	247	1,700	4,199	3,863	4.50	17,384
1943.....	394	390	1,450	5,655	5,259	4.85	25,506
1944.....	347	340	1,290	4,386	3,991	4.90	19,556
1945.....	246	235	1,160	2,726	2,562	4.00	10,248
1946.....	244	235	1,480	3,478	3,200	4.70	15,040
1947.....	256	247	1,300	3,211	3,018	5.30	15,995
1948.....	162	156	1,280	1,997	1,857	4.70	8,728
1949.....	210	198	760	1,505	1,407	3.05	4,291
1950.....	137	127	1,420	1,803	1,690	3.45	5,830
1951.....	188	175	1,320	2,310	2,167	3.80	8,235
1952.....	106	100	1,140	1,140	1,064	5.20	5,533
1953.....	116	110	1,360	1,496	1,366	5.10	6,967

1/ Bags of 100 pounds each.

Table 34.--DRY FIELD PEAS: Acreage, yield, production, and value, Oregon, 1934-53

Year	Acreage planted	Acreage harvested	Yield per harvested acre (uncleaned)	Production		Price per 100 pounds	Value of production
				Uncleaned	Cleaned		
	1,000 acres	1,000 acres	Pounds	1,000 bags 1/	1,000 bags 1/	Dollars	1,000 dollars
1934.....	3	3	480	14	--	3.00	42
1935.....	4	4	1,305	52	--	2.00	104
1936.....	2	2	1,200	24	--	2.40	58
1937.....	1	1	960	10	--	1.40	14
1938.....	4	4	1,200	48	--	1.55	74
1939.....	2	2	1,200	24	--	2.50	60
1940.....	3	3	800	24	--	3.25	78
1941.....	10	10	1,990	199	149	3.25	484
1942.....	25	25	2,240	560	510	4.60	2,346
1943.....	54	53	1,500	795	723	4.70	3,398
1944.....	58	56	1,120	627	564	4.70	2,651
1945.....	39	37	950	352	299	4.20	1,256
1946.....	20	19	1,300	247	209	4.90	1,024
1947.....	25	24	1,180	283	240	5.40	1,296
1948.....	19	18	1,300	234	206	5.10	1,051
1949.....	17	14	700	98	83	3.70	307
1950.....	15	14	1,150	161	138	3.75	518
1951.....	13	13	800	104	88	4.95	436
1952.....	9	8	1,150	92	78	5.10	398
1953.....	14	14	1,100	154	87	5.50	478

1/ Bags of 100 pounds each.

Table 35.--DRY FIELD PEAS: Acreage, yield, production, and value, California, 1944-53

Year	Acreage planted	Acreage harvested	Yield per harvested acre (uncleaned)	Production		Price per 100 pounds	Value of production
				Uncleaned	Cleaned		
	1,000 <u>acres</u>	1,000 <u>acres</u>	<u>Pounds</u>	1,000 <u>bags 1/</u>	1,000 <u>bags 1/</u>	<u>Dollars</u>	1,000 <u>dollars</u>
1944.....	23	19	1,225	233	214	6.00	1,284
1945.....	23	20	1,045	209	192	6.20	1,190
1946.....	18	18	890	160	148	6.40	947
1947.....	27	27	790	213	196	8.70	1,705
1948.....	18	18	960	173	158	6.75	1,066
1949.....	17	17	1,230	209	187	6.45	1,206
1950.....	9	9	1,000	90	80	5.20	416
1951.....	4	4	1,250	50	44	6.20	273
1952.....	5	5	1,680	84	74	6.30	466
1953.....	6	6	1,300	78	69	5.60	386

1/ Bags of 100 pounds each.

Table 36.--DRY FIELD PEAS: Production by commercial classes, 1942-53 1/

(Thousands of 100-pound bags)

State and class 2/	1942	1943	1944		1945	
			Un-cleaned	Cleaned	Un-cleaned	Cleaned
UNITED STATES						
Alaska.....	4,722	7,726	6,458	5,864	3,739	3,439
Canada.....	704	1,210	1,185	1,064	800	723
Other.....	1,976	1,967	1,251	1,092	1,376	1,203
TOTAL.....	7,402	10,903	8,894	8,020	5,915	5,365
MONTANA						
Alaska.....	135	114	116	100	68	60
Canada.....	3	2	1	1	15	13
Other.....	391	556	324	269	277	233
TOTAL.....	529	672	441	370	360	306
IDAHO						
Alaska.....	905	2,180	1,994	1,807	1,093	962
Canada.....	164	308	396	356	204	180
Other.....	706	838	402	350	539	474
TOTAL.....	1,775	3,326	2,792	2,513	1,836	1,616
COLORADO						
Alaska.....	9	8	--	--	--	--
Canada.....	238	191	152	135	197	177
Other.....	9	9	37	33	10	9
TOTAL.....	256	208	189	168	207	186
WASHINGTON						
Alaska.....	3,624	5,002	3,940	3,586	2,396	2,254
Canada.....	275	400	288	262	182	170
Other.....	300	253	158	143	148	138
TOTAL.....	4,199	5,655	4,386	3,991	2,726	2,562
OREGON						
Alaska.....	28	404	397	361	172	153
Canada.....	3	133	152	135	31	27
Other.....	529	258	78	68	149	119
TOTAL.....	560	795	627	564	352	299
CALIFORNIA						
Canada.....	--	--	29	28	22	21
Other.....	--	--	204	186	187	171
TOTAL.....	--	--	233	214	209	192
OTHER STATES 3/						
Alaska.....	21	18	11	10	10	10
Canada.....	21	176	167	147	149	135
Other.....	41	53	48	43	66	59
TOTAL.....	83	247	226	200	225	204

See footnotes page 45.

- 43 -

Table 36.--DRY FIELD PEAS: Production by commercial classes, 1942-53 1/--Continued

State and class 2/	(Thousands of 100-pound bags)							
	1946		1947		1948		1949	
	Un-cleansed	Cleansed	Un-cleansed	Cleansed	Un-cleansed	Cleansed	Un-cleansed	Cleansed
UNITED STATES								
Alaska.....	4,499	4,124	4,024	3,748	2,368	2,170	1,947	1,794
Canada.....	789	716	849	765	472	421	525	471
Other.....	1,391	1,234	1,449	1,282	600	707	740	655
TOTAL.....	6,679	6,074	6,322	5,795	3,640	3,298	3,212	2,920
MONTANA								
Alaska.....	52	46	42	37	21	19	22	20
Canada.....	11	10	--	--	--	--	--	--
Other.....	206	173	134	114	72	61	46	39
TOTAL.....	269	229	176	151	93	80	68	59
IDAHO								
Alaska.....	1,228	1,121	1,192	1,078	472	408	538	478
Canada.....	247	227	208	188	54	46	94	84
Other.....	631	568	580	516	304	268	365	325
TOTAL.....	2,106	1,916	1,980	1,782	830	722	997	887
COLORADO								
Alaska.....	--	--	5	4	4	4	--	--
Canada.....	119	100	175	153	180	160	195	176
Other.....	1	1	9	8	6	5	--	--
TOTAL.....	120	101	189	165	190	169	195	176
WASHINGTON								
Alaska.....	3,169	2,915	2,774	2,620	1,858	1,728	1,378	1,289
Canada.....	163	152	225	206	62	58	73	68
Other.....	146	133	212	192	77	71	54	50
TOTAL.....	3,478	3,200	3,211	3,018	1,997	1,857	1,505	1,407
OREGON								
Alaska.....	50	42	11	9	13	11	9	7
Canada.....	20	18	32	28	36	32	23	20
Other.....	177	149	240	203	185	163	66	56
TOTAL.....	247	209	283	240	234	206	98	83
CALIFORNIA								
Canada.....	35	32	34	31	68	64	81	75
Other.....	125	116	179	165	105	94	128	112
TOTAL.....	160	148	213	196	173	158	209	187
OTHER STATES 3/								
Canada.....	194	177	175	159	72	61	59	48
Other.....	105	94	95	84	51	45	81	73
TOTAL.....	299	271	270	243	123	106	140	121

See footnotes page 45.

Table 36.--DRY FIELD PEAS: Production by commercial classes, 1942-53 1/--Continued

(Thousands of 100-pound bags)

State and class 2/	1950		1951		1952		1953	
	Un-cleansed	Cleansed	Un-cleansed	Cleansed	Un-cleansed	Cleansed	Un-cleansed	Cleansed
UNITED STATES								
Alaska.....	2,028	1,895	2,196	2,042	912	841	1,506	1,368
Canada.....	359	328	530	494	619	570	711	648
Other.....	954	849	1,098	994	1,176	1,052	1,220	1,036
TOTAL.....	3,341	3,072	3,824	3,530	2,707	2,463	3,437	3,052
MONTANA								
Alaska.....	14	13	13	11	10	9	16	13
Other.....	70	60	57	51	60	52	51	41
TOTAL.....	84	73	70	62	70	61	67	54
IDAHO								
Alaska.....	471	431	492	448	429	389	808	727
Canada.....	78	71	70	64	130	118	66	59
Other.....	487	441	556	505	476	425	490	442
TOTAL.....	1,036	943	1,118	1,017	1,035	932	1,364	1,228
COLORADO								
Canada.....	48	43	30	27	80	74	66	61
TOTAL.....	48	43	30	27	80	74	66	61
WASHINGTON								
Alaska.....	1,533	1,442	1,686	1,579	465	437	676	623
Canada.....	130	122	350	335	321	302	442	407
Other.....	140	126	274	253	354	325	378	336
TOTAL.....	1,803	1,690	2,310	2,167	1,140	1,064	1,496	1,366
OREGON								
Alaska.....	10	9	5	4	8	6	6	5
Canada.....	3	2	10	9	11	10	2	2
Other.....	148	127	89	75	73	62	146	80
TOTAL.....	161	138	104	88	92	78	154	87
CALIFORNIA								
Canada.....	37	33	12	10	20	18	19	17
Other.....	53	47	38	34	64	56	59	52
TOTAL.....	90	80	50	44	84	74	78	69
OTHER STATES 3/								
Canada.....	63	57	58	49	57	48	116	102
Other.....	56	48	84	76	149	132	96	85
TOTAL.....	119	105	142	125	206	180	212	187

1/ Not including Austrian winter peas. Cleansed production not estimated before 1944.

2/ Alaska and other smooth green kinds; White Canada, First and Best, and other yellow and white seeded kinds; other, principally wrinkled kinds.

3/ Michigan, Wisconsin, Minnesota, North Dakota, and Wyoming.

GrLg 4-1(57)

END