



AgEcon SEARCH
RESEARCH IN AGRICULTURAL & APPLIED ECONOMICS

The World's Largest Open Access Agricultural & Applied Economics Digital Library

This document is discoverable and free to researchers across the globe due to the work of AgEcon Search.

Help ensure our sustainability.

Give to AgEcon Search

AgEcon Search
<http://ageconsearch.umn.edu>
aesearch@umn.edu

*Papers downloaded from **AgEcon Search** may be used for non-commercial purposes and personal study only. No other use, including posting to another Internet site, is permitted without permission from the copyright owner (not AgEcon Search), or as allowed under the provisions of Fair Use, U.S. Copyright Act, Title 17 U.S.C.*

SB 198 (1956)

USDA STATISTICAL BULLETINS

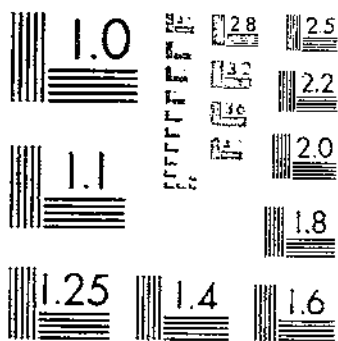
UPDATA

POTATOES - SUMMARY OF 1954 CROP CENSUS WITH COMPARISONS

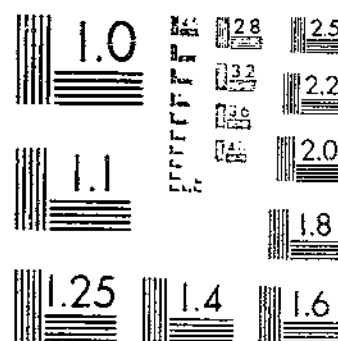
FANEY, J. V.

1 OF 1

START



MICROCOPY RESOLUTION TEST CHART
NAT. BUREAU OF STANDARDS-1963-A



MICROCOPY RESOLUTION TEST CHART
NAT. BUREAU OF STANDARDS-1963-A

POTATOES

Summary of 1954 Crop Census with Comparisons

LARGER POTATO FARMS PRODUCE BULK OF CROP

Potato Acres
Per Farm

Small plot to 0.9
1.0 to 9.9

10.0 to

50 or more

1949 Crop Census
(220 Million Cwt.)

6.2%

11.3%

19.1%

21.1%

42.3%

1954 Crop Census
(204 Million Cwt.)

5.1%

6.6%

15.7%

19.7%

52.9%

Percentage of
crop produced
by acre
groupings

R 630.5 U 53-13

no. 198

Source 1950 and 1955 Census of Agriculture, Bureau of the Census

U S DEPARTMENT OF AGRICULTURE

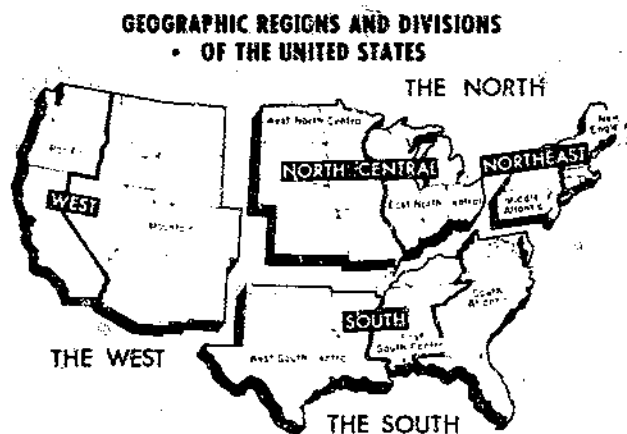
NEG 3500 - 56 (9) AGRICULTURAL MARKETING SERVICE

UNITED STATES DEPARTMENT OF AGRICULTURE
AGRICULTURAL MARKETING SERVICE

Washington, D. C.
November 1956

TABLE OF CONTENTS

	<u>Page</u>		<u>Page</u>
Introduction	1	Census data by geographic divisions and States:	
Summary	1-2	New England	12-18
Summary charts	3-6	Middle Atlantic	19-22
Summary tables	7-8	East North Central	23-28
Rank of States in acreage	9	West North Central	29-36
Rank of States in production	10	South Atlantic	37-45
Census data, total, United States	11	East South Central	46-50
		West South Central	51-55
		Mountain	56-62
		Pacific	63-68
		Index of States	(back cover)



(In this publication, reference is made to specific regions and divisions of the United States. This map, originally sketched by the Bureau of the Census, United States Department of Commerce, is included to aid in reader visualization of geographic areas).

POTATOES - SUMMARY OF 1954 CROP CENSUS WITH COMPARISONS

By James V. Fahey, agricultural economist, Fruit and
Vegetable Division, Agricultural Marketing Service

INTRODUCTION

This publication summarizes information on potatoes obtained from the 1949 and 1954 censuses of agriculture conducted by the Bureau of the Census, United States Department of Commerce. It includes acreage and production of potatoes by size of farm and by county, State and region. Yield per acre was computed from census production divided by census acreage. Acreage and yield per acre on small plots was derived by the Agricultural Marketing Service, United States Department of Agriculture.

Potato production was tabulated on a bushel (60 pounds) basis in the censuses. Production and derived yield were converted to the hundredweight basis for this summary in line with the new program of the United States Department of Agriculture for reporting potato statistics. Some data have been rounded, and adjusted so as to tally to total.

The 1949 and 1954 crop census figures do not coincide exactly with crop estimates published by the Crop Reporting Board, AMS. The Crop Reporting Board uses census data as "benchmarks" and makes certain adjustments on the basis of check data such as rail and truck shipments, information available through marketing officials and programs, and allowances for small plot acreage not obtained in the census.

SUMMARY

Both the 1949 and 1954 crop censuses showed that the bulk of the nation's potato crop is produced in relatively few States and on comparatively few farms within these States. Concentration of production has become more pronounced since 1949. Both censuses showed that high yields are usually obtained on large acreage farms, and low yields on small acreage farms.

The 1954 potato crop census recorded a sharp decline since 1949 in the number of farms growing potatoes and in acreage harvested. The effect of these declines on total production was partly offset by a significant increase in the number of large farms, (50 acres or more) and by higher average yield per acre.

For sale by the Superintendent of Documents, U. S. Government Printing Office, Washington 25, D. C. - Price 40 cents

A total of 1,432,466 farms reported a 1954 harvest of 204.1 million hundredweight of potatoes for home use or sale. Slightly less than 2 percent of these farms - 24,674 farms each growing 10 or more acres of potatoes - produced 88 percent of the crop. The number of farms reporting potatoes declined by 217,440 units or 13 percent since 1949. However, the number of 50-acre-or-more farms increased from 5,078 farms in 1949 to 5,510 farms in 1954, an increase of 8 percent. These larger farms produced 53 percent of the 1954 crop compared to 42 percent in 1949 (see cover page chart and table 1). In 1954, an average large potato farm had 108 acres and harvested 20,000 hundredweight of potatoes - a quantity (less cullage) equivalent to the total annual needs of approximately 17,000 consumers, based on the recent annual per capita rate of slightly more than 100 pounds.

Maine had the most potato farms in both the 50 acre and larger classification and in the 25 to 49.9 acre classification, with 734 and 1,322 farms, respectively. Idaho had the most farms in both the 10 to 24.4 and 5.0 to 9.9 acre classifications with 3,112 and 1,418 farms respectively. Michigan led in the 3.0 to 4.9 acre size with 1,004 farms.

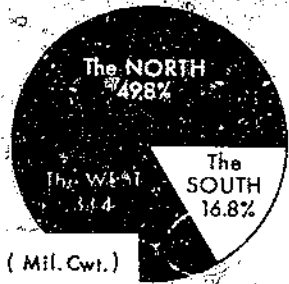
Yield per acre in 1954 on all sizes of potato farms increased over 1949. Washington ranked first in average yield with 248 hundredweight, followed by California with 240 hundredweight, and Arizona with 228 hundredweight. Since 1950, average yield per acre has tended to stabilize.

Maine, Idaho, California, New York, and North Dakota were the five leading States in production in 1954 - in that order. Their combined production harvested on 41 percent of the total acres reported represented 51 percent of the total crop. Maine and New York are predominantly round white-type potato areas; California, long white; Idaho, Russet Burbanks; and North Dakota, round reds. The ranking five counties in production were also located in these five States. Aroostook County, Maine was the leading county with 13 percent of the national production.

Potato production has shown a more pronounced concentration since 1949. Numbers of farms have declined; fewer areas are producing a larger proportion of the crop. Such concentration results from a combination of factors, including climatic advantages, adaptability of a popular consumer variety to the area, intensified competition, technological advances, advantageous alternative farm enterprises, capital requirements for land, buildings and machinery, and cash requirements for annual production costs. A high degree of marketing skill must now accompany production "know-how".

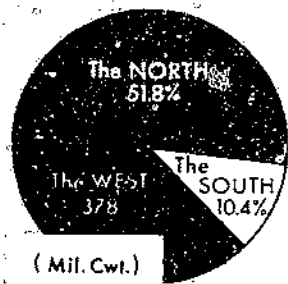
REGIONAL POTATO PRODUCTION

1949 CROP



(Mil. Cwt.)
 North... 109
 West... 74
 South... 37

1954 CROP



(Mil. Cwt.)
 North... 106
 West... 77
 South... 21

Source: 1950 and 1955 Censuses of Agriculture, Bureau of the Census.

U.S. DEPARTMENT OF AGRICULTURE

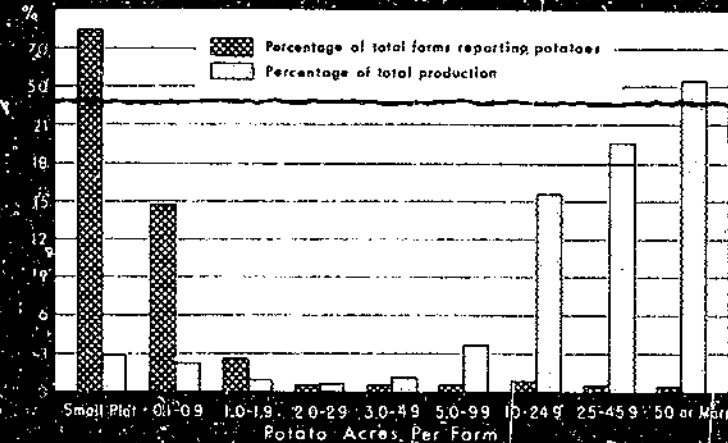
REG. 3501-36 (9) AGRICULTURAL MARKETING SERVICE

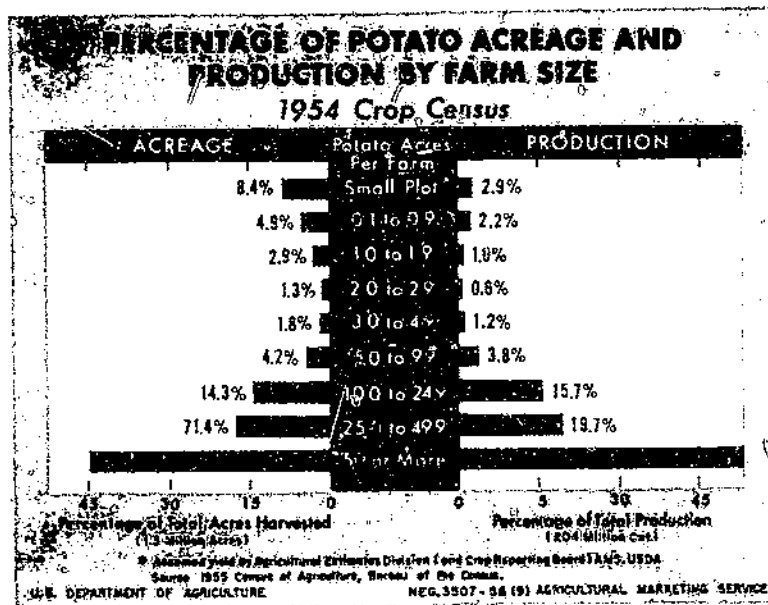
While relatively few farms produce the bulk of the potato crop, many farms grow a few potatoes. Many farmers produce enough potatoes for their own needs for part of the year, and draw on the commercial supply at other times. (see Table 3).

The bulk of the nation's potato crop is grown in the northern tier of States - an area north of the 39th parallel. Florida and California produce all of the winter crop and most of the spring crop. In contrast with the decline in other southern States, Florida potato acreage and production have shown upward trends the past few years. The general decline in production in the South can be attributed to relatively low yield per acre, and more advantageous alternative farm enterprises. (see Table 2).

FEW LARGE POTATO FARMS PRODUCE BULK OF CROP

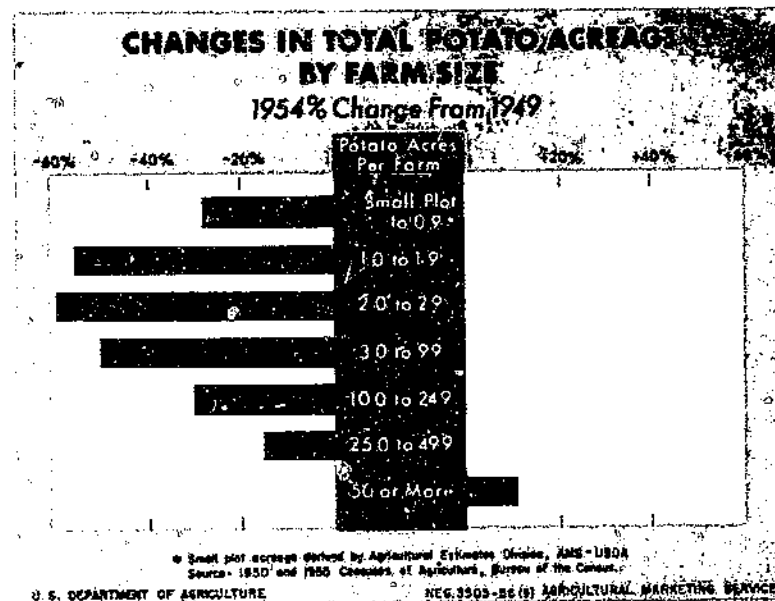
1954 Crop Census





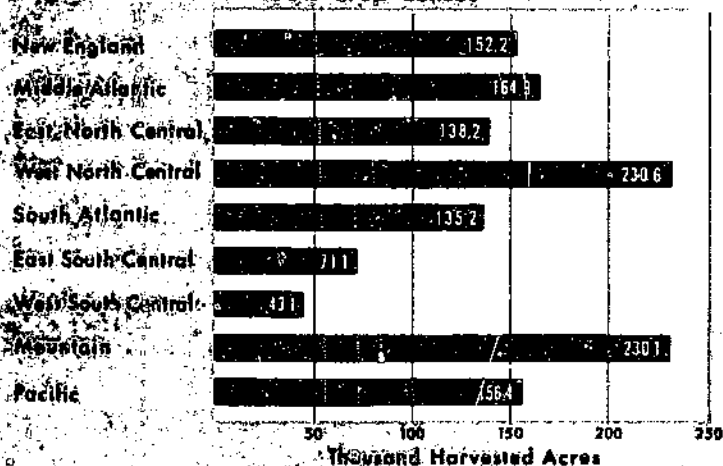
From 1949 to 1954 the total acreage on farms with up to 49.9 acres of potatoes declined 32 percent. An 11 percent increase in acreage on farms with 50 or more acres of potatoes was due to a net gain of 432 farms in this category. The number of farms with 50 or more acres of potatoes increased in 22 States, decreased in 22 States, and was the same in 4 States. For example, Idaho had 216 more farms, but New Jersey had 60 less (see Table 4).

About three-fourths of the potato acreage is on farms having 10 or more acres of potatoes. Farms with less than 10 acres had one-fourth of the acreage, but produced only 12 percent of the crop (see Table 3).



POTATO ACREAGE IN GEOGRAPHIC DIVISIONS

1954 Crop Census



Source: 1955 Census of Agriculture, Bureau of the Census.

U.S. DEPARTMENT OF AGRICULTURE

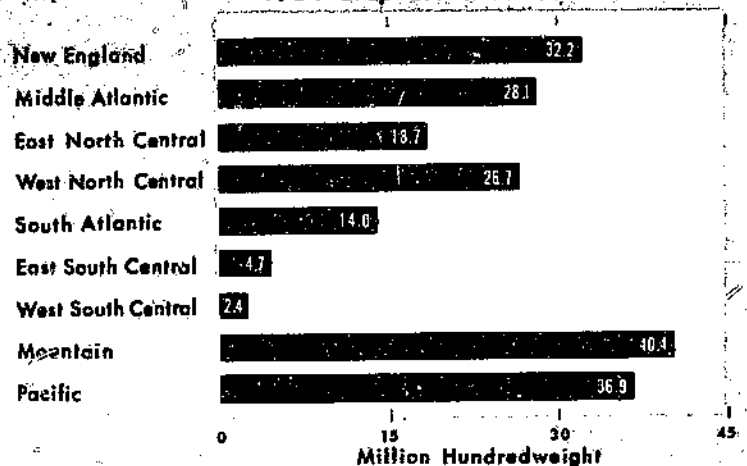
NEG. 3508-86(9) AGRICULTURAL MARKETING SERVICE

In 1954 yield per acre ranged from 65 hundredweight in the East South Central division to 236 hundredweight in the Pacific Division. The New England Division ranked second in yield with 212 hundredweight. Long white type potatoes represent the bulk of production in the Pacific Division; Russet Burbank in the Mountain Division; and round white in the New England Division. (see Table 5).

One-half the nation's 1954 potato acreage was on the land area east of the Mississippi River - one-half to the west. The variation in acreage among divisions is due in great part to climatic conditions and type of soil. Potato plants thrive best in fairly porous soil, and where there are long, sunny days, cool nights and liberal rainfall. (see Table 5).

POTATO PRODUCTION IN GEOGRAPHIC DIVISIONS

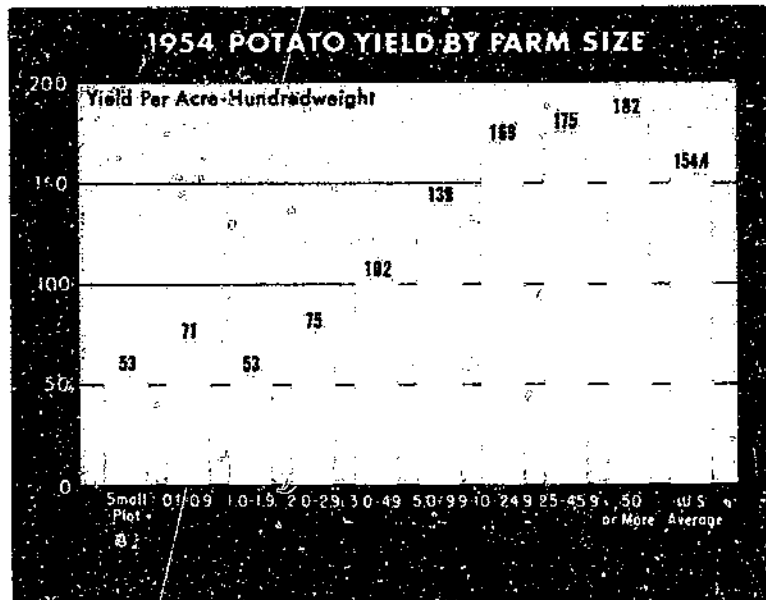
1954 Crop Census



Source: 1955 Census of Agriculture, Bureau of the Census.

U.S. DEPARTMENT OF AGRICULTURE

NEG. 3508-86(9) AGRICULTURAL MARKETING SERVICE



Aroostook County, Maine produced more potatoes than any other county, and more than any State, except Maine. The Maine crop is marketed from September through early June. The bulk of the Kern County, California crop is marketed in June and is the chief source of commercial supply during that month. (see Table 7).

Technological improvements and retirement of marginal acreage contributed to the 12 percent increase in average yield since 1949. Fertilizer, insecticides, fungicides, specialized machinery, and equipment complement and counteract soil and weather influences during the growing and harvesting seasons. If potato production becomes more concentrated, average yield per acre can be expected to increase in future years. (see Table 6).

10 RANKING COUNTIES IN POTATO PRODUCTION

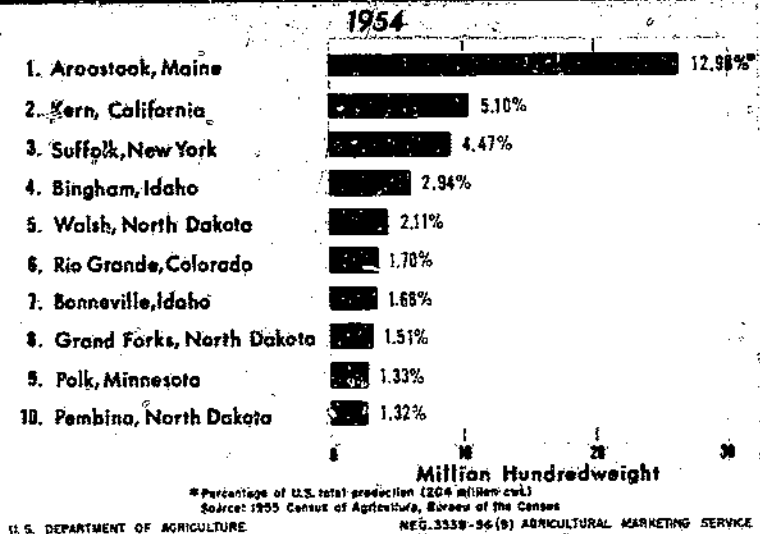


Table 1. - Larger Potato Farms
Produce Bulk of Crop

Potato acres per farm	1949		1954	
	: crop census: : production :	: Percent: : of total :	: crop census: : production :	: Percent: : of total :
	<u>1,000 cwt.</u>	<u>Percent</u>	<u>1,000 cwt.</u>	<u>Percent</u>
Small plot-0.9	13,696	6.2	10,515	5.1
1.0 - 9.9	24,868	11.3	13,438	6.6
10.0 -24.9	42,109	19.2	31,954	15.7
25.0 -49.9	46,363	21.1	40,224	19.7
50 or more	92,881	42.2	107,982	52.9
Total	<u>219,917</u>	<u>100.0</u>	<u>204,113</u>	<u>100.0</u>

Table 3. - Potato Data by Size of
Farm, 1954 Crop Census

Potato acres per farm	Percentage of total		1/ Production
	: Farms : reporting :	: Acres : harvested :	
		<u>Percent</u>	
Small plot	79.3	8.4	2.9
0.1 - 0.9	14.7	4.9	2.2
1.0 - 1.9	2.5	2.9	1.0
2.0 - 2.9	.6	1.3	.7
3.0 - 4.9	.5	1.8	1.2
5.0 - 9.9	.6	4.2	3.7
10.0 - 24.9	.9	14.3	15.7
25.0 - 49.9	.5	17.4	19.7
50 or more	.4	44.8	52.9
Total	<u>100.0</u>	<u>100.0</u>	<u>100.0</u>

1/ 1,432,466 farms; 1,321,738 acres harvested; production, 204,112,597 cwt.

Source: 1950 and 1955 Censuses of Agriculture, Bureau of the Census.

Table 2. - Regional Potato Production,
1949 and 1954 Crop Censuses

Region	1949		1954	
	: Pro- : duction:	: Percent: : of total:	: Pro- : duction:	: Percent: : of total:
	<u>Million cwt.</u>	<u>Percent</u>	<u>Million cwt.</u>	<u>Percent</u>
The North	109	49.8	106	51.8
The South	37	16.8	21	10.4
The West	74	33.4	77	37.8
Total	<u>220</u>	<u>100.0</u>	<u>204</u>	<u>100.0</u>

Table 4. - Changes in Total Acreage
and Production by Farm Size

1954 Crop Percentage Change from 1949

Potato acreage per farm	Percentage	
	: change : in acreage :	: change in : production :
		<u>Percent</u>
Small plot - 0.9	-28	-23
1.0 - 1.9	-55	-52
2.0 - 2.9	-59	-53
3.0 - 9.9	-50	-43
10.0 - 24.9	-30	-24
25.0 - 49.9	-15	-13
50 or more	+11	+16
Average	-18	-7

Table 5. - Potato Acreage and Production in Geographic Divisions, 1954 Crop Census

Geographic division	: Acres harvested	: Percent of total acreage	: Percent of Production	: Percent of total production
	Acres	Percent	1,000 cwt.	Percent
New England	152,213	11.52	32,193	15.77
Middle Atlantic	164,947	12.48	28,125	13.78
East N. Central	138,188	10.45	18,699	9.16
West N. Central	230,565	17.44	26,728	13.09
South Atlantic	135,153	10.23	14,043	6.88
East S. Central	71,086	5.38	4,669	2.29
West S. Central	43,123	3.26	2,434	1.19
Mountain	230,079	17.41	40,369	19.79
Pacific	156,384	11.83	36,853	18.05
United States	1,321,738	100.00	204,113	100.00

Table 7. - Ten Ranking Counties in Potato Production, 1954 crop census

County	: Rank	: Production	: Percentage of total
		1,000 cwt.	Percent
Aroostook, Maine	1	26,498	12.98
Kern, California	2	10,416	5.10
Suffolk, New York	3	9,117	4.47
Bingham, Idaho	4	6,010	2.94
Walsh, North Dakota	5	4,307	2.11
Rio Grande, Colorado	6	3,469	1.70
Bonneville, Idaho	7	3,435	1.68
Grand Forks, North Dakota	8	3,076	1.51
Polk, Minnesota	9	2,710	1.33
Pembina, North Dakota	10	2,687	1.32
Total - 10 Counties	-	71,725	35.14
Total - U. S.	-	204,113	100.00

Source: 1950 and 1955 Censuses of Agriculture, Bureau of the Census.

Table 6. - Potato Yield per Acre by Size of Farm

1949 and 1954 Crop Censuses

Potato acreage per farm	: 1949	: 1954
	Hundredweight	
Small plot	49	53
0.1 - 0.9	61	71
1.0 - 1.9	49	53
2.0 - 2.9	66	75
3.0 - 9.9	112	128
3.0 - 4.9	Not Available	102
5.0 - 9.9	Not Available	139
10.0 - 24.9	155	169
25.0 - 49.9	171	175
50 or more	173	182
U. S. average	137	154

Table 8.-POTATOES: Rank of States in acres harvested and State's acreage as percentage of total, 1954 crop census

State and Rank	Acres harvested	Percentage of total acres harvested	Cumulative percentage	State and Rank	Acres harvested	Percentage of total acres harvested	Cumulative percentage
Ida. - 1	150,442	11.38	11.38	:S. Dak. - 25	10,734	.81	88.94
Me. - 2	130,557	9.88	21.26	:Miss. - 26	10,108	.77	90.71
N. Dak. - 3	96,755	7.32	28.58	:La. - 27	9,905	.75	91.46
Calif. - 4	93,667	7.09	35.67	:Ind. - 28	9,569	.72	92.18
N. Y., - 5	88,684	6.71	42.38	:Mo. - 29	9,270	.70	92.88
Minn. - 6	83,386	6.31	48.69	:Utah - 30	9,241	.70	93.58
Mich. - 7	55,049	4.16	52.85	:Mont. - 31	8,494	.64	94.22
Penn. - 8	54,463	4.12	56.97	:S. C. - 32	8,230	.62	94.84
Colo. - 9	51,245	3.88	60.85	:Iowa - 33	6,460	.49	95.33
Wis. - 10	47,536	3.60	64.45	:Conn. - 34	6,378	.48	95.81
Ore. - 11	37,240	2.82	67.27	:Del. - 35	6,257	.48	96.29
N. C. - 12	33,139	2.51	69.78	:Mass. - 36	6,193	.47	96.76
Fla. - 13	32,449	2.46	72.24	:Ga. - 37	5,957	.45	97.21
Va. - 14	30,660	2.32	74.56	:Md. - 38	5,467	.41	97.62
Ala. - 15	26,707	2.02	76.58	:Wyo. - 39	4,943	.37	97.99
Wash. - 16	25,477	1.93	78.51	:Okla. - 40	4,783	.36	98.35
Ohio - 17	22,152	1.68	80.19	:Ill. - 41	3,882	.29	98.64
N. J. - 18	21,800	1.65	81.84	:R. I. - 42	3,816	.29	98.93
Nebr. - 19	20,781	1.57	83.41	:Ariz. - 43	3,487	.26	99.19
Ky. - 20	17,499	1.32	84.73	:Kan. - 44	3,179	.24	99.43
Texas - 21	17,084	1.29	86.02	:Vt. - 45	2,893	.22	99.65
Tenn. - 22	16,772	1.27	87.29	:N. H. - 46	2,376	.18	99.83
W. Va. - 23	12,994	.98	88.27	:Nev. - 47	1,446	.11	99.84
Ark. - 24	11,351	.86	89.13	:N. Mex. - 48	781	.06	100.00
Continued in adjoining columns				:United States	204,113	100.00	--

1/ Includes acreages on small plots.

Source: 1955 Census of Agriculture, Bureau of the Census.

Table 9.-POTATOES: Rank of States in production and State's production as percentage of total, 1954 crop census

State and Rank	Production 1,000 cwt.	Percentage of total production Percent	Cumulative percentage Percent	State and Rank	Production 1,000 cwt.	Percentage of total production Percent	Cumulative percentage Percent
Me. - 1	28,273	13.85	13.85	Tenn. - 25	1,087	.53	93.76
Ida. - 2	25,736	12.61	26.46	Mass. - 26	1,014	.50	94.26
Calif. - 3	22,469	11.01	37.47	Ky. - 27	955	.47	94.73
N. Y. - 4	16,817	8.24	45.71	W. Va. - 28	912	.45	95.18
N. Dak. - 5	11,576	5.67	51.38	Wyo. - 29	833	.41	95.59
Minn. - 6	10,411	5.10	56.48	Del. - 30	827	.40	95.99
Colo. - 7	10,017	4.91	61.39	S. Dak. - 31	810	.40	96.39
Penn. - 8	8,204	4.02	65.41	Ariz. - 32	796	.39	96.78
Ore. - 9	8,059	3.95	69.36	R. I. - 33	740	.36	97.14
Mich. - 10	6,766	3.31	72.67	S. C. - 34	727	.36	97.50
Wis. - 11	6,595	3.23	75.90	Ark. - 35	613	.30	97.80
Wash. - 12	6,325	3.10	79.00	Mo. - 36	538	.26	98.06
Fla. - 13	5,476	2.68	81.68	Miss. - 37	493	.24	98.30
Ohio - 14	3,364	1.65	83.33	Iowa - 38	465	.23	98.53
N. J. - 15	3,103	1.52	84.85	La. - 39	458	.22	98.75
N. C. - 16	2,923	1.43	86.28	Md. - 40	448	.22	98.97
Nebr. - 17	2,764	1.35	87.63	Vt. - 41	439	.21	99.18
Va. - 18	2,474	1.21	88.84	N.H. - 42	368	.18	99.36
Ala. - 19	2,134	1.05	89.89	Nev. - 43	297	.15	99.51
Ind. - 20	1,747	.86	90.75	Okla. - 44	263	.13	99.64
Utah - 21	1,458	.71	91.46	Ga. - 45	257	.13	99.73
Conn. - 22	1,361	.67	92.13	Ill. - 46	228	.11	99.88
Mont. - 23	1,151	.56	92.69	Kan. - 47	164	.08	99.96
Texas - 24	1,101	.54	93.23	N. Mex. - 48	80	.04	100.00
Continued in adjoining columns				United States 204,113 100.00 --			

Source: 1955 Census of Agriculture. Bureau of Census.

Table 10.-POTATOES, UNITED STATES: Number of farms, acreage, production and yield, with percentage comparisons, 1949 and 1954 crop censuses

Potato acreage per farm	Farms reporting		Acres harvested		Production		Yield per acre	
	1949	1954	1949	1954	1949	1954	1949	1954
Acre(s)	Number		Acres		1,000 cwt.		Cwt.	
Small plot ^{1/}	988,320	1,137,507	2,93,653	2,110,866	4,616	5,926	^{3/} 49	^{3/} 53
0.1 - 0.9	497,895	210,387	148,303	64,514	9,080	4,589	61	71
1.0 - 1.9	80,697	36,307	84,938	38,032	4,174	2,009	49	53
2.0 - 2.9	20,590	8,436	42,840	17,696	2,831	1,327	66	75
3.0 - 9.9	31,615	15,155	158,823	79,069	17,863	10,102	112	128
3.0 - 4.9 ^{4/}	--	6,755	--	23,455	--	2,396	-	102
5.0 - 9.9 ^{4/}	--	8,400	--	55,614	--	7,706	-	139
10.0 - 24.9	17,710	12,359	271,449	188,801	42,109	31,954	155	169
25.0 - 49.9	8,001	6,805	271,446	229,877	46,363	40,224	171	175
50.0 or more	5,078	5,510	536,295	592,883	92,881	107,982	173	182
Total	1,649,906	1,432,466	1,607,747	1,321,738	219,917	204,113	137	154

Potato acreage per farm	Percent of total: farms reporting		Percent of total: acres harvested		Percent of total: Production		Percent of average yield	
	1949	1954	of 1949	of 1949	1949	1954	of 1949	of 1949
Acre(s)	Percent							

Small plot ^{1/}	59.9	79.3	115	5.8	8.4	118	2.1	2.9	128	36	34
0.1 - 0.9	30.2	14.7	42	9.2	4.9	44	4.1	2.2	51	45	46
1.0 - 1.9	4.9	2.5	45	5.3	2.9	45	1.9	1.0	48	36	34
2.0 - 2.9	1.2	.6	41	2.7	1.3	41	1.3	.7	47	48	49
3.0 - 9.9	1.9	1.1	48	9.9	6.0	50	8.1	4.9	57	82	83
3.0 - 4.9	-	.5	-	-	1.8	-	-	1.2	-	-	66
5.0 - 9.9	-	.6	-	-	4.2	-	-	3.7	-	-	90
10.0 - 24.9	1.1	.9	70	16.9	14.3	70	19.2	15.7	76	113	110
25.0 - 49.9	.5	.5	85	16.9	17.4	85	21.1	19.7	87	125	114
50.0 or more	.3	.4	108	33.3	44.8	111	42.2	52.9	116	126	118
Total	100.0	100.0	87	100.0	100.0	82	100.0	100.0	93	100	100

^{1/} Farms reporting less than 20 bushels or 10 bags harvested. Acreage not reported for these small plots.

^{2/} Derived acreage based on assumed yields. ^{3/} Assumed yield by Agricultural Estimates Division (and Crop Reporting Board) AMS, USDA. ^{4/} Data for 1949 not available.

Source: 1950 and 1955 Censuses of Agriculture, Bureau of the Census.

NEW ENGLAND DIVISION

(Maine, New Hampshire, Vermont, Massachusetts, Rhode Island, and Connecticut)

Table 11.-POTATOES: Number of farms, acreage, production, yield, and group percentages, 1954 crop census

Potato acreage per farm	Farms reporting	Percent of total farms reporting	Acres harvested	Percent of total acres harvested	Production 1,000 cwt.	Percent of total production	Yield per acre
<u>Acre(s)</u>	<u>Number</u>	<u>Percent</u>	<u>Acres</u>	<u>Percent</u>	<u>1,000 cwt.</u>	<u>Percent</u>	<u>Cwt.</u>
Small plot ^{1/}	10,484	45.8	^{2/} 754	.5	63	.2	^{3/} 83
0.1 - 0.9	6,189	27.1	2,167	1.4	193	.6	89
1.0 - 1.9	1,271	5.6	1,366	.9	112	.3	82
2.0 - 2.9	498	2.2	1,306	.9	172	.5	131
3.0 - 4.9	351	1.5	1,191	.8	167	.5	140
5.0 - 9.9	463	2.0	3,058	2.0	440	1.4	144
10.0 - 24.9	1,355	5.9	22,367	14.7	4,526	14.1	202
25.0 - 49.9	1,437	6.3	49,596	32.6	10,756	33.4	217
50.0 - or more	820	3.6	70,408	46.2	15,756	49.0	224
Total	22,868	100.0	152,213	100.0	32,194	100.0	212

^{1/} Farms reporting less than 20 bushels or 10 bags harvested. Acreage not reported for these small plots.

^{2/} Derived acreage based on assumed yields.

^{3/} Assumed yield by Agricultural Estimates Division (and Crop Reporting Board) AMS, USDA.

Source: 1955 Census of Agriculture, Bureau of the Census.

Table 12.-POTATOES, MAINE: Number of farms, acreage, production and yield, with percentage comparisons, 1949 and 1954 crop censuses

Potato acreage per farm	Farms reporting		Acres harvested		Production		Yield per acre	
	1949	1954	1949	1954	1949	1954	1949	1954
Acres(s)	Number		Acres		1,000 cwt.		Cwt.	
Small plot 1/	4,484	3,477	2/ 335	2/ 254	30	21	3/ 89	3/ 83
0.1 - 0.9	4,621	1,607	1,512	560	133	47	88	83
1.0 - 1.9	794	372	856	396	86	34	101	85
2.0 - 2.9	346	122	786	259	153	29	194	111
3.0 - 9.9	906	442	4,957	2,481	1,127	334	231	135
3.0 - 4.9 4/	-	154	-	524	-	74	-	142
5.0 - 9.9 4/	-	288	-	1,957	-	260	-	133
10.0 - 24.9	1,668	1,147	28,172	19,316	7,199	3,976	256	206
25.0 - 49.9	1,408	1,322	48,545	45,237	13,631	9,877	281	218
50.0 or more	677	734	58,563	62,054	17,136	13,955	293	225
Total	14,904	9,223	143,726	130,557	39,495	28,273	275	217

Potato acreage per farm	Percent of total farms reporting	Percent of total acres harvested	Percent of total Production	Percent of average yield							
1949	1954	1949	1954	1949	1954						
Small plot 1/	30.1	37.7	78	.2	.2	76	.1	.1	70	32	38
0.1 - 0.9	31.0	17.4	35	1.1	.4	37	.3	.2	35	32	38
1.0 - 1.9	5.3	4.0	47	.6	.3	46	.2	.1	40	37	39
2.0 - 2.9	2.3	1.3	35	.5	.2	33	.4	.1	19	71	51
3.0 - 9.9	6.1	4.8	49	3.5	1.9	50	2.9	1.2	30	84	62
3.0 - 4.9 4/	-	1.7	-	-	.4	-	-	.3	-	-	65
5.0 - 9.9 4/	-	3.1	-	-	1.5	-	-	.9	-	-	61
10.0 - 24.9	11.2	12.4	69	19.6	14.8	69	18.2	14.1	55	93	95
25.0 - 49.9	9.4	14.4	94	33.8	34.6	93	34.5	34.9	72	102	100
50.0 or more	4.6	8.0	108	40.7	47.6	106	43.4	49.3	81	107	104
Total	100.0	100.0	62	100.0	100.0	91	100.0	100.0	72	100	100

----- Percent -----

Small plot 1/	30.1	37.7	78	.2	.2	76	.1	.1	70	32	38
0.1 - 0.9	31.0	17.4	35	1.1	.4	37	.3	.2	35	32	38
1.0 - 1.9	5.3	4.0	47	.6	.3	46	.2	.1	40	37	39
2.0 - 2.9	2.3	1.3	35	.5	.2	33	.4	.1	19	71	51
3.0 - 9.9	6.1	4.8	49	3.5	1.9	50	2.9	1.2	30	84	62
3.0 - 4.9 4/	-	1.7	-	-	.4	-	-	.3	-	-	65
5.0 - 9.9 4/	-	3.1	-	-	1.5	-	-	.9	-	-	61
10.0 - 24.9	11.2	12.4	69	19.6	14.8	69	18.2	14.1	55	93	95
25.0 - 49.9	9.4	14.4	94	33.8	34.6	93	34.5	34.9	72	102	100
50.0 or more	4.6	8.0	108	40.7	47.6	106	43.4	49.3	81	107	104
Total	100.0	100.0	62	100.0	100.0	91	100.0	100.0	72	100	100

1/ Farms reporting less than 20 bushels or 10 bags harvested. Acreage not reported for these small plots.
 2/ Derived acreage based on assumed yields. 3/ Assumed yield by Agricultural Estimates Division (and Crop Reporting Board) AMS, USDA. 4/ Data for 1949 not available.

Source: 1950 and 1955 Censuses of Agriculture, Bureau of the Census.

Table 13.-POTATOES, NEW HAMPSHIRE: Number of farms, acreage, production and yield, with percentage comparisons, 1949 and 1954 crop censuses

Potato acreage per farm	Farms reporting		Acres harvested		Production		Yield per acre	
	1949	1954	1949	1954	1949	1954	1949	1954
Acres(s)	Number		Acres		1,000 cwt.		Cwt.	
Small plot ^{1/}	1,834	1,497	^{2/} 135	^{2/} 110	12	8	^{3/} 90	^{3/} 78
0.1 - 0.9	2,524	1,014	835	330	73	26	87	80
1.0 - 1.9	487	219	527	232	49	16	93	70
2.0 - 2.9	123	52	258	109	31	10	121	88
3.0 - 9.9	129	87	606	370	102	50	169	135
3.0 - 4.9 ^{4/}	-	60	-	192	-	24	-	125
5.0 - 9.9 ^{4/}	-	27	-	178	-	26	-	145
10.0 - 24.9	41	27	643	369	109	70	169	190
25.0 - 49.9	15	11	531	388	114	76	214	195
50.0 or more	8	9	814	468	185	112	228	238
Total	5,161	2,916	4,349	2,376	675	368	155	155

Potato acreage: per farm	Percent of total: farms reporting		Percent of total: as percent: of 1949		Percent of total: as percent: of 1949		Percent of total: as percent: of 1949		Percent of average yield	
	1949	1954	1949	1954	1949	1954	1949	1954	1949	1954
Acres(s)	Percent		Percent		Percent		Percent		Percent	

Small plot ^{1/}	35.5	51.3	82	3.1	4.6	81	1.8	2.3	67	58	50
0.1 - 0.9	48.9	34.8	40	19.2	13.9	40	10.7	7.2	36	56	52
1.0 - 1.9	9.4	7.5	45	12.1	9.8	44	7.3	4.3	33	60	45
2.0 - 2.9	2.4	1.8	42	5.9	4.6	42	4.6	2.6	32	78	57
3.0 - 9.9	2.5	3.0	67	14.0	15.6	61	15.1	13.6	49	109	87
3.0 - 4.9	-	2.1	-	-	8.1	-	-	6.5	-	-	81
5.0 - 9.9	-	.9	-	-	7.5	-	-	7.1	-	-	94
10.0 - 24.9	.8	.9	66	14.8	15.5	57	16.1	19.1	64	109	123
25.0 - 49.9	.3	.4	73	12.2	16.3	73	16.9	20.5	67	138	126
50.0 or more	.2	.3	112	18.7	19.7	57	27.5	30.4	61	147	154
Total	100.0	100.0	56	100.0	100.0	55	100.0	100.0	55	100	100

^{1/} Farms reporting less than 20 bushels or 10 bags harvested. Acreage not reported for these small plots.

^{2/} Derived acreage based on assumed yields. ^{3/} Assumed yield by Agricultural Estimates Division (and Crop Reporting Board) AMS, USDA. ^{4/} Data for 1949 not available.

Source: 1950 and 1955 Censuses of Agriculture, Bureau of the Census.

Table 14.-POTATOES, VERMONT: Number of farms, acreage, production and yield, with percentage comparisons, 1949 and 1954 crop censuses

Potato acreage per farm	Farms reporting		Acres harvested		Production		Yield per acre	
	1949	1954	1949	1954	1949	1954	1949	1954
Acres	Number		Acres		1,000 cwt.		cwt.	
Small plot ^{1/}	1,852	2,560	^{2/} 165	^{2/} 217	14	17	^{3/} 84	^{3/} 78
0.1 - 0.9	4,563	2,111	1,639	718	145	70	89	98
1.0 - 1.9	728	301	779	318	65	22	83	68
2.0 - 2.9	135	52	283	109	25	10	86	88
3.0 - 9.9	116	52	550	238	75	40	136	168
3.0 - 4.9 ^{4/}	-	29	-	93	-	12	-	129
5.0 - 9.9 ^{4/}	-	23	-	145	-	28	-	190
10.0 - 24.9	41	24	954	308	99	56	167	183
25.0 - 49.9	9	11	324	594	62	134	192	226
50.0 or more	11	6	926	391	202	89	218	229
Total	7,455	5,117	5,260	2,893	687	438	130	152

Potato acreage: per farm	Percent of total: farms reporting	1954	Percent of total: as percent: of 1949	1954	Percent of total: as percent: of 1949	1954	Percent of total: as percent: of 1949	1954	Percent of average yield	1954	Percent of average yield	1954
Acres	Percent											

Small plot ^{1/}	24.8	50.0	138	3.1	7.5	132	2.0	3.9	121	65	51
0.1 - 0.9	61.3	41.3	46	31.1	24.8	44	21.2	16.0	48	68	64
1.0 - 1.9	9.8	5.9	41	14.8	11.0	41	9.4	4.9	34	64	45
2.0 - 2.9	1.8	1.0	39	5.4	3.8	39	3.6	2.2	40	66	58
3.0 - 9.9	1.6	1.0	45	10.5	8.2	43	10.9	9.0	53	105	111
3.0 - 4.9	-	.6	-	-	3.2	-	-	2.7	-	-	85
5.0 - 9.9	-	.4	-	-	5.0	-	-	6.3	-	-	125
10.0 - 24.9	.5	.5	59	11.3	10.7	52	14.4	12.9	57	128	120
25.0 - 49.9	.1	.2	122	6.2	20.5	183	9.1	30.7	216	148	149
50.0 or more	.1	.1	55	17.6	13.5	42	29.4	20.4	44	168	151
Total	100.0	100.0	69	100.0	100.0	55	100.0	100.0	64	100	100

^{1/} Farms reporting less than 20 bushels or 10 bags harvested. Acreage not reported for these small plots.
^{2/} Derived acreage based on assumed yields. ^{3/} Assumed yield by Agricultural Estimates Division (and Crop Reporting Board) AMS, USDA. ^{4/} Data for 1949 not available.

Source: 1950 and 1955 Censuses of Agriculture, Bureau of the Census.

Table 15.-POTATOES, MASSACHUSETTS: Number of farms, acreage, production and yield, with percentage comparisons, 1949 and 1954 crop censuses

Potato acreage per farm	Farms reporting		Acres harvested		Production		Yield per acre	
	1949	1954	1949	1954	1949	1954	1949	1954
Acres)	Number		Acres		1,000 cwt.		Cwt.	
Small plot 1/	1,649	1,474	2/ 112	2/ 77	9	8	3/ 81	3/ 106
0.1 - 0.9	1,908	721	663	300	52	26	78	86
1.0 - 1.9	611	193	666	220	55	23	82	106
2.0 - 2.9	184	177	384	593	35	91	90	153
3.0 - 9.9	384	152	1,806	736	220	112	122	152
3.0 - 4.9 4/	-	75	-	267	-	40	-	148
5.0 - 9.9 4/	-	77	-	469	-	72	-	154
10.0 - 24.9	129	88	1,857	1,321	282	216	152	164
25.0 - 49.9	35	32	1,172	1,276	182	232	155	182
50.0 or more	32	14	3,022	1,670	535	306	178	184
Total	4,932	2,851	9,682	6,193	1,370	1,014	142	164

Potato acreage: per farm	Percent of total: 1954		Percent of total: 1954		Percent of total: 1954		Percent of 1954				
	farms reporting: 1949	as percent: 1954	acrea harvested: 1949	as percent: 1954	Production 1949	as percent: 1954	average yield 1949	1954			
Acres)	Percent										
Small plot 1/	33.4	51.7	89	1.2	1.2	69	.7	.8	89	57	65
0.1 - 0.9	38.7	25.3	38	6.8	4.8	45	3.8	2.6	50	55	52
1.0 - 1.9	12.4	6.8	32	6.9	3.6	33	4.0	2.3	42	58	65
2.0 - 2.9	3.7	6.2	96	4.0	9.6	154	2.5	8.9	260	63	93
3.0 - 9.9	7.8	5.3	40	18.6	11.9	41	16.1	11.0	51	86	93
3.0 - 4.9	-	2.6	-	-	4.3	-	-	3.9	-	-	90
5.0 - 9.9	-	2.7	-	-	7.6	-	-	7.1	-	-	94
10.0 - 24.9	2.6	3.1	68	19.2	21.3	71	20.6	21.3	77	107	100
25.0 - 49.9	.7	1.1	91	12.1	20.6	109	13.2	22.9	127	109	111
50.0 or more	.7	.5	44	31.2	27.0	55	39.1	30.2	57	125	112
Total	100.0	100.0	58	100.0	100.0	54	100.0	100.0	74	100	100

1/ Farms reporting less than 20 bushels or 10 bags harvested. Acreage not reported for these small plots.
 2/ Derived acreage based on assumed yields. 3/ Assumed yield by Agricultural Estimates Division (and Crop Reporting Board) AMS, USDA. 4/ Data for 1949 not available.

Source: 1950 and 1955 Censuses of Agriculture, Bureau of the Census.

Table 16.-POTATOES, RHODE ISLAND: Number of farms, acreage, production and yield, with percentage comparisons, 1949 and 1954 crop censuses

Potato acreage per farm	Farms reporting		Acres harvested		Production		Yield per acre	
	1949	1954	1949	1954	1949	1954	1949	1954
Acres	Number		Acres		1,000 cwt.		Cwt.	
Small plot 1/	203	139	2/ 18	2/ 10	1	1	3/ 72	3/ 80
0.1 - 0.9	151	49	52	18	4	1	79	100
1.0 - 1.9	83	20	87	22	6	2	67	109
2.0 - 2.9	23	14	46	30	4	3	68	100
3.0 - 9.9	49	27	232	137	23	19	101	139
3.0 - 4.9 4/	-	12	-	43	-	6	-	140
5.0 - 9.9 4/	-	15	-	94	-	13	-	134
10.0 - 24.9	50	25	794	373	94	70	118	187
25.0 - 49.9	30	15	1,070	518	143	79	134	153
50.0 or more	23	24	2,145	2,708	389	565	181	209
Total	612	313	4,444	3,816	664	740	149	194

Potato acreage: per farm	Percent of total: farms reporting	Percent of total: as percent of 1949	Percent of total: acres harvested	Percent of total: as percent of 1949	Percent of total: Production	Percent of total: as percent of 1949	Percent of total: average yield	Percent of total: as percent of 1949
1949	1954	of 1949	1949	1954	of 1949	1949	1954	of 1949

Acres	Percent		Percent		Percent		Percent		Percent		
Small plot 1/	33.2	44.4	68	.4	.2	56	.2	.2	100	48	41
0.1 - 0.9	24.7	15.6	32	1.2	.5	35	.6	.2	25	53	52
1.0 - 1.9	13.6	6.4	24	1.9	.6	25	.9	.3	33	45	56
2.0 - 2.9	3.7	4.5	61	1.0	.8	65	.5	.4	75	46	52
3.0 - 9.9	8.0	8.6	55	5.2	3.6	59	3.5	2.5	83	68	72
3.0 - 4.9	-	3.8	-	-	1.1	-	-	.8	-	-	72
5.0 - 9.9	-	4.8	-	-	2.5	-	-	1.7	-	-	69
10.0 - 24.9	8.2	8.0	50	17.9	9.8	47	14.1	9.4	74	79	96
25.0 - 49.9	4.9	4.8	50	24.1	13.5	48	21.5	10.7	55	90	79
50.0 or more	3.7	7.7	104	48.3	71.0	126	58.7	76.3	145	121	108
Total	100.0	100.0	51	100.0	100.0	86	100.0	100.0	111	100	100

1/ Farms reporting less than 20 bushels or 10 bags harvested. Acreage not reported for these small plots.
 2/ Derived acreage based on assumed yields. 3/ Assumed yield by Agricultural Estimates Division (and Crop Reporting Board) AHS, USDA. 4/ Data for 1949 not available.

Source: 1950 and 1955 Censuses of Agriculture, Bureau of the Census.

Table 17.-POTATOES, CONNECTICUT: Number of farms, acreage, production and yield, with percentage comparisons, 1949 and 1954 crop censuses

Potato acreage per farm	Farms reporting		Acres harvested		Production		Yield per acre	
	1949	1954	1949	1954	1949	1954	1949	1954
Acres(s)	Number		Acres		1,000 cwt.		Cwt.	
Small plot 1/	1,276	1,337	2/ 99	2/ 86	7	8	3/ 72	3/ 90
0.1 - 0.9	1,596	687	559	241	41	23	74	95
1.0 - 1.9	356	166	381	178	26	15	68	84
2.0 - 2.9	132	81	276	206	28	30	100	146
3.0 - 9.9	181	54	880	287	117	53	133	185
3.0 - 4.9 4/	-	21	-	72	-	11	-	158
5.0 - 9.9 4/	-	33	-	215	-	42	-	196
10.0 - 24.9	78	44	1,180	680	175	137	148	201
25.0 - 49.9	47	46	1,648	1,583	233	358	142	226
50.0 or more	42	33	3,870	3,117	638	737	165	236
Total	3,708	2,448	8,893	6,378	1,265	1,361	142	213

Potato acreage: per farm	Percent of total: farms reporting		Percent of total: as percent: of 1949		Percent of total: as percent: of 1949		Percent of total: Production as percent: of 1949		Percent of average yield of 1949:		
	1949	1954	1949	1954	1949	1954	1949	1954	1949	1954	
Acres(s)	Percent										
Small plot 1/	34.4	54.6	95	1.1	1.4	87	.6	.6	114	51	42
0.1 - 0.9	43.0	28.1	43	6.3	3.8	43	3.2	1.7	56	52	45
1.0 - 1.9	9.6	6.8	47	4.3	2.8	47	2.0	1.1	58	48	39
2.0 - 2.9	3.6	3.3	61	3.1	3.2	75	2.2	2.2	107	70	69
3.0 - 9.9	4.9	2.2	30	9.9	4.5	33	9.3	3.9	45	94	87
3.0 - 4.9	-	.9	-	-	1.1	-	-	.8	-	-	74
5.0 - 9.9	-	1.3	-	-	3.4	-	-	3.1	-	-	92
10.0 - 24.9	2.1	1.8	56	13.3	10.7	58	13.8	10.1	78	104	94
25.0 - 49.9	1.3	1.9	98	18.5	24.8	96	18.4	26.3	154	100	106
50.0 or more	1.1	1.3	79	43.5	48.8	81	50.5	54.1	116	116	111
Total	100.0	100.0	66	100.0	100.0	72	100.0	100.0	108	100	100

1/ Farms reporting less than 20 bushels or 10 bags harvested. Acreage not reported for these small plots.
 2/ Derived acreage based on assumed yields. 3/ Assumed yield by Agricultural Estimates Division (and Crop Reporting Board) AMS, USDA. 4/ Data for 1949 not available.

Source: 1950 and 1955 Censuses of Agriculture, Bureau of the Census.

MIDDLE ATLANTIC DIVISION
(New York, New Jersey, and Pennsylvania)

Table 18.-POTATOES: Number of farms, acreage, production,
yield, and group percentages, 1954 crop census

Pctato acreage per farm	:	:	Percent of total	:	:	Percent of total	:	:	Percent of total	:	Yield per acre	
Acre(s)	:	Farms reporting	Percent reporting	:	Acres harvested	:	Percent harvested	:	1,000 cwt. Production	:	Percent production	Cwt. per acre
Small plot <u>1/</u>		31,953	55.6		<u>2/</u> 2,629		1.6		194		.7	<u>3/</u> 74
0.1 - 0.9		12,141	21.1		4,516		2.7		341		1.2	76
1.0 - 1.9		5,119	8.9		5,309		3.2		366		1.3	69
2.0 - 2.9		1,711	3.0		3,484		2.1		323		1.1	93
3.0 - 4.9		1,668	2.9		5,854		3.5		706		2.5	121
5.0 - 9.9		1,657	2.9		10,659		6.5		1,593		5.7	149
10.0 -24.9		1,476	2.6		21,884		13.3		3,571		12.7	163
25.0 -49.9		847	1.5		28,638		17.4		5,136		18.3	179
50.0 or more		868	1.5		81,974		49.7		15,895		56.5	194
Total		57,440	100.0		164,947		100.0		28,125		100.0	170

1/ Farms reporting less than 20 bushels or 10 bags harvested. Acreage not reported for these small plots.

2/ Derived acreage based on assumed yields.

3/ Assumed yield by Agricultural Estimates Division (and Crop Reporting Board) AMS, USDA.

Source: 1955 Census of Agriculture, Bureau of the Census.

Table 19.-POTATOES, NEW YORK: Number of farms, acreage, production and yield, with percentage comparisons, 1949 and 1954 crop censuses

Potato acreage per farm	Farms reporting		Acres harvested		Production		Yield per acre	
	1949	1954	1949	1954	1949	1954	1949	1954
Acres	Number		Acres		1,000 cwt.		Cwt.	
Small plot 1/	12,243	12,310	2/ 1,175	2/ 958	77	75	3/ 66	3/ 78
0.1 - 0.9	13,519	5,719	5,154	2,175	365	165	71	76
1.0 - 1.9	5,347	2,237	5,703	2,482	358	171	62	69
2.0 - 2.9	1,823	608	3,810	1,258	326	111	86	88
3.0 - 9.9	2,821	1,235	13,594	6,013	1,853	864	136	144
3.0 - 4.9 4/	-	660	-	2,280	-	271	-	119
5.0 - 9.9 4/	-	575	-	3,733	-	593	-	159
10.0 - 24.9	1,085	507	16,689	7,593	2,826	1,377	169	181
25.0 - 49.9	614	399	21,255	13,845	3,331	2,822	157	204
50.0 or more	486	543	45,623	54,360	7,458	11,232	163	206
Total	37,938	23,558	113,003	88,684	16,594	16,817	147	190

Potato acreage per farm	Percent of total: farms reporting		Percent of total: as percent of acres harvested		Percent of total: Production		Percent of total: as percent of average yield				
	1949	1954	of 1949	of 1954	of 1949	of 1954	of 1949	of 1954			
Acres	Percent		Percent		Percent		Percent				
Small plot 1/	32.3	52.2	101	1.0	1.1	82	.5	.4	97	45	41
0.1 - 0.9	35.6	24.3	42	4.6	2.5	42	2.2	1.0	45	48	40
1.0 - 1.9	14.1	9.5	42	5.0	2.8	44	2.2	1.0	48	42	36
2.0 - 2.9	4.8	2.6	33	3.4	1.4	33	1.9	.7	34	59	46
3.0 - 9.9	7.4	5.2	44	12.0	6.8	44	11.2	5.1	47	93	76
3.0 - 4.9	-	2.8	-	-	2.6	-	-	1.6	-	-	63
5.0 - 9.9	-	2.4	-	-	4.2	-	-	3.5	-	-	84
10.0 - 24.9	2.9	2.2	47	14.8	8.6	45	17.0	8.2	49	115	95
25.0 - 49.9	1.6	1.7	65	18.8	15.6	65	20.1	16.8	85	107	107
50.0 or more	1.3	2.3	112	40.4	61.2	119	44.9	66.8	151	111	108
Total	100.0	100.0	62	100.0	100.0	76	100.0	100.0	101	100	100

1/ Farms reporting less than 20 bushels or 10 bags harvested. Acreage not reported for these small plots.
 2/ Derived acreage based on assumed yields. 3/ Assumed yield by Agricultural Estimates Division (and Crop Reporting Board) AMS, USDA. 4/ Data for 1949 not available.

Source: 1950 and 1955 Censuses of Agriculture, Bureau of the Census.

Table 20.-POTATOES, NEW JERSEY: Number of farms, acreage, production and yield, with percentage comparisons, 1949 and 1954 crop censuses

Potato acreage per farm	Farms reporting		Acres harvested		Production		Yield per acre	
	1949	1954	1949	1954	1949	1954	1949	1954
Acres	Number		Acres		1,000 cwt.		Cwt.	
Small plot ^{1/}	646	623	^{2/} 52	^{2/} 47	3	3	^{3/} 54	^{3/} 62
0.1 - 0.9	491	147	185	60	10	4	56	60
1.0 - 1.9	299	107	319	117	18	7	57	62
2.0 - 2.9	147	68	308	139	16	13	52	95
3.0 - 9.9	340	131	1,817	669	174	59	96	88
3.0 - 4.9 ^{4/}	-	67	-	233	-	19	-	80
5.0 - 9.9 ^{4/}	-	64	-	436	-	40	-	91
10.0 - 24.9	287	130	4,724	2,136	539	276	114	129
25.0 - 49.9	311	146	11,214	5,112	1,268	603	113	118
50.0 or more	231	171	19,164	13,520	2,282	2,139	119	158
Total	2,752	1,523	37,783	21,800	4,310	3,104	114	142

Potato acreage: per farm	Percent of total: farms reporting:		Percent of total: acres harvested:		Percent of total: Production:		Percent of average yield:	
1949	1954	of 1949	1949	1954	of 1949	1949	1954	of 1949
Acres	Percent		Percent		Percent		Percent	
Small plot ^{1/}	23.5	40.9	96	.1	.2	90	.1	.1
0.1 - 0.9	17.8	9.7	30	.5	.3	32	.2	.1
1.0 - 1.9	10.9	7.0	36	.9	.5	37	.4	.2
2.0 - 2.9	5.3	4.5	46	.8	.6	45	.4	.4
3.0 - 9.9	12.4	8.6	39	4.8	3.1	37	4.0	1.9
3.0 - 4.9	-	4.4	-	-	1.1	-	-	.6
5.0 - 9.9	-	4.2	-	-	2.0	-	-	1.3
10.0 - 24.9	10.4	8.5	45	12.5	9.8	45	12.5	8.9
25.0 - 49.9	11.3	9.6	47	29.7	23.4	46	29.4	19.4
50.0 or more	8.4	11.2	74	50.7	62.1	71	53.0	69.0
Total	100.0	100.0	55	100.0	100.0	58	100.0	100.0

^{1/} Farms reporting less than 20 bushels or 10 bags harvested. Acreage not reported for these small plots.
^{2/} Derived acreage based on assumed yields. ^{3/} Assumed yield by Agricultural Estimates Division (and Crop Reporting Board) AMS, USDA. ^{4/} Data for 1949 not available.

Source: 1950 and 1955 Censuses of Agriculture, Bureau of the Census.

Table 21.-POTATOES, PENNSYLVANIA: Number of farms, acreage, production and yield, with percentage comparisons, 1949 and 1954 crop censuses

Potato acreage per farm	Farms reporting		Acres harvested		Production		Yield per acre	
	1949	1954	1949	1954	1949	1954	1949	1954
Acre(s)	Number		Acres		1,000 cwt.		Cwt.	
Small plot 1/	13,490	19,020	2/ 1,106	2/ 1,624	73	117	3/ 72	3/ 72
0.1 - 0.9	18,140	6,275	6,461	2,281	444	172	79	76
1.0 - 1.9	6,165	2,775	6,575	2,710	432	187	67	69
2.0 - 2.9	2,052	1,035	4,258	2,087	384	199	68	95
3.0 - 9.9	3,832	1,959	18,827	9,831	2,400	1,376	101	140
3.0 - 4.9 4/	-	941	-	3,341	-	416	-	124
5.0 - 9.9 4/	-	1,018	-	6,490	-	960	-	148
10.0 - 24.9	1,395	839	20,462	12,155	3,233	1,918	118	158
25.0 - 49.9	360	302	11,649	9,681	2,059	1,711	134	176
50.0 or more	170	154	14,526	14,094	2,780	2,524	181	179
Total	45,604	32,359	83,864	54,463	11,805	8,204	149	151

Potato acreage per farm	Percent of total: farms reporting		Percent of total: as percent: of 1949		Percent of total: as percent: of 1949		Percent of total: as percent: of 1949		Percent of average yield		
	1949	1954	1949	1954	1949	1954	1949	1954	1949	1954	
Acre(s)	Percent										
Small plot 1/	29.6	58.8	141	1.3	3.0	147	.6	1.4	160	48	48
0.1 - 0.9	39.8	19.4	35	7.7	4.2	35	3.8	2.1	39	53	50
1.0 - 1.9	13.5	8.6	45	7.8	5.0	41	3.7	2.3	43	45	46
2.0 - 2.9	4.5	3.2	50	5.1	3.8	49	3.3	2.4	52	46	63
3.0 - 9.9	8.4	6.0	51	22.5	18.0	52	20.3	16.8	57	68	93
3.0 - 4.9	-	2.9	-	-	6.1	-	-	5.1	-	-	82
5.0 - 9.9	-	3.1	-	-	11.9	-	-	11.7	-	-	98
10.0 - 24.9	3.0	2.6	60	24.4	22.3	59	27.4	23.4	59	79	105
25.0 - 49.9	.8	.9	84	13.9	17.8	83	17.4	20.8	83	90	117
50.0 or more	.4	.5	91	17.3	25.9	97	23.5	30.8	91	121	119
Total	100.0	100.0	71	100.0	100.0	65	100.0	100.0	69	100	100

1/ Farms reporting less than 20 bushels or 10 bags harvested. Acreage not reported for these small plots.
 2/ Derived acreage based on assumed yields. 3/ Assumed yield by Agricultural Estimates Division (and Crop Reporting Board) AMS, USDA. 4/ Data for 1949 not available.

Source: 1950 and 1955 Censuses of Agriculture, Bureau of the Census.

EAST NORTH CENTRAL DIVISION
(Ohio, Indiana, Illinois, Michigan, and Wisconsin)

Table 22.-POTATOES: Number of farms, acreage, production,
yield, and group percentages, 1954 crop census

Potato acreage per farm	: :	Percent : of total:	: :	Percent : of total:	: :	Percent : of total:	: :	Yield per acre
Acre(s)	: Farms : reporting	: farms : reporting	: Acres : harvested	: acres : harvested	: Production : 1,000 cwt.	: production : Percent	: :	Cwt.
Small plot ^{1/}	125,233	75.8	^{2/} 11,172	8.1	674	3.6		^{3/} 61
0.1 - 0.9	25,244	15.3	8,642	6.3	612	3.3		71
1.0 - 1.9	6,224	3.8	6,683	4.8	393	2.1		59
2.0 - 2.9	1,936	1.2	4,071	2.9	295	1.6		73
3.0 - 4.9	1,745	1.1	6,136	4.4	554	3.0		90
5.0 - 9.9	1,981	1.2	12,940	9.4	1,494	8.0		115
10.0 - 24.9	1,744	1.1	24,967	18.1	3,474	18.6		139
25.0 - 49.9	554	.3	18,454	13.4	2,698	14.4		146
50.0 or more	404	.2	45,123	32.6	8,505	45.4		188
Total	165,065	100.0	138,188	100.0	18,699	100.0		135

^{1/} Farms reporting less than 20 bushels or 10 bags harvested. Acreage not reported for these small plots.

^{2/} Derived acreage based on assumed yields.

^{3/} Assumed yield by Agricultural Estimates Division (and Crop Reporting Board) AMS, USDA.

Source: 1955 Census of Agriculture, Bureau of the Census.

Table 23.-POTATOES, OHIO: Number of farms, acreage, production and yield, with percentage comparisons, 1949 and 1954 crop censuses

Potato acreage per farm	Farms reporting		Acres harvested		Production		Yield per acre	
	1949	1954	1949	1954	1949	1954	1949	1954
Acres(s)	Number		Acres		1,000 cwt.		Cwt.	
Small plot 1/	26,566	29,636	2/ 2,106	2/ 2,176	133	157	3/ 63	3/ 72
0.1 - 0.9	12,984	3,807	3,715	1,168	236	91	64	78
1.0 - 1.9	1,669	740	1,789	804	106	54	59	67
2.0 - 2.9	534	245	1,119	508	85	46	76	90
3.0 - 9.9	704	410	3,339	2,028	352	242	106	119
3.0 - 4.9 4/	-	200	-	688	-	72	-	104
5.0 - 9.9 4/	-	210	-	1,340	-	170	-	127
10.0 - 24.9	288	193	4,296	2,771	587	448	143	161
25.0 - 49.9	103	99	3,424	3,342	530	556	155	166
50.0 or more	91	99	8,407	9,355	1,485	1,770	173	189
Total	42,939	35,229	28,195	22,152	3,514	3,364	125	152

Potato acreage: per farm	Percent of total: farms reporting	1954 : as percent:	Percent of total: acres harvested	1954 : as percent:	Percent of total: Production	1954 : as percent:	Percent of average yield
1949	1954	of 1949	1949	1954	of 1949	1949	1954
Acres(s)	Percent						
Small plot 1/	61.9	84.1	112	7.5	9.8	103	47
0.1 - 0.9	30.2	10.8	29	13.2	5.3	31	51
1.0 - 1.9	3.9	2.1	44	6.4	3.6	45	44
2.0 - 2.9	1.3	.7	46	4.0	2.3	45	59
3.0 - 9.9	1.6	1.2	58	11.8	9.1	61	78
3.0 - 4.9	-	.6	-	-	3.1	-	68
5.0 - 9.9	-	.6	-	-	6.0	-	84
10.0 - 24.9	.7	.5	67	15.2	12.5	64	106
25.0 - 49.9	.2	.3	96	12.1	15.1	98	109
50.0 or more	.2	.3	109	29.8	42.3	111	124
Total	100.0	100.0	82	100.0	100.0	79	100

1/ Farms reporting less than 20 bushels or 10 bags harvested. Acreage not reported for these small plots.
 2/ Derived acreage based on assumed yields. 3/ Assumed yield by Agricultural Estimates Division (and Crop Reporting Board) AMS, USDA. 4/ Data for 1949 not available.

Source: 1950 and 1955 Censuses of Agriculture, Bureau of the Census.

Table 24.-POTATOES, INDIANA: Number of farms, acreage, production and yield, with percentage comparisons, 1949 and 1954 crop censuses

Potato acreage per farm	Farms reporting		Acres harvested		Production		Yield per acre	
	1949	1954	1949	1954	1949	1954	1949	1954
Acres(s)	Number		Acres		1,000 cwt.		Cwt.	
Small plot 1/	24,116	25,963	2/ 2,242	2/ 2,092	121	125	3/ 54	3/ 60
0.1 - 0.9	8,822	2,348	2,275	662	148	48	65	73
1.0 - 1.9	778	280	835	292	40	16	48	53
2.0 - 2.9	177	85	363	174	23	13	65	73
3.0 - 9.9	295	151	1,348	724	117	89	87	123
3.0 - 4.9 4/	-	78	-	263	-	27	-	103
5.0 - 9.9 4/	-	73	-	461	-	62	-	134
10.0 - 24.9	89	66	1,326	918	173	144	131	157
25.0 - 49.9	41	26	1,492	928	211	166	141	178
50.0 or more	19	16	4,044	3,779	760	1,146	188	304
Total	34,337	28,935	13,925	9,569	1,593	1,747	115	183

Potato acreage: per farm	Percent of total: farms reporting		Percent of total: as percent: acres harvested		Percent of total: Production		Percent of total: as percent: average yield	
	1949	1954	of 1949	1949 : 1954	of 1949	1949 : 1954	of 1949	1949 : 1954

Acres(s)	Percent		Percent		Percent		Percent	
Small plot 1/	70.2	89.7	108	16.1	21.9	93	7.6	7.2
0.1 - 0.9	25.7	8.1	27	16.3	6.9	29	9.3	2.7
1.0 - 1.9	2.3	1.0	36	6.0	3.1	35	2.5	.9
2.0 - 2.9	.5	.3	48	2.6	1.8	48	1.5	.7
3.0 - 9.9	.9	.6	51	9.7	7.5	54	7.4	5.0
3.0 - 4.9	-	.3	-	-	2.7	-	-	1.5
5.0 - 9.9	-	.3	-	-	4.8	-	-	3.5
10.0 - 24.9	.3	.2	74	9.5	9.6	69	10.8	8.2
25.0 - 49.9	.1	.1	63	10.7	9.7	62	13.2	9.5
50.0 or more	5/	5/	84	29.1	39.5	93	47.7	65.8
Total	100.0	100.0	84	100.0	100.0	69	100.0	100.0

1/ Farms reporting less than 20 bushels or 10 bags harvested. Acreage not reported for these small plots.
 2/ Derived acreage based on assumed yields. 3/ Assumed yield by Agricultural Estimates Division (and Crop Reporting Board) AMS, USDA. 4/ Data for 1949 not available. 5/ Less than one-tenth of one percent.

Source: 1950 and 1955 Censuses of Agriculture, Bureau of the Census.

Table 25.-POTATOES, ILLINOIS: Number of farms, acreage, production and yield, with percentage comparisons, 1949 and 1954 crop censuses

Potato acreage per farm	Farms reporting		Acres harvested		Production		Yield per acre	
	1949	1954	1949	1954	1949	1954	1949	1954
Acres(s)	Number		Acres		1,000 cwt.		Cwt.	
Small plot 1/	35,781	23,941	2/ 3,097	2/ 2,278	176	109	3/ 57	3/ 48
0.1 - 0.9	12,359	1,473	3,188	468	202	31	63	65
1.0 - 1.9	713	231	745	242	36	10	48	40
2.0 - 2.9	117	59	241	120	15	8	64	70
3.0 - 9.9	85	60	396	275	32	23	80	84
3.0 - 4.9	-	34	-	117	-	9	-	77
5.0 - 9.9 4/	-	26	-	158	-	14	-	80
10.0 - 24.9 4/	16	19	208	224	18	22	88	97
25.0 - 49.9	7	5	205	175	20	11	99	65
50.0 or more	6	2	495	100	67	14	136	144
Total	49,084	25,790	8,575	3,882	566	228	66	59

Potato acreage per farm	Percent of total farms reporting	1954	Percent of total acres harvested	1954	Percent of total production	1954	Percent of average yield	1954
	: 1949	: 1954	: of 1949	: 1949	: 1954	: of 1949	: 1949	: 1954
Acres(s)	Percent							

Small plot 1/	72.9	92.9	67	36.1	58.6	74	31.2	47.8	62	86	81
0.1 - 0.9	25.2	5.7	12	37.2	12.1	15	35.5	13.6	15	95	110
1.0 - 1.9	1.5	.9	32	8.7	6.2	32	6.4	4.4	28	73	68
2.0 - 2.9	.2	.2	50	2.8	3.1	50	2.6	3.5	53	97	119
3.0 - 9.9	.2	.2	71	4.6	7.1	69	5.6	10.1	72	121	142
3.0 - 4.9	-	.1	-	-	3.0	-	-	3.9	-	-	131
5.0 - 9.9	-	.1	-	-	4.1	-	-	6.2	-	-	149
10.0 - 24.9 5/	5/	.1	119	2.4	5.8	108	3.2	9.6	122	133	164
25.0 - 49.9 5/	5/	5/	71	2.4	4.5	85	3.6	4.8	55	150	110
50.0 or more 5/	5/	5/	33	5.8	2.6	20	11.9	6.2	21	206	244
Total	100.0	100.0	53	100.0	100.0	45	100.0	100.0	40	100	100

1/ Farms reporting less than 20 bushels or 10 bags harvested. Acreage not reported for these small plots.
 2/ Derived acreage based on assumed yields. 3/ Assumed yield by Agricultural Estimates Division (and Crop Reporting Board) AMS, USDA. 4/ Data for 1949 not available. 5/ Less than one-tenth of one percent.

Source: 1950 and 1955 Censuses of Agriculture, Bureau of the Census.

Table 26.-POTATOES, MICHIGAN: Number of farms, acreage, production and yield, with percentage comparisons, 1949 and 1954 crop censuses

Potato acreage per farm	Farms reporting		Acres harvested		Production		Yield per acre	
	1949	1954	1949	1954	1949	1954	1949	1954
Acres(s)	Number		Acres		1,000 cwt.		Cwt.	
Small plot ^{1/}	14,385	19,469	^{2/} 1,335	^{2/} 1,827	84	115	^{3/} 63	^{3/} 63
0.1 - 0.9	18,961	7,234	7,060	2,794	476	196	67	70
1.0 - 1.9	7,431	2,920	7,988	3,135	454	191	57	61
2.0 - 2.9	2,431	1,022	5,051	2,118	334	158	66	75
3.0 - 9.9	4,464	2,152	22,298	11,072	2,085	1,172	94	106
3.0 - 4.9 ^{4/}	-	1,004	-	3,477	-	313	-	90
5.0 - 9.9 ^{4/}	-	1,148	-	7,595	-	859	-	113
10.0 - 24.9	1,479	967	21,172	14,085	2,409	1,835	114	130
25.0 - 49.9	331	282	10,795	9,243	1,299	1,252	121	136
50.0 or more	123	125	9,778	10,775	1,383	1,847	142	172
Total	49,605	34,171	85,477	55,049	8,524	6,766	100	123

Potato acreage per farm	Percent of total: farms reporting		Percent of total: as percent: of 1949		Percent of total: as percent: of 1949		Percent of total: as percent: of 1949		Percent of average yield		
	1949	1954	1949	1954	1949	1954	1949	1954	1949	1954	
Acres(s)	Percent										
Small plot ^{1/}	29.0	57.0	135	1.6	3.3	137	1.0	1.7	137	63	51
0.1 - 0.9	38.2	21.2	38	8.3	5.1	40	5.6	2.9	41	67	57
1.0 - 1.9	15.0	8.5	39	9.3	5.7	39	5.3	2.8	42	57	50
2.0 - 2.9	4.9	3.0	42	5.9	3.8	42	3.9	2.3	47	66	61
3.0 - 9.9	9.0	6.3	48	26.1	20.1	50	24.5	17.3	56	94	86
3.0 - 4.9	-	2.9	-	-	6.3	-	-	4.6	-	-	73
5.0 - 9.9	-	3.4	-	-	13.8	-	-	12.7	-	-	92
10.0 - 24.9	3.0	2.8	65	24.8	25.6	67	28.3	27.1	76	114	106
25.0 - 49.9	.7	.8	85	12.6	16.8	86	15.2	18.5	96	121	111
50.0 or more	.2	.4	102	11.4	19.6	110	16.2	27.4	134	142	140
Total	100.0	100.0	69	100.0	100.0	64	100.0	100.0	79	100	100

^{1/} Farms reporting less than 20 bushels or 10 bags harvested. Acreage not reported for these small plots.
^{2/} Derived acreage based on assumed yields. ^{3/} Assumed yield by Agricultural Estimates Division (and Crop Reporting Board) AMS, USDA. ^{4/} Data for 1949 not available.

Source: 1950 and 1955 Censuses of Agriculture, Bureau of the Census.

Table 27.-POTATOES, WISCONSIN: Number of farms, acreage, production and yield, with percentage comparisons, 1949 and 1954 crop censuses

Potato acreage per farm	Farms reporting		Acres harvested		Production		Yield per acre	
	1949	1954	1949	1954	1949	1954	1949	1954
Acres (s)	Number		Acres		1,000 cwt.		Cwt.	
Small plot ^{1/}	18,380	26,224	^{2/} 2,191	^{2/} 2,799	101	168	^{3/} 46	^{3/} 60
0.1 - 0.9	26,845	10,382	9,566	3,550	562	246	59	69
1.0 - 1.9	6,822	2,053	7,256	2,210	321	122	44	55
2.0 - 2.9	1,714	525	3,549	1,151	172	70	48	62
3.0 - 9.9	1,909	953	9,213	4,977	737	523	80	105
3.0 - 4.9 ^{4/}	-	429	-	1,591	-	133	-	83
5.0 - 9.9 ^{4/}	-	524	-	3,386	-	390	-	115
10.0 - 24.9	624	499	8,896	6,969	986	1,027	111	148
25.0 - 49.9	141	142	4,791	4,766	839	713	167	149
50.0 or more	108	162	13,989	21,114	2,662	3,725	190	176
Total	56,543	40,940	59,451	47,536	6,380	6,594	107	139

Potato acreage per farm	Percent of total:		Percent of total:		Percent of total:		Percent of				
	1949	1954	1949	1954	1949	1954	1949	1954			
	as percent:	of	as percent:	of	as percent:	of	average	yield			
	1949	1954	1949	1954	1949	1954	1949	1954			
	32.5	64.1	143	3.7	5.9	128	1.6	2.5	166	43	43
0.1 - 0.9	47.5	25.4	39	16.1	7.5	37	8.8	3.7	44	55	50
1.0 - 1.9	12.1	5.0	30	12.2	4.6	30	5.0	1.9	38	41	40
2.0 - 2.9	3.0	1.3	31	6.0	2.4	32	2.7	1.1	41	45	45
3.0 - 9.9	3.4	2.3	50	15.5	10.4	54	11.5	7.9	71	75	76
3.0 - 4.9	-	1.0	-	-	3.3	-	-	2.0	-	-	60
5.0 - 9.9	-	1.3	-	-	7.1	-	-	5.9	-	-	83
10.0 - 24.9	1.1	1.2	80	15.0	14.7	78	15.5	15.6	104	104	106
25.0 - 49.9	.2	.3	101	8.0	10.0	99	13.1	10.8	85	156	107
50.0 or more	.2	.4	150	23.5	44.5	151	41.8	56.5	140	178	127
Total	100.0	100.0	72	100.0	100.0	80	100.0	100.0	103	100	100

^{1/} Farms reporting less than 20 bushels or 10 bags harvested. Acreage not reported for these small plots.
^{2/} Derived acreage based on assumed yields. ^{3/} Assumed yield by Agricultural Estimates Division (and Crop Reporting Board) AMS, USDA. ^{4/} Data for 1949 not available.

Source: 1950 and 1955 Censuses of Agriculture, Bureau of the Census.

WEST NORTH CENTRAL DIVISION
(Minnesota, Iowa, Missouri, North Dakota, South Dakota, Nebraska, and Kansas)

Table 28.-POTATOES: Number of farms, acreage, production, yield, and group percentages, 1954 crop census

Potato acreage per farm	: :	Percent : of total	: :	Percent : of total	: :	Percent : of total	: :	Yield per acre
Acres(s)	: Farms : reporting	: farms : reporting	: Acres : harvested	: acres : harvested	: Production : 1,000 cwt.	: production : Percent	: :	Cwt.
Small plot ^{1/}	196,586	81.3	^{2/} 19,946	8.7	1,007	3.8	^{3/}	150
0.1 - 0.9	34,782	14.4	11,405	4.9	735	2.8		64
1.0 - 1.9	4,678	1.9	4,947	2.1	235	.9		47
2.0 - 2.9	934	.4	1,916	.8	101	.4		53
3.0 - 4.9	641	.3	2,162	.9	152	.6		70
5.0 - 9.9	706	.3	4,725	2.0	515	1.9		109
10.0 - 24.9	1,285	.5	19,836	8.6	2,597	9.7		131
25.0 - 49.9	905	.4	30,956	13.5	3,724	13.9		121
50.0 or more	1,136	.5	134,672	58.5	17,662	66.0		131
Total	24,653	100.0	230,565	100.0	26,728	100.0		116

^{1/} Farms reporting less than 20 bushels or 10 bags harvested. Acreage not reported for these small plots.

^{2/} Derived acreage based on assumed yields.

^{3/} Assumed yield by Agricultural Estimates Division (and Crop Reporting Board) AMS, USDA.

Source: 1955 Census of Agriculture, Bureau of the Census.

Table 29.-POTATOES, MINNESOTA: Number of farms, acreage, production, and yield, with percentage comparisons, 1949 and 1954 crop censuses

Potato acreage : per farm	Farms reporting :		Acres harvested :		Production :		Yield per acre	
	1949	1954	1949	1954	1949	1954	1949	1954
Acre(s)	Number		Acres		1,000 cwt.		Cwt.	
Small plot <u>1/</u>	21,871	30,702	<u>2/</u> 2,549	<u>2/</u> 3,087	115	185	<u>3/</u> 45	<u>3/</u> 60
0.1 - 0.9	22,707	12,523	8,347	4,298	452	301	54	70
1.0 - 1.9	6,369	2,382	6,723	2,506	271	134	40	53
2.0 - 2.9	1,217	512	2,505	1,054	113	62	45	59
3.0 - 9.9	1,334	671	6,339	3,335	422	315	67	94
3.0 - 4.9 <u>4/</u>		353		1,171		86		74
5.0 - 9.9 <u>4/</u>		318		2,164		229		106
10.0 - 24.9	602	508	9,380	7,929	936	940	100	119
25.0 - 49.9	441	414	15,375	14,160	1,619	1,789	106	127
58.0 or more	387	429	39,570	47,017	4,761	6,684	121	142
Total	54,928	48,141	90,788	83,386	8,689	10,410	96	125

Potato acreage : per farm	Percent of total : farm reporting		Percent of total : acres harvested		Percent of total : Production		Percent of total : 1954 as : percent : average yield				
	1949	1954	of 1949	of 1954	of 1949	of 1954	of 1949	of 1954			
Acre(s)	Percent										
Small plot <u>1/</u>	39.8	63.7	140	2.8	3.7	121	1.3	1.8	161	47	48
0.1 - 0.9	41.4	26.0	55	9.2	5.2	51	5.2	2.9	67	56	56
1.0 - 1.9	11.6	4.9	37	7.4	3.0	37	3.1	1.3	49	42	42
2.0 - 2.9	2.2	1.1	42	2.8	1.3	42	1.3	.6	55	47	47
3.0 - 9.9	2.4	1.4	50	7.0	4.0	53	4.9	3.0	75	70	75
3.0 - 4.9		.7			1.4			.8			59
5.0 - 9.9		.7			2.6			2.2			85
10.0 - 24.9	1.1	1.1	84	10.3	9.5	85	10.8	9.0	101	104	95
25.0 - 49.9	.8	.9	94	16.9	17.0	92	18.6	17.2	110	110	102
50.0 or more	.7	.9	111	43.6	56.3	119	54.8	64.2	140	126	114
Total	100.0	100.0	88	100.0	100.0	92	100.0	100.0	120	100	100

1/ Farms reporting less than 20 bushels or 10 bags harvested. Acreage not reported for these small plots.

2/ Derived acreage based on assumed yields.

3/ Assumed yield by Agricultural Estimates Division and Crop Reporting Board, AMS, USDA.

4/ Data for 1949 not available.

Source: 1950 and 1955 Censuses of Agriculture, Bureau of the Census.

Table 30.-POTATOES, IOWA: Number of farms, acreage, production and yield, with percentage comparisons, 1949 and 1954 crop censuses

Potato acreage per farm	Farms reporting		Acres harvested		Production		Yield per acre	
	1949	1954	1949	1954	1949	1954	1949	1954
Acre(s)	Number		Acres		1,000 cwt.		Cwt.	
Small plot ^{1/}	34,537	32,449	^{2/} 3,947	^{2/} 3,269	178	157	^{3/} 45	^{3/} 48
0.1 - 0.9	15,724	2,761	4,309	901	250	58	58	65
1.0 - 1.9	1,034	329	1,061	343	34	14	32	40
2.0 - 2.9	85	57	175	116	5	6	30	52
3.0 - 9.9	115	55	495	248	29	18	58	73
3.0 - 4.9 ^{4/}	-	32	-	109	-	5	-	50
5.0 - 9.9 ^{4/}	-	23	-	139	-	13	-	91
10.0 - 24.9	25	27	359	374	37	29	101	79
25.0 - 49.9	9	2	285	65	38	4	133	65
50.0 or more	10	8	1,340	1,144	220	179	164	157
Total	51,539	35,688	11,971	6,460	791	465	66	72

Potato acreage: per farm	Percent of total: farms reporting		Percent of total: acres harvested		Percent of total: Production		Percent of average yield	
	1949	1954	of 1949	of 1954	of 1949	of 1954	of 1949	of 1954
Acre(s)							Percent	
Small plot ^{1/}	67.0	90.9	94	33.0	50.5	83	22.4	33.8
0.1 - 0.9	30.5	7.7	18	36.0	14.0	21	31.8	12.5
1.0 - 1.9	2.0	.9	32	8.9	5.3	32	4.3	3.0
2.0 - 2.9	.2	.2	67	1.4	1.8	66	.7	1.3
3.0 - 9.9	.2	.2	48	4.1	3.9	50	3.6	3.9
3.0 - 4.9	-	.1	-	-	1.7	-	-	1.1
5.0 - 9.9	-	.1	-	-	2.2	-	-	2.8
10.0 - 24.9	.1	.1	108	3.0	5.8	104	4.6	6.2
25.0 - 49.9	^{5/}	^{5/}	22	2.4	1.0	23	4.8	.9
50.0 or more	^{5/}	^{5/}	80	11.2	17.7	85	27.8	38.4
Total	100.0	100.0	69	100.0	100.0	54	100.0	100.0

^{1/} Farms reporting less than 20 bushels or 10 bags harvested. Acreage not reported for these small plots.
^{2/} Derived acreage based on assumed yields. ^{3/} Assumed yield by Agricultural Estimates Division (and Crop Reporting Board) AMS, USDA. ^{4/} Data for 1949 not available. ^{5/} Less than one-tenth of one percent.

Source: 1950 and 1955 Censuses of Agriculture, Bureau of the Census.

Table 31.-POTATOES, MISSOURI: Number of farms, acreage, production and yield, with percentage comparisons. 1949 and 1954 crop censuses

Potato acreage per farm	Farms reporting		Acres harvested		Production		Yield per acre	
	1949	1954	1949	1954	1949	1954	1949	1954
Acres	Number		Acres		1,000 cwt.		Cwt.	
Small plot ^{1/}	70,600	74,017	^{2/} 5,630	^{2/} 6,347	368	343	^{3/} 65	^{3/} 54
0.1 - 0.9	33,535	3,978	7,455	1,075	515	71	69	66
1.0 - 1.9	1,018	342	1,065	353	37	18	35	49
2.0 - 2.9	135	50	273	100	13	5	46	54
3.0 - 9.9	95	71	386	330	24	21	62	64
3.0 - 4.9 ^{4/}	-	32	-	110	-	6	-	55
5.0 - 9.9 ^{4/}	-	39	-	220	-	15	-	68
10.0 - 24.9	32	21	479	269	37	18	77	67
25.0 - 49.9	12	8	400	286	29	21	72	71
50.0 or more	15	6	1,326	510	88	41	66	81
Total	105,442	78,493	17,014	9,270	1,111	538	65	58

Potato acreage per farm	Percent of total: 1954		Percent of total: 1954		Percent of total: 1954		Percent of total: 1954	
	farms reporting	as percent of 1949	acres harvested	as percent of 1949	Production	as percent of 1949	average yield	as percent of 1949
	1949	1954	1949	1954	1949	1954	1949	1954
Acres	Percent		Percent		Percent		Percent	
Small plot ^{1/}	67.0	94.3	105	33.1	68.4	113	33.2	63.9
0.1 - 0.9	31.8	5.1	12	43.8	11.6	14	46.4	13.2
1.0 - 1.9	1.0	.5	34	6.3	3.8	33	3.3	3.2
2.0 - 2.9	.1	.1	37	1.6	1.1	58	1.1	1.0
3.0 - 9.9	.1	^{5/}	75	2.3	3.6	85	2.2	3.9
3.0 - 4.9	-	^{5/}	-	-	1.2	-	-	1.1
5.0 - 9.9	-	^{5/}	-	-	2.4	-	-	2.8
10.0 - 24.9	^{5/}	^{5/}	66	2.8	2.9	56	3.3	3.3
25.0 - 49.9	^{5/}	^{5/}	67	2.3	3.1	72	2.6	3.8
50.0 or more	^{5/}	^{5/}	40	7.8	5.5	38	7.9	7.7
Total	100.0	100.0	74	100.0	100.0	54	100.0	100.0

^{1/} Farms reporting less than 20 bushels or 10 bags harvested. Acreage not reported for these small plots.
^{2/} Derived acreage based on assumed yields. ^{3/} Assumed yield by Agricultural Estimates Division (and Crop Reporting Board) AMS, USDA. ^{4/} Data for 1949 not available. ^{5/} Less than one-tenth of one percent.

Source: 1950 and 1955 Censuses of Agriculture, Bureau of the Census.

Table 32.-POTATOES, NORTH DAKOTA: Number of farms, acreage production and yield, with percentage comparisons, 1949 and 1954 crop censuses

Potato acreage per farm	Farms reporting		Acres harvested		Production		Yield per acre	
	1949	1954	1949	1954	1949	1954	1949	1954
Acre(s)	Number		Acres		1,000 cwt.		Cwt.	
Small plot 1/	10,976	16,098	2/ 1,375	2/ 2,246	58	101	3/ 42	3/ 45
0.1 - 0.9	10,219	8,274	3,489	2,773	175	167	50	60
1.0 - 1.9	1,291	750	1,348	813	43	34	32	42
2.0 - 2.9	237	122	483	255	16	12	32	47
3.0 - 9.9	252	180	1,174	879	89	67	76	76
3.0 - 4.9 4/	-	91	-	312	-	26	-	85
5.0 - 9.9 4/	-	89	-	567	-	41	-	73
10.0 - 24.9	231	206	3,822	3,476	438	400	115	115
25.0 - 49.9	346	309	12,463	10,800	1,304	1,097	104	101
50.0 or more	618	596	78,930	75,513	8,798	9,698	112	128
Total	24,170	26,535	103,034	96,755	10,921	11,576	106	120

Potato acreage: per farm	Percent of total: farms reporting		Percent of total: as percent: of 1949		Percent of total: as percent: of 1949		Percent of total: as percent: of 1949		Percent of average yield		
	1949	1954	1949	1954	1949	1954	1949	1954	1949	1954	
Acre(s)	Percent		Percent		Percent		Percent		Percent		
Small plot 1/	45.4	60.7	147	1.3	2.3	163	.5	.9	174	40	37
0.1 - 0.9	42.3	31.2	81	3.4	2.9	79	1.6	1.4	95	47	50
1.0 - 1.9	5.3	2.8	58	1.3	.8	60	.4	.3	79	30	35
2.0 - 2.9	1.0	1.5	51	.5	.3	53	.1	.1	75	30	39
3.0 - 9.9	1.0	.6	71	1.1	.9	75	.8	.6	75	72	63
3.0 - 4.9	-	.3	-	-	.3	-	-	.2	-	-	71
5.0 - 9.9	-	.3	-	-	.6	-	-	.4	-	-	61
10.0 - 24.9	1.0	.3	89	3.7	3.6	91	4.0	3.5	91	102	96
25.0 - 49.9	1.4	1.2	89	12.1	11.2	87	12.0	9.5	84	98	84
50.0 or more	2.6	2.2	96	76.6	72.0	96	80.6	83.7	110	106	107
Total	100.0	100.0	110	100.0	100.0	94	100.0	100.0	106	100	100

1/ Farms reporting less than 20 bushels or 10 bags harvested. Acreage not reported for these small plots.
 2/ Derived acreage based on assumed yields. 3/ Assumed yield by Agricultural Estimates Division (and Crop Reporting Board) ACS, USDA. 4/ Data for 1949 not available.

Source: 1950 and 1955 Censuses of Agriculture, Bureau of the Census.

Table 33.-POTATOES, SOUTH DAKOTA: Number of farms, acreage, production and yield, with percentage comparisons, 1949 and 1954 crop censuses

Potato acreage per farm	Farms reporting		Acres harvested		Production		Yield per acre	
	1949	1954	1949	1954	1949	1954	1949	1954
Acres	Number		Acres		1,000 cwt.		Cwt.	
Small plot ^{1/}	7,860	10,512	^{2/} 1,091	^{2/} 1,382	36	58	^{3/} 33	^{3/} 42
0.1 - 0.9	3,117	3,108	1,090	1,052	49	61	44	58
1.0 - 1.9	805	454	846	488	22	19	26	38
2.0 - 2.9	191	114	390	232	13	10	34	44
3.0 - 9.9	195	108	872	495	26	27	29	54
3.0 - 4.9 ^{4/}	-	62	-	217	-	10	-	47
5.0 - 9.9 ^{4/}	-	46	-	282	-	17	-	62
10.0 - 24.9	67	59	1,006	788	44	67	43	86
25.0 - 49.9	56	29	1,824	1,010	91	91	50	90
50.0 or more	48	32	5,713	5,283	382	477	67	90
Total	12,339	14,419	12,832	10,734	663	810	52	75

Potato acreage per farm	Percent of total: farms reporting		Percent of total: acres harvested		Percent of total: Production		Percent of average yield				
	1949	1954	1949	1954	1949	1954	1949	1954			
Acres	Percent		Percent		Percent		Percent				
Small plot ^{1/}	63.7	73.0	134	8.5	12.9	127	5.4	7.2	161	63	56
0.1 - 0.9	25.3	21.6	100	8.5	9.8	97	7.3	7.5	124	85	77
1.0 - 1.9	6.5	3.1	56	6.6	4.5	58	3.4	2.3	86	50	51
2.0 - 2.9	1.5	.8	60	3.1	2.2	59	2.0	1.3	77	65	59
3.0 - 9.9	1.6	.7	55	6.8	4.6	57	3.9	3.4	104	56	72
3.0 - 4.9	-	.4	-	-	2.0	-	-	1.3	-	-	63
5.0 - 9.9	-	.3	-	-	2.6	-	-	2.1	-	-	83
10.0 - 24.9	.5	.4	88	7.8	7.3	78	6.6	8.3	152	83	115
25.0 - 49.9	.5	.2	52	14.2	9.4	55	13.8	11.3	100	96	120
50.0 or more	.4	.2	67	44.5	49.3	92	57.6	58.7	125	129	120
Total	100.0	100.0	117	100.0	100.0	84	100.0	100.0	122	100	100

^{1/} Farms reporting less than 20 bushels or 10 bags harvested. Acreage not reported for these small plots.
^{2/} Derived acreage based on assumed yields. ^{3/} Assumed yield by Agricultural Estimates Division (and Crop Reporting Board) AMS, USDA. ^{4/} Data for 1949 not available.

Source: 1950 and 1955 Censuses of Agriculture, Bureau of the Census.

Table 34.-POTATOES, NEBRASKA: Number of farms, acreage, production and yield, with percentage comparisons, 1949 and 1954 crop censuses

Potato acreage per farm	Farms reporting		Acres harvested		Production		Yield per acre	
	1949	1954	1949	1954	1949	1954	1949	1954
Acres	Number		Acres		1,000 cwt.		Cwt.	
Small plot 1/	14,056	14,629	2/ 1,598	2/ 1,703	67	77	3/ 42	3/ 45
0.1 - 0.9	7,029	2,518	2,131	850	105	48	49	64
1.0 - 1.9	539	303	566	316	20	13	35	40
2.0 - 2.9	107	58	220	116	9	5	41	41
3.0 - 9.9	389	244	2,384	1,519	313	211	131	139
3.0 - 4.9 4/	-	59	-	204	-	15	-	74
5.0 - 9.9 4/	-	185	-	1,315	-	196	-	149
10.0 - 24.9	811	458	12,594	6,924	1,925	1,137	153	164
25.0 - 49.9	308	139	10,037	4,496	1,478	713	147	158
50.0 or more	84	60	7,577	4,857	935	561	124	115
Total	23,323	18,409	37,107	20,781	4,852	2,765	131	133

Potato acreage: per farm	Percent of total: farms reporting	1954 as percent of 1949	Percent of total: acres harvested	1954 as percent of 1949	Percent of total: Production	1954 as percent of 1949	Percent of average yield	1954 of 1949
Acres	Percent							
Small plot 1/	60.3	79.5	104	4.3	8.2	107	1.4	2.8
0.1 - 0.9	30.1	13.7	36	5.8	4.1	40	2.2	1.7
1.0 - 1.9	2.3	1.6	56	1.5	1.5	56	.4	.5
2.0 - 2.9	.4	.3	54	.6	.6	53	.2	.2
3.0 - 9.9	1.7	1.3	63	6.4	7.3	64	6.4	7.6
3.0 - 4.9	-	.3	-	-	1.0	-	-	.5
5.0 - 9.9	-	1.0	-	-	6.3	-	-	7.1
10.0 - 24.9	3.5	2.5	56	33.9	33.3	55	39.6	41.1
25.0 - 49.9	1.3	.8	45	27.1	21.6	45	30.5	25.8
50.0 or more	.4	.3	71	20.4	23.4	64	19.3	20.3
Total	100.0	100.0	79	100.0	100.0	56	100.0	100.0

1/ Farms reporting less than 20 bushels or 10 bags harvested. Acreage not reported for these small plots.
 2/ Derived acreage based on assumed yields. 3/ Assumed yield by Agricultural Estimates Division (and Crop Reporting Board) AMS, USDA. 4/ Data for 1949 not available.

Source: 1950 and 1955 Censuses of Agriculture, Bureau of the Census.

Table 35.-POTATOES, KANSAS: Number of farms, acreage, production and yield, with percentage comparisons, 1949 and 1954 crop censuses

Potato acreage : per farm	Farms reporting		Acres harvested		Production		Yield per acre	
	1949	1954	1949	1954	1949	1954	1949	1954
Acres(s)	Number		Acres		1,000 cwt.		Cwt.	
Small plot 1/	23,015	18,176	2/ 2,741	2/ 1,912	107	86	3/ 39	3/ 45
0.1 - 0.9	8,426	1,620	2,104	456	124	30	59	66
1.0 - 1.9	318	118	331	128	10	4	31	33
2.0 - 2.9	40	21	82	43	2	1	21	28
3.0 - 9.9	35	18	170	77	9	5	52	65
3.0 - 4.9 4/	-	12	-	39	-	3	-	77
5.0 - 9.9 4/	-	6	-	38	-	2	-	63
10.0 - 24.9	14	6	185	76	15	5	81	63
25.0 - 49.9	18	4	601	139	50	11	83	77
50.0 or more	13	5	1,372	348	143	22	105	62
Total	31,879	19,968	7,586	3,179	460	164	61	52

Potato acreage: per farm	Percent of total: farms reporting		Percent of total: as percent: of 1949		Percent of total: as percent: of 1949		Percent of total: as percent: of 1949		Percent of average yield	
	1949	1954	1949	1954	1949	1954	1949	1954	1949	1954
Acres(s)	Percent		Percent		Percent		Percent		Percent	
Small plot 1/	72.2	91.1	79	36.1	60.1	70	23.2	52.5	80	64
0.1 - 0.9	26.4	2.1	19	27.7	14.4	22	26.9	18.3	24	97
1.0 - 1.9	1.0	.6	37	4.4	4.0	39	2.2	2.4	40	51
2.0 - 2.9	.2	.1	52	1.1	1.4	52	.4	.6	50	34
3.0 - 9.9	.1	.1	51	2.3	2.4	45	2.0	3.0	56	85
3.0 - 4.9	-	.1	-	-	1.2	-	-	1.8	-	-
5.0 - 9.9	-	5/	-	-	1.2	-	-	1.2	-	-
10.0 - 24.9	5/	5/	43	2.4	2.4	41	3.3	3.1	33	133
25.0 - 49.9	.1	5/	22	7.9	4.4	23	10.8	6.7	22	136
50.0 or more	5/	5/	38	18.1	10.9	25	31.2	13.4	15	172
Total	100.0	100.0	63	100.0	100.0	42	100.0	100.0	36	100

1/ Farms reporting less than 20 bushels or 10 bags harvested. Acreage not reported for these small plots.
 2/ Derived acreage based on assumed yields. 3/ Assumed yield by Agricultural Estimates Division (and Crop Reporting Board) AMS, USDA. 4/ Data for 1949 not available. 5/ Less than one-tenth of one percent.

Source: 1950 and 1955 Censuses of Agriculture, Bureau of the Census.

SOUTH ATLANTIC DIVISION

(Delaware, Maryland, Virginia, West Virginia, North Carolina, South Carolina, Georgia, and Florida)

Table 36.-POTATOES: Number of farms, acreage, production, yield, and group percentages, 1954 crop census

Potato acreage per farm	Farms :reporting	Percent : of total : farms : reporting	Acres : harvested	Percent : of total : acres : harvested	Production : 1,000 cwt.	Percent : of : total : production	Yield : per : acre
<u>Acre(s)</u>	<u>Number</u>	<u>Percent</u>	<u>Acres</u>	<u>Percent</u>	<u>1,000 cwt.</u>	<u>Percent</u>	<u>Cwt.</u>
Small plot ^{1/}	292,172	81.3	^{2/} 26,059	19.3	1,469	10.6	^{3/} 56
0.1 - 0.9	55,903	15.6	16,299	12.1	1,186	8.4	73
1.0 - 1.9	7,566	2.1	7,874	5.8	371	2.6	47
2.0 - 2.9	1,189	.3	2,416	1.8	142	1.0	59
3.0 - 4.9	645	.2	2,187	1.6	177	1.3	81
5.0 - 9.9	488	.1	3,054	2.3	307	2.2	101
10.0 - 24.9	633	.2	9,512	7.0	1,058	7.5	111
25.0 - 49.9	347	.1	12,382	9.2	1,394	9.9	113
50.0 or more	453	.1	55,370	40.9	7,940	56.5	143
Total	359,396	100.0	135,153	100.0	14,044	100.0	104

^{1/} Farms reporting less than 20 bushels or 10 bags harvested. Acreage not reported for these small plots.

^{2/} Derived acreage based on assumed yields.

^{3/} Assumed yield by Agricultural Estimates Division (and Crop Reporting Board) AMS, USDA.

Source: 1955 Census of Agriculture, Bureau of the Census.

Table 37.-POTATOES, DELAWARE: Number of farms, acreage, production and yield, with percentage comparisons, 1949 and 1954 crop censuses

Potato acreage : per farm	Farms reporting		Acres harvested		Production		Yield per acre	
	1949	1954	1949	1954	1949	1954	1949	1954
Acre(s)	Number		Acres		1,000 cwt.		Cwt.	
Small plot 1/	1,119	1,249	2/ 102	2/ 134	6	6	3/ 60	3/ 48
0.1 - 0.9	918	205	312	74	19	4	73	57
1.0 - 1.9	186	48	197	53	10	4	49	68
2.0 - 2.9	56	5	116	10	7	1	54	60
3.0 - 9.9	44	18	190	74	13	8	69	108
3.0 - 4.9 4/	-	11	-	36	-	4	-	100
5.0 - 9.9 4/	-	7	-	38	-	4	-	95
10.0 - 24.9	9	5	118	74	8	8	68	106
25.0 - 49.9	0	9	0	343	0	44	0	128
50.0 or more	10	46	1,060	5,495	121	752	116	137
Total	2,342	1,585	2,095	6,257	184	827	88	132

Potato acreage:	Percent of total:		Percent of total:		Percent of total:		Percent of	
per	farms reporting		acres harvested		Production		average yield	
farm	1949	1954	of 1949	of 1954	of 1949	of 1954	of 1949	of 1954
----- Percent -----								

Acre(s)	Percent of total:		Percent of total:		Percent of total:		Percent of				
Small plot 1/	farms reporting		acres harvested		Production		average yield				
	1949	1954	of 1949	of 1954	of 1949	of 1954	of 1949	of 1954			
Small plot 1/	47.8	78.8	112	4.9	2.1	131	3.3	.8	100	68	36
0.1 - 0.9	39.2	13.0	22	14.9	1.2	24	10.1	.5	21	83	43
1.0 - 1.9	7.9	3.0	26	9.4	.8	27	5.2	.5	40	56	52
2.0 - 2.9	2.4	.3	9	5.5	.2	9	3.6	.1	14	61	45
3.0 - 9.9	1.9	1.1	41	9.1	1.2	39	7.2	1.0	62	78	82
3.0 - 4.9	-	.7	-	-	.6	-	-	.5	-	-	76
5.0 - 9.9	-	.4	-	-	.6	-	-	.5	-	-	72
10.0 - 24.9	.4	.3	56	5.6	1.2	63	4.2	1.0	100	77	80
25.0 - 49.9	0	.6	5/	0	5.5	5/	0	5.3	5/	0	97
50.0 or more	.4	2.9	460	50.6	87.8	518	66.4	90.8	621	132	104
Total	100.0	100.0	68	100.0	100.0	299	100.0	100.0	449	100	100

1/ Farms reporting less than 20 bushels or 10 bags harvested. Acreage not reported for these small plots.
 2/ Derived acreage based on assumed yields. 3/ Assumed yield by Agricultural Estimates Division (and Crop Reporting Board) AMS, USDA. 4/ Data for 1949 not available. 5/ Infinity

Source: 1950 and 1955 Censuses of Agriculture, Bureau of the Census.

Table 38.-POTATOES, MARYLAND: Number of farms, acreage, production and yield, with percentage comparisons, 1949 and 1954 crop censuses

Potato acreage per farm	Farms reporting		Acres harvested		Production		Yield per acre	
	1949	1954	1949	1954	1949	1954	1949	1954
Acres(s)	Number		Acres		1,000 cwt.		Cwt.	
Small plot ^{1/}	5,195	7,710	^{2/} 496	^{2/} 887	30	46	^{3/} 60	^{3/} 52
0.1 - 0.9	5,444	1,841	1,669	620	107	40	65	65
1.0 - 1.9	1,629	435	1,319	468	77	23	58	49
2.0 - 2.9	235	63	493	127	26	6	52	47
3.0 - 9.9	258	73	1,286	354	100	30	77	85
3.0 - 4.9 ^{4/}	-	40	-	134	-	9	-	67
5.0 - 9.9 ^{4/}	-	33	-	220	-	21	-	95
10.0 - 24.9	111	38	1,694	578	181	50	107	87
25.0 - 49.9	52	30	1,694	975	181	79	107	81
50.0 or more	17	17	1,104	1,458	101	174	91	119
Total	12,941	10,207	9,755	5,467	803	448	82	82

Potato acreage per farm	:Percent of total: 1954		:Percent of total: 1954		:Percent of total: 1954		:Percent of				
	: farms reporting	: as percent:	: acres harvested	: as percent:	: Production	: as percent:	: average yield				
	: 1949	: 1954	: of 1949	: 1949	: of 1949	: 1949	: 1954	: of 1949	: 1949	: 1954	
Acres (s)	----- Percent -----										
Small plot ^{1/}	40.1	75.5	148	5.1	16.2	179	3.7	10.3	153	73	63
0.1 - 0.9	42.1	18.0	34	17.1	11.3	37	13.4	9.0	37	79	79
1.0 - 1.9	12.6	4.3	27	13.5	8.6	35	9.6	5.1	30	71	60
2.0 - 2.9	1.8	.6	27	5.0	2.3	26	3.2	1.3	23	63	57
3.0 - 9.9	2.0	.7	28	13.2	6.5	28	12.4	6.7	30	94	104
3.0 - 4.9	-	.4	-	-	2.5	-	-	2.0	-	-	82
5.0 - 9.9	-	.3	-	-	4.0	-	-	4.7	-	-	116
10.0 - 24.9	.9	.4	34	17.4	10.6	34	22.6	11.2	28	130	106
25.0 - 49.9	.4	.3	58	17.4	17.8	58	22.6	17.7	44	130	99
50.0 or more	.1	.2	100	11.3	26.7	132	12.5	38.7	172	111	145
Total	100.0	100.0	79	100.0	100.0	56	100.0	100.0	56	100	100

^{1/} Farms reporting less than 20 bushels or 10 bags harvested. Acreage not reported for these small plots.

^{2/} Derived acreage based on assumed yields. ^{3/} Assumed yield by Agricultural Estimates Division (and Crop Reporting Board) AMS, USDA. ^{4/} Data for 1949 not available.

Source: 1950 and 1955 Censuses of Agriculture, Bureau of the Census.

Table 39.-POTATOES, VIRGINIA: Number of farms, acreage, production and yield, with percentage comparisons, 1949 and 1954 crop censuses

Potato acreage per farm	Farms reporting		Acres harvested		Production		Yield per acre	
	1949	1954	1949	1954	1949	1954	1949	1954
Acres(s)	Number		Acres		1,000 cwt.		Cwt.	
Small plot ^{1/}	51,855	71,656	^{2/} 4,166	^{2/} 6,154	251	399	^{3/} 60	^{3/} 65
0.1 - 0.9	28,549	13,189	7,321	3,402	470	262	64	77
1.0 - 1.9	2,220	1,145	2,339	1,187	100	49	43	41
2.0 - 2.9	367	130	780	268	59	13	76	49
3.0 - 9.9	667	189	3,615	994	353	71	98	71
3.0 - 4.9 ^{4/}	-	74	-	253	-	14	-	57
5.0 - 9.9 ^{4/}	-	115	-	741	-	57	-	76
10.0 - 24.9	495	244	7,454	3,721	875	301	118	81
25.0 - 49.9	208	142	7,000	5,379	824	454	118	85
50.0 or more	84	111	8,780	9,555	1,044	925	119	97
Total	84,445	86,806	41,455	30,660	3,976	2,474	96	81

Potato acreage per farm	Percent of total:		Percent of total:		Percent of total:		Percent of total:							
	1949	1954	1949	1954	1949	1954	1949	1954						
Acres(s)	: farms reporting		: as percent:		: acres harvested		: as percent:		: production		: as percent:		: average yield	
	1949	1954	of 1949	of 1949	of 1949	of 1949	of 1949	of 1949	of 1949	of 1949	of 1949	of 1949	of 1949	of 1954
Small plot ^{1/}	61.5	82.6	138	10.0	20.1	148	6.3	16.1	159	62	80			
0.1 - 0.9	33.8	15.2	46	17.7	11.1	46	11.8	10.6	56	67	95			
1.0 - 1.9	2.6	1.3	52	5.6	3.9	51	2.5	2.0	49	45	51			
2.0 - 2.9	.4	.1	35	1.9	.9	34	1.5	.5	22	79	60			
3.0 - 9.9	.8	.2	28	8.7	3.2	27	8.9	2.9	20	102	88			
3.0 - 4.9	-	.1	-	-	.8	-	-	.6	-	-	70			
5.0 - 9.9	-	.1	-	-	2.4	-	-	2.3	-	-	94			
10.0 - 24.9	.6	.3	49	18.0	12.1	50	22.0	12.2	34	123	100			
25.0 - 49.9	.2	.2	68	16.9	17.5	77	20.8	18.4	55	123	105			
50.0 or more	.1	.1	132	21.2	31.2	109	26.2	37.3	89	124	120			
Total	100.0	100.0	103	100.0	100.0	74	100.0	100.0	62	100	100			

^{1/} Farms reporting less than 20 bushels or 10 bags harvested. Acreage not reported for these small plots.
^{2/} Derived acreage based on assumed yields. ^{3/} Assumed yield by Agricultural Estimates Division (and Crop Reporting Board) AMS, USDA. ^{4/} Data for 1949 not available.

Source: 1950 and 1955 Censuses of Agriculture, Bureau of the Census.

Table 40.-POTATOES, WEST VIRGINIA: Number of farms, acreage, production and yield, with percentage comparisons, 1949 and 1954 crop censuses

Potato acreage per farm	Farms reporting		Acres harvested		Production		Yield per acre	
	1949	1954	1949	1954	1949	1954	1949	1954
Acre(s)	Number		Acres		1,000 cwt.		Cwt.	
Small plot ^{1/}	19,500	29,213	^{2/} 1,992	^{2/} 3,476	107	209	^{3/} 54	^{3/} 60
0.1 - 0.9	28,801	21,272	8,985	6,197	549	497	61	80
1.0 - 1.9	3,431	2,131	3,536	2,182	148	98	42	45
2.0 - 2.9	345	189	701	381	29	19	43	49
3.0 - 9.9	152	92	640	385	47	32	73	83
3.0 - 4.9 ^{4/}	-	61	-	202	-	14	-	71
5.0 - 9.9 ^{4/}	-	31	-	183	-	18	-	98
10.0 - 24.9	15	19	198	333	21	53	105	160
25.0 - 49.9	4	1	141	40	18	4	125	105
50.0 or more	2	0	142	0	24	0	169	0
Total	52,250	52,917	16,335	12,994	943	912	58	70

Potato acreage per farm	Percent of total: farms reporting		Percent of total: as percent: of 1949		Percent of total: as percent: of 1949		Percent of total: as percent: of 1949		Percent of total: as percent: of 1949	
1949	1954	1949	1954	1949	1954	1949	1954	1949	1954	

Acre(s)	Percent		Percent		Percent		Percent		Percent		
1949	1954	1949	1954	1949	1954	1949	1954	1949	1954		
Small plot ^{1/}	37.3	55.2	150	12.2	26.8	175	11.4	22.9	195	93	86
0.1 - 0.9	55.1	40.2	74	55.0	47.6	69	58.2	54.5	91	105	114
1.0 - 1.9	6.6	4.0	62	21.6	16.8	62	15.7	10.7	66	72	64
2.0 - 2.9	.7	.4	55	4.3	2.9	54	3.1	2.0	66	74	70
3.0 - 9.9	.3	.2	61	3.9	3.0	60	5.0	3.6	68	126	119
3.0 - 4.9	-	.1	-	-	1.6	-	-	1.6	-	-	101
5.0 - 9.9	-	.1	-	-	1.4	-	-	2.0	-	-	140
10.0 - 24.9	^{5/}	^{5/}	127	1.2	2.6	168	2.2	5.9	252	181	229
25.0 - 49.9	^{5/}	^{5/}	25	.9	.3	28	1.9	.4	22	216	150
50 or more	^{5/}	0	0	.9	0	0	2.5	0	0	291	0
Total	100.0	100.0	101	100.0	100.0	80	100.0	100.0	97	100	100

^{1/} Farms reporting less than 20 bushels or 10 bags harvested. Acreage not reported for these small plots.
^{2/} Derived acreage based on assumed yields. ^{3/} Assumed yield by Agricultural Estimates Division (and Crop Reporting Board) AMS, USDA. ^{4/} Data for 1949 not available. ^{5/} Less than one-tenth of one percent.
Source: 1950 and 1955 Censuses of Agriculture, Bureau of the Census.

Table 41.-POTATOES, NORTH CAROLINA: Number of farms, acreage, production and yield, with percentage comparisons, 1949 and 1954 crop censuses

Potato acreage	Farms reporting		Acres harvested		Production		Yield per acre	
per farm	1949	1954	1949	1954	1949	1954	1949	1954
Acre(s)	Number		Acres		1,000 cwt.		Cwt.	
Small plot 1/	75,865	113,046	2/ 6,742	2/ 9,726	344	566	3/ 51	3/ 58
0.1 - 0.9	34,770	15,529	9,452	4,629	554	310	59	67
1.0 - 1.9	5,801	2,607	6,159	2,744	273	149	44	55
2.0 - 2.9	1,923	499	4,074	1,014	224	69	55	68
3.0 - 9.9	2,033	519	9,241	2,383	763	255	83	107
3.0 - 4.9 4/	-	309	-	1,060	-	98	-	93
5.0 - 9.9 4/	-	210	-	1,323	-	157	-	118
10.0 - 24.9	409	221	5,983	3,154	630	422	106	134
25.0 - 49.9	110	90	3,565	3,053	393	404	110	133
50.0 or more	53	64	5,301	6,436	580	748	109	116
Total	120,964	132,575	50,517	33,139	3,761	2,923	74	88

Potato acreage:	Percent of total:		Percent of total:		Percent of total:		Percent of	
per farm	farms reporting	as percent:	acres harvested	as percent:	Production	as percent:	average yield	
	1949	1954	1949	1954	1949	1954	1949	1954
	Percent							

Acre(s)	Percent		Percent		Percent		Percent	
Small plot 1/	62.7	85.2	14.9	13.3	29.3	14.4	9.1	19.4
0.1 - 0.9	28.8	11.7	4.5	18.7	14.0	4.9	14.7	10.6
1.0 - 1.9	4.8	2.0	4.5	12.2	8.3	4.5	7.3	5.1
2.0 - 2.9	1.6	.4	2.6	8.1	3.1	2.5	6.0	2.4
3.0 - 9.9	1.7	.4	2.6	18.3	7.2	2.6	20.3	8.8
3.0 - 4.9	-	.2	-	-	3.2	-	-	3.4
5.0 - 9.9	-	.2	-	-	4.0	-	-	5.4
10.0 - 24.9	.3	.2	5.4	11.8	9.5	5.3	16.8	14.4
25.0 - 49.9	.1	.1	8.2	7.1	9.2	8.6	10.4	13.8
50.0 or more	5/	5/	12.1	10.5	19.4	12.1	15.4	25.5
Total	100.0	100.0	11.0	100.0	100.0	6.6	100.0	100.0

1/ Farms reporting less than 20 bushels or 10 bags harvested. Acreage not reported for these small plots.
 2/ Derived acreage based on assumed yields. 3/ Assumed yield by Agricultural Estimates Division (and Crop Reporting Board) AMS, USDA. 4/ Data for 1949 not available. 5/ Less than one-tenth of one percent.

Source: 1950 and 1955 Censuses of Agriculture, Bureau of the Census.

Table 42.-POTATOES, SOUTH CAROLINA: Number of farms, acreage, production and yield, with percentage comparisons, 1949 and 1954 crop censuses

Potato acreage per farm	Farms reporting 1949	Farms reporting 1954	Acres harvested 1949	Acres harvested 1954	Production 1949	Production 1954	Yield per acre 1949	Yield per acre 1954
Acres	Number		Acres		1,000 cwt.		Cwt.	
Small plot 1/	25,160	24,865	2/ 1,839	2/ 1,828	83	88	3/ 45	3/ 48
0.1 - 0.9	4,736	1,229	1,540	457	73	23	47	51
1.0 - 1.9	1,445	454	1,542	472	67	19	44	40
2.0 - 2.9	460	130	953	264	41	14	43	52
3.0 - 9.9	291	85	1,163	381	61	30	53	79
3.0 - 4.9 4/	-	50	-	168	-	11	-	68
5.0 - 9.9 4/	-	35	-	213	-	19	-	88
10.0 - 24.9	34	23	476	334	37	34	77	103
25.0 - 49.9	25	17	865	578	106	65	122	113
50.0 or more	27	31	2,892	3,916	328	454	113	116
Total	32,178	26,834	11,270	8,230	796	727	71	88

Potato acreage per farm	Percent of total farms reporting 1949	Percent of total farms reporting 1954	Percent of total acres harvested 1949	Percent of total acres harvested 1954	Percent of total Production 1949	Percent of total Production 1954	Percent of total average yield 1949	Percent of total average yield 1954
Acres	Percent		Percent		Percent		Percent	
Small plot 1/	78.2	92.6	99	16.3	22.2	99	10.4	12.1
0.1 - 0.9	14.7	4.6	26	13.7	5.6	30	9.1	3.2
1.0 - 1.9	4.5	1.7	31	13.7	5.7	31	8.4	2.6
2.0 - 2.9	1.4	.5	28	8.4	3.2	28	5.2	1.9
3.0 - 9.9	.9	.3	29	10.3	4.6	33	7.7	4.1
3.0 - 4.9	-	.2	-	-	2.0	-	-	1.5
5.0 - 9.9	-	.1	-	-	2.6	-	-	2.6
10.0 - 24.9	.1	.1	68	4.2	4.1	70	4.6	4.7
25.0 - 49.9	.1	.1	68	7.7	7.0	67	13.4	8.9
50.0 or more	.1	.1	115	25.7	47.6	135	41.2	62.5
Total	100.0	100.0	83	100.0	100.0	73	100.0	100.0

1/ Farms reporting less than 20 bushels or 10 bags harvested. Acreage not reported for these small plots.

2/ Derived acreage based on assumed yields. 3/ Assumed yield by Agricultural Estimates Division (and Crop Reporting Board) AMS, USDA. 4/ Data for 1949 not available.

Source: 1950 and 1955 Censuses of Agriculture, Bureau of the Census.

Table 43.-POTATOES, GEORGIA: Number of farms, acreage, production and yield, with percentage comparisons, 1949 and 1954 crop censuses

Potato acreage per farm	Farms reporting		Acres harvested		Production		Yield per acre	
	1949	1954	1949	1954	1949	1954	1949	1954
Acres	Number		Acres		1,000 cwt.		Cwt.	
Small plot 1/	41,000	39,799	2/ 3,229	2/ 3,648	136	140	3/ 42	3/ 38
0.1 - 0.9	7,288	2,331	2,333	813	108	42	46	52
1.0 - 1.9	982	653	1,034	668	40	22	38	32
2.0 - 2.9	216	132	449	268	23	13	52	49
3.0 - 9.9	207	76	875	294	58	15	65	51
3.0 - 4.9 4/	-	55	-	178	-	8	-	47
5.0 - 9.9 4/	-	21	-	116	-	7	-	62
10.0 - 24.9	19	11	244	136	19	11	80	79
25.0 - 49.9	1	1	35	30	2	2	63	60
50.0 or more	0	2	0	100	0	12	0	120
Total	49,803	43,005	8,199	5,957	386	257	47	43

Potato acreage per farm	Percent of total: farms reporting		Percent of total: as percent: of 1949		Percent of total: as percent: of 1949		Percent of total: as percent: of 1949		Percent of average yield of 1949		
	1949	1954	1949	1954	1949	1954	1949	1954	1949	1954	
Acres	Percent		Percent		Percent		Percent		Percent		
Small plot 1/	82.5	92.5	97	39.4	61.2	113	35.1	54.4	103	89	88
0.1 - 0.9	14.6	5.4	32	28.4	13.7	35	28.0	16.3	39	98	121
1.0 - 1.9	2.0	1.5	66	12.6	11.2	65	10.4	8.6	55	81	74
2.0 - 2.9	.5	.3	61	5.5	4.5	60	6.0	5.1	57	111	114
3.0 - 9.9	.4	.2	37	10.7	4.9	34	14.9	5.8	26	138	119
3.0 - 4.9	-	.1	-	-	3.0	-	-	3.1	-	-	109
5.0 - 9.9	-	.1	-	-	1.9	-	-	2.7	-	-	144
10.0 - 24.9	5/	.1	58	3.0	2.3	56	5.0	4.3	58	170	184
25.0 - 49.9	5/	5/	100	.4	.5	86	.6	.8	100	134	140
50.0 or more	0	5/	6/	0	1.7	6/	0	4.7	6/	0	279
Total	100.0	100.0	86.	100.0	100.0	73	100.0	100.0	67	100	100

1/ Farms reporting less than 20 bushels or 10 bags harvested. Acreage not reported for these small plots.

2/ Derived acreage based on assumed yields. 3/ Assumed yield by Agricultural Estimates Division (and Crop Reporting Board) AMS, USDA. 4/ Data for 1949 not available. 5/ Less than one tenth of one percent.

6/ Infinity

Source: 1950 and 1955 Censuses of Agriculture, Bureau of the Census.

Table 44.-POTATOES, FLORIDA: Number of farms, acreage, production and yield, with percentage comparisons, 1949 and 1954 crop censuses

Potato acreage per farm	Farms reporting		Acres harvested		Production		Yield per acre	
	1949	1954	1949	1954	1949	1954	1949	1954
Acre(s)	Number		Acres		1,000 cwt.		Cwt.	
Small plot ^{1/}	3,637	4,634	^{2/} 197	^{2/} 206	11	15	^{3/} 54	^{3/} 72
0.1 - 0.9	1,019	307	347	107	18	7	51	67
1.0 - 1.9	274	93	291	100	16	8	56	78
2.0 - 2.9	115	41	236	34	15	7	65	79
3.0 - 9.9	143	81	684	376	52	43	76	114
3.0 - 4.9 ^{4/}	-	45	-	156	-	17	-	112
5.0 - 9.9 ^{4/}	-	36	-	220	-	26	-	120
10.0 - 24.9	64	72	1,024	1,182	94	179	92	152
25.0 - 49.9	66	57	2,213	1,984	284	342	128	172
50.0 or more	117	182	16,180	28,410	2,203	4,874	136	172
Total	5,435	5,467	21,172	32,449	2,693	5,475	127	169

Potato acreage: per farm	Percent of total: farms reporting		Percent of total: as percent of 1949		Percent of total: acres harvested		Percent of total: as percent of 1949		Percent of total: Production		Percent of total: as percent of 1949		Percent of total: average yield	
	1949	1954	1949	1954	1949	1954	1949	1954	1949	1954	1949	1954	1949	1954
Acre(s)	Percent													
Small plot ^{1/}	66.9	84.9	127	0.9	.6	105	.4	.3	136	43	43			
0.1 - 0.9	18.8	5.6	30	1.7	.3	31	.7	.1	39	40	40			
1.0 - 1.9	5.0	1.7	34	1.4	.3	34	.6	.1	50	44	46			
2.0 - 2.9	2.1	.7	36	1.1	.3	36	.6	.1	47	51	47			
3.0 - 9.9	2.6	1.5	57	3.2	1.2	55	1.9	.8	83	60	67			
3.0 - 4.9	-	.8	-	-	.5	-	-	.3	-	-	66			
5.0 - 9.9	-	.7	-	-	.7	-	-	.5	-	-	71			
10.0 - 24.9	1.2	1.3	112	4.8	3.6	115	3.5	3.3	190	72	90			
25.0 - 49.9	1.2	1.0	86	10.5	6.1	90	10.5	6.2	120	101	102			
50.0 or more	2.2	3.3	156	76.4	87.6	176	81.8	89.1	221	107	102			
Total	100.0	100.0	101	100.0	100.0	153	100.0	100.0	203	100	100			

^{1/} Farms reporting less than 20 bushels or 10 bags harvested. Acreage not reported for these small plots.
^{2/} Derived acreage based on assumed yields. ^{3/} Assumed yield by Agricultural Estimates Division (and Crop Reporting Board) AMS, USDA. ^{4/} Data for 1949 not available.

Source: 1950 and 1955 Censuses of Agriculture, Bureau of the Census.

EAST SOUTH CENTRAL DIVISION
(Kentucky, Tennessee, Alabama, and Mississippi)

Table 45.-POTATOES: Number of farms, acreage, production, yield, and group percentages, 1945 crop census.

Potato acreage per farm	Farms reporting	Percent of total farms reporting	Acres harvested	Percent of total acres harvested	Production	Percent of total production	Yield per acre
<u>Acres(s)</u>	<u>Number</u>	<u>Percent</u>	<u>Acres</u>	<u>Percent</u>	<u>1,000 cwt.</u>	<u>Percent</u>	<u>Cwt.</u>
Small plot ^{1/}	307,673	85.4	^{2/} 32,180	45.3	1,623	34.8	^{3/} 50
0.1 - 0.9	45,837	12.7	12,306	17.3	866	18.5	70
1.0 - 1.9	5,208	1.4	5,343	7.5	194	4.2	37
2.0 - 2.9	721	.2	1,466	2.1	68	1.5	46
3.0 - 4.9	283	.1	926	1.3	53	1.1	57
5.0 - 9.9	205	.1	1,284	1.8	87	1.9	68
10.0 - 24.9	199	.1	2,918	4.1	239	5.1	82
25.0 - 49.9	112	-	3,760	5.3	380	8.1	101
50.0 or more	101	-	10,903	15.3	1,159	24.8	106
Total	360,339	100.0	71,086	100.0	4,669	100.0	65

^{1/} Farms reporting less than 20 bushels or 10 bags harvested. Acreage not reported for these small plots.

^{2/} Derived acreage based on assumed yields.

^{3/} Assumed yield by Agricultural Estimates Division (and Crop Reporting Board) AMS, USDA.

Source: 1955 Census of Agriculture, Bureau of the Census.

Table 46.-POTATOES, KENTUCKY: Number of farms, acreage, production and yield, with percentage comparisons, 1949 and 1954 crop censuses

Potato acreage per farm	Farms reporting		Acres harvested		Production		Yield per acre	
	1949	1954	1949	1954	1949	1954	1949	1954
<u>Acre(s)</u>	<u>Number</u>		<u>Acres</u>		<u>1,000 cwt.</u>		<u>Cwt.</u>	
Small plot ^{1/}	76,994	95,679	^{2/} 8,600	^{2/} 10,837	381	553	^{3/} 45	^{3/} 51
0.1 - 0.9	31,737	14,953	8,129	3,816	481	279	59	73
1.0 - 1.9	2,360	1,453	2,429	1,479	72	44	30	30
2.0 - 2.9	241	110	490	225	23	10	47	46
3.0 - 9.9	157	61	756	287	52	19	70	66
3.0 - 4.9 ^{4/}	-	32	-	104	-	7	-	64
5.0 - 9.9 ^{4/}	-	29	-	183	-	12	-	65
10.0 - 24.9	76	33	1,059	479	69	28	65	59
25.0 - 49.9	24	6	813	201	59	13	72	65
50.0 or more	2	2	110	175	8	9	71	52
Total	111,591	112,297	22,386	17,499	1,145	955	51	55

Potato acreage per farm	Percent of total: farms reporting		Percent of total: as percent: of 1949		Percent of total: as percent: of 1949		Percent of total: as percent: of 1949		Percent of total: as percent: of 1949	
	1949	1954	1949	1954	1949	1954	1949	1954	1949	1954
	Percent		Percent		Percent		Percent		Percent	

<u>Acre(s)</u>	Percent		Percent		Percent		Percent		Percent		
Small plot ^{1/}	69.1	85.3	124	38.4	62.0	126	33.3	57.9	145	88	93
0.1 - 0.9	28.4	13.3	47	36.3	21.8	47	42.0	29.3	58	116	133
1.0 - 1.9	2.1	1.3	62	10.9	8.5	61	6.3	4.6	61	59	55
2.0 - 2.9	.2	.1	46	2.2	1.3	46	2.0	1.0	43	92	84
3.0 - 9.9	.1	^{5/}	39	3.4	1.6	38	4.6	2.0	37	137	120
3.0 - 4.9	-	^{5/}	-	-	.6	-	-	.7	-	-	116
5.0 - 9.9	-	^{5/}	-	-	1.0	-	-	1.3	-	-	118
10.0 - 24.9	.1	^{5/}	43	4.7	2.7	45	6.0	2.9	41	127	107
25.0 - 49.9	^{5/}	^{5/}	25	3.6	1.1	25	5.1	1.4	22	141	118
50.0 or more	^{5/}	^{5/}	100	.5	1.0	159	.7	.9	112	139	95
Total	100.0	100.0	101	100.0	100.0	78	100.0	100.0	83	100	100

^{1/} Farms reporting less than 20 bushels or 10 bags harvested. Acreage not reported for these small plots.
^{2/} Derived acreage based on assumed yields. ^{3/} Assumed yield by Agricultural Estimates Division (and Crop Reporting Board) AMS, USDA. ^{4/} Data for 1949 not available. ^{5/} Less than one-tenth of one percent.

Source: 1950 and 1955 Censuses of Agriculture, Bureau of the Census.

Table 47.-POTATOES, TENNESSEE: Number of farms, acreage, production and yield, with percentage comparisons, 1949 and 1954 crop censuses

Potato acreage per farm	Farms reporting		Acres harvested		Production		Yield per acre	
	1949	1954	1949	1954	1949	1954	1949	1954
Acres(s)	Number		Acres		1,000 cwt.		Cwt.	
Small plot 1/	78,400	90,414	2/ 7,313	2/ 8,589	373	515	3/ 51	3/ 60
0.1 - 0.9	34,597	18,029	9,167	4,620	560	348	61	76
1.0 - 1.9	3,250	1,461	3,408	1,498	155	64	46	43
2.0 - 2.9	623	185	1,283	377	58	17	46	46
3.0 - 9.9	654	127	2,912	566	148	40	51	71
3.0 - 4.9 4/	-	75	-	228	-	16	-	71
5.0 - 9.9 4/	-	52	-	338	-	24	-	71
10.0 - 24.9	69	28	905	350	50	24	55	68
25.0 - 49.9	8	3	223	96	11	6	52	62
50.0 or more	2	4	246	676	48	73	195	107
Total	117,603	110,251	25,457	16,772	1,403	1,087	55	65

Potato acreage: per farm	Percent of total: farms reporting		Percent of total: acres harvested		Percent of total: Production		Percent of average yield	
	1949	1954	1949	1954	1949	1954	1949	1954
Acres(s)	Percent		Percent		Percent		Percent	
Small plot 1/	66.7	82.0	115	28.7	51.2	117	26.6	47.4
0.1 - 0.9	29.4	16.4	52	36.0	27.6	50	39.8	32.0
1.0 - 1.9	2.8	1.3	45	13.4	8.9	44	11.0	5.9
2.0 - 2.9	.5	.2	30	5.0	2.2	29	4.2	1.6
3.0 - 9.9	.6	.1	19	11.4	3.4	19	10.6	3.7
3.0 - 4.9	-	.1	-	-	1.4	-	-	1.5
5.0 - 9.9	-	5/	-	-	2.0	-	-	2.2
10.0 - 24.9	5/	5/	41	3.6	2.1	39	3.6	2.2
25.0 - 49.9	5/	5/	38	.9	.6	43	.8	.5
50.0 or more	5/	5/	200	1.0	4.0	275	3.4	6.7
Total	100.0	100.0	94	100.0	100.0	66	100.0	100.0

1/ Farms reporting less than 20 bushels or 10 bags harvested. Acreage not reported for these small plots.
 2/ Derived acreage based on assumed yields. 3/ Assumed yield by Agricultural Estimates Division (and Crop Reporting Board) AMS, USDA. 4/ Data for 1949 not available. 5/ Less than one-tenth of one percent.

Source: 1950 and 1955 Censuses of Agriculture, Bureau of the Census.

Table 48.-POTATOES, ALABAMA: Number of farms, acreage, production and yield, with percentage comparisons, 1949 and 1954 crop censuses

Potato acreage per farm	Farms reporting		Acres harvested		Production		Yield per acre	
	1949	1954	1949	1954	1949	1954	1949	1954
<u>Acre(s)</u>	<u>Number</u>		<u>Acres</u>		<u>1,000 cwt.</u>		<u>Cwt.</u>	
Small plot <u>1/</u>	64,158	53,539	<u>2/</u> 6,402	<u>2/</u> 6,109	250	257	<u>3/</u> 39	<u>3/</u> 42
0.1 - 0.9	13,714	5,561	4,119	1,771	198	106	48	60
1.0 - 1.9	2,359	1,440	2,460	1,494	85	55	35	37
2.0 - 2.9	729	337	1,482	681	57	32	38	47
3.0 - 9.9	661	264	2,922	1,216	130	75	44	62
3.0 - 4.9 <u>4/</u>	-	150	-	507	-	26	-	51
5.0 - 9.9 <u>4/</u>	-	114	-	709	-	49	-	69
10.0 - 24.9	209	134	3,030	2,029	210	181	70	89
25.0 - 49.9	87	102	2,959	3,423	205	358	69	104
50.0 or more	60	94	5,057	9,984	378	1,070	75	107
Total	81,977	61,471	28,431	26,707	1,513	2,134	53	80

Potato acreage: per farm	Percent of total: farms reporting		Percent of total: as percent of acres harvested		Percent of total: Production		Percent of total: as percent of average yield				
	1949	1954	of 1949	of 1949	1949	1954	of 1949	of 1949			
<u>Acre(s)</u>	<u>Percent</u>		<u>Percent</u>		<u>Percent</u>		<u>Percent</u>				
Small plot <u>1/</u>	78.3	87.2	83	22.5	22.9	95	16.5	12.0	103	74	52
0.1 - 0.9	16.7	9.0	40	14.5	6.6	43	13.1	5.0	54	91	75
1.0 - 1.9	2.9	2.3	61	8.6	5.6	61	5.6	2.6	65	66	46
2.0 - 2.9	.9	.5	46	5.2	2.5	46	3.8	1.5	56	72	59
3.0 - 9.9	.8	.4	40	10.3	4.6	42	8.6	3.5	58	83	78
3.0 - 4.9	-	.2	-	-	1.9	-	-	1.2	-	-	64
5.0 - 9.9	-	.2	-	-	2.7	-	-	2.3	-	-	86
10.0 - 24.9	.2	.2	64	10.7	7.6	67	13.9	8.5	86	132	111
25.0 - 49.9	.1	.2	117	10.4	12.8	116	13.5	16.8	175	130	130
50.0 or more	.1	.2	157	17.8	37.4	197	25.0	50.1	283	142	134
Total	100.0	100.0	75	100.0	100.0	72	100.0	100.0	141	100	100

1/ Farms reporting less than 20 bushels or 10 bags harvested. Acreage not reported for these small plots.
2/ Derived acreage based on assumed yields. 3/ Assumed yield by Agricultural Estimates Division (and Crop Reporting Board) AMS, USDA. 4/ Data for 1949 not available.

Source: 1950 and 1955 Censuses of Agriculture, Bureau of the Census.

Table 49.-POTATOES, MISSISSIPPI: Number of farms, acreage, production, and yield, with percentage comparisons, 1949 and 1954 crop censuses

Potato acreage per farm	Farms reporting		Acres harvested		Production		Yield per acre	
	1949	1954	1949	1954	1949	1954	1949	1954
Acre(s)	Number		Acres		1,000 cwt.		Cwt.	
Small plot ^{1/}	61,663	68,041	^{2/} 5,398	^{2/} 6,645	211	300	^{3/} 39	^{3/} 45
0.1 - 0.9	11,005	7,294	3,532	2,099	164	133	47	64
1.0 - 1.9	1,533	854	1,571	872	50	32	32	37
2.0 - 2.9	166	89	346	183	12	8	34	46
3.0 - 9.9	69	36	273	141	8	7	29	50
3.0 - 4.9 ^{4/}	-	26	-	87	-	4	-	41
5.0 - 9.9 ^{4/}	-	10	-	54	-	3	-	56
10.0 - 24.9	8	4	90	60	3	6	33	100
25.0 - 49.9	0	1	0	40	0	2	0	45
50.0 or more	1	1	70	68	3	5	40	79
Total	74,445	76,320	11,280	10,108	451	493	40	49

Potato acreage per farm	Percent of total:		Percent of total:		Percent of total:		Percent of	
	1949	1954	1949	1954	1949	1954	1949	1954
	as percent of 1949	as percent of 1949	as percent of 1949	as percent of 1949	Production of 1949	Production of 1949	as percent of 1949	as percent of 1949
	Percent							

Acre(s)	1949	1954	1949	1954	1949	1954	1949	1954	1949	1954
Small plot ^{1/}	82.8	89.2	110	47.9	65.7	123	46.7	60.7	142	98
0.1 - 0.9	14.8	9.6	66	31.3	20.8	59	36.4	27.0	81	118
1.0 - 1.9	2.1	1.1	56	13.9	8.6	56	11.2	6.6	64	80
2.0 - 2.9	.2	.1	54	3.1	1.8	53	2.7	1.7	67	85
3.0 - 9.9	.1	^{5/}	52	2.4	1.4	52	1.6	1.3	88	72
3.0 - 4.9	-	^{5/}	-	-	.9	-	-	.7	-	-
5.0 - 9.9	-	^{5/}	-	-	.5	-	-	.6	-	-
10.0 - 24.9	^{5/}	^{5/}	50	.8	.6	67	.7	1.2	200	82
25.0 - 49.9	^{6/}	^{5/}	6/	.0	.4	6/	.0	.4	6/	0
50.0 or more	^{5/}	^{5/}	100	.6	.7	97	.7	1.1	167	100
Total	100.0	100.0	103	100.0	100.0	90	100.0	100.0	109	100

- ^{1/} Farms reporting less than 20 bushels or 10 bags harvested. Acreage not reported for these small plots.
^{2/} Derived acreage based on assumed yields. ^{3/} Assumed yield by Agricultural Estimates Division (and Crop Reporting Board) AMS, USDA.
^{4/} Data for 1949 not available.
^{5/} Less than one-tenth of one percent.
^{6/} Infinity

Source: 1950 and 1955 Censuses of Agriculture, Bureau of the Census.

WEST SOUTH CENTRAL DIVISION
(Arkansas, Louisiana, Oklahoma, and Texas)

Table 50.-POTATOES: Number of farms, acreage, production, yield, and group percentages, 1954 crop census

Potato acreage per farm	:	:	Percent of total farms	:	:	Percent of total acres	:	:	Percent of total production	:	:	Yield per acre
Acre(s)	:	:	Percent	:	:	Acres	:	:	1,000 cwt.	:	:	Cwt.
Small plot ^{1/}	:	:	84.0	:	:	2/ 15,544	:	:	758	:	:	3/ 49
0.1 - 0.9	:	:	12.5	:	:	6,907	:	:	430	:	:	62
1.0 - 1.9	:	:	2.6	:	:	4,580	:	:	161	:	:	35
2.0 - 2.9	:	:	.4	:	:	1,456	:	:	53	:	:	36
3.0 - 4.9	:	:	.2	:	:	1,175	:	:	51	:	:	43
5.0 - 9.9	:	:	.1	:	:	1,407	:	:	70	:	:	49
10.0 - 24.9	:	:	.1	:	:	2,410	:	:	157	:	:	65
25.0 - 49.9	:	:	.1	:	:	3,513	:	:	299	:	:	85
50.0 or more	:	:	-	:	:	6,131	:	:	455	:	:	74
Total	:	:	100.0	:	:	43,123	:	:	2,434	:	:	56

^{1/} Farms reporting less than 20 bushels or 10 bags harvested. Acreage not reported for these small plots.

^{2/} Derived acreage based on assumed yields.

^{3/} Assumed yield by Agricultural Estimates Division (and Crop Reporting Board) AMS, USDA.

Source: 1955 Census of Agriculture, Bureau of the Census.

Table 51.-POTATOES, ARKANSAS: Number of farms, acreage, production and yield, with percentage comparisons, 1949 and 1954 crop censuses

Potato acreage : per farm	Farms reporting		Acres harvested		Production		Yield per acre	
	1949	1954	1949	1954	1949	1954	1949	1954
Acre(s)	Number		Acres		1,000 cwt.		Cwt.	
Small plot ^{1/}	41,611	51,846	^{2/} 4,271	^{2/} 5,295	220	302	^{3/} 52	^{3/} 57
0.1 - 0.9	28,451	10,029	7,625	3,017	484	199	64	66
1.0 - 1.9	3,817	1,742	3,973	1,789	164	64	41	36
2.0 - 2.9	910	245	1,851	503	73	16	39	32
3.0 - 9.9	572	111	2,278	452	89	19	40	42
3.0 - 4.9 ^{4/}	-	72	-	238	-	9	-	38
5.0 - 9.9 ^{4/}	-	39	-	214	-	10	-	47
10.0 - 24.9	29	11	360	145	16	9	45	62
25.0 - 49.9	2	0	65	0	3	0	49	-
50.0 or more	2	2	114	150	7	4	58	28
Total	75,394	63,986	20,537	11,351	1,056	613	51	54
Potato acreage:Percent of total:	1954		1954		1954		1954	
per	as percent:		as percent:		as percent:		as percent:	
farm	1949	1954	of 1949	of 1949	of 1949	of 1949	of 1949	of 1949
Acre(s)								
Small plot ^{1/}	55.2	81.0	125	20.8	46.6	124	20.9	49.2
0.1 - 0.9	37.7	15.7	35	37.1	26.6	40	45.7	32.4
1.0 - 1.9	5.1	2.7	46	19.3	15.8	45	15.6	10.4
2.0 - 2.9	1.2	.4	27	9.0	4.4	27	6.9	2.6
3.0 - 9.9	.8	.2	19	11.1	4.0	20	8.5	3.2
3.0 - 4.9	-	.1	-	-	2.1	-	-	1.5
5.0 - 9.9	-	.1	-	-	1.9	-	-	1.7
10.0 - 24.9	^{5/}	^{5/}	38	1.8	1.3	40	1.5	1.5
25.0 - 49.9	^{5/}	0	-	.3	0	-	.3	0
50.0 or more	^{5/}	^{5/}	100	.6	1.3	132	.6	.7
Total	100.0	100.0	85	100.0	100.0	55	100.0	100.0

^{1/} Farms reporting less than 20 bushels or 10 bags harvested. Acreage not reported for these small plots.
^{2/} Derived acreage based on assumed yields. ^{3/} Assumed yield by Agricultural Estimates Division (and Crop Reporting Board) AMS, USDA. ^{4/} Data for 1949 not available. ^{5/} Less than one-tenth of one percent.

Source: 1950 and 1955 Censuses of Agriculture, Bureau of the Census.

Table 52.-POTATOES, LOUISIANA: Number of farms, acreage, production and yield, with percentage comparisons, 1949 and 1954 crop censuses

Potato acreage per farm	Farms reporting		Acres harvested		Production		Yield per acre	
	1949	1954	1949	1954	1949	1954	1949	1954
Acres	Number		Acres		1,000 cwt.		Cwt.	
Small plot <u>1/</u>	16,006	21,722	<u>2/</u> 1,977	<u>2/</u> 2,933	62	115	<u>3/</u> 31	<u>3/</u> 39
0.1 - 0.9	7,415	3,619	2,513	1,340	122	76	46	57
1.0 - 1.9	1,842	1,248	1,909	1,296	60	46	31	35
2.0 - 2.9	395	241	804	487	23	18	29	37
3.0 - 9.9	401	273	1,696	1,226	52	53	31	43
3.0 - 4.9 <u>4/</u>	-	162	-	538	-	23	-	43
5.0 - 9.9 <u>4/</u>	-	111	-	688	-	30	-	44
10.0 - 24.9	49	70	664	964	22	46	34	48
25.0 - 49.9	12	18	376	582	12	31	31	53
50.0 or more	9	8	983	1,077	47	73	49	68
Total	26,129	27,199	11,022	9,905	400	458	36	46

Potato acreage: per farm	Percent of total: farms reporting		Percent of total: acres harvested		Percent of total: Production		Percent of average yield	
	1949	1954	of 1949	of 1949	of 1949	of 1949	of 1949	1954
----- Percent -----								

Small plot <u>1/</u>	61.3	79.8	136	18.0	29.7	148	15.5	25.0	185	86	85
0.1 - 9.9	28.4	13.3	49	23.7	13.5	51	30.2	16.6	62	128	124
1.0 - 1.9	7.0	4.6	68	17.3	13.1	68	15.0	10.1	77	86	76
2.0 - 2.9	1.5	.9	61	7.3	4.9	61	5.8	3.9	78	81	80
3.0 - 9.9	1.5	1.0	68	15.4	12.3	72	13.1	11.7	102	86	93
3.0 - 4.9	-	.6	-	-	5.4	-	-	5.1	-	-	93
5.0 - 9.9	-	.4	-	-	6.9	-	-	6.6	-	-	96
10.0 - 24.9	.2	.3	143	6.0	9.7	145	5.5	10.0	209	94	104
25.0 - 49.9	.1	.1	150	3.4	5.9	155	3.0	6.7	258	86	115
50.0 or more	<u>5/</u>	<u>5/</u>	89	8.9	10.9	110	11.9	16.0	155	136	148
Total	100.0	100.0	104	100.0	100.0	90	100.0	100.0	114	100	100

1/ Farms reporting less than 20 bushels or 10 bags harvested. Acreage not reported for these small plots.
2/ Derived acreage based on assumed yields. 3/ Assumed yield by Agricultural Estimates Division (and Crop Reporting Board) AMS, USDA. 4/ Data for 1949 not available. 5/ Less than one-tenth of one percent.

Source: 1950 and 1955 Censuses of Agriculture, Bureau of the Census.

Table 53.-POTATOES, OKLAHOMA: Number of farms, acreage, production and yield, with percentage comparisons, 1949 and 1954 crop censuses

Potato acreage per farm	Farms reporting		Acres harvested		Production		Yield per acre	
	1949	1954	1949	1954	1949	1954	1949	1954
Acres	Number		Acres		1,000 cwt.		Cwt.	
Small plot ^{1/}	27,252	25,736	^{2/} 2,961	^{2/} 2,912	124	131	^{3/} 42	^{3/} 45
0.1 - 0.9	9,789	2,767	2,631	824	143	51	54	63
1.0 - 1.9	854	356	880	363	29	11	33	31
2.0 - 2.9	112	55	229	114	9	4	38	37
3.0 - 9.9	79	29	325	125	13	7	40	56
3.0 - 4.9 ^{4/}	-	19	-	62	-	3	-	49
5.0 - 9.9 ^{4/}	-	10	-	63	-	4	-	57
10.0 - 24.9	15	20	187	290	11	31	62	106
25.0 - 49.9	2	1	78	25	8	1	106	48
50.0 or more	5	2	411	130	44	27	107	208
Total	38,108	28,966	7,702	4,783	381	263	49	55

Potato acreage per farm	Percent of total: farms reporting		Percent of total: as percent: of 1949		Percent of total: as percent: of 1949		Percent of total: as percent: of 1949		Percent of average yield		
1949	1954	1949	1954	1949	1954	1949	1954	1949	1954		
Small plot ^{1/}	71.5	88.8	94	38.5	60.9	98	32.6	49.6	106	86	82
0.1 - 0.9	25.7	9.6	28	34.2	17.2	31	37.3	19.6	36	110	115
1.0 - 1.9	2.3	1.2	42	11.4	7.6	41	7.5	4.3	38	67	56
2.0 - 2.9	.3	.2	49	3.0	2.4	50	2.4	1.6	44	78	67
3.0 - 9.9	.2	.1	37	4.2	2.6	38	3.5	2.5	54	82	102
3.0 - 4.9	-	.1	-	-	1.3	-	-	1.1	-	-	89
5.0 - 9.9	-	^{5/}	-	-	1.3	-	-	1.4	-	-	104
10.0 - 24.9	^{5/}	.1	133	2.4	6.1	155	3.0	11.6	282	127	193
25.0 - 49.9	^{5/}	^{5/}	50	1.0	.5	32	2.2	.5	12	216	87
50.0 or more	^{5/}	^{5/}	40	5.3	2.7	32	11.5	10.3	61	218	378
Total	100.0	100.0	76	100.0	100.0	62	100.0	100.0	69	100	100

^{1/} Farms reporting less than 20 bushels or 10 bags harvested. Acreage not reported for these small plots.
^{2/} Derived acreage based on assumed yields. ^{4/} Assumed yield by Agricultural Estimates Division (and Crop Reporting Board) AMS, USDA. ^{3/} Data for 1949 not available. Less than one-tenth of one percent.

Source: 1950 and 1955 Censuses of Agriculture, Bureau of the Census.

Table 54.-POTATOES, TEXAS: Number of farms, acreage, production and yield, with percentage comparisons, 1949 and 1954 crop censuses

Potato acreage per farm	Farms reporting		Acres harvested		Production		Yield per acre	
	1949	1954	1949	1954	1949	1954	1949	1954
Acre(s)	Number		Acres		1,000 cwt.		Cwt.	
Small plot 1/	37,944	46,353	2/ 3,552	2/ 4,404	149	211	3/ 42	3/ 48
0.1 - 0.9	10,428	5,308	3,318	1,726	160	104	49	60
1.0 - 1.9	2,072	1,115	2,158	1,132	73	40	34	35
2.0 - 2.9	359	178	745	352	28	14	38	41
3.0 - 9.9	311	178	1,365	779	61	42	45	54
3.0 - 4.9 4/	-	102	-	337	-	16	-	46
5.0 - 9.9 4/	-	76	-	442	-	26	-	58
10.0 - 24.9	107	65	1,679	1,011	101	71	60	70
25.0 - 49.9	88	87	3,074	2,906	195	268	64	92
50.0 or more	80	52	13,197	4,774	792	351	60	74
Total	51,389	53,336	29,088	17,084	1,559	1,101	53	64

Potato acreage: per farm	Percent of total: farms reporting		Percent of total: as percent: of 1949		Percent of total: as percent: of 1949		Percent of total: as percent: of 1949		Percent of average yield		
	1949	1954	1949	1954	1949	1954	1949	1954	1949	1954	
Acre(s)	Percent		Percent		Percent		Percent		Percent		
Small plot 1/	73.8	86.9	122	12.2	25.8	124	9.6	19.2	142	79	75
0.1 - 0.9	20.3	10.0	51	11.4	10.1	52	10.3	9.4	65	92	94
1.0 - 1.9	4.0	2.1	54	7.4	6.6	52	4.7	3.7	55	64	55
2.0 - 2.9	.7	.3	50	2.5	2.1	47	1.8	1.3	50	72	64
3.0 - 9.9	.6	.3	57	4.7	4.6	57	3.9	3.7	69	85	84
3.0 - 4.9	-	.2	-	-	2.0	-	-	1.4	-	-	72
5.0 - 9.9	-	.1	-	-	2.6	-	-	2.3	-	-	91
10.0 - 24.9	.2	.1	61	5.8	5.9	60	6.5	6.5	70	113	109
25.0 - 49.9	.2	.2	99	10.6	17.0	95	12.5	24.3	137	121	144
50.0 or more	.2	.1	65	45.4	27.9	36	50.7	31.9	44	113	116
Total	100.0	100.0	104	100.0	100.0	59	100.0	100.0	71	100	100

1/ Farms reporting less than 20 bushels or 10 bags harvested. Acreage not reported for these small plots.
 2/ Derived acreage based on assumed yields. 3/ Assumed yield by Agricultural Estimates Division (and Crop Reporting Board) AMS, USDA. 4/ Data for 1949 not available.

Source: 1950 and 1955 Censuses of Agriculture, Bureau of the Census.

MOUNTAIN DIVISION

(Montana, Idaho, Wyoming, Colorado, New Mexico, Arizona, Utah, and Nevada)

Table 55.-POTATOES: Number of farms, acreage, production, yield, and group percentages, 1954 crop census

Potato acreage per farm	Farms reporting	Percent of total farms reporting	Acres harvested	Percent of total acres harvested	Production 1,000 cwt.	Percent of total production	Yield per acre
<u>Acre(s)</u>	<u>Number</u>	<u>Percent</u>	<u>Acres</u>	<u>Percent</u>	<u>1,000 cwt.</u>	<u>Percent</u>	<u>Cwt.</u>
Small plot ^{1/}	12,236	42.4	^{2/} 1,269	.5	68	.2	^{3/} 53
0.1 - 0.9	5,059	17.5	1,501	.7	146	.4	97
1.0 - 1.9	1,196	4.2	1,284	.6	118	.3	92
2.0 - 2.9	516	1.8	1,135	.5	127	.3	112
3.0 - 4.9	804	2.8	2,884	1.3	402	1.0	139
5.0 - 9.9	2,108	7.3	14,692	6.4	2,429	6.0	166
10.0 - 24.9	4,207	14.6	64,720	28.1	11,524	28.5	178
25.0 - 49.9	1,760	6.1	57,382	24.9	10,078	25.0	176
50.0 or more	960	3.3	85,212	37.0	15,475	38.3	182
Total	28,846	100.0	230,079	100.0	40,367	100.0	175

^{1/} Farms reporting less than 20 bushels or 10 bags harvested. Acreage not reported for these small plots.^{2/} Derived acreage based on assumed yields.^{3/} Assumed yield by Agricultural Estimates Division (and Crop Reporting Board) AMS, USDA.

Source: 1955 Census of Agriculture, Bureau of the Census.

Table 56.-POTATOES, MONTANA: Number of farms, acreage, production and yield, with percentage comparisons, 1949 and 1954 crop censuses

Potato acreage per farm	Farms reporting		Acres harvested		Production		Yield per acre	
	1949	1954	1949	1954	1949	1954	1949	1954
Acres	Number		Acres		1,000 cwt.		Cwt.	
Small plot 1/	3,902	5,971	2/ 324	2/ 712	22	34	3/ 69	3/ 48
0.1 - 0.9	2,380	2,203	758	665	59	55	78	83
1.0 - 1.9	497	360	536	382	31	30	57	77
2.0 - 2.9	167	89	356	186	27	16	75	84
3.0 - 9.9	296	150	1,663	720	160	83	96	115
3.0 - 4.9 4/	-	81	-	280	-	26	-	92
5.0 - 9.9 4/	-	69	-	440	-	57	-	130
10.0 - 24.9	131	108	1,912	1,913	223	307	117	161
25.0 - 49.9	72	52	2,552	1,639	341	259	134	158
50.0 or more	44	28	4,212	2,277	574	367	137	161
Total	7,489	8,961	12,313	8,494	1,437	1,151	117	136

Potato acreage: per farm	Percent of total farms reporting		Percent of total acres harvested		Percent of total Production		Percent of average yield				
	1949	1954	of 1949	1954	of 1949	1954	of 1949	1954			
Acres	Percent		Percent		Percent		Percent				
Small plot 1/	52.1	66.6	153	2.6	8.4	220	1.5	3.0	155	59	35
0.1 - 0.9	31.8	24.6	93	6.2	7.8	88	4.1	4.8	93	67	61
1.0 - 1.9	6.6	4.0	72	4.4	4.5	71	2.1	2.6	97	49	57
2.0 - 2.9	2.2	1.0	53	2.9	2.2	52	1.9	1.4	59	64	62
3.0 - 9.9	4.0	1.7	51	13.5	8.5	43	11.1	7.2	52	82	85
3.0 - 4.9	-	.9	-	-	3.3	-	-	2.2	-	-	68
5.0 - 9.9	-	.8	-	-	5.2	-	-	5.0	-	-	96
10.0 - 24.9	1.7	1.2	82	15.5	22.5	100	15.5	26.7	138	100	118
25.0 - 49.9	1.0	.6	72	20.7	19.3	64	23.8	22.5	76	115	116
50.0 or more	.6	.3	64	34.2	26.8	54	40.0	31.8	64	117	118
Total	100.0	100.0	120	100.0	100.0	69	100.0	100.0	80	100	100

1/ Farms reporting less than 20 bushels or 10 bags harvested. Acreage not reported for these small plots.
 2/ Derived acreage based on assumed yields. 3/ Assumed yield by Agricultural Estimates Division (and Crop Reporting Board) AMS, USDA. Data for 1949 not available.

Source: 1950 and 1955 Censuses of Agriculture, Bureau of the Census.

Table 57.-POTATOES, IDAHO: Number of farms, acreage, production and yield, with percentage comparisons, 1949 and 1954 crop censuses

Potato acreage per farm		Farms reporting		Acres harvested		Production		Yield per acre	
		1949	1954	1949	1954	1949	1954	1949	1954
Acres	Number	Acres		1,000 cwt.		Cwt.			
Small plot 1/	2,039	3,367	2/ 106	2/ 291	11	18	3/ 105	3/ 62	
0.1 - 0.9	1,339	1,037	407	290	43	32	106	110	
1.0 - 1.9	339	221	383	244	43	27	113	110	
2.0 - 2.9	242	139	525	349	78	48	148	137	
3.0 - 9.9	2,748	1,774	17,203	11,241	2,604	1,885	151	168	
3.0 - 4.9 4/	-	356	-	1,298	-	210	-	162	
5.0 - 9.9 4/	-	1,418	-	9,943	-	1,675	-	169	
10.0 - 24.9	3,775	3,112	58,799	47,917	8,645	8,502	147	178	
25.0 - 49.9	1,223	1,200	40,051	38,960	5,900	6,649	148	171	
50.0 or more	343	559	27,152	51,150	3,996	8,575	147	167	
Total	12,048	11,409	144,629	150,442	21,320	25,736	148	171	

Potato acreage per farm	Percent of total: 1954	Percent of total: 1954	Percent of total: 1954	Percent of total: 1954	Percent of total: 1954	Percent of total: 1954	Percent of total: 1954	Percent of total: 1954	Percent of total: 1954	Percent of total: 1954	
	as percent of 1949	as percent of 1949	as percent of 1949	as percent of 1949	as percent of 1949	as percent of 1949	as percent of 1949	as percent of 1949	as percent of 1949	as percent of 1949	
Small plot 1/	16.9	29.6	165	.1	.2	275	.1	.1	164	71	36
0.1 - 0.9	11.1	9.1	77	.3	.2	71	.2	.1	74	72	64
1.0 - 1.9	2.8	1.9	65	.3	.2	64	.2	.1	63	76	64
2.0 - 2.9	2.0	1.2	57	.4	.2	66	.4	.2	62	100	80
3.0 - 9.9	22.8	15.5	65	11.9	7.5	65	12.2	7.3	72	102	98
3.0 - 4.9	-	3.1	-	-	.9	-	-	.8	-	-	95
5.0 - 9.9	-	12.4	-	-	6.6	-	-	6.5	-	-	99
10.0 - 24.9	31.3	27.3	82	40.6	31.8	81	40.5	33.0	98	99	104
25.0 - 49.9	10.2	10.5	98	27.7	25.9	97	27.7	25.8	113	100	100
50.0 or more	2.9	4.9	163	18.7	34.0	188	18.7	33.4	215	99	98
Total	100.0	100.0	95	100.0	100.0	104	100.0	100.0	121	100	100

1/ Farms reporting less than 20 bushels or 10 bags harvested. Acreage not reported for these small plots.
 2/ Derived acreage based on assumed yields. 3/ Assumed yield by Agricultural Estimates Division (and Crop Reporting Board) AMS, USDA. 4/ Data for 1949 not available.

Source: 1950 and 1955 Censuses of Agriculture, Bureau of the Census.

Table 58.-POTATOES, WYOMING: Number of farms, acreage, production and yield, with percentage comparisons, 1949 and 1954 crop censuses

Potato acreage per farm	Farms reporting		Acres harvested		Production		Yield per acre	
	1949	1954	1949	1954	1949	1954	1949	1954
Acre(s)	Number		Acres		1,000 cwt.		Cwt.	
Small plot ^{1/}	524	566	^{2/} 40	² 68	3	3	^{3/} 71	^{3/} 42
0.1 - 0.9	319	169	106	56	8	5	82	86
1.0 - 1.9	113	61	121	64	6	4	48	56
2.0 - 2.9	36	20	75	41	5	4	67	88
3.0 - 9.9	125	72	728	397	90	53	124	134
3.0 - 4.9 ^{4/}	-	25	-	87	-	9	-	103
5.0 - 9.9 ^{4/}	-	47	-	310	-	44	-	143
10.0 - 24.9	166	101	2,545	1,528	324	295	127	193
25.0 - 49.9	46	34	1,509	1,038	166	200	109	193
50.0 or more	24	22	1,878	1,751	206	269	110	154
Total	1,353	1,045	7,002	4,943	808	833	115	168

Potato acreage per farm	Percent of total: farms reporting		Percent of total: as percent: of 1949		Percent of total: as percent: of 1949		Percent of total: as percent: of 1949		Percent of average yield		
	1949	1954	1949	1954	1949	1954	1949	1954	1949	1954	
Acre(s)	Percent		Percent		Percent		Percent		Percent		
Small plot ^{1/}	38.6	54.1	108	.6	1.4	170	.4	.4	100	62	25
0.1 - 0.9	23.6	16.2	53	1.5	1.1	53	1.0	.6	62	71	51
1.0 - 1.9	8.4	5.8	54	1.7	1.3	53	.7	.4	67	42	33
2.0 - 2.9	2.7	1.9	56	1.1	.8	55	.6	.4	80	58	52
3.0 - 9.9	9.2	6.9	58	10.4	8.1	55	11.1	6.4	59	109	80
3.0 - 4.9	-	2.4	-	-	1.8	-	-	1.1	-	-	61
5.0 - 9.9	-	4.5	-	-	6.3	-	-	5.3	-	-	85
10.0 - 24.9	12.3	9.7	61	36.4	30.9	60	40.1	35.5	91	110	115
25.0 - 49.9	3.4	3.3	74	21.5	21.0	69	20.6	24.0	120	95	115
50.0 or more	1.8	2.1	92	26.8	35.4	93	25.5	32.3	131	96	92
Total	100.0	100.0	77	100.0	100.0	71	100.0	100.0	103	100	100

----- Percent -----

^{1/} Farms reporting less than 20 bushels or 10 bags harvested. Acreage not reported for these small plots.
^{2/} Derived acreage based on assumed yields. ^{3/} Assumed yield by Agricultural Estimates Division (and Crop Reporting Board) AMS, USDA. ^{4/} Data for 1949 not available.

Source: 1950 and 1955 Censuses of Agriculture, Bureau of the Census.

Table 59.-POTATOES, COLORADO: Number of farms, acreage, production and yield, with percentage comparisons, 1949 and 1954 crop censuses

Potato acreage per farm	Farms reporting		Acres harvested		Production		Yield per acre	
	1949	1954	1949	1954	1949	1954	1949	1954
Acres	Number		Acres		1,000 cwt.		Cwt.	
Small plot ^{1/}	708	758	^{2/} 41	^{2/} 64	4	4	^{3/} 93	^{3/} 60
0.1 - 0.9	667	502	221	155	17	16	79	104
1.0 - 1.9	309	176	336	190	26	17	76	92
2.0 - 2.9	152	84	314	170	39	17	125	99
3.0 - 9.9	906	462	5,386	2,869	829	488	154	170
3.0 - 4.9 ^{4/}	-	135	-	486	-	65	-	134
5.0 - 9.9 ^{4/}	-	327	-	2,383	-	423	-	178
10.0 - 24.9	1,007	635	15,363	9,658	2,665	1,870	193	194
25.0 - 49.9	430	409	14,551	13,641	2,818	2,614	194	191
50.0 or more	251	309	19,897	24,498	4,462	4,991	224	204
Total	4,430	3,335	56,109	51,245	10,860	10,017	194	195

Potato acreage per farm	Percent of total:		Percent of total:		Percent of total:		Percent of				
	1949	1954	of 1949	1949	1954	of 1949	1949	1954			
Acres	Percent		Percent		Percent		Percent				
Small plot ^{1/}	16.0	22.7	107	.1	.1	156	-	.1	100	48	31
0.1 - 0.9	15.0	15.1	75	.4	.3	70	.2	.2	94	41	53
1.0 - 1.9	7.0	5.3	57	.6	.4	57	.2	.2	65	39	47
2.0 - 2.9	3.4	2.5	55	.6	.3	54	.4	.2	44	64	51
3.0 - 9.9	20.5	13.8	51	9.6	5.6	53	7.6	4.9	59	79	87
3.0 - 4.9	-	4.0	-	-	.9	-	-	.7	-	-	69
5.0 - 9.9	-	9.8	-	-	4.7	-	-	4.2	-	-	91
10.0 - 24.9	22.7	19.0	63	27.4	18.8	63	24.5	18.7	70	99	99
25.0 - 49.9	9.7	12.3	95	25.9	26.6	94	26.0	26.0	93	100	98
50.0 or more	5.7	9.3	123	35.4	47.9	123	41.1	49.7	112	115	105
Total	100.0	100.0	75	100.0	100.0	91	100.0	100.0	92	100	100

^{1/} Farms reporting less than 20 bushels or 10 bags harvested. Acreage not reported for these small plots.
^{2/} Derived acreage based on assumed yields. ^{3/} Assumed yield by Agricultural Estimates Division (and Crop Reporting Board) AMS, USDA. ^{4/} Data for 1949 not available.

Source: 1950 and 1955 Censuses of Agriculture, Bureau of the Census.

Table 60.-POTATOES, NEW MEXICO: Number of farms, acreage, production and yield, with percentage comparisons, 1949 and 1954 crop censuses

Potato acreage per farm	Farms reporting		Acres harvested		Production		Yield per acre	
	1949	1954	1949	1954	1949	1954	1949	1954
Acres	Number		Acres		1,000 cwt.		Cwt.	
Small plot 1/	175	250	2/ 13	2/ 22	1	1	3/ 48	3/ 60
0.1 - 0.9	74	43	29	17	2	1	55	71
1.0 - 1.9	78	53	91	56	4	3	42	53
2.0 - 2.9	45	13	92	26	4	1	46	46
3.0 - 9.9	67	19	338	103	27	9	79	87
3.0 - 4.9 4/	-	7	-	28	-	2	-	64
5.0 - 9.9 4/	-	12	-	75	-	7	-	96
10.0 - 24.9	24	11	333	193	35	22	107	115
25.0 - 49.9	5	6	142	201	13	28	89	137
50.0 or more	3	2	176	163	14	15	79	92
Total	471	397	1,214	781	100	80	82	103

Potato acreage: per farm	Percent of total: farms reporting		Percent of total: as percent: acres harvested		Percent of total: Production		Percent of total: as percent: average yield				
1949	1954	of 1949	of 1949	of 1949	of 1949	of 1949	of 1949	of 1949			
Acres	Percent		Percent		Percent		Percent				
Small plot 1/	37.2	62.9	143	1.1	2.8	169	.7	1.5	100	59	58
0.1 - 0.9	15.7	10.8	58	2.4	2.2	59	1.6	1.5	50	67	69
1.0 - 1.9	16.6	13.4	68	7.5	7.2	62	3.9	3.7	75	51	51
2.0 - 2.9	9.5	3.3	29	7.6	3.3	28	4.3	1.5	25	56	45
3.0 - 9.9	14.2	4.8	28	27.8	13.2	30	26.9	11.2	33	96	84
3.0 - 4.9	-	1.8	-	-	3.6	-	-	2.2	-	-	62
5.0 - 9.9	-	3.0	-	-	9.6	-	-	9.0	-	-	93
10.0 - 24.9	5.1	2.8	46	27.4	24.7	58	35.0	27.6	63	130	112
25.0 - 49.9	1.1	1.5	120	11.7	25.7	142	12.6	34.3	215	109	133
50.0 or more	.6	.5	67	14.5	20.9	93	14.0	18.7	107	96	89
Total	100.0	100.0	84	100.0	100.0	64	100.0	100.0	80	100	100

1/ Farms reporting less than 20 bushels or 10 bags harvested. Acreage not reported for these small plots.
 2/ Derived acreage based on assumed yields. 3/ Assumed yield by Agricultural Estimates Division (and Crop Reporting Board) AMS, USDA. 4/ Data for 1949 not available.

Source: 1950 and 1955 Censuses of Agriculture, Bureau of the Census.

Table 62. - POTATOES, UTAH: Number of farms, acreage, production and yield, with percentage comparisons, 1949 and 1954 crop censuses

Potato acreage per farm	Farms reporting		Acres harvested		Production		Yield per acre	
	1949	1954	1949	1954	1949	1954	1949	1954
<u>Acre(s)</u>	<u>Number</u>		<u>Acres</u>		<u>1,000 cwt.</u>		<u>Cwt.</u>	
Small plot <u>1/</u>	1,087	1,198	<u>2/</u> 60	<u>2/</u> 99	7	7	<u>3/</u> 114	<u>3/</u> 57
0.1 - 0.9	1,612	1,001	514	283	62	33	121	116
1.0 - 1.9	537	287	595	308	61	35	102	113
2.0 - 2.9	324	156	702	332	86	40	122	119
3.0 - 9.9	807	396	4,150	2,014	551	278	133	138
3.0 - 4.9 <u>4/</u>	-	186	-	655	-	85	-	129
5.0 - 9.9 <u>4/</u>	-	210	-	1,359	-	193	-	142
10.0 - 24.9	279	200	3,965	2,868	503	409	127	142
25.0 - 49.9	58	35	1,847	1,140	242	175	131	154
50.0 or more	15	12	1,882	2,197	453	481	241	220
Total	4,719	3,285	13,715	9,241	1,965	1,458	143	158

Potato acreage per farm	Percent of total:		Percent of total:		Percent of total:		Percent of	
	1949	1954	1949	1954	1949	1954	1949	1954
	: farms reporting		: acres harvested		: Production		: average yield	
	: 1949	: 1954	: 1949	: 1954	: 1949	: 1954	: 1949	: 1954

<u>Acre(s)</u>	Percent		Percent		Percent		Percent		Percent		
Small plot <u>1/</u>	23.0	36.4	110	.4	1.1	165	.4	.5	100	80	44
0.1 - 0.9	34.2	30.5	62	3.8	3.1	55	3.1	2.3	53	85	73
1.0 - 1.9	11.4	8.7	53	4.3	3.3	52	3.1	2.4	57	71	72
2.0 - 2.9	6.9	4.7	48	5.1	3.6	47	4.4	2.7	47	85	75
3.0 - 9.9	17.1	12.1	49	30.3	21.8	49	28.1	19.1	50	93	87
3.0 - 4.9	-	5.7	-	-	7.1	-	-	5.8	-	-	82
5.0 - 9.9	-	6.4	-	-	14.7	-	-	13.3	-	-	90
10.0 - 24.9	5.9	6.1	72	28.9	31.0	72	25.6	28.0	81	89	90
25.0 - 49.9	1.2	1.1	60	13.5	12.3	62	12.3	12.0	72	92	98
50.0 or more	.3	.4	80	13.7	23.8	117	23.0	33.0	106	169	139
Total	100.0	100.0	70	100.0	100.0	67	100.0	100.0	74	100	100

1/ Farms reporting less than 20 bushels or 10 bags harvested. Acreage not reported for these small plots.
2/ Derived acreage based on assumed yields. 3/ Assumed yield by Agricultural Estimates Division (and Crop Reporting Board) AMS, USDA. 4/ Data for 1949 not available.

Source: 1950 and 1955 Censuses of Agriculture, Bureau of the Census.

Table 63.-POTATOES, NEVADA: Number of farms, acreage, production and yield, with percentage comparisons, 1949 and 1954 crop censuses

Potato acreage: per farm	Farms reporting		Acres harvested		Production		Yield per acre	
	1949	1954	1949	1954	1949	1954	1949	1954
<u>Acres(s)</u>	<u>Number</u>		<u>Acres</u>		<u>1,000 cwt.</u>		<u>Cwt.</u>	
Small plot <u>1/</u>	172	103	<u>2/</u> 11	<u>2/</u> 11	1	1	<u>3/</u> 99	<u>3/</u> 48
0.1 - 0.9	124	92	51	32	5	2	101	75
1.0 - 1.9	83	32	87	34	9	3	99	88
2.0 - 2.9	34	11	70	22	5	2	69	109
3.0 - 9.9	69	35	354	211	49	36	137	171
3.0 - 4.9 <u>4/</u>	-	12	-	43	-	7	-	154
5.0 - 9.9 <u>4/</u>	-	23	-	168	-	29	-	172
10.0 - 24.9	27	31	399	486	59	101	148	209
25.0 - 49.9	9	11	269	340	42	69	157	203
50.0 or more	3	4	151	310	23	83	155	267
Total	521	319	1,392	1,446	193	297	139	205

Potato acreage: per farm	Percent of total: farms reporting		Percent of total: as percent: of 1949		Percent of total: as percent: of 1949		Percent of total: as percent: of 1949		Percent of average yield		
	1949	1954	1949	1954	1949	1954	1949	1954	1949	1954	
<u>Acres(s)</u>	----- Percent -----										
Small plot <u>1/</u>	33.0	32.4	60	.8	.8	100	.6	.2	100	71	23
0.1 - 0.9	23.8	28.8	74	3.7	2.2	63	2.7	.8	40	73	37
1.0 - 1.9	15.9	10.0	39	6.2	2.3	39	4.5	1.0	33	71	43
2.0 - 2.9	6.5	3.4	32	5.0	1.5	31	2.5	.8	40	50	53
3.0 - 9.9	13.3	11.0	51	25.4	14.6	60	25.2	11.9	73	99	83
3.0 - 4.9	-	3.8	-	-	3.0	-	-	2.2	-	-	75
5.0 - 9.9	-	7.2	-	-	11.6	-	-	9.7	-	-	84
10.0 - 24.9	5.2	9.7	115	28.7	33.7	122	30.5	34.1	171	106	102
25.0 - 49.9	1.7	3.4	122	19.3	23.5	126	21.9	23.2	164	113	99
50.0 or more	.6	1.3	133	10.9	21.4	205	12.1	28.0	361	112	130
Total	100.0	100.0	61	100.0	100.0	104	100.0	100.0	154	100	100

1/ Farms reporting less than 20 bushels or 10 bags harvested. Acreage not reported for these small plots.
2/ Derived acreage based on assumed yields. 3/ Assumed yield by Agricultural Estimates Division (and Crop Reporting Board) AMS, USDA. 4/ Data for 1949 not available.

Source: 1950 and 1955 Censuses of Agriculture, Bureau of the Census.

PACIFIC DIVISION
(Washington, Oregon, and California)

Table 64.-POTATOES: Number of farms, acreage, production, yield, and group percentages, 1954 crop census

Potato acreage per farm	:	:	Percent of total	:	:	Percent of total	:	:	Percent of total	:	:	Yield per acre
Acre(s)	:	:	Percent	:	:	Percent	:	:	Percent	:	:	Cwt.
Number	:	:	Acres	:	:	1,000 cwt.	:	:	Cwt.			
Small plot ^{1/}	15,513	66.4	^{2/} 1,313	.8	68	.2	^{3/} 52					
0.1 - 0.9	3,509	15.0	771	.5	81	.2	105					
1.0 - 1.9	584	2.5	646	.4	59	.2	91					
2.0 - 2.9	212	.9	446	.3	46	.1	104					
3.0 - 4.9	263	1.1	940	.6	134	.4	143					
5.0 - 9.9	556	2.4	3,795	2.4	772	2.1	203					
10.0 - 24.9	1,294	5.5	20,187	12.9	4,807	13.0	238					
25.0 - 49.9	737	3.2	25,196	16.1	5,759	15.6	229					
50.0 or more	704	3.0	103,090	66.0	25,126	68.2	244					
Total	23,372	100.0	156,384	100.0	36,852	100.0	236					

^{1/} Farms reporting less than 20 bushels or 10 bags harvested. Acreage not reported for these small plots.

^{2/} Derived acreage based on assumed yields.

^{3/} Assumed yield by Agricultural Estimates Division (and Crop Reporting Board) AMS, USDA.

Source: 1955 Census of Agriculture, Bureau of the Census.

Table 65.-POTATOES, WASHINGTON: Number of farms, acreage, production and yield, with percentage comparisons, 1949 and 1954 crop censuses

Potato acreage per farm	Farms reporting		Acres harvested		Production		Yield per acre	
	1949	1954	1949	1954	1949	1954	1949	1954
Acre(s)	Number		Acres		1,000 cwt.		Cwt.	
Small plot ^{1/}	5,233	8,491	^{2/} 305	^{2/} 771	28	40	^{3/} 90	^{3/} 51
0.1 - 0.9	2,094	1,587	601	432	53	45	89	104
1.0 - 1.9	380	274	428	305	38	30	89	98
2.0 - 2.9	133	76	279	164	34	21	122	128
3.0 - 9.9	387	210	2,104	1,195	391	281	185	235
3.0 - 4.9 ^{4/}	-	65	-	225	-	34	-	149
5.0 - 9.9 ^{4/}	-	145	-	970	-	247	-	255
10.0 - 24.9	391	309	6,224	4,374	1,480	1,333	238	305
25.0 - 49.9	184	200	6,321	6,755	1,400	1,686	221	250
50.0 - or more	111	115	11,180	11,481	2,767	2,889	247	251
Total	8,913	11,262	27,442	25,477	6,191	6,325	226	248

Potato acreage per farm	Percent of total:		Percent of total:		Percent of total:		Percent of							
	1949	1954	of 1949	of 1949	of 1949	of 1949	of 1949	of 1949						
	: farms reporting		: as percent:		: acres harvested:		: as percent:		: production		: as percent:		: average yield	
	1949	1954	of 1949	of 1949	of 1949	of 1949	of 1949	of 1949	of 1949	of 1949	of 1949	of 1949	of 1949	of 1949

Acre(s)	Percent		Percent		Percent		Percent		Percent		Percent	
Small plot ^{1/}	58.7	75.4	162	1.1	3.0	253	.4	.6	143	40	21	
0.1 - 0.9	23.5	14.1	76	2.2	1.7	72	.9	.7	85	39	42	
1.0 - 1.9	4.3	2.4	72	1.6	1.2	71	.6	.5	79	39	40	
2.0 - 2.9	1.5	.7	57	1.0	.6	59	.6	.3	62	54	52	
3.0 - 9.9	4.3	1.9	54	7.7	4.7	57	6.3	4.4	72	82	95	
3.0 - 4.9	-	.6	-	-	.9	-	-	.5	-	-	60	
5.0 - 9.9	-	1.3	-	-	3.8	-	-	3.9	-	-	103	
10.0 - 24.9	4.4	2.7	79	22.7	17.2	70	23.9	21.1	90	105	123	
25.0 - 49.9	2.1	1.8	109	23.0	26.5	107	22.6	26.7	120	98	101	
50.0 or more	1.2	1.0	104	40.7	45.1	103	44.7	45.7	104	109	101	
Total	100.0	100.0	126	100.0	100.0	93	100.0	100.0	102	100	100	

^{1/} Farms reporting less than 20 bushels or 10 bags harvested. Acreage not reported for these small plots.
^{2/} Derived acreage based on assumed yields. ^{3/} Assumed yield by Agricultural Estimates Division (and Crop Reporting Board) AMS, USDA. ^{4/} Data for 1949 not available.

Source: 1950 and 1955 Censuses of Agriculture, Bureau of the Census.

Table 66.-POTATOES, OREGON: Number of farms, acreage, production and yield, with percentage comparisons, 1949 and 1954 crop censuses

Potato acreage per farm	Farms reporting		Acres harvested		Production		Yield per acre	
	1949	1954	1949	1954	1949	1954	1949	1954
Acre(s)	Number		Acres		1,000 cwt.		Cwt.	
Small plot 1/	5,465	5,805	2/ 339	2/ 505	25	25	3/ 75	3/ 49
0.1 - 0.9	1,894	1,764	579	287	49	31	84	107
1.0 - 1.9	505	263	550	288	36	23	66	81
2.0 - 2.9	182	106	381	220	31	19	81	85
3.0 - 9.9	641	474	3,590	2,731	522	462	145	169
3.0 - 4.9 4/	-	163	-	587	-	77	-	131
5.0 - 9.9 4/	-	311	-	2,144	-	385	-	179
10.0 - 24.9	629	603	9,672	9,488	1,687	2,130	174	224
25.0 - 49.9	283	286	9,414	9,715	1,748	2,095	186	215
50.0 or more	131	160	12,045	14,006	2,386	3,274	198	234
Total	9,730	9,461	36,570	37,240	6,484	8,059	177	216

Potato acreage: per farm	Percent of total: farms reporting		Percent of total: as percent: of 1949		Percent of total: as percent: of 1949		Percent of total: as percent: of 1949		Percent of average yield 1949		Percent of average yield 1954	
	1949	1954	1949	1954	1949	1954	1949	1954	1949	1954	1949	1954

Acre(s)	Percent of total: farms reporting		Percent of total: as percent: of 1949		Percent of total: as percent: of 1949		Percent of total: as percent: of 1949		Percent of average yield 1949		Percent of average yield 1954	
	1949	1954	1949	1954	1949	1954	1949	1954	1949	1954	1949	1954
Small plot 1/	56.2	61.4	106	.9	1.4	149	.4	.3	100	42	23	
0.1 - 0.9	19.5	18.6	93	1.6	.8	50	.7	.4	63	47	50	
1.0 - 1.9	5.2	2.8	52	1.5	.8	52	.6	.3	64	37	37	
2.0 - 2.9	1.9	1.1	58	1.1	.6	58	.5	.2	61	46	39	
3.0 - 9.9	6.6	5.0	74	9.8	7.4	76	8.0	5.8	88	82	78	
3.0 - 4.9	-	1.7	-	-	1.6	-	-	1.0	-	-	61	
5.0 - 9.9 4/	-	3.3	-	-	5.8	-	-	4.8	-	-	83	
10.0 - 24.9	6.4	6.4	96	26.5	25.5	98	26.0	26.4	126	98	104	
25.0 - 49.9	2.9	3.0	101	25.7	26.0	103	27.0	26.0	120	105	100	
50.0 or more	1.3	1.7	122	32.9	37.5	116	36.8	40.6	137	112	108	
Total	100.0	100.0	97	100.0	100.0	102	100.0	100.0	124	100	100	

1/ Farms reporting less than 20 bushels or 10 bags harvested. Acreage not reported for these small plots.
 2/ Derived acreage based on assumed yields. 3/ Assumed yield by Agricultural Estimates Division (and Crop Reporting Board) AMS, USDA. 4/ Data for 1949 not available.

Source: 1950 and 1955 Censuses of Agriculture, Bureau of the Census.

Table 67.-POTATOES, CALIFORNIA: Number of farms, acreage, production and yield, with percentage comparisons, 1949 and 1954 crop censuses

Potato acreage per farm	Farms reporting		Acres harvested		Production		Yield per acre	
	1949	1954	1949	1954	1949	1954	1949	1954
Acre(s)	Number		Acres		1,000 cwt.		Cwt.	
Small plot ^{1/}	1,674	1,217	^{2/} 71	^{2/} 37	7	4	^{3/} 90	^{3/} 105
0.1 - 0.9	459	158	145	52	13	5	86	104
1.0 - 1.9	129	47	141	53	13	5	90	102
2.0 - 2.9	69	30	145	62	14	7	100	106
3.0 - 9.9	233	135	1,376	809	314	164	228	203
3.0 - 4.9 ^{4/}	-	35	-	128	-	24	-	188
5.0 - 9.9 ^{4/}	-	100	-	681	-	140	-	206
10.0 - 24.9	502	382	8,070	6,325	1,955	1,343	242	212
25.0 - 49.9	344	251	11,998	8,726	2,762	1,979	230	227
50.0 or more	457	429	78,379	77,603	18,505	18,962	236	244
Total	3,867	2,649	100,325	93,667	23,583	22,469	235	240

Potato acreage: per farm	Percent of total: farms reporting		Percent of total: acres harvested		Percent of total: Production		Percent of average yield			
1949	1954	of 1949	1949	1954	of 1949	1949	1954	of 1949	1949	1954

Acre(s)	Percent		Percent		Percent		Percent		Percent		
Small plot ^{1/}	43.3	45.9	73	.1	.1	52	^{5/} .1	^{5/} .1	57	38	44
0.1 - 0.9	11.9	6.0	34	.1	.1	36	.1	^{5/} .1	38	37	43
1.0 - 1.9	3.3	1.8	36	.1	.1	38	.1	^{5/} .1	38	38	42
2.0 - 2.9	1.8	1.1	43	.2	.1	43	.1	^{5/} .1	50	43	44
3.0 - 9.9	6.0	5.1	58	1.4	.8	59	1.3	.7	52	97	85
3.0 - 4.9	-	1.3	-	-	.1	-	-	.1	-	-	78
5.0 - 9.9	-	3.8	-	-	.7	-	-	.6	-	-	86
10.0 - 24.9	13.0	14.4	76	8.0	6.8	78	8.3	6.0	69	103	88
25.0 - 49.9	8.9	9.5	73	12.0	9.3	73	11.7	8.8	72	98	95
50.0 or more	11.8	16.2	94	78.1	82.7	99	78.4	84.5	102	100	102
Total	100.0	100.0	69	100.0	100.0	93	100.0	100.0	95	100	100

^{1/} Farms reporting less than 20 bushels or 10 bags harvested. Acreage not reported for these small plots.

^{2/} Derived acreage based on assumed yields. ^{3/} Assumed yield by Agricultural Estimates Division (and Crop Reporting Board) AMS, USDA. ^{4/} Data for 1949 not available. ^{5/} Less than one-tenth of one percent.

Source: 1950 and 1955 Censuses of Agriculture, Bureau of the Census.

INDEX OF STATE TABLES

	<u>Page</u>		<u>Page</u>
Alabama.....	49	Nebraska.....	35
Arizona.....	62	Nevada.....	64
Arkansas.....	52	New Hampshire.....	14
California.....	68	New Jersey.....	21
Colorado.....	60	New Mexico.....	61
Connecticut.....	18	New York.....	20
Delaware.....	38	North Carolina.....	42
Florida.....	45	North Dakota.....	33
Georgia.....	44	Ohio.....	24
Idaho.....	58	Oklahoma.....	54
Illinois.....	26	Oregon.....	67
Indiana.....	25	Pennsylvania.....	22
Iowa.....	31	Rhode Island.....	17
Kansas.....	36	South Carolina.....	43
Kentucky.....	47	South Dakota.....	34
Louisiana.....	53	Tennessee.....	48
Maine.....	13	Texas.....	55
Maryland.....	39	Utah.....	63
Massachusetts.....	16	Vermont.....	15
Michigan.....	27	Virginia.....	40
Minnesota.....	30	Washington.....	66
Mississippi.....	50	West Virginia.....	41
Missouri.....	32	Wisconsin.....	28
Montana.....	57	Wyoming.....	59

END