



AgEcon SEARCH
RESEARCH IN AGRICULTURAL & APPLIED ECONOMICS

The World's Largest Open Access Agricultural & Applied Economics Digital Library

This document is discoverable and free to researchers across the globe due to the work of AgEcon Search.

Help ensure our sustainability.

Give to AgEcon Search

AgEcon Search
<http://ageconsearch.umn.edu>
aesearch@umn.edu

*Papers downloaded from **AgEcon Search** may be used for non-commercial purposes and personal study only. No other use, including posting to another Internet site, is permitted without permission from the copyright owner (not AgEcon Search), or as allowed under the provisions of Fair Use, U.S. Copyright Act, Title 17 U.S.C.*

1956 (1956)

USDA STATISTICAL BULLETINS

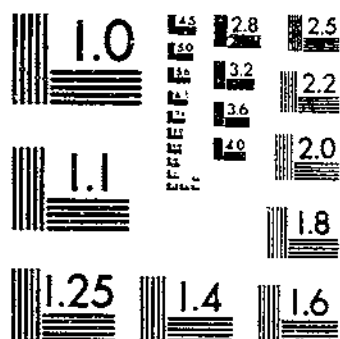
UP DATA

ANIMAL UNITS OF LIVESTOCK FED ANNUALLY 1909-55

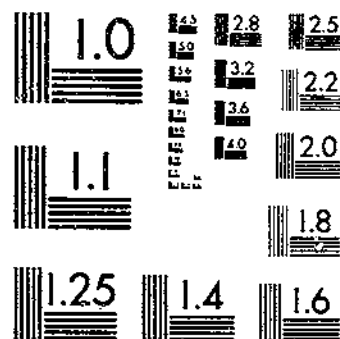
1 OF 1

JENNINGS ROAD

START



MICROCOPY RESOLUTION TEST CHART
NATIONAL BUREAU OF STANDARDS-1963-A

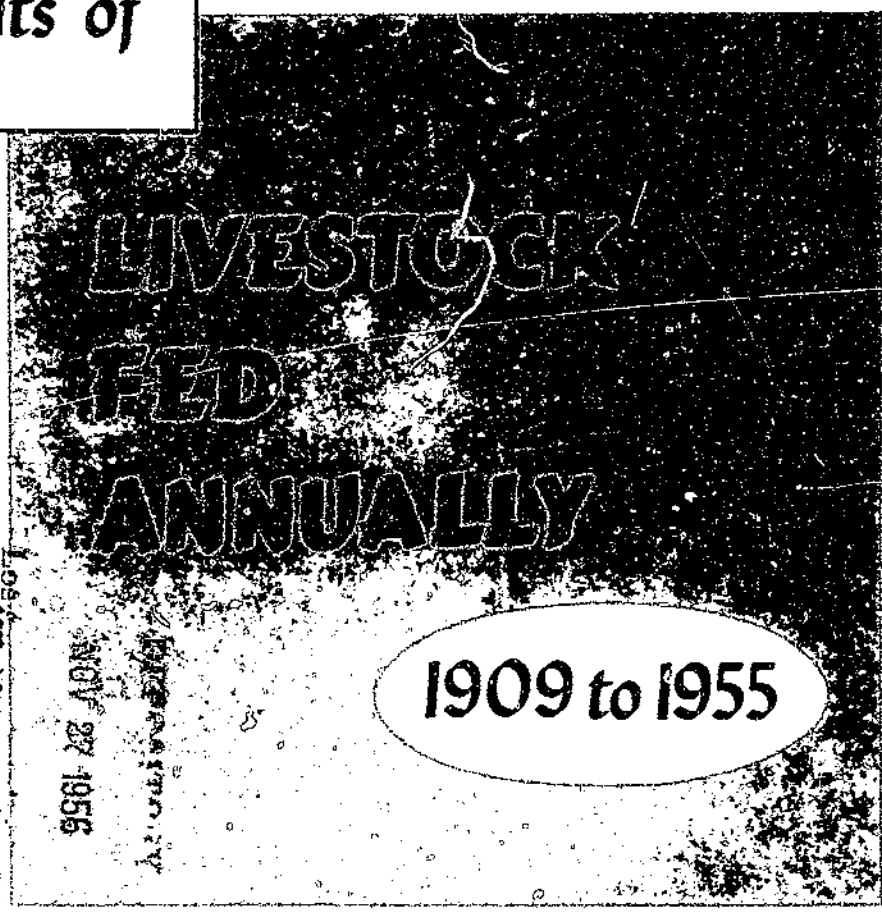


MICROCOPY RESOLUTION TEST CHART
NATIONAL BUREAU OF STANDARDS-1963-A

R 630.5
253-13
194

REFERENCE
D. ...

**Animal
units of**



Statistical Bulletin No. 194

U. S. DEPARTMENT OF AGRICULTURE

AGRICULTURAL RESEARCH SERVICE

OCTOBER 1956

Prepared in
Production Economics Research Branch
Agricultural Research Service
United States Department of Agriculture

ANIMAL UNITS OF LIVESTOCK FED ANNUALLY
1909 to 1955

by

R. D. Jennings, Agricultural Economist
Production Economics Research Branch
Agricultural Research Service

This publication is a revision of earlier processed reports issued by the Department. ^{1/} Some changes in procedure have been made which will be described later.

Three sets of animal units are presented in this report: (1) Grain-consuming livestock; (2) roughage-consuming livestock; and (3) grain-and-roughage consuming livestock. Numbers of livestock when converted into animal units provide statistics for comparing livestock numbers with the feed supply. A unit is considered as one milk cow or its equivalent as measured by average rates of feed consumption. Each kind of livestock and poultry is converted into the standard animal unit according to the proportion its feed consumption bears to the consumption of one milk cow. Calculations of each of the three kinds of animal units were made separately. Thus we have grain-consuming animal units for which livestock and poultry numbers are combined by a set of factor weights that represent consumption of concentrate feeds. For roughage-consuming animal units, numbers are combined by a different set of weights that represent the consumption of hay, pasture, and other forage. A third set of weights is used to combine livestock and poultry numbers on the basis of total feed of all kinds used, thus resulting in the third set of animal units, grain-and-roughage consuming animal units.

Animal units are designed to take into account all livestock and poultry fed on farms during a year, not merely those on hand January 1. They represent the total size of livestock operations over a year, using the statistics reported by the Department of Agriculture on the numbers of livestock and poultry of different kinds on farms January 1 and the number raised during the year.

^{1/} Agricultural Research Service, Animal Units of Livestock Fed Annually, 1909 to 1954, ARS 43-10, June 1955; and Bureau of Agricultural Economics, Animal Units of Livestock Fed Annually, 1919-20 to 1948-49, F. M. 64 revised, Oct. 1949.

The animal units were computed by multiplying the numbers of different classes of cattle, sheep, horses and mules, and hens and pullets, on farms on January 1 in each State, by factors that reflect the feed consumption of these classes for a year. In addition, the number of pigs saved, and chickens and turkeys raised, are multiplied by factors that represent their feed consumption in a year. Thus, the total for a given kind of livestock or of all livestock gives the animal units fed in a year.

Animal units are computed by States, and therefore, the factors used for the various kinds of livestock and poultry may differ from State to State and region to region to reflect differences in average rates of feed consumption (tables 1 to 3). Factors for grain-consuming animal units vary more than for roughage or for grain-and-roughage consuming animal units because rates of grain consumption have a wider range of variability in different parts of the country than do rates of roughage consumption.

The State factors used in computing animal units are held constant over the entire period from 1919 to date regardless of any change that may have occurred in the rates of feeding for the different kinds of livestock. For this reason, changes in the animal units of the different kinds of livestock do not necessarily reflect changes in the aggregate quantity of feed fed. This is especially true for grain-consuming livestock over a period of several years because the rates of feeding grain for some kinds of livestock have changed greatly in the last 20 to 30 years. Horses and mules, for instance, are fed much less grain per head than was true 30 years ago while milk cows are fed much more (table 4). However, year-to-year changes in animal units would usually approximate changes in the average quantities of feed required since they are aggregates of all kinds of livestock, and changes in production per head from one year to the next would usually be small. Over a period of years, animal units measure only a head count of livestock fed. They do not measure the volume of livestock production or the quantity of feed fed, which vary according to production per head and rate of feeding per head in each year.

The base period used for determining the factors used to compute animal units was 1940-45 for all livestock except broilers. The 1950-53 period was used for broilers because of the great growth in this industry since 1945. The State factors for grain-consuming livestock except for broilers are much the same as those used in previous reports of animal units fed annually. ^{2/} Some changes have been made in factors for some States to bring them more in line with neighboring States. Factors for

^{2/} See footnote 1, page 1.

Table 1. - Animal-unit factors for grain-consuming livestock fed in a year 1/

State	Cattle on farms Jan. 1 2/		Cattle on feed	All other cattle	Stock sheep on farms Jan. 1	Horses and mules on farms Jan. 1		Hogs fed during year 3/	Hens and pullets on farms Jan. 1	Chick-ens raised during year	Turkeys raised during year 4/	
	Milk cows and heifers 2 years old and over	Heifers and calves kept for milk				Beef cows 2 years old and over	Colts					Colts
Maine	1.1	0.4	0.30	---	0.10	0.030	1.5	0.2	0.70	0.070	0.020	0.07
New Hampshire	1.0	.4	.30	---	.10	.030	1.3	.2	.70	.070	.020	.07
Vermont	1.1	.4	.30	---	.10	.030	1.7	.2	.70	.065	.020	.07
Massachusetts	1.2	.4	.30	---	.10	.030	1.6	.2	.50	.075	.020	.07
Rhode Island	1.2	.4	.30	---	.10	.030	1.3	.2	.70	.065	.020	.07
Connecticut	1.2	.4	.30	---	.10	.030	1.3	.2	.70	.070	.020	.07
New York	1.3	.4	.30	---	.10	.040	1.3	.2	.70	.065	.020	.07
New Jersey	1.5	.4	.30	---	.10	.030	1.9	.2	.50	.070	.020	.07
Pennsylvania	1.5	.4	.30	2.2	.10	.040	1.9	.2	.70	.065	.020	.07
Delaware	1.1	.4	.30	---	.10	.040	1.5	.2	.70	.060	.020	.07
Maryland	1.2	.4	.30	---	.10	.040	1.5	.2	.70	.060	.020	.07
Ohio	1.2	.5	.40	2.3	.30	.050	1.2	.2	.70	.065	.020	.07
Indiana	1.2	.5	.4	2.5	.40	.050	1.3	.2	.70	.060	.020	.07
Illinois	1.3	.5	.4	2.6	.40	.050	1.4	.2	.75	.055	.020	.07
Iowa	1.2	.5	.40	2.5	.30	.050	1.4	.2	.75	.055	.020	.07
Missouri	.9	.4	.30	2.1	.30	.040	1.2	.2	.70	.050	.020	.07
Michigan	1.0	.4	.30	2.0	.30	.050	1.1	.2	.70	.060	.020	.07
Wisconsin	1.0	.4	.30	1.9	.10	.050	1.1	.2	.70	.060	.020	.07
Minnesota	.8	.4	.40	1.8	.20	.050	1.2	.2	.75	.055	.020	.07
North Dakota	.7	.3	.20	1.5	.10	.030	1.0	.2	.75	.055	.020	.07
South Dakota	.5	.3	.30	1.9	.10	.020	.8	.2	.80	.055	.020	.07
Nebraska	.9	.3	.20	3.1	.20	.030	1.1	.2	.80	.055	.020	.07
Kansas	.0	.3	.10	2.1	.10	.030	1.1	.2	.70	.055	.020	.07
Virginia	.9	.4	.20	---	.10	.030	1.4	.2	.65	.060	.015	.07
West Virginia	.8	.4	.20	---	.10	.030	1.2	.2	.65	.060	.015	.07
Kentucky	.8	.4	.10	---	.10	.030	1.3	.2	.65	.060	.015	.07
Tennessee	.9	.4	.2	---	.10	.030	1.6	.2	.65	.050	.015	.07
North Carolina	1.1	.3	.2	---	.20	.030	1.8	.2	.65	.060	.015	.07
South Carolina	.9	.2	.2	---	.1	---	2.3	.2	.60	.050	.015	.07
Georgia	.9	.2	.2	---	.1	---	2.0	.2	.60	.050	.015	.07
Florida	1.5	.2	.10	---	.1	---	2.0	.2	.50	.050	.015	.07
Alabama	.9	.2	.2	---	.1	---	2.1	.2	.60	.050	.015	.07
Mississippi	.8	.2	.2	---	.1	---	1.9	.2	.55	.045	.015	.07
Arkansas	.8	.2	.2	---	.1	---	1.5	.2	.50	.045	.015	.07
Louisiana	.6	.2	.10	---	.10	---	1.6	.2	.50	.045	.015	.07
Oklahoma	.8	.2	.10	1.2	.10	.010	1.1	.2	.70	.050	.015	.07
Texas	.9	.2	.10	1.4	.10	.015	1.4	.2	.65	.050	.015	.07
Montana	.6	.2	.10	.7	.10	.015	.4	---	.65	.050	.015	.07
Wyoming	.6	.2	.10	.7	.10	.015	.3	---	.60	.050	.015	.07
Colorado	.9	.2	.10	.9	.10	.015	.5	---	.70	.055	.015	.07
Idaho	.7	.2	.10	.7	.10	.015	.2	---	.60	.050	.015	.07
Utah	.7	.2	.1	.7	.03	.010	.3	---	.60	.06	.015	.07
Nevada	.6	.2	.1	.7	.01	.010	.1	---	.60	.050	.015	.07
New Mexico	.7	.2	.1	.7	.06	.010	.7	---	.60	.050	.015	.07
Arizona	.6	.2	.1	.7	.02	.005	.2	---	.55	.050	.015	.08
Washington	1.1	.2	.10	.7	.06	.015	.3	---	.70	.06	.015	.08
Oregon	1.1	.2	.10	.7	.06	.015	.3	---	.70	.060	.015	.08
California	1.1	.2	.10	.7	.04	.015	.2	---	.65	.06	.015	.08

1/ The base (1.00) for the factors in this table is the average quantity of grain and other concentrates used by the average milk cow in the U. S. in a year in the period 1940-45. Other livestock which are included in calculating animal units and for which the factors are the same in all States are: Sheep and lambs on feed January 1, 0.12 per head; commercial broilers produced, 0.008 per head. 2/ The factors for heifers and heifer calves kept for milk allow for milk allow for dairy bulls, so the animal units calculated from columns 1 and 2 may be added to show the total animal units of all dairy cattle. Likewise, factors for "all other cattle" allow for beef bulls and the animal units calculated from the factors in columns 3, 4, and 5, may be added to show the animal units of all beef cattle. In AMS statistics, the number of all bulls (dairy and beef not shown separately), is included in "all other cattle." Therefore, in those States where the number of dairy bulls is a large part of the number of "all other cattle," the factors for "all other cattle" are smaller than in other States. 3/ The number of hogs fed in the feeding year beginning October 1 since 1952 was obtained by adding from 10 to 55 percent of the spring pig crop of the year in which the October 1 in question falls, 100 percent of the fall pig crop of the same year, and from 90 to 45 percent of the spring pig crop of the following year. The percentages vary by States and are given in table 5. For the country as a whole, in a normal year, about 65 percent of the feed for the spring pig crop of a given year is fed before October 1, and 35 percent after October 1. Nearly all the feed for the fall crop of pigs is fed within the feeding year beginning October 1. 4/ Beginning with 1952-53 the factors given in the table were used for heavy turkeys and 0.03 was used for light turkeys.

Table 2. - Animal-unit factors for roughage-consuming livestock fed in a year 1/

State	Cattle on farms January 1				All other cattle	Horses and mules 2 years old and over
	Milk cows 2 years old and over	Heifers and heifer calves kept for milk	Beef cows 2 years old and over	Cattle on feed		
Maine	1.1	0.8	1.0	---	0.7	0.9
New Hampshire	1.1	.8	1.0	---	.7	.8
Vermont	1.1	.8	1.0	---	.7	.8
Massachusetts	1.1	.8	1.0	---	.7	.7
Rhode Island	1.1	.8	1.0	---	.7	.8
Connecticut	1.1	.8	1.0	---	.7	.9
New York	1.1	.8	1.0	---	.7	.8
New Jersey	1.1	.8	1.0	---	.7	.7
Pennsylvania	1.0	.8	1.0	0.4	.7	.8
Delaware	.9	.8	1.0	.4	.7	.8
Maryland	.9	.8	1.0	.4	.7	.7
Ohio	1.0	.8	1.0	.4	.8	.8
Indiana	1.0	.8	1.0	.4	.8	.8
Illinois	1.0	.8	1.0	.4	.8	.8
Iowa	1.0	.8	1.0	.4	.8	.8
Missouri	1.0	.8	1.0	.4	.8	.8
Michigan	1.0	.8	1.0	.4	.7	.7
Wisconsin	1.1	.8	1.0	.4	.7	.8
Minnesota	1.0	.8	1.0	.4	.7	.8
North Dakota	1.0	.8	1.0	.4	.9	.8
South Dakota	1.0	.8	1.0	.4	.9	.8
Nebraska	1.0	.8	1.0	.5	.9	.8
Kansas	1.0	.8	1.0	.5	.9	.9
Virginia	1.0	.8	1.0	---	.9	.8
West Virginia	1.0	.8	1.0	---	.9	.8
Kentucky	.9	.8	1.0	---	.9	.7
Tennessee	.8	.7	.8	---	.8	.7
North Carolina	.8	.7	.8	---	.8	.6
South Carolina	.8	.7	.8	---	.7	.5
Georgia	.8	.7	.8	---	.7	.6
Florida	.7	.7	.9	---	.9	.4
Alabama	.8	.7	.8	---	.8	.5
Mississippi	.8	.7	.8	---	.7	.6
Arkansas	.8	.7	.8	---	.7	.7
Louisiana	.8	.7	.8	---	.7	.5
Oklahoma	.8	.7	1.0	.30	.9	.8
Texas	.8	.7	1.0	.30	.9	.7
Montana	1.1	.8	1.05	.7	.9	1.0
Wyoming	1.1	.8	1.05	.7	.9	.9
Colorado	1.0	.8	1.05	.7	.8	.9
Idaho	1.3	.8	1.05	.7	.9	1.1
Utah	1.2	.8	1.05	.7	.9	1.1
Nevada	1.2	.8	1.05	.7	.9	1.1
New Mexico	1.0	.8	1.0	.8	.8	.9
Arizona	1.1	.8	1.0	.8	.8	.9
Washington	1.2	.8	1.05	.7	.9	1.0
Oregon	1.1	.8	1.05	.7	.9	.9
California	1.2	.8	1.05	.7	.9	1.0

1/ The base (1.0) for the factors used in this table is the quantity of hay, silage, stover, and pasture, expressed in feed units used annually by the average milk cow in the U. S. in the years 1940-45. Other livestock for which the factors are the same in all States are: Goats clipped, per head 0.2; hogs, per head Jan. 1, 0.01; chickens, per head Jan. 1, 0.0012; turkeys, per head raised during year, 0.0024; stock sheep, per head Jan. 1, 0.2; sheep and lambs, per head on feed Jan. 1, 0.058; colts, per head Jan. 1, 1.0.

Table 3. - Animal-unit factors for grain-and-roughage consuming livestock fed in a year ^{1/}

State	Cattle on farms January 1					Horses and mules		Hogs fed during feeding year	Hens and pullets on farms Jan. 1	Chickens raised during year
	Milk cows: and heifers 2 years old and over	Helpers and heifer calves kept for milk	Beef cows: 2 years old and over	Cattle on feed	All other cattle	2 years old and over on farms Jan. 1	old and over on farms Jan. 1			
Maine	1.1	0.64	0.8	---	0.64	1.2	0.17	0.019	0.0050	
New Hampshire	1.1	.64	.8	---	.64	1.0	.17	.019	.0050	
Vermont	1.1	.64	.8	---	.64	1.0	.17	.019	.0050	
Massachusetts	1.2	.64	.8	---	.64	1.0	.17	.019	.0050	
Rhode Island	1.2	.64	.8	---	.64	1.0	.17	.019	.0050	
Connecticut	1.2	.64	.8	---	.64	1.0	.17	.019	.0050	
New York	1.2	.64	.8	---	.64	1.0	.17	.018	.0045	
New Jersey	1.3	.64	.8	---	.64	1.0	.17	.018	.0045	
Pennsylvania	1.2	.64	.8	.9	.64	1.0	.17	.018	.0045	
Delaware	1.0	.64	.8	---	.64	1.0	.17	.018	.0045	
Maryland	1.0	.64	.8	---	.64	1.0	.18	.018	.0045	
Ohio	1.1	.64	.8	.9	.57	.9	.20	.017	.0050	
Indiana	1.1	.64	.8	.9	.57	.9	.20	.017	.0050	
Illinois	1.1	.64	.8	.9	.57	.9	.20	.017	.0050	
Iowa	1.0	.64	.8	.9	.57	.9	.20	.017	.0050	
Missouri	.9	.64	.8	.9	.57	.9	.20	.017	.0040	
Michigan	1.1	.64	.8	.9	.57	.8	.20	.015	.0045	
Wisconsin	1.1	.64	.8	.8	.57	.9	.20	.015	.0040	
Minnesota	1.0	.64	.8	.8	.57	.9	.20	.014	.0045	
North Dakota	.9	.64	.8	.7	.64	.8	.20	.015	.0045	
South Dakota	.9	.64	.8	.8	.64	.8	.20	.015	.0045	
Nebraska	1.0	.64	.8	1.1	.64	.8	.20	.015	.0045	
Kansas	1.0	.64	.8	.8	.64	.9	.20	.015	.0040	
Virginia	.9	.62	.8	---	.63	.9	.20	.016	.0040	
West Virginia	.9	.62	.8	---	.63	.8	.20	.016	.0040	
Kentucky	.9	.62	.8	---	.63	.9	.20	.016	.0040	
Tennessee	.8	.60	.7	---	.63	.9	.20	.016	.0040	
North Carolina	.9	.60	.7	---	.63	.9	.20	.016	.0040	
South Carolina	.9	.60	.7	---	.58	.9	.17	.015	.0035	
Georgia	.9	.60	.7	---	.58	.9	.17	.015	.0035	
Florida	.9	.60	.7	---	.58	.8	.12	.015	.0035	
Alabama	.8	.60	.7	---	.58	.9	.17	.015	.0035	
Mississippi	.8	.60	.7	---	.54	.9	.15	.015	.0035	
Arkansas	.8	.60	.7	---	.54	.9	.15	.015	.0035	
Louisiana	.8	.60	.7	---	.54	.8	.15	.015	.0035	
Oklahoma	.8	.62	.7	.6	.63	.8	.19	.015	.0035	
Texas	.8	.62	.7	.6	.63	.9	.19	.015	.0035	
Montana	1.0	.64	.8	.8	.64	.8	.16	.016	.0040	
Wyoming	1.0	.64	.8	.8	.64	.8	.15	.016	.0040	
Colorado	1.0	.64	.8	.8	.64	.8	.17	.016	.0040	
Idaho	1.1	.64	.8	.8	.64	.8	.15	.016	.0040	
Utah	1.2	.64	.8	.7	.64	.9	.15	.016	.0040	
Nevada	1.1	.64	.8	.7	.64	.8	.15	.016	.0035	
New Mexico	1.0	.62	.7	.9	.60	.9	.15	.016	.0035	
Arizona	1.2	.62	.7	.9	.60	.8	.15	.016	.0035	
Washington	1.2	.64	.8	.7	.64	.9	.17	.016	.0045	
Oregon	1.1	.64	.8	.7	.64	.8	.17	.016	.0035	
California	1.3	.64	.8	.7	.64	.8	.17	.016	.0045	

^{1/} The base (1.0) for the factors used in this table is the quantity of all feeds including pasture expressed in feed units used annually by the average milk cow in the U. S. in the years 1940-45. Other livestock for which the factors are the same in all States are: Stock sheep, per head Jan. 1, 0.15; sheep and lambs, per head on feed Jan. 1, 0.074; colts, per head Jan. 1, 0.6; commercial broilers, per head produced during year, 0.002; turkeys, per head raised during year, 0.02; goats clipped, per head 0.15.

Table 4. - Concentrates fed per head, selected kinds of livestock, United States, 5-year averages, 1920-24 to 1950-54

Year beginning October 1	Milk cows	Horses and mules, 2 years old and over	Hens and pullets Jan. 1
	<u>Pounds</u>	<u>Pounds</u>	<u>Pounds</u>
1920-24-----	1,010	2,287	48
1925-29-----	1,062	2,243	52
1930-34-----	989	1,829	50
1935-39-----	1,105	1,731	53
1940-44-----	1,329	1,709	66
1945-49-----	1,468	1,539	77
1950-54-----	1,574	1,359	86

both heavy and light turkeys are included.

A change has also been made in the method of computing the number of hogs fed in a year, beginning in 1952. Data show that pigs in recent years are being farrowed earlier and the feeding period is being shortened. A much smaller percentage of the spring pig crop is on hand the following January 1 than formerly. The percentage of the total feed fed to spring pigs that is fed after October 1 is smaller than it used to be. The percentages used in recent years are given in table 5. The estimate of hogs fed in the feeding year beginning October 1 in a particular State is obtained by adding from 10 to 55 percent of the spring pig crop of the year in which the October 1 in question falls, 100 percent of the fall pig crop of the same year, and from 90 to 45 percent of the spring pig crop of the following year. The percentages vary by States as shown in table 5. For the United States, about 35 percent of the total feed fed to spring pigs now comes after October 1 compared with 55 percent

Table 5. - Estimated percentage of feed for spring pig crop that is fed after October 1, by States, 1919-51 and 1952-55

State	Estimated percentage		State	Estimated percentage	
	1919-51	1952-55		1919-51	1952-55
	Percent	Percent		Percent	Percent
Maine-----	60	55	North Carolina-----	65	45
New Hampshire---	60	50	South Carolina ----	65	55
Vermont -----	60	40	Georgia -----	65	40
Massachusetts---	60	50	Florida -----	65	45
Rhode Island ---	60	50	Alabama -----	65	40
Connecticut ----	60	50			
New York -----	60	30	Mississippi-----	65	55
New Jersey -----	60	50	Arkansas-----	65	55
Pennsylvania ---	60	35	Louisiana -----	65	50
Delaware -----	60	40			
Maryland -----	60	25	Oklahoma -----	60	20
			Texas -----	60	40
Ohio -----	45	10			
Indiana -----	45	15	Montana -----	50	35
Illinois -----	50	25	Wyoming -----	50	50
Iowa -----	50	40	Colorado -----	50	50
Missouri-----	45	25	Idaho -----	50	35
			Utah -----	50	50
Michigan-----	45	20	Nevada-----	50	50
Wisconsin-----	45	20			
Minnesota-----	50	40	New Mexico -----	50	40
			Arizona -----	50	50
North Dakota ---	55	55			
South Dakota ---	55	50	Washington -----	50	20
Nebraska -----	55	40	Oregon-----	50	25
Kansas -----	50	25	California -----	50	50
Virginia -----	60	40			
West Virginia ---	60	40			
Kentucky -----	50	30	United States -----	55	35
Tennessee -----	50	35			

before 1952. Largely because of the smaller factor used for broilers, the changes made have resulted in slightly fewer animal units of grain-consuming livestock, especially in recent years.

A significant change has been made in the factors used for computing roughage-consuming animal units and grain-and-roughage consuming animal units. This change was made for young cattle, both dairy and beef, and for colts. Previous factors were found to be not large enough to take care of the nutrients required for growth so the factors were increased. This resulted in an increase in total roughage-consuming animal units of 20 percent or more. The same type of change resulted in about 10 percent more grain-and-roughage consuming animal units.

Trends in Animal Units by Regions Since 1920

To show trends, States were grouped into regions as follows:

New England - Maine, New Hampshire, Vermont, Massachusetts, Rhode Island, and Connecticut

Lower Northeastern - New York, Pennsylvania, New Jersey, Delaware, and Maryland

Corn Belt - Ohio, Indiana, Illinois, Iowa, and Missouri

Lake - Michigan, Wisconsin, and Minnesota

Northern Plains - North Dakota, South Dakota, Nebraska, and Kansas

Appalachian - Virginia, West Virginia, Kentucky, Tennessee, and North Carolina

Southeastern - South Carolina, Georgia, Florida, and Alabama

Delta - Arkansas, Mississippi, and Louisiana

Southern Plains - Oklahoma and Texas

Mountain - Montana, Idaho, Wyoming, Colorado, Utah, and Nevada

Southwestern - New Mexico and Arizona

Pacific - Washington, Oregon, and California

In the United States, especially in the Northeast, the Corn Belt, and the Lake States, numbers of grain-consuming livestock (including poultry) have tended to increase relative to roughage-consuming livestock in the last 35 years. They have tended to decrease relative to roughage-consuming livestock in the Northern Plains and in the Southern Plains, especially in the last 10 years (figures 1 to 5). The number of grain-consuming animal units shows an upward trend but also a wide variation from the drought years of the thirties to the World War II peak. It shows an upward trend in most regions except the Plains and Mountain States.

Animal units of roughage-consuming livestock show a cyclical variation mainly owing to changes in number of beef cattle. At present, the number is nearly as high as in 1943-44 and a little higher than at the previous high points of 1933-34 and 1917-18 (fig. 1). There has been little if any uptrend in roughage-consuming animal units for the country as a whole such as there has been in grain-consuming livestock. The number is higher than at previous peaks in the South, the Appalachian region and the Pacific States. It is somewhat lower than wartime peaks in the Corn Belt, Lake States and Northern Plains, and much lower in the Southern Plains and Southwest. (See fig. 6).

The number of grain-consuming animal units in 1955 was only about 14 percent larger than in 1920, but the number excluding horses and mules was 36 percent larger (table 6). In grain-consuming livestock the striking change in the last 35 years in the United States is the decrease in importance of horses and mules and the increase in meat animals and poultry. Meat animals and poultry now account for 80 percent of grain-consuming livestock (table 7). Poultry now account for over half the grain-consuming livestock in the Northeast and Pacific States and over a third in the Appalachian region, the South and the Southern Plains. The percentage of animal units of poultry has been increasing in New England while that of dairy cattle has been decreasing. Poultry have been increasing in importance in the last 10 to 15 years in several areas because of the growth of the broiler industry. Hogs and poultry add up to two-thirds of the grain-consuming animal units for the country as a whole.

The total of roughage-consuming livestock is no larger than at previous high points in the cycle (table 8), but beef cattle have replaced horses, mules and sheep in the roughage-consuming livestock in the last 2 to 3 decades. The number of beef cattle is nearly half again as high as it was at previous high points; the number of dairy cattle has been relatively constant for 25 years except for the war years, and sheep numbers are now about 60 percent of their high level during the 1930's and

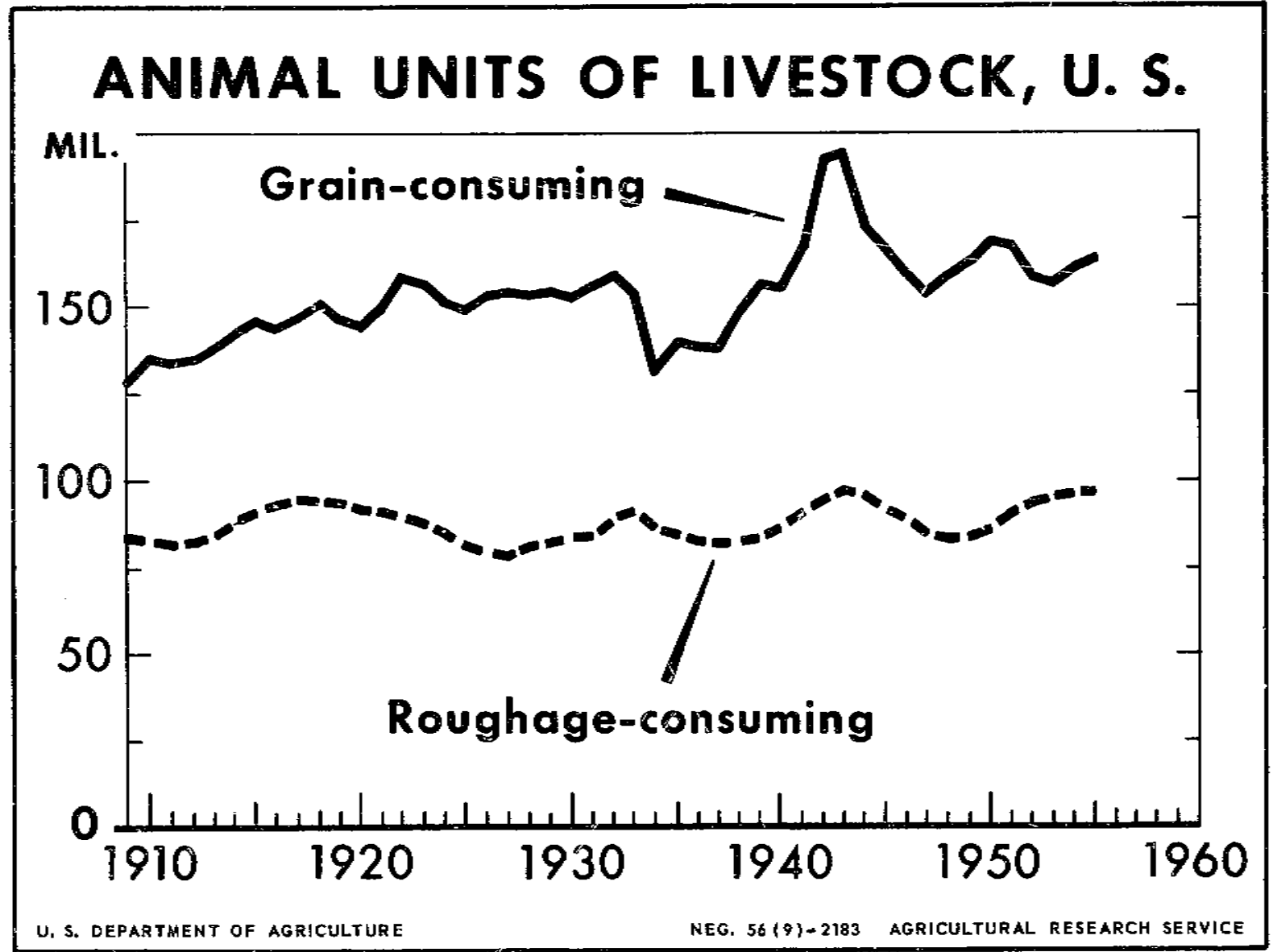
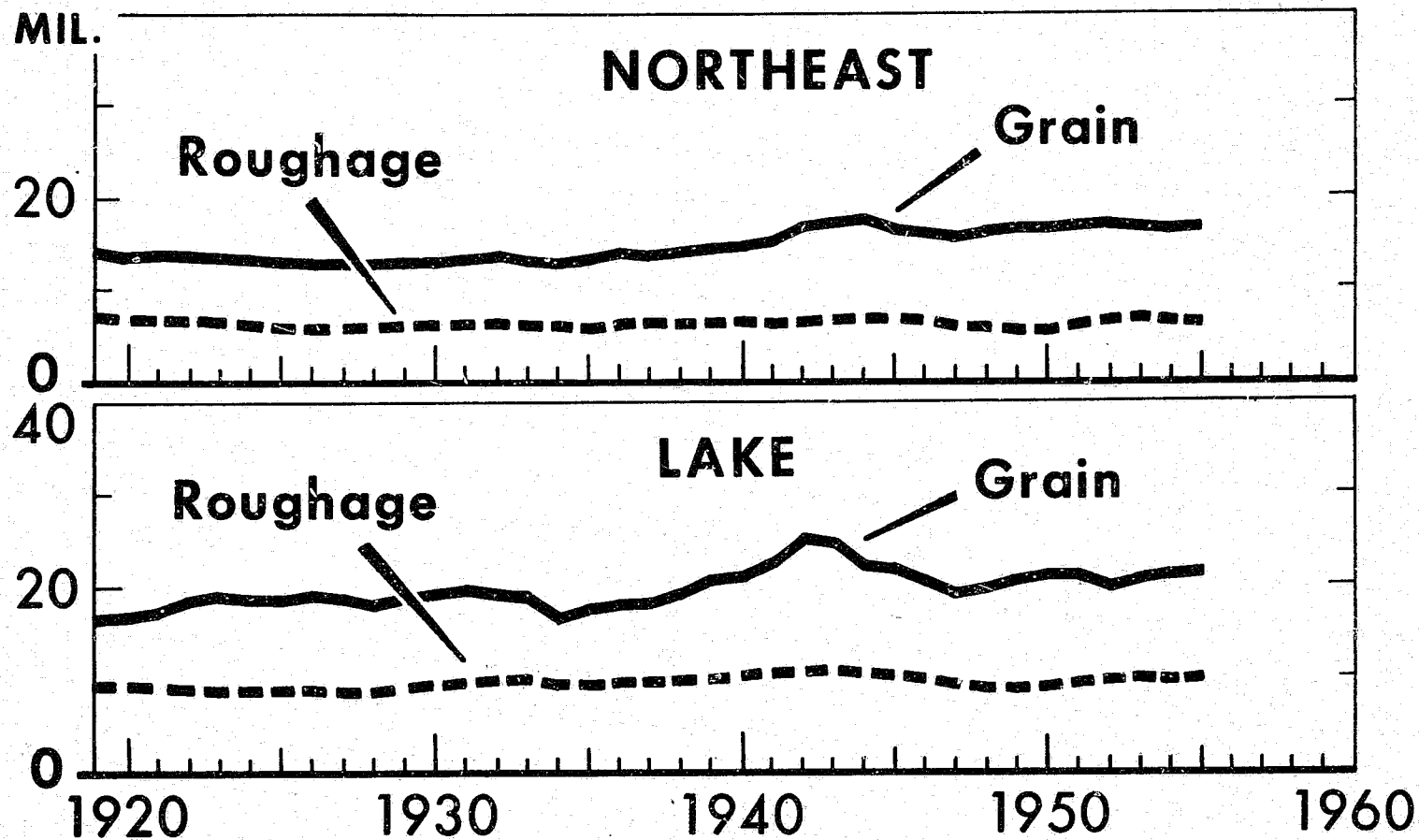


Figure 1

ANIMAL UNITS OF LIVESTOCK

Northeast and Lake Regions



U. S. DEPARTMENT OF AGRICULTURE

NEG. 56 (9)-2184 AGRICULTURAL RESEARCH SERVICE

Figure 2

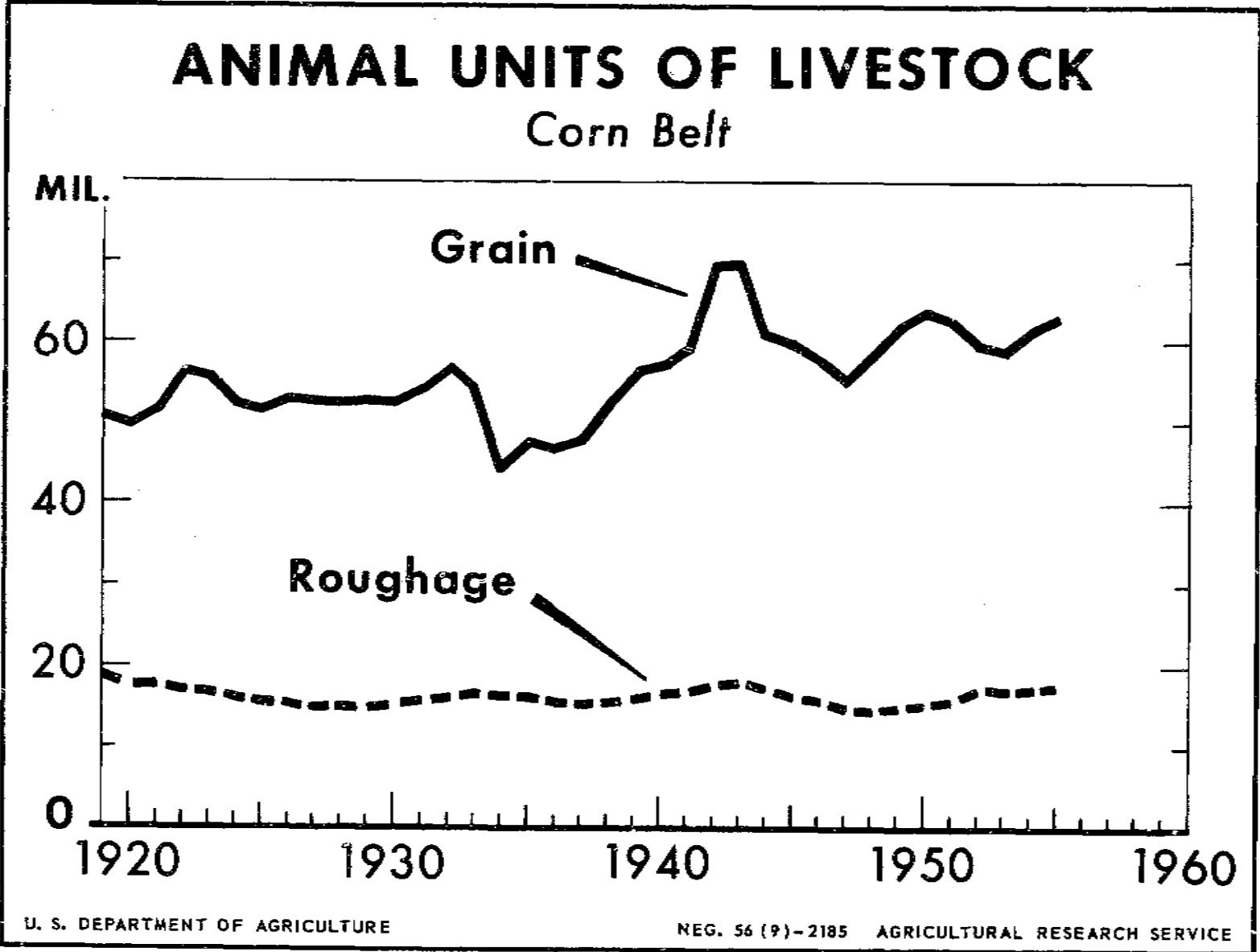
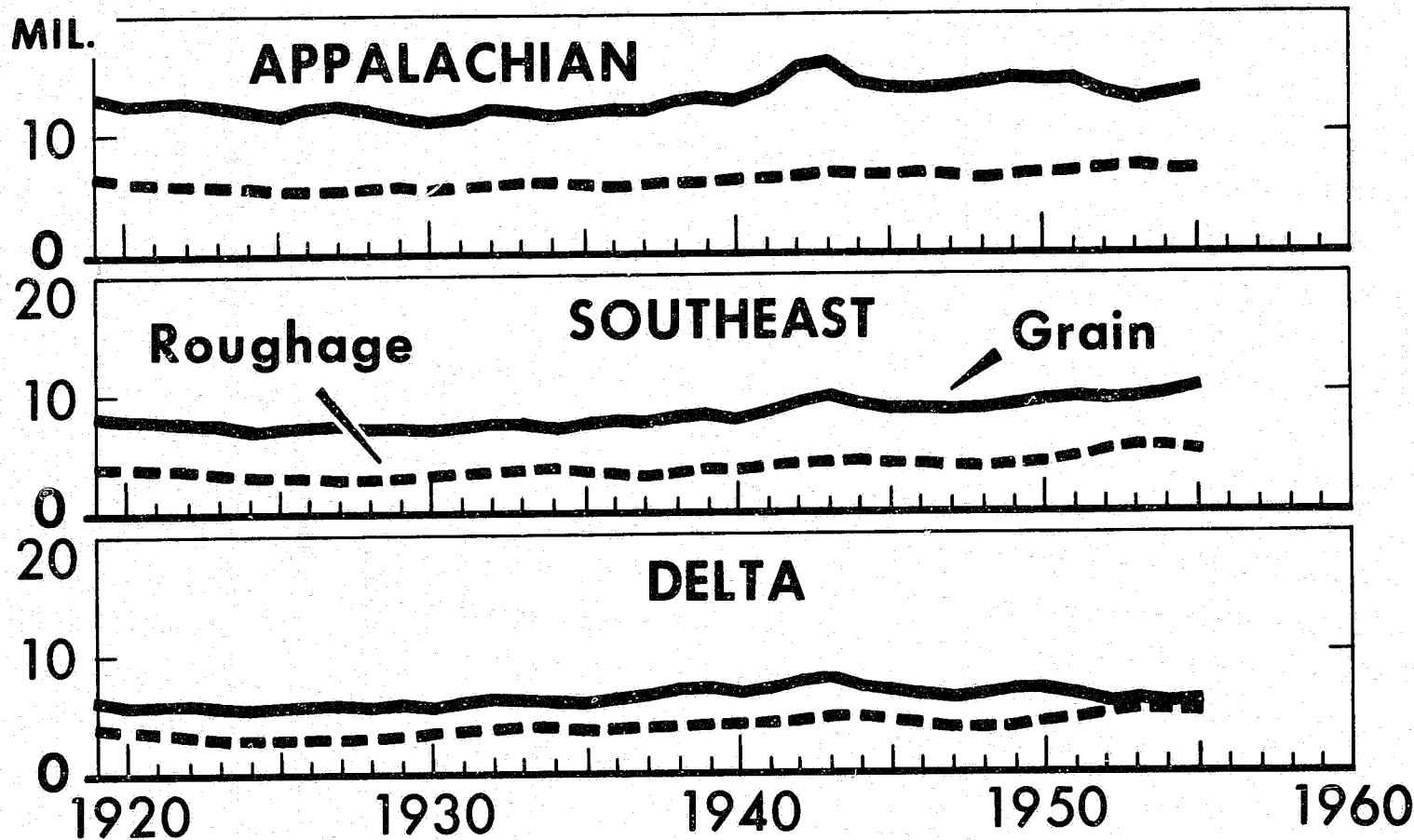


Figure 3

ANIMAL UNITS OF LIVESTOCK

Southern Regions



U. S. DEPARTMENT OF AGRICULTURE

NEG. 56 (9)-2186 AGRICULTURAL RESEARCH SERVICE

Figure 4

ANIMAL UNITS OF LIVESTOCK

Western Regions

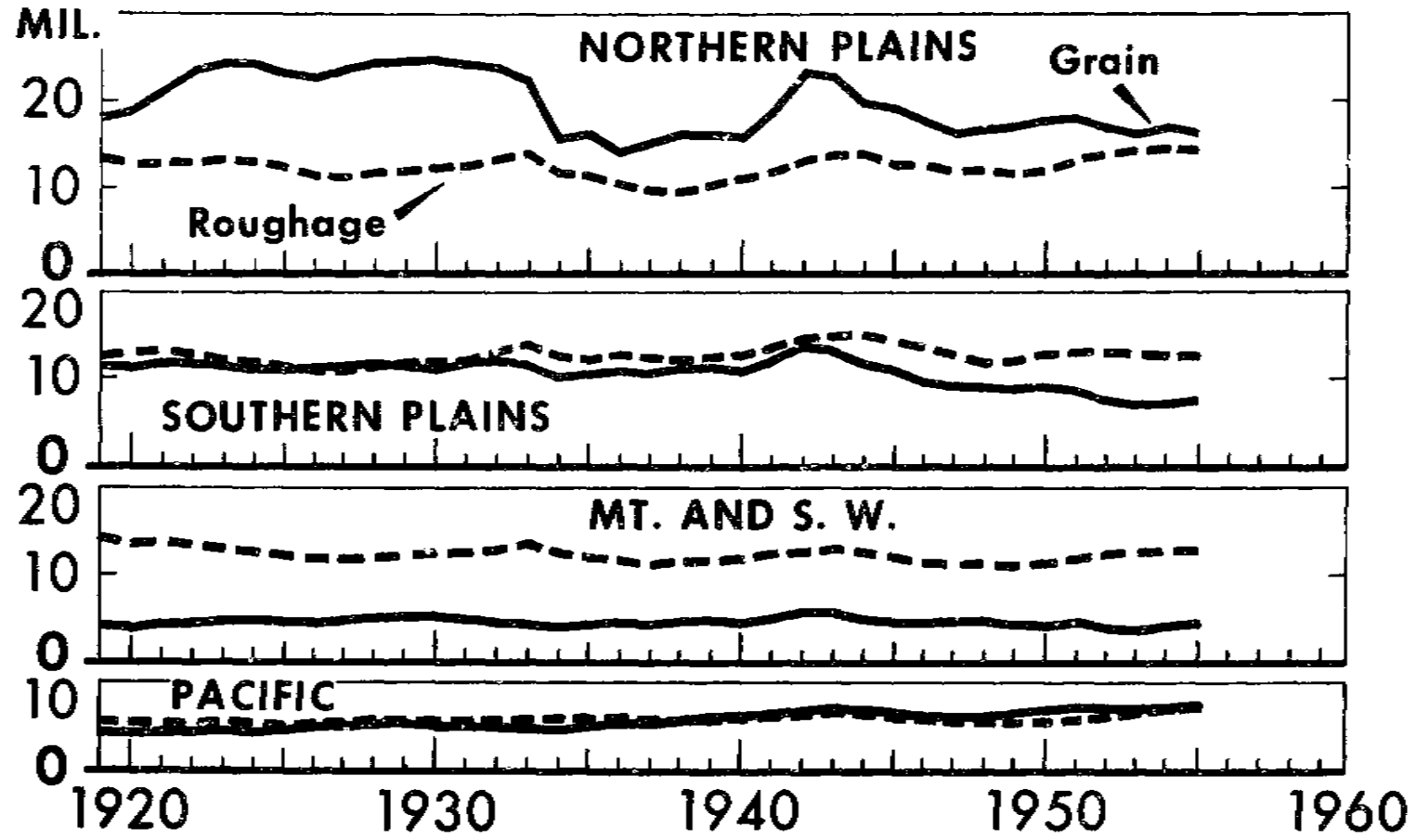


Figure 5

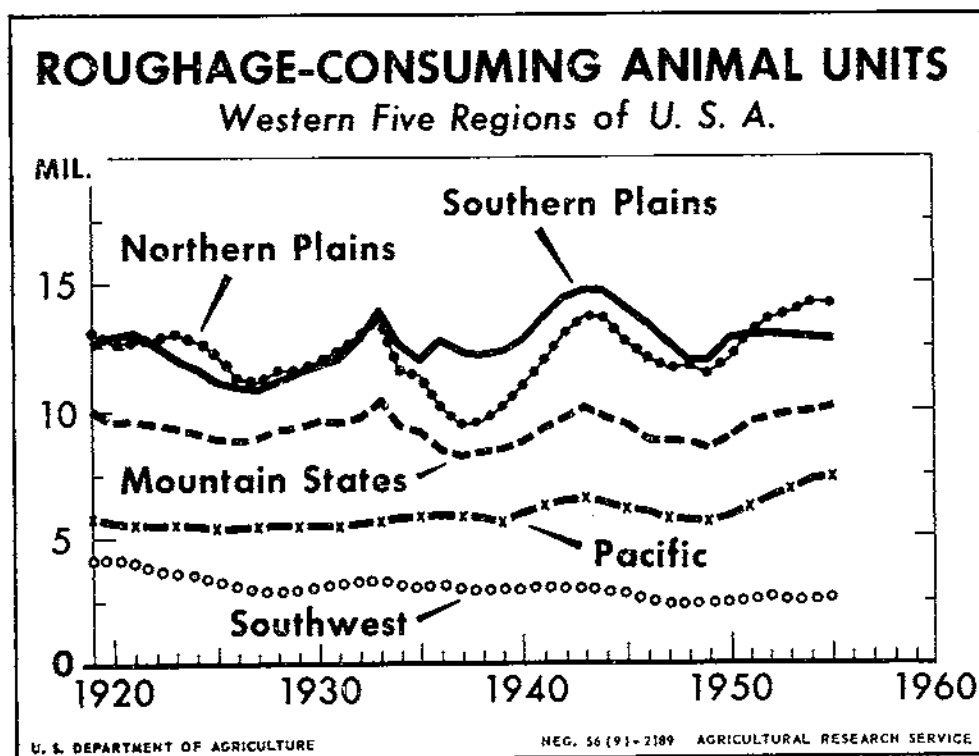
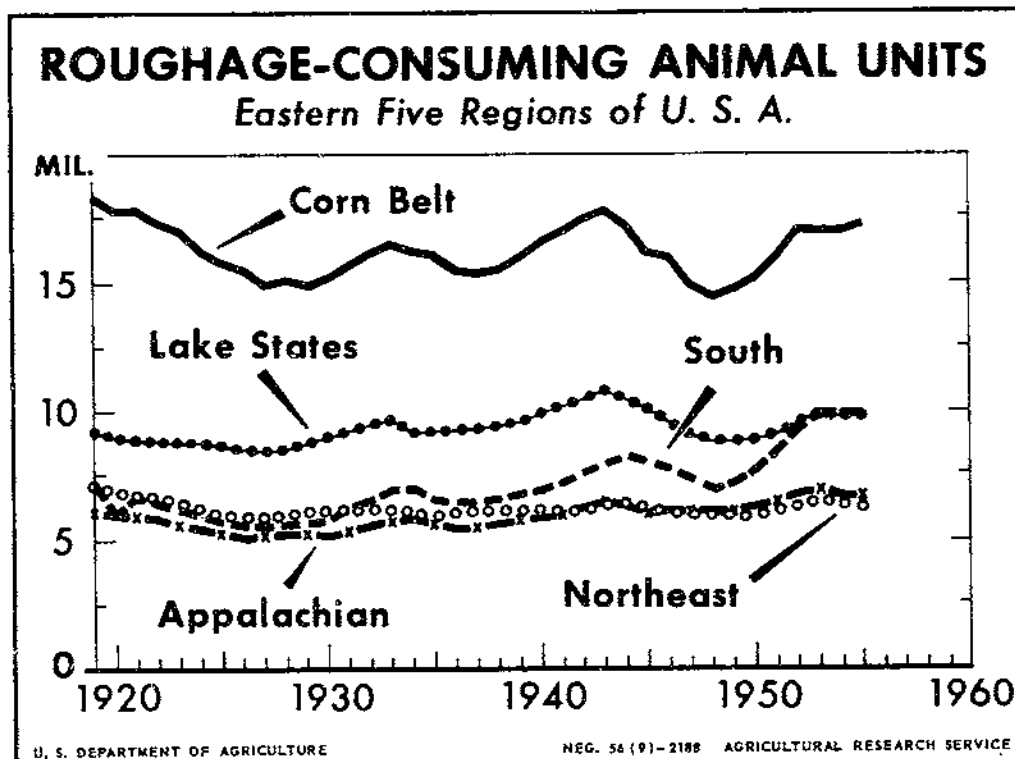


Figure 6

Table 6. - Grain-consuming livestock: Animal units fed annually, by kinds of livestock, United States, 1909-55

Year beginning October 1	Dairy cattle	Beef cattle	Sheep	Hogs	Poultry	Horses and mules	Total
	1,000 units	1,000 units	1,000 units	1,000 units	1,000 units	1,000 units	1,000 units
1909	22,318	11,471	1,511	39,760	27,421	25,298	127,779
1910	22,287	10,965	1,521	44,893	29,389	25,855	134,910
1911	22,395	10,488	1,440	44,491	28,289	26,212	133,315
1912	22,468	10,737	1,343	45,699	28,090	26,576	134,913
1913	22,744	11,498	1,296	46,806	28,231	27,086	137,661
1914	23,260	12,641	1,218	48,416	29,210	27,477	142,222
1915	23,813	13,543	1,203	51,839	28,458	27,627	146,483
1916	24,341	14,435	1,170	47,813	27,690	27,982	143,431
1917	24,712	14,940	1,193	50,128	27,990	28,392	147,355
1918	24,723	14,662	1,260	50,933	30,146	28,581	150,305
1919	24,856	14,532	1,217	47,639	29,353	28,262	145,859
1920	24,688	13,628	1,246	48,264	28,115	28,060	144,001
1921	24,991	13,292	1,135	51,856	30,415	27,783	149,472
1922	25,351	13,158	1,194	59,036	31,988	27,443	158,170
1923	25,520	12,728	1,212	57,180	33,932	26,807	157,379
1924	25,678	11,623	1,220	52,175	34,378	26,127	151,201
1925	25,490	10,837	1,315	51,069	35,219	25,509	149,439
1926	25,388	9,758	1,331	55,040	36,896	24,658	153,071
1927	25,403	9,158	1,411	57,084	36,727	23,908	153,691
1928	25,792	9,553	1,508	55,454	37,660	23,192	153,159
1929	26,624	10,112	1,690	54,057	39,005	22,582	154,070
1930	27,414	10,167	1,680	54,768	36,848	21,876	152,753
1931	28,403	10,100	1,772	58,252	36,705	21,204	156,436
1932	29,649	10,978	1,713	59,306	37,408	20,682	159,736
1933	30,650	10,989	1,684	54,878	35,530	20,215	153,946
1934	29,615	9,137	1,704	37,357	33,685	19,696	131,194
1935	28,774	10,971	1,694	42,207	35,967	19,043	138,656
1936	28,244	9,554	1,663	45,081	34,749	18,536	137,827
1937	28,113	10,636	1,714	45,120	34,390	17,839	137,812
1938	28,495	10,704	1,697	53,440	37,071	17,370	148,777
1939	28,980	11,581	1,716	59,705	37,149	17,012	156,143
1940	29,622	12,850	1,818	56,036	38,833	16,594	155,753
1941	30,608	13,477	1,913	61,505	43,475	16,141	167,119
1942	31,555	14,709	1,899	78,189	50,091	15,784	192,227
1943	33,276	14,377	1,747	79,188	49,227	15,239	193,054
1944	32,266	15,289	1,686	59,756	49,019	14,552	172,568
1945	30,764	14,615	1,578	61,152	45,453	13,697	167,259
1946	30,122	14,772	1,368	58,177	42,511	12,650	159,600
1947	28,890	13,214	1,213	57,997	40,090	11,694	153,098
1948	28,132	14,677	1,057	61,306	42,633	10,792	158,597
1949	28,192	14,812	997	66,178	43,728	9,937	163,844
1950	27,989	15,630	992	70,102	44,337	9,045	168,095
1951	27,622	17,296	1,090	69,051	44,363	7,927	167,349
1952	28,214	20,204	1,134	59,720	42,572	6,971	158,815
1953	28,566	19,502	1,122	57,817	43,577	6,157	156,741
1954	28,014	20,447	1,140	64,123	42,223	5,511	161,458
1955	27,764	20,523	1,093	65,925	44,535	5,067	164,907

Table 7. - Percentage of grain-consuming animal units, by kinds of livestock, by regions, selected years

Region and kind of livestock	Year beginning October 1							
	1919	1924	1929	1934	1939	1944	1949	1955
	Percent	Percent	Percent	Percent	Percent	Percent	Percent	Percent
New England								
Horses and mules---	16.7	15.7	12.5	10.2	7.4	5.2	3.5	1.7
Dairy cattle-----	41.5	40.5	40.4	41.2	37.1	29.5	27.7	25.9
Beef cattle-----	.6	.4	.4	.4	.4	.3	.3	.3
Hogs-----	11.3	7.7	7.2	7.0	7.1	7.1	5.0	4.0
Poultry-----	29.6	35.5	39.3	41.1	47.9	57.8	63.5	68.1
Sheep-----	.3	.2	.2	.1	.1	.1	---	---
Lower Northeast								
Horses and mules---	18.6	16.9	13.4	12.8	10.4	6.6	4.2	1.9
Dairy cattle-----	35.5	36.1	35.7	38.3	35.9	32.4	33.5	35.5
Beef cattle-----	2.6	1.6	1.5	2.0	1.7	1.5	1.9	2.1
Hogs-----	15.8	9.9	8.8	7.6	12.0	10.6	10.7	9.7
Poultry-----	27.1	35.1	40.1	38.9	39.7	48.7	49.6	50.6
Sheep-----	.4	.4	.5	.4	.3	.2	.1	.2
Corn Belt								
Horses and mules---	13.4	11.5	9.6	9.9	6.4	4.6	2.4	.8
Dairy cattle-----	12.1	12.3	12.9	17.3	12.9	13.1	11.1	9.7
Beef cattle-----	13.3	9.7	8.2	10.0	10.7	12.0	11.3	15.8
Hogs-----	42.2	45.8	47.5	40.1	51.7	49.8	58.1	58.9
Poultry-----	18.3	20.1	21.1	21.6	17.5	19.8	16.7	14.3
Sheep-----	.7	.6	.7	1.1	.8	.7	.4	.5
Lake States								
Horses and mules---	14.4	11.6	10.5	11.0	7.8	5.9	3.4	1.1
Dairy cattle-----	27.1	26.0	26.1	31.6	26.5	27.9	26.9	27.9
Beef cattle-----	7.2	4.1	4.3	4.4	5.3	5.2	5.7	7.4
Hogs-----	32.0	37.2	35.9	27.4	38.2	33.1	39.6	40.3
Poultry-----	18.5	20.4	22.3	24.4	21.3	27.2	23.9	22.8
Sheep-----	.8	.7	.9	1.2	.9	.7	.5	.5
Northern Plains								
Horses and mules---	19.5	14.3	11.6	14.6	9.5	6.9	4.4	1.9
Dairy cattle-----	10.8	9.3	9.7	16.9	13.8	12.5	10.7	10.0
Beef cattle-----	19.3	13.7	11.9	10.6	12.1	18.7	20.1	25.0
Hogs-----	31.5	45.3	46.4	34.2	39.6	35.3	42.2	43.5
Poultry-----	18.1	16.9	19.4	22.4	23.6	24.8	21.6	18.5
Sheep-----	.8	.5	1.0	1.3	1.4	1.8	1.0	1.1
Appalachian								
Horses and mules---	25.1	26.3	23.3	20.8	18.5	16.3	14.4	9.2
Dairy cattle-----	14.6	16.6	17.3	21.0	17.7	18.4	18.0	18.8
Beef cattle-----	1.8	1.5	1.3	1.7	1.5	1.8	1.9	3.3
Hogs-----	32.4	23.5	24.6	24.0	33.4	29.3	33.8	33.7
Poultry-----	25.6	31.6	32.8	31.8	28.3	33.8	31.6	34.6
Sheep-----	.5	.5	.7	.7	.6	.4	.3	.4
Southeastern								
Horses and mules---	34.0	34.8	32.7	29.9	25.5	20.9	18.3	9.2
Dairy cattle-----	14.4	15.4	15.3	18.4	14.2	14.5	13.4	12.3
Beef cattle-----	2.9	2.6	1.9	2.7	2.2	3.0	3.1	5.3
Hogs-----	32.4	25.0	27.0	28.2	37.7	35.9	37.3	32.9
Poultry-----	16.3	22.2	23.1	20.8	20.4	25.7	27.9	40.3
Sheep-----	---	---	---	---	---	---	---	---

- Continued

Table 7. - Percentage of grain-consuming animal units, by kinds of livestock, by regions, selected years - Continued

Region and kind of livestock	Year beginning October 1							
	1919	1924	1929	1934	1939	1944	1949	1955
	Percent	Percent	Percent	Percent	Percent	Percent	Percent	Percent
Delta								
Horses and mules---	35.4	38.2	37.0	31.5	28.0	26.4	23.6	14.2
Dairy cattle-----	15.6	16.3	16.7	20.6	16.9	18.6	17.2	19.2
Beef cattle-----	3.4	2.9	2.3	3.5	3.0	4.4	4.4	9.9
Hogs-----	29.5	21.1	19.7	24.6	31.3	26.2	26.0	20.3
Poultry-----	16.1	21.5	24.3	19.8	20.8	24.4	28.8	36.4
Sheep-----	---	---	---	---	---	---	---	---
Southern Plains								
Horses and mules---	35.1	37.4	30.2	28.2	18.8	13.6	10.7	6.9
Dairy cattle-----	12.4	14.1	15.9	21.0	18.8	20.7	18.9	17.1
Beef cattle-----	10.5	9.4	6.4	8.6	7.7	9.7	12.2	17.2
Hogs-----	23.6	16.1	17.8	16.3	25.8	21.7	25.7	23.3
Poultry-----	18.0	22.4	28.7	24.5	27.3	32.8	31.2	34.0
Sheep-----	.4	.6	1.0	1.4	1.6	1.5	1.3	1.5
Mountain								
Horses and mules---	14.7	13.2	10.0	10.2	6.5	5.6	4.5	3.0
Dairy cattle-----	14.9	16.4	15.8	21.1	16.4	17.1	16.6	17.4
Beef cattle-----	17.6	13.0	11.8	14.2	12.9	16.3	20.3	30.1
Hogs-----	23.5	27.0	24.8	16.9	29.0	22.5	23.7	15.5
Poultry-----	20.5	20.4	25.6	25.8	25.0	30.0	29.0	27.4
Sheep-----	8.8	10.0	12.0	11.8	10.2	8.5	5.7	6.6
Southwestern								
Horses and mules---	26.7	29.2	25.4	23.7	16.9	15.0	14.3	9.6
Dairy cattle-----	12.4	14.1	15.6	19.5	16.6	15.5	16.3	13.7
Beef cattle-----	23.0	18.8	13.6	14.7	18.0	14.8	19.8	39.3
Hogs-----	17.3	12.6	12.4	10.0	19.0	19.8	17.0	11.8
Poultry-----	15.5	20.3	26.7	24.6	21.7	28.9	28.7	20.0
Sheep-----	5.1	5.0	6.3	7.5	7.8	5.0	3.9	5.6
Pacific								
Horses and mules---	5.6	5.0	3.0	3.0	1.9	1.4	.9	.5
Dairy cattle-----	27.1	30.4	25.5	32.1	27.1	27.8	25.2	23.6
Beef cattle-----	5.0	4.1	2.9	4.0	4.6	4.6	5.2	9.0
Hogs-----	25.0	16.8	16.8	14.0	22.4	14.1	13.3	9.5
Poultry-----	35.0	41.5	49.5	44.4	42.2	50.8	54.4	56.2
Sheep-----	2.3	2.2	2.2	2.5	1.8	1.3	1.0	1.2
United States								
Horses and mules---	19.4	17.3	14.6	15.0	10.9	8.4	6.1	3.1
Dairy cattle-----	17.0	17.0	17.3	22.6	18.6	18.7	17.2	16.8
Beef cattle-----	10.0	7.7	6.5	6.9	7.4	8.9	9.0	12.4
Hogs-----	32.7	34.5	35.1	28.5	38.2	34.6	40.4	40.0
Poultry-----	20.1	22.7	25.3	25.7	23.8	28.4	26.7	27.0
Sheep-----	.8	.8	1.1	1.3	1.1	1.0	.6	.7

Table 8. - Roughage-consuming livestock: Animal units fed annually, by kinds of livestock, United States, 1909-55

Year beginning October 1	Dairy cattle	Beef cattle	Sheep and goats	Hogs and poultry	Horses and mules	Total
	1,000 units	1,000 units	1,000 units	1,000 units	1,000 units	1,000 units
1909	25,088	28,829	9,947	908	18,605	83,377
1910	25,053	27,560	10,010	1,012	19,053	82,688
1911	25,174	26,361	9,484	995	19,348	81,362
1912	25,256	26,985	8,841	975	19,640	81,697
1913	25,566	28,901	8,532	968	20,015	83,982
1914	26,147	31,772	8,022	1,021	20,280	87,242
1915	26,768	34,037	7,922	1,049	20,352	90,128
1916	27,361	36,283	7,699	1,007	20,535	92,885
1917	27,779	37,550	7,853	1,065	20,715	94,962
1918	27,791	36,854	8,291	1,113	20,701	94,750
1919	28,004	35,664	8,143	1,051	20,776	93,638
1920	27,598	34,562	7,829	1,025	20,194	91,208
1921	28,079	34,811	7,328	1,073	19,679	90,970
1922	28,547	32,965	7,223	1,186	19,157	89,078
1923	28,750	31,488	7,331	1,185	18,527	87,281
1924	28,959	29,016	7,645	1,079	17,911	84,610
1925	28,762	26,679	8,036	1,047	17,427	81,951
1926	28,689	24,545	8,518	1,104	16,778	79,634
1927	28,878	23,496	9,141	1,184	16,157	78,856
1928	29,562	24,197	9,758	1,161	15,573	80,251
1929	30,739	23,947	10,309	1,157	15,047	81,199
1930	31,476	24,907	10,755	1,125	14,513	82,776
1931	32,761	26,161	10,734	1,170	13,969	84,795
1932	34,090	28,719	10,608	1,204	13,585	88,206
1933	35,098	31,518	10,739	1,157	13,420	91,932
1934	33,604	28,199	10,269	903	13,107	86,082
1935	32,796	27,914	10,150	977	12,767	84,604
1936	32,201	26,960	10,162	998	12,420	82,741
1937	32,103	25,948	10,142	971	11,981	81,145
1938	32,786	25,842	10,298	1,078	11,599	81,603
1939	33,417	27,032	10,453	1,210	11,360	83,472
1940	34,372	29,091	10,771	1,122	11,058	86,414
1941	35,649	31,614	11,151	1,248	10,688	90,350
1942	36,873	34,938	10,896	1,461	10,344	94,512
1943	37,780	37,956	10,053	1,610	9,810	97,209
1944	37,491	38,470	9,179	1,309	9,182	95,631
1945	35,487	37,720	8,290	1,332	8,557	91,386
1946	34,711	36,980	7,425	1,203	7,758	88,077
1947	33,300	35,641	6,811	1,152	7,073	83,977
1948	32,485	35,852	6,130	1,178	6,451	82,096
1949	32,600	36,707	5,955	1,237	5,882	82,381
1950	32,478	40,426	6,141	1,260	5,287	85,592
1951	32,269	45,738	6,282	1,274	4,612	90,175
1952	32,923	50,217	6,240	1,138	4,049	94,567
1953	33,233	51,560	6,186	1,090	3,595	95,664
1954	32,551	52,960	6,279	1,130	3,233	96,153
1955	32,173	54,093	6,234	1,178	2,973	96,651

early 1940's. The number of horses and mules has gone down steadily since 1920, and in 1956 there were only one-seventh as many as in 1920. Beef cattle have increased greatly in importance as roughage-consuming livestock in all parts of the country except New England in the last 5 to 10 years (table 9). During this period in most areas the number of dairy cattle has held about the same but the number of beef cattle has increased greatly. In the Corn Belt and Great Plains there has been a decrease in the number of dairy cattle as well as a very large increase in beef cattle. In the Southern Plains, beef cattle account for nearly three-fourths of roughage-consuming livestock where in earlier years around half was nearer the average. The same tendency prevails in the Northern Plains, the Mountain States, and the Southwest. In the South, beef cattle now make up over 60 percent of the forage-consuming animal units and dairy cattle 25 to 30 percent. Numbers of dairy cattle in the United States have about held their own since before the war but now there are twice as many beef cattle. About 56 percent of the roughage-consuming livestock in the Nation now are beef cattle compared with 32 percent in 1940.

The numbers of different kinds of livestock are combined by a set of weights representing total feed per head (grain and roughage) in the years 1940-45 and the data are shown by kinds and years for the United States in table 10. Cattle now are over two-thirds of the total. In the period 1909-19 horses and mules were over 20 percent of the total. Tables 11, 12, and 13 show the three kinds of animal units by States from 1919-20 to 1955-56. Tables 6, 8, and 10 carry the figures back to 1909-10 for the United States only.

Use of Animal Units Fed

Animal units fed may be used to estimate the concentrates and hay required to carry the probable or assumed number of livestock in the United States in a particular year. Table 14 shows the assumed number of livestock and poultry for 1956-57 and the calculated number of animal units to be fed. In table 15 the concentrates fed per animal unit are listed for each year back to 1926. From the years 1950-54 it may be estimated that 0.79 ton will be fed per animal unit in 1956-57 or 127.5 million tons for the 161,388,000 grain-consuming animal units calculated in table 13. If later estimates show that a different number of livestock is probable, then the calculation can be revised.

Similarly, the hay disappearance may be estimated by multiplying the roughage-consuming animal units in 1956-57 (96.4 million) by 1.15 tons of hay per unit which is the average disappearance for 1951-55 shown in

Table 9. - Percentage of roughage-consuming animal units, by kinds of livestock, by regions, selected years

Region and kind of livestock	Year beginning October 1							
	1919	1924	1929	1934	1939	1944	1949	1955
	Percent	Percent	Percent	Percent	Percent	Percent	Percent	Percent
New England								
Horses and mules--	15.8	15.8	12.6	10.5	8.6	7.7	5.3	2.8
Dairy cattle-----	75.2	77.4	80.4	82.7	84.7	85.1	87.5	88.9
Beef cattle-----	5.2	3.6	3.8	4.3	4.1	4.4	4.4	4.9
Sheep and other---	3.8	3.2	3.2	2.5	2.6	2.8	2.8	3.4
Lower Northeast								
Horses and mules--	20.5	19.2	15.4	14.3	12.8	9.3	5.9	2.5
Dairy cattle-----	65.9	69.9	72.8	74.6	77.1	80.1	83.9	83.4
Beef cattle-----	8.0	5.4	5.7	5.7	5.4	6.4	6.6	10.3
Sheep and other---	5.6	5.5	6.1	5.4	4.7	4.2	3.6	3.8
Corn Belt								
Horses and mules--	26.6	24.6	22.4	18.3	15.8	10.3	6.4	2.0
Dairy cattle-----	32.6	38.7	45.4	45.9	44.6	46.1	46.6	36.2
Beef cattle-----	33.1	28.8	22.0	25.6	28.8	34.8	39.2	54.7
Sheep and other---	7.7	7.9	10.2	10.2	10.8	8.8	7.8	7.1
Lake States								
Horses and mules--	19.2	17.3	15.8	14.4	12.6	8.7	5.4	1.7
Dairy cattle-----	61.0	67.7	68.9	70.1	70.7	73.9	78.2	76.1
Beef cattle-----	14.6	10.0	8.6	9.0	10.3	12.1	12.1	17.9
Sheep and other---	5.2	5.0	6.7	6.5	6.4	5.3	4.3	4.3
Northern Plains								
Horses and mules--	26.7	24.3	21.8	17.7	14.4	8.9	5.7	1.9
Dairy cattle-----	21.6	26.0	31.2	32.0	32.5	26.8	23.7	16.9
Beef cattle-----	48.0	45.9	40.6	44.3	44.8	57.9	66.3	76.9
Sheep and other---	3.7	3.8	6.4	6.0	8.3	6.4	4.3	4.3
Appalachian								
Horses and mules--	28.9	28.8	25.0	20.4	21.4	18.3	16.1	8.7
Dairy cattle-----	33.9	38.8	41.5	44.5	44.0	45.5	46.6	41.7
Beef cattle-----	28.8	23.6	22.1	24.3	24.3	28.2	30.4	43.1
Sheep and other---	8.4	8.8	11.4	10.8	10.3	8.0	6.9	6.5
Southeastern								
Horses and mules--	19.9	20.5	21.2	16.0	17.1	12.8	11.5	4.8
Dairy cattle-----	34.4	37.1	43.4	42.9	41.2	38.8	36.8	27.2
Beef cattle-----	42.4	39.2	32.1	38.5	38.7	46.0	49.5	66.0
Sheep and other---	3.3	3.2	3.3	2.6	3.0	2.4	2.2	2.0

- Continued

Table 9. - Percentage of roughage-consuming animal units, by kinds of livestock, by regions, selected years - Continued

Region and kind of livestock	Year beginning October 1							
	1919	1924	1929	1934	1939	1944	1949	1955
	Percent	Percent	Percent	Percent	Percent	Percent	Percent	Percent
Delta								
Horses and mules	26.6	27.7	27.3	20.0	21.3	16.9	15.7	6.3
Dairy cattle	36.5	38.8	43.3	45.1	43.5	41.5	40.6	30.9
Beef cattle	32.5	29.3	25.0	31.3	31.0	38.3	41.2	60.9
Sheep and other	4.4	4.2	4.4	3.6	4.2	3.3	2.5	1.9
Southern Plains								
Horses and mules	20.3	20.6	17.2	13.4	10.8	6.6	4.8	2.3
Dairy cattle	12.9	15.1	17.6	19.3	20.1	19.3	16.7	11.5
Beef cattle	57.8	53.2	47.0	50.5	46.4	54.8	62.9	73.1
Sheep and other	9.0	11.1	18.2	16.8	22.7	19.3	15.6	13.1
Mountain								
Horses and mules	18.3	17.7	14.5	11.7	10.7	8.3	6.4	3.3
Dairy cattle	9.2	12.6	13.2	13.9	14.4	14.4	13.6	11.3
Beef cattle	46.9	43.1	38.0	42.7	41.7	53.7	61.8	69.5
Sheep and other	25.6	26.6	34.3	31.7	33.2	23.6	18.2	15.9
Southwestern								
Horses and mules	8.5	9.9	9.2	7.6	7.2	6.6	6.3	4.6
Dairy cattle	3.2	4.0	5.5	6.1	6.5	6.5	6.5	5.8
Beef cattle	69.5	65.3	57.1	61.5	62.3	67.7	71.3	75.9
Sheep and other	18.8	20.8	28.2	24.8	24.0	19.2	15.9	13.7
Pacific								
Horses and mules	18.4	16.1	12.0	10.2	8.5	5.9	4.7	2.2
Dairy cattle	25.6	31.1	33.5	34.8	37.6	39.3	40.3	32.7
Beef cattle	35.7	32.0	28.8	32.6	33.8	40.6	44.0	55.8
Sheep and other	20.3	20.8	25.7	22.4	20.1	14.2	11.0	9.3
United States								
Horses and mules	22.2	21.2	18.5	15.2	13.6	9.6	7.1	3.1
Dairy cattle	29.9	34.2	37.9	39.0	40.0	39.2	39.6	33.3
Beef cattle	38.1	34.3	29.5	32.8	32.4	40.2	44.6	55.9
Sheep and other	9.8	10.3	14.1	13.0	14.0	11.0	8.7	7.7

Table 10. - Grain-and-roughage consuming livestock: Animal units fed annually, by kinds of livestock, United States, 1909-55

Year beginning October 1	Dairy cattle	Beef cattle	Sheep and goats	Hogs	Poultry	Horses and mules	Total
	1,000 units	1,000 units	1,000 units	1,000 units	1,000 units	1,000 units	1,000 units
1909	24,361	22,054	7,628	11,166	7,484	19,889	92,582
1910	24,327	21,083	7,676	12,611	8,021	20,373	73,718
1911	24,445	20,166	7,272	12,512	7,721	20,694	92,810
1912	24,525	20,642	6,779	12,829	7,667	21,010	93,452
1913	24,826	22,108	6,542	13,146	7,706	21,410	95,738
1914	25,389	24,304	6,151	13,601	7,972	21,690	99,107
1915	25,992	26,037	6,075	14,571	7,767	21,762	102,204
1916	26,568	27,756	5,904	13,423	7,557	21,944	103,152
1917	26,974	28,725	6,022	14,096	7,639	22,117	105,573
1918	26,986	28,192	6,358	14,314	8,228	22,079	106,157
1919	27,409	27,446	6,223	13,390	8,047	21,679	104,194
1920	27,090	26,557	6,006	13,311	7,817	21,331	102,112
1921	27,470	26,338	5,619	14,243	8,349	20,974	102,993
1922	27,902	25,252	5,569	16,126	8,773	20,569	104,191
1923	28,114	24,096	5,651	15,616	9,119	19,991	102,587
1924	28,314	22,165	5,876	14,169	9,201	19,401	99,126
1925	28,105	20,407	6,185	13,873	9,417	18,903	96,890
1926	27,981	18,771	6,545	15,001	9,884	18,227	96,409
1927	28,152	17,993	7,019	15,572	9,865	17,593	96,194
1928	28,704	18,524	7,485	15,105	10,079	17,000	96,897
1929	29,722	19,286	7,935	14,704	10,445	16,478	98,570
1930	30,559	19,998	8,257	14,896	9,867	15,919	99,496
1931	31,763	20,842	8,269	15,856	9,803	15,379	101,912
1932	33,096	23,160	8,168	16,234	9,970	14,986	105,614
1933	33,935	24,798	8,234	15,046	9,474	14,655	106,142
1934	32,746	21,984	7,894	10,279	8,982	14,340	96,225
1935	31,901	22,308	7,805	11,591	9,594	13,898	97,097
1936	31,550	21,270	7,813	12,339	9,354	13,509	95,835
1937	31,431	20,837	7,818	12,414	9,183	13,011	94,694
1938	32,047	20,829	7,913	14,682	9,916	12,619	98,006
1939	32,470	21,783	8,033	16,424	9,982	12,359	101,051
1940	33,265	23,597	8,293	15,395	10,332	12,037	102,919
1941	34,475	25,503	8,592	17,494	11,552	11,669	109,285
1942	35,631	28,135	8,392	21,440	13,277	11,357	118,232
1943	36,480	30,193	7,760	21,739	13,170	10,818	120,160
1944	36,292	30,809	7,125	16,404	13,027	10,260	113,917
1945	34,423	30,148	6,438	16,703	12,175	9,602	109,489
1946	33,675	29,690	5,757	15,977	11,351	8,780	105,230
1947	32,293	28,368	5,265	15,936	10,747	8,053	100,662
1948	31,484	28,896	4,731	16,844	11,326	7,379	100,660
1949	31,565	29,521	4,585	18,185	11,680	6,755	102,291
1950	31,416	32,343	4,715	19,247	11,798	6,110	105,629
1951	31,147	36,504	4,848	18,940	11,821	5,338	108,598
1952	31,780	40,449	4,818	16,359	11,521	4,694	109,621
1953	32,107	41,327	4,780	15,832	11,816	4,162	110,024
1954	31,475	42,575	4,860	17,566	11,461	3,734	111,671
1955	31,148	43,370	4,808	18,083	12,009	3,432	112,850

Table 11. - Grain-consuming livestock: Animal units fed annually, by States, 1919-55

State	Year beginning October 1												
	1919	1920	1921	1922	1923	1924	1925	1926	1927	1928	1929	1930	1931
	1,000 units	1,000 units	1,000 units	1,000 units	1,000 units	1,000 units	1,000 units	1,000 units	1,000 units	1,000 units	1,000 units	1,000 units	1,000 units
Maine	616	575	587	564	578	576	557	553	535	510	519	524	531
New Hampshire	323	309	311	308	302	305	290	281	274	265	265	272	279
Vermont	636	632	627	626	616	600	584	582	575	565	563	568	573
Massachusetts	575	546	560	574	565	562	546	540	553	565	575	596	621
Rhode Island	75	72	75	73	74	75	75	73	71	73	76	75	76
Connecticut	413	393	398	398	394	408	403	396	399	400	415	425	444
New York	4,512	4,310	4,295	4,305	4,149	4,034	3,974	3,909	3,928	3,885	3,927	3,856	3,930
New Jersey	828	788	788	782	777	773	787	812	830	833	877	818	831
Pennsylvania	4,895	4,721	4,800	4,778	4,884	4,623	4,553	4,571	4,524	4,439	4,473	4,291	4,331
Delaware	222	213	214	217	224	228	233	272	270	285	311	298	306
Maryland	1,028	1,000	1,005	995	1,015	999	998	1,001	1,013	1,024	1,028	989	1,006
Ohio	7,215	7,028	7,175	7,269	7,194	6,976	6,730	7,028	7,050	7,169	7,220	7,070	7,452
Indiana	7,356	6,968	6,891	7,516	7,290	6,701	6,690	6,989	7,014	6,876	6,732	6,710	7,047
Illinois	11,227	11,020	10,819	11,996	11,789	11,445	11,067	11,123	10,935	10,736	10,653	10,747	11,327
Iowa	16,227	15,777	17,346	19,950	19,839	18,486	18,214	18,915	18,751	18,674	19,415	19,575	19,385
Missouri	8,485	8,695	9,282	9,783	9,658	8,704	8,696	8,002	9,043	9,043	8,868	8,398	9,048
Michigan	3,966	3,849	3,950	3,971	4,003	3,915	3,784	3,844	3,760	3,553	3,470	3,453	3,680
Wisconsin	5,622	5,753	5,845	6,081	6,159	6,055	6,121	6,407	6,146	5,899	6,121	6,280	6,346
Minnesota	6,861	7,977	7,705	8,433	8,738	8,443	8,517	8,819	8,390	8,429	8,988	9,304	9,279
North Dakota	2,057	2,043	2,116	2,249	2,449	2,562	2,500	2,407	2,393	2,564	2,604	2,674	2,701
South Dakota	3,976	3,790	4,225	4,993	5,010	5,017	4,818	4,786	4,887	4,969	5,173	5,329	4,737
Nebraska	6,500	7,281	8,038	9,471	9,977	9,931	9,348	9,208	9,526	9,839	9,846	10,010	9,883
Kansas	5,618	5,799	6,357	6,873	6,905	6,742	6,440	6,411	6,599	6,910	6,984	6,688	7,016
West Virginia	1,029	994	1,017	1,003	982	965	922	927	932	924	923	883	874
Kentucky	3,181	3,015	2,991	3,084	3,044	2,934	3,011	3,230	3,205	3,030	2,889	2,776	2,907
Tennessee	4,432	3,266	3,350	3,430	3,217	2,986	2,953	3,079	3,223	3,013	2,852	2,750	2,871
Virginia	2,489	2,388	2,376	2,381	2,346	2,233	2,243	2,275	2,340	2,273	2,292	2,158	2,222
North Carolina	2,653	2,624	2,663	2,591	2,580	2,521	2,469	2,609	2,634	2,443	2,330	2,374	2,501
South Carolina	1,521	1,492	1,507	1,491	1,464	1,352	1,320	1,338	1,342	1,254	1,251	1,258	1,333
Georgia	3,020	2,896	2,857	2,674	2,570	2,477	2,527	2,538	2,579	2,475	2,532	2,499	2,557
Florida	816	828	821	803	767	707	733	785	790	768	750	769	798
Alabama	2,525	2,435	2,409	2,377	2,288	2,125	2,180	2,283	2,357	2,298	2,223	2,193	2,275
Mississippi	2,395	2,237	2,263	2,186	2,139	2,037	2,092	2,191	2,242	2,163	2,176	2,160	2,244
Louisiana	1,513	1,441	1,414	1,371	1,334	1,281	1,316	1,358	1,351	1,327	1,374	1,342	1,437
Arkansas	2,386	2,283	2,321	2,252	2,126	2,123	2,139	2,147	2,166	2,058	2,052	1,928	2,157
Oklahoma	3,488	3,384	3,622	3,663	3,495	3,345	3,301	3,476	3,592	3,587	3,512	3,238	3,524
Texas	7,869	7,957	8,009	7,786	7,516	7,238	7,456	7,690	7,754	7,908	7,539	7,349	7,926
Montana	783	772	831	873	943	947	927	886	888	948	952	932	908
Idaho	602	572	642	678	712	658	673	699	717	733	718	751	752
Wyoming	335	322	341	356	369	356	368	366	378	391	401	420	416
Colorado	1,414	1,431	1,471	1,616	1,573	1,538	1,494	1,424	1,555	1,643	1,704	1,666	1,666
New Mexico	373	386	401	379	367	364	349	356	350	355	378	367	393
Arizona	200	187	186	185	175	174	164	166	157	155	146	160	174
Utah	307	287	311	338	355	331	352	385	405	441	477	477	436
Nevada	84	82	86	91	93	90	91	88	86	84	91	94	91
Washington	1,043	1,006	1,005	1,053	1,076	1,084	1,141	1,216	1,291	1,240	1,281	1,284	1,280
Oregon	832	807	824	841	865	851	843	861	891	954	932	959	1,025
California	2,316	2,248	2,358	2,413	2,392	2,304	2,450	2,769	3,000	3,179	3,210	3,006	2,820
United States	145,859	144,001	148,472	158,170	157,379	151,201	148,439	153,071	153,691	153,159	154,070	152,753	156,436

- Continued

Table 11.- Grain-consuming livestock: Animal units fed annually, by State, 1919-55 - Continued

State	Year beginning October 1												
	1932	1933	1934	1935	1936	1937	1938	1939	1940	1941	1942	1943	1944
	1,000 units	1,000 units	1,000 units	1,000 units	1,000 units	1,000 units	1,000 units	1,000 units	1,000 units	1,000 units	1,000 units	1,000 units	1,000 units
Maine-----	540	518	495	505	515	500	513	518	509	538	596	645	623
New Hampshire-----	293	289	287	314	321	323	329	325	330	370	427	453	461
Vermont-----	586	561	542	555	560	562	573	575	578	579	609	640	627
Massachusetts-----	043	525	628	675	719	704	751	749	765	820	927	1,017	1,013
Rhode Island-----	82	79	75	79	82	82	86	85	89	95	105	110	110
Connecticut-----	469	456	459	490	501	502	522	542	565	612	698	731	730
New York-----	4,020	3,932	3,748	3,835	3,925	3,904	4,022	4,011	3,986	4,110	4,486	4,599	4,490
New Jersey-----	855	832	843	898	884	928	971	1,000	1,046	1,176	1,379	1,419	1,453
Pennsylvania-----	4,375	4,326	4,400	4,563	4,659	4,610	4,711	4,765	4,706	4,852	5,439	5,656	5,569
Delaware-----	327	257	267	287	329	349	383	433	608	658	710	682	816
Maryland-----	1,006	971	989	980	1,010	1,019	1,095	1,145	1,163	1,222	1,341	1,366	1,484
Ohio-----	8,076	7,738	6,814	7,142	7,384	7,309	7,807	8,220	8,192	8,486	9,303	9,321	8,182
Indiana-----	7,894	7,707	6,308	6,716	6,945	7,020	7,620	8,199	8,233	8,704	9,505	9,737	8,601
Illinois-----	12,077	11,488	9,460	10,141	10,281	10,317	11,081	12,023	12,210	13,031	14,447	14,218	12,935
Iowa-----	18,995	18,313	14,836	16,410	15,825	16,693	18,163	19,411	19,780	19,813	24,906	24,381	21,689
Missouri-----	9,528	9,219	6,572	6,940	6,366	6,529	7,586	8,265	8,412	9,173	10,580	11,211	9,128
Michigan-----	3,928	3,757	3,422	3,638	3,747	3,705	3,838	4,072	4,112	4,247	4,665	4,714	4,235
Wisconsin-----	6,310	6,268	5,901	6,320	6,268	6,214	6,545	6,877	7,026	7,593	8,187	8,247	7,542
Minnesota-----	8,888	8,434	7,038	7,631	7,825	8,076	8,894	9,512	9,765	10,651	11,990	11,622	10,155
North Dakota-----	2,536	2,336	1,818	1,964	1,803	1,753	1,891	2,038	2,137	2,491	2,932	2,943	2,460
South Dakota-----	4,473	3,858	2,491	2,803	2,520	2,448	2,921	3,235	3,335	3,880	4,771	4,671	4,119
Nebraska-----	9,547	9,454	6,249	6,749	5,548	5,147	5,855	6,219	5,951	6,972	9,088	8,757	7,629
Kansas-----	7,162	6,670	4,722	4,714	4,037	3,804	4,437	4,587	4,566	5,469	6,681	6,279	5,296
West Virginia-----	969	960	914	960	934	928	968	973	959	995	1,143	1,196	1,052
Kentucky-----	3,163	3,174	2,977	3,028	3,041	3,034	3,273	3,389	3,233	3,597	4,136	4,078	3,450
Tennessee-----	3,116	3,009	2,853	2,933	2,966	2,982	3,238	3,313	3,110	3,393	3,859	4,018	3,442
Virginia-----	2,265	2,176	2,090	2,189	2,241	2,243	2,349	2,380	2,347	2,509	2,821	3,034	2,769
North Carolina-----	2,617	2,559	2,496	2,559	2,672	2,686	2,801	2,777	2,778	2,941	3,395	3,639	3,389
South Carolina-----	1,365	1,295	1,312	1,346	1,374	1,343	1,426	1,478	1,374	1,426	1,591	1,701	1,620
Georgia-----	2,610	2,622	2,535	2,605	2,747	2,755	2,966	2,976	2,854	3,111	3,525	3,680	3,371
Florida-----	803	792	764	822	850	898	979	989	980	1,030	1,123	1,237	1,178
Alabama-----	2,425	2,395	2,296	2,343	2,614	2,389	2,552	2,558	2,373	2,556	2,846	3,074	2,780
Mississippi-----	2,344	2,332	2,321	2,347	2,418	2,458	2,594	2,536	2,370	2,542	2,865	2,991	2,708
Louisiana-----	1,504	1,550	1,584	1,535	1,597	1,604	1,716	1,739	1,665	1,705	1,824	1,961	1,829
Arkansas-----	2,380	2,304	2,147	2,147	2,282	2,315	2,544	2,578	2,479	2,618	2,960	2,866	2,513
Oklahoma-----	3,750	3,498	3,007	3,095	2,982	2,975	3,328	3,467	3,230	3,655	4,384	4,131	3,410
Texas-----	8,127	7,687	6,896	7,117	7,429	7,187	7,546	7,667	7,355	8,093	9,209	9,243	8,155
Montana-----	895	891	755	716	615	571	649	748	780	866	1,029	1,082	928
Idaho-----	705	710	652	704	785	767	842	940	933	1,020	1,087	1,037	832
Wyoming-----	409	396	328	359	357	354	382	401	386	407	449	451	393
Colorado-----	1,574	1,531	1,250	1,250	1,279	1,238	1,289	1,348	1,283	1,501	1,781	1,746	1,441
New Mexico-----	404	388	347	353	363	358	368	386	371	393	442	443	383
Arizona-----	171	174	150	179	180	189	177	193	196	210	232	203	198
Utah-----	418	407	389	446	476	476	501	518	534	611	700	741	689
Nevada-----	83	80	75	88	92	98	84	90	97	91	93	92	91
Washington-----	1,272	1,237	1,165	1,245	1,272	1,248	1,309	1,384	1,398	1,480	1,614	1,622	1,410
Oregon-----	969	942	931	1,018	1,086	1,104	1,150	1,188	1,178	1,244	1,357	1,355	1,263
California-----	2,789	2,732	2,615	2,923	3,111	3,114	3,142	3,301	3,408	3,583	3,891	3,975	3,928
United States-----	159,736	153,846	131,194	138,656	137,827	137,812	148,777	156,143	155,753	167,119	192,227	193,054	172,568

- Continued

Table 11. - Grain-consuming livestock: Animal units fed annually, by States, 1919-55 - Continued

State	Year beginning October 1										
	1945	1946	1947	1948	1949	1950	1951	1952	1953	1954	1955
	1,000 units	1,000 units	1,000 units	1,000 units	1,000 units	1,000 units	1,000 units	1,000 units	1,000 units	1,000 units	1,000 units
Maine-----	563	559	594	576	730	760	831	869	893	907	970
New Hampshire-----	421	402	390	419	443	431	456	465	480	468	493
Vermont-----	602	581	550	551	547	528	541	568	587	581	585
Massachusetts-----	956	865	858	886	957	923	931	899	902	885	920
Rhode Island-----	103	97	94	97	100	99	99	98	97	94	98
Connecticut-----	664	630	638	670	717	744	793	823	820	815	865
New York-----	4,198	4,016	3,939	3,950	3,922	3,827	3,856	3,807	3,743	3,728	3,749
New Jersey-----	1,406	1,387	1,370	1,483	1,556	1,637	1,690	1,740	1,732	1,738	1,813
Pennsylvania-----	5,292	5,146	4,998	5,161	5,169	5,148	5,205	5,211	5,134	5,030	5,145
Delaware-----	662	647	629	775	848	886	738	762	787	764	866
Maryland-----	1,374	1,359	1,369	1,433	1,505	1,503	1,471	1,470	1,412	1,386	1,476
Ohio-----	7,977	7,758	7,475	7,687	7,766	7,781	7,543	7,045	6,966	7,130	7,346
Indiana-----	8,576	8,446	8,120	8,619	9,032	9,402	9,253	8,688	8,689	8,924	9,151
Illinois-----	12,915	12,505	12,082	12,414	13,142	13,572	13,395	12,875	12,802	13,403	13,997
Iowa-----	21,611	20,743	19,458	20,842	22,353	23,545	23,446	23,027	22,359	23,784	23,740
Missouri-----	8,771	8,546	8,229	8,662	9,069	9,363	8,670	7,995	7,924	8,066	8,711
Michigan-----	4,022	3,874	3,436	3,518	3,675	3,646	3,697	3,491	3,489	3,464	3,533
Wisconsin-----	7,391	7,040	6,817	6,911	7,039	7,230	7,234	7,030	7,226	7,482	7,500
Minnesota-----	10,033	9,365	8,681	9,008	9,472	9,824	9,650	9,212	9,434	9,945	9,906
North Dakota-----	2,227	1,961	1,738	1,683	1,652	1,645	1,659	1,576	1,586	1,662	1,722
South Dakota-----	4,110	3,909	3,580	3,642	3,738	3,835	3,903	3,693	3,691	4,028	3,977
Nebraska-----	7,658	7,138	6,671	7,006	7,137	7,704	7,890	7,744	7,342	7,792	7,014
Kansas-----	5,035	4,623	4,090	4,286	4,342	4,496	4,308	3,587	3,436	3,461	3,389
West Virginia-----	1,026	1,010	1,016	1,053	1,074	1,063	1,057	963	970	926	976
Kentucky-----	3,439	3,345	3,477	3,603	3,635	3,451	3,213	2,886	2,822	2,913	3,079
Tennessee-----	3,279	3,282	3,280	3,287	3,435	3,396	3,316	2,951	2,841	2,919	3,050
Virginia-----	2,641	2,587	2,562	2,691	2,755	2,871	3,042	2,730	2,633	2,551	2,617
North Carolina-----	3,178	3,195	3,190	3,249	3,324	3,415	3,663	3,588	3,590	3,675	3,751
South Carolina-----	1,597	1,599	1,605	1,586	1,567	1,545	1,618	1,534	1,395	1,348	1,392
Georgia-----	3,182	3,212	3,107	3,098	3,322	3,653	3,929	3,781	3,932	4,215	4,549
Florida-----	1,177	1,156	1,142	1,138	1,103	1,100	1,201	1,219	1,183	1,157	1,198
Alabama-----	2,712	2,647	2,526	2,576	2,749	2,768	2,785	2,565	2,652	2,766	2,880
Mississippi-----	2,643	2,564	2,486	2,477	2,513	2,468	2,454	2,390	2,312	2,272	2,410
Louisiana-----	1,742	1,619	1,528	1,500	1,483	1,437	1,396	1,318	1,215	1,200	1,246
Arkansas-----	2,421	2,320	2,204	2,327	2,445	2,517	2,366	2,200	2,121	2,032	2,220
Oklahoma-----	3,286	2,834	2,657	2,654	2,630	2,604	2,472	1,982	1,904	1,890	1,900
Texas-----	7,515	6,745	6,383	6,298	6,215	6,274	6,115	5,421	5,045	5,172	5,339
Montana-----	866	763	720	734	667	672	751	657	650	667	695
Idaho-----	734	680	688	700	671	649	689	646	635	660	692
Wyoming-----	383	372	361	342	330	321	336	314	298	281	279
Colorado-----	1,388	1,226	1,248	1,284	1,287	1,257	1,303	1,179	1,086	1,104	1,066
New Mexico-----	346	311	319	320	304	295	292	261	246	247	258
Arizona-----	181	171	188	178	180	204	209	204	215	253	282
Utah-----	631	579	590	649	597	598	589	527	572	567	594
Nevada-----	92	84	85	86	77	70	69	67	67	69	70
Washington-----	1,284	1,183	1,123	1,125	1,086	1,089	1,105	1,050	1,067	1,101	1,148
Oregon-----	1,100	1,011	1,001	1,049	1,063	1,074	1,086	992	971	1,015	1,051
California-----	3,848	3,698	3,805	4,214	4,421	4,775	5,026	4,719	4,788	4,821	5,197
United States-----	167,259	159,600	153,098	158,597	163,844	168,095	167,349	158,815	156,741	161,458	164,907

Table 12. - Roughage-consuming livestock: Animal units fed annually, by States, 1919-55

State	Year beginning October 1												
	1919	1920	1921	1922	1923	1924	1925	1926	1927	1928	1929	1930	1931
	1,000 units	1,000 units	1,000 units	1,000 units	1,000 units	1,000 units	1,000 units	1,000 units	1,000 units	1,000 units	1,000 units	1,000 units	1,000 units
Maine-----	404	378	356	346	341	337	330	322	310	300	307	315	320
New Hampshire-----	197	196	196	184	171	160	150	143	140	141	146	151	153
Vermont-----	509	517	515	511	497	459	459	456	461	464	466	477	482
Massachusetts-----	259	260	266	265	252	238	227	217	216	215	217	216	218
Rhode Island-----	39	37	36	36	32	32	32	30	31	31	32	32	32
Connecticut-----	212	208	211	211	206	202	191	185	179	181	183	190	198
New York-----	2,722	2,650	2,698	2,543	2,454	2,359	2,302	2,254	2,283	2,312	2,347	2,345	2,369
New Jersey-----	246	242	236	229	217	210	202	199	202	202	202	202	205
Pennsylvania-----	1,986	1,910	1,894	1,861	1,786	1,703	1,639	1,604	1,614	1,637	1,663	1,644	1,674
Delaware-----	74	72	70	68	67	68	68	66	68	71	70	69	69
Maryland-----	394	386	381	374	372	365	360	351	355	364	370	364	363
Ohio-----	2,881	2,785	2,726	2,653	2,565	2,472	2,425	2,402	2,369	2,377	2,397	2,415	2,505
Indiana-----	2,238	2,157	2,054	2,003	1,948	1,868	1,860	1,880	1,866	1,853	1,819	1,869	1,930
Illinois-----	3,893	3,600	3,470	3,478	3,398	3,271	3,181	3,074	2,908	2,911	2,842	2,920	3,031
Iowa-----	5,509	5,279	5,699	5,414	5,399	5,192	5,018	4,864	4,650	4,702	4,594	4,653	4,748
Missouri-----	3,866	3,831	3,759	3,651	3,571	3,322	3,234	3,127	3,078	3,179	3,200	3,306	3,390
Michigan-----	2,071	1,978	1,934	1,900	1,858	1,830	1,772	1,745	1,736	1,753	1,763	1,767	1,608
Wisconsin-----	3,638	3,646	3,594	3,558	3,611	3,598	3,567	3,540	3,472	3,459	3,588	3,707	3,783
Minnesota-----	3,537	3,484	3,519	3,476	3,419	3,391	3,393	3,352	3,333	3,439	3,534	3,640	3,735
North Dakota-----	2,029	2,006	2,026	1,975	1,960	1,920	1,901	1,760	1,735	1,792	1,978	1,974	2,120
South Dakota-----	3,104	2,752	2,790	2,735	2,788	2,703	2,563	2,318	2,308	2,385	2,384	2,470	2,476
Nebraska-----	3,955	3,734	3,785	3,982	4,103	4,034	3,895	3,531	3,471	3,618	3,566	3,686	3,807
Kansas-----	4,103	4,125	4,091	4,121	4,208	4,052	3,847	3,555	3,584	3,746	3,697	3,820	3,952
West Virginia-----	807	810	824	822	791	759	696	650	656	680	710	697	742
Kentucky-----	1,631	1,614	1,588	1,515	1,481	1,475	1,449	1,468	1,488	1,487	1,447	1,445	1,479
Tennessee-----	1,517	1,480	1,459	1,412	1,361	1,292	1,256	1,207	1,228	1,221	1,232	1,253	1,298
Virginia-----	1,269	1,269	1,212	1,224	1,186	1,141	1,095	1,047	1,084	1,101	1,111	1,078	1,113
North Carolina-----	808	781	764	773	723	711	695	656	661	654	675	690	713
South Carolina-----	407	447	475	436	422	410	385	369	362	355	350	354	366
Georgia-----	1,218	1,192	1,163	1,099	1,038	988	940	927	852	868	875	894	932
Florida-----	829	791	717	718	696	666	639	599	573	554	544	561	607
Alabama-----	1,096	1,079	1,048	1,006	951	901	864	844	857	874	886	937	1,000
Mississippi-----	1,320	1,253	1,231	1,159	1,095	1,046	1,030	1,016	1,004	1,024	1,047	1,093	1,161
Louisiana-----	972	947	921	910	894	882	857	847	839	848	866	891	928
Arkansas-----	1,263	1,141	1,204	1,131	1,076	1,034	1,002	975	952	981	1,005	1,022	1,109
Oklahoma-----	2,739	2,655	2,690	2,543	2,360	2,283	2,191	2,230	2,238	2,299	2,334	2,376	2,510
Texas-----	9,897	10,281	10,281	10,101	9,597	9,325	8,849	8,616	8,473	8,833	9,155	9,309	9,494
Montana-----	2,484	2,344	2,473	2,434	2,419	2,413	2,411	2,271	2,319	2,426	2,460	2,485	2,394
Idaho-----	1,525	1,443	1,426	1,404	1,394	1,329	1,282	1,269	1,262	1,285	1,292	1,347	1,352
Wyoming-----	1,706	1,600	1,580	1,533	1,475	1,478	1,486	1,543	1,566	1,603	1,614	1,721	1,779
Colorado-----	2,346	2,278	2,245	2,225	2,135	2,064	2,018	1,999	2,048	2,118	2,283	2,227	2,250
Utah-----	1,176	1,133	1,124	1,144	1,133	1,093	1,089	1,113	1,133	1,158	1,132	1,154	1,144
Nevada-----	846	780	780	800	770	743	712	683	658	615	587	580	582
New Mexico-----	2,211	2,278	2,336	1,955	1,859	1,825	1,775	1,832	1,732	1,693	1,806	1,865	1,938
Arizona-----	1,821	1,868	1,787	1,755	1,705	1,594	1,355	1,226	1,139	1,036	1,051	1,090	1,129
Washington-----	1,091	1,024	1,005	998	996	989	955	921	921	941	954	969	997
Oregon-----	1,608	1,523	1,492	1,463	1,437	1,430	1,374	1,370	1,380	1,418	1,453	1,500	1,503
California-----	2,896	2,944	2,920	2,954	3,063	2,951	2,930	2,981	3,062	3,047	2,965	3,016	2,907
United States-----	93,638	91,208	90,970	89,078	87,281	84,810	81,851	79,834	78,856	80,251	81,199	82,776	84,795

- Continued

Table 12. - Roughage-consuming livestock: Animal units fed annually, by States, 1919-55 - Continued

State	Year beginning October 1												
	1932	1933	1934	1935	1936	1937	1938	1939	1940	1941	1942	1943	1944
	1,000 units	1,000 units	1,000 units	1,000 units	1,000 units	1,000 units	1,000 units	1,000 units	1,000 units	1,000 units	1,000 units	1,000 units	1,000 units
Maine-----	317	317	303	285	282	278	276	276	268	254	255	272	272
New Hampshire-----	153	153	147	142	140	140	139	139	136	132	132	143	141
Vermont-----	467	474	459	463	473	476	480	480	485	472	479	497	495
Massachusetts-----	216	214	217	217	222	218	223	224	223	218	216	233	224
Rhode Island-----	32	33	29	29	31	30	30	30	30	31	31	33	33
Connecticut-----	202	201	199	198	201	189	199	201	201	199	201	205	207
New York-----	2,438	2,421	2,276	2,281	2,328	2,351	2,402	2,412	2,431	2,422	2,416	2,439	2,467
New Jersey-----	211	218	228	231	232	232	234	238	243	242	246	257	252
Pennsylvania-----	1,686	1,701	1,719	1,698	1,693	1,688	1,680	1,686	1,693	1,702	1,743	1,780	1,815
Delaware-----	68	66	67	66	66	66	66	66	67	68	68	71	70
Maryland-----	364	364	366	366	364	367	373	379	392	394	406	412	421
Ohio-----	2,589	2,662	2,682	2,703	2,620	2,594	2,615	2,638	2,653	2,690	2,725	2,702	2,602
Indiana-----	2,010	2,052	2,029	2,005	1,959	1,935	1,947	1,913	2,015	2,041	2,082	2,116	2,062
Illinois-----	3,141	3,241	3,184	3,192	3,078	3,011	3,020	3,129	3,215	3,280	3,336	3,349	3,278
Iowa-----	4,835	5,029	5,011	4,989	4,737	4,741	4,729	4,943	5,223	5,357	5,456	5,546	5,388
Missouri-----	3,470	3,498	3,196	3,174	3,011	3,013	3,109	3,343	3,453	3,603	3,813	4,002	3,800
Michigan-----	1,869	1,893	1,869	1,884	1,924	1,939	1,962	1,998	2,048	2,069	2,087	2,150	2,097
Wisconsin-----	3,804	3,839	3,653	3,700	3,753	3,776	3,825	3,944	4,055	4,220	4,302	4,460	4,371
Minnesota-----	3,847	3,987	3,680	3,622	3,661	3,671	3,675	3,742	3,883	3,985	4,071	4,113	3,990
North Dakota-----	2,251	2,346	1,717	1,778	1,601	1,541	1,549	1,684	1,828	1,996	2,095	2,214	2,152
South Dakota-----	2,673	2,746	2,154	2,226	1,948	1,930	1,958	2,109	2,304	2,506	2,739	2,930	2,945
Nebraska-----	4,023	4,358	3,684	3,851	3,421	3,112	3,118	3,219	3,269	3,520	3,940	4,129	4,239
Kansas-----	4,083	4,305	3,893	3,516	3,159	2,886	2,936	3,086	3,470	3,816	4,252	4,439	4,368
West Virginia-----	784	807	794	776	727	725	729	725	754	736	753	763	714
Kentucky-----	1,528	1,590	1,643	1,645	1,567	1,615	1,641	1,694	1,686	1,780	1,894	1,912	1,807
Tennessee-----	1,353	1,372	1,392	1,349	1,276	1,267	1,337	1,392	1,429	1,474	1,544	1,610	1,572
Virginia-----	1,121	1,124	1,081	1,118	1,094	1,099	1,115	1,147	1,186	1,206	1,261	1,304	1,287
North Carolina-----	764	781	786	764	730	713	726	724	739	766	815	871	858
South Carolina-----	383	396	406	396	390	371	361	368	369	383	389	412	414
Georgia-----	975	1,052	1,068	895	953	936	947	965	967	1,006	1,034	1,090	1,115
Florida-----	669	696	706	705	714	701	735	756	808	846	833	1,018	1,039
Alabama-----	1,082	1,102	1,115	1,033	884	974	999	1,039	1,040	1,089	1,150	1,264	1,264
Mississippi-----	1,237	1,257	1,345	1,242	1,250	1,289	1,286	1,274	1,296	1,364	1,459	1,540	1,598
Louisiana-----	874	1,039	1,079	1,044	1,061	1,085	1,107	1,156	1,160	1,182	1,252	1,357	1,395
Arkansas-----	1,246	1,399	1,228	1,097	1,110	1,124	1,165	1,215	1,244	1,286	1,353	1,328	1,328
Oklahoma-----	2,725	2,955	2,868	2,661	2,489	2,357	2,399	2,501	2,596	2,830	3,146	3,168	3,100
Texas-----	10,189	11,024	9,827	9,285	10,199	9,933	9,727	9,734	10,075	10,713	11,356	11,578	11,642
Montana-----	2,592	2,865	2,598	2,332	1,789	1,666	1,847	2,079	2,248	2,450	2,595	2,769	2,696
Idaho-----	1,398	1,497	1,465	1,584	1,412	1,320	1,302	1,328	1,387	1,446	1,478	1,486	1,448
Wyoming-----	1,829	1,914	1,665	1,632	1,547	1,589	1,630	1,616	1,644	1,718	1,770	1,761	1,687
Colorado-----	2,273	2,408	2,182	2,055	2,074	1,981	1,949	1,942	1,963	2,147	2,273	2,406	2,288
Utah-----	1,104	1,111	1,013	1,009	1,036	1,016	1,006	954	970	1,002	1,006	1,011	1,019
Nevada-----	562	566	549	559	563	556	562	554	567	582	608	633	630
New Mexico-----	2,031	2,165	1,847	1,807	1,829	1,787	1,759	1,780	1,751	1,778	1,820	1,849	1,725
Arizona-----	1,144	1,176	1,181	1,154	1,175	1,142	1,077	1,060	1,101	1,157	1,102	1,110	1,062
Washington-----	1,047	1,073	1,112	1,108	1,086	1,070	1,076	1,079	1,128	1,173	1,227	1,235	1,171
Oregon-----	1,526	1,572	1,562	1,487	1,486	1,440	1,429	1,402	1,451	1,518	1,556	1,540	1,471
California-----	2,902	2,873	2,998	3,151	3,296	3,195	3,147	3,099	3,270	3,485	3,615	3,702	3,602
United States-----	88,206	91,832	86,082	84,804	82,741	81,145	81,603	83,472	86,414	90,350	94,512	97,209	95,631

- Continued

Table 12. - Roughage-consuming livestock: Animal units fed annually, by States, 1919-55 - Continued

State	Year beginning October 1										
	1945	1946	1947	1948	1949	1950	1951	1952	1953	1954	1955
	1,000 units	1,000 units	1,000 units	1,000 units	1,000 units	1,000 units	1,000 units	1,000 units	1,000 units	1,000 units	1,000 units
Maine	258	256	242	234	234	226	239	258	260	247	244
New Hampshire	136	135	130	126	124	119	122	128	130	124	125
Vermont	483	480	454	456	453	440	455	488	498	490	487
Massachusetts	222	217	209	201	205	199	200	211	210	205	197
Rhode Island	33	31	30	29	29	29	30	30	30	29	28
Connecticut	200	192	187	184	188	188	190	192	193	192	190
New York	2,344	2,301	2,275	2,276	2,275	2,257	2,334	2,402	2,422	2,400	2,383
New Jersey	247	243	244	242	247	249	253	261	264	262	261
Pennsylvania	1,762	1,746	1,728	1,723	1,706	1,703	1,748	1,832	1,870	1,863	1,832
Delaware	67	65	65	61	60	60	66	69	71	67	65
Maryland	418	412	416	415	418	433	448	461	509	488	479
Ohio	2,480	2,394	2,331	2,269	2,241	2,272	2,317	2,401	2,442	2,402	2,424
Indiana	1,949	1,921	1,817	1,759	1,761	1,828	1,879	2,039	2,066	2,035	2,085
Illinois	3,171	3,201	2,988	2,889	3,020	3,054	3,222	3,436	3,488	3,459	3,525
Iowa	4,982	4,868	4,407	4,324	4,388	4,541	4,893	5,262	5,121	5,308	5,340
Missouri	3,544	3,410	3,273	3,186	3,281	3,460	3,630	3,867	3,851	3,773	3,846
Michigan	1,980	1,871	1,766	1,733	1,741	1,746	1,770	1,857	1,840	1,803	1,776
Wisconsin	4,308	4,221	4,027	3,911	3,907	3,946	4,050	4,279	4,348	4,365	4,389
Minnesota	3,758	3,573	3,252	3,175	3,164	3,186	3,300	3,512	3,618	3,635	3,678
North Dakota	1,974	1,802	1,709	1,621	1,580	1,562	1,662	1,772	1,938	1,988	2,137
South Dakota	2,804	2,756	2,665	2,660	2,644	2,562	2,890	3,070	3,225	3,325	3,392
Nebraska	4,053	3,894	3,765	3,738	3,707	3,936	4,328	4,594	4,419	4,696	4,510
Kansas	3,856	3,640	3,389	3,594	3,569	3,846	4,208	4,182	4,169	4,185	4,149
West Virginia	695	692	671	664	664	678	686	704	699	680	680
Kentucky	1,809	1,789	1,845	1,800	1,803	1,890	1,902	1,954	1,949	1,901	1,945
Tennessee	1,515	1,539	1,491	1,441	1,507	1,555	1,592	1,654	1,692	1,624	1,606
Virginia	1,252	1,264	1,240	1,260	1,308	1,360	1,433	1,529	1,535	1,500	1,508
North Carolina	803	790	773	759	768	812	848	949	981	961	933
South Carolina	411	399	384	368	371	410	452	517	557	561	551
Georgia	1,088	1,054	1,012	939	969	1,018	1,101	1,217	1,304	1,346	1,300
Florida	1,077	1,065	1,064	1,031	1,108	1,197	1,413	1,517	1,527	1,525	1,537
Alabama	1,258	1,219	1,142	1,087	1,166	1,266	1,338	1,522	1,652	1,586	1,554
Mississippi	1,558	1,500	1,419	1,366	1,418	1,478	1,571	1,762	1,885	1,887	2,033
Louisiana	1,378	1,296	1,132	1,095	1,133	1,235	1,312	1,520	1,594	1,560	1,570
Arkansas	1,263	1,201	1,063	1,048	1,094	1,143	1,242	1,336	1,396	1,299	1,315
Oklahoma	2,833	2,667	2,444	2,388	2,472	2,646	2,929	3,058	3,146	3,083	3,060
Texas	11,338	10,761	10,163	9,401	9,525	10,138	9,961	9,807	9,707	9,713	9,696
Montana	2,591	2,374	2,336	2,391	2,137	2,298	2,488	2,546	2,672	2,759	2,859
Idaho	1,335	1,282	1,285	1,268	1,245	1,295	1,411	1,474	1,533	1,611	1,686
Wyoming	1,630	1,589	1,562	1,461	1,409	1,478	1,598	1,617	1,603	1,504	1,541
Colorado	2,263	2,080	2,122	2,089	2,062	2,148	2,341	2,388	2,335	2,267	2,292
Utah	883	921	905	913	907	936	1,010	1,057	1,056	1,063	1,090
Nevada	631	625	631	635	637	650	677	681	689	691	693
New Mexico	1,609	1,478	1,435	1,450	1,441	1,475	1,484	1,474	1,414	1,368	1,420
Arizona	1,061	1,018	949	901	905	923	891	1,032	1,007	1,038	1,064
Washington	1,103	1,063	1,011	1,015	988	1,017	1,074	1,162	1,209	1,257	1,305
Oregon	1,350	1,284	1,247	1,305	1,276	1,276	1,421	1,548	1,618	1,660	1,629
California	3,563	3,488	3,282	3,215	3,206	3,429	3,668	3,839	3,932	4,238	4,242
United States	91,386	86,077	83,977	82,096	82,381	85,592	90,175	94,567	95,664	96,153	96,651

Table 13. - Grain-and-roughage consuming livestock: Animal units fed annually, by States, 1919-55

State	Year beginning October 1												
	1919	1920	1921	1922	1923	1924	1925	1926	1927	1928	1929	1930	1931
	1,000 units	1,000 units	1,000 units	1,000 units	1,000 units	1,000 units	1,000 units	1,000 units	1,000 units	1,000 units	1,000 units	1,000 units	1,000 units
Maine	464	440	422	411	416	406	396	388	376	360	365	373	378
New Hampshire	232	229	229	221	208	198	187	180	175	175	177	184	187
Vermont	532	542	538	538	523	491	485	482	485	484	486	495	500
Massachusetts	359	354	362	361	346	334	321	313	315	316	322	326	334
Rhode Island	50	50	50	50	45	45	45	43	43	43	45	45	46
Connecticut	271	265	268	267	261	262	251	243	240	244	248	255	267
New York	3,253	3,155	3,121	3,073	2,960	2,860	2,797	2,738	2,761	2,768	2,804	2,782	2,831
New Jersey	413	396	391	384	369	362	358	362	369	367	376	363	370
Pennsylvania	2,700	2,608	2,620	2,598	2,544	2,439	2,372	2,345	2,347	2,340	2,378	2,321	2,353
Delaware	113	111	110	110	110	110	115	120	121	124	133	128	127
Maryland	577	564	561	554	551	544	537	532	538	546	554	538	537
Ohio	3,927	3,826	3,826	3,809	3,730	3,601	3,492	3,556	3,539	3,576	3,639	3,617	3,788
Indiana	3,491	3,340	3,251	3,387	3,298	3,120	3,112	3,207	3,212	3,165	3,117	3,146	3,305
Illinois	5,407	5,188	5,052	5,380	5,286	5,148	4,997	4,955	4,802	4,753	4,788	4,849	5,071
Iowa	7,617	7,448	7,734	8,523	8,492	8,068	7,909	8,013	7,653	7,868	8,136	8,217	8,227
Missouri	4,835	4,873	4,996	5,048	4,949	4,544	4,489	4,508	4,495	4,551	4,607	4,548	4,771
Michigan	2,579	2,484	2,485	2,466	2,430	2,377	2,291	2,290	2,260	2,217	2,216	2,215	2,308
Wisconsin	4,155	4,215	4,203	4,236	4,277	4,250	4,238	4,285	4,170	4,092	4,243	4,377	4,459
Minnesota	4,304	4,321	4,518	4,684	4,702	4,660	4,685	4,717	4,605	4,689	4,933	5,097	5,159
North Dakota	1,905	1,893	1,924	1,930	1,868	1,978	1,948	1,829	1,807	1,892	1,974	2,072	2,172
South Dakota	3,083	2,810	2,945	3,095	3,134	3,096	2,963	2,796	2,811	2,885	2,996	3,095	2,954
Nebraska	4,456	4,302	4,545	5,055	5,253	5,082	4,860	4,600	4,642	4,810	4,907	5,034	5,098
Kansas	4,252	4,329	4,465	4,632	4,677	4,519	4,301	4,102	4,175	4,367	4,407	4,439	4,635
West Virginia	828	829	840	835	807	783	729	698	707	718	739	721	761
Kentucky	2,157	2,077	2,027	2,024	1,974	1,861	1,870	1,847	1,955	1,900	1,829	1,794	1,804
Tennessee	2,023	1,947	1,960	1,950	1,868	1,748	1,707	1,717	1,775	1,708	1,667	1,648	1,723
Virginia	1,587	1,499	1,455	1,463	1,427	1,362	1,338	1,319	1,383	1,360	1,364	1,303	1,343
North Carolina	1,307	1,280	1,274	1,238	1,232	1,203	1,176	1,190	1,199	1,139	1,108	1,150	1,204
South Carolina	768	750	744	713	696	660	650	623	622	592	589	592	624
Georgia	1,728	1,678	1,638	1,546	1,472	1,408	1,384	1,372	1,361	1,310	1,336	1,342	1,389
Florida	770	751	727	697	673	637	624	614	598	578	567	586	630
Alabama	1,428	1,390	1,373	1,327	1,265	1,186	1,165	1,203	1,235	1,225	1,216	1,238	1,307
Mississippi	1,594	1,504	1,500	1,427	1,368	1,308	1,304	1,323	1,327	1,322	1,346	1,371	1,444
Louisiana	1,086	1,114	1,066	1,065	1,052	1,046	1,038	1,043	1,033	1,033	1,058	1,069	1,124
Arkansas	1,567	1,508	1,512	1,439	1,374	1,335	1,318	1,304	1,293	1,281	1,299	1,278	1,407
Oklahoma	2,777	2,692	2,786	2,692	2,523	2,429	2,358	2,436	2,476	2,515	2,532	2,495	2,668
Texas	9,003	9,300	9,316	9,131	8,671	8,385	8,144	8,064	8,009	8,299	8,472	8,553	8,809
Montana	1,967	1,860	1,976	1,961	1,967	1,964	1,958	1,845	1,885	1,983	2,014	2,024	1,953
Idaho	1,254	1,183	1,182	1,183	1,185	1,128	1,100	1,099	1,100	1,121	1,133	1,179	1,181
Wyoming	1,332	1,250	1,249	1,212	1,176	1,175	1,184	1,224	1,240	1,269	1,285	1,369	1,406
Colorado	2,078	2,035	2,021	2,039	1,966	1,902	1,880	1,829	1,895	1,968	2,097	2,050	2,062
Utah	945	907	908	930	923	890	895	923	942	970	970	966	968
Nevada	621	580	575	582	570	550	528	514	490	461	439	450	452
New Mexico	1,721	1,785	1,839	1,539	1,460	1,428	1,389	1,438	1,366	1,335	1,416	1,456	1,517
Arizona	1,408	1,368	1,310	1,284	1,245	1,174	997	917	856	791	622	853	866
Washington	1,080	1,024	1,010	1,019	1,027	1,026	1,015	1,008	1,026	1,026	1,050	1,063	1,083
Oregon	1,384	1,318	1,302	1,276	1,272	1,263	1,221	1,222	1,236	1,278	1,297	1,339	1,356
California	2,796	2,739	2,757	2,799	2,879	2,782	2,809	2,932	3,044	3,083	3,093	3,081	2,932
United States	104,194	102,112	102,993	104,191	102,587	99,126	96,890	95,409	96,194	96,887	98,570	99,496	101,812

- Continued

Table 13. - Grain-and-roughage consuming livestock: Animal units fed annually, by States, 1919-55 - Continued

State	Year beginning October 1													
	1932	1933	1934	1935	1936	1937	1938	1939	1940	1941	1942	1943	1944	
	1,000 units	1,000 units	1,000 units	1,000 units	1,000 units	1,000 units	1,000 units	1,000 units	1,000 units	1,000 units	1,000 units	1,000 units	1,000 units	
Maine-----	377	372	357	346	344	338	337	338	330	329	341	367	360	
New Hampshire-----	191	191	186	187	189	188	189	188	186	194	209	225	225	
Vermont-----	511	492	474	481	491	492	499	500	503	495	507	520	523	
Massachusetts-----	333	331	332	346	361	354	368	368	370	378	403	440	435	
Rhode Island-----	46	46	44	44	46	46	48	45	45	50	54	57	55	
Connecticut-----	276	270	273	280	285	284	287	296	303	313	337	348	346	
New York-----	2,905	2,865	2,707	2,729	2,787	2,797	2,865	2,869	2,879	2,898	2,987	3,036	3,030	
New Jersey-----	381	380	390	407	409	416	429	437	454	488	540	556	561	
Pennsylvania-----	2,375	2,376	2,409	2,433	2,451	2,433	2,452	2,471	2,459	2,505	2,680	2,765	2,773	
Delaware-----	132	119	117	121	130	137	144	158	203	219	232	223	260	
Maryland-----	544	533	527	535	540	545	570	586	596	614	653	674	701	
Ohio-----	4,014	3,967	3,727	3,821	3,833	3,797	3,947	4,078	4,078	4,191	4,438	4,427	4,047	
Indiana-----	3,574	3,553	3,135	3,219	3,258	3,260	3,445	3,641	3,655	3,005	4,054	4,136	3,785	
Illinois-----	5,336	5,255	4,694	4,857	4,819	4,786	4,981	5,290	5,395	5,665	6,072	6,026	5,399	
Iowa-----	8,099	8,125	7,206	7,595	7,287	7,507	7,888	8,346	8,623	9,312	10,136	10,051	9,265	
Missouri-----	4,060	4,842	3,958	4,041	3,789	3,813	4,177	4,530	4,634	4,929	5,460	5,492	5,069	
Michigan-----	2,411	2,393	2,288	2,353	2,426	2,415	2,467	2,555	2,605	2,655	2,779	2,837	2,681	
Wisconsin-----	4,457	4,496	4,196	4,378	4,410	4,414	4,537	4,713	4,829	5,101	5,318	5,454	5,190	
Minnesota-----	5,145	5,132	4,544	4,649	4,728	4,801	5,070	5,222	5,392	5,685	6,087	6,023	5,558	
North Dakota-----	2,222	2,001	1,664	1,745	1,579	1,526	1,568	1,701	1,827	3,034	2,219	2,310	2,144	
South Dakota-----	3,033	2,941	2,175	2,305	2,031	1,995	2,137	2,320	2,487	2,769	3,147	3,260	3,130	
Nebraska-----	5,576	5,391	4,130	4,366	3,772	3,456	3,631	3,740	3,761	4,186	4,997	5,044	4,850	
Kansas-----	4,767	4,803	3,997	3,717	3,292	3,033	3,229	3,390	3,646	4,120	4,754	4,762	4,473	
West Virginia-----	803	815	799	793	753	750	765	761	778	775	826	842	769	
Kentucky-----	1,968	2,016	1,990	2,009	1,957	1,988	2,063	2,146	2,094	2,263	2,503	2,502	2,241	
Tennessee-----	1,835	1,820	1,785	1,783	1,738	1,737	1,864	1,925	1,889	2,005	2,226	2,296	2,092	
Virginia-----	1,363	1,339	1,315	1,337	1,336	1,342	1,382	1,413	1,426	1,482	1,608	1,719	1,564	
North Carolina-----	1,272	1,270	1,252	1,256	1,263	1,255	1,298	1,289	1,296	1,361	1,526	1,632	1,551	
South Carolina-----	646	640	654	652	656	626	647	667	640	662	715	762	743	
Georgia-----	1,444	1,507	1,497	1,458	1,461	1,449	1,517	1,532	1,496	1,602	1,736	1,820	1,759	
Florida-----	664	685	688	695	710	713	754	781	804	847	930	1,017	1,016	
Alabama-----	1,402	1,416	1,394	1,348	1,326	1,322	1,384	1,423	1,364	1,450	1,570	1,717	1,638	
Mississippi-----	1,530	1,584	1,605	1,533	1,787	1,827	1,860	1,609	1,583	1,682	1,834	1,935	1,908	
Louisiana-----	1,180	1,243	1,280	1,248	1,268	1,299	1,345	1,388	1,361	1,394	1,484	1,609	1,605	
Arkansas-----	1,570	1,567	1,491	1,395	1,443	1,459	1,559	1,605	1,602	1,661	1,807	1,768	1,671	
Oklahoma-----	2,878	2,976	2,783	2,662	2,513	2,428	2,556	2,669	2,675	2,960	3,374	3,314	3,073	
Texas-----	9,355	9,805	8,581	8,568	9,171	8,894	8,869	8,925	9,056	9,684	10,431	10,605	10,344	
Montana-----	2,092	2,286	2,061	1,863	1,451	1,347	1,497	1,697	1,817	1,997	2,134	2,269	2,178	
Idaho-----	1,198	1,274	1,236	1,205	1,229	1,163	1,148	1,209	1,250	1,313	1,347	1,340	1,267	
Wyoming-----	1,442	1,498	1,300	1,284	1,222	1,251	1,289	1,290	1,302	1,380	1,411	1,403	1,332	
Colorado-----	2,053	2,144	1,908	1,818	1,838	1,753	1,753	1,760	1,761	1,846	2,106	2,181	2,030	
Utah-----	935	841	855	869	898	878	882	846	885	908	929	946	942	
Nevada-----	437	438	421	431	436	432	435	431	444	454	471	490	490	
New Mexico-----	1,584	1,675	1,436	1,407	1,423	1,393	1,378	1,395	1,374	1,396	1,435	1,456	1,353	
Arizona-----	897	922	918	805	920	897	851	839	871	920	864	874	832	
Washington-----	1,120	1,125	1,133	1,149	1,136	1,118	1,139	1,157	1,200	1,251	1,326	1,332	1,234	
Oregon-----	1,358	1,383	1,372	1,340	1,355	1,324	1,329	1,319	1,349	1,415	1,470	1,457	1,375	
California-----	2,923	2,881	2,846	3,134	3,288	3,215	3,181	3,203	3,362	3,572	3,745	3,820	3,750	
United States-----	105,614	106,142	98,225	97,097	95,835	94,694	98,006	101,051	102,919	109,285	118,232	120,160	113,917	

- Continued

Table 13. - Grain-and-roughage consuming livestock: Animal units fed annually, by States, 1919-55 - Continued

State	Year beginning October 1										
	1945	1946	1947	1948	1949	1950	1951	1952	1953	1954	1955
	1,000 units	1,000 units	1,000 units	1,000 units	1,000 units	1,000 units	1,000 units	1,000 units	1,000 units	1,000 units	1,000 units
Maine	339	334	333	348	361	361	389	411	420	412	424
New Hampshire	211	204	197	203	207	200	207	214	218	213	220
Vermont	509	503	475	477	472	458	471	502	517	508	508
Massachusetts	416	396	380	381	403	389	382	396	394	385	390
Rhode Island	53	49	48	48	50	49	49	50	49	48	47
Connecticut	325	312	310	315	328	336	349	359	358	359	367
New York	2,867	2,786	2,746	2,746	2,738	2,698	2,762	2,798	2,786	2,778	2,773
New Jersey	546	538	535	559	583	605	620	641	638	642	659
Pennsylvania	2,675	2,628	2,578	2,613	2,608	2,600	2,652	2,725	2,743	2,716	2,723
Delaware	219	214	209	242	259	271	235	251	264	252	276
Maryland	671	665	671	684	704	712	717	745	753	731	745
Ohio	3,912	3,792	3,675	3,692	3,693	3,716	3,677	3,604	3,613	3,633	3,704
Indiana	3,706	3,650	3,492	3,587	3,699	3,840	3,825	3,771	3,787	3,828	3,913
Illinois	5,558	5,464	5,216	5,230	5,500	5,626	5,670	5,668	5,686	5,813	5,999
Iowa	8,844	8,651	8,019	8,316	8,755	9,162	9,359	9,489	9,247	9,730	9,727
Missouri	4,809	4,657	4,483	4,535	4,710	4,894	4,826	4,794	4,774	4,765	4,882
Michigan	2,556	2,389	2,245	2,239	2,289	2,286	2,313	2,319	2,308	2,277	2,278
Wisconsin	5,120	4,964	4,763	4,698	4,733	4,810	4,885	4,995	5,092	5,193	5,211
Minnesota	5,358	5,057	4,650	4,675	4,786	4,890	4,928	4,994	5,139	5,281	5,298
North Dakota	1,958	1,771	1,653	1,578	1,542	1,529	1,607	1,666	1,785	1,849	1,966
South Dakota	3,036	2,952	2,806	2,814	2,765	2,803	3,050	3,133	3,246	3,402	3,439
Nebraska	4,721	4,495	4,289	4,349	4,364	4,663	4,980	5,134	4,925	5,226	4,898
Kansas	4,050	3,799	3,488	3,674	3,681	3,926	4,135	3,917	3,895	3,916	3,869
West Virginia	756	750	737	740	747	752	758	756	755	731	739
Kentucky	2,165	2,208	2,277	2,287	2,304	2,310	2,249	2,193	2,177	2,170	2,248
Tennessee	2,011	2,029	1,994	1,958	2,057	2,004	2,092	2,033	2,032	2,012	2,038
Virginia	1,555	1,551	1,529	1,575	1,626	1,695	1,792	1,812	1,789	1,750	1,769
North Carolina	1,453	1,449	1,440	1,442	1,471	1,529	1,627	1,679	1,702	1,720	1,718
South Carolina	735	727	719	702	697	724	779	814	810	799	802
Georgia	1,673	1,669	1,608	1,546	1,631	1,758	1,900	1,952	2,063	2,174	2,220
Florida	1,043	1,031	1,027	1,000	1,051	1,111	1,379	1,361	1,371	1,362	1,382
Alabama	1,618	1,575	1,491	1,466	1,571	1,651	1,710	1,787	1,906	1,897	1,906
Mississippi	1,857	1,792	1,712	1,668	1,720	1,757	1,828	1,959	2,038	2,112	2,180
Louisiana	1,565	1,463	1,313	1,277	1,303	1,372	1,420	1,564	1,597	1,569	1,594
Arkansas	1,593	1,520	1,388	1,408	1,478	1,532	1,564	1,593	1,609	1,522	1,580
Oklahoma	2,848	2,610	2,413	2,369	2,425	2,531	2,681	2,638	2,676	2,627	2,609
Texas	8,945	9,322	8,804	8,235	8,298	8,723	8,547	8,311	8,061	8,107	8,134
Montana	2,085	1,092	1,862	1,903	1,708	1,826	1,981	2,000	2,091	2,155	2,233
Idaho	1,157	1,109	1,113	1,107	1,079	1,111	1,204	1,241	1,285	1,349	1,409
Wyoming	1,387	1,254	1,231	1,150	1,110	1,157	1,247	1,252	1,240	1,167	1,189
Colorado	2,002	1,827	1,866	1,848	1,843	1,886	2,037	2,041	1,979	1,936	1,940
Utah	901	840	830	852	831	856	907	930	942	947	973
Nevada	482	483	488	488	489	500	518	520	526	529	531
New Mexico	1,253	1,155	1,126	1,137	1,122	1,145	1,152	1,138	1,089	1,071	1,097
Arizona	836	802	754	720	723	747	797	829	815	857	885
Washington	1,148	1,092	1,042	1,038	1,010	1,031	1,073	1,127	1,164	1,203	1,250
Oregon	1,257	1,188	1,154	1,208	1,191	1,196	1,299	1,374	1,422	1,461	1,446
California	3,695	3,611	3,483	3,532	3,576	3,821	4,059	4,141	4,232	4,487	4,562
United States	109,489	105,230	100,662	100,660	102,291	105,629	108,598	109,621	110,024	111,671	112,850

Table 14. - Calculation of animal units, United States, for the year beginning October 1, 1956

Livestock	Number	Animal units					
		Grain-consuming		Roughage-consuming		Grain-and-roughage consuming	
		Factor	Number	Factor	Number	Factor	Number
	1,000 units	1,000 units		1,000 units		1,000 units	
On farms January 1:							
Cattle:							
Milk cows -----	23,300	1.02	23,766	0.99	23,067	1.00	23,300
Milk heifers and heifer calves-----	11,600	.344	3,990	.782	9,071	.63	7,308
Beef cows -----	26,000	.167	4,342	.975	25,350	.76	19,760
Cattle on feed-----	5,700	2.00	11,400	.483	2,753	.86	4,902
Other cattle-----	30,800	.154	4,743	.844	25,995	.61	18,788
Stock sheep-----	27,000	.022	594	.20	5,400	.15	4,050
Sheep and lambs on feed-----	4,200	.12	504	.058	244	.074	311
Horses and mules							
2 years old and over -----	3,460	1.34	4,636	.737	2,550	.88	3,045
Colts -----	190	.15	28	1.0	190	.6	114
Hens and pullets -----	365,000	.0577	21,060	.0012	438	.0154	5,621
Hogs -----	51,000	---	---	.01	510	---	---
Raised during year:							
Commercial broilers -----	1,400,000	.008	11,200	---	---	.002	2,800
Chickens-----	480,000	.018	8,640	---	---	.0043	2,064
Turkeys, large-----	55,000	.07	3,850	.0024	132	.02	1,100
Turkeys, small -----	14,000	.03	420	.0024	34	.02	280
Goats clipped -----	3,100	---	---	.2	620	.15	465
Hogs fed in year -----	1/ 87,380	.712	62,215	---	---	.195	17,039
Total -----	---	---	161,388	---	96,354	---	110,947

1/ Calculated as follows:

Spring pigs 1956, (35% of 53,085)-----	18,580
Fall pigs 1956, (100% of 35,000)-----	35,000
Spring pigs 1957, (65% of 52,000)-----	<u>33,800</u>
Hogs fed in year beginning Oct. 1, 1956 -----	87,380

Table 15. - Feed fed per unit of livestock, United States, 1926-55 ^{1/}

Year beginning Oct. 1	Concentrates	Hay	Year beginning Oct. 1	Concentrates	Hay
	Tons	Tons		Tons	Tons
1926-----	0.68	0.96	:::1941-----	0.71	1.07
1927-----	.70	1.17	:::1942-----	.74	1.11
1928-----	.70	1.11	:::1943-----	.72	1.09
1929-----	.68	1.07	:::1944-----	.75	1.05
1930-----	.63	.92	:::1945-----	.79	1.13
1931-----	.66	.88	:::1946-----	.77	1.18
1932-----	.70	.92	:::1947-----	.72	1.21
1933-----	.60	.85	:::1948-----	.76	1.17
1934-----	.54	.73	:::1949-----	.77	1.18
1935-----	.68	.96	:::1950-----	.77	1.20
1936-----	.55	.94	:::1951-----	.79	1.21
1937-----	.70	.94	:::1952-----	.77	1.13
1938-----	.66	1.10	:::1953-----	.80	1.13
1939-----	.65	1.09	:::1954-----	.77	1.12
1940-----	.69	1.08	:::1955-----	.80	1.16
:			:::		

^{1/} Concentrates per grain-consuming animal unit and hay per rough-age-consuming animal unit.

table 14. The estimated hay disappearance thus calculated would be 111 million tons.

Animal units may be used to estimate the change in feed requirements for a State from year to year but with less accuracy than at the national level. No figures are available regularly on the quantity of concentrates fed in a State, so a figure is not available with which to compare the animal units. If the grain-consuming animal units increase 5 percent from one year to another in a particular State, it may be assumed that 5 percent more grain and other concentrates will be required unless other influences affect the result, such as an increase in grain fed per head. Shortages of feed because of drought, or excessive supplies because of unusually good pastures are other things that should be taken into account when estimating the feed required. Year to year changes in feed requirements usually can be more accurately estimated from changes in animal units than those extending over a longer period of time, during which rates of feeding may have changed considerably. For instance, milk cows get a third more grain per head than they did 15 to 20 years ago, and broilers use about a third less feed per head.

END