



AgEcon SEARCH
RESEARCH IN AGRICULTURAL & APPLIED ECONOMICS

The World's Largest Open Access Agricultural & Applied Economics Digital Library

This document is discoverable and free to researchers across the globe due to the work of AgEcon Search.

Help ensure our sustainability.

Give to AgEcon Search

AgEcon Search

<http://ageconsearch.umn.edu>

aesearch@umn.edu

*Papers downloaded from **AgEcon Search** may be used for non-commercial purposes and personal study only. No other use, including posting to another Internet site, is permitted without permission from the copyright owner (not AgEcon Search), or as allowed under the provisions of Fair Use, U.S. Copyright Act, Title 17 U.S.C.*

CS-1184 (1956)

USDA STATISTICAL BULLETINS

UPDATE

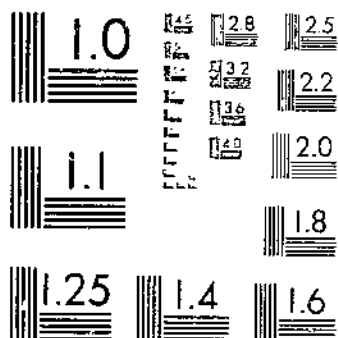
MEAT ANIMALS - FARM PRODUCTION

BY STATES, 1950-54

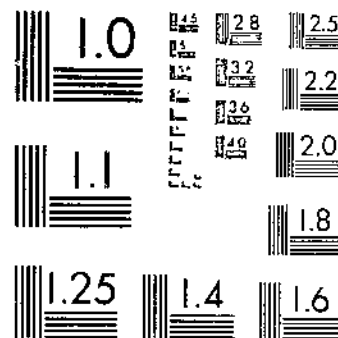
REVISED ESTIMATES

1 OF 1

START



MICROCOPY RESOLUTION TEST CHART
NATIONAL BUREAU OF STANDARDS-1963-A



MICROCOPY RESOLUTION TEST CHART
NATIONAL BUREAU OF STANDARDS-1963-A

MEAT ANIMALS

REFERENCE
JUN 1956

FARM PRODUCTION,
DISPOSITION, AND
INCOME, BY STATES

1950-54

Revised Estimates

Statistical Bulletin No.184

UNITED STATES DEPARTMENT OF AGRICULTURE
Agricultural Marketing Service Crop Reporting Board
WASHINGTON, D. C. JUNE 1956

C O N T E N T S

	Page
Comments	1
Cattle and Calves:	
United States	3
By States	6
Hogs:	
United States	3
By States	16
Sheep and Lambs:	
United States	3
By States	26

For earlier years in the series covered in this report see bulletins with similar title for

1945-49 Statistical Bulletin No. 113 June 1952

1924-44 Published September 1947

U.S. GOVERNMENT PRINTING OFFICE: 1952 O - 481111

MEAT ANIMALS

Farm Production, Disposition, and Income, by States, 1950-54 Revised Estimates

Revised estimates by States of farm production and income from meat animals are presented in this report for the years 1950-54. These estimates continue the official series on farm production, disposition, cash receipts, and gross income as shown in "Meat Animals, Farm Production and Income, 1924-44" ^{1/} and "Meat Animals, Farm Production, Disposition, and Income, 1945-49." ^{2/}

This report is one of a series on agricultural products presenting revised estimates of farm production, disposition, cash receipts, and gross income for the years 1950 through 1954. These revisions resulted from a review and analysis of the 1954 Census of Agriculture covering livestock numbers, and of other data relating to the production and disposition of meat animals. Estimates of numbers on farms January 1 are revised every 5 years after taking into consideration the changes indicated by census enumerations and all the other data available. When revisions are made for the inventory numbers or for the livestock crops, corresponding adjustments are usually necessary in other items of a livestock balance sheet. Because production estimates take into account the differences in inventory weight at the beginning and end of the year as well as the pounds sold during the year, a revision of the inventory numbers, births, or disposition items generally requires adjustment in production and income estimates.

An explanation of the various items included in this report, together with a description of the source of the information and the methods employed in determining the estimates, is set forth below.

On Hand, January 1: Inventory numbers at the beginning and end of the year are the official estimates of the Crop Reporting Board as published in February each year. The level of these estimates is based on census enumerations (or the January 1 equivalent of those enumerations) every 5 years. In the intervening years, estimates are based on voluntary returns from livestock producers, obtained largely in cooperation with the Post Office Department through the rural carriers. State records of livestock assessed each year and annual farm census enumerations in some States are also used as indications of the yearly change in livestock numbers.

Births - Calves Born: The number of calves born is computed by multiplying the number of all cows 2 years old and over on farms at the beginning of the year by an estimated percentage calf crop for the year. These estimated calf crop percentages are not strictly calving rates. The figure represents calves born expressed as a percentage of the January 1 inventory of cows and heifers 2 years old and over on January 1 and not the number of all cows and heifers giving birth to calves during the year. They are based on sample data obtained by mailed inquiry from approximately 85,000 producers at the end of the year.

Pigs Saved: The number of sows farrowing in the spring (Dec. 1 - June 1) and fall (June 1 - Dec. 1) is estimated by the Crop Reporting Board and published in the Pig Crop Reports of June and December. The level of these estimates is based primarily upon census enumerations of sows farrowing in census years. The year-to-year changes are estimated currently from indications of changes in numbers obtained from the Rural Carrier Livestock Surveys with approximately 150,000 farms reporting. The year-to-year changes are revised on the basis of annual State census enumerations in some States and on the basis of records of hogs marketed and slaughtered. The series on "pigs saved" is computed by multiplying the estimated number of sows by the average number of pigs saved per litter reported on the June and December Livestock Surveys. "Pigs saved" is interpreted to mean the number of spring or fall pigs on hand June 1 or December 1 or sold before those dates.

^{1/} United States Bureau of Agricultural Economics. Meat Animals, Farm Production, and Income. 1924-44. Revised Estimates by States. 152 pp., September 1947.

^{2/} United States Bureau of Agricultural Economics. Meat Animals, Farm Production, Disposition, and Income 1945-49. Revised Estimates by States. Statistical Bulletin No. 113, 19 pp. July 1952.

Lambs Saved: This term is defined as the number of lambs living on June 1 or sold before that date for the Native States and as lambs docked or branded in the 13 Western Sheep States. The estimated lamb crop percentages are the number of lambs saved per 100 ewes 1 year old and over on farms and ranches at the beginning of the year. Lambing rates are based upon indications from the June 1 Rural Carrier Livestock Survey for the Native States and a special July 1 sheep survey in the 13 Western Sheep States.

Inshipments: The estimates of inshipments for feeding and breeding purposes are based primarily on records showing shipments into the States, such as the Animal Quarantine Branch records of inspections at public stockyards of dairy cattle and of feeding and breeding cattle, hogs, and sheep; railroad records of receipts of livestock; and State health or brand inspections. Records are also obtained on the direct movement of livestock into a number of States. Livestock shipped into a State for immediate slaughter are not included in this item.

Marketings: This item represents shipments to markets and packers within a State and all shipments out of the State. It includes retail slaughter of animals originating in the State, but does not include interfarm sales within the State or farm slaughter. The estimated marketings are based on reports from stockyard companies, packers, State Sanitary Boards, and railroads. In States where such records are incomplete, marketings are estimated from the available sample of market records and from other data on disposition. The average weight per head is estimated on the basis of average weights at the principal markets and of averages for livestock slaughtered in commercial plants. Slaughter in commercial plants includes slaughter in Federally inspected plants and in other wholesale and retail plants but excludes farm slaughter.

Farm Slaughter: The estimate of farm slaughter represents slaughter by or for farmers for home use or for sale as meat. These estimates are based upon periodic data from the Bureau of the Census and on annual sample data obtained by mailed inquiry from livestock producers. Average weights of farm slaughter are based on sample data from several mailed inquiries on the number of head and total live weight of the animals slaughtered.

Deaths: The estimated deaths from all causes for each species are based on sample data from several mailed inquiries on livestock and from the Rural Carrier Livestock Surveys in 14 Western States.

Cattle and Calves: Losses of cattle represent the deaths during the year of the cattle (including calves) on hand at the beginning of the year. Death losses of calves represent the number of calves that died during the year of birth.

Hogs: This item represents deaths of hogs that were on hand at the beginning of the year, as well as deaths of pigs from the pig crops (pigs saved) for that year.

Sheep and Lambs: Losses of sheep represent deaths of stock sheep (including lambs) on hand at the beginning of the year. Losses of lambs represent the number of deaths of lambs that were saved or docked during the year, and deaths of lambs that were on feed at the beginning of the year.

Livestock Production: Livestock production for each State is the live weight produced on farms and ranches in that State during the calendar year. It is obtained for each State by deducting the weight of livestock shipped into the State from the total pounds of marketings and farm slaughter and adding or subtracting, as the case might be, the difference in the inventory poundage between the beginning and end of the year. The sum of production for the States gives the total production for the United States.

Prices: The State prices are annual averages of the monthly estimates of prices received by farmers, weighted by monthly marketings. The U. S. prices are derived by dividing the sum of the State values (prices times marketings) by the sum of the State marketings. This gives a U. S. price weighted by State marketings or sales.

Cash Receipts: The estimates of cash receipts represent the receipts from sales of live animals by farmers and ranchers and from sales of meat from animals slaughtered on farms and ranches. It does not include receipts from direct sales of livestock among farmers in the same State. No allowances are made for the cost of animals shipped into the State or for changes in inventories.

Value of Home Consumption: The proportion of the live weight of farm slaughter for home use is valued by States at the same price as marketings.

Gross Income: The estimated gross income is the sum of cash receipts and the value of home consumption.

Cost of Inshipments: The live weight of inshipments is valued at an estimated price per pound based largely upon reported market prices of stocker and feeder animals. The cost of purchases by farmers from other farmers within the State is not included.

Table 1.—Meat animals: Production and marketings, United States 1945-54

Year	Production 1/				Marketings 2/			
	Cattle and calves	Hogs	Sheep and lambs	Total meat animals	Cattle and calves	Hogs	Sheep and lambs	Total meat animals
	Million pounds	Million pounds	Million pounds	Million pounds	Million pounds	Million pounds	Million pounds	Million pounds
1945...	19,517	18,843	1,912	40,272	26,675	15,494	2,842	45,011
1946...	18,999	18,744	1,762	39,505	25,270	15,984	2,694	43,948
1947...	19,130	18,159	1,567	38,856	26,099	15,722	2,278	44,099
1948...	18,402	18,222	1,383	38,007	23,105	15,280	2,083	40,460
1949...	19,274	19,457	1,278	40,009	23,593	16,747	1,777	42,117
1950 3/	21,185	20,214	1,336	42,735	23,613	17,398	1,688	42,704
1951...	22,990	21,436	1,372	45,798	23,679	19,007	1,663	44,349
1952...	24,933	19,727	1,471	46,131	24,937	19,082	1,802	45,821
1953...	27,405	16,800	1,538	45,743	29,448	16,026	1,845	47,319
1954...	27,580	18,218	1,607	47,405	31,428	15,762	1,905	49,095

1/ Adjustments made for numbers shipped in and changes in inventory.

2/ Excludes interfarm sales.

3/ For hogs, beginning with January 1, 1950, balance sheet estimates for New Jersey include garbage fed hogs in Hudson county. Previously, balance sheet estimates excluded these hogs.

Table 2.—Meat animals: Cash receipts and gross income, United States, 1945-54

Year	Cash receipts				Gross income			
	Cattle and calves	Hogs	Sheep and lambs	Total meat animals	Cattle and calves	Hogs	Sheep and lambs	Total meat animals
	1,000 dollars	1,000 dollars	1,000 dollars	1,000 dollars	1,000 dollars	1,000 dollars	1,000 dollars	1,000 dollars
1945...	3,318,156	2,262,963	317,492	5,900,611	3,374,809	2,639,717	322,917	6,337,443
1946...	3,761,321	2,916,591	363,138	7,041,050	3,832,944	3,400,332	367,107	7,600,383
1947...	4,967,257	3,926,412	401,500	9,295,169	5,054,185	4,522,785	405,907	9,982,877
1948...	5,284,339	3,659,884	409,422	9,354,145	5,381,315	4,202,133	411,142	9,997,590
1949...	4,848,640	3,124,726	350,835	8,324,201	4,931,689	3,513,205	354,900	8,799,794
1950 1/	5,679,708	3,214,247	387,344	9,281,299	5,773,564	3,569,629	391,942	9,735,135
1951...	7,004,949	3,889,145	466,310	11,360,404	7,127,998	4,277,654	471,479	11,877,131
1952...	6,205,603	3,464,118	390,821	10,060,542	6,324,650	3,792,848	394,907	10,512,405
1953...	4,877,805	3,483,040	316,978	8,677,823	4,972,241	3,818,937	320,307	9,111,485
1954...	5,088,323	3,454,542	325,224	8,868,089	5,190,235	3,776,096	328,337	9,294,668

1/ For hogs, beginning with January 1, 1950, balance sheet estimates for New Jersey include garbage fed hogs in Hudson county. Previously, balance sheet estimates excluded these hogs.

Table 3.—Cattle and calves: Inventory numbers, calf crop, and disposition, United States, 1945-54 1/

Year	On hand January 1		Calves born		In-shipments	Marketings 3/		Farm slaughter		Deaths	
	All cattle and calves	All cows 2 years and older	Number	As pct. of cows 2 years & older 2/		Cattle	Calves	Cattle	Calves	Cattle	Calves
	1,000 head	1,000 head	1,000 head	Percent	1,000 head	1,000 head	1,000 head	1,000 head	1,000 head	1,000 head	1,000 head
1945....	85,573	44,226	35,155	79	8,257	27,541	13,222	919	753	1,637	2,678
1946....	82,235	42,929	34,643	81	8,774	26,267	13,026	943	766	1,549	2,547
1947....	80,554	42,330	34,703	82	8,302	26,981	13,893	871	713	1,464	2,466
1948....	77,171	40,625	33,125	82	7,595	23,417	12,607	791	611	1,388	2,247
1949....	76,830	39,781	33,748	85	8,079	22,905	12,627	752	570	1,507	2,333
1950....	77,963	40,596	34,899	86	8,896	22,664	12,028	713	528	1,445	2,297
1951....	82,083	42,094	35,825	85	9,185	22,638	11,328	708	484	1,537	2,326
1952....	88,072	43,923	38,273	87	9,091	23,652	12,246	769	494	1,603	2,431
1953....	94,241	46,840	41,261	88	8,367	28,307	14,431	860	532	1,573	2,487
1954....	95,679	48,946	42,601	87	9,907	30,622	15,514	872	524	1,574	2,489

See footnotes Table 9, page 6.

Table 4.—Hogs: Inventory numbers, pig crop, and disposition, United States, 1945-54 1/

Year	On hand January 1 All hogs	Spring		Fall		In-shipments	Marketings 2/	Farm slaughter	Deaths
		Sows farrowing	Pigs saved	Sows farrowing	Pigs saved				
	1,000 head	1,000 head	1,000 head	1,000 head	1,000 head	1,000 head	1,000 head	1,000 head	1,000 head
1945....	59,373	8,302	52,216	5,429	34,611	464	61,035	13,631	10,692
1946....	61,306	8,077	52,191	4,704	30,503	464	64,409	13,721	9,544
1947....	56,810	8,548	52,199	4,866	31,090	497	63,499	12,072	10,435
1948....	54,590	7,833	50,468	5,070	33,358	459	61,790	11,200	9,628
1949....	56,257	8,820	56,969	5,568	36,275	541	69,249	10,236	11,705
1950....	58,937	9,179	57,958	5,927	39,423	580	72,673	9,720	12,236
1951....	62,269	9,484	61,298	5,955	39,288	755	79,142	9,479	12,872
1952....	62,117	8,311	55,135	5,067	33,694	740	80,448	8,882	10,601
1953....	51,755	7,045	47,940	4,479	29,974	812	68,572	7,455	9,340
1954....	45,114	7,669	52,852	5,014	33,978	1,116	66,012	6,668	9,906

See footnotes Table 19, page 16.

Table 5.—Sheep and lambs: Inventory numbers, lamb crop, and disposition, United States 1945-54 1/

Year	On hand January 1 All sheep and lambs	Lambs saved		Inshipments		Marketings 2/		Farm slaughter		Deaths	
		Number	As pct. of ewes 1 year and older	Sheep	Lambs	Sheep	Lambs	Sheep	Lambs	Sheep	Lambs
	1,000 head	1,000 head	Percent	1,000 head	1,000 head	1,000 head	1,000 head	1,000 head	1,000 head	1,000 head	1,000 head
1945....	46,520	27,042	86	601	6,994	7,332	24,983	274	297	3,418	2,490
1946....	42,362	24,489	89	737	6,718	6,758	24,088	265	289	3,125	2,283
1947....	37,498	21,858	88	652	5,910	5,224	20,937	229	270	2,845	2,076
1948....	34,337	19,594	85	627	5,486	4,828	18,947	213	261	2,916	1,936
1949....	30,943	18,298	87	721	5,242	3,473	16,784	177	227	2,898	1,819
1950....	29,826	17,905	89	730	5,965	2,640	16,486	177	215	2,558	1,717
1951....	30,633	17,978	88	753	5,880	3,244	15,457	146	195	2,495	1,725
1952....	31,982	18,479	88	696	5,660	3,220	17,086	133	209	2,533	1,736
1953....	31,900	19,497	90	612	4,857	2,945	17,939	131	223	2,494	1,778
1954....	31,356	20,340	95	670	5,316	2,826	19,832	125	210	2,365	1,742

1/ Balance sheet estimates. Total marketings, farm slaughter, deaths, and on hand end of year equals total of lamb crop, inshipments, and on hand beginning of year. 2/ Excludes interfarm sales.

Table 6.--Cattle and calves: Production and income, United States, 1945-54

Year	Production <u>1/</u>	Marketings <u>2/</u>	Price per 100 pounds		Cash receipts <u>3/</u>	Value of home consumption	Gross income	Cost of inshipments
			Cattle	Calves				
	1,000 pounds	1,000 pounds	Dollars	Dollars	1,000 dollars	1,000 dollars	1,000 dollars	1,000 dollars
1945....	19,517,065	26,674,760	12.10	13.00	3,318,156	56,653	3,374,809	706,007
1946....	18,998,709	25,270,189	14.50	15.20	3,761,321	71,623	3,832,944	888,326
1947....	19,129,845	26,099,145	16.40	20.40	4,967,257	86,928	5,054,185	1,087,069
1948....	18,401,950	23,104,585	22.20	24.40	5,284,839	96,476	5,381,315	1,284,957
1949....	19,274,489	23,593,141	19.80	22.60	4,848,640	83,049	4,931,689	1,163,294
1950....	21,185,248	23,617,788	23.30	26.30	5,679,708	93,856	5,773,564	1,617,694
1951....	22,990,053	23,678,710	28.70	31.90	7,004,949	123,049	7,127,998	1,977,784
1952....	24,932,623	24,937,063	24.30	25.80	6,205,603	119,047	6,324,650	1,500,146
1953....	27,405,041	29,448,031	16.30	16.70	4,877,805	94,436	4,972,241	910,157
1954....	27,580,320	31,428,450	16.00	16.50	5,088,323	101,912	5,190,235	1,110,047

1/ Adjustments made for inshipments and changes in inventory. 2/ Excludes interfarm sales.
3/ Includes receipts from marketings and from sales of farm slaughtered meat.

Table 7.--Hogs: Production and income, United States, 1945-54

Year	Production <u>1/</u>	Marketings <u>2/</u>	Price per 100 pounds		Cash receipts <u>3/</u>	Value of home consumption	Gross income	Cost of inshipments
	1,000 pounds	1,000 pounds	Dollars	Dollars	1,000 dollars	1,000 dollars	1,000 dollars	1,000 dollars
1945....	18,843,444	15,493,614	14.00	14.00	2,262,963	376,754	2,639,717	7,144
1946....	18,744,289	15,984,074	17.50	17.50	2,916,591	483,741	3,400,332	8,794
1947....	18,159,250	15,722,320	24.10	24.10	3,926,412	596,373	4,522,785	12,815
1948....	18,222,058	15,279,948	23.10	23.10	3,659,884	542,249	4,202,133	11,405
1949....	19,457,476	16,747,211	18.10	18.10	3,124,726	388,479	3,513,205	10,670
1950....	20,213,732	17,397,682	18.00	18.00	3,214,247	355,382	3,569,629	11,344
1951....	21,436,178	19,006,543	20.00	20.00	3,889,145	388,509	4,277,654	16,252
1952....	19,726,620	19,082,155	17.80	17.80	3,464,118	328,730	3,792,848	14,356
1953....	16,800,404	16,026,179	21.40	21.40	3,483,040	335,897	3,818,937	18,477
1954....	18,218,278	15,761,848	21.60	21.60	3,454,542	321,554	3,776,096	25,747

1/ Adjustments made for inshipments and changes in inventory. 2/ Excludes interfarm sales.
3/ Includes receipts from marketings and from sales of farm slaughtered meats.

Table 8.--Sheep and lambs: Production and income, United States, 1945-54

Year	Production <u>1/</u>	Marketings <u>2/</u>	Price per 100 pounds		Cash receipts <u>3/</u>	Value of home consumption	Gross income	Cost of inshipments
			Sheep	Lambs				
	1,000 pounds	1,000 pounds	Dollars	Dollars	1,000 dollars	1,000 dollars	1,000 dollars	1,000 dollars
1945....	1,911,980	2,842,375	6.38	13.10	319,492	3,425	322,917	75,494
1946....	1,761,938	2,694,367	7.48	15.60	363,138	3,969	367,107	85,944
1947....	1,566,857	2,277,737	8.39	20.50	401,500	4,407	405,907	88,746
1948....	1,383,456	2,083,082	9.69	22.80	409,422	4,720	414,142	89,164
1949....	1,277,713	1,776,664	9.27	22.40	350,835	4,065	354,900	87,646
1950....	1,335,720	1,688,279	11.60	25.10	387,344	4,598	391,942	122,683
1951....	1,371,614	1,662,713	16.00	31.00	466,310	5,169	471,479	134,898
1952....	1,470,752	1,801,830	10.00	24.30	390,821	4,086	394,907	90,077
1953....	1,538,438	1,844,801	6.67	19.30	316,978	3,329	320,307	60,614
1954....	1,607,312	1,904,973	6.14	19.10	325,224	3,113	328,337	66,997

1/ Adjustments made for inshipments and changes in inventory. 2/ Excludes interfarm sales.
3/ Includes receipts from marketings and from sales of farm slaughtered meat.

Table 9:—Cattle and calves: Inventory numbers, calf crop, and disposition, 1950 1/

State	On hand Jan. 1, 1950		Calves born		In-shipments	Marketings 2/		Farm slaughter		Deaths		On hand Jan. 1, 1951 all cattle and calves
	All cattle and calves	All cows 2 years and older	Number	As pct. of cows 2 years & older		Cattle	Calves	Cattle	Calves	Cattle	Calves	
	Thou-sands	Thou-sands	Thou-sands	Percent	Thou-sands	Thou-sands	Thou-sands	Thou-sands	Thou-sands	Thou-sands	Thou-sands	Thou-sands
Maine.....	212	125	101	81	4	43	46	5	5	4	6	208
N. H.....	115	71	58	82	3	23	31	2	1	3	4	112
Vt.....	428	289	223	77	13	79	136	5	2	7	16	419
Mass.....	184	131	106	81	25	48	70	3	2	3	9	180
R. I.....	26	20	16	80	5	7	11	—	1	1	1	26
Conn.....	173	119	100	84	13	34	63	2	3	2	7	175
N. Y.....	2,116	1,424	1,210	85	27	327	672	19	16	40	163	2,116
N. J.....	215	156	122	78	19	39	81	2	2	4	11	217
Pa.....	1,704	1,000	860	86	106	338	460	29	21	28	73	1,721
Ohio.....	2,137	1,128	970	86	83	444	368	45	13	44	76	2,170
Ind.....	1,760	898	817	91	287	607	270	35	14	38	52	1,848
Ill.....	3,223	1,381	1,229	89	895	1,521	333	48	16	64	78	3,287
Mich.....	1,781	904	866	88	48	365	390	26	16	34	65	1,799
Wis.....	3,727	2,400	2,136	89	57	569	1,274	42	21	54	158	3,802
Minn.....	3,242	1,645	1,513	92	345	1,028	524	55	22	53	111	3,307
Iowa.....	4,858	1,782	1,693	95	1,405	2,397	520	72	14	74	97	5,052
Mo.....	3,107	1,569	1,459	93	437	979	493	19	33	56	67	3,356
N. Dak....	1,495	759	660	87	9	384	185	20	14	31	50	1,480
S. Dak....	2,454	1,189	1,046	88	145	756	284	17	8	42	59	2,479
Nebr.....	3,843	1,544	1,412	92	671	1,534	95	32	12	65	83	4,105
Kans.....	3,588	1,532	1,379	90	723	1,481	120	31	21	58	68	3,911
Del.....	61	39	29	75	1	9	13	1	1	1	3	63
Md.....	432	254	216	85	20	64	119	4	2	8	17	454
Va.....	1,129	648	531	82	19	155	256	5	4	25	37	1,197
W. Va.....	554	312	262	84	1	86	123	4	3	13	17	571
N. C.....	670	410	312	76	8	63	116	5	12	23	34	737
S. C.....	353	212	167	79	3	16	61	2	6	14	11	413
Ge.....	1,040	557	446	80	2	172	127	8	6	32	30	1,113
Fla.....	1,250	700	434	62	39	173	157	4	3	16	20	1,350
Ky.....	1,548	848	738	87	214	431	305	8	4	40	53	1,656
Tenn.....	1,490	851	732	86	68	302	308	5	6	38	52	1,579
Ala.....	1,239	705	557	79	7	162	197	4	7	28	30	1,375
Miss.....	1,501	912	629	69	12	200	261	3	7	32	33	1,606
Ark.....	1,142	645	529	82	12	191	196	2	8	22	31	1,233
La.....	1,285	783	626	80	22	120	299	6	13	31	38	1,426
Okla.....	2,580	1,367	1,203	88	377	862	396	12	18	42	44	2,786
Texas.....	8,116	4,423	3,848	87	569	2,072	1,264	16	67	125	224	8,765
Mont.....	1,726	882	811	92	99	436	202	15	9	32	61	1,881
Idaho.....	939	437	376	86	49	226	76	11	8	16	22	1,005
Wyo.....	991	484	421	87	74	306	78	5	2	17	28	1,050
Colo.....	1,800	807	694	86	461	844	136	12	8	27	38	1,890
N. Mex....	1,178	676	554	82	218	477	180	5	7	19	37	1,225
Ariz.....	818	442	349	79	200	319	139	4	4	21	29	851
Utah.....	588	302	263	87	41	139	98	7	5	16	15	612
Nev.....	530	278	211	76	10	113	73	2	2	9	11	541
Wash.....	851	453	381	84	50	198	104	22	20	19	34	885
Oreg.....	1,085	561	449	80	50	279	115	17	20	23	34	1,096
Calif.....	2,709	1,462	1,155	79	953	1,246	473	15	19	51	60	2,953
U. S.....	77,963	40,596	34,899	86	8,896	22,664	12,028	713	528	1,445	2,297	82,083

1/ Balance sheet estimates. Total of marketings, farm slaughter, deaths and on hand end of year equals total of calf crop, inshipments, and on hand beginning of year. 2/ Not strictly a calving rate. Figure represents calves born expressed as percentage of the January 1 inventory of cows and heifers 2 years old and over on January 1 and not the number of all cows and heifers giving birth to calves during the year. 3/ Excludes interfarm sales.

Table 10:—Cattle and calves: Production and income, 1950

State	Production ^{1/}	Marketings ^{2/}	Price per 100 pounds		Cash receipts ^{3/}	Value of home consumption	Gross income	Cost of inshipments
			Cattle	Calves				
	1,000 pounds	1,000 pounds	Dollars	Dollars	1,000 dollars	1,000 dollars	1,000 dollars	1,000 dollars
Maine.....	40,450	41,785	17.80	22.30	8,484	147	8,631	836
N. H.....	20,695	21,000	18.10	22.00	4,780	61	4,841	625
Vt.....	64,460	75,560	16.50	21.20	13,591	197	13,788	2,718
Mass.....	32,705	52,025	17.30	21.70	9,624	213	9,837	5,291
R. I.....	3,950	7,610	17.30	21.90	1,384	7	1,391	1,050
Conn.....	34,670	40,325	18.10	22.10	7,902	128	8,030	2,730
N. Y.....	441,235	394,380	19.10	28.30	85,183	1,567	86,750	5,792
N. J.....	41,980	51,040	19.40	28.70	11,279	156	11,435	4,086
Pa.....	374,830	384,360	23.40	29.00	98,243	2,588	100,831	20,808
Ohio.....	501,705	474,395	23.90	28.30	121,209	5,408	126,617	16,583
Ind.....	530,790	626,900	23.30	28.50	156,209	4,520	160,729	52,280
Ill.....	966,005	1,559,340	24.60	27.50	392,127	5,705	397,832	180,696
Mich.....	416,460	395,820	21.80	23.80	95,285	2,301	97,586	7,590
Wis.....	882,325	751,465	20.40	26.60	171,186	2,632	173,818	8,308
Minn.....	956,950	1,087,660	22.60	27.20	253,147	8,278	261,425	58,754
Iowa.....	1,703,045	2,446,970	25.30	25.90	623,760	12,573	636,333	259,518
Mo.....	897,150	1,031,150	24.50	26.70	259,938	3,708	263,646	80,810
N. Dak.....	426,860	399,085	22.00	25.20	90,821	3,444	94,235	1,556
S. Dak.....	755,143	775,373	23.90	26.30	188,193	3,394	191,587	25,356
Nebr.....	1,249,945	1,505,160	25.20	28.20	382,102	6,653	388,755	128,248
Kans.....	1,210,085	1,453,965	23.90	26.40	351,314	5,617	356,931	126,417
Del.....	11,685	10,200	23.20	28.60	2,681	74	2,755	200
Md.....	86,275	79,985	22.50	28.70	19,887	298	20,185	3,564
Va.....	232,380	192,190	23.10	28.90	48,253	476	48,729	2,993
W. Va.....	110,535	99,125	21.90	27.50	23,670	299	23,969	161
N. C.....	111,770	71,110	19.00	24.90	15,815	472	16,287	1,423
S. C.....	53,675	24,340	20.20	23.60	5,964	151	6,115	534
Ga.....	190,325	147,415	20.40	23.50	32,441	328	32,769	292
Fla.....	207,060	165,170	18.70	22.40	33,108	119	33,227	6,402
Ky.....	379,340	446,480	22.90	29.00	107,172	668	107,840	35,484
Tenn.....	330,315	317,220	20.30	26.60	70,733	452	71,185	11,071
Ala.....	247,215	172,200	20.20	22.60	37,019	322	37,341	832
Miss.....	267,750	212,500	18.90	23.80	44,984	251	45,235	1,426
Ark.....	254,915	205,910	20.70	25.30	46,383	221	46,604	1,461
La.....	245,720	165,260	19.70	24.50	37,855	658	38,513	2,614
Okla.....	813,860	907,560	22.00	25.30	207,488	1,797	209,285	62,978
Texas.....	2,161,565	2,157,350	21.70	25.50	494,566	4,299	498,865	98,221
Mont.....	528,300	454,740	23.70	27.70	112,236	2,279	114,515	19,388
Idaho.....	260,850	238,575	23.10	26.40	58,201	807	59,008	8,635
Wyo.....	304,150	287,320	23.70	27.70	69,650	860	70,400	12,242
Colo.....	588,860	844,555	25.10	27.10	214,915	1,699	216,614	89,326
N. Mex.....	332,310	428,600	23.10	27.90	102,772	1,092	103,864	35,260
Ariz.....	207,935	296,895	23.00	27.80	71,018	771	71,789	31,297
Utah.....	157,125	158,135	23.20	26.80	38,794	850	39,644	7,827
Nev.....	140,825	130,410	23.10	26.50	31,085	349	31,434	1,909
Wash.....	219,690	207,510	22.20	26.20	51,880	1,582	53,462	10,213
Oreg.....	300,900	295,660	21.80	25.80	69,732	1,042	70,774	9,510
Calif.....	888,480	1,323,005	22.60	27.20	305,755	2,373	308,128	172,379
U. S....	21,185,248	23,617,788	23.30	26.30	5,679,708	93,856	5,773,564	1,617,694

1/ Adjustments made for inshipments and changes in inventory. 2/ Excludes interfarm sales. 3/ Includes receipts from marketings and from sales of farm slaughtered meat.

Table 11.--Cattle and calves: Inventory numbers, calf crop, and disposition, 1951 1/

State	On hand Jan. 1, 1951		Calves born		In-ship-ments	Marketings 3/		Farm slaughter		Deaths		On hand Jan. 1, 1952 all cattle and calves
	All cattle and calves	All cows 2 years and older	Number	As pct. of cows 2 years & older 2/		Cattle	Calves	Cattle	Calves	Cattle	Calves	
	Thou-sands	Thou-sands	Thou-sands	Per-cent	Thou-sands	Thou-sands	Thou-sands	Thou-sands	Thou-sands	Thou-sands	Thou-sands	Thou-sands
Maine.....	208	119	107	90	4	33	40	4	4	5	10	223
N.H.....	112	67	58	86	2	17	30	2	2	3	4	114
Vt.....	419	278	222	80	6	52	128	6	2	7	13	440
Mass.....	180	128	102	80	21	42	63	3	2	3	10	180
R.I.....	26	20	15	77	5	7	9	---	1	1	1	27
Conn.....	175	119	100	84	13	36	62	2	3	2	6	177
N.Y.....	2,116	1,413	1,201	85	34	277	615	19	13	44	161	2,222
N.J.....	217	156	120	77	19	40	76	2	2	4	11	221
Pa.....	1,721	990	851	86	116	316	433	31	17	29	72	1,790
Ohio.....	2,170	1,127	947	84	91	485	310	45	14	42	77	2,235
Ind.....	1,848	914	813	89	172	542	230	35	11	38	55	1,922
Ill.....	3,287	1,375	1,238	90	847	1,418	225	48	13	74	77	3,517
Mich.....	1,799	985	827	84	68	380	318	27	16	37	63	1,853
Wis.....	3,802	2,389	2,126	89	43	545	1,199	44	20	55	154	3,954
Minn.....	3,307	1,626	1,480	91	259	876	459	56	19	58	104	3,472
Iowa.....	5,052	1,817	1,690	93	1,489	2,242	202	71	12	91	106	5,507
Mo.....	3,356	1,645	1,546	94	319	922	509	16	33	69	81	3,591
N.Dak.....	1,480	769	692	90	23	316	187	19	14	26	35	1,598
S.Dak.....	2,479	1,225	1,102	90	168	635	165	19	6	42	56	2,826
Nebr.....	4,105	1,654	1,505	91	768	1,531	77	31	11	70	83	4,575
Kans.....	3,911	1,621	1,475	91	715	1,467	91	32	20	70	80	4,341
Del.....	63	39	31	80	2	10	13	1	1	1	3	67
Md.....	454	266	218	82	22	68	116	3	2	8	16	481
Va.....	1,197	669	555	83	16	156	257	4	4	27	39	1,281
W.Va.....	571	310	270	87	1	95	130	4	2	13	16	582
N.C.....	737	438	333	76	7	88	121	6	11	21	34	796
S.C.....	413	228	178	78	1	34	52	2	5	11	13	475
Ge.....	1,113	696	471	79	2	153	103	6	6	35	36	1,247
Fla.....	1,350	752	504	67	33	77	174	4	2	18	19	1,593
Ky.....	1,656	881	731	83	175	464	286	8	4	42	52	1,706
Tenn.....	1,579	874	743	85	76	337	310	5	6	35	47	1,658
Ala.....	1,375	770	585	76	49	247	206	4	6	30	31	1,465
Miss.....	1,606	965	685	71	14	166	311	2	7	35	33	1,751
Ark.....	1,233	687	577	84	27	166	199	2	7	25	32	1,406
La.....	1,426	855	650	76	16	137	318	5	13	37	42	1,540
Okl.....	2,786	1,459	1,313	90	363	826	423	13	17	43	48	3,092
Texas.....	8,765	4,807	3,798	79	630	2,622	1,242	15	69	154	238	6,853
Mont.....	1,881	969	872	90	124	524	189	15	7	22	51	2,069
Idaho.....	1,005	452	402	89	73	242	48	11	6	19	28	1,126
Wyo.....	1,050	523	450	86	88	330	62	5	1	17	29	1,144
Colo.....	1,890	861	758	88	512	816	155	11	8	29	43	2,098
N.Mex.....	1,225	683	581	85	201	470	244	5	7	17	39	1,225
Ariz.....	851	444	360	81	310	405	124	4	4	23	33	928
Utah.....	612	314	261	83	52	140	65	7	5	11	18	679
Nev.....	541	284	222	78	17	112	82	3	2	8	10	583
Wash.....	885	460	386	84	45	197	84	20	17	17	25	956
Oreg.....	1,096	575	477	83	72	233	94	17	17	19	27	1,238
Calif.....	2,953	1,496	1,197	80	1,075	1,342	492	15	13	50	65	3,248
U.S.....	82,082	42,094	35,825	85	9,185	22,638	11,328	708	484	1,537	2,325	88,072

1/ Balance sheet estimates. Total of marketings, farm slaughter, deaths and on hand end of year equals total of calf crop, inshipments, and on hand beginning of year. 2/ Not strictly a calving rate. Figure represents calves born expressed as percentage of the January 1 inventory of cows and heifers 2 years old and over on January 1 and not the number of all cows and heifers giving birth to calves during the year. 3/ Excludes interfarm sales.

Table 12.—Cattle and calves: Production and income, 1951

State	Production 1/	Marketings 2/	Price per 100 pounds		Cash receipts 3/	Value of home consumption	Gross income	Cost of inshipments
			Cattle	Calves				
	1,000 pounds	1,000 pounds	Dollars	Dollars	1,000 dollars	1,000 dollars	1,000 dollars	1,000 dollars
Maine.....	43,534	33,464	23.40	28.90	8,940	208	9,148	1,033
N.H.....	21,756	18,806	23.90	28.70	5,058	109	5,167	515
Vt.....	71,070	55,200	22.50	27.10	13,688	344	14,032	1,550
Mass.....	32,250	45,520	23.40	27.20	11,284	326	11,610	5,490
R.I.....	3,965	7,360	23.40	27.40	1,784	13	1,797	1,299
Conn.....	35,150	41,685	23.90	27.80	10,600	188	10,788	3,377
N.Y.....	450,835	339,110	24.50	34.70	93,576	2,261	95,837	8,976
N.J.....	49,030	55,900	24.80	35.10	15,405	236	15,641	5,043
Pa.....	389,175	359,490	29.50	35.40	115,359	3,862	119,221	28,211
Ohio.....	533,760	508,510	29.50	34.60	158,625	7,084	165,909	21,922
Ind.....	543,685	567,195	28.80	34.40	170,800	5,580	176,380	36,614
Ill.....	1,046,065	1,451,710	30.90	33.10	457,408	7,412	464,820	206,973
Mich.....	451,780	403,930	27.60	35.00	120,628	3,417	124,045	12,528
Wis.....	952,110	732,880	25.00	32.80	204,630	3,832	208,462	7,850
Minn.....	991,400	947,915	28.20	32.30	274,440	10,812	285,252	53,704
Iowa.....	1,772,590	2,326,115	31.10	31.70	728,451	15,597	744,048	323,798
Mo.....	986,225	996,075	29.20	32.40	299,475	4,533	304,008	66,378
N.Dak.....	459,505	345,090	26.70	30.90	96,731	4,174	99,905	4,890
S.Dak.....	806,050	654,460	29.70	31.00	196,131	4,421	200,552	36,061
Nebr.....	1,389,040	1,519,725	31.50	33.80	481,405	8,136	489,541	170,554
Kans.....	1,376,920	1,463,685	29.10	33.20	430,318	7,280	437,598	141,892
Del.....	13,790	12,025	28.50	35.70	3,800	113	3,912	474
Md.....	92,045	84,685	29.30	35.50	26,685	382	27,067	4,633
Va.....	264,470	205,860	28.40	35.30	63,008	587	63,595	2,980
W.Va.....	127,028	110,805	27.20	34.60	32,692	426	33,118	191
N.C.....	136,230	91,270	23.40	31.60	24,416	737	25,153	1,480
S.C.....	75,205	37,665	24.70	29.00	10,543	204	10,747	211
Ge.....	206,920	131,190	24.60	28.90	34,723	407	35,130	349
Fla.....	213,955	106,110	24.10	27.70	27,986	213	28,199	6,482
Ky.....	390,355	463,460	28.00	35.30	135,156	901	136,057	36,855
Tenn.....	367,855	358,125	26.30	32.30	99,409	634	100,043	15,595
Ala.....	286,115	237,155	24.60	27.80	61,220	412	61,632	7,374
Miss.....	310,995	216,470	23.70	29.70	58,201	332	58,533	2,107
Ark.....	294,125	203,535	25.30	30.90	56,477	361	56,838	4,144
La.....	283,225	201,735	23.60	29.10	54,449	842	55,291	2,408
Okla.....	857,310	868,805	26.70	30.60	241,281	2,551	243,832	72,043
Texas.....	2,265,530	2,539,625	26.40	30.60	698,252	6,068	704,320	127,663
Mont.....	628,825	553,325	29.70	34.10	169,426	2,830	172,256	29,128
Idaho.....	297,125	243,090	29.30	33.30	74,367	1,174	75,541	15,486
Wyo.....	338,010	315,260	30.10	34.50	96,218	1,023	97,241	17,510
Colo.....	648,795	836,735	30.60	32.10	259,064	2,070	261,134	117,417
N.Mex.....	363,930	452,840	27.70	33.50	131,276	1,368	132,644	39,255
Aris.....	223,140	348,930	28.60	32.70	102,046	1,002	103,048	58,590
Utah.....	177,010	154,910	29.50	33.70	47,825	1,228	49,053	11,943
Nev.....	155,700	135,980	29.70	33.20	41,775	636	42,411	3,905
Wash.....	251,690	209,900	29.30	32.90	67,573	2,378	69,957	11,053
Oreg.....	325,870	253,590	27.40	32.60	75,557	1,553	77,110	16,485
Calif.....	986,910	1,431,825	28.60	33.70	417,582	2,792	420,374	233,361
U.S.....	22,990,053	23,678,710	28.70	31.90	7,004,949	123,049	7,127,998	1,977,784

1/ Adjustments made for inshipments and changes in inventory.

2/ Excludes interfarm sales.

3/ Includes receipts from marketings and from sales of farm slaughtered meat.

Table 13.--Cattle and calves: Inventory numbers, calf crop, and disposition 1952 1/

State	On hand Jan. 1, 1952		Calves born		In-shipments	Marketings 3/		Farm slaughter		Deaths		On hand Jan. 1, 1953 all cattle and calves
	All cattle and calves	All cows 2 years and older	Number	As pct. of cows 2 years & older 2/		Cattle	Calves	Cattle	Calves	Cattle	Calves	
	Thou-sands	Thou-sands	Thou-sands	Per-cent	Thou-sands	Thou-sands	Thou-sands	Thou-sands	Thou-sands	Thou-sands	Thou-sands	Thou-sands
Maine.....	223	122	107	88	1	27	41	4	4	5	7	243
N.H.....	114	68	58	85	2	14	29	2	1	3	5	120
Vt.....	440	234	236	83	3	40	133	5	2	7	17	475
Mass.....	180	127	105	83	15	24	62	3	2	3	10	106
R.I.....	27	20	17	83	3	5	12	--	1	1	1	27
Conn.....	177	119	95	80	11	33	56	2	4	2	7	179
N.Y.....	2,222	1,433	1,261	88	14	297	653	18	9	36	158	2,311
N.J.....	221	154	121	78	17	36	75	2	2	5	11	228
Pa.....	1,790	1,003	853	85	122	295	420	32	19	29	73	1,897
Ohio.....	2,234	1,127	959	86	129	530	280	48	13	40	75	2,347
Ind.....	1,922	921	857	93	224	524	205	39	10	41	55	2,133
Ill.....	3,517	1,405	1,307	93	93	1,523	219	51	14	64	72	3,834
Mich.....	1,853	974	847	87	84	354	285	29	18	39	66	1,983
Wis.....	3,954	2,423	2,253	93	81	521	1,260	47	17	45	157	4,231
Minn.....	3,472	1,641	1,526	93	331	926	411	58	16	59	109	3,750
Iowa.....	5,507	1,905	1,772	93	1,655	2,340	205	71	13	89	103	6,113
Mo.....	3,591	1,802	1,676	93	384	935	559	29	25	73	80	3,950
N.Dak.....	1,598	821	764	93	18	331	215	20	13	33	39	1,726
S.Dak.....	2,826	1,345	1,210	90	200	816	223	20	8	58	59	3,052
Nebr.....	4,575	1,778	1,645	93	839	1,733	115	33	11	81	94	4,992
Kans.....	4,341	1,742	1,585	91	521	1,726	153	38	23	81	85	4,341
Del.....	67	39	32	83	1	0	15	1	1	1	3	70
Md.....	481	271	228	84	25	54	113	5	2	9	17	529
Va.....	1,281	709	596	84	17	141	280	5	4	28	40	1,306
W.Va.....	582	320	269	84	1	89	125	6	2	10	15	605
N.C.....	796	453	385	85	6	26	146	7	11	25	33	939
S.C.....	475	256	215	84	2	26	67	2	5	10	12	570
Ga.....	1,247	646	530	82	4	152	113	7	8	39	35	1,422
Fla.....	1,593	825	536	65	41	193	297	5	2	19	24	1,720
Ky.....	1,706	912	793	87	160	439	335	9	5	30	50	1,791
Tenn.....	1,658	905	795	89	65	304	350	5	8	36	51	1,774
Ala.....	1,485	822	674	82	39	160	220	4	7	37	33	1,737
Miss.....	1,751	1,061	785	74	15	117	327	2	9	32	33	2,031
Ark.....	1,406	766	651	85	21	197	246	3	10	25	36	1,561
La.....	1,540	930	753	81	27	57	333	5	13	34	45	1,833
Okl.....	3,092	1,586	1,475	93	364	973	558	17	22	50	54	3,247
Texas.....	8,853	4,763	4,001	84	543	2,623	1,421	15	71	154	260	8,853
Mont.....	2,069	1,037	923	89	52	550	243	15	8	25	51	2,152
Idaho.....	1,126	493	439	89	62	276	72	12	6	22	34	1,205
Wyo.....	1,144	582	495	85	78	376	105	6	1	19	32	1,178
Colo.....	2,098	910	783	86	551	1,019	158	12	7	29	46	2,161
N.Mex.....	1,225	699	524	75	185	467	162	5	7	17	39	1,237
Ariz.....	928	477	391	82	228	366	147	6	4	27	32	965
Utah.....	679	339	292	86	53	167	79	8	5	13	25	727
Nev.....	563	305	223	73	6	111	72	4	2	14	15	574
Wash.....	956	465	405	87	51	202	75	20	16	18	29	1,052
Oreg.....	1,238	630	510	81	23	229	78	13	17	24	31	1,374
Calif.....	3,240	1,507	1,296	86	860	1,286	553	14	16	52	73	3,410
U.S.....	88,072	43,923	38,273	87	9,091	23,652	12,246	769	494	1,603	2,431	94,241

1/Balance sheet estimates. Total of marketings, farm slaughter, deaths and on hand end of year equals total of calf crop, inshipments, and on hand beginning of year. 2/Not strictly a calving rate. Figure represents calves born expressed as percentage of the January 1 inventory of cows and heifers 2 years old and over on January 1 and not the number of all cows and heifers giving birth to calves during the year. 3/Excludes interfarm sales.

Table 14.--Cattle and calves: Production and income, 1952

State	Production 1/	Marketings 2/	Price per 100 pounds		Cash receipts 3/	Value of home consumption	Gross income	Cost of inshipments
			Cattle	Calves				
	1,000 pounds	1,000 pounds	Dollars	Dollars	1,000 dollars	1,000 dollars	1,000 dollars	1,000 dollars
Maine.....	49,515	28,445	19.60	26.30	6,548	202	6,750	202
N.H.....	22,503	16,473	19.70	26.10	3,725	100	3,825	402
Vt.....	81,140	47,110	18.70	24.40	10,023	327	10,350	605
Mass.....	30,745	27,915	19.40	24.40	5,982	293	6,275	3,063
R.I.....	4,155	5,805	19.60	24.60	1,214	11	1,225	608
Conn.....	36,070	38,990	19.80	25.00	8,347	184	8,531	2,228
N.Y.....	505,960	366,830	19.80	27.40	80,499	1,849	82,348	2,899
N.J.....	49,940	51,930	20.70	32.70	12,390	227	12,617	3,527
Pa.....	403,750	337,225	36.80	32.10	98,419	4,105	102,524	22,660
Ohio.....	601,100	549,555	26.60	31.10	153,868	7,051	160,919	23,839
Ind.....	599,235	540,635	25.40	28.80	143,133	5,682	148,815	36,077
Ill.....	1,200,550	1,562,400	27.20	28.50	432,056	7,532	439,588	171,626
Mich.....	483,435	384,785	24.40	31.40	101,961	3,678	105,639	12,156
Wis.....	1,024,585	710,175	21.60	28.90	173,311	4,080	177,391	11,737
Minn.....	1,068,655	976,775	24.90	28.10	248,700	9,937	258,637	51,100
Iowa.....	1,853,400	2,424,435	27.30	27.30	665,639	14,151	679,790	264,800
Mo.....	1,058,520	1,025,300	24.60	26.30	258,608	4,703	263,311	62,563
N.Dak.....	489,615	355,450	21.10	23.70	77,542	3,511	81,053	2,933
S.Dak.....	932,285	837,675	24.90	23.60	208,754	3,977	212,731	33,782
Nebr.....	1,503,920	1,728,140	26.80	26.00	464,654	7,226	471,880	142,219
Kans.....	1,499,380	1,725,575	23.30	24.80	405,363	6,912	412,275	81,401
Del.....	14,765	11,275	25.60	32.80	3,230	125	3,355	183
Md.....	99,205	73,695	25.60	32.10	21,047	608	21,655	4,104
Va.....	281,260	192,790	24.80	31.40	52,476	728	53,204	2,467
W.Va.....	131,270	106,120	23.20	30.90	27,214	584	27,798	148
N.C.....	143,570	44,675	20.70	27.10	11,980	810	12,790	980
S.C.....	92,985	34,400	22.30	26.10	8,833	252	9,085	327
Ge.....	240,620	132,780	20.90	23.40	29,681	572	30,253	533
Fla.....	297,395	206,065	19.10	21.00	41,026	262	41,288	6,153
Ky.....	432,020	458,050	24.10	32.10	117,119	1,065	118,184	26,800
Tenn.....	380,840	331,280	21.50	26.90	76,375	785	77,160	10,539
Ala.....	308,755	187,100	20.60	22.90	40,931	487	41,418	4,614
Miss.....	352,610	202,695	19.90	24.50	46,427	437	46,864	1,775
Ark.....	361,145	251,880	21.70	25.10	58,636	544	59,180	2,536
La.....	317,540	156,425	20.30	23.60	36,341	850	37,191	3,261
Okla.....	987,350	1,052,830	21.70	23.40	234,663	2,970	237,633	57,730
Texas.....	2,376,190	2,599,160	21.00	23.90	567,592	5,484	573,076	90,530
Mont.....	657,155	572,015	22.20	22.60	128,815	2,278	131,093	9,360
Idaho.....	329,835	285,040	24.50	25.90	72,269	1,238	73,507	10,066
Wyo.....	374,095	376,500	21.40	23.70	81,745	882	82,627	11,897
Colo.....	683,935	1,012,675	26.00	24.10	263,827	1,865	265,692	97,114
N.Mex.....	326,690	414,620	21.90	23.70	92,316	1,074	93,390	27,761
Ariz.....	248,070	335,390	25.30	25.80	85,559	1,154	86,713	33,201
Utah.....	198,085	179,090	25.00	28.40	46,685	1,276	47,961	9,284
Nev.....	146,120	129,760	24.40	27.20	32,745	663	33,408	1,051
Wash.....	279,995	213,120	24.20	26.60	55,914	2,219	58,133	9,559
Oreg.....	357,355	245,150	21.50	26.60	57,448	1,465	58,913	4,013
Calif.....	1,015,310	1,390,870	25.00	28.00	353,973	2,632	356,605	141,831
U.S.....	24,932,623	24,937,063	24.30	25.80	6,205,603	119,047	6,324,650	1,500,146

1/ Adjustments made for inshipments and changes in inventory.

2/ Excludes interfarm sales.

3/ Includes receipts from marketings and from sales of farm slaughtered meat.

Table 15.--Cattle and calves: Inventory numbers, calf crop, and disposition 1953 1/

State	On hand Jan. 1, 1953		Calves born		In-ship-meris	Marketings 3/		Farm slaughter		Deaths		On hand Jan. 1, 1954 all cattle and calves
	All cattle and calves	All cows 2 years and older	Number	As pct. of cows 2 years & older		Cattle	Calves	Cattle	Calves	Cattle	Calves	
	Thou-sands	Thou-sands	Thou-sands	Per-cent	Thou-sands	Thou-sands	Thou-sands	Thou-sands	Thou-sands	Thou-sands	Thou-sands	Thou-sands
Maine.....	243	133	117	88	2	44	50	5	6	5	9	245
N.H.....	120	72	61	85	2	18	31	2	1	3	6	122
Vt.....	475	305	256	84	10	66	159	5	3	7	17	484
Mass.....	106	132	114	86	17	41	71	3	3	3	10	196
R.I.....	27	20	17	85	4	6	12	--	1	1	1	27
Conn.....	179	120	98	82	11	32	62	3	2	2	6	181
N.Y.....	2,311	1,468	1,292	88	24	323	739	24	11	40	156	2,334
N.J.....	228	158	123	78	15	37	80	2	2	4	11	230
Pa.....	1,897	1,057	898	85	110	334	481	34	19	33	60	1,935
Ohio.....	2,347	1,159	1,008	87	146	600	301	52	14	42	75	2,417
Ind.....	2,133	992	903	91	245	711	217	42	13	42	59	2,197
Ill.....	3,834	1,509	1,418	94	1,024	1,878	264	55	15	70	73	3,911
Mich.....	1,983	1,007	866	86	86	477	312	34	18	39	72	1,983
Wis.....	4,231	2,533	2,356	93	44	634	1,411	56	10	46	159	4,316
Minn.....	3,750	1,745	1,658	95	393	1,155	485	64	20	57	120	3,900
Iowa.....	6,113	2,013	1,953	97	1,451	3,080	284	77	16	87	105	5,868
Mo.....	3,950	1,916	1,839	96	330	1,335	629	36	26	67	76	3,950
N.Dak.....	1,726	881	802	91	15	365	154	24	12	29	13	1,716
S.Dak.....	3,052	1,448	1,303	90	171	940	24	6	55	63	303	2,255
Nebr.....	4,992	1,915	1,762	92	576	2,210	154	39	13	71	91	4,752
Kans.....	4,341	1,842	1,695	92	490	1,832	191	40	25	60	80	4,298
Del.....	70	42	35	83	1	8	20	1	1	1	3	72
Md.....	529	287	255	89	25	83	151	5	2	10	18	540
Va.....	1,396	775	651	84	10	238	331	6	4	27	41	1,410
W.Va.....	605	333	283	85	1	104	147	7	2	9	15	605
N.C.....	930	529	407	77	6	119	149	10	12	27	40	995
S.C.....	570	301	247	82	1	66	84	2	7	13	13	633
Ga.....	1,122	732	600	82	3	198	169	8	9	37	40	1,564
Fla.....	1,720	920	607	66	38	243	336	4	2	19	24	1,737
Ky.....	1,791	977	860	88	143	492	387	11	7	33	55	1,909
Tenn.....	1,774	990	991	90	62	346	426	8	8	39	55	1,845
Ala.....	1,737	926	750	81	33	256	262	6	10	34	41	1,911
Miss.....	2,031	1,177	930	79	20	225	443	4	11	35	48	2,211
Ark.....	1,561	864	708	82	20	288	265	5	12	26	38	1,655
La.....	1,833	1,091	862	79	17	220	451	5	15	33	45	1,943
Okl.....	3,247	1,731	1,593	92	351	1,039	655	20	26	52	55	3,344
Texas.....	8,853	4,984	4,236	85	575	2,816	1,765	14	71	156	255	8,587
Mont.....	2,152	1,087	1,044	96	68	598	258	16	8	24	57	2,303
Idaho.....	1,205	517	455	88	30	295	59	14	7	19	28	1,268
Wyo.....	1,178	577	490	85	56	408	83	5	1	18	31	1,178
Colo.....	2,161	931	838	90	405	998	219	13	9	28	41	2,096
N.Mex.....	1,237	693	575	83	157	482	230	4	7	19	39	1,188
Ariz.....	965	514	432	84	229	474	160	4	4	21	27	936
Utah.....	727	364	328	90	46	196	119	7	5	15	25	734
Nev.....	574	300	240	80	8	122	88	3	2	10	12	585
Wash.....	1,052	514	457	89	43	244	108	22	14	25	37	1,105
Oreg.....	1,374	659	587	89	22	298	143	20	17	26	36	1,443
Calif.....	3,410	1,601	1,361	85	821	1,326	603	15	16	53	67	3,512
U.S.....	94,241	46,840	41,261	88	8,367	28,307	14,431	860	532	1,573	2,487	95,679

1/Balance sheet estimates. Total of marketings, farm slaughter, deaths and on hand end of year equals total of calf crop, inshipments, and on hand beginning of year. 2/Not strictly a calving rate. Figure represents calves born expressed as percentage of the January 1 inventory of cows and heifers 2 years old and over on January 1 and not the number of all cows and heifers giving birth to calves during the year.

3/Excludes interfarm sales.

Table 16.—Cattle and calves: Production and income 1953

State	Production 1/	Marketings 2/	Price per 100 pounds		Cash receipts 3/	Value of home consumption	Gross income	Cost of inshipments
			Cattle	Calves				
	1,000 pounds	1,000 pounds	Dollars	Dollars	1,000 dollars	1,000 dollars	1,000 dollars	1,000 dollars
Maine.....	53,410	44,070	11.60	19.20	6,007	209	6,216	269
N.H.....	24,531	20,826	11.50	18.10	2,762	80	2,842	267
Vt.....	86,710	70,330	11.20	16.50	8,918	242	9,160	1,345
Mass.....	36,135	44,110	11.70	15.60	5,562	200	5,762	2,314
R.I.....	4,000	6,760	11.70	16.20	852	9	861	538
Conn.....	37,505	39,575	11.90	16.80	5,286	166	5,452	1,479
N.Y.....	515,700	398,975	12.60	17.40	55,994	1,704	57,698	3,346
N.J.....	54,270	54,200	13.30	22.80	8,491	156	8,647	2,079
Pa.....	431,965	383,475	15.50	23.40	67,161	2,904	70,065	13,664
Ohio.....	650,585	615,385	17.30	22.30	112,814	5,333	118,147	17,803
Ind.....	690,220	728,805	18.10	19.90	135,584	4,751	140,335	26,384
Ill.....	1,362,030	1,908,645	19.00	19.80	367,263	6,239	373,502	119,388
Mich.....	514,095	491,505	14.60	22.60	78,500	2,920	81,426	8,712
Wis.....	1,119,780	834,735	12.40	20.00	121,382	3,438	124,820	5,215
Minn.....	1,187,945	1,202,125	16.50	18.90	202,481	7,608	210,089	39,555
Iowa.....	2,208,795	3,136,505	19.30	17.80	606,876	11,127	618,003	153,835
Mo.....	1,232,070	1,408,430	16.30	17.70	234,155	3,781	237,936	35,719
N.Dak.....	530,540	362,520	14.30	16.20	53,346	3,007	56,353	1,594
S.Dak.....	1,017,010	953,000	17.00	15.50	161,630	3,168	164,798	18,673
Nebr.....	1,693,770	2,185,680	18.50	17.20	405,022	6,163	411,185	65,007
Kans.....	1,567,005	1,816,895	16.00	15.80	292,088	5,317	297,405	51,144
Del.....	14,750	11,150	14.80	23.20	1,992	88	2,080	119
Md.....	111,295	106,590	14.70	22.70	18,134	411	18,545	2,726
Va.....	331,010	301,960	14.60	20.90	49,182	587	49,769	965
W.Va.....	137,900	122,875	13.90	20.30	19,314	450	19,764	98
N.C.....	187,225	120,115	12.90	18.80	18,012	835	18,847	638
S.C.....	115,260	63,720	13.70	18.00	9,922	264	10,186	106
Ga.....	282,625	177,550	12.80	14.40	24,169	507	24,676	253
Fla.....	328,100	270,990	10.90	12.50	31,308	156	31,464	3,614
Ky.....	464,980	517,855	15.20	22.10	85,220	1,041	86,261	15,691
Tenn.....	412,755	380,175	14.00	17.90	57,350	767	58,117	6,473
Ala.....	393,190	270,170	12.70	14.10	36,122	532	36,654	2,490
Miss.....	450,725	312,925	10.60	14.50	39,634	437	40,066	1,509
Ark.....	413,095	325,715	12.30	16.00	44,315	534	44,849	1,607
La.....	421,255	305,875	11.00	15.20	40,589	662	41,251	1,366
Ocla.....	1,041,195	1,137,220	13.90	15.20	162,940	2,519	165,459	37,129
Texas.....	2,404,580	2,810,290	13.20	14.40	381,774	3,446	385,220	63,376
Mont.....	702,920	604,170	14.70	15.50	90,444	1,772	92,216	8,022
Idaho.....	355,750	297,375	16.20	16.30	49,607	1,087	50,694	3,164
Wyo.....	364,010	382,565	15.20	17.10	58,838	547	59,385	5,568
Colo.....	692,630	990,780	18.00	16.50	178,325	1,587	179,912	46,778
N.Mex.....	347,210	443,570	14.30	15.50	64,648	677	65,325	15,706
Ariz.....	267,490	418,220	17.10	16.70	71,473	592	72,065	22,158
Utah.....	209,930	213,750	16.10	17.80	35,570	786	36,356	5,226
Nev.....	162,710	144,280	15.70	16.90	23,172	346	23,518	909
Wash.....	305,930	257,720	15.90	17.40	43,801	1,800	45,601	5,229
Oreg.....	412,325	321,450	15.20	17.10	51,944	1,440	53,384	2,484
Calif.....	1,056,025	1,432,425	17.80	18.80	257,826	2,049	259,875	88,323
U.S.....	27,405,041	29,448,031	16.30	16.70	4,877,805	94,436	4,972,241	910,157

1/ Adjustments made for inshipments and changes in inventory.

2/ Excludes interfarm sales.

3/ Includes receipts from marketings and from sales of farm slaughtered meat.

Table 17.—Cattle and calves: Inventory numbers, calf crop, and disposition, 1954 1/

State	On hand Jan. 1, 1954		Calves born		In-shipments	Marketings 3/		Farm slaughter		Deaths		On hand Jan. 1, 1955 all cattle and calves
	All cattle and calves	All cows 2 years and older	Number	As pct. of cows 2 years & older 2/		Cattle	Calves	Cattle	Calves	Cattle	Calves	
	Thou-sands	Thou-sands	Thou-sands	Percent		Thou-sands	Thou-sands	Thou-sands	Thou-sands	Thou-sands	Thou-sands	
Maine.....	245	135	115	85	1	47	55	5	3	5	11	233
N. H.....	122	74	64	86	2	21	35	2	2	3	7	118
Vt.....	464	320	262	82	5	68	177	6	2	7	17	474
Mass.....	196	132	107	81	16	44	68	3	2	3	11	188
R. I.....	27	20	16	80	3	6	11	—	1	1	1	26
Conn.....	181	121	96	79	11	34	60	2	2	2	7	181
N. Y.....	2,334	1,512	1,300	86	18	334	777	24	11	41	154	2,311
N. J.....	230	161	134	83	15	39	94	2	2	4	10	228
Pa.....	1,935	1,106	929	84	96	354	513	32	21	32	73	1,935
Ohio.....	2,417	1,184	1,018	86	149	698	340	53	10	40	74	2,369
Ind.....	2,197	1,029	906	88	253	816	213	43	12	42	55	2,175
Ill.....	3,911	1,565	1,408	90	1,049	1,987	262	55	13	68	72	3,911
Mich.....	1,983	1,013	871	86	92	502	342	36	17	33	73	1,943
Wis.....	4,316	2,621	2,464	94	55	674	1,522	56	19	55	168	4,341
Minn.....	3,900	1,820	1,674	92	384	1,240	528	63	22	53	113	3,939
Iowa.....	5,868	2,137	2,052	96	1,910	3,068	325	82	13	83	98	6,161
Mo.....	3,950	2,039	1,835	90	310	1,321	650	36	27	71	80	3,910
N. Dak.....	1,916	937	853	91	17	496	202	25	12	34	44	1,973
S. Dak.....	3,205	1,536	1,428	93	169	1,037	330	22	8	45	59	3,301
Neb.....	4,752	1,976	1,848	94	1,085	2,278	133	38	12	68	91	5,065
Kans.....	4,298	1,937	1,782	92	593	1,951	180	37	26	63	75	4,341
Del.....	72	46	36	78	1	12	22	1	1	1	2	70
Md.....	540	311	258	83	20	101	148	4	2	8	15	540
Va.....	1,410	817	670	82	10	280	352	7	4	26	39	1,382
W. Va.....	605	344	286	83	1	112	150	8	2	12	15	593
N. C.....	995	566	441	78	5	170	195	13	11	26	41	985
S. C.....	633	336	262	78	1	114	99	3	7	14	13	646
Ga.....	1,564	805	668	83	2	261	242	10	8	39	47	1,627
Fla.....	1,737	1,035	673	65	68	323	362	5	2	22	27	1,737
Ky.....	1,809	1,021	898	88	117	526	425	11	6	32	51	1,773
Tenn.....	1,845	1,055	897	85	56	456	459	8	8	39	57	1,771
Ala.....	1,911	1,064	809	76	32	463	363	6	9	36	40	1,835
Miss.....	2,214	1,305	1,005	77	9	262	497	4	10	40	46	2,369
Ark.....	1,655	919	717	78	30	458	309	4	12	25	38	1,556
La.....	1,943	1,163	872	75	20	323	472	6	15	39	46	1,904
Okl.....	3,344	1,792	1,649	92	341	1,242	667	19	26	52	51	3,277
Texas.....	8,587	4,932	4,242	86	570	2,664	1,763	14	73	137	247	8,501
Mont.....	2,303	1,158	1,089	94	60	681	263	16	9	26	62	2,395
Idaho.....	1,268	567	522	92	39	321	76	14	7	19	30	1,362
Wyo.....	1,178	580	516	89	44	442	147	5	1	19	28	1,096
Colo.....	2,096	981	873	89	545	1,122	242	13	9	31	44	2,054
N. Mex.....	1,188	693	541	78	156	435	218	4	6	22	36	1,164
Ariz.....	936	478	378	79	306	411	159	4	4	24	35	983
Utah.....	734	371	334	90	50	210	106	7	6	15	25	749
Nev.....	585	311	233	75	7	132	77	3	2	10	10	591
Wash.....	1,105	536	493	92	65	283	116	23	14	24	43	1,160
Oreg.....	1,443	719	611	85	25	344	146	21	17	28	37	1,486
Calif.....	3,512	1,666	1,466	88	1,094	1,427	623	17	16	55	71	3,663
U. S.	95,679	48,946	42,601	87	9,907	30,622	15,514	872	524	1,574	2,489	96,592

1/ Balance sheet estimates. Total of marketings, farm slaughter, deaths and on hand end of year equals total of calf crop, inshipments, and on hand beginning of year. 2/ Not strictly a calving rate. Figure represents calves born expressed as percentage of the January 1 inventory of cows and heifers 2 years old and over on January 1 and not the number of all cows and heifers giving birth to calves during the year. 3/ Excludes interfarm sales.

Table 18.—Cattle and calves: Production and income, 1954

State	Production ^{1/}	Marketings ^{2/}	Price per 100 pounds		Cash receipts ^{3/}	Value of home consumption	Gross income	Cost of shipments
			Cattle	Calves				
	1,000 pounds	1,000 pounds	Dollars	Dollars	1,000 dollars	1,000 dollars	1,000 dollars	1,000 dollars
Maine.....	50,295	48,460	9.50	16.00	5,336	208	5,544	143
N. H.....	23,310	23,890	9.60	15.20	2,636	98	2,734	284
Vt.....	80,900	73,560	9.30	14.30	7,869	281	8,150	713
Mass.....	32,980	45,580	10.00	12.90	4,840	182	5,022	2,311
R. I.....	3,755	6,690	10.20	13.50	730	8	738	128
Conn.....	36,240	39,850	10.70	14.30	4,618	120	4,738	1,570
N. Y.....	492,495	415,425	11.20	16.00	52,078	1,770	53,848	2,658
N. J.....	51,500	57,640	12.00	19.40	8,054	164	8,218	2,205
Pa.....	411,485	398,110	14.10	18.90	61,564	2,850	64,414	12,544
Ohio.....	639,835	695,640	16.60	19.90	120,648	5,337	125,985	20,169
Ind.....	689,880	811,045	17.80	17.80	146,758	5,237	151,995	28,470
Ill.....	1,308,770	1,971,705	18.60	17.90	369,571	6,710	376,281	129,321
Mich.....	500,205	513,265	13.80	20.50	76,619	3,171	79,790	10,278
Wis.....	1,068,650	880,320	11.60	17.80	117,388	4,010	121,398	5,871
Minn.....	1,178,205	1,285,445	16.10	17.10	209,946	7,946	217,892	41,288
Iowa.....	2,144,305	3,065,655	19.60	17.10	601,457	12,042	613,499	216,709
Mo.....	1,207,645	1,379,305	16.10	17.70	226,858	4,624	231,482	34,391
N. Dak.....	618,215	516,240	14.40	15.70	75,616	3,187	78,803	1,826
S. Dak.....	1,102,080	1,074,995	16.90	17.70	183,002	3,172	186,174	19,512
Nebr.....	1,731,545	2,203,210	18.70	19.10	413,302	6,265	419,567	128,768
Kans.....	1,580,730	1,888,585	16.00	16.40	303,657	5,397	309,054	65,897
Del.....	14,810	15,470	12.40	20.20	2,257	90	2,347	125
Md.....	110,400	121,120	12.50	19.90	17,224	346	17,570	2,270
Va.....	328,040	336,620	13.00	19.40	49,016	645	49,661	1,003
W. Va.....	132,355	130,295	13.00	19.20	19,087	551	19,638	102
N. C.....	200,760	168,320	11.10	17.00	21,600	915	22,515	555
S. C.....	123,215	99,360	11.20	14.50	12,205	304	12,509	111
Ga.....	305,295	232,215	11.30	13.50	28,276	605	28,881	177
Fla.....	319,720	334,550	10.60	12.00	37,007	211	37,218	6,777
Ky.....	467,015	548,215	14.30	19.60	83,809	1,051	84,860	13,359
Tenn.....	422,915	476,585	13.40	16.70	67,650	847	68,497	6,098
Ala.....	427,420	436,720	11.10	13.20	51,491	532	52,023	2,514
Miss.....	493,485	361,400	9.40	13.20	40,955	422	41,377	707
Ark.....	442,790	467,750	11.30	15.80	58,095	573	58,668	2,313
La.....	427,945	399,545	10.00	15.20	48,476	760	49,236	1,542
Okla.....	1,077,390	1,308,850	13.80	15.80	187,258	2,734	189,992	34,700
Tex.....	2,349,650	2,742,355	13.40	15.50	384,625	4,042	388,667	60,483
Mont.....	769,720	697,030	15.10	17.60	108,070	2,028	110,098	6,859
Idaho.....	393,930	330,370	16.00	17.00	54,314	1,245	55,559	3,980
Wyo.....	374,215	430,200	14.90	17.90	65,616	554	66,170	4,233
Colo.....	683,795	1,090,800	17.50	17.20	191,583	1,687	193,270	60,983
N. Mex.....	322,700	407,270	15.50	17.50	64,904	697	65,601	15,006
Ariz.....	254,240	376,100	17.00	17.20	64,236	616	64,852	28,463
Utah.....	207,695	222,945	15.20	18.00	35,259	868	36,127	5,499
Nev.....	154,815	144,370	15.10	17.80	22,620	339	22,959	770
Wash.....	326,890	300,365	15.60	17.80	49,652	2,132	51,784	7,656
Oreg.....	408,570	353,555	14.90	17.10	55,577	1,859	57,436	2,732
Calif.....	1,087,520	1,501,460	18.20	18.40	274,914	2,480	277,394	115,674
U. S....	27,580,320	31,428,450	16.00	16.50	5,088,323	101,912	5,190,235	1,110,047

^{1/} Adjustments made for shipments and changes in inventory. ^{2/} Excludes interfarm sales. ^{3/} Includes receipts from marketings and from sales of farm slaughtered meat.

Table 19:--Hogs: Inventory numbers, pig crops, and disposition 1950 1/

State	On hand January 1, 1950 2/	Spring		Fall		In- ship- ments	Marketings 3/	Farm slaugh- ter	Deaths	On hand January 1, 1951 2/
		Sows farrow- ing	Pigs saved	Sows farrow- ing	Pigs saved					
	Thou- sands	Thou- sands	Thou- sands	Thou- sands	Thou- sands	Thou- sands	Thou- sands	Thou- sands	Thou- sands	Thou- sands
Maine.....	33	4	29	3	21	---	19	20	11	33
N. H.....	15	2	11	1	8	---	10	8	3	13
Vt.....	18	2	13	1	10	---	9	13	3	16
Mass.....	108	14	76	8	48	---	89	12	23	108
R. I.....	8	1	4	1	4	---	3	2	1	10
Conn.....	32	4	22	3	22	---	27	13	6	30
N. Y.....	217	22	152	18	131	2	113	120	42	197
N. J. 4/..	221	20	110	15	86	15	148	16	29	239
Pa.....	704	81	526	73	504	---	566	320	144	704
Ohio.....	3,051	443	2,862	399	2,761	11	4,484	320	708	3,173
Ind.....	4,393	629	3,982	606	4,090	19	6,623	270	890	4,701
Ill.....	6,285	1,002	6,172	679	4,481	48	8,569	350	1,531	6,536
Mich.....	835	128	855	96	667	20	1,130	145	200	902
Wis.....	1,733	352	2,306	190	1,590	3	2,708	310	460	1,854
Minn.....	3,427	731	4,591	299	1,961	21	5,262	340	663	3,735
Iowa.....	11,595	2,124	13,742	971	6,564	133	16,770	425	2,200	12,639
Mo.....	4,180	550	3,558	500	3,455	67	5,486	470	790	4,514
N. Dak.....	413	97	595	16	104	6	472	145	100	401
S. Dak.....	1,442	351	2,050	57	359	11	1,956	103	260	1,543
Nebr.....	2,499	525	3,155	196	1,262	12	3,314	165	450	2,999
Kans.....	1,253	190	1,214	144	969	23	1,535	170	250	1,504
Del.....	39	4	29	4	29	---	33	14	8	42
Md.....	270	30	198	26	177	---	238	85	52	270
Va.....	816	93	604	86	585	6	570	460	157	824
W. Va.....	247	22	152	21	151	---	118	165	40	227
N. C.....	1,177	145	942	112	728	8	756	660	250	1,189
S. C.....	631	69	421	67	425	---	443	280	138	606
Ga.....	1,667	198	1,247	190	1,159	1	1,234	630	410	1,800
Fla.....	544	70	378	55	308	---	351	160	175	544
Ky.....	1,561	187	1,197	145	1,000	15	1,452	450	310	1,561
Tenn.....	1,371	160	1,040	147	1,000	15	1,235	515	305	1,371
Ala.....	1,225	135	850	137	877	---	982	420	300	1,250
Miss.....	905	101	556	78	452	7	435	440	159	946
Ark.....	854	108	691	79	514	4	742	330	180	811
La.....	703	85	476	71	419	8	517	270	200	619
Okla.....	766	106	678	92	616	59	933	235	170	781
Texas.....	1,650	166	1,046	175	1,120	17	1,271	490	340	1,732
Mont.....	163	21	126	14	94	4	167	53	22	145
Idaho.....	198	25	160	17	109	1	219	44	25	180
Wyo.....	75	10	59	6	41	2	68	23	14	72
Colo.....	338	42	256	28	182	1	359	55	45	318
N. Mex.....	73	9	56	6	36	---	58	26	8	73
Ariz.....	27	3	18	3	18	---	26	6	3	28
Utah.....	88	10	64	7	48	1	83	19	15	84
Nev.....	26	3	17	2	10	---	18	6	4	25
Wash.....	148	16	110	12	84	17	158	55	20	126
Oreg.....	166	20	134	14	101	14	207	43	24	141
Calif.....	687	69	428	57	353	9	677	49	98	653
U. S....	58,937	9,179	57,958	5,927	39,423	580	72,673	9,720	12,236	62,269

1/ Balance sheet estimates. Total of marketings, farm slaughter, deaths and on hand end of year equals total of pig crops, shipments and on hand beginning of year. 2/ All hogs and pigs. 3/ Excludes interfarm sales. 4/ Beginning with January 1, 1950, balance sheet estimates for New Jersey include garbage fed hogs in Hudson County. Previously, balance sheet estimates excluded these hogs.

Table 20.—Hogs: Production and income, 1950

State	Production 1/	Marketings 2/	Price per 100 pounds	Cash receipts 3/	Value of home consumption	Gross income	Cost of inship- ments
	1,000 pounds	1,000 pounds	Dollars	1,000 dollars	1,000 dollars	1,000 dollars	1,000 dollars
Maine.....	10,144	4,984	17.10	1,352	470	1,822	—
N. H.....	4,760	3,130	17.80	753	226	979	—
Vt.....	5,250	2,070	17.40	666	353	1,019	—
Mass.....	23,521	21,231	18.00	4,078	298	4,376	—
R. I.....	1,645	765	18.00	189	59	248	—
Conn.....	8,844	6,379	13.20	1,403	346	1,749	—
N. Y.....	55,871	31,346	18.50	8,122	3,319	11,441	40
N. J. 4/.....	36,226	30,296	18.90	6,088	418	6,506	367
Pa.....	197,372	122,197	19.20	30,171	9,585	39,756	—
Ohio.....	1,076,671	985,836	18.50	185,880	12,946	198,826	232
Ind.....	1,708,464	1,601,569	18.50	297,848	10,789	308,637	399
Ill.....	2,268,391	2,157,021	18.90	390,271	13,892	404,163	1,030
Mich.....	298,551	252,796	18.10	48,162	4,318	52,480	392
Wis.....	742,311	655,336	17.70	119,204	9,877	129,081	58
Minn.....	1,446,772	1,316,082	17.60	233,458	12,656	246,114	401
Iowa.....	4,556,305	4,309,605	17.70	763,929	17,151	781,080	2,554
Mo.....	1,465,815	1,303,760	18.40	241,578	20,323	261,901	1,200
N. Dak....	144,360	115,815	17.00	20,378	4,770	25,148	100
S. Dak....	544,459	497,204	17.30	86,294	4,063	90,357	186
Nebr.....	970,949	848,594	17.70	150,685	7,075	157,760	230
Kans.....	450,930	373,625	18.20	68,615	7,417	76,032	453
Del.....	10,320	6,480	18.80	1,419	464	1,883	—
Md.....	70,885	47,600	19.10	10,126	3,182	13,308	—
Va.....	236,736	114,096	18.00	26,242	17,554	43,796	117
W. Va....	69,386	26,316	18.30	6,724	6,685	13,409	—
N. C.....	311,046	151,766	18.10	34,039	23,020	57,059	144
S. C.....	152,437	90,372	18.00	17,708	9,979	27,687	—
Ga.....	379,804	220,969	17.70	43,896	20,852	64,748	17
Fla.....	89,730	60,480	16.40	11,505	2,847	14,352	—
Ky.....	410,532	290,512	18.60	57,495	19,518	77,013	271
Tenn.....	400,145	261,710	18.00	51,748	21,923	73,671	322
Ala.....	303,821	244,431	17.50	37,608	15,619	53,227	—
Miss.....	183,803	97,498	17.20	18,080	14,319	32,399	157
Ark.....	227,286	144,716	17.20	29,046	10,614	39,660	75
La.....	134,455	83,230	15.60	18,229	5,916	24,145	217
Okla.....	264,357	209,327	18.40	39,893	9,535	49,428	1,057
Texas.....	424,776	285,636	18.30	56,916	20,199	77,115	320
Mont.....	48,656	38,206	17.90	7,406	1,746	9,152	78
Idaho.....	56,822	47,672	19.50	9,714	1,823	11,537	21
Wyo.....	20,574	15,154	17.70	2,896	751	3,647	38
Colo.....	100,168	88,188	18.50	16,791	2,076	18,867	20
N. Mex....	21,360	13,875	18.70	2,905	953	3,858	—
Ariz.....	7,318	5,758	18.90	1,217	185	1,402	—
Utah.....	23,272	18,687	18.60	3,779	544	4,323	20
Nev.....	5,586	3,966	19.30	848	191	1,039	—
Wash.....	43,339	34,834	20.30	8,214	1,633	9,847	371
Oreg.....	51,248	46,848	20.10	10,405	1,141	11,546	302
Calif.....	152,259	144,664	20.40	30,274	1,762	32,036	158
U. S.....	20,213,732	17,397,682	18.00	3,214,247	355,382	3,569,629	11,344

1/ Adjustments made for inshipments and changes in inventory. 2/ Excludes interfarm sales. 3/ Includes receipts from marketings and from sales of farm slaughtered meats. 4/ Beginning with January 1, 1950, balance sheet estimates for New Jersey include garbage fed hogs in Hudson County. Previously, balance sheet estimates excluded these hogs.

Table 21.--Hogs: Inventory numbers, pig crops, and disposition, 1951 1/

State	On hand January 1, 1951 2/	Spring		Fall		In-ship- ments	Marketings 3/	Farm slaugh- ter	Deaths	On hand January 1, 1952 2/
		Sows farrow- ing	Pigs saved	Sows farrow- ing	Pigs saved					
	Thou- sands	Thou- sands	Thou- sands	Thou- sands	Thou- sands	Thou- sands	Thou- sands	Thou- sands	Thou- sands	Thou- sands
Maine.....	33	5	34	4	26	---	28	19	13	33
N. H.....	13	2	11	1	11	---	5	10	5	15
Vt.....	16	2	13	2	12	---	9	13	4	15
Mass.....	108	15	82	9	55	1	103	9	22	112
R. I.....	10	1	5	1	4	---	7	2	1	9
Conn.....	30	3	19	3	23	---	25	10	6	31
N. Y.....	197	24	175	21	158	1	156	115	43	217
N. J.....	239	20	116	15	94	25	165	16	35	258
Pa.....	704	87	583	75	518	---	656	320	125	704
Ohio.....	3,173	421	2,821	375	2,561	11	4,632	310	610	3,014
Ind.....	4,701	629	4,170	588	3,975	15	6,988	245	880	4,748
Ill.....	6,536	1,022	6,490	665	4,356	52	9,168	340	1,390	6,536
Mich.....	902	134	930	103	718	24	1,263	155	200	956
Wis.....	1,854	352	2,387	198	1,319	3	2,846	320	450	1,947
Minn.....	3,735	738	4,782	305	1,976	17	5,494	350	744	3,922
Iowa.....	12,639	2,209	14,557	1,010	6,747	263	18,762	425	2,380	12,639
Mo.....	4,514	588	3,875	470	3,102	61	6,070	440	1,025	4,017
N. Dak.....	401	102	677	16	106	9	529	150	73	441
S. Dak.....	1,543	376	2,342	66	403	23	2,142	105	290	1,774
Nebr.....	2,999	588	3,622	212	1,329	12	3,958	170	595	3,239
Kans.....	1,504	226	1,424	148	961	21	1,916	180	325	1,489
Del.....	42	5	31	5	31	---	35	13	12	44
Md.....	270	34	224	29	200	1	289	77	59	270
Va.....	824	103	649	88	598	8	608	160	195	816
W. Va.....	227	21	151	19	137	---	128	155	39	193
N. C.....	1,189	152	973	130	884	9	777	670	300	1,308
S. C.....	606	78	468	70	441	1	480	245	185	606
Ga.....	1,800	208	1,269	205	1,292	3	1,341	660	455	1,908
Fla.....	544	72	446	60	360	---	438	160	170	582
Ky.....	1,561	166	1,079	126	857	10	1,485	420	275	1,327
Tenn.....	1,371	166	1,046	140	938	18	1,266	495	310	1,302
Ala.....	1,250	139	890	140	910	3	1,163	380	310	1,200
Miss.....	946	88	466	81	462	4	436	380	173	889
Ark.....	811	89	570	68	442	6	688	290	170	681
La.....	619	73	409	64	365	8	425	250	175	551
Okla.....	781	114	730	88	581	57	1,003	235	185	726
Tex.....	2,732	184	1,196	166	1,112	26	1,581	490	350	1,645
Mont.....	145	31	202	18	122	17	214	58	31	183
Idaho.....	180	27	170	22	141	1	207	46	32	207
Wyo.....	72	12	73	8	49	1	84	22	13	76
Colo.....	318	42	260	29	188	2	368	57	44	299
N. Mex.....	73	9	60	6	41	---	56	28	10	80
Ariz.....	28	3	18	3	18	---	23	6	4	31
Utah.....	84	13	86	8	56	1	91	22	22	92
Nev.....	25	3	21	2	12	---	22	6	4	26
Wash.....	126	16	107	16	110	19	145	60	18	139
Oreg.....	141	19	129	19	139	11	180	38	22	180
Calif.....	653	73	460	58	348	11	687	52	93	640
U. S.....	62,269	9,484	61,298	5,955	39,288	755	79,142	9,479	12,872	62,117

1/ Balance sheet estimates. Total of marketings, farm slaughter, deaths and on hand end of year equals total of pig crops, inshipments and on hand beginning of year. 2/ All hogs and pigs. 3/ Excludes interfarm sales.

Table 22.--Hogs: Production and income, 1951

State	Production <u>1/</u>	Marketings <u>2/</u>	Price per 100 pounds	Cash receipts <u>3/</u>	Value of home consumption	Gross income	Cost of inship- ments
	1,000 pounds	1,000 pounds	Dollars	1,000 dollars	1,000 dollars	1,000 dollars	1,000 dollars
Maine.....	11,968	7,388	19.80	1,952	564	2,516	---
N. H.....	4,345	1,445	20.00	549	300	849	---
Vt.....	5,438	2,176	20.40	810	422	1,232	---
Mass.....	27,509	24,484	20.20	5,149	235	5,384	22
R. I.....	2,202	1,722	20.40	410	68	478	---
Conn.....	8,807	5,987	20.70	1,475	337	1,812	---
N. Y.....	62,647	34,397	21.00	9,805	3,689	13,494	22
N. J.....	36,702	33,822	21.20	7,576	468	8,044	681
Pa.....	221,798	144,768	21.40	38,302	10,460	48,762	---
Ohio.....	1,092,048	1,037,568	20.70	217,434	13,678	231,112	256
Ind.....	1,725,128	1,643,048	20.60	340,075	11,128	351,203	348
Ill.....	2,415,492	2,308,432	20.10	466,172	15,069	481,241	1,236
Mich.....	321,491	277,841	20.10	58,580	4,907	63,487	518
Wis.....	781,693	687,868	19.70	139,013	11,489	150,502	64
Minn.....	1,541,287	1,395,392	19.60	275,504	13,892	289,396	359
Iowa.....	4,923,130	4,783,845	19.70	943,723	19,089	962,812	5,576
Mo.....	1,511,364	1,466,084	20.10	296,408	20,783	317,191	1,186
N. Dak.....	170,406	129,201	18.60	24,811	5,398	30,209	163
S. Dak.....	626,193	554,793	19.20	106,828	4,501	111,329	428
Nebr.....	1,130,095	1,024,990	19.70	202,467	7,953	210,420	254
Kans.....	510,493	465,123	20.00	93,713	8,291	102,004	452
Del.....	10,582	7,087	21.20	1,704	520	2,224	---
Md.....	77,433	58,363	21.40	13,473	3,446	16,919	23
Va.....	248,540	129,325	20.70	32,452	19,910	52,362	178
W. Va.....	66,483	28,413	20.50	7,721	7,121	14,842	---
N. C.....	333,606	161,056	20.30	39,758	26,528	66,286	177
S. C.....	156,125	99,840	20.20	21,583	9,799	31,382	20
Ge.....	393,146	240,281	19.80	53,055	23,882	76,937	58
Fla.....	107,347	75,252	18.80	15,836	3,513	19,349	---
Ky.....	388,680	299,800	20.70	65,478	21,278	86,756	200
Tenn.....	408,865	278,340	20.40	61,559	24,598	86,157	434
Ala.....	319,737	231,897	19.60	48,705	15,372	64,077	76
Miss.....	171,210	87,620	19.50	19,745	14,998	34,743	101
Ark.....	204,610	147,820	19.50	31,071	11,561	42,632	126
La.....	116,450	82,600	18.70	17,251	6,325	23,576	242
Okla.....	270,247	227,612	20.30	47,545	10,419	57,964	1,118
Tex.....	464,175	355,725	20.20	76,360	21,281	97,641	536
Mont.....	66,235	49,220	20.20	10,622	2,230	12,852	369
Idaho.....	58,892	44,712	21.30	9,983	1,999	11,982	23
Wyo.....	24,613	18,928	20.40	4,099	894	4,993	22
Colo.....	101,841	90,416	20.40	18,953	2,400	21,353	44
N. Mex.....	20,585	12,740	20.60	2,955	1,159	4,114	---
Ariz.....	7,220	5,160	21.00	1,205	197	1,402	---
Utah.....	25,769	20,074	21.00	4,581	759	5,340	22
Nev.....	6,141	4,706	21.80	1,110	216	1,326	---
Wash.....	45,533	31,983	22.00	8,299	2,064	10,363	446
Oreg.....	52,451	40,401	22.50	10,036	1,239	11,275	264
Calif.....	159,426	146,796	22.10	33,250	2,080	35,330	208
U. S....	21,436,178	19,006,543	20.00	3,889,145	388,509	4,277,654	16,252

1/ Adjustments made for inshipments and changes in inventory. 2/ Excludes interfarm sales. 3/ Includes receipts from marketings and from sales of farm slaughtered meat.

Table 23:—Hogs: Inventory numbers, pig crops, and disposition, 1952 1/

State	On hand January 1, 1952 2/	Spring		Fall		In- ship- ments	Marketings 3/	Farm slaugh- ter	Deaths	On hand January 1, 1953 2/
		Sows farrow- ing	Pigs saved	Sows farrow- ing	Pigs saved					
	Thou- sands	Thou- sands	Thou- sands	Thou- sands	Thou- sands	Thou- sands	Thou- sands	Thou- sands	Thou- sands	Thou- sands
Maine.....	33	4	31	3	20	—	28	18	9	29
N. H.....	15	2	13	2	11	—	12	7	6	14
Vt.....	15	2	14	2	12	—	10	12	4	15
Mass.....	112	15	93	10	58	1	117	9	22	116
R. I.....	9	1	6	1	4	—	5	2	1	11
Conn.....	31	3	19	3	23	—	25	9	9	30
N. Y.....	217	26	192	18	135	1	197	115	31	202
N. J.....	258	20	120	14	87	16	197	16	33	235
Pa.....	704	89	614	70	497	1	708	310	122	676
Ind.....	3,014	379	2,585	315	2,170	15	4,537	275	470	2,502
Ohio.....	4,748	591	4,019	523	3,483	14	7,091	245	750	4,178
Ill.....	6,536	930	6,073	585	3,849	72	9,504	300	1,040	5,686
Mich.....	956	115	795	82	574	18	1,257	165	175	746
Wis.....	1,947	327	2,273	172	1,195	3	2,981	310	375	1,752
Minn.....	3,922	627	4,226	287	1,897	12	5,788	325	610	3,334
Iowa.....	12,639	1,900	12,939	960	6,499	288	18,894	395	2,080	10,996
Mo.....	4,017	441	2,972	376	2,553	58	5,306	400	680	3,214
N. Dak.....	441	90	603	14	95	4	607	135	70	331
S. Dak.....	1,774	320	2,054	58	367	15	2,522	102	220	1,366
Nebr.....	3,239	476	2,989	155	1,003	10	4,219	160	465	2,397
Kans.....	1,489	160	1,029	89	587	40	1,862	165	225	893
Del.....	44	6	37	4	28	—	41	13	11	44
Md.....	270	32	221	27	184	—	270	83	49	273
Va.....	816	98	657	76	509	4	636	430	177	743
W. Va.....	193	19	139	15	110	1	97	150	30	166
N. C.....	1,308	170	1,071	114	752	12	1,020	610	310	1,203
S. C.....	606	80	480	72	454	—	562	230	148	600
Ga.....	1,908	220	1,386	172	1,066	—	1,472	660	530	1,698
Fla.....	582	75	472	53	318	1	581	160	160	472
Ky.....	1,327	141	945	96	662	11	1,315	400	195	1,035
Tenn.....	1,302	149	983	106	710	18	1,272	475	250	1,016
Ala.....	1,200	125	825	113	723	4	1,100	360	260	1,032
Miss.....	889	83	490	70	420	2	549	360	136	756
Ark.....	681	80	504	49	323	3	531	285	137	558
La.....	551	73	438	50	290	8	479	195	150	463
Okl.....	726	90	585	54	356	42	896	225	145	443
Texas.....	1,645	140	924	116	742	20	1,585	410	250	1,086
Mont.....	183	26	177	12	84	14	260	54	21	123
Idaho.....	207	25	158	14	94	—	249	45	28	137
Wyo.....	76	8	49	5	34	—	78	20	8	53
Colo.....	299	32	192	23	150	1	345	55	33	209
N. Mex.....	80	6	37	4	27	1	65	24	8	48
Ariz.....	31	3	17	2	15	—	29	5	3	26
Utah.....	92	9	56	5	32	—	86	18	17	59
Nev.....	26	2	13	2	11	—	24	5	3	18
Wash.....	139	15	102	14	98	14	168	56	18	111
Oreg.....	180	21	141	13	96	6	231	40	17	135
Calif.....	640	65	377	47	287	10	640	39	110	525
U. S....	62,117	8,311	55,135	5,067	33,694	740	80,448	8,882	10,601	51,755

1/ Balance sheet estimates. Total of marketings, farm slaughter, deaths and on hand end of year equals total of pig crops, inshipments and on hand beginning of year. 2/ All hogs and pigs. 3/ Excludes interfarm sales.

Table 24:--Hogs: Production and income, 1952

State	Production 1/ 1,000 pounds	Marketings 2/ 1,000 pounds	Price per 100 pounds Dollars	Cash receipts 3/ 1,000 dollars	Value of home consumption 1,000 dollars	Gross income 1,000 dollars	Cost of inship- ments 1,000 dollars
Maine.....	11,615	7,280	17.90	1,699	566	2,265	---
N. H.....	4,525	3,160	17.80	701	198	899	---
Vt.....	5,600	2,450	18.50	716	375	1,091	---
Mass.....	30,445	28,280	18.00	5,256	237	5,493	20
R. I.....	1,945	1,210	18.20	261	59	320	---
Conn.....	8,053	6,183	18.40	1,309	242	1,551	---
N. Y.....	61,292	42,552	18.00	9,516	3,333	12,849	20
N. J.....	39,966	21,206	18.00	8,133	435	8,568	394
Pa.....	224,421	154,036	19.60	36,550	9,084	45,634	21
Ohio.....	1,003,212	1,011,247	18.50	189,065	11,193	200,258	315
Ind.....	1,645,750	1,660,925	18.30	305,234	9,996	315,230	291
Ill.....	2,339,383	2,394,978	17.90	430,209	11,728	441,937	1,536
Mich.....	290,235	281,630	18.10	53,159	5,040	58,199	353
Wis.....	768,056	717,141	17.50	128,356	10,009	138,365	57
Minn.....	1,423,464	1,435,424	17.30	250,009	11,639	261,648	226
Iowa.....	4,545,344	4,741,939	17.40	826,169	15,670	841,839	5,443
Mo.....	1,245,108	1,260,053	18.10	229,454	16,674	246,128	1,023
N. Dak.....	157,738	148,108	16.50	24,998	4,358	29,356	65
S. Dak.....	580,806	633,166	17.00	107,903	3,871	111,774	250
Nebr.....	960,301	1,050,326	17.40	183,209	6,612	189,821	189
Kans.....	401,408	443,648	17.90	79,977	6,802	86,779	776
Del.....	11,851	8,586	18.60	1,751	474	2,225	---
Md.....	76,821	54,371	19.10	11,209	3,329	14,538	---
Va.....	243,608	134,448	18.80	29,732	17,995	47,727	81
W. Va.....	61,819	21,539	18.80	5,691	6,633	12,324	20
N. C.....	352,470	206,460	18.40	43,709	23,099	66,808	215
S. C.....	166,931	115,116	18.20	22,175	8,476	30,651	---
Ga.....	388,598	262,308	17.60	50,190	20,717	70,907	---
Fla.....	114,054	100,239	17.40	18,658	2,962	21,620	17
Ky.....	351,697	275,887	18.60	53,975	18,414	72,389	199
Tenn.....	373,769	277,994	18.10	54,005	20,806	74,811	388
Ala.....	287,863	215,208	17.70	40,527	13,738	54,265	92
Miss.....	176,047	113,512	17.50	21,757	11,775	33,532	46
Ark.....	163,808	111,288	17.30	20,804	9,654	30,458	56
La.....	110,796	90,491	17.10	16,584	4,481	21,065	223
Okla.....	210,823	201,088	18.20	37,577	8,665	46,242	745
Texas.....	388,412	351,272	18.30	67,516	16,646	84,162	376
Mont.....	62,175	57,845	17.90	10,897	1,902	12,799	272
Idaho.....	53,510	52,225	19.10	10,335	1,700	12,035	---
Wyo.....	18,865	17,270	17.70	3,230	699	3,929	---
Colo.....	83,118	83,108	18.10	15,438	2,035	17,473	20
N. Mex.....	16,422	14,947	19.80	3,217	1,038	4,255	21
Ariz.....	6,868	6,418	19.10	1,305	149	1,454	---
Utah.....	18,213	18,218	18.60	3,629	585	4,214	---
Nev.....	4,662	4,992	19.20	1,014	163	1,177	---
Wash.....	44,319	36,289	20.00	8,229	1,829	10,058	301
Oreg.....	52,511	50,601	20.30	11,080	1,206	12,286	131
Calif.....	130,923	135,488	20.30	28,001	1,439	29,440	174
U. S. ...	19,726,620	19,082,155	17.80	3,464,118	328,730	3,792,848	14,356

1/ Adjustments made for inshipments and changes in inventory. 2/ Excludes interfarm sales. 3/ Includes receipts from marketings and from sales of farm slaughtered meat.

Table 25:—Hogs: Inventory numbers, pig crops, and disposition, 1953 1/

State	On hand January 1, 1953 2/	Spring		Fall		In- ship- ments	Marketings 3/	Farm slaugh- ter	Deaths	On hand January 1, 1954 2/
		Sows farrow- ing	Pigs saved	Sows farrow- ing	Pigs saved					
	Thou- sands	Thou- sands	Thou- sands	Thou- sands	Thou- sands	Thou- sands	Thou- sands	Thou- sands	Thou- sands	Thou- sands
Maine.....	29	4	28	3	17	---	28	14	8	24
N. H.....	14	1	10	1	8	---	12	4	3	13
Vt.....	15	2	12	1	10	---	12	9	3	13
Mass.....	116	14	83	12	68	---	113	7	19	128
R. I.....	11	1	6	1	5	---	10	1	1	10
Conn.....	30	2	17	2	15	---	28	7	6	21
N. Y.....	202	21	155	13	98	1	168	100	34	154
N. J.....	235	18	112	13	81	14	196	11	28	207
Pa.....	676	74	518	57	399	---	692	260	100	541
Ohio.....	2,502	337	2,403	284	1,968	22	3,948	220	425	2,302
Ind.....	4,178	514	3,598	460	3,142	5	6,201	220	700	3,802
Ill.....	5,686	846	5,702	538	3,535	58	8,645	275	1,000	5,061
Mich.....	746	92	643	75	517	3	1,010	120	160	619
Wis.....	1,752	281	1,925	163	1,097	---	2,617	270	345	1,542
Minn.....	3,334	564	3,790	273	1,791	10	5,098	290	570	2,967
Iowa.....	10,996	1,748	12,219	874	5,847	408	17,374	330	1,980	9,786
Mo.....	3,214	415	2,839	346	2,377	82	4,647	350	590	2,925
N. Dak.....	331	69	473	12	79	4	417	110	65	295
S. Dak.....	1,366	275	1,768	61	384	8	2,038	90	210	1,188
Nebr.....	2,397	381	2,541	144	924	35	3,329	132	375	2,061
Kans.....	893	102	692	71	491	41	1,135	125	160	697
Del.....	44	5	32	4	27	---	49	13	5	36
Md.....	273	29	194	21	149	---	298	70	46	202
Va.....	743	77	539	60	420	1	587	375	132	609
W. Va.....	166	14	102	13	95	---	85	128	21	129
N. C.....	1,203	139	931	97	650	8	901	550	222	1,119
S. C.....	600	60	360	51	337	---	468	215	104	510
Ga.....	1,698	178	1,157	138	911	---	1,373	540	410	1,443
Fla.....	472	68	415	45	266	4	424	150	155	428
Ky.....	1,035	103	700	90	621	3	969	330	180	880
Tenn.....	1,016	98	657	89	614	18	811	415	205	874
Ala.....	1,032	96	634	97	650	3	907	320	215	877
Miss.....	756	51	311	56	342	2	427	280	114	590
Ark.....	558	44	295	35	234	3	399	200	100	391
La.....	463	47	268	37	218	4	302	170	115	366
Okla.....	443	45	306	41	275	21	509	145	85	306
Texas.....	1,086	87	566	92	589	13	815	330	240	869
Mont.....	123	15	108	9	63	12	156	44	15	91
Idaho.....	137	12	80	9	64	1	140	33	17	92
Wyo.....	53	5	30	3	22	---	49	16	6	34
Colo.....	209	18	113	15	96	---	196	39	26	157
N. Mex.....	48	5	31	4	24	1	36	20	8	40
Ariz.....	26	2	14	2	12	---	22	4	4	22
Utah.....	59	6	44	5	34	---	57	14	14	52
Nev.....	18	2	10	1	9	---	14	5	3	15
Wash.....	111	12	88	10	74	14	154	40	13	80
Oreg.....	135	14	99	10	75	1	171	29	16	94
Calif.....	525	52	322	41	250	12	535	35	87	452
U. S..	51,755	7,045	47,940	4,479	29,974	812	68,572	7,455	9,340	45,144

1/ Balance sheet estimates. Total of marketings, farm slaughter, deaths and on hand end of year equals total of pig crops, inshipments and on hand beginning of year. 2/ All hogs and pigs. 3/ Excludes interfarm sales.

Table 26:--Hogs: Production and income, 1953

State	Production 1/	Marketings 2/	Price per 100 pounds	Cash receipts 3/	Value of home consumption	Gross income	Cost of inship- ments
	1,000 pounds	1,000 pounds	Dollars	1,000 dollars	1,000 dollars	1,000 dollars	1,000 dollars
Maine.....	9,953	7,063	19.00	1,622	503	2,125	---
N. H.....	4,035	3,020	19.20	653	132	785	---
Vt.....	4,933	2,928	20.00	769	328	1,097	---
Mass.....	30,839	26,999	19.80	5,476	233	5,709	---
R. I.....	2,524	2,364	19.80	488	35	523	---
Conn.....	7,045	6,660	20.30	1,488	244	1,732	---
N. Y.....	52,992	36,747	20.40	9,054	3,596	12,650	22
N. J.....	35,817	39,992	20.80	8,532	384	8,916	375
Pa.....	194,302	150,672	22.40	39,316	9,988	49,304	---
Ohio.....	886,489	874,304	22.20	195,806	10,650	206,456	547
Ind.....	1,481,001	1,482,606	22.20	330,510	10,667	341,177	124
Ill.....	2,068,992	2,113,767	21.70	460,363	13,033	473,396	1,480
Mich.....	241,253	229,918	21.40	50,738	4,725	55,463	69
Wis.....	647,327	617,352	20.60	130,002	10,618	140,620	---
Minn.....	1,220,634	1,218,504	21.00	257,707	12,606	270,313	225
Iowa.....	4,086,627	4,239,052	21.10	895,504	15,545	911,049	9,221
Mo.....	1,108,328	1,068,298	21.50	230,907	17,851	248,778	1,697
N. Dak.....	120,497	101,247	19.80	20,545	4,409	24,954	77
S. Dak.....	484,415	497,440	20.60	102,700	4,183	106,883	159
Nebr.....	783,713	812,208	21.20	172,552	6,716	179,268	794
Kans.....	266,552	269,652	21.50	58,412	6,383	64,795	943
Del.....	11,873	10,018	21.90	2,339	544	2,883	---
Md.....	71,552	62,082	22.30	14,583	3,491	18,074	---
Va.....	204,920	120,515	21.70	30,151	18,895	49,046	23
W. Va.....	49,210	18,570	21.50	5,496	6,550	12,046	---
N. C.....	321,826	181,401	21.00	43,837	25,034	68,871	162
S. C.....	134,294	92,449	20.60	20,311	8,770	29,081	---
Ga.....	338,379	244,394	20.80	51,776	22,239	77,015	---
Fla.....	97,949	77,824	18.90	15,909	3,471	19,380	73
Ky.....	276,712	205,027	21.70	46,837	18,246	65,083	63
Tenn.....	279,343	175,678	21.60	41,599	22,737	64,336	457
Ala.....	236,647	176,052	20.50	38,389	14,304	52,693	79
Miss.....	135,772	90,762	19.80	19,629	11,476	31,105	51
Ark.....	111,473	84,993	20.30	18,442	8,222	26,664	65
La.....	72,863	55,238	19.10	11,525	4,608	16,133	124
Okla.....	125,491	113,006	21.30	24,857	6,962	31,819	431
Texas.....	239,212	183,097	21.20	41,655	16,007	57,662	280
Mont.....	40,148	34,348	21.50	7,887	1,884	9,771	276
Idaho.....	31,755	30,460	22.00	6,989	1,484	8,473	24
Wyo.....	12,127	10,962	21.10	2,471	688	3,159	---
Colo.....	49,747	46,257	21.60	10,294	1,705	11,999	---
N. Mex.....	11,425	8,420	21.50	1,967	740	2,707	23
Ariz.....	5,146	4,766	22.00	1,116	147	1,263	---
Utah.....	13,802	11,797	22.10	2,805	574	3,379	---
Nev.....	3,729	2,984	23.10	746	187	933	---
Wash.....	36,675	33,060	23.10	8,355	1,572	9,927	344
Oreg.....	37,920	37,490	23.20	9,294	1,021	10,315	25
Calif.....	112,146	113,736	23.90	27,637	1,490	29,127	244
U. S....	16,800,404	16,026,179	21.40	3,483,040	335,897	3,818,937	18,477

1/ Adjustments made for inshipments and changes in inventory. 2/ Excludes interfarm sales. 3/ Includes receipts from marketings and from sales of farm slaughtered meat.

Table 27.—Hogs: Inventory numbers, pig crops, and disposition 1/, 1954

State	On hand January 1, 1954 2/	Spring		Fall		In- ship- ments	Marketings 3/	Farm slaugh- ter	Deaths	On hand January 1, 1955 2/
		Sows farrow- ing	Pigs saved	Sows farrow- ing	Pigs saved					
	Thou- sands	Thou- sands	Thou- sands	Thou- sands	Thou- sands	Thou- sands	Thou- sands	Thou- sands	Thou- sands	Thou- sands
Maine.....	24	3	19	3	18	—	17	13	8	23
N. H.....	13	1	9	1	10	—	11	5	3	13
Vt.....	13	2	12	1	8	—	8	10	3	12
Mass.....	128	13	68	14	85	—	100	7	22	152
R. I.....	10	1	5	1	6	—	8	1	1	11
Conn.....	21	2	16	3	16	—	17	7	6	23
N. Y.....	154	20	142	15	114	1	148	87	31	145
N. J.....	207	18	95	13	81	19	141	12	23	226
Pa.....	541	70	497	60	426	—	573	210	97	584
Ohio.....	2,302	357	2,495	318	2,220	38	3,827	195	455	2,578
Ind.....	3,802	540	3,839	506	3,471	8	5,968	200	770	4,182
Ill.....	5,061	897	6,135	603	4,040	78	8,296	250	1,100	5,668
Mich.....	619	103	733	86	593	2	954	110	190	693
Wis.....	1,542	323	2,277	183	1,255	4	2,746	250	355	1,727
Minn.....	2,967	632	4,317	311	2,102	12	5,037	280	550	3,531
Iowa.....	9,786	1,870	13,146	953	6,519	643	16,613	325	2,000	11,156
Mo.....	2,925	452	3,214	367	2,540	53	4,602	320	680	3,130
N. Dak.....	295	85	568	16	108	4	431	115	78	351
S. Dak.....	1,188	314	2,054	77	506	20	2,036	85	210	1,437
Nebr.....	2,061	442	2,992	167	1,119	44	3,355	133	420	2,308
Kans.....	697	120	836	84	561	42	1,021	120	180	815
Del.....	36	5	34	4	28	—	43	12	6	37
Md.....	202	26	187	22	152	—	241	55	39	206
Va.....	609	73	511	64	454	1	417	355	145	658
W. Va.....	129	15	111	14	104	—	63	114	25	142
N. C.....	1,119	157	1,052	118	814	5	969	510	235	1,276
S. C.....	510	55	358	53	344	—	437	175	90	510
Ga.....	1,443	194	1,300	159	1,034	—	1,405	485	415	1,472
Fla.....	428	57	342	47	273	2	329	130	150	436
Ky.....	880	121	847	107	749	5	1,000	295	200	986
Tenn.....	874	121	823	105	714	14	870	360	225	970
Ala.....	877	108	734	110	759	2	950	240	235	947
Miss.....	590	59	348	60	354	3	354	200	110	631
Ark.....	391	44	299	41	275	4	273	170	100	426
La.....	366	45	279	40	240	5	247	140	115	388
Okla.....	306	58	394	48	317	38	432	135	115	373
Tex.....	869	109	730	115	748	6	791	300	280	982
Mont.....	91	17	119	11	75	12	124	42	19	112
Idaho.....	92	14	97	11	76	1	113	31	17	105
Wyo.....	34	5	31	3	22	—	31	16	6	34
Colo.....	157	22	143	17	114	1	171	34	29	181
N. Mex.....	40	6	39	4	28	1	39	20	7	42
Ariz.....	22	2	17	2	13	—	21	4	3	24
Utah.....	52	7	45	6	38	—	48	14	17	56
Nev.....	15	2	12	2	9	—	12	4	3	17
Wash.....	80	14	104	13	92	32	143	37	18	110
Oreg.....	94	16	110	14	102	11	147	25	18	127
Calif.....	452	52	317	42	252	5	433	30	102	461
U. S. . .	45,114	7,669	52,852	5,014	33,978	1,116	66,012	6,668	9,446	50,474

1/ Balance sheet estimates. Total of marketings, farm slaughter, deaths and on hand end of year equals total of pig crops, inshipments and on hand beginning of year. 2/ All hogs and pigs. 3/ Excludes interfarm sales.

Table 28.—Hogs: Production and income, 1954

State	Production 1/	Marketings 2/	Price per 100 pounds	Cash receipts 3/	Value of home consumption	Gross income	Cost of inship- ments
	1,000 pounds	1,000 pounds	Dollars	1,000 dollars	1,000 dollars	1,000 dollars	1,000 dollars
Maine.....	7,419	4,354	20.00	1,086	497	1,583	---
N. H.....	3,850	2,750	19.60	617	180	797	---
Vt.....	4,147	1,872	19.50	517	351	868	---
Mass.....	31,043	25,118	20.20	5,186	260	5,446	---
R. I.....	2,292	1,962	20.50	417	34	451	---
Conn.....	5,954	4,014	20.80	944	251	1,195	---
N. Y.....	50,635	32,560	21.50	8,167	3,591	11,758	23
N. J.....	33,490	29,110	22.10	6,627	448	7,075	538
Pa.....	184,180	124,620	23.60	33,276	8,920	42,196	---
Ohio.....	942,503	859,313	22.80	197,368	10,004	207,372	970
Ind.....	1,550,686	1,439,506	22.20	320,724	10,212	330,936	199
Ill.....	2,232,672	2,080,467	21.60	450,757	12,172	462,929	1,982
Mich.....	252,919	212,324	22.10	48,038	4,856	52,894	47
Wis.....	767,044	664,784	21.00	142,171	10,364	152,535	90
Minn.....	1,402,726	1,223,781	21.20	261,294	12,821	274,115	272
Iowa.....	4,421,033	4,153,018	21.00	872,986	15,725	888,711	14,468
Mo.....	1,201,500	1,086,160	21.90	239,031	16,977	256,008	1,116
N. Dak.....	144,033	106,728	19.30	23,053	4,644	25,697	75
S. Dak.....	583,767	513,202	20.70	106,453	4,054	110,507	400
Nebr.....	911,990	838,680	21.10	177,340	7,004	184,344	994
Kans.....	294,942	247,542	21.90	54,648	6,366	61,014	983
Del.....	12,001	8,856	23.20	2,188	580	2,768	---
Md.....	64,322	49,187	23.60	12,145	3,027	15,172	---
Va.....	185,332	87,112	23.40	24,175	19,513	43,688	25
W. Va.....	54,476	13,966	22.30	4,433	6,231	10,664	---
N. C.....	345,990	198,225	22.60	50,043	24,781	74,824	108
S. C.....	130,494	89,374	21.80	20,649	8,068	28,717	---
Ga.....	365,710	258,000	21.80	59,570	20,702	80,272	---
Fla.....	87,442	64,672	21.20	14,677	3,390	18,067	41
Ky.....	307,278	209,443	22.90	49,958	17,713	67,671	110
Tenn.....	308,547	196,702	23.20	48,729	21,423	70,152	380
Ala.....	254,274	187,479	21.70	42,376	11,718	54,094	56
Miss.....	126,592	76,112	21.50	17,471	8,609	26,080	83
Ark.....	102,852	59,332	21.60	13,804	7,686	21,490	92
La.....	76,466	48,896	20.10	10,552	4,508	15,060	162
Okla.....	134,364	98,224	22.20	22,474	6,829	29,303	811
Texas.....	267,355	179,160	22.20	42,250	15,411	57,661	135
Mont.....	40,154	27,344	22.50	6,634	1,945	8,579	288
Idaho.....	34,488	24,973	23.20	6,058	1,487	7,545	25
Wyo.....	11,233	7,008	22.80	1,757	753	2,510	---
Colo.....	53,601	41,031	22.80	9,610	1,587	11,197	24
N. Mex.....	14,273	9,233	22.10	2,227	961	3,188	24
Ariz.....	5,873	4,608	22.40	1,091	152	1,243	---
Utah.....	14,294	10,224	22.80	2,503	602	3,105	---
Nev.....	3,955	2,550	23.00	627	153	780	---
Wash.....	40,734	30,819	23.90	7,974	1,566	9,540	813
Oreg.....	41,912	32,822	24.30	8,485	1,006	9,491	284
Calif.....	105,441	94,661	24.30	23,382	1,422	24,804	129
U. S....	18,218,278	15,761,848	21.60	3,454,542	321,554	3,776,096	25,747

1/ Adjustments made for inshipments and changes in inventory. 2/ Excludes interfarm sales. 3/ Includes receipts from marketings and from sales of farm slaughtered meats.

Table 29.--Sheep and lambs: Inventory numbers, lamb crop, and disposition, 1950 1/

State	On hand Jan. 1, 1950 2/	Lambs saved		Inshipments		Marketings 3/		Farm slaughter		Deaths		On hand Jan. 1 1951 2/
		Number	As pct. of ewes 1 year & older	Sheep	Lambs	Sheep	Lambs	Sheep	Lambs	Sheep	Lambs	
	Thou- sands	Thou- sands	Per- cent	Thou- sands	Thou- sands	Thou- sands	Thou- sands	Thou- sands	Thou- sands	Thou- sands	Thou- sands	Thou- sands
Maine.....	19	13	93	--	--	2	5	1	2	1	1	20
N.H.....	7	4	100	--	--	2	1	--	--	--	1	7
Vt.....	10	7	100	--	--	2	3	--	1	1	1	9
Mass.....	8	5	100	--	--	--	3	--	--	1	--	9
R.I.....	2	2	82	--	--	--	2	--	--	--	--	2
Conn.....	7	4	85	--	--	1	2	--	--	1	--	7
N.Y.....	144	93	101	1	10	6	55	3	4	19	14	147
N.J.....	12	7	81	--	3	2	7	--	--	--	1	12
Pa.....	214	132	96	--	--	17	68	2	3	25	13	218
Ohio.....	1,150	659	92	5	68	91	496	2	5	90	69	1,129
Ind.....	432	280	106	10	151	40	348	1	1	34	10	439
Ill.....	576	317	106	12	327	31	559	1	1	42	15	583
Mich.....	425	270	101	4	15	30	218	2	5	27	19	413
Wis.....	252	161	111	3	95	14	185	2	4	20	16	270
Minn.....	736	481	106	18	271	51	588	2	3	46	67	749
Iowa.....	1,012	572	105	110	697	111	1,053	2	2	72	80	1,071
Mo.....	968	708	104	37	256	94	782	2	2	74	57	958
N.Dak.....	398	263	92	13	30	35	174	1	2	33	53	406
S.Dak.....	869	515	88	13	157	30	482	2	3	63	41	933
Nebr.....	588	442	106	47	933	56	846	1	3	10	29	765
Kans.....	802	287	101	100	864	86	1,211	1	3	25	26	701
Del.....	2	1	100	--	--	1	--	--	--	--	--	2
Md.....	38	29	97	1	--	1	18	--	1	4	3	41
Va.....	288	264	113	6	4	20	188	2	3	24	28	297
W.Va.....	296	246	105	--	1	11	168	2	3	27	24	308
N.C.....	35	27	108	5	--	2	13	1	2	4	4	41
S.C.....	3	2	80	--	1	--	2	--	--	1	--	3
Ga.....	9	4	84	--	--	--	1	--	1	1	--	10
Fla.....	3	2	100	--	--	--	1	--	--	1	--	3
Ky.....	631	592	116	40	36	80	449	1	3	47	63	656
Tenn.....	251	205	102	4	53	25	195	2	2	18	23	248
Ala.....	18	11	92	2	3	3	7	--	1	1	1	21
Miss.....	66	34	81	1	8	5	15	--	1	7	8	73
Ark.....	37	26	90	2	--	--	17	--	1	5	3	39
La.....	98	40	63	--	2	4	5	2	2	13	10	104
Okla.....	145	71	88	18	63	22	93	1	1	12	8	160
Texas.....	6,605	3,346	79	8	126	1,079	1,020	6	9	720	400	6,851
Mont.....	1,584	907	77	30	106	67	569	4	6	150	115	1,716
Idaho.....	1,065	916	108	45	205	88	951	3	7	70	42	1,060
Wyo.....	1,924	1,168	78	22	69	98	796	3	11	170	83	2,022
Colo.....	1,782	944	93	45	625	126	1,397	7	10	107	77	1,672
N.Mex.....	1,371	745	70	44	38	109	410	55	26	120	86	1,392
Ariz.....	423	257	78	20	28	35	139	37	43	40	28	406
Utah.....	1,329	895	84	18	74	39	668	10	12	125	70	1,392
Nev.....	448	308	86	17	31	17	238	3	3	40	25	478
Wash.....	299	235	111	1	9	6	173	2	2	26	19	316
Oreg.....	689	532	94	15	9	29	429	1	6	76	32	672
Calif.....	1,756	1,176	91	13	597	72	1,436	10	15	165	42	1,802
U.S.....	29,826	17,905	89	730	5,965	2,640	16,486	177	215	2,558	1,717	30,633

1/Balance sheet estimates. Total marketings, farm slaughter, deaths, and on hand end of year equals total of lamb crop, inshipments, and on hand beginning of year. 2/All sheep and lambs. 3/Excludes interfarm sales.

Table 30.--Sheep and lambs: Production and income, 1950

State	Production 1/	Marketings 2/	Price per 100 pounds		Cash receipts 3/	Value of home consumption	Gross income	Cost of inshipments
			Sheep	Lambs				
	1,000 pounds	1,000 pounds	Dollars	Dollars	1,000 dollars	1,000 dollars	1,000 dollars	1,000 dollars
Maine.....	898	613	11.60	21.50	1h7	10	157	--
N.H.....	262	262	11.70	22.50	38	--	38	--
Vt.....	372	h27	11.50	21.80	86	3	89	--
Mass.....	339	22h	10.00	22.00	h9	--	h9	--
R.I.....	172	172	10.00	22.10	38	--	38	--
Conn.....	253	253	10.00	22.40	h4	--	h4	--
N.Y.....	5,015	h,915	11.80	26.00	1,311	11	1,322	19h
N.J.....	5h1	766	11.40	26.00	167	--	167	66
Pa.....	7,426	6,651	10.60	25.80	1,536	11	1,5h7	--
Ohio.....	h2,219	h8,42h	9.90	25.90	10,9h7	85	11,032	1,359
Ind.....	2h,976	35,089	10.50	26.10	8,1h4	26	8,1h0	3,16h
Ill.....	33,773	57,901	10.70	25.30	1h,111	26	1h,137	7,2h8
Mich.....	21,086	22,751	10.50	25.40	5,351	h6	5,397	365
Wis.....	13,1h6	17,916	10.00	23.90	h,096	82	h,178	2,012
Minn.....	h4,852	60,5h7	10.80	25.50	1h,60h	66	1h,670	h,908
Iowa.....	61,992	112,7h4	10.00	25.30	26,438	h9	26,487	1h,771
Mo.....	57,151	77,956	10.10	25.20	18,0h7	h9	18,096	5,312
N.Dak.....	15,236	17,881	11.50	25.10	3,957	h9	h,006	722
S.Dak.....	37,162	h2,922	11.30	25.80	10,588	83	10,671	3,359
Nebr.....	39,43h	90,467	11.30	25.40	22,038	69	22,107	18,198
Kans.....	h8,919	119,921	11.20	2h.80	28,436	59	28,495	17,406
Del.....	100	100	9.90	25.20	10	--	10	--
Md.....	1,907	1,622	10.20	25.10	h05	9	h11	12
Va.....	18,327	17,082	9.00	26.00	h,310	h5	h,355	161
W.Va.....	16,91h	15,469	9.00	25.40	3,777	h2	3,819	22
N.C.....	1,638	1,273	10.50	2h.80	311	20	331	61
S.C.....	89	15h	9.40	19.40	30	--	30	19
Ga.....	265	80	9.30	19.80	2h	6	30	--
Fla.....	73	63	9.70	19.20	12	--	12	--
Ky.....	h2,835	h6,585	10.90	27.10	11,173	3h	11,207	1,283
Tenn.....	1h,7h7	18,797	9.70	26.60	h,569	27	h,596	1,1h8
Ala.....	611	726	9.80	20.00	128	5	133	80
Miss.....	1,610	1,3h5	10.00	21.20	2h6	h	250	128
Ark.....	1,185	1,105	8.30	21.70	250	6	256	2h
La.....	1,298	708	10.30	17.20	116	21	137	35
Okla.....	6,236	10,261	10.60	2h.90	2,213	23	2,236	1,2h2
Texas.....	187,855	17h,220	12.80	23.30	29,519	189	29,708	2,20h
Mont.....	57,113	5h,128	11.90	23.60	11,96h	116	12,080	2,3h4
Idaho.....	79,652	97,722	12.30	2h.80	22,998	152	23,150	h,557
Wyo.....	73,289	70,816	11.20	25.10	16,389	196	16,585	1,621
Colo.....	89,1h8	139,618	11.90	25.90	3h,262	266	3h,528	12,129
N.Mex.....	h0,508	39,363	12.00	25.20	8,566	979	9,5h5	1,36h
Ariz.....	15,618	1h,7h8	9.70	2h.20	3,090	1,005	h,095	8h2
Utah.....	56,611	56,62h	10.60	2h.90	13,535	278	13,813	1,7h9
Nev.....	21,918	20,268	10.50	2h.70	h,750	77	h,827	829
Wash.....	17,662	16,017	9.10	23.20	3,66h	2h	3,688	197
Oreg.....	37,090	h0,260	9.50	23.00	8,861	79	8,9h0	h22
Calif.....	96,167	129,423	9.60	25.30	31,729	271	32,000	11,036
U.S.....	1,335,720	1,688,279	11.60	25.10	387,3h4	4,598	391,9h2	122,683

1/Adjustments made for inshipments and changes in inventory.

2/Excludes interfarm sales.

3/Includes receipts from marketings and from sales of farm slaughtered meat.

Table 31.—Sheep and lambs: Inventory numbers, lamb crop, and disposition, 1951 ^{1/}

State	On hand Jan. 1, 1951 ^{2/}	Lambs saved		Inshipments		Marketings ^{3/}		Farm slaughter		Deaths		On hand Jan. 1, 1952 ^{2/}
		Number	As pct. of ewes 1 year & older	Sheep	Lambs	Sheep	Lambs	Sheep	Lambs	Sheep	Lambs	
	Thou- sands	Thou- sands	Per- cent	Thou- sands	Thou- sands	Thou- sands	Thou- sands	Thou- sands	Thou- sands	Thou- sands	Thou- sands	Thou- sands
Maine.....	20	15	107	---	---	2	5	---	2	1	1	24
N.H.....	7	4	100	---	---	1	1	---	---	---	1	8
Vt.....	9	6	100	---	---	---	2	---	1	1	1	10
Mass.....	9	5	83	---	---	---	3	---	---	1	---	10
R.I.....	2	1	60	---	---	---	1	---	---	---	---	2
Conn.....	7	5	100	---	---	---	3	---	---	1	---	8
N.Y.....	147	100	109	1	12	8	62	2	3	15	13	157
N.J.....	12	7	78	---	4	1	7	---	---	1	1	13
Pa.....	218	128	91	---	---	11	60	2	3	25	10	235
Ohio.....	1,129	675	94	18	62	67	460	1	4	92	69	1,191
Ind.....	439	304	112	12	135	43	317	1	1	35	14	479
Ill.....	583	343	107	33	384	10	531	1	1	49	25	726
Mich.....	413	270	100	6	32	33	187	2	6	30	21	443
Wis.....	270	174	114	4	66	17	160	1	3	20	21	292
Minn.....	749	507	108	24	300	44	491	2	4	51	63	925
Iowa.....	1,071	612	106	130	606	113	871	2	2	75	92	1,264
Mo.....	958	681	100	35	220	119	655	1	2	73	61	983
N.Dak.....	406	298	107	15	37	21	305	---	2	26	30	472
S.Dak.....	933	618	98	12	184	73	496	2	4	61	41	1,070
Nebr.....	765	160	109	61	963	32	997	1	3	14	31	871
Kans.....	701	307	96	60	455	57	753	1	3	31	32	646
Del.....	2	1	100	---	---	---	---	---	---	---	---	3
Md.....	41	32	100	---	---	---	17	---	1	5	4	45
Va.....	297	267	113	5	2	9	181	2	3	30	31	315
W.Va.....	308	253	106	---	2	19	175	2	3	26	24	314
K.C.....	41	29	100	2	---	1	12	1	2	5	5	46
S.C.....	3	2	100	1	---	---	1	---	---	1	---	4
Ge.....	10	5	83	1	---	---	1	1	1	1	1	11
Fla.....	3	2	100	---	---	---	1	---	---	1	---	3
Ky.....	656	590	113	25	28	95	444	1	3	47	66	643
Tenn.....	248	196	99	6	31	16	160	2	3	20	25	255
Ala.....	21	11	79	4	1	4	5	---	1	1	1	25
Miss.....	73	34	76	---	1	8	7	---	1	6	9	77
Ark.....	39	26	84	2	---	1	14	---	1	5	4	42
Ia.....	104	38	58	---	1	9	3	2	2	13	10	104
Okla.....	160	85	100	13	90	20	124	1	1	12	9	181
Texas.....	6,851	2,636	61	8	127	1,608	745	7	9	680	385	6,188
Mont.....	1,716	1,066	87	45	122	154	674	3	6	135	110	1,867
Idaho.....	1,060	916	109	50	200	97	863	3	8	72	48	1,115
Wyo.....	2,022	1,344	88	18	123	134	909	2	10	155	75	2,222
Colo.....	1,672	975	97	50	840	107	1,305	4	9	104	84	1,924
N.Mex.....	1,392	747	71	21	31	100	427	43	20	93	85	1,423
Ariz.....	406	246	81	23	74	32	191	28	32	25	18	423
Utah.....	1,392	915	85	15	107	30	680	9	11	140	74	1,485
Nev.....	478	333	87	7	10	6	235	3	3	55	31	495
Wash.....	316	254	112	1	14	14	188	2	2	29	18	332
Oreg.....	672	554	99	30	3	11	386	1	5	78	35	743
Calif.....	1,802	1,201	92	15	613	116	1,422	10	15	154	46	1,868
U.S.....	30,633	17,978	88	753	5,880	3,244	15,457	146	195	2,495	1,725	31,982

^{1/} Balance sheet estimates. Total of marketings, farm slaughter, deaths, and on hand end of year equals total of lamb crop, inshipments, and on hand beginning of year. ^{2/} All sheep and lambs.

^{3/} Excludes interfarm sales.

Table 32.—Sheep and lambs: Production and income, 1951

State	Production 1/	Marketings 2/	Price per 100 pounds		Cash receipts 3/	Value of home consumption	Gross income	Cost of inshipments
			Sheep	Lambs				
	1,000 pounds	1,000 pounds	Dollars	Dollars	1,000 dollars	1,000 dollars	1,000 dollars	1,000 dollars
Maine.....	1,092	612	15.00	27.50	172	10	182	---
N.H.....	285	170	15.00	28.10	35	---	35	---
Vt.....	326	151	14.80	27.50	57	4	61	---
Mass.....	342	227	14.40	27.80	63	---	63	---
R.I.....	85	85	14.40	27.90	24	---	24	---
Conn.....	340	230	14.50	27.90	64	---	64	---
N.Y.....	6,292	5,772	15.70	31.30	1,772	20	1,792	253
N.J.....	449	679	15.40	32.30	201	---	201	97
Pa.....	7,503	5,408	14.10	30.10	1,544	19	1,563	---
Ohio.....	42,686	42,456	14.20	30.29	11,655	79	11,734	1,605
Ind.....	25,932	32,447	14.00	30.99	9,131	33	9,164	3,167
Ill.....	35,137	52,643	15.40	30.80	16,039	34	16,073	9,664
Mich.....	20,486	20,131	14.30	31.00	5,721	63	5,784	829
Wis.....	13,774	16,054	14.70	29.30	4,451	72	4,523	1,569
Minn.....	46,641	51,211	15.00	30.80	15,013	105	15,118	6,170
Iowa.....	63,131	96,757	14.00	31.40	27,958	66	28,034	14,902
Mo.....	53,485	69,865	13.70	30.29	18,879	50	18,929	5,143
N.Dak.....	23,044	19,094	13.60	28.90	5,131	42	5,173	1,003
S.Dak.....	50,599	49,424	15.00	30.70	13,887	124	14,011	4,291
Nebr.....	43,783	102,536	15.90	32.00	33,130	90	33,280	20,863
Kans.....	37,853	75,718	15.50	32.40	23,532	80	23,612	10,277
Del.....	115	---	13.70	30.90	---	---	---	---
Md.....	2,176	1,576	13.50	30.70	480	12	492	---
Va.....	19,353	16,438	13.40	30.60	4,895	61	4,957	130
W.Va.....	17,833	16,913	13.60	30.50	4,860	56	4,916	48
N.C.....	1,669	1,079	13.20	30.00	334	26	360	33
S.C.....	90	80	13.00	28.10	22	---	22	16
Ge.....	272	82	13.20	28.30	41	16	57	16
Fla.....	75	65	12.90	26.90	17	---	17	---
Ky.....	43,265	48,445	15.10	31.30	13,420	44	13,464	1,071
Tenn.....	13,506	15,081	13.80	31.40	4,485	52	4,537	807
Ala.....	695	670	14.10	30.30	161	8	169	85
Miss.....	1,752	1,117	13.20	28.00	222	6	228	16
Ark.....	1,108	1,008	11.90	27.30	272	9	281	33
La.....	1,338	1,068	12.60	23.60	180	29	209	19
Okla.....	7,943	12,643	15.60	31.20	3,607	30	3,637	1,792
Texas.....	142,804	205,394	17.20	28.90	41,148	255	41,403	2,459
Mont.....	75,546	73,216	16.70	31.10	20,356	146	20,502	3,238
Idaho.....	82,488	91,638	16.00	29.80	25,807	209	26,016	5,102
Wyo.....	91,669	83,178	15.90	30.90	23,639	213	23,852	2,888
Colo.....	92,161	130,546	14.80	32.10	39,906	266	40,172	17,790
N.Mex.....	43,664	39,574	15.20	29.50	10,327	935	11,262	1,053
Ariz.....	17,406	18,468	14.00	30.90	5,192	1,000	6,192	2,051
Utah.....	62,013	57,862	13.90	30.20	16,993	319	17,312	2,641
Nev.....	22,182	19,082	13.10	30.10	5,644	94	5,738	337
Wash.....	19,135	18,205	14.00	29.40	5,170	36	5,206	330
Oreg.....	37,909	34,869	13.70	29.60	10,175	90	10,265	659
Calif.....	100,182	132,786	15.10	31.80	40,427	366	40,793	12,451
U.S.....	1,371,614	1,662,713	16.00	31.00	466,310	5,169	471,479	134,898

1/ Adjustments made for inshipments and changes in inventory.

2/ Excludes interfarm sales.

3/ Includes receipts from marketings and from sales of farm slaughtered meat.

Table 33.--Sheep and lambs: Inventory numbers, lamb crop, and disposition, 1952 ^{1/}

State	On hand Jan. 1, 1952 2/	Lambs saved		Inshipments		Marketings ^{3/}		Farm slaughter		Deaths		On hand Jan. 1, 1953 2/
		Number	As pct. of ewes 1 year & older	Sheep	Lambs	Sheep	Lambs	Sheep	Lambs	Sheep	Lambs	
	Thou- sands	Thou- sands	Per- cent	Thou- sands	Thou- sands	Thou- sands	Thou- sands	Thou- sands	Thou- sands	Thou- sands	Thou- sands	Thou- sands
Maine.....	24	16	100	---	---	2	6	---	1	1	2	28
N.H.....	8	4	90	---	---	2	1	---	---	---	1	8
Vt.....	10	6	86	---	---	1	2	---	1	1	1	10
Mass.....	10	7	100	---	---	---	4	---	---	---	1	12
R.I.....	2	2	86	---	---	---	2	---	---	---	---	2
Conn.....	8	5	83	---	---	---	3	---	---	1	---	9
N.Y.....	157	105	107	1	13	2	67	2	4	20	12	169
N.J.....	13	8	89	---	1	1	5	---	---	---	1	15
Pa.....	235	141	95	---	---	21	68	2	3	24	11	247
Ohio.....	1,191	734	99	13	81	66	515	2	4	88	68	1,275
Ind.....	479	332	114	18	147	18	359	1	2	37	13	546
Ill.....	726	404	110	10	38 1/2	37	627	1	1	42	27	789
Mich.....	443	281	103	5	38	28	217	2	5	32	25	458
Wis.....	292	193	114	3	70	20	173	2	3	22	19	319
Minn.....	935	578	110	31	367	63	668	1	3	51	65	1,050
Iowa.....	1,264	681	105	110	718	137	1,044	2	2	75	105	1,408
Mo.....	983	662	102	35	255	112	738	2	3	72	60	948
N.Dak.....	472	348	112	12	42	31	264	1	2	30	36	510
S.Dak.....	1,070	656	97	11	203	83	605	2	4	70	51	1,105
Nebr.....	871	191	107	54	903	102	1,049	1	3	16	38	810
Kans.....	646	352	95	55	293	114	593	1	3	26	32	577
Del.....	3	2	100	---	---	1	1	---	---	---	---	3
MD.....	45	36	109	---	---	4	21	---	1	5	5	45
Va.....	315	279	112	2	3	14	200	2	2	33	30	318
W.Va.....	314	262	107	---	---	9	191	2	3	23	21	327
N.C.....	46	34	106	2	---	2	16	1	2	6	7	48
S.C.....	4	3	100	---	---	---	2	---	---	1	---	4
Ga.....	11	6	86	1	---	---	1	---	1	1	1	14
Fla.....	3	2	100	---	---	---	1	---	---	1	---	3
Ky.....	643	608	118	9	19	79	484	1	3	44	57	611
Tenn.....	255	214	105	4	23	21	173	1	3	18	25	255
Ala.....	25	14	78	5	2	2	8	---	1	1	1	33
Miss.....	77	38	78	---	1	7	13	---	1	5	7	83
Ark.....	42	27	84	---	1	---	16	---	1	5	2	46
La.....	104	46	69	1	---	8	10	2	2	13	8	108
Okla.....	181	83	97	16	88	14	161	1	1	12	7	172
Texas.....	6,188	2,447	59	6	155	1,189	824	8	10	680	360	5,725
Mont.....	1,867	1,147	90	30	124	210	910	3	6	135	113	1,791
Idaho.....	1,115	890	106	40	213	113	878	2	7	73	52	1,133
Wyo.....	2,223	1,298	81	20	77	192	951	3	13	170	93	2,195
Colo.....	1,924	984	96	50	780	96	1,583	4	10	120	70	1,855
N.Mex.....	1,423	793	74	54	15	210	486	37	18	102	82	1,350
Ariz.....	423	243	80	11	66	6	188	20	39	27	18	445
Utah.....	1,485	972	86	15	71	59	737	8	11	135	77	1,516
Nev.....	495	322	81	2	10	29	230	3	4	50	28	485
Wash.....	332	267	114	1	12	27	192	2	3	28	19	341
Oreg.....	743	577	100	16	10	17	442	1	6	74	43	763
Calif.....	1,868	1,199	91	53	475	71	1,356	10	17	163	42	1,936
U.S.....	31,932	18,479	88	696	5,660	3,220	17,036	133	209	2,533	1,736	31,900

^{1/} Balance sheet estimates. Total of marketings, farm slaughter, deaths, and on hand end of year equals total of lamb crop, inshipments, and on hand beginning of year. ^{2/} All sheep and lambs. ^{3/} excludes interfarm sales.

Table 34.--Sheep and lambs: Production and income, 1952

State	Production 1/	Marketings 2/	Price per 100 pounds		Cash receipts 3/	Value of home consumption	Gross income	Cost of inshipments
			Sheep	Lambs				
	1,000 pounds	1,000 pounds	Dollars	Dollars	1,000 dollars	1,000 dollars	1,000 dollars	1,000 dollars
Maine.....	1,211	691	11.30	24.30	153	5	158	---
N.H.....	265	265	11.30	25.10	40	---	40	---
Vt.....	319	259	11.20	24.00	61	5	66	---
Mass.....	534	304	10.80	24.60	75	---	75	---
R.I.....	170	170	10.80	24.60	42	---	42	---
Conn.....	344	234	10.80	24.80	58	---	58	---
N.Y.....	6,793	5,493	11.40	26.40	1,506	29	1,535	194
N.J.....	685	515	12.80	28.40	129	---	129	17
Pa.....	9,385	7,025	10.80	25.70	1,561	19	1,580	---
Ohio.....	52,812	47,082	9.20	25.30	10,746	75	10,821	1,330
Ind.....	30,952	33,738	8.10	25.20	8,143	42	8,185	2,482
Ill.....	43,773	65,829	10.10	25.00	15,796	27	15,823	6,554
Mich.....	21,301	22,196	9.90	25.30	5,170	60	5,230	665
Wis.....	16,472	17,377	8.50	22.80	3,660	61	3,721	1,162
Minn.....	57,820	70,035	9.10	24.70	16,186	56	16,242	5,315
Iowa.....	72,066	115,124	7.60	24.90	25,742	47	25,789	11,737
Mo.....	54,219	76,239	8.70	24.60	16,745	64	16,809	4,069
N.Dak.....	27,478	24,923	9.50	23.00	5,260	44	5,304	715
S.Dak.....	53,629	59,594	9.60	24.10	13,008	93	13,101	3,286
Nebr.....	46,741	116,084	10.60	25.60	27,887	69	27,956	13,638
Kans.....	36,668	66,847	10.40	25.40	15,063	61	15,124	4,792
Del.....	479	184	10.10	26.50	32	---	32	---
Md.....	4,251	2,176	9.80	26.40	513	11	524	---
Va.....	20,267	18,492	9.20	26.20	4,585	40	4,725	71
W.Va.....	17,641	17,146	8.80	25.40	4,232	46	4,278	---
N.C.....	1,470	1,500	10.00	26.10	379	24	403	19
S.C.....	422	162	11.50	27.00	44	---	44	---
Ge.....	105	70	11.70	28.00	29	10	39	9
Fla.....	70	65	11.60	27.10	18	---	18	---
Ky.....	44,825	49,400	8.70	27.70	11,982	41	12,023	401
Tenn.....	14,985	16,520	9.70	26.90	4,066	40	4,106	410
Ala.....	918	698	12.10	25.60	166	8	174	75
Miss.....	2,322	1,392	12.00	24.70	275	6	281	11
Ark.....	1,380	1,040	8.60	21.60	233	8	241	13
La.....	1,970	1,420	10.60	22.40	244	27	271	9
Okl.....	8,581	14,911	10.00	25.30	3,543	22	3,565	1,249
Texas.....	121,668	171,683	10.70	20.00	23,632	190	23,822	2,028
Mont.....	84,622	97,972	10.30	22.80	19,469	105	19,574	2,057
Idaho.....	81,505	92,184	12.00	22.30	19,236	131	19,367	3,573
Wyo.....	94,808	90,559	9.70	23.30	18,401	210	18,611	1,343
Colo.....	104,964	154,629	8.70	24.50	36,244	211	36,455	11,654
N.Mex.....	47,233	54,683	10.50	20.50	9,150	572	9,722	820
Ariz.....	16,606	15,567	11.80	25.40	3,932	862	4,794	1,156
Utah.....	71,806	65,781	9.70	23.30	14,463	232	14,695	1,277
Nev.....	21,690	21,010	10.20	24.50	4,700	93	4,793	169
Wash.....	21,558	19,978	9.10	23.20	4,263	39	4,302	200
Oreg.....	44,779	40,014	8.80	24.10	9,392	88	9,481	361
Calif.....	106,190	122,580	9.50	25.70	30,466	313	30,779	7,217
U.S.....	1,470,752	1,801,830	10.00	24.30	390,821	4,086	394,907	90,077

1/ Adjustments made for inshipments and changes in inventory.

2/ Excludes interfarm sales.

3/ Includes receipts from marketings and from sales of farm slaughtered meat.

Table 35.—Sheep and lambs: Inventory numbers, lamb crop, and disposition, 1953 1/

State	On hand Jan. 1, 1953 2/	Lambs saved		Inshipments		Marketings 3/		Farm slaughter		Deaths		On hand Jan. 1, 1954 2/
		Number	As pct. of ewes 1 year & older	Sheep	Lambs	Sheep	Lambs	Sheep	Lambs	Sheep	Lambs	
	Thou- sands	Thou- sands	Per- cent	Thou- sands	Thou- sands	Thou- sands	Thou- sands	Thou- sands	Thou- sands	Thou- sands	Thou- sands	Thou- sands
Maine.....	28	17	85	—	—	3	7	—	1	2	2	30
N.H.....	8	5	100	—	—	1	2	—	—	—	1	9
Vt.....	10	7	100	—	—	—	3	—	1	1	1	11
Mass.....	12	9	100	—	—	2	5	—	—	1	1	12
R.I.....	2	2	100	—	—	—	2	—	—	—	—	2
Conn.....	9	6	86	—	—	1	4	—	—	1	—	9
N.Y.....	169	118	110	1	15	15	80	2	5	16	15	170
N.J.....	15	9	82	—	4	3	8	—	—	—	1	16
Pa.....	247	154	96	—	1	27	84	2	4	25	11	249
Ohio.....	1,275	819	103	10	74	92	665	3	5	87	75	1,351
Ind.....	546	392	113	17	94	58	403	1	3	37	15	532
Ill.....	789	458	111	6	323	53	688	1	1	52	35	746
Mich.....	458	298	105	4	21	54	244	2	6	28	26	421
Wis.....	319	216	112	3	48	31	204	2	3	23	22	301
Minn.....	1,050	671	111	29	238	121	752	1	4	51	75	984
Iowa.....	1,408	758	101	85	608	126	1,247	2	3	75	100	1,306
Mo.....	948	688	103	18	158	130	743	2	4	61	48	824
N.Dak.....	510	371	107	12	44	48	290	1	3	25	40	530
S.Dak.....	1,105	694	95	15	163	60	628	2	4	71	50	1,162
Nebr.....	810	180	103	50	876	62	1,014	1	2	19	30	788
Kans.....	577	316	95	50	261	70	427	1	3	22	28	653
Del.....	3	2	100	—	—	1	1	—	—	—	—	3
Md.....	45	34	100	—	—	4	21	—	1	4	4	45
Va.....	318	291	114	2	3	16	211	2	2	29	30	324
W.Va.....	327	274	105	—	—	36	205	2	3	24	24	317
N.C.....	48	39	111	1	—	3	20	1	2	6	7	49
S.C.....	4	3	100	—	—	—	1	—	—	—	1	5
Ga.....	14	8	89	1	—	1	2	—	1	1	1	17
Fla.....	3	2	100	1	—	1	1	—	—	1	—	3
Ky.....	611	598	118	15	15	72	480	1	3	40	56	587
Tenn.....	255	212	103	7	26	6	170	1	3	21	24	275
Ala.....	33	23	88	6	—	—	12	—	1	1	1	47
Miss.....	83	49	91	—	4	6	26	—	1	5	7	91
Ark.....	46	34	100	—	1	1	22	—	1	5	3	49
La.....	108	44	65	—	—	9	9	2	2	13	6	111
Okla.....	172	103	102	22	97	12	125	1	1	13	9	233
Texas.....	5,725	2,573	66	10	142	852	1,048	9	12	640	340	5,549
Mont.....	1,791	1,124	84	25	107	194	846	3	7	130	118	1,749
Idaho.....	1,133	969	112	40	209	112	961	2	7	70	69	1,130
Wyo.....	2,195	1,313	78	12	41	180	971	3	12	175	95	2,125
Colo.....	1,855	1,047	96	40	580	96	1,437	3	10	104	74	1,798
N.Mex.....	1,350	817	79	18	31	172	509	29	18	103	91	1,294
Ariz.....	445	276	87	5	54	8	179	25	38	31	21	478
Utah.....	1,516	985	83	15	63	37	777	9	13	165	90	1,488
Nev.....	485	320	82	1	6	36	224	2	4	42	26	478
Wash.....	341	271	115	1	11	29	213	2	4	28	19	329
Oreg.....	763	617	99	37	9	11	471	1	7	84	41	811
Calif.....	1,936	1,281	90	53	530	103	1,497	10	18	162	45	1,965
U.S.....	31,900	19,497	90	612	4,857	2,945	17,939	131	223	2,494	1,778	31,356

1/ Balance sheet estimates. Total of marketings, farm slaughter, deaths, and on hand end of year equals total of lamb crop, inshipments, and on hand beginning of year.

2/ All sheep and lambs.

3/ Excludes interfarm sales.

Table 36.--Sheep and lambs: Production and income 1953

State	Production 1/ 1,000 pounds	Marketings 2/ 1,000 pounds	Price per 100 pounds		Cash receipts 3/ 1,000 dollars	Value of home consumption 1,000 dollars	Gross income 1,000 dollars	Cost of inshipments 1,000 dollars
			Sheep Dollars	Lambs Dollars				
Maine.....	1,170	880	7.60	20.10	146	5	151	--
N.H.....	362	247	8.00	20.40	39	--	39	--
Vt.....	409	234	8.00	19.40	54	5	59	--
Mass.....	551	581	7.30	19.60	90	--	90	--
R.I.....	174	174	7.30	19.70	34	--	34	--
Conn.....	457	422	7.30	20.10	71	--	71	--
N.Y.....	8,140	7,775	6.90	20.00	1,414	34	1,448	176
N.J.....	746	981	8.50	22.40	175	--	175	55
Pa.....	10,468	8,703	7.00	21.60	1,545	24	1,569	12
Ohio.....	62,043	62,678	5.80	20.50	11,348	80	11,428	939
Ind.....	35,779	41,991	5.80	20.40	7,558	48	7,606	1,294
Ill.....	45,561	73,018	6.50	20.00	13,738	21	13,759	4,346
Mich.....	24,653	27,888	7.20	20.50	4,931	63	4,994	299
Wis.....	17,505	21,170	5.80	17.90	3,377	46	3,423	640
Minn.....	67,138	81,603	6.20	19.70	11,805	57	11,862	2,779
Iowa.....	80,819	132,842	5.00	20.30	24,590	50	24,640	7,715
Mo.....	58,967	78,732	5.70	19.90	13,581	64	13,645	1,945
N.Dak.....	29,768	28,678	6.30	17.60	4,434	46	4,480	572
S.Dak.....	55,661	58,276	6.80	18.50	9,092	71	10,063	2,126
Nebr.....	44,210	106,806	5.80	20.80	21,103	38	21,141	10,357
Kans.....	31,661	46,769	6.10	20.90	8,617	48	8,665	3,356
Del.....	184	184	6.70	21.70	25	--	25	--
Md.....	2,453	2,443	6.30	21.60	104	10	114	--
Va.....	21,576	19,631	6.20	21.20	3,892	32	3,924	54
W.Va.....	19,754	20,139	6.40	19.10	3,511	36	3,547	--
N.C.....	2,532	1,927	7.30	21.80	389	21	410	6
S.C.....	208	83	7.60	20.50	17	--	17	--
Ga.....	553	253	7.50	20.60	44	8	52	6
Fla.....	72	157	7.30	20.50	20	--	20	6
Ky.....	45,844	47,774	6.10	23.70	9,879	39	9,918	307
Tenn.....	16,102	15,107	6.20	22.60	3,331	37	3,368	380
Ala.....	1,662	792	7.80	21.00	174	7	181	38
Miss.....	3,435	2,165	7.80	21.50	402	6	408	35
Ark.....	2,033	1,528	5.70	18.40	274	8	282	11
La.....	2,052	1,482	8.30	17.30	190	23	213	--
Okla.....	9,619	11,569	6.40	20.80	2,223	17	2,240	1,106
Texas.....	128,766	154,336	8.30	17.40	19,357	189	19,546	1,477
Mont.....	85,454	91,994	5.50	16.70	12,960	83	13,043	1,363
Idaho.....	89,659	101,466	7.30	18.00	16,804	102	16,906	2,726
Wyo.....	89,834	90,802	5.70	17.70	13,831	146	13,977	564
Colo.....	102,365	139,920	6.30	19.50	25,911	161	26,072	6,857
N.Mex.....	48,034	53,539	7.00	15.50	6,856	352	7,208	517
Ariz.....	18,829	15,071	7.80	22.30	3,282	739	4,021	709
Utah.....	67,002	66,472	6.50	17.10	10,964	196	11,160	899
Nev.....	22,992	21,562	5.90	16.90	3,212	56	3,268	77
Wash.....	22,012	22,997	6.10	18.00	3,637	40	3,677	145
Oreg.....	46,018	41,333	5.90	18.30	7,447	77	7,524	442
Calif.....	113,152	137,827	5.00	20.10	26,210	244	26,454	6,278
U.S.....	1,538,438	1,844,801	6.67	19.30	316,978	3,329	320,307	60,614

1/Adjustments made for inshipments and changes in inventory.

2/Excludes interfarm sales.

3/Includes receipts from marketings and from sales of farm slaughtered meat.

Table 37.--Sheep and lambs: Inventory numbers, lamb crop, and disposition, 1954 1/

State	On hand Jan. 1, 1954 2/	Lambs saved		Inshipments		Marketings 3/		Farm slaughter		Deaths		On hand Jan. 1 1955 2/
		Number	As pct. of ewes 1 year & older	Sheep	Lambs	Sheep	Lambs	Sheep	Lambs	Sheep	Lambs	
	Thou- sands	Thou- sands	Per- cent	Thou- sands	Thou- sands	Thou- sands	Thou- sands	Thou- sands	Thou- sands	Thou- sands	Thou- sands	Thou- sands
Maine.....	30	21	95	--	--	4	9	--	1	2	3	32
N.H.....	9	6	100	--	--	2	2	--	--	--	1	10
Vt.....	11	7	88	--	--	--	3	--	1	1	1	12
Mass.....	12	8	100	--	--	2	4	--	--	--	1	13
R.I.....	2	2	100	--	--	--	2	--	--	--	--	2
Conn.....	9	6	86	--	--	1	4	--	--	1	--	9
N.Y.....	170	122	111	1	17	9	85	2	4	20	16	174
N.J.....	16	10	91	--	3	3	8	--	--	--	1	17
Pa.....	249	153	93	--	1	32	78	2	3	25	12	251
Ohio.....	1,251	828	102	8	61	86	644	3	5	80	73	1,257
Ind.....	532	396	111	16	88	60	393	1	3	38	18	519
Ill.....	746	480	111	6	250	44	633	1	1	52	34	717
Mich.....	421	283	104	4	24	21	226	2	5	29	25	424
Wis.....	301	202	108	3	33	37	173	1	3	20	19	286
Minn.....	984	678	114	20	248	91	741	1	4	48	70	975
Iowa.....	1,306	801	105	105	762	168	1,296	2	2	71	109	1,326
Mo.....	824	646	106	30	186	101	667	2	4	57	44	811
N.Dak.....	530	391	109	25	40	41	319	1	3	25	38	559
S.Dak.....	1,162	774	101	19	169	33	675	2	3	75	48	1,288
Nebr.....	788	199	106	55	977	37	1,079	1	2	21	30	819
Kans.....	653	337	102	53	370	66	561	1	3	22	26	634
Del.....	3	2	100	--	--	--	1	--	--	--	--	4
Md.....	45	35	100	--	--	4	23	--	1	4	3	45
Va.....	324	288	111	1	2	13	214	2	2	28	29	327
W.Va.....	317	271	106	--	--	21	206	2	3	24	21	311
N.C.....	49	41	117	1	--	1	24	1	2	6	6	51
S.C.....	5	4	100	1	--	1	3	--	--	1	--	5
Ga.....	17	9	82	1	--	2	1	--	1	1	1	21
Fla.....	3	2	100	1	--	--	1	--	--	--	1	4
Ky.....	587	568	116	14	18	55	452	1	3	42	53	581
Tenn.....	275	232	105	5	20	18	176	1	3	22	26	286
Ala.....	47	27	77	1	3	2	18	--	1	1	1	55
Miss.....	91	54	87	--	1	16	25	--	1	5	8	91
Ark.....	49	34	92	1	3	--	23	--	1	5	3	55
La.....	111	47	66	--	1	8	10	2	2	14	8	115
Okla.....	233	121	101	10	94	20	180	1	1	14	13	229
Texas.....	5,549	2,926	79	14	131	713	1,339	8	11	570	320	5,659
Mont.....	1,749	1,168	90	22	97	189	840	3	7	125	116	1,756
Idaho.....	1,130	995	115	42	208	110	998	2	8	74	58	1,125
Wyo.....	2,125	1,402	85	7	34	214	1,057	3	11	150	97	2,036
Colo.....	1,798	1,054	96	42	608	133	1,393	3	10	98	82	1,783
N.Mex.....	1,294	759	77	23	16	118	463	28	17	110	78	1,278
Ariz.....	478	283	86	13	71	80	175	26	39	22	26	477
Utah.....	1,488	1,033	87	17	70	42	858	8	11	123	85	1,481
Nev.....	478	336	88	1	6	22	236	1	4	57	33	468
Wash.....	329	267	114	2	20	32	221	2	3	26	19	315
Oreg.....	811	667	101	36	26	20	542	1	6	86	38	847
Calif.....	1,965	1,365	95	70	658	154	1,651	8	15	170	48	2,012
U.S.....	31,356	20,340	95	670	5,316	2,826	18,832	5	210	2,365	1,742	31,582

1/Balance sheet estimates. Total of marketings, farm slaughter, deaths, and on hand end of year equals total of lamb crop, inshipments, and on hand beginning of year. 2/All sheep and lambs.

3/Excludes interfarm sales.

Table 38.--Sheep and lambs: Production and income, 1954

State	Production 1/	Marketings 2/	Price per 100 pounds		Cash Receipts 3/	Value of home consumption	Gross income	Cost of inshipments
			Sheep	Lambs				
	1,000 pounds	1,000 pounds	Dollars	Dollars	1,000 dollars	1,000 dollars	1,000 dollars	1,000 dollars
Maine.....	1,549	1,144	6.60	18.80	172	6	178	--
N.H.....	460	345	7.00	18.70	42	--	42	--
Vt.....	472	232	7.10	18.10	50	6	56	--
Mass.....	664	504	6.20	18.20	68	--	68	--
R.I.....	182	172	6.20	18.70	32	--	32	--
Conn.....	463	418	6.20	19.10	66	--	66	--
N.Y.....	8,398	7,868	6.00	19.70	1,465	32	1,497	202
N.J.....	809	974	7.10	20.90	159	--	159	42
Pa.....	10,385	8,755	6.40	20.40	1,375	23	1,398	12
Ohio.....	64,056	60,951	4.70	19.50	10,471	77	10,548	781
Ind.....	34,636	41,395	5.10	19.90	7,177	48	7,225	1,224
Ill.....	46,983	65,973	5.40	19.30	11,993	19	12,012	3,428
Mi.ch.....	22,951	22,601	5.80	19.80	4,176	61	4,237	341
Wis.....	16,559	18,989	4.50	17.60	2,800	38	2,838	453
Minn.....	67,394	79,379	5.10	19.50	13,986	58	14,044	2,859
Iowa.....	86,374	112,656	5.00	19.50	24,808	39	24,847	9,767
Mo.....	55,301	69,546	5.20	19.50	11,931	66	11,997	2,374
N.Dak.....	31,978	30,513	6.00	17.80	4,883	49	4,932	622
S.Dak.....	64,043	58,338	6.50	18.90	10,574	60	10,634	2,261
Nebr.....	46,203	108,020	5.80	21.10	22,116	41	22,157	11,720
Kans.....	36,734	67,544	6.00	21.00	13,088	52	13,140	4,688
Del.....	207	82	6.00	21.10	17	--	17	--
Md.....	2,585	2,360	5.90	20.30	423	11	434	--
Va.....	21,736	19,516	5.00	20.50	3,792	33	3,825	34
W.Va.....	21,109	19,724	5.30	18.80	3,421	36	3,457	--
N.C.....	2,680	2,030	5.20	19.50	394	20	414	6
S.C.....	282	357	5.40	18.60	53	--	53	6
Ga.....	664	269	5.20	18.10	27	8	35	6
Fla.....	94	69	5.50	18.50	13	--	13	6
Ky.....	42,886	43,961	5.40	21.70	8,519	42	8,561	335
Tenn.....	17,027	16,592	5.30	21.70	3,289	38	3,327	292
Ala.....	2,251	1,436	5.80	19.70	266	8	274	42
Miss.....	3,451	3,101	6.30	20.70	444	7	451	9
Ark.....	2,216	1,544	5.60	18.60	292	9	301	38
La.....	2,607	1,472	8.00	17.20	192	26	218	11
Okla.....	11,834	16,929	5.90	20.50	3,159	18	3,177	997
Texas.....	131,213	160,248	8.20	17.00	21,243	173	21,416	1,419
Mont.....	90,372	91,312	4.90	17.30	13,154	86	13,240	1,241
Idaho.....	91,907	104,826	6.30	18.20	17,555	114	17,669	2,756
Wyo.....	101,966	103,698	5.90	18.60	16,350	143	16,493	447
Colo.....	97,973	133,347	5.80	19.60	24,101	160	24,261	7,286
N.Mex.....	48,879	46,319	5.30	16.90	6,468	312	6,780	369
Ariz.....	22,135	22,839	6.30	19.80	3,356	662	4,018	993
Utah.....	76,705	75,260	5.90	17.50	12,650	169	12,819	1,010
Nev.....	23,119	22,119	5.40	17.40	3,559	51	3,610	78
Wash.....	22,385	23,440	5.40	17.60	3,714	33	3,747	268
Oreg.....	50,942	47,897	4.90	17.30	8,031	65	8,096	650
Calif.....	121,493	157,912	6.10	19.90	29,310	214	29,524	7,924
U.S.....	1,607,312	1,904,973	6.14	19.10	325,224	3,113	328,337	66,997

1/Adjustments made for inshipments and changes in inventory.

2/Excludes interfarm sales.

3/Includes receipts from marketings and from sales of farm slaughtered meat.

END