



AgEcon SEARCH
RESEARCH IN AGRICULTURAL & APPLIED ECONOMICS

The World's Largest Open Access Agricultural & Applied Economics Digital Library

This document is discoverable and free to researchers across the globe due to the work of AgEcon Search.

Help ensure our sustainability.

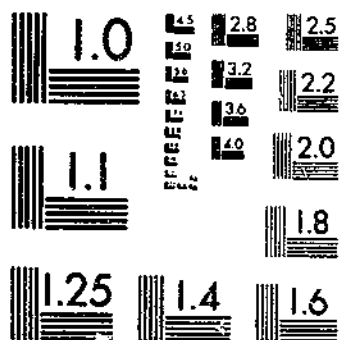
Give to AgEcon Search

AgEcon Search
<http://ageconsearch.umn.edu>
aesearch@umn.edu

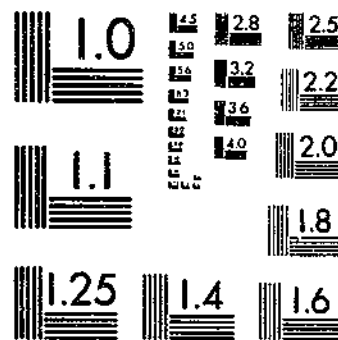
*Papers downloaded from **AgEcon Search** may be used for non-commercial purposes and personal study only. No other use, including posting to another Internet site, is permitted without permission from the copyright owner (not AgEcon Search), or as allowed under the provisions of Fair Use, U.S. Copyright Act, Title 17 U.S.C.*

FEB 15 1955 (1955) USDA STATISTICAL BULLETINS 1955-56 UPDATES
RELATIVE USE OF FEEDS FOR LIVESTOCK INCLUDING PASTURE BY STATES
JENNINGS, R. D. 1955

START



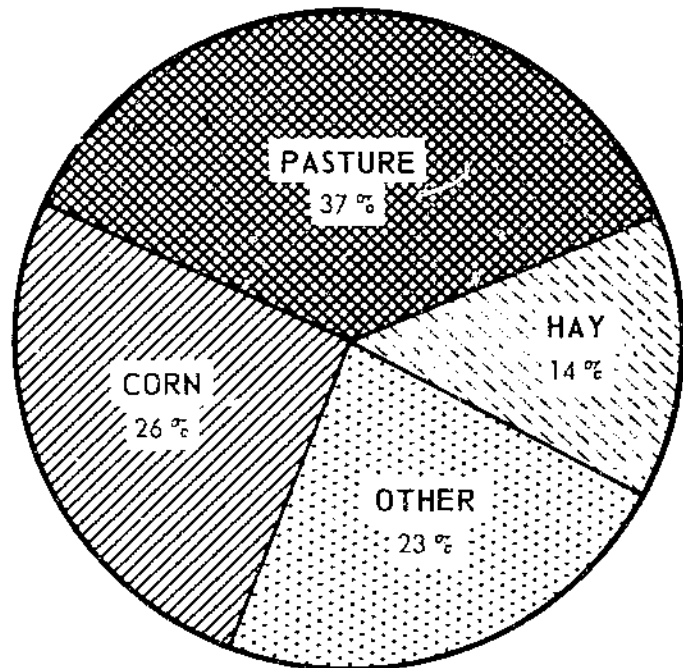
MICROCOPY RESOLUTION TEST CHART
NATIONAL BUREAU OF STANDARDS-1963-A



MICROCOPY RESOLUTION TEST CHART
NATIONAL BUREAU OF STANDARDS-1963-A

REFERENCE
DO NOT LOAN

Relative use of
FEEDS FOR LIVESTOCK
including pasture
...by States



Statistical Bulletin No. 153

UNITED STATES DEPARTMENT OF AGRICULTURE
Agricultural Research Service

February 1955

CONTENTS

	Page
Introduction.....	1
Importance of various kinds of feed and different kinds of livestock in use of feed.....	2
Importance of different feeds for each kind of livestock, by States.....	3
Importance of each kind of livestock in use of feed, by States.....	6
Feed consumption rates for livestock, United States, 1949-50.....	17
Feed from pasture, by States.....	17
Methods of procedure.....	18

Prepared in the Production Economics Research Branch, Agricultural Research Service, U. S. Department of Agriculture.

RELATIVE USE OF FEEDS FOR LIVESTOCK
INCLUDING PASTURE, BY STATES

By
R. D. Jennings
Agricultural Economist
Production Economics Research Branch
Agricultural Research Service

INTRODUCTION

The many kinds of feed consumed by livestock in this country range from grain feeds to grass. Most of these feeds may be substituted for one another in varying degree when they are similar or even when their composition differs widely. Hay may be substituted for grain in the dairy ration. As all feeds do not have the same nutritive value in a pound, some common denominator is needed so that the total feed nutrients of several kinds of feeds combined can be calculated. The total digestible nutrients (TDN) contained in a feed is the common denominator ordinarily used by animal nutritionists. This is a good measure for similar feeds, but it is not so effective when feeds that differ as widely as do cottonseed meal, grain, hay, and corn stover are added together. The TDN denominator tends to put too high a value on hay and other roughage and too low a value on high-protein feeds fed as supplements to grain.

The "feed unit" ^{1/} is a device to convert all kinds of feed to the equivalent of pounds of corn. It takes into account the protein content as well as the energy value of different feeds. The feed unit is used here in evaluating the importance of different feeds fed to the several kinds of livestock in this country. The relation between digestible nutrients and feed units and the details of procedure are given in the section, "Methods of Procedure." In general, the method was as follows: To arrive at the total digestible nutrients and feed units required for each class of livestock, specified digestible nutrient allowances were multiplied by the number of livestock reported in each State. Then the quantities of feed fed reported in Statistical Bulletin 145 ^{2/} were converted into feed units. The difference between the requirements and the quantity fed was assumed to have come from grazing. The feed

^{1/} A feed unit is the equivalent in feeding value of a pound of corn.

^{2/} Jennings, R. D. Feed Consumed by Livestock and Supply and Disposition of Feeds by States, 1949-50. U. S. Dept. Agr. Statis. Bull. 145. 1954.

value of pasture and grazing was then related to acres of grazing. The data in this report covers the year beginning October 1, 1949. It should be understood that these data, and especially the data for individual States, may be subject to a considerable percentage error because of the nature of the data and methods of estimating.

IMPORTANCE OF VARIOUS KINDS OF FEED AND DIFFERENT KINDS OF LIVESTOCK IN USE OF FEED

Corn, excluding silage but including corn in formula feeds, ^{3/} accounted for about a fourth of all feed nutrients, including pasture consumed by all livestock in 1949-50 (tables 1 and 2). All other grains and byproduct feeds added to about 18 percent of the total. Oats accounted for 5 to 6 percent and oilseed meals for 4 to 5 percent. Formula feeds, which are included in these percentages, accounted for about 11 percent. Hay was about half as important as corn, but pasture and grazing amounted to about 37 percent. Thus roughage and forage were more important in the national feed supply than were grains and other concentrates.

Dairy cattle used more total feed nutrients than any other livestock. They used about 30 percent of all feed used by all livestock (table 3). Only about 10 percent of the feed for dairy cattle came from corn, including corn in formula feed but excluding corn in silage. If corn in silage were included, the figure for corn would be about 15 to 16 percent.

All concentrates ^{4/} accounted for a little more than a fourth of the feed for dairy cattle, about the same as for hay. Feed from pasture amounted to 37 percent. Beef cattle used about a fourth of all feed for all livestock. But two-thirds of their feed was obtained from grazing while only about 15 percent came from grain and other concentrates, and about the same percentage from hay. Sheep and goats used only 4 to 5 percent of all feed for all livestock; more than 80 percent was obtained from grazing and most of the rest from hay or other roughage. In 1949-50 horses and mules consumed only 6 percent of all feed, 30 percent of which was grain or other concentrates, nearly 20 percent hay, and the rest pasture.

Hogs consumed less than a fifth of all feed but nearly 40 percent of all concentrate feeds and nearly half of the corn fed as grain or in formula feeds. They consumed approximately a third of the oats and barley fed, or about the same percentage as for dairy cattle.

^{3/} Formula feeds are feeds manufactured by mixing several ingredients according to a formula. They exclude custom-mixed or home-mixed feeds. Most formula feeds are registered and have brand names. Formula feeds containing only minerals are not included in this bulletin.

^{4/} Concentrates include grains, byproduct feeds, and formula feeds.

Poultry used about one-fourth of all concentrates and 20 percent of the corn fed as grain or in formula feed. They used a large percentage of the high-protein feeds and these feeds accounted for about 17 percent of the feed-unit value of all feeds consumed by poultry. This is a larger percentage than that for any other class of livestock.

Previous discussion of individual feeds has included the quantities in formula feeds. Formula feeds as a separate category accounted for about 25 percent of the feed-unit value of all concentrates and about 11 percent of all feed fed including pasture (table 4). More than half of all formula feeds was consumed by poultry and more than 20 percent by dairy cattle. As a group, formula feeds accounted for nearly half as much feed as corn fed as grain, nearly 80 percent as much as all hay fed. It also accounted for more feed units than all small grains and byproduct feeds combined fed as such or in home- or custom-mixed feeds. About 40 percent of the feed value of formula feeds consist of high-protein feeds (table 5).

IMPORTANCE OF DIFFERENT FEEDS FOR EACH KIND OF LIVESTOCK, BY STATES

Although formula feeds accounted for only 11 percent of all feed for the country as a whole, they accounted for more than half the feed, including hay and pasture, consumed in several Northeastern States. They also accounted for less than 5 percent of all feed fed in several Great Plains and Western States (tables 6, 7). Corn fed as grain amounted to less than 10 percent of the feed-unit value of all feed fed in all Western States and several Eastern States. In most of the Corn Belt corn fed as grain accounted for 35 to 50 percent of all feed fed. Small grains formed the largest percentage of total feed in the Lake States and the smallest in the South and some New England States. Concentrates as a group made up 60 percent or more of all feed in several Corn Belt and Northeastern States and in North and South Carolina (fig. 1).

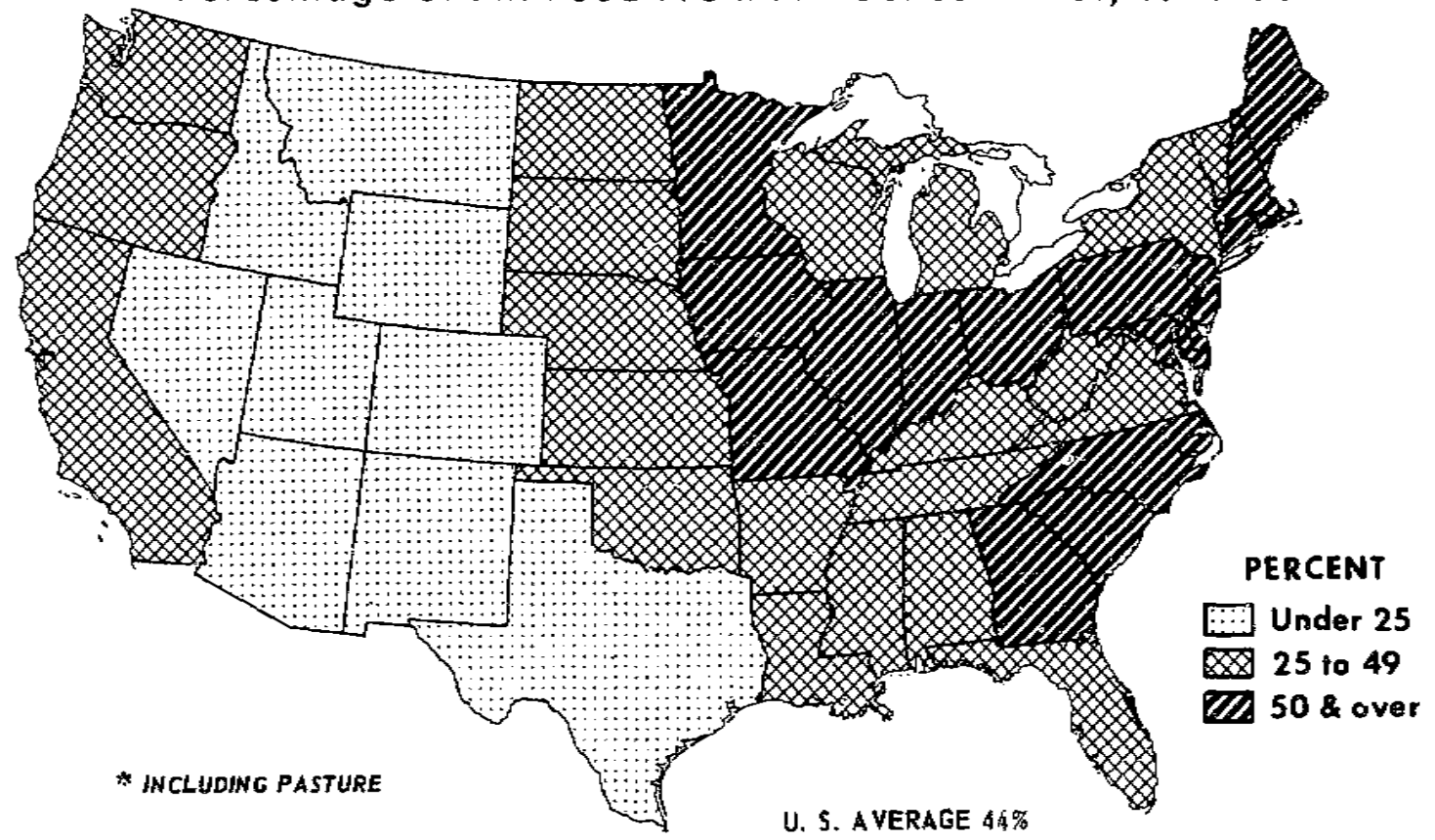
Hay made up 20 percent or more of all feed fed to all livestock in several Western and Northern States, but the percentage was small in most Southern States (fig. 2).

Pasture and grazing accounted for 37 percent of all feed nutrients in the country as a whole in 1949-50, but in several Southern and Western States this figure was 50 percent or more (fig. 3). Pasture and grazing were least important in several Northeastern States (tables 6, 7).

Formula feed amounted to 15 percent or more of all feed for dairy cattle in several Northeastern and Far Western States and in 2 States of the South (tables 8 to 10). It was a small percentage of the total in the Lake States and the Corn Belt. Corn as grain amounted to less than 10 percent of all feed in nearly all States, except the Corn Belt and nearby States. Small grains made up 10 percent or more of all feed in the Lake States and in several Western States. Concentrates made up 25 percent or more of all feed in the Northeast, Corn Belt, Lake States,

FEED FOR ALL LIVESTOCK

Percentage of All Feed From All Concentrates, 1949-50 *



U. S. DEPARTMENT OF AGRICULTURE

NEG. 55 (1)-598 AGRICULTURAL RESEARCH SERVICE

Figure 1.- Grains and other concentrates accounted for half or more of all feed consumed in 15 States east of the Mississippi River and in only 3 States west of the river.

and Appalachian regions, and in some Southern States. Hay amounted to 30 percent or more of all feed for dairy cattle in several Western and Northeastern States, but the percentage was small in the South (fig. 4). Pasture supplied from 20 to 30 percent of all feed for dairy cattle in the main dairy States, but it supplied a much larger percentage in several Southern States where little hay was fed (fig. 5).

Pasture and grazing make up a high percentage of all feed consumed by sheep and goats (tables 11 to 13). Corn made up around 30 percent or more of all feed for beef cattle in the Corn Belt and Lake States (tables 14 to 17). Grain feeding of cattle is important in these States. Corn and other concentrates are less important in the Western States where range cattle predominate.

Hay and pasture account for more than 80 percent of the feed used by beef cattle in most States except those in the Middle West, with the percentage of hay relatively large in the North and small in the South (fig. 6).

Only about 30 percent of the feed for horses and mules consists of grain or other concentrates (tables 18 - 19). The percentage is higher than this in most Southern States, but less in most other States. Formula feed is a small percentage of feed for hogs, but it amounts to nearly half of the feed for poultry in the country as a whole (fig. 7). Formula feed for poultry is high in the Northeastern States, on the Pacific Coast, and in Florida, but low in the northern Great Plains. Grains fed as such supply more than half of the feed nutrients for poultry in the Corn Belt and Lake States, and less than half of the feed for hogs (tables 20 - 23, fig. 8).

IMPORTANCE OF EACH KIND OF LIVESTOCK IN USE OF FEED, BY STATES

Poultry used about 53 percent of the formula feed fed (expressed in feed units), dairy cattle 22 percent, and hogs 12 percent (figs. 9 - 10) (table 24). Dairy cattle got a high percentage in only a few States, while poultry used more than any other kind of livestock in almost all States. Hogs got a fairly high percentage of the total in the Midwestern States.

More than half the corn fed as grain (excluding corn in formula feeds) was fed to hogs, 15 percent to poultry, 12 percent to dairy cattle, and 11 percent to beef cattle (fig. 11). The percentage of the total fed to hogs was high in the Middle West and the South (fig. 12). The percentage fed to dairy cattle was fairly high in several Northeastern States and in Michigan and Wisconsin. The percentage going to poultry was generally higher in the deficit areas than in States where production of corn was especially important.

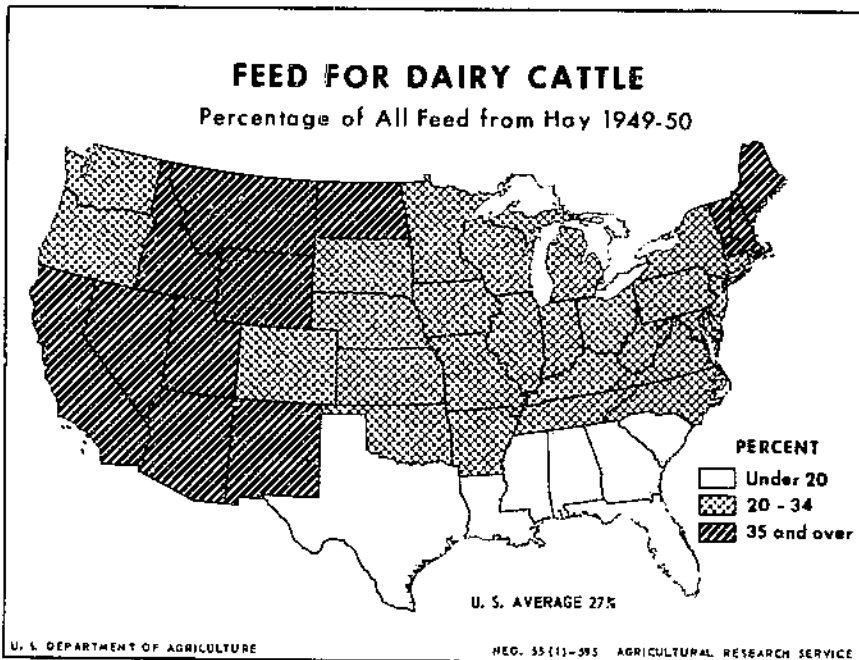


Figure 4.- Hay accounted for a third or more of all feed for dairy cattle in several Western and Northeastern States.

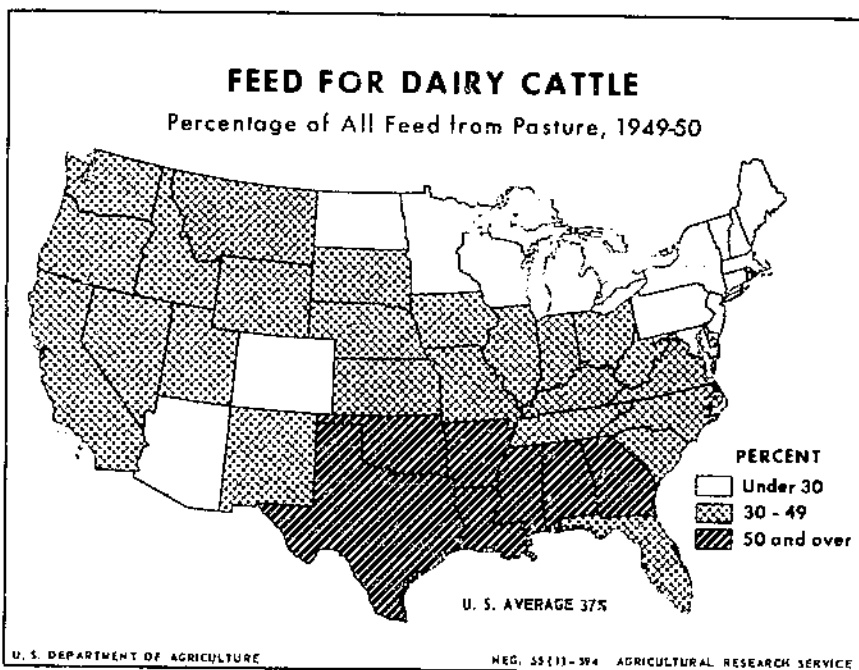
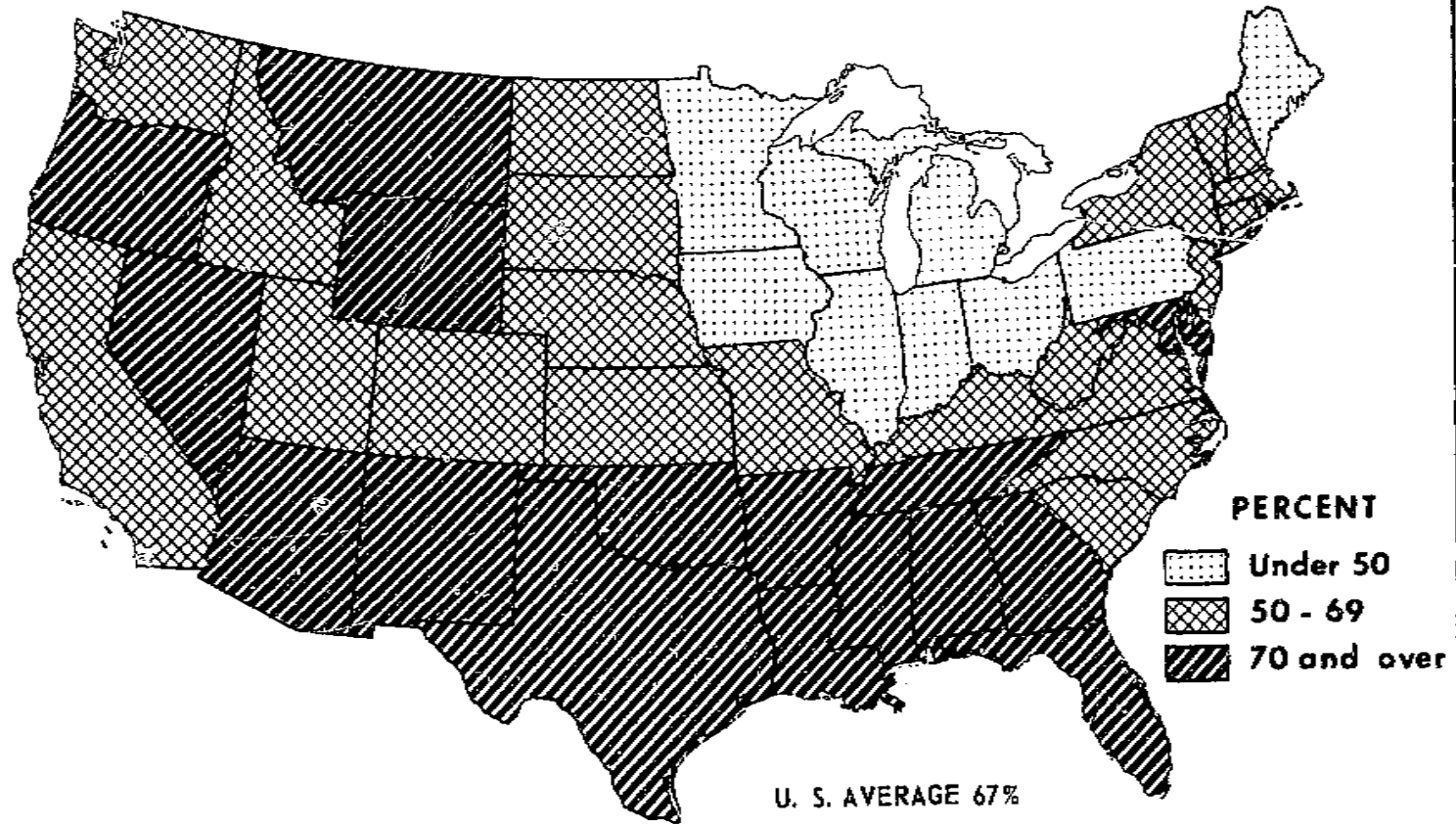


Figure 5.- Pasture accounted for less than 30 percent of all feed for dairy cattle in the principal dairy areas but for more than 50 percent in most of the South.

FEED FOR BEEF CATTLE

Percentage of All Feed from Pasture and Grazing, 1949-50



U. S. DEPARTMENT OF AGRICULTURE

NEG. 55 (1)-593 AGRICULTURAL RESEARCH SERVICE

Figure 6.- Beef cattle got a high percentage of their feed from grass in most States, except in States where large numbers were fattened on grain.

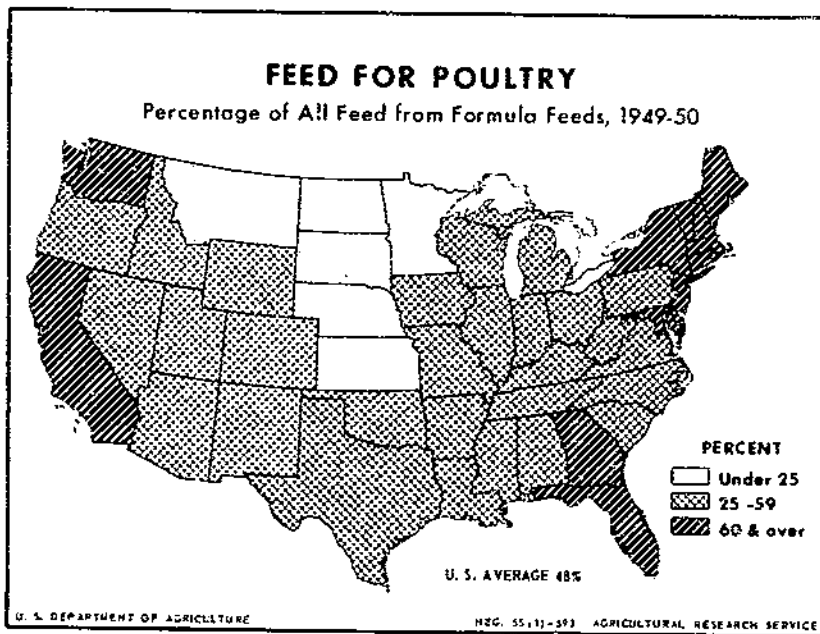


Figure 7.- A large percentage of feed for poultry in the Northeast, and in California and Florida was formula feed. It was lowest in the northern Great Plains.

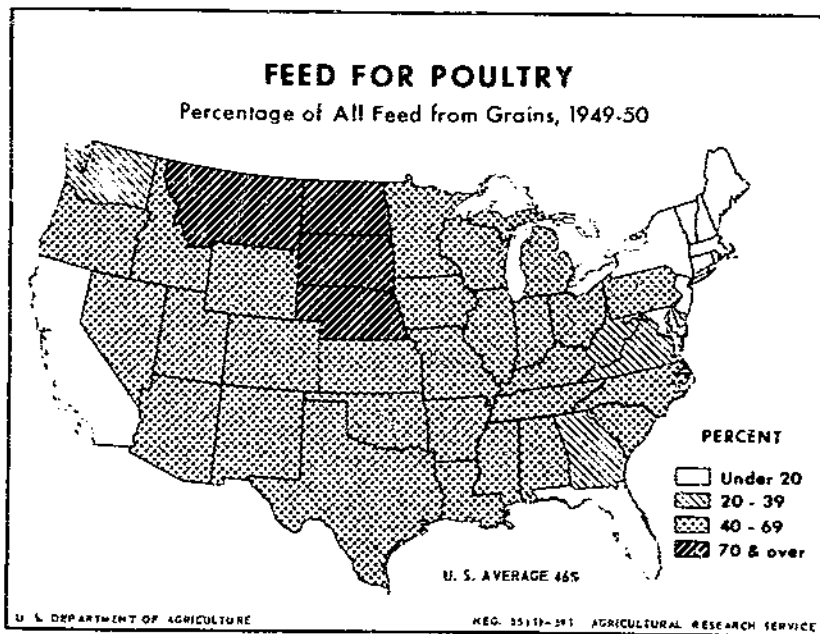


Figure 8.- Grains excluding those in formula feeds made up nearly half of the feeds fed to poultry for the country as a whole and more than half in many States.

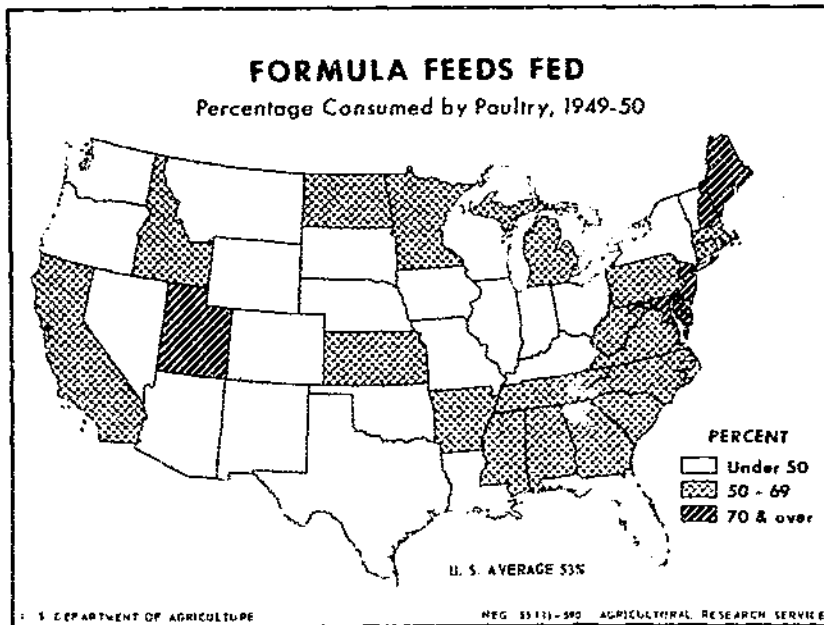


Figure 9.- In a large number of States half or more of all formula feed was fed to poultry.

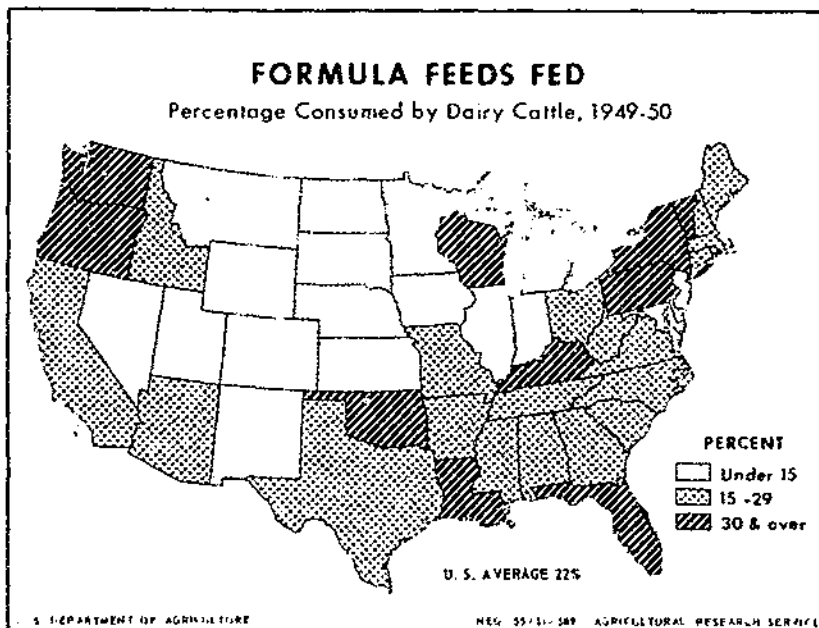


Figure 10.- In only a few States did as much as 30 percent of the formula feed fed go to dairy cattle.

About 36 percent of the small grain (excluding that in formula feed) was fed to hogs, 27 percent to dairy cattle, and 25 percent to poultry. The percentages were usually high for dairy cattle in several Northeastern States, the Lake States, and some States in the Appalachian region. Hogs took a large percentage of the total in the Corn Belt, and several Western States. Of all concentrates fed, hogs consumed 38 percent, poultry 26 percent, beef cattle 9 percent, dairy cattle 18 percent (figs. 13 - 16). The percentage fed to poultry exceeded that for other classes of livestock in most Northeastern States, in some Southern States, and in the Pacific Coast and some other Western States.

Sixty percent of the hay fed went to dairy cattle and 27 percent to beef cattle for the country as a whole (fig. 17). The percentage used by dairy cattle was higher than for beef cattle or other livestock in all States except some northern Plains and Western States. Horses and mules were fed only 9 percent of all hay for the country as a whole, but in several Southern States, they got a fourth or more of it. Sheep got 10 percent or more of the hay in only 3 States-- Montana, Idaho, and Wyoming.

Nearly half the feed from pasture and grazing in this country was used by beef cattle in 1949-50, 31 percent by dairy cattle, 10 percent by sheep, and 8 percent by horses and mules (figs. 18 - 19). The percentage going to dairy cattle exceeded that going to beef cattle in all States east of the Mississippi River, except Florida, Alabama, Mississippi, and Louisiana. Dairy cattle used more pasture than beef cattle in only 3 States west of the Mississippi--Minnesota, Arkansas, and Washington. In several States in the western half of the country and in Florida, beef cattle used 70 percent or more of all pasture and grazing. Sheep got as much as 20 percent of the grazing in only 5 States. Horses and mules obtained 15 percent or more of the pasture in several Southern States. Harvested forage (hay, silage, and stover) accounted for more feed than did pasture only in the Northeastern and Lake States (table 6). For the country as a whole, more than twice as much feed came from pasture as from harvested roughage (tables 25 and 26).

Dairy cattle consumed 30 percent of all feed fed in the country as a whole, including pasture, in 1949-50. Beef cattle used 27 percent of all feed, hogs 19 percent, poultry 12 percent, horses and mules 6 percent, and sheep and goats 5 percent. Dairy cattle used more feed than any other class of livestock in all States east of the Mississippi River, except New Hampshire, Massachusetts, New Jersey, Delaware, Indiana, Illinois, and Florida. Beef cattle consumed the greatest quantity of feed in all States west of the Mississippi, except Missouri, Arkansas, Washington, and California. Hogs used the greatest quantity in only 4 Corn Belt States and poultry in only 4 Northeastern States. Sheep consumed 20 percent or more of all feed in only 2 Western States, and horses and mules consumed 20 percent or more of the feed in only 2 Southern States.

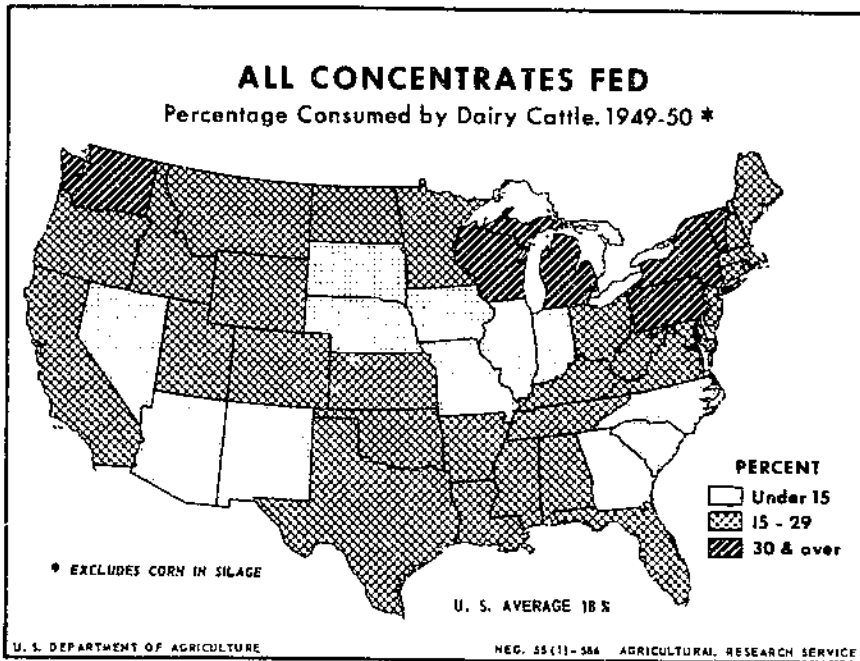


Figure 13.- Dairy cattle got more than 30 percent of all concentrates fed in most dairy States but less than 15 percent in several States.

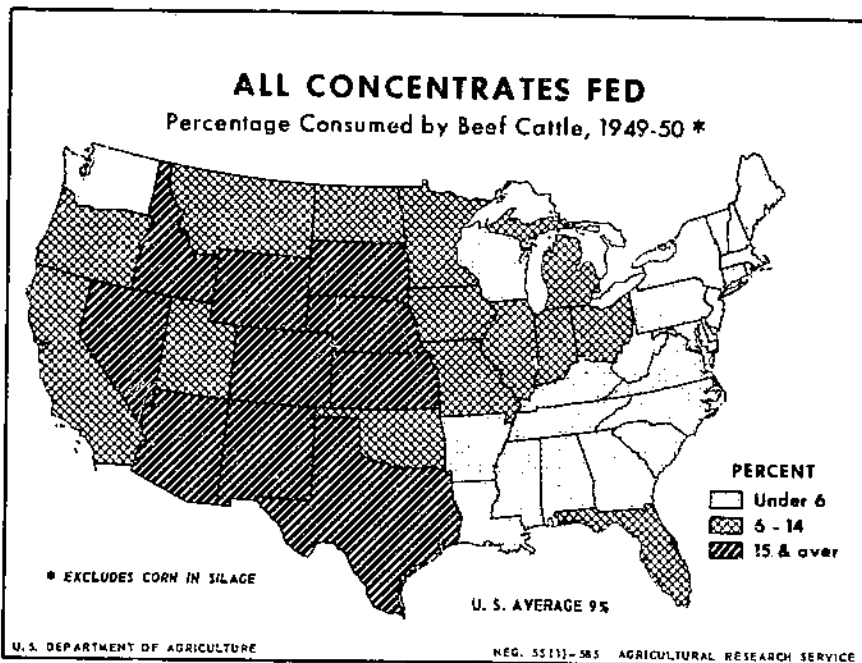


Figure 14.- Beef cattle were fed a large percentage of all concentrates only in the Western States.

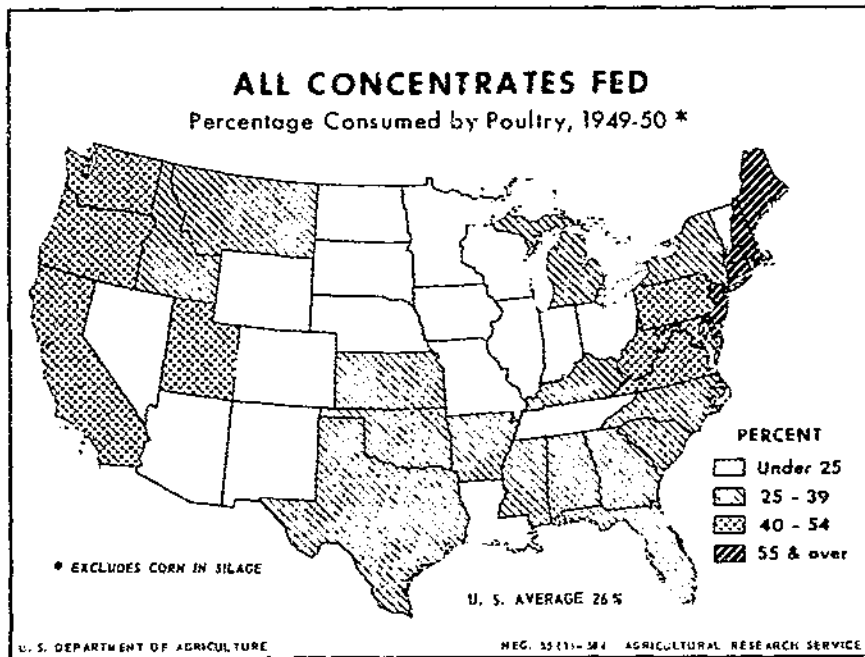


Figure 15.- A large percentage of all concentrates went to poultry in several Northeastern States and in the Pacific Coast but less than a fourth in many Midwestern States.

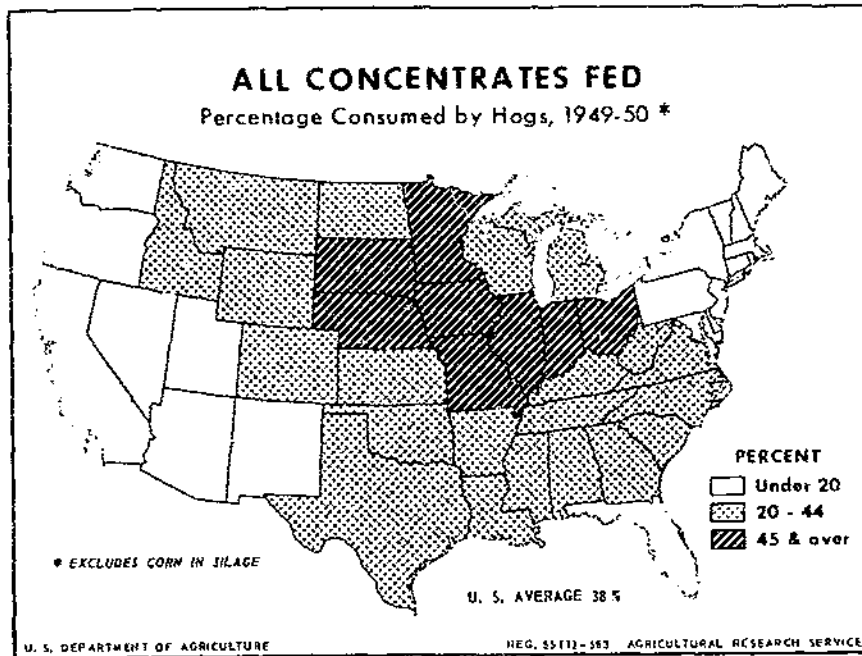
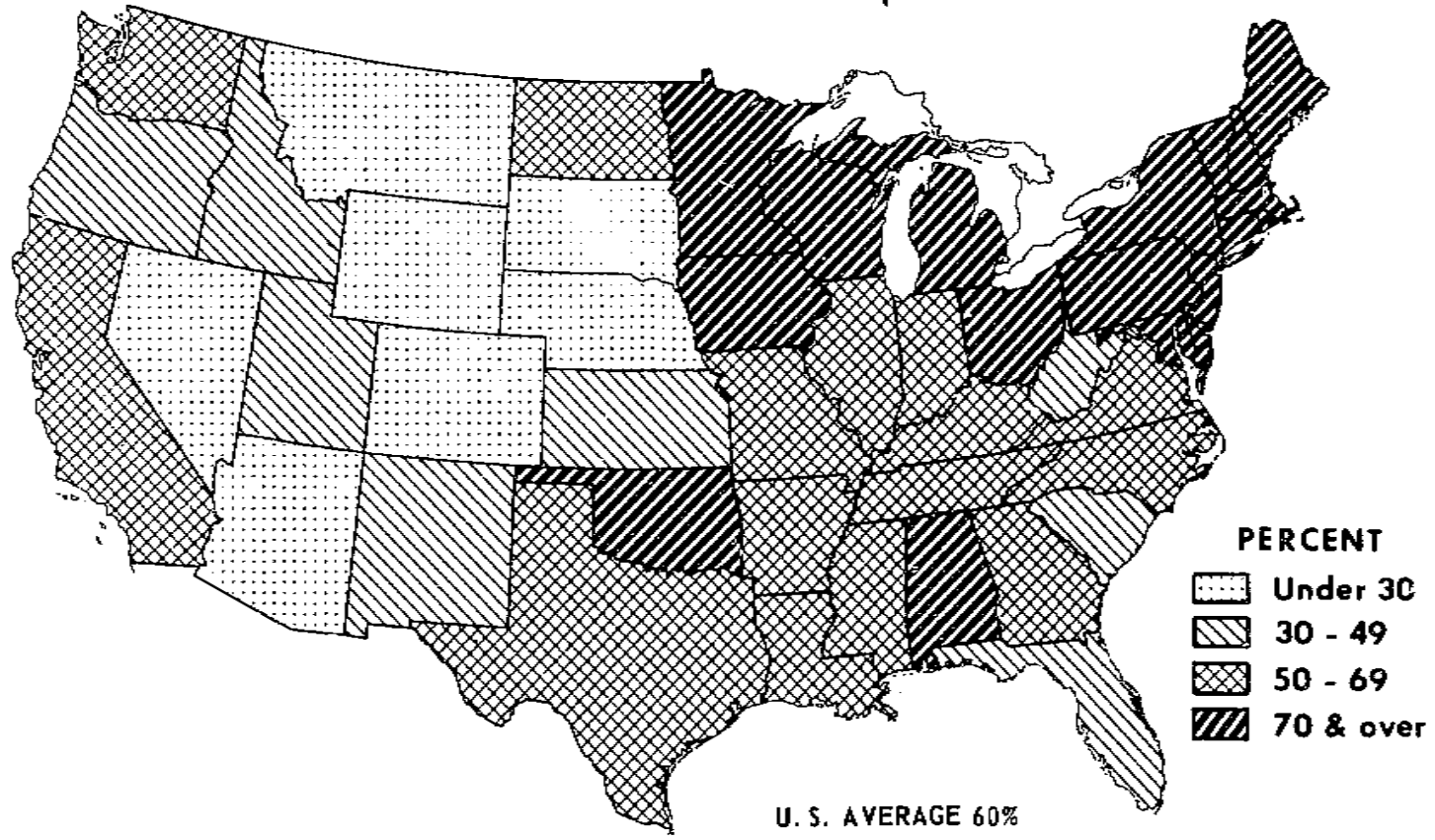


Figure 16.- In 8 North Central States hogs got 45 percent of all concentrates fed but only a small percentage in many States.

HAY FED

Percentage Fed to Dairy Cattle, 1949-50



U. S. DEPARTMENT OF AGRICULTURE

NEG. 55 (1)- 5B2 AGRICULTURAL RESEARCH SERVICE

Figure 17.- In most States more than half the hay produced was fed to dairy cattle. In western States, however, beef cattle got most of the hay.

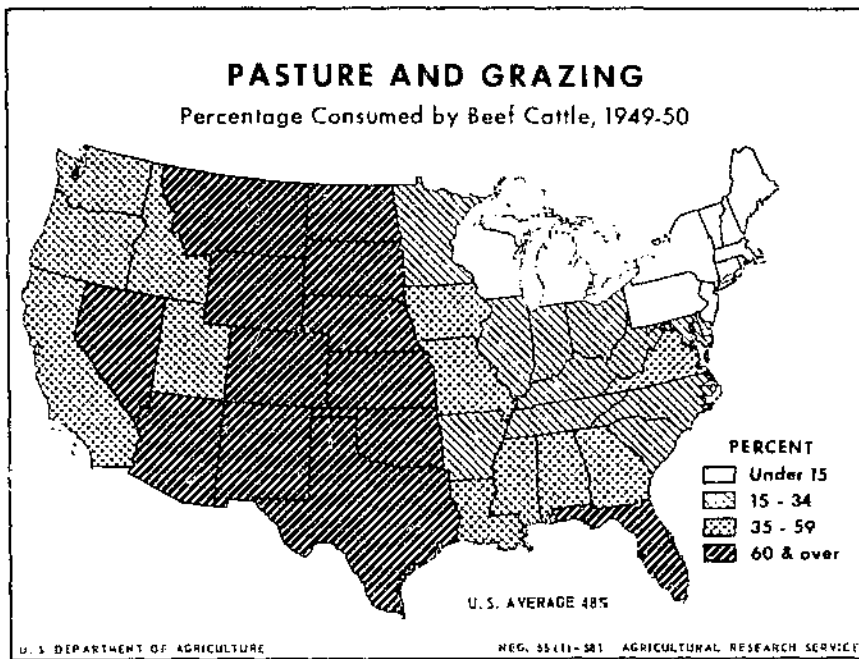


Figure 18.- Beef cattle consumed nearly half of all feed obtained from grazing in the United States but less than 35 percent in most States east of the Mississippi River.

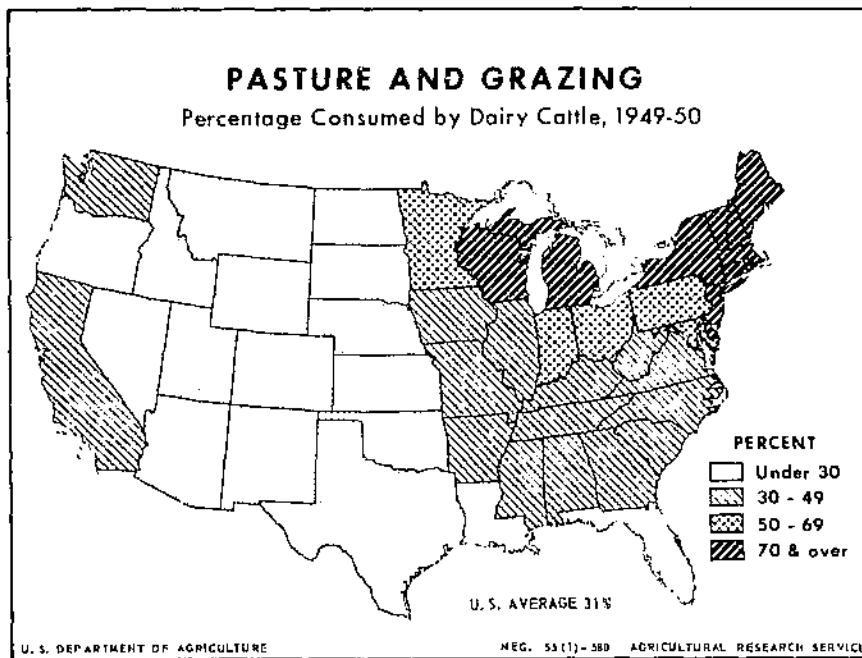


Figure 19.- Dairy cattle consumed about 31 percent of all feed obtained from pastures and grazing in the United States but a much higher percentage in the Lake States and the Northeast.

FEED CONSUMPTION RATES FOR LIVESTOCK,
UNITED STATES, 1949-50

Annual consumption of feed per head expressed in feed units for the various kinds of livestock are shown in table 27. The table shows that a beef cow consumes about 72 percent as much feed as a milk cow, that it takes about 6.4 sheep to use as much feed as a milk cow, and that 100 horses and mules eat as much feed as 85 milk cows. Sixty hens and pullets on hand January 1 or 185 chickens raised during the year are the equivalent of a milk cow in feed consumption, counting feed of all kinds including hay and pasture.

FEED FROM PASTURE, BY STATES

Feed obtained from pasture varies from year to year with growing conditions. The condition of pastures in 1950 was above average. The feed obtained also varies with the number of livestock and with the supply of other feeds available. The supply of concentrate feeds was large in 1949-50, and the supply of hay was about average in relation to the number of livestock in the country as a whole. Feed obtained from pasture was calculated for each class of livestock in each State by estimating the total digestible nutrients required per head for the year or season, multiplying this total by the number of head, and subtracting the figures for concentrates and harvested forage consumed. Some variation was allowed in requirements per head of cattle between regions because of a difference in weight and in production per head. But it seems probable that, because of the nature of the data, the estimated quantity of feed obtained from pasture at the State level is subject to large percentage errors.

To obtain the yield per acre, feed obtained from pasture was related to the acreage of pasture in each State. As there are several classes of pasture it was necessary to convert to some common denominator. The categories of pasture acreage reported in U. S. Department of Agriculture's Technical Bulletin 1082 ^{5/} are cropland pasture, open permanent pasture, woodland pasture, and grazing land not on farms. Cropland pasture was taken as the common denominator and acreages of other kinds of pasture were converted to cropland pasture equivalent by the factors shown in table 28.

Acreages of each kind of pasture are given in table 29 and the cropland equivalent appears in table 30. The calculations made to obtain the acres grazed per animal unit and yield per acre in feed units are given in table 31. It takes about 2 acres of cropland pasture or from 3 to 4 acres of open permanent pasture to carry an animal unit,

^{5/} Wooten, H. H. Major Uses of Land in the United States. U. S. Dept. Agr. Tech. Bull. 1082, 1953.

without other feed, for the season in the Corn Belt and Lake States. Feed obtained per acre of cropland pasture for the Corn Belt and Lake States was the equivalent on the average of about 22 bushels of corn and for open permanent pasture it was the equivalent of about half as much (table 32). Feed obtained per acre from all land grazed in the United States excluding aftermath but including land not in farms, was the equivalent of about 186 pounds, or 3.3 bushels, of corn.

METHODS OF PROCEDURE

The daily digestible nutrients required per head for each kind and age of livestock were estimated, using the "Recommended Nutrient Allowances" of the National Research Council and Morrison's feeding standards as guides (table 33). Daily rates used may be high for some classes of livestock and low for others as there are no accurate figures on average weights of cattle and other livestock on farms. The TDN allowance used for dairy cows and milk was about 10 percent above that given in the feeding standards. This rate was used because in the New England States, where dairy cattle are the principal kind of roughage-consuming livestock, the recommended feeding rates gave a very small or no feed value for pasture after allowing for the feed in concentrates, hay, and silage at conservative rates. Days on the farm were estimated for some classes of livestock. Daily rates multiplied by days on farm gave the annual TDN requirement per head. This total multiplied by the number of head reported gave the total annual requirements. As requirements for poultry are not reported by nutritionists as TDN, the concentrates estimated to be fed reported in Statistical Bulletin 145 were multiplied by 0.75, and a small percentage was added for feed from pasture for all poultry except broilers. The total requirement for all livestock came to about 240 million tons of TDN.

The next step was to convert the concentrates and roughage fed to each kind of livestock, as reported in Statistical Bulletin 145, into TDN and subtract the sum of these feeds from the total requirements to arrive at the TDN obtained from pasture and grazing. The tonnage of concentrate feeds fed was multiplied by 75 percent to obtain the TDN. It was assumed that 10 percent of the hay and silage was not consumed, that is, that it was lost or used for bedding. The remaining hay was multiplied by 0.50 and silage by 0.18 to obtain the TDN consumed. These calculations resulted in 93.6 million tons of TDN in concentrate feeds, 53.7 million tons in hay, silage and other forage, and, by subtraction, 93 million tons of TDN in pasture and grazing (table 34).

A test of the reasonableness of these estimates was made by dividing the year into quarters and calculating total feed requirements for each quarter. Total TDN for milk cows was divided into that for maintenance ^{6/} and for milk as shown in table 35. Maintenance

^{6/} No allowance was made for greater maintenance requirements for any livestock in winter as compared with the summer quarters, although it may be argued that this should have been done.

was divided equally by quarters, and TDN for milk were distributed according to production, by quarters. A similar procedure was followed for laying flocks, except that 80 percent of total feed was allowed for maintenance and 20 percent for eggs. The only other class of livestock for which an attempt was made to divide feed requirements into those for maintenance and those for production was work animals. It was assumed that more than twice as much work was done in the 2 quarters from January to June as in the other 2 quarters of the year.

Feed requirements for other dairy and other beef cattle and broilers were divided uniformly among the 4 quarters. Requirements for grain-fattened cattle were assumed to be 25 percent in the October-December quarter, 35 percent in the January-March quarter, and 20 percent in each of the next 2 quarters. Requirements for chickens raised were assumed to be 15 percent in the January-March quarter, 20 percent in the April-June quarter, 40 percent in the July-September quarter, and 25 percent in the October-December quarter. Feed requirements for turkeys were assumed to be 5 percent in each of the first 2 quarters of the year and 45 percent in each of the last 2 quarters, F.M. 63. ^{7/} Requirements for stock sheep were divided equally among the 4 quarters, but the requirement for lambs was put in the spring and summer quarters. Requirements for hogs were calculated for 1949-50, as shown in table 4, F.M. 63.

Total quantities of concentrates fed by quarters are reported in U. S. Department of Agriculture Statistical Bulletin 139, table 2. ^{8/} These were adjusted and converted to TDN as shown in table 36 herein. In table 2 of Statistical Bulletin 139, corn in silage is included as a concentrate and as fed in the October-December quarter; although probably half of it is fed in the January-March quarter. In this bulletin silage is included as a roughage; the corn in it was deducted from the concentrates reported fed. The figure for seeds fed is a rough estimate of the soybeans, peanuts, velvet beans, cowpeas, and cottonseed fed. Concentrates were converted to TDN by multiplying by 0.76. These are the figures shown at the bottom of the concentrate section of table 35.

Allocation of concentrates for each class of livestock was made as indicated in tables 3 and 4, F.M. 63. Concentrates fed to all livestock were computed for each quarter and compared and made to agree with the totals reported in Feed Statistics, previously mentioned. Adjustment for the difference was made in the feed for hogs. The total quantity of concentrates for each class of livestock for the year is that given in Statistical Bulletin 145, converted to TDN.

^{7/} U. S. Bureau of Agricultural Economics. Units of Livestock Production, F.M. 63. April 1948. See table 3.

^{8/} U. S. Agricultural Marketing Service. Feed Statistics. U. S. Dept. Agr. Statis. Bull. 139. January 1954.

No official estimates of the disappearance of hay by quarters are available but there are data for the period May-December inclusive and January-April inclusive. Estimated disappearance of hay by months for the above periods is as follows:

<u>Date</u>	<u>Million tons</u>	
1949		
May.....	2.5	
June.....	2.6	
July.....	4.3	
August.....	4.5	
September.....	4.4	
October.....	4.1	} October-December } 25.0-10% loss X 50%=11.2 TDN
November.....	6.8	
December.....	<u>14.1</u>	
Reported May-December disappearance	43.3	
1950		
January.....	14.8	} January-March } 44.2-10% loss X 50%=19.9 TDN
February.....	14.6	
March.....	14.8	
April.....	<u>7.9</u>	
Reported January-April disappearance	52.1	
May.....	2.5	} April-June } 13.0-0.3 alfalfa meal-10% loss } X 50%=5.8 TDN
June.....	2.6	
July.....	4.3	} July-September } 13.2-0.8 alfalfa meal-10% loss } X 50%=5.6 TDN
August.....	4.5	
September.....	4.4	

Tonnage of hay, silage, wet beet pulp, corn stover, and sorghum fodder consumed by livestock by quarters and expressed in TDN is estimated as follows:

	<u>Total for year</u> <u>Mil.tons</u>	<u>October- December</u> <u>Mil.tons</u>	<u>January- March</u> <u>Mil.tons</u>	<u>April- June</u> <u>Mil.tons</u>	<u>July- September</u> <u>Mil.tons</u>
Hay.....	42.5	11.2	19.9	5.8	5.6
Silage and beet pulp.....	7.3	3.1	3.2	1.0	
Stover and sorghum forage.	<u>3.9</u>	<u>1.7</u>	<u>1.7</u>	<u>.5</u>	
Total.....	53.7	16.1	24.8	7.3	5.6

These are the figures that appear as totals in the section, "Hay, silage and other harvested forage," in table 35. Total TDN of harvested forage for each kind of livestock were obtained by using the quantities fed shown in Statistical Bulletin 145, and converting them to TDN after allowing for a loss. The total TDN that came from pasture and grazing was obtained by subtracting concentrates and harvested forage from total feed requirements. It was assumed that hogs would obtain from 6 to 7 percent of their total nutrients from pasture. The corresponding figure for laying flocks was 2 to 3 percent, chickens raised 3 to 4 percent, and turkeys 5 to 6 percent.

Allocation of harvested forage and of pasture and grazing by quarters, by classes of livestock, was made in such a way that the sum of TDN of harvested forage for all classes of livestock for each quarter had to agree with the previously determined total. TDN from pasture for all livestock were determined by subtracting TDN of concentrates and harvested forage from total requirements. Seasonal distribution of harvested forage and of pasture appears to be logical.

A comparison of the quantity of TDN and feed units consumed by different classes of livestock in this country in 1949-50 is given in table 33. As used in this report, a feed unit is a pound of corn or equivalent in other feed (tables 37 and 38). One hundred pounds of No. 3 corn contain 78 pounds of digestible nutrients. One hundred pounds of oats contain 70 TDN, 100 pounds of soybean meal contain 78 TDN, and 100 pounds of hay 50 TDN. However, in feed units 100 pounds of corn are 100 feed units, 100 pounds of oats 90 feed units, 100 pounds of soybean meal 165 feed units, and 100 pounds of hay 45 feed units. The feed-unit comparison is more in line with average prices than is the TDN comparison. Whereas it takes 50 TDN of average hay to make 45 feed units, it is probable that 17.5 TDN of average pasture forage will make 19 feed units. Green pasture grasses or forage crops contain more protein and vitamins in relation to TDN than does the cured hay.

Table 1.- Percentage of all feed for each kind of livestock supplied by different kinds of feeds, United States, year beginning October 1, 1949

Item	Corn	Oats	Barley	Other grain	Animal protein feeds	Oil-seed meals	Other high-protein feeds	Other by-products	Total concentrates	Seeds	Skim milk	Hay	Other roughage	Silage and beet pulp	Pasture	All feed
	1/			2/	3/	4/	5/		6/	7/			8/	9/		
	Percent	Percent	Percent	Percent	Percent	Percent	Percent	Percent	Percent	Percent	Percent	Percent	Percent	Percent	Percent	Percent
Dairy cattle	10.4	5.8	1.0	0.6		4.2	1.5	2.8	26.3	0.5	1.3	26.7	1.1	7.0	37.1	100
Beef cattle	10.1	1.0	.3	.3		2.6	.1	.8	15.0	.9		14.7	1.6	1.7	66.1	100
Sheep and goats	1.9	.8	.6	--		1.3	--	.5	5.1			9.5	1.8	.7	82.9	100
Horses and mules	21.1	6.9	.2	.2		.1	.1	1.3	29.9			18.9	2.4		48.8	100
Hogs	68.4	11.3	1.7	1.2	1.6	5.7		1.0	90.9	.6	3.3				5.2	100
Poultry	45.0	8.5	2.0	13.6	4.0	11.3	1.7	10.9	97.0		.5				2.5	100
Other livestock	10/	52.2	7.8	1.7	3.1	2.1	12.0	1.0	11.9			8.2				100
Total		26.4	5.8	1.0	2.1	.8	4.6	.7	44.3	.5	1.1	13.7	1.0	2.6	36.8	100

1/ Corn fed as grain or in formula feeds, but excluding corn in silage.

2/ Sorghum grains, wheat, and rye.

3/ Tankage, meat scraps, fishmeal, and dried milk products.

4/ Gluten feed and meal, brewers' and distillers' dried grains.

5/ Millfeeds, alfalfa meal, molasses, and so on.

6/ Cottonseed, soybeans, velvet beans, peanuts, and cowpeas.

7/ Dry equivalent of skim milk fed as a liquid.

8/ Corn stover and sorghum forage.

9/ Corn and sorghum silage and wet beet pulp. Grass silage not included.

10/ Other livestock on farms and all livestock in cities. Includes dogs and cats.

Table 2.- Feeds, including those in formula feeds, expressed in feed units consumed by principal kinds of livestock, United States, year beginning October 1, 1949

Item	Concentrates									Harvested roughage						
	Corn	Oats	Barley	Other grain	Animal	Other	Other	Total	Seeds	Skim milk	Hay	Other	Silage	Pasture and grazing	All feed	
					protein	Oil-	high-					by-	dry			and
					feeds	seed	protein					prod-	rough-			beet
1/	2/	3/	4/	5/	6/	7/	8/	9/								
1,000	1,000	1,000	1,000	1,000	1,000	1,000	1,000	1,000	1,000	1,000	1,000	1,000	1,000	1,000	1,000	
tons	tons	tons	tons	tons	tons	tons	tons	tons	tons	tons	tons	tons	tons	tons	tons	
Dairy cattle	8,848	4,955	886	502		3,565	1,277	2,425	22,458	422	1,088	22,788	896	5,956	31,688	85,296
Beef cattle	7,529	742	179	49		1,903	100	619	11,121	676		10,905	1,233	1,280	49,123	74,338
Sheep and goats	240	101	78	2		156	1	60	638			1,186	219	88	10,308	12,439
Horses and mules	3,658	1,205	38	32		13	24	227	5,197			3,284	417		8,488	17,386
Hogs	35,971	5,935	914	627	823	3,007		527	47,804	296	1,721				2,749	52,570
Poultry	15,231	2,881	691	4,605	1,359	3,819	560	3,693	32,839		178				828	33,845
Other livestock ^{10/}	2,396	358	78	144	98	550	47	547	4,218			379				4,597
Total	73,873	16,177	2,864	5,961	2,280	13,013	2,009	8,098	124,275	1,394	2,987	38,542	2,765	7,324	103,184	280,471

- 1/ Corn fed as grain or in formula feeds, but excluding corn in silage.
- 2/ Sorghum grains, wheat, and rye.
- 3/ Tankage, meat scraps, fishmeal and dried milk products.
- 4/ Gluten feed and meal, brewers' and distillers' dried grains.
- 5/ Millfeeds, alfalfa meal, molasses, etc.
- 6/ Cottonseed, soybeans, velvet beans, peanuts, and cowpeas.
- 7/ Dry equivalent of skim milk fed as a liquid.
- 8/ Corn stover and sorghum forage.
- 9/ Corn and sorghum silage and wet beet pulp. Grass silage not included.
- 10/ Other livestock on farms and all livestock in cities. Includes dogs and cats.

Table 3.- Percentage of each kind of feed expressed in feed units consumed by principal kinds of livestock, United States, year beginning October 1, 1949

Item	Corn 1/	Oats	Barley	Other grain 2/	Animal protein feeds 3/	Oil- seed meals	Other high- protein feeds 4/	Other byprod- ucts 5/	Total concentrates	Seeds 6/	Skim milk 7/	Hay	Other dry rough- age 8/	Silage and beet pulp 9/	Pasture	All feed
	Percent	Percent	Percent	Percent	Percent	Percent	Percent	Percent	Percent	Percent	Percent	Percent	Percent	Percent	Percent	Percent
Dairy cattle	12.0	30.6	30.9	8.4		27.4	63.6	29.9	18.1	30.3	36.4	59.1	32.4	81.3	30.7	30.4
Beef cattle	10.2	4.6	6.3	.8		14.6	5.0	7.6	8.9	48.5		28.3	44.6	17.5	47.7	26.5
Sheep and goats	.3	.6	2.7			1.2		.7	.5			3.1	7.9	1.2	10.0	4.4
Horses and mules	5.0	7.4	1.3	.5		.1	1.2	2.8	4.2			8.5	15.1		6.2	6.2
Hogs	48.7	36.8	32.0	10.6	36.1	23.1		6.5	38.5	21.2	57.6				2.6	18.8
Poultry	20.6	17.8	24.1	77.3	59.6	29.4	27.9	45.7	26.4		6.0				.8	12.1
Other live- stock 10/	3.2	2.2	2.7	2.4	4.3	4.2	2.3	6.8	3.4			1.0				1.6
Total	100	100	100	100	100	100	100	100	100	100	100	100	100	100	100	100

- 1/ Corn fed as grain or in formula feeds, but excluding corn in silage.
- 2/ Sorghum grain, oat, and rye.
- 3/ Tankage, meat scraps, fishmeal, and dried milk products.
- 4/ Gluten feed and meal, brewers' and distillers' dried grains.
- 5/ Millfeeds, alfalfa meal, molasses, and so on.
- 6/ Cottonseed, soybeans, velvet beans, peanuts, and cowpeas.
- 7/ Dry equivalent of skim milk fed as a liquid.
- 8/ Corn stover and sorghum forage.
- 9/ Corn and sorghum silage and wet beet pulp. Grass silage not included.
- 10/ Other livestock on farms and all livestock in cities. Includes dogs and cats.

Table 4.- Different kinds of feeds expressed in feed units consumed by principal kinds of livestock, United States, year beginning October 1, 1949

Item	Concentrates									Harvested roughage								
	Formula feeds	Corn	Oats	Barley	Other grain	Animal protein	Oil seed meal	High protein feeds	Other byprod.	Total	Seeds	Skim milk	Hay	Other dry roughage	Silage and beet pulp	Total	Pasture	All feed
	1,000 tons	1,000 tons	1,000 tons	1,000 tons	1,000 tons	1,000 tons	1,000 tons	1,000 tons	1,000 tons	1,000 tons	1,000 tons	1,000 tons	1,000 tons	1,000 tons	1,000 tons	1,000 tons	1,000 tons	1,000 tons
Dairy cattle	6,651	8,071	4,439	740	377		1,275	317	588	22,458	422	1,088	22,788	896	5,956	29,640	31,688	85,296
Beef cattle	864	7,467	663	165	49		1,653		260	11,121	676		10,905	1,233	1,280	13,418	49,123	74,336
Sheep and goats	66	239	100	75			140		18	638			1,186	219	88	1,493	10,306	12,439
Horses and mules	367	3,613	1,147	38	32					5,197			3,284	417		3,701	8,488	17,386
Hogs	3,725	35,870	5,935	914	608	263	423		66	47,804	296	1,721					2,749	52,570
Poultry	16,270	10,328	2,087	213	2,871	228	351	23	468	32,839		178					828	33,845
Other livestock ^{10/}	2,557	1,424	233	4						4,218			379			379		4,597
Total	30,500	67,012	14,604	2,149	3,937	491	3,842	340	1,400	124,275	1,394	2,987	38,542	2,765	7,324	48,631	103,164	280,471

1/ Corn fed as grain. Excludes corn in formula feeds or in silage.
 2/ Sorghum grains, wheat, and rye.
 3/ Tankage and meat scraps.
 4/ Gluten feed and meal, brewers' and distillers' dried grains.
 5/ Mill feeds, alfalfa meal, molasses, and so on.
 6/ Cottonseed, soybeans, velvet beans, peanuts, and coupeas.
 7/ Dry equivalent of skim milk fed as a liquid.
 8/ Corn stover and sorghum forage.
 9/ Corn and sorghum silage and wet beet pulp. Grass silage not included.
 10/ Other livestock on farms and all livestock in cities. Includes dogs and cats.

Table 5.- Ingredients in formula feeds expressed in feed units consumed by principal kinds of livestock, United States, year beginning October 1, 1949 ^{1/}

Item	Corn	Oats	Barley	Other grain	Animal protein	Oil-seed meal	Other high-protein feeds	Other by-products	Total
	1,000 tons	1,000 tons	1,000 tons	1,000 tons	1,000 tons	1,000 tons	1,000 tons	1,000 tons	1,000 tons
Dairy cattle	777	516	146	125		2,290	960	1,837	6,651
Beef cattle	62	79	14			250	100	359	864
Sheep and goats	1	1	3	2		16	1	42	66
Horses and mules	45	58				13	24	227	367
Hogs	101			19	560	2,584		461	3,725
Poultry	4,903	794	478	1,734	1,131	3,468	537	3,225	16,270
Other livestock	972	125	74	144	98	550	47	547	2,557
Total	6,861	1,573	715	2,024	1,789	9,171	1,669	6,698	30,500

^{1/} See footnotes to table 4 for kinds of feeds included.

Table 6.- Principal kinds of feeds expressed in feed units consumed by livestock, United States, year beginning October 1, 1949

State	Concentrates					Total	Seeds and skin milk		Harvested forage				Pasture	All feed
	Formula feed	Corn	Other grain	High- protein feeds 1/	Other by- products 2/		Hay	Other dry- roughage 3/	Silage and beet pulp 5/	Total	Pasture	All feed		
	1,000 tons	1,000 tons	1,000 tons	1,000 tons	1,000 tons	1,000 tons	1,000 tons	1,000 tons	1,000 tons	1,000 tons	1,000 tons	1,000 tons	1,000 tons	1,000 tons
Maine	519	48	47			624	6	261		17		278	125	1,023
Vermont	383	45	30		8	446	6	468		89		557	250	1,259
New Hampshire	331	35	8			374	2	132		15		347	82	605
Massachusetts	779	103	22		2	906	2	222		43		265	109	1,282
Rhode Island	100	11	2			113		16				24	27	164
Connecticut	568	48	9			625	2	156		51		207	125	959
New York	2,508	471	421	116	37	3,553	49	1,799		8	732	2,539	1,615	7,756
New Jersey	1,169	136	59	16		1,380	4	183		3	72	258	159	1,801
Pennsylvania	1,748	1,569	767	65	42	4,191	47	1,298		42	397	1,737	1,089	7,064
Delaware	507	89	16	2		614	2	38		7		52	58	726
Maryland	656	375	102	14		1,147	8	269		23	65	357	389	1,901
Ohio	880	3,678	972	188	57	5,775	85	1,303		103	228	1,634	2,631	10,125
Indiana	1,116	4,829	725	193	36	6,899	89	948		31	127	1,166	2,275	10,369
Illinois	1,206	6,618	1,494	207	60	9,585	135	1,573		35	304	1,914	3,581	15,213
Iowa	1,368	11,837	2,837	220	43	16,305	521	1,921		39	364	2,324	4,874	24,074
Missouri	1,113	4,924	595	178	22	6,832	149	1,835		89	111	2,035	3,811	12,827
Michigan	417	1,443	981	104	25	2,970	138	1,282		62	356	1,700	1,504	6,312
Wisconsin	721	2,631	1,739	277	112	5,480	134	2,331		64	1,713	4,108	2,996	12,718
Minnesota	708	3,887	2,150	193	113	7,051	364	2,151		32	961	3,144	2,636	13,195
North Dakota	40	490	580	13	11	1,134	83	1,275		13	94	1,382	1,534	4,133
South Dakota	132	1,605	841	39	21	2,638	138	1,323		50	128	1,493	3,275	7,544
Nebraska	385	3,826	683	179	90	5,163	204	1,807		141	104	2,052	4,328	11,747
Kansas	386	1,644	736	186	70	3,022	141	1,173		314	409	1,896	4,739	9,798
West Virginia	374	412	55	3	2	846	27	392		39	21	452	810	2,135
Kentucky	530	2,036	112	66	32	2,776	73	951		26	42	1,079	2,390	6,318
Tennessee	584	1,761	131	90	12	2,578	70	808		83	33	924	2,128	5,700
Virginia	850	1,072	200	51	22	2,195	60	719		87	94	900	1,480	4,635
North Carolina	785	1,546	213	72	12	2,628	77	528		119	28	675	835	4,215
South Carolina	291	669	216	53	1	1,230	52	184		30	16	230	513	2,025
Georgia	868	1,296	127	82	11	2,384	323	304		62	11	377	1,403	4,487
Florida	541	193	11	41	81	867	117	35		1	4	40	2,002	3,026
Alabama	438	1,429	46	119	21	2,053	136	226		42	12	280	2,084	4,553
Mississippi	455	1,133	45	105	6	1,744	123	365		49	17	431	2,438	4,736
Louisiana	345	596	22	67	20	1,050	38	142		16	4	162	2,242	3,492
Arkansas	605	1,029	55	84	21	1,794	116	564		53	8	625	1,589	4,124
Oklahoma	441	839	340	200	43	1,863	129	701		221	43	965	3,868	6,825
Texas	1,549	1,453	952	718	85	4,757	398	553		661	61	1,275	16,242	22,672
Montana	51	73	234	34	23	415	32	1,111		26		1,137	2,927	4,511
Idaho	98	75	320	9	17	519	20	967		57		1,024	1,233	2,796
Wyoming	48	24	134	27	5	238	8	503		1	25	529	2,207	2,982
Colorado	197	387	365	86	52	1,087	38	909		82	200	1,191	2,472	4,601
New Mexico	57	41	101	101		300	13	180		39	12	231	2,472	3,016
Arizona	65	12	47	133	25	282	34	246		11	24	281	1,309	1,906
Utah	158	56	202	45	10	471	6	484		54	538	1,130	2,145	2,145
Nevada	11	4	29	46		90	2	212		4		216	917	1,225
Washington	491	128	173	57	35	884	28	688		15	703	1,134	2,749	3,244
Oregon	368	66	305	28	28	795	22	712		18	730	1,697	3,244	3,244
California	2,560	340	459	156	97	3,612	80	2,294		27	108	2,429	3,439	9,560
United States	30,500	67,012	20,690	4,673	1,400	124,275	4,381	38,542		2,765	7,324	48,631	103,184	280,471

1/ Animal proteins except skin milk fed as a liquid, oilseed meals, gluten feed and meal, and brewers' and distillers' dried grains.

2/ Millfeeds, alfalfa meal, molasses, and so on.

3/ Cottonseed, soybeans, velvet beans, peanuts, cowpeas, and the dry equivalent of skin milk fed as a liquid.

4/ Corn stover and sorghum forage.

5/ Corn and sorghum silage and wet beet pulp. Grass silage not included.

Table 7.- Percentage of feed for livestock from specified sources, 1949-50 1/2

States	All livestock				Milk cows				Beef cattle				Sheep and goats				Horses and mules				Hogs		Poultry		
	Formula feeds	Corn	Small ruminant grainstrates	Hay	Formula feeds	Corn	Small ruminant grainstrates	Hay	Formula feeds	Corn	Small ruminant grainstrates	Hay	Formula feeds	Corn	Small ruminant grainstrates	Hay	Formula feeds	Corn	Small ruminant grainstrates	Hay	Formula feeds	Grains	Formula feeds	Grains	
Maine	50	5	5	60	26	12	25	3	1	29	16	21	11	48	11	-	29	71	30	54	16	33	67	90	9
Vermont	30	6	1	35	37	20	27	2	-	30	10	22	-	50	50	-	25	75	29	53	18	23	77	87	3
New Hampshire	55	6	1	62	22	14	26	-	-	26	13	25	-	44	56	-	33	67	32	48	20	23	77	87	3
Massachusetts	62	8	2	71	17	9	28	3	-	32	10	19	-	44	56	-	33	67	29	66	5	38	66	93	5
Rhode Island	61	7	1	69	10	16	33	-	-	33	21	35	-	-	62	-	-	-	-	50	50	10	60	90	8
Connecticut	59	5	1	65	16	13	29	3	-	32	32	25	-	38	62	-	33	67	33	52	14	29	71	96	2
New York	32	6	5	46	23	21	20	5	4	33	29	25	6	32	61	6	21	73	23	41	35	35	63	86	13
New Jersey	65	8	3	77	20	9	24	7	4	37	28	21	-	44	56	-	20	80	32	35	26	34	66	94	4
Pennsylvania	25	22	13	58	18	15	15	11	8	37	30	21	52	19	26	5	15	77	33	30	36	16	80	52	65
Delaware	70	12	2	85	5	8	8	16	5	30	22	16	-	70	30	-	-	-	37	32	28	12	87	90	9
Maryland	35	20	5	60	14	20	10	18	4	34	25	29	8	19	70	6	18	76	28	33	36	5	92	87	12
Ohio	9	36	10	57	13	26	3	12	8	27	25	40	15	16	44	11	12	70	24	28	43	8	85	28	65
Indiana	13	47	7	67	9	22	11	6	4	24	26	40	35	16	45	10	17	71	23	19	56	9	83	35	57
Illinois	8	40	10	63	10	24	2	15	9	28	23	42	43	16	38	13	18	66	22	20	51	8	85	34	59
Iowa	6	50	12	69	6	23	1	16	8	29	23	40	50	4	42	14	16	66	22	14	63	5	85	28	66
Missouri	9	38	5	53	14	30	9	11	4	27	31	38	26	20	51	8	13	73	23	19	58	6	85	35	58
Michigan	7	23	16	47	20	24	1	14	13	26	31	29	34	21	36	11	14	72	26	21	50	3	84	28	65
Wisconsin	6	21	14	43	18	24	3	10	11	27	24	28	45	19	27	12	16	89	26	22	52	5	86	33	58
Minnesota	5	29	16	53	16	20	2	11	11	25	29	28	37	23	31	11	18	70	28	23	49	5	83	22	68
North Dakota	1	12	14	27	31	37	4	4	17	22	50	20	9	29	61	7	22	71	17	26	57	3	84	9	85
South Dakota	2	21	11	35	18	43	1	8	9	19	28	15	13	23	62	7	18	72	13	22	63	3	84	11	81
Nebraska	3	33	6	44	15	37	1	10	5	24	29	12	23	23	54	30	14	47	17	18	61	4	84	15	73
Kansas	4	17	8	31	12	48	1	11	6	22	25	43	10	11	69	15	13	63	14	19	61	8	78	22	69
West Virginia	18	19	3	40	18	38	13	6	2	21	26	48	5	16	56	5	11	79	28	18	49	11	76	58	39
Kentucky	8	32	2	44	15	38	8	4	2	28	25	23	20	73	68	12	12	79	34	15	48	6	84	23	40
Tennessee	10	31	2	45	14	37	5	15	3	26	24	45	6	6	6	6	9	82	37	14	47	9	83	17	47
Virginia	18	23	4	47	15	32	12	8	4	26	28	38	5	21	66	10	79	34	17	14	10	80	59	59	34
North Carolina	19	37	5	62	13	29	13	7	5	30	27	33	6	23	59	13	73	51	19	26	13	77	50	50	44
South Carolina	14	33	11	41	9	25	8	8	5	25	17	48	7	15	61	-	100	60	15	22	8	89	47	44	44
Georgia	19	29	3	53	7	31	11	8	2	24	17	50	6	2	73	-	100	60	12	25	12	66	72	24	24
Florida	18	6	29	1	66	34	3	14	3	46	3	14	5	5	94	-	100	61	12	46	17	15	55	1	1
Alabama	10	31	1	45	5	46	5	12	1	24	12	59	5	5	88	-	100	46	6	46	6	79	45	46	46
Mississippi	10	24	1	37	8	51	7	9	9	21	13	41	4	4	89	4	96	42	16	11	6	80	51	44	44
Louisiana	10	17	1	30	4	44	16	1	1	19	10	48	4	4	94	5	5	90	31	9	59	11	76	16	56
Arkansas	15	25	1	44	14	39	9	7	1	21	25	50	5	14	74	7	7	87	32	18	47	13	72	51	44
Oklahoma	6	32	5	27	10	57	8	3	5	15	24	50	5	3	86	11	15	64	16	18	60	4	70	33	56
Texas	7	6	4	23	2	72	10	6	5	24	10	58	6	1	87	2	95	29	4	62	12	68	65	47	47
Montana	1	2	5	9	25	65	1	1	12	15	47	35	2	24	74	3	23	74	8	26	65	5	76	21	73
Idaho	4	3	11	19	35	44	2	2	12	16	46	35	3	19	51	2	28	69	6	23	71	11	77	35	57
Wyoming	2	1	8	8	17	74	2	2	11	18	37	40	3	19	77	3	10	87	10	22	67	9	80	41	50
Colorado	4	8	8	23	19	52	3	6	13	24	33	29	10	21	64	9	12	74	19	19	59	6	81	33	58
New Mexico	2	1	3	10	6	82	2	5	9	16	36	15	5	4	89	3	2	94	20	6	70	9	79	44	53
Arizona	3	1	2	15	13	69	10	3	3	13	43	27	12	13	75	3	2	95	5	22	69	17	76	48	80
Utah	7	3	9	22	23	53	3	14	19	41	32	6	33	58	3	5	91	7	38	35	9	85	47	49	
Nevada	1	-	2	7	17	75	1	1	39	14	39	44	5	17	78	4	5	91	1	38	58	9	92	38	62
Washington	18	5	6	32	25	41	15	5	5	23	32	43	4	31	85	3	26	70	11	40	49	17	69	62	31
Oregon	11	2	9	25	22	52	15	6	6	22	32	43	4	25	71	2	12	86	10	33	56	15	72	45	47
California	27	4	5	38	24	36	17	3	23	37	37	37	9	31	57	4	11	83	4	55	10	21	68	81	25
United States	11	24	7	44	14	37	9	9	7	26	27	37	15	14	67	5	10	83	30	19	49	7	82	48	46

1/ The percentages do not add to 100 percent in most instances because of other feeds such as byproduct feeds, corn stover, and pasture that were omitted from the table.

Table 8.- Dairy cattle: Feeds expressed in feed units consumed, year beginning, October 1, 1949 1/

State	Concentrates						Seeds and milk	Harvested forage				Total	Pasture	All feed
	Formula feeds	Corn	Other grain	High-protein feeds	Other by-products	Total		Hay	Silage and bent pulp	corn stover	age			
	1,000 tons	1,000 tons	1,000 tons	1,000 tons	1,000 tons	1,000 tons		1,000 tons	1,000 tons	1,000 tons	1,000 tons			
Maine	117	12	3			132	6	210	17		227	95	460	
Vermont	281	23		8		312	6	421	89		510	227	1,055	
New Hampshire	70					70	2	113	15		128	65	265	
Massachusetts	132	15		2		149	2	188	43		231	91	473	
Rhode Island	24					24		15	8		23	25	72	
Connecticut	126	13				139	2	140	51		191	109	441	
New York	1,087	248	198	116	37	1,686	49	1,580	732	5	2,317	1,350	5,402	
New Jersey	138	39	25	16		218	4	154	72	1	237	125	584	
Pennsylvania	550	414	263	57	14	1,318	41	1,074	368	30	1,492	751	3,602	
Delaware	10	20	6	2		38	2	30	7	5	42	43	125	
Maryland	60	142	33	14		269	8	200	65	14	279	231	787	
Ohio	129	496	333	105	33	1,096	60	986	206	34	1,226	1,605	3,987	
Indiana	120	364	154	48	7	713	37	655	98	7	760	1,195	2,705	
Illinois	72	617	344	70	21	1,124	48	939	216	11	1,166	1,704	4,042	
Iowa	46	791	346	74	10	1,267	126	1,004	195	11	1,210	1,749	4,352	
Missouri	288	369	129	74		860	44	924	58	29	1,071	1,236	3,211	
Michigan	44	487	397	71	3	1,002	64	1,098	316	46	1,460	1,053	3,579	
Wisconsin	230	913	970	207	59	2,379	105	2,141	1,686	44	3,871	2,497	8,852	
Minnesota	92	598	576	49	52	1,367	152	1,589	799	20	2,408	1,513	5,440	
North Dakota	2	57	242	7		308	32	705	80	4	789	285	1,414	
South Dakota	8	115	132	6		261	30	387	81	11	479	628	1,398	
Nebraska	11	325	87	14		441	34	521	32	35	588	761	1,824	
Kansas	23	243	122	43	27	458	47	526	105	92	723	914	2,142	
West Virginia	98	40	15		2	155	10	166	18	12	216	346	727	
Kentucky	161	285	49	37	19	551	15	502	34	34	570	856	1,992	
Tennessee	106	295	53	49	10	513	31	480	27	39	546	902	1,992	
Virginia	185	120	74	20	10	409	24	433	89	20	542	591	1,566	
North Carolina	145	76	56	45	9	331	29	296	26	52	374	367	1,101	
South Carolina	43	40	26	19	1	129	19	89	16	11	116	246	510	
Georgia	132	96	23	26	6	283	83	202	11	18	231	591	1,188	
Florida	175	15	3	3	55	248	21	17	4		21	232	522	
Alabama	75	167	11	66	11	330	36	162	12	17	191	811	1,368	
Mississippi	109	150	3	66	1	329	38	225	17	12	254	968	1,589	
Louisiana	144	8	4	12	5	173	17	91	4	2	97	608	895	
Arkansas	121	101	13	32	15	262	40	336	8	24	368	678	1,368	
Oklahoma	159	66	99	43	25	392	39	505	29	75	609	1,035	2,075	
Texas	335	199	177	79	47	837	78	353	33	148	534	1,966	3,435	
Montana	3	4	54	3	3	67	10	216	4		220	163	460	
Idaho	18	16	98		5	137	10	404	33		437	289	873	
Wyoming	3	4	28			35	2	72	6		78	78	193	
Colorado	20	45	96	7	7	175	12	239	79	12	330	210	727	
New Mexico	3	10	17			30	5	67	8	11	86	64	185	
Arizona	17	5	6	1		29	9	71	12	5	88	46	172	
Utah	14	2	61		2	79	6	174	31		205	134	424	
Nevada	1		7	1		9	2	31	2		33	35	79	
Washington	178	4	56	19	20	277	14	384	12		396	518	1,205	
Oregon	138	2	54		13	207	10	291	15		306	398	921	
California	528		96	81	55	820	49	1,292	67	5	1,364	1,284	3,517	
United States	6,651	8,071	5,556	1,592	588	22,458	1,510	22,788	5,956	896	29,640	31,688	85,296	

1/ For kinds of feeds included, see footnotes to table 6.

Table 9.- Milk cows: Number and feed consumed expressed in feed units

State	Number	Feeds consumed in year beginning October 1,				Total feed per head
	milk cows January 1, 1950	Concen- trates	Harvested forage	Pasture	Total	
	1,000 head	1,000 tons	1,000 tons	1,000 tons	1,000 tons	Pounds
Maine	120	113	170	48	331	5,517
Vermont	287	267	393	163	823	5,735
New Hampshire	70	59	92	45	196	5,600
Massachusetts	129	134	187	67	388	6,015
Rhode Island	20	22	19	21	62	6,200
Connecticut	118	124	149	80	353	5,983
New York	1,411	1,510	1,854	958	4,322	6,126
New Jersey	355	202	190	99	491	6,335
Pennsylvania	970	1,128	1,179	401	2,708	5,584
Delaware	37	35	28	30	93	5,027
Maryland	236	235	223	127	585	4,957
Ohio	1,029	936	981	1,093	3,010	5,850
Indiana	720	630	623	838	2,091	5,808
Illinois	1,001	938	956	1,036	2,930	5,854
Iowa	1,194	1,142	992	1,130	3,264	5,467
Missouri	975	786	900	787	2,473	5,073
Michigan	945	864	1,197	598	2,659	5,628
Wisconsin	2,383	2,111	3,213	1,569	6,893	5,785
Minnesota	1,470	1,215	1,999	786	4,000	5,442
North Dakota	427	275	663	94	1,032	4,834
South Dakota	379	224	345	382	951	5,018
Nebraska	493	385	465	497	1,347	5,465
Kansas	604	419	600	560	1,579	5,228
West Virginia	231	139	173	251	563	4,874
Kentucky	661	498	479	627	1,604	4,853
Tennessee	668	479	442	603	1,524	4,563
Virginia	479	364	450	397	1,211	5,056
North Carolina	361	317	303	207	827	4,582
South Carolina	158	124	89	154	367	4,646
Georgia	364	300	185	331	816	4,484
Florida	143	234	17	98	349	4,881
Alabama	395	307	191	404	902	4,567
Mississippi	559	323	254	592	1,169	4,182
Louisiana	308	167	97	369	633	4,110
Arkansas	440	280	298	391	969	4,405
Oklahoma	600	366	481	564	1,411	4,703
Texas	1,121	805	502	1,166	2,473	4,412
Montana	128	64	163	113	340	5,312
Idaho	218	128	328	173	629	5,771
Wyoming	53	30	63	48	141	5,321
Colorado	192	161	264	104	529	5,510
New Mexico	57	30	75	32	137	4,807
Arizona	49	32	71	26	129	5,265
Utah	108	73	158	87	318	5,889
Nevada	18	9	24	17	50	5,556
Washington	296	256	313	345	914	6,176
Oregon	233	191	245	236	672	5,768
California	840	783	1,091	819	2,693	6,412
United States	23,853	20,214	24,174	19,563	63,951	5,362

1/ Seeds included in concentrates. See table 6 for kinds of feeds included in concentrates and harvested forage.

Table 10. Other dairy cattle: Number and feeds consumed expressed in feed units

State	Feeds consumed, year beginning					Total : feed per : head
	Number	October 1, 1949 2/			Total	
	: January 1, : 1950 1/	: Concentrates	: Harvested : forage	: Pasture	: Total	
	1,000 head	1,000 tons	1,000 tons	1,000 tons	1,000 tons	Pounds
Maine	77	25	57	47	129	3,351
Vermont	134	51	117	64	232	3,467
New Hampshire	40	13	36	20	69	3,450
Massachusetts	50	17	44	24	85	3,400
Rhode Island	6	2	4	4	10	3,333
Connecticut	51	17	42	29	88	3,451
New York	644	225	463	392	1,080	3,354
New Jersey	55	20	47	26	93	3,382
Pennsylvania	537	231	313	350	894	3,329
Delaware	19	5	14	13	32	3,368
Maryland	121	42	56	104	202	3,338
Ohio	569	220	245	512	977	3,434
Indiana	352	120	137	357	614	3,489
Illinois	634	234	210	668	1,112	3,508
Iowa	623	251	218	619	1,088	3,493
Missouri	446	118	171	449	738	3,309
Michigan	541	202	263	455	920	3,401
Wisconsin	1,132	373	658	928	1,959	3,461
Minnesota	831	304	409	727	1,440	3,466
North Dakota	227	65	126	191	382	3,366
South Dakota	258	67	134	246	447	3,465
Nebraska	275	90	123	264	477	3,469
Kansas	327	86	123	354	563	3,443
West Virginia	98	26	43	95	164	3,346
Kentucky	232	68	91	229	388	3,345
Tennessee	283	65	104	299	468	3,307
Virginia	214	69	92	194	355	3,318
North Carolina	170	43	71	160	274	3,224
South Carolina	90	24	27	92	143	3,178
Georgia	228	66	46	260	372	3,263
Florida	107	35	4	134	173	3,234
Alabama	289	59	-	407	466	3,225
Mississippi	258	44	-	376	420	3,256
Louisiana	164	23	-	239	262	3,195
Arkansas	246	42	70	287	399	3,244
Oklahoma	386	65	128	471	664	3,440
Texas	575	110	32	820	962	3,346
Montana	70	13	57	50	120	3,429
Idaho	143	19	109	116	244	3,413
Wyoming	31	7	15	30	52	3,355
Colorado	116	26	66	106	198	3,414
New Mexico	29	5	11	32	48	3,379
Arizona	26	6	17	20	43	3,308
Utah	61	12	47	47	106	3,475
Nevada	17	2	9	18	29	3,412
Washington	169	35	83	173	291	3,444
Oregon	143	26	61	162	249	3,483
California	478	86	273	465	824	3,448
United States	12,572	3,754	5,466	12,125	21,345	3,396

1/ Includes 5.4 million dairy heifers 1 to 2 years of age, 6.2 million heifer calves, and 970,000 dairy bulls.

2/ Feeds fed to young stock and milk fed to calves included in concentrates. See table 6 for feeds included in concentrates and harvested forage.

Table 11.- Sheep and goats: Feeds expressed in feed units consumed, year beginning October 1, 1949 1/

State	Formula feeds	Corn	Other grain	High-protein feeds	Other by-products	Total concentrates	Hay	Other dry roughage	Silage and beet pulp	Total harvested roughage	Pasture		Total feed
	1,000 tons	1,000 tons	1,000 tons	1,000 tons	1,000 tons	1,000 tons	1,000 tons	1,000 tons	1,000 tons	1,000 tons	1,000 tons	1,000 tons	1,000 tons
Maine							2			2	5		7
Vermont							1			1	3		4
New Hampshire							1			1	2		3
Massachusetts							1			1	2		3
Rhode Island													
Connecticut							1			1	2		3
New York	2		1			3	11			11	36		52
New Jersey							1			1	4		5
Pennsylvania	2		2			4	14	2		16	67		87
Delaware													
Maryland		1				1	3			3	13		17
Ohio	1	29	17			47	51	25	3	79	297		423
Indiana	1	10	5			16	26	2	1	29	112		157
Illinois	1	15	9			25	35	2	3	40	128		193
Iowa		36	9			45	51	3	5	69	218		312
Missouri	2	23	9			34	54	10	2	66	287	21	408
Michigan	1	10	6			17	21	5	1	27	111		155
Wisconsin		6	4			10	14	2	1	17	59		86
Minnesota	3	17	9			29	48	2	2	52	185		266
North Dakota	1		9			10	33	1	1	35	108		153
South Dakota	2		22			24	60	4	3	67	230		329
Nebraska	2	29	1		3	35	16	2	10	28	55		118
Kansas	5	22	1	4	1	33	29	6	12	49	141		223
West Virginia	1	5				6	14	7		21	104		131
Kentucky		13		2		15	35	10		45	222		282
Tennessee	1	5				6	10	4		14	89		109
Virginia	1	4		2		7	13	7		20	102		129
North Carolina							2	2		4	11		15
South Carolina											1		1
Georgia											4		4
Florida													
Alabama											8		8
Mississippi		1				1					26		27
Louisiana	1	1				2	2			2	36		40
Arkansas	1					1	1			1	13		15
Oklahoma		3		2		5	7	4	1	12	30		47
Texas	9	7		56	2	74	17	100	1	118	2,466	894	3,554
Montana	2		6	9	2	19	139		4	143	455		617
Idaho	2		5	2	1	10	117		2	119	288		417
Wyoming	6		14	2		22	75		3	78	689		789
Colorado	3		35	11	3	52	70	12	20	102	442		596
New Mexico	3			16		19	11		1	12	513	19	563
Arizona	3			2		5	4			4	168	12	189
Utah	1		4	13		18	30		1	31	506	1	556
Nevada				7		7	10			10	167		184
Washington		2		2		4	31		1	32	84		120
Oregon			2	4	1	7	36		1	37	255	13	312
California	9		5	6	5	25	79	5	9	93	589	3	710
United States	66	239	175	140	18	638	1,186	219	88	1,493	9,343	965	12,439

1/ For kinds of feed included, see table 6.

Table 12.- Stock Sheep: Number and feed consumed expressed in feed units 1/

State	Feeds consumed year beginning						Total feed per head
	Number January 1, 1950	October 1, 1949				Total	
		Concen- trates	Harvested forage	Pasture	Total		
	1,000 head	1,000 tons	1,000 tons	1,000 tons	1,000 tons	Pounds	
Maine	19		2	5	7	736	
Vermont	10		1	3	4	800	
New Hampshire	7		1	2	3	857	
Massachusetts	8		1	2	3	750	
Rhode Island	2						
Connecticut	7		1	2	3	857	
New York	124	2	10	38	50	806	
New Jersey	12		1	4	5	833	
Pennsylvania	214	4	16	67	87	813	
Delaware	2						
Maryland	38	1	3	13	17	895	
Ohio	940	32	66	297	395	840	
Indiana	348	9	25	112	146	839	
Illinois	396	11	28	128	167	843	
Iowa	668	18	47	218	283	847	
Missouri	838	23	59	287	369	881	
Michigan	336	10	22	111	143	851	
Wisconsin	192	6	14	59	79	823	
Minnesota	571	17	42	185	244	855	
North Dakota	346	7	31	108	146	844	
South Dakota	739	14	58	238	310	839	
Nebraska	168	3	10	55	68	810	
Kansas	342	5	19	116	140	819	
West Virginia	296	6	21	104	131	885	
Kentucky	631	15	45	222	282	894	
Tennessee	251	6	14	89	109	868	
Virginia	288	7	20	102	129	896	
North Carolina	35		4	11	15	857	
South Carolina	3			1	1	667	
Georgia	9			4	4	889	
Florida	3						
Alabama	18			8	8	889	
Mississippi	66	1		26	27	818	
Louisiana	98	2	2	36	40	816	
Arkansas	37	1	1	13	15	811	
Oklahoma	105	2	10	30	42	800	
Texas	6,487	64	112	2,466	2,642	815	
Montana	1,464	10	133	455	598	817	
Idaho	990	5	110	288	403	814	
Wyoming	1,841	15	71	689	775	842	
Colorado	1,237	11	61	442	514	831	
New Mexico	1,343	16	10	513	539	803	
Arizona	413	4	3	168	175	847	
Utah	1,269	14	26	506	546	861	
Nevada	440	7	9	167	183	832	
Washington	271	2	29	84	115	849	
Oregon	671	6	35	255	296	882	
California	1,589	12	76	589	677	852	
United States	26,182	368	1,249	9,318	10,935	835	

1/ For kinds of feeds included, see table 6.

Table 13.-Sheep on feed: Number and feeds consumed expressed in feed units 1/

State	Number on :		Feeds consumed, year beginning :				Total feed : per head
	: feed :		: October 1, 1949 :				
	: January 1, :	: Concent- :	: Harvested :	: Pasture :	: Total :	: Pounds	
	: 1950 :	: rates :	: forage :	: 1,000 tons :	: 1,000 tons :		
	: 1,000 head :	: 1,000 tons :	: 1,000 tons :	: 1,000 tons :	: 1,000 tons :		
Maine	:	:	:	:	:	:	
Vermont	:	:	:	:	:	:	
New Hampshire	:	:	:	:	:	:	
Massachusetts	:	:	:	:	:	:	
Rhode Island	:	:	:	:	:	:	
Connecticut	:	:	:	:	:	:	
New York	:	20	1	1	2	200	
New Jersey	:	:	:	:	:	:	
Pennsylvania	:	:	:	:	:	:	
Delaware	:	:	:	:	:	:	
Maryland	:	:	:	:	:	:	
Ohio	:	210	15	13	28	267	
Indiana	:	84	7	4	11	262	
Illinois	:	180	14	12	26	289	
Iowa	:	344	27	22	49	285	
Missouri	:	130	11	7	18	277	
Michigan	:	89	7	5	12	270	
Wisconsin	:	60	4	3	7	233	
Minnesota	:	165	12	10	22	267	
North Dakota	:	52	3	4	7	269	
South Dakota	:	130	10	9	19	292	
Nebraska	:	420	32	18	50	238	
Kansas	:	460	28	30	25	83	
West Virginia	:	:	:	:	:	:	
Kentucky	:	:	:	:	:	:	
Tennessee	:	:	:	:	:	:	
Virginia	:	:	:	:	:	:	
North Carolina	:	:	:	:	:	:	
South Carolina	:	:	:	:	:	:	
Georgia	:	:	:	:	:	:	
Florida	:	:	:	:	:	:	
Alabama	:	:	:	:	:	:	
Mississippi	:	:	:	:	:	:	
Louisiana	:	:	:	:	:	:	
Arkansas	:	:	:	:	:	:	
Oklahoma	:	40	3	2	5	250	
Texas	:	118	10	6	16	271	
Montana	:	120	9	10	19	317	
Idaho	:	75	5	9	14	373	
Wyoming	:	83	7	7	14	337	
Colorado	:	545	41	41	82	301	
New Mexico	:	28	3	2	5	357	
Arizona	:	10	1	1	2	400	
Utah	:	60	4	5	9	300	
Nevada	:	8		1	1	250	
Washington	:	28	2	3	5	357	
Oregon	:	18	1	2	3	333	
California	:	167	13	17	30	359	
United States	:	3,644	270	244	25	539	
	:					296	

1/ For kinds of feeds included, see table 6.

Table 14.- Beef cattle: Feeds expressed in feed units consumed, year beginning October 1, 1949 ^{1/}

State	Formula feeds	Concentrates					Seeds	Harvested forage					Pasture	All feed
		Corn	Other grain	High-protein feeds	Other by-products	Total		Hay	Silage and beet pulp	Corn stover and sorghum forage	Total			
		1,000 tons	1,000 tons	1,000 tons	1,000 tons	1,000 tons		1,000 tons	1,000 tons	1,000 tons	1,000 tons	1,000 tons		
Maine				3		3		13				13	11	27
Vermont								6				6	6	12
New Hampshire								3				3	5	8
Massachusetts								5				5	5	10
Rhode Island														
Connecticut								3				3	5	8
New York	1		6			7		35				35	66	108
New Jersey								4				4	5	9
Pennsylvania	18	162	18	5		203		75	9	5		89	100	392
Delaware								2		1		3	7	10
Maryland		10				10		25		5		30	93	133
Ohio	12	292	14	11		329		155	19	29		203	411	943
Indiana	19	389	18	9		435		199	28	17		244	554	1,233
Illinois	47	1,175	65	29		1,308		482	85	18		585	1,154	3,047
Iowa	126	2,037	90	34		2,291		765	164	20		949	1,918	5,158
Missouri	42	736		20		802		610	51	30		691	1,566	3,059
Michigan		155	13	12		180		111	39	6		156	186	522
Wisconsin		143	14	7		164		71	26	7		104	98	366
Minnesota	32	475	90	15		612		375	160	5		540	507	1,659
North Dakota	11	59	64	4	2	140		449	13	7		469	942	1,551
South Dakota	14	288	109	18		429		768	36	30		854	2,109	3,392
Nebraska	120	963	90	103	24	1,300		1,180	62	92		1,334	3,049	5,683
Kansas	32	225	93	104	8	462		522	292	194		1,008	3,324	4,794
West Virginia	2	18				20		148	3	11		162	232	414
Kentucky	6	52		12		70		276	8	22		306	817	1,193
Tennessee	3	11	10	26		50	6	166	6	20		192	602	850
Virginia	2	32		7		41	1	182	5	40		227	513	782
North Carolina		8		5		13	10	53		15		70	135	228
South Carolina				13		13	22	26		7		33	108	176
Georgia	2	17		20	2	41	120	16		25		41	533	735
Florida	7	20		38	26	91	24						1,681	1,796
Alabama	3	14		25	5	47	46			15		15	626	934
Mississippi		14		24	5	43	60			20		20	1,019	1,242
Louisiana		2		41	14	57	11			10		10	1,231	1,309
Arkansas		1		29	5	35	35	99		12		111	506	687
Oklahoma	22	10	10	115	1	148	35	97	13	112		222	2,446	2,851
Texas	127	69	30	474	8	708	245	109	27	368		504	10,113	11,570
Montana	7	20	1	15	17	60		677	18			695	2,118	2,873
Idaho	6		63	2	7	78		396	22			418	519	1,015
Wyoming	8	10	9	22	4	53		319	16			335	1,330	1,718
Colorado	46	60	71	53	35	265		548	101	51		700	1,684	2,649
New Mexico	4			85		89	5	86	3			113	1,752	1,959
Arizona	6		2	127	24	159	25	140	12	24		152	984	1,320
Utah	1		1	32	7	41		236	22			258	416	715
Nevada	4		2	38		44		148	2			150	679	873
Washington	1			19	7	27		218	2			220	456	703
Oregon	2		11	22	13	48		330	2			332	932	1,312
California	141			38	26	205	31	757	32	15		804	1,370	2,410
United States	864	7,467	877	1,653	260	11,121	676	10,905	1,280	1,233	13,418	49,123	74,338	

^{1/} For kinds of feeds included, see table 6.

Table 15.- Grain-fattened cattle: Number and feeds consumed expressed in feed units

State	Number put:		Feeds consumed, year beginning				Feed per head put on feed
	Number on feed January 1, 1950	on feed year beginning October 1, 1949, excluding short-feds 1/	October 1, 1949, excluding short-feds 1/	October 1, 1949, excluding short-feds 1/	October 1, 1949, excluding short-feds 1/	October 1, 1949, excluding short-feds 1/	
	1,000 head	1,000 head	1,000 tons	1,000 tons	1,000 tons	1,000 tons	Pounds
Maine							
Vermont							
New Hampshire							
Massachusetts							
Rhode Island							
Connecticut							
New York							
New Jersey							
Pennsylvania	88	98	177	36	20	233	4,755
Delaware							
Maryland							
Ohio	125	158	244	61	32	337	4,266
Indiana	185	244	329	81	49	459	3,762
Illinois	489	739	1,202	258	148	1,608	4,352
Iowa	955	1,526	1,881	475	305	2,661	3,488
Missouri	315	445	556	168	89	813	3,654
Michigan	90	98	130	40	20	190	3,878
Wisconsin	87	112	146	43	22	211	3,768
Minnesota	294	359	467	132	72	671	4,565
North Dakota	57	57	69	20	11	100	3,509
South Dakota	180	216	292	77	44	413	3,789
Nebraska	420	756	1,079	261	151	1,491	3,944
Kansas	252	336	329	159	67	555	3,304
West Virginia							
Kentucky							
Tennessee							
Virginia							
North Carolina							
South Carolina							
Georgia							
Florida							
Alabama							
Mississippi							
Louisiana							
Arkansas							
Oklahoma	55	66	54	21	13	88	2,667
Texas	161	217	191	44	43	278	2,562
Montana	25	32	19	26	6	51	3,188
Idaho	78	113	61	82	23	166	2,938
Wyoming	15	15	23	15	3	41	5,467
Colorado	206	309	212	197	62	471	3,049
New Mexico	17	17	15	22	3	40	4,705
Arizona	59	83	70	68	17	155	3,735
Utah	40	52	25	39	10	74	2,846
Nevada	22	26	17	20	5	42	3,231
Washington	22	29	16	20	6	42	2,897
Oregon	30	39	20	30	8	58	2,974
California	196	323	156	210	65	431	2,669
United States	4,463	6,467	7,780	2,605	1,294	11,679	3,612

1/ Unpublished estimate prepared within the U. S. Department of Agriculture.

2/ For kinds of feeds included, see table 6.

Table 16.- Other beef cattle: Number and feeds consumed expressed in feed units ^{1/}

State	Feed consumed in year beginning						Total feed per head
	Number	October 1, 1949 ^{2/}					
	January 1, 1950	Concen- trates	Harvested forage	Pasture	Total	Total feed	
	1,000 head	1,000 tons	1,000 tons	1,000 tons	1,000 tons	Pounds	
Maine	10	2	8	7	17	3,400	
Vermont	5		4	4	8	3,200	
New Hampshire	4		2	4	6	3,000	
Massachusetts	3		3	3	6	4,000	
Rhode Island							
Connecticut	3		2	4	6	4,000	
New York	48	4	23	55	82	3,417	
New Jersey	4		3	4	7	3,500	
Pennsylvania	69	19	35	55	109	2,870	
Delaware	3		2	4	6	4,000	
Maryland	57	6	20	72	98	3,439	
Ohio	252	59	88	260	407	3,230	
Indiana	266	66	77	273	416	3,128	
Illinois	469	66	141	516	725	2,878	
Iowa	927	291	246	838	1,375	2,837	
Missouri	647	145	230	677	1,052	3,252	
Michigan	158	41	86	127	254	3,215	
Wisconsin	83	14	45	62	121	2,916	
Minnesota	407	104	241	293	638	3,135	
North Dakota	452	36	189	559	784	3,469	
South Dakota	789	60	303	988	1,351	3,425	
Nebraska	1,268	102	440	1,538	2,080	3,281	
Kansas	1,393	67	323	1,984	2,374	3,408	
West Virginia	144	10	91	157	258	3,583	
Kentucky	468	42	190	600	832	3,556	
Tennessee	356	26	97	424	547	3,073	
Virginia	267	12	100	344	456	3,416	
North Carolina	90	11	32	102	145	3,222	
South Carolina	51	13	14	52	79	3,098	
Georgia	255	94	21	287	402	3,153	
Florida	443	35		697	732	3,305	
Alabama	245	29	5	336	370	3,020	
Mississippi	331	26	8	466	500	3,021	
Louisiana	338	17	3	425	445	2,633	
Arkansas	251	24	48	272	344	2,741	
Oklahoma	761	44	50	1,189	1,283	3,372	
Texas	2,901	274	115	4,530	4,919	3,391	
Montana	742	14	281	1,012	1,307	3,523	
Idaho	246	7	124	278	409	3,325	
Wyoming	461	13	144	654	811	3,518	
Colorado	568	19	211	712	942	3,317	
New Mexico	456	23	38	694	755	3,311	
Arizona	267	26	36	364	426	3,191	
Utah	173	4	72	200	276	3,191	
Nevada	209	9	44	289	342	3,273	
Washington	200	7	80	258	345	3,450	
Oregon	342	9	112	474	595	3,480	
California	446	50	202	479	731	3,278	
United States	18,328	1,920	4,629	23,624	30,173	3,293	

^{1/} All beef cattle except beef cows and cattle grain-fattened. Includes beef bulls.

^{2/} For kinds of feeds included, see table 6.

Table 17.- Beef cows: Number and feeds consumed expressed in feed units ^{1/}

State	Number January 1, 1950	Feed consumed year beginning October 1, 1949				Total feed per head
		Concen- trates	Harvested forage	Pasture	Total	
	1,000 head	1,000 tons	1,000 tons	1,000 tons	1,000 tons	Pounds
Maine	5	1	5	4	10	4,000
Vermont	2		2	2	4	4,000
New Hampshire	1		1	1	2	4,000
Massachusetts	2		2	2	4	4,000
Rhode Island						
Connecticut	1		1	1	2	4,000
New York	13	3	12	11	26	4,000
New Jersey	1		1	1	2	4,000
Pennsylvania	30	7	18	25	50	4,000
Delaware	2		1	3	4	4,000
Maryland	18	4	10	21	35	3,889
Ohio	99	26	54	119	199	4,020
Indiana	178	40	86	232	358	4,022
Illinois	380	40	186	488	714	4,021
Iowa	588	119	228	775	1,122	4,020
Missouri	594	101	293	800	1,194	4,020
Michigan	39	9	30	39	78	4,000
Wisconsin	17	4	16	14	34	4,000
Minnesota	175	41	167	142	350	4,000
North Dakota	332	35	260	372	667	4,018
South Dakota	610	77	474	1,077	1,628	4,020
Nebraska	1,051	119	633	1,360	2,112	4,019
Kansas	928	66	526	1,273	1,865	4,019
West Virginia	81	10	71	75	156	3,852
Kentucky	187	28	116	217	361	3,861
Tennessee	183	30	95	178	303	3,858
Virginia	169	30	127	169	326	3,858
North Carolina	49	12	37	33	82	3,347
South Carolina	54	22	20	56	98	3,630
Georgia	193	67	20	246	333	3,451
Florida	557	80		984	1,064	3,641
Alabama	310	64	10	490	564	3,639
Mississippi	353	77	12	553	642	3,637
Louisiana	475	51	7	806	864	3,638
Arkansas	205	46	63	234	343	3,639
Oklahoma	767	85	151	1,244	1,480	3,859
Texas	3,302	488	345	5,540	6,373	3,860
Montana	754	27	388	1,100	1,515	4,019
Idaho	219	10	212	218	440	4,018
Wyoming	431	17	176	673	866	4,019
Colorado	615	34	292	910	1,236	4,020
New Mexico	619	56	53	1,055	1,164	3,761
Arizona	393	88	48	603	739	3,761
Utah	194	12	147	206	365	3,763
Nevada	260	18	86	385	489	3,762
Washington	157	4	120	192	316	4,025
Oregon	328	19	190	450	659	4,018
California	622	30	392	826	1,248	4,013
United States	16,743	2,097	6,184	24,205	32,486	3,880

^{1/} For kinds of feeds included, see table 6.

Table 16.- Horses and mules: Feeds expressed in feed units consumed, year beginning October 1, 1949 1/

State	Formula feeds	Corn	Other grain	Total concentrates	Hay	Other dry roughage	Total harvested forage	Pasture	Total feed
	1,000 tons	1,000 tons	1,000 tons	1,000 tons	1,000 tons	1,000 tons	1,000 tons	1,000 tons	1,000 tons
Maine	4		14	18	33		33	10	61
Vermont	5	11	5	21	38		38	13	72
New Hampshire	2	1	5	8	12		12	5	25
Massachusetts	2		7	9	20		20	2	31
Rhode Island					1		1	1	2
Connecticut	2		5	7	11		11	3	21
New York	19	10	61	90	163	3	166	140	396
New Jersey	1	7	2	10	11	2	13	8	31
Pennsylvania	10	46	59	115	104	5	109	125	349
Delaware		7		7	6	1	7	5	19
Maryland	3	25	5	33	39	4	43	42	118
Ohio	7	48	22	77	91	15	106	137	320
Indiana	2	47	14	63	52	5	57	150	270
Illinois	2	75	26	103	91	4	95	263	461
Iowa	2	67	50	119	75	5	80	342	541
Missouri	2	109	63	174	153	20	173	470	817
Michigan		28	34	62	49	5	54	118	234
Wisconsin	1	47	75	123	99	11	110	237	470
Minnesota	2	62	89	153	128	5	133	270	556
North Dakota		14	40	54	83	1	84	181	319
South Dakota		8	42	50	83	5	88	237	375
Nebraska		35	45	80	83	12	95	299	474
Kansas	2	34	22	58	81	20	101	270	429
West Virginia	1	52	9	62	40	9	49	108	219
Kentucky	13	268	9	290	131	20	151	409	850
Tennessee	46	297	15	358	137	20	157	460	975
Virginia	7	142	15	164	81	20	101	212	477
North Carolina	11	428	36	475	174	50	224	241	940
South Carolina	7	181	92	280	69	12	81	104	465
Georgia	13	355	43	411	84	19	103	170	684
Florida	18	26	11	55	16	1	17	62	134
Alabama	20	320	14	354	49	10	59	350	763
Mississippi	32	318	23	373	140	17	157	162	892
Louisiana	37	126	9	172	49	4	53	326	551
Arkansas	28	169	18	215	122	17	139	320	674
Oklahoma	4	45	22	71	81	30	111	276	458
Texas	53	169	73	295	40	45	85	626	1,006
Montana		2	22	24	76		76	188	288
Idaho		3	7	10	41		41	126	177
Wyoming		4	13	17	36	1	37	109	163
Colorado	3	12	30	45	46	7	53	142	240
New Mexico		15	20	35	13	4	17	119	171
Arizona			7	7	30	6	36	96	139
Utah			8	8	42		42	60	110
Nevada			2	2	23		23	35	60
Washington	2		12	14	50		50	61	125
Oregon	1		14	15	48		48	81	144
California	3		8	11	160	2	162	117	290
United States	367	3,613	1,217	5,197	3,284	417	3,701	8,488	17,386

1/ For kinds of feeds included, see table 6.

Table 19.- Horses and mules 2 years old and over: Number and feed consumed expressed in feed units ^{1/}

State	Number January 1, 1950	Feeds consumed in year beginning October 1, 1949				Total feed per head January 1, Pounds
		Concen- trates	Harvested forage	Pasture	Total	
		1,000 tons	1,000 tons	1,000 tons	1,000 tons	
Maine	23	18	33	10	61	5,304
Vermont	27	21	38	13	72	5,333
New Hampshire	9	8	12	5	25	5,555
Massachusetts	11	9	20	2	31	5,636
Rhode Island	1		1	1	2	4,000
Connecticut	8	7	11	3	21	5,250
New York	145	90	164	138	392	5,407
New Jersey	13	10	13	8	31	4,769
Pennsylvania	130	115	108	124	347	5,338
Delaware	8	7	7	5	19	4,750
Maryland	48	33	42	41	116	4,833
Ohio	149	77	104	134	315	4,228
Indiana	124	63	54	143	260	4,194
Illinois	214	103	91	253	447	4,177
Iowa	252	119	77	329	525	4,167
Missouri	376	174	166	447	787	4,186
Michigan	110	62	53	116	231	4,200
Wisconsin	222	123	108	233	464	4,180
Minnesota	263	153	132	267	552	4,198
North Dakota	145	54	80	172	306	4,220
South Dakota	164	50	80	213	343	4,183
Nebraska	215	80	91	284	455	4,233
Kansas	194	58	96	254	408	4,206
West Virginia	91	62	48	106	216	4,747
Kentucky	343	290	145	389	824	4,805
Tennessee	359	358	153	447	958	5,337
Virginia	197	164	99	208	471	4,781
North Carolina	349	475	222	239	936	5,364
South Carolina	172	280	80	103	463	5,384
Georgia	253	411	102	169	682	5,391
Florida	48	55	16	59	130	5,417
Alabama	285	354	58	345	757	5,312
Mississippi	386	373	153	352	878	4,549
Louisiana	228	172	51	316	539	4,728
Arkansas	277	215	135	310	660	4,765
Oklahoma	218	71	104	251	426	3,908
Texas	496	295	83	589	967	3,899
Montana	129	24	65	160	249	3,860
Idaho	85	10	37	113	160	3,764
Wyoming	74	17	32	95	144	3,892
Colorado	114	45	44	129	218	3,825
New Mexico	80	35	15	104	154	3,850
Arizona	63	7	32	81	120	3,809
Utah	50	8	37	52	97	3,880
Nevada	24	2	18	27	47	3,917
Washington	60	14	46	56	116	3,867
Oregon	68	15	43	73	131	3,853
California	115	11	152	110	273	4,748
United States	7,425	5,197	3,551	8,078	16,826	4,538

^{1/} For kinds of feeds included, see table 6.

Table 20.- Poultry: Feeds expressed in feed units consumed, year beginning October 1, 1949 1/

State	Formula feeds	Corn	Other grain	High-protein feeds	Other by-products	Total concentrates	Skim milk	Pasture	Total feed
	1,000 tons	1,000 tons	1,000 tons	1,000 tons	1,000 tons	1,000 tons	1,000 tons	1,000 tons	1,000 tons
Maine	368	21	18			407		4	411
Vermont	86	3				89		1	90
New Hampshire	243	24				267		5	272
Massachusetts	507	28				535		9	544
Rhode Island	47	4				51		1	52
Connecticut	385	9				394		6	400
New York	927	52	87			1,066		18	1,084
New Jersey	883	40				923		17	940
Pennsylvania	913	493	288		28	1,722		31	1,753
Delaware	485	41	8			534		3	537
Maryland	505	34	36			575		5	580
Ohio	387	606	281	42	19	1,335	4	33	1,372
Indiana	528	675	171	52	23	1,449	10	36	1,495
Illinois	514	608	279	43	20	1,464	12	36	1,512
Iowa	593	955	433	27	20	2,028	16	46	2,090
Missouri	522	62.0	244	36	18	1,430	12	36	1,478
Michigan	243	319	243	11	20	836	8	16	860
Wisconsin	348	409	191	24	43	1,015	8	18	1,041
Minnesota	361	767	373	69	51	1,621	12	36	1,669
North Dakota	23	105	119		9	256	2	6	264
South Dakota	61	263	186	3	21	534	6	11	551
Nebraska	143	447	238	27	51	906	8	26	940
Kansas	206	304	329	17	30	886	8	26	920
West Virginia	222	123	25	3		373	2	9	384
Kentucky	260	437	31	13	13	754	4	26	784
Tennessee	293	261	31	12	2	599	6	20	625
Virginia	534	218	90	16	10	868	8	26	902
North Carolina	464	315	89	15	3	886	8	34	928
South Carolina	179	112	53	16		360	2	16	378
Georgia	548	169	17	12	3	749	4	20	773
Florida	226	3				229	2	7	238
Alabama	260	243	21	19	5	548	6	20	574
Mississippi	263	210	17	7		497	2	18	517
Louisiana	93	138	9	7	1	248	2	11	261
Arkansas	357	284	24	15	1	681	6	19	706
Oklahoma	206	186	164	23	16	595	6	22	623
Texas	740	365	408	40	26	1,579	12	55	1,646
Montana	25	33	55	3	1	117		3	120
Idaho	49	24	55	3	4	135		4	139
Wyoming	22	2	25	3	1	53		1	54
Colorado	87	74	79	10	7	257	2	7	266
New Mexico	28	4	30			62		2	64
Arizona	23	7	12	3	1	46		2	48
Utah	124	47	83		1	255		10	265
Nevada	5	1	7			13			13
Washington	240	41	78	13	8	380		9	389
Oregon	177	43	129	2	1	352		12	364
California	1,567	171	115	16	11	1,880		50	1,930
United States:	16,270	10,328	5,171	602	468	32,839	178	828	33,845

1/ Includes feed for laying flocks, farm chickens raised, commercial broilers, and turkeys. For kinds of feeds included, see table 6.

Table 21.- Chickens: Feeds expressed in feed units consumed, year beginning October 1, 1949 1/

State	For different kinds of chickens														
	Laying flocks					Chickens raised					Broilers				
	Number :	Feed consumed in year		Feed :	per head :	Number :	Feed consumed in year		Feed :	per head :	Number :	Concen- :	Concen- :	Feed :	
	shens and pullets:	Concen- :	Skin :	Pas- :		raised :	Concen- :	Skin :	Pas- :		produced :	Concen- :	Concen- :	per head :	
Jan. 1	1,000	1,000	1,000	1,000	Jan. 1	1,000	1,000	1,000	1,000	1,000	1,000	1,000	1,000	1,000	
head	tons	tons	tons	tons	Pounds	head	tons	tons	tons	tons	Pounds	head	tons	Pounds	
Maine	3,303	160		1	161	97	5,883	94		3	97	33	16,916	150	18
Vermont	1,057	53			53	100	1,618	27		1	28	35	1,662	3	13
New Hampshire	2,746	139		1	140	102	5,370	93		4	97	36	4,034	29	14
Massachusetts	5,465	278		2	280	102	8,623	143		6	149	35	11,943	94	16
Rhode Island	601	28			26	93	1,046	15		1	16	31	770	6	16
Connecticut	3,816	179		2	181	95	5,984	97		4	101	34	13,982	105	15
New York	14,089	650		6	686	97	19,447	293		10	303	31	7,714	56	15
New Jersey	11,787	642		6	648	110	14,656	212		10	222	30	7,538	53	14
Pennsylvania	22,035	1,026		8	1,034	94	33,379	520		20	540	32	13,562	97	14
Delaware	999	50		1	51	102	1,640	23		2	25	30	80,922	455	11
Maryland	3,842	179		1	180	94	5,539	78		3	81	29	54,596	296	11
Ohio	17,393	840	3	11	854	98	26,483	394	1	19	444	31	5,823	34	12
Indiana	16,925	811	7	13	831	98	28,002	407	3	20	430	31	27,880	167	12
Illinois	21,528	904	8	14	926	86	29,671	439	4	20	463	31	14,610	76	10
Iowa	30,966	1,188	11	16	1,215	78	45,719	651	5	24	680	30	6,007	36	12
Missouri	26,605	862	8	12	882	86	29,234	407	4	20	431	29	14,288	74	10
Michigan	10,884	488	5	4	497	91	18,690	291	3	10	304	33	2,180	13	12
Wisconsin	14,648	635	5	6	646	87	21,458	290	3	10	303	28	6,607	39	12
Minnesota	25,242	961	8	10	979	78	30,124	429	4	16	449	30	2,193	13	12
North Dakota	4,162	151	1	2	156	75	6,142	80	1	3	84	27			
South Dakota	8,663	349	4	3	346	80	12,988	182	2	7	191	29			
Nebraska	12,695	530	5	9	544	84	22,249	315	3	15	333	30	3,720	21	11
Kansas	13,792	573	5	10	588	85	21,729	266	3	13	282	26	2,094	12	11
West Virginia	3,991	181	1	3	185	93	4,678	70	1	4	75	32	15,079	88	12
Kentucky	10,742	479	3	13	495	92	16,839	249	1	12	262	31	1,702	10	12
Tennessee	9,975	383	4	11	398	80	15,640	188	2	9	199	25	3,894	19	10
Virginia	8,441	397	5	15	417	99	10,758	174	3	8	185	34	40,033	222	11
North Carolina	10,568	466	5	18	491	93	17,549	251	3	15	269	31	28,109	144	10
South Carolina	4,240	172	1	7	180	84	7,824	108	1	6	115	29	8,801	42	10
Georgia	6,741	252	3	11	296	88	12,440	146	1	8	155	25	62,892	306	10
Florida	2,986	126	1	4	131	88	5,149	52	1	3	56	22	9,001	44	10
Alabama	6,814	318	4	11	331	98	12,600	157	2	9	168	27	13,114	67	10
Mississippi	6,776	285	1	10	296	87	11,468	122	1	8	131	20	17,010	86	10
Louisiana	4,169	144	1	6	151	73	8,253	90	1	5	96	23	2,146	11	10
Arkansas	6,912	277	4	10	291	84	11,665	144	2	8	154	26	49,179	242	10
Oklahoma	9,435	397	4	12	413	88	11,550	158	2	9	169	23	2,909	16	11
Texas	22,553	947	8	30	985	87	31,292	315	4	18	337	22	33,383	167	10
Montana	1,812	70	1	7	71	78	3,360	41	2	43	26				
Idaho	1,854	78	1	7	79	85	3,238	39	2	41	25	750	4	11	
Wyoming	726	32			32	80	1,227	15	1	16	26				
Colorado	3,052	141	1	2	144	94	5,115	69	1	3	73	29	1,638	10	12
New Mexico	1,028	42		1	43	84	1,535	16	1	17	22				
Arizona	611	26		1	27	88	994	10		10	20	1,046	5	10	
Utah	2,871	120		3	123	79	3,986	41		2	43	22	700	4	11
Nevada	189	8			8	85	344	4		4	23				
Washington	4,597	203		2	205	89	7,862	102		5	107	27	4,646	25	11
Oregon	3,445	146		3	149	87	5,463	73		4	77	28	4,336	24	11
California	21,541	931		16	947	86	25,627	266		14	300	23	32,605	201	12
United States	623,771	18,341	116	329	18,786	89	635,110	8,666	62	397	9,125	29	603,816	3,566	12

1/ For kinds of feeds included, see table 6.

Table 22.- Turkeys: Feeds expressed in feed units consumed, year beginning October 1, 1949

State	Number turkeys raised	Feed consumed in year			Feed per head Pounds
		Concen- trates 1,000 tons	Pasture 1,000 tons	Total 1,000 tons	
Maine	74	3		3	81
Vermont	120	6		6	100
New Hampshire	120	6		6	100
Massachusetts	447	20	1	21	94
Rhode Island	47	2		2	85
Connecticut	269	13		13	97
New York	808	37	2	39	97
New Jersey	332	16	1	17	102
Pennsylvania	1,682	79	3	82	98
Delaware	124	6		6	97
Maryland	438	22	1	23	105
Ohio	1,361	67	3	70	103
Indiana	1,249	64	3	67	107
Illinois	865	45	2	47	109
Iowa	2,956	153	6	159	108
Missouri	1,681	87	4	91	108
Michigan	916	44	2	46	100
Wisconsin	977	51	2	53	108
Minnesota	4,446	218	10	228	110
North Dakota	495	23	1	24	97
South Dakota	320	13	1	14	88
Nebraska	784	40	2	42	107
Kansas	713	35	3	38	107
West Virginia	887	34	2	36	81
Kentucky	314	16	1	17	108
Tennessee	186	9		9	97
Virginia	2,294	75	3	78	68
North Carolina	559	23	1	24	86
South Carolina	771	38	3	41	106
Georgia	316	15	1	16	101
Florida	131	7		7	107
Alabama	152	6		6	79
Mississippi	113	4		4	71
Louisiana	85	3		3	71
Arkansas	427	18	1	19	89
Oklahoma	545	24	1	25	92
Texas	2,927	150	7	157	107
Montana	130	6		6	92
Idaho	247	14	1	15	121
Wyoming	117	6		6	103
Colorado	723	37	2	39	108
New Mexico	64	4		4	125
Arizona	85	5		5	118
Utah	1,673	100	5	105	126
Nevada	26	1		1	77
Washington	909	50	2	52	114
Oregon	1,985	109	5	114	115
California	7,202	462	20	482	134
United States	43,792	2,266	102	2,368	108

Table 23.- Hogs: Feed expressed in feed units consumed and production, year beginning October 1, 1949 1/

State	Formula feeds	Corn	Other grain	High-protein feeds	Other by-products	Total concentrates	Seeds	Skim milk as liquid	Pasture	Total feed	Production of hogs	Feed per 100 pounds
	1,000 tons	1,000 tons	1,000 tons	1,000 tons	1,000 tons	1,000 tons	1,000 tons	1,000 tons	1,000 tons	1,000 tons	Million pounds	Pounds
Maine	9	9	9			27				27	10.8	500
Vermont	3	6	5			14				14	5.4	518
New Hampshire	3	7	3			13				13	5.0	520
Massachusetts	21	36	5			62				62	23.3	521
Rhode Island	2	3				5				5	1.7	588
Connecticut	7	14	3			24				24	9.2	522
New York	61	80	28			169			3	172	61.7	558
New Jersey	26	33	17			76				76	30.3	502
Pennsylvania	89	348	107	3		547		6	15	568	204.0	557
Delaware	3	19	2			24				24	10.0	480
Maryland	10	140	28			178			5	183	71.5	512
Ohio	220	2,151	265	30	5	2,671		21	148	2,840	1,076	528
Indiana	390	3,268	345	84	6	4,113	12	30	228	4,383	1,673	524
Illinois	427	4,045	767	65	7	5,311	12	63	296	5,682	2,214	513
Iowa	570	7,926	1,901	85	9	10,491	9	420	601	11,521	4,443	519
Missouri	224	3,028	142	48		3,442	3	90	194	3,729	1,430	521
Michigan	23	374	280	10	2	689		66	20	775	291	533
Wisconsin	91	1,074	477	39	10	1,691		21	87	1,799	724	497
Minnesota	192	1,936	1,005	60	10	3,203		200	125	3,528	1,405	502
North Dakota	2	252	102	2		358		49	12	419	150	559
South Dakota	44	930	344	12		1,330		102	52	1,484	547	542
Nebraska	96	2,014	218	35	8	2,371		162	138	2,671	948	563
Kansas	93	796	165	18	4	1,076		86	64	1,226	441	556
West Virginia	23	151	6			180		15	11	206	70.3	586
Kentucky	65	940	23	2		1,030		54	60	1,144	417	549
Tennessee	96	854	22	3		975		27	55	1,057	395	535
Virginia	66	520	21	6	2	615	3	24	36	678	236	575
North Carolina	122	674	32	7		835	12	18	47	912	309	590
South Carolina	38	317	41	5		401	3	6	38	448	153	586
Georgia	121	630	40	24		815	101	15	85	1,016	365	557
Florida	42	109				151	67	3	20	241	85.0	567
Alabama	46	647		9		702	33	15	69	819	295	555
Mississippi	32	422	2	8		464	2	21	45	532	181	588
Louisiana	40	276		7		323	2	6	30	361	136	531
Arkansas	79	456		8		543	2	33	53	631	225	561
Oklahoma	31	501	45	17	1	595	5	44	59	703	258	545
Texas	144	552	254	69	2	1,031	30	33	100	1,194	424	563
Montana	7	6	96	4		113		22		135	50.3	537
Idaho	16	25	92	2		135		10	7	152	58.8	517
Wyoming	5		45			50		6		56	21.4	523
Colorado	17	182	50	5		254		24		278	99.9	557
New Mexico	5	8	34			47		3	3	53	21.6	491
Arizona	3		13			16		1	1	17	7.1	479
Utah	5		45			50		3	3	53	24.2	438
Nevada			11			11			1	12	5.8	414
Washington	16	60	27	4		107		14	6	127	45.2	561
Oregon	21	7	95			123		12	6	141	54.6	516
California	79	24	235	15		353			26	379	151.0	502
United States	3,725	35,870	7,457	686	66	47,904	296	1,721	2,749	52,570	19,864.6	529

1/ For kinds of feeds included, see table 6.

Table 2h.- Percentage of food consumed by specified livestock 1949-50 1/

States	All feed including pasture				Formula feed				Corn				Small grains				All concentrates				Hay				Pasture					
	Dairy cattle	Beef cattle	Sheep and goats	Horses and mules	Dairy cattle	Beef cattle	Horses and goats	Poultry	Dairy cattle	Beef cattle	Horses and goats	Poultry	Dairy cattle	Beef cattle	Horses and goats	Poultry	Dairy cattle	Beef cattle	Horses and goats	Poultry	Dairy cattle	Beef cattle	Horses and goats	Poultry	Dairy cattle	Beef cattle	Horses and goats	Poultry		
Maine	45	3	1	6	2	10	23	2	71	25	19	44	6	6	19	38	22	3	4	66	80	5	1	13	76	9	4	8		
Vermont	84	1		6	1	7	73	1	22	51	13	7			50	70	5	3	20	50	1		8	91	2	1	5			
New Hampshire	44	1	1	4	2	45	21	1	73	20	69			38	29	2	3	71	86	3	1	9	79	6	2	6				
Massachusetts	37	1		2	5	62	17	1	65	15				35	27			23		1	7	59	85	2	5	63				
Rhode Island	43			1	3	31	24	2	47	27	36				27				16	4	65	54		6	93		4			
Connecticut	46	1		2	3	62	22	1	68	27					29	19	33			22		4	63	90	2	1	7			
New York	70	1	1	5	2	24	43	2	37	53					27	11	47	1	7	21	47	3	5	30	88	2	1	9		
New Jersey	32	1		2	4	53	12	2	76	29					24	29	42			29	16	1	4	67	90	2	1	6		
Pennsylvania	51	6	1	5	8	25	31	1	5	52	26	10			22	31	37	2	14	38	31	5	3	13	61	83	6	1	8	
Delaware	17	1		3	3	74	2		96	22					21	16	38			12	50	6	1	87	79	5	5	16		
Maryland	41	7	1	6	10	31	12	2	77	38	3	37	9	32		9	32			27	35	23	1	3	16	50	74	9	1	14
Ohio	60	9	4	3	28	24	15	1	25	44	13	8	58	24	34	1	27	29	19	6	1	46	23	76	12	4	7	61		
Indiana	26	12		3	42	14	6	2	35	47	7	8	68	14	21	2	2	48	24	10	6	1	60	21	59	21	3	5		
Illinois	27	20		3	37	30	11	4	76	43	7	28	62	9	23	3	3	51	30	12	14	1	55	15	50	31	2	6		
Iowa	18	22	1	2	39	8	3	9	42	13	7	37	67	8	12	3	67	35	8	14	1	64	12	76	12	2	6	36		
Missouri	25	24	3	6	29	12	26	4	20	47	7	35	61	12	22		24	11	13	12		5	50	21	54	33	3	8	32	
Michigan	57	8	2	4	12	14	11	6	58	34	11	26	22	40	1	29	25	34	6	2	23	28	86	9	2	4	70			
Wisconsin	69	3	1	4	14	8	32	13	48	35	5	41	16	56	1	27	13	43	3	2	31	19	92	3	1	4	83			
Minnesota	41	12	2	4	27	13	13	5	27	52	15	12	50	20	27	4	47	17	19	9	2	45	23	74	17	2	6	57		
North Dakota	31	38	4	8	10	6	5	28	5	58	12	12	51	23	42	11	28	21	27	12	5	32	23	55	35	3	7	19		
South Dakota	39	45	4	5	20	7	6	12	33	15	7	18	58	16	13	14	22	30	16	2	50	20	29	60	5	6	19			
Nebraska	36	48	1	4	23	8	3	31	25	37	8	25	53	12	13	13	32	35	9	25	1	46	18	29	65	1	5	18		
Kansas	22	49	2	4	13	9	6	8	24	53	35	14	68	18	17	13	22	15	15	2	36	29	45	45	2	7	19			
West Virginia	34	19	6	10	10	18	26	1	6	59	10	4	37	30	27		13	45	18	2	8	21	44	47	38	4	10	43		
Kentucky	32	19	5	14	16	12	30	1	12	49	14	3	46	21	44		21	28	20	3	11	37	27	51	29	4	14	35		
Tennessee	35	15	2	17	16	13	18	1	16	50	17	1	48	15	40	8	17	24	20	2	15	38	23	59	21	1	17	42		
Virginia	34	17	3	10	15	19	22	8	63	11	3	69	20	37		10	45	29	2	8	28	40	60	25	2	13	40			
North Carolina	26	6		22	22	22	18		16	59	5	1	44	20	26		15	24	23		19	32	34	56	10		33	44		
South Carolina	25	9		23	22	19	15		13	62	6		47	17	12		19	25	20	1	24	33	29	46	14		37	48		
Georgia	27	16		15	23	17	25		14	63	7	1	49	13	18		31	13	12	2	18	34	31	66	5		28	42		
Florida	17	59		5	8	8	32		8	42	8	10	56	2			29	10	7	17	26	45					46	12		
Alabama	30	20		17	18	13	17		1	10	59	12	1	45	17	24		66	16	2	38	34	27	72			22	39		
Mississippi	33	24	1	19	11	11	24		7	58	13	1	37	19	7		4	38	19	3	22	27	28	62			38	40		
Louisiana	26	38	1	16	10	7	42		12	27	1	46	23	18			44	16	5	18	31	28	64			1	35	27		
Arkansas	33	17		17	15	17	20		13	59			44	28	24			14	16	2	13	39	38	60			18	22		
Oklahoma	30	42	1	7	10	9	36		7	47	8	1	60	22	29		3	13	46	21	8	4	32	32	72	14		12	27	
Texas	15	51	16	5	5	7	22		8	9	48	14	5	36	25	29		3	28	43	18	15	7	22	33	44	20	3	7	
Montana	10	64	14	6	1	3	6	14	14	49	5	27	8	45	23		20	41	24	16	24	6	27	28	19	61	13	7	6	
Idaho	31	36	15	6	4	5	18	4	16	50	21	33	32	31			29	17	26	15	2	26	26	42	12	4	23	42		
Wyoming	7	50	26	5	2	2	6	17	10	46	17	42	8	21		7	34	19	15	22	8	21	22	14	63	15	7	7		
Colorado	15	25	12	6	6	10	24	9	45	12	16	47	19	26		19	14	24	26	24	5	23	24	26	60	6	5	3		
New Mexico	8	65	18	6	2	2	5	7	6	47	24	20	30	17			34	20	10	30	13	16	21	37	48	6	7	3		
Arizona	9	69	10	7	1	3	24	9	5	35	42		58	11			10	28	30	56	3	6	16	29	97	2	12	4		
Utah	20	33	26	5	3	12	9	1	3	78	4		84	30			22	41	17	9		11	54	34	49	6	9	12		
Nevada	7	71	15	5	1	9	34		45				25	24		7	38	24	10	49	3	12	14	15	69	5	11	4		
Washington	41	26	4	4	5	14	37		3	49	3		47	32	32		35	45	31	3	2	12	43	56	32	5	7	16		
Oregon	28	41	10	4	4	11	37		1	46	48	3		11	65	18		31	42	26	6	2	15	44	61	46	5	7	23	
California	37	25	8	3	4	20	23		6	61			7	50	21		51	25	23	6	3	10	52	56	33	3	7	37		
United States	30	27	4	6	19	12	22		3	14	53	12	54	15	27		4	36	25	18	9	4	38	26	60	27	3	9	31	

1/ The percentages do not add to 100 percent in most instances because some of the feed goes to livestock in cities or other classes that were omitted from the table.

UPDATE 1981

Table 25.- Feed from harvested forage: Hay, silage, and stover expressed in feed units consumed by different classes of livestock

State	Dairy cattle	Beef cattle	Sheep and goats	Horses and mules	Other	Total
	1,000 tons	1,000 tons	1,000 tons	1,000 tons	1,000 tons	1,000 tons
Maine	227	13	2	33	3	278
Vermont	510	6	1	38	2	557
New Hampshire	128	4	1	12	2	147
Massachusetts	231	4	1	20	9	265
Rhode Island	23			1		24
Connecticut	191	3	1	11	1	207
New York	2,317	35	11	166	10	2,539
New Jersey	237	4	1	13	3	258
Pennsylvania	1,492	89	16	109	31	1,737
Delaware	42	3		7		52
Maryland	279	30	3	43	2	357
Ohio	1,226	203	79	106	20	1,634
Indiana	760	244	29	57	16	1,106
Illinois	1,166	585	40	95	26	1,912
Iowa	1,210	949	69	80	16	2,324
Missouri	1,071	691	66	173	34	2,035
Michigan	1,460	156	27	54	3	1,700
Wisconsin	3,871	104	17	110	6	4,108
Minnesota	2,408	540	52	133	11	3,144
North Dakota	789	469	35	84	5	1,382
South Dakota	479	854	67	88	5	1,493
Nebraska	588	1,334	28	95	7	2,052
Kansas	723	1,008	49	101	15	1,896
West Virginia	216	162	21	49	4	452
Kentucky	570	306	45	151	7	1,079
Tennessee	546	192	14	157	15	924
Virginia	542	227	20	101	10	900
North Carolina	374	70	4	224	3	675
South Carolina	116	33		81		230
Georgia	231	41		103	2	377
Florida	21			17	2	40
Alabama	191	15		59	15	280
Mississippi	254	20		157		431
Louisiana	97	10	2	53		162
Arkansas	368	111	1	139	6	625
Oklahoma	609	222	12	111	11	965
Texas	534	504	118	85	34	1,275
Montana	220	695	143	76	3	1,137
Idaho	437	418	119	41	9	1,024
Wyoming	78	335	78	37	1	529
Colorado	330	700	102	53	6	1,191
New Mexico	86	113	12	17	3	231
Arizona	88	152	4	36	1	281
Utah	205	258	31	42	2	538
Nevada	33	150	10	23		216
Washington	396	220	32	50	5	703
Oregon	306	332	37	48	7	730
California	1,364	804	93	162	6	2,429
United States	29,640	13,418	1,493	3,701	379	48,631

Table 26.- Feed from pasture for different classes of livestock, expressed in feed units, year beginning October 1, 1949

State	Dairy cattle	Beef cattle	Sheep and goats	Horses and mules	Poultry	Hogs	Total
	1,000 tons	1,000 tons	1,000 tons	1,000 tons	1,000 tons	1,000 tons	1,000 tons
Maine	95	11	5	10	4		125
Vermont	227	6	3	13	1		250
New Hampshire	65	5	2	5	5		82
Massachusetts	91	5	2	2	9		109
Rhode Island	25			1	1		27
Connecticut	109	5	2	3	6		125
New York	1,350	66	38	140	18	3	1,615
New Jersey	125	5	4	8	17		159
Pennsylvania	751	100	67	125	31	15	1,089
Delaware	43	7		5	3		58
Maryland	231	93	13	42	5	5	389
Ohio	1,605	411	297	137	33	148	2,631
Indiana	1,195	554	112	150	36	228	2,275
Illinois	1,704	1,154	128	263	36	296	3,581
Iowa	1,749	1,918	218	342	46	601	4,874
Missouri	1,236	1,566	309	470	36	194	3,811
Michigan	1,053	186	111	118	16	20	1,504
Wisconsin	2,497	98	59	237	18	87	2,996
Minnesota	1,513	507	185	270	36	125	2,636
North Dakota	285	942	108	181	6	12	1,534
South Dakota	628	2,109	236	237	11	52	3,275
Nebraska	761	3,049	55	299	26	138	4,328
Kansas	914	3,324	141	270	26	64	4,739
West Virginia	346	232	104	108	9	11	810
Kentucky	856	817	222	409	26	60	2,390
Tennessee	902	602	89	460		55	2,128
Virginia	591	513	102	212	26	36	1,480
North Carolina	367	135	11	241	34	47	835
South Carolina	246	108	1	104	16	38	513
Georgia	591	533	4	170	20	85	1,403
Florida	232	1,661		62	7	20	2,002
Alabama	811	826	8	350	20	69	2,084
Mississippi	968	1,019	26	362	18	45	2,438
Louisiana	608	1,231	36	326	11	30	2,242
Arkansas	678	506	13	320	19	53	1,589
Oklahoma	1,035	2,446	30	276	22	59	3,868
Texas	1,986	10,113	3,362	626	55	100	16,242
Montana	163	2,118	455	188	3		2,927
Idaho	289	519	288	126	4	7	1,233
Wyoming	78	1,330	689	109	1		2,207
Colorado	210	1,684	442	142	7		2,485
New Mexico	64	1,752	532	119	2	3	2,472
Arizona	46	984	180	96	2	1	1,309
Utah	134	416	507	60	10	3	1,130
Nevada	35	679	167	35		1	917
Washington	518	456	84	61	9	6	1,134
Oregon	398	932	268	81	12	6	1,697
California	1,284	1,370	592	117	50	26	3,439
United States:	31,688	49,123	10,308	8,488	828	2,749	103,184

Table 27.- Feed consumption rates expressed in feed units for different kinds of livestock, United States, year beginning October 1, 1949

Item	Milk cows	Other dairy	Beef cattle	Other beef cattle	Grain-cattle	Stock	Sheep	Horses and mules	Hogs	Hens and pullets	Chickens raised	Broilers	Turkeys									
	per 100 head Jan. 1	per 100 head Jan. 1	per 100 head Jan. 1	per 100 head Jan. 1	per 100 head Jan. 1	per 100 head Jan. 1	per 100 head Jan. 1	per 100 head Jan. 1	per 100 head Jan. 1	per 100 head Jan. 1	per 100 head Jan. 1	per 100 head Jan. 1	per 100 head Jan. 1									
Formula feeds	527	11	58	12	205	11	12	4	4	10	99	37	42	30	10	222	11	344	47	255		
Corn	591	12	163	75	1,978	49	84	8	76	36	975	361	27	19	11	244	1	31	35	190		
Other grain	373	7	175	44	43	40	20	6	55	27	328	75	16	12	5	111			14	76		
High-protein feeds	128	3	11	71	143	65	17	9	11	21		7	1	1	1	22			4	22		
Other byproducts	43	1	3	8	37	8	3	1	2	3		1	1						3	16		
Total concentrates	1,667	34	410	210	2,406	173	136	28	148	97	1,402	481	87	62	27	599	12	375	103	559		
Seeds and skim milk	28	1	187	40	-	37	18					20										
Hay	1,525	31	733	595	640	420	148	75	107	180	846	953										
Other dry roughage	61	1	26	98	9	42	14	14	19	33	112											
Silage and best pulp	441	9	111	46	157	43	20	6	8	13												
Pasture	1,640	34	1,929	2,891	400	2,578	606	712	14	1,418	754	2,178	2,603	28	2	1	2	44		5	27	
All feed	5,362	110	3,396	3,880	3,612	3,293	942	835	296	1,741	754	4,538	3,556	529	89	63	29	643	12	375	108	586

1/ Dairy heifers, heifer calves, and dairy bulls.
 2/ The gain in weight per head was probably about 350 pounds.
 3/ Feed for all cattle except milk cows divided by the net live-weight production of all cattle and calves; 20,184,000 pounds. It was assumed that the milk cows did not gain or lose weight in the aggregate.
 4/ The gain in weight per head was probably about 30 pounds.
 5/ For each 100 pounds of sheep and lamb produced there were 18.8 pounds of wool produced from the same feed.

Table 28.- Assumed yields of different kinds of pasture used in calculating acres of cropland pasture equivalent grazed ^{1/}

State	Feed obtained as a percentage of feed from the same acreage of cropland pasture			Feed from after-math and other pasture on farms as a percentage of total feed from all pasture
	Open permanent pasture	Woodland pasture	Grazing not on farms	
	Percent	Percent	Percent	Percent
Maine	20	10	7	5
Vermont	20	10	7	5
New Hampshire	20	10	7	5
Massachusetts	20	10	7	5
Rhode Island	20	10		5
Connecticut	20	10		5
New York	40	10	7	5
New Jersey	60	10		5
Pennsylvania	50	10	7	5
Delaware	60	10		5
Maryland	60	10	7	5
Ohio	40	11	16	15
Indiana	60	11		15
Illinois	60	11		15
Iowa	60	11		15
Missouri	30	11	16	15
Michigan	30	8	6	15
Wisconsin	50	8	6	15
Minnesota	60	8	6	15
North Dakota	20	14	15	8
South Dakota	30	14	15	8
Nebraska	40	14	15	8
Kansas	40	14	15	8
West Virginia	20	13	13	5
Kentucky	30	13	13	5
Tennessee	50	13	13	5
Virginia	50	13	13	5
North Carolina	50	13	10	5
South Carolina	70	8	6	5
Georgia	70	8	6	5
Florida	70	8	6	5
Alabama	70	8	6	5
Mississippi	50	12	18	5
Louisiana	50	12	18	5
Arkansas	50	12	18	5
Oklahoma	30	28	25	5
Texas	30	28	25	5
Montana	8	4	4	8
Idaho	8	4	4	8
Wyoming	8	4	4	8
Colorado	8	4	4	8
New Mexico	8	4	4	5
Arizona	4	4	4	5
Utah	6	4	4	5
Nevada	4	4	4	5
Washington	10	2	3	8
Oregon	10	2	3	8
California	10	2	3	8

^{1/} Adapted from unpublished data used in U. S. Dept. Agr., Agr. Inf. Bull. 88, Agriculture's Capacity to Produce, and U. S. Dept. Agr. Misc. Pub. 595. Peacetime Adjustments in Farming.

Table 29.- Acres of pasture and grazing, 1950 1/

State	Cropland pasture	Open permanent pasture	Woodland pasture	Grazing not in farms	Total
	1,000 acres	1,000 acres	1,000 acres	1,000 acres	1,000 acres
Maine	221	273	383	400	1,277
Vermont	219	752	733	500	2,204
New Hampshire	102	148	295	450	995
Massachusetts	151	145	195	300	791
Rhode Island	25	13	14		52
Connecticut	129	157	164		450
New York	1,579	3,126	1,362	500	6,567
New Jersey	160	125	44		329
Pennsylvania	1,111	1,811	933	500	4,355
Delaware	72	28	11		111
Maryland	448	350	163	150	1,111
Ohio	2,049	3,063	1,606	500	7,218
Indiana	2,050	1,468	1,660		5,178
Illinois	2,592	2,265	2,041		6,898
Iowa	3,144	3,731	1,902		8,777
Missouri	5,104	6,036	5,805	4,800	21,745
Michigan	1,983	1,101	2,145	1,800	7,029
Wisconsin	2,187	2,432	4,424	2,200	11,243
Minnesota	1,560	2,618	3,349	2,200	9,727
North Dakota	935	10,735	483	2,386	14,539
South Dakota	816	22,913	438	2,289	26,456
Nebraska	1,400	21,415	603	739	24,157
Kansas	1,523	16,263	743	1,115	19,642
West Virginia	787	2,326	1,206	2,350	6,669
Kentucky	5,265	1,696	1,509	2,650	11,220
Tennessee	2,856	1,657	1,902	1,500	7,915
Virginia	1,564	2,379	1,356	1,500	6,799
North Carolina	733	1,057	1,423	3,800	7,013
South Carolina	495	489	1,207	2,500	4,691
Georgia	1,273	1,185	4,371	5,850	12,679
Florida	937	3,395	7,288	10,465	22,085
Alabama	1,598	1,707	3,712	6,800	13,817
Mississippi	1,604	2,280	4,483	6,120	14,487
Louisiana	1,804	1,152	1,804	11,500	16,260
Arkansas	2,472	1,585	3,245	10,500	17,802
Oklahoma	2,318	12,744	5,019	4,850	24,931
Texas	6,642	72,318	30,590	10,850	120,400
Montana	1,272	41,226	2,755	20,270	65,523
Idaho	485	5,625	1,243	27,580	34,933
Wyoming	405	29,845	1,275	23,010	54,535
Colorado	970	22,603	2,818	21,270	47,661
New Mexico	446	36,251	7,114	24,825	68,636
Arizona	184	31,113	6,936	25,150	63,383
Utah	305	6,815	1,454	32,935	41,509
Nevada	145	6,218	68	52,325	58,756
Washington	715	5,806	2,433	9,760	18,714
Oregon	969	9,665	3,618	31,175	45,427
California	3,530	13,544	6,290	29,800	53,164
United States	69,332	415,649	134,715	400,164	1,019,860

1/ From United States Department of Agriculture, Supplement to U. S. Dept. Agr. Tech. Bull. 1082, tables 9 and 10.

Table 30.- Acres of cropland pasture equivalent grazed, 1950 ^{1/}

State	Cropland pasture	Open permanent pasture	Woodland pasture	Grazing not in farms	Other pasture ^{2/} on farms	Total
	1,000 acres	1,000 acres	1,000 acres	1,000 acres	1,000 acres	1,000 acres
Maine	221	55	38	28	17	359
Vermont	219	150	73	35	24	501
New Hampshire	102	30	30	32	10	204
Massachusetts	151	29	20	21	11	232
Rhode Island	25	3	1		2	31
Connecticut	129	31	16		10	186
New York	1,579	1,250	136	35	150	3,150
New Jersey	160	75	4		12	251
Pennsylvania	1,111	906	93	35	113	2,258
Delaware	72	17	1		5	95
Maryland	448	210	16	10	36	720
Ohio	2,049	1,225	177	80	623	4,154
Indiana	2,050	881	183		552	3,666
Illinois	2,592	1,359	225		741	4,917
Iowa	3,144	2,239	209		993	6,585
Missouri	5,104	1,811	639	768	1,468	9,790
Michigan	1,983	330	172	108	458	3,051
Wisconsin	2,187	1,216	354	132	606	4,575
Minnesota	1,560	1,571	268	132	623	4,154
North Dakota	935	2,147	68	358	305	3,813
South Dakota	816	6,874	61	343	703	8,797
Nebraska	1,400	8,566	84	111	883	11,044
Kansas	1,521	6,505	104	167	438	8,735
West Virginia	787	465	157	306	90	1,805
Kentucky	5,265	509	209	344	333	6,660
Tennessee	2,856	828	247	195	217	4,343
Virginia	1,564	1,190	176	195	164	3,289
North Carolina	733	528	185	380	96	1,922
South Carolina	495	342	97	150	50	1,134
Georgia	1,273	830	350	352	129	2,934
Florida	937	2,376	583	628	186	4,710
Alabama	1,596	1,195	297	408	158	3,656
Mississippi	1,604	1,140	538	1,102	231	4,615
Louisiana	1,804	576	216	2,070	246	4,912
Arkansas	2,472	792	389	1,890	291	5,834
Oklahoma	2,318	3,823	1,405	1,212	468	9,226
Texas	6,642	21,695	8,565	2,712	2,122	41,736
Montana	1,272	3,298	110	811	477	5,968
Idaho	485	450	50	1,103	162	2,270
Wyoming	405	2,388	51	920	327	4,091
Colorado	970	1,808	113	851	325	4,067
New Mexico	446	2,900	285	993	243	4,867
Arizona	184	1,244	277	1,006	125	2,836
Utah	305	409	58	1,317	117	2,206
Nevada	145	249	3	2,093	144	2,634
Washington	715	581	49	293	142	1,780
Oregon	969	967	72	935	256	3,199
California	3,530	1,354	126	894	513	6,417
United States	69,332	89,417	17,580	25,555	16,495	218,379

^{1/} Computed by applying the factors in table 26 to the acres in table 27.

^{2/} Grain, hay, and stalk feeds, and so on.

Table 31.- Pasture and grazing: Animal unit months and acres per animal unit

State	Feed from	Animal	Months	Animal	Acres grazed per animal unit ^{4/}		
	all pasture	unit	grazed	units	Cropland pasture	Open perma- nent pasture	All pasture
	in feed	months of	in year	grazed			
units	1/ grazing	2/ 2/	3/ 3/	equivalent	equivalent	equivalent	
	1,000 tons	1,000 months	Months	1,000 units	Acres	Acres	Acres
Maine	125	556	5	111	3.2	16.0	11.5
Vermont	250	1,111	5	222	2.3	11.5	10.0
New Hampshire	82	364	5	73	2.8	14.0	13.8
Massachusetts	109	484	5	97	2.4	12.0	8.2
Rhode Island	27	120	6	20	1.6	8.0	2.6
Connecticut	125	556	5	111	1.7	8.5	4.1
New York	1,615	7,178	5.25	1,367	2.3	5.7	4.8
New Jersey	159	707	5.25	135	1.9	3.2	2.5
Pennsylvania	1,089	4,840	5	968	2.3	4.6	4.5
Delaware	58	258	6.5	40	2.4	4.0	2.8
Maryland	389	1,729	6	288	2.5	4.2	3.9
Ohio	2,631	11,693	5.25	2,227	1.9	4.7	3.2
Indiana	2,275	10,111	6	1,685	2.2	3.7	3.1
Illinois	3,581	15,916	6	2,653	1.9	3.2	2.6
Iowa	4,874	21,662	6	3,610	1.8	3.0	2.4
Missouri	3,811	16,938	6.5	2,606	3.8	12.7	8.4
Michigan	1,504	6,684	5.75	1,162	2.6	8.7	6.0
Wisconsin	2,996	13,316	5.25	2,536	1.8	3.6	4.5
Minnesota	2,636	11,716	5.5	2,130	2.0	3.3	4.6
North Dakota	1,534	6,818	4.75	1,435	2.7	13.5	10.1
South Dakota	2,275	14,556	6	2,426	3.6	12.0	10.9
Nebraska	4,328	19,236	5.5	3,497	3.2	8.0	6.9
Kansas	4,739	21,062	6.25	3,370	2.6	6.5	5.8
West Virginia	810	3,600	6.25	576	3.1	15.5	11.6
Kentucky	2,390	10,622	6.75	1,574	4.2	14.0	7.1
Tennessee	2,128	9,458	7.25	1,305	3.3	6.6	6.1
Virginia	1,480	6,578	6	1,096	3.0	6.0	6.2
North Carolina	835	3,711	6.5	571	3.4	6.8	12.3
South Carolina	513	2,280	8	285	4.0	5.7	16.5
Georgia	1,403	6,236	8.5	734	4.0	5.7	17.3
Florida	2,002	8,898	12	741	6.4	9.1	29.8
Alabama	2,084	9,262	10.5	882	4.1	5.9	15.7
Mississippi	2,438	10,836	9	1,204	3.8	7.6	12.0
Louisiana	2,242	9,964	11	906	5.4	10.8	18.0
Arkansas	1,589	7,062	8	683	6.6	13.2	20.3
Oklahoma	3,868	17,191	9	1,910	4.8	16.0	13.0
Texas	16,242	72,187	11	6,562	6.4	21.3	18.3
Montana	2,927	13,009	8	1,626	3.7	46.2	40.3
Idaho	1,233	5,480	6.5	843	2.7	33.7	41.4
Wyoming	2,207	9,809	9.75	1,006	4.1	51.2	54.3
Colorado	2,485	11,044	7.5	1,472	2.8	35.0	32.4
New Mexico	2,472	10,987	10.5	1,046	4.7	58.7	65.6
Arizona	1,309	5,817	10.25	567	4.4	110.0	96.8
Utah	1,130	5,022	7.75	648	3.4	56.7	64.0
Nevada	927	4,075	9	453	5.8	145.0	129.7
Washington	1,134	5,040	6	840	2.1	21.0	22.7
Oregon	1,697	7,542	7.25	1,040	3.1	31.0	43.7
California	3,439	15,284	9	1,698	3.8	38.0	31.3
United States	103,184	458,605	7.25	63,237	3.5	21.9	16.0

1/ An animal unit month of grazing as used in this report is the equivalent of 410 TDN or 450 feed units from grazing per month which is about the total quantity of feed of all kinds that the average milk cow uses per month. However, the average milk cow obtains only about 30 percent of its feed from grass. The average beef cow uses about 330 feed units per month and obtains about 75 percent of its feed from grazing.

2/ Adapted from unpublished data used in U. S. Dept. Agr., Agr. Inf. Bull. 85, Agriculture's Capacity to Produce, and from other sources.

3/ This is the number of animal units that could have received 450 feed units a month for the number of months specified.

4/ This is the number of acres required to furnish 450 feed units a month for the grazing season.

Table 32.- Pasture and grazing: Feed expressed in feed units obtained from different kinds of pasture, year beginning October 1, 1949

State	Pasture on farms				Grazing : not on farms	All : pasture and grazing	:Feed unit yield per acre in the grazing season			
	: Cropland	: Open perma- : nent	: Woodland : After- : math 1/2	: : : : : :			: 1,000 : tons	: 1,000 : tons	: Pounds	: Pounds
Maine	77	19	13	6	10	125	697	139		
Vermont	109	75	37	12	17	250	995	199		
New Hampshire	41	12	12	4	13	82	804	162		
Massachusetts	71	13	10	5	10	109	940	179		
Rhode Island	22	2	1	1	1	27	1,760	308		
Connecticut	87	21	11	6		125	1,349	268		
New York	809	641	70	77	18	1,615	1,025	410		
New Jersey	102	48	3	6		159	1,275	768		
Pennsylvania	536	437	45	54	17	1,089	965	483		
Delaware	44	11		3		58	1,222	786		
Maryland	242	114	9	19	5	389	1,080	651		
Ohio	1,298	776	112	394	51	2,631	1,267	507		
Indiana	1,272	547	114	342		2,275	1,241	745		
Illinois	1,887	990	164	540		3,581	1,456	874		
Iowa	2,327	1,657	155	735		4,874	1,480	888		
Missouri	1,986	705	249	572	299	3,811	778	234		
Michigan	978	162	85	226	53	1,504	986	294		
Wisconsin	1,433	746	232	499	86	2,996	1,310	613		
Minnesota	990	997	170	395	84	2,636	1,269	762		
North Dakota	376	864	27	123	144	1,534	804	161		
South Dakota	304	2,559	22	262	128	3,275	745	223		
Nebraska	549	3,357	33	346	43	4,328	784	314		
Kansas	825	3,529	57	237	91	4,739	1,085	434		
West Virginia	353	209	70	40	138	810	897	180		
Kentucky	1,890	183	75	119	123	2,390	718	216		
Tennessee	1,399	406	121	107	95	2,128	980	490		
Virginia	704	535	79	74	88	1,480	900	450		
North Carolina	319	230	80	41	165	835	870	435		
South Carolina	224	155	44	22	68	513	905	634		
Georgia	609	396	167	63	168	1,403	957	668		
Florida	398	1,010	248	79	267	2,002	850	595		
Alabama	911	681	169	90	232	2,089	1,140	798		
Mississippi	847	602	285	122	582	2,436	1,056	528		
Louisiana	823	263	99	112	945	2,241	912	457		
Arkansas	673	216	106	79	515	1,589	544	273		
Oklahoma	972	1,603	589	196	508	3,868	839	252		
Texas	2,585	8,441	3,333	827	1,056	16,242	778	233		
Montana	624	1,617	54	234	398	2,927	981	78		
Idaho	263	245	27	99	599	1,233	1,085	87		
Wyoming	219	1,288	27	177	496	2,207	1,081	86		
Colorado	593	1,104	69	199	520	2,485	1,223	98		
New Mexico	226	1,473	145	124	504	2,472	1,013	81		
Arizona	97	474	145	66	527	1,309	1,054	30		
Utah	156	210	29	60	675	1,130	1,023	62		
Nevada	50	87	2	50	728	917	690	28		
Washington	455	370	31	91	187	1,134	1,273	127		
Oregon	514	513	38	136	496	1,697	1,061	104		
California	1,892	725	68	275	479	3,439	1,072	107		
United States	34,161	41,317	7,731	8,346	11,629	103,184	985	199		

1/ Grain, hay, stalk feeds, and so on.

Table 33.- Digestible nutrient requirements of all livestock and poultry,
United States, year beginning
October 1, 1949

Kind of livestock	: TDN per:		: TDN	: Number	: Subtotal	: Total
	: day or	: Days				
	: per unit	:	: per year	: livestock	: 1,000	: 1,000
	: Pounds	: Number	: Pounds	: head	: tons	: tons
Dairy cattle:						
Milk cows Maintenance	: 7.9	365	2,884			
Allowance for pregnancy	: 6.0	66	396			
4,892 lbs. milk	: .352 per lb.		1,722			
			5,002	23,853		59,656
Dairy heifers:						
1 - 2 years	: 9.2	365	3,356	5,394	9,057	
Heifer calves	: 6.2	365	2,263	6,208	7,024	
Veal calves sold	: 2.75	60	165	11,908	982	
Dairy bulls	: 13.2	365	4,818	994	2,395	19,458
Beef cattle:						
Cattle grain-fattened	: (13.5	185)	2,862	6,467	9,254	9,254
	: (9.0	40)				
Beef cows	: 8.9	365	3,248			
Add for calves 3.6 TDN x 120 days x 75% of cows			324			
			3,572	16,743	29,903	
Heifers 1 - 2 years	: 8.5	365	3,102	4,754	7,373	
Bulls	: 13.0	365	4,745	696	1,651	
Cattle going into feedlot	: 8.0	365-225	1,120	6,467	3,622	
Other cattle	: 6.975	365	2,546	12,354	16,360	58,909
Sheep and goats:						
Sheep on feed	: 1.7	120	204	3,644	372	
Stock sheep, 1 year and over	: 2.0	365	730	21,165	7,725	
Lambs on hand	: 1.0	365	365	5,017	915	
Lambs sold	: 1.0	180	180	10,530	948	
Goats sheared	: 1.9	365	694	2,530	878	10,839
Horses and mules:						
2 years and over	: 16.0	50	800			
	: 12.0	50	600			
	: 10.25	265	2,716	4,116	7,415	15,260
Colts 1 - 2 years	: 11.5	365	4,198	193	405	
Colts under 1 year	: 8.4	365	3,066	173	265	15,930
Hogs:						
Number fed in year less deaths	: 4.33	190	823	81,514	33,542	
Sows and gilts	: 4.5	200	900	10,244	4,610	38,152
Poultry:						
TDN requirements based on 75% of concentrates fed plus three percent for pasture (except for broilers)						
Hens and pullets					14,005	
Chickens raised					6,605	
Broilers					2,432	
Turkeys					1,613	24,655
Other livestock:						
TDN requirements based on 75% of concentrates fed and 50% of hay fed						3,505
All livestock and poultry						240,358

Table 34.- Digestible nutrients and feed units consumed by different kinds of livestock, by classes of feed, United States, year beginning October 1, 1949

Item	Total digestible nutrients				Feed units			
	All feed	Concen- trates	Harvested forage	Pasture	All feed	Concen- trates	Harvested forage	Pasture
	1/	2/	2/		1/	2/	2/	
	1,000 tons	1,000 tons	1,000 tons	1,000 tons	1,000 tons	1,000 tons	1,000 tons	1,000 tons
Dairy cattle	79,114	17,586	32,718	28,810	85,296	23,968	29,640	31,688
Beef cattle	68,163	8,997	15,321	43,845	74,338	11,797	13,418	49,123
Sheep and goats	10,839	431	1,035	9,373	12,439	638	1,493	10,308
Horses and mules	15,930	4,012	4,202	7,716	17,386	5,197	3,701	8,488
Hogs	38,152	35,653		2,499	52,570	49,821		2,749
Poultry	24,655	23,902		753	33,845	33,017		828
Other livestock	3,505	3,033	472		4,597	4,218	379	
Total	240,358	93,614	53,748	92,996	280,471	128,656	48,631	103,184
Feed units per 100 TDN					117	137	90	111
TDN . per 100 feed units	86	73	110	90				

1/ Includes seeds and skim milk.

2/ Includes hay, silage, corn stover, sorghum forage, and so on.

Table 35.- Digestible nutrients consumed by different kinds of livestock and poultry, by classes of feed and quarters of the year, United States, year beginning October 1, 1949

Item	All feed					Concentrates including seeds					Hay, silage, and other harvested forage					Pasture and grazing					
	Total	Oct.- Dec.	Jan.- Mar.	Apr.- June	July- Sept.	Total	Oct.- Dec.	Jan.- Mar.	Apr.- June	July- Sept.	Total	Oct.- Dec.	Jan.- Mar.	Apr.- June	July- Sept.	Total	Oct.- Dec.	Jan.- Mar.	Apr.- June	July- Sept.	
	1,000 tons	1,000 tons	1,000 tons	1,000 tons	1,000 tons	1,000 tons	1,000 tons	1,000 tons	1,000 tons	1,000 tons	1,000 tons	1,000 tons	1,000 tons	1,000 tons	1,000 tons	1,000 tons	1,000 tons	1,000 tons	1,000 tons	1,000 tons	
Milk cows																					
Maintenance	(39,119	9,700	9,780	9,780	9,779)	14,376	3,593	3,956	3,677	2,946	27,495	9,634	9,629	4,102	4,674	17,785	1,410	833	7,877	7,657	
Milk	(20,537	4,315	4,640	6,032	5,500)																
Other dairy cattle	19,456	4,644	4,864	4,865	4,865	3,210	1,137	1,662	137	274	5,223	1,703	2,302	713	-	11,025	2,024	400	4,010	4,591	
Cattle grain-fattened	9,251	2,314	3,251	1,894	1,895	5,672	1,418	1,905	1,134	1,135	2,406	449	1,102	426	427	1,176	447	64	332	333	
Other beef cattle	53,909	14,052	14,052	15,403	15,402	3,325	1,122	1,837	122	244	12,915	2,931	3,441	1,429	14	42,544	9,949	3,774	13,852	15,094	
Sheep	9,901	2,042	1,991	2,937	2,991	431	215	210			1,035	39	594	5		3,495	1,441	1,161	2,082	2,991	
Goats	376	219	219	219	221											873	219	219	219	221	
Hogs	34,152	16,440	6,537	6,243	8,712	35,653	16,369	6,254	5,255	7,775						2,499	291	283	988	937	
Horses and mules:																					
Maintenance	(11,793	3,096	3,025	2,875	2,798)	4,012	590	1,408	1,408	590	4,202	1,364	2,074	432	312	7,716	1,733	993	2,485	2,505	
Work	(4,134	617	1,450	1,450	617)																
Hens and pullets:																					
Maintenance	(11,233	3,019	3,154	2,626	2,424)	13,706	3,565	3,955	3,320	2,560						299	76	22	97	126	
Eggs	(2,772	602	813	769	563)																
Chickens raised:																					
Broilers	6,605	1,652	990	1,321	2,642	6,244	1,536	935	1,217	2,456						361	66	5	104	126	
Turkeys	2,432	608	608	608	608	2,432	608	608	608	608											
	1,113	726	87	72	728	1,520	686	57	57	690						93	40	-	15	38	
Other livestock	3,505	877	877	876	875	3,033	754	746	753	759	472	119	119	117	116	-					
Total	240,350	65,445	56,240	58,040	60,625	93,614	31,055	23,713	17,493	20,353	53,743	17,106	24,761	7,400	5,593	92,990	17,604	7,774	32,059	34,679	

Table 36.-Concentrates fed in the United States in 1949-50
by quarters

Item	Oct.- Dec.	Jan.- Mar.	Apr.- June	July- Sept.	Total
	Million tons	Million tons	Million tons	Million tons	Million tons
As reported ^{1/}	46.7	31.2	23.2	26.2	127.3
Deduct corn in silage	5.5				5.5
	<u>41.2</u>				<u>121.8</u>
Add seeds fed	.3		.3	.6	1.2
Total	41.5	31.2	23.5	26.8	123.0
Converted to TDN	31.6	23.7	17.9	20.4	93.6

^{1/} As reported in table 2, U. S. Dept. Agr. Statis. Bull. 139.

Table 37.- Estimated average measures of feed value of 100 pounds of selected feeds

Item	Unit	Corn	Oats	Soybean meal	Hay	Corn silage	Corn stover	Pasture forage
Feed consumed	Pounds	100	100	100	100	100	100	100
Dry matter	do.	83	90	90	90	25	80	30
Net energy	Therms	78	69	78	39	15	24	13.5
Digestible protein	Pounds	6.5	9.4	37.0	7.0	1.1	2.0	2.5
TDN	do.	78	70	78	50	18	45	17.5
Feed units	do.	100	90	165	45	19	25	19

Table 38.- Value of selected feeds compared with corn as 100 percent, using the price, net energy, TDN, and feed units as measured of value

Item	Corn	Oats	Soybean meal	Hay	Corn silage	Corn stover	Pasture forage
	Percent	Percent	Percent	Percent	Percent	Percent	Percent
Price ^{1/}	100	92	161	38			
Net energy	100	88	100	50	19	31	17
TDN	100	90	100	64	22	58	22
Feed unit	100	90	165	45	19	25	19

^{1/} The prices used were the 10-year average prices received by farmers for corn, oats, and hay and the price paid by farmers for soybean meal, in Illinois, Iowa, and Missouri.

END