



AgEcon SEARCH
RESEARCH IN AGRICULTURAL & APPLIED ECONOMICS

The World's Largest Open Access Agricultural & Applied Economics Digital Library

This document is discoverable and free to researchers across the globe due to the work of AgEcon Search.

Help ensure our sustainability.

Give to AgEcon Search

AgEcon Search
<http://ageconsearch.umn.edu>
aesearch@umn.edu

*Papers downloaded from **AgEcon Search** may be used for non-commercial purposes and personal study only. No other use, including posting to another Internet site, is permitted without permission from the copyright owner (not AgEcon Search), or as allowed under the provisions of Fair Use, U.S. Copyright Act, Title 17 U.S.C.*

CSB 430 (1953)

USDA STATISTICAL BULLETINS

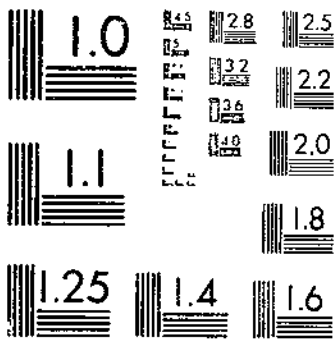
STATISTICS OF FOREIGN

THE AMERICAN-EGYPTIAN COTTON SITUATION

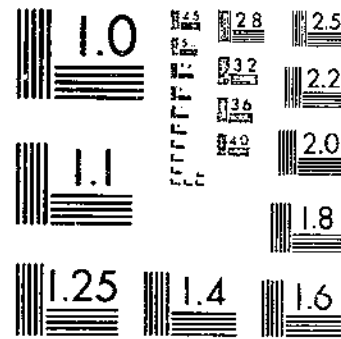
LOWENSTEIN, F. FRAZIER, S. J.

OF

START



MICROCOPY RESOLUTION TEST CHART
NATIONAL BUREAU OF STANDARDS-1963-A



MICROCOPY RESOLUTION TEST CHART
NATIONAL BUREAU OF STANDARDS-1963-A

Prepared by

Frank Lowenstein
Agricultural Economic Statistician 1/

CONTENTS

	Page
New varieties of American-Egyptian cotton	1
Revision of grade standards	2
Production	3
Consumption	6
Quotas and import duties	8
Prices	8
Index of tables	9

Since the publication by the Bureau of Agricultural Economics in December 1943 of a statistical summary for American-Egyptian cotton 2/ certain new developments have affected this crop. New and improved varieties have been developed; a law was passed by the 82d Congress which spells out price-support procedures for the crop; standards for grades of this cotton have been revised; and production, consumption, and prices have shown wide variations. This report brings the statistics contained in the earlier publication to date, adds some additional statistical series to those previously published, and analyzes the situation and outlook for American-Egyptian cotton.

NEW VARIETIES OF AMERICAN-EGYPTIAN COTTON

Porter's report 2/ explains the development of the various varieties of American-Egyptian cotton from 1911 to 1943.

Porter says, 3/ "The first American strain of Egyptian cotton to be grown commercially in this country was a variety known as 'Yuma'. It was first produced commercially in the Salt River Valley in Arizona and in the Imperial Valley in California about 1911. By 1919 'Yuma' cotton had been almost entirely displaced by 'Pima' cotton, an American-Egyptian variety which monopolized the

1/ Data for this report were compiled by Susie J. Frazier.

2/ Porter, Horace G. Some Phases of the American-Egyptian Cotton Situation and Outlook with Statistical Supplement. Bur. Agr. Econ., Washington, D. C. December 1943. (Processed.)

3/ See footnote 2 above.

field up to the time a new variety, 'S x P', was introduced about 1934. 'S x P', which is a cross between Egyptian Sakellaridis and American-Egyptian Pima, gradually displaced Pima and has since become the only variety of American-Egyptian cotton in commercial production in this country."

Since 1943, two new varieties have replaced "S x P", "Amsak" and "Pima 32." Amsak was developed by crossing "S x P" with "Sakel" and was first produced commercially in 1943. Pima 32 is the result of crossing "S x P", "Pima", and "Giza 7", an Egyptian variety. It was first grown commercially in 1948. "Pima 32" has almost completely replaced "S x P." ^{4/} Currently, only a small quantity of Amsak is produced. ^{5/}

A new variety of American-Egyptian Cotton, called Pima S-1, is being put into commercial production for the first time. About 3,000 acres of this variety are to be planted in 1953. Preliminary spinning tests indicate that the quality characteristics of Pima S-1 are equal to those of Karnak, Amsak, and Pima 32.

REVISION OF GRADE STANDARDS

Effective August 1, 1952, the "Official Cotton Standards of the United States for the Grade of American-Egyptian Cotton" were revised. In general, the standards were changed to coincide with the kind of cotton now produced.

The grade designations were revised so that grades are no longer designated as "half" grades. The equivalent old and new designations are shown below:

Grade Designations

<u>Old</u>	<u>New</u>
1	1
1-1/2	2
2	3
2-1/2	4
3	5
3-1/2	6
4	7
4-1/2	8
5	9

^{4/} For a detailed description of the development of the various American-Egyptian varieties, see Hathorn, Scott, Jr. American Egyptian Cotton; Ariz. Agr. Expt. Sta. Bul. 238, November 1951, pp. 7 to 10.

^{5/} United States Department of Agriculture, Production and Marketing Administration, Cotton Branch. Cotton Varieties Planted 1950-52. Memphis, Tenn., July 1952, table 25, p. 27.

As the statistics in this report are for years prior to August 1, 1952, all grades mentioned in this report refer to the old designations.

PRODUCTION

Prior to the 1920's, relatively large quantities of Sea Island cotton were produced. From 1910 to 1915 the yearly average was 88,500 bales. However, after 1919, production stayed below 5,100 bales a year and since 1945 less than 100 bales a year have been produced (table 4).

Production of American-Egyptian cotton increased at the same time that production of Sea Island cotton declined. American-Egyptian cotton partially replaced Sea Island, whose production declined because of damage by boll weevils. However, boll weevils are not a production hazard in the Arizona-California area where American-Egyptian cotton is grown.

The crop of 1914 was the first American-Egyptian crop to exceed 5,000 bales (see table 4). During the 1920's production of this variety averaged 30,700 bales a year. During the 1930's average yearly production declined to 16,300 bales.

During World War II, the Commodity Credit Corporation operated purchase programs for American-Egyptian cotton. These programs were designed to promote increases in production which were needed for national security purposes. (See table 6). Production reached a peak of 73,800 bales in 1942. Purchase programs were not in operation and price-support operations at lower levels in relation to prices of upland cotton were maintained by CCC loans from 1944 to 1949. During this period production dropped to a yearly average of 3,900 bales. In 1950 production increased sharply. Purchase prices of more than a dollar a pound were maintained in 1951 and 1952 to stimulate production for stockpiling purposes. Production increased to 93,500 bales in 1952.

Hathorn ^{6/} estimates that from 1930 to 1950 the price of American-Egyptian cotton had to be 1.7 to 2.5 times that of American upland to give Arizona growers the same return from both types of cotton. The break-even ratio in this period averaged 2.1. A comparison of actual and break-even prices is shown in table 1.

If production of American-Egyptian cotton were dependent upon the difference between its break-even and actual prices, the acreage planted to American-Egyptian would have varied as this difference between the two prices varied in the preceding crop-year. But such a variation in acreage did not occur. Other factors influenced the planting of American-Egyptian cotton. Among them was the influence of acreage allotments for upland cotton in the West.

^{6/} Hathorn, Scott, Jr. American-Egyptian Cotton, table 16, p. 76.

Table 1.- Cotton: Price per pound received by farmers for American-Egyptian and upland and break-even ratio, Arizona, 1936-50

Year beginning August 1	Price per pound			Break-even ratio of American-Egyptian to Upland
	American-Egyptian Actual 1/	Break-even	Upland 1/	
	Cents	Cents	Cents	
1936	27.8	29.25	13.00	2.25
1937	24.6	18.23	8.68	2.10
1938	18.7	20.28	8.38	2.42
1939	21.8	19.24	9.62	2.00
1940	30.2	24.14	10.45	2.31
1941	30.7	41.99	17.35	2.42
1942	44.0	44.39	18.73	2.37
1943	46.4	47.41	18.89	2.51
1944	45.9	38.00	20.54	1.85
1945	42.4	39.05	22.97	1.70
1946	46.5	53.77	30.21	1.78
1947	59.0	65.04	30.11	2.16
1948	60.3	61.35	30.52	2.01
1949	55.0	60.90	27.31	2.23
1950	70.2	103.19	41.11	2.51

1/ Average price received by farmers.

The concept of break-even prices is based on the substitution of upland for American-Egyptian cotton or vice versa in the Western States where American-Egyptian cotton is produced. Such substitution means that farmers would plant the most profitable type of cotton in any year. However, acreage allotments for upland cotton in Arizona during the 1930's restricted the acreage of upland cotton that could be planted in that State. Therefore, American-Egyptian, which was considered the next most profitable crop, was planted on land that might otherwise have been planted to upland cotton. During the 1930's production of American-Egyptian cotton was stimulated by acreage allotments for upland cotton.

In 1937, when there were no acreage allotments, the acreage planted to upland cotton in Arizona increased sharply and that planted to American-Egyptian cotton decreased almost as sharply. Acreage of the upland variety increased by about 64 percent from 1936 and acreage of American-Egyptian decreased by 45 percent. With the re-establishment of acreage controls on upland cotton in 1938, production of American-Egyptian again increased while acreage of upland decreased. Acreage planted to American-Egyptian cotton continued to increase because of a combination of favorable prices and acreage controls through 1941, except for 1939 when acreage planted to this variety declined slightly.

In an effort to stimulate production of American-Egyptian cotton for use by the military forces, the United States Department of Agriculture supported the price of the 1942 crop through a purchase program of 43.25 cents a pound

on grade No. 2, 1-1/2 inches in staple length. This purchase program apparently had the desired effect and the July 1 acreage in cultivation to American-Egyptian cotton reached the highest point since 1920--192,900 acres.

Although a CCC purchase program and a loan program were in effect for the 1943 crop of this cotton, acreage decreased about 27 percent from the 1942 peak.

Acreage allotments were removed from upland cotton after 1943 and area planted to American-Egyptian cotton dropped to less than 15,000 acres and remained below this point until 1950. Although CCC loans were available for American-Egyptian cotton during the entire period, actual prices were below break-even prices in 4 of the 6 years between 1944 and 1949, inclusive.

In 1950 acreage allotments were established on upland cotton. As a result, acreage in cultivation to American-Egyptian cotton on July 1 increased from 5,700 acres in 1949 to 104,600 acres in 1950. There were no acreage allotments in 1951 and the area of American-Egyptian dropped to 64,400 acres. It would probably have dropped further except that a purchase program, instituted by the Commodity Credit Corporation, averaged \$1.04 a pound for grade No. 2, 1-1/2 inches in staple length. This purchase price was raised to \$1.07 in 1952 and American-Egyptian increased to 104,200 acres.

Cultivation of additional land for production of cotton in Arizona, the principal American-Egyptian producing State, has influenced production of this cotton. Successive record peaks of acreage in cultivation to all types of cotton in Arizona were reached in 1937, 1949, 1951, and 1952. When acreage quotas were imposed on upland cotton after 1937 and in 1950, the new cotton land had to be diverted to other uses. Consequently the acreage of American-Egyptian cotton increased above the acreages of the preceding 3 or 4 years. The introduction of new land introduces a variable which makes difficult mathematical analysis of the response of American-Egyptian acreage to the various factors that affected it.

In 1952, Public Law 585 was passed by the 82d Congress. This law provides for mandatory price supports for extra-long-staple cotton, including American-Egyptian, and for acreage allotments and marketing quotas on extra-long-staple cotton. When a marketing quota is proclaimed, it must be 30,000 bales or more. This provision means that acreage allotments must be large enough to permit the production of 30,000 bales.

There are to be no marketing quotas or acreage allotments for the 1953 crop. However, a production goal of 39,500 acres and 30,000 bales has been announced for 1953. These figures are 38 and 32 percent, respectively, of the 1952 figures.

This law may offset the shift of acreage from upland to American-Egyptian cotton in the future. However, production from each crop from 1944 to 1949 was well below the 30,000-bale minimum marketing quota specified in Public Law 585. (See table 4). If these years represent the level at which production of American-Egyptian cotton will stabilize in the absence of stimulated production for defense purposes, the law may affect production of this cotton very little.

CONSUMPTION

Consumption of American-Egyptian cotton has varied widely from year to year, particularly during the postwar years. The factors that cause this variation are difficult to assess as this cotton comprises only a small part of the consumption of extra-long-staple cotton in this country. From 1945 through 1950 it averaged only about 10 percent of the consumption of extra-long-staple cotton other than upland. In 1950 the American-Egyptian variety comprised about 22 percent and in 1949 approximately 2 percent of the consumption of extra-long-staple cotton other than upland. (See table 4).

Extra-long-staple cotton is used primarily in industrial sewing thread, fine goods such as broadcloth, organdy, and voiles, typewriter ribbons, lace, certain types of knitting yarns, and wire insulation. ^{7/} In 1949, about 59 percent of the extra-long-staple cotton consumed in this country went into industrial sewing thread. ^{7/}

The quantity of American-Egyptian cotton consumed depends upon the domestic mill demand for all extra-long-staple cotton; the relative prices of American-Egyptian, Peruvian Pima, and Egyptian Karnak; and, perhaps most important, the relative quality of the three growths. In the past, producers of industrial thread and other extra-long-staple products have preferred the quality characteristics of Egyptian cotton to those of American-Egyptian. ^{8/}

The newer varieties of American-Egyptian cotton, Amsak and Pima 32, are reported to have more desirable quality characteristics than S x P. However, insufficient time has elapsed since their production in quantity was started to judge their acceptance by mills in relation to Karnak. Tests of the performance of Karnak, Pima 32, and Amsak cotton have been made. These results are shown in table 2.

Results of these tests indicate that yarn spun from Karnak cotton has a better appearance and fewer neps than yarn spun from Pima 32 or Amsak cotton. However, yarn spun from Pima 32 and Amsak cotton was stronger. Amsak cotton yielded less waste than either of the other varieties and Pima 32 gave less waste than Karnak at a card-production rate of 3.5 pounds or less an hour.

During a large part of the 1951-52 season, the price of Egyptian cotton was higher than the price of American-Egyptian (table 12). This relationship may partially account for the large quantities of American-Egyptian cotton which were consumed by mills in this country in relation to the quantity of Egyptian cotton consumed. Since April 1952, this price relationship has been reversed and from August through December 1952 consumption of American-Egyptian cotton was only about 22 percent as large as consumption of Egyptian cotton. Consumption of American-Egyptian was about 54 percent as large as consumption of Egyptian cotton in 1951-52.

^{7/} McClure, Joe H. Market Outlets for Extra Long Staple Cotton in the United States. U. S. Dept. Agr. Inform. Bul. 33, December 1950. Table 2, p. 13.

^{8/} United States Tariff Commission. The Import Quotas. Long Staple Cotton Rept. 161, Second Ser. 1948, Washington, D. C., p. 43.

Table 2.- Quality factors of combed yarns spun from Karnak, Pima 32, and Amsak cotton, by specified rates of card production ^{1/}

Average nepes per 100 square inches of card web ^{2/}			
Item	Variety		
	Karnak	Pima 32	Amsak
	Number	Number	Number
Card production rate of-			
2.0 pounds per hour	7	11	16
3.5	9	11	25
6.5	20	27	40
9.5	36	64	66
Average index of appearance ^{3/}			
2.5	113	110	117
3.5	110	107	107
6.5	103	97	90
9.5	93	83	77
Average skein strength of yarn (yarn strength in pounds x yarn numbers) ^{4/}			
2.0	5/3,211	6/3,419	7/3,667
3.5	5/3,276	6/3,402	7/3,650
6.5	5/3,241	6/3,468	7/3,600
9.5	5/3,249	6/3,369	7/3,647
Cord and comb waste loss (percent) ^{8/}			
	Percent	Percent	Percent
2.0	25.3	22.3	21.4
3.5	24.5	22.1	20.8
6.5	22.2	23.0	21.6
9.5	22.7	23.4	22.8

^{1/} From Rouse, Joseph T., and Burley, Samuel T., Jr. Performance of Selected Commercial Varieties of Cotton When Processed at Varying Rate of Cord Production. Washington, D. C., U. S. Dept. Agr., Production and Marketing Admin., Cotton Br., March 1952.

^{2/} Ibid., table 13, p. 42.

^{3/} Ibid., table 14, p. 44.

^{4/} Ibid., table 15, p. 46.

^{5/} 3.90 twist multiplier.

^{6/} 3.60 twist multiplier.

^{7/} 3.55 twist multiplier.

^{8/} Ibid., table 16, p. 48.

Apparently future consumption of American-Egyptian cotton will depend upon the relation of its price to that of imported Egyptian cotton and upon whether the quality characteristics of Aneak and Pima 32 are good enough to offer serious competition to Egyptian Karnak.

QUOTAS AND IMPORT DUTIES

Over the last two decades, import duties and quotas have been maintained on cotton 1-1/8 inches and longer which is imported into the United States. These duties and quotas affect the supply and price of cotton in the United States which competes with American-Egyptian cotton.

The first import quota on long-staple cotton (1-1/8 inches and longer) was established as country quotas totaling 45,656,420 pounds, effective September 20, 1939. This is equivalent to approximately 95,000 bales. Since that time the quota has been modified from time to time. On December 19, 1940, the quota on cotton 1-11/16" or longer was suspended. On July 29, 1942, the sum of country quotas was made a global quota with no separate quota for any country. A supplemental quota of 23,094,000 pounds of cotton 1-3/8 inches and longer for the quota year 1946-47 was opened June 16, 1947. A supplemental quota of a maximum of 18,000,000 pounds for the quota year 1947-48 was opened July 21, 1948. The opening of the quota year was changed from September 20 to February 1 on September 3, 1949. An interim quota of 16,487,042 pounds for the period September 20, 1949 to January 31, 1950, was announced September 3, 1949. A supplemental quota of a maximum of 7,500,000 pounds of cotton 1-3/8 inches or more but less than 1-11/16 inches and 1,500,000 pounds of harsh rough cotton 1-3/16 inches but less than 1-3/8 inches was announced in October 1950, for the quota year 1950-51. For 1952-53 the quota is approximately 95,000 bales.

During the first 6 years of the long-staple quota, imports were less than the quota, averaging about 40 million pounds from 1939 to 1944. During 3 of the next 6 years supplemental quotas were granted to fill requests from mills. The total quota was filled in only 1 of these 3 years. Throughout the entire history of import quotas, they have been filled in only 6 years and these were the post-World War II years of 1945, 1946, 1948, 1949, 1951, and 1952.

The import duties have affected the price of imported long-staple cotton in the United States. From June 18, 1930, to July 1942, the import duty on cotton longer than 1-1/8 inches was 7 cents a pound. In July 1942, the duty was reduced to 3.5 cents. In October 1951, the duty on cotton 1-11/16 inches and longer was reduced to 1.75 cents a pound, but the duty on cotton 1-1/8 to 1-11/16 inches remained at 3.5 cents.

PRICES

In discussing supply and consumption the effect of prices on these phenomena was emphasized somewhat. In the absence of price supports, supply and consumption in turn would probably influence strongly the price farmers receive for American-Egyptian cotton. However, except for the 1950 crop, a price-support program has been in effect for each American-Egyptian crop since 1942. These support prices have in large part determined the price of the cotton.

Public Law 585 makes support prices for domestically produced extra-long-staple cotton mandatory unless producers disapprove marketing quotas. All crops after the one planted in 1953 will have support prices computed in the same way as the support prices for upland cotton.

For the 1953 crop, the law states, "the level of price support which shall be made available to cooperators for extra-long-staple cotton of the 1953 crop--shall be at a level bearing the same relationship to the level of price support determined for American Upland cotton as the average farm price for extra-long-staple cotton during the period 1936-42 inclusive, bore to such price for American Upland cotton."

In line with this provision, on January 14, 1953, the Department of Agriculture announced that the 1953 crop of extra-long-staple cotton would be supported at a price level 2.4 times the level at which upland cotton is supported. The varieties to be supported are American-Egyptian, Sealand, and Sea Island. On February 26, the minimum average price-support levels were announced at 74.52 cents a pound for American-Egyptian and 56.22 cents for Sea Island and Sealand.

INDEX TO TABLES

	<u>Page</u>
Acreage, production, and yield	
Table 5.- American-Egyptian cotton: Acreage, production and yield per acre, by States, United States, 1911 to date	14
Carryover	
Table 21.- American-Egyptian cotton: Carryover, by grade and staple, United States, August 1, 1928 to date	31
Table 22.- American-Egyptian cotton, carryover: Percentage each grade is of total, United States, 1928 to date	35
Table 23.- American-Egyptian cotton: Percentage each staple length is of total, United States, August 1, 1928 to date	35
Table 24.- Egyptian cotton: Carryover, by staple length, United States, August 1, 1928 to date	36
Table 25.- Peruvian cotton: Carryover, by staple length, United States, August 1, 1928 to date	36
Consumption	
Table 18.- American-Egyptian cotton: Mill consumption, United States, by months, 1918 to date	28
Table 19.- Egyptian cotton: Mill consumption, United States, by months, 1914 to date	29

INDEX TO TABLES - Continued

	<u>Page</u>
Table 20.- Peruvian cotton: Mill consumption, United States, by months, 1932 to date	30
Ginnings	
Table 13.- American-Egyptian cotton: Ginnings by grade and staple, United States, 1928 to date	21
Table 14.- American-Egyptian cotton, ginnings: Percentage each grade is of total, United States, 1928 to date	25
Table 15.- American-Egyptian cotton, ginnings: Percentage each staple length is of total, United States, 1928 to date	25
Table 16.- American-Egyptian cotton: Ginnings, by grade, by States, United States, 1941 to date	26
Table 17.- American-Egyptian cotton: Ginnings, by staple length, by States, United States, 1941 to date	27
Prices	
Table 1.- American-Egyptian cotton, break-even and actual prices received by farmers in Arizona	4
Table 7.- Season average price per pound received by farmers for American-Egyptian cotton, by States and United States, Sea Island, Sealand, extra long staple, American upland and all cotton, United States, 1935-51	17
Table 8.- American-Egyptian cotton: Average price per pound received by farmers, United States, by months, 1929 to date	17
Table 9.- American-Egyptian cotton: Price per pound f.o.b. gin yards, net weight; by grade and staple, El Paso and Phoenix, 1941 to date	18
Table 10.- American-Egyptian cotton: Price per pound received by farmers, Arizona, by months, 1929 to date	19
Table 11.- American-Egyptian cotton: Average spot price per pound at New England mill points, by months, July 1919 to date	19
Table 12.- Domestic and foreign growths of cotton: Price per pound at New England mill points, by months, 1949 to date	20

INDEX TO TABLES - Continued

	<u>Page</u>
Purchase price and loan rates	
Table 6.- American-Egyptian cotton: Commodity Credit Corporation purchase price or loan rate per pound, net weight, by staple and grade, 1942-51	15
Quality characteristics	
Table 2.- Quality factors of combed yarns spun from Karnak, Pima 32, and Amsak cotton, by specified rates of card production	7
Stocks	
Table 26.- American-Egyptian cotton: Total stocks, United States, end of month, November 1918 to date	37
Table 27.- Egyptian cotton: Stocks in all locations, United States, end of month, 1914 to date	38
Table 28.- Peruvian cotton: Stocks in all locations, United States, end of month, 1945 to date	38
Supply and distribution	
Table 3.- Long-staple (other than upland) cotton: Supply and distribution, United States, 1911 to date	12
Table 4.- Long-staple (other than upland) cotton: Supply and distribution, by growths, United States, 1911 to date	13

TABLE 3.- Long-staple (other than upland) cotton: Supply and distribution, United States, 1911 to date

Year beginning August 1	Supply				Distribution			
	Carryover beginning of season	Imports	Production	Total	Mill consumption	Exports 1/	Carryover end of season	Total
	1,000 bales 2/	1,000 bales 2/	1,000 bales 2/	1,000 bales 2/	1,000 bales 2/	1,000 bales 2/	1,000 bales 2/	1,000 bales 2/
1911	98.5	188.6	119.3	406.4	283.9	17.8	109.8	411.5
1912	109.8	207.9	74.1	391.8	266.4	20.2	93.0	379.6
1913	93.0	151.7	79.8	324.5	245.8	10.0	85.1	340.9
1914	85.1	263.3	88.0	436.4	271.1	13.9	154.8	439.9
1915	154.8	362.5	93.1	610.4	362.8	5.8	223.3	592.0
1916	223.3	211.3	120.9	555.5	366.3	3.6	177.0	546.8
1917	177.0	134.6	108.8	420.4	230.8	1.8	129.5	362.2
1918	129.5	125.6	88.4	343.5	186.4	2.2	116.1	324.8
1919	136.1	549.0	47.4	732.5	449.0	3.8	282.4	735.2
1920	282.4	110.5	94.4	487.3	207.4	3.9	210.8	422.1
1921	210.8	273.4	40.4	524.6	319.5	---	202.3	521.8
1922	202.3	351.8	37.9	592.1	356.7	---	195.3	552.0
1923	195.3	185.2	23.2	403.7	294.0	---	94.4	388.4
1924	94.4	204.6	4.3	303.4	234.1	---	74.4	308.5
1925	74.4	256.3	20.1	350.7	238.0	---	111.2	349.2
1926	111.2	253.8	16.3	381.2	275.2	---	87.1	362.3
1927	87.1	226.6	24.4	338.1	249.3	---	78.1	327.4
1928	78.1	314.6	28.3	421.0	257.5	1.9	142.0	401.4
1929	142.0	235.4	28.8	406.1	226.5	5.1	161.8	393.3
1930	161.8	26.4	23.3	211.5	124.1	1.1	86.8	212.1
1931	86.8	86.5	13.7	187.0	94.4	.4	90.8	185.6
1932	90.8	74.3	8.4	173.5	109.4	.5	67.7	177.6
1933	67.7	100.2	9.7	177.6	117.4	.5	71.2	189.1
1934	71.2	72.4	14.1	157.6	95.4	.2	58.2	153.8
1935	58.2	67.0	17.8	142.9	89.6	.2	49.7	139.4
1936	49.7	77.6	18.5	145.7	99.7	.2	52.1	152.0
1937	52.1	44.8	15.0	111.9	56.6	.1	41.7	98.3
1938	41.7	48.8	24.8	115.3	75.0	.2	39.2	114.4
1939	39.2	68.8	29.0	137.0	79.1	.4	55.1	134.5
1940	55.1	68.5	37.3	160.8	92.7	.4	67.2	160.3
1941	67.2	95.9	61.4	224.4	140.1	1.0	71.5	212.6
1942	71.5	142.1	74.7	288.2	163.1	.0	78.6	241.7
1943	78.6	77.8	60.0	216.3	116.5	.1	131.5	248.2
1944	131.5	97.9	8.6	238.0	113.5	.3	95.6	209.4
1945	95.6	97.9	4.1	197.5	107.4	.0	54.1	161.6
1946	54.1	171.2	2.4	227.8	143.7	.0	74.6	218.3
1947	74.6	122.2	1.2	198.1	150.7	3.0	44.3	198.1
1948	44.3	105.0	3.5	152.8	100.9	.6	45.8	147.3
1949	45.8	152.8	3.9	202.5	119.4	.0	65.0	184.4
1950	65.0	120.2	62.2	247.4	154.1	3/	82.4	236.5
1951 4/	82.4	46.7	46.0	175.1	77.4	3/	49.3	126.7
1952 4/	49.3	---	93.5	---	---	---	---	---

1/ Exports of Sea Island for 1911-20 in bales of 500 pounds. No data readily available for 1921-28. Since January 1, 1929, data include "Pima and Sea Island" and are in running bales.

2/ American in running bales, and foreign in equivalent bales of 500 pounds.

3/ Less than 500 bales.

4/ Preliminary.

Totals were made before figures were rounded to thousands.

Compiled from records and reports of the Bureau of the Census.

TABLE 5.- American-Egyptian cotton: Acreage, production, and yield per acre, by States, United States, 1911 to date

Year beginning: Aug. 1	Acreage in cultivation July 1					Acreage harvested					Production					Yield per harvested acre					
	Ariz.	Calif.	Texas	New Mexico	Total 1/	Ariz.	Calif.	Texas	New Mexico	Total 1/	Ariz.	Calif.	Texas	New Mexico	Total 1/	Ariz.	Calif.	Texas	New Mexico	Total 1/	
	1,000 acres	1,000 acres	1,000 acres	1,000 acres	1,000 acres	1,000 acres	1,000 acres	1,000 acres	1,000 acres	1,000 acres	1,000 bales 2/	1,000 bales 2/	1,000 bales 2/	1,000 bales 2/	1,000 bales 2/	Pounds	Pounds	Pounds	Pounds	Pounds	
1911	---	---	---	---	---	0.0	3/	---	---	3/	---	4/	---	---	4/	---	500	---	---	---	500
1912	---	---	---	---	---	0.4	0.2	---	---	0.6	0.2	0.1	---	---	0.4	300	387	---	---	324	
1913	---	---	---	---	---	4.0	.1	---	---	4.1	2.2	4/	---	---	2.2	275	315	---	---	276	
1914	---	---	---	---	---	12.0	.6	---	---	12.6	6.2	.1	---	---	6.3	258	100	---	---	251	
1915	---	---	---	---	---	2.6	---	---	---	2.6	1.2	---	---	---	1.2	222	---	---	---	222	
1916	---	---	---	---	---	7.3	---	---	---	7.3	3.3	---	---	---	3.3	226	---	---	---	226	
1917	---	---	---	---	---	33.0	2.4	---	---	35.4	15.2	1.0	---	---	16.2	230	206	---	---	229	
1918	---	---	---	---	---	72.0	6.6	---	---	78.6	34.2	3.0	---	---	37.2	238	228	---	---	237	
1919	---	---	---	---	---	87.0	1.5	---	---	88.5	39.8	.7	---	---	40.5	229	225	---	---	229	
1920	---	---	---	---	---	200.0	43.0	---	---	243.0	82.0	9.7	---	---	91.7	205	112	---	---	189	
1921	---	---	---	---	---	75.0	9.1	---	---	84.1	35.0	3.3	---	---	38.3	234	181	---	---	228	
1922	---	---	---	---	---	77.0	.1	---	---	77.1	33.9	.1	---	---	34.0	220	325	---	---	220	
1923	---	---	---	---	---	40.0	---	---	---	40.0	23.0	---	---	---	23.0	287	---	---	---	287	
1924	9.0	---	---	---	9.0	9.0	---	---	---	9.0	5.0	---	---	---	5.0	252	---	---	---	252	
1925	41.0	---	---	---	41.0	41.0	---	---	---	41.0	21.0	---	---	---	21.0	247	---	---	---	247	
1926	27.0	---	---	---	27.0	27.0	---	---	---	27.0	17.0	---	---	---	17.0	306	---	---	---	306	
1927	42.0	---	---	---	42.0	41.0	---	---	---	41.0	25.0	---	---	---	25.0	296	---	---	---	296	
1928	51.0	---	---	---	51.0	51.0	---	---	---	51.0	30.0	---	---	---	30.0	278	---	---	---	278	
1929	67.0	---	---	---	67.0	67.0	---	---	---	67.0	30.0	---	---	---	30.0	217	---	---	---	217	
1930	47.0	---	---	---	47.0	47.0	---	---	---	47.0	25.0	---	---	---	25.0	260	---	---	---	260	
1931	37.0	---	---	---	37.0	35.0	---	---	---	35.0	15.0	---	---	---	15.0	199	---	---	---	199	
1932	22.0	---	---	---	22.0	22.0	---	---	---	22.0	9.0	---	---	---	9.0	189	---	---	---	189	
1933	26.0	---	---	---	26.0	26.0	---	---	---	26.0	10.0	---	---	---	10.0	184	---	---	---	184	
1934	28.0	---	---	---	28.0	28.0	---	---	---	28.0	15.0	---	---	---	15.0	247	---	---	---	247	
1935	39.0	---	---	---	39.0	39.0	---	---	---	39.0	19.0	---	---	---	19.0	220	---	---	---	220	
1936	38.0	---	---	---	38.0	38.0	---	---	---	38.0	18.0	---	---	---	18.0	230	---	---	---	230	
1937	21.0	---	---	---	21.0	21.0	---	---	---	21.0	12.0	---	---	---	12.0	269	---	---	---	269	
1938	44.0	---	---	---	44.0	44.0	---	---	---	44.0	21.0	---	---	---	21.0	234	---	---	---	234	
1939	41.0	3/	---	0.1	41.0	41.0	3/	---	0.1	41.0	27.6	4/	---	0.1	27.7	323	300	---	309	323	
1940	65.0	3/	1.3	2.3	68.6	65.0	3/	1.3	2.0	68.3	30.5	4/	1.3	1.4	33.2	225	103	481	339	233	
1941	101.5	0.3	15.6	20.9	138.3	101.0	0.3	15.6	19.2	136.1	41.5	0.1	7.7	10.5	59.8	197	177	236	262	211	
1942	130.0	2.3	33.0	27.6	192.9	129.0	2.1	23.0	26.6	180.7	56.0	.5	10.1	8.7	75.3	208	104	210	157	200	
1943	96.0	1.4	25.0	19.3	141.7	95.0	1.0	24.0	19.0	139.0	35.7	.4	13.8	11.0	60.9	180	182	275	279	210	
1944	9.0	.1	4.5	1.1	14.7	9.0	.1	4.5	1.1	14.7	5.7	4/	2.4	.7	8.8	302	165	256	331	289	
1945	5.0	---	1.2	.5	6.7	5.0	---	1.2	.4	6.6	3.0	---	.9	.2	4.1	287	---	357	270	299	
1946	2.0	---	.8	.3	3.1	2.0	---	.8	.3	3.1	1.4	---	.8	.3	2.5	348	---	490	455	394	
1947	.3	---	1.0	.2	1.5	.3	---	1.0	.2	1.5	.2	---	.9	.1	1.2	259	---	451	303	395	
1948	1.6	---	1.6	.8	4.0	1.6	---	1.6	.8	4.0	1.1	---	1.7	.8	3.6	320	---	524	484	434	
1949	2.6	---	2.1	1.0	5.7	2.6	---	2.1	.9	5.6	1.8	---	1.5	.8	4.0	327	---	350	384	346	
1950	44.0	.5	43.1	17.0	104.6	44.0	.5	42.2	16.5	103.2	36.9	.2	18.9	8.2	64.2	402	168	214	238	298	
1951	24.0	.4	25.0	15.0	64.4	24.0	.4	24.0	14.4	62.8	19.7	.3	18.7	8.5	47.2	393	346	373	280	359	
1952 5/	46.0	1.2	35.0	22.0	104.2	34.0	1.2	46.0	21.2	102.4	45.0	.8	28.0	15.0	88.8	468	319	395	339	415	

1/ Totals were computed before data were rounded to thousands.

2/ Bales of 500 pounds, gross weight.

3/ Less than 50 acres.

4/ Less than 50 bales.

5/ Preliminary.

Crop Reporting Board.

TABLE 6.- American-Egyptian cotton: Commodity Credit Corporation purchase price or loan rate per pound, net weight, by grade and staple 1942-47

Crop year and grade	Purchase price							
	1 3/8 inches		1 7/16 inches		1 1/2 inches		1 9/16 inches and longer	
	Cents	Cents	Cents	Cents	Cents	Cents	Cents	Cents
1942								
1	42.20		43.25		45.35		47.45	
1 1/2	41.15		42.20		44.30		46.40	
2	40.10		41.15		1/43.25		45.35	
2 1/2	39.05		40.10		42.20		44.30	
3	36.95		38.00		40.10		42.20	
1943 2/								
1	46.00		48.00		50.00		51.00	
1 1/2	45.00		47.00		49.00		50.00	
2	44.00		46.00		1/48.00		49.00	
2 1/2	43.00		45.00		47.00		48.00	
3	41.00		43.00		45.00		46.00	
	Loan rate							
	Ariz. and Calif.	N. Mex. and Texas	Ariz. and Calif.	N. Mex. and Texas	Ariz. and Calif.	N. Mex. and Texas	Ariz. and Calif.	N. Mex. and Texas
	Cents	Cents	Cents	Cents	Cents	Cents	Cents	Cents
1943 and 1944 3/								
1	39.25	39.50	40.70	40.95	42.85	43.10	44.45	44.70
1 1/2	38.20	38.45	39.70	39.95	41.85	42.10	43.40	43.65
2	37.15	37.40	38.65	38.90	1/40.80	1/41.05	42.35	42.60
2 1/2	36.10	36.35	37.60	37.85	39.70	39.95	41.35	41.60
3	34.05	34.30	35.50	35.75	37.60	37.85	39.15	39.40
3 1/2	29.55	29.80	31.75	32.00	34.35	34.60	34.50	34.75
4	24.70	24.95	27.95	28.20	30.85	31.10	30.95	31.20
4 1/2	20.10	20.35	23.40	23.65	26.70	26.95	26.70	26.95
5	17.65	17.90	20.60	20.85	23.60	23.85	23.60	23.85
1945 4/								
1	38.95	39.20	42.30	42.55	45.15	45.40	45.40	45.65
1 1/2	37.95	38.20	41.25	41.50	44.30	44.55	44.55	44.80
2	36.45	36.70	39.45	39.70	1/42.65	1/42.90	42.95	43.20
2 1/2	34.60	34.85	36.90	37.15	39.95	40.20	40.25	40.50
3	31.95	32.20	33.55	33.80	35.80	36.05	36.10	36.35
3 1/2	26.30	26.55	28.55	28.80	31.50	31.75	31.60	31.85
4	21.45	21.70	24.75	25.00	28.00	28.25	28.05	28.30
4 1/2	16.85	17.10	20.20	20.45	23.85	24.10	23.95	24.10
5	14.40	14.65	17.40	17.65	20.75	21.00	20.75	21.00
1946 5/								
1	45.15	45.40	48.60	48.85	51.55	51.80	51.55	51.80
1 1/2	44.15	44.40	47.60	47.85	50.60	50.85	50.60	50.85
2	42.60	42.85	46.00	46.25	1/49.45	1/49.70	49.45	49.70
2 1/2	40.75	41.00	42.35	42.60	45.40	45.65	45.40	45.65
3	37.00	37.25	38.60	38.85	40.75	41.00	40.75	41.00
3 1/2	31.60	31.85	33.95	34.20	36.70	36.95	36.70	36.95
4	26.75	27.00	30.05	30.30	33.20	33.45	33.20	33.45
4 1/2	22.15	22.40	25.50	25.75	29.05	29.30	29.05	29.30
5	19.70	19.95	22.70	22.95	25.95	26.20	25.95	26.20
1947 6/								
1	52.30	52.55	55.70	55.95	58.65	58.90	58.65	58.90
1 1/2	51.30	51.55	54.70	54.95	57.70	57.95	57.70	57.95
2	49.75	50.00	53.15	53.40	1/56.60	1/56.85	56.60	56.85
2 1/2	47.90	48.15	49.45	49.70	52.50	52.75	52.50	52.75
3	44.15	44.40	45.75	46.00	47.90	48.15	47.90	48.15
3 1/2	38.70	38.95	40.95	41.20	43.80	44.05	43.80	44.05
4	33.85	34.10	37.15	37.40	40.30	40.55	40.30	40.55
4 1/2	29.25	29.50	32.60	32.85	36.15	36.40	36.15	36.40
5	26.80	27.05	29.80	30.05	33.05	33.30	33.05	33.30

Continued -

TABLE 6.- American-Egyptian cotton: Commodity Credit Corporation purchase price or loan rate per pound, net weight, by grade and staple 1948-52 -Continued

Crop year and grade	Loan rate							
	1 3/8 inches		1 7/16 inches		1 1/2 inches		1 9/16 inches and longer	
	Ariz. and Calif.	N. Mex. and Texas	Ariz. and Calif.	N. Mex. and Texas	Ariz. and Calif.	N. Mex. and Texas	Ariz. and Calif.	N. Mex. and Texas
	Cents	Cents	Cents	Cents	Cents	Cents	Cents	Cents
1948 7/								
1	56.80	57.05	60.25	60.50	63.20	63.45	63.20	63.45
1 1/2	55.80	56.05	59.25	59.50	62.25	62.50	62.25	62.50
2	54.25	54.50	57.65	57.90	1/61.10	1/61.35	61.10	61.35
2 1/2	52.40	52.65	54.00	54.25	57.05	57.30	57.05	57.30
3	48.65	48.90	50.25	50.50	52.40	52.65	52.40	52.65
3 1/2	43.25	43.50	47.90	48.15	48.35	48.60	48.35	48.60
4	38.40	38.65	41.70	41.95	44.85	45.10	44.85	45.10
4 1/2	33.80	34.05	37.15	37.40	40.70	40.95	40.70	40.95
5	31.35	31.60	34.35	34.60	37.60	37.85	37.60	37.85
1949 8/								
1	52.50	52.75	55.95	56.20	61.60	61.85	61.60	61.85
1 1/2	51.50	51.75	54.95	55.20	60.20	60.45	60.20	60.45
2	49.95	50.20	53.55	53.80	1/57.85	1/58.10	57.85	58.10
2 1/2	48.10	48.35	49.70	49.95	52.75	53.00	52.75	53.00
3	44.35	44.60	45.95	46.20	48.10	48.35	48.10	48.35
3 1/2	38.95	39.20	41.20	41.45	44.05	44.30	44.05	44.30
4	34.10	34.35	37.40	37.65	40.55	40.80	40.55	40.80
4 1/2	29.55	29.80	32.85	33.10	36.40	36.65	36.40	36.65
5	27.05	27.30	30.05	30.30	33.30	33.55	33.30	33.55
1950 9/								
Purchase rates								
1951 10/								
1	101.55	101.95	104.90	105.30	106.05	106.45		
1 1/2	100.45	100.85	103.80	104.20	104.90	105.30		
2	98.20	98.60	101.55	101.95	1/103.80	1/104.20		
2 1/2	93.75	94.15	98.20	98.60	100.45	100.85		
3	89.25	89.65	94.85	95.25	97.10	97.50		
3 1/2	83.65	84.05	88.25	88.55	91.90	92.30		
4	78.10	78.50	80.30	80.70	83.65	84.05		
4 1/2	72.50	72.90	74.75	75.15	75.85	76.25		
5	66.90	67.30	69.15	69.55	71.35	71.75		
Grade 2, 1 1/2 inches	will average \$1.04 per pound, PMA, February 5, 1951.							
1952 10/								
1	104.05	104.45	108.35	108.75	109.80	110.20		
1 1/2	102.65	103.05	106.90	107.30	108.35	108.75		
2	99.75	100.15	104.45	104.85	106.90	107.30		
2 1/2	94.10	94.50	99.75	100.15	1/106.90	1/107.30		
3	88.35	88.75	95.50	95.90	102.65	103.05		
3 1/2	81.20	81.60	86.95	87.35	98.35	98.75		
4	74.10	74.50	76.90	77.30	91.20	91.60		
4 1/2	67.35	67.75	69.85	70.25	81.20	81.60		
5	59.80	60.20	62.65	63.05	71.25	71.65		
Grade 2, 1 1/2 inches	will average 107.10 cents per pound, PMA, January 4, 1952.							

1/ Base price.
 2/ An additional payment of 1.83 cents a pound was announced in May 1944.
 3/ Announced by CCC Feb. 10, 1944.
 4/ Announced by CCC Aug. 11, 1945.
 5/ Announced by Dept. Agr. Aug. 13, 1946.
 6/ Announced by Dept. Agr. Aug. 22, 1947.
 7/ Announced by Dept. Agr. Sept. 8, 1948.
 8/ Announced by Dept. Agr. Sept. 9, 1949.
 9/ No purchase or loan program for the 1950-51 crop.
 10/ Purchase rate for cotton longer than 1 1/2 inches are identical with rates for cotton 1 1/2 inches long.

Production and Marketing Administration.

TABLE 7.- Season average price per pound received by farmers for American-Egyptian cotton by States and United States; Sea Island, Sealand, extra-long-staple, American upland, and all cotton, United States, 1935 to date

Year	Extra-long-staple							American upland	All cotton
	American-Egyptian				Sea Island	Sealand	All extra-long staple		
	Texas	New Mexico	Arizona	United States					
Cents	Cents	Cents	Cents	Cents	Cents	Cents	Cents	Cents	
1935	---	---	21.6	21.6	25.0	---	21.6	11.08	11.09
1936	---	---	27.8	27.8	26.0	---	27.7	12.34	12.36
1937	---	---	24.6	24.6	24.2	---	24.5	8.40	8.41
1938	---	---	18.7	18.7	25.4	---	19.6	8.58	8.60
1939	---	---	21.8	21.8	32.2	---	22.4	9.06	9.09
1940	28.3	28.3	30.2	30.0	34.6	---	30.5	9.83	9.89
1941	34.5	34.5	30.7	31.9	35.1	---	32.0	16.95	17.03
1942	43.0	43.0	44.0	43.7	42.6	---	43.7	18.90	19.04
1943	47.0	47.0	46.4	46.7	44.8	---	46.6	19.76	19.90
1944	42.8	42.8	45.9	44.8	---	---	44.8	20.72	20.73
1945	43.0	43.0	42.4	42.5	---	---	42.5	22.51	22.52
1946	45.0	45.0	46.5	45.8	---	---	45.8	32.63	32.64
1947	62.0	62.0	59.0	61.5	---	---	61.3	31.92	31.93
1948	63.0	63.3	60.3	62.2	---	45.0	61.6	30.38	30.38
1949	60.0	60.0	55.0	57.8	---	43.5	56.8	28.57	28.58
1950	61.5	71.4	70.2	67.8	---	49.5	67.7	39.90	40.07
1951	104.0	103.0	95.4	100.0	---	55.5	99.5	37.69	37.88
1952									
1953									
1954									
1955									

Compiled from "Agricultural Prices", Bureau of Agricultural Economics.

TABLE 8.- American-Egyptian cotton: Average price per pound received by farmers, United States, by months, 1929 to date

Year beginning August	Aug. 15	Sept. 15	Oct. 15	Nov. 15	Dec. 15	Jan. 15	Feb. 15	Mar. 15	Apr. 15	May 15	June 15	July 15	Average
	Cents	Cents	Cents	Cents	Cents	Cents	Cents	Cents	Cents	Cents	Cents	Cents	Cents
1929	35.0	35.0	34.8	31.7	29.0	29.5	26.0	25.0	25.0	25.0	25.0	24.2	32.50
1930	23.0	22.0	19.2	19.8	18.2	18.5	20.0	22.5	22.2	22.5	21.5	20.5	20.00
1931	17.5	15.0	14.8	16.2	15.0	14.5	15.0	15.0	15.0	14.5	14.5	15.2	15.55
1932	15.4	15.5	15.5	14.7	13.0	14.5	15.0	14.5	14.2	16.0	19.0	20.5	14.49
1933	20.2	20.0	20.0	20.5	20.5	21.5	24.5	23.0	23.5	23.5	23.5	23.5	20.91
1934	23.5	22.5	21.0	21.0	21.0	21.0	21.0	21.0	21.0	20.0	20.0	19.5	21.80
1935	18.8	17.0	20.0	22.5	22.5	24.0	25.0	25.0	25.0	24.9	25.0	25.0	21.58
1936	25.0	24.8	25.7	26.0	27.5	28.5	28.5	29.0	29.0	29.3	29.0	29.0	27.78
1937	28.0	26.2	24.9	23.0	24.2	25.1	24.6	24.5	22.5	24.0	19.0	19.5	24.59
1938	19.5	18.6	19.0	18.6	18.4	13.7	18.7	18.6	19.0	19.0	19.0	19.0	18.68
1939	19.2	24.0	22.5	21.6	20.8	22.3	22.0	21.4	20.4	20.2	22.2	24.5	21.85
1940	24.7	27.2	28.0	27.7	28.3	30.3	31.2	31.1	30.3	29.8	30.0	30.7	30.03
1941	32.2	30.0	29.3	25.3	28.8	37.8	37.9	38.7	39.6	40.2	39.6	40.2	31.87
1942	40.0	41.0	43.9	44.1	43.1	44.1	43.4	43.6	43.5	43.3	43.3	43.5	43.72
1943	45.7	46.4	46.6	46.5	47.0	46.4	47.3	46.6	46.9	47.2	46.3	46.3	
1944 2/													
1945													
1946													
1947													
1948													
1949													
1950		60.0	63.0	68.1	68.7	69.0	77.5	65.8	82.5	82.5	102.0	102.0	
1951	102.0	103.0	101.0	104.0	102.0	97.9	99.6	98.5	101.0	83.3	83.7	83.7	101.00
1952	83.7	105.0	108.0	107.0	105.0	100.0	96.5	101.0					

1/ Weighted average.

2/ Not available. August 1944-August 1950.

Bureau of Agricultural Economics.

TABLE 9.- American-Egyptian cotton: Price per pound, f.o.b. gin yards, net weight, by grade and staple, El Paso and Phoenix, 1941 to date

Crop year and staple length (inches)	Grade									
	1	1-1/2	2	2-1/2	3	3-1/2	4	4-1/2	5	
	Cents	Cents	Cents	Cents	Cents	Cents	Cents	Cents	Cents	
1941										
1-3/8	33.10	32.42	31.46	29.47	27.56	24.10	21.65	1/19.90	1/17.83	
1-7/16	34.58	33.91	32.95	30.97	29.05	25.89	23.58	1/22.82	1/20.69	
1-1/2	36.51	35.84	2/34.92	32.89	31.01	28.02	25.73	1/25.39	1/23.26	
1-9/16	36.81	36.14	35.22	33.19	31.16	28.17	25.88	1/25.39	1/23.26	
1942										
1-3/8	41.52	40.48	39.44	38.40	36.32	31.85	27.01	22.38	19.94	
1-7/16	42.99	41.98	40.96	39.87	37.81	34.04	30.24	25.69	22.90	
1-1/2	45.12	44.13	2/43.10	42.01	39.88	36.62	33.16	27.99	25.88	
1-9/16	46.74	45.71	44.66	43.62	41.46	36.78	33.24	28.99	25.88	
1943										
1-3/8	45.84	44.84	43.84	42.84	40.83	30.40	26.10	21.19	18.98	
1-7/16	47.81	46.81	45.81	44.80	42.80	32.49	28.58	24.33	20.88	
1-1/2	49.83	48.83	2/47.85	46.82	44.81	34.76	30.99	26.92	23.34	
1-9/16	50.85	49.85	48.85	47.85	45.84	35.94	31.04	26.92	23.34	
1944										
1-3/8	42.78	41.78	40.24	38.40	35.70	30.17	25.32	20.72	18.27	
1-7/16	46.17	45.13	43.28	40.70	37.32	32.38	28.58	24.03	21.23	
1-1/2	49.02	48.17	2/46.53	43.78	39.51	33.27	31.83	27.68	24.58	
1-9/16	49.26	48.43	46.80	44.05	39.79	33.39	31.87	27.68	24.58	
1945										
1-3/8	40.62	39.62	38.07	36.20	32.47	27.02	22.18	17.58	15.13	
1-7/16	44.06	43.06	41.45	37.76	34.03	29.27	25.47	20.92	18.12	
1-1/2	47.00	46.05	2/44.89	40.81	36.22	32.14	28.65	24.50	21.40	
1-9/16	47.00	46.05	44.89	40.81	36.22	32.14	28.65	24.50	21.40	
1946										
1-3/8	44.97	43.97	42.42	40.57	36.81	31.40	26.55	21.95	19.50	
1-7/16	48.41	47.41	45.82	42.15	38.41	33.65	29.85	25.30	22.50	
1-1/2	51.36	50.41	2/49.27	45.19	40.57	36.51	33.01	28.86	25.76	
1-9/16	51.36	50.41	49.27	45.19	40.57	36.51	33.01	28.86	25.76	
1947										
1-3/8	53.17	52.17	50.62	48.77	45.02	39.57	34.72	30.12	27.67	
1-7/16	56.57	55.57	54.02	50.32	46.62	41.82	38.02	33.47	30.67	
1-1/2	59.52	58.57	2/57.47	53.37	48.77	44.67	41.17	37.02	33.92	
1-9/16	59.52	58.57	57.47	53.37	48.77	44.67	41.17	37.02	33.92	
1948										
1-3/8	56.88	55.88	54.33	52.48	48.73	43.32	38.47	33.92	31.42	
1-7/16	60.32	59.32	57.92	54.07	50.33	45.57	41.77	37.22	34.42	
1-1/2	63.95	62.57	2/62.23	57.12	52.48	48.42	44.92	40.77	37.67	
1-9/16	63.95	62.57	62.23	57.12	52.48	48.42	44.92	40.77	37.67	
1949										
1-3/8	53.21	52.21	50.66	48.81	45.06	39.66	34.81	30.26	27.76	
1-7/16	56.66	55.66	54.24	50.41	46.66	41.91	38.11	33.56	30.76	
1-1/2	62.47	61.03	2/58.62	53.46	48.81	44.76	41.26	37.11	34.01	
1-9/16	62.47	61.03	58.62	53.46	48.81	44.76	41.26	37.11	34.01	
1950										
1-3/8	79.91	78.48	76.29	70.56	60.25	54.41	49.06	43.56	37.61	
1-7/16	84.24	82.96	80.60	75.51	65.11	58.76	52.93	47.08	41.30	
1-1/2	86.17	84.93	2/83.32	78.23	67.67	62.08	56.25	49.96	44.22	
1-9/16	86.17	84.93	83.32	78.23	67.67	62.08	56.25	49.96	44.22	
1951										
1-3/8	101.63	100.46	98.08	93.04	86.38	80.71	75.17	69.33	63.58	
1-7/16	105.00	103.83	101.38	97.42	91.88	85.21	77.58	71.79	66.04	
1-1/2	106.22	105.01	2/103.73	99.71	94.17	88.67	80.96	73.21	68.30	
1-9/16	106.22	105.01	103.73	99.71	94.17	88.67	80.96	73.21	68.30	

1/ Average for 7 months, January-July 1942.

2/ Prices per pound, f.o.b. gin yards, net weight, Base quality is No. 2, 1-1/2 inches.

Production and Marketing Administration.

TABLE 10.- American-Egyptian cotton: Price per pound received by farmers, Arizona, by months, August 1929 to date ^{1/}

Year beginning August	Aug.	Sept.	Oct.	Nov.	Dec.	Jan.	Feb.	Mar.	Apr.	May	June	July	Averages
	Cents	Cents	Cents	Cents	Cents	Cents	Cents	Cents	Cents	Cents	Cents	Cents	Cents
1929	35.0	35.0	34.8	31.7	29.0	29.5	26.0	25.0	25.0	25.0	25.0	24.2	32.50
1930	23.0	22.0	19.2	19.8	18.2	18.5	20.0	22.5	22.2	22.5	21.5	20.5	20.00
1931	17.5	15.0	14.8	16.2	15.0	14.5	15.0	15.0	15.0	14.5	14.5	15.2	15.55
1932	15.4	15.5	15.5	14.7	13.0	14.5	15.0	14.5	14.2	16.0	19.0	20.5	14.49
1933	20.2	20.0	20.0	20.5	20.5	21.5	24.5	23.0	23.5	23.5	23.5	23.5	20.91
1934	23.5	22.5	21.0	21.0	21.0	21.0	21.0	21.0	21.0	20.0	20.0	19.5	21.80
1935	18.8	17.0	20.0	22.5	22.5	24.0	25.0	25.0	25.0	24.9	25.0	25.0	21.58
1936	25.0	24.8	25.7	26.0	27.5	28.5	28.5	29.0	29.0	29.3	29.0	29.0	27.78
1937	28.0	26.2	24.9	23.0	24.2	25.1	24.6	24.5	22.5	24.0	19.0	19.5	24.59
1938	19.5	18.6	19.0	18.6	18.4	18.7	18.7	18.6	19.0	19.0	19.0	19.0	18.68
1939	19.2	24.0	22.5	21.6	20.8	22.3	22.0	21.4	20.4	20.2	22.2	24.5	21.85
1940	24.7	27.2	28.1	25.5	28.0	30.3	31.2	31.1	30.3	29.8	30.0	30.7	30.19
1941	32.2	30.0	29.3	25.1	28.7	33.8	38.5	39.3	39.7	40.3	39.7	40.3	30.71
1942	40.0	41.0	44.0	44.7	43.5	44.3	43.5	43.7	43.5	43.3	43.3	43.5	43.95
1943	45.7	46.3	46.3	46.0	---	---	---	---	---	---	---	---	46.4
1944	---	---	---	---	---	---	---	---	---	---	---	---	45.9
1945	---	---	---	---	---	---	---	---	---	---	---	---	42.4
1946	---	---	---	---	---	---	---	---	---	---	---	---	46.5
1947	---	---	---	---	---	---	---	---	---	---	---	---	59.0
1948	---	---	---	---	---	---	---	---	---	---	---	---	60.3
1949	---	---	---	---	---	---	---	---	---	---	---	---	55.0
1950	---	---	---	---	---	---	---	---	---	---	---	---	70.2
1951	---	---	---	---	---	---	---	---	---	---	---	---	95.4
1952	---	---	---	---	---	---	---	---	---	---	---	---	---
1953	---	---	---	---	---	---	---	---	---	---	---	---	---
1954	---	---	---	---	---	---	---	---	---	---	---	---	---
1955	---	---	---	---	---	---	---	---	---	---	---	---	---

^{1/} Not available by months, December 1943 to date.

TABLE 11.- American-Egyptian cotton: Average spot price per pound at New England mill points, by months, July 1919 to date ^{1/}

Season	Aug.	Sept.	Oct.	Nov.	Dec.	Jan.	Feb.	Mar.	Apr.	May	June	July	Average
	Cents	Cents	Cents	Cents	Cents	Cents	Cents	Cents	Cents	Cents	Cents	Cents	Cents
1918	---	---	---	---	---	---	---	---	---	---	---	60.00	---
1919	71.00	75.00	72.00	50.00	83.00	98.00	108.00	110.00	118.00	125.00	125.00	108.00	97.75
1920	105.00	85.00	70.00	45.80	37.80	33.71	34.13	29.94	31.28	33.25	32.85	32.75	47.59
1921	33.33	38.13	41.80	39.00	35.50	37.67	36.17	33.63	31.00	35.50	36.25	36.50	36.21
1922	36.00	36.75	34.62	37.00	36.70	36.62	37.33	37.80	38.50	37.00	36.00	35.62	36.66
1923	34.00	35.00	37.62	40.90	44.50	44.88	44.00	42.75	43.50	43.25	42.88	42.17	41.29
1924	43.50	44.00	47.50	50.00	56.50	61.33	65.00	68.33	66.50	65.00	64.70	67.38	58.31
1925	67.00	54.25	55.25	51.75	43.80	40.21	41.38	39.50	37.50	36.50	36.50	36.50	45.02
1926	36.50	36.50	35.70	35.75	35.67	35.52	37.44	39.31	40.95	41.00	40.94	43.00	38.21
1927	43.00	44.50	42.25	42.33	41.35	41.88	41.88	45.25	49.39	52.62	51.40	50.75	42.02
1928	44.80	40.00	39.88	42.20	43.50	44.00	44.00	44.00	45.50	42.60	42.00	40.25	42.73
1929	43.00	40.25	35.75	37.00	36.12	35.50	35.00	35.00	35.00	35.00	35.00	33.75	36.61
1930	31.80	27.12	23.90	23.31	21.75	21.00	24.69	26.75	26.38	27.00	25.75	25.20	25.39
1931	23.50	21.50	19.50	19.75	19.55	19.88	20.38	20.50	20.50	20.50	20.75	21.50	20.65
1932	20.75	20.90	20.38	19.52	18.30	18.62	19.44	20.38	20.83	22.00	23.20	25.50	20.82
1933	24.17	23.40	23.75	24.75	24.75	25.62	29.12	29.62	29.62	29.38	29.00	28.62	26.76
1934	28.40	27.12	23.62	22.80	23.25	23.62	23.50	23.50	23.50	23.50	23.50	23.50	24.15
1935	24.00	21.75	23.25	26.30	27.93	27.95	28.12	29.12	29.50	28.20	28.25	29.00	26.93
1936	28.75	28.50	30.50	30.62	32.70	34.88	34.25	34.75	35.00	35.38	35.00	35.00	32.94
1937	33.00	29.83	27.30	25.88	27.00	28.50	28.00	27.75	27.20	26.88	26.00	24.40	27.69
1938	23.50	21.70	21.25	21.08	20.70	22.00	22.12	22.00	22.50	23.00	22.80	22.88	22.13
1939	22.50	26.75	25.94	24.19	24.05	25.88	25.50	24.81	24.38	24.45	26.38	28.00	25.24
1940	28.40	30.25	30.88	31.00	2/	2/	2/	2/	2/	2/	2/	2/	---
1941	28.67	30.25	30.88	31.60	33.50	34.40	34.75	34.50	34.50	34.90	35.25	35.50	33.23
1942	35.50	33.00	31.30	28.69	33.28	41.67	42.65	43.35	43.88	44.35	44.39	44.52	38.88
1943	44.86	45.30	47.54	45.56	47.88	47.20	47.30	47.29	47.10	47.23	47.44	47.96	47.22
1944	48.20	48.13	49.00	49.00	49.40	50.63	49.75	50.00	50.00	50.00	51.50	51.50	49.76
1945	51.50	51.50	51.00	51.75	52.00	2/	2/	2/	2/	2/	2/	2/	---
1946	2/	---	---	---	---	---	---	---	---	---	---	---	---
1947	2/	---	---	---	---	---	---	---	---	---	---	---	---
1948	2/	---	---	---	---	---	---	---	---	---	---	---	---
1949	58.00	62.50	56.00	57.00	64.00	63.58	64.00	65.00	65.00	63.75	63.50	64.00	62.19
1950	2/	2/	69.01	74.00	78.00	90.00	112.00	116.50	118.33	117.67	115.00	112.00	3/100.25
1951	2/	104.67	101.00	107.67	110.25	110.00	108.50	112.00	110.00	112.00	97.50	110.00	5/107.60
1952	108.67	110.00	102.50	---	---	---	---	---	---	---	---	---	---

^{1/} Pima, grade 2, 1 9/16 inches in length from 1919 through November 1940; SXP grade 2, 1 1/2 inches from August 1940 through December 1944, no quotations for January 1945 through July 1949; American-Egyptian grade 2, 1 1/2 inches from August 1949 to date.
^{2/} Not available. ^{3/} Average for 10 months. ^{4/} Average for 11 months.

Compiled from records of Production and Marketing Administration.

TABLE 12.- Domestic and foreign growths of cotton: Price per pound at New England mill points, by months, 1949 to date

Year beginning August and description	Aug.	Sept.	Oct.	Nov.	Dec.	Jan.	Feb.	Mar.	Apr.	May	June	July
	Cents	Cents	Cents	Cents	Cents	Cents	Cents	Cents	Cents	Cents	Cents	Cents
1949												
American-Egyptian, No. 2, 1 1/2 inches	1/58.00	1/62.50	1/56.00	1/57.00	64.00	63.58	64.00	65.00	65.00	63.75	63.50	64.00
Egyptian Karnak												
Fully good to extra. Good staple												
Egyptian Government selling price	62.00	57.00	57.00	59.00	59.13	59.94	60.76	61.34	61.70	61.20	61.46	62.19
Free market	---	---	---	---	63.46	66.16	66.76	2/	63.67	64.43	61.53	67.44
Fully good. Good staple												
Egyptian Government selling price	59.00	56.00	56.00	57.00	57.19	57.11	57.73	58.03	58.20	58.16	59.03	59.04
Free market	---	---	---	---	59.43	62.76	62.93	2/	60.30	60.76	58.83	66.06
Sudanese												
G S - Staple not stated	2/	2/	2/	2/	68.25	67.63	71.75	70.75	71.75	70.75	69.80	73.00
X L - Staple not stated	2/	2/	2/	2/	62.50	62.25	66.30	65.30	66.90	65.90	67.00	70.00
Peruvian												
Pima, No. 1, 1 5/8 inches	47.50	50.50	50.50	52.00	51.53	53.10	55.50	55.40	52.83	53.70	54.35	58.88
Tanguis, No. 3, 1 3/16 inches	2/	2/	46.50	47.00	48.46	49.94	50.96	51.13	50.72	48.86	49.16	50.63
Sea Island												
West Indian												
St. Vincent, No. 1	2/	2/	2/	2/	70.00	70.00	2/	68.60	70.75	69.85	70.00	75.00
Montserrat, No. 1	2/	2/	2/	2/	66.00	66.00	69.60	64.50	64.55	64.50	66.00	71.00
Puerto Rican, No. 1	62.00	62.00	56.00	60.00	60.50	60.50	61.00	61.50	61.50	61.50	62.00	62.00
1950												
American-Egyptian, No. 2, 1 1/2 inches	3/	3/	69.01	74.00	78.00	90.00	112.00	116.50	118.33	117.67	115.00	112.00
Egyptian Karnak												
Fully good to extra. Good staple												
Egyptian Government selling price	64.15	2/	81.00	85.33	90.00	119.25	2/	2/	2/	2/	1/220.70	1/111.00
Free market	68.60	77.15	89.88	89.15	92.64	130.59	135.00	139.85	135.81	123.84	120.70	111.00
Fully good. Good staple												
Egyptian Government	60.10	2/	79.00	83.17	86.50	115.65	2/	2/	2/	2/	1/114.50	1/109.00
Free market	66.85	75.40	87.33	87.38	90.54	128.13	133.00	136.59	132.06	119.99	114.50	109.00
Sudanese												
G S - Staple not stated	2/	2/	73.00	89.00	95.50	2/	2/	133.00	133.00	124.00	122.00	108.00
X L - Staple not stated	2/	2/	71.00	88.00	93.00	2/	2/	2/	2/	123.00	112.00	96.00
Peruvian												
Pima, No. 1, 1 5/8 inches	5/65.00	5/68.00	74.52	81.63	81.50	110.00	115.00	118.38	104.50	102.29	100.00	87.50
Tanguis, No. 3, 1 3/16 inches	5/58.00	6/60.00	63.15	70.80	76.08	85.00	90.00	90.75	99.75	78.81	79.00	65.00
Sea Island												
West Indian												
St. Vincent, No. 1	2/	2/	79.00	2/	2/	2/	2/	2/	2/	130.00	2/	2/
Montserrat, No. 1	2/	2/	77.50	88.00	98.00	112.00	125.00	130.00	130.00	127.00	125.00	115.00
Puerto Rican, No. 1	5/66.00	5/71.00	74.00	76.00	2/	98.00	105.00	126.00	126.00	123.00	110.00	105.00
1951												
American-Egyptian, No. 2, 1 1/2 inches	2/	104.67	101.00	107.67	110.25	110.00	108.50	112.00	110.00	112.00	97.50	110.00
Egyptian Karnak												
Fully good to extra. Good staple												
Egyptian Government selling price	---	---	---	---	---	---	---	1/119.00	---	1/98.00	---	---
Free market	102.50	106.37	107.46	137.26	140.50	144.17	136.64	119.00	112.17	119.00	93.43	90.48
Fully good. Good staple												
Egyptian Government selling price	---	---	---	---	---	---	---	1/109.00	---	1/88.00	---	---
Free market	101.00	103.85	104.43	130.07	129.54	131.67	127.75	109.00	99.56	119.00	88.77	86.08
Sudanese												
G S - Staple not stated	90.00	97.50	102.00	108.50	137.00	2/	2/	131.00	103.50	96.00	92.17	2/
X L - Staple not stated	2/	100.0	99.00	105.00	130.00	2/	2/	107.00	2/	83.00	84.00	2/
Peruvian												
Pima, No. 1, 1 5/8 inches	73.33	77.26	84.85	99.28	105.71	103.63	99.00	71.00	73.00	64.00	60.67	64.38
Tanguis, No. 3, 1 3/16 inches	52.75	56.03	55.40	62.58	65.55	67.00	57.25	2/	50.00	2/	50.88	52.16
Sea Island												
West Indian												
St. Vincent, No. 1	2/	105.00	101.00	110.00	140.00	2/	2/	2/	2/	2/	2/	2/
Montserrat, No. 1	100.00	100.00	99.50	111.50	125.00	115.00	115.00	125.00	98.00	98.00	98.00	82.00
Puerto Rican, No. 1	95.00	102.50	95.00	102.50	116.33	110.00	110.00	107.00	95.00	85.00	85.00	80.00
1952												
American-Egyptian, No. 2, 1 1/2 inches	108.67	110.00	102.50	103.00	2/	112.00	2/	112.00	112.00	---	---	---
Egyptian Karnak												
Fully good to extra. Good staple												
Egyptian Government selling price	---	---	---	---	---	---	---	---	---	---	---	---
Free market	79.57	79.50	64.02	59.27	2/	58.35	2/	54.35	53.20	---	---	---
Fully good. Good staple												
Egyptian Government selling price	---	---	---	---	---	---	---	---	---	---	---	---
Free market	75.32	72.18	61.15	56.90	2/	56.35	2/	53.15	52.10	---	---	---
Sudanese												
G S - Staple not stated	79.00	79.00	75.00	66.50	2/	2/	2/	2/	2/	---	---	---
X L - Staple not stated	75.00	75.00	72.00	62.00	2/	2/	2/	2/	2/	---	---	---
Peruvian												
Pima, No. 1, 1 5/8 inches	60.16	60.41	55.88	52.58	2/	52.75	2/	49.50	52.50	---	---	---
Tanguis, No. 3, 1 3/16 inches	53.04	53.24	52.36	50.61	2/	2/	2/	2/	2/	---	---	---
Sea Island												
West Indian												
St. Vincent, No. 1	85.00	85.00	80.00	70.00	2/	2/	2/	2/	2/	---	---	---
Montserrat, No. 1	77.50	74.50	68.00	63.00	2/	59.00	2/	58.00	58.00	---	---	---
Puerto Rican, No. 1	77.00	76.00	70.75	60.00	2/	2/	2/	2/	2/	---	---	---

1/ Prices mostly nominal or for resale values quoted by mills. 2/ Not available. 3/ No sales. 4/ Not described as to which market.
 5/ Cotton 1 1/2 inches in length. 6/ Cotton 1 1/4 inches in length. 7/ Cotton 1 7/8 inches in length.
 Production and Marketing Administration.

TABLE 13.- American-Egyptian cotton: Ginnings by grade and staple, United States 1928 to date

Year beginning August 1 and grade	Shorter than 1 1/2 inches	1 1/2 inches	1 9/16 inches	1 5/8 inches	1 3/4 inches	All lengths 1/2 longer	
	Running bales	Running bales	Running bales	Running bales	Running bales	Running bales	
1923							
1 and 1 1/2	200	2,200	2,700	400	0	5,500	
2 and 2 1/2	300	5,900	6,400	800	100	13,600	
3 and 3 1/2	200	4,800	3,000	400	0	8,400	
4 and 4 1/2	0	400	300	0	0	700	
5	0	100	0	0	0	100	
Below 5	0	0	0	0	0	0	
All grades	700	13,400	12,900	1,600	100	28,300	
1929							
1 and 1 1/2	0	600	3,100	1,700	100	5,500	
2 and 2 1/2	0	2,300	10,000	3,500	300	16,400	
3 and 3 1/2	0	2,100	3,900	500	0	6,500	
4 and 4 1/2	0	300	100	0	0	400	
5	0	0	0	0	0	0	
Below 5	0	0	0	0	0	0	
All grades	0	5,300	17,100	6,000	400	25,900	
1930							
1 and 1 1/2	0	400	4,100	1,700	0	6,200	
2 and 2 1/2	0	700	5,100	2,600	0	11,400	
3 and 3 1/2	0	1,100	3,700	300	0	5,100	
4 and 4 1/2	0	300	300	0	0	600	
5	0	0	0	0	0	0	
Below 5	0	0	0	0	0	0	
All grades	0	2,500	16,200	4,600	0	23,300	
1931							
1 and 1 1/2	0	300	600	300	0	1,200	
2 and 2 1/2	0	1,100	3,500	1,300	0	5,900	
3 and 3 1/2	0	700	3,000	300	0	4,500	
4 and 4 1/2	0	300	1,200	400	0	1,900	
5	0	0	100	100	0	200	
Below 5	0	0	0	0	0	0	
All grades	0	2,400	8,400	2,900	0	13,700	
1932							
1 and 1 1/2	0	300	1,900	700	0	2,900	
2 and 2 1/2	500	1,600	1,300	300	0	3,700	
3 and 3 1/2	900	900	300	100	0	2,200	
4 and 4 1/2	300	100	0	0	0	400	
5	0	0	0	0	0	0	
Below 5	0	0	0	0	0	0	
All grades	1,700	2,900	2,600	1,100	0	8,300	
1933							
1 and 1 1/2	0	1,200	3,000	700	0	4,900	
2 and 2 1/2	100	1,700	2,200	300	0	4,300	
3 and 3 1/2	0	300	200	0	0	500	
4 and 4 1/2	0	0	0	0	0	0	
5	0	0	0	0	0	0	
Below 5	0	0	0	0	0	0	
All grades	100	3,200	5,400	1,000	0	9,700	
	Shorter than 1 1/2 inches	1 1/2 inches	1 9/16 inches	1 5/8 inches	1 11/16 inches	1 3/4 inches	All lengths 1/2 longer
	Running bales	Running bales	Running bales	Running bales	Running bales	Running bales	Running bales
1934							
1 and 1 1/2	0	1,300	3,400	0	1,400	0	6,100
2 and 2 1/2	0	1,300	3,100	0	700	0	5,600
3 and 3 1/2	0	900	600	0	0	0	1,500
4 and 4 1/2	0	600	200	0	0	0	800

Continued -

TABLE 13.- American-Egyptian cotton: Ginnings by grade and staple, United States 1928 to date - Continued

Year beginning August 1 and grade	Shorter than 1 1/2 inches	1 1/2 and 1 17/32 inches	1 9/16 and 1 19/32 inches	1 5/8 and 1 21/32 inches	1 5/8 to 1 23/32 inches	1 11/16 and 1 23/32 inches	1 3/4 and longer	All lengths 1/		
	Running bales	Running bales	Running bales	Running bales	Running bales	Running bales	Running bales	Running bales		
1934										
5	0	0	0	0	0	0	0	0		
Below 5	0	0	0	0	0	0	0	0		
All grades	0	4,600	7,300	0	2,100	0	0	14,000		
1935										
1 and 1 1/2	0	500	2,800	0	100	0	0	3,400		
2 and 2 1/2	0	3,500	3,000	0	500	0	0	12,000		
3 and 3 1/2	0	700	1,100	0	100	0	0	1,900		
4 and 4 1/2	0	200	100	0	0	0	0	300		
5	0	0	0	0	0	0	0	0		
Below 5	0	0	0	0	0	0	0	0		
All grades	0	4,900	12,000	0	700	0	0	17,600		
1936										
1 and 1 1/2	0	200	2,700	600	0	0	0	3,500		
2 and 2 1/2	0	1,400	6,400	1,300	0	0	0	9,100		
3 and 3 1/2	0	1,600	1,300	200	0	0	0	3,100		
4 and 4 1/2	0	1,200	300	100	0	0	0	1,600		
5	0	200	100	0	0	0	0	300		
Below 5	0	0	0	0	0	0	0	0		
All grades	0	4,600	10,800	2,200	0	0	0	17,600		
1937										
1 and 1 1/2	0	1,300	4,600	1,300	0	0	0	7,200		
2 and 2 1/2	100	900	1,700	200	0	0	0	2,900		
3 and 3 1/2	100	400	200	0	0	0	0	700		
4 and 4 1/2	0	200	0	0	0	0	0	200		
5	0	0	0	0	0	0	0	0		
Below 5	0	0	0	0	0	0	0	0		
All grades	200	2,800	6,500	1,500	0	0	0	11,000		
1938										
1 and 1 1/2	172	2,361	7,284	4,139	0	317	43	14,866		
2 and 2 1/2	31	1,790	2,461	678	0	67	12	5,089		
3 and 3 1/2	10	195	230	34	0	7	0	476		
4 and 4 1/2	21	31	10	0	0	0	0	62		
5	0	10	0	0	0	0	0	10		
Below 5	0	0	0	0	0	0	0	0		
All grades	284	4,387	9,995	4,901	0	391	55	20,503		
1939										
1 and 1 1/2	15	1,364	3,395	796	0	18	0	5,578		
2 and 2 1/2	394	2,351	6,545	1,511	0	33	21	11,360		
3 and 3 1/2	521	3,639	3,513	679	0	44	16	8,461		
4 and 4 1/2	396	553	266	70	0	0	0	1,285		
5	36	94	12	0	0	0	0	142		
Below 5	0	0	0	0	0	0	0	0		
All grades	1,362	4,550	13,731	3,046	0	100	37	26,326		
1940										
1 and 1 1/2	636	3,246	1,617	25	0	0	0	5,524		
2 and 2 1/2	2,632	9,117	1,934	11	0	0	0	13,794		
3 and 3 1/2	3,509	5,315	637	9	0	0	0	9,520		
4 and 4 1/2	1,843	1,019	122	4	0	0	0	2,988		
5	339	102	6	0	0	0	0	497		
Below 5	2	0	0	0	0	0	0	2		
All grades	9,061	19,799	4,416	49	0	0	0	32,325		
1941										
1 and 1 1/2	---	---	180	0	3,306	15,546	3,266	172	---	22,470
2 and 2 1/2	---	---	474	---	4,443	15,155	3,226	159	---	23,477

Continued -

TABLE 13.- American-Egyptian cotton: (Hinnings by grade and staple, United States 1928 to date - Continued)

Year beginning August 1 and grade	1 9/32 inches and shorter	1 5/16 inches and shorter	1 3/8 inches and shorter	1 3/8 inches and shorter	1 7/16 inches and shorter	1 1/2 inches and shorter	1 9/16 inches and shorter	1 5/8 inches and longer	1 3/4 inches and longer	1 9/16 inches and longer	All lengths 1/
	Running bales	Running bales	Running bales	Running bales	Running bales	Running bales	Running bales	Running bales	Running bales	Running bales	Running bales
1941											
3 and 3 1/2	---	---	1,400	0	3,085	5,473	822	7	---	---	10,787
4 and 4 1/2	---	---	665	0	246	347	49	0	---	---	1,307
5 and lower	---	---	257	0	31	0	0	0	---	---	288
All grades	---	---	2,322	0	10,711	36,521	7,363	338	---	---	57,929
1942											
1	0	0	---	54	4,320	11,845	---	---	---	1,421	17,640
1 1/2	1	0	---	302	9,102	12,752	---	---	---	471	22,628
2	15	16	---	942	6,367	3,886	---	---	---	100	11,826
2 1/2	36	55	---	1,451	4,064	946	---	---	---	24	6,576
3	63	95	---	2,399	3,011	281	---	---	---	1	5,850
3 1/2	73	141	---	2,290	2,182	155	---	---	---	1	4,847
4	146	83	---	1,455	968	41	---	---	---	0	2,693
4 1/2	42	51	---	672	466	24	---	---	---	0	1,295
5 and lower	84	41	---	191	174	3	---	---	---	0	493
All grades	465	482	---	9,756	31,194	29,933	---	---	---	2,018	73,898
1943											
1	0	0	---	92	1,421	4,342	---	---	---	198	6,053
1 1/2	0	0	---	362	6,696	12,827	---	---	---	391	20,276
2	0	0	---	466	7,223	7,991	---	---	---	113	15,799
2 1/2	0	0	---	435	5,221	3,623	---	---	---	6	9,339
3	5	0	---	606	3,563	1,219	---	---	---	2	5,700
3 1/2	3	2	---	196	1,122	361	---	---	---	0	1,637
4	30	0	---	101	415	54	---	---	---	0	600
4 1/2	15	0	---	36	59	15	---	---	---	0	124
5 and lower	6	0	---	12	10	2	---	---	---	0	39
All grades	63	2	---	2,356	26,047	30,434	---	---	---	710	59,617
1944											
1	0	0	---	9	142	833	---	---	---	0	984
1 1/2	0	0	---	38	324	1,254	---	---	---	14	1,630
2	0	0	---	22	255	1,244	---	---	---	5	1,526
2 1/2	0	0	---	13	323	731	---	---	---	0	1,072
3	0	0	---	17	485	658	---	---	---	0	1,190
3 1/2	0	0	---	14	715	433	---	---	---	0	1,165
4	0	0	---	17	603	213	---	---	---	0	833
4 1/2	3	0	---	9	174	9	---	---	---	0	195
5 and lower	5	0	---	1	4	0	---	---	---	0	10
All grades	3	0	---	141	3,033	5,465	---	---	---	19	8,605
1945											
1	0	0	---	0	110	339	---	---	---	0	499
1 1/2	0	0	---	7	148	1,023	---	---	---	3	1,136
2	0	0	---	14	431	1,655	---	---	---	8	1,553
2 1/2	0	0	---	2	295	172	---	---	---	0	459
3	0	0	---	5	133	19	---	---	---	0	207
3 1/2	0	0	---	2	107	21	---	---	---	0	130
4	0	0	---	0	15	0	---	---	---	0	15
4 1/2	0	0	---	0	0	0	---	---	---	0	0
5 and lower	0	0	---	0	0	0	---	---	---	0	0
All grades	0	0	---	30	1,329	2,684	---	---	---	11	4,054
1946											
1	0	0	---	0	106	372	---	---	---	42	520
1 1/2	0	0	---	17	126	594	---	---	---	31	763
2	0	0	---	26	50	347	---	---	---	2	425
2 1/2	0	0	---	0	26	318	---	---	---	0	344
3	0	0	---	0	37	208	---	---	---	0	245
3 1/2	0	0	---	0	21	33	---	---	---	0	54
4	0	0	---	0	14	10	---	---	---	0	24
4 1/2	0	0	---	0	6	0	---	---	---	0	6
5 and lower	0	0	---	0	0	0	---	---	---	0	0
All grades	0	0	---	43	356	1,842	---	---	---	75	2,416
1947											
1	0	0	---	0	4	243	---	---	---	57	304
1 1/2	0	0	---	0	27	352	---	---	---	75	454

Continued -

TABLE 13.- American-Egyptian cotton: Ginnings by grade and staple, United States 1928 to date - Continued

Year beginning August 1 and grade	1 9/32 inches and shorter	1 5/16 inches and 1 11/32 inches	1 3/8 inches and shorter	1 3/8 inches and 1 13/32 inches	1 7/16 inches and 1 15/32 inches	1 1/2 inches and 1 17/32 inches	1 9/16 inches and 1 19/32 inches	1 5/8 inches and longer	1 3/4 inches and longer	1 9/16 inches and longer	All lengths 1/2
	Running bales	Running bales	Running bales	Running bales	Running bales	Running bales	Running bales	Running bales	Running bales	Running bales	Running bales
1947											
2	0	0	0	0	51	202	---	---	---	9	262
2 1/2	0	0	---	4	29	45	0	0	0	0	78
3	0	0	---	1	15	18	0	0	0	0	34
3 1/2	0	0	0	0	13	4	0	0	0	0	17
4	0	0	---	1	10	0	0	0	0	0	11
4 1/2	0	0	0	0	6	0	0	0	0	0	6
5 and lower	0	0	0	39	3	0	0	0	0	0	42
All grades	0	0	---	45	153	264	0	0	---	161	1,208
	1 9/32 inches and shorter	1 5/16 inches and 1 11/32 inches	1 3/8 inches and 1 13/32 inches	1 7/16 inches and 1 15/32 inches	1 1/2 inches and 1 17/32 inches	1 9/16 inches and longer					All lengths 1/2
	Running bales	Running bales	Running bales	Running bales	Running bales	Running bales					Running bales
1948											
1	0	0	0	0	52	1,199	154	1,405			
1 1/2	0	0	0	0	35	889	137	1,061			
2	0	0	0	1	50	504	21	576			
2 1/2	0	0	0	5	50	144	2	201			
3	0	0	0	3	23	81	1	113			
3 1/2	0	0	0	1	21	33	1	56			
4	0	0	0	1	8	11	0	20			
4 1/2	0	0	0	0	11	2	0	13			
5 and lower	0	0	0	1	15	4	0	20			
All grades	0	0	0	12	270	2,867	316	3,465			
1949											
1	0	0	0	0	40	1,145	164	1,349			
1 1/2	0	0	0	0	84	928	34	1,046			
2	0	0	0	3	100	690	10	903			
2 1/2	0	0	0	0	78	246	0	324			
3	0	0	0	0	61	153	0	214			
3 1/2	0	0	0	0	33	42	0	75			
4	0	0	0	2	30	13	0	45			
4 1/2	0	0	0	1	7	5	0	13			
5 and lower	0	0	0	10	9	1	0	20			
All grades	0	0	0	16	442	3,223	208	3,889			
1950											
1	0	0	0	1	1,360	9,709	278	11,348			
1 1/2	0	0	0	54	3,392	15,318	42	18,806			
2	0	0	0	283	4,428	8,414	2	13,127			
2 1/2	4	1	0	622	3,237	2,304	0	6,168			
3	14	4	0	873	2,402	543	0	3,836			
3 1/2	83	5	0	510	1,370	113	0	2,081			
4	146	4	0	497	640	20	0	1,307			
4 1/2	63	1	0	142	233	1	0	440			
5 and lower	1,272	16	0	556	278	0	0	5,122			
All grades	4,562	31	0	3,538	17,340	36,422	322	62,235			
1951 2/											
1	0	0	0	4	35	11,776	99	11,914			
1 1/2	0	0	0	0	532	9,499	208	10,239			
2	0	0	0	16	1,769	5,710	35	7,530			
2 1/2	4	0	0	77	2,134	3,534	0	5,749			
3	102	0	0	166	2,700	1,733	0	4,701			
3 1/2	503	0	0	132	1,686	360	0	2,681			
4	339	0	0	181	1,209	72	0	1,801			
4 1/2	134	0	0	112	373	3	0	622			
5 and lower	160	0	0	261	391	0	0	812			
All grades	2,242	0	0	949	10,829	32,687	342	46,049			

1/ Crop totals are from Bureau of the Census.

2/ Preliminary report of September 19, 1952.

Compiled from "Cotton Quality Statistics" reports of the Cotton Branch, Production and Marketing Administration.

TABLE 14.- American-Egyptian cotton, ginnings: Percentage each grade is of total, United States, 1928 to date 1/

Year beginning August 1	Grade									Total
	1	1 1/2	2	2 1/2	3	3 1/2	4	4 1/2	5 and below	
	Percent	Percent	Percent	Percent	Percent	Percent	Percent	Percent	Percent	
1928		19.4		48.1		29.7		2.5	0.3	100.0
1929		19.1		56.9		22.6		1.4	.0	100.0
1930		26.6		48.9		21.9		2.6	.0	100.0
1931		8.7		43.1		32.8		13.9	1.5	100.0
1932		24.1		44.6		26.5		4.8	.0	100.0
1933		50.5		44.3		5.2		.0	.0	100.0
1934		43.6		40.0		10.7		5.7	.0	100.0
1935		19.3		68.2		10.8		1.7	.0	100.0
1936		19.9		51.7		17.6		9.1	1.7	100.0
1937		65.4		26.4		6.4		1.8	.0	100.0
1938		72.5		24.8		2.3		.3	2/	100.0
1939		20.8		42.4		31.5		4.8	.5	100.0
1940		17.1		42.7		29.5		9.2	1.5	100.0
1941		38.8		39.8		18.6		2.3	.5	100.0
1942		2.2	11.2	33.3	20.7	17.8	7.0		3/7.8	100.0
1943		10.1	34.0	26.5	15.7	9.6	2.8		.2	100.0
1944		11.4	19.0	17.7	12.5	13.8	13.5	9.7	2.3	100.0
1945		12.2	29.3	38.5	11.3	5.1	3.2		.4	100.0
1946		21.8	32.1	17.8	14.4	10.3	2.3	1.0	.3	100.0
1947		25.2	37.6	21.7	6.5	2.8	1.4	.8	.6	100.0
1948		40.5	30.6	16.6	5.8	3.3	1.6	.6	.4	100.0
1949		34.8	26.9	20.6	6.3	5.5	1.9	1.2	.3	100.0
1950		18.2	30.5	21.1	9.9	6.2	3.3	2.1	.7	100.0
1951 4/		25.8	22.2	16.4	12.5	10.2	5.8	3.9	1.4	100.0

1/ Includes Pima, SXP, Amak, and Pima 32 in the years these types were grown.

2/ Less than 0.05 percent.

3/ Grades 4 and below.

4/ Preliminary, report of 9-19-52.

Compiled from "Cotton Quality Statistics," reports of Production and Marketing Administration.

TABLE 15.- American-Egyptian cotton, ginnings: Percentage each staple length is of total, United States, 1948 to date 1/

Year beginning August 1	1 9/32	1 5/16	1 3/8	1 7/16	Shorter than 1 1/2	1 1/2	1 9/16	1 5/8	1 9/16	Total
	inches and shorter	inches and	inches and	inches and	inches	inches and	inches and	inches to	inches and longer	Percent
	Percent	Percent	Percent	Percent	Percent	Percent	Percent	Percent	Percent	Percent
1928	---	---	---	---	2.5	47.3	44.2	5.6	0.4	100.0
1929	.0	.0	.0	.0	.0	18.4	59.4	20.8	1.4	100.0
1930	.0	.0	.0	.0	.0	10.7	69.5	19.8	---	100.0
1931	.0	.0	.0	.0	.0	17.5	61.3	21.2	---	100.0
1932	---	---	---	---	20.5	34.9	31.3	13.3	---	100.0
1933	---	---	---	---	1.0	33.0	55.7	10.3	---	100.0
1934	.0	.0	.0	.0	.0	32.9	52.1	15.0	---	100.0
1935	.0	.0	.0	.0	.0	27.8	68.2	4.0	---	100.0
1936	.0	.0	.0	.0	.0	26.1	61.4	12.5	---	100.0
1937	---	---	---	---	1.8	25.5	59.1	13.6	---	100.0
1938	---	---	---	---	1.4	23.8	48.0	25.9	---	100.0
1939	---	---	---	---	5.1	31.9	51.1	11.8	.1	100.0
1940	---	---	---	---	28.0	58.1	13.7	.2	---	100.0
1941	---	---	---	---	23.7	63.0	12.7	.6	---	100.0
1942	0.6	0.7	13.2	42.2	---	40.6	---	---	2.7	100.0
1943	.1	2/	4.0	43.7	---	51.0	---	---	1.2	100.0
1944	.1	.0	1.6	35.3	---	62.8	---	---	.2	100.0
1945	---	---	.7	32.8	---	66.2	---	---	.3	100.0
1946	---	---	1.8	16.2	---	78.9	---	---	3.1	100.0
1947	---	---	3.7	13.1	---	71.5	---	---	11.7	100.0
1948	---	---	3.1	37.3	---	52.2	---	---	7.4	100.0
1949	---	---	.4	11.1	---	83.2	---	---	5.3	100.0
1950	7.4	2/	5.7	27.9	---	58.5	---	---	.5	100.0
1951 3/	2.7	.0	2.1	23.5	---	71.0	---	---	.7	100.0

1/ Includes Pima, SXP, Amak, Pima 32 when these types were produced.

2/ Less than 0.05 percent.

3/ Preliminary, report of 9-19-52.

Compiled from "Cotton Quality Statistics" reports of Production and Marketing Administration.

TABLE 16.- American-Egyptian cotton: Ginnings, by grades, by States, United States, 1941 to date 1/

Year beginning August 1 and State	Grade									Total 2/
	1	1 1/2	2	2 1/2	3	3 1/2	4	4 1/2	5 and below	
	Running bales	Running bales	Running bales	Running bales	Running bales	Running bales	Running bales	Running bales	Running bales	Running bales
1941										
Arizona	20,313		14,357		4,913		638		18	40,239
New Mex.-Tex.	2,157		8,720		5,874		669		270	17,690
United States	22,470		23,077		10,787		1,307		288	57,929
1942										
Ariz.-Calif.	15,547	14,613	7,353	4,779	4,729	3,960	2,295	1,125	367	54,768
New Mex.-Tex.	2,093	8,015	4,473	1,798	1,119	837	399	130	126	19,040
United States	17,640	22,628	11,826	6,577	5,850	4,847	2,693	1,255	493	73,808
1943										
Ariz.-Calif.	2,281	8,640	11,568	6,931	4,044	1,237	397	68	10	35,216
New Mex.-Tex.	3,772	11,636	4,231	2,358	1,656	450	213	56	29	28,401
United States	6,053	20,276	15,799	9,339	5,700	1,687	600	124	39	59,617
1944										
Ariz.-Calif.	367	833	664	587	921	1,072	798	175	4	5,471
New Mex.-Tex.	617	747	862	485	269	93	35	20	6	3,134
United States	984	1,580	1,526	1,072	1,190	1,165	833	195	10	8,605
1945										
Ariz.-Calif.	134	586	1,430	454	204	129	15	0	0	2,952
New Mex.-Tex.	365	600	128	5	3	1	0	0	0	1,102
United States	499	1,186	1,558	459	207	130	15	0	0	4,054
1946										
Arizona	14	379	317	333	243	52	24	6	0	1,373
Texas	506	399	103	6	2	2	0	0	0	1,013
United States	520	768	425	344	245	54	24	6	0	2,386
1947										
Arizona	24	75	50	3	2	2	0	2	0	158
Texas	280	379	212	75	32	15	11	4	42	1,050
United States	304	454	262	78	34	17	11	6	42	1,208
1948										
Arizona	134	401	201	119	90	43	17	8	17	1,030
Texas	1,271	660	375	82	23	13	3	5	3	2,435
United States	1,405	1,061	576	201	113	56	20	13	20	3,465
1949										
Arizona	128	435	612	248	145	58	35	7	8	1,676
Texas	1,221	611	191	76	69	17	10	6	12	2,213
United States	1,349	1,046	803	324	214	75	45	13	20	3,889
1950										
Arizona	4,833	12,093	10,025	4,096	2,243	1,278	571	216	332	35,692
Texas	5,689	5,171	2,466	1,736	1,438	760	705	211	4,752	22,973
New Mexico	821	1,542	636	286	155	43	31	13	38	3,565
United States	11,343	18,806	13,127	6,168	3,836	2,081	1,307	440	5,122	62,230
1951 3/										
Arizona	458	2,558	3,611	4,675	4,006	1,954	1,291	452	643	19,648
Texas	10,200	7,818	2,863	905	616	521	379	104	103	21,509
New Mexico	733	2,111	1,270	301	186	232	142	69	67	5,111
United States	11,391	10,487	7,744	5,881	4,808	2,707	1,812	625	813	46,268

1/ Includes Pima, SIP, Amak and Pima 32 when these types were produced.

2/ Crop totals are from reports of the Bureau of the Census.

3/ Preliminary.

TABLE 17.- American-Egyptian cotton: Ginnings by staple length, by States, United States, 1941 to date 1/

Year beginning August 1 and State	1 9/32 inches and shorter	1 5/16 inches and 1 11/32 inches	1 3/8 inches and shorter	1 3/8 inches and 1 13/32 inches	1 7/16 inches and 1 15/32 inches	1 1/2 inches and 1 17/32 inches	1 9/16 inches and longer	Total 2/
	Running bales	Running bales	Running bales	Running bales	Running bales	Running bales	Running bales	Running bales
1941								
Arizona	---	---	1,846	---	8,301	25,030	5,062	40,239
New Mex.-Texas	---	---	1,150	---	2,410	11,491	2,639	17,690
United States	---	---	2,996	---	10,711	36,521	7,701	57,929
1942								
Ariz.-Calif.	380	4	---	7,333	23,299	22,151	1,601	54,768
New Mex.-Texas	85	478	---	2,423	7,825	7,782	417	19,040
United States	465	482	---	9,756	31,124	29,933	2,018	73,808
1943								
Ariz.-Calif.	58	0	---	2,111	16,376	16,123	548	35,216
New Mex.-Texas	10	2	---	245	9,671	14,311	162	24,401
United States	68	2	---	2,356	26,047	30,434	710	59,617
1944								
Ariz.-Calif.	0	---	---	110	2,539	2,803	19	5,471
New Mex.-Texas	8	---	---	30	494	2,602	0	3,134
United States	8	---	---	140	3,033	5,405	19	8,605
1945								
Ariz.-Calif.	0	0	---	8	1,231	1,702	11	2,952
New Mex.-Texas	0	0	---	22	98	982	0	1,102
United States	0	0	---	30	1,329	2,684	11	4,054
1946								
Arizona	0	0	---	0	128	1,226	19	1,373
Texas	0	0	---	43	258	656	56	1,013
United States	0	0	---	43	386	1,882	75	2,386
1947								
Arizona	0	0	---	7	147	147	4	158
Texas	0	0	---	45	151	717	137	1,050
United States	0	0	---	45	158	864	141	1,208
1948								
Arizona	0	0	---	2	71	895	62	1,030
Texas	0	0	---	10	199	1,972	254	2,435
United States	0	0	---	12	270	2,867	316	3,465
1949								
Arizona	0	0	---	9	201	1,452	14	1,676
Texas	0	0	---	7	241	1,771	194	2,213
United States	0	0	---	16	442	3,223	208	3,889
1950								
Arizona	0	0	---	164	10,772	24,477	279	35,692
Texas	4,552	31	---	3,180	5,135	10,037	43	22,978
New Mexico	30	---	---	194	1,433	1,908	0	3,565
United States	4,582	31	---	3,538	17,340	36,422	322	62,235
1951 3/								
Arizona	23	0	---	550	7,756	11,004	315	19,648
Texas	849	0	---	308	2,212	18,123	17	21,509
New Mexico	372	0	---	94	1,038	3,607	0	5,111
United States	1,244	0	---	952	11,006	32,734	332	46,268

1/ Includes Pima, SLP, Anzac, and Pima 32 when these types were produced.

2/ Crop totals are from reports of the Bureau of the Census.

3/ Preliminary.

TABLE 18.- American-Egyptian cotton: Mill consumption, United States, by months, 1918 to date

Year	August	September	October	November	December	January	February	March	April	May	June	July	Total 1/
beginning:	August 1:												
	Running bales	Running bales	Running bales	Running bales	Running bales	Running bales	Running bales	Running bales	Running bales	Running bales	Running bales	Running bales	Running bales
1918	---	---	---	1,162	1,324	1,919	1,791	1,837	2,822	2,809	3,073	4,334	---
1919	3,557	3,674	3,288	2,708	3,218	4,225	4,111	4,475	4,537	4,504	3,527	4,043	45,867
1920	2,549	1,590	1,194	771	887	389	836	947	1,337	1,838	1,962	2,471	16,771
1921	2,239	2,158	2,277	2,557	3,240	4,029	3,761	4,287	4,418	6,663	7,862	5,868	49,359
1922	7,794	7,783	7,570	6,652	5,772	5,183	4,452	4,637	3,784	4,552	3,964	3,092	65,235
1923	2,616	2,601	2,759	2,451	2,388	3,006	2,450	3,037	4,296	3,502	2,978	3,914	35,998
1924	2,855	2,263	2,258	1,398	1,298	1,785	1,414	1,534	1,272	1,043	1,061	837	19,018
1925	766	653	687	818	836	876	941	1,049	1,290	1,451	1,389	984	11,740
1926	1,335	1,785	1,838	1,920	1,957	1,506	1,654	1,793	1,739	1,770	1,284	1,088	19,669
1927	1,057	1,132	1,197	1,306	1,291	1,547	1,426	1,365	1,140	1,220	1,152	1,304	15,137
1928	804	447	913	984	1,022	1,451	992	1,093	1,263	1,308	1,400	1,778	13,455
1929	1,395	1,034	1,623	1,235	1,024	1,109	868	849	1,054	914	761	706	12,572
1930	754	690	944	1,041	1,177	1,472	1,641	1,745	1,722	1,381	1,413	1,379	15,359
1931	1,130	1,802	1,322	1,042	1,315	1,041	1,063	1,145	713	612	457	788	12,430
1932	1,600	1,811	1,671	2,104	1,694	1,184	1,178	1,207	1,125	1,142	1,607	1,485	17,808
1933	1,128	898	1,085	940	1,119	1,143	1,210	1,288	1,154	963	996	611	12,535
1934	882	349	952	740	742	929	808	817	1,097	1,417	1,351	1,259	11,343
1935	1,957	1,727	2,001	1,764	1,825	2,242	1,922	1,729	1,669	1,413	1,372	1,755	21,376
1936	1,366	1,682	1,750	2,107	2,029	1,797	1,820	2,081	1,684	1,497	1,394	980	20,097
1937	769	728	731	594	599	377	335	389	357	409	492	507	6,187
1938	710	610	651	931	1,353	1,734	2,037	2,398	2,160	2,222	2,209	1,623	18,638
1939	2,123	2,121	2,110	2,296	1,833	2,208	1,608	1,280	1,226	1,164	1,360	1,875	21,204
1940	1,936	1,745	2,076	1,761	1,928	2,524	2,277	2,118	2,457	2,579	2,449	3,087	26,937
1941	2,772	2,430	3,174	2,891	3,679	4,534	4,667	4,951	4,533	4,209	4,463	4,728	47,031
1942	4,143	4,314	4,594	4,402	4,500	3,770	3,862	3,821	3,912	4,377	4,564	3,524	49,783
1943	3,407	3,633	3,723	3,559	3,712	3,639	3,663	4,381	3,778	3,816	3,531	2,942	43,784
1944	3,622	3,349	3,487	3,561	3,298	3,818	3,387	3,957	3,761	4,310	3,859	3,124	43,533
1945	2,349	1,553	1,740	1,500	1,276	1,938	1,869	1,763	1,573	1,800	1,063	969	19,485
1946	1,040	1,115	1,152	1,000	700	1,004	767	600	700	600	800	400	9,477
1947	374	200	300	300	300	400	400	500	600	600	800	400	5,220
1948	704	394	351	162	296	204	219	331	349	393	607	367	4,377
1949	506	398	179	129	160	2/175	165	163	73	164	215	131	2,458
1950	612	3/751	751	3/4,418	2,385	3/4,048	3,601	3,756	3/4,739	4,792	4,224	3/3,380	34,457
1951 4/	3,052	2,548	3/2,882	2,133	1,981	3/3,117	2,165	1,598	3/1,572	1,241	1,007	3/924	24,008
1952 4/	1,308	1,345	3/1,560	841	539	3/595	494	---	---	---	---	---	---

1/ Totals are revised and are not always summation of monthly data shown here.

2/ Since January 1950, data cover a 4-week period except as noted.

3/ 5-week period.

4/ Preliminary.

Compiled from records and reports of the Bureau of the Census.

TABLE 19.- Egyptian cotton: Mill consumption, United States, by months, 1914 to date

Year	Beginning	August	September	October	November	December	January	February	March	April	May	June	July	Total
August 1	Bales 1/	Bales 1/	Bales 1/	Bales 1/	Bales 1/	Bales 1/	Bales 1/	Bales 1/	Bales 1/	Bales 1/	Bales 1/	Bales 1/	Bales 1/	Bales 1/
1914		10,639	10,578	12,455	10,707	13,902	15,232	15,751	17,830	19,182	18,133	18,536	18,266	181,211
1915		18,853	20,484	22,144	23,870	25,963	24,793	23,008	27,074	20,330	21,658	22,350	18,797	269,324
1916		21,246	20,404	23,144	24,060	21,034	24,622	21,336	23,210	20,086	22,760	19,680	17,578	259,160
1917		17,175	13,433	14,895	14,745	11,751	11,194	10,407	10,618	8,047	9,187	7,634	7,315	136,401
1918		7,895	7,470	7,289	7,182	10,331	12,389	11,108	11,217	13,513	11,376	12,413	13,404	126,087
1919		15,865	16,392	22,079	20,261	24,989	28,173	24,804	31,578	34,933	33,606	37,511	32,933	323,124
1920		26,682	19,581	12,867	10,236	7,219	7,180	7,600	9,705	12,198	14,765	15,446	15,717	159,196
1921		20,263	15,896	18,891	22,291	20,779	20,777	19,908	20,390	16,748	17,253	17,205	15,929	226,330
1922		16,707	13,209	15,476	20,439	21,344	25,947	25,923	27,410	27,145	29,165	22,496	17,070	262,331
1923		17,819	15,740	20,846	19,880	18,085	23,443	23,040	20,998	21,166	15,846	13,894	12,892	223,649
1924		11,715	13,723	13,971	10,127	16,479	18,980	17,698	17,720	18,502	17,088	17,876	17,865	191,544
1925		16,213	17,966	17,529	12,558	16,195	18,408	19,149	21,778	18,198	16,866	14,676	14,577	204,113
1926		17,129	22,884	20,812	16,383	16,876	17,297	17,042	21,773	19,527	22,146	26,045	21,354	239,768
1927		22,469	19,795	19,413	20,507	18,864	20,199	20,435	17,112	16,466	14,943	13,951	13,430	217,584
1928		18,759	16,297	20,057	17,858	18,003	22,325	19,546	20,515	20,159	20,484	18,046	20,343	232,392
1929		20,285	17,484	20,107	18,263	17,976	19,646	17,036	15,826	18,156	15,947	13,278	11,761	205,765
1930		7,673	7,915	9,429	8,980	10,134	7,782	8,377	8,774	9,763	8,630	8,898	7,740	104,095
1931		5,667	7,096	6,598	6,609	6,509	6,611	6,665	8,263	6,427	6,908	6,026	6,085	79,464
1932		6,398	6,323	7,858	7,908	6,645	5,998	6,253	7,212	6,217	9,319	9,040	9,634	88,805
1933		11,397	8,967	9,525	8,990	6,150	10,227	9,281	10,706	8,552	7,380	6,284	6,006	103,455
1934		7,871	4,512	10,332	8,477	6,801	8,745	7,004	6,904	6,794	5,625	4,519	4,665	82,249
1935		4,700	5,559	6,420	5,222	5,522	6,578	5,566	4,989	5,798	5,182	5,297	6,149	66,982
1936		6,030	5,921	5,978	5,456	6,354	6,543	6,103	7,971	8,078	6,782	6,767	5,875	77,858
1937		5,714	6,145	4,998	4,320	3,596	3,532	3,330	4,386	3,233	2,828	3,232	2,562	47,876
1938		4,710	3,979	4,997	5,431	4,765	4,879	3,793	4,873	4,233	4,356	3,919	3,250	53,185
1939		3,776	4,172	4,667	5,523	4,865	5,399	4,555	4,278	4,159	4,513	4,013	3,983	53,903
1940		4,028	4,259	4,945	4,267	4,513	5,035	4,906	5,606	6,416	6,016	5,468	5,425	60,884
1941		5,814	5,881	6,889	6,037	7,086	7,634	6,776	7,611	7,457	7,118	7,567	7,984	83,854
1942		7,494	8,828	9,287	8,386	9,121	9,612	8,674	10,343	9,339	7,897	7,928	6,698	103,607
1943		6,366	6,516	5,828	5,838	5,574	5,525	5,219	5,861	4,867	5,304	5,225	4,613	66,736
1944		4,878	4,561	4,637	4,837	4,513	5,348	5,584	6,781	6,131	6,566	6,463	5,406	65,705
1945		5,877	5,112	5,564	6,059	5,470	6,349	6,058	6,994	6,826	8,009	8,099	7,009	77,426
1946		8,262	8,132	9,246	8,802	8,090	10,703	9,739	10,982	10,337	8,510	7,342	6,367	106,512
1947		7,365	8,446	9,433	9,414	10,365	11,870	10,823	12,436	11,149	9,971	10,718	7,399	119,399
1948		8,890	9,683	8,216	7,748	7,364	7,314	6,761	7,923	6,455	5,574	6,564	4,702	87,194
1949		6,191	7,302	7,784	9,185	8,958	2/8,684	8,478	3/10,575	8,093	8,403	3/9,703	6,929	100,285
1950		9,096	3/11,672	9,424	3/11,303	7,980	3/9,918	8,421	8,300	3/9,133	6,674	6,075	3/4,735	102,731
1951 1/2		4,530	4,636	3/5,104	3,357	3,104	3/3,614	3,465	3,347	3/3,817	3,463	3,250	3/3,318	45,099
1952 1/2		3,726	3,957	3/5,447	6,004	5,745	3/7,363	7,140	---	---	---	---	---	---

1/ Bales of 500 pounds.

2/ Since January 1950 data cover a 4-week period except as noted.

3/ Data cover a 5-week period.

4/ Preliminary.

Compiled from reports of the Bureau of the Census.

TABLE 20.- Peruvian cotton: Mill consumption, United States, by months, 1932 to date

Year beginning August 1	August	September	October	November	December	January	February	March	April	May	June	July	Total 1/
	Bales 2/	Bales 2/	Bales 2/	Bales 2/	Bales 2/	Bales 2/	Bales 2/	Bales 2/	Bales 2/	Bales 2/	Bales 2/	Bales 2/	Bales 2/
1932	142	170	155	174	86	3/	64	102	82	128	234	377	1,900
1933	3/	88	120	37	70	136	67	73	89	70	113	158	1,100
1934	77	38	67	127	47	85	104	233	248	79	40	116	1,300
1935	29	27	67	56	56	41	54	115	131	201	108	94	1,000
1936	74	72	89	65	3/	152	128	178	159	62	82	164	1,300
1937	3/	70	80	53	37	37	19	28	30	41	28	47	600
1938	29	27	37	41	3/	3/	3/	3/	3/	3/	3/	3/	4/
1939	59	32	56	54	54	55	74	65	118	49	44	119	779
1940	41	28	60	47	81	165	172	170	156	163	268	237	1,608
1941	157	162	170	241	209	283	488	578	546	628	565	905	4,932
1942	577	677	601	476	231	217	265	278	176	137	181	204	4,020
1943	140	137	168	243	208	294	331	212	232	265	210	239	2,749
1944	413	330	262	323	247	249	171	311	134	231	265	246	3,182
1945	593	562	573	538	543	695	736	994	1,078	1,112	1,374	1,249	10,047
1946	1,310	1,078	2,609	1,639	1,489	1,451	1,343	1,392	1,456	1,213	3/	2,109	26,353
1947	2,096	2,004	2,514	2,080	2,149	2,231	2,303	2,388	2,046	1,830	1,576	1,332	24,549
1948	1,401	1,374	1,337	1,002	601	437	493	522	285	369	413	117	8,351
1949	179	527	1,397	1,656	1,564	2/1,672	1,917	6/1,698	1,339	1,495	6/1,523	915	15,872
1950	1,854	6/1,484	1,624	6/1,838	1,638	6/1,794	1,094	1,047	6/1,125	838	802	6/881	16,019
1951 7/	881	776	6/747	819	603	6/1,427	658	375	6/482	310	420	6/792	8,317
1952 7/	912	1,226	6/1,626	1,189	1,081	1,296	999	---	---	---	---	---	---

1/ Totals not always summation of monthly data shown here owing to revisions.

2/ Bales of 500 pounds.

3/ Not available.

4/ Less than 500 bales.

5/ Since January 1950, data cover a 4-week period except as noted.

6/ 5 weeks.

7/ Preliminary.

Compiled from reports of the Bureau of the Census.

TABLE 21.- American-Egyptian cotton: Carryover by grade and staple, United States, August 1, 1928 to date

Year and grade	Shorter than 1 1/2 inches	1 1/2 inches and 1 17/32 inches	1 9/16 inches and 1 19/32 inches	1 5/8 inches to 1 23/32 inches	1 3/4 inches and longer	All lengths 1/
		Running bales	Running bales	Running bales	Running bales	
1928						
1 and 1 1/2	0	200	800	300	0	1,300
2 and 2 1/2	0	600	100	400	0	1,100
3 and 3 1/2	0	400	1,500	800	0	2,700
4 and 4 1/2	100	200	0	100	0	400
5	0	0	0	100	0	100
Below 5	0	200	0	0	0	200
All grades	100	1,600	2,400	1,700	0	5,800
1929						
1 and 1 1/2	200	0	1,000	500	0	1,700
2 and 2 1/2	100	100	3,600	200	0	4,000
3 and 3 1/2	0	300	500	400	0	1,200
4 and 4 1/2	0	200	0	0	0	200
5	0	0	0	0	0	0
Below 5	0	100	0	0	0	100
All grades	300	700	5,100	1,100	0	7,200
1930						
1 and 1 1/2	0	0	2,100	300	0	2,400
2 and 2 1/2	0	100	3,000	400	0	3,500
3 and 3 1/2	0	100	7,900	100	0	8,100
4 and 4 1/2	0	0	100	0	0	100
5	0	0	0	0	0	0
Below 5	0	0	0	0	0	0
All grades	0	200	7,100	800	0	8,100
1931						
1 and 1 1/2	0	300	4,200	200	0	4,700
2 and 2 1/2	0	600	7,200	800	0	8,600
3 and 3 1/2	0	900	1,900	100	0	2,900
4 and 4 1/2	0	200	300	0	0	500
5	0	0	0	0	0	0
Below 5	0	0	0	0	0	0
All grades	0	2,000	13,600	1,100	0	16,700
1932						
1 and 1 1/2	0	300	2,500	100	0	2,900
2 and 2 1/2	0	1,500	7,000	600	0	9,100
3 and 3 1/2	0	1,100	2,200	200	0	3,500
4 and 4 1/2	0	200	700	100	0	1,000
5	0	0	0	0	0	0
Below 5	0	0	0	0	0	0
All grades	0	3,100	12,400	1,000	0	16,500
1933						
1 and 1 1/2	0	100	1,300	400	0	1,800
2 and 2 1/2	200	1,700	3,000	600	0	5,500
3 and 3 1/2	400	1,000	500	100	0	2,000
4 and 4 1/2	100	100	300	0	0	500
5	0	0	0	0	0	0
Below 5	0	0	0	0	0	0
All grades	700	2,900	5,100	1,100	0	9,800
1934						
1 and 1 1/2	0	900	1,400	600	---	2,900
2 and 2 1/2	100	500	2,100	400	---	3,100
3 and 3 1/2	0	300	300	0	---	600
4 and 4 1/2	0	100	0	0	---	100
5	0	100	0	0	---	100
Below 5	200	0	0	0	---	200
All grades	300	1,900	3,800	1,000	---	7,000

Continued -

TABLE 21.- American-Egyptian cotton: Carryover by grade and staple, United States, August 1, 1928 to date - Continued

Year and grade	Shorter than 1 1/2 inches	1 1/2 inches and 1 17/32 inches	1 9/16 inches and 1 19/32 inches	1 5/8 inches to 1 23/32 inches	1 5/8 inches and 1 21/32 inches	All lengths 1/
	Running bales	Running bales	Running bales	Running bales	Running bales	Running bales
1935						
1 and 1 1/2	0	500	1,300	0	0	1,800
2 and 2 1/2	100	400	4,400	0	0	4,900
3 and 3 1/2	0	700	700	0	0	1,400
4 and 4 1/2	0	200	100	0	0	300
5	0	100	0	0	0	100
Below 5	100	0	0	0	0	100
All grades	200	1,900	6,500	0	0	8,600
1936						
1 and 1 1/2	0	800	1,000	---	100	1,900
2 and 2 1/2	100	1,200	2,100	---	300	3,700
3 and 3 1/2	0	700	200	0	0	900
4 and 4 1/2	0	300	100	0	0	400
5	0	100	0	0	0	100
Below 5	0	0	0	0	0	0
All grades	100	3,100	3,400	---	400	7,000
1937						
1 and 1 1/2	0	100	300	---	400	800
2 and 2 1/2	100	200	1,100	---	300	1,700
3 and 3 1/2	0	400	600	---	200	1,200
4 and 4 1/2	0	500	200	---	0	700
5	0	300	0	0	0	300
Below 5	0	800	0	0	0	800
All grades	100	2,300	2,200	---	900	5,500
1938						
1 and 1 1/2	0	632	1,928	---	134	2,694
2 and 2 1/2	189	1,015	1,221	---	89	2,514
3 and 3 1/2	51	770	561	0	0	1,382
4 and 4 1/2	0	149	193	0	0	342
5	0	263	0	0	0	263
Below 5	0	664	0	0	0	664
All grades	240	3,423	3,903	---	223	7,859
1939						
1 and 1 1/2	124	2,842	2,423	---	100	5,489
2 and 2 1/2	132	1,028	2,055	---	100	3,315
3 and 3 1/2	24	586	291	---	50	951
4 and 4 1/2	0	157	81	0	0	238
5	0	224	0	0	0	224
Below 5	0	72	0	0	0	72
All grades	280	4,902	4,850	---	250	10,289
	1 15/32 inches and shorter	1 1/2 inches and 1 17/32 inches	1 9/16 inches and 1 19/32 inches	1 5/8 inches and 1 21/32 inches		All lengths 1/
	Running bales	Running bales	Running bales	Running bales		Running bales
1940						
1 and 1 1/2	164	2,126	855	26		3,171
2 and 2 1/2	1,040	2,325	2,369	0		5,734
3 and 3 1/2	2,292	1,136	689	0		4,117
4 and 4 1/2	0	500	159	0		659
5	0	0	0	0		0
Below 5	0	0	0	0		0
All grades	3,496	6,087	4,072	26		13,681
1941						
1 and 1 1/2	58	3,380	480	0		3,918
2 and 2 1/2	2,251	3,413	556	0		6,220
3 and 3 1/2	1,367	2,790	323	0		4,480
4 and 4 1/2	455	287	266	0		1,008
5	30	39	0	0		69
Below 5	0	0	0	0		0
All grades	4,161	9,909	1,625	0		15,695

Continued -

TABLE 21.- American-Egyptian cotton: Carryover by grade and staple, United States, August 1, 1928 to date - Continued

Year and grade	1 15/32 inches and shorter	1 1/2 inches and 1 17/32 inches	1 9/16 inches and 1 19/32 inches	1 5/8 inches and 1 21/32 inches	All lengths 1/			
	Running bales	Running bales	Running bales	Running bales	Running bales			
1942								
1 and 1 1/2	1,628	13,575	499	0	15,702			
2 and 2 1/2	2,108	4,899	18	0	7,025			
3 and 3 1/2	670	805	28	0	1,503			
4 and 4 1/2	700	119	0	0	819			
5	6	0	0	0	6			
Below 5	19	0	0	0	19			
All grades	5,131	19,398	545	0	25,074			
	1 7/32 inches and shorter	1 1/4 inches and 1 9/32 inches	1 5/16 inches and 1 11/32 inches	1 3/8 inches and 1 13/32 inches	1 7/16 inches and 1 15/32 inches	1 1/2 inches and 1 17/32 inches	1 9/16 inches and longer	All lengths 1/
	Running bales	Running bales	Running bales	Running bales	Running bales	Running bales	Running bales	Running bales
1943								
1	0	0	0	3	1,038	5,649	1,409	8,099
1 1/2	0	0	0	39	1,569	7,360	376	9,344
2	0	2	0	277	1,509	3,075	90	4,953
2 1/2	0	5	1	353	2,471	747	10	3,587
3	0	11	2	1,275	2,617	235	0	4,140
3 1/2	23	8	2	1,041	2,551	150	0	3,775
4	7	5	2	725	885	0	0	1,624
4 1/2	0	1	30	486	228	0	0	745
5	0	10	25	171	27	0	0	233
Below 5	0	15	0	26	0	0	0	41
All grades	30	57	62	4,396	12,895	17,216	1,885	36,541
	1 3/8 inches and shorter	1 7/16 inches and 1 15/32 inches	1 1/2 inches and 1 17/32 inches	1 9/16 inches and longer	All lengths 1/			
	Running bales	Running bales	Running bales	Running bales	Running bales			
1944								
1	77	1,069	4,538	407	6,091			
1 1/2	283	3,005	13,636	493	17,417			
2	596	6,338	9,152	198	16,284			
2 1/2	786	6,088	4,041	16	10,931			
3	1,783	5,231	1,333	2	8,349			
3 1/2	1,144	2,184	489	0	3,817			
4	764	1,183	42	0	1,989			
4 1/2	486	93	14	0	593			
5	27	12	1	0	40			
Below grade	0	0	0	0	0			
All grades	5,946	25,203	33,246	1,116	65,511			
	1 3/8 inches and shorter	1 7/16 inches and 1 15/32 inches	1 1/2 inches and 1 17/32 inches	1 9/16 inches and longer	All lengths 1/			
	Running bales	Running bales	Running bales	Running bales	Running bales			
1945								
1	15	300	1,289	359	1,963			
1 1/2	12	526	5,283	338	6,159			
2	239	1,399	3,096	185	4,919			
2 1/2	773	5,569	2,089	19	8,450			
3	1,558	4,304	1,931	7	7,800			
3 1/2	371	395	209	0	975			
4	840	324	28	0	1,192			
4 1/2	51	62	2	0	115			
5	353	7	1	0	361			
Below grade	0	0	0	0	0			
All grades	4,212	12,886	13,928	908	31,934			
	1 3/8 inches and shorter	1 7/16 inches and 1 15/32 inches	1 1/2 inches and 1 17/32 inches	1 9/16 inches and longer	All lengths 1/			
	Running bales	Running bales	Running bales	Running bales	Running bales			
1946								
1	0	0	925	0	925			
1 1/2	0	433	285	0	718			
2	1	962	1,389	0	2,352			
2 1/2	1	165	105	0	271			
3	12	30	18	0	60			
3 1/2	110	398	70	0	578			
4	197	327	28	0	552			
4 1/2	50	62	2	0	114			
5	99	7	1	0	107			
Below grade	0	0	0	0	0			
All grades	470	2,364	2,823	0	5,677			

Continued -

TABLE 21.- American-Egyptian cotton: Carryover by grade and staple, United States, August 1, 1928 to date - Continued

Year and grade	1 3/8 inches and shorter	1 7/16 inches and 1 15/32 inches	1 1/2 inches and 1 17/32 inches	1 9/16 inches and longer	All lengths 1/
	Running bales	Running bales	Running bales	Running bales	Running bales
1947					
1	0	105	848	0	953
1 1/2	0	503	854	0	1,357
2	0	90	430	0	520
2 1/2	0	3	213	0	216
3	10	65	50	0	125
3 1/2	55	253	0	0	308
4	95	41	0	0	136
4 1/2	47	0	0	0	47
5 and below	0	0	0	0	0
All grades	207	1,060	2,395	0	3,662
1948					
1	0	0	544	77	621
1 1/2	0	91	1,099	0	1,190
2	0	0	427	7	434
2 1/2	0	0	153	0	153
3	0	0	28	0	28
3 1/2	0	0	0	0	0
4	0	27	17	0	44
4 1/2	4	0	0	0	4
5	23	0	0	0	23
Below grade	0	0	0	0	0
All grades	27	118	2,268	84	2,497
1949					
1	0	8	191	6	205
1 1/2	53	410	412	44	919
2	0	9	340	3	352
2 1/2	43	87	74	2	206
3	8	18	45	0	71
3 1/2	0	16	24	0	40
4	1	9	8	0	18
4 1/2	0	11	2	0	13
5	9	15	3	0	27
Below grade	0	0	0	0	0
All grades	114	583	1,099	55	1,851
1950					
1	0	0	39	0	39
1 1/2	0	15	62	0	77
2	108	108	850	0	1,066
2 1/2	0	0	1,128	0	1,128
3	0	0	0	0	0
3 1/2	0	31	0	0	31
4	0	0	0	0	0
4 1/2	0	31	0	0	31
5	0	31	294	0	325
Below grade	0	62	0	0	62
All grades	108	278	2,373	0	2,759
1951					
1	0	1,520	4,998	43	6,561
1 1/2	0	332	5,436	28	5,796
2	389	1,444	2,708	89	4,630
2 1/2	178	500	135	34	847
3	56	2,044	473	6	2,579
3 1/2	38	199	53	0	290
4	151	163	13	0	327
4 1/2	24	36	0	0	60
5	90	42	0	0	132
Below grade	52	24	0	0	76
All grades	978	6,304	11,816	200	21,298
1952 2/					
1	0	286	293	0	579
1 1/2	1,704	661	1,466	0	3,831
2	61	1,047	931	0	2,039
2 1/2	226	505	292	0	1,023
3	286	217	71	0	574
3 1/2	864	71	0	0	935
4	458	72	1	0	531
4 1/2	419	145	4	0	568
5	573	71	0	0	644
Below grade	55	0	0	0	55
All grades	4,646	3,075	3,058	0	10,779

1/ Seasonal totals are from reports of the Bureau of the Census. 2/ Preliminary report of October 30, 1952. Compiled from "Cotton Quality Statistics", reports of Production and Marketing Administration.

TABLE 22.- American-Egyptian cotton, carryover: Percentage each grade is of total, United States, 1928 to date 1/

Year beginning August 1	Grade										Total
	1	1 1/2	2	2 1/2	3	3 1/2	4	4 1/2	5	Below grade	
	Percent	Percent	Percent	Percent	Percent	Percent	Percent	Percent	Percent	Percent	
1928	22.4		19.0		46.6		6.9		1.7	3.4	100.0
1929	23.6		55.5		16.7		2.8		.0	1.4	100.0
1930	29.7		43.2		25.9		1.2		.0	.0	100.0
1931	28.1		51.5		17.4		3.0		.0	.0	100.0
1932	17.6		55.1		21.2		6.1		.0	.0	100.0
1933	18.4		56.1		20.4		5.1		.0	.0	100.0
1934	41.4		44.3		8.6		1.4		1.4	2.9	100.0
1935	20.9		56.9		16.3		3.5		1.2	1.2	100.0
1936	27.1		52.9		12.9		5.7		1.4	.0	100.0
1937	14.5		30.9		21.8		12.8		5.5	14.5	100.0
1938	34.3		32.0		17.6		4.4		3.3	8.4	100.0
1939	53.4		32.2		9.2		2.3		2.2	.7	100.0
1940	23.2		41.9		30.1		4.8		.0	.0	100.0
1941	25.0		39.7		28.5		6.4		.4	.0	100.0
1942	62.6		28.0		6.0		3.3		.0	.1	100.0
1943	22.2	25.6	13.6	9.8	11.3	10.3	4.5	2.0	0.6	.1	100.0
1944	9.3	26.6	24.9	16.7	12.7	5.8	3.0	.9	.1	.0	100.0
1945	6.1	19.3	15.4	26.5	24.4	3.1	3.7	.4	1.1	.0	100.0
1946	16.3	12.6	41.4	4.8	1.1	10.2	9.7	2.0	1.9	.0	100.0
1947	26.0	37.1	14.2	5.9	3.4	8.4	3.7	1.3	.0	.0	100.0
1948	24.9	47.8	17.4	6.1	1.1	.0	1.8	.0	.9	.0	100.0
1949	11.1	49.6	19.0	11.1	3.8	2.2	1.0	.7	1.5	.0	100.0
1950	1.4	2.8	38.7	40.9	.0	1.1	.0	1.1	11.8	2.2	100.0
1951	30.8	27.2	21.7	4.0	12.1	1.4	1.5	.3	.6	.4	100.0
1952	5.4	35.5	18.9	9.5	5.3	6.7	4.9	5.3	6.0	.5	100.0

1/ Includes Pima, SXF, Ansak, and Pima 32 in the years that these types were produced.

Compiled from "Cotton Quality Statistics," reports of Production and Marketing Administration.

TABLE 23.- American-Egyptian cotton, carryover: Percentage each staple length is of total, United States, August 1, 1928 to date 1/

Year beginning August 1	1 3/8	1 3/8	1 7/16	1 15/32	Shorter than	1 1/2	1 9/16	1 5/8	1 5/8	1 9/16	Total
	inches and shorter	inches and 1 13/32	inches and 1 15/32	inches and shorter	inches and 1 1/2	inches and 1 17/32	inches and 1 19/32	inches and 1 21/32	inches to 1 23/32	inches and longer	
	Percent	Percent	Percent	Percent	Percent	Percent	Percent	Percent	Percent	Percent	
1928	---	---	---	---	1.7	27.6	41.4	---	29.3	0.0	100.0
1929	---	---	---	---	4.2	9.7	70.8	---	15.3	.0	100.0
1930	0.0	0.0	0.0	0.0	.0	2.4	87.7	---	9.9	.0	100.0
1931	.0	.0	.0	.0	.0	12.0	81.4	---	6.6	.0	100.0
1932	.0	.0	.0	.0	.0	18.8	75.2	---	6.0	.0	100.0
1933	.0	.0	.0	.0	7.1	29.6	52.1	---	11.2	.0	100.0
1934	.0	.0	.0	.0	4.3	27.1	54.3	---	14.3	.0	100.0
1935	.0	.0	.0	.0	2.3	22.1	75.6	0.0	.0	.0	100.0
1936	.0	.0	.0	.0	1.4	44.3	48.6	---	5.7	.0	100.0
1937	.0	.0	.0	.0	1.8	44.8	40.0	---	16.4	.0	100.0
1938	.0	.0	.0	.0	3.1	44.4	49.7	2.8	.0	.0	100.0
1939	.0	.0	.0	.0	2.7	47.8	47.1	2.4	.0	.0	100.0
1940	.0	.0	.0	.0	25.6	44.5	29.8	2/	.0	.0	100.0
1941	.0	.0	.0	.0	26.5	63.1	10.4	.0	.0	.0	100.0
1942	---	---	---	20.5	---	77.3	2.2	.0	.0	.0	100.0
1943	.4	12.0	35.3	---	---	47.1	5.2	2/	.0	.0	100.0
1944	9.1	.0	38.5	---	---	50.7	---	---	.0	1.7	100.0
1945	13.2	.0	40.4	---	---	43.6	---	---	.0	2.8	100.0
1946	8.3	.0	42.0	---	---	49.7	.0	.0	.0	.0	100.0
1947	5.7	.0	29.9	---	---	64.4	.0	.0	.0	.0	100.0
1948	1.1	.0	4.7	---	---	90.8	.0	.0	.0	3.4	100.0
1949	6.2	.0	31.5	---	---	59.3	.0	.0	.0	3.0	100.0
1950	3.9	.0	10.1	---	---	86.0	.0	.0	.0	.0	100.0
1951	4.6	.0	29.6	---	---	64.9	---	---	---	.9	100.0
1952 3/	43.1	.0	28.5	---	---	28.4	.0	.0	.0	.0	100.0

1/ Includes Pima, SXF, Ansak, Pima 32 when these types were produced.

2/ Less than 0.05 percent.

3/ Preliminary.

Compiled from "Cotton Quality Statistics" Reports of Production and Marketing Administration.

TABLE 24.- Egyptian cotton: Carryover by staple length, United States, August 1, 1928 to date

Year beginning August 1	1 3/32 inches and shorter	1 1/8 inches and 1 7/32 inches	1 3/16 inches and 1 7/32 inches	1 1/4 inches to 1 11/32 inches	1 3/8 inches to 1 15/32 inches	1 1/2 inches to 1 19/32 inches	1 5/8 inches to 1 23/32 inches	1 3/4 inches and longer	Total 1/
	Bales 2/	Bales 2/	Bales 2/	Bales 2/	Bales 2/	Bales 2/	Bales 2/	Bales 2/	Bales 2/
1928	1,400	83,400	1,700	7,500	21,300	7,000	2,600	400	65,300
1929	300	70,800	6,600	2,700	34,100	12,900	1,800	0	129,200
1930	300	47,300	11,500	9,900	23,700	22,300	600	0	145,400
1931	1,100	21,500	800	6,500	28,600	5,200	0	200	63,900
1932	8,000	13,000	700	3,100	30,300	11,500	1,400	100	68,100
1933	7,900	12,500	2,000	2,400	22,700	6,600	600	100	54,800
1934	1,900	16,400	900	2,000	36,700	3,900	0	0	61,800
1935	100	14,200	800	4,400	25,300	3,000	200	0	48,000
1936	200	9,100	1,000	9,000	19,500	3,000	0	0	41,800
1937	0	2,300	500	9,500	31,000	1,500	100	0	44,800
1938	240	1,385	438	14,923	10,878	3,459	0	0	31,315
1939	5	696	267	3,137	14,176	7,305	92	0	25,678
1940	18	509	1,383	20,180	11,678	4,070	611	0	38,449
1941	0	446	1,151	19,044	19,486	5,296	0	0	45,423
1942	5	693	2,001	16,595	12,961	6,331	0	0	38,546
1943	0	0	2,981	10,087	16,063	8,876	0	0	38,007
1944	0	0	1,254	21,884	27,495	11,263	0	0	61,896
1945	0	253	2,691	35,256	11,050	9,687	0	0	58,937
1946	0	246	734	10,741	16,241	11,979	0	128	40,069
1947	0	0	13	3,084	34,540	16,848	3	0	54,488
1948	0	180	0	719	12,055	19,187	1,430	0	33,571
1949	0	0	353	5,495	35,418	912	0	0	42,178
1950	0	0	346	11,080	34,257	11,779	1,035	0	58,497
1951	0	0	413	2,733	33,902	20,822	0	0	57,870
1952 3/	0	0	1,444	0	26,951	5,780	0	0	34,175

1/ Bureau of the Census.
2/ Bales of 500 pounds gross weight.
3/ Preliminary.

Compiled from "Cotton Quality Statistics," Reports of the Production and Marketing Administration. See issue of October 30, 1952.

TABLE 25.- Peruvian cotton: Carryover by staple length, United States, August 1, 1928 to date

Year beginning August 1	31/32 inch and shorter	1 inch and 1 1/32 inches	1 1/16 inches and 1 3/32 inches	1 1/8 inches and 1 5/32 inches	1 3/16 inches and 1 7/32 inches	1 1/4 inches and longer	All lengths 1/
	Bales 2/	Bales 2/	Bales 2/	Bales 2/	Bales 2/	Bales 2/	Bales 2/
1928	0	0	0	100	900	4,500	5,500
1929	0	0	700	100	300	3,500	4,600
1930	0	0	300	1,300	100	5,400	7,100
1931	0	0	100	300	1,300	1,500	3,200
1932	0	0	0	100	200	2,900	3,200
1933	0	0	100	300	400	800	1,600
1934	0	0	100	0	700	100	900
1935	0	0	0	700	200	0	900
1936	0	0	400	200	100	0	700
1937	0	300	0	0	0	400	700
1938	73	0	8	54	287	153	565
1939	0	40	0	27	49	198	314
1940	0	0	0	45	25	575	645
1941	0	0	43	188	697	222	1,150
1942	6	2	0	56	58	2,628	2,750
1943	16	30	32	0	80	1,184	1,342
1944	0	0	50	0	191	2,123	2,364
1945	0	0	0	0	199	3,386	3,585
1946	0	0	0	420	385	2,583	6,388
1947	0	0	237	927	630	12,716	14,510
1948	171	0	0	0	122	7,128	7,421
1949	0	0	147	16	23	863	1,049
1950	0	0	0	0	0	3,161	3,161
1951	0	0	0	0	217	3,979	4,196
1952 3/	0	0	0	0	102	3,881	3,983

1/ Bureau of the Census.
2/ Bales of 500 pounds gross weight.
3/ Preliminary.

Compiled from "Cotton Quality Statistics," Reports of the Production and Marketing Administration.

TABLE 26.- American-Egyptian cotton: Total stocks, United States, end of month, November 1918 to date ^{1/}

Year	August	September	October	November	December	January	February	March	April	May	June	July
	Running bales	Running bales	Running bales	Running bales	Running bales	Running bales	Running bales	Running bales	Running bales	Running bales	Running bales	Running bales
1918	---	---	---	4,367	8,186	12,400	17,014	20,649	26,078	26,114	28,829	21,746
1919	18,688	17,018	16,610	16,851	19,116	17,305	17,244	18,872	24,517	23,234	21,800	18,582
1920	17,680	16,441	13,656	29,791	43,943	50,661	53,987	54,590	56,023	53,946	54,285	55,237
1921	51,871	49,266	50,512	58,320	61,346	91,249	92,052	92,123	81,449	69,185	64,102	59,533
1922	50,313	44,083	43,778	46,741	49,439	47,359	42,810	42,529	39,575	36,130	30,690	29,221
1923	24,581	26,688	29,436	33,275	32,269	31,190	32,101	27,077	22,822	19,640	17,070	15,198
1924	13,141	11,364	10,707	11,325	12,298	10,944	9,593	9,143	5,872	5,137	4,436	
1925	3,945	5,677	6,853	8,008	11,207	12,780	13,406	11,687	10,273	9,773	9,665	9,144
1926	8,333	9,047	9,005	9,257	9,321	10,714	10,594	8,892	7,917	7,306	7,092	6,355
1927	5,117	5,760	8,684	8,197	9,419	10,209	10,809	9,937	8,873	7,098	6,819	5,783
1928	4,169	7,933	8,941	11,869	10,736	11,321	12,744	11,965	6,833	8,792	9,013	7,204
1929	6,027	7,744	9,249	11,814	15,582	12,753	12,811	11,789	10,930	10,052	9,030	8,139
1930	11,147	14,046	16,951	17,500	17,801	18,167	18,427	19,287	19,264	18,874	17,584	16,709
1931	17,952	18,622	19,711	20,325	21,360	22,529	21,507	19,639	19,181	18,314	16,209	16,532
1932	15,174	14,469	16,353	14,958	15,407	15,282	13,466	13,039	13,519	12,039	10,817	9,826
1933	9,143	8,676	8,359	8,496	7,596	9,449	8,524	9,199	8,395	8,395	7,955	7,041
1934	6,479	7,178	7,635	7,893	10,552	12,122	12,687	11,256	11,966	11,553	9,799	8,615
1935	7,561	6,481	6,986	6,442	8,225	11,106	11,392	10,269	9,080	8,215	5,697	6,960
1936	5,783	6,573	6,837	7,617	11,327	11,866	11,216	9,570	7,708	7,154	5,842	5,488
1937	4,610	5,317	6,810	7,739	8,108	8,415	8,278	8,913	9,898	9,149	8,648	7,859
1938	7,856	11,563	12,947	16,053	17,088	17,553	19,324	17,155	15,932	14,490	12,725	10,289
1939	8,979	8,951	12,618	14,943	19,057	18,471	17,688	17,441	16,505	15,319	13,571	13,681
1940	11,187	13,621	17,188	17,991	18,602	19,568	23,778	22,493	21,663	20,400	18,235	15,695
1941	15,397	17,542	21,622	23,358	24,401	35,562	40,616	37,122	33,747	32,436	29,584	24,859
1942	22,264	23,621	29,010	36,144	42,285	48,036	45,139	47,449	45,603	39,705	34,823	36,657
1943	36,980	39,438	46,535	53,463	57,355	56,234	59,348	61,516	63,805	58,464	55,183	65,511
1944	55,766	48,237	49,809	46,384	48,845	46,598	46,271	45,025	42,207	37,671	34,805	31,634
1945	2/	27,530	25,106	25,059	25,083	24,454	23,590	21,423	2/	12,067	7,881	5,677
1946	6,309	5,924	5,272	5,269	7,348	6,885	6,384	6,474	6,187	5,066	3,010	3,662
1947	2,714	2,510	2,454	3,189	3,340	3,491	3,613	2/	3,685	3,221	2,715	2,497
1948	2,196	2,417	2,410	2,879	2,899	2,680	3,565	3,095	3,190	2,716	2,320	1,891
1949	1,409	1,527	1,581	2,083	2,745	3/3,065	2,721	2,711	2,528	2,642	1,902	2,759
1950	2,964	5,818	10,801	20,418	23,439	24,920	29,348	29,062	24,996	25,539	22,367	21,298
1951 ^{4/}	18,575	19,016	23,934	35,158	39,999	42,799	41,794	39,423	2/	2/	2/	10,679
1952 ^{4/}	9,805	11,234	26,178	40,861	60,052	70,390	59,934	---	---	---	---	---

^{1/} Includes stocks in mills, public storage and compresses.

^{2/} Not available.

^{3/} Since January 1950, data refer to a particular day near the end of the month.

^{4/} Preliminary.

Bureau of the Census. "Cotton Production and Distribution" except latest 12 months which are from monthly reports and therefore preliminary.

TABLE 27.- Egyptian cotton: Stocks in all locations, United States, end of month, 1914 to date 1/

Year beginning August 1	August	September	October	November	December	January	February	March	April	May	June	July
	Bales 2/	Bales 2/	Bales 2/	Bales 2/	Bales 2/	Bales 2/	Bales 2/	Bales 2/	Bales 2/	Bales 2/	Bales 2/	Bales 2/
1914	56,922	51,229	46,295	40,884	37,994	53,990	61,653	69,213	97,194	106,397	114,290	121,951
1915	115,208	104,956	90,595	81,358	74,148	85,368	121,766	128,688	144,863	168,183	168,670	182,608
1916	167,256	153,262	131,673	108,899	92,401	100,662	113,317	122,124	135,754	126,573	133,114	117,912
1917	98,722	88,906	70,351	53,244	44,834	44,571	45,053	34,120	41,586	51,830	65,984	67,278
1918	84,496	79,201	73,273	63,313	67,732	58,566	48,730	39,741	40,713	52,282	53,977	52,757
1919	46,315	70,668	68,155	63,609	71,212	88,417	105,991	133,170	229,707	259,336	244,954	220,099
1920	198,780	182,969	167,896	157,715	153,958	150,239	145,229	144,012	148,990	147,051	142,319	128,062
1921	116,755	101,948	88,503	99,073	114,870	127,828	126,363	147,926	148,312	140,200	125,700	116,290
1922	98,334	93,497	89,350	95,808	98,908	118,977	143,044	173,042	180,413	170,567	162,453	142,576
1923	123,328	106,709	90,780	77,344	74,339	92,972	92,492	90,697	87,413	83,796	73,654	64,241
1924	54,517	43,457	34,003	31,930	41,341	63,688	74,518	91,388	92,341	84,052	74,090	62,055
1925	49,600	44,484	32,088	26,206	36,737	66,868	74,355	92,074	93,764	95,555	96,048	92,713
1926	78,745	64,393	47,518	43,527	49,951	65,813	62,986	68,869	69,978	69,715	66,203	72,169
1927	58,839	70,055	63,105	65,809	73,816	77,547	72,959	73,106	73,621	73,343	67,747	65,356
1928	61,097	60,121	52,297	50,214	60,920	71,157	71,558	75,076	100,665	126,997	132,215	129,160
1929	126,498	123,369	107,920	97,748	104,574	110,976	102,867	100,412	97,029	145,611	155,201	145,458
1930	137,180	128,159	120,278	109,416	101,213	93,990	89,301	83,059	79,426	75,140	70,936	63,936
1931	60,362	56,834	52,055	47,412	44,431	41,616	41,247	39,588	39,756	55,677	61,947	68,091
1932	66,592	66,993	62,692	58,956	58,396	60,978	63,268	62,810	62,728	60,051	56,498	54,752
1933	49,942	43,109	41,594	44,993	46,774	49,717	50,558	56,060	60,819	63,889	62,537	61,793
1934	60,609	60,292	53,686	50,889	51,018	46,306	48,143	48,619	49,078	48,377	48,725	48,023
1935	44,684	39,193	35,858	36,143	36,732	37,157	39,822	41,746	42,685	43,210	44,381	41,754
1936	43,031	39,707	36,689	33,922	33,224	34,291	38,959	43,185	46,273	47,247	49,808	44,845
1937	37,225	32,090	31,512	33,649	35,180	33,545	32,504	31,195	32,179	31,674	33,303	31,315
1938	28,591	27,300	24,576	21,726	19,783	18,128	19,173	18,867	19,170	23,827	26,601	25,678
1939	24,961	24,996	30,318	35,479	38,482	38,289	30,948	32,937	33,216	35,123	41,657	38,449
1940	35,111	33,131	31,744	34,957	40,494	37,434	34,651	42,759	49,035	51,031	47,584	45,423
1941	40,050	42,988	42,354	34,402	38,491	50,158	48,834	50,398	46,274	41,984	36,786	38,546
1942	27,171	27,956	31,957	36,466	47,761	45,983	45,450	46,602	45,471	42,997	39,952	38,007
1943	34,292	36,335	44,181	62,201	60,301	67,021	51,892	51,882	72,309	62,119	63,282	61,896
1944	50,800	46,984	46,791	43,045	42,079	38,950	35,579	34,199	33,018	51,485	56,101	58,937
1945	55,444	53,454	51,558	54,657	65,974	60,628	64,530	65,357	64,746	55,315	49,024	40,069
1946	37,845	34,160	36,900	51,812	67,024	70,755	63,084	45,853	36,896	30,112	57,328	54,488
1947	50,179	57,226	96,233	106,364	99,446	91,427	77,773	68,904	57,637	48,750	38,991	33,571
1948	29,480	85,081	94,523	92,526	87,015	81,271	71,736	64,698	59,329	54,035	47,369	42,178
1949	35,862	46,402	51,285	38,884	30,893	3/54,821	60,278	90,609	60,415	74,067	66,054	58,497
1950	51,190	43,027	35,574	22,605	21,533	15,623	63,451	89,010	77,502	69,603	83,353	56,115
1951 4/	50,997	47,682	41,806	39,206	37,355	34,628	50,480	51,952	51,330	46,749	68,963	34,175
1952 4/	28,952	23,160	18,506	17,013	25,332	40,540	43,509	---	---	---	---	---

- 1/ Summation of stocks at mills, public storage, and compresses.
- 2/ Bales of 500 pounds gross weight.
- 3/ Since January 1950 data refer to a particular day near the end of the month.
- 4/ Preliminary.

Compiled from reports of the Bureau of the Census.

TABLE 28.- Peruvian cotton: Stocks in all locations, United States, end of month, 1945 to date 1/

Year beginning August 1	August	September	October	November	December	January	February	March	April	May	June	July
	Bales 1/	Bales 1/	Bales 1/	Bales 1/	Bales 1/	Bales 1/	Bales 1/	Bales 1/	Bales 1/	Bales 1/	Bales 1/	Bales 1/
1945	3,362	3,607	4,832	4,577	7,015	7,701	6,330	7,005	5,290	6,371	5,632	6,388
1946	11,679	15,222	12,944	14,974	16,049	19,948	20,774	20,008	19,102	19,041	20,002	14,510
1947	14,936	13,955	19,519	17,381	17,509	19,281	18,188	15,640	13,259	11,479	9,104	7,421
1948	5,764	4,286	4,169	3,766	3,023	2,440	2,234	1,642	1,679	1,546	1,198	1,049
1949	971	3,204	6,196	5,786	4,907	2/6,927	6,536	6,452	6,393	5,216	3,540	3,161
1950	2,345	3,777	4,996	9,267	9,133	7,996	7,870	7,196	6,406	5,686	4,899	4,206
1951 3/	4,315	4,546	4,418	6,628	6,106	4,451	5,795	6,206	5,763	5,413	5,575	3,983
1952 3/	2,877	3,733	3,212	3,540	4,241	4,493	4,834	---	---	---	---	---

- 1/ Bales of 500 pounds gross weight.
- 2/ Since January 1950 data refer to stocks on a particular day near the end of the month.
- 3/ Preliminary data for latest 12 months.

Compiled from monthly reports of the Bureau of the Census. Data are copied from latest issue in which they appear.

END