



AgEcon SEARCH
RESEARCH IN AGRICULTURAL & APPLIED ECONOMICS

The World's Largest Open Access Agricultural & Applied Economics Digital Library

This document is discoverable and free to researchers across the globe due to the work of AgEcon Search.

Help ensure our sustainability.

Give to AgEcon Search

AgEcon Search

<http://ageconsearch.umn.edu>

aesearch@umn.edu

*Papers downloaded from **AgEcon Search** may be used for non-commercial purposes and personal study only. No other use, including posting to another Internet site, is permitted without permission from the copyright owner (not AgEcon Search), or as allowed under the provisions of Fair Use, U.S. Copyright Act, Title 17 U.S.C.*

FB 120 (1952)

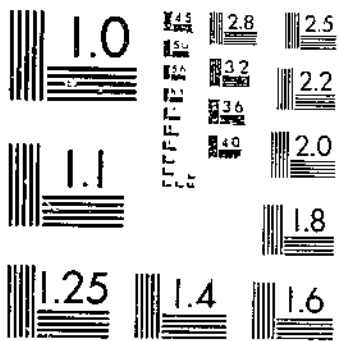
USDA STATISTICAL BULLETINS

UPDATES

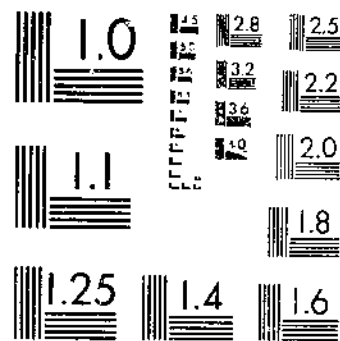
PRODUCTION OF MANUFACTURED DAIRY PRODUCTS, 1954

1 OF 1

START



MICROCOPY RESOLUTION TEST CHART
NATIONAL BUREAU OF STANDARDS 1963-A



MICROCOPY RESOLUTION TEST CHART
NATIONAL BUREAU OF STANDARDS 1963-A

PRODUCTION OF MANUFACTURED DAIRY PRODUCTS, 1951

Prepared in the Bureau of Agricultural Economics 1/

Whole-milk Equivalents

The whole-milk equivalent of manufactured dairy products produced in 1951 totaled 51,437,259,000 pounds, a decline of 7 percent from 1950 and the lowest for any year since 1937. A decline in the quantity of milk used in creamery butter and cheese was responsible for this decrease, which was partially offset by gains in the quantity of milk used for other major groups of dairy products. Considering the individual commodities, record high production in 1951 was reported for plain condensed whole milk (bulk goods), part-skimmed dry milk, dry cream, and ice milk. Output of Blue Mold cheese for 1951 was the lowest on record.

With a sharp decline in the quantity of milk used in creamery butter from 1950 to 1951 and a slight decline in the quantity of milk used in cheese, the decrease in the volume of milk used in these two major commodities totaled approximately 4,000,000,000 pounds. Slight gains in the quantity used in evaporated, condensed, and dry milk, as well as ice cream and other products, amounted to approximately 400,000,000 pounds. This resulted in a net decline in total whole milk equivalents of roughly 3.5 billion pounds.

Whole-milk equivalent of milk used for manufactured dairy products in Wisconsin represented roughly one-fifth of the milk used in all manufactured dairy products in the United States. The net total for Wisconsin was 10,740,293,000 pounds, compared to its nearest competitor, Minnesota, with 6,118,117,000 pounds. Iowa, with 4,299,115,000 pounds, ranked third, followed by Illinois with 2,623,368,000 pounds.

Creamery Butter

Production of creamery butter for the United States for 1951 totaled 1,202,981,000 pounds, a decline of 13 percent from the preceding year. The lowest output in recent years was in 1946 when only 1,171,339,000 pounds were produced. Output declined from a year earlier in all regions of the United States, with the decline ranging from 7 percent in the West North Central States to as high as 36 percent in the Middle Atlantic States. In the three major butter-producing States, Minnesota, Iowa, and Wisconsin, output for 1951 totaled 567,745,000 pounds, or 47 percent of the Nation's total. Production in these three States combined decreased 7 percent from 1950 to 1951. In production of creamery butter, some of the leading States ranked as follows: Minnesota, Iowa, Wisconsin, Nebraska, Illinois, Missouri, Michigan, and North Dakota.

1/ The material appearing in this report was compiled under the supervision of W. D. Bormuth, in cooperation with Federal-State Statisticians and cooperating State agencies, and under the general direction of B. H. Bennett, Head, Division of Dairy Statistics, Bureau of Agricultural Economics. All of the computations in this bulletin were made under the supervision of Jessie M. Cooley.

Total Cheese Production

Total production of cheese in the United States for 1951 amounted to 1,160,926,000 pounds, the fourth highest of record, but down 3 percent from 1950. Gains in production by regions were: New England 10 percent, Middle Atlantic 6 percent, South Atlantic 9 percent, with the West North Central unchanged. Declines were shown, however, in the East North Central, the South Central, Mountain, and Pacific regions.

Table 1.—Whole milk used in manufactured dairy products: Total per capita, and percentage distribution by major products on net whole-milk equivalent basis, United States, 1937-51

Year	Whole Milk Products						
	Total	Per capita	Percentage distribution				
			Creamery butter	All whole milk and part skim cheese	Evaporated and condensed milk	Ice cream and other frozen products	Other milk products
1,000 pounds	Pounds	Percent	Percent	Percent	Percent	Percent	
1937	47,051,407	365.2	69.0	13.8	9.8	7.1	0.3
1938	51,466,808	396.4	69.3	14.1	9.7	6.5	.4
1939	51,706,737	395.1	69.0	13.7	9.8	7.0	.5
1940	54,645,224	414.2	67.3	14.4	10.8	7.0	.5
1941	59,772,267	449.2	62.6	16.0	12.9	7.8	.7
1942	60,515,630	452.4	58.1	18.4	13.6	9.0	.9
1943	56,721,675	423.4	59.5	17.5	12.8	8.0	2.2
1944	54,776,539	413.0	54.6	18.5	14.9	8.6	3.4
1945	54,910,165	415.6	49.7	20.3	16.3	9.4	4.3
1946	51,722,010	369.7	45.2	21.2	14.0	15.8	3.8
1947	55,526,660	387.3	47.9	21.2	14.2	13.5	3.2
1948	51,821,614	354.8	46.7	21.1	15.7	12.9	3.6
1949	55,243,334	371.9	51.2	21.6	12.2	12.2	2.8
1950	55,038,583	362.8	50.5	21.5	12.6	12.3	3.1
1951	51,437,259	333.2	46.8	22.5	13.6	13.3	3.8

American Cheese

Production of American cheese, at 873,080,000 pounds for 1951, was the lowest since 1948 and down 2 percent from 1950. Regional changes followed much the same pattern as those of total cheese production, except for the East North Central region, in which production was fractionally higher, and the West North Central, in which production was 4 percent lower. Wisconsin, which produced 432,066,000 pounds in 1951, still maintained considerable lead over the production of any other State. Its output was 49 percent of the United States total. The second ranking State—Missouri—produced 59,552,000 pounds, less than a seventh of that produced by Wisconsin. Other States, in order of their rank, were Minnesota, Illinois, New York, and Tennessee.

Production of Swiss cheese during 1951 at 92,049,000 pounds was second only to the 1950 all-time record high. It declined, however, 7 percent from the 1950 level. Production of Brick cheese totaled 22,648,000 pounds

for 1951, the highest since 1941 and up 16 percent from the preceding year. Wisconsin produces 71 percent of the country's output of this variety of cheese. Output of Munster cheese for 1951 was 9,232,000 pounds, down 13 percent from 1950 and the lowest since 1948. Production of Limburger cheese was 6,539,000 pounds, the second lowest in 33 years. Production for 1951, however, gained 9 percent from the preceding year, which was the low point. Production of Italian cheese, at 57,215,000 pounds, was the fourth highest of record but 7 percent less than in the preceding year. The output of 69,277,000 pounds of cream cheese was 6 percent higher than in the preceding year and the highest of record, except for 1946. Neufchatel cheese totaled 4,286,000 pounds for 1951, highest since 1947 and 20 percent above that of 1950. Blue mold cheese totaled 5,451,000 pounds, down 29 percent from 1950 and the lowest in 9 years for which records are available. Unclassified varieties of cheese totaled 20,261,000 pounds, down 11 percent from the preceding year and the lowest since 1942.

Production of cottage cheese curd in 1951 totaled 356,290,000 pounds, a gain of 10 percent from the preceding year. Production gained in all regions of the country. Production of creamed cottage cheese, at 396,323,000 pounds, was 12 percent higher than in the preceding year. Production was uniformly higher in all regions of the country. California is the leading State in production of creamed cottage cheese, with more than 20 percent of the country's total, followed by New York, Ohio, Michigan, Wisconsin, and Washington in order of rank.

Evaporated and Condensed Whole Milk

Production of evaporated whole milk totaled 2,896,386,000 pounds in 1951, a fractional gain from 1950 and the highest since 1948. Production was higher than a year earlier in all regions of the country, except the Middle Atlantic, the South Central, and the Pacific. Wisconsin manufactures approximately 25 percent of the Nation's total and ranks first among the States in output of evaporated whole milk. Other States, in order of importance in production of the product are California, Ohio, Kentucky, Michigan, and Illinois.

Production of canned, condensed whole milk totaled 59,474,000 pounds, down 4 percent from 1950 and the smallest annual output since 1939.

Plain condensed whole milk set another record high at 230,143,000 pounds. Production of this product was 4 percent higher than in the preceding year. Changes from 1950 varied by regions, with the New England, Middle Atlantic, West North Central, and Mountain regions showing gains and the remaining regions registering declines. Production of sweetened condensed whole milk at 42,705,000 pounds was 9 percent larger than in 1950. However, the 1950 production was the smallest since 1935.

Ice Cream Production

For the first time since 1946, production of ice cream increased over the preceding year. Output of 568,704,000 gallons in 1951 was 3 percent above that of 1950, which was the recent low point. All geographic regions

showed gains over those of a year earlier except the West North Central, which was down 1 percent. Gains in other regions were as follows: The New England, Middle Atlantic, East North Central, and South Atlantic regions gained 3 percent. The South Central region registered a gain of 2 percent, the Mountain area, 1 percent, and the Pacific area, 5 percent. Pennsylvania continued to rank first among the States in production of ice cream, with New York a close second. Other States, in order of importance, were California, Ohio, Illinois, Michigan, Texas, and Massachusetts.

With roadside stands continuing to gain in numbers, the number of plants manufacturing ice cream, including both wholesale and retail, totaled 16,750 for 1951 compared with a revised figure of 16,484 for 1950. The number of retail plants or stands increased, while the number of wholesale manufacturers of ice cream declined in 1950 and 1951.

Production of ice cream for wholesale totaled 517,343,000 gallons in 1951 and for retail, 51,361,000 gallons. Output by retail establishments rose 5 percent from the preceding year compared with only 2 percent for the wholesale production. Wholesale production constituted 91 percent of the 1951 output and retail production 9 percent.

Milk Sherbet Production

Production of milk sherbet, at 20,992,000 gallons in 1951, was the highest since 1945 and 23 percent above the preceding year. However, it was only the fourth largest annual production of record. Output of milk sherbet was considerably higher than a year earlier in all geographic regions of the country. Increases ranged from 5 percent in the South Central States to 56 percent in the Mountain area. Production of sherbet has doubled since 1947. However, it is still much below the record high production during the war years, when the use of milk fat was restricted in the frozen dairy products industry and many manufacturers shifted from production of ice cream to sherbet with its lower butterfat content. In this way, producers were able to get a larger volume of product from their limited supplies of butterfat.

Ice Milk

Production of ice milk continues to gain rapidly, and for the country as a whole showed an increase of 23 percent from 1950 to 1951. It is now legal to produce ice milk in several States where the product was previously prohibited. However, its production is still not permitted in any States of the Middle Atlantic area. Output of ice milk for the United States in 1951 totaled 45,229,000 gallons, a gain of 23 percent from the preceding year and nearly three times the quantities that were produced back in 1946 and 1947. California has long been the leading State in production of ice milk and in 1951 its production of 11,571,000 gallons was more than a fourth of the United States total. Other States, in order of their importance, were North Carolina, Illinois, Texas, Washington, Oregon, Tennessee, Alabama, and Ohio. Changes in production by regions from 1950 to 1951 were all sharply higher except for the Pacific Coast States. These changes were as follows: New England, 122 percent; East North Central,

27 percent; West North Central, 27 percent; South Atlantic, 42 percent; South Central, 38 percent; Mountain, 17 percent; Pacific, 2 percent.

Composite Production of All Frozen Dairy Products

Low-fat frozen dairy products, combined, showed a higher output in 1951 than in 1950 despite the sharp contrast among products in the extent of gains shown. The combined production of milk sherbet, ice milk, and other frozen dairy products rose by slightly more than 13 million gallons or 21 percent from the preceding year. The gain in production of ice cream from 1950 to 1951 was 14 million gallons. In other words, only about half the quantitative gain in total frozen dairy products was shown by ice cream alone, whereas approximately the same quantitative gain was shown by the other three frozen products combined. But in 1946, the production of ice cream represented 96 percent of the composite production of all four items of frozen dairy products for that year; in 1951 only 88 percent.

Table 2.—Frozen dairy products: Production for specified items and total, United States, 1946-51

	1946	1947	1948	1949	1950	1951
	1,000 gallons					
Ice Cream						
Wholesale	651,541	576,979	525,168	508,103	505,659	517,343
Retail	62,053	53,787	51,093	49,826	48,692	51,361
Sherbet	12,019	10,447	12,211	13,616	17,018	20,992
Ice Milk	15,471	15,829	19,585	29,651	36,873	45,229
Other Frozen Dairy Products	1/5,626	1/5,542	1/4,986	6,754	8,230	9,158
Total	746,710	662,584	613,043	607,950	616,472	644,083

1/ For purposes of comparison, frosted malted milk and frozen custard were combined.

The number of establishments reporting production of sherbet rose from 4,159 in 1950 to 4,658 in 1951. The number of establishments making ice milk showed a particularly sharp gain, increasing from 4,281 plants in 1950 to 5,558 plants in 1951. The number of plants reporting other frozen dairy products was lower from 1950 to 1951.

Frozen Dairy Products Mix

The total mix manufactured for use in making frozen dairy products in 1951 totaled 342,919,000 gallons, a gain of almost 10 million gallons from 1950. As in 1950, the volume of mix specifically produced for the manufacture of low-fat frozen dairy products was not sufficient to produce all of the products reported. It is evident that some of the mix produced for use in ice cream was modified for use in production of low-fat frozen dairy products.

SKIM-MILK PRODUCTS

Skim-milk equivalents in all manufactured skim-milk products in 1951 totaled 14,075,000,000 pounds, the lowest since 1948, but the fifth highest in 23 years of record. The 1951 skim-milk equivalent total was 11 percent less than that of 1950 and 14 percent less than the record high of 1949. Wisconsin continued to lead with the highest skim-milk equivalent of any State. In 1951, Wisconsin had 3,135,601,000 pounds of skim-milk equivalent. Minnesota was second with slightly more than 2 billion, New York third with 1.7 billion, and California fourth with nearly a billion pounds.

Table 3.—Skim-milk equivalents: Calculated quantities used in certain skim milk and buttermilk products, United States, 1937-51

Year	Full skim Amer- ican cheese	Cottage cheese curd	Condensed and evapo- rated skim milk	Concen- trated skim milk (for ani- mal feed)	Nonfat dry milk solids	Dry casein	Condensed and dried butter- milk	Total
	Million pounds	Million pounds	Million pounds	Million pounds	Million pounds	Million pounds	Million pounds	Million pounds
1937	3	827	1,129	30	4,094	2,409	848	9,340
1938	3	896	1,192	40	4,942	1,733	971	9,777
1939	4	1,042	1,132	35	4,492	1,459	997	9,161
1940	4	1,089	1,244	45	5,300	1,664	1,083	10,429
1941	7	1,172	1,519	58	5,242	1,690	1,217	10,905
1942	16	1,230	1,651	40	6,892	1,509	1,276	12,614
1943	37	1,337	1,901	45	5,873	658	1,173	11,022
1944	42	1,402	2,216	62	6,593	545	1,096	11,959
1945	35	1,780	2,922	37	7,261	440	1,026	13,501
1946	38	1,574	3,971	70	7,339	654	1,105	14,751
1947	34	1,346	2,887	56	7,701	1,279	1,067	14,370
1948	28	1,598	2,257	68	7,641	513	973	13,078
1949	20	1,774	2,324	42	10,518	655	1,078	16,411
1950	28	2,018	2,210	36	9,888	662	1,081	15,929
1951	21	2,227	2,118	27	7,885	772	1,025	14,075

Nonfat Dry Milk Solids

For the second successive year the production of nonfat dry milk solids, at 702,465,000 pounds, declined sharply from that of the preceding year. Production was down 20 percent from 1950 and 25 percent from the record high production of 1949. All geographic regions registered declines, ranging from 2 percent in the Mountain area to 44 percent in the Pacific region.

Dry Buttermilk

Production of dry buttermilk for 1951 was 45,546,000 pounds, 7 percent lower than in the preceding year and the lowest since 1948. Minnesota has an impressive lead in production of this product. With 17,200,000

pounds in 1951, Minnesota produced 38 percent of the country's output. Iowa ranked second with 7,425,000 pounds and Wisconsin third with 3,899,000 pounds.

Dry Casein

Production of dry casein for 1951 at 21,620,000 pounds was the highest since 1947 and 17 percent above a year earlier. Minnesota was the leading State in production of dry casein, with New York a close second and Wisconsin third.

Dry Whey Production

Output of dry whey in 1951 totaled 139,946,000 pounds, a decline of 10 percent from the preceding year and approximately 12 percent from 1949, the highest year in 15 years of record.

Condensed Skim-milk Production

Output of plain condensed skim milk continued to decline for the second successive year at 485,084,000 pounds. Production was down 7 percent from the preceding year. For the fifth succeeding year, production of sweetened condensed skim milk declined. However, the output for 1951, at 209,801,000 pounds, was only fractionally lower than the 1950 output, but it was only one-fourth the record output of 818,076,000 pounds in 1946. Wisconsin was the leading State in production of sweetened condensed skimmed milk with an output of 39,230,000 pounds reported, nearly a fourth of the United States total.

Crude Milk Sugar Production

During 1951, the output of crude milk sugar totaled 50,156,000 pounds, the highest production of record and a gain of nearly 28 percent from the preceding year. Production in Wisconsin was 23,385,000 pounds, the largest of any individual State. This output was almost half of the United States total. New York's production ranked second with 7,977,000 pounds.

Table 4 - Revisions, manufactured dairy products: Production, by specified items, United States, by months, 1950 1/

Product	Plants	January	February	March	April	May	June	July	August	September	October	November	December	Total
		Number	1,000 pounds	1,000 pounds	1,000 pounds	1,000 pounds	1,000 pounds	1,000 pounds	1,000 pounds	1,000 pounds	1,000 pounds	1,000 pounds	1,000 pounds	
Butter, creamery 2/	3,060	161,348	97,982	121,852	128,649	157,184	165,098	146,058	124,796	100,726	89,261	85,568	77,886	1,386,408
Cheese:														
American														
Cheddar 3/	1,556	51,076	51,393	67,109	80,300	103,105	111,513	98,054	82,243	63,915	53,581	42,375	42,114	646,778
Total American 4/	1,820	54,489	54,538	71,015	84,395	107,328	116,579	102,559	86,136	67,412	56,986	45,269	45,100	892,706
All Italian varieties 5/	157	5,331	5,603	6,972	6,430	5,569	4,564	3,972	4,422	4,438	4,558	4,567	5,278	61,704
Green cheese 6/	48	5,853	5,225	6,136	5,167	5,054	5,135	5,048	4,893	5,012	5,593	5,932	6,127	65,175
Total 7/	2,158	77,782	77,543	99,042	111,688	136,021	144,368	127,591	110,340	90,139	80,757	67,445	68,311	1,191,487
Soft cheese:														
Curd 8/	1,900	23,045	24,713	29,329	28,108	30,611	29,268	28,521	27,572	25,149	27,104	24,976	24,407	322,603
Creamed 9/	1,571	25,125	26,877	32,250	30,573	32,919	31,421	31,721	30,258	27,445	29,498	27,729	26,612	352,428
Condensed milk:														
Sweetened														
Bulk goods														
Skimmed 10/	239	11,466	11,990	16,211	18,214	26,610	25,935	22,696	20,975	16,161	14,642	11,717	14,020	210,637
Unskimmed 11/	87	2,925	2,503	2,850	3,248	3,859	3,946	4,040	4,283	4,108	3,028	2,037	2,387	39,210
Evaporated milk:														
Unsweetened														
Case goods														
Skimmed 12/	4	2	25	128	134	508	20	134	239	317	461	464	364	2,796
Dry milk:														
Nonfat dry milk solids														
Spray process 13/	225	47,198	47,429	60,567	68,972	80,989	82,131	68,948	48,369	34,005	28,432	24,962	31,485	623,487
Roller process 14/	288	20,940	20,985	27,632	34,755	39,688	40,193	29,937	15,809	10,822	7,849	5,961	7,436	258,005
Total nonfat for human food 15/	459	68,138	68,414	88,199	103,727	120,675	122,324	94,885	64,178	44,827	36,281	30,923	38,921	881,492
Skim milk for animal feed 16/	204	1,186	1,461	1,673	2,025	2,219	2,287	1,903	1,267	999	792	799	793	17,404
Whey 17/	70	7,802	11,345	17,226	14,065	16,250	17,417	15,605	10,900	18,078	10,630	8,148	8,112	155,579
Buttermilk 18/	237	3,967	3,821	4,806	4,734	5,701	5,849	4,778	3,942	3,075	2,711	2,538	2,915	48,837
Frozen products:														
Ice cream		1,000 gallons	1,000 gallons	1,000 gallons	1,000 gallons	1,000 gallons	1,000 gallons	1,000 gallons	1,000 gallons	1,000 gallons	1,000 gallons	1,000 gallons	1,000 gallons	1,000 gallons
Wholesale 19/	3,269	29,142	30,543	36,001	38,925	51,706	58,611	56,605	58,589	44,330	39,133	32,728	27,346	505,659
Retail 20/	13,215	2,532	2,643	3,167	3,705	4,902	5,785	6,206	6,077	4,331	3,705	3,001	2,638	48,692
Total 21/	16,484	31,674	33,186	39,168	42,630	56,608	64,396	64,811	64,666	48,661	42,838	35,729	29,984	554,351
Sherbet 22/	4,159	508	674	922	1,176	1,682	2,464	2,413	2,315	1,641	1,289	1,019	715	17,018
Ice milk 23/	4,261	1,495	1,773	2,311	2,808	3,880	4,449	4,689	4,753	3,698	3,115	2,211	1,688	36,770
Other frozen dairy products 24/	1,854	319	369	468	652	940	1,081	1,042	1,082	811	696	460	305	8,217
Water ices 25/	2,058	261	324	842	1,809	3,136	3,783	3,129	2,540	1,153	686	406	230	18,299
Ice cream mix 26/	3,149	16,962	17,723	21,000	22,927	30,970	35,059	35,202	35,068	26,337	23,158	18,901	16,364	299,671
All other mix 27/	1,156	1,150	1,374	1,929	2,599	3,687	4,325	4,505	4,481	3,410	2,879	1,959	1,505	33,803

1/ For revised annual totals by States, see table 8. Some State totals may not be shown if there were less than 3 plants reporting. Revisions shown in following States: 2/ Pennsylvania, 3/ Pennsylvania, 4/ Pennsylvania, 5/ Pennsylvania, 6/ Illinois, 7/ Pennsylvania, Illinois, 8/ Texas, 9/ Pennsylvania, Texas, 10/ Illinois, 11/ Illinois, 12/ Indiana, Ohio, 13/ Vermont, 14/ Vermont, Pennsylvania, 15/ Pennsylvania, 16/ Missouri, 17/ Illinois, 18/ Missouri, 19/ Pennsylvania, Missouri, Maryland, North Carolina, 20/ Indiana, South Dakota, 21/ Pennsylvania, Indiana, Missouri, South Dakota, Maryland, North Carolina, 22/ North Carolina, Oregon, 23/ Indiana, South Dakota, West Virginia, North Carolina, Florida, New Hampshire, 24/ Missouri, South Dakota, West Virginia, North Carolina, Georgia, 25/ Pennsylvania, South Dakota, North Carolina, Georgia, 26/ Pennsylvania, Michigan, South Dakota, Maryland, North Carolina, Texas, 27/ California.

Table 5 - Manufactured dairy products: Production, by specified items, United States, 1942-51

Product	1942	1943	1944	1945	1946	1947	1948	1949	1950	1951
	1,000 pounds	1,000 pounds	1,000 pounds	1,000 pounds	1,000 pounds	1,000 pounds	1,000 pounds	1,000 pounds	1,000 pounds	1,000 pounds
Butter:										
Creamery 1/	1,764,054	1,673,788	1,486,502	1,363,717	1,171,339	1,329,094	1,210,324	1,412,111	2/1,386,408	1,202,981
Renovated or processed.	3,768	2,940	6,406	2,345	1,441	1,219	1,090	1,419	1,306	903
Cheese:										
American										
Whole milk.	916,850	765,089	804,787	875,084	801,264	932,718	854,447	935,206	2/892,706	873,080
Part skim.	3,759	4,670	2,248	1,098	2,696	4,906	3,987	769	2,319	888
Swiss (including block)	52,561	45,626	45,571	50,065	55,695	71,612	70,665	81,043	2/99,483	92,049
Brick and Munster	28,798	27,978	27,435	14,756	17,678	26,533	26,506	30,376	30,148	31,880
Liebig	8,441	6,653	7,510	8,777	9,548	7,753	7,358	7,180	6,003	6,539
Cream & Neufchatel	2/47,554	70,451	60,440	66,912	78,803	66,503	56,816	58,495	2/68,753	73,563
All Italian varieties	34,916	43,003	41,762	64,628	75,388	38,100	43,579	54,863	2/61,704	57,215
Blue mold	4/	8,036	6,835	9,828	12,451	10,580	9,289	8,141	7,657	5,451
All other varieties	19,435	21,788	20,659	25,524	52,824	24,241	25,719	23,369	22,714	20,261
Total 5/	1,112,314	993,294	1,017,247	1,116,772	1,106,347	1,182,946	1,098,366	1,199,442	2/1,191,487	1,160,926
Full-skin American type	1,001	2,337	2,628	2,172	2,367	2,153	1,754	1,251	1,774	1,302
Cottage, pot. & bakers'	196,799	213,910	224,374	284,774	6/	6/	6/	6/	6/	6/
Cottage cheese	-	-	-	-	246,303	215,302	255,639	283,938	2/322,803	356,290
Curd 1/	-	-	-	-	209,893	230,597	249,236	287,067	2/352,428	396,323
Creamed 2/	-	-	-	-	-	-	-	-	-	-
Condensed milk:										
Sweetened										
Case goods										
Skimmed	4,839	697	102	216	302	243	362	-	91	1,475
Unskimmed	62,453	117,247	139,145	143,306	113,906	164,733	126,295	100,902	61,973	59,474
Bulk goods										
Skimmed	225,840	306,899	374,840	519,188	818,076	541,813	239,290	215,295	2/210,637	209,801
Unskimmed	75,382	66,588	63,586	77,016	69,750	82,553	45,542	47,179	2/39,210	42,705
Unsweetened										
Bulk goods										
Skimmed	318,379	325,512	363,771	454,443	487,219	403,194	494,036	537,668	523,182	485,084
Unskimmed	125,880	102,452	119,403	128,875	98,471	174,525	200,485	202,851	221,724	230,143
Evaporated milk, unsweetened:										
Case goods, unskimmed	3,518,504	3,057,274	3,428,089	3,776,383	3,050,643	3,208,027	3,382,893	2,755,780	2,882,475	2,896,386
Condensed or evaporated buttermilk	169,999	167,338	157,503	160,441	226,708	189,135	170,954	178,383	183,470	174,652
Dry milk:										
Whole milk	62,167	137,766	177,754	217,276	188,406	164,888	170,087	125,541	124,986	131,017
Nonfat dry milk solids for human food	565,414	509,620	582,912	642,546	653,465	677,941	681,532	934,934	2/881,492	702,465
Skim milk for animal feed	61,148	24,279	16,407	17,508	13,704	22,119	13,145	21,244	2/17,404	14,362
Buttermilk	69,637	60,995	56,683	49,578	38,627	45,437	41,839	49,359	2/48,837	45,546
Cream	54	216	193	203	567	320	312	178	459	1,070
Casin.	42,268	18,386	15,264	12,333	18,319	35,831	14,372	18,348	18,531	21,620
Malted milk powder	34,679	49,435	40,549	42,751	45,029	37,354	31,361	25,369	20,710	33,391
	1,000 gallons	1,000 gallons	1,000 gallons	1,000 gallons	1,000 gallons	1,000 gallons	1,000 gallons	1,000 gallons	1,000 gallons	1,000 gallons
Ice cream, total.	464,146	411,628	444,198	476,357	713,394	630,766	576,261	557,929	2/554,351	568,704

1/ Includes whey butter.

2/ Revised.

3/ Cream cheese only.

4/ Included in "All Other Varieties of Cheese" prior to 1943.

5/ Excludes full skim cheddar and cottage cheese.

6/ Data not gathered on comparable basis with previous years. See cottage cheese curd and creamed cottage cheese.

7/ Comparable data for years prior to 1946 not available. Cottage cheese curd includes cottage, pot., and bakers' cheese with a butterfat content of less than 4 percent made by reporting plants. Creamed cottage cheese includes cheese with a butterfat content of 4 to 19 percent. Cottage cheese curd and creamed cottage cheese should not be added together to get a total cottage cheese figure, for while some of the cottage cheese curd is sold direct for consumption without further processing, a considerable part is creamed within the plant or shipped to another plant for creaming prior to sale.

6

Table 6 - Manufactured dairy products: Production, by specified items, by geographic division, United States, 1950 and 1951

Product	New England		Middle Atlantic		East North Central		West North Central		South Atlantic	
	1950	1951	1950	1951	1950	1951	1950	1951	1950	1951
	1,000 pounds	1,000 pounds	1,000 pounds	1,000 pounds	1,000 pounds	1,000 pounds	1,000 pounds	1,000 pounds	1,000 pounds	1,000 pounds
Butter, creamery	2,581	1,854	1/39,920	25,692	387,526	318,162	721,589	670,027	16,110	12,595
Cheeses:										
American										
Cheddar	2,281	2,659	1/32,026	35,628	517,972	522,314	131,265	124,935	2,290	2,503
Other varieties, whole 2/	597	417	5,812	5,221	31,452	29,821	1,046	1,439	-	1
Total, whole milk 1/	2,878	3,076	1/37,837	41,449	549,424	552,135	132,311	126,374	2,290	2,504
Part skim	-	-	277	170	1,454	496	303	-	-	-
Swiss, including block	-	-	627	754	83,644	69,590	5,457	12,237	14	3
Monster	-	-	278	166	10,273	9,066	-	-	-	-
Brick	-	-	15	31	19,122	21,912	446	496	-	-
Likburger	-	-	1,452	1,677	4,546	4,799	5	65	-	-
All Italian varieties	2,156	3,226	1/21,220	22,724	37,044	29,650	-	23	-	-
Cream 1/	1,660	1,592	28,362	29,063	1/26,040	28,121	31	31	-	-
Beaufchatel 2/	25	34	3,549	3,384	-	-	-	-	-	-
Blue mold	-	-	13	10	5,434	3,771	1,321	953	-	-
All other varieties	1,628	1,289	7,433	7,689	11,150	9,438	195	411	-	-
Total 6/	8,347	9,177	1/101,463	107,117	1/748,131	728,978	140,069	140,218	2,304	2,507
Full-skim Am. type cheese	526	493	204	147	332	308	706	354	6	-
Cottage cheese										
Curd	20,112	23,354	62,606	67,603	96,675	107,063	31,346	37,530	13,483	13,936
Creamed	13,023	14,792	1/53,976	59,393	98,544	112,226	38,811	45,890	11,162	14,233
Condensed milk:										
Sweetened										
Case goods	-	-	-	-	91	30	-	-	-	-
Skinned	-	-	-	-	28,217	25,264	11	-	-	-
Unskinned	-	-	8,876	8,037	-	-	-	-	-	-
Bulk goods	6,147	5,047	57,360	49,335	1/96,118	109,413	20,607	18,497	10,943	11,557
Skinned	403	449	2,834	4,208	1/23,231	19,591	9,826	9,251	669	2,734
Unskinned	-	-	-	-	-	-	-	-	-	-
Unsweetened										
Bulk goods	16,447	13,028	96,723	90,697	159,894	148,820	84,814	75,341	48,452	41,965
Skinned	9,416	14,497	93,903	106,750	61,696	54,872	5,660	7,677	20,948	18,073
Unskinned	-	-	-	-	-	-	-	-	-	-
Evaporated milk, unsweetened:										
Case goods	-	-	-	-	2,729	8,659	7	940	-	-
Skinned	-	-	87,627	69,929	1,345,374	1,404,947	278,703	290,164	16,532	166,457
Unskinned	-	-	-	-	-	-	-	-	-	-
Cond. skim milk for animal feed	438	-	2,759	2,352	5,117	4,231	3,527	2,051	507	490
Condensed or evaporated buttermilk	438	-	4,672	2,736	71,166	68,691	85,223	81,234	474	301
Dry milk:										
Whole milk	1,204	211	26,984	24,004	71,177	77,614	15,939	19,494	-	-
Nonfat dry milk solids										
Spray process	1/13,702	10,595	55,135	52,822	277,345	242,302	174,951	156,080	6,989	5,639
Roller process	1/8,235	4,855	1/62,610	36,784	111,605	69,319	49,624	30,402	8,392	5,816
Total nonfat for human food	21,937	15,450	1/117,745	95,606	388,950	311,621	224,575	187,381	15,381	11,455
Skim milk for animal feed	840	936	1,467	1,702	6,812	6,479	1/3,624	3,253	400	156
Buttermilk	-	-	618	412	10,501	9,120	1/34,216	32,919	80	34
Cream	-	-	12	14	209	347	132	60	-	-
Whey	-	-	16,410	11,133	1/72,336	66,782	32,656	36,238	-	-
Casein	1,374	1,165	5,485	5,198	2,992	5,408	4,030	5,659	-	-
Frozen products: 7/										
Ice cream										
Wholesale	33,079	33,431	1/122,518	125,061	112,620	116,343	1/53,300	52,341	1/60,084	61,346
Retail	2,939	3,753	13,559	15,554	1/12,571	12,651	1/1,875	4,031	1,211	3,939
Total	36,018	37,184	1/136,077	139,615	1/125,271	129,345	1/57,175	56,374	1/63,295	65,285
Sherbet, milk	823	955	1,407	1,563	4,233	5,754	1,605	1,886	1/2,496	3,310
Ice milk	1,007	2,235	-	-	1/3,461	4,382	1/4,285	5,435	1/4,265	6,033
Other frozen dairy products	195	193	-	-	1,703	2,167	1/1,062	1,167	1/1,164	872
Water ices	1,357	1,576	1/4,365	5,011	3,655	3,711	1/935	1,256	1/2,786	4,237
Ice cream mix	20,749	20,337	1/71,522	73,231	1/67,028	70,363	1/37,863	30,938	1/34,000	33,768
All other mix	1,145	1,452	435	448	5,395	5,922	2,936	4,262	4,436	5,600

Continued

Table 6—Manufactured dairy products: Production, by specified items, by geographic divisions, United States, 1950 and 1951 (Continued)

Product	South Central		Mountain		Pacific		United States		Percentage Change
	1950	1951	1950	1951	1950	1951	1950	1951	
	1,000	1,000	1,000	1,000	1,000	1,000	1,000	1,000	
	pounds	pounds	pounds	pounds	pounds	pounds	pounds	pounds	Percent
Butter, creamery	90,931	70,481	59,487	52,688	71,264	51,492	1/1,386,408	1,202,981	- 13
Cheeses									
American									
Cheddar	104,689	90,719	28,042	25,250	28,213	25,273	1/846,778	829,281	- 8
Other varieties, whole 2/	457	876	2,469	2,146	4,096	1,278	45,928	43,799	- 4
Total, whole milk 3/	105,146	91,595	30,511	27,396	32,309	26,551	1/892,706	873,080	- 8
Part skim	82	14	162	150	41	58	2,319	888	- 62
Swiss, including block	-	-	9,679	9,424	62	41	99,483	92,049	- 7
Munster	-	-	-	-	-	-	10,551	9,232	- 13
Brick	-	162	-	-	14	47	19,597	22,648	+ 16
Limburger	-	-	-	-	-	-	6,003	6,539	+ 9
All Italian varieties	-	-	182	77	1,102	1,515	1/61,704	57,215	- 7
Cream 4/	4,206	5,182	-	-	4,876	5,328	1/65,175	59,277	+ 6
Neufchatel 5/	-	868	-	-	4	-	3,571	4,286	+ 20
Blue mold	-	-	-	-	887	717	7,657	5,451	- 29
All other varieties	68	31	223	292	1,617	1,081	22,734	20,261	- 11
Total 6/	109,502	97,852	40,727	37,339	40,914	37,738	1/1,191,487	1,160,926	- 3
Full-skim Am. type cheese	-	-	-	-	-	-	1,774	1,302	- 27
Cottage cheese									
Curd	1/19,776	21,824	9,113	10,095	69,692	74,885	1/322,803	356,290	+ 10
Creamed	1/25,354	28,728	10,639	12,935	100,919	108,126	1/352,428	396,323	+ 12
Condensed milk:									
Sweetened									
Case goods									
Skimmed	-	-	-	-	-	1,445	91	1,475	+ 62
Unskimmed	12,288	9,685	-	-	12,561	15,888	61,973	59,474	- 4
Bulk goods									
Skimmed	6,096	2,154	1,898	810	11,468	12,988	1/210,637	209,801	0
Unskimmed	1,278	3,247	-	-	969	3,225	39,210	42,705	+ 9
Unsweetened									
Bulk goods									
Skimmed	48,687	44,385	5,231	3,926	62,934	66,912	523,182	485,084	- 7
Unskimmed	4,430	4,024	4,867	5,218	20,804	19,032	221,724	230,143	+ 4
Evaporated milk, unsweetened:									
Case goods									
Skimmed	-	-	-	-	-	-	2,796	9,599	+243
Unskimmed	453,325	427,254	157,814	163,355	397,120	384,640	2,882,475	2,896,386	0
Cond. skim milk for animal feed	-	-	-	-	-	-	12,071	9,124	- 24
Condensed or evaporated buttermilk	19,355	20,865	1,582	787	494	38	183,470	174,652	- 5
Dry milk:									
Whole milk	605	-	1,149	1,093	7,924	8,601	124,986	131,017	+ 5
Nonfat dry milk solids									
Spray process	4,479	2,627	38,534	37,873	52,312	31,601	1/623,487	546,439	- 12
Roller process	5,880	4,904	82	25	11,577	1,922	1/258,005	156,026	- 40
Total nonfat for human food	10,359	7,531	38,616	37,898	63,889	35,523	1/881,492	702,465	- 20
Skim milk for animal feed	471	98	494	338	3,256	1,400	1/17,404	14,362	- 17
Buttermilk	1,567	1,345	914	941	941	771	1/48,837	45,546	- 7
Cream	-	-	-	-	106	649	459	1,070	+133
Whey	4,193	4,671	7,985	5,273	20,899	15,889	1/155,579	139,946	- 10
Casein	205	30	390	234	4,055	3,925	18,531	21,680	+ 17
	1,000	1,000	1,000	1,000	1,000	1,000	1,000	1,000	
	gallons	gallons	gallons	gallons	gallons	gallons	gallons	gallons	
Frozen products 1/									
Ice cream									
Wholesale	63,203	64,027	14,981	15,097	45,814	49,697	1/505,659	517,343	+ 2
Retail	2,666	3,095	2,397	2,491	7,454	6,894	1/48,692	51,361	+ 5
Total	65,869	67,122	17,378	17,588	53,268	56,191	1/554,351	568,704	+ 3
Sherbet, milk	2,801	2,904	541	846	3,112	3,429	1/17,018	20,998	+ 23
Ice milk	6,548	9,061	2,379	2,778	8/14,935	8/15,307	1/36,870	45,229	+ 23
Other frozen dairy products	3,028	3,789	754	751	220	217	1/8,230	9,158	+ 11
Water ices	4,510	3,184	358	482	2,333	2,166	1/718,299	21,683	+ 18
Ice cream mix	1/38,021	38,977	9,108	9,288	27,320	28,187	1/299,571	305,089	+ 2
All other mix	6,184	7,724	2,367	2,591	1/10,905	9,761	1/33,803	37,830	+ 12

1/ Reversed. 2/ Includes colby, washed curd, high and low moisture Jack, Monterey, and granular.

3/ Comparable to data published prior to 1944 under designation of American Cheddar cheeses. 4/ Not less than 33 percent butterfat.

5/ Butterfat content ranges from 20 to 32 percent, inclusive. 6/ Excluding full-skim American and cottage cheese.

7/ The production shown for frozen products includes that made by all types of plants for both wholesale and retail.

8/ Includes substandard ice cream in Oregon.

Table 8 - Manufactured dairy products: Production, by specified items, by State, 1950 and 1951

Product	Alabama		Arizona		Arkansas		California		Colorado		Connecticut		Delaware	
	1950	1951	1950	1951	1950	1951	1950	1951	1950	1951	1950	1951	1950	1951
	1,000 pounds	1,000 pounds	1,000 pounds	1,000 pounds	1,000 pounds	1,000 pounds	1,000 pounds	1,000 pounds	1,000 pounds	1,000 pounds	1,000 pounds	1,000 pounds	1,000 pounds	1,000 pounds
Butter, creamery	1/	1/	1,155	673	6,227	4,478	34,623	21,886	16,283	15,591	1/	5	1/	1/
Cheese:														
American														
Cheddar	2,975	2,291	-	-	12,247	11,149	905	825	1,740	811	-	-	-	-
Other varieties, whole milk 2/	-	-	-	-	457	340	3,270	3,094	139	25	-	-	-	-
Total, whole milk 2/	2,975	2,291	-	-	704	11,489	4,175	3,919	1,879	836	-	-	-	-
Part skim	-	-	-	-	-	-	1/	58	1/	1/	-	-	-	-
Swiss, including block	-	-	-	-	-	-	1/	47	-	-	-	-	-	-
Munster	-	-	-	-	-	-	-	-	-	-	-	-	-	-
Brick	-	-	-	-	-	-	-	-	-	-	-	-	-	-
Limburger	-	-	-	-	-	-	-	-	-	-	-	-	-	-
All Italian varieties	-	-	-	-	-	-	1,088	1,499	-	-	1/	1/	-	-
Cream 4/	-	-	-	-	-	-	3,383	4,330	-	-	-	-	-	-
Moufchatel 2/	-	-	-	-	-	-	1/	-	-	-	-	-	-	-
Blue mold	-	-	-	-	-	-	-	-	-	-	-	-	-	-
All other varieties	-	-	1/	1/	-	-	1,432	1,342	1/	1/	-	-	-	-
Total 6/	2,975	2,291	1/	1/	12,704	11,489	7,110,136	7,111,201	7,2,042	7,993	1/	1/	-	-
Full-skin Am. type cheese	-	-	-	-	-	-	-	-	-	-	1/	-	1/	-
Cottage cheese														
Curd 2/	203	281	785	868	823	1,018	52,819	58,873	3,241	3,263	2,587	2,057	150	179
Creamed 8/	76	239	1,499	1,714	316	218	77,399	82,617	2,204	3,541	1,239	1,420	-	1/
Condensed milk:														
Sweetened														
Case goods														
Unskimmed	-	-	-	-	-	-	1/	3,320	-	-	-	-	-	-
Bulk goods														
Skimmed	1/	-	-	-	1/	-	8,642	8,865	1,898	810	-	-	1/	1/
Unskimmed	-	-	-	-	-	-	616	1,223	-	-	-	-	1/	1/
Unsweetened														
Bulk goods														
Skimmed	2,775	2,338	1/	1/	1/	1/	59,537	61,812	917	1/	1/	1/	1/	1/
Unskimmed	2/	1/	-	-	-	-	17,850	15,674	1/	1/	1/	1/	1/	1/
Evaporated milk, unsweetened														
Case goods, unskimmed	-	-	1/	1/	1/	1/	312,988	318,756	1/	1/	-	-	-	-
Concentrated skim milk for animal feed	-	-	-	-	-	-	-	-	1/	1/	-	-	-	-
Condensed or evaporated buttermilk	-	-	-	-	-	-	-	-	-	-	-	-	-	-
Dry milk:														
Whole milk	-	-	-	-	-	-	7,032	7,577	1/	1/	-	-	-	-
Nonfat dry milk solids														
Spray process	-	-	-	-	1/	1/	37,764	21,118	-	-	-	-	-	-
Roller process	-	-	-	-	-	-	7,156	3,023	-	-	-	-	-	-
Total nonfat for human food	-	-	-	-	1/	1/	44,920	24,141	-	-	-	-	-	-
Skim milk, for animal feed	-	-	-	1/	1/	-	2,143	546	-	-	-	-	-	-
Buttermilk	-	-	-	1/	1/	-	745	507	1/	1/	-	-	-	-
Whey	-	-	-	1/	-	-	1/	1/	-	-	-	-	-	-
Casein	-	-	1/	1/	-	-	3,727	3,241	-	-	-	-	-	-
Frozen products: 2/														
Ice cream														
Wholesale	6,358	6,549	1,510	1,610	1,952	2,053	33,403	36,606	5,105	5,130	6,388	6,585	1,933	1,860
Retail	131	214	96	129	327	276	5,386	4,359	166	467	448	445	88	96
Total	6,541	6,763	1,606	1,739	2,179	2,329	38,789	40,965	5,471	5,597	6,836	7,030	2,021	1,956
Sherbet, milk	477	294	83	103	17	23	2,789	3,075	146	277	106	168	1/	1/
Ice milk	1,322	1,551	465	685	213	158	11,747	11,571	342	473	303	447	-	-
Other frozen dairy products	43	56	43	56	48	107	-	-	392	394	74	39	-	-
Water ice	313	418	91	119	37	23	2,004	1,665	39	113	281	262	43	118
Ice cream mix	3,362	3,587	954	967	2,470	2,698	19,109	19,952	2,888	2,961	3,805	3,961	1,005	1,002
All other mix	979	1,147	444	691	20	106	10,939	7,949	652	619	142	140	1/	1/

Continued

Table g—Manufactured dairy products: Production, by specified items, by States, 1950 and 1951—Continued

Product	D. C.		Florida		Georgia		Idaho		Illinois		Indiana		Iowa	
	1950	1951	1950	1951	1950	1951	1950	1951	1950	1951	1950	1951	1950	1951
	1,000 pounds	1,000 pounds	1,000 pounds	1,000 pounds	1,000 pounds	1,000 pounds	1,000 pounds	1,000 pounds	1,000 pounds	1,000 pounds	1,000 pounds	1,000 pounds	1,000 pounds	1,000 pounds
Butter, creamery	-	-	1/	1/	468	305	23,849	20,648	63,109	53,554	39,866	28,260	199,737	186,778
Cheeses:														
American														
Cheddar	-	-	-	-	408	649	16,225	15,115	43,018	40,346	32,112	26,653	9,887	10,018
Other varieties, whole milk 2/	-	-	-	-	-	-	2,117	2,121	2,342	1,045	2,286	3,349	590	1,064
Total, whole milk 2/	-	-	-	-	408	649	18,342	17,236	45,360	41,391	34,398	30,002	10,477	11,082
Part skin	-	-	-	-	-	-	-	-	1/	-	-	-	1/	-
Swiss, including block	-	-	-	-	-	-	2,553	2,841	23,091	22,264	-	-	507	417
Munster	-	-	-	-	-	-	-	-	618	223	-	-	-	-
Brick	-	-	-	-	-	-	-	-	1,675	1,180	-	4,588	1/	1/
Limburger	-	-	-	-	-	-	-	-	1,067	1,317	-	1/	-	-
All Italian varieties	-	-	-	-	-	-	-	-	2,915	1,301	1/	1/	-	-
Cream 1/	-	-	-	-	-	-	-	-	10/1,756	2,518	-	-	-	-
Neufchatel 5/	-	-	-	-	-	-	-	-	-	-	-	-	-	-
Blue mold	-	-	-	-	-	-	-	-	1,332	1/	1/	1/	1/	1/
All other varieties	-	-	-	-	-	-	-	-	1,308	1,012	-	-	1/	1/
Total 5/	-	-	-	-	408	649	20,895	20,077	10/179,850	172,409	1735,919	1735,043	7/11,312	7/11,716
Full skin Am. type cheese	-	-	-	-	-	-	-	-	1/	-	-	-	-	-
Cottage cheese	-	-	-	-	-	-	-	-	-	-	-	-	-	-
Curd 8/	962	1/	1,568	1,483	336	553	825	976	20,004	21,037	8,485	9,273	5,131	6,508
Creamed 8/	1/	1/	1,177	1,391	278	460	1,143	1,427	18,975	19,333	8,149	9,109	4,950	6,891
Condensed milk:														
Sweetened														
Case goods	-	-	-	-	-	-	-	-	-	-	-	-	-	-
Unskimmed	-	-	-	-	-	-	-	-	-	-	-	-	-	-
Bulk goods	-	-	1/	-	697	500	-	-	10/18,475	19,739	19,848	21,069	1/	1/
Skimmed	-	-	1/	-	1/	1/	-	-	10/5,300	6,036	433	1,030	1/	1/
Unskimmed	-	-	-	-	-	-	-	-	-	-	-	-	-	-
Unsweetened														
Bulk goods	-	-	1/	-	2,318	1/	1/	1/	25,498	22,661	9,109	10,718	8,516	9,453
Skimmed	-	-	1/	1/	1/	1/	-	-	2,331	2,098	21,189	16,608	1/	1/
Unskimmed	-	-	-	-	-	-	-	-	-	-	-	-	-	-
Evaporated milk, unsweetened:														
Case goods, unskimmed	-	-	-	-	-	-	1/	1/	154,814	151,316	97,404	89,639	40,903	1/
Concentrated skim milk for animal feed	-	-	-	-	-	-	-	-	1/	1/	1/	1/	2,256	1,502
Condensed or evaporated buttermilk	-	-	-	-	-	-	-	-	43,622	45,856	1/	1/	33,266	35,252
Dry milk:														
Whole milk	-	-	-	-	-	-	1/	1/	3,128	1/	3,447	3,997	-	-
Nonfat dry milk solids														
Spray process	-	-	-	-	-	-	32,579	31,648	3,627	4,164	16,573	10,620	8,353	7,377
Roller process	-	-	-	-	-	-	24	25	7,256	3,014	15,612	12,924	6,528	5,316
Total nonfat for human food	-	-	-	-	-	-	32,603	31,673	10,883	7,178	32,185	23,544	14,881	12,693
Skim milk, for animal feed	-	-	-	-	-	-	492	303	272	209	346	209	579	665
Buttermilk	-	-	-	-	-	-	159	130	649	454	750	602	8,152	7,425
Whey	-	-	-	-	-	-	5,244	2,918	10/6,037	8,477	4,539	4,944	1/	1/
Casein	-	-	-	-	-	-	1/	1/	632	533	-	-	416	438
Frozen products: 9/	1,000 gallons	1,000 gallons	1,000 gallons	1,000 gallons	1,000 gallons	1,000 gallons	1,000 gallons	1,000 gallons	1,000 gallons	1,000 gallons	1,000 gallons	1,000 gallons	1,000 gallons	1,000 gallons
Ice cream														
Wholesale	5,997	6,644	8,825	9,232	6,917	7,316	2,058	2,201	28,541	29,282	35,673	15,941	9,910	9,090
Retail	155	159	685	619	195	198	223	285	3,511	3,512	10/1,649	2,364	1,116	1,142
Total	6,152	6,803	9,510	9,851	7,112	7,514	2,281	2,487	32,052	32,814	10/17,322	18,305	11,046	10,232
Sherbet, milk	197	240	349	594	248	468	46	61	1,469	1,912	425	487	386	440
Ice milk	-	-	10/438	858	1,071	1,048	553	583	2,385	2,851	-	-	812	1,078
Other frozen dairy products	217	11/	69	37	10/197	167	4	1	863	1,663	354	11/	120	232
Water ices	324	379	224	401	10/370	478	12	19	1,226	1,409	214	205	182	215
Ice cream mix	4,782	2,995	5,024	5,024	3,839	4,330	1,072	1,208	16,480	16,280	8,404	9,437	5,965	5,660
All other mix	59	61	433	579	809	889	250	279	3,041	3,146	744	472	708	1,098

Continued

Table 8 - Manufactured dairy products: Production, by specified items, by States, 1950 and 1951-Continued

Product	Kansas		Kentucky		Louisiana		Maine		Maryland		Massachusetts		Michigan	
	1950	1951	1950	1951	1950	1951	1950	1951	1950	1951	1950	1951	1950	1951
Butter, creamery.	1,000 pounds	1,000 pounds	1,000 pounds	1,000 pounds	1,000 pounds	1,000 pounds	1,000 pounds	1,000 pounds	1,000 pounds	1,000 pounds	1,000 pounds	1,000 pounds	1,000 pounds	1,000 pounds
	50,614	42,759	21,940	18,579	523	256	169	213	3,425	3,125	261	237	58,914	49,046
Cheese:														
American														
Cheddar.	9,534	8,857	24,910	23,713	1/	1/	1/	1/	1/	1/	-	-	21,223	22,042
Other varieties, whole milk 2/.	254	-	-	536	-	-	-	-	-	-	-	-	5,119	4,224
Total, whole milk 3/.	9,788	8,857	24,910	24,249	1/	1/	1/	1/	1/	1/	-	-	26,342	26,266
Part skim														
Swiss, including Alouk.	1/	-	-	-	-	-	-	-	1/	1/	-	-	-	-
Munster.	-	-	-	-	-	-	-	-	-	-	-	-	-	-
Brick.	-	-	-	1/	-	-	-	-	-	-	-	-	-	-
Limburger.	-	-	-	-	-	-	-	-	-	-	-	-	-	-
All Italian varieties	-	-	-	-	1/	-	1/	1/	-	-	993	1,020	2,047	2,665
Green 4/.	-	-	-	-	-	-	-	-	-	-	1,601	1,511	1/	-
Neufchâtel 2/.	-	-	-	-	-	-	-	-	-	-	1/	1/	-	-
Blue mold.	-	-	-	-	-	-	-	-	-	-	-	-	-	-
All other varieties.	-	-	-	-	-	-	-	-	-	-	-	-	1/	1/
Total 6/.	7/9,956	8,857	24,910	7/24,411	7/210	1/	1/	1/	1/	1/	7/2,619	7/2,565	7/28,614	7/29,055
Full-skin Am. type cheese.	1/	-	-	-	-	-	-	-	-	-	-	-	-	-
Cottage cheese														
Curd 8/.	5,867	7,377	5,475	5,651	1,104	1,198	2,771	3,469	3,894	4,682	457	535	21,330	23,620
Creamed 9/.	6,516	7,065	7,285	7,225	2,165	2,159	2,988	860	4,668	5,447	360	3,425	25,443	26,435
Condensed milk:														
Sweetened														
Case goods														
Unskimmed.	-	-	-	-	-	-	-	-	-	-	-	-	1/	1/
Bulk goods														
Skimmed.	7,975	8,211	1,417	850	1/	1/	1/	1/	4,633	4,541	1/	1/	8,476	9,386
Unskimmed.	1/	218	1/	1/	-	-	-	-	1/	2,219	-	-	1/	604
Unsweetened														
Bulk goods														
Skimmed.	32,005	39,637	2,523	2,097	1/	1/	1/	1/	16,307	13,945	1/	1/	25,183	28,262
Unskimmed.	2,220	2,598	-	-	-	-	-	-	15,684	12,717	1/	1/	7,108	8,880
Evaporated milk, unsweetened:														
Case goods, unskimmed.	52,495	46,885	206,204	181,552	-	-	-	-	1/	1/	-	-	173,474	171,307
Concentrated skim milk for animal feed.	-	-	-	-	-	-	-	-	1/	1/	-	-	1/	1/
Condensed or evaporated buttermilk.	18,874	14,017	14,574	14,744	-	-	-	-	1/	1/	-	-	4,181	3,884
Dry milk:														
Whole milk.	-	-	-	-	-	-	-	-	-	-	-	-	11,120	11,962
Nonfat dry milk solids														
Spray process.	10,485	5,800	1/	1/	-	-	-	-	921	735	1/	1/	28,168	17,990
Roller process.	1,324	241	1/	1/	-	-	-	-	8,254	5,680	1/	1/	23,283	17,149
Total nonfat for human food.	11,809	6,041	2,159	1,920	-	-	-	-	9,175	6,415	1/	1/	51,451	35,139
Skim milk for animal feed.	1/	1/	1/	1/	-	-	-	-	217	101	1/	1/	1,140	801
Buttermilk.	594	1,464	-	-	-	-	-	-	-	-	-	-	3,665	2,964
Whey.	-	-	1/	1/	-	-	-	-	-	-	-	-	1/	1/
Casein.	-	-	-	-	-	-	-	-	-	-	-	-	1/	1/
Frozen products: 9/														
Ice cream														
Wholesale.	5,596	5,542	4,814	4,849	6,710	6,655	2,574	2,605	10/8,002	8,404	18,240	18,439	23,745	24,760
Retail.	685	664	344	465	207	226	211	277	406	670	1,580	2,309	2,190	2,016
Total.	6,281	6,206	5,158	5,314	6,917	6,881	2,789	2,882	10/8,408	9,074	19,820	20,748	25,936	26,776
Sherbet, milk.	173	237	182	223	448	274	31	46	550	645	559	599	1,244	1,814
Ice milk.	12/971	12/1,263	332	367	521	693	61	680	1/	-	513	913	-	-
Other frozen dairy products	198	313	75	46	161	220	55	49	1/	-	38	94	-	-
Water ices.	130	131	113	113	285	320	133	147	414	549	818	944	785	714
Ice cream mix.	4,068	3,766	3,214	3,416	3,453	3,226	1,825	1,520	10/4,664	5,187	11,446	11,266	10/14,134	15,387
All other mix.	162	224	251	467	353	409	37	189	263	415	767	942	269	467

15

Continued

Table 5 - Manufactured dairy products: Production, by specified items, by States, 1950 and 1951-Continued

Product	Minnesota		Mississippi		Missouri		Montana		Nebraska		Nevada	
	1950	1951	1950	1951	1950	1951	1950	1951	1950	1951	1950	1951
	1,000 pounds	1,000 pounds	1,000 pounds	1,000 pounds	1,000 pounds	1,000 pounds	1,000 pounds	1,000 pounds	1,000 pounds	1,000 pounds	1,000 pounds	1,000 pounds
Butter, creamery.....	251,369	237,237	4,119	2,775	66,329	50,373	8,073	7,011	76,557	74,566	823	613
Cheese:												
American:												
Cheddar.....	45,5	44,688	11,799	10,130	63,736	59,392	2,948	2,810	843	1/	1/	1/
Other varieties, whole milk 2/.....						160			138	1/		
Total, whole milk 1/.....	45,997	44,688	11,799	10,130	63,736	59,552	2,948	2,810	1,041	656	1/	1/
Part skim.....												
Swiss, including block.....	4,950	1/	-	-	-	-	-	-	-	-	-	-
Munster.....												
Brick.....	443	494	-	-	-	-	-	-	-	-	-	-
Limburger.....	1/	1/	-	-	-	1/	-	-	-	-	-	-
All Italian varieties.....						1/	-	-	-	-	-	-
Cream 1/.....						1/	-	-	-	-	-	-
Neufchatel 5/.....						1/	-	-	-	-	-	-
Blue mold.....	1,149	1/	-	-	-	-	-	-	-	-	-	-
All other varieties.....	185	30	1/	1/	-	-	-	-	-	-	-	-
Total 6/.....	7,52,329	7,51,782	7,11,861	7,10,161	7,63,767	7,59,668	2,948	2,810	1,041	656	1/	1/
Full-Skim Am. type cheese.....	1/	1/	-	-	1/	1/	-	-	-	-	-	-
Cottage cheese:												
Curd 8/.....	6,857	7,824	1/	9	9,913	10,972	958	881	3,099	3,864	60	90
Creamed 9/.....	8,489	9,521	34	63	14,743	15,566	1,188	1,062	3,588	5,218	111	133
Condensed milk:												
Sweetened:												
Case goods:												
Unskimmed.....	-	-	1/	1/	1/	-	-	-	-	-	-	-
Bilk goods:												
Skimmed.....	7,042	6,704	1/	1/	2,522	1,187	-	-	2,102	1,543	-	-
Unskimmed.....	1/	1/	-	1/	139	1/	-	-	1/	1/	-	-
Unsweetened:												
Bilk goods:												
Skimmed.....	11,531	12,402	1/	1/	26,633	21,273	-	-	6,049	1,576	-	-
Unskimmed.....	-	-	1/	1/	3,395	4,757	-	-	-	1/	-	-
Evaporated milk, unsweetened:												
Case goods, unskimmed.....	1/	1/	58,706	63,406	161,412	146,708	-	-	-	-	-	-
Concentrated skim milk for animal feed.....	-	-	-	-	1/	1/	-	-	-	-	-	-
Condensed or evaporated buttermilk.....	8,329	7,185	-	-	8,905	9,081	-	-	10,828	10,626	-	-
Dry milk:												
Whole milk.....	15,904	19,241	-	-	1/	1/	-	-	-	-	-	-
Nonfat dry milk solids:												
Spray Process.....	123,023	113,224	-	-	28,392	27,114	-	-	1/	1/	-	-
Roller process.....	37,451	22,518	2,789	1,914	4,093	2,256	-	-	-	-	1/	-
Total nonfat for human food.....	160,474	135,742	2,789	1,914	32,485	29,370	-	-	1/	1/	1/	-
Skin milk for animal feed.....	2,280	2,039	1/	1/	1/	1/	-	-	1/	1/	-	-
Buttermilk.....	18,961	17,200	207	147	10,1,226	1,253	-	-	1,920	2,041	1/	-
Whey.....	23,927	24,488	-	-	7,998	11,086	-	-	1/	-	-	-
Casein.....	3,614	5,221	-	-	-	-	-	-	-	-	-	-
Frozen products 9/:												
Ice cream:												
Wholesale.....	12,695	12,850	3,190	3,220	10,15,399	15,558	1,949	1,953	5,581	5,236	651	647
Retail.....	461	457	191	180	7,757	991	802	812	474	427	86	28
Total.....	13,156	13,307	3,383	3,400	18,16,156	16,549	2,751	2,765	6,055	5,663	697	675
Sherbet, milk.....	266	259	188	228	501	558	38	63	173	277	47	55
Ice milk.....	644	785	911	1,156	1,033	1,401	-	-	595	581	198	190
Other frozen dairy products.....	160	206	67	57	10,351	283	-	-	153	74	-	-
Water ices.....	220	378	178	194	296	403	4	15	36	49	20	-
Ice cream mix.....	7,276	7,416	2,085	2,287	9,070	8,970	1,461	1,555	3,391	3,097	350	360
All other mix.....	427	805	302	334	1,046	1,192	26	25	416	679	89	93

16

Table 8--Manufactured dairy products: Production, by specified items, by States, 1950 and 1951--Continued

Product	New Hampshire		New Jersey		New Mexico		New York		North Carolina		North Dakota	
	1950	1951	1950	1951	1950	1951	1950	1951	1950	1951	1950	1951
	1,000 pounds	1,000 pounds	1,000 pounds	1,000 pounds	1,000 pounds	1,000 pounds	1,000 pounds	1,000 pounds	1,000 pounds	1,000 pounds	1,000 pounds	1,000 pounds
Butter, creamy	1/	1/	131	40	1,076	763	27,078	15,349	2,482	1,267	44,534	44,636
Cheese:												
American:												
Cheddar	-	-	1/	1/	-	-	31,618	35,186	1/	1/	-	-
Other varieties, whole milk 2/	-	-	-	-	1/	-	5,403	5,424	-	-	-	-
Total, whole milk 1/	-	-	1/	1/	1/	-	37,021	40,610	1/	1/	-	-
Part skim:												
Swiss, including block	-	-	-	-	-	-	1/	1/	-	-	-	-
Munster	-	-	-	-	-	-	15	31	-	-	-	-
Brick	-	-	-	-	-	-	1,452	1,677	-	-	-	-
Limburger	-	-	-	-	-	-	18,349	19,370	-	-	-	-
All Italian varieties	-	-	1,425	1,425	-	-	22,706	24,168	-	-	-	-
Cream 1/	-	-	1/	1/	-	-	754	626	-	-	-	-
Neufchatel 5/	-	-	1/	1/	-	-	-	-	-	-	-	-
Blue mold	-	-	-	-	-	-	-	-	-	-	-	-
All other varieties	-	-	-	-	-	-	7,109	7,024	-	-	-	-
Total 6/	-	-	1/1,808	1/2,155	1/	-	1/87,582	1/93,741	1/	1/	-	-
Full skim Am. type cheese	-	-	1/	1/	-	-	182	141	-	-	-	-
Cottage cheese	171	182	447	1,781	567	713	45,047	48,427	1,889	1,354	183	156
Curd 8/	100	166	2,552	3,279	733	872	35,585	41,520	654	1,418	146	309
Creamed 8/	-	-	-	-	-	-	-	-	-	-	-	-
Condensed milk:												
Sweetened:												
Case goods	-	-	-	-	-	-	8,876	8,037	-	-	-	-
Unskimmed	-	-	-	-	-	-	-	-	-	-	-	-
Bulk goods	1/	1/	1/	1/	-	-	27,758	23,532	-	-	1/	1/
Skimmed	-	-	-	-	-	-	1,114	2,224	1/	-	-	-
Unskimmed	-	-	-	-	-	-	-	-	-	-	-	-
Unsweetened:												
Bulk goods	-	-	1/	1/	1/	1/	68,084	64,794	1,420	2,234	-	-
Skimmed	-	-	-	-	-	-	65,330	77,693	613	1/	-	-
Unskimmed	-	-	-	-	-	-	-	-	-	-	-	-
Evaporated milk, unsweetened:												
Case goods, unskimmed	-	-	-	-	-	-	1/	1/	1/	1/	-	-
Concentrated skim milk for animal feed	-	-	-	-	1/	-	1/	1/	-	-	1/	1/
Condensed or evaporated buttermilk	-	-	-	-	-	-	-	-	-	-	-	-
Dry milk:												
Whole milk	-	-	-	-	-	-	26,984	24,004	-	-	-	-
Nonfat dry milk solids:												
Spray process	-	-	-	-	-	-	46,674	53,009	-	1/	-	-
Roller process	-	-	1/	1/	-	-	53,062	31,242	-	-	1/	1/
Total nonfat for human food	-	-	1/	1/	-	-	99,736	84,251	-	1/	1/	1/
Skim milk for animal feed	-	-	-	-	-	-	770	1,192	-	-	2,455	2,560
Buttermilk	-	-	-	-	-	-	618	412	-	-	-	-
Whey	-	-	-	-	-	-	16,910	11,133	-	-	-	-
Casein	-	-	-	-	-	-	5,272	5,198	-	-	-	-
Frozen products: 2/												
Ice cream:												
Wholesale	1,027	980	10,534	10,643	1,035	1,031	51,416	51,992	10/11,920	11,087	1,815	1,815
Retail	245	269	1,156	1,384	92	126	6,833	6,576	755	1,050	133	132
Total	1,272	1,249	11,690	12,027	1,117	1,157	58,249	58,568	10/12,675	12,137	1,948	1,947
Sherbet, milk	44	47	156	216	55	115	843	932	10/168	262	37	42
Ice milk	-	-	-	-	242	221	-	-	10/2,036	3,180	101	180
Other frozen dairy products	1/	-	-	-	101	89	-	-	10/236	57	25	19
Water ices	4	16	350	358	67	63	2,434	2,637	10/723	1,519	52	48
Ice cream mix	525	570	5,939	6,560	622	626	31,250	31,729	10/7,298	5,800	818	863
All other mix	-	-	144	270	257	255	-	-	1,800	2,075	1/	82

Continued

Table 8 - Manufactured dairy products: Production, by specified items, by States, 1950 and 1951-Continued

Product	Ohio		Oklahoma		Oregon		Pennsylvania		Rhode Island		South Carolina	
	1950	1951	1950	1951	1950	1951	1950	1951	1950	1951	1950	1951
	1,000 pounds	1,000 pounds	1,000 pounds	1,000 pounds	1,000 pounds	1,000 pounds	1,000 pounds	1,000 pounds	1,000 pounds	1,000 pounds	1,000 pounds	1,000 pounds
Butter, creamery	60,993	43,572	32,856	26,700	17,500	14,246	10/12,711	10,303	-	-	177	1/
Cheese:												
American												
Cheddar	16,516	13,799	8,659	5,381	23,607	21,926	10/386	392	-	-	-	-
Other varieties, whole milk 2/	8,319	8,557	-	-	710	40	408	397	-	-	-	-
Total, whole milk 1/	24,835	22,356	8,659	5,381	24,317	21,966	10/794	789	-	-	-	-
Part skim	594	460	-	-	-	-	1/	1/	-	-	-	-
Swiss, including block	8,293	6,478	-	-	58	35	1/	620	-	-	-	-
Munster	-	-	-	-	-	-	1/	1/	-	-	-	-
Brick	25	1/	-	-	-	-	-	-	-	-	-	-
Limburger	602	571	-	-	-	-	-	-	-	-	-	-
All Italian varieties	1/	1/	-	-	-	-	-	-	-	-	-	-
Cream 1/	1/	1/	1/	1/	-	-	10/1,446	1,429	1/	1/	-	-
Neufchatel 5/	-	-	-	-	-	-	5,332	4,746	-	-	-	-
Blue mold	-	-	-	-	-	-	2,758	2,727	-	-	-	-
All other varieties	1/	1/	-	-	1/	1/	1/	1/	-	-	-	-
Total 6/	7/45,773	7/40,918	7/9,756	7/8,384	7/24,890	7/22,490	10/12,073	7/11,221	1/	1/	-	-
Full skim Am. type cheese	325	1/	-	-	-	-	-	-	-	-	-	-
Cottage cheese	26,086	27,625	4,391	4,580	3,620	3,859	17,112	17,395	-	-	55	19
Curd 8/	30,177	33,124	5,725	6,001	5,771	6,163	10/15,839	14,594	-	-	1/	50
Condensed milk:												
Sweetened												
Case goods												
Unskimmed	-	-	-	-	1/	1/	-	-	-	-	-	-
Bulk goods												
Skimmed	16,830	19,489	395	247	1/	1/	29,418	25,611	-	-	-	-
Unskimmed	5,375	5,325	1,055	1,481	1/	1/	1,720	1,984	-	-	-	-
Unsweetened												
Bulk goods												
Skimmed	26,076	31,097	4,736	5,735	1/	1/	28,386	25,480	-	-	-	-
Unskimmed	13,653	8,309	3,368	2,985	-	-	28,573	29,057	-	-	-	-
Evaporated milk, unsweetened:												
Case goods, unskimmed	282,318	258,739	-	-	1/	1/	54,328	1/	-	-	1/	1/
Concentrated skim milk for animal feed	-	-	-	-	-	-	-	-	-	-	-	-
Condensed or evaporated buttermilk	20,740	16,513	3,760	5,270	1/	1/	2,747	1/	-	-	-	-
Driv milks												
Whole milk	13,622	9,811	1/	-	1/	1/	-	-	-	-	-	-
Nonfat dry milk solids												
Spray process	26,639	15,683	1,020	589	7,950	4,582	8,461	5,813	-	-	-	-
Roller process	10,080	8,946	1,917	1,593	239	112	10/9,196	5,461	-	-	-	-
Total nonfat for human food	36,579	25,628	2,937	2,182	8,189	4,694	10/17,657	11,274	-	-	-	-
Skim milk for animal feed	736	648	-	1/	576	506	697	510	-	-	-	-
Buttermilk	2,043	1,197	1,113	1,055	1/	1/	-	-	-	-	-	-
Whey	-	-	1,722	1,204	1/	1/	-	-	-	-	-	-
Casain	-	-	1/	1/	-	-	1/	-	-	-	-	-
Frozen products: 9/												
Ice cream												
Wholesale	30,459	31,669	5,644	5,475	5,549	5,560	10/60,568	62,426	3,664	3,595	2,452	2,328
Retail	1,157	1,227	475	718	1,028	1,023	5,570	6,594	373	364	152	188
Total	33,816	34,980	6,119	6,193	6,577	6,583	10/66,138	69,020	4,037	3,959	2,604	2,516
Sherbet, milk	854	1,092	255	321	192	175	408	715	60	70	55	80
Ice milk	1,076	1,531	716	923	13/1,534	13/1,709	-	-	106	136	268	396
Other frozen dairy products	446	504	290	264	95	100	-	-	-	-	1/	74
Water ices	1,024	898	93	171	94	86	10/1,581	2,016	105	151	158	148
Ice cream mix	18,159	19,200	3,107	2,914	3,534	3,623	10/34,393	34,942	2,201	2,050	1,136	1,186
All other mix	1,341	1,907	708	986	424	424	291	178	113	118	99	195

Table 8 - Manufactured dairy products: Production, by specified items, by States, 1950 and 1951-Continued

Product	South Dakota		Tennessee		Texas		Utah		Vermont		Virginia	
	1950	1951	1950	1951	1950	1951	1950	1951	1950	1951	1950	1951
	1,000 pounds	1,000 pounds	1,000 pounds	1,000 pounds	1,000 pounds	1,000 pounds	1,000 pounds	1,000 pounds	1,000 pounds	1,000 pounds	1,000 pounds	1,000 pounds
Butter, creamery	32,429	33,678	12,549	10,595	12,559	6,988	5,834	5,150	2,145	1,398	7,778	6,745
Cheese:												
American												
Cheddar	1,664	1,539	38,826	34,341	5,079	3,530	6,901	6,422	2,279	2,653	1/	1/
Other varieties, whole milk 2/	-	-	-	-	-	-	-	-	597	417	-	-
Total, whole milk 3/	1,664	1,539	38,826	34,341	5,079	3,530	6,901	6,422	2,876	3,070	1/	1/
Part skim	-	-	1/	-	1/	1/	-	-	-	-	-	-
Swiss, including block	-	-	-	-	-	-	1/	1/	-	-	-	-
Munster	-	-	-	-	-	-	-	-	-	-	-	-
Brick	-	-	-	-	-	-	-	-	-	-	-	-
Limburger	-	-	-	-	-	-	-	-	-	-	-	-
All Italian varieties	-	-	-	-	-	-	-	-	-	-	-	-
Green 4/	-	-	1/	1/	-	-	1/	1/	1/	1/	-	-
Neufchatel 5/	-	-	-	-	-	-	-	-	-	-	-	-
Blue mold	-	-	-	-	-	-	-	-	-	-	-	-
All other varieties	-	-	-	-	-	-	-	-	1,488	1,247	-	-
Total 6/	1,664	1,539	7/41,987	7/37,388	7/5,093	7/3,544	7/12,246	7/11,073	7/5,109	7/5,810	1/	1/
Full-skin Am. type cheese	1/	1/	-	-	-	-	-	-	482	489	-	-
Cottage cheese												
Curd 8/	296	829	2,065	2,863	10/5,713	6,224	2,476	3,039	14,126	17,111	2,113	1,978
Creamed 9/	579	1,320	2,744	3,886	10/7,049	8,937	3,563	3,879	8,316	8,921	478	612
Condensed milk:												
Sweetened												
Case goods												
Unskimmed	-	-	-	-	-	-	-	-	-	-	-	-
Milk goods												
Skimmed	1/	1/	1/	-	1,077	230	-	-	2,815	1,718	5,561	6,509
Unskimmed	-	-	-	-	1/	-	-	-	1/	-	1/	1/
Unsweetened												
Milk goods												
Skimmed	-	-	16,930	14,378	15,105	12,295	1,474	524	6,492	6,851	24,260	22,129
Unskimmed	-	-	1/	1/	1/	1/	-	-	2,481	6,277	1/	1/
Evaporated milk, unsweetened:												
Case goods, unskimmed	-	-	129,963	129,586	28,433	21,208	59,858	60,782	-	-	1/	1/
Concentrated skim milk for animal feed	-	-	-	-	-	-	-	-	-	-	-	-
Condensed or evaporated buttermilk	3,610	3,745	1/	1/	1/	1/	-	-	1/	-	-	-
Dry milk												
Whole milk	-	-	1/	-	-	-	1/	1/	1/	1/	-	-
Nonfat dry milk solids												
Spray process	-	-	1/	1/	1/	1/	4,887	5,091	10/13,456	9,990	5,501	3,560
Roller process	-	-	1/	1/	1/	1/	-	-	10/7,376	3,664	136	136
Total nonfat for human food	-	-	1/	429	1/	1/	4,887	5,091	10/20,852	13,654	5,639	3,696
Skim milk for animal feed	-	-	-	-	1/	1/	-	-	1/	1/	223	55
Buttermilk	808	936	-	-	1/	1/	-	-	-	-	-	-
Whey	-	-	-	-	-	-	1/	1/	-	-	-	-
Casein	-	-	-	-	-	-	1/	1/	1,326	1/	-	-
	1,000 gallons	1,000 gallons	1,000 gallons	1,000 gallons	1,000 gallons	1,000 gallons	1,000 gallons	1,000 gallons	1,000 gallons	1,000 gallons	1,000 gallons	1,000 gallons
Frozen products: 9/												
Ice cream												
Wholesale	2,304	2,250	11,570	11,351	22,961	23,875	1,966	1,975	1,182	1,227	9,050	9,492
Retail	10/227	220	499	455	526	561	566	500	72	89	485	533
Total	10/2,531	2,470	12,069	11,806	23,487	24,436	2,532	2,475	1,254	1,316	9,535	10,025
Sherbet, milk	69	73	348	413	1,086	1,175	76	87	23	25	573	693
Ice milk	10/129	205	1,051	1,688	1,482	2,217	578	600	24	1/	-	-
Other frozen dairy products	10/55	39	275	335	2,212	2,760	294	207	-	1/	161	179
Water ices	10/19	32	618	692	1,098	1,253	124	152	-	52	281	460
Ice cream mix	10/1,275	1,166	6,774	7,230	10/13,556	13,619	1,374	1,314	947	970	5,925	5,994
All other mix	72	182	561	919	3,010	3,356	620	599	86	63	467	524

Table 8 - Manufactured dairy products: Production, by specified items, by States, 1950 and 1951-Continued

Product	Washington		West Virginia		Wisconsin		Wyoming		United States 13/		Percentage change from 1950 to 1951
	1950	1951	1950	1951	1950	1951	1950	1951	1950	1951	
Butter, creamery	1,000 pounds	1,000 pounds	1,000 pounds	1,000 pounds	1,000 pounds	1,000 pounds	1,000 pounds	1,000 pounds	1,000 pounds	1,000 pounds	
	19,141	15,400	1,768	965	161,644	143,730	2,394	2,239	10/1,386,408	1,202,981	- 13
Cheese:											
American											
Cheddar	3,701	2,522	1/	1/	405,163	419,434	1/	1/	10/846,778	829,281	- 2
Other varieties, whole milk 2/	116	144	-	-	13,186	12,632	-	-	45,928	47,799	- 5
Total, whole milk 1/	3,817	2,666	1/	1/	418,349	432,066	1/	1/	10/892,706	877,080	- 2
Part skim											
Swiss, including block	1/	-	-	-	58,260	40,846	1/	1/	2,119	888	- 62
Munster	-	-	-	-	9,655	8,443	-	-	99,483	92,049	- 7
Brick	1/	-	-	-	17,422	16,131	-	-	10,551	9,232	- 13
Linzburger	1/	-	-	-	3,479	3,206	-	-	19,597	22,647	+ 16
All Italian varieties	1/	1/	-	-	31,334	24,973	-	-	6,003	6,539	+ 9
Cream 4/	1/	1/	-	-	15,677	1/	-	-	10/61,704	57,235	- 7
Neufchatel 5/	1/	-	-	-	-	-	-	-	10/65,735	69,377	+ 6
Blue mold	1/	1/	-	-	3,951	2,834	-	-	3,578	4,286	+ 20
All other varieties	173	136	-	-	5,874	5,576	1/	-	3,657	5,451	- 29
Total 6/	7/5,888	7/4,047	1/	1/	557,951	7/551,553	7/2,124	7/2,022	10/1,191,487	1,160,926	- 3
Full skin Am. type cheese											
Cottage cheese	-	-	-	-	-	-	-	-	1,774	1,302	- 27
Curd 8/	11,253	12,153	2,536	2,361	20,770	25,508	201	265	10/322,803	356,290	+ 10
Creamed 9/	17,749	19,346	2,537	3,133	15,360	24,225	198	307	10/352,428	376,323	+ 12
Condensed milk:											
Sweetened											
Case goods											
Unskimmed	-	-	-	-	1/	-	-	-	61,973	59,474	- 4
Bulk goods											
Skimmed	1,924	2,692	1/	-	32,449	39,230	-	-	10/210,637	209,801	0
Unskimmed	1/	1,881	-	-	11,865	6,596	-	-	10/39,210	42,705	+ 9
Unsweetened											
Bulk goods											
Skimmed	3,079	2,346	1/	1/	74,028	56,082	-	-	523,182	485,084	- 7
Unskimmed	2,954	3,358	1/	1/	17,615	18,977	-	-	221,724	230,143	+ 4
Evaporated milk, unsweetened:											
Case goods, unskimmed	71,370	55,412	1/	1/	631,344	733,946	-	-	2,882,475	2,896,386	0
Concentrated skim milk for animal feed											
Condensed or evaporated buttermilk	1/	-	1/	1/	-	1/	-	-	12,071	9,124	- 24
	1/	-	1/	1/	-	1/	-	-	183,470	174,652	- 5
Dry milk:											
Whole milk	1/	1/	-	-	39,860	47,071	-	-	124,986	131,017	+ 5
Nonfat dry milk solids											
Spray process	6,548	5,901	1/	1/	202,338	192,845	1/	1/	10/623,487	546,439	- 12
Roller process	4,182	767	-	-	55,414	27,287	-	-	10/258,005	156,026	- 40
Total nonfat for human food	10,730	6,668	1/	1/	257,752	220,132	1/	1/	10/881,492	702,465	- 20
Skin milk, for animal feed											
Buttermilk	537	348	-	-	4,318	4,723	-	-	10/17,404	14,362	- 17
Whey	1/	1/	1/	1/	3,394	3,839	-	-	10/48,837	45,546	- 7
Casain	1/	1/	-	-	60,523	51,678	1/	1/	10/755,579	739,946	- 10
	1/	1/	-	-	2,354	4,870	-	-	18,531	21,620	+ 17
Frozen products: 9/											
Ice cream											
Wholesale	6,862	7,531	4,988	4,983	14,281	14,691	717	550	10/505,659	517,343	+ 2
Retail	1,040	1,112	290	166	1,884	1,771	206	143	10/48,622	51,361	+ 5
Total	7,902	8,643	5,278	5,149	16,145	16,464	923	693	10/554,351	568,704	+ 3
Sherbet, milk											
Ice milk	191	179	256	385	201	449	-	85	10/17,018	20,992	+ 23
Other frozen dairy products	1,614	2,027	10/423	551	-	-	-	26	10/36,870	45,229	+ 23
Water ices	125	77	10/264	358	-	-	20	6	10/8,230	9,158	+ 11
Ice cream mix	235	415	249	245	366	445	1	1/	10/18,299	21,683	+ 18
Ice cream mix	4,677	4,612	2,287	2,250	9,851	10,059	407	297	10/299,671	305,089	+ 2
All other mix	1,084	1,368	454	803	-	-	29	30	10/33,803	37,830	+ 12

1/ Production by States not shown when made by less than 3 plants.
 2/ Includes only, washed curd, high and low moisture jack, Monterey, and granular.
 3/ Comparable with data published prior to 1944 under the designation of American Cheddar cheese.
 4/ Not less than 33 percent butterfat.
 5/ Butterfat content ranging from 20 to 32 percent, inclusive.
 6/ Excluding full-skin American and cottage cheese.
 7/ Sum of individual varieties does not equal total cheese since the production of some varieties is not shown separately when made by less than 3 plants.
 8/ Cottage cheese curd includes cottage, pot, and baker's cheese with a butterfat content of less than 4 percent made by reporting plants. Creamed cottage cheese includes cheese with a butterfat content of 4 to 13 percent. Cottage cheese curd and creamed cottage cheese should not be added together to get a total cottage cheese figure, for while some of the cottage

cheese curd is sold direct for consumption without further processing a considerable part is creamed within the plant or shipped to another plant for creaming prior to sale.
 9/ The production for frozen products includes that made by all types of plants for both wholesale and retail.
 10/ Includes in ice cream.
 11/ Includes in ice cream.
 12/ "Ice milk" total for Kansas refers to the product elsewhere usually known by that name and does not conform to the Kansas Dairy Law which, for taxation purposes, states that all frozen products containing less than 10 percent butterfat are "ice milk".
 13/ Includes substandard ice cream in Oregon.
 14/ U. S. totals for all products include production for some States not shown separately in this table except ice cream for retail, total ice cream, and ice cream mix.

Table 9 - Butter, creamery: Production, by States, by months, 1951

State and division	Plants	January	February	March	April	May	June	July	August	September	October	November	December	Total
		1,000 pounds	1,000 pounds	1,000 pounds	1,000 pounds	1,000 pounds	1,000 pounds	1,000 pounds	1,000 pounds	1,000 pounds	1,000 pounds	1,000 pounds	1,000 pounds	1,000 pounds
Maine	4	10	4	9	15	21	37	33	29	26	20	6	3	213
Vermont	11	19	8	28	214	317	518	95	48	24	71	28	28	1,398
Massachusetts	7	22	15	15	14	18	25	30	24	21	22	16	15	237
Connecticut	2/	-	-	-	1	1	1	1	1	-	-	-	-	5
New England 1/	27	51	27	52	245	357	581	159	102	71	113	50	46	1,854
New York	103	549	651	955	1,659	1,715	2,100	1,884	1,741	1,245	1,799	511	540	15,349
New Jersey	6	3	3	4	3	4	4	4	3	3	3	3	3	40
Pennsylvania	72	547	446	533	665	1,416	1,695	1,252	1,187	797	733	532	499	10,303
Middle Atlantic	181	1,099	1,100	1,493	2,327	3,135	3,797	3,140	2,931	2,045	2,535	1,646	1,042	25,692
Ohio	97	2,462	2,066	2,223	2,846	5,023	5,555	4,868	4,821	4,096	4,341	2,806	2,481	43,572
Indiana	57	1,828	1,681	1,737	1,713	2,874	2,994	2,997	3,118	2,679	2,614	1,948	1,799	28,260
Illinois	91	3,611	3,241	3,213	4,016	5,677	6,135	5,204	6,128	4,727	4,491	3,111	2,689	53,554
Michigan	132	3,511	3,107	3,532	3,987	5,594	6,172	5,205	4,722	3,908	3,729	2,731	2,758	49,046
Wisconsin	274	4,950	4,144	10,605	12,646	16,183	17,338	16,621	15,434	11,173	9,360	7,008	8,308	143,730
East North Central	651	21,390	19,179	21,716	25,532	35,271	38,194	35,900	34,223	26,583	24,535	17,604	14,035	318,162
Minnesota	660	19,728	19,013	22,322	23,019	26,727	27,589	23,481	18,755	14,377	13,278	12,735	16,213	237,237
Iowa	370	14,480	13,904	15,511	15,984	19,709	20,706	19,608	17,979	14,094	13,244	10,960	10,579	186,778
Missouri	58	2,901	2,463	2,776	2,957	4,649	5,576	5,768	6,412	5,803	5,476	3,320	2,272	50,373
North Dakota	100	2,298	2,606	3,134	3,690	5,109	5,981	5,750	5,036	3,801	2,951	2,207	2,073	44,636
South Dakota	92	2,118	2,229	2,620	2,725	3,779	4,317	3,991	3,546	2,674	2,132	1,755	1,792	33,678
Nebraska	82	5,186	5,313	6,303	6,533	8,107	8,693	8,377	7,543	5,466	4,613	4,132	4,294	74,566
Kansas	64	3,530	3,388	3,566	3,563	4,662	4,943	4,586	4,025	3,070	2,634	2,342	2,450	42,759
West North Central	1,426	50,241	48,922	56,232	58,471	72,742	77,805	71,561	63,316	49,285	44,328	37,451	39,673	670,027
Maryland	7	180	152	159	202	344	385	387	395	334	266	182	139	3,125
Virginia	35	353	257	296	410	702	812	819	887	772	621	420	386	6,745
West Virginia	5	56	41	42	47	105	143	137	125	110	104	70	5	985
North Carolina	16	112	94	114	168	190	126	122	76	74	98	57	36	1,267
Georgia	5	23	25	31	24	29	23	19	22	25	34	30	20	305
South Atlantic 1/	72	744	576	654	864	1,388	1,504	1,499	1,522	1,330	1,136	772	596	12,585
Kentucky	24	915	883	860	1,068	1,913	1,977	2,075	2,423	2,159	2,006	1,375	925	18,579
Tennessee	19	546	474	506	745	1,236	951	1,142	1,238	1,057	1,218	907	575	10,595
Mississippi	7	178	170	192	287	317	227	309	240	169	312	248	126	2,775
Arkansas	10	189	185	208	249	311	563	599	648	585	451	215	165	4,478
Louisiana	2/	31	26	16	25	24	26	23	19	16	14	13	23	256
Oklahoma	40	1,834	1,841	1,865	2,062	3,147	3,427	3,058	2,582	1,960	1,901	1,591	1,432	26,700
Texas	53	553	559	422	600	853	781	661	638	506	568	431	368	6,988
South Central 1/	159	4,264	4,142	4,128	5,047	7,983	7,964	7,878	7,795	6,394	6,472	4,783	3,625	70,481
Montana	64	453	426	493	526	743	880	837	713	596	554	416	374	7,011
Idaho	36	1,682	1,389	1,503	1,753	2,201	2,190	1,958	1,862	1,656	1,560	1,367	1,527	20,648
Wyoming	23	174	161	166	186	224	263	242	192	166	148	154	163	2,239
Colorado	44	1,070	1,124	1,282	1,327	1,565	1,748	1,702	1,472	1,151	1,070	954	1,116	15,591
New Mexico	5	61	61	69	69	72	80	94	77	56	46	45	45	763
Arizona	2/	58	89	89	74	64	55	31	32	38	21	31	48	673
Utah	16	462	406	454	485	592	525	429	382	350	356	330	379	5,150
Nevada	5	50	45	51	59	63	59	58	51	47	48	40	42	613
Mountain	196	4,060	3,694	4,099	4,479	5,524	5,800	5,351	4,781	4,060	3,808	3,338	3,694	52,688
Washington	71	864	751	915	1,123	2,053	1,953	1,691	2,387	1,197	1,311	1,112	1,043	15,400
Oregon	52	885	859	1,012	1,348	1,884	1,730	1,390	1,211	1,082	1,138	895	812	14,246
California	44	1,965	1,658	1,938	2,394	2,282	1,910	1,883	1,752	1,591	1,257	1,385	1,331	21,846
Pacific	167	3,714	3,268	3,865	4,865	6,219	5,593	4,964	4,350	3,870	3,706	3,392	3,686	51,492
UNITED STATES	2,879	85,563	80,914	92,239	101,830	132,619	141,240	130,452	119,020	93,638	86,633	68,436	70,397	1,202,981

1/ Regional totals include production for some States not shown separately.

Production omitted for States in which less than 3 plants reporting.

2/ Either 3 or 4 plants reporting.

Table 10 - Cheese, Cheddar, made from whole milk: Production, by States, by months, 1951

State and division	Plants	January	February	March	April	May	June	July	August	September	October	November	December	Total
	Number	1,000 pounds	1,000 pounds	1,000 pounds	1,000 pounds	1,000 pounds	1,000 pounds	1,000 pounds	1,000 pounds	1,000 pounds	1,000 pounds	1,000 pounds	1,000 pounds	1,000 pounds
Vermont	5	-	2	282	418	648 ^{1/2}	733	554	12	1	2	-	1	2,653
New England 1/ . . .	6	-	3	283	419	648	734	554	14	1	2	-	1	2,659
New York	80	286	435	2,472	4,691	7,329	8,570	5,506	2,950	1,625	980	186	156	35,186
Pennsylvania	8	27	15	28	35	65	90	55	24	19	14	9	11	392
Middle Atlantic 1/ . .	89	313	450	2,500	4,730	7,412	8,677	5,561	2,974	1,650	994	196	171	35,628
Ohio	15	583	618	503	886	2,101	2,293	2,027	1,603	1,102	893	523	517	13,799
Indiana	22	1,330	1,397	1,674	2,153	3,674	3,653	3,252	3,250	2,591	1,899	948	862	26,653
Illinois	74	2,437	2,461	2,755	3,067	4,440	4,923	4,673	4,611	3,741	3,127	2,268	1,843	40,346
Michigan	31	1,172	1,162	1,671	1,838	2,461	2,997	2,523	2,354	2,084	1,616	1,077	1,127	22,082
Wisconsin	949	26,551	26,431	34,027	37,706	47,362	52,985	46,226	40,615	33,616	28,147	21,930	23,838	419,434
East North Central . .	1,091	32,073	32,069	40,630	45,650	60,038	66,831	58,702	52,493	43,134	35,762	26,746	28,187	522,314
Minnesota	49	3,942	4,220	4,855	4,664	4,967	5,153	4,006	3,156	2,416	2,243	2,347	2,719	44,688
Iowa	25	717	739	873	880	1,133	1,148	1,051	917	739	677	564	580	10,018
Missouri	45	2,661	2,625	3,350	4,086	7,056	7,555	7,810	7,608	6,248	4,971	2,916	2,506	59,392
South Dakota	2/	136	132	143	139	178	169	158	134	97	65	75	113	1,539
Kansas	18	649	668	720	749	1,121	1,121	922	917	651	494	424	421	8,857
West North Central 1/	143	8,160	8,434	9,981	10,566	14,531	15,216	14,019	12,762	10,151	8,450	6,326	6,339	124,935
Georgia	2/	77	75	95	60	71	53	58	44	40	29	25	22	649
South Atlantic 1/ . .	8	129	114	153	139	275	374	349	282	254	211	130	93	2,503
Kentucky	19	620	682	888	1,367	3,217	3,321	3,283	3,259	2,666	2,444	1,237	729	23,713
Tennessee	25	1,259	1,327	1,946	2,679	4,457	4,288	4,733	4,487	3,305	2,762	1,745	1,353	34,341
Alabama	6	93	74	158	190	334	282	297	250	203	202	128	100	2,291
Mississippi	12	401	426	624	866	1,412	1,202	1,317	1,210	915	784	540	427	10,130
Arkansas	11	356	395	559	806	1,411	1,430	1,567	1,487	1,264	963	514	397	11,149
Oklahoma	10	359	406	369	445	813	798	693	519	323	288	197	171	5,381
Texas	7	223	198	228	292	409	487	474	347	277	240	184	171	3,530
South Central 1/ . .	92	3,322	3,518	4,808	6,681	12,113	11,793	12,387	11,565	8,953	7,683	4,545	3,351	90,719
Montana	5	122	113	146	214	357	426	392	316	246	197	135	146	2,810
Idaho	19	1,077	1,144	1,177	1,278	1,565	1,634	1,528	1,470	1,209	1,096	968	969	15,115
Colorado	5	58	115	151	134	137	135	59	17	-	2	1	2	811
Utah	22	459	431	527	584	640	658	624	583	523	506	447	440	6,422
Mountain 1/	54	1,723	1,810	2,014	2,228	2,721	2,868	2,607	2,387	1,983	1,801	1,551	1,557	25,250
Washington	6	205	166	193	246	320	282	209	159	177	182	180	203	2,522
Oregon	28	557	699	1,388	2,296	3,302	3,219	2,842	2,305	1,777	1,550	1,202	790	21,926
California	8	41	40	70	142	168	201	90	42	5	1	-	25	825
Pacific	42	803	905	1,651	2,654	3,790	3,702	3,140	2,506	1,959	1,733	1,382	1,018	25,273
UNITED STATES	1,525	46,523	47,303	62,020	73,097	101,528	110,195	97,315	84,983	68,085	56,636	40,876	40,717	829,281

1/ Regional totals include production for some States not shown separately.
 Production omitted for States in which less than 3 plants reported.
 2/ Either 3 or 4 plants reporting.

Table 11- Cheese, total American, made from whole milk: Production, by States, by months, 1951 1/

State and division	Plants	January	February	March	April	May	June	July	August	September	October	November	December	Total
	<u>Number</u>	<u>1,000 pounds</u>	<u>1,000 pounds</u>	<u>1,000 pounds</u>	<u>1,000 pounds</u>	<u>1,000 pounds</u>	<u>1,000 pounds</u>	<u>1,000 pounds</u>	<u>1,000 pounds</u>	<u>1,000 pounds</u>	<u>1,000 pounds</u>	<u>1,000 pounds</u>	<u>1,000 pounds</u>	<u>1,000 pounds</u>
Vermont	7	15	10	292	431	750	872	629	24	13	14	9	11	3,070
New England 2/ . . .	8	15	11	293	432	750	873	629	26	13	14	9	11	3,076
New York	93	429	559	2,781	5,368	8,271	9,741	6,208	3,286	2,097	1,249	339	282	40,610
Pennsylvania	10	45	33	52	68	119	149	107	68	52	42	27	27	789
Middle Atlantic 2/ . .	104	474	592	2,833	5,440	8,408	9,907	6,315	3,354	2,155	1,291	367	313	41,449
Ohio	18	1,255	1,278	1,281	1,616	3,057	3,164	2,789	2,353	1,733	1,728	1,054	1,058	22,366
Indiana	23	1,535	1,587	1,910	2,330	3,926	3,776	3,717	3,799	2,896	2,137	1,129	1,160	30,002
Illinois	74	2,486	2,508	2,833	3,154	4,547	5,012	4,793	4,740	3,867	3,209	2,304	1,938	41,391
Michigan	42	1,404	1,394	1,986	2,177	2,908	3,572	3,101	2,838	2,465	1,880	1,264	1,321	26,310
Wisconsin	968	27,716	27,470	35,082	38,798	48,683	54,384	47,466	41,635	34,469	28,920	22,690	24,753	432,066
East North Central . .	1,125	34,396	34,237	43,092	48,075	63,121	70,008	61,866	55,365	45,430	37,874	28,441	30,230	552,135
Minnesota	49	3,942	4,220	4,855	4,664	4,967	5,153	4,006	3,156	2,416	2,243	2,347	2,719	44,688
Iowa	28	794	828	947	944	1,222	1,264	1,137	988	812	776	662	708	11,082
Missouri	45	2,661	2,625	3,350	4,086	7,056	7,555	7,828	7,650	6,301	4,984	2,921	2,535	59,552
South Dakota	3/	136	132	143	139	178	169	158	134	97	65	75	113	1,539
Nebraska	2/	71	64	58	67	99	93	94	50	16	13	14	17	656
Kansas	18	649	668	720	749	1,121	1,121	922	917	651	494	424	421	8,857
West North Central . .	147	8,253	8,537	10,073	10,649	14,643	15,355	14,145	12,895	10,293	8,575	6,443	6,513	126,374
Georgia	3/	77	75	95	60	71	53	58	44	40	29	25	22	649
South Atlantic 2/ . .	8	129	114	153	139	276	374	349	282	254	211	130	93	2,504
Kentucky	19	620	682	888	1,367	3,217	3,321	3,283	3,259	2,848	2,599	1,350	855	24,249
Tennessee	25	1,259	1,327	1,946	2,679	4,457	4,288	4,733	4,487	3,305	2,762	1,745	1,353	34,341
Alabama	6	93	74	158	196	334	262	297	250	203	202	128	100	2,291
Mississippi	12	401	426	624	866	1,418	1,202	1,317	1,210	915	784	540	427	10,130
Arkansas	11	479	442	579	814	1,449	1,502	1,599	1,487	1,264	963	514	397	11,489
Oklahoma	10	359	406	369	445	813	798	693	519	323	288	197	171	5,381
Texas	7	223	198	228	292	409	487	474	347	277	240	184	171	3,530
South Central 2/ . .	92	3,445	3,565	4,828	6,689	12,151	11,865	12,419	11,565	9,135	7,798	4,658	3,477	91,595
Montana	5	122	113	146	214	357	426	392	316	246	197	135	146	2,810
Idaho	19	1,241	1,276	1,322	1,410	1,748	1,805	1,713	1,652	1,401	1,323	1,168	1,177	17,236
Colorado	6	65	119	153	142	141	135	59	17	-	2	1	2	836
Utah	22	459	431	527	584	640	658	624	583	523	506	447	440	6,422
Mountain 2/	55	1,894	1,946	2,161	2,368	2,908	3,039	2,792	2,569	2,175	2,028	1,751	1,765	27,396
Washington	7	218	178	211	259	333	296	219	169	185	194	190	214	2,665
Oregon	28	595	700	1,389	2,296	3,302	3,219	2,841	2,305	1,777	1,550	1,202	790	21,966
California	18	251	284	388	474	475	477	397	271	226	221	167	278	3,919
Pacific	53	1,074	1,162	1,988	3,029	4,110	3,992	3,457	2,745	2,188	1,965	1,559	1,282	28,551
UNITED STATES	1,592	49,680	50,164	65,421	76,821	106,367	115,413	101,972	88,801	71,643	59,756	43,358	43,684	873,080

1/ Includes cheddar, colby, washed or stirred curd, high and low moisture jack, Monterey, and granular.
 2/ Regional totals include production for some States not shown separately. Production omitted for States in which less than 3 plants reporting.
 3/ Either 3 or 4 plants reporting.

Table 12- Cheese, total, excluding full-skin American and cottage: Production, by States, by months, 1951

State and division	Plants Number	January	February	March	April	May	June	July	August	September	October	November	December	Total
		1,000 pounds	1,000 pounds	1,000 pounds	1,000 pounds	1,000 pounds	1,000 pounds	1,000 pounds	1,000 pounds	1,000 pounds	1,000 pounds	1,000 pounds	1,000 pounds	1,000 pounds
Vermont	11	138	223	729	861	1,017	1,044	788	211	205	196	185	213	5,810
Massachusetts	8	213	200	308	197	206	184	151	189	174	213	246	284	2,565
New England 1/	23	407	493	1,134	1,152	1,319	1,312	991	443	432	465	478	551	9,177
New York	151	4,871	4,555	8,083	9,550	12,809	13,990	9,928	7,433	6,234	5,978	4,869	5,441	93,741
New Jersey	5	168	192	331	171	153	158	116	125	140	158	188	255	2,155
Pennsylvania	28	1,087	966	1,102	928	1,066	1,027	835	840	815	873	824	858	11,221
Middle Atlantic	184	6,126	5,713	9,516	10,649	14,028	15,175	10,879	8,398	7,189	7,009	5,881	6,554	107,117
Ohio	46	2,919	2,615	2,839	3,245	4,694	4,814	4,278	3,829	3,300	3,424	2,483	2,478	40,918
Indiana	24	1,984	1,841	2,044	2,369	4,255	4,490	4,263	4,238	3,397	2,751	1,803	1,608	35,043
Illinois	108	4,833	4,752	5,630	5,956	7,636	8,107	7,557	7,469	6,551	5,883	4,101	3,883	72,409
Michigan	49	1,552	1,535	2,197	2,449	3,243	3,849	3,348	3,065	2,755	2,123	1,433	1,506	29,055
Wisconsin	1,234	37,559	37,427	46,787	49,471	60,955	66,546	57,233	50,493	43,145	38,155	30,799	33,023	551,553
East North Central	1,461	48,827	48,170	59,437	63,490	80,783	87,406	76,679	69,094	59,148	52,337	40,709	42,498	728,978
Minnesota	53	4,776	4,922	5,568	5,664	6,045	6,366	5,296	4,424	3,538	3,442	3,638	4,163	57,782
Iowa	31	849	886	1,004	1,000	1,288	1,333	1,203	1,055	854	807	692	745	11,716
Missouri	48	2,709	2,649	3,355	4,091	7,059	7,559	7,832	7,653	6,305	4,989	2,926	2,541	59,668
South Dakota	2/	136	132	143	139	178	169	158	134	97	65	75	113	4,539
Nebraska	2/	71	64	58	67	99	93	94	50	16	13	14	17	656
Kansas	18	649	668	720	749	1,121	1,121	922	917	651	494	424	421	8,857
West North Central	157	4,140	3,321	10,848	11,650	15,790	16,641	15,505	14,233	11,461	9,810	7,269	8,000	140,218
Georgia	2/	77	75	95	60	71	53	58	44	40	29	25	22	649
South Atlantic 1/	8	129	114	154	139	277	375	349	282	254	211	130	93	2,507
Kentucky	19	620	582	888	1,367	3,217	3,321	3,283	3,259	2,848	2,559	1,453	914	24,411
Tennessee	25	1,473	1,517	2,187	2,945	4,746	4,618	4,978	4,713	3,591	3,014	1,983	1,623	37,388
Alabama	6	93	74	158	190	334	462	297	250	203	202	128	100	2,291
Mississippi	13	406	431	630	872	1,425	1,204	1,317	1,210	915	784	580	427	10,161
Arkansas	11	479	442	579	814	1,449	1,502	1,599	1,487	1,264	963	514	397	11,489
Oklahoma	10	556	586	550	703	1,122	1,082	1,003	802	591	471	418	500	8,384
Texas	8	224	193	229	293	410	488	475	349	278	242	185	172	3,544
South Central 1/	94	3,862	3,941	5,257	7,220	12,757	12,482	12,975	12,076	9,690	8,235	5,221	4,136	97,852
Montana	5	122	113	146	214	357	426	392	316	246	197	135	146	2,810
Idaho	26	1,388	1,410	1,573	1,672	2,066	2,141	2,020	1,903	1,622	1,545	1,362	1,375	20,077
Wyoming	2/	124	125	163	145	192	228	219	201	185	166	128	146	2,022
Colorado	6	78	136	172	153	146	156	68	39	7	5	19	19	993
Utah	22	842	806	973	1,016	1,118	1,068	1,017	916	835	833	809	840	11,073
Mountain 1/	64	2,581	2,619	3,064	3,243	3,921	4,056	3,748	3,393	2,918	2,765	2,460	2,571	37,339
Washington	11	288	321	307	404	520	457	300	255	274	326	273	322	4,047
Oregon	29	608	712	1,432	2,364	3,372	3,288	2,904	2,358	1,819	1,594	1,231	808	22,490
California	30	766	776	1,042	1,032	1,196	1,022	927	920	806	878	878	958	11,201
Pacific	70	1,662	1,809	2,781	3,800	5,088	4,767	4,131	3,533	2,899	2,798	2,382	2,088	37,738
UNITED STATES	2,061	72,784	72,180	92,191	101,343	133,963	142,614	125,257	111,452	93,991	83,630	65,030	66,491	1,160,926

1/ Regional totals include production for some States not shown separately.
 Production omitted for States in which less than 3 plants reported.
 2/ Either 3 or 4 plants reporting.

Table 13- Cheese, cottage, curd: Production, by States, by months, 1951 1/

State and division	Plants	January	February	March	April	May	June	July	August	September	October	November	December	Total
	Number	1,000 pounds	1,000 pounds	1,000 pounds	1,000 pounds	1,000 pounds	1,000 pounds	1,000 pounds	1,000 pounds	1,000 pounds	1,000 pounds	1,000 pounds	1,000 pounds	1,000 pounds
Maine	9	270	315	307	311	320	287	317	288	253	275	263	263	3,469
New Hampshire	7	12	13	15	16	18	17	18	17	15	13	14	13	182
Vermont	14	1,181	1,092	1,502	1,742	2,206	2,087	1,562	1,321	1,226	1,275	897	957	17,111
Massachusetts	14	37	43	53	62	57	52	37	41	40	34	34	38	535
Connecticut	12	108	166	187	290	340	316	128	135	115	102	82	87	2,657
New England	56	1,608	1,629	2,068	2,421	2,941	2,759	2,062	1,803	1,710	1,705	1,290	1,358	23,354
New York	171	3,610	4,073	4,552	4,154	4,971	4,865	4,313	4,056	3,408	3,565	3,406	3,454	48,427
New Jersey	22	43	75	89	162	229	197	184	194	164	159	148	137	1,781
Pennsylvania	126	1,481	1,484	1,571	1,517	1,831	1,642	1,525	1,395	1,237	1,352	1,150	1,210	17,395
Middle Atlantic	319	5,134	5,632	6,212	5,833	7,031	6,704	6,022	5,645	4,809	5,076	4,704	4,801	67,603
Ohio	258	2,039	2,241	2,545	2,408	2,735	2,439	2,360	2,324	2,157	2,238	2,068	2,071	27,625
Indiana	66	708	748	845	806	872	792	755	829	733	732	689	754	9,273
Illinois	134	1,787	1,730	1,942	1,830	1,984	1,838	1,761	1,726	1,677	1,706	1,546	1,510	21,037
Michigan	125	1,838	1,958	2,026	1,951	2,209	1,909	2,036	2,084	1,955	2,034	1,828	1,828	23,620
Wisconsin	112	1,854	2,203	2,306	2,160	2,288	2,120	2,136	2,024	1,975	2,194	2,121	2,118	25,508
East North Central	715	8,226	8,860	9,604	9,164	10,088	9,098	9,058	8,951	8,497	8,904	8,252	8,281	107,063
Minnesota	26	592	575	680	666	735	684	677	672	621	654	622	646	7,824
Iowa	96	580	610	659	568	615	549	550	518	469	469	441	480	6,508
Missouri	53	408	484	1,061	966	928	879	929	993	874	884	786	779	10,972
North Dakota	2/	10	14	16	16	21	16	15	10	10	11	8	9	156
South Dakota	12	59	63	72	72	87	88	82	74	58	57	63	54	829
Nebraska	27	276	291	365	355	429	335	328	319	311	308	291	256	3,864
Kansas	72	551	560	690	671	722	672	619	626	566	606	553	519	7,377
West North Central	282	2,979	3,097	3,543	3,314	3,537	3,223	3,220	3,212	2,909	2,989	2,764	2,743	37,530
Delaware	6	13	15	19	18	17	15	14	13	12	19	11	13	179
Maryland	18	335	463	413	434	434	416	402	379	359	368	350	329	4,682
Virginia	18	135	155	203	152	185	215	180	156	151	161	145	134	1,978
West Virginia	38	160	175	221	229	277	264	242	194	172	146	140	141	2,361
North Carolina	21	75	84	118	113	132	141	137	130	110	118	106	90	1,354
South Carolina	2/	7	7	9	8	7	6	6	7	6	6	5	5	79
Georgia	10	34	41	49	51	53	49	47	45	41	48	45	47	553
Florida	13	140	151	151	132	128	130	116	114	88	93	107	131	1,483
South Atlantic 1/	130	994	1,208	1,291	1,242	1,338	1,334	1,244	1,139	1,031	1,059	1,014	1,042	13,936
Kentucky	47	432	482	558	499	538	478	487	493	464	445	402	373	5,651
Tennessee	29	161	164	244	235	264	262	267	276	254	248	233	250	2,863
Alabama	7	19	22	25	27	27	26	27	26	22	20	18	18	281
Mississippi	2/	1	1	-	-	-	2	1	1	-	-	-	-	9
Arkansas	9	38	45	63	82	93	94	101	117	97	88	102	98	1,018
Louisiana	6	74	79	100	94	119	130	125	127	111	100	71	68	1,198
Oklahoma	41	359	353	434	414	451	430	388	380	370	361	322	318	4,580
Texas	30	489	479	602	624	666	617	640	643	448	435	310	372	6,224
South Central	172	1,573	1,625	2,027	1,975	2,158	2,059	1,936	1,963	1,772	1,697	1,542	1,497	21,824
Montana	13	62	62	71	71	77	77	80	86	86	85	73	51	811
Idaho	12	68	70	83	94	77	95	97	94	69	74	69	66	976
Wyoming	11	18	26	26	30	29	29	25	21	13	15	17	16	265
Colorado	38	248	267	293	288	310	309	337	292	250	238	208	217	3,263
New Mexico	5	52	56	47	73	74	66	52	47	67	66	57	46	713
Arizona	2/	64	67	86	86	73	84	78	70	66	70	67	57	868
Utah	13	226	235	297	272	285	274	314	274	221	239	206	196	3,039
Nevada	2/	7	6	8	6	8	10	11	9	7	6	6	6	90
Mountain	100	745	789	917	920	953	944	1,004	893	779	793	703	655	10,695
Washington	32	875	846	1,036	1,050	1,130	1,098	1,159	1,082	968	1,016	949	944	12,153
Oregon	16	324	305	383	420	366	329	326	304	269	283	275	275	3,859
California	96	4,358	4,245	5,356	5,319	5,323	4,996	5,276	5,119	4,778	4,923	4,751	4,570	58,873
Pacific	104	5,557	5,395	6,775	6,789	6,619	6,423	6,761	6,509	6,015	6,282	5,975	5,789	74,885
UNITED STATES	1,848	26,816	28,255	32,447	31,658	34,665	32,544	31,307	30,111	27,222	28,505	26,244	26,166	356,290

1/ Cottage cheese curd includes cottage, pot, and baker's cheese with a butterfat content of less than 4 percent made by reporting plants. Creamed cottage cheese includes cheese with a butterfat content of 4 to 19 percent. Cottage cheese curd and creamed cottage cheese should not be added together to get a total cottage cheese figure, for while some of the cottage cheese curd is sold direct for consumption without further processing, a considerable part is creamed within the plant or shipped to another plant for creaming prior to sale.

2/ Either 3 or 4 plants reporting.

3/ Regional totals include production for some States not shown separately. Production omitted for States in which less than 3 plants reported.

Table 14- Cheese, cottage, creamed: Production, by States, by months, 1951

State and division	Plants	January	February	March	April	May	June	July	August	September	October	November	December	Total
		1,000 pounds	1,000 pounds	1,000 pounds	1,000 pounds	1,000 pounds	1,000 pounds	1,000 pounds	1,000 pounds	1,000 pounds	1,000 pounds	1,000 pounds	1,000 pounds	
Maine	7	170	108	54	58	57	56	57	65	60	60	59	56	860
New Hampshire	5	11	11	14	14	15	15	17	16	15	13	13	12	166
Vermont	9	722	688	793	736	891	826	828	752	689	704	628	664	8,921
Massachusetts	15	154	243	339	322	353	301	344	306	256	286	263	258	3,425
Connecticut	13	100	128	136	119	130	133	131	130	108	111	99	95	1,820
New England	49	1,157	1,178	1,336	1,249	1,446	1,331	1,377	1,269	1,128	1,174	1,062	1,085	14,792
New York	65	3,036	3,368	3,600	3,451	3,918	3,721	3,830	3,725	3,250	3,350	3,158	3,113	41,520
New Jersey	19	231	330	288	302	375	303	292	278	258	255	184	183	3,279
Pennsylvania	108	1,102	1,227	1,347	1,301	1,412	1,306	1,242	1,182	1,075	1,185	1,088	1,115	14,594
Middle Atlantic	192	4,369	4,925	5,237	5,054	5,705	5,330	5,364	5,195	4,583	4,790	4,430	4,411	59,393
Ohio	228	2,527	2,761	3,059	2,836	3,200	2,976	2,820	2,758	2,546	2,664	2,497	2,480	33,124
Indiana	75	690	691	814	815	874	839	798	754	712	747	686	689	9,109
Illinois	123	1,550	1,593	1,774	1,681	1,794	1,626	1,589	1,589	1,518	1,619	1,510	1,490	19,333
Michigan	137	2,040	2,155	2,399	2,278	2,487	2,222	2,323	2,191	2,154	2,165	2,004	2,017	26,435
Wisconsin	111	1,742	2,098	2,237	2,142	2,298	2,077	2,079	1,945	1,847	1,962	1,857	1,901	24,225
West North Central	674	8,589	9,298	10,243	9,752	10,653	9,740	9,609	9,237	8,777	9,157	8,554	8,577	112,226
Minnesota	25	721	726	838	825	896	855	832	821	741	801	722	743	9,521
Iowa	54	534	634	614	598	678	632	622	577	536	560	508	493	6,891
Missouri	52	1,158	1,291	1,518	1,362	1,404	1,326	1,273	1,137	1,278	1,278	1,199	1,152	15,566
North Dakota	6	21	25	29	31	40	32	28	25	21	21	19	17	309
South Dakota	14	42	32	101	105	131	132	128	129	106	108	109	97	1,320
Nebraska	28	380	407	490	468	597	450	433	432	404	407	370	370	5,218
Kansas	52	562	541	680	642	622	622	581	622	534	629	539	519	7,065
West North Central	231	3,458	3,613	4,240	4,031	4,318	4,049	3,897	3,943	3,520	3,827	3,503	3,391	45,890
Maryland	12	426	499	544	491	492	464	462	449	419	424	404	373	5,447
Virginia	9	47	45	54	53	55	55	52	56	50	53	46	46	612
West Virginia	42	226	237	295	308	360	340	311	294	224	199	191	188	3,133
North Carolina	23	74	85	119	111	135	144	141	134	122	134	118	101	1,418
South Carolina	1/	3	5	5	5	5	4	4	3	4	4	4	4	50
Georgia	8	27	34	40	43	46	45	41	43	36	35	34	36	460
Florida	12	154	145	151	127	135	140	106	99	80	76	81	97	1,391
South Atlantic 2/	113	1,074	1,205	1,368	1,285	1,381	1,333	1,260	1,178	1,061	1,053	1,000	1,035	14,233
Kentucky	49	556	614	726	637	693	650	627	635	572	563	491	461	7,225
Tennessee	27	249	255	338	323	357	354	348	356	339	329	315	323	3,886
Alabama	5	16	20	20	18	21	21	23	24	18	19	23	16	239
Mississippi	6	3	4	5	5	6	8	8	8	6	6	4	3	63
Arkansas	5	15	16	18	21	21	20	19	18	17	17	17	17	218
Louisiana	6	130	142	168	160	213	232	225	233	199	179	141	137	2,199
Oklahoma	41	461	472	587	536	540	525	518	534	498	426	426	424	6,001
Texas	43	646	705	838	824	835	839	812	848	706	701	612	571	8,937
South Central	182	2,076	2,228	2,700	2,524	2,686	2,647	2,580	2,656	2,357	2,293	2,029	1,952	28,728
Montana	14	87	92	101	101	98	96	104	86	79	81	64	75	1,062
Idaho	11	94	95	118	127	144	138	145	141	110	108	107	100	1,427
Wyoming	13	19	26	26	31	26	30	27	23	23	26	25	25	307
Colorado	32	248	270	321	307	330	341	336	323	275	276	256	258	3,541
New Mexico	6	62	66	60	86	87	78	92	66	70	79	70	56	872
Arizona	5	130	135	164	162	145	160	147	132	133	145	135	126	1,714
Utah	12	282	307	385	345	360	346	358	328	290	324	286	268	3,879
Nevada	1/	9	9	10	11	11	15	16	14	10	10	8	7	133
Mountain	97	931	998	1,185	1,170	1,204	1,204	1,225	1,113	990	1,049	951	915	12,935
Washington	35	1,477	1,410	1,634	1,813	1,775	1,718	1,810	1,641	1,522	1,593	1,448	1,505	19,346
Oregon	18	479	462	522	522	604	551	582	536	422	507	467	449	6,163
California	60	6,428	6,352	7,460	6,966	7,303	6,915	7,286	7,178	6,738	7,199	6,481	6,311	82,617
Pacific	113	8,384	8,224	9,616	9,361	9,682	9,184	9,678	9,355	8,682	9,299	8,396	8,265	108,126
UNITED STATES	1,651	30,038	31,669	35,965	34,426	37,075	34,818	34,990	33,946	31,198	32,642	29,925	29,631	396,323

1/ Either 3 or 4 plants reporting.
 2/ Regional totals include production for some States not shown separately.
 Production omitted for States, in which less than 3 plants reported.

Table 15 - Condensed milk, whole, unsweetened, bulk goods: Production, by States, by months, 1951

State	Plants Number	January	February	March	April	May	June	July	August	September	October	November	December	Total
		1,000 pounds	1,000 pounds	1,000 pounds	1,000 pounds	1,000 pounds	1,000 pounds	1,000 pounds	1,000 pounds	1,000 pounds	1,000 pounds	1,000 pounds	1,000 pounds	1,000 pounds
Vermont.....	1/	449	333	224	266	235	206	833	762	826	873	530	740	6,277
New York.....	24	5,278	5,913	7,635	4,591	4,052	5,131	9,799	9,754	8,059	6,412	5,299	5,770	77,693
Pennsylvania.....	15	1,709	1,794	2,583	2,853	3,529	3,280	3,241	3,238	2,181	1,752	1,194	1,703	29,057
Ohio.....	14	501	435	752	661	1,110	832	1,027	855	574	543	563	456	8,309
Indiana.....	6	1,418	1,158	1,275	1,318	1,461	1,415	1,493	1,580	1,463	1,449	1,259	1,319	16,608
Illinois.....	5	357	127	255	252	224	187	140	164	157	181	161	153	2,098
Michigan.....	6	600	618	642	769	929	821	1,006	905	720	718	544	608	8,880
Wisconsin.....	13	1,040	790	1,615	1,397	1,702	1,692	1,962	2,315	1,858	1,651	1,348	1,607	18,977
Missouri.....	1/	212	268	373	273	518	518	536	772	480	306	257	244	4,757
Kansas.....	1/	263	224	311	311	393	344	250	223	143	121	-	15	2,598
Maryland.....	1/	430	511	795	1,292	1,776	1,750	1,839	1,820	1,152	572	254	526	12,717
Oklahoma.....	1/	164	169	235	138	253	254	615	524	233	131	107	162	2,985
Washington.....	5	150	127	153	460	532	479	518	355	323	258	2	1	3,358
California.....	8	1,065	1,101	1,341	1,284	1,342	785	1,522	1,853	1,723	1,604	1,016	1,038	15,674
All other States.....	27	1,082	1,024	1,756	1,985	3,059	2,817	2,374	1,849	1,388	1,075	768	978	20,155
UNITED STATES.....	140	14,518	14,592	19,945	17,850	21,115	20,451	27,155	26,969	21,280	17,646	13,302	15,320	230,143

1/ Either 3 or 4 plants reporting.

Table 16 - Condensed milk, skim, unsweetened, bulk goods: Production, by States, by months, 1951

State	Plants Number	January	February	March	April	May	June	July	August	September	October	November	December	Total
		1,000 pounds	1,000 pounds	1,000 pounds	1,000 pounds	1,000 pounds	1,000 pounds	1,000 pounds	1,000 pounds	1,000 pounds	1,000 pounds	1,000 pounds	1,000 pounds	1,000 pounds
Vermont.....	5	200	193	286	341	567	868	1,362	1,212	515	500	341	466	6,851
New York.....	36	4,020	3,637	4,412	5,845	7,859	7,687	6,985	5,678	5,293	4,428	4,355	4,595	64,794
Pennsylvania.....	29	1,218	1,345	1,961	2,307	2,781	3,934	3,358	3,053	2,232	1,564	1,153	974	25,880
Ohio.....	38	1,798	2,026	2,278	2,323	2,857	3,533	3,774	3,386	2,845	1,998	2,076	2,203	31,097
Indiana.....	16	628	800	1,025	1,582	949	664	836	1,040	1,137	736	752	569	10,718
Illinois.....	19	1,504	1,347	1,752	1,955	2,625	2,370	2,700	2,526	1,979	1,500	964	1,439	22,661
Michigan.....	20	1,571	1,417	1,911	2,160	2,617	3,528	2,785	2,911	3,140	2,965	2,373	1,884	28,262
Wisconsin.....	33	4,493	4,552	4,828	3,930	4,399	4,694	4,977	4,814	5,453	4,935	4,567	4,440	56,082
Minnesota.....	8	997	764	654	768	1,181	1,198	1,336	1,247	961	1,067	997	1,232	12,402
Iowa.....	11	543	656	864	918	1,164	1,302	1,255	960	653	513	281	344	9,453
Missouri.....	11	1,305	991	901	992	1,637	2,517	2,692	2,455	2,750	1,778	1,670	1,565	21,273
Nebraska.....	1/	86	219	121	100	171	186	219	200	108	79	42	45	1,576
Kansas.....	11	2,453	2,521	2,931	3,031	3,187	3,297	2,743	3,098	2,373	1,769	1,629	1,605	30,637
Maryland.....	6	728	706	1,012	1,217	1,862	1,925	1,540	1,358	1,085	1,026	710	816	13,985
Virginia.....	12	1,182	1,493	1,493	1,422	1,652	2,373	2,816	2,968	2,329	1,726	1,156	1,425	22,129
North Carolina.....	6	60	54	87	228	322	339	306	221	215	147	78	177	2,234
Kentucky.....	7	83	78	119	144	249	280	333	332	218	107	71	83	2,097
Tennessee.....	8	896	932	1,000	1,029	1,486	1,449	1,428	1,819	1,597	1,115	883	744	14,378
Alabama.....	1/	129	104	199	277	319	254	300	251	177	176	90	82	2,338
Oklahoma.....	8	202	212	465	497	535	602	894	710	520	436	311	351	5,735
Texas.....	8	615	745	1,086	1,423	1,833	2,042	1,334	696	736	531	595	599	12,295
Utah.....	1/	32	32	32	54	77	84	60	40	33	27	26	27	524
Washington.....	6	42	40	73	229	159	391	455	410	305	163	26	53	2,346
California.....	20	3,871	4,180	5,475	5,730	5,777	6,906	6,674	5,629	6,257	4,694	3,221	3,398	61,812
All other States.....	22	1,237	1,619	2,240	2,193	3,086	2,714	2,482	2,153	2,229	1,458	1,077	1,037	23,525
UNITED STATES.....	351	29,893	30,252	37,210	41,195	49,411	54,157	53,644	49,167	45,140	35,438	29,444	30,133	485,084

1/ Either 3 or 4 plants reporting.

Table 17 - Evaporated milk, whole, unsweetened, case goods: Production, by States, by months, 1951

State and division	Plants	January	February	March	April	May	June	July	August	September	October	November	December	Total
	Number	1,000 pounds	1,000 pounds	1,000 pounds	1,000 pounds	1,000 pounds	1,000 pounds	1,000 pounds	1,000 pounds	1,000 pounds	1,000 pounds	1,000 pounds	1,000 pounds	1,000 pounds
Middle Atlantic.....	4	2,202	3,636	9,432	8,713	12,802	11,806	6,082	4,467	3,291	2,987	2,037	2,574	69,929
Ohio.....	12	14,681	15,277	19,935	22,808	37,572	38,337	31,853	26,692	16,653	15,030	9,103	11,098	258,739
Indiana.....	1/	5,395	5,853	7,126	7,589	12,378	12,629	10,294	8,305	5,845	5,336	4,027	4,792	89,639
Illinois.....	10	11,592	11,790	14,826	14,235	19,254	20,189	15,292	12,996	8,744	7,420	6,756	8,462	151,316
Michigan.....	7	11,921	11,847	15,471	16,500	22,931	24,789	19,468	13,976	10,437	8,728	6,109	9,170	171,307
Wisconsin.....	26	53,409	61,302	83,163	84,254	95,292	88,801	69,325	55,933	41,447	33,679	31,070	35,871	733,946
East North Central.....	59	96,998	106,669	140,391	145,686	187,427	184,465	146,232	117,902	83,126	70,193	57,065	69,393	2,404,947
Missouri.....	5	8,703	8,227	10,653	12,035	18,943	17,965	17,345	16,999	12,398	9,907	6,628	6,905	146,708
Kansas.....	1/	1,175	2,883	3,675	3,783	6,531	6,572	5,930	4,629	3,006	1,940	1,210	46,885	46,885
West North Central.....	12	18,027	18,748	24,331	27,218	37,348	34,869	30,379	27,031	19,572	16,416	12,361	13,864	280,164
South Atlantic.....	6	6,903	5,972	7,802	11,315	22,916	23,020	22,163	21,331	16,684	12,401	8,519	7,071	166,097
Kentucky.....	1/	8,155	6,926	10,381	14,556	25,327	24,878	23,492	19,287	16,983	14,772	9,264	7,531	181,552
Tennessee.....	1/	3,947	3,659	5,942	10,657	18,197	17,799	19,522	17,857	11,967	10,152	5,429	4,378	129,586
Mississippi.....	2/	2,471	2,616	5,001	5,300	8,524	6,669	7,029	7,960	5,625	4,620	2,997	2,624	63,406
Texas.....	1/	1,168	1,121	1,515	2,176	3,458	3,112	2,537	1,711	1,462	1,590	829	502	21,208
South Central.....	14	17,115	15,661	24,493	35,810	59,485	56,400	57,702	50,806	39,243	33,931	20,187	16,421	427,254
Utah.....	1/	4,762	4,287	5,055	5,269	6,636	6,733	5,889	5,128	4,221	4,316	4,356	4,356	60,782
Mountain.....	8	12,066	11,739	13,780	14,842	18,242	17,817	15,694	14,244	11,662	11,561	10,629	11,079	163,355
Washington.....	1/	3,671	3,692	4,753	6,920	9,044	8,648	5,811	3,011	2,019	2,804	2,490	2,549	55,412
California.....	11	22,952	21,325	31,692	37,214	41,694	34,743	29,596	25,274	19,445	18,001	17,343	17,477	318,756
Pacific.....	17	27,452	27,881	37,294	45,168	52,218	44,516	36,491	29,016	22,116	21,321	20,473	20,694	384,440
All other States.....	2/21	24,751	26,931	38,444	44,156	64,657	61,302	50,460	45,023	35,342	29,811	23,056	23,211	467,144
UNITED STATES.....	120	180,763	189,706	257,523	288,752	390,438	372,893	314,743	264,797	195,594	168,810	131,271	141,096	2,896,386

1/ Either 3 or 4 plants reporting.
2/ Included in regional totals.

Table 18 - Dried milk, whole: Production, by States, by months, 1951

State	Plants	January	February	March	April	May	June	July	August	September	October	November	December	Total
	Number	1,000 pounds	1,000 pounds	1,000 pounds	1,000 pounds	1,000 pounds	1,000 pounds	1,000 pounds	1,000 pounds	1,000 pounds	1,000 pounds	1,000 pounds	1,000 pounds	1,000 pounds
New York.....	5	2,192	2,165	2,908	2,845	3,668	3,232	3,009	960	654	652	684	1,035	24,004
Ohio.....	1/	658	777	867	840	1,402	1,478	1,013	881	889	433	242	331	9,811
Indiana.....	1/	226	380	280	319	307	532	167	357	514	387	315	113	3,997
Michigan.....	7	944	967	1,105	1,656	1,356	1,436	1,296	1,221	836	613	272	261	11,962
Wisconsin.....	24	4,742	4,300	4,694	4,845	5,744	4,803	5,551	2,744	2,657	2,304	1,804	2,883	47,071
Minnesota.....	8	2,949	2,446	2,255	2,049	1,485	1,833	1,634	1,520	948	574	591	957	19,241
California.....	1/	292	394	1,337	1,300	1,333	732	498	995	189	196	204	107	7,577
All other States.....	12	361	479	893	541	569	612	701	695	651	846	536	470	7,354
UNITED STATES.....	67	12,364	11,908	14,339	14,394	15,864	14,758	13,869	9,373	7,338	6,005	4,648	6,257	131,017

1/ Either 3 or 4 plants reporting.

Table 19- Nonfat dry milk solids, spray process, for human consumption: Production, by States, by months, 1951

State	Plants Number	January	February	March	April	May	June	July	August	September	October	November	December	Total
		1,000 pounds	1,000 pounds	1,000 pounds	1,000 pounds	1,000 pounds	1,000 pounds	1,000 pounds	1,000 pounds	1,000 pounds	1,000 pounds	1,000 pounds	1,000 pounds	1,000 pounds
New York.....	19	2,749	2,960	4,848	6,711	8,065	8,052	5,228	4,673	5,027	3,449	1,445	1,792	53,009
Pennsylvania.....	5	316	331	442	540	1,165	1,192	607	326	210	240	199	245	5,813
Ohio.....	13	637	498	904	1,522	2,646	2,927	2,432	2,089	1,398	1,062	285	283	16,683
Indiana.....	5	258	192	660	956	1,671	1,882	1,448	1,243	1,019	662	300	329	10,620
Illinois.....	5	180	154	185	324	723	797	645	676	124	90	98	98	4,164
Michigan.....	10	1,074	838	1,368	1,742	2,396	2,522	2,165	1,943	1,541	1,037	654	710	17,990
Wisconsin.....	58	13,259	12,988	15,929	18,882	23,767	26,665	23,033	19,288	12,305	9,415	7,228	10,086	192,845
Minnesota.....	32	9,312	9,230	10,592	11,037	13,189	14,681	11,271	7,991	6,209	5,080	5,689	8,943	113,224
Iowa.....	7	614	561	574	672	948	1,092	937	678	408	300	254	339	7,377
Missouri.....	5	1,068	1,028	1,490	1,914	3,807	4,071	4,112	3,414	2,594	1,934	904	778	27,114
Kansas.....	8	420	214	194	467	1,470	1,413	713	303	301	118	52	135	5,800
Virginia.....	5	48	59	251	487	1,226	708	512	98	23	126	4	18	3,560
Idaho.....	7	2,139	1,919	2,300	2,860	3,523	3,383	3,312	3,012	2,574	2,437	2,056	2,133	31,648
Utah.....	1/	321	330	410	528	624	635	567	393	351	326	286	320	5,091
Washington.....	1/	109	86	174	277	1,081	1,025	330	709	464	467	365	314	5,901
Oregon.....	1/	87	212	215	636	924	883	573	373	273	185	69	92	4,582
California.....	15	624	758	1,159	2,650	2,654	3,253	3,495	2,349	1,737	761	709	969	21,118
All other States.....	16	1,472	1,334	2,015	2,352	3,029	3,056	1,681	1,500	1,257	1,028	390	786	19,900
UNITED STATES.....	221	34,687	33,692	43,710	54,557	72,968	78,247	63,561	51,058	35,859	28,751	20,979	28,370	546,439

1/ Either 3 or 4 plants reporting.

Table 20 - Nonfat dry milk solids, roller process, for human consumption: Production, by States, by months, 1951

State	Plants Number	January	February	March	April	May	June	July	August	September	October	November	December	Total
		1,000 pounds	1,000 pounds	1,000 pounds	1,000 pounds	1,000 pounds	1,000 pounds	1,000 pounds	1,000 pounds	1,000 pounds	1,000 pounds	1,000 pounds	1,000 pounds	1,000 pounds
Vermont.....	5	96	118	316	571	723	929	232	360	156	114	17	32	3,664
New York.....	39	1,064	772	2,089	4,304	7,156	7,223	2,851	1,759	1,204	1,405	333	1,082	31,242
Pennsylvania.....	15	244	183	521	722	1,271	1,389	453	214	94	137	40	193	5,461
Ohio.....	16	120	220	497	638	1,649	1,911	1,497	1,064	699	417	107	126	8,945
Indiana.....	11	661	432	757	867	1,953	2,120	1,779	1,542	1,163	790	355	505	12,924
Illinois.....	9	74	54	92	120	509	646	649	466	229	113	9	53	3,014
Michigan.....	19	1,233	1,039	1,451	1,491	2,486	2,961	1,827	1,330	1,060	885	541	845	17,149
Wisconsin.....	41	1,293	1,280	1,653	2,541	3,859	5,598	3,358	2,422	1,302	1,282	965	1,734	27,287
Minnesota.....	36	1,673	1,663	1,729	2,305	3,002	2,904	2,322	1,612	1,010	1,085	1,263	1,950	22,518
Iowa.....	8	389	327	409	459	617	765	550	530	319	263	232	232	5,316
Missouri.....	5	46	40	22	33	175	346	321	328	328	271	170	176	2,256
Maryland.....	6	254	228	560	712	1,316	712	521	515	200	130	222	310	5,680
Mississippi.....	1/	76	113	248	275	334	262	283	140	77	53	25	28	1,914
Oklahoma.....	1/	147	138	93	112	234	206	144	131	123	70	74	121	1,593
Washington.....	1/	6	15	25	37	198	171	89	53	30	34	49	80	787
California.....	6	121	65	226	491	578	589	353	229	164	88	64	55	3,023
All other States.....	14	288	272	312	399	565	525	312	242	132	112	26	65	3,253
UNITED STATES.....	240	7,785	6,959	11,000	16,077	26,625	29,257	17,541	12,937	8,427	7,305	4,523	7,590	156,026

1/ Either 3 or 4 plants reporting.

Table 21- Ice cream, wholesale: Production, by State, by month, 1951

State and division	Plants	January	February	March	April	May	June	July	August	September	October	November	December	Total
	Number	1,000 gallons	1,000 gallons	1,000 gallons	1,000 gallons	1,000 gallons	1,000 gallons	1,000 gallons	1,000 gallons	1,000 gallons	1,000 gallons	1,000 gallons	1,000 gallons	1,000 gallons
Maine.....	13	155	128	188	193	261	312	354	365	208	169	144	128	2,605
New Hampshire.....	7	58	40	55	76	105	120	137	84	60	53	43	60	980
Vermont.....	7	58	40	55	76	105	120	137	84	60	53	43	60	980
Massachusetts.....	43	1,090	986	1,422	1,468	1,921	1,938	2,231	2,062	1,637	1,381	1,169	1,114	18,139
Rhode Island.....	23	197	201	250	297	373	401	492	462	283	246	198	195	3,595
Connecticut.....	35	186	166	235	297	373	401	492	462	283	246	198	195	3,595
New England.....	172	1,944	1,791	2,535	2,659	3,478	3,611	4,193	3,996	2,877	2,405	2,017	1,925	33,431
New York.....	330	2,852	2,705	3,684	4,236	5,551	6,017	6,618	6,408	4,366	3,788	2,902	2,835	51,992
New Jersey.....	36	585	598	750	833	1,097	1,185	1,382	1,348	914	715	662	574	10,643
Pennsylvania.....	232	1,703	1,641	4,621	4,888	6,325	6,770	7,399	7,299	5,339	4,788	3,915	3,738	62,426
Middle Atlantic.....	598	7,170	6,944	9,055	9,957	12,973	13,972	15,399	15,055	10,619	9,291	7,479	7,147	125,061
Ohio.....	196	1,932	1,835	2,376	2,454	3,355	3,427	3,722	3,692	2,714	2,501	1,886	1,775	31,669
Indiana.....	98	966	867	1,162	1,219	1,703	1,754	1,929	1,894	1,411	1,252	932	856	15,941
Illinois.....	163	1,923	1,716	2,253	2,280	3,182	2,999	3,388	3,285	2,434	2,326	1,789	1,707	29,282
Michigan.....	255	1,435	1,366	1,764	1,908	2,696	2,827	3,144	2,948	2,059	1,883	1,397	1,333	24,760
Wisconsin.....	127	898	792	1,026	1,070	1,556	1,582	1,864	1,735	1,244	1,147	900	877	14,691
West North Central.....	839	7,150	6,576	8,581	8,931	12,492	12,589	14,047	13,554	9,862	9,109	6,904	6,548	116,343
Minnesota.....	99	790	779	827	921	1,325	1,450	1,654	1,486	1,032	1,016	800	770	12,850
Iowa.....	16	565	577	668	670	965	965	1,071	1,030	758	736	567	547	9,090
Missouri.....	84	977	901	1,179	1,179	1,653	1,633	1,836	1,889	1,345	1,223	882	865	15,558
North Dakota.....	31	112	103	135	130	188	201	213	144	104	123	109	109	1,815
South Dakota.....	17	145	138	187	164	239	240	284	278	174	181	141	120	2,250
Nebraska.....	39	340	337	389	412	520	558	617	630	416	409	338	296	5,236
Kansas.....	61	328	308	388	447	593	634	636	704	468	412	321	291	5,542
West North Central.....	407	3,277	3,103	3,723	3,923	5,452	5,681	6,324	6,230	4,334	4,128	3,166	3,000	52,341
District of Columbia.....	9	404	405	509	521	629	697	731	715	580	540	454	428	6,644
Maryland.....	29	486	470	611	653	853	911	991	960	760	707	529	463	8,404
Virginia.....	19	559	574	706	738	957	1,051	1,133	1,073	860	738	569	502	9,492
West Virginia.....	20	268	273	388	379	516	577	618	618	451	414	282	239	4,983
North Carolina.....	51	640	607	803	852	1,127	1,232	1,292	1,292	1,036	942	669	570	11,087
South Carolina.....	15	119	138	169	184	261	284	260	273	235	178	136	111	2,328
Georgia.....	17	382	417	520	547	725	800	876	890	719	609	394	340	7,316
Florida.....	15	618	703	855	728	862	870	860	917	816	729	648	606	9,232
South Atlantic.....	257	3,584	3,706	4,658	4,782	6,231	6,655	6,966	6,965	5,619	4,995	3,806	3,379	61,346
Kentucky.....	46	294	278	353	369	515	542	567	580	437	380	265	269	4,849
Tennessee.....	57	638	617	837	852	1,229	1,309	1,399	1,400	1,028	881	601	560	11,351
Alabama.....	42	335	347	489	546	725	777	811	811	609	500	312	323	6,549
Mississippi.....	40	168	165	220	250	350	366	394	405	326	286	152	144	3,220
Arkansas.....	15	111	100	144	156	217	235	267	297	194	174	96	98	2,053
Louisiana.....	37	372	394	522	482	725	754	823	823	630	529	355	326	6,655
Oklahoma.....	49	315	314	450	431	625	663	663	663	478	430	284	271	5,475
Texas.....	141	1,258	1,366	1,805	1,947	2,433	2,698	2,767	2,901	2,239	1,953	1,342	1,170	21,875
South Central.....	437	3,491	3,585	4,800	5,021	6,771	7,304	7,575	7,838	5,941	5,133	3,407	3,161	64,027
Montana.....	57	111	113	128	146	185	209	293	286	140	138	118	107	1,953
Idaho.....	19	121	133	172	184	201	234	281	270	194	160	134	117	2,201
Wyoming.....	17	31	34	40	39	46	53	73	72	52	43	34	33	560
Colorado.....	52	309	318	378	390	480	529	625	608	499	398	331	305	5,130
New Mexico.....	14	57	57	69	83	101	119	131	121	98	83	57	53	1,031
Arizona.....	12	93	103	116	133	169	171	160	157	116	109	123	100	1,610
Utah.....	23	118	127	145	162	187	195	242	226	175	161	133	104	1,975
Nevada.....	6	31	33	43	49	61	75	89	86	61	49	31	30	647
Mountain.....	200	871	918	1,091	1,186	1,430	1,585	1,896	1,796	1,324	1,180	971	849	15,097
Washington.....	48	456	448	539	654	729	857	907	854	627	547	465	448	7,531
Oregon.....	59	326	344	391	486	540	643	713	674	458	389	322	274	5,560
California.....	163	2,229	2,280	2,891	2,821	3,280	3,682	4,028	4,111	3,381	3,132	2,585	2,017	36,606
Pacific.....	270	3,011	3,072	3,821	3,961	4,549	5,152	5,648	5,659	4,478	4,275	3,332	2,739	49,697
UNITED STATES.....	3,180	30,498	29,695	32,264	40,420	53,376	56,549	62,048	61,093	45,054	40,516	31,082	28,748	517,343

1/ Regional totals include production for some States not shown separately. Production omitted for States in which less than 3 plants reported.

Table 22- Ice cream, total: Production, by States, by months, 1951 1/

State and Division	Plants	January	February	March	April	May	June	July	August	September	October	November	December	Total
	Number	1,000 gallons	1,000 gallons	1,000 gallons	1,000 gallons	1,000 gallons	1,000 gallons	1,000 gallons	1,000 gallons	1,000 gallons	1,000 gallons	1,000 gallons	1,000 gallons	1,000 gallons
Maine.....	84	160	135	198	209	306	354	411	422	225	182	153	137	2,882
New Hampshire.....	92	68	47	66	87	131	160	206	186	113	69	64	52	1,243
Vermont.....	37	66	78	92	97	138	154	168	173	116	90	79	65	1,316
Massachusetts.....	601	1,187	1,072	1,546	1,649	2,189	2,240	2,582	2,391	1,850	1,525	1,287	1,230	20,788
Rhode Island.....	88	212	219	27	322	416	448	549	508	316	267	207	207	3,959
Connecticut.....	164	411	389	584	572	733	786	857	816	598	503	406	413	7,030
New England.....	1,066	2,106	1,940	2,745	2,936	3,913	4,102	4,773	4,506	3,218	2,633	2,208	2,104	37,184
New York.....	2,711	3,246	3,047	4,150	4,772	6,253	6,778	7,455	7,218	4,919	4,267	3,269	3,194	58,568
New Jersey.....	290	660	671	804	911	1,238	1,342	1,551	1,510	1,046	819	738	667	12,027
Pennsylvania.....	1,645	4,035	3,981	5,035	5,368	6,969	7,534	8,254	8,095	5,978	5,330	4,338	4,103	69,080
Middle Atlantic.....	4,653	7,941	7,699	10,029	11,081	14,460	15,654	17,260	16,823	11,943	10,416	8,345	7,964	139,615
Ohio.....	1,416	2,113	2,005	2,604	2,694	3,708	3,817	4,139	4,106	3,011	2,760	2,072	1,957	34,986
Indiana.....	483	1,067	968	1,295	1,387	1,952	2,046	2,266	2,215	1,642	1,446	1,051	960	18,305
Illinois.....	1,110	2,117	1,894	2,487	2,576	3,558	3,433	3,845	3,702	2,721	2,587	2,002	1,812	32,814
Michigan.....	788	1,552	1,477	1,908	2,063	2,916	3,057	3,400	3,188	2,227	2,036	1,511	1,401	26,776
Wisconsin.....	683	984	875	1,127	1,192	1,748	1,797	2,130	1,973	1,406	1,282	990	960	16,464
East North Central.....	4,480	7,833	7,239	9,421	9,922	13,882	14,130	15,780	15,184	11,007	10,111	7,626	7,230	129,345
Minnesota.....	217	818	807	856	954	1,372	1,502	1,713	1,539	1,069	1,052	828	797	13,307
Iowa.....	317	647	615	731	747	1,051	1,106	1,230	1,177	861	820	633	614	10,232
Missouri.....	352	1,028	956	1,247	1,248	1,754	1,790	1,972	2,012	1,433	1,300	939	920	16,549
North Dakota.....	78	120	109	121	140	202	219	244	229	155	160	131	117	1,947
South Dakota.....	100	158	152	160	179	263	264	313	308	189	198	155	131	2,470
Nebraska.....	176	367	341	417	442	561	667	683	683	452	445	358	322	5,663
Kansas.....	264	364	342	441	499	660	714	722	796	531	458	355	326	6,206
West North Central.....	1,504	3,502	3,322	3,973	4,209	5,863	6,152	6,860	6,744	4,690	4,433	3,399	3,227	56,374
District of Columbia.....	57	416	416	521	535	644	714	748	761	593	553	465	437	6,803
Delaware.....	27	112	122	143	145	201	209	229	223	170	145	131	126	1,956
Maryland.....	163	537	510	661	714	921	981	1,057	1,033	820	760	578	502	9,074
Virginia.....	245	585	602	738	810	1,010	1,115	1,206	1,137	910	783	601	528	10,025
West Virginia.....	179	290	296	374	411	559	618	659	482	442	447	304	261	5,349
North Carolina.....	267	700	666	882	938	1,233	1,368	1,450	1,442	1,127	1,012	730	619	12,137
South Carolina.....	72	127	147	182	199	284	280	292	292	195	149	121	121	2,516
Georgia.....	100	393	432	536	560	832	876	863	903	737	622	407	353	7,514
Florida.....	139	633	756	918	785	946	938	933	878	878	785	693	658	9,911
South Atlantic.....	1,249	3,793	3,947	4,955	5,097	6,627	7,102	7,425	7,400	5,974	5,302	4,058	3,605	65,285
Kentucky.....	154	326	309	382	404	563	589	627	633	483	419	289	290	5,314
Tennessee.....	251	664	642	871	886	1,278	1,361	1,455	1,456	1,069	916	625	583	11,806
Alabama.....	113	346	357	503	558	746	801	800	839	633	520	325	335	6,763
Mississippi.....	134	176	172	234	258	370	391	423	429	341	298	159	149	3,400
Arkansas.....	88	120	115	158	185	259	277	304	294	217	187	107	106	2,329
Louisiana.....	81	383	405	532	499	747	777	768	846	652	551	375	346	6,881
Oklahoma.....	184	357	354	483	490	656	720	747	747	542	479	316	302	6,193
Texas.....	275	1,283	1,194	1,843	1,988	2,485	2,764	2,839	2,973	2,298	1,999	1,372	1,198	24,436
South Central.....	1,280	3,655	3,748	5,006	5,268	7,304	7,680	7,963	8,217	6,235	5,369	3,568	3,309	67,122
Montana.....	273	149	155	180	213	272	301	406	363	224	195	162	145	2,765
Idaho.....	140	138	152	193	209	230	264	320	305	218	178	150	130	2,487
Wyoming.....	53	35	40	47	48	61	73	100	96	62	50	40	41	693
Colorado.....	180	338	346	415	427	525	577	679	660	503	433	361	333	5,597
New Mexico.....	32	62	64	77	92	115	132	146	135	111	94	67	62	1,157
Arizona.....	32	100	111	125	144	182	185	173	170	147	161	133	108	1,739
Utah.....	142	148	159	182	203	234	245	303	283	219	202	167	130	2,475
Nevada.....	13	32	34	45	51	64	78	93	90	64	50	43	31	675
Mountain.....	865	1,002	1,061	1,264	1,387	1,683	1,855	2,220	2,102	1,548	1,363	1,123	980	17,588
Washington.....	479	512	508	609	746	839	998	1,070	987	719	623	531	501	8,643
Oregon.....	362	386	408	464	577	640	762	848	797	542	459	380	324	6,583
California.....	812	2,531	2,578	3,268	3,181	3,727	4,110	4,498	4,566	3,776	3,685	2,815	2,230	40,965
Pacific.....	1,653	3,429	3,494	4,341	4,504	5,206	5,870	6,412	6,350	5,037	4,767	3,726	3,055	56,191
UNITED STATES.....	16,750	33,261	32,430	41,734	44,404	58,738	62,545	68,693	67,326	49,652	44,394	34,053	31,474	568,704

1/ Includes ice cream produced both for wholesale and retail.

Table 23 - Ice milk: Production, by States, by months, 1951 1/

State and division	Plants Number	January	February	March	April	May	June	July	August	September	October	November	December	Total
		1,000 gallons	1,000 gallons	1,000 gallons	1,000 gallons	1,000 gallons	1,000 gallons	1,000 gallons	1,000 gallons	1,000 gallons	1,000 gallons	1,000 gallons	1,000 gallons	1,000 gallons
Maine.....	89	27	33	43	52	71	82	87	88	68	57	41	31	680
Vermont.....	12	3	3	4	4	6	7	8	8	6	5	3	2	59
Massachusetts.....	81	13	11	24	63	126	154	180	164	100	43	23	12	913
Rhode Island.....	25	5	3	5	8	14	18	25	26	33	9	5	5	136
Connecticut.....	69	10	10	15	40	51	59	63	92	51	35	17	4	447
New England.....	276	58	60	91	167	268	320	363	378	238	149	89	54	2,235
Ohio.....	402	43	39	58	87	236	267	230	246	111	99	74	41	1,531
Illinois.....	387	118	108	182	182	350	322	386	430	284	236	131	122	2,851
East North Central.....	789	161	147	240	269	586	589	616	676	395	335	205	163	4,382
Minnesota.....	153	17	18	27	39	86	92	107	111	58	63	53	54	725
Iowa.....	141	33	39	55	68	141	149	143	160	92	82	64	52	1,078
Missouri.....	117	65	60	86	98	134	158	197	195	136	120	75	77	1,401
North Dakota.....	26	10	17	30	26	19	28	13	9	11	11	1	5	180
South Dakota.....	66	7	8	8	15	29	35	34	26	20	11	8	4	205
Nebraska.....	110	24	24	37	43	71	70	76	92	50	45	25	24	581
Kansas.....	188	32	43	84	105	149	165	182	185	130	101	52	35	1,263
West North Central.....	801	188	209	327	394	629	697	752	778	497	433	278	251	5,433
West Virginia.....	143	30	28	37	34	77	69	75	70	40	40	30	21	551
North Carolina.....	110	170	172	233	258	328	372	386	373	306	272	170	140	3,180
South Carolina.....	47	22	20	28	29	46	44	45	47	44	32	26	13	396
Georgia.....	63	69	67	72	78	116	94	98	126	106	96	70	56	1,048
Florida.....	138	46	49	60	58	77	79	71	93	89	89	77	70	858
South Atlantic.....	501	337	336	430	457	644	658	675	709	585	529	373	300	6,033
Kentucky.....	48	10	9	17	17	46	43	59	61	32	33	17	23	367
Tennessee.....	238	79	76	123	118	218	200	196	205	168	154	90	61	1,688
Alabama.....	109	85	85	113	126	172	186	190	187	148	128	68	66	1,553
Mississippi.....	168	52	49	70	73	115	143	140	150	132	114	64	54	1,156
Arkansas.....	77	7	9	13	20	27	77	80	79	68	42	24	12	458
Louisiana.....	75	40	33	48	52	78	82	72	73	70	77	36	38	699
Oklahoma.....	94	42	41	58	80	110	114	120	116	80	71	49	42	923
Texas.....	189	102	99	150	168	234	236	270	294	238	187	127	112	2,217
South Central.....	998	417	401	592	654	1,000	1,081	1,127	1,165	936	806	475	407	9,061
Idaho.....	306	18	20	31	52	68	78	89	88	59	39	24	17	583
Wyoming.....	13	1	1	2	2	3	3	3	3	3	2	2	1	26
Colorado.....	70	15	18	25	35	54	61	77	70	50	33	19	16	473
New Mexico.....	28	9	10	13	16	24	27	30	28	24	20	11	9	221
Arizona.....	45	28	35	42	51	68	73	83	82	66	71	48	38	685
Utah.....	94	27	31	37	46	76	73	79	79	62	42	30	18	600
Nevada.....	18	6	8	12	13	16	21	31	30	21	14	11	7	190
Mountain.....	574	104	123	162	215	309	336	392	380	285	221	145	106	2,778
Washington.....	210	103	93	128	193	205	236	279	277	179	141	101	92	2,027
Oregon 2/.....	304	81	86	95	172	183	216	220	217	170	118	82	69	1,709
California.....	1,105	640	662	860	849	1,093	1,222	1,377	1,383	1,160	1,078	757	490	11,571
Pacific.....	1,619	824	841	1,083	1,214	1,481	1,674	1,876	1,877	1,509	1,337	940	651	15,307
UNITED STATES.....	5,558	2,089	2,117	2,925	3,370	4,917	5,355	5,801	5,963	4,445	3,810	2,505	1,932	45,229

1/ During 1951, this product was not permitted by law in States not shown in this table.

2/ Includes substandard ice cream.

Table 24—Whole milk used in manufactured dairy products: Calculated quantities used in specified products, on a whole milk equivalent basis, by States, 1951 1/

State and division	Creamery butter	Cheese		Evap. milk (unsweetened) Case	Cond. milk (unsweetened) Milk	Sweetened cond. milk Case & Milk	Dry whole milk	Ice cream & other frozen products	Other milk & products	Total	Duplications	Net total
		American	Other than American									
	1,000 pounds	1,000 pounds	1,000 pounds	1,000 pounds	1,000 pounds	1,000 pounds	1,000 pounds	1,000 pounds	1,000 pounds	1,000 pounds	1,000 pounds	1,000 pounds
Maine	4,140	53	2,868	—	16,211	868	—	43,830	2,425	70,395	14,354	56,041
New Hampshire	23	—	—	—	—	—	—	21,667	231	21,921	7,530	14,391
Vermont	26,341	29,500	24,079	—	14,711	—	1,564	21,950	16,225	134,370	4,784	129,586
Massachusetts	4,690	—	23,479	—	—	—	—	332,948	4,275	365,392	132,166	233,206
Rhode Island	—	—	1,260	—	—	—	—	60,623	—	61,883	17,914	43,969
Connecticut	100	—	3,014	—	3,053	53	—	206,410	2,395	115,025	5,276	109,747
New England	35,294	29,553	54,700	—	33,975	921	1,564	587,428	25,551	768,986	182,046	586,940
New York	332,263	418,592	513,391	62,584	192,063	24,083	166,135	894,184	96,648	2,722,013	499,669	2,222,344
New Jersey	—	500	19,528	—	—	—	—	178,395	4,205	182,600	10,251	203,265
Pennsylvania	213,243	8,694	98,886	92,833	71,833	4,361	—	1,052,312	22,154	1,564,316	60,292	1,504,024
Middle Atlantic	546,374	427,186	631,805	155,417	263,916	26,444	166,135	2,334,891	123,057	4,499,825	570,212	3,929,613
Ohio	1,032,189	219,237	159,026	944,711	19,474	11,079	71,125	479,100	75,575	2,611,516	80,592	2,530,924
Indiana	526,343	268,526	44,000	188,711	38,495	2,132	28,975	228,738	15,571	1,364,891	56,866	1,308,005
Illinois	1,088,089	439,667	296,000	316,250	5,194	13,250	36,907	511,663	39,097	2,746,117	122,749	2,623,368
Michigan	1,003,578	266,750	26,200	380,694	21,944	63,111	91,289	391,425	44,701	2,289,693	58,263	2,230,430
Wisconsin	2,941,190	4,505,689	1,209,364	1,631,000	46,917	14,472	359,237	266,710	163,258	11,137,977	397,684	10,740,293
East North Central	6,591,390	5,700,009	1,734,590	3,081,366	132,424	104,044	587,533	1,877,636	341,202	20,190,194	717,174	19,473,020
Minnesota	5,086,373	493,083	124,943	87,889	—	18,917	146,842	205,789	47,597	6,171,433	53,316	6,118,117
Iowa	3,922,831	112,361	6,057	104,900	28	—	—	159,430	10,027	4,315,254	16,119	4,299,135
Missouri	942,138	557,333	1,000	300,949	10,846	462	1,828	221,926	20,625	2,057,104	49,170	2,007,934
North Dakota	994,187	—	—	—	—	—	—	30,613	417	994,604	11,808	977,409
South Dakota	718,053	15,611	—	—	—	—	—	40,648	1,833	776,145	8,964	767,181
Nebraska	1,592,427	6,639	—	—	750	389	—	88,920	7,067	1,696,592	25,900	1,670,692
Kansas	888,044	87,378	—	101,378	6,243	429	—	91,590	10,205	1,185,697	10,506	1,175,191
West North Central	14,108,253	1,232,405	132,000	594,716	17,457	20,227	148,667	838,916	77,771	17,191,422	175,783	17,015,639
District of Columbia	—	—	—	—	—	—	—	102,825	2,150	104,975	40,820	64,155
Delaware	125	—	—	—	105	79	—	25,538	100	28,947	11,415	17,532
Maryland	65,995	53	26	76,395	29,779	4,605	—	136,850	7,200	320,913	53,900	267,013
Virginia	131,742	1,897	—	110,769	5,949	949	—	148,195	1,481	500,582	43,636	357,346
West Virginia	18,227	590	—	58,974	590	—	—	73,500	3,810	155,691	3,452	152,239
North Carolina	23,235	14,821	—	79,650	538	—	—	169,977	1,773	286,194	78,956	207,238
South Carolina	2,642	—	—	17,405	—	—	—	30,682	68	50,797	14,228	36,569
Georgia	5,408	5,925	—	—	4,619	—	—	97,226	628	113,806	18,549	95,277
Florida	23	—	—	—	25	—	—	127,953	1,905	129,906	48,949	80,957
South Atlantic	247,397	23,286	26	339,393	41,615	5,633	—	915,746	19,115	1,592,211	313,885	1,278,326
Kentucky	342,146	221,275	1,350	163,100	—	125	—	66,791	6,753	1,003,540	16,718	986,822
Tennessee	185,311	313,350	25,450	259,175	850	—	—	149,136	4,477	936,749	44,047	892,662
Alabama	1,978	40,900	—	—	200	—	—	84,599	314	107,995	24,567	83,428
Mississippi	44,355	92,425	250	126,800	1,225	24,200	—	41,156	68	334,479	7,969	326,510
Arkansas	82,192	106,192	—	63,000	—	—	—	30,349	643	282,336	7,930	274,406
Louisiana	4,511	1,675	—	—	25	—	—	85,773	922	42,966	4,156	48,810
Oklahoma	502,056	50,359	25,718	—	6,821	3,000	—	80,166	7,310	675,429	20,276	655,153
Texas	124,777	32,350	—	42,425	25	—	—	319,067	10,395	529,039	31,405	497,634
South Central	1,291,326	838,486	52,788	854,500	9,146	27,325	—	856,036	32,946	3,962,533	159,368	3,803,165
Montana	143,458	27,730	—	—	—	—	—	37,769	1,436	210,793	7,665	203,128
Idaho	411,336	167,760	25,307	178,373	—	—	2,590	39,064	62,439	846,665	26,597	820,068
Wyoming	46,772	135	18,639	—	—	—	—	10,403	432	75,081	1,926	73,155
Colorado	329,714	10,000	57	34,750	2,861	—	4,056	88,263	13,941	483,642	4,899	478,743
New Mexico	15,400	—	—	—	1,763	—	—	14,000	1,122	16,885	805	25,400
Arizona	13,923	—	2,533	7,093	7,867	—	—	29,179	2,293	62,888	1,473	61,415
Utah	109,584	63,351	41,973	131,432	—	—	1,821	41,894	5,405	395,460	19,320	376,140
Nevada	12,921	795	—	—	—	—	—	12,447	189	26,352	621	25,731
Mountain	1,082,308	269,771	88,509	351,648	12,491	—	8,467	276,719	87,253	2,177,166	63,266	2,113,900
Washington	295,083	25,273	11,974	115,143	7,766	3,870	195	133,487	23,024	615,815	8,887	606,928
Oregon	293,685	809,490	4,375	20,990	—	27,275	6,721	92,465	7,000	613,121	22,351	590,770
California	484,124	40,353	67,028	708,333	38,750	—	57,816	621,281	172,370	2,170,677	91,719	2,078,958
Pacific	1,003,096	266,056	83,377	844,426	46,516	41,783	64,732	847,233	202,394	3,399,613	122,957	3,276,656
UNITED STATES	24,906,038	8,787,352	2,777,775	6,221,466	557,950	224,377	999,078	5,334,605	929,289	53,741,950	2,304,691	51,437,259

1/ Total whole-milk equivalent of factory dairy products calculated from production in each State as reported by the Bureau of Agricultural Economics, and pounds of fat received at plants per pound of product made and test of milk used for such purpose as determined from a survey of 1,900 plants in 46 States for the year July 1930 to June 1931. No adjustment has been made for shipments of milk and cream between States differing in the test of milk produced. Because of interstate shipments the milk equivalent of products manufactured in each State does not necessarily show utilization of milk produced in the State. Duplication is removed on the basis of information from the survey referred to above. 201 plants making American cheese reported the sale of 0.0281 pound of butterfat per pound of cheese made. Butterfat from whey cream is used primarily as a source of fat in making butter. In order to avoid duplication in calculating the milk equivalent of all products made, deductions were made for the amount of fat recovered in whey cream and used for making butter, and for the amount of fat from butter and concentrated milk used in making ice cream.

2/ Includes milk equivalents of dry cream, salted milk powder, part-skim dry milk, dry or concentrated ice cream mix, creamed cottage cheese, sweetened dry whole milk, infant food, candy base, canned condensed chocolate milk, dehydrated butterfat, and other special milk products.

Table 25 - Skim milk equivalents: Calculated quantities used in specified skim milk and buttermilk products, by States, 1951 1/

State and division	Full skim American Cheddar cheese	Cottage cheese curd	Sweetened condensed skim milk		Unsweetened condensed skim milk 2/ (Case & bulk)	Concentrated skim milk (for animal feed)	Condensed or evaporated buttermilk	Dry or powdered		Dry casein 3/	Total
			1,000 pounds					Butter-milk	Nonfat milk solids 4/		
			Ounce	Bulk							
	1,000 pounds	1,000 pounds	1,000 pounds	1,000 pounds	1,000 pounds	1,000 pounds	1,000 pounds	1,000 pounds	1,000 pounds	1,000 pounds	1,000 pounds
Maine.....	64	21,681	-	9,399	16,791	-	-	-	6,490	393	54,818
New Hampshire.....	-	1,138	-	45	-	-	-	-	-	-	1,183
Vermont.....	7,824	208,944	-	5,154	20,553	-	-	-	155,826	41,198	337,499
Massachusetts.....	-	3,344	-	543	1,044	-	-	-	17,930	-	22,861
Rhode Island.....	-	-	-	-	-	-	-	-	-	-	-
Connecticut.....	-	12,856	-	-	696	-	-	-	-	-	13,552
New England.....	7,888	345,963	-	15,141	39,084	-	-	-	180,246	41,591	429,913
New York.....	2,256	302,669	-	70,586	194,382	-	-	-	4,532	939,873	1,702,358
New Jersey.....	96	11,131	-	576	69	-	-	-	-	891	12,763
Pennsylvania.....	-	108,719	-	76,833	77,640	7,056	-	-	5,727	129,624	405,599
Middle Atlantic.....	2,352	422,519	-	146,005	272,091	7,056	-	-	8,208	4,532	2,120,720
Ohio.....	4,928	172,656	-	59,967	105,221	-	-	-	49,539	13,167	695,514
Indiana.....	-	57,956	-	63,207	32,194	7,224	-	-	7,227	6,622	436,652
Illinois.....	-	131,481	-	59,217	61,030	765	-	-	137,568	4,994	515,340
Michigan.....	-	147,625	90	24,158	64,786	4,704	-	-	11,652	32,648	702,982
Wisconsin.....	-	159,425	-	117,690	168,246	-	-	-	42,889	243,405	3,135,601
East North Central.....	4,928	669,143	90	328,239	472,437	12,693	-	-	206,073	100,320	5,486,098
Minnesota.....	3,280	48,900	-	20,112	37,206	432	-	-	21,555	189,200	2,022,666
Iowa.....	-	40,675	-	237	28,359	4,506	-	-	105,756	81,675	423,783
Missouri.....	336	68,575	-	3,561	63,819	1,215	-	-	27,243	13,783	506,475
North Dakota.....	-	975	-	2,148	-	-	-	-	3,984	28,160	36,037
South Dakota.....	2,048	5,181	-	171	-	-	-	-	11,235	10,296	28,931
Nebraska.....	-	24,150	-	4,629	4,728	-	-	-	31,878	22,891	127,436
Kansas.....	-	46,106	-	24,653	94,731	-	-	-	42,051	16,104	290,197
West North Central.....	5,664	234,562	-	55,491	228,243	6,153	-	-	243,702	362,109	3,435,523
District of Columbia.....	-	7,919	-	-	-	-	-	-	-	-	7,919
Delaware.....	-	1,119	-	21	-	-	-	-	-	-	1,140
Maryland.....	-	29,262	-	13,623	41,955	-	-	-	651	-	157,167
Virginia.....	-	12,362	-	19,527	66,387	-	-	-	-	71,676	139,537
West Virginia.....	-	14,756	-	-	10,575	1,470	-	-	282	418	34,643
North Carolina.....	-	8,462	-	-	6,702	-	-	-	-	-	22,776
South Carolina.....	-	494	-	-	-	-	-	-	-	-	494
Georgia.....	-	3,456	-	1,500	336	-	-	-	-	-	5,282
Florida.....	-	9,269	-	-	-	-	-	-	-	-	9,269
South Atlantic.....	-	87,099	-	34,671	125,955	1,470	-	-	903	418	378,237
Kentucky.....	-	35,319	-	2,550	6,291	-	-	-	44,232	-	109,765
Tennessee.....	-	17,894	-	-	43,134	-	-	-	2,004	-	67,751
Alabama.....	-	1,756	-	-	7,014	-	-	-	-	-	8,770
Mississippi.....	-	56	-	2,244	20,421	-	-	-	-	1,617	46,008
Arkansas.....	-	6,362	-	-	735	-	-	-	-	913	8,527
Louisiana.....	-	7,488	-	237	1,470	-	-	-	-	-	14,431
Oklahoma.....	-	28,625	-	741	17,205	-	-	-	15,810	11,605	99,103
Texas.....	-	38,900	-	690	36,885	-	-	-	589	660	84,042
South Central.....	-	136,400	-	6,462	133,155	-	-	-	62,595	14,795	438,597
Montana.....	-	5,506	-	-	-	-	-	-	-	-	5,506
Idaho.....	-	6,100	-	-	3,777	-	-	-	-	1,430	364,400
Wyoming.....	-	1,656	-	-	-	-	-	-	-	-	18,330
Colorado.....	-	20,394	-	2,430	1,902	-	-	-	2,361	8,316	35,403
New Mexico.....	-	4,486	-	-	9	-	-	-	-	-	4,486
Arizona.....	-	5,425	-	-	4,488	-	-	-	605	385	17,900
Utah.....	-	18,994	-	-	1,572	-	-	-	-	-	76,567
Nevada.....	-	582	-	-	-	-	-	-	-	56,001	582
Mountain.....	-	63,093	-	2,430	11,748	-	-	-	2,361	10,351	518,933
Washington.....	-	75,956	-	8,076	7,038	-	-	-	-	660	193,580
Oregon.....	-	24,119	-	4,293	8,262	-	-	-	114	2,244	96,232
California.....	-	367,956	4,335	26,595	185,436	-	-	-	5,577	271,557	977,160
Pacific.....	-	468,031	4,335	38,964	200,736	-	-	-	114	8,481	140,158
UNITED STATES.....	20,832	2,226,810	4,425	629,403	1,464,049	27,372	-	-	523,956	501,006	7,085,097

1/ Skim-milk equivalents of the skimmed milk and buttermilk products as reported by dairy manufacturing plants. Totals shown exclude skim milk and buttermilk sold in fluid form or used for some minor products. Products included and conversion factors for converting to a skim-milk equivalent basis are: American full-skim cheese, 16.0; cottage cheese, 6.25; dried or powdered buttermilk and nonfat dry milk solids, 11; dry casein, 35.7; and 3 each for case and bulk sweetened condensed skim milk, bulk unsweetened condensed skim milk (plain condensed), concentrated skim milk (for animal feed), and condensed or evaporated buttermilk. Because of the fact that some of the skimmed milk and buttermilk products are not standardized, and because of the variations in percentage of solids not fat in skim milk and buttermilk, these conversion factors are only approximate.

2/ Plain condensed.

3/ Includes skim milk for animal feed.

4/ Skimmed milk or buttermilk.

List of Tables

<u>Table Number</u>		<u>Page No.</u>
1.	Whole milk used in manufactured dairy products: Total per capita, and percentage distribution by major products on net whole milk equivalent basis, United States, 1937-51	2
2.	Frozen dairy products: Production for specified items and total, United States, 1946-51	5
3.	Skim-milk equivalents: Calculated quantities used in certain skim milk and buttermilk products, United States, 1937-51	6
4.	Revisions, manufactured dairy products: Production, by specified items, United States, by months, 1950	8
5.	Manufactured dairy products: Production, by specified items, United States, 1942-51	9
6.	Manufactured dairy products: Production, by specified items, by geographic divisions, United States, 1950 and 1951	10-11
7.	Manufactured dairy products: Production, by specified items, United States, by months, 1951	12
8.	Manufactured dairy products: Production, by specified items, by States, 1950 and 1951	13-20
9.	Butter, creamery: Production, by States, by months, 1951	21
10.	Cheese, Cheddar, made from whole milk: Production, by States, by months, 1951	22
11.	Cheese, total American, made from whole milk: Production, by States, by months, 1951	23
12.	Cheese, total, excluding full-skim American and cottage: Production, by States, by months, 1951	24
13.	Cheese, cottage, curd: Production, by States, by months, 1951	25
14.	Cheese, cottage, creamed: Production, by States, by months, 1951	26
15.	Condensed milk, whole, unsweetened, bulk goods: Production, by States, by months, 1951	27
16.	Condensed milk, skim, unsweetened, bulk goods: Production, by States, by months, 1951	27
17.	Evaporated milk, whole, unsweetened, case goods: Production, by States, by months, 1951	28
18.	Dried milk, whole: Production, by States, by months, 1951	28
19.	Nonfat dry milk solids, spray process, for human consumption: Production, by States, by months, 1951	29
20.	Nonfat dry milk solids, roller process, for human consumption: Production, by States, by months, 1951	29
21.	Ice cream, wholesale: Production, by States, by months, 1951	30

(Continued on page 36)

<u>Table Number</u>	<u>Page No.</u>
22. Ice cream, total: Production, by States, by months, 1951	31
23. Ice milk: Production by States, by months, 1951	32
24. Whole milk used in manufactured dairy products: Calculated quantities used in specified products, on a whole-milk equivalent basis, by States, 1951	33
25. Skim-milk equivalents: Calculated quantities used in specified skim milk and buttermilk products, by States, 1951	34

END