



AgEcon SEARCH
RESEARCH IN AGRICULTURAL & APPLIED ECONOMICS

The World's Largest Open Access Agricultural & Applied Economics Digital Library

This document is discoverable and free to researchers across the globe due to the work of AgEcon Search.

Help ensure our sustainability.

Give to AgEcon Search

AgEcon Search

<http://ageconsearch.umn.edu>

aesearch@umn.edu

*Papers downloaded from **AgEcon Search** may be used for non-commercial purposes and personal study only. No other use, including posting to another Internet site, is permitted without permission from the copyright owner (not AgEcon Search), or as allowed under the provisions of Fair Use, U.S. Copyright Act, Title 17 U.S.C.*

SSB 414 (1952)

USDA STATISTICAL BULLETINS

UPDATA

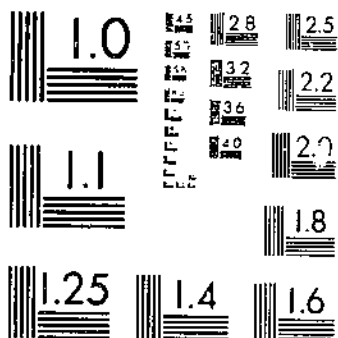
FRUITS - NONCITRUS

PRODUCTION - FARM DISPOSITION

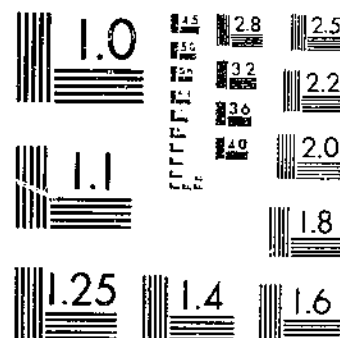
VALUE - AND - 1944-49

OF

START



MICROCOPY RESOLUTION TEST CHART
NATIONAL BUREAU OF STANDARDS 1963-A



MICROCOPY RESOLUTION TEST CHART
NATIONAL BUREAU OF STANDARDS 1963-A

Fruits

(NONCITRUS)

PRODUCTION, FARM DISPOSITION, VALUE, AND UTILIZATION OF SALES, 1944 - 49

Revised Estimates



Statistical Bulletin No. 114

UNITED STATES DEPARTMENT OF AGRICULTURE
BUREAU OF AGRICULTURAL ECONOMICS
CROP REPORTING BOARD

Washington, D. C.
October 1952

- INDEX -

FRUITS-NONCITRUS: PRODUCTION, FARM DISPOSITION, VALUE,
AND UTILIZATION OF SALES, 1944-1949

	<u>Page</u>
Apples - Commercial crop	4 - 8
Apples - Production by varieties	8 - 16
Apricots	42 - 43
Avocados	42
Cherries	31 - 35
Cranberries	39
Dates	41
Figs	40 - 41
Grapes	26 - 30
Olives	39 - 40
Peaches	17 - 20
Pears	21 - 25
Persimmons	44
Pineapples	44
Plums	36 - 37
Pomegranates	44
Prunes	36 - 38
Economic abandonment	45
Marketing seasons	2
Total production, by kinds	3
Total production, value and utilization	3

UNITED STATES DEPARTMENT OF AGRICULTURE
Bureau of Agricultural Economics
Crop Reporting Board

FRUITS
(Noncitrus)
PRODUCTION, FARM DISPOSITION, VALUE, AND
UTILIZATION OF SALES, 1944-1949

This publication presents statistics on production, farm disposition, price, value, and utilization of noncitrus fruits for the crop years 1944 through 1949. Data for years prior to 1944 are shown in the publication "Fruits (non-citrus)" issued May 1948. For commercial apples, production is shown by varieties for selected States and areas. The data in this bulletin are revised on the basis of the 1950 Census of Agriculture.

The categories of use given here cover first commercial use of fruit and not necessarily final utilization. For example, dried apple chops made into apple butter are considered as dried apples and not as apple butter, and frozen fruits used for preserves are included under frozen fruits. Fruit bought fresh by housewives and later canned or otherwise processed is included in fresh sales. The difference between total production and production having value is the quantity not utilized because of economic conditions, including unharvested fruit and excess cullage of harvested fruit. The difference between production and sales of fruit is the quantity consumed in farm households and quantities not utilized because of economic conditions. Estimates of the commercial apple crop refer to the total production of apples in the commercial apple areas of each State.

The season average prices shown in this report are estimated average returns to growers for all methods of sale. Value of production is the season average price multiplied by production having value, including fruit used on farms. Value of sales is the season average price multiplied by the quantity sold. The values shown are for the marketing season or crop year, and should not be confused with calendar-year income. Two series of United States season average prices are shown in the various tables. These were computed by weighting the State prices by production having value and also by quantities sold.

Prepared by E. O. Schlotzhauer and O. M. Frost with the assistance of the State Statisticians and under the general direction of R. Royston, Head, Division of Fruit and Vegetable Statistics.

FRUITS (Noncitrus): MARKETING SEASONS FOR SPECIFIED CROPS

- Apples: Fresh fruit, New Jersey, Indiana, Illinois, Missouri, New Mexico, and all South Atlantic and South Central States, June 1 to May 31; all other States, July 1 to June 30; canning, August 1 to February 28; dried, August 1 to July 31.
- Apricots: Fresh fruit, June 1 to August 31; canning, June 1 to August 31; dried, California, July 1 to June 30.
- Avocados: California, October 1 to September 30; Florida, July 1 to February 28.
- Cherries: Fresh fruit, sweet varieties, May 1 to July 31; sour varieties, June 1 to August 31.
- Cranberries: Fresh fruit, September 1 to December 31; processing, September 1 to March 31.
- Dates: September 1 to August 31.
- Figs: Fresh fruit, June 1 to October 31; canning, August 1 to October 31; dried, California, September 1 to August 31.
- Grapes: Fresh fruit, June 1 to January 31; for wine and brandy, August 1 to November 30; California dried raisins, September 1 to August 31.
- Olives: October 1 to February 28.
- Peaches: Fresh fruit, Georgia, May 1 to August 31; South Atlantic States (except Georgia), South Central States and California, June 1 to September 30; New England States and Idaho, August 1 to September 30; all other States, July 1 to September 30; canning, California, July 1 to September 30; dried, California, August 1 to July 31.
- Pears: Fresh fruit, California, June 1 to May 31; Washington, Oregon and New York, July 1 to May 31; South Carolina, Georgia, Florida, Alabama, Mississippi, Louisiana and Texas, June 1 to December 31; all other States, July 1 to December 31; canning, California, Washington and Oregon, August 1 to November 30; dried, California, September 1 to August 31.
- Pineapples: Florida, May 1 to December 31.
- Plums: Fresh fruit, May 1 to September 30; canning, June 1 to September 30.
- Prunes: Fresh fruit, July 1 to October 31; canning, August 1 to October 31; dried, September 1 to August 31.

PRODUCTION BY KINDS, UNITED STATES, 1944-1949

Season	Apples (commercial crop 1/)	Peaches	Pears	Grapes	Cherries	Plums and Prunes	Apricots	Figs	Olives	Avocados	Dates	Cran- berries	Persimmons and Pomegranates	Pineapples	Total 16 Fruits
<u>Thousand tons - fresh equivalent</u>															
1944	2,910	1,874	766	2,696	196	604	352	125	42	17	13	19	7		9,621
1945	1,600	1,901	799	2,767	148	784	192	113	30	27	7	33	7		8,408
1946	2,854	1,988	823	3,137	228	794	339	129	48	20	17	43	7		10,427
1947	2,709	1,834	837	3,020	171	674	201	131	40	21	10	40	7		9,695
1948	2,144	1,455	614	3,061	213	615	246	103	58	18	16	48	6		8,597
1949	3,216	1,660	835	2,623	245	635	197	94	35	20	14	42	7		9,623

1/ Estimates of the commercial crop refer to the total production of apples in the commercial areas of the State.

PRODUCTION 1/, VALUE, AND UTILIZATION, UNITED STATES, 1944-1949

Season	Production		Farm disposition		Value of production	Value of sales	Fresh sales	Total	Utilization of sales				Other 3/				
	2/ value	2/ use	having value	For farm household Sold					Canned	Dried	Frozen	Processed					
<u>Thousand tons - fresh equivalent</u>													<u>Thousand dollars</u>		<u>Thousand tons - fresh equivalent</u>		
1944	9,621	9,496	428	9,068	872,281	829,647	4,043	5,025	1,176	2,264	150		1,435				
1945	8,408	8,333	323	8,010	772,875	738,024	3,425	4,585	983	1,994	176		1,432				
1946	10,427	10,400	380	10,020	1,074,566	1,035,311	4,130	5,890	1,623	1,867	169		2,231				
1947	9,695	9,540	357	9,183	644,582	613,627	4,129	5,054	1,370	2,168	77		1,439				
1948	8,597	8,514	297	8,217	636,960	607,914	3,375	4,842	1,317	1,652	81		1,792				
1949	9,623	9,067	303	8,764	517,916	496,314	3,972	4,792	1,428	1,830	93		1,441				

1/ Apples (commercial crop), peaches, pears, grapes, cherries, plums, prunes, apricots, figs, olives, avocados, dates, cranberries, persimmons, pomegranates and pineapples.

2/ Differences between production and production having value consist of fruit not harvested on account of economic conditions and/or excess cullage of harvested fruit.

3/ Used for jellies, juice, wine, etc.

APPLES - COMMERCIAL CROP 1/; PRODUCTION, FARM DISPOSITION, SEASON AVERAGE PRICE PER BUSHEL TO GROWERS AND VALUE, BY STATES, 1944 AND 1945

Area and State	1944								1945					
	Production	Not utilized	Production having value	Farm disposition		Price	Value of production	Value of sales	Production	Farm disposition		Price	Value of production	Value of sales
				household use	Sold					household use	Sold			
	Thousand bushels	2/	Thousand bushels	Thousand bushels	Thousand bushels	Dollars	Thousand dollars	Thousand dollars	Thousand bushels	Thousand bushels	Dollars	Thousand dollars	Thousand dollars	
Eastern														
N. Atlantic														
Me.	1,058	--	1,058	130	928	2.01	2,127	1,865	149	20	129	4.35	648	561
N. H.	970	--	970	85	885	2.02	1,959	1,798	182	12	169	4.31	780	728
Vt.	755	--	755	50	705	2.27	1,714	1,600	144	9	135	4.31	621	582
Mass.	3,100	91	3,009	152	2,857	2.09	6,289	5,971	455	39	416	4.02	1,829	1,672
R. I.	234	23	201	13	188	2.06	414	387	68	5	63	4.07	277	256
Conn.	1,380	58	1,322	144	1,178	2.43	3,212	2,953	487	45	422	4.31	2,013	1,819
N. Y.	15,795	566	15,229	667	14,562	1.65	25,128	24,027	2,160	240	1,920	3.15	6,804	6,048
N. J.	2,650	46	2,604	65	2,539	2.51	6,536	6,373	1,575	59	1,516	3.58	5,638	5,427
Pa.	8,295	273	8,022	780	7,242	1.65	13,238	11,982	2,375	248	2,127	3.05	7,244	6,487
Total N.A.	34,227	1,057	33,170	2,066	31,104	4/1.83	60,615	56,856	7,574	677	6,897	4/3.42	25,954	23,590
S. Atlantic														
Del.	692	24	668	20	648	1.95	1,303	1,264	235	8	227	2.97	698	674
Md.	1,895	12	1,883	116	1,767	1.65	3,107	2,916	689	70	619	2.85	1,964	1,784
Va.	13,500	412	13,088	620	12,468	1.45	18,978	18,079	3,600	200	3,600	2.75	10,450	9,900
W. Va.	4,884	98	4,786	297	4,489	1.45	6,940	6,509	1,944	90	1,854	2.85	5,540	5,284
N. C.	1,320	53	1,267	427	840	1.61	2,040	1,952	202	95	107	2.77	560	526
Total S. A.	22,291	599	21,692	1,480	20,212	4/1.49	32,368	30,120	6,870	463	6,407	4/2.80	19,212	17,918
Total Eastern	56,518	1,656	54,862	3,546	51,316	4/1.69	92,983	86,976	14,444	1,140	13,304	4/3.12	45,066	41,496
Central														
N. Central														
Ohio	4,540	100	4,440	660	3,780	2.20	9,768	8,316	780	200	580	3.64	2,839	2,111
Ind.	1,220	--	1,220	234	986	2.30	2,806	2,253	730	158	574	2.80	2,044	1,607
Ill.	2,300	--	2,300	160	2,040	2.45	5,350	4,998	2,378	150	2,228	2.55	6,059	5,676
Mich.	7,300	150	7,150	380	6,770	1.65	11,798	11,204	1,250	180	1,070	2.90	3,625	3,103
Wis.	905	--	905	98	707	2.54	2,045	1,796	335	90	245	3.60	1,206	882
Minn.	167	--	167	68	99	2.22	371	220	117	45	72	3.35	393	242
Iowa	83	--	83	25	58	2.76	229	160	63	9	54	3.91	246	211
Mo.	748	--	748	148	600	2.85	2,132	1,710	852	150	732	3.10	2,734	2,259
Nebr.	84	--	84	10	74	2.75	231	204	39	10	29	3.19	124	93
Kans.	347	--	347	17	330	2.67	996	947	324	20	304	3.08	998	936
Total N. C.	17,494	250	17,244	1,780	15,464	4/2.06	35,766	31,823	6,895	1,010	5,886	4/2.91	20,268	17,130
S. Central														
Ky.	185	--	185	50	135	2.18	403	294	227	52	175	2.51	570	439
Tenn.	351	--	351	10	341	2.67	937	910	308	46	260	2.47	756	642
Ark.	486	--	486	68	418	1.55	753	648	269	36	233	2.30	619	536
Total S. C.	1,022	--	1,022	128	894	4/2.07	2,093	1,852	802	134	668	4/2.42	1,945	1,617
Total Central	18,516	250	18,266	1,908	16,358	4/2.06	37,859	33,675	7,698	1,144	6,554	4/2.86	22,213	18,747
Western														
Mont.	256	10	246	25	221	1.97	485	435	241	28	213	2.80	675	596
Idaho	1,639	36	1,603	49	1,614	1.90	3,160	3,087	2,299	42	2,257	3.05	7,012	6,894
Calif.	1,930	60	1,870	51	1,819	1.89	3,534	3,438	1,275	42	1,233	2.99	3,812	3,587
N. Mex.	817	--	817	80	737	2.18	1,781	1,607	500	82	418	3.04	1,520	1,274
Utah	629	29	600	44	556	2.09	1,254	1,182	488	40	448	2.80	1,361	1,249
Wash.	31,600	--	31,600	114	31,486	2.48	78,368	78,085	26,530	92	26,438	3.04	80,651	80,372
Ore.	3,157	--	3,157	184	2,973	2.22	7,009	6,600	2,645	184	2,461	2.94	7,778	7,255
Calif.	6,144	--	6,144	112	6,032	1.92	11,796	11,581	10,588	112	10,456	2.18	23,038	22,794
Total Western	46,232	136	46,097	659	45,438	4/2.33	107,387	105,975	44,544	622	43,922	4/2.83	125,945	124,088
Total U. S.	121,286	2,041	119,225	6,113	113,112	4/2.00	238,229	226,626	65,686	2,906	63,780	4/2.89	193,174	184,333

1/ Estimates of the commercial crop refer to the total production of apples in commercial areas of each State.
 2/ See page 45 for separate estimates of quantities not harvested on account of economic conditions and/or excess cullage of harvested fruit.
 3/ Production all of value.
 4/ State prices weighted by quantities sold.
 5/ State prices weighted by production having value.

APPLES - COMMERCIAL CROP 1/; PRODUCTION, FARM DISPOSITION, SEASON AVERAGE PRICE PER BUSHEL TO GROWERS AND VALUE, BY STATES, 1946 AND 1947

1946

1947

Area and State	Production	Not utilized	Production having value	Farm disposition		Price	Value of production	Value of sales	Production	Not utilized	Production having value	Farm disposition		Price	Value of production	Value of sales
				Household use	Sold							Household use	Sold			
	Thousand bushels					Dollars	Thousand dollars		Thousand bushels					Dollars	Thousand dollars	
Eastern																
N. Atlantic																
Me.	767	--	767	86	681	3.20	2,454	2,179	930	--	930	121	809	2.80	2,604	2,265
N. H.	493	--	493	38	455	3.25	1,602	1,479	958	--	958	59	899	2.40	2,299	2,158
Vt.	424	--	424	19	405	3.15	1,338	1,276	799	16	783	25	758	2.60	2,036	1,971
Mass.	1,914	--	1,914	99	1,815	3.15	6,029	5,717	2,697	--	2,697	88	2,609	2.25	6,068	5,870
R. I.	129	--	129	8	121	3.15	406	381	184	--	184	8	176	2.55	469	449
Conn.	1,122	--	1,122	88	1,034	3.20	3,590	3,309	1,292	26	1,266	74	1,192	2.65	3,355	3,159
N. Y.	15,116	227	14,889	621	14,268	1.70	25,311	24,256	15,045	889	14,156	575	13,581	1.45	20,526	19,692
N. J.	2,970	--	2,970	71	2,899	2.60	7,722	7,537	1,935	--	1,935	74	1,861	2.10	4,054	3,908
Pa.	8,308	--	8,308	700	7,608	2.10	17,237	15,767	6,213	--	6,213	600	5,613	1.90	11,805	10,665
Total N.A.	31,143	227	30,916	1,730	29,186	3/2.12	65,687	61,901	30,053	931	29,122	1,624	27,498	3/1.82	53,226	50,137
S. Atlantic																
Del.	570	--	570	10	560	2.15	1,226	1,204	308	--	308	8	300	1.80	554	540
Md.	1,853	--	1,853	87	1,766	2.10	3,691	3,709	853	--	853	55	798	1.80	1,535	1,436
Va.	12,975	300	12,775	600	12,175	1.95	24,911	23,741	5,072	--	5,072	220	4,852	1.80	9,130	8,734
W. Va.	4,900	--	4,900	232	4,668	2.15	10,535	10,036	2,720	--	2,720	129	2,592	1.90	5,188	4,925
N. C.	1,404	--	1,404	490	924	2.25	3,159	2,079	940	--	940	350	590	2.20	2,088	1,828
Total S.A.	21,702	300	21,502	1,409	20,093	3/2.03	43,722	40,769	9,893	--	9,893	761	9,132	3/1.85	18,455	16,933
Midwestern																
Total M.W.	52,845	427	52,418	3,139	49,279	3/2.08	109,409	102,670	39,946	931	39,015	2,495	36,630	3/1.93	71,681	67,070
Central																
N. Central																
Ohio	2,350	--	2,350	396	1,954	2.80	6,580	5,471	3,038	243	2,795	432	2,363	1.90	5,310	4,490
Ind.	1,260	--	1,260	153	1,107	2.60	3,278	2,878	1,680	102	1,578	153	1,400	2.10	3,272	2,940
Ill.	3,300	--	3,300	178	3,122	2.20	7,436	7,044	4,029	375	3,654	198	3,456	1.75	6,394	6,048
Mich.	7,560	--	7,560	325	7,235	1.65	12,474	11,938	6,400	255	6,145	325	5,920	1.35	8,298	7,857
Wis.	1,182	--	1,182	133	1,029	2.00	2,324	2,058	1,080	--	1,080	132	948	2.10	2,268	1,991
Minn.	65	--	65	10	55	2.70	176	148	272	42	230	75	155	2.20	506	341
Iowa	143	--	143	60	83	2.60	372	216	129	--	129	50	79	2.50	322	198
Mo.	1,230	--	1,230	194	1,036	2.65	3,260	2,745	1,680	--	1,680	225	1,455	2.10	3,528	3,056
Nebr.	68	--	68	14	54	2.90	197	157	88	3	85	16	69	2.30	196	159
Kans.	514	--	514	28	486	2.85	1,465	1,385	666	52	614	30	584	2.25	1,382	1,314
Total N.C.	17,732	--	17,732	1,491	16,241	3/2.10	37,560	34,040	19,042	1,072	17,970	1,641	16,329	3/1.74	31,474	28,394
S. Central																
Ky.	297	--	297	68	229	2.65	728	561	302	--	302	60	242	2.30	695	557
Tenn.	351	--	351	48	303	2.55	895	773	459	--	459	63	396	2.40	1,102	950
Ark.	677	--	677	70	607	1.75	1,185	1,062	756	113	643	75	568	1.25	804	710
Total S.C.	1,325	--	1,325	186	1,139	3/2.10	2,808	2,396	1,517	113	1,404	198	1,206	3/1.84	2,601	2,217
Total Central	19,057	--	19,057	1,677	17,380	3/2.10	40,368	36,436	20,559	1,185	19,374	1,839	17,535	3/1.75	34,075	30,611
Western																
Mont.	50	--	50	4	46	3.00	150	138	238	50	188	14	174	1.95	367	339
Idaho	1,233	20	1,213	34	1,179	2.70	3,275	3,183	2,075	162	1,913	34	1,879	1.30	2,487	2,443
Calo.	1,100	20	1,080	40	1,040	2.30	2,484	2,392	1,568	232	1,336	46	1,290	1.95	2,605	2,516
N. Mex.	924	--	924	75	849	2.90	2,680	2,462	575	30	545	68	477	2.30	1,254	1,097
Utah	364	40	324	45	279	2.70	875	753	505	65	440	56	384	2.00	890	768
Wash.	32,710	--	32,710	96	32,614	2.80	91,588	91,319	33,480	670	32,810	108	32,702	2.05	67,260	67,039
Ore.	2,970	--	2,970	164	2,786	2.50	7,425	6,965	2,864	20	2,844	184	2,660	1.57	4,465	4,176
Calif.	7,648	--	7,648	112	7,536	1.78	13,613	13,414	11,082	1,125	9,957	112	9,845	.93	9,260	9,156
Total Western	46,999	80	46,919	590	46,329	3/2.30	122,080	120,626	52,387	2,354	50,033	622	49,411	3/1.77	88,578	87,534
Total U.S.	118,901	507	118,394	5,406	112,988	3/2.30	271,667	259,732	112,892	4,470	108,422	4,846	103,576	3/1.79	194,334	185,215

1/ Estimates of the commercial crop refer to the total production of apples in commercial areas of each State.

2/ See page 45 for separate estimates of quantities not harvested on account of economic conditions and/or excess cullage of harvested fruit.

3/ State prices weighted by quantities sold.

4/ State prices weighted by production having value.

APPLES - COMMERCIAL CROP 1/: PRODUCTION, FARM DISPOSITION, SEASON AVERAGE PRICE PER BUSHEL TO GROWERS AND VALUE, BY STATES, 1948 AND 1949

UPDATA 1981

Area and State	1948						1949									
	Produc- tion	Not util- ized	Produc- tion having value	Farm disposition Farm household Sold	Price	Value of produc- tion	Value of sales	Produc- tion	Not util- ized	Produc- tion having value	Farm disposition Farm household Sold	Price	Value of produc- tion	Value of sales		
	2/ Thousand bushels	2/ Thousand bushels	2/ Thousand bushels	3/ Use	Dollars	Thousand dollars	Thousand dollars	2/ Thousand bushels	2/ Thousand bushels	2/ Thousand bushels	3/ Use	Dollars	Thousand dollars	Thousand dollars		
Eastern																
N. Atlantic																
Me.	949	---	949	108	841	2.70	2,562	2,271	1,006	---	1,006	98	908	2.05	2,062	1,861
N.H.	731	---	731	52	679	2.65	1,937	1,799	1,328	---	1,328	50	1,278	1.85	2,457	2,264
Vt.	774	---	774	23	751	2.55	1,974	1,915	1,089	44	1,045	22	1,023	1.85	1,933	1,893
Mass.	2,040	---	2,040	85	1,955	2.60	5,304	5,083	3,442	103	3,339	88	3,251	1.80	6,010	5,852
R.I.	136	---	136	6	130	2.90	394	377	258	13	245	5	240	1.85	453	444
Conn.	845	---	845	54	791	3.00	2,535	2,373	1,697	102	1,595	65	1,530	1.95	3,110	2,984
N.Y.	11,750	294	11,456	500	10,956	2.00	22,912	21,912	20,090	2,722	17,368	438	16,930	1.15	19,973	19,470
N.J.	1,364	---	1,364	60	1,304	2.40	3,274	3,130	3,124	219	2,905	78	2,827	1.60	4,648	4,523
Pa.	4,120	---	4,120	420	3,700	1.80	7,416	6,660	8,288	663	7,625	500	7,125	1.15	8,769	8,194
Total E.A.	22,709	294	22,415	1,308	21,107	3/ 2.16	48,308	45,520	40,322	3,866	36,456	1,344	35,112	3/1.36	49,415	47,585
S. Atlantic																
Del.	284	---	284	7	277	2.00	568	554	425	---	425	6	419	1.40	595	587
Md.	862	---	862	49	813	1.60	1,379	1,301	1,151	---	1,151	54	1,097	1.45	1,669	1,591
Va.	8,240	86	8,154	336	7,818	1.60	13,046	12,509	8,525	---	8,525	300	8,225	1.18	10,050	9,706
W. Va.	2,948	---	2,948	135	2,813	1.75	5,159	4,923	3,900	---	3,900	90	3,810	1.15	4,485	4,382
D.C.	1,540	---	1,540	330	1,210	2.00	3,080	2,428	744	---	744	250	494	2.00	1,488	988
Total S.A.	13,874	86	13,788	857	12,931	3/ 1.68	23,232	21,702	14,745	---	14,745	700	14,045	3/1.23	18,297	17,254
Total Eastern	36,583	380	36,203	2,165	34,038	3/ 1.98	71,540	67,222	55,067	3,866	51,201	2,044	49,157	3/1.32	67,712	64,839
Central																
N. Central																
Ohio	1,936	---	1,936	288	1,648	2.40	4,646	3,955	5,446	1,002	4,444	484	3,960	1.25	5,555	4,950
Ind.	1,233	---	1,233	150	1,083	2.20	2,713	2,383	2,320	430	1,890	220	1,670	1.45	2,740	2,422
Ill.	2,450	---	2,450	144	2,306	2.15	5,268	4,958	4,680	650	4,030	150	3,880	1.40	5,642	5,432
Mich.	4,830	---	4,830	200	4,630	2.20	10,626	10,186	11,735	2,347	9,388	300	9,088	1.05	9,857	9,542
Wis.	990	---	990	146	844	2.50	2,475	2,110	1,280	180	1,100	165	935	1.35	1,485	1,262
Minn.	58	---	58	3	55	2.95	171	162	400	75	325	75	250	1.30	422	325
Iowa	210	---	210	72	138	2.75	578	380	319	44	275	99	176	1.80	495	317
Mo.	920	---	920	156	764	2.50	2,300	1,910	1,710	167	1,543	180	1,363	1.55	2,392	2,113
Nebr.	102	10	92	20	72	2.50	230	180	120	12	108	20	88	1.90	205	167
Kans.	285	---	285	20	265	2.25	641	596	510	58	452	71	421	1.90	859	800
Total N. Cent.	13,014	10	13,004	1,199	11,805	3/ 2.27	29,648	26,820	28,520	1,365	27,155	1,724	21,831	3/1.25	29,652	27,370
S. Central																
Ty.	288	---	288	66	222	2.15	619	477	518	36	482	82	400	1.75	844	700
Tenn.	426	---	426	50	376	2.35	1,001	884	383	19	364	40	324	1.70	764	680
Ark.	567	---	567	70	497	2.00	1,134	994	709	---	709	75	634	1.20	847	757
Total S. Cent.	1,281	---	1,281	186	1,095	3/ 2.15	2,754	2,355	1,602	55	1,547	197	1,355	3/1.58	2,455	2,137
Total Central	14,295	10	14,285	1,385	12,900	3/ 2.26	32,402	29,175	30,122	5,020	25,107	1,921	23,186	3/1.27	32,107	29,507
Western																
Mont.	214	73	141	17	124	2.20	310	273	170	38	132	18	114	1.50	198	171
Idaho	1,450	54	1,396	30	1,366	1.80	2,513	2,459	1,825	222	1,603	30	1,573	1.00	1,603	1,573
Colo.	1,380	75	1,305	53	1,252	2.20	2,871	2,754	1,570	218	1,352	62	1,290	1.60	2,163	2,064
N. Mex.	660	65	595	60	535	2.10	1,250	1,124	660	74	586	60	526	1.80	1,055	947
Utah	450	---	450	50	400	1.95	878	780	365	21	344	50	294	1.55	533	456
Wash.	25,760	76	25,684	108	25,576	2.80	71,915	71,613	31,820	2,340	29,480	120	29,360	1.73	51,000	50,793
Oreg.	2,668	100	2,568	175	2,393	2.10	5,393	5,025	2,953	130	2,823	180	2,643	1.70	4,799	4,493
Calif.	5,870	---	5,870	112	5,758	1.22	7,161	7,025	9,445	---	9,445	112	9,333	---	7,650	7,560
Total Western	38,452	443	38,009	605	37,404	3/ 2.43	92,291	91,053	48,808	3,043	45,765	632	45,133	3/1.51	69,001	68,057
Total U. S.	89,330	833	88,497	4,155	84,342	3/ 2.22	196,233	187,455	134,002	11,929	122,073	4,597	117,476	3/1.38	168,820	162,363

1/ Estimates of the commercial crop refer to the total production of apples in commercial areas for each State.
 2/ See page 45 for separate estimates of quantities not harvested on account of economic conditions and/or excess cullage of harvested fruit.
 3/ State prices weighted by quantities sold.
 4/ State prices weighted by production having value.

APPLES--COMMERCIAL CROP 1/: PRODUCTION AND UTILIZATION, 1944-1949

© UPDATA 1981

201400 0-53-2

Season	Utilization of sales										Utilization of sales									
	Production 2/	Production 2/	Production 2/	Production 2/	Production 2/	Production 2/	Production 2/	Production 2/	Production 2/	Production 2/	Production 2/	Production 2/	Production 2/	Production 2/	Production 2/	Production 2/	Production 2/	Production 2/	Production 2/	Production 2/
Thousand bushels																				
TOTAL 35 COMMERCIAL STATES										TOTAL NORTH ATLANTIC STATES 4/										
1944	121,266	119,225	6,113	113,112	77,808	9,468	5/7,015	5/2,221	16,600	34,227	33,170	2,066	31,104	19,029	4,343	487	667	6,578	6,578	
1945	66,686	66,686	2,906	63,780	47,264	3,867	5/4,685	5/2,442	5,522	7,574	7,574	6,897	4,614	1,037	---	---	3	1,243	1,243	
1946	118,901	118,394	5,406	112,988	75,658	13,747	5/5,714	5/2,175	15,694	31,143	30,916	1,730	29,186	15,610	6,578	145	459	6,394	6,394	
1947	112,892	108,422	4,846	103,576	77,207	9,003	5/4,926	5/762	11,678	30,053	29,122	1,624	27,498	17,170	5,104	109	256	4,859	4,859	
1948	89,330	88,497	4,155	84,342	64,887	7,796	5/2,564	5/913	8,182	22,709	22,415	1,308	21,107	14,288	3,322	40	294	3,163	3,163	
1949	134,002	122,073	4,597	117,476	81,235	14,068	5/4,847	5/1,531	15,795	40,322	36,456	1,344	35,112	21,274	6,350	347	509	6,632	6,632	
TOTAL SOUTH ATLANTIC STATES 6/										TOTAL CENTRAL STATES 7/										
1944	22,291	21,692	1,480	20,212	11,182	3,399	5/598	5/283	4,750	18,516	18,266	1,908	16,358	12,024	366	---	284	3,684	3,684	
1945	6,870	6,870	463	6,407	3,719	1,702	5/60	5/121	805	7,698	7,698	1,144	6,554	5,357	61	---	18	1,118	1,118	
1946	21,702	21,502	1,409	20,093	10,470	4,369	5/452	5/489	4,313	19,057	19,057	1,677	17,380	12,724	1,007	---	415	3,234	3,234	
1947	9,893	9,893	761	9,132	5,305	2,359	5/19	5/98	1,351	20,559	19,374	1,839	17,535	13,532	390	---	230	3,383	3,383	
1948	13,874	13,788	857	12,931	8,226	2,831	5/105	5/321	1,448	14,295	14,285	1,385	12,900	10,855	285	---	60	1,700	1,700	
1949	14,745	14,745	700	14,045	6,760	5,126	5/179	5/390	1,590	30,127	25,107	1,921	23,186	17,250	755	---	301	4,880	4,880	
TOTAL WESTERN STATES 8/										NEW ENGLAND STATES										
1944	46,232	46,097	659	45,438	35,573	1,360	5,930	987	1,588	7,487	7,315	574	6,741	5,769	24	---	---	948	948	
1945	44,544	44,544	622	43,922	33,574	1,067	4,625	2,300	2,356	1,464	1,464	130	1,334	1,171	8	---	---	155	155	
1946	46,999	46,919	590	46,329	36,854	1,793	5,117	812	1,753	4,849	4,849	338	4,511	3,811	35	---	---	665	665	
1947	52,387	50,033	622	49,411	41,200	1,150	4,798	178	2,085	6,860	6,818	375	6,443	5,588	39	---	---	816	816	
1948	38,452	38,009	605	37,404	31,518	1,358	2,419	238	1,871	5,475	5,475	328	5,147	4,681	21	---	---	445	445	
1949	48,808	45,765	632	45,133	35,951	1,837	4,321	331	2,693	8,820	8,558	328	8,230	7,269	34	---	---	927	927	
NEW YORK										PENNSYLVANIA										
1944	15,795	15,229	667	14,562	7,584	1,909	437	577	4,055	8,295	8,022	760	7,262	3,617	2,410	50	90	1,095	1,095	
1945	2,160	2,160	240	1,920	1,312	90	---	3	515	2,375	2,375	248	2,127	807	935	---	---	385	385	
1946	15,116	14,889	621	14,268	6,218	3,551	115	449	3,935	8,208	8,208	700	7,508	3,264	2,954	30	10	1,250	1,250	
1947	15,045	14,156	575	13,581	7,227	3,140	109	196	2,909	6,213	6,213	600	5,613	2,713	1,900	---	60	940	940	
1948	11,750	11,456	500	10,956	6,667	2,236	40	184	1,829	4,120	4,120	420	3,700	1,800	1,050	---	110	740	740	
1949	20,090	17,368	438	16,930	8,181	4,406	222	349	3,772	8,288	7,625	500	7,125	3,625	1,900	125	160	1,315	1,315	
VIRGINIA										WEST VIRGINIA										
1944	13,500	13,088	620	12,468	6,521	2,067	5/	5/	3,880	4,884	4,786	297	4,489	2,316	862	5/	5/	1,311	1,311	
1945	3,800	3,800	200	3,600	1,987	969	5/	5/	644	1,944	1,944	90	1,854	941	614	5/	5/	239	239	
1946	12,975	12,775	600	12,175	5,700	2,667	5/	5/	3,808	4,900	4,900	232	4,668	2,631	939	5/	5/	1,098	1,098	
1947	5,072	5,072	220	4,852	2,592	1,338	5/	5/	922	2,720	2,720	128	2,592	1,560	640	5/	5/	392	392	
1948	8,240	8,154	336	7,818	4,541	2,115	5/	5/	1,162	2,948	2,948	135	2,813	1,808	425	5/	5/	580	580	
1949	8,525	8,525	300	8,225	3,361	3,552	5/	5/	1,312	3,900	3,900	90	3,810	1,747	1,369	5/	5/	694	694	
MICHIGAN										WASHINGTON										
1944	7,300	7,150	360	6,790	4,402	316	---	259	1,813	31,600	31,600	114	31,486	25,966	710	3,942	322	546	546	
1945	1,250	1,250	180	1,070	740	49	---	10	271	26,530	26,530	92	26,438	23,105	426	2,195	358	354	354	
1946	7,560	7,560	325	7,235	4,360	980	---	400	1,495	32,710	32,710	96	32,614	28,120	725	3,057	267	445	445	
1947	6,400	6,145	325	5,820	3,960	330	---	200	1,330	33,480	32,810	108	32,702	29,848	247	1,932	84	591	591	
1948	4,830	4,830	200	4,630	3,565	275	---	35	755	25,760	25,684	108	25,576	23,468	229	1,286	56	537	537	
1949	11,735	9,388	300	9,088	5,818	630	---	261	2,379	31,820	29,480	120	29,360	26,094	403	2,071	42	750	750	

See page g for footnotes.

APPLES - COMMERCIAL CROP 1/: PRODUCTION AND UTILIZATION, 1944-1949 - CONTINUED

Season	Product- tion 2/					Farm disposition 3/					Utilization of sales					Product- tion 2/					Farm disposition 3/					Utilization of sales																																																			
	value 2/	having	house-	Sold	hold use:	Fresh sales	Canned	Dried	Frozen	Other 3/	Processed	Other 3/	value 2/	having	house-	Sold	hold use:	Fresh sales	Canned	Dried	Frozen	Other 3/	Processed	Other 3/	value 2/	having	house-	Sold	hold use:	Fresh sales	Canned	Dried	Frozen	Other 3/	Processed	Other 3/																																									
																	Thousand bushels																																																												
																	OREGON																																																												
1944	3,157	3,157	184	2,973	2,209	322	---	118	324	---	---	6,144	6,144	112	6,032	2,842	288	1,867	375	660	---	---	10,568	10,568	112	10,456	4,369	379	2,430	1,725	1,553	---	---	7,648	7,648	112	7,536	3,329	750	2,000	397	1,060	---	---	11,082	9,957	112	9,845	5,174	650	2,832	30	1,159	---	---	5,870	5,870	112	5,758	2,661	831	1,073	120	1,073	---	---	9,445	9,445	112	9,333	4,215	1,120	2,210	166	1,622	---	---
1945	2,645	2,645	184	2,461	1,993	242	---	109	117	---	---	10,568	10,568	112	10,456	4,369	379	2,430	1,725	1,553	---	---	7,648	7,648	112	7,536	3,329	750	2,000	397	1,060	---	---	11,082	9,957	112	9,845	5,174	650	2,832	30	1,159	---	---	5,870	5,870	112	5,758	2,661	831	1,073	120	1,073	---	---	9,445	9,445	112	9,333	4,215	1,120	2,210	166	1,622	---	---											
1946	2,970	2,970	184	2,786	2,339	265	---	---	182	---	---	7,648	7,648	112	7,536	3,329	750	2,000	397	1,060	---	---	10,568	10,568	112	10,456	4,369	379	2,430	1,725	1,553	---	---	7,648	7,648	112	7,536	3,329	750	2,000	397	1,060	---	---	11,082	9,957	112	9,845	5,174	650	2,832	30	1,159	---	---	5,870	5,870	112	5,758	2,661	831	1,073	120	1,073	---	---	9,445	9,445	112	9,333	4,215	1,120	2,210	166	1,622	---	---
1947	2,864	2,864	184	2,660	2,277	236	---	10	147	---	---	7,648	7,648	112	7,536	3,329	750	2,000	397	1,060	---	---	10,568	10,568	112	10,456	4,369	379	2,430	1,725	1,553	---	---	7,648	7,648	112	7,536	3,329	750	2,000	397	1,060	---	---	11,082	9,957	112	9,845	5,174	650	2,832	30	1,159	---	---	5,870	5,870	112	5,758	2,661	831	1,073	120	1,073	---	---	9,445	9,445	112	9,333	4,215	1,120	2,210	166	1,622	---	---
1948	2,668	2,568	175	2,393	1,951	271	---	---	171	---	---	10,568	10,568	112	10,456	4,369	379	2,430	1,725	1,553	---	---	7,648	7,648	112	7,536	3,329	750	2,000	397	1,060	---	---	11,082	9,957	112	9,845	5,174	650	2,832	30	1,159	---	---	5,870	5,870	112	5,758	2,661	831	1,073	120	1,073	---	---	9,445	9,445	112	9,333	4,215	1,120	2,210	166	1,622	---	---											
1949	2,953	2,823	180	2,643	2,283	200	---	---	160	---	---	7,648	7,648	112	7,536	3,329	750	2,000	397	1,060	---	---	10,568	10,568	112	10,456	4,369	379	2,430	1,725	1,553	---	---	7,648	7,648	112	7,536	3,329	750	2,000	397	1,060	---	---	11,082	9,957	112	9,845	5,174	650	2,832	30	1,159	---	---	5,870	5,870	112	5,758	2,661	831	1,073	120	1,073	---	---	9,445	9,445	112	9,333	4,215	1,120	2,210	166	1,622	---	---
																	OTHER STATES																																																												
1944	23,104	22,734	2,425	20,309	16,582	560	121	207	2,839	---	---	6,144	6,144	112	6,032	2,842	288	1,867	375	660	---	---	10,568	10,568	112	10,456	4,369	379	2,430	1,725	1,553	---	---	7,648	7,648	112	7,536	3,329	750	2,000	397	1,060	---	---	11,082	9,957	112	9,845	5,174	650	2,832	30	1,159	---	---	5,870	5,870	112	5,758	2,661	831	1,073	120	1,073	---	---	9,445	9,445	112	9,333	4,215	1,120	2,210	166	1,622	---	---
1945	13,950	13,950	1,430	12,520	10,839	155	1	116	1,409	---	---	10,568	10,568	112	10,456	4,369	379	2,430	1,725	1,553	---	---	7,648	7,648	112	7,536	3,329	750	2,000	397	1,060	---	---	11,082	9,957	112	9,845	5,174	650	2,832	30	1,159	---	---	5,870	5,870	112	5,758	2,661	831	1,073	120	1,073	---	---	9,445	9,445	112	9,333	4,215	1,120	2,210	166	1,622	---	---											
1946	21,965	21,885	2,198	19,687	15,886	881	61	163	2,696	---	---	7,648	7,648	112	7,536	3,329	750	2,000	397	1,060	---	---	10,568	10,568	112	10,456	4,369	379	2,430	1,725	1,553	---	---	7,648	7,648	112	7,536	3,329	750	2,000	397	1,060	---	---	11,082	9,957	112	9,845	5,174	650	2,832	30	1,159	---	---	5,870	5,870	112	5,758	2,661	831	1,073	120	1,073	---	---	9,445	9,445	112	9,333	4,215	1,120	2,210	166	1,622	---	---
1947	23,156	21,687	2,219	19,468	16,268	493	34	84	2,589	---	---	7,648	7,648	112	7,536	3,329	750	2,000	397	1,060	---	---	10,568	10,568	112	10,456	4,369	379	2,430	1,725	1,553	---	---	7,648	7,648	112	7,536	3,329	750	2,000	397	1,060	---	---	11,082	9,957	112	9,845	5,174	650	2,832	30	1,159	---	---	5,870	5,870	112	5,758	2,661	831	1,073	120	1,073	---	---	9,445	9,445	112	9,333	4,215	1,120	2,210	166	1,622	---	---
1948	17,669	17,392	1,841	15,551	13,745	343	63	112	1,288	---	---	10,568	10,568	112	10,456	4,369	379	2,430	1,725	1,553	---	---	7,648	7,648	112	7,536	3,329	750	2,000	397	1,060	---	---	11,082	9,957	112	9,845	5,174	650	2,832	30	1,159	---	---	5,870	5,870	112	5,758	2,661	831	1,073	120	1,073	---	---	9,445	9,445	112	9,333	4,215	1,120	2,210	166	1,622	---	---											
1949	28,426	24,961	2,229	22,732	18,642	454	43	200	3,395	---	---	7,648	7,648	112	7,536	3,329	750	2,000	397	1,060	---	---	10,568	10,568	112	10,456	4,369	379	2,430	1,725	1,553	---	---	7,648	7,648	112	7,536	3,329	750	2,000	397	1,060	---	---	11,082	9,957	112	9,845	5,174	650	2,832	30	1,159	---	---	5,870	5,870	112	5,758	2,661	831	1,073	120	1,073	---	---	9,445	9,445	112	9,333	4,215	1,120	2,210	166	1,622	---	---

- 1/ Estimates of the commercial crop refer to production of apples in the commercial areas of each State.
- 2/ Differences between production and production having value consist of fruit not harvested on account of economic conditions and/or excess cullage of harvested fruit.
- 3/ Mostly crushed for vinegar, cider, and juice. For some minor States small quantities canned, dried and frozen are included.
- 4/ Ms., N.H., Vt., Mass., R.I., Conn., N.Y., N.J., and Pa.
- 5/ Dried and frozen apples in Va. and W. Va. are included with other processing. In the total South Atlantic States and 35 Commercial States these quantities are included under dried and frozen.
- 6/ Del., Md., Va., W. Va., and N.C.
- 7/ Ohio, Ind., Ill., Mich., Wis., Minn., Iowa, Mo., Nebr., Kans., Ky., Tenn. and Ark.
- 8/ Mont., Idaho, Colo., N. Mex., Utah, Wash., Oreg. and Calif.

APPLES: COMMERCIAL PRODUCTION FOR SELECTED STATES AND AREAS, BY VARIETIES, 1944-1949

VARIETIES	1944	1945	1946	1947	1948	1949	1944	1945	1946	1947	1948	1949	1944	1945	1946	1947	1948	1949
	Thousand bushels						Thousand bushels						Thousand bushels					
	TOTAL U.S.						NEW ENGLAND						NEW YORK					
SUMMER VARIETIES																		
Gravenstein	2,064	3,592	2,885	4,421	1,967	3,263	161	36	74	148	112	201	---	---	---	---	---	---
Other Summer	3,668	1,736	3,709	2,952	2,501	3,661	131	39	110	142	111	164	632	151	907	451	352	402
FALL VARIETIES																		
Grimes Golden	2,399	1,318	2,811	2,309	2,066	3,055	---	---	---	---	---	---	---	---	---	---	---	---
Jonathan	9,148	4,887	8,861	8,390	6,525	10,163	---	---	---	---	---	---	---	---	---	---	---	---
Wealthy	1,899	789	3,041	2,202	2,229	2,768	163	66	240	216	184	197	632	194	1,058	602	822	800
Other Fall	2,737	1,673	3,074	2,630	1,992	2,808	65	13	55	67	57	84	632	43	605	451	352	350
WINTER VARIETIES																		
Baldwin	3,827	911	2,399	5,099	1,795	5,067	1,275	284	669	1,446	757	1,150	1,737	367	1,058	2,106	588	2,100
Ben Davis and Gano	3,189	669	2,367	2,272	1,577	2,710	37	7	50	46	40	52	948	65	756	752	352	804
Black Twig (Paragon)	1,301	335	1,383	536	495	868	---	---	---	---	---	---	---	---	---	---	---	---
Cortland	1,553	250	1,895	2,041	1,986	3,255	265	66	290	364	315	463	1,106	130	1,360	1,354	1,410	2,100
Delicious	23,557	17,119	24,527	24,519	18,171	22,029	418	70	275	337	256	517	632	86	605	602	588	804
Golden Delicious	2,379	1,970	2,998	3,017	2,650	3,666	21	6	31	31	28	37	---	---	---	---	---	---
Mc Intosh	11,557	2,027	8,457	9,596	8,596	14,299	4,205	719	2,467	3,299	3,019	5,021	4,896	605	3,930	4,063	3,879	6,227
Northern Spy	2,066	412	1,894	2,067	1,266	2,648	286	56	207	280	222	302	790	151	756	903	352	804
R. I. Greening	2,371	217	2,313	2,419	1,734	3,874	117	28	77	129	76	162	1,895	130	1,965	2,106	1,528	3,289
Rome Beauty	6,608	4,409	7,574	6,585	6,132	8,345	21	7	26	29	25	51	474	108	1,058	602	705	1,205
Stayman	8,191	1,682	6,999	3,876	3,232	5,227	14	5	11	13	9	17	---	---	---	---	---	---
Winesap	13,892	10,553	13,054	11,895	10,008	12,454	---	---	---	---	---	---	---	---	---	---	---	---
Yellow Newtown 1/																		

APPLES: COMMERCIAL PRODUCTION FOR SELECTED STATES AND AREAS, BY VARIETIES, 1944-49, CONTINUED

© UPDATA 1981

Varieties	1944	1945	1946	1947	1948	1949	1944	1945	1946	1947	1948	1949	1944	1945	1946	1947	1948	1949
	Thousand bushels NEW JERSEY						Thousand bushels PENNSYLVANIA						Thousand bushels Total North Atlantic States					
SUMMER VARIETIES																		
Gravestain	53	32	59	19	9	9	---	---	---	---	---	---	214	68	133	167	121	210
Other Summer	398	189	238	155	100	312	166	95	164	124	82	249	1,327	474	1,419	872	645	1,127
FALL VARIETIES																		
Grimes Golden	106	63	119	77	55	156	166	119	287	249	206	373	272	182	406	326	261	529
Jonathan	53	32	59	39	14	31	498	190	657	373	330	663	551	222	716	412	344	694
Wealthy	27	47	89	77	27	63	166	47	246	146	165	166	988	354	1,633	1,081	1,198	1,226
Other Fall	133	94	149	97	68	93	83	71	205	186	124	456	913	221	1,014	801	601	983
WINTER VARIETIES																		
Baldwin	26	32	59	116	28	31	166	47	164	311	124	166	3,204	730	1,950	3,979	1,497	3,447
Ben Davis & Gano	---	---	---	---	---	---	249	36	164	124	124	166	1,234	108	970	922	516	1,022
Black Twig(Paragon)	80	32	89	19	14	63	166	95	287	186	82	207	246	127	376	205	96	270
Cortland	---	---	---	---	41	94	166	47	164	186	82	166	1,537	243	1,814	1,904	1,848	2,823
Delicious	318	205	267	174	95	281	664	228	657	373	247	564	2,032	589	1,804	1,486	1,186	2,166
Golden Delicious	53	94	149	155	95	156	249	190	287	249	165	332	323	290	467	435	288	525
McIntosh	238	94	178	213	109	281	249	71	246	311	247	414	9,588	1,489	6,821	7,886	7,254	11,943
Northern Spy	---	---	---	---	---	---	83	20	82	62	41	83	1,159	227	1,045	1,245	615	1,189
R. I. Greening	26	16	30	19	6	31	10	10	---	---	---	---	2,048	184	2,072	2,254	1,610	3,482
Rome Beauty	450	330	653	388	450	875	912	285	1,068	808	536	911	1,857	730	2,805	1,827	1,716	3,042
Stayman	424	173	624	272	205	531	2,737	238	2,299	1,243	577	1,491	3,175	416	2,934	1,528	791	2,039
Winesap	80	32	59	19	28	63	83	47	82	62	41	141	163	79	141	81	69	204
Yellow Newtown/	---	---	---	---	---	---	---	---	---	---	---	---	---	---	---	---	---	---
York Imperial	26	16	30	19	5	7	1,244	475	985	1,056	865	1,326	1,270	491	1,015	1,075	870	1,333
Other Winter	159	94	119	77	15	47	238	64	164	124	82	414	2,126	350	1,608	1,567	1,181	2,068
TOTAL ALL VARIETIES	2,650	1,575	2,970	1,935	1,364	3,124	8,295	2,375	8,208	6,213	4,120	8,288	34,227	7,574	31,143	30,053	22,709	40,322
	VIRGINIA						WEST VIRGINIA						NORTH CAROLINA					
SUMMER VARIETIES																		
Gravestain	---	---	---	---	---	---	---	---	---	---	---	---	---	---	---	---	---	---
Other Summer	405	76	389	155	181	170	195	78	196	82	118	117	26	2	14	9	15	7
FALL VARIETIES																		
Grimes Golden	405	190	519	330	495	391	440	156	490	272	265	351	13	2	28	28	46	45
Jonathan	405	76	389	125	247	313	290	78	196	163	147	234	13	---	14	10	15	7
Wealthy	---	---	---	---	---	---	---	---	---	---	---	---	---	---	---	---	---	---
Other Fall	405	190	519	280	412	313	195	78	245	136	59	156	92	4	84	38	62	7
WINTER VARIETIES																		
Baldwin	---	---	---	---	---	---	---	---	---	---	---	---	---	---	---	---	---	---
Ben Davis & Gano	675	114	519	255	231	406	295	97	196	109	118	312	40	4	28	19	31	7
Black Twig(Paragon)	540	76	519	150	214	430	195	39	147	27	29	78	66	6	70	28	46	22
Cortland	---	---	---	---	---	---	---	---	---	---	---	---	---	---	---	---	---	---
Delicious	1,485	266	1,427	455	577	1,194	540	194	392	245	236	663	290	47	281	141	200	149
Golden Delicious	270	190	389	291	330	272	100	97	196	82	177	234	106	12	155	94	185	120
McIntosh	---	---	---	---	---	---	---	---	---	---	---	---	---	---	---	---	---	---
Northern Sky	---	---	---	---	---	---	---	---	---	---	---	---	---	---	---	---	---	---
R. I. Greening	---	---	---	---	---	---	---	---	---	---	---	---	---	---	---	---	---	---
Rome Beauty	135	38	130	50	214	239	245	97	294	217	354	351	53	14	70	75	154	67
Stayman	1,890	342	1,687	515	865	1,023	730	97	637	217	265	390	264	30	267	263	416	120
Winesap	2,430	380	2,076	683	1,071	1,449	100	58	147	82	89	78	79	10	98	47	92	52
Yellow Newtown/	675	152	519	280	412	384	---	---	---	---	---	---	---	---	---	---	---	---
York Imperial	3,375	1,520	3,633	1,378	2,826	1,705	1,465	817	1,568	1,006	1,002	858	40	6	28	19	31	7
Other Winter	405	190	260	125	165	236	94	58	196	82	89	78	238	65	267	169	247	134
TOTAL ALL VARIETIES	13,500	3,800	12,975	5,072	8,240	8,525	4,884	1,944	4,900	2,720	2,948	3,900	1,320	202	1,404	940	1,540	744

1/ Albemarle Pippin

APPLES: COMMERCIAL PRODUCTION FOR SELECTED STATES AND AREAS, BY VARIETIES, 1944-49, CONTINUED

Varieties	1944	1945	1946	1947	1948	1949	1944	1945	1946	1947	1948	1949	1944	1945	1946	1947	1948	1949
	Thousand bushels						Thousand bushels						Thousand bushels					
	MARYLAND-DELAWARE						TOTAL SOUTH ATLANTIC STATES						OHIO					
SUMMER VARIETIES																		
Gravenstein	---	---	---	---	---	---	---	---	---	---	---	---	---	---	---	---	---	---
Other Summer	238	133	198	109	130	162	864	289	797	355	444	456	227	39	118	122	97	218
FALL VARIETIES																		
Grimes Golden	104	76	136	87	87	103	962	424	1,173	717	893	890	273	78	211	182	135	327
Jonathan	66	43	85	32	51	93	774	197	634	330	460	647	636	93	305	425	174	599
Wealthy	66	19	103	41	69	34	66	19	103	41	69	34	136	39	117	122	77	136
Other Fall	52	23	62	44	33	49	744	295	910	498	566	525	91	16	24	61	39	55
WINTER VARIETIES																		
Baldwin	---	---	---	---	---	---	---	---	---	---	---	---	363	93	141	577	136	817
Ben Davis and Gano	67	9	24	15	15	36	1,077	224	767	398	395	761	45	8	24	30	19	54
Black Twig (Paragon)	173	40	215	79	77	36	974	161	951	284	366	566	---	---	---	---	---	---
Cortland	---	---	---	---	---	---	---	---	---	---	---	---	---	---	---	40	39	191
Delicious	452	83	244	101	56	212	2,767	590	2,344	942	1,069	2,218	499	47	141	213	135	490
Golden Delicious	106	64	79	45	35	112	582	363	819	512	727	738	91	47	118	122	136	272
McIntosh	---	---	---	---	---	---	---	---	---	---	---	---	227	23	94	122	97	245
Northern Spy	---	---	---	---	---	---	---	---	---	---	---	---	45	8	24	30	39	136
R. I. Greening	---	---	---	---	---	---	---	---	---	---	---	---	91	8	24	30	19	82
Rome Beauty	117	60	160	82	133	176	550	209	654	424	855	833	681	164	540	456	503	980
Stayman	656	109	475	191	114	163	3,540	578	3,066	1,186	1,660	1,696	636	47	211	182	136	463
Winesap	42	7	43	18	21	11	2,651	455	2,364	830	1,273	1,590	---	---	---	---	---	---
Yellow Newtown 1/	---	---	---	---	---	---	675	152	519	280	412	384	---	---	---	---	---	---
York Imperial	291	191	420	246	263	296	5,171	2,534	5,649	2,649	4,122	2,866	45	16	47	30	39	54
Other Winter	157	67	179	71	62	93	894	380	902	447	563	541	454	54	211	294	116	327
TOTAL ALL VARIETIES	2,587	924	2,423	1,161	1,146	1,576	22,291	6,870	21,702	9,893	13,874	14,745	4,540	780	2,350	3,038	1,936	5,446
	ILLINOIS						MICHIGAN						MISSOURI					
SUMMER VARIETIES																		
Gravenstein	---	---	---	---	---	---	---	---	---	---	---	---	---	---	---	---	---	---
Other Summer	286	285	304	483	318	609	415	48	455	300	435	480	43	62	62	119	55	89
FALL VARIETIES																		
Grimes Golden	110	214	236	282	122	281	352	68	362	255	270	470	48	71	49	121	55	99
Jonathan	396	618	811	967	564	1,030	1,485	225	1,735	1,150	800	2,500	200	255	418	449	252	442
Wealthy	22	47	68	80	74	140	345	135	546	385	400	640	8	18	12	35	11	32
Other Fall	22	23	34	81	24	47	95	39	132	120	95	180	13	18	25	32	19	32
WINTER VARIETIES																		
Baldwin	---	---	---	---	---	---	248	81	295	510	150	780	---	---	---	---	---	---
Ben Davis and Gano	44	24	68	81	24	47	125	12	113	115	90	175	85	44	98	119	50	133
Black Twig (Paragon)	---	---	---	---	---	---	---	---	---	---	---	---	---	---	---	---	---	---
Cortland	---	---	---	---	---	---	---	---	---	---	---	---	---	---	---	---	---	---
Delicious	154	119	304	322	172	421	647	12	405	460	180	1,030	45	62	148	170	82	171
Golden Delicious	352	356	270	443	245	655	103	50	120	120	75	140	88	114	98	209	70	243
McIntosh	---	---	---	---	---	---	1,180	150	1,155	1,020	850	1,550	---	---	---	---	---	---
Northern Spy	---	---	---	---	---	---	850	175	812	775	600	1,300	---	---	---	---	---	---
R. I. Greening	---	---	---	---	---	---	220	24	217	135	105	310	---	---	---	---	---	---
Rome Beauty	66	24	68	81	74	140	---	---	---	---	---	---	---	---	---	---	---	---
Stayman	22	24	34	40	24	47	100	4	80	50	40	200	26	26	49	82	43	89
Winesap	66	24	101	81	98	187	---	---	---	---	---	---	57	53	86	109	67	115
Yellow Newtown 1/	---	---	---	---	---	---	---	---	---	---	---	---	---	---	---	---	---	---
York Imperial	---	---	---	---	---	---	---	---	---	---	---	---	62	62	62	72	66	89
Other Winter	660	618	1,082	1,088	711	1,076	1,135	227	1,133	1,005	740	1,880	73	97	123	163	150	176
TOTAL ALL VARIETIES	2,200	2,376	3,380	4,029	2,450	4,680	7,300	1,250	7,560	6,400	4,830	11,735	748	882	1,230	1,680	920	1,710

1/ Albemarle Pippin.

APPLES: COMMERCIAL PRODUCTION FOR SELECTED STATES AND AREAS, BY VARIETIES, 1944-49, CONTINUED

Varieties	1944	1945	1946	1947	1948	1949	1944	1945	1946	1947	1948	1949	1944	1945	1946	1947	1948	1949
	Thousand bushels OTHER CENTRAL STATES 1/						Thousand bushels TOTAL CENTRAL STATES						Thousand bushels IDAHO					
<u>SUMMER VARIETIES</u>																		
Gravenstein	---	---	---	---	---	---	---	---	---	---	---	---	---	---	---	---	---	---
Other Summer	323	260	379	475	365	495	1,294	694	1,318	1,499	1,270	1,891	17	23	12	21	15	18
<u>FALL VARIETIES</u>																		
Grimes Golden	289	184	301	353	274	412	1,072	615	1,159	1,193	856	1,589	17	23	12	21	15	18
Jonathan	561	412	839	897	659	1,023	3,278	1,603	4,108	3,888	2,449	5,594	578	575	260	590	304	420
Wealthy	306	154	541	433	371	534	817	393	1,284	1,055	933	1,482	---	---	---	---	---	---
Other Fall	198	101	115	241	157	343	419	197	330	535	334	657	34	23	6	10	7	9
<u>WINTER VARIETIES</u>																		
Baldwin	12	7	13	33	12	23	623	181	449	1,120	298	1,620	---	---	---	---	---	---
Ben Davis and Gano	157	52	197	249	172	206	456	140	500	594	355	615	20	23	6	62	51	82
Black Twig (Paragon)	7	2	10	18	6	12	7	2	10	18	6	12	---	---	---	---	---	---
Cortland	16	7	81	97	99	241	16	7	81	137	138	432	---	---	---	---	---	---
Delicious	308	204	315	444	360	664	1,653	444	1,313	1,609	929	2,776	442	712	420	520	333	465
Golden Delicious	286	249	315	563	373	630	920	816	921	1,457	899	1,940	17	23	6	10	15	18
McIntosh	239	104	303	296	191	287	1,646	277	1,552	1,438	1,138	2,182	---	---	---	---	---	---
Northern Spy	12	2	13	17	12	23	907	185	849	822	651	1,459	---	---	---	---	---	---
R. I. Greening	12	1	---	---	---	---	323	33	241	165	124	392	---	---	---	---	---	---
Rome Beauty	185	88	203	217	182	368	932	276	811	754	759	1,488	408	644	388	622	536	622
Stayman	199	153	246	300	277	412	983	254	620	654	520	1,211	17	23	6	21	15	18
Winesap	256	187	241	285	226	301	379	264	428	475	391	603	68	115	80	125	101	82
Yellow Newtown 2/	---	---	---	---	---	---	---	---	---	---	---	---	---	---	---	---	---	---
York Imperial	61	77	86	97	81	95	168	155	195	199	186	238	---	---	---	---	---	---
Other Winter	301	166	339	397	342	487	2,623	1,162	2,888	2,947	2,059	3,946	81	115	37	73	58	73
TOTAL ALL VARIETIES	3,728	2,410	4,537	5,412	4,159	6,556	18,516	7,698	19,057	20,559	14,295	30,127	1,699	2,299	1,233	2,075	1,450	1,825
	COLORADO						WASHINGTON						OREGON					
<u>SUMMER VARIETIES</u>																		
Gravenstein	---	---	---	---	---	---	---	---	---	---	---	---	68	37	75	43	26	31
Other Summer	40	76	22	30	14	16	32	53	33	34	26	25	8	4	8	7	3	11
<u>FALL VARIETIES</u>																		
Grimes Golden	60	64	33	40	28	16	---	---	---	---	---	---	---	---	---	---	---	---
Jonathan	730	434	418	500	489	549	2,528	1,247	2,126	1,975	1,958	1,591	79	62	61	71	43	86
Wealthy	20	13	11	16	14	16	---	---	---	---	---	---	---	---	---	---	---	---
Other Fall	40	13	11	20	14	16	63	53	67	67	26	22	16	14	15	15	12	10
<u>WINTER VARIETIES</u>																		
Baldwin	---	---	---	---	---	---	---	---	---	---	---	---	---	---	---	---	---	---
Ben Davis and Gano	300	127	44	227	179	157	---	---	---	---	---	---	---	---	---	---	---	---
Black Twig (Paragon)	---	---	---	---	---	---	---	---	---	---	---	---	---	---	---	---	---	---
Cortland	---	---	---	---	---	---	---	---	---	---	---	---	---	---	---	---	---	---
Delicious	250	229	121	220	166	314	14,884	12,920	17,009	17,912	13,009	18,042	758	760	763	803	763	1,069
Golden Delicious	---	---	---	---	---	---	537	478	785	603	721	445	---	---	---	---	---	---
McIntosh	---	---	---	---	---	---	95	53	65	67	26	32	---	---	---	---	---	---
Northern Spy	---	---	---	---	---	---	---	---	---	---	---	---	---	---	---	---	---	---
R. I. Greening	---	---	---	---	---	---	---	---	---	---	---	---	---	---	---	---	---	---
Rome Beauty	160	166	198	235	248	266	2,054	1,539	2,028	1,908	1,468	1,336	99	94	80	85	59	96
Stayman	---	---	---	---	---	---	411	371	327	435	206	223	---	---	---	---	---	---
Winesap	250	115	198	220	193	157	10,049	9,312	9,519	9,810	7,754	9,514	64	42	49	40	44	42
Yellow Newtown 2/	---	---	---	---	---	---	474	265	491	368	309	445	1,552	1,208	1,398	1,312	1,327	1,312
York Imperial	---	---	---	---	---	---	---	---	---	---	---	---	---	---	---	---	---	---
Other Winter	80	38	44	60	55	63	473	239	262	301	257	145	513	424	521	488	391	296
TOTAL ALL VARIETIES	1,930	1,275	1,100	1,568	1,380	1,570	31,600	26,530	32,710	33,480	25,760	31,820	3,157	2,645	2,970	2,864	2,668	2,953

1/ Includes Indiana, Wisconsin, Minnesota, Iowa, Nebraska, Kansas, Kentucky, Tennessee and Arkansas.

2/ Albemarle Pippin.

APPLES: COMMERCIAL PRODUCTION FOR SELECTED STATES AND AREAS, BY VARIETIES, 1944-1949, CONTINUED

VARIETIES	1944	1945	1946	1947	1948	1949	1944	1945	1946	1947	1948	1949	1944	1945	1946	1947	1948	1949
	<u>Thousand bushels</u>						<u>Thousand bushels</u>						<u>Thousand bushels</u>					
	<u>CALIFORNIA</u>						<u>OTHER WESTERN STATES 1/</u>						<u>TOTAL WESTERN STATES</u>					
<u>SUMMER VARIETIES</u>																		
Gravenstein	1,782	3,487	2,677	4,211	1,820	3,022	---	---	---	---	---	---	1,850	3,524	2,752	4,254	1,846	3,053
Other Summer	61	106	76	111	59	94	25	17	24	23	25	23	183	279	175	226	142	187
<u>FALL VARIETIES</u>																		
Grimes Golden	---	---	---	---	---	---	16	10	28	12	13	13	93	97	73	73	56	47
Jonathan	184	317	230	332	176	283	446	230	258	292	322	299	4,545	2,865	3,353	3,760	3,272	3,228
Wealthy	---	---	---	---	---	---	8	10	10	9	15	10	28	23	21	25	29	26
Other Fall	492	845	688	665	411	567	16	12	35	19	21	19	661	960	820	796	491	643
<u>WINTER VARIETIES</u>																		
Baldwin	---	---	---	---	---	---	---	---	---	---	---	---	---	---	---	---	---	---
Ben Davis and Geno	---	---	---	---	---	---	102	47	80	69	81	73	422	197	130	358	311	---
Black Twig (Paragon)	---	---	---	---	---	---	74	45	46	29	27	20	74	45	46	29	27	312
Cortland	---	---	---	---	---	---	---	---	---	---	---	---	---	---	---	---	---	20
Delicious	492	634	459	776	470	756	279	241	294	251	246	223	17,105	15,496	19,066	20,482	14,987	20,869
Golden Delicious	---	---	---	---	---	---	---	---	---	---	---	---	554	501	791	613	736	463
Mc Intosh	---	---	---	---	---	---	228	208	19	205	178	142	323	261	84	272	204	174
Northern Spy	---	---	---	---	---	---	---	---	---	---	---	---	---	---	---	---	---	---
R. I. Greening	---	---	---	---	---	---	---	---	---	---	---	---	---	---	---	---	---	---
Rome Beauty	369	528	382	554	293	472	179	223	228	176	198	190	3,269	3,194	3,304	3,580	2,802	2,982
Stayman	---	---	---	---	---	---	65	40	46	52	40	40	493	434	379	508	261	281
Winesap	123	106	153	222	117	189	145	65	122	92	66	73	10,699	9,755	10,121	10,509	8,275	10,057
Yellow Newtown 2/	1,658	3,171	1,912	2,881	1,702	2,834	---	---	---	---	---	---	3,684	4,644	3,801	4,561	3,338	4,591
York Imperial	---	---	---	---	---	---	16	10	18	6	7	7	16	10	18	6	7	7
Other Winter	983	1,374	1,071	1,330	822	1,228	103	69	130	83	85	63	2,233	2,259	2,065	2,335	1,668	1,868
TOTAL ALL VARIETIES	6,144	10,568	7,648	11,082	5,870	9,445	1,702	1,227	1,338	1,318	1,324	1,195	46,232	44,544	46,999	52,387	38,452	48,808

1/ Includes Montana, New Mexico and Utah.

2/ Albemarle Pippin.

APPLES: COMMERCIAL PRODUCTION, BY VARIETIES, FOR SELECTED STATES AND AREAS, 1944-1949

© UDATA 1981

AREA AND STATE	1944	1945	1946	1947	1948	1949	1944	1945	1946	1947	1948	1949	1944	1945	1946	1947	1948	1949
	Thousand bushels GRAVENSSTEIN						Thousand bushels SUMMER VARIETIES OTHER SUMMER VARIETIES						Thousand bushels TOTAL SUMMER VARIETIES					
NORTH ATLANTIC STATES																		
New England	161	36	74	148	112	201	131	39	110	142	111	164	292	75	184	290	223	365
New York	---	---	---	---	---	---	632	151	907	451	352	402	632	151	907	451	352	402
New Jersey	53	32	59	19	9	9	398	189	238	155	100	312	451	221	297	174	109	321
Pennsylvania	---	---	---	---	---	---	166	95	164	124	82	249	166	95	164	124	82	249
TOTAL NORTH ATLANTIC	214	68	133	167	121	210	1,327	474	1,419	872	645	1,127	1,541	542	1,552	1,094	766	1,337
SOUTH ATLANTIC STATES																		
Virginia	---	---	---	---	---	---	405	76	389	155	181	170	405	76	389	155	181	170
West Virginia	---	---	---	---	---	---	195	78	196	82	118	117	195	78	196	82	118	117
North Carolina	---	---	---	---	---	---	26	2	14	9	15	7	26	2	14	9	15	7
Maryland-Delaware	---	---	---	---	---	---	238	133	198	109	130	162	238	133	198	109	130	162
TOTAL SOUTH ATLANTIC	---	---	---	---	---	---	864	289	797	355	444	456	864	289	797	355	444	456
CENTRAL STATES																		
Ohio	---	---	---	---	---	---	227	39	118	122	97	218	227	39	118	122	97	218
Illinois	---	---	---	---	---	---	286	285	304	483	318	609	286	285	304	483	318	609
Michigan	---	---	---	---	---	---	415	48	455	300	435	480	415	48	455	300	435	480
Missouri	---	---	---	---	---	---	43	62	62	119	55	89	43	62	62	119	55	89
Other States 1/	---	---	---	---	---	---	323	260	379	475	365	495	323	260	379	475	365	495
TOTAL CENTRAL	---	---	---	---	---	---	1,294	694	1,318	1,499	1,270	1,891	1,294	694	1,318	1,499	1,270	1,891
WESTERN STATES																		
Idaho	---	---	---	---	---	---	17	23	12	21	15	18	17	23	12	21	15	18
Colorado	---	---	---	---	---	---	40	76	22	30	14	16	40	76	22	30	14	16
Washington	---	---	---	---	---	---	32	53	33	34	26	25	32	53	33	34	26	25
Oregon	63	37	75	43	26	31	8	4	8	7	3	11	76	41	83	50	29	42
California	1,782	3,487	2,677	4,211	1,820	3,022	61	106	76	111	59	94	1,843	3,593	2,753	4,322	1,879	3,116
Other States 2/	---	---	---	---	---	---	25	17	24	23	25	23	25	17	24	23	25	23
TOTAL WESTERN	1,850	3,524	2,752	4,254	1,846	3,053	183	279	175	226	142	187	2,033	3,803	2,927	4,440	1,988	3,240
TOTAL US.	2,064	3,592	2,885	4,421	1,967	3,263	3,668	1,736	3,709	2,926	2,501	3,661	5,732	5,328	6,594	7,373	4,468	6,924
	Thousand bushels GRIMES GOLDEN						Thousand bushels JONATHAN						Thousand bushels WEALTHY					
NORTH ATLANTIC STATES																		
New England	---	---	---	---	---	---	---	---	---	---	---	---	163	66	240	216	184	197
New York	---	---	---	---	---	---	---	---	---	---	---	---	632	194	1,058	602	822	800
New Jersey	106	63	119	77	55	156	53	32	59	39	14	31	27	47	89	77	27	63
Pennsylvania	166	119	287	249	206	373	498	190	657	373	330	663	166	47	246	186	165	166
TOTAL NORTH ATLANTIC	272	182	406	326	261	529	551	222	716	412	344	694	988	354	1,633	1,081	1,198	1,226
SOUTH ATLANTIC STATES																		
Virginia	405	190	519	330	495	391	405	76	389	125	247	313	---	---	---	---	---	---
West Virginia	440	156	490	272	265	351	290	78	196	163	147	234	---	---	---	---	---	---
North Carolina	13	2	28	28	46	45	13	---	14	10	15	7	---	---	---	---	---	---
Maryland-Delaware	104	76	136	87	87	103	66	43	85	32	51	93	66	19	103	41	69	34
TOTAL SOUTH ATLANTIC	962	424	1,173	717	893	890	774	197	684	330	460	647	66	19	103	41	69	34
CENTRAL STATES																		
Ohio	273	78	211	182	135	327	636	93	305	425	174	599	136	39	117	122	77	136
Illinois	110	214	235	282	122	281	396	618	811	967	564	1,030	22	47	68	80	74	140
Michigan	352	68	362	255	270	470	1,485	225	1,735	1,150	800	2,500	345	135	546	385	400	640
Missouri	48	71	49	121	55	99	200	255	418	449	252	442	8	18	12	35	11	32
Other States 1/	289	184	301	353	274	412	561	412	839	897	659	1,023	306	154	541	433	371	534
TOTAL CENTRAL	1,072	615	1,159	1,193	856	1,589	3,278	1,603	4,108	3,888	2,449	5,594	817	393	1,284	1,055	933	1,482
WESTERN STATES																		
Idaho	17	23	12	21	15	18	578	575	260	590	304	420	---	---	---	---	---	---
Colorado	60	64	33	40	28	16	730	434	418	500	469	549	20	13	11	16	14	16
Washington	---	---	---	---	---	---	2,528	1,247	2,126	1,975	1,958	1,591	---	---	---	---	---	---
Oregon	---	---	---	---	---	---	79	62	61	71	43	86	---	---	---	---	---	---
California	---	---	---	---	---	---	184	317	230	332	176	283	---	---	---	---	---	---
Other States 2/	16	10	28	12	13	13	446	230	258	292	322	299	8	10	10	9	15	10
TOTAL WESTERN	93	97	73	73	56	47	4,545	2,865	3,353	3,760	3,272	3,228	28	23	21	25	29	26
TOTAL US.	2,399	1,318	2,811	2,309	2,066	3,055	9,148	4,887	8,861	8,390	6,525	10,163	1,899	789	3,041	2,202	2,229	2,768

1/ Includes Indiana, Wisconsin, Minnesota, Iowa, Nebraska, Kansas, Kentucky, Tennessee and Arkansas. 2/ Includes Montana, New Mexico and Utah.

APPLMS: COMMERCIAL PRODUCTION, BY VARIETIES, FOR SELECTED STATES AND AREAS, 1944-1949, CONTINUED

AREA AND STATE	1944	1945	1946	1947	1948	1949	1944	1945	1946	1947	1948	1949	1944	1945	1946	1947	1948	1949
	Thousand bushels						Thousand bushels						Thousand bushels					
	OTHER FALL VARIETIES						TOTAL FALL VARIETIES						WINTER VARIETIES					
													BALDWIN					
NORTH ATLANTIC STATES																		
New England	65	13	55	67	57	84	228	79	295	283	241	281	1,275	284	669	1,446	757	1,150
New York	632	43	605	451	352	350	1,264	237	1,663	1,053	1,174	1,150	1,737	367	1,058	2,106	588	2,100
New Jersey	133	94	149	97	68	93	319	236	416	290	164	343	26	32	59	116	28	31
Pennsylvania	83	71	205	186	124	456	913	427	1,395	994	825	1,658	166	47	164	311	124	166
TOTAL NORTH ATLANTIC	913	221	1,014	801	601	983	2,724	979	3,769	2,620	2,404	3,432	3,204	730	1,950	3,979	1,497	3,477
SOUTH ATLANTIC STATES																		
Virginia	405	190	519	280	412	313	1,215	456	1,427	735	1,154	1,017	---	---	---	---	---	---
West Virginia	195	78	245	136	59	156	925	312	931	571	471	741	---	---	---	---	---	---
North Carolina	92	4	84	38	62	7	118	6	126	76	123	59	---	---	---	---	---	---
Maryland-Delaware	52	23	62	44	33	49	288	161	386	204	240	279	---	---	---	---	---	---
TOTAL SOUTH ATLANTIC	744	295	910	498	566	525	2,546	935	2,870	1,586	1,988	2,096	---	---	---	---	---	---
CENTRAL STATES																		
Ohio	91	16	24	61	39	55	1,136	226	657	790	425	1,117	363	93	141	577	136	817
Illinois	22	23	34	81	24	47	550	902	1,149	1,410	784	1,498	---	---	---	---	---	---
Michigan	95	39	132	120	95	180	2,277	467	2,775	1,910	1,565	3,790	248	81	295	510	150	780
Missouri	13	18	25	32	19	32	269	362	504	637	337	605	---	---	---	---	---	---
Other States 1/	198	101	115	241	157	343	1,354	851	1,756	1,924	1,461	2,312	12	7	13	33	12	23
TOTAL CENTRAL	419	197	330	535	334	657	5,586	2,808	6,881	6,671	4,572	9,322	623	181	449	1,120	298	1,620
WESTERN STATES																		
Idaho	34	23	6	10	7	9	629	621	278	621	326	447	---	---	---	---	---	---
Colorado	40	13	11	20	14	16	850	524	473	576	525	597	---	---	---	---	---	---
Washington	63	53	65	67	26	22	2,591	1,300	2,191	2,042	1,984	1,613	---	---	---	---	---	---
Oregon	16	14	15	15	12	10	95	76	76	86	55	96	---	---	---	---	---	---
California	492	845	688	665	411	567	676	1,162	918	997	587	850	---	---	---	---	---	---
Other States 2/	16	12	35	19	21	19	486	262	331	332	371	341	---	---	---	---	---	---
TOTAL WESTERN	661	960	820	796	491	643	5,327	3,945	4,267	4,654	3,848	3,944	---	---	---	---	---	---
TOTAL U. S.	2,737	1,673	3,074	2,630	1,992	2,808	16,183	8,667	17,787	15,531	12,812	18,794	3,827	911	2,399	5,099	1,795	5,067
							WINTER VARIETIES CONTINUED											
NORTH ATLANTIC STATES							BLACK TWIG (PARAGON)						CORTLAND					
New England	37	7	50	46	40	52	---	---	---	---	---	---	265	66	290	364	315	463
New York	948	65	756	752	352	804	---	---	---	---	---	---	1,106	130	1,360	1,354	1,410	2,100
New Jersey	---	---	---	---	---	---	80	32	89	19	14	63	---	---	---	---	41	94
Pennsylvania	249	36	164	124	124	166	166	95	287	186	82	207	166	47	164	186	82	166
TOTAL NORTH ATLANTIC	1,234	108	970	922	516	1,022	246	127	376	205	96	270	1,537	243	1,814	1,904	1,848	2,823
SOUTH ATLANTIC STATES																		
Virginia	675	114	519	255	231	406	540	76	519	150	214	430	---	---	---	---	---	---
West Virginia	295	97	196	109	118	312	195	39	147	27	29	78	---	---	---	---	---	---
North Carolina	40	4	28	19	31	7	66	6	70	28	46	22	---	---	---	---	---	---
Maryland-Delaware	67	9	24	15	15	36	173	40	215	79	77	36	---	---	---	---	---	---
TOTAL SOUTH ATLANTIC	1,077	224	767	398	395	761	974	161	951	284	366	566	---	---	---	---	---	---
CENTRAL STATES																		
Ohio	45	8	24	30	19	54	---	---	---	---	---	---	---	---	---	40	39	191
Illinois	44	24	68	81	24	47	---	---	---	---	---	---	---	---	---	---	---	---
Michigan	125	12	113	115	90	175	---	---	---	---	---	---	---	---	---	---	---	---
Missouri	85	44	98	119	50	133	---	---	---	---	---	---	---	---	---	---	---	---
Other States 1/	157	52	197	249	172	206	7	2	10	18	6	12	16	7	81	97	99	241
TOTAL CENTRAL	456	140	500	594	355	615	7	2	10	18	6	12	16	7	81	137	138	432
WESTERN STATES																		
Idaho	20	23	6	62	51	82	---	---	---	---	---	---	---	---	---	---	---	---
Colorado	300	127	44	227	179	157	---	---	---	---	---	---	---	---	---	---	---	---
Washington	---	---	---	---	---	---	---	---	---	---	---	---	---	---	---	---	---	---
Oregon	---	---	---	---	---	---	---	---	---	---	---	---	---	---	---	---	---	---
California	---	---	---	---	---	---	---	---	---	---	---	---	---	---	---	---	---	---
Other States 2/	102	47	80	69	81	73	74	45	46	29	27	20	---	---	---	---	---	---
TOTAL WESTERN	422	197	130	358	311	312	74	45	46	29	27	20	---	---	---	---	---	---
TOTAL U. S.	3,189	669	2,367	2,272	1,577	2,710	1,301	335	1,383	536	495	868	1,553	250	1,895	2,041	1,986	3,255

1/ Includes Indiana, Wisconsin, Minnesota, Iowa, Nebraska, Kansas, Kentucky, Tennessee and Arkansas.
 2/ Includes Montana, New Mexico and Utah

APPLES: COMMERCIAL PRODUCTION BY VARIETIES, FOR SELECTED STATES AND AREAS, 1944-1949, CONTINUED

AREA AND STATE	1944						1945						1946						1947						1948						1949					
	Thousand bushels												Thousand bushels												Thousand bushels											
	DELICIOUS						GOLDEN DELICIOUS						MC INTOSH																							
	WINTER VARIETIES CONTINUED						GOLDEN DELICIOUS						MC INTOSH																							
NORTH ATLANTIC STATES																																				
New England	418	70	275	337	256	517	21	6	31	31	28	37	4,205	719	2,467	3,299	3,019	5,021																		
New York	632	86	605	602	588	804	---	---	---	---	---	---	4,896	605	3,930	4,063	3,879	6,227																		
New Jersey	318	205	267	174	95	281	53	94	149	155	95	156	238	94	178	213	109	281																		
Pennsylvania	664	228	657	373	247	564	249	190	287	249	165	332	249	71	246	311	247	414																		
TOTAL NORTH ATLANTIC	2,032	589	1,804	1,486	1,186	2,166	323	290	457	435	288	525	9,588	1,489	6,821	7,886	7,254	11,943																		
SOUTH ATLANTIC STATES																																				
Virginia	1,485	266	1,427	455	577	1,194	270	190	389	291	330	272	---	---	---	---	---	---																		
West Virginia	540	194	392	245	236	663	100	97	196	82	177	234	---	---	---	---	---	---																		
North Carolina	290	47	281	141	200	149	106	12	155	94	185	120	---	---	---	---	---	---																		
Maryland-Delaware	452	83	244	101	56	212	106	64	79	45	35	112	---	---	---	---	---	---																		
TOTAL SOUTH ATLANTIC	2,767	590	2,344	942	1,069	2,218	582	363	819	512	727	738	---	---	---	---	---	---																		
CENTRAL STATES																																				
Ohio	499	47	141	213	135	490	91	47	118	122	136	272	227	23	94	122	97	245																		
Illinois	154	119	304	322	172	421	352	356	270	443	245	655	---	---	---	---	---	---																		
Michigan	647	12	405	460	180	1,030	103	50	120	120	75	140	1,180	150	1,155	1,020	850	1,650																		
Missouri	45	62	148	170	82	171	88	114	98	209	70	243	---	---	---	---	---	---																		
Other States 1/	308	204	315	444	360	664	286	249	315	563	373	630	239	104	303	296	191	287																		
TOTAL CENTRAL	1,553	444	1,313	1,609	929	2,776	920	816	921	1,457	899	1,940	1,646	277	1,552	1,438	1,138	2,382																		
WESTERN STATES																																				
Idaho	442	712	420	520	333	465	17	23	6	10	15	18	---	---	---	---	---	---																		
Colorado	250	229	121	220	166	314	---	---	---	---	---	---	---	---	---	---	---	---																		
Washington	14,884	12,920	17,009	17,912	13,009	18,042	537	478	785	603	721	445	95	53	65	67	26	32																		
Oregon	758	760	763	803	763	1,069	---	---	---	---	---	---	---	---	---	---	---	---																		
California	492	634	459	776	470	756	---	---	---	---	---	---	---	---	---	---	---	---																		
Other States 2/	279	241	294	251	246	223	---	---	---	---	---	---	228	208	19	205	178	142																		
TOTAL WESTERN	17,105	16,456	19,066	20,482	14,987	20,869	554	501	791	613	736	463	323	261	84	272	204	174																		
TOTAL U. S.	23,557	17,119	24,527	24,519	18,171	28,029	2,379	1,970	2,998	3,017	2,650	3,666	11,557	2,027	8,457	9,596	8,596	14,299																		
NORTH ATLANTIC STATES																																				
New England	286	56	207	280	222	302	117	28	77	129	76	162	21	7	26	29	25	51																		
New York	790	151	756	903	352	804	1,895	130	1,965	2,106	1,528	3,289	474	108	1,058	602	705	1,205																		
New Jersey	---	---	---	---	---	---	26	16	30	19	6	31	450	330	653	388	450	875																		
Pennsylvania	83	20	82	62	41	83	10	10	---	---	---	---	912	285	1,068	808	536	911																		
TOTAL NORTH ATLANTIC	1,159	227	1,045	1,245	615	1,189	2,048	184	2,072	2,254	1,610	3,482	1,857	730	2,805	1,827	1,716	3,042																		
SOUTH ATLANTIC STATES																																				
Virginia	---	---	---	---	---	---	---	---	---	---	---	---	135	38	130	50	214	239																		
West Virginia	---	---	---	---	---	---	---	---	---	---	---	---	245	97	294	217	354	351																		
North Carolina	---	---	---	---	---	---	---	---	---	---	---	---	53	14	70	75	154	67																		
Maryland-Delaware	---	---	---	---	---	---	---	---	---	---	---	---	117	60	160	82	133	176																		
TOTAL SOUTH ATLANTIC	---	---	---	---	---	---	---	---	---	---	---	---	550	209	654	424	855	833																		
CENTRAL STATES																																				
Ohio	45	8	24	30	39	136	91	8	24	30	19	82	681	164	540	456	503	980																		
Illinois	---	---	---	---	---	---	---	---	---	---	---	---	66	24	68	81	74	140																		
Michigan	850	175	812	775	600	1,300	220	24	217	135	105	310	---	---	---	---	---	---																		
Missouri	---	---	---	---	---	---	---	---	---	---	---	---	---	---	---	---	---	---																		
Other States 1/	12	2	13	17	12	23	12	1	---	---	---	---	185	88	203	217	182	368																		
TOTAL CENTRAL	907	185	849	822	651	1,459	323	33	241	165	124	392	932	276	811	754	759	1,488																		
WESTERN STATES																																				
Idaho	---	---	---	---	---	---	---	---	---	---	---	---	408	644	388	622	536	622																		
Colorado	---	---	---	---	---	---	---	---	---	---	---	---	160	166	198	235	248	266																		
Washington	---	---	---	---	---	---	---	---	---	---	---	---	2,054	1,539	2,028	1,908	1,468	1,336																		
Oregon	---	---	---	---	---	---	---	---	---	---	---	---	99	94	80	85	59	96																		
California	---	---	---	---	---	---	---	---	---	---	---	---	369	528	382	554	293	472																		
Other States 2/	---	---	---	---	---	---	---	---	---	---	---	---	179	223	228	176	198	190																		
TOTAL WESTERN	---	---	---	---	---	---	---	---	---	---	---	---	3,269	3,194	3,304	3,580	2,802	2,982																		
TOTAL U. S.	2,066	412	1,894	2,067	1,266	2,648	2,371	217	2,313	2,419	1,734	3,874	6,608	4,409	7,574	6,589	6,132	8,245																		

1/ Includes Indiana, Wisconsin, Minnesota, Iowa, Nebraska, Kansas, Kentucky, Tennessee and Arkansas.

2/ Includes Montana, New Mexico and Utah.

APPLES: COMMERCIAL PRODUCTION, BY VARIETIES, FOR SELECTED STATES AND AREAS, 1944-1949, CONTINUED

AREA AND STATE	1944	1945	1946	1947	1948	1949	1944	1945	1946	1947	1948	1949	1944	1945	1946	1947	1948	1949
	Thousand bushels						Thousand bushels						Thousand bushels					
	STAYMAN						WINTER VARIETIES CONTINUED						YELLOW NEWTOWN (LIZEMARLE PIPPIN)					
							WINESAP											
NORTH ATLANTIC STATES																		
New England	14	5	11	13	9	17	---	---	---	---	---	---	---	---	---	---	---	---
New York	---	---	---	---	---	---	---	---	---	---	---	---	---	---	---	---	---	---
New Jersey	424	173	624	272	205	531	80	32	59	19	28	63	---	---	---	---	---	
Pennsylvania	2,737	238	2,299	1,243	577	1,491	83	47	82	62	41	141	---	---	---	---	---	
TOTAL NORTH ATLANTIC	3,175	416	2,934	1,528	791	2,039	163	79	141	81	69	204	---	---	---	---	---	
SOUTH ATLANTIC STATES																		
Virginia	1,890	342	1,687	515	865	1,023	2,430	380	2,076	683	1,071	1,449	675	152	519	280	412	384
West Virginia	730	97	637	217	265	390	100	58	147	82	89	78	---	---	---	---	---	
North Carolina	264	30	267	263	416	120	79	10	98	47	92	52	---	---	---	---	---	
Maryland-Delaware	656	109	475	191	114	163	42	7	43	18	21	11	---	---	---	---	---	
TOTAL SOUTH ATLANTIC	3,540	578	3,066	1,186	1,660	1,696	2,651	452	2,364	830	1,273	1,590	675	152	519	280	412	384
CENTRAL STATES																		
Ohio	636	47	211	182	136	463	---	---	---	---	---	---	---	---	---	---	---	
Illinois	22	24	34	40	24	47	66	24	101	81	98	187	---	---	---	---	---	
Michigan	100	4	80	50	40	200	---	---	---	---	---	---	---	---	---	---	---	
Missouri	26	26	49	82	43	89	57	53	86	109	67	115	---	---	---	---	---	
Other States 1/	199	153	246	300	277	412	256	187	241	285	226	301	---	---	---	---	---	
TOTAL CENTRAL	983	254	620	654	520	1,211	379	264	428	475	391	603	---	---	---	---	---	
WESTERN STATES																		
Idaho	17	23	6	21	15	18	68	115	80	125	101	82	---	---	---	---	---	
Colorado	---	---	---	---	---	---	250	115	198	220	193	157	---	---	---	---	---	
Washington	411	371	327	435	206	223	10,049	9,312	9,519	9,810	7,754	9,514	474	265	491	368	309	445
Oregon	---	---	---	---	---	---	64	42	49	40	44	44	1,552	1,208	1,398	1,312	1,327	1,312
California	---	---	---	---	---	---	123	106	153	222	117	189	1,658	3,171	1,912	2,881	1,702	2,834
Other States 2/	65	40	46	52	40	40	145	65	122	92	66	73	---	---	---	---	---	
TOTAL WESTERN	493	434	379	508	261	281	10,699	9,755	10,121	10,509	8,275	10,057	3,684	4,604	3,801	4,561	3,338	4,591
TOTAL U. S.	8,191	1,682	6,999	3,876	3,232	5,227	13,892	10,551	13,054	11,895	10,008	12,454	4,359	4,796	4,320	4,841	3,750	4,975
YORK IMPERIAL																		
OTHER WINTER VARIETIES																		
TOTAL WINTER VARIETIES																		
NORTH ATLANTIC STATES																		
New England	---	---	---	---	---	---	308	62	267	313	264	402	6,967	1,310	4,370	6,287	5,011	8,174
New York	---	---	---	---	---	---	1,421	130	1,058	1,053	822	1,205	13,899	1,772	12,546	13,541	10,224	18,538
New Jersey	26	16	30	19	5	7	159	94	119	77	15	47	1,880	1,118	2,257	1,471	1,091	2,460
Pennsylvania	1,244	475	985	1,056	865	1,326	238	64	164	124	82	414	7,216	1,853	6,649	5,095	3,213	6,381
TOTAL NORTH ATLANTIC	1,270	491	1,015	1,075	870	1,333	2,126	350	1,608	1,567	1,183	2,068	29,962	6,053	25,822	26,394	19,539	35,553
SOUTH ATLANTIC STATES																		
Virginia	3,375	1,520	3,633	1,378	2,826	1,705	405	190	260	125	165	236	11,880	3,268	11,159	4,182	6,905	7,538
West Virginia	1,465	817	1,568	1,006	1,002	858	94	58	196	82	89	78	3,764	1,554	3,773	2,067	2,359	3,042
North Carolina	40	6	28	19	31	7	238	65	267	169	247	134	1,176	194	1,264	855	1,402	678
Maryland-Delaware	291	191	420	246	263	296	157	67	179	71	62	93	2,061	630	1,839	848	776	1,135
TOTAL SOUTH ATLANTIC	2,171	2,534	5,649	2,649	4,122	2,866	894	380	902	447	563	541	18,881	5,646	18,035	7,952	11,442	12,191
CENTRAL STATES																		
Ohio	45	16	47	30	39	54	454	54	211	294	116	327	3,177	515	1,575	2,126	1,414	4,111
Illinois	---	---	---	---	---	---	660	618	1,082	1,088	711	1,076	1,364	1,189	1,927	2,136	1,348	2,573
Michigan	---	---	---	---	---	---	1,135	227	1,133	1,005	740	1,880	4,608	735	4,330	4,190	2,830	7,465
Missouri	62	62	62	72	66	89	73	97	123	163	150	176	436	458	664	924	528	1,016
Other States 1/	61	77	86	97	81	95	301	166	339	397	342	487	2,051	1,299	2,362	3,013	2,333	3,749
TOTAL CENTRAL	168	155	195	192	186	238	2,623	1,162	2,888	2,947	2,059	3,946	11,636	4,196	10,858	12,389	8,451	18,914
WESTERN STATES																		
Idaho	---	---	---	---	---	---	81	115	37	73	58	73	1,053	1,655	943	1,433	1,109	1,360
Colorado	---	---	---	---	---	---	80	38	44	60	55	63	1,040	675	605	962	841	957
Washington	---	---	---	---	---	---	473	239	262	301	257	145	28,977	25,177	30,486	31,404	23,750	30,182
Oregon	---	---	---	---	---	---	513	424	521	488	391	296	2,986	2,528	2,811	2,728	2,584	2,815
California	---	---	---	---	---	---	983	1,374	1,071	1,330	822	1,228	3,625	5,813	3,977	5,763	3,404	5,479
Other States 2/	16	10	18	6	7	7	103	69	130	83	85	63	1,191	948	983	963	928	831
TOTAL WESTERN	16	10	18	6	7	7	2,231	2,259	2,065	2,335	1,668	1,868	38,872	36,796	39,805	42,253	32,616	41,624
TOTAL U. S.	6,625	3,190	6,877	3,222	5,185	4,444	7,876	4,151	7,461	7,296	2,473	8,423	99,351	52,691	94,520	89,988	72,050	108,284

1/ Includes Indiana, Wisconsin, Minnesota, Iowa, Nebraska, Kansas, Kentucky, Tennessee and Arkansas. 2/ Includes Montana, New Mexico and Utah.

PEACHES: PRODUCTION, FARM DISPOSITION, SEASON AVERAGE PRICE PER BUSHEL TO GROWERS AND VALUE, BY STATES, 1944 AND 1945

State	1944								1945							
	Production	Not utilized 1/	Production having value	Farm disposition: Farm - hold use	Sold	Price	Value of production	Value of sales	Production	Not utilized 1/	Production having value	Farm disposition: Farm - hold use	Sold	Price	Value of production	Value of sales
	Thousand bushels					Dollars	Thousand dollars		Thousand bushels					Dollars	Thousand bushels	
N.H.	22	---	22	3	19	3.70	81	70	6	---	6	1	5	4.90	29	24
Mass.	77	---	77	8	69	3.35	258	231	42	---	42	5	37	4.90	206	181
R.I.	21	---	21	1	20	3.50	74	70	9	---	9	1	8	4.50	40	36
Conn.	163	---	163	7	156	3.75	611	585	120	---	120	5	115	4.35	522	500
N.Y.	1,480	30	1,450	85	1,365	2.60	3,770	3,549	1,335	---	1,335	80	1,255	3.20	4,272	4,016
N.J.	1,740	---	1,740	12	1,728	2.70	4,698	4,666	1,269	---	1,269	12	1,257	2.75	3,490	3,457
Pa.	2,588	---	2,588	280	2,308	3.00	7,764	6,924	1,616	---	1,616	143	1,473	3.25	5,252	4,787
Ohio	1,424	---	1,424	264	1,160	2.70	3,845	3,132	995	---	995	168	827	3.20	3,184	2,646
Ind.	674	---	674	108	566	2.90	1,955	1,641	626	---	626	119	507	2.75	1,722	1,394
Ill.	1,950	---	1,950	175	1,775	3.05	5,948	5,414	2,223	---	2,223	216	2,007	2.65	5,891	5,319
Mich.	4,500	180	4,320	160	4,160	2.40	10,368	9,984	5,100	40	5,060	160	4,900	2.00	10,120	9,800
Mo.	340	---	340	120	220	3.50	1,190	770	884	---	884	270	614	2.95	2,608	1,811
Kans.	14	---	14	12	2	3.50	49	7	81	---	81	54	27	2.80	227	76
Del.	552	---	552	5	547	1.80	994	985	180	---	180	4	176	3.10	558	546
Md.	825	---	825	40	785	2.30	1,898	1,806	392	---	392	27	365	3.50	1,372	1,278
Va.	2,480	---	2,480	540	1,940	2.45	6,076	4,753	667	---	667	91	576	2.70	1,801	1,555
W.Va.	891	---	891	101	790	2.10	1,871	1,659	415	---	415	41	374	3.25	1,349	1,216
N.C.	2,698	---	2,698	600	2,098	2.50	6,745	5,245	2,084	---	2,084	300	1,784	2.35	4,897	4,192
S.C.	2,838	---	2,838	188	2,650	3.10	8,798	8,215	5,940	---	5,940	300	5,640	2.65	15,741	14,946
Ga.	4,200	---	4,200	495	3,705	4.00	16,800	14,820	7,160	---	7,160	600	6,560	2.95	21,122	19,352
Fla.	103	---	103	52	51	3.00	309	153	96	---	96	52	44	2.50	240	110
Ky.	720	---	720	400	320	2.95	2,124	944	918	---	918	490	428	2.30	2,111	984
Tenn.	608	---	608	310	298	2.90	1,763	864	1,482	---	1,482	450	1,032	1.90	2,816	1,951
Ala.	1,200	---	1,200	616	584	3.00	3,600	1,752	1,600	---	1,600	600	1,000	2.05	3,280	2,050
Miss.	897	---	897	393	504	2.60	2,332	1,310	1,053	---	1,053	375	678	2.60	2,738	1,763
Ark.	2,330	---	2,330	520	1,810	2.80	6,524	5,068	2,360	---	2,360	480	1,880	2.30	5,428	4,324
La.	296	---	296	161	135	3.00	888	405	265	---	265	80	185	2.95	782	546
Okla.	286	---	286	84	202	3.40	972	687	676	---	676	288	388	2.45	1,656	951
Texas	1,300	---	1,300	357	943	3.00	3,900	2,829	2,026	---	2,026	420	1,606	2.25	4,558	3,614
Idaho	375	20	355	32	323	1.90	674	614	382	6	376	26	350	1.90	714	665
Colo.	2,112	---	2,112	21	2,091	2.65	5,597	5,541	2,372	---	2,372	21	2,351	2.30	5,456	5,407
N.Mex.	218	---	218	30	188	3.10	676	583	235	---	235	30	205	2.50	588	512
Utah	850	---	850	27	823	2.15	1,828	1,769	844	84	760	27	733	1.55	1,178	1,135
Wash.	2,539	91	2,448	96	2,352	1.75	4,284	4,116	2,380	---	2,380	100	2,280	1.95	4,641	4,446
Oreg.	730	---	730	90	640	2.60	1,898	1,664	562	---	562	79	483	2.80	1,574	1,352
Calif., All	34,045	2,125	31,920	137	31,783	2/1.77	56,570	56,311	30,836	1,083	29,753	138	29,615	2/1.74	51,847	51,588
Clingstones	20,502	2,083	18,419	54	18,365	1.51	27,813	27,731	19,418	1,083	18,335	54	18,281	1.52	27,869	27,787
Freestones	13,543	42	13,501	83	13,418	2.13	28,757	28,580	11,418	---	11,418	84	11,334	2.10	23,978	23,801
U.S.	78,086	2,446	75,640	6,530	69,110	3/2.30	177,732	159,136	79,231	1,213	78,018	6,253	71,765	3/2.21	174,010	158,541
						4/2.35								4/2.23		

1/ See page 45 for separate estimates of quantities not harvested on account of economic conditions and/or excess cullage of harvested fruit.

2/ Clingstones and Freestones weighted by quantities sold.

3/ State prices weighted by quantities sold.

4/ State prices weighted by production having value.

PEACHES: PRODUCTION, FARM DISPOSITION, SEASON AVERAGE PRICE PER BUSHEL TO GROWERS AND VALUE, BY STATES, 1946 AND 1947

State	1946						1947							
	Production	Not utilised	Production having value	Farm disposition	Price	Value of production	Production	Not utilised	Production having value	Farm disposition	Price	Value of production	Value of sales	
	Thousand bushels	1/	value	hold use	Dollars	Thousand dollars	Thousand bushels	1/	value	hold use	Dollars	Thousand bushels	Value of sales	
N.H.	5	---	5	1	4	3.80	19	15	18	---	18	4	14	46
Mass.	70	---	70	8	62	3.50	245	217	81	---	81	8	73	223
R.I.	15	---	15	1	14	3.45	52	48	14	---	14	1	13	38
Conn.	154	---	154	9	145	3.45	531	500	151	---	151	9	142	412
N.Y.	1,582	84	1,598	85	1,513	2.10	3,356	3,177	1,440	72	1,368	85	1,283	2,566
N.J.	1,776	---	1,776	17	1,759	2.30	4,085	4,046	1,584	---	1,584	17	1,567	4,128
Pa.	2,226	---	2,226	196	2,030	2.65	5,899	5,380	1,920	---	1,920	200	1,720	4,128
Ohio	588	---	588	99	489	2.70	1,588	1,320	1,044	---	1,044	168	876	2,015
Ind.	519	---	519	108	411	2.75	1,427	1,130	725	---	725	125	600	1,260
Ill.	1,622	---	1,622	175	1,447	2.60	4,217	3,762	2,635	87	2,548	252	2,296	4,133
Mich.	5,100	---	5,100	160	4,940	2.00	10,200	9,880	4,020	50	3,970	152	3,818	6,872
Mo.	884	---	884	270	614	2.75	2,431	1,688	910	---	910	290	620	1,426
Kans.	154	---	154	63	91	2.40	370	218	12	---	12	7	5	14
Del.	305	---	305	3	302	2.80	854	846	108	---	108	3	105	252
Md.	582	---	582	36	546	3.30	1,921	1,802	360	---	360	28	332	813
Va.	2,580	---	2,580	450	2,130	2.25	5,805	4,792	1,580	117	1,463	240	1,223	2,385
W.Va.	563	---	563	60	503	2.35	1,323	1,182	422	---	422	48	374	804
N.C.	2,884	---	2,884	490	2,394	2.30	6,633	5,506	2,570	---	2,570	490	2,080	3,016
S.C.	5,265	---	5,265	252	5,013	2.50	13,162	12,532	5,400	427	4,973	234	4,739	7,819
Ga.	5,159	---	5,159	540	4,619	2.90	14,961	13,395	5,012	250	4,762	540	4,222	6,755
Fla.	79	---	79	43	36	2.25	178	81	41	---	41	24	17	36
Ky.	595	---	595	250	345	2.50	1,488	862	644	---	644	256	388	776
Tenn.	459	---	459	200	259	2.50	1,148	648	899	---	899	330	569	1,195
Ala.	900	---	900	360	540	2.65	2,385	1,431	976	---	976	385	591	1,418
Miss.	744	---	744	302	442	3.10	2,306	1,370	682	---	682	270	412	1,174
Ark.	2,211	---	2,211	420	1,791	2.35	5,196	4,209	1,920	---	1,920	370	1,550	3,255
La.	201	---	201	68	133	3.05	613	406	148	---	148	52	96	274
Okla.	557	---	557	216	341	2.50	1,392	852	396	---	396	182	214	535
Texas	1,392	---	1,392	400	992	2.25	3,132	2,232	1,086	---	1,086	370	716	1,826
Idaho	285	---	285	16	269	2.40	684	646	357	14	343	25	318	636
Colo.	1,985	---	1,985	24	1,961	2.20	4,367	4,314	2,106	---	2,106	27	2,079	5,405
N.Mex.	360	---	360	30	330	2.25	810	742	94	---	94	25	69	172
Utah	665	---	665	30	635	2.10	1,396	1,334	782	---	782	31	751	1,352
Wash.	2,538	---	2,538	110	2,428	1.94	4,924	4,710	2,565	---	2,565	90	2,475	4,208
Oreg.	664	---	664	80	584	2.85	1,892	1,664	722	---	722	80	642	1,444
Calif., All	37,086	292	36,794	137	36,657	2/1.71	62,823	62,576	33,003	334	32,669	137	32,532	40,606
Clingstones	23,085	292	22,793	54	22,739	1.54	35,101	35,018	21,377	84	21,293	54	21,239	25,699
Freestones	14,001	---	14,001	83	13,918	1.98	27,722	27,558	11,626	250	11,376	83	11,293	14,907
U.S.	82,854	376	82,478	5,709	76,769	3/2.08 4/2.11	173,813	159,513	76,427	1,351	75,076	5,555	69,521	123,464
														112,031

1/ See page 45 for separate estimates of quantities not harvested on account of economic conditions and/or excess cullage of harvested fruit.

2/ Clingstones and Freestones weighted by quantities sold.

3/ State prices weighted by quantities sold.

4/ State prices weighted by production having value.

PEACHES: PRODUCTION, FARM DISPOSITION, SEASON AVERAGE PRICE PER BUSHEL TO GROWERS AND VALUE, BY STATES, 1948 AND 1949

© UPDATA 1981

1948

1949

State	Production	Not utilized 1/	Production having value	Farm disposition:		Price	Value of production	Value of sales	Production	Not utilized 1/	Production having value	Farm disposition:		Price	Value of production	Value of sales
				household use	Sold							household use	Sold			
	Thousand bushels			Dollars		Thousand dollars			Thousand bushels			Dollars		Thousand dollars		
N.H.	10	---	10	4	6	3.60	36	22	13	---	13	4	9	3.00	39	27
Mass.	65	---	65	8	57	3.60	234	205	71	---	71	8	63	3.00	213	189
R.I.	15	---	15	1	14	3.60	54	50	17	---	17	1	16	2.90	49	46
Conn.	132	---	132	8	124	3.50	462	434	144	---	144	9	135	2.85	410	385
N.Y.	1,114	---	1,114	85	1,029	2.50	2,785	2,572	1,428	86	1,342	85	1,257	1.50	2,013	1,886
N.J.	1,128	---	1,128	15	1,113	2.70	3,046	3,005	1,848	---	1,848	20	1,828	1.75	3,234	3,199
Pa.	2,182	---	2,182	208	1,974	2.30	5,019	4,540	2,451	---	2,451	208	2,243	1.60	3,922	3,589
Ohio	753	---	753	156	597	2.50	1,882	1,492	1,095	---	1,095	192	903	2.00	2,190	1,806
Ind.	559	---	559	108	451	2.40	1,342	1,082	730	35	695	135	560	1.85	1,286	1,036
Ill.	1,652	---	1,652	180	1,472	2.50	4,130	3,680	2,722	495	2,227	280	1,947	1.45	3,229	2,823
Mich.	3,250	---	3,250	144	3,106	1.90	6,175	5,901	3,800	270	3,530	136	3,394	1.20	4,236	4,073
Mo.	460	---	460	200	260	2.50	1,150	650	454	---	454	196	258	2.05	931	529
Kans.	160	---	160	110	50	2.25	360	112	185	---	185	110	75	1.75	324	131
Del.	212	---	212	3	209	2.00	424	418	200	---	200	3	197	1.70	340	335
Md.	420	---	420	30	390	2.50	1,050	975	527	---	527	30	497	1.80	949	895
Va.	1,059	---	1,059	105	954	3.00	3,177	2,862	1,494	---	1,494	144	1,350	1.85	2,764	2,498
W.Va.	496	---	496	60	436	2.15	1,066	937	529	---	529	60	469	1.75	926	821
N.C.	1,355	---	1,355	300	1,055	2.65	3,591	2,796	870	---	870	150	720	2.70	2,349	1,944
S.C.	2,472	---	2,472	160	2,312	3.10	7,663	7,167	1,844	---	1,844	120	1,724	3.00	5,532	5,172
Ge.	2,318	---	2,318	270	2,048	3.10	7,186	6,349	1,674	---	1,674	125	1,549	2.95	4,938	4,570
Fla.	49	---	49	20	29	2.20	108	64	16	---	16	12	4	2.10	34	8
Ky.	350	---	350	135	215	2.65	928	570	420	---	420	156	264	2.10	882	554
Tenn.	288	---	288	152	136	2.65	763	360	213	---	213	108	105	2.45	522	257
Ala.	729	---	729	310	419	2.50	1,822	1,048	396	---	396	129	267	2.70	1,069	721
Miss.	610	---	610	210	400	2.90	1,769	1,160	261	---	261	120	141	2.90	757	409
Ark.	2,108	---	2,108	350	1,758	2.10	4,427	3,692	2,010	---	2,010	280	1,730	2.05	4,120	3,546
La.	139	---	139	40	99	2.90	403	287	76	---	76	28	48	2.80	213	134
Okla.	246	---	246	126	120	2.35	578	282	559	---	559	314	245	1.75	978	429
Texas	702	---	702	275	427	2.65	1,860	1,132	1,440	---	1,440	448	992	2.00	2,880	1,984
Idaho	324	13	311	25	286	1.85	575	529	353	---	353	25	328	1.15	406	377
Colo.	1,922	---	1,922	28	1,894	1.75	3,364	3,314	2,109	200	1,909	28	1,881	1.70	3,245	3,198
N.Mex.	74	---	74	25	49	2.60	192	127	100	---	100	24	76	2.30	230	175
Utah	664	---	664	33	631	1.85	1,228	1,167	600	---	600	33	567	1.55	930	879
Wash.	1,958	---	1,958	80	1,878	1.92	3,759	3,606	2,528	500	2,028	80	1,948	.79	1,602	1,539
Oreg.	512	---	512	75	437	2.70	1,382	1,180	784	---	784	80	626	1.35	953	845
Calif., All	30,127	125	30,002	137	29,865	2/1.58	47,370	47,147	35,211	4,042	31,169	137	31,032	2/1.11	34,573	34,407
Clingstones	20,835	---	20,835	54	20,781	1.53	31,878	31,795	24,085	4,042	20,043	54	19,989	.97	19,442	19,389
Freesones	9,292	125	9,167	83	9,084	1.69	15,492	15,352	11,126	---	11,126	83	11,043	1.36	15,131	15,018
U.S.	60,614	138	60,476	4,176	56,300	3/1.97 4/2.01	121,360	110,914	69,172	5,706	63,466	4,018	59,448	3/1.44 4/1.47	93,268	85,416

1/ See page 45 for separate estimates of quantities not harvested on account of economic conditions and/or excess cullage of harvested fruit.

2/ Clingstones and Freesones weighted by quantities sold.

3/ State prices weighted by quantities sold.

4/ State prices weighted by production having value.

PEACHES: PRODUCTION AND UTILIZATION, 1944-1949

Season	Production		Farm disposition		Utilization of sales					Production		Farm disposition		Utilization of sales				
	1/	value 1/	having	house- hold use	Fresh sales	Canned	Dried	Frozen	Other	1/	value 1/	having	house- hold use	Fresh sales	Canned	Dried	Frozen	Other
Thousand bushels																		
UNITED STATES										TOTAL NORTH ATLANTIC STATES 3/								
1944	78,086	75,640	6,530	69,110	42,074	18,298	7,298	1,244	196	6,091	6,061	396	5,665	5,552	100	---	13	---
1945	79,231	78,018	6,253	71,765	43,480	19,370	6,267	2,446	202	4,397	4,397	247	4,150	3,908	130	---	112	---
1946	82,854	82,478	5,709	76,769	42,683	25,558	6,806	1,527	195	5,928	5,844	317	5,527	5,389	138	---	---	---
1947	76,427	75,076	5,555	69,521	38,899	25,165	4,642	747	68	5,208	5,136	324	4,812	4,672	94	---	46	---
1948	60,614	60,476	4,176	56,300	29,937	23,706	2,208	410	39	4,646	4,646	329	4,317	4,238	40	---	39	---
1949	69,172	63,466	4,018	59,448	32,157	22,737	3,888	620	46	5,972	5,886	335	5,551	5,442	34	---	75	---
TOTAL SOUTH ATLANTIC STATES 4/										TOTAL NORTH CENTRAL STATES 5/								
1944	14,587	14,587	2,021	12,566	12,171	272	---	113	10	8,902	8,722	839	7,883	7,493	300	---	90	---
1945	16,934	16,934	1,415	15,519	14,151	1,085	---	218	65	9,909	9,869	987	8,882	8,069	640	---	170	3
1946	17,417	17,417	1,874	15,543	14,235	858	---	266	184	8,867	8,867	875	7,992	7,431	501	---	60	---
1947	15,493	14,699	1,607	13,092	11,797	1,026	---	242	27	9,346	9,209	994	8,215	7,704	451	---	60	---
1948	8,381	8,381	948	7,433	7,273	70	---	80	10	6,834	6,834	898	5,936	5,621	275	---	35	5
1949	7,154	7,154	644	6,510	6,375	74	---	46	15	8,986	8,186	1,049	7,137	6,727	372	---	33	5
TOTAL SOUTH CENTRAL STATES 6/										TOTAL WESTERN STATES 7/								
1944	7,637	7,637	2,841	4,796	4,731	65	---	---	---	40,869	38,633	433	38,200	12,127	17,561	7,298	1,028	186
1945	10,380	10,380	3,183	7,197	7,106	17	---	34	40	37,611	36,438	421	36,017	10,246	17,498	6,267	1,912	94
1946	7,059	7,059	2,216	4,843	4,761	64	---	18	---	43,583	43,291	427	42,864	10,867	23,997	6,806	1,183	11
1947	6,751	6,751	2,215	4,536	4,517	9	---	10	---	39,629	39,281	415	38,866	10,209	23,585	4,642	389	41
1948	5,172	5,172	1,598	3,574	3,573	---	---	---	1	35,581	35,443	403	35,040	9,232	23,321	2,208	256	23
1949	5,375	5,375	1,583	3,792	3,792	---	---	---	---	41,685	36,865	407	36,458	9,821	22,257	3,888	466	26

PEACHES:- CALIFORNIA: PRODUCTION AND UTILIZATION, BY VARIETIES, 1944-1949

Season	Production		Farm disposition	Utilization of sales					Production		Farm disposition	Utilization of sales						
	1/	value 1/		Fresh sales	Canned	Dried	Frozen	Other	1/	value 1/		Fresh sales	Canned	Dried	Frozen	Other		
Thousand tons																		
GLIMSTONE VARIETIES								FREESTONE VARIETIES										
1944	492.0	442.0	1.3	440.7	19.0	395.7	12.5	10.0	3.5	325.0	324.0	2.0	322.0	140.4	12.7	162.5	6.0	.4
1945	466.0	440.0	1.3	438.7	7.7	395.0	16.0	18.7	1.3	274.0	274.0	2.0	272.0	107.9	13.7	134.4	16.0	---
1946	554.0	547.0	1.3	545.7	8.0	529.9	4.1	3.7	---	336.0	336.0	2.0	334.0	134.5	25.6	159.2	14.7	---
1947	513.0	511.0	1.3	509.7	12.3	496.1	.9	.4	---	279.0	273.0	2.0	271.0	117.3	40.3	110.5	2.9	---
1948	500.0	500.0	1.3	498.7	6.0	491.3	1.4	---	---	223.0	220.0	2.0	218.0	113.6	50.2	51.6	2.6	---
1949	578.0	481.0	1.3	479.7	8.4	469.4	1.7	.2	---	267.0	267.0	2.0	265.0	123.3	44.5	91.6	5.6	---
ALL VARIETIES																		
1944	817.0	766.0	3.3	762.7	159.4	408.4	175.0	16.0	3.9									
1945	740.0	714.0	3.3	710.7	115.6	408.7	150.4	34.7	1.3									
1946	890.0	883.0	3.3	879.7	142.5	555.5	163.3	18.4	---									
1947	792.0	784.0	3.3	780.7	129.6	536.4	111.4	3.3	---									
1948	723.0	720.0	3.3	716.7	119.6	541.5	53.0	2.6	---									
1949	845.0	748.0	3.3	744.7	131.7	513.9	93.3	5.8	---									

1/ Differences between production and production having value consist of fruit not harvested on account of economic conditions and/or excess cullage of harvested fruit.
 2/ Used for jams, preserves, brandy, etc.
 3/ New Hampshire, Massachusetts, Rhode Island, Connecticut, New York, New Jersey and Pennsylvania.
 4/ Delaware, Maryland, Virginia, West Virginia, North Carolina, South Carolina, Georgia and Florida.
 5/ Ohio, Indiana, Illinois, Michigan, Missouri and Kansas.
 6/ Kentucky, Tennessee, Alabama, Mississippi, Arkansas, Louisiana, Oklahoma and Texas.
 7/ Idaho, Colorado, New Mexico, Utah, Washington, Oregon and California.

PEARS: PRODUCTION, FARM DISPOSITION, SEASON AVERAGE PRICE PER BUSHEL TO GROWERS AND VALUE, BY STATES, 1944 AND 1945

State	1944							1945									
	Production	Not utilized 1/	Production having value	Farm disposition: Farm house-hold use	Sold	Price	Value of production	Value of sales	Production	Not utilized 1/	Production having value	Farm disposition: Farm house-hold use	Sold	Price	Value of production	Value of sales	
	Thousand bushels			Dollars				Thousand dollars			Thousand bushels			Dollars			
Mass.	65	---	65	13	52	2.30	150	120	14	---	14	5	9	4.00	56	36	
Conn.	49	---	49	9	40	3.30	162	132	24	---	24	6	18	4.50	108	81	
N.Y.	1,210	24	1,186	100	1,086	2.35	2,787	2,552	272	---	272	20	252	3.40	925	857	
Pa.	500	10	490	168	322	1.70	833	547	120	---	120	60	60	2.50	300	150	
Ohio	340	10	330	125	205	1.65	544	338	192	---	192	105	87	2.20	422	191	
Ind.	173	---	173	63	110	1.15	199	126	146	---	146	72	74	1.20	175	89	
Ill.	335	---	335	90	245	1.35	452	331	320	---	320	99	221	1.25	400	276	
Mich.	938	---	938	120	818	1.70	1,595	1,391	140	---	140	40	100	2.50	350	250	
Mo.	112	---	112	60	52	1.95	218	101	222	---	222	120	102	1.50	333	153	
Kans.	40	---	40	35	5	2.00	80	10	94	---	94	45	49	1.60	150	78	
Va.	405	---	405	228	177	1.25	506	221	52	---	52	48	4	2.05	107	8	
W.Va.	178	---	178	90	88	1.50	267	132	20	---	20	12	8	2.20	44	18	
N.C.	268	---	268	214	54	1.85	496	100	211	---	211	171	40	1.75	369	70	
S.C.	133	---	133	75	58	1.60	213	93	136	---	136	90	46	1.35	184	62	
Ga.	459	---	459	128	331	1.15	528	381	421	---	421	128	293	1.15	484	337	
Fla.	209	---	209	17	192	1.10	230	211	168	---	168	17	151	1.10	185	166	
Ky.	96	---	96	50	46	1.60	154	74	155	---	155	96	59	1.40	217	83	
Tenn.	101	---	101	56	45	1.80	182	81	256	---	256	144	112	1.35	346	151	
Ala.	312	---	312	140	172	1.50	468	258	336	---	336	180	156	1.35	454	211	
Miss.	328	---	328	91	237	1.45	476	344	341	---	341	91	250	1.50	512	375	
Ark.	205	---	205	80	125	1.80	369	225	184	---	184	80	104	1.75	322	182	
La.	245	---	245	62	183	1.25	306	229	205	---	205	62	143	1.30	266	186	
Okla.	96	---	96	46	50	2.00	192	100	189	---	189	76	113	1.30	246	147	
Texas	418	---	418	116	302	1.80	752	544	388	---	388	135	253	1.60	621	405	
Idaho	72	---	72	12	60	2.30	166	138	59	---	59	12	47	2.35	139	110	
Colo.	130	---	130	8	122	2.75	358	336	282	---	282	8	274	2.00	564	548	
Utah	174	---	174	9	165	3.00	522	495	223	---	223	9	214	2.00	446	428	
Wash., All	8,665	287	8,378	300	8,078	2/2.15	17,998	17,356	7,770	400	7,370	304	7,066	2/2.28	16,752	16,083	
Bartlett	6,885	287	6,598	238	6,360	1.87	12,338	11,893	5,800	400	5,400	238	5,162	1.88	10,152	9,705	
Other	1,780	---	1,780	62	1,718	3.18	5,660	5,463	1,970	---	1,970	66	1,904	3.35	6,600	6,378	
Oreg., All	4,398	---	4,398	180	4,218	2/3.18	13,918	13,394	5,372	40	5,332	184	5,148	2/3.19	16,951	16,417	
Bartlett	1,794	---	1,794	140	1,654	2.75	4,934	4,548	2,250	40	2,210	144	2,066	2.74	6,055	5,661	
Other	2,604	---	2,604	40	2,564	3.45	8,984	8,846	3,122	---	3,122	40	3,082	3.49	10,896	10,756	
Calif., All	10,417	125	10,292	54	10,238	2/3/2.09	21,498	21,385	14,209	333	13,876	54	13,822	2/3/1.92	26,575	26,472	
Bartlett	9,167	125	9,042	46	8,996	3/2.09	18,898	18,802	12,292	333	11,959	46	11,913	3/1.90	22,722	22,635	
Other	1,250	---	1,250	8	1,242	3/2.08	2,600	2,583	1,917	---	1,917	8	1,909	3/2.01	3,853	3,837	
U. S.	31,071	456	30,615	2,739	27,876	4/2.21	66,619	61,745	32,521	773	31,748	2,473	29,275	4/2.21	69,003	64,620	
						5/2.18								5/2.17			

1/ See page 45 for separate estimates of quantities not harvested on account of economic conditions and/or excess cullage of harvested fruit.

2/ Bartlett and other weighted by quantities sold.

3/ Equivalent returns per bushel for bulk fruit at first delivery point.

4/ State prices weighted by quantities sold.

5/ State prices weighted by production having value.

PEARS: PRODUCTION, FARM DISPOSITION, SEASON AVERAGE PRICE PER BUSHEL TO GROWERS AND VALUE, BY STATES, 1946 AND 1947

© UPDATA 1981

1946

1947

State	Farm disposition			Price	Value of production	Value of sales	Production	Not utilized	Production having value	Farm disposition			Price	Value of production	Value of sales
	Production 1/	Farm house- hold use	Sold							Farm house- hold use	Sold				
	Thousand bushels			Dollars	Thousand dollars		Thousand bushels			Dollars	Thousand dollars		Dollars	Thousand dollars	
Mass.	37	11	26	3.65	135	95	57	---	57	10	47	2.60	148	122	
Conn.	43	9	34	3.60	155	122	50	---	50	9	41	3.30	165	135	
N.Y.	574	60	514	2.70	1,550	1,388	695	14	681	75	606	2.00	1,362	1,212	
Pa.	280	150	130	2.25	630	292	200	---	200	108	92	2.15	430	198	
Ohio	119	75	44	2.40	286	106	224	---	224	99	125	2.10	470	262	
Ind.	129	94	35	1.40	181	49	125	---	125	66	59	1.25	156	74	
Ill.	220	80	140	1.40	308	196	320	30	290	100	190	1.25	362	238	
Mich.	766	120	646	2.00	1,532	1,292	597	---	597	90	507	2.15	1,284	1,090	
Mo.	148	90	58	1.75	259	102	216	---	216	90	126	1.50	324	189	
Kans.	90	45	45	1.45	130	65	88	---	88	40	48	1.30	114	62	
Va.	277	210	67	1.65	457	111	175	---	175	125	50	1.60	280	80	
W.Va.	72	40	32	2.10	151	67	27	---	27	19	8	2.00	54	16	
N.C.	242	193	49	1.55	448	91	204	---	204	160	44	1.80	367	79	
S.C.	98	75	23	1.65	162	38	85	---	85	70	15	1.50	128	22	
Ga.	346	112	234	1.25	432	292	308	---	308	104	204	1.20	370	245	
Fla.	170	20	150	1.10	187	165	144	---	144	25	119	1.00	144	119	
Ky.	105	75	30	1.75	184	52	120	---	120	87	33	1.65	198	54	
Tenn.	130	80	50	1.75	228	88	194	---	194	105	89	1.55	301	138	
Ala.	244	144	100	1.65	403	165	214	---	214	133	81	1.50	321	122	
Miss.	292	91	201	1.55	453	312	266	---	266	91	175	1.50	399	262	
Ark.	157	80	77	1.90	298	146	150	---	150	80	70	1.75	262	122	
La.	192	62	130	1.50	288	195	161	---	161	60	101	1.45	233	146	
Okla.	135	68	67	1.80	243	121	158	---	158	81	77	1.30	205	100	
Texas	374	135	239	1.70	636	406	354	---	354	135	219	1.55	549	339	
Idaho	64	1	52	2.45	157	127	70	---	70	16	54	2.40	168	130	
Colo.	87	8	79	2.50	218	198	232	---	232	8	224	2.00	464	448	
Utah	120	12	108	2.80	336	302	213	---	213	12	201	2.50	532	502	
Wash., All	8,890	298	8,592	3/2.33	20,048	20,048	8,305	271	8,034	298	7,736	3/2.08	16,709	16,101	
Bartlett	6,750	238	6,512	2.05	13,838	13,350	6,156	185	5,971	238	5,733	1.90	11,345	10,893	
Other	2,140	60	2,080	3.22	6,891	6,698	2,149	86	2,063	60	2,003	2.60	5,364	5,208	
Oreg., All	6,120	185	5,935	3/3.43	20,951	20,379	5,724	---	5,724	180	5,544	3/2.51	14,394	13,910	
Bartlett	2,335	145	2,190	2.91	6,795	6,373	1,975	---	1,975	140	1,835	2.77	5,471	5,083	
Other	3,785	40	3,745	3.74	14,156	14,006	3,749	---	3,749	40	3,709	2.38	8,923	8,827	
Calif., All	12,917	54	12,863	3/4/2.30	29,751	29,627	14,376	---	14,376	54	14,322	3/4/1.77	25,427	25,332	
Bartlett	11,167	46	11,121	4/2.31	25,796	25,690	12,334	---	12,334	46	12,288	4/1.80	22,201	22,118	
Other	1,750	8	1,742	4/2.26	3,955	3,937	2,042	---	2,042	8	2,034	4/1.58	3,226	3,214	
U.S.	33,438	2,688	30,750	5/2.49 6/2.45	81,878	76,637	34,052	315	33,737	2,530	31,207	5/1.98 6/1.97	66,320	61,849	

1/ Production all of value.

2/ See page 45 for separate estimates of quantities not harvested on account of economic conditions and/or excess cullage of harvested fruit.

3/ Bartlett and other weighted by quantities sold.

4/ Equivalent returns per bushel for bulk fruit at first delivery point.

5/ State prices weighted by quantities sold.

6/ State prices weighted by production having value.

PEARS: PRODUCTION, FARM DISPOSITION, SEASON AVERAGE PRICE PER BUSHEL TO GROWERS AND VALUE, BY STATES, 1948 AND 1949

State	1948								1949							
	Production	Not utilized	Farm disposition			Price	Value		Production	Not utilized	Farm disposition			Price	Value	
			Production	having	house-		of	of			Production	having	house-		of	of
Thousand bushels	1/	value	hold	Sold	Dollars	Thousand dollars	Thousand dollars	Thousand bushels	1/	value	hold	Sold	Dollars	Thousand dollars	Thousand dollars	
Mass.	23	---	23	8	15	3.30	76	50	44	---	44	9	35	2.20	97	77
Conn.	36	---	36	8	28	3.60	130	101	62	---	62	10	52	2.50	155	130
N.Y.	242	---	242	48	194	2.75	666	534	619	43	576	75	501	1.50	864	752
Pa.	176	---	176	106	70	2.10	370	147	231	---	231	109	122	1.60	370	195
Ohio	150	---	150	90	60	2.25	338	135	250	---	250	106	144	1.50	375	216
Ind.	94	---	94	68	26	1.25	118	32	110	20	90	72	18	.90	81	16
Ill.	236	20	216	72	144	1.20	259	173	275	50	225	120	105	.85	191	89
Mich.	300	---	300	50	250	2.35	705	588	1,075	70	1,005	120	885	1.20	1,206	1,062
Mo.	170	---	170	75	95	1.35	230	128	195	---	195	90	105	1.05	205	110
Kans.	109	---	109	58	51	1.05	114	54	84	---	84	45	39	1.05	88	41
Va.	126	---	126	100	26	1.75	220	46	39	---	39	30	9	1.85	72	17
W.Va.	51	---	51	32	19	1.95	99	37	32	---	32	26	6	1.60	51	10
H.C.	123	---	123	98	25	2.00	246	50	57	---	57	50	7	1.90	108	13
S.C.	71	---	71	58	13	1.50	106	20	35	---	35	27	8	1.50	52	12
Ga.	280	---	280	96	184	1.10	308	202	121	---	121	51	70	1.10	133	77
Fla.	139	---	139	25	114	1.00	139	114	98	---	98	24	74	1.00	98	74
Ky.	105	---	105	75	30	1.80	189	54	90	---	90	69	21	1.45	130	30
Tenn.	92	---	92	70	22	1.80	166	40	54	---	54	45	9	1.80	97	16
Ala.	181	---	181	108	73	1.50	272	110	113	---	113	70	43	1.65	186	71
Miss.	245	---	245	94	151	1.65	404	249	117	---	117	60	57	1.80	211	103
Ark.	160	---	160	80	80	1.70	272	136	110	---	110	72	38	1.55	170	59
La.	160	---	160	65	95	1.25	200	119	120	---	120	60	60	1.30	156	78
Okla.	98	---	98	60	38	1.25	122	48	152	---	152	86	66	1.05	160	69
Texas	202	---	202	112	90	1.90	384	171	400	---	400	135	265	1.30	520	344
Idaho	61	---	61	16	45	2.65	162	119	60	---	60	16	44	2.20	132	97
Colo.	155	---	155	8	147	2.75	426	404	204	---	204	8	196	1.70	347	333
Utah	151	---	151	13	138	2.85	430	393	206	---	206	13	193	2.00	412	386
Wash., All	5,555	---	5,555	250	5,305	2/ 2.65	14,740	14,067	6,677	695	5,982	250	5,732	2/ 1.28	7,630	7,328
Bartlett	3,780	---	3,780	190	3,590	2.81	10,622	10,088	4,822	600	4,222	190	4,032	.89	3,758	3,588
Other	1,775	---	1,775	60	1,715	2.32	4,118	3,979	1,855	95	1,760	60	1,700	2.20	3,872	3,740
Oreg., All	4,825	65	4,760	160	4,600	2/ 2.70	12,837	12,409	6,103	380	5,723	190	5,533	2/ 2.20	12,495	12,155
Bartlett	1,861	25	1,836	125	1,711	2.66	4,884	4,551	2,618	160	2,458	150	2,308	1.55	3,810	3,577
Other	2,964	40	2,924	35	2,889	2.72	7,953	7,858	3,485	220	3,265	40	3,225	2.66	8,685	8,578
Calif., All	10,668	---	10,668	54	10,614	2/3/ 2.76	29,447	29,299	16,335	1,167	15,168	54	15,114	2/3/ .76	11,473	11,432
Bartlett	9,418	---	9,418	46	9,372	3/ 2.84	26,747	26,616	14,335	875	13,460	46	13,414	3/ .78	10,499	10,463
Other	1,250	---	1,250	8	1,242	3/ 2.16	2,700	2,683	2,000	292	1,708	8	1,700	3/ .52	924	969
U. S.	24,984	85	24,899	2,157	22,742	4/ 2.64	64,175	60,029	34,068	2,425	31,643	2,092	29,551	4/ 1.20	38,265	35,392
						5/ 2.58								5/ 1.21		

1/ See page 45 for separate estimates of quantities not harvested on account of economic conditions and/or excess cullage of harvested fruit.
 2/ Bartlett and other weighted by quantities sold.
 3/ Equivalent returns per bushel for bulk fruit at first delivery point.
 4/ State prices weighted by quantities sold.
 5/ State prices weighted by production having value.

PEARS: PRODUCTION AND UTILIZATION, 1944-1949

Season	Farm Utilization of sales								Farm Utilization of sales									
	Production 1/	Production having value 1/	disposition			Utilization of sales				Production 1/	Production having value 1/	disposition			Utilization of sales			
			use	household	Sold	Fresh sales 2/	Processed Canned	Dried	Other 3/			use	household	Sold	Fresh sales 2/	Processed Canned	Dried	Other 3/
UNITED STATES								TOTAL NORTH ATLANTIC STATES 4/										
1944	31,071	30,615	2,739	27,876	16,899	9,846	920	211	1,824	1,790	290	1,500	1,405	95	---	---		
1945	32,521	31,748	2,473	29,275	18,163	9,558	1,239	315	1,730	1,730	91	1,339	1,233	16	---	---		
1946	33,438	33,438	2,688	30,750	17,982	11,401	1,041	326	934	934	230	704	694	10	---	---		
1947	34,052	33,737	2,530	31,207	16,844	13,503	602	258	1,002	988	202	786	704	82	---	---		
1948	24,984	24,899	2,157	22,742	10,728	11,544	221	249	477	477	170	307	297	10	---	---		
1949	34,068	31,643	2,092	29,551	16,200	12,534	509	308	956	913	203	710	695	15	---	---		
TOTAL SOUTH ATLANTIC STATES 5/								TOTAL CENTRAL STATES 6/										
1944	1,652	1,652	752	900	850	50	---	---	3,739	3,729	1,174	2,595	2,374	261	---	---		
1945	1,008	1,008	466	542	492	50	---	---	3,168	3,168	1,345	1,823	1,762	3	---	58		
1946	1,205	1,205	650	555	505	50	---	---	3,101	3,101	1,239	1,862	1,594	225	---	43		
1947	943	943	503	440	420	20	---	---	3,187	3,157	1,257	1,900	1,680	205	---	15		
1948	790	790	409	381	361	20	---	---	2,302	2,282	1,077	1,205	1,062	140	---	3		
1949	382	382	208	174	169	5	---	---	3,145	3,005	1,150	1,855	1,430	425	---	---		
TOTAL WESTERN STATES 7/																		
1944	23,856	23,444	563	22,881	12,310	9,440	920	211										
1945	27,915	27,142	571	26,571	15,586	9,489	1,239	257										
1946	28,198	28,198	569	27,629	15,189	11,116	1,041	283										
1947	28,920	28,649	568	28,081	14,040	13,196	602	243										
1948	21,415	21,350	501	20,849	9,008	11,374	221	246										
1949	29,585	27,343	531	26,812	13,906	12,089	509	308										

PEARS - WASHINGTON, OREGON AND CALIFORNIA, BY VARIETIES, 1944-49

Season	WASHINGTON, OREGON AND CALIFORNIA, BY VARIETIES								WASHINGTON, BY VARIETIES							
	Tons	Tons	Tons	Tons	Tons	Tons	Tons	Tons	Tons	Tons	Tons	Tons	Tons	Tons	Tons	Tons
BARTLETT'S																
1944	436,975	426,800	10,550	416,250	178,150	216,250	20,500	1,350	172,125	164,950	5,950	159,000	71,000	85,550	1,500	950
1945	496,250	475,000	10,650	466,600	226,000	211,900	26,475	2,225	145,000	135,000	5,950	129,050	54,675	69,000	3,775	1,600
1946	495,125	495,125	10,675	484,450	207,100	252,950	20,500	3,900	168,750	168,750	5,950	162,800	70,250	88,150	2,000	2,400
1947	499,275	494,650	10,550	484,100	168,225	299,775	12,675	3,425	153,900	149,275	5,950	143,325	44,750	95,075	575	2,925
1948	367,025	366,400	8,975	357,425	94,325	253,850	5,300	3,950	94,500	91,500	4,750	89,750	29,325	57,850	---	2,575
1949	530,000	490,000	9,600	480,400	195,150	268,600	12,200	4,150	120,550	105,550	4,750	100,800	27,700	69,400	---	3,700
OTHER THAN BARTLETT'S																
1944	139,600	139,600	2,750	136,850	116,875	14,350	1,700	3,925	44,500	44,500	1,550	42,950	41,000	---	1,700	250
1945	173,300	173,300	2,850	170,450	143,500	19,275	3,475	4,200	49,250	49,250	1,650	47,600	45,000	250	1,875	475
1946	190,125	190,125	2,700	187,425	161,400	18,200	4,675	3,150	53,500	53,500	1,500	52,000	48,825	---	2,875	300
1947	166,450	164,300	2,700	161,600	165,425	21,650	1,875	2,650	53,725	51,575	1,500	50,075	47,675	---	1,875	525
1948	148,475	147,475	2,575	144,900	120,400	22,350	---	2,150	44,375	44,375	1,500	42,875	40,475	2,200	---	200
1949	181,500	166,625	2,700	163,925	135,225	25,450	---	3,250	46,375	44,000	1,500	42,500	41,000	1,250	---	250
ALL VARIETIES																
1944	576,575	566,400	13,300	553,100	295,025	230,600	22,200	5,275	216,625	209,450	7,500	201,950	112,000	85,550	3,200	1,200
1945	669,550	650,550	13,500	637,050	369,500	231,175	29,950	6,425	194,250	184,250	7,600	176,650	99,675	69,250	5,650	2,075
1946	685,250	685,250	13,375	671,875	368,500	271,150	25,175	7,050	222,250	222,250	7,450	214,800	119,075	88,150	4,875	2,700
1947	695,725	688,950	13,250	675,700	333,650	321,425	14,550	6,075	207,625	200,850	7,450	193,400	92,425	85,075	2,450	3,450
1948	515,500	513,875	11,550	502,325	214,725	276,200	5,300	6,100	138,875	138,875	6,250	132,625	69,800	60,050	---	2,775
1949	711,500	656,625	12,300	644,325	330,375	294,050	12,200	7,700	166,925	149,550	6,250	143,300	68,700	70,650	---	3,950

See page 25 for footnotes.

PEARS - WASHINGTON, OREGON AND CALIFORNIA, BY VARIETIES, 1944-1949, CONTINUED

Season	CALIFORNIA				WASHINGTON				OREGON				ALL STATES			
	Production 1/ Tons	Production having value 1/ Tons	Farm disposition Farm household use Tons	Utilization of sales Fresh sales Tons	Processed Canned Tons	Processed Dried Tons	Other 3/ Tons	--- Tons	Production 1/ Tons	Production having value 1/ Tons	Farm disposition Farm household use Tons	Utilization of sales Fresh sales Tons	Processed Canned Tons	Processed Dried Tons	Other 3/ Tons	--- Tons
CALIFORNIA BY VARIETIES																
BARTLETTS																
1944	220,000	217,000	1,100	215,900	81,700	115,200	19,000	---	44,850	44,850	3,500	41,350	25,450	15,500	---	400
1945	295,000	287,000	1,100	285,900	137,100	125,900	22,700	200	56,250	55,250	3,600	51,650	34,225	17,000	---	425
1946	268,000	268,000	1,100	266,900	104,000	143,800	18,500	600	58,375	58,375	3,625	54,750	32,850	21,000	---	900
1947	296,000	296,000	1,100	294,900	101,400	181,400	12,100	---	49,375	49,375	3,500	45,875	22,075	23,300	---	500
1948	226,000	226,000	1,100	224,900	42,900	175,800	5,300	900	46,525	45,900	3,125	42,775	22,100	20,200	---	475
1949	344,000	323,000	1,100	321,900	138,000	171,700	12,200	---	65,450	61,450	3,750	57,700	29,450	27,500	---	750
OTHER THAN BARTLETTS																
1944	30,000	30,000	200	29,800	15,500	14,300	---	---	65,100	65,100	1,000	64,100	60,375	50	---	3,675
1945	46,000	46,000	200	45,800	24,900	19,000	1,600	300	78,050	78,050	1,000	77,050	73,600	25	---	3,425
1946	42,000	42,000	200	41,800	21,900	18,100	1,800	---	94,625	94,625	1,000	93,625	90,675	100	---	2,850
1947	49,000	49,000	200	48,800	27,200	21,600	---	---	93,725	93,725	1,000	92,725	90,550	50	---	2,125
1948	30,000	30,000	200	29,800	10,100	19,700	---	---	74,100	73,100	875	72,225	69,825	450	---	1,950
1949	48,000	41,000	200	40,800	16,600	24,200	---	---	87,125	81,625	1,000	80,625	77,625	---	---	3,000
HARDYS 8/																
1944	14,700	14,700	100	14,600	2,500	12,100	---	---	109,950	109,950	4,500	105,450	85,825	15,550	---	4,075
1945	22,000	22,000	100	21,900	4,300	17,100	500	---	134,300	133,300	4,600	128,700	107,825	17,025	---	3,850
1946	17,000	17,000	100	16,900	2,200	14,400	300	---	153,000	153,000	4,625	148,375	123,525	21,100	---	3,750
1947	22,100	22,100	100	22,000	6,100	15,900	---	---	143,100	143,100	4,500	138,600	112,625	23,350	---	2,625
1948	12,400	12,400	100	12,300	200	12,100	---	---	120,625	119,000	4,000	115,000	91,925	20,650	---	2,425
1949	22,500	17,000	100	16,900	700	16,200	---	---	152,575	143,075	4,750	138,325	107,075	27,500	---	3,750
ALL VARIETIES																
1944	250,000	247,000	1,300	245,700	97,200	129,500	19,000	---								
1945	341,000	333,000	1,300	331,700	162,000	144,900	24,300	500								
1946	310,000	310,000	1,300	308,700	125,900	161,900	20,300	600								
1947	345,000	345,000	1,300	343,700	128,600	203,000	12,100	---								
1948	256,000	256,000	1,300	254,700	53,000	195,500	5,300	900								
1949	392,000	364,000	1,300	362,700	154,600	195,900	12,200	---								

1/ Differences between production and production having value consist of fruit not harvested on account of economic conditions and/or excess cullage of harvested fruit.
 2/ For some States includes small quantities canned or otherwise processed.
 3/ Mostly crushed for sprites.
 4/ Massachusetts, Connecticut, New York and Pennsylvania.
 5/ Virginia, West Virginia, North Carolina, South Carolina, Georgia and Florida.
 6/ Ohio, Indiana, Illinois, Michigan, Missouri, Kansas, Kentucky, Tennessee, Alabama, Mississippi, Arkansas, Louisiana, Oklahoma and Texas.
 7/ Idaho, Colorado, Utah, Washington, Oregon and California.
 8/ Included in other than Bartlett's and all varieties totals.

GRAPES: PRODUCTION, FARM DISPOSITION, SEASON AVERAGE PRICE PER TON TO GROWERS, AND VALUE, BY STATES, 1944 AND 1945

State	1944					1945								
	Farm disposition			Price	Value	Production	Not utilized	Production having value	Farm disposition		Price	Value	Value	
	Production	household	Sold	Dollars	of production				of sales	household	Sold	Dollars	of production	of sales
Tons	Tons	Tons		Thousand dollars	Tons	Tons	Tons	Tons	Tons		Thousand dollars	Thousand dollars	Thousand dollars	
N.Y.	51,600	1,640	49,950	98.00	5,057	4,896	31,300	---	31,300	1,620	29,680	143.00	4,476	4,244
N.J.	2,500	220	2,280	104.00	260	237	800	---	800	170	630	128.00	102	81
Pa.	19,500	2,600	16,900	100.00	1,950	1,690	6,000	---	6,000	1,000	5,000	140.00	840	700
Ohio	18,600	3,000	15,600	85.00	1,581	1,326	4,900	---	4,900	1,500	3,400	135.00	662	459
Ind.	2,500	1,210	1,290	82.00	205	106	1,300	---	1,300	900	400	120.00	156	48
Ill.	3,100	1,920	1,180	90.00	279	106	2,700	---	2,700	1,860	840	110.00	297	92
Mich.	32,000	1,800	30,200	99.00	3,168	2,990	13,500	---	13,500	1,120	12,380	138.00	1,863	1,708
Iowa	3,100	1,200	1,900	100.00	310	190	2,800	---	2,800	1,200	1,600	100.00	280	160
Mo.	4,200	2,250	1,950	82.00	344	160	4,000	---	4,000	2,250	1,750	86.00	344	150
Kans.	2,100	880	1,220	100.00	210	122	2,300	---	2,300	960	1,340	76.00	175	102
Va.	2,600	1,800	800	130.00	338	104	350	---	350	240	110	180.00	63	20
W. Va.	2,100	1,360	740	100.00	210	74	300	---	300	240	60	184.00	55	11
N.C.	5,600	3,600	2,000	156.00	874	312	2,700	---	2,700	1,600	1,100	178.00	481	196
S.C.	1,100	600	500	162.00	178	81	1,200	---	1,200	600	600	165.00	198	99
Ga.	2,200	1,100	1,100	180.00	396	198	2,300	---	2,300	1,100	1,200	180.00	414	216
Ark.	10,600	1,500	9,100	90.00	954	819	5,200	---	5,200	750	4,450	120.00	624	534
Ariz.	1,600	110	1,490	180.00	288	268	1,000	---	1,000	100	900	266.00	266	239
Wash.	15,100	630	14,470	62.00	936	897	19,500	---	19,500	540	18,960	64.20	1,252	1,217
Oreg.	1,700	600	1,100	95.00	162	104	1,600	---	1,600	650	950	87.00	139	83
Calif., All	2,514,000	2,700	2,511,300	3/4/ 77.20	194,083	193,816	2,663,000	12,000	2,651,000	2,700	2,648,300	3/4/ 56.50	149,876	149,712
Wine	563,000	1,400	561,600	3/111.00	62,493	62,338	619,000	---	619,000	1,400	617,600	3/ 62.30	38,564	38,476
Table	513,000	600	512,400	3/110.00	56,430	56,364	512,000	---	512,000	600	511,400	3/ 58.00	29,696	29,661
Raisin	1,438,000	700	1,437,300	3/5/ 52.30	75,160	75,114	1,532,000	12,000	1,520,000	700	1,519,300	3/5/ 53.70	81,616	81,575
Dried 6/	309,500	---	309,500	3/200.00	61,900	61,900	241,000	---	241,000	---	241,000	3/203.00	48,923	48,923
Not dried	200,000	700	199,300	3/ 66.30	13,260	13,214	568,000	12,000	556,000	700	555,300	3/ 58.80	32,693	32,652
U.S.	2,695,800	30,720	2,665,080	2/ 78.20 3/ 78.60	211,783	208,496	2,766,750	12,000	2,754,750	21,100	2,733,650	2/ 58.60 3/ 53.00	162,563	160,071

1/ Production all of value.
 2/ See page 45 for separate estimates of quantities not harvested on account of economic conditions and/or excess cullage of harvested fruit.
 3/ Equivalent returns per ton for bulk fruit at first delivery point.
 4/ Wine, Table and Raisin weighted by quantities sold.
 5/ Fresh equivalent of dried and not dried weighted by quantities sold.
 6/ Dried basis: 1 ton of raisins equivalent to about 4 tons of fresh grapes.
 7/ State prices weighted by quantities sold.
 8/ State prices weighted by production having value.

GRAPES: PRODUCTION, FARM DISPOSITION, SEASON AVERAGE PRICE PER TON TO GROWERS AND VALUE, BY STATES, 1946 AND 1947

State	1946						1947					
	Production 1/ Tons	Farm disposition		Price Dollars	Value of production Thousand dollars	Value of sales Thousand dollars	Production 1/ Tons	Farm disposition		Price Dollars	Value of production Thousand dollars	Value of sales Thousand dollars
		house- hold use	Sold					house- hold use	Sold			
N.Y.	64,500	1,620	62,880	163.00	10,514	10,249	56,100	1,530	54,570	106.00	5,947	5,784
N.J.	1,800	200	1,600	114.00	205	182	1,400	200	1,200	102.00	143	122
Pa.	18,500	2,000	16,500	158.00	2,923	2,607	16,600	1,600	15,200	110.00	1,848	1,672
Ohio	11,000	2,000	9,000	150.00	1,650	1,350	12,000	2,200	9,800	100.00	1,200	980
Ind.	1,600	1,100	500	100.00	160	50	1,800	1,200	600	75.00	135	45
Ill.	2,100	1,200	900	100.00	210	90	2,700	1,600	1,100	94.00	254	103
Mich.	29,800	1,100	28,700	137.00	4,083	3,932	41,100	1,100	40,000	88.00	3,617	3,520
Iowa	2,400	1,280	1,120	95.00	228	106	2,300	1,360	940	95.00	218	89
Mo.	3,400	1,550	1,850	84.00	286	155	4,200	1,900	2,300	74.00	311	170
Kans.	1,400	800	600	92.00	129	55	1,400	800	600	88.00	123	53
Va.	1,800	1,260	540	170.00	306	92	1,300	880	420	170.00	221	71
W. Va.	1,500	1,200	300	150.00	225	45	600	400	200	150.00	90	30
N.C.	4,000	2,500	1,500	200.00	800	300	3,700	2,400	1,300	180.00	666	234
S.C.	1,200	600	600	200.00	240	120	1,300	600	700	180.00	234	126
Ga.	2,100	1,160	940	190.00	399	179	2,200	1,250	950	180.00	396	171
Ark.	10,300	800	9,500	125.00	1,288	1,188	11,200	800	10,400	89.00	997	926
Ariz.	1,000	110	890	387.00	387	344	1,100	100	1,000	242.00	266	242
Wash.	19,400	680	18,720	84.70	1,643	1,586	21,400	710	20,690	67.40	1,442	1,395
Oreg.	1,500	650	850	90.00	135	76	1,400	650	750	80.00	112	60
Calif., All	2,958,000	2,700	2,955,300	2/3/ 90.50	267,789	267,524	2,836,000	2,700	2,833,300	2/3/ 36.00	102,082	101,984
Wine	684,000	1,400	682,600	2/104.00	71,136	70,990	517,000	1,400	515,600	2/ 33.40	17,268	17,221
Table	630,000	600	629,400	2/ 98.50	62,055	61,996	620,000	600	619,400	2/ 45.60	28,272	28,245
Raisin	1,644,000	700	1,643,300	2/4/ 81.90	134,598	134,538	1,699,000	700	1,698,300	2/4/ 33.30	56,542	56,518
Dried 5/	193,000	—	193,000	2/312.00	60,216	60,216	306,000	—	306,000	2/ 132.00	40,392	40,392
Not dried	872,000	700	871,300	2/ 85.30	74,382	74,322	475,000	700	474,300	2/ 34.00	16,150	16,126
U.S.	3,137,300	24,510	3,112,790	6/ 93.20	293,600	290,230	3,020,000	23,980	2,996,020	6/ 39.30	120,302	117,777
				7/ 93.60						7/ 39.80		

1/ Production all of value.

2/ Equivalent returns per ton for bulk fruit at first delivery point.

3/ Wine, Table, and Raisin weighted by quantities sold.

4/ Fresh equivalent of dried and not dried weighted by quantities sold.

5/ Dried basis: 1 ton of raisins equivalent to 4 tons of fresh grapes.

6/ State prices weighted by quantities sold.

7/ State prices weighted by production having value.

GRAPES: PRODUCTION, FARM DISPOSITION, SEASON AVERAGE PRICE PER TON TO GROWERS AND VALUE, BY STATES, 1948 AND 1949

State	1948							1949						
	Production 1/	Not utilized 1/	Production having value	Farm disposition		Price	Value of production	Value of sales	Production 2/	Farm disposition		Price	Value of production	Value of sales
				house- hold	Sold					house- hold	Sold			
Tons	Tons	Tons	Tons	Tons	Dollars	Thousand dollars	Thousand dollars	Tons	Tons	Tons	Dollars	Thousand dollars	Thousand dollars	
N.Y.	60,200	---	60,200	1,440	58,760	105.00	6,321	6,170	39,500	1,170	38,330	110.00	4,345	4,216
N.J.	1,400	---	1,400	200	1,200	90.00	126	108	1,400	300	1,100	70.00	98	77
Pa.	15,800	---	15,800	1,400	14,400	110.00	1,738	1,584	12,600	1,280	11,320	105.00	1,323	1,189
Ohio	9,300	---	9,300	1,800	7,500	105.00	976	788	12,000	2,100	9,900	104.00	1,248	1,030
Ind.	1,300	---	1,300	1,000	300	85.00	110	26	1,400	960	440	98.00	137	43
Ill.	2,500	---	2,500	1,500	1,000	100.00	250	100	2,400	1,190	1,210	90.00	216	109
Mich.	26,000	---	26,000	960	25,040	98.00	2,548	2,454	32,000	1,050	30,950	101.00	3,232	3,126
Iowa	2,500	---	2,500	1,440	1,060	100.00	250	106	2,500	1,440	1,060	80.00	200	85
Mo.	4,300	---	4,300	1,900	2,400	76.00	327	182	4,300	1,930	2,370	72.00	310	171
Kans.	1,700	200	1,500	960	540	86.00	129	46	1,600	960	640	80.00	128	51
Va.	1,400	---	1,400	960	440	170.00	75	75	900	720	180	150.00	135	27
W. Va.	900	---	900	640	260	115.00	104	30	800	640	160	90.00	72	14
N.C.	3,400	---	3,400	2,250	1,150	176.00	598	202	2,500	1,720	780	145.00	362	113
S.C.	1,300	---	1,300	600	700	180.00	234	126	1,100	500	600	160.00	176	96
Ge.	2,200	---	2,200	1,350	850	180.00	396	153	1,100	800	300	160.00	176	48
Ark.	9,700	---	9,700	780	8,920	79.00	766	705	10,600	840	9,760	99.00	1,049	966
Ariz.	800	---	800	100	700	345.00	276	242	1,000	100	900	375.00	375	338
Wash.	24,000	---	24,000	710	23,290	42.00	1,008	978	20,800	680	20,120	46.60	969	938
Oreg.	1,300	---	1,300	650	650	86.00	112	56	1,200	600	600	67.00	80	40
Calif., All	2,891,000	---	2,891,000	2,700	2,888,300	3/4/ 35.60	102,936	102,838	2,473,000	2,700	2,470,300	3/4/ 32.50	80,329	80,245
Wine	620,000	---	620,000	1,400	618,600	3/ 35.70	22,134	22,084	538,000	1,400	536,600	4/ 29.80	16,032	15,991
Table	592,000	---	592,000	600	591,400	3/ 35.50	21,016	20,995	514,000	600	513,400	4/ 31.30	16,088	16,069
Raisin	1,679,000	---	1,679,000	700	1,678,300	3/5/ 35.60	59,786	59,759	1,421,000	700	1,420,300	3/5/ 33.90	48,209	48,185
Dried 6/	231,500	---	231,500	---	231,500	3/134.00	31,021	31,021	259,000	---	259,000	3/135.00	34,965	34,965
Not dried	753,000	---	753,000	700	752,300	3/ 38.20	28,765	28,738	385,000	700	384,300	3/ 34.40	13,244	13,220
U.S.	3,061,000	200	3,060,800	23,340	3,037,460	7/ 38.50	119,443	116,969	2,622,700	21,680	2,601,020	7/ 35.70	94,960	92,922
						8/ 39.00						8/ 36.20		

- 1/ See page 45 for separate estimates of quantities not harvested on account of economic conditions and/or excess cullage of harvested fruit.
- 2/ Production all of value.
- 3/ Equivalent returns per ton for bulk fruit at first delivery point.
- 4/ Wine, Table and Raisin weighted by quantities sold.
- 5/ Fresh equivalent of dried and not dried weighted by quantities sold.
- 6/ Dried basis: 1 ton of raisins equivalent to about 4 tons of fresh grapes.
- 7/ State prices weighted by quantities sold.
- 8/ State prices weighted by production having value.

GRAPES: PRODUCTION AND UTILIZATION, 1944-1949

UNITED STATES

Season	Production 1/	Production having value 1/	Farm disposition		Utilization of sales				Season	Production 1/	Production having value 1/	Farm disposition		Utilization of sales			
			For farm-household use	Sold	Fresh sales	Canned	Dried	Crushed for wine, juice etc.				For farm-household use	Sold	Fresh sales	Canned	Dried	Crushed for wine, juice etc.
	Tons	Tons	Tons	Tons	Tons	Tons	Tons	Tons	Tons	Tons	Tons	Tons	Tons	Tons	Tons	Tons	Tons
1944	2,695,800	2,695,800	30,720	2,665,080	444,980	14,000	1,238,000	988,100	1947	3,020,000	3,020,000	23,980	2,996,020	651,850	23,000	1,225,100	1,096,070
1945	2,766,750	2,754,750	21,100	2,733,650	516,290	11,000	969,200	1,237,160	1948	3,061,000	3,060,800	23,340	3,037,460	569,030	30,000	928,200	1,510,230
1946	3,137,300	3,137,300	24,510	3,112,790	547,200	14,300	772,400	1,778,890	1949	2,622,700	2,622,700	21,680	2,601,020	542,380	25,000	1,037,300	996,340

1/ Differences between production and production having value consist of fruit not harvested on account of economic conditions.

GRAPES: PRODUCTION AND UTILIZATION, 1944-1949

CALIFORNIA

Season	Production 1/	Production having value 1/	Farm disposition		Utilization of sales				Production 1/	Production having value 1/	Farm disposition		Utilization of sales				
			For farm-household use	Sold	Fresh sales	Canned	Dried	Crushed for wine, juice etc.			For farm-household use	Sold	Fresh sales	Canned	Dried	Crushed for wine, juice etc.	
Thousand tons - fresh weight								Thousand tons - fresh weight									
RAISIN VARIETIES								WINE VARIETIES									
1944	1,438.0	1,438.0	.7	1,437.3	31.3	14.0	1,238.0	154.0	563.0	563.0	1.4	561.6	107.6	---	---	---	454.0
1945	1,532.0	1,520.0	.7	1,519.3	132.6	11.0	964.0	411.7	619.0	619.0	1.4	617.6	114.4	---	5.2	---	498.0
1946	1,644.0	1,644.0	.7	1,643.3	144.2	14.3	772.0	712.8	684.0	684.0	1.4	682.6	102.1	---	---	---	580.5
1947	1,699.0	1,699.0	.7	1,698.3	177.0	23.0	1,224.0	274.3	517.0	517.0	1.4	515.6	114.6	---	---	---	401.0
1948	1,679.0	1,679.0	.7	1,678.3	187.7	30.0	926.0	534.6	620.0	620.0	1.4	518.6	99.3	---	2.0	---	517.3
1949	1,421.0	1,421.0	.7	1,420.3	156.4	25.0	1,036.0	202.9	538.0	538.0	1.4	536.6	89.1	---	---	---	447.5
TABLE VARIETIES								ALL VARIETIES									
1944	513.0	513.0	.6	512.4	262.4	---	---	250.0	2,514.0	2,514.0	2.7	2,511.3	401.3	14.0	1,238.0	---	858.0
1945	512.0	512.0	.6	511.4	251.1	---	---	260.3	2,563.0	2,651.0	2.7	2,648.3	498.1	11.0	969.2	---	1,170.0
1946	630.0	630.0	.6	629.4	270.4	---	---	358.6	2,958.0	2,958.0	2.7	2,955.3	516.7	14.3	772.4	---	1,651.9
1947	620.0	620.0	.6	619.4	327.6	---	---	1.1	2,836.0	2,836.0	2.7	2,833.3	619.2	23.0	1,225.1	---	966.0
1948	592.0	592.0	.6	591.4	256.8	---	---	.2	2,891.0	2,891.0	2.7	2,888.3	543.8	30.0	928.2	---	1,386.3
1949	514.0	514.0	.6	513.4	274.7	---	---	1.3	2,473.0	2,473.0	2.7	2,470.3	520.2	25.0	1,037.3	---	887.8

1/ Differences between production and production having value consist of fruit not harvested on account of economic conditions.

GRAPES: PRODUCTION AND UTILIZATION, 1944-1949 CONTINUED

Season	Farm disposition			Utilization of sales			Production 2/	Farm disposition			Utilization of sales		
	Production 1/	For farm household use	Sold	Fresh sales	Processed	Crushed for juice, wine, etc.		Production 2/	For farm household use	Sold	Fresh sales	Processed	Crushed for juice, wine, etc.
	Tons	Tons	Tons	Tons	Tons	Tons	Tons	Tons	Tons	Tons	Tons	Tons	Tons
NEW YORK													
1944	51,600	1,640	49,960	6,430	43,530		2,500	2,500	220	2,280	1,200	1,080	
1945	31,300	1,620	29,680	2,860	26,820		800	800	170	630	340	290	
1946	64,500	1,620	62,880	6,880	56,000		1,800	1,800	200	1,600	640	960	
1947	56,100	1,530	54,570	5,070	49,500		1,400	1,400	200	1,200	370	830	
1948	60,200	1,440	58,760	5,160	53,600		1,400	1,400	200	1,200	340	860	
1949	39,500	1,170	38,330	3,930	34,400		1,400	1,400	300	1,100	450	650	
NEW JERSEY													
1944	19,500	2,600	16,900	3,200	13,700		18,600	18,600	3,000	15,600	5,500	10,100	
1945	6,000	1,000	5,000	400	4,600		4,900	4,900	1,500	3,400	600	2,800	
1946	18,500	2,000	16,500	1,900	14,600		11,000	11,000	2,000	9,000	2,500	6,500	
1947	16,800	1,600	15,200	900	14,300		12,000	12,000	2,200	9,800	2,500	7,300	
1948	15,800	1,400	14,400	1,000	13,400		9,300	9,300	1,800	7,500	1,800	5,700	
1949	12,600	1,280	11,320	820	10,500		12,000	12,000	2,100	9,900	2,000	7,900	
PENNSYLVANIA													
1944	32,000	1,800	30,200	10,500	19,700		10,600	10,600	1,500	9,100	2,250	6,850	
1945	13,500	1,120	12,380	3,780	8,600		5,200	5,200	750	4,450	750	3,700	
1946	29,800	1,100	28,700	8,700	20,000		10,300	10,300	800	9,500	500	9,000	
1947	41,100	1,100	40,000	13,450	26,550		11,200	11,200	800	10,400	580	9,820	
1948	26,000	960	25,040	7,020	18,020		9,700	9,700	780	8,920	920	8,000	
1949	32,000	1,050	30,950	5,860	25,090		10,600	10,600	840	9,760	1,160	8,600	
MICHIGAN													
1944	15,100	630	14,470	2,100	12,370		31,900	31,900	16,630	15,270	12,500	2,770	
1945	19,500	540	18,960	1,910	17,050		22,550	22,550	11,700	10,850	7,550	3,300	
1946	19,400	680	18,720	1,580	17,140		24,000	24,000	13,410	10,590	7,800	2,790	
1947	21,400	710	20,690	1,880	18,810		24,000	24,000	13,140	10,860	7,900	2,960	
1948	24,000	710	23,290	1,850	21,440		23,600	23,400	13,350	10,050	7,140	2,910	
1949	30,700	680	29,120	1,920	18,200		20,800	20,800	11,560	9,240	6,040	3,200	
OHIO													
1944	15,100	630	14,470	2,100	12,370		31,900	31,900	16,630	15,270	12,500	2,770	
1945	19,500	540	18,960	1,910	17,050		22,550	22,550	11,700	10,850	7,550	3,300	
1946	19,400	680	18,720	1,580	17,140		24,000	24,000	13,410	10,590	7,800	2,790	
1947	21,400	710	20,690	1,880	18,810		24,000	24,000	13,140	10,860	7,900	2,960	
1948	24,000	710	23,290	1,850	21,440		23,600	23,400	13,350	10,050	7,140	2,910	
1949	30,700	680	29,120	1,920	18,200		20,800	20,800	11,560	9,240	6,040	3,200	
ARKANSAS													
1944	15,100	630	14,470	2,100	12,370		31,900	31,900	16,630	15,270	12,500	2,770	
1945	19,500	540	18,960	1,910	17,050		22,550	22,550	11,700	10,850	7,550	3,300	
1946	19,400	680	18,720	1,580	17,140		24,000	24,000	13,410	10,590	7,800	2,790	
1947	21,400	710	20,690	1,880	18,810		24,000	24,000	13,140	10,860	7,900	2,960	
1948	24,000	710	23,290	1,850	21,440		23,600	23,400	13,350	10,050	7,140	2,910	
1949	30,700	680	29,120	1,920	18,200		20,800	20,800	11,560	9,240	6,040	3,200	
WASHINGTON													
1944	15,100	630	14,470	2,100	12,370		31,900	31,900	16,630	15,270	12,500	2,770	
1945	19,500	540	18,960	1,910	17,050		22,550	22,550	11,700	10,850	7,550	3,300	
1946	19,400	680	18,720	1,580	17,140		24,000	24,000	13,410	10,590	7,800	2,790	
1947	21,400	710	20,690	1,880	18,810		24,000	24,000	13,140	10,860	7,900	2,960	
1948	24,000	710	23,290	1,850	21,440		23,600	23,400	13,350	10,050	7,140	2,910	
1949	30,700	680	29,120	1,920	18,200		20,800	20,800	11,560	9,240	6,040	3,200	
OTHER STATES 3/													
1944	15,100	630	14,470	2,100	12,370		31,900	31,900	16,630	15,270	12,500	2,770	
1945	19,500	540	18,960	1,910	17,050		22,550	22,550	11,700	10,850	7,550	3,300	
1946	19,400	680	18,720	1,580	17,140		24,000	24,000	13,410	10,590	7,800	2,790	
1947	21,400	710	20,690	1,880	18,810		24,000	24,000	13,140	10,860	7,900	2,960	
1948	24,000	710	23,290	1,850	21,440		23,600	23,400	13,350	10,050	7,140	2,910	
1949	30,700	680	29,120	1,920	18,200		20,800	20,800	11,560	9,240	6,040	3,200	

1/ Production all of value.

2/ Differences between production and producer having value consist of fruit not harvested on account of economic conditions.

3/ Indiana, Illinois, Iowa, Kansas, Virginia, West Virginia, North Carolina, South Carolina, Georgia, Arizona, and Oregon.

SWEET CHERRIES: PRODUCTION, FARM DISPOSITION, SEASON AVERAGE PRICE PER TON TO GROWERS AND VALUE, BY STATES, 1944-1947

© UPDATA 1981

State	Production: utilized		Production: having		Farm disposition		Value		Production: utilized	Production: having		Farm disposition		Value		
	Tons	Tons	Tons	Tons	Tons	Tons	Dollars	Thousand dollars		Tons	Tons	Tons	Tons	Tons	Dollars	Thousand dollars
<u>1944</u>																
N.Y.	2,500	---	2,500	540	1,960	255.00	638	500	2,200	---	2,200	540	1,660	321.00	706	.533
Pa.	1,900	---	1,900	630	1,270	250.00	475	318	700	---	700	240	460	310.00	217	143
Ohio	760	---	760	490	270	280.00	213	76	290	---	290	180	110	340.00	99	37
Mich.	4,600	---	4,600	700	3,900	242.00	1,113	944	500	---	500	200	300	380.00	190	114
Mont.	610	---	610	20	590	340.00	207	201	480	---	480	20	460	400.00	192	184
Idaho	2,640	---	2,640	200	2,440	250.00	660	610	2,460	---	2,460	200	2,260	265.00	652	599
Colo.	500	---	500	90	410	320.00	160	131	380	---	380	70	310	340.00	129	105
Utah	3,300	---	3,300	320	2,980	296.00	977	882	4,300	---	4,300	320	3,980	260.00	1,118	1,035
Wash.	21,200	---	21,200	1,980	19,220	2/278.00	5,894	5,343	22,400	---	22,400	1,980	20,420	2/259.00	8,392	7,879
Oreg.	18,100	300	17,800	1,700	16,100	2/262.00	4,664	4,218	20,800	1,100	19,700	1,800	17,900	2/259.00	5,102	4,636
Calif.	27,000	---	27,000	300	26,700	3/290.00	7,830	7,243	38,000	---	38,000	300	37,700	3/282.00	10,716	10,631
U.S.	83,110	300	82,810	6,970	75,840	4/276.00	22,831	20,966	102,510	1,100	101,410	5,850	95,560	4/271.00	27,513	25,896
<u>1946</u>																
N.Y.	1,400	---	1,400	320	1,080	353.00	494	381	2,400	---	2,400	480	1,920	273.00	655	524
Pa.	700	---	700	300	400	350.00	245	140	800	---	800	300	500	282.00	226	141
Ohio	150	---	150	120	30	360.00	54	11	370	---	370	180	190	330.00	122	63
Mich.	4,500	---	4,500	400	4,100	283.00	1,274	1,160	4,600	---	4,600	400	4,200	252.00	1,159	1,058
Mont.	700	---	700	20	680	420.00	294	286	1,120	---	1,120	40	1,080	292.00	327	315
Idaho	3,520	---	3,520	170	3,350	245.00	862	821	2,380	50	2,330	170	2,160	240.00	559	518
Colo.	300	---	300	60	240	370.00	111	89	680	---	680	80	600	380.00	258	228
Utah	3,900	---	3,900	300	3,600	250.00	975	900	3,500	---	3,500	300	3,200	280.00	980	896
Wash.	32,200	---	32,200	1,980	30,220	2/269.00	8,662	8,129	25,600	1,000	24,600	1,980	22,620	2/275.00	6,765	6,220
Oreg.	31,000	1,000	30,000	1,800	28,200	2/263.00	7,890	7,417	10,800	---	10,800	1,500	9,300	2/211.00	2,279	1,962
Calif.	34,000	---	34,000	300	33,700	3/304.00	10,336	10,245	28,000	---	28,000	300	27,700	3/251.00	7,028	6,953
U.S.	112,370	1,000	111,370	5,770	105,600	4/280.00	31,197	29,579	80,250	1,050	79,200	5,730	73,470	4/257.00	20,358	18,878
<u>1947</u>																

See page 33 for footnotes.

SWEET CHERRIES: PRODUCTION, FARM DISPOSITION, SEASON AVERAGE PRICE PER TON TO GROWERS AND VALUE, BY STATES, 1948 AND 1949

State	1948		1948					1949		1949						
	Production	Not utilized	Production	Farm disposition	Price	Value of production	Value of sales	Production	Not utilized	Production	Farm disposition	Price	Value of production	Value of sales		
	Tons	Tons	Tons	Tons	Dollars	Thousand dollars	Thousand dollars	Tons	Tons	Tons	Tons	Dollars	Thousand dollars	Thousand dollars		
N.Y.	3,200	---	3,200	380	2,820	267.00	854	753	3,100	---	3,100	420	2,680	192.00	595	515
Pa.	800	---	800	300	500	265.00	212	132	1,500	---	1,500	380	1,120	244.00	366	273
Ohio	220	---	220	150	70	300.00	66	21	370	---	370	200	170	260.00	96	44
Mich.	4,600	---	4,600	400	4,200	282.00	1,297	1,184	7,200	---	7,200	400	6,800	135.00	972	918
Mont.	500	---	500	30	470	260.00	130	122	1,780	---	1,780	50	1,730	195.00	347	337
Idaho	3,430	170	3,260	170	3,090	216.00	704	667	4,100	600	3,500	170	3,330	140.00	490	466
Colo.	820	---	820	100	720	320.00	262	230	640	---	640	90	550	250.00	160	138
Utah	3,900	---	3,900	320	3,580	260.00	1,014	931	3,100	---	3,100	320	2,780	190.00	589	528
Wash.	21,300	---	21,300	1,830	19,470	2/253.00	5,389	4,926	36,400	4,800	31,600	1,900	29,700	2/135.00	4,266	4,010
Oreg.	18,500	---	18,500	1,600	16,900	2/258.00	4,773	4,360	34,200	3,000	31,200	1,800	29,400	2/129.00	4,025	3,793
Calif.	23,500	---	23,500	300	23,200	3/326.00	7,661	7,563	44,000	---	44,000	300	43,700	3/182.00	8,008	7,953
U.S.	80,770	170	80,600	5,580	75,020	4/278.00	22,362	20,889	136,390	8,400	127,990	6,030	121,960	4/156.00	19,914	18,975
						5/277.00								5/156.00		

SOUR CHERRIES: PRODUCTION, FARM DISPOSITION, SEASON AVERAGE PRICE PER TON TO GROWERS AND VALUE, BY STATES, 1944 AND 1945

State	1944		1944					1945		1945						
	Production	Not utilized	Production	Farm disposition	Price	Value of production	Value of sales	Production	Not utilized	Production	Farm disposition	Price	Value of production	Value of sales		
	Tons	Tons	Tons	Tons	Dollars	Thousand dollars	Thousand dollars	Tons	Tons	Tons	Tons	Dollars	Thousand dollars	Thousand dollars		
N.Y.	19,400	---	19,400	1,020	18,380	175.00	3,395	3,216	7,300	---	7,300	400	6,900	295.00	2,154	2,036
Pa.	7,900	---	7,900	1,500	6,400	170.00	1,343	1,088	3,600	---	3,600	660	2,940	329.00	1,184	967
Ohio	2,770	---	2,770	960	1,810	170.00	471	308	1,680	---	1,680	280	1,400	262.00	440	367
Mich.	50,000	---	50,000	1,300	48,700	156.00	7,800	7,597	14,000	---	14,000	600	13,400	294.00	4,116	3,940
Wis.	15,000	---	15,000	600	14,400	170.00	2,550	2,448	7,300	---	7,300	500	6,800	270.00	1,971	1,836
Mont.	470	---	470	40	430	140.00	66	60	370	---	370	40	330	200.00	74	66
Idaho	660	---	660	150	510	156.00	103	80	610	---	610	150	460	160.00	98	74
Colo.	5,400	---	5,400	320	5,080	150.00	810	762	2,000	---	2,000	150	1,850	194.00	388	359
Utah	2,400	---	2,400	120	2,280	170.00	408	388	2,600	---	2,600	120	2,480	160.00	416	397
Wash.	5,800	200	5,600	840	4,760	2/168.00	941	800	4,200	110	4,090	780	3,310	2/167.00	683	553
Oreg.	2,600	---	2,600	300	2,300	2/168.00	437	386	2,100	---	2,100	300	1,800	2/168.00	353	302
U.S.	112,400	200	112,200	7,150	105,050	4/163.00	18,324	17,133	45,760	110	45,650	3,980	41,670	4/262.00	11,877	10,897
						5/163.00								5/260.00		

See page 33 for footnotes.

SOUR CHERRIES: PRODUCTION, FARM DISPOSITION, SEASON AVERAGE PRICE PER TON TO GROWERS AND VALUE, BY STATES, 1946-1949

© UPDATA 1981

State	Production		Farm disposition			Value		Price	Production		Farm disposition			Value		
	utilized	Not utilized	Production having value	Household use	Sold	of production	of sales		utilized	Not utilized	Production having value	Household use	Sold	of production	of sales	
	Tons	Tons	Tons	Tons	Tons	Dollars	Thousand dollars		Tons	Tons	Tons	Tons	Tons	Dollars	Thousand dollars	
<u>1946</u>																
N.Y.	15,000	---	15,000	700	14,300	357.00	5,355	5,105	14,200	---	14,200	600	13,600	212.00	3,010	2,883
Pa.	4,600	---	4,600	1,000	3,600	300.00	1,380	1,080	4,400	---	4,400	860	3,540	237.00	1,043	839
Ohio	1,670	---	1,670	260	1,410	260.00	434	367	1,790	---	1,790	420	1,370	224.00	401	307
Mich.	60,500	---	60,500	800	59,700	298.00	18,029	17,791	49,500	---	49,500	760	48,740	192.00	9,504	9,358
Wis.	20,000	---	20,000	800	19,200	316.00	6,320	6,067	9,000	---	9,000	560	8,440	210.00	1,890	1,772
Mont.	60	---	60	10	50	180.00	11	9	440	---	440	50	390	144.00	63	56
Idaho	420	40	380	140	240	185.00	70	44	540	---	540	150	390	180.00	97	70
Colo.	3,000	---	3,000	200	2,800	260.00	780	728	3,400	---	3,400	200	3,200	180.00	612	576
Utah	3,600	---	3,600	120	3,480	200.00	720	696	2,100	---	2,100	120	1,980	180.00	378	356
Wash.	4,300	---	4,300	770	3,530	2/273.00	1,174	964	4,200	590	3,610	770	2,840	2/184.00	664	523
Orge.	2,900	---	2,900	350	2,550	2/215.00	624	548	1,400	---	1,400	230	1,170	2/200.00	280	234
U.S.	116,050	40	116,010	5,150	110,860	4/301.00	34,897	33,399	90,970	590	90,380	4,720	85,660	4/198.00	17,942	16,974
<u>5/301.00</u>																
<u>1947</u>																
N.Y.	19,500	---	19,500	600	18,900	216.00	4,212	4,082	16,500	---	16,500	600	15,900	227.00	3,746	3,609
Pa.	6,000	---	6,000	990	5,010	210.00	1,260	1,052	8,000	---	8,000	920	7,080	221.00	1,768	1,565
Ohio	1,090	---	1,090	240	850	244.00	266	207	1,480	---	1,480	260	1,220	205.00	303	250
Mich.	69,000	---	69,000	800	68,200	181.00	12,489	12,344	60,500	---	60,500	840	59,660	182.00	11,011	10,858
Wis.	25,000	---	25,000	850	24,150	159.00	3,975	3,840	11,600	---	11,600	600	11,000	161.00	1,868	1,771
Mont.	380	---	380	50	330	160.00	61	53	340	---	340	50	290	150.00	51	44
Idaho	520	---	520	130	390	172.00	89	67	470	---	470	130	340	175.00	82	60
Colo.	4,300	---	4,300	200	4,100	150.00	645	615	2,800	---	2,800	200	2,600	164.00	459	426
Utah	2,500	---	2,500	120	2,380	180.00	450	428	1,700	---	1,700	110	1,590	150.00	255	238
Wash.	1,800	---	1,800	600	1,200	2/207.00	373	248	2,500	---	2,500	700	1,800	2/195.00	488	351
Orge.	1,700	---	1,700	340	1,360	2/206.00	354	283	2,800	---	2,800	400	2,400	2/159.00	445	382
U.S.	131,790	---	131,790	4,920	126,870	4/183.00	24,174	23,219	108,690	---	108,690	4,810	103,880	4/188.00	20,476	19,554
<u>5/183.00</u>																
<u>1948</u>																
N.Y.	19,500	---	19,500	600	18,900	216.00	4,212	4,082	16,500	---	16,500	600	15,900	227.00	3,746	3,609
Pa.	6,000	---	6,000	990	5,010	210.00	1,260	1,052	8,000	---	8,000	920	7,080	221.00	1,768	1,565
Ohio	1,090	---	1,090	240	850	244.00	266	207	1,480	---	1,480	260	1,220	205.00	303	250
Mich.	69,000	---	69,000	800	68,200	181.00	12,489	12,344	60,500	---	60,500	840	59,660	182.00	11,011	10,858
Wis.	25,000	---	25,000	850	24,150	159.00	3,975	3,840	11,600	---	11,600	600	11,000	161.00	1,868	1,771
Mont.	380	---	380	50	330	160.00	61	53	340	---	340	50	290	150.00	51	44
Idaho	520	---	520	130	390	172.00	89	67	470	---	470	130	340	175.00	82	60
Colo.	4,300	---	4,300	200	4,100	150.00	645	615	2,800	---	2,800	200	2,600	164.00	459	426
Utah	2,500	---	2,500	120	2,380	180.00	450	428	1,700	---	1,700	110	1,590	150.00	255	238
Wash.	1,800	---	1,800	600	1,200	2/207.00	373	248	2,500	---	2,500	700	1,800	2/195.00	488	351
Orge.	1,700	---	1,700	340	1,360	2/206.00	354	283	2,800	---	2,800	400	2,400	2/159.00	445	382
U.S.	131,790	---	131,790	4,920	126,870	4/183.00	24,174	23,219	108,690	---	108,690	4,810	103,880	4/188.00	20,476	19,554
<u>5/188.00</u>																
<u>1949</u>																
N.Y.	19,500	---	19,500	600	18,900	216.00	4,212	4,082	16,500	---	16,500	600	15,900	227.00	3,746	3,609
Pa.	6,000	---	6,000	990	5,010	210.00	1,260	1,052	8,000	---	8,000	920	7,080	221.00	1,768	1,565
Ohio	1,090	---	1,090	240	850	244.00	266	207	1,480	---	1,480	260	1,220	205.00	303	250
Mich.	69,000	---	69,000	800	68,200	181.00	12,489	12,344	60,500	---	60,500	840	59,660	182.00	11,011	10,858
Wis.	25,000	---	25,000	850	24,150	159.00	3,975	3,840	11,600	---	11,600	600	11,000	161.00	1,868	1,771
Mont.	380	---	380	50	330	160.00	61	53	340	---	340	50	290	150.00	51	44
Idaho	520	---	520	130	390	172.00	89	67	470	---	470	130	340	175.00	82	60
Colo.	4,300	---	4,300	200	4,100	150.00	645	615	2,800	---	2,800	200	2,600	164.00	459	426
Utah	2,500	---	2,500	120	2,380	180.00	450	428	1,700	---	1,700	110	1,590	150.00	255	238
Wash.	1,800	---	1,800	600	1,200	2/207.00	373	248	2,500	---	2,500	700	1,800	2/195.00	488	351
Orge.	1,700	---	1,700	340	1,360	2/206.00	354	283	2,800	---	2,800	400	2,400	2/159.00	445	382
U.S.	131,790	---	131,790	4,920	126,870	4/183.00	24,174	23,219	108,690	---	108,690	4,810	103,880	4/188.00	20,476	19,554
<u>5/188.00</u>																

- 1/ See page 45 for separate estimates of quantities not harvested on account of economic conditions and/or excess cullage of harvested fruit.
- 2/ Bulk fruit at packing house door.
- 3/ Bulk fruit at first delivery point.
- 4/ State prices weighted by quantities sold.
- 5/ State prices weighted by production having value.

SWEET CHERRIES: PRODUCTION AND UTILIZATION, 1944-1949

Season	Production				Farm disposition				Utilization of sales				Production				Farm disposition				Utilization of sales						
	1/ Tons	having value 1/ Tons	For farm house- hold use Tons	Sold Tons	Fresh sales Tons	Processed Canned Tons	Frozen Tons	Brined Tons	1/ Tons	having value 1/ Tons	For farm house- hold use Tons	Sold Tons	Fresh sales Tons	Processed Canned Tons	Frozen Tons	Brined Tons	1/ Tons	having value 1/ Tons	For farm house- hold use Tons	Sold Tons	Fresh sales Tons	Processed Canned Tons	Frozen Tons	Brined Tons			
<u>UNITED STATES</u>																											
1944	83,110	82,810	6,970	75,840	40,140	13,660	1,580	20,460	9,760	9,760	2,360	7,400	3,610	690	---	---	3,100										
1945	102,510	101,410	5,850	95,560	42,730	21,590	6,720	24,520	3,690	3,690	1,160	2,530	930	20	250	1,330											
1946	112,370	111,370	5,770	105,600	37,430	30,320	5,390	32,460	6,750	6,750	1,140	5,610	1,700	910	240	2,760											
1947	80,250	79,200	5,730	73,470	37,260	10,410	660	25,140	8,170	8,170	1,360	6,810	2,660	600	120	3,430											
1948	80,770	80,600	5,580	75,020	28,780	15,800	710	29,730	8,820	8,820	1,230	7,590	2,780	790	170	3,850											
1949	136,390	127,990	6,030	121,960	53,160	27,780	900	40,120	12,170	12,170	1,400	10,770	3,010	1,310	90	6,360											
<u>GREAT LAKE STATES 2/</u>																											
1944									18,100	17,800	1,700	16,100	3,700	4,900	600	6,900											
1945									20,800	19,700	1,800	17,900	4,900	5,900	900	6,200											
1946									31,000	30,000	1,800	28,200	3,400	11,000	800	13,000											
1947									10,800	10,800	1,500	9,300	2,050	2,200	100	4,950											
1948									18,500	18,500	1,600	16,900	3,100	6,300	---	7,500											
1949									34,200	31,200	1,800	29,400	5,600	9,700	---	14,100											
<u>WASHINGTON</u>																											
1944	21,200	21,200	1,980	19,220	11,750	3,240	580	3,650																			
1945	32,400	32,400	1,980	30,420	16,510	6,540	1,600	5,770																			
1946	32,200	32,200	1,980	30,220	13,460	7,880	1,240	7,640																			
1947	25,600	24,600	1,980	22,620	13,400	2,360	240	6,620																			
1948	21,300	21,300	1,830	19,470	9,950	4,000	340	5,180																			
1949	36,400	31,600	1,900	29,700	21,010	5,250	410	3,030																			
<u>OREGON</u>																											
1944									7,050	7,050	630	6,420	5,180	630	80	530											
1945									7,620	7,620	610	7,010	4,390	930	1,170	520											
1946									8,420	8,420	550	7,870	4,370	1,330	610	1,560											
1947									7,680	7,630	590	7,040	5,350	550	100	1,040											
1948									8,650	8,480	620	7,860	5,250	910	200	1,500											
1949									9,620	9,020	630	8,390	6,340	420	100	1,530											
<u>CALIFORNIA</u>																											
1944	27,000	27,000	300	26,700	15,900	4,200	320	6,280																			
1945	38,000	38,000	300	37,700	16,000	8,200	2,800	10,700																			
1946	34,000	34,000	300	33,700	14,500	9,200	2,500	7,500																			
1947	28,000	28,000	300	27,700	13,800	4,700	100	9,100																			
1948	23,500	23,500	300	23,200	7,700	3,800	---	11,700																			
1949	44,000	44,000	300	43,700	17,200	11,100	300	15,100																			
<u>OTHER STATES 3/</u>																											
1944									7,050	7,050	630	6,420	5,180	630	80	530											
1945									7,620	7,620	610	7,010	4,390	930	1,170	520											
1946									8,420	8,420	550	7,870	4,370	1,330	610	1,560											
1947									7,680	7,630	590	7,040	5,350	550	100	1,040											
1948									8,650	8,480	620	7,860	5,250	910	200	1,500											
1949									9,620	9,020	630	8,390	6,340	420	100	1,530											

1/ Differences between production and production having value consist of fruit not harvested on account of economic conditions and/or excess cullage of harvested fruit.

2/ New York, Ohio, Pennsylvania and Michigan.

3/ Montana, Idaho, Colorado and Utah.

© UPDATA 1981

SOUR CHERRIES: PRODUCTION AND UTILIZATION, 1944-1949

Season	Production					Utilization of sales					Production					Utilization of sales					
	1/ value	1/ value	For farm hold use	Sold	Fresh sales	Canned	Frozen	Brined	Other 2/	1/ value	1/ value	For farm hold use	Sold	Fresh sales	Canned	Frozen	Brined	Other 2/			
	Tons	Tons	Tons	Tons	Tons	Tons	Tons	Tons	Tons	Tons	Tons	Tons	Tons	Tons	Tons	Tons	Tons	Tons	Tons		
<u>UNITED STATES</u>										<u>NEW YORK</u>											
1944	112,400	112,200	7,150	105,050	3/12,760	54,530	35,330	1,290	1,140	19,400	19,400	1,020	18,380	3/2,410	6,470	9,500	---	---	---	---	
1945	45,760	45,650	3,980	41,670	3/6,570	25,320	9,025	210	545	7,300	7,300	400	6,900	3/1,100	2,510	3,290	---	---	---	---	
1946	116,050	116,010	5,150	110,860	3/9,470	55,930	44,160	470	830	15,000	15,000	700	14,300	3/1,460	2,130	10,710	---	---	---	---	
1947	90,970	90,380	4,720	85,660	8,120	40,470	35,530	1,270	270	14,200	14,200	600	13,600	1,370	3,180	9,000	---	---	---	50	
1948	131,790	131,790	4,920	126,870	9,080	66,890	46,570	3,530	800	19,500	19,500	600	18,900	1,730	4,500	12,670	---	---	---	---	
1949	108,690	108,690	4,810	103,880	8,240	58,315	35,575	1,440	310	16,500	16,500	600	15,900	1,380	3,250	11,270	---	---	---	---	
<u>PENNSYLVANIA AND OHIO</u>										<u>MICHIGAN</u>											
1944	10,670	10,670	2,460	8,210	1,860	3,250	2,600	---	500	50,000	50,000	1,300	48,700	2,900	35,950	9,350	500	---	---	---	---
1945	5,280	5,280	940	4,340	900	2,600	645	80	115	14,000	14,000	600	13,400	1,800	10,100	1,400	100	---	---	---	---
1946	6,270	6,270	1,260	5,010	1,400	2,250	1,070	---	290	60,500	60,500	800	59,700	2,850	39,450	17,150	250	---	---	---	---
1947	6,190	6,190	1,280	4,910	830	2,810	1,060	---	210	49,500	49,600	760	48,740	3,290	27,350	17,150	950	---	---	---	---
1948	7,090	7,090	1,230	5,860	880	3,250	1,130	---	600	69,000	69,000	800	68,200	3,250	44,500	19,000	1,450	---	---	---	---
1949	9,480	9,480	1,180	8,300	1,390	4,945	1,965	---	---	60,500	60,500	840	59,660	2,610	41,500	14,400	1,150	---	---	---	---
<u>WISCONSIN</u>										<u>WESTERN STATES 4/</u>											
1944	15,000	15,000	600	14,400	1,230	4,920	7,330	790	130	17,330	17,130	1,770	15,360	4,360	3,940	6,550	---	---	---	510	
1945	7,300	7,300	500	6,800	730	4,880	1,180	10	---	11,880	11,770	1,540	10,230	2,040	5,230	2,510	20	---	---	430	
1946	20,000	20,000	800	19,200	1,540	8,400	8,800	210	250	14,280	14,240	1,590	12,650	2,220	3,700	6,430	10	---	---	290	
1947	9,000	9,000	560	8,440	680	4,140	3,410	200	10	12,080	11,490	1,520	9,970	1,950	2,990	4,910	120	---	---	---	
1948	25,000	25,000	850	24,150	860	11,300	9,760	2,080	150	11,200	11,200	1,440	9,760	2,360	3,340	4,010	---	---	---	50	
1949	11,600	11,600	600	11,000	500	5,600	4,340	290	270	10,610	10,610	1,590	9,020	2,360	3,020	3,600	---	---	---	40	

1/ Differences between production and production having value consist of quantities not harvested on account of economic conditions and/or excess cullage of harvested fruit.

2/ Used for juice, wine, preserves, etc.

3/ Includes some quantities of New York sour cherries brined.

4/ Montana, Idaho, Colorado, Utah, Washington and Oregon.

PLUMS AND PRUNES (FOR ALL PURPOSES): PRODUCTION 1/ AND VALUE, 1944-1949

Season	Michigan	Idaho	California	Oregon 2/			Washington 2/			United States		
	2/	2/	2/	Eastern 2/	Western 2/	Total 2/	Eastern 2/	Western 2/	Total 2/	Total production 2/	Value of production	Value of sales
	Tons	Tons	Tons	Tons	Tons	Tons	Tons	Tons	Tons	Tons	Thousand dollars	
1944	4,500	23,300	489,500	14,400	46,000	60,400	19,500	6,300	25,800	603,500	54,925	54,200
1945	1,700	28,200	630,000	20,100	72,000	92,100	19,600	6,400	26,000	784,000	68,232	67,651
1946	6,000	22,400	635,000	18,100	83,000	101,100	19,800	9,300	29,100	793,600	81,625	81,040
1947	5,200	37,000	574,000	18,900	15,500	34,400	19,100	4,000	23,100	673,700	48,757	48,254
1948	4,800	20,800	522,000	19,700	29,100	48,800	17,000	2,000	19,000	615,400	42,030	41,691
1949	8,700	27,100	467,500	18,700	89,000	107,700	15,000	8,700	23,700	634,700	39,026	38,690

1/ Equivalent fresh basis. California dried prunes converted to fresh basis on ratio of 2½ fresh pounds to 1 pound dried. In Washington and Oregon the ratio ranges from 3 to 4 pounds fresh to 1 pound dried.

2/ See page 45 for estimated amounts not harvested on account of economic conditions and/or excess cullage of harvested fruit which are included in production.

PLUMS 1/: PRODUCTION AND UTILIZATION, 1944-1949

Season	Production				Farm disposition				Utilization of sales				Production				Farm disposition				Utilization of sales			
	2/	2/	2/	2/	For farm:	For farm:	For farm:	For farm:	Fresh sales	Processed Canned	Processed Frozen	Other	2/	2/	2/	2/	For farm:	For farm:	For farm:	For farm:	Fresh sales	Processed Canned	Processed Frozen	Other
	Tons	Tons	Tons	Tons	hold use:	hold use:	hold use:	hold use:	Tons	Tons	Tons	Tons	Tons	Tons	Tons	Tons	Tons	Tons	Tons	Tons	Tons	Tons	Tons	Tons
UNITED STATES																								
1944	96,500	94,500	840	93,660	85,560	3/ 3,300	800	4,000	92,000	90,000	300	89,700	82,000	3/ 2,900	800	4,000	71,000	70,000	300	69,700	63,500	3/ 2,100	1,000	3,100
1945	72,700	71,700	600	71,100	64,850	3/ 2,150	1,000	3,100	100,000	100,000	300	99,700	92,000	3/ 2,100	1,600	4,000	74,000	74,000	300	73,700	70,900	3/ 2,100	---	700
1946	106,000	106,000	840	105,160	96,110	3/ 2,830	2,020	4,200	67,000	67,000	300	66,700	65,100	3/ 1,600	---	---	98,700	87,950	1,050	86,900	84,115	3/ 2,110	665	10
1947	79,200	79,200	780	78,420	75,260	3/ 2,350	95	715	90,000	80,000	300	79,700	77,500	3/ 1,900	---	300	79,200	79,200	480	78,720	75,260	250	95	15
1948	71,800	71,800	700	71,100	69,205	3/ 1,835	---	60	71,000	70,000	300	70,700	68,500	3/ 2,100	---	---	71,800	71,800	700	71,100	69,205	3/ 1,835	---	60
1949	98,700	87,950	1,050	86,900	84,115	3/ 2,110	665	10	90,000	80,000	300	79,700	77,500	3/ 1,900	---	300	98,700	87,950	1,050	86,900	84,115	3/ 2,110	665	10
MICHIGAN																								
1944	4,500	4,500	540	3,960	3,560	400	---	---	4,500	4,500	540	3,960	3,560	400	---	---	4,500	4,500	540	3,960	3,560	400	---	---
1945	1,700	1,700	300	1,400	1,350	50	---	---	1,700	1,700	300	1,400	1,350	50	---	---	1,700	1,700	300	1,400	1,350	50	---	---
1946	6,000	6,000	540	5,460	4,110	730	420	200	6,000	6,000	540	5,460	4,110	730	420	200	6,000	6,000	540	5,460	4,110	730	420	200
1947	5,200	5,200	480	4,720	4,360	250	95	15	5,200	5,200	480	4,720	4,360	250	95	15	5,200	5,200	480	4,720	4,360	250	95	15
1948	4,800	4,800	400	4,400	4,105	235	---	60	4,800	4,800	400	4,400	4,105	235	---	60	4,800	4,800	400	4,400	4,105	235	---	60
1949	8,700	7,950	750	7,200	6,615	210	365	10	8,700	7,950	750	7,200	6,615	210	365	10	8,700	7,950	750	7,200	6,615	210	365	10

1/ Includes small quantities of fresh prunes.

2/ Differences between production and production having value consist of fruit unharvested on account of economic conditions and/or excess cullage of harvested fruit.

3/ Includes California plums used for jam.

PLUMS 1/: PRODUCTION, FARM DISPOSITION, SEASON AVERAGE PRICE PER TON TO GROWERS AND VALUE, BY STATES, 1944-1949

State	Production Tons	Not utilized Tons	Production having value Tons	Farm disposition		Price Dollars	Value of production Thousand dollars	Value of sales Thousand dollars	Production Tons	Not utilized Tons	Production having value Tons	Farm disposition		Price Dollars	Value of production Thousand dollars	Value of sales Thousand dollars
				House- hold use Tons	Sold Tons							House- hold use Tons	Sold Tons			
1944																
Calif.	92,000	2,000	90,000	300	89,700	117.00	10,530	10,495	71,000	1,000	70,000	300	69,700	138.00	9,660	9,619
Mich.	4,500	---	4,500	540	3,960	130.00	585	515	1,700	---	1,700	300	1,400	140.00	238	196
U. S.	96,500	2,000	94,500	840	93,660	3/118.00	11,115	11,010	72,700	1,000	71,700	600	71,100	3/138.00	9,898	9,815
4/118.00																
1945																
Calif.	100,000	---	100,000	300	99,700	137.00	13,700	13,659	74,000	---	74,000	300	73,700	157.00	11,618	11,571
Mich.	6,000	---	6,000	540	5,460	95.00	570	519	5,200	---	5,200	480	4,720	106.00	551	500
U. S.	106,000	---	106,000	840	105,160	3/135.00	14,270	14,178	79,200	---	79,200	780	78,420	3/154.00	12,169	12,071
4/135.00																
1946																
Calif.	67,000	---	67,000	300	66,700	150.00	10,050	10,005	90,000	10,000	80,000	300	79,700	105.00	8,400	8,368
Mich.	4,800	---	4,800	400	4,400	81.00	389	356	8,700	750	7,950	750	7,200	57.50	457	414
U. S.	71,800	---	71,800	700	71,100	3/145.00	10,439	10,361	98,700	10,750	87,950	1,050	86,900	3/101.00	8,857	8,782
4/145.00																
1947																
Calif.	100,000	---	100,000	300	99,700	137.00	13,700	13,659	74,000	---	74,000	300	73,700	157.00	11,618	11,571
Mich.	6,000	---	6,000	540	5,460	95.00	570	519	5,200	---	5,200	480	4,720	106.00	551	500
U. S.	106,000	---	106,000	840	105,160	3/135.00	14,270	14,178	79,200	---	79,200	780	78,420	3/154.00	12,169	12,071
4/135.00																
1948																
Calif.	67,000	---	67,000	300	66,700	150.00	10,050	10,005	90,000	10,000	80,000	300	79,700	105.00	8,400	8,368
Mich.	4,800	---	4,800	400	4,400	81.00	389	356	8,700	750	7,950	750	7,200	57.50	457	414
U. S.	71,800	---	71,800	700	71,100	3/145.00	10,439	10,361	98,700	10,750	87,950	1,050	86,900	3/101.00	8,857	8,782
4/145.00																
1949																
Calif.	67,000	---	67,000	300	66,700	150.00	10,050	10,005	90,000	10,000	80,000	300	79,700	105.00	8,400	8,368
Mich.	4,800	---	4,800	400	4,400	81.00	389	356	8,700	750	7,950	750	7,200	57.50	457	414
U. S.	71,800	---	71,800	700	71,100	3/145.00	10,439	10,361	98,700	10,750	87,950	1,050	86,900	3/101.00	8,857	8,782
4/101.00																

1/ Includes small quantities of fresh prunes.
 2/ See page 45 for separate estimates of quantities not harvested on account of economic conditions and/or excess cullage of harvested fruit.
 3/ State prices weighted by quantities sold.
 4/ State prices weighted by production having value.

PRUNES: PRODUCTION, FARM DISPOSITION, SEASON AVERAGE PRICE PER TON TO GROWERS AND VALUE, BY STATES, 1944-1949

State	Production Tons	Not utilized Tons	Production having value Tons	Farm disposition		Price Dollars	Value of production Thousand dollars	Value of sales Thousand dollars	Production Tons	Not utilized Tons	Production having value Tons	Farm disposition		Price Dollars	Value of production Thousand dollars	Value of sales Thousand dollars
				House- hold use Tons	Sold Tons							House- hold use Tons	Sold Tons			
1944																
Idaho	23,300	---	23,300	1,000	22,300	96.00	2,237	2,141	28,200	---	28,200	800	27,400	85.20	2,402	2,334
Wash.	25,200	---	25,200	1,800	24,000	95.10	2,453	2,222	26,000	---	26,000	1,800	24,200	87.30	2,270	2,113
Oreg.	60,400	3,300	57,100	2,800	54,300	78.10	4,458	4,239	92,100	11,700	80,400	3,000	77,400	77.10	6,202	5,971
3 STATES	109,500	3,300	106,200	5,600	100,600	3/86.10	9,148	8,662	146,300	11,700	134,600	5,600	129,000	3/80.80	10,274	10,418
4/86.10																
DRIED BASIS																
Calif.	159,000	---	159,000	200	158,800	218.00	34,662	34,618	226,000	---	226,000	200	225,800	210.00	47,460	47,418
1945																
Idaho	22,400	---	22,400	800	21,600	113.00	2,527	2,437	37,000	---	37,000	800	36,200	67.20	2,487	2,433
Wash.	29,100	---	29,100	2,000	27,100	91.00	2,647	2,465	23,100	---	23,100	2,000	21,100	89.90	2,077	1,897
Oreg.	101,100	4,200	96,900	3,000	93,900	77.00	7,458	7,227	34,400	3,500	30,900	1,800	29,100	78.50	2,424	2,223
3 STATES	152,600	4,200	148,400	5,800	142,600	3/85.10	12,632	12,129	94,500	3,500	91,000	4,600	86,400	3/76.50	6,988	6,613
4/85.10																
DRIED BASIS																
Calif.	214,000	---	214,000	200	213,800	256.00	54,784	54,733	200,000	---	200,000	200	199,800	148.00	29,600	29,570
1946																
Idaho	20,800	1,700	19,100	800	18,300	65.40	1,249	1,197	27,100	3,900	23,200	800	22,400	40.30	935	903
Wash.	19,000	1,100	17,900	1,340	16,560	58.90	1,054	975	23,700	5,890	17,810	1,870	15,940	35.10	626	560
Oreg.	48,800	10,900	37,900	2,200	35,700	68.20	2,586	2,436	107,700	29,800	77,900	3,100	74,800	41.60	3,240	3,111
3 STATES	88,600	13,700	74,900	4,340	70,560	3/65.30	4,889	4,608	158,500	39,590	118,910	5,770	113,140	3/46.40	4,801	4,574
4/65.30																
DRIED BASIS																
Calif.	182,000	6,000	176,000	200	175,800	152.00	26,752	26,722	151,000	---	151,000	200	150,800	168.00	25,368	25,334
1947																
Idaho	20,800	1,700	19,100	800	18,300	65.40	1,249	1,197	27,100	3,900	23,200	800	22,400	40.30	935	903
Wash.	19,000	1,100	17,900	1,340	16,560	58.90	1,054	975	23,700	5,890	17,810	1,870	15,940	35.10	626	560
Oreg.	48,800	10,900	37,900	2,200	35,700	68.20	2,586	2,436	107,700	29,800	77,900	3,100	74,800	41.60	3,240	3,111
3 STATES	88,600	13,700	74,900	4,340	70,560	3/65.30	4,889	4,608	158,500	39,590	118,910	5,770	113,140	3/46.40	4,801	4,574
4/40.40																
DRIED BASIS																
Calif.	182,000	6,000	176,000	200	175,800	152.00	26,752	26,722	151,000	---	151,000	200	150,800	168.00	25,368	25,334

1/ See page 45 for separate estimates of quantities not harvested on account of economic conditions and/or excess cullage of harvested fruit.
 2/ Prices derived from separate utilizations of sales. 3/ State prices weighted by quantities sold. 4/ State prices weighted by production having value.

PRUNES: PRODUCTION AND UTILIZATION, 1944-1949

Season	Production				Utilization of sales					Season	Production				Utilization of sales				
	Production 1/ value	Production having value	Farm disposition		Fresh sales	Processed					Production 1/ value	Production having value	Farm disposition		Fresh sales	Processed			
			hold	use		Dried	Canned	Frozen	Other				hold	use		Dried	Canned	Frozen	Other
Tons	Tons	Tons	Tons	Tons	Tons	Tons	Tons	Tons	Tons	Tons	Tons	Tons	Tons	Tons	Tons	Tons	Tons	Tons	
<u>UNITED STATES</u>										<u>OREGON</u>									
1944	507,000	503,700	6,100	497,600	55,710	163,150	20,830	8,430	2,290	60,400	57,100	2,800	54,300	17,800	4,100	14,800	7,300	1,900	
1945	711,300	699,600	6,100	693,500	63,800	233,750	26,700	10,050	3,700	92,100	80,400	3,000	77,400	23,600	7,700	19,000	8,300	2,600	
1946	687,600	683,400	6,300	677,100	49,500	222,250	357,890	6,210	2,790	101,100	96,900	3,000	93,900	18,100	8,200	42,200	5,700	2,500	
1947	594,500	591,000	5,100	585,900	57,130	200,200	326,170	1,250	600	34,400	30,900	1,800	29,100	13,000	300	13,700	1,100	400	
1948	543,600	514,900	4,840	510,060	50,430	177,350	314,350	950	150	48,800	37,900	2,200	35,700	21,200	1,500	9,200	800	---	
1949	536,000	496,410	6,270	490,140	52,100	160,200	326,600	3,600	640	107,700	77,900	3,100	74,800	21,000	9,200	20,800	3,300	200	
<u>WASHINGTON</u>										<u>IDAHO</u>									
1944	25,800	25,800	1,800	24,000	15,610	250	6,030	1,130	390	23,300	23,300	1,000	22,300	22,300	---	---	---	---	
1945	26,000	26,000	1,800	24,200	13,400	250	7,700	1,750	500	28,200	28,200	800	27,400	26,800	---	---	---	600	
1946	29,100	29,100	2,000	27,100	10,600	250	14,890	510	290	22,400	22,400	800	21,600	20,800	---	3/ 800	---	---	
1947	23,100	23,100	2,090	21,100	10,830	100	9,570	150	200	37,000	37,000	800	36,200	33,300	---	3/2,900	---	---	
1948	19,000	17,900	1,340	16,560	11,130	50	4,950	150	150	20,800	19,100	800	18,300	18,100	---	3/ 200	---	---	
1949	23,700	17,810	1,870	15,940	10,000	200	4,500	300	440	27,100	23,200	800	22,400	21,100	---	3/1,300	---	---	
<u>CALIFORNIA</u>																			
1944	159,000	159,000	200	158,800	---	158,800	---	---	---										
1945	226,000	226,000	200	225,800	---	225,800	---	---	---										
1946	214,000	214,000	200	213,800	---	213,800	---	---	---										
1947	200,000	200,000	200	199,800	---	199,800	---	---	---										
1948	182,000	176,000	200	175,800	---	175,800	---	---	---										
1949	151,000	151,000	200	150,800	---	150,800	---	---	---										

- 1/ Differences between production and production having value consist of fruit not harvested on account of economic conditions and/or excess cullage of harvested fruit.
- 2/ The drying ratio in Washington and Oregon ranges from 3 to 4 pounds of fresh fruit to 1 pound dried; in California the drying ratio is approximately 2½ pounds fresh to 1 pound dried.
- 3/ Includes some frozen and other.

CRANBERRIES: PRODUCTION, FARM DISPOSITION, SEASON AVERAGE PRICE PER BARREL TO GROWERS, VALUE AND UTILIZATION BY STATES, 1944-1949

© UPDATA 1981

State	Production 1/ 5/		Price	Value of production 2/		Utilization		Production 4/		Price	Value of production 2/		Utilization	
	Barrels	Dollars		Thousand dollars	Barrels	Total	Barrels	Dollars	Thousand dollars		Barrels	Total		
<u>1944</u>														
Mass.	159,000	24.60	3,911	88,000	71,000	478,000	21.00	10,038	251,000	227,000				
N.J.	59,000	24.20	1,428	25,000	34,000	49,000	19.40	951	12,000	37,000				
Wis.	115,000	25.50	2,932	87,000	28,000	82,000	21.20	1,738	57,000	25,000				
Wash.	30,000	21.80	654	9,100	20,900	36,400	20.10	732	7,500	28,900				
Oreg.	12,700	24.60	312	10,200	2,500	10,700	21.20	227	7,800	2,900				
U.S.	375,700	24.60	9,237	219,300	158,400	656,100	20.90	13,686	335,300	320,800				
<u>1945</u>														
Mass.	553,000	31.40	17,364	189,000	364,000	487,000	17.20	8,376	210,000	277,000				
N.J.	101,000	32.20	3,252	11,000	90,000	82,000	16.90	1,386	11,000	71,000				
Wis.	145,000	33.50	4,858	58,000	87,000	161,000	17.30	2,785	65,000	96,000				
Wash.	42,000	32.00	1,344	3,000	39,000	48,000	15.00	720	1,400	46,600				
Oreg.	15,100	31.30	473	7,600	7,500	14,200	17.90	254	3,600	10,600				
U.S.	856,100	31.90	27,291	268,600	587,500	792,200	17.10	13,521	291,000	501,200				
<u>1946</u>														
Mass.	605,000	9.90	5,990	323,000	282,000	520,000	9.30	4,594	334,000	160,000				
N.J.	69,000	10.20	704	19,000	50,000	67,000	9.40	630	34,000	33,000				
Wis.	238,000	10.90	2,594	114,000	124,000	200,000	10.10	2,020	166,000	34,000				
Wash.	42,400	8.00	341	2,400	40,000	40,000	6.40	256	8,400	31,600				
Oreg.	13,300	9.30	124	3,900	2,400	13,800	7.75	107	7,000	6,800				
U.S.	967,700	10.10	9,753	462,300	505,400	840,800	9.34	7,607	549,400	265,400				
<u>1947</u>														
Mass.	605,000	9.90	5,990	323,000	282,000	520,000	9.30	4,594	334,000	160,000				
N.J.	69,000	10.20	704	19,000	50,000	67,000	9.40	630	34,000	33,000				
Wis.	238,000	10.90	2,594	114,000	124,000	200,000	10.10	2,020	166,000	34,000				
Wash.	42,400	8.00	341	2,400	40,000	40,000	6.40	256	8,400	31,600				
Oreg.	13,300	9.30	124	3,900	2,400	13,800	7.75	107	7,000	6,800				
U.S.	967,700	10.10	9,753	462,300	505,400	840,800	9.34	7,607	549,400	265,400				
<u>1948</u>														
Mass.	605,000	9.90	5,990	323,000	282,000	520,000	9.30	4,594	334,000	160,000				
N.J.	69,000	10.20	704	19,000	50,000	67,000	9.40	630	34,000	33,000				
Wis.	238,000	10.90	2,594	114,000	124,000	200,000	10.10	2,020	166,000	34,000				
Wash.	42,400	8.00	341	2,400	40,000	40,000	6.40	256	8,400	31,600				
Oreg.	13,300	9.30	124	3,900	2,400	13,800	7.75	107	7,000	6,800				
U.S.	967,700	10.10	9,753	462,300	505,400	840,800	9.34	7,607	549,400	265,400				
<u>1949</u>														
Mass.	605,000	9.90	5,990	323,000	282,000	520,000	9.30	4,594	334,000	160,000				
N.J.	69,000	10.20	704	19,000	50,000	67,000	9.40	630	34,000	33,000				
Wis.	238,000	10.90	2,594	114,000	124,000	200,000	10.10	2,020	166,000	34,000				
Wash.	42,400	8.00	341	2,400	40,000	40,000	6.40	256	8,400	31,600				
Oreg.	13,300	9.30	124	3,900	2,400	13,800	7.75	107	7,000	6,800				
U.S.	967,700	10.10	9,753	462,300	505,400	840,800	9.34	7,607	549,400	265,400				

1/ Production all of value.
 2/ Value of sales same as value of production.
 3/ Includes following quantities dried (bbls.): 1944, Mass. 28,400; N.J. 7,000; Wis. 12,000; Wash. 13,900. 1945, Mass. 22,000; Wis. 8,000; Wash. 14,800. Remainder canned. All canned for years 1946-49.
 4/ Differences between production and production having value consist of quantities not harvested on account of economic conditions and/or excess cullage of harvested fruit. See par. 45 for separate estimates.
 5/ Quantities used in farm household negligible, production having value all sold.

OLIVES: PRODUCTION, FARM DISPOSITION, SEASON AVERAGE PRICE PER TON TO GROWERS AND VALUE, 1944-1949

Production 1/	Farm disposition		Price 2/	Value of production	Value of sales	Production 1/	Farm disposition		Price 2/	Value of production	Value of sales
	hold use	Sold					hold use	Sold			
<u>1944</u>											
42,000	200	41,800	200.00	8,400	8,360	30,000	200	29,800	269.00	8,070	8,016
<u>1946</u>											
48,000	200	47,800	374.00	17,952	17,877	40,000	200	39,800	150.00	6,000	5,970
<u>1948</u>											
58,000	200	57,800	145.00	8,410	8,381	35,000	200	34,800	190.00	6,650	6,612

1/ Production all of value.
 2/ Equivalent returns per ton for bulk fruit at first delivery point.

OLIVES: PRODUCTION AND UTILIZATION, 1944-1949

CALIFORNIA

Season	Farm disposition			Utilization of sales				Season	Farm disposition			Utilization of sales			
	Production 1/	For farm house- hold use	Sold	Fresh sales	Crushed for oil	Processed Canned	Other 1/		Production 1/	For farm house- hold use	Sold	Fresh sales	Crushed for oil	Processed Canned	Other 1/
	Tons	Tons	Tons	Tons	Tons	Tons	Tons	Tons	Tons	Tons	Tons	Tons	Tons	Tons	Tons
1944	42,000	200	41,800	600	19,800	13,800	7,600	1947	40,000	200	39,800	600	19,400	13,700	6,100
1945	30,000	200	29,800	100	9,800	13,500	6,400	1948	58,000	200	57,800	700	33,600	13,500	10,000
1946	48,000	200	47,800	100	14,300	27,500	5,900	1949	35,000	200	34,800	600	7,900	20,400	5,900

1/ California Spanish Green, Greek Style, Sicilian Style, chopped, minced, brined, and other cures.

FIGS: PRODUCTION, FARM DISPOSITION, SEASON AVERAGE PRICE PER TON TO GROWERS AND VALUE, BY STATES, 1944-1949

Season	Farm disposition			Price	Value of production	Value of sales	Season	Farm disposition			Price	Value of production	Value of sales
	Production 1/	For farm house- hold use	Sold					Production 1/	For farm house- hold use	Sold			
	Tons	Tons	Tons	Dollars	Thousand dollars		Tons	Tons	Tons	Dollars	Thousand dollars		
<u>CALIFORNIA-Dried</u>													
<u>Dried basis</u>						<u>Dried basis</u>							
1944	35,200	---	35,200	253.00	8,906	8,906	1947	38,000	---	38,000	123.00	4,674	4,674
1945	32,600	---	32,600	273.00	8,900	8,900	1948	30,300	---	30,300	139.00	4,212	4,212
1946	36,600	---	36,600	278.00	10,175	10,175	1949	28,400	---	28,400	170.00	4,828	4,828
<u>Fresh basis</u>						<u>CALIFORNIA-Canned and used fresh</u>							
1944	19,000	200	18,800	2/130.00	2,470	2,444	1947	16,000	200	15,800	2/116.00	1,856	1,833
1945	14,000	200	13,800	2/139.00	1,946	1,918	1948	12,000	200	11,800	2/98.10	1,177	1,158
1946	18,000	200	17,800	2/141.00	2,538	2,510	1949	8,000	200	7,800	2/102.00	816	796
<u>TEXAS(for commercial preserving only)</u>													
1944	750	---	750	168.00	126	126	1947	760	---	760	174.00	132	132
1945	1,100	---	1,100	152.00	167	167	1948	510	---	510	112.00	57	57
1946	1,280	---	1,280	174.00	223	223	1949	660	---	660	106.00	70	70

1/ Production all of value.

2/ Equivalent returns per ton for bulk fruit at first delivery point.

UPDATA 1981

FIGS: PRODUCTION AND UTILIZATION, 1944-1949

Season	California Fresh Figs						Texas (fresh)	California Dried Figs			Calif. & Texas
	Production	Farm disposition		Utilization of sales			Production for com'l preserving (all sold)	Total	Standard	Sub-standard	Total production (fresh equiv. basis) 1/
		Farm house-hold use	Sold	Fresh sales	Canned	Other					
Tons	Tons	Tons	Tons	Tons	Tons	Tons	Tons	Tons	Tons	Tons	
				<u>Fresh basis</u>			<u>Fresh basis</u>		<u>Dried basis</u>		<u>Fresh basis</u>
1944	19,000	200	18,800	3,700	13,800	1,300	750	35,200	27,400	7,800	125,350
1945	14,000	200	13,800	3,400	10,150	250	1,100	32,600	25,600	7,000	112,900
1946	18,000	200	17,800	2,700	15,100	---	1,280	36,600	27,700	8,900	129,080
1947	16,000	200	15,800	2,700	13,100	---	760	38,000	30,600	7,400	130,760
1948	12,000	200	11,800	3,000	8,800	---	510	30,300	23,300	7,000	103,410
1949	8,000	200	7,800	3,600	4,200	---	660	28,400	22,700	5,700	93,860

1/ In California, the drying ratio is about 3 pounds of fresh fruit to 1 pound dried.

DATES: PRODUCTION, FARM DISPOSITION, SEASON AVERAGE PRICE PER TON TO GROWERS, VALUE AND UTILIZATION, 1944-1949

State	Production 1/	Farm disposition		Price 2/	Value of production	Value of sales	Production 1/	Farm disposition		Price 2/	Value of production	Value of sales
		Farm house-hold use	Sold					Farm house-hold use	Sold			
	Tons	Tons	Tons	Dollars	Thousand dollars		Tons	Tons	Tons	Dollars	Thousand dollars	
California	13,190	1944 20	13,170	492.00	6,489	6,480	6,800	1945 20	6,780	398.00	2,706	2,698
California	16,720	1946 20	16,700	185.00	3,093	3,090	10,180	1947 20	10,160	81.00	825	823
California	16,240	1948 20	16,220	110.00	1,786	1,784	14,100	1949 20	14,080	158.00	2,228	2,225

1/ Production all of value.

2/ Equivalent returns per ton for bulk fruit at first delivery point.

AVOCADOS: PRODUCTION, FARM DISPOSITION, SEASON AVERAGE PRICE PER TON TO GROWERS AND VALUE, BY STATES, 1944-1949

State	Production Tons	Farm disposition			Price $\frac{2}{1}$ Dollars	Value of production Thousand dollars	Value of sales Thousand dollars	Production Tons	Farm disposition			Price $\frac{2}{1}$ Dollars	Value of production Thousand dollars	Value of sales Thousand dollars
		Farm house- hold use	Sold $\frac{1}{1}$ Tons	Tons					Farm house- hold use	Sold $\frac{1}{1}$ Tons	Tons			
<u>1944</u>														
Calif.	11,600	250	11,350	522.00	6,055	5,925	24,000	260	23,740	297.00	7,128	7,051		
Fla.	5,800	25	5,775	140.00	812	808	3,200	25	3,175	144.00	461	457		
U. S.	17,400	275	17,125	$\frac{3}{4}$ 393.00 $\frac{4}{4}$ 395.00	6,867	6,733	27,200	285	26,915	$\frac{3}{4}$ 279.00 $\frac{4}{4}$ 279.00	7,589	7,508		
<u>1946</u>														
Calif.	18,500	260	18,240	388.00	7,178	7,077	18,600	260	18,340	400.00	7,440	7,336		
Fla.	1,600	15	1,585	336.00	538	533	2,300	15	2,285	200.00	460	457		
U. S.	20,100	275	19,825	$\frac{3}{4}$ 384.00 $\frac{4}{4}$ 384.00	7,716	7,610	20,900	275	20,625	$\frac{3}{4}$ 378.00 $\frac{4}{4}$ 378.00	7,900	7,793		
<u>1948</u>														
Calif.	14,400	270	14,130	400.00	5,760	5,652	15,500	270	15,230	446.00	6,913	6,793		
Fla.	3,100	25	3,075	180.00	558	554	5,000	25	4,975	150.00	750	746		
U. S.	17,500	295	17,205	$\frac{3}{4}$ 361.00 $\frac{4}{4}$ 361.00	6,318	6,206	20,500	295	20,205	$\frac{3}{4}$ 373.00 $\frac{4}{4}$ 374.00	7,663	7,539		

- $\frac{1}{1}$ All sold fresh.
- $\frac{2}{1}$ Equivalent returns per ton at first delivery point.
- $\frac{3}{1}$ State prices weighted by quantities sold.
- $\frac{4}{1}$ State prices weighted by production having value.

APRICOTS: PRODUCTION, FARM DISPOSITION, SEASON AVERAGE PRICE PER TON TO GROWERS AND VALUE, BY STATES 1944-1949

State	Production Tons	Not utilized $\frac{1}{1}$ Tons	Produc- tion having value Tons	Farm disposition			Price Dollars	Value of production Thousand dollars	Value of sales Thousand dollars	Production Tons	Not utilized $\frac{1}{1}$ Tons	Produc- tion having value Tons	Farm disposition			Price Dollars	Value of production Thousand dollars	Value of sales Thousand dollars
				Farm house- hold use	Sold Tons	Tons							Farm house- hold use	Sold Tons	Tons			
<u>1944</u>																		
Calif.	324,000	---	324,000	1,800	322,200	108.00	34,992	34,798	159,000	---	159,000	1,700	157,300	118.00	18,762	18,561		
Wash.	23,100	---	23,100	700	22,400	139.00	3,211	3,114	22,500	---	22,500	700	21,800	142.00	3,195	3,096		
Utah	4,700	---	4,700	700	4,000	115.00	540	460	10,000	550	9,450	700	8,750	90.10	851	788		
U. S.	351,800	---	351,800	3,200	348,600	$\frac{2}{3}$ 110.00 $\frac{3}{3}$ 110.00	38,743	38,372	191,500	550	190,950	3,100	187,850	$\frac{2}{3}$ 119.00 $\frac{3}{3}$ 119.00	22,808	22,445		
<u>1946</u>																		
Calif.	306,000	---	306,000	1,700	304,300	106.00	32,436	32,256	169,000	---	169,000	1,700	167,300	86.40	14,602	14,455		
Wash.	27,300	---	27,300	740	26,560	113.00	3,085	3,001	28,000	1,960	26,040	750	25,290	106.00	2,760	2,681		
Utah	5,400	---	5,400	700	4,700	93.60	505	440	4,200	---	4,200	700	3,500	92.70	389	324		
U. S.	338,700	---	338,700	3,140	335,560	$\frac{2}{3}$ 106.00 $\frac{3}{3}$ 106.00	36,026	35,697	201,200	1,960	199,240	3,150	196,090	$\frac{2}{3}$ 89.00 $\frac{3}{3}$ 89.10	17,751	17,460		
<u>1948</u>																		
Calif.	219,000	26,000	193,000	1,700	191,300	68.20	13,163	13,047	165,000	5,000	160,000	1,700	158,300	76.20	12,192	12,062		
Wash.	20,300	1,940	18,360	800	17,560	82.40	1,513	1,447	26,400	7,500	18,900	800	18,100	46.60	881	843		
Utah	6,800	500	6,300	700	5,600	55.00	346	308	5,300	500	4,800	700	4,100	44.00	211	180		
U. S.	246,100	28,440	217,660	3,200	214,460	$\frac{2}{3}$ 69.00 $\frac{3}{3}$ 69.00	15,022	14,802	196,700	13,000	183,700	3,200	180,500	$\frac{2}{3}$ 72.50 $\frac{3}{3}$ 72.30	13,284	13,085		

- $\frac{1}{1}$ See page 45 for separate estimates of quantities not harvested on account of economic conditions and/or excess cullage of harvested fruit.
- $\frac{2}{1}$ State prices weighted by quantities sold.
- $\frac{3}{1}$ State prices weighted by production having value.

APRICOTS: PRODUCTION AND UTILIZATION, 1944-1949

State	Farm disposition:				Utilization of sales				Production	Farm disposition:				Utilization of sales			
	Production 1/ value	Production having value 1/ Tons	For farm household use Tons	Sold Tons	Fresh sales Tons	Canned 2/ Tons	Processed Dried Tons	Frozen Tons		Production 1/ value	Production having value 1/ Tons	For farm house- hold use Tons	Sold Tons	Fresh sales Tons	Canned 2/ Tons	Processed Dried Tons	Frozen Tons
<u>1944</u>																	
Calif.	324,000	324,000	1,800	322,200	34,600	128,600	141,600	17,400	159,000	159,000	1,700	157,300	23,600	64,400	42,900	26,400	
Wash.	23,100	23,100	700	22,400	18,390	840	70	3,100	22,500	22,500	700	21,800	16,490	990	---	4,320	
Utah	4,700	4,700	700	4,000	3,110	220	---	670	10,000	9,450	700	8,750	4,400	2,400	---	1,950	
U.S.	351,800	351,800	3,200	348,600	56,100	129,660	141,670	21,170	191,500	190,950	3,100	187,850	44,490	67,790	42,900	32,670	
<u>1946</u>																	
Calif.	306,000	306,000	1,700	304,300	26,100	162,000	98,600	17,600	169,000	169,000	1,700	167,300	20,700	60,500	84,200	1,900	
Wash.	27,300	27,300	740	26,560	17,170	5,150	150	4,090	28,000	26,040	750	25,290	18,340	5,220	---	1,730	
Utah	5,400	5,400	700	4,700	3,200	1,240	---	260	4,200	4,200	700	3,500	2,420	880	---	200	
U.S.	338,700	338,700	3,140	335,560	46,470	168,390	98,750	21,950	201,200	199,240	3,150	196,090	41,460	66,600	84,200	3,830	
<u>1948</u>																	
Calif.	219,000	193,000	1,700	191,300	20,900	101,500	68,200	700	165,000	160,000	1,700	158,300	19,900	59,700	78,400	300	
Wash.	20,300	18,360	800	17,560	14,800	2,170	---	590	26,400	18,900	800	18,100	15,580	2,330	---	190	
Utah	6,800	6,300	700	5,600	4,970	630	---	---	5,300	4,800	700	4,100	3,830	270	---	---	
U.S.	246,100	217,660	3,200	214,460	40,670	104,300	68,200	1,290	196,700	183,700	3,200	180,500	39,710	62,300	78,400	490	

1/ Differences between production and production having value consist of quantities not harvested on account of economic conditions and/or excess cullage of harvested fruit.

2/ Includes some quantities used for jam, nectar, wine and brandy.

PERSIMMONS, POMEGRANATES, AND PINEAPPLES: PRODUCTION, FARM DISPOSITION, SEASON AVERAGE PRICE TO GROWERS, VALUE AND UTILIZATION, 1944-1949

© UPDATE 1981

State	Production Tons	Farm disposition		Price Dollars per ton	Value of production Thousand dollars	Value of sales Thousand dollars	Production Tons	Farm disposition		Price Dollars per ton	Value of production Thousand dollars	Value of sales Thousand dollars
		Farm house- hold use Tons	Sold 1/ Tons					Farm house- hold use Tons	Sold 1/ Tons			
<u>PERSIMMONS</u>						<u>PERSIMMONS</u>						
California	3,700	25	3,675	2/ 96.00	355	353	3,800	25	3,775	2/ 105.00	399	396
California	2,800	25	2,775	2/ 88.00	246	244	3,600	25	3,575	2/ 83.00	299	297
California	3,300	25	3,275	2/ 83.00	274	272	3,500	25	3,475	2/ 38.00	133	132
<u>POMEGRANATES</u>						<u>POMEGRANATES</u>						
California	2,600	10	2,590	2/ 51.00	133	132	2,700	10	2,690	2/ 73.00	197	196
California	3,200	10	3,190	2/ 62.00	198	198	2,900	10	2,890	2/ 44.00	128	127
California	2,800	10	2,790	2/ 36.00	101	100	3,000	10	2,990	2/ 28.00	84	84
<u>PINEAPPLES</u>						<u>PINEAPPLES</u>						
Florida	15,000	3/	15,000	7.50	112	112	10,000	3/	10,000	8.50	85	85
Florida	20,000	3/	20,000	9.50	190	190	4,000	3/	4,000	4.75	19	19
Florida	4,600	3/	4,600	5.00	23	23	5,000	3/	5,000	4.80	24	24

1/ All sold fresh.

2/ Equivalent returns per ton for bulk fruit at first delivery point.

3/ Negligible.

QUANTITIES NOT HARVESTED ON ACCOUNT OF ECONOMIC CONDITIONS AND EXCESS CULLAGE OF HARVESTED FRUIT 1944-1949

UPDATA 1981

STATE	1944	1945	1946	1947	1948	1949	1944	1945	1946	1947	1948	1949
	NOT HARVESTED						EXCESS CULLAGE					
	Thousand bushels						Thousand bushels					
							APPLES					
Vt.							44			16		
Mass.	91						103					
R.I.	23						13					
Conn.	58			26			102					
N.Y.	316			451	1,808	250			227	438	294	914
N.J.					219	46						
Pa.	273				663							
Del.						24						
Md.						12						
Va.	312		100		86	100		100				
W.Va.	98											
N.C.	53											
Ohio				91		817	100		152		185	
Ind.				32		320			70		110	
Ill.				375		650						
Mich.				200		2,347	150		55			
Wis.						180						
Minn.				14		75			28			
Iowa						44						
Mo.						167						
Nebr.				3	10	12						
Kans.				20		40			32		18	
Ky.						36						
Tenn.						19						
Ark.				113								
Mont.	10			29	32	8			21	41	30	
Idaho				58		182	36		20	104	54	40
Colo.						155	60		20	232	75	63
N.Mex.					30	34				30	35	40
Utah	12					21	17		40	65		
Wash.						1,810				670	76	530
Oreg.						100				20		
Calif.				1,125								
TOTAL U. S.	1,246	100	2,517	258	9,999	795		407	1,933	575	1,930	
STATE							PEACHES					
N.Y.	30		84	72		86						
Ind.												35
Ill.				55		460			32			35
Mich.	180	40		50		270						
Va.				50					67			
S.C.				281					146			
Ga.				100					150			
Idaho	20	6		14	13							
Colo.												200
Utah		84										
Wash.	52					500	39					
Oreg.						78						
Calif. All	2,125	1,083	42	250	125	3,083			250	84		959
Clingstone	2,083	1,083	42			3,083			250	84		959
Freestone	42			250	125							
TOTAL U. S.	2,407	1,213	126	872	138	4,477	39		250	479		1,229
	Tons	Tons	Tons	Tons	Tons	Tons	Tons	Tons	Tons	Tons	Tons	Tons
						APRICOTS						
Calif.					26,000	5,000						
Wash.				1,960	1,940	7,500						
Utah		550			500	500						
TOTAL U. S.		550		1,960	2,440	13,000						

STATE	1944	1945	1946	1947	1948	1949	1944	1945	1946	1947	1948	1949
	NOT HARVESTED						EXCESS CULLAGE					
	Thousand bushels			PEARS			Thousand bushels					
N.Y.	24			14			43					
Pa.	10											
Ohio	10											
Ind.							15					5
Ill.				30	20		50					
Mich.							70					
Wash. all	287	400		271			695					
Bartlett	287	400		185			600					
Other				86			95					
Oreg. all		40			65		20					360
Bartlett		40			25		20					140
Other					40							220
Calif. all	125	333					1,167					
Bartlett	125	333					875					
Other							292					
TOTAL U. S.	456	773		315	85	2,060						2,200
	Tons	Tons	Tons	Tons	Tons	Tons	Tons	Tons	Tons	Tons	Tons	Tons
						SWEET CHERRIES						
Idaho					170	600				50		
Wash.						3,000				1,000		1,800
Oreg.		1,100	1,000			3,000	300					
TOTAL U. S.		1,100	1,000		170	6,600	300			1,050		1,800
						SOUP CHERRIES						
Idaho			40									
Wash.							200	110		590		
TOTAL U. S.			40				200	110		590		
						GRAPES						
Kans.						200						
Calif. Raisin		12,000										
TOTAL U. S.		12,000				200						
						PLUMS						
Mich.						750						
Calif.	2,000	1,000				6,000						4,000
TOTAL U. S.	2,000	1,000				6,750						4,000
						PRUNES (fresh basis)						
Idaho					700	3,900					1,000	
Wash. all					1,100	5,890						
East					1,100	3,890						
West						2,000						
Oreg. all	3,300	9,700	4,200	3,500	9,900	28,300		2,000			1,000	1,500
East						1,500						1,500
West	3,300	9,700	4,200	3,500	9,900	26,800		2,000			1,000	
Calif.						15,000						
TOTAL U. S.	3,300	9,700	4,200	3,500	26,700	38,090		2,000			2,000	1,500
						BARRELS						
						CRANBERRIES						
Mass.												26,000

U. S. GOVERNMENT PRINTING OFFICE: 1952 O-20140

END