



AgEcon SEARCH
RESEARCH IN AGRICULTURAL & APPLIED ECONOMICS

The World's Largest Open Access Agricultural & Applied Economics Digital Library

This document is discoverable and free to researchers across the globe due to the work of AgEcon Search.

Help ensure our sustainability.

Give to AgEcon Search

AgEcon Search

<http://ageconsearch.umn.edu>

aesearch@umn.edu

*Papers downloaded from **AgEcon Search** may be used for non-commercial purposes and personal study only. No other use, including posting to another Internet site, is permitted without permission from the copyright owner (not AgEcon Search), or as allowed under the provisions of Fair Use, U.S. Copyright Act, Title 17 U.S.C.*

SB 97 (1954)

USDA STATISTICAL BULLETINS

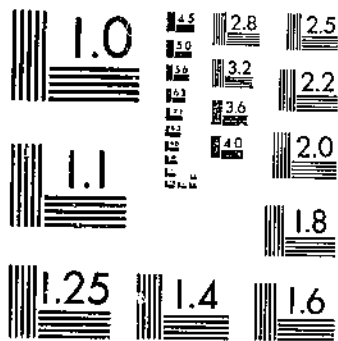
UPDATA

BRAZIL AGRICULTURAL PRODUCTION AND TRADE STATISTICS

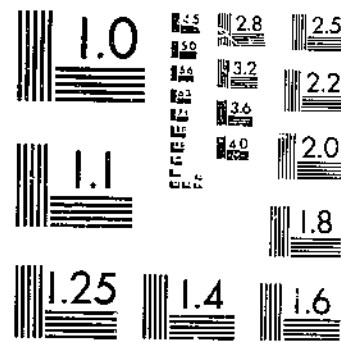
RISHOP, D. R.

1 OF 1

START



MICROCOPY RESOLUTION TEST CHART
NATIONAL BUREAU OF STANDARDS-1963-A



MICROCOPY RESOLUTION TEST CHART
NATIONAL BUREAU OF STANDARDS-1963-A

630.5
U53-12

#97

STACKS

BRAZIL:

**AGRICULTURAL PRODUCTION
AND TRADE STATISTICS**



Los Angeles & San Francisco

DEPOSITORY
JUN 20 1951

United States Department of Agriculture
Office of Foreign Agricultural Relations
Washington, D. C., April 1951
Statistical Bulletin No. 97

LIST OF TABLES

	<u>Page</u>
Rural and urban population by states, 1940 census	3
Total land area in farms and in cultivation by States, 1940.....	3
Distribution and area of farms according to size, 1940	4
Area in principal crops, in hectares	4
Area in principal crops, in acres	5
Production of principal crops, in metric units	6
Production of principal crops, in U. S. units	7
Value of production of principal crops	8
Exports of principal agricultural commodities, in metric units	9
Exports of principal agricultural commodities, in U. S. units	10
Value of exports of principal agricultural commodities	11
Value of imports of principal commodities	11
Coffee area production, and exports	12
Coffee area and production by States	12
Coffee exports by countries of destination	14
Cotton area, production, and exports	16
Cotton area and production by States	16
Cotton exports by countries of destination.....	16
Cacao area, production, and exports	17
Cacao exports by countries of destination	17
Corn area, production, and exports	19
Corn area and production by States	19
Corn exports by countries of destination	19
Rice area, production, and exports	20
Rice area and production by States	20
Rice exports by countries of destination	22
Wheat area, production, and imports	22
Wheat and wheat flour imports by countries of origin.....	23
Rye and barley area and production	23
Sugarcane area and production and sugar production and exports.....	24
Sugarcane area and production by States	24
Sugar exports by countries of destination	25
Bean area, production, and exports	26
Bean area and production by States	26
Manioc area and production and manioc flour production and exports	27
Manioc area and production by States	27
Orange and banana area, production, and exports.....	28
Orange area and production by States	29
Banana area and production by States	29
Apple area, production, and exports	29
Tobacco area, production, and exports	31
Tobacco area and production by States	31
Tobacco leaf exports by countries of destination	31
Vegetable oilseed production	32
Vegetable oil production	33
Vegetable oilseed and oil exports	33
Casterbean area, production, and exports	34
Casterbean area and production by States	34
Pabasa and carnauba wax production and exports.....	35
Rubber and latex production and exports	35
Brazil nut production and exports	35
Miscellaneous vegetable fibers production	35
Livestock number.....	36
Livestock distribution by States	37
Livestock slaughter	38
Food, pork, northern beef, and other meats	38
Food and production and exports	39
Hides and skins production and exports	40
Wool production, exports, and imports	40

LIST OF MAPS

	<u>Page</u>
Identification map	
Population distribution map	2
Coffee area	13
Cotton area	15
Corn area	18
Rice area	21
Sugarcane area	25
Bean area	25
Manioc area	28
Banana area	28
Tobacco area	30
Cattle distribution	37
Hog distribution	37
Sheep distribution	38
Goat distribution	38

The primary sources of all but a fraction of the data used in this publication are the Brazilian Federal Ministry of Agriculture (for acreage and production statistics) and the Brazilian Federal Ministry of Finance (for trade statistics). When data from these sources were not available, estimates were made from Foreign Service reports.

Conversion factors used are as follows:

	2,204.6 pounds
	1.1023 short tons
	45.929 bushels of barley
1 metric ton equals	39.368 bushels of corn
	68.894 bushels of oats
	39.368 bushels of rye
	36.743 bushels of wheat
	11.248 barrels of wheat flour
1 hectare equals	2.471 acres



BRAZIL: AGRICULTURAL PRODUCTION AND TRADE STATISTICS

By

Dwight R. Bishop, Agricultural Economist,
Latin American Division, Office of Foreign Agricultural Relations

Brazil extends over nearly half of the continent of South America. Its total area exceeds that of continental United States by about 250,000 square miles. It is the fourth largest country in the world, being surpassed in continuous territory only by Russia, China, and Canada.

In 1949, the population of Brazil was officially estimated at more than 49 million, indicating a density of around 14 persons per square mile, approximately the same as for all of South America. After more than four centuries of settlement the majority of the inhabitants still live within 100 miles of the coast, leaving the vast interior of the country sparsely settled.

An estimated 70 percent of Brazil's population live on farms, considerably more than in the United States, although the cultivated acreage is only one-tenth as large. Slightly more than 39 million acres--only about 2 percent of Brazil's vast land area--was in cultivation in 1949. An estimated two-thirds of the country is unoccupied except for a few scattered settlements of cattle herders, collectors of forest products, and Indian tribes.

Despite important industrial expansion in recent years, Brazil's economy is still largely based on agriculture. Climatic variations due to differences in elevation, rainfall, prevailing winds, and distance from the equator permit the production of a wide variety of agricultural commodities. Coffee has been the leading export crop for more than a century and the dominant factor in the country's economy. Nevertheless, Brazil's livestock industries, which are widely distributed, are more important to the internal economy. Other agricultural commodities of major importance are cotton, cacao, rice, sugar, tobacco, corn, fruits, castor beans, manioc, and beans. Of special importance is a variety of oleaginous seed, such as babassu, oiticica, and palm kernels, which are collected in the forests.

Of the 16 million hectares (39 million acres) in crops in 1949, more than one-fourth were devoted to corn. Coffee was the second most important crop acreage-wise, followed by cotton, rice, and beans. Seven crops - coffee, corn, rice, cotton, sugarcane, manioc, and beans - accounted for 90 percent of the 1949 acreage and 80 percent of the value of the production of the 30 principal commodities for which statistics are available. The area used for pasture, principally for cattle grazing, was estimated to be at least 6 times as large as that for crops.

All but a fraction of the country's exports consist of agricultural and forest products. The value of coffee exports during 1949 was almost 60 percent of the value of all exports from Brazil and far more than double that of any other commodity. Coffee, cotton, cacao, and hides together made up 70 percent of the value of the 1949 exports.

The United States is the predominant purchaser of Brazil's exports, receiving 50.2 percent of the 1949 total, according to value. The countries next most important on a percentage basis were: United Kingdom (8.5), Argentina (7.7), Belgium-Luxembourg (4.4), Netherlands (3.1), Sweden (2.9), and Italy (2.6).

Brazil is still dependent on imports for a wide variety of items, particularly vehicles, machinery, fuels, and wheat. In 1949, the United States supplied 42.5 percent of the value of the total imports. Percentages supplied by other countries were: 12.9, United Kingdom; 10.5, Argentina; 7.1, Netherlands West Indies; 4.5, Belgium-Luxembourg; 3.0, Sweden; and 2.8, Switzerland.

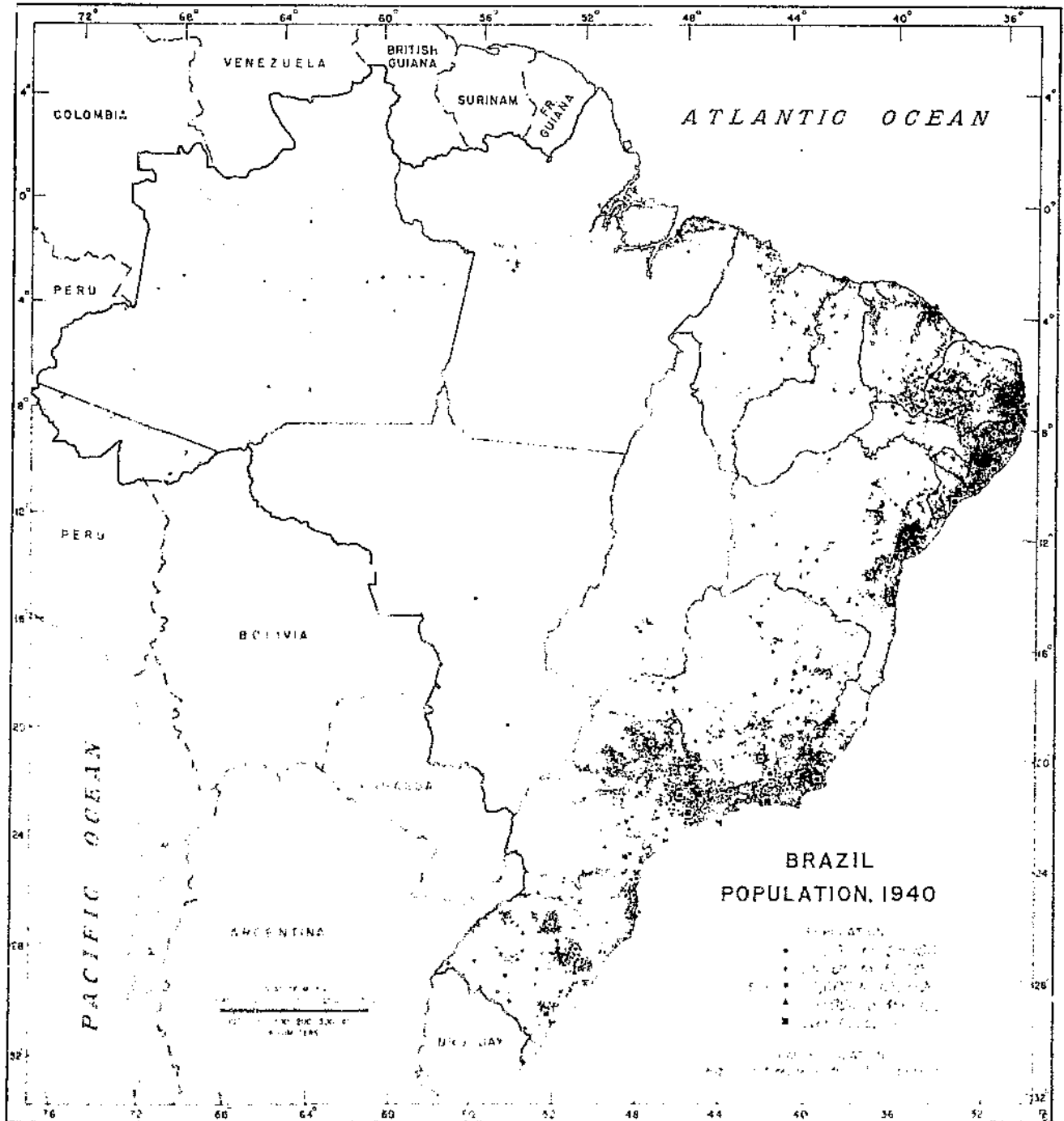


TABLE 1.--Rural and urban population by states, 1940 census

State	On farms	In cities and villages	Total	Percentage on farms
				Percent
Alabama	65,611	14,138	79,749	83
Alaska	333,219	104,789	438,008	76
Arizona	657,773	276,866	934,639	70
Arkansas	1,049,017	145,552	1,235,169	85
California	693,474	124,197	817,671	85
Colorado	1,016,574	475,023	1,491,597	68
Connecticut	893,774	164,248	1,058,022	84
Delaware	1,111,949	311,462	1,423,411	78
District of Columbia	1,361,430	787,868	2,149,298	63
Florida	722,176	229,126	951,302	76
Georgia	376,385	166,241	542,626	69
Idaho	2,961,541	937,571	3,919,112	75
Illinois	5,111,371	1,691,647	6,803,018	75
Indiana	593,199	141,609	734,808	81
Iowa	1,194,551	693,211	1,887,762	63
Kentucky	245,731	1,517,401	1,763,132	14
Louisiana	4,111,271	3,121,111	7,232,382	57
Maine	345,111	1,111,111	1,456,222	24
Maryland	1,111,111	1,111,111	2,222,222	50
Massachusetts	1,111,111	1,111,111	2,222,222	50
Michigan	1,111,111	1,111,111	2,222,222	50
Minnesota	1,111,111	1,111,111	2,222,222	50
Mississippi	1,111,111	1,111,111	2,222,222	50
Missouri	1,111,111	1,111,111	2,222,222	50
Montana	1,111,111	1,111,111	2,222,222	50
Nebraska	1,111,111	1,111,111	2,222,222	50
Nevada	1,111,111	1,111,111	2,222,222	50
New Hampshire	1,111,111	1,111,111	2,222,222	50
New Jersey	1,111,111	1,111,111	2,222,222	50
New Mexico	1,111,111	1,111,111	2,222,222	50
New York	1,111,111	1,111,111	2,222,222	50
North Carolina	1,111,111	1,111,111	2,222,222	50
North Dakota	1,111,111	1,111,111	2,222,222	50
Ohio	1,111,111	1,111,111	2,222,222	50
Oklahoma	1,111,111	1,111,111	2,222,222	50
Oregon	1,111,111	1,111,111	2,222,222	50
Pennsylvania	1,111,111	1,111,111	2,222,222	50
Rhode Island	1,111,111	1,111,111	2,222,222	50
South Carolina	1,111,111	1,111,111	2,222,222	50
South Dakota	1,111,111	1,111,111	2,222,222	50
Tennessee	1,111,111	1,111,111	2,222,222	50
Texas	1,111,111	1,111,111	2,222,222	50
Utah	1,111,111	1,111,111	2,222,222	50
Vermont	1,111,111	1,111,111	2,222,222	50
Virginia	1,111,111	1,111,111	2,222,222	50
Washington	1,111,111	1,111,111	2,222,222	50
West Virginia	1,111,111	1,111,111	2,222,222	50
Wisconsin	1,111,111	1,111,111	2,222,222	50
Wyoming	1,111,111	1,111,111	2,222,222	50
Total	100,000,000	100,000,000	200,000,000	50

TABLE 2.--Total population on farms and in cultivation with improvements, 1940

State	Total population	On farms	In cultivation with improvements	Percentage on farms	Percentage in cultivation with improvements	Percentage of total population in cultivation with improvements
Alabama	1,235,169	65,611	14,138	83	1.1	0.7
Alaska	438,008	333,219	104,789	76	74	17
Arizona	934,639	657,773	276,866	70	29	31
Arkansas	1,235,169	1,049,017	145,552	85	12	12
California	817,671	693,474	124,197	85	15	18
Colorado	1,491,597	1,016,574	475,023	68	32	21
Connecticut	1,058,022	893,774	164,248	84	16	15
Delaware	1,423,411	1,111,949	311,462	78	22	15
District of Columbia	2,149,298	1,361,430	787,868	63	37	17
Florida	951,302	722,176	229,126	76	24	25
Georgia	542,626	376,385	166,241	69	31	29
Idaho	3,919,112	2,961,541	937,571	75	24	24
Illinois	6,803,018	5,111,371	1,691,647	75	25	24
Indiana	734,808	593,199	141,609	81	19	26
Iowa	1,887,762	1,194,551	693,211	63	37	35
Kentucky	1,763,132	245,731	1,517,401	14	86	48
Louisiana	7,232,382	4,111,271	3,121,111	57	43	43
Maine	1,456,222	345,111	1,111,111	24	76	16
Maryland	2,222,222	1,111,111	1,111,111	50	50	23
Massachusetts	2,222,222	1,111,111	1,111,111	50	50	23
Michigan	2,222,222	1,111,111	1,111,111	50	50	23
Minnesota	2,222,222	1,111,111	1,111,111	50	50	23
Mississippi	2,222,222	1,111,111	1,111,111	50	50	23
Missouri	2,222,222	1,111,111	1,111,111	50	50	23
Montana	2,222,222	1,111,111	1,111,111	50	50	23
Nebraska	2,222,222	1,111,111	1,111,111	50	50	23
Nevada	2,222,222	1,111,111	1,111,111	50	50	23
New Hampshire	2,222,222	1,111,111	1,111,111	50	50	23
New Jersey	2,222,222	1,111,111	1,111,111	50	50	23
New Mexico	2,222,222	1,111,111	1,111,111	50	50	23
New York	2,222,222	1,111,111	1,111,111	50	50	23
North Carolina	2,222,222	1,111,111	1,111,111	50	50	23
North Dakota	2,222,222	1,111,111	1,111,111	50	50	23
Ohio	2,222,222	1,111,111	1,111,111	50	50	23
Oklahoma	2,222,222	1,111,111	1,111,111	50	50	23
Oregon	2,222,222	1,111,111	1,111,111	50	50	23
Pennsylvania	2,222,222	1,111,111	1,111,111	50	50	23
Rhode Island	2,222,222	1,111,111	1,111,111	50	50	23
South Carolina	2,222,222	1,111,111	1,111,111	50	50	23
South Dakota	2,222,222	1,111,111	1,111,111	50	50	23
Tennessee	2,222,222	1,111,111	1,111,111	50	50	23
Texas	2,222,222	1,111,111	1,111,111	50	50	23
Utah	2,222,222	1,111,111	1,111,111	50	50	23
Vermont	2,222,222	1,111,111	1,111,111	50	50	23
Virginia	2,222,222	1,111,111	1,111,111	50	50	23
Washington	2,222,222	1,111,111	1,111,111	50	50	23
West Virginia	2,222,222	1,111,111	1,111,111	50	50	23
Wisconsin	2,222,222	1,111,111	1,111,111	50	50	23
Wyoming	2,222,222	1,111,111	1,111,111	50	50	23
Total	200,000,000	100,000,000	100,000,000	50	50	23

TABLE 3.--Distribution and area of farms according to size, 1940

Size in hectares	Number	Area		Farms in each size group	Area in each size group
		Thousands	Million hectares		
0-19.....	970	8	20	50.9	3.8
20-49.....	455	14	35	23.9	7.2
50-199.....	328	31	77	17.3	15.9
200-999.....	121	49	121	6.4	24.8
1,000-4,999.....	24	47	116	1.3	23.7
5,000 and over.....	3	49	121	.2	24.6
Total.....	1,901	198	489	100.0	100.0

TABLE 4.--Area in principal crops
[In thousands of hectares]

Crop	1930-34 average	1935-39 average	1940-44 average	1945-49 average	1945	1946	1947	1948	1949
Corn.....	3,808	4,092	4,093	4,310	4,092	4,327	4,323	4,347	4,460
Coffee.....	3,709	3,331	2,352	2,433	2,382	2,406	2,415	2,464	2,500
Cotton.....	990	2,251	2,352	1,829	2,024	1,862	1,781	1,659	1,821
Beans.....	745	955	1,073	1,579	1,432	1,534	1,584	1,650	1,693
Rice.....	812	956	1,106	1,639	1,498	1,646	1,651	1,662	1,740
Manioc.....	370	411	650	916	898	908	911	913	948
Sugarcane.....	395	464	580	758	657	758	773	819	781
Wheat.....	162	168	274	330	263	283	314	364	425
Cacao.....	172	188	238	256	268	244	258	261	250
Castorbeans.....	69	120	160	215	200	200	219	258	252
Tobacco.....	92	102	100	141	144	136	134	144	149
Potatoes.....	38	66	79	119	116	110	117	128	125
Sweetpotatoes.....	50	60	75	115	108	113	112	121	120
Peanuts.....	20	25	30	74	41	34	52	142	100
Bananas.....	51	73	80	92	84	91	91	96	100
Oranges.....	94	106	113	77	73	76	78	76	81
Broadbeans.....	50	50	50	66	59	57	63	76	75
Coconuts.....	27	35	46	44	37	38	47	49	50
Grapes.....	39	40	33	35	32	33	37	35	37
Onions.....	20	20	20	24	22	23	23	25	25
Alfalfa.....	21	26	26	25	27	24	25	25	25
Tomatoes.....	1	2	3	11	7	9	11	13	15
Rye.....	16	13	16	15	14	12	14	17	16
Oats.....	14	10	10	13	13	12	14	14	12
Pineapple.....	8	10	11	12	11	13	12	13	12
Barley.....	9	9	13	13	14	13	12	11	14
Tung.....	--	1	2	3	4	5	9	11	12
Garlic.....	3	4	5	7	6	7	7	7	7
Tea.....	--	--	--	2	2	1	2	2	2
Total.....	11,785	13,586	13,590	15,158	14,528	14,975	15,089	15,402	15,847

TABLE 5.--Area in principal crops, averages, 1930 to 1949 and annual, 1945 to 1949

[In thousands of acres]

Crop	1930-34 average	1935-39 average	1940-44 average	1945-49 average	1945	1946	1947	1948	1949
Corn.....	9,410	10,110	10,115	10,650	10,111	10,692	10,682	10,740	11,021
Coffee.....	9,165	8,231	5,812	6,012	5,886	5,945	5,967	6,089	6,178
Cotton.....	2,446	5,562	5,812	4,519	5,000	4,600	4,400	4,100	4,500
Beans.....	1,841	2,355	2,651	3,902	3,538	3,791	3,914	4,077	4,183
Rice.....	2,006	2,362	2,733	4,050	3,702	4,067	4,080	4,107	4,300
Manioc.....	914	1,016	1,606	2,263	2,219	2,244	2,251	2,256	2,343
Sugarcane.....	976	1,147	1,433	1,873	1,623	1,873	1,910	2,024	1,930
Wheat.....	400	415	677	815	650	700	775	900	1,050
Cacao.....	425	465	588	633	662	603	638	645	618
Castorbeans.....	170	297	395	531	494	494	541	638	623
Tobacco.....	227	252	247	348	356	336	331	356	368
Potatoes.....	94	163	195	294	287	272	289	316	309
Sweetpotatoes.....	124	148	185	284	267	279	277	299	297
Peanuts.....	49	62	74	183	101	84	128	351	247
Bananas.....	126	180	198	227	208	225	225	237	247
Oranges.....	232	262	279	190	180	188	193	188	200
Broadbeans.....	124	124	124	163	146	141	156	188	185
Coconuts.....	67	86	114	109	91	94	116	121	124
Grapes.....	96	99	82	86	79	82	91	86	91
Onions.....	49	49	49	59	54	57	57	62	62
Alfalfa.....	52	64	64	62	67	59	62	62	62
Tomatoes.....	2	5	7	27	17	22	27	32	37
Rye.....	40	32	39	36	34	30	34	43	40
Oats.....	35	25	25	32	32	30	35	35	30
Pineapple.....	20	25	27	30	27	32	30	32	30
Barley.....	23	33	33	31	34	32	29	27	34
Tung.....	--	2	5	20	10	12	22	27	30
Garlic.....	7	10	12	17	15	17	17	17	17
Tea.....	--	--	--	5	5	2	5	5	5
Total.....	29,120	33,571	33,581	37,451	35,895	37,003	37,282	38,060	39,161

TABLE 6.--Production of principal crops, averages 1920 to 1949 and annual, 1945 to 1949

Crop	1920-24 average	1925-29 average	1930-34 average	1935-39 average	1940-44 average	1945-49 average	1945	1946	1947	1948	1949
In thousands of metric tons											
Alfalfa.....	208	188	152	141	103	169	148	162	178	189	170
Barley.....	9	7	9	12	14	13	15	12	12	12	14
Beans.....	594	680	695	824	888	1,092	1,002	1,076	1,046	1,133	1,205
Cacao.....	57	68	92	130	117	124	120	122	119	97	161
Castorbeans.....	(1)	(1)	77	134	159	187	160	164	183	231	199
Corn.....	5,289	4,782	5,289	5,677	5,275	5,466	4,847	5,721	5,503	5,607	5,650
Cotton.....	118	109	167	424	470	294	293	293	274	327	283
Garlic.....	(1)	(1)	6	8	12	15	13	14	16	15	15
Grapes.....	(1)	(1)	210	209	187	213	209	220	169	239	226
Broadbeans.....	(1)	(1)	35	35	35	36	35	31	35	38	40
Manioc roots.....	(1)	(1)	5,084	5,529	8,456	12,218	11,415	12,225	11,845	12,455	13,150
Oats.....	9	7	12	11	8	10	11	9	9	10	10
Onions.....	(1)	(1)	70	70	70	90	78	87	87	98	100
Peanuts.....	(1)	(1)	20	25	28	79	29	32	53	139	140
Pineapples.....	37	75	124	131	121	108	112	103	104	112	110
Potatoes.....	200	259	346	400	457	575	596	542	575	585	575
Rice.....	775	876	1,113	1,365	1,779	2,519	2,147	2,759	2,596	2,554	2,540
Rye.....	21	17	17	14	14	11	10	8	10	13	13
Sugarcane.....	12,875	13,672	16,416	17,407	22,323	28,634	25,179	28,069	28,990	30,893	30,041
Sweetpotatoes.....	(1)	(1)	400	500	600	908	968	788	851	934	1,000
Tea.....	--	--	--	--	--	1	1	1	1	1	1
Tobacco.....	74	87	98	93	95	115	113	119	111	118	116
Tomatoes.....	(1)	(1)	10	20	30	93	59	87	115	103	100
Tung.....	--	--	--	1	1	9	4	5	11	14	12
Wheat.....	111	129	156	135	189	293	233	213	326	354	340
In millions of bunches											
Bananas.....	31	45	70	78	83	127	107	117	127	136	147
In millions of nuts											
Coconuts.....	108	118	130	136	142	189	138	156	217	234	200
In thousands of bags											
Coffee.....	11,989	16,661	24,538	21,740	14,430	13,512	11,700	12,800	12,370	15,740	14,950
In thousands of boxes											
Oranges.....	2,807	6,503	23,903	33,745	34,134	31,542	28,621	29,955	30,170	34,825	34,138

¹Not available.

TABLE 7 --Production of principal crops, averages, 1920 to 1949 and annual, 1945 to 1949

Crop	Unit	1920-24 average	1925-29 average	1930-34 average	1935-39 average	1940-44 average	1945-45 average	1945	1946	1947	1948	1949
Alfalfa.....	Million pounds	459	414	335	311	238	373	326	357	392	417	375
Barley.....	Thousand bushels	395	346	433	566	631	602	684	529	564	568	666
Beans.....	Million pounds	1,310	1,499	1,532	1,817	1,958	2,407	2,209	2,372	2,306	2,498	2,657
Cacao.....	do	126	150	203	287	258	273	265	269	262	214	355
Castorbeans...	do	(¹)	(¹)	170	295	351	412	353	362	403	509	439
Corn.....	Thousand bushels	208,217	188,258	208,217	223,479	207,666	215,185	190,789	225,238	216,624	220,754	222,440
Cotton.....	Thousand bales	547	503	772	1,956	2,169	1,352	1,350	1,350	1,260	1,500	1,300
Garlic.....	Million pounds	(¹)	(¹)	13	18	26	33	29	31	35	33	33
Grapes.....	do	(¹)	(¹)	463	461	412	470	461	485	373	527	498
Broadbeans.....	do	(¹)	(¹)	77	77	77	79	77	68	77	84	88
Manioc roots...	do	(¹)	(¹)	11,208	12,189	18,642	26,936	25,166	26,951	26,113	27,458	28,990
Oats.....	Thousand bushels	620	482	827	758	551	689	758	620	620	689	689
Onions.....	Million pounds	(¹)	(¹)	154	154	154	198	172	192	192	216	220
Peanuts.....	do	(¹)	(¹)	44	55	62	159	64	71	117	306	231
Pineapples.....	do	82	165	273	289	267	238	247	227	229	247	243
Potatoes.....	do	441	571	763	882	1,008	1,268	1,314	1,195	1,268	1,290	1,268
Rice.....	do	1,709	1,931	2,454	3,009	3,922	5,553	4,733	6,082	5,723	5,631	5,600
Rye.....	Thousand bushels	827	675	650	570	558	434	400	333	411	525	500
Sugarcane.....	Thousand tons	14,192	15,071	18,095	19,188	24,607	31,563	27,755	30,940	31,956	34,053	33,114
Sweetpotatoes..	Million pounds	(¹)	(¹)	882	1,102	1,323	2,002	2,134	1,737	1,876	2,059	2,205
Tea.....	do	--	--	--	--	--	2	2	2	2	2	2
Tobacco.....	do	163	192	216	205	209	254	249	262	245	260	256
Tomatoes.....	do	(¹)	(¹)	22	44	66	205	130	192	254	227	220
Tung.....	do	--	--	--	2	2	20	9	11	24	31	26
Wheat.....	Thousand bushels	4,078	4,747	5,710	4,978	6,235	10,776	8,572	7,808	12,000	13,000	12,500
Bananas.....	Million bunches	31	45	70	78	83	127	107	117	127	136	147
Coconuts.....	Million nuts	108	118	130	136	142	189	138	156	217	234	200
Coffee.....	Thousand bags	11,989	16,661	24,538	21,740	14,430	13,512	11,700	12,800	12,370	15,740	14,950
Oranges.....	Thousand boxes	2,807	6,503	23,903	33,745	34,134	31,542	28,621	29,955	20,170	34,825	34,138

¹Not available.

TABLE 8.--Value of production of principal crops, averages 1920 to 1944 and annual 1944 to 1948
 [In million cruzeiros]¹

Crop	1920-24 average	1925-29 average	1930-34 average	1935-39 average	1940-44 average	1944	1945	1946	1947	1948
Coffee.....	1,504	3,313	2,134	1,903	1,640	2,393	3,717	5,336	5,532	6,451
Corn.....	1,025	1,126	951	1,229	1,860	3,152	3,381	4,088	4,390	5,249
Rice.....	268	357	337	693	1,282	2,122	2,441	3,188	3,338	4,131
Cotton.....	336	337	382	1,292	1,991	3,147	2,040	3,168	3,255	3,484
Sugarcane.....	208	245	358	441	864	1,398	1,682	1,972	2,191	2,426
Manioc.....	87	(²)	425	504	802	1,310	1,689	1,956	2,070	2,358
Beans.....	232	369	226	355	654	1,100	1,178	1,388	1,760	2,719
Potatoes.....	58	122	132	153	263	418	632	722	1,017	1,069
Wheat.....	36	60	67	60	143	152	242	378	931	1,023
Cacao.....	61	97	103	140	203	180	221	419	790	630
Bananas.....	28	69	109	118	175	283	414	537	638	754
Tobacco.....	133	194	167	180	243	401	515	617	614	615
Oranges.....	10	42	259	309	223	196	296	390	443	568
Cottonseed.....	56	68	119	305	373	439	276	309	403	434
Castorbeans.....	(²)	(²)	(²)	67	108	130	133	284	390	348
Grapes.....	(²)	(²)	108	74	82	120	157	175	196	290
Coconuts.....	18	24	22	32	54	80	95	154	179	226
Alfalfa.....	30	43	39	35	37	57	78	95	120	151
Pineapples.....	6	15	22	22	32	45	53	63	83	94
Rye.....	9	9	7	5	9	9	12	17	23	26
Barley.....	2	2	4	4	7	6	10	12	18	22
Oats.....	3	3	4	4	4	5	9	10	12	15
Total.....	4,110	6,495	5,975	7,925	11,049	17,143	19,271	25,278	28,393	33,083
Garlic ³						45	69	85	99	93
Peanuts ³						33	34	47	111	292
Sweetpotatoes ³						175	279	293	349	436
Onions ³						105	149	163	171	176
Tea ³						5	6	13	13	12
Broadbeans ³						42	39	42	46	60
Tomatoes ³						69	90	117	145	142
Tung ³						5	8	9	13	12
Grand total.....						17,622	19,945	26,047	29,340	34,306

¹One cruzeiro equals approximately 5 cents U. S. currency.

²Not available.

³Data not available prior to 1944.

TABLE 9.--Exports of principal agricultural commodities, averages 1920 to 1949 and annual, 1945 to 1949

Commodity	1920-24 average	1925-29 average	1930-34 average	1935-39 average	1940-44 average	1945-49 average	1945	1946	1947	1948	1949
In thousands of metric tons											
Cotton.....	21	24	38	233	170	240	164	353	285	259	140
Castorbeans.....	12	16	26	109	151	143	150	99	169	164	122
Cacao.....	55	68	88	120	106	103	83	130	99	72	132
Hides and skins..	51	59	51	58	47	50	16	37	74	63	61
Mate.....	83	89	73	64	51	50	50	49	55	47	47
Sugar.....	144	23	37	46	44	102	27	22	62	361	38
Meat.....	(¹)	49	69	77	97	40	31	55	36	42	24
Tobacco.....	35	31	31	33	19	35	31	53	38	25	28
Brazil nuts ²	(¹)	11	30	33	13	18	3	22	23	15	25
Sisal.....	--	--	--	--	--	12	--	3	15	19	23
Manioc flour.....	9	6	7	9	16	77	28	165	121	48	21
Babassu nuts.....	18	18	7	28	28	24	44	13	11	32	20
Soybeans.....	--	--	--	--	--	6	--	--	--	--	15
Tucum nuts.....	(¹)	2	1	3	3	8	6	7	9	6	14
Castor oil.....	--	--	--	--	6	7	6	7	6	5	11
Carnauba wax.....	4	6	7	9	10	9	9	10	8	9	11
Cottonseed oil...	--	--	8	22	19	11	23	5	7	10	9
Oiticica oil.....	--	--	--	4	6	10	12	15	5	11	6
Pineapple.....	2	1	2	4	3	3	2	2	3	4	4
Rubber.....	20	22	11	13	14	12	19	18	15	5	3
Beans.....	5	--	--	1	6	27	10	77	29	15	3
Rice ³	54	6	42	41	74	142	88	164	241	215	1
Corn.....	18	5	13	49	9	80	--	123	166	111	--
In thousands of bags ⁴											
Coffee.....	13,052	14,102	14,936	15,050	10,810	16,325	14,147	15,480	14,830	17,492	15,677
In thousands of boxes ⁵											
Oranges.....	425	654	2,009	4,389	1,740	2,145	1,397	2,768	1,703	2,845	2,011
In millions of bunches ⁶											
Bananas.....	4	5	8	11	5	6	3	5	7	8	8

¹Not available.

²Unshelled basis.

³Milled basis.

⁴Bag of 60 kilograms.

⁵Boxes average 32 kilograms.

⁶Bunches average 20 kilograms.

TABLE 10.--Exports of principal agricultural commodities, averages 1920 to 1949 and annual, 1945 to 1949

Commodity	Unit	1920-24 average	1925-29 average	1930-34 av. rge	1935-39 average	1940-44 average	1945-49 average	1945	1946	1947	1948	1949
Cotton.....	Thousand bales	96	109	175	1,077	786	1,107	758	1,627	1,311	1,188	642
Castorbeans.....	Million pounds	26	35	57	240	323	315	331	218	373	362	269
Cacao.....	do	121	150	194	265	234	227	183	287	218	159	291
Hides and skins.....	do	112	130	112	128	104	110	35	62	163	139	134
Mate.....	do	183	196	161	141	112	110	110	108	121	104	104
Sugar.....	Thousand tons	159	25	41	51	49	112	30	24	68	398	43
Meat.....	Million pounds	(¹)	108	152	170	214	23	68	121	79	93	75
Tobacco.....	do	77	68	68	73	42	77	68	117	84	55	62
Brazil nuts ²	do	(¹)	24	66	73	29	40	7	49	51	33	55
Sisal.....	do	--	--	--	--	--	27	--	7	33	42	51
Manioc flour....	do	20	13	15	20	35	170	62	364	267	106	46
Babassu nuts....	do	40	40	15	62	62	53	97	29	24	70	44
Soybeans.....	do	--	--	--	--	--	13	--	--	--	--	42
Tucum nuts.....	do	(¹)	4	2	7	7	18	13	15	20	13	31
Castor oil.....	do	--	--	--	--	13	15	13	15	13	11	24
Carnauba wax....	do	9	13	15	20	22	20	20	22	18	20	24
Cottonseed oil..	do	--	--	18	49	42	24	51	11	15	22	20
Oiticica oil....	do	--	--	--	9	13	22	26	33	11	24	13
Pineapple.....	do	4	2	4	9	7	7	4	4	7	9	11
Rubber.....	do	44	49	24	29	31	26	42	40	33	11	7
Beans.....	do	11	--	--	2	13	60	22	170	64	33	7
Rice ³	do	119	13	93	90	163	313	194	362	531	474	2
Corn.....	Thousand bushels	709	197	512	1,929	354	3,149	--	4,842	6,535	4,370	--
Coffee.....	Thousand bags	13,052	14,102	14,936	15,050	10,810	16,274	14,172	15,505	14,830	17,492	19,369
Oranges.....	Thousand boxes	425	654	2,009	4,389	1,740	2,145	1,397	2,768	1,703	2,845	2,011
Bananas.....	Million bunches	4	5	8	11	5	6	3	5	7	8	8

¹Not available.²Unshelled basis.³Milled basis.⁴Bags of 132 pounds.⁵Boxes average 70 pounds.⁶Bunches average 44 pounds.

TABLE 11.--Value of exports of principal agricultural commodities, averages 1920 to 1949 and annual, 1945 to 1949

[In millions of cruzeiros]¹

Commodity	1920-24 average	1925-29 average	1930-34 average	1935-39 average	1940-44 average	1945-49 average	1945	1946	1947	1948	1949
Coffee.....	1,688	2,681	2,033	2,215	2,451	7,817	4,260	6,441	7,755	9,019	11,611
Cotton.....	78	79	125	922	715	2,491	1,049	2,938	3,076	3,385	2,007
Cacao.....	74	129	108	218	275	792	229	651	1,048	1,066	964
Hides and skins.....	118	179	129	224	305	683	302	651	1,004	763	693
Meat.....	75	68	93	149	452	364	199	389	384	494	352
Carnauba wax.....	13	26	23	93	245	355	270	492	384	286	343
Tobacco.....	56	73	52	81	72	334	255	493	377	268	279
Castorbeans.....	6	9	13	77	171	343	200	196	619	440	261
Mate.....	58	111	82	64	69	138	111	133	160	138	148
Brazil nuts.....	37	36	36	78	33	112	32	187	144	65	134
Oranges.....	4	8	43	98	43	119	57	147	101	171	121
Sisal.....	--	--	--	--	--	70	--	19	96	116	118
Bananas.....	8	14	23	33	22	75	24	54	83	103	111
Babassu nuts.....	12	4	37	37	49	79	90	29	33	163	82
Sugar.....	97	13	16	23	45	223	54	72	221	692	78
Manioc flour.....	4	2	3	3	4	112	4	203	171	119	61
Cottonseed oil.....	--	--	5	37	52	79	100	36	83	102	75
Castor oil.....	--	--	--	1	21	46	28	48	65	40	51
Oiticica oil.....	--	--	--	--	39	78	88	122	54	85	43
Tucum nuts.....	--	1	1	2	4	26	12	16	35	22	43
Soybeans.....	--	--	--	--	--	7	--	--	--	--	34
Rubber.....	61	108	25	57	174	199	346	268	304	47	28
Beans.....	2	--	--	--	9	56	17	142	73	41	8
Pineapple.....	1	1	2	2	3	6	4	5	7	9	7
Rice.....	36	5	28	39	149	434	203	385	840	741	3
Corn.....	--	--	--	16	3	116	--	153	245	183	--
Total.....	2,428	3,547	2,878	4,469	5,405	15,154	7,934	14,270	17,362	18,558	17,655
Total, all exports.....	2,591	3,737	3,024	4,961	7,729	18,691	12,198	18,230	21,179	21,694	20,153
Percent of total exports..	94	95	95	90	70	81	65	78	82	86	88

¹One cruzeiro equals approximately 5 cents U. S. currency.

TABLE 12.--Value of imports of principal commodities, specified years

[In millions of cruzeiros]

Commodity	1939	1944	1946	1947	1948	1949
Machinery.....	1,373	273	673	5,310	4,772	5,363
Petroleum products.....	293	298	622	1,121	1,667	2,127
Wheat.....	354	1,097	406	1,057	1,146	1,942
Automotive vehicles.....	504	104	954	2,725	2,712	1,481
Foods and food products.....	273	473	1,553	1,584	1,409	1,290
Iron and steel.....	442	336	413	1,407	985	1,217
Chemicals.....	291	472	594	1,020	992	1,174
Textiles.....	79	29	217	550	598	991
Wheat flour.....	18	117	535	1,431	1,345	373
Paper.....	95	144	255	479	362	294
Coal.....	235	194	365	627	426	259
All other.....	1,027	4,428	8,442	5,478	4,571	4,137
Total.....	4,984	7,965	15,029	22,789	20,985	20,648

TABLE 13.--Coffee area, production, and exports, averages 1920 to 1949 and annual, 1944 to 1949

Year	Area		Number of trees	Production ¹	Exports ²
	Thousand hectares	Thousand acres	Million	Thousand bags	Thousand bags
Average:					
1920-24.....	(⁴)	(⁴)	1,832	11,989	13,052
1925-29.....	(⁴)	(⁴)	2,225	16,661	14,102
1930-34.....	3,709	9,165	2,808	24,538	14,936
1935-39.....	3,331	8,231	2,737	21,740	15,050
1940-44.....	2,352	5,812	2,371	14,430	10,810
1945-49.....	2,433	6,012	2,099	13,512	16,325
Annual:					
1944.....	2,326	5,748	2,040	11,060	13,558
1945.....	2,382	5,886	2,078	11,700	14,147
1946.....	2,406	5,945	2,099	12,800	15,480
1947.....	2,415	5,967	2,078	12,370	14,830
1948.....	2,464	6,089	2,105	15,740	17,492
1949.....	2,500	6,178	2,135	14,950	19,677

¹Year of harvest; exportable production adjusted for estimated domestic consumption.

²Calendar year.

³Bags of 60 kilograms or 132 pounds.

⁴Not available.

TABLE 14.--Coffee area and production by states, 1939 and 1948

State	Area				Production ¹	
	1939		1948		1939	1948
	Thousand hectares	Thousand acres	Thousand hectares	Thousand acres	Thousand bags	Thousand bags
Sao Paulo.....	1,890	4,670	1,299	3,210	11,463	10,386
Minas Gerais.....	917	2,266	549	1,357	2,935	2,236
Parana.....	137	321	198	489	1,027	1,747
Espirito Santo.....	260	642	228	563	1,375	956
Goiás.....	19	47	12	30	21	146
Rio de Janeiro.....	169	417	53	131	599	132
Bahia.....	50	124	57	141	193	82
Pernambuco.....	31	77	41	101	105	38
All others.....	38	94	27	67	(²)	17
Total.....	3,504	8,658	2,464	6,089	17,718	15,740

¹Exportable production adjusted for domestic consumption.

²All consumed domestically.

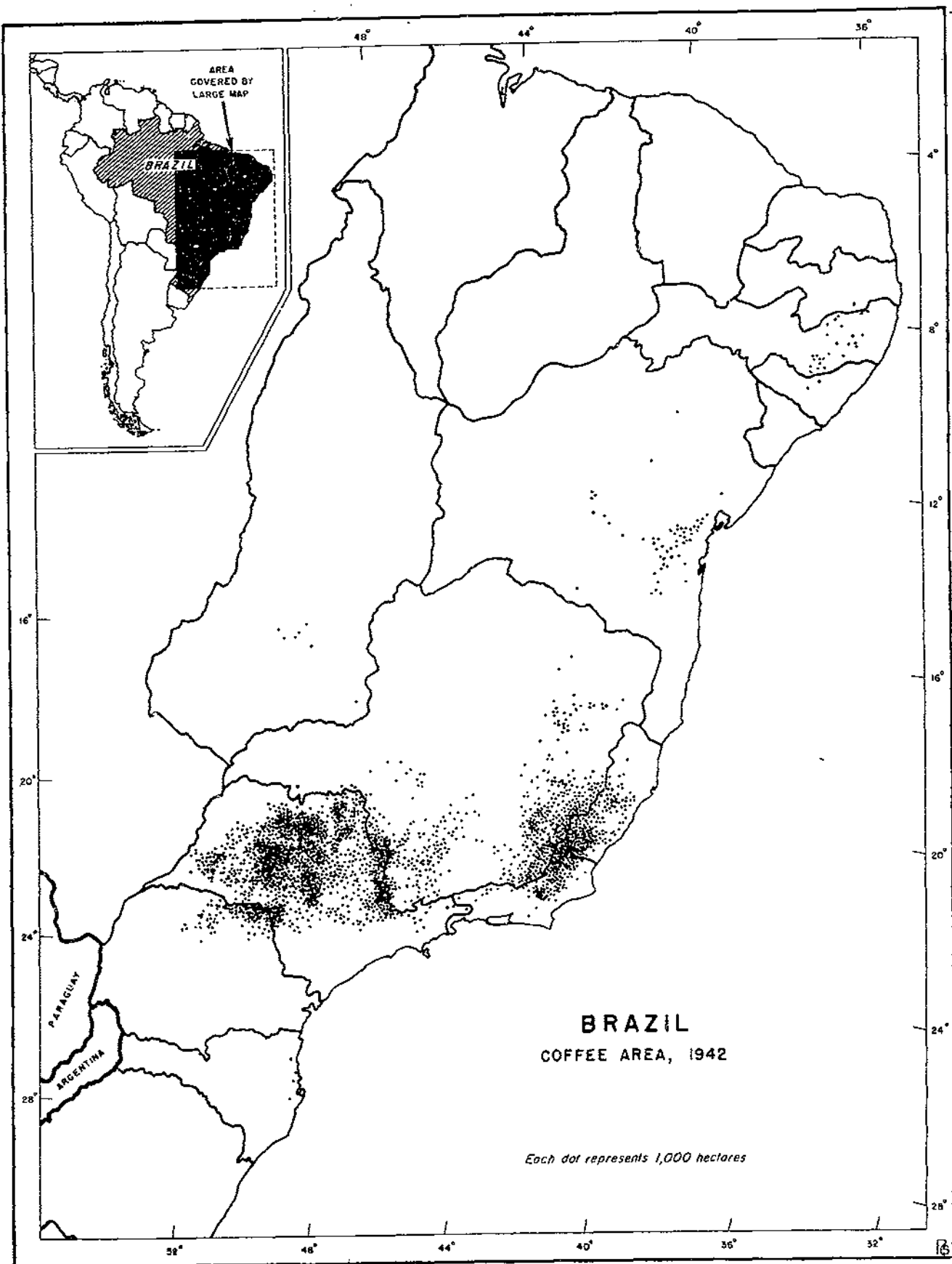


TABLE 15.--Coffee exports by countries of destination, 1939 and 1946-49

[In thousands of bags]

Country	1939	1946	1947	1948	1949
United States.....	9,177	10,947	9,745	11,726	12,322
Benelux.....	447	737	815	1,031	1,182
United Kingdom.....	13	54	311	1,027	310
Argentina.....	381	575	636	702	308
Italy.....	292	351	192	401	579
Canada.....	66	157	270	329	375
Sweden.....	818	612	542	279	485
Denmark.....	276	184	215	213	276
Germany.....	1,033	--	--	174	292
Chile.....	38	190	135	156	177
Norway.....	108	238	23	142	227
Iraq.....	8	--	--	112	41
Switzerland.....	169	138	71	108	155
Netherlands.....	606	252	248	107	681
Union of South Africa.....	128	51	71	100	188
Egypt.....	83	160	117	66	20
Finland.....	270	80	70	48	41
Turkey.....	105	108	100	35	27
France.....	1,638	102	420	24	546
Spain.....	1	12	500	--	--
Trieste.....	--	--	--	86	223
All others.....	837	532	349	626	1,222
Total.....	16,499	15,480	14,830	17,492	19,677

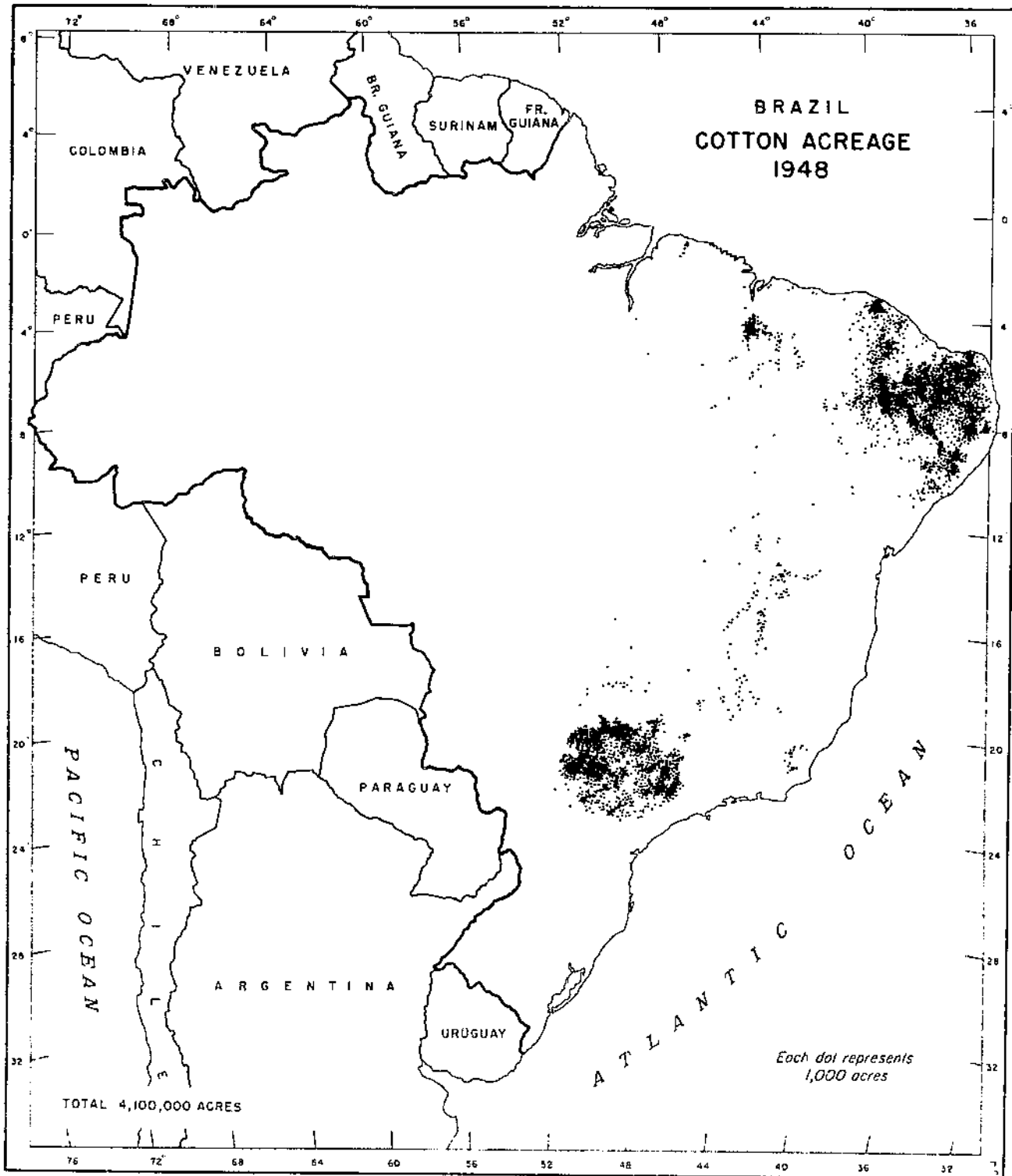


TABLE 16.--Cotton area, production, and exports, averages 1920 to 1949 and annual, 1944 to 1949

Year	Area		Production ¹		Exports ²	
	Thousand hectares	Thousand acres	Thousand M.T.	Thousand bales	Thousand M.T.	Thousand bales
Averages:						
1920-24.....	581	1,435	118	547	21	96
1925-29.....	604	1,492	109	503	24	109
1930-34.....	990	2,446	167	772	38	175
1935-39.....	2,251	5,562	424	1,956	233	1,077
1940-44.....	2,352	5,812	470	2,169	170	786
1945-49.....	1,829	4,519	294	1,352	240	1,107
Annual:						
1944.....	2,428	6,000	353	1,626	108	496
1945.....	2,024	5,000	293	1,350	164	758
1946.....	1,862	4,600	293	1,350	353	1,627
1947.....	1,781	4,400	274	1,260	285	1,311
1948.....	1,659	4,100	327	1,500	259	1,188
1949.....	1,821	4,500	283	1,300	140	642

¹Year beginning August 1.

²Calendar year.

³Bales are 478 pounds net through 1945; 480 pounds thereafter.

TABLE 17.--Cotton area and production by states, 1939 and 1948

State	Area				Production			
	1939		1948		1939		1948	
	Thousand hectares	Thousand acres	Thousand hectares	Thousand acres	Thousands metric tons	Thousand bales	Thousand metric tons	Thousand bales
Sao Paulo.....	1,416	3,500	961	2,375	308	1,418	222	1,020
Rio Grande do Norte...	125	309	160	395	22	102	20	92
Ceara.....	173	428	165	408	28	129	21	96
Paraiba.....	226	558	155	383	39	181	26	119
Pernambuco.....	164	405	102	252	24	110	15	69
Maranhao.....	28	69	25	62	5	23	5	23
Minas Gerais.....	58	143	20	49	9	42	4	18
Alagoas.....	62	154	24	59	9	42	4	18
Parana.....	25	61	35	87	5	25	8	37
All others.....	106	262	12	30	15	69	2	8
Total.....	2,383	5,889	1,659	4,100	464	2,141	327	1,500

TABLE 18.--Cotton exports by countries of destination, 1939 and 1946-49

Country	1939	1946	1947	1948	1949	1939	1946	1947	1948	1949
	In thousands of metric tons					In thousands of bales				
United Kingdom.....	48	94	57	65	59	221	434	263	297	270
Spain.....	3	35	37	39	21	12	163	172	177	95
Italy.....	13	66	21	26	--	62	303	98	118	1
Benelux.....	7	31	24	21	--	33	143	110	98	2
France.....	33	10	23	20	7	154	45	104	94	30
Poland.....	4	1	19	20	14	19	2	86	94	64
Netherlands.....	12	13	18	10	1	54	59	81	45	6
Sweden.....	2	11	6	8	17	10	53	30	35	76
China.....	48	51	24	5	--	222	236	109	22	--
Colombia.....	--	7	6	4	1	--	30	28	19	2
Canada.....	--	4	9	4	--	--	17	39	17	--
Australia.....	--	5	9	2	7	--	25	40	7	32
Japan.....	78	--	--	1	--	359	--	--	2	--
Germany.....	65	--	--	1	--	301	--	--	3	--
All others.....	10	25	32	33	1?	45	117	151	160	64
Total.....	323	353	285	259	140	1,492	1,627	1,311	1,188	642

TABLE 19.--Cacao area, production, and exports, averages 1920 to 1949 and annual, 1944 to 1949

Year	Area		Production		Exports	
	Thousand hectares	Thousand acres	Thousand metric tons	Thousand pounds	Thousand metric tons	Million pounds
Averages:						
1920-24.....	(1)	(1)	57	126	66	121
1925-29.....	(1)	(1)	68	150	68	150
1930-34.....	172	425	92	203	88	194
1935-39.....	188	465	130	287	120	265
1940-44.....	238	588	117	258	106	234
1945-49.....	256	633	124	273	103	227
Annual:						
1944.....	242	598	117	258	102	225
1945.....	268	662	120	265	83	183
1946.....	244	603	122	269	130	287
1947.....	258	638	119	262	99	218
1948.....	261	645	97	214	72	159
1949.....	250	618	161	355	132	291

¹Not available.

TABLE 20.--Cacao exports by countries of destination, 1939 and 1945-49

Country	1939	1945	1946	1947	1948	1949
	In thousands of metric tons					
United States.....	88	62	76	65	54	97
Netherlands.....	2	-	26	9	2	6
Argentina.....	5	19	9	8	5	5
Italy.....	7	-	6	1	1	3
Sweden.....	4	-	2	1	-	-
Germany.....	19	-	-	-	-	-
All others.....	7	2	11	15	10	21
Total.....	132	83	130	99	72	132
	In millions of pounds					
United States.....	194	137	168	143	119	214
Netherlands.....	5	-	57	20	5	13
Argentina.....	11	42	20	18	11	11
Italy.....	15	-	13	2	2	7
Sweden.....	9	-	5	2	-	-
Germany.....	42	-	-	-	-	-
All others.....	15	4	24	33	22	46
Total.....	291	183	287	218	159	291



TABLE 21.--Corn area, production, and exports, averages 1920 to 1949 and annual, 1944 to 1949

Year	Area		Production		Exports	
	Thousand hectares	Thousand acres	Thousand metric tons	Thousand bushels	Thousand metric tons	Thousand bushels
Averages:						
1920-24.....	(1)	(1)	5,289	208,217	18	709
1925-29.....	(1)	(1)	4,782	186,258	5	197
1930-34.....	3,808	9,410	5,289	208,217	13	512
1935-39.....	4,092	10,110	5,677	223,479	49	1,929
1940-44.....	4,093	10,115	5,275	207,666	9	354
1945-49.....	4,310	10,650	5,466	215,170	80	3,149
Annual:						
1944.....	4,101	10,134	5,575	219,466	1	39
1945.....	4,092	10,111	4,847	190,789	--	--
1946.....	4,327	10,692	5,721	225,238	123	4,842
1947.....	4,323	10,682	5,503	216,624	166	6,535
1948.....	4,347	10,740	5,607	220,754	111	4,370
1949.....	4,460	11,021	5,650	222,440	--	--

¹Not available.

TABLE 22.--Corn area and production by states, 1939 and 1948

State	Area				Production			
	1939		1948		1939		1948	
	Thousand hectares	Thousand acres	Thousand hectares	Thousand acres	Thousand metric tons	Thousand bushels	Thousand metric tons	Thousand bushels
Minas Gerais.....	1,390	3,435	998	2,466	1,475	58,068	1,317	51,648
Sao Paulo.....	1,050	2,594	841	2,078	1,320	51,966	1,149	45,234
Rio Grande do Sul.....	650	1,606	797	1,969	938	36,927	1,108	43,620
Parana.....	188	464	473	1,169	338	13,306	731	28,778
Santa Catarina.....	126	311	200	494	233	9,173	360	14,173
Ceara.....	34	84	147	363	49	1,929	136	5,354
Goiás.....	140	346	72	178	204	8,031	111	4,370
Pernambuco.....	176	435	145	358	185	7,283	110	4,330
Bahia.....	56	138	93	230	58	2,283	101	3,976
Paraiba.....	27	67	113	279	36	1,417	99	3,897
Rio de Janeiro.....	273	675	95	235	264	10,393	96	3,779
Espirito Santo.....	148	366	78	192	162	6,378	64	2,520
Alagoas.....	27	67	67	166	30	1,181	55	2,165
Rio Grande do Norte.....	26	64	68	168	21	827	39	1,535
Maranhao.....	8	20	68	168	5	197	38	1,496
Mato Grosso.....	13	44	25	62	35	1,378	32	1,260
All others.....	118	292	67	165	136	4,173	61	2,419
Total.....	4,455	11,008	4,347	10,740	5,459	214,910	5,607	220,754

TABLE 23.--Corn exports by countries of destination, 1939 and 1946-48

Country	1939		1946		1947		1948	
	Thousand metric tons	Thousand bushels	Thousand metric tons	Thousand bushels	Thousand metric tons	Thousand bushels	Thousand metric tons	Thousand bushels
Benelux.....	31	1,220	8	315	55	2,165	42	1,654
Norway.....	--	--	--	--	59	2,323	38	1,496
Greece.....	--	--	--	--	--	--	11	433
Germany.....	--	--	--	--	--	--	7	276
Switzerland.....	1	39	--	--	--	--	6	236
Denmark.....	--	--	--	--	--	--	4	157
France.....	--	--	29	1,142	14	551	1	39
United Kingdom.....	20	787	50	1,968	22	866	--	--
Netherlands.....	7	276	--	--	--	--	--	--
Japan.....	7	276	--	--	--	--	--	--
All others.....	6	236	36	1,417	16	636	2	79
Total.....	72	2,834	123	4,842	166	6,535	111	4,370

TABLE 24.--Rice area, production, and exports, averages 1920 to 1949 and annual, 1944 to 1949

Year	Area		Production			Exports	
			Rough	Milled ¹			
	Thousand hectares	Thousand acres	Thousand metric tons	Thousand metric tons	Million pounds	Thousand metric tons	Million pounds
Averages:							
1920-24.....	(2)	(2)	775	504	1,111	54	119
1925-29.....	(2)	(2)	876	569	1,254	6	13
1930-34.....	812	2,006	1,113	723	1,594	42	93
1935-39.....	956	2,362	1,365	887	1,955	41	90
1940-44.....	1,106	2,733	1,779	1,156	2,549	74	163
1945-49.....	1,639	4,050	2,519	1,637	3,609	142	313
Annual:							
1944.....	1,428	3,529	2,110	1,372	3,025	151	333
1945.....	1,498	3,702	2,147	1,396	3,078	88	194
1946.....	1,646	4,067	2,759	1,793	3,953	164	362
1947.....	1,651	4,080	2,596	1,687	3,719	241	531
1948.....	1,662	4,107	2,554	1,660	3,660	215	474
1949.....	1,740	4,300	2,540	1,651	3,640	1	2

¹Milled equivalent conversion factor 0.65.

²Not available.

TABLE 25.--Rice area and production by states, 1939 and 1948

State	Area				Production			
	1939		1948		1939		1948	
	Thousand hectares	Thousand acres	Thousand hectares	Thousand acres	Thousand metric tons	Million pounds	Thousand metric tons	Million pounds
Sao Paulo.....	396	979	555	1,372	468	1,032	833	1,836
Minas Gerais.....	291	719	444	1,097	331	730	532	1,173
Rio Grande do Sul.....	146	361	209	517	357	787	516	1,137
Goias.....	75	185	108	267	89	196	160	353
Parana.....	12	30	70	173	12	26	116	256
Santa Catarina.....	22	54	32	79	51	112	81	179
Maranhao.....	15	37	64	158	22	49	75	161
Mato Grosso.....	11	27	34	84	17	37	49	108
Rio de Janeiro.....	30	74	26	64	41	90	39	86
Ceara.....	13	32	26	64	14	31	35	77
Piaui.....	6	15	20	49	8	18	27	60
Espirito Santo.....	7	17	15	37	8	18	22	49
Para.....	23	57	21	52	27	60	20	44
All others.....	29	71	38	94	40	86	51	112
Total.....	1,076	2,658	1,662	4,107	1,485	3,272	2,554	5,631

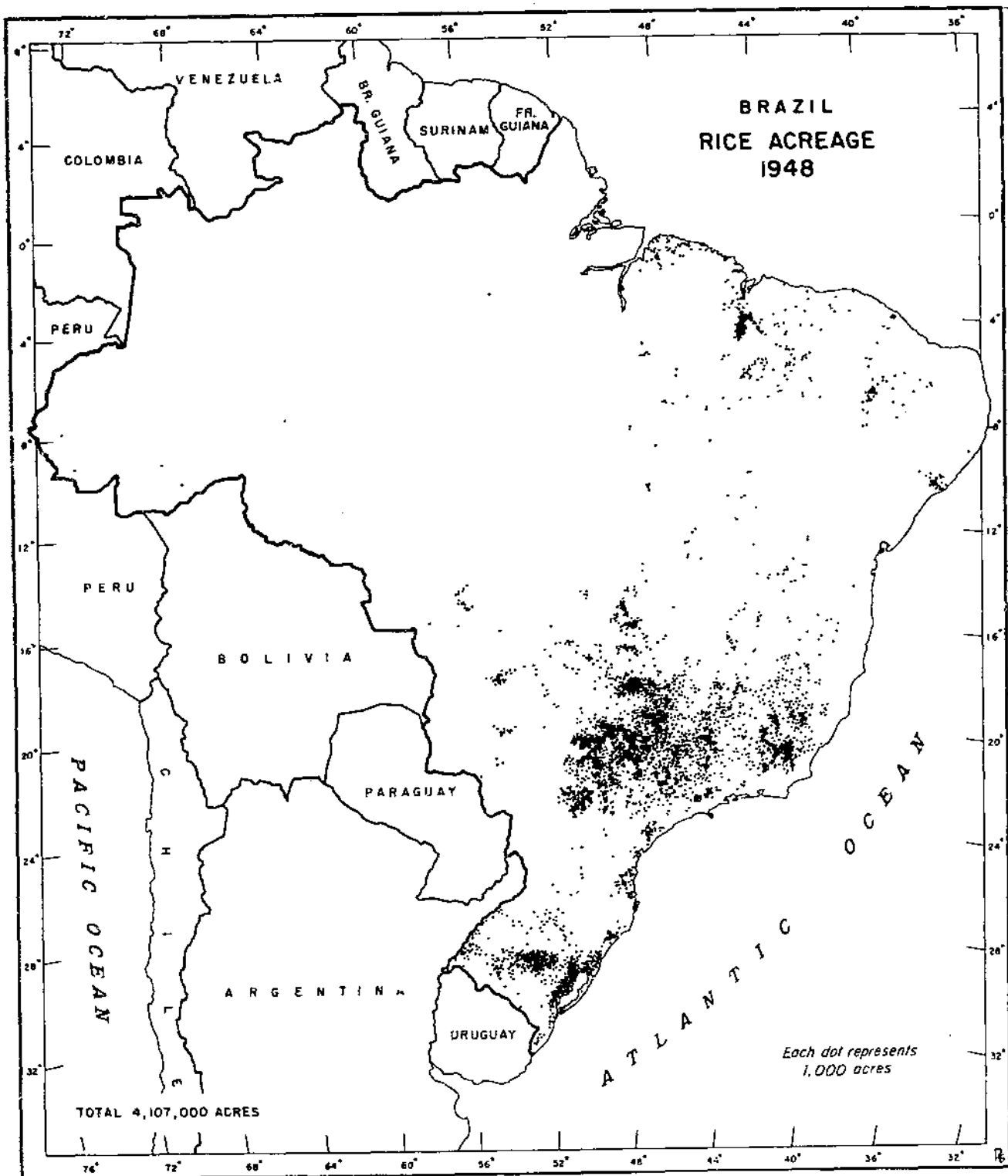


TABLE 26.--Rice exports¹ by countries of destination, 1939 and 1945-48

Country	1939	1945	1946	1947	1948	1939	1945	1946	1947	1948
	In thousand metric tons					In millions of pounds				
India.....	--	--	21	32	58	--	--	46	70	128
Singapore.....	--	--	23	29	28	--	--	51	64	62
Netherlands Antilles.....	--	--	--	--	19	--	--	--	--	42
Ceylon.....	--	--	34	64	16	--	--	75	141	35
Union of So. Africa.....	--	8	7	9	16	--	18	15	20	35
Senegal.....	--	--	--	8	15	--	--	--	18	33
Benelux.....	6	--	--	13	9	13	--	--	29	20
Lebanon.....	--	--	--	10	8	--	--	--	22	18
Guadeloupe.....	--	1	3	2	6	--	2	7	4	13
Portugal.....	--	--	--	17	--	--	--	--	37	--
Venezuela.....	1	--	3	14	4	2	--	7	31	9
Switzerland.....	4	--	--	12	1	9	--	--	26	2
United Kingdom.....	1	² 75	² 66	3	--	2	16 ¹	² 146	7	--
Argentina.....	17	--	--	--	--	38	--	--	--	--
Germany.....	7	--	--	--	2	16	--	--	--	4
All others.....	16	4	7	28	33	35	9	15	62	73
Total.....	52	88	164	241	215	115	194	362	531	474

¹Includes rough rice converted to milled basis and broken rice.

²All but a fraction of these shipments went to Empire possessions rather than British Isles. Not available separately.

TABLE 27.--Wheat area, production and imports, averages 1920 to 1949 and annual, 1944 to 1949

Year	Area		Production		Imports ¹	
	Thousand hectares	Thousand acres	Thousand metric tons	Thousand bushels	Thousand metric tons	Thousand bushels
Averages:						
1920-24.....	(²)	(²)	111	4,078	575	21,127
1925-29.....	(²)	(²)	129	4,747	876	32,187
1930-34.....	162	400	156	5,710	872	32,040
1935-39.....	168	414	135	4,978	1,004	36,890
1940-44.....	274	677	189	6,935	1,029	37,809
1945-49.....	330	815	293	10,776	926	34,024
Annual:						
1944.....	283	750	171	6,268	1,298	47,692
1945.....	263	650	233	8,572	1,279	46,994
1946.....	283	700	213	7,808	537	19,731
1947.....	314	775	326	12,000	986	36,229
1948.....	364	900	354	13,000	848	31,158
1949.....	425	1,050	340	12,500	981	36,045

¹Includes flour imports converted to wheat equivalent.

²Not available.

TABLE 28.--Wheat and wheat flour imports by countries of origin, 1938 and 1945-49

WHEAT						
Country	1938	1945	1946	1947	1948	1949
	1,000 metric tons	1,000 metric tons	1,000 metric tons	1,000 metric tons	1,000 metric tons	1,000 metric tons
Argentina.....	1,037	1,088	165	357	313	737
Uruguay.....	--	2	1	1	--	66
United States.....	--	--	39	6	--	--
Chile.....	--	--	7	5	--	--
Total.....	1,037	1,090	212	369	313	803
	1,000 bushels	1,000 bushels	1,000 bushels	1,000 bushels	1,000 bushels	1,000 bushels
Argentina.....	38,102	39,796	6,063	13,117	11,501	27,080
Uruguay.....	--	74	37	37	--	2,425
United States.....	--	--	1,433	220	--	--
Chile.....	--	--	257	184	--	--
Total.....	38,102	40,050	7,790	13,558	11,501	29,505

FLOUR						
	1,000 metric tons	1,000 metric tons	1,000 metric tons	1,000 metric tons	1,000 metric tons	1,000 metric tons
United States.....	4	75	213	435	349	73
Argentina.....	23	67	15	17	10	--
Uruguay.....	16	--	--	--	31	60
Canada.....	--	--	16	11	3	1
Australia.....	--	--	--	--	9	--
Total.....	43	142	244	463	402	134
	1,000 barrels	1,000 barrels	1,000 barrels	1,000 barrels	1,000 barrels	1,000 barrels
United States.....	45	843	2,396	4,893	3,926	821
Argentina.....	249	754	169	191	112	--
Uruguay.....	180	--	--	--	349	675
Canada.....	--	--	180	124	34	11
Australia.....	--	--	--	--	101	--
Total.....	484	1,597	2,745	5,208	4,522	1,507

TABLE 29.--Rye and barley, area and production, averages 1920 to 1949 and annual, 1944 to 1949

Year	Rye				Barley			
	Area		Production		Area		Production	
	Thousand hectares	Thousand acres	Thousand metric tons	Thousand bushels	Thousand hectares	Thousand acres	Thousand metric tons	Thousand bushels
Averages:								
1920-24.....	(1)	(1)	21	827	(1)	(1)	9	395
1925-29.....	(1)	(1)	17	675	(1)	(1)	7	346
1930-34.....	16	40	17	650	9	23	9	433
1935-39.....	13	32	14	570	9	23	12	566
1940-44.....	16	39	14	558	13	33	14	631
1945-49.....	15	36	11	434	13	31	13	602
Annual:								
1944.....	14	36	10	381	12	30	9	403
1945.....	14	34	10	400	14	34	15	484
1946.....	12	30	8	333	13	32	12	529
1947.....	14	34	10	411	12	29	12	564
1948.....	17	43	13	525	11	27	12	568
1949.....	16	40	13	500	14	34	14	666

1 Not available.

TABLE 30.--Sugarcane area and production and sugar production and exports, averages 1920 to 1949 and annual, 1944 to 1949

Year	Area		Cane Production ¹		Sugar Production ²		Sugar Exports ¹	
	Thousand hectares	Thousand acres	Thousand metric tons	Thousand short tons	Thousand metric tons	Thousand short tons	Thousand metric tons	Thousand short tons
Averages:								
1920-24.....	(³)	(³)	12,875	14,192	794	875	144	159
1925-29.....	(³)	(³)	13,672	15,071	927	1,022	23	25
1930-34.....	395	976	16,416	18,095	1,003	1,106	37	41
1935-39.....	464	1,147	17,407	19,188	1,051	1,159	46	51
1940-44.....	580	1,433	22,323	24,607	1,267	1,397	44	49
1945-49.....	758	1,873	28,634	31,563	1,544	1,702	102	112
Annual:								
1944.....	576	1,670	25,149	27,722	1,255	1,383	70	77
1945.....	657	1,623	25,179	27,755	1,265	1,394	27	30
1946.....	758	1,873	28,069	30,940	1,457	1,606	22	24
1947.....	773	1,910	28,990	31,956	1,481	1,633	62	68
1948.....	819	2,024	30,893	34,053	1,735	1,912	361	398
1949.....	781	1,930	30,041	33,114	1,784	1,966	39	43

¹Calendar year.
²Year ending May 30.
³Not available.

TABLE 31.--Sugarcane area and production by states, 1939 and 1948

State	Area				Production			
	1939		1948		1939		1948	
	Thousand hectares	Thousand acres	Thousand hectares	Thousand acres	Thousand metric tons	Thousand short tons	Thousand metric tons	Thousand short tons
Sao Paulo.....	70	173	131	324	2,708	2,985	6,046	6,664
Pernambuco.....	122	302	157	388	4,204	4,634	5,616	6,191
Minas Gerais.....	77	190	144	356	3,506	3,865	5,128	5,653
Rio de Janeiro.....	52	128	86	212	3,000	3,307	3,562	3,926
Alagoas.....	35	86	55	136	1,591	1,754	2,191	2,415
Bahia.....	25	62	36	89	1,339	1,476	1,712	1,887
Paraiba.....	10	25	30	74	396	437	1,280	1,411
Ceara.....	12	30	20	49	380	419	894	985
Santa Catarina.....	25	62	36	89	895	987	864	952
Sergipe.....	15	37	14	35	550	606	617	680
Rio Grande do Sul....	24	59	39	96	305	336	615	678
Goiás.....	7	17	12	30	160	176	465	513
Espirito Santo.....	4	10	15	37	140	154	430	474
All others.....	15	37	44	109	695	766	1,473	1,624
Total.....	493	1,218	819	2,024	19,869	21,902	30,893	34,053

TABLE 32.--Sugar exports by countries of destination, 1938 and 1945-49

Country	1938	1945	1946	1947	1948	1949
In thousands of metric tons						
France.....	--	1	--	--	91	8
Benelux.....	8	--	--	--	--	6
Iraq.....	--	--	--	--	64	--
Chile.....	--	--	--	--	50	--
Netherlands.....	--	--	--	--	47	--
India.....	--	--	--	--	39	--
Uruguay.....	--	22	9	23	20	--
Greece.....	--	--	--	--	19	--
Argentina.....	--	3	6	12	--	--
All others.....	--	1	7	27	31	25
Total.....	8	27	22	62	361	39
In thousands of short tons						
France.....	--	1	--	--	100	9
Benelux.....	9	--	--	--	--	7
Iraq.....	--	--	--	--	71	--
Chile.....	--	--	--	--	55	--
Netherlands.....	--	--	--	--	52	--
India.....	--	--	--	--	43	--
Uruguay.....	--	24	10	25	22	--
Greece.....	--	--	--	--	21	--
Argentina.....	--	4	7	13	--	--
All others.....	--	1	8	30	34	27
Total.....	9	30	25	68	398	43

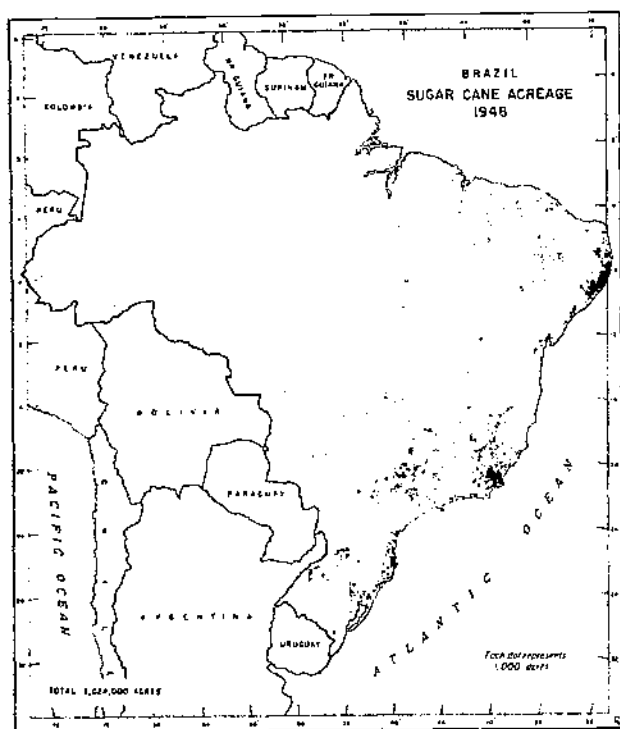


TABLE 33.--Bean area, production, and exports, averages 1920 to 1949 and annual, 1944 to 1949

Year	Area		Production		Exports	
	Thousand hectares	Thousand acres	Thousand metric tons	Million pounds	Thousand metric tons	Million pounds
Averages:						
1920-24.....	(1)	(1)	594	1,310	5	11
1925-29.....	(1)	(1)	680	1,499	--	--
1930-34.....	745	1,841	695	1,532	--	--
1935-39.....	953	2,355	824	1,817	1	2
1940-44.....	1,073	2,651	888	1,958	6	13
1945-49.....	1,579	3,902	1,092	2,407	27	60
Annual:						
1944.....	1,350	3,336	1,043	2,299	13	29
1945.....	1,432	3,538	1,002	2,209	10	22
1946.....	1,534	3,791	1,076	2,372	77	170
1947.....	1,584	3,914	1,046	2,306	29	64
1948.....	1,650	4,077	1,133	2,498	15	33
1949.....	1,693	4,183	1,205	2,657	3	7

¹Not available.

TABLE 34.--Bean area and production by states, 1939 and 1948

State	Area				Production			
	1939		1948		1939		1948	
	Thousand hectares	Thousand acres	Thousand hectares	Thousand acres	Thousand metric tons	Million pounds	Thousand metric tons	Million pounds
Minas Gerais.....	202	499	387	956	209	461	255	562
Parana.....	35	86	207	512	32	70	175	386
Sao Paulo.....	374	924	276	682	180	397	174	384
Rio Grande do Sul.....	131	324	144	356	123	271	122	269
Bahia.....	33	81	72	178	32	70	62	137
Pernambuco.....	19	47	100	247	18	40	57	126
Ceara.....	16	40	113	279	18	40	53	117
Santa Catarina.....	33	82	36	89	34	75	45	99
Pernambuco.....	29	72	69	171	23	51	40	88
Goiás.....	25	62	37	91	24	53	27	59
Rio Grande do Norte....	19	47	52	129	14	31	25	55
Alagoas.....	13	32	47	116	12	26	25	55
Espirito Santo.....	24	59	37	91	24	53	25	55
All others.....	46	114	73	180	43	95	48	106
Total.....	999	2,469	1,650	4,077	786	1,733	1,133	2,498

TABLE 35.--Manioc area and production and manioc flour production and exports, averages 1920 to 1949 and annual 1944 to 1949

Year	Manioc				Flour			
	Area		Production		Production		Exports ¹	
	Thousand hectares	Thousand acres	Thousand metric tons	Million pounds	Thousand metric tons	Million pounds	Thousand metric tons	Million pounds
Averages:								
1920-24.....	(²)	(²)	(²)	(²)	842	1,856	9	20
1925-29.....	(²)	(²)	(²)	(²)	1,036	2,284	6	13
1930-34.....	370	914	5,084	11,208	1,028	2,266	7	15
1935-39.....	411	1,016	5,529	12,189	976	2,152	9	20
1940-44.....	650	1,606	8,456	18,642	1,199	2,643	16	35
1945-49.....	916	2,263	12,218	26,936	1,194	2,632	77	170
Annual:								
1944.....	807	1,994	10,333	22,780	1,193	2,630	13	29
1945.....	898	2,219	11,415	25,166	1,164	2,566	28	62
1946.....	908	2,244	12,225	26,951	1,224	2,698	165	364
1947.....	911	2,251	11,845	26,113	(²)	(²)	121	267
1948.....	913	2,256	12,455	27,458	(²)	(²)	48	106
1949.....	948	2,343	13,150	28,990	(²)	(²)	21	46

¹Includes meal and flake.

²Not available.

TABLE 36.--Manioc area and production by states, 1939 and 1948

State	Area				Production			
	1939		1948		1939		1948	
	Thousand hectares	Thousand acres	Thousand hectares	Thousand acres	Thousand metric tons	Million pounds	Thousand metric tons	Million pounds
Bahia.....	88	218	133	329	1,331	2,934	2,041	4,500
Minas Gerais.....	40	19	85	210	857	1,889	1,346	2,967
Santa Catarina.....	38	94	81	200	710	1,565	1,204	2,654
Rio Grande do Sul.....	86	213	106	262	559	1,232	1,190	2,623
Perbambuco.....	59	146	83	205	696	1,534	1,073	2,366
Sao Paulo.....	25	62	47	116	200	441	844	1,861
Goera.....	44	109	41	102	700	1,543	577	1,272
Para.....	9	22	39	96	171	377	548	1,208
Paraiba.....	20	49	41	101	250	551	534	1,177
Alagoas.....	20	49	39	96	284	626	445	981
Seripe.....	26	64	32	79	370	816	404	891
Maranhao.....	9	22	41	102	171	377	392	864
Goiias.....	8	20	20	49	130	287	356	785
Espirito Santo.....	10	25	24	59	104	229	330	728
Piaui.....	1	2	22	54	22	49	279	615
Parana.....	4	10	16	40	56	124	250	551
All others.....	54	133	63	156	620	1,367	642	1,415
Total.....	541	1,337	913	2,256	7,231	15,941	12,455	27,458

TABLE 37.--Orange and banana area, production, and exports, averages 1920 to 1949 and annual, 1944 to 1949

Year	Oranges				Bananas			
	Area		Production	Exports	Area		Production	Exports
	Thousand hectares	Thousand acres	Thousand boxes	Thousand boxes	Thousand hectares	Thousand acres	Million bunches	Million bunches
Averages:								
1920-24.....	(1)	(1)	2,807	425	(1)	(1)	31	4
1925-29.....	(1)	(1)	6,503	654	(1)	(1)	45	5
1930-34.....	94	232	23,903	2,009	51	126	70	8
1935-39.....	106	262	33,745	4,389	73	180	78	11
1940-44.....	113	279	34,134	1,740	80	198	83	5
1945-49.....	77	190	31,542	2,145	92	227	127	6
Annual:								
1944.....	71	175	27,804	1,271	76	188	93	3
1945.....	73	180	28,621	1,397	84	208	107	3
1946.....	76	188	29,955	2,768	91	225	117	5
1947.....	78	193	30,170	1,703	91	225	127	7
1948.....	76	188	34,825	2,845	96	237	136	8
1949.....	81	200	34,138	2,011	100	247	147	8

¹Not available.

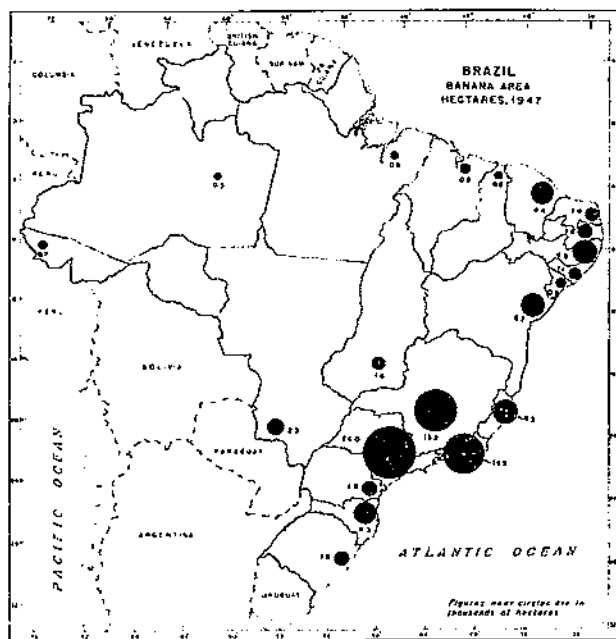
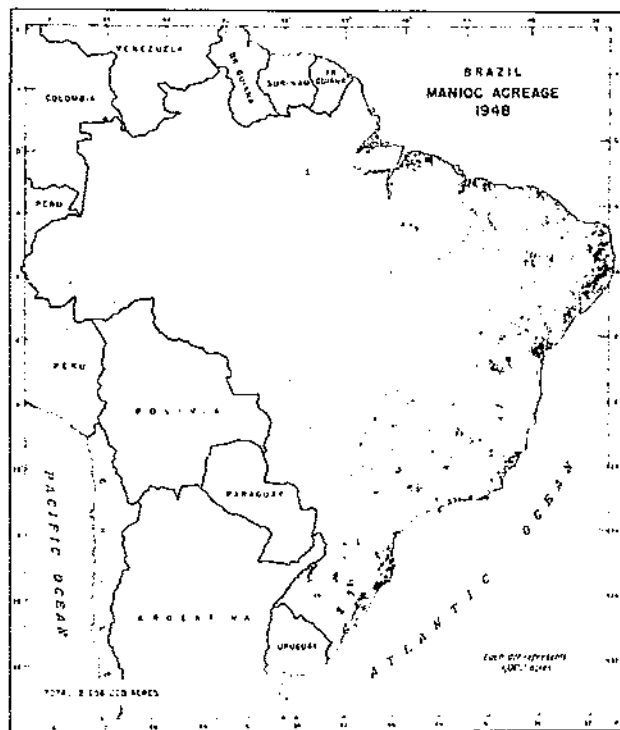


TABLE 38.--Orange area and production by states, 1939 and 1948

State	Area				Production	
	1939		1948		1939	1948
	Thousand hectares	Thousand acres	Thousand hectares	Thousand acres	Thousand boxes	Thousand boxes
Rio de Janeiro.....	42	104	19	47	10,820	9,639
Sao Paulo.....	40	99	17	42	12,000	6,214
Minas Gerais.....	8	20	9	22	4,986	5,678
Rio Grande do Sul.....	9	22	14	35	1,875	4,502
Parana.....	1	2	2	5	364	1,679
Santa Catarina.....	3	7	2	5	1,187	1,446
All others.....	13	32	13	32	3,024	5,667
Total.....	116	287	76	188	34,256	34,825

TABLE 39.--Banana area and production by states, 1939 and 1948

State	Area				Production	
	1939		1948		1939	1948
	Thousand hectares	Thousand acres	Thousand hectares	Thousand acres	Million bunches	Million bunches
Minas Gerais.....	7	17	17	42	12	26
Sao Paulo.....	40	99	22	54	30	25
Rio de Janeiro.....	11	27	15	37	16	21
Pernambuco.....	3	8	6	15	4	10
Espirito Santo.....	-	-	5	12	-	7
Bahia.....	5	13	4	10	6	6
Rio Grande do Norte...	2	5	2	5	2	4
Mato Grosso.....	1	2	2	5	1	4
Parana.....	3	8	2	5	3	3
Rio Grande do Sul.....	-	-	2	5	-	3
Maranhao.....	-	-	1	2	-	3
Paraiba.....	1	2	2	5	1	3
All others.....	11	27	16	40	13	21
Total.....	84	208	96	237	88	136

TABLE 40.--Pineapple area, production and exports, averages 1920 to 1949 and annual, 1944 to 1949

Year	Area		Production		Exports	
	Thousand hectares	Thousand acres	Thousand metric tons	Million pounds	Thousand metric tons	Million pounds
Averages:						
1920-24.....	(1)	(1)	37	82	2	4
1925-29.....	(1)	(1)	75	165	1	2
1930-34.....	8	20	124	273	2	4
1935-39.....	10	25	131	289	4	9
1940-44.....	11	27	121	267	3	7
1945-49.....	12	30	108	238	3	7
Annual:						
1944.....	9	22	111	245	3	7
1945.....	11	27	112	247	2	4
1946.....	13	32	103	227	2	4
1947.....	12	30	104	229	3	7
1948.....	13	32	112	247	4	9
1949.....	12	30	110	243	4	11

¹Not available.

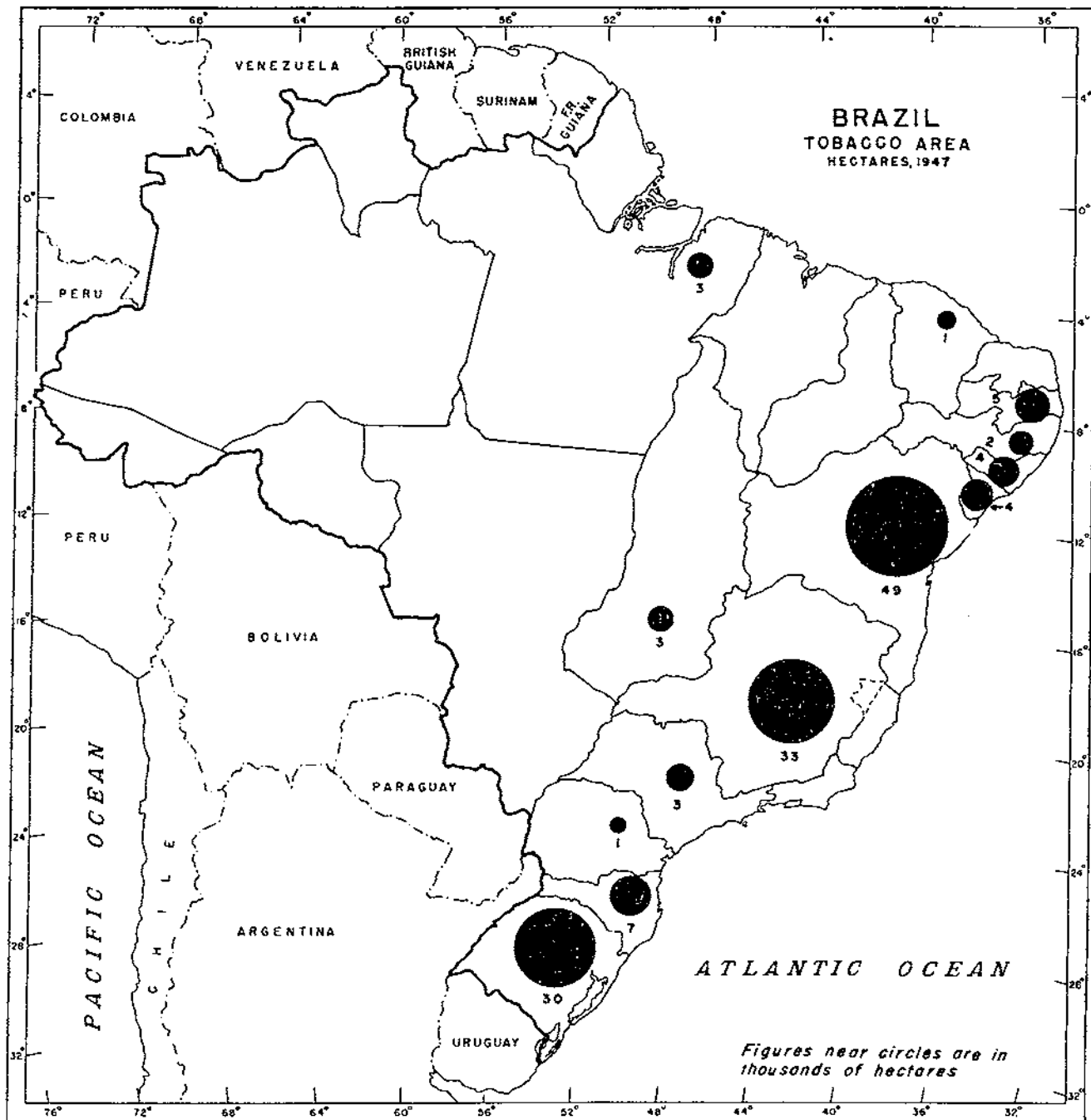


TABLE 41.--Tobacco area, production, and exports, averages 1920 to 1949 and annual, 1944 to 1949

Year	Area		Production		Exports	
	Thousand hectares	Thousand acres	Thousand metric tons	Million pounds	Thousand metric tons	Million pounds
Averages:						
1920-24.....	(1)	(1)	74	163	35	77
1925-29.....	89	220	87	192	31	68
1930-34.....	92	227	98	216	31	68
1935-39.....	102	252	93	205	33	73
1940-44.....	100	247	95	209	19	42
1945-49.....	141	348	115	254	35	77
Annual:						
1944.....	115	284	104	229	29	64
1945.....	144	356	113	249	31	68
1946.....	136	336	119	262	53	117
1947.....	134	331	111	245	38	84
1948.....	144	356	118	260	25	55
1949.....	149	368	116	256	28	62

¹Not available.

TABLE 42.--Tobacco area and production by states, 1939 and 1948

State	Area				Production			
	1939		1948		1939		1948	
	Thousand hectares	Thousand acres	Thousand hectares	Thousand acres	Thousand metric tons	Million pounds	Thousand metric tons	Million pounds
Rio Grande do Sul.....	29	72	40	99	33	73	44	97
Bahia.....	35	86	44	108	33	73	36	79
Minas Gerais.....	10	25	23	57	11	25	13	29
Santa Catarina.....	4	10	12	30	5	11	8	18
Alagoas.....	2	5	4	10	1	2	3	7
Pernambuco.....	2	5	3	7	2	4	2	4
Paraiba.....	2	5	2	5	2	4	2	4
Para.....	1	2	2	5	1	2	2	4
Goiás.....	1	2	2	5	2	4	2	4
All others.....	6	15	12	30	6	14	6	14
Total.....	92	227	144	356	96	212	118	260

TABLE 43.--Tobacco leaf exports by countries of destination, 1938 and 1945-49

Country	1938	1945	1946	1947	1948	1949
	In thousands of metric tons					
Spain.....	-	8	17	8	6	6
Argentina.....	5	5	4	5	6	5
Netherlands.....	5	3	6	5	4	4
Germany.....	13	-	-	-	2	4
Denmark.....	-	-	4	2	2	2
Uruguay.....	1	1	1	1	1	2
Switzerland.....	-	2	3	2	1	1
Benelux.....	-	2	2	3	1	1
France.....	1	2	11	7	-	-
All others.....	1	8	5	5	2	3
Total.....	26	31	53	38	25	28
	In millions of pounds					
Spain.....	-	18	38	18	14	14
Argentina.....	11	11	9	11	14	11
Netherlands.....	11	7	13	11	9	9
Germany.....	29	-	-	-	4	9
Denmark.....	-	-	9	4	4	4
Uruguay.....	2	2	2	2	2	4
Switzerland.....	-	4	7	4	2	2
Benelux.....	-	4	4	16	2	2
France.....	2	4	24	7	-	-
All others.....	2	18	11	11	4	7
Total.....	57	68	117	84	55	62

TABLE 44.--Vegetable oilseed production, averages 1935 to 1949 and annual, 1945 to 1949

Oilseed	1935-39 average	1940-44 average	1945-49 average	1945	1946	1947	1948	1949
In thousands of metric tons								
Babassu.....	42	58	67	72	52	64	83	63
Castorbeans.....	134	159	187	160	164	183	231	199
Cottonseed ²	848	940	588	586	586	548	654	566
Flaxseed.....	(¹)	15	22	23	22	18	20	22
Murumuru.....	3	3	3	3	4	4	4	2
Oiticica.....	22	22	33	36	32	24	65	9
Ouricuri.....	3	5	3	3	4	3	5	3
Peanuts.....	(¹)	28	79	29	32	53	139	140
Sesame.....	(¹)	(¹)	4	1	2	4	6	4
Soybeans.....	--	--	13	--	4	12	18	30
Tucum.....	(¹)	2	10	7	10	10	7	14
Tung.....	1	1	9	4	5	11	14	12
Total.....	1,053	1,233	1,018	924	917	934	1,246	1,064
In millions of pounds								
Babassu.....	93	128	148	159	115	141	183	139
Castorbeans.....	295	351	412	353	362	403	509	439
Cottonseed.....	1,870	2,072	1,296	1,292	1,292	1,208	1,442	1,248
Flaxseed.....	(¹)	33	48	50	48	40	44	49
Murumuru.....	7	7	7	7	9	7	9	4
Oiticica.....	49	49	73	79	70	53	143	20
Ouricuri.....	7	11	7	7	9	7	11	7
Peanuts.....	(¹)	62	174	64	70	117	306	308
Sesame.....	(¹)	(¹)	9	2	4	9	13	9
Soybeans.....	--	--	28	--	9	26	40	66
Tucum.....	(¹)	4	22	15	22	22	15	31
Tung.....	2	2	20	9	11	24	31	26
Total.....	2,323	2,719	2,244	2,037	2,021	2,057	2,746	2,346

¹Not available.

²Cottonseed year beginning August 1; others year of harvest.

TABLE 45.--Vegetable oil production averages 1935 to 1949 and annual, 1945 to 1949

Oil	1935-39 average	1940-44 average	1945-49 average	1945	1946	1947	1948	1949
In thousands of metric tons								
Babassu.....	5	8	17	13	12	20	19	21
Castor.....	3	11	14	13	13	10	14	22
Coconut.....	1	2	2	1	1	2	3	1
Corn.....	-	1	2	2	2	1	2	2
Cottonseed.....	58	94	68	89	59	62	61	69
Linseed.....	5	7	7	8	8	5	5	7
Oiticica.....	6	7	11	11	16	5	18	7
Peanut.....	-	2	16	2	3	10	38	29
Sesame.....	-	-	1	-	-	2	1	2
Soybean.....	-	-	3	-	1	-	-	-
Total.....	78	132	141	139	115	117	161	160
In millions of pounds								
Babassu.....	11	18	38	29	26	44	42	47
Castor.....	7	24	31	29	29	22	31	49
Coconut.....	2	4	4	2	2	4	7	2
Corn.....	-	2	4	4	4	2	4	4
Cottonseed.....	128	207	150	196	130	137	134	152
Linseed.....	11	16	15	18	18	11	11	15
Oiticica.....	13	16	24	24	35	11	40	15
Peanut.....	-	4	35	4	7	22	84	64
Sesame.....	-	-	2	-	-	4	2	4
Soybean.....	-	-	7	-	2	-	-	18
Total.....	172	291	310	306	253	257	355	352

TABLE 46.--Vegetable oilseed and oil exports, averages 1935 to 1949 and annual, 1945 to 1949

TIRES

Oilseed	1935-49 average	1935-49 average	1935-49 average	1945	1946	1947	1948	1949
	1,000 metric tons	1,000 metric tons	1,000 metric tons	1,000 metric tons	1,000 metric tons	1,000 metric tons	1,000 metric tons	1,000 metric tons
Barley.....	28	27	27	44	14	21	30	27
Barterbeans.....	119	121	147	153	14	100	104	117
Black beans.....	27	4	—	—	—	—	—	—
Black-eyed peas.....	3	—	2	—	—	9	—	14
Chickpeas.....	—	—	—	—	—	—	—	17
Total.....	171	152	176	207	111	139	202	175
	1,000,000 pounds	1,000,000 lb units	1,000,000 pounds	1,000,000 pounds	1,000,000 pounds	1,000,000 pounds	1,000,000 pounds	1,000,000 pounds
Barley.....	67	6	3	97	29	24	77	64
Barterbeans.....	243	33	—	331	212	373	362	269
Black beans.....	12	—	—	—	4	—	—	—
Black-eyed peas.....	7	—	5	13	15	20	14	31
Chickpeas.....	—	—	—	—	—	—	—	42
Total.....	329	39	8	441	276	417	453	336
	1,000 metric tons	1,000 metric tons	1,000 metric tons	1,000 metric tons	1,000 metric tons	1,000 metric tons	1,000 metric tons	1,000 metric tons
Barley.....	—	—	—	—	—	—	—	—
Barterbeans.....	—	—	—	—	—	—	—	—
Black beans.....	—	—	—	—	—	—	—	—
Black-eyed peas.....	—	—	—	—	—	—	—	—
Chickpeas.....	—	—	—	—	—	—	—	—
Total.....	—	—	—	—	—	—	—	—
	1,000,000 pounds	1,000,000 lb units	1,000,000 pounds	1,000,000 pounds	1,000,000 pounds	1,000,000 pounds	1,000,000 pounds	1,000,000 pounds
Barley.....	—	—	—	—	—	—	—	—
Barterbeans.....	—	—	—	—	—	—	—	—
Black beans.....	—	—	—	—	—	—	—	—
Black-eyed peas.....	—	—	—	—	—	—	—	—
Chickpeas.....	—	—	—	—	—	—	—	—
Total.....	—	—	—	—	—	—	—	—

TABLE 47.--Vegetable oilseed and oil exports, averages 1920 to 1949 and annual, 1945 to 1949

Oilseed	Average metric tons	Average lb units	Exports		Imports	
			Quantity metric tons	Value million pounds	Quantity metric tons	Value million pounds
Barley.....	28	27	28	1.0	28	1.0
Barterbeans.....	119	121	119	4.2	119	4.2
Black beans.....	27	4	27	0.1	27	0.1
Black-eyed peas.....	3	—	3	0.0	3	0.0
Chickpeas.....	—	—	—	—	—	—
Total.....	171	152	171	5.3	171	5.3
	1,000,000 pounds	1,000,000 lb units	1,000,000 pounds	1,000,000 pounds	1,000,000 pounds	1,000,000 pounds
Barley.....	67	6	67	2.3	67	2.3
Barterbeans.....	243	33	243	15.0	243	15.0
Black beans.....	12	—	12	0.4	12	0.4
Black-eyed peas.....	7	—	7	0.1	7	0.1
Chickpeas.....	—	—	—	—	—	—
Total.....	329	39	329	17.8	329	17.8

Source: U.S. Department of Commerce, Bureau of Economic Analysis.

TABLE 48.--Casterbean area and production by states, 1939 and 1948

State	Area				Production			
	1939		1948		1939		1948	
	Thousand hectares	Thousand acres	Thousand hectares	Thousand acres	Thousand metric tons	Million pounds	Thousand metric tons	Million pounds
Bahia.....	15	37	1	24	18	41	69	153
Sao Paulo.....	13	32	1	24	12	27	54	123
Pernambuco.....	27	67	1	24	24	53	42	92
Ceara.....	37	74	1	24	25	55	49	108
Minas Gerais.....	15	37	1	24	21	46	17	37
Paraiba.....	2	5	1	24	1	2	4	11
Alagoas.....	7	17	4	10	8	18	4	9
Parana.....	1	2	3	7	2	4	3	7
All others.....	5	12	9	22	7	15	6	13
Total.....	115	284	251	617	118	261	191	429

TABLE 49.--Babassu and carnauba wax production and exports, averages 1920 to 1949 and annual, 1944 to 1949

Year	Babassu				Carnauba wax			
	Production		Exports		Production		Exports	
	Thousand metric tons	Million pounds	Thousand metric tons	Thousand pounds	Thousand metric tons	Million pounds	Thousand metric tons	Million pounds
Averages:								
1920-29.....	10	42	18	40	4	17	4	17
1930-39.....	14	57	17	37	7	31	7	31
1940-43.....	16	64	17	37	8	35	7	31
1945-49.....	16	64	17	37	7	31	7	31
1944.....	18	72	17	37	10	44	7	31
1945.....	17	67	17	37	11	48	7	31
Annual:								
1944.....	18	72	17	37	11	48	7	31
1945.....	17	67	17	37	10	44	7	31
1946.....	16	64	17	37	9	39	7	31
1947.....	15	61	17	37	8	35	7	31
1948.....	14	57	17	37	7	31	7	31
1949.....	13	54	17	37	6	27	7	31

TABLE 5.--Brazilian and foreign production of castor beans, averages 1920 to 1949 and annual, 1944 to 1949

Year	Brazilian		Foreign		Production		Exports	
	Thousand metric tons	Million pounds	Thousand metric tons	Thousand pounds	Thousand metric tons	Million pounds	Thousand metric tons	Million pounds
Average:								
1920-29.....	10	42	18	40	28	62	22	49
1930-39.....	14	57	17	37	31	68	24	53
1940-43.....	16	64	17	37	33	73	25	55
1945-49.....	16	64	17	37	33	73	25	55
1944.....	18	72	17	37	35	77	27	59
1945.....	17	67	17	37	34	75	26	57
Annual:								
1944.....	18	72	17	37	35	77	27	59
1945.....	17	67	17	37	34	75	26	57
1946.....	16	64	17	37	33	73	25	55
1947.....	15	61	17	37	32	70	24	53
1948.....	14	57	17	37	31	68	24	53
1949.....	13	54	17	37	30	66	23	51

TABLE 51.--Brazil nut production and exports averages 1920 to 1949 and annual, 1944 to 1949

Year	Production ¹		Exports ¹	
	Thousand metric tons	Million pounds	Thousand metric tons	Million pounds
Averages:				
1920-24.....	25	55	(2)	(2)
1925-29.....	24	53	11	24
1930-34.....	33	73	30	66
1935-39.....	36	79	33	73
1940-44.....	19	42	13	29
1945-49.....	22	49	18	40
Annual:				
1944.....	4	9	1	2
1945.....	7	15	3	7
1946.....	24	53	22	49
1947.....	28	62	23	51
1948.....	20	44	15	33
1949.....	32	71	25	55

¹Unshelled basis

²Not available.

TABLE 52.--Miscellaneous vegetable fibers production, specified years

Fiber	1939		1944		1946		1948	
	Thousand metric tons	Million pounds	Thousand metric tons	Million pounds	Thousand metric tons	Million pounds	Thousand metric tons	Million pounds
Jute.....	-	-	6	13	8	18	9	20
Caroa.....	2	4	11	24	9	20	7	15
Piassava.....	6	13	6	13	6	13	5	11
Sisal.....	-	-	2	4	9	20	26	57
Uacima.....	1	2	3	7	2	4	2	4
Guaxima.....	-	-	6	13	3	7	3	7
Ramie.....	-	-	5	11	1	2	1	2

TABLE 53.--Livestock numbers, specified years

In thousand head

Year	Cattle	Hogs	Sheep	Goats	Horses	Mules and asses
1920.....	34,271	16,168	7,933	5,087	5,254	1,865
1938.....	40,076	22,496	10,616	5,748	6,190	3,848
1945.....	44,613	24,343	13,283	6,768	6,522	4,062
1946.....	46,358	23,815	15,542	7,363	6,768	4,325
1947 ¹	46,000	24,000	16,000	7,500	7,000	4,550
1948 ¹	46,000	23,000	16,000	7,500	7,200	4,680

¹Estimated.

TABLE 54.--Livestock distribution by states, 1946

[In thousand head]

State	Cattle	Hogs	Sheep	Goats
Minas Gerais.....	10,179	4,032	231	253
Rio Grande do Sul.....	9,035	3,356	10,068	100
Sao Paulo.....	6,208	3,219	167	357
Bahia.....	3,777	1,658	1,427	1,861
Goiás.....	3,766	1,479	72	70
Mato Grosso.....	3,220	665	110	46
Ceará.....	1,354	833	885	1,117
Piauí.....	1,099	930	824	1,170
Santa Catarina.....	1,075	1,999	109	56
Maranhão.....	1,006	779	127	244
Rio de Janeiro.....	988	400	38	84
Pernambuco.....	820	403	421	951
Para.....	769	311	57	40
Paraná.....	632	2,267	126	133
Paraíba.....	557	207	272	318
Rio Grande do Norte.....	479	145	341	275
Espirito Santo.....	393	689	15	43
Sergipe.....	331	93	111	70
Alagoas.....	307	187	108	159
Amazonas.....	139	84	10	7
Rio Branco.....	138	5	3	2
All others.....	86	74	20	7
Total.....	46,358	23,815	15,542	7,363

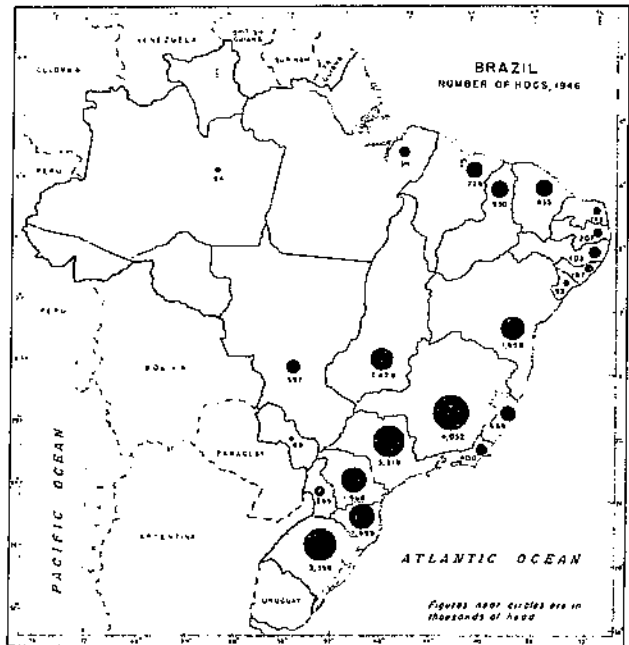
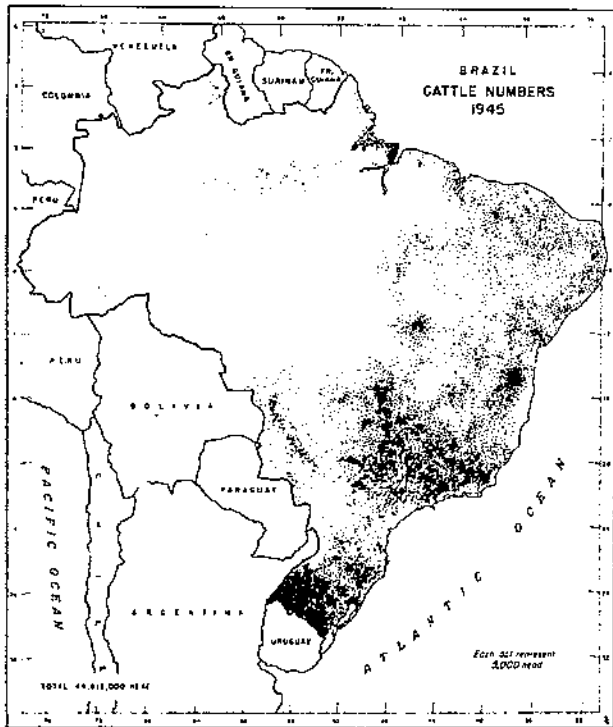


TABLE 55.--Livestock slaughter averages 1925 to 1944 and annual, 1944 to 1948¹
 [In thousand head]

Year	Cattle	Hogs	Sheep	Goats
Averages:				
1925-29.....	3,025	(²)	(²)	(²)
1931-34.....	3,469	2,617	403	337
1935-39.....	4,463	3,189	434	378
1940-44.....	4,591	4,305	1,102	861
Annual:				
1944.....	4,036	4,917	1,273	1,140
1945.....	4,203	5,220	1,350	1,134
1946.....	4,875	5,421	1,468	1,183
1947.....	5,204	5,256	1,445	1,210
1948.....	5,829	5,094	1,293	1,258

¹Calendar year; does not include slaughter on farms.

²Not available.

Table 56.--Beef, pork, mutton, and goat meat production Averages 1930 to 1944 and annual, 1944 to 1948¹

Year	Beef		Pork		Mutton		Goat Meat	
	Thousand Metric tons	Million pounds	Thousand Metric tons	Million pounds	Thousand Metric tons	Million pounds	Thousand Metric tons	Million pounds
Averages:								
1930-34.....	734	1,618	190	419	7	15	3	7
1935-39.....	346	1,843	240	539	7	15	5	11
1940-44.....	732	1,614	225	496	16	35	8	18
Annual:								
1944.....	626	1,390	247	545	20	44	11	24
1945.....	637	1,404	332	511	31	46	11	24
1946.....	736	1,623	342	534	32	49	12	26
1947.....	800	1,764	291	637	27	44	12	26
1948.....	910	2,006	225	496	18	40	13	29

¹On net weight basis.

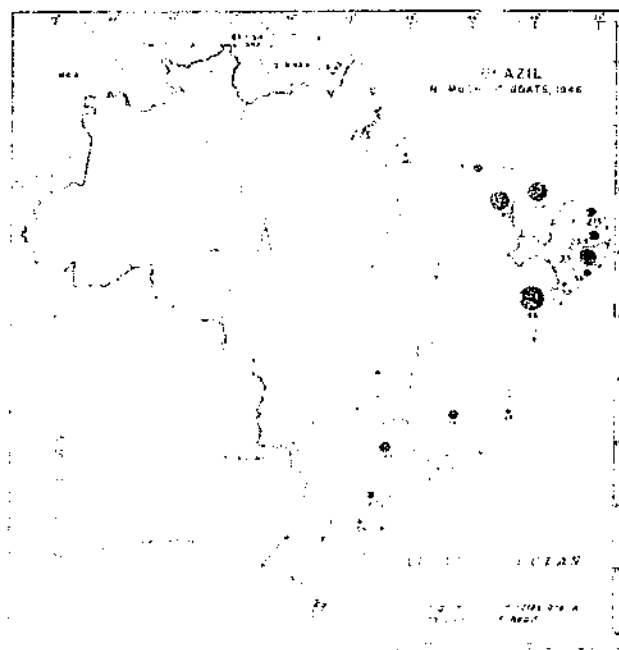
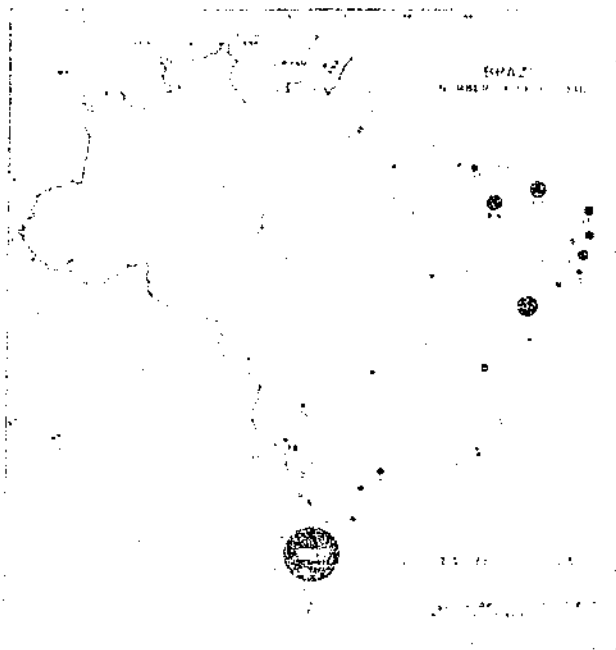


Table 57.--Total meat production and exports averages 1925 to 1944 and annual, 1944 to 1948¹

Year	Production		Exports	
	Thousand Metric tons	Million pounds	Thousand Metric tons	Million pounds
Averages:				
1925-29.....	607	1,537	49	108
1930-34.....	934	2,059	69	152
1935-39.....	1,038	2,399	77	170
1940-44.....	981	2,163	97	214
Annual:				
1944.....	904	1,993	51	112
1945.....	901	1,986	31	68
1946.....	1,012	2,231	55	121
1947.....	1,053	2,321	36	79
1948.....	1,166	2,571	42	93

¹Product weight basis.

Table 58.--Hides and skins production and exports, averages 1935 to 1944 and annual, 1944 to 1948

Year	Production				Exports	
	Cattle hides		Total		Thousand Metric tons	Million pounds
	Thousand Metric tons	Million pounds	Thousand Metric tons	Million pounds		
Averages:						
1935-39.....	(1)	(1)	(1)	(1)	58	128
1940-44.....	108	238	112	247	101	223
Annual:						
1944.....	86	190	92	204	24	53
1945.....	94	207	101	224	16	35
1946.....	110	244	114	253	32	71
1947.....	118	260	122	271	24	53
1948.....	132	291	136	300	23	50

¹Not available.

TABLE 59.--Wool production, exports, and import averages 1925 to 1944 and annual, 1944 to 1948

Year	Production		Exports		Imports	
	Thousand metric tons	Million pounds	Thousand metric tons	Million pounds	Thousand metric tons	Million pounds
Averages:						
1925-29.....	1,000	2,200	1,000	2,200	0	0
1930-34.....	1,000	2,200	1,000	2,200	0	0
1935-39.....	1,000	2,200	1,000	2,200	0	0
1940-44.....	1,000	2,200	1,000	2,200	0	0
Annual:						
1944.....	1,000	2,200	1,000	2,200	0	0
1945.....	1,000	2,200	1,000	2,200	0	0
1946.....	1,000	2,200	1,000	2,200	0	0
1947.....	1,000	2,200	1,000	2,200	0	0
1948.....	1,000	2,200	1,000	2,200	0	0

END