



AgEcon SEARCH
RESEARCH IN AGRICULTURAL & APPLIED ECONOMICS

The World's Largest Open Access Agricultural & Applied Economics Digital Library

This document is discoverable and free to researchers across the globe due to the work of AgEcon Search.

Help ensure our sustainability.

Give to AgEcon Search

AgEcon Search

<http://ageconsearch.umn.edu>

aesearch@umn.edu

*Papers downloaded from **AgEcon Search** may be used for non-commercial purposes and personal study only. No other use, including posting to another Internet site, is permitted without permission from the copyright owner (not AgEcon Search), or as allowed under the provisions of Fair Use, U.S. Copyright Act, Title 17 U.S.C.*

SB 93 (1950)

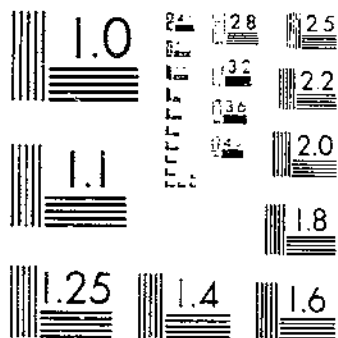
USDA STATISTICAL BULLETINS

UPDATED

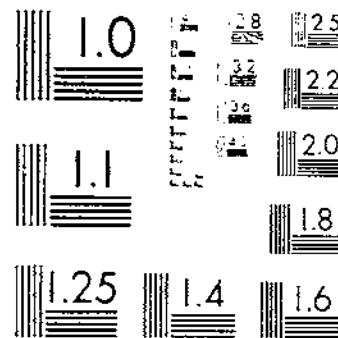
PRODUCTION OF MANUFACTURED DAIRY PRODUCTS, 1949

1 OF 1

START



M. P. ...
...

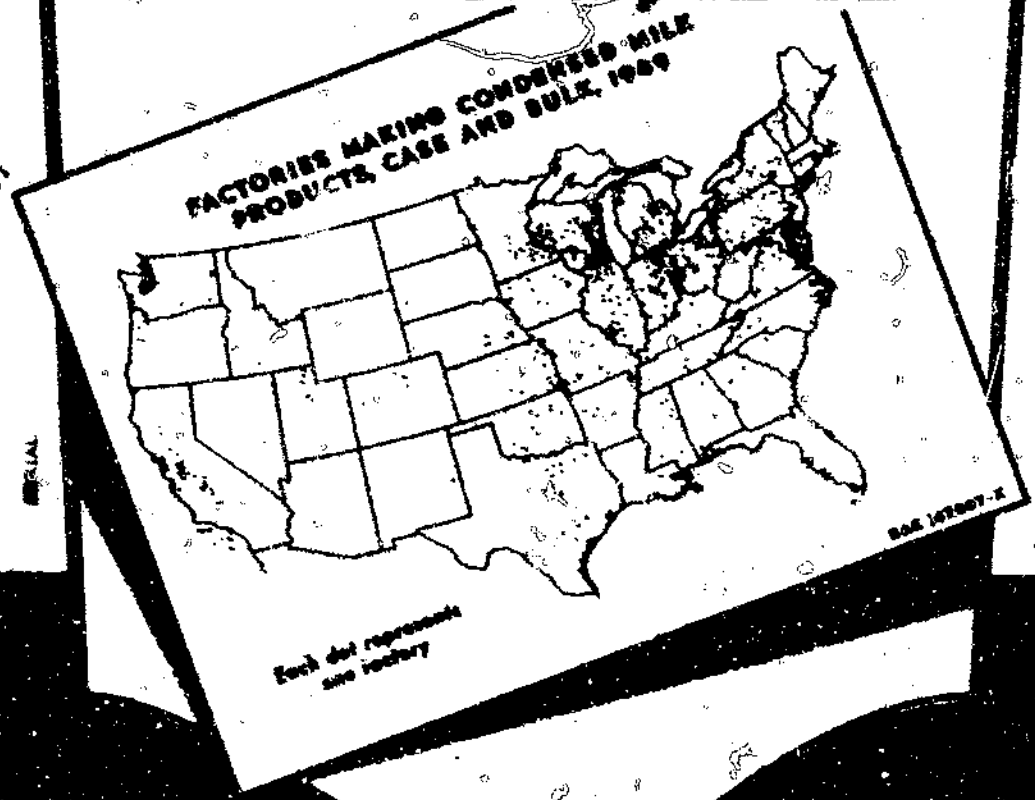


M. P. ...
...

E 30.5
U 53-13
#93

REPORT

PRODUCTION OF MANUFACTURED DAIRY PRODUCTS, 1949



DEC - 8/1950
Los Angeles Public Library

UNITED STATES DEPARTMENT OF AGRICULTURE
BUREAU OF AGRICULTURAL ECONOMICS

Washington, D. C.

November 1950

R 630.5 U 53-13 no. 93-102
STATISTICAL BULLETIN No. 93

The data for manufactured dairy products in 1949, given in this report, are compiled from reports made by dairy manufacturers direct to the United States Department of Agriculture or through the cooperating State agencies shown below:

<u>State</u>	<u>Agency</u>	<u>Collaborator</u>
Alabama	State Department of Agriculture and Industries	J. Elygood Paterson, Commissioner
California	State Department of Agriculture	A. A. Brock, Director
Colorado	State Department of Agriculture, Division of Animal Industry	Harry B. Stever, Dairy Section
Idaho	State Department of Agriculture, Bureau of Dairying	Lester Hendrix, Director
Illinois	State Department of Agriculture	Ray E. Tug, Director
Indiana	State Experiment Station, Creamery License Division	E. H. Binney, In charge
Iowa	State Department of Agriculture, Dairy and Food Division	Ray J. Gours, Chief
Kansas	State Board of Agriculture, Dairy Division	R. E. Dodge, Commissioner
Michigan	State Department of Agriculture, Bureau of Dairying	F. M. Schler, Director
Minnesota	State Department of Agriculture, Dairy and Food Division	Hyron W. Clark, Commissioner
Mississippi	State Department of Agriculture and Commerce	St. Corley, Commissioner
Montana	State Department of Agriculture, Labor and Industry	Alfred H. Anderson, Commissioner
Nebraska	State Department of Agriculture and Inspection, Bureau of Dairies, Foods, Weights and Measures	Conrad B. Flagg, Chief
Nevada	State Extension Service	Dr. V. E. Scott, Extension Dairyman
New York	State Department of Agriculture and Markets, Division of Milk Control	Kenneth F. Fee, Director
North Carolina	State Department of Agriculture, Dairy Division	C. W. Ferguson, Director
North Dakota	State Department of Agriculture and Labor, Dairy Division	William J. Murphy, Commissioner
Ohio	State Department of Agriculture, Division of Foods and Dairies	H. S. Rount, Director
Oklahoma	State Board of Agriculture, Bureau of Dairying	Clyde D. Leagy, Commissioner
Oregon	State Department of Agriculture, Division of Foods and Dairies	E. L. Peterson, Director
Pennsylvania	State Department of Internal Affairs	William S. Livengood, Secretary
South Dakota	State Department of Agriculture	L. V. Jensen, Secretary
Tennessee	State Department of Agriculture, Division of Foods, Fertilizers and Dairies	James W. Farler, Commissioner
Utah	State Board of Agriculture, Dairy and Foods Division	Guy P. Stevens, Supervising Inspector
Virginia	State Department of Agriculture, Dairy and Food Division	S. S. Smith, Director
Washington	State Department of Agriculture, Dairy and Livestock Division	Swere N. Orndahl, Director
West Virginia	State Department of Agriculture	J. B. McLaughlin, Commissioner
Wisconsin	State Department of Agriculture, Dairy Division	Harvey J. Weavers, Chief

PRODUCTION OF MANUFACTURED DAIRY PRODUCTS 1/ 1949

The milk equivalent of manufactured whole-milk products produced in the United States in 1949 totaled 54,953,000,000 pounds; this is 6 percent higher than 1948 and is the fifth highest production on record, according to the Bureau of Agricultural Economics. Sharp gains were shown from 1948 to 1949 in creamery butter and cheese production, whereas declines were shown in evaporated and condensed milk, dry whole milk, and ice cream. New high records were established for output of American, Swiss, and total cheese, and for cottage cheese. Production of canned condensed and evaporated milk, dry whole milk, and ice cream was the lowest in several years.

Whole-milk Equivalents Increase in Volume

Whole-milk equivalents of manufactured dairy products totaled 54,954,748,000 pounds during 1949, a gain of 6 percent or 3,224,000,000 pounds from the preceding year. Use of milk on a whole-milk-equivalent basis in manufactured dairy products in 1949 represented 46 percent of total milk produced on farms during the year. Sharp gains in the quantities of whole-milk equivalent used in creamery butter and in whole milk used in all cheese were partially offset by declines in quantities used in evaporated and condensed milk, dry whole milk, and ice cream. Whole-milk equivalent used in creamery butter increased more than 4 billion pounds from 1948 to 1949, while whole milk used in all cheese rose more than 1 billion pounds. Utilization of whole milk in evaporated milk declined more than 1-1/3 billion pounds, while that for all other products dropped a total of about 1/2 billion pounds. Per capita use of whole-milk equivalent in the 1949 production of manufactured dairy products was 368.3 pounds, a gain of 5 percent from 1948.

Wisconsin led in the volume of whole-milk equivalent utilized in manufactured dairy products in 1949. Its total of 11,030,684,000 pounds was equal to 71 percent of the total milk produced on farms in the State. Minnesota ranked second with 6,397,308,000 pounds, or 77 percent of the State milk production utilized in manufactured dairy products. With a milk equivalent of 4,413,815,000 pounds, Iowa ranked third. About 92 percent of the milk produced in Iowa in 1949 for manufacturing purposes was used in the production of creamery butter.

Creamery Butter Production

Creamery butter production during 1949 totaled 1,412,101,000 pounds, the largest since 1944 and up 17 percent from 1948. Minnesota with an output of 252,621,000 pounds, ranked first as in preceding years. Iowa ranked second, with 193,153,000 pounds. Wisconsin strengthened its third rank position by a gain of 68 percent from 1948 to 1949. Production in Wisconsin was 168,214,000 pounds, 11.9 percent of the country's total. This is the highest proportion of the national production manufactured by Wisconsin in 25 years. Other States in order of their rank were Nebraska, Missouri, Ohio, Illinois, Michigan, Indiana, and Kansas. All principal regions registered gains over 1948 except the Mountain States.

1/ The material appearing in this report was compiled under the supervision of W. D. Bornuth, in cooperation with Federal-State Statisticians and cooperating State agencies, and under the general direction of B. E. Bennett, Head, Division of Dairy Statistics, Bureau of Agricultural Economics. All of the computations in this publication were made under the supervision of Jessie M. Cooley.

TABLE 1 -- NET WHOLE MILK EQUIVALENT OF DAIRY PRODUCTS MANUFACTURED IN PLANTS, PERCENTAGE DISTRIBUTION BY MAJOR PRODUCTS, AND PER CAPITA ANNUAL WHOLE MILK EQUIVALENT, UNITED STATES, 1930-49

Year	Creamery butter	All whole milk and part skim cheese	Evaporated and condensed milk	Ice cream and other frozen products	Other milk products	Total of all whol milk products	per
							annual
	Percent	Percent	Percent	Percent	Percent	1,000 lb.	Pounds
1930	72.9	11.5	8.7	6.5	0.4	44,117,231	358.5
1931	74.9	11.1	8.2	5.5	.3	44,814,081	361.3
1932	76.1	10.9	8.6	4.1	.3	44,754,949	358.5
1933	75.5	11.7	8.8	3.7	.3	46,899,352	373.5
1934	73.6	12.6	8.9	4.6	.3	46,235,522	365.9
1935	71.3	13.6	9.6	5.1	.4	45,838,275	360.2
1936	69.4	13.7	10.4	6.1	.4	47,071,054	367.6
1937	69.0	13.8	9.8	7.1	.3	47,031,818	365.1
1938	69.4	14.1	9.7	6.4	.4	51,447,110	396.3
1939	69.0	13.7	9.9	6.9	.5	51,661,423	394.7
1940	67.5	14.4	10.8	6.8	.5	54,549,576	413.3
1941	62.7	16.0	13.0	7.6	.7	59,660,301	447.9
1942	58.3	18.4	13.6	8.8	.9	60,398,622	448.5
1943	59.5	17.5	12.8	7.7	2.5	56,748,402	415.8
1944	54.6	18.5	14.9	8.2	3.8	54,748,971	396.5
1945	49.7	20.3	16.3	9.4	4.3	54,870,932	393.1
1946	45.2	21.2	14.0	15.8	3.8	51,718,254	366.2
1947	47.9	21.2	14.2	13.5	3.2	55,519,970	385.5
1948	46.8	21.1	15.8	12.7	3.6	51,730,817	352.9
1949	51.5	21.8	12.2	11.7	2.8	54,954,748	368.3

Production of Total Cheese Highest on Record

Production of total cheese in 1949 was 1,200,011,000 pounds, the largest on record, showing a gain of 9 percent over 1948. Wisconsin had an unchallenged leadership in volume of cheese production; it produced 47 percent of the United States total. This is the highest proportion of the national production made by Wisconsin since 1946. New York's output in 1949 exceeded that of Illinois. This enabled New York to recapture second rank for the first time since 1940. Illinois ranked third; Missouri fourth; followed by Minnesota, Tennessee, Ohio, Indiana, Michigan, and Kentucky.

American Cheese Production Also Record High

American cheese production totaled 935,018,000 pounds in 1949 -- the highest on record, and showing a gain of 9 percent over 1948. However, the new record was only fractionally above the previous record of 1947. Wisconsin remained the undisputed leader in volume, with a production of 430,103,000 pounds. Missouri surpassed Illinois for the first time to gain the second position; it produced 64,114,000 pounds, Illinois was third, with 57,136,000 pounds. Other States in order of production were: Minnesota, 54,309,000 pounds; Tennessee, 41,333,000 pounds; New York, 39,354,000 pounds; Indiana, 38,910,000 pounds; Ohio, 26,380,000 pounds; Kentucky, 26,354,000 pounds; and Oregon, 24,264,000 pounds.

Of the types of American cheese made in the United States, Cheddar is the most important, comprising 95 percent of the total American-type cheese made. Output of Cheddar totaled 885,114,000 pounds in 1949, a gain of 9 percent over 1948. Other types of American cheese are Colby, Washed Curd, Jack, and Monterey. Their combined production was 49,904,000 pounds, a gain of 18 percent over 1948.

Other Cheese Higher in Volume

For the first time in 4 years, the combined production of cheese other than American whole-milk cheese increased. The output of 264,993,000 pounds for 1949 was up 9 percent from the preceding year. Most of the major varieties of cheese in this group registered gains in output from 1948 to 1949. The principal exceptions were part-skim American, Limburger, Blue Mold, and miscellaneous varieties. Production of Swiss cheese in 1949 reached a new high record of 81,043,000 pounds, 15 percent above 1948 and 13 percent above the previous record in 1947. Output of Munster cheese was 10,098,000 pounds, the second highest on record and 22 percent above the production in 1948. Brick cheese production totaled 20,278,000 pounds, the highest since 1941 and 11 percent above the preceding year. Limburger cheese production during 1949 at 7,180,000 pounds was the lowest since 1943 and 2 percent less than the previous year. Output of Italian varieties of cheese totaled 55,127,000 pounds, the highest since 1946, the third highest on record, and 26 percent higher than in 1948. At 54,449,000 pounds, cream cheese output for 1949 was 3 percent higher than in the previous year. Output of Neufchatel cheese was 4,046,000 pounds, 5 percent higher than in the preceding year. Production of Blue Mold cheese at 8,141,000 pounds was the lowest since 1944 and down 12 percent from 1948. Unclassified varieties of cheese totaled 23,860,000 pounds -- the lowest total since 1944, and 7 percent below the preceding year.

Wisconsin led in the output of all classified varieties of cheese except cream and Neufchatel cheese. New York led in volume of cream cheese production, with Wisconsin ranking second. In output of Neufchatel cheese, Pennsylvania led and Wisconsin produced none. Wisconsin's proportion of the Nation's 1949 cheese production by varieties was as follows: Swiss, 60 percent; Munster, 95 percent; brick, 91 percent; Limburger, 49 percent; Italian, 50 percent; cream, 27 percent; Blue Mold, 59 percent; and unclassified varieties, 28 percent.

Cottage cheese production for 1949 was the highest on record. Output of cottage cheese curd was 283,607,000 pounds, a gain of 11 percent over the previous year. Nearly one-third of the total United States output of both cottage cheese curd and creamed cottage cheese is produced in New York and California. Creamed cottage cheese production at 286,766,000 pounds was 15 percent higher than in 1948.

Evaporated Whole-Milk Production Sharply Lower

Production of evaporated whole milk during 1949 was 2,755,780,000 pounds, the lowest since 1940. However, gains in production over 1948 were shown by all regions except the South Central States. Wisconsin ranked first with 578,578,000 pounds, or 21 percent of the Nation's total. Other States in order of production were: Ohio, 280,213,000 pounds; California, 268,496,000 pounds; Kentucky, 199,816,000 pounds; Illinois, 166,052,000 pounds; Missouri, 163,396,000 pounds; Tennessee, 128,829,000 pounds; Michigan, 127,756,000 pounds; Indiana, 94,641,000 pounds; and Idaho, 74,349,000 pounds; Kentucky was one of the few States in which the output increased and its rank changed from seventh to fourth from 1948 to 1949. On the other hand, Missouri's production dropped from fourth to sixth place.

Canned condensed whole-milk output for 1949 was 100,902,000 pounds, down 20 percent from the previous year. States in order of production were: Michigan, Wisconsin, Oregon, Mississippi, New York, and California.

Output of plain condensed whole milk was 202,073,000 pounds for 1949 -- 1 percent higher than in the previous year. Production of sweetened condensed whole milk totaled 48,085,000 pounds, a gain of 6 percent from the preceding year.

Production of Ice Cream Declines for Third Successive Year

Production of ice cream in 1949 totaled 556,654,000 gallons, a decrease of 3 percent from 1948 and 2 percent from the 1944-48 average. This was the third successive year since the peak in 1946 that national output of ice cream has been lower than for the preceding year. Production is still considerably larger than prewar, however, when it averaged around 315,000,000 gallons annually.

The decline in the 1949 production of ice cream was rather general. Only nine States -- New York, Pennsylvania, Wisconsin, Louisiana, Montana, Idaho, Colorado, Nevada, and Oregon -- reported a larger output than in 1948. The increase in most of these States was small.

Production of ice cream for wholesale distribution in 1949 totaled 506,803,000 gallons and for retail distribution 49,851,000 gallons. The output in both of these categories declined; the decrease in wholesale production was 3 percent, and in retail production it was 2 percent.

Output of Milk Sherbet and Ice Milk Increases

In contrast to the trend in ice-cream production, output of both milk sherbet and ice milk in 1949 was substantially larger than in 1948. Totaling 13,573,000 gallons, the production of milk sherbet was the largest since 1945 when a peak of 65,177,000 gallons was reached. Although the output in 1949 was sharply below that of the war years, the expansion in the last few years has been steady, and it appears to be of a more permanent nature than the rapid increases of 1943, 1944, and 1945. Those 3 years were war years when the limitation on use of butterfat in the production of ice cream caused manufacturers to hold back their output of ice cream and increase without limitation the production of such frozen dairy foods as milk sherbet and ice milk that did not require as much butterfat as ice cream.

The production of ice milk in 1949 totaled 25,455,000 pounds, a gain of 30 percent over 1948 and a new high record output for one year. Although the production of ice milk is widely distributed, the largest part is made in the West. The three Pacific Coast States -- California, Oregon, and Washington -- produced more than half of the total in 1949; California alone made about 43 percent of output.

Production of Other Frozen Dairy Foods

Before 1949, separate figures were collected and published on the production of frozen custards and frosted or frozen malted milk. Beginning with the year 1949 and because of the difficulty in obtaining a clearly defined classification for these two products, all frozen dairy products (other than ice cream, milk sherbet, and ice milk) were placed together in one category under the designation of "Other Frozen Dairy Products." Production for the year totaled 7,103,000 gallons. In

1948, the combined production of frozen custards and frosted or frozen malted milk totaled 4,986,000 gallons. Although it is not possible to make absolute comparisons between the combined production of frozen custards and frosted or frozen malted in 1948 with the production of "Other Frozen Dairy Products" in 1949, the comparison is sufficiently sound to indicate a rather sharp expansion in the production of miscellaneous frozen dairy products in 1949 over 1948.

Ice-Cream Mix

The Bureau of Agricultural Economics has been collecting data on the production of ice-cream mix in a few States for several years. In order to get a more comprehensive figure the 1949 survey of the ice-cream industry was extended to cover the production of ice-cream mix in all States. The collected data indicated a 1949 production of 299,528,000 gallons. Not all of this mix was used in ice cream, as some undetermined quantities were used for the production of "frosted or frozen malteds" and possibly some other miscellaneous frozen dairy products. This inquiry will be continued and the data should be more useful when year-to-year comparisons can be made.

Water Ices

In 1949, for the first time, an inquiry on the production of water ices was added to the questionnaire used by the Bureau in its survey of the ice-cream industry. Reports from the industry indicated that, in 1949, a total of 19,342,000 gallons of water ices was made by ice-cream manufacturers. Because of the absence of data, no comparison of this figure can be made with either the production in 1948 or in preceding years but from reports received informally from the trade, it is believed that the production was somewhat larger in 1949 than in 1948.

Skim-Milk Products Up Sharply

Total skim-milk equivalent of all manufactured dairy products for 1949 at 16,398,000,000 pounds was the highest on record and 25 percent above the previous year. The gain was largely the result of an increase of nearly 2 billion pounds used in nonfat dry-milk solids. Wisconsin held a substantial lead in the quantity of total skim-milk equivalent used in manufactured dairy products -- 3,564,106,000 pounds, or 22 percent of the United States total. Minnesota came second with 2,480,880,000 pounds, or 15 percent of the total. Other leading States in order of their rank were: New York, California, Michigan, Ohio, Indiana, Missouri, Illinois, Pennsylvania, and Iowa.

Nonfat Dry-Milk Solids Record High for Sixth Successive Year

Nonfat dry-milk solids produced in 1949 totaled 933,662,000 pounds, a new high record which was 37 percent above the figure for the preceding year. Spray-dried nonfat milk solids totaled 629,341,000 pounds, a gain of 44 percent from the previous year. Roller-dried nonfat milk production totaled 304,321,000 pounds, an increase of 24 percent from 1948. Production of total nonfat dry-milk solids showed a gain from 1948 to 1949 in all States except Idaho where output was only slightly lower.

TABLE 2 -- SKIM MILK EQUIVALENT OF MANUFACTURED SKIM AND BUTTERMILK PRODUCTS, UNITED STATES, 1934-49

Year	Full skim Amer- ican cheese	Cottage pot & bakers' cheese	Condensed and evapo- rated skim milk	Concen- trated skim milk (for ani- mal feed)	Nonfat dry milk solids	Dry casein	Cond. & dried butter- milk	Total
	Mil.lb.	Mil.lb.	Mil.lb.	Mil.lb.	Mil.lb.	Mil.lb.	Mil.lb.	
1934	2	645	789	38	3,244	1,333	787	6,838
1935	4	685	899	54	3,273	1,344	760	7,019
1936	4	750	1,048	38	3,845	1,647	828	8,160
1937	3	827	1,129	30	4,094	2,409	849	9,341
1938	3	896	1,192	40	4,942	1,733	971	9,777
1939	4	1,042	1,132	35	4,492	1,459	997	9,161
1940	4	1,089	1,244	45	5,300	1,664	1,083	10,429
1941	7	1,172	1,519	58	5,242	1,690	1,217	10,905
1942	16	1,230	1,651	40	6,892	1,509	1,276	12,614
1943	37	1,337	1,901	45	5,873	656	1,173	11,022
1944	42	1,402	2,216	62	6,593	545	1,096	11,956
1945	35	1,780	2,922	37	7,261	440	1,026	13,501
1946	38	1,574	3,971	70	7,339	654	1,105	14,751
1947	34	1,346	2,887	56	7,701	1,279	1,067	14,370
1948	28	1,598	2,257	68	7,641	513	973	13,078
1949	20	1,772	2,327	42	10,504	655	1,078	16,398

Dry Buttermilk Output Largest Since 1945

Dry buttermilk production for 1949 was 49,359,000 pounds, the largest total since 1945; it was up 18 percent from the preceding year. Volume of Minnesota's production was practically unchanged from the preceding year but it still maintained an impressive lead over any other State with an output of 19,646,000 pounds. Iowa ranked second with a production of 7,886,000 pounds -- a gain of 32 percent from 1948.

Dry-Casein Production Higher

Dry-casein production was 18,348,000 pounds for 1949, showing a gain of 28 percent over 1948. New York regained first rank in output, following 3 years during which California held the lead. New York made 4,188,000 pounds in 1949, a gain of 34 percent from 1948. California, with 4,059,000 pounds, was 20 percent below the preceding year. Minnesota ranked third, Wisconsin fourth, and Vermont fifth.

Dry Whey At Record High

Production of dry whey showed a sharp gain over 1948, establishing a new high record of 158,957,000 pounds. Wisconsin maintained a substantial lead over any other State with an output of 76,216,000 pounds. Minnesota, the second State, produced 18,439,000 pounds.

Condensed Skim Milk (Bulk Goods)

Plain condensed skim milk for 1949 was the highest on record, whereas sweetened condensed skim milk was the lowest since before the war. At 535,844,000 pounds, volume of plain condensed skim milk was 8 percent above the preceding year. Wisconsin, with 104,477,000 pounds of plain condensed skim milk ranked first in output. Other States in order of their volume are: New York, California, Kansas, Illinois, Pennsylvania, Michigan, Missouri, Ohio, and Virginia. The output in the United States of sweetened condensed skim milk was 218,209,000 pounds for 1949, 9 percent less than in the preceding year. Pennsylvania ranks first with 39,529,000 pounds, followed by New York, Wisconsin, Illinois, and Ohio.

Milk Sugar Production Slightly Lower

Crude milk sugar production for 1949 totaled 24,033,000 pounds, down 2 percent from the preceding year. Refined milk sugar, technical grade, at 4,466,000 pounds, made a gain in volume of 35 percent. Production of refined milk sugar, U.S.P. grade, was 8,592,000 pounds, marking a decline from 1948 of 9 percent.

TABLE 3 - REVISIONS, MANUFACTURED DAIRY PRODUCTS, BY MONTHS, UNITED STATES, 1948 1/

Product	Number plants	January	February	March	April	May	June	July	August	September	October	November	December	Total 1948
		1000 lb.	1000 lb.	1000 lb.	1000 lb.	1000 lb.	1000 lb.	1000 lb.	1000 lb.	1000 lb.	1000 lb.	1000 lb.	1000 lb.	1000 lb.
Creamery butter 2/.....	3,224	80,051	77,892	90,350	100,806	133,095	134,364	125,137	115,871	95,575	91,872	80,353	84,958	1,210,324
American type cheese:														
Cheddar 3/.....	1,571	42,560	44,644	55,372	68,369	98,265	101,365	90,601	86,319	68,400	59,484	46,668	50,072	812,120
Total American cheese 4/.....	1,759	44,951	46,955	58,160	72,083	103,926	107,287	95,556	90,159	71,476	62,225	49,087	52,582	854,447
All Italian varieties of cheese 5/.....	144	3,414	3,465	4,975	3,941	4,191	3,622	3,028	2,840	2,823	3,347	3,540	4,393	43,579
Total cheese 6/.....	2,294	63,742	65,186	80,259	94,018	129,753	131,872	114,677	108,520	89,417	81,547	67,335	72,060	1,098,366
Full-skim American type cheese 7/..	21	35	110	108	191	240	360	336	172	97	55	29	21	1,754
Cottage cheese (curd) 8/.....	1,582	17,607	19,372	22,540	22,355	24,723	25,233	23,612	22,093	20,763	20,132	18,768	18,441	255,639
Cottage cheese (cream) 9/.....	1,240	18,685	19,792	22,560	21,624	22,105	21,982	22,545	21,187	20,151	20,311	19,397	18,897	249,236
Condensed milk (sweetened):														
Milk goods (skimmed) 10/.....	263	10,862	9,991	13,395	22,287	41,156	42,407	30,957	23,411	15,120	10,517	8,652	10,535	239,290
(unskimmed) 11/.....	107	2,844	2,895	3,635	3,924	7,647	4,799	4,983	4,844	3,533	2,781	2,424	1,233	45,542
Plain condensed milk (unsweetened):														
Milk goods (skimmed) 12/.....	385	31,205	35,597	39,876	38,972	44,570	49,980	52,297	48,297	45,258	36,415	36,009	35,460	494,636
(unskimmed) 13/.....	132	11,736	12,928	18,243	20,221	21,667	23,692	23,932	21,784	17,637	12,616	7,961	8,028	200,485
Dry buttermilk 14/.....	248	3,167	2,936	3,608	3,865	4,800	4,811	4,057	3,401	2,708	2,730	2,648	3,108	41,839
Frozen products:		1000 gal.	1000 gal.	1000 gal.	1000 gal.	1000 gal.	1000 gal.	1000 gal.	1000 gal.	1000 gal.	1000 gal.	1000 gal.	1000 gal.	1000 gal.
Ice cream (wholesale) 15/.....	3,787	27,940	28,330	40,094	46,047	50,768	60,647	66,389	60,324	50,879	33,554	31,616	28,580	525,168
Ice cream (retail) 16/.....	12,179	2,454	2,517	3,416	4,271	4,909	6,074	6,898	6,398	4,998	3,399	3,006	2,755	52,691
Total ice cream 17/.....	14,993	30,394	30,847	43,510	50,320	55,677	66,721	73,287	66,718	55,877	36,953	34,622	31,335	576,261
Frozen custard 18/.....	402	51	54	78	122	147	210	229	252	192	120	83	71	1,609
Frosted or frozen malted milk 19/	1,336	137	151	219	269	328	405	462	449	348	243	198	168	3,377

1/ For revised annual totals by States, see table 7. Some States totals may not be shown if there were less than 3 plants reporting. Revisions shown in following States: 2/ Pennsylvania, Missouri, and South Dakota. 3/ Arkansas. 4/ Arkansas. 5/ Utah. 6/ Arkansas and Utah. 7/ Utah. 8/ Missouri. 9/ Missouri and Oregon. 10/ Missouri. 11/ Missouri. 12/ Missouri and North Carolina. 13/ Wisconsin and Missouri. 14/ South Dakota. 15/ New Hampshire, New York, and Pennsylvania. 16/ New Hampshire, Massachusetts, New York, Ohio, Minnesota, Missouri, South Dakota, Maryland, Virginia, North Carolina, Florida, Alabama, Oregon. 17/ New Hampshire, Massachusetts, New York, Pennsylvania, Ohio, Minnesota, Missouri, South Dakota, Maryland, Virginia, North Carolina, Florida, Alabama, and Oregon. 18/ New Hampshire, Massachusetts, New York, Ohio, Minnesota, Missouri, South Dakota, Kansas, Maryland, Virginia, North Carolina, Florida, and Alabama. 19/ New York and District of Columbia.

TABLE 4--PRODUCTION OF MANUFACTURED DAIRY PRODUCTS IN THE UNITED STATES, 1940-1949

Product	1940	1941	1942	1943	1944	1945	1946	1947	1948	1949
	1000 lb.	1000 lb.	1000 lb.	1000 lb.	1000 lb.	1000 lb.	1000 lb.	1000 lb.	1000 lb.	1000 lb.
Creamery butter 1/	1,836,826	1,872,183	1,764,054	1,673,788	1,488,502	1,363,717	1,171,339	1,329,094	1,210,324*	1,412,101
Renovated or process butter	2,672	3,195	3,768	2,940	6,406	2,345	1,441	1,219	1,090	1,419
American cheese:										
Whole milk	602,790	753,122	916,850	765,089	804,787	875,084	801,264	932,718	854,447*	935,018
Part skim	3,890	4,139	3,759	4,670	2,348	1,098	2,696	4,906	3,987	771
Swiss cheese (including block)	48,659	55,962	52,561	45,626	45,571	50,065	55,695	71,612	70,665	81,043
Brick & Munster cheese	34,328	32,066	28,798	27,978	27,435	14,756	17,678	26,533	26,506	30,376
Limburger cheese	8,198	8,088	8,441	6,653	7,510	8,777	9,548	7,753	7,358	7,180
Cream & Neufchatel cheese	2/51,183	2/50,012	2/47,554	70,451	50,440	66,912	78,803	66,503	56,816	58,495
All Italian varieties of cheese	25,002	34,363	34,916	43,003	41,762	64,628	75,388	36,100	43,579*	55,127
Blue mold cheese	3/	3/	3/	8,036	6,835	9,828	12,451	10,580	9,289	8,141
All other varieties of cheese	11,440	18,409	19,435	21,788	20,659	25,624	52,824	24,241	25,719	23,860
Total cheese 4/	785,490	956,161	1,112,314	993,294	1,017,247	1,116,772	1,106,347	1,182,946	1,098,366*	1,200,011
Full-skim Am. type cheese	247	416	1,001	2,337	2,628	2,172	2,367	2,153	1,754*	1,251
Cottage, pot. & bakers' cheese	174,257	187,595	196,799	213,910	224,374	284,774	5/	5/	5/	5/
Cottage cheese (curd) 6/	-	-	-	-	-	-	246,303	215,302	255,639*	283,607
Cottage cheese (creamed) 6/	-	-	-	-	-	-	209,893	230,597	249,236*	286,766
Condensed milk (sweetened):										
Case goods (skimmed)	1,872	2,334	4,839	697	102	216	302	243	362	-
(unskimmed)	61,955	114,772	62,453	117,247	139,145	143,306	113,906	164,733	126,295	100,902
Milk goods (skimmed)	166,017	173,658	225,840	306,899	374,840	519,188	818,076	541,813	239,290*	218,209
(unskimmed)	76,134	79,299	75,382	66,588	63,586	77,016	69,750	82,553	45,542*	48,085
Plain condensed milk (unsweetened):										
Milk goods (skimmed)	246,910	326,535	318,379	325,512	363,771	454,443	487,219	403,194	494,036*	535,844
(unskimmed)	128,017	113,965	125,880	102,452	119,403	128,875	98,471	174,525	200,485*	202,073
Evaporated milk (unsweetened):										
Case goods (unskimmed)	2,464,668	3,246,547	3,518,504	3,057,274	3,428,089	3,776,383	3,050,643	3,208,027	3,382,893	2,755,780
Condensed or evaporated buttermilk	111,842	128,183	169,999	167,338	157,503	160,441	226,708	189,135	170,954	176,383
Dry whole milk	29,409	45,627	62,167	137,766	177,754	217,276	188,406	164,888	170,087	125,541
Nonfat dry milk solids for human food	321,843	366,455	565,414	509,620	582,912	642,546	653,465	677,941	681,532	933,662
Dry skim milk for animal feed	159,962	110,042	61,148	24,279	16,407	17,508	13,704	22,149	13,145	21,244
Dry buttermilk	67,931	75,614	69,637	60,995	56,683	49,578	38,627	45,437	41,839*	49,359
Dry cream	54	43	54	216	193	203	567	320	312	178
Dry casein	46,616	47,346	42,268	18,386	15,264	12,333	18,319	35,831	14,372	18,348
Malted milk powder	20,021	23,242	34,679	49,435	40,589	42,751	45,029	37,354	31,361	25,400
Total ice cream	318,088	390,175	464,146	411,626	444,198	476,357	713,594	628,903	576,261*	556,654

* Revised.
 1/ Includes whey butter.
 2/ Cream cheese only.
 3/ Included in "All Other Varieties of Cheese" prior to 1943.
 4/ Excludes full skim cheddar and cottage cheese.
 5/ Data not gathered on comparable basis with previous years. See cottage cheese curd and creamed cottage cheese.
 6/ Comparable data for years prior to 1946 not available. Cottage cheese curd includes cottage, pot. and bakers' cheese with a butterfat content of less than 4 percent made by reporting plants. Creamed cottage cheese includes cheese with a butterfat content of 4 to 19 percent. Cottage cheese curd and creamed cottage cheese should not be added together to get a total cottage cheese figure, for while some of the cottage cheese curd is sold direct for consumption without further processing, a considerable part is creamed within the plant or shipped to another plant for creaming prior to sale.

TABLE 7-PRODUCTION OF MANUFACTURED DAIRY PRODUCTS, BY STATES, 1949 and 1948

Manufactured product	Alabama		Arizona		Arkansas		California		Colorado		Connecticut		Delaware	
	1949	1948	1949	1948	1949	1948	1949	1948	1949	1948	1949	1948	1949	1948
	1000 lb.	1000 lb.	1000 lb.	1000 lb.	1000 lb.	1000 lb.	1000 lb.	1000 lb.	1000 lb.	1000 lb.	1000 lb.	1000 lb.	1000 lb.	1000 lb.
Creamery butter	50	87	702	635	6,868	6,493	36,734	26,264	13,662	14,077	87	87	-	-
American type cheese:														
Cheddar	2,997	3,006	87	87	11,331	11,201*	680	1,268	955	444	-	-	-	-
Other Am. varieties (whole milk)†	-	-	-	-	-	-	3,450	2,863	129	-	87	87	-	-
Total Am. cheese (whole milk)†	2,997	3,006	87	87	11,331	11,201*	4,130	4,117	1,084	444	87	87	-	-
Part skim	-	-	87	87	-	-	87	504	87	87	-	-	-	-
Swiss cheese (including block)	-	-	-	-	-	-	87	87	-	-	-	-	-	-
Munster cheese	-	-	-	-	-	-	-	-	-	-	-	-	-	-
Brick cheese	-	-	-	-	-	-	47	87	-	-	-	-	-	-
Lisburger cheese	-	-	-	-	-	-	-	-	-	-	-	-	-	-
All Italian varieties of cheese	-	-	-	-	-	-	1,101	613	502	512	87	87	-	-
Crown cheese ‡	-	-	-	-	-	-	2,519	3,753	-	87	-	-	-	-
Neufchatel cheese ‡	-	-	-	-	-	-	87	87	-	-	-	-	-	-
Blue mold cheese	-	-	-	-	-	-	-	-	-	-	-	-	-	-
All other varieties of cheese	-	-	622	688	-	-	1,358	1,303	120	87	-	-	-	-
Total cheese ‡	2,997	3,006	2,435	2,701	11,331	11,201*	9,973	9,100	2,208	2,129	2,260	2,174	-	-
Full-skim Am. type cheese	-	-	-	-	-	-	87	-	87	87	-	-	-	-
Cottage cheese (curd) ‡	392	176	981	1,121	682	597	49,294	43,963	2,969	2,432	753	196	87	87
Cottage cheese (curd) ‡	263	87	1,438	1,661	87	87	72,217	63,325	1,767	1,667	790	408	-	-
Condensed milk (sweetened):														
Cane goods (unskinned)	-	-	-	-	-	-	5,121	10,720	-	-	-	-	-	-
Milk goods (skinned)	-	-	-	-	87	87	8,672	7,992	2,317	87	87	87	-	-
(unskinned)	-	-	-	-	87	87	489	465	-	-	87	87	-	-
Plain condensed milk (unsweetened):														
Milk goods (skinned)	2,489	87	87	87	87	563	62,981	56,033	880	87	264	87	-	-
(unskinned)	-	-	-	-	-	-	15,951	6,273	87	87	87	87	-	-
Evaporated milk (unsweetened):														
Cane goods (unskinned)	-	-	87	87	87	87	266,496	324,007	87	87	-	-	-	-
Concentrated skim milk for animal feed	-	-	-	-	-	-	87	-	-	-	-	-	-	-
Condensed or evaporated buttermilk	-	-	-	-	-	-	87	-	87	87	-	-	-	-
Dry whole milk	-	-	-	-	-	-	6,768	13,570	87	87	-	-	-	-
Nonfat dry milk solids:														
Spray process	-	-	-	-	87	-	46,413	31,746	-	-	-	-	-	-
Roller process	87	87	-	-	87	87	8,117	5,462	-	-	87	87	-	-
Total for human food	87	87	-	-	87	87	52,530	37,208	-	-	-	-	-	-
Dry skim milk for animal feed	-	-	-	87	87	87	1,156	544	-	-	-	-	-	-
Dry buttermilk	-	-	-	87	87	87	781	225	580	428	-	-	-	-
Dry whey	-	-	-	-	87	87	87	87	-	-	-	-	-	-
Dry casein	-	-	87	87	-	-	4,059	5,071	-	-	-	-	-	-
Frozen products: ‡														
Ice cream (wholesale)	6,111	6,614	1,384	1,632	2,521	2,772	32,301	34,751	4,833	4,777	6,442	6,746	87	87
Ice cream (retail)	248	234*	315	36	120	180	5,255	5,288	462	495	457	519	72	87
Total ice cream	6,359	6,848*	1,499	1,914	2,701	2,952	37,556	40,039	5,295	5,272	6,899	7,265	2,047	2,098
Sherbet (milk)	185	327	55	59	43	23	2,306	1,927	84	97	75	43	87	87
Ice milk	1,071	496	401	231	7	87	11,003	9,662	315	252	95	147	-	-
Frozen custards	-	-	337	33	-	-	-	-	-	120	-	49	-	-
Frosted or frozen malted milk	-	47	-	-	-	34	-	-	-	75	-	-	-	6
Other frozen dairy products ‡	17	-	87	-	25	-	-	-	317	-	84	-	2	-
Water ices	270	-	74	-	87	-	87	-	87	-	338	-	87	-
Ice cream mix	3,172	-	382	-	2,042	-	19,761	-	2,776	-	3,172	-	1,021	-

* Revised.
See end of table 7, page 19, for footnotes.

Continued

TABLE 7 - (Continued) PRODUCTION OF MANUFACTURED DAIRY PRODUCTS, BY STATES, 1949 and 1948

Manufactured product	D. C.		Florida		Georgia		Idaho		Illinois		Indiana		Iowa		
	1949	1948	1949	1948	1949	1948	1949	1948	1949	1948	1949	1948	1949	1948	
	1000 lb.	1000 lb.	1000 lb.	1000 lb.	1000 lb.	1000 lb.	1000 lb.	1000 lb.	1000 lb.	1000 lb.	1000 lb.	1000 lb.	1000 lb.	1000 lb.	
Creamery butter	-	-	-	8/	577	553	23,908	24,923	66,708	55,390	48,011	33,487	193,153	187,885	
American type cheeses:															
Cheddar	8/	8/	-	-	-	8/	16,258	18,049	55,786	53,942	29,074	35,584	9,769	8,128	
Other Am. varieties (whole milk) 1/	8/	8/	-	-	-	-	1,733	1,099	1,350	2,550	9,836	1,807	518	579	
Total Am. cheese (whole milk) 2/	8/	8/	-	-	-	8/	17,991	19,148	57,136	56,492	38,910	37,391	10,287	8,707	
Part skim	-	-	-	-	-	-	-	-	8/	8/	-	-	-	-	
Swiss cheese (including block)	8/	8/	-	-	-	-	2,691	3,527	24,726	10,372	-	-	391	8/	
Munster cheese	-	-	-	-	-	-	-	-	8/	318	-	-	-	-	
Brick cheese	-	-	-	-	-	-	-	-	1,298	2,287	-	-	8/	8/	
Limburger cheese	-	-	-	-	-	-	-	-	1,747	2,155	-	-	-	-	
All Italian varieties of cheese	-	-	-	-	-	-	-	-	2,553	1,780	-	-	-	-	
Cream cheese 3/	-	-	-	-	-	-	-	-	941	935	-	-	-	-	
Neufchatel cheese 4/	-	-	-	-	-	-	-	-	-	-	-	-	-	-	
Blue mold cheese	-	-	-	-	-	-	-	-	1,191	1,257	-	-	8/	8/	
All other varieties of cheese	-	-	-	-	-	-	-	8/	1,743	1,931	8/	8/	8/	8/	
Total cheese 5/	8/	8/	-	-	-	8/	20,682	2/22,686	2/81,711	2/77,704	2/39,172	2/37,882	2/10,828	2/9,234	
Full-skin Am. type cheese	-	-	-	-	-	-	-	-	8/	162	-	-	-	-	
Cottage cheese (curd) 6/	8/	8/	886	577	124	85	723	597	16,049	13,606	8,654	7,473	4,886	4,586	
Cottage cheese (cream) 6/	8/	8/	862	800	127	42	957	828	12,670	13,662	7,241	6,613	4,298	4,243	
Condensed milk (sweetened):															
Case goods (unskimmed)	-	-	-	-	-	-	-	-	8/	3,342	-	-	-	-	
Bulk goods (skimmed)	-	-	8/	-	2,144	8/	-	-	23,240	21,591	19,344	26,013	574	728	
(unskimmed)	-	-	8/	-	8/	-	-	-	3,089	3,135	739	855	8/	8/	
Flat condensed milk (unsweetened):															
Bulk goods (skimmed)	-	-	8/	8/	234	8/	8/	8/	26,641	22,253	13,029	17,943	10,814	12,030	
(unskimmed)	-	-	8/	-	-	-	-	-	2,175	3,448	16,281	20,497	8/	119	
Evaporated milk (unsweetened):															
Case goods (unskimmed)	-	-	-	-	-	-	-	8/	8/	166,052	188,196	94,641	127,107	39,165	41,844
Concentrated skim milk															
for animal feed	-	-	-	-	-	-	-	-	8/	-	8/	8/	4,606	5,166	
Condensed or evaporated buttermilk	-	-	-	-	-	-	-	-	48,098	39,186	8/	8/	23,865	22,729	
Dry whole milk	-	-	-	-	-	-	-	8/	8/	8/	4,235	3,947	-	-	
Nonfat dry milk solids:															
Spray process	-	-	-	-	-	-	30,128	30,465	3,925	1,551	23,624	13,199	6,172	4,488	
Roller process	-	-	-	-	-	-	24	37	9,335	5,917	16,612	11,682	7,348	5,406	
Total for human food	-	-	-	-	-	-	30,152	30,502	13,260	7,468	40,236	26,881	13,520	9,894	
Dry skim milk for animal feed	-	-	-	-	-	-	-	436	366	219	102	602	205	1,157	
Dry buttermilk	-	-	-	-	-	-	-	105	79	752	607	822	698	7,886	
Dry whey	-	-	-	-	-	-	-	6,155	5,233	7,790	3,892	8,974	8/	-	
Dry casein	-	-	-	-	-	-	-	8/	8/	697	271	-	8/	344	
Frozen products: 7/															
Ice cream (wholesale)	6,179	6,394	7,894	8,545	6,220	6,468	1,903	1,738	30,045	32,551	16,443	16,727	10,458	10,824	
Ice cream (retail)	124	137	380	552*	103	77	273	320	3,713	3,924	1,615	2,144	1,060	1,285	
Total ice cream	6,303	6,531	8,274	9,097*	6,323	6,545	2,176	2,058	33,758	36,475	18,058	18,871	11,518	12,109	
Sherbet (milk)	141	92	260	236	180	250	34	26	998	860	339	211	309	231	
Ice milk	8/	-	322	232	377	392	483	178	1,676	1,527	63	48	382	375	
Frozen custards	-	84	-	11/	-	-	-	-	-	403	-	102	-	4	
Frosted or frozen malted milk	-	8/	-	11	-	135	-	-	8/	539	-	42	-	68	
Other frozen dairy products 10/	289	-	59	-	227	-	6	-	1,233	-	314	-	213	-	
Water ices	319	-	233	-	83	-	8/	-	1,285	-	170	-	250	-	
Ice cream mix	2,888	-	4,287	-	3,343	-	1,011	-	17,771	-	9,352	-	6,052	-	

13

See end of table, page 1, for footnotes.

Continued

UPDATA 1981

TABLE 7--(Continued) PRODUCTION OF MANUFACTURED DAIRY PRODUCTS, BY STATE, 1949 and 1948

Manufactured product	Kansas		Kentucky		Louisiana		Maine		Maryland		Massachusetts		Michigan	
	1949	1948	1949	1948	1949	1948	1949	1948	1949	1948	1949	1948	1949	1948
	1000 lb.	1000 lb.	1000 lb.	1000 lb.	1000 lb.	1000 lb.	1000 lb.	1000 lb.	1000 lb.	1000 lb.	1000 lb.	1000 lb.	1000 lb.	1000 lb.
Creamery butter	47,490	46,823	24,844	23,310	702	419	90	53	3,548	2,972	242	248	61,002	43,079
American type cheese:														
Cheddar	8,720	8,525	26,354	23,033	8/	8/	-	-	-	-	-	-	20,829	19,323
Other Am. varieties (whole milk) 1/	401	-	-	-	-	-	-	-	-	-	-	-	4,541	3,724
Total Am. cheese (whole milk) 2/	9,121	8,525	26,354	23,033	8/	8/	-	-	-	-	-	-	25,370	23,047
Part skim	8/	8/	-	-	-	-	-	-	-	-	-	-	-	-
Swiss cheese (including block)	-	-	-	-	-	-	-	-	-	-	-	-	-	8/
Munster cheese	-	-	-	-	-	-	-	-	-	-	-	-	-	-
Brick cheese	-	-	-	-	-	-	-	-	-	-	-	-	8/	-
Limburger cheese	-	-	-	-	-	-	-	-	-	-	-	-	-	-
All Italian varieties of cheese	-	-	-	-	-	-	8/	8/	-	-	794	977	1,368	1,060
Cream cheese 3/	-	-	-	-	-	-	-	-	-	-	1,442	1,390	8/	8/
Neufchatel cheese 4/	-	-	-	-	-	-	-	-	-	-	8/	8/	-	-
Blue mold cheese	-	-	-	-	-	-	-	-	-	-	-	-	-	-
All other varieties of cheese	-	-	-	-	8/	8/	8/	8/	-	-	-	8/	8/	8/
Total cheese 5/	9/9,127	9/8,860	26,354	23,033	8/	8/	8/	8/	-	-	9/2,257	9/2,378	9/26,877	9/24,264
Part-skim Am. type cheese	-	-	8/	8/	-	-	-	-	-	-	-	-	-	-
Cottage cheese (curd) 6/	6,524	6,101	4,718	5,956	1,821	8/	1,671	8/	2,744	2,447	187	142	17,645	18,350
Cottage cheese (creamed) 6/	2,969	3,790	3,196	2,671	1,079	8/	1,929	8/	3,684	3,396	376	308	22,393	23,373
Condensed milk (sweetened):														
Case goods (unskimmed)	-	-	-	-	-	-	-	-	-	-	-	-	-	-
Bulk goods (skimmed)	5,753	10,417	635	924	8/	8/	8/	8/	4,042	2,967	-	-	8/	33,796
Bulk goods (unskimmed)	8/	8/	-	8/	-	-	-	-	8/	-	-	-	9,852	18,237
Total	-	-	-	-	-	-	-	-	-	-	-	-	412	746
Plain condensed milk (unsweetened):														
Bulk goods (skimmed)	30,287	31,003	2,395	1,705	-	-	8/	8/	12,332	1,055	-	-	25,719	28,177
Bulk goods (unskimmed)	8/	8/	-	8/	-	-	8/	8/	15,909	8/	-	-	8,141	12,815
Evaporated milk (unsweetened):														
Case goods (unskimmed)	56,537	64,829	199,816	183,824	-	-	-	-	8/	8/	-	-	127,756	186,267
Concentrated skim milk for animal feed	-	-	-	-	-	-	-	-	-	-	-	-	8/	8/
Condensed or evaporated buttermilk	19,697	23,609	8/	8/	-	-	-	-	8/	8/	-	-	8/	8/
Dry whole milk	-	-	-	-	-	-	-	-	-	-	-	-	11,954	10,843
Nonfat dry milk solids:														
Spray process	10,257	5,732	8/	958	-	-	-	-	295	239	-	-	37,526	14,632
Roller process	1,925	1,440	8/	810	-	-	-	-	7,168	4,032	-	-	25,883	20,207
Total for human food	12,182	7,172	2,179	1,768	-	-	-	-	8/	8/	-	-	63,409	34,839
Total	-	8/	555	8/	-	-	8/	8/	139	8/	8/	8/	2,118	545
Dry buttermilk	416	513	8/	8/	-	-	-	-	-	-	-	-	5,642	2,553
Dry whey	-	-	8/	8/	-	-	-	-	-	-	-	-	8/	8/
Dry casein	-	-	-	-	-	-	8/	8/	-	-	-	-	8/	8/
Frozen products: 1/														
Ice cream (wholesale)	5,245	5,583	4,065	4,218	6,637	6,440	2,800	2,890	7,928	8,182	18,270	18,195	23,788	23,161
Ice cream (retail)	1,239	1,163	290	332	152	177	162	175	285	358*	1,401	1,538*	2,404	1,071
Total ice cream	6,484	6,746	4,315	4,550	6,789	6,617	2,962	3,065	8,213	8,540*	19,671	19,733*	26,192	26,232
Sherbet (milk)	119	90	137	107	308	370	24	18	359	246	466	352	774	599
Ice milk	-	-	35	77	370	235	8/	68	29	44	301	222	-	-
Frozen custards	-	185*	-	-	-	-	-	102	-	11/	-	-	-	-
Frosted or frozen salted milk	-	239	-	36	-	16	-	-	-	-	-	-	-	-
Other frozen dairy products 10/	549	-	62	-	70	-	8/	-	11	-	51	-	-	11/
Water ices	8/	-	116	-	180	-	142	-	617	-	686	-	705	-
Ice cream mix	3,601	-	2,520	-	3,270	-	1,443	-	4,599	-	10,581	-	14,260	-

See end of table 7, page 19, for footnotes.

Continued

TABLE 7--(Continued) PRODUCTION OF MANUFACTURED DAIRY PRODUCTS, BY STATE, 1949 and 1948

Manufactured Product	Minnesota		Mississippi		Missouri		Montana		Nebraska		Nevada	
	1949	1948	1949	1948	1949	1948	1949	1948	1949	1948	1949	1948
	1000 lb.	1000 lb.	1000 lb.	1000 lb.	1000 lb.	1000 lb.	1000 lb.	1000 lb.	1000 lb.	1000 lb.	1000 lb.	1000 lb.
Creamery butter	252,621	222,657	4,025	2,523	71,248	61,974*	7,948	8,637	73,607	78,240	919	940
American type cheeses:												
Cheddar	54,309	51,635	11,625	11,094	64,108	56,330	2,890	2,812	1,336	853	8/	8/
Other Am. varieties (whole milk) 1/	-	-	-	-	6	-	-	-	47	-	-	-
Total Am. cheese (whole milk) 2/	54,309	51,635	11,625	11,094	64,114	56,330	2,890	2,812	1,383	853	8/	8/
Part skim	-	-	-	-	8/	-	-	-	-	-	-	-
Swiss cheese (including block)	8/	8/	-	-	-	-	-	-	-	-	-	-
Munster cheese	-	-	-	-	-	-	-	-	-	-	-	-
Brick cheese	380	110	-	-	-	-	-	-	-	-	-	-
Limburger cheese	8/	8/	-	-	-	-	-	-	-	-	-	-
All Italian varieties of cheese	8/	8/	-	-	-	8/	-	-	-	-	-	-
Cream cheese 3/	8/	8/	-	-	8/	8/	-	-	8/	8/	-	-
Neufchatel cheese 4/	-	8/	-	-	-	-	-	-	-	-	-	-
Blue mold cheese	1,244	1,426	-	-	-	-	-	-	-	-	-	-
All other varieties of cheese	114	8/	8/	8/	-	-	-	-	8/	-	-	-
Total cheese 5/	9/56,457	9/54,061	9/11,627	9/11,142	9/64,203	9/56,378	2,890	2,812	9/1,385	9/856	8/	8/
Full-skin Am. type cheese	8/	-	-	-	8/	8/	-	-	-	-	-	-
Cottage cheese (curd) 6/	6,390	6,072	8/	9	7,768	7,322*	852	699	2,361	2,596	52	106
Cottage cheese (creamed) 6/	8,241	7,271	8/	8/	8,261	6,441*	1,049	921	3,344	3,123	111	138
Condensed milk (sweetened):												
Case goods (unskimmed)	-	-	8/	8/	8/	8/	-	-	8/	-	-	-
Bulk goods (skimmed)	8,158	9,054	8/	8/	1,538	2,405*	-	-	1,314	1,001	-	-
Bulk goods (unskimmed)	9,405	8/	8/	8/	206	930*	-	-	8/	257	-	-
Plain condensed milk (unsweetened):												
Bulk goods (skimmed)	9,036	17,548	6,420	5,717	25,296	22,586*	-	-	1,409	599	-	-
Bulk goods (unskimmed)	-	8/	-	8/	2,606	16,419*	-	-	8/	156	-	-
Evaporated milk (unsweetened):												
Case goods (unskimmed)	8/	33,820	54,842	44,593	163,396	208,026	-	-	-	-	-	-
Concentrated skim milk for animal feed	-	8/	-	-	8/	8/	-	-	-	-	-	-
Condensed or evaporated buttermilk	5,917	4,233	-	-	11,735	16,751	-	-	13,137	15,479	-	-
Dry whole milk	20,072	34,763	-	-	8/	8/	-	-	-	-	-	-
Nonfat dry milk solids:												
Spray process	127,775	106,928	-	-	31,037	23,707	-	-	8/	8/	-	-
Roller process	53,215	56,069	2,772	1,912	6,940	6,261	-	-	-	-	8/	8/
Total for human food	180,990	162,997	2,772	1,912	37,977	29,968	-	-	8/	8/	8/	8/
Dry skim milk for animal feed	2,381	2,434	8/	8/	534	625	-	-	8/	8/	8/	8/
Dry buttermilk	19,646	19,643	148	87	1,485	1,252	-	-	1,881	911	8/	8/
Dry whey	18,439	15,108	-	-	4,782	3,295	-	-	-	-	-	-
Dry casein	3,777	2,714	-	-	-	8/	-	-	-	-	-	-
Frozen products: 7/												
Ice cream (wholesale)	13,298	14,130	3,210	3,548	15,135	15,791	2,025	1,909	5,714	6,096	679	652
Ice cream (retail)	721	633*	256	284	604	590*	848	812	498	511	44	52
Total ice cream	14,019	14,763*	3,466	3,832	15,739	16,381*	2,873	2,721	6,212	6,607	723	704
Sherbet (milk)	178	141	215	244	362	320	31	23	176	143	33	24
Ice milk	265	32	426	258	466	389	-	-	425	212	137	133
Frozen custards	-	11/	-	44	-	11/	-	-	-	6	-	-
Frosted or frozen malted milk	-	113	-	15	-	159	-	-	-	71	-	3
Other frozen dairy products 10/	179	-	56	-	247	-	-	-	99	-	-	-
Water ices	8/	-	135	-	305	-	-	-	51	-	8/	-
Ice cream mix	7,379	-	1,955	-	9,229	-	1,418	-	3,169	-	357	-

See end of table 7 page 13 for footnotes.

Continued

UPDATA 1981

TABLE 7-(Continued) PRODUCTION OF MANUFACTURED DAIRY PRODUCTS, BY STATE, 1949 and 1948

Manufactured Products	New Hampshire		New Jersey		New Mexico		New York		North Carolina		North Dakota	
	1949	1948	1949	1948	1949	1948	1949	1948	1949	1948	1949	1948
	1000 lb.	1000 lb.	1000 lb.	1000 lb.	1000 lb.	1000 lb.	1000 lb.	1000 lb.	1000 lb.	1000 lb.	1000 lb.	1000 lb.
Creamery butter	-	-	78	87	1,107	1,164	29,448	14,868	2,719	1,630	43,372	44,999
American type cheeses:												
Cheddar	-	-	87	-	-	-	33,694	22,316	87	87	-	-
Other Am. varieties (whole milk) 2/	-	-	-	-	87	87	5,660	8,314	-	-	-	-
Total Am. cheese (whole milk) 2/	-	-	87	-	87	87	39,354	30,630	87	87	-	-
Part skim	-	-	-	-	-	-	48	40	-	-	-	-
Swiss cheese (including block)	-	-	-	-	-	-	87	87	-	-	-	-
Munster cheese	-	-	-	-	-	-	-	-	-	-	-	-
Brick cheese	-	-	-	-	-	-	26	17	-	-	-	-
Limburger cheese	-	-	-	-	-	-	1,753	1,342	-	-	-	-
All Italian varieties of cheese	-	-	1,296	768	-	-	16,553	15,428	-	-	-	-
Cream cheese 3/	-	-	87	87	-	-	18,813	19,005	-	-	-	-
Neufchâtel cheese 4/	-	-	87	87	-	-	791	539	-	-	-	-
Blue mold cheese	-	-	-	-	-	-	-	-	-	-	-	-
All other varieties of cheese	-	-	-	-	-	-	7,089	6,302	-	-	-	-
Total cheese 5/	-	-	2/1,689	2/1,136	87	87	2/84,535	2/73,405	87	87	-	-
Full-skin Am. type cheese	-	-	-	-	-	-	84	133	-	-	-	-
Cottage cheese (curd) 6/	49	34	329	158	187	87	42,782	45,776	1,158	916	87	151
Cottage cheese (cream) 6/	87	45	1,891	1,052	87	87	27,628	22,103	572	529	194	184
Condensed milk (sweetened):												
Case goods (unskimmed)	-	-	-	-	-	-	13,032	16,806	-	-	-	-
Bulk goods (skimmed)	-	-	87	87	-	-	26,504	29,094	-	-	87	87
Bulk goods (unskimmed)	-	-	-	-	-	-	4,264	2,296	-	-	-	-
Plain condensed milk (unsweetened):												
Bulk goods (skimmed)	-	-	87	87	87	87	68,889	72,273	1,665	807*	-	87
Bulk goods (unskimmed)	-	-	87	87	-	-	57,636	37,821	87	-	-	-
Evaporated milk (unsweetened):												
Case goods (unskimmed)	-	-	-	-	-	-	66,638	70,987	87	87	-	-
Concentrated skim milk for animal feed	-	-	-	-	-	-	-	87	-	-	-	-
Condensed or evaporated buttermilk	-	-	-	-	87	87	87	87	-	-	87	87
Dry whole milk	-	-	-	-	-	-	21,635	15,918	-	-	-	-
Nonfat dry milk solids:												
Spray process	-	-	-	-	-	-	47,640	28,077	-	-	-	-
Roller process	-	-	87	-	-	-	44,405	21,868	-	-	87	87
Total for human food	-	-	87	-	-	-	92,045	49,945	-	-	87	87
Dry skim milk for animal feed	-	-	-	-	-	-	2,072	511	-	-	-	-
Dry buttermilk	-	-	-	-	-	-	346	146	-	-	2,406	2,634
Dry whey	-	-	-	-	-	-	14,191	10,949	-	-	-	-
Dry casein	-	-	-	-	-	-	4,188	1,126	-	-	-	-
	1000 gal.	1000 gal.	1000 gal.	1000 gal.	1000 gal.	1000 gal.	1000 gal.	1000 gal.	1000 gal.	1000 gal.	1000 gal.	1000 gal.
Frozen products: 7/												
Ice cream (wholesale)	1,007	1,022*	8,585	9,542	963	1,039	52,557	51,699*	12,479	13,316	2,071	2,136
Ice cream (retail)	202	228*	970	1,042	10	55	7,757	8,059*	951	1,115*	140	188
Total ice cream	1,209	1,250	9,555	10,584	973	1,094	60,314	59,758*	13,430	14,431	2,211	2,324
Sherbet (milk)	18	16	127	112	35	24	764	912	284	277	28	20
Ice milk	-	87	-	87	140	115	-	-	1,312	643	-	-
Frozen custards	-	117	-	47	-	3	-	-	-	117	-	-
Fronted or frozen malted milk	-	-	-	22	-	-	-	117	-	97	-	2
Other frozen dairy products 10/	87	-	43	-	63	-	-	-	82	-	87	-
Water ices	15	-	378	-	58	-	3,297	-	10	-	73	-
Ice cream mix	349	-	4,784	-	595	-	32,133	-	7,068	-	1,150	-

See end of table 7, page 23, for footnotes.

Continued

TABLE 7 - (Continued) PRODUCTION OF MANUFACTURED DAIRY PRODUCTS, BY STATES, 1949 and 1948

Manufactured products	Ohio		Oklahoma		Oregon		Pennsylvania		Rhode Island		South Carolina	
	1949	1948	1949	1948	1949	1948	1949	1948	1949	1948	1949	1948
	1000 lb.	1000 lb.	1000 lb.	1000 lb.	1000 lb.	1000 lb.	1000 lb.	1000 lb.	1000 lb.	1000 lb.	1000 lb.	1000 lb.
Creamery butter	68,865	52,535	30,241	31,332	17,489	17,411	13,098	9,482*	-	-	-	217
American type cheese:												
Cheddar	18,736	12,588	10,741	12,467	23,746	25,800	834	411	-	-	-	-
Other Am. varieties (whole milk) 1/	7,844	7,571	-	-	518	170	444	397	-	-	-	-
Total Am. cheese (whole milk) 2/	26,380	20,159	10,741	12,467	24,264	25,970	1,278	808	-	-	-	-
Part skim	8/	2,094	-	-	-	-	-	-	-	-	-	-
Swiss cheese (including block)	7,754	6,663	-	-	8/	8/	8/	686	-	-	-	-
Munster cheese	8/	-	-	-	-	-	-	-	-	-	-	-
Briek cheese	8/	39	-	-	-	-	-	-	-	-	-	-
Lisburger cheese	-	-	-	-	-	-	-	-	-	-	-	-
All Italian varieties of cheese	651	658	-	-	-	-	1,734	1,429	-	-	-	-
Cream cheese 3/	8/	8/	8/	-	-	-	3,644	3,574	-	-	-	-
Neufchatel cheese 4/	-	-	-	-	-	-	3,119	3,241	-	-	-	-
Blue mold cheese	-	8/	-	-	8/	8/	8/	8/	-	-	-	-
All other varieties of cheese	2,951	8/	-	-	8/	8/	8/	1,211	-	-	-	-
Total cheese 5/	9/44,387	9/36,098	9/11,597	9/12,566	9/24,691	9/26,570	9/11,341	9/10,919	-	-	-	-
Full-skin Am. type cheese	8/	612	-	-	-	-	-	-	-	-	-	-
Cottage cheese (curd) 6/	23,482	21,657	4,488	2,246	3,473	3,616	16,557	13,048	-	-	-	-
Cottage cheese (creamed) 6/	25,815	24,042	5,043	3,429	4,947	2,905*	8,477	5,765	8/	-	-	-
Condensed milk (sweetened):												
Case goods (unskimmed)	-	-	-	-	8/	8/	-	-	-	-	-	-
Bulk goods (skimmed)	19,988	26,521	783	1,732	8/	1,149	19,529	24,545	-	-	-	-
Bulk goods (unskimmed)	5,930	4,865	729	1,082	8/	8/	1,899	3,835	-	-	-	-
Plain condensed milk (unsweetened):												
Bulk goods (skimmed)	25,109	22,513	4,790	4,520	8/	8/	25,853	22,725	-	-	-	-
Bulk goods (unskimmed)	11,597	14,884	2,463	8/	-	-	21,177	20,813	-	-	-	-
Evaporated milk (unsweetened):												
Case goods (unskimmed)	280,213	332,965	8/	8/	8/	8/	44,091	52,508	-	-	8/	8/
Concentrated skim milk for animal feed	-	-	-	-	-	-	3,524	3,501	-	-	-	-
Condensed or evaporated buttermilk	21,567	19,324	3,160	3,044	-	-	3,045	8/	-	-	-	-
Dry whole milk	9,651	12,325	8/	8/	8/	8/	1,441	-	-	-	-	-
Nonfat dry milk solids:												
Spray process	31,025	18,045	8/	8/	6,977	4,325	9,185	4,592	-	-	-	-
Roller process	14,329	11,192	8/	8/	69	460	1,691	3,239	-	-	-	-
Total for human food	45,354	29,237	2,638	2,385	7,046	4,775	12,876	7,831	-	-	-	-
Dry skim milk for animal feed	914	423	8/	-	713	758	1,164	652	-	-	-	-
Dry buttermilk	1,803	1,231	1,012	1,196	8/	8/	-	-	-	-	-	-
Dry whey	-	-	692	568	8/	8/	-	-	-	-	-	-
Dry casein	8/	-	8/	8/	8/	-	8/	-	-	-	-	-
Frozen products: 7/												
Ice cream (wholesale)	30,572	31,619	5,866	6,386	5,577	5,362	62,864	63,703*	3,657	3,914	2,216	2,510
Ice cream (retail)	3,250	3,346*	378	350	726	754*	5,265	3,823	318	204	70	92
Total ice cream	33,822	34,965*	6,244	6,736	6,303	6,120*	68,129	67,526*	3,975	4,208	2,306	2,602
Sherbet (milk)	829	656	203	114	126	90	482	668	54	27	68	40
Ice milk	530	168	329	189	1,295	817	30	60	60	56	115	173
Frozen custards	-	11/	-	22	-	25	-	204	-	-	-	-
Frosted or frozen salted milk	-	310	-	144	-	50	-	152	-	8/	-	78
Other frozen dairy products 10/	514	-	154	-	33	-	542	-	14	-	8/	-
Water ices	940	-	8/	-	62	-	1,285	-	117	-	102	-
Ice cream mix	18,433	-	3,095	-	3,371	-	35,857	-	1,903	-	1,124	-

See end of table 7, page 19, for footnotes.

Continued

UPDATA 1981

TABLE 7 --(Continued) PRODUCTION OF MANUFACTURED DAIRY PRODUCTS, BY STATES, 1949 and 1948

Manufactured products	South Dakota		Tennessee		Texas		Utah		Vermont		Virginia	
	1949	1948	1949	1948	1949	1948	1949	1948	1949	1948	1949	1948
	1000 lb.	1000 lb.	1000 lb.	1000 lb.	1000 lb.	1000 lb.	1000 lb.	1000 lb.	1000 lb.	1000 lb.	1000 lb.	1000 lb.
Creamery butter	31,485	31,569*	13,839	13,518	13,618	12,731	5,515	5,485	1,581	798	7,501	7,303
American type cheeses:												
Cheddar	1,464	1,141	41,333	37,004	5,758	6,920	6,437	7,013	780	756	8/	8/
Other Am. varieties (whole milk) 1/	-	-	-	-	-	-	1	11	691	653	-	-
Total Am. cheeses (whole milk) 2/	1,464	1,141	41,333	37,004	5,758	6,920	6,438	7,024	1,471	1,409	8/	8/
Part skim	-	-	-	-	8/	8/	-	-	-	-	-	-
Swiss cheese (including block)	-	-	-	-	-	-	8/	8/	-	-	-	-
Monter cheese	-	-	-	-	-	-	-	-	-	-	-	-
Brick cheese	-	-	-	-	-	-	-	-	-	-	-	-
Lieberger cheese	-	-	-	-	-	-	-	8/	-	-	-	-
All Italian varieties of cheese	-	-	-	-	-	-	8/	8/	8/	8/	-	-
Cream cheese 3/	-	-	8/	8/	-	8/	-	-	-	8/	-	-
Boursin cheese 4/	-	-	-	-	-	-	-	-	-	-	-	-
Kine mold cheese	-	-	-	-	8/	8/	-	-	-	-	-	-
All other varieties of cheese	-	-	-	-	-	-	-	-	1,178	1,480	-	-
Total cheese 5/	1,464	1,141	2/44,545	2/40,091	2/ 5,778	2/9,217	2/11,342	2/11,687*	2/2,705	2/3,398	8/	8/
Part-skim Am. type cheeses	8/	8/	8/	-	-	-	-	-	486	270	-	-
Cottage cheese (cured) 6/	247	255	1,726	1,231	3,855	1,964	2,395	1,886	10,046	8,267	1,727	1,115
Cottage cheese (cream) 6/	501	503	2,087	535	5,368	3,933	3,443	2,660	8,660	5,628	866	8/
Condensed milk (sweetened):												
Case goods (unskimmed)	8/	8/	8/	8/	1,672	2,058	-	-	1,916	6,309	4,318	8,420
Milk goods (skimmed)	-	-	-	-	8/	8/	-	-	8/	8/	8/	8/
(unskimmed)	-	-	-	-	-	-	-	-	-	-	-	-
Plain condensed milk (unsweetened):												
Milk goods (skimmed)	-	-	13,740	16,611	16,997	9,666	2,152	901	8,068	7,076	24,058	22,425
(unskimmed)	-	-	-	8/	8/	8/	-	-	8/	8/	8/	2,814
Evaporated milk (unsweetened):												
Case goods (unskimmed)	-	-	128,829	136,198	28,439	28,957	61,680	70,885	-	-	8/	8/
Concentrated skim milk for animal feed	-	-	-	-	-	-	-	-	-	-	-	-
Condensed or evaporated buttermilk	3,070	3,542	8/	8/	8/	8/	-	-	-	-	-	-
Dry whole milk	-	-	409	-	-	-	8/	8/	8/	8/	8/	-
Nonfat dry milk solids:												
Spray process	-	-	8/	8/	8/	8/	5,177	4,309	13,812	5,963	6,221	2,156
Roller process	-	-	-	-	-	-	-	225	7,227	1,449	138	-
Total for human food	-	-	8/	8/	8/	8/	5,177	4,534	21,039	7,412	6,419	2,156
Dry skim milk for animal feed	-	-	-	-	96	8/	-	-	404	8/	657	561
Dry buttermilk	762	625*	-	-	174	133	-	8/	8/	8/	-	-
Dry whey	-	-	-	-	-	-	8/	8/	8/	8/	-	-
Dry casein	-	-	-	-	-	-	8/	8/	1,045	419	-	-
Total	-	-	-	-	-	-	-	-	-	-	-	-
Frozen products: 7/												
Ice cream (wholesale)	2,465	2,322	11,613	12,773	22,305	23,322	2,041	2,348	1,239	1,204	9,214	9,780
Ice cream (retail)	139	147*	527	469	435	835	539	366	56	54	539	666*
Total ice cream	2,604	2,469*	12,140	13,242	22,740	24,157	2,580	2,714	1,295	1,258	9,753	10,446*
Sherbet (milk)	69	33	292	313	845	1,123	76	73	16	10	296	73
Ice milk	8/	-	796	287	670	694	384	301	8/	8/	-	-
Frozen custards	-	11/	-	23	-	28	-	-	-	8/	-	11/
Frozen or frozen salted milk	-	27	-	115	-	193	-	65	-	-	-	26
Other frozen dairy products 10/	42	-	138	-	857	-	63	-	8/	-	36	-
Water loss	39	-	368	-	817	-	115	-	24	-	8/	-
Ice cream mix	1,250	-	6,774	-	13,770	-	1,374	-	1,638	-	6,006	-

See end of table 7, page 19, for footnotes.

Continued

TABLE 7 - (Continued) PRODUCTION OF MANUFACTURED DAIRY PRODUCTS, BY STATES, 1949 and 1948

Manufactured Product	Washington		West Virginia		Wisconsin		Wyoming		U. S. total 12/		Percent change
	1949	1948	1949	1948	1949	1948	1949	1948	1949	1948	
	1000 lb.	1000 lb.	1000 lb.	1000 lb.	1000 lb.	1000 lb.	1000 lb.	1000 lb.	1000 lb.	1000 lb.	
Creamery butter	20,708	19,630	1,536	1,614	168,214	99,992	2,002	2,078	1,412,101	1,210,324	+ 17
American type cheese:											
Cheddar	3,935	4,166	8/	8/	417,647	373,708	8/	8/	885,114	812,120*	+ 9
Other Am. varieties (whole milk) 1/	112	102	-	-	12,456	12,312	-	-	49,904	42,327	+ 18
Total Am. cheese (whole milk) 2/	4,047	4,268	8/	8/	430,103	386,020	8/	8/	935,018	854,447*	+ 9
Part skim	-	-	-	-	-	-	-	-	771	3,987	- 81
Swiss cheese (including block)	8/	8/	-	-	48,271	43,192	8/	8/	81,043	70,665	+ 15
Munster cheese	-	-	-	-	9,613	7,990	-	-	10,098	8,308	+ 22
Brick cheese	8/	8/	-	-	18,387	15,726	-	-	20,278	18,198	+ 11
Limburg cheese	-	-	-	-	3,528	3,637	-	-	7,180	7,358	- 2
All Italian varieties of cheese	8/	8/	-	-	27,771	19,492	-	-	55,127	43,579*	+ 26
Cream cheese 3/	8/	8/	-	-	-	-	-	-	-	-	-
Neufchatel cheese 4/	-	-	-	-	14,796	13,339	-	-	54,449	52,975	+ 3
Blue mold cheese	8/	8/	-	-	4,770	5,536	-	-	8,141	9,289	- 12
All other varieties of cheese	395	1,865	-	-	6,741	7,172	-	-	23,860	25,119	- 7
Total cheese 5/	9/5,920	9/6,824	8/	8/	563,980	502,104	8/2,286	8/1,557	1,200,011	1,098,366*	+ 9
Full-skin Am. type cheese	-	-	-	-	-	-	-	-	1,251	1,754*	- 29
Cottage cheese (curd) 6/	10,146	9,219	2,560	2,273	18,322	17,194	241	231	283,607	255,639*	+ 11
Cottage cheese (crowned) 6/	16,300	14,987	2,848	2,853	11,660	9,763	125	8/	286,766	249,236*	+ 15
Condensed milk (unsweetened):											
Case goods (unskimmed)	-	-	-	-	-	-	-	-	-	-	-
Bulk goods (skimmed)	3,044	2,697	8/	8/	23,103	35,041	-	-	100,902	126,295	- 20
Bulk goods (unskimmed)	248	1,465	8/	-	23,360	30,947	-	-	218,209	239,290*	- 9
Plain condensed milk (unsweetened):											
Bulk goods (skimmed)	1,802	604	8/	8/	104,477	88,412	-	-	535,844	494,036*	+ 8
Bulk goods (unskimmed)	4,153	4,168	8/	-	27,207	32,457*	-	-	202,073	200,485*	+ 1
Evaporated milk (unsweetened):											
Case goods (unskimmed)	66,551	92,182	8/	8/	578,578	875,123	-	-	2,755,780	3,382,893	- 19
Concentrated skim milk for animal feed	8/	8/	-	-	8/	8/	-	-	13,873	22,633	- 39
Condensed or evaporated buttermilk	8/	8/	8/	-	-	-	-	-	178,383	170,954	+ 4
Dry whole milk	8/	8/	-	-	45,648	73,336	-	-	125,541	170,087	- 26
Nonfat dry milk solids:											
Spray process	8,147	5,399	8/	8/	175,246	122,129	8/	8/	629,341	436,071	+ 44
Roller process	6,178	1,601	-	-	84,915	79,411	-	-	204,321	245,461	+ 28
Total for human food	14,325	9,002	8/	8/	260,161	201,560	8/	8/	933,662	681,532	+ 37
Dry skim milk for animal feed	596	319	-	-	4,658	3,306	-	-	21,244	13,145	+ 62
Dry buttermilk	8/	-	8/	8/	4,258	2,152	-	-	49,359	41,839*	+ 18
Dry whey	8/	8/	-	-	76,216	64,686	8/	-	158,957	125,185	+ 27
Dry casein	8/	974	-	-	2,954	1,862	-	-	18,348	14,372	+ 28
Frozen products: 7/											
Ice cream (wholesale)	6,301	6,811	5,617	6,084	13,543	14,014	526	627	506,803	525,161*	- 3
Ice cream (retail)	1,027	1,012	316	206	1,147	2,625	108	133	49,851	51,093*	- 2
Total ice cream	7,390	7,823	5,933	6,290	16,690	16,639	634	760	556,654	576,261*	- 3
Sherbet (milk)	121	113	304	245	172	164	33	7	13,573	12,211	+ 11
Ice milk	881	1,125	210	187	-	-	-	-	25,455	19,585	+ 30
Frozen custards	-	51	-	8/	-	-	-	8/	-	1,609*	-
Frosted or frozen malted milk	-	194	-	52	-	-	-	8/	-	3,377*	-
Other frozen dairy products 10/	97	-	87	-	-	-	-	-	7,103	-	-
Water ices	240	-	8/	-	455	-	8/	-	19,342	-	-
Ice cream mix	4,019	-	2,496	-	9,947	-	451	-	299,528	-	-

8/ Revised.
 1/ Includes Colby, Washed Curd, High and Low Moisture Jack, Monterey, and Grawlar.
 2/ Comparable with data published prior to 1944 under the designation of American Cheddar cheese.
 3/ Not less than 33 percent butterfat.
 4/ Butterfat content ranging from 20 to 32 percent, inclusive.
 5/ Excluding full-skin American and cottage cheese.
 6/ Cottage cheese curd includes cottage, pot, and baker's cheese with a butterfat content of less than 4 percent, made by reporting plants. Creamed cottage cheese includes cheese with a butterfat content of 4 to 19 percent. Cottage cheese curd and creamed cottage cheese should not be added together to get a total cottage cheese figure, for while some of the cottage cheese curd is sold direct for consumption without further processing a considerable part is creamed within the plant or shipped to another plant for creaming prior to sale.
 7/ The production shown for frozen products includes that made by all types of plants for both wholesale and retail.
 8/ Production by States not shown when made by less than 3 plants.
 9/ Sum of individual varieties does not equal total cheese since the production of some varieties is not shown separately when made by less than 3 plants.
 10/ Previous to 1949, separate figures were published on the production of frozen custards and frosted or frozen malted milk. Beginning with 1949, these two classifications were dropped and the production of frozen custards and frosted or frozen malted milk that did not meet the minimum standards for ice cream in States where produced were included in the classification "Other Frozen Dairy Products." Because of this, the 1949 production of "Other Frozen Dairy Products" is not comparable with similar classification in preceding years.
 11/ Frozen custard shown in the 1948 report has been included in ice cream since it met the minimum standards for ice cream in this State.
 12/ U.S. totals for all products include production for some States not shown separately in this table except ice cream for retail and total ice cream.

TABLE 3 - CHEDDAR CHEESE (made from whole milk) PRODUCED MONTHLY, BY STATES, 1949

State and division	Number plants	January	February	March	April	May	June	July	August	September	October	November	December	Total 1949
		1000 lb.	1000 lb.	1000 lb.	1000 lb.	1000 lb.	1000 lb.	1000 lb.	1000 lb.	1000 lb.	1000 lb.	1000 lb.	1000 lb.	1000 lb.
Vermont.....	•	1	-	5	2	226	324	157	22	13	24	2	4	780
New England.....	•	1	-	5	2	226	324	157	22	13	24	2	4	780
New York.....	98	781	700	1,935	3,557	7,524	7,298	3,582	1,486	2,067	2,876	1,186	842	33,694
Pennsylvania.....	9	14	12	14	105	264	178	32	29	22	55	48	61	834
Middle Atlantic 1/.....	108	795	712	1,949	3,662	7,800	7,489	3,614	1,415	2,089	2,931	1,194	903	34,553
Ohio.....	14	771	754	807	1,647	2,783	2,695	1,940	1,870	1,605	1,489	1,287	1,088	18,736
Indiana.....	22	1,888	1,830	1,759	2,590	3,813	3,712	3,025	2,937	2,400	2,029	1,701	1,390	29,074
Illinois.....	84	3,521	3,814	4,386	4,764	6,853	6,907	5,957	5,693	4,499	3,525	2,920	2,853	55,786
Michigan.....	27	1,570	1,172	1,578	1,771	2,553	2,664	2,294	2,084	1,870	1,515	1,115	1,143	20,829
Wisconsin.....	961	28,758	29,218	35,196	38,577	49,924	43,819	42,261	37,927	31,923	26,451	22,661	24,932	417,647
East North Central.....	1,108	36,068	36,748	43,720	49,349	65,926	65,797	55,477	50,511	42,297	35,109	29,684	31,406	542,072
Minnesota.....	53	4,898	4,886	5,674	5,640	6,547	6,109	4,197	3,454	3,057	2,938	3,205	3,704	54,309
Iowa.....	25	749	735	901	883	1,057	1,104	731	793	721	614	570	671	9,769
Missouri.....	45	3,039	2,814	3,571	5,122	7,238	7,308	7,757	7,982	6,731	5,000	4,084	3,462	64,108
South Dakota.....	•	103	93	140	135	188	194	159	104	78	75	78	117	1,464
Nebraska.....	•	122	134	152	167	226	208	145	106	51	8	8	9	1,336
Kansas.....	22	644	745	745	846	1,079	959	862	813	560	449	521	458	8,720
West North Central.....	144	9,544	9,467	11,233	12,793	16,382	15,835	14,031	13,252	11,198	9,084	8,466	8,421	139,706
South Atlantic 1/.....	5	71	56	73	99	226	302	319	313	273	219	148	99	2,198
Kentucky.....	19	1,275	1,165	1,294	2,367	3,350	3,086	2,988	3,278	3,031	2,998	1,523	899	26,354
Tennessee.....	28	1,883	1,884	2,528	3,922	5,622	4,974	5,184	5,242	3,927	2,573	2,062	1,772	41,333
Alabama.....	7	81	99	185	339	430	420	394	343	282	188	120	116	2,997
Mississippi.....	15	433	493	681	1,110	1,688	1,527	1,529	1,416	1,023	724	548	453	11,625
Arkansas.....	9	598	487	628	1,011	1,397	1,320	1,395	1,347	1,144	864	631	565	11,331
Oklahoma.....	15	739	850	960	1,127	1,564	1,373	1,042	945	619	518	485	519	10,741
Texas.....	14	316	356	449	606	792	749	657	532	402	340	275	284	5,758
South Central 1/.....	109	5,029	5,375	6,784	10,518	14,887	13,480	13,214	13,112	10,432	7,265	5,644	4,615	110,335
Montana.....	11	122	127	160	216	377	396	374	314	272	233	158	141	2,890
Idaho.....	21	1,180	1,015	1,210	1,382	1,962	1,875	1,613	1,551	1,339	1,166	962	1,003	16,258
Colorado.....	8	46	67	137	114	158	233	68	27	21	17	50	50	955
Utah.....	22	471	414	489	526	670	648	612	563	524	554	475	491	6,437
Mountain 1/.....	66	1,849	1,654	2,034	2,285	3,239	3,223	2,729	2,514	2,203	2,013	1,646	1,720	27,109
Washington.....	8	275	166	245	357	554	540	484	344	223	278	245	224	3,935
Oregon.....	38	595	767	1,393	2,413	3,490	3,332	3,050	2,638	1,967	1,742	1,260	969	23,746
California.....	6	23	12	8	36	182	150	96	30	20	7	25	91	680
Pacific.....	52	993	945	1,646	2,836	4,226	4,022	3,630	3,012	2,210	2,027	1,530	1,284	28,361
UNITED STATES.....	1,604	54,290	54,957	67,444	81,564	112,912	110,472	93,171	84,151	70,715	58,672	48,314	48,452	885,114

* Either 3 or 4 plants reporting.
 1/ Regional totals include production for some States not shown separately. Production omitted for States in which more than 3 plants reported.

TABLE 10—TOTAL AMERICAN CHEESE (made from whole milk) PRODUCED MONTHLY, BY STATES, 1949

State and Division	Number plants	January	February	March	April	May	June	July	August	September	October	November	December	Total 1949
		1000 lb.	1000 lb.	1000 lb.	1000 lb.	1000 lb.	1000 lb.	1000 lb.	1000 lb.	1000 lb.	1000 lb.	1000 lb.	1000 lb.	1000 lb.
Vermont.....	6	6	4	10	158	354	468	267	55	47	52	28	22	1,611
New England 1/.....	7	7	5	12	160	356	470	269	57	48	54	29	24	1,691
New York.....	113	1,011	953	2,310	4,110	8,324	8,186	4,027	1,637	2,582	3,748	1,199	1,067	39,354
Pennsylvania.....	11	27	23	39	143	132	254	87	70	59	85	71	88	1,278
Middle Atlantic 1/.....	125	1,038	976	2,349	4,253	8,668	8,453	4,114	1,707	2,641	3,833	1,470	1,159	40,657
Ohio.....	18	1,299	1,264	1,308	2,243	3,466	3,354	2,671	2,655	2,266	2,148	2,024	1,722	26,180
Indiana.....	27	2,499	2,357	2,376	3,459	5,122	4,880	4,073	3,938	3,263	2,781	2,287	1,919	38,910
Illinois.....	85	3,622	3,933	4,493	4,870	6,999	7,019	6,095	5,821	4,619	3,680	1,013	2,856	57,136
Michigan.....	39	1,314	1,375	1,842	2,102	3,046	3,235	2,732	2,543	2,349	1,937	1,440	1,455	25,370
Wisconsin.....	984	29,853	30,125	36,339	39,723	51,329	51,142	41,287	38,817	32,940	27,205	21,415	25,894	430,103
West North Central.....	1,153	38,507	39,054	46,358	52,397	69,962	69,621	58,868	51,770	45,437	37,770	32,205	33,950	571,699
Minnesota.....	53	4,38	4,686	5,674	5,640	6,547	6,109	4,197	3,454	3,057	2,938	3,205	3,704	54,309
Iowa.....	27	902	822	941	916	1,104	1,108	944	854	757	660	614	725	10,287
Missouri.....	45	3,039	2,814	3,571	5,122	7,238	7,308	7,751	7,982	6,735	5,002	4,084	3,462	64,114
South Dakota.....	•	103	93	140	135	182	194	155	104	78	75	78	117	1,464
Nebraska.....	•	123	135	154	169	209	211	148	112	59	13	14	16	1,383
Kansas.....	23	646	773	798	846	1,099	986	875	537	628	523	584	526	9,127
West North Central.....	156	9,611	9,873	11,278	12,828	16,445	15,916	14,090	13,343	11,314	9,211	8,579	8,550	140,677
South Atlantic 1/.....	5	71	56	73	99	226	302	315	313	273	219	148	99	2,198
Kentucky.....	19	1,275	1,165	1,294	2,367	3,350	3,086	2,988	1,278	3,631	2,098	1,521	897	26,354
Tennessee.....	28	1,683	1,884	2,528	3,922	5,622	4,974	5,184	5,242	3,921	2,531	2,062	1,772	41,317
Alabama.....	7	81	99	185	339	430	420	394	343	282	188	120	116	2,997
Mississippi.....	15	433	493	681	1,110	1,688	1,527	1,529	1,416	1,023	724	546	453	11,628
Arkansas.....	8	502	487	668	1,011	1,397	1,320	1,195	1,147	1,144	864	631	565	11,331
Oklahoma.....	15	739	850	960	1,127	1,564	1,373	1,042	945	619	518	405	519	10,741
Texas.....	14	316	356	469	606	792	749	657	532	402	340	275	284	5,782
South Central 1/.....	107	5,029	5,335	6,784	10,538	14,867	13,480	13,214	13,112	10,432	7,265	5,644	4,615	110,335
Montana.....	11	122	127	160	216	377	396	374	314	272	233	158	141	2,890
Idaho.....	21	1,289	1,144	1,374	1,566	2,080	2,052	1,777	1,664	1,502	1,300	1,104	1,139	17,991
Colorado.....	8	46	67	137	129	177	295	95	47	30	19	19	65	1,084
Utah.....	22	472	444	489	526	670	548	612	563	524	564	476	401	5,438
Mountain 1/.....	67	1,979	1,801	2,231	2,525	3,430	3,481	2,966	2,693	2,385	2,152	1,792	1,884	29,319
Washington.....	8	282	172	256	369	569	550	497	352	235	286	251	228	4,047
Oregon.....	18	695	767	1,441	2,503	3,559	3,395	3,116	2,638	1,967	1,814	1,329	1,040	24,264
California.....	16	267	262	372	470	533	470	403	280	241	225	100	107	4,135
Pacific.....	62	1,244	1,201	2,069	3,342	4,661	4,115	4,016	3,270	2,443	2,325	1,880	1,575	38,144
UNITED STATES.....	1,682	57,486	57,951	71,154	86,342	118,631	116,138	97,846	88,265	74,971	62,829	51,747	51,852	935,018

* Either 3 or 4 plants reporting.

1/ Regional totals include production for some States not shown separately. Production omitted for States in which less than 3 plants reporting.

TABLE 11--TOTAL CHEESE (excluding full-cream American and cottage) PRODUCED MONTHLY, BY STATE, 1949

State and Division	Number plants	January	February	March	April	May	June	July	August	September	October	November	December	Total 1949
		1000 lb.	1000 lb.	1000 lb.	1000 lb.	1000 lb.	1000 lb.	1000 lb.	1000 lb.	1000 lb.	1000 lb.	1000 lb.	1000 lb.	1000 lb.
Mont.	8	150	189	296	495	419	499	305	87	75	82	53	55	2,705
Massachusetts	8	182	175	204	256	190	177	130	145	166	174	205	253	2,257
Connecticut	•	18	16	22	29	21	24	30	26	22	22	24	24	280
New England 1/	20	366	391	539	797	663	730	486	273	287	297	292	343	5,464
New York	156	4,646	4,596	6,448	8,322	12,315	11,553	7,058	4,998	6,227	7,573	5,283	5,516	64,535
New Jersey	•	136	138	233	212	143	140	106	112	115	115	101	135	1,689
Pennsylvania	31	851	784	1,017	1,043	1,212	1,074	768	854	886	872	971	1,005	11,341
Middle Atlantic	191	5,633	5,518	7,694	9,577	13,670	12,771	7,932	5,964	7,228	8,560	6,355	6,654	97,565
Ohio	51	2,809	2,403	2,940	3,655	5,217	5,046	4,012	4,235	3,956	3,547	3,428	3,099	44,387
Indiana	28	2,459	2,357	2,378	3,477	5,127	4,880	4,093	4,007	3,364	2,793	2,309	1,933	39,172
Illinois	120	5,409	5,621	6,608	7,073	9,431	9,247	8,024	7,722	6,673	5,818	5,102	4,983	71,711
Michigan	44	1,392	1,464	2,013	2,243	3,191	3,393	2,844	2,682	2,481	2,042	1,514	1,574	26,477
Wisconsin	1,304	39,065	39,330	48,292	52,670	65,988	64,225	54,950	49,744	43,294	36,746	33,394	36,438	561,402
West North Central	1,547	51,134	51,175	62,231	69,118	87,949	86,791	73,963	68,390	59,772	50,946	49,547	44,071	756,127
Minnesota	57	5,129	5,116	5,918	5,822	6,744	6,315	4,336	3,543	3,163	3,029	3,336	3,966	56,457
Iowa	30	880	871	990	969	1,197	1,165	982	905	801	1,197	644	776	10,828
Missouri	46	3,042	2,816	3,574	5,124	7,271	7,338	7,759	7,985	6,734	5,004	4,087	3,465	64,203
South Dakota	•	103	93	140	135	184	194	159	104	78	75	78	117	1,464
Nebraska	•	124	135	154	170	229	211	148	112	59	13	14	16	1,185
Kansas	24	646	775	802	846	1,094	986	875	817	624	523	544	526	9,127
West North Central	165	9,884	9,806	11,578	13,066	16,724	16,209	14,259	13,526	11,467	9,332	8,743	8,466	141,464
South Atlantic 1/	5	72	56	73	99	226	302	319	313	273	219	148	99	2,199
Kentucky	19	1,275	1,165	1,294	2,367	3,350	3,086	2,944	3,278	3,031	2,094	1,523	899	26,354
Tennessee	28	1,989	2,222	2,870	4,169	5,842	5,138	5,454	5,492	4,176	2,735	2,361	2,097	44,545
Alabama	7	81	99	185	339	430	420	394	343	282	184	120	116	2,997
Mississippi	15	433	493	681	1,110	1,688	1,527	1,530	1,416	1,024	724	548	453	11,627
Arkansas	8	502	487	668	1,011	1,397	1,320	1,395	1,347	1,144	864	631	565	11,331
Louisiana	•	27	29	48	84	74	57	43	27	22	22	26	34	497
Oklahoma	15	739	850	1,027	1,226	1,651	1,457	1,119	1,024	704	603	569	624	11,597
Texas	16	317	357	450	606	793	751	659	539	403	342	276	285	5,778
South Central	111	5,363	5,702	7,223	10,912	15,225	13,756	13,582	13,466	10,790	7,576	6,054	5,077	114,726
Montana	11	122	127	160	216	377	396	374	314	272	231	158	141	2,890
Idaho	27	1,403	1,289	1,545	1,757	2,361	2,355	2,069	1,950	1,767	1,542	1,246	1,344	20,682
Wyoming	•	157	147	167	184	236	266	251	229	190	166	144	145	2,286
Colorado	11	137	143	214	245	312	336	202	131	97	69	78	124	2,088
Arizona	•	74	97	52	54	51	54	44	43	14	45	53	54	635
Utah	23	879	795	911	971	1,161	1,024	1,004	913	852	923	862	911	11,342
Mountains 1/	80	2,813	2,616	3,102	3,472	4,557	4,566	3,944	3,626	3,262	2,983	2,595	2,756	40,282
Washington	13	360	237	341	458	755	737	734	641	443	464	413	329	5,920
Oregon	40	702	773	1,473	2,567	3,632	3,454	3,164	2,679	1,994	1,842	1,349	1,054	24,691
California	36	705	665	863	921	961	911	851	746	670	703	746	772	9,573
Pacific	89	1,767	1,675	2,677	3,946	5,348	5,122	4,757	4,046	3,111	3,013	2,547	2,155	40,174
UNITED STATES	2,208	77,032	76,939	95,121	110,987	145,366	140,247	119,292	109,624	96,130	82,046	72,247	74,026	1,200,011

• Either 3 or 4 plants reporting.
 1/ Regional totals include production for some States not shown separately. Production omitted for States in which less than 3 plants reported.

TABLE 12-CYTAKE CHEESE CURD PRODUCED MONTHLY, BY STATE, 1949

State and division	Number plants	January	February	March	April	May	June	July	August	September	October	November	December	Total 1949
		1000 lb.	1000 lb.	1000 lb.	1000 lb.	1000 lb.	1000 lb.	1000 lb.	1000 lb.	1000 lb.	1000 lb.	1000 lb.	1000 lb.	1000 lb.
Maine.....	•	144	151	172	138	152	140	145	117	126	120	121	115	1,671
New Hampshire.....	•	3	3	4	5	5	5	4	4	4	4	4	4	49
Vermont.....	10	584	598	865	868	1,125	1,165	1,010	899	912	895	613	494	10,046
Massachusetts.....	6	55	22	23	12	11	12	10	9	10	9	10	4	187
Connecticut.....	8	27	31	29	72	69	80	77	71	59	57	62	62	754
New England 1/.....	31	819	824	1,151	1,106	1,371	1,409	1,259	1,110	1,119	1,092	837	686	12,799
New York.....	180	2,591	2,921	4,031	3,718	4,752	4,493	4,072	3,823	3,259	3,208	2,853	2,799	42,782
New Jersey.....	11	11	18	27	41	62	37	35	20	17	17	18	26	329
Pennsylvania.....	113	1,040	1,552	1,458	1,407	1,640	1,547	1,407	1,344	1,776	1,227	1,069	1,090	16,557
Middle Atlantic.....	304	3,642	4,501	5,518	5,166	6,664	6,077	5,514	5,197	5,052	4,452	3,940	3,915	59,668
Ohio.....	274	1,784	1,790	2,404	2,196	2,235	2,158	2,025	1,846	1,765	1,829	1,713	1,697	23,482
Indiana.....	90	682	686	838	789	853	847	792	750	650	630	569	568	8,664
Illinois.....	102	1,115	1,213	1,563	1,438	1,468	1,457	1,358	1,276	1,273	1,314	1,282	1,282	16,049
Michigan.....	118	1,419	1,170	1,775	1,519	1,581	1,641	1,392	1,392	1,333	1,397	1,325	1,350	17,645
Wisconsin.....	159	1,346	1,510	1,929	1,820	1,637	1,583	1,493	1,432	1,404	1,527	1,442	1,418	18,322
East North Central.....	743	6,346	6,569	8,509	7,562	7,774	7,686	7,222	6,716	6,425	6,697	6,131	6,315	84,152
Minnesota.....	27	514	515	612	553	578	568	561	537	470	528	493	445	6,390
Iowa.....	51	372	412	502	439	460	441	401	378	344	377	373	387	4,886
Missouri.....	43	580	621	934	741	698	705	677	618	565	524	516	516	7,768
South Dakota.....	10	19	20	25	26	26	26	22	16	20	17	15	15	247
Nebraska.....	26	147	162	229	201	212	208	226	210	180	200	196	190	2,361
Kansas.....	78	491	546	661	559	565	592	563	582	555	528	458	424	6,524
West North Central 1/.....	237	2,331	2,286	2,979	2,559	2,555	2,556	2,471	2,351	2,143	2,222	2,066	2,005	28,310
Maryland.....	7	186	197	322	351	257	265	246	214	198	211	204	193	2,744
Virginia.....	15	71	68	128	192	261	194	160	150	139	129	136	99	1,727
West Virginia.....	33	237	201	242	245	246	242	236	222	178	179	164	172	2,560
North Carolina.....	11	94	93	119	102	98	90	95	94	92	103	86	92	1,158
Georgia.....	5	6	7	10	10	12	11	13	12	10	10	11	12	124
Florida.....	8	93	89	113	92	84	84	47	77	55	50	55	47	886
South Atlantic 1/.....	62	717	685	966	924	994	902	834	823	704	713	687	646	9,595
Kentucky.....	22	328	335	466	428	435	411	420	398	378	387	374	358	4,718
Tennessee.....	26	97	104	159	172	172	173	172	162	142	136	126	125	1,726
Alabama.....	•	26	28	40	46	48	35	35	40	32	23	21	17	392
Arkansas.....	•	35	41	55	61	64	73	74	70	62	49	49	37	682
Louisiana.....	•	80	79	130	145	195	234	208	223	166	133	107	122	1,821
Oklahoma.....	40	259	264	375	387	342	366	361	384	340	442	489	479	4,488
Texas.....	22	207	255	342	294	365	365	351	350	332	355	333	304	3,855
South Central 1/.....	123	1,032	1,107	1,569	1,521	1,623	1,659	1,625	1,629	1,452	1,539	1,500	1,401	17,700
Montana.....	15	54	54	70	76	75	75	77	86	72	78	70	65	852
Idaho.....	13	46	50	72	70	69	80	85	77	63	61	65	55	793
Wyoming.....	8	19	20	23	22	23	22	24	24	17	13	17	17	241
Colorado.....	43	188	205	274	250	283	271	278	288	240	236	225	231	2,969
New Mexico.....	•	2	1	1	20	34	41	37	16	2	2	14	18	187
Arizona.....	•	90	89	111	97	102	87	79	73	69	66	61	57	981
Utah.....	12	169	163	239	231	217	219	220	205	193	187	182	170	2,395
Nevada.....	•	4	4	4	4	5	5	5	5	5	3	4	3	58
Mountain.....	101	572	586	794	770	808	800	806	774	660	646	638	616	8,470
Washington.....	26	702	651	894	893	964	926	911	869	852	817	788	819	10,146
Oregon.....	22	259	249	380	386	333	307	303	303	259	239	237	218	3,473
California.....	•	3,446	3,600	4,417	4,423	4,541	4,461	4,325	4,337	4,109	4,038	3,951	3,833	48,294
Pacific.....	117	4,407	4,540	5,691	5,702	5,838	5,694	5,539	5,329	5,220	5,095	4,986	4,870	62,913
UNITED STATES.....	1,738	19,665	21,138	27,177	25,296	27,627	26,783	25,266	23,939	22,775	22,456	20,957	20,497	283,607

• Either 3 or 4 plants reporting.

1/ Regional totals include production for some States not shown separately. Production omitted for States in which less than 3 plants reported.

TABLE 13-COTTAGE CHEESE, CREAMED, PRODUCED MONTHLY, BY STATES, 1949

State and Division	Number plants	January	February	March	April	May	June	July	August	September	October	November	December	Total 1949
		1000 lb.	1000 lb.	1000 lb.	1000 lb.	1000 lb.	1000 lb.	1000 lb.	1000 lb.	1000 lb.	1000 lb.	1000 lb.	1000 lb.	1000 lb.
Maine.....	•	164	189	206	165	176	163	165	161	143	138	136	123	1,929
Vermont.....	8	585	583	748	738	901	871	831	787	646	708	634	688	8,660
Massachusetts.....	6	41	38	44	30	32	34	27	26	25	24	25	30	376
Connecticut.....	8	34	42	72	71	74	85	84	77	65	61	62	63	790
New England 1/.....	27	825	853	1,072	1,007	1,186	1,156	1,109	993	881	934	859	906	11,781
New York.....	46	1,707	2,000	2,646	2,246	2,467	2,713	2,673	2,519	2,085	2,192	2,200	2,180	27,628
New Jersey.....	7	122	149	269	175	201	172	144	162	122	141	117	117	1,291
Pennsylvania.....	57	617	643	865	772	828	798	781	698	628	637	609	641	8,477
Middle Atlantic.....	110	2,446	2,792	3,780	3,393	3,496	3,683	3,558	3,379	2,835	2,970	2,926	2,938	37,996
Ohio.....	212	1,871	1,924	2,693	2,392	2,446	2,424	2,234	2,050	1,889	1,997	1,913	1,982	25,815
Indiana.....	65	541	537	672	675	682	677	643	593	563	573	537	548	7,241
Illinois.....	91	309	922	1,214	1,174	1,184	1,154	1,088	1,001	950	1,048	1,009	977	12,670
Michigan.....	156	1,808	1,736	2,270	2,004	2,025	2,062	1,951	1,736	1,627	1,751	1,723	1,700	22,393
Wisconsin.....	110	841	826	1,111	995	982	1,052	1,007	1,007	944	967	977	951	11,660
East North Central.....	634	5,970	5,945	7,960	7,240	7,319	7,369	6,923	6,387	6,013	6,336	6,159	6,158	79,779
Minnesota.....	25	670	659	839	749	764	780	722	692	589	628	601	548	8,241
Iowa.....	43	303	312	416	384	423	409	357	354	319	350	342	329	4,298
Missouri.....	37	553	622	957	771	723	754	726	677	614	628	602	644	8,261
North Dakota.....	5	13	14	17	17	20	19	18	15	15	15	13	15	194
South Dakota.....	12	36	48	53	44	45	44	43	37	37	34	35	35	501
Nebraska.....	28	224	251	339	311	300	306	314	289	262	269	251	228	3,344
Kansas.....	15	237	221	320	267	267	264	235	266	290	264	176	162	2,969
West North Central.....	165	2,046	2,107	2,941	2,543	2,542	2,577	2,416	2,339	2,126	2,191	2,019	1,961	27,808
Maryland.....	•	258	269	438	339	337	328	323	313	263	282	272	262	3,684
Virginia.....	5	11	13	53	99	133	120	94	89	75	64	66	49	866
West Virginia.....	33	250	211	279	277	268	267	251	234	212	207	194	198	2,848
North Carolina.....	10	43	44	57	49	49	45	47	48	47	49	44	50	572
Georgia.....	5	6	6	10	9	13	12	13	11	11	11	12	13	127
Florida.....	10	99	82	97	93	87	87	33	79	53	47	56	49	862
South Atlantic 1/.....	68	699	657	967	901	926	899	802	811	695	698	677	654	9,386
Kentucky.....	18	216	209	362	311	303	282	270	256	251	249	241	240	3,196
Tennessee.....	22	115	122	194	190	203	207	207	195	176	167	155	156	2,087
Alabama.....	•	18	19	24	24	24	23	22	27	25	20	19	18	263
Louisiana.....	•	52	55	80	93	104	114	113	115	109	96	74	74	1,079
Oklahoma.....	41	334	350	473	460	422	456	423	447	416	433	413	416	5,043
Texas.....	32	338	383	546	481	503	490	473	475	456	427	403	393	5,368
South Central 1/.....	123	1,085	1,159	1,710	1,596	1,606	1,615	1,552	1,557	1,468	1,425	1,337	1,327	17,437
Montana.....	13	68	72	92	99	95	97	87	105	84	85	83	82	1,049
Idaho.....	16	65	60	85	85	91	95	94	91	81	68	73	69	957
Wyoming.....	5	10	11	13	12	12	11	11	8	8	8	9	9	125
Colorado.....	26	84	87	171	154	143	149	172	177	147	164	159	160	1,767
Arizona.....	•	137	130	165	141	146	128	112	107	101	98	90	83	1,438
Utah.....	11	243	237	361	333	308	308	310	300	274	256	260	253	3,443
Nevada.....	5	8	9	9	9	10	10	11	10	9	9	9	8	111
Mountain 1/.....	81	630	621	916	854	826	823	819	817	721	706	698	684	9,115
Washington.....	28	1,245	1,193	1,519	1,485	1,547	1,498	1,384	1,428	1,270	1,268	1,254	1,209	16,300
Oregon.....	23	318	336	484	426	487	470	451	442	393	393	386	361	4,947
California.....	75	5,215	5,324	6,407	6,153	6,446	6,521	6,059	6,181	6,120	5,961	5,839	5,681	72,217
Pacific.....	126	6,778	6,853	8,410	8,374	8,489	8,489	7,894	8,051	7,783	7,622	7,479	7,251	93,464
UNITED STATES.....	1,334	20,479	20,987	27,756	25,708	26,381	26,611	25,073	24,334	22,522	22,882	22,154	21,879	286,766

• Either 3 or 4 plants reporting.

1/ Regional totals include production for some States not shown separately. Production omitted for States in which less than 3 plants reported

TABLE 14—PLAIN CONDENSED WHOLE MILK — MILK GOODS — (unsweetened) PRODUCED MONTHLY, BY STATES, 1949

State	Number plants	January	February	March	April	May	June	July	August	September	October	November	December	Total 1949
		1000 lb.	1000 lb.	1000 lb.	1000 lb.	1000 lb.	1000 lb.	1000 lb.	1000 lb.	1000 lb.	1000 lb.	1000 lb.	1000 lb.	1000 lb.
New York.....	22	1,246	1,437	4,291	4,106	4,297	5,537	9,376	8,627	6,230	4,199	3,641	4,649	57,636
Pennsylvania.....	13	851	894	1,315	1,999	2,588	2,573	2,499	2,565	1,455	1,465	1,501	1,472	21,177
Ohio.....	13	621	461	781	1,339	1,477	1,538	1,363	1,517	645	657	457	541	11,597
Indiana.....	7	885	789	1,408	1,318	1,413	1,375	1,547	1,532	1,740	1,666	1,256	1,352	16,281
Illinois.....	7	182	163	170	206	228	189	192	126	193	239	174	129	2,173
Michigan.....	8	900	803	892	577	673	698	1,180	967	567	423	362	362	8,181
Wisconsin.....	10	2,530	3,259	2,583	2,634	2,819	2,524	2,766	2,912	1,862	1,725	1,394	199	47,207
Missouri.....	7	357	258	432	394	236	237	187	215	87	111	149	143	2,606
Maryland.....	*	878	902	1,170	1,487	1,687	1,910	1,767	1,822	1,527	1,116	807	836	15,909
Oklahoma.....	*	12	12	120	117	352	180	282	425	311	226	238	188	2,463
Washington.....	5	73	188	363	457	596	586	554	528	347	159	143	159	4,153
California.....	13	617	681	1,160	1,232	1,629	1,145	1,614	1,678	1,804	1,370	1,682	1,339	15,951
All other States.....	19	326	231	1,255	1,937	2,439	2,749	3,035	2,329	1,282	478	296	422	16,779
UNITED STATES.....	129	9,278	10,066	15,540	17,803	20,434	21,241	26,282	25,237	18,042	13,978	12,151	12,011	202,073

* Either 3 or 4 plants reporting.

TABLE 15—PLAIN CONDENSED SKIM MILK — MILK GOODS — (unsweetened) PRODUCED MONTHLY, BY STATES, 1949

State	Number plants	January	February	March	April	May	June	July	August	September	October	November	December	Total 1949
		1000 lb.	1000 lb.	1000 lb.	1000 lb.	1000 lb.	1000 lb.	1000 lb.	1000 lb.	1000 lb.	1000 lb.	1000 lb.	1000 lb.	1000 lb.
Vermont.....	*	502	600	613	585	737	1,038	1,270	1,302	532	375	333	181	8,068
Connecticut.....	*	14	16	40	41	45	28	20	16	8	16	11	9	264
New York.....	39	4,091	4,071	5,401	6,514	8,795	9,619	6,972	6,740	4,246	4,874	4,136	3,430	68,889
Pennsylvania.....	30	998	1,127	2,089	2,523	3,035	3,863	3,886	3,301	2,037	1,052	1,052	675	25,853
Ohio.....	41	1,889	1,913	1,703	2,032	2,703	3,160	2,830	2,180	1,991	1,944	1,429	1,335	25,109
Indiana.....	14	929	715	624	657	1,561	1,605	1,998	1,680	923	888	737	783	13,029
Illinois.....	14	1,560	1,941	2,381	2,047	2,424	2,559	3,080	2,776	2,214	1,952	1,982	1,765	26,641
Michigan.....	22	2,088	2,418	2,514	2,127	2,853	3,238	2,769	2,401	1,415	1,541	1,167	1,188	25,719
Wisconsin.....	45	9,335	7,362	9,333	9,530	11,439	10,919	8,966	8,548	7,379	7,392	6,839	7,436	104,477
Minnesota.....	9	721	839	767	735	919	1,163	822	863	594	715	595	303	9,036
Iowa.....	13	798	952	858	974	1,272	1,346	1,304	1,144	629	553	468	516	10,814
Missouri.....	13	2,064	1,525	1,047	1,697	2,606	2,439	2,674	2,704	2,446	2,466	1,839	1,789	25,296
Nebraska.....	*	24	71	266	126	166	156	247	162	49	53	57	32	1,409
Kansas.....	12	1,845	1,623	1,669	2,177	2,811	3,097	3,030	3,489	3,370	2,820	2,334	2,022	30,287
Maryland.....	5	257	508	704	1,218	2,076	1,424	956	1,093	1,093	1,086	948	897	12,332
Virginia.....	11	1,346	1,223	1,546	1,572	2,228	2,490	2,970	2,860	2,578	2,890	1,614	1,377	24,098
North Carolina.....	5	63	66	70	126	273	228	228	284	122	76	70	81	1,665
Georgia.....	*	2	-	1	50	44	40	45	23	21	-	1	7	234
Kentucky.....	5	88	252	207	176	218	250	286	241	185	207	168	117	2,395
Tennessee.....	8	1,082	1,027	1,026	767	955	932	1,141	1,350	1,936	1,563	1,010	951	13,740
Alabama.....	*	87	123	220	315	343	292	302	272	206	149	96	84	2,489
Mississippi.....	*	354	275	369	470	641	631	709	725	633	597	564	456	6,420
Oklahoma.....	8	336	272	224	212	471	720	492	506	423	408	409	317	4,790
Texas.....	19	1,057	950	967	1,768	1,851	1,803	1,588	1,650	1,480	1,447	1,185	1,251	16,997
Colorado.....	*	13	16	71	90	126	130	98	82	80	58	58	58	880
Utah.....	*	126	113	180	159	201	247	236	239	176	162	149	154	2,152
Washington.....	7	30	23	68	148	224	217	257	230	211	144	118	132	1,802
California.....	27	3,863	3,982	5,858	5,735	6,262	6,314	6,395	5,032	5,195	4,517	4,543	4,505	62,981
All other States.....	14	666	763	436	492	449	443	618	499	457	1,131	1,113	891	7,978
UNITED STATES.....	395	36,248	34,766	41,258	45,043	57,728	60,389	56,144	53,257	42,629	40,661	35,015	32,712	535,844

* Either 3 or 4 plants reporting.

TABLE 16—EVAPORATED WHEAT MILK—CASE GOODS—(unseasoned) PRODUCED MONTHLY, BY STATES, 1949

State and division	Number plants	January	February	March	April	May	June	July	August	September	October	November	December	Total 1949
		1000 lb.	1000 lb.	1000 lb.	1000 lb.	1000 lb.	1000 lb.	1000 lb.	1000 lb.	1000 lb.	1000 lb.	1000 lb.	1000 lb.	1000 lb.
New York.....	5	904	1,853	6,951	8,362	17,171	16,221	5,780	2,581	2,275	1,929	1,338	1,273	66,638
Pennsylvania.....	•	1,265	1,562	2,878	4,547	6,432	6,617	5,287	3,558	3,155	2,862	1,881	2,084	34,051
Middle Atlantic.....	8	2,169	3,435	9,829	12,909	28,003	22,838	11,071	7,136	6,030	4,799	3,219	3,335	110,769
Ohio.....	12	15,877	14,714	80,303	26,064	36,054	38,274	38,080	29,534	22,109	17,264	14,065	13,875	280,213
Indiana.....	5	6,348	7,325	8,741	11,717	11,926	11,401	9,961	7,190	6,144	4,779	4,476	4,633	94,641
Illinois.....	10	13,371	13,251	15,757	16,927	21,673	20,197	17,002	14,282	9,803	8,349	5,927	9,513	166,052
Michigan.....	6	6,989	6,762	10,336	10,766	17,362	17,332	14,382	12,775	8,797	7,523	6,114	6,618	127,756
Wisconsin.....	10	18,186	41,029	50,011	55,267	73,251	73,896	60,031	50,617	40,677	32,615	28,229	36,537	578,578
East North Central.....	63	80,771	83,081	105,148	120,741	160,268	159,100	133,456	114,398	87,530	70,530	59,041	73,176	1,247,240
Iowa.....	•	3,153	3,191	4,303	3,836	4,918	4,803	3,249	2,588	2,099	2,077	2,165	2,783	39,165
Missouri.....	6	7,328	8,502	13,109	15,438	20,373	19,672	20,252	19,882	15,395	10,871	6,890	5,684	163,396
Kansas.....	•	3,543	3,337	5,120	5,850	7,709	6,652	6,284	5,312	3,584	2,761	3,491	3,491	56,517
West North Central 1/.....	14	16,876	18,271	25,592	27,945	36,343	34,472	32,009	29,809	22,331	17,053	12,841	13,131	286,713
South Atlantic 1/.....	6	5,480	4,714	6,129	11,995	20,949	21,236	19,836	20,672	18,090	13,541	8,746	6,980	158,369
Kentucky.....	•	8,396	8,001	12,000	18,001	25,367	24,847	25,447	25,188	20,535	14,012	9,701	8,319	199,879
Tennessee.....	•	3,736	3,896	5,080	18,678	18,177	18,718	19,224	16,201	12,086	7,732	4,907	4,304	128,629
Mississippi.....	•	1,772	2,213	3,194	5,978	7,837	7,177	7,429	6,669	4,856	3,401	2,395	1,921	54,652
Texas.....	•	1,223	1,447	2,356	3,369	3,821	3,558	3,580	3,166	2,152	1,638	1,026	1,017	28,430
South Central 1/.....	15	17,069	17,136	27,925	42,351	58,907	58,192	59,512	55,622	42,790	29,075	20,036	17,164	445,739
Utah.....	•	5,082	4,265	5,422	5,773	7,000	6,869	6,022	5,465	4,460	3,544	3,474	4,324	61,680
Mountain 1/.....	8	11,840	10,987	13,874	14,705	17,368	16,952	15,400	14,873	11,741	10,356	9,790	10,783	158,009
Washington.....	•	3,537	4,313	4,598	7,263	10,575	10,258	7,722	5,026	3,417	3,264	3,210	3,368	66,951
California.....	12	17,704	18,214	21,937	27,456	28,612	25,702	26,389	25,786	21,879	18,082	15,921	20,332	268,956
Pacific 1/.....	18	22,348	23,237	27,396	36,119	40,599	37,364	35,699	31,663	26,301	23,450	19,987	24,774	348,941
All other States.....	17	14,139	16,366	20,797	28,474	39,911	39,950	36,848	36,796	31,200	25,046	18,668	17,265	330,060
UNITED STATES.....	132	156,513	160,861	215,893	266,766	358,577	350,154	306,989	273,573	214,813	168,754	133,540	149,347	2,755,780

• Either 3 or 4 plants reporting.
 1/ National totals include production for some States not shown separately. Production omitted for States in which less than 3 plants reported.

TABLE 17—DRIED WHOLE MILK PRODUCED MONTHLY, BY STATES, 1949

State	Number plants	January	February	March	April	May	June	July	August	September	October	November	December	Total 1949
		1000 lb.	1000 lb.	1000 lb.	1000 lb.	1000 lb.	1000 lb.	1000 lb.	1000 lb.	1000 lb.	1000 lb.	1000 lb.	1000 lb.	1000 lb.
New York.....	7	449	548	1,553	1,647	3,262	2,969	1,814	2,166	2,690	1,200	731	2,606	21,635
Ohio.....	•	858	924	772	868	1,346	688	467	460	614	1,003	711	940	9,691
Indiana.....	5	378	146	164	354	472	467	435	610	464	139	234	372	4,835
Michigan.....	10	1,076	1,102	1,151	854	1,120	1,116	950	987	1,127	903	744	824	11,954
Wisconsin.....	26	5,479	4,303	4,350	4,166	4,991	3,459	3,758	3,363	3,077	3,196	3,028	2,522	49,648
Minnesota.....	7	2,196	1,281	2,083	2,487	1,929	1,887	3,107	1,385	705	542	941	1,529	20,072
California.....	8	182	358	634	349	438	370	1,283	632	623	976	426	497	6,768
All other States.....	14	282	69	152	467	844	716	514	473	787	383	301	850	5,578
UNITED STATES.....	80	10,900	8,731	10,859	11,592	14,402	11,672	12,328	10,076	10,067	8,042	7,112	9,540	125,541

• Either 3 or 4 plants reporting.

TABLE 18-SPLAT PROCESS BOWPAT DRY MILK SOLIDS (for human consumption) PRODUCED MONTHLY, BY STATES, 1949

State	Number plants	January	February	March	April	May	June	July	August	September	October	November	December	Total 1949
		1000 lb.	1000 lb.	1000 lb.	1000 lb.	1000 lb.	1000 lb.	1000 lb.	1000 lb.	1000 lb.	1000 lb.	1000 lb.	1000 lb.	
Vermont.....	*	591	565	1,191	1,461	1,951	1,594	1,170	925	1,025	1,400	889	1,050	13,812
New York.....	14	3,405	3,353	3,846	5,506	5,337	4,572	4,196	2,978	3,082	4,435	3,946	2,764	47,640
Pennsylvania.....	7	194	297	799	1,051	1,636	1,414	916	818	577	428	659	854	9,185
Ohio.....	11	1,172	1,328	2,070	2,304	3,627	3,434	3,135	3,575	3,309	2,646	2,204	1,983	31,025
Indiana.....	10	1,028	1,392	2,052	2,211	3,016	2,975	2,556	2,498	2,290	1,702	1,047	867	21,824
Illinois.....	*	233	353	457	322	477	447	261	177	249	237	245	157	3,925
Michigan.....	14	2,326	2,343	3,111	3,993	4,770	3,889	3,145	3,255	3,114	2,535	2,481	2,733	37,528
Wisconsin.....	19	11,884	12,548	16,460	17,690	20,305	19,635	16,385	15,275	12,006	9,122	10,249	13,707	175,246
Minnesota.....	32	11,647	12,146	13,524	13,823	15,619	14,023	9,727	8,523	6,950	6,007	6,356	9,396	127,775
Iowa.....	*	510	870	874	741	826	706	567	417	373	214	213	516	6,172
Missouri.....	*	1,651	1,730	1,794	2,812	4,278	3,934	3,672	3,609	2,528	1,917	1,488	1,410	31,037
Kansas.....	6	699	723	860	1,113	1,572	1,232	1,048	1,024	616	299	437	614	10,257
Virginia.....	*	26	11	310	345	815	1,074	740	794	851	406	205	439	6,221
Idaho.....	8	2,296	2,048	2,593	2,782	3,182	2,971	1,015	2,561	2,145	2,225	2,331	2,125	30,128
Utah.....	5	265	369	360	467	694	492	546	447	360	141	253	351	5,377
Washington.....	*	337	180	393	565	1,093	1,064	1,045	1,121	814	704	611	517	8,147
Oregon.....	*	86	109	267	336	1,119	1,251	1,080	687	473	401	740	427	6,977
California.....	17	1,793	1,605	3,253	5,196	5,733	5,541	5,190	4,904	3,042	2,843	2,101	3,070	48,413
All other States.....	11	540	669	903	1,466	1,697	1,237	1,094	1,179	620	435	420	593	11,054
UNITED STATES.....	209	40,770	42,481	54,900	64,620	77,607	72,423	59,883	54,696	44,334	38,499	36,051	41,073	629,341

* Either 3 or 4 plants reporting.

TABLE 19-SPLAT PROCESS BOWPAT DRY MILK SOLIDS (for human consumption) PRODUCED MONTHLY, BY STATES, 1949

State	Number plants	January	February	March	April	May	June	July	August	September	October	November	December	Total 1949
		1000 lb.	1000 lb.	1000 lb.	1000 lb.	1000 lb.	1000 lb.	1000 lb.	1000 lb.	1000 lb.	1000 lb.	1000 lb.	1000 lb.	
Vermont.....	7	266	346	725	857	1,135	1,134	676	334	367	513	372	522	7,227
New York.....	39	1,170	1,502	3,264	5,571	8,208	7,027	3,834	2,608	3,092	2,881	2,354	2,941	44,406
Pennsylvania.....	11	139	175	298	444	693	539	294	175	343	264	77	264	3,491
Ohio.....	17	663	802	1,047	1,486	2,049	1,839	1,404	1,494	1,465	918	590	572	14,329
Indiana.....	10	697	972	1,023	1,380	2,023	2,140	1,945	1,674	1,214	939	743	499	16,612
Illinois.....	13	344	460	674	1,101	1,491	1,325	978	1,025	661	405	352	109	9,338
Michigan.....	25	1,493	1,503	1,765	2,339	3,185	3,207	2,432	2,555	2,284	1,751	1,699	2,093	28,643
Wisconsin.....	26	4,582	5,257	7,658	10,071	13,127	11,994	9,418	7,038	4,324	3,235	3,162	4,921	84,935
Minnesota.....	33	4,052	4,454	6,252	5,891	7,165	6,184	4,651	3,240	2,222	2,233	2,041	3,620	53,215
Iowa.....	10	513	677	729	729	836	762	690	639	568	444	439	490	7,348
Missouri.....	7	416	466	634	834	727	735	754	790	737	445	416	350	6,940
Kansas.....	42	42	81	179	253	395	327	232	184	32	30	50	120	1,925
Maryland.....	5	57	185	454	887	1,414	1,040	547	901	662	434	36	531	7,368
Mississippi.....	*	72	110	253	381	436	385	391	320	356	72	61	115	2,772
Washington.....	9	60	45	273	571	1,146	1,097	907	743	500	441	196	159	6,178
Oregon.....	9	181	200	485	1,048	1,297	1,126	1,153	923	487	482	256	490	8,117
California.....	14	175	205	333	517	702	556	430	349	291	249	165	268	4,240
UNITED STATES.....	293	14,832	17,388	26,055	33,800	46,029	41,697	30,646	25,157	19,870	16,171	14,097	18,583	304,321

* Either 3 or 4 plants reporting.

TABLE 22-(Continued) PRODUCTION OF CERTAIN MANUFACTURED DAIRY PRODUCTS, UNITED STATES, BY MONTHS, 1935-1949

C
UPDATA
1981

Brick Cheese

Year	January	February	March	April	May	June	July	August	September	October	November	December	Total
	1000 lb.	1000 lb.	1000 lb.	1000 lb.	1000 lb.	1000 lb.	1000 lb.	1000 lb.	1000 lb.	1000 lb.	1000 lb.	1000 lb.	1000 lb.
1935	2,067	1,991	2,334	2,446	3,042	3,306	2,871	2,561	2,411	2,188	2,132	2,556	29,905
1936	2,429	2,263	2,615	2,721	3,311	3,559	2,751	2,179	2,112	2,277	2,085	2,134	30,436
1937	2,220	2,191	2,556	2,670	3,106	3,237	2,588	1,918	1,689	1,906	1,985	2,127	28,193
1938	1,863	1,676	1,871	2,149	3,030	2,894	2,498	2,157	1,889	2,086	1,921	2,033	26,067
1939	2,018	1,950	2,494	2,732	3,276	3,404	2,647	2,196	1,768	1,738	1,754	1,960	27,937
1940	2,003	1,951	2,243	2,381	2,973	3,265	2,414	1,835	1,621	1,644	1,654	1,982	25,966
1941	1,980	1,849	2,073	2,224	2,751	2,609	2,108	1,752	1,660	1,747	1,757	2,130	24,640
1942	1,822	1,758	1,933	1,963	2,268	1,669	1,411	1,294	1,301	1,408	1,337	1,424	19,588
1943	1,209	1,242	1,705	1,832	1,904	1,915	1,632	1,446	1,495	1,536	1,463	1,653	19,032
1944	1,884	1,801	1,864	1,805	1,921	1,584	1,104	924	803	898	828	828	16,244
1945	728	646	645	618	677	738	628	503	501	553	579	626	7,442
1946	582	516	573	552	686	735	650	632	702	812	894	1,109	8,443
1947	1,485	1,445	1,801	1,781	1,661	1,441	1,101	1,129	984	1,278	1,245	1,451	16,802
1948	1,628	1,689	1,461	1,383	1,715	1,715	1,370	1,201	1,163	1,421	1,600	1,786	18,198
1949	1,836	1,637	1,852	1,855	2,130	1,796	1,501	1,323	1,314	1,379	1,696	1,959	20,278

Minster Cheese

1935	713	647	717	713	739	707	518	490	517	609	622	625	7,617
1936	686	719	776	758	749	678	451	404	490	636	614	684	7,645
1937	736	656	795	693	722	613	515	400	420	595	647	658	7,450
1938	832	792	916	874	968	871	691	497	490	661	691	766	8,928
1939	699	719	752	716	656	588	440	385	384	492	580	621	7,032
1940	737	714	850	816	750	689	537	568	582	669	646	794	8,362
1941	679	651	865	813	657	540	475	421	447	599	668	611	7,426
1942	827	866	976	890	952	797	589	557	522	655	733	846	9,210
1943	917	914	1,127	837	511	507	494	494	564	701	816	1,064	8,946
1944	1,291	1,259	1,245	1,090	1,085	859	732	620	585	725	794	906	11,191
1945	931	747	634	447	444	497	461	302	452	663	807	929	7,314
1946	960	715	738	572	736	730	653	622	714	848	917	1,030	9,235
1947	873	832	1,213	1,008	866	757	686	573	531	660	798	934	9,731
1948	761	685	728	755	794	792	542	440	459	673	743	936	8,308
1949	802	792	1,103	1,027	885	823	656	655	662	839	916	938	10,098

All Italian Varieties of Cheese

1935	777	796	824	965	959	1,175	857	813	829	837	829	967	10,628
1936	883	791	1,024	1,127	1,202	1,161	938	854	937	943	734	767	11,361
1937	859	902	1,321	1,079	1,291	1,376	1,127	1,069	1,082	1,078	1,100	1,236	13,520
1938	1,106	1,087	1,302	1,660	1,514	1,440	1,353	1,331	1,279	1,447	1,402	1,540	16,461
1939	1,560	1,561	1,944	1,898	2,023	1,905	1,765	1,599	1,535	1,643	1,451	1,625	20,509
1940	1,655	1,802	2,440	1,980	2,009	2,002	1,942	1,816	1,757	2,112	2,389	3,098	25,002
1941	2,851	2,591	2,943	3,387	3,155	2,896	2,547	2,611	2,705	3,006	2,727	2,944	34,363
1942	2,955	2,996	3,973	3,775	3,109	2,719	2,496	2,450	2,354	2,420	2,530	3,139	34,916
1943	3,176	3,397	4,185	4,759	4,178	3,890	3,590	3,320	3,347	3,074	2,590	3,497	43,003
1944	3,692	4,034	4,755	4,569	3,981	3,086	2,809	2,749	2,701	2,973	3,044	3,369	41,762
1945	3,999	4,339	6,045	5,912	6,516	8,368	8,423	4,724	3,974	4,441	3,767	4,120	64,628
1946	5,061	4,907	6,740	8,073	8,967	9,570	7,917	6,438	5,195	4,066	3,887	4,220	75,388
1947	3,338	2,786	4,425	4,220	3,083	2,678	2,489	2,561	2,719	2,988	3,002	3,811	38,100
1948	3,414	3,465	4,975	3,941	4,191	3,622	3,028	2,840	2,823	3,347	3,540	4,393	43,579*
1949	3,994	4,318	5,698	6,137	5,190	4,235	3,886	4,004	4,192	3,867	4,214	5,392	55,127

* Revised.

Continued

TABLE 22--(Continued) PRODUCTION OF CERTAIN MANUFACTURED DAIRY PRODUCTS, UNITED STATES, BY MONTHS, 1935-1949

C
UPDATE
1981

Limburger Cheese

Year	January	February	March	April	May	June	July	August	September	October	November	December	Total
	1000 lb.	1000 lb.	1000 lb.	1000 lb.	1000 lb.	1000 lb.	1000 lb.	1000 lb.	1000 lb.	1000 lb.	1000 lb.	1000 lb.	1000 lb.
1935	425	401	543	744	1,089	1,216	1,022	935	909	859	719	673	9,535
1936	676	618	838	1,033	1,447	1,534	1,037	891	1,045	1,175	917	771	11,982
1937	614	531	557	490	899	1,120	832	643	638	697	589	555	8,165
1938	488	452	612	786	1,185	1,174	912	781	759	851	686	621	9,307
1939	555	506	661	837	1,152	1,034	827	768	731	722	609	569	8,971
1940	525	494	628	734	1,015	1,058	823	645	645	634	518	479	8,198
1941	478	424	742	922	922	894	696	680	665	754	645	617	8,088
1942	658	698	909	1,041	1,117	858	563	511	576	593	471	446	8,441
1943	372	377	526	529	664	792	674	556	626	661	458	418	6,653
1944	433	443	531	609	710	802	697	669	682	700	638	596	7,510
1945	613	554	697	762	928	938	847	762	755	753	623	545	8,777
1946	579	523	689	734	932	912	850	951	916	1,003	770	689	9,548
1947	559	583	891	841	936	899	570	390	386	617	512	569	7,753
1948	564	565	737	681	807	707	555	541	550	630	479	542	7,358
1949	580	626	745	612	596	490	450	497	629	613	690	652	7,180

Cream and Neufchatel Cheese

1935	3,586	3,028	3,669	3,315	3,198	3,539	2,682	2,764	2,984	3,271	3,466	3,469	38,971
1936	3,499	3,497	3,917	3,441	3,376	3,451	3,082	2,902	3,069	3,259	3,502	3,453	40,448
1937 1/	4,568	4,065	4,558	3,766	4,044	3,824	3,429	3,195	3,124	3,492	3,534	3,188	43,987
1938 1/	3,891	3,908	4,395	3,626	3,562	3,995	3,038	3,337	3,359	3,496	3,946	3,503	44,056
1939	3,894	4,418	4,849	3,647	3,995	3,765	3,615	3,857	3,504	3,932	4,198	4,287	47,961
1940 1/	4,339	4,347	4,666	4,056	4,515	3,672	3,797	3,635	4,031	4,405	5,038	4,682	51,183
1941 1/	4,922	4,812	5,260	3,965	4,410	3,982	3,370	3,219	3,613	4,139	4,063	4,257	50,012
1942 1/	4,190	4,103	4,461	3,781	4,184	3,748	3,476	4,079	3,402	4,050	3,930	4,150	47,554
1943	5,159	4,766	6,049	6,445	6,985	5,117	5,346	5,575	5,878	6,626	6,327	6,178	70,451
1944	6,467	5,069	5,440	5,459	4,659	4,688	4,134	4,269	5,123	5,275	4,926	4,930	60,440
1945	5,634	5,037	5,133	5,772	6,204	5,999	5,620	5,459	5,437	6,125	5,172	5,260	66,912
1946	6,095	6,238	7,139	7,492	7,554	7,300	6,902	5,729	5,976	7,307	6,022	5,049	78,803
1947	5,919	5,466	5,690	5,373	5,733	6,558	6,004	5,370	4,635	5,152	5,296	5,307	66,503
1948	5,511	4,715	5,344	4,990	5,333	4,835	3,309	3,968	4,169	4,965	4,759	4,878	56,816
1949	5,317	4,875	5,635	4,868	4,880	4,539	4,027	4,526	4,612	4,599	5,116	5,501	58,495

"Other Varieties" of Cheese (not including Cottage, Pot.& Bakers' Cheese)

1935	403	386	466	457	457	414	408	468	553	619	630	629	5,890
1936	658	561	715	543	551	516	485	493	563	782	683	684	7,234
1937	720	767	730	670	795	743	633	637	777	957	845	897	9,171
1938	874	874	972	839	878	914	862	964	886	947	958	1,087	11,055
1939	1,062	957	1,089	954	1,082	1,048	775	941	899	1,064	1,032	1,079	11,941
1940	859	829	884	784	901	885	796	873	1,008	1,139	1,210	1,272	11,440
1941	1,361	1,400	1,596	1,547	1,594	1,482	1,501	1,336	1,476	1,608	1,628	1,880	18,409
1942	1,882	1,778	1,762	1,648	1,516	1,417	1,267	1,406	1,461	1,742	1,677	1,879	19,435
1943 2/	1,754	1,640	2,083	2,013	1,924	1,661	1,447	1,489	1,661	1,796	2,454	2,178	21,788
1944 2/	1,899	1,748	2,005	1,987	1,947	1,569	1,468	1,418	1,439	1,687	1,732	1,760	20,659
1945 2/	2,058	1,973	2,230	2,151	2,318	2,141	1,911	1,788	1,885	2,430	2,274	2,455	25,624
1946	3,090	3,381	5,824	8,563	6,440	5,938	4,822	3,393	3,076	3,127	2,772	2,398	52,824
1947	2,254	2,366	2,378	2,103	1,917	1,891	1,932	1,696	1,792	1,956	1,874	2,082	20,241
1948	2,294	2,383	2,507	2,428	2,536	2,192	1,510	1,545	1,914	1,899	2,193	2,318	27,719
1949	2,197	1,838	2,231	2,273	2,124	1,817	1,648	1,861	2,084	2,064	1,933	1,790	23,860

1/ Cream cheese only.

2/ Excludes Blue Mold cheese production which was not gathered separately prior to 1943. Annual production Blue Mold excluded was: 1943 - 8,036,000 pounds; 1944 - 6,835,000 pounds; and 1945 - 9,828,000 pounds.

Continued

608

TABLE 22--(Continued) PRODUCTION OF CERTAIN MANUFACTURED DAIRY PRODUCTS, UNITED STATES, BY MONTHS, 1935-1949

Year	Sweetened Condensed Whole Milk (Case)												
	January	February	March	April	May	June	July	August	September	October	November	December	Total
	1000 lb.	1000 lb.	1000 lb.	1000 lb.	1000 lb.	1000 lb.	1000 lb.	1000 lb.	1000 lb.	1000 lb.	1000 lb.	1000 lb.	1000 lb.
1935.....	4,546	4,797	4,820	6,201	4,519	4,694	3,923	4,394	3,824	3,711	3,630	3,926	52,985
1936.....	3,741	3,939	3,970	4,473	4,695	4,098	3,863	4,472	4,269	3,041	3,241	3,559	47,361
1937.....	4,208	3,593	3,491	3,612	4,702	4,354	3,977	3,888	3,875	4,200	3,341	4,205	47,446
1938.....	3,646	3,171	4,104	4,689	4,601	3,139	3,053	3,162	2,981	2,757	3,323	2,933	41,539
1939.....	3,218	2,998	3,074	3,037	2,736	2,607	2,777	2,374	4,227	3,251	2,284	2,149	34,732
1940.....	2,557	3,313	2,770	4,606	5,957	6,774	6,062	6,552	7,711	6,147	6,256	6,256	61,955
1941.....	7,015	7,050	10,300	10,535	11,628	10,675	11,575	10,784	9,915	10,167	8,412	6,682	114,772
1942.....	2,974	3,719	5,052	3,915	4,006	5,658	6,746	7,964	6,018	4,959	4,655	6,787	62,453
1943.....	7,995	8,405	9,416	10,987	11,636	12,340	10,270	9,990	9,376	9,862	8,382	8,588	117,247
1944.....	6,795	9,451	11,823	13,982	16,323	16,344	12,835	11,801	10,472	9,754	8,933	8,632	139,145
1945.....	9,542	8,541	11,242	13,939	15,775	15,384	14,224	13,625	11,806	11,086	9,308	8,834	143,306
1946.....	8,689	8,255	9,997	11,816	12,532	12,759	10,746	10,367	8,183	7,506	6,271	6,785	113,906
1947.....	9,047	7,857	9,581	11,593	12,917	12,961	16,427	19,440	21,685	18,988	12,846	11,391	164,733
1948.....	9,613	9,501	10,857	13,804	12,916	11,570	10,521	11,725	9,680	8,329	8,477	9,932	126,295
1949.....	9,269	10,888	12,999	11,670	10,481	9,749	8,132	7,959	5,721	4,580	4,513	4,941	100,902

Nonfat Dry Milk Solids (for human consumption)

1935.....	11,854	11,795	15,232	17,272	22,723	24,100	17,570	16,899	15,364	13,015	9,902	11,805	187,531
1936.....	13,319	13,410	16,601	19,542	25,165	27,266	19,124	17,019	18,448	19,822	16,129	17,982	223,827
1937.....	16,495	15,790	19,671	22,211	28,848	29,611	24,442	19,635	17,646	16,049	13,731	18,382	244,511
1938.....	20,327	18,724	23,455	27,580	34,555	32,482	27,621	23,212	22,762	22,548	17,154	18,701	289,121
1939.....	20,108	18,461	22,502	24,048	30,666	31,489	24,360	20,260	18,848	18,013	18,041	21,124	267,860
1940.....	24,495	23,374	27,442	29,036	35,358	38,578	31,094	26,631	22,157	22,564	22,088	21,943	321,843
1941.....	25,714	25,715	31,142	34,449	43,781	41,780	31,953	29,293	27,016	25,253	22,812	27,543	366,455
1942.....	33,900	36,198	47,429	54,868	71,617	68,846	58,696	52,999	43,646	36,664	28,626	31,929	566,414
1943.....	35,820	37,302	48,972	56,700	68,325	66,768	54,425	42,985	32,942	24,121	18,285	22,975	509,620
1944.....	26,006	28,877	48,771	59,598	77,948	80,204	67,379	51,969	41,249	35,685	29,551	35,675	582,912
1945.....	42,522	42,833	59,214	70,831	88,475	87,982	70,288	51,852	40,814	31,492	24,581	31,662	642,546
1946.....	38,762	41,191	57,533	72,816	93,952	90,038	74,003	56,005	38,319	28,829	25,023	36,994	653,465
1947.....	44,774	49,643	66,515	74,341	88,911	95,472	81,322	51,885	41,286	31,157	20,586	32,049	677,941
1948.....	38,053	40,118	55,683	69,196	95,089	94,890	69,502	52,977	39,892	38,779	37,173	50,180	681,532
1949.....	55,602	59,865	80,955	98,420	123,636	114,120	90,527	79,853	64,204	54,670	50,148	61,662	933,682

Dry Skim Milk (for animal feed)

1935.....	6,235	6,200	7,420	9,927	14,453	15,710	12,836	10,315	9,356	7,145	4,470	5,908	109,975
1936.....	7,445	7,450	9,504	11,447	14,872	16,002	12,530	9,895	10,008	9,867	7,883	8,820	125,723
1937.....	9,773	9,907	13,029	13,584	17,580	16,120	11,804	8,254	6,820	5,469	7,247	8,247	127,692
1938.....	10,573	12,361	15,716	17,437	21,010	20,293	15,470	10,781	10,749	8,919	7,493	9,368	160,170
1939.....	11,011	10,445	12,844	14,943	18,929	17,316	12,543	8,799	8,660	7,947	7,126	9,957	140,520
1940.....	10,931	11,148	14,987	17,776	20,585	19,604	13,705	11,935	10,685	10,556	8,462	9,528	159,962
1941.....	9,800	9,349	12,331	13,774	15,835	14,363	9,824	7,620	5,987	3,930	3,500	3,729	110,042
1942.....	4,462	4,683	6,199	6,939	8,158	7,567	6,359	5,396	3,625	3,072	2,387	2,301	61,148
1943.....	1,974	1,597	2,406	2,708	3,303	3,512	2,761	1,851	1,393	1,017	791	876	24,279
1944.....	759	841	1,105	1,506	2,442	2,737	1,877	1,510	1,135	966	649	880	16,407
1945.....	1,425	1,011	1,425	1,853	2,516	3,159	2,251	1,493	1,053	637	409	463	17,508
1946.....	276	582	1,015	1,691	2,295	2,424	1,649	1,249	784	418	400	661	13,704
1947.....	676	857	1,701	2,351	3,182	3,935	3,636	2,438	1,432	825	524	592	22,149
1948.....	687	710	962	1,158	2,040	1,982	1,408	1,193	860	822	581	742	13,145
1949.....	1,570	1,348	1,901	2,254	2,927	2,842	2,172	1,599	1,290	1,148	1,000	1,193	21,244

Continued

CS


 UPDATA
 1981

TABLE 22 -(Continued) PRODUCTION OF CERTAIN MANUFACTURED DAIRY PRODUCTS, UNITED STATES, BY MONTHS, 1935-1949

Year	Total Dry Skim Milk (for human food and animal feed)												
	January	February	March	April	May	June	July	August	September	October	November	December	Total
	1000 lb.	1000 lb.	1000 lb.	1000 lb.	1000 lb.	1000 lb.	1000 lb.	1000 lb.	1000 lb.	1000 lb.	1000 lb.	1000 lb.	1000 lb.
1935	18,089	17,995	22,652	27,199	37,176	39,810	30,406	27,214	24,720	20,160	14,372	17,713	297,506
1936	20,764	20,860	26,105	30,989	40,037	43,268	31,654	26,914	28,456	29,689	24,012	26,802	349,550
1937	28,268	25,697	32,700	35,795	46,428	45,731	36,246	27,889	25,751	22,869	19,200	25,629	372,203
1938	30,900	31,085	39,171	45,017	55,565	52,775	43,091	33,993	33,511	31,467	24,647	28,069	449,291
1939	31,119	28,846	35,346	38,991	49,595	48,805	36,903	29,059	27,508	25,960	25,167	31,081	408,380
1940	35,426	34,518	42,429	46,812	55,943	58,242	44,799	38,566	32,842	33,120	27,492	31,616	481,805
1941	35,514	35,064	43,473	48,223	59,616	56,143	41,777	36,913	33,003	29,183	26,316	31,272	476,497
1942	38,362	40,881	53,628	61,807	79,775	76,413	65,055	58,395	47,271	39,736	31,009	34,230	626,562
1943	37,794	38,899	51,468	59,408	71,628	70,280	57,186	44,836	34,335	25,138	19,076	23,851	533,899
1944	26,765	29,718	49,876	61,104	80,390	82,941	69,256	53,479	42,384	36,651	30,200	36,555	599,319
1945	43,760	43,844	60,639	72,684	90,991	91,141	72,539	53,345	41,867	24,990	24,990	32,125	660,054
1946	39,338	41,773	58,548	74,507	96,207	92,462	75,652	57,254	39,103	29,247	25,423	37,655	667,169
1947	45,450	50,500	68,216	76,692	92,093	99,407	84,958	54,323	42,718	31,962	21,110	32,641	700,090
1948	38,740	40,828	56,645	70,354	97,129	96,872	70,910	54,170	40,752	39,601	37,754	50,922	694,677
1949	57,172	61,213	82,856	100,674	126,563	116,962	92,699	81,452	65,494	55,818	51,148	62,855	954,906

Dry Casein (Skim Milk or Buttermilk Product)

1935	2,414	2,275	3,000	3,677	4,582	5,321	4,315	3,390	2,808	2,288	1,733	1,835	37,638
1936	2,186	2,621	3,583	4,516	5,721	5,975	4,717	3,699	3,550	3,356	2,773	3,043	46,140
1937	4,244	4,182	6,618	7,423	8,822	10,077	6,987	5,055	4,294	3,736	2,853	3,196	67,467
1938	3,143	2,720	3,385	4,384	6,234	5,986	4,437	4,775	4,775	3,670	2,676	2,692	48,549
1939	2,774	2,744	3,668	4,178	5,120	5,011	3,550	2,832	2,678	3,139	2,561	2,623	40,878
1940	2,712	2,921	3,866	4,818	6,336	6,486	4,825	3,631	3,354	2,962	2,601	3,105	46,616
1941	3,373	3,400	3,995	4,682	6,075	6,175	4,630	3,912	3,412	2,890	2,317	2,465	47,346
1942	3,040	3,451	4,468	4,975	6,840	6,320	4,014	3,037	2,267	1,098	1,693	1,085	42,268
1943	1,044	951	1,316	1,785	2,672	3,686	2,319	1,435	1,154	909	519	596	18,386
1944	900	980	1,231	1,647	2,423	2,986	1,731	988	763	661	428	526	15,264
1945	633	621	995	1,411	2,086	2,425	1,687	915	675	438	215	232	12,333
1946	303	388	632	1,162	2,410	3,395	2,507	1,447	1,154	1,122	1,402	2,397	18,319
1947	3,003	2,853	3,281	3,385	4,161	4,918	3,864	3,730	2,911	2,087	893	805	35,831
1948	898	861	1,221	1,839	2,443	2,311	1,363	910	775	697	474	560	14,372
1949	922	1,442	1,808	2,375	3,143	2,531	1,413	1,143	846	805	800	1,066	18,294

Dry Whole Milk

1935	1,268	1,248	1,572	1,549	1,869	2,314	1,633	1,920	2,057	1,693	1,391	918	19,432
1936	752	843	1,171	1,316	2,522	2,872	1,850	1,664	1,559	1,479	1,018	1,018	18,180
1937	824	938	915	939	991	1,452	1,144	849	1,789	1,824	1,151	1,260	13,676
1938	1,202	1,393	1,661	1,458	1,974	2,373	3,302	2,464	1,114	1,423	1,707	1,425	21,496
1939	1,167	1,243	1,975	1,902	2,411	2,570	2,133	1,908	2,412	2,328	2,086	2,337	24,472
1940	2,047	1,257	2,048	2,260	3,706	3,630	3,752	2,143	1,883	2,273	2,216	2,194	29,409
1941	3,126	3,175	3,933	3,726	4,070	4,294	3,749	4,196	3,265	3,170	4,340	4,340	45,627
1942	4,080	2,678	4,697	4,409	4,739	5,871	5,624	5,425	6,238	6,821	4,488	7,097	62,167
1943	9,777	9,339	11,888	12,601	14,866	17,006	13,189	9,912	10,375	9,356	8,181	11,276	137,766
1944	14,447	16,135	13,114	16,161	18,720	20,090	16,560	13,136	13,437	12,905	10,318	12,731	177,754
1945	13,963	13,784	19,430	22,336	27,090	26,894	21,229	21,229	12,808	12,158	11,512	12,013	217,276
1946	12,892	12,159	15,377	17,525	23,647	24,784	19,825	17,839	13,418	10,507	8,752	11,681	188,406
1947	13,901	12,298	11,296	11,773	16,715	17,450	17,823	15,656	14,421	14,361	9,617	9,577	164,688
1948	12,071	12,174	12,433	14,897	20,348	19,827	19,345	17,175	12,929	11,773	7,962	9,153	170,087
1949	10,900	8,731	10,859	11,592	14,402	11,672	12,328	10,076	10,087	8,242	7,112	9,540	125,541

Continued

TABLE 22--(Continued) PRODUCTION OF CERTAIN MANUFACTURED DAIRY PRODUCTS, UNITED STATES, BY MONTHS, 1935-1949

Year	Ice Cream (Wholesale)												
	January	February	March	April	May	June	July	August	September	October	November	December	Total
	1000 gal.	1000 gal.	1000 gal.	1000 gal.	1000 gal.	1000 gal.	1000 gal.	1000 gal.	1000 gal.	1000 gal.	1000 gal.	1000 gal.	1000 gal.
1935	-	-	-	-	-	-	-	-	-	-	-	-	-
1936	-	-	-	-	-	-	-	-	-	-	-	-	-
1937	-	-	-	-	-	-	-	-	-	-	-	-	-
1938	-	-	-	-	-	-	-	-	-	-	-	-	-
1939	11,395	12,447	17,733	21,963	27,688	33,463	36,968	37,634	22,001	17,098	13,457	11,650	263,497
1940	11,896	12,311	17,816	20,969	32,308	36,158	38,836	36,685	26,728	17,974	13,569	13,282	278,532
1941	10,995	13,764	17,522	22,607	31,441	36,103	42,065	36,838	25,760	20,226	15,346	14,432	287,099
1942	15,229	15,072	19,616	29,361	37,999	41,222	47,814	41,671	32,523	24,707	17,580	18,198	340,992
1943	16,709	17,600	24,622	32,633	38,975	48,799	56,542	50,602	41,394	32,921	27,149	21,223	409,169
1944	17,879	17,519	23,031	28,913	34,559	42,995	49,040	45,028	36,698	29,035	24,292	19,949	368,938
1945	17,860	18,669	24,140	29,826	39,753	52,236	54,362	46,396	37,347	29,445	24,612	19,477	394,123
1946	18,229	18,508	24,334	29,533	35,354	44,335	47,919	44,546	51,248	43,695	37,275	29,213	424,289
1947	36,310	36,984	48,340	57,312	62,853	73,242	83,707	71,107	56,004	50,849	39,962	34,871	651,541
1948	34,865	34,009	40,700	48,703	57,363	61,910	69,377	70,986	56,675	44,172	29,637	28,582	576,979
1949	27,940	28,330	40,094	46,047	50,768	60,647	66,389	60,324	50,879	33,554	31,616	28,580	525,168*
1949	26,885	29,172	37,909	41,556	51,602	60,568	62,659	60,826	42,696	35,356	30,743	26,631	506,803

Total Ice Cream (Retail & Wholesale)

1935	7,645	8,301	12,333	14,944	20,988	25,710	33,101	29,136	16,782	12,411	9,865	8,169	199,385
1936	8,362	8,452	14,633	17,308	23,833	32,313	39,550	34,050	23,425	14,537	11,084	11,004	243,551
1937	11,777	12,169	16,379	22,064	31,511	37,861	42,404	39,720	25,684	16,185	13,303	11,854	280,901
1938	12,183	13,299	18,932	23,465	29,553	35,783	39,618	40,318	23,568	18,337	14,415	12,508	281,939
1939	13,067	13,510	19,487	22,940	35,183	39,432	42,372	40,089	29,229	19,719	14,912	14,582	304,522
1940	12,231	15,276	19,467	25,029	34,717	39,915	46,466	40,798	28,633	22,456	17,021	16,079	318,088
1941	17,048	17,336	22,568	33,491	43,450	47,327	54,681	47,809	37,140	28,088	20,126	20,741	390,175
1942	19,004	19,970	27,994	37,107	44,350	55,404	64,336	57,639	46,769	37,128	30,442	24,003	464,146
1943	19,943	19,567	25,606	32,219	38,687	48,139	54,928	50,477	40,853	32,210	26,877	22,120	411,626
1944	20,167	21,055	27,234	33,656	44,837	58,789	61,357	52,463	41,916	33,169	27,612	21,943	444,198
1945	20,460	20,900	27,450	33,417	39,961	50,353	54,538	50,445	56,881	48,331	41,166	32,455	476,357
1946	39,603	40,281	52,788	62,595	68,980	80,446	91,958	78,190	61,607	55,464	43,599	38,083	713,594
1947	37,806	36,846	44,288	53,011	62,733	68,025	76,445	77,982	61,792	48,137	32,470	31,261	630,766
1948	30,394	30,847	43,510	50,320	55,677	66,721	73,287	66,718	55,877	36,953	34,622	31,335	576,261*
1949	29,317	31,791	41,310	45,647	56,355	66,758	69,173	67,027	46,943	38,828	33,713	29,292	556,654

Sherbet (Excluding water ices)

1935	108	125	176	241	385	505	662	608	301	198	150	127	3,586
1936	147	155	251	352	618	742	979	819	490	300	222	197	5,272
1937	183	211	306	490	801	964	965	840	516	297	228	191	5,992
1938	213	223	361	503	656	828	905	932	517	375	288	245	6,046
1939	540	519	761	1,034	1,421	1,712	1,884	1,815	1,600	1,057	803	647	13,793
1940	249	305	441	640	945	1,147	1,305	1,115	704	539	367	332	8,089
1941	310	316	445	660	988	1,072	1,251	1,078	734	520	362	324	8,060
1942	310	333	475	675	831	1,078	1,371	1,165	864	629	466	575	8,772
1943	1,956	2,667	3,330	4,097	4,674	6,359	6,544	6,134	4,274	2,851	2,239	2,093	47,218
1944	2,373	3,262	4,107	4,337	5,644	5,628	5,444	6,218	4,322	3,211	2,727	2,208	49,447
1945	2,628	3,423	6,828	7,929	7,956	9,338	10,946	11,012	2,548	1,233	836	501	65,171
1946	581	619	867	1,117	1,245	1,656	1,819	1,471	987	770	501	386	12,019
1947	395	427	595	811	1,088	1,214	1,458	1,523	1,230	808	476	422	10,447
1948	415	435	701	943	1,159	1,564	1,810	1,711	1,440	802	683	548	12,211
1949	477	548	811	1,056	1,487	1,837	2,059	1,873	1,235	894	729	567	13,573

* Revised.

1/ Data on production of ice cream prior to 1938 not broken down between wholesale and retail.

UPDATA 1981

TABLE 24--PRODUCTION OF SWISS CHEESE, BY STATES, 1935-1949

State	1935	1936	1937	1938	1939	1940	1941	1942	1943	1944	1945	1946	1947	1948	1949
	1000 lb.	1000 lb.	1000 lb.	1000 lb.	1000 lb.	1000 lb.	1000 lb.	1000 lb.	1000 lb.	1000 lb.	1000 lb.	1000 lb.	1000 lb.	1000 lb.	1000 lb.
Idaho.....	1,726	2,128	2,486	2,268	1,863	2,334	2,478	2,599	2,498	2,800	2,908	2,922	3,584	3,527	2,691
Illinois.....	4,140	3,303	4,648	4,258	5,250	6,151	6,897	6,521	5,978	6,016	6,155	6,594	8,487	10,372	14,726
Ohio.....	4,392	4,249	4,402	4,782	4,366	5,377	6,496	6,682	4,752	5,173	5,418	5,251	6,609	6,663	7,754
Pennsylvania.....	573	645	705	745	582	682	672	629	507	482	386	450	615	606	508
Wisconsin.....	29,646	27,993	27,676	29,377	28,881	32,304	37,570	34,193	29,643	28,960	32,958	36,227	46,720	43,192	48,271
All other States.....	2,145	1,760	1,587	1,654	1,689	1,801	1,849	1,937	2,248	2,140	2,240	4,251	5,597	6,305	7,093
UNITED STATES.....	42,622	40,078	41,504	43,084	42,631	48,659	55,962	52,561	45,626	45,571	50,065	55,695	71,612	70,665	81,043

TABLE 25 --PRODUCTION OF ALL ITALIAN VARIETIES OF CHEESE, BY STATES, 1935-1949

State and division	1935	1936	1937	1938	1939	1940	1941	1942	1943	1944	1945	1946	1947	1948	1949
	1000 lb.	1000 lb.	1000 lb.	1000 lb.	1000 lb.	1000 lb.	1000 lb.	1000 lb.	1000 lb.	1000 lb.	1000 lb.	1000 lb.	1000 lb.	1000 lb.	1000 lb.
Massachusetts.....	-	-	18	63	515	446	532	573	626	785	932	766	814	977	794
New England 1/.....	46	10	138	189	655	613	673	944	766	909	1,759	1,523	2,010	1,230	1,284
New York.....	4,468	3,143	4,354	4,901	5,164	5,558	6,397	9,245	10,228	10,737	10,875	14,473	13,310	15,428	16,553
New Jersey.....	41	45	45	41	266	485	236	345	293	3	561	1,126	648	768	1,296
Pennsylvania.....	11	-	164	213	422	268	844	737	964	968	990	1,412	1,480	1,429	1,734
Middle Atlantic.....	4,520	3,188	4,563	5,155	5,852	6,311	7,477	10,327	11,485	11,708	12,426	17,011	15,438	17,625	19,583
Ohio.....	99	28	71	605	1,133	1,277	2,302	1,415	1,829	1,258	1,717	2,696	741	658	651
Illinois.....	173	109	207	225	340	435	617	865	1,003	614	1,374	1,756	1,025	1,780	2,553
Michigan.....	949	1,594	1,826	1,995	2,303	2,475	3,105	3,001	2,962	3,649	3,546	5,820	1,543	1,060	1,368
Wisconsin.....	4,472	5,906	5,811	7,238	9,261	12,456	17,822	17,139	22,220	18,878	39,515	41,723	15,396	19,492	27,771
East North Central.....	5,633	7,637	7,915	10,063	13,037	16,637	23,846	22,440	28,014	24,399	46,152	51,995	18,705	22,990	32,343
West North Central 1/.....	6	8	-	40	59	162	324	386	459	515	1,103	1,829	542	379	140
South Central 1/.....	-	-	-	-	114	115	185	102	824	276	486	-	-	-	-
Colorado.....	-	-	-	-	-	8	193	295	203	293	419	755	724	512	502
Mountain 1/.....	-	-	-	-	-	24	193	295	203	293	419	755	724	714	658
California.....	337	491	876	984	753	1,103	1,602	368	1,017	2,656	1,716	2,146	626	613	1,101
Pacific 1/.....	363	518	904	1,014	792	1,140	1,665	422	1,252	3,662	2,283	2,275	681	641	1,119
All other States.....	78	45	148	196	352	497	713	913	1,658	1,921	2,983	2,715	1,793	862	804
UNITED STATES.....	10,628	11,361	13,520	16,461	20,509	25,002	34,363	34,916	43,003	41,762	64,628	75,388	38,100	43,579*	55,127

* Revised.

1/ Some regional totals include production for States not shown separately. Production omitted for States in which less than 3 plants reported.

TABLE 26-TOTAL AMERICAN CHEESE (made from whole milk) PRODUCED ANNUALLY, BY STATES, 1935-1949

State and division	1935	1936	1937	1938	1939	1940	1941	1942	1943	1944	1945	1946	1947	1948	1949
	1000 lb.	1000 lb.	1000 lb.	1000 lb.	1000 lb.	1000 lb.	1000 lb.	1000 lb.	1000 lb.	1000 lb.	1000 lb.	1000 lb.	1000 lb.	1000 lb.	1000 lb.
Vermont.....	801	1,106	1,222	794	695	1,226	817	586	140	401	906	114	1,013	1,409	1,471
New England 1/.....	802	1,108	1,264	827	695	1,226	819	586	140	401	906	114	1,013	1,427	1,491
New York.....	20,597	22,079	23,542	26,141	21,970	25,035	29,748	46,607	19,905	19,187	23,633	11,780	30,191	30,630	39,354
Pennsylvania.....	1,414	1,312	1,320	1,665	1,554	1,420	1,609	1,846	1,057	1,072	1,711	1,252	1,272	808	1,278
Middle Atlantic 1/.....	22,011	23,391	30,862	27,806	23,524	26,455	31,357	48,568	20,962	20,259	25,344	13,043	31,463	31,438	40,657
Ohio.....	6,276	8,513	9,675	10,790	11,440	12,366	16,219	25,151	16,579	19,907	23,415	19,983	23,260	20,159	26,380
Indiana.....	21,441	24,305	26,107	27,198	24,186	29,399	33,323	46,134	38,067	36,257	39,816	38,496	39,708	37,391	38,910
Illinois.....	16,923	19,091	26,656	31,241	29,207	34,477	51,340	69,802	53,647	59,226	68,753	63,280	67,791	56,492	57,136
Michigan.....	10,550	12,509	12,639	13,990	13,328	15,607	19,394	24,417	20,793	22,885	25,800	23,509	25,894	23,047	25,370
Wisconsin.....	270,851	270,191	243,003	281,977	284,075	314,867	371,611	417,414	383,350	370,194	388,617	370,734	416,043	385,020	430,103
East North Central.....	326,041	334,611	318,080	365,196	362,196	406,716	491,887	582,918	512,436	508,469	546,401	516,002	572,696	523,109	577,899
Minnesota.....	10,624	11,595	13,298	15,232	13,118	15,604	20,713	33,420	27,546	35,257	44,056	41,152	56,586	51,635	54,309
Iowa.....	2,958	4,339	4,011	3,745	3,124	3,981	5,572	10,840	8,055	10,552	13,134	10,750	10,013	8,707	10,287
Missouri.....	8,185	7,596	9,637	12,229	13,158	19,306	33,092	40,488	36,284	44,812	49,906	47,940	57,092	56,330	64,114
North Dakota.....	-	-	-	-	-	-	61	570	275	349	80	155	163	-	-
South Dakota.....	1,038	1,040	859	993	1,038	982	1,199	1,731	1,472	1,559	1,649	1,648	1,421	1,441	1,464
Nebraska.....	1,358	1,411	1,571	2,032	1,563	1,414	2,167	3,612	1,865	2,208	1,691	1,256	1,302	853	1,383
Kansas.....	7,407	6,331	6,594	8,531	9,529	10,852	13,804	19,434	11,323	13,619	12,729	10,877	16,354	8,525	9,121
West North Central.....	31,620	32,312	35,970	42,762	41,530	52,139	77,608	110,095	86,820	108,356	123,245	113,778	142,931	127,191	140,678
South Atlantic 1/.....	764	922	1,320	1,576	1,040	878	1,502	1,461	267	684	1,532	1,481	1,809	2,126	2,198
Kentucky.....	5,314	5,396	5,989	6,901	5,646	5,989	9,262	14,232	12,895	15,148	19,250	18,900	22,480	23,033	26,354
Tennessee.....	6,725	7,439	8,508	13,065	12,459	13,247	17,264	22,183	21,250	24,033	29,175	30,339	35,979	37,004	41,333
Alabama.....	1,723	1,609	1,972	1,909	1,244	1,578	3,278	4,254	4,008	4,522	5,379	3,567	4,094	3,006	2,997
Mississippi.....	6,997	7,822	9,292	11,006	8,165	6,984	9,514	10,471	8,701	10,969	12,338	10,943	11,345	11,094	11,625
Arkansas.....	1,687	2,243	3,279	2,904	2,281	3,796	7,213	8,200	5,668	7,571	7,812	6,073	7,618	11,201*	11,331
Oklahoma.....	6,076	6,041	7,266	7,713	5,786	7,564	11,036	13,121	8,911	14,349	15,776	13,552	15,861	12,467	10,741
Texas.....	8,465	11,139	15,554	19,400	15,078	16,096	20,139	19,954	14,518	15,225	13,669	7,693	10,904	6,920	5,758
South Central 1/.....	37,207	44,008	52,276	63,444	50,993	55,462	77,990	92,563	75,951	91,827	103,399	91,067	108,297	104,755	110,335
Montana.....	1,862	1,648	1,087	1,435	1,184	1,227	1,454	1,905	2,147	4,078	4,266	3,464	3,808	2,818	2,890
Idaho.....	6,822	7,666	8,240	9,512	9,215	10,641	13,540	16,304	16,957	19,344	21,024	20,114	20,447	19,148	17,991
Colorado.....	1,513	1,946	1,411	2,099	1,362	1,452	1,514	1,538	525	1,395	806	1,331	444	1,084	1,084
Utah.....	4,277	4,925	3,626	4,193	4,496	4,496	5,085	6,106	5,398	6,963	8,290	7,042	8,057	7,024	5,438
Mountain 1/.....	15,194	17,019	15,154	19,275	17,976	19,395	23,126	27,802	26,355	33,865	36,434	32,988	34,785	30,046	29,319
Washington.....	9,262	8,289	8,865	9,096	9,550	9,730	12,274	12,793	8,484	9,388	7,562	6,644	7,093	4,268	4,047
Oregon.....	16,129	16,332	19,076	19,599	21,092	26,159	28,564	24,033	25,901	26,582	23,379	28,596	25,970	24,264	24,264
California.....	9,967	9,584	9,174	10,961	9,887	9,667	10,400	11,900	9,641	5,637	3,679	2,76*	4,034	4,117	4,110
Pacific.....	35,358	34,205	37,115	39,656	39,344	40,519	48,833	52,857	42,158	40,926	37,823	32,791	39,724	34,355	32,441
UNITED STATES.....	468,999	487,576	492,041	560,542	537,298	602,790	753,122	916,850	765,089	804,787	875,084	801,264	932,718	854,447*	935,018

* Revised.
 1/ Some regional totals include production for States not shown separately. Production omitted for States in which less than 3 plants reported.

TABLE 31-PRODUCTION OF NONFAT DRY MILK SOLIDS (for human consumption), 1935-1949

State and division	1935	1936	1937	1938	1939	1940	1941	1942	1943	1944	1945	1946	1947	1948	1949
	1000 lb.	1000 lb.	1000 lb.	1000 lb.	1000 lb.	1000 lb.	1000 lb.	1000 lb.	1000 lb.	1000 lb.	1000 lb.	1000 lb.	1000 lb.	1000 lb.	1000 lb.
Vermont.....	2,948	6,774	7,027	4,566	6,840	11,603	11,468	13,030	7,789	10,121	6,345	1,497	7,437	7,412	21,039
New England 1/.....	3,600	7,310	7,366	4,855	7,302	12,112	11,810	13,415	8,146	11,037	7,426	2,866	7,672	7,464	21,588
New York.....	48,206	49,399	36,843	44,536	46,027	56,774	61,159	78,028	42,102	39,396	45,556	36,578	53,537	49,945	92,046
Pennsylvania.....	8,012	8,263	7,736	11,644	11,238	14,076	14,568	19,603	11,127	9,538	9,267	8,489	9,083	7,831	12,876
Middle Atlantic 1/.....	56,319	57,662	44,579	56,180	57,265	70,850	75,727	97,631	53,275	48,934	54,823	45,067	62,620	57,776	105,132
Ohio.....	1,484	3,724	4,714	7,905	7,629	9,019	9,951	19,655	18,236	20,820	23,243	18,233	25,023	29,237	45,354
Indiana.....	3,585	4,616	4,803	6,802	5,568	7,235	10,002	18,584	17,471	20,593	21,842	24,097	26,421	26,421	40,236
Illinois.....	1,413	1,417	2,851	2,131	2,065	2,137	2,532	3,947	5,269	5,575	5,575	6,963	7,313	7,464	13,260
Michigan.....	14,206	21,821	23,558	28,010	21,827	22,869	22,132	35,742	29,786	33,914	32,949	30,586	36,986	34,839	63,409
Wisconsin.....	39,222	50,922	60,920	68,849	69,430	80,715	100,881	176,569	158,101	168,994	191,179	185,346	189,565	201,560	260,181
West North Central.....	59,910	82,500	96,846	113,697	106,519	121,975	145,498	253,085	227,541	249,590	274,838	266,642	282,984	299,985	422,440
Minnesota.....	5,800	7,766	9,577	13,752	11,454	18,457	29,598	68,066	85,252	116,748	167,594	197,337	164,827	162,997	180,990
Iowa.....	18	57	112	-	-	-	4	1,169	2,954	6,154	9,593	11,143	10,387	9,894	13,520
Missouri.....	4,136	6,152	9,341	12,380	10,210	12,053	16,691	17,467	16,215	20,802	21,560	24,974	27,848	29,268	37,977
Kansas.....	2,025	1,748	2,555	3,856	3,408	2,865	4,408	5,819	5,238	6,039	4,481	4,970	6,898	7,172	12,182
West North Central 1/.....	14,305	19,288	25,463	33,741	27,927	36,343	54,369	97,167	113,340	152,776	206,249	243,402	215,427	213,662	248,661
Maryland.....	1,556	1,876	2,022	4,219	2,773	2,469	2,105	1,832	1,543	2,585	2,347	1,479	3,221	4,271	7,463
Virginia.....	-	-	-	-	-	1,123	492	414	487	654	454	222	283	2,156	6,419
South Atlantic 1/.....	1,556	1,876	2,022	4,219	2,773	3,592	2,597	2,264	2,276	3,580	3,636	2,999	4,001	6,994	14,382
Kentucky.....	223	198	553	1,029	887	832	1,056	1,520	1,088	1,521	1,345	1,326	1,305	1,768	2,179
Mississippi.....	1,130	472	907	2,433	614	565	1,235	795	979	2,055	2,489	1,857	1,847	1,912	2,772
Oklahoma.....	29	-	9	145	437	352	345	325	1,113	3,261	2,680	2,155	2,078	2,385	2,638
Texas.....	1,072	1,723	2,734	2,378	1,445	2,072	2,713	2,405	1,442	2,345	1,406	504	492	188	331
South Central 1/.....	7,120	6,889	9,140	11,628	6,567	6,841	8,411	7,590	6,283	11,182	9,176	7,780	7,909	8,132	10,856
Idaho.....	295	988	4,359	4,799	4,205	4,719	4,510	8,246	17,287	33,018	34,095	33,326	30,697	30,502	30,152
Utah.....	1,671	1,714	3,876	5,397	5,118	5,794	5,564	5,977	6,615	6,781	5,885	4,247	3,960	4,534	5,177
Mountain 1/.....	2,170	2,936	8,758	11,377	10,095	11,331	10,932	15,423	24,886	40,944	40,329	38,875	36,163	36,532	36,702
Washington.....	8,397	8,732	11,144	10,297	8,050	8,739	7,944	11,412	14,408	15,988	11,422	7,741	11,133	9,002	14,325
Oregon.....	2,872	3,294	3,982	3,631	3,293	4,497	3,990	7,842	7,596	6,619	3,125	4,566	8,184	4,775	7,046
California.....	31,282	31,340	35,211	39,496	38,069	45,563	45,177	59,285	51,869	42,262	31,522	33,527	41,848	37,210	52,530
Pacific.....	42,551	45,366	50,337	53,424	49,412	58,799	57,111	78,539	73,873	64,869	46,069	45,834	61,165	50,987	73,901
All other States.....	7,942	8,831	9,677	10,865	7,273	7,315	7,930	9,094	6,995	7,435	6,542	10,885	9,891	7,625	9,560
UNITED STATES.....	187,531	223,827	244,511	289,121	267,860	321,843	366,455	565,414	509,620	582,912	642,546	653,465	677,941	681,532	933,662

1/ Some regional totals include production for States not shown separately. Production omitted for States in which less than 3 plants reported.

C
 UPDATE
 1981

TABLE 33--PRODUCTION OF SHERBET (excluding water ices), BY STATES, 1935-1949

State and division	1935	1936	1937	1938	1939	1940	1941	1942	1943	1944	1945	1946	1947	1948	1949
	1000 gal.	1000 gal.	1000 gal.	1000 gal.	1000 gal.	1000 gal.	1000 gal.	1000 gal.	1000 gal.	1000 gal.	1000 gal.	1000 gal.	1000 gal.	1000 gal.	1000 gal.
Maine.....	7	9	16	23	39	33	29	32	386	484	484	37	23	18	24
New Hampshire.....	4	3	9	9	9	8	10	14	63	71	87	8	12	16	18
Vermont.....	4	5	8	15	15	15	12	12	168	159	191	19	9	10	16
Massachusetts.....	206	245	333	343	408	444	492	478	1,608	1,573	1,547	519	286	352	466
Rhode Island.....	7	5	8	13	23	65	25	37	378	377	350	150	42	27	54
Connecticut.....	25	72	88	86	94	112	106	105	882	745	803	193	82	43	76
New England.....	253	319	462	529	588	677	677	618	3,485	3,409	3,462	926	454	466	654
New York.....	474	518	583	479	453	295	382	414	5,826	5,500	5,849	851	710	912	704
New Jersey.....	5	61	101	82	123	124	90	49	625	338	476	56	69	112	127
Pennsylvania.....	109	214	289	127	216	225	259	281	3,402	4,650	6,453	925	553	668	882
Middle Atlantic.....	588	795	973	688	782	644	731	704	9,853	10,488	12,778	1,832	1,332	1,692	1,373
Ohio.....	175	201	205	271	313	357	514	682	2,863	3,156	4,193	514	452	656	829
Indiana.....	43	71	62	86	115	136	154	166	946	1,244	1,457	113	145	211	339
Illinois.....	127	176	328	557	564	570	717	667	2,907	3,624	4,269	1,251	1,271	860	998
Michigan.....	119	163	286	291	364	448	459	504	2,006	2,039	2,790	529	643	599	774
Wisconsin.....	51	55	85	113	140	197	147	142	833	1,083	1,573	189	152	164	172
East North Central.....	507	666	966	1,314	1,496	1,708	1,991	2,161	9,535	11,150	14,242	2,596	2,663	2,490	3,132
Minnesota.....	42	48	72	85	95	96	119	108	539	528	1,345	152	123	141	178
Iowa.....	36	58	81	134	156	154	160	165	1,310	1,325	1,868	296	203	231	309
Missouri.....	110	157	126	176	163	271	173	166	1,311	992	2,180	474	339	320	352
North Dakota.....	13	22	16	15	12	13	10	14	134	124	323	8	4	20	28
South Dakota.....	6	17	28	23	33	45	45	41	132	106	283	1	16	33	69
Nebraska.....	107	152	153	131	148	154	169	184	511	481	559	125	126	143	176
Kansas.....	26	45	83	95	75	60	54	21	206	188	144	102	86	90	139
West North Central.....	340	539	559	659	682	793	730	679	4,143	3,744	6,942	1,158	897	978	1,241
District of Columbia.....	40	65	87	95	60	75	122	144	759	446	989	83	48	42	119
Delaware.....	-	-	-	2	-	-	-	1	278	168	24	160	63	92	141
Maryland.....	34	56	112	45	39	60	53	49	1,477	1,013	637	187	118	246	359
Virginia.....	29	41	53	44	91	129	93	91	649	624	947	43	63	73	296
West Virginia.....	51	64	84	69	88	22	32	41	451	345	385	23	96	245	304
North Carolina.....	51	70	138	193	514	602	140	487	699	995	1,265	288	228	277	284
South Carolina.....	1	-	5	10	23	27	27	35	102	228	540	145	72	40	68
Georgia.....	40	26	11	11	87	125	99	112	567	704	1,334	170	282	250	180
Florida.....	151	186	199	239	138	157	184	255	833	957	1,200	100	134	236	260
South Atlantic.....	397	508	749	708	1,100	1,198	800	1,215	5,815	5,480	7,321	1,197	1,104	1,501	2,011
Kentucky.....	68	69	86	75	66	69	122	143	508	461	822	89	70	107	137
Tennessee.....	53	119	92	92	116	136	171	171	1,110	1,183	1,599	102	130	313	292
Alabama.....	16	24	10	26	31	171	126	84	599	513	914	137	108	327	185
Mississippi.....	41	36	33	79	73	103	77	104	183	214	336	191	206	244	215
Arkansas.....	19	26	13	25	39	27	29	18	131	147	177	24	56	23	43
Louisiana.....	56	47	20	66	68	123	117	184	700	880	1,409	551	400	370	308
Oklahoma.....	29	67	64	76	105	101	102	149	549	597	1,103	47	84	114	203
Texas.....	91	189	304	229	347	301	395	395	2,599	2,448	3,879	1,458	1,077	1,123	865
South Central.....	373	577	622	668	845	1,031	1,066	1,248	6,478	6,843	10,239	2,599	2,131	2,621	2,248
Montana.....	27	34	28	25	28	34	28	38	104	121	81	20	17	23	31
Idaho.....	45	7	10	39	28	31	32	79	100	80	12	12	19	26	34
Wyoming.....	2	5	13	8	9	8	15	10	18	23	15	3	6	7	33
Colorado.....	91	104	110	116	128	134	128	120	480	402	740	95	93	97	84
New Mexico.....	4	6	7	3	22	14	11	6	89	31	122	39	24	24	35
Arizona.....	7	14	15	14	15	12	14	30	77	105	226	75	61	59	55
Utah.....	22	59	53	30	38	60	64	37	346	322	339	28	34	73	76
Nevada.....	3	-	-	5	3	15	12	19	10	6	3	-	4	24	33
Mountain.....	201	229	237	240	271	308	304	284	1,201	1,110	1,606	272	258	333	381
Washington.....	67	131	131	83	82	133	130	101	935	1,383	1,917	450	131	113	121
Oregon.....	17	10	33	64	74	68	92	103	485	633	778	118	95	90	126
California.....	843	1,478	1,260	1,089	7,873	1,529	1,539	1,639	5,285	5,241	5,852	871	1,382	1,927	2,306
Pacific.....	927	1,619	1,424	1,236	8,029	1,730	1,761	1,843	6,706	7,257	8,547	1,439	1,608	2,140	2,553
UNITED STATES.....	3,586	5,272	5,992	6,046	13,793	8,089	8,060	8,772	47,218	49,481	65,177	12,019	10,447	12,211	13,573

TABLE 35—SKIM-MILK EQUIVALENT OF CERTAIN SKIMMED MILK AND BUTTERMILK PRODUCTS, UNITED STATES, 1949 1/

State and Division	Full skim American Cheddar cheese	Cottage cheese curd 2/	Sweetened condensed skim milk		Unsweetened condensed skim milk 3/	Concentrated skim milk (for animal feed)	Condensed or evaporated buttermilk	Dry or powdered		Dry casein 5/	Total
			Case	Milk				Butter-milk	Nonfat milk solids 4/		
Maine.....	-	10,444	-	6,105	11,232	-	-	-	6,160	1,107	35,048
New Hampshire.....	-	306	-	-	-	-	-	-	-	-	306
Vermont.....	7,776	62,758	-	5,928	24,204	-	209	235,873	4,160	37,306	374,084
Massachusetts.....	-	1,169	-	-	-	-	-	-	-	-	5,349
Rhode Island.....	-	581	-	-	-	-	-	-	-	-	581
Connecticut.....	-	4,706	-	61	792	-	-	-	-	-	5,561
New England.....	7,776	79,934	-	12,096	36,228	-	-	209	246,213	38,413	420,929
New York.....	1,344	267,388	-	79,512	206,667	-	3,396	3,806	1,035,298	149,512	1,746,923
New Jersey.....	-	2,056	-	2,334	1,188	-	-	-	2,310	-	7,888
Pennsylvania.....	-	103,461	-	118,587	17,559	10,572	9,135	-	154,495	7,640	481,469
Middle Atlantic.....	1,344	372,925	-	200,433	285,414	10,572	12,531	3,806	1,192,103	157,152	2,236,280
Ohio.....	5,728	146,762	-	59,994	75,327	-	64,701	19,833	508,948	714	681,977
Indiana.....	-	54,088	-	58,032	102,330	10,467	7,701	9,042	649,218	-	690,878
Illinois.....	400	100,306	-	69,720	80,142	147	144,294	6,272	148,269	24,863	576,433
Michigan.....	-	110,281	-	29,556	17,157	327	14,088	40,062	720,797	178	992,446
Wisconsin.....	-	114,532	-	70,080	311,431	558	-	46,838	2,913,229	105,458	3,564,105
West North Central.....	6,128	585,949	-	267,352	646,387	11,499	230,784	124,047	4,740,461	131,233	6,705,840
Minnesota.....	2,320	39,938	-	24,474	28,371	-	17,751	216,306	2,017,881	134,839	2,480,880
Iowa.....	-	30,538	-	1,722	32,442	13,818	17,595	86,746	161,447	20,956	419,264
Missouri.....	64	48,550	-	4,614	75,999	5,643	35,379	16,335	423,621	-	610,205
North Dakota.....	-	838	-	2,517	-	-	4,785	25,466	2,695	-	37,301
South Dakota.....	1,936	1,544	-	87	-	-	9,210	8,322	-	-	21,159
Nebraska.....	-	14,756	-	3,942	4,227	-	39,413	20,691	42,394	-	125,421
Kansas.....	-	40,775	-	17,259	90,861	-	52,091	4,576	134,002	-	315,564
West North Central.....	4,320	176,939	-	94,615	231,900	19,451	237,222	379,302	2,781,240	155,795	4,040,794
District of Columbia..	-	2,244	-	-	-	-	-	-	-	-	2,244
Delaware.....	-	231	-	-	-	-	-	-	-	-	231
Maryland.....	-	17,150	-	12,126	36,996	-	894	-	83,622	-	150,718
Virginia.....	-	10,794	-	13,138	72,294	-	-	-	77,836	-	174,058
West Virginia.....	-	16,000	-	504	1,293	-	480	770	5,500	-	24,547
North Carolina.....	-	7,238	-	-	4,995	-	-	-	-	-	12,233
Georgia.....	-	775	-	6,432	702	-	-	-	-	-	7,908
Florida.....	-	5,538	-	27	123	-	-	-	-	-	5,688
South Atlantic.....	-	59,970	-	32,223	116,403	-	1,374	770	166,958	-	377,698
Kentucky.....	96	29,488	-	1,905	7,185	-	35,393	660	30,074	-	104,501
Tennessee.....	208	10,788	-	6,789	41,220	-	2,730	-	20,999	-	82,674
Alabama.....	-	2,450	-	-	7,467	-	-	-	319	-	10,236
Mississippi.....	-	112	-	5,016	19,260	-	-	1,628	30,822	-	56,838
Arkansas.....	-	4,262	-	507	972	-	-	1,353	12,078	-	19,172
Louisiana.....	-	11,381	-	1,197	-	-	-	-	-	-	12,578
Oklahoma.....	-	28,050	-	2,349	14,370	-	9,480	11,132	29,326	6,426	101,133
Texas.....	-	24,094	-	5,016	50,991	-	771	1,914	4,697	-	87,483
South Central.....	304	110,625	-	22,719	141,465	-	48,174	16,687	128,315	6,426	474,715
Montana.....	-	5,325	-	-	-	-	-	-	-	-	5,325
Idaho.....	-	4,956	-	-	3,468	-	-	1,155	336,468	10,067	356,114
Wyoming.....	-	1,506	-	-	-	-	-	-	11,715	-	13,221
Colorado.....	32	18,556	-	6,951	2,640	-	3,189	6,380	-	-	37,748
New Mexico.....	-	1,169	-	-	540	-	879	-	-	-	2,588
Arizona.....	-	6,111	-	-	5,109	-	-	-	-	1,928	13,168
Utah.....	-	14,969	-	-	6,456	-	-	-	56,947	536	78,908
Nevada.....	-	325	-	-	-	-	-	22	1,520	-	1,867
Mountain.....	32	52,937	-	6,951	18,213	-	4,068	7,557	408,650	12,531	516,939
Washington.....	-	63,412	-	9,132	5,806	84	474	66	164,131	8,247	250,952
Oregon.....	-	21,706	-	3,090	9	-	-	1,914	85,349	321	112,389
California.....	112	308,088	-	26,016	188,943	3	522	6,591	590,546	144,906	1,267,727
Pacific.....	112	397,206	-	38,238	194,358	87	996	10,571	840,026	153,474	1,631,068
UNITED STATES.....	20,016	1,772,545	-	654,627	1,672,368	41,619	535,149	542,949	10,503,966	655,024	16,398,263

1/ Skim-milk equivalents of the skimmed milk and buttermilk products as reported by dairy manufacturing plants. Totals shown exclude skim milk and buttermilk sold in fluid form or used for some minor products.
 Products included and conversion factors for converting to a skim-milk equivalent basis are: American full-skim cheese, 16.0; cottage cheese, 6.25; dried or powdered buttermilk and nonfat dry milk solids, 11; dry casein, 35.7; and 3 each for case and bulk sweetened condensed skim milk, bulk unsweetened condensed skim milk (plain condensed), concentrated skim milk (for animal feed), and condensed or evaporated buttermilk. Because of the fact that some of the skimmed milk and buttermilk products are not standardized, and because of the variations in percentage of solids not fat in skim milk and buttermilk, these conversion factors are only approximate.

2/ Not strictly comparable with previous years as the cottage cheese for previous years included some duplication in the form of creamed cottage cheese.

3/ Plain condensed.

4/ Includes skim milk for animal feed.

5/ Skimmed milk or buttermilk.

END