



AgEcon SEARCH
RESEARCH IN AGRICULTURAL & APPLIED ECONOMICS

The World's Largest Open Access Agricultural & Applied Economics Digital Library

This document is discoverable and free to researchers across the globe due to the work of AgEcon Search.

Help ensure our sustainability.

Give to AgEcon Search

AgEcon Search
<http://ageconsearch.umn.edu>
aesearch@umn.edu

*Papers downloaded from **AgEcon Search** may be used for non-commercial purposes and personal study only. No other use, including posting to another Internet site, is permitted without permission from the copyright owner (not AgEcon Search), or as allowed under the provisions of Fair Use, U.S. Copyright Act, Title 17 U.S.C.*

SB 91 (1945)

USDA STATISTICAL BULLETIN

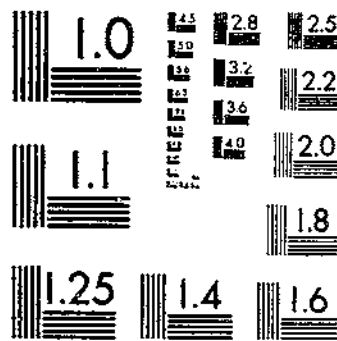
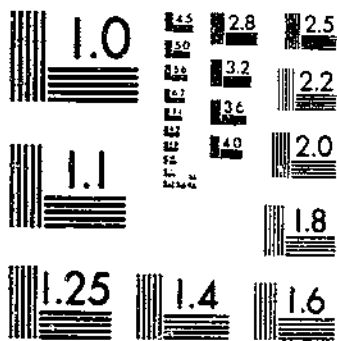
SUPPLEMENT

COMMERCIAL HATCHERY CHICK PRODUCTION

KINBALL, E. S. MOORE, R. A. SMITH, P. W. SMITH

1-0-1

START



© UPDATA 1981

MICROCOPY RESOLUTION TEST CHART
NATIONAL BUREAU OF STANDARDS-1963-A

MICROCOPY RESOLUTION TEST CHART
NATIONAL BUREAU OF STANDARDS-1963-A

35
53-13

Stacks

UNITED STATES DEPARTMENT OF AGRICULTURE
STATISTICAL BULLETIN No. 81

Washington, D. C.



February 1945

COMMERCIAL HATCHERY CHICK
PRODUCTION

By

E. Smith Kimball
Robert F. Moore

and

Paul W. Smith

Agricultural Statisticians
Bureau of Agricultural Economics



For sale by the Superintendent of Documents, U. S. Government Printing Office
Washington 25, D. C. - Price 10 cents

EXPLANATION

Estimates of chicks produced by commercial hatcheries are made, monthly and annually, by the United States Department of Agriculture. Basic data for these estimates are obtained from comprehensive surveys of the industry made at intervals of about 5 years, under sponsorship of the Department of Agriculture, as these items are not obtained by the United States Agricultural Census. The most recent of these was an extensive survey of hatchery operations made in 1943, and previous to that, in 1938. For periods between these bench-mark surveys, estimates are based upon sample data from a large segment of the industry. The estimates published in this report reveal the changes that have occurred in the hatchery industry from 1938 through 1943.

The 1943 hatchery survey was conducted by the State Agricultural Statisticians of the Bureau of Agricultural Economics in cooperation with State Departments of Agriculture, State Agricultural Colleges, the National Poultry Improvement Plan, members of the International Baby Chick Association, and other interested organizations. An effort was made in this survey to obtain at least the capacity of every commercially operated hatchery in the United States.

UNITED STATES DEPARTMENT OF AGRICULTURE
STATISTICAL BULLETIN No. 81.

Washington, D. C.



February 1945

Commercial Hatchery Chick Production

BY E. SMITH KIMBALL, ROBERT F. MOORE, AND PAUL W. SMITH,
Agricultural Statisticians, Bureau of Agricultural Economics

CONTENTS

	Page		Page
Introduction.....	1	Chick production.....	4
Number of hatcheries.....	2	Estimating total hatch.....	5
Hatchery capacity.....	2	Chicks hatched on year-round basis.....	6
Rate of hatch.....	4	Value of chicks produced.....	6
Rate of capacity utilization.....	4	Number of chicks sexed, 1943.....	6

INTRODUCTION

The commercial hatchery industry is a vital part of the poultry industry in the United States. Commercial hatcheries operate in every State. In 1943, about 84 percent of the chickens raised on farms were purchased as baby chicks from commercial hatcheries.

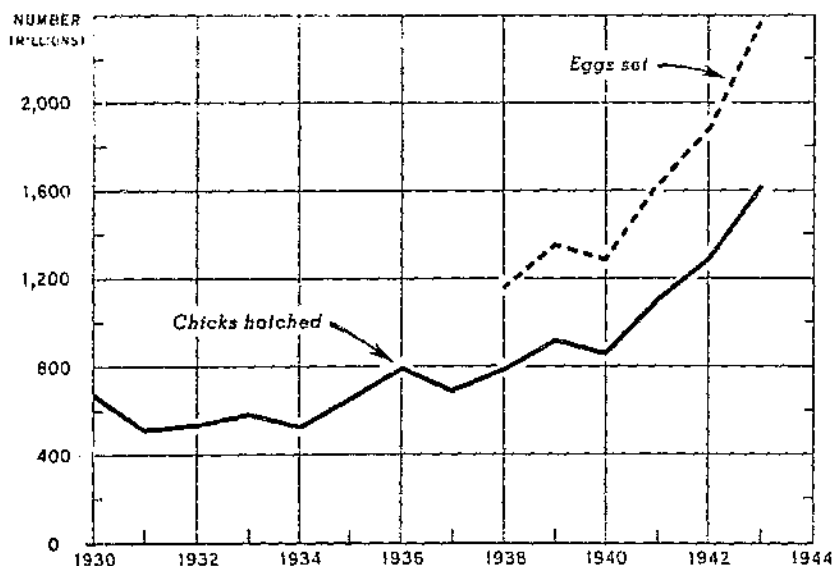


FIGURE 1.—Number of chicks hatched annually by commercial hatcheries in the United States, 1930-43. The annual output of chicks by commercial hatcheries more than doubled from 1930 to 1943.

In addition, commercial hatcheries produced 286 million commercial broiler chicks in 1943. The industry, in supplying the chicks necessary to meet the greatly expanded need for poultry products for war purposes, has made marked changes in capacity and chick production since 1938 (fig. 1). The record output of chicks in 1943 may not again be reached by the hatchery industry for some time to come.

NUMBER OF HATCHERIES

The number of hatcheries has decreased 4 percent since 1938 (table 1). The 1943 survey figures show that 10,112 hatcheries were in operation in the United States at the close of 1943, as compared with 10,531 in 1938. Pennsylvania, with 636 hatcheries, had the highest number of hatcheries in any State; Iowa was second with 624; and Texas was third with 615.

In 20 States, between 1938 and 1943, numbers of hatcheries increased. In 25 States, numbers decreased. In 3 States, no change was shown. Most of the increases occurred in the South Atlantic and South Central regions. Numbers declined principally in the East North Central, New England, and Pacific Coast States. A decline of 109 hatcheries in California was the largest shown for any State; Illinois was next with a decrease of 96 hatcheries.

UNITED STATES, 1938 AND 1943

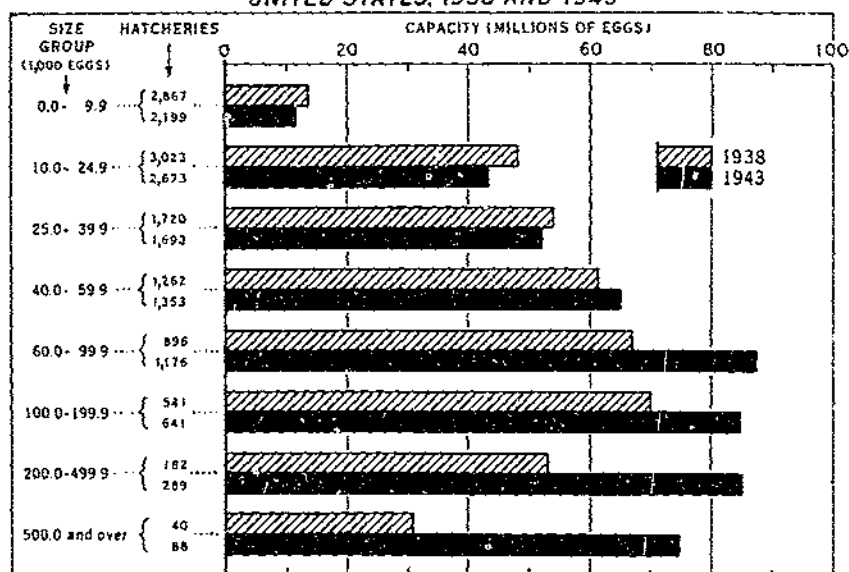


FIGURE 2.—Capacity of commercial hatcheries by size groups in the United States in 1938 and 1943. The number and capacity of hatcheries have decreased in the size groups having egg capacities of less than 40,000 eggs. All other size groups have shown increases in number and capacity.

HATCHERY CAPACITY

Hatcheries that were operating in 1943 had a total incubator capacity of 504,640,000 eggs, compared with a total capacity of 397,376,000 in 1938—an increase of 27 percent. In all regions except the Pacific coast,

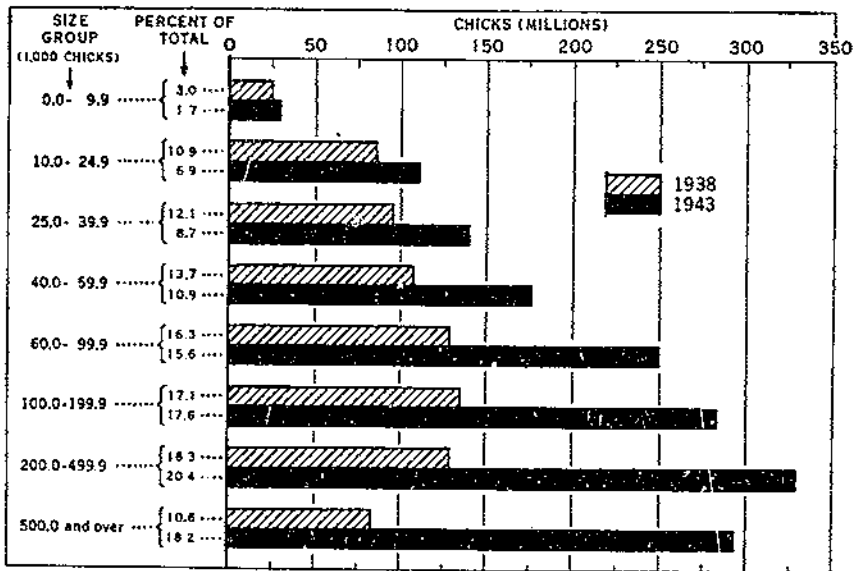


FIGURE 3.—Number of chicks hatched by commercial hatcheries, by size groups, in the United States, 1938 and 1943. Hatcheries with capacities of 60,000 eggs and over, which comprise about 22 percent of the total number, produced about 72 percent of all hatchery chicks in 1943.

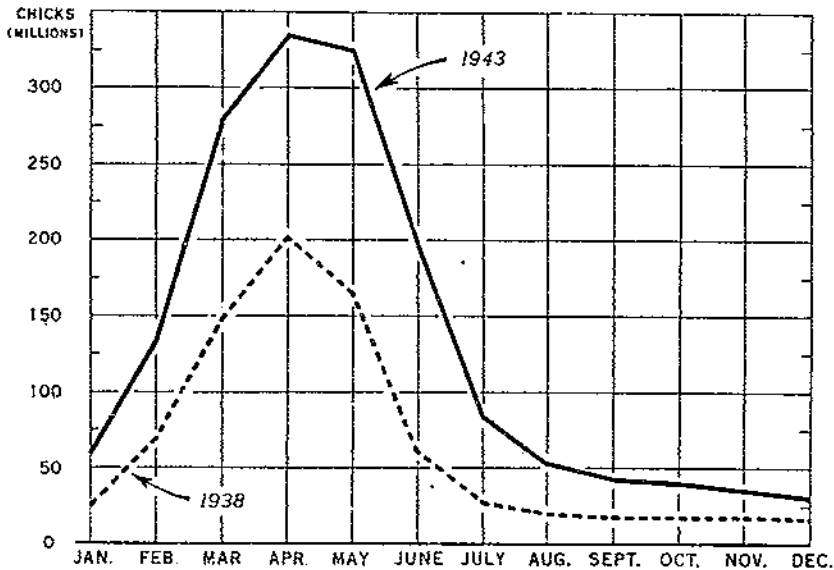


FIGURE 4.—Number of chicks hatched monthly by commercial hatcheries in the United States, 1938 and 1943. Approximately 60 percent of the annual output of chicks is usually produced during March, April, and May.

incubator capacity increased during the 5-year period (table 1). The smallest increase was 11 percent in the East North Central States. The South Atlantic and South Central States showed the greatest increases—97 and 48 percent, respectively. The largest percentage changes in capacity in individual States occurred in these two regions. Delaware led with an increase of 202 percent, North Carolina was second with an increase of 161 percent, and Georgia third with an increase of 159 percent. The largest quantity increases in egg capacity were in Missouri (14,829,000 eggs), Minnesota (11,154,000 eggs), and Iowa (7,962,000 eggs).

In 1943 the average capacity per hatchery was 49,900 eggs, compared with 37,700 in 1938. Table 2 shows the changes within the 8 size groupings of hatcheries between 1938 and 1943. The number and capacity of hatcheries have decreased in the size groups that have egg capacities of less than 40,000. In all other size groups, the number of hatcheries and their egg capacities have increased. The capacity of hatcheries in the 500,000-eggs-and-over group increased by 43,995,000 eggs from 1938 to 1943—41 percent of all the expansion in the industry between 1938 and 1943 (fig. 2).

RATE OF HATCH

The average percentage of eggs hatched changed very little in this period. In 1938 the average-percentage hatch for the United States was 68.2 and in 1943 it was 68.3. The New England States had the highest percentage hatch in 1943 with 69.8, followed by the West North Central States with 69.3 percent (table 3). The Mountain States, with 65.0 percent, had the lowest. Vermont led all States, with 72.7 percent hatch. Utah and Wyoming were lowest among the States, with 60.9 and 63.8 percent, respectively.

RATE OF CAPACITY UTILIZATION

Eggs set per unit of capacity of the hatchery is a significant item. The average number of eggs set per unit of capacity for the United States in 1943 was 4.67 eggs, as compared with 2.90 eggs in 1938. An average of 3.19 chicks were hatched per unit of capacity in 1943 as compared with 1.98 chicks in 1938. The New England States set an average of 7.10 eggs per unit of capacity and led all other regions. Delaware led all States, with an average of 8.66 eggs per unit of capacity. Other States with a high utilization of existing capacity were Connecticut, Rhode Island, Maryland, New Hampshire, and Florida. A considerable number of individual hatcheries reported as high as 10 eggs set per unit of capacity in 1943. A definite relationship apparently exists between size of hatchery and rate of capacity utilization, with the rate of capacity utilization increasing as the size of hatchery increases. Many of the larger hatcheries operate on a year-round basis, supplying chicks for the rapidly expanding commercial broiler production (tables 4 and 5).

CHICK PRODUCTION

From 1938 to 1943, the annual output of chicks by commercial hatcheries more than doubled. About 1,609,121,000 chicks were

produced in 1943, as compared with 785,687,000 in 1938. The output increased decidedly in all sections and in all States (tables 1 and 7). The South Atlantic and South Central States showed the largest percentage increases. The output of chicks in the South Atlantic States during 1943 totaled 222,483,000, compared with 67,733,000 in 1938—an increase of 228 percent. The output during 1943 in the South Central States totaled 185,427,000, compared with 80,075,000 in 1938—an increase of 132 percent. Other increases were 99 percent in the Middle Atlantic States, 95 percent in the West North Central States, 93 percent in the New England States, 83 percent in the Pacific Coast States, 80 percent in the Mountain States, and 79 percent in the East North Central States.

The 3 States that showed the largest percentage gain were Delaware, with a gain of 622 percent, Georgia, 354 percent, and Louisiana, 262 percent. The 3 States making the largest actual gain in output were Missouri, with an increase of 74,284,000 chicks, Illinois, with an increase of 61,347,000, and Iowa, with an increase of 52,776,000.

Hatcheries with capacities of 60,000 eggs and over, comprising about 22 percent of the total number, produced 72 percent of the hatchery chicks in 1943 (fig. 3). Almost one-fifth (18.2 percent) of the chicks hatched in 1943 were produced by the 88 largest hatcheries that have egg capacities of 500,000 eggs and over.

ESTIMATING TOTAL HATCH

The method used in estimating the 1943 production can be called the ratio-to-capacity method. As the number of eggs set and, therefore, the number of chicks hatched per unit capacity vary with the size of hatchery, the total operating capacity was established for each of eight size groups within each State. To establish the ratio of production to capacity the hatcheries replying to the questionnaires were segregated into these eight size groups.

Taking each size group as a unit, the ratios of chicks hatched and eggs set to total egg capacity were calculated for those replying. These ratios were applied to the total estimated capacity of all hatcheries in the size group in order to compute the totals of eggs set and chicks hatched.

The assumption on which this procedure is based is that the operations of the hatcheries that did not reply to the questionnaire would be on approximately the same scale as those of the hatcheries within the same capacity size group in the same State that did reply. The sum of the totals of the eight size groups is the estimated total production for the State.

After annual estimates of production for each size group had been established, estimates of monthly operations were made by distributing the annual production by size groups according to the monthly percentage distribution shown by hatcheries that reported monthly operations. Returns that reported production were received from hatcheries having 72 percent of the total estimated egg capacity of all hatcheries in the United States. The estimates of total hatchings based upon these returns indicate that they produced 72.7 percent of all chicks.

CHICKS HATCHED ON YEAR-ROUND BASIS

The main hatching season runs from January through July. More than 80 percent of the annual output of chicks is produced during these months. Approximately 60 percent of the annual production is usually produced during the 3 months of March, April, and May. The volume of hatchings apparently remains fairly constant from August to December. During each of the months, August, September, October, November, and December production is approximately 2 to 3 percent of the annual production. The production of hatchery chicks during the period August through December, is small when compared with production during the other months of the year. But its importance to the hatchery industry becomes apparent when it is pointed out that the greater part of this seasonal hatch is for commercial broilers, which were not prominent in the markets 10 years ago. It represents the sale of millions of chicks during a period in which, a few years ago, very few were hatched (fig. 4).

In all but a few States, some chicks are hatched by commercial hatcheries during every month of the year. The output ranges by States from a few thousand to millions of chicks. When the demand for commercial broilers is good, as in 1943, many hatcheries in the New England, South Atlantic, and South Central States operate during every month of the year, with very little variation in monthly output (tables 8 to 14).

Principal States in which hatchery chicks are produced in volume during every month, are Connecticut, Massachusetts, and New Hampshire in the New England States; Pennsylvania and New Jersey in the Middle Atlantic States; Delaware, Maryland, Virginia, North Carolina, Georgia, and Florida in the South Atlantic States; Indiana, Ohio, and Illinois in the East North Central States; Missouri in the West North Central States; Texas, Oklahoma, and Arkansas in the South Central States; Arizona in the Mountain States; and California in the Pacific Coast States. The rapid growth of the commercial broiler industry in the South Atlantic and South Central States is mainly responsible for the large increase shown by the hatchery industry.

VALUE OF CHICKS PRODUCED

The estimated value of chicks produced by commercial hatcheries in 1943 was \$223,076,000, the highest in the history of the industry. Prices for chicks averaged the highest in the Pacific Coast and New England States (table 14). The average price was lowest in the South Central States. Iowa led all States in the total value of chicks produced in 1943, with Missouri, Illinois, and Indiana ranking next in importance in the order named.

NUMBER OF CHICKS SEXED 1943

The segregation of pullets from cockerel chicks is one of the latest developments in the poultry industry. The commercial development of sexing chicks began during the 1934 chick season and was chiefly confined to the Pacific Coast States. Since 1934, a large number of

schools have been established to train chick sexers and the practice of sexing chicks has spread among the hatcheries throughout the country. The sexing of baby chicks has filled a distinct need in the poultry industry by enabling commercial egg producers to buy pullet chicks only, thus eliminating the expense and work of brooding and feeding unwanted male chicks. More Leghorn chicks are sexed than any other breed, because the Leghorn is the dominant breed in commercial egg-laying flocks. Many unwanted Leghorn male chicks are usually destroyed each year. Very few cockerels of the heavy breeds are destroyed because they find a ready market with commercial broiler producers.

The practice of sexing varies widely among hatcheries. For the country as a whole about 1 out of every 6 chicks hatched in 1943 was sexed. The percentage of sexed chicks to total chicks hatched in the various States ranged from less than 1 percent in Nevada, Wyoming, and Alabama to 34 percent in Michigan and Wisconsin. Every chick hatched was in demand in 1943, regardless of sex, so the proportion of chicks sexed in some of the States may have been somewhat lower than usual. More chicks are sexed in proportion to total chicks hatched in the Pacific Coast States than in any other geographic division of the country (table 15).

TABLE 1.—Number of hatcheries, egg capacity, and number of chicks hatched, by States, 1938 and 1943

State and division	Hatcheries		Capacity		Chicks hatched	
	1938	1943	1938	1943	1938	1943
	Number	Number	Thousands	Thousands	Thousands	Thousands
Maine.....	204	158	1,739	1,886	4,223	6,208
New Hampshire.....	202	150	2,664	3,599	9,318	19,628
Vermont.....	54	43	537	407	1,324	1,606
Massachusetts.....	369	325	6,828	6,828	14,769	20,060
Rhode Island.....	11	37	551	677	1,398	3,709
Connecticut.....	113	130	4,386	5,780	18,300	32,859
New England.....	1,017	843	15,799	19,177	49,302	65,096
New York.....	521	498	9,729	10,861	16,050	28,158
New Jersey.....	213	217	7,775	10,519	18,369	34,787
Pennsylvania.....	592	636	18,099	23,744	30,245	77,271
Middle Atlantic.....	1,326	1,375	36,413	45,067	70,601	140,216
Ohio.....	687	507	30,831	30,783	59,805	97,277
Indiana.....	540	451	28,652	23,506	60,662	114,993
Illinois.....	532	446	29,811	36,681	55,510	116,857
Michigan.....	368	274	12,853	13,376	22,061	39,172
Wisconsin.....	378	342	12,756	12,873	15,748	31,256
East North Central.....	2,513	2,110	114,003	127,309	222,786	399,555
Minnesota.....	472	538	24,708	35,082	34,315	74,282
Iowa.....	681	624	35,050	43,682	67,082	119,828
Missouri.....	417	410	24,713	30,542	61,189	135,473
North Dakota.....	55	65	1,775	3,243	2,470	6,646
South Dakota.....	116	126	4,995	7,717	8,924	18,660
Nebraska.....	259	225	14,230	15,760	24,471	40,103
Kansas.....	414	360	17,031	19,516	50,585	51,754
West North Central.....	2,414	2,348	123,235	165,682	229,069	415,752
Delaware.....	49	48	2,320	7,092	5,843	42,182
Maryland.....	137	123	6,038	9,532	15,292	49,809
Virginia.....	172	144	6,501	6,346	15,365	38,291
West Virginia.....	62	51	1,335	1,714	2,922	5,892
North Carolina.....	130	217	3,695	6,393	13,084	39,180
South Carolina.....	66	70	1,715	2,688	3,844	8,394
Georgia.....	104	147	2,572	6,668	6,161	27,950
Florida.....	88	96	1,698	2,500	5,322	11,025
South Atlantic.....	808	905	24,777	48,723	67,734	222,493
Kentucky.....	99	115	3,575	5,963	6,018	14,531
Tennessee.....	100	159	2,836	4,797	8,098	15,893
Alabama.....	99	133	1,774	4,084	4,362	11,048
Mississippi.....	55	61	1,386	1,938	3,490	7,143
Arkansas.....	80	107	2,321	3,827	4,035	15,310
Louisiana.....	37	85	824	1,981	2,083	7,546
Oklahoma.....	215	253	7,002	11,500	14,567	36,021
Texas.....	634	615	17,914	25,471	34,992	77,745
South Central.....	1,337	1,531	39,503	58,771	80,075	185,427
Montana.....	21	17	492	640	686	1,610
Idaho.....	50	50	1,428	1,773	2,328	4,698
Wyoming.....	11	12	236	186	344	393
Colorado.....	69	89	3,575	4,515	6,831	10,843
New Mexico.....	13	15	648	678	985	1,049
Arizona.....	25	25	716	907	1,317	3,121
Utah.....	27	31	1,708	1,638	1,851	2,778
Nevada.....	4	3	50	74	117	137
Mountain.....	210	245	8,783	10,411	14,262	25,628
Washington.....	193	292	6,158	6,959	9,079	16,756
Oregon.....	187	196	5,388	4,909	6,316	12,098
California.....	496	387	22,227	18,641	36,464	66,136
Pacific.....	776	755	33,873	29,509	51,859	94,002
United States.....	10,831	10,112	307,374	504,640	785,087	1,604,121

COMMERCIAL HATCHERY CHICK PRODUCTION

TABLE 2.—Number of hatcheries and egg capacity by size groups, United States, 1938 and 1943

Size groups (number of eggs)	Hatcheries		Egg capacity	
	1938	1943	1938	1943
Under 10,000.....	<i>Number</i> 2,807	<i>Number</i> 2,199	<i>Thousands</i> 13,673	<i>Thousands</i> 11,401
10,000 to 24,999.....	3,023	2,673	48,131	43,233
25,000 to 39,999.....	1,720	1,353	54,108	52,284
40,000 to 59,999.....	1,262	1,463	61,124	65,189
60,000 to 99,999.....	896	1,176	66,826	87,610
100,000 to 199,999.....	541	641	69,810	84,946
200,000 to 499,999.....	182	289	52,905	85,184
500,000 and over.....	40	88	30,793	74,788
All sizes.....	10,531	10,112	307,376	504,040

TABLE 3.—Eggs set and chicks hatched per unit of capacity and percentage hatched, by States, 1938 and 1943

State and division	Eggs set		Chicks hatched		Percentage hatch	
	1938	1943	1938	1943	1938	1943
	<i>Number</i>	<i>Number</i>	<i>Number</i>	<i>Number</i>	<i>Percent</i>	<i>Percent</i>
Maine.....	3.41	0.09	2.43	4.35	71.3	71.5
New Hampshire.....	4.32	7.70	3.14	5.45	72.7	70.9
Vermont.....	3.39	5.43	2.47	3.95	72.8	72.7
Massachusetts.....	3.66	6.02	2.64	4.26	72.2	70.7
Rhode Island.....	3.43	8.16	2.35	5.48	68.6	67.0
Connecticut.....	6.06	8.33	4.17	5.68	68.6	68.2
New England.....	4.41	7.10	3.12	4.96	70.8	69.8
New York.....	2.50	3.59	1.65	2.61	66.1	67.1
New Jersey.....	3.43	4.93	2.35	3.31	68.5	66.5
Pennsylvania.....	2.91	4.77	1.92	3.25	65.8	68.2
Middle Atlantic.....	2.91	4.61	1.94	3.11	66.6	67.5
Ohio.....	2.89	4.77	1.94	3.16	67.1	66.3
Indiana.....	3.32	4.99	2.33	3.42	67.9	68.6
Illinois.....	2.71	4.72	1.85	3.10	68.7	67.5
Michigan.....	2.66	4.49	1.72	2.93	64.7	65.2
Wisconsin.....	2.21	3.65	1.47	2.43	66.4	66.5
East North Central.....	2.88	4.67	1.94	3.14	67.4	67.2
Minnesota.....	2.15	3.17	1.39	2.07	64.4	65.2
Iowa.....	2.71	3.02	1.88	2.75	69.3	70.0
Missouri.....	3.52	4.91	2.48	3.43	70.3	71.3
North Dakota.....	2.11	2.64	1.39	1.74	66.0	65.9
South Dakota.....	2.66	3.61	1.79	2.42	67.2	67.0
Nebraska.....	2.51	3.74	1.72	2.54	67.6	68.0
Kansas.....	2.50	3.66	1.80	2.61	70.1	71.4
West North Central.....	2.71	3.88	1.83	2.69	68.6	69.3
Delaware.....	3.60	6.68	2.52	6.02	69.9	69.6
Maryland.....	4.40	7.78	3.62	6.20	68.6	69.9
Virginia.....	3.40	5.84	2.36	4.10	69.4	70.2
West Virginia.....	3.11	4.93	2.19	3.42	70.3	69.4
North Carolina.....	5.18	5.04	3.64	4.17	70.3	70.2
South Carolina.....	3.12	4.88	2.24	3.26	71.7	66.9
Georgia.....	3.44	6.18	2.40	4.19	69.7	69.0
Florida.....	4.47	6.45	3.13	4.41	70.0	68.4
South Atlantic.....	3.92	6.82	2.73	4.57	69.7	68.9
Kentucky.....	2.78	4.00	1.94	2.76	69.8	69.0
Tennessee.....	3.23	4.92	2.27	3.37	70.2	68.7
Alabama.....	3.82	4.07	2.46	2.71	69.2	66.4
Mississippi.....	3.68	5.65	2.52	3.69	68.3	65.3

TABLE 3.—Eggs set and chicks hatched per unit of capacity and percentage hatched by States, 1938 and 1943—Continued

State and division	Eggs set		Chicks hatched		Percentage hatch	
	1938	1943	1938	1943	1938	1943
	Number	Number	Number	Number	Percent	Percent
Arkansas.....	3.00	6.10	2.13	4.05	70.8	66.4
Louisiana.....	3.70	5.80	2.53	3.81	68.3	65.7
Oklahoma.....	2.02	4.53	1.83	3.13	69.9	69.2
Texas.....	2.70	4.44	1.95	3.05	70.0	68.7
South Central.....	2.80	4.63	2.02	3.16	69.9	68.2
Montana.....	2.56	3.82	1.71	2.52	66.8	65.8
Idaho.....	2.43	3.65	1.63	2.65	67.2	67.0
Wyoming.....	2.32	3.31	1.46	2.11	62.0	63.8
Colorado.....	2.72	3.78	1.56	2.42	68.2	64.1
New Mexico.....	2.01	4.19	1.80	2.87	68.8	68.6
Arizona.....	2.70	5.15	1.84	3.44	68.2	66.8
Utah.....	1.65	2.79	1.03	1.70	62.3	60.0
Nevada.....	2.04	2.64	1.46	1.85	71.8	70.3
Mountain.....	2.42	3.79	1.52	2.46	67.1	65.0
Washington.....	2.18	4.01	1.47	2.82	67.7	70.2
Oregon.....	1.70	3.51	1.17	2.40	69.0	70.3
California.....	2.54	5.42	1.63	3.55	64.4	65.5
Pacific.....	2.34	4.81	1.53	3.22	65.5	60.8
United States.....	2.90	4.67	1.98	3.19	68.2	68.3

TABLE 4.—Eggs Set: Number per unit of capacity and percentage hatched, by size groups, United States, 1938 and 1943

Size groups (number of eggs)	Total		Per unit of capacity		Percentage hatched	
	1938	1943	1938	1943	1938	1943
	Thousands	Thousands	Number	Number	Percent	Percent
Under 10,000.....	34,623	40,752	2.54	3.57	68.9	68.3
10,000 to 24,999.....	124,362	161,234	2.58	3.73	68.8	68.9
25,000 to 30,999.....	139,736	204,956	2.58	3.92	68.1	68.2
40,000 to 59,999.....	158,380	258,783	2.50	3.07	67.6	68.0
60,000 to 92,999.....	158,901	367,806	2.83	4.20	67.0	68.0
100,000 to 199,999.....	198,433	412,746	2.81	4.68	67.6	68.6
200,000 to 499,999.....	187,564	482,093	3.55	5.66	68.3	68.1
500,000 and over.....	120,058	428,952	3.90	5.74	69.1	68.2
All sizes.....	1,152,436	2,357,322	2.90	4.67	68.2	68.3

TABLE 5.—Salable chicks hatched: Number and per unit of capacity, by size groups, United States, 1938 and 1943

Size groups (number of eggs)	Total		Percentage of total		Per unit of capacity	
	1938	1943	1938	1943	1938	1943
	Thousands	Thousands	Percent	Percent	Number	Number
Under 10,000.....	23,835	27,551	3.0	1.7	1.75	2.44
10,000 to 24,999.....	85,520	111,153	10.9	6.9	1.78	2.57
25,000 to 30,999.....	95,170	139,846	12.1	8.7	1.73	2.67
40,000 to 59,999.....	107,358	178,057	13.7	10.9	1.76	2.70
60,000 to 92,999.....	128,294	230,146	16.3	15.6	1.86	2.89
100,000 to 199,999.....	174,208	281,029	17.1	17.6	1.92	3.33
200,000 to 499,999.....	128,311	328,478	16.3	20.4	2.42	3.85
500,000 and over.....	82,981	302,561	10.6	18.2	2.60	3.91
All Sizes.....	785,087	1,609,121	100.0	100.0	1.98	3.10

COMMERCIAL HATCHERY CHICK PRODUCTION

TABLE 6.—Number of eggs set by commercial hatcheries, by States, 1938-48

State and division	1938	1939	1940	1941	1942	1943
	Thousands	Thousands	Thousands	Thousands	Thousands	Thousands
Maine.....	5,924	6,436	6,539	8,128	9,041	11,467
New Hampshire.....	12,818	14,101	14,288	19,119	22,233	27,697
Vermont.....	1,819	1,096	1,632	1,915	2,055	2,269
Massachusetts.....	20,455	24,321	21,610	26,817	31,370	41,117
Rhode Island.....	1,993	2,370	2,370	3,292	3,800	5,528
Connecticut.....	20,000	27,641	25,819	39,713	45,267	48,155
New England.....	69,650	76,568	72,267	98,982	113,781	136,101
New York.....	24,260	27,074	25,909	27,530	30,091	41,983
New Jersey.....	26,608	29,452	27,285	32,943	37,258	52,349
Pennsylvania.....	55,868	60,079	52,845	67,550	96,957	113,376
Middle Atlantic.....	100,026	115,005	108,100	127,623	154,306	207,707
Ohio.....	89,133	94,335	83,969	104,615	121,396	146,707
Indiana.....	98,120	110,297	108,784	132,820	142,029	167,559
Illinois.....	80,762	94,992	97,756	119,570	129,412	173,116
Michigan.....	34,120	41,708	39,107	46,214	50,107	60,047
Wisconsin.....	28,236	30,520	27,749	31,618	37,092	46,993
East North Central.....	330,371	371,852	357,356	439,846	480,038	594,422
Minnesota.....	53,422	60,031	62,477	77,546	102,996	114,015
Iowa.....	96,818	103,721	102,412	124,087	138,320	171,574
Missouri.....	67,070	102,450	97,845	127,534	148,571	190,042
North Dakota.....	3,742	3,883	4,872	5,615	7,774	8,595
South Dakota.....	13,274	17,302	13,350	23,347	25,989	27,867
Nebraska.....	36,192	47,302	40,534	45,185	52,985	58,953
Kansas.....	43,634	56,864	45,815	55,558	61,782	72,445
West North Central.....	334,182	391,603	371,595	458,372	538,420	642,971
Delaware.....	8,360	11,987	17,884	23,551	38,571	60,693
Maryland.....	22,162	37,025	42,321	55,701	68,264	74,142
Virginia.....	22,119	20,139	31,671	40,254	45,417	54,534
West Virginia.....	1,154	5,194	4,559	5,162	6,098	8,451
North Carolina.....	18,617	20,476	25,656	32,956	42,023	55,839
South Carolina.....	5,304	6,736	5,555	7,391	10,000	12,539
Georgia.....	8,842	11,138	14,703	19,275	27,143	40,619
Florida.....	7,597	9,883	10,647	12,769	13,493	16,121
South Atlantic.....	97,215	131,578	150,427	197,299	240,850	322,748
Kentucky.....	9,048	9,538	8,671	11,746	15,971	21,071
Tennessee.....	12,400	13,000	11,655	14,200	18,774	23,136
Alabama.....	6,249	7,636	7,049	8,748	11,940	16,633
Mississippi.....	5,107	6,292	5,335	7,091	9,304	10,945
Arkansas.....	6,069	10,294	11,940	18,355	15,217	23,342
Louisiana.....	3,048	3,718	3,443	5,224	7,500	11,488
Oklahoma.....	20,552	28,824	22,823	32,591	39,076	52,049
Texas.....	40,978	58,631	53,901	67,797	85,960	113,163
South Central.....	114,551	137,879	124,220	166,562	204,432	271,827
Montana.....	1,627	1,856	1,038	1,511	2,077	2,445
Idaho.....	3,464	5,058	4,598	6,119	6,667	7,019
Wyoming.....	547	610	382	533	574	616
Colorado.....	9,733	12,097	11,432	12,023	13,889	17,082
New Mexico.....	1,432	1,770	1,706	2,217	2,601	2,838
Arizona.....	1,932	2,123	1,791	2,433	2,971	4,669
Utah.....	2,970	3,362	2,180	3,000	3,590	4,562
Nevada.....	183	184	120	154	169	193
Mountain.....	21,268	27,579	23,247	28,890	32,448	39,417
Washington.....	13,406	19,137	12,183	15,217	19,286	23,870
Oregon.....	6,150	11,291	7,715	10,735	12,286	17,209
California.....	56,619	63,464	53,130	68,012	77,039	100,960
Pacific.....	76,134	93,892	73,028	93,964	109,611	142,03
United States.....	1,152,430	1,346,526	1,278,240	1,632,238	1,872,899	2,357,322

TABLE 7.—Chicks hatched by commercial hatcheries, by States, 1938-43

State and division	1938	1939	1940	1941	1942	1943
	<i>Thousands</i>	<i>Thousands</i>	<i>Thousands</i>	<i>Thousands</i>	<i>Thousands</i>	<i>Thousands</i>
Maine.....	4,223	4,588	4,643	4,832	5,000	8,208
New Hampshire.....	9,318	9,600	9,716	13,192	15,674	19,026
Vermont.....	1,224	1,264	1,126	1,369	1,500	1,606
Massachusetts.....	14,769	17,264	14,917	18,772	22,279	29,090
Rhode Island.....	1,368	1,600	1,580	2,150	2,550	3,709
Connecticut.....	18,309	18,761	17,682	27,402	31,687	32,859
New England.....	49,362	53,337	49,664	69,808	80,290	98,068
New York.....	16,059	17,878	16,880	18,107	19,860	28,158
New Jersey.....	18,366	19,439	18,418	22,500	25,000	34,787
Pennsylvania.....	36,245	41,064	35,407	46,090	60,000	77,271
Middle Atlantic.....	70,691	78,321	70,705	89,697	104,860	140,216
Ohio.....	69,805	62,167	55,000	68,000	60,000	97,227
Indiana.....	66,662	73,035	71,471	63,778	68,000	114,093
Illinois.....	55,519	64,455	63,700	70,000	88,000	116,857
Michigan.....	22,061	27,027	26,537	29,434	32,820	30,172
Wisconsin.....	18,748	19,901	17,875	21,500	23,000	31,256
East North Central.....	222,786	247,481	235,674	291,712	323,820	399,555
Minnesota.....	34,375	38,840	40,173	50,405	66,124	74,282
Iowa.....	67,082	71,736	68,666	85,000	96,000	113,828
Missouri.....	81,189	71,102	66,000	88,000	104,000	135,473
North Dakota.....	2,470	2,524	3,074	3,650	5,100	6,646
South Dakota.....	8,024	11,601	12,436	15,376	17,817	18,666
Nebraska.....	24,471	32,260	27,266	30,500	35,500	40,103
Kansas.....	30,588	40,070	31,780	38,000	43,000	51,754
West North Central.....	220,069	268,123	249,866	311,431	367,241	445,752
Delaware.....	5,843	8,142	12,000	16,600	27,000	42,182
Maryland.....	15,202	25,647	28,355	37,320	39,579	49,600
Virginia.....	15,355	20,747	22,455	28,500	32,700	38,201
West Virginia.....	2,922	3,464	3,160	3,500	4,200	5,862
North Carolina.....	13,684	14,619	16,313	23,186	29,500	39,180
South Carolina.....	3,844	4,786	3,840	5,100	6,800	8,384
Georgia.....	6,161	7,701	10,000	13,300	19,000	27,950
Florida.....	5,322	6,846	7,474	8,828	9,243	11,025
South Atlantic.....	67,733	91,066	103,637	130,334	168,022	222,463
Kentucky.....	6,948	6,651	5,045	7,987	11,214	14,531
Tennessee.....	5,678	9,202	7,628	9,727	12,766	15,853
Alabama.....	4,362	5,227	4,934	6,036	8,239	11,048
Mississippi.....	3,490	4,143	3,374	5,228	6,260	7,143
Arkansas.....	4,935	7,000	8,000	12,500	10,500	15,610
Louisiana.....	2,683	2,560	2,300	3,500	5,100	7,546
Oklahoma.....	14,567	20,465	18,970	23,076	27,773	36,021
Texas.....	34,092	41,280	38,000	48,000	60,000	77,745
South Central.....	80,075	96,628	86,157	116,054	141,792	185,427
Montana.....	686	1,253	685	1,020	1,350	1,610
Idaho.....	2,328	3,418	3,136	4,157	4,400	4,696
Wyoming.....	344	386	220	320	350	393
Colorado.....	6,634	8,056	7,400	8,400	9,000	10,943
New Mexico.....	985	1,186	1,160	1,530	1,800	1,948
Arizona.....	1,317	1,427	1,200	1,620	2,050	3,121
Utah.....	1,851	2,076	1,330	1,800	2,100	2,778
Nevada.....	117	131	84	107	115	137
Mountain.....	14,262	17,033	15,221	18,964	21,165	25,628
Washington.....	0,070	13,196	8,532	10,560	13,500	16,756
Oregon.....	0,316	7,466	5,300	7,300	8,600	12,098
California.....	36,464	41,813	34,653	45,500	51,000	66,138
Pacific.....	51,850	62,615	48,415	63,300	73,100	94,992
United States.....	786,687	910,404	850,341	1,093,300	1,280,296	1,609,121

TABLE 8.—Chicks hatched by commercial hatcheries, by States, by months, 1938

State and division	January	February	March	April	May	June
	Thousands	Thousands	Thousands	Thousands	Thousands	Thousands
Maine.....	274	414	507	798	735	531
New Hampshire.....	550	1,006	1,146	1,854	745	717
Vermont.....	40	91	132	236	238	205
Massachusetts.....	1,551	2,112	2,378	3,130	1,787	1,010
Rhode Island.....	109	122	194	244	150	126
Connecticut.....	1,208	2,063	2,257	2,357	1,867	1,029
New England.....	3,741	5,813	6,644	8,540	5,328	4,257
New York.....	1,011	1,541	4,029	3,724	3,130	802
New Jersey.....	605	2,087	4,052	4,814	3,490	989
Pennsylvania.....	870	3,295	7,830	5,700	5,763	2,718
Middle Atlantic.....	2,636	6,026	15,041	17,233	12,359	4,509
Ohio.....	538	4,426	12,795	13,337	14,054	4,485
Indiana.....	1,600	6,268	13,256	13,132	14,460	4,800
Illinois.....	666	3,573	9,215	16,763	13,321	5,718
Michigan.....	607	1,455	3,661	7,180	5,015	2,205
Wisconsin.....	131	292	3,713	6,290	6,299	1,425
East North Central.....	3,542	15,962	42,553	61,631	54,555	18,634
Minnesota.....		1,238	4,503	12,031	12,271	4,091
Iowa.....	603	2,883	12,136	21,860	21,658	5,901
Missouri.....	970	3,855	9,074	14,624	14,012	4,344
North Dakota.....	2	47	272	682	671	370
South Dakota.....		232	1,541	2,945	2,909	1,294
Nebraska.....	318	1,150	6,485	6,827	6,485	3,206
Kansas.....	551	2,355	6,723	10,829	5,136	1,009
West North Central.....	2,483	11,760	41,643	69,798	65,442	20,215
Delaware.....	275	310	467	811	684	380
Maryland.....	1,079	1,262	2,166	2,433	2,265	1,079
Virginia.....	829	1,474	2,179	2,150	1,638	1,450
West Virginia.....	135	243	352	687	374	298
North Carolina.....	623	904	2,342	2,787	1,557	1,021
South Carolina.....	351	438	685	776	461	142
Georgia.....	234	456	569	1,330	759	634
Florida.....	474	617	734	910	493	293
South Atlantic.....	3,910	5,704	10,287	11,884	8,220	5,356
Kentucky.....	230	1,237	1,438	2,085	1,452	77
Tennessee.....	270	1,353	1,034	2,765	1,418	670
Alabama.....	201	576	824	1,086	650	462
Mississippi.....	216	482	666	858	505	166
Arkansas.....	444	495	524	593	504	345
Louisiana.....	121	304	430	333	250	73
Oklahoma.....	772	2,331	3,176	3,071	2,607	1,063
Texas.....	2,294	7,068	7,768	8,188	3,219	1,260
South Central.....	4,473	13,870	16,466	19,479	10,606	4,115
Montana.....		34	182		146	140
Idaho.....		156	626		592	221
Wyoming.....	6	23	55	100	99	22
Colorado.....	358	783	1,048	1,486	1,625	860
New Mexico.....	27	146	220	274	262	56
Arizona.....	166	196	291	192	138	53
Utah.....	133	241	420	439	350	231
Nevada.....		13	33	41	18	12
Mountain.....	690	1,692	2,875	3,300	3,230	1,604
Washington.....	354	1,689	2,033	2,070	771	645
Oregon.....	189	638	1,434	1,484	1,009	783
California.....	3,172	5,105	7,840	6,819	2,224	1,788
Pacific.....	3,715	7,332	11,907	10,373	4,094	3,110
United States.....	26,245	69,058	148,310	202,492	165,064	61,839

TABLE 8.—Chicks hatched by commercial hatcheries, by States, by months, 1938—Continued

State and division	July	August	September	October	November	December
	<i>Thousands</i>	<i>Thousands</i>	<i>Thousands</i>	<i>Thousands</i>	<i>Thousands</i>	<i>Thousands</i>
Maine.....	270	165	177	135	93	55
New Hampshire.....	214	485	556	596	520	635
Vermont.....	135	82	65	45	25	37
Massachusetts.....	857	236	443	207	414	635
Rhode Island.....	82	51	64	72	70	78
Connecticut.....	860	1,171	1,153	1,354	1,281	1,135
New England.....	2,427	2,170	2,455	2,409	2,704	2,575
New York.....	440	401	355	273	225	80
New Jersey.....	590	110	421	311	275	220
Pennsylvania.....	2,247	1,522	1,087	642	761	607
Middle Atlantic.....	3,302	2,033	1,893	1,520	1,261	897
Ohio.....	3,229	2,512	1,854	1,376	777	419
Indiana.....	1,153	1,400	733	1,333	1,600	1,033
Illinois.....	2,609	1,166	777	611	389	222
Michigan.....	619	258	92	82	39	37
Wisconsin.....	206	78	94	94	75	75
East North Central.....	7,826	5,411	3,550	3,506	2,580	2,686
Minnesota.....	241	268	67	134	134	134
Iowa.....	1,274	2,325	2,445	2,578	2,142	979
Missouri.....	2,631	2,325	2,445	2,578	2,142	979
North Dakota.....	126					
South Dakota.....						
Nebraska.....						
Kansas.....	306	245	214	31	31	122
West North Central.....	4,578	2,835	2,729	3,041	2,367	1,235
Delaware.....	469	427	467	462	407	654
Maryland.....	562	1,019	760	471	654	1,450
Virginia.....	1,014	722	915	691	908	1,166
West Virginia.....	213	140	70	70	85	78
North Carolina.....	824	610	222	393	864	1,047
South Carolina.....	55	123	66	127	165	85
Georgia.....	345	228	277	200	320	370
Florida.....	357	223	208	224	419	319
South Atlantic.....	3,836	3,401	3,635	2,931	3,066	5,110
Kentucky.....	63	104	90	80	28	14
Tennessee.....	174	122	35	70	61	96
Alabama.....	74	35	100	131	153	61
Mississippi.....	115	70	63	91	126	129
Arkansas.....	69	192	429	429	444	464
Louisiana.....	71	103	162	100	67	106
Missouri.....	213	175	146	116	110	146
Oklahoma.....	1,190	875	700	689	665	675

South Central.....

Montana.....	26					
Idaho.....	72					
Wyoming.....						
Colorado.....	339	86	33	7		
New Mexico.....					73	71
Arizona.....	33	30	28	46		
Utah.....	37					
Nevada.....						

Mountain.....

Washington.....	372	191	82	100	101	181
Oregon.....	234	82	82	51	107	132
California.....	1,263	1,495	1,969	1,730	1,596	1,203

Pacific.....

United States.....	26,402	19,416	17,530	17,374	17,065	18,892
--------------------	--------	--------	--------	--------	--------	--------

TABLE 9.—Chicks hatched by commercial hatcheries, by States, by months, 1959

State and division	January	February	March	April	May	June
	<i>Thousands</i>	<i>Thousands</i>	<i>Thousands</i>	<i>Thousands</i>	<i>Thousands</i>	<i>Thousands</i>
Maine.....	218	482	514	589	798	674
New Hampshire.....	475	1,060	1,426	1,782	832	782
Vermont.....	30	90	141	224	226	163
Massachusetts.....	1,625	2,472	3,162	3,318	2,161	1,227
Rhode Island.....	120	142	253	243	188	160
Connecticut.....	1,463	2,007	2,120	2,234	1,876	1,558
New England.....	3,907	6,262	7,610	8,700	6,081	4,552
New York.....	614	1,788	4,076	7,254	3,087	1,073
New Jersey.....	836	2,024	4,063	6,034	3,460	1,205
Pennsylvania.....	1,197	3,813	8,678	9,284	7,873	4,050
Middle Atlantic.....	2,537	8,225	16,217	17,572	15,340	6,337
Ohio.....	1,306	4,663	13,179	13,366	13,925	4,911
Indiana.....	2,809	6,949	14,712	20,475	14,860	4,983
Illinois.....	1,547	3,030	14,560	18,114	15,405	7,477
Michigan.....	682	1,810	4,651	8,650	7,690	2,487
Wisconsin.....	219	358	4,040	5,910	6,387	2,368
East North Central.....	6,673	10,810	48,442	66,448	68,267	22,106
Minnesota.....	110	1,562	4,622	14,099	13,515	4,544
Iowa.....	502	2,182	11,763	22,236	24,603	7,800
Missouri.....	1,280	5,475	11,574	16,211	15,714	4,977
North Dakota.....	3	58	300	744	960	374
South Dakota.....		302	1,995	3,328	3,704	1,082
Nebraska.....	613	2,387	8,581	9,637	7,013	2,530
Kansas.....	521	3,106	8,134	14,304	11,781	1,082
West North Central.....	3,038	15,132	47,269	81,358	77,929	23,388
Delaware.....	301	472	627	1,148	912	440
Maryland.....	1,175	3,040	3,660	3,756	3,423	2,401
Virginia.....	1,245	1,929	3,071	3,154	2,750	1,829
West Virginia.....	165	297	671	839	459	365
North Carolina.....	848	1,447	2,748	2,805	1,784	1,069
South Carolina.....	449	546	1,221	965	574	177
Georgia.....	624	923	1,355	1,355	601	539
Florida.....	445	712	901	1,321	671	452
South Atlantic.....	5,342	9,367	14,162	15,403	11,183	7,209
Kentucky.....	366	1,210	1,371	1,902	1,317	189
Tennessee.....	616	1,491	1,684	2,648	1,518	755
Alabama.....	215	703	1,007	1,325	794	565
Mississippi.....	257	572	791	1,016	601	199
Arkansas.....	700	763	791	875	735	504
Louisiana.....	140	374	526	412	307	90
Oklahoma.....	1,494	3,172	4,359	4,035	3,970	1,614
Texas.....	3,509	8,050	9,123	9,453	3,880	1,092
South Central.....	7,333	16,346	19,632	22,138	13,122	5,505
Montana.....	10	103	303	334	233	200
Idaho.....		383	793	889	875	363
Wyoming.....	7	25	67	122	110	35
Colorado.....	435	951	1,273	1,804	1,074	1,055
New Mexico.....	53	218	225	338	265	81
Arizona.....	180	213	315	205	180	59
Utah.....	162	270	460	490	392	255
Nevada.....		15	38	40	20	12
Mountain.....	537	2,178	3,516	4,237	4,042	2,056
Washington.....	440	2,441	3,664	3,378	1,267	792
Oregon.....	304	814	1,803	1,820	1,892	867
California.....	3,429	5,812	8,655	8,613	3,554	1,965
Pacific.....	4,182	9,067	14,021	13,817	6,213	3,624
United States.....	33,860	83,415	170,836	229,673	192,177	74,867

TABLE 9.—Chicks hatched by commercial hatcheries, by States, by months, 1939—Con.

State and division	July	August	September	October	November	December
	<i>Thousands</i>	<i>Thousands</i>	<i>Thousands</i>	<i>Thousands</i>	<i>Thousands</i>	<i>Thousands</i>
Maine.....	317	184	165	138	115	64
New Hampshire.....	356	653	742	631	729	416
Vermont.....	112	63	57	30	26	42
Massachusetts.....	1,227	536	795	242	225	294
Rhode Island.....	117	83	101	85	48	50
Connecticut.....	1,120	1,361	1,351	1,238	1,313	1,120
New England.....	3,255	2,880	3,211	2,367	2,454	1,992
New York.....	572	447	429	394	232	72
New Jersey.....	544	214	622	389	253	175
Pennsylvania.....	2,501	1,804	1,230	1,066	770	410
Middle Atlantic.....	3,617	2,465	2,281	1,769	1,264	657
Ohio.....	3,233	2,735	2,238	1,368	746	497
Indiana.....	1,100	1,022	687	1,331	1,848	2,070
Illinois.....	3,267	1,354	1,031	709	451	193
Michigan.....	694	247	69	36	29	33
Wisconsin.....	210	80	80	80	80	80
East North Central.....	6,542	6,338	4,305	3,524	3,154	2,873
Minnesota.....	350					
Iowa.....	1,678	430	143	143	143	143
Missouri.....	2,844	3,128	3,200	3,200	2,275	924
North Dakota.....	136					
South Dakota.....						
Nebraska.....	200					
Kansas.....	401	321	240	40	40	40
West North Central.....	5,699	3,870	3,583	3,363	2,458	1,107
Delaware.....	480	513	570	830	879	871
Maryland.....	1,389	1,277	1,405	1,354	1,363	1,533
Virginia.....	1,260	1,017	1,037	1,120	1,037	1,162
West Virginia.....	265	186	86	60	72	86
North Carolina.....	672	620	278	424	677	1,038
South Carolina.....	105	153	129	158	268	105
Georgia.....	408	354	331	331	408	470
Florida.....	424	301	397	288	438	493
South Atlantic.....	5,133	4,430	4,224	4,595	5,220	5,758
Kentucky.....	86	67	47	46	33	20
Tennessee.....	175	138	46	74	74	83
Alabama.....	91	93	133	170	156	75
Mississippi.....	137	83	75	108	149	153
Arkansas.....	105	280	564	448	636	605
Louisiana.....	87	131	123	123	110	131
Oklahoma.....	307	205	205	266	184	184
Texas.....	1,445	1,197	660	908	537	826
South Central.....	2,433	2,144	1,763	2,133	1,903	2,137
Montana.....	50					
Idaho.....	169					
Wyoming.....						
Colorado.....	411	105	40	8		
New Mexico.....						
Arizona.....	34	31	31	50	79	77
Utah.....	42					
Nevada.....						
Mountain.....	646	136	71	58	70	77
Washington.....	541	260	145	70	110	132
Oregon.....	251	160	61	30	38	30
California.....	1,538	1,673	1,756	1,840	1,882	1,296
Pacific.....	2,130	2,123	1,862	1,919	2,036	1,458
United States.....	31,355	24,365	21,430	19,768	18,571	16,059

COMMERCIAL HATCHERY CHICK PRODUCTION

TABLE 10.—Chicks hatched by commercial hatcheries, by States, by months, 1940

State and division	January	February	March	April	May	June
	<i>Thousands</i>	<i>Thousands</i>	<i>Thousands</i>	<i>Thousands</i>	<i>Thousands</i>	<i>Thousands</i>
Maine.....	105	525	599	1,008	710	649
New Hampshire.....	515	1,088	1,504	1,614	1,001	777
Vermont.....	34	96	120	207	1,007	155
Massachusetts.....	955	2,178	2,670	3,162	1,969	1,143
Rhode Island.....	107	131	215	244	188	155
Connecticut.....	1,132	1,273	1,098	2,430	1,425	1,255
New England.....	2,938	5,291	7,190	5,673	5,480	4,130
New York.....	608	1,536	3,612	3,866	3,747	1,334
New Jersey.....	405	1,529	4,310	5,304	3,978	1,230
Pennsylvania.....	567	2,762	7,329	8,072	6,161	3,161
Middle Atlantic.....	1,580	5,827	15,251	17,242	13,880	5,824
Ohio.....	1,155	2,800	10,505	12,950	13,035	4,785
Indiana.....	2,501	5,074	12,936	20,728	14,724	5,217
Illinois.....	1,250	2,632	11,310	10,078	15,461	3,158
Michigan.....	1,197	1,692	4,791	8,151	6,601	2,039
Wisconsin.....	125	340	3,057	6,114	5,256	2,395
East North Central.....	6,228	12,598	42,005	67,051	55,167	22,594
Minnesota.....	121	2,250	5,423	13,495	12,373	6,967
Iowa.....	481	1,030	10,360	21,149	21,830	10,712
Missouri.....	1,050	1,980	12,738	18,282	13,602	6,672
North Dakota.....	3	86	458	821	1,091	466
South Dakota.....		348	2,114	3,420	4,192	2,238
Nebraska.....	823	1,305	6,719	9,855	7,358	2,416
Kansas.....	254	2,318	8,223	12,447	8,509	952
West North Central.....	2,748	9,386	44,044	78,502	69,021	20,112
Delaware.....	660	630	720	1,602	1,452	798
Maryland.....	1,701	2,382	3,034	3,884	3,715	1,768
Virginia.....	1,145	1,370	3,029	4,267	2,674	2,335
West Virginia.....	140	198	423	587	833	236
North Carolina.....	914	1,582	3,018	3,523	1,697	1,403
South Carolina.....	370	528	895	741	312	1,130
Georgia.....	600	1,020	1,770	2,100	820	730
Florida.....	441	605	875	1,674	807	523
South Atlantic.....	5,977	8,321	13,839	18,768	12,410	7,823
Kentucky.....	208	606	1,373	1,700	1,409	297
Tennessee.....	328	938	1,740	2,281	1,137	717
Alabama.....	232	370	1,021	1,333	928	597
Mississippi.....	236	270	540	681	520	273
Arkansas.....	700	800	944	1,024	800	560
Louisiana.....	159	225	450	421	324	133
Oklahoma.....	1,182	1,595	2,039	4,473	2,812	1,214
Texas.....	2,166	4,820	9,614	10,564	3,914	1,520
South Central.....	5,271	10,090	18,631	22,077	11,850	6,311
Montana.....	3	30	211	227	108	74
Idaho.....		348	860	928	608	270
Wyoming.....	3	15	40	80	64	15
Colorado.....	393	740	1,191	1,739	1,884	1,029
New Mexico.....	42	157	312	353	203	82
Arizona.....	137	212	252	179	103	52
Utah.....	70	118	335	375	232	170
Nevada.....		8	10	29	18	10
Mountain.....	624	1,634	3,235	3,916	3,230	1,708
Washington.....	256	1,470	2,685	1,869	708	512
Oregon.....	104	647	1,240	1,315	917	535
California.....	2,663	4,115	7,263	6,986	2,465	1,971
Pacific.....	3,023	6,341	11,085	10,170	4,140	3,018
United States.....	28,140	50,488	155,892	220,990	175,184	79,529

TABLE 10.—Chicks hatched by commercial hatcheries, by States, by months, 1940—Continued

State and division	July	August	September	October	November	December
	<i>Thousands</i>	<i>Thousands</i>	<i>Thousands</i>	<i>Thousands</i>	<i>Thousands</i>	<i>Thousands</i>
Maine.....	336	181	135	139	116	60
New Hampshire.....	478	573	670	428	651	339
Vermont.....	116	62	66	34	20	20
Massachusetts.....	610	209	656	313	239	567
Rhode Island.....	128	88	93	87	70	71
Connecticut.....	1,415	1,114	955	1,680	1,662	1,314
New England.....	3,375	2,227	2,565	2,681	2,764	2,332
New York.....	608	540	405	287	210	68
New Jersey.....	424	239	332	253	166	184
Pennsylvania.....	2,231	1,877	921	814	814	708
Middle Atlantic.....	3,263	2,656	1,658	1,359	1,100	960
Ohio.....	3,680	2,695	1,760	1,045	605	405
Indiana.....	2,716	1,930	1,672	1,286	1,429	1,858
Illinois.....	3,269	1,570	1,250	789	526	461
Michigan.....	472	250	137	40	31	31
Wisconsin.....	215	89	72	71	71	71
East North Central.....	9,773	6,582	4,291	3,237	2,662	2,916
Minnesota.....	241					
Iowa.....	2,197	275	137	137	137	137
Missouri.....	2,064	2,598	2,376	2,310	1,534	528
North Dakota.....	166					
South Dakota.....	121					
Nebraska.....	250					
Kansas.....	222	222	222	127	127	137
West North Central.....	6,098	3,005	2,735	2,574	1,848	702
Delaware.....	789	732	896	1,104	1,416	1,494
Maryland.....	1,815	1,843	1,446	2,212	1,935	2,580
Virginia.....	1,819	876	698	1,100	1,325	1,347
West Virginia.....	217	101	78	77	65	74
North Carolina.....	934	718	326	440	718	1,240
South Carolina.....	731	130	162	133	197	166
Georgia.....	679	400	470	450	440	570
Florida.....	359	239	449	486	463	523
South Atlantic.....	6,415	5,159	4,465	6,067	6,069	7,844
Kentucky.....	77	65	42	42	24	12
Tennessee.....	137	114	39	61	61	79
Alabama.....	66	39	39	69	133	84
Mississippi.....	105	84	71	98	165	125
Arkansas.....	128	304	536	592	760	792
Louisiana.....	69	74	108	163	166	113
Oklahoma.....	265	293	303	256	178	192
Texas.....	1,094	874	912	1,162	640	798
South Central.....	1,895	1,762	2,040	2,358	2,071	2,192
Montana.....	86					
Idaho.....	107					
Wyoming.....		59	37	15		
Colorado.....	333	1	2	6	1	2
New Mexico.....	39	34	55	64	41	43
Arizona.....	24					
Utah.....						
Nevada.....						
Mountain.....	528	84	94	74	42	46
Washington.....	350	176	102	94	110	119
Oregon.....	164	160	69	32	37	74
California.....	1,009	1,591	1,487	1,418	1,025	1,349
Pacific.....	2,174	1,970	1,658	1,644	1,781	1,542
United States.....	33,521	23,331	19,616	19,824	18,976	18,623

TABLE 11.—Chicks hatched by commercial hatcheries, by States, by months, 1941

State and division	January	February	March	April	May	June
	<i>Thousands</i>	<i>Thousands</i>	<i>Thousands</i>	<i>Thousands</i>	<i>Thousands</i>	<i>Thousands</i>
Maine.....	214	540	991	1,079	1,080	890
New Hampshire.....	607	1,543	2,068	1,900	1,543	1,009
Vermont.....	45	129	146	221	203	193
Massachusetts.....	1,727	2,722	2,741	3,436	2,121	1,692
Rhode Island.....	166	178	232	267	278	317
Connecticut.....	2,055	2,116	2,987	2,740	2,329	2,329
New England.....	4,614	7,222	9,155	9,643	7,560	6,200
New York.....	637	2,275	4,131	3,639	3,548	1,510
New Jersey.....	698	2,160	4,515	5,670	4,515	1,800
Pennsylvania.....	1,104	3,772	7,988	8,045	7,728	4,968
Middle Atlantic.....	2,430	8,207	16,004	17,957	15,821	8,278
Ohio.....	1,202	4,216	13,210	12,852	15,028	7,004
Indiana.....	3,376	8,003	15,102	21,101	18,943	8,346
Illinois.....	2,054	5,530	14,220	17,548	18,070	10,981
Michigan.....	1,141	2,465	6,174	7,254	7,829	3,977
Wisconsin.....	104	404	3,648	6,665	7,116	2,838
East North Central.....	8,077	21,738	51,394	65,410	67,876	33,146
Minnesota.....	151	2,007	6,401	16,433	15,575	0,375
Iowa.....	680	2,720	12,665	21,505	26,045	16,915
Missouri.....	1,320	4,400	13,552	17,512	10,536	13,552
North Dakota.....	4	62	274	070	1,412	730
South Dakota.....	16	445	2,477	4,144	4,698	3,794
Nebraska.....	524	2,044	6,405	9,302	8,290	3,355
Kansas.....	418	2,698	8,246	11,932	11,324	1,824
West North Central.....	3,413	14,436	40,020	81,758	87,786	40,545
Delaware.....	1,029	1,145	1,245	1,042	1,643	1,145
Maryland.....	2,403	3,657	3,881	3,093	4,217	2,165
Virginia.....	1,639	2,252	3,620	4,161	3,990	2,064
West Virginia.....	161	208	485	774	605	410
North Carolina.....	1,435	2,600	3,733	3,966	2,021	2,272
South Carolina.....	388	770	1,006	842	078	336
Georgia.....	672	1,250	2,500	2,568	1,237	1,064
Florida.....	583	927	1,050	1,545	1,006	927
South Atlantic.....	5,173	12,059	17,457	19,791	16,497	11,273
Kentucky.....	479	1,062	1,382	2,076	1,973	639
Tennessee.....	447	1,255	1,936	2,918	1,508	895
Alabama.....	302	748	1,111	1,468	893	754
Mississippi.....	408	476	863	993	810	623
Arkansas.....	1,112	1,262	1,463	1,613	1,125	962
Louisiana.....	192	346	676	683	536	315
Oklahoma.....	1,615	3,092	4,385	4,915	4,351	1,939
Texas.....	2,448	6,768	11,232	11,608	5,184	3,120
South Central.....	7,063	15,099	23,048	26,471	16,300	9,147
Montana.....	10	42	259	260	269	148
Idaho.....	8	543	1,027	1,110	808	403
Wyoming.....	7	32	66	104	76	35
Colorado.....	429	924	1,402	1,579	1,957	1,277
New Mexico.....	70	141	311	482	389	67
Arizona.....	151	209	341	202	130	57
Utah.....	36	158	500	528	296	247
Nevada.....			13	25	42	26
Mountain.....	711	2,059	3,970	4,290	4,060	2,260
Washington.....	388	1,838	2,508	2,174	945	724
Oregon.....	226	854	1,628	1,661	1,154	789
California.....	3,889	5,323	8,782	7,462	4,368	3,367
Pacific.....	4,482	8,015	13,318	11,300	6,467	4,880
United States.....	39,112	90,575	185,305	236,653	222,457	124,729

TABLE 11.—Chicks hatched by commercial hatcheries, by States, by months, 1941—Continued

State and division	July	August	September	October	November	December
	Thousands	Thousands	Thousands	Thousands	Thousands	Thousands
Maine.....	307	243	178	148	113	63
New Hampshire.....	528	739	805	654	923	923
Vermont.....	162	67	57	36	30	49
Massachusetts.....	1,236	810	713	676	682	713
Rhode Island.....	161	130	114	133	159	105
Connecticut.....	2,182	2,028	2,028	2,247	2,439	1,918
New England.....	4,650	3,836	3,805	3,796	4,246	3,761
New York.....	746	601	473	309	255	73
New Jersey.....	640	450	472	495	405	450
Pennsylvania.....	3,030	2,300	1,858	1,426	1,380	1,794
Middle Atlantic.....	4,322	3,351	2,831	2,230	2,040	2,317
Ohio.....	6,188	3,392	2,108	1,202	610	612
Indiana.....	6,814	3,751	2,063	1,782	1,969	2,438
Illinois.....	3,871	1,806	1,422	1,185	790	553
Michigan.....	996	240	153	52	63	41
Wisconsin.....	215	86	86	86	86	86
East North Central.....	17,081	9,314	5,832	4,307	3,714	3,730
Minnesota.....	403					
Iowa.....	2,720	170	170	170	170	170
Missouri.....	6,192	3,432	3,108	3,168	2,200	968
North Dakota.....	208					
South Dakota.....	302					
Nebraska.....	274					
Kansas.....	380	342	342	190	152	152
West North Central.....	9,470	3,944	3,680	3,528	2,622	1,200
Delaware.....	1,013	930	996	1,444	1,992	1,876
Maryland.....	2,438	2,675	2,239	2,762	3,247	3,583
Virginia.....	2,422	1,368	1,282	1,393	1,682	1,624
West Virginia.....	255	102	63	01	77	91
North Carolina.....	1,043	1,043	533	626	1,182	1,739
South Carolina.....	143	290	143	168	265	178
Georgia.....	771	925	655	698	732	795
Florida.....	556	309	380	415	547	583
South Atlantic.....	8,741	7,251	6,246	7,500	9,714	10,672
Kentucky.....	104	85	64	56	40	24
Tennessee.....	195	58	165	107	146	97
Alabama.....	85	60	72	199	187	157
Mississippi.....	225	188	162	185	214	178
Arkansas.....	225	525	788	1,075	1,125	1,225
Louisiana.....	98	98	136	136	144	140
Oklahoma.....	360	300	415	360	209	208
Texas.....	1,152	1,656	1,632	1,584	912	1,104
South Central.....	2,453	2,373	3,434	3,714	2,070	3,133
Montana.....	32					
Idaho.....	168					
Wyoming.....						
Colorado.....	512	168	67	25		
New Mexico.....	67	3	4	4	2	
Arizona.....	85	64	103	121	114	75
Utah.....	32					
Nevada.....	1					
Mountain.....	857	215	174	150	116	73
Washington.....	556	315	116	136	200	200
Oregon.....	299	190	139	80	102	175
California.....	1,820	2,138	2,092	2,306	2,138	1,866
Pacific.....	2,675	2,643	2,257	2,532	2,440	2,241
United States.....	60,291	32,947	28,349	27,897	27,708	27,217

TABLE 12.—Chicks hatched by commercial hatcheries, by States, by months, 1942

State and division	January	February	March	April	May	June
	Thousands	Thousands	Thousands	Thousands	Thousands	Thousands
Maine.....	207	548	1,069	1,194	1,188	964
New Hampshire.....	893	1,505	1,881	2,288	2,178	1,180
Vermont.....	56	114	178	282	224	202
Massachusetts.....	1,782	3,275	3,320	3,475	2,406	1,760
Rhode Island.....	267	224	296	314	339	285
Connecticut.....	1,838	2,123	3,359	3,834	3,105	2,947
New England.....	6,073	7,789	10,103	11,337	9,441	7,293
New York.....	735	2,006	3,873	4,528	3,754	2,020
New Jersey.....	625	2,500	5,159	6,575	6,225	1,700
Pennsylvania.....	1,620	5,580	10,380	12,120	9,480	6,660
Middle Atlantic.....	2,980	10,086	19,403	23,223	18,459	10,386
Ohio.....	2,680	4,640	14,240	18,210	16,320	8,060
Indiana.....	4,214	9,310	19,012	23,912	19,600	5,580
Illinois.....	2,461	5,104	17,072	22,352	20,850	10,120
Michigan.....	1,045	2,222	6,053	9,068	8,455	4,136
Wisconsin.....	225	950	4,225	7,425	8,225	3,225
East North Central.....	10,028	22,226	60,602	80,997	73,456	31,147
Minnesota.....	195	3,438	13,555	20,764	20,334	7,604
Iowa.....	672	3,840	18,240	28,992	29,092	11,040
Missouri.....	2,012	6,032	17,160	20,904	22,256	11,232
North Dakota.....	20	162	627	1,363	1,795	882
South Dakota.....	18	543	3,521	4,834	4,572	3,090
Nebraska.....	497	3,088	8,910	11,325	8,165	3,195
Kansas.....	602	3,416	11,266	13,760	10,320	2,107
West North Central.....	4,919	20,483	73,270	101,942	97,204	39,756
Delaware.....	1,074	1,074	2,133	3,097	2,565	1,728
Maryland.....	2,355	3,215	3,681	4,038	4,711	2,880
Virginia.....	1,020	2,610	4,414	5,000	4,611	3,205
West Virginia.....	155	248	563	928	790	500
North Carolina.....	1,855	2,891	5,015	5,221	3,192	3,216
South Carolina.....	469	666	1,027	1,822	938	571
Georgia.....	1,007	1,057	3,230	3,765	1,824	1,539
Florida.....	767	523	1,054	1,211	878	641
South Atlantic.....	10,194	14,120	21,117	24,058	19,700	14,489
Kentucky.....	505	1,413	2,142	2,804	2,703	1,165
Tennessee.....	625	1,340	2,036	3,078	2,362	1,123
Alabama.....	604	989	1,664	1,787	1,209	873
Mississippi.....	484	508	1,476	1,134	942	422
Arkansas.....	1,071	1,102	1,428	1,407	1,071	777
Louisiana.....	230	515	817	801	780	617
Oklahoma.....	1,805	3,333	6,860	6,240	4,888	2,191
Texas.....	3,000	8,760	13,920	13,620	7,920	4,260
South Central.....	8,355	17,060	30,343	30,880	21,935	11,421
Montana.....	34	180	369	369	282	78
Idaho.....	123	467	1,091	1,105	1,003	401
Wyoming.....	3	31	59	108	98	44
Colorado.....	414	936	1,773	1,089	2,295	1,089
New Mexico.....	83	160	490	470	418	164
Arizona.....	178	221	435	303	191	68
Utah.....	84	172	491	668	462	280
Nevada.....			14	20	39	24
Mountain.....	910	2,217	4,632	4,887	4,788	2,184
Washington.....	513	2,295	3,362	2,862	1,485	945
Oregon.....	258	955	1,944	1,883	1,585	877
California.....	4,080	5,263	9,339	8,925	4,182	3,090
Pacific.....	4,851	8,503	14,045	13,670	7,172	4,882
United States.....	47,319	103,384	234,424	291,944	252,254	121,563

TABLE 12.—Chicks hatched by commercial hatcheries, by States, by months, 1942—Continued

State and division	July	August	September	October	November	December
	<i>Thousands</i>	<i>Thousands</i>	<i>Thousands</i>	<i>Thousands</i>	<i>Thousands</i>	<i>Thousands</i>
Maine.....	442	277	295	172	132	112
New Hampshire.....	987	900	893	831	1,082	1,066
Vermont.....	165	81	56	50	46	46
Massachusetts.....	1,671	1,159	913	713	869	926
Rhode Island.....	201	133	128	145	173	125
Connecticut.....	2,725	2,884	1,901	2,598	2,440	1,933
New England.....	6,191	5,443	4,096	4,579	4,742	4,248
New York.....	993	695	816	357	278	90
New Jersey.....	626	475	625	600	475	425
Pennsylvania.....	3,780	2,940	2,400	1,620	1,440	1,980
Middle Atlantic.....	5,398	4,110	3,541	2,577	2,193	2,594
Ohio.....	6,560	3,840	2,480	1,760	1,040	720
Indiana.....	4,214	3,038	2,058	1,882	2,156	3,038
Illinois.....	4,224	1,848	1,468	1,076	880	616
Michigan.....	1,165	249	183	68	105	104
Wisconsin.....	225	100	100	100	100	100
East North Central.....	16,385	9,075	6,109	4,843	4,281	4,578
Minnesota.....	331					
Iowa.....	2,208	288	192	192	192	192
Missouri.....	6,448	4,472	4,368	3,848	2,012	1,456
North Dakota.....	311					
South Dakota.....	333					
Nebraska.....	320					
Kansas.....	215	387	344	258	172	129
West North Central.....	10,768	5,147	4,904	4,208	3,276	1,777
Delaware.....	1,071	1,647	1,701	2,646	3,024	3,240
Maryland.....	2,965	2,889	2,612	2,968	3,483	3,760
Virginia.....	2,016	1,688	1,604	1,570	1,733	1,759
West Virginia.....	340	218	105	118	92	143
North Carolina.....	1,328	1,336	944	856	1,328	2,065
South Carolina.....	157	252	190	218	279	211
Georgia.....	1,064	817	631	741	988	1,197
Florida.....	639	388	692	638	776	739
South Atlantic.....	10,980	9,265	8,579	9,755	11,703	13,153
Kentucky.....	146	123	78	78	45	22
Tennessee.....	309	255	204	204	166	166
Alabama.....	99	58	239	264	198	165
Mississippi.....	254	205	186	217	192	180
Arkansas.....	315	336	399	746	882	968
Louisiana.....	219	178	210	265	255	204
Oklahoma.....	417	333	472	389	380	444
Texas.....	1,600	1,660	1,920	1,620	1,380	1,440
South Central.....	3,266	3,048	3,717	3,783	3,697	3,587
Montana.....	38					
Idaho.....	180					
Wyoming.....	7					
Colorado.....	432	39	18	18		
New Mexico.....	65	3	3		2	
Arizona.....	92	64	60	150	125	107
Utah.....	97					
Nevada.....	12					
Mountain.....	923	103	107	171	127	107
Washington.....	621	495	216	202	260	338
Oregon.....	285	221	155	189	146	206
California.....	2,499	2,448	2,550	2,858	2,652	2,856
Pacific.....	3,378	2,677	2,921	3,247	3,054	3,400
United States.....	56,680	39,268	34,064	33,183	32,683	33,324

TABLE 13.—Chicks hatched by commercial hatcheries, by States, by months, 1948

State and division	January	February	March	April	May	June
	<i>Thousands</i>	<i>Thousands</i>	<i>Thousands</i>	<i>Thousands</i>	<i>Thousands</i>	<i>Thousands</i>
Maine	368	745	1,291	1,421	1,474	1,244
New Hampshire	1,517	1,535	2,531	2,029	2,690	2,251
Vermont	59	127	220	273	277	249
Massachusetts	2,327	3,191	4,375	4,518	4,108	3,596
Rhode Island	369	339	453	507	530	456
Connecticut	2,010	2,688	4,066	4,024	3,817	3,351
New England	6,620	8,925	12,837	13,368	12,896	11,147
New York	965	2,441	4,819	5,520	5,214	3,902
New Jersey	840	4,011	7,200	7,133	6,502	3,545
Pennsylvania	3,811	6,486	12,720	14,258	13,166	9,454
Middle Atlantic	5,346	13,238	24,730	27,491	24,012	16,991
Ohio	2,003	5,891	15,518	19,185	20,493	13,836
Indiana	3,067	9,028	19,090	24,562	24,348	13,682
Illinois	1,002	8,449	21,780	26,285	26,710	17,243
Michigan	1,233	2,778	7,824	8,077	9,384	7,280
Wisconsin	220	1,192	5,406	8,404	8,870	5,449
East North Central	6,415	28,240	70,078	87,443	80,605	57,495
Minnesota	246	4,159	15,197	22,366	21,782	10,027
Iowa	917	5,568	22,042	33,106	33,417	18,366
Missouri	2,517	7,952	20,508	25,705	28,778	20,069
North Dakota	24	130	572	1,337	1,830	1,308
South Dakota	33	636	3,792	5,032	5,349	3,465
Nebraska	520	3,295	8,076	11,990	11,007	3,958
Kansas	833	4,338	12,204	14,642	13,185	4,737
West North Central	5,680	26,078	85,351	114,178	115,348	61,880
Delaware	2,628	2,739	3,877	4,522	4,028	3,245
Maryland	3,895	3,839	4,686	5,535	6,140	4,180
Virginia	2,428	3,243	4,574	5,350	6,058	3,871
West Virginia	173	379	845	1,116	1,172	863
North Carolina	2,904	4,611	6,215	6,560	5,546	4,090
South Carolina	540	991	1,496	1,647	1,215	709
Georgia	1,927	2,838	4,100	3,980	3,327	3,375
Florida	962	1,133	1,287	1,441	1,225	1,168
South Atlantic	14,747	19,773	27,168	30,180	28,710	20,605
Kentucky	641	1,677	3,016	3,517	3,151	1,720
Tennessee	891	1,885	3,219	3,356	3,073	1,564
Alabama	824	1,448	2,198	2,186	1,788	1,138
Mississippi	469	810	1,398	1,448	1,130	643
Arkansas	1,509	1,537	2,115	2,278	2,036	1,346
Louisiana	671	971	1,272	1,206	1,186	671
Oklahoma	1,720	4,365	7,613	8,472	7,470	3,426
Texas	4,775	10,561	15,985	16,462	13,219	6,483
South Central	11,485	23,257	37,016	39,110	31,621	16,996
Montana	30	82	216	301	424	279
Idaho	145	558	967	1,019	1,063	692
Wyoming	4	25	54	107	110	72
Colorado	564	1,092	2,187	2,454	2,439	1,504
New Mexico	46	200	421	415	421	278
Arizona	314	309	499	488	395	322
Utah	108	309	542	597	546	402
Nevada			20	20	45	20
Mountain	1,151	2,065	4,066	5,551	5,352	3,568
Washington	751	2,013	3,427	3,449	2,792	1,605
Oregon	425	1,365	2,423	2,588	2,319	1,442
California	4,827	7,546	11,193	11,258	8,513	5,739
Pacific	6,003	10,854	17,043	17,287	13,624	8,786
United States	59,847	133,030	279,198	331,617	323,700	197,468

Table 13.—Chicks hatched by commercial hatcheries, by States, by months, 1943—Continued

State and division	July	August	September	October	November	December
	<i>Thousands</i>	<i>Thousands</i>	<i>Thousands</i>	<i>Thousands</i>	<i>Thousands</i>	<i>Thousands</i>
Maine.....	569	356	248	205	137	115
New Hampshire.....	1,666	1,060	970	870	1,025	682
Vermont.....	180	88	53	28	17	15
Massachusetts.....	2,326	1,178	1,098	881	609	673
Rhode Island.....	324	196	147	149	181	116
Connecticut.....	2,914	2,518	2,451	2,532	1,577	921
New England.....	7,088	5,707	4,967	4,645	3,546	2,422
New York.....	2,104	1,101	708	484	375	115
New Jersey.....	1,486	1,202	910	797	354	207
Pennsylvania.....	5,887	3,733	3,093	1,902	1,012	1,569
Middle Atlantic.....	9,337	6,030	4,711	3,183	2,341	1,591
Ohio.....	7,020	5,538	3,086	2,104	1,146	485
Indiana.....	6,072	4,001	2,810	2,292	2,044	1,207
Illinois.....	6,106	2,817	2,174	1,700	1,080	636
Michigan.....	1,590	274	145	65	79	47
Wisconsin.....	1,024	116	115	114	113	113
East North Central.....	22,718	12,746	8,330	6,355	4,462	2,468
Minnesota.....	505					
Iowa.....	2,845	777	247	220	105	222
Missouri.....	4,960	5,973	5,289	4,568	3,002	1,192
North Dakota.....	345					
South Dakota.....	369					
Nebraska.....	347					
Kansas.....	485	304	400	266	183	87
West North Central.....	14,876	7,144	5,036	5,000	3,380	1,501
Delaware.....	3,114	2,797	2,437	3,823	4,301	4,231
Maryland.....	4,290	3,277	3,077	3,787	3,990	3,725
Virginia.....	3,330	2,123	1,703	1,797	1,754	2,002
West Virginia.....	463	309	146	137	122	130
North Carolina.....	2,085	1,534	1,210	1,200	1,766	1,423
South Carolina.....	382	292	228	267	335	102
Georgia.....	1,833	1,476	1,364	1,470	1,584	1,586
Florida.....	731	498	491	623	749	717
South Atlantic.....	16,147	12,306	10,856	13,204	14,691	14,096
Kentucky.....	356	161	108	92	65	27
Tennessee.....	535	397	282	249	190	136
Alabama.....	365	103	272	270	219	173
Mississippi.....	315	183	184	230	194	139
Arkansas.....	602	414	412	635	1,132	1,431
Louisiana.....	425	153	207	294	271	219
Oklahoma.....	723	413	364	455	413	348
Texas.....	2,001	1,712	1,705	1,535	1,557	1,745
South Central.....	5,322	3,626	3,534	3,790	4,041	4,218
Montana.....	138					
Idaho.....	324					
Wyoming.....	11					
Colorado.....	616	85	43	20		
New Mexico.....	86	7	6	5	5	7
Arizona.....	199	83	108	150	130	124
Utah.....	147	20	20	24	35	19
Nevada.....	14					
Mountain.....	1,445	204	177	199	170	150
Washington.....	942	559	350	296	271	301
Oregon.....	709	393	192	103	120	79
California.....	3,660	2,013	2,991	2,681	2,372	2,523
Pacific.....	5,251	3,365	3,533	3,080	2,763	2,903
United States.....	83,084	61,634	42,044	39,456	35,394	29,649

TABLE 14.—Average prices paid by farmers per hundred chicks and total value of chicks hatched, by States, 1943

State and division	1943		State and division	1943	
	Average price for 100 chicks	Total value of hatchery chicks		Average price for 100 chicks	Total value of hatchery chicks
	Dollars	1,000 dollars		Dollars	1,000 dollars
Maine.....	15.70	1,280	North Carolina.....	12.40	4,858
New Hampshire.....	16.70	3,278	South Carolina.....	12.50	1,048
Vermont.....	15.20	244	Georgia.....	12.20	3,410
Massachusetts.....	15.70	4,682	Florida.....	14.40	1,588
Rhode Island.....	19.10	597	South Atlantic.....	13.17	29,304
Connecticut.....	16.70	5,159	Kentucky.....	12.00	1,831
New England.....	15.91	15,129	Tennessee.....	12.20	1,938
New York.....	15.50	4,364	Alabama.....	11.70	1,263
New Jersey.....	15.50	5,392	Mississippi.....	12.10	864
Pennsylvania.....	14.20	10,972	Arkansas.....	11.20	1,737
Middle Atlantic.....	14.78	20,728	Louisiana.....	12.10	013
Ohio.....	14.20	13,813	Oklahoma.....	12.80	4,611
Indiana.....	12.00	14,834	Texas.....	12.80	9,951
Illinois.....	12.00	13,075	South Central.....	12.48	23,138
Michigan.....	15.00	6,223	Montana.....	15.00	242
Wisconsin.....	10.00	5,138	Idaho.....	15.70	738
East North Central.....	13.80	55,138	Wyoming.....	13.30	52
Minnesota.....	16.70	11,662	Colorado.....	13.50	1,477
Iowa.....	13.80	16,535	New Mexico.....	13.00	205
Missouri.....	11.90	10,121	Arizona.....	17.00	549
North Dakota.....	14.30	807	Utah.....	17.50	486
South Dakota.....	13.50	2,520	Nevada.....	20.50	28
Nebraska.....	12.40	4,973	Mountain.....	14.97	3,837
Kansas.....	12.40	6,417	Washington.....	18.20	3,050
West North Central.....	13.24	59,036	Oregon.....	18.80	2,274
Delaware.....	13.80	5,821	California.....	17.30	11,442
Maryland.....	14.00	6,945	Pacific.....	17.05	16,708
Virginia.....	12.00	4,825	United States.....	13.86	223,076
West Virginia.....	13.80	809			

TABLE 15.—Number of hatchery chicks sexed and percentage of total hatch, 1948

State and division	1943		State and division	1943	
	Number sexed	Percentage of total hatch		Number sexed	Percentage of total hatch
	Thousands	Percent		Thousands	Percent
Maine.....	1, 778	27	North Carolina.....	3, 458	9
New Hampshire.....	2, 118	1	South Carolina.....	245	3
Vermont.....	205	13	Georgia.....	303	1
Massachusetts.....	6, 252	25	Florida.....	355	3
Rhode Island.....	413	11	South Atlantic.....	8, 242	4
Connecticut.....	2, 421	7	Kentucky.....	525	4
New England.....	13, 187	14	Tennessee.....	1, 203	8
New York.....	5, 789	21	Alabama.....	(1)
New Jersey.....	5, 534	17	Mississippi.....	509	3
Pennsylvania.....	15, 873	20	Arkansas.....	1, 672	11
Middle Atlantic.....	27, 196	19	Louisiana.....	205	3
Ohio.....	14, 017	14	Oklahoma.....	4, 115	11
Indiana.....	17, 400	15	Texas.....	8, 236	11
Illinois.....	16, 072	14	South Central.....	10, 556	9
Michigan.....	13, 252	34	Montana.....	90	6
Wisconsin.....	10, 555	34	Idaho.....	983	21
East North Central.....	71, 298	18	Wyoming.....	(1)
Minnesota.....	24, 419	35	Colorado.....	328	8
Iowa.....	24, 695	20	New Mexico.....	48	2
Missouri.....	30, 052	22	Arizona.....	241	5
North Dakota.....	410	7	Utah.....	729	26
South Dakota.....	1, 716	9	Nevada.....	(1)
Nebraska.....	1, 870	5	Mountain.....	3, 010	12
Kansas.....	8, 459	16	Washington.....	4, 127	25
West North Central.....	91, 012	20	Oregon.....	3, 650	30
Delaware.....	317	1	California.....	17, 968	27
Maryland.....	1, 982	4	Pacific.....	25, 765	27
Virginia.....	1, 236	3	United States.....	250, 264	16
West Virginia.....	346	6			

1 Less than 1 percent.

END

© UPDATA 1981