



AgEcon SEARCH
RESEARCH IN AGRICULTURAL & APPLIED ECONOMICS

The World's Largest Open Access Agricultural & Applied Economics Digital Library

This document is discoverable and free to researchers across the globe due to the work of AgEcon Search.

Help ensure our sustainability.

Give to AgEcon Search

AgEcon Search

<http://ageconsearch.umn.edu>

aesearch@umn.edu

*Papers downloaded from **AgEcon Search** may be used for non-commercial purposes and personal study only. No other use, including posting to another Internet site, is permitted without permission from the copyright owner (not AgEcon Search), or as allowed under the provisions of Fair Use, U.S. Copyright Act, Title 17 U.S.C.*

SB-56 (1937)

USDA STATISTICAL BULLETINS

UPDATES

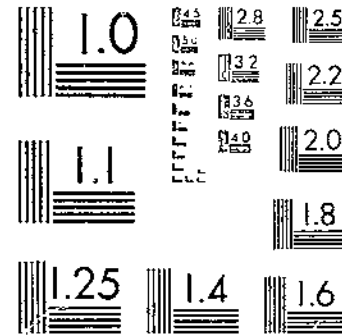
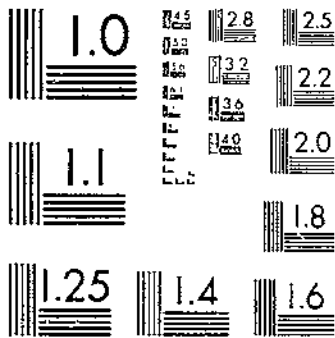
GRADE, STAPLE LENGTH AND TENDERABILITY OF COTTON

1928-29 TO 1924-25

HARPER, F. H. ET AL.

105

START



© UPDATA 1980

MICROCOPY RESOLUTION TEST CHART
NATIONAL BUREAU OF STANDARDS 1963-A

MICROCOPY RESOLUTION TEST CHART
NATIONAL BUREAU OF STANDARDS 1963-A

Washington, D. C.



February 1937

**GRADE, STAPLE LENGTH, AND
TENDERABILITY OF COTTON IN THE
UNITED STATES
1928-29 TO 1934-35**

*Prepared in the Bureau of Agricultural Economics
In cooperation with State Agricultural Agencies*



MAR 31 1937

STATEMENT OF COOPERATION

In assembling the information on which this report is based, the following agencies cooperated during each of the 7 years covered by the data:

Arizona Agricultural Experiment Station.
California State Department of Agriculture.
Georgia Experiment Station of the University System.
North Carolina Agricultural Experiment Station.
Oklahoma Agricultural Experiment Station.
South Carolina Agricultural Experiment Station.
Tennessee Agricultural Experiment Station.

In addition, the following agencies cooperated during some parts of the 7-year period:

Alabama Agricultural Experiment Station.
Arkansas Agricultural Experiment Station.
Florida Agricultural Experiment Station.
Louisiana Agricultural Experiment Station.
Mississippi Agricultural Experiment Station.
Missouri Agricultural Experiment Station.
New Mexico Agricultural Experiment Station.
Texas Agricultural Experiment Station.

UNITED STATES DEPARTMENT OF AGRICULTURE
STATISTICAL BULLETIN NO. 56

Washington, D. C.

February 1937

GRADE, STAPLE LENGTH, AND TENDERABILITY OF COTTON
IN THE UNITED STATES, 1928-29 to 1934-35

Prepared in the Bureau of Agricultural Economics¹ in cooperation with State agricultural agencies

CONTENTS

	Page
Introduction.....	1
Grade and staple length of American upland cotton ginned, by States, crop of 1934.....	8
Grade and staple length of American-Egyptian cotton ginned, crops of 1930-34.....	20
Staple length of American upland cotton ginned in the United States, crops of 1928-34, and by States, crops of 1930-34.....	21
Average staple length of American upland cotton ginned, by States and districts thereof, crop of 1934.....	24
Average staple length of American upland cotton ginned, by States, crops of 1928-34.....	25
Grade of American upland cotton ginned, by States and specified periods, crop of 1934.....	26
Grade of American-Egyptian cotton ginned, by specified periods, crop of 1934.....	37
Staple length of American upland cotton ginned, by States and specified periods, crop of 1934.....	37
Staple length of American-Egyptian cotton ginned, by specified periods, crop of 1934.....	41
Staple length of American upland cotton ginned, by districts (10 States), crop of 1934.....	41
Tenderability of American upland cotton ginned in the United States, crops of 1928-34, and by States, crops of 1930-34.....	55
Tenderability of American upland cotton on hand, Aug. 1, 1928-35.....	56
Grade and staple length of American upland cotton on hand, Aug. 1, 1935.....	57
Grade and staple length of American-Egyptian cotton on hand, Aug. 1, 1931-35.....	58
Staple length of American upland cotton on hand, by places of storage, Aug. 1, 1928-35.....	59
Average staple length of American upland cotton on hand, by places of storage, Aug. 1, 1928-35.....	60
Staple length of foreign cotton on hand, Aug. 1, 1928-35.....	60
An act authorizing the Secretary of Agriculture to collect and publish statistics of the grade and staple length of cotton.....	62

INTRODUCTION

Among the characteristics of cotton lint that determine its usefulness and desirability for manufacturing purposes are grade and length of staple.

Grade is a term denoting the composite of (1) the color, luster, and brightness of the lint; (2) the nature and quantity of foreign material present, such as sand or dust, or particles of leaves, bark of stalks, shale, etc.; and (3) preparation, or ginning. A white cotton is usually preferred, and a high degree of luster and brightness is desired by manufacturers of some classes of products.

Cotton is commonly referred to as being short, medium, or long with respect to staple length. Short cotton is sometimes considered as that which is $2\frac{1}{32}$ inch or less in length of staple; medium, that which ranges from $1\frac{1}{16}$ inch up to and including $1\frac{3}{32}$ inches; and long

¹ By W. B. Latham, F. H. Harper, Sam W. Martin, F. E. Nelson, C. C. McWhorter, and G. B. Miller. Credit is due Carl H. Robinson for general supervision; Arthur W. Palmer for helpful suggestions; cooperating State agencies, and the cotton ginners, wholesalers, dealers, manufacturers, and owners of cotton whose cooperation has made this report possible.

cotton, that which has a staple length of $1\frac{1}{8}$ inches or more. Cotton of the longer staples is expected to sell for higher prices, other conditions being equal, than cotton of the shorter staples, and growers frequently find it advantageous to produce such cotton.

Character of cotton also is related to its usefulness and desirability for manufacturing purposes. The term "character" is used to designate those elements of quality not described or indicated by grade and staple-length classifications. There are no established official standards for character, and therefore the data herein presented include no information on this element of quality. The United States Department of Agriculture recognizes the need for such standards, however, and a comprehensive program of research is being conducted in the Division of Cotton Marketing for the purpose of studying character of cotton in its relation to spinning value.

Under the authority of legislation enacted in 1927 (act of Mar. 3, 44 Stat. 1372-1374), the Division of Cotton Marketing has prepared periodic reports during the ginning season, beginning in 1928, on the grade, staple length, and tenderability of cotton ginned during specified periods in the individual States and in the United States as a whole and has issued a report on the entire crop after the end of each ginning season. In addition, a report has been prepared and issued each year since 1928 on the grade, staple length, and tenderability of cotton on hand in the United States on August 1.

The Division conducted preliminary work of this nature during the 1927-28 season, but it was of restricted scope, having reference only to the State of Georgia and a Texas-Oklahoma area of 27 counties. The results of this study were published in Statistical Bulletin 40, tables 31 and 32, the counties included in the Texas-Oklahoma area being listed in footnote 1 of table 32. It was in 1918, however, that the Department of Agriculture made its first attempt to assemble information on the quality of cotton stocks on hand. On June 7 of that year the Cotton Division of the Bureau of Markets sent telegrams to exchanges or firms in 50 principal cotton centers in the South asking for the number of bales of each grade of cotton in storage not sold to consumers. On June 15, 1918, questionnaires asking for information on the grade of cotton stocks were sent to dealers, manufacturers, and warehousemen. Information received in response to both inquiries was summarized in the Bureau of Markets, but it was not published. (The Bureau of Markets was combined with the Bureau of Crop Estimates in 1921 to form the Bureau of Markets and Crop Estimates, and this latter Bureau was combined with the Office of Farm Management and Farm Economics in 1922 to form the Bureau of Agricultural Economics.)

These reports on the crop and carry-over contain figures showing the number of bales of cotton recognized as being tenderable on contracts for future delivery under section 5 of the United States Cotton Futures Act of August 11, 1916, as amended, and the number of bales of cotton that are untenderable. Included in the latter is all cotton shorter than seven-eighths of an inch in staple, irrespective of grade, and cotton of certain of the lower grades in the various color groups, irrespective of staple length. Table 1 lists the standards for grade for American upland cotton in effect at the time the classifications reported upon in this bulletin were made. New standards for grade became effective on August 20, 1936.

The new grade standards are the result of efforts covering nearly a quarter of a century in the interest of more efficient and orderly marketing of cotton. The original United States Cotton Futures Act was approved on August 18, 1914. This statute was declared unconstitutional by the United States District Court for the Southern District of New York for the reason that in form the act was a revenue-raising measure and had originated in the Senate rather than in the House of Representatives. The constitutional question involved was not decided by an appellate court, but a reenactment of the statute with certain modifications was approved on August 11, 1916. Acting under authority contained in the original statute, the Secretary of Agriculture, on December 15, 1914, issued orders promulgating a set of standards for nine White grades, which replaced the entire set of nine permissive official standards for the White grades set up in 1909. Other grades were added later, and the standards have been revised from time to time. The first order establishing official standards for length of staple was signed on October 25, 1918.

In the revision of the grade standards for upland cotton which was promulgated in 1935, effective August 20, 1936, the grades for Blue Stained and Light Yellow Stained cotton were eliminated, and the grades for Yellow Stained were made descriptive. The grades for White cotton were shifted to include whiter color, and the more creamy samples in the higher grades for White cotton were eliminated, since creamy cotton could not be found in quantities sufficient to make copies of the old standards. The highest grade for White cotton, No. 1 or Middling Fair, was made descriptive, as were the grades for Extra White. The latter were increased in number from 5 to 7. The new grades for Tinged cotton do not contain the deeper colored cottons of the old series, and the changes in the White and in the Tinged standards resulted in excluding from the descriptive standards for Spotted cotton much of the Light Tinged cotton heretofore classified as Spotted. No. 2 Yellow Tinged (or Strict Good Middling Yellow Tinged) was eliminated in the revision. The revision thus provided for a reduction in the number of grades from 37 to 32, and a reduction in the number of standards represented by grade boxes from 25 to 13. It should be pointed out, however, that all of the figures presented in this publication are based upon classifications according to the official standards in use prior to August 20, 1936. For the revised standards effective August 20, 1936, physical standards have been prepared for the grades Strict Good Middling, Good Middling, Strict Middling, Middling, Strict Low Middling, Low Middling, Strict Good Ordinary, and Good Ordinary of the White color group and for the grades Good Middling, Strict Middling, Middling, Strict Low Middling, and Low Middling of the Tinged color group. All other grades of these revised standards are descriptive and are not represented in physical form.

Physical forms of the standards for grade listed in table 1 were prepared for all grades of American upland cotton except those of the Spotted, Light Yellow Stained, and Gray color groups and the grade Strict Good Middling of the Yellow Tinged color group. For these grades descriptive standards only were set up. All of the physical and descriptive standards for grade of upland cotton, with the exception of those for Extra White, are known as the Universal Standards for grade of American upland cotton, in accordance with the universal

standards agreements between the United States Department of Agriculture and the nine leading cotton organizations of Europe, as follows:

Liverpool Cotton Association, Ltd., Liverpool, England.
 Manchester Cotton Association, Ltd., Manchester, England.
 Federation of Master Cotton Spinners' Associations, Ltd., Manchester, England.
 Syndicat du Commerce des Cotons au Havre, Havre, France.
 Bremer Baumwollbörse, Bremen, Germany.
 Associazione Italiana Fascista degli Industriali Cotonieri, Milan, Italy.
 Centro Algodonero de Barcelona, Barcelona, Spain.
 Marché de Coton à Gand, Ghent, Belgium.
 Vereeniging voor den Katoenhandel te Rotterdam, Rotterdam, Netherlands.

The universal standards do not apply to the standards for length of staple.

In the case of American-Egyptian cotton, for which there are nine established grades, physical standards have been prepared for the five "even" grades—No. 1, No. 2, No. 3, No. 4, and No. 5—whereas for the four half grades—No. 1½, No. 2½, No. 3½, and No. 4½—and for cotton not described by any of the established classifications, referred to as "below grade No. 5", descriptive standards only are used. Descriptive standards for grade have the same legal status as grades represented in physical form.

TABLE 1.—Official color groups and grades for American upland cotton¹

Extra White	White	Spotted	Yellow Tinged	Light Yellow Stained	Yellow Stained	Gray	Blue Stained
	M. F. S. G. M.						
G. M.	G. M.	G. M.	S. G. M.	G. M.	G. M.	G. M.	G. M.
S. M.	S. M.	S. M.	S. M.	S. M.	S. M.	S. M.	S. M.
M.	M.	M.	M.	M.	M.	M.	M.
S. L. M.	S. L. M.	S. L. M.	S. L. M.	S. L. M.	S. L. M.	S. L. M.	S. L. M.
L. M.	L. M.	L. M.	L. M.	L. M.	L. M.	L. M.	L. M.
	S. G. O. G. O.						

¹ The grades shown above the heavy black line are deliverable on futures contracts made in accordance with sec. 6 of the United States Cotton Futures Act. Those below the line are intenderable on such contracts. These standards were superseded by revised grade standards effective Aug. 29, 1936.

The last complete revision of the staple standards became effective August 1, 1929. Issuance of staple types for additional lengths, $1\frac{1}{16}$, $2\frac{1}{32}$, and $3\frac{1}{32}$ inch, was authorized July 30, 1932, officially effective August 1, 1933. The standards in physical form include American upland cotton of the lengths $\frac{3}{8}$, $1\frac{1}{16}$, $\frac{7}{8}$, $2\frac{1}{32}$, $1\frac{1}{16}$, $3\frac{1}{32}$, and 1 inch, $1\frac{1}{32}$, $1\frac{1}{16}$, $1\frac{1}{8}$, $1\frac{1}{4}$, $1\frac{1}{2}$, $1\frac{3}{4}$, $1\frac{7}{8}$, $1\frac{1}{2}$, $1\frac{3}{4}$, $1\frac{7}{8}$, and $1\frac{1}{2}$ inches; and American-Egyptian cotton of the lengths $1\frac{1}{2}$, $1\frac{1}{16}$, $1\frac{1}{8}$, and $1\frac{1}{4}$ inches. Descriptive staple standards for American upland cotton are in use for the lengths $1\frac{1}{32}$, $1\frac{1}{16}$, $1\frac{1}{32}$, $1\frac{1}{32}$, $1\frac{1}{32}$ inches, and upward in gradations of thirty-seconds of an inch. American-Egyptian cotton of the lengths $1\frac{1}{32}$, $1\frac{1}{32}$, $1\frac{1}{32}$, $1\frac{1}{16}$, $1\frac{1}{32}$ inches, and longer than $1\frac{1}{32}$ inches is designated descriptively in gradations of thirty-seconds of an inch.

This bulletin, of the same series as Statistical Bulletins 40, 47, and 52, contains information on the grade, staple length, and tenderabil-

ity of cotton ginned and carried over in the United States. Some of the information is published in more than one of these bulletins in order to provide continuity of the data, thus facilitating comparisons of grade, staple length, and tenderability distributions from year to year.

In this bulletin certain information previously published is omitted. Statistics on the crops of 1928 and 1929 are not included in either the cross-classification figures for American-Egyptian cotton or the staple-length and tenderability figures on ginnings of upland cotton in the individual States. In the table on average staple length of ginnings of upland cotton in States and districts, figures for 1934 only are included, but in another table these figures are supplemented by State averages for 1933 and for the 5-year period 1928-32. In Statistical Bulletins 47 and 52, averages were included for all years for which they were available at the time they were prepared for publication.

Figure 1 (p. 25), constructed to facilitate comparisons of average staple lengths for the different States and changes that have taken place, differs from the corresponding figure in Statistical Bulletins 47 and 52 in that averages for the 5-year period 1928-32 and for the years 1933 and 1934 are shown instead of an average for each individual year for which data were included in those bulletins. Averages were not published in Statistical Bulletin 40.

Figures on the grade and staple of cotton ginned in individual States during specified ginning periods, and figures on the staple length of cotton ginned in districts into which States are divided, are presented for 1934 only. Statistical Bulletins 40 and 47 contain these figures for each individual year. Statistical Bulletin 52 also carries these figures for individual years with the exception of those for ginning periods for 1928. In the case of ginnings of American-Egyptian cotton, figures for grade and for staple by ginning periods are included for 1934 only.

The carry-over statistics for American-Egyptian cotton do not include cross-classifications for 1928, 1929, and 1930, whereas figures for all years for which they were available were published in Statistical Bulletins 40, 47, and 52.

Final figures on the 1934 crop and on the 1935 carry-over are herein published for the first time, although much of the information for the 1934-35 season has been released previously in preliminary form, as was much of that for earlier seasons prior to its publication in final form. This is therefore the first publication issued by the United States Department of Agriculture in which official statistics on the quality of the American cotton crop and carry-over are assembled for 7 consecutive years.

All of the grade, staple-length, and tenderability figures on the crop are based on the classification, according to official standards, of samples of cotton furnished by ginners who cooperated with the Department through its Grade and Staple Statistics Section of the Division of Cotton Marketing. In effecting the cooperative arrangements, ginners agreed to furnish a press-box sample of not less than 4 ounces from each bale ginned at their establishments. The number of samples classed and used as a basis for the grade, staple-length, and tenderability reports was as follows for each of the crops of specified years: 1928, 1,363,226; 1929, 1,012,285; 1930, 1,144,201;

1931, 1,034,860; 1932, 843,473; 1933, 743,317; and 1934, 768,240. The number of gins from which these samples were received in each of the years was as follows: 1928, 1,115; 1929, 784; 1930, 927; 1931, 800; 1932, 772; 1933, 695; and 1934, 899.

The samples drawn by cooperating ginneres were forwarded at frequent intervals to classing offices of the Division of Cotton Marketing located at Atlanta, Ga.; Memphis, Tenn.; and Dallas, Austin, and El Paso, Tex. At these offices the samples were classed, according to official standards, and the results of the classification were subsequently assembled for use in preparing the reports on the quality of the crop.²

Figures on the grade, staple length, and tenderability of stocks of cotton in the United States at the beginning of the season on August 1 are based on the classification, according to official standards, of samples representing stocks in public warehouses and compresses, consuming establishments, and other places of storage.

For all years prior to 1934 the same divisions of States were used in the assembling and dissemination of information regarding the quality of the crop. Beginning with that year, however, certain changes were made in the boundaries of some of the districts into which the States of Arkansas, Mississippi, Tennessee, and Texas are divided for purposes of the reports.

In the case of Arkansas, Randolph County was changed from district 1 to district 4; Little River and Miller Counties were changed from district 3 to district 4; and Pike and Hot Spring Counties were changed from district 2 to district 3.

Yazoo and Holmes Counties in Mississippi were changed from district 2 to district 1; Rankin County, from district 2 to district 3; and Amite County, from district 3 to district 2. Clay, Noxubee, and Lowndes Counties, which formerly constituted district 4, were changed to district 3, thus reducing to 3 the number of districts in Mississippi.

In Tennessee, district 1, comprising Obion, Dyer, Lauderdale, Tipton, Shelby, and Lake Counties, was combined with district 2 to form the new district 1, leaving only three districts in the State, the district formerly designated as 3 being changed to 2, and the district formerly designated as 4 being changed to 3.

The greatest number of changes was made in the district boundaries of Texas. In that State, Coleman and Concho Counties were changed from district 4 to district 3; Callahan County, from district 5 to district 3; Hays and Comal Counties from district 4 to district 7; Johnson County, from district 5 to district 7; Atascosa, Duval, LaSalle, and Webb Counties, from district 10 to district 4; and Lavaca and Colorado Counties, from district 9 to district 10.

Statistics presented in this bulletin reflect changes that have taken place in the grade, staple length, and tenderability of cotton in the United States during the period 1928-35. Some of these changes are of special significance.

The production of cotton shorter than $\frac{7}{8}$ inch in staple has definitely decreased, both in number of bales and in the proportion that they constitute of the annual crop. Ginnings of these lengths from the

² Additional information regarding the assembling of basic data on the crop and regarding the preparation of reports is contained in Statistical Bulletin 46, which contains also similar information concerning the carry-over.

crop of 1929 amounted to 2,921,500 bales, or 20.1 percent of the total crop, whereas only 539,100 bales of these lengths, 4.3 percent of the total, were ginned from the crop of 1933, and only 783,000 bales, 8.3 percent of the total, from the crop of 1934. Although the production of cotton shorter than $\frac{3}{8}$ inch in staple was greater in 1934 than in 1933, the number of bales of these lengths ginned from the crop of 1934 was only 26.8 percent as great as the number ginned from the crop of 1929.

The production of cotton ranging from $\frac{3}{8}$ inch to $\frac{3}{16}$ inch in length of staple has fluctuated from year to year, decreasing on the whole, both in number of bales and in the proportion that they constitute of each annual crop. Ginnings of these lengths from the 1934 crop amounted to 3,490,900 bales, which was but 59 percent as great as the 5,914,800 bales of the same lengths ginned from the 1928 crop and only 63 percent as great as the 5,533,700 bales ginned from the crop of 1929. Except in 1931, the number of bales of cotton ranging from $\frac{3}{8}$ inch to $\frac{3}{16}$ inch in staple decreased each year from 1928 to 1934.

From 1929 to 1933, the proportion of $\frac{1}{16}$ -inch and $\frac{3}{32}$ -inch cotton increased from year to year. Ginnings of these lengths from the 1934 crop were much less than from the crop of any other year during the period 1929-34, and the proportion that these ginnings represented of the total crop of 1934 was less than the corresponding proportion for each of the other years except 1929. This decrease in $\frac{1}{16}$ -inch and $\frac{3}{32}$ -inch cotton in 1934, however, was associated with increases in both the number of bales and the proportions of most of the lengths longer than 1 inch, as well as with increases in the number of bales and the proportion of cotton shorter than $\frac{3}{8}$ inch and with a slight increase in the proportion of lengths ranging from $\frac{7}{8}$ inch to $\frac{2}{32}$ inch.

Production of cotton 1 inch and longer in staple has increased appreciably, on the whole, since the grade and staple reports were inaugurated.

The net effect of changes in staple-length distribution of the crop from one year to another is indicated by the average staple length of cotton ginned. Calculated on the midpoints of staple-length groups, the averages for the crops of specified years, in terms of sixteenths of an inch, are as follows: 1934, 15.58; 1933, 15.55; 1932, 15.45; 1931, 15.44; 1930, 15.22; 1929, 15.11; and 1928, 15.18.³

The proportion of tenderable cotton produced has increased greatly since 1929. Of the upland cotton ginned from the crop of that year, 75.7 percent was of tenderable grades and staples, compared with 84.6 percent of the 1930 crop, 89.3 percent of the 1931 crop, 90.5 percent of the 1932 crop, 93.1 percent of the 1933 crop, and 90.1 percent of the 1934 crop.

The relation of carry-over stocks of American upland cotton to the crops of immediately preceding years is indicated to some extent by differences between average staple lengths. During the period 1929-35 the average staple length of carry-over stocks was greater than the average staple length of the preceding crop in each instance except 1935, when the carry-over of upland cotton averaged slightly shorter in staple than did the crop of 1934. The average staple length of American upland cotton carried over in consuming establishments

³ The averages for 1933 and 1934 are shown in Table 6; averages for other years are published in Statistical Bulletin 52 (Table 5).

during the period 1928-35 was appreciably greater for each year than the average staple length of upland cotton carried over in other places.

The tenderability of the carry-over of American upland cotton each year during the period 1929-35 differed very little from that of the preceding crop. For 1934 and 1935 the proportion of tenderable cotton in the carry-over was a little less than in the crops of 1933 and 1934, respectively; but during the period 1929-33 there was a greater proportion of tenderable cotton in the carry-over each year than in the preceding crop.

Statistics on American upland cotton and American-Egyptian cotton ginned and carried over are presented separately in this bulletin, and figures on the carry-over of upland cotton are shown separately for public warehouses and compresses and for consuming establishments. Carry-over of foreign cotton imported into this country and remaining on hand on August 1 is also reported separately. Egyptian cotton constituted the greater part of the carry-over of foreign growths each year during the period 1928-35, the remainder being made up chiefly of Peruvian, Chinese, and British Indian growths.

Grades and staples untenderable in settlement of contracts of sale for future delivery made subject to section 5 of the United States Cotton Futures Act and regulations of the Secretary of Agriculture thereunder are marked by footnote references in each table where they are reported.

Throughout the bulletin grades have been abbreviated as follows: 1-M. F., Middling Fair; 2-S. G. M., Strict Good Middling; 3-G. M., Good Middling; 4-S. M., Strict Middling; 5-M., Middling; 6-S. L. M., Strict Low Middling; 7-L. M., Low Middling; 8-S. G. O., Strict Good Ordinary; 9-G. O., Good Ordinary.

TABLE 2.—Grade and staple length of American upland cotton ginned in the United States, by States, crop of 1934

[Quantities are given in running bales, except that round bales are counted as half bales. Linters are not included]

Grade	All staple lengths		Shorter (than 7 $\frac{1}{2}$ inch)	7 $\frac{1}{2}$ and 7 $\frac{3}{4}$ inch	7 $\frac{3}{4}$ and 8 $\frac{1}{4}$ inch	1 and 1 $\frac{1}{2}$ inches	1 $\frac{1}{2}$ and 1 $\frac{3}{4}$ inches	1 $\frac{3}{4}$ and 1 $\frac{7}{8}$ inches	1 $\frac{7}{8}$ and 1 $\frac{5}{8}$ inches	1 $\frac{5}{8}$ and longer
	1,000 bales	Percent	1,000 bales	1,000 bales	1,000 bales	1,000 bales	1,000 bales	1,000 bales	1,000 bales	1,000 bales
All grades	9,458.0	100.0	783.0	3,490.0	2,005.5	1,416.6	880.1	680.6	123.1	10.3
Extra White	3,871.1	50.9	312.2	1,444.8	981.5	708.4	627.1	565.8	101.3	12.7
Above 3-G. M.	10.3	0.1	0.2	0.5	0.5	0.5	0.5	0.5	0.5	0.5
3-G. M.	914.1	0.6	60.5	209.8	156.4	73.5	1.6	2.4		
4-S. M.	2,259.3	23.9	171.5	674.7	449.1	368.4	280.2	256.8	18.7	2.0
5-M.	1,284.2	13.6	67.2	364.3	230.3	239.6	141.9	121.9	53.6	5.0
6-S. L. M.	281.9	3.0	9.2	71.1	65.3	56.4	40.6	34.2	26.2	3.8
7-L. M.	63.0	0.7	3.5	30.4	11.5	7.9	5.6	3.4	3.3	1.8
Below 7-L. M.	1.6	0.0	0.1	0.5	0.4	0.4	0.2			0.1
White	3,312.6	35.3	296.9	1,430.7	787.5	479.4	195.6	99.7	18.0	6.8
1-M. F.										
2-S. G. M.	6	(9)		4	1	1				
3-G. M.	110.0	1.2	8.7	62.6	31.9	4.2	1.1	1.1	1	0.1
4-S. M.	1,187.2	12.5	145.9	530.0	286.3	152.3	48.8	18.9	4.4	0.7
5-M.	1,421.6	15.1	110.6	593.7	333.8	232.7	90.1	50.3	10.3	2.1
6-S. L. M.	68.2	0.7	28.1	191.1	102.0	69.6	47.0	25.6	2.8	1.7
7-L. M.	107.2	1.1	10.1	53.6	21.0	12.1	7.4	3.3		0.1
8-S. G. O.	33.4	0.4	2.7	16.5	7.9	4.8	1.0			0.1
9-G. O.	11.3	0.1	0.5	2.5	1.5	3.6	2	1		0.1

See footnotes at end of table pp. 29.

TABLE 2.—Grade and staple length of American upland cotton ginned in the United States, by States, crop of 1934—Continued

UNITED STATES—Continued

Grade	All staple lengths		Shorter than 1/4 inch ¹	3/8 and 1/2 inch	1 1/8 and 1 1/2 inch	1 and 1 1/2 inches	1 1/8 and 1 3/8 inches	1 1/8 and 1 3/4 inches	1 3/8 and 1 7/8 inches	1 3/4 inches and longer
	1,000 bales	Percent								
Spotted	1,264.5	13.4	161.2	576.2	289.5	164.1	52.5	14.2	3.0	0.8
3-G. M.	130.2	1.4	16.0	64.9	29.1	15.1	4.2	.5	.3	.1
4-S. M.	604.4	7.0	79.4	297.0	156.8	93.5	27.4	9.0	1.0	.4
5-M.	945.4	3.7	41.7	157.1	79.2	45.5	18.5	4.3	.3	.3
6-S. L. M.	93.3	1.0	10.8	37.2	18.2	8.5	2.2	.4		
7-L. M.	28.2	.3	7.3	10.0	7.2	3.5	.2			
Yellow Tinted	14.0	.1	6.8	4.3	1.8	1.0	.1			
2-S. G. M.	.1	(3)	.1							
3-G. M.	.9	(2)	.1	.5	.1	.2				
4-S. M.	3.2	(2)	.5	1.3	.8	.6				
6-M.	5.5	1	2.9	1.8	.5	.2	.1			
6-S. L. M.	3.0	(2)	2.1	.5	.4					
7-L. M.	1.3	(2)	1.1	.2						
Light Yellow Stained	.3	(3)	.1	.1	.1					
3-G. M.										
4-S. M.	.2	(3)		.1	.1					
5-M.	.1	(3)	.1							
Gray	10.1	.1		2.7	1.4	.7	4.4	.8	.1	
3-G. M.	.1	(3)			.1					
4-S. M.	5.4	1		1.8	.9	.6	3.5	.5	.1	
5-M.	2.6	(3)		.9	.4	.1	.9	.3		
No grade ^{1,2}	12.1	.1	2.8	3.1	3.6	2.0	.4	.1	.1	

ALABAMA

All grades	2,936.1	100.0	196.2	574.50	111.7	47.7	5.1	6.9	0.5	
Extra White	326.5	34.9	66.8	189.7	45.7	20.9	2.7	.5	.5	
Above 3-G. M.										
3-G. M.	28.3	3.0	7.9	13.8	3.5	2.3	.5	.1	.2	
4-S. M.	173.4	18.5	38.3	100.1	23.0	10.3	1.3	.2	.2	
5-M.	111.1	11.9	19.1	66.9	16.9	7.2	.7	.2	.1	
6-S. L. M.	13.2	1.4	1.1	8.3	2.2	1.1	.2			
7-L. M.	.9	.1	.1	.6	.1					
Below 7-L. M.										
White	473.4	50.6	101.2	297.9	39.5	19.6	1.8	.1		
1-M. F.										
2-S. G. M.	.1	(3)		.1						
3-G. M.	.8	1	.2	.5		.1				
4-S. M.	162.2	17.3	41.3	91.1	17.0	6.2	.5	.1		
5-M.	217.3	26.4	59.7	159.7	25.1	10.5	1.1	.2		
6-S. L. M.	57.9	6.2	8.3	39.9	6.8	2.6	.2	.1		
7-L. M.	4.8	.5	.7	3.4	.5	.2				
8-S. G. O.	.3	(3)		.2	.1					
0-G. O.										
Spotted	131.7	14.4	25.2	85.4	16.3	7.2	.6			
3-G. M.	8.5	.9	2.0	1.4	1.2	.8	.1			
4-S. M.	85.1	9.2	17.0	53.4	10.6	1.7	.3			
5-M.	37.6	4.0	5.8	25.5	4.7	1.5	.1			
6-S. L. M.	2.9	.3	.3	2.0	.1	.1	.1			
7-L. M.	.3	(3)	.1	.1		.1				
Yellow Tinted	.3			.3						
2-S. G. M.										
3-G. M.										
4-S. M.	.1			.1						
5-M.	.2			.2						
6-S. L. M.										
7-L. M.										
Gray	.9	1		.7	.2					
3-G. M.	.1			.1						
4-S. M.		1			.2					
5-M.	.1			.1						

See footnotes at end of table

TABLE 2.—Grade and staple length of American upland cotton ginned in the United States, by States, crop of 1934—Continued

ARIZONA

Grade	All staple lengths		Shorter than 3/8 inch ¹	3/8 and 29/32 inch	15/16 and 31/32 inch	1 and 1 1/2 inches	1 1/4 and 1 1/2 inches	1 3/4 and 1 7/8 inches	1 7/8 and 2 inches	2 inches and longer
	1,000 bales	Per cent 100.0								
All grades.....	299.1				6.9	32.9	32.4	5.7		
Extra White.....	71.0	71.7		.1	.9	18.5	46.0	5.5		
Above 3-G. M.....										
3-G. M.....	11.3	11.4				1.2	11.6	1.5		
4-S. M.....	43.6	44.4			.4	12.3	27.4	3.8		
5-M.....	11.2	11.3		.1	.3	4.1	6.5	.2		
6-S. L. M.....	1.2	1.2			.1	.0	.5			
7-L. M.....	.4	.4			.1	.3				
Below 7-L. M.....										
White.....	12.3	12.1		.2	3.8	6.3	1.8	.1		
1-M. F.....										
2-S. G. M.....										
3-G. M.....										
4-S. M.....	3.1	3.5			1.8	1.2				
5-M.....	3.6	3.6		.1	1.4	1.4	.6	.1		
6-S. L. M.....	3.2	3.2			.1	2.3	.6			
7-L. M.....	1.7	1.7			.1	1.1	.2			
8-S. G. O.....	.3	.3		.1	.2					
9-G. O.....	.1	.1			.1					
Spotted.....	15.1	15.2		.3	2.0	8.1	4.6	.1		
3-G. M.....	.5	.5			.1	.3	.1			
4-S. M.....	5.5	5.5			.6	3.1	1.7	.1		
5-M.....	6.6	6.7			.1	3.5	2.7			
6-S. L. M.....	1.5	1.5			.5	.9	.1			
7-L. M.....	1.0	1.0		.3	.4	.3				
Yellow Tinged.....	.1	.1		.1						
2-S. G. M.....										
3-G. M.....										
4-S. M.....										
5-M.....										
6-S. L. M.....	.1	.1		.1						
7-L. M.....										
No grade.....	.6	.6		.1	.1					

ARKANSAS

All grades.....	2819.0	100.0	12.2	119.0	211.2	221.0	126.5	91.5	11.7	0.3
Extra White.....	615.1	72.5	22.5	86.4	111.4	171.0	101.9	78.0	10.6	.3
Above 3-G. M.....										
3-G. M.....	56.8	6.7	2.8	10.7	11.1	11.4	7.6	5.4	1.4	.1
4-S. M.....	286.2	33.7	13.4	38.8	69.4	82.6	45.0	31.8	5.1	.1
5-M.....	205.3	21.2	5.1	28.3	48.8	56.8	35.1	27.3	3.8	.1
6-S. L. M.....	59.1	7.0	1.1	7.8	13.5	13.1	12.1	9.2	.3	
7-L. M.....	7.4	.9	.1	.8	1.2	2.0	2.0	1.3		
Below 7-L. M.....	.3	.4			.1	.1	.1			
White.....	195.6	23.0	15.3	46.9	61.1	42.9	22.6	12.8	1.0	
1-M. F.....										
2-S. G. M.....										
3-G. M.....	2.1	.3	.3	.8	.8	.3	.1	.1		
4-S. M.....	62.6	7.1	8.0	19.3	17.2	10.9	4.1	2.5	.3	
5-M.....	81.1	9.9	5.5	18.8	23.9	18.6	10.9	6.7	.6	
6-S. L. M.....	31.3	4.0	1.1	5.8	8.6	9.8	6.5	2.3	.1	
7-L. M.....	5.0	.7	.3	.8	1.6	1.5	1.3	.5		
8-S. G. O.....	3.1	.4	.1	.6	.9	1.0	.5	.3		
9-G. O.....	2.8	.3		.8	1.1	.8		.1		

See footnotes at end of table.

TABLE 2.—Grade and staple length of American upland cotton ginned in the United States, by States, crop of 1934—Continued

ARKANSAS—Continued

Grade	All staple lengths		Shorter than 3/8 inch	3/8 and 29/64 inch	15/16 and 31/64 inch	1 and 13/32 inches	1 1/8 and 13/32 inches	1 1/2 and 15/32 inches	1 3/4 and 17/32 inches	1 1/2 inches and longer
	1,000 bales	Percent								
Spotted.....	37.0	4.3	4.3	11.3	12.0	6.7	1.9	6.7	0.1	
3-G. M.....	4.3	.5	.4	1.3	1.5	.9	.2			
4-S. M.....	18.5	2.2	3.0	6.6	5.1	2.1	.8	.5	.1	
5-M.....	9.8	1.1	.8	2.7	3.5	2.0	.6	.2		
6-S. L. M.....	2.5	.3	.1	.3	.8	1.0	.3			
7-L. M.....	1.0	.2		.4	1.1	.4				
Yellow Tinged.....	.4	(0)	.1		.3					
2-S. G. M.....										
3-G. M.....										
4-S. M.....	.1	(0)	.1							
5-M.....										
6-S. L. M.....	.3	(0)			.3					
7-L. M.....										
No grade.....	.9	.1			.4	.4	.1			

CALIFORNIA

All grades.....	251.5	100.0	0.1	1.8	1.5	12.2	139.6	96.3		
Extra White.....	226.4	90.0			.1	5.2	125.5	95.6		
Above 3-G. M.....	2.0	.8					.8	1.2		
3-G. M.....	127.3	50.6				.8	68.7	57.8		
4-S. M.....	85.7	34.1			.1	3.2	47.9	34.5		
5-M.....	11.1	4.4				1.1	7.9	2.1		
6-S. L. M.....	.3	.1				.1	.2			
7-L. M.....										
Below 7-L. M.....										
White.....	10.3	4.1			.2	3.0	6.8	.3		
1-M. F.....										
2-S. G. M.....										
3-G. M.....										
4-S. M.....	.9	.4			.1	.4	.3	.1		
5-M.....	4.4	1.8				.5	3.7	.2		
6-S. L. M.....	3.5	1.4				1.0	2.5			
7-L. M.....	1.1	.4			.1	.7	.3			
8-S. G. G.....	.3	.1				.3	.2			
9-G. G.....	.1	(0)				.1				
Spotted.....	8.1	3.3	.1	.2	1.1	3.7	3.2	.1		
3-G. M.....										
4-S. M.....	1.8	.7			.1	.8	.6			
5-M.....	1.1	.7			.2	.8	2.3	.1		
6-S. L. M.....	1.3	.5			.1	.9	.3			
7-L. M.....	.9	.4	.1	.2	.4	.2				
Yellow Tinged.....	.1	(0)			.1					
2-S. G. M.....										
3-G. M.....										
4-S. M.....										
5-M.....	.4	(0)			.1					
6-S. L. M.....										
7-L. M.....										
Gray.....	4.7	1.9				.3	4.1	.3		
3-G. M.....										
4-S. M.....	3.8	1.5				.3	3.3	.2		
5-M.....	.9	.4					.8	.1		
No grade.....	1.6	.6		1.0						

See footnotes at end of table.

TABLE 2.—Grade and staple length of American upland cotton ginned in the United States, by States, crop of 1934—Continued

FLORIDA

Grade	All staple lengths		Shorter than 3/8 inch ¹	3/8 and 7/16 inch	7/16 and 1/2 inch	1 and 1 1/2 inches	1 1/2 and 1 3/4 inches	1 3/4 and 1 7/8 inches	1 7/8 and longer
	1,000 bales	Percent							
All grades.....	24.3	100.0	1.6	19.5	2.7	0.4	0.1		
Extra White.....	3.7	15.2	.4	2.9	.4				
Above 3-G. M.....									
3-G. M.....	.2	.8		.1	.1				
4-S. M.....	1.9	7.8	.2	1.4	.3				
5-M.....	1.5	6.2	.2	1.3					
6-S. L. M.....	.1	.4		.1					
7-L. M.....									
Below 7-L. M.....									
White.....	12.7	52.3	.8	10.1	1.4	.3	.1		
1-M. F.....									
2-S. G. M.....									
3-G. M.....									
4-S. M.....	5.6	23.1	.2	4.6	.7	.1			
5-M.....	6.2	25.5	.5	4.8	.6	.2	.1		
6-S. L. M.....	.8	3.3	.1	.6	.1				
7-L. M.....	.1	.4		.1					
8-S. G. O.....									
9-G. O.....									
Spotted.....	7.9	32.5	.4	6.5	.9	.1			
3-G. M.....	.7	2.9		.6	.1				
4-S. M.....	6.0	24.7	.3	4.9	.7	.1			
5-M.....	1.1	4.5	.1	.9	.1				
6-S. L. M.....	.1	.4		.1					
7-L. M.....									

GEORGIA

All grades.....	2974.9	100.0	37.4	527.8	203.1	164.2	30.2	1.1	0.1
Extra White.....	397.8	40.8	15.0	207.4	82.4	73.4	17.8	.7	.1
Above 3-G. M.....	.1	(3)		.1					
3-G. M.....	52.2	5.4	1.0	20.4	12.2	13.6	3.9	.2	
4-S. M.....	189.4	19.4	5.8	94.3	41.0	37.6	9.4	.3	.1
5-M.....	134.6	13.8	6.9	77.9	25.4	20.1	4.1	.2	
6-S. L. M.....	20.1	2.1	1.3	13.7	2.8	1.9	.4		
7-L. M.....	1.4	.1	.1	1.0	.1	.2			
Below 7-L. M.....									
White.....	418.2	42.0	15.8	238.0	88.7	65.2	13.2	.9	
1-M. F.....									
2-S. G. M.....	.1	(2)				.1			
3-G. M.....	1.9			.6	.7	.6			
4-S. M.....	165.3	17.0	4.6	86.9	37.4	29.8	6.5	.2	
5-M.....	210.6	21.6	8.6	128.0	40.2	30.0	5.7	.1	
6-S. L. M.....	37.5	3.8	2.5	22.6	7.0	4.5	.9		
7-L. M.....	2.8	.3	.3	1.7	.4	.3			
8-S. G. O.....	.2	(2)		.2					
9-G. O.....									
Spotted.....	157.7	16.2	5.5	84.8	39.0	25.8	5.2	.1	
3-G. M.....	21.0	2.2	.6	9.0	5.4	4.7	1.3		
4-S. M.....	95.2	9.8	2.8	48.9	24.1	15.0	3.4	.1	
5-M.....	38.1	3.9	1.7	21.7	9.6	4.6	.5		
6-S. L. M.....	3.1	.3	.4	2.1	.4	.2			
7-L. M.....	.3	(3)		.1		.1			
Yellow Tinged.....	1.1	.1	.1	.6	.3	.1			
2-S. G. M.....									
3-G. M.....	.2	(2)		.1		.1			
4-S. M.....	.5	.1		.3	.2				
5-M.....	.4	(2)	.1	.2	.1				
6-S. L. M.....									
7-L. M.....									
Gray.....	.1	(2)				.1			
3-G. M.....									
4-S. M.....	.1	(2)				.1			
5-M.....									

See footnotes at end of table.

GRADE, STAPLE LENGTH, AND TENDERABILITY OF COTTON 13

TABLE 2.—Grade and staple length of American upland cotton ginned in the United States, by States, crop of 1934—Continued

LOUISIANA

Grade	All staple lengths		Shorter than 7 $\frac{1}{8}$ inch ¹	7 $\frac{1}{8}$ and 2 $\frac{3}{32}$ inch	1 $\frac{11}{16}$ and 3 $\frac{1}{32}$ inch	1 and 1 $\frac{1}{32}$ inches	1 $\frac{1}{16}$ and 1 $\frac{1}{32}$ inches	1 $\frac{1}{8}$ and 1 $\frac{1}{32}$ inches	1 $\frac{1}{4}$ and 1 $\frac{1}{32}$ inches	1 $\frac{3}{8}$ and 1 $\frac{1}{32}$ inches	1 $\frac{1}{2}$ inches and longer
	1,000 bales	Percent 100.0									
All grades	2,473.3	100.0	50.1	98.0	129.7	102.0	68.2	22.7	1.5	0.1	
Extras White	210.1	50.7	24.9	49.1	68.4	48.3	32.2	11.9	1.2	.1	
Above 3-G. M.	.1	(?)	.1								
3-G. M.	30.9	6.5	6.7	8.6	8.6	5.3	1.4	.3			
4-S. M.	129.1	25.4	12.7	27.0	37.3	21.6	12.9	4.9	.6	.1	
5-M.	79.4	16.8	5.2	12.6	21.4	16.4	14.8	8.5	.5		
6-S. L. M.	9.1	1.9	.2	.8	1.9	1.9	3.0	1.2	.1		
7-L. M.	.5	.1		.1	.2	.1	.1				
Below 7-L. M.											
White	182.3	38.5	19.4	40.5	45.4	39.3	30.0	7.4	.3		
1-M. F.											
2-S. G. M.											
3-G. M.	5.0	1.1	1.6	2.4	.5	.4	.1				
4-S. M.	65.7	13.9	10.8	18.0	18.1	12.1	4.6	1.1	.1		
5-M.	75.1	15.9	6.2	15.7	19.2	16.2	13.8	3.8	.2		
6-S. L. M.	30.5	6.4	.7	3.1	6.6	8.1	9.8	2.2			
7-L. M.	4.7	1.0	.1	.3	.8	1.6	1.6	.3			
8-S. G. O. O.	1.1	.2		.1	.2	.7	.1				
9-G. O. O.	.2	(?)				.2					
Spotted	50.5	10.7	5.8	9.4	14.8	14.2	5.9	.4			
3-G. M.	4.8	1.0	1.3	.0	.8	1.1	.7				
4-S. M.	29.0	6.1	3.2	5.7	9.0	8.0	2.9	.2			
5-M.	14.8	3.1	1.1	2.5	4.5	4.6	2.0	.1			
6-S. L. M.	1.8	.4	.2	.2	.5	.5	.3				
7-L. M.	.1	(?)		.1							
Yellow Tinged	.1	(?)									
2-S. G. M.											
3-G. M.											
4-S. M.	.1	(?)									
5-M.											
6-S. L. M.											
7-L. M.											
Gray	.3	.1			.1	.1	.1				
3-G. M.											
4-S. M.	.2	(?)					.1				
5-M.	.1	(?)			.1						

MISSISSIPPI

All grades	4,121.3	100.0	27.3	97.1	115.3	169.8	188.7	387.1	89.6	16.1	
Extra White	728.7	65.0	12.7	42.1	61.8	92.9	120.2	308.8	76.6	10.6	
Above 3-G. M.	.1	(?)						.1			
3-G. M.	112.9	10.1	2.2	6.5	7.6	10.1	16.6	52.0	16.2	1.7	
4-S. M.	381.2	31.3	8.6	26.3	37.1	54.9	58.1	156.3	39.6	3.7	
5-M.	173.2	15.6	1.8	8.6	16.7	22.7	28.0	76.1	18.0	3.4	
6-S. L. M.	51.2	4.6	.1	.6	3.0	5.7	15.0	22.1	2.7	1.7	
7-L. M.	4.9	.4		.1	.1	.5	2.1	1.9	.1	.1	
Below 7-L. M.	.1	(?)					.1				
White	278.9	21.9	9.3	31.3	59.5	50.0	51.2	67.3	11.3	5.0	
1-M. F.											
2-S. G. M.											
3-G. M.			1.1	.8	1.1	1.2	.6	1.0	.3		
4-S. M.	99.9	8.9	6.5	20.7	23.9	22.0	13.3	11.1	1.8	.3	
5-M.	113.7	10.3	2.2	10.6	19.5	20.3	19.9	31.5	6.8	2.0	
6-S. L. M.	51.4	4.6	.2	2.1	5.4	5.7	14.8	19.3	2.2	1.7	
7-L. M.	6.0	.5		.1	.1	.7	2.3	2.1	.2	.1	
8-S. G. O. O.	.5	.1			.1	.1	.4				
9-G. O. O.											

See footnotes at end of table.

TABLE 2.—Grade and staple length of American upland cotton ginned in the United States, by States, crop of 1934—Continued

MISSISSIPPI—Continued

Grade	All staple lengths		Shorter than 78 inch	78 and 79 1/2 inch	1 1/16 and 30 3/32 inch	1 and 1 1/32 inches	1 1/16 and 1 1/32 inches	1 1/8 and 1 1/4 inches	1 1/4 and 1 1/2 inches	1 1/2 inches and longer
	1,000 bales	Per cent								
Spotted	112.7	30.0	5.3	21.0	30.0	26.8	17.1	10.5	1.5	0.5
3-G. M.	7.1	.6	.6	1.6	2.2	1.8	.6	.3		
4-S. M.	72.6	6.5	3.7	15.1	19.9	16.5	9.1	6.7		.2
5-M.	30.0	2.7	1.0	3.9	7.3	7.8	6.6	3.3	.8	.3
6-S. L. M.	2.1	.2		.1	.6	.7	.5	.2		
7-L. M.										
Below Tinged	2					1			.1	
2-S. G. M.										
3-G. M.										
4-S. M.	1					1				
5-M.										
6-S. L. M.										
7-L. M.	1									.4
Gray	8	1					.2	.5	.1	
3-G. M.										
4-S. M.	.5	1					1	.3	.1	
5-M.	.3						1	.2		

MISSOURI

All grade	230.1	100.0	8.2	31.7	82.1	60.3	22.3	2.1	0.3	0.1
Fair White	123.2	53.5	3.6	20.5	44.9	32.7	11.5	.8	.2	
Above 3-G. M.										
3-G. M.	.9	.4		.3	.1	.1	.1			
4-S. M.	28.2	12.2	1.5	8.7	19.6	15.5	1.7	.1	.1	
5-M.	57.5	25.0	1.7	15.1	22.6	13.7	4.0	.3		
6-S. L. M.	30.7	13.3	.1	1.8	9.8	10.7	1.6	.1		
7-L. M.	7.7	3.5		.6	1.5	2.6	1.0			
Below 7-L. M.	2	.1				.1	.1			
White	76.6	33.2	3.1	18.7	26.3	19.1	8.1	1.2		
1-M. F.										
2-S. G. M.										
3-G. M.	.1	.1				.1				
4-S. M.	11.1	4.9	.1	3.8	4.9	2.2	1.0			
5-M.	30.2	13.1	1.5	8.4	11.1	6.5	2.1		.4	
6-S. L. M.	19.6	8.5	.7	3.8	5.1	5.3	1.0		.7	
7-L. M.	1.9	.8	.2	1.0	1.1	1.5	.6		.2	
8-S. G. O.	5.1	2.2	.1	1.0	2.1	1.7	.1			
9-G. O. L.	5.3	2.3	.2	.7	2.5	1.8				
Spotted	21.9	10.8	1.5	6.0	7.9	6.9	2.3	.3		
3-G. M.	.2	.1		.1			.1			
4-S. M.	6.1	2.6	.5	1.9	2.0	1.1	.6			
5-M.	9.6	4.2	.5	2.6	3.0	2.2	1.1		.2	
6-S. L. M.	5.0	2.2	.1	1.0	1.3	1.9	.5		.1	
7-L. M.	1.0	.7	.1	.1	1.6	1.7	.2			
Yellow Tinged	2	1				1	1			
2-S. G. M.										
3-G. M.										
4-S. M.	1	.1				1				
5-M.	1	.1					1			
6-S. L. M.										
7-L. M.										
No grade	5.5	2.4		.5	3.0	1.5	.3	.1	.1	

See footnotes at end of table.

TABLE 2.—Grade and staple length of American upland cotton ginned in the United States, by States, crop of 1934—Continued

NEW MEXICO

Grade	All staple lengths		Shorter than 7 1/2 inch ¹	7 1/2 and 29/32 inch	1 1/16 and 33/32 inch	1 and 13/32 inches	1 1/16 and 19/32 inches	1 3/8 and 1 3/32 inches	1 1/2 and 17/32 inches	1 3/4 and 1 1/2 inches	1 7/8 and 1 1/2 inches
	1,000 bales	Per- cent									
All grades	887	100.0	0.3	0.1	0.8	16.2	47.3	19.0			
Extra White	82.1	92.4				15.1	47.1	19.0			
Above 3 G. M.	1.2	1.1									
3-G. M.	16.2	55.2				3	7.2	26.2	12.5		
4-S. M.	31.0	37.1				1	5.9	19.0	6.0		
5-M.	3.1	3.7				1	1.7	1.3			
6-S. L. M.	5.7	6.6				1	1.1				
7-L. M.	1.1	1.1				1					
Below 7 L. M.											
White	7	8				1	5	1			
1-M. F.											
2-S. G. M.											
3-G. M.	2	2					1	1			
4-S. M.	3	1					2				
5-M.	2	2					2				
6-S. L. M.											
7-L. M.											
8-S. G. O. 1											
9-G. O. 2											
Spotted	5	6			1	1	3	1			
3-G. M.											
4-S. M.	3	1					2	1			
5-M.	2	2				1	1				
6-S. L. M.											
7-L. M.											
No grade ²	1	5	3	1							

NORTH CAROLINA

All grades	613.0	100.0	7.8	170.3	189.5	206.6	79.2	5.0	2.2	0.3
Extra White	222.6	36.3	8.1	38.8	62.5	83.8	29.6	3.2	1.0	
Above 3 G. M.										
3-G. M.	15.5	1.8		2.1	3.3	3.7	1.6	2		
4-S. M.	91.1	14.2	2	12.7	23.2	37.6	11.6	1.7	1.1	
5-M.	193.2	31.5	5	19.5	29.6	39.8	12.1	1.1	2	1
6-S. L. M.	13.1	2.1	1	3.9	5.8	1.1	1.0	2		
7-L. M.	1.1	2		3	5	3				
Below 7 L. M.										
White	315.0	51.4	6.2	108.6	99.8	192.3	29.0	1.5	6	
1-M. F.										
2-S. G. M.										
3-G. M.	3	6			1	1	1			
4-S. M.	65.2	10.2	3	12.9	19.0	21.5	7.9	1.1	2	
5-M.	182.1	29.1	2	21.0	53.8	59.6	11.1	1.8	3	
6-S. L. M.	88.2	14.3	2	35.7	23.3	16.2	3.2	3	1	
7-L. M.	11.3	2.2	1	8.0	3.2	1.7	1.4			
8-S. G. O. 1	1.6	2	2	8	1	2				
9-G. O. 2	3	6	1	2						
Spotted	69.7	11.4	6	21.1	25.7	18	3.6	3		
3-G. M.	5.8	9		1.7	2.1	1	1			
4-S. M.	29.9	4.2	3	11.6	11.3	11.1	2.1	2		
5-M.	22.2	3.5	2	7.2	8.7	5.1	8	1		
6-S. L. M.	1.7	3	1	8	6	2				
7-L. M.	1			1						

See footnotes at end of table.

TABLE 2.—Grade and staple length of American upland cotton ginned in the United States, by States, crop of 1934—Continued

NORTH CAROLINA—Continued

Grade	All staple lengths		Shorter than 7 $\frac{1}{2}$ inch ¹	7 $\frac{1}{2}$ and 8 $\frac{1}{2}$ inch	1 $\frac{1}{2}$ and 3 $\frac{1}{2}$ inch	1 and 1 $\frac{1}{2}$ inches	1 $\frac{1}{8}$ and 1 $\frac{3}{8}$ inches	1 $\frac{1}{4}$ and 1 $\frac{3}{4}$ inches	1 $\frac{3}{8}$ and 1 $\frac{1}{2}$ inches	1 $\frac{1}{2}$ inches and longer
	1,000 bales	Percent								
Yellow Tinged.....	1.4									
2-S, G. M.....										
3-G, M.....	.1	(9)			.1					
4-S, M.....	.8	.1		.2	.4	.2				
5-M.....	.5	.1		.2	.2	.1				
6-S, L, M.....										
7-L, M.....										
Light Yellow Stained	.2	(9)			.2					
3-G, M.....										
4-S, M.....	.1	(9)			.1					
5-M.....	.1	(9)			.1					
Gray.....	1.8	.3		1.1	.6	.1				
3-G, M.....										
4-S, M.....	1.1	.2		.6	.4	.1				
5-M.....	.7	.1		.5	.2					
No grade (1)	.2	(9)	.2							

OKLAHOMA

All grades.....	7,229.9	100.0	62.4	212.4	59.7	4.3	0.1			
Extra White.....	91.7	28.7	12.9	69.1	17.2	1.4				
Above 3-G, M.....										
3-G, M.....	7.6	2.3	2.6	3.9	.9	.1				
4-S, M.....	21.5	7.1	4.3	14.7	5.1	.4				
5-M.....	21.1	6.5	1.8	12.8	6.2	.5				
6-S, L, M.....	15.9	4.8	1.9	11.2	2.5	.3				
7-L, M.....	25.3	7.7	2.3	20.1	2.5	.1				
Below 7-L, M.....	.1	(4)		.1						
White.....	106.5	32.3	15.7	76.1	15.8	.9				
1-M, F.....										
2-S, G, M.....										
3-G, M.....	1.1	.3	.3	.7	.1					
4-S, M.....	15.8	4.8	3.2	10.4	2.1	.1				
5-M.....	21.9	7.6	3.1	17.6	4.0	.2				
6-S, L, M.....	23.4	7.7	3.2	17.1	4.7	.3				
7-L, M.....	26.7	8.1	2.7	20.0	3.8	.2				
8-S, G, O.....	12.4	3.7	1.1	10.1	1.1					
9-G, O.....	.3	.1	.1	.2						
Spotted.....	126.3	38.3	34.1	72.5	17.7	2.0				
3-G, M.....	2.8	.9	1.2	1.3	.3					
4-S, M.....	33.1	10.1	10.1	18.3	4.5	.5				
5-M.....	17.6	14.4	12.3	27.1	7.6	.6				
6-S, L, M.....	33.6	10.8	7.0	22.1	4.8	.8				
7-L, M.....	6.9	2.1	2.6	3.7	.5	.1				
Yellow Tinged.....	1.3	.4	.7	.6						
2-S, G, M.....										
3-G, M.....										
4-S, M.....	.1	(9)	.1							
5-M.....	.1	.1	.2	.2						
6-S, L, M.....	.1	.1	.1	.3						
7-L, M.....	.1	.1	.3	.1						
No grade (1)	1.1	.3	1.0	.1						

See footnotes at end of table.

TABLE 2.—Grade and staple length of American upland cotton ginned in the United States, by States, crop of 1934—Continued

SOUTH CAROLINA

Grade	All staple lengths		Shorter than 7 $\frac{1}{2}$ inch ¹	7 $\frac{1}{2}$ and 8 $\frac{1}{2}$ inch	8 $\frac{1}{2}$ and 9 $\frac{1}{2}$ inch	1 and 1 $\frac{1}{2}$ inches	1 $\frac{1}{2}$ and 1 $\frac{3}{4}$ inches	1 $\frac{3}{4}$ and 1 $\frac{5}{8}$ inches	1 $\frac{5}{8}$ and 1 $\frac{7}{8}$ inches	1 $\frac{7}{8}$ inches and longer
	1,000 bales	Percent								
All grades	1,681.6	100.0	2.1	111.2	190.4	218.3	84.0	20.3	17.0	2.3
Extra White	289.2	42.3	.4	38.7	70.7	100.3	47.3	19.6	10.9	1.4
Above 3-G. M.										
3-G. M.	12.4	1.5	.1	1.7	2.6	4.0	1.7	.7	.0	.2
4-S. M.	159.3	20.1	.2	17.0	32.1	49.9	21.8	9.7	6.8	.9
5-M.	121.0	18.1	.1	16.3	31.3	42.4	21.8	8.5	3.4	.2
6-S. L. M.	12.8	1.9		2.6	4.3	3.2	1.9	.0	.1	.1
7-L. M.	.7	.1		.2	.2	.2	.1			
Below 7-L. M.										
White	280.8	41.0	.6	67.5	82.6	86.7	29.0	8.1	4.7	.7
1-M. F.										
2-S. G. M.										
3-G. M.	.3	.0		.1	.1	.1				
4-S. M.	83.2	12.2	.3	18.0	23.4	27.2	9.1	2.8	2.0	.4
5-M.	101.7	24.1	.2	11.4	48.6	50.6	10.9	4.1	2.3	.3
6-S. L. M.	27.6	4.0	.1	0.8	8.4	7.8	.5	.8	.4	
7-L. M.	3.8	.5		1.2	1.3	.9	.3	.1		
8-S. G. O.	1.0	.1		.1	.7	.1	.1			
9-G. O.	.2			.1	.1					
Spotted	113.8	16.6	1.0	31.8	36.9	31.0	6.8	1.7	1.4	.2
3-G. M.	9.7	1.4	.1	2.7	2.8	3.0	.8	.1	.2	
4-S. M.	77.0	11.3	.7	22.2	21.1	22.7	4.7	1.3	1.1	.2
5-M.	26.2	3.8	.2	9.6	9.5	5.2	1.3	.3	.1	
6-S. L. M.	.0	.1		.3	.5	.1				
7-L. M.										
Yellow Tinged	.1	.0		.1	.1	.2				
2-S. G. M.										
3-G. M.	.1	.0				.1				
4-S. M.	.1	.0				.1				
5-M.	.2	.0		.1	.1					
6-S. L. M.										
7-L. M.										
Gray	.3	.0		.1	.1	.1				
3-G. M.										
4-S. M.	.1	.0				.1				
5-M.	.2	.0		.1	.1					
No grade	.1	.0	.1							

TENNESSEE

All grades	396.7	100.0	51.7	125.0	129.2	77.1	12.3	1.1	0.2	0.1
Extra White	230.3	58.1	21.3	67.0	79.1	52.7	8.0	1.0	.2	.1
Above 3-G. M.										
3-G. M.	13.4	3.1	2.4	4.7	3.5	2.8	.4	.1		
4-S. M.	109.7	27.7	12.4	36.2	34.1	22.4	3.9	.5	.1	.1
5-M.	79.0	19.9	5.9	21.5	28.6	19.6	3.0	.3	.1	
6-S. L. M.	25.2	6.4	.6	4.2	11.4	7.5	1.4	.1		
7-L. M.	2.9	.7		.4	1.4	.9	.2			
Below 7-L. M.	.1	.0			.1					
White	118.8	29.9	21.6	43.2	34.7	16.8	2.4	.1		
1-M. F.										
2-S. G. M.										
3-G. M.	.4	.1	.1	.2	.1					
4-S. M.	48.3	12.2	10.7	16.1	7.6	3.6	.5			
5-M.	56.0	14.3	6.4	20.8	17.6	7.7	1.0	.1		
6-S. L. M.	18.3	4.6	1.3	3.5	7.2	3.6	.7			
7-L. M.	3.4	.9	.1	.5	1.7	1.0	.1			
8-S. G. O.	1.0	.2		.1	.5	.4				
9-G. O.	.8	.2			.1	.0	.1			

See footnotes at end of table.

80630 —37—3

TABLE 2.—Grade and staple length of American upland cotton ginned in the United States, by States, crop of 1934—Continued

TENNESSEE—Continued

Grade	All staple lengths		Shorter than 7/8 inch	7/8 and 23/32 inch	15/16 and 31/32 inch	1 and 11/32 inches	1 1/16 and 13/32 inches	1 1/8 and 15/32 inches	1 3/8 and 17/32 inches	1 1/2 inches and longer
	1,000 bales	Percent	1,000 bales	1,000 bales	1,000 bales	1,000 bales	1,000 bales	1,000 bales	1,000 bales	1,000 bales
Spotted	47.6	12.0	8.8	14.8	15.4	7.5	1.0			
3-G, M.	1.1	.4	.4	.7	.2	.1				
4-S, M.	26.7	6.7	6.6	9.5	7.1	3.1	.4			
5-M	14.6	3.7	1.8	3.9	5.2	3.3	.4			
6-S, L, M, J	2.8	.7		.4	1.4	.8	.2			
7-L, M, J	2.0	.5		.3	1.5	.2				
Yellow Tinged	.1	(0)				.1				
2-S, G, M										
3-G, M.										
4-S, M.	.1	(0)				.1				
5-M, J										
6-S, L, M, J										
7-L, M, J										

TEXAS

All grades	2,314.9	100.0	265.0	1,298.7	593.0	72.7	37.0	18.5		
Extra White	1,144.6	49.4	120.7	623.6	294.0	43.0	35.4	18.3		
Above 3-G, M	6.8	.3	.2	3.4	2.4	.1		.7		
3-G, M	390.3	17.3	33.8	220.8	95.7	9.6	16.8	13.6		
4-S, M	546.9	23.6	74.1	295.3	130.4	20.7	16.5	3.0		
5-M	150.2	6.7	18.6	78.6	96.0	11.0	1.9	.1		
6-S, L, M	23.5	1.0	2.2	12.6	6.8	1.7	.2			
7-L, M	11.2	.5	.8	6.5	3.5	.4				
Below 7-L, M, J	.7	(0)		.4	.2	.1				
White	898.2	31.9	86.6	461.0	232.0	24.1	1.3	.2		
1-M, P	.4	(0)		.3	.1					
2-S, G, M										
3-G, M	92.1	4.0	5.8	59.5	28.3	1.1	.1			
4-S, M	405.6	17.5	46.8	231.3	113.5	11.5	.4			
5-M	295.7	12.8	29.3	144.0	65.8	8.8	.7			
6-S, L, M	71.0	3.1	7.6	41.6	17.0	1.7	.1			
7-L, M	26.5	1.1	4.8	15.7	5.7	.3				
8-S, G, O, J	6.1	.3	1.1	3.2	1.5	.3				
9-G, O, J	.8	(0)		.4	.1					
Spotted	351.3	15.2	71.7	297.8	69.5	5.9	.3			
3-G, M	63.1	2.7	9.4	49.7	12.2	.7	.1			
4-S, M	164.0	7.1	31.3	96.6	32.0	3.0	.2			
5-M	79.4	3.4	16.0	48.6	13.9	.9				
6-S, L, M, J	31.6	1.5	10.6	17.6	6.2	.3				
7-L, M, J	10.2	.5	4.5	4.3	1.3	.1				
Yellow Tinged	8.0	.3	5.8	2.1	.1					
2-S, G, M	.1	(0)		.1						
3-G, M	.5	(0)		.4						
4-S, M	1.0	(0)		.5	.1					
5-M, J	3.5	.2	2.7	.8						
6-S, L, M, J	2.1	.1	1.1	.2						
7-L, M, J	.8	(0)	.7	.1						
Light Yellow Stained	.1	(0)	.1							
3-G, M.										
4-S, M, J	.1	(0)	.1							
5-M, J										
Gray	1.2	(0)		.8	.1					
3-G, M										
4-S, M	.9	(0)		.6	.3					
5-M, J	.3	(0)		.2	.1					
No grade	1.5	.1	1.1	.4						

See footnotes at end of table.

TABLE 2.—Grade and staple length of American upland cotton ginned in the United States, by States, crop of 1934—Continued

VIRGINIA

Grade	All staple lengths		Shorter than 7 $\frac{1}{2}$ inch ¹	7 $\frac{1}{2}$ and 2 $\frac{1}{2}$ inch	2 $\frac{1}{2}$ and 3 $\frac{1}{2}$ inch	3 $\frac{1}{2}$ and 4 $\frac{1}{2}$ inches	4 $\frac{1}{2}$ and 5 $\frac{1}{2}$ inches	5 $\frac{1}{2}$ and 6 $\frac{1}{2}$ inches	6 $\frac{1}{2}$ and 7 $\frac{1}{2}$ inches	7 $\frac{1}{2}$ inches and longer
	1,000 bales	Per-cent	1,000 bales	1,000 bales	1,000 bales	1,000 bales	1,000 bales	1,000 bales	1,000 bales	1,000 bales
All grades	733.0	100.0	0.5	23.0	7.4	1.9	0.2			
Extra White	8.9	27.0	.1	6.2	1.8	.7	.1			
Above 3 G. M.										
3 G. M.										
4 S. M.		5.2		1.1	.4	.2				
5 M.	6.6	20.0	.1	4.7	1.3	.4	.1			
6 S. L. M.		1.8		.4	.1	.1				
7 L. M.										
Below 7 L. M.										
White	19.0	57.6	.4	13.6	3.8	1.1	.1			
1 M. F.										
2 S. G. M.										
3 G. M.										
4 S. M.	1.4	4.2		.9	.4	.1				
5 M.	12.3	37.3	.2	8.8	2.4	.8	.1			
6 S. L. M.	5.1	15.5	.2	3.7	1.0	.2				
7 L. M.		.6		.2						
8 S. G. O.										
9 G. O.										
Spotted	1.8	11.6		3.1	1.6	.1				
3 G. M.										
4 S. M.		4.0		.2	.1					
5 M.	2.7	8.1		1.7	.9	.1				
6 S. L. M.	1.7	5.2		1.1	.6					
7 L. M.		.3		.1						
Yellow Tinged	.3	.9		.1	.2					
2 S. G. M.										
3 G. M.										
4 S. M.	.1	.3		.1						
5 M.	.1	.3			.1					
6 S. L. M.	.1	.3			.1					
7 L. M.										

ALL OTHER STATES

All grades	414.1	100.0		0.3	5.2	5.0	0.6			
Extra White	9.2	61.0		.1	2.6	5.7	.8			
Above 3 G. M.										
3 G. M.										
4 S. M.	1.8	12.5			.4	1.2	.2			
5 M.	3.7	25.7			.9	2.3	.5			
6 S. L. M.	3.0	20.9		.1	1.1	1.7	.1			
7 L. M.	.6	4.2			.2	.1				
Below 7 L. M.	.1	.7				.1				
White	3.3	22.9		.1	1.6	1.5	.1			
1 M. F.										
2 S. G. M.										
3 G. M.										
4 S. M.	.1	2.8			.2	.2				
5 M.	.9	6.3			.3	.6				
6 S. L. M.	.9	6.3			.5	.3	.1			
7 L. M.	.1	2.8			.2	.2				
8 S. G. O.	.2	1.3			.1	.1				
9 G. O.	.5	3.4		.1	.3	.1				

See footnotes at end of table.

TABLE 2.—Grade and staple length of American upland cotton ginned in the United States, by States, crop of 1934—Continued

ALL OTHER STATES—Continued

Grade	All staple lengths		Shorter than 7 $\frac{1}{2}$ inch ¹	7 $\frac{1}{2}$ and 28 $\frac{1}{2}$ inch	1 $\frac{1}{16}$ and 31 $\frac{1}{2}$ inch	1 and 1 $\frac{1}{2}$ inches	1 $\frac{1}{16}$ and 1 $\frac{1}{2}$ inches	1 $\frac{1}{8}$ and 1 $\frac{3}{4}$ inches	1 $\frac{3}{16}$ and 1 $\frac{7}{8}$ inches	1 $\frac{1}{4}$ inches and longer
	1,000 bales	Percent	1,000 bales	1,000 bales	1,000 bales	1,000 bales	1,000 bales	1,000 bales	1,000 bales	1,000 bales
Spotted	1.7	11.8			0.9	0.8				
3-O, M										
4-S, M	.3	2.1			.1	.2				
5-M	.5	4.2			.2	.4				
6-S, L, M	.3	2.1			.2	.1				
7-L, M	.5	3.4			.1	.1				
No grade	.2	1.3		0.1	.1					

¹ Unrederable in settlement of futures contracts made subject to sec. 5 of the United States Cotton Futures Act and the regulations of the Secretary of Agriculture thereunder.

² As reported by the Bureau of the Census.

³ Less than 0.05 percent.

⁴ Includes bales not otherwise classified above.

⁵ Includes Illinois, Kansas, and Kentucky.

TABLE 3.—Grade and staple length of American-Egyptian cotton ginned in the United States, crops of 1934, 1933, 1932, 1931, and 1930

[Quantities are given in running bales]

Crop and grade	All staple lengths		Shorter than 11 $\frac{1}{2}$ inches	11 $\frac{1}{2}$ and 11 $\frac{7}{8}$ inches	1 $\frac{1}{16}$ and 11 $\frac{1}{2}$ inches	1 $\frac{1}{8}$ to 1 $\frac{3}{4}$ inches	1 $\frac{3}{8}$ inches and longer
	1,000 bales	Percent	1,000 bales	1,000 bales	1,000 bales	1,000 bales	1,000 bales
All grades... 1934	143.0	100.0		4.6	7.3		2.1
1 and 1 $\frac{1}{2}$	6.1	4.3		1.3	3.4		1.4
2 and 2 $\frac{1}{2}$	5.6	40.0		1.8	3.1		.7
3 and 3 $\frac{1}{2}$	1.5	10.7		.9	.6		
4 and 4 $\frac{1}{2}$.8	5.7		.6	.2		
5							
Below 5							
All grades... 1933	19.7	100.0	0.1	3.2	5.4		1.0
1 and 1 $\frac{1}{2}$	1.9	50.5		1.2	3.0		.7
2 and 2 $\frac{1}{2}$	4.3	41.3	.1	1.7	2.2		.3
3 and 3 $\frac{1}{2}$.5	5.2		.3	.2		
4 and 4 $\frac{1}{2}$							
5							
Below 5							
All grades... 1932	18.3	100.0	1.7	2.9	2.6		1.1
1 and 1 $\frac{1}{2}$	2.0	21.1		.3	1.0		.7
2 and 2 $\frac{1}{2}$	3.7	41.6	.5	1.6	1.3		.3
3 and 3 $\frac{1}{2}$	2.2	26.5	.9	.9	.3		.1
4 and 4 $\frac{1}{2}$.4	4.8	.9	.1			
5							
Below 5							
All grades... 1931	113.7	100.0		2.4	8.4		2.0
1 and 1 $\frac{1}{2}$	1.2	8.7		.3	.6		.3
2 and 2 $\frac{1}{2}$	5.9	43.1		1.1	3.5		1.3
3 and 3 $\frac{1}{2}$	4.5	32.8		.7	3.0		.8
4 and 4 $\frac{1}{2}$	1.9	13.9		.3	1.2		.4
5	.2	1.5			.1		.1
Below 5							
All grades... 1930	121.3	100.0		2.5	16.2		1.6
1 and 1 $\frac{1}{2}$	6.2	26.6		.1	3.1		1.7
2 and 2 $\frac{1}{2}$	11.1	48.9		.7	8.1		2.6
3 and 3 $\frac{1}{2}$	5.1	21.9		1.1	2.7		.3
4 and 4 $\frac{1}{2}$.6	2.4		.3	.3		
5							
Below 5							

¹ As reported by the Bureau of the Census.

GRADE, STAPLE LENGTH, AND TENDERABILITY OF COTTON 21

TABLE 4.—Staple length of American upland cotton ginned in the United States, crops of 1934, 1933, 1932, 1931, 1930, 1929, and 1928; and by States, crops of 1934, 1933, 1932, 1931, and 1930

[Quantities are given in running bales, except that round bales are counted as half bales. Linters are not included]

State	Crop year	All staple lengths ¹		Shorter than 7½ inch ¹		7½ and 8 ² inch		8 ² and 9 ³ inch	
		1,000 bales	Percent	1,000 bales	Percent	1,000 bales	Percent	1,000 bales	Percent
United States	1934	3,468.0	100.0	783.0	8.3	3,490.9	36.9	2,035.4	21.8
	1933	12,654.3	100.0	539.1	4.3	4,504.4	35.6	3,892.2	31.6
	1932	12,701.3	100.0	837.7	6.6	4,786.6	37.7	3,671.0	28.9
	1931	16,616.2	100.0	1,019.6	6.1	6,593.3	39.7	4,511.9	27.2
	1930	13,732.2	100.0	1,820.2	13.3	5,327.7	38.8	3,421.6	24.9
	1929	14,519.0	100.0	2,921.5	20.1	5,333.7	38.1	2,748.2	18.9
	1928	11,268.2	100.0	2,072.1	14.5	5,914.8	41.5	3,225.7	22.6
Alabama	1934	936.1	100.0	196.2	21.0	571.0	61.3	111.7	11.9
	1933	951.1	100.0	82.5	8.7	691.2	73.0	132.1	13.9
	1932	933.7	100.0	137.3	14.7	657.5	70.4	198.7	21.7
	1931	1,385.0	100.0	136.5	9.9	1,044.7	75.4	168.7	12.2
	1930	1,411.0	100.0	533.3	38.3	802.2	55.5	77.1	5.3
Arizona	1934	99.1	100.0	1	1	1	1	6.0	7.0
	1933	83.2	100.0	1	1	1.5	1.8	7.1	8.5
	1932	68.8	100.0	1	1	1.4	2.4	6.9	11.7
	1931	97.3	100.0	3.3	3.4	6	6	14.9	15.3
	1930	127.2	100.0	3	2	5.5	4.3	41.2	32.4
Arkansas	1934	849.0	100.0	42.2	5.0	144.6	17.0	211.2	24.9
	1933	1,014.6	100.0	7.5	.8	93.8	9.2	243.1	21.0
	1932	1,283.4	100.0	25.8	2.0	185.9	14.5	375.0	29.2
	1931	1,836.1	100.0	20.9	1.1	307.4	16.7	549.6	29.9
	1930	883.5	100.0	76.0	8.6	196.1	22.7	262.9	29.3
California	1934	261.5	100.0	1	(⁴)	1.8	1	1.5	0
	1933	210.7	100.0	2	2	2	1	2.0	1.4
	1932	124.4	100.0	1	1	2.2	1.8	3.9	3.1
	1931	171.2	100.0	5.0	5.2	1	1	2.4	1.3
	1930	266.3	100.0	1	1	1.7	1.7	13.9	5.4
Florida	1934	24.3	100.0	1.6	6.6	10.5	80.2	2.7	11.1
	1933	21.1	100.0	1.4	5.8	10.8	82.2	2.6	10.4
	1932	15.6	100.0	2.3	14.8	12.5	80.1	7	4.5
	1931	43.4	100.0	2.9	6.7	33.9	78.1	6.1	14.1
	1930	51.1	100.0	10.1	19.8	34.0	68.3	5.8	11.3
Georgia	1934	874.9	100.0	37.4	3.8	527.8	54.1	208.1	24.4
	1933	1,093.4	100.0	59.8	5.5	733.9	67.1	202.9	18.6
	1932	861.8	100.0	43.1	5.0	692.8	68.8	163.1	18.0
	1931	1,393.7	100.0	89.4	5.0	1,015.6	73.9	242.1	17.4
	1930	1,597.5	100.0	237.1	14.8	1,096.8	68.7	218.4	13.7
Louisiana	1934	473.3	100.0	50.1	10.6	99.0	20.9	129.7	27.4
	1933	469.3	100.0	12.2	2.6	89.2	19.0	153.1	26.7
	1932	599.5	100.0	62.1	10.4	131.0	21.8	152.6	25.4
	1931	876.6	100.0	58.6	6.7	157.3	17.9	203.6	23.2
	1930	704.8	100.0	91.3	13.0	160.1	22.7	167.4	23.8
Mississippi	1934	1,121.3	100.0	27.3	2.4	97.4	8.7	148.3	13.0
	1933	1,132.2	100.0	12.6	1.1	125.2	11.1	156.6	13.8
	1932	1,164.2	100.0	32.2	2.8	148.6	12.8	162.3	14.0
	1931	1,519.4	100.0	65.4	3.8	243.4	16.6	238.0	13.8
	1930	1,458.7	100.0	114.9	7.9	299.2	20.5	264.5	18.1
Missouri	1934	236.4	100.0	8.2	3.6	51.7	23.7	82.1	35.0
	1933	237.9	100.0	3	1.3	38.8	16.3	94.1	39.6
	1932	300.7	100.0	2.0	0.7	52.1	17.3	114.9	38.2
	1931	280.4	100.0	2.6	0.9	85.9	30.6	128.0	45.7
	1930	151.3	100.0	11.2	7.3	56.0	36.5	55.6	36.3
New Mexico	1934	83.7	100.0	3	3.4	1	1	8	1.0
	1933	84	100.0	1	1	1	1	8	1.0
	1932	67.5	100.0	2.1	3.1	2.6	3.8	3.4	5.0
	1931	93.8	100.0	6.1	6.5	1.4	1.5	13.7	14.6
	1930	95.8	100.0	5	5	1.3	1.4	7.8	8.1
North Carolina	1934	640.9	100.0	7.8	1.2	170.3	26.6	159.5	24.6
	1933	690.5	100.0	21.8	3.2	277.6	40.2	226.7	32.8
	1932	650.3	100.0	7.8	1.2	227.8	33.4	223.6	32.9
	1931	771.2	100.0	7.8	1.0	310.1	44.1	264.6	34.3
	1930	800.6	100.0	40.4	5.0	410.2	51.2	296.5	36.0
Oklahoma	1934	320.9	100.0	62.4	18.9	212.4	64.1	50.7	15.4
	1933	1,235.8	100.0	73.5	5.9	391.4	31.7	590.2	47.7
	1932	1,072.0	100.0	91.0	8.6	535.8	50.0	356.1	36.0
	1931	1,235.9	100.0	137.9	11.2	557.4	45.1	411.5	33.5
	1930	856.8	100.0	126.7	14.8	348.6	40.7	295.1	31.4
South Carolina	1934	684.6	100.0	2.1	0.3	141.2	20.6	290.4	27.8
	1933	728.0	100.0	0.4	0.4	263.1	36.2	207.0	28.6
	1932	722.2	100.0	2.8	0.4	181.2	25.1	223.6	31.2
	1931	1,010.2	100.0	12.6	1.2	395.6	39.1	315.2	31.2
	1930	1,015.3	100.0	20.9	2.6	420.0	42.0	288.6	28.4

See footnotes at end of table.

TABLE 4.—Staple length of American upland cotton ginned in the United States, crops of 1934, 1933, 1932, 1931, 1930, 1929, and 1928; and by States, crops of 1934, 1933, 1932, 1931, and 1930—Continued

State	Crop year	All staple lengths ¹		Shorter than 3/8 inch ²		7/8 and 29/32 inch		1 1/16 and 31/32 inch	
		1,000 bales	Per-cent	1,000 bales	Per-cent	1,000 bales	Per-cent	1,000 bales	Per-cent
Tennessee	1934	396.7	100.0	51.7	13.0	125.0	31.5	129.2	32.6
	1933	428.9	100.0	12.9	3.0	133.2	31.0	167.3	39.0
	1932	467.5	100.0	12.4	2.7	115.9	24.8	175.3	37.5
	1931	578.0	100.0	39.9	6.9	218.6	37.8	211.3	36.6
	1930	371.4	100.0	59.7	16.1	228.1	61.5	129.8	34.9
Texas	1934	2,314.9	100.0	235.0	10.2	1,298.7	56.1	569.0	24.6
	1933	4,220.3	100.0	249.4	5.9	1,615.3	38.4	1,511.9	35.8
	1932	4,307.4	100.0	414.3	9.6	1,918.6	44.5	1,554.8	36.1
	1931	5,068.8	100.0	416.5	8.2	2,123.4	41.9	1,719.3	33.9
	1930	3,886.1	100.0	475.5	12.2	1,336.4	34.2	1,363.2	35.1
Virginia	1934	33.0	100.0	1.7	4.9	23.0	69.7	7.4	22.4
	1933	31.4	100.0	1.7	5.4	25.2	73.3	6.6	19.2
	1932	31.3	100.0	1.5	4.8	19.4	62.0	8.7	27.8
	1931	42.5	100.0	1.7	4.0	22.9	53.9	16.2	38.1
	1930	42.6	100.0	3.9	9.1	29.6	69.3	8.4	19.7
All other ³	1934	14.4	100.0	---	---	3	2.1	5.2	36.1
	1933	13.8	100.0	---	---	7	5.1	6.6	47.8
	1932	14.0	100.0	---	---	1.2	8.6	5.4	38.5
	1931	11.7	100.0	1	8.6	3.0	25.6	3.7	31.6
	1930	6.4	100.0	5	7.8	1.0	15.6	1.4	21.9

State	Crop year	1 and 1 1/32 inches		1 1/8 and 1 1/32 inches		1 1/4 and 1 1/32 inches		1 1/2 and 1 1/32 inches		1 1/2 inches and longer	
		1,000 bales	Per-cent	1,000 bales	Per-cent	1,000 bales	Per-cent	1,000 bales	Per-cent	1,000 bales	Per-cent
United States	1934	1,415.6	13.0	880.1	9.3	680.6	7.2	123.1	1.3	19.3	0.2
	1933	2,004.3	15.8	824.1	6.5	640.3	5.1	143.8	1.1	6.1	0.0
	1932	1,822.0	14.3	871.8	6.9	622.1	4.9	81.5	0.7	5.7	0.0
	1931	2,577.1	15.4	1,087.8	6.5	580.0	3.5	221.6	1.3	31.0	0.2
	1930	1,725.9	12.6	970.9	7.1	393.3	2.9	60.8	0.4	2.8	0.0
	1929	1,693.6	11.7	938.6	6.5	556.1	3.8	119.4	0.8	7.9	0.1
	1928	1,578.8	11.0	794.2	5.6	489.2	3.4	167.9	1.2	25.5	0.2
Alabama	1934	47.7	5.1	5.1	.5	9	1	2	.1	3	0.1
	1933	37.9	3.8	4.9	.5	1.5	1	---	---	---	---
	1932	26.5	2.8	3.1	.3	6	1	---	---	---	---
	1931	28.0	2.6	5.8	.4	1.3	1	---	---	---	---
	1930	9.2	.6	2.5	.2	6	1	---	---	---	---
Arkansas	1934	32.9	33.2	52.4	52.9	5.7	5.7	---	---	---	---
	1933	36.3	43.8	34.7	41.7	3.5	1.2	---	---	---	---
	1932	23.5	10.0	20.3	31.5	6.3	10.7	---	---	---	---
	1931	43.1	41.6	30.8	31.7	4.4	4.4	---	---	---	---
	1930	47.8	37.5	29.6	23.3	2.8	2.2	---	---	---	---
Arkansas	1934	221.0	26.0	126.5	11.9	91.5	10.8	11.7	1.4	3	0.1
	1933	398.6	30.3	171.1	17.1	84.9	8.6	10.1	1.0	2	0.1
	1932	369.6	28.1	196.8	15.3	120.4	9.4	17.4	1.4	1.8	0.1
	1931	614.2	33.5	247.0	13.5	81.4	3.1	11.9	0.8	1.7	0.1
	1930	296.8	21.0	166.6	12.3	22.4	2.6	1.7	0.2	1.1	0.0
California	1934	12.2	4.0	139.6	55.5	96.3	38.3	---	---	---	---
	1933	18.3	29.9	123.2	58.5	36.1	17.1	---	---	---	---
	1932	13.1	10.8	57.0	46.5	46.8	37.6	---	---	---	---
	1931	25.6	15.0	98.0	57.2	33.9	19.8	2.3	1.3	---	---
	1930	11.2	16.1	160.0	62.1	39.2	15.3	---	---	---	---
Florida	1934	1.1	1.7	1.1	1.1	---	---	---	---	---	---
	1933	1.1	1.2	1.1	1.1	---	---	---	---	---	---
	1932	1.1	.6	---	---	---	---	---	---	---	---
	1931	1.1	.9	1.1	1.2	---	---	---	---	---	---
	1930	1.3	.6	---	---	---	---	---	---	---	---
Georgia	1934	161.2	16.8	36.2	3.7	1.1	1	---	---	---	---
	1933	89.6	7.4	14.5	1.4	1.1	1	---	---	---	---
	1932	3.9	6.3	6.7	.8	1.3	1	---	---	---	---
	1931	51.8	3.9	10.4	1.3	1	1	---	---	---	---
	1930	36.5	2.3	7.3	1	1	1	2	1	---	---

See footnotes at end of table.

TABLE 4.—Staple length of American upland cotton ginned in the United States, crops of 1934, 1935, 1932, 1931, 1930, 1929, and 1928; and by States, crops of 1934, 1935, 1932, 1931, and 1930—Continued

State	Crop year	1 and 1 ¹ / ₂ inches		1 ¹ / ₂ and 1 ³ / ₄ inches		1 ³ / ₄ and 1 ⁷ / ₈ inches		1 ⁷ / ₈ and 1 ⁷ / ₈ inches		1 ¹ / ₂ inches and longer	
		1,000 bales	Per cent	1,000 bales	Per cent	1,000 bales	Per cent	1,000 bales	Per cent	1,000 bales	Per cent
Louisiana	1934	102.0	21.5	68.2	14.4	22.7	4.8	1.5	0.3		
	1935	130.0	27.8	71.8	15.3	38.4	8.2	2.0	.4		
	1932	153.4	26.1	78.7	11.5	26.2	4.4	2.4	.4	1.1	
	1931	263.0	32.3	138.7	15.2	35.4	4.0	5.3	.6	3.3	
	1930	186.8	26.5	97.2	9.5	28.0	4.0	3.8	.5	2.2	
	1931	169.8	15.2	86.2	10.8	38.7	31.5	89.6	8.0	16.1	
Mississippi	1932	133.1	11.7	158.3	14.0	404.7	35.7	116.4	10.3	5.3	
	1931	170.9	14.7	271.5	23.4	328.2	28.2	45.3	3.9	2.2	
	1930	234.8	13.7	311.0	18.1	368.1	21.4	188.7	11.0	28.6	
	1931	202.4	11.4	312.9	21.5	216.6	14.8	39.1	2.7	1.6	
	1932	160.3	26.2	92.3	4.8	2.4	1.0				
	1933	160.3	38.0	11.9	1.8						
Missouri	1932	107.7	35.8	23.0	7.7	1.9	.3				
	1931	53.9	19.2	9.5	3.4						
	1930	22.4	14.6	7.1	4.6						
	1931	16.2	19.3	47.3	66.3	0.0					
	1932	36.0	41.8	36.7	42.6	3.5					
	1933	23.6	35.0	25.1	37.2	10.7	15.9				
New Mexico	1931	36.7	39.1	31.4	33.5						
	1930	35.6	37.2	42.5	44.1						
	1931	266.6	32.2	50.2	9.2	5.0		2.2	.3	1.4	
	1932	138.4	20.1	23.8	3.1	2.0		3.4	.7	1.1	
	1933	160.4	25.6	47.5	7.0	11.0	1.6	2.3	.3	1.1	
	1934	126.0	16.3	29.5	4.7	3.8		4.1	.4	1.1	
North Carolina	1930	81.6	19.2	25.6	3.2	5.6		7.7	.7		
	1931	4.3	1.3								
	1932	147.0	11.9	25.8	2.1	7.7		1.1			
	1933	32.4	4.9	5.2	1.5						
	1934	110.8	9.0	14.0	1.1	1.3		1.1			
	1930	71.6	8.4	12.2	1.1	2.7		1.3			
South Carolina	1931	218.3	31.9	84.0	12.3	26.3	4.3	17.0	2.5	2.3	
	1932	194.8	18.5	58.9	8.1	39.6	5.4	13.5	1.8	1.5	
	1933	169.5	23.5	81.8	13.3	41.0	6.1	15.8	2.2	1.7	
	1934	169.8	16.8	67.8	6.7	36.0	3.6	12.0	1.2	1.8	
	1930	140.1	13.8	83.9	8.3	28.4	3.8	10.6	1.0	1.4	
	1931	77.1	19.4	12.3	3.1	1.1		1.1			
Tennessee	1932	39.0	23.1	11.0	2.6	5.1	1.2	1.1			
	1933	131.7	28.8	21.6	5.3	1.9		1.1			
	1930	64.5	16.2	11.7	2.0	2.5		1.1			
	1931	48.0	12.9	11.0	3.0	8.8		1.2			
	1932	72.7	3.2	37.0	1.6	18.5	.8				
	1933	468.8	11.1	73.8	1.8	19.1		1.1			
Texas	1932	362.3	8.4	37.5	.9	19.7	.5	2.2			
	1931	678.3	13.4	86.9	1.7	13.9	.3	1.1			
	1930	586.3	15.1	161.0	2.6	25.7	.7	3.9			
	1931	1.9	5.8	.2	.6						
	1932	1.9	2.6								
	1933	1.5	4.8	.2	.6						
Virginia	1931	1.7	4.0								
	1930	.7	1.7								
	1931	8.0	55.5	.9	6.3						
	1932	5.3	38.4	1.0	7.2	2.1	1.5				
	1933	4.8	31.3	1.9	13.6	.6	4.3	1	.7		
	1934	2.2	18.8	1.8	15.4	.8	6.8	1	.9		
All other	1931	1.8	28.1	1.1	21.9	.3	1.7				

1 As reported by the Bureau of the Census.
 2 Unmarketable in settlement of future contract made subject to sec. 5 of the United States Cotton Futures Act and the regulation of the Secretary of Agriculture thereunder.
 3 Less than 0.05 percent.
 4 Includes Illinois, Kansas, and Kentucky.

TABLE 5.—Average staple length¹ of American upland cotton ginned in the United States, by States and districts thereof, crop of 1934

State and district ²	Sixteenth inches	State and district ²	Sixteenth inches
United States.....	15.58	New Mexico.....	17.50
Alabama.....	14.53	North Carolina.....	15.76
District 1.....	14.69	District 1.....	15.78
District 2.....	14.61	District 2.....	16.00
District 3.....	14.85	District 3.....	15.77
District 4.....	14.36	District 4.....	15.24
District 5.....	14.50	Oklahoma.....	14.49
District 6.....	14.56	District 1.....	14.41
Arizona.....	17.05	District 2.....	14.55
Arkansas.....	16.17	District 3.....	14.64
District 1.....	14.09	District 4.....	14.93
District 2.....	15.15	District 5.....	14.44
District 3.....	15.00	South Carolina.....	16.10
District 4.....	16.69	District 1.....	15.88
District 5.....	15.78	District 2.....	17.07
California.....	17.50	District 3.....	16.18
Florida.....	14.59	District 4.....	15.43
Georgia.....	15.13	Tennessee.....	15.19
District 1.....	15.52	District 1.....	15.29
District 2.....	15.47	District 2.....	14.41
District 3.....	14.80	District 3.....	14.99
District 4.....	14.71	Texas.....	14.77
Louisiana.....	15.74	District 1.....	17.68
District 1.....	14.54	District 2.....	14.66
District 2.....	15.65	District 3.....	14.35
District 3.....	16.21	District 4.....	14.67
District 4.....	14.64	District 5.....	14.40
Mississippi.....	17.28	District 6.....	14.50
District 1.....	18.51	District 7.....	14.79
District 2.....	16.88	District 8.....	14.34
District 3.....	15.62	District 9.....	15.16
Missouri.....	15.60	District 10.....	14.97
		District 11.....	15.12
		Virginia.....	14.84
		All other ³	16.16

¹ Average calculated by multiplying the number of bales in each length group by the midpoint of the group expressed in sixteenths of an inch (that is, $1\frac{1}{16}$ and $2\frac{1}{16}=15.5$, etc.), summing, and dividing by the total number of bales. The midpoint of the $1\frac{1}{16}$ - and $2\frac{1}{16}$ -inch group, for example, was taken as 15.5 sixteenths ($3\frac{1}{32}$) inch because according to regulations $1\frac{1}{16}$ is the lower limit of the group which includes all cotton classed as being as long as $1\frac{1}{16}$ and shorter than 1 inch. In making calculations, the midpoints of the groups "shorter than $1\frac{1}{16}$ inch" and " $1\frac{1}{16}$ inches and longer" were considered to be 13.5 and 20.5, respectively. Averages can be converted to inches by dividing by 16.

² For location of districts into which States are divided, see maps accompanying tables for individual States, by districts, pp. 42-51.

³ Includes Illinois, Kansas, and Kentucky.

TABLE 6.—Average staple length¹ of American upland cotton ginned in the United States, by States, crops of 1934, 1933, and 1928-32

State	1934	1933	5-year period 1928-32	State	1934	1933	5-year period 1928-32
	<i>Sixteenth inches</i>	<i>Sixteenth inches</i>	<i>Sixteenth inches</i>		<i>Sixteenth inches</i>	<i>Sixteenth inches</i>	<i>Sixteenth inches</i>
United States...	15.58	15.55	15.28	Missouri.....	15.69	15.79	15.59
Alabama.....	14.53	14.65	14.33	New Mexico.....	17.50	16.88	16.76
Arizona.....	17.05	16.88	16.51	North Carolina.....	15.76	15.31	15.09
Arkansas.....	16.17	16.43	15.84	Oklahoma.....	14.49	15.21	15.89
California.....	17.50	17.41	17.12	South Carolina.....	16.16	15.70	15.44
Florida.....	14.59	14.85	14.45	Tennessee.....	15.19	15.45	15.16
Georgia.....	15.13	14.82	14.69	Texas.....	14.77	15.16	15.01
Louisiana.....	15.74	16.10	15.65	Virginia.....	14.84	14.69	14.72
Mississippi.....	17.28	17.20	16.61	All other ²	16.16	16.02	16.45

¹ Average calculated by multiplying the number of bales in each length group by the midpoint of the group expressed in sixteenths of an inch (that is, $\frac{13}{16}$ and $\frac{14}{16}$ = 15.5, etc.), summing, and dividing by the total number of bales. The midpoint of the $\frac{13}{16}$ - and $\frac{14}{16}$ -inch group, for example, was taken as 15.5 sixteenths ($\frac{24.2}{16}$) inch because according to regulations $\frac{13}{16}$ is the lower limit of the group which includes all cotton classed as being as long as $\frac{13}{16}$ and shorter than 1 inch. In making the calculations, the midpoints of the groups "shorter than $\frac{7}{8}$ inch" and " $\frac{13}{16}$ inches and longer" were considered to be 13.5 and 20.5, respectively. Averages can be converted to inches by dividing by 16. Averages for each individual year of the period 1928-32 are published in table 5 of Statistical Bulletin 52.

² Includes Illinois, Kansas, and Kentucky.

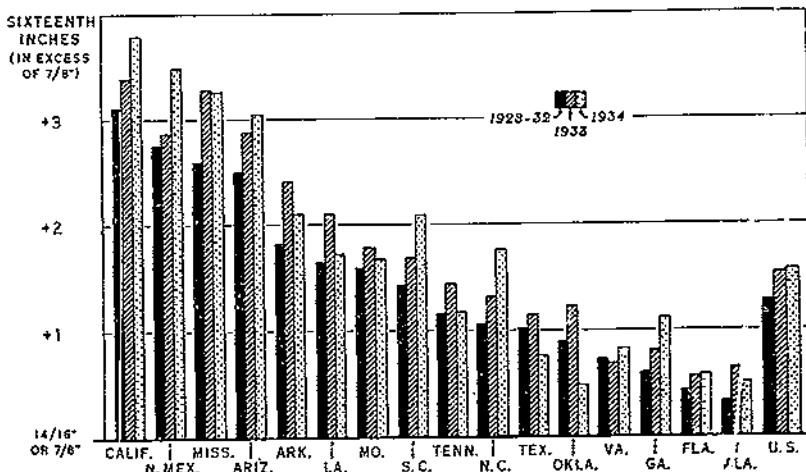


FIGURE 1.—Average staple length of American upland cotton in excess of $\frac{7}{8}$ inch.

The cotton-growing States are here arranged according to the 5-year average staple length of cotton ginned from the crops of 1928-32. The average staple length of cotton ginned in the United States has increased from year to year since 1929.

TABLE 7.—Grade of American upland cotton ginned in the United States during specified periods,¹ by States, crop of 1934

[Quantities are given in running bales, except that round bales are counted as half bales. Linters are not included]

		UNITED STATES				
Grade	Total crop	Ginnings during specified period				
		Prior to Oct. 1	October	November	Dec. 1- Jan. 15	After Jan. 15
	1,000 bales	1,000 bales	1,000 bales	1,000 bales	1,000 bales	1,000 bales
All grades ²	4,458.0	4,958.0	2,951.3	1,009.9	254.8	93.4
Extra White	4,814.4	3,025.5	1,335.3	388.9	56.8	8.5
Above 3-G, M.	10.3	7.1	3.2			
3-G, M.	904.1	733.3	158.7	19.9	1.6	.6
4-S, M.	2,259.3	1,555.3	528.2	155.8	17.6	2.4
5-M	1,284.2	636.7	483.9	134.0	25.4	3.6
6-S, L, M.	281.9	66.4	141.5	63.0	0.4	1.0
7-L, M.	63.0	25.9	19.7	14.4	2.7	.3
Below 7-L, M, S.	1.6	.8	.1	.6	.1	
White	3,342.6	1,530.4	1,173.5	402.1	142.4	34.2
1-M, F.						
2-S, G, M.	.6	.5	.1			
3-G, M.	110.0	93.5	14.9	1.3	.3	
4-S, M.	1,187.2	717.8	333.0	109.2	22.6	4.0
5-M	1,424.0	568.6	570.7	221.4	49.7	8.2
6-S, L, M.	408.2	107.2	211.7	106.5	33.7	9.1
7-L, M	197.2	30.8	30.5	20.2	20.1	5.6
8-S, G, O, S	33.4	11.4	5.7	3.2	9.8	3.3
9-G, O, S.	11.4	.6	.3	.3	0.2	4.0
Spotted	1,264.5	398.6	437.0	245.7	144.3	38.0
3-G, M.	139.2	82.1	37.6	8.3	2.0	.2
4-S, M.	691.4	236.8	271.9	129.9	32.3	3.5
5-M	315.1	73.3	112.9	60.7	55.9	12.6
6-S, L, M, S	96.3	43.7	13.9	15.4	41.9	11.4
7-L, M, S	28.2	2.7	1.6	1.4	12.2	10.3
Yellow Tinged	14.0	2.0	1.3	1.0	4.2	5.5
2-S, G, M.	.1	.1				
3-G, M.	.9	.6	.2		.1	
4-S, M.	3.2	.8	.4	.6	1.1	.3
5-M, S.	5.5	.3	.5	.4	2.1	2.2
6-S, L, M, S	3.9	.7	.1		.8	2.0
7-L, M, S	1.3	.1	.1		.1	1.0
Light Yellow Stained	.3	.1			.1	.1
3-G, M.						
4-S, M, S	.2	.1				.1
5-M, S.	.1				.1	
Gray	66.1	1.3	3.1	2.8	2.6	.3
3-G, M.	.1		.1			
4-S, M.	7.4	1.0	1.9	2.3	1.9	.3
5-M, S	2.6	.8	1.1	.5	.7	
No grade ^{2,3}	12.1	.7	.2		4.4	0.8

ALABAMA

All grades ²	936.1	508.5	336.4	82.4	7.0	1.8
Extra White	326.8	217.4	94.6	11.3	.3	.2
Above 3-G, M.						
3-G, M.	28.3	24.6	3.3	.4		
4-S, M.	173.4	128.6	39.8	4.7	.1	.2
5-M	111.1	62.1	42.7	6.2	.4	
6-S, L, M.	13.2	2.6	8.3	2.8	.1	
7-L, M.	.8	.1	.5	.2		
Below 7-L, M, S.						

See footnotes at end of table.

TABLE 7.—Grade of American upland cotton ginned in the United States during specified periods,¹ by States, crop of 1934—Continued

ALABAMA—Continued

Grade	Total crop 1,000 bales	Ginnings during specified period				
		Prior to Oct. 1 1,000 bales	October 1,000 bales	November 1,000 bales	Dec. 1- Jan. 15 1,000 bales	After Jan. 15 1,000 bales
White	473.4	244.1	182.3	42.1	4.0	0.9
1-M. F.						
2-S. G. M.	.1	.1				
3-G. M.	.8	.3	.4	.1		
4-S. M.	162.2	107.4	45.8	7.0	.9	.2
5-M.	247.3	126.7	96.2	21.0	2.0	.5
6-S. L. M.	57.9	8.8	36.8	11.1	1.0	.2
7-L. M.	4.8	.8	2.9	1.0	.1	
8-S. G. O. 3	.3		.2	.1		
9-G. O. 3						
Spotted	134.7	46.0	58.6	25.8	2.7	.7
3-G. M.	8.5	4.9	3.1	.5		
4-S. M.	85.4	32.7	38.4	13.2	.0	.2
5-M.	37.6	8.7	16.6	11.5	1.6	.2
6-S. L. M.	2.9	.6	1.1	.6	.2	.1
7-L. M.	.3		.4			.2
Yellow Tinged	.3	.1	.2			
2-S. G. M.						
3-G. M.						
4-S. M.	.1	.1				
5-M.	.2		.2			
6-S. L. M.						
7-L. M.						
Gray	.9		.7	.2		
3-G. M.	.1		.1			
4-S. M.	.7		.5	.2		
5-M.	.1		.1			

ARIZONA

All grades ²	99.1	21.9	26.5	21.7	17.6	11.1
Extra White	71.0	17.4	21.8	19.7	7.7	1.4
Above 3-G. M.						
3-G. M.	14.3	5.1	7.3	1.8	.1	
4-S. M.	33.9	19.0	14.8	15.2	3.9	
5-M.	11.2	1.1	2.0	2.5	3.7	1.0
6-S. L. M.	1.2		.1	.2	.6	.3
7-L. M.	.1				.3	.1
Below 7-L. M. ³						
White	12.3	4.3	1.7	.8	1.0	4.5
1-M. F.						
2-S. G. M.						
3-G. M.						
4-S. M.	3.4	1.7	.8	.5	.4	
5-M.	3.6	2.2	.6	.3	.1	.4
6-S. L. M.	3.2	.1	.3		.4	2.1
7-L. M.	1.7				.1	1.6
8-S. G. O. 3	.3					.3
9-G. O. 3	.1					.1
Spotted	15.1	.2		1.2	8.7	5.0
3-G. M.	.4				.5	
4-S. M.	5.5	.2		.9	4.1	.3
5-M.	6.6			.3	3.3	3.0
6-S. L. M.	1.5				.5	1.0
7-L. M.	1.0				.3	.7
Yellow Tinged	.1					.1
2-S. G. M.						
3-G. M.						
4-S. M.						
5-M.						
6-S. L. M.	.1					.1
7-L. M.						
No grade ^{3,4}	.0				.2	.4

See footnotes at end of table.

TABLE 7.—Grade of American upland cotton ginned in the United States during specified periods,¹ by States, crop of 1934—Continued

ARKANSAS

Grade	Total crop	Ginnings during specified period				
		Prior to Oct. 1	October	November	Dec. 1—Jan. 15	After Jan. 15
All grades ²	1,000 bales 510.0	1,000 bales 453.0	1,000 bales 288.6	1,000 bales 80.7	1,000 bales 21.1	1,000 bales 5.0
Extra White	615.1	371.1	195.7	41.6	0.3	.5
Above 3-G, M.						
3-G, M.	50.8	50.4	5.5	.8		
4-S, M.	256.2	215.4	61.7	7.9	1.1	.1
5-M	205.3	91.6	91.7	13.9	1.8	.3
6-S, L, M.	50.1	10.4	31.6	14.5	2.5	.1
7-L, M.	7.4	.3	2.2	.3	.8	
Below 7-L, M. ³	.3			4.1		
White	105.6	70.3	80.4	32.0	9.9	3.0
1-M, F.						
2-S, G, M.						
3-G, M.						
4-S, M.	2.4	1.0	.3	.1	.1	
5-M	62.0	33.5	22.5	5.9	.5	.2
6-S, L, M.	54.1	28.0	40.9	13.6	1.5	.1
7-L, M.	31.3	6.4	16.2	0.6	3.0	.2
8-S, G, O. ³	6.0	.3	1.3	2.0	2.2	.1
9-G, O. ³	3.4	.2	.2	.7	1.5	.8
	2.8			.1	1.1	1.6
Spotted	37.0	11.6	12.4	7.2	4.0	1.8
3-G, M.	4.3	3.4	.8		.1	
4-S, M.	18.6	6.3	8.6	2.9	.2	
5-M	2.5	1.4	2.9	3.4	1.6	.5
6-S, L, M. ³	2.8		.1	.8	1.5	.1
7-L, M. ³	1.9			.1	.6	1.2
Yellow Tinted	.4		.1			.3
2-S, G, M.						
3-G, M.						
4-S, M.	.1		.1			
5-M. ³						
6-S, L, M. ³	.3					.3
7-L, M. ³						
No grade ^{3, 4}	.9				.9	

CALIFORNIA

All grades ²	251.5	70.9	100.2	31.4	15.4	12.6
Extra White	226.4	70.8	105.9	31.3	5.1	1.3
Above 3-G, M.	2.0	.2	1.8			
3-G, M.	127.3	63.3	69.8	2.0	.1	.5
4-S, M.	85.7	10.1	45.7	22.3	1.5	.1
5-M	11.1	.2	.0	8.3	3.4	.6
6-S, L, M.	.9			.1	.1	.1
7-L, M.						
Below 7-L, M. ³						
White	10.3	.1	.2	1.0	4.7	4.3
1-M, F.						
2-S, G, M.						
3-G, M.						
4-S, M.	.0	.1	.2	.4	.2	
5-M	4.4			.6	3.0	.8
6-S, L, M.	3.5				1.4	2.1
7-L, M.	1.1				.1	1.0
8-S, G, O. ³	.3					.3
9-G, O. ³	.1					.4

See footnotes at end of table.

GRADE, STAPLE LENGTH, AND TENDERABILITY OF COTTON 29

TABLE 7.—Grade of American upland cotton ginned in the United States during specified periods,¹ by States, crop of 1934—Continued

CALIFORNIA—Continued

Grade	Total crop	Ginnings during specified period				
		Prior to Oct. 1	October	November	Dec. 1—Jan. 15	After Jan. 15
	1,000 bales	1,000 bales	1,000 bales	1,000 bales	1,000 bales	1,000 bales
Spotted.....	8.4		0.1	0.2	3.1	5.0
3-G. M.....						
4-S. M.....	1.8		.1	.2	1.1	.4
5-M.....	4.4				1.9	2.5
6-S. L. M. ³	1.3				.1	1.2
7-L. M. ³9					.6
Yellow Tinged.....	.1					.1
2-S. G. M.....						
3-G. M.....						
4-S. M.....						
5-M. ³1					.1
6-S. L. M. ³						
7-L. M. ³						
Gray.....	4.7			1.9	2.5	.3
3-G. M.....						
4-S. M.....	3.8			1.6	1.9	.3
5-M. ³9			.3	.6	
No grade ^{1,2}	1.6					1.6

FLORIDA

All grades ²	21.3	16.8	8.5	0.8	0.1	0.1
Extra White.....	3.7	3.1	.6			
Above 3-G. M.....						
3-G. M.....	.2	.2				
4-S. M.....	1.9	1.7	.2			
5-M.....	1.5	1.1	.4			
6-S. L. M.....	.1	.1				
7-L. M.....						
Below 7-L. M. ³						
White.....	12.7	9.9	2.4	.3	.1	
1-M. F.....						
2-S. G. M.....						
3-G. M.....						
4-S. M.....	5.6	4.1	1.5	.2		
5-M.....	0.2	5.1	.9	.1	.1	
6-S. L. M.....	.5	.6	.2			
7-L. M.....	.1	.1				
8-S. G. O. ³						
9-G. O. ³						
Spotted.....	7.9	3.8	3.5	.5		.1
3-G. M.....	.7	.2	.4	.1		
4-S. M.....	6.0	3.0	2.5	.4		.1
5-M.....	1.1	.6	.6			
6-S. L. M. ³1		.1			
7-L. M. ³						

GEORGIA

All grades ²	974.9	521.0	301.0	129.3	15.5	4.1
Extra White.....	307.8	262.4	102.2	30.2	2.4	.6
Above 3-G. M.....	.1	.1				
3-G. M.....	52.2	40.3	16.0	1.8	.1	
4-S. M.....	180.4	129.5	66.2	13.2	.4	.1
5-M.....	131.6	82.0	38.5	11.8	1.4	.3
6-S. L. M.....	20.1	0.4	6.0	3.3	.4	.1
7-L. M.....	1.4	.5	.6	.1	.1	.1
Below 7-L. M. ³						

See footnotes at end of table.

TABLE 7.—Grade of American upland cotton ginned in the United States during specified periods,¹ by States, crop of 1934—Continued

GEORGIA—Continued

Grade	Total crop	Ginnings during specified period				
		Prior to Oct. 1	October	November	Dec. 1- Jan. 15	After Jan. 15
		1,000 bales	1,000 bales	1,000 bales	1,000 bales	1,000 bales
White	418.2	213.1	136.2	50.2	7.5	2.2
1-M, F						
2-S, G, M	.1		.1			
3-G, M	1.9	.8	1.0	.1		
4-S, M	165.3	91.1	37.5	19.8	3.3	.6
5-M	210.6	109.3	69.1	30.1	3.7	1.4
6-S, L, M	37.5	11.1	17.4	8.4	.5	.1
7-L, M	2.6	.7	1.1	.7		.1
8-S, G, O, J	.2	.1		.1		
9-G, O, J						
Spotted	157.7	44.8	65.4	39.6	0.6	1.3
3-G, M	21.0	10.1	7.9	2.1	.9	
4-S, M	65.2	26.5	41.0	23.8	3.0	.3
5-M	38.1	7.6	15.0	12.3	2.3	.9
6-S, L, M, J	3.4	.6	.8	1.3	.4	
7-L, M, J	.3		.1	.1		.1
Yellow Tinged	1.1	.7	.1	.3		
2-S, G, M						
3-G, M	.2	.2				
4-S, M	.5	.3		.2		
5-M, J	.1	.2	.1	.1		
6-S, L, M, J						
7-L, M, J						
Gray	.1		.1			
3-G, M			.1			
4-S, M	.1		.1			
5-M, J						

LOUISIANA

All grades	473.3	339.9	116.4	43.5	2.5	1.0
Extra White	340.1	235.5	32.4	1.1	.6	.2
Above 3-G, M	.1	.1				
3-G, M	30.9	28.1	2.8			
4-S, M	120.1	103.3	13.5	.3		
5-M	79.1	65.4	12.7	.5	.6	.2
6-S, L, M	9.1	5.4	3.2	.5		
7-L, M	.5	.2	.2	.1		
Below 7-L, M, J						
White	182.3	109.8	62.5	8.0	1.5	.6
1-M, F						
2-S, G, M						
3-G, M	5.0	2.9	2.1			
4-S, M	65.7	46.4	17.2	1.5	.5	.7
5-M	75.1	47.7	23.8	3.0	.4	.2
6-S, L, M	30.5	11.0	16.6	2.9		
7-L, M	4.7	1.4	2.7	.5		
8-S, G, O, J	1.1	.3	.1	.1	.4	.2
9-G, O, J	.2				.2	
Spotted	50.5	21.4	21.3	4.1	.1	.3
3-G, M	4.8	4.1	.4	.1		
4-S, M	29.0	15.3	12.1	1.1	.3	.2
5-M	13.8	4.5	7.8	2.3	.1	.1
6-S, L, M, J	1.8	.4	.8	.6		
7-L, M, J	.1	.1				
Yellow Tinged	.1		.1			
2-S, G, M						
3-G, M						
4-S, M	.1		.1			
5-M, J						
6-S, L, M, J						
7-L, M, J						
Gray	.3	.2	.1			
3-G, M						
4-S, M	.2	.2				
5-M, J	.1		.1			

See footnotes at end of table.

TABLE 7.—Grade of American upland cotton ginned in the United States during specified periods,¹ by States, crop of 1934—Continued

Grade	Total crop	Ginnings during specified period				
		Prior to Oct. 1	October	November	Dec. 1-Jan. 15	After Jan. 15
		1,000 bales	1,000 bales	1,000 bales	1,000 bales	1,000 bales
All grades ²	1,121.3	636.1	379.7	92.6	10.5	2.4
Extra White.....	728.7	512.5	176.6	34.3	5.2	1.1
Above 3-G. M.....	.1	.1				
3-G. M.....	112.9	103.4	7.9	1.3	.2	.1
4-S. M.....	384.2	310.3	56.2	9.5	1.8	.4
5-M.....	175.3	90.1	74.0	0.1	1.8	.3
6-S. L. M.....	51.2	2.5	35.0	12.3	1.1	.3
7-L. M.....	4.9	.1	2.5	2.1	.2	
Below 7-L. M.....	.1				.1	
White.....	278.9	87.0	145.5	41.8	3.7	.9
1-M. F.....						
2-S. G. M.....						
3-G. M.....	5.4	5.0	.3	.1		
4-S. M.....	99.9	54.2	35.8	8.9	.7	.3
5-M.....	115.7	25.2	73.2	14.9	1.0	.5
6-S. L. M.....	51.4	2.5	32.9	15.1	.8	.1
7-L. M.....	6.0	.1	3.1	2.6	.2	
8-S. G. O. ³5		.2	.2	.1	
9-G. O. ³						
Spotted.....	112.7	36.5	57.7	16.5	1.6	.4
3-G. M.....	7.1	4.9	2.1	.1		.1
4-S. M.....	72.6	20.1	37.5	8.6	.3	.1
5-M.....	30.9	5.3	17.1	7.1	1.2	.2
6-S. L. M.....	2.1	.2	1.0	.7	.1	.1
7-L. M.....						
Yellow Tinged.....	.2	.1	.1			
2-S. G. M.....						
3-G. M.....						
4-S. M.....	.1	.1				
5-M.....						
6-S. L. M.....						
7-L. M.....	.1		.1			
Gray.....	.8		.8			
3-G. M.....						
4-S. M.....	.5		.5			
5-M.....	.3		.3			

MISSOURI						
Grade	Total crop	Ginnings during specified period				
		Prior to Oct. 1	October	November	Dec. 1-Jan. 15	After Jan. 15
		1,000 bales	1,000 bales	1,000 bales	1,000 bales	1,000 bales
All grades ²	230.4	86.3	91.8	29.8	16.2	6.3
Extra White.....	123.2	52.1	59.3	11.3	.5	
Above 3-G. M.....						
3-G. M.....	.9	.9				
4-S. M.....	28.2	10.2	8.0	.1		
5-M.....	67.5	25.7	29.6	2.1	.1	
6-S. L. M.....	30.7	5.9	19.2	5.4	.2	
7-L. M.....	5.7	.4	1.6	3.5	.2	
Below 7-L. M.....	.2			.2		
White.....	76.6	30.7	25.3	9.9	8.2	2.5
1-M. F.....						
2-S. G. M.....						
3-G. M.....	.1	.1				
4-S. M.....	11.4	9.0	2.1	.2	.1	
5-M.....	30.2	16.4	11.9	1.8	.1	
6-S. L. M.....	19.6	4.7	9.6	4.7	.3	.2
7-L. M.....	4.0	.4	1.8	2.2	.0	.1
8-S. G. O. ³	5.1	.1	.1	.0	3.5	.5
9-G. O. ³	5.3			.1	3.5	1.7

See footnotes at end of table.

TABLE 7.—Grade of American upland cotton ginned in the United States during specified periods,¹ by States, crop of 1934—Continued

MISSOURI—Continued

Grade	Total crop	Ginatings during specified period				
		Prior to Oct. 1	October	November	Dec. 1-Jan. 15	After Jan. 15
	1,000 bales	1,000 bales	1,000 bales	1,000 bales	1,000 bales	1,000 bales
Spotted.....	24.0	3.4	7.2	8.6	6.0	0.7
3-O. M.....	.2	.1	.1			
4-S. M.....	6.1	1.0	3.3	.9		
5-M.....	9.6	1.2	3.4	4.4	.6	
6-S. L. M.....	5.0	.2	.4	2.0	1.7	.1
7-L. M.....	4.0			.7	2.7	.6
Yellow Tinged.....	.2				.1	.1
2-S. G. M.....						
3-G. M.....						
4-S. M.....						
5-M.....	.1				.1	
6-S. L. M.....	.1					.1
7-L. M.....						
No grade.....	5.6	.1			2.4	3.0

NEW MEXICO

All grades ²	83.7	29.6	33.6	15.0	5.3	0.2
Extra White.....	82.1	29.3	33.4	14.8	4.4	.2
Above 3-G. M.....	1.2	.1	1.1			
3-G. M.....	46.2	22.7	19.3	4.0	.2	
4-S. M.....	31.0	6.6	12.9	9.7	1.8	.1
5-M.....	3.1		.1	1.1	1.8	.1
6-S. L. M.....	.5				.5	
7-L. M.....	.1				.1	
Below 7-L. M.....						
White.....	.7	.3	.2	.1	.1	
1-M. F.....						
2-S. G. M.....						
3-G. M.....		.2				
4-S. M.....	.3	.1	.2			
5-M.....	.2					
6-S. L. M.....				.1	.1	
7-L. M.....						
8-S. G. O.....						
9-O. O.....						
Spotted.....	.5			.1	.4	
3-O. M.....						
4-S. M.....	.3				.2	
5-M.....	.2			.1	.2	
6-S. L. M.....						
7-L. M.....						
No grade.....	.4				.4	

NORTH CAROLINA

All grades ²	649.9	74.7	313.6	169.5	45.0	8.1
Extra White.....	222.6	32.9	115.8	65.2	6.9	1.8
Above 3-G. M.....						
3-G. M.....	11.5	3.0	6.1	2.0	.4	
4-S. M.....	91.4	14.5	40.6	21.1	2.3	.9
5-M.....	103.2	13.8	53.4	32.4	3.3	.3
6-S. L. M.....	15.4	1.4	6.5	6.1	.8	.6
7-L. M.....	1.1	.2	.2	.6	.1	
Below 7-L. M.....						
White.....	345.0	35.8	172.4	107.3	26.4	4.1
1-M. F.....						
2-S. G. M.....						
3-G. M.....	.3		.3			
4-S. M.....	65.2	9.9	35.1	11.6	4.9	.7
5-M.....	182.1	16.2	93.6	57.9	13.1	1.2
6-S. L. M.....	31.2	7.9	30.9	28.7	6.2	1.5
7-L. M.....	14.3	1.5	5.0	5.5	1.2	.5
8-S. G. O.....	1.0	.2	.7	.5		.2
9-O. O.....	.3		.2	.1		

See footnotes at end of table.

TABLE 7.—Grade of American upland cotton ginned in the United States during specified periods,¹ by States, crop of 1934.—Continued

NORTH CAROLINA Continued

Grade	Total crop	Ginnings during specified period				
		Prior to Oct. 1	October	November	Dec. 1-Jan. 15	After Jan. 15
Spotted.....	1,000 bales 69.7	1,000 bales 5.8	1,000 bales 21.0	1,000 bales 26.1	1,000 bales 11.8	1,000 bales 2.0
3-G. M.....	5.8	1.0	3.0	1.4	.4	
4-S. M.....	30.9	3.4	15.0	15.1	6.0	.4
5-M.....	22.2	1.3	5.8	8.9	4.8	1.1
6-S. L. M.....	1.7	.1	.2	.0	.6	.2
7-L. M.....	.1			.1		
Yellow Tinged.....	1.4			.4	.8	.2
2-S. G. M.....						
3-G. M.....	.1				.1	
4-S. M.....	.8			.3	.5	
5-M.....	.6			.1	.2	.2
6-S. L. M.....						
7-L. M.....						
Light Yellow Stained.....	.2	.1			.1	
3-G. M.....						
4-S. M.....	.1	.1				
5-M.....	.1				.1	
Gray.....	1.8		1.3	.5		
3-G. M.....						
4-S. M.....	1.1		.7	.4		
5-M.....	.7		.6	.1		
No grade ²2	.1	.1			

OKLAHOMA

All grades ²	329.9	129.7	108.2	43.2	42.0	6.8
Extra White.....	91.7	57.2	36.7	6.7	1.1	
Above 3-G. M.....						
3-G. M.....	7.5	6.2	1.1	.2		
4-S. M.....	21.5	15.3	6.9	2.1	.2	
5-M.....	21.4	12.9	6.8	1.4	.3	
6-S. L. M.....	15.9	8.2	6.3	1.1	.3	
7-L. M.....	25.3	14.6	9.6	.9	.3	
Below 7-L. M.....	.1	.1				
White.....	109.5	46.1	36.8	12.7	10.0	.9
1-M. F.....						
2-S. G. M.....						
3-G. M.....	1.1	.7	.1	.2	.1	
4-S. M.....	15.8	7.0	6.0	2.5	.3	
5-M.....	24.0	10.6	9.4	3.6	1.4	
6-S. L. M.....	25.4	8.3	8.8	1.4	3.7	.2
7-L. M.....	26.7	11.5	9.0	2.0	3.8	.4
8-S. (L. O.).....	12.3	7.8	3.5	.1	.7	.2
9-G. O.....	.3	.2				.1
Spotted.....	120.3	26.2	60.3	21.7	30.3	5.8
3-G. M.....	2.8	.7	1.5	.6		
4-S. M.....	33.4	7.4	15.0	8.0	2.0	.1
5-M.....	17.0	9.2	15.8	10.4	11.5	.7
6-S. L. M.....	35.6	7.4	7.0	6.5	13.5	2.2
7-L. M.....	9.9	1.5	1.0	.2	2.4	1.8
Yellow Tinged.....	1.3	.2	.3	.1	.3	.4
2-S. G. M.....						
3-G. M.....						
4-S. M.....	.1		.1			
5-M.....	.4		.1			
6-S. L. M.....	.4	.1	.1	.1	.2	.2
7-L. M.....	.4	.1	.1		.1	.2
No grade ²	1.1	.1	.1		.3	.7

See footnotes at end of table.

TABLE 7.—Grade of American upland cotton ginned in the United States during specified periods, by States, crop of 1934—Continued

SOUTH CAROLINA

Grade	Total crop	Ginnings during specified period				
		Prior to Oct. 1	October	November	Dec. 1-Jan. 15	After Jan. 15
		1,000 bales	1,000 bales	1,000 bales	1,000 bales	1,000 bales
All grades 2	681.6	200.5	305.6	147.0	25.5	0.0
Extra White	289.2	101.1	132.0	46.8	5.6	.7
Above 3-G, M						
3-G, M	12.4	7.9	3.6	.8	.1	.3
4-S, M	139.3	53.8	65.1	18.0	2.1	.3
5-M	121.0	39.4	59.2	22.6	2.5	.3
6-S, L, M	12.8	2.0	4.0	5.0	.8	.1
7-L, M	.7	.1	.1	.4	.1	
Below 7-L, M, S						
White	280.8	70.6	122.7	58.8	15.3	4.4
1-M, F						
2-S, G, M						
3-G, M	.3	.1	.2			
4-S, M	83.2	28.6	35.3	14.7	3.6	1.0
5-M	161.7	42.8	76.4	35.5	8.3	1.7
6-S, L, M	27.6	7.2	10.4	7.5	2.0	.5
7-L, M	3.8	.9	.9	1.1	1.2	.3
8-S, G, O, S	1.0		.1		.2	.7
9-G, O, S	.2					.2
Spotted	113.8	16.6	50.7	41.1	4.5	.9
3-G, M	9.7	4.3	3.8	4.6		.4
4-S, M	77.0	9.8	38.0	26.7	2.1	.4
5-M	26.2	2.4	8.7	12.6	2.1	.4
6-S, L, M, S	.9	.1	.2	.2	.3	.1
7-L, M, S						
Yellow Tinged	.1	.1	.2	.1		
2-S, G, M						
3-G, M	.1		.1			
4-S, M	.1	.1				
5-M, S	.2		.1	.1		
6-S, L, M, S						
7-L, M, S						
Gray	.3			.2	.4	
3-G, M						
4-S, M	.1			.1		
5-M, S	.2			.1	.1	
No grade 3	.1	.1				

TENNESSEE

All grades 2	396.7	135.3	173.0	73.7	11.0	3.1
Extra White	230.3	110.9	84.5	31.0	3.0	
Above 3-G, M						
3-G, M	13.4	11.4	4.6	.3	.1	
4-S, M	109.7	73.4	28.6	7.1	.6	
5-M	79.0	21.3	36.3	14.0	1.4	
6-S, L, M	25.2	1.7	13.7	8.9	.9	
7-L, M	2.9	.1	1.2	1.6		
Below 7-L, M, S	.1		.1			
White	118.8	46.3	64.8	27.3	4.7	.7
1-M, F						
2-S, G, M						
3-G, M	.1	.3	.1			
4-S, M	38.3	11.4	18.2	7.8	.9	
5-M	56.6	6.9	35.3	12.5	1.9	
6-S, L, M	18.3	.7	11.5	5.4	.9	.3
7-L, M	3.4		1.4	1.3	.3	.4
8-S, G, O, S	1.0		.3	.3	.4	.4
9-G, O, S	.8				.8	

See footnotes at end of table.

TABLE 7.—Grade of American upland cotton ginned in the United States during specified periods,¹ by States, crop of 1934—Continued

TENNESSEE—Continued

Grade	Total crop	Hinnings during specified period				
		Prior to Oct. 1	October	November	Dec. 1-Jan. 15	After Jan. 15
	1,000 bales	1,000 bales	1,000 bales	1,000 bales	1,000 bales	1,000 bales
Spotted ..	47.5	5.1	22.2	14.5	3.3	2.4
3-G. M.	1.4	.6	.7	.1		
4-S. M.	26.7	3.8	15.0	7.1	.8	
5-M.	14.6	.7	6.1	6.0	1.2	.6
6-S. L. M. ²	2.8		.1	1.1	.8	.5
7-L. M. ²	2.0			.2	.5	1.3
Yellow Tinged ..	.1		.1			
2-S. G. M.						
3-G. M.						
4-S. M.						
5-M.			.1			
6-S. L. M. ²						
7-L. M. ²						
TEXAS						
All grades ²	2,311.9	1,720.6	333.9	122.0	115.6	22.8
Extra White ..	1,111.6	906.7	135.3	34.9	7.2	.5
Above 3-G. M.	6.8	6.5	.3			
3-G. M.	360.3	365.8	26.4			
4-S. M.	516.0	446.3	76.8	3.9	.2	
5-M.	156.2	121.8	33.2	21.1	2.6	.2
6-S. L. M.	23.5	16.3	4.6	8.0	2.9	.2
7-L. M.	11.2	9.4	.9	1.6	1.0	
Below 7-L. M. ²	.7	.7		.3	.5	.1
White.....	808.2	678.4	123.8	61.2	41.9	4.9
1-M. F.						
2-S. G. M.	.4	.4				
3-G. M.	92.1	81.2	10.1	.7	.1	
4-S. M.	405.6	310.0	61.7	23.8	6.3	.8
5-M.	205.7	132.5	37.8	21.4	11.7	1.3
6-S. L. M.	71.0	37.2	11.5	7.2	13.4	1.7
7-L. M.	26.5	13.0	1.3	1.0	10.2	1.0
8-S. G. O. ³	6.1	2.7	.3	.1	2.9	.1
9-G. O. ³	.8	.4	.1		.3	
Spotted.....	351.3	173.2	72.6	32.8	60.5	12.2
3-G. M.	63.1	47.8	13.6	1.6	.1	.1
4-S. M.	104.0	89.8	43.9	19.3	10.1	.9
5-M.	79.4	30.4	13.2	10.7	23.0	2.1
6-S. L. M. ²	34.6	4.1	1.3	1.3	21.9	5.8
7-L. M. ²	10.2	1.1	.5		5.4	3.3
Yellow Tinged	8.0	.8	.1	.1	2.8	4.2
2-S. G. M.	.1	.1				
3-G. M.	.5	.1	.1			
4-S. M.	1.0	.2				
5-M.	3.5	.1		.1	.4	.3
6-S. L. M. ²	2.1				1.8	1.6
7-L. M. ²	.8				.6	1.5
Light Yellow Stained.....	.1					.1
3-G. M.						
4-S. M.	.1					.1
5-M.						
Gray.....	1.2	1.1	.1			
3-G. M.						
4-S. M.	.9	.8				
5-M.	.3	.3				
No grade ^{1,2}	1.5	.4			.2	.9

See footnotes at end of table.

TABLE 7.—Grade of American upland cotton ginned in the United States during specified periods,¹ by States, crop of 1934—Continued

VIRGINIA

Grade	Total crop	Ginnings during specified period				
		Prior to Oct. 1	October	November	Dec. 1-Jan. 15	After Jan. 15
All grades ²	1,000 bales 33.0	1,000 bales 1.0	1,000 bales 17.2	1,000 bales 11.8	1,000 bales 2.5	1,000 bales 0.5
Extra White	8.9	2	4.6	3.6	.5	
Above 3-G. M.						
3-G. M.						
4-S. M.	1.7		1.1	.5	.1	
5-M.	6.6	.2	3.1	2.7	.3	
6-S. L. M.	.6		.1	.4	.1	
7-L. M.						
Below 7-L. M. ³						
White	19.0	8	11.2	5.9	.9	.2
1-M. F.						
2-S. G. M.						
3-G. M.						
4-S. M.	1.4		.8	.5		.1
5-M.	12.3	.5	7.2	4.2	.3	.1
6-S. L. M.	5.1	.3	3.1	1.2	.5	
7-L. M.	.2		.1		.1	
8-S. G. O. ⁴						
9-G. O. ⁵						
Spotted	4.8		1.1	2.3	.9	.2
3-G. M.	.3			.2		.1
4-S. M.	2.7		.7	1.9	.3	.1
5-M.	1.7		.7	.5	.5	
6-S. L. M. ³	.1				.1	
7-L. M. ³						
Yellow Tinged	.3				.2	.1
2-S. G. M.						
3-G. M.						
4-S. M.	.1				.1	
5-M.	.1				.1	
6-S. L. M. ³	.1					.1
7-L. M. ³						

ALL OTHER STATES¹

All grades ²	11.4	3.8	6.7	2.5	1.0	0.6
Extra White	9.2	2.9	4.9	1.4		
Above 3-G. M.						
3-G. M.						
4-S. M.	1.8	1.6	.2			
5-M.	3.7	1.1	2.6			
6-S. L. M.	3.0	.2	2.0	.8		
7-L. M.	.6		.1	.5		
Below 7-L. M. ³	.1			.1		
White	3.3	.8	1.1	.7	.5	.2
1-M. F.						
2-S. G. M.						
3-G. M.						
4-S. M.	.4	.3	.1			
6-M.	.9	.1	.1		.1	
6-S. L. M.	.9	.1	.5	.3		
7-L. M.	.1		.1	.3		
8-S. G. O. ⁴	.2			.1	.1	.2
9-G. O. ⁵	.5				.3	.2
Spotted	1.7	.1	.5	.4	.5	.2
3-G. M.						
4-S. M.	.3	.1	.2			
5-M.	.6		.3	.3		
6-S. L. M. ³	.3			.1		.2
7-L. M. ³	.5				.3	.2
No grade ^{3,4}	.2					.2

¹ Periods are those used by the Bureau of the Census.² As reported by the Bureau of the Census.³ Understandable in settlement of futures contracts made subject to section 3 of the United States Cotton Futures Act and the regulations of the Secretary of Agriculture thereunder.⁴ Includes bales not otherwise classified above.⁵ Includes Illinois, Kansas, and Kentucky.

TABLE 8.- Grade of American-Egyptian cotton ginned in the United States during specified periods,¹ crop of 1934

[Quantities are given in running bales]

Grade	Total crop	Ginnings during specified period				
		Prior to Oct. 1	October	November	Dec. 1-Jan. 15	After Jan. 15
All grades ²	1,000 bales 14.0	1,000 bales 3.8	1,000 bales 4.0	1,000 bales 2.2	1,000 bales 2.1	1,000 bales 1.9
1 and 1½	6.1	1.8	2.6	1.1	.3	.3
2 and 2½	5.6	1.8	1.3	1.1	1.2	.2
3 and 3½	1.5	.2	.1		.4	.8
4 and 4½	.8				.2	.6
5						
Below 5						

¹ Periods are those used by the Bureau of the Census.

² As reported by the Bureau of the Census.

 TABLE 9.- Staple length of American upland cotton ginned in the United States during specified periods,¹ by States, crop of 1934

[Quantities are given in running bales, except that round bales are counted as half bales. Linters are not included]

UNITED STATES

Staple length (inches)	Total crop	Ginnings during specified period				
		Prior to Oct. 1	October	November	Dec. 1-Jan. 15	After Jan. 15
All lengths ²	1,000 bales 9,458.0	1,000 bales 4,908.0	1,000 bales 2,951.3	1,000 bales 1,069.0	1,000 bales 354.8	1,000 bales 93.4
Shorter than 7½	783.0	410.6	234.5	63.3	27.8	16.8
7½ and 29½	3,493.0	1,892.7	1,037.0	392.7	142.6	25.9
29½ and 31½	2,095.4	1,079.0	593.6	269.3	91.5	23.0
1 and 1½	1,415.6	593.4	512.4	205.9	55.0	17.9
1½ and 1¾	881.1	360.1	357.6	117.6	27.5	8.0
1¾ and 1¾	681.6	401.4	230.5	42.0	4.6	1.2
1¾ and 1¾	123.1	75.7	40.7	4.7	.8	.2
1¾ and longer	10.3	5.4	9.0	2.6	2.0	.4

ALABAMA

All lengths ²	936.1	508.5	330.4	82.4	7.0	1.8
Shorter than 7½	198.2	111.3	43.1	10.5	1.0	.3
7½ and 29½	574.0	301.0	210.6	37.0	4.8	1.0
29½ and 31½	111.7	45.4	51.0	30.7	1.2	.4
1 and 1½	47.7	18.5	25.4	3.7		.1
1½ and 1¾	5.1	2.2	2.1	.5		
1¾ and 1¾	.9	.2	.7			
1¾ and 1¾	.5	.3	.2			
1¾ and longer						

ARIZONA

All lengths ²	90.1	21.9	26.5	21.7	17.6	11.1
Shorter than 7½	1.1				.1	
7½ and 29½	1.1				.1	.9
29½ and 31½	6.0	2.8	.7	.9	1.3	1.2
1 and 1½	32.9	1.4	6.7	6.8	7.0	7.0
1½ and 1¾	52.4	11.8	16.5	13.7	8.1	2.3
1¾ and 1¾	5.7	2.8	2.4	.2	.1	
1¾ and longer						

See footnotes at end of table.

TABLE 9.—Staple length of American upland cotton ginned in the United States during specified periods,¹ by States, crop of 1934—Continued

ARKANSAS

Staple length (inches)	Total crop 1,000 bales	Ginnings during specified period				
		Prior to Oct. 1	October	November	Dec. 1- Jan. 15	After Jan. 15
		1,000 bales	1,000 bales	1,000 bales	1,000 bales	1,000 bales
All lengths ²	849.0	453.0	283.6	80.7	21.1	5.6
Shorter than 7/8 ³	42.2	37.2	19.5	5.1	.4	—
7/8 and 29/32	141.6	65.2	59.4	15.1	3.3	1.6
15/16 and 31/32	211.2	109.4	73.1	19.0	6.6	3.1
1 and 1 1/2	221.0	125.7	68.1	19.1	7.2	9.0
1 1/2 and 1 3/4	126.5	74.7	36.5	13.3	2.0	—
1 3/4 and 1 7/8	91.5	53.1	28.3	8.5	1.0	—
1 7/8 and 1 7/8	11.7	7.5	3.7	.5	—	—
1 7/8 and longer	.3	.2	—	.1	—	—

CALIFORNIA

All lengths ²	251.5	79.0	109.2	34.4	15.4	12.6
Shorter than 7/8 ³	.1	—	—	—	—	.1
7/8 and 29/32	1.8	—	—	—	—	1.8
15/16 and 31/32	1.5	—	.1	—	.8	4.6
1 and 1 1/2	12.2	1.2	2.1	1.7	2.6	4.6
1 1/2 and 1 3/4	139.6	37.0	61.5	25.2	11.1	4.8
1 3/4 and 1 7/8	96.3	41.7	35.5	7.5	.9	.7
1 7/8 and 1 7/8	—	—	—	—	—	—
1 7/8 and longer	—	—	—	—	—	—

FLORIDA

All lengths ²	24.3	16.8	6.5	0.8	0.1	0.1
Shorter than 7/8 ³	1.6	1.1	.4	.1	—	.1
7/8 and 29/32	19.5	13.1	5.5	.7	.1	—
15/16 and 31/32	2.7	2.2	.5	—	—	—
1 and 1 1/2	.4	.3	.1	—	—	—
1 1/2 and 1 3/4	.1	.1	—	—	—	—
1 3/4 and 1 7/8	—	—	—	—	—	—
1 7/8 and 1 7/8	—	—	—	—	—	—
1 7/8 and longer	—	—	—	—	—	—

GEORGIA

All lengths ²	974.0	521.0	301.0	129.3	16.5	4.1
Shorter than 7/8 ³	37.4	29.6	5.8	1.7	.2	.1
7/8 and 29/32	527.8	307.6	135.9	72.1	10.0	2.2
15/16 and 31/32	208.1	95.3	74.8	32.3	4.3	1.4
1 and 1 1/2	161.2	73.2	67.4	21.3	1.9	.4
1 1/2 and 1 3/4	30.2	14.0	10.7	1.8	.1	—
1 3/4 and 1 7/8	1.1	.5	.4	.1	—	—
1 7/8 and 1 7/8	.1	.1	—	—	—	—
1 7/8 and longer	—	—	—	—	—	—

LOUISIANA

All lengths ²	473.3	339.9	116.4	13.5	2.5	1.0
Shorter than 7/8 ³	50.1	31.6	15.4	2.8	.1	.2
7/8 and 29/32	99.0	66.4	27.8	3.2	1.1	.3
15/16 and 31/32	129.7	95.2	30.4	3.2	.7	.2
1 and 1 1/2	102.0	78.1	24.5	1.5	.6	.3
1 1/2 and 1 3/4	68.2	51.4	14.5	2.3	—	—
1 3/4 and 1 7/8	22.7	17.8	4.4	.5	—	—
1 7/8 and 1 7/8	4.5	1.1	.4	—	—	—
1 7/8 and longer	.1	.1	—	—	—	—

See footnotes at end of table.

TABLE 9.—Staple length of American upland cotton ginned in the United States during specified periods,¹ by States, crop of 1934—Continued

MISSISSIPPI

Staple length (inches)	Total crop	Ginnings during specified period				
		Prior to Oct. 1	October	November	Dec. 1—Jan. 15	After Jan. 15
All lengths 7.....	1,000 bales 1,121.3	1,000 bales 636.1	1,000 bales 379.7	1,000 bales 92.6	1,000 bales 19.5	1,000 bales 2.4
Shorter than 7½.....	27.3	11.9	11.9	3.3	2
7½ and 29/32.....	97.4	36.2	39.7	9.5	1.6	.4
13/16 and 3/8.....	145.3	71.0	50.5	15.9	1.4	.5
1 and 1½.....	169.8	88.4	61.2	17.6	2.2	.4
1½ and 1¾.....	188.7	96.4	66.3	21.1	1.6	.3
1¾ and 1⅞.....	387.1	253.6	114.2	18.2	.9	.2
1⅞ and 1¾.....	89.6	63.9	23.1	1.8	.6	.2
1¾ and longer.....	16.1	4.7	6.8	2.2	2.0	.4

MISSOURI

All lengths 7.....	230.4	86.3	91.8	29.8	16.2	6.3
Shorter than 7½.....	8.2	1.0	4.9	1.0	.5	.2
7½ and 29/32.....	51.7	22.4	23.5	5.6	2.0	1.2
13/16 and 3/8.....	82.1	32.4	34.9	8.6	6.4	3.8
1 and 1½.....	60.3	20.0	22.4	10.4	6.6	.9
1½ and 1¾.....	22.3	8.8	9.3	3.5	.5	.2
1¾ and 1⅞.....	2.4	1.0	.6	.7	.1
1⅞ and 1¾.....	.3	.1	.11
1¾ and longer.....	.11

NEW MEXICO

All lengths 7.....	83.7	29.6	33.6	15.0	5.3	0.2
Shorter than 7½.....	.33
7½ and 29/32.....	.11
13/16 and 3/8.....	.8	.24
1 and 1½.....	16.2	4.1	4.9	4.9	3.9	.2
1½ and 1¾.....	47.3	14.1	20.9	10.8	1.5
1¾ and 1⅞.....	19.0	11.2	7.6	.2
1⅞ and 1¾.....
1¾ and longer.....

NORTH CAROLINA

All lengths 7.....	640.9	74.7	313.6	199.5	45.0	8.1
Shorter than 7½.....	7.8	1.5	2.8	3.1	.4
7½ and 29/32.....	170.3	19.9	64.6	64.8	18.2	2.8
13/16 and 3/8.....	189.5	15.7	82.8	69.0	17.8	4.2
1 and 1½.....	206.6	25.4	116.4	59.1	7.8	.9
1½ and 1¾.....	59.2	11.6	42.4	4.7	.5
1¾ and 1⅞.....	5.0	.5	3.0	1.0	.3	.2
1⅞ and 1¾.....	2.2	.1	1.4	.7
1¾ and longer.....	.32	.1

OKLAHOMA

All lengths 7.....	329.9	129.7	168.2	43.2	42.0	6.8
Shorter than 7½.....	62.4	26.5	22.2	4.8	5.2	3.7
7½ and 29/32.....	212.4	84.4	74.1	28.1	23.5	2.3
13/16 and 3/8.....	50.7	17.7	11.6	8.9	11.8	.7
1 and 1½.....	4.3	1.1	.3	1.4	1.4	.1
1½ and 1¾.....	.11
1¾ and 1⅞.....
1⅞ and 1¾.....
1¾ and longer.....

See footnotes at end of table.

TABLE 9.—Staple length of American upland cotton ginned in the United States during specified periods,¹ by States, crop of 1934—Continued

SOUTH CAROLINA

Staple length (inches)	Total crop	Ginnings during specified period				
		Prior to Oct. 1	October	November	Dec. 1—Jan. 15	After Jan. 15
All lengths ²	1,000 bales 684.6	1,000 bales 200.5	1,000 bales 305.6	1,000 bales 147.0	1,000 bales 29.5	1,000 bales 6.0
Shorter than 7 $\frac{1}{8}$ ³	2.1	.5	1.1	.5		
7 $\frac{1}{8}$ and 29 $\frac{1}{2}$	141.2	39.8	51.3	41.1	7.2	1.8
7 $\frac{1}{8}$ and 31 $\frac{1}{2}$	190.4	57.1	72.1	47.4	11.3	2.5
1 and 13 $\frac{1}{2}$	248.3	67.0	101.7	42.3	6.0	1.3
1 $\frac{1}{2}$ and 13 $\frac{1}{2}$	81.0	25.2	49.3	8.9	.3	.3
1 $\frac{1}{2}$ and 15 $\frac{1}{2}$	29.3	7.1	16.5	5.0	.6	.1
1 $\frac{1}{2}$ and 17 $\frac{1}{2}$	17.0	3.5	11.7	1.7	.1	
1 $\frac{1}{2}$ and longer	2.3	.3	1.9	.1		

TENNESSEE

All lengths ²	396.7	135.3	173.6	73.7	11.0	3.1
Shorter than 7 $\frac{1}{8}$ ³	61.7	14.6	25.7	11.1	.3	
7 $\frac{1}{8}$ and 29 $\frac{1}{2}$	125.0	43.2	56.3	23.5	1.7	.3
7 $\frac{1}{8}$ and 31 $\frac{1}{2}$	129.2	41.5	57.9	24.0	3.7	2.1
1 and 13 $\frac{1}{2}$	77.1	28.8	39.0	13.3	1.4	.6
1 $\frac{1}{2}$ and 13 $\frac{1}{2}$	12.3	8.8	3.4	1.5	.5	.1
1 $\frac{1}{2}$ and 15 $\frac{1}{2}$	1.1	.5	.2	.3	.1	
1 $\frac{1}{2}$ and 17 $\frac{1}{2}$.2	.1	.1			
1 $\frac{1}{2}$ and longer	.1					

TEXAS

All lengths ²	2,314.9	1,720.6	333.0	122.0	115.6	22.8
Shorter than 7 $\frac{1}{8}$ ³	295.0	163.1	81.5	19.1	19.1	12.2
7 $\frac{1}{8}$ and 29 $\frac{1}{2}$	1,208.7	982.9	177.1	62.5	67.0	9.2
7 $\frac{1}{8}$ and 31 $\frac{1}{2}$	563.0	492.0	47.5	26.6	25.5	1.4
1 and 13 $\frac{1}{2}$	72.7	56.8	6.9	6.9	3.1	
1 $\frac{1}{2}$ and 13 $\frac{1}{2}$	37.0	14.5	14.4	7.2	.9	
1 $\frac{1}{2}$ and 15 $\frac{1}{2}$	18.5	11.3	6.5	.7		
1 $\frac{1}{2}$ and 17 $\frac{1}{2}$						
1 $\frac{1}{2}$ and longer						

VIRGINIA

All lengths ²	33.0	1.0	17.2	11.8	2.5	0.5
Shorter than 7 $\frac{1}{8}$ ³	.5	.1	.2	.2		
7 $\frac{1}{8}$ and 29 $\frac{1}{2}$	23.0	.7	11.1	9.5	1.7	
7 $\frac{1}{8}$ and 31 $\frac{1}{2}$	7.4	.2	4.0	2.0	.8	.4
1 and 13 $\frac{1}{2}$	1.9		1.7	.1		.1
1 $\frac{1}{2}$ and 13 $\frac{1}{2}$.2		.2			
1 $\frac{1}{2}$ and 15 $\frac{1}{2}$						
1 $\frac{1}{2}$ and 17 $\frac{1}{2}$						
1 $\frac{1}{2}$ and longer						

ALL OTHER STATES⁴

All lengths ²	11.4	3.8	6.5	2.5	1.0	0.6
Shorter than 7 $\frac{1}{8}$ ³						
7 $\frac{1}{8}$ and 29 $\frac{1}{2}$.4		.4		.2	
7 $\frac{1}{8}$ and 31 $\frac{1}{2}$	5.2	.9	2.5	.5	.5	.5
1 and 13 $\frac{1}{2}$	5.0	2.4	3.6	1.6	.3	.1
1 $\frac{1}{2}$ and 13 $\frac{1}{2}$.9	.5	.3	.1		
1 $\frac{1}{2}$ and 15 $\frac{1}{2}$						
1 $\frac{1}{2}$ and 17 $\frac{1}{2}$						
1 $\frac{1}{2}$ and longer						

¹ Periods are those used by the Bureau of the Census.² As reported by the Bureau of the Census.³ Untradeable in settlement of futures contracts made subject to sec. 5 of the United States Cotton Futures Act and the regulations of the Secretary of Agriculture thereunder.⁴ Includes Illinois, Kansas, and Kentucky.

TABLE 10.—Staple length of American-Egyptian cotton ginned in the United States during specified periods,¹ crop of 1934

[Quantities are given in running bales]

Staple length (inches)	Total crop	Ginnings during specified period				
		Prior to Oct. 1	October	November	Dec. 1-Jan. 15	After Jan. 15
All lengths ²	1,000 bales 14.0	1,000 bales 3.8	1,000 bales 4.0	1,000 bales 2.2	1,000 bales 2.1	1,000 bales 1.9
Shorter than 1 1/2.....						
1 1/2 and 1 1/4.....	4.6	1.0	1.3	2	.9	1.2
1 1/4 and 1 1/8.....	7.3	2.1	2.0	1.1	1.1	.7
1 1/8 and 1 1/2.....	2.1	.7	.7	.6	.1	
1 1/2 and longer.....						

¹ Periods are those used by the Bureau of the Census.
² As reported by the Bureau of the Census.

TABLE 11.—Staple length of American upland cotton ginned in designated districts of Alabama, crop of 1934 (fig. 2)

[Quantities are given in running bales, except that round bales are counted as half bales. Linters are not included]

Staple length (inches)	Total		District 1		District 2		District 3		District 4		District 5		District 6	
	1,000 bales	Per cent	1,000 bales	Per cent	1,000 bales	Per cent	1,000 bales	Per cent	1,000 bales	Per cent	1,000 bales	Per cent	1,000 bales	Per cent
All lengths.....	1,936.1	100.0	190.5	100.0	178.5	100.0	79.1	100.0	107.7	100.0	40.3	100.0	39.9	100.0
Shorter than 7/8.....	106.2	21.0	38.8	20.4	27.8	15.6	5.0	6.3	110.3	27.1	8.0	19.8	6.3	15.8
7/8 and 29/32.....	574.0	61.3	198.3	51.9	113.4	63.5	48.0	61.5	261.5	64.2	21.0	50.0	27.7	69.4
29/32 and 31/32.....	111.7	11.9	32.8	17.2	28.5	15.9	17.8	22.5	23.8	5.8	5.2	12.9	3.0	0.0
1 and 1 1/2.....	47.7	5.1	18.8	9.9	7.8	4.4	7.3	9.2	6.1	2.2	2.9	7.2	1.8	4.5
1 1/2 and 1 1/4.....	5.1	.5	1.0	.5	.9	.5	.5	2.1	.5	.2	.5	.5	.5	1.3
1 1/4 and 1 1/8.....	.9	.1	.2	.1	.2	.1	.1	.5	.1	.1				
1 1/8 and 1 1/2.....	.5	.1	.1	(0)				.1	.1					
1 1/2 and longer.....														

¹ As reported by the Bureau of the Census.
² Untenderable in settlement of futures contracts made subject to sec. 5 of the United States Cotton Futures Act and the regulations of the Secretary of Agriculture thereunder.
³ Less than 0.05 percent.

TABLE 12.—Staple length of American upland cotton ginned in designated districts of Arkansas, crop of 1934 (fig. 3)

[Quantities are given in running bales, except that round bales are counted as half bales. Linters are not included]

Staple length (inches)	Total		District 1		District 2		District 3		District 4		District 5	
	1,000 bales	Per cent	1,000 bales	Per cent	1,000 bales	Per cent	1,000 bales	Per cent	1,000 bales	Per cent	1,000 bales	Per cent
All lengths.....	1,819.0	100.0	5.9	100.0	93.8	100.0	95.0	100.0	581.8	100.0	68.9	100.0
Shorter than 7/8.....	42.2	5.0	3.1	52.5	11.5	12.3	10.9	11.1	14.1	1.9	5.0	8.1
7/8 and 29/32.....	141.6	17.0	2.2	37.3	31.7	33.8	40.1	41.9	62.9	10.8	7.7	11.2
29/32 and 31/32.....	211.2	24.9	.5	8.5	34.0	35.2	32.6	34.1	122.5	20.9	22.0	32.8
1 and 1 1/2.....	221.0	26.0	.1	1.7	11.1	15.0	10.3	10.8	107.9	28.7	28.6	41.5
1 1/2 and 1 1/4.....	126.5	14.9			2.9	3.1	1.2	1.3	118.7	20.3	3.7	5.4
1 1/4 and 1 1/8.....	91.5	10.8			.6	.6	.4	.4	89.8	15.3	.7	1.0
1 1/8 and 1 1/2.....	11.7	1.4					1	1	11.6	2.0		
1 1/2 and longer.....	3	(0)							.3	.1		

¹ As reported by the Bureau of the Census.
² Untenderable in settlement of futures contracts made subject to sec. 5 of the United States Cotton Futures Act and the regulations of the Secretary of Agriculture thereunder.
³ Less than 0.05 percent.

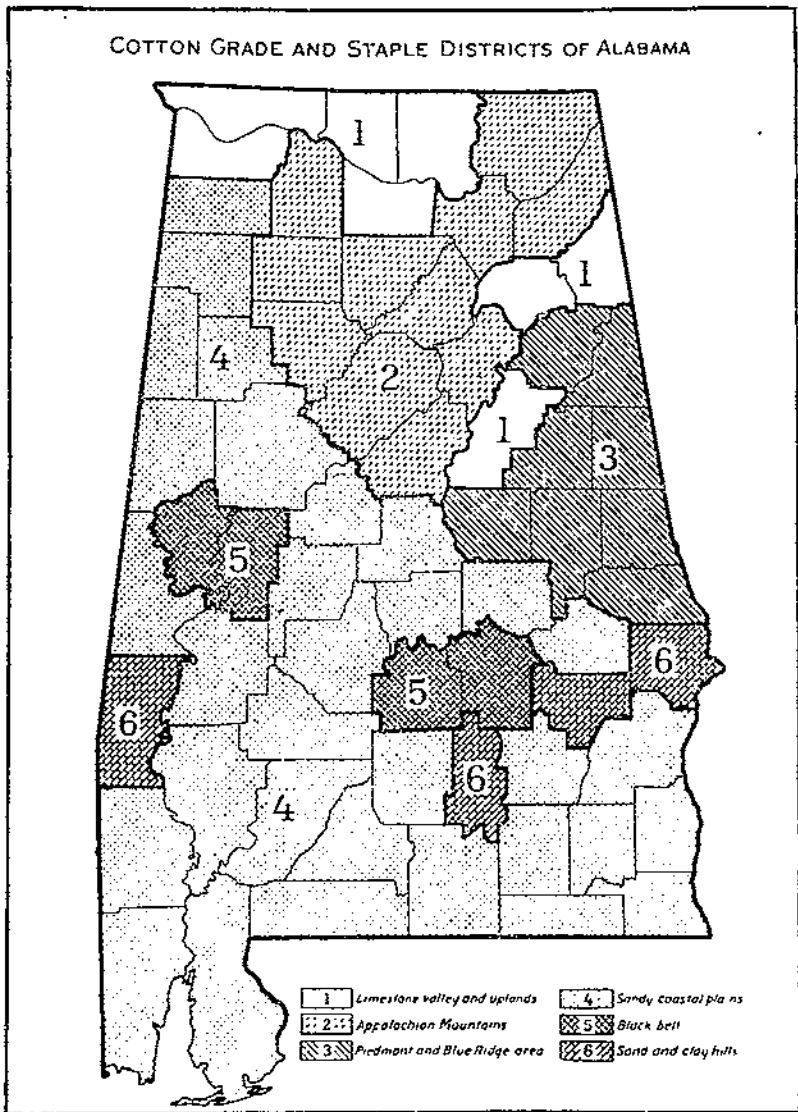


FIGURE 2.

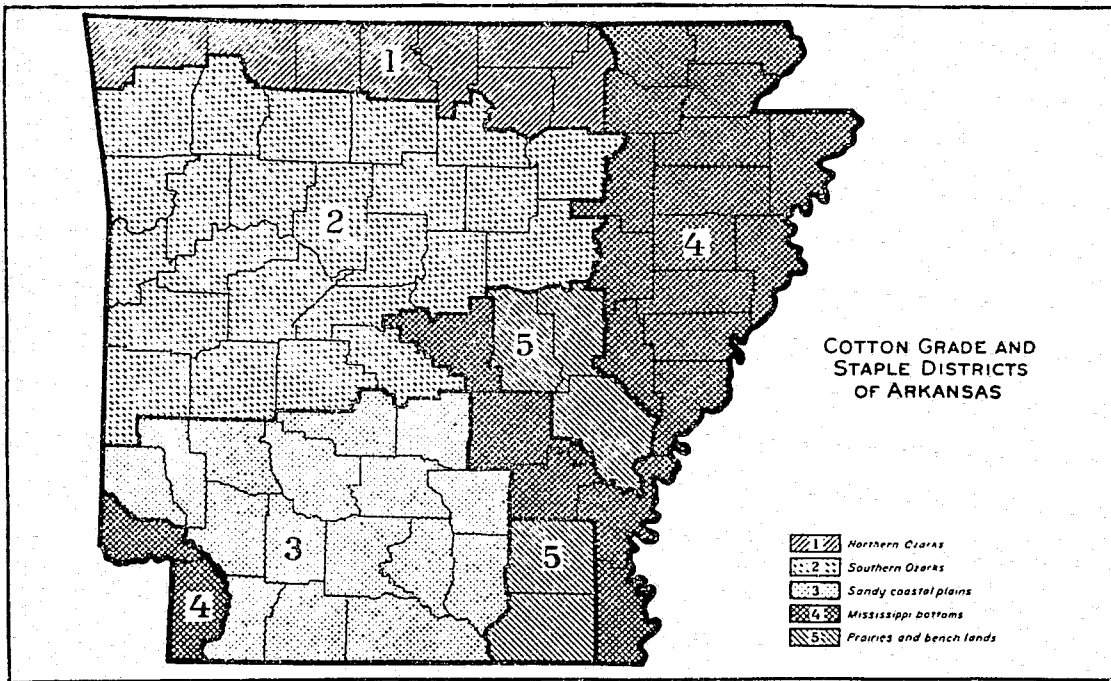


FIGURE 3.

(See p. 6 for statement of changes in boundaries of districts shown in Statistical Bulletins 40, 47, and 52.)

TABLE 13.—Staple length of American upland cotton ginned in designated districts of Georgia, crop of 1934 (fig. 4)

[Quantities are given in running bales, except that round bales are counted as half bales. Linters are not included]

Staple length (inches)	Total		District 1		District 2		District 3		District 4	
	1,000 bales	Per-cent	1,000 bales	Per-cent	1,000 bales	Per-cent	1,000 bales	Per-cent	1,000 bales	Per-cent
All lengths.....	1,974.9	100.0	89.2	100.0	430.4	100.0	84.4	100.0	379.9	100.0
Shorter than 7/8.....	37.4	3.8	3	.4	5.6	1.3	7.5	8.9	21.0	6.3
7/8 and 29/32.....	527.8	51.1	28.9	35.0	167.3	38.9	60.5	59.8	281.1	74.0
1 1/8 and 31/32.....	295.1	21.4	21.4	30.4	120.3	27.9	14.7	17.4	48.7	12.8
1 and 1 1/8.....	161.2	16.8	22.2	27.7	109.8	25.6	9.6	11.4	22.6	5.9
1 1/8 and 1 1/4.....	36.2	3.7	4.4	5.5	26.7	6.2	2.1	2.5	3.0	.8
1 1/4 and 1 1/2.....	1.1	.1			.7	.2			.4	.1
1 1/2 and 1 3/4.....	.1	(?)							.1	(?)
1 3/4 and longer.....										

¹ As reported by the Bureau of the Census.

² Untenderable in settlement of futures contracts made subject to sec. 5 of the United States Cotton Futures Act and the regulations of the Secretary of Agriculture thereunder.

³ Less than 0.05 percent.

TABLE 14.—Staple length of American upland cotton ginned in designated districts of Louisiana, crop of 1934 (fig. 5)

[Quantities are given in running bales, except that round bales are counted as half bales. Linters are not included]

Staple length (inches)	Total		District 1		District 2		District 3		District 4	
	1,000 bales	Per-cent	1,000 bales	Per-cent	1,000 bales	Per-cent	1,000 bales	Per-cent	1,000 bales	Per-cent
All lengths.....	1,453.3	100.0	105.2	100.0	42.6	100.0	310.6	100.0	14.9	100.0
Shorter than 7/8.....	50.1	10.9	31.5	32.8	3	.7	11.2	3.6	4.1	27.5
7/8 and 29/32.....	109.0	20.9	41.4	39.3	8.1	19.0	43.4	14.0	6.1	40.9
1 1/8 and 31/32.....	120.7	27.4	20.7	19.7	20.9	49.1	31.8	27.3	3.3	22.2
1 and 1 1/8.....	102.0	21.5	8.0	7.6	11.1	26.8	81.3	26.2	1.3	8.7
1 1/8 and 1 1/4.....	68.2	14.4	.6	.6	1.8	4.2	65.7	21.1	.1	.7
1 1/4 and 1 1/2.....	23.7	4.8			.1	.2	22.8	7.3		
1 1/2 and 1 3/4.....	1.5	.3					1.5	.5		
1 3/4 and longer.....	.1	(?)					.1	(?)		

¹ As reported by the Bureau of the Census.

² Untenderable in settlement of futures contracts made subject to sec. 5 of the United States Cotton Futures Act and the regulations of the Secretary of Agriculture thereunder.

³ Less than 0.05 percent.

TABLE 15.—Staple length of American upland cotton ginned in designated districts of Mississippi, crop of 1934 (fig. 6)

[Quantities are given in running bales, except that round bales are counted as half bales. Linters are not included]

Staple length (inches)	Total		District 1		District 2		District 3	
	1,000 bales	Per-cent	1,000 bales	Per-cent	1,000 bales	Per-cent	1,000 bales	Per-cent
All lengths.....	1,121.3	100.0	556.9	100.0	199.8	100.0	364.6	100.0
Shorter than 7/8.....	27.3	2.4			4.0	2.0	23.3	6.4
7/8 and 29/32.....	97.4	8.7	.2	(?)	11.5	5.8	55.7	23.5
1 1/8 and 31/32.....	115.3	13.0	.8	.1	26.3	13.2	118.2	32.4
1 and 1 1/8.....	169.8	15.2	5.7	1.0	68.5	29.3	105.6	29.0
1 1/8 and 1 1/4.....	188.7	16.8	17.5	17.5	65.9	33.0	25.3	6.9
1 1/4 and 1 1/2.....	347.1	31.5	350.7	63.0	30.4	15.2	6.0	1.7
1 1/2 and 1 3/4.....	89.6	8.0	86.1	15.5	3.1	1.5	.4	.1
1 3/4 and longer.....	16.1	1.4	15.9	2.9	.1	(?)	.1	(?)

¹ As reported by the Bureau of the Census.

² Untenderable in settlement of futures contracts made subject to sec. 5 of the United States Cotton Futures Act and the regulations of the Secretary of Agriculture thereunder.

³ Less than 0.05 percent.

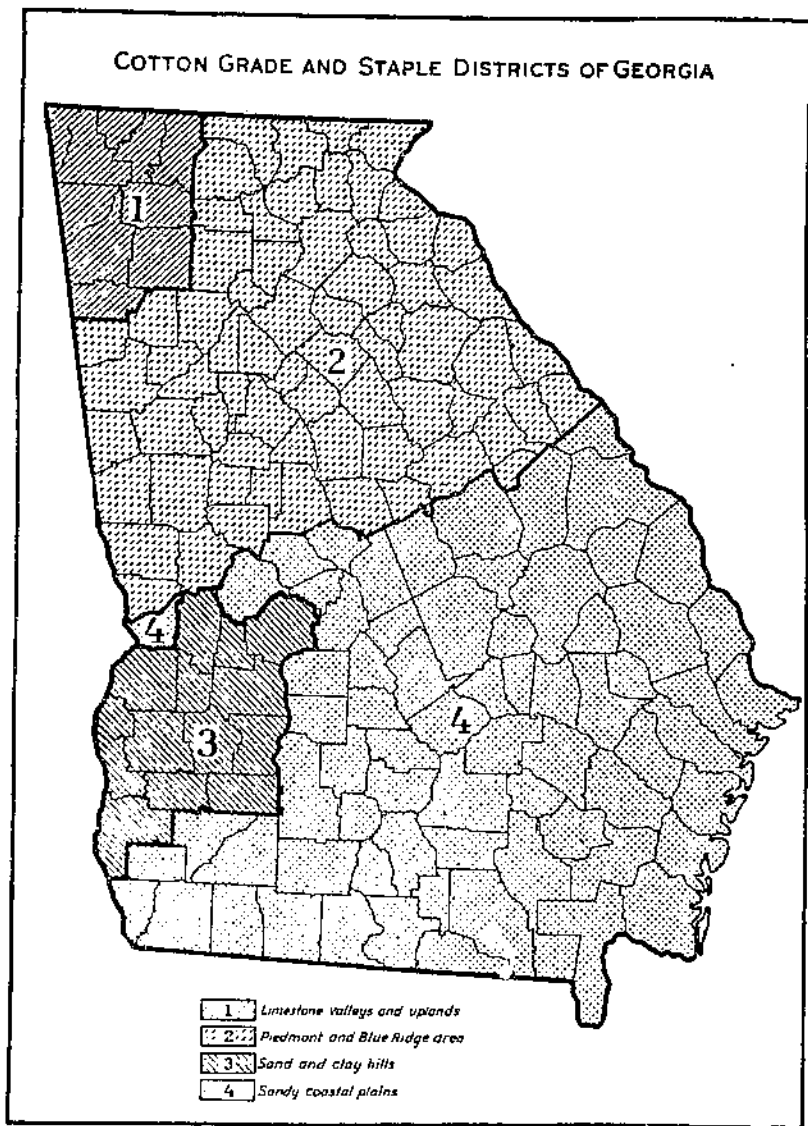
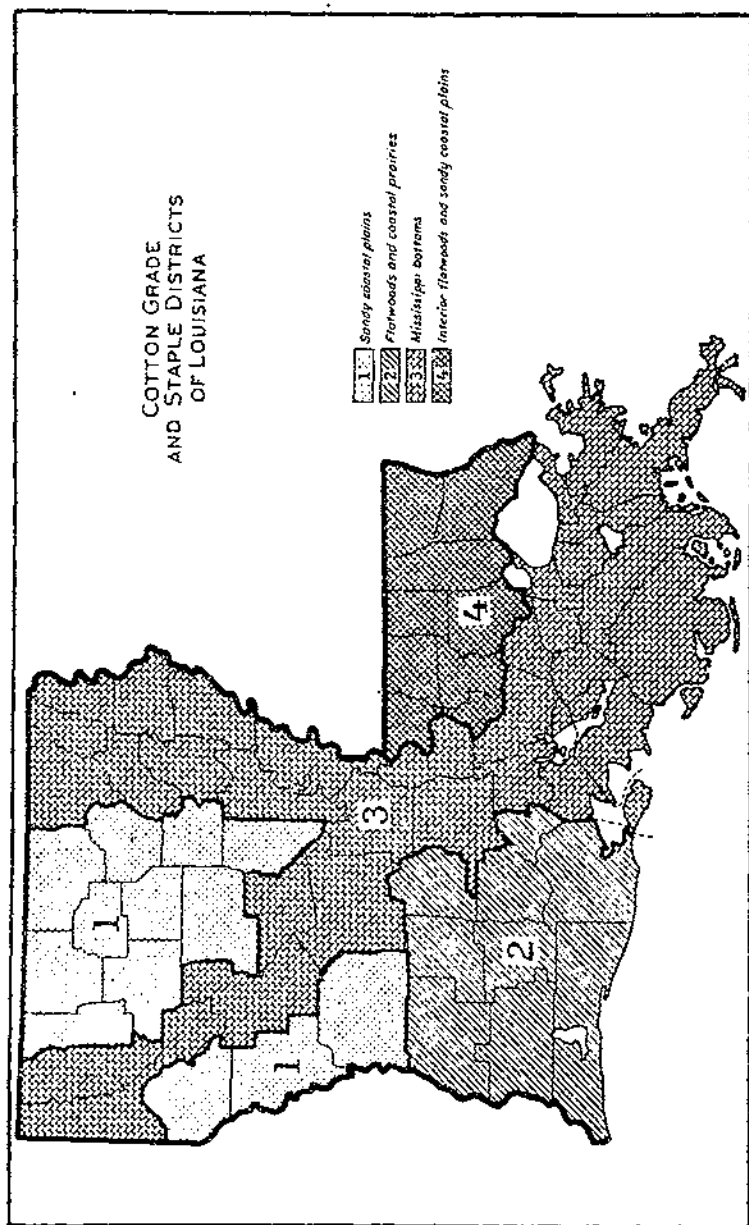


FIGURE 4.



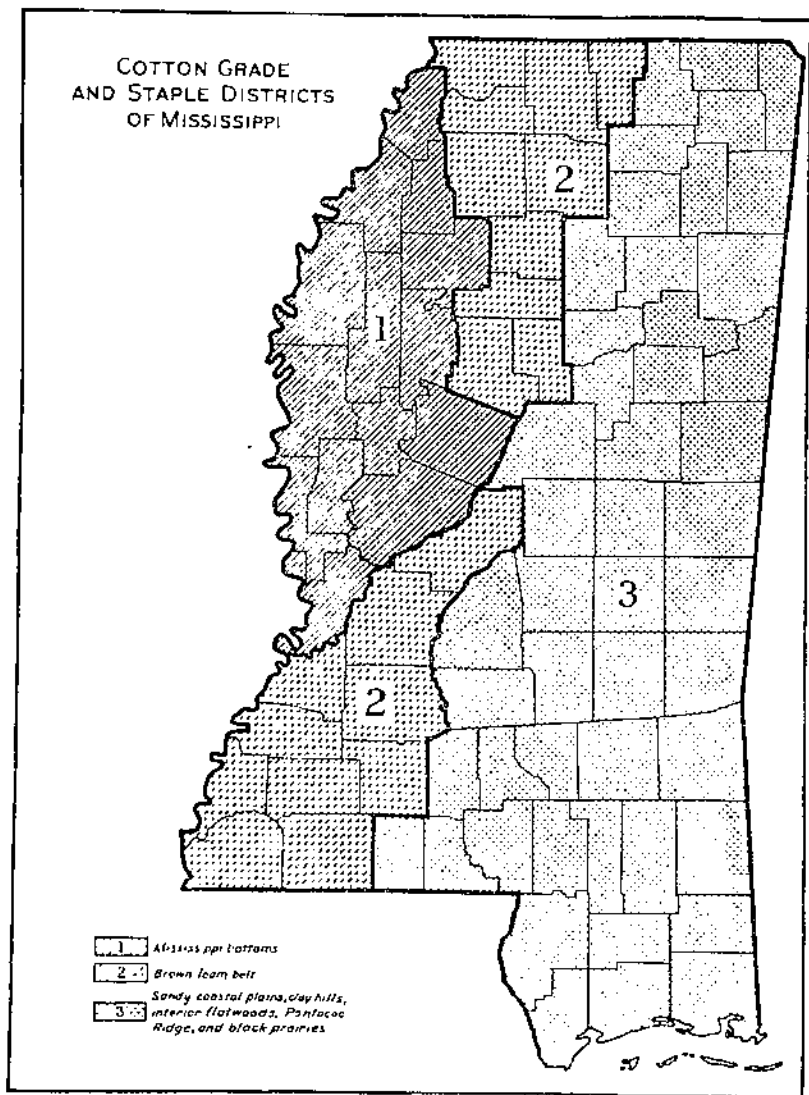


FIGURE 6.

(See p. 8 for statement of changes in boundaries of districts shown in Statistical Bulletins 40, 47, and 52.)

TABLE 16.—*Staple length of American upland cotton ginned in designated districts of North Carolina, crop of 1934 (fig. 7)*

[Quantities are given in running bales, except that round bales are counted as half bales. Linters are not included]

Staple length (inches)	Total		District 1		District 2		District 3		District 4	
	1,000 bales	Per cent	1,000 bales	Per cent	1,000 bales	Per cent	1,000 bales	Per cent	1,000 bales	Per cent
All lengths.....	1,640.9	100.0	237.2	100.0	55.5	100.0	296.2	100.0	52.0	100.0
Shorter than 7 $\frac{1}{2}$	7.3	1.2	.7	.3	.2	.4	5.0	1.7	1.9	3.6
7 $\frac{1}{2}$ and 2 $\frac{1}{2}$	170.2	26.6	59.3	25.0	9.5	17.8	78.6	26.5	22.5	43.3
1 $\frac{1}{2}$ and 3 $\frac{1}{2}$	189.5	29.0	77.3	32.6	16.0	27.0	80.6	27.2	16.6	31.9
1 and 1 $\frac{1}{2}$	205.6	32.2	76.0	32.4	20.8	37.5	99.4	33.6	9.5	18.3
1 $\frac{1}{2}$ and 1 $\frac{1}{2}$	59.2	9.2	20.1	8.5	7.6	13.7	30.1	10.2	1.4	2.7
1 $\frac{1}{2}$ and 1 $\frac{1}{2}$	5.0	.8	1.7	.7	1.1	2.0	2.1	.7	.1	.2
1 $\frac{1}{2}$ and 1 $\frac{1}{2}$	2.2	.3	1.0	.4	.8	1.4	.4	.1		
1 $\frac{1}{2}$ and longer.....	.3	(?)	.2	.1	.1	.2				

¹ As reported by the Bureau of the Census.

² Unfavorable in settlement of futures contracts made subject to sec. 5 of the United States Cotton Futures Act and the regulations of the Secretary of Agriculture thereunder.

³ Less than 0.05 percent.

TABLE 17.—*Staple length of American upland cotton ginned in designated districts of Oklahoma, crop of 1934 (fig. 8)*

[Quantities are given in running bales, except that round bales are counted as half bales. Linters are not included]

Staple length (inches)	Total		District 1		District 2		District 3		District 4		District 5	
	1,000 bales	Per cent	1,000 bales	Per cent	1,000 bales	Per cent	1,000 bales	Per cent	1,000 bales	Per cent	1,000 bales	Per cent
All lengths.....	1,329.9	100.0	169.2	100.0	128.7	100.0	16.5	100.0	9.3	100.0	15.2	100.0
Shorter than 7 $\frac{1}{2}$	62.4	18.9	46.5	29.0	11.3	8.8	1.4	8.5	1.0	10.7	2.2	14.5
7 $\frac{1}{2}$ and 2 $\frac{1}{2}$	212.4	64.4	85.7	53.5	99.7	77.5	11.6	70.3	3.7	39.8	11.7	77.0
1 $\frac{1}{2}$ and 3 $\frac{1}{2}$	50.7	15.4	21.5	15.3	17.1	13.5	3.3	20.0	4.2	45.2	4.3	8.5
1 and 1 $\frac{1}{2}$	4.3	1.3	3.1	2.1	.3	.2	.2	1.2	.4	4.3		
1 $\frac{1}{2}$ and 1 $\frac{1}{2}$1	(?)	.1	.1								
1 $\frac{1}{2}$ and 1 $\frac{1}{2}$												
1 $\frac{1}{2}$ and 1 $\frac{1}{2}$												
1 $\frac{1}{2}$ and longer.....												

¹ As reported by the Bureau of the Census.

² Unfavorable in settlement of futures contracts made subject to sec. 5 of the United States Cotton Futures Act and the regulations of the Secretary of Agriculture thereunder.

³ Less than 0.05 percent.

TABLE 18.—*Staple length of American upland cotton ginned in designated districts of South Carolina, crop of 1934 (fig. 9)*

[Quantities are given in running bales, except that round bales are counted as half bales. Linters are not included]

Staple length (inches)	Total		District 1		District 2		District 3		District 4	
	1,000 bales	Per cent	1,000 bales	Per cent	1,000 bales	Per cent	1,000 bales	Per cent	1,000 bales	Per cent
All lengths.....	1,684.6	100.0	397.0	100.0	57.1	100.0	276.4	100.0	33.3	100.0
Shorter than 7 $\frac{1}{2}$	2.1	.3	1.9	.6			.1	(?)	.1	.3
7 $\frac{1}{2}$ and 2 $\frac{1}{2}$	141.2	20.6	70.1	22.9	3.4	6.0	61.7	19.8	12.7	37.6
1 $\frac{1}{2}$ and 3 $\frac{1}{2}$	190.1	27.8	87.7	28.6	12.3	18.3	78.3	28.3	12.1	35.8
1 and 1 $\frac{1}{2}$	218.3	31.9	109.2	35.6	22.7	38.7	79.0	28.6	7.4	21.9
1 $\frac{1}{2}$ and 1 $\frac{1}{2}$	87.0	12.3	33.4	10.9	12.2	18.1	36.9	13.1	1.5	4.4
1 $\frac{1}{2}$ and 1 $\frac{1}{2}$	29.3	4.3	3.2	1.0	6.0	10.2	19.2	6.9		
1 $\frac{1}{2}$ and 1 $\frac{1}{2}$	17.0	2.5	1.0	.3	8.3	12.3	7.7	2.8		
1 $\frac{1}{2}$ and longer.....	2.3	.3	.2	.1	1.6	2.4	.5	.2		

¹ As reported by the Bureau of the Census.

² Unfavorable in settlement of futures contracts made subject to sec. 5 of the United States Cotton Futures Act and the regulations of the Secretary of Agriculture thereunder.

³ Less than 0.05 percent.

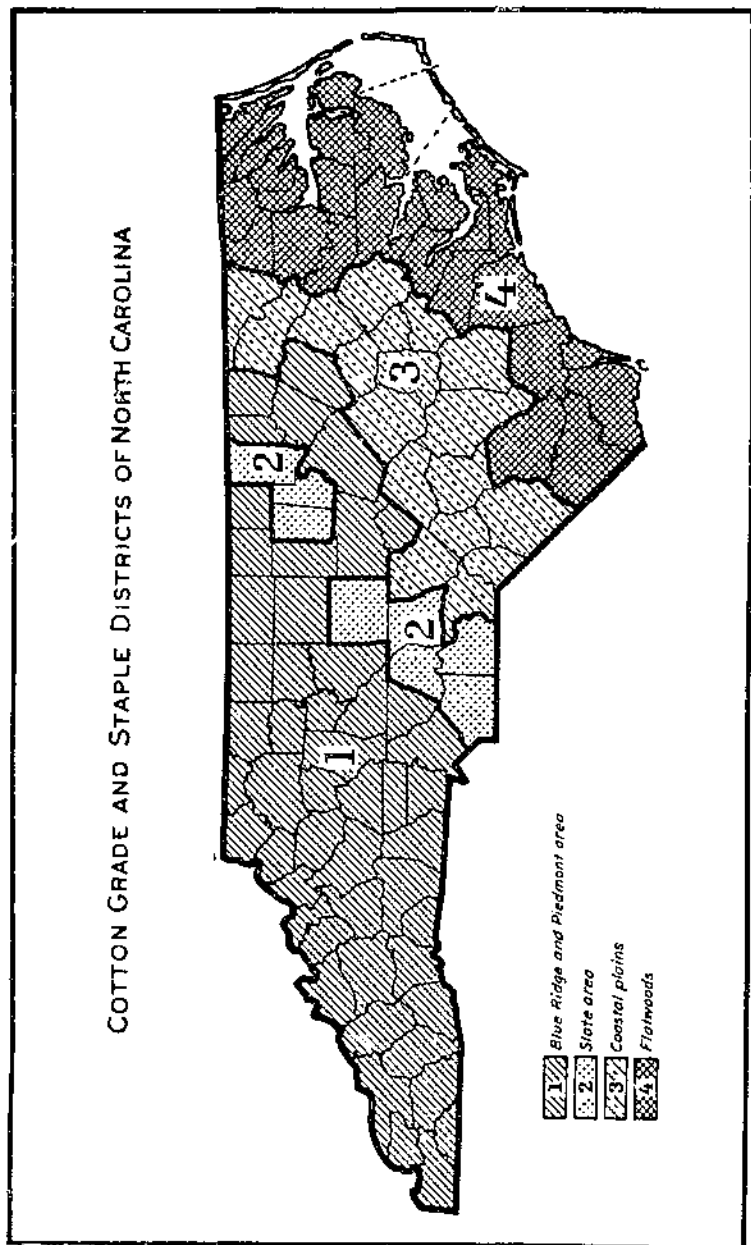


FIGURE 7

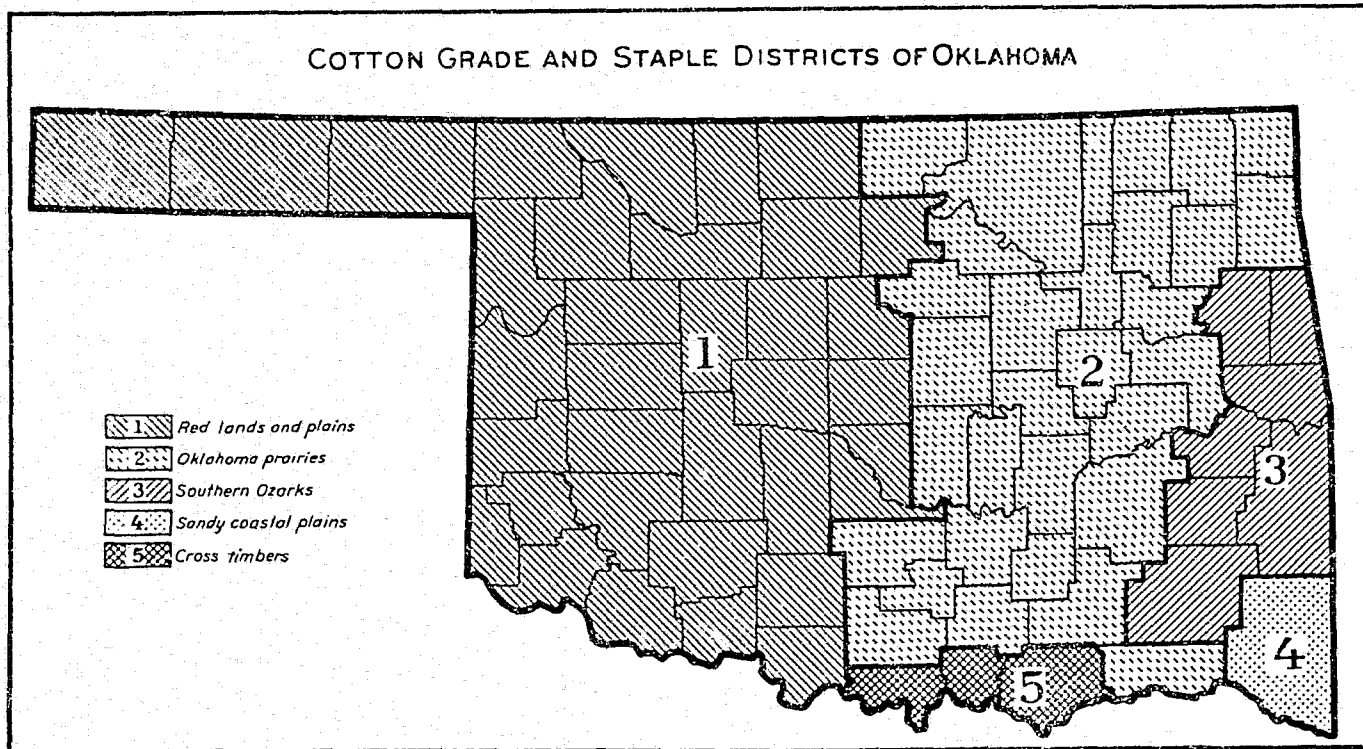


FIGURE 8.

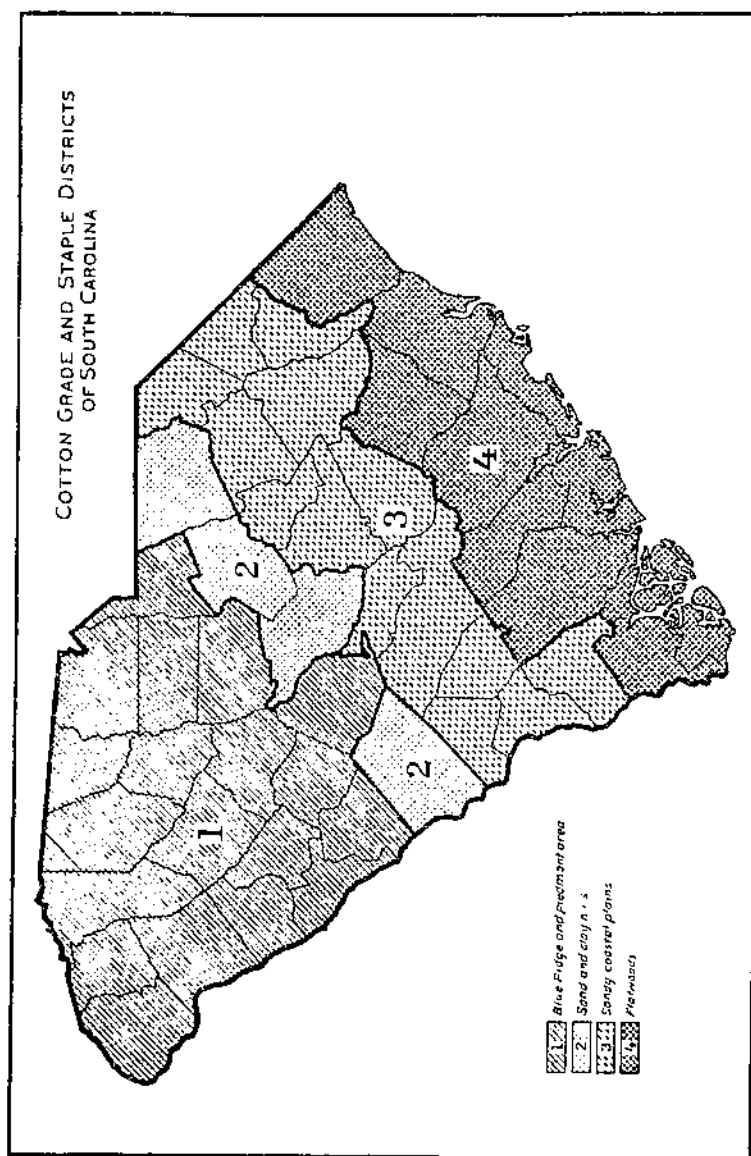


FIGURE 9.

TABLE 19.—Staple length of American upland cotton ginned in designated districts of Tennessee, crop of 1934 (fig. 10)

(Quantities are given in running bales, except that round bales are counted as half bales. Linters are not included)

Staple length (inches)	Total		District 1		District 2		District 3	
	1,000 bales	Percent	1,000 bales	Percent	1,000 bales	Percent	1,000 bales	Percent
All lengths.....	1,395.7	100.0	387.7	100.0	22.4	100.0	65.6	100.0
Shorter than ¾".....	51.7	3.6	39.3	12.8	5.0	22.3	7.4	11.1
¾" and 29/32".....	125.0	31.5	88.6	26.2	15.2	67.9	29.2	43.8
15/16" and 31/32".....	129.2	32.6	106.9	34.7	1.6	7.1	20.7	31.1
1" and 1 1/32".....	77.1	19.4	67.0	22.1	.5	2.2	8.7	15.1
1 1/8" and 1 1/4".....	12.3	3.1	11.6	3.8	.1	.5	.6	.9
1 1/4" and 1 1/2".....	1.0	.3	1.1	.3				
1 1/2" and 1 5/8".....	.2	.1	.2	.1				
1 5/8" and longer.....	.1	(?)	.1	(?)				

¹ As reported by the Bureau of the Census.

² Unfavorable in settlement of futures contracts made subject to sec. 5 of the United States Cotton Futures Act and the regulations of the Secretary of Agriculture thereunder.

³ Less than 0.05 percent.

TABLE 20.—Staple length of American upland cotton ginned in designated districts of Texas, crop of 1934 (fig. 11)

(Quantities are given in running bales, except that round bales are counted as half bales. Linters are not included)

Staple length (inches)	Total		District 1		District 2		District 3	
	1,000 bales	Percent	1,000 bales	Percent	1,000 bales	Percent	1,000 bales	Percent
All lengths.....	2,514.9	100.0	55.3	100.0	101.9	100.0	265.9	100.0
Shorter than ¾".....	295.0	12.7			55.8	54.8	74.2	27.9
¾" and 29/32".....	1,298.7	56.1			36.7	36.0	158.4	59.6
15/16" and 31/32".....	503.0	25.6	.2	.4	8.1	7.9	32.1	12.1
1" and 1 1/32".....	72.7	3.2	7.3	13.0	1.1	1.1	1.1	.4
1 1/8" and 1 1/4".....	37.0	1.6	30.7	54.5	.2	.2	.1	(?)
1 1/4" and 1 1/2".....	18.5	.8	18.1	32.1				
1 1/2" and longer.....								

Staple length (inches)	District 4		District 5		District 6		District 7	
	1,000 bales	Percent	1,000 bales	Percent	1,000 bales	Percent	1,000 bales	Percent
All lengths.....	55.4	100.0	44.0	100.0	63.8	100.0	778.0	100.0
Shorter than ¾".....	6.2	11.0	16.0	22.4	6.9	10.8	20.3	2.6
¾" and 29/32".....	36.0	63.8	29.2	65.5	50.0	78.4	521.5	67.0
15/16" and 31/32".....	12.7	22.5	5.2	11.7	6.8	10.6	223.9	28.8
1" and 1 1/32".....	1.5	2.7	.2	.4	.1	.2	12.2	1.6
1 1/8" and 1 1/4".....							.1	(?)
1 1/4" and 1 1/2".....								
1 1/2" and longer.....								

Staple length (inches)	District 8		District 9		District 10		District 11	
	1,000 bales	Percent	1,000 bales	Percent	1,000 bales	Percent	1,000 bales	Percent
All lengths.....	337.5	100.0	105.7	100.0	177.8	100.0	327.0	100.0
Shorter than ¾".....	163.8	30.7	3.4	3.2	2.0	1.6	11.5	3.5
¾" and 29/32".....	182.6	55.6	47.7	45.1	95.3	53.0	136.3	41.7
15/16" and 31/32".....	42.4	12.6	41.1	38.9	72.9	41.0	147.6	45.1
1" and 1 1/32".....	3.7	1.1	0.2	0.7	6.5	3.7	20.8	9.1
1 1/8" and 1 1/4".....			4.0	3.8	.2	.1	1.7	.5
1 1/4" and 1 1/2".....			.3	.3			.1	(?)
1 1/2" and longer.....								

¹ As reported by the Bureau of the Census.

² Unfavorable in settlement of futures contracts made subject to sec. 5 of the United States Cotton Futures Act and the regulations of the Secretary of Agriculture thereunder.

³ Less than 0.05 percent.

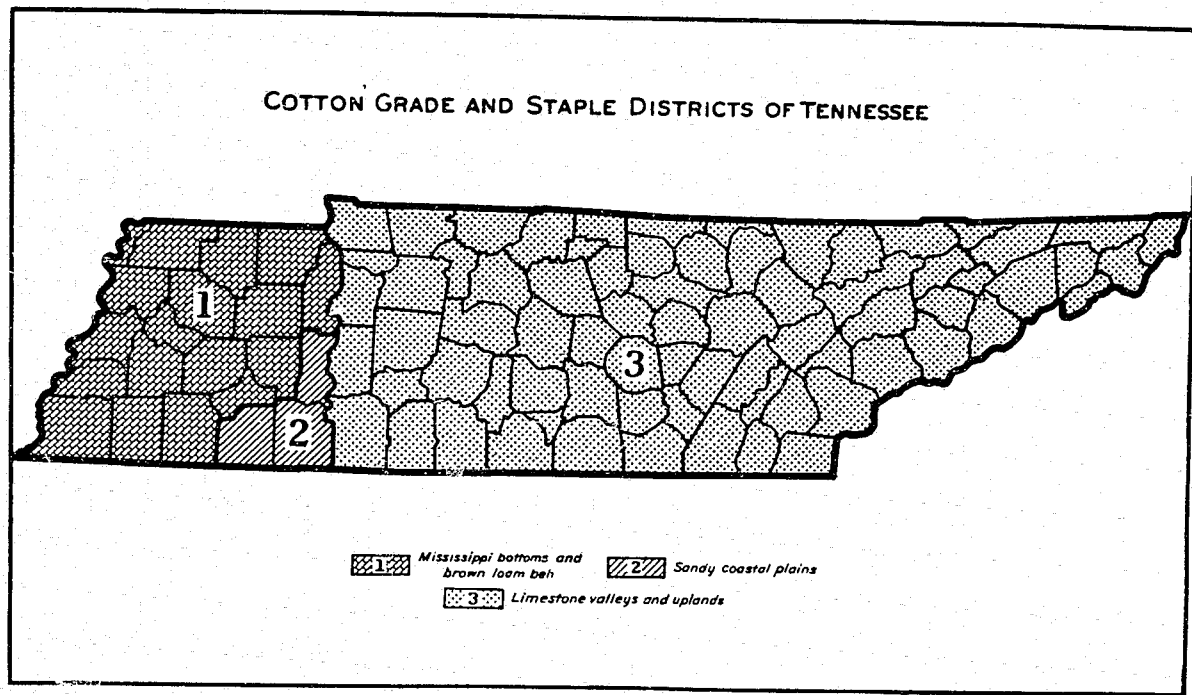


FIGURE 10.

(See p. 6 for statement of changes in boundaries of districts shown in Statistical Bulletins 40, 47, and 52.)

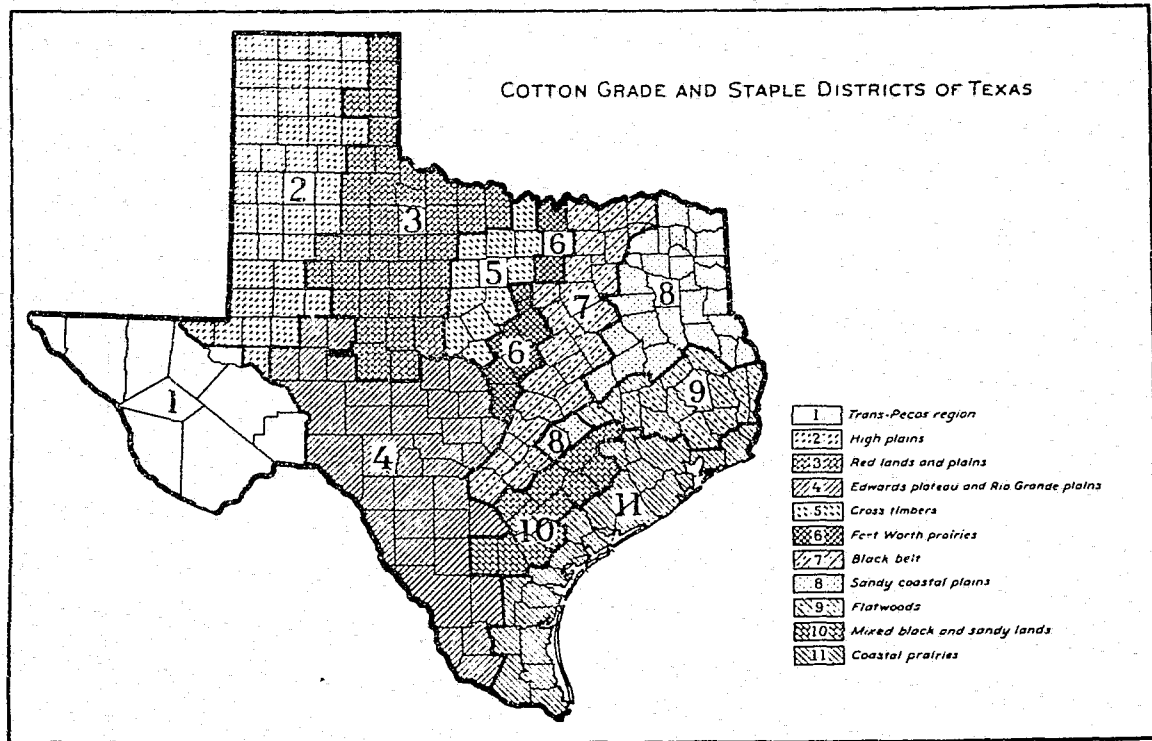


FIGURE 11.

(See p. 6 for statement of changes in boundaries of districts shown in Statistical Bulletins 40, 47, and 52.)

TABLE 21.—Tenderability of American upland cotton ginned in the United States, crops of 1934, 1933, 1932, 1931, 1930, 1929, and 1928; and by States, crops of 1934, 1933, 1932, 1931, and 1930

[Quantities are given in running bales, except that round bales are counted as half bales. Linters are not included]

State	Crop year	Total American upland cotton ginned ¹		Tenderable ²						Untenderable	
				All staple lengths		Staple lengths 7 1/2 to 13 1/2 inches		Staple lengths 1 1/2 inches and longer			
				1,000 bales	Per cent	1,000 bales	Per cent	1,000 bales	Per cent		
United States	1934	9,458.0	100.0	5,518.7	60.1	6,822.3	72.1	1,936.4	18.0	938.0	9.9
	1933	12,651.3	100.0	11,782.8	93.1	10,177.9	80.1	1,601.9	12.7	871.5	6.9
	1932	12,701.3	100.0	11,180.1	90.5	9,929.4	78.2	1,559.7	12.3	1,212.2	9.5
	1931	16,615.2	100.0	11,833.9	71.3	12,989.1	78.2	1,844.5	11.1	1,781.3	10.7
	1930	14,732.2	100.0	11,623.2	78.9	10,207.2	71.3	1,116.0	10.3	2,109.0	15.1
	1929	14,519.0	100.0	10,992.5	75.7	9,131.5	65.9	1,559.0	10.7	3,526.5	24.3
	1928	11,268.2	100.0	11,661.7	103.5	10,231.2	91.7	1,133.5	10.1	2,603.5	23.2
Alabama	1934	936.1	100.0	736.5	78.7	730.1	78.0	6.4	.7	189.6	21.3
	1933	951.1	100.0	866.0	91.1	859.9	90.4	6.4	.7	85.1	8.9
	1932	933.7	100.0	792.0	84.8	788.3	84.4	3.7	.4	141.7	15.2
	1931	1,385.0	100.0	1,217.6	90.1	1,200.5	89.6	7.1	.5	137.4	9.9
	1930	1,141.9	100.0	873.0	76.4	863.9	80.2	3.1	.2	571.9	39.6
	1929	90.1	100.0	95.5	106.1	87.5	97.9	58.0	68.5	3.6	3.6
	1928	81.2	100.0	82.1	101.0	44.2	53.1	38.2	45.9	.8	1.0
Arizona	1934	58.8	100.0	57.9	98.5	31.0	52.7	26.9	45.8	.9	1.5
	1933	97.3	100.0	92.9	95.5	37.8	39.4	35.1	38.1	3.4	3.5
	1932	127.0	100.0	119.8	94.2	87.4	68.7	32.1	25.5	7.4	5.8
	1931	849.0	100.0	794.9	93.6	766.3	90.7	228.6	26.9	74.1	6.4
	1930	1,044.0	100.0	967.5	95.4	690.3	69.9	267.9	26.4	47.1	4.6
	1929	1,283.4	100.0	1,187.5	92.5	864.9	67.4	322.6	25.1	95.9	7.5
	1928	1,830.1	100.0	1,616.6	88.0	1,298.1	70.7	318.2	17.5	216.5	12.0
Arkansas	1934	863.5	100.0	753.5	86.9	643.8	74.6	129.7	15.0	300.0	34.4
	1933	231.5	100.0	216.3	95.9	11.6	4.6	231.7	94.3	5.2	2.1
	1932	100.7	100.0	205.1	205.1	16.6	22.1	158.8	75.4	5.5	2.5
	1931	121.4	100.0	130.9	107.9	16.2	13.9	101.7	84.2	3.5	2.8
	1930	171.9	100.0	163.1	94.9	37.8	16.2	133.6	78.1	9.8	5.7
	1929	254.3	100.0	215.6	85.8	16.1	18.0	199.5	77.8	10.7	4.2
	1928	21.9	100.0	22.0	100.0	22.5	102.6	.4	.4	1.7	7.0
California	1934	15.6	100.0	13.2	84.6	13.2	84.6	.4	.4	1.1	5.8
	1933	43.4	100.0	40.2	92.6	40.1	92.4	.1	.2	3.2	7.1
	1932	51.1	100.0	49.7	97.3	30.7	59.6	.1	.2	10.4	20.1
	1931	97.1	100.0	94.0	96.8	80.6	82.0	3.8	3.8	40.9	4.2
	1930	1,093.4	100.0	1,019.0	93.3	1,093.8	100.0	16.1	1.5	73.5	6.7
	1929	861.8	100.0	809.3	93.9	800.1	92.9	8.9	1.0	22.5	2.6
	1928	1,393.7	100.0	1,322.0	95.0	1,310.2	94.0	11.8	.9	71.7	5.1
Florida	1934	1,597.5	100.0	1,317.8	82.5	1,300.0	81.9	8.8	.6	279.7	17.5
	1933	473.2	100.0	420.4	88.8	328.1	69.3	92.0	19.5	53.2	11.2
	1932	401.2	100.0	359.4	89.6	328.9	82.0	111.7	28.8	18.7	4.6
	1931	599.5	100.0	536.8	89.4	438.8	73.2	97.0	16.2	63.7	10.6
	1930	576.6	100.0	505.4	87.7	423.2	73.4	172.2	29.6	81.2	14.1
	1929	704.8	100.0	598.2	84.9	509.6	71.0	97.6	13.9	106.6	15.1
	1928	1,121.3	100.0	1,080.9	97.3	110.9	36.6	680.0	60.7	50.1	2.7
Georgia	1934	1,132.2	100.0	1,117.6	98.7	1,131.3	98.4	68.3	6.0	11.1	1.3
	1933	1,164.2	100.0	1,111.0	95.5	973.8	80.8	681.2	57.4	47.2	4.1
	1932	1,719.4	100.0	1,764.8	100.8	726.2	42.2	831.6	48.6	157.6	9.2
	1931	1,458.5	100.0	1,322.9	90.7	759.3	52.1	563.6	38.6	135.6	9.3
	1930	239.4	100.0	197.8	85.9	171.2	75.6	23.6	10.1	12.4	11.4
	1929	257.9	100.0	195.6	82.2	185.2	75.8	10.1	4.1	12.4	11.4
	1928	306.7	100.0	261.5	85.8	219.7	73.0	32.1	5.8	37.6	17.8
Louisiana	1934	280.1	100.0	261.5	92.9	191.5	69.3	10.9	4.0	75.9	27.1
	1933	153.3	100.0	133.9	87.3	126.3	82.3	7.6	5.0	19.1	12.7
	1932	83.7	100.0	81.3	97.3	17.0	20.3	66.3	79.2	.1	.1
	1931	86.1	100.0	83.2	96.6	43.6	49.9	40.2	46.7	2.9	3.1
	1930	67.5	100.0	60.1	89.0	21.3	36.0	35.8	51.9	2.9	4.1
	1929	91.5	100.0	88.1	96.3	51.2	51.6	36.9	39.3	5.7	6.0
	1928	97.8	100.0	91.0	93.9	39.1	41.1	30.6	32.8	5.7	6.1
Mississippi	1934	600.9	100.0	628.1	108.0	564.7	97.6	66.7	10.1	12.5	2.0
	1933	680.5	100.0	663.9	98.4	645.9	92.1	26.6	3.7	26.6	3.9
	1932	680.3	100.0	668.3	98.2	667.8	98.3	60.5	8.9	12.0	1.8
	1931	774.2	100.0	764.7	98.8	723.0	91.5	32.7	4.3	6.4	1.8
	1930	800.6	100.0	747.0	93.3	715.3	89.3	31.7	4.0	33.6	6.7
	1929	800.6	100.0	747.0	93.3	715.3	89.3	31.7	4.0	33.6	6.7
	1928	800.6	100.0	747.0	93.3	715.3	89.3	31.7	4.0	33.6	6.7

¹As reported by the Bureau of the Census.
²Tenderable in settlement of futures contracts made subject to the United States Cotton Futures Act and the regulations of the Secretary of Agriculture thereunder.

TABLE 21.—Tenderability of American upland cotton ginned in the United States, crops of 1934, 1933, 1932, 1931, 1930, 1929, and 1928; and by States, crops of 1934, 1933, 1932, 1931, and 1930—Continued

State	Crop year	Total American upland cotton ginned ¹		Tenderable ²						Untenderable	
				All staple lengths		Staple lengths 7 ⁸ to 11 ³² inches		Staple lengths 11 ¹⁶ inches and longer			
		1,000 bales	Per cent	1,000 bales	Per cent	1,000 bales	Per cent	1,000 bales	Per cent	1,000 bales	Per cent
Oklahoma	1934	329.9	100.0	223.3	67.7	223.2	67.7	0.1	0	106.6	32.3
	1933	1,235.8	100.0	1,035.0	83.8	1,032.8	83.6	32.2	2.6	170.8	13.8
	1932	1,072.0	100.0	959.0	89.5	953.8	88.0	5.8	.5	112.4	10.5
	1931	1,235.9	100.0	954.1	77.3	948.9	76.8	16.2	1.2	271.8	22.0
	1930	850.8	100.0	700.2	81.7	685.5	80.6	14.7	1.7	155.6	18.3
South Carolina	1934	684.0	100.0	680.0	99.3	547.5	80.0	132.6	19.3	4.6	.7
	1933	728.0	100.0	700.3	97.4	597.3	82.0	112.0	15.4	18.7	2.6
	1932	722.2	100.0	714.8	99.0	572.1	79.3	142.4	19.7	7.4	1.0
	1931	1,010.2	100.0	997.1	98.7	870.5	87.1	117.0	11.6	13.1	1.3
	1930	1,015.3	100.0	975.2	96.1	842.4	83.0	132.8	13.1	40.1	3.9
Tennessee	1934	396.7	100.0	338.3	85.3	324.9	81.9	13.4	3.4	58.4	14.7
	1933	428.9	100.0	404.2	94.2	387.6	90.3	16.6	3.9	24.7	5.8
	1932	467.5	100.0	423.4	90.6	395.1	84.5	28.3	6.1	44.1	9.4
	1931	578.0	100.0	508.8	88.0	494.1	85.5	14.7	2.5	69.2	12.0
	1930	371.4	100.0	301.0	81.2	289.8	78.0	11.8	3.2	69.8	18.8
Texas	1934	2,314.0	100.0	1,982.0	85.6	1,926.5	83.2	55.5	2.4	332.9	14.4
	1933	4,220.3	100.0	3,885.1	92.1	3,801.3	90.1	83.8	2.0	335.2	7.9
	1932	4,307.4	100.0	3,748.6	87.0	3,601.6	83.7	57.0	1.3	558.8	13.0
	1931	5,008.8	100.0	4,422.8	88.3	4,321.7	86.3	101.1	2.0	646.0	12.7
	1930	3,855.1	100.0	3,340.1	86.9	3,209.7	83.5	130.4	3.4	516.0	14.1
Virginia	1934	33.0	100.0	32.2	97.6	32.0	97.0	.2	.6	.8	2.4
	1933	34.4	100.0	32.4	94.2	32.1	94.2	.2	.6	2.0	5.8
	1932	31.3	100.0	29.7	94.9	29.5	94.3	.2	.6	1.6	5.1
	1931	42.5	100.0	40.8	96.0	40.8	96.0	.1	.2	1.7	4.0
	1930	42.7	100.0	39.5	92.3	38.4	90.0	.9	2.1	4.2	9.8
All other ⁴	1931	14.4	100.0	12.0	87.5	11.7	81.2	.9	6.3	1.8	12.5
	1933	13.8	100.0	12.0	87.0	10.8	78.3	1.2	8.7	1.3	13.0
	1932	14.0	100.0	10.9	77.9	8.6	61.5	2.3	16.4	3.1	22.1
	1931	11.7	100.0	8.1	69.2	5.5	47.0	2.6	22.2	3.6	30.8
1930	0.4	100.0	5.2	81.3	3.6	56.3	4.6	25.0	1.2	18.7	

¹ As reported by the Bureau of the Census.

² Tenderable in settlement of futures contracts made subject to sec. 5 of the United States Cotton Futures Act and the regulations of the Secretary of Agriculture thereunder.

³ Less than 0.05 percent.

⁴ Includes Illinois, Kansas, and Kentucky.

TABLE 22.—Tenderability of American upland cotton on hand in the United States, Aug. 1, 1935, 1934, 1933, 1932, 1931, 1930, 1929, and 1928

[Quantities are given in running bales, except that round bales are counted as half bales. Linters are not included]

Year	Total American upland cotton on hand Aug. 1		Tenderable ¹						Untenderable	
			All staple lengths		Staple lengths 7 ⁸ to 11 ³² inches		Staple lengths 11 ¹⁶ inches and longer			
	1,000 bales	Per cent	1,000 bales	Per cent	1,000 bales	Per cent	1,000 bales	Per cent	1,000 bales	Per cent
1935	7,128.9	100.0	6,371.0	89.4	5,357.8	75.2	1,015.2	14.2	757.9	10.6
1934	7,638.1	100.0	6,909.8	91.3	5,709.5	74.8	1,200.3	16.5	688.3	9.0
1933	8,003.7	100.0	7,437.4	92.2	6,065.8	75.2	1,371.6	17.0	632.3	7.8
1932	9,580.3	100.0	8,822.7	92.9	7,418.4	77.6	1,404.3	15.3	677.6	7.1
1931	6,216.0	100.0	5,843.3	94.0	4,773.0	76.4	770.3	12.5	702.7	11.3
1930	4,313.0	100.0	3,416.3	79.2	2,666.6	61.8	749.7	17.4	897.3	20.8
1929	2,122.0	100.0	1,717.0	80.9	1,251.0	58.9	496.0	23.4	375.6	17.7
1928	2,410.8	100.0	2,198.0	91.2	1,459.6	60.3	738.5	30.6	221.8	9.2

¹ As reported by the Bureau of the Census.

² Tenderable in settlement of futures contracts made subject to sec. 5 of the United States Cotton Futures Act and the regulations of the Secretary of Agriculture thereunder.

TABLE 23.—Grade and staple length of American upland cotton on hand in the United States, Aug. 1, 1935

[Quantities are given in running bales, except that round bales are counted as half bales. Linters are not included]

Grade	All staple lengths		Shorter than 7 $\frac{1}{2}$ inch †	7 $\frac{1}{2}$ and 7 $\frac{3}{4}$ inch	7 $\frac{3}{4}$ and 8 $\frac{1}{2}$ inch	8 $\frac{1}{2}$ and 9 $\frac{1}{2}$ inch	9 $\frac{1}{2}$ and 10 $\frac{1}{2}$ inches	10 $\frac{1}{2}$ and 11 $\frac{1}{2}$ inches	11 $\frac{1}{2}$ and 12 $\frac{1}{2}$ inches	12 $\frac{1}{2}$ and longer
	1,000 bales	Percent 100.0	1,000 bales	1,000 bales	1,000 bales	1,000 bales	1,000 bales	1,000 bales	1,000 bales	1,000 bales
All grades	47,128.9	100.0	528.8	2,773.6	1,799.5	997.2	533.1	350.4	111.9	20.4
Extra White.	1,954.5	27.4	68.4	625.8	499.1	250.7	106.3	291.5	74.9	21.8
Above 3-G. M.	2	(3)		2						
3-G. M.	56.8	7	3.3	16.4	10.4	4.8	4.6	7.2	3.8	1.3
4-S. M.	519.4	7.3	26.6	150.3	133.8	61.7	56.6	38.5	28.0	0.4
5-M.	926.2	13.0	32.4	321.7	233.4	112.0	82.9	66.6	37.6	9.6
6-S. L. M.	383.0	5.4	5.3	113.6	90.7	73.6	48.1	36.0	4.6	1.
7-L. M.	71.2	1.0	1.8	21.6	21.5	14.2	10.0	2.6		
Below 7-L. M.	7	(2)	1		3	2	1			
White.	4,006.9	57.5	335.9	1,644.8	1,019.1	611.6	293.7	148.1	36.2	7.5
1-M. F.										
2-S. G. M.	9	(1)	1	3	4	1				
3-G. M.	119.3	1.7	11.2	52.5	33.9	13.5	4.5	2.9	.7	.1
4-S. M.	1,141.7	16.0	138.7	488.2	251.3	132.4	69.0	32.4	13.6	3.1
5-M.	1,770.3	24.8	136.8	693.5	430.5	226.0	127.7	61.5	17.2	3.5
6-S. L. M.	548.1	11.9	36.8	339.3	232.8	131.5	88.6	31.2	4.1	.5
7-L. M.	160.6	2.3	7.5	57.9	43.7	31.8	16.2	3.0	.5	.1
8-S. G. O.	10.0	.6	2.8	9.8	9.7	10.8	5.9	1.0		
9-G. O.	16.0	.2	2.0	3.3	3.8	4.9	1.9	.1		
Spotted	911.7	13.2	101.3	433.4	254.8	105.3	40.1	5.9	.8	.1
3-G. M.	45.5	.6	7.4	19.8	9.8	3.7	4.2	.6		
4-S. M.	445.3	6.2	56.4	217.3	108.3	43.4	17.0	2.4	.4	.1
5-M.	351.8	5.0	26.4	160.8	108.3	43.2	13.4	2.2	.3	
6-S. L. M.	76.8	1.1	8.8	28.6	22.0	12.0	6.7	.7		
7-L. M.	12.5	.3	2.3	7.0	6.4	3.0	.8			
Yellow Tinged	97.6	1.4	10.3	57.3	21.7	7.6	.7			
2-S. G. M.	3	(2)	1	2						
3-G. M.	1.3	(2)	1	.6	.3	.3				
4-S. M.	17.4	.2	1.0	8.1	4.6	3.4	.3			
5-M.	28.0	.4	3.6	13.3	8.9	2.0	.2			
6-S. L. M.	36.3	.5	3.5	25.3	6.9	.5	.1			
7-L. M.	14.3	.2	2.0	9.8	4.0	1.4	.1			
Light Yellow Stained	6.1	(2)	1	.3	.1	.1				
3-G. M.	1	(2)								
4-S. M.	2	(2)		.1	.1					
5-M.	3	(2)	1	.2						
Yellow Stained	2.1	(2)	2	1.3	.5	.1				
3-G. M.	1	(2)				.1				
4-S. M.	3	(2)		2	.1					
5-M.	1.7	(2)	2	1.1	.1					
Gray	4.0	.1	1	.8	.6	.6	1.0	.9		
3-G. M.										
4-S. M.	2.6	(2)	1	.1	.1	.4	.4	.7		
5-M.	1.4	(2)		.1	.2	.2	.1	.2		
Blue Stained	1	(2)								
3-G. M.										
4-S. M.										
5-M.	.1	(2)								
No grade	31.4	.1	12.5	6.9	3.5	4.2	1.3			

† Untenderable in settlement of futures contracts made subject to sec. 5 of the United States Cotton Futures Act and the regulations of the Secretary of Agriculture thereunder.

‡ As reported by the Bureau of the Census.

§ Less than 0.05 percent.

¶ Includes bales not otherwise classified above.

TABLE 24.—Grade and staple length of American-Egyptian cotton on hand in the United States, Aug. 1, 1935, 1934, 1933, 1932, and 1931

Year and grade	Quantities in million bales						
	All staple length		Shorter than 1 1/4 inches	1 1/4 and 1 1/2 inches	1 1/2 and 1 3/4 inches	1 3/4 to 1 7/8 inches	1 7/8 inches and longer
	1,000 bales	Percent	1,000 bales	1,000 bales	1,000 bales	1,000 bales	
1935							
All grades	8.6	100.0	0.2	1.9	6.5		
1 and 1 1/2	1.8	20.9		.7	1.3		
2 and 2 1/2	1.9	22.0	.1	.4	1.1		
3 and 3 1/2	1.1	12.8			.7		
4 and 4 1/2	.4	4.7		.2	.1		
5	.1	1.2		.1			
Below 5	.1	1.3	.1				
1934							
All grade	11.6	100.0	.3	1.9	3.8	1.0	
1 and 1 1/2	7.8	67.1		.9	1.1	.6	
2 and 2 1/2	3.1	27.1	.1	.5	1.1	.1	
3 and 3 1/2	.6	5.0		.3	.3		
4 and 4 1/2	.1	1.1					
5	.1	1.1		.1			
Below 5	.2	2.0	.2				
1933							
All grade	10.8	100.0	.7	2.9	5.1	1.1	
1 and 1 1/2	1.8	18.1		.1	1.3	.3	
2 and 2 1/2	5.5	51.1	.2	.7	3.0	.6	
3 and 3 1/2	2.0	19.4	.1	1.0	.5	.1	
4 and 4 1/2	.5	5.1	.1	.1	.3		
5							
Below 5							
1932							
All grades	16.5	100.0		3.1	12.4	3.0	
1 and 1 1/2	3.9	27.6		.3	2.5	.1	
2 and 2 1/2	9.1	55.4		1.7	7.0	.6	
3 and 3 1/2	3.5	21.2		1.1	2.2	.2	
4 and 4 1/2	1.0	6.1		.2	.7	.1	
5							
Below 5							
1931							
All grades	16.7	100.0		2.0	13.5	1.1	
1 and 1 1/2	1.7	10.1		.3	1.2	.2	
2 and 2 1/2	8.6	51.5		.6	7.2	.8	
3 and 3 1/2	2.9	17.4		.9	1.9	.1	
4 and 4 1/2	.6	3.9		.2	.3		
5							
Below 5							

* As reported by the Bureau of the Census.

GRADE, STAPLE LENGTH, AND TENDERABILITY OF COTTON 59

TABLE 25.—Staple length of American upland cotton on hand in the United States, by places of storage, Aug. 1, 1935, 1934, 1933, 1932, 1931, 1930, 1929, and 1928

[Quantities are given in running bales, except that round bales are counted as half bales. Linters are not included]

Place of storage	Year	All staple lengths ¹		Shorter than 1 1/2 inches		1 and 1 1/2 inches		1 1/2 and 1 3/4 inches		1 and 1 3/4 inches	
		1,000 bales	Per cent	1,000 bales	Per cent	1,000 bales	Per cent	1,000 bales	Per cent	1,000 bales	Per cent
All places	1935	7,128.9	100.0	528.8	7.4	2,773.6	38.9	1,791.5	25.2	409.2	5.7
	1934	7,638.1	100.0	233.4	3.0	2,534.1	33.2	1,112.0	14.6	1,771.4	23.2
	1933	8,009.7	100.0	188.4	2.3	2,501.6	31.0	2,193.3	27.3	1,657.9	20.7
	1932	9,560.3	100.0	298.3	3.1	3,392.6	35.5	2,701.0	28.3	1,677.4	17.4
	1931	9,210.0	100.0	463.2	5.0	2,615.7	28.4	1,528.2	16.6	1,602.9	17.4
	1930	4,313.6	100.0	116.8	2.7	1,415.6	33.0	823.4	19.1	788.0	18.3
	1929	2,122.6	100.0	155.0	7.3	650.9	30.8	397.4	18.7	395.1	18.6
	1928	2,119.8	100.0	87.9	4.1	485.0	23.0	426.8	20.2	659.8	31.1
Public warehouses and compresses	1935	6,387.0	100.0	521.3	8.2	2,685.0	42.0	1,611.0	25.2	776.0	12.2
	1934	6,473.7	100.0	225.7	3.5	2,321.0	35.8	1,811.0	28.0	1,091.1	17.1
	1933	6,779.1	100.0	178.2	2.6	2,283.9	33.7	1,873.0	27.6	1,361.1	20.1
	1932	8,105.1	100.0	286.1	3.5	3,173.1	39.2	2,133.9	26.3	2,292.7	28.3
	1931	5,333.9	100.0	111.7	2.1	1,408.0	26.4	1,306.1	24.5	656.8	12.3
	1930	3,271.0	100.0	125.0	3.8	1,222.2	37.1	602.1	18.4	504.0	15.4
	1929	1,190.8	100.0	115.3	9.7	452.1	37.9	177.6	14.9	105.0	8.8
	1928	1,188.7	100.0	77.1	6.5	511.2	42.9	256.0	21.6	333.5	28.1
Consuming establishments	1935	1,161.4	100.0	1.1	0.1	88.6	7.6	155.5	13.4	220.2	19.0
	1934	1,290.6	100.0	7.1	0.5	237.1	18.3	268.9	20.8	308.3	23.9
	1933	1,154.9	100.0	10.1	0.9	230.0	20.0	226.3	19.6	413.5	35.8
	1932	1,154.9	100.0	11.6	1.0	219.5	19.0	260.1	22.5	361.9	31.3
	1931	943.1	100.0	21.3	2.3	207.7	21.9	222.1	23.5	192.4	20.4
	1930	1,012.6	100.0	21.2	2.1	234.1	23.1	223.2	22.1	279.0	27.5
	1929	925.8	100.0	9.1	1.0	198.5	21.4	219.8	23.8	190.1	20.6
	1928	931.1	100.0	19.1	2.1	113.8	12.2	150.8	16.3	322.3	34.6

Place of storage	Year	1 and 1 1/2 inches		1 1/2 and 1 3/4 inches		1 3/4 and 1 7/8 inches		1 7/8 inches and longer	
		1,000 bales	Per cent	1,000 bales	Per cent	1,000 bales	Per cent	1,000 bales	Per cent
All places	1935	533.1	7.5	350.4	5.0	111.9	1.6	29.4	0.4
	1934	615.0	8.1	329.2	4.9	111.6	1.5	23.9	0.3
	1933	671.7	8.3	362.9	5.4	113.6	1.8	32.6	0.4
	1932	751.5	7.9	316.7	4.2	171.0	1.8	32.6	0.3
	1931	411.8	6.6	299.5	4.5	89.7	1.4	15.7	0.3
	1930	389.3	9.0	284.1	7.3	115.8	2.7	21.3	0.6
	1929	221.3	10.4	170.1	8.0	96.4	4.5	36.4	1.7
	1928	268.3	11.1	287.2	11.9	157.0	6.5	37.7	2.0
Public warehouses and compresses	1935	135.9	6.8	215.0	3.7	72.9	1.2	12.9	0.2
	1934	199.7	7.7	405.8	6.3	69.3	1.0	5.1	0.1
	1933	315.3	8.0	311.7	6.4	91.2	1.1	12.0	0.2
	1932	626.5	7.5	454.4	5.4	115.7	1.4	12.1	0.1
	1931	309.7	5.7	179.5	3.2	37.4	0.7	6.1	0.1
	1930	305.7	9.2	156.8	4.8	32.6	1.6	6.0	0.2
	1929	101.4	8.7	79.2	6.6	34.3	2.9	7.6	0.6
	1928	183.6	12.5	182.5	12.3	95.6	6.5	11.9	1.0
Consuming establishments	1935	95.2	13.1	120.5	16.2	39.0	3.3	16.5	2.2
	1934	115.9	10.0	123.1	10.6	41.3	3.1	18.8	1.6
	1933	126.4	9.8	128.2	9.9	6.3	4.1	13.6	1.1
	1932	125.0	11.1	92.3	8.0	58.3	5.0	20.5	1.8
	1931	108.3	11.9	99.2	10.9	52.3	3.7	9.6	1.0
	1930	87.6	8.4	126.6	12.1	63.2	6.1	18.3	1.8
	1929	116.9	12.6	90.9	9.8	62.1	6.7	28.8	3.1
	1928	81.9	8.8	101.4	11.2	60.1	6.5	32.8	3.5

¹ As reported by the Bureau of the Census.

² Entendable in settlement of futures contracts made subject to sec. 5 of the United States Cotton Futures Act and the regulation of the Secretary of Agriculture thereunder.

³ Figures include cotton reported by the Bureau of the Census as "elsewhere", amounting to 345,000 bales for 1928; 275,000 for 1929; 470,000 for 1930; 840,000 for 1931; 1,760,000 for 1932; 1,080,000 for 1933; 650,000 for 1934; and 680,000 for 1935.

TABLE 26.—Average staple length¹ of American upland cotton on hand in the United States, by places of storage, Aug. 1, 1935, 1934, 1933, 1932, 1931, 1930, 1929, and 1928

Place of storage	1935	1934	1933	1932	1931	1930	1929	1928
All places.....	Sixteenth inches 15.49	Sixteenth inches 15.74	Sixteenth inches 15.83	Sixteenth inches 15.67	Sixteenth inches 15.40	Sixteenth inches 15.65	Sixteenth inches 15.95	Sixteenth inches 16.44
Public warehouses and compresses ²	15.34	15.03	15.73	15.58	15.25	15.42	15.56	16.32
Consuming establishments	16.74	16.38	16.35	16.36	16.28	16.38	16.45	16.62

¹ Average calculated by multiplying the number of bales in each length group by the midpoint of the group expressed in sixteenths of an inch (that is, $1\frac{1}{16}$ and $3\frac{1}{32}$ = 15.5, etc.), summing, and dividing by the total number of bales. The midpoint of the $1\frac{1}{16}$ - and $3\frac{1}{32}$ -inch group, for example, was taken as 15.5 sixteenths ($3\frac{1}{32}$) inch because according to regulations $3\frac{1}{32}$ is the lower limit of the group which includes all cotton classed as being as long as $1\frac{1}{16}$ and shorter than 1 inch. In making the calculations, the midpoints of the groups "shorter than $\frac{7}{8}$ inch" and " $1\frac{1}{4}$ inches and longer" were considered to be 13.5 and 26.5, respectively. Averages can be converted to inches by dividing by 16.

² Figures include cotton reported by the Bureau of the Census as "elsewhere."

TABLE 27.—Staple length of Egyptian cotton¹ on hand in the United States, Aug. 1, 1935, 1934, 1933, 1932, 1931, 1930, 1929, and 1928

[Quantities are given in equivalent 500-pound bales]

Year	All staple lengths ²	Shorter than $1\frac{1}{8}$ inches	$1\frac{1}{8}$ and $1\frac{1}{32}$ inches	$1\frac{1}{32}$ and $1\frac{1}{16}$ inches	$1\frac{1}{16}$ to $1\frac{1}{8}$ inches	$1\frac{1}{8}$ to $1\frac{1}{4}$ inches	$1\frac{1}{4}$ to $1\frac{1}{2}$ inches	$1\frac{1}{2}$ to $1\frac{3}{4}$ inches	$1\frac{3}{4}$ inches and longer
	1,000 bales	1,000 bales	1,000 bales	1,000 bales	1,000 bales	1,000 bales	1,000 bales	1,000 bales	1,000 bales
1935	48.0	0.1	11.2	0.8	4.4	25.3	3.0	0.2
1934	61.8	1.0	16.4	.9	2.0	36.7	3.9
1933	51.8	7.9	12.5	2.0	2.4	22.7	6.6	.6	0.1
1932	68.1	8.0	13.0	.7	3.1	30.3	11.5	1.4	.1
1931	63.9	1.1	21.5	.8	6.5	28.6	5.22
1930	145.4	.3	47.3	11.5	9.9	53.5	22.3	.6
1929	129.2	.3	70.8	6.6	2.7	31.1	12.9	1.8
1928	65.3	1.4	23.4	1.7	7.5	21.3	7.0	2.6	.4

¹ Foreign cottons are not deliverable in settlement of futures contracts made subject to the United States Cotton Futures Act.

² As reported by the Bureau of the Census.

TABLE 28.—Staple length of foreign cotton¹ other than Egyptian on hand in the United States, Aug. 1, 1935, 1934, 1933, 1932, 1931, 1930, 1929, and 1928

[Quantities are given in equivalent 500-pound bales]

Growth	Year	All staple lengths ²		Shorter than 7 $\frac{1}{2}$ inch	7 $\frac{1}{2}$ and 2 $\frac{1}{2}$ inch	15 $\frac{1}{2}$ and 3 $\frac{1}{2}$ inch	1 and 1 $\frac{1}{2}$ inches	1 $\frac{1}{2}$ and 1 $\frac{3}{4}$ inches	1 $\frac{3}{4}$ and 1 $\frac{1}{2}$ inches	17 $\frac{1}{2}$ and 17 $\frac{1}{4}$ inches	14 inches and longer
		1,000 bales	Per cent								
Foreign, other than Egyptian	1935	23.0	100.0	21.3						0.2	0.5
	1934	36.8	100.0	32.6						0.7	3.2
	1933	30.3	100.0	26.7			0.2	0.1		0.8	2.6
	1932	32.9	100.0	25.4	0.8					0.4	2.6
	1931	43.4	100.0	39.5						0.1	6.4
	1930	63.3	100.0	55.6						0.3	2.2
	1929	53.6	100.0	42.1						0.3	0.0
	1928	45.6	100.0	39.3		3.5				0.7	3.9
								0.3		0.1	0.9
Peruvian	1935	.9	3.9							.7	
	1934	.9	2.1							.7	.1
	1933	1.6	5.3							.1	.8
	1932	2.6	7.9							.1	2.3
	1931	3.2	7.4							.3	1.5
	1930	7.1	11.2							1.3	1.1
	1929	1.6	8.7							0.3	5.4
	1928	5.5	12.1							0.7	3.5
									.1	0.9	4.5
Chinese	1935	9.9	41.0	9.9							
	1934	19.9	51.1	19.9							
	1933	21.4	79.6	21.4							
	1932	10.5	31.9	10.2	.3						
	1931	21.1	48.6	21.1							
	1930	25.5	40.3	25.5							
	1929	22.7	42.8	18.1		4.6					
1928	20.0	65.5	20.9								
British Indian	1935	10.8	47.0	10.8							
	1934	12.1	32.9	12.1							
	1933	5.3	17.5	5.3							
	1932	15.4	46.8	15.0	.4						
	1931	18.3	42.2	18.3							
	1930	20.0	47.2	20.0							
	1929	25.0	47.2	23.0	.3						
1928	9.4	20.6	0.1								
Other	1935	1.4	6.1	.6							.5
	1934	3.9	10.6	.6							3.1
	1933	2.0	6.6								1.8
	1932	3.4	13.1	.2	.1						4.1
	1931	.8	1.8	.1							.7
	1930	.8	1.3	.2							.6
	1929	.7	1.3	.1							.4
1928	.8	1.8								.5	

¹ Foreign cottons are not deliverable in settlement of futures contracts made subject to the United States Cotton Futures Act.

² As reported by the Bureau of the Census.

An Act Authorizing the Secretary of Agriculture to collect and publish statistics of the grade and staple length of cotton.

Be it enacted by the Senate and House of Representatives of the United States of America in Congress assembled, That the Secretary of Agriculture be, and he is hereby, authorized and directed to collect and publish annually, on dates to be announced by him, statistics or estimates concerning the grades and staple length of stocks of cotton, known as the carry-over, on hand on the 1st of August of each year in warehouses and other establishments of every character in the continental United States, and following such publication each year, to publish, at intervals in his discretion, his estimate of the grades and staple length of cotton of the then current crop: *Provided*, That not less than three such estimates shall be published with respect to each crop. In any such statistics or estimates published, the cotton which on the date for which such statistics are published may be recognized as tenderable on contracts of sale of cotton for future delivery under the United States Cotton Futures Act of August 11, 1910, as amended, shall be stated separately from that which may be untenderable under said Act as amended.

Sec. 2. That the information furnished by any individual establishment under the provisions of this Act shall be considered as strictly confidential and shall be used only for the statistical purpose for which it is supplied. Any employee of the Department of Agriculture who, without the written authority of the Secretary of Agriculture, shall publish or communicate any information given into his possession by reason of his employment under the provisions of this Act shall be guilty of a misdemeanor and shall, upon conviction thereof, be fined not less than \$300 or more than \$1,000, or imprisoned for a period of not exceeding one year, or both so fined and imprisoned, at the discretion of the court.

Sec. 3. That it shall be the duty of every owner, president, treasurer, secretary, director, or other officer or agent of any cotton warehouse, cotton gin, cotton mill, or other place or establishment where cotton is stored, whether conducted as a corporation, firm, limited partnership, or individual, and of any owner or holder of any cotton and of the agents and representatives of any such owner or holder, when requested by the Secretary of Agriculture or by any special agent or other employee of the Department of Agriculture acting under the instructions of said Secretary to furnish completely and correctly, to the best of his knowledge, all of the information concerning the grades and staple length of cotton on hand, and when requested to permit such agent or employee of the Department of Agriculture to examine and classify samples of all such cotton on hand. The request of the Secretary of Agriculture for such information may be made in writing or by a visiting representative, and if made in writing shall be forwarded by registered mail, and the registry receipt of the Post Office Department shall be accepted as evidence of such demand. Any owner, president, treasurer, secretary, director, or other officer or agent of any cotton warehouse, cotton gin, cotton mill, or other place or establishment where cotton is stored, or any owner or holder of any cotton or the agent or representative of any such owner or holder, who, under the conditions hereinbefore stated, shall refuse or willfully neglect to furnish any information herein provided for or shall willfully give answers that are false or shall refuse to allow agents or employees of the Department of Agriculture to examine or classify any cotton in store in any such establishment, or in the hands of any owner or holder or of the agent or representative of any such owner or holder, shall be guilty of a misdemeanor and, upon conviction thereof, shall be fined not less than \$300 or more than \$1,000.

Sec. 4. The Secretary of Agriculture may cooperate with any department or agency of the Government, any State, Territory, District, or possession, or department, agency, or political subdivision thereof, or any person; and shall have the power to appoint, remove, and fix the compensation of such officers and employees, not in conflict with existing law, and make such expenditures for the

purchase of samples of cotton, for rent outside the District of Columbia, printing, telegrams, telephones, books of reference, periodicals, furniture, stationery, office equipment, travel, and other supplies and expenses as shall be necessary to the administration of this Act in the District of Columbia and elsewhere, and there are hereby authorized to be appropriated, out of any moneys in the Treasury not otherwise appropriated, such sums as may be necessary for such purposes.

Sec. 5. That, of the reports issued by the Secretary of Agriculture, pursuant to the Act entitled "An Act authorizing the Department of Agriculture to issue semi-monthly cotton crop reports and providing for their publication simultaneously with the ginning reports of the Department of Commerce," approved May 3, 1924, only five shall be issued hereafter, one as of August 1, one as of September 1, one as of October 1, one as of November 1, and one as of December 1, each of which shall state the condition and progress of the crop and the probable number of bales which will be ginned, these reports to be issued simultaneously with the cotton ginning reports of the Bureau of the Census relating to the same dates, the two reports to be issued from the same place at eleven antemeridian of the eighth day following that to which the respective reports relate. When such date of release falls on Sunday or a legal holiday the report shall be issued at eleven o'clock antemeridian of the next succeeding workday.

Sec. 6. The Secretary of Agriculture shall cause to be issued a report on or before the 10th day of July of each year showing by States and in toto the number of acres of cotton in cultivation on July 1, to be followed on September 1 and December 1 with an estimate of the acreage of cotton abandoned since July 1.

Approved, March 3, 1927.

END

© UPLATA 1980