



**AgEcon** SEARCH  
RESEARCH IN AGRICULTURAL & APPLIED ECONOMICS

*The World's Largest Open Access Agricultural & Applied Economics Digital Library*

**This document is discoverable and free to researchers across the globe due to the work of AgEcon Search.**

**Help ensure our sustainability.**

Give to AgEcon Search

AgEcon Search  
<http://ageconsearch.umn.edu>  
[aesearch@umn.edu](mailto:aesearch@umn.edu)

*Papers downloaded from **AgEcon Search** may be used for non-commercial purposes and personal study only. No other use, including posting to another Internet site, is permitted without permission from the copyright owner (not AgEcon Search), or as allowed under the provisions of Fair Use, U.S. Copyright Act, Title 17 U.S.C.*

99-49 (4934)

USDA STATISTICAL BULLETINS

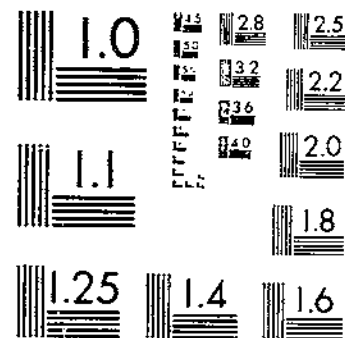
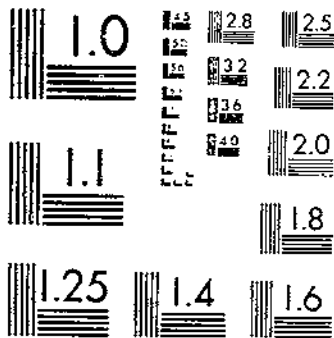
UPDATA

GOLD STORAGE HOLDINGS YEAR-ENDED DECEMBER 31, 1953

BROXTON, MA

1954

# START



© UPDATA 1981

MICROCOPY RESOLUTION TEST CHART  
NATIONAL BUREAU OF STANDARDS - 1963-A

MICROCOPY RESOLUTION TEST CHART  
NATIONAL BUREAU OF STANDARDS - 1963-A

Washington, D.C.

September 1934

# COLD-STORAGE HOLDINGS

Year Ended December 31, 1933  
With comparable data for earlier years



Prepared by the  
BUREAU OF AGRICULTURAL ECONOMICS

For sale by the Government Printing Office, Washington, D.C. Price 30 cents

## STATISTICAL BULLETIN SERIES

At the present time (September, 1934) statistical bulletins have been issued as follows:

1. Cold-storage holdings, year ended January 1923.
2. Seed statistics.
3. Sheep, hush, mutton, and wool statistics.
4. Cold-storage holdings, to October 1924.
5. Motor, trucks, and motor vehicles.  
Grain futures; daily data.
6. Shipments and unloads of certain fruits and vegetables.
7. Carload shipments of fruits and melons.
8. Carload shipments of vegetables.
9. Statistics of potatoes and sweet potatoes.
10. Hay and feed statistics.
11. Wheat and rye statistics.
12. Cold-storage holdings, year ended December 1925.
13. Prices of farm products received by producers, North Atlantic States.
14. Prices of farm products received by producers, South Central States.
15. Prices of farm products received by producers, South Atlantic and South Central States.
16. Prices of farm products received by producers, Mountain and Pacific States.
17. Statistics of hogs, pork, and lard products.
18. Carload shipments of fruits and vegetables from growers in the United States.
19. Cattle, calves, beef, veal, hides, and skins statistics.
20. American for sale and forest products.
21. Vegetable statistics.
22. Carload shipments and unloads of certain fruits and vegetables, 1924-26.
23. Statistics of fats, oils, and oleaginous raw materials.
24. Dairy statistics.
25. Cold-storage holdings, year ended December 31, 1927.
26. Car-load shipments of fruits and vegetables from growers in the United States for the calendar years 1926 and 1927.
27. Corn statistics.
28. Statistics of oats, barley, and grain sorghums.
29. Car-load shipments and unloads of important fruits and vegetables for the calendar years 1927 and 1928.
30. Wheat futures: Volume of trading, open commitments, and prices.
31. Stampage and log prices for the calendar year 1928.
32. Cold-storage holdings, year ended December 31, 1928.
33. Corn futures.
34. Car-load shipments of fruits and vegetables from growers in the United States for the calendar years 1928 and 1929.
35. Stampage and log prices for the calendar year 1929.
36. Stampage and log prices for the calendar year 1930.
37. Car-load shipments and unloads of important fruits and vegetables for the calendar years 1929 and 1930.
38. Cold-storage holdings, year ended December 31, 1931.
39. Grade, staple length, and tenacity of cotton in the United States, 1928-29 to 1931-32.
40. Wheat futures.
41. Car-load shipments of fruits and vegetables from growers in the United States for the calendar years 1930 and 1931.
42. Corn futures.
43. Stampage and log prices for the calendar years 1931 and 1932.
44. Grade and staple length of cotton in the United States as related to the domestic supply, 1928-29 to 1931-32.
45. Car-load shipments and unloads of important fruits and vegetables for the calendar years 1931 and 1932.
46. Grade, staple length, and tenacity of cotton in the United States, 1932-29 to 1932-33.
47. Cold-storage holdings, year ended December 31, 1933.

**UNITED STATES DEPARTMENT OF AGRICULTURE**  
**STATISTICAL BULLETIN No. 48**

Washington, D.C.



September 1934

## COLD-STORAGE HOLDINGS <sup>1</sup>

Year Ended December 31, 1933

With comparable data for earlier years

Prepared by the Bureau of Agricultural Economics <sup>2</sup>

### CONTENTS

	Page		Page
Introduction.....	1	Tables of cold-storage holdings--Continued.	
Tables of refrigerated space.....	3	Eggs.....	14
Tables of cold-storage holdings:		Poultry.....	16
Apples.....	8	Meats.....	19
Pears.....	9	Lard.....	27
Fruits, frozen and preserved.....	10	Fish.....	30
Butter.....	10	Index.....	42
Cheese.....	11		

### INTRODUCTION

This is the seventh of a series of bulletins published biennially on cold-storage warehouse space and cold-storage stocks of fruits, dairy products, eggs, dressed poultry, meats, lard, and fish.

It brings up to date to December 31, 1933, the tables shown in Statistical Bulletin No. 39 and includes tables showing the capacity of refrigerated warehouses as reported by a survey of October 1, 1933. A comparison of these tables of capacity with those of 1931 shows a decrease in refrigerated warehouse space of 28,901,473 cubic feet, or approximately 4 percent. Of this decrease, 29 percent, or 8,491,391 cubic feet, has been in public-warehouse capacity.

No additional commodity tables have been included in this bulletin and the arrangement and form are similar to those of Statistical Bulletin No. 39. Figures for cream and for ducks are not given as the period during which these items have been reported has been too brief to warrant making tables.

Table 1 showing the percentage holdings of commodities by geographic divisions, arranged according to the map shown in figure 1, is based on the year 1933.

<sup>1</sup> This bulletin brings to the dates shown the information given in Statistical Bulletin No. 39, Cold-Storage Holdings, issued Mar. 31, 1933.

<sup>2</sup> Compiled under the direction of William Broxton, assistant marketing specialist, in charge, cold-storage statistics.

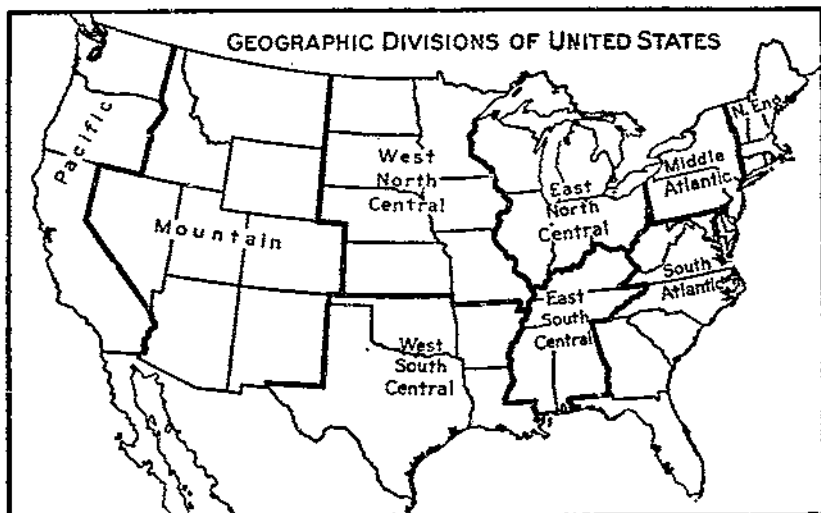


FIGURE 1.—The census geographic divisions as used in table 1.

TABLE 1.—Cold-storage stocks of commodities on the 1st of the month of heaviest holdings, by geographical divisions, 1933

Commodity	New England	Middle Atlantic	East North Central	West North Central	South Atlantic	East South Central	West South Central	Mountain	Pacific
	Percent	Percent	Percent	Percent	Percent	Percent	Percent	Percent	Percent
Apples.....	5	25	8	4	12	-----	1	1	44
Frozen and preserved fruits..	5	42	18	3	4	-----	1	-----	37
Creamery butter.....	7	21	35	23	1	3	2	2	6
Cheese.....	4	26	55	3	3	1	-----	3	5
Shell eggs.....	3	28	35	17	2	3	3	1	8
Frozen eggs.....	4	22	30	29	3	2	5	-----	5
Poultry.....	9	40	25	19	1	1	-----	-----	3
Beef.....	2	13	41	33	2	-----	6	-----	5
Pork.....	2	5	39	44	2	1	3	2	2
Lamb and mutton.....	14	32	27	17	-----	-----	-----	1	9
Meats, total.....	2	6	38	44	2	1	3	2	2
Lard.....	5	4	68	17	-----	1	1	2	2

TABLE 2.—Refrigerated space: Public cold-storage plants, Oct. 1, 1933

State	Concerns	Space held at temperatures of—				Total space
		10° F. and below	11° to 29° F.	30° to 44° F.	45° F. and above	
Alabama.....	Number	Cubic feet	Cubic feet	Cubic feet	Cubic feet	Cubic feet
Alaska.....	4	148,300	16,000	950,053	-----	1,112,353
Arkansas.....	3	697,083	70,950	-----	-----	768,033
California.....	4	4,750	40,000	671,428	-----	718,178
Colorado.....	43	1,992,197	1,521,066	16,416,165	31,230	19,960,687
Delaware.....	5	492,481	269,716	724,241	-----	1,396,418
Florida.....	4	76,800	488,808	233,706	-----	772,316
Georgia.....	10	324,233	292,268	1,173,582	174,320	1,964,403
Idaho.....	4	493,840	7,620	2,301,852	5,472	2,808,790
Illinois.....	5	121,700	61,600	334,032	-----	517,332
Indiana.....	26	9,230,013	819,089	24,363,072	200,600	34,612,173
Iowa.....	13	816,864	426,048	3,142,045	-----	4,388,977
-----	8	427,713	64,063	822,450	48,000	1,362,163

TABLE 2.—Refrigerated space: Public cold-storage plants, Oct. 1, 1933—Con.

State	Concerns	Space held at temperatures of—				Total space
		10° F. and below	11° to 29° F.	30° to 44° F.	45° F. and above	
	Number	Cubic feet	Cubic feet	Cubic feet	Cubic feet	Cubic feet
Kansas.....	12	1, 110, 494	930, 643	1, 669, 542	207, 013	3, 920, 692
Kentucky.....	5	305, 319	226, 755	2, 480, 662	.....	3, 012, 736
Louisiana.....	6	311, 147	10, 100	1, 751, 377	2, 800	2, 075, 424
Maryland.....	3	412, 610	254, 090	1, 095, 598	.....	1, 752, 238
Massachusetts.....	9	5, 288, 038	437, 850	4, 937, 447	1, 980	10, 666, 212
Michigan.....	12	1, 989, 410	357, 177	6, 373, 922	141, 585	8, 853, 100
Minnesota.....	8	1, 513, 497	400, 217	2, 012, 645	3, 135	4, 820, 494
Missouri.....	22	5, 273, 513	507, 489	13, 375, 430	89, 403	10, 335, 844
Nebraska.....	4	372, 274	39, 407	393, 213	7, 151	812, 135
New Jersey.....	15	4, 109, 880	2, 841, 838	14, 354, 416	281, 709	21, 590, 836
New York.....	09	11, 251, 985	3, 597, 163	49, 885, 510	021, 091	65, 650, 568
North Carolina.....	4	44, 668	30, 068	253, 362	.....	324, 110
Ohio.....	17	3, 747, 520	970, 646	12, 076, 950	82, 800	17, 786, 925
Oklahoma.....	5	161, 833	12, 220	1, 335, 911	121, 028	1, 630, 692
Oregon.....	13	1, 356, 994	699, 381	4, 061, 996	151, 048	6, 259, 409
Pennsylvania.....	35	4, 266, 018	3, 159, 170	15, 984, 713	239, 443	23, 619, 342
Tennessee.....	7	735, 809	42, 808	2, 719, 854	12, 008	3, 510, 471
Texas.....	23	1, 143, 797	214, 452	4, 471, 566	344, 327	6, 174, 342
Virginia.....	23	345, 570	773, 756	13, 448, 748	250, 000	14, 818, 105
Washington.....	37	2, 011, 651	3, 231, 712	15, 050, 781	29, 100	20, 323, 250
West Virginia.....	5	.....	.....	1, 622, 000	11, 200	1, 644, 400
Wisconsin.....	13	572, 959	617, 000	2, 140, 891	20, 750	3, 351, 600
All other States.....	14	1, 013, 684	60, 905	3, 774, 730	23, 760	4, 878, 999
Total.....	540	62, 018, 186	23, 598, 070	228, 187, 912	3, 407, 182	317, 211, 350

TABLE 3.—Refrigerated space: Private cold storage, Oct. 1, 1933

State	Concerns	Space held at temperatures of—				Total space
		10° F. and below	11° to 29° F.	30° to 44° F.	45° F. and above	
	Number	Cubic feet	Cubic feet	Cubic feet	Cubic feet	Cubic feet
California.....	4	64, 958	47, 432	698, 275	7, 000	817, 705
Colorado.....	3	3, 000	23, 672	34, 152	.....	60, 824
Illinois.....	6	1, 181, 673	1, 455, 032	745, 923	68, 160	3, 450, 788
Indiana.....	5	21, 207	.....	53, 873	14, 229	89, 309
Iowa.....	8	312, 484	451, 725	279, 559	.....	1, 043, 768
Kansas.....	5	26, 236	22, 440	433, 500	23, 666	505, 842
Maine.....	6	471, 048	.....	.....	.....	471, 048
Massachusetts.....	11	852, 329	.....	388, 653	.....	1, 240, 982
Michigan.....	8	21, 273	11, 462	178, 913	.....	211, 648
Mississippi.....	3	16, 130	15, 598	50, 190	12, 250	74, 168
Nebraska.....	3	17, 860	8, 954	75, 981	.....	102, 795
New Jersey.....	4	62, 638	26, 399	157, 059	23, 744	269, 740
New York.....	29	308, 227	149, 520	1, 194, 324	123, 463	1, 775, 554
Ohio.....	19	107, 902	325, 914	440, 645	202, 040	1, 076, 501
Oregon.....	8	22, 189	169, 602	1, 704, 006	.....	1, 895, 857
Pennsylvania.....	15	474, 527	115, 550	1, 098, 358	32, 227	1, 720, 662
Tennessee.....	5	163, 662	17, 870	161, 242	.....	342, 774
Texas.....	7	.....	.....	262, 805	46, 023	308, 828
Utah.....	3	54, 000	600, 000	282, 200	.....	936, 200
Washington.....	36	354, 167	253, 440	12, 931, 359	49, 212	13, 568, 178
Wisconsin.....	20	19, 255	51, 171	1, 170, 501	67, 029	1, 297, 958
All other States.....	17	473, 010	98, 714	789, 515	116, 334	1, 477, 573
Total.....	225	5, 007, 715	3, 844, 555	23, 111, 033	775, 397	32, 738, 700



TABLE 4.—Refrigerated space: Combined public and private cold storages, Oct. 1, 1935

State	Concerns	Space held at temperatures of—				Total space
		10° F. and below	11° to 29° F.	30° to 44° F.	45° F. and above	
	<i>Number</i>	<i>Cubic feet</i>	<i>Cubic feet</i>	<i>Cubic feet</i>	<i>Cubic feet</i>	<i>Cubic feet</i>
California.....	3	8,898	12,276	1,068,854		1,028,028
Colorado.....	3	9,765	48,137	920,580	18,742	1,037,233
Connecticut.....	4	138,375	34,960	480,120		653,455
Illinois.....	4	1,523,830	2,126,374	7,474,596		11,124,790
Iowa.....	5	351,351	91,667	814,519		1,257,537
Kansas.....	4	2,028,127	787,725	10,785,850	1,055,028	14,656,730
Massachusetts.....	9	51,053	145,726	731,051	5,034	935,264
Michigan.....	4	164,065	216,439	785,362	10,000	1,176,798
Minnesota.....	4	199,332	35,600	164,664		399,696
Missouri.....	4			516,027		516,027
Montana.....	3	18,990	35,872	77,815	15,000	147,677
Nebraska.....	7	1,372,172	164,007	1,529,716		3,065,895
New Jersey.....	8	253,688	130,917	270,422		655,027
New York.....	16	354,821	156,789	1,950,131	40,860	2,502,601
North Carolina.....	3	10,790	10,790	115,635	19,200	156,415
Ohio.....	6	140,123	105,528	1,049,342		1,294,993
Oregon.....	6	100,554	124,120	754,114		978,788
Pennsylvania.....	4	21,730	5,400	377,233	1,350	405,713
Texas.....	3	112,103	104,937	834,368	51,538	1,103,931
Virginia.....	0	28,000		1,797,000		1,825,000
Washington.....	29	166,684	174,497	10,604,944	311,291	11,257,316
West Virginia.....	4	3,000	800	1,535,700	1,530	1,541,036
Wisconsin.....	14	239,959	735,383	2,202,570	30,300	3,208,212
All other States.....	15	630,092	565,250	2,351,370	187,021	3,744,233
Total.....	175	8,016,337	5,813,184	49,130,412	1,757,850	64,717,783

TABLE 5.—Refrigerated space: Meat-packing establishments, Oct. 1, 1935

State	Concerns	Space held at temperatures of—				Total space
		10° F. and below	11° to 29° F.	30° to 44° F.	45° F. and above	
	<i>Number</i>	<i>Cubic feet</i>	<i>Cubic feet</i>	<i>Cubic feet</i>	<i>Cubic feet</i>	<i>Cubic feet</i>
California.....	21	499,816	244,972	5,078,089	294,696	6,117,573
Colorado.....	5	738,652	454,221	3,428,623	443,390	5,065,586
Idaho.....	8	36,096	9,000	178,572	1,740	225,408
Illinois.....	33	3,746,969	19,348,036	29,828,340	6,883,760	59,807,104
Indiana.....	20	465,478	958,211	10,401,949	1,272,635	13,098,273
Iowa.....	9	1,601,625	2,495,224	14,428,930	3,327,697	21,763,476
Kansas.....	8	746,052	1,472,403	10,955,344	2,081,768	15,255,567
Kentucky.....	0	32,556	44,974	1,277,033	113,428	1,468,991
Maryland.....	9	62,056	107,394	2,039,810	326,040	2,532,309
Massachusetts.....	6	548,978	100,016	6,537,768	604,106	8,090,866
Michigan.....	5	217,356	266,947	3,497,858		3,982,171
Minnesota.....	12	2,400,730	1,983,880	12,607,101	2,689,984	19,681,695
Missouri.....	4	1,131,987	874,901	11,988,864	734,340	14,640,102
Nebraska.....	4	1,818,708	1,661,906	13,780,270	1,210,046	17,870,930
New Jersey.....	8	3,023	144,388	1,160,893	1,070,569	2,364,873
New York.....	33	350,128	926,498	10,138,487	920,630	12,341,743
Ohio.....	32	177,020	338,814	6,761,254	349,138	7,626,224
Pennsylvania.....	35	238,390	596,761	5,336,315	764,189	6,935,655
South Dakota.....	3	157,130	1,655,128	1,893,240	768,745	4,474,243
Tennessee.....	4	82,616	52,700	1,050,431	119,076	1,314,423
Texas.....	11	908,024	437,708	8,280,837	696,105	10,323,674
Washington.....	8	164,490	573,045	2,119,509	145,403	3,002,447
West Virginia.....	3		3,519	814,546		818,065
Wisconsin.....	9	709,060	123,844	3,471,279	373,531	4,677,714
All other States.....	28	541,145	1,274,420	7,359,027	1,158,308	10,330,906
Total.....	334	17,679,104	35,459,610	174,350,078	26,359,932	253,829,644

TABLE 6.—Refrigerated space: Meat-packing establishments doing public cold-storage business, Oct. 1, 1933

State	Concerns	Space held at temperatures of—				Total space.
		10° F. and below	11° to 29° F.	30° to 44° F.	45° F. and above	
	Number	Cubic feet	Cubic feet	Cubic feet	Cubic feet	Cubic feet
Iowa.....	5	585,851	6,850	2,587,316	194,000	3,374,017
Kansas.....	3	843,040	685,170	6,268,636	1,007,123	8,594,969
New York.....	3	370,635	142,190	2,775,779	15,920	3,304,544
Pennsylvania.....	3	.....	22,000	1,288,715	231,694	1,542,409
All other States.....	13	3,792,650	1,866,411	14,753,047	5,910,270	26,322,378
Total.....	25	5,593,105	2,722,687	27,708,493	7,420,007	43,444,292

TABLE 7.—Total refrigerated space: All cold storages, including meat-packing establishments, reporting to the Bureau of Agricultural Economics, Oct. 1, 1933

State	Concerns	Space held at temperatures of—				Total space
		10° F. and below	11° to 29° F.	30° to 44° F.	45° F. and above	
	Number	Cubic feet	Cubic feet	Cubic feet	Cubic feet	Cubic feet
Alabama.....	5	146,300	20,500	1,314,553	185,000	1,675,353
Alaska.....	2	984,381	125,157	.....	.....	1,109,538
Arizona.....	2	.....	45,024	415,801	24,350	480,075
Arkansas.....	6	4,750	45,360	1,091,428	.....	1,141,538
California.....	71	2,563,911	1,825,745	23,201,383	332,956	27,923,995
Colorado.....	16	1,243,878	796,446	5,107,605	462,132	7,610,061
Connecticut.....	8	224,225	55,160	1,292,660	.....	1,572,045
Delaware.....	5	79,800	468,888	318,751	33,111	900,560
District of Columbia.....	2	350,230	.....	1,713,695	31,776	2,095,601
Florida.....	12	228,283	303,418	1,329,413	180,692	2,141,806
Georgia.....	29	729,540	185,220	3,551,876	278,872	4,745,514
Idaho.....	15	160,196	165,000	1,099,562	1,740	1,426,494
Illinois.....	71	18,185,860	24,203,530	66,486,203	10,537,881	119,503,474
Indiana.....	31	1,407,162	1,395,259	13,838,675	1,310,963	17,952,059
Iowa.....	36	3,279,024	3,019,460	18,932,774	3,569,697	28,800,961
Kansas.....	32	4,703,858	3,907,357	30,136,872	4,434,678	43,242,745
Kentucky.....	13	445,950	284,017	4,055,752	113,428	4,899,147
Louisiana.....	7	311,147	16,100	1,828,105	2,800	2,152,152
Maine.....	10	725,211	24,021	826,459	4,907	1,580,598
Maryland.....	15	674,966	361,424	3,921,371	390,440	5,354,201
Massachusetts.....	35	7,056,809	702,252	13,913,967	689,180	21,362,295
Michigan.....	33	2,383,150	851,925	10,830,655	151,565	14,222,715
Minnesota.....	25	4,113,559	2,410,697	15,093,853	2,693,119	24,020,228
Mississippi.....	3	16,130	15,598	30,190	12,250	74,168
Missouri.....	45	0,493,110	1,511,030	25,904,330	898,928	34,807,407
Montana.....	5	42,984	52,372	271,619	15,000	381,976
Nebraska.....	18	3,591,014	1,274,454	15,776,160	1,217,197	21,848,845
New Jersey.....	36	4,891,484	3,345,948	16,720,900	1,630,794	26,589,036
New York.....	182	12,835,816	4,072,160	65,044,240	2,029,794	85,982,010
North Carolina.....	10	55,470	30,859	423,501	34,840	550,669
North Dakota.....	3	209,493	26,074	618,221	18,719	874,507
Ohio.....	75	4,231,315	1,764,732	22,483,295	937,820	29,422,168
Oklahoma.....	10	592,604	789,663	5,426,292	1,155,679	7,964,178
Oregon.....	29	1,535,297	1,138,088	7,205,084	309,815	10,278,284
Pennsylvania.....	92	4,040,663	3,928,941	24,085,334	1,268,963	34,223,841
Rhode Island.....	4	234,053	7,200	1,469,017	.....	1,730,270
South Dakota.....	5	157,130	1,676,578	1,908,090	863,245	4,605,043
Tennessee.....	18	987,923	149,628	4,107,027	131,676	5,465,354
Texas.....	57	2,164,929	787,297	13,849,606	1,138,043	17,909,875
Utah.....	8	482,632	1,078,803	1,196,388	723,040	3,480,863
Virginia.....	29	391,570	869,910	16,088,216	341,114	17,690,810
Washington.....	111	2,682,652	4,308,760	43,122,237	535,012	50,628,651
West Virginia.....	14	3,000	15,519	3,993,493	12,736	4,024,748
Wisconsin.....	57	1,813,233	2,377,398	11,458,241	1,004,610	16,053,482
All other States.....	7	10,572	24,249	295,583	.....	330,406
Total.....	1,290	98,314,447	71,438,106	502,468,823	39,720,388	711,041,769

TABLE 8.—Total refrigerated warehouse space with comparisons, stated years

Class of business	1921		1923		1925		1927	
	Firms	Space	Firms	Space	Firms	Space	Firms	Space
	<i>Number</i>	<i>Cubic feet</i>	<i>Number</i>	<i>Cubic feet</i>	<i>Number</i>	<i>Cubic feet</i>	<i>Number</i>	<i>Cubic feet</i>
Public cold storage.....	342	194,166,381	369	205,035,902	410	242,563,913	482	273,896,321
Private cold storage.....	275	15,040,156	807	24,076,886	264	24,065,827	273	24,805,867
Combined public and private cold storages.....	250	39,743,977	216	46,312,511	212	57,034,780	218	57,275,110
Meat-packing establishments.....	443	258,518,990	433	201,448,848	397	240,165,022	378	245,554,904
Packing establishments doing a public cold-storage business.....	22	35,173,388	27	47,630,397	34	56,537,608	31	66,314,371
Total.....	1,302	543,572,892	1,354	585,404,634	1,323	626,667,750	1,303	667,840,573

Class of business	1929		1931		1933	
	Firms	Space	Firms	Space	Firms	Space
	<i>Number</i>	<i>Cubic feet</i>	<i>Number</i>	<i>Cubic feet</i>	<i>Number</i>	<i>Cubic feet</i>
Public cold storage.....	517	316,810,362	529	325,702,741	540	317,211,350
Private cold storage.....	270	29,132,614	249	35,222,469	225	32,738,709
Combined public and private cold storages.....	269	60,321,748	209	58,853,463	175	64,717,783
Meat-packing establishments.....	375	266,284,067	345	251,599,061	334	253,829,644
Packing establishments doing a public cold-storage business.....	29	56,065,142	24	68,465,578	25	43,444,292
Total.....	1,400	728,594,833	1,356	740,843,242	1,299	711,941,769

TABLE 9.—Refrigerated space: Summary by class of business Oct. 1, 1933

Class of business	Warehouses	Space held at temperatures of—				Total space
		10° F. and below	11° to 29° F.	30° to 44° F.	45° F. and above	
	<i>Number</i>	<i>Cubic feet</i>	<i>Cubic feet</i>	<i>Cubic feet</i>	<i>Cubic feet</i>	<i>Cubic feet</i>
Public cold storage.....	540	62,018,169	23,598,070	228,187,912	3,407,182	317,211,350
Private cold storage.....	225	5,007,715	3,844,355	23,111,033	775,397	32,738,709
Combined public and private cold storages.....	175	8,016,237	5,813,164	49,130,412	1,757,850	64,717,783
Meat-packing establishments.....	334	17,678,104	35,459,810	174,330,978	26,359,952	253,829,644
Packing establishments doing a public cold-storage business.....	25	5,593,105	2,722,687	27,708,493	7,420,007	43,444,292
Total.....	1,299	98,314,447	71,438,106	502,468,828	38,720,388	711,941,769

TABLE 10.—Refrigerated space: Leading cities, public cold storages, Oct. 1, 1933

City	Concerns	Space held at temperatures of—				Total space
		10° F. and below	11° to 29° F.	30° to 44° F.	45° F. and above	
	<i>Number</i>	<i>Cubic feet</i>	<i>Cubic feet</i>	<i>Cubic feet</i>	<i>Cubic feet</i>	<i>Cubic feet</i>
Buffalo, N.Y.....	3	1,578,562	335,622	2,385,727	.....	4,299,911
Chicago, Ill.....	10	9,145,351	737,064	21,540,824	200,000	31,643,239
Cincinnati, Ohio.....	4	691,394	392,940	2,135,772	.....	3,190,016
Cleveland, Ohio.....	5	2,319,483	616,706	7,736,622	.....	10,672,811
Dallas and Fort Worth, Tex.....	7	966,405	25,856	2,320,202	59,759	3,283,222
Detroit, Mich.....	7	1,856,854	243,504	5,931,025	141,585	8,172,968
Kansas City, Kans. and Mo.....	3	1,461,585	.....	3,271,477	.....	4,733,062
Los Angeles, Calif.....	6	507,634	546,937	5,855,475	.....	6,940,046
Milwaukee, Wis.....	3	556,509	600,900	993,281	.....	2,143,790
Minneapolis and St. Paul, Minn.....	6	1,160,773	363,352	1,691,197	3,125	3,208,457
Greater New York.....	29	10,517,737	3,488,113	25,821,990	339,044	40,165,884
Philadelphia, Pa.....	8	2,548,560	1,220,172	6,189,253	188,303	10,154,294
Portland, Ore.....	5	937,094	427,309	1,906,120	138,800	3,411,923
Pittsburgh, Pa.....	6	1,026,474	1,355,599	3,615,021	11,140	8,008,234
St. Louis, Mo., and East St. Louis, Ill.....	6	3,027,800	197,661	6,348,450	.....	9,573,921
Seattle, Wash.....	6	1,277,995	569,027	2,750,327	.....	4,594,349
Total.....	114	30,592,226	11,178,862	100,424,773	1,081,766	152,217,127

TABLE 11.—Refrigerated space: Leading cities, meat-packing establishments, Oct. 1, 1933

City	Concerns	Space held at temperatures of—				Totalspace
		10° F. and below	11° to 29° F.	30° to 44° F.	45° F. and above	
	Number	Cubic feet	Cubic feet	Cubic feet	Cubic feet	Cubic feet
Baltimore, Md.	9	62,056	107,394	2,036,819	326,040	2,532,309
Boston, Mass.	3	830,053	86,267	5,983,747	586,035	7,486,102
Buffalo, N.Y.	4	5,115	62,239	1,460,984	43,610	1,571,948
Chicago, Ill.	22	2,985,272	18,783,383	23,168,221	6,056,404	60,943,340
Cincinnati, Ohio	9	13,246	11,330	1,291,621	51,424	1,367,615
Cleveland, Ohio	6	142,500	74,263	2,481,294	189,320	2,887,377
Louisville, Ky.	3	31,056	27,686	1,185,649	97,658	1,292,249
Greater New York	20	220,732	577,412	6,906,375	897,014	8,602,433
Philadelphia, Pa.	9	94,578	207,285	1,532,946	497,686	2,332,395
Pittsburgh, Pa.	5	20,574	20,880	1,305,535	119,686	1,472,674
St. Louis, Mo., and East St. Louis, Ill.	10	1,142,225	753,397	7,942,549	726,369	10,564,540
Total	100	5,497,401	20,717,438	55,245,740	9,572,405	91,032,982

TABLE 12.—Refrigerated space: Leading cities, all cold storages and meat-packing establishments, Oct. 1, 1933

City	Concerns	Space held at temperatures of—				Totalspace
		10° F. and below	11° to 29° F.	30° to 44° F.	45° F. and above	
	Number	Cubic feet	Cubic feet	Cubic feet	Cubic feet	Cubic feet
Baltimore, Md.	13	659,966	278,424	3,612,705	396,440	4,945,535
Boston, Mass.	7	5,505,753	359,127	9,928,195	643,195	16,436,270
Buffalo, N.Y.	12	2,179,491	688,987	6,691,175	43,610	9,601,263
Chicago, Ill.	42	17,036,244	23,662,353	56,002,034	9,710,685	106,411,216
Cincinnati, Ohio	14	763,294	739,400	4,697,488	355,274	6,195,176
Cleveland, Ohio	14	2,461,963	389,400	10,269,928	331,120	13,802,429
Dallas and Fort Worth, Tex.	12	1,857,929	433,924	9,586,938	755,664	12,644,555
Denver, Colo.	7	1,068,550	756,730	4,037,286	462,132	6,342,698
Detroit, Mich.	11	2,074,220	510,451	9,361,415	141,585	12,067,571
Green Bay, Wis.	9	141,959	505,174	1,826,851		2,473,984
Kansas City, Kans. and Mo.	11	4,554,185	2,699,934	25,426,362	4,014,725	36,695,206
Los Angeles, Calif.	14	621,158	749,593	9,236,667	163,650	10,771,068
Marshfield, Wis.	4	22,450		277,002	12,760	312,262
Milwaukee, Wis.	10	936,967	920,644	3,362,793	367,681	5,586,085
Minneapolis and St. Paul, Minn.	14	2,661,767	1,623,569	11,379,023	1,466,731	17,121,090
Greater New York	61	11,538,426	4,334,668	33,802,114	1,485,649	51,160,857
Omaha, Nebr.	9	3,231,101	1,110,387	15,012,304	1,217,197	20,570,989
Philadelphia, Pa.	21	3,113,024	1,485,505	8,404,199	685,889	13,689,217
Providence, R.I.	3	234,033	7,200	1,242,276		1,483,529
Portland, Ore.	9	1,078,306	597,234	2,963,938	297,587	4,957,047
Pittsburgh, Pa.	12	1,047,048	1,404,639	6,024,271	218,519	8,694,377
San Francisco and South San Francisco, Calif.	10	1,240,624	702,902	4,736,384	112,257	6,792,167
St. Louis, Mo., and East St. Louis, Ill.	18	4,377,925	951,058	15,317,676	801,554	21,448,413
Syracuse, N.Y.	6	790,964	52,444	1,584,394	365,109	2,782,913
Seattle, Wash.	16	1,111,255	1,212,611	3,893,276	239,960	6,517,122
Total	359	70,697,264	46,171,948	258,866,862	24,279,063	400,035,167

TABLE 13.—Apples, barreled: <sup>1</sup> Cold-storage holdings, 1915-33

[Thousand barrels; i. e., 000 omitted]

Year	Jan. 1	Feb. 1	Mar. 1	Apr. 1	May 1	June 1	Oct. 1	Nov. 1	Dec. 1
Average:									
1916-20.....	2,890	2,293	1,805	955	434	127	2,925	3,507	3,852
1921-25.....	3,436	2,682	1,917	1,120	565	198	747	3,420	3,168
1925-29.....	3,048	2,355	1,643	958	470	169	641	2,794	3,168
1929-33.....	1,693	1,215	770	408	196	74	460	1,647	1,504
1915.....	2,929	2,438	1,716	896	299	61		3,093	4,213
1916.....	3,743	3,524	2,543	1,561	709	218		2,530	3,166
1917.....	2,680	2,121	1,560	1,044	543	183		2,558	3,195
1918.....	2,754	2,226	1,575	978	356	101		2,915	3,280
1919.....	2,582	1,704	962	487	195	68	824	3,108	3,326
1920.....	2,693	2,002	1,385	795	274	64	452	3,516	4,570
1921.....	3,966	3,016	2,020	1,027	449	170	570	1,822	1,979
1922.....	1,742	1,424	996	561	248	74	1,219	4,133	4,319
1923.....	3,708	2,839	2,013	1,199	578	150	584	4,226	5,010
1924.....	4,512	3,634	2,755	1,768	1,044	430	479	3,172	3,709
1925.....	3,254	2,438	1,803	1,046	504	165	855	3,749	4,245
1926.....	3,855	3,157	2,288	1,307	617	221	484	3,188	4,554
1927.....	4,077	3,178	2,152	1,266	650	229	440	1,864	2,055
1928.....	1,699	1,266	840	501	262	121	652	2,078	2,889
1929.....	2,354	1,678	1,128	632	319	108	735	2,180	2,097
1930.....	1,762	1,316	897	481	229	96	500	1,571	1,456
1931.....	1,197	834	482	200	86	38	398	2,285	2,177
1932.....	1,944	1,322	762	369	165	63	389	1,342	1,340
1933.....	1,209	924	600	337	182	64	276	949	892

<sup>1</sup> All apples, except those packed in western-style boxes, are tabulated in terms of barrels on the basis of 3 bushels to the barrel. Previous to Oct. 1, 1923, apples packed in bushel baskets are included in this tabulation.

TABLE 14.—Apples, boxed: Cold-storage holdings, 1915-33

[Thousand boxes; i. e., 000 omitted]

Year	Jan. 1	Feb. 1	Mar. 1	Apr. 1	May 1	June 1	Oct. 1	Nov. 1	Dec. 1
Average:									
1916-20.....	5,340	4,644	3,254	1,916	923	239	2,809	5,570	11,075
1921-25.....	9,986	8,272	6,170	4,050	2,055	710	809	6,460	11,647
1925-29.....	12,487	9,081	7,099	4,845	2,424	870	1,340	10,228	16,415
1929-33.....	16,162	11,054	8,523	5,376	2,842	1,024	2,044	13,225	16,415
1915.....	4,091	3,441	2,323	1,341	525	142		1,789	3,685
1916.....	3,210	2,738	2,090	1,268	709	258		2,190	3,977
1917.....	4,356	3,790	2,646	1,504	796	246		2,216	4,463
1918.....	5,534	5,102	3,764	2,416	966	172		2,513	4,945
1919.....	5,137	4,205	2,431	1,410	545	170	440	4,244	7,793
1920.....	8,508	7,296	5,331	2,982	1,598	447	277	2,578	6,651
1921.....	7,259	6,266	4,890	3,548	2,009	826	667	5,464	11,281
1922.....	11,061	8,667	6,282	4,107	2,088	721	669	4,164	7,271
1923.....	8,310	7,612	5,593	3,345	1,475	360	789	6,686	13,896
1924.....	14,201	11,550	8,821	5,837	2,961	949	825	6,620	9,917
1925.....	9,059	7,264	5,266	3,412	1,801	674	1,091	9,165	15,041
1926.....	11,868	10,009	7,898	5,350	2,892	1,104	1,809	9,523	15,083
1927.....	13,365	10,435	7,298	4,613	2,312	717	1,043	9,674	13,423
1928.....	12,260	9,809	7,023	4,960	2,889	1,223	1,854	12,333	17,452
1929.....	15,853	12,388	7,905	4,889	2,224	631	901	11,046	15,235
1930.....	13,108	10,149	7,282	4,790	2,446	761	2,135	15,669	21,267
1931.....	19,137	13,347	11,371	6,852	3,683	1,425	3,203	15,472	16,849
1932.....	14,617	11,761	8,789	5,886	3,392	1,364	2,414	12,873	14,852
1933.....	12,704	10,124	7,179	4,462	2,463	938	1,567	11,067	13,574

TABLE 15.—Apples, basket:<sup>1</sup> Cold-storage holdings, 1923-33

[Thousand baskets; i.e., 000 omitted]

Year	Jan. 1	Feb. 1	Mar. 1	Apr. 1	May 1	June 1	Oct. 1	Nov. 1	Dec. 1
Average:									
1925-29	2,632	2,034	1,406	820	406	159	894	3,782	4,141
1929-33	6,906	5,317	3,650	2,022	977	365	2,200	8,255	8,697
1923							241	1,179	1,400
1924	1,351	1,078	808	471	203	64	193	1,138	1,374
1925	1,187	940	608	314	117	29	619	2,056	2,419
1926	2,103	1,672	1,138	672	329	124	352	2,235	2,713
1927	2,472	2,037	1,589	952	633	199	724	3,309	3,905
1928	3,177	2,315	1,536	900	460	222	1,064	4,032	5,057
1929	4,240	3,204	2,171	1,308	590	220	1,793	6,379	6,813
1930	5,607	4,005	2,595	1,555	763	309	1,965	6,748	6,948
1931	5,996	4,469	2,855	1,300	571	193	2,032	9,787	10,817
1932	9,681	7,664	5,182	2,737	1,269	465	2,342	9,881	10,633
1933	9,117	7,213	5,237	3,208	1,691	640	2,851	8,632	8,577

<sup>1</sup> Prior to Oct. 1, 1923, included with barreled apples.TABLE 16.—Apples (barreled and boxed):<sup>1</sup> Cold-storage holdings, 1915-33

[Thousand barrels; i.e., 000 omitted]

Year	Jan. 1	Feb. 1	Mar. 1	Apr. 1	May 1	June 1	Oct. 1	Nov. 1	Dec. 1
Average:									
1916-20	4,673	3,841	2,600	1,583	741	213		3,861	5,364
1921-25	6,833	5,574	4,066	2,523	1,271	441	1,083	5,865	7,890
1925-29	8,088	6,380	4,478	2,783	1,413	511	1,386	7,464	9,407
1929-33	9,030	6,972	4,833	2,874	1,469	537	1,874	8,817	9,965
1915	4,203	3,585	2,491	1,343	474	108		3,689	5,441
1916	4,813	4,230	3,242	1,984	1,035	304		3,260	4,492
1917	4,132	3,385	2,442	1,545	808	265		3,296	4,680
1918	4,599	3,957	2,830	1,783	678	159		3,752	4,928
1919	4,294	3,105	1,772	956	380	125	971	4,523	5,023
1920	5,529	4,524	3,162	1,699	806	213	544	4,475	6,789
1921	6,386	5,105	3,650	2,210	1,119	445	792	3,643	5,737
1922	5,429	4,313	3,090	1,930	944	314	1,452	5,521	6,743
1923	6,481	5,376	3,877	2,314	1,070	277	927	6,014	10,606
1924	9,696	7,843	5,965	3,871	2,060	768	820	5,758	7,473
1925	6,673	5,233	3,761	2,288	1,143	399	1,422	7,489	9,398
1926	8,512	7,051	5,360	3,314	1,691	630	1,204	7,107	10,486
1927	9,356	7,335	5,114	3,141	1,568	534	1,038	5,902	7,831
1928	6,845	5,307	3,609	2,454	1,378	602	1,631	8,733	10,392
1929	9,052	6,875	4,517	2,718	1,257	392	1,633	7,997	9,380
1930	7,967	6,034	4,259	2,566	1,299	453	1,572	9,043	10,860
1931	9,575	7,439	5,224	2,917	1,501	577	2,143	10,705	11,399
1932	10,043	7,807	5,419	3,243	1,799	673	1,974	8,827	9,811
1933	8,513	6,703	4,748	2,594	1,567	590	1,749	7,515	8,376

<sup>1</sup> All apples, except those packed in western-style boxes, are tabulated in terms of barrels, on the basis of 3 bushels to the barrel. Three boxes are considered the equivalent of 1 barrel. Since Oct. 1, 1923, apples packed in bushel baskets are also included in this tabulation.

TABLE 17.—Pears, boxes: Cold-storage holdings, 1923-33

[Thousand boxes; i.e., 000 omitted]

Year	Jan. 1	Feb. 1	Mar. 1	Apr. 1	May 1	June 1	July 1	Aug. 1	Sept. 1	Oct. 1	Nov. 1	Dec. 1
Average:												
1925-29	619	431	269	151	77	29	16	108	659	1,395	1,510	1,079
1929-33	1,166	823	543	299	122	26	8	118	972	1,952	2,007	1,556
1923								58	408	501	790	906
1924	380	218	134	75	28	9	1	91	425	489	576	468
1925	301	182	149	87	46	19	8	162	551	632	662	679
1926	490	381	177	97	52	16	7	129	719	1,285	1,171	834
1927	569	360	215	120	75	42	24	22	683	1,267	1,307	876
1928	642	452	296	168	93	46	31	125	904	2,024	2,100	1,511
1929	1,085	779	508	283	120	20	20	71	437	1,565	2,060	1,455
1930	1,123	825	512	265	71	21	6	164	1,382	2,464	2,812	2,828
1931	1,681	1,230	818	463	220	44	11	193	1,019	1,844	1,666	1,203
1932	864	590	423	248	102	21	4	142	1,377	1,906	1,768	1,472
1933	1,085	680	456	236	98	23	8	18	647	1,960	1,707	1,270

TABLE 18.—Pears, baskets: Cold-storage holdings, 1923-33

(Thousand baskets; i. e., 000 omitted)

Year	Jan. 1	Feb. 1	Mar. 1	Apr. 1	May 1	June 1	July 1	Aug. 1	Sept. 1	Oct. 1	Nov. 1	Dec. 1
Average:												
1923-29	56	45	27	18	9	6	3	32	225	279	135	96
1929-33	62	44	27	13	6	3	1	3	212	393	221	102
1923								273	111	192	126	93
1924	69	42	21	9	0			12	38	300	231	132
1925	87	63	27	12	9			108	345	219	177	186
1926	87	57	39	27	12	6	6	42	89	276	171	123
1927	78	51	30	18	9	3	3	3	171	192	126	60
1928	39	27	21	15	9	6	3	3	9	186	114	66
1929	45	30	21	15	12	9	6	6	495	525	84	39
1930	24	18	6	3				5	171	420	193	80
1931	49	36	23	8	3	1	1	1	93	153	353	130
1932	107	82	60	33	13	4	1	2	178	617	253	129
1933	87	54	25	4	1	1		1	122	249	224	133

TABLE 19.—Frozen and preserved fruits: Cold-storage holdings, 1923-33

(Thousand pounds; i. e., 000 omitted)

Year	Jan. 1	Feb. 1	Mar. 1	Apr. 1	May 1	June 1	July 1	Aug. 1	Sept. 1	Oct. 1	Nov. 1	Dec. 1
Average:												
1923-29	45,565	43,350	36,771	33,668	29,517	32,849	47,781	58,142	59,547	57,354	56,319	52,968
1929-33	73,082	67,590	61,513	57,018	50,944	53,097	68,133	82,068	82,707	79,626	77,940	74,407
1923							9,818	17,748	18,736	20,247	17,423	16,458
1924	15,588	11,549	11,244	9,592	7,519	9,993	20,325	33,918	37,472	38,001	34,601	34,688
1925	34,610	33,827	21,768	19,810	17,016	19,168	24,259	28,702	28,353	25,564	24,640	22,624
1926	24,054	21,562	19,124	16,368	13,370	23,347	39,421	53,941	59,825	57,960	55,068	54,189
1927	50,773	48,921	45,718	43,455	39,147	41,073	57,670	62,974	65,352	62,412	61,840	58,971
1928	54,681	52,196	43,945	40,137	36,659	38,372	60,616	82,226	79,211	79,457	77,274	73,195
1929	68,725	60,216	53,310	48,570	41,392	42,255	65,159	84,583	84,995	81,348	81,752	87,860
1930	54,942	58,085	41,723	38,554	32,535	35,854	44,797	73,360	81,734	81,178	80,049	76,737
1931	74,845	70,646	66,636	60,822	58,740	66,358	83,979	110,223	107,271	103,427	99,234	96,674
1932	92,308	88,819	82,283	78,182	72,184	69,068	90,323	92,717	91,968	87,592	83,570	79,651
1933	74,595	70,184	63,613	58,983	51,881	51,922	60,029	59,275	67,621	64,877	65,068	61,713

TABLE 20.—Creamery butter: Cold-storage holdings, 1916-33

(Thousand pounds; i. e., 000 omitted)

Year	Jan. 1	Feb. 1	Mar. 1	Apr. 1	May 1	June 1	July 1	Aug. 1	Sept. 1	Oct. 1	Nov. 1	Dec. 1
Average:												
1916-20	48,697	32,673	19,510	9,849	6,288	14,395	59,134	100,967	112,359	106,552	93,700	73,147
1921-25	45,061	30,730	16,446	9,477	5,488	16,076	66,008	106,191	118,381	110,116	91,649	67,999
1925-29	48,580	31,220	17,874	8,512	7,137	22,664	80,458	131,485	147,078	134,704	111,736	80,999
1929-33	47,561	34,422	23,187	14,489	13,165	35,644	95,681	134,597	139,891	126,877	106,314	83,485
1916							68,578	101,662	99,450	92,719	71,849	
1917	48,977	31,139	15,033	3,348	1,082	7,017	53,863	102,537	105,836	106,522	85,260	67,292
1918	46,134	30,474	16,252	6,805	3,607	9,953	49,962	88,992	108,179	109,154	90,813	79,928
1919	50,726	28,613	18,808	14,629	9,536	12,696	49,140	88,365	99,334	87,883	80,674	65,111
1920	43,910	26,777	24,191	11,909	9,659	29,433	90,158	123,548	131,368	121,816	100,474	73,554
1921	53,737	38,350	22,608	12,585	7,554	12,672	52,326	101,455	113,558	113,385	101,778	70,750
1922	58,682	41,466	27,163	14,732	7,712	21,682	61,991	82,838	92,292	90,116	77,983	65,129
1923	46,412	35,047	22,582	9,113	3,830	13,292	67,410	103,151	112,039	96,580	73,857	47,773
1924	26,819	16,122	8,910	4,824	3,248	10,112	22,788	101,774	102,731	96,117	75,472	51,598
1925	30,299	15,248	9,947	7,847	8,913	22,348	74,184	134,118	156,440	153,494	135,918	100,632
1926	65,694	45,748	28,790	10,846	3,739	13,036	63,687	109,073	128,403	114,172	94,916	74,754
1927	52,785	39,381	26,313	17,392	17,527	30,561	86,897	131,152	138,151	123,342	100,671	64,581
1928	34,347	17,652	7,952	3,044	3,436	25,494	89,996	145,147	163,701	147,390	118,679	83,224
1929	45,286	26,273	14,404	5,716	5,102	15,932	99,756	120,437	136,178	128,071	105,811	70,985
1930	43,783	24,747	11,910	5,532	5,883	28,300	91,962	151,621	168,362	158,541	138,405	111,650
1931	81,933	60,230	46,530	30,556	22,657	50,378	106,522	145,061	143,069	131,489	109,646	88,012
1932	63,401	46,792	30,672	18,010	17,165	35,165	89,172	115,121	104,678	90,162	68,229	47,242
1933	26,043	22,506	15,243	9,094	10,394	29,160	84,296	110,247	107,256	89,490	68,826	37,267
1933	22,043	17,533	11,580	9,255	9,398	35,159	106,378	130,934	176,476	174,713	166,465	138,166

TABLE 21.—American cheese:<sup>1</sup> Cold-storage holdings, 1915-33<sup>2</sup>

(Thousand pounds; i.e., 000 omitted)

Year	Jan. 1	Feb. 1	Mar. 1	Apr. 1	May 1	June 1	July 1	Aug. 1	Sept. 1	Oct. 1	Nov. 1	Dec. 1
<b>Average:</b>												
1915-20	40,038	31,287	22,110	16,286	11,040	13,060	20,645	52,425	66,219	63,766	55,731	48,060
1921-25	38,835	31,016	24,507	16,103	18,162	21,505	39,324	55,240	63,428	61,751	55,313	50,330
1925-29	57,099	48,921	41,894	36,883	34,647	39,306	55,130	73,842	81,426	79,634	74,807	67,889
1929-33	65,252	57,230	50,455	44,719	41,857	46,537	65,232	79,564	83,556	83,754	79,933	73,199
1915												
1916	28,558	18,908	13,373	8,443	6,546	7,301	16,357	31,689	46,776	49,679	45,713	37,060
1917	31,855	22,113	15,569	9,842	7,028	11,626	34,169	67,595	91,545	90,671	78,087	75,186
1918	66,794	56,299	37,743	27,905	17,736	20,393	30,054	48,804	55,742	42,086	83,402	25,625
1919	19,823	15,456	9,837	6,750	6,027	12,478	37,601	62,645	76,661	81,859	72,589	62,508
1920	53,168	43,631	34,039	23,431	16,963	13,502	29,654	51,512	60,372	55,007	48,568	39,821
1921	34,115	25,000	17,477	14,204	13,466	17,814	34,948	41,284	46,635	45,163	42,969	34,655
1922	27,691	21,430	15,006	10,745	10,868	15,481	33,130	46,560	53,625	49,473	40,862	37,291
1923	33,617	26,593	20,693	14,465	14,077	17,507	36,834	55,839	63,960	62,384	57,927	55,105
1924	49,586	40,608	35,182	28,204	26,202	27,172	45,239	65,894	76,406	73,153	67,905	68,705
1925	49,187	41,852	34,647	27,718	26,147	29,550	46,428	65,634	76,512	78,682	71,913	68,495
1926	58,457	50,339	42,587	38,041	35,697	39,346	54,069	73,681	81,207	77,646	72,491	63,881
1927	56,758	48,108	41,383	37,188	34,332	37,710	52,085	69,119	71,825	67,402	60,766	55,140
1928	49,014	43,837	38,189	33,294	32,177	39,203	55,386	75,862	86,632	84,745	85,126	77,258
1929	71,177	60,772	52,665	48,175	44,983	50,721	66,640	82,914	96,863	89,797	83,737	76,669
1930	68,930	58,972	53,208	40,607	43,230	53,403	74,966	93,773	102,963	90,162	83,674	75,736
1931	67,599	58,516	52,304	45,277	44,792	48,764	63,166	73,093	73,740	70,940	69,011	68,053
1932	60,804	54,360	47,106	42,009	38,951	40,461	53,922	63,667	66,721	68,556	66,813	62,392
1933	57,749	53,532	46,962	41,625	37,321	41,336	67,456	82,771	94,394	99,326	95,831	85,146

<sup>1</sup>The term "American cheese" is intended to cover only those varieties known as twins, flats, daisies, cheddars, longhorns, and square prints. It does not, therefore, include all kinds of cheese made in North America.

<sup>2</sup>The figures in this table from Jan. 1, 1927, to Dec. 1, 1931, which were shown in Statistical Bulletin 33 have been changed to take care of a quantity of cheese which had been reported as current trading stock, but which now appears to have been in reality, storage holdings.

TABLE 22.—Swiss cheese: Cold-storage holdings, 1917-33

(Thousand pounds; i.e., 000 omitted)

Year	Jan. 1	Feb. 1	Mar. 1	Apr. 1	May 1	June 1	July 1	Aug. 1	Sept. 1	Oct. 1	Nov. 1	Dec. 1
<b>Average:</b>												
1918-22	3,039	2,655	2,353	1,810	1,452	1,183	1,283	2,191	3,382	4,137	4,355	4,139
1921-25	6,446	5,906	5,317	4,308	4,702	3,467	3,289	4,039	5,536	6,447	7,209	7,301
1925-29	8,588	8,122	7,405	6,048	5,215	4,721	4,801	5,672	6,964	7,850	7,744	7,910
1929-33	7,891	7,480	6,908	5,982	5,223	4,589	4,898	6,071	7,141	7,447	7,624	7,624
1917												
1918	651	518	591	420	328	363	205	439	2,130	2,649	2,880	2,820
1919	3,205	2,848	2,604	1,768	1,065	867	1,003	2,017	2,789	3,124	3,277	3,187
1920	2,822	2,982	2,639	2,261	1,944	1,777	2,088	3,055	3,995	4,743	5,248	4,863
1921	4,580	3,675	2,951	2,204	1,878	1,394	1,440	2,910	3,337	4,404	4,641	4,326
1922	3,929	3,252	2,092	2,398	2,043	1,672	1,670	2,535	4,661	5,768	5,720	5,472
1923	5,417	4,824	3,537	2,619	1,853	1,708	2,089	3,132	4,718	5,135	6,064	7,358
1924	7,825	7,879	7,730	7,362	6,349	7,094	5,676	6,130	7,376	8,095	10,635	10,309
1925	10,469	9,596	9,376	8,955	8,385	5,567	5,593	5,486	7,588	8,683	8,955	9,041
1926	8,958	8,856	8,254	6,846	5,310	4,741	4,465	5,390	5,418	7,266	7,903	8,364
1927	8,424	8,128	7,444	6,148	3,580	5,328	5,265	6,872	7,024	7,752	7,634	7,258
1928	7,210	6,318	5,343	4,422	3,877	3,559	3,700	4,580	6,367	6,748	6,487	7,332
1929	7,920	7,309	6,600	5,869	4,822	4,410	5,014	5,534	7,024	7,780	7,741	7,557
1930	8,881	7,939	7,417	6,608	6,324	6,621	5,728	6,334	7,570	8,040	8,504	8,629
1931	8,867	8,742	8,381	7,275	6,245	5,237	5,098	5,799	6,479	6,820	9,749	10,007
1932	9,747	9,542	8,411	7,606	6,558	4,963	3,948	4,013	5,040	4,968	4,577	4,430
1933	4,238	3,867	3,727	3,153	2,164	1,691	2,322	2,812	4,345	5,595	6,064	7,596



12 STATISTICAL BULLETIN 48, U. S. DEPT. OF AGRICULTURE

TABLE 23.—*Brick and Münster cheese: Cold-storage holdings, 1917-33*

(Thousand pounds; i.e., 000 omitted)

Year	Jan. 1	Feb. 1	Mar. 1	Apr. 1	May 1	June 1	July 1	Aug. 1	Sept. 1	Oct. 1	Nov. 1	Dec. 1
<b>Average:</b>												
1918-22	1,266	1,193	993	696	663	779	1,303	1,322	1,370	1,172	1,216	1,332
1921-25	1,714	1,430	1,148	864	895	1,310	1,852	2,055	2,024	1,828	1,794	1,741
1925-29	1,843	1,568	1,275	1,150	1,277	1,539	1,769	1,907	1,754	1,532	1,483	1,529
1929-33	1,226	1,019	723	587	667	830	1,313	1,211	1,008	960	911	903
1917									417	352	369	576
1918	532	423	377	612	658	451	416	531	687	615	781	1,157
1919	1,074	1,323	983	503	336	418	860	845	828	810	824	952
1920	1,114	1,018	802	560	486	715	1,850	2,065	2,254	1,869	1,742	1,592
1921	1,753	1,492	1,200	902	884	1,151	1,675	1,671	1,663	1,726	1,709	1,767
1922	1,855	1,710	1,602	902	949	1,158	1,692	1,500	1,117	842	1,023	1,193
1923	1,606	1,259	909	692	861	1,307	2,511	2,916	3,235	3,037	2,535	1,945
1924	1,635	1,385	1,038	961	1,019	1,467	2,141	2,023	1,815	1,539	1,680	1,692
1925	1,721	1,306	992	924	1,112	1,465	1,739	2,164	2,291	1,994	2,022	2,110
1926	2,347	2,126	1,605	1,458	1,573	1,931	1,906	1,865	1,531	1,442	1,381	1,519
1927	1,801	1,633	1,548	1,282	1,478	1,807	1,971	1,964	1,850	1,857	1,762	1,708
1928	1,749	1,463	1,247	1,118	1,207	1,390	1,992	2,335	2,113	1,567	1,305	1,214
1929	1,597	1,311	981	968	1,017	1,100	1,266	1,205	982	800	940	1,003
1930	1,449	1,356	1,085	974	1,086	1,400	1,763	1,452	895	796	890	758
1931	997	890	634	379	506	498	673	672	668	801	1,116	1,385
1932	1,365	1,024	516	308	401	568	1,039	911	766	964	563	594
1933	720	606	404	306	320	525	1,830	1,814	1,728	1,438	1,041	687

TABLE 24.—*Limburger cheese: Cold-storage holdings, 1917-33*

(Thousand pounds; i.e., 000 omitted)

Year	Jan. 1	Feb. 1	Mar. 1	Apr. 1	May 1	June 1	July 1	Aug. 1	Sept. 1	Oct. 1	Nov. 1	Dec. 1
<b>Average:</b>												
1918-22	881	660	598	454	390	362	564	841	1,212	1,182	1,104	967
1921-25	924	780	671	548	491	499	757	1,091	1,241	1,275	1,181	1,025
1925-29	1,429	1,272	1,125	966	924	942	1,138	1,516	1,690	1,680	1,576	1,430
1929-33	1,114	950	722	573	532	587	831	1,043	1,195	1,164	1,068	1,033
1917									719	655	378	323
1918	534	311	300	157	250	197	233	430	1,441	1,552	1,485	1,341
1919	1,314	932	622	739	568	410	690	834	1,135	920	762	744
1920	712	630	592	540	415	503	595	1,097	1,401	1,333	1,276	1,059
1921	955	791	681	494	417	341	660	957	1,095	1,170	1,127	866
1922	887	585	493	334	346	351	636	879	986	937	868	824
1923	753	618	558	440	371	421	800	1,261	1,531	1,677	1,264	1,098
1924	1,050	952	721	700	681	625	751	1,138	1,239	1,119	1,224	1,046
1925	903	952	904	773	690	797	923	1,220	1,354	1,470	1,422	1,292
1926	1,449	1,293	1,192	1,029	957	1,068	1,277	1,095	1,803	1,829	1,544	1,554
1927	1,615	1,478	1,469	1,342	1,334	1,313	1,594	2,035	2,189	2,122	2,055	1,776
1928	1,659	1,355	1,159	950	854	904	1,119	1,458	1,491	1,433	1,449	1,454
1929	1,457	1,282	901	735	785	716	779	1,172	1,618	1,544	1,409	1,072
1930	1,200	959	810	716	638	654	1,039	1,453	1,470	1,418	1,007	959
1931	856	614	474	339	265	271	516	719	614	604	688	903
1932	1,071	1,084	833	769	837	927	1,173	1,218	1,263	1,128	1,001	985
1933	937	811	562	395	435	406	651	651	1,008	1,124	1,236	1,245

TABLE 25.—Miscellaneous varieties of cheese:<sup>1</sup> Cold-storage holdings, 1917-33

(Thousand pounds; i.e., 000 omitted)

Year	Jan. 1	Feb. 1	Mar. 1	Apr. 1	May 1	June 1	July 1	Aug. 1	Sept. 1	Oct. 1	Nov. 1	Dec. 1
<b>Average:</b>												
1918-22	3,236	3,177	2,835	2,718	2,799	3,276	4,252	5,074	5,422	5,156	4,844	4,521
1921-25	6,030	6,094	5,458	4,068	5,347	6,087	7,405	8,091	7,900	7,358	6,510	6,082
1925-29	5,720	5,165	4,015	4,460	4,902	6,154	8,171	8,792	8,319	7,369	6,545	5,948
1929-33	5,563	5,128	4,639	4,477	4,985	6,032	8,620	8,461	7,879	6,921	6,045	5,499
1917												
1918	1,118	944	825	824	966	1,741	4,317	6,579	8,669	7,919	6,529	6,530
1919	4,810	5,160	4,262	5,343	6,842	9,110	11,333	12,053	11,175	10,380	9,208	9,022
1920	6,876	6,104	5,594	5,346	5,797	6,845	10,316	12,306	12,237	12,030	12,260	11,345
1921	9,754	9,248	8,149	7,013	7,294	7,751	8,867	9,494	10,171	9,904	9,060	7,988
1922	7,232	6,023	5,385	4,960	4,774	5,507	6,465	6,265	6,486	5,906	5,464	3,840
1923	3,840	3,934	3,819	3,599	3,930	5,292	6,485	7,712	7,219	6,558	6,482	7,117
1924	7,126	6,510	5,739	5,156	6,034	6,266	7,916	8,918	8,375	7,376	6,599	5,842
1925	5,218	4,753	4,198	4,112	4,703	5,509	7,299	8,064	7,727	7,048	6,554	5,323
1926	5,438	4,917	4,537	3,911	4,013	5,081	7,054	7,422	7,424	7,152	6,466	5,766
1927	5,019	4,871	4,229	3,875	4,737	6,590	8,387	9,975	9,395	7,947	7,117	6,540
1928	5,643	4,933	4,325	4,026	5,546	6,421	8,186	8,247	7,620	6,758	5,862	5,645
1929	8,681	6,350	5,934	5,476	5,962	7,230	9,926	10,232	9,430	7,910	6,725	6,162
1930	5,815	5,297	4,781	5,123	5,653	10,020	11,716	10,911	10,063	8,361	7,103	5,703
1931	5,169	4,816	4,364	4,441	5,614	7,472	8,558	8,381	7,783	6,805	6,222	5,687
1932	5,331	4,672	4,102	3,029	4,017	5,174	6,448	6,518	6,057	5,791	5,290	5,515
1933	5,020	4,505	4,016	3,417	3,650	4,763	6,450	6,243	6,600	5,648	4,883	4,336

<sup>1</sup> Includes cheese not classified on cold-storage report and holdings of storages not reporting by varieties.TABLE 26.—All varieties of cheese:<sup>1</sup> Cold-storage holdings, 1917-33

(Thousand pounds; i.e., 000 omitted)

Year	Jan. 1	Feb. 1	Mar. 1	Apr. 1	May 1	June 1	July 1	Aug. 1	Sept. 1	Oct. 1	Nov. 1	Dec. 1
<b>Average:</b>												
1918-22	51,460	42,373	31,607	24,294	20,660	24,449	44,458	63,850	74,316	70,332	62,955	54,063
1921-25	54,555	45,226	37,191	29,791	28,677	32,858	52,727	70,516	80,225	78,628	73,307	68,479
1925-29	74,689	65,028	56,344	49,567	47,055	52,692	71,009	91,629	100,153	97,865	92,158	84,706
1929-33	81,046	71,667	63,447	56,338	54,264	59,475	80,410	95,177	100,309	99,940	95,404	88,258
1917												
1918	69,619	58,495	39,530	29,978	19,937	23,087	35,225	50,762	65,970	54,800	44,366	37,473
1919	30,225	25,748	18,608	15,102	14,838	23,201	51,407	78,394	92,559	96,593	87,860	76,414
1920	64,694	54,416	43,656	32,144	25,605	23,341	44,504	70,034	80,268	74,962	69,092	58,800
1921	51,169	40,207	30,456	24,908	23,940	28,453	47,617	56,317	62,903	62,366	59,505	49,002
1922	41,594	33,001	25,477	19,339	18,950	24,070	43,542	57,763	66,875	62,923	53,815	49,620
1923	45,234	37,228	29,516	21,615	21,192	26,235	48,728	70,860	80,063	78,791	74,302	72,623
1924	67,221	57,232	50,388	42,413	40,235	42,644	61,755	84,073	95,211	91,252	88,043	77,594
1925	67,558	58,461	50,117	40,480	39,637	42,888	61,992	83,568	95,472	97,777	90,866	84,561
1926	76,649	67,531	58,175	51,285	47,450	52,167	68,771	90,653	98,473	95,385	89,785	81,084
1927	74,217	64,216	56,073	49,635	47,461	52,749	69,302	86,965	92,260	87,080	79,334	72,426
1928	66,164	57,906	50,263	44,710	43,761	51,477	71,353	92,482	104,224	101,251	100,229	92,903
1929	88,832	77,024	67,087	61,223	57,569	64,177	83,627	102,077	110,311	107,831	100,558	92,555
1930	66,075	74,523	67,281	59,928	56,040	72,358	95,221	113,923	112,061	108,767	101,148	91,775
1931	83,288	73,488	66,177	57,711	57,422	60,242	77,989	99,264	91,284	88,564	87,366	84,035
1932	78,316	70,682	60,962	54,021	50,764	52,118	66,531	76,327	79,847	81,406	78,274	73,016
1933	68,714	63,321	55,731	48,806	43,626	48,481	78,715	94,291	108,035	113,131	109,655	99,009

<sup>1</sup> Figures in this table from Jan. 1, 1927, to Dec. 1, 1931, which were shown in Statistical Bulletin 33, have been changed to take care of a quantity of American cheese which had been reported as current trading stock, but which now appears to have been, in reality, storage holdings.

TABLE 27.—Shell eggs: <sup>1</sup> Cold-storage holdings, 1915-33

[Thousand cases; i. e., 000 omitted]

Year	Jan. 1	Feb. 1	Mar. 1	Apr. 1	May 1	June 1	July 1	Aug. 1	Sept. 1	Oct. 1	Nov. 1	Dec. 1
Average:												
1910-20.....	1,202	256	23	248	2,560	5,251	6,630	6,849	6,472	5,645	4,272	2,466
1921-25.....	1,117	203	27	1,030	4,346	7,475	9,147	9,513	9,070	7,790	5,868	3,315
1925-29.....	1,225	237	63	1,125	4,515	7,757	9,538	10,015	9,517	8,071	5,774	3,220
1929-33.....	1,129	372	185	1,443	4,544	7,442	8,893	9,120	8,568	7,338	5,172	2,814
1915.....								5,029	5,683	5,019	3,687	2,788
1916.....	1,508	458	35	204	2,327	4,593	5,574	6,060	5,400	4,868	3,985	2,146
1917.....	920	149	7	190	2,105	4,922	6,617	6,895	6,338	5,837	4,638	2,948
1918.....	1,300	200	20	344	2,657	5,499	6,554	6,568	6,285	5,369	3,812	2,071
1919.....	740	130	28	320	3,278	6,098	7,659	7,850	7,685	6,858	5,087	3,341
1920.....	1,542	342	29	122	2,135	5,143	6,747	6,872	6,372	5,295	3,858	1,824
1921.....	408	43	43	1,928	4,909	8,844	7,534	7,605	7,210	6,269	4,830	2,403
1922.....	899	173	13	950	4,648	8,056	9,811	10,161	9,603	8,737	6,428	3,257
1923.....	1,311	210	13	453	3,737	7,890	10,222	10,509	8,883	8,737	6,645	4,028
1924.....	1,927	500	44	579	3,593	6,875	8,685	9,267	8,778	7,409	5,267	3,102
1925.....	1,050	81	21	1,240	4,872	7,712	9,482	10,024	8,873	8,012	6,322	3,786
1926.....	1,683	578	77	872	3,735	7,236	9,133	9,845	9,573	8,048	5,888	3,215
1927.....	1,066	253	92	1,868	5,501	8,902	10,565	10,746	9,650	7,960	5,485	2,856
1928.....	882	26	66	1,087	4,515	8,168	10,002	10,496	9,944	8,542	6,247	3,542
1929.....	1,415	248	11	559	3,952	6,705	8,510	8,862	8,547	7,195	4,930	2,631
1930.....	794	139	84	2,231	5,766	9,178	10,743	11,198	10,375	9,174	6,785	4,154
1931.....	1,894	735	408	1,993	5,162	7,887	9,507	9,504	9,016	7,960	5,745	3,447
1932.....	1,475	663	258	790	2,962	5,330	6,339	6,431	5,960	4,895	3,225	1,199
1933.....	159	75	163	1,833	4,857	8,062	9,364	9,507	8,944	7,466	5,175	2,641

<sup>1</sup> 30 dozen per case.

TABLE 28.—Frozen eggs: Cold-storage holdings, 1916-33

[Thousand pounds; i. e., 000 omitted]

Year	Jan. 1	Feb. 1	Mar. 1	Apr. 1	May 1	June 1	July 1	Aug. 1	Sept. 1	Oct. 1	Nov. 1	Dec. 1
Average:												
1917-21.....	14,586	12,602	10,842	9,859	10,624	14,288	17,578	19,531	21,188	20,654	19,051	20,269
1921-25.....	24,552	20,725	16,920	14,749	18,418	25,065	30,570	34,008	36,088	35,868	33,802	29,314
1925-29.....	38,400	32,677	26,239	27,161	40,146	55,093	65,568	69,848	70,626	66,073	59,201	51,728
1929-33.....	65,509	57,341	51,161	55,368	72,974	93,074	103,383	105,840	101,104	93,769	84,024	74,850
1916.....					3,133	4,176	5,416	5,822	5,223	6,457	6,307	5,104
1917.....	2,737	1,724	1,334	2,394	3,329	7,558	13,398	15,384	19,741	17,585	16,424	13,978
1918.....	14,603	12,207	9,746	9,061	8,488	11,555	12,895	15,240	15,871	14,757	13,281	11,832
1919.....	6,940	7,760	6,931	5,089	8,046	11,568	18,472	19,024	21,017	20,687	18,976	22,690
1920.....	19,286	16,394	13,836	11,039	10,520	13,939	17,368	20,655	21,901	23,584	25,461	26,945
1921.....	27,325	24,927	22,363	20,873	21,730	26,822	27,737	27,952	27,406	26,056	26,114	25,899
1922.....	19,260	16,209	13,103	10,473	14,154	18,273	23,528	27,855	34,516	33,545	30,523	26,233
1923.....	22,787	18,517	14,603	10,311	12,921	20,730	29,686	36,192	37,260	43,836	40,424	36,004
1924.....	32,057	27,682	23,196	20,736	23,707	29,956	33,565	35,184	34,126	31,006	28,633	25,100
1925.....	21,303	16,292	11,304	11,353	16,579	29,544	38,379	42,855	47,099	44,299	45,314	39,336
1926.....	33,905	29,250	24,167	21,849	25,739	34,815	45,688	51,810	52,634	51,062	44,966	38,020
1927.....	33,593	31,207	26,053	23,272	32,053	71,605	81,263	81,418	77,509	71,258	62,066	54,703
1928.....	47,020	38,575	31,362	34,411	51,532	67,941	77,744	81,670	89,196	82,255	73,327	64,201
1929.....	56,181	48,035	36,250	34,918	51,825	71,560	84,766	91,458	86,693	81,541	70,331	61,772
1930.....	53,644	44,089	35,192	49,751	76,604	106,904	115,134	110,272	118,138	100,631	93,359	85,407
1931.....	83,184	75,685	73,889	78,051	91,517	106,607	113,513	114,700	116,271	103,302	94,816	85,407
1932.....	79,198	72,439	68,024	69,031	81,920	94,978	100,485	99,112	92,537	84,187	74,314	64,150
1933.....	55,339	46,448	40,450	45,090	62,944	85,323	103,019	107,660	102,449	93,182	82,302	72,348

TABLE 29.—Frozen eggs: Cold-storage holdings, case equivalent,<sup>1</sup> 1916-33

[Thousand cases; i. e., 1,000 omitted]

Year	Jan. 1	Feb. 1	Mar. 1	Apr. 1	May 1	June 1	July 1	Aug. 1	Sept. 1	Oct. 1	Nov. 1	Dec. 1
Average:												
1917-21...	417	360	310	282	304	408	502	558	605	590	544	578
1921-25	702	592	484	421	526	716	874	972	1,031	1,025	966	838
1925-29	1,097	934	750	776	1,147	1,574	1,873	1,985	2,018	1,888	1,691	1,478
1929-33	1,872	1,638	1,462	1,582	2,085	2,659	2,954	3,024	2,869	2,679	2,401	2,139
1916					90	119	155	166	149	184	180	146
1917	78	49	38	68	95	210	383	440	504	502	409	390
1918	417	349	278	257	271	330	368	435	453	422	379	338
1919	257	222	193	171	230	331	471	544	600	591	542	648
1920	551	468	395	315	301	398	497	573	628	674	685	868
1921	781	712	639	596	621	706	792	799	783	762	746	654
1922	550	463	377	299	404	522	672	766	986	958	872	750
1923	651	529	417	295	399	592	848	1,034	1,065	1,232	1,155	1,029
1924	917	791	660	592	677	856	959	1,005	975	886	781	631
1925	609	465	325	324	559	844	1,097	1,224	1,346	1,266	1,295	1,124
1926	969	836	690	624	735	995	1,305	1,480	1,504	1,459	1,285	1,104
1927	960	892	744	951	1,487	2,046	2,322	2,326	2,215	2,035	1,773	1,563
1928	1,343	1,102	896	983	1,472	1,941	2,221	2,333	2,548	2,350	2,095	1,884
1929	1,605	1,373	1,093	998	1,481	2,045	2,422	2,614	2,477	2,330	2,009	1,705
1930	1,533	1,259	1,005	1,421	2,190	3,054	3,290	3,322	3,233	3,047	2,810	2,569
1931	2,377	2,162	2,111	2,230	2,615	3,046	3,243	3,277	3,151	2,851	2,709	2,469
1932	2,263	2,070	1,944	1,972	2,341	2,714	2,871	2,832	2,656	2,405	2,123	1,833
1933	1,581	1,327	1,156	1,288	1,798	2,438	2,943	3,076	2,927	2,682	2,352	2,067

<sup>1</sup> 35 pounds to a case.

TABLE 30.—Classification of frozen eggs: Cold-storage holdings,<sup>1</sup> 1924-33

Year	Jan. 1			Feb. 1			Mar. 1			Apr. 1			May 1			June 1		
	Whites	Yolks	Mixed	Whites	Yolks	Mixed	Whites	Yolks	Mixed	Whites	Yolks	Mixed	Whites	Yolks	Mixed	Whites	Yolks	Mixed
	Pct.	Pct.	Pct.	Pct.	Pct.	Pct.	Pct.	Pct.	Pct.	Pct.	Pct.	Pct.	Pct.	Pct.	Pct.	Pct.	Pct.	Pct.
1925	24	29	47	24	29	47	24	32	44	25	28	47	24	26	50	24	26	47
1926	24	28	48	25	28	47	28	28	46	28	29	45	28	27	45	27	27	48
1927	27	20	53	30	18	52	31	17	52	35	20	45	31	19	50	30	30	50
1928	40	18	42	44	16	40	48	15	37	32	14	44	35	16	49	31	17	52
1929	36	16	54	32	16	52	36	15	48	39	17	44	33	20	47	28	20	52
1930	20	20	60	20	21	59	19	22	59	20	22	55	20	22	58	21	22	58
1931	17	20	63	15	22	63	14	21	65	16	20	64	18	21	61	20	22	58
1932	19	20	61	19	19	62	19	20	61	19	17	64	21	18	61	25	16	58
1933	32	18	50	34	17	49	36	16	49	35	17	48	36	23	42	34	22	44

Year	July 1			Aug. 1			Sept. 1			Oct. 1			Nov. 1			Dec. 1		
	Whites	Yolks	Mixed	Whites	Yolks	Mixed	Whites	Yolks	Mixed	Whites	Yolks	Mixed	Whites	Yolks	Mixed	Whites	Yolks	Mixed
	Pct.	Pct.	Pct.	Pct.	Pct.	Pct.	Pct.	Pct.	Pct.	Pct.	Pct.	Pct.	Pct.	Pct.	Pct.	Pct.	Pct.	Pct.
1924							24	32	44	24	32	44	23	32	45	23	32	45
1925	24	28	50	23	26	51	15	23	57	23	25	52	24	26	50	23	28	51
1926	26	23	51	24	20	56	30	25	45	25	19	56	25	18	57	28	16	55
1927	30	20	50	31	20	49	31	29	48	32	19	49	34	19	47	37	18	45
1928	29	17	54	23	16	56	27	18	57	27	16	57	26	16	56	28	16	56
1929	25	18	57	23	18	59	22	18	60	22	18	60	21	15	61	21	19	60
1930	20	21	59	19	20	61	18	20	62	18	20	62	17	20	63	17	21	62
1931	20	22	53	20	21	59	20	20	60	20	21	59	19	20	61	19	20	61
1932	28	20	52	29	19	52	29	19	52	20	18	52	29	18	53	31	18	51
1933	32	22	46	31	21	48	30	21	49	20	23	49	28	24	48	28	22	46

<sup>1</sup> This classification is based on an average of about 70 percent of the total quantity of frozen eggs reported.



TABLE 34.—*Fowls: Cold-storage holdings, 1916-33*

[Thousand pounds; i.e., 000 omitted]

Year	Jan. 1	Feb. 1	Mar. 1	Apr. 1	May 1	June 1	July 1	Aug. 1	Sept. 1	Oct. 1	Nov. 1	Dec. 1
<b>Average:</b>												
1917-21	16,235	18,596	15,828	12,547	8,460	5,814	5,275	5,005	4,518	4,253	5,001	10,095
1921-25	17,652	18,263	16,662	12,857	8,658	5,895	6,049	5,787	4,733	3,866	4,425	9,741
1925-29	18,252	17,044	16,420	11,407	7,162	5,804	6,229	6,285	5,894	5,605	7,307	12,354
1929-33	15,382	13,900	12,681	9,406	6,469	5,557	7,045	7,218	7,039	7,143	9,140	12,240
1916					1,615	384	378	391	926	1,341	1,881	4,613
1917	5,939	8,293	5,105	4,688	6,396	4,751	3,787	3,482	2,770	2,666	3,301	8,487
1918	13,899	15,283	12,484	9,419	4,107	2,749	4,360	5,841	7,349	7,453	9,456	16,068
1919	26,030	30,698	28,068	23,581	15,549	11,121	9,672	7,349	4,897	4,364	4,331	9,691
1920	20,636	23,110	18,384	13,177	7,251	4,654	3,985	5,239	6,002	3,769	4,264	7,212
1921	14,673	15,598	15,098	11,861	8,996	5,794	4,670	3,112	2,576	3,170	3,380	16,006
1922	20,197	20,562	16,746	11,477	6,702	4,341	5,379	5,283	3,897	2,720	2,842	7,122
1923	18,091	20,619	18,622	15,001	11,099	7,430	7,101	6,306	4,502	3,110	3,380	8,035
1924	13,016	13,204	13,047	11,235	7,318	6,025	7,054	8,501	7,806	6,389	6,969	11,616
1925	21,283	21,433	19,785	14,711	9,177	6,877	6,043	5,731	4,890	3,937	5,280	11,922
1926	16,104	16,686	14,062	9,402	5,538	4,758	4,993	6,239	6,691	6,106	7,487	13,607
1927	20,332	20,137	17,560	13,860	8,589	7,068	7,032	5,976	5,169	5,085	6,290	12,354
1928	19,791	19,101	17,266	14,377	8,734	7,248	6,695	7,760	6,110	4,688	5,616	9,112
1929	13,752	10,965	8,417	5,637	3,722	3,049	6,384	5,728	6,620	8,311	11,962	14,981
1930	18,226	17,049	17,510	13,337	9,816	8,178	8,029	7,101	5,648	5,644	7,474	12,127
1931	18,542	18,402	19,676	14,762	8,599	6,026	6,198	7,117	6,909	6,987	7,439	8,738
1932	13,256	11,041	8,400	6,484	5,138	4,978	4,693	3,964	3,490	3,932	7,124	10,210
1933	13,132	11,490	9,501	6,868	5,060	4,957	9,323	12,178	12,526	10,839	11,702	15,143

TABLE 35.—*Turkeys: Cold-storage holdings, 1916-33*

[Thousand pounds; i.e., 000 omitted]

Year	Jan. 1	Feb. 1	Mar. 1	Apr. 1	May 1	June 1	July 1	Aug. 1	Sept. 1	Oct. 1	Nov. 1	Dec. 1
<b>Average:</b>												
1917-21	5,537	7,415	7,080	6,170	5,333	4,712	4,187	3,438	2,591	1,990	2,487	4,069
1921-25	9,895	11,969	12,203	11,167	9,711	8,604	7,676	6,599	5,429	4,508	3,441	6,262
1925-29	10,628	12,169	12,548	11,110	9,544	8,334	7,177	6,292	5,694	4,987	3,595	5,781
1929-33	9,952	12,503	13,402	11,017	8,860	7,435	6,460	5,355	4,415	3,500	2,285	6,914
1916					169	180	254	149	151	296	401	2,842
1917	2,708	3,321	3,220	2,602	3,054	3,239	4,382	4,078	3,547	3,020	6,485	3,152
1918	4,744	10,509	9,688	8,506	7,324	5,935	4,236	3,088	2,100	1,770	1,579	6,337
1919	9,039	10,606	10,117	8,669	7,072	6,358	5,378	4,300	3,200	1,849	1,327	3,212
1920	5,178	6,030	5,691	4,546	3,497	2,832	2,432	1,800	1,183	872	870	4,351
1921	6,015	6,407	6,682	6,228	5,718	5,198	4,505	3,836	2,927	2,439	2,172	3,293
1922	7,756	7,973	7,639	6,943	6,022	5,295	4,642	3,999	3,204	2,645	2,306	2,154
1923	9,335	13,240	13,509	13,129	12,206	10,933	9,653	8,617	7,420	6,352	5,198	6,656
1924	10,626	14,507	16,094	14,075	11,626	10,095	9,058	7,705	6,417	5,390	3,983	8,989
1925	15,744	17,418	17,091	15,450	12,983	11,496	10,024	8,840	7,161	5,712	3,544	5,168
1926	5,759	7,216	7,141	6,129	5,192	4,784	3,884	3,237	3,073	2,674	1,773	5,912
1927	10,820	12,188	12,128	11,020	9,719	8,584	7,671	6,452	5,815	5,160	4,170	6,242
1928	9,352	10,966	11,013	11,402	9,517	8,371	7,208	6,513	6,049	6,206	4,798	6,264
1929	10,486	13,058	14,467	11,547	10,308	8,452	7,196	6,420	5,873	5,173	3,719	6,320
1930	9,823	11,946	14,388	13,000	10,400	8,742	7,469	5,893	4,406	3,603	2,751	4,632
1931	4,566	7,018	8,557	6,351	4,818	3,895	3,091	2,777	3,358	3,365	2,303	5,123
1932	10,320	14,273	13,853	11,423	9,596	8,271	7,285	5,985	4,286	2,691	1,033	11,997
1933	14,686	16,728	15,744	12,765	9,179	7,817	7,280	5,709	4,062	2,760	1,620	6,500

18 STATISTICAL BULLETIN 48, U. S. DEPT. OF AGRICULTURE

TABLE 36.—Miscellaneous frozen poultry: Cold-storage holdings, 1916-33<sup>1</sup>

[Thousand pounds; i.e., 000 omitted]

Year	Jan. 1	Feb. 1	Mar. 1	Apr. 1	May 1	June 1	July 1	Aug. 1	Sept. 1	Oct. 1	Nov. 1	Dec
Average:												
1917-21	21,976	20,898	18,210	14,484	17,401	16,825	16,332	15,201	15,900	14,933	16,232	17,518
1921-25	25,940	27,284	24,701	19,680	19,667	14,214	11,895	11,630	11,201	10,754	11,081	12,488
1925-29	30,598	29,763	28,829	29,357	15,345	13,367	13,224	13,770	14,699	15,621	16,029	20,728
1929-33	28,582	25,906	21,922	15,930	11,603	10,490	12,153	13,574	14,879	16,770	10,150	24,087
1916			9,441	8,718	30,076	5,477	5,160	5,932	6,741	16,009	24,494	9,730
1917	13,105	11,568			43,604	41,031	36,188	41,729	33,501	32,509	10,618	
1918	20,050	15,595	12,935	9,734	4,941	4,612	5,410	6,734	7,229	9,160	13,029	19,046
1919	23,032	30,144	26,757	21,206	18,705	15,255	18,550	15,416	13,693	14,215	14,905	18,907
1920	23,824	22,656	19,795	16,440	12,031	11,028	10,303	10,031	9,287	9,225	10,951	15,270
1921	22,867	23,777	27,121	16,312	11,501	9,635	8,355	7,614	7,584	8,558	9,766	17,662
1922	24,721	24,438	21,068	15,952	12,093	10,388	11,452	11,300	10,700	10,204	9,658	13,723
1923	25,828	31,226	28,722	23,883	17,718	13,245	12,670	12,171	10,703	10,338	12,087	16,865
1924	23,673	23,813	20,968	16,388	10,611	8,570	8,904	9,449	10,058	11,537	14,016	20,719
1925	31,812	33,073	30,680	25,915	10,050	17,641	16,500	15,384	14,651	14,680	16,073	24,399
1926	27,336	26,337	23,058	18,210	13,778	11,970	11,641	12,428	12,653	13,055	10,135	30,342
1927	39,287	39,228	35,440	28,930	21,971	18,335	15,769	14,603	14,025	15,216	16,884	25,308
1928	30,345	20,157	21,513	16,624	11,747	9,752	10,621	12,520	14,448	13,993	15,710	19,373
1929	24,206	20,822	16,430	12,649	9,575	9,137	11,693	13,656	16,667	20,560	26,445	34,217
1930	33,698	37,057	33,280	24,898	18,943	15,727	16,449	16,360	16,520	17,605	19,338	22,955
1931	25,973	22,933	19,403	13,328	9,577	8,604	11,179	15,058	18,205	22,081	23,100	28,821
1932	33,259	30,211	25,778	19,630	13,753	12,113	12,371	12,457	12,392	12,832	14,949	18,559
1933	20,786	17,959	14,114	9,741	0,991	7,864	11,303	13,762	15,226	15,989	16,812	20,603

<sup>1</sup> Since segregation of fryers was made in the classification of poultry on Jan. 1, 1926, it is probable that some of this item was included in this table previous to that date. This is true also of ducks, which were segregated on July 1, 1932.

TABLE 37.—Total frozen poultry: Cold-storage holdings, 1916-33

[Thousand pounds; i.e., 000 omitted]

Year	Jan. 1	Feb. 1	Mar. 1	Apr. 1	May 1	June 1	July 1	Aug. 1	Sept. 1	Oct. 1	Nov. 1	Dec. 1	
Average:													
1917-21	74,401	79,373	70,369	57,350	50,621	40,955	35,824	31,403	30,588	31,116	30,053	57,951	
1921-25	102,063	108,751	101,045	82,067	61,571	47,742	40,931	36,052	32,730	33,829	42,881	70,979	
1925-29	123,432	122,462	109,600	87,685	64,506	51,595	45,117	42,587	43,210	47,574	63,182	94,733	
1929-33	116,733	112,325	100,609	77,274	55,582	44,024	41,235	39,458	41,610	49,359	64,296	93,276	
1916						17,847	6,550	6,216	7,032	8,882	20,041	31,175	27,139
1917	32,184	35,601	27,795	25,988	67,242	64,289	60,194	54,132	56,093	46,737	51,743	49,561	
1918	64,557	68,238	59,950	44,115	26,528	18,929	17,652	18,756	23,034	29,768	44,433	71,238	
1919	108,722	119,675	109,647	92,807	71,162	55,816	49,212	40,573	32,918	30,492	33,139	54,740	
1920	87,512	92,253	78,421	61,436	43,328	30,535	24,769	22,364	21,331	22,053	31,070	49,046	
1921	79,025	81,096	79,001	62,315	47,851	35,408	27,268	21,189	20,064	25,602	34,876	65,167	
1922	103,697	103,850	88,709	68,471	50,840	38,602	34,837	30,659	27,671	25,984	30,238	51,781	
1923	100,170	121,632	113,593	94,872	74,592	57,274	49,109	41,250	34,131	33,142	40,363	63,274	
1924	93,434	99,488	93,407	76,067	52,068	39,299	34,850	33,604	33,837	40,070	55,130	87,939	
1925	133,990	138,189	130,513	108,608	82,732	68,126	58,562	53,558	47,946	44,345	53,787	86,733	
1926	111,501	108,512	95,307	73,124	52,783	42,808	36,730	35,703	35,834	44,771	64,842	106,854	
1927	144,497	145,076	129,510	104,097	77,282	61,525	50,004	42,293	39,711	43,201	52,315	85,030	
1928	117,490	118,154	103,494	83,169	56,832	43,872	38,230	40,395	40,749	43,578	58,093	79,173	
1929	109,684	102,380	89,088	68,728	52,901	41,643	42,901	40,896	49,010	61,976	88,873	115,876	
1930	140,723	141,552	133,172	105,708	77,426	61,167	54,253	46,907	42,589	40,938	59,269	82,925	
1931	104,913	101,307	95,188	69,989	45,920	35,348	32,702	36,438	43,056	56,215	65,688	89,871	
1932	118,700	111,554	96,422	74,660	56,676	44,829	36,691	31,471	30,305	36,683	54,980	91,118	
1933	111,642	104,838	88,675	67,285	46,824	38,131	42,705	44,070	47,789	50,177	59,528	91,211	

TABLE 33.—Beef, frozen: Cold-storage holdings, 1915-33

[Thousand pounds; i.e., 000 omitted]

Year	Jan. 1	Feb. 1	Mar. 1	Apr. 1	May 1	June 1	July 1	Aug. 1	Sept. 1	Oct. 1	Nov. 1	Dec. 1
Average:												
1916-20	241,004	232,368	211,850	191,820	155,267	132,130	115,407	117,061	114,596	120,843	149,804	187,302
1921-25	95,513	92,530	86,432	77,177	64,149	51,252	43,196	34,901	31,011	30,070	42,710	60,881
1925-29	75,651	71,575	65,052	56,089	43,810	32,567	27,345	23,802	23,231	25,187	37,064	57,217
1929-33	55,404	51,921	48,752	43,847	37,848	32,474	30,488	29,015	28,944	30,554	37,027	45,839
1915	125,374	132,266	124,954	118,279	90,176	73,025	55,100	58,857	58,303	64,310	92,815	158,148
1916	202,442	190,009	169,793	154,193	118,391	103,607	109,354	108,729	100,453	119,221	170,032	235,664
1917	315,572	292,114	276,114	268,016	212,725	190,084	164,638	180,962	185,144	194,469	224,312	229,608
1918	268,818	294,514	265,203	221,725	184,586	163,913	162,639	159,279	162,069	169,244	184,196	223,311
1919	261,312	252,037	223,145	196,890	170,455	130,619	95,297	77,469	67,010	58,461	68,603	89,718
1920	120,245	110,945	122,402	114,063	100,672	88,836	76,523	60,262	50,204	44,290	49,014	63,188
1921	68,495	61,522	55,785	50,772	45,241	37,548	31,593	27,727	28,210	34,611	47,929	73,027
1922	91,805	89,272	75,604	65,292	54,522	41,207	34,385	24,112	24,625	27,490	43,772	71,024
1923	82,884	79,944	76,769	68,075	52,041	41,784	37,028	29,435	29,135	28,599	45,857	76,731
1924	114,034	111,947	101,598	87,684	67,271	46,887	36,452	26,970	22,879	19,755	27,065	50,436
1925	59,850	55,705	51,498	43,528	32,372	26,640	23,007	23,509	21,311	25,267	38,079	59,603
1926	72,352	67,431	60,659	50,945	39,712	28,719	23,201	18,552	17,241	19,456	26,696	45,567
1927	54,968	50,673	44,017	37,625	28,253	20,654	17,250	18,896	17,603	22,463	41,035	60,189
1928	77,051	72,117	67,486	60,646	51,442	39,873	35,759	31,055	32,122	38,996	51,902	70,390
1929	77,230	72,692	69,890	64,164	57,273	49,013	46,819	45,830	42,433	43,515	47,221	54,894
1930	55,049	52,130	47,334	41,508	34,082	31,195	28,842	25,211	24,061	20,861	29,871	26,364
1931	37,812	36,147	35,663	31,377	26,837	22,429	17,856	14,975	12,943	14,139	23,324	27,843
1932	29,279	26,521	23,475	21,541	19,606	18,954	23,104	27,972	33,160	35,261	41,810	50,706

TABLE 39.—Beef, frozen monthly, 1919-33

[Thousand pounds; i.e., 000 omitted]

Year	Jan.	Feb.	Mar.	Apr.	May	June	July	Aug.	Sept.	Oct.	Nov.	Dec.
Average:												
1919-23	23,707	19,835	12,154	10,400	11,887	12,120	11,089	19,313	14,088	27,974	42,485	35,222
1921-25	11,182	7,890	6,873	5,565	5,577	6,051	6,643	9,306	9,785	25,285	37,845	30,090
1925-29	10,679	7,990	6,998	6,691	6,184	6,973	8,931	8,819	12,061	24,687	32,022	23,171
1929-33	8,238	7,055	6,091	6,042	6,111	7,932	8,833	9,553	10,837	17,107	18,695	15,957
1919	63,743	61,691	52,703	26,348	30,413	33,795	30,600	59,822	31,012	42,944	71,607	69,751
1920	23,593	13,995	10,089	8,072	10,810	8,075	10,204	7,712	9,215	21,712	31,499	39,113
1921	12,665	11,990	6,403	6,773	6,091	5,657	7,258	7,949	7,448	21,065	26,765	17,684
1922	8,168	6,662	6,252	5,630	6,869	5,825	5,607	10,223	10,514	24,455	41,108	32,523
1923	10,365	4,539	5,317	5,180	6,234	7,176	6,278	10,858	12,252	20,695	41,326	27,041
1924	10,652	7,660	5,965	4,273	4,514	5,693	6,931	9,428	10,441	28,795	44,840	49,295
1925	14,031	8,597	10,525	5,968	5,155	5,535	7,139	8,074	8,270	22,413	35,126	23,939
1926	11,851	9,121	5,158	5,371	6,342	7,788	11,211	8,093	13,102	26,685	34,362	23,072
1927	9,190	6,757	6,092	6,244	4,494	6,140	7,288	7,320	10,233	19,349	31,803	20,501
1928	8,217	7,095	6,898	8,776	8,456	6,744	10,756	8,192	13,037	29,141	28,945	27,677
1929	10,101	8,388	6,366	7,096	6,445	8,359	8,268	12,418	15,062	25,348	29,873	20,578
1930	8,515	8,211	6,279	5,649	5,215	8,754	9,677	8,314	12,555	16,761	18,795	11,817
1931	8,572	5,222	5,011	6,044	5,071	5,848	7,328	7,818	7,072	11,087	13,151	20,341
1932	8,027	8,143	7,170	5,348	4,538	4,609	5,322	5,423	8,155	16,037	12,755	8,941
1933	5,973	6,312	5,581	6,072	8,365	12,100	13,599	15,793	11,342	16,303	19,901	18,109



TABLE 40.—Beef, cured: Cured and in process of cure in cold-storage warehouses and meat-packing establishments, 1915-33

[Thousand pounds; i. e., 000 omitted]

Year	Jan. 1	Feb. 1	Mar. 1	Apr. 1	May 1	June 1	July 1	Aug. 1	Sept. 1	Oct. 1	Nov. 1	Dec. 1
<b>Average:</b>												
1916-20.....	34,261	33,612	34,088	31,251	27,730	25,340	26,432	26,723	27,392	27,707	29,904	33,332
1921-25.....	22,071	23,262	23,888	24,414	23,826	23,170	21,827	20,399	20,147	18,997	19,173	21,705
1925-29.....	25,288	24,853	24,756	24,835	23,397	21,870	20,313	18,161	17,656	18,113	19,474	22,356
1929-33.....	10,425	19,327	19,071	18,470	17,426	16,429	15,420	15,009	14,084	15,192	16,093	17,567
1915.....												18,803
1916.....	21,443	20,852	20,959	25,811	21,860	17,324	18,915	18,589	18,450	21,653	30,013	37,958
1917.....	37,301	35,801	37,660	30,601	29,409	30,831	35,679	32,401	30,290	31,240	32,223	38,325
1918.....	39,243	38,793	37,575	34,106	29,217	24,804	21,968	28,065	26,981	28,718	30,339	32,381
1919.....	36,267	35,810	31,246	30,689	27,822	27,089	29,244	30,949	35,520	37,328	37,595	35,547
1920.....	37,052	36,715	37,002	35,047	30,353	26,653	26,355	23,617	22,711	19,594	20,352	22,448
1921.....	22,567	22,026	24,006	24,282	21,510	20,716	19,697	17,829	17,130	15,526	14,472	17,144
1922.....	15,313	16,774	17,997	18,743	19,166	19,304	19,113	19,304	20,081	18,981	19,884	22,602
1923.....	24,450	24,841	24,887	25,210	24,013	23,816	22,835	21,781	21,416	20,697	19,640	22,142
1924.....	22,583	22,711	23,238	25,109	25,482	24,285	22,390	20,377	19,771	18,939	21,387	23,508
1925.....	26,930	26,758	29,216	28,634	28,952	27,731	25,102	22,704	22,335	20,964	20,473	23,128
1926.....	25,146	24,833	26,192	27,253	27,606	25,930	24,691	22,539	20,386	20,883	23,119	26,374
1927.....	28,521	27,823	27,361	26,214	23,216	21,694	20,495	17,170	16,205	16,422	17,220	18,778
1928.....	21,079	20,078	19,732	19,631	17,041	16,558	14,982	13,546	13,462	14,760	16,401	10,444
1929.....	21,862	21,873	21,268	20,943	19,272	17,437	16,296	14,845	15,892	17,438	20,167	23,054
1930.....	26,653	26,328	25,798	24,507	23,347	21,643	20,072	18,761	17,322	16,508	16,641	18,408
1931.....	19,636	20,268	20,288	19,602	19,068	18,253	16,706	15,844	14,989	14,310	13,636	13,794
1932.....	15,387	15,138	15,444	14,969	14,389	13,226	12,053	11,744	11,433	11,770	12,712	13,180
1933.....	13,591	13,620	12,540	12,240	11,052	11,584	11,972	13,851	15,286	15,937	17,417	19,304

TABLE 41.—Beef placed in cure in meat-packing establishments, 1919-33

[Thousand pounds; i. e., 000 omitted]

Year	Jan.	Feb.	Mar.	Apr.	May	June	July	Aug.	Sept.	Oct.	Nov.	Dec.
<b>Average:</b>												
1919-23.....	10,327	9,686	8,688	8,211	8,623	9,425	9,824	10,918	9,424	10,440	11,234	9,145
1921-25.....	8,109	7,877	7,730	7,988	7,685	8,326	8,817	9,022	8,258	10,933	11,202	9,228
1925-29.....	6,664	6,354	6,420	6,132	6,162	6,841	7,570	7,161	7,245	9,399	9,549	8,048
1929-33.....	4,737	4,667	4,476	4,718	5,419	5,668	6,196	6,231	5,692	6,647	5,963	5,336
1919.....	10,936	14,816	11,072	10,643	11,265	12,381	13,950	19,055	14,747	12,242	12,630	11,766
1920.....	9,163	9,952	8,726	6,668	7,516	8,750	8,739	8,295	7,890	9,592	9,954	9,724
1921.....	7,259	6,712	6,476	6,451	6,993	8,042	8,418	8,568	7,189	9,051	10,602	6,232
1922.....	6,952	8,508	8,680	7,839	8,446	8,985	9,706	10,202	9,500	11,381	12,067	8,530
1923.....	8,328	8,414	8,464	9,510	8,907	8,309	8,622	7,796	9,280	10,915	8,475	8,475
1924.....	8,086	8,242	7,806	8,489	7,070	7,186	8,424	9,266	9,221	13,781	12,124	11,889
1925.....	8,900	7,510	7,205	7,643	7,021	8,450	9,227	8,453	7,584	10,470	10,300	10,005
1926.....	7,001	7,040	7,437	7,539	6,657	7,518	8,615	7,285	8,039	11,015	11,784	9,098
1927.....	6,534	6,016	6,136	6,162	5,296	5,931	6,937	7,128	7,064	7,865	10,429	7,931
1928.....	5,623	6,064	6,032	5,099	5,856	6,090	6,614	6,103	5,288	6,623	8,066	7,698
1929.....	5,113	5,120	5,238	5,218	5,979	6,217	6,601	6,537	6,656	9,004	7,165	5,609
1930.....	4,563	4,733	4,969	4,691	5,614	6,090	6,680	4,962	5,128	6,790	6,785	6,012
1931.....	5,635	4,642	4,732	5,812	5,329	5,071	6,071	6,062	5,204	5,275	4,608	5,651
1932.....	4,632	4,811	3,859	4,285	4,521	4,585	4,679	4,963	5,148	5,362	4,427	3,990
1933.....	3,740	3,977	3,583	3,684	5,650	6,368	7,074	8,331	6,329	6,803	6,848	5,507

TABLE 42.—Total beef (frozen, cured, and in process of cure) in cold-storage warehouses and meat-packing establishments, 1916-33

[Thousand pounds; i.e., 000 omitted]

Year	Jan. 1	Feb. 1	Mar. 1	Apr. 1	May 1	June 1	July 1	Aug. 1	Sept. 1	Oct. 1	Nov. 1	Dec. 1
Average:												
1916-20	275,265	265,830	245,948	223,671	182,997	157,470	141,839	143,784	141,988	148,650	179,705	220,634
1921-25	118,484	115,732	110,320	101,591	87,975	74,423	65,024	55,300	51,157	49,068	61,888	88,880
1925-29	100,939	96,428	89,808	80,624	67,207	54,427	47,658	41,963	39,687	43,301	56,638	79,593
1929-33	74,820	71,248	67,823	62,317	55,274	48,903	45,903	44,024	43,028	45,740	53,120	63,406
1915												122,130
1916	147,817	153,118	151,912	144,080	112,045	90,349	74,024	77,486	70,753	87,972	122,828	160,106
1917	230,743	226,800	207,453	184,794	147,800	133,838	148,033	141,130	130,743	156,468	211,254	273,980
1918	354,814	330,007	313,089	302,121	241,042	214,688	176,606	209,027	215,125	223,181	283,652	262,040
1919	335,085	330,324	296,539	252,415	212,407	191,002	191,883	190,222	197,565	203,571	221,791	258,858
1920	298,364	288,752	260,147	231,937	200,788	157,271	121,652	101,056	89,721	78,055	89,015	112,106
1921	142,813	142,691	140,409	138,345	122,188	109,553	96,220	84,091	67,334	59,822	63,466	80,333
1922	84,805	78,295	73,782	69,516	64,507	56,852	50,706	47,031	48,291	53,572	67,814	95,628
1923	110,255	114,113	100,591	90,502	78,535	65,023	57,220	45,593	46,041	49,187	63,421	93,166
1924	105,577	102,655	100,007	93,274	78,423	66,060	59,418	49,812	48,905	47,538	67,244	100,239
1925	142,964	140,705	130,809	116,318	96,223	74,018	61,551	49,074	45,214	40,710	47,431	73,564
1926	84,990	80,538	77,590	70,781	59,878	52,579	48,688	46,048	41,697	46,250	61,108	85,977
1927	100,873	95,254	88,020	77,159	62,828	50,413	43,756	35,722	33,446	35,878	43,916	65,345
1928	76,947	71,651	63,749	57,256	46,194	37,212	32,238	32,442	31,065	37,222	58,036	79,633
1929	98,913	93,990	88,771	81,607	70,714	57,315	52,055	45,920	48,014	56,434	72,059	93,111
1930	103,883	96,020	95,598	88,743	80,620	71,556	66,891	64,501	59,750	60,023	63,822	73,292
1931	75,285	72,398	67,622	61,111	53,150	40,445	45,545	41,055	39,050	35,171	34,407	39,158
1932	53,190	51,255	51,107	46,346	41,226	35,055	29,909	20,719	24,376	25,909	26,030	41,020
1933	42,870	39,550	36,015	33,781	30,658	30,639	35,130	41,923	48,446	51,193	59,233	70,010

TABLE 43.—Lamb and mutton, frozen: Cold storage holdings, 1915-33

[Thousand pounds; i.e., 000 omitted]

Year	Jan. 1	Feb. 1	Mar. 1	Apr. 1	May 1	June 1	July 1	Aug. 1	Sept. 1	Oct. 1	Nov. 1	Dec. 1
Average:												
1916-20	8,063	7,320	6,482	5,113	4,355	4,060	4,068	3,744	5,547	8,853	14,639	17,110
1921-25	16,858	18,524	14,478	10,368	7,413	5,364	4,088	3,283	2,927	2,964	3,370	3,608
1925-29	3,871	3,510	3,397	2,936	2,123	1,711	1,955	1,757	1,844	2,313	3,304	3,834
1929-33	4,140	3,347	3,140	2,877	2,617	2,468	2,677	2,323	2,391	2,842	3,356	3,520
1915												4,047
1916	4,076	5,286	5,812	5,084	3,858	2,525	1,930	2,098	2,135	2,579	3,405	5,000
1917	4,886	5,895	4,949	4,872	4,369	3,505	4,380	3,912	2,716	2,768	4,194	5,406
1918	7,403	6,315	7,855	5,899	3,348	3,580	2,429	3,150	4,046	5,275	8,615	9,635
1919	12,760	11,360	8,013	6,505	7,623	7,718	7,279	7,263	7,817	8,318	7,894	8,408
1920	10,296	7,767	5,781	3,517	2,579	5,735	4,311	2,909	11,021	23,322	38,997	56,702
1921	68,024	78,082	59,304	34,529	25,129	15,877	8,714	6,751	5,903	3,993	6,840	7,520
1922	6,444	3,914	2,863	2,878	2,071	2,310	3,720	3,308	3,376	3,473	3,458	3,633
1923	4,523	5,950	5,758	6,635	5,774	4,445	3,556	2,752	1,785	1,719	1,997	2,014
1924	2,493	2,306	2,173	1,710	2,093	2,273	2,917	2,257	2,230	2,525	3,166	3,326
1925	2,949	2,336	2,294	2,090	1,098	1,913	1,535	1,349	1,339	1,112	1,435	1,549
1926	1,820	2,354	3,346	3,289	2,393	1,607	1,871	1,813	1,929	2,234	2,814	3,166
1927	4,556	4,447	4,074	2,940	1,862	1,210	1,300	1,161	1,302	1,991	2,958	3,790
1928	4,408	4,044	4,020	3,252	1,828	1,276	1,947	1,822	1,691	2,113	4,321	5,472
1929	5,623	4,009	3,252	3,109	2,533	2,461	3,001	2,639	3,159	4,113	4,992	5,104
1930	5,317	4,667	5,408	5,174	5,190	4,030	4,820	4,476	3,977	4,320	4,326	4,628
1931	4,677	4,051	3,573	3,063	2,520	2,371	2,685	1,992	1,975	1,908	1,975	1,975
1932	2,318	1,947	1,784	1,222	1,061	1,018	1,010	1,012	1,305	1,983	2,074	2,004
1933	2,767	2,020	1,683	1,318	1,773	1,843	1,807	1,594	1,487	1,886	2,511	2,588



TABLE 47.—Pork, dry salt: Cured and in process of cure in cold-storage warehouses and meat-packing establishments, 1915-33

[Thousand pounds; i.e., 000 omitted]

Year	Jan. 1	Feb. 1	Mar. 1	Apr. 1	May 1	June 1	July 1	Aug. 1	Sept. 1	Oct. 1	Nov. 1	Dec. 1
Average:												
1916-20	243,893,513	629,345,319	355,433,356	364,349,408	323,973,311	047,273,409	226,795,181	909,186,673				
1921-25	128,806,158	231,179,655	189,577,190	726,192,211	266,048,200	018,173,070	136,806,09	121,93,238				
1925-29	109,377,129	516,147,256	155,104,154	048,152,670	164,530,171	191,164,082	135,549,103	534,88,395				
1929-33	95,486,115	531,128,509	129,350,132	048,132,023	135,255,142	484,132,956	104,862,78	381,66,683				
1915												83,415
1916	145,661	194,033	226,010	206,703	202,392	206,008	202,058	205,251	153,194	140,908	118,958	142,858
1917	200,998	228,424	259,050	234,396	219,810	213,802	224,813	231,005	195,678	143,319	110,632	150,882
1918	252,934	341,422	402,734	448,114	471,809	493,795	402,540	370,203	333,472	283,572	247,194	283,002
1919	357,254	471,747	435,661	430,205	425,411	402,652	381,736	366,547	338,270	322,756	281,930	242,224
1920	262,020	332,548	402,229	457,745	492,359	430,782	408,681	381,328	316,433	213,389	150,812	114,400
1921	144,997	202,900	251,593	255,390	246,443	240,610	250,752	231,511	200,291	149,974	108,611	96,731
1922	114,071	128,690	139,281	145,184	142,039	157,059	186,048	179,856	165,068	122,783	88,671	83,017
1923	121,123	155,922	178,024	203,420	227,728	244,453	217,862	221,716	171,711	146,974	108,850	110,524
1924	148,121	167,507	178,258	192,034	191,882	206,009	212,158	202,618	180,127	138,702	81,460	78,871
1925	118,718	136,125	150,819	142,950	145,546	142,292	162,518	164,374	152,555	128,599	104,011	96,746
1926	119,617	138,005	144,071	151,286	140,324	136,801	148,184	168,882	172,766	143,420	98,521	64,765
1927	68,263	86,135	101,156	124,670	129,637	143,143	173,258	185,920	178,107	140,420	100,922	77,240
1928	97,335	119,751	160,603	178,012	173,652	169,663	174,906	164,473	156,462	125,899	101,123	102,440
1929	143,011	167,561	179,776	178,595	185,550	171,450	183,805	172,309	160,519	139,256	111,092	88,782
1930	107,782	116,298	123,740	115,653	110,303	105,013	108,171	114,095	97,237	71,143	43,194	48,931
1931	70,185	108,394	129,278	141,225	147,995	148,682	154,490	168,505	163,507	116,180	79,433	63,124
1932	87,158	103,827	122,902	124,242	127,146	128,423	118,092	111,210	108,770	91,355	63,337	50,874
1933	69,263	81,585	86,848	87,009	89,216	105,646	131,256	146,303	144,888	126,377	92,779	81,703

TABLE 48.—Pork, dry salt: Placed in cure in meat-packing establishments, 1919-33

[Thousand pounds; i.e., 000 omitted]

Year	Jan.	Feb.	Mar.	Apr.	May	June	July	Aug.	Sept.	Oct.	Nov.	Dec.
Average:												
1919-23	174,937	131,794	109,752	91,289	98,087	114,566	108,389	87,835	73,124	71,082	85,821	119,502
1921-25	115,100	96,620	87,948	81,395	86,376	104,346	100,320	85,321	72,424	72,411	81,920	108,053
1925-29	91,283	78,601	74,010	67,153	74,419	88,134	88,206	70,029	62,264	58,700	55,928	77,000
1929-33	71,505	62,687	53,188	50,360	61,148	67,645	71,259	60,209	50,184	46,885	49,515	59,393
1919	319,279	243,795	170,018	127,269	142,481	165,087	158,900	105,042	94,339	84,674	106,770	172,565
1920	205,872	121,354	101,571	75,596	82,261	81,619	66,716	59,692	44,533	45,723	56,451	94,374
1921	116,903	105,956	82,076	77,621	83,639	106,024	104,267	81,952	65,918	59,648	60,549	74,297
1922	88,866	82,858	75,993	63,322	92,154	115,759	104,950	91,909	75,093	72,713	91,522	126,332
1923	134,068	105,009	119,110	112,638	80,801	104,340	107,100	100,520	85,719	92,650	113,878	130,144
1924	126,686	102,959	94,026	86,633	94,521	96,051	110,966	79,758	64,136	61,036	76,098	110,518
1925	108,976	86,318	68,547	66,772	71,767	99,558	89,303	72,405	71,237	75,110	67,629	97,675
1926	102,410	78,551	76,184	71,135	72,084	85,093	99,149	90,826	69,167	49,006	43,170	60,490
1927	79,747	69,999	81,927	73,266	83,589	104,187	101,739	78,768	69,065	48,282	47,912	71,002
1928	61,641	95,963	86,629	59,060	81,690	76,125	72,383	66,707	49,494	56,270	60,773	87,475
1929	63,699	67,176	57,361	65,590	62,967	73,709	81,457	73,437	62,337	64,833	52,158	67,448
1930	71,683	65,176	54,876	57,367	50,992	70,402	75,745	54,437	43,607	46,843	56,451	63,918
1931	90,469	73,225	64,180	68,745	57,094	70,665	70,717	54,888	46,983	41,555	45,462	66,477
1932	61,375	60,255	48,188	52,059	57,839	50,745	51,671	53,968	50,546	41,293	41,717	52,006
1933	50,361	47,003	44,307	53,180	67,237	72,643	70,703	64,316	47,447	39,969	46,788	48,125

24 STATISTICAL BULLETIN 48, U. S. DEPT. OF AGRICULTURE

TABLE 49.—Pork, pickled:<sup>1</sup> Cured and in process of cure in cold-storage warehouses and meat-packing establishments, 1915-33

[Thousand pounds; i. e., 000 omitted]

Year	Jan. 1	Feb. 1	Mar. 1	Apr. 1	May 1	June 1	July 1	Aug. 1	Sept. 1	Oct. 1	Nov. 1	Dec. 1
Average:												
1916-20	278, 118 339	745 380	567 392	609 382	685 387	882 394	113 378	975 330	193 269	231 225	930 235	713
1921-25	351, 495 345	108 436	738 432	550 434	109 421	442 422	553 390	780 370	052 314	821 271	438 293	931
1925-29	339, 144 382	254 431	357 436	824 435	041 416	335 415	240 395	291 362	081 300	279 274	879 287	614
1929-33	345 102 390	574 436	935 421	261 424	728 420	219 411	707 392	377 358	052 321	408 286	932 304	593
1915												150, 085
1916	250, 891 288	893 330	750 351	051 337	454 320	183 359	300 350	570 305	308 251	004 209	061 251	519
1917	307, 473 315	269 375	347 362	931 381	236 403	183 412	810 403	704 328	947 252	152 192	854 204	907
1918	259, 063 522	004 369	014 402	377 400	191 397	486 372	347 365	941 315	517 248	827 235	148 242	976
1919	305, 763 892	260 435	107 431	711 434	071 440	180 422	337 384	764 341	724 237	712 239	710 226	593
1920	279, 467 337	238 369	028 391	978 353	804 371	593 403	719 380	896 361	381 295	460 254	838 254	240
1921	294, 993 316	328 376	376 307	553 353	041 366	291 390	346 316	623 320	190 257	245 212	528 221	345
1922	252, 622 284	487 321	950 347	276 345	395 363	395 391	474 385	692 360	187 318	517 278	812 302	708
1923	377, 107 415	806 451	270 469	130 490	119 483	073 473	569 449	411 413	798 367	374 325	456 384	694
1924	431, 030 468	692 500	784 512	190 500	083 483	372 473	914 443	018 408	028 351	485 283	710 269	968
1925	395, 821 443	025 493	302 468	059 467	393 425	451 407	610 373	227 338	156 284	483 226	684 261	123
1926	294, 642 319	720 348	661 346	019 338	845 320	305 338	305 310	657 350	326 293	106 237	736 268	222
1927	306, 994 352	681 395	642 420	007 435	067 432	963 400	172 440	741 497	723 341	469 239	553 276	946
1928	320, 436 370	916 461	264 456	322 450	060 459	878 454	828 408	964 351	036 288	306 255	098 262	625
1929	375, 217 424	921 473	016 453	612 452	848 443	944 430	317 412	649 392	750 312	038 304	400 316	180
1930	368, 178 392	723 443	882 430	926 411	705 392	403 398	810 380	182 329	074 263	379 249	465 285	636
1931	398, 010 402	448 458	612 451	926 453	039 444	391 430	623 405	423 311	953 277	145 247	986 269	195
1932	354, 360 388	273 445	346 419	637 430	772 442	222 411	208 372	787 349	559 328	300 308	632 291	177
1933	319, 794 350	114 368	592 370	149 375	257 389	102 410	740 433	842 410	891 377	593 324	700 365	766

<sup>1</sup> Pickled pork includes sweet-pickled, plain-brine, and barreled pork.

TABLE 50.—Pork, pickled:<sup>1</sup> Placed in cure in meat-packing establishments, 1919-33

[Thousand pounds; i. e., 000 omitted]

Year	Jan.	Feb.	Mar.	Apr.	May	June	July	Aug.	Sept.	Oct.	Nov.	Dec.
Average:												
1919-23	179, 632 152	876 151	594 148	078 165	082 157	063 171	510 143	875 120	621 132	607 116	034 174	933
1923-25	197, 399 174	411 168	789 159	184 166	198 168	411 186	891 151	743 131	703 142	600 158	613 185	648
1925-29	263, 214 181	024 169	456 153	288 163	033 188	267 175	849 150	404 129	160 143	121 148	961 181	911
1929-33	202, 014 180	941 159	874 168	946 184	575 191	211 190	808 158	246 146	384 153	416 165	216 176	336
1919	175, 256 147	409 123	331 137	540 146	765 159	241 151	863 103	393 01	468 117	169 113	733 158	833
1920	193, 398 129	446 137	334 130	576 170	403 183	108 158	513 132	478 105	218 112	490 118	056 147	865
1921	162, 927 130	414 140	724 143	532 158	652 184	806 163	672 135	674 113	397 116	266 131	228 138	164
1922	160, 581 152	540 156	226 133	516 167	809 208	016 175	046 156	591 131	034 143	090 173	024 190	473
1923	205, 497 177	077 199	889 195	175 182	364 200	372 228	607 191	248 156	863 178	019 158	553 210	329
1924	221, 013 198	764 196	067 181	283 180	248 199	844 215	235 158	713 134	409 138	021 168	984 232	205
1925	233, 413 183	750 198	037 182	361 182	186 183	335 198	896 131	340 121	086 141	602 131	288 168	068
1926	175, 337 141	771 147	697 140	570 144	728 167	820 169	553 146	182 124	516 118	535 129	916 159	380
1927	187, 429 163	029 172	634 161	403 160	307 168	293 159	623 155	417 123	299 122	153 133	041 179	532
1928	201, 480 233	585 212	889 160	185 170	298 196	516 163	925 144	146 120	096 160	062 190	910 200	242
1929	218, 413 197	681 167	630 165	767 185	646 193	690 187	204 174	357 149	065 168	246 163	660 193	332
1930	196, 185 187	771 151	378 163	962 171	085 189	664 185	363 139	005 127	931 148	852 163	985 168	313
1931	237, 322 179	418 156	678 175	225 161	231 173	312 171	863 130	085 144	342 153	435 156	390 193	826
1932	190, 765 193	454 165	322 145	189 168	762 180	333 155	599 161	360 158	313 147	643 146	522 170	055
1933	177, 357 176	480 168	468 171	580 208	537 217	086 203	742 185	822 151	427 147	960 195	175 171	408

<sup>1</sup> Pickled pork includes sweet-pickled, plain-brine, and barreled pork.

TABLE 51.—Total pork (frozen, dry salt, and pickled, cured, and in process of cure) in cold-storage warehouses and meat-packing establishments, 1915-33

[Thousand pounds; i.e., 000 omitted]

Year	Jan. 1	Feb. 1	Mar. 1	Apr. 1	May 1	June 1	July 1	Aug. 1	Sept. 1	Oct. 1	Nov. 1	Dec. 1
Average:												
1916-20	572, 713	733, 937	829, 402	840, 642	849, 840	853, 396	841, 571	806, 753	688, 962	650, 870	447, 993	461, 114
1921-25	575, 164	694, 667	732, 346	812, 164	811, 805	797, 068	806, 280	751, 480	638, 512	520, 136	412, 222	433, 026
1925-29	587, 162	683, 565	796, 507	822, 859	814, 486	780, 178	788, 431	757, 494	674, 942	641, 216	437, 982	426, 804
1929-33	573, 275	700, 177	801, 080	784, 213	785, 441	798, 022	756, 163	725, 797	640, 200	530, 301	431, 101	446, 251
1915												256, 144
1916	430, 730	556, 369	660, 203	546, 097	617, 655	615, 390	643, 959	641, 667	550, 013	430, 732	352, 004	426, 392
1917	559, 041	642, 755	701, 258	662, 323	675, 782	694, 521	729, 185	732, 283	596, 177	435, 238	322, 859	379, 293
1918	563, 600	725, 086	876, 378	967, 040	995, 780	1, 009, 582	892, 871	74, 363	720, 344	579, 991	517, 310	500, 728
1919	722, 556	868, 715	969, 756	1, 004, 100	959, 293	937, 850	959, 389	882, 448	770, 576	691, 915	568, 921	513, 932
1920	597, 638	776, 763	903, 350	968, 039	960, 706	959, 339	982, 454	938, 028	807, 011	618, 441	472, 798	425, 677
1921	533, 980	668, 832	837, 158	842, 900	802, 190	801, 337	790, 261	727, 569	623, 967	471, 901	359, 856	365, 559
1922	415, 096	484, 838	547, 450	591, 223	594, 241	635, 635	707, 385	688, 351	619, 671	453, 096	395, 171	419, 498
1923	570, 510	685, 921	783, 690	861, 674	840, 071	908, 771	908, 505	866, 199	754, 202	613, 143	503, 940	577, 496
1924	708, 800	800, 850	878, 086	932, 408	908, 532	891, 109	872, 638	810, 596	710, 871	565, 173	407, 731	427, 520
1925	547, 364	778, 792	905, 355	829, 567	814, 189	748, 418	738, 655	669, 335	553, 789	467, 378	392, 005	385, 027
1926	472, 219	556, 042	609, 847	626, 594	603, 798	574, 472	602, 170	642, 673	622, 030	514, 351	405, 623	388, 228
1927	472, 757	589, 071	671, 674	738, 449	770, 212	787, 550	844, 275	841, 271	766, 418	606, 767	467, 119	419, 822
1928	523, 425	665, 638	885, 916	997, 737	930, 672	919, 369	915, 360	819, 185	632, 016	515, 087	433, 180	401, 702
1929	670, 039	838, 296	944, 742	921, 961	923, 558	870, 735	841, 337	819, 351	719, 400	600, 498	491, 402	469, 629
1930	620, 986	687, 140	785, 564	752, 906	711, 700	675, 167	670, 221	651, 444	550, 959	447, 427	354, 806	411, 704
1931	521, 192	726, 264	853, 408	843, 671	867, 524	827, 751	774, 651	711, 811	585, 053	474, 887	350, 596	396, 583
1932	563, 306	674, 151	812, 398	792, 197	799, 064	795, 806	724, 271	643, 632	578, 870	408, 253	192, 548	403, 895
1933	490, 850	575, 084	699, 321	610, 240	630, 360	670, 553	760, 730	808, 322	756, 701	630, 437	403, 305	520, 464

TABLE 52.—Miscellaneous meats:<sup>1</sup> Cold-storage holdings, 1917-33

[Thousand pounds; i.e., 000 omitted]

Year	Jan. 1	Feb. 1	Mar. 1	Apr. 1	May 1	June 1	July 1	Aug. 1	Sept. 1	Oct. 1	Nov. 1	Dec. 1
Average:												
1918-22	85, 779	90, 645	92, 155	80, 544	94, 785	79, 065	79, 902	77, 161	77, 339	72, 015	70, 168	72, 164
1921-25	74, 931	77, 040	80, 043	77, 263	75, 275	71, 208	71, 634	68, 377	65, 939	57, 759	53, 281	59, 223
1925-29	71, 470	74, 004	75, 058	74, 511	70, 607	67, 252	67, 182	67, 611	64, 480	57, 631	52, 579	57, 948
1929-33	73, 059	77, 629	78, 673	73, 897	71, 645	71, 132	72, 832	73, 363	69, 093	62, 787	54, 492	57, 678
1917								16, 173	47, 754	44, 328	42, 914	50, 355
1918	55, 560	55, 658	67, 632	80, 260	78, 252	71, 148	77, 470	79, 959	96, 316	96, 879	102, 623	106, 254
1919	128, 892	141, 914	132, 070	125, 735	113, 125	67, 195	95, 909	61, 448	85, 358	80, 454	82, 113	82, 853
1920	108, 769	113, 228	109, 452	100, 048	87, 435	80, 381	80, 047	78, 679	69, 471	63, 657	59, 486	60, 002
1921	75, 421	85, 254	95, 163	87, 835	93, 015	90, 302	85, 207	80, 995	79, 778	69, 739	60, 666	61, 216
1922	80, 255	57, 171	56, 450	53, 801	52, 068	50, 205	54, 378	54, 734	55, 773	49, 047	45, 954	50, 405
1923	63, 201	67, 231	67, 879	69, 997	69, 385	60, 985	71, 470	68, 355	65, 923	60, 410	57, 214	65, 817
1924	83, 303	81, 922	82, 550	80, 460	74, 787	68, 837	70, 029	67, 935	63, 644	57, 201	57, 619	67, 290
1925	92, 475	98, 162	101, 163	94, 128	87, 090	80, 070	76, 586	69, 866	64, 573	52, 550	44, 054	50, 415
1926	56, 596	57, 168	54, 825	52, 399	48, 174	46, 033	52, 935	57, 053	58, 557	56, 135	52, 590	53, 980
1927	63, 846	61, 791	59, 230	60, 951	58, 521	50, 878	63, 768	66, 457	65, 873	58, 163	48, 235	52, 227
1928	61, 420	64, 219	71, 707	74, 949	70, 438	64, 846	63, 941	63, 610	66, 883	49, 794	60, 201	60, 392
1929	82, 915	88, 679	91, 363	90, 129	88, 314	82, 331	81, 132	81, 068	76, 539	71, 511	63, 914	72, 744
1930	89, 742	89, 144	89, 970	85, 868	83, 622	85, 294	87, 980	90, 681	84, 324	80, 857	72, 444	75, 813
1931	34, 169	63, 747	62, 744	56, 678	51, 359	76, 331	75, 469	69, 025	66, 334	56, 881	48, 744	50, 664
1932	65, 579	69, 249	73, 398	65, 001	60, 028	59, 625	54, 745	51, 670	46, 419	40, 086	37, 041	34, 912
1933	42, 892	47, 313	45, 919	41, 858	44, 903	51, 179	64, 836	74, 522	72, 848	64, 805	50, 415	54, 243

<sup>1</sup> Miscellaneous meats include all stocks of beef, pork, and mutton trimmings and edible offal that have been frozen, cured, or otherwise prepared for food. It does not include the trimmings that have not been frozen, cured, or processed, nor does it include sausage or canned-meat products.

TABLE 53.—Total meats in cold-storage warehouses and meat-packing establishments, 1917-33

[Thousand pounds; i. e., 000 omitted]

Year	Jan. 1	Feb. 1	Mar. 1	Apr. 1	May 1	June 1
Average:						
1917-21.....	982,461	1,141,467	1,226,080	1,221,209	1,173,350	1,145,527
1921-25.....	785,468	899,871	937,736	1,001,377	982,468	948,152
1925-29.....	733,441	857,600	904,309	980,930	954,323	903,509
1929-33.....	725,303	852,398	950,722	923,294	916,977	890,646
1917.....	803,059	875,450	913,059	851,990	827,951	831,897
1918.....	981,378	1,117,965	1,205,554	1,354,981	1,319,328	1,299,779
1919.....	1,199,292	1,462,312	1,436,378	1,388,794	1,332,443	1,283,768
1920.....	1,016,558	1,186,630	1,278,720	1,304,142	1,251,608	1,208,728
1921.....	820,245	970,058	1,158,033	1,107,700	1,042,552	1,017,209
1922.....	620,033	824,278	680,553	717,417	712,887	745,022
1923.....	754,459	878,251	957,908	1,031,608	1,053,705	1,045,224
1924.....	900,242	937,773	1,062,816	1,107,801	1,063,035	1,028,288
1925.....	885,762	1,019,995	1,069,621	1,042,063	990,500	905,019
1926.....	616,731	690,102	745,708	753,063	714,343	670,781
1927.....	642,632	750,693	822,592	870,469	893,523	900,451
1928.....	669,200	795,912	1,025,392	1,135,194	1,079,132	1,022,700
1929.....	867,490	1,024,067	1,128,128	1,069,800	1,055,119	1,012,892
1930.....	819,028	870,937	970,540	932,781	881,132	834,080
1931.....	685,323	860,490	1,017,347	993,523	1,004,562	958,901
1932.....	684,402	796,632	938,069	905,060	901,379	892,164
1933.....	670,370	663,076	692,938	687,697	707,694	764,113

Year	July 1	Aug. 1	Sept. 1	Oct. 1	Nov. 1	Dec. 1
Average:						
1917-21.....	1,110,492	1,043,180	925,803	782,723	702,226	734,501
1921-25.....	946,035	878,421	778,535	630,800	530,771	584,443
1925-29.....	905,778	868,735	781,199	644,401	560,493	570,208
1929-33.....	877,690	846,607	755,602	641,678	542,169	570,853
1917.....	878,698	893,472	778,119	632,832	587,245	700,042
1918.....	1,149,377	1,130,601	1,035,861	905,326	882,230	938,060
1919.....	1,254,457	1,171,381	1,061,274	984,269	880,719	885,101
1920.....	1,191,464	1,115,082	977,225	783,777	670,295	655,638
1921.....	989,402	896,406	770,981	607,455	490,648	504,059
1922.....	816,689	788,624	727,111	580,188	512,390	569,165
1923.....	1,040,751	983,160	808,016	723,469	628,578	730,403
1924.....	1,005,002	930,680	826,651	672,437	535,760	598,345
1925.....	878,330	760,425	694,015	561,769	486,475	510,556
1926.....	705,720	747,667	726,269	618,970	522,225	531,331
1927.....	953,159	944,611	807,036	704,709	563,228	541,184
1928.....	1,013,486	917,059	771,659	604,221	547,718	607,250
1929.....	678,185	643,991	647,112	732,556	632,397	661,011
1930.....	838,912	811,142	690,015	592,423	497,433	565,542
1931.....	898,863	823,784	702,422	568,847	466,021	488,370
1932.....	800,635	722,353	649,970	566,231	509,599	482,743
1933.....	802,609	926,261	870,482	748,326	605,367	660,696

TABLE 54.—Lard in cold-storage warehouses and meat-packing establishments, 1915-33<sup>1</sup>

[Thousand pounds; i. e., 000 omitted]

Year	Jan. 1	Feb. 1	Mar. 1	Apr. 1	May 1	June 1	July 1	Aug. 1	Sept. 1	Oct. 1	Nov. 1	Dec. 1
Average:												
1916-20	73, 142	94, 772	100, 619	99, 546	105, 594	99, 815	115, 129	120, 532	109, 518	81, 522	56, 703	54, 165
1921-25	53, 211	73, 570	91, 725	103, 458	117, 610	131, 313	159, 178	155, 350	124, 980	77, 777	37, 957	35, 851
1925-29	58, 718	94, 200	120, 024	135, 859	141, 482	145, 332	165, 538	177, 810	158, 190	115, 188	73, 010	52, 476
1929-33	62, 212	85, 318	102, 360	106, 011	113, 650	128, 224	150, 439	156, 833	133, 011	109, 037	68, 785	50, 153
1915												34, 377
1916	63, 304	92, 342	111, 897	97, 237	108, 731	85, 113	87, 127	95, 991	82, 028	71, 570	30, 929	58, 950
1917	80, 977	86, 208	88, 460	65, 170	61, 640	72, 365	95, 197	112, 249	102, 172	69, 929	37, 095	44, 307
1918	54, 539	59, 310	65, 355	59, 854	103, 373	106, 194	107, 871	102, 411	104, 663	90, 308	76, 124	81, 076
1919	104, 274	138, 353	125, 410	112, 469	112, 409	83, 090	92, 132	100, 478	87, 947	76, 456	68, 036	49, 147
1920	62, 614	97, 648	111, 975	132, 993	141, 819	152, 307	133, 316	191, 531	170, 774	109, 258	47, 329	36, 683
1921	59, 319	83, 549	117, 609	128, 614	152, 428	181, 692	204, 301	191, 490	148, 586	85, 113	45, 850	42, 001
1922	47, 541	61, 202	61, 297	86, 031	96, 053	123, 798	154, 254	143, 084	119, 755	75, 338	30, 750	32, 506
1923	48, 808	56, 268	59, 101	69, 743	85, 251	84, 539	123, 865	143, 579	115, 860	72, 695	35, 225	35, 327
1924	49, 340	54, 130	65, 610	85, 722	102, 317	127, 949	152, 520	149, 672	124, 676	84, 198	31, 706	35, 718
1925	61, 049	112, 704	151, 927	150, 182	151, 489	138, 295	145, 919	145, 924	114, 724	71, 026	37, 256	33, 710
1926	42, 478	64, 187	76, 145	93, 108	88, 305	103, 824	120, 527	153, 572	151, 233	105, 558	72, 355	46, 744
1927	49, 992	69, 576	77, 103	92, 069	99, 011	111, 976	147, 318	179, 136	167, 018	118, 174	72, 121	40, 154
1928	54, 856	84, 007	121, 082	164, 506	173, 088	186, 073	214, 479	204, 839	177, 888	126, 890	83, 474	67, 257
1929	86, 217	140, 526	173, 864	179, 428	184, 748	183, 490	190, 659	203, 010	180, 085	153, 090	99, 845	68, 517
1930	82, 098	92, 171	111, 914	105, 067	104, 905	115, 270	120, 322	118, 353	85, 868	59, 732	30, 211	31, 582
1931	51, 434	62, 634	74, 977	78, 249	95, 693	103, 360	115, 561	121, 929	95, 047	69, 206	39, 766	34, 824
1932	51, 224	78, 430	92, 861	105, 835	111, 007	128, 103	130, 363	121, 618	100, 377	70, 056	34, 410	29, 768
1933	41, 088	52, 841	58, 182	61, 674	71, 895	110, 589	130, 250	219, 259	224, 478	192, 061	133, 693	116, 977

<sup>1</sup> Lard includes all prime steam, kettle-rendered, neutral, and other pure lards. It does not include lard substitutes or lard compounds.



TABLE 55.—Cold-storage holdings on the 1st of each month, 1933

[Thousands, i. e., 000 omitted]

Commodity	Jan. 1	Feb. 1	Mar. 1	Apr. 1	May 1	June 1	July 1	Aug. 1	Sept. 1	Oct. 1	Nov. 1	Dec. 1
<b>Fruits:</b>												
Apples.....barrels	1,209	924	609	337	182	64				276	949	892
Do.....boxes	12,704	10,124	7,179	4,462	2,463	939				1,567	11,067	13,874
Do.....baskets	9,117	7,213	5,237	3,208	1,691	640				2,851	8,632	8,577
<b>Total.....barrels</b>	<b>8,513</b>	<b>6,703</b>	<b>4,748</b>	<b>2,894</b>	<b>1,667</b>	<b>580</b>				<b>1,749</b>	<b>7,515</b>	<b>8,376</b>
Pears.....boxes	1,085	690	456	236	98	23		18	647	1,980	1,707	1,270
Do.....baskets	87	54	25	4	1	1	8	1	122	249	224	133
Frozen and preserved fruits.....pounds	74,595	70,184	63,613	58,983	51,861	51,922	60,029	60,275	67,631	64,877	65,088	61,713
<b>Dairy products:</b>												
40-percent cream.....40-qt. cans	169	123	82	55	53	111	191	199	165	199	217	200
20-percent cream.....do			1	1	1	1	5	3	3	3	2	2
Butter, creamery.....pounds	22,043	17,833	11,580	9,255	9,398	35,159	106,378	150,934	175,476	174,713	160,403	138,160
Cheese, American.....do	57,749	53,532	46,992	41,625	37,321	41,336	67,456	82,771	94,394	99,326	95,831	85,146
Cheese, Swiss, including block.....do	4,238	3,867	3,727	3,153	2,164	1,691	2,322	2,812	4,846	5,595	6,064	7,595
Cheese, brick and Munster.....do	729	606	404	308	320	525	1,830	1,814	1,728	1,438	1,041	687
Cheese, Limburger.....do	987	811	592	305	135	166	651	651	1,008	1,124	1,236	1,245
Cheese, all other varieties.....do	5,020	4,505	4,016	3,417	3,680	4,703	6,460	6,243	6,060	5,648	4,883	4,336
<b>Total.....do</b>	<b>68,714</b>	<b>63,321</b>	<b>55,731</b>	<b>48,806</b>	<b>43,628</b>	<b>48,481</b>	<b>78,715</b>	<b>94,291</b>	<b>108,035</b>	<b>113,131</b>	<b>109,655</b>	<b>99,009</b>
<b>Eggs:</b>												
Shell.....cases	150	75	163	1,333	4,857	8,062	9,364	9,507	8,944	7,466	5,175	2,641
Frozen.....pounds	55,339	40,448	40,450	45,090	62,944	85,323	103,019	107,660	102,449	93,182	82,302	72,348
Frozen, case equivalent.....cases	1,581	1,327	1,156	1,288	1,798	2,438	2,943	3,070	2,927	2,662	2,352	2,067
<b>Total case equivalent, shell and frozen eggs cases</b>	<b>1,740</b>	<b>1,402</b>	<b>1,319</b>	<b>3,121</b>	<b>6,655</b>	<b>10,500</b>	<b>12,307</b>	<b>12,583</b>	<b>11,871</b>	<b>10,128</b>	<b>7,527</b>	<b>4,708</b>
<b>Frozen poultry:</b>												
Broilers.....pounds	11,269	10,031	8,445	6,802	4,868	3,785	4,221	5,520	9,137	11,801	13,211	15,448
Fryers.....do	14,122	12,893	11,037	8,939	6,185	4,088	2,636	1,602	1,957	3,097	5,338	9,962
Roasters.....do	37,763	35,722	29,834	22,080	13,532	9,020	7,902	6,199	4,881	5,682	10,845	23,555
Fowls.....do	13,132	11,490	9,501	6,868	5,069	4,957	9,323	12,178	12,526	10,839	11,702	15,143
Turkeys.....do	14,586	16,728	15,744	12,765	9,179	7,817	7,260	5,709	4,062	2,769	1,620	6,500
Ducks.....do	4,439	3,027	2,814	1,644	828	995	2,207	3,452	4,675	5,194	4,849	4,722
Miscellaneous frozen poultry.....do	10,341	14,342	11,390	8,097	6,163	6,869	9,096	10,310	10,651	10,795	11,963	15,881
<b>Total.....do</b>	<b>111,642</b>	<b>104,833</b>	<b>88,675</b>	<b>67,285</b>	<b>45,824</b>	<b>38,131</b>	<b>42,705</b>	<b>44,970</b>	<b>47,789</b>	<b>50,177</b>	<b>58,528</b>	<b>91,211</b>

Meats:													
Beef, frozen.....	pounds.....	20,279	20,521	23,475	21,541	10,693	18,054	23,104	27,072	33,160	35,261	41,810	50,706
Beef in process of cure.....	do.....	8,091	8,485	7,817	7,237	6,542	7,717	8,569	10,820	12,104	12,748	13,806	15,313
Beef, cured.....	do.....	4,600	4,544	4,723	5,003	4,510	3,807	3,404	3,031	3,182	3,180	3,551	3,991
Total.....	do.....	42,870	30,550	30,015	33,781	30,659	30,538	35,136	41,823	48,440	51,198	50,233	70,010
Pork, frozen.....	do.....	101,703	143,085	163,881	153,032	165,887	175,805	212,734	228,177	194,022	128,497	75,760	81,085
Pork, dry salt, in process of cure <sup>1</sup> .....	do.....	37,882	43,798	44,604	45,245	40,500	58,082	67,243	72,606	67,677	58,832	41,261	43,968
Pork, dry salt, fully cured <sup>1</sup> .....	do.....	31,381	38,117	42,244	41,704	39,710	46,664	64,013	73,697	77,211	67,545	51,518	37,715
Pork, pickled in process of cure.....	do.....	198,907	234,040	229,878	220,598	229,957	244,608	260,323	268,839	258,085	218,074	187,648	215,297
Pork, pickled fully cured.....	do.....	120,887	126,068	141,714	149,571	145,300	144,494	150,417	165,003	158,806	150,850	137,112	150,460
Total.....	do.....	400,850	575,084	609,321	610,240	630,360	670,553	760,730	808,422	756,701	630,437	493,308	520,454
Lamb and mutton, frozen.....	do.....	2,767	2,029	1,083	1,818	1,773	1,843	1,807	1,594	1,487	1,886	2,511	2,988
Miscellaneous meats, frozen and cured.....	do.....	42,892	47,313	45,910	41,858	44,903	51,178	64,839	74,522	72,848	64,805	50,315	54,243
Total meats.....	do.....	579,379	663,976	692,938	687,697	707,694	754,133	892,599	926,261	870,482	748,326	605,307	656,595
Lard.....	do.....	41,088	52,841	58,182	61,674	71,895	110,889	186,250	210,250	224,476	192,061	133,693	116,077

<sup>1</sup> 3 boxes or 3 bushel baskets are considered the equivalent of 1 barrel.

<sup>2</sup> Frozen eggs are converted on the basis of 35 pounds to a case.

<sup>3</sup> "Dry salt rough sides" for United States Government account under emergency hog-control program are not included in these figures.

TABLE 56.—Bluefish: Cold-storage holdings, 1916-33  
(Thousand pounds; i.e., 000 omitted)

Year	Jan. 15	Feb. 15	Mar. 15	Apr. 15	May 15	June 15	July 15	Aug. 15	Sept. 15	Oct. 15	Nov. 15	Dec. 15
Average:												
1917-21.....	260	157	131	83	69	98	90	149	226	371	373	349
1921-25.....	435	264	155	101	82	87	152	194	276	482	526	552
1925-29.....	430	338	244	179	169	232	300	379	437	495	520	535
1929-33.....	604	478	246	261	232	244	289	559	646	765	751	660
1916.....										248	472	253
1917.....	242	16	106	46	15	79	125	84	43	173	269	175
1918.....	157	123	84	64	65	27	25	39	216	274	239	230
1919.....	249	176	109	51	32	27	32	128	173	295	269	282
1920.....	321	233	134	91	109	219	153	211	258	367	402	411
1921.....	330	237	212	162	126	128	114	262	442	748	745	668
1922.....	500	289	154	85	77	66	147	217	412	617	822	760
1923.....	579	344	164	77	48	64	260	282	335	504	466	474
1924.....	422	253	177	150	108	115	101	93	69	107	124	320
1925.....	288	197	67	32	46	60	136	95	103	335	475	548
1926.....	446	343	291	200	232	321	335	278	335	410	499	559
1927.....	591	416	276	196	198	284	316	275	343	368	337	304
1928.....	274	237	226	194	161	225	238	486	621	627	630	704
1929.....	581	470	359	265	203	270	473	762	734	744	653	580
1930.....	451	313	213	132	141	179	199	508	489	640	718	589
1931.....	514	404	240	134	120	101	79	308	788	1,124	1,136	1,017
1932.....	912	768	569	503	445	430	492	826	770	787	680	673
1933.....	560	435	347	269	240	242	200	403	398	530	570	463

TABLE 57.—Butterfish: Cold-storage holdings, 1916-33  
(Thousand pounds; i.e., 000 omitted)

Year	Jan. 15	Feb. 15	Mar. 15	Apr. 15	May 15	June 15	July 15	Aug. 15	Sept. 15	Oct. 15	Nov. 15	Dec. 15
Average:												
1917-21.....	825	495	302	181	143	298	565	43	800	1,012	1,139	985
1921-25.....	573	372	221	128	65	134	225	147	537	733	862	707
1925-29.....	703	510	306	194	211	499	700	360	1,144	1,326	1,369	1,180
1929-33.....	905	608	324	159	247	648	870	998	1,084	1,213	1,336	1,175
1916.....										1,089	1,446	1,032
1917.....	867	271	232	76	34	580	1,088	1,166	1,143	1,419	1,472	1,127
1918.....	876	516	220	97	166	364	893	1,256	1,250	1,271	1,308	1,154
1919.....	922	692	451	193	163	183	393	548	668	772	736	669
1920.....	459	335	254	207	182	201	295	489	515	987	1,353	1,208
1921.....	1,003	662	355	233	181	153	154	255	422	612	826	665
1922.....	518	393	227	174	32	46	139	271	331	413	698	560
1923.....	456	218	138	54	26	147	236	384	410	490	602	519
1924.....	410	221	131	56	43	171	322	438	805	850	887	736
1925.....	480	365	253	95	43	155	276	388	716	1,294	1,248	1,057
1926.....	846	611	294	160	227	277	490	659	1,181	1,433	1,618	1,361
1927.....	1,153	903	581	428	386	311	280	433	622	703	591	437
1928.....	318	169	106	69	46	100	260	481	832	894	1,037	938
1929.....	709	480	295	219	353	1,591	2,193	2,341	2,471	2,308	2,353	2,108
1930.....	1,632	1,070	519	177	409	538	652	732	728	865	921	717
1931.....	1,534	367	160	80	55	522	709	988	1,162	1,266	1,655	1,607
1932.....	1,312	909	533	266	243	352	491	621	564	586	583	445
1933.....	339	212	104	52	114	238	305	306	494	1,069	1,166	996

TABLE 58.—Catfish: <sup>1</sup> Cold-storage holdings, 1922-33  
(Thousand pounds; i.e., 000 omitted)

Year	Jan. 15	Feb. 15	Mar. 15	Apr. 15	May 15	June 15	July 15	Aug. 15	Sept. 15	Oct. 15	Nov. 15	Dec. 15
Average:												
1925-29.....	225	187	121	90	123	146	178	227	251	252	262	273
1929-33.....	405	349	199	123	150	191	242	304	306	290	318	367
1922.....							94	226	224	287	295	276
1923.....	436	367	210	150	164	118	111	178	166	319	352	342
1924.....	236	171	111	87	163	227	227	220	186	168	306	244
1925.....	173	101	45	38	124	132	151	112	111	95	106	92
1926.....	111	83	38	42	127	159	158	171	164	218	213	239
1927.....	227	225	223	153	151	169	236	348	339	404	305	353
1928.....	328	296	183	147	152	176	186	196	246	223	218	256
1929.....	287	228	116	69	59	94	158	340	364	322	377	434
1930.....	478	367	210	134	251	311	372	508	513	422	401	466
1931.....	492	390	203	111	141	190	274	289	336	368	483	498
1932.....	472	421	282	168	183	155	161	151	129	137	172	220
1933.....	298	310	185	115	116	205	247	221	188	170	150	218

<sup>1</sup> Until July 15, 1922, included with miscellaneous frozen fish.

TABLE 59.—Ciscos: Cold-storage holdings, 1916-33

[Thousand pounds; i.e., 000 omitted]

Year	Jan. 15	Feb. 15	Mar. 15	Apr. 15	May 15	June 15	July 15	Aug. 15	Sept. 15	Oct. 15	Nov. 15	Dec. 15
Average:												
1917-21	4,860	3,385	2,242	1,642	1,257	1,035	1,148	2,024	4,813	5,093	5,155	6,502
1921-25	7,684	6,102	4,269	3,100	2,421	2,093	2,046	3,679	5,610	6,903	6,813	7,946
1925-29	6,221	4,618	3,448	2,462	1,978	1,813	1,789	2,175	2,568	2,552	3,202	4,480
1929-33	2,731	2,304	1,785	1,324	1,152	1,211	1,366	1,498	1,705	1,788	2,331	2,982
1916												
1917	1,782	489	486	220	65	173	292	1,018	2,660	4,275	5,837	9,455
1918	7,202	4,479	2,814	2,224	1,755	1,307	1,398	3,339	4,457	3,822	4,183	6,010
1919	5,052	3,602	2,002	1,379	879	602	1,070	2,165	3,409	4,433	3,815	4,567
1920	4,250	3,310	1,901	1,148	802	567	405	2,152	4,999	6,444	6,046	6,534
1921	5,952	4,957	3,945	3,331	2,783	2,525	2,605	4,444	5,839	6,343	5,294	6,244
1922	7,125	6,351	4,510	3,316	2,849	2,216	2,052	3,693	6,183	7,460	6,792	6,727
1923	5,864	3,676	1,649	1,048	493	379	630	4,227	8,801	10,919	10,378	12,866
1924	10,972	8,896	6,006	4,690	3,889	3,453	3,341	4,173	5,777	8,942	8,951	10,321
1925	8,477	6,633	4,874	3,114	2,286	1,802	1,600	1,658	1,449	1,113	2,052	3,431
1926	3,368	2,790	1,926	1,190	992	1,117	1,322	2,073	2,629	2,875	3,937	5,880
1927	5,067	4,481	3,222	2,270	1,665	1,739	1,925	2,784	3,709	3,665	4,106	5,028
1928	5,587	6,539	4,213	3,513	2,830	2,571	2,445	2,637	2,858	2,681	2,895	4,044
1929	3,683	3,147	2,647	2,323	1,815	1,747	1,651	1,725	2,199	2,148	3,019	3,787
1930	3,033	2,760	2,181	1,789	1,572	1,046	1,902	1,969	2,116	2,227	3,320	4,233
1931	3,366	2,825	1,926	1,156	1,064	1,173	1,252	1,399	1,488	1,641	2,083	2,724
1932	2,321	1,603	1,181	825	777	765	760	1,167	1,303	1,415	1,481	1,846
1933	1,348	1,184	690	531	533	734	932	1,232	1,423	1,509	1,523	2,333

TABLE 60.—Cod, hake, pollock, and haddock: Cold-storage holdings, 1916-33<sup>1</sup>

[Thousand pounds; i.e., 000 omitted]

Year	Jan. 15	Feb. 15	Mar. 15	Apr. 15	May 15	June 15	July 15	Aug. 15	Sept. 15	Oct. 15	Nov. 15	Dec. 15
Average:												
1917-21	3,583	2,820	2,224	1,855	2,113	2,584	2,744	2,705	3,004	3,391	4,240	4,309
1921-25	1,483	1,182	1,009	828	822	820	846	955	1,118	1,109	1,218	1,198
1925-29	1,039	1,090	821	855	1,147	1,489	1,740	2,419	3,090	3,195	3,019	2,578
1929-33	5,354	4,293	3,162	3,077	3,903	4,260	5,061	6,045	7,491	7,455	6,608	6,186
1916												
1917	1,189	657	482	390	1,104	1,994	2,232	1,374	1,826	2,872	3,778	4,504
1918	2,489	1,554	1,285	1,591	2,451	3,405	3,908	4,680	5,006	5,275	7,510	7,005
1919	6,577	6,952	4,736	3,299	3,612	3,757	3,788	3,482	3,746	3,966	4,380	4,775
1920	3,922	2,966	1,802	1,487	1,406	1,857	1,818	2,113	2,578	3,109	3,786	3,641
1921	3,580	3,331	2,815	2,230	1,991	1,955	1,918	1,878	1,865	1,633	1,766	1,722
1922	1,361	1,136	913	674	591	391	340	402	400	374	468	679
1923	323	154	121	192	356	475	533	873	1,021	1,243	1,447	1,542
1924	1,105	882	687	387	464	470	622	695	710	732	888	1,041
1925	795	605	510	651	797	805	821	928	1,583	1,605	1,523	1,634
1926	384	636	490	554	703	1,040	1,320	2,040	2,467	2,798	3,017	2,505
1927	2,190	1,854	1,379	743	1,024	1,100	1,207	1,348	1,950	2,095	2,303	1,830
1928	1,360	871	653	841	1,188	1,522	1,673	2,378	3,049	3,556	3,332	3,382
1929	2,058	1,482	1,069	1,486	2,021	2,970	3,670	5,394	6,400	6,312	4,921	4,067
1930	5,467	4,769	3,924	2,731	4,136	4,978	6,057	8,904	10,989	11,700	10,050	9,325
1931	6,564	7,186	5,597	5,337	6,094	5,798	6,415	7,652	7,672	7,523	6,577	6,904
1932	6,052	5,995	4,136	3,911	4,172	3,989	4,389	5,270	6,280	5,845	4,703	3,753
1933	2,832	2,013	1,175	1,870	3,191	3,593	4,157	5,944	6,107	6,803	6,780	6,824

<sup>1</sup> Includes haddock fillets, reported separately since Dec. 15, 1929.

TABLE 61.—*Croakers: Cold-storage holdings, 1916-33*

[Thousand pounds; i. e., 000 omitted]

Year	Jan. 15	Feb. 15	Mar. 15	Apr. 15	May 15	June 15	July 15	Aug. 15	Sept. 15	Oct. 15	Nov. 15	Dec. 15
Average:												
1917-21.....	356	255	148	112	206	388	414	401	500	506	625	533
1921-25.....	189	125	73	93	254	297	442	539	488	387	331	325
1925-29.....	601	418	106	197	714	982	1,271	1,848	1,639	1,270	1,086	938
1929-33.....	743	507	206	256	442	578	625	1,310	1,365	1,153	1,017	892
1916.....												215
1917.....	213	91	13	18	173	175	185	325	218	330	518	426
1918.....	274	162	58	51	569	1,116	1,143	1,209	1,030	1,043	1,006	964
1919.....	722	578	378	223	334	400	349	307	198	193	180	163
1920.....	82	38	11	31	34	64	134	281	709	706	764	577
1921.....	488	406	281	235	219	187	277	331	338	266	219	546
1922.....	73	23	12	27	37	24	75	37	22	6	18	4
1923.....	4	8	1	115	277	489	353	352	339	392	364	319
1924.....	249	104	52	85	296	304	379	758	617	403	278	223
1925.....	130	90	19	4	440	479	1,118	1,219	1,112	867	775	535
1926.....	342	179	69	2	1,572	1,713	2,005	2,768	2,422	1,939	1,744	1,581
1927.....	1,252	851	225	55	824	1,251	1,442	2,109	1,780	1,615	1,272	1,001
1928.....	786	507	132	82	319	715	623	1,362	1,025	681	665	658
1929.....	405	324	87	861	415	653	869	1,783	1,854	1,247	1,072	918
1930.....	717	466	152	65	639	772	1,448	2,095	1,645	1,714	1,441	1,185
1931.....	919	592	221	127	609	756	894	1,221	1,372	1,304	1,207	1,058
1932.....	907	685	372	130	354	412	458	880	1,207	982	853	777
1933.....	677	466	200	99	193	290	458	569	548	520	511	523

TABLE 62.—*Flounders: <sup>1</sup> Cold-storage holdings, 1922-33*

[Thousand pounds; i. e., 000 omitted]

Year	Jan. 15	Feb. 15	Mar. 15	Apr. 15	May 15	June 15	July 15	Aug. 15	Sept. 15	Oct. 15	Nov. 15	Dec. 15
Average:												
1925-29.....	607	458	351	317	493	739	727	811	814	825	842	816
1929-33.....	560	448	333	276	351	478						
1922.....							233	253	261	294	369	323
1923.....	258	121	60	94	187	503	641	891	594	730	702	647
1924.....	517	396	326	226	215	384	438	396	384	346	395	474
1925.....	336	246	249	275	499	608	691	746	824	775	710	647
1926.....	828	424	341	158	346	623	789	819	795	780	886	803
1927.....	726	623	424	330	368	670	667	707	690	800	778	678
1928.....	521	395	253	325	581	930	917	932	941	940	966	1,124
1929.....	826	614	487	499	652	856	873	851	839	819	870	827
1930.....	627	483	382	311	824	506	606	694	607	626	767	795
1931.....	728	600	470	326	414	593	668	447	455	498	539	501
1932.....	437	376	233	152	181	244	230	215	188	180	180	232
1933.....	214	108	91	93	184	192	189	246	219	106	224	265

<sup>1</sup> Until July 15, 1922, included with miscellaneous frozen fish.

TABLE 63.—*Mahibut: Cold-storage holdings, 1916-33*

[Thousand pounds; i.e., 000 omitted]

Year	Jan. 15	Feb. 15	Mar. 15	Apr. 15	May 15	June 15	July 15	Aug. 15	Sept. 15	Oct. 15	Nov. 15	Dec. 15
<b>Average:</b>												
1917-21	6,217	3,811	2,772	2,801	3,360	4,963	6,703	8,688	9,943	9,910	9,870	8,431
1921-25	6,018	4,158	2,690	2,529	3,250	4,749	6,384	7,962	9,531	9,595	8,711	7,241
1925-29	6,802	4,305	3,222	3,213	4,623	6,674	8,438	10,698	12,106	12,297	11,062	9,622
1929-33	5,523	3,625	2,385	2,282	3,712	5,216	7,144	9,127	10,555	10,597	9,683	8,112
1916												
1917	4,118	1,144	1,004	1,157	2,458	3,536	4,612	5,971	6,750	6,792	8,545	6,409
1918	5,294	2,850	1,973	1,934	2,329	3,685	7,372	10,526	11,940	11,720	11,602	10,301
1919	7,922	5,671	4,377	3,342	4,584	5,503	8,640	10,818	11,568	11,875	11,476	9,828
1920	7,789	5,371	3,978	3,105	4,155	5,713	6,980	8,830	10,340	10,677	9,730	8,749
1921	5,961	4,117	2,526	1,965	2,773	4,375	6,213	7,693	9,129	8,486	7,965	6,899
1922	6,306	4,805	3,792	2,552	2,879	3,878	4,361	4,835	6,287	6,826	6,741	4,534
1923	3,782	2,371	1,711	381	1,344	2,040	4,602	5,793	7,516	7,058	6,767	6,306
1924	5,633	3,754	2,310	3,342	4,074	5,647	8,376	11,738	14,107	14,609	13,663	11,469
1925	8,507	5,741	4,104	4,403	5,180	7,207	8,448	9,753	10,617	10,995	9,400	7,039
1926	4,908	2,604	1,584	1,474	3,047	4,368	8,019	10,769	12,312	12,079	11,422	9,359
1927	6,265	4,221	2,905	3,097	5,108	7,567	9,019	12,233	13,960	14,114	13,585	13,051
1928	9,584	6,183	5,340	4,741	5,657	7,296	8,850	11,284	12,364	11,561	10,450	8,960
1929	4,747	2,838	2,172	2,351	4,124	5,933	7,853	9,449	11,261	12,288	10,437	9,719
1930	6,870	4,686	2,823	2,927	4,317	6,100	7,879	9,989	12,087	11,377	11,425	10,072
1931	7,223	4,666	2,422	2,196	4,188	6,111	8,600	10,868	11,974	11,917	10,167	7,994
1932	5,856	3,719	2,875	2,476	4,052	4,400	5,614	6,958	7,975	7,733	7,151	4,985
1933	2,817	1,785	1,532	1,458	1,877	3,534	5,875	8,372	9,507	9,768	9,243	7,792

TABLE 64.—*Herring: Cold-storage holdings, 1916-33*

[Thousand pounds; i.e., 000 omitted]

Year	Jan. 15	Feb. 15	Mar. 15	Apr. 15	May 15	June 15	July 15	Aug. 15	Sept. 15	Oct. 15	Nov. 15	Dec. 15
<b>Average:</b>												
1917-21	8,265	5,647	3,663	2,372	3,802	6,822	8,795	8,575	8,480	9,225	9,433	9,748
1921-25	3,515	3,035	1,680	1,177	1,380	1,923	2,316	2,675	2,926	4,350	4,234	3,990
1925-29	2,988	2,814	2,601	2,023	2,203	2,197	2,125	2,237	2,429	2,695	3,090	3,165
1929-33	2,325	1,797	1,552	1,346	1,714	1,655	1,521	1,700	2,019	2,250	2,051	2,723
1916												
1917	6,749	3,294	1,892	1,160	3,059	5,902	6,029	6,231	5,955	7,460	7,427	7,849
1918	5,891	3,015	2,185	1,811	5,240	12,635	16,170	16,761	16,274	15,861	15,785	15,930
1919	13,034	9,623	6,749	4,225	5,891	9,486	11,709	10,680	10,895	11,425	11,749	11,436
1920	9,206	6,496	3,712	2,012	2,303	3,297	5,688	5,460	5,405	6,124	6,582	7,738
1921	6,357	5,208	3,775	2,054	1,888	2,889	3,775	3,715	3,870	5,269	5,024	5,789
1922	4,148	2,484	1,158	757	595	1,121	1,086	1,685	1,939	3,426	4,065	2,826
1923	2,484	1,803	1,060	939	1,053	2,076	2,827	3,421	3,484	3,831	4,075	3,368
1924	3,300	1,742	1,744	708	1,927	2,710	2,781	3,661	3,318	3,653	4,454	4,533
1925	3,777	3,827	2,132	928	766	819	1,110	992	2,018	2,481	2,952	3,254
1926	2,852	2,303	2,368	2,164	2,049	2,476	2,598	2,515	2,371	2,409	2,627	2,325
1927	2,154	1,951	2,020	1,593	2,166	2,718	2,627	2,769	3,082	3,982	4,106	4,124
1928	3,959	4,085	4,523	3,887	3,739	3,250	2,860	3,093	2,845	2,520	2,767	2,908
1929	2,196	1,846	1,994	1,096	1,076	1,714	1,469	1,816	2,125	2,081	3,026	3,214
1930	2,430	1,503	1,449	1,487	2,229	2,338	2,422	2,826	3,413	3,958	3,679	3,462
1931	2,736	2,291	1,767	1,307	1,649	1,374	1,246	1,241	1,450	2,022	2,782	2,991
1932	2,627	2,127	1,568	1,278	1,909	1,895	1,682	1,741	1,835	1,771	1,747	1,942
1933	1,574	1,217	1,009	903	1,049	956	797	846	1,294	1,436	2,023	2,017

TABLE 65.—Herring, cured: Cold-storage holdings, 1916-33

[Thousand pounds; i. e., 000 omitted]

Year	Jan. 15	Feb. 15	Mar. 15	Apr. 15	May 15	June 15	July 15	Aug. 15	Sept. 15	Oct. 15	Nov. 15	Dec. 15
<b>Average:</b>												
1917-21.....	11,226	10,217	11,208	12,481	13,760	16,970	16,765	20,769	22,164	20,701	17,812	16,171
1921-25.....	15,148	13,578	12,351	12,242	12,233	11,896	11,869	14,336	19,338	21,650	19,934	19,741
1925-29.....	19,236	18,292	17,062	18,230	17,653	18,152	17,600	17,878	19,992	21,605	21,705	21,395
1929-33.....	15,734	14,753	13,697	13,604	14,501	14,573	13,824	14,411	16,793	17,980	16,886	15,431
<b>1916</b>										1,944	3,347	3,269
1917.....	3,353	4,727	5,998	7,322	7,371	10,389	12,180	12,187	10,187	8,817	8,843	7,928
1918.....	6,496	4,511	5,602	8,127	12,306	16,635	23,828	27,290	27,311	23,189	20,102	18,740
1919.....	14,810	14,131	18,249	21,133	23,158	26,983	29,633	30,342	34,395	32,092	24,871	21,818
1920.....	18,466	16,621	14,913	15,042	15,806	18,632	19,760	22,111	22,752	21,655	19,377	18,369
1921.....	13,055	11,097	10,776	10,776	10,111	9,210	8,388	11,613	16,207	17,753	15,868	18,062
1922.....	14,862	14,651	12,385	12,861	12,894	12,991	13,422	15,921	24,637	24,126	22,942	22,730
1923.....	19,949	16,275	15,017	14,741	15,572	14,706	15,355	15,924	18,728	17,586	15,572	14,608
1924.....	14,349	13,026	10,914	8,849	9,082	9,410	9,440	12,887	10,522	19,138	18,436	15,936
1925.....	13,534	12,827	12,965	13,985	13,527	13,163	12,739	15,237	20,594	26,672	28,651	29,427
1926.....	27,863	25,867	22,914	22,656	20,090	22,787	20,898	19,626	19,182	20,891	22,440	21,374
1927.....	19,909	19,172	17,783	17,978	18,027	17,456	16,487	16,528	18,189	19,113	17,540	16,363
1928.....	15,413	14,079	12,857	13,231	13,110	13,504	14,383	15,270	17,426	16,137	20,339	20,257
1929.....	19,439	18,897	19,091	23,247	23,561	23,852	23,513	22,731	24,569	23,802	21,357	19,557
1930.....	17,530	15,258	14,268	12,115	14,691	15,008	15,102	14,981	17,334	19,067	17,391	15,466
1931.....	13,728	12,921	11,763	11,379	12,296	12,920	11,093	13,026	15,388	17,070	15,660	15,625
1932.....	16,850	15,550	13,740	13,157	13,304	12,774	10,359	12,088	14,351	14,260	14,810	12,987
1933.....	12,136	11,187	9,624	7,822	8,663	9,212	9,063	9,236	12,326	15,710	15,214	13,621

TABLE 66.—Lake trout: Cold-storage holdings, 1916-33

[Thousand pounds; i. e., 000 omitted]

Year	Jan. 15	Feb. 15	Mar. 15	Apr. 15	May 15	June 15	July 15	Aug. 15	Sept. 15	Oct. 15	Nov. 15	Dec. 15
<b>Average:</b>												
1917-21.....	1,029	706	446	312	363	431	501	541	566	827	1,559	1,774
1921-25.....	1,583	1,124	724	388	406	520	651	666	679	860	1,595	2,011
1925-29.....	1,742	1,335	804	433	419	515	606	765	657	1,168	1,944	2,064
1929-33.....	1,368	1,063	681	442	422	444	457	518	552	701	1,304	1,285
<b>1916</b>										106	629	771
1917.....	392	153	80	43	120	139	196	218	202	482	1,292	1,050
1918.....	667	270	232	196	269	342	452	570	547	758	1,660	1,551
1919.....	1,190	895	483	292	277	287	343	374	473	739	1,619	1,660
1920.....	1,230	817	321	91	252	442	480	554	555	943	1,721	2,118
1921.....	1,665	1,394	1,114	936	896	944	1,032	991	1,053	1,213	2,004	2,489
1922.....	1,866	1,256	700	262	400	498	585	497	426	592	1,617	1,854
1923.....	1,443	839	287	50	45	194	281	372	389	570	1,189	1,614
1924.....	1,233	897	745	282	270	406	630	653	687	928	1,818	1,953
1925.....	1,610	1,236	773	410	418	557	746	819	840	987	1,850	2,144
1926.....	2,093	1,704	887	227	215	530	673	740	755	1,095	2,026	2,019
1927.....	1,564	1,245	896	556	641	564	696	818	977	1,292	2,079	1,975
1928.....	1,565	1,148	668	470	370	470	584	824	921	1,086	1,760	2,326
1929.....	1,879	1,343	800	563	450	463	440	625	792	1,079	2,013	1,855
1930.....	1,591	1,236	888	577	610	626	673	767	815	1,017	1,814	1,810
1931.....	1,649	1,358	920	894	647	626	631	630	639	697	1,261	2,282
1932.....	1,129	937	600	308	315	318	380	395	349	440	864	776
1933.....	592	441	195	68	89	194	180	175	175	270	667	702







TABLE 73.—Scup (porgies): <sup>1</sup> Cold-storage holdings, 1922-33

[Thousand pounds; i.e., 000 omitted]

Year	Jan. 15	Feb. 15	Mar. 15	Apr. 15	May 15	June 15	July 15	Aug. 15	Sept. 15	Oct. 15	Nov. 15	Dec. 15
Average:												
1925-29	270	182	85	43	97	394	579	657	656	631	573	491
1929-33	452	349	217	86	117	310	301	489	546	530	496	411
1922				1,028	910		1,043	1,994	2,056	2,019	1,837	1,690
1923	1,388	1,200	1,080			953	1,125	1,155	1,223	1,152	1,037	825
1924	679	468	175	87	32	76	219	291	255	226	192	132
1925	68	24	10	4	86	401	668	736	690	672	545	420
1926	318	192	62	15	64	209	231	248	235	211	187	145
1927	103	62	27	6	1	223	351	350	404	480	452	394
1928	292	202	103	75	124	552	920	971	935	868	821	736
1929	572	428	225	116	214	586	723	952	1,005	926	858	708
1930	627	489	314	92	191	312	523	713	828	795	725	574
1931	516	426	287	48	33	182	228	265	328	359	368	291
1932	370	277	195	158	133	300	301	334	354	344	323	263
1933	177	125	64	14	15	169	181	150	225	225	207	159

<sup>1</sup> Until July 15, 1922, included with miscellaneous frozen fish.

TABLE 74.—Shad and shad roe: Cold-storage holdings, 1916-33

[Thousand pounds; i.e., 000 omitted]

Year	Jan. 15	Feb. 15	Mar. 15	Apr. 15	May 15	June 15	July 15	Aug. 15	Sept. 15	Oct. 15	Nov. 15	Dec. 15
Average:												
1917-21	465	304	245	200	251	541	560	591	558	638	618	561
1921-25	410	383	182	158	239	391	515	551	508	526	539	529
1925-29	499	446	287	243	369	547	547	571	508	556	524	509
1929-33	446	350	234	163	199	309	307	410	470	460	445	447
1916												
1917	360	190	153	118	207	402	356	404	375	656	636	693
1918	620	376	333	319	413	921	814	808	804	798	765	673
1919	482	528	483	320	347	661	776	851	825	842	799	724
1920	523	322	142	166	193	481	490	524	545	554	518	491
1921	344	195	115	75	95	250	324	370	392	359	372	314
1922	302	261	59	100	121	273	300	317	337	350	350	214
1923	280	137	44	35	151	312	419	449	471	468	566	
1924	461	580	144	107	216	409	877	797	683	717	801	879
1925	713	739	523	474	611	762	794	750	688	735	702	672
1926	577	399	197	151	235	497	592	568	493	463	434	347
1927	331	305	136	108	377	595	569	590	607	564	540	534
1928	390	405	350	325	308	512	528	563	590	564	543	535
1929	483	394	230	155	218	370	353	427	416	427	401	455
1930	389	260	177	124	255	462	562	614	718	700	623	611
1931	642	529	297	192	228	364	430	484	483	637	583	547
1932	403	432	326	256	187	221	237	188	270	253	250	390
1933	224	188	140	90	108	127	204	338	415	379	367	

TABLE 75.—Shellfish: <sup>1</sup> Cold-storage holdings, 1922-33

[Thousand pounds; i.e., 000 omitted]

Year	Jan. 15	Feb. 15	Mar. 15	Apr. 15	May 15	June 15	July 15	Aug. 15	Sept. 15	Oct. 15	Nov. 15	Dec. 15
Average:												
1925-29	1,698	1,766	1,428	1,015	852	897	826	813	958	1,285	1,767	2,070
1929-33	2,447	2,196	1,830	1,318	1,151	1,324	1,426	1,352	1,411	1,621	2,082	2,275
1922												
1923	428	256	181	214	230	229	285	297	190	296	493	563
1924	781	715	450	244	323	401	457	350	377	625	660	934
1925	1,279	1,227	1,018	702	657	668	637	490	542	767	1,108	1,311
1926	900	844	633	356	416	574	625	487	796	927	1,081	1,268
1927	1,561	1,558	1,166	792	681	690	632	487	508	985	1,378	1,548
1928	1,987	2,330	1,989	1,483	997	959	797	772	881	1,296	1,666	2,110
1929	2,782	2,330	2,334	1,798	1,505	1,562	1,597	1,607	1,020	1,579	2,560	3,228
1930	2,083	1,866	1,523	1,050	845	1,105	1,378	1,487	1,487	1,636	2,152	2,195
1931	2,741	2,335	1,611	998	1,045	1,323	1,451	1,917	2,034	2,226	2,642	2,502
1932	2,730	2,620	2,206	1,852	1,281	1,286	1,439	1,355	1,248	1,395	2,229	2,754
1933	1,911	1,348	1,388	940	832	1,043	982	899	1,056	1,264	1,700	2,025

<sup>1</sup> Until July 15, 1922, included with miscellaneous frozen fish.

TABLE 76.—*Smelts, eulachon, etc.: Cold-storage holdings, 1916-33*

(Thousand pounds; i. e., 000 omitted)

Year	Jan. 15	Feb. 15	Mar. 15	Apr. 15	May 15	June 15	July 15	Aug. 15	Sept. 15	Oct. 15	Nov. 15	Dec. 15
<b>Average:</b>												
1917-21	614	853	1,014	909	824	797	745	787	746	807	806	677
1921-25	351	555	823	449	359	333	319	292	321	330	333	354
1925-29	665	1,090	1,211	771	619	681	599	628	529	527	523	469
1929-33	571	929	1,098	584	468	450	555	448	453	462	443	401
1916	217	358	878	1,051	987	825	794	845	813	1,121	1,223	958
1917	807	1,071	1,718	2,098	1,889	1,984	1,933	2,073	1,860	1,830	1,775	1,442
1918	1,262	1,860	1,408	875	797	729	626	645	605	674	583	424
1919	613	697	396	215	156	121	102	101	116	166	162	182
1920	171	331	672	394	293	248	298	272	335	334	317	380
1921	384	982	1,153	448	361	351	334	332	336	327	299	204
1922	237	167	276	92	86	76	69	76	78	113	146	247
1923	443	790	1,267	537	273	228	228	212	271	330	318	239
1924	522	603	748	892	780	765	717	568	584	578	583	660
1925	1,036	1,418	1,530	655	557	532	521	619	521	590	575	519
1926	609	1,309	1,383	745	653	508	485	474	459	434	358	252
1927	1,022	1,253	731	447	428	403	398	392	416	454	454	472
1928	1,049	1,342	832	680	672	718	682	680	679	645	652	552
1929	393	844	963	547	456	452	451	444	467	514	490	341
1930	805	972	1,208	488	419	400	409	369	390	416	403	672
1931	685	1,181	972	286	224	212	197	187	192	180	240	259
1932	344	797	1,001	637	570	515	501	517	527	510	437	431

TABLE 77.—*Squid: Cold-storage holdings, 1916-33*

(Thousand pounds; i. e., 000 omitted)

Year	Jan. 15	Feb. 15	Mar. 15	Apr. 15	May 15	June 15	July 15	Aug. 15	Sept. 15	Oct. 15	Nov. 15	Dec. 15
<b>Average:</b>												
1917-21	1,147	825	632	372	428	1,382	1,480	1,599	1,970	2,004	1,926	1,542
1921-25	1,219	881	628	307	534	1,688	1,939	2,002	1,890	1,891	1,681	1,325
1925-29	1,814	1,442	1,076	591	896	2,382	2,639	2,798	2,689	2,646	2,449	2,159
1929-33	1,812	1,489	1,018	586	1,184	2,242	2,340	2,313	2,149	1,899	1,707	1,494
1916	1,065	666	829	347	288	1,387	1,502	1,901	2,471	2,893	3,052	2,434
1917	2,066	1,685	1,241	600	363	787	825	1,134	991	868	688	326
1918	313	178	92	76	184	1,194	1,202	1,375	1,209	857	771	570
1919	421	283	183	96	94	518	703	910	2,163	2,577	2,626	2,226
1920	1,888	1,302	1,017	741	1,250	3,026	3,170	3,177	3,017	2,855	2,581	2,162
1921	1,879	1,438	1,009	514	640	1,036	1,039	1,038	881	801	497	268
1922	294	100	84	40	38	952	1,343	1,404	1,285	1,160	928	760
1923	580	327	180	38	167	1,660	2,117	2,281	2,231	2,558	2,430	1,850
1924	1,533	1,239	840	200	574	1,764	2,028	2,110	2,035	2,080	1,871	1,597
1925	1,191	872	751	390	395	1,310	1,615	1,588	1,673	2,080	2,229	2,045
1926	1,790	1,502	1,303	825	672	1,010	1,077	1,447	1,425	1,531	1,465	1,394
1927	1,133	780	440	138	937	4,366	5,187	5,006	5,362	5,059	4,046	3,969
1928	3,425	2,619	2,045	1,402	1,901	3,358	3,288	3,239	2,960	2,406	2,034	1,792
1929	1,206	907	430	111	1,773	3,171	3,418	3,479	3,370	2,996	2,707	2,424
1930	2,022	1,669	1,230	687	738	1,582	1,600	1,520	1,860	1,245	1,186	1,037
1931	840	690	433	177	1,028	2,355	2,559	2,605	2,423	2,222	2,098	1,851
1932	1,568	1,359	950	555	482	732	828	732	633	537	500	864

TABLE 78.—*Sturgeon or spoonbill cat:<sup>1</sup> Cold-storage holdings, 1912-33*

(Thousand pounds; i. e., 000 omitted)

Year	Jan. 15	Feb. 15	Mar. 15	Apr. 15	May 15	June 15	July 15	Aug. 15	Sept. 15	Oct. 15	Nov. 15	Dec. 15
<b>Average:</b>												
1925-29	767	740	707	688	652	684	754	774	815	931	1,011	977
1929-33	850	857	937	860	797	763	774	738	704	667	826	742
1922	447	411	310	295	214	232	279	320	389	434	467	367
1923	209	189	133	54	153	273	369	606	549	543	531	555
1924	497	467	303	244	274	306	368	445	409	404	377	299
1925	196	146	133	67	106	294	530	617	746	1,255	1,231	1,137
1926	1,161	1,078	858	1,009	1,015	1,095	1,109	1,069	1,248	1,236	1,241	1,420
1927	1,212	1,213	1,052	919	765	723	806	788	735	907	938	836
1928	668	704	1,189	1,209	1,099	1,001	956	953	936	850	1,270	1,191
1929	979	1,278	1,202	1,190	1,219	1,138	1,195	1,137	772	604	1,369	948
1930	870	786	688	625	488	630	652	607	1,013	852	490	322
1931	717	483	764	590	575	498	607	556	521	767	730	846
1932	1,018	944	844	688	605	550	460	357	277	261	273	405

<sup>1</sup> Until July 15, 1922, included with miscellaneous frozen fish.

TABLE 79.—Suckers: Cold-storage holdings, 1922-33

[Thousand pounds; i.e., 000 omitted]

Year	Jan. 15	Feb. 15	Mar. 15	Apr. 15	May 15	June 15	July 15	Aug. 15	Sept. 15	Oct. 15	Nov. 15	Dec. 15
<b>Average:</b>												
1925-29	72	52	44	36	43	69	71	71	71	78	94	86
1929-33	84	45	38	30	40	59	62	68	72	83	71	71
1922	18	3	10	5	13	28	19	14	8	7	13	17
1923	32	32	22	16	35	49	49	44	38	38	38	39
1924	42	40	50	31	30	32	31	33	34	38	44	61
1925	72	48	28	31	49	63	63	61	59	58	83	87
1926	92	66	58	39	43	50	46	52	45	55	93	89
1927	96	70	38	35	37	84	103	107	100	103	109	94
1928	83	34	44	49	56	115	112	103	117	130	133	110
1929	84	64	39	27	59	69	80	136	167	123	132	155
1930	122	101	89	68	64	68	70	64	31	40	49	45
1931	37	13	9	4	4	11	14	11	12	16	20	14
1932	13	12	9	4	12	27	36	36	32	32	21	30

1 Until July 15, 1922, included with miscellaneous frozen fish.

TABLE 80.—Weakfish (squeteagues): Cold-storage holdings, 1916-33

[Thousand pounds; i.e., 000 omitted]

Year	Jan. 15	Feb. 15	Mar. 15	Apr. 15	May 15	June 15	July 15	Aug. 15	Sept. 15	Oct. 15	Nov. 15	Dec. 15
<b>Average:</b>												
1917-21	770	524	305	174	282	521	862	1,045	1,026	1,394	1,478	1,286
1921-25	722	470	234	153	255	274	574	648	641	1,272	1,260	1,019
1925-29	1,100	704	293	126	270	509	532	907	1,148	1,460	1,673	1,544
1929-33	1,389	923	467	179	349	571	664	873	1,112	1,460	1,676	1,395
1916											687	521
1917	444	36	91	25	162	197	222	723	547	931	1,460	1,166
1918	713	377	163	85	540	1,309	1,345	1,794	1,778	2,175	2,121	2,022
1919	1,619	1,261	638	411	655	731	763	619	557	760	758	707
1920	439	281	96	57	38	124	571	449	498	920	1,098	812
1921	736	604	336	290	263	263	1,406	1,640	1,751	2,193	2,044	1,735
1922	1,485	1,161	659	415	359	293	260	179	439	535	612	531
1923	314	55	12	10	332	349	579	683	727	1,489	1,531	1,088
1924	770	378	132	39	166	213	290	279	256	295	498	446
1925	306	194	33	13	163	263	366	481	1,030	1,639	1,616	1,296
1926	1,129	673	270	83	307	445	391	488	581	1,112	1,383	1,279
1927	1,098	771	269	77	314	653	633	928	914	1,105	1,163	1,009
1928	799	451	79	56	145	528	654	1,418	1,007	1,791	2,734	2,664
1929	2,170	1,459	814	402	433	656	868	1,212	1,608	1,588	1,621	1,471
1930	1,283	845	536	249	670	1,251	1,395	1,571	1,794	2,954	3,039	2,453
1931	1,977	1,322	559	79	213	399	400	677	1,142	1,539	1,870	1,603
1932	1,206	637	220	83	214	264	385	624	689	685	666	878
1933	379	352	208	83	214	285	272	279	329	532	783	668

TABLE 81.—Whitefish: Cold-storage holdings, 1916-33

[Thousand pounds; i.e., 000 omitted]

Year	Jan. 15	Feb. 15	Mar. 15	Apr. 15	May 15	June 15	July 15	Aug. 15	Sept. 15	Oct. 15	Nov. 15	Dec. 15
<b>Average:</b>												
1917-21	1,427	1,267	1,062	1,125	843	787	918	1,186	1,320	1,748	2,041	2,204
1921-25	1,739	1,569	1,415	1,205	1,009	948	1,081	1,286	1,362	1,555	1,904	2,180
1925-29	1,580	1,743	1,478	978	767	777	937	1,071	1,063	964	1,382	1,573
1929-33	1,415	1,474	1,352	948	774	758	1,064	1,461	1,649	1,618	1,735	1,796
1916											301	554
1917	413	295	388	306	173	164	273	381	249	1,672	1,572	1,741
1918	1,139	712	597	487	335	312	393	626	767	1,253	1,757	1,977
1919	1,774	1,083	1,040	2,632	2,287	2,193	2,368	2,410	2,696	2,796	2,813	2,702
1920	2,209	1,959	1,499	822	382	267	378	824	1,018	1,097	1,095	1,986
1921	1,596	1,417	1,084	1,400	1,067	985	1,278	1,587	1,752	2,022	2,360	2,614
1922	2,201	1,991	1,414	1,633	1,489	1,427	1,440	1,444	1,756	2,182	2,278	2,147
1923	1,565	1,228	853	256	146	170	257	569	677	834	1,151	1,690
1924	1,381	1,463	1,082	1,441	1,074	1,026	1,149	1,206	1,351	1,410	1,822	2,134
1925	1,952	1,746	1,743	1,205	1,224	1,133	1,283	1,374	1,393	1,328	1,907	2,316
1926	2,309	2,201	1,544	611	433	511	697	970	980	953	1,324	1,297
1927	1,279	1,493	1,228	837	607	655	702	740	718	692	891	1,104
1928	1,126	1,398	1,101	577	358	412	623	673	602	611	888	1,284
1929	1,234	1,879	1,752	1,559	1,214	1,276	1,377	1,590	1,618	1,536	1,899	1,804
1930	1,618	1,988	1,768	1,262	1,212	1,236	1,336	1,368	1,367	1,323	1,458	1,483
1931	1,360	1,320	1,250	754	618	608	816	931	980	966	1,068	1,298
1932	1,242	1,008	846	511	368	366	660	1,181	1,311	1,762	1,737	1,606
1933	1,312	1,119	1,152	624	458	313	1,230	2,181	2,525	2,503	2,511	2,729

TABLE 82.—Whiting: Cold-storage holdings, 1916-33

[Thousand pounds; i.e., 000 omitted]

Year	Jan. 15	Feb. 15	Mar. 15	Apr. 15	May 15	June 15	July 15	Aug. 15	Sept. 15	Oct. 15	Nov. 15	Dec. 15
Average:												
1917-21.....	7, 115	4, 450	2, 516	1, 600	1, 197	3, 353	6, 762	9, 281	9, 764	10, 373	10, 973	9, 866.
1921-25.....	3, 612	2, 282	1, 461	1, 113	909	1, 467	3, 194	4, 404	4, 872	4, 824	4, 933	4, 481
1925-29.....	4, 376	3, 030	1, 861	1, 249	1, 028	2, 517	4, 994	6, 586	6, 444	6, 040	6, 216	5, 941
1929-33.....	4, 962	3, 690	2, 694	1, 765	1, 367	3, 598	5, 876	6, 402	6, 130	5, 890	5, 780	5, 433
1916.....										6, 834	6, 683	5, 220.
1917.....	2, 573	935	393	140	128	4, 585	9, 047	10, 906	9, 931	11, 425	12, 330	11, 498
1918.....	7, 459	4, 308	2, 196	1, 150	868	3, 130	8, 112	11, 463	12, 884	13, 395	15, 013	13, 016
1919.....	10, 549	7, 441	3, 648	1, 803	1, 292	4, 064	7, 725	10, 430	11, 090	12, 419	12, 694	12, 253
1920.....	6, 320	6, 855	3, 488	2, 289	1, 833	2, 378	4, 426	8, 630	9, 649	9, 529	9, 412	7, 811
1921.....	5, 085	3, 754	2, 854	2, 600	2, 369	2, 696	4, 499	4, 974	5, 258	5, 096	5, 405	4, 760.
1922.....	8, 440	5, 672	3, 930	2, 692	1, 445	3, 048	3, 786	4, 010	4, 040	3, 931	3, 407	3, 407
1923.....	2, 364	1, 143	729	381	185	159	1, 230	3, 187	4, 698	5, 058	5, 474	4, 601
1924.....	3, 793	2, 245	1, 447	1, 151	932	1, 007	1, 527	3, 908	3, 369	3, 218	3, 677	3, 590.
1925.....	4, 301	2, 297	1, 335	827	848	2, 034	5, 266	7, 066	7, 023	6, 791	6, 774	6, 145
1926.....	2, 780	3, 894	1, 827	1, 216	905	3, 332	6, 667	7, 753	8, 067	7, 432	7, 624	7, 069
1927.....	5, 459	3, 452	1, 890	1, 429	1, 417	2, 321	2, 620	4, 445	4, 713	4, 461	4, 680	3, 980.
1928.....	2, 940	1, 786	1, 211	696	469	2, 752	6, 012	7, 656	6, 756	6, 337	6, 385	5, 977
1929.....	5, 811	4, 051	3, 043	2, 076	1, 503	2, 248	4, 433	6, 010	5, 660	5, 270	5, 692	5, 636
1930.....	5, 178	3, 836	2, 398	1, 400	1, 013	4, 984	8, 299	8, 402	8, 170	7, 876	7, 627	7, 148
1931.....	6, 018	4, 886	3, 740	2, 777	2, 371	4, 685	6, 394	6, 579	6, 177	6, 289	6, 036	5, 600.
1932.....	4, 894	3, 918	2, 503	1, 987	1, 621	3, 969	5, 246	5, 365	5, 106	4, 732	4, 516	3, 681
1933.....	2, 919	1, 388	1, 285	584	326	2, 123	5, 020	5, 652	5, 635	5, 294	4, 977	4, 800.

TABLE 83.—Miscellaneous frozen fish: <sup>1</sup> Cold-storage holdings, 1916-33

[Thousand pounds; i.e., 000 omitted]

Year	Jan. 15	Feb. 15	Mar. 15	Apr. 15	May 15	June 15	July 15	Aug. 15	Sept. 15	Oct. 15	Nov. 15	Dec. 15
Average:												
1925-29.....	5, 582	4, 815	3, 433	3, 021	3, 318	4, 098	4, 637	5, 467	6, 277	6, 215	5, 694	7, 129
1929-33.....	7, 919	6, 703	4, 064	4, 336	4, 913	5, 617	6, 230	7, 294	7, 874	8, 163	8, 530	8, 975.
1916.....										3, 061	4, 391	5, 177
1917.....	3, 658	2, 890	3, 474	1, 970	2, 641	4, 815	6, 378	6, 726	6, 924	9, 047	10, 172	11, 225
1918.....	8, 852	8, 842	9, 517	11, 004	11, 544	12, 938	13, 476	16, 315	15, 340	17, 614	18, 250	17, 950
1919.....	14, 515	14, 769	12, 294	10, 791	9, 550	11, 573	11, 676	11, 958	12, 316	13, 377	14, 132	12, 445
1920.....	11, 187	10, 011	7, 372	6, 788	5, 923	7, 686	8, 099	8, 872	8, 762	10, 166	10, 881	10, 982
1921.....	9, 552	8, 113	8, 041	8, 284	7, 718	8, 107	7, 917	8, 717	9, 363	9, 649	10, 636	11, 343
1922.....	8, 197	6, 496	3, 746	3, 160	3, 616	4, 074	3, 325	3, 440	3, 317	4, 094	4, 833	4, 680
1923.....	3, 213	2, 645	1, 851	1, 215	2, 011	2, 838	3, 240	3, 866	4, 623	5, 574	5, 884	6, 402.
1924.....	5, 400	4, 440	3, 387	2, 853	3, 110	3, 695	3, 993	5, 064	5, 413	6, 310	6, 668	6, 983
1925.....	6, 113	4, 678	2, 975	2, 059	2, 344	3, 069	3, 420	2, 935	4, 469	3, 229	3, 643	3, 674
1926.....	3, 668	3, 381	2, 519	2, 353	2, 824	3, 505	3, 884	4, 140	4, 382	4, 588	5, 490	5, 177
1927.....	5, 509	5, 329	3, 801	2, 016	3, 605	4, 060	4, 274	5, 137	5, 573	5, 946	6, 219	6, 939
1928.....	5, 517	5, 144	3, 839	3, 245	3, 482	4, 420	4, 964	6, 442	6, 954	7, 116	7, 655	8, 852
1929.....	7, 102	5, 546	4, 036	4, 532	4, 335	5, 391	6, 544	8, 674	10, 009	10, 197	10, 464	10, 805
1930.....	7, 851	7, 012	5, 530	4, 675	6, 805	8, 047	9, 347	11, 031	11, 095	11, 174	11, 476	11, 516
1931.....	9, 905	8, 515	6, 390	5, 189	5, 727	6, 337	6, 847	7, 024	7, 702	8, 743	9, 117	10, 233
1932.....	9, 435	8, 116	5, 713	4, 411	4, 575	4, 847	4, 837	5, 650	5, 890	5, 744	6, 104	6, 117
1933.....	5, 241	4, 327	3, 179	2, 893	3, 123	3, 473	3, 477	4, 091	4, 703	4, 956	5, 489	6, 105.

<sup>1</sup> Includes rockfishes and sea bass reported separately prior to July 15, 1922, also catfish, flounders, pike, scup, suckers, sheffish, and sturgeon were included until July 15, 1922; now shown in separate tables.

TABLE 84.—All varieties of fish: Cold-storage holdings, 1916-33

[Thousand pounds; i.e., 000 omitted]

Year	Jan. 15	Feb. 15	Mar. 15	Apr. 15	May 15	June 15	July 15	Aug. 15	Sept. 15	Oct. 15	Nov. 15	Dec. 15
Average:												
1917-21	55,879	41,854	31,046	24,450	25,753	37,404	47,950	57,259	63,350	70,976	75,623	73,151
1921-25	50,023	38,277	27,008	20,090	20,284	26,001	33,902	43,052	52,176	60,331	62,289	69,896
1925-29	55,688	44,667	32,384	24,297	26,352	36,223	46,597	58,028	64,892	68,779	72,158	69,317
1929-33	61,312	49,062	34,661	26,075	28,773	37,438	47,923	59,558	67,374	70,726	73,297	69,283
1916										37,753	44,703	42,784
1917	32,235	14,727	13,374	9,516	14,040	27,791	38,431	44,025	47,188	60,677	70,939	59,987
1918	61,116	35,907	28,457	26,548	31,403	50,298	64,865	82,555	89,204	93,812	99,632	96,600
1919	80,684	67,617	60,036	37,111	37,174	48,840	59,674	65,145	69,581	70,763	78,769	74,202
1920	61,510	47,904	29,958	20,633	19,804	27,779	36,618	47,140	56,298	64,731	67,549	65,841
1921	53,851	42,117	33,404	28,444	26,846	32,311	40,160	47,431	54,469	58,899	61,228	59,126
1922	48,320	37,742	25,474	17,485	17,074	20,818	25,621	32,227	41,139	54,755	64,503	48,689
1923	40,033	27,070	16,724	10,590	12,312	17,780	27,237	39,101	53,220	62,616	63,456	64,290
1924	52,827	40,421	29,571	21,489	21,840	27,115	36,036	49,026	56,607	67,025	70,406	68,325
1925	55,308	44,034	29,865	22,442	23,749	31,980	40,458	47,474	55,447	58,358	61,849	58,048
1926	46,181	37,378	24,894	16,154	21,640	31,345	45,608	57,027	64,657	70,316	75,034	69,854
1927	58,655	48,884	34,887	24,731	26,782	36,896	42,118	54,061	60,330	65,960	66,790	64,787
1928	53,921	44,877	34,528	26,473	26,513	40,946	53,140	66,170	71,352	73,410	77,677	78,090
1929	62,375	48,364	37,744	31,087	30,174	40,148	51,664	64,810	72,074	75,864	79,439	75,807
1930	62,417	49,012	35,581	25,357	34,139	47,632	64,877	78,993	85,358	88,603	91,872	85,323
1931	71,817	56,560	38,667	28,095	31,283	39,384	48,445	57,519	68,083	73,144	74,725	72,362
1932	64,478	60,001	35,671	25,016	28,622	34,311	41,306	51,581	59,269	63,073	62,104	55,738
1933	45,476	35,469	25,855	19,335	19,645	25,711	33,331	44,882	51,475	55,928	58,338	57,188

## INDEX

	Page		Page
All commodities, holdings by months, year 1933.....	28	Fish, monthly holdings—Continued.....	
Beef:		Whitefish.....	39
Cured and in process of cure.....	20	Whiting.....	40
Frozen, monthly holdings.....	19	Fruits, monthly holdings:	
Frozen monthly.....	19	Fresh—	
Placed in cure monthly.....	20	Apples—	
Total holdings.....	21	Barreled.....	8
Butter, creamery, monthly holdings.....	10	Baskets.....	9
Cheese, monthly holdings:		Boxed.....	8
American.....	11	Barreled, baskets and boxed combined.....	9
Brick.....	12	Pears—	
Limburger.....	12	Boxed.....	9
Miscellaneous.....	13	Baskets.....	10
Munster.....	12	Frozen and preserved.....	10
Swiss.....	11	Geographical sections, stocks for year.....	2
Total of all cheese.....	13	Lamb and mutton:	
Eggs, monthly holdings:		Monthly holdings.....	21
Frozen.....	14	Frozen monthly.....	22
Case equivalent.....	15	Lard, monthly holdings.....	27
Classification.....	15	Meat:	
Shell.....	14	Miscellaneous, monthly holdings.....	25
Fish, monthly holdings:		Total holdings, all meats.....	26
All varieties, total holdings.....	30	<i>See also</i> Beef; Pork; Lamb; Mutton.	
Bluefish.....	30	Mutton. <i>See</i> Lamb and mutton.	
Butterfish.....	30	Pork:	
Catfish.....	31	Dry salt cured and in process of cure,	
Ciscoes.....	31	monthly holdings.....	23
Cod.....	31	Dry salt, placed in cure monthly.....	23
Croakers.....	32	Frozen, monthly holdings.....	22
Eulachon.....	32	Frozen monthly.....	22
Flounders.....	31	Pickled, cured, and in process of cure,	
Haddock.....	31	monthly holdings.....	24
Hake.....	31	Pickled, placed in cure monthly.....	24
Halibut.....	33	Total holdings.....	25
Herring, cured.....	34	Poultry, monthly holdings:	
Herring, frozen.....	33	Broilers.....	16
Mackerel.....	35	Fowls.....	17
Miscellaneous.....	40	Fryers.....	16
Pike.....	35	Miscellaneous.....	18
Pollock.....	31	Roasters.....	16
Sablefish.....	35	Total frozen poultry.....	18
Salmon—		Turkeys.....	17
Cured mild.....	38	Refrigerated space:	
Miscellaneous.....	36	Meat-packing establishments.....	4
Steelhead trout.....	36	Meat-packing establishments doing a public cold-storage business.....	5
Scup (porgies).....	37	Private cold-storage plants.....	3
Shad and shad roe.....	37	Public cold-storage plants.....	3
Shellfish.....	37	Public and private cold-storage plants combined.....	4
Smelts.....	38	Summary by class of business.....	6
Spoonbill cat.....	35	Total refrigerated space.....	5
Squid.....	35	Total refrigerated space in leading cities.....	6
Sturgeon.....	38	Total refrigerated space with comparisons 1921-33.....	8
Suckers.....	39		
Trout, lake.....	34		
Weakfish (squeteagues).....	39		

**ORGANIZATION OF THE UNITED STATES DEPARTMENT OF AGRICULTURE  
WHEN THIS PUBLICATION WAS LAST PRINTED**

---

<i>Secretary of Agriculture</i> .....	HENRY A. WALLACE.
<i>Under Secretary</i> .....	REXFORD G. TUGWELL.
<i>Assistant Secretary</i> .....	M. L. WILSON.
<i>Director of Extension Work</i> .....	C. W. WARBURTON.
<i>Director of Personnel</i> .....	W. W. STOCKBERGER.
<i>Director of Information</i> .....	M. S. EISENHOWER.
<i>Director of Finance</i> .....	W. A. JUMP.
<i>Solicitor</i> .....	SETH THOMAS.
<i>Agricultural Adjustment Administration</i> .....	CHESTER C. DAVIS, <i>Administrator.</i>
<i>Bureau of Agricultural Economics</i> .....	NILS A. OLSEN, <i>Chief.</i>
<i>Bureau of Agricultural Engineering</i> .....	S. H. MCCRORY, <i>Chief.</i>
<i>Bureau of Animal Industry</i> .....	JOHN R. MOHLER, <i>Chief.</i>
<i>Bureau of Biological Survey</i> .....	J. N. DARLING, <i>Chief.</i>
<i>Bureau of Chemistry and Soils</i> .....	H. G. KNIGHT, <i>Chief.</i>
<i>Office of Cooperative Extension Work</i> .....	C. B. SMITH, <i>Chief.</i>
<i>Bureau of Dairy Industry</i> .....	O. E. REED, <i>Chief.</i>
<i>Bureau of Entomology and Plant Quarantine</i> .....	LEE A. STRONG, <i>Chief.</i>
<i>Office of Experiment Stations</i> .....	JAMES T. JARDINE, <i>Chief.</i>
<i>Food and Drug Administration</i> .....	WALTER G. CAMPBELL, <i>Chief.</i>
<i>Forest Service</i> .....	FERDINAND A. SILCOX, <i>Chief.</i>
<i>Grain Futures Administration</i> .....	J. W. T. DUVEL, <i>Chief.</i>
<i>Bureau of Home Economics</i> .....	LOUISE STANLEY, <i>Chief.</i>
<i>Library</i> .....	CLARIBEL R. BARNETT, <i>Librarian.</i>
<i>Bureau of Plant Industry</i> .....	KNOWLES A. RYERSON, <i>Chief.</i>
<i>Bureau of Public Roads</i> .....	THOMAS H. MACDONALD, <i>Chief.</i>
<i>Weather Bureau</i> .....	WILLIS R. GREGG, <i>Chief.</i>

---

This bulletin is a contribution from

<i>Bureau of Agricultural Economics</i> .....	NILS A. OLSEN, <i>Chief.</i>
<i>Cold Storage Statistics</i> .....	WILLIAM BROXTON, <i>Assistant Marketing Specialist, in Charge.</i>





**END**