



AgEcon SEARCH
RESEARCH IN AGRICULTURAL & APPLIED ECONOMICS

The World's Largest Open Access Agricultural & Applied Economics Digital Library

This document is discoverable and free to researchers across the globe due to the work of AgEcon Search.

Help ensure our sustainability.

Give to AgEcon Search

AgEcon Search
<http://ageconsearch.umn.edu>
aesearch@umn.edu

*Papers downloaded from **AgEcon Search** may be used for non-commercial purposes and personal study only. No other use, including posting to another Internet site, is permitted without permission from the copyright owner (not AgEcon Search), or as allowed under the provisions of Fair Use, U.S. Copyright Act, Title 17 U.S.C.*

5B-15 (1926)

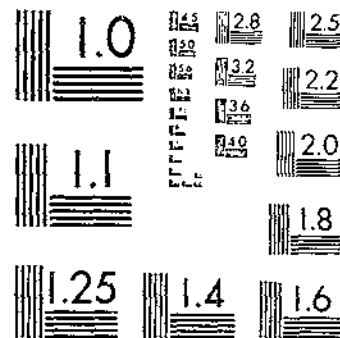
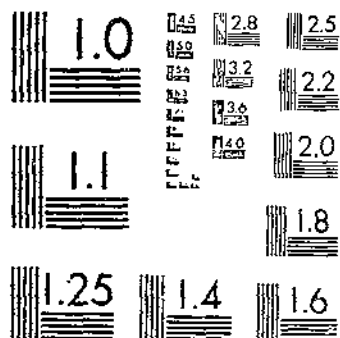
USDA STATISTICAL BULLETINS

NO. 14

COLLAGE HOLDINGS YEAR ENDED DECEMBER 1925 WITH COMPARABLE DATA FOR

1924

START



© UPDATA 1981

MICROCOPY RESOLUTION TEST CHART
NATIONAL BUREAU OF STANDARDS-1963-A

MICROCOPY RESOLUTION TEST CHART
NATIONAL BUREAU OF STANDARDS-1963-A

4

See

UNITED STATES DEPARTMENT OF AGRICULTURE
STATISTICAL BULLETIN NO. 13

WASHINGTON, D. C.

★

SEPTEMBER, 1926

COLD-STORAGE HOLDINGS

Year Ended December, 1925
With Comparable Data for Earlier Years

Prepared by the Bureau of Agricultural Economics

CONTENTS

	Page
Introduction	i
Refrigerated Space	4
Cold-Storage Holdings:	
Apples	7
Butter	8
Cheese	8
Eggs	10
Poultry	10
Meats	12
Lard	17
Fish	20
Index	31



WASHINGTON
GOVERNMENT PRINTING OFFICE
1926

STATISTICAL BULLETIN SERIES

The bulletins of the statistical series will contain available statistics on one or more commodities, annual, monthly, or weekly, on production, movement from the farm, receipts at markets, reshipments, farm and market prices, exports, imports, production in foreign countries, and foreign market prices, for the current year, together with comparable data for earlier years.

At the present time (September, 1926) statistical bulletins have been issued or are now in press as follows:

1. Cold-storage holdings.
2. Seed statistics.
3. Sheep, lamb, mutton, and wool statistics.
4. Cold-storage holdings.
5. Horses, mules, and motor vehicles.
6. Grain futures: Daily data.
7. Shipments and unloads of certain fruits and vegetables.
8. Carload shipments of fruits and melons.
9. Carload shipments of vegetables.
10. Statistics of potatoes and sweet potatoes.
11. Hay and feed statistics.
12. Wheat and rye statistics.
13. Cold-storage holdings.

UNITED STATES DEPARTMENT OF AGRICULTURE
STATISTICAL BULLETIN NO. 13

WASHINGTON, D. C.

*

SEPTEMBER, 1926

COLD-STORAGE HOLDINGS ¹

Year Ended December, 1925

With Comparable Data for Earlier Years

Prepared by the Bureau of Agricultural Economics ²

CONTENTS

	Page		Page
Introduction.....	1	Cold-storage holdings—Continued.	
Refrigerated space.....	4	Poultry.....	10
Cold-storage holdings.....	7	Meats.....	12
Apples.....	7	Lard.....	17
Butter.....	8	Fish.....	20
Cheese.....	8	Index.....	31
Eggs.....	10		

INTRODUCTION

The statistics in this, the third, bulletin on cold-storage holdings include cold-storage warehouse space and cold-storage holdings of apples, dairy products, eggs, meats, lard, dressed poultry, and fish in the United States.

A survey of storage space of cold-storage establishments has been made by the Bureau of Agricultural Economics, from time to time, as of October 1. The space figures appearing in this bulletin are as of October 1, 1925.

For the purpose of determining what commodities and establishments to include, it is considered that a cold-storage warehouse is any place artificially cooled to a temperature of 45° F., or below, in which food commodities are stored and held for 30 days or more. Since some commodities not reported as in cold storage are stored in space cooled to temperature varying from 45° to 60° F., all refrigerated space is shown in the tabulation in order to make a complete report on refrigerated storage space.

Changes occur from year to year not only in the number of establishments but in the amount of space in the different temperature groups. New establishments are usually of considerable size; those that discontinue are often small. The amount of space at the different temperatures varies according to the demand for storage space for the various commodities.

Each operator of a cold-storage warehouse, whether public or private, who stores apples, pears, frozen and preserved fruits, dairy products, eggs, poultry, frozen and cured meats, and lard is requested to mail to the bureau a complete report of holdings of such commodities on the first business day of each month.

¹ This bulletin brings to dates shown the data originally published in Statistical Bulletin No. 4, "Cold-Storage Holdings."

² Prepared under the direction of William Broxton, Cold-Storage Report Section, and Lewis B. Flohr, Division of Statistical and Historical Research.

A weekly report on creamery butter, American cheese, case eggs, and poultry is issued by the bureau giving the holdings in 26 of the cities having the largest stocks of these commodities; this report covers about 75 per cent of the total holdings in the United States.

A daily report is issued from 10 cities, covering about 50 per cent of the total holdings in the United States. These weekly and daily reports take the place of the preliminary report which was discontinued in March, 1924.

The mail reports from all operators are tabulated and the complete report is issued about the twelfth day of the month. In compiling this report, it is necessary to estimate, on the basis of reports received, the probable holdings of the few concerns not reporting. These estimates are only a very small percentage of the total figures; and in the case of dairy products, eggs, and poultry they rarely reach 1 per cent. The quantities estimated on meats and lard usually run somewhat higher.

Occasionally discrepancies are found in the schedules which should be adjusted. If these apparent discrepancies are important, confirmation or correction is requested by telegram before the reports are made. Minor discrepancies are adjusted by correspondence, therefore these corrections may not be made before the next month. Corrections, although insignificant relative to the total, are made for the sake of accuracy. The reports compiled each month from the mailed schedules are checked against the schedule for next month and corrected when corrections are necessary, and the revised figures are published with the current figures of the succeeding month. This revision of the figures of the preceding month is final.

After the schedules have been tabulated and before the report is issued, the results are carefully examined and approved by a representative board consisting of statisticians and specialists who are familiar with the movements and market conditions of the commodities reported.

Operators of cold-storage warehouses storing and freezing fish are requested to report holdings as of the fifteenth of each month. The tabulation of these reports is completed about the last business day of each month. They are then turned over to the Bureau of Fisheries for release.

The Bureau of Agricultural Economics is entirely dependent upon the voluntary cooperation of the operators of cold-storage warehouses and meat-packing establishments for the information contained in these reports. The returns received each month represent from 95 to 98 per cent of the firms listed and 95 to 99 per cent of the stocks held in the country.

That the reports may be as complete as possible, representatives of the bureau are sent out from time to time to check up lists, to locate new cold-storage warehouses, and to enlist the cooperation of operators. It is essential to the accuracy of the reports that a feeling of good will and mutual understanding should exist between the bureau and the cooperating concerns, and to this end it is the policy of the bureau that its representatives make a personal contact for the furthering of that good will and mutual understanding. Trade journals and periodicals are constantly searched for information as to changes in and additions to the industry.

The arrangement of tables in the preceding bulletin on cold-storage holdings, Statistical Bulletin No. 4, was on a "crop year"

or seasonal basis. In this issue the calendar-year arrangement has been used, as it is thought that this arrangement will be found more suitable to the needs of the industry.

Reports of cold-storage holdings supply a basis on which the trade may forecast future business and give the general public a knowledge of the quantity of such foodstuffs available for consumption. Commodities are placed in cold storage during the period of greatest production and withdrawn for consumption during the period of low production, thereby insuring a better distribution of the supply throughout the year.

Current monthly figures of cold-storage holdings of all commodities but fish are published in the monthly statistical supplement to Crops and Markets. Details as to holdings of fish may be had as soon as compiled from the Bureau of Agricultural Economics, United States Department of Agriculture or from the Bureau of Fisheries, United States Department of Commerce.

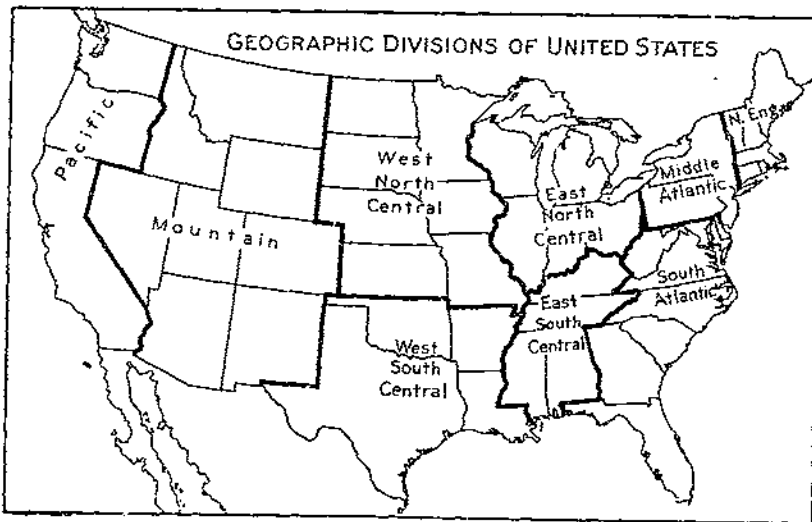


FIG. 1. The census geographic divisions are used here

The map (fig. 1) shows the grouping of States into geographic divisions. The following table shows the percentage of holdings of the various commodities by geographic divisions, and is based on the seasonal year 1924-25:

Cold-storage stocks by geographic divisions for seasonal year 1924-25

Commodity	New England	Middle Atlantic	East North Central	West North Central	South Atlantic	East South Central	West South Central	Mountain	Pacific
	Per cent	Per cent	Per cent	Per cent	Per cent	Per cent	Per cent	Per cent	Per cent
Apples.....	3	31	21	12	10	2	3	1	17
Creamery butter.....	18	30	27	15	1	2	1	1	5
Cheese.....	1	23	61	4	1	1	1	2	7
Cheese eggs.....	7	30	25	30	2	3	4	2	7
Poultry.....	11	38	34	10	1	3	1	2	5
Beef.....	4	15	53	21	2	3	1	1	2
Pork.....	4	6	39	43	3	1	2	1	1
Lamb and mutton.....	23	51	14	6	1	1	1	1	5
Meats.....	6	13	11	32	2	1	2	1	2
Lard.....	4	7	58	23	2	1	2	1	2

TABLE 1.—Refrigerated space: Public cold-storage plants,¹ October 1, 1925

State	Concerns	Space held at temperatures of—				Total space Cubic feet
		10° F. and below	11° to 29° F., inclusive	30° to 44° F., inclusive	45° F. and above	
Arkansas	4	33,750		1,365,440		1,400,190
California	35	1,438,647	1,448,103	11,143,688	169,330	14,199,858
Colorado	5	516,465		436,352		1,152,817
Florida	5	27,760	10,045	191,729		409,683
Georgia	17	27,127	2,484,660	1,451,166	14,210	1,707,003
Illinois	23	11,187,253	2,382,837	30,545,527	1,437,112	45,522,769
Indiana	10	293,939	325,583	3,525,525		4,145,247
Iowa	8	55,056	20,800	1,785,875		1,861,731
Kansas	11	453,825	1,254,349	1,557,013	280,000	3,545,189
Kentucky	6	73,337	220,013	1,644,538		1,938,108
Louisiana	5	125,200	116,800	1,094,337	70,000	1,917,337
Maryland	4	439,300	101,800	932,700		1,503,500
Massachusetts	8	4,329,514	1,460,599	5,937,142	283,626	13,000,878
Michigan	9	571,037	332,843	1,088,850		2,003,330
Minnesota	7	1,004,649	751,219	2,750,921		4,506,189
Missouri	22	2,787,172	446,941	12,530,104	311,998	16,545,215
Nebraska	3	209,480		6,683,576	5,000	7,407,056
New Jersey	13	2,796,110	4,172,917	37,903,449	1,006,288	52,289,189
New York	73	9,155,565	1,772,917	37,903,449	1,006,288	693,000
North Carolina	3	15,000	50,000	565,000		9,511,221
Ohio	13	1,504,031	241,336	7,554,068	211,186	1,475,146
Oklahoma	5	64,840	30,420	640,416		1,065,188
Oregon	8	153,288	1,171,484	9,613,661	330,783	13,313,392
Pennsylvania	27	2,029,227	1,348,721	3,800,710		4,175,310
Tennessee	8	270,060	104,660	2,611,581	450,472	4,203,573
Texas	21	106,008	1,086,512	10,501,332	201,600	11,407,417
Virginia	16	178,346	325,039	4,983,566	508,629	7,191,217
Washington	17	309,423	1,369,647	2,202,065		2,227,065
West Virginia	8		25,000	1,785,275	9,591	2,540,170
Wisconsin	7	236,470	414,837	5,270,783		6,674,691
All other States	15	894,740	730,078			
Total	416	41,311,136	20,196,330	175,214,429	3,811,924	212,563,913

¹ A public cold-storage warehouse is one in which the goods stored are not owned or controlled by the operators but which the warehousemen receive and store for a consideration.

TABLE 2.—Refrigerated space: Private cold-storage plants,¹ October 1, 1925

State	Concerns	Space held at temperatures of—				Total space Cubic feet
		10° F. and below	11° to 29° F., inclusive	30° to 44° F., inclusive	45° F. and above	
Alaska	3	31,792	372,872	11,388	2,000	418,062
California	9	36,640	137,440	1,628,414	5,760	1,878,354
Colorado	3	3,000	23,660	38,000		74,660
Illinois	10	391,245	1,975,966	1,055,412	13,335	4,325,958
Indiana	5	1,497	109,670	39,262	367,949	461,338
Iowa	7	28,718	19,082	251,491	88,116	387,407
Kansas	3	238,232		372,105	43,420	653,767
Maine	5	330,732	1,836	9,792		342,860
Massachusetts	15	1,021,108	186,010	275,983		1,476,107
Michigan	10		32,338	105,185	1,000	138,546
Minnesota	4	12,170	21,537	42,880		76,587
Missouri	3	0,000	89,868	166,102		251,970
Nebraska	5	20,178	24,188	208,775	2,100	255,301
New Jersey	6	171,670	97,742	47,805		317,217
New York	35	171,663	691,234	1,775,932	24,223	2,663,052
Ohio	28	32,602	251,417	340,754	120,242	751,105
Oklahoma	5		11,000	25,917		69,424
Oregon	8	136,248	72,489	1,442,870		1,651,613
Pennsylvania	19	432,763	221,408	611,872	73,918	1,289,061
Tennessee	3		5,000	51,120		56,120
Texas	12	16,352	23,760	269,105	18,184	318,451
Utah	3			137,057		137,057
Washington	15	57,023	743,177	2,336,143	2,012	3,138,355
Wisconsin	27	21,024	102,203	490,217	435,098	1,048,542
All other States	21	124,376	115,444	1,590,902	47,022	1,883,743
Total	264	3,288,072	5,313,301	14,291,598	1,172,946	24,065,827

¹ A private cold-storage warehouse is one in which all the goods stored are owned by the operators of the warehouse.

Cold-Storage Holdings

TABLE 3.—Refrigerated space: Combined public and private cold-storage plants,¹
October 1, 1925

EXCLUSIVE OF MEAT-PACKING ESTABLISHMENTS

State	Concerns	Space held at temperatures of—				Total space
		10° F. and below	11° to 29° F., inclusive	30° to 44° F., inclusive	45° F. and above	
		<i>Cubic feet</i>	<i>Cubic feet</i>	<i>Cubic feet</i>	<i>Cubic feet</i>	<i>Cubic feet</i>
California	6	2,160	42,342	352,473	—	356,975
Connecticut	3	114,400	132,544	483,291	—	730,235
Illinois	11	4,209,218	7,008,784	9,090,733	44,520	21,283,255
Iowa	10	431,096	944,645	800,888	123,890	2,200,619
Kansas	6	84,310	58,476	730,552	85,000	982,338
Massachusetts	8	208,847	358,361	361,559	50,593	979,360
Michigan	8	186,942	75,181	373,596	69,090	705,719
Minnesota	4	145,950	16,500	482,150	—	644,600
Missouri	3	—	—	1,020,000	—	1,020,000
Montana	3	18,520	8,048	40,616	9,228	76,512
Nebraska	6	1,614,344	11,312	1,717,086	55,892	3,387,637
New Jersey	3	48,000	2,300	740,500	—	790,800
New York	37	164,105	240,103	5,223,512	50,520	5,684,241
Ohio	31	332,139	208,709	1,463,857	15,000	2,019,705
Oregon	6	15,350	162,494	476,057	—	653,841
Pennsylvania	12	129,070	87,030	1,323,429	65,000	1,704,529
Texas	5	62,800	111,730	562,650	3,415	739,595
Virginia	7	140,000	43,438	592,182	5,880	781,500
Washington	25	54,928	84,760	6,353,005	313,664	6,786,357
West Virginia	1	7,840	3,000	164,674	34,000	209,514
Wisconsin	18	80,228	44,450	1,062,186	64,949	1,251,813
All other States	22	500,664	604,278	2,895,233	31,060	4,031,663
Total	212	8,450,311	11,173,425	36,353,333	1,027,711	57,034,780

MEAT-PACKING ESTABLISHMENTS DOING PUBLIC COLD-STORAGE BUSINESS

Illinois	4	36,850	337,142	3,506,831	665,453	4,636,285
Kansas	5	553,692	4,326,263	15,687,269	2,416,556	23,283,880
New Jersey	3	245,031	406,060	1,230,015	329,512	2,210,621
All other States	22	3,006,736	1,202,910	20,543,902	1,944,474	26,698,022
Total	34	4,142,218	6,272,375	41,067,020	5,355,995	56,837,608

¹ A combined cold-storage warehouse is one in which some of the goods are owned by the operators of the warehouse and some are stored for other concerns.

TABLE 4.—Refrigerated space: Meat-packing establishments,¹ October 1, 1925

State	Concerns	Space held at temperatures of—				Total space
		10° F. and below	11° to 29° F., inclusive	30° to 44° F., inclusive	45° F. and above	
		<i>Cubic feet</i>	<i>Cubic feet</i>	<i>Cubic feet</i>	<i>Cubic feet</i>	<i>Cubic feet</i>
California	25	184,002	757,185	4,276,780	129,186	5,347,213
Colorado	5	467,904	153,717	3,292,858	384,226	4,298,720
Idaho	6	13,551	11,397	179,380	25,000	100,228
Illinois	38	2,828,370	4,782,704	50,112,003	8,807,019	66,530,056
Indiana	26	6,550	1,206,687	9,615,008	929,233	11,756,478
Iowa	13	1,497,210	1,733,864	14,680,178	1,944,649	19,855,931
Kansas	6	376,951	614,510	10,361,424	2,322,075	13,675,960
Kentucky	5	6,780	15,072	965,005	72,814	1,060,191
Maryland	13	18,560	107,649	1,619,103	118,240	1,863,652
Massachusetts	7	125,320	50,274	4,736,456	10,189	4,931,238
Michigan	6	436,217	86,640	4,128,511	10,000	4,661,598
Minnesota	11	659,302	1,457,154	6,021,063	1,243,872	9,381,391
Missouri	20	631,532	719,788	14,910,143	1,023,658	17,285,121
Nebraska	4	1,108,524	308,498	11,128,026	840,918	15,445,966
New Jersey	3	—	94,014	720,161	98,719	888,894
New York	37	499,804	627,046	12,405,817	674,292	14,200,920
Ohio	43	280,121	410,710	9,000,502	543,172	11,445,505
Oregon	7	191,011	157,074	1,020,674	136,373	1,440,932
Pennsylvania	48	63,850	356,621	7,027,029	177,993	7,524,893
Tennessee	13	14,450	50,242	1,560,994	125,012	1,750,298
Texas	19	610,743	1,198,437	6,183,858	1,230,392	9,202,430
Virginia	7	—	25,450	670,092	100,800	1,100,242
Washington	4	576,748	312,777	2,200,998	14,284	3,170,807
West Virginia	4	—	62,176	695,872	27,103	754,711
Wisconsin	9	254,726	67,083	8,460,744	750,301	9,541,944
All other States	25	736,955	1,022,003	7,834,450	1,301,427	10,895,315
Total	397	11,530,051	16,458,902	195,026,108	23,150,501	246,165,622

¹ All concerns, excepting those of retail butchers, that are engaged in the business of curing meats or rendering lard are considered to be meat-packing establishments. Some meat-packing establishments also store goods for others.

TABLE 5.—Total refrigerated space: All cold storages, including meat-packing establishments, reporting to the Bureau of Agricultural Economics, October 1, 1925

State	Con- cerns	Space held at temperatures of—				Total space
		10° F. and below	11° to 29° F., inclusive	30° to 44° F., inclusive	45° F. and above	
		<i>Cubic feet</i>	<i>Cubic feet</i>	<i>Cubic feet</i>	<i>Cubic feet</i>	<i>Cubic feet</i>
Alabama.....	4	30,652	75,258	1,157,945	1,263,855
Alaska.....	5	56,592	693,572	26,898	2,000	779,352
Arizona.....	4	15,360	3,000	473,436	492,696
Arkansas.....	7	38,750	1,386,546	5,823	1,430,119
California.....	74	1,691,559	2,385,750	17,471,385	304,246	21,822,350
Colorado.....	17	1,075,091	225,454	4,704,383	402,932	6,407,859
Connecticut.....	6	160,400	132,544	1,850,837	118,000	2,261,781
District of Columbia.....	4	252,617	1,822	2,304,931	22,650	2,582,026
Florida.....	10	45,010	109,695	617,074	12,171	786,950
Georgia.....	19	122,812	377,003	2,288,556	14,210	2,802,581
Idaho.....	12	34,451	45,041	404,178	25,900	509,570
Illinois.....	86	18,652,985	17,397,433	95,301,476	11,027,430	142,379,333
Indiana.....	42	450,648	1,806,601	13,193,005	1,237,182	16,687,434
Iowa.....	38	1,912,030	2,718,421	16,918,532	2,156,055	23,705,688
Kansas.....	31	2,006,940	6,278,598	28,708,375	5,147,951	42,141,861
Kentucky.....	15	377,460	343,067	4,236,306	72,814	5,029,701
Louisiana.....	7	146,200	135,363	1,903,470	77,177	2,256,210
Maine.....	8	549,732	3,606	839,092	4,907	1,388,337
Maryland.....	21	560,985	288,149	3,380,916	146,438	4,385,488
Massachusetts.....	39	6,530,939	2,055,231	14,891,725	344,408	23,872,303
Michigan.....	33	1,196,790	527,222	6,698,145	80,000	8,412,163
Minnesota.....	27	2,253,127	2,285,557	14,999,603	2,219,072	21,757,359
Missouri.....	50	3,410,764	1,295,237	20,271,878	1,835,656	35,819,535
Montana.....	6	31,080	57,488	173,618	9,328	271,512
Nebraska.....	19	3,653,522	890,862	17,927,664	1,394,654	23,866,702
New Jersey.....	30	3,260,811	590,116	9,389,060	403,231	13,643,218
New York.....	180	10,107,787	5,811,300	57,715,051	1,778,273	75,412,411
North Carolina.....	8	18,000	50,000	640,102	6,800	714,702
Ohio.....	92	2,148,983	1,120,968	19,270,427	807,600	23,437,978
Oklahoma.....	13	599,298	595,182	6,716,366	1,043,919	8,954,785
Oregon.....	29	436,797	1,561,381	3,580,023	136,373	5,717,574
Pennsylvania.....	168	2,941,267	2,050,007	19,489,301	606,694	25,137,869
Rhode Island.....	3	330,888	400,000	822,828	1,552,816
South Dakota.....	7	267,806	442,481	2,600,855	387,061	3,699,106
Tennessee.....	20	301,060	150,842	5,461,820	125,612	6,048,364
Texas.....	55	800,583	2,422,448	9,731,594	1,780,463	14,735,088
Utah.....	7	125,441	87,490	1,243,005	142,000	1,597,936
Virginia.....	28	318,346	597,827	12,514,777	308,280	13,739,159
Washington.....	65	1,042,911	2,638,232	16,232,640	838,589	20,749,762
West Virginia.....	17	7,840	90,176	3,047,771	61,163	3,206,950
Wisconsin.....	63	695,350	628,503	11,811,390	1,269,029	14,404,362
All other States.....	14	33,094	134,176	686,929	71,791	925,891
Total.....	1,323	68,721,782	59,414,433	402,012,398	30,519,137	626,667,750

TABLE 6.—Refrigerated space: Summary by class of business, October 1, 1925

Class of business	Number of con- cerns	Space held at temperatures of—				Total space
		10° F. and below	11° to 29° F., inclusive	30° to 44° F., inclusive	45° F. and above	
		<i>Cubic feet</i>	<i>Cubic feet</i>	<i>Cubic feet</i>	<i>Cubic feet</i>	<i>Cubic feet</i>
Public cold storage.....	416	41,311,130	20,196,430	175,244,429	5,811,924	242,563,913
Private cold storage.....	264	3,288,072	5,313,301	14,291,508	1,172,946	24,005,827
Combined public and private cold storage.....	212	8,450,311	11,173,425	38,383,333	1,027,711	57,034,780
Meat-packing establish- ments.....	397	11,530,051	16,458,902	195,026,108	23,150,581	240,165,622
Meat-packing establish- ments doing a public cold-storage business.....	34	4,142,218	6,272,375	41,067,020	5,355,093	50,837,608
Total refrigerated space.....	1,323	68,721,782	59,414,433	402,012,398	30,519,137	626,667,750

Cold-Storage Holdings

7

TABLE 7.—Apples, barreled: Cold-storage holdings, 1915-1925¹

[Thousand barrels; i. e., 000 omitted]

Year	Jan. 1	Feb. 1	Mar. 1	Apr. 1	May 1	June 1	Oct. 1	Nov. 1	Dec. 1
Average:									
1916-1920	2,800	2,203	1,608	955	434	127		2,025	3,507
1921-1925	3,604	2,817	2,012	1,173	586	204	811	3,712	4,199
1915	2,920	2,438	1,716	896	299	61		3,093	4,213
1916	3,743	3,324	2,543	1,561	799	218		2,530	3,166
1917	2,680	2,121	1,569	1,044	543	183		2,558	3,195
1918	2,754	2,226	1,575	978	356	101		2,915	3,280
1919	2,582	1,704	962	487	198	68	824	3,198	3,326
1920	2,693	2,002	1,385	706	274	64	452	3,516	4,570
1921	3,966	3,016	2,020	1,027	449	170	570	1,822	1,079
1922	1,742	1,424	996	561	248	74	1,219	4,183	4,319
1923	3,708	2,839	2,013	1,190	578	150	664	4,019	5,477
1924	4,082	3,993	3,024	1,925	1,113	451	543	3,551	4,167
1925	3,643	2,811	2,006	1,151	543	175	1,058	4,434	5,051

¹ All apples, except those packed in western-style boxes, are tabulated in terms of barrels, on the basis of 3 bushels to the barrel; since Oct. 1, 1923, apples packed in bushel baskets are also included in this tabulation. Three boxes are considered the equivalent of 1 barrel.

TABLE 8.—Apples, boxed: Cold-storage holdings, 1915-1925

[Thousand boxes; i. e., 000 omitted]

Year	Jan. 1	Feb. 1	Mar. 1	Apr. 1	May 1	June 1	Oct. 1	Nov. 1	Dec. 1
Average:									
1916-1920	5,349	4,644	3,254	1,916	823	250		2,808	5,570
1921-1925	9,086	8,372	6,170	4,050	2,055	710	809	6,460	11,075
1915	4,091	3,441	2,323	1,341	525	142		1,789	3,585
1916	3,210	2,738	2,096	1,268	709	298		2,190	3,977
1917	4,356	3,790	2,646	1,504	786	246		2,216	4,483
1918	5,534	5,192	3,764	2,416	966	172		2,513	4,945
1919	5,137	4,205	2,431	1,410	545	170	440	4,244	2,793
1920	6,508	7,296	5,331	2,982	1,598	447		2,878	6,651
1921	7,259	6,266	4,890	2,548	2,000	828	667	5,404	11,281
1922	11,001	8,667	6,282	4,107	2,088	721	669	4,164	7,271
1923	8,319	7,612	5,508	3,345	1,475	380	789	6,886	13,866
1924	14,201	11,560	8,821	5,837	2,901	949	820	6,020	9,917
1925	9,089	7,264	5,266	3,412	1,801	674	1,091	9,165	13,041

TABLE 9.—Apples (barreled and boxed): Cold-storage holdings, 1915-1925¹

[Thousand barrels; i. e., 000 omitted]

Year	Jan. 1	Feb. 1	Mar. 1	Apr. 1	May 1	June 1	Oct. 1	Nov. 1	Dec. 1
Average:									
1916-1920	4,073	3,841	2,690	1,593	741	213		3,881	5,304
1921-1925	6,933	5,574	4,069	2,523	1,271	441	1,083	5,865	7,899
1915	4,293	3,585	2,491	1,343	474	108		3,089	5,441
1916	4,813	4,236	3,243	1,984	1,036	304		3,260	4,492
1917	4,132	3,385	2,442	1,545	808	205		3,296	4,089
1918	4,599	3,957	2,830	1,783	678	159		3,752	4,928
1919	4,204	3,105	1,772	950	380	125	971	4,523	5,923
1920	5,529	4,324	3,162	1,690	806	213	544	4,475	6,787
1921	6,386	5,105	3,650	2,210	1,119	445	792	3,643	5,739
1922	5,429	4,313	3,090	1,930	944	314	1,452	5,521	6,743
1923	6,481	5,376	3,872	2,314	1,070	277	927	6,914	10,099
1924	6,696	7,843	5,985	3,571	2,080	708	820	5,758	7,473
1925	6,873	5,233	3,721	2,288	1,143	399	1,422	7,489	9,398

¹ All apples excepting those packed in western-style boxes are tabulated in terms of barrels on the basis of 3 bushels to the barrel. Three boxes are considered the equivalent of 1 barrel. Since Oct. 1, 1923, apples packed in bushel baskets are also included in this tabulation.

TABLE 10.—Creamery butter: Cold-storage holdings, 1915-1925

[Thousand pounds; i. e., 000 omitted]

Year	Jan. 1	Feb. 1	Mar. 1	Apr. 1	May 1	June 1	July 1	Aug. 1	Sept. 1	Oct. 1	Nov. 1	Dec. 1
Average:												
1916-1920	48,097	32,673	19,510	9,849	6,288	14,305	59,134	103,967	112,059	106,552	93,700	73,147
1921-1925	45,081	30,730	19,446	9,477	5,488	16,076	66,008	106,191	118,381	110,116	91,049	67,999
1915								68,578	101,662	99,450	92,719	71,849
1916	48,977	31,139	15,933	3,346	1,682	7,017	73,873	102,537	105,836	100,522	85,260	67,202
1917	46,134	30,474	16,952	6,505	3,607	9,953	49,982	88,992	108,170	109,154	100,115	79,028
1918	50,726	26,618	18,808	14,029	9,536	12,688	49,140	88,305	99,234	87,883	80,874	65,111
1919	43,010	36,777	24,191	11,909	9,659	29,435	90,158	123,546	131,388	121,810	100,474	73,054
1920	53,737	39,359	22,568	12,555	7,554	13,872	62,526	161,455	115,558	113,385	101,778	79,750
1921	58,682	41,486	27,103	14,732	7,712	21,682	61,991	82,538	92,292	90,116	77,983	65,129
1922	48,412	35,047	22,582	9,113	3,830	13,202	67,410	103,151	112,036	96,680	73,857	47,773
1923	26,819	16,122	8,910	4,824	3,248	10,112	62,768	101,774	102,731	96,117	78,472	51,508
1924	30,299	15,246	9,847	7,842	8,913	22,348	74,184	134,118	156,440	153,494	135,018	100,832
1925	65,694	45,748	28,789	19,875	3,730	13,636	63,087	109,075	128,403	114,172	94,016	74,754

TABLE 11.—American cheese: Cold-storage holdings, 1915-1925

[Thousand pounds; i. e., 000 omitted]

Year	Jan. 1	Feb. 1	Mar. 1	Apr. 1	May 1	June 1	July 1	Aug. 1	Sept. 1	Oct. 1	Nov. 1	Dec. 1
Average:												
1916-1920	40,038	31,287	22,110	15,236	11,040	13,060	29,545	52,425	66,219	63,736	55,731	43,060
1921-1925	38,835	31,016	24,597	19,168	16,152	21,505	39,324	55,240	63,428	61,751	59,313	50,330
1915								28,575	24,144	32,428	31,271	
1916	28,558	18,008	13,373	8,443	6,540	7,301	16,357	31,569	40,770	49,579	45,713	37,030
1917	31,855	22,113	15,590	9,842	7,928	11,626	31,159	67,565	91,545	90,071	78,087	75,160
1918	66,784	50,298	37,743	27,965	17,736	20,395	30,934	48,601	55,742	42,063	33,492	25,625
1919	19,823	15,486	9,837	6,750	6,027	12,478	37,501	62,615	76,061	81,359	72,889	62,508
1920	53,168	43,031	34,039	23,481	16,093	13,502	29,554	51,512	66,372	55,007	48,569	39,921
1921	34,115	25,000	17,477	14,294	13,466	17,814	34,945	41,289	40,055	45,163	42,060	34,055
1922	27,491	21,430	15,006	10,745	10,868	15,481	33,130	46,586	53,655	49,473	40,522	37,291
1923	33,617	28,593	20,983	14,465	14,077	17,697	26,534	55,839	63,960	62,384	57,927	55,105
1924	49,566	40,506	35,160	28,294	26,202	27,172	45,239	65,864	75,406	73,153	67,905	58,705
1925	40,187	41,552	34,647	27,716	26,147	29,650	46,468	66,634	73,612	78,582	71,913	66,495

The term "American cheese" is intended to cover only those varieties known as twins, ants, daisies, cheddars, longhorns, and square prints. It does not, therefore, include all kinds of cheese made in America.

TABLE 12.—Swiss cheese: Cold-storage holdings, 1917-1925

[Thousand pounds; i. e., 000 omitted]

Year	Jan. 1	Feb. 1	Mar. 1	Apr. 1	May 1	June 1	July 1	Aug. 1	Sept. 1	Oct. 1	Nov. 1	Dec. 1
Average:												
1918-1922	3,039	2,665	2,333	1,819	1,462	1,163	1,283	2,191	3,382	4,137	4,355	4,138
1921-1925	6,416	5,506	5,317	4,898	3,702	3,407	3,289	4,039	5,530	6,417	7,209	7,301
1917								664	859		948	874
1918	651	518	591	420	325	303	295	439	2,130	2,740	2,850	2,820
1919	3,205	2,848	2,604	1,768	1,065	867	1,003	2,017	2,789	3,124	3,277	3,187
1920	2,822	2,082	2,622	2,261	1,944	1,777	2,085	3,055	3,065	4,742	5,248	4,883
1921	1,590	3,675	2,591	2,204	1,878	1,394	1,440	2,910	3,337	4,404	4,651	4,326
1922	3,929	3,252	2,662	2,358	2,043	1,572	1,679	2,635	4,661	5,706	6,720	5,472
1923	5,417	4,824	3,537	2,619	1,853	1,708	2,089	3,132	4,718	5,156	6,081	7,338
1924	7,825	7,879	7,750	7,302	6,319	7,094	5,676	8,130	7,376	8,095	10,535	10,309
1925	10,469	9,808	9,376	8,955	8,388	5,567	5,593	8,486	7,588	8,683	8,056	9,041

Cold-Storage Holdings

TABLE 13.—Brick and Münster cheese: Cold-storage holdings, 1917-1925
[Thousand pounds; i. e., 000 omitted]

Year	Jan. 1	Feb. 1	Mar. 1	Apr. 1	May 1	June 1	July 1	Aug. 1	Sept. 1	Oct. 1	Nov. 1	Dec. 1
Average:												
1918-1922	1,266	1,193	993	696	603	779	1,303	1,322	1,370	1,172	1,216	1,332
1921-1925	1,714	1,450	1,248	804	985	1,310	1,952	2,055	2,021	1,528	1,794	1,741
1917												
1918	532	423	377	612	693	451	416	331	417	615	781	1,157
1919	1,074	1,223	953	538	330	118	880	815	825	810	824	682
1920	1,114	1,018	802	350	456	715	1,950	2,063	2,251	1,869	1,712	1,552
1921	1,733	1,492	1,200	802	881	1,151	1,675	1,671	1,663	1,726	1,709	1,767
1922	1,855	1,470	1,002	902	919	1,158	1,692	1,709	1,117	842	1,023	1,193
1923	1,606	1,259	1,000	692	961	1,307	2,511	2,916	3,235	3,037	2,535	1,945
1924	1,635	1,585	1,088	901	1,919	1,451	2,141	2,025	1,815	1,539	1,680	1,692
1925	1,721	1,306	802	924	1,112	1,165	1,739	2,164	2,261	1,964	2,022	2,110

TABLE 14.—Lamburger cheese: Cold-storage holdings, 1917-1925
[Thousand pounds; i. e., 000 omitted]

Year	Jan. 1	Feb. 1	Mar. 1	Apr. 1	May 1	June 1	July 1	Aug. 1	Sept. 1	Oct. 1	Nov. 1	Dec. 1
Average:												
1918-1922	881	650	598	454	390	362	564	841	1,212	1,182	1,104	967
1921-1925	924	780	671	518	491	389	757	1,091	1,214	1,275	1,181	1,025
1917												
1918	334	311	300	157	259	197	223	439	1,441	1,532	1,465	1,241
1919	1,314	942	922	730	568	119	690	834	1,135	920	782	744
1920	712	680	592	516	415	503	295	1,067	1,461	1,353	1,276	1,059
1921	956	791	681	494	417	341	665	957	1,095	1,170	1,127	866
1922	837	355	482	334	346	351	656	879	986	637	565	824
1923	763	618	558	410	371	321	569	1,331	1,631	1,677	1,264	1,095
1924	1,059	952	721	760	631	623	751	1,138	1,239	1,119	1,224	1,046
1925	963	932	664	773	630	797	923	1,220	1,354	1,470	1,422	1,292

TABLE 15.—Miscellaneous varieties of cheese: Cold-storage holdings, 1917-1925
[Thousand pounds; i. e., 000 omitted]

Year	Jan. 1	Feb. 1	Mar. 1	Apr. 1	May 1	June 1	July 1	Aug. 1	Sept. 1	Oct. 1	Nov. 1	Dec. 1
Average:												
1918-1922	3,236	3,177	2,835	2,718	2,759	3,274	4,252	5,074	5,422	5,156	4,844	4,521
1921-1925	6,636	6,094	5,458	4,988	5,347	6,087	7,405	8,991	7,996	7,358	6,810	6,082
1917												
1918	1,118	944	825	824	966	1,741	4,317	6,379	8,609	7,117	6,885	6,574
1919	4,810	5,160	4,262	5,343	6,842	9,110	11,333	12,053	11,175	10,380	10,208	9,023
1920	6,876	6,101	5,504	5,346	5,797	6,845	10,316	12,369	12,237	12,030	12,260	11,345
1921	6,754	6,248	6,149	7,013	7,214	7,751	8,887	9,404	10,171	9,904	9,060	7,985
1922	7,232	6,023	5,485	4,930	4,774	5,507	6,405	6,265	6,486	5,900	5,354	3,940
1923	3,840	3,931	3,819	3,609	3,130	5,292	6,365	7,712	7,219	6,555	6,382	7,117
1924	7,136	6,510	5,739	5,156	6,034	6,286	7,918	8,918	8,375	7,376	6,599	5,842
1925	5,218	3,733	4,198	4,112	4,703	5,599	7,269	8,064	7,727	7,045	6,554	5,623

¹ Includes cheese not classified on cold-storage report and holdings of storages not reporting by varieties.

TABLE 16.—All varieties of cheese: Cold-storage holdings, 1917-1925
[Thousand pounds; i. e., 000 omitted]

Year	Jan. 1	Feb. 1	Mar. 1	Apr. 1	May 1	June 1	July 1	Aug. 1	Sept. 1	Oct. 1	Nov. 1	Dec. 1
Average:												
1918-1922	51,460	42,373	31,607	24,294	20,660	24,449	44,438	63,859	74,318	70,332	62,653	54,063
1921-1925	64,555	45,226	37,191	29,701	28,077	32,568	52,727	70,546	80,223	78,628	73,364	66,480
1917												
1918	69,819	58,499	39,839	30,978	19,537	23,067	55,225	66,792	68,679	54,890	43,366	37,473
1919	30,222	27,718	18,694	15,162	13,838	23,201	51,467	78,591	62,589	96,593	87,950	76,414
1920	64,669	54,416	43,656	32,144	25,605	29,811	54,594	70,034	80,258	74,682	69,092	58,800
1921	51,594	40,307	30,456	24,008	21,949	28,453	47,617	56,317	62,095	62,366	54,563	49,002
1922	41,594	33,001	26,477	19,539	18,989	24,670	43,512	57,768	60,875	62,023	53,815	48,929
1923	45,234	37,228	26,516	21,815	21,192	29,236	48,728	70,860	80,663	78,791	74,302	72,623
1924	67,221	67,232	50,368	42,413	40,235	42,614	61,755	84,073	83,211	81,282	86,043	77,594
1925	67,558	55,461	50,117	40,450	39,037	42,888	61,022	83,568	85,472	87,777	90,860	83,561

TABLE 17.—Case eggs: Cold-storage holdings, 1915-1925¹

(Thousand cases; i. e., 000 omitted)

Year	Jan. 1	Feb. 1	Mar. 1	Apr. 1	May 1	June 1	July 1	Aug. 1	Sept. 1	Oct. 1	Nov. 1	Dec. 1
Average:												
1916-1920.....	1,202	256	23	248	2,560	5,251	6,630	6,849	6,472	5,645	4,272	2,466
1921-1925.....	1,117	203	27	1,030	4,340	7,475	9,147	9,513	9,070	7,780	5,668	3,315
1916.....	1,569	458	35	264	2,327	4,593	5,574	6,060	5,683	5,019	3,687	2,788
1917.....	920	149	7	190	2,105	4,922	6,017	6,595	6,336	5,837	4,638	2,948
1918.....	1,300	200	20	344	2,957	5,499	6,554	6,598	6,265	5,369	3,812	2,071
1919.....	740	130	26	320	3,278	6,095	7,659	7,850	7,685	6,858	5,087	3,341
1920.....	1,542	342	29	122	2,135	5,143	6,747	6,872	6,372	5,295	3,836	1,524
1921.....	408	43	33	1,926	4,909	6,844	7,534	7,605	7,210	6,269	4,380	2,403
1922.....	889	179	13	950	4,648	8,050	9,811	10,101	9,663	7,924	5,726	3,257
1923.....	1,311	213	13	453	3,737	7,800	10,222	10,509	9,883	8,737	6,045	4,028
1924.....	1,927	500	44	879	3,693	6,875	8,685	9,267	8,778	7,400	5,267	3,102
1925.....	1,050	81	21	1,240	4,872	7,712	9,482	10,024	9,873	8,612	6,322	3,786

¹ 30 dozen per case.

TABLE 18.—Frozen eggs: Cold-storage holdings, 1916-1925

(Thousand pounds; i. e., 000 omitted)

Year	Jan. 1	Feb. 1	Mar. 1	Apr. 1	May 1	June 1	July 1	Aug. 1	Sept. 1	Oct. 1	Nov. 1	Dec. 1
Average:												
1917-1921.....	14,586	12,062	10,842	9,859	10,624	14,288	17,578	19,531	21,188	20,654	19,051	20,209
1921-1925.....	24,552	20,725	16,925	14,749	18,418	25,065	30,579	34,008	30,086	35,868	33,807	29,314
1916.....	2,737	1,724	1,334	2,394	3,133	4,170	5,410	5,822	5,223	6,457	6,302	5,104
1917.....	14,663	12,207	9,746	9,001	9,488	7,558	13,398	15,384	19,741	17,585	16,424	13,979
1918.....	8,080	7,780	6,031	5,980	8,046	11,568	16,472	19,024	21,017	20,687	18,976	22,690
1919.....	19,236	16,394	13,836	11,039	10,529	13,939	17,388	20,955	21,901	23,584	20,401	20,945
1920.....	27,325	24,927	22,363	20,873	21,730	26,822	27,737	27,959	27,408	26,650	20,114	22,809
1921.....	10,260	16,209	13,193	10,479	14,154	18,274	23,528	27,855	34,516	33,545	30,523	26,233
1922.....	22,787	18,517	14,603	10,411	12,921	20,750	26,680	36,162	37,280	43,836	40,424	35,004
1923.....	32,037	27,682	23,106	20,736	23,707	29,056	33,565	35,184	34,128	31,068	26,633	22,100
1924.....	21,303	16,212	11,364	11,853	10,579	29,544	38,370	42,856	47,069	44,299	46,314	39,330

TABLE 19.—Broilers: Cold-storage holdings, 1916-1925

(Thousand pounds; i. e., 000 omitted)

Year	Jan. 1	Feb. 1	Mar. 1	Apr. 1	May 1	June 1	July 1	Aug. 1	Sept. 1	Oct. 1	Nov. 1	Dec. 1
Average:												
1917-1921.....	9,343	9,555	8,920	7,159	6,563	4,824	3,967	3,554	4,605	6,727	8,813	10,956
1921-1925.....	14,968	14,013	12,565	10,224	7,496	5,418	4,256	4,205	6,100	9,350	12,347	14,681
1916.....					523	2571	175	317	658	1,312	2,359	4,147
1917.....	3,927	4,638	4,418	3,645	7,422	4,999	4,360	4,274	3,219	3,683	4,197	8,717
1918.....	9,206	8,211	7,256	4,731	3,126	1,710	1,318	1,605	5,118	8,600	12,045	14,580
1919.....	15,156	15,023	14,230	12,190	10,954	8,709	7,409	6,159	6,081	5,004	6,096	8,046
1920.....	6,187	8,405	6,968	5,570	4,081	3,448	3,052	2,691	4,135	7,152	9,756	10,970
1921.....	12,235	11,490	11,827	9,604	7,232	5,253	3,697	3,046	4,890	8,107	10,430	12,463
1922.....	13,769	12,546	10,250	7,937	5,397	3,473	2,900	3,110	5,238	7,334	9,202	11,535
1923.....	13,592	13,137	11,200	8,818	6,503	4,482	3,414	3,126	4,588	7,486	10,554	12,537
1924.....	13,250	12,189	10,958	9,150	6,725	5,000	3,988	4,531	7,164	12,720	17,935	20,255
1925.....	21,780	20,695	18,588	15,611	11,625	8,881	7,281	7,665	9,069	11,012	13,616	16,016

Cold-Storage Holdings

TABLE 20.—Roasters: Cold-storage holdings, 1916-1925

[Thousand pounds; i. e., 000 omitted]

Year	Jan. 1	Feb. 1	Mar. 1	Apr. 1	May 1	June 1	July 1	Aug. 1	Sept. 1	Oct. 1	Nov. 1	Dec. 1
Average:												
1917-1921.....	20,710	22,900	20,322	16,999	12,864	8,780	6,063	4,205	2,984	3,173	6,520	15,313
1921-1925.....	34,268	37,281	34,914	28,128	21,491	15,930	11,413	8,160	5,627	5,025	10,180	22,626
1916.....					1,061	558	342	242	400	1,084	2,040	5,817
1917.....	6,505	7,581	5,612	6,036	10,095	7,694	6,035	6,110	4,798	3,873	5,191	12,578
1918.....	16,659	18,346	14,588	11,724	7,025	3,923	2,328	1,469	1,297	2,749	7,685	16,201
1919.....	29,466	33,201	30,455	27,244	18,821	14,189	10,291	7,280	5,046	4,069	5,800	14,833
1920.....	28,687	32,651	27,683	21,690	13,665	8,573	5,019	2,604	1,724	1,935	5,231	11,242
1921.....	22,232	23,817	23,273	18,300	14,115	9,528	6,041	3,590	2,113	3,239	8,915	21,713
1922.....	37,254	37,831	33,009	26,161	20,626	15,107	10,464	6,877	4,836	2,992	6,232	17,247
1923.....	35,614	43,516	41,400	34,041	27,036	21,175	15,982	11,031	6,918	5,856	9,144	19,181
1924.....	32,870	35,673	32,490	25,219	16,388	10,609	6,882	3,410	2,392	4,034	12,236	26,061
1925.....	43,371	45,570	44,350	36,921	29,261	23,220	18,714	13,938	12,178	9,604	14,374	28,922

TABLE 21.—Fowls: Cold-storage holdings, 1916-1925

[Thousand pounds; i. e., 000 omitted]

Year	Jan. 1	Feb. 1	Mar. 1	Apr. 1	May 1	June 1	July 1	Aug. 1	Sept. 1	Oct. 1	Nov. 1	Dec. 1
Average:												
1917-1921.....	16,235	18,596	15,528	12,547	8,460	5,814	5,275	5,005	4,518	4,283	5,001	10,095
1921-1925.....	17,052	18,263	16,602	12,857	8,658	5,805	6,049	5,787	4,733	3,866	4,425	9,741
1916.....					1,611	384	378	301	226	1,341	1,881	4,613
1917.....	5,939	8,293	5,105	4,698	6,396	4,753	3,787	3,482	2,770	2,660	3,361	8,457
1918.....	13,899	15,283	12,484	9,419	4,107	2,749	4,360	5,841	7,319	7,453	9,456	16,058
1919.....	26,030	30,698	28,068	23,481	15,519	11,121	6,572	7,349	4,897	4,364	4,331	9,691
1920.....	20,636	23,110	18,384	13,177	7,261	4,054	3,085	3,230	3,003	3,767	4,284	7,212
1921.....	14,673	15,598	15,098	11,861	8,996	5,704	4,670	3,112	2,870	3,170	3,655	10,006
1922.....	20,197	20,562	16,716	11,477	6,702	4,341	5,379	5,283	3,807	2,720	2,842	7,122
1923.....	10,091	20,519	18,622	15,001	11,099	7,439	7,101	6,306	4,502	3,110	3,390	8,035
1924.....	13,016	13,204	13,047	11,235	7,318	5,025	7,054	5,501	7,308	6,339	9,969	11,915
1925.....	21,263	21,433	19,735	14,711	9,177	6,577	6,043	5,731	4,890	3,937	5,230	11,628

TABLE 22.—Turkeys: Cold-storage holdings, 1916-1925

[Thousand pounds; i. e., 000 omitted]

Year	Jan. 1	Feb. 1	Mar. 1	Apr. 1	May 1	June 1	July 1	Aug. 1	Sept. 1	Oct. 1	Nov. 1	Dec. 1
Average:												
1917-1921.....	5,337	7,415	7,080	6,170	5,333	4,712	4,187	3,438	2,591	1,930	2,487	4,069
1921-1925.....	9,856	11,909	12,393	11,167	9,711	8,604	7,570	6,699	5,420	4,508	3,441	5,252
1916.....					189	180	254	149	151	266	401	2,842
1917.....	2,708	3,521	3,220	2,832	3,054	3,238	4,382	4,078	3,547	3,020	6,485	3,152
1918.....	4,744	10,569	6,088	8,566	7,321	5,935	4,236	3,086	2,100	1,770	1,570	6,337
1919.....	9,039	10,094	10,117	8,669	7,072	6,358	5,378	4,390	3,290	1,849	1,327	3,212
1920.....	5,178	6,030	5,691	4,545	3,497	2,832	2,432	1,800	1,183	872	870	4,351
1921.....	6,015	6,407	6,082	4,238	3,718	3,198	4,503	3,836	2,927	2,439	2,172	3,293
1922.....	7,750	7,973	7,039	6,045	5,022	5,206	4,042	3,999	3,204	2,045	2,300	2,154
1923.....	9,335	13,240	13,569	13,126	12,206	10,033	9,653	8,611	7,420	6,352	5,198	6,656
1924.....	10,020	14,507	16,064	14,075	11,626	10,085	9,058	7,703	6,417	5,390	3,983	5,980
1925.....	15,714	17,418	17,091	15,450	12,083	11,408	10,084	8,840	7,161	5,712	3,544	5,168

TABLE 23.—Miscellaneous poultry: Cold-storage holdings, 1916-1925

(Thousand pounds; i. e., 000 omitted)

Year	Jan. 1	Feb. 1	Mar. 1	Apr. 1	May 1	June 1	July 1	Aug. 1	Sept. 1	Oct. 1	Nov. 1	Dec. 1
Average:												
1917-1921	21,976	20,808	18,210	14,484	17,401	16,825	16,232	15,201	15,000	14,933	16,232	17,518
1921-1925	25,940	27,284	24,701	19,690	14,477	11,895	11,688	11,201	10,754	11,051	12,488	18,680
1916												
1917	13,105	11,568	9,441	8,718	39,678	43,601	41,931	36,188	41,739	33,501	32,500	16,616
1918	20,050	15,895	12,935	9,734	4,941	4,612	3,410	6,754	7,229	9,166	13,020	19,046
1919	29,032	30,144	26,737	21,206	18,765	16,245	16,539	15,418	13,693	14,215	14,905	18,987
1920	23,824	22,656	19,785	16,440	12,031	11,625	10,303	10,031	9,287	9,225	10,951	15,270
1921	23,867	23,777	22,121	16,312	11,591	9,643	8,355	7,614	7,564	8,558	9,795	17,692
1922	24,721	24,453	21,066	15,952	12,093	10,286	11,452	11,390	10,706	10,294	9,658	13,723
1923	25,628	31,220	28,722	23,839	17,718	13,245	12,970	12,171	10,703	10,338	12,087	16,865
1924	23,672	23,913	20,968	16,388	10,011	8,570	8,901	9,448	10,056	11,537	14,016	20,719
1925	31,812	33,073	30,689	25,915	19,650	17,641	16,500	15,384	14,651	14,650	16,973	24,399

TABLE 24.—Total frozen poultry: Cold-storage holdings, 1916-1925

(Thousand pounds; i. e., 000 omitted)

Year	Jan. 1	Feb. 1	Mar. 1	Apr. 1	May 1	June 1	July 1	Aug. 1	Sept. 1	Oct. 1	Nov. 1	Dec. 1
Average:												
1917-1921	74,401	79,373	70,360	57,350	50,621	40,555	35,824	31,403	30,688	31,116	39,053	57,951
1921-1925	103,063	108,751	101,045	82,067	61,571	47,742	40,931	36,652	32,730	33,829	42,861	70,979
1916												
1917	32,184	35,691	27,796	25,988	67,242	61,286	60,194	54,132	56,013	46,737	51,743	49,564
1918	61,537	68,238	56,950	44,115	26,523	18,929	17,652	18,756	23,034	29,798	44,487	71,238
1919	108,742	119,675	109,027	92,887	71,102	55,016	49,212	46,573	32,918	30,492	33,139	54,749
1920	87,512	92,258	78,421	61,436	40,525	30,535	21,790	22,364	21,331	22,953	31,076	49,046
1921	79,025	81,096	74,091	62,315	47,631	35,408	27,205	21,188	20,064	25,602	34,876	65,167
1922	103,697	103,350	88,769	68,471	50,480	38,062	31,587	39,650	27,467	25,984	30,228	51,781
1923	100,170	121,032	113,503	91,872	74,562	57,274	49,100	41,250	34,131	33,142	40,368	63,274
1924	93,434	99,486	93,497	76,067	52,068	39,209	34,884	33,604	33,837	40,070	55,139	87,939
1925	133,990	138,150	130,513	108,608	82,732	68,126	58,562	53,538	47,040	44,345	53,787	86,733

TABLE 25.—Beef, frozen: Cold-storage holdings, 1915-1925

(Thousand pounds; i. e., 000 omitted)

Year	Jan. 1	Feb. 1	Mar. 1	Apr. 1	May 1	June 1	July 1	Aug. 1	Sept. 1	Oct. 1	Nov. 1	Dec. 1
Average:												
1916-1920	211,004	232,368	211,860	191,820	155,267	132,130	115,467	117,061	114,596	120,943	149,864	187,302
1921-1925	95,513	92,539	85,432	77,177	61,149	51,282	43,196	34,904	31,011	30,970	42,716	66,831
1915												
1916	126,374	132,266	121,954	118,279	90,176	73,025	55,109	58,867	53,303	60,319	92,815	158,148
1917	202,142	190,909	169,793	154,103	118,391	103,007	89,351	108,729	100,453	119,221	179,032	235,054
1918	315,572	302,111	276,114	268,015	212,725	190,684	154,635	180,902	185,144	191,469	224,312	229,668
1919	263,818	294,514	265,293	221,725	184,586	163,913	162,539	159,279	162,060	166,241	184,196	225,511
1920	261,812	232,037	223,145	196,800	170,465	130,619	95,297	77,409	67,010	58,401	66,668	80,718
1921	120,245	119,965	122,402	114,003	100,672	85,836	76,523	69,292	50,204	44,500	49,014	63,188
1922	63,495	61,522	55,785	50,772	45,341	37,548	31,593	27,727	26,210	34,611	47,929	53,027
1923	81,805	89,372	75,604	65,292	51,522	41,207	34,385	21,112	21,625	27,590	43,772	71,624
1924	82,984	79,944	70,769	68,075	52,941	41,784	37,023	29,438	29,135	25,590	45,857	76,731
1925	114,034	111,047	101,599	87,684	67,271	46,887	36,462	26,970	22,579	19,575	27,068	50,436

TABLE 26.—Beef frozen monthly, 1919-1925

[Thousand pounds; i. e., 000 omitted]

Year	Jan.	Feb.	Mar.	Apr.	May	June	July	Aug.	Sept.	Oct.	Nov.	Dec.
Average:												
1919-1923	23,707	19,835	12,154	10,400	11,887	12,120	11,980	19,313	14,058	27,974	42,485	35,222
1921-1925	11,182	7,990	6,873	5,565	5,577	6,051	6,643	9,306	9,785	25,255	37,845	
1919	63,743	61,994	32,703	28,346	30,413	33,795	30,600	59,822	31,012	42,944	71,667	59,751
1920	23,593	13,935	10,089	8,072	10,510	8,073	10,201	7,712	9,218	21,712	31,499	39,113
1921	8,168	11,990	6,495	6,773	6,099	5,687	7,258	7,049	7,448	21,051	26,765	17,684
1922	10,365	6,662	6,252	5,030	5,839	5,595	5,607	10,223	10,314	24,455	41,108	32,523
1923	10,682	7,660	5,357	5,180	6,234	7,176	6,278	10,858	12,253	29,035	41,326	27,041
1924	10,682	7,660	5,357	4,273	4,314	5,693	6,531	9,428	10,441	28,795	44,540	49,295
1925	14,031	8,597	10,525	5,968	5,155	5,835	7,139	8,074	8,270	22,413	35,120	

TABLE 27.—Beef, cured: Cured and in process of cure in cold-storage warehouses and meat-packing establishments, 1915-1925

[Thousand pounds; i. e., 000 omitted]

Year	Jan. 1	Feb. 1	Mar. 1	Apr. 1	May 1	June 1	July 1	Aug. 1	Sept. 1	Oct. 1	Nov. 1	Dec. 1
Average:												
1916-1920	34,261	33,612	34,088	31,251	27,730	25,340	26,432	26,723	27,302	27,797	29,004	33,332
1921-1925	22,971	23,202	23,886	24,414	23,826	23,170	21,827	20,399	20,147	18,997	19,173	21,705
1915												13,803
1916	21,443	20,852	20,959	25,813	21,869	17,324	16,915	18,589	18,450	21,663	30,013	37,358
1917	37,391	35,891	37,660	30,601	29,409	30,831	35,079	32,404	30,200	31,246	32,223	36,225
1918	30,243	38,793	37,575	34,106	29,217	24,504	21,968	28,068	29,081	28,718	29,339	32,381
1919	36,267	35,510	31,246	39,689	27,822	27,089	29,284	30,943	35,526	37,328	37,003	33,347
1920	37,032	36,715	37,002	35,047	30,393	26,053	26,355	23,617	22,711	19,594	20,352	22,448
1921	22,567	22,920	24,006	24,282	21,510	20,710	19,697	17,829	17,130	15,626	14,472	17,144
1922	16,313	16,774	17,997	18,744	19,106	19,394	19,113	19,394	20,081	18,961	19,884	22,602
1923	24,450	24,841	24,987	25,210	24,013	23,816	22,533	21,781	21,416	20,397	19,649	23,142
1924	22,533	22,711	23,238	25,199	25,482	24,285	22,390	20,377	19,771	18,939	21,387	23,508
1925	26,930	28,738	29,210	28,634	28,952	27,731	25,102	22,704	22,335	20,964	20,473	23,128

TABLE 28.—Beef placed in cure in meat-packing establishments, 1919-1925

[Thousand pounds; i. e., 000 omitted]

Year	Jan.	Feb.	Mar.	Apr.	May	June	July	Aug.	Sept.	Oct.	Nov.	Dec.
Average:												
1919-1923	10,327	9,686	8,698	8,211	8,623	9,425	9,824	10,945	9,424	10,440	11,234	9,145
1921-1925	8,163	7,877	7,740	7,988	7,683	8,326	8,817	9,022	8,258	10,933	11,202	
1919	19,036	14,816	11,072	10,643	11,265	12,381	13,950	19,955	14,747	12,212	12,630	11,766
1920	9,163	9,982	8,720	6,608	7,516	8,750	8,739	8,295	7,890	9,692	9,931	9,734
1921	7,250	6,912	6,470	6,451	6,983	8,012	8,418	8,568	7,150	9,051	10,602	6,232
1922	6,952	8,508	8,480	7,839	8,416	8,982	9,706	10,202	9,500	11,351	12,067	9,509
1923	8,328	8,414	8,481	8,516	8,907	8,067	8,369	8,622	7,706	9,600	10,915	8,475
1924	8,986	8,242	7,505	8,489	7,670	7,989	8,324	9,265	9,221	13,781	12,121	11,599
1925	8,990	7,510	7,263	7,643	7,021	8,450	9,227	8,433	7,584	10,470	10,300	

TABLE 29.—Total beef (frozen, cured, and in process of cure) in cold-storage warehouses and meat-packing establishments, 1916-1925

[Thousand pounds; i. e., 000 omitted]

Year	Jan. 1	Feb. 1	Mar. 1	Apr. 1	May 1	June 1	July 1	Aug. 1	Sept. 1	Oct. 1	Nov. 1	Dec. 1
Average:												
1916-1920	275,265	265,989	245,048	223,071	182,907	157,470	141,839	143,784	141,988	148,650	170,708	202,634
1921-1925	118,484	115,732	110,320	101,501	87,972	71,423	65,021	55,300	51,157	40,968	31,889	38,585
1916	147,817	153,118	151,912	144,060	112,045	90,349	74,024	77,466	70,753	67,972	122,528	196,105
1917	230,743	226,800	207,453	184,794	147,800	133,834	146,033	171,130	130,743	150,468	211,254	273,089
1918	354,814	336,907	313,089	302,121	211,042	214,888	170,609	209,027	215,123	223,151	253,652	262,044
1919	298,864	288,752	260,147	231,437	200,789	157,271	121,652	101,086	89,721	78,055	80,015	112,165
1920	342,813	342,801	346,400	338,345	312,188	269,553	265,220	241,601	217,334	199,822	163,486	80,333
1921	84,808	78,285	73,782	69,516	64,607	50,852	50,706	47,031	48,291	53,572	67,814	95,028
1922	116,255	114,113	100,591	90,592	78,539	68,023	57,220	45,803	46,911	48,187	63,421	93,165
1923	105,577	102,055	103,007	95,274	78,423	66,059	50,415	40,812	48,900	47,538	67,244	100,219
1924	142,964	140,705	130,800	118,318	96,223	74,618	61,554	49,674	49,214	40,719	47,481	73,564
1925												

TABLE 30.—Lamb and mutton, frozen: Cold-storage holdings, 1915-1925

[Thousand pounds; i. e., 000 omitted]

Year	Jan. 1	Feb. 1	Mar. 1	Apr. 1	May 1	June 1	July 1	Aug. 1	Sept. 1	Oct. 1	Nov. 1	Dec. 1
Average:												
1916-1920.....	5,063	7,329	6,482	5,415	4,355	4,060	4,068	3,744	5,517	8,853	14,639	17,110
1921-1925.....	16,888	18,524	14,478	10,308	7,413	6,364	4,088	3,285	2,927	2,964	3,370	3,608
1915.....												4,047
1916.....	4,976	5,286	5,813	5,081	3,858	2,925	1,939	2,098	2,135	2,479	3,465	5,000
1917.....	4,886	5,895	4,949	4,872	4,360	3,508	4,380	3,912	2,716	2,768	4,194	5,408
1918.....	7,403	6,315	7,855	5,599	3,348	3,860	2,429	3,150	4,046	5,275	8,615	9,035
1919.....	12,790	11,360	8,013	6,505	7,023	7,748	7,279	7,263	7,817	8,318	7,894	9,490
1920.....	10,200	7,787	5,781	3,517	2,579	5,785	1,311	2,269	11,021	25,325	48,997	56,702
1921.....	68,082	78,082	59,304	38,520	25,129	15,877	8,714	6,751	5,903	5,993	6,810	7,520
1922.....	6,444	3,914	2,903	2,878	2,071	2,310	3,720	3,208	3,376	3,473	3,458	3,633
1923.....	4,523	3,950	5,778	6,435	5,774	4,145	3,556	2,752	1,780	1,719	1,997	2,014
1924.....	2,493	2,306	2,173	1,719	2,093	2,273	2,917	2,257	2,255	2,525	3,166	3,326
1925.....	2,919	2,336	2,294	2,090	1,998	1,913	1,535	1,349	1,339	1,112	1,435	1,549

TABLE 31.—Lamb and mutton frozen monthly, 1919-1925

[Thousand pounds; i. e., 000 omitted]

Year	Jan.	Feb.	Mar.	Apr.	May	June	July	Aug.	Sept.	Oct.	Nov.	Dec.
Average:												
1919-1923.....	1,212	874	742	815	962	1,078	855	1,041	1,192	1,551	1,386	1,523
1924-1925.....	771	569	475	506	519	767	427	491	658	1,013	750
1919.....	1,736	1,265	1,351	1,531	1,271	998	954	921	1,804	1,793	2,546	1,457
1920.....	1,117	902	554	830	1,508	1,454	742	2,368	1,942	2,334	1,666	3,094
1921.....	1,458	834	419	453	569	1,050	663	737	1,181	2,035	1,444	1,218
1922.....	690	656	851	816	620	1,139	511	703	698	878	890	1,187
1923.....	1,117	720	585	424	315	635	378	378	426	714	472	657
1924.....	345	254	214	475	395	987	331	331	840	817	517	454
1925.....	397	359	323	361	260	419	251	244	235	619	519

TABLE 32.—Pork frozen: Cold-storage holdings, 1915-1925

[Thousand pounds; i. e., 000 omitted]

Year	Jan. 1	Feb. 1	Mar. 1	Apr. 1	May 1	June 1	July 1	Aug. 1	Sept. 1	Oct. 1	Nov. 1	Dec. 1
Average:												
1916-1920.....	59,702	80,495	103,516	112,200	116,737	116,101	123,485	116,731	85,360	54,844	40,144	39,028
1921-1925.....	91,863	141,329	175,953	190,727	186,970	180,415	176,638	151,665	110,390	68,511	42,663	45,856
1915.....												21,764
1916.....	44,194	63,376	88,694	88,344	77,812	85,195	82,571	85,845	63,420	38,861	25,988	32,015
1917.....	50,564	66,062	63,352	64,998	74,728	77,534	91,562	90,638	72,286	39,767	25,317	23,504
1918.....	41,665	61,659	101,630	116,548	117,786	118,801	117,878	108,220	71,385	46,563	36,968	34,750
1919.....	61,539	91,708	128,897	142,189	139,205	144,212	155,263	131,137	90,510	61,417	47,271	44,864
1920.....	55,551	100,677	132,095	148,922	144,453	156,993	170,031	161,894	129,197	87,592	67,148	60,007
1921.....	92,990	150,594	208,886	219,904	209,706	194,389	182,163	149,435	103,480	64,682	38,518	37,513
1922.....	51,203	71,722	86,210	98,765	103,967	114,571	128,962	117,903	81,815	46,796	30,688	33,774
1923.....	72,278	120,166	164,377	189,115	213,221	210,643	217,074	195,002	148,753	98,795	71,610	82,638
1924.....	126,718	164,491	199,044	227,284	215,767	201,728	186,566	164,049	121,816	77,986	52,504	48,781
1925.....	130,125	199,642	231,281	218,508	201,246	180,645	168,527	131,935	93,078	54,294	26,910	27,153

TABLE 33.—Pork frozen monthly, 1919-1925

[Thousand pounds; i. e., 000 omitted]

Year	Jan.	Feb.	Mar.	Apr.	May	June	July	Aug.	Sept.	Oct.	Nov.	Dec.
Average:												
1919-1923.....	68,076	55,211	44,805	35,938	30,347	45,676	33,442	21,137	17,144	18,800	28,022	55,292
1924-1925.....	73,623	91,350	48,598	36,954	37,889	44,164	36,242	22,352	18,828	20,634	31,013
1919.....	66,371	49,478	38,180	28,904	28,121	33,235	24,055	13,143	11,839	13,075	15,615	37,727
1920.....	74,501	49,453	44,741	33,831	46,995	52,752	38,697	25,309	20,700	17,500	25,984	63,531
1921.....	83,055	78,665	43,610	29,739	37,337	39,125	39,407	19,034	14,421	17,774	18,171	17,174
1922.....	43,719	30,261	35,070	31,592	42,703	53,510	32,600	20,980	17,100	17,899	30,414	61,728
1923.....	72,734	50,109	61,824	55,615	61,579	49,727	42,012	27,226	21,658	27,285	49,928	76,278
1924.....	70,206	63,914	59,527	35,041	36,733	38,369	48,810	23,050	20,468	20,510	35,857	104,218
1925.....	97,809	65,712	42,047	31,873	31,003	40,058	28,292	20,568	18,991	16,786	21,053

Cold-Storage Holdings

TABLE 34.—Pork, dry salt: Cured and in process of cure in cold-storage warehouses and meat-packing establishments, 1915-1925

[Thousand pounds, i. e., 000 omitted]

Year	Jan. 1	Feb. 1	Mar. 1	Apr. 1	May 1	June 1	July 1	Aug. 1	Sept. 1	Oct. 1	Nov. 1	Dec. 1
Average:												
1916-1920.....	243,893	313,699	345,310	355,433	356,261	349,408	323,973	311,047	273,409	226,795	181,909	186,673
1921-1925.....	128,806	158,231	179,655	188,577	190,726	192,211	205,048	200,015	178,070	136,806	98,121	93,238
1915.....												83,415
1916.....	145,661	194,053	220,910	203,763	202,392	206,008	202,088	205,251	183,194	140,908	118,958	142,858
1917.....	200,998	228,424	259,050	234,396	210,810	213,802	224,813	231,905	195,678	143,319	110,632	150,882
1918.....	252,934	341,422	402,734	448,114	471,809	493,795	402,549	370,203	333,472	283,572	247,190	283,002
1919.....	357,254	471,747	495,661	430,205	426,411	402,652	381,736	366,547	338,272	283,786	281,930	242,224
1920.....	262,620	332,848	402,220	457,745	402,389	430,782	405,681	381,328	316,433	233,389	150,812	114,400
1921.....	144,997	202,909	291,803	295,390	246,443	240,610	250,752	231,511	200,291	149,974	108,611	96,731
1922.....	111,071	128,690	139,281	145,183	142,030	157,666	186,048	179,856	165,668	128,788	85,671	83,017
1923.....	121,125	153,923	178,024	206,429	227,728	214,453	217,862	221,716	191,711	146,974	108,890	110,824
1924.....	148,121	167,807	178,288	192,934	191,882	206,006	212,168	202,618	180,127	135,702	81,460	78,871
1925.....	118,718	136,128	150,810	142,950	145,548	142,202	162,518	164,374	152,555	128,599	106,011	96,746

TABLE 35.—Pork, dry salt: Placed in cure in meat-packing establishments, 1919-1925

[Thousand pounds; i. e., 000 omitted]

Year	Jan.	Feb.	Mar.	Apr.	May	June	July	Aug.	Sept.	Oct.	Nov.	Dec.
Average:												
1919-1923.....	172,937	131,794	109,752	91,289	98,087	114,560	108,389	87,535	73,124	71,082	85,321	119,802
1921-1925.....	115,100	96,620	87,948	81,395	86,376	104,346	103,320	85,321	72,424	72,411	81,929
1919.....	319,278	243,798	170,018	127,269	142,481	165,037	158,900	105,042	94,339	84,674	106,707	172,565
1920.....	295,572	121,354	101,571	78,596	82,361	81,618	66,718	59,692	41,558	48,723	56,461	94,374
1921.....	116,603	105,956	82,076	77,621	83,039	106,024	104,267	81,052	65,918	59,648	60,549	74,967
1922.....	88,866	82,858	75,933	63,322	92,154	115,753	104,956	91,069	78,093	72,713	91,522	126,932
1923.....	124,068	105,009	119,110	112,638	89,801	104,340	107,106	100,520	85,715	92,650	113,875	130,144
1924.....	124,066	102,959	94,026	86,623	94,521	96,631	110,966	79,756	64,138	61,935	76,068	110,518
1925.....	108,976	85,318	88,547	66,772	71,767	90,555	89,303	72,406	71,257	75,110	67,629

TABLE 36.—Pork, pickled: Cured and in process of cure in cold-storage warehouses and meat-packing establishments, 1915-1925

[Thousand pounds; i. e., 000 omitted]

Year	Jan. 1	Feb. 1	Mar. 1	Apr. 1	May 1	June 1	July 1	Aug. 1	Sept. 1	Oct. 1	Nov. 1	Dec. 1
Average:												
1916-1920.....	278,118	339,742	380,567	382,000	382,685	387,887	391,113	378,975	330,103	266,231	225,930	235,713
1921-1925.....	351,495	385,108	426,738	432,850	434,109	424,412	422,583	399,780	370,052	314,821	271,438	293,331
1915.....												150,985
1916.....	230,881	298,930	350,750	351,031	337,164	328,183	330,950	300,750	267,802	236,351	209,061	251,519
1917.....	307,478	348,260	378,847	394,931	381,236	403,185	412,810	403,704	338,913	252,152	162,884	204,007
1918.....	209,003	322,004	369,014	402,377	404,194	397,436	372,317	365,941	315,817	246,827	233,148	242,676
1919.....	303,783	342,240	435,107	431,714	434,671	410,989	422,387	384,704	341,721	267,712	230,719	226,893
1920.....	270,467	337,238	369,026	391,973	354,864	371,593	403,719	380,836	361,381	285,400	254,838	252,270
1921.....	204,993	316,328	370,376	367,573	355,611	330,291	306,346	340,633	320,100	207,244	212,525	221,345
1922.....	252,822	284,487	321,950	347,276	346,309	363,395	391,474	385,692	366,187	313,517	278,812	302,708
1923.....	377,107	412,808	451,279	460,130	409,119	453,673	473,569	449,441	413,798	367,374	325,456	384,004
1924.....	434,030	468,632	500,784	512,190	500,689	483,372	473,914	443,618	408,328	351,485	283,710	269,866
1925.....	398,521	443,025	483,302	488,099	497,393	425,481	407,010	373,227	338,150	294,485	286,684	261,128

1 Pickled pork includes sweet pickled, plain brine, and barreled pork.

TABLE 37.—Pork, pickled:¹ Placed in cure in meat-packing establishments 1910-1925

[Thousand pounds; i. e., 000 omitted]

Year	Jan.	Feb.	Mar.	Apr.	May	June	July	Aug.	Sept.	Oct.	Nov.	Dec.
Average:												
1910-1923.....	179,632	152,870	151,361	148,078	165,062	187,063	171,540	143,875	120,621	132,607	146,038	174,933
1921-1925.....	197,366	174,411	165,789	184,166	198,195	411,186	891,154	712,131	703,142	600,138	613,131	613,131
1910.....	175,355	145,409	123,331	137,540	146,365	158,241	151,863	103,308	94,868	117,168	113,733	158,833
1920.....	193,398	120,446	137,634	130,578	170,406	183,199	155,513	132,478	105,218	112,469	118,656	147,865
1921.....	162,927	159,014	140,724	143,582	158,652	184,786	163,672	135,071	113,367	115,266	131,226	138,164
1922.....	160,981	152,549	156,226	134,516	167,509	208,910	175,046	156,591	134,038	143,090	173,024	199,473
1923.....	205,497	177,077	199,589	195,175	182,380	200,372	208,007	191,243	155,583	175,010	183,553	216,329
1924.....	224,013	198,764	186,067	181,283	180,265	199,844	218,235	165,713	134,409	138,021	165,994	232,205
1925.....	233,413	183,750	140,037	142,364	142,186	183,333	168,586	131,340	121,086	141,602	131,280	131,280

¹ Pickled pork includes sweet pickled, plain brine, and barreled pork.

TABLE 38.—Total pork (frozen, dry salt, and pickled, cured, and in process of cure) in cold-storage warehouses and meat-packing establishments, 1916-1925

[Thousand pounds; i. e., 000 omitted]

Year	Jan. 1	Feb. 1	Mar. 1	Apr. 1	May 1	June 1	July 1	Aug. 1	Sept. 1	Oct. 1	Nov. 1	Dec. 1
Average:												
1916-1920.....	572,713	733,937	829,402	849,642	849,846	853,396	841,571	806,753	688,962	550,870	447,983	461,414
1921-1925.....	575,164	684,607	782,346	812,154	811,805	797,068	808,289	751,460	658,512	520,138	412,222	433,026
1916.....	420,786	556,309	666,263	646,097	617,668	615,386	643,959	641,667	550,013	430,782	352,006	426,392
1917.....	559,041	642,755	701,288	692,323	675,782	694,521	729,183	732,268	696,907	435,238	325,883	370,203
1918.....	583,600	725,085	876,378	967,040	945,786	1,009,882	892,871	844,365	720,374	579,991	517,310	500,728
1919.....	722,556	968,716	999,756	1,004,109	949,238	987,853	959,387	852,448	770,504	691,915	508,921	513,982
1920.....	507,638	776,763	963,350	968,639	960,700	959,338	982,454	933,028	807,011	616,441	472,798	426,677
1921.....	533,980	669,832	837,158	842,066	862,100	801,387	799,261	737,569	623,967	471,901	359,656	355,589
1922.....	415,006	484,598	547,155	591,223	594,241	635,655	707,385	689,161	619,071	483,090	395,171	410,496
1923.....	570,510	688,924	783,880	864,674	940,671	908,771	908,505	860,159	754,262	613,143	505,940	577,495
1924.....	708,869	800,890	878,086	932,408	908,332	891,109	872,638	810,665	710,871	565,173	407,731	427,520
1925.....	647,361	778,792	845,355	826,557	814,189	748,418	738,655	669,536	583,789	467,378	392,605	385,027

TABLE 39.—Miscellaneous meats:¹ Cold-storage holdings, 1917-1925

[Thousand pounds; i. e., 000 omitted]

Year	Jan. 1	Feb. 1	Mar. 1	Apr. 1	May 1	June 1	July 1	Aug. 1	Sept. 1	Oct. 1	Nov. 1	Dec. 1
Average:												
1917-1922.....	85,770	90,645	92,155	86,544	81,785	79,065	79,902	77,163	77,336	72,016	70,105	72,164
1921-1925.....	74,931	77,949	80,448	77,244	75,272	71,298	71,634	68,377	65,639	57,789	53,281	50,223
1917.....								16,173	17,751	11,328	42,514	30,355
1918.....	55,569	55,078	67,432	80,200	78,252	71,118	77,470	79,959	96,316	95,879	102,023	106,244
1919.....	128,892	111,914	132,670	125,735	113,126	97,193	95,908	91,448	83,358	80,454	82,113	82,853
1920.....	108,769	113,338	109,152	100,945	87,435	81,384	80,617	78,670	69,471	63,957	59,489	60,092
1921.....	75,421	85,254	95,163	87,935	93,015	90,392	85,207	80,955	79,778	69,739	60,696	61,216
1922.....	60,255	57,171	56,459	53,841	52,064	50,265	54,878	54,734	55,773	49,047	45,954	50,405
1923.....	63,201	67,231	67,879	69,907	69,387	68,882	71,470	68,353	65,928	60,910	57,214	65,817
1924.....	83,303	84,922	82,550	80,400	74,787	68,837	70,029	67,485	63,049	57,201	57,610	67,260
1925.....	92,475	98,162	101,163	94,128	87,090	80,076	76,586	69,806	64,573	52,550	44,951	50,415

¹ Miscellaneous meats include all stocks of beef, pork, and mutton trimmings and edible offal that have been frozen, cured, or otherwise prepared for food. It does not include the trimmings that have not been frozen, cured, or processed, nor does it include sausage or canned-meat products.

Cold-Storage Holdings

17

TABLE 40.—Total meats in cold-storage warehouses and meat-packing establishments, 1917-1925

(Thousand pounds; i. e. 000 omitted)

Year	Jan. 1	Feb. 1	Mar. 1	Apr. 1	May 1	June 1
Average:						
1917-1921	982,461	1,141,407	1,226,086	1,221,209	1,173,350	1,145,527
1921-1925	785,406	896,371	987,786	1,001,377	982,468	948,152
1917	806,669	875,450	913,559	851,990	827,951	831,867
1918	981,378	1,117,965	1,265,554	1,354,061	1,319,328	1,250,779
1919	1,199,292	1,452,312	1,436,378	1,388,764	1,332,443	1,283,768
1920	1,015,558	1,186,590	1,278,729	1,304,142	1,252,508	1,208,728
1921	820,245	976,058	1,138,033	1,107,706	1,042,552	1,017,209
1922	566,608	624,278	680,553	717,417	712,887	745,022
1923	754,489	876,251	957,908	1,031,808	1,093,705	1,045,224
1924	900,242	987,773	1,062,816	1,107,861	1,063,635	1,028,238
1925	885,752	1,019,995	1,059,021	1,042,093	999,500	905,019

Year	July 1	Aug. 1	Sept. 1	Oct. 1	Nov. 1	Dec. 1
Average:						
1917-1921	1,110,492	1,043,169	925,893	782,723	702,226	734,501
1921-1925	916,035	878,421	778,535	630,860	530,771	594,443
1917	878,598	893,472	778,119	632,802	557,245	709,043
1918	1,149,377	1,136,501	1,635,861	905,326	882,230	938,066
1919	1,254,457	1,171,381	1,061,274	984,259	886,719	865,191
1920	1,194,464	1,115,082	977,225	783,777	670,295	655,836
1921	989,462	689,406	776,981	607,455	480,648	504,659
1922	816,689	788,524	727,111	589,188	512,396	509,165
1923	1,040,761	963,159	868,616	723,459	628,578	730,493
1924	1,005,002	930,589	825,951	672,437	535,760	598,345
1925	878,330	790,425	694,915	561,759	480,475	510,555

TABLE 41.—Lard in cold-storage warehouses and meat-packing establishments, 1916-1925¹

(Thousand pounds; i. e., 000 omitted)

Year	Jan. 1	Feb. 1	Mar. 1	Apr. 1	May 1	June 1	July 1	Aug. 1	Sept. 1	Oct. 1	Nov. 1	Dec. 1
Average:												
1916-1920	73,142	94,772	100,619	99,546	105,594	99,815	115,129	120,632	109,518	83,522	66,703	54,165
1921-1925	53,211	73,570	91,725	103,468	117,510	131,313	156,178	155,350	124,980	77,777	37,957	35,851
1916	63,304	82,342	111,697	97,237	108,731	83,113	87,127	95,994	82,028	71,570	56,929	58,950
1917	80,977	86,268	85,469	65,179	61,640	72,365	98,197	112,249	102,172	69,929	37,095	44,367
1918	54,530	50,316	65,355	89,854	103,373	106,194	107,871	102,411	104,668	90,398	76,124	81,670
1919	104,274	138,363	125,410	112,469	112,469	83,096	92,132	100,478	87,947	76,456	66,036	49,147
1920	62,614	97,649	111,975	132,993	141,819	152,307	193,316	191,531	170,774	109,258	47,329	36,683
1921	59,319	83,549	117,680	128,614	152,428	181,992	204,301	194,490	149,886	85,115	48,829	42,001
1922	57,541	61,262	61,297	89,031	96,056	123,798	164,254	143,084	119,755	75,338	36,750	32,506
1923	48,808	56,266	59,101	76,743	85,251	84,530	123,898	143,579	115,860	72,608	35,225	35,327
1924	49,340	54,120	68,610	85,722	102,317	127,949	162,520	149,672	124,676	84,198	31,706	35,713
1925	61,049	112,764	151,927	150,182	151,490	138,296	145,019	145,024	114,724	71,620	37,256	33,710

¹ Lard includes all prime steam, kettle-rendered, neutral, and other pure lards. It does not include lard substitutes or lard compounds.

TABLE 42.—*Summary of cold storage holdings, by months, 1925*

[Thousands; i. e., 000 omitted]

Commodity	Jan. 1	Feb. 1	Mar. 1	Apr. 1	May 1	June 1
Fresh fruits and vegetables:						
Apples..... barrels.....	3,254	2,498	1,803	1,046	504	165
Do..... boxes.....	9,089	7,204	5,256	3,412	1,801	674
Do..... baskets.....	1,157	940	698	314	117	29
Total apples..... barrels.....	6,673	5,233	3,761	2,288	1,443	369
Pears..... do.....	29	21	9	4	3	—
Do..... boxes.....	301	182	149	87	46	19
Onions..... pounds.....	38,577	36,136	21,327	15,143	2,802	1,721
Frozen and preserved fruits..... do.....	34,610	33,827	21,758	19,810	17,016	19,168
Dairy products and eggs:						
Butter, creamery..... do.....	65,694	45,748	28,789	10,875	3,739	13,030
Cheese—						
American..... do.....	49,187	41,552	34,647	27,716	26,147	29,550
Swiss, including block..... do.....	10,469	9,888	9,376	6,955	6,385	5,507
Brick and Munster..... do.....	1,721	1,306	982	921	1,112	1,465
Limburger..... do.....	963	952	904	773	690	707
All other varieties..... do.....	5,218	4,753	4,198	4,112	4,703	5,509
Total cheese..... do.....	67,568	58,461	50,117	40,460	39,037	42,888
Eggs—						
Case..... cases.....	1,050	81	21	1,240	4,572	7,712
Frozen..... pounds.....	21,303	16,292	11,361	11,353	19,579	29,544
Frozen poultry—						
Broilers..... do.....	21,780	20,695	15,888	15,611	11,625	8,881
Roasters..... do.....	43,371	45,570	44,350	36,921	29,221	23,229
Fowls..... do.....	21,283	21,433	19,795	14,711	9,177	6,877
Turkeys..... do.....	13,744	17,415	17,091	15,450	12,983	11,496
Miscellaneous frozen poultry..... do.....	31,812	33,073	30,659	25,915	19,656	17,641
Total frozen poultry..... do.....	133,990	138,189	130,513	108,608	82,732	68,126
Meats:						
Beef—						
Frozen..... do.....	114,034	111,947	101,399	87,681	67,271	46,887
In process of cure..... do.....	15,757	14,589	13,341	12,952	12,206	11,693
Cured..... do.....	13,173	14,169	15,869	15,682	16,748	16,128
Total beef..... do.....	142,964	140,705	130,609	116,315	96,223	74,718
Pork—						
Frozen..... do.....	130,123	190,642	231,234	218,508	201,246	180,645
Dry salt, in process of cure..... do.....	77,536	75,957	79,250	66,901	67,691	68,477
Dry salt cured..... do.....	41,382	37,108	71,509	70,049	77,947	73,815
Pickled, in process of cure..... do.....	267,970	286,468	280,895	251,719	233,212	218,822
Pickled cured..... do.....	130,551	159,569	202,467	216,380	234,183	206,659
Total, pork..... do.....	647,364	778,792	865,355	829,557	814,189	748,418
Lamb and mutton, frozen..... do.....	2,949	2,336	2,204	2,000	1,098	1,013
Miscellaneous meats, frozen and cured..... do.....	92,475	98,162	101,103	94,128	87,090	80,070
Total meats..... do.....	885,752	1,019,995	1,009,621	1,042,093	999,500	905,019
Lard..... do.....	61,049	112,704	151,927	150,182	151,499	138,205

Cold-Storage Holdings

19

TABLE 42.—Summary of cold storage holdings, by months, 1925—Continued

(Thousands, i. e., 000 omitted)

Commodity	July 1	Aug. 1	Sept. 1	Oct. 1	Nov. 1	Dec. 1
Fresh fruits and vegetables:						
Apples..... barrels.....				885	3,749	4,245
Do..... boxes.....				1,091	9,165	13,041
Do..... baskets.....				519	2,056	2,419
Total apples ¹ barrels.....				1,422	7,489	9,398
Pears..... do.....		36	115	73	50	62
Do..... boxes.....	8	162	551	832	892	679
Onions..... pounds.....	750	926	3,050	9,555	24,311	33,539
Frozen and preserved fruits..... do.....	24,239	28,702	28,385	25,564	24,640	22,624
Dairy products and eggs:						
Butter, creamery..... do.....	63,687	109,075	128,403	114,172	94,916	74,754
Cheese—						
American..... do.....	46,468	60,634	70,512	78,582	71,913	66,405
Swiss, including block..... do.....	5,563	5,486	7,588	8,683	8,955	9,041
Brick and Munster..... do.....	1,739	2,164	2,291	1,994	2,022	2,110
Limburger..... do.....	923	1,220	1,354	1,470	1,422	1,292
All other varieties..... do.....	7,299	8,064	7,727	7,948	6,554	5,623
Total cheese..... do.....	61,992	83,568	95,472	97,777	90,866	84,561
Eggs—						
Case..... cases.....	9,482	10,024	9,873	8,612	6,322	3,786
Frozen..... pounds.....	38,379	42,855	47,099	44,299	45,314	39,336
Frozen poultry—						
Broilers..... do.....	7,281	7,695	9,069	11,012	13,616	16,616
Roasters..... do.....	18,714	15,938	12,175	9,604	14,374	28,922
Fowls..... do.....	6,043	5,731	4,800	3,937	5,260	11,628
Turkeys..... do.....	10,024	8,840	7,191	5,712	3,544	5,168
Miscellaneous frozen poultry..... do.....	16,300	15,384	14,651	14,080	16,973	24,399
Total frozen poultry..... do.....	58,562	53,588	47,946	44,345	53,787	80,733
Meats:						
Beef—						
Frozen..... do.....	36,452	26,970	22,879	19,755	27,068	50,436
In process of cure..... do.....	10,497	10,982	10,915	10,090	11,427	14,665
Cured..... do.....	14,605	11,722	11,420	10,874	9,946	8,463
Total beef..... do.....	61,554	49,674	45,214	40,719	47,441	73,564
Pork—						
Frozen..... do.....	168,627	131,935	93,078	54,294	29,910	27,153
Dry salt, in process of cure..... do.....	85,451	82,285	76,384	66,040	58,488	56,538
Dry salt cured..... do.....	77,067	82,089	75,571	62,550	47,523	40,208
Pickled, in process of cure..... do.....	234,988	220,335	102,936	171,632	162,774	167,428
Pickled cured..... do.....	172,642	182,892	145,220	112,853	93,910	93,700
Total pork..... do.....	738,655	669,536	583,789	467,378	392,695	395,027
Lamb and mutton, frozen..... do.....	1,535	1,349	1,339	1,112	1,435	1,549
Miscellaneous meats, frozen and cured..... do.....	76,586	69,866	64,573	52,550	44,954	50,415
Total meats..... do.....	878,330	790,425	694,915	561,759	486,475	510,555
Lard..... do.....	145,919	145,924	114,724	71,626	37,256	33,710

¹ Three boxes or 3 bushel baskets are considered the equivalent of 1 barrel.

TABLE 43.—Bluefish: Cold-storage holdings, 1916-1925

[Thousand pounds; i. e., 000 omitted]

Year	Jan. 15	Feb. 15	Mar. 15	Apr. 15	May 15	June 15	July 15	Aug. 15	Sept. 15	Oct. 15	Nov. 15	Dec. 15
Average:												
1917-1921.....	260	157	131	83	69	96	90	149	226	371	373	349
1921-1925.....	436	264	155	101	82	87	152	194	276	462	326	552
1916.....										248	472	253
1917.....	242	16	100	46	15	70	125	84	43	173	309	175
1918.....	157	123	94	64	65	27	25	39	216	274	239	230
1919.....	249	176	109	51	32	27	32	128	173	266	269	262
1920.....	321	233	134	91	109	210	153	211	256	307	402	411
1921.....	330	237	212	162	126	128	114	282	442	746	745	668
1922.....	560	289	154	85	77	66	147	217	412	617	822	750
1923.....	579	344	164	77	46	64	260	282	335	504	466	474
1924.....	422	253	177	150	108	115	101	93	89	107	124	320
1925.....	288	107	67	32	40	60	136	95	103	335	475	548

TABLE 44.—Bluefish frozen monthly, 1919-1925

[Thousand pounds; i. e., 000 omitted]

Year	Jan.	Feb.	Mar.	Apr.	May	June	July	Aug.	Sept.	Oct.	Nov.	Dec.
1919.....								64	149	31	14	5
1920.....	2	4	4	67	115	10	38	69	188	58	60	4
1921.....	2	1	6		22	15	139	180	341	91	77	8
1922.....			3	3	5	97	106	165	216	191	2	3
1923.....				1	25	204	43	44	197	23	50	37
1924.....	1	2	29	9	33	20	8	12	34	50	176	95
1925.....	1	14	4	11	13	42	17	29	268	74	3	

TABLE 45.—Butterfish: Cold-storage holdings, 1916-1925

[Thousand pounds; i. e., 000 omitted]

Year	Jan. 15	Feb. 15	Mar. 15	Apr. 15	May 15	June 15	July 15	Aug. 15	Sept. 15	Oct. 15	Nov. 15	Dec. 15
Average:												
1917-1921.....	825	495	302	161	143	206	565	743	800	1,012	1,130	965
1921-1925.....	573	372	221	128	65	134	225	347	537	733	882	707
1916.....										1,089	1,446	1,032
1917.....	867	271	232	76	34	360	1,088	1,166	1,143	1,410	1,472	1,127
1918.....	876	516	220	97	156	314	893	1,256	1,250	1,271	1,308	1,174
1919.....	922	692	451	193	163	182	393	548	668	772	736	669
1920.....	459	335	254	207	182	201	295	489	515	967	1,353	1,208
1921.....	1,003	662	355	233	181	153	174	255	422	612	826	665
1922.....	518	393	227	174	32	46	139	271	331	413	698	500
1923.....	458	218	138	84	25	147	236	384	410	496	602	519
1924.....	410	221	131	56	43	171	322	438	805	850	887	736
1925.....	480	363	273	95	43	155	276	388	716	1,294	1,248	1,057

TABLE 46.—Butterfish frozen monthly, 1919-1925

[Thousand pounds; i. e., 000 omitted]

Year	Jan.	Feb.	Mar.	Apr.	May	June	July	Aug.	Sept.	Oct.	Nov.	Dec.
1919.....								160	153	83	8	3
1920.....				5	54	129	214	79	407	585	62	21
1921.....	3				14	2	108	203	243	347	22	6
1922.....			4		20	83	173	88	106	329	85	
1923.....			4	8	154	166	174	47	117	176	20	5
1924.....	6		10	24	149	173	139	393	100	97	35	7
1925.....			2	8	147	142	113	313	640	94	53	

TABLE 47.—Ciscos: ¹ Cold-storage holdings, 1916-1925

[Thousand pounds; i. e., 000 omitted]

Year	Jan. 15	Feb. 15	Mar. 15	Apr. 15	May 15	June 15	July 15	Aug. 15	Sept. 15	Oct. 15	Nov. 15	Dec. 15
Average:												
1917-1921.....	4,506	3,385	2,242	1,642	1,237	1,035	1,148	2,024	4,313	5,063	5,155	6,502
1921-1925.....	7,084	6,102	4,269	3,100	2,421	2,003	2,046	3,670	5,610	6,903	6,813	7,946
1916.....	1,782	499	486	229	65	173	262	1,018	2,869	4,275	5,837	6,455
1917.....	7,292	4,479	2,814	2,224	1,755	1,367	1,390	3,339	4,457	3,822	4,153	6,010
1918.....	5,652	3,692	2,062	1,279	879	602	1,070	2,166	3,409	4,493	3,515	4,587
1919.....	4,250	3,310	1,901	1,146	802	567	405	2,152	4,909	6,444	6,046	6,534
1920.....	5,852	4,957	3,945	3,331	2,783	2,525	2,605	4,444	5,839	6,343	5,894	6,241
1922.....	7,125	6,351	4,510	3,316	2,619	2,216	2,052	3,593	6,183	7,499	6,792	6,727
1923.....	5,804	3,675	1,949	1,048	498	379	450	1,227	8,501	10,910	10,378	12,506
1924.....	10,972	5,896	6,068	4,600	3,859	3,453	3,341	4,173	3,777	8,642	8,051	10,321
1925.....	8,477	6,633	4,574	3,114	2,255	1,892	1,600	1,658	1,440	1,113	2,052	3,631

¹ Includes tullibees reported separately since January, 1922.TABLE 48.—Ciscos ¹ frozen monthly, 1919-1925

[Thousand pounds; i. e., 000 omitted]

Year	Jan.	Feb.	Mar.	Apr.	May	June	July	Aug.	Sept.	Oct.	Nov.	Dec.
1919.....								2,031	1,556	671	1,168	736
1920.....	30	41	48	42	21	313	2,321	2,600	1,707	631	1,318	528
1921.....	45	38	69	14	61	292	2,050	1,875	1,076	1,394	1,157	572
1922.....	22	38	60	15	9	169	2,261	2,578	2,108	676	1,659	1,060
1923.....	104	96	38	16	76	309	3,585	5,222	2,031	694	3,180	742
1924.....	36	91	44	178	163	405	1,354	2,602	4,260	1,396	2,708	1,205
1925.....	182	153	206	112	94	66	162	76	226	1,165	1,917	

¹ Includes tullibees, reported separately since January, 1922.

TABLE 49.—Cod, hake, pollock, and haddock: Cold-storage holdings, 1916-1925

[Thousand pounds; i. e., 000 omitted]

Year	Jan. 15	Feb. 15	Mar. 15	Apr. 15	May 15	June 15	July 15	Aug. 15	Sept. 15	Oct. 15	Nov. 15	Dec. 15
Average:												
1917-1921....	3,553	2,820	2,224	1,855	2,113	2,594	2,744	2,705	3,604	3,391	4,240	4,309
1921-1925....	1,433	1,182	1,006	828	822	820	846	955	1,110	1,169	1,218	1,198
1916.....	1,189	557	452	660	1,104	1,994	2,202	1,374	1,826	2,972	3,778	4,501
1917.....	2,489	1,554	1,285	1,591	2,451	3,405	3,008	4,690	5,006	5,275	7,510	7,005
1918.....	6,577	5,952	4,796	3,206	3,612	3,757	3,786	3,482	3,746	3,966	4,360	4,775
1919.....	3,929	2,900	1,802	1,467	1,406	1,857	1,818	2,113	2,578	2,109	3,786	3,511
1921.....	3,580	3,131	2,815	2,230	1,991	1,955	1,916	1,878	1,865	1,633	1,766	1,722
1922.....	1,361	1,130	913	674	501	391	340	402	400	374	408	549
1923.....	323	154	121	162	356	475	533	573	1,021	1,243	1,447	1,572
1924.....	1,105	852	687	387	464	476	622	605	710	732	888	1,041
1925.....	795	695	510	631	797	805	821	926	1,553	1,565	1,523	1,104

TABLE 50.—Cod, hake, pollock, and haddock frozen monthly, 1919-1925

[Thousand pounds; i. e., 000 omitted]

Year	Jan.	Feb.	Mar.	Apr.	May	June	July	Aug.	Sept.	Oct.	Nov.	Dec.
1919.....								557	565	659	660	112
1920.....	95	171	147	188	488	293	458	603	589	768	138	275
1921.....	172	30	72	47	126	114	88	95	617	256	186	150
1922.....	7	30	121	52	81	20	140	01	112	202	171	34
1923.....	32	28	40	215	166	146	418	240	338	345	222	55
1924.....	62	63	23	203	88	254	267	111	200	305	284	135
1925.....	113	175	327	304	122	104	178	632	237	330	121	

TABLE 51.—Crawfish: Cold-storage holdings, 1916-1925

(Thousand pounds; i. e., 000 omitted)

Year	Jan. 15	Feb. 15	Mar. 15	Apr. 15	May 15	June 15	July 15	Aug. 15	Sept. 15	Oct. 15	Nov. 15	Dec. 15
Average:												
1917-1921	356	255	148	112	206	388	414	491	509	508	525	533
1921-1925	189	125	73	93	254	297	442	530	486	387	331	325
1916										215	177	140
1917	213	91	13	18	173	175	165	325	218	330	518	426
1918	274	162	56	51	509	1,116	1,143	1,209	1,080	1,043	1,006	964
1919	722	578	378	223	334	400	349	307	198	193	180	153
1920	82	38	11	31	34	64	134	281	709	709	704	577
1921	488	406	281	236	219	187	277	331	338	266	219	546
1922	73	23	12	27	37	24	75	37	22	4	18	4
1923	4	3	1	115	277	489	363	352	339	332	364	319
1924	249	104	52	85	296	304	379	758	617	403	278	223
1925	130	90	19	4	440	479	1,118	1,219	1,112	867	775	535

TABLE 52.—Crawfish frozen monthly, 1919-1925

(Thousand pounds; i. e., 000 omitted)

Year	Jan.	Feb.	Mar.	Apr.	May	June	July	Aug.	Sept.	Oct.	Nov.	Dec.
1919								21	35	12		
1920	5	1		9	30	73	153	450			4	
1921	2	2			11	108	32	93		31	61	1
1922			15	11		65	23	10		13		
1923			114	106	18	53	6	7	62	14		1
1924			60	230	9	77	377	45	4	1		2
1925			2	362	69	396	158	123	2	54	4	

TABLE 53.—Halibut: Cold-storage holdings, 1916-1925

(Thousand pounds; i. e., 000 omitted)

Year	Jan. 15	Feb. 15	Mar. 15	Apr. 15	May 15	June 15	July 15	Aug. 15	Sept. 15	Oct. 15	Nov. 15	Dec. 15
Average:												
1917-1921	6,217	3,811	2,772	2,301	3,360	4,903	6,703	8,688	9,943	9,910	9,870	8,431
1921-1925	6,018	4,158	2,690	2,529	3,250	4,749	6,384	7,962	9,731	9,595	8,711	7,241
1916										7,010	6,440	5,446
1917	4,118	1,144	1,004	1,157	2,459	3,536	4,612	5,971	6,770	6,792	8,545	6,409
1918	5,294	2,870	1,973	1,934	2,829	5,085	7,372	10,620	11,940	11,720	11,602	10,301
1919	7,922	5,671	4,377	3,342	4,584	5,603	8,690	10,618	11,581	11,875	11,476	9,828
1920	7,789	5,371	3,975	3,103	4,155	5,716	6,680	8,630	10,340	10,677	9,739	8,749
1921	5,961	4,117	2,626	1,965	2,773	4,375	6,213	7,603	9,129	8,486	7,995	6,869
1922	6,306	4,805	3,792	2,592	2,879	3,878	4,381	4,836	6,287	6,825	5,741	4,534
1923	3,782	2,371	711	381	1,344	2,640	4,602	5,793	7,516	7,038	6,757	6,306
1924	5,523	3,754	2,310	3,342	4,074	5,647	8,376	11,730	14,107	14,609	13,663	11,459
1925	8,507	5,741	4,109	4,403	5,180	7,267	8,448	9,753	10,617	10,995	9,400	7,039

TABLE 54.—Halibut frozen monthly, 1919-1925

(Thousand pounds; i. e., 000 omitted)

Year	Jan.	Feb.	Mar.	Apr.	May	June	July	Aug.	Sept.	Oct.	Nov.	Dec.
1919												
1920	260	749	797	1,086	1,565	1,190	1,972	1,395	1,018	317	253	182
1921	303	153	344	915	2,045	1,455	1,893	1,363	423	872	620	370
1922	367	133	87	60	328	742	602	1,291	1,062	234	146	101
1923	143	81	183	1,210	1,432	2,244	1,575	1,798	404	569	414	621
1924	284	159	962	1,164	1,729	3,092	2,610	1,487	673	738	475	453
1925	121	1,210	1,339	869	1,923	1,261	1,430	1,419	615	395	479	

TABLE 55.—Herring: Cold-storage holdings, 1916-1925

(Thousand pounds; i. e., 000 omitted)

Year	Jan. 15	Feb. 15	Mar. 15	Apr. 15	May 15	June 15	July 15	Aug. 15	Sept. 15	Oct. 15	Nov. 15	Dec. 15
Average:												
1917-1921.....	3,265	5,647	3,663	2,372	3,802	4,822	5,705	8,375	8,480	9,225	9,435	9,748
1921-1925.....	3,815	3,035	1,050	1,175	1,390	1,923	2,316	2,675	2,920	4,330	4,234	3,996
1916.....										8,595	8,585	8,853
1917.....	6,749	3,294	1,592	1,160	3,689	5,902	6,629	6,231	5,955	7,456	7,427	7,849
1918.....	5,591	3,615	2,185	1,811	5,240	12,535	16,176	16,761	16,274	15,861	15,785	15,930
1919.....	13,034	9,623	6,749	4,225	5,891	9,456	11,709	10,690	10,898	11,425	11,749	11,436
1920.....	9,296	6,496	3,712	2,012	2,203	3,297	5,688	5,480	5,409	6,124	6,582	7,738
1921.....	6,351	5,208	3,775	2,654	1,988	2,880	3,775	3,715	3,570	6,259	5,624	5,789
1922.....	4,145	2,494	1,168	737	595	1,121	1,086	1,585	1,939	6,426	4,065	2,936
1923.....	2,481	1,903	1,090	939	1,653	2,076	2,827	3,421	3,464	3,831	4,075	3,368
1924.....	2,469	1,742	1,744	708	1,927	2,710	2,781	3,661	3,318	3,653	4,454	4,633
1925.....	3,777	3,827	2,132	828	786	819	1,116	992	2,018	2,431	2,652	3,254

TABLE 56.—Herring frozen monthly, 1919-1925

(Thousand pounds; i. e., 000 omitted)

Year	Jan.	Feb.	Mar.	Apr.	May	June	July	Aug.	Sept.	Oct.	Nov.	Dec.
1919.....								849	1,440	1,813	1,392	165
1920.....	244	394	165	111	1,424	2,914	325	195	1,139	1,033	2,360	495
1921.....	427	205	89	288	1,671	1,559	643	632	1,937	980	1,272	125
1922.....	238	118	180	117	413	127	769	398	4,897	646	403	58
1923.....	132	105	514	983	701	668	914	368	563	528	213	123
1924.....	384	265	101	1,561	1,330	595	1,283	195	869	1,118	846	158
1925.....	180	224	9	376	245	493	158	1,018	706	960	504	

TABLE 57.—Herring, cured: Cold-storage holdings, 1916-1925

(Thousand pounds; i. e., 000 omitted)

Year	Jan. 15	Feb. 15	Mar. 15	Apr. 15	May 15	June 15	July 15	Aug. 15	Sept. 15	Oct. 15	Nov. 15	Dec. 15
Average:												
1917-1921.....	11,228	10,217	11,108	12,481	13,759	16,070	18,765	20,769	22,164	20,701	17,812	16,171
1921-1925.....	15,148	13,576	12,351	12,242	12,233	11,896	11,869	14,336	19,338	21,050	19,934	19,741
1916.....										1,944	3,347	3,289
1917.....	3,353	4,727	5,998	7,322	7,571	10,389	12,180	12,187	10,187	8,817	8,843	7,928
1918.....	6,456	4,511	5,602	8,127	12,306	19,635	23,828	27,260	27,311	23,189	20,162	18,740
1919.....	11,810	14,131	18,249	21,138	23,158	26,983	29,636	30,342	34,368	32,092	34,371	21,818
1920.....	18,466	16,621	14,913	15,042	15,806	18,632	19,790	22,111	24,752	21,655	19,377	16,369
1921.....	13,056	11,097	10,776	10,776	10,111	9,210	8,389	11,913	16,207	17,763	15,860	16,002
1922.....	14,852	14,651	12,385	12,861	12,891	12,991	13,422	15,921	21,637	24,126	22,942	22,730
1923.....	19,949	16,275	15,017	14,741	15,572	14,709	15,355	15,021	16,726	17,666	15,672	14,668
1924.....	14,349	13,028	10,914	8,819	9,062	9,419	9,440	12,687	16,622	19,133	18,436	15,936
1925.....	13,534	12,327	12,066	13,065	13,527	13,163	12,739	15,237	20,594	20,672	26,851	29,427

TABLE 58.—Lake trout: Cold-storage holdings, 1916-1925

[Thousand pounds; i. e., 000 omitted]

Year	Jan. 15	Feb. 15	Mar. 15	Apr. 15	May 15	June 15	July 15	Aug. 15	Sept. 15	Oct. 15	Nov. 15	Dec. 15
Average:												
1917-1921	1,029	765	496	312	363	431	501	541	556	827	1,659	1,774
1921-1925	1,563	1,124	724	388	406	520	651	666	679	866	1,635	2,011
1916										198	629	771
1917	392	153	80	43	120	139	106	218	202	482	1,292	1,050
1918	667	270	232	195	269	342	452	570	547	758	1,660	1,551
1919	1,190	895	483	292	277	287	343	374	473	739	1,619	1,660
1920	1,230	817	321	91	252	442	480	554	555	943	1,721	2,118
1921	1,695	1,394	1,114	936	896	944	1,032	991	1,063	1,213	2,004	2,489
1922	1,866	1,256	700	262	400	498	565	497	420	692	1,617	1,854
1923	1,443	839	287	50	45	194	281	372	359	579	1,199	1,614
1924	1,233	897	745	282	270	406	630	653	687	928	1,816	1,953
1925	1,610	1,236	773	410	418	557	746	819	840	987	1,850	2,144

TABLE 59.—Lake trout frozen monthly, 1919-1925

[Thousand pounds; i. e., 000 omitted]

Year	Jan.	Feb.	Mar.	Apr.	May	June	July	Aug.	Sept.	Oct.	Nov.	Dec.
1919								124	472	906	295	171
1920	184	35	40	193	226	66	132	63	414	842	599	27
1921	81	1	4	31	145	125	33	99	215	910	854	10
1922	17	17	4	161	164	109	38	57	174	1036	435	26
1923	11	2	6	4	164	86	107	65	124	614	609	73
1924	64	39	4	71	152	259	68	159	364	571	244	218
1925	51	30	13	63	88	142	156	113	290	790	161	

TABLE 60.—Mackerel: Cold-storage holdings, 1916-1925

[Thousand pounds; i. e., 000 omitted]

Year	Jan. 15	Feb. 15	Mar. 15	Apr. 15	May 15	June 15	July 15	Aug. 15	Sept. 15	Oct. 15	Nov. 15	Dec. 15
Average:												
1917-1921	2,494	1,949	1,427	970	793	1,727	2,397	2,505	2,546	2,850	2,832	2,589
1921-1925	3,188	2,402	1,684	1,062	890	1,762	2,440	3,194	4,339	5,163	5,010	4,336
1916										2,298	2,730	2,563
1917	1,654	937	817	714	768	1,067	1,583	2,110	2,341	3,658	4,037	3,103
1918	2,414	1,778	1,239	1,002	697	1,532	2,559	3,319	3,840	4,112	3,785	3,569
1919	3,851	3,445	2,685	1,564	1,338	2,580	2,784	2,361	2,227	2,389	2,190	2,033
1920	2,339	2,103	1,267	724	547	1,760	3,283	3,015	2,678	2,593	2,479	2,406
1921	2,211	1,483	1,198	841	675	1,695	1,670	1,696	1,603	1,406	1,667	1,534
1922	1,180	1,333	908	382	671	1,929	2,425	2,817	2,983	5,025	5,693	4,953
1923	4,663	3,447	2,696	1,766	1,475	1,717	2,497	2,985	5,322	6,756	6,254	5,501
1924	4,353	3,266	2,093	1,226	918	1,911	2,336	3,894	1,922	4,665	4,015	4,650
1925	3,242	2,481	1,564	851	712	2,457	2,880	4,397	6,867	7,643	6,910	5,343

TABLE 61.—Mackerel frozen monthly, 1919-1925

[Thousand pounds; i. e., 000 omitted]

Year	Jan.	Feb.	Mar.	Apr.	May	June	July	Aug.	Sept.	Oct.	Nov.	Dec.
1919								200	165	91	9	4
1920	62	37	64	7	1,324	1,732	130	130	139	316	394	230
1921	81	141	54	25	1,114	169	242	105	192	212	201	119
1922	60	38	6	273	1,333	624	503	355	2,010	606	160	191
1923	185	216	24	298	452	1,042	341	2,521	1,770	179	120	122
1924	92	59	30	58	270	1,423	1,425	1,234	110	335	242	90
1925	202	48	72	102	1,926	649	1,950	2,472	953	402	228	

TABLE 62.—Sablefish: Cold-storage holdings, 1916-1925

(Thousand pounds; i. e., 000 omitted)

Year	Jan. 15	Feb. 15	Mar. 15	Apr. 15	May 15	June 15	July 15	Aug. 15	Sept. 15	Oct. 15	Nov. 15	Dec. 15
Average:												
1917-1921	1,282	871	654	514	480	734	968	1,343	1,707	1,968	1,014	1,813
1921-1925	1,065	785	711	514	301	317	563	868	1,145	1,538	1,730	1,589
1916										708	1,044	785
1917	542	342	98	100	122	657	1,155	1,647	1,668	1,194	1,456	1,830
1918	942	430	192	122	231	916	1,318	2,286	3,201	3,899	3,519	3,186
1919	2,827	2,420	2,170	1,798	1,581	1,633	1,620	1,564	1,854	2,039	1,982	1,644
1920	1,355	766	513	302	233	193	283	597	834	1,119	1,017	921
1921	743	389	290	250	208	270	456	600	977	1,619	1,624	1,488
1922	1,235	1,070	934	707	651	580	488	527	610	893	905	813
1923	394	268	139	59	60	181	994	1,438	1,897	2,134	2,274	2,184
1924	1,915	1,522	1,322	964	467	378	443	912	1,100	1,630	1,700	1,359
1925	1,088	675	872	592	568	225	532	852	1,083	1,601	2,146	2,154

TABLE 63.—Sablefish frozen monthly, 1919-1925

(Thousand pounds; i. e., 000 omitted)

Year	Jan.	Feb.	Mar.	Apr.	May	June	July	Aug.	Sept.	Oct.	Nov.	Dec.
1919								509	229	215	37	21
1920	25	26	7	56	51	184	378	362	301	109	110	28
1921	4	58	52	40	110	66	185	339	655	121	34	14
1922	9	20	28	90	10	56	127	165	282	228	83	17
1923	27	18	19	34	78	757	570	378	281	240	73	97
1924	37	108	39	18	58	163	457	373	515	284	91	73
1925	19	54	9	86	38	376	342	275	512	530	145	

TABLE 64.—Fall and silver salmon: Cold-storage holdings, 1916-1925

(Thousand pounds; i. e., 000 omitted)

Year	Jan. 15	Feb. 15	Mar. 15	Apr. 15	May 15	June 15	July 15	Aug. 15	Sept. 15	Oct. 15	Nov. 15	Dec. 15
Average:												
1917-1921	3,498	2,411	2,027	1,410	1,117	990	1,063	1,279	1,616	3,010	4,957	3,900
1921-1925	3,212	2,370	1,546	915	650	646	1,008	1,487	2,131	3,761	4,381	3,647
1916										1,234	4,232	3,469
1917	3,200	1,155	1,630	953	631	574	552	673	1,174	2,020	3,579	3,090
1918	2,714	1,961	1,912	1,295	798	707	809	1,090	1,457	3,241	4,591	4,845
1919	4,664	3,856	3,179	2,501	2,252	2,047	1,946	2,015	2,163	3,741	4,927	4,683
1920	3,649	2,675	1,845	1,277	1,104	993	1,001	1,228	1,430	2,989	4,907	4,340
1921	3,263	2,408	1,561	1,020	801	658	665	1,390	1,856	3,061	3,780	3,008
1922	2,393	1,532	1,129	636	466	344	601	960	2,006	3,301	4,265	3,415
1923	3,673	2,598	1,650	994	519	318	713	1,006	1,329	3,363	3,862	3,277
1924	2,568	1,835	1,415	921	726	725	1,260	1,928	2,509	5,782	6,219	5,155
1925	4,127	3,477	1,941	1,097	847	1,184	1,599	2,143	2,462	3,210	3,841	3,380

TABLE 65.—Fall and silver salmon frozen monthly, 1919-1925

(Thousand pounds; i. e., 000 omitted)

Year	Jan.	Feb.	Mar.	Apr.	May	June	July	Aug.	Sept.	Oct.	Nov.	Dec.
1919								340	1,629	1,777	122	88
1920	21	3	78	2	64	162	388	224	1,538	2,376	290	87
1921	210	65	38	4	29	294	541	618	1,138	1,416	98	86
1922	114	60	11	12	79	340	442	938	1,584	1,248	75	93
1923	95	9	29	51	56	493	250	612	1,685	977	122	103
1924	66	16	18	37	90	598	511	435	3,191	983	161	155
1925	17	69	40	142	332	287	774	436	891	967	211	

TABLE 66.—Miscellaneous salmon: ¹ Cold-storage holdings, 1916-1925

[Thousand pounds; i. e., 000 omitted]

Year	Jan. 15	Feb. 15	Mar. 15	Apr. 15	May 15	June 15	July 15	Aug. 15	Sept. 15	Oct. 15	Nov. 15	Dec. 15
Average:												
1917-1921.....	2,244	1,661	1,086	772	691	912	1,732	2,510	3,554	3,786	3,468	3,160
1921-1925.....	3,541	2,727	1,902	1,419	1,170	1,348	2,455	3,530	5,407	6,257	5,044	5,091
1916.....	2,554	977	825	389	303	401	1,194	1,321	1,608	1,988	1,731	1,617
1917.....	3,052	788	694	437	391	948	1,783	2,967	4,982	4,625	4,187	4,449
1918.....	3,269	2,692	1,948	1,439	1,401	1,283	1,958	2,561	2,907	3,279	2,963	2,682
1919.....	2,100	1,838	1,098	722	636	906	1,543	2,291	3,246	3,683	3,121	2,888
1920.....	2,344	2,011	1,216	874	667	963	2,182	3,419	5,177	5,055	5,309	4,518
1921.....	3,368	2,781	2,028	1,136	908	837	1,403	2,287	5,010	6,847	6,073	4,886
1922.....	3,112	2,088	1,178	822	553	688	2,417	3,928	5,540	5,771	5,529	4,639
1923.....	3,682	2,587	1,769	1,254	911	1,241	2,371	4,398	5,624	7,061	6,982	6,363
1924.....	5,198	4,216	2,270	3,011	2,714	3,012	3,902	5,119	5,786	6,202	5,767	4,902

¹ Includes steelhead trout, reported separately since Jan. 15, 1922.TABLE 67.—Miscellaneous salmon frozen monthly, 1919-1925 ¹

[Thousand pounds; i. e., 000 omitted]

Year	Jan.	Feb.	Mar.	Apr.	May	June	July	Aug.	Sept.	Oct.	Nov.	Dec.
1919.....								572	499	47	17	47
1920.....	48	61	66	104	348	789	705	1,023	593	120	214	214
1921.....	128	64	22	37	319	958	1,326	1,684	754	221	55	46
1922.....	13	23	49	149	290	889	1,088	2,410	1,854	340	103	29
1923.....	75	29	12	204	269	2,005	1,484	1,418	665	233	160	33
1924.....	44	69	78	78	560	1,743	2,118	628	1,354	561	96	43
1925.....	33	82	1,306	88	604	1,097	1,588	1,185	526	550	116	

¹ Includes steelhead trout, reported separately since December, 1921.

TABLE 68.—Salmon, mild cured: Cold-storage holdings, 1916-1925

[Thousand pounds; i. e., 000 omitted]

Year	Jan. 15	Feb. 15	Mar. 15	Apr. 15	May 15	June 15	July 15	Aug. 15	Sept. 15	Oct. 15	Nov. 15	Dec. 15
Average:												
1917-1921.....	5,040	4,711	3,701	3,195	3,151	3,349	4,408	6,578	7,203	7,533	7,032	6,210
1921-1925.....	4,458	3,290	2,632	2,182	1,859	3,589	4,650	7,192	7,811	7,632	6,582	5,358
1916.....	3,480	3,936	2,730	2,584	2,245	2,174	2,249	3,747	3,587	5,113	4,716	4,546
1917.....	2,903	2,898	2,387	1,984	1,873	2,151	2,689	5,129	6,643	7,104	6,905	6,672
1918.....	6,054	5,191	4,164	3,798	4,098	5,093	7,020	9,698	10,757	10,471	10,259	9,388
1920.....	7,946	7,566	6,433	5,629	5,893	5,656	6,644	8,149	8,275	8,275	7,712	8,794
1921.....	4,727	3,906	2,793	1,980	1,644	1,672	3,140	6,165	6,855	6,696	5,565	4,652
1922.....	3,890	2,697	2,252	2,002	1,684	2,358	3,840	5,988	7,565	8,092	7,294	4,874
1923.....	4,874	3,708	2,650	2,247	1,867	2,406	4,302	6,085	7,155	6,017	5,235	5,235
1924.....	3,165	1,961	2,136	1,621	1,221	2,522	5,642	9,360	9,670	9,059	8,691	6,881
1925.....	5,636	4,148	3,328	2,961	2,848	3,686	6,255	8,357	7,903	7,695	6,322	5,149

Cold-Storage Holdings

TABLE 69.—*Shad and shad roe: Cold-storage holdings, 1916-1925*

[Thousand pounds; i. e., 000 omitted]

Year	Jan. 15	Feb. 15	Mar. 15	Apr. 15	May 15	June 15	July 16	Aug. 15	Sept. 15	Oct. 15	Nov. 15	Dec. 16
Average:												
1917-1921	465	304	245	200	251	541	560	591	588	698	618	561
1921-1925	410	382	182	158	239	391	515	531	508	526	539	529
1916										393	606	465
1917	360	100	153	118	207	402	356	404	375	658	636	693
1918	620	376	338	319	413	921	644	808	904	798	705	673
1919	482	528	483	320	347	661	778	851	825	842	709	724
1920	523	322	145	166	193	481	499	524	545	554	518	401
1921	344	195	112	75	95	250	324	370	392	359	372	314
1922	302	261	89	100	121	273	300	317	337	350	350	214
1923	230	137	44	35	151	260	312	419	440	471	468	566
1924	461	580	144	167	216	409	577	797	683	717	801	879
1925	713	789	523	471	611	762	764	750	688	735	702	672

TABLE 70.—*Shad and shad roe frozen monthly, 1919-1925*

[Thousand pounds; i. e., 000 omitted]

Year	Jan.	Feb.	Mar.	Apr.	May	June	July	Aug.	Sept.	Oct.	Nov.	Dec.
1919								75	23	3	6	
1920	49	5	16	164	221	74	31	108	4	2		
1921	1	12	27	8	211	65	56	28	19	1		
1922	1	1	37	51	168	22	39	18	28	5		1
1923			17	126	142	32	9	3	2		4	6
1924	2		5	155	83	287	44	3	9	107	37	1
1925	2	4	22	90	205	18	5			2	2	

TABLE 71.—*Smelts, eulachon, etc.: Cold-storage holdings, 1916-1925*

[Thousand pounds; i. e., 000 omitted]

Year	Jan. 15	Feb. 15	Mar. 15	Apr. 15	May 15	June 15	July 15	Aug. 15	Sept. 15	Oct. 15	Nov. 15	Dec. 15
Average:												
1917-1921	614	968	1,014	909	824	797	745	787	746	807	808	677
1921-1925	351	555	823	449	359	333	319	292	321	336	333	354
1916										138	199	227
1917	217	358	878	1,051	937	925	794	845	813	1,121	1,223	956
1918	807	1,071	1,718	2,096	1,839	1,964	1,933	2,073	1,860	1,838	1,775	1,442
1919	1,262	1,860	1,408	875	797	729	620	645	605	574	593	424
1920	613	697	305	215	156	121	102	191	116	160	162	182
1921	171	331	672	304	263	248	268	272	335	334	317	380
1922	384	982	1,163	448	361	351	334	332	338	327	299	204
1923	237	167	275	92	86	75	69	76	78	113	146	247
1924	443	790	1,267	537	273	226	208	212	271	330	318	289
1925	522	593	748	862	780	765	717	568	584	578	583	650

TABLE 72.—*Smelts, eulachons, etc., frozen monthly, 1919-1925*

[Thousand pounds; i. e., 000 omitted]

Year	Jan.	Feb.	Mar.	Apr.	May	June	July	Aug.	Sept.	Oct.	Nov.	Dec.
1919								67	17	27	10	71
1920	134	65	11	12			9	26	50	29	46	82
1921	253	177	19		12		8	15	16	9	12	46
1922	151	116	34	1	1	1	3	10	7	8	25	28
1923	28	13	12	1b			1	2	30	38	23	9
1924	98	103	12	6	2		13	68	89	46	52	84
1925	34	39	30	9	23	1	4	21	18	48	27	

TABLE 73.—Squid: Cold-storage holdings, 1916-1925

[Thousand pounds; i. e., 000 omitted]

Year	Jan. 15	Feb. 15	Mar. 15	Apr. 15	May 15	June 15	July 15	Aug. 15	Sept. 15	Oct. 15	Nov. 15	Dec. 15
Average:												
1917-1921.....	1,147	825	632	372	428	1,382	1,480	1,699	1,970	2,004	1,926	1,542
1921-1925.....	1,219	881	626	307	531	1,688	1,939	2,002	1,890	1,891	1,661	1,325
1916.....										1,241	1,367	1,420
1917.....	1,068	666	629	347	268	1,387	1,502	1,901	2,471	2,863	3,052	2,434
1918.....	2,065	1,695	1,241	600	363	787	825	1,134	901	868	596	326
1919.....	313	178	92	76	164	1,194	1,202	1,375	1,203	857	771	570
1920.....	421	283	183	95	94	518	703	910	2,163	2,577	2,626	2,226
1921.....	1,868	1,302	1,017	741	1,250	3,025	3,170	3,177	3,017	2,855	2,581	2,152
1922.....	1,879	1,438	1,000	514	640	1,036	1,039	1,038	881	801	497	268
1923.....	234	100	84	40	38	952	1,343	1,404	1,285	1,160	928	760
1924.....	580	327	180	38	167	1,060	2,117	2,281	2,231	2,558	2,430	1,850
1925.....	1,533	1,230	840	200	574	1,704	2,026	2,110	2,035	2,080	1,871	1,507

TABLE 74.—Squid frozen monthly, 1919-1925

[Thousand pounds; i. e., 000 omitted]

Year	Jan.	Feb.	Mar.	Apr.	May	June	July	Aug.	Sept.	Oct.	Nov.	Dec.
1919.....								35	35	8		
1920.....				21	429	224	235	1,428	604	314	7	38
1921.....	10	20		487	1,791	261	273	53	7	3	18	11
1922.....	5	1		207	422	92	124	1	19	31	9	
1923.....	3			22	929	463	108	21	38	10	9	32
1924.....	4	1	8	150	1,528	511	275	151	516	140	27	
1925.....		49	1	500	1,277	279	216	212	220	66	90	

TABLE 75.—Weakfish (squeteagues): Cold-storage holdings, 1916-1925

[Thousand pounds; i. e., 000 omitted]

Year	Jan. 15	Feb. 15	Mar. 15	Apr. 15	May 15	June 15	July 15	Aug. 15	Sept. 15	Oct. 15	Nov. 15	Dec. 15
Average:												
1917-1921.....	770	524	303	174	282	521	862	1,015	1,026	1,394	1,478	1,296
1921-1925.....	722	470	231	153	253	274	574	648	841	1,272	1,200	1,019
1916.....										697	911	521
1917.....	444	88	91	29	152	107	228	723	547	931	1,460	1,156
1918.....	713	377	168	85	540	1,309	1,347	1,794	1,776	2,175	2,121	2,022
1919.....	1,510	1,201	833	411	425	711	763	619	557	750	758	707
1920.....	439	201	96	57	38	124	571	449	498	920	1,008	812
1921.....	736	604	330	290	253	293	1,005	1,040	1,751	2,193	2,044	1,735
1922.....	1,485	1,151	659	415	359	283	260	179	430	535	612	531
1923.....	314	55	12	10	332	349	579	663	727	1,639	1,531	1,088
1924.....	770	376	132	39	105	213	260	279	250	206	408	446
1925.....	306	194	33	13	153	263	366	481	1,030	1,639	1,616	1,296

TABLE 76.—Weakfish (squeteagues) frozen monthly, 1919-1925

[Thousand pounds; i. e., 000 omitted]

Year	Jan.	Feb.	Mar.	Apr.	May	June	July	Aug.	Sept.	Oct.	Nov.	Dec.
1919.....								75	227	77	5	5
1920.....	20	4	1	8	91	492	11	220	371	146	1	7
1921.....	8	8	4		44	1,194	299	190	462	7	3	13
1922.....	8		7	10	15	40	9	303	115	87	2	2
1923.....			2	200	62	238	143	151	977	6	13	
1924.....				146	54	64	64	25	52	219	25	3
1925.....				143	131	38	150	466	650	66	1	

TABLE 77.—Whitefish: Cold-storage holdings, 1916-1925

(Thousand pounds; i. e., 000 omitted)

Year	Jan. 15	Feb. 15	Mar. 15	Apr. 15	May 15	June 15	July 15	Aug. 15	Sept. 15	Oct. 15	Nov. 15	Dec. 15
Average:												
1917-1921	1,427	1,267	1,062	1,125	843	787	918	1,185	1,320	1,746	2,041	2,204
1921-1925	1,739	1,509	1,415	1,205	1,000	948	1,081	1,256	1,302	1,555	1,904	2,180
1916										301	554	600
1917	413	265	383	306	173	194	273	391	349	1,572	2,177	1,741
1918	1,139	712	397	467	335	312	383	926	757	1,233	1,757	1,977
1919	1,774	1,983	1,940	2,532	2,257	2,158	2,286	2,410	2,696	2,796	2,818	2,702
1920	2,209	1,959	1,499	822	382	287	378	324	1,016	1,087	1,095	1,988
1921	1,598	1,417	1,084	1,400	1,067	983	1,278	1,387	1,782	2,022	2,360	2,614
1922	2,201	1,991	1,414	1,933	1,489	1,427	1,440	1,444	1,755	2,182	2,278	2,147
1923	1,565	1,228	853	259	146	170	247	377	677	684	1,151	1,690
1924	1,381	1,463	1,932	1,441	1,074	1,026	1,149	1,305	1,351	1,410	1,822	2,134
1925	1,952	1,743	1,743	1,265	1,224	1,133	1,283	1,374	1,393	1,328	1,907	2,316

TABLE 78.—Whitefish frozen monthly, 1919-1925

(Thousand pounds; i. e., 000 omitted)

Year	Jan.	Feb.	Mar.	Apr.	May	June	July	Aug.	Sept.	Oct.	Nov.	Dec.
1919								207	184	161	398	15
1920	180	61	110	28	6	78	294	316	168	104	939	60
1921	148	38	136	11	12	272	280	207	337	245	640	49
1922	5	8	19	3	4	50	49	260	173	276	301	30
1923	74	21	42	3	41	86	303	84	59	210	602	41
1924	293	247	96	49	6	111	142	114	84	328	263	80
1925	104	206	180	88	68	140	45	48	11	642	156	

TABLE 79.—Whiting: Cold-storage holdings, 1916-1925

(Thousand pounds; i. e., 000 omitted)

Year	Jan. 15	Feb. 15	Mar. 15	Apr. 15	May 15	June 15	July 15	Aug. 15	Sept. 15	Oct. 15	Nov. 15	Dec. 15
Average:												
1917-1921	7,115	4,659	2,518	1,600	1,197	3,353	6,762	9,281	9,764	10,373	10,973	9,868
1921-1925	3,612	2,282	1,461	1,113	999	1,407	3,104	4,404	4,872	4,824	4,833	4,481
1916										6,384	6,683	5,220
1917	2,573	935	393	140	128	4,595	9,047	10,966	9,331	11,425	12,339	11,498
1918	7,458	4,308	2,196	1,150	868	3,130	8,112	11,463	12,884	13,395	15,013	15,016
1919	10,340	7,441	5,048	1,803	1,292	4,094	7,725	10,430	11,099	12,419	12,594	12,253
1920	9,320	6,855	3,488	2,239	1,333	2,378	4,426	3,630	9,649	9,529	9,412	7,811
1921	5,985	3,754	2,854	2,606	2,366	2,690	4,469	4,974	5,268	5,030	5,405	4,750
1922	3,440	1,972	939	602	682	1,445	3,048	2,780	4,010	4,049	3,631	3,407
1923	2,364	1,143	729	381	165	159	1,239	3,187	4,698	5,058	5,088	4,601
1924	3,793	2,245	1,447	1,151	932	1,007	1,527	3,003	3,369	3,218	3,467	3,500
1925	2,780	2,297	1,335	827	848	2,034	5,209	7,060	7,023	6,701	6,774	6,145

TABLE 80.—Whiting frozen monthly, 1919-1925

(Thousand pounds; i. e., 000 omitted)

Year	Jan.	Feb.	Mar.	Apr.	May	June	July	Aug.	Sept.	Oct.	Nov.	Dec.
1919								865	1,445	1,147	837	109
1920	88	71	183	30	1,185	2,347	4,309	1,942	63	324	101	107
1921	36	120	3	117	786	2,016	599	464	160	559	441	196
1922	67	308	220	105	954	1,857	910	382	381	324	318	232
1923	120	498	4		122	1,518	2,547	1,845	1,032	445	352	217
1924	278	605	693	90	211	741	1,967	783	487	881	368	12
1925	410	178	74	300	1,404	3,057	2,224	260	253	974	390	

TABLE 81.—Miscellaneous varieties of frozen fish: Cold-storage holdings, 1916-1925

[Thousand pounds; i. e., 000 omitted]

Year	Jan. 15	Feb. 15	Mar. 15	Apr. 15	May 15	June 15	July 15	Aug. 15	Sept. 15	Oct. 15	Nov. 15	Dec. 15
Average:												
1917-1921	9,075	8,740	7,886	7,371	7,260	8,706	9,503	10,518	10,641	12,091	12,816	12,791
1921-1925	9,257	7,492	5,513	4,510	6,083	6,203	6,841	7,325	8,177	8,816	10,213	11,196
1916												
1917	3,658	2,890	3,471	1,976	2,641	1,815	6,378	6,726	6,924	3,001	4,391	6,177
1918	8,352	8,812	9,517	11,064	11,544	12,958	13,476	16,315	15,846	17,614	18,259	17,660
1919	14,515	14,768	12,294	10,791	9,550	11,573	11,676	11,938	12,316	13,377	14,132	12,445
1920	11,187	10,611	7,372	5,788	5,927	7,686	5,069	8,572	8,762	10,166	10,881	10,902
1921	9,552	8,113	8,041	8,284	7,716	8,107	7,917	8,572	8,762	9,619	10,636	11,343
1922	8,197	6,486	3,746	3,166	3,616	4,074	5,498	6,704	6,777	7,888	9,409	9,307
1923	8,293	6,331	4,573	3,309	4,441	6,495	7,084	7,774	8,433	10,237	11,010	12,838
1924	10,414	8,732	5,936	4,110	4,919	5,939	6,741	7,801	8,252	9,305	10,492	11,611
1925	9,831	7,798	5,268	3,678	4,721	6,408	6,094	6,565	8,059	7,003	9,458	10,283

TABLE 82.—Miscellaneous varieties of fish frozen monthly, 1919-1925

[Thousand pounds; i. e., 000 omitted]

Year	Jan.	Feb.	Mar.	Apr.	May	June	July	Aug.	Sept.	Oct.	Nov.	Dec.
1919								1,706	1,982	1,985	643	561
1920	821	860	727	1,021	2,415	1,692	1,467	915	1,987	1,503	2,313	1,423
1921	912	621	1,440	671	1,191	1,184	958	1,189	1,878	2,134	2,413	699
1922	370	437	612	717	1,531	1,982	2,034	1,626	1,954	2,844	3,002	735
1923	624	394	351	1,610	2,795	1,334	1,236	1,589	2,154	1,690	3,726	822
1924	655	556	410	1,806	1,618	1,477	1,355	1,723	1,761	2,041	2,251	1,121
1925	688	536	660	2,139	2,071	1,302	1,104	2,493	1,239	3,381	1,913	

TABLE 83.—All varieties of fish: Cold-storage holdings, 1916-1925

[Thousand pounds; i. e., 000 omitted]

Year	Jan. 15	Feb. 15	Mar. 15	Apr. 15	May 15	June 15	July 15	Aug. 15	Sept. 15	Oct. 15	Nov. 15	Dec. 15
Average:												
1917-1921	55,924	41,651	31,046	24,433	25,533	37,103	47,094	57,260	63,349	70,976	75,625	73,150
1921-1925	50,928	38,277	27,008	20,090	20,264	26,091	33,102	43,052	52,176	60,331	62,289	59,696
1916												
1917	32,293	14,727	13,374	9,516	14,016	27,791	38,431	44,025	47,198	60,677	70,939	69,987
1918	51,116	35,907	28,437	26,548	31,403	50,298	64,863	82,355	80,294	93,812	99,632	96,600
1919	80,684	67,617	50,636	37,111	37,174	48,840	59,674	65,145	69,581	76,797	78,769	74,202
1920	61,510	47,994	29,958	20,633	19,804	27,779	36,618	47,140	56,206	64,765	67,649	65,841
1921	53,851	42,117	33,461	28,411	26,346	32,311	40,160	47,431	54,490	55,899	61,228	59,126
1922	48,320	42,117	28,474	17,485	17,674	20,818	25,621	32,227	41,189	51,755	51,693	48,089
1923	46,633	27,070	19,721	10,590	12,312	17,780	27,237	39,191	53,220	62,675	68,458	64,290
1924	52,627	40,421	23,571	21,489	21,810	27,115	36,049	49,626	66,607	67,027	70,496	68,325
1925	55,308	44,034	29,965	22,442	23,749	31,980	40,458	47,174	55,747	58,358	61,819	58,048

TABLE 84.—All varieties of fish: Quantities frozen monthly, 1919-1925

[Thousand pounds; i. e., 000 omitted]

Year	Jan.	Feb.	Mar.	Apr.	May	June	July	Aug.	Sept.	Oct.	Nov.	Dec.
1919												
1920	2,271	2,630	2,465	3,688	10,094	12,762	13,620	9,913	11,722	10,031	5,863	2,291
1921	2,843	1,770	2,413	2,698	9,621	10,151	9,515	9,356	9,990	9,860	8,173	2,442
1922	1,433	1,364	1,406	1,982	5,847	7,376	9,122	10,825	16,830	9,344	9,069	2,730
1923	1,062	1,412	1,369	6,927	7,671	11,872	13,941	16,417	12,512	6,923	9,938	3,188
1924	2,429	2,414	2,532	6,033	8,132	11,004	14,707	10,556	14,606	10,416	8,380	3,933
1925	2,193	3,162	4,315	5,852	10,777	10,680	10,761	11,592	8,168	11,690	6,650	

INDEX

	Page		Page
Apples, monthly holdings:		Fish—Continued.	
Barreled	7	Squid	28
Boxed	7	Trout, lake	24
Barreled and boxed combined	7	Weak fish (squetengues)	28
Beef:		Whitfish	29
Cured and in process of cure	13	Whiting	20
Frozen, monthly holdings	12	Geographical sections, stocks for seasonal year	
Frozen monthly	13	Lamb and mutton:	
Placed in cure, monthly	13	Holdings, monthly	14
Total holdings	13	Frozen monthly	14
Butter, monthly holdings:		Lard:	
Creamery	8	Monthly holdings	17
Cheese, monthly holdings:		Meat:	
American	8	Miscellaneous, monthly holdings	10
Brie	9	Total holdings, all meats	17
Limburger	3	See also beef, pork, lamb, and mutton.	
Miscellaneous	9	Mutton. (See Lamb and mutton.)	
Munster	9	Pork:	
Swiss	8	Dry salt, cured and in process of cure,	
Total of all cheese	9	monthly holdings	15
Eggs:		Dry salt, placed in cure monthly	15
Case	10	Frozen, monthly holdings	14
Frozen	10	Frozen monthly	14
Fish:		Pickled, cured and in process	15
All varieties, total holdings	30	Monthly holdings	16
Bluefish	20	Pickled, placed in cure monthly	16
Butterfish	20	Total holdings	16
Cisnoes	21	Poultry, monthly holdings:	
Cod	21	Broilers	10
Cronkers	23	Fowls	11
Ehuelhon	27	Miscellaneous	12
Haddock	21	Roasters	11
Hake	21	Total frozen poultry	12
Halibut	22	Turkeys	11
Herring, cured	23	Refrigerated space:	
Herring, frozen	23	Meat-packing establishments	5
Mackerel	24	Meat-packing establishments doing pub-	
Miscellaneous	30	lic cold-storage business	5
Pollock	21	Private cold-storage plants	4
Sablefish	25	Public cold-storage plants	4
Salmon		Public and private cold-storage plants	
cured, mild	26	combined	5
fall and silver	25	Summary by class of business	0
miscellaneous	26	Total refrigerated space	0
Shad and sand roe	27	Summary:	
Smelts	27	Holdings by months, 1925	18

**ORGANIZATION OF THE
UNITED STATES DEPARTMENT OF AGRICULTURE**

SEPTEMBER 8, 1926

<i>Secretary of Agriculture</i>	W. M. JARDINE.
<i>Assistant Secretary</i>	R. W. DUNLAP.
<i>Director of Scientific Work</i>	A. F. WOODS.
<i>Director of Regulatory Work</i>	WALTER G. CAMPBELL.
<i>Director of Extension Work</i>	C. W. WARBURTON.
<i>Director of Information</i>	NELSON ANTRIM CRAWFORD.
<i>Director of Personnel and Business Administration</i>	W. W. STOCKBERGER.
<i>Solicitor</i>	R. W. WILLIAMS.
<i>Weather Bureau</i>	CHARLES F. MARVIN, <i>Chief</i> .
<i>Bureau of Agricultural Economics</i>	LOYD S. TENNY, <i>Acting Chief</i> .
<i>Bureau of Animal Industry</i>	JOHN R. MOHLER, <i>Chief</i> .
<i>Bureau of Plant Industry</i>	WILLIAM A. TAYLOR, <i>Chief</i> .
<i>Forest Service</i>	W. B. GREELEY, <i>Chief</i> .
<i>Bureau of Chemistry</i>	C. A. BROWNE, <i>Chief</i> .
<i>Bureau of Soils</i>	MILTON WHITNEY, <i>Chief</i> .
<i>Bureau of Entomology</i>	L. O. HOWARD, <i>Chief</i> .
<i>Bureau of Biological Survey</i>	E. W. NELSON, <i>Chief</i> .
<i>Bureau of Public Roads</i>	THOMAS H. MACDONALD, <i>Chief</i> .
<i>Bureau of Home Economics</i>	LOUISE STANLEY, <i>Chief</i> .
<i>Bureau of Dairy Industry</i>	C. W. LARSON, <i>Chief</i> .
<i>Fixed Nitrogen Research Laboratory</i>	F. G. COTTRELL, <i>Director</i> .
<i>Office of Experiment Stations</i>	E. W. ALLEN, <i>Chief</i> .
<i>Office of Cooperative Extension Work</i>	C. B. SMITH, <i>Chief</i> .
<i>Library</i>	CLARIBEL R. BARNETT, <i>Librarian</i> .
<i>Federal Horticultural Board</i>	C. L. MARLATT, <i>Chairman</i> .
<i>Insecticide and Fungicide Board</i>	J. K. HAYWOOD, <i>Chairman</i> .
<i>Packers and Stockyards Administration</i>	JOHN T. CAINE III, <i>in Charge</i> .
<i>Grain Futures Administration</i>	J. W. T. DUVEL, <i>in Charge</i> .

This bulletin is a contribution from

<i>Bureau of Agricultural Economics</i>	LOYD S. TENNY, <i>Acting Chief</i> .
<i>Cold Storage Report Section</i>	WILLIAM BROXTON, <i>in Charge</i> .

32

ADDITIONAL COPIES
OF THIS PUBLICATION MAY BE PROCURED FROM
THE SUPERINTENDENT OF DOCUMENTS
GOVERNMENT PRINTING OFFICE
WASHINGTON, D. C.

AT
10 CENTS PER COPY

▽

END