



AgEcon SEARCH
RESEARCH IN AGRICULTURAL & APPLIED ECONOMICS

The World's Largest Open Access Agricultural & Applied Economics Digital Library

This document is discoverable and free to researchers across the globe due to the work of AgEcon Search.

Help ensure our sustainability.

Give to AgEcon Search

AgEcon Search

<http://ageconsearch.umn.edu>

aesearch@umn.edu

*Papers downloaded from **AgEcon Search** may be used for non-commercial purposes and personal study only. No other use, including posting to another Internet site, is permitted without permission from the copyright owner (not AgEcon Search), or as allowed under the provisions of Fair Use, U.S. Copyright Act, Title 17 U.S.C.*

SB-4 (1925)

USDA STATISTICAL BULLETINS

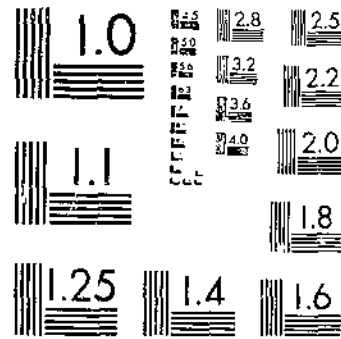
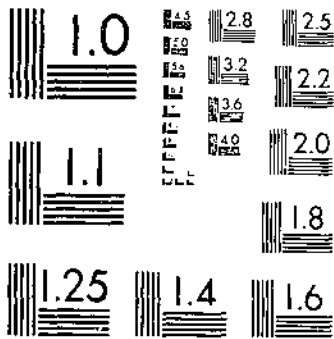
UPON THE

GOLD STORAGE HOLDINGS TO OCTOBER 1924

BY TONNIE W. FOHR, ED.

10 PAGES

START



© UPDATA 1981

MICROCOPY RESOLUTION TEST CHART
NATIONAL BUREAU OF STANDARDS-1963-A

MICROCOPY RESOLUTION TEST CHART
NATIONAL BUREAU OF STANDARDS-1963-A

COLD STORAGE HOLDINGS

To October, 1924

Prepared by the Bureau of Agricultural Economics

CONTENTS

Introduction	1
Refrigerated space	4
Cold-storage holdings:	
Apples	8
Butter	10
Cheese	10
Eggs	12
Poultry	12
Meat	14
Lard	19
Fish	19
Index	31



WASHINGTON
 GOVERNMENT PRINTING OFFICE
 1925

UNITED STATES DEPARTMENT OF AGRICULTURE

STATISTICAL BULLETIN NO. 4

WASHINGTON, D. C.

JANUARY 1925

COLD-STORAGE HOLDINGS¹

To October, 1924

Prepared by the Bureau of Agricultural Economics²

INTRODUCTION

The statistics of this bulletin include cold-storage space and cold-storage holdings of apples, dairy products, eggs, meats, lard, dressed poultry, and fish, in the United States.

The storage space of cold-storage establishments has been ascertained by the Bureau of Agricultural Economics as of October 1 from time to time. The space data appearing in this bulletin is as of October 1, 1923. For the purpose of determining what commodities and establishments to include, it is considered that a cold-storage warehouse is any place artificially cooled to a temperature of 45° F., or below, in which food commodities are stored and held for 30 days or more. Since some commodities not reported as in cold storage are stored in space cooled to temperatures ranging from 45° up to 60° F., all refrigerated space is shown in the tabulations, in order to make a complete report on refrigerated storage space.

It must ordinarily be expected that changes will occur from year to year, not only in the number of establishments, but in the amount of space in the different temperature groups. New establishments are usually of good size; those that discontinue are often small. The amount of space at the different temperatures varies according to the demand for storage space for the commodities requiring different temperatures.

Each operator of a cold-storage warehouse, whether public or private, who stores apples, pears, frozen and preserved fruits, onions, dairy products, poultry, frozen and cured meats, and lard, is requested to mail a complete report of holdings of such commodities on the first business day of each month.

In addition to this complete monthly report from all storages, a preliminary report on holdings of butter, cheese, and case eggs has been obtained from storages holding those commodities. This preliminary

¹ This bulletin is a revision of Statistical Bulletin No. 1, Cold-Storage Holdings, issued August, 1923.
² Prepared under the direction of William Broxton, and Lewis B. Flohr, in the Market Statistics Section, Division of Statistical and Historical Research.

report was obtained on a simple mail form from near-by storages and by telegraph from the others. These preliminary reports to the bureau were tabulated and a preliminary report of the holdings of the three commodities in the United States was issued to the public on the fifth business day of the month, excluding Saturdays. The preliminary report of the holdings of creamery butter, American cheese, and case eggs was checked and corrected, when corrections were necessary, in the report of the holdings of all commodities made about the middle of the month. The difference between the two reports was usually very slight, rarely exceeding five-tenths of 1 per cent. The preliminary report was discontinued March, 1924.

The complete mail reports from all operators are tabulated and the complete report of the bureau is issued about the 15th of the month. In compiling these reports it is necessary to estimate, on the basis of reports received, the probable holdings of the few concerns not reporting.

Occasionally discrepancies are found in the schedules which should be adjusted. If these apparent discrepancies are important, confirmation or correction is requested by telegram before reports are made up. Minor discrepancies are adjusted by correspondence, and therefore the corrections may not be made before the next month. These corrections, though insignificant relative to the total, are made for the sake of accuracy. The reports made up each month from the mailed schedules are checked against the schedules of the next month and corrected when corrections are necessary, and the corrected figures published with the current figures of the next month. These corrected figures of the preceding month are final.

After the schedules have been tabulated and before the report is issued, the results are carefully examined and approved by a representative board consisting of statisticians, and specialists who are familiar with the movements and market conditions of the commodities included.

Operators of cold-storage warehouses storing fish are requested to report holdings on the 15th of each month. The tabulation of these reports is completed about the last business day of the month and a summary of the report is then issued.

The bureau is entirely dependent upon the voluntary cooperation of the operators of cold-storage warehouses and meat-packing establishments for the information contained in these reports. The returns received each month represent from 95 to 99 per cent of the firms listed and 98 to 99 per cent of the stocks held in the country.

In order that the reports may be as complete as possible, representatives of the bureau are sent out from time to time to check up lists, to locate new cold-storage warehouses, and to enlist the cooperation of operators. It is essential to the accuracy of the reports that a feeling of good will and mutual understanding should exist between the bureau and the concerns cooperating and to this end it is the policy of the bureau that its representatives make a personal contact for the furthering of that good will and mutual understanding.

Work on the project of collecting cold-storage holdings data was begun in October, 1914. The collecting of statistics on cold-storage holdings of apples began with January, 1915. The reporting of case eggs and creamery butter began on August 1, 1916. Although the report was not regularly issued until August, 1916, the tables show

holdings from August, 1915. These were secured by asking those reporting in 1916 to report also holdings of the previous year for the same month. American cheese was added to the list of commodities on September 1, 1916, and other varieties September 1, 1918; on January 1, 1917, the work was expanded to include reports on frozen beef, frozen pork, frozen lamb and mutton, dry salt pork, sweet pickled pork, cured beef, and lard. The statistics of holdings of meat products also included reports for 1916 which were reported in 1917 as of the previous year. Reports of the holdings of frozen fish began with October 15, 1917, and included reports for the same months of the previous year which supplied statistics of holdings beginning with October, 1916. Reports on stocks of frozen eggs and frozen poultry began with May 1, 1917, and packing stock butter was added to the list September 1, 1917. The latter commodity was dropped after June 1 report 1923, as being of insufficient economic importance to warrant a continuance.

On July 1, 1923, several additional commodities were asked for in the report, with a view to ascertaining their relative importance as cold-storage products. Grapefruit, oranges, and pears were added to fresh fruits but reports of grapefruit and oranges have been discontinued. Dried apples, apricots, peaches, prunes, and raisins were added; but it has been found impracticable to attempt a continuance of these items because they are stored under the heading "Dried fruits," and are not classified. Frozen and preserved fruits, and onions will remain in the report until comparable figures are obtained. The item "lard compound and substitutes," which was added to the report July 1, 1923, has been dropped, as it was found that this commodity is not carried in cold storage in a manufactured state to any great extent.

The arrangement of tables for this bulletin has been made on a crop year or seasonal basis; that is, the table for each commodity, or group of commodities, begins with the month usually showing the lowest holdings.

The reports of cold-storage holdings supply a basis on which the trade may forecast future business, and gives the general public a knowledge of the amount of such foodstuffs available for consumption. A perusal of the tables will show the economic value of the cold-storage industry to the consuming public; commodities are placed in cold storage during the period of greatest production and withdrawn for consumption during the period of low production, thereby insuring a better distribution of the supply during the whole year.

Current monthly figures of cold-storage holdings of all commodities but fish are published in the monthly statistical supplement to Crops and Markets. Details as to holdings of fish may be had as soon as compiled from the Bureau of Agricultural Economics, these are later published by the Bureau of Fisheries.

TABLE 1.—Refrigerated space: Public cold-storage plants,¹ October 1, 1923

State	Con- cerns	Cubic feet of space held at temperatures of—				Total space
		10° F. and below	11° to 20° F., inclusive	30° to 44° F., inclusive	45° F. and above	
Arkansas.....	6	15,000		587,440		582,440
California.....	33	572,498	1,176,078	10,135,809		11,879,383
Colorado.....	4	11,265	200,000	706,087		913,352
Florida.....	4		6,000	188,841	35,400	230,241
Georgia.....	13		86,000	1,099,130	800	1,185,930
Illinois.....	24	6,815,682	1,866,275	25,094,898	328,266	34,105,101
Indiana.....	10	188,390	465,299	3,229,191		3,882,880
Iowa.....	7	36,677	323,000	754,515	60,000	1,174,192
Kansas.....	9	460,665	960,370	1,696,555	29,137	3,140,727
Kentucky.....	7	293,850	271,478	2,939,108		3,504,446
Louisiana.....	4	100,000		1,377,337	5,000	1,482,337
Maryland.....	6	467,360	152,388	1,472,876	45,549	2,078,173
Massachusetts.....	7	4,768,116	1,021,705	5,387,019	297,941	11,414,780
Minnesota.....	8	1,476,730	742,956	1,874,377		4,094,063
Missouri.....	19	1,971,868	1,239,278	11,252,591	125,800	14,589,537
New Jersey.....	13	2,081,487	1,691,998	5,021,634	1,691,195	10,076,313
New York.....	68	8,134,686	4,111,904	31,403,104	1,528,850	45,178,444
North Carolina.....	4		12,000	356,840	20,000	388,840
Ohio.....	14	1,581,763	1,474,383	6,461,731	30,000	9,547,877
Oklahoma.....	5	24,840	40,420	1,899,520		1,964,780
Oregon.....	4	38,435	302,016	128,582	8,100	477,133
Pennsylvania.....	21	1,525,325	1,645,714	8,423,988	110,550	11,706,087
Tennessee.....	7	415,242	199,600	2,896,611		3,511,453
Texas.....	10	113,600	472,893	2,544,575	89,592	3,220,660
Virginia.....	15	43,300	605,464	7,673,428	1,060,000	9,382,192
Washington.....	10	935,129	2,983,550	1,293,838	124,000	5,336,517
West Virginia.....	5		1,377,078	1,515,769	8,272	1,885,360
Wisconsin.....	7	351,230	32,100	1,515,769	92,800	1,991,889
All other States.....	16	1,131,500	1,001,752	4,576,617	1,298,000	8,007,869
Total.....	360	33,435,025	22,471,619	142,840,085	7,189,263	205,935,962

¹ A public cold-storage warehouse is one in which the goods stored are not owned or controlled by the operators, but which the warehousemen receive and store for a consideration.

TABLE 2.—Refrigerated space of private cold-storage plants,¹ October 1, 1923

State	Con- cerns	Cubic feet of space held at temperatures of—				Total space
		10° F. and below	11° to 20° F., inclusive	30° to 44° F., inclusive	45° F. and above	
Alaska.....	3	36,346	389,739	11,388	2,000	439,473
California.....	11	53,320	87,638	1,921,973		2,062,931
Colorado.....	4		5,890	823,120		829,000
Illinois.....	16	393,245	1,996,956	2,305,305	16,260	4,701,886
Indiana.....	5	4,187		72,242	4,047	80,476
Iowa.....	9	89,698	17,368	175,794	93,958	376,818
Kansas.....	5	25,400	153,760	178,065	5,044	385,269
Maine.....	4	265,989	1,680	14,887		272,547
Massachusetts.....	20	1,139,107	343,415	1,002,277		2,484,859
Michigan.....	14	22,173	269,061	315,931	13,200	620,365
Minnesota.....	6	6,750	39,132	55,437		101,319
Missouri.....	8	63,000	46,516	647,447	3,630	760,573
Montana.....	3	15,800	11,144	31,928		58,872
Nebraska.....	5	21,100	10,879	135,944	3,020	171,043
New Jersey.....	8	307,545	36,333	116,525	3,520	463,923
New York.....	41	118,795	739,688	2,137,701	31,873	3,018,857
Ohio.....	28	13,962	227,805	391,341	117,850	750,988
Oklahoma.....	3		16,012	9,600		25,612
Oregon.....	11	27,298	57,018	213,428		297,654
Pennsylvania.....	23	67,043	182,010	925,491	7,280	1,181,804
Tennessee.....	3		7,708	42,388		50,096
Texas.....	14	70,990	30,610	279,699	48,789	429,488
Virginia.....	3	800		135,257		136,117
Washington.....	14	81,344	711,545	1,216,415	391,572	2,400,876
Wisconsin.....	23	7,095	98,647	655,778	316,085	1,077,006
All other States.....	23	105,957	100,217	687,450	24,490	915,114
Total.....	307	2,929,968	5,545,259	14,509,633	1,092,028	24,076,886

¹ A private cold-storage warehouse is one in which all the goods stored are owned by the operators of the warehouse.

Cold-Storage Holdings

5

**TABLE 3.—Refrigerated space: Combined public and private cold-storage plants,¹
October 1, 1923**

OTHER THAN MEAT-PACKING ESTABLISHMENTS

State	Con- cerns	Cubic feet of space held at temperatures of—				Total space
		10° F. and below	11° to 20° F., inclusive	30° to 44° F., inclusive	45° F. and above	
California.....	3	144,622		801,644	12,981	959,247
Connecticut.....	4	292,465	81,350	823,440	13,545	1,100,803
Idaho.....	3	10,000	236,540	170,860		437,430
Illinois.....	10	4,270,856	1,390,543	2,248,221		7,918,420
Iowa.....	11	323,514	564,570	770,233	108,000	1,772,317
Kansas.....	5	150,920	533,144	737,248	47,420	1,438,732
Massachusetts.....	9	261,278	295,864	377,722	83,697	1,018,561
Michigan.....	8	176,719	33,856	692,455	81,030	984,070
Minnesota.....	3	52,112	25,000	157,281	19,185	263,678
Missouri.....	5	1,782	32,108	1,146,510		1,180,400
Nebraska.....	9	1,121,293	193,602	1,933,811	48,413	3,297,119
New Jersey.....	3	48,000	2,300	188,000		238,300
New York.....	32	731,355	535,009	5,800,158	86,308	7,142,822
Ohio.....	0	58,248	45,363	338,520	32,500	472,631
Oregon.....	7	31,954	112,630	1,041,827		1,266,411
Pennsylvania.....	10	923,792	220,846	1,790,540	46,514	2,680,192
South Dakota.....	3			182,276		182,276
Texas.....	4	15,600	14,560	651,573		681,733
Virginia.....	8	185,000	82,550	1,350,254		1,540,804
Washington.....	24	140,643	600,850	5,637,616	2,772	6,681,911
West Virginia.....	3		720	791,920	20,000	722,640
Wisconsin.....	19	158,243	278,450	984,310	67,064	1,488,044
All other States.....	23	234,946	1,071,771	1,522,673	18,380	2,848,070
Total.....	213	8,832,122	6,431,156	30,362,182	687,071	46,312,511

¹ Combined cold-storage warehouse is one in which some of the goods are owned by the operators of the warehouse and some are stored for other concerns.

**TABLE 4.—Refrigerated space: Combined public and private cold-storage plants,¹
October 1, 1923**

MEAT-PACKING ESTABLISHMENTS

State	Con- cerns	Cubic feet of space held at temperatures of—				Total space
		10° F. and below	11° to 20° F., inclusive	30° to 44° F., inclusive	45° F. and above	
Illinois.....	5	748,794	4,306,660	11,102,644	272,630	16,431,757
Kansas.....	5	1,076,880	2,420,409	11,835,983	2,082,849	20,435,121
New Jersey.....	3	245,031	406,180	1,248,640	320,512	2,220,383
New York.....	3	348,289	38,586	1,745,083	156,519	2,289,478
All other States.....	11	1,091,441	146,091	4,996,908	10,098	6,244,623
Total.....	27	3,510,430	7,337,935	33,920,368	2,852,658	47,630,397

¹ A combined cold-storage warehouse is one in which some of the goods are owned by the operators of the warehouse and some are stored for other concerns.

TABLE 5.—Refrigerated space: Meat-packing establishments,¹ October 1, 1923

State	Concerns	Cubic feet of space held at temperatures of—				Total space
		10° F. and below	11° to 20° F., inclusive	30° to 44° F., inclusive	45° F. and above	
California.....	21	289,429	629,949	3,862,905	183,793	4,963,076
Colorado.....	7	256,074	458,935	2,751,587	582,109	4,048,706
Idaho.....	0	13,551	11,157	107,154	25,000	150,862
Illinois.....	44	1,804,864	3,144,937	56,726,870	8,358,334	70,035,014
Indiana.....	30	63,380	555,847	9,022,247	941,617	10,614,091
Iowa.....	14	800,304	1,514,326	14,440,159	1,800,333	18,555,421
Kansas.....	9	468,672	708,028	13,687,480	3,203,646	18,067,827
Kentucky.....	7	5,700	12,500	708,309	102,550	829,059
Maryland.....	15	59,788	130,201	2,827,960	22,988	3,046,665
Massachusetts.....	6	18,700	44,344	3,243,036	757,189	4,063,269
Michigan.....	6	235,093	362,124	3,842,133	59,832	4,499,182
Minnesota.....	9	459,154	2,059,452	10,887,901	1,577,651	14,984,158
Missouri.....	21	557,370	961,177	17,895,174	760,007	20,114,388
Montana.....	3	22,828	33,568	269,136		325,532
Nebraska.....	5	1,387,263	745,763	15,070,485	1,356,052	18,558,573
New Jersey.....	7		49,307	835,670	105,828	990,685
New York.....	36	137,113	414,179	8,774,602	933,805	10,259,699
Ohio.....	48	226,583	246,034	8,585,787	340,043	9,418,347
Oklahoma.....	4	235,150	735,742	5,529,426	595,570	7,395,888
Oregon.....	7	168,785	262,153	1,217,513	61,240	1,737,701
Pennsylvania.....	53	59,580	246,826	7,570,816	425,636	8,295,338
Tennessee.....	6	8,400	32,132	735,701		776,233
Texas.....	11	378,899	1,296,631	6,161,185	1,240,223	9,082,936
Virginia.....	4	10,720	38,165	857,335	169,815	1,182,035
Washington.....	10	250,960	384,324	2,207,480	100,000	2,942,764
West Virginia.....	12		50,032	1,262,570	68,000	1,388,602
Wisconsin.....	6	192,304	360,247	7,448,717	627,631	8,620,899
All other States.....	26	297,686	538,369	5,193,452	480,179	6,509,686
Total.....	433	8,432,075	15,972,311	211,820,828	25,223,631	261,448,848

¹ All concerns, excepting those of retail butchers, that are engaged in the business of curing meats or rendering lard are considered to be meat-packing establishments. Some meat-packing establishments also store goods for others. They are listed in Table 4.

TABLE 6.—Total refrigerated space: All cold storages, including meat-packing establishments reporting to the Bureau of Agricultural Economics, Oct. 1, 1923

State	Concerns	Cubic feet of space held at temperatures of—				Total space
		10° F. and below	11° to 20° F., inclusive	30° to 44° F., inclusive	45° F. and above	
Alabama.....	4	11,094	100,953	1,214,548	9,600	1,336,195
Alaska.....	5	66,668	616,339	12,550	2,000	697,365
Arizona.....	5	15,368	27,840	442,096		485,296
Arkansas.....	8	15,000	733	589,692	15,521	620,946
California.....	68	1,036,867	1,893,665	16,717,331	196,774	19,864,637
Colorado.....	17	345,176	984,262	4,940,345	588,109	6,857,911
Connecticut.....	6	248,408	61,350	1,368,446	131,545	1,779,603
District of Columbia.....	3	26,000	258,000	207,397	1,280,000	1,763,397
Florida.....	18	20,260	69,650	416,350	35,400	538,650
Georgia.....	16	20,632	147,048	1,975,347	11,040	2,153,967
Idaho.....	12	36,051	207,697	345,924	25,869	678,541
Illinois.....	97	14,042,221	12,695,380	97,478,037	8,976,660	183,192,298
Indiana.....	49	361,457	1,266,146	12,943,535	945,664	14,916,602
Iowa.....	32	1,258,593	2,461,519	16,363,517	2,062,291	22,135,820
Kansas.....	43	2,165,637	4,794,712	31,129,351	5,368,096	43,447,696
Kentucky.....	17	358,021	286,978	4,019,622	104,650	4,768,671
Louisiana.....	16	130,000	77,000	1,752,337	6,000	1,971,337
Maine.....	3	255,980	4,580	1,047,887	1,800	1,310,247
Maryland.....	23	543,271	288,589	4,758,897	79,235	5,669,992
Massachusetts.....	40	7,119,030	1,705,328	13,860,589	1,138,827	23,823,774
Michigan.....	34	1,937,985	789,531	6,237,069	172,032	8,233,617
Minnesota.....	26	1,994,746	2,896,540	12,974,996	1,596,836	19,433,118
Missouri.....	54	2,694,020	2,218,567	31,033,122	890,077	36,765,786
Montana.....	9	61,758	60,872	353,904	3,080	459,614
Nebraska.....	21	2,677,034	949,344	17,549,442	1,407,485	22,583,305
New Hampshire.....	4	31,280	116,649	153,337		301,263
New Jersey.....	34	2,682,063	1,676,176	7,410,489	2,330,056	13,968,784
New York.....	180	9,460,139	5,631,368	49,860,648	2,737,147	67,860,300
North Carolina.....	7	512	15,360	393,074	20,000	423,946
North Dakota.....	3		42,288	187,922		230,210

TABLE 6.—Total refrigerated space: All cold storages, including meat-packing establishments reporting to the Bureau of Agricultural Economics, Oct. 1, 1923—Continued.

State	Concerns	Cubic feet of space held at temperatures of—				Total space
		10° F. and below	11° to 20° F., inclusive	30° to 44° F., inclusive	45° F. and above	
Ohio.....	66	1,883,556	1,693,585	15,785,370	527,323	20,189,843
Oklahoma.....	14	259,990	867,287	6,966,264	905,170	8,998,711
Oregon.....	30	276,758	863,945	2,038,826	99,340	3,872,869
Pennsylvania.....	113	2,269,220	2,294,396	15,710,835	588,970	23,863,421
Rhode Island.....	4	329,788	500,952	703,564	—	1,534,304
South Dakota.....	7	79,512	246,330	1,597,346	204,000	2,037,238
Tennessee.....	17	433,954	239,440	3,713,436	—	4,386,830
Texas.....	49	589,769	1,820,908	9,710,456	1,387,604	13,499,707
Utah.....	7	319,306	125,531	963,455	118,800	1,343,786
Virginia.....	30	165,830	723,179	10,125,274	1,229,815	12,247,148
Washington.....	59	1,408,916	4,680,269	10,897,840	518,344	17,574,368
West Virginia.....	16	—	50,752	3,453,068	94,272	3,598,032
Wisconsin.....	69	712,980	768,844	10,625,881	1,103,580	13,211,085
Wyoming.....	3	—	384	50,079	24,750	76,113
All other States.....	8	40,924	91,049	522,519	7,588	692,061
Total.....	1,354	57,139,627	57,758,230	433,462,076	37,644,651	585,404,634

TABLE 7.—Refrigerated space: Leading cities, October 1, 1923

COLD-STORAGE PLANTS, NOT INCLUDING MEAT-PACKING ESTABLISHMENTS

City	Concerns	Cubic feet of space held at temperatures of—				Total space
		10° F. and below	11° to 20° F., inclusive	30° to 44° F., inclusive	45° F. and below	
Chicago, Ill.....	25	11,416,488	5,041,457	26,527,654	343,266	43,328,865
Greater New York.....	52	8,057,429	2,934,152	19,530,334	3,188,748	34,310,663
Boston, Mass.....	7	4,450,921	700,289	4,554,065	297,941	10,003,817
Philadelphia, Pa.....	14	1,108,922	789,003	5,169,637	—	7,157,562
Cleveland, Ohio.....	7	1,199,048	1,183,710	3,379,620	81,740	5,845,027
Kansas City, Mo.....	7	1,003,782	78,024	3,145,154	3,610	4,231,170
St. Louis, Mo. ¹	11	1,018,008	1,110,292	0,137,204	125,800	8,391,304
Buffalo, N. Y.....	7	1,240,035	499,844	1,558,332	—	3,298,211
San Francisco, Calif.....	4	273,544	453,947	2,848,769	—	3,576,260
Seattle, Wash.....	13	1,118,337	3,183,276	920,708	356,800	5,570,121
Total.....	147	31,577,414	15,831,603	73,762,078	4,397,905	125,619,000

¹ Includes East St. Louis, Ill.

TABLE 8.—Refrigerated space: Leading cities, October 1, 1923

MEAT-PACKING ESTABLISHMENTS ONLY

City	Concerns	Cubic feet of space held at temperatures of—				Total space
		10° F. and below	11° to 20° F., inclusive	30° to 44° F., inclusive	45° F. and below	
Chicago, Ill.....	24	1,860,028	6,955,893	59,692,314	8,133,040	76,641,083
Kansas City, Mo.....	7	1,474,892	2,983,498	24,589,572	4,932,771	33,981,731
St. Louis, Mo. ¹	17	889,977	864,404	13,390,605	484,610	15,609,596
Omaha, Neb.....	4	1,387,263	625,523	14,191,126	1,350,777	17,554,189
St. Joseph, Mo.....	4	373,946	508,863	11,618,157	592,966	13,093,932
Greater New York.....	33	380,044	791,026	8,553,925	1,347,299	11,073,164
Indianapolis, Ind.....	9	81,000	447,016	7,724,201	853,635	9,135,912
Fort Worth, Tex.....	4	340,904	1,219,097	4,965,084	1,241,888	7,766,974
Boston, Mass.....	5	691,770	33,200	7,017,870	—	8,042,840
Buffalo, N. Y.....	4	—	54,868	1,328,150	21,878	1,404,894
Total.....	121	7,769,722	14,463,296	153,001,994	18,988,333	194,214,345

¹ Includes East St. Louis, Ill.

TABLE 9.—Refrigerated space: Leading cities, October 1, 1923

COLD-STORAGE AND MEAT-PACKING ESTABLISHMENTS COMBINED

City	Concerns	Cubic feet of space held at temperatures of—				Total space
		10° F. and below	11° to 29° F., inclusive	30° to 44° F., inclusive	45° F. and below	
Chicago, Ill.	50	13, 276, 514	11, 997, 260	86, 219, 865	8, 476, 306	110, 969, 948
Greater New York	85	9, 038, 373	3, 725, 178	28, 084, 259	4, 536, 017	45, 383, 827
Kansas City, Mo.	14	2, 478, 674	3, 042, 120	27, 725, 726	4, 936, 381	38, 182, 901
St. Louis, Mo. ¹	28	1, 867, 985	1, 374, 698	19, 517, 809	610, 410	23, 980, 900
Boston, Mass.	12	5, 442, 691	733, 489	11, 572, 536	297, 941	18, 046, 657
Omaha, Nebr.	11	2, 539, 117	828, 304	16, 038, 096	1, 350, 277	20, 755, 794
Cleveland, Ohio	14	1, 329, 748	1, 311, 014	6, 321, 040	274, 908	9, 236, 710
Philadelphia, Pa.	28	1, 204, 362	942, 762	6, 687, 669	93, 000	9, 127, 853
Total	251	37, 197, 484	24, 554, 823	202, 367, 003	20, 575, 300	284, 694, 500

¹ Includes East St. Louis, Ill.

TABLE 10.—Refrigerated space: Summary by class of business, October 1, 1923

Class of business	Number of warehouses	Cubic feet of space held at temperatures of—				Total space
		10° F. and below	11° to 29° F., inclusive	30° to 44° F., inclusive	45° F. and above	
Public cold storage	369	33, 435, 025	22, 471, 619	142, 840, 085	7, 189, 263	205, 085, 992
Private cold storage	307	2, 926, 066	5, 545, 259	14, 509, 633	1, 092, 028	24, 070, 886
Combined public and private cold storage	218	8, 832, 122	6, 481, 156	30, 362, 162	687, 071	46, 312, 611
Meat-packing establishments	433	8, 432, 078	15, 972, 311	211, 820, 828	25, 223, 631	261, 448, 848
Meat-packing establishments doing a public cold-storage business	27	3, 510, 436	7, 337, 935	33, 920, 268	2, 852, 658	47, 630, 397
Total refrigerated space	1, 354	57, 139, 627	57, 758, 280	433, 462, 076	37, 044, 651	585, 404, 634

TABLE 11.—Apples, barreled: Cold-storage holdings, 1914-1924¹

[In thousands of barrels; i. e., 000 omitted]

Year	Oct. 1	Nov. 1	Dec. 1	Jan. 1	Feb. 1	Mar. 1	Apr. 1	May 1	June 1	July 1	Aug. 1	Sept. 1
5-yr. av.:												
Oct., 1915—												
Sept., 1920		2, 841	3, 430	2, 890	2, 293	1, 605	955	434	127			
Oct., 1918—												
Sept., 1923		3, 099	3, 405	2, 938	2, 215	1, 476	796	349	195			
1914-15				2, 929	2, 438	1, 716	805	206	61			
1915-16		3, 093	4, 213	3, 748	3, 324	2, 543	1, 501	799	218			
1916-17		2, 530	3, 160	2, 080	2, 121	1, 560	1, 044	543	183			
1917-18		2, 558	3, 195	2, 754	2, 226	1, 675	978	336	101			
1918-19		2, 915	3, 280	2, 582	1, 704	962	487	198	88			
1919-20	824	3, 108	3, 326	2, 603	2, 062	1, 385	705	74	64			
1920-21	452	3, 510	4, 570	3, 966	3, 016	2, 020	1, 027	449	170			
1921-22	570	1, 822	1, 970	1, 742	1, 424	966	561	248	74			
1922-23	1, 218	4, 133	4, 319	3, 708	2, 839	2, 013	1, 199	578	150			
1923-24	664	4, 619	5, 477	4, 982	3, 903	3, 024	1, 925	1, 113	451			
1924-25	589											

¹ All apples, excepting those packed in western-style boxes, are tabulated in terms of barrels, on the basis of 3 bushels to the barrel.

Cold-Storage Holdings

TABLE 12.—Apples, boxed: Cold-storage holdings, 1914-1924

[In thousands of boxes; i. e., 000 omitted]

Year	Oct. 1	Nov. 1	Dec. 1	Jan. 1	Feb. 1	Mar. 1	Apr. 1	May 1	June 1	July 1	Aug. 1	Sept. 1
5-yr. av.:												
Oct., 1915— Sept., 1920		2,500	4,977	5,349	4,644	3,254	1,916	923	259			
Oct., 1918— Sept., 1923		3,853	7,588	8,057	6,809	4,905	3,078	1,543	509			
1914-15				4,091	3,441	2,323	1,341	525	142			
1915-16		1,789	3,685	3,210	2,738	2,096	1,288	709	258			
1916-17		2,190	3,977	4,356	3,790	2,648	1,594	796	246			
1917-18		2,216	4,483	5,534	5,192	3,784	2,416	986	172			
1918-19		2,513	4,945	6,137	4,205	2,431	1,410	645	170			
1919-20	440	4,244	7,793	8,508	7,200	5,331	2,982	1,598	447			
1920-21	277	2,878	6,651	7,259	6,266	4,890	3,548	2,009	826			
1921-22	667	5,484	11,281	11,061	8,687	6,282	4,107	2,088	721			
1922-23	699	4,194	7,371	8,319	7,612	5,593	3,345	1,475	380			
1923-24	789	6,886	13,866	14,201	11,550	8,821	5,837	2,901	949			
1924-25	738											

TABLE 13.—Apples (barreled and boxed): Cold-storage holdings, 1914-1924¹

[In thousands of barrels; i. e., 000 omitted]

Year	Oct. 1	Nov. 1	Dec. 1	Jan. 1	Feb. 1	Mar. 1	Apr. 1	May 1	June 1	July 1	Aug. 1	Sept. 1
5-yr. av.:												
Oct., 1915— Sept., 1920		3,704	5,085	4,073	3,841	2,690	1,593	741	213			
Oct., 1918— Sept., 1923		4,383	6,024	5,624	4,485	3,110	1,822	864	275			
1914-15				4,293	3,555	2,491	1,343	474	108			
1915-16		3,689	5,441	4,813	4,236	3,242	1,984	1,035	304			
1916-17		3,253	4,402	4,132	3,385	2,442	1,545	808	285			
1917-18		3,206	4,680	4,509	3,957	2,836	1,783	878	159			
1918-19		3,752	4,928	4,294	3,105	1,772	956	380	125			
1919-20	971	4,523	5,923	5,529	4,524	3,162	1,690	806	213			
1920-21	544	1,475	6,787	6,386	5,105	3,650	2,210	1,119	445			
1921-22	792	3,643	5,739	5,420	4,313	3,090	1,930	944	314			
1922-23	1,452	5,521	6,748	6,481	5,376	3,877	2,314	1,070	277			
1923-24	927	6,914	10,099	9,696	7,843	5,965	3,871	2,080	768			
1924-25	784											

¹ All apples, excepting those packed in western-style boxes, are tabulated in terms of barrels on the basis of 3 bushels to the barrel. Three boxes are considered the equivalent of 1 barrel. Since Oct. 1, 1923, apples packed in bushel baskets are also included in this tabulation.

TABLE 14.—Creamery butter: Cold-storage holdings, 1915-1924

[In thousands of pounds; i. e., 000 omitted]

Year	May 1	June 1	July 1	Aug. 1	Sept. 1	Oct. 1	Nov. 1	Dec. 1	Jan. 1	Feb. 1	Mar. 1	Apr. 1
5-yr. av.:												
May, 1915— Apr., 1920					94,392	109,230	103,765	91,888	71,567	48,697	32,673	19,510
May, 1918— Apr., 1923	7,858	17,978	64,245	96,859	110,122	101,978	80,993	66,283	46,312	33,558	21,071	10,627
1915-16				68,578	101,852	99,450	92,719	71,840	48,977	31,139	15,033	3,346
1916-17	1,082	7,017	53,883	192,587	105,836	109,522	85,260	67,292	46,134	30,474	18,952	6,805
1917-18	3,607	9,053	46,982	88,062	108,170	109,154	100,115	79,928	50,726	26,618	18,808	14,629
1918-19	9,636	12,898	40,140	84,306	96,334	87,883	80,874	65,111	43,910	28,777	24,191	11,909
1919-20	9,689	26,435	90,158	123,546	131,388	121,816	100,474	73,654	53,737	38,359	22,568	12,555
1920-21	7,564	12,872	52,528	101,465	115,558	113,385	101,778	79,720	58,682	41,486	27,103	14,732
1921-22	7,712	21,662	61,991	82,838	92,292	96,116	77,983	65,129	48,412	35,047	22,582	9,113
1922-23	3,830	13,202	67,410	103,151	112,039	96,080	73,857	47,773	28,819	16,122	8,910	4,824
1923-24	3,248	10,112	62,768	101,774	102,731	95,117	76,472	51,668	20,269	13,246	9,847	7,842
1924-25	8,913	22,348	74,184	134,118	156,440	153,271						

TABLE 15.—Packing-stock butter: Cold-storage holdings, 1916-1923¹

(In thousands of pounds; i. e., 000 omitted)

Year	May 1	June 1	July 1	Aug. 1	Sept. 1	Oct. 1	Nov. 1	Dec. 1	Jan. 1	Feb. 1	Mar. 1	Apr. 1
5-yr. av.: May, 1916- Apr., 1921					3,850	3,720	3,129	2,650	1,880	1,758	1,454	1,183
May, 1918- Apr., 1923	1,337	1,792	2,656	3,239	3,393	3,201	2,583	1,993	1,486	1,472	1,442	1,109
1916-17					3,695	3,333	2,645	2,284	1,785	1,663	868	364
1917-18	173	343	1,319	3,447	3,320	3,380	3,408	3,403	2,046	1,666	895	1,328
1918-19	1,941	3,468	4,779	5,276	5,421	4,600	3,394	2,328	1,384	1,196	1,340	859
1919-20	825	888	1,908	3,074	3,314	3,441	2,671	2,098	1,410	1,620	1,472	1,149
1920-21	784	712	1,916	2,970	3,543	3,786	3,528	3,189	2,772	2,847	2,626	2,216
1921-22	2,181	2,661	2,793	2,794	2,519	2,149	1,703	1,427	1,304	1,447	1,538	1,185
1922-23	972	1,253	1,884	2,173	2,186	1,971	1,621	971	603	349	234	157
1923-24	65	164	(²)									

¹ Packing-stock butter includes all dairy and farm-made butter that is to be used in making lacted and renovated process butter.² Not reported since June, 1923.TABLE 16.—American cheese: Cold-storage holdings, 1915-1924¹

(In thousands of pounds; i. e., 000 omitted)

Year	May 1	June 1	July 1	Aug. 1	Sept. 1	Oct. 1	Nov. 1	Dec. 1	Jan. 1	Feb. 1	Mar. 1	Apr. 1
5-yr. av.: May, 1915- Apr., 1920					59,890	57,564	52,504	46,330	40,038	31,287	22,110	15,286
May, 1918- Apr., 1923	18,012	15,934	33,057	50,165	58,607	54,613	47,736	39,880	33,083	26,428	19,410	13,937
1915-16					28,575	24,144	32,428	31,271	28,559	18,908	13,373	8,443
1916-17	6,546	7,301	16,357	31,569	46,776	46,579	45,713	37,080	31,855	22,113	15,580	9,842
1917-18	7,928	11,626	34,159	67,595	91,545	90,671	78,087	75,168	66,784	56,298	37,743	27,965
1918-19	17,738	20,396	30,054	48,804	55,742	42,045	33,402	25,625	19,823	15,488	9,837	6,760
1919-20	6,027	12,478	37,501	62,645	76,661	81,359	72,859	62,508	53,168	43,631	34,039	23,431
1920-21	16,963	13,502	29,654	51,512	60,372	55,007	48,866	39,921	34,115	25,000	17,477	14,294
1921-22	13,466	17,814	34,948	41,284	46,635	45,163	42,989	34,055	27,691	21,430	15,000	10,745
1922-23	10,868	15,481	33,180	46,580	53,625	40,473	40,852	37,291	33,617	26,593	20,693	14,465
1923-24	14,077	17,507	36,834	55,839	63,950	62,384	57,927	55,105	48,566	40,508	35,160	28,294
1924-25	26,202	27,172	45,239	65,884	76,409	73,087						

¹ The term "American cheese" is intended to cover only those varieties known as twins, flats, daisies, cheddars, longhorns, and square prints. It does not, therefore, include all kinds of cheese made in America.

TABLE 17.—Swiss cheese: Cold-storage holdings, 1917-1924

(In thousands of pounds; i. e., 000 omitted)

Year	May 1	June 1	July 1	Aug. 1	Sept. 1	Oct. 1	Nov. 1	Dec. 1	Jan. 1	Feb. 1	Mar. 1	Apr. 1
5-yr. av.: May, 1918- Apr., 1923	1,452	1,183	1,283	2,101	3,362	4,137	4,355	4,138	3,993	3,516	2,943	2,250
1917-18					664	850	948	874	651	518	591	429
1918-19	328	303	205	439	2,130	2,649	2,859	2,820	3,205	2,846	2,604	1,768
1919-20	1,065	887	1,003	2,017	2,789	3,124	3,277	3,187	2,822	2,982	2,629	2,261
1920-21	1,944	1,777	2,098	3,055	3,995	4,743	5,248	4,883	4,590	3,652	2,951	2,204
1921-22	1,878	1,394	1,440	2,910	3,337	4,404	4,641	4,326	3,929	3,275	2,962	2,398
1922-23	2,043	1,572	1,679	2,535	4,601	5,706	5,720	5,472	5,417	4,824	3,537	2,619
1923-24	1,853	1,708	2,689	3,132	4,718	5,135	6,094	7,358	7,825	7,870	7,730	7,362
1924-25	6,349	7,004	5,676	6,130	7,376	8,079						

Cold-Storage Holdings

TABLE 18.—Brick and Munster Cheeses: Cold-storage holdings, 1917-1924

[In thousands of pounds; 1. e., 600 omitted]

Year	May 1	June 1	July 1	Aug. 1	Sept. 1	Oct. 1	Nov. 1	Dec. 1	Jan. 1	Feb. 1	Mar. 1	Apr. 1
5-yr. av.: May, 1918- Apr., 1923	603	779	1,303	1,322	1,370	1,172	1,218	1,332	1,485	1,360	1,099	712
1917-18					417	352	309	576	532	423	377	612
1918-19	658	451	416	531	937	615	781	1,157	1,074	1,323	933	503
1919-20	336	418	880	845	828	810	824	952	1,114	1,018	862	580
1920-21	486	716	1,850	2,006	2,254	1,869	1,742	1,592	1,753	1,462	1,200	992
1921-22	884	1,154	1,675	1,671	1,663	1,726	1,709	1,767	1,855	1,716	1,602	632
1922-23	949	1,158	1,692	1,500	1,117	842	1,023	1,193	1,608	1,259	908	692
1923-24	961	1,307	2,016	3,235	3,037	2,535	1,945	1,635	1,385	1,038	901	901
1924-25	1,010	1,467	2,141	2,023	1,815	1,634						

TABLE 19.—Limburger cheese: Cold-storage holdings, 1917-1924

[In thousands of pounds; 1. e., 000 omitted]

Year	May 1	June 1	July 1	Aug. 1	Sept. 1	Oct. 1	Nov. 1	Dec. 1	Jan. 1	Feb. 1	Mar. 1	Apr. 1
5-yr. av.: May, 1918- Apr., 1923	399	382	564	841	1,212	1,182	1,104	967	924	721	648	511
1917-18					719	655	378	323	534	311	300	157
1918-19	260	197	233	439	1,441	1,552	1,465	1,341	1,314	932	922	739
1919-20	598	419	690	834	1,135	920	782	744	712	680	592	646
1920-21	415	503	395	1,097	1,401	1,333	1,275	1,059	950	791	681	494
1921-22	417	341	669	957	1,095	1,170	1,127	866	887	535	493	334
1922-23	340	351	636	879	986	937	868	824	753	618	558	440
1923-24	371	421	899	1,261	1,531	1,077	1,264	1,098	1,059	952	721	700
1924-25	631	625	751	1,138	1,239	1,131						

TABLE 20.—Miscellaneous varieties of cheese: Cold-storage holdings, 1917-1924

[In thousands of pounds; 1. e., 000 omitted]

Year	May 1	June 1	July 1	Aug. 1	Sept. 1	Oct. 1	Nov. 1	Dec. 1	Jan. 1	Feb. 1	Mar. 1	Apr. 1
5-yr. av.: May, 1918- Apr., 1923	5,135	6,181	8,252	9,340	9,748	9,228	8,542	7,745	6,502	6,094	5,442	5,452
1917-18					2,117	1,885	1,640	1,574	1,118	944	825	824
1918-19	966	1,741	4,317	6,579	8,609	7,919	5,829	6,530	4,810	5,160	4,262	5,343
1919-20	6,842	9,110	11,333	12,063	11,175	10,380	10,208	9,023	6,776	6,104	5,594	5,346
1920-21	5,797	6,845	10,316	12,306	12,237	12,030	12,260	11,345	9,754	9,248	8,149	8,013
1921-22	7,294	7,751	8,887	9,494	10,171	9,904	9,060	7,938	7,232	6,038	5,385	4,960
1922-23	4,774	5,507	6,405	6,268	6,466	5,906	5,354	3,840	3,840	3,934	3,819	3,699
1923-24	3,930	5,292	6,485	7,712	7,219	6,558	6,482	7,117	7,136	6,510	5,739	5,166
1924-25	6,034	6,286	7,948	8,618	8,375	7,360						

¹ Includes cheese not classified on cold-storage report and holdings of storages not reporting by varieties.

TABLE 21.—All varieties of cheese: Cold-storage holdings, 1917-1924

[In thousands of pounds; 1. e., 000 omitted]

Year	May 1	June 1	July 1	Aug. 1	Sept. 1	Oct. 1	Nov. 1	Dec. 1	Jan. 1	Feb. 1	Mar. 1	Apr. 1
5-yr. av. May, 1918- Apr., 1923	20,660	24,448	44,459	63,860	74,319	70,333	62,952	54,062	46,583	38,120	29,543	22,662
1917-18					95,461	84,421	81,423	78,513	69,619	58,495	30,836	29,978
1918-19	19,037	23,057	35,225	64,762	68,970	54,800	44,368	37,473	30,225	25,748	18,808	15,102
1919-20	14,838	23,241	51,407	78,304	92,589	96,503	87,989	76,414	64,694	54,410	43,656	32,144
1920-21	25,605	23,241	44,504	70,034	80,258	74,982	69,092	68,800	51,169	40,267	30,456	24,908
1921-22	23,940	26,453	47,617	56,317	62,906	62,366	59,505	46,002	41,594	33,001	25,477	19,339
1922-23	18,980	24,070	43,642	57,763	66,876	62,923	53,816	45,620	45,234	37,226	29,516	21,815
1923-24	21,192	26,235	48,728	70,800	60,663	78,791	74,302	72,623	67,221	57,232	50,368	42,413
1924-25	40,235	42,644	61,755	84,673	85,211	91,191						

TABLE 22.—Case eggs:¹ Cold-storage holdings, 1915-1924

(In thousands of cases; i. e., 000 omitted)

Year	Mar. 1	Apr. 1	May 1	June 1	July 1	Aug. 1	Sept. 1	Oct. 1	Nov. 1	Dec. 1	Jan. 1	Feb. 1
5-yr. av.:												
Mar., 1916- Feb., 1921..	23	248	2,560	5,251	6,630	6,849	6,472	5,645	4,272	2,466	982	173
Mar., 1918- Feb., 1923..	26	732	3,585	6,328	7,661	7,811	7,428	6,343	4,509	2,679	978	181
1915-16.....							5,683	5,019	3,687	2,788	1,508	468
1916-17.....	35	264	2,327	4,593	5,574	6,060	6,600	4,868	3,955	2,148	920	149
1917-18.....	7	190	2,105	4,922	6,617	6,895	6,438	5,837	4,638	2,948	1,300	200
1918-19.....	20	344	2,957	5,499	6,554	6,568	6,265	5,329	3,812	2,071	740	130
1919-20.....	26	320	3,278	6,098	7,659	7,850	7,685	6,858	5,087	3,341	1,642	342
1920-21.....	29	122	2,135	5,143	6,747	6,872	6,372	5,295	3,838	1,824	408	43
1921-22.....	43	1,926	4,809	6,844	7,534	7,605	7,210	6,269	4,380	2,403	889	179
1922-23.....	13	950	4,648	8,056	9,811	10,161	9,608	7,924	5,726	3,257	1,311	213
1923-24.....	13	453	3,737	7,890	10,222	10,609	9,883	8,737	6,645	4,028	1,927	500
1924-25.....	44	579	3,593	6,875	8,685	9,267	8,778	7,416				

¹ 30-dozen cases.

TABLE 23.—Frozen eggs: Cold-storage holdings, 1916-1924

(In thousands of pounds; i. e., 000 omitted)

Year	Mar. 1	Apr. 1	May 1	June 1	July 1	Aug. 1	Sept. 1	Oct. 1	Nov. 1	Dec. 1	Jan. 1	Feb. 1
5-yr. av.:												
Mar., 1916- Feb., 1921..			6,905	9,759	13,113	15,105	16,761	16,614	15,090	16,710	14,586	12,802
Mar., 1918- Feb., 1923..	13,214	11,475	12,789	16,431	19,604	22,026	24,143	23,846	21,871	22,720	19,628	16,761
1916-17.....			3,133	4,176	5,410	5,822	5,223	6,457	6,307	5,104	2,737	1,724
1917-18.....	1,334	2,394	3,329	7,558	13,398	15,384	19,741	17,538	16,424	11,979	14,603	12,207
1918-19.....	9,746	9,001	9,488	11,558	12,895	15,240	15,871	14,787	13,281	11,832	8,960	7,760
1919-20.....	6,931	5,989	8,046	11,568	16,472	19,024	21,017	20,687	18,976	22,690	19,286	15,394
1920-21.....	13,836	11,039	10,559	13,639	17,388	20,056	21,801	23,884	20,401	20,945	27,325	28,927
1921-22.....	22,363	20,873	21,730	26,822	27,737	27,952	27,408	26,656	28,114	22,899	19,269	18,269
1922-23.....	13,193	10,473	14,154	18,273	23,528	27,855	34,516	33,945	30,523	28,233	22,787	18,517
1923-24.....	14,603	10,311	12,921	20,780	29,688	36,192	37,280	43,836	40,424	36,004	32,087	27,682
1924-25.....	23,166	20,738	23,707	29,956	33,565	35,184	34,128	31,088				

TABLE 24.—Broilers: Cold-storage holdings, 1916-1924

(In thousands of pounds; i. e., 000 omitted)

Year	Sept. 1	Oct. 1	Nov. 1	Dec. 1	Jan. 1	Feb. 1	Mar. 1	Apr. 1	May 1	June 1	July 1	Aug. 1
5-yr. av.:												
Sept., 1917- Aug., 1922..	4,665	6,737	8,813	10,050	11,911	11,156	10,086	8,009	6,168	4,519	3,675	3,322
Sept., 1918- Aug., 1923..	5,092	7,467	9,814	11,520	12,770	12,121	10,875	8,826	6,833	5,073	4,094	3,626
1916-17.....									7,422	4,999	4,360	4,274
1917-18.....	3,249	3,683	4,197	8,717	9,208	8,211	7,266	4,731	3,126	1,710	1,318	1,605
1918-19.....	5,118	8,660	12,685	14,698	15,166	15,023	14,230	12,196	10,954	8,709	7,409	6,168
1919-20.....	6,091	5,994	6,896	8,046	9,187	8,405	6,868	5,576	4,081	3,448	3,052	2,691
1920-21.....	4,135	7,152	9,766	10,970	12,238	11,496	11,827	9,604	7,232	5,253	3,697	3,048
1921-22.....	4,890	8,197	10,430	12,463	13,769	12,546	10,250	7,937	5,397	3,473	2,000	3,110
1922-23.....	5,238	7,394	9,202	11,635	13,502	13,137	11,200	8,818	6,503	4,482	3,414	3,125
1923-24.....	4,588	7,486	10,554	12,537	13,260	12,139	10,958	9,150	6,725	5,000	3,988	4,581
1924-25.....	7,164	12,687										

TABLE 25.—Roasters: Cold-storage holdings, 1916-1924

[In thousands of pounds; i. e., 000 omitted]

Year	Sept. 1	Oct. 1	Nov. 1	Dec. 1	Jan. 1	Feb. 1	Mar. 1	Apr. 1	May 1	June 1	July 1	Aug. 1
5-yr. av.: Sept., 1917- Aug., 1922..	2,984	3,173	6,529	15,313	26,860	29,049	25,802	21,024	14,850	10,253	6,829	4,358
Sept., 1918- Aug., 1923..	2,931	2,997	6,726	16,247	30,651	34,084	31,174	25,487	18,853	13,713	9,556	6,270
1916-17.....									20,695	7,694	6,635	6,110
1917-18.....	4,798	3,873	5,191	12,578	16,659	18,340	14,588	11,724	7,625	3,923	2,328	1,469
1918-19.....	1,237	2,749	7,685	16,201	28,466	33,204	30,455	27,254	18,821	14,183	10,294	7,260
1919-20.....	5,046	4,680	5,580	14,833	28,687	32,051	27,683	21,690	13,665	8,573	5,019	2,604
1920-21.....	1,724	1,935	5,291	11,242	22,292	26,811	23,273	18,300	14,115	9,528	6,041	3,580
1921-22.....	2,113	3,239	8,015	21,713	37,254	37,831	38,069	20,161	20,625	15,107	10,464	6,877
1922-23.....	4,536	2,992	6,232	17,247	35,614	43,316	41,450	34,941	27,036	21,175	15,982	11,631
1923-24.....	6,918	5,856	9,144	19,181	32,870	35,673	32,490	25,219	16,388	10,609	5,882	3,419
1924-25.....	2,392	4,004										

TABLE 26.—Fowls: Cold-storage holdings, 1916-1924

[In thousands of pounds; i. e., 000 omitted]

Year	Sept. 1	Oct. 1	Nov. 1	Dec. 1	Jan. 1	Feb. 1	Mar. 1	Apr. 1	May 1	June 1	July 1	Aug. 1
5-yr. av.: Sept., 1917- Aug., 1922..	4,518	4,283	5,001	10,095	19,087	21,650	18,156	13,903	8,521	5,732	5,593	5,365
Sept., 1918- Aug., 1923..	4,743	4,295	4,910	9,820	19,325	22,097	19,384	15,019	9,919	6,670	6,141	5,438
1916-17.....									6,398	4,751	3,787	3,482
1917-18.....	2,770	2,660	3,301	8,497	13,899	15,283	12,484	9,419	4,107	2,749	4,360	5,841
1918-19.....	7,349	7,453	6,456	15,069	26,030	30,698	28,068	23,581	15,549	11,121	9,372	7,349
1919-20.....	4,897	4,364	4,331	6,691	20,636	23,110	18,384	13,177	7,251	4,654	3,955	5,239
1920-21.....	5,002	3,769	4,294	7,212	14,673	15,998	15,098	11,661	8,996	5,794	4,670	3,112
1921-22.....	2,570	3,170	3,655	10,005	20,197	20,662	16,746	11,477	6,702	4,341	5,379	5,283
1922-23.....	3,697	2,720	2,842	7,122	16,091	25,519	18,622	15,001	11,069	7,439	7,101	6,306
1923-24.....	4,502	3,110	3,380	8,035	13,016	13,204	13,047	11,235	7,318	5,026	7,054	8,501
1924-25.....	7,608	6,385										

TABLE 27.—Turkeys: Cold-storage holdings, 1916-1924

[In thousands of pounds; i. e., 000 omitted]

Year	Sept. 1	Oct. 1	Nov. 1	Dec. 1	Jan. 1	Feb. 1	Mar. 1	Apr. 1	May 1	June 1	July 1	Aug. 1
5-yr. av.: Sept., 1917- Aug., 1922..	2,591	1,990	2,487	4,069	6,546	8,305	7,963	6,980	5,927	5,124	4,289	3,422
Sept., 1918- Aug., 1923..	2,523	1,915	1,651	3,869	7,465	8,851	8,728	7,905	6,903	6,123	5,322	4,523
1916-17.....									3,054	3,238	4,382	4,078
1917-18.....	3,547	6,020	6,485	3,152	4,744	10,509	9,688	8,508	7,324	5,935	4,236	3,086
1918-19.....	2,100	1,770	1,579	6,337	9,039	10,806	10,117	8,669	7,072	6,358	5,378	4,390
1919-20.....	3,200	1,849	1,327	3,212	5,178	6,030	6,691	4,545	3,497	2,832	2,432	1,900
1920-21.....	1,183	872	870	4,351	6,015	5,407	6,082	6,238	5,718	5,198	4,505	3,838
1921-22.....	2,927	2,439	2,172	3,293	7,756	7,973	7,039	6,943	6,022	5,295	4,642	3,999
1922-23.....	3,204	2,645	2,906	2,154	9,335	13,240	13,509	13,129	12,205	10,933	9,653	8,617
1923-24.....	7,420	6,852	5,198	6,650	10,626	14,507	15,094	14,075	11,626	10,095	9,058	7,705
1924-25.....	6,417	5,865										

TABLE 28.—Miscellaneous poultry: Cold-storage holdings, 1916-1924

[In thousands of pounds; i. e., 000 omitted]

Year	Sept. 1	Oct. 1	Nov. 1	Dec. 1	Jan. 1	Feb. 1	Mar. 1	Apr. 1	May 1	June 1	July 1	Aug. 1
5-yr. av.:												
Sept., 1917- Aug., 1922..	15,900	14,933	16,232	17,518	24,299	23,352	20,535	15,931	11,884	10,181	10,418	10,241
Sept., 1918- Aug., 1923..	9,714	10,292	11,650	16,940	25,414	26,447	23,692	18,766	14,440	11,908	11,928	11,325
1916-17									39,675	43,604	41,081	36,188
1917-18	41,729	33,501	32,569	16,616	20,050	15,895	12,935	9,734	4,941	4,612	5,410	6,754
1918-19	7,229	9,166	13,029	19,046	29,032	30,144	26,767	21,206	18,765	15,245	16,559	15,418
1919-20	13,693	14,215	14,905	18,967	23,824	22,658	19,795	16,449	12,031	11,028	10,303	10,014
1920-21	9,287	9,225	10,951	15,270	23,867	23,777	22,121	16,312	11,591	9,685	8,355	7,614
1921-22	7,564	8,558	9,795	17,692	24,721	24,438	21,066	15,852	12,093	10,380	11,452	11,390
1922-23	10,796	10,294	9,658	13,723	25,623	31,220	28,722	23,583	17,718	13,245	12,970	12,171
1923-24	10,703	10,338	12,087	16,865	23,672	23,913	20,908	16,383	10,011	8,570	8,904	9,448
1924-25	10,056	11,649										

TABLE 29.—Total frozen poultry: Cold-storage holdings, 1916-1924

[In thousands of pounds; i. e., 000 omitted]

Year	Sept. 1	Oct. 1	Nov. 1	Dec. 1	Jan. 1	Feb. 1	Mar. 1	Apr. 1	May 1	June 1	July 1	Aug. 1
5-yr. av.:												
Sept., 1917- Aug., 1922..	30,688	31,116	39,052	57,952	88,703	92,922	82,542	65,847	47,340	35,818	30,752	26,768
Sept., 1918- Aug., 1923..	25,004	26,966	34,751	58,396	96,825	103,601	93,852	75,998	56,948	43,487	37,041	31,207
1916-17									67,242	64,286	60,194	54,132
1917-18	56,093	46,737	51,743	49,581	64,557	68,238	56,950	44,115	26,523	18,929	17,652	18,756
1918-19	23,034	29,798	44,433	71,238	108,722	119,675	109,627	92,897	71,162	55,016	49,212	40,573
1919-20	32,918	30,492	33,139	54,749	87,512	92,353	78,421	61,436	40,825	30,555	24,700	22,364
1920-21	21,331	22,953	31,070	49,046	79,026	81,096	79,001	62,315	47,651	35,408	27,268	21,188
1921-22	20,064	25,602	34,876	65,167	103,697	103,350	88,709	68,471	50,840	38,002	34,837	30,659
1922-23	27,671	25,984	30,238	51,781	100,170	121,632	113,503	94,872	74,562	57,274	49,100	41,250
1923-24	34,131	33,142	40,362	63,274	93,434	99,486	93,497	76,067	62,068	39,299	34,866	33,604
1924-25	33,837	40,099										

TABLE 30.—Beef, frozen: Cold-storage holdings, 1915-1924

[In thousands of pounds; i. e., 000 omitted]

Year	Nov. 1	Dec. 1	Jan. 1	Feb. 1	Mar. 1	Apr. 1	May 1	June 1	July 1	Aug. 1	Sept. 1	Oct. 1
5-yr. av.:												
Nov., 1915- Oct., 1920..			241,004	232,368	211,860	191,820	155,267	132,130	115,407	117,061	114,596	120,943
Nov., 1918- Oct., 1923..	114,823	135,782	168,235	163,462	148,446	129,748	111,116	92,425	80,037	70,970	66,424	66,240
1915-16			126,374	182,266	174,954	118,279	90,176	73,025	55,109	58,867	58,303	66,319
1916-17	82,815	158,148	202,442	190,909	169,793	154,193	118,391	103,007	109,354	108,729	100,453	119,221
1917-18	179,032	235,664	315,572	292,114	276,114	268,015	212,725	190,684	154,638	160,962	185,144	194,469
1918-19	224,312	229,568	298,818	294,514	265,293	221,725	184,688	163,913	162,639	159,279	162,069	166,244
1919-20	194,196	223,311	261,812	252,637	223,145	195,890	170,455	130,619	95,297	77,469	67,010	58,461
1920-21	68,663	89,718	120,245	119,955	122,402	114,063	100,672	83,836	76,523	66,262	50,204	44,296
1921-22	49,014	63,188	68,495	61,622	55,785	50,772	45,841	37,548	31,593	27,727	28,210	34,611
1922-23	47,929	78,027	91,805	89,272	75,604	65,292	54,522	41,207	34,385	24,112	24,625	27,690
1923-24	43,772	71,024	82,984	79,944	76,769	68,075	52,941	41,764	37,028	29,435	29,135	28,642

TABLE 31.—Beef frozen monthly, 1918-1924

[In thousands of pounds; i. e., 000 omitted]

Year	Nov.	Dec.	Jan.	Feb.	Mar.	Apr.	May	June	July	Aug.	Sept.	Oct.
5-yr. av.: Nov., 1918- Oct., 1923			23,707	19,885	14,154	10,400	11,867	12,120	11,959	19,313	14,068	27,974
1918-19			33,743	61,991	82,708	26,346	30,413	33,795	30,600	59,822	31,012	42,944
1919-20	71,667	69,751	23,593	13,995	10,089	8,072	10,810	5,675	10,204	7,712	9,215	21,712
1920-21	31,499	39,113	12,665	11,990	6,408	6,773	6,091	6,657	7,258	7,349	7,449	21,065
1921-22	26,765	17,684	8,168	6,062	6,252	5,630	5,899	5,699	5,607	10,223	10,514	24,465
1922-23	41,268	32,523	10,365	4,539	5,317	5,189	6,294	7,179	6,278	10,868	12,252	29,695
1923-24	41,326	27,041	10,682	7,660	5,865	4,273	4,514	5,493	6,931	9,428	10,359	

TABLE 32.—Beef, cured: Cured and in process of cure in cold-storage warehouses and meat-packing establishments, 1915-1924

[In thousands of pounds; i. e., 000 omitted]

Year	Nov. 1	Dec. 1	Jan. 1	Feb. 1	Mar. 1	Apr. 1	May 1	June 1	July 1	Aug. 1	Sept. 1	Oct. 1
5-yr. av.: Nov., 1915- Oct., 1920			34,261	33,012	34,088	31,251	27,730	25,340	26,432	26,723	27,392	27,707
Nov., 1918- Oct., 1923	24,328	26,024	27,330	27,413	27,048	26,794	24,570	23,510	23,440	22,695	23,373	22,401
1915-16			21,443	20,852	20,959	25,811	21,869	17,324	18,015	18,589	18,460	21,653
1916-17	30,013	37,932	37,301	35,891	37,660	30,601	29,409	30,831	35,679	32,401	30,290	31,240
1917-18	32,223	38,329	39,243	38,793	37,575	34,106	29,217	24,804	21,968	25,065	29,981	28,713
1918-19	29,339	32,381	36,207	35,810	31,240	30,689	27,322	27,069	29,244	30,943	35,526	37,324
1919-20	37,593	35,347	37,032	30,715	37,002	35,047	30,333	26,653	26,856	25,617	22,711	19,594
1920-21	20,852	22,448	22,567	22,026	24,005	24,282	21,616	20,716	19,697	17,829	17,130	15,520
1921-22	14,472	17,144	16,313	16,774	17,997	18,744	19,169	19,304	19,113	19,304	20,081	18,961
1922-23	19,684	22,602	24,459	24,841	24,987	25,210	24,013	23,816	22,835	21,781	21,416	20,697
1923-24	19,649	22,142	22,593	22,711	23,238	25,199	25,492	24,285	22,390	20,377	19,771	18,035

TABLE 33.—Beef placed in cure in meat-packing establishments, 1918-1924

[In thousands of pounds; i. e., 000 omitted]

Year	Nov.	Dec.	Jan.	Feb.	Mar.	Apr.	May	June	July	Aug.	Sept.	Oct.
5-yr. av.: Nov., 1918- Oct., 1923			10,327	9,680	8,688	8,211	8,623	9,425	9,824	10,048	9,424	10,449
1918-19			13,936	14,816	11,072	10,043	11,265	12,381	13,950	19,055	14,747	12,242
1919-20	12,630	11,786	9,163	9,982	8,720	6,608	7,516	8,750	8,739	8,295	7,890	9,592
1920-21	9,954	9,724	7,259	6,712	6,476	6,451	6,993	8,042	8,418	8,568	7,189	9,051
1921-22	10,602	6,232	6,053	8,508	8,680	7,939	8,446	8,935	9,700	10,202	9,500	11,381
1922-23	12,667	9,530	8,326	8,414	8,454	9,516	8,907	8,967	8,369	8,622	7,796	9,980
1923-24	10,915	8,475	8,986	8,242	7,806	8,489	7,070	7,188	8,424	9,255	9,163	

TABLE 34.—Total beef frozen and cured, in cold-storage warehouses and meat-packing establishments, 1915-1924

[In thousands of pounds; i. e., 000 omitted]

Year	Nov. 1	Dec. 1	Jan. 1	Feb. 1	Mar. 1	Apr. 1	May 1	June 1	July 1	Aug. 1	Sept. 1	Oct. 1
5-yr. av.: Nov., 1915- Oct., 1920			275,265	265,980	245,948	223,071	182,096	157,470	141,840	143,784	141,687	148,049
Nov., 1918- Oct., 1923	139,152	161,807	195,585	199,875	175,494	156,543	135,685	115,940	103,530	93,685	89,796	88,641
1915-16			147,817	153,118	151,912	144,089	112,046	90,349	74,024	77,456	76,753	87,973
1916-17	122,829	166,106	230,743	226,800	207,453	184,794	147,800	133,838	145,033	141,130	130,743	150,468
1917-18	211,254	279,989	354,614	330,907	373,689	302,121	241,942	214,888	176,606	209,027	216,125	223,181
1918-19	253,652	262,049	335,085	330,324	296,539	252,418	212,407	191,002	191,883	190,222	197,595	203,571
1919-20	221,791	238,553	298,864	288,752	260,147	231,637	200,788	157,271	121,652	161,056	89,721	78,056
1920-21	89,016	112,166	142,813	142,891	146,409	136,446	122,188	109,553	96,220	84,091	67,334	59,822
1921-22	63,498	60,833	84,868	78,296	73,782	68,516	64,507	58,852	50,708	47,031	48,291	53,572
1922-23	67,814	93,628	118,255	114,113	100,591	90,502	78,535	65,023	57,220	46,693	46,041	48,187
1923-24	63,421	93,160	105,677	102,655	100,067	93,274	78,423	66,069	59,418	49,812	48,906	47,577

TABLE 35.—Lamb and mutton, frozen: Cold-storage holdings, 1915-1924
[In thousands of pounds; i. e., 000 omitted]

Year	Nov. 1	Dec. 1	Jan. 1	Feb. 1	Mar. 1	Apr. 1	May 1	June 1	July 1	Aug. 1	Sept. 1	Oct. 1
5-yr. av.: Nov., 1915- Oct., 1920 Nov., 1918- Oct., 1923	15,167	17,280	20,410	21,425	16,344	11,611	8,635	7,217	5,516	4,475	5,980	8,863
1915-16			4,976	5,286	5,812	5,084	3,858	2,525	1,939	2,098	2,185	2,579
1916-17	3,455	5,000	4,886	6,895	4,949	4,872	4,369	3,508	4,383	3,912	2,716	2,768
1917-18	4,184	5,406	7,403	6,315	7,855	6,599	3,848	3,860	2,423	3,150	4,046	5,275
1918-19	3,845	9,035	12,760	11,380	8,013	6,505	7,023	7,718	7,270	7,263	7,817	8,318
1919-20	7,894	9,409	10,280	7,787	5,781	3,517	2,579	5,735	4,311	2,299	11,021	25,325
1920-21	48,997	56,702	68,032	78,082	59,304	38,520	25,129	18,877	8,714	6,761	5,903	5,993
1921-22	6,840	7,520	6,444	3,914	2,863	2,878	2,071	2,310	3,720	3,308	3,376	3,473
1922-23	3,458	3,633	4,523	5,980	5,758	6,635	5,774	4,445	3,556	2,752	1,785	1,719
1923-24	1,997	2,014	2,483	2,306	2,173	1,719	2,693	2,273	2,917	2,257	2,230	2,535

TABLE 36.—Lamb and mutton frozen monthly, 1918-1924
[In thousands of pounds; i. e., 000 omitted]

Year	Nov.	Dec.	Jan.	Feb.	Mar.	Apr.	May	June	July	Aug.	Sept.	Oct.
5-yr. av.: Nov., 1918- Oct., 1923			1,212	875	742	815	962	1,078	655	1,041	1,192	1,551
1918-19			1,736	1,285	1,351	1,531	1,271	998	991	931	1,804	1,793
1919-20	2,546	1,457	1,117	902	554	850	1,508	1,854	742	2,398	1,942	2,334
1920-21	1,668	3,094	1,458	834	419	453	754	686	693	737	1,181	2,035
1921-22	1,444	1,218	900	656	551	816	930	1,139	511	763	608	878
1922-23	800	1,187	1,147	720	835	424	345	635	378	378	428	714
1923-24	472	657	845	274	244	475	305	987	331	331	828	

TABLE 37.—Pork, frozen: Cold-storage holdings, 1915-1924
[In thousands of pounds; i. e., 000 omitted]

Year	Nov. 1	Dec. 1	Jan. 1	Feb. 1	Mar. 1	Apr. 1	May 1	June 1	July 1	Aug. 1	Sept. 1	Oct. 1
5-yr. av.: Nov., 1915- Oct., 1920 Nov., 1918- Oct., 1923	44,118	42,182	66,912	110,779	142,095	159,791	160,299	164,175	170,703	151,056	111,352	71,856
1915-16			44,194	63,376	88,604	88,344	77,812	83,195	82,571	85,545	63,420	38,851
1916-17	23,988	32,015	50,564	66,062	63,352	64,998	74,728	77,534	91,562	96,648	72,286	39,787
1917-18	25,847	23,594	41,663	61,659	104,630	116,548	117,788	118,601	117,976	108,220	71,385	46,593
1918-19	30,668	34,760	61,539	104,708	128,897	142,189	139,205	144,212	155,263	131,137	90,510	61,417
1919-20	47,271	44,864	55,551	100,677	132,095	148,922	144,453	156,963	170,054	161,804	129,197	87,592
1920-21	67,148	60,007	93,890	150,594	208,889	219,964	200,708	194,486	182,163	149,435	103,486	64,682
1921-22	38,617	37,513	51,203	71,722	86,219	68,765	163,907	114,571	128,962	117,903	84,815	46,796
1922-23	30,638	33,774	72,278	120,199	154,377	186,115	213,224	210,646	217,074	195,002	148,753	98,795
1923-24	71,640	82,068	126,718	164,491	199,044	227,284	215,767	201,728	186,566	184,046	121,816	77,621

TABLE 38.—Pork frozen monthly, 1918-1924
[In thousands of pounds; i. e., 000 omitted]

Year	Nov.	Dec.	Jan.	Feb.	Mar.	Apr.	May	June	July	Aug.	Sept.	Oct.
5-yr. av.: Nov., 1918- Oct., 1923			68,076	55,211	44,865	35,938	39,347	45,676	33,442	21,137	17,144	18,809
1918-12			66,371	49,478	28,180	28,904	28,121	33,235	24,405	13,143	11,839	13,675
1919-20	18,615	37,727	74,501	49,453	44,741	33,831	46,995	52,752	36,697	25,309	20,700	17,500
1920-21	25,984	63,631	83,056	78,665	43,616	29,749	37,337	39,125	29,407	19,034	14,421	17,774
1921-22	18,171	37,724	43,719	36,261	35,970	31,592	42,703	63,540	32,690	20,980	17,100	17,809
1922-23	30,414	61,198	72,734	59,199	61,824	55,615	41,579	49,727	42,012	27,220	27,658	27,285
1923-24	49,828	76,276	70,286	63,914	59,527	35,841	30,733	38,369	46,810	28,956	20,177	

TABLE 39.—Pork, dry salt: Cured and in process of cure in cold-storage warehouses and meat-packing establishments, 1915-1924

[In thousands of pounds; i. e., 000 omitted]

Year	Nov. 1	Dec. 1	Jan. 1	Feb. 1	Mar. 1	Apr. 1	May 1	June 1	July 1	Aug. 1	Sept. 1	Oct. 1
5-yr. av.: Nov., 1915- Oct., 1920			243, 893	313, 699	345, 319	355, 432	350, 304	349, 408	323, 973	311, 047	273, 409	228, 785
Nov., 1918- Oct., 1923	174, 843	163, 876	199, 413	258, 423	281, 418	298, 950	300, 800	289, 237	259, 193	276, 182	242, 476	197, 181
1915-16		145, 601	184, 033	228, 910	206, 703	207, 392	206, 008	202, 089	205, 251	183, 104	140, 008	
1916-17	118, 958	142, 858	200, 999	228, 424	259, 059	234, 396	219, 819	213, 802	224, 813	231, 005	195, 678	143, 319
1917-18	110, 652	130, 892	252, 934	311, 422	402, 734	448, 114	471, 809	493, 795	462, 549	370, 203	333, 472	283, 572
1918-19	247, 194	283, 602	357, 254	471, 747	435, 661	430, 205	425, 411	422, 652	381, 736	365, 547	338, 270	332, 786
1919-20	281, 930	242, 224	262, 620	332, 848	402, 229	457, 745	462, 389	430, 782	408, 031	381, 328	316, 433	233, 399
1920-21	150, 812	114, 400	144, 897	202, 908	251, 893	255, 390	248, 443	240, 610	250, 752	231, 511	200, 291	149, 074
1921-22	103, 611	95, 731	111, 071	128, 690	139, 281	145, 183	142, 032	157, 680	186, 948	170, 856	165, 668	122, 783
1922-23	85, 671	83, 017	121, 125	155, 922	178, 024	209, 429	227, 728	214, 453	217, 862	221, 716	191, 711	146, 974
1923-24	108, 850	110, 824	148, 121	167, 607	178, 288	152, 934	191, 882	206, 009	212, 158	202, 618	180, 127	135, 594

TABLE 40.—Pork, dry salt: Placed in cure in meat-packing establishments, 1918-1924

[In thousands of pounds; i. e., 000 omitted]

Year	Nov.	Dec.	Jan.	Feb.	Mar.	Apr.	May	June	July	Aug.	Sept.	Oct.
5-yr. av.: Nov. 1918- Oct. 1923			172, 937	131, 794	109, 752	91, 289	98, 087	114, 566	108, 389	87, 835	73, 124	71, 082
1918-19			319, 278	243, 795	170, 018	127, 269	142, 481	105, 087	158, 900	105, 042	94, 339	84, 674
1919-20	108, 707	172, 585	205, 572	121, 354	101, 571	75, 596	92, 361	81, 618	66, 715	59, 692	44, 553	45, 723
1920-21	66, 451	94, 374	116, 903	105, 950	82, 076	77, 021	83, 639	105, 024	104, 207	81, 952	65, 918	59, 048
1921-22	69, 548	74, 907	88, 868	82, 858	75, 083	63, 322	92, 154	116, 759	104, 959	91, 969	75, 093	72, 713
1922-23	91, 522	128, 932	134, 058	105, 000	112, 110	112, 638	89, 801	104, 340	107, 109	100, 520	85, 715	92, 650
1923-24	113, 878	130, 144	128, 888	102, 959	94, 026	86, 423	94, 621	96, 051	110, 966	79, 758	64, 069	

TABLE 41.—Pork, pickled:¹ Cured and in process of cure in cold-storage warehouses and meat-packing establishments, 1915-1924

[In thousands of pounds; i. e., 000 omitted]

Year	Nov. 1	Dec. 1	Jan. 1	Feb. 1	Mar. 1	Apr. 1	May 1	June 1	July 1	Aug. 1	Sept. 1	Oct. 1
5-yr. av.: Nov., 1915- Oct., 1920			278, 118	339, 742	380, 567	382, 009	382, 095	387, 887	394, 113	378, 076	330, 193	269, 231
Nov., 1918- Oct., 1923	243, 809	249, 238	301, 630	348, 824	390, 766	395, 529	398, 200	405, 188	411, 499	391, 283	361, 256	306, 261
1915-16			230, 881	298, 030	350, 750	351, 051	337, 464	326, 183	359, 300	350, 570	303, 899	251, 004
1916-17	209, 061	251, 519	307, 478	348, 269	378, 847	362, 931	351, 236	303, 185	412, 810	403, 704	328, 943	252, 152
1917-18	192, 884	204, 907	269, 093	322, 004	309, 014	412, 377	400, 191	367, 486	372, 347	365, 941	315, 517	249, 827
1918-19	233, 148	242, 976	303, 763	382, 290	435, 197	431, 714	434, 671	440, 089	422, 387	394, 764	341, 724	297, 712
1919-20	239, 710	220, 893	279, 467	337, 358	369, 028	361, 073	353, 864	371, 593	403, 719	339, 806	361, 381	295, 460
1920-21	254, 838	252, 270	294, 993	316, 328	376, 376	376, 307	353, 355	401, 366	291, 366	346, 346	323, 320	190, 257, 244
1921-22	212, 628	221, 345	252, 822	284, 487	321, 950	347, 276	345, 305	363, 395	391, 474	365, 692	369, 187	318, 517
1922-23	278, 612	302, 708	377, 107	412, 800	451, 279	400, 130	459, 119	483, 673	473, 569	449, 441	413, 798	367, 374
1923-24	325, 456	384, 604	434, 030	468, 892	500, 784	512, 190	500, 683	493, 372	473, 914	443, 918	408, 928	351, 999

¹ Pickled pork includes sweet pickled, plain brine, and barreled pork.

TABLE 42.—Pork, pickled:¹ Placed in cure in meat-packing establishments, 1918-1924
[In thousands of pounds; i. e., 000 omitted]

Year	Nov.	Dec.	Jan.	Feb.	Mar.	Apr.	May	June	July	Aug.	Sept.	Oct.
5-yr. av.: Nov., 1918- Oct., 1923.			179, 632	152, 879	151, 561	148, 078	165, 062	187, 063	171, 540	143, 875	120, 621	132, 607
1918-19			175, 355	145, 409	123, 331	137, 540	146, 365	158, 241	151, 863	103, 303	94, 868	117, 168
1919-20	113, 733	158, 823	183, 398	129, 446	137, 634	130, 576	170, 406	183, 168	158, 513	132, 478	105, 218	112, 490
1920-21	118, 656	147, 865	162, 927	159, 014	140, 724	143, 582	158, 652	184, 586	163, 672	135, 071	113, 397	115, 266
1921-22	131, 226	138, 164	160, 381	152, 539	156, 228	133, 516	167, 569	208, 918	175, 046	136, 581	134, 038	143, 090
1922-23	173, 024	199, 473	205, 497	177, 077	199, 889	185, 175	182, 380	200, 372	203, 007	161, 243	155, 583	175, 019
1923-24	188, 553	210, 329	224, 613	198, 764	186, 067	181, 283	180, 266	199, 844	215, 236	158, 713	134, 096	

¹ Pickled pork includes sweet pickled, plain brine, and barreled pork.

TABLE 43.—Total pork: Frozen, dry salt, and pickled, cured and in process of cure in cold-storage warehouses and meat-packing establishments, 1915-1924
[In thousands of pounds; i. e., 000 omitted]

Year	Nov. 1	Dec. 1	Jan. 1	Feb. 1	Mar. 1	Apr. 1	
5-yr. av.: Nov., 1915-Oct., 1920 Nov., 1918-Oct., 1923.		462, 771	455, 295	572, 714 567, 958	733, 937 717, 826	829, 401 814, 279	849, 642 854, 310
1915-16		352, 006	426, 392	559, 041	642, 755	701, 258	662, 323
1916-17		328, 883	379, 293	503, 600	725, 085	876, 378	967, 040
1917-18		517, 310	580, 728	722, 656	988, 716	999, 766	1, 004, 109
1918-19		508, 921	513, 982	697, 633	776, 763	903, 359	968, 639
1919-20		472, 796	426, 677	533, 980	666, 832	837, 158	842, 966
1920-21		359, 656	355, 589	416, 098	484, 898	547, 450	591, 223
1921-22		395, 171	419, 498	570, 510	689, 924	783, 680	864, 674
1922-23		505, 948	577, 496	705, 869	800, 890	788, 086	932, 408

Year	May 1	June 1	July 1	Aug. 1	Sept. 1	Oct. 1
5-yr. av.: Nov., 1915-Oct., 1920 Nov., 1918-Oct., 1923.	849, 846 859, 299	853, 398 853, 601	841, 571 871, 393	806, 763 818, 631	688, 862 715, 083	550, 869 575, 299
1915-16	817, 688	615, 366	643, 959	641, 687	550, 013	430, 762
1916-17	675, 782	694, 521	729, 185	732, 258	596, 907	435, 333
1917-18	985, 786	1, 009, 892	892, 871	844, 395	720, 374	579, 691
1918-19	989, 283	887, 853	956, 387	862, 448	770, 504	691, 615
1919-20	960, 705	959, 338	962, 454	933, 028	807, 011	616, 441
1920-21	802, 199	801, 387	796, 281	727, 569	624, 987	471, 901
1921-22	594, 241	635, 055	707, 385	683, 451	610, 671	483, 096
1922-23	840, 071	908, 771	908, 605	866, 159	754, 262	618, 143
1923-24	908, 332	801, 109	872, 638	810, 585	710, 671	565, 414

TABLE 44.—Miscellaneous meats:¹ Cold-storage holdings, 1916-1924

[In thousands of pounds; i. e., 000 omitted]

Year	Nov. 1	Dec. 1	Jan. 1	Feb. 1	Mar. 1	Apr. 1	May 1	June 1	July 1	Aug. 1	Sept. 1	Oct. 1
5 yr. av.: Nov., 1917- Oct., 1922. Nov., 1918- Oct., 1923.	69, 560 70, 168	72, 154 72, 164	85, 779 87, 307	90, 645 92, 960	92, 185 92, 203	86, 544 87, 603	84, 785 83, 012	79, 065 78, 232	79, 902 78, 702	77, 161 74, 840	77, 339 71, 262	72, 015 64, 721
1916-17										16, 173	47, 754	44, 328
1917-18	42, 914	50, 355	55, 560	55, 658	67, 632	80, 200	78, 252	71, 148	77, 470	79, 959	96, 810	96, 879
1918-19	102, 623	106, 254	128, 892	141, 914	132, 070	125, 735	113, 123	97, 195	95, 908	91, 443	85, 368	83, 257
1919-20	82, 113	82, 863	108, 769	113, 228	109, 452	100, 049	87, 435	88, 384	80, 047	78, 670	69, 471	68, 454
1920-21	59, 480	60, 092	75, 421	85, 254	95, 163	87, 935	93, 046	90, 392	85, 207	80, 993	79, 778	69, 739
1921-22	60, 690	61, 219	60, 255	57, 171	54, 459	63, 801	52, 008	60, 296	64, 878	54, 734	55, 773	49, 047
1922-23	45, 954	50, 405	63, 201	67, 234	67, 879	89, 997	69, 336	66, 886	71, 470	63, 355	65, 923	60, 410
1923-24	52, 714	66, 817	83, 303	81, 922	82, 550	80, 469	74, 787	68, 837	70, 029	67, 935	63, 644	57, 174

¹ Miscellaneous meats include all stocks of beef, pork, and mutton trimmings and edible offal that have been frozen, cured, or otherwise prepared for food. It does not include the trimmings that have not been frozen, cured nor processed, nor does it include sausage or canned-meat products.

TABLE 45.—Total meats in cold-storage warehouses and meat-packing establishments, 1916-1924

(In thousands of pounds; i. e., 000 omitted)

Year	Nov. 1	Dec. 1	Jan. 1	Feb. 1	Mar. 1	Apr. 1
5-yr. av.: Nov., 1916-Oct., 1921			964,028	1,121,663	1,206,471	1,261,513
Nov., 1918-Oct., 1923	687,258	708,525	871,237	1,023,086	1,096,820	1,109,967
1916-17			803,669	875,460	913,659	851,990
1917-18	587,245	709,043	981,378	1,117,965	1,265,554	1,354,961
1918-19	882,239	938,096	1,199,272	1,452,312	1,436,378	1,388,764
1919-20	880,719	865,101	1,016,558	1,186,583	1,278,729	1,304,142
1920-21	670,285	656,636	820,245	976,053	1,133,633	1,107,706
1921-22	490,648	504,669	666,603	624,273	680,563	717,417
1922-23	512,396	569,165	754,489	876,251	957,908	1,031,808
1923-24	628,578	739,403	900,242	987,773	1,062,816	1,107,861
Year	May 1	June 1	July 1	Aug. 1	Sept. 1	Oct. 1
5-yr. av.: Nov., 1916-Oct., 1921		1,128,270	1,093,260	1,043,168	925,882	782,724
Nov., 1918-Oct., 1923	1,154,758	1,059,990	1,059,153	991,510	882,121	737,623
1916-17	827,951	831,867	878,599	893,472	778,119	632,802
1917-18	1,319,325	1,299,779	1,149,377	1,136,501	1,036,861	905,326
1918-19	1,332,443	1,283,768	1,264,457	1,171,381	1,061,274	984,259
1919-20	1,251,508	1,233,728	1,194,484	1,115,082	977,225	783,777
1920-21	1,022,552	1,017,209	989,402	899,406	770,951	607,455
1921-22	712,887	745,022	816,689	788,524	727,111	589,188
1922-23	1,063,765	1,045,224	1,040,751	983,159	868,016	723,459
1923-24	1,063,635	1,028,288	1,005,002	930,589	825,651	672,706

TABLE 46.—Lard in cold-storage warehouses and meat-packing establishments, 1915-1924¹

(In thousands of pounds; i. e., 000 omitted)

Year	Nov. 1	Dec. 1	Jan. 1	Feb. 1	Mar. 1	Apr. 1	May 1	June 1	July 1	Aug. 1	Sept. 1	Oct. 1
5-yr. av.: Nov., 1915- Oct., 1920			73,142	94,772	100,619	99,546	105,594	93,815	115,129	120,532	109,518	83,522
Nov., 1918- Oct., 1923	53,018	48,403	64,611	87,404	95,098	105,370	117,592	125,145	153,580	154,632	128,844	83,755
1915-16			63,304	92,342	111,897	97,237	108,781	85,113	87,127	95,991	82,028	71,570
1916-17	56,929	58,930	90,977	86,208	88,460	65,170	61,640	72,305	85,197	112,249	102,172	89,929
1917-18	37,035	44,367	54,539	69,310	65,355	89,854	103,373	106,194	107,871	162,411	104,668	90,398
1918-19	76,124	81,679	104,274	138,353	125,410	112,469	112,409	83,080	92,132	100,478	87,947	76,436
1919-20	66,036	49,147	62,614	97,649	111,975	132,993	141,519	152,307	183,316	191,531	170,774	109,258
1920-21	47,329	30,683	53,319	83,549	117,690	128,614	152,428	181,922	204,301	194,490	149,886	85,115
1921-22	48,850	42,001	47,541	61,202	61,297	86,031	96,056	123,788	154,254	143,084	119,755	75,338
1922-23	36,750	32,506	45,808	35,293	59,101	60,743	85,251	84,530	123,890	143,579	115,860	72,608
1923-24	35,225	35,317	49,340	34,130	68,619	85,722	102,317	127,949	152,520	149,672	124,676	83,854

¹ Lard includes all prime steam, kettle-rendered, neutral, and other pure lards. It does not include lard substitutes nor compounds.

TABLE 47.—Bluefish: Cold-storage holdings, 1916-1924

(In thousands of pounds; i. e., 000 omitted)

Year	May 15	June 15	July 15	Aug. 15	Sept. 15	Oct. 15	Nov. 15	Dec. 15	Jan. 15	Feb. 15	Mar. 15	Apr. 15
5-yr. av.: May, 1917- Apr., 1922	69	95	90	149	226	371	373	349	323	212	141	91
May, 1918- Apr., 1923	82	93	94	175	300	460	405	464	406	256	155	93
1916-17						248	472	253	242	16	106	46
1917-18	15	79	125	84	43	173	209	175	157	123	94	64
1918-19	05	27	25	30	216	274	239	230	249	178	109	51
1919-20	32	27	32	128	173	295	269	262	321	223	134	91
1920-21	109	219	153	211	256	367	402	411	330	237	212	162
1921-22	126	128	114	282	442	748	745	668	560	280	154	85
1922-23	77	66	147	217	412	617	822	750	579	344	164	77
1923-24	48	64	200	282	335	604	406	474	422	253	177	150
1924-25	108	115	101	93	89	107						

TABLE 48.—Bluefish frozen monthly, 1919-1924

[In thousands of pounds; i. e., 000 omitted]

Year	May	June	July	Aug.	Sept.	Oct.	Nov.	Dec.	Jan.	Feb.	Mar.	Apr.
1919-20				64	149	31	14	5	2			
1920-21	118	10	38	99	188	58	60	4	2	1	4	57
1921-22	22	19	180	180	341	91	77	8			3	3
1922-23	5	97	108	185	212	191	2	3				1
1923-24	25	204	43	44	197	23	59	57	1	2	29	9
1924-25	33	20	9	12	34							

TABLE 49.—Butterfish: Cold-storage holdings, 1916-1924

[In thousands of pounds; i. e., 000 omitted]

Year	May 15	June 15	July 15	Aug. 15	Sept. 15	Oct. 15	Nov. 15	Dec. 15	Jan. 15	Feb. 15	Mar. 15	Apr. 15
5-yr. av.:												
May, 1917- Apr., 1922	143	296	565	743	806	1,012	1,139	965	756	520	301	181
May, 1918- Apr., 1923	143	189	375	504	637	811	984	851	672	460	285	178
1916-17						1,099	1,446	1,032	867	271	232	76
1917-18	34	580	1,098	1,166	1,143	1,419	1,472	1,127	876	516	220	97
1918-19	156	364	593	1,258	1,250	1,271	1,308	1,154	922	692	451	193
1919-20	163	183	393	548	668	772	736	969	459	335	254	237
1920-21	182	201	295	489	515	987	1,353	1,208	1,068	662	355	233
1921-22	181	153	154	255	422	612	828	865	518	392	227	174
1922-23	32	46	139	271	331	413	698	560	458	218	188	84
1923-24	25	147	226	394	410	496	602	519	410	221	181	58
1924-25	43	171	322	438	805	850						

TABLE 50.—Butterfish frozen monthly, 1919-1924

[In thousands of pounds; i. e., 000 omitted]

Year	May	June	July	Aug.	Sept.	Oct.	Nov.	Dec.	Jan.	Feb.	Mar.	Apr.
1919-20				160	153	83	8	3				5
1920-21	58	128	214	79	497	585	62	21	3	7		
1921-22	14	2	198	203	243	347	22	6			4	
1922-23	20	83	153	89	106	329	85				10	8
1923-24	154	106	154	47	117	176	28	5	6		4	24
1924-25	149	173	139	393	109							

TABLE 51.—Ciscos:¹ Cold-storage holdings, 1916-1924

[In thousands of pounds; i. e., 000 omitted]

Year	May 15	June 15	July 15	Aug. 15	Sept. 15	Oct. 15	Nov. 15	Dec. 15	Jan. 15	Feb. 15	Mar. 15	Apr. 15
5-yr. av.:												
May, 1917- Apr., 1922	1,257	1,035	1,148	2,624	4,313	5,063	5,155	6,562	5,934	4,558	3,040	2,239
May, 1918- Apr., 1923	1,774	1,443	1,506	3,199	4,977	5,708	5,340	6,016	5,655	4,397	2,873	2,024
1916-17						345	813	2,200	1,782	489	486	229
1917-18	65	173	262	1,018	2,860	4,275	5,337	9,456	7,292	4,479	2,814	2,224
1918-19	1,755	1,307	1,399	3,339	4,457	3,822	4,183	6,010	5,652	3,692	2,062	1,279
1919-20	879	602	1,070	2,165	3,408	4,433	3,815	4,507	4,260	3,310	1,901	1,146
1920-21	892	567	465	2,152	4,909	6,444	6,040	8,534	6,952	4,957	3,945	3,331
1921-22	2,783	2,525	2,605	4,444	5,839	6,343	5,894	6,244	7,125	6,351	4,510	3,316
1922-23	2,649	2,216	2,062	3,893	6,183	7,499	6,792	6,727	5,894	3,875	1,949	1,048
1923-24	498	379	630	4,227	8,801	10,919	10,378	12,806	10,972	8,896	6,068	4,690
1924-25	3,899	3,463	3,341	4,172	5,739	8,642						

¹ Includes tullibees reported separately since January, 1922.

Cold-Storage Holdings

21

TABLE 52.—Ciscos' frozen monthly, 1919-1924

[In thousands of pounds; i. e., 000 omitted]

Year	May	June	July	Aug.	Sept.	Oct.	Nov.	Dec.	Jan.	Feb.	Mar.	Apr.
1919-20				2,631	1,556	671	1,168	736	30	41	48	42
1920-21	21	313	2,331	2,606	1,707	651	1,318	528	45	38	69	14
1921-22	61	292	2,056	1,875	1,076	1,394	1,157	372	22	38	60	15
1922-23	9	169	2,261	2,378	2,108	676	1,689	1,060	104	96	38	16
1923-24	76	399	3,585	5,222	2,031	684	3,180	742	56	91	44	178
1924-25	165	405	1,384	2,602	4,260							

1 Includes tullfibees, reported separately since January, 1922.

TABLE 53.—Cod, hake, pollock, and haddock: Cold-storage holdings, 1916-1924

[In thousands of pounds; i. e., 000 omitted]

Year	May 15	June 15	July 15	Aug. 15	Sept. 15	Oct. 15	Nov. 15	Dec. 15	Jan. 15	Feb. 15	Mar. 15	Apr. 15
5-yr. av.: May 15, 1917- Apr. 15, 1922	2,113	2,504	2,744	2,705	3,004	3,391	4,240	4,309	3,587	2,936	2,310	1,857
May 15, 1918- Apr. 15, 1923	1,992	2,273	2,354	2,511	2,719	2,871	3,578	3,524	3,154	2,056	2,077	1,577
1916-17						1,349	1,717	2,017	1,189	557	482	666
1917-18	1,104	1,994	2,292	1,374	1,826	2,872	3,778	4,004	2,489	1,285	1,285	1,591
1918-19	2,451	3,403	3,908	4,680	5,005	5,275	7,510	7,005	6,377	5,852	4,736	3,487
1919-20	3,612	3,767	3,789	3,492	3,746	3,060	4,360	4,775	3,823	2,908	1,802	1,286
1920-21	1,406	1,857	1,818	2,113	2,578	3,109	3,786	3,541	3,580	3,131	2,815	2,236
1921-22	1,991	1,955	1,916	1,878	1,805	1,633	1,760	1,722	1,361	1,136	913	674
1922-23	501	391	340	402	400	374	469	579	823	154	121	192
1923-24	356	475	533	873	1,021	1,243	1,447	1,542	1,105	882	687	387
1924-25	464	476	622	695	655	732						

TABLE 54.—Cod, hake, pollock, and haddock frozen monthly, 1919-1924

[In thousands of pounds; i. e., 000 omitted]

Year	May	June	July	Aug.	Sept.	Oct.	Nov.	Dec.	Jan.	Feb.	Mar.	Apr.
1919-20				557	565	659	669	112	95	171	147	188
1920-21	488	293	438	603	589	793	138	275	172	39	72	47
1921-22	126	114	88	95	617	286	186	150	7	39	121	52
1922-23	81	26	140	61	112	202	171	34	32	28	40	215
1923-24	166	146	418	240	338	345	222	55	62	63	23	203
1924-25	88	254	207	114	200							

TABLE 55.—Croakers: Cold-storage holdings, 1916-1924

[In thousands of pounds; i. e., 000 omitted]

Year	May 15	June 15	July 15	Aug. 15	Sept. 15	Oct. 15	Nov. 15	Dec. 15	Jan. 15	Feb. 15	Mar. 15	Apr. 15
6-yr. av.: May 15, 1917- Apr. 15, 1922	266	388	414	491	509	508	625	633	328	241	148	114
May 15, 1918- Apr. 15, 1923	239	358	396	433	469	443	425	449	274	210	137	126
1916-17						215	177	149	213	91	13	19
1917-18	173	175	165	325	218	380	518	426	274	162	56	51
1918-19	569	1,116	1,143	1,209	1,080	1,043	1,006	964	722	578	378	223
1919-20	334	400	349	307	198	193	180	153	82	38	11	31
1920-21	34	64	134	231	709	706	704	577	488	406	281	236
1921-22	219	187	277	331	338	266	219	546	73	23	12	27
1922-23	37	24	75	37	22	6	18	4	4	3	1	115
1923-24	277	489	363	352	339	392	304	319	249	104	52	86
1924-25	286	304	379	758	017	403						

TABLE 56.—*Croakers frozen monthly, 1919-1924*

[In thousands of pounds; i. e., 000 omitted]

Year	May	June	July	Aug.	Sept.	Oct.	Nov.	Dec.	Jan.	Feb.	Mar.	Apr.
1919-20				21	35	12			5	1		9
1920-21	30	73	153	450					2	2		
1921-22	11	108	32	93		31	4	1			15	11
1922-23		65	23	10		13					114	106
1923-24	18	53	6	7	62	14		1			60	230
1924-25	9	77	377	45	4							

TABLE 57.—*Halibut: Cold-storage holdings, 1916-1924*

[In thousands of pounds; i. e., 000 omitted]

Year	May 15	June 15	July 15	Aug. 15	Sept. 15	Oct. 15	Nov. 15	Dec. 15	Jan. 15	Feb. 15	Mar. 15	Apr. 15
3-yr. av.: May, 1917- Apr., 1922	3,360	4,968	6,703	8,688	9,943	9,910	9,870	8,431	6,654	4,543	3,329	2,580
May, 1918- Apr., 1923	3,444	5,031	6,057	8,460	9,851	9,917	9,309	8,056	6,352	4,447	3,077	2,269
1916-17						7,010	6,446	5,446	4,118	1,144	1,004	1,157
1917-18	2,459	3,536	4,612	5,971	6,750	6,792	8,545	6,490	5,204	2,850	1,978	1,824
1918-19	2,829	5,085	7,372	10,528	11,940	11,720	11,692	10,301	7,922	5,571	4,377	3,342
1919-20	4,584	5,503	6,640	10,618	11,558	11,875	11,476	9,828	7,789	5,371	3,978	3,105
1920-21	4,155	5,715	6,680	8,830	10,340	10,677	9,730	8,749	5,961	4,117	2,626	1,965
1921-22	2,773	4,375	5,213	7,093	9,129	8,486	7,995	6,869	6,386	4,805	3,792	2,552
1922-23	2,679	3,878	4,861	4,835	6,287	6,825	5,741	4,534	3,782	2,371	711	381
1923-24	1,344	2,849	4,562	5,793	7,516	7,058	6,757	6,308	5,533	3,754	2,310	3,242
1924-25	4,074	5,647	8,376	11,736	14,104	14,609						

TABLE 58.—*Halibut frozen monthly, 1919-1924*

[In thousands of pounds; i. e., 000 omitted]

Year	May	June	July	Aug.	Sept.	Oct.	Nov.	Dec.	Jan.	Feb.	Mar.	Apr.
1919-20				1,395	1,018	317	253	182	260	749	797	1,588
1920-21	1,565	1,190	1,972	1,615	1,737	391	625	488	303	153	344	916
1921-22	2,045	1,455	1,893	1,363	423	672	629	379	367	133	87	60
1922-23	328	742	602	1,261	1,092	234	146	161	143	81	193	1,210
1923-24	1,432	2,244	1,575	1,798	401	569	414	621	284	169	962	1,184
1924-25	1,729	3,092	2,610	1,487	673							

TABLE 59.—*Herring: Cold-storage holdings, 1916-1924*

[In thousands of pounds; i. e., 000 omitted]

Year	May 15	June 15	July 15	Aug. 15	Sept. 15	Oct. 15	Nov. 15	Dec. 15	Jan. 15	Feb. 15	Mar. 15	Apr. 15
5-yr. av.: May, 1917- Apr., 1922	3,802	6,822	8,795	8,575	8,480	9,225	9,433	9,748	7,745	5,487	3,516	2,292
May, 1918- Apr., 1923	3,183	5,800	7,687	7,646	7,677	9,019	8,761	8,766	7,064	5,145	3,297	2,117
1916-17						8,508	8,585	8,853	6,749	3,294	1,892	1,160
1917-18	3,689	5,902	6,620	6,231	5,955	7,450	7,427	7,340	5,891	3,615	2,185	1,811
1918-19	5,240	12,535	16,176	16,761	16,274	15,861	15,785	15,930	13,024	9,623	6,749	4,225
1919-20	5,891	9,488	11,709	10,690	10,898	11,425	11,749	11,439	9,296	6,480	3,712	2,012
1920-21	2,203	3,297	5,688	5,480	6,405	6,124	6,582	7,736	6,357	5,268	3,775	2,654
1921-22	1,988	2,889	3,775	3,715	3,870	5,259	5,624	5,786	4,148	2,484	1,158	767
1922-23	595	1,121	1,086	1,585	1,939	6,429	4,665	2,930	2,484	1,803	1,090	639
1923-24	1,653	2,076	2,827	3,421	3,484	3,831	4,075	3,368	2,309	1,742	1,744	839
1924-25	1,927	2,710	2,781	3,601	3,188	3,063						708

TABLE 60.—Herring frozen monthly, 1919-1924

[In thousands of pounds; i. e., 000 omitted]

Year	May	June	July	Aug.	Sept.	Oct.	Nov.	Dec.	Jan.	Feb.	Mar.	Apr.
1919-20				849	1,440	1,813	1,392	185	244	394	165	111
1920-21	1,424	2,914	325	186	1,139	1,083	2,380	495	427	205	89	288
1921-22	1,671	1,559	843	632	1,937	989	1,272	125	238	118	180	117
1922-23	413	127	569	398	4,667	646	403	58	132	105	514	983
1923-24	701	668	914	368	593	528	213	123	384	255	101	1,561
1924-25	1,330	595	1,283	195	869							

TABLE 61.—Herring, cured: Cold-storage holdings, 1916-1924

[In thousands of pounds; i. e., 000 omitted]

Year	May 15	June 15	July 15	Aug. 15	Sept. 15	Oct. 15	Nov. 15	Dec. 15	Jan. 15	Feb. 15	Mar. 15	Apr. 15
5-yr. av.: May, 1917- Apr., 1922	13,760	16,970	18,765	20,769	22,164	20,701	17,812	16,171	13,528	12,202	12,385	13,589
May, 1918- Apr., 1923	14,855	17,490	19,013	21,515	25,054	23,763	20,632	19,132	16,226	14,535	14,268	14,912
1916-17						1,044	3,347	3,209	3,353	4,727	5,998	7,322
1917-18	7,371	10,389	12,180	12,187	10,187	8,817	8,843	7,928	6,456	4,611	5,602	8,127
1918-19	12,306	19,635	23,828	27,200	27,511	23,189	20,192	18,740	14,810	14,131	12,249	21,138
1919-20	23,158	26,983	29,638	30,342	34,565	32,092	24,871	21,818	18,499	16,021	14,913	15,042
1920-21	15,808	18,632	19,790	22,111	22,752	21,655	19,377	16,369	13,056	11,097	10,776	10,776
1921-22	10,111	9,210	8,389	11,913	16,207	17,783	15,809	16,002	14,852	14,851	12,385	12,861
1922-23	12,894	12,991	13,422	15,921	24,637	24,129	22,942	22,730	19,949	16,275	15,017	14,741
1923-24	15,572	14,706	15,353	15,924	18,726	17,506	15,572	14,608	14,349	13,028	10,914	8,849
1924-25	9,062	9,410	9,440	12,687	16,521	10,133						

TABLE 62.—Lake trout: Cold-storage holdings, 1916-1924

[In thousands of pounds; i. e., 000 omitted]

Year	May 15	June 15	July 15	Aug. 15	Sept. 15	Oct. 15	Nov. 15	Dec. 15	Jan. 15	Feb. 15	Mar. 15	Apr. 15
5-yr. av.: May, 1917- Apr., 1922	363	431	501	541	566	827	1,659	1,774	1,324	926	570	355
May, 1918- Apr., 1923	419	503	574	597	611	840	1,721	1,934	1,470	1,040	581	326
1916-17						108	629	771	392	153	80	43
1917-18	120	189	198	218	202	482	1,232	1,050	667	270	232	196
1918-19	269	342	452	570	547	758	1,660	1,551	1,199	895	483	292
1919-20	277	287	343	374	473	739	1,619	1,069	1,230	817	321	91
1920-21	252	442	480	554	555	943	1,721	2,118	1,665	1,394	1,114	936
1921-22	896	944	1,032	991	1,053	1,213	2,094	2,489	1,866	1,256	700	262
1922-23	490	468	585	497	426	502	1,617	1,854	1,443	839	287	50
1923-24	45	194	281	372	389	579	1,189	1,614	1,232	897	745	282
1924-25	270	498	630	653	687	928						

TABLE 63.—Lake trout frozen monthly, 1919-1924

[In thousands of pounds; i. e., 000 omitted]

Year	May	June	July	Aug.	Sept.	Oct.	Nov.	Dec.	Jan.	Feb.	Mar.	Apr.
1919-20				124	372	600	265	171	184	38	40	193
1920-21	226	60	132	63	414	842	599	27	81	1	4	31
1921-22	145	126	33	93	215	910	854	10	17	17	4	101
1922-23	164	109	38	57	174	1,036	435	26	11	2	6	4
1923-24	168	86	107	65	124	614	699	73	64	39	4	71
1924-25	152	269		169	301							

TABLE 64.—Mackerel: Cold-storage holdings, 1916-1924

(In thousands of pounds; i. e., 000 omitted)

Year	May 15	June 15	July 15	Aug. 15	Sept. 15	Oct. 15	Nov. 15	Dec. 15	Jan. 15	Feb. 15	Mar. 15	Apr. 15
5-yr. av.: May, 1917- Apr., 1922	793	1,727	2,397	2,505	2,546	2,850	2,832	2,589	2,459	2,028	1,446	903
May, 1918- Apr., 1923	786	1,899	2,595	2,652	2,674	3,123	3,145	2,959	2,907	2,362	1,739	1,044
1916-17						2,288	2,730	2,563	1,654	937	817	714
1917-18	708	1,067	1,583	2,110	2,341	3,058	4,037	3,103	2,414	1,778	1,230	1,002
1918-19	697	1,532	2,559	3,319	3,880	4,112	4,112	3,785	3,569	3,445	2,685	1,564
1919-20	1,338	2,580	2,784	2,384	2,227	2,399	2,190	2,033	2,339	2,103	1,207	728
1920-21	547	1,760	3,359	3,015	2,678	2,593	2,479	2,406	2,211	1,480	1,198	841
1921-22	675	1,095	1,670	1,696	1,603	1,496	1,667	1,634	1,480	1,333	908	382
1922-23	671	1,029	2,425	2,847	2,983	5,025	5,603	4,953	4,633	3,447	2,696	1,706
1923-24	1,475	1,717	2,697	2,935	5,322	6,756	6,254	5,501	4,355	3,266	2,063	1,226
1924-25	918	1,014	2,526	3,394	4,922	4,895						

TABLE 65.—Mackerel frozen monthly, 1919-1923

(In thousands of pounds; i. e., 000 omitted)

Year	May	June	July	Aug.	Sept.	Oct.	Nov.	Dec.	Jan.	Feb.	Mar.	Apr.
1919-20				200	165	91	9	4	62	37	64	7
1920-21				130	129	316	394	230	81	141	94	25
1921-22	1,324	1,732	130	242	105	192	212	119	60	38	6	273
1922-23	1,333	624	503	355	2,016	606	160	191	185	216	24	208
1923-24	452	1,042	341	2,821	1,770	179	120	122	92	59	30	58
1924-25	270	1,423	1,425	1,234	110							

TABLE 66.—Sablefish: Cold-storage holdings, 1916-1924

(In thousands of pounds; i. e., 000 omitted)

Year	May 15	June 15	July 15	Aug. 15	Sept. 15	Oct. 15	Nov. 15	Dec. 15	Jan. 15	Feb. 15	Mar. 15	Apr. 15
5-yr. av.: May, 1917- Apr., 1922	480	734	968	1,343	1,707	1,968	1,914	1,813	1,420	1,017	822	636
May, 1918- Apr., 1923	585	718	835	1,119	1,496	1,891	1,803	1,610	1,811	984	811	623
1916-17						708	1,044	785	542	342	96	100
1917-18	122	657	1,155	1,647	1,668	1,196	1,456	1,830	942	435	192	122
1918-19	234	916	1,318	2,236	3,204	3,869	3,519	3,185	2,827	2,429	2,179	1,789
1919-20	1,581	1,633	1,629	1,584	1,854	2,039	1,952	1,644	1,355	768	513	302
1920-21	253	193	283	597	834	1,119	1,017	921	743	339	290	250
1921-22	208	270	456	600	977	1,619	1,624	1,486	1,235	1,070	934	707
1922-23	651	580	486	527	610	808	905	813	394	263	139	59
1923-24	60	131	894	1,438	1,887	2,134	2,274	2,134	1,916	1,522	1,322	964
1924-25	467	378	443	912	1,140	1,530						

TABLE 67.—Sablefish frozen monthly, 1919-1924

(In thousands of pounds; i. e., 000 omitted)

Year	May	June	July	Aug.	Sept.	Oct.	Nov.	Dec.	Jan.	Feb.	Mar.	Apr.
1919-20				500	229	215	37	21	25	26	7	56
1920-21				382	391	109	110	23	4	53	52	40
1921-22	110	66	185	389	655	121	34	14	9	20	28	90
1922-23	10	66	127	165	282	228	83	17	27	18	19	34
1923-24	78	757	570	378	261	240	78	97	37	168	39	18
1924-25	58	163	457	873	515							

TABLE 68.—Fall and silver salmon: Cold-storage holdings, 1916-1924

[In thousands of pounds; i. e., 000 omitted]

Year	May 15	June 15	July 15	Aug. 15	Sept. 15	Oct. 15	Nov. 15	Dec. 15	Jan. 15	Feb. 15	Mar. 15	Apr. 15
5-yr. av.: May 15, 1917- Apr. 15, 1922	1,117	990	1,063	1,279	1,616	3,010	4,357	3,990	3,337	2,436	1,926	1,327
May 15, 1918- Apr. 15, 1923	1,072	944	1,072	1,338	1,781	3,285	4,494	4,055	3,528	2,614	1,879	1,267
1916-17						1,384	4,232	3,469	3,200	1,155	1,635	953
1917-18	531	574	552	673	1,174	2,020	3,579	3,959	2,714	1,881	1,012	1,295
1918-19	798	707	909	1,090	1,457	3,241	4,691	4,846	4,064	3,856	3,179	2,501
1919-20	2,252	2,047	1,940	2,015	2,163	3,741	4,927	4,658	3,640	2,675	1,848	1,277
1920-21	1,104	993	1,001	1,228	1,430	2,989	4,907	4,340	3,283	2,408	1,561	1,026
1921-22	301	658	905	1,390	1,856	3,061	3,780	3,008	2,363	1,532	1,129	536
1922-23	406	344	801	969	2,000	3,391	4,265	3,415	3,073	2,598	1,680	994
1923-24	519	318	713	1,066	1,829	3,363	3,802	3,277	2,593	1,895	1,415	921
1924-25	726	720	1,260	1,928	2,457	5,782						

TABLE 69.—Fall and silver salmon frozen monthly, 1919-1924

[In thousands of pounds; i. e., 000 omitted]

Year	May	June	July	Aug.	Sept.	Oct.	Nov.	Dec.	Jan.	Feb.	Mar.	Apr.
1919-20				340	1,629	1,777	122	83	21	3	75	2
1920-21	64	192	398	224	1,538	2,376	290	87	216	65	38	4
1921-22	26	204	541	518	1,138	1,416	98	88	114	68	11	12
1922-23	79	346	442	938	1,584	1,248	75	93	95	9	20	51
1923-24	56	493	250	612	1,685	977	132	103	88	16	18	37
1924-25	90	598	541	435	3,191							

TABLE 70.—Miscellaneous salmon:¹ Cold-storage holdings, 1916-1924

[In thousands of pounds; i. e., 000 omitted]

Year	May 15	June 15	July 15	Aug. 15	Sept. 15	Oct. 15	Nov. 15	Dec. 15	Jan. 15	Feb. 15	Mar. 15	Apr. 15
5-yr. av.: May, 1917- Apr. 1922	691	912	1,732	2,510	3,584	3,786	3,468	3,160	2,407	2,022	1,397	922
May, 1918- Apr., 1923	800	957	1,774	2,703	4,265	4,778	4,337	3,885	2,839	2,282	1,494	999
1916-17						1,986	1,701	1,617	2,554	977	525	389
1917-18	363	461	1,194	1,321	1,608	1,685	1,731	1,265	952	788	694	437
1918-19	391	948	1,783	2,967	4,082	4,825	4,157	4,449	3,269	2,692	1,948	1,439
1919-20	1,461	1,283	1,056	2,561	2,607	3,279	2,963	2,682	2,100	1,838	1,098	722
1920-21	636	906	1,543	2,281	3,248	3,663	3,121	2,888	2,344	2,011	1,216	874
1921-22	665	963	2,182	3,419	5,177	5,655	5,369	4,519	3,368	2,781	2,028	1,136
1922-23	908	937	1,403	2,287	5,010	6,847	6,073	4,886	3,112	2,098	1,178	822
1923-24	653	685	2,417	3,923	5,540	5,771	5,529	4,630	3,682	2,537	1,769	1,254
1924-25	911	1,241	2,371	4,398	5,524	7,061						

¹ Includes steelhead trout, reported separately since January 15, 1922.TABLE 71.—Miscellaneous salmon frozen monthly, 1919-1924¹

[In thousands of pounds; i. e., 000 omitted]

Year	May	June	July	Aug.	Sept.	Oct.	Nov.	Dec.	Jan.	Feb.	Mar.	Apr.
1919-20				572	499	47	17	47	48	61	65	104
1920-21	348	799	795	1,023	593	120	214	105	128	64	71	37
1921-22	319	856	1,326	1,064	754	221	55	46	13	23	49	149
1922-23	290	889	938	2,410	1,864	340	193	20	75	29	12	20
1923-24	295	2,005	1,494	1,418	665	233	180	33	44	69	78	78
1924-25	590	1,743	2,118	628	1,354							

¹ Includes steelhead trout, reported separately since December, 1921.

TABLE 72.—*Salmon, mild-cured: Cold-storage holdings, 1916-1924*

[In thousands of pounds; i. e., 000 omitted]

Year	May 15	June 15	July 15	Aug. 15	Sept. 15	Oct. 15	Nov. 15	Dec. 15	Jan. 15	Feb. 15	Mar. 15	Apr. 15
5-yr. av.: May, 1917- Apr., 1922	3,151	3,349	4,408	6,578	7,203	7,532	7,032	6,210	5,122	4,464	3,606	3,079
May, 1918- Apr., 1923	3,038	3,336	4,728	7,026	7,900	8,128	7,548	6,276	5,498	4,626	3,658	3,131
1916-17						3,554	4,800	3,818	3,480	3,936	2,730	2,584
1917-18	2,245	2,174	2,240	3,747	3,587	5,113	4,716	4,546	2,093	2,898	2,337	1,984
1918-19	1,873	2,151	2,689	5,129	6,542	7,104	6,905	6,672	6,054	5,191	4,104	3,788
1919-20	4,068	5,093	7,020	9,698	10,737	10,474	10,259	9,388	7,948	7,586	6,433	5,629
1920-21	5,893	5,656	6,644	8,149	8,275	8,275	7,712	5,794	4,727	3,968	2,793	1,680
1921-22	1,644	1,672	3,140	8,165	8,855	6,666	5,569	4,652	3,640	2,697	2,252	2,002
1922-23	1,084	2,358	3,849	5,988	7,565	8,092	7,284	4,874	4,814	3,708	2,650	2,247
1923-24	1,897	2,406	4,392	6,085	7,155	6,617	5,691	5,294	3,167	1,981	2,135	1,621
1924-25	1,221	2,522	5,642	9,366	9,429	9,059						

TABLE 73.—*Shad and shad roe: Cold-storage holdings, 1916-1924*

[In thousands of pounds; i. e., 000 omitted]

Year	May 15	June 15	July 15	Aug. 15	Sept. 15	Oct. 15	Nov. 15	Dec. 15	Jan. 15	Feb. 15	Mar. 15	Apr. 15
5-yr. av.: May, 1917- Apr. 1922	251	541	660	591	585	638	618	561	454	336	252	196
May, 1918- Apr. 1923	234	516	549	574	581	577	561	465	376	289	175	139
1916-17						393	608	465	360	100	153	118
1917-18	207	402	356	404	375	658	636	693	620	376	333	319
1918-19	413	921	844	908	804	788	795	673	482	528	483	320
1919-20	347	651	778	851	825	842	799	724	523	322	145	106
1920-21	193	481	469	524	546	534	518	401	344	195	112	75
1921-22	95	250	324	370	392	359	372	314	302	261	89	160
1922-23	121	273	360	317	337	350	350	214	230	137	44	35
1923-24	151	260	312	419	440	471	468	566	461	580	144	107
1924-25	216	409	877	797	683	717						

TABLE 74.—*Shad and shad roe frozen monthly, 1919-1924*

[In thousands of pounds; i. e. 000 omitted]

Year	May	June	July	Aug.	Sept.	Oct.	Nov.	Dec.	Jan.	Feb.	Mar.	Apr.
1919-20				75	23	3	6					
1920-21	221	74	31	108	4	2			49	5	16	104
1921-22	211	65	50	28	19	1			1	12	27	8
1922-23	168	22	39	18	23	5				1	37	51
1923-24	142	32	9	3	2		4	6			17	126
1924-25	83	287	44	3	9				2		5	155

TABLE 75.—*Smelts, eulachon, etc.: Cold-storage holdings, 1916-1924*

[In thousands of pounds; i. e., 000 omitted]

Year	May 15	June 15	July 15	Aug. 15	Sept. 15	Oct. 15	Nov. 15	Dec. 15	Jan. 15	Feb. 15	Mar. 15	Apr. 15
5-yr. av.:												
May, 1917- Apr. 1922...	824	797	745	787	746	807	808	677	847	988	1,069	788
May, 1918- Apr. 1923...	699	683	653	685	650	648	623	626	533	807	781	387
1916-17.....						138	199	227	217	358	876	1,051
1917-18.....	687	925	794	845	813	1,121	1,223	956	807	1,671	1,718	2,098
1918-19.....	1,889	1,964	1,933	2,073	1,860	1,838	1,775	1,442	1,262	1,860	1,408	876
1919-20.....	797	729	626	645	605	574	563	424	613	697	396	218
1920-21.....	156	121	102	101	116	166	162	182	171	331	672	304
1921-22.....	293	248	268	272	335	334	317	380	384	982	1,153	448
1922-23.....	361	351	334	332	336	327	299	204	237	167	276	82
1923-24.....	86	75	69	76	78	113	146	247	443	790	1,267	637
1924-25.....	273	226	208	212	271	330						

TABLE 76.—*Smelts, eulachons, etc., frozen monthly, 1919-1924*

[In thousands of pounds; i. e., 000 omitted]

Year	May	June	July	Aug.	Sept.	Oct.	Nov.	Dec.	Jan.	Feb.	Mar.	Apr.
1919-20.....				67	17	27	19	71	134	95	11	12
1920-21.....			9	26	50	20	46	82	263	177	13	
1921-22.....	12		8	65	16	9	12	46	151	116	33	1
1922-23.....	1	1	3	10	7	8	25	28	28	13	12	18
1923-24.....			1	2	30	38	23	9	98	103	12	8
1924-25.....	2		13	68	80							

TABLE 77.—*Squid: Cold-storage holdings, 1916-1924*

[In thousands of pounds; i. e., 000 omitted]

Year	May 15	June 15	July 15	Aug. 15	Sept. 15	Oct. 15	Nov. 15	Dec. 15	Jan. 15	Feb. 15	Mar. 15	Apr. 15
5-yr. av.:												
May, 1917- Apr. 1922...	428	1,382	1,480	1,690	1,970	2,004	1,926	1,542	1,309	979	708	405
May, 1918- Apr. 1923...	502	1,312	1,383	1,527	1,652	1,592	1,415	1,108	943	660	477	293
1916-17.....						1,241	1,367	1,420	1,068	666	629	347
1917-18.....	268	1,387	1,502	1,901	2,471	2,863	3,052	2,434	2,086	1,695	1,241	600
1918-19.....	363	787	825	1,134	981	868	593	326	313	178	92	76
1919-20.....	164	1,194	1,202	1,375	1,209	857	771	570	421	283	183	96
1920-21.....	94	518	703	910	2,163	2,577	2,626	2,228	1,868	1,302	1,017	741
1921-22.....	1,250	3,026	3,170	3,177	3,017	2,855	2,581	2,152	1,879	1,438	1,009	514
1922-23.....	640	1,036	1,039	1,038	881	801	497	268	234	100	84	40
1923-24.....	38	952	1,343	1,404	1,235	1,160	923	760	580	327	180	38
1924-25.....	167	1,660	2,117	2,281	2,230	2,558						

TABLE 78.—*Squid frozen monthly, 1919-1924*

[In thousands of pounds; i. e., 000 omitted]

Year	May	June	July	Aug.	Sept.	Oct.	Nov.	Dec.	Jan.	Feb.	Mar.	Apr.
1919-20.....				35	35	8						21
1920-21.....	429	224	235	1,428	604	314	7	38	19	20		487
1921-22.....	1,791	261	273	53	7	3	18	11	5	1		207
1922-23.....	422	92	124	1	19	31	9		3			22
1923-24.....	929	463	198	21	38	10	9	32	4	1	8	150
1924-25.....	1,528	511	275	161	516							

TABLE 79.—*Weakfish (Squeteagus): Cold-storage holdings, 1916-1924*

[In thousands of pounds, i. e., 000 omitted]

Year	May 15	June 15	July 15	Aug. 15	Sept. 15	Oct. 15	Nov. 15	Dec. 15	Jan. 15	Feb. 15	Mar. 15	Apr. 15
5-yr. av.:												
May, 1917- Apr., 1922.....	282	521	862	1,045	1,026	1,394	1,478	1,286	978	737	418	252
May, 1918- Apr., 1923.....	323	538	869	930	1,004	1,315	1,809	1,151	899	672	367	237
1916-17.....												
1917-18.....	152	197	228	723	547	697	911	521	444	88	91	29
1918-19.....	540	1,309	1,345	1,704	1,776	2,175	2,121	2,022	1,519	1,261	833	411
1919-20.....	425	711	763	619	557	760	758	707	439	291	96	57
1920-21.....	38	124	571	449	498	920	1,008	812	736	604	336	290
1921-22.....	253	263	1,405	1,640	1,751	2,193	2,044	1,735	1,485	1,151	659	415
1922-23.....	359	283	266	179	439	535	612	531	314	55	12	10
1923-24.....	332	349	379	693	727	1,099	1,531	1,088	770	376	132	39
1924-25.....	166	213	260	279	266	206						

TABLE 80.—*Weakfish (Squeteagus) frozen monthly, 1919-1924*

[In thousands of pounds; i. e., 000 omitted]

Year	May	June	July	Aug.	Sept.	Oct.	Nov.	Dec.	Jan.	Feb.	Mar.	Apr.
1919-20.....				75	227	77	5	5	20	4	1	8
1920-21.....	91	492	11	220	371	146	1	7	6	8	4	
1921-22.....	44	1,194	299	190	462	7	3	13	8		7	10
1922-23.....	15	40	9	303	115	87	2	2			2	200
1923-24.....	52	238	143	151	977	6	13					143
1924-25.....	54	64	64	25	52							

TABLE 81.—*Whitefish: Cold-storage holdings, 1916-1924*

[In thousands of pounds; i. e., 000 omitted]

Year	May 15	June 15	July 15	Aug. 15	Sept. 15	Oct. 15	Nov. 15	Dec. 15	Jan. 15	Feb. 15	Mar. 15	Apr. 15
5-yr. av.:												
May, 1917- Apr., 1922.....	843	787	918	1,186	1,320	1,748	2,041	2,204	1,784	1,612	1,267	1,391
May, 1918- Apr., 1923.....	1,106	1,040	1,151	1,398	1,601	1,870	2,062	2,285	1,800	1,716	1,358	1,349
1916-17.....												
1917-18.....	173	164	273	381	349	1,572	2,177	1,741	1,139	712	388	306
1918-19.....	335	312	393	920	757	1,253	1,757	1,977	1,774	1,683	1,940	2,632
1919-20.....	2,257	2,188	2,286	2,410	2,605	2,799	2,818	2,702	2,206	1,959	1,499	822
1920-21.....	382	287	378	624	1,016	1,097	1,095	1,986	1,598	1,417	1,094	1,400
1921-22.....	1,067	985	1,278	1,587	1,782	2,022	2,360	2,614	2,201	1,991	1,414	1,633
1922-23.....	1,489	1,427	1,440	1,444	1,756	2,182	2,278	2,147	1,565	1,228	853	256
1923-24.....	146	170	257	669	677	834	1,151	1,690	1,381	1,483	1,982	1,441
1924-25.....	1,074	1,026	1,149	1,366	1,352	1410						

TABLE 82.—*Whitefish frozen monthly, 1919-1924*

[In thousands of pounds; i. e., 000 omitted]

Year	May	June	July	Aug.	Sept.	Oct.	Nov.	Dec.	Jan.	Feb.	Mar.	Apr.
1919-20.....				267	184	161	398	15	180	61	110	28
1920-21.....	6	73	264	318	168	104	939	60	148	38	138	11
1921-22.....	12	272	289	207	357	245	540	49	5	8	19	8
1922-23.....	4	50	49	280	173	276	301	80	74	21	42	3
1923-24.....	41	85	303	94	53	210	802	41	293	247	96	49
1924-25.....	6	111	142	114	84							

TABLE 83.—Whiting: Cold-storage holdings, 1916-1924

(In thousands of pounds; i. e., 000 omitted)

Year	May 15	June 15	July 15	Aug. 15	Sept. 15	Oct. 15	Nov. 15	Dec. 15	Jan. 15	Feb. 15	Mar. 15	Apr. 15
5-yr. av.: May, 1917- Apr., 1922	1,197	3,353	6,782	8,281	9,764	10,378	10,973	9,866	7,289	4,866	2,628	1,690
May, 1918- Apr., 1923	1,308	2,729	5,662	7,857	8,580	8,898	9,291	8,247	6,276	4,233	2,332	1,538
1916-17						6,834	6,583	5,220	2,873	936	383	140
1917-18	128	4,565	9,047	16,908	9,931	11,425	12,339	11,498	7,453	4,303	2,196	1,150
1918-19	888	3,130	8,112	11,463	12,384	13,395	15,013	13,016	10,540	7,441	3,648	1,803
1919-20	1,292	4,004	7,725	10,423	11,099	12,419	12,394	12,253	9,320	6,855	3,488	2,289
1920-21	1,333	2,378	4,426	8,630	9,649	9,539	9,412	7,811	5,685	3,764	2,854	2,609
1921-22	2,366	2,690	4,499	4,974	5,258	5,094	5,405	4,750	3,440	1,973	939	802
1922-23	682	1,445	3,048	3,786	4,016	4,049	3,931	3,407	2,584	1,143	729	381
1923-24	165	159	1,239	3,187	4,698	5,058	5,038	4,001	3,793	2,216	1,447	1,111
1924-25	932	1,067	1,527	3,008	3,359	3,214						

TABLE 84.—Whiting frozen monthly, 1919-1924

(In thousands of pounds; i. e., 000 omitted)

Year	May	June	July	Aug.	Sept.	Oct.	Nov.	Dec.	Jan.	Feb.	Mar.	Apr.
1919-20				865	1,445	1,147	837	109	88	71	183	30
1920-21	1,185	2,347	4,390	1,342	63	324	161	167	36	120	3	117
1921-22	796	2,016	599	464	180	589	441	196	67	308	220	105
1922-23	954	1,857	910	382	381	324	318	232	129	463	4	
1923-24	122	1,518	2,547	1,845	1,032	415	352	217	273	405	603	90
1924-25	211	741	1,997	783	487							

TABLE 85.—Miscellaneous varieties of frozen fish: Cold-storage holdings, 1916-1924

(In thousands of pounds; i. e., 000 omitted)

Year	May 15	June 15	July 15	Aug. 15	Sept. 15	Oct. 15	Nov. 15	Dec. 15	Jan. 15	Feb. 15	Mar. 15	Apr. 15
5-yr. av.: May, 1917- Apr., 1922	7,475	9,034	9,503	10,518	10,641	12,091	12,816	12,701	10,361	9,764	8,194	7,807
May, 1918- Apr., 1923	7,670	8,886	9,327	10,525	10,612	11,739	12,675	12,527	10,349	9,261	7,205	6,268
1916-17						3,001	4,391	5,177	3,056	2,890	5,474	1,976
1917-18	2,641	4,815	6,378	6,728	6,924	9,647	10,172	11,225	8,352	8,842	9,517	11,004
1918-19	11,544	12,988	13,476	16,315	15,840	17,614	18,259	17,850	14,515	14,766	12,294	10,791
1919-20	9,550	11,573	11,678	11,058	12,316	13,377	14,132	12,445	11,187	10,611	7,372	5,788
1920-21	5,923	7,636	8,089	8,872	8,762	10,166	10,881	10,992	9,552	8,113	8,041	8,284
1921-22	7,716	8,107	7,917	8,717	9,363	9,649	10,636	11,347	8,197	6,486	3,746	3,166
1922-23	3,616	4,074	5,499	6,764	8,777	7,858	9,469	9,907	8,293	6,331	4,573	3,309
1923-24	4,441	6,495	7,084	7,774	8,433	10,237	11,010	12,838	10,414	8,732	5,936	4,110
1924-25	4,919	5,933	6,745	7,804	8,252	9,305						

TABLE 86.—Miscellaneous varieties of fish frozen monthly, 1919-1924

(In thousands of pounds; i. e., 000 omitted)

Year	May	June	July	Aug.	Sept.	Oct.	Nov.	Dec.	Jan.	Feb.	Mar.	Apr.
1919-20				1,766	1,982	1,965	648	561	824	869	727	1,024
1920-21	2,445	1,682	1,467	915	1,987	1,503	2,315	1,423	912	621	1,440	674
1921-22	1,104	1,184	988	1,189	1,378	2,134	2,413	606	370	437	612	717
1922-23	1,551	1,992	2,024	1,026	1,954	2,864	3,063	725	624	324	351	1,819
1923-24	2,795	1,334	1,285	1,689	2,164	1,690	3,726	822	655	555	410	1,808
1924-25	1,618	1,477	1,555	1,723	1,764							

TABLE 87.—All varieties of fish: Cold-storage holdings, 1916-1924

[In thousands of pounds; i. e., 000 omitted]

Year	May 15	June 15	July 15	Aug. 15	Sept. 15	Oct. 15	Nov. 15	Dec. 15	Jan. 15	Feb. 15	Mar. 15	Apr. 15
5-yr. av.:												
May, 1917-												
Apr., 1922.	25,753	37,404	47,950	57,259	63,350	70,976	75,625	73,151	59,096	46,257	33,486	26,944
May, 1918-												
Apr., 1923.	28,361	36,010	45,387	54,896	62,138	69,792	72,336	68,892	56,879	44,490	31,119	22,853
1916-17-----												
1917-18-----	14,040	27,791	38,431	44,025	47,169	37,752	44,703	42,784	32,235	14,727	13,374	9,516
1918-19-----	31,403	50,298	64,865	82,555	89,204	64,677	76,939	69,987	51,116	35,907	28,457	26,549
1919-20-----	37,174	48,843	59,674	65,145	69,581	53,812	69,632	96,600	80,684	67,617	50,036	37,111
1920-21-----	19,804	27,779	36,618	47,140	53,295	75,769	74,232	61,510	47,904	29,958	20,633	
1921-22-----	26,346	32,311	40,160	47,431	54,469	64,731	67,546	65,841	53,551	42,117	33,404	28,444
1922-23-----	17,674	20,818	25,621	32,227	41,136	55,893	61,228	59,126	48,320	37,742	25,474	17,485
1923-24-----	12,312	17,790	27,237	39,191	53,220	64,755	54,503	48,689	46,033	27,070	16,724	10,590
1924-25-----	21,840	27,115	36,036	49,026	58,341	67,025	63,458	64,290	52,627	40,421	29,571	21,489

TABLE 88.—All varieties of fish: Quantities frozen monthly, 1919-1924

[In thousands of pounds; i. e., 000 omitted]

Year	May	June	July	Aug.	Sept.	Oct.	Nov.	Dec.	Jan.	Feb.	Mar.	Apr.
1919-20-----				9,913	11,722	10,631	5,863	2,291	2,274	2,630	2,465	3,688
1920-21-----	10,094	12,762	13,630	11,804	11,169	9,712	9,751	4,065	2,843	1,770	2,413	2,698
1921-22-----	9,624	10,151	9,845	9,356	9,996	6,869	8,173	2,442	1,453	1,364	1,496	1,932
1922-23-----	5,847	7,376	9,122	10,825	16,836	6,344	7,069	2,739	1,662	1,412	1,400	5,027
1923-24-----	7,671	11,872	13,944	16,417	12,512	6,952	9,938	3,158	2,429	2,414	2,532	6,033
1924-25-----	8,132	11,994	14,707	10,556	14,606							

INDEX

	Page		Page
Apples, monthly holdings:		Fish—Continued.	
Barreled.....	8	Shad and shad roe.....	26
Boxed.....	9	Smelts.....	27
Barreled and boxed combined.....	9	Squid.....	27
Beef:		Trout, lake.....	28
Cured and in process of cure.....	15	Weakfish (squeteagues).....	28
Frozen, monthly holdings.....	14	Whitefish.....	28
Frozen monthly.....	15	Whiting.....	29
Frozen, cured, and in process of cure com- bined.....	15	Lamb and mutton:	
Placed in cure monthly.....	15	Frozen monthly holdings.....	16
Butter, monthly holdings:		Frozen monthly.....	16
Creamery.....	9	Lard:	
Packing stock.....	10	Monthly holdings.....	19
Cheese, monthly holdings:		Meat:	
American.....	10	Miscellaneous, monthly holdings.....	18
Brick.....	11	Total stocks.....	19
Limburger.....	11	See also Beef, pork, lamb and mutton.	
Miscellaneous.....	11	Mutton. (See Lamb and mutton.)	
Munster.....	11	Pork:	
Swiss.....	10	Dry salt, cured and in process of cure, monthly holdings.....	17
Total cheese.....	11	Dry salt, placed in cure monthly.....	17
Eggs:		Frozen, monthly holdings.....	18
Case.....	12	Frozen monthly.....	18
Frozen.....	12	Pickled cured and in process of cure, monthly holdings.....	17
Fish:		Pickled, placed in cure monthly.....	18
All varieties.....	30	Total stocks.....	18
Bluefish.....	19	Poultry, monthly holdings:	
Butterfish.....	20	Broilers.....	12
Cliscoes.....	20	Fowls.....	13
Cod.....	21	Miscellaneous.....	14
Croakers.....	21	Rousters.....	13
Eulachon.....	27	Turkeys.....	13
Haddock.....	21	Total frozen poultry.....	14
Hake.....	21	Refrigerated space:	
Halibut.....	22	Meat-packing establishments.....	5, 6, 7
Herring, cured.....	23	Meat-packing establishments doing pub- lic cold-storage business.....	5
Herring, frozen.....	22	Private cold-storage plants.....	4
Mackerel.....	24	Public cold-storage plants.....	4
Miscellaneous.....	29	Public and private cold-storage plants combined.....	5
Pollock.....	21	Total refrigerated space.....	6
Sablefish.....	24	Total refrigerated space in leading cities.....	8
Salmon—			
Cured, mild.....	28		
Fall and silver.....	25		
Miscellaneous.....	25		

**ORGANIZATION OF THE
UNITED STATES DEPARTMENT OF AGRICULTURE**

JANUARY 2, 1925

<i>Secretary of Agriculture</i>	HOWARD M. GORE.
<i>Assistant Secretary</i>	
<i>Director of Scientific Work</i>	E. D. BALL.
<i>Director of Regulatory Work</i>	WALTER G. CAMPBELL.
<i>Director of Extension Work</i>	C. W. WARBURTON.
<i>Solicitor</i>	R. W. WILLIAMS.
<i>Weather Bureau</i>	CHARLES F. MARVIN, <i>Chief</i> .
<i>Bureau of Agricultural Economics</i>	HENRY C. TAYLOR, <i>Chief</i> .
<i>Bureau of Animal Industry</i>	JOHN R. MOHLER, <i>Chief</i> .
<i>Bureau of Plant Industry</i>	WILLIAM A. TAYLOR, <i>Chief</i> .
<i>Forest Service</i>	W. B. GREELEY, <i>Chief</i> .
<i>Bureau of Chemistry</i>	C. A. BROWNE, <i>Chief</i> .
<i>Bureau of Soils</i>	MILTON WHITNEY, <i>Chief</i> .
<i>Bureau of Entomology</i>	L. O. HOWARD, <i>Chief</i> .
<i>Bureau of Biological Survey</i>	E. W. NELSON, <i>Chief</i> .
<i>Bureau of Public Roads</i>	THOMAS H. MACDONALD, <i>Chief</i> .
<i>Bureau of Home Economics</i>	LOUISE STANLEY, <i>Chief</i> .
<i>Bureau of Dairying</i>	C. W. LARSON, <i>Chief</i> .
<i>Fixed Nitrogen Research Laboratory</i>	F. G. COTTRELL, <i>Director</i> .
<i>Office of Experiment Stations</i>	E. W. ALLEN, <i>Chief</i> .
<i>Office of Cooperative Extension Work</i>	C. B. SMITH, <i>Chief</i> .
<i>Office of Publications</i>	L. J. HAYNES, <i>Director</i> .
<i>Library</i>	CLARIBEL R. BARNETT, <i>Librarian</i> .
<i>Federal Horticultural Board</i>	C. L. MARLATT, <i>Chairman</i> .
<i>Insecticide and Fungicide Board</i>	J. K. HAYWOOD, <i>Chairman</i> .
<i>Packers and Stockyards Administration</i>	CHESTER MORRILL, <i>Assistant to the</i> <i>Secretary</i> .
<i>Grain Futures Administration</i>	

This bulletin is a contribution from

<i>Bureau of Agricultural Economics</i>	HENRY C. TAYLOR, <i>Chief</i> .
<i>Division of Statistical and Historical</i> <i>Research</i>	O. C. STINE, <i>in Charge</i> .

32

ADDITIONAL COPIES
OF THIS PUBLICATION MAY BE PROCURED FROM
THE SUPERINTENDENT OF DOCUMENTS
GOVERNMENT PRINTING OFFICE
WASHINGTON, D. C.
AT
5 CENTS PER COPY



END