



**AgEcon** SEARCH  
RESEARCH IN AGRICULTURAL & APPLIED ECONOMICS

*The World's Largest Open Access Agricultural & Applied Economics Digital Library*

**This document is discoverable and free to researchers across the globe due to the work of AgEcon Search.**

**Help ensure our sustainability.**

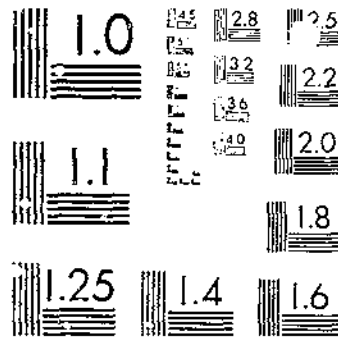
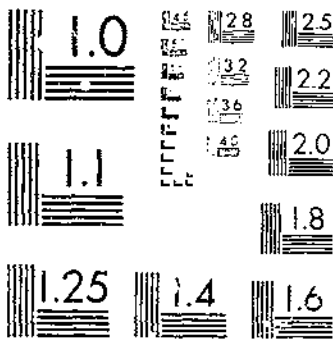
Give to AgEcon Search

AgEcon Search  
<http://ageconsearch.umn.edu>  
[aesearch@umn.edu](mailto:aesearch@umn.edu)

*Papers downloaded from **AgEcon Search** may be used for non-commercial purposes and personal study only. No other use, including posting to another Internet site, is permitted without permission from the copyright owner (not AgEcon Search), or as allowed under the provisions of Fair Use, U.S. Copyright Act, Title 17 U.S.C.*

LOCAL BULLETINS - QUADRA  
ENDING JANUARY 1923 WITH COMPARABLE DATA  
1907

# START



UDATA 1981

MICROCOPY RESOLUTION TEST CHART  
NATIONAL BUREAU OF STANDARDS-1963-A

MICROCOPY RESOLUTION TEST CHART  
NATIONAL BUREAU OF STANDARDS-1963-A

# COLD-STORAGE HOLDINGS

Year Ending January, 1923  
With Comparable Data for Earlier Years

Prepared by the Bureau of Agricultural Economics

## CONTENTS

Introduction	.....
Compressed space	.....
Cold-storage holdings:	.....
Apples	.....
Bananas	.....
Grapes	.....
Eggs	.....
Poultry	.....
Wool	.....
Lard	.....
Fish	.....
Notes	.....

RG30.5 2.53-13



1927

WASHINGTON  
GOVERNMENT PRINTING OFFICE  
1927

### ANNOUNCEMENT.

THIS is No. 1 of a series of statistical bulletins to be published by the United States Department of Agriculture. The series will include statistics on cold-storage holdings of certain food products; statistics on horses, mules, and turkeys; lamb and mutton, and wool; vegetables; seeds; fruits; potatoes; export shipments of fruits and vegetables; wheat, tobacco; rye, oats, barley, rice, buckwheat, grain sorghum, and flax; cotton; hay and feed; cattle, calves, beef, veal, hides, and skins; hogs and pork; corn; dairy and poultry products.

# UNITED STATES DEPARTMENT OF AGRICULTURE

## STATISTICAL BULLETIN NO. 1

WASHINGTON D. C.



SEPTEMBER, 1923

### COLD-STORAGE HOLDINGS.

Year Ending January, 1923,  
With Comparable Data for Earlier Years.

*Prepared by the Bureau of Agricultural Economics.*

#### INTRODUCTION.

The statistics of cold-storage holdings presented in this bulletin are compilations of the regular monthly reports made to the former Bureau of Markets and to the Bureau of Agricultural Economics.

For the purpose of these reports it is considered that a cold-storage warehouse is any place artificially cooled to a temperature of 45° F., or below, in which food commodities are stored and held for 30 days or more. It will be noticed that in the tables of capacity, space above a temperature of 45° has been listed. When the space survey was made, October, 1922, the concerns were asked to furnish particulars of all artificially cooled storage space, and for this reason all space has been included in the tables. Refrigerated space of a temperature from 45° to 60° is used by the meat-packing establishments for carrying stocks of oleo oil and lard for short periods and by some public cold-storage warehouses for certain varieties of fruits and vegetables.

Each cold-storage warehouse operator who stores apples, butter, cheese, eggs, poultry, frozen and cured pork and beef, frozen lamb and mutton and stocks of lard is requested to report holdings on the first business day of each month. Distant operators are requested to telegraph holdings of creamery butter, American cheese, and case eggs, and to mail complete reports on holdings of all commodities. A preliminary report of the holdings of the three commodities is made up as early as possible from the telegrams of distant operators and from the mailed reports of near-by operators. The preliminary

<sup>1</sup>Prepared under the direction of J. O. Bell in the Market Statistics Section, Lewis B. Flohr, in charge.

reports of these commodities are issued on the fifth business day of each month. The mailed reports from all operators are tabulated and the complete report issued about the 15th of the month. Cold-storage warehouse operators storing fish are requested to report holdings on the 15th day of each month. The tabulation of these reports is completed by the Bureau of Agricultural Economics on the last business day of the month and the report is issued by the Bureau of Fisheries.

In making these reports it is necessary to estimate, on the basis of reports received, the probable holdings in the few concerns not reporting. The preliminary report of the holdings of creamery butter, American cheese, and case eggs is checked and corrected, when corrections are necessary, in the report of the holdings of all commodities made about the middle of the month. The variation between the two reports is very slight, usually less than 0.5 per cent. The reports made up each month from the mailed schedules are checked, and corrected when corrections are necessary, and the corrected figures published with the current figures of the next month. Occasionally discrepancies are found in the schedules which should be adjusted. If these apparent discrepancies are important, confirmation or correction is requested by telegram before reports are made up. Minor discrepancies are adjusted by correspondence, and therefore the corrections may not be made before the report is issued. These corrections are usually insignificant, relative to the total, but are made for the sake of accuracy.

After the schedules have been tabulated the results are carefully examined and approved by a representative board, consisting of statisticians and specialists who are familiar with the movements and market conditions of the commodities being reported, before the report is issued.

The bureau is entirely dependent upon the voluntary cooperation of the operators of cold-storage warehouses and meat-packing establishments for the information contained in these reports. The returns received each month represent from 95 to 99 per cent of the firms listed and 98 to 99 per cent of the stocks held in the country. Representatives of the bureau are sent out from time to time to check up lists, to locate new cold-storage warehouses, and to enlist the cooperation of operators, in order that the reports may be as complete as possible.

Work on the project of collecting cold-storage holdings was begun in October of 1914. The collecting of statistics on cold-storage holdings of apples began with January, 1915. The reporting of case egg and creamery butter began on August 1, 1916. Although the report was not commenced until August of 1916, the tables show holdings from August, 1915. These were secured by asking those

reporting in 1916 to report also holdings of the previous year for the same month. American cheese was added to the list of commodities on September 1, 1916, and on January 1, 1917, the work was expanded to include reports on frozen beef, frozen pork, frozen lamb and mutton, dry salt pork, sweet pickled pork, cured beef, and lard. The statistics of holdings of meat products also included reports for 1916 which were reported in 1917 as of the previous year. Reports of the holdings of frozen fish began with October 15, 1917, and included reports for the same months of the previous year which supplied statistics of holdings beginning with October, 1916. Reports on stocks of frozen eggs and frozen poultry began with May 1, 1917, and packing stock butter was added to the list September 1, 1917.

The economic value of reports of cold-storage holdings of food commodities, both to the trade and to the general public, can not be overestimated. To the trade they supply a basis on which to forecast future business, and to the general public, a knowledge of the amount of such foodstuffs available for consumption.

TABLE 1—Refrigerated space of public cold-storage plants,<sup>1</sup> October 1, 1922.

State.	Con- cerns.	Cubic feet of space held at temperatures of—				Total space.
		10° F. and below.	11° to 1° F., inclusive.	30° to 44° F., inclusive.	45° F. and above.	
Arkansas.....	6	3,57		544,990		548,490
California.....	27	568,911	1,203,638	8,806,033		10,498,685
Colorado.....	4	11,265	290,070	709,487		920,752
Florida.....	4		12,000	306,782		318,782
Georgia.....	11			1,078,030	3,000	1,167,030
Illinois.....	23	12,300,020	85,000	4,044,418	20,149,038	37,407,992
Indiana.....	19	24,000	109,903	3,028,197	823,566	3,351,197
Iowa.....	5	32,000	320,000	1,117,590		1,469,590
Kansas.....	9	466,751	273,337	1,17,192	34,798	2,161,412
Kentucky.....	8	273,337	230,013	2,808,119	127,203	3,228,672
Louisiana.....	4	100,000		1,357,337	20,000	1,477,337
Maryland.....	2	383,400		1,157,590	48,500	1,589,400
Massachusetts.....	7	4,901,235	1,220,372	5,028,676	605,120	11,761,403
Minnesota.....	7	1,345,869	543,412	1,840,980	28,000	3,558,077
Missouri.....	15	1,850,543	2,058,433	5,271,475	40,000	9,220,451
New Jersey.....	14	3,308,694	65,960	6,464,537		9,839,191
New York.....	63	9,383,880	1,218,745	31,510,216	744,857	42,857,698
North Carolina.....	3		12,000	245,000	25,000	386,000
Ohio.....	14	1,651,571	641,917	7,433,106	30,000	9,756,594
Oklahoma.....	5	24,840	40,420	1,167,325	200,000	1,433,185
Oregon.....	5	90,476	506,323	180,832	8,100	1,066,141
Pennsylvania.....	28	1,914,861	1,385,160	8,010,578	287,000	11,497,599
Tennessee.....	6	376,400	230,000	2,639,748		3,246,148
Texas.....	19	92,848	143,058	2,212,286	325,000	2,774,800
Virginia.....	13	489,571	261,680	4,778,050		5,549,781
Washington.....	8	142,763	763,594	5,076,044	1,621,074	4,303,476
West Virginia.....	5			1,352,076	8,272	1,360,350
Wisconsin.....	8	296,500	56,000	1,219,537	20,000	2,692,037
All other States.....	20	1,319,623	1,252,622	6,123,401	41,122	8,736,968
Total.....	353	41,843,063	23,076,278	129,961,591	4,940,705	199,321,840

<sup>1</sup> A public cold-storage warehouse is one in which the goods stored are not owned or controlled by the operators but which the warehousemen receive and store for consideration.



TABLE 2.—Refrigerated space of private cold-storage plants,<sup>1</sup> October 1, 1922.

State.	Con- cerns.	Cubic feet of space held at temperatures of—				Total space.
		10° F. and below.	11° to 29° F., inclusive.	30° to 44° F., inclusive.	45° F. and above.	
Alaska.....	3	36,106	397,467	3,500	.....	437,073
California.....	5	25,850	35,894	473,594	.....	535,298
Colorado.....	3	.....	5,800	15,500	.....	21,300
Georgia.....	3	512	217,028	90,605	.....	278,145
Illinois.....	11	221,448	1,507,041	1,263,215	39,300	3,031,004
Indiana.....	4	4,187	.....	95,650	4,047	103,884
Iowa.....	8	.....	9,504	162,987	62,994	235,485
Kansas.....	3	28,400	153,700	137,320	6,000	325,420
Maine.....	6	382,500	19,160	14,040	1,200	417,040
Massachusetts.....	18	1,159,872	265,195	390,24	.....	1,812,315
Michigan.....	11	6,587	97,548	88,635	.....	190,769
Minnesota.....	5	55,000	43,732	64,007	9,504	174,303
Missouri.....	6	25,000	228,200	306,030	129,520	688,750
Montana.....	3	15,050	10,444	2,128	1,350	52,972
Nebraska.....	5	15,428	24,999	109,274	9,750	151,951
New Jersey.....	5	.....	9,736	72,293	.....	85,549
New York.....	30	189,018	169,223	1,950,759	63,084	2,352,084
Ohio.....	26	21,022	212,911	331,045	131,116	696,094
Oklahoma.....	3	.....	26,687	.....	.....	26,687
Oregon.....	10	63,555	150,130	434,729	22,395	670,810
Pennsylvania.....	23	28,875	253,945	560,230	39,318	882,368
Tennessee.....	3	756	4,280	36,968	4,668	46,670
Texas.....	12	840	840	163,423	51,348	216,456
Utah.....	3	.....	19,690	19,280	.....	38,970
Washington.....	10	26,220	438,165	1,238,433	34,772	1,788,590
Wisconsin.....	25	10,280	100,775	432,290	79,462	622,810
All other States.....	17	13,130	78,525	441,040	38,076	570,771
Total.....	261	2,306,717	4,501,390	8,918,969	724,490	16,451,566

<sup>1</sup> A private cold-storage warehouse is one in which all the goods stored are owned by the operators of the warehouse.

TABLE 3.—Refrigerated space of combined public and private cold-storage plants,<sup>1</sup> October 1, 1922.

State.	Con- cerns.	Cubic feet of space held at temperatures of—				Total space.
		10° F. and below.	11° to 29° F., inclusive.	30° to 44° F., inclusive.	45° F. and above.	
Connecticut.....	3	108,068	157,347	298,150	.....	563,565
Idaho.....	4	26,150	26,240	263,010	.....	315,400
Illinois.....	12	2,739,291	469,325	3,590,301	60,000	6,858,917
Indiana.....	4	213,090	64,480	109,449	21,000	408,019
Iowa.....	14	227,770	433,089	1,622,128	53,000	2,335,987
Kan.....	6	205,689	260,441	953,680	47,420	1,578,230
Massachusetts.....	9	625,674	583,174	867,227	112,662	2,188,742
Michigan.....	9	29,459	51,64	599,015	127,000	806,518
Missouri.....	8	413,065	467,578	2,853,072	.....	3,733,658
Nebraska.....	11	1,121,799	137,232	1,696,031	56,221	3,011,283
New Jersey.....	4	204,444	652,892	62,702	31,321	951,359
New York.....	32	340,690	342,676	5,260,039	250,000	6,233,314
Ohio.....	8	178,496	133,712	505,992	34,500	852,480
Oregon.....	7	11,766	113,454	689,449	29,680	844,249
Pennsylvania.....	9	131,394	211,883	744,640	40,000	1,127,917
South Dakota.....	3	.....	.....	212,276	.....	212,276
Texas.....	4	16,600	100,000	490,134	.....	606,734
Virginia.....	8	118,125	148,798	1,158,308	.....	1,455,229
Washington.....	16	178,074	635,135	3,630,600	2,772	4,348,581
West Virginia.....	4	.....	.....	645,818	1,820	647,638
Wisconsin.....	25	133,524	560,437	1,076,294	118,812	1,868,479
All other States.....	22	260,145	609,130	1,882,453	6,700	2,758,428
Total.....	222	7,334,402	6,167,281	28,440,700	903,138	43,035,551

TABLE 3.—Refrigerated space of combined public and private cold-storage plants, October 1, 1912—Continued.

REFRIGERATED SPACE OF MEAT-PACKING ESTABLISHMENTS DOING A PUBLIC COLD-STORAGE BUSINESS.

State.	Concerns.	Cubic feet of space held at temperatures of—				Total space.
		10° F. and below.	11° to 29° F., inclusive.	30° to 44° F., inclusive.	45° F. and above.	
Illinois.....	4	469,194	4,445,489	10,939,498	323,289	16,177,461
Massachusetts.....	5	940,799	37,621	3,586,979	.....	4,565,399
New York.....	2	348,290	72,346	1,671,054	151,069	2,442,759
All other States.....	12	1,132,335	1,536,050	11,077,035	1,145,001	14,890,421
Total.....	24	2,890,618	6,091,506	27,474,566	1,619,350	38,076,040

<sup>1</sup> A combined cold-storage warehouse is one in which some of the goods are owned by the operators of the warehouse and some are stored for other concerns.

TABLE 4.—Refrigerated space of meat-packing establishments,<sup>1</sup> October 1, 1922.

State.	Concerns.	Cubic feet of space held at temperatures of—				Total space.
		10° F. and below.	11° to 29° F., inclusive.	30° to 44° F., inclusive.	45° F. and above.	
California.....	25	386,913	645,304	3,192,738	100,747	4,305,702
Colorado.....	8	143,402	346,834	2,577,259	491,076	3,658,571
Florida.....	3	16,200	95,858	228,870	.....	340,928
Idaho.....	5	.....	13,620	83,718	25,000	121,738
Illinois.....	44	5,162,111	4,357,083	48,314,396	6,425,224	64,258,814
Indiana.....	26	92,984	592,214	9,333,941	917,232	10,935,531
Iowa.....	15	871,785	1,120,494	15,541,901	1,838,564	19,372,644
Kansas.....	14	915,218	2,011,448	17,611,901	3,576,965	24,115,432
Kentucky.....	7	69,547	26,475	748,588	221,492	1,066,102
Maryland.....	15	24,786	102,629	2,785,592	604,892	3,517,899
Massachusetts.....	7	33,338	33,200	4,294,597	1,453	4,362,588
Michigan.....	5	21,25	297,934	2,662,511	50,552	3,062,726
Minnesota.....	9	83,718	1,634,855	16,159,179	1,597,284	14,100,996
Missouri.....	22	528,133	1,215,440	15,276,597	708,184	17,728,354
Montana.....	4	76,323	64,202	282,050	.....	423,475
Nebraska.....	7	1,710,495	592,384	19,527,885	1,440,945	22,671,709
New Jersey.....	10	181,177	690,241	1,863,068	327,487	2,871,593
New York.....	44	149,652	770,517	9,055,680	425,493	10,401,342
Ohio.....	44	132,412	158,508	7,421,921	244,710	7,957,551
Oklahoma.....	4	463,490	1,606,396	3,602,816	819,636	6,491,726
Oregon.....	7	110,630	79,990	1,001,977	178,373	1,370,065
Pennsylvania.....	48	36,120	364,264	6,606,994	124,627	7,132,005
Tennessee.....	5	12,288	12,288	48,025	.....	511,601
Texas.....	13	407,983	1,370,808	5,048,101	1,464,912	9,190,104
Virginia.....	7	16,720	38,165	1,100,675	169,815	1,325,375
Washington.....	8	488,998	406,693	1,760,745	146,455	2,822,931
West Virginia.....	6	4,680	5,640	1,632,277	2,128,090	3,170,687
Wisconsin.....	13	18,439	154,071	7,388,709	80,250	7,651,129
All other States.....	26	361,220	638,365	5,002,063	367,969	6,369,457
Total.....	455	13,220,477	19,454,820	203,824,404	24,840,617	261,353,408

<sup>1</sup> All concerns, excepting those of retail butchers, that are engaged in the business of curing meats or rendering lard are considered to be meat-packing establishments. Some meat-packing establishments also store goods for others. They are listed in Table 3 as "Meat-packing establishments doing a public cold-storage business."

TABLE 5.—Total refrigerated space of meat-packing establishments and cold storages reporting to the Bureau of Agricultural Economics, October 1, 1922.

State.	Con- cerns.	Cubic feet of space held at temperatures of—				Total space.
		10° F. and below.	11° to 29° F., inclusive.	30° to 41° F., inclusive.	45° F. and above.	
Alabama.....	5	11,094	96,683	795,955	23,550	929,312
Alaska.....	5	52,786	497,467	4,472		554,725
Arizona.....	3		38,400	434,287	14,212	486,899
Arkansas.....	8	4,625	9,693	666,117	10,296	596,675
California.....	60	1,087,456	1,846,661	13,221,714	100,747	18,356,578
Colorado.....	17	165,417	896,100	4,059,797	491,076	5,692,390
Connecticut.....	6	249,554	317,507	912,366		1,480,727
District of Columbia.....	4	170,847	291,409	1,028,162		2,358,218
Florida.....	8	18,200	107,858	581,472	2,520	708,050
Georgia.....	16	55,100	457,957	2,003,791	13,240	2,528,988
Idaho.....	12	48,392	39,260	403,898	25,000	516,550
Illinois.....	94	20,982,064	14,823,356	84,257,398	7,671,370	127,734,188
Indiana.....	44	524,261	765,604	12,508,337	942,339	14,798,631
Iowa.....	43	1,139,655	1,934,117	18,795,177	1,954,558	23,823,507
Kansas.....	34	2,723,081	4,374,031	30,029,608	4,762,184	41,918,505
Kentucky.....	17	342,894	252,228	3,696,183	348,695	464,070
Maine.....	7	109,500	18,575	1,651,877	38,320	1,818,572
Massachusetts.....	11	472,580	422,060	847,040	3,060	1,744,740
Maryland.....	22	408,166	198,109	4,287,325	671,092	5,484,712
Massachusetts.....	46	7,657,918	2,145,567	14,187,727	719,235	24,690,447
Michigan.....	27	562,815	577,903	4,792,947	214,482	6,148,127
Minnesota.....	23	2,240,387	2,308,535	12,105,492	1,634,788	18,289,202
Missouri.....	52	2,625,281	4,896,940	23,798,574	877,704	32,499,499
Montana.....	10	109,314	90,346	356,849	1,350	557,859
Nebraska.....	25	2,995,100	754,115	20,832,882	1,899,986	26,582,183
New Hampshire.....	4	25,632	17,884	91,458		134,974
New Jersey.....	35	3,694,315	1,430,229	8,315,820	362,328	13,802,092
New York.....	177	10,431,239	7,573,507	49,647,748	1,634,596	69,287,090
North Carolina.....	7		22,753	412,760	30,760	466,273
North Dakota.....	3		32,288	179,969		212,257
Ohio.....	92	1,983,471	1,147,048	15,691,874	440,326	19,262,719
Oklahoma.....	13	483,320	1,649,316	4,799,929	1,020,085	7,957,601
Oregon.....	29	276,428	850,503	2,586,667	198,548	3,912,166
Pennsylvania.....	106	2,011,250	2,215,252	15,922,427	490,943	20,639,887
Rhode Island.....	4	329,788	259,952	773,100	154,456	1,508,296
South Dakota.....	7	111,095	226,660	1,823,447	133,500	2,094,702
Tennessee.....	16	389,444	272,900	3,199,361	4,666	3,866,371
Texas.....	49	523,051	1,620,978	8,886,303	1,841,260	12,871,592
Utah.....	6	113,056	54,395	1,048,137	1,215,588	1,215,588
Virginia.....	29	625,576	458,821	7,094,290	169,815	8,358,502
Washington.....	42	836,655	2,193,567	8,520,982	1,705,073	13,261,577
West Virginia.....	16	5,400	5,640	3,168,173	2,138,282	5,317,495
Wisconsin.....	69	464,743	872,293	10,116,895	307,524	11,761,455
Wyoming.....	3			44,470	24,750	69,220
All other States.....	9	41,580	156,933	379,656	18,761	596,310
Total.....	1,315	67,095,340	59,291,275	399,624,320	33,127,290	559,138,225

TABLE 6.—Refrigerated space in leading cities, October 1, 1922.

## SPACE IN COLD STORAGE PLANTS.

City.	Con- cerns.	Cubic feet of space held at temperatures of—				Total space.
		10° F. and below.	11° to 29° F., inclusive.	30° to 44° F., inclusive.	45° F. and above.	
Chicago, Ill.....	25	15,296,839	5,696,829	22,955,734	578,566	44,424,968
Greater New York.....	45	11,682,251	2,916,829	21,618,739	425,839	36,623,658
Boston, Mass.....	10	5,082,685	759,053	4,742,55	605,120	11,199,323
Philadelphia, Pa.....	14	1,101,073	763,449	5,202,244	126,816	7,196,582
Cleveland, Ohio.....	8	1,300,122	314,040	4,903,005	131,116	6,736,243
Kansas City.....	6	1,037,881	2,269,828	1,973,230	43,720	5,324,649
St. Louis, Mo. <sup>1</sup> .....	6	987,014	505,751	3,617,737		5,110,502
Buffalo, N. Y.....	7	389,650	2,732,484	1,276,478		4,378,618
San Francisco, Calif.....	6	252,027	700,632	3,340,453		4,290,112
Seattle, Wash.....	9	320,799	653,339	1,430,575	1,326,574	3,763,267
Total.....	138	37,303,347	17,282,234	71,151,610	3,232,751	129,059,942

<sup>1</sup> Includes East St. Louis, Ill.

# Cold-Storage Holdings.

**TABLE 6.—Refrigerated space in leading cities, October 1, 1922—Continued.**

**SPACE IN MEAT PACKING ESTABLISHMENTS.**

City.	Con. cerns.	Cubic feet of space held at temperatures of—				Total space.
		10° F. and below.	11° to 29° F., inclusive.	30° to 44° F., inclusive.	45° F. and above.	
Chicago, Ill.	35	4,880,658	7,993,304	61,483,084	5,009,066	69,366,112
Kansas City.	8	1,976,381	3,182,289	23,849,389	4,383,263	33,406,322
St. Louis, Mo. <sup>1</sup>	17	1,963,382	1,523,983	12,299,521	1,805,554	18,597,440
Omaha, Nebr.	4	1,245,519	245,984	12,136,215	1,365,297	14,973,025
St. Joseph, Mo.	4	1,305,379	477,644	9,630,620	596,781	11,010,424
Greater New York	41	285,132	1,354,237	6,590,666	718,004	10,928,289
Indianapolis, Ind.	8	85,784	481,885	8,634,572	847,597	9,429,838
Fort Worth, Tex.	4	368,488	1,283,092	4,851,568	1,456,343	7,959,491
Boston, Mass.	6	690,686	33,200	6,446,777	1,453	7,381,118
Buffalo, N. Y.	6	354,462	43,803	3,006,081	175,045	3,639,391
<b>Total</b>	<b>133</b>	<b>11,344,873</b>	<b>16,594,431</b>	<b>140,368,693</b>	<b>16,373,403</b>	<b>184,681,400</b>

**SPACE IN COLD STORAGE AND MEAT PACKING ESTABLISHMENTS.**

Chicago, Ill.	60	20,177,497	13,582,133	74,436,818	5,582,632	113,781,080
Greater New York	36	11,927,363	4,271,066	30,209,605	1,143,843	47,551,897
Kansas City.	14	3,014,282	5,452,117	25,822,609	4,441,983	38,730,971
St. Louis, Mo. <sup>1</sup>	23	2,950,396	2,034,734	15,917,258	1,805,554	21,707,942
Boston, Mass.	18	5,162,373	822,253	11,189,242	606,573	18,680,441
Omaha, Nebr.	12	2,398,801	395,591	13,983,185	1,365,297	18,142,874
St. Joseph, Mo.	6	1,336,132	1,256,077	10,314,719	596,781	12,503,709
Indianapolis, Ind.	10	229,784	570,855	9,284,573	847,597	11,002,838
Cleveland, Ohio.	15	1,429,974	441,336	7,840,201	324,284	10,035,795
Philadelphia, Pa.	26	1,104,073	922,705	6,697,772	195,712	8,920,262
<b>Total</b>	<b>268</b>	<b>48,600,075</b>	<b>26,748,897</b>	<b>205,697,981</b>	<b>16,910,256</b>	<b>300,957,809</b>

<sup>1</sup> Includes East St. Louis, Ill.

**TABLE 7.—Summary of refrigerated space by class of business, October 1, 1922.**

Class of business.	Number of warehouses.	Cubic feet of space held at temperatures of—				Total space.
		10° F. and below.	11° to 29° F., inclusive.	30° to 44° F., inclusive.	45° F. and above.	
Public cold storage	353	41,343,066	23,076,278	129,061,591	4,940,705	199,321,640
Private cold storage	261	2,306,717	4,601,390	8,918,909	724,400	16,551,556
Combined public and private cold storage	222	7,334,462	6,167,261	29,440,700	983,138	43,935,561
Meat-packing establishments doing a public cold-storage business.	455	13,220,477	19,454,820	203,828,494	24,849,017	261,353,808
Meat-packing establishments doing a public cold-storage business.	24	2,690,618	6,091,506	27,474,566	1,619,350	3,076,040
<b>Total refrigerated space</b>	<b>1,315</b>	<b>67,095,340</b>	<b>59,291,275</b>	<b>309,324,320</b>	<b>33,127,290</b>	<b>559,138,225</b>

**TABLE 8.—Cold-storage holdings of barrels of apples.<sup>1</sup>**

[In thousands of barrels; i. e., 900 omitted.]

Year.	Jan. 1.	Feb. 1.	Mar. 1.	Apr. 1.	May 1.	June 1.	July 1.	Aug. 1.	Sept. 1.	Oct. 1.	Nov. 1.	Dec. 1.
1915.	2,029	2,439	1,710	896	299	61					3,093	4,213
1916.	3,743	3,324	2,543	1,561	789	218					2,530	3,166
1917.	2,380	2,121	1,560	1,044	543	183					2,558	3,195
1918.	2,754	2,228	1,575	978	356	101					2,915	3,280
1919.	2,582	1,704	962	487	198	68					3,108	3,323
1920.	2,693	2,092	1,385	705	274	64				824	3,516	4,570
1921.	3,966	3,016	2,020	1,027	449	170				570	1,822	1,979
<b>5-yr. ave.</b>	<b>2,955</b>	<b>2,232</b>	<b>1,500</b>	<b>848</b>	<b>364</b>	<b>117</b>					<b>2,784</b>	<b>3,270</b>
1922.	1,742	1,424	998	561	248	74				1,219	4,133	4,319
1923.	3,708											

<sup>1</sup> All apples, excepting those packed in western-style boxes, are tabulated in terms of barrels, on the basis of 3 bushels to the barrel.

TABLE 9.—Cold-storage holdings of boxed apples.

[In thousands of boxes; i. e., 000 omitted.]

Year.	Jan. 1.	Feb. 1.	Mar. 1.	Apr. 1.	May 1.	June 1.	July 1.	Aug. 1.	Sept. 1.	Oct. 1.	Nov. 1.	Dec. 1.
1915.....	4,091	3,441	2,323	1,341	525	142					1,789	3,685
1916.....	3,210	2,738	2,096	1,268	709	258					2,190	3,977
1917.....	4,356	3,790	2,848	1,504	706	246					2,216	4,483
1918.....	5,334	5,192	3,764	2,416	966	172					2,613	4,945
1919.....	5,137	4,205	2,431	1,410	545	170					4,244	7,793
1920.....	8,598	7,286	5,311	2,952	1,508	447				440	2,678	6,651
1921.....	7,259	5,266	4,090	3,548	2,009	826				377	5,464	11,281
5-yr. ave.....	6,169	5,350	3,812	2,372	1,183	372					3,463	7,031
1922.....	11,061	8,667	6,282	4,107	2,088	721				699	4,164	7,271
1923.....	8,819											

TABLE 10.—Cold-storage holdings of apples (barreled and boxed) combined in terms of barrels.<sup>1</sup>

[In thousands of barrels; i. e., 000 omitted.]

Year.	Jan. 1.	Feb. 1.	Mar. 1.	Apr. 1.	May 1.	June 1.	July 1.	Aug. 1.	Sept. 1.	Oct. 1.	Nov. 1.	Dec. 1.
1915.....	4,293	3,585	2,491	1,343	474	108					3,089	5,441
1916.....	4,813	4,236	3,242	1,9	1,035	304					3,260	4,492
1917.....	4,132	3,385	2,442	1,545	808	265					3,296	4,689
1918.....	4,599	3,957	2,830	1,783	678	169					3,752	4,028
1919.....	94	3,105	1,772	956	380	125				971	4,623	5,923
1920.....	5,629	4,524	3,102	1,699	806	213				544	4,475	6,787
1921.....	6,366	5,105	3,650	2,210	1,119	445				792	3,643	5,739
5-yr. ave.....	4,968	4,015	2,771	1,677	758	241					3,638	5,613
1922.....	5,420	4,313	3,000	1,930	944	314				1,452	5,521	8,743
1923.....	6,481											

<sup>1</sup> All apples, excepting those packed in western-style boxes, are tabulated in terms of barrels, on the basis of 3 bushels to the barrel. Three boxes are considered the equivalent of 1 barrel.

TABLE 11.—Cold-storage holdings of creamery butter.

[In thousands of pounds; i. e., 000 omitted.]

Year.	Jan. 1.	Feb. 1.	Mar. 1.	Apr. 1.	May 1.	June 1.	July 1.	Aug. 1.	Sept. 1.	Oct. 1.	Nov. 1.	Dec. 1.
1915.....												
1916.....	48,977	31,139	15,633	3,346	1,082	7,017	53,863	68,578	101,662	99,450	92,719	71,849
1917.....	46,134	30,474	16,952	6,805	3,607	9,953	40,982	88,992	108,179	109,154	100,116	79,928
1918.....	50,726	26,818	18,808	14,629	9,536	12,698	49,140	88,303	99,334	87,883	80,874	66,111
1919.....	43,910	36,777	24,191	11,909	9,659	29,435	90,168	123,540	131,398	121,816	100,474	73,654
1920.....	63,727	38,359	22,588	12,556	7,554	12,572	32,526	101,455	115,558	113,385	101,778	79,750
1921.....	58,682	41,486	27,103	14,732	7,712	21,682	61,981	82,838	92,292	90,116	77,983	65,129
5-yr. ave.....	50,638	34,743	21,924	12,126	7,614	17,328	60,759	97,027	109,350	104,471	92,245	72,714
1922.....	48,412	35,047	22,682	9,113	3,830	13,202	67,410	103,151	112,039	96,680	73,857	47,773
1923.....	26,819											

## Cold-Storage Holdings.

9

TABLE 12.—Cold-storage holdings of packing-stock butter.<sup>1</sup>

[In thousands of pounds; i. e., 000 omitted.]

Year.	Jan. 1.	Feb. 1.	Mar. 1.	Apr. 1.	May 1.	June 1.	July 1.	Aug. 1.	Sept. 1.	Oct. 1.	Nov. 1.	Dec. 1.
1916.....									3,695	3,333	2,845	2,284
1917.....	1,785	1,683	868	364	173	343	1,319	3,447	3,320	3,380	3,408	3,403
1918.....	2,046	1,566	805	1,328	1,941	3,458	4,779	5,276	5,421	4,660	3,394	2,328
1919.....	1,384	1,196	1,340	859	825	888	1,908	3,074	3,314	3,441	2,671	2,098
1920.....	1,410	1,520	1,472	1,149	764	712	1,010	2,970	3,548	3,786	3,528	3,139
1921.....	2,773	2,847	2,626	2,216	2,181	2,651	2,793	2,704	2,519	2,149	1,703	1,427
5-yr. ave.....	1,830	1,758	1,434	1,183	1,177	1,610	2,543	3,494	3,624	3,433	2,941	2,479
1922.....	1,304	1,447	1,538	1,165	972	1,252	1,884	2,173	2,186	1,971	1,621	971
1923.....	608											

<sup>1</sup> Packing-stock butter includes all dairy and farm-made butter that is to be used in making laded and renovated process butter.

TABLE 13.—Cold-storage holdings of American cheese.<sup>1</sup>

[In thousands of pounds; i. e., 000 omitted.]

Year.	Jan. 1.	Feb. 1.	Mar. 1.	Apr. 1.	May 1.	June 1.	July 1.	Aug. 1.	Sept. 1.	Oct. 1.	Nov. 1.	Dec. 1.
1915.....												
1916.....	28,558	18,906	13,373	8,443	6,546	7,801	16,357	31,569	28,575	24,144	32,428	31,271
1917.....	31,855	22,113	15,589	9,842	7,928	11,026	34,159	67,595	91,545	90,671	78,087	75,166
1918.....	66,784	56,298	37,743	27,965	17,730	20,365	30,054	48,804	55,742	42,113	33,402	25,625
1919.....	19,823	15,486	9,837	6,750	6,027	12,478	37,501	62,646	78,691	81,346	72,889	62,508
1920.....	53,168	43,631	34,039	23,431	16,963	13,502	29,654	51,512	60,372	55,007	45,560	39,621
1921.....	34,115	25,000	17,477	14,204	13,466	17,814	34,948	41,234	46,635	45,163	42,969	34,055
5-yr. ave.....	41,149	32,506	22,931	16,456	12,424	15,163	33,263	54,368	66,191	62,853	55,183	47,455
1922.....	27,691	21,430	15,006	10,745	10,898	15,481	33,130	46,560	53,625	49,479	40,852	37,291
1923.....	33,617											

<sup>1</sup> The term "American cheese" is intended to cover only those varieties known as twins, flats, daisies, cheddars, longhorns, and square prints. It does not, therefore, include all kinds of cheese made in America.

TABLE 14.—Cold-storage holdings of Swiss cheese.

[In thousands of pounds; i. e., 000 omitted.]

Year.	Jan. 1.	Feb. 1.	Mar. 1.	Apr. 1.	May 1.	June 1.	July 1.	Aug. 1.	Sept. 1.	Oct. 1.	Nov. 1.	Dec. 1.
1917.....									664	859	943	874
1918.....	651	518	591	420	325	303	205	439	2,130	2,640	2,839	2,820
1919.....	3,205	2,846	2,604	1,768	1,065	837	1,003	2,017	2,789	3,124	3,277	3,187
1920.....	2,822	2,982	2,629	2,201	1,944	1,777	2,088	3,055	3,995	4,743	5,248	4,583
1921.....	4,590	3,673	2,951	2,204	1,876	1,304	1,440	2,910	3,337	4,404	4,641	4,326
5-yr. ave.....									2,563	3,156	3,401	3,218
1922.....	3,929	3,252	2,992	2,898	2,043	1,572	1,079	2,535	4,601	5,766	5,720	5,472
1923.....	5,417											

TABLE 15.—Cold-storage holdings of brick and Münster cheese.

[In thousands of pounds; i. e., 000 omitted.]

Year.	Jan. 1.	Feb. 1.	Mar. 1.	Apr. 1.	May 1.	June 1.	July 1.	Aug. 1.	Sept. 1.	Oct. 1.	Nov. 1.	Dec. 1.
1917.....									417	352	369	576
1918.....	532	423	377	612	658	451	416	531	987	615	781	1,157
1919.....	1,074	1,323	983	603	336	418	880	945	828	810	824	952
1920.....	1,114	1,018	802	500	493	715	1,850	2,065	2,264	1,809	1,742	1,592
1921.....	1,763	1,492	1,200	902	884	1,154	1,675	1,671	1,663	1,726	1,709	1,767
5-yr. ave.....									1,230	1,074	1,085	1,209
1922.....	1,855	1,710	1,602	902	940	1,168	1,662	1,600	1,117	842	1,023	1,103
1923.....	1,608											

50487-33—2

TABLE 16.—Cold-storage holdings of Limburger cheese.

[In thousands of pounds; i. e., 000 omitted.]

Year.	Jan. 1.	Feb. 1.	Mar. 1.	Apr. 1.	May 1.	June 1.	July 1.	Aug. 1.	Sept. 1.	Oct. 1.	Nov. 1.	Dec. 1.
1917.....									719	67	378	323
1918.....	334	311	306	167	250	197	233	459	1,441	1,552	1,465	1,341
1919.....	1,314	932	922	739	566	419	690	834	1,135	920	762	744
1920.....	712	680	592	546	415	503	395	1,077	1,491	1,333	1,271	1,059
1921.....	956	791	481	494	417	341	666	307	75	1,170	1,127	866
5-yr. ave.....									1,158	1,126	1,006	867
1922.....	857	585	493	334	346	351	633	879	985	937	868	824
1923.....	763											

TABLE 17.—Cold-storage holdings of cottage, pot, and bakers' cheese.

[In thousands of pounds; i. e., 000 omitted.]

Year.	Jan. 1.	Feb. 1.	Mar. 1.	Apr. 1.	May 1.	June 1.	July 1.	Aug. 1.	Sept. 1.	Oct. 1.	Nov. 1.	Dec. 1.
1917.....									1,339	889	1,214	1,220
1918.....	892	632	521	458	539	603	2,117	2,402	3,194	3,012	2,564	3,080
1919.....	2,718	2,280	1,904	2,786	4,000	5,294	6,501	6,957	6,638	5,760	5,073	4,028
1920.....	2,785	2,433	2,041	1,954	2,511	3,253	5,135	5,785	5,689	5,780	5,493	4,825
1921.....	4,089	3,723	3,319	3,649	3,012	3,227	3,456	3,474	3,510	3,319	3,176	2,627
5-yr. ave.....									4,874	3,752	3,504	3,156
1922.....	2,327	1,920	1,677	1,379	1,315	1,391	1,657	1,502	1,380	1,136	901	519
1923.....	34											

TABLE 18.—Cold-storage holdings of cream and Neufchatel cheese.

[In thousands of pounds; i. e., 000 omitted.]

Year.	Jan. 1.	Feb. 1.	Mar. 1.	Apr. 1.	May 1.	June 1.	July 1.	Aug. 1.	Sept. 1.	Oct. 1.	Nov. 1.	Dec. 1.
1917.....									66	199	67	59
1918.....	55	27	53	29	31	31	219	220	135	255	369	181
1919.....	136	80	92	86	95	114	228	334	242	259	223	194
1920.....	168	161	158	180	181	177	207	226	276	275	187	199
1921.....	150	99	58	52	39	110	259	292	392	373	312	280
5-yr. ave.....									222	273	232	143
1922.....	313	229	150	127	94	74	119	150	169	186	194	160
1923.....	183											

TABLE 19.—Cold-storage holdings of all other cheese reported.<sup>1</sup>

[In thousands of pounds; i. e., 000 omitted.]

Year.	Jan. 1.	Feb. 1.	Mar. 1.	Apr. 1.	May 1.	June 1.	July 1.	Aug. 1.	Sept. 1.	Oct. 1.	Nov. 1.	Dec. 1.
1917.....									712		359	295
1918.....	171	265	251	337	396	807	1,931	3,957	5,340	4,682	2,596	3,269
1919.....	1,956	2,791	2,206	2,471	2,687	3,702	4,504	4,782	4,294	4,351	4,912	4,301
1920.....	3,943	3,510	3,395	3,212	3,105	3,415	4,974	6,315	5,272	5,375	6,530	6,321
1921.....	5,615	5,426	4,772	4,112	4,243	3,414	5,172	5,728	6,269	6,207	5,572	5,081
5-yr. ave.....									4,577	4,398	4,064	3,933
1922.....	4,594	3,874	3,549	3,459	3,365	4,042	4,829	4,607	4,937	4,584	4,259	3,181
1923.....	3,317											

<sup>1</sup> Includes also holdings of storages not reporting by varieties.

# Cold-Storage Holdings.

TABLE 20.—Cold-storage holdings of all varieties of cheese.

[In thousands of pounds; i. e., 000 omitted.]

Year.	Jan. 1.	Feb. 1.	Mar. 1.	Apr. 1.	May 1.	June 1.	July 1.	Aug. 1.	Sept. 1.	Oct. 1.	Nov. 1.	Dec. 1.
1917.....									95,461	94,421	81,423	78,513
1918.....	69,619	58,495	35,839	29,978	19,937	23,081	35,225	56,792	68,970	54,800	44,366	37,473
1919.....	30,225	25,748	18,908	15,102	14,837	23,291	51,407	74,394	92,589	96,593	87,980	76,414
1920.....	64,694	54,416	43,656	32,144	25,662	23,341	44,504	70,034	80,258	74,982	69,002	58,800
1921.....	51,169	40,207	30,458	24,978	23,940	28,173	47,617	56,317	62,963	62,369	59,605	49,002
5 yr. ave.....									80,035	76,622	68,475	60,041
1922.....	41,594	33,001	25,477	19,339	18,990	24,070	43,542	57,768	66,873	62,423	53,815	48,620
1923.....	45,234											

TABLE 21.—Cold-storage holdings of case eggs.

[In thousands of cases; i. e., 000 omitted.]

Year.	Jan. 1.	Feb. 1.	Mar. 1.	Apr. 1.	May 1.	June 1.	July 1.	Aug. 1.	Sept. 1.	Oct. 1.	Nov. 1.	Dec. 1.
1915.....												
1916.....	1,698	458	5	264	2,327	4,593	5,574	6,097	5,623	5,019	3,687	2,788
1917.....	920	149	7	190	2,105	4,922	7,117	6,895	6,436	5,827	4,638	2,948
1918.....	1,300	200	20	344	2,957	5,499	6,554	6,568	6,265	5,369	3,812	2,071
1919.....	740	136	26	320	3,278	6,008	7,959	7,850	7,685	6,858	5,087	3,342
1920.....	1,542	342	26	122	2,135	5,143	6,747	6,872	6,372	5,295	3,839	1,624
1921.....	408	43	43	1,926	4,909	6,844	7,534	7,603	7,216	6,269	4,385	2,402
5 yr. ave.....	992	173	25	580	3,077	5,701	7,022	7,158	6,794	5,926	4,351	2,511
1922.....	889	179	13	950	4,648	8,056	9,811	10,161	9,608	7,924	5,726	3,257
1923.....	1,311											

1 30-dozen cases.

TABLE 22.—Cold-storage holdings of frozen eggs.

[In thousands of pounds; i. e., 000 omitted.]

Year.	Jan. 1.	Feb. 1.	Mar. 1.	Apr. 1.	May 1.	June 1.	July 1.	Aug. 1.	Sept. 1.	Oct. 1.	Nov. 1.	Dec. 1.
1916.....					3,133	4,176	5,410	5,822	5,223	6,457	6,307	5,104
1917.....	2,737	1,724	1,334	2,394	3,329	7,558	13,396	15,384	19,771	17,585	16,424	13,979
1918.....	14,603	12,207	9,740	9,091	9,498	11,555	12,595	15,240	15,871	14,757	13,231	11,832
1919.....	8,990	7,760	6,931	5,989	8,048	11,568	16,472	19,024	21,017	20,687	18,976	22,690
1920.....	19,298	16,394	13,856	11,039	10,529	13,939	17,388	20,055	21,901	23,584	20,461	28,945
1921.....	27,325	24,927	22,363	20,873	21,730	25,622	27,737	27,952	27,408	26,656	26,114	22,899
5 yr. ave.....	14,586	12,602	10,842	9,859	10,624	14,283	17,578	19,531	21,128	20,654	19,051	20,269
1922.....	19,280	16,209	13,193	10,473	14,154	18,273	23,528	27,855	34,516	33,545	30,523	26,233
1923.....	22,787											

TABLE 23.—Cold-storage holdings of broilers.

[In thousands of pounds; i. e., 000 omitted.]

Year.	Jan. 1.	Feb. 1.	Mar. 1.	Apr. 1.	May 1.	June 1.	July 1.	Aug. 1.	Sept. 1.	Oct. 1.	Nov. 1.	Dec. 1.
1917.....					7,422	4,699	4,360	4,274	3,249	3,683	4,187	8,717
1918.....	9,206	8,211	7,258	4,731	3,126	1,710	1,318	1,005	5,118	8,660	12,685	14,586
1919.....	15,156	15,023	14,236	12,190	10,954	8,709	7,409	6,156	6,031	5,994	6,996	8,046
1920.....	9,137	8,405	6,898	5,576	4,081	3,448	3,052	2,691	4,135	7,152	9,756	10,970
1921.....	12,238	11,496	11,527	9,604	7,552	5,253	3,607	3,046	4,890	8,197	10,430	12,463
5 yr. ave.....					6,563	4,824	3,907	3,110	4,693	6,737	8,813	10,956
1922.....	13,769	12,546	10,250	7,937	5,397	3,473	2,906	3,110	5,238	7,334	9,202	11,635
1923.....	13,502											



TABLE 24.—Cold-storage holdings of roasters.

(In thousands of pounds; i. e., 000 omitted.)

Year.	Jan. 1.	Feb. 1.	Mar. 1.	Apr. 1.	May 1.	June 1.	July 1.	Aug. 1.	Sept. 1.	Oct. 1.	Nov. 1.	Dec. 1.
1917.....					10,005	7,694	8,635	6,110	4,798	3,873	5,191	12,578
1918.....	16,659	18,340	14,588	11,724	7,025	3,923	2,328	1,459	1,237	2,749	7,685	16,201
1919.....	20,466	33,204	30,465	27,244	18,821	14,193	10,294	7,250	5,040	4,068	5,580	14,833
1920.....	28,687	32,651	27,683	21,690	13,665	8,573	5,019	2,504	1,724	1,935	5,231	11,242
1921.....	22,232	23,817	23,273	18,300	14,115	9,528	6,041	3,580	2,113	3,239	8,915	21,713
5-yr. ave.....					12,804	8,780	6,083	4,205	2,984	3,173	6,520	15,313
1922.....	37,254	37,831	33,006	26,161	20,626	15,107	10,464	6,877	4,536	2,392	6,232	17,247
1923.....	35,614											

TABLE 25.—Cold-storage holdings of fowls.

(In thousands of pounds; i. e., 000 omitted.)

Year.	Jan. 1.	Feb. 1.	Mar. 1.	Apr. 1.	May 1.	June 1.	July 1.	Aug. 1.	Sept. 1.	Oct. 1.	Nov. 1.	Dec. 1.
1917.....					6,396	4,751	3,787	3,482	2,770	2,660	3,301	8,497
1918.....	13,899	15,283	12,484	9,419	4,107	2,749	4,360	5,841	7,349	7,453	9,456	15,068
1919.....	25,030	30,698	28,058	23,581	15,549	11,121	9,572	7,349	4,897	4,364	4,331	9,691
1920.....	20,636	23,110	18,384	13,177	7,251	4,654	3,985	5,239	5,002	3,769	4,284	7,212
1921.....	14,673	15,598	15,098	11,861	8,996	5,794	4,670	3,112	2,570	3,170	3,655	10,006
5-yr. ave.....					8,460	5,814	5,275	5,005	4,518	4,283	5,001	10,095
1922.....	20,197	20,562	18,746	11,477	6,702	4,341	5,379	5,263	3,897	2,720	2,842	7,122
1923.....	16,091											

TABLE 26.—Cold-storage holdings of turkeys.

(In thousands of pounds; i. e., 000 omitted.)

Year.	Jan. 1.	Feb. 1.	Mar. 1.	Apr. 1.	May 1.	June 1.	July 1.	Aug. 1.	Sept. 1.	Oct. 1.	Nov. 1.	Dec. 1.
1917.....					3,054	3,238	4,382	4,078	3,547	3,020	6,485	3,152
1918.....	4,744	10,509	9,688	8,508	7,324	5,835	4,258	3,086	2,100	1,770	1,579	6,337
1919.....	9,039	10,605	10,117	8,068	7,072	6,354	5,378	4,390	3,200	1,849	1,827	3,212
1920.....	5,178	6,030	5,691	4,545	3,497	2,832	2,432	1,800	1,183	872	870	4,351
1921.....	6,015	6,407	6,682	6,238	5,718	5,198	4,505	3,836	2,927	2,439	2,172	3,293
5-yr. ave.....					5,333	4,712	4,187	3,438	2,591	1,990	2,487	4,069
1922.....	7,759	7,873	7,830	6,043	5,022	5,295	4,642	3,996	3,204	2,645	2,306	2,154
1923.....	9,335											

TABLE 27.—Cold-storage holdings of miscellaneous poultry.

(In thousands of pounds; i. e., 000 omitted.)

Year.	Jan. 1.	Feb. 1.	Mar. 1.	Apr. 1.	May 1.	June 1.	July 1.	Aug. 1.	Sept. 1.	Oct. 1.	Nov. 1.	Dec. 1.
1917.....					39,675	43,604	41,031	36,188	41,729	33,501	22,569	16,616
1918.....	29,039	15,885	12,935	9,734	4,941	4,612	5,410	6,754	7,229	9,166	13,029	19,046
1919.....	29,032	30,144	26,757	21,206	18,705	15,245	16,359	15,418	13,693	14,515	14,905	18,967
1920.....	23,824	22,659	19,705	16,449	12,031	11,028	10,303	10,031	9,287	9,225	10,951	15,270
1921.....	23,867	23,777	22,121	16,312	11,591	9,635	8,355	7,614	7,564	8,558	9,703	17,692
5-yr. ave.....					17,401	16,826	16,332	15,201	15,600	14,833	16,232	17,513
1922.....	24,721	24,438	21,060	15,952	12,093	10,380	11,452	11,300	10,706	10,294	9,658	13,723
1923.....	25,622											

TABLE 28.—Cold-storage holdings of frozen poultry.

[In thousands of pounds; i. e., 000 omitted.]

Year.	Jan. 1.	Feb. 1.	Mar. 1.	Apr. 1.	May 1.	June 1.	July 1.	Aug. 1.	Sept. 1.	Oct. 1.	Nov. 1.	Dec. 1.
1917					67,242	64,268	60,19*	54,132	56,093	46,737	51,743	46,561
1918	64,557	68,238	58,950	44,115	26,523	18,929	17,652	18,756	23,034	29,798	44,433	71,238
1919	108,722	119,675	108,627	92,897	71,162	55,616	49,212	40,573	32,93*	30,492	33,138	54,749
1920	87,512	92,253	78,421	61,436	40,525	30,535	24,790	22,364	21,331	22,953	31,070	49,046
1921	79,025	81,096	79,001	62,315	47,651	35,408	27,268	21,188	20,064	25,902	34,876	65,167
5-yr. ave.					50,621	40,955	35,824	31,403	30,688	31,118	39,053	57,951
1922	103,697	108,350	88,709	68,471	50,840	38,602	34,837	30,659	27,671	25,984	30,238	51,781
1923	109,170											

TABLE 29.—Cold-storage holdings of frozen beef.

[In thousands of pounds; i. e., 000 omitted.]

Year.	Jan. 1.	Feb. 1.	Mar. 1.	Apr. 1.	May 1.	June 1.	July 1.	Aug. 1.	Sept. 1.	Oct. 1.	Nov. 1.	Dec. 1.
1916	126,374	132,266	124,954	118,279	99,178	73,025	55,109	58,867	58,303	66,319	92,815	158,148
1917	202,442	190,909	169,793	154,193	118,391	133,067	109,354	108,729	100,453	119,221	179,032	235,664
1918	315,572	292,114	276,114	268,015	212,725	193,084	154,638	150,962	165,144	194,480	224,312	229,668
1919	298,818	294,514	285,293	221,725	184,580	163,913	162,639	156,279	162,069	166,244	184,196	223,311
1920	261,812	252,937	223,145	196,890	170,455	130,619	95,297	77,409	67,010	58,461	68,663	89,718
1921	120,245	119,865	122,492	114,063	100,672	836	76,523	66,262	50,204	44,296	49,014	63,188
5-yr. ave.	239,778	229,908	211,349	190,977	157,368	135,292	119,690	118,540	112,976	116,538	141,043	168,310
1922	68,495	61,522	55,788	50,772	45,341	37,648	31,593	27,727	28,210	34,611	47,929	73,027
1923	91,806											

TABLE 30.—Quantities of beef frozen monthly.

[In thousands of pounds; i. e., 000 omitted.]

Year.	Jan.	Feb.	Mar.	Apr.	May.	June.	July.	Aug.	Sept.	Oct.	Nov.	Dec.
1919	63,743	61,991	32,703	26,346	30,413	33,795	30,606	58,822	31,012	42,944	71,667	59,751
1920	23,593	18,993	16,089	8,072	10,810	8,075	10,204	7,712	6,215	21,712	31,499	39,113
1921	12,665	11,990	6,438	6,773	6,091	5,657	7,258	7,948	7,448	21,065	26,765	17,684
1922	8,168	6,662	6,252	5,630	5,889	5,895	5,607	10,223	10,514	24,455	41,166	32,523

TABLE 31.—Stocks of cured beef and beef in process of cure in cold-storage warehouses and meat-packing establishments.

[In thousands of pounds; i. e., 000 omitted.]

Year.	Jan. 1.	Feb. 1.	Mar. 1.	Apr. 1.	May 1.	June 1.	July 1.	Aug. 1.	Sept. 1.	Oct. 1.	Nov. 1.	Dec. 1.
1916	21,443	20,852	26,959	25,811	21,869	17,324	18,916	18,589	18,450	21,653	30,013	37,958
1917	37,301	35,891	37,060	30,601	29,409	30,831	35,679	32,401	30,290	31,246	32,223	38,325
1918	39,243	38,793	37,675	34,108	29,217	24,504	21,969	28,065	29,951	28,713	29,330	32,391
1919	39,267	35,510	31,246	30,659	27,822	27,089	23,244	39,943	35,526	37,328	37,595	35,547
1920	37,052	36,715	37,021	35,047	30,333	29,653	28,358	23,617	22,711	19,594	20,352	22,448
1921	22,507	22,926	24,006	24,282	21,518	20,716	19,697	17,829	17,130	15,526	14,472	17,144
5-yr. ave.	34,486	34,027	33,498	30,045	27,659	26,019	26,589	26,571	27,128	26,481	26,796	29,160
1922	16,313	16,774	17,997	18,744	19,166	19,304	19,113	19,364	20,081	18,961	19,884	22,602
1923	24,450											

TABLE 32.—Stocks of beef placed in cure in meat-packing establishments.

[In thousands of pounds; i. e., 000 omitted.]

Year.	Jan.	Feb.	Mar.	Apr.	May.	June.	July.	Aug.	Sept.	Oct.	Nov.	Dec.
1919.....	19,936	14,816	11,072	10,643	11,295	7,381	13,956	19,055	14,747	12,242	12,630	11,766
1920.....	8,163	9,982	8,728	6,608	7,519	8,756	8,739	8,295	7,890	9,592	9,954	9,724
1921.....	7,259	8,712	6,476	5,451	6,953	8,042	8,418	8,568	7,189	9,051	10,652	6,282
1922.....	6,952	8,508	8,680	7,837	8,448	8,955	9,706	10,202	9,500	11,381	12,067	9,530

TABLE 33.—Total stocks of beef (frozen, cured, and in process of cure) in cold-storage warehouses and meat-packing establishments.

[In thousands of pounds; i. e., 000 omitted.]

Year.	Jan. 1.	Feb. 1.	Mar. 1.	Apr. 1.	May 1.	June 1.	July 1.	Aug. 1.	Sept. 1.	Oct. 1.	Nov. 1.	Dec. 1.
1916.....	147,817	153,118	151,912	144,089	112,045	90,349	74,024	77,456	76,753	87,972	122,828	196,106
1917.....	239,743	226,800	207,453	184,794	147,800	133,838	145,033	141,130	130,743	150,468	211,254	273,889
1918.....	354,814	330,907	313,689	302,121	241,942	214,898	176,606	209,027	215,125	223,181	253,652	262,049
1919.....	335,085	330,324	296,539	252,415	212,457	191,002	191,883	190,222	197,595	203,571	221,791	258,858
1920.....	268,874	288,752	280,147	231,937	200,788	157,271	121,682	101,086	89,721	78,055	89,015	112,166
1921.....	142,813	142,891	146,409	138,343	122,188	109,5	96,220	84,091	67,334	59,822	63,486	80,333
5-yr. ave.....	274,234	263,935	244,847	221,922	185,025	161,311	146,279	145,111	140,104	143,019	167,839	197,479
1922.....	84,808	78,285	73,782	69,516	64,507	56,852	50,706	47,031	48,291	53,522	67,814	95,628
1923.....	116,255											

TABLE 34.—Cold-storage holdings of frozen lamb and mutton.

[In thousands of pounds; i. e., 000 omitted.]

Year.	Jan. 1.	Feb. 1.	Mar. 1.	Apr. 1.	May 1.	June 1.	July 1.	Aug. 1.	Sept. 1.	Oct. 1.	Nov. 1.	Dec. 1.
1916.....	4,976	5,286	5,812	5,084	3,858	2,525	1,939	2,098	2,135	2,579	3,465	5,000
1917.....	4,886	5,895	4,971	4,872	4,369	3,508	4,390	3,912	2,716	2,768	4,194	5,406
1918.....	7,403	6,315	7,856	6,509	3,348	3,800	2,429	3,150	4,046	5,275	8,045	8,035
1919.....	12,760	11,360	8,013	6,505	7,623	7,718	7,279	7,283	7,817	8,318	7,504	6,409
1920.....	10,290	7,787	6,781	3,517	2,879	5,736	4,311	2,299	11,021	25,323	48,997	58,702
1921.....	68,032	78,082	59,304	38,520	25,129	15,877	8,714	6,751	5,903	5,993	6,840	7,520
5-yr. ave.....	20,000	21,888	17,180	11,803	8,610	7,340	5,423	4,675	6,301	9,536	15,314	17,614
1922.....	6,444	3,914	2,863	2,878	2,071	2,310	3,720	3,308	3,376	3,473	3,458	3,633
1923.....	4,523											

TABLE 35.—Quantities of lamb and mutton frozen monthly.

[In thousands of pounds; i. e., 000 omitted.]

Year.	Jan.	Feb.	Mar.	Apr.	May.	June.	July.	Aug.	Sept.	Oct.	Nov.	Dec.
1919.....	1,736	1,265	1,351	1,531	1,271	998	981	931	1,804	1,793	2,546	1,457
1920.....	1,117	902	594	850	1,508	1,954	742	2,393	1,942	2,334	1,066	3,094
1921.....	1,458	834	419	453	754	668	663	737	1,181	2,035	1,444	1,213
1922.....	600	656	551	816	930	1,139	511	793	608	878	800	1,187

TABLE 36.—Cold-storage holdings of frozen pork.

[In thousands of pounds; i. e., 000 omitted.]

Year.	Jan. 1.	Feb. 1.	Mar. 1.	Apr. 1.	May 1.	June 1.	July 1.	Aug. 1.	Sept. 1.	Oct. 1.	Nov. 1.	Dec. 1.
1916.....	44, 194	63, 376	89, 604	88, 344	77, 812	83, 193	82, 571	85, 845	63, 420	38, 851	23, 938	32, 013
1917.....	50, 564	66, 062	83, 352	64, 996	74, 723	77, 531	91, 552	96, 648	72, 286	39, 767	25, 347	23, 594
1918.....	41, 663	61, 658	104, 639	116, 548	117, 738	118, 801	111, 674	108, 226	71, 385	40, 593	30, 908	34, 760
1919.....	61, 539	104, 708	128, 897	142, 188	139, 205	144, 212	155, 263	181, 137	90, 510	61, 417	47, 274	44, 564
1920.....	55, 551	106, 677	132, 035	148, 922	144, 453	156, 963	170, 054	161, 304	129, 187	87, 592	67, 143	60, 007
1921.....	93, 990	159, 594	205, 869	219, 964	200, 706	194, 486	182, 193	149, 435	103, 466	64, 682	38, 517	37, 513
5-yr. ave. ....	60, 661	97, 940	127, 573	138, 524	133, 376	138, 359	143, 404	129, 449	83, 373	60, 010	43, 050	40, 128
1922.....	51, 203	71, 722	86, 219	98, 705	103, 907	114, 571	128, 962	117, 903	84, 815	46, 796	30, 688	33, 774
1923.....	72, 276											

TABLE 37.—Quantities of pork frozen monthly.

[In thousands of pounds; i. e., 000 omitted.]

Year.	Jan.	Feb.	Mar.	Apr.	May.	June.	July.	Aug.	Sept.	Oct.	Nov.	Dec.
1919.....	65, 371	49, 478	38, 180	28, 904	28, 121	33, 235	24, 405	13, 143	11, 839	13, 675	15, 615	37, 727
1920.....	74, 501	49, 453	44, 741	33, 831	46, 995	52, 752	33, 697	25, 309	20, 700	17, 500	25, 994	63, 531
1921.....	83, 053	78, 665	43, 610	29, 749	37, 337	29, 125	29, 407	19, 034	14, 421	17, 774	18, 171	37, 724
1922.....	43, 719	39, 261	35, 970	31, 592	42, 703	53, 540	32, 690	20, 980	17, 100	17, 809	30, 414	61, 198

TABLE 38.—Stocks of dry salt pork and salt pork in process of cure in cold-storage warehouses and meat-packing establishments.

[In thousands of pounds; i. e., 000 omitted.]

Year.	Jan. 1.	Feb. 1.	Mar. 1.	Apr. 1.	May 1.	June 1.	July 1.	Aug. 1.	Sept. 1.	Oct. 1.	Nov. 1.	Dec. 1.
1916.....	145, 661	194, 053	226, 910	206, 703	202, 392	206, 008	202, 038	205, 251	183, 194	140, 908	119, 958	142, 858
1917.....	200, 998	228, 424	259, 059	234, 396	210, 818	213, 802	224, 813	231, 905	195, 678	143, 319	110, 652	130, 892
1918.....	252, 934	311, 422	402, 734	448, 114	471, 809	493, 795	402, 549	370, 203	333, 472	283, 572	247, 194	283, 092
1919.....	357, 254	471, 747	435, 661	430, 295	425, 411	402, 652	381, 736	366, 547	338, 270	332, 786	281, 930	242, 224
1920.....	262, 620	332, 648	402, 229	447, 745	462, 393	430, 782	408, 681	381, 328	316, 433	233, 389	150, 812	114, 400
1921.....	144, 997	202, 909	251, 893	235, 390	246, 443	246, 610	250, 752	311, 511	200, 291	149, 974	108, 511	66, 731
5-yr. ave. ....	243, 761	315, 470	350, 315	365, 170	365, 174	356, 328	333, 706	316, 299	276, 629	228, 608	179, 840	177, 448
1922.....	111, 071	128, 690	139, 281	145, 183	142, 030	157, 689	186, 042	179, 850	165, 668	122, 783	85, 671	83, 017
1923.....	121, 125											

TABLE 39.—Stocks of dry salt pork placed in cure in meat-packing establishments.

[In thousands of pounds; i. e., 000 omitted.]

Year.	Jan.	Feb.	Mar.	Apr.	May.	June.	July.	Aug.	Sept.	Oct.	Nov.	Dec.
1919.....	319, 278	243, 795	170, 048	127, 269	142, 481	185, 087	158, 900	105, 042	94, 339	84, 674	106, 707	172, 565
1920.....	205, 372	121, 354	101, 571	75, 596	82, 361	81, 048	66, 715	69, 632	41, 553	45, 728	50, 451	91, 374
1921.....	116, 903	103, 950	82, 076	77, 621	83, 639	106, 024	104, 267	81, 932	65, 918	59, 648	60, 549	74, 997
1922.....	88, 866	82, 858	75, 933	63, 322	92, 154	115, 759	104, 959	91, 939	75, 093	72, 713	91, 522	126, 032

TABLE 40.—Stocks of pickled pork and pickled pork in process of cure in cold-storage warehouses and meat-packing establishments.<sup>1</sup>

[In thousands of pounds; i. e., 000 omitted.]

Year.	Jan. 1.	Feb. 1.	Mar. 1.	Apr. 1.	May 1.	June 1.	July 1.	Aug. 1.	Sept. 1.	Oct. 1.	Nov. 1.	Dec. 1.
1916.....	230,881	298,989	350,789	351,051	337,464	326,153	359,300	350,576	303,399	251,004	209,061	251,519
1917.....	307,478	348,269	378,874	362,931	381,226	403,185	412,810	403,704	328,943	252,152	192,894	204,507
1918.....	269,003	322,004	369,014	402,377	406,191	397,488	372,347	365,941	315,517	249,877	233,148	242,976
1919.....	303,763	392,260	435,197	431,714	434,671	440,989	438,584	404,741	341,724	297,712	239,719	226,893
1920.....	279,467	337,238	369,626	361,973	353,864	371,593	403,719	383,896	351,381	295,460	254,538	232,270
1921.....	294,993	316,328	376,376	367,563	355,011	366,291	368,348	346,623	320,196	257,244	212,528	221,345
5-yr. ave.....	290,941	343,220	385,692	385,310	389,201	395,969	395,522	378,198	333,551	270,479	226,623	229,678
1922.....	252,822	284,487	321,950	347,276	348,305	363,395	391,474	395,692	369,187	313,517	278,812	302,768
1923.....	377,107											

<sup>1</sup> Pickled pork includes sweet pickled, plain brine, and barreled pork.TABLE 41.—Stocks of pickled pork placed in cure in meat-packing establishments.<sup>1</sup>

[In thousands of pounds; i. e., 000 omitted.]

Year.	Jan.	Feb.	Mar.	Apr.	May.	June.	July.	Aug.	Sept.	Oct.	Nov.	Dec.
1919.....	175,358	145,409	123,331	137,540	146,365	158,241	151,863	103,393	94,898	117,168	113,733	158,833
1920.....	293,398	129,446	137,634	130,576	170,406	193,198	158,513	132,478	105,218	112,490	118,856	147,865
1921.....	162,927	159,914	140,794	143,582	153,652	184,588	163,672	135,671	113,897	115,268	131,229	138,164
1922.....	160,981	152,549	156,226	133,516	167,509	208,916	175,046	156,591	134,036	143,090	173,024	196,473

<sup>1</sup> Pickled pork includes sweet pickled, plain brine, and barreled pork.

TABLE 42.—Total stocks of pork (frozen, dry salt, and pickled, cured and in process of cure) in cold-storage warehouses and meat-packing establishments.

[In thousands of pounds i. e., 000 omitted.]

Year.	Jan. 1.	Feb. 1.	Mar. 1.	Apr. 1.	May 1.	June 1.	July 1.	Aug. 1.	Sept. 1.	Oct. 1.	Nov. 1.	Dec. 1.
1916.....	420,736	556,369	666,263	646,097	617,668	615,336	643,959	641,667	550,013	430,762	352,006	426,392
1917.....	559,041	642,755	701,258	662,323	675,782	694,521	729,185	732,258	596,907	435,238	328,883	379,293
1918.....	583,600	725,085	876,378	967,040	985,780	1,009,822	992,871	844,385	720,374	579,991	517,310	560,728
1919.....	722,556	968,715	999,756	1,004,109	999,288	987,853	959,387	882,448	770,504	691,915	568,921	513,622
1920.....	597,638	776,703	903,350	968,639	960,706	959,338	982,454	933,028	807,011	616,441	472,798	426,677
1921.....	538,980	669,832	837,158	842,906	802,190	801,387	739,261	727,669	623,967	471,901	359,658	355,589
5-yr. ave.....	595,303	758,630	863,590	889,004	886,751	890,596	872,632	823,634	703,753	559,097	449,513	447,254
1922.....	415,096	484,898	547,450	591,223	594,241	636,655	707,385	683,451	619,671	483,006	395,171	419,498
1923.....	570,510											

TABLE 43.—Cold-storage holdings of miscellaneous meats.<sup>1</sup>

[In thousands of pounds; i. e., 000 omitted.]

Year.	Jan. 1.	Feb. 1.	Mar. 1.	Apr. 1.	May 1.	June 1.	July 1.	Aug. 1.	Sept. 1.	Oct. 1.	Nov. 1.	Dec. 1.
1917.....												
1918.....	55,560	55,658	67,632	80,200	78,252	71,148	77,470	79,959	96,316	98,579	102,623	106,254
1919.....	128,892	141,914	132,070	125,735	133,125	97,195	95,908	91,449	85,358	89,454	82,113	82,833
1920.....	108,766	113,228	109,452	106,048	87,435	80,384	86,047	78,676	69,471	63,957	59,498	60,092
1921.....	75,421	85,254	95,163	87,825	93,043	90,392	85,267	80,995	78,778	69,739	60,666	61,216
5-year ave.....								69,449	75,735	71,071	69,560	72,154
1922.....	60,253	57,171	56,459	53,801	52,064	50,201	54,878	54,734	55,773	49,617	45,954	50,405
10.3.....	63,201											

<sup>1</sup> Miscellaneous meats include all stocks of beef, pork, and mutton trimmings and edible offal that have been frozen, cured, or otherwise prepared for food. It does not include the trimmings that have not been frozen, cured, nor processed, nor does it include, sausage or canned-meat products.

TABLE 44.—Total stocks of meats in cold-storage warehouses and meat-packing establishments.

[In thousands of pounds; i. e., 000 omitted.]

Year.	Jan. 1.	Feb. 1.	Mar. 1.	Apr. 1.	May 1.	June 1.
1917.....	803,669	875,450	913,659	851,990	827,951	831,867
1918.....	981,378	1,117,965	1,266,554	1,354,961	1,319,328	1,299,779
1919.....	1,109,292	1,452,312	1,436,378	1,389,764	1,332,443	1,283,768
1920.....	1,015,558	1,168,580	1,278,729	1,304,142	1,251,508	1,208,728
1921.....	820,245	979,058	1,138,033	1,107,706	1,042,552	1,017,209
5-year ave.....	982,461	1,141,467	1,226,686	1,221,269	1,173,350	1,145,527
1922.....	566,603	624,273	680,553	717,417	712,887	745,022
1923.....	754,489					

Year.	July 1.	Aug. 1.	Sept. 1.	Oct. 1.	Nov. 1.	Dec. 1.
1917.....	878,598	693,472	778,119	632,602	587,245	709,043
1918.....	1,149,377	1,136,501	1,035,951	905,526	882,230	938,066
1919.....	1,254,437	1,171,881	1,061,274	984,259	880,719	865,101
1920.....	1,194,464	1,115,082	977,225	783,777	679,295	655,636
1921.....	969,402	890,406	776,981	307,455	490,648	504,659
5-year ave.....	1,110,492	1,043,169	925,693	782,723	702,226	734,501
1922.....	818,659	788,524	727,111	589,188	512,396	569,165
1923.....						

TABLE 45.—Total stocks of lard in cold-storage warehouses and meat-packing establishments.<sup>1</sup>

[In thousands of pounds; i. e., 000 omitted.]

Year.	Jan. 1.	Feb. 1.	Mar. 1.	Apr. 1.	May 1.	June 1.	July 1.	Aug. 1.	Sept. 1.	Oct. 1.	Nov. 1.	Dec. 1.
1916.....	63,304	92,342	111,897	97,237	108,731	85,113	87,127	95,991	82,028	71,571	56,929	58,950
1917.....	80,977	86,208	88,460	65,179	61,640	72,365	95,197	112,240	102,172	69,929	37,095	44,367
1918.....	54,539	59,310	65,355	89,854	103,373	106,194	107,871	102,411	104,668	90,398	76,124	81,676
1919.....	104,274	138,333	125,410	112,469	112,409	83,090	92,132	100,478	87,947	76,456	66,036	49,147
1920.....	62,614	97,649	111,973	132,993	141,819	152,307	193,316	191,531	170,774	109,258	47,329	36,683
1921.....	59,319	83,549	117,690	128,614	152,428	181,002	204,301	194,490	149,896	85,115	48,850	42,001
5-year ave.....	72,345	93,014	101,773	105,822	114,334	119,191	138,563	140,232	123,089	86,231	55,087	50,775
1922.....	47,541	61,202	81,297	86,031	96,055	123,708	154,254	143,084	119,755	75,338	36,750	32,506
1923.....	48,808											

<sup>1</sup> Lard includes all prime steam, kettle-rendered, neutral, and other pure lards. It does not include lard substitutes or compounds.

TABLE 46.—Total production of lard in meat-packing establishments.

[In thousands of pounds; i. e., 000 omitted.]

Year.	Jan.	Feb.	Mar.	Apr.	May.	June.	July.	Aug.	Sept.	Oct.	Nov.	Dec.
1919.....	129,160	103,378	85,512	84,472	91,305	100,489	85,420	54,891	50,523	77,069	82,594	109,735
1920.....	149,917	98,029	116,113	105,887	119,545	127,625	104,037	76,452	69,804	73,712	83,516	130,219
1921.....	149,071	140,641	123,130	119,375	121,464	138,735	117,322	97,904	91,701	98,404	109,793	125,157
1922.....	145,409	129,177	128,856	110,074	130,706	152,193	122,698	113,615	106,046	113,463	138,090	170,806

TABLE 47.—Cold-storage holdings of cured herring.

[In thousands of pounds; i. e., 000 omitted.]

Year.	Jan. 15.	Feb. 15.	Mar. 15.	Apr. 15.	May 15.	June 15.	July 15.	Aug. 15.	Sept. 15.	Oct. 15.	Nov. 15.	Dec. 15.
1916										1,944	3,347	3,209
1917	3,333	4,227	5,968	7,322	7,371	10,381	12,190	12,187	10,187	8,817	8,843	7,928
1918	6,466	4,611	5,602	8,127	12,306	19,635	23,628	27,290	27,311	23,189	20,102	18,740
1919	14,210	14,131	18,249	21,138	23,158	26,500	23,633	30,342	34,365	32,082	26,371	21,818
1920	18,466	18,621	14,217	15,042	15,806	18,632	19,793	22,111	22,752	21,585	19,377	16,369
1921	13,055	11,097	10,776	10,776	10,111	9,210	8,389	11,913	16,207	17,763	15,869	16,002
5-year ave.	11,228	10,217	11,106	12,481	13,750	16,070	18,765	20,789	22,164	20,701	17,812	16,171
1922	14,852	14,651	12,385	12,861	12,894	12,991	13,422	15,921	24,637	24,126	22,942	22,730
1923	19,949											

TABLE 48.—Cold-storage holdings of mild-cured salmon.

[In thousands of pounds; i. e., 000 omitted.]

Year.	Jan. 15.	Feb. 15.	Mar. 15.	Apr. 15.	May 15.	June 15.	July 15.	Aug. 15.	Sept. 15.	Oct. 15.	Nov. 15.	Dec. 15.
1916										3,554	4,800	3,818
1917	3,480	3,936	2,730	2,584	2,245	2,174	2,249	3,747	3,587	5,113	4,716	4,546
1918	2,893	2,898	2,987	1,934	1,873	2,151	2,883	5,129	6,643	7,104	6,905	6,672
1919	6,354	5,181	4,764	3,738	4,068	5,043	6,020	9,698	10,757	10,474	10,259	9,338
1920	7,940	7,596	6,433	5,629	5,893	6,644	6,149	8,276	8,276	8,276	7,712	5,794
1921	4,727	3,960	2,793	1,950	1,644	1,072	1,140	0,165	6,855	6,696	5,569	4,652
5-yr. ave.	5,040	4,711	3,701	3,195	3,151	3,349	4,408	6,578	7,203	7,533	7,032	6,210
1922	3,800	2,697	2,252	2,002	1,884	2,358	3,849	5,088	7,565	8,092	7,294	4,874
1923	4,874											

TABLE 49.—Cold-storage holdings of bluefish.

[In thousands of pounds; i. e., 000 omitted.]

Year.	Jan. 15.	Feb. 15.	Mar. 15.	Apr. 15.	May 15.	June 15.	July 15.	Aug. 15.	Sept. 15.	Oct. 15.	Nov. 15.	Dec. 15.
1916										248	472	253
1917	242	16	106	46	15	79	125	84	43	173	209	175
1918	157	123	94	64	65	27	25	39	216	274	239	230
1919	249	176	109	51	32	27	32	128	173	295	269	262
1920	321	233	134	91	109	219	153	211	256	367	402	411
1921	330	237	212	102	126	128	114	282	442	745	745	668
5-yr. ave.	260	157	131	83	69	96	90	149	226	371	373	349
1922	560	289	154	85	77	85	147	217	412	617	822	750
1923	579											

TABLE 50.—Quantities of bluefish frozen monthly.

[In thousands of pounds; i. e., 000 omitted.]

Year.	Jan.	Feb.	Mar.	Apr.	May.	June.	July.	Aug.	Sept.	Oct.	Nov.	Dec.
1919								64	149	31	14	5
1920	2	4	4	57	118	10	34	99	183	53	60	4
1921	2	1	6	3	22	10	186	180	341	91	77	6
1922			3	3	5	97	103	185	218	191	2	3

TABLE 51.—Cold-storage holdings of butterfish.

[In thousands of pounds; i. e., 000 omitted.]

Year.	Jan. 15.	Feb. 15.	Mar. 15.	Apr. 15.	May 15.	June 15.	July 15.	Aug. 15.	Sept. 15.	Oct. 15.	Nov. 15.	Dec. 15.
1916.....										1,080	1,446	1,032
1917.....	867	271	232	76	34	580	1,088	1,166	1,143	1,419	1,472	1,127
1918.....	876	616	220	97	156	364	893	1,256	1,260	1,271	1,308	1,154
1919.....	622	692	451	193	163	183	393	548	368	772	736	669
1920.....	459	335	254	207	182	201	295	489	513	957	1,353	1,238
1921.....	1,003	662	355	233	181	153	154	255	422	612	826	665
5-yr. ave.....	825	495	302	161	143	296	565	743	800	1,012	1,139	985
1922.....	518	393	227	174	32	46	139	271	331	413	698	560
1923.....	460											

TABLE 52.—Quantities of butterfish frozen monthly.

[In thousands of pounds; i. e., 000 omitted.]

Year.	Jan.	Feb.	Mar.	Apr.	May.	June.	July.	Aug.	Sept.	Oct.	Nov.	Dec.
1919.....								160	153	83	8	3
1920.....				5	58	129	214	79	437	585	62	21
1921.....	3	7			14	2	108	203	248	347	22	6
1922.....			4		20	83	153	88	106	329	85	

TABLE 53.—Cold-storage holdings of ciscoes.

[In thousands of pounds; i. e., 000 omitted.]

Year.	Jan. 15.	Feb. 15.	Mar. 15.	Apr. 15.	May 15.	June 15.	July 15.	Aug. 15.	Sept. 15.	Oct. 15.	Nov. 15.	Dec. 15.
1916.....										345	813	2,200
1917.....	1,782	489	480	229	65	173	262	1,018	2,860	4,275	5,837	9,455
1918.....	7,292	4,479	2,814	2,224	1,755	1,307	399	3,339	4,457	3,822	4,183	6,010
1919.....	5,652	3,692	2,062	1,279	879	662	1,070	2,185	3,409	4,433	3,815	4,567
1920.....	4,250	3,310	1,901	1,146	802	567	405	2,152	4,969	6,444	6,046	6,534
1921.....	5,952	4,957	3,945	3,331	2,783	2,525	2,605	4,444	5,839	6,343	5,894	6,244
5-yr. ave.....	4,566	3,395	2,232	1,642	1,237	1,035	1,148	2,624	4,313	5,063	5,155	6,562
1922.....	7,125	6,351	4,510	3,316	2,640	2,216	2,052	3,893	6,183	7,499	6,792	6,727
1923.....	5,894											

TABLE 54.—Quantities of ciscoes frozen monthly.

[In thousands of pounds; i. e., 000 omitted.]

Year	Jan.	Feb.	Mar.	Apr.	May.	June.	July.	Aug.	Sept.	Oct.	Nov.	Dec.
1919.....								2,031	1,556	671	1,168	736
1920.....	30	41	48	42	21	313	2,321	2,600	1,707	651	1,318	528
1921.....	45	38	69	14	61	292	2,056	1,875	1,076	1,394	1,157	572
1922.....	22	38	60	15	9	169	2,261	2,878	2,108	679	1,689	1,060



TABLE 55.—Cold-storage holdings of cod, hake, pollock, and haddock.

[In thousands of pounds; i. e., 000 omitted.]

Year.	Jan. 15.	Feb. 15.	Mar. 15.	Apr. 15.	May 15.	June 15.	July 15.	Aug. 15.	Sept. 15.	Oct. 15.	Nov. 15.	Dec. 15.
1916.....										1,349	1,717	2,017
1917.....	1,189	557	482	655	1,104	1,994	2,262	1,374	1,826	2,972	3,778	4,504
1918.....	2,469	1,554	1,285	1,591	2,451	3,405	3,908	4,680	5,006	5,275	7,510	7,005
1919.....	6,577	5,932	4,736	3,296	3,612	3,757	3,738	3,452	3,746	3,966	4,360	4,775
1920.....	3,928	2,906	1,802	1,487	1,406	1,657	1,818	2,113	2,578	3,108	3,788	3,541
1921.....	3,580	3,131	2,815	2,236	1,991	1,955	1,916	1,875	1,865	1,633	1,769	1,722
5-yr. ave.....	3,553	2,820	2,224	1,855	2,113	2,594	2,744	2,705	3,004	3,391	4,240	4,309
1922.....	1,361	1,136	913	674	501	391	340	402	400	374	468	579
1923.....	322											

TABLE 56.—Quantities of cod, hake, pollock, and haddock frozen monthly.

[In thousands of pounds; i. e., 000 omitted.]

Year.	Jan.	Feb.	Mar.	Apr.	May.	June.	July.	Aug.	Sept.	Oct.	Nov.	Dec.
1919.....								557	565	659	669	112
1920.....	95	171	147	188	482	293	458	603	569	768	138	276
1921.....	172	39	72	47	126	114	58	95	617	285	186	150
1922.....	7	39	121	52	81	20	140	61	112	202	171	34

TABLE 57.—Cold-storage holdings of croakers.

[In thousands of pounds; i. e., 000 omitted.]

Year.	Jan. 15.	Feb. 15.	Mar. 15.	Apr. 15.	May 15.	June 15.	July 15.	Aug. 15.	Sept. 15.	Oct. 15.	Nov. 15.	Dec. 15.
1916.....										215	177	149
1917.....	213	91	13	18	173	175	165	325	218	330	518	426
1918.....	274	162	56	51	560	1,116	1,143	1,209	1,080	1,043	1,000	964
1919.....	722	578	378	223	334	400	349	307	198	193	180	153
1920.....	82	38	11	31	34	64	134	281	709	706	704	577
1921.....	488	406	281	230	219	187	277	331	338	266	219	546
5-yr. ave.....	356	255	148	112	286	388	414	491	509	508	525	533
1922.....	73	23	12	27	37	24	75	37	22	6	18	4
1923.....	4											

TABLE 58.—Quantities of croakers frozen monthly.

[In thousands of pounds; i. e., 000 omitted.]

Year.	Jan.	Feb.	Mar.	Apr.	May	June	July	Aug.	Sept.	Oct.	Nov.	Dec.
1919.....								21	35	12		
1920.....	5	1		9	30	73	153	450			4	
1921.....	2	2			11	108	52	93		31	61	1
1922.....			15	11		65	23	10		13		

TABLE 59.—Cold-storage holdings of halibut.

[In thousands of pounds; i. e., 000 omitted.]

Year.	Jan. 15.	Feb. 15.	Mar. 15.	Apr. 15.	May 15.	June 15.	July 15.	Aug. 15.	Sept. 15.	Oct. 15.	Nov. 15.	Dec. 15.
1916.....										7,010	6,446	5,446
1917.....	4,118	1,144	1,004	1,157	2,459	3,536	4,612	5,971	6,750	6,762	8,545	6,409
1918.....	5,294	2,850	1,973	1,634	2,829	5,685	7,372	10,526	11,940	11,720	11,602	10,301
1919.....	7,922	5,571	4,377	2,342	4,584	5,503	8,640	10,618	11,558	11,875	11,476	9,828
1920.....	7,789	5,371	3,978	3,103	4,155	5,716	6,680	8,630	10,340	10,677	9,730	8,749
1921.....	5,961	4,117	2,526	1,965	2,773	4,375	6,213	7,093	9,129	8,486	7,995	6,569
5-yr. ave.....	6,217	3,811	2,772	2,301	3,390	4,963	6,703	8,688	9,943	9,910	9,870	8,431
1922.....	6,306	4,805	3,792	2,552	2,879	3,878	4,381	4,535	6,287	6,825	5,741	4,534
1923.....	3,782											

TABLE 60.—Quantities of halibut frozen monthly.

[In thousands of pounds; i. e., 000 omitted.]

Year.	Jan.	Feb.	Mar.	Apr.	May	June	July	Aug.	Sept.	Oct.	Nov.	Dec.
1919.....								1,395	1,018	317	253	182
1920.....	260	749	787	1,688	1,585	1,190	1,972	1,615	737	391	823	488
1921.....	303	153	344	915	2,045	1,455	1,893	1,363	423	872	629	379
1922.....	597	133	87	69	326	742	602	1,261	1,002	234	145	161

TABLE 61.—Cold-storage holdings of herring.

[In thousands of pounds; i. e., 000 omitted.]

Year.	Jan. 15.	Feb. 15.	Mar. 15.	Apr. 15.	May 15.	June 15.	July 15.	Aug. 15.	Sept. 15.	Oct. 15.	Nov. 15.	Dec. 15.
1916.....										8,508	8,585	8,853
1917.....	6,749	3,294	1,892	1,160	3,089	5,902	6,629	6,231	5,955	7,456	7,427	7,849
1918.....	5,891	3,615	2,185	1,811	5,240	12,535	16,176	16,761	15,274	15,861	15,785	15,930
1919.....	13,034	9,623	6,749	4,225	5,891	9,486	11,709	10,090	10,898	11,425	11,749	11,436
1920.....	9,296	6,496	3,712	2,012	2,203	3,297	5,698	6,480	5,405	6,124	6,582	7,738
1921.....	6,357	5,208	3,775	2,654	1,988	2,889	3,775	3,715	3,870	5,259	5,624	5,789
5-yr. ave.....	8,265	5,647	3,663	2,372	3,802	6,322	8,795	8,575	8,460	9,225	9,433	9,748
1922.....	4,148	2,494	1,158	757	595	1,121	1,086	1,585	1,939	6,426	4,065	2,936
1923.....	2,484											

TABLE 62.—Quantities of herring frozen monthly.

[In thousands of pounds; i. e., 000 omitted.]

Year.	Jan.	Feb.	Mar.	Apr.	May.	June.	July.	Aug.	Sept.	Oct.	Nov.	Dec.
1919.....								849	1,440	1,813	1,392	165
1920.....	244	394	165	111	1,424	2,914	325	196	1,139	1,083	2,360	495
1921.....	427	203	89	288	1,671	1,556	643	632	1,937	990	1,272	125
1922.....	238	115	160	117	413	127	569	393	4,697	646	403	58

TABLE 63.—Cold-storage holdings of lake trout.

[In thousands of pounds; i. e., 000 omitted.]

Year.	Jan. 15.	Feb. 15.	Mar. 15.	Apr. 15.	May 15.	June 15.	July 15.	Aug. 15.	Sept. 15.	Oct. 15.	Nov. 15.	Dec. 15.
1916.....										108	528	771
1917.....	362	153	80	43	120	139	196	218	302	482	1,292	1,050
1918.....	667	270	232	196	269	342	452	570	547	758	1,860	1,551
1919.....	1,190	895	483	282	277	287	343	374	478	739	1,619	1,680
1920.....	1,236	817	321	91	252	442	480	554	555	943	1,721	2,118
1921.....	1,665	1,394	1,114	936	896	944	1,032	991	1,053	1,213	2,004	2,489
5-yr. ave.....	1,029	706	446	312	363	431	501	541	586	827	1,659	1,774
1922.....	1,866	1,256	790	262	400	498	585	497	426	592	1,617	1,634
1923.....	1,443											

TABLE 64.—Quantities of lake trout frozen monthly.

[In thousands of pounds; i. e., 000 omitted.]

Year.	Jan.	Feb.	Mar.	Apr.	May.	June.	July.	Aug.	Sept.	Oct.	Nov.	Dec.
1919.....								124	372	906	265	171
1920.....	184	38	40	193	226	60	132	63	414	842	569	27
1921.....	81	1	4	31	135	125	33	93	215	910	854	10
1922.....	17	17	4	101	164	109	38	57	174	1,036	435	26

TABLE 65.—Cold-storage holdings of mackerel.

[In thousands of pounds; i. e., 000 omitted.]

Year.	Jan. 15.	Feb. 15.	Mar. 15.	Apr. 15.	May 15.	June 15.	July 15.	Aug. 15.	Sept. 15.	Oct. 15.	Nov. 15.	Dec. 15.
1916.....										2,298	2,730	2,563
1917.....	1,654	937	817	714	768	1,067	1,583	2,110	2,341	3,658	4,037	3,103
1918.....	2,414	1,778	1,230	1,002	697	1,532	2,559	3,319	3,880	4,112	3,785	3,569
1919.....	3,851	3,445	2,685	1,584	1,338	2,680	2,784	2,384	2,227	2,389	2,190	2,033
1920.....	2,339	2,103	1,207	728	547	1,760	3,389	3,015	2,678	2,593	2,479	2,406
1921.....	2,211	1,490	1,198	841	675	1,825	1,670	1,696	1,603	1,496	1,667	1,834
5-yr. ave.....	2,494	1,949	1,427	976	793	1,727	2,397	2,505	2,546	2,850	2,832	2,589
1922.....	1,480	1,333	908	382	671	1,929	2,425	2,847	2,983	5,025	5,603	4,953
1923.....	4,653											

TABLE 66.—Quantities of mackerel frozen monthly.

[In thousands of pounds; i. e., 000 omitted.]

Year.	Jan.	Feb.	Mar.	Apr.	May.	June.	July.	Aug.	Sept.	Oct.	Nov.	Dec.
1919.....								200	165	91	9	4
1920.....	62	37	64	7	1,324	1,732	130	130	179	316	394	230
1921.....	81	141	94	25	1,114	169	242	105	192	212	261	119
1922.....	60	38	6	273	1,333	624	503	355	2,016	606	100	191

TABLE 67.—Cold-storage holdings of rockfishes.

[In thousands of pounds; i. e., 000 omitted.]

Year.	Jan. 15.	Feb. 15.	Mar. 15.	Apr. 15.	May 15.	June 15.	July 15.	Aug. 15.	Sept. 15.	Oct. 15.	Nov. 15.	Dec. 15.
1916.....										12	26	57
1917.....		1	15	32	84	104	204	169	256	318	131	130
1918.....	51	108	117	124	183	333	371	453	510	463	421	473
1919.....	313	410	383	335	372	345	398	417	535	597	579	502
1920.....	406	291	235	185	141	167	142	185	200	184	215	142
1921.....	111	102	73	37	47	57	71	69	69	57	66	29
5-yr. ave.....	220	182	165	143	165	201	237	259	294	285	282	255
1922.....	29	34	63	42	39	34	( <sup>1</sup> )	( <sup>1</sup> )	( <sup>1</sup> )	( <sup>1</sup> )	( <sup>1</sup> )	( <sup>1</sup> )
1923.....	( <sup>1</sup> )											

<sup>1</sup> Have been reported with miscellaneous fish since June 15, 1922. (See Table 97.)

TABLE 68.—Quantities of rockfishes frozen monthly.

[In thousands of pounds; i. e., 000 omitted.]

Year.	Jan.	Feb.	Mar.	Apr.	May.	June.	July.	Aug.	Sept.	Oct.	Nov.	Dec.
1919.....								91	112	17		4
1920.....	2	9		26	41	4	50	14	5	4		2
1921.....	7		13	10	14	8	5	4	2	1	5	3
1922.....	13					( <sup>1</sup> )	( <sup>1</sup> )	( <sup>1</sup> )	( <sup>1</sup> )	( <sup>1</sup> )	( <sup>1</sup> )	( <sup>1</sup> )

<sup>1</sup> Have been reported with miscellaneous fish since May, 1922. (See Table 98.)

TABLE 69.—Cold-storage holdings of sablefish.

[In thousands of pounds; i. e., 000 omitted.]

Year.	Jan. 15.	Feb. 15.	Mar. 15.	Apr. 15.	May 15.	June 15.	July 15.	Aug. 15.	Sept. 15.	Oct. 15.	Nov. 15.	Dec. 15.
1916.....										708	1,041	735
1917.....	542	342	96	100	122	657	1,155	1,647	1,668	1,196	1,456	1,830
1918.....	942	430	192	122	234	916	1,318	2,236	3,204	3,860	3,519	3,185
1919.....	2,827	2,429	2,179	1,798	1,581	1,333	1,629	1,584	1,854	2,039	1,952	1,644
1920.....	1,355	766	513	302	253	193	233	697	834	1,119	1,017	921
1921.....	743	380	290	250	208	270	456	600	977	1,619	1,624	1,486
5-yr. ave.....	1,282	871	654	514	480	734	963	1,343	1,707	1,938	1,914	1,813
1922.....	1,235	1,070	934	797	651	580	488	527	610	808	905	813
1923.....	394											

TABLE 70.—Quantities of sablefish frozen monthly.

[In thousands of pounds; i. e., 000 omitted.]

Year.	Jan.	Feb.	Mar.	Apr.	May.	June.	July.	Aug.	Sept.	Oct.	Nov.	Dec.
1919.....								509	229	215	37	21
1920.....	25	26	7	56	51	164	378	362	391	109	110	28
1921.....	4	58	52	49	110	60	185	339	655	121	34	14
1922.....	9	29	28	90	19	50	127	165	282	228	83	17

TABLE 71.—Cold-storage holdings of fall salmon.

(In thousands of pounds; i. e., 000 omitted.)

Year.	Jan. 15.	Feb. 15.	Mar. 15.	Apr. 15.	May 15.	June 15.	July 15.	Aug. 15.	Sept. 15.	Oct. 15.	Nov. 15.	Dec. 15.
1916.....										885	2,891	2,331
1917.....	2,087	792	1,059	493	370	258	256	356	548	847	2,555	1,971
1918.....	1,826	1,341	1,338	912	543	468	473	450	847	1,612	2,515	2,445
1919.....	2,302	2,406	2,193	1,790	1,592	1,445	1,370	1,451	1,423	2,289	3,132	2,893
1920.....	2,370	1,714	1,196	822	739	624	652	815	891	1,377	2,194	2,829
1921.....	2,229	1,708	1,130	825	654	506	612	759	829	1,507	1,317	(1)
5-yr. ave.....	2,163	1,604	1,383	968	780	660	673	706	908	1,526	2,543	.....

<sup>1</sup> Holdings of fall salmon and silver salmon have been reported together since Nov. 15, 1921. (See Table 75.)

TABLE 72.—Quantities of fall salmon frozen monthly.

(In thousands of pounds; i. e., 000 omitted.)

Year.	Jan.	Feb.	Mar.	Apr.	May.	June.	July.	Aug.	Sept.	Oct.	Nov.	Dec.
1919.....								156	928	1,236		53
1920.....	6	1	70	1	16	128	292	92	477	2,085	213	74
1921.....	172	53	38	3	15	164	185	65	506	874	(1)	(1)

<sup>1</sup> The quantities of fall salmon and silver salmon frozen monthly have been reported together since October, 1921. (See Table 76.)

TABLE 73.—Cold-storage holdings of silver salmon.

(In thousands of pounds; i. e., 000 omitted.)

Year.	Jan. 15.	Feb. 15.	Mar. 15.	Apr. 15.	May 15.	June 15.	July 15.	Aug. 15.	Sept. 15.	Oct. 15.	Nov. 15.	Dec. 15.
1916.....										399	1,341	1,138
1917.....	1,113	863	577	460	261	317	296	317	626	1,174	1,024	1,118
1918.....	898	600	571	483	256	239	437	640	511	1,629	2,076	2,401
1919.....	2,362	1,360	986	711	690	602	576	564	740	1,452	1,795	1,775
1920.....	1,279	961	652	455	365	339	349	414	540	1,612	1,713	1,511
1921.....	1,034	700	431	201	147	152	293	631	1,027	1,554	2,463	(1)
5-yr. ave.....	1,335	807	644	442	338	330	390	513	709	1,484	1,814	.....

<sup>1</sup> Holdings of fall salmon and silver salmon have been reported together since Nov. 15, 1921. (See Table 76.)

TABLE 74.—Quantities of silver salmon frozen monthly.

(In thousands of pounds; i. e., 000 omitted.)

Year.	Jan.	Feb.	Mar.	Apr.	May.	June.	July.	Aug.	Sept.	Oct.	Nov.	Dec.
1919.....								184	704	541	72	31
1920.....	15	3	8		48	66	97	132	1,060	292	77	13
1921.....	44	7	2	1	11	130	356	453	632	542	(1)	(1)

<sup>1</sup> The quantities of fall salmon and silver salmon frozen monthly have been reported together since October, 1921. (See Table 76.)

TABLE 75.—Cold-storage holdings of fall and silver salmon.

[In thousands of pounds; i. e., 000 omitted.]

Year.	Jan. 15.	Feb. 15.	Mar. 15.	Apr. 15.	May 15.	June 15.	July 15.	Aug. 15.	Sept. 15.	Oct. 15.	Nov. 15.	Dec. 15.
1916.....										1,284	4,232	3,469
1917.....	3,200	1,155	1,828	953	631	574	532	673	1,174	2,020	3,579	3,090
1918.....	2,714	1,961	1,912	1,295	788	707	909	1,090	1,457	3,241	4,591	4,846
1919.....	4,664	3,856	3,179	2,501	2,252	2,047	1,945	2,015	2,163	3,741	4,927	4,668
1920.....	3,649	2,675	1,848	1,277	1,104	963	1,001	1,223	1,430	2,989	4,907	4,349
1921.....	3,263	2,408	1,561	1,026	801	638	905	1,390	1,836	3,061	3,780	3,003
5-yr. ave.....	3,498	2,411	2,027	1,410	1,117	990	1,063	1,279	1,616	3,010	4,357	3,996
1922.....	2,393	1,532	1,129	535	406	344	601	969	2,000	3,391	4,265	3,415
1923.....	3,873											

TABLE 76.—Quantities of fall and silver salmon frozen monthly.

[In thousands of pounds; i. e., 000 omitted.]

Year.	Jan.	Feb.	Mar.	Apr.	May.	June.	July.	Aug.	Sept.	Oct.	Nov.	Dec.
1919.....								340	1,629	1,777	122	83
1920.....	21	3	78	2	64	192	386	224	1,538	2,376	290	87
1921.....	216	65	38	4	26	264	541	518	1,138	1,416	93	88
1922.....	144	69	11	12	79	346	442	938	1,584	1,248	75	93

TABLE 77.—Cold-storage holdings of miscellaneous salmon.

[In thousands of pounds; i. e., 000 omitted.]

Year.	Jan. 15.	Feb. 15.	Mar. 15.	Apr. 15.	May 15.	June 15.	July 15.	Aug. 15.	Sept. 15.	Oct. 15.	Nov. 15.	Dec. 15.
1916.....										1,968	1,701	1,617
1917.....	2,554	977	525	389	303	461	1,194	1,321	1,608	1,688	1,731	1,265
1918.....	982	788	694	437	391	948	1,783	2,967	4,982	4,625	4,157	4,449
1919.....	3,269	2,692	1,948	1,439	1,401	1,283	1,958	2,501	2,907	3,279	2,963	2,682
1920.....	2,100	1,838	1,098	722	636	906	1,543	2,281	3,248	3,683	3,121	2,888
1921.....	2,344	2,011	1,216	874	665	963	2,182	3,419	5,177	5,655	5,369	4,518
5-yr. ave.....	2,244	1,661	1,096	772	691	912	1,732	2,510	3,584	3,786	3,468	3,160
1922.....	3,368	2,781	2,028	1,136	908	837	1,403	2,287	5,010	6,647	6,073	4,866
1923.....	3,112											

TABLE 78.—Quantities of miscellaneous salmon frozen monthly.

[In thousands of pounds; i. e., 000 omitted.]

Year.	Jan.	Feb.	Mar.	Apr.	May.	June.	July.	Aug.	Sept.	Oct.	Nov.	Dec.
1919.....								572	499	47	17	47
1920.....	48	61	66	104	348	790	705	1,023	593	120	214	165
1921.....	128	64	22	37	319	956	1,326	1,664	754	221	55	46
1922.....	13	23	50	149	990	838	938	2,469	1,851	340	103	29

TABLE 79.—Cold-storage holdings of sea bass.

[In thousands of pounds; i. e., 000 omitted.]

Year.	Jan. 15.	Feb. 15.	Mar. 15.	Apr. 15.	May 15.	June 15.	July 15.	Aug. 15.	Sept. 15.	Oct. 15.	Nov. 15.	Dec. 15.
1916.....										493	493	274
1917.....	339	125	146	81	48	193	407	499	410	396	483	402
1918.....	290	143	77	40	36	257	530	532	486	440	361	293
1919.....	239	195	125	67	45	87	51	102	90	78	76	98
1920.....	109	81	48	49	50	70	116	122	109	101	124	130
1921.....	123	65	50	36	23	28	56	68	61	56	59	52
5-yr. ave.....	202	122	89	55	40	127	232	285	231	214	221	195
1922.....	74	61	53	47	49	53	(1)	(1)	(1)	(1)	(1)	(1)

<sup>1</sup> Have been reported with miscellaneous fish since June 15, 1922. (See Table 97.)

TABLE 80.—Quantities of sea bass frozen monthly.

[In thousands of pounds; i. e., 000 omitted.]

Year.	Jan.	Feb.	Mar.	Apr.	May.	June.	July.	Aug.	Sept.	Oct.	Nov.	Dec.
1919.....								9	2	10	37	16
1920.....	10		8	8	36	66	17	4	6	5	6	82
1921.....	5		1		14	33	18	4	9	9	9	30
1922.....	2	2	2	7	11	(1)	(1)	(1)	(1)	(1)	(1)	(1)

<sup>1</sup> Have been reported with miscellaneous fish since May, 1922. (See Table 98.)

TABLE 81.—Cold-storage holdings of shad.

[In thousands of pounds; i. e., 000 omitted.]

Year.	Jan. 15.	Feb. 15.	Mar. 15.	Apr. 15.	May 15.	June 15.	July 15.	Aug. 15.	Sept. 15.	Oct. 15.	Nov. 15.	Dec. 15.
1916.....										369	554	425
1917.....	330	92	134	112	199	390	345	391	362	611	576	628
1918.....	565	319	303	290	378	867	781	767	701	758	723	634
1919.....	484	500	404	308	334	931	749	824	799	818	775	696
1920.....	508	310	139	147	177	435	446	474	502	482	476	359
1921.....	303	161	90	52	77	198	270	325	349	331	344	287
5-yr. ave.....	432	276	226	182	233	602	518	556	555	602	579	521
1922.....	279	251	85	62	86	208	(1)	(1)	(1)	(1)	(1)	(1)

<sup>1</sup> Holdings of shad and shad roe have been reported together since June 15, 1922. (See Table 85.)

TABLE 82.—Quantities of shad frozen monthly.

[In thousands of pounds; i. e., 000 omitted.]

Year.	Jan.	Feb.	Mar.	Apr.	May.	June.	July.	Aug.	Sept.	Oct.	Nov.	Dec.
1919.....								75	23	3		
1920.....	49	4	13	100	211	72	36	108	3	2		
1921.....	1	12	12	5	175	46	56	28	19	1		
1922.....		1	2	29	151	(1)	(1)	(1)	(1)	(1)	(1)	(1)

<sup>1</sup> The quantities of shad and shad roe frozen monthly have been reported together since May, 1922. (See Table 85.)

# Cold-Storage Holdings.

27

TABLE 83.—Cold-storage holdings of shad roe.

[In thousands of pounds; i. e., 000 omitted.]

Year.	Jan. 15.	Feb. 15.	Mar. 15.	Apr. 15.	May 15.	June 15.	July 15.	Aug. 15.	Sept. 15.	Oct. 15.	Nov. 15.	Dec. 15.
1916.....										23	52	40
1917.....	30	9	18	5	8	12	11	12	13	45	56	65
1918.....	55	57	29	29	34	64	64	41	43	40	41	40
1919.....	27	28	18	12	13	20	29	27	26	24	24	28
1920.....	14	12	6	19	15	40	52	49	43	42	42	42
1921.....	41	34	22	23	18	54	54	45	43	28	28	27
5-yr. ave.....	33	28	19	18	18	39	42	35	34	36	38	40
1922.....	22	11	4	37	55	65	( <sup>1</sup> )	( <sup>1</sup> )	( <sup>1</sup> )	( <sup>1</sup> )	( <sup>1</sup> )	( <sup>1</sup> )

<sup>1</sup> Holdings of shad and shad roe have been reported together since June 15, 1922. (See Table 85.)

TABLE 84.—Quantities of shad roe frozen monthly.

[In thousands of pounds; i. e., 000 omitted.]

Year.	Jan.	Feb.	Mar.	Apr.	May.	June.	July.	Aug.	Sept.	Oct.	Nov.	Dec.
1919.....											6	
1920.....		1	3	4	10	2		1				
1921.....			15	3	36	19			1			
1922.....	1		34	22	17	( <sup>1</sup> )	( <sup>1</sup> )	( <sup>1</sup> )	( <sup>1</sup> )	( <sup>1</sup> )	( <sup>1</sup> )	( <sup>1</sup> )

<sup>1</sup> The quantities of shad and shad roe frozen monthly have been reported together since May, 1922. (See Table 86.)

TABLE 85.—Cold-storage holdings of shad and shad roe.

[In thousands of pounds; i. e., 000 omitted.]

Year.	Jan. 15.	Feb. 15.	Mar. 15.	Apr. 15.	May 15.	June 15.	July 15.	Aug. 15.	Sept. 15.	Oct. 15.	Nov. 15.	Dec. 15.
1916.....										393	600	465
1917.....	350	100	153	118	207	402	350	404	375	536	636	693
1918.....	620	376	333	319	413	921	844	808	804	796	765	673
1919.....	482	528	463	320	347	651	778	851	825	842	769	724
1920.....	523	322	145	100	193	481	409	524	545	534	518	401
1921.....	344	195	112	75	95	250	324	370	392	359	372	314
5-yr. ave.....	466	304	245	200	251	541	560	591	588	638	618	561
1922.....	302	261	89	106	121	273	300	317	337	350	350	214
1923.....	230											

TABLE 86.—Quantities of shad and shad roe frozen monthly.

[In thousands of pounds; i. e., 000 omitted.]

Year.	Jan.	Feb.	Mar.	Apr.	May.	June.	July.	Aug.	Sept.	Oct.	Nov.	Dec.
1919.....								75	23	3	6	
1920.....	49	5	16	104	221	74	31	108	4	2		
1921.....	1	12	27	8	213	65	56	28	19	1		
1922.....	1	1	37	51	168	22	39	18	28	5		1



TABLE 87.—Cold-storage holdings of smelts, eulachon, etc.

[In thousands of pounds; i. e., 000 omitted.]

Year.	Jan. 15.	Feb. 15.	Mar. 15.	Apr. 15.	May 15.	June 15.	July 15.	Aug. 15.	Sept. 15.	Oct. 15.	Nov. 15.	Dec. 15.
1916.....										138	199	227
1917.....	217	353	876	1,051	987	92 <sup>r</sup>	704	845	813	1,121	1,223	856
1918.....	807	1,071	1,718	2,038	1,889	1,962	1,633	2,073	1,800	1,838	1,775	1,424
1919.....	1,262	1,860	1,408	875	797	729	626	645	605	574	563	183
1920.....	613	697	390	215	156	121	102	101	116	166	162	183
1921.....	171	331	672	304	293	248	263	272	335	334	317	380
5-yr. ave.....	614	863	1,014	909	824	797	745	787	746	807	808	677
1922.....	584	982	1,153	448	361	351	334	332	336	327	299	294
1923.....	237											

TABLE 88.—Quantities of smelts, eulachon, etc., frozen monthly.

[In thousands of pounds; i. e., 000 omitted.]

Year.	Jan.	Feb.	Mar.	Apr.	May.	June.	July.	Aug.	Sept.	Oct.	Nov.	Dec.
1919.....								67	17	27	19	71
1920.....	134	95	11	12			9	28	50	20	46	82
1921.....	253	177	13		12		8	65	15	9	12	46
1922.....	151	116	33	1	1	1	3	10	7	8	25	28

TABLE 89.—Cold-storage holdings of squid.

[In thousands of pounds; i. e., 000 omitted.]

Year.	Jan. 15.	Feb. 15.	Mar. 15.	Apr. 15.	May 15.	June 15.	July 15.	Aug. 15.	Sept. 15.	Oct. 15.	Nov. 15.	Dec. 15.
1916.....										1,241	1,367	1,420
1917.....	1,068	668	626	347	268	1,387	1,502	1,901	2,471	2,863	3,052	2,434
1918.....	2,066	1,685	1,241	000	363	787	825	1,134	991	868	598	326
1919.....	313	178	92	76	164	1,194	1,202	1,375	1,208	857	771	670
1920.....	421	283	193	96	94	518	703	910	2,103	2,577	2,626	2,226
1921.....	1,868	1,302	1,017	741	1,250	3,020	3,170	3,177	3,017	2,855	2,581	2,152
5-yr. ave.....	1,147	825	632	372	428	1,282	1,480	1,699	1,979	2,004	1,926	1,542
1922.....	1,679	1,438	1,009	514	640	1,036	1,039	1,038	881	801	497	268
1923.....	234											

TABLE 90.—Quantities of squid frozen monthly.

[In thousands of pounds; i. e., 000 omitted.]

Year.	Jan.	Feb.	Mar.	Apr.	May.	June.	July.	Aug.	Sept.	Oct.	Nov.	Dec.
1919.....								35	35	8		
1920.....				21	429	224	235	1,428	604	314	7	38
1921.....	19	20		457	1,791	261	273	53	7	3	18	11
1922.....	5	1		207	422	92	124	1	19	31	9	

TABLE 91.—Cold-storage holdings of weakfish (squeteagus).

[In thousands of pounds; i. e., 000 omitted.]

Year.	Jan. 15.	Feb. 15.	Mar. 15.	Apr. 15.	May 15.	June 15.	July 15.	Aug. 15.	Sept. 15.	Oct. 15.	Nov. 15.	Dec. 15.
1916.....										697	911	524
1917.....	444	88	91	29	152	197	228	723	547	931	1,460	1,156
1918.....	713	377	188	85	340	1,809	1,345	1,794	1,776	2,175	2,121	2,022
1919.....	1,519	1,261	533	411	425	711	763	619	557	750	758	707
1920.....	430	291	98	57	35	124	571	449	498	920	1,008	812
1921.....	736	604	330	290	253	263	1,405	1,640	1,751	2,193	2,044	1,735
5-yr. ave.....	770	524	365	174	282	521	862	1,045	1,026	1,394	1,478	1,286
1922.....	1,485	1,151	659	415	359	263	260	170	439	535	612	531
1923.....	314											

TABLE 92.—Quantities of weakfish (squeteagus) frozen monthly.

[In thousands of pounds; i. e., 000 omitted.]

Year.	Jan.	Feb.	Mar.	Apr.	May.	June.	July.	Aug.	Sept.	Oct.	Nov.	Dec.
1919.....								75	227	77	5	5
1920.....	20	4	1	8	91	492	11	220	371	146	1	7
1921.....	6	8	4		44	1,194	299	190	462	7	3	13
1922.....	8		7	10	15	40	9	303	115	87	2	2

TABLE 93.—Cold-storage holdings of whitefish.

[In thousands of pounds; i. e., 000 omitted.]

Year.	Jan. 15.	Feb. 15.	Mar. 15.	Apr. 15.	May 15.	June 15.	July 15.	Aug. 15.	Sept. 15.	Oct. 15.	Nov. 15.	Dec. 15.
1916.....										301	554	600
1917.....	413	285	333	306	173	164	273	381	349	1,572	2,177	1,741
1918.....	1,139	712	397	467	335	312	393	926	757	1,233	1,757	1,977
1919.....	1,774	1,933	1,940	2,632	2,237	2,183	2,266	2,410	2,696	2,796	2,818	2,762
1920.....	2,309	1,939	1,499	822	382	287	378	624	1,016	1,037	1,035	1,936
1921.....	1,693	1,417	1,034	1,400	1,067	935	1,278	1,587	1,782	2,022	2,360	2,614
5-yr. ave.....	1,427	1,267	1,062	1,125	843	787	918	1,186	1,329	1,748	2,041	2,204
1922.....	2,201	1,991	1,414	1,033	1,489	1,427	1,440	1,444	1,756	2,182	2,278	2,147
1923.....	1,565											

TABLE 94.—Quantities of whitefish frozen monthly.

[In thousands of pounds; i. e., 000 omitted.]

Year.	Jan.	Feb.	Mar.	Apr.	May.	June.	July.	Aug.	Sept.	Oct.	Nov.	Dec.
1919.....								267	184	161	395	15
1920.....	180	61	110	28	6	73	284	316	168	104	939	60
1921.....	148	39	136	11	12	272	299	207	357	245	640	49
1922.....	5	8	19	8	4	50	49	280	173	276	391	60

TABLE 95.—Cold-storage holdings of whiting.

[In thousands of pounds; i. e., 000 omitted.]

Year.	Jan. 15.	Feb. 15.	Mar. 15.	Apr. 15.	May 15.	June 15.	July 15.	Aug. 15.	Sept. 15.	Oct. 15.	Nov. 15.	Dec. 15.
1916.....										6,834	6,683	5,220
1917.....	2,573	935	393	140	128	4,565	2,047	10,906	9,931	11,425	12,339	11,498
1918.....	7,458	4,308	2,198	1,150	868	3,130	8,112	11,463	12,884	13,395	15,013	13,016
1919.....	10,540	7,441	3,648	1,803	1,292	4,004	7,725	10,430	11,099	12,419	12,694	12,253
1920.....	9,220	6,955	3,488	2,289	1,333	2,378	4,426	8,630	9,649	9,599	9,412	7,811
1921.....	5,685	3,754	2,854	2,606	2,366	2,690	4,499	4,974	5,258	5,096	5,465	4,750
5-yr. ave.....	7,115	4,659	2,516	1,606	1,197	3,353	6,762	9,281	9,764	10,373	10,973	9,868
1922.....	3,440	1,972	939	602	682	1,445	3,048	3,786	4,010	4,349	3,931	3,407
1923.....	2,364											

TABLE 96.—Quantities of whiting frozen monthly.

[In thousands of pounds; i. e., 000 omitted.]

Year.	Jan.	Feb.	Mar.	Apr.	May.	June.	July.	Aug.	Sept.	Oct.	Nov.	Dec.
1919.....								865	1,445	1,147	837	109
1920.....	88	71	183	30	1,185	2,347	4,396	1,342	63	324	191	107
1921.....	36	120	3	117	786	2,016	599	464	180	589	441	196
1922.....	67	308	220	105	954	1,857	910	382	381	324	318	232

TABLE 97.—Cold-storage holdings of miscellaneous frozen fish.

[In thousands of pounds; i. e., 000 omitted.]

Year.	Jan. 15.	Feb. 15.	Mar. 15.	Apr. 15.	May 15.	June 15.	July 15.	Aug. 15.	Sept. 15.	Oct. 15.	Nov. 15.	Dec. 15.
1916.....										2,521	3,872	4,846
1917.....	3,319	2,764	3,313	1,863	2,509	4,518	5,787	6,058	6,358	6,133	9,558	10,593
1918.....	8,101	8,591	9,322	10,840	11,325	12,398	12,575	15,330	14,844	16,706	17,477	17,184
1919.....	13,964	14,161	11,788	10,389	9,133	11,141	11,227	11,439	11,691	12,702	13,477	11,845
1920.....	10,672	10,239	7,089	5,554	5,732	7,449	7,811	8,565	8,453	9,881	10,542	10,720
1921.....	9,318	7,946	7,918	8,211	7,846	8,022	7,790	8,580	9,233	9,636	10,511	11,282
5-yr. ave.....	9,075	8,740	7,886	7,371	7,209	8,708	9,034	9,994	10,116	11,592	12,313	12,341
1922.....	8,094	8,391	3,630	3,077	3,528	3,987	5,498	6,764	6,777	7,888	9,469	9,907
1923.....	8,292											

TABLE 98.—Quantities of miscellaneous fish frozen monthly.

[In thousands of pounds; i. e., 000 omitted.]

Year.	Jan.	Feb.	Mar.	Apr.	May.	June.	July.	Aug.	Sept.	Oct.	Nov.	Dec.
1919.....								1,806	1,868	1,958	606	511
1920.....	812	860	719	996	2,368	1,002	1,400	807	1,976	1,494	2,304	1,359
1921.....	900	621	1,424	664	1,078	1,113	965	1,181	1,367	2,124	2,396	376
1922.....	355	436	610	710	1,540	1,982	2,034	1,026	1,954	2,864	3,062	724

## Cold-Storage Holdings.

31

TABLE 99.—Cold-storage holdings of frozen fish.

[In thousands of pounds; i. e., 000 omitted.]

Year.	Jan. 15.	Feb. 15.	Mar. 15.	Apr. 15.	May 15.	June 15.	July 15.	Aug. 15.	Sept. 15.	Oct. 15.	Nov. 15.	Dec. 15.
1916.....										37,753	44,707	42,784
1917.....	32,235	14,727	13,374	9,516	14,040	27,791	38,431	44,025	47,106	60,677	70,939	69,987
1918.....	51,116	35,907	28,467	26,548	31,403	50,299	64,865	82,558	89,204	93,812	99,632	96,600
1919.....	80,684	37,617	50,038	37,111	37,174	48,840	59,674	65,145	69,551	76,763	78,769	74,202
1920.....	61,510	47,904	29,958	20,633	19,804	27,779	36,618	47,140	56,296	64,731	67,549	65,841
1921.....	53,851	32,117	33,404	28,444	25,346	32,311	40,160	47,431	54,469	58,899	61,228	59,126
5-yr. ave. ....	55,924	41,654	31,046	24,543	25,753	37,403	47,950	57,260	63,349	70,976	75,625	73,150
1922.....	48,320	37,742	25,474	17,485	17,074	20,818	25,621	32,227	41,139	54,755	54,503	48,689
1923.....	40,033											

TABLE 100.—Total fish frozen monthly.

[In thousands of pounds; i. e., 000 omitted.]

Year.	Jan.	Feb.	Mar.	Apr.	May.	June.	July.	Aug.	Sept.	Oct.	Nov.	Dec.
1919.....								9,913	11,722	16,031	5,863	2,291
1920.....	2,274	2,630	2,465	3,688	10,094	12,762	13,620	11,804	11,169	9,712	9,751	4,005
1921.....	2,843	1,770	2,413	2,698	9,624	10,151	9,845	9,356	9,990	9,809	8,173	2,442
1922.....	1,453	1,354	1,496	1,982	5,847	7,376	9,122	10,825	16,830	9,344	7,069	2,739

50487—23—3

## INDEX.

<p>Apples, monthly holdings:</p> <p style="padding-left: 20px;">Barreled..... 7</p> <p style="padding-left: 20px;">Boxed..... 8</p> <p style="padding-left: 20px;">Barreled and boxed combined..... 8</p> <p>Beef:</p> <p style="padding-left: 20px;">Cured and in process of cure..... 13</p> <p style="padding-left: 20px;">Frozen, monthly holdings..... 13</p> <p style="padding-left: 20px;">Frozen monthly..... 13</p> <p style="padding-left: 20px;">Frozen, cured, and in process of cure combined..... 14</p> <p style="padding-left: 20px;">Placed in cure monthly..... 14</p> <p>Butter, monthly holdings:</p> <p style="padding-left: 20px;">Creamery..... 8</p> <p style="padding-left: 20px;">Packing stock..... 9</p> <p>Cheese, monthly holdings:</p> <p style="padding-left: 20px;">American..... 9</p> <p style="padding-left: 20px;">Bakers'..... 10</p> <p style="padding-left: 20px;">Brick..... 9</p> <p style="padding-left: 20px;">Cottage..... 10</p> <p style="padding-left: 20px;">Cream..... 10</p> <p style="padding-left: 20px;">Limburger..... 10</p> <p style="padding-left: 20px;">Miscellaneous..... 10</p> <p style="padding-left: 20px;">Munster..... 9</p> <p style="padding-left: 20px;">Neufchatel..... 10</p> <p style="padding-left: 20px;">Pot..... 10</p> <p style="padding-left: 20px;">Swiss..... 9</p> <p style="padding-left: 20px;">Total of all cheese..... 11</p> <p>Eggs:</p> <p style="padding-left: 20px;">Case..... 11</p> <p style="padding-left: 20px;">Frozen..... 11</p> <p>Fish:</p> <p style="padding-left: 20px;">Bass, sea..... 26</p> <p style="padding-left: 20px;">Bluefish..... 18</p> <p style="padding-left: 20px;">Butterfish..... 19</p> <p style="padding-left: 20px;">Cod..... 20</p> <p style="padding-left: 20px;">Cliscoes..... 19</p> <p style="padding-left: 20px;">Croakers..... 20</p> <p style="padding-left: 20px;">Eulachon..... 28</p> <p style="padding-left: 20px;">Frozen fish..... 31</p> <p style="padding-left: 20px;">Haddock..... 20</p> <p style="padding-left: 20px;">Hake..... 20</p> <p style="padding-left: 20px;">Halibut..... 21</p> <p style="padding-left: 20px;">Herring, cured..... 18</p> <p style="padding-left: 20px;">Herring, frozen..... 21</p> <p style="padding-left: 20px;">Mackerel..... 22</p> <p style="padding-left: 20px;">Miscellaneous..... 30</p> <p style="padding-left: 20px;">Pollock..... 20</p> <p style="padding-left: 20px;">Rockfishes..... 23</p> <p style="padding-left: 20px;">Sablefish..... 23</p>	<p>Page.</p>	<p>Fish—Continued.</p> <p style="padding-left: 20px;">Salmon—</p> <p style="padding-left: 40px;">cured, mild..... 18</p> <p style="padding-left: 40px;">fall..... 24</p> <p style="padding-left: 40px;">fall and silver..... 25</p> <p style="padding-left: 40px;">silver..... 24</p> <p style="padding-left: 40px;">miscellaneous..... 25</p> <p style="padding-left: 20px;">Shad..... 26</p> <p style="padding-left: 20px;">Shad roe..... 27</p> <p style="padding-left: 20px;">Smelts..... 28</p> <p style="padding-left: 20px;">Squid..... 28</p> <p style="padding-left: 20px;">Trout, lake..... 22</p> <p style="padding-left: 20px;">Weakfish..... 29</p> <p style="padding-left: 20px;">Whitefish..... 29</p> <p style="padding-left: 20px;">Whiting..... 30</p> <p>Lamb and mutton:</p> <p style="padding-left: 20px;">Frozen, holdings..... 14</p> <p style="padding-left: 20px;">Frozen monthly..... 14</p> <p>Lard:</p> <p style="padding-left: 20px;">Monthly holdings..... 17</p> <p style="padding-left: 20px;">Production in meat-packing establishments..... 17</p> <p>Meat:</p> <p style="padding-left: 20px;">Miscellaneous, monthly holdings..... 16</p> <p style="padding-left: 20px;">Total stocks..... 17</p> <p style="padding-left: 20px;"><i>See also</i> Beef, pork, lamb, and mutton.</p> <p>Mutton. (<i>See</i> Lamb and mutton.)</p> <p>Pork:</p> <p style="padding-left: 20px;">Dry salt, and salt in process of cure, monthly holdings..... 15</p> <p style="padding-left: 20px;">Dry salt, placed in cure monthly..... 15</p> <p style="padding-left: 20px;">Frozen, monthly holdings..... 15</p> <p style="padding-left: 20px;">Frozen monthly..... 15</p> <p style="padding-left: 20px;">Pickled and in process, monthly holdings..... 16</p> <p style="padding-left: 20px;">Pickled, placed in cure monthly..... 16</p> <p style="padding-left: 20px;">Total stocks..... 16</p> <p>Poultry, monthly holdings:</p> <p style="padding-left: 20px;">Broilers..... 11</p> <p style="padding-left: 20px;">Fowls..... 12</p> <p style="padding-left: 20px;">Miscellaneous..... 12</p> <p style="padding-left: 20px;">Roasters..... 12</p> <p style="padding-left: 20px;">Turkeys..... 12</p> <p>Refrigerated space:</p> <p style="padding-left: 20px;">Meat-packing establishments..... 5</p> <p style="padding-left: 20px;">Meat-packing establishments doing public cold-storage business..... 5</p> <p style="padding-left: 20px;">Private cold-storage plants..... 4</p> <p style="padding-left: 20px;">Public cold-storage plants..... 3</p> <p style="padding-left: 20px;">Public and private cold-storage plants combined..... 4</p> <p style="padding-left: 20px;">Total refrigerated space..... 6</p> <p style="padding-left: 20px;">Total refrigerated space in leading cities..... 6</p>	<p>Page.</p>
--	--------------	---	--------------

**END**