



AgEcon SEARCH
RESEARCH IN AGRICULTURAL & APPLIED ECONOMICS

The World's Largest Open Access Agricultural & Applied Economics Digital Library

This document is discoverable and free to researchers across the globe due to the work of AgEcon Search.

Help ensure our sustainability.

Give to AgEcon Search

AgEcon Search

<http://ageconsearch.umn.edu>

aesearch@umn.edu

*Papers downloaded from **AgEcon Search** may be used for non-commercial purposes and personal study only. No other use, including posting to another Internet site, is permitted without permission from the copyright owner (not AgEcon Search), or as allowed under the provisions of Fair Use, U.S. Copyright Act, Title 17 U.S.C.*

JOURNAL OF
AGRICULTURAL & APPLIED
ECONOMICS

VOLUME 28

JULY 1996

NUMBER 1

Proceedings

The Information Age University?	<i>L. L. Reinschmiedt</i>
Economic Analysis of Public Policy	<i>P. O'Brien</i>
Farm Policy Equity Issues	<i>M. R. Dicks</i>
Farm Bill Challenges	<i>H. H. Conley</i>
The 1995 Farm Bill: Discussion	<i>L. Salathe</i>
Agricultural Policy Analysis: Discussion	<i>L. P. Schertz</i>
Farm Structural Changes	<i>T. G. Gebremedhin and R. D. Christy</i>
Small Farm Challenges: Discussion	<i>R. A. Hinson</i>
Small Farms and Sustainability	<i>G. D'Souza and J. Ikerd</i>
Small Farms and Sustainability: Discussion	<i>M. S. Henry</i>
Alternatives for Small Farm Survival	<i>L. G. Tweeten and W. A. Amponsah</i>
Small Farm Survival: Discussion	<i>M. C. Ahearn</i>
Federal Environmental Policy	<i>R. R. Carriker</i>
Environmental Regulatory Reform	<i>C. L. Infanger</i>
Environmental Policy Reform	<i>L. Shabman and K. Stephenson</i>
Environmental Regulatory Reform: Discussion	<i>W. M. Park</i>
Environmental Regulatory Reform: Discussion	<i>P. E. Norris</i>

Articles

Effect of Liberalized U.S.-Mexico Dry Onion Trade	<i>S. Fuller, M. Gillis, and H. A. Ziari</i>
Measuring the Quality of Imported Tobacco	<i>G. C. Davis and W. J. Hewitt</i>
Comparative Static Analysis of Oklahoma Vegetables	<i>S. R. Henneberry, R. J. Schatzer, and Y. El Beheisi</i>
Energy Supplementation Strategies for Wheat Pasture Stocker Cattle	<i>N. Coulibaly, D. J. Bernardo, and G. W. Horn</i>
A Decision Support Aid for Beef Cattle Investment	<i>L. L. Falconer, C. R. Long, and J. M. McGrann</i>
Manure-Value and Liveweight Swine Decisions	<i>F. M. Roka and D. L. Hoag</i>
Nonconstant Price Expectations and Acreage Response	<i>S. D. Parrott and C. S. McIntosh</i>

Comments and Replies

Incorporating the 1990 Farm Bill into Farm-Level Decision Models: Comment	<i>H. Önal and J. D. Monke</i>
--	--------------------------------

EDITORIAL STAFF

Editors

Chung L. Huang
The University of Georgia

Michael E. Wetzstein
The University of Georgia

Editorial Council

Ntam Baharanyi
Iuskegee University

Melvin Blase
University of Missouri

Garnett Bradford
Clemson University

Wen S. Chern
Ohio State University

Bruce Dixon
University of Arkansas

Gary F. Fairchild
University of Florida

Fred Gale
USDA/ERS

Stephan Goetz
University of Kentucky

Orlen Grunewald
Kansas State University

Shida R. Henneberry
Oklahoma State University

Paul M. Jakus
University of Tennessee

Richard Kazmierczak
Louisiana State University

Henry Kinnucan
Auburn University

David Letson
University of Miami

Rigoberto A. Lopez
University of Connecticut

Teofilo Ozuna
Texas A&M University

Dixie W. Reaves
Virginia Polytechnic Institute

and State University
Stan Spurlock
Mississippi State University

Technical Editor

Judith L. Harrison
1615 South Black Avenue, #82, Bozeman, MT 59715, (406) 587-0452

Editorial Assistants

Teresa A. Byrd
The University of Georgia

Marsha D. Richmond
The University of Georgia

EDITORIAL POLICY

The *Journal of Agricultural and Applied Economics (JAAE)* provides a forum for creative and scholarly work in agricultural economics and related areas. Contributions on methodology and applications in business, extension, research, and teaching phases of agricultural and applied economics are equally encouraged. Submitted manuscripts are subject to peer review for publication consideration. Submissions of critiques or comments on *JAAE* articles are welcomed.

EDITORIAL COMMUNICATIONS

Manuscript submissions and editorial correspondence should be addressed to: Chung L. Huang or Michael E. Wetzstein, Editors, *JAAE*, Conner Hall, The University of Georgia, Athens, GA 30602-7509, (706) 542-0753, fax: (706) 542-0739, e-mail: JAAE@agecon.uga.edu.

The *Journal of Agricultural and Applied Economics* (ISSN 1074-0708) is published in July and December by the Southern Agricultural Economics Association (SAEA).

Copyright (c) 1996 by the Southern Agricultural Economics Association. Any article or other material published in the *JAAE* may not be resubmitted for publication or republished elsewhere in full or in part without the written permission of the editors.

JOURNAL OF
AGRICULTURAL & APPLIED
ECONOMICS

VOLUME 28

JULY 1996

NUMBER 1

Lifetime Achievement Award

Carlton G. Davisiii

SAEA President, 1996–97

Lynn L. Reinschmidtv

Presidential Address

The Information Age University? / *Lynn L. Reinschmidt*1

Invited Paper Sessions

Did the 1995 Farm Bill Address the Critical Issues?

Economic Analysis and the Shaping of Public Policy: A 1995 Farm Bill Perspective /
Patrick O'Brien12

Regional Adjustment Costs: A Failure of National Analysis / *Michael R. Dicks*.24

The 1995 Farm Bill: Opportunities and Challenges for Economists / *Howard H. Conley*35

Did the 1995 Farm Bill Address the Critical Issues? Discussion / *Larry Salathe*45

Agricultural Policy Analysis: Discussion / *Lyle P. Schertz*.52

Small Farms in Sustainable Agricultural and Rural Development

Structural Changes in U.S. Agriculture: Implications for Small Farms /
Tesfa G. Gebremedhin and Ralph D. Christy.57

Structural Change Implications for Small Farms: Discussion / *Roger A. Hinson*67

Small Farms and Sustainable Development: Is Small *More* Sustainable? /
Gerard D'Souza and John Ikerd73

Small Farms and Sustainable Development: Is Small *More* Sustainable? Discussion /
Mark S. Henry.84

Alternatives for Small Farm Survival: Government Policies Versus the Free Market /
Luther G. Tweeten and William A. Amponsah88

Alternatives for Small Farm Survival: Government Policies Versus the Free Market: Discussion / <i>Mary C. Ahearn</i>	95
---	----

Environmental Regulatory Reform

Federal Environmental Policy: A Summary Overview / <i>Roy R. Carriker</i>	99
Environmental Regulatory Reform and the Unholy Trinity: Unfunded Mandates, Risk Assessment, and Property Rights / <i>Craig L. Infanger</i>	108
Environmental Policy Reform: A Taxonomy of Economists' Perspectives / <i>Leonard Shabman and Kurt Stephenson</i>	117
Environmental Regulatory Reform: Discussion / <i>William M. Park</i>	126
Environmental Regulatory Reform: Discussion / <i>Patricia E. Norris</i>	130

Articles

Effect of Liberalized U.S.-Mexico Dry Onion Trade: A Spatial and Intertemporal Equilibrium Analysis / <i>Stephen Fuller, Melanie Gillis, and Houshmand A. Ziari</i>	135
Measuring the Quality of Imported Tobacco / <i>George C. Davis and William J. Hewitt</i>	148
A Comparative Static Analysis of Oklahoma's Vegetable Industry / <i>Shida Rastegari Henneberry, Raymond Joe Schatzer, and Yousif El Beheisi</i>	159
Energy Supplementation Strategies for Wheat Pasture Stocker Cattle Under Uncertain Forage Availability / <i>Nouhoun Coulibaly, Daniel J. Bernardo, and Gerald W. Horn</i>	172
A Decision Support Aid for Beef Cattle Investment Using Expert Systems / <i>Lawrence L. Falconer, Charles R. Long, and James M. McGrann</i>	180
Manure Value and Liveweight Swine Decisions / <i>Fritz M. Roka and Dana L. Hoag</i>	193
Nonconstant Price Expectations and Acreage Response: The Case of Cotton Production in Georgia / <i>Scott D. Parrott and Christopher S. McIntosh</i>	203

Comments and Replies

Incorporating the 1990 Farm Bill into Farm-Level Decision Models: An Application to Cotton Farms: Comment / <i>Hayri Önal and James D. Monke</i>	211
---	-----

Abstracts

Selected Papers	214
Organized Symposia	231
Posters	234

SAEA Business

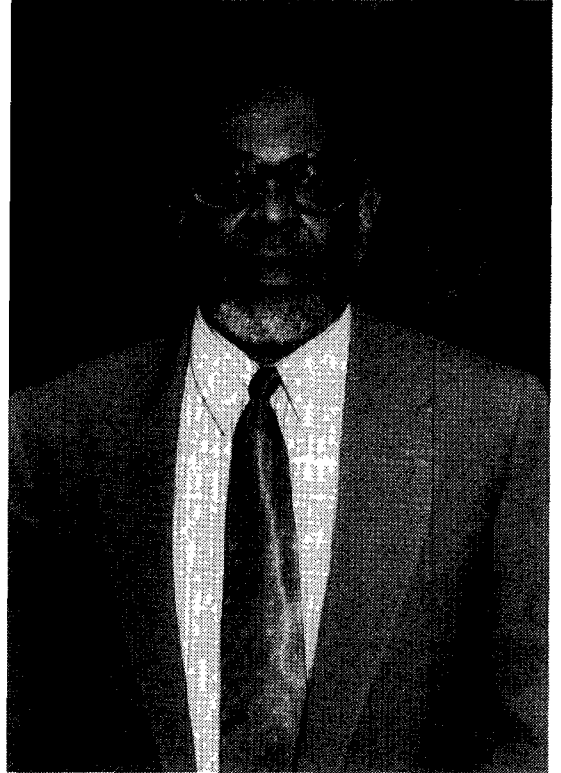
Secretary-Treasurer's Report	239
Outgoing Editors' Report.	243
Editors' Report	245

Dr. Carlton G. Davis

Lifetime Achievement Award

- Distinguished Service Professor in Food and Resource Economics, University of Florida, Gainesville, 1990–present
- Assistant Professor, Associate Professor, and Professor in Food and Resource Economics, University of Florida, Gainesville, 1970–90
- Visiting Professor, Department of Agricultural Economics and Farm Management, The University of the West Indies, St. Augustine, Trinidad, West Indies, 1991–92
- Ford Foundation International Research Fellow, Department of Agricultural Economics and Farm Management, The University of the West Indies, Trinidad, West Indies, 1968–69
- Editorial Council, *Journal of Agricultural Economics Issues*—A Journal of the Southern Agricultural Economics Association (in transition to AAEA auspices), 1995–present
- Editorial Advisory Board, *Farm and Business*—The Journal of the Caribbean Agro-Economic Society, 1991–present
- Named Outstanding Black Agricultural Economist by the Committee on Opportunities and Status of Blacks in Agricultural Economics, American Agricultural Economics Association, 1989
- North American representative for the Caribbean Agro-Economic Society, 1988–92
- Phi Beta Delta, International Society of Scholars, University of Florida Chapter, 1987
- Governing Board, American Agricultural Economics Association Foundation, 1985–88
- Danforth Foundation Associate, 1978–84
- American Men and Women of Science; Personalities of the South; Dictionary of International Biography; Who's Who in Florida; Gamma Sigma Delta

Carlton G. Davis has compiled a record of excellence in research, teaching, and professional service. His notable achievements in the study of hu-



man resource development, rural poverty, food and agricultural policy, and international trade and development have been distinguished by scholarly excellence and focus on critical issues in the South. His research, teaching, and professional services are renowned not only in the South, but across the nation and the Caribbean.

Dr. Davis earned a Ph.D. degree in agricultural economics from Michigan State University in 1970, after earning his B.S. and M.S. degrees in agricultural economics from the University of Nebraska, Lincoln, in 1964 and 1965, respectively. In 1955, he received his Cambridge University School Certificate from the Mannings School, Jamaica. Dr.

Davis has served as an instructor at Michigan State University, and as a visiting professor in the Department of Agricultural Economics and Farm Management, The University of the West Indies, St. Augustine, Trinidad. Nearly all of his professional career (1970–present) has been spent at the University of Florida, where he progressed from assistant professor to Distinguished Service Professor. His outstanding service, academically and professionally, has merited him membership in the honor societies of Phi Beta Delta and Gamma Sigma Delta.

Dr. Davis' promotion to Distinguished Service Professor is a testimony to the superior quality of his teaching. Another indication of his initiative and commitment to teaching has been his framing of the first undergraduate rural development course at the University of Florida, entitled "Income and Employment of Rural People," the first graduate rural development course entitled "Rural Welfare and Development Policy," and the development of a more recent graduate course entitled "Contemporary Caribbean Agro-economics Issues."

Dr. Davis is also ardently involved in research. His research has been particularly effective in stimulating and directing the attention of the profession to issues related to human resource adjustments and human capital. He has published extensively (books, journal articles, book chapters, monographs) on special-interest topics of the South. Because of his outstanding qualifications, keen research insights, and policy analysis expertise, he is often invited to give presentations at professional meetings of agricultural economists.

Dr. Davis' early work focused on poverty and rural underdevelopment in the United States; he has made significant contributions to the literature in this area, including his landmark book entitled *Rural Poverty and the Policy Crisis*. Dr. Davis' path-breaking research—on both the impact of USDA food programs on food expenditures and nutrient intakes of low-income rural households, and the impact of socioeconomic characteristics on food consumption—has served to greatly enhance knowledge on the effectiveness of the food assis-

tance programs and intervention strategies to improve the nutritional status of consumers, especially the poor. His research on food programs, nutritional status, and food consumption has been published in refereed agricultural economics journals as well as refereed journals in other disciplines (e.g., economics, nutrition, and political studies).

Throughout his distinguished career, Dr. Davis has made significant contributions to research on the labor market for agricultural economists. He was a pioneer in addressing traditional graduate admission standards as constraints in increasing the supply of black professional agriculturalists, and he contributed substantially to the AAEA landmark study on *Opportunities and Status of Blacks in the Agricultural Economics Profession*.

Dr. Davis has made lasting contributions to the analysis of international development and trade issues. His seminal research includes studies on strategies for enhancing United States-Caribbean agricultural trade, poverty reduction and sustainable agricultural development, and agricultural industrialization and sustainable development. He is widely recognized as an expert on agricultural development in the Caribbean.

In addition to research, outreach, and teaching, Dr. Davis has provided exemplary leadership to the agricultural economics profession. He has been a member of the Governing Board of the AAEA Foundation, and served on numerous committees including the Nominating Committee, International Committee, and the SAEA Honorary Lifetime Membership Award Committee. He is a member of the editorial council of the *Journal of Agricultural Economics Issues* and the *Caribbean Journal of Agriculture and Natural Resources* (Guyana, South America), as well as a member of the editorial advisory board of *Farm and Business* (the journal of the Caribbean Agro-Economic Society).

Dr. Davis has received numerous professional honors and nationwide recognition. He has been and continues to be an important contributor in the arenas of United States and Caribbean agriculture.

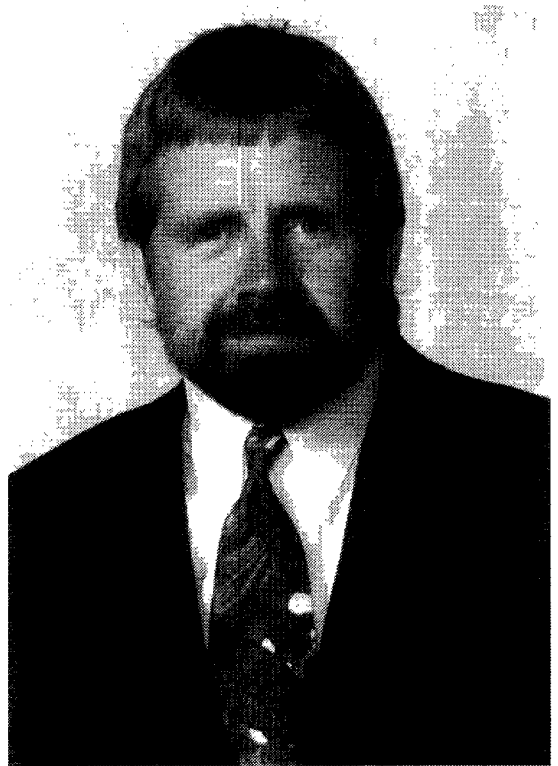
Lynn L. Reinschmiedt

1996–97 President

Lynn L. Reinschmiedt was born in Clinton, Oklahoma, and grew up on a wheat-livestock farm. He received his B.S. and M.S. degrees in agricultural economics from Oklahoma State University, and his Ph.D. from Texas A&M University. Following graduation, he served on the agricultural economics faculty of the University of Delaware (1976–77) before joining the faculty at Mississippi State University in 1978. Dr. Reinschmiedt is a professor and Coordinator of Undergraduate Programs in the Department of Agricultural Economics at Mississippi State University, where he holds a teaching/research appointment.

Dr. Reinschmiedt's research has emphasized agricultural and resource policy, conservation tillage and cropping systems, water demand and supply, and rural community development. Specific studies have addressed evaluation and development of rural water system pricing strategies, assessment of agricultural water demands and crop distributions, socioeconomic analysis of the Lower Mississippi River Delta, and development and analysis of conservation tillage systems.

As Coordinator for Undergraduate Programs, a significant amount of Dr. Reinschmiedt's professional emphasis has focused on academic governance responsibilities at the departmental, college, and university levels. His undergraduate and graduate teaching interests currently include resource economics, policy, agribusiness, and research methodology. His professional service has included a number of AAEA and SAEA committees, and a three-year term on the editorial council of the *Southern Journal of Agricultural Economics*. At Mississippi State University, Dr. Reinschmiedt has been actively involved in the advisement of student clubs and other professional and honor societies. He has served as advisor to Alpha Zeta, the agricultural economics club, and has held various offices in Gamma Sigma Delta.



At Mississippi State University, Dr. Reinschmiedt received the Mississippi State University Student Association Outstanding Faculty Member Award in 1987, the Alpha Zeta Outstanding Teaching Award for the College of Agriculture and Home Economics in 1993, and in 1995 he was awarded Mississippi State University's John Grisham Faculty Excellence Award.

Lynn Reinschmiedt and his wife, Judy, an English teacher, have one daughter, Jordan, and reside in Starkville, Mississippi. They are involved in a number of community organizations, having been particularly active in fund raising and educational awareness programs for the American Cancer Society.

