



AgEcon SEARCH
RESEARCH IN AGRICULTURAL & APPLIED ECONOMICS

The World's Largest Open Access Agricultural & Applied Economics Digital Library

This document is discoverable and free to researchers across the globe due to the work of AgEcon Search.

Help ensure our sustainability.

Give to AgEcon Search

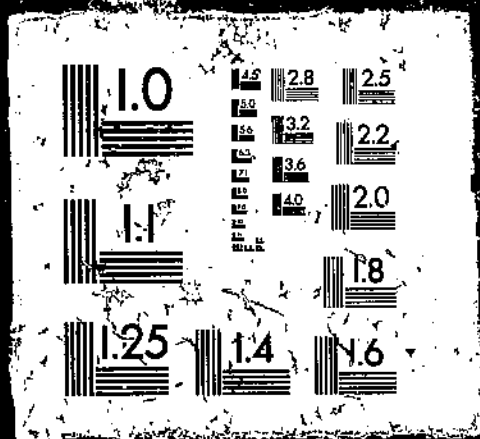
AgEcon Search
<http://ageconsearch.umn.edu>
aesearch@umn.edu

*Papers downloaded from **AgEcon Search** may be used for non-commercial purposes and personal study only. No other use, including posting to another Internet site, is permitted without permission from the copyright owner (not AgEcon Search), or as allowed under the provisions of Fair Use, U.S. Copyright Act, Title 17 U.S.C.*

PB83-145946

FAER-178 TRINIDAD AND TOBAGO: FACTORS AFFECTING ITS CAPACITY TO IM
PORT FOOD, / H. CHRISTINE BOLLING ECONOMIC RESEARCH SERVICE, WASHI
NGTON, DC. INTERNATIONAL ECONOMICS DIV. JAN 83 38P

1 OF 1
PB 83
145 946

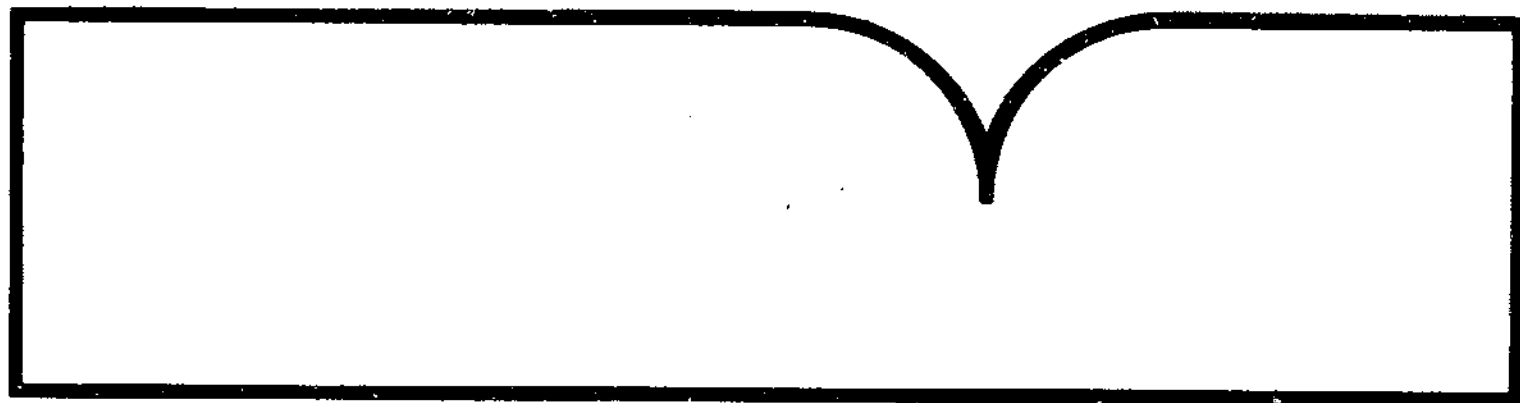


PB83-145946

Trinidad and Tobago: Factors Affecting
Its Capacity to Import Food

(U.S.) Economic Research Service
Washington, DC

Jan 83



U.S. Department of Commerce
National Technical Information Service
NTIS

REPORT DOCUMENTATION PAGE	1. REPORT NO. FAER-178	2.	3. Recipient's Accession No. PB83-145946
4. Title and Subtitle Trinidad and Tobago: Factors Affecting Its Capacity to Import Food		5. Report Date January 1983	
7. Author(s) H. Christine Bolling		6.	
9. Performing Organization Name and Address International Economics Division Economic Research Service U.S. Department of Agriculture Washington, D.C. 20250		8. Performing Organization Rept. No. FAER-178	
12. Sponsoring Organization Name and Address		10. Project/Task/Work Unit No.	
		11. Contract(C) or Grant(G) No. (C) (G)	
15. Supplementary Notes		13. Type of Report & Period Covered	
		14.	
16. Abstract (Limit: 200 words) Population growth and changes in real income, food import prices, domestic food production, food aid, and foreign reserves are the principal economic factors, as well as changes in import policy, affecting Trinidad and Tobago's food imports. The U.S. share of Trinidad and Tobago's \$295 million food import market in 1980 was \$105 million. The outlook is for continued growth, with the 1985 U.S. share forecast at \$180 million.			
17. Document Analysis a. Descriptors Economic factors Income Food Output Forecast Population Growth Prices Imports Statistical analysis b. Identifiers/Open-Ended Terms Domestic Share Food aid Tobago Food import Trinidad Import policy Policy c. COSATI Field/Group 05-C Prices as of 1/1/83 Paper: Fiche: \$4.50 Cost codes are: for Paper and A01 for Fiche			
18. Availability Statement: National Technical Information Service 5285 Port Royal Road, Springfield, VA 22161		19. Security Class (This Report) Unclassified	21. No. of Pages
		20. Security Class (This Page) Unclassified	22. Price See box 37



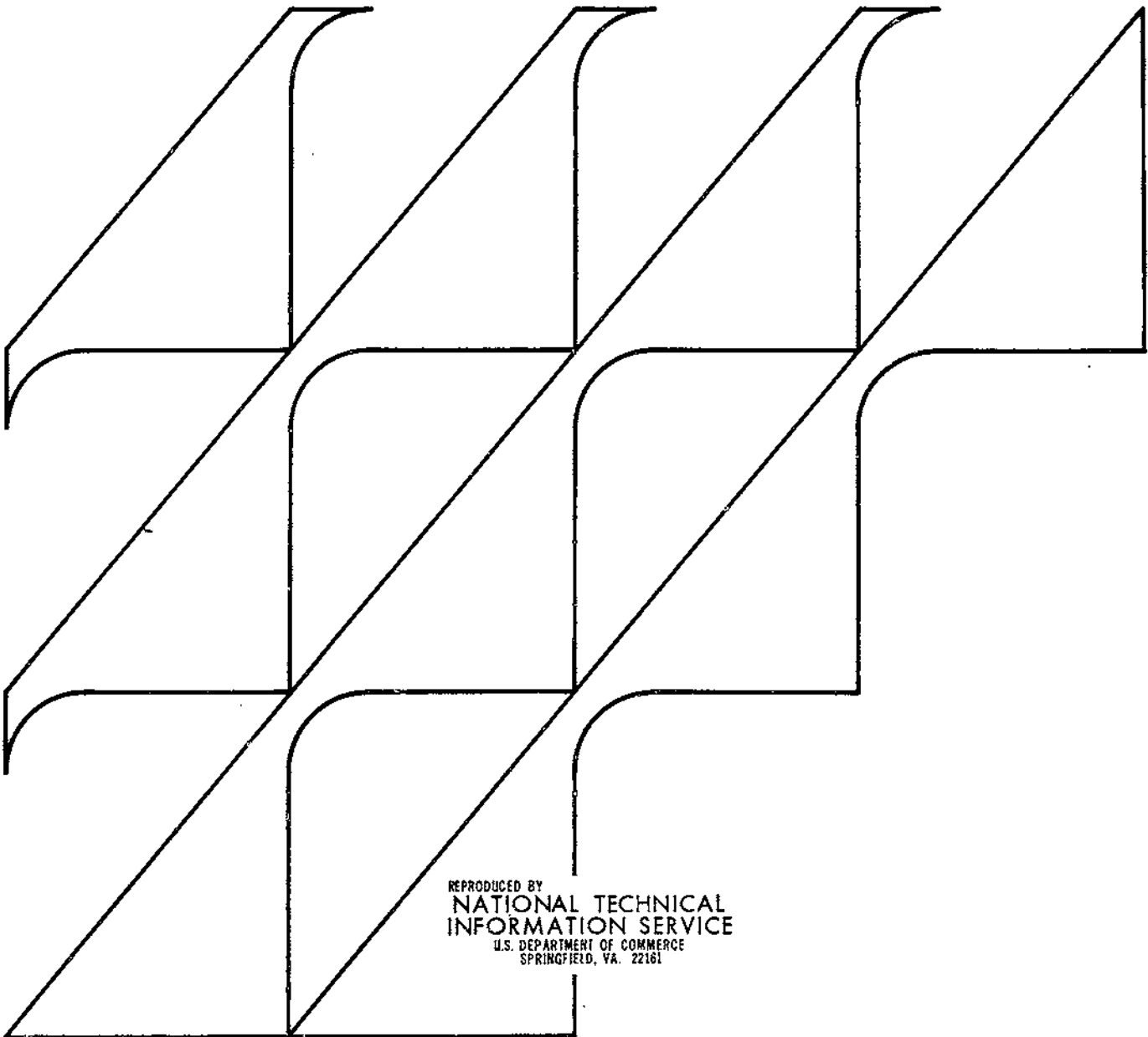
United States
Department of
Agriculture

Economic
Research
Service

Foreign Agricultural
Economic Report
Number 178

Trinidad and Tobago: Factors Affecting Its Capacity to Import Food

H. Christine Bolling



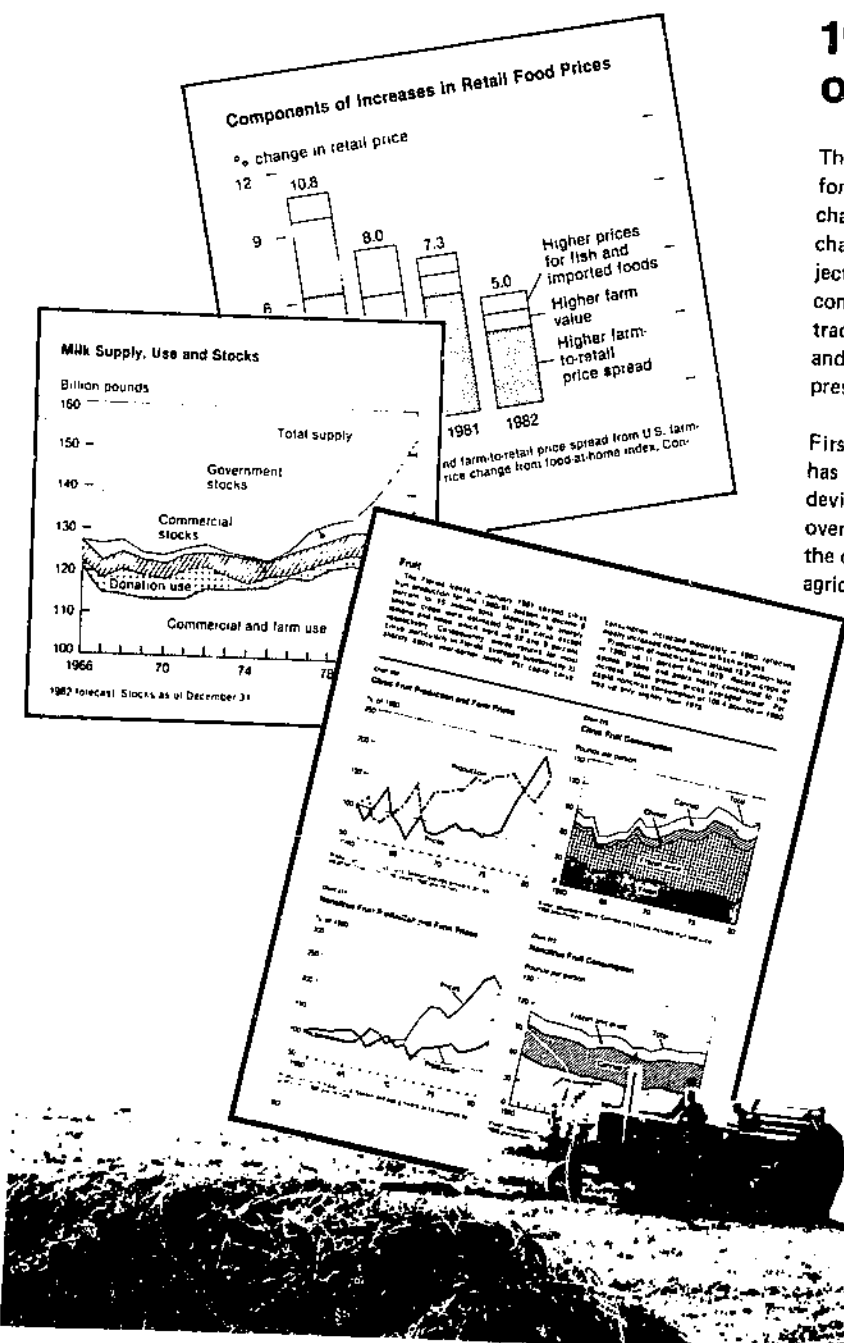
REPRODUCED BY
NATIONAL TECHNICAL
INFORMATION SERVICE
U.S. DEPARTMENT OF COMMERCE
SPRINGFIELD, VA. 22161

1982 Handbook of Agricultural Charts

The *1982 Handbook of Agricultural Charts*, now available for sale from the Government Printing Office, contains 291 charts depicting all significant aspects of agriculture. These charts illustrate data and complex trends for agricultural subjects ranging from farm income to consumer costs, and from commodities to energy production and use. Charts showing trade data, cost of production figures, farmland numbers, and population trends round out the agricultural picture presented in this handbook.

First published in 1933, the *Handbook of Agricultural Charts* has proven to be a valuable research tool, a popular teaching device, and a convenient format for presenting a complete overview of the agricultural sector. The 1982 issue maintains the chartbook's successful tradition by making economic and agricultural trends come graphically alive.

Copies of the *1982 Handbook of Agricultural Charts*, AH-609, are now available for sale from the Government Printing Office. Ask for GPO stock no. 001-000-04305-6. The cost is \$5.50 per copy. Make your check or money order payable to Superintendent of Documents and mail to Superintendent of Documents, U.S. Government Printing Office, Washington, D.C. 20402.



TRINIDAD AND TOBAGO: FACTORS AFFECTING ITS CAPACITY TO
IMPORT FOOD. By H. Christine Bolling. International Economics
Division, Economic Research Service, U.S. Department of
Agriculture. Foreign Agricultural Economic Report No.178.

ABSTRACT

Population growth and changes in real income, food import prices, domestic food production, food aid, and foreign reserves are the principal economic factors, as well as changes in import policy, affecting Trinidad and Tobago's food imports. The U.S. share of Trinidad and Tobago's \$295 million food import market in 1980 was \$105 million. The outlook is for continued growth, with the 1985 U.S. share forecast at \$180 million.

Keywords: Trinidad and Tobago, food imports, income, prices, import policy.

ACKNOWLEDGMENTS

The author thanks the following agricultural economists in USDA's Economic Research Service for their helpful reviews and comments on this research: Oswald Blaich, David Peacock, William Kost, Richard Nehring, Fausto Medina-Lopez, Luis Sanint, Myles Mielke, and Nydia Rivera-Sanchez.

SALES INFORMATION

Additional copies of this report may be ordered from:

National Technical Information Service
5285 Port Royal Road
Springfield, VA 22161

Order this report by using PB83-145946, and indicate whether you want paper copies or microfiche. Cost per paper copy is \$8.50; cost per microfiche copy is \$4.50.

Washington, D.C. 20250

January 1983

CONTENTS

	<u>Page</u>
SUMMARY.....	v
INTRODUCTION.....	1
FACTORS AFFECTING FOOD IMPORTS.....	2
PROJECTIONS TO 1985.....	6
REFERENCES.....	7
APPENDIX: MODEL METHODS AND ESTIMATING PROCEDURES.....	9
TABLES.....	13

SUMMARY

The 1985 U.S. share of Trinidad and Tobago's import market could reach \$180 million, up substantially from its \$105 million level in 1980. This report looks at the factors affecting Trinidad and Tobago's food imports.

- Trinidad and Tobago's total food import bill has increased nine-fold between 1960 and 1980 to \$295 million; it is expected to reach \$450 million by 1985.
- During the past two decades, population growth alone has increased total food imports by 1.5 percent per year, a trend expected to continue.
- Per capita real gross domestic product was a major factor affecting the growth of the market with Trinidad and Tobago (afterwards called Trinidad) experiencing strong economic growth in the seventies, chiefly because of its growing petroleum industry. Each 10-percent change in per capita real income resulted in a 6-percent change in the quantity of food imports; any decline in the petroleum industry could also dampen food imports.
- Real food prices moved up and down substantially from 1960-80. The net effect is that a 10-percent drop in the real price of food imports will raise per capita food imports by 4 percent.
- Trinidad's per capita food production changed little in the past two decades, but each 10-percent increase in domestic food production will cause a 4-percent decline in food imports.
- The effect of foreign aid on Trinidad's commercial food imports has been insignificant. Trinidad has received no P.L. 480 aid (the principal U.S. food aid program) since 1972.
- Foreign exchange is generated by petroleum revenues, as is a substantial part of Trinidad's gross domestic product. As a result, the impact of Trinidad's foreign exchange reserves on its food imports was minimal from 1960 to 1980.

Trinidad and Tobago: Factors Affecting Its Capacity to Import Food

H. Christine Bolling

INTRODUCTION

The Caribbean Islands depend on imports for about half of their food supply and are the second largest Latin American market for U.S. farm products. The islands' proximity to the United States makes them strategically important, as exemplified by the President's Caribbean Basin initiative. Trinidad and Tobago is one of the Caribbean's leading food importers, with imports accounting for more than 60 percent of the food consumed in the country.^{1/}

U.S. food exports to Trinidad amounted to \$105 million in 1980, about 35 percent of Trinidad's total food imports. This study examines some of the major factors affecting Trinidad's food imports during the sixties and seventies--population, income, domestic food production, foreign exchange reserves, food aid, and prices of imported food. This analysis provides a useful framework for projecting the future size of the market in accordance with the expected developments for each variable examined. It also evaluates the extent to which growth in domestic production has or has not competed with imported foods. The report assesses the extent to which P.L. 480 assistance affected commercial food imports, a topic of particular importance for U.S. agriculture.

During the seventies, the value of Trinidad's food imports jumped more than nine-fold (table 1), but because of inflation, the quantity of food imports increased by only 70 percent (figs. 1, 2, table 2). By 1980, food imports had reached \$295 million, of which the U.S. share was \$105 million.^{2/} Nearly 60 percent of Trinidad's total food supply was imported and consisted mostly of wheat, wheat flour, corn, beef, dried milk, soybean oilcake and livestock feeds, potatoes, and dried beans and peas.

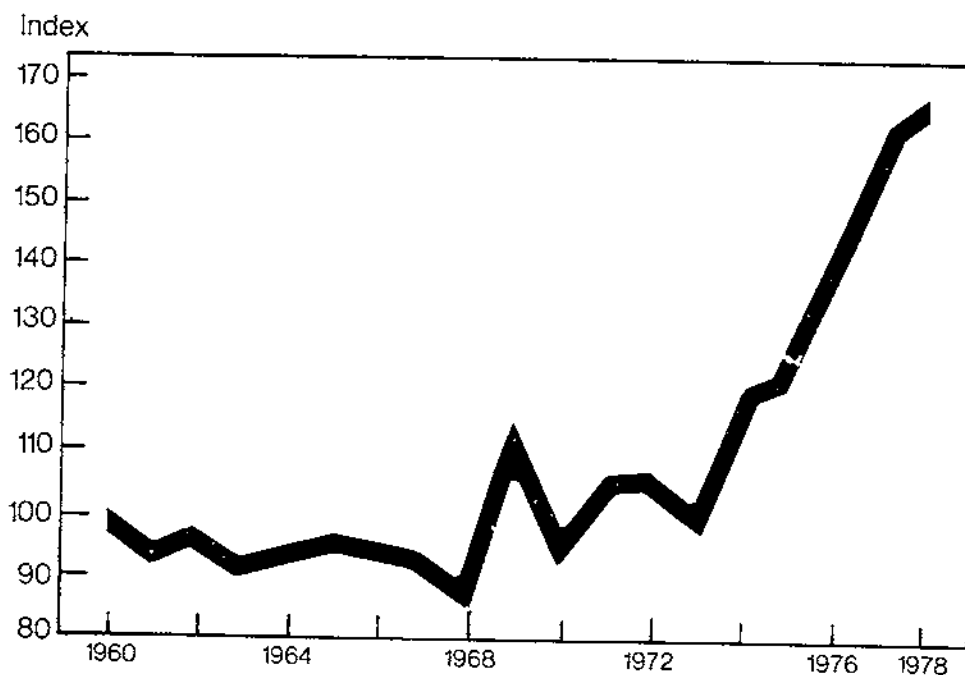
Foreign exchange to pay for this growth in imports was earned largely by the discovery of new petroleum fields and a sharp

^{1/} Hereafter "Trinidad" is used to refer to Trinidad and Tobago.

^{2/} All currency is listed in U.S. dollars unless otherwise noted.

Figure 1

Trinidad: Quantity Index of Food Imports



rise in international oil prices. Before the petroleum discoveries, the islands had been much less prosperous with much slower growth in imports.

While neighboring countries like Jamaica felt the pressure of the dramatic increases in food and oil import prices in the seventies, Trinidad capitalized on the situation through its oil exports. The increase in value of its oil exports more than offset the rising cost of food imports and allowed Trinidad to pull away from its low import levels of the sixties.

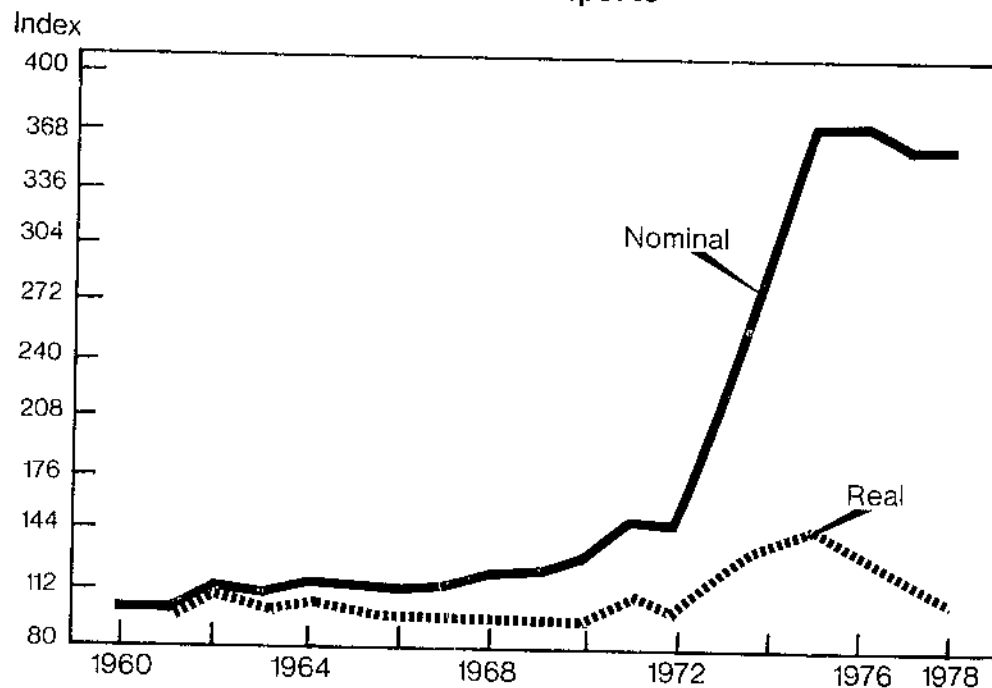
FACTORS AFFECTING FOOD IMPORTS

The factors cited in this section are the economic variables in the econometric model described in the appendix. The impact attributed to each of these variables is the result of the empirical analysis and the elasticity attributed to the variables by the model.

Population growth is an important force underlying import demand. Trinidad's current population is about 1.1 million. Population growth alone increased Trinidad's food requirements by 1.5 percent annually since 1960. However, real income, food supplies from domestic production, and real food import prices also had an effect.

Figure 2

Trinidad: Price Indexes of Food Imports



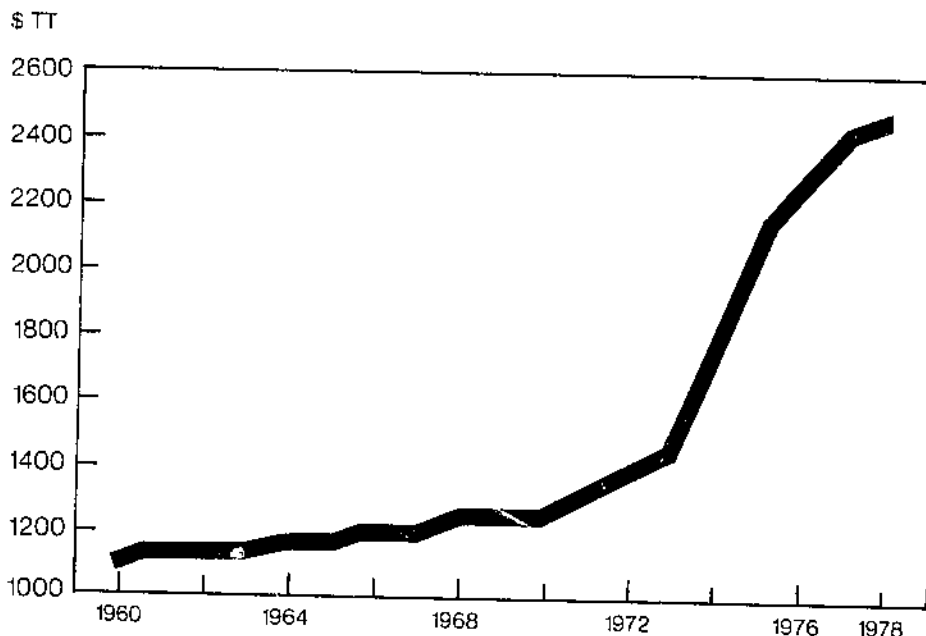
Real per capita gross domestic product (GDP) was the single most important economic determinant of food imports. In the last 20 years, each 10-percent rise in real per capita GDP generated about a 6-percent increase in the quantity of food imports. The income effect was especially important since real per capita GDP grew at an average rate of 4.3 percent per annum.^{3/} Most of the growth in GDP occurred after 1972 when the phenomenal growth in the petroleum and mining industries began (fig. 3, tables 3 and 4). Trade, finance, public administration, and construction also contributed to that growth. In recent years, oil drilling and refining represented 41 percent of the total GDP; manufacturing, 14 percent; construction and transportation, 6 percent each; trade and finance together, 15 percent; and agriculture, 3 percent.

The production of food for domestic consumption increased by only 1.4 percent per year after 1960, barely keeping up with population growth. Thus, per capita domestic food production has increased very slightly. In general, a 10-percent increase in per capita food production tended to reduce food imports by less than 4 percent (table 5).

^{3/} Deflated by the Trinidad and Tobago Consumer Price Index.

Figure 3

Trinidad: Per Capita Real Gross Domestic Product



Adjusted by Trinidadian Consumer Price Index to show constant 1960 dollars.

In 1980, Trinidad produced only 35 percent of its own food needs but produced substantial quantities for export. About 65 percent of Trinidad's 139,000 hectares (about 335,000 acres) of arable land are in sugar, cocoa beans, and coffee, mainly for export. The rest of the land is in food crops such as rice, cassava, sweetpotatoes, tomatoes, coconuts, bananas, and citrus--mainly for domestic use.

Trinidad has developed a sizable broiler industry based on imported hatching eggs and feedstuffs, both of which are subsidized. The country produces about 20 percent of the beef it consumes and very little pork (table 6).

Import prices were fairly steady in the sixties and, as in other parts of the world, rose sharply, in nominal terms, in the early seventies (table 7, fig. 2). Since then, the index of real food import prices has fallen from its 1975 peak, which was nearly 50 percent higher than the level of the sixties. A leveling off in world food prices and the increase in the relative prices of nonfood items in the Consumer Price Index deflator contributed to the recent decline in the index. Real food import prices had an effect on imports--each 10-percent rise in real prices tended to reduce imports of food by about 4 percent.

Although food imports are subject to tariffs and import licenses, the tariffs have had virtually no effect on the

quantity of food imported. The tariffs, a source of revenue more than a restriction on imports, generally constitute less than 1 percent of the import cost. Many basic commodities are subsidized before they reach the consumer:

Wheat flour: The price to bakers and retailers is controlled, and flour mills are subsidized to ensure a fair net return and recovery of import costs.

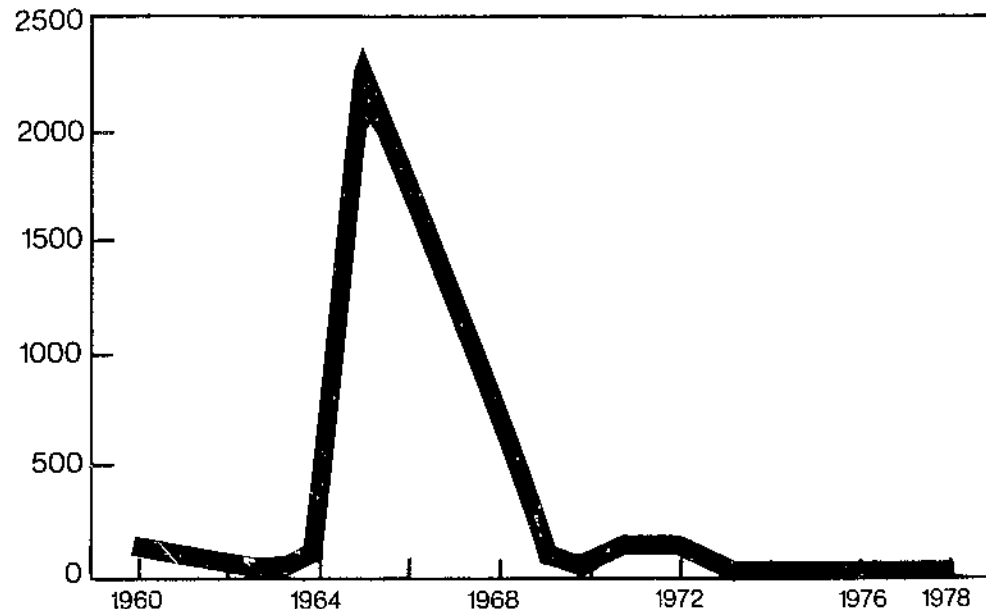
Rice: The imported rice is distributed by the Ministry of Industry and Commerce at controlled subsidized prices.

Beef: Importers must obtain licenses and prices are controlled for frozen beef and other beef products.

Food aid came from multilateral programs, like UNICEF, as well as from individual countries during the sixties and seventies. Title I P.L. 480 sales of corn peaked at \$2.3 million in 1965 and then declined (fig. 4, table 8). There have been no such sales since 1972. The limited amount of food aid makes it impossible to discern statistically the effect of food aid on food imports.

UNICEF has assisted in the government's child feeding program since 1954 by meeting ocean freight costs for donated skim milk powder or corn-soy milk blend.

Figure 4
Trinidad: U.S. P.L. 480 Aid
\$ Thou. U.S.



Foreign reserves generally reflect a country's ability to pay for imports. However, Trinidad's reserves have been so high through most of the seventies that occasional variances seem to have had little effect on food imports (table 9). An exception was in 1973 when Trinidad's reserves of foreign currency were down to the equivalent of less than 1 month's import bill. The subsequent increase in oil prices, which spurred the growth in income, also helped reserves to rise to \$1.8 billion by 1978, the equivalent of more than a year's import bill. At the same time, tourism more than tripled and investment loans from Eurodollar lenders, the International Development Bank, and the International Bank of Reconstruction and Development were negotiated to finance oil, mining, and other industrial development (table 10).

PROJECTIONS TO 1985

Trinidad should remain an important food import market in the future. On the basis of its past performance, Trinidad ought to experience the following by 1985:

- A 2-percent-per-year growth rate in real GDP.
- No growth in per capita domestic agricultural production.
- No significant amount of food aid.
- No significant change in the real price of food imports.
- A 1-percent-per-year growth in population.
- A 10-percent-per-year rate of inflation.
- Continued adequate levels of foreign exchange reserves.

These assumptions yield an import market of some \$450 million of agricultural products, a 28-percent increase in the quantity of imports from the 1978 level. If the United States can maintain its 40-percent share of the market, U.S. food exports to Trinidad will amount to \$180 million by 1985.

If Trinidad continues its recent trade patterns, the United States will be virtually the sole supplier of wheat and corn, and the major foreign supplier of hatching eggs and animal feedstuffs (table 11); the Caribbean Common Market (CARICOM) will continue to be the chief supplier of rice, cocoa, and chocolate products to Trinidad. Canada and New Zealand will be the principal sources of wheat flour, fresh and frozen meats, butter, cheese, fish, flour, tea, and spices; and the European Community will be the leading source of live animals, milk and cream, honey, cereal preparations (biscuits, malt extract, infant foods), sugar preparations (chewing gum and candies), and canned meats (table 12).

By 1985, Trinidad will be at least a \$20-million market for U.S. wheat, \$20 million for U.S. corn, \$20 million for U.S. soybean meal, \$15 million for other U.S. feedstuffs, \$7.5 million for U.S. hatching eggs, and \$5 million for U.S. beef and pork.

1. Abbott, Phillip C. "Modeling International Grain Trade with Government Controlled Markets," American Journal of Agricultural Economics, Vol. 61, No. 1, Feb. 1979.
2. _____. "Developing Countries and International Grain Trade," Ph.D. diss. Massachusetts Institute of Technology, Boston, June 1976.
3. Food and Agriculture Organization of the United Nations. Provisional Food Balance Sheets, 1972-74 average. Rome, 1977.
4. _____. Food Balance Sheets, 1971. Rome, 1971.
5. Garcia Garcia, Jorge. Exchange Rate, Commercial Policy and Agricultural Development: The Experience of Colombia from 1953 to 1978. International Food Policy Research Institute, Washington, D.C., June 1981.
6. International Monetary Fund. International Financial Statistics 1980 Yearbook. Washington, D.C.
7. _____. Balance of Payments Yearbook, Washington, D.C., 1978, 1979.
8. Leamer, Edward E., and Robert M. Stern. Quantitative International Economics. Boston: Allyn and Bason, 1970.
9. May, Jacques M., and Donna L. McLellan. The Ecology of Malnutrition in the Caribbean, Studies in Medical Geography, Vol. 12. New York: Hafner Publishing Co., 1973.
10. Solemano, Georgio, and Lance Taylor. Food Price Policies and Nutrition in Latin America. United Nations University, World Hunger Program, Food and Nutrition Bulletin, Supplement 3. Tokyo, 1980.
11. Trinidad and Tobago, Central Statistical Office. Annual Statistical Digest. Selected years. Port of Spain.
12. _____. Overseas Trade. Selected years. Port of Spain.

13. United Nations. Monthly Bulletin of Statistics. Selected issues. Rome.
14. United States Department of Agriculture; Economics, Statistics, and Cooperatives Service. Indices of Agricultural Production for the Western Hemisphere 1970 through 1979, excluding the United States and Cuba. SB-639 (supplemented by unpublished data). 1980.
15. _____. U.S. Agricultural Exports under Public Law 480. ERS-Foreign 395 (supplemented by unpublished data). 1974.
16. _____. Jamaica, Trinidad, and Tobago, Leeward Islands, Windward Islands, Barbados, and British Guyana Projected Levels of Demand, Supply and Imports of Agricultural Products to 1975. ERS-Foreign 94, 1963.
17. World Bank. World Trade Tables. Baltimore: Johns Hopkins Press, 1979.

APPENDIX: MODEL
METHODS AND
ESTIMATING
PROCEDURES

The variables included in the model to explain changes in Trinidad's food imports were real income, real food import prices, population, food supplies from domestic food production, food aid, and foreign reserves. These variables are suggested by the classical theory of demand. The expected signs of these variables in an equation are as follows:

- a) The quantity index of food imports is expected to be inversely related to real import prices.
- b) The quantity index of food imports is expected to be directly related to per capita real GDP.
- c) The quantity index of food imports is expected to be directly related to per capita real foreign reserves.
- d) The quantity index of food imports may be inversely correlated to per capita real aid if granting aid means that the country substitutes P.L. 480 purchases for food that would otherwise have been imported on a commercial basis.
- e) The quantity index of food imports may be inversely related to per capita production if imports and domestic production are substitute sources of food.

The model is a single equation and is specified in the following way:

$$PCQIIMP = f(PCGDP, PCAGPROD, PCRELRES, PCREALAID, REALIMPPR)$$

Where:

PCQIIMP = Per capita quantity index of food imports adjusted for P.L. 480 imports.

PCGDP = Per capita GDP in constant 1960 Trinidad and Tobago dollars.

PCAGPROD = Per capita domestic food production index.

PCRELRES = Per capita foreign reserves in constant 1960 Trinidad and Tobago dollars.

PCREALAID = Per capita real U.S. P.L. 480 exports to Trinidad and Tobago in constant 1960 Trinidad and Tobago dollars.

REALIMPPR = Food import price index in constant 1960 Trinidad and Tobago dollars.

Annual observations for 1960-78 are the data base of this model, and Cochrane-Orcutt method of estimation was used.

Several of the indexes were calculated by the author: PCQIIMP, REALIMPPR, and PCAGPROD.

PCQIIMP was partially obtained from the quantity index of food imports published by the Government of Trinidad and Tobago for the years 1967 to 1977. These data were supplemented by a quantity index calculated by using the quantities of 88 imported commodities weighted by their 1975 import unit values, using the unit values calculated from 1975 food imports as the base (see tables 13 and 14.) The index was then converted to a 1960 base.

REALIMPPR was partially obtained from the quantity index of food imports published by the Government of Trinidad and Tobago for the years 1967 to 1977. These data were supplemented by a price index calculated by using the import unit values of 88 imported commodities weighted by their quantities of imports in 1975 as the base (see tables 13 and 14). The index was then converted to a 1960 base.

PCAGPROD was obtained by adjusting the USDA agricultural production index for Trinidad by recalculating the index after sugar, coffee, and cocoa bean exports were subtracted from production--to better represent the domestic food supply that originates from domestic agricultural production (table 6 [14]).

Real food import prices and real income appear to be the most significant variables in determining Trinidad's demand for food imports. Reserves were excluded because of the high multicollinearity that existed between GDP and reserves ($R = 0.97$), since both GDP and reserves have risen since 1973 because of the upsurge in oil prices.

$$\begin{aligned} \text{PCQIIMP} = & 100.054 - .311 \text{ REALIMPPR} - 2.337 \text{ PCREALAID} - \\ & \quad \quad \quad (t = 3.489^*) \quad \quad \quad (t = 2.125^*) \\ & .365 \text{ PCAGPROD} \quad + \quad .037 \text{ PCGDP} \\ & \quad \quad \quad (t = 1.615) \quad \quad \quad (t = 10.454^*) \end{aligned}$$

$$F\text{-test} = 46.660$$

$$R^2 = .915 \quad \quad R^2 \text{ (corrected for degrees of freedom)} = .883$$

$$\text{Durbin-Watson} = 2.447$$

$$\text{Number of observations} = 17 \text{ (1962-78)}$$

$$\text{Sum of squared residuals} = 307.185$$

$$\text{Standard error of the regression} = 5.284$$

The relative importance of each variable can also be expressed by its elasticity of imports with respect to the independent variables.

Variable	Elasticity
RELIMPPR	-0.387
PCAGPROD	-.390
PCREALAID	-.016
PCGDP	.644

The fitted equation yields two highly significant factors (income and import prices) and has all the expected signs for the coefficients. The income variable, which best describes the purchasing power of Trinidad, is positively correlated to food imports. The model yields an income elasticity of food imports of 0.64 which is close to the findings of the Jamaican Institute of Social and Economic Research. The price variable is inversely related for food imports, as one would expect from classical demand theory.

Domestic food production is inversely related to food imports, although the relationship is statistically insignificant. The quantity indexes of commercial food imports and P.L. 480 imports are likewise inversely related, but again the relationship is statistically insignificant. P.L. 480 imports to Trinidad have been nil since 1973, and even at their highest (in 1965 and 1966) amounted to only about US \$2 per person.

Foreign reserves were not a constraint. They were initially included as a variable but extremely high multicollinearity existed with GDP ($R = .097$) so that they were not included. The recent growth in both Trinidad's GDP and reserves is tied to the recent increase in petroleum industry revenues.

Although the model appears to track reasonably well during the years under consideration, 1967-68 were the most difficult to portray. Food imports in Trinidad were reduced through government action in 1967 only to be compensated for in 1968.

To obtain the projected value of commercial food imports the following identities are used:

$$\begin{aligned} QI &= PCQI \text{ (POPINDEX)} \\ PI &= REALIMPPR \text{ (CPI)} \\ VI &= QI \text{ (PI)} \\ VAL &= VI \text{ (BASEVAL)} \end{aligned}$$

Where:

PCQI = the PCQI projected from the model and the assumptions assigned to the independent variables.

POPINDEX = the assumed population index for the projected year.

CPI = the assumed consumer price index for the projected year.

VI = The calculated value index.

VAL = The value of food imports calculated from VI and the value of the food imports in the 1960 base year.

BASEVAL = the value of food imports in 1960.

Table 1--Trinidad and Tobago: Food imports

Year	Food imports			Year	Food imports		
	Value		Percent of total imports		Value		Percent of total imports
	TT\$1,000	US\$1,000	Percent		TT\$1,000	US\$1,000	Percent
1960	70,600	41,171	13	1970	103,351	51,680	10
1961	73,100	42,641	13	1971	114,541	57,998	9
1962	76,400	44,566	13	1972	132,923	69,183	9
1963	78,047	45,527	12	1973	161,906	82,179	10
1964	84,962	49,560	12	1974	250,266	121,891	7
1965	87,588	51,092	11	1975	284,884	131,295	9
1966	89,747	50,047	11	1976	321,294	131,808	7
1967	86,986	43,983	12	1977	366,610	152,754	8
1968	87,577	50,387	10	1978	442,212	184,255	9
1969	106,178	53,089	11	1979	535,972	223,321	11
				1980	707,803	294,758	9

Source: (12, see References).

Table 2--Trinidad and Tobago: Indexes of food imports and population

Year	Quantity index of food imports	Population index	Per capita quantity index of food imports	Per capita quantity index of food imports excluding P.L. 480
1960	100	100	100	100
1961	92	104	88	88
1962	95	107	89	88
1963	90	111	81	81
1964	93	114	82	79
1965	95	117	82	78
1966	93	119	78	78
1967	92	121	76	74
1978	85	122	69	69
1969	112	123	91	91
1970	93	124	76	76
1971	104	124	84	84
1972	106	125	84	84
1973	97	126	77	77
1974	119	128	93	93
1975	121	129	94	94
1976	135	131	103	103
1977	158	134	118	118
1978	165	135	123	123
1979	208	135	154	154
1980	229	136	168	168

Sources: (7, 12, see References).

Table 3--Trinidad and Tobago: Gross domestic product in current and constant Trinidad dollars

Year	GDP	Per capita GDP	CPI	Per capita real GDP
	TT\$million	TT\$1,000	1960=100	TT\$1,000
1960	918	1,101	100	1,100.7
1961	1,003	1,160	101	1,131.3
1962	1,062	1,187	104	1,130.1
1963	1,145	1,239	108	1,126.5
1964	1,220	1,283	109	1,166.2
1965	1,263	1,297	111	1,152.6
1966	1,398	1,408	116	1,198.2
1967	1,421	1,407	118	1,197.4
1968	1,631	1,597	128	1,252.9
1969	1,684	1,643	131	1,239.9
1970	1,734	1,683	134	1,247.0
1971	1,918	1,855	139	1,325.0
1972	2,205	2,110	152	1,383.6
1973	2,715	2,573	175	1,470.5
1974	4,259	3,995	213	1,858.3
1975	5,701	5,279	249	2,111.5
1976	6,758	6,172	275	2,244.3
1977	8,391	7,492	308	2,416.8
1978	9,350	8,311	340	2,444.4
1979	10,809	9,450	389	2,429.3

Source: (7, see References).

Table 4--Trinidad and Tobago: Gross domestic product by industry

Industry	1967	1968	1969	1970	1971	1972	1973	1974	1975	1976	1977
	<u>TT\$million</u>										
Agriculture	62.7	73.7	75.5	79.8	84.1	103.5	112.0	140.4	175.2	191.8	211.4
Mining	212.0	225.3	184.5	150.9	156.2	194.6	454.7	1,477.8	2,269.8	2,498.6	2,910.5
Manufacturing	245.9	330.4	337.9	368.4	378.4	443.2	480.2	653.1	759.2	877.8	1,014.0
Construction	54.7	61.9	77.9	93.2	131.1	158.1	171.4	231.1	271.3	404.5	493.2
Electricity, gas, and water	27.8	29.3	33.5	32.2	39.8	45.0	47.9	45.5	58.5	64.7	76.3
Transport and commerce	211.6	231.3	238.0	253.0	279.0	290.2	306.3	354.7	378.1	409.7	441.2
Trade and finance	272.1	297.1	326.4	343.0	366.7	385.5	43.0	503.4	690.6	896.5	1,076.9
Public administration	110.0	120.7	127.8	136.6	179.6	209.8	233.0	290.9	424.2	467.8	500.9
Other	142.2	154.0	160.6	166.4	184.2	203.8	235.2	306.1	355.3	409.4	474.4
GDP at factor cost	1,339.0	1,523.7	1,562.1	1,523.5	1,799.1	2,033.4	2,472.7	4,003.0	5,382.2	5,220.8	7,198.8
Net indirect tax	69.8	87.6	97.5	104.1	117.7	104.2	100.8	41.9	29.7	-1.5	-75.5
GDP at market price	1,408.8	1,611.3	1,659.6	1,727.6	1,916.8	2,137.6	2,573.5	4,044.9	5,411.9	6,219.3	7,123.3
	<u>TT\$million (1970 dollars)</u>										
Agriculture	73.1	81.3	78.4	79.8	81.2	87.0	83.8	77.4	81.8	83.5	80.0
Mining	196.4	188.3	153.3	150.9	170.5	200.6	204.9	211.0	232.6	247.4	252.0
Manufacturing	316.4	339.7	359.0	368.4	356.3	373.3	355.9	337.6	309.9	338.9	365.6
Construction	60.7	66.9	81.3	93.2	125.0	141.5	133.6	131.2	126.1	160.9	175.1
Electricity, gas, and water	28.9	29.3	32.8	32.2	36.6	40.6	39.5	31.4	39.4	42.8	49.7
Transport and commerce	246.4	238.4	239.4	253.0	268.9	264.6	255.2	266.2	242.3	240.8	238.7
Trade and finance	307.6	312.6	335.9	343.0	364.8	357.6	346.0	340.0	414.0	489.2	536.6
Public administration	118.3	128.5	134.6	136.6	181.9	174.0	182.8	206.2	224.7	208.4	198.5
Other	154.7	161.3	165.5	166.4	171.7	174.3	185.5	219.2	205.9	221.7	241.7
GDP at factor cost	1,502.5	1,546.3	1,580.2	1,623.5	1,756.9	1,813.5	1,787.2	1,820.2	1,876.7	2,033.6	2,137.9
Net indirect tax	78.3	88.9	98.6	104.1	114.9	92.9	72.9	19.1	10.4	-5	-22.4
GDP at market price	1,580.8	1,635.2	1,678.8	1,727.6	1,871.8	1,906.4	1,860.1	1,839.3	1,887.1	2,033.1	2,115.5

Source: (19, see References).

Table 5--Trinidad and Tobago: Adjusted agricultural production index

Year	Index	Per capita index	Year	Index	Per capita index
1960	100	100	1970	121	98
1961	98	95	1971	115	93
1962	97	90	1972	121	97
1963	93	84	1973	121	96
1964	94	82	1974	123	96
1965	96	82	1975	138	106
1966	105	88	1976	133	102
1967	109	90	1977	133	99
1968	111	91	1978	131	97
1969	126	103	1979	132	97
			1980	133	97

Source: (15, see References).

Table 6--Trinidad and Tobago: Adjusted agricultural production

Item	1960	1961	1962	1963	1964	1965	1966	1967	1968	1969	1970
	1,000 tons										
Rice, paddy	10	10	11	10	10	10	10	11	10	10	10
Cassava	4	5	5	5	5	5	4	2	3	3	3
Sweetpotatoes and yams	9	7	5	4	3	4	5	5	5	5	5
Tomatoes	2	3	3	3	3	4	4	3	3	4	4
Oranges	12	13	9	12	18	19	19	19	13	15	18
Grapefruit	27	28	21	22	36	29	30	26	21	20	21
Bananas	34	32	30	26	26	25	27	27	30	28	30
Coconuts	130	125	120	115	110	105	103	105	114	118	94
Beef and veal	2	2	2	2	2	2	3	3	2	2	2
Pork	2	2	2	2	2	2	3	3	4	6	3
Chicken meat	5	6	7	8	9	10	11	12	13	13	15
Milk	5	4	5	5	5	5	6	7	8	10	7
Eggs	3	3	3	3	3	3	3	4	4	6	7
Index (1960=100)	100	98	97	93	94	96	105	109	111	126	121
	1,000 tons										
	1971	1972	1973	1974	1975	1976	1977	1978	1979	1980	
Rice, paddy	12	12	12	18	20	22	24	21	18	20	
Cassava	3	4	4	5	5	5	5	5	5	5	
Sweetpotatoes and yams	6	6	6	7	6	6	6	6	6	6	
Tomatoes	6	7	9	11	10	10	10	10	10	9	
Oranges	11	12	8	12	3	6	4	1	2	2	
Grapefruit	18	19	5	19	7	9	3	7	5	4	
Bananas	29	32	28	30	25	24	22	20	18	16	
Coconuts	104	105	99	57	76	78	79	70	65	60	
Beef and veal	2	1	2	2	2	3	3	3	3	3	
Pork	2	2	2	2	2	2	2	2	2	2	
Chicken meat	14	14	14	15	21	19	19	20	21	21	
Milk	9	11	7	8	8	7	6	6	7	7	
Eggs	6	8	8	7	8	7	8	8	7	6	
Index (1960=100)	115	121	121	123	138	133	133	131	132	133	

Source: (15, see References).

Table 7--Trinidad and Tobago: Price indexes of food imports

Year	Import price index	Real import price index	Year	Import price index	Real import price index
1960	100	100	1970	130	96
1961	100	98	1971	151	108
1962	113	107	1972	148	97
1963	108	98	1973	216	123
1964	114	104	1974	295	137
1965	113	100	1975	372	149
1966	113	96	1976	372	135
1967	113	96	1977	358	116
1968	121	95	1978	358	105
1969	122	92	1979	398	103
			1980	510	112

Source: (12, see References).

Table 8--Trinidad and Tobago: U.S. P.L. 480 sales

Year	P.L. 480 sales	P.L. 480	Per capita P.L. 480	Per capita real P.L. 480
	US\$1,000	TT\$1,000	TT\$	1960 TT\$
1960	135	231	0.28	0.28
1961	49	84	.10	.09
1962	25	43	.05	.05
1963	19	33	.04	.03
1964	115	197	.21	.19
1965	2,303	3,948	4.05	3.60
1966	1,827	3,132	3.15	2.68
1967	1,227	2,133	2.11	1.80
1968	855	1,710	1.67	1.31
1969	52	104	.10	.08
1970	5	10	.01	.01
1971	150	296	.29	.20
1972	149	286	.27	.18

Note: No P.L. 480 sales after 1972.

Source: (16, see References).

Table 9--Trinidad and Tobago: Foreign reserves

Year	Foreign reserves		Per capita reserves	
	US\$million	TT\$million	TT\$	1960 TT\$
1960	23.6	40	49	49
1961	26.3	45	52	51
1962	23.3	40	45	43
1963	24.5	42	45	41
1964	29.9	51	54	49
1965	28.5	49	50	45
1966	29.7	51	51	44
1967	30.3	53	52	44
1968	49.4	99	97	76
1969	44.7	89	87	66
1970	43.0	86	83	62
1971	69.4	137	133	95
1972	58.3	112	107	70
1973	47.0	92	87	50
1974	390.3	801	752	350
1975	751.0	1,630	1,509	604
1976	1,013.5	2,471	2,256	820
1977	1,481.7	3,556	3,175	1,024
1978	1,804.8	4,332	3,850	1,132
1979	2,137.8	5,130	4,551	1,169
1980	2,780.0	6,672	5,878	1,286

Source: (8, see References).

Table 10 --Trinidad and Tobago: Composition of foreign reserves account

Item	1972	1973	1974	1975	1976	1977	1978	1979
	<u>TT\$million</u>							
Balance of trade, f.o.b.	-249	-74	915	674	649	677	493	1,149
Other goods and services credit including:								
Port services	372	467	509	632	808	920	1015	1,193
Oil-processing fees	124	84	117	111	124	150	159	N.A.
Travel <u>1/</u>	57	64	62	61	114	115	126	N.A.
	97	116	112	163	184	218	219	298
Other services debit including:								
Travel	-354	-445	-842	-665	-929	-1174	-1175	-1,541
Direct investment income	-52	-46	-53	-72	-90	-124	-162	-205
	-61	-67	-177	-84	-124	-179	-107	-134
Private unrequited transfers <u>2/</u>	0	-5	-16	-23	-22	-32	-40	-69
Official unrequited transfers	-5	-11	-20	-25	-51	-42	-57	-410
Direct investment and other long-term capital	202	137	162	357	60	661	590	765
Direct investments in Trinidad, including	165	128	246	440	261	336	336	312
Reinvestment of earnings	0	131	401	161	315	419	234	339
Other long-term capital	165	3	154	278	54	83	101	26
Drawings on long-term loans <u>3/</u>	46	65	47	11	11	375	264	145
Repayment on long-term loans <u>4/</u>	-4	-6	-62	-30	-97	-11	-10	-14
Change in reserves	17	32	690	859	656	958	502	736

Note: This table includes only the major items which influenced reserve position.

1/ Payments made by tourists.

2/ Salaries paid to citizens living abroad.

3/ Includes loans from Eurodollar lenders, InterAmerican Development Bank, International Bank for Reconstruction & Development (World Bank), and others.

4/ Includes repayment to United Kingdom, U.S. export-import bank, and others.

Source: (8, see References).

Table 11--Trinidad and Tobago; U.S. share of value of imports of selected foods

Item	1960	1965	1970	1975	1980
	<u>Percent</u>				
Live animals	63	24	26	27	1
Fresh and frozen meats	39	12	17	22	24
Preserved meats, uncanned	56	46	43	48	56
Canned meats	5	5	4	8	1
Milk, fresh or sour	32	50	20	1	0
Canned or dried milk	1	1	1	0	0
Butter	1	2	1	0	5
Cheese and curds	1	1	4	2	6
Eggs	31	90	97	74	98
Honey	0	0	0	0	0
Dairy products, other	14	3	2	0	0
Fish, fresh or preserved	2	1	1	1	1
Fish, canned	6	4	3	5	5
Wheat, unmilled	98	53	99	99	99
Rice	0	0	0	0	2
Barley	55	0	0	0	0
Corn	91	80	98	98	99
Other cereals, unmilled	32	9	5	59	27
Wheat flour	34	31	0	5	8
Other milled cereal	0	56	66	13	0
Cereal preparations	14	8	5	9	29
Fruits and nuts, fresh	6	23	34	44	47
Dried fruits	55	27	37	28	21
Preserved fruits and veg.	11	21	19	8	12
Dried vegetables and beans	6	26	21	25	26
Canned vegetables	15	6	6	9	16
Sugar	77	5	2	1	81
Sugar preparation	1	4	12	23	23
Coffee	1	17	14	23	0
Cocoa	19	0	1	1	1
Chocolate and preparations	1	1	2	4	14
Tea	1	1	0	1	0
Spices	1	3	9	4	1
Animal feedstuffs	90	59	76	84	90
Margarine	0	0	0	0	0
Other foods	9	11	14	18	21
Total	23	22	29	40	35

Source: (13, see References).

Table 12--Trinidad and Tobago: Sources of food imports, 1975

Item	Common-wealth Caribbean 1/	Common-wealth non-Caribbean	United States	European Community	European free trade association	Latin America free trade association	Non-Common-wealth Caribbean 3/	Central America nonwealth 4/	Rest of world	Total
TT\$1,000										
Live animals	214	44	404	818	--	--	3	--	--	1,483
Fresh and frozen meats	57	13,178	3,928	395	--	--	--	--	--	17,558
Preserved meats, uncanned	--	2,384	2,200	29	--	--	--	--	--	4,625
Canned meats	274	503	371	1,767	--	--	--	--	12	4,726
Milk, fresh or sour	28	6,932	108	20,694	1,477	1,802	9	--	--	29,239
Canned or dried milk	--	--	--	--	--	--	--	--	--	--
Butter	38	4,448	--	510	764	--	--	--	--	5,760
Cheese and curds	--	4,905	113	2	97	--	--	--	--	5,117
Eggs	--	196	3,489	1,059	--	--	--	--	--	4,744
Honey	--	--	--	484	--	--	--	--	--	484
Other dairy products	--	--	--	--	--	--	--	--	--	--
Fish, fresh or preserved	107	3,123	38	--	419	22	--	--	--	4,890
Fish, canned	--	2,321	152	1	45	--	--	--	1,181	3,241
Wheat, unmilled	--	--	47,239	1	--	--	20	--	702	47,240
Rice	25,774	--	1	55	--	--	--	--	--	31,588
Barley	--	2	1	1	--	5,758	--	--	--	4
Corn	--	--	28,155	--	--	580	--	--	--	28,735
Other cereals, unmilled	--	71	185	55	--	--	--	--	--	311
Wheat flour	--	2,611	169	641	--	--	--	--	--	3,421
Other milled cereal	3	180	47	17	--	2	88	--	34	371
Cereal preparations	666	450	1,032	9,667	--	67	--	--	--	11,935
Fruits and nuts, fresh	202	1,473	1,374	57	--	--	--	--	53	3,106
Dried fruits	--	967	605	16	--	428	--	--	--	2,140
Preserved fruits and veg.	1,338	1,456	284	191	30	47	21	--	124	3,471
Dried vegetables and beans	2,526	5,686	5,479	6,990	9	631	--	--	104	22,053
Canned vegetables	81	491	255	400	--	178	37	--	732	2,727
Sugar	302	1,100	10	579	1	236	6,356	--	1,285	8,841
Sugar preparation	143	111	563	1,607	--	26	17	--	257	2,472
Coffee	165	22	115	185	5	18	--	--	--	510
Cocoa	1,055	6	1	514	--	366	--	--	--	1,942
Chocolate and preparations	1,584	193	110	491	--	180	--	--	--	2,558
Tea	--	920	2	96	--	30	--	--	--	1,085
Spices	93	545	53	343	--	--	--	--	37	1,298
Animal feedstuffs	3	1,302	14,355	423	--	1,002	49	10	254	17,180
Margarine	192	--	--	88	--	--	--	--	46	280
Other foods	1,619	2,356	1,848	2,221	81	272	1,848	--	88	10,333
Total	36,464	57,976	112,686	50,397	2,928	11,645	8,448	10	4,914	285,468

-- = Not available.

1/ Includes Guyana, Dominica, Grenada, St. Vincent, St. Lucia, Antigua, St. Kitts, Barbados, Jamaica, Belize, and some others in the region.

2/ Includes Norway, Sweden, Portugal, Switzerland, Finland, Austria, Ireland.

3/ Includes Argentina, Brazil, Ecuador, Colombia, Mexico, Venezuela, and others.

4/ Includes Nicaragua, Honduras, Costa Rica, El Salvador, Guatemala.

Source: (13, see References).

Table 13--Trinidad and Tobago: Quantity of food imports

Commodity	1,000 pounds									
	1960	1961	1962	1963	1964	1965	1967	1968	1969	
Livestock and meat:										
Chicks	407	263	162	199	295	226	324	301	326	
Beef	7,005	6,514	5,969	6,192	7,600	6,376	4,794	4,133	6,542	
Mutton	958	1,353	1,342	1,583	1,739	1,255	1,104	968	1,477	
Goat	0	0	0	0	0	0	0	0	0	
Pork	1,076	1,309	1,269	1,433	1,701	1,616	441	7	330	
Chicken backs	0	0	0	0	0	0	0	0	0	
Chicken parts	0	0	0	0	0	0	0	0	0	
Whole chickens	4,662	6,053	6,786	6,648	4,457	355	273	318	212	
Other poultry	0	0	0	0	0	0	0	0	0	
Pig feet	0	0	0	0	0	0	0	0	0	
Salted pork	3,809	3,346	3,855	3,905	3,906	3,489	2,851	3,275	2,141	
Other offals	714	841	816	958	227	1,260	1,676	1,209	1,397	
Other pigmeat	0	0	0	0	0	0	0	0	0	
Salted beef	857	895	793	841	880	819	830	759	796	
Other offals, salted	0	0	0	0	0	0	0	0	0	
Canned sausage	386	436	574	763	354	1,148	1,504	1,570	714	
Canned corned beef	1,605	1,611	1,804	1,742	1,904	1,633	1,716	1,489	1,449	
Bacon, uncanned	295	341	390	339	378	399	398	390	122	
Ham, uncanned	920	944	963	1,002	1,279	1,085	44	737	622	
Sausage, uncanned	706	649	381	418	354	342	168	221	71	
Canned ham	720	677	799	640	885	571	703	656	188	
Other prepared meats	0	0	0	0	0	0	0	0	0	
Dairy products:										
Milk and cream	123	74	732	488	231	1	52	5	1	
Evaporated milk	4,321	4,267	3,928	4,382	4,765	5,170	6,249	7,221	7,044	
Condensed milk	14,903	14,858	13,394	11,510	9,764	6,646	2,835	2,761	2,911	
Dried milk, 8 percent fat and over	6,380	6,904	6,657	6,397	6,972	7,283	7,568	7,508	8,839	
Dried milk, under 8 percent fat	1,978	2,731	2,877	4,609	5,148	4,985	5,882	5,410	6,144	
Butterfat	0	0	0	0	0	0	0	907	749	
Butter	3,531	3,371	3,253	3,349	3,977	4,343	4,657	3,461	4,174	
Chee	50	41	42	41	69	77	89	93	123	
Cheese and curds	2,142	2,440	2,514	2,642	3,256	2,717	3,922	3,766	6,004	
Eggs	434	492	456	744	1,398	1,452	1,540	1,825	1,189	
Fish:										
Codfish	4,712	4,203	4,522	4,359	4,497	4,339	3,894	3,476	3,862	
Herring, salted	16	40	44	14	17	732	0	0	0	
Other fish, salted	897	1,018	1,224	1,131	1,354	804	739	767	657	
Herring, smoked	526	478	507	525	551	124	874	953	801	
Sardines, canned	820	970	869	772	1,041	981	1,060	857	1,145	
Salmon, canned	512	632	593	522	650	540	521	327	348	
Herring	230	215	200	268	259	238	224	294	451	
Mackerel	0	30	0	0	0	0	0	0	0	
Grain and grain products:										
Wheat	1,961	1,314	1,181	226	375	17,474	139,597	103,265	207,134	
Rice, retail packages	2,180	2,777	2,072	2,403	3,425	4,675	4,715	3,762	4,535	
Rice in bulk	58,257	55,505	69,013	58,655	61,622	63,699	61,894	55,999	60,542	
Corn, unmilled	16,060	18,470	21,205	2,533	43,427	57,760	85,135	83,166	117,389	
Oats, unmilled	3,233	2,762	2,989	2,962	2,756	2,978	2,893	2,715	2,331	
Wheat flour	123,959	130,512	129,400	137,244	136,563	133,657	38,472	27,504	52,056	
Wheat meal, groats	0	0	0	0	0	13	1,747	2,353	2,910	
Corn flour	23	9	102	328	151	109	151	210	296	
Groats and cornmeal	4,617	2,378	2,107	1,625	1,938	2,228	1,326	1,562	821	
Puffed rice	789	685	699	787	911	829	842	879	979	
Other malt	3,458	2,792	3,570	2,703	2,568	3,388	4,116	3,736	5,397	
Macaroni	680	565	583	517	636	340	42	43	47	
Pastry biscuits, sweet	544	728	533	586	601	596	846	698	832	
Infant food	0	0	0	0	0	0	0	0	0	

--Continued

Table 13--Trinidad and Tobago: Quantity of food imports--Continued

Commodity	1970	1971	1972	1973	1974	1975	1976	1977	1978	1979	1980
	1,000 pounds										
Livestock and meat:											
Chicks	396	332	414	321	334	221	293	172	20	542	573
Beef	7,032	6,255	7,450	5,888	4,949	8,741	13,555	12,267	19,077	13,322	9,881
Mutton	1,603	1,286	1,537	885	982	856	984	729	1,016	817	992
Goat	0	0	0	0	483	567	859	1,283	1,900	573	2,065
Pork	1,494	1,841	1,535	1,060	888	1,291	469	421	1,671	983	2,599
Chicken backs	0	0	0	0	0	30	95	28	542	0	5
Chicken parts	0	0	0	0	0	38	129	52	176	176	24
Whole chickens	375	383	205	306	2	0	13	348	1,236	6,854	5,888
Other poultry	0	0	0	0	301	256	416	491	895	1,347	2,103
Pig feet	0	0	0	0	0	818	1,571	1,373	1,984	1,047	1,746
Salted pork	1,844	2,881	2,754	3,608	538	168	51	44	103	309	1,144
Other offals	1,772	1,591	2,911	1,961	1,204	1,660	2,619	2,877	3,661	2,358	2,097
Other pigmeat	0	0	0	0	0	378	307	390	502	346	44
Salted beef	1,197	612	793	0	626	551	832	526	540	688	694
Other offals, salted	0	0	0	0	2,558	2,854	2,589	2,001	2,455	0	0
Canned sausage	206	364	394	489	944	263	442	388	809	595	888
Canned corned beef	1,680	1,888	1,478	1,521	1,184	883	3,072	3,300	3,390	3,522	3,145
Bacon, uncanned	17	26	15	0	668	67	65	40	11	33	5
Ham, uncanned	402	168	390	114	152	228	442	61	85	101	148
Sausage, uncanned	16	22	19	27	69	34	61	33	39	22	18
Canned ham	103	42	53	114	152	228	229	198	295	117	190
Other prepared meats	0	0	0	0	0	255	444	489	220	441	205
Dairy products:											
Milk and cream	8	1	0	0	0	0	0	0	0	395	2,101
Evaporated milk	7,525	6,284	7,658	5,391	8,878	0	0	0	0	15,963	16,212
Condensed milk	1,755	253	0	0	1	9,579	9,787	15,640	2,685	0	0
Dried milk, 8 percent fat and over	9,751	11,869	12,301	12,831	13,791	14,588	12,431	20,979	20,227	11,208	14,030
Dried milk, under 8 percent fat	5,995	7,550	5,284	5,335	5,789	3,419	4,395	3,452	2,363	6,543	13,236
Butterfat	954	1,400	1,401	781	825	713	1,511	1,576	1,693	1,172	1,880
Butter	4,060	3,684	2,861	2,642	3,103	2,624	2,835	3,108	3,400	3,400	897
Chee	177	159	279	229	134	352	321	381	604	494	666
Cheese and curds	6,492	5,594	5,271	4,806	5,803	4,042	4,077	6,283	5,939	4,105	9,482
Eggs	1,418	1,516	1,491	3,706	1,077	1,073	1,540	1,825	2,591	79,373	76,465
Fish:											
Codfish	3,767	2,154	1,833	1,379	2,215	2,241	3,121	2,308	2,473	3,306	3,721
Herring, salted	0	0	19	176	351	298	322	251	2,473	265	69
Other fish, salted	7	1,451	1,960	771	0	282	314	288	68	66	13
Herring, smoked	635	500	669	371	0	0	0	0	0	390	827
Sardines, canned	979	413	1,069	1,537	203	1,409	1,472	319	304	1,161	1,763
Salmon, canned	458	413	413	482	0	3	187	0	304	352	346
Herring	458	888	658	360	814	423	371	392	513	432	228
Mackerel	0	0	0	0	0	0	883	601	2,550	957	1,276
Grain and grain products:											
Wheat	127,813	144,662	111,360	173,726	180,070	231,268	251,365	222,962	224,924	343,680	255,264
Rice, retail packages	4,174	6,643	6,145	5,734	5,961	5,352	4,080	2,502	4,431	5,072	15,533
Rice in bulk	56,905	68,105	60,031	46,143	93,736	60,002	65,900	83,813	55,821	68,506	55,757
Corn, unmilled	102,978	93,976	137,043	60,189	138,029	171,852	151,257	147,705	159,983	212,192	214,031
Oats, unmilled	2,069	1,638	1,412	1,130	983	743	949	1,552	1,137	1,556	2,182
Wheat flour	46,497	37,997	42,698	33,852	27,789	6,677	752	2,054	2,570	2,411	4,746
Wheat meal, groats	2,996	3,665	4,109	2,079	990	1,786	2,315	2,996	3,529	2,030	3,456
Corn flour	247	837	366	643	521	190	88	275	222	265	280
Groats and cornmeal	845	348	1,096	629	424	657	913	1,880	2,674	2,136	3,379
Puffed rice	1,040	986	1,121	1,282	634	684	810	684	1,373	1,172	1,543
Other malt	7,603	7,332	8,156	9,527	9,350	10,913	12,784	10,913	9,673	12,822	13,710
Macaroni	62	143	77	435	54	51	62	88	61	110	130
Pastry biscuits, sweet	877	1,219	1,291	1,602	1,539	1,154	1,284	2,034	12,024	2,056	2,623
Infant food	0	0	0	0	0	341	1,307	630	330	373	851

--Continued

Table 13--Trinidad and Tobago: Quantity of food imports--Continued

Commodity	1960	1961	1962	1963	1964	1965	1967	1968	1969
	1,000 pounds								
Fruits:									
Apples	2,893	1,900	1,931	2,122	2,876	2,193	2,009	1,437	1,928
Plantains	2,892	2,786	3,370	1,923	2,430	1,247	160	3	53
Grapes	421	421	544	414	590	593	403	332	425
Dried fruit	1,145	1,372	1,342	1,162	1,467	1,348	1,576	1,413	1,914
Orange juice	1	0	0	0	0	0	0	0	1
Vegetables:									
Potatoes	23,137	24,030	27,277	26,680	28,493	25,387	23,023	22,873	25,888
Beans and peas, dried	12,253	16,086	15,293	11,884	10,886	8,648	15,134	15,312	16,508
Carrots	0	0	0	0	0	0	0	0	0
Garlic	1,016	998	990	1,144	1,359	1,128	1,339	1,352	1,217
Onions	7,201	6,932	6,807	7,620	7,300	7,365	7,491	7,001	7,986
Dasheens and eddoes	0	0	0	0	0	0	0	0	0
Sweetpotatoes	5,311	3,714	4,738	4,106	4,294	5,004	5,157	4,419	4,421
Tannias	4	7	9	18	33	0	13	24	123
Yams	199	246	514	423	457	714	134	148	336
Peas and beans, canned	906	986	1,038	1,056	1,088	0	84	134	34
Tomato paste	0	0	0	0	0	0	0	0	0
Sugar and sugar products:									
Confectionery sugar	898	976	974	903	889	1,112	951	1,174	1,058
Other refined cane sugar	0	0	0	0	0	1	0	0	0
Other refined sugar	0	0	0	0	0	0	0	0	15
Glucose, lactose	0	0	0	0	0	0	0	0	0
Other tropical plants:									
Cocoa powder	533	650	558	616	560	551	422	686	437
Chocolate	296	402	427	430	449	502	539	588	630
Tea	470	436	409	477	413	432	395	484	485
Feeds:									
Bran and pollards	1,951	1,456	1,259	0	0	6,971	1,937	4,077	3,649
Soybean oilcake	2,500	2,582	3,950	3,624	5,567	9,995	11,397	14,393	14,064
Linseed oilcake	2,775	2,286	2,049	2,191	2,299	1,991	2,081	1,179	1,504
Pet foods	0	0	0	0	0	0	0	1,043	1,652
Mixed feeds	29,201	29,166	26,587	17,876	14,923	19,867	16,291	12,241	15,792
Other animal feed	39,413	8,631	12,201	12,235	831	15,489	18,111	20,601	7,525
Other food products:									
Spices and condiments	837	1,069	1,150	1,454	1,450	1,624	1,801	2,098	1,107
Soups and broths	0	0	0	0	0	0	0	0	0
Natural yeasts	198	202	212	215	236	0	286	351	300
Infant food, other	0	0	0	0	0	247	0	0	0
Flavoring	143	1,806	175	224	182	175	244	182	202
Peanut butter	0	0	0	0	0	0	0	0	0

--Continued

Table 13--Trinidad and Tobago: Quantity of food imports--Continued

Commodity	1970	1971	1972	1973	1974	1975	1976	1977	1978	1979	1980
	1,000 pounds										
Fruits:											
Apples	2,255	1,754	2,618	2,350	1,976	3,129	2,728	3,129	3,950	5,782	7,217
Plantains	240	6	42	192	0	3	4	10	48	33	13
Grapes	498	277	277	478	0	639	519	293	714	864	1,258
Dried fruit	1,741	1,657	1,657	1,435	0	2,633	1,612	2,633	2,140	1,699	2,601
Orange juice	8	74	10	71	8	201	1,533	3,009	3,093	15,000	1,709
Vegetables:											
Potatoes	28,216	31,446	32,978	31,736	30,053	24,488	28,586	24,488	37,501	53,146	43,442
Beans and peas, dried	21,141	27,400	26,222	24,839	1,277	19,055	27,938	21,785	29,575	24,658	29,072
Carrots	2,210	3,270	2,043	3,101	3,369	2,495	3,558	3,721	5,910	6,126	8,077
Garlic	1,097	1,439	1,521	1,515	1,328	1,457	1,507	1,761	1,995	2,396	2,647
Onions	8,035	8,361	8,147	7,730	7,117	6,704	7,528	7,718	9,239	10,017	14,175
Dasheens and eddoes	0	0	0	0	0	1,355	1,625	5,463	3,355	4,537	9,166
Sweetpotatoes	2,405	2,805	3,244	2,743	3,450	1,921	3,180	895	2,923	2,261	5,264
Tannias	108	85	46	422	273	362	610	2,048	1,613	1,457	1,171
Yams	338	369	369	610	596	519	463	3,604	1,217	1,521	1,792
Peas and beans, canned	89	32	57	60	0	0	0	0	0	3,915	0
Tomato paste	0	0	0	0	998	1,520	2,454	1,492	2,546	2,123	4,672
Sugar and sugar products:											
Confectionery sugar	716	1,578	856	1,239	555	1,619	870	1,873	1,693	933	1,450
Other refined cane sugar	8	15	2	71	0	0	0	5,908	1,095	9,398	37,998
Other refined sugar	7	0	0	0	5,634	1,716	0	0	0	1,966	6,188
Glucose, lactose	0	0	0	0	1,360	2,273	1,726	1,741	12,461	1,574	2,643
Other tropical plants											
Cocoa powder	835	588	561	775	870	824	659	304	626	575	445
Chocolate	922	52	1,005	842	593	617	537	218	192	320	756
Tea	449	471	542	406	455	533	371	295	339	604	392
Feeds:											
Bran and pollards	2,576	936	2,086	700	0	0	0	0	0	3,545	8,135
Soybean oilcake	32,378	18,601	47,050	20,776	43,812	41,635	44,420	47,571	51,692	68,050	65,810
Linseed oilcake	660	912	708	366	0	244	103	10,064	0	40	0
Pet foods	1,952	1,906	2,828	2,949	2,787	2,817	2,866	3,240	4,440	4,190	5,866
Mixed feeds	6,728	4,459	4,763	8,449	6,255	5,073	22,767	51,855	9,468	46,605	89,732
Other animal feed	7,450	10,795	12,669	7,417	4,237	1,378	9,021	14,958	39,533	56,255	27,383
Other food products:											
Spices and condiments	808	1,072	1,690	1,314	1,564	1,819	1,602	1,854	2,187	4,054	2,486
Soups and broths	0	0	0	0	172	203	118	123	222	2,400	496
Natural yeasts	284	308	299	343	355	357	366	416	447	509	644
Infant food, other	0	0	0	0	0	0	668	445	921	225	619
Flavoring	327	564	321	368	275	0	313	335	593	4,054	1,086
Peanut butter	0	0	0	0	418	624	494	15	2	2,400	13

Table 14--Trinidad and Tobago: Value of food imports--Continued

Commodity	1970	1971	1972	1973	1974	1975	1976	1977	1978	1979	1980
	Tt\$1,000										
Livestock and meat:											
Chicks	393	374	416	272	367	349	487	290	10	450	408
Beef	6,415	6,354	8,584	9,996	9,061	11,097	20,846	19,989	34,184	37,344	45,996
Mutton	908	763	980	1,038	1,181	1,004	1,552	1,248	2,103	2,013	2,695
Goat	0	0	0	0	541	675	1,185	711	3,264	1,194	5,249
Pork	1,399	1,634	1,414	1,377	1,252	2,531	969	737	3,952	2,014	6,026
Chicken backs	0	0	0	0	0	24	83	52	577	0	39
Chicken parts	0	0	0	0	0	23	226	0	309	222	62
Whole chickens	338	336	185	456	2	0	21	181	2,261	9,656	10,178
Other poultry	0	0	0	0	0	483	963	898	1,243	1,303	2,375
Pig feet	0	0	0	0	470	451	685	806	1,312	796	1,214
Salted pork	1,048	1,397	1,499	3,019	524	200	66	46	114	72	1,422
Other offals	932	825	1,618	1,492	1,083	1,249	2,624	3,125	4,559	4,749	3,610
Other pigmeat	0	0	0	0	0	354	457	398	465	443	136
Salted beef	863	414	562	0	745	566	1,072	541	779	1,111	1,186
Other offals, salted	0	0	0	0	2,079	3,018	3,786	2,016	2,492	0	0
Canned sausage	189	350	454	792	1,604	640	1,202	992	1,976	1,718	2,794
Canned corned beef	1,301	1,767	1,638	2,148	2,557	1,816	5,343	7,186	7,995	10,145	14,137
Bacon, uncanned	17	24	15	0	158	254	186	162	14	132	13
Ham, uncanned	672	288	570	275	235	713	126	209	376	390	542
Sausage, uncanned	44	48	49	97	130	127	204	144	199	183	134
Canned ham	125	47	114	275	235	713	707	739	1,134	484	870
Other prepared meats	0	0	0	0	0	457	1,012	842	459	990	558
Dairy products:											
Milk and cream	5	1	0	0	0	0	0	0	0	816	1,331
Evaporated milk	1,959	1,850	2,793	2,020	4,695	0	0	0	0	14,333	16,217
Condensed milk	488	79	0	0	0	6,019	6,267	10,195	2,113	0	0
Dried milk, 8 percent fat and over	4,783	6,125	8,699	10,044	14,109	19,542	13,245	23,302	21,432	15,768	27,785
Dried milk, under 8 percent fat	1,362	2,554	2,434	3,040	5,538	3,260	3,093	2,250	2,361	4,867	22,270
Butterfat	537	1,205	1,787	886	921	1,192	2,343	2,410	2,886	1,865	3,897
Butter	2,761	2,068	2,735	2,435	3,447	3,325	3,258	3,504	4,520	4,884	2,234
Chee	157	156	387	361	247	736	684	919	1,191	1,352	2,012
Cheese and curds	3,074	3,631	4,094	4,265	7,072	5,626	5,619	8,363	10,569	9,118	16,376
Eggs	1,512	1,607	1,570	851	3,281	3,593	5,966	7,516	11,495	14,035	15,155
Fish:											
Codfish	2,179	1,532	1,435	1,201	3,265	3,173	5,016	4,429	5,096	7,411	9,678
Herring, salted	0	0	13	140	425	359	398	331	797	594	144
Other fish, salted	6	1,053	1,499	671	0	317	402	413	147	136	48
Herring, smoked	292	301	410	249	0	0	0	0	0	734	1,485
Sardines, canned	747	346	899	1,371	254	2,479	3,130	762	1,070	2,993	5,769
Salmon, canned	628	612	609	751	0	13	657	9,020	5,401	1,199	1,519
Herring	223	621	432	259	861	508	471	554	778	732	711
Mackerel	0	0	0	0	0	0	751	814	1,063	1,100	1,772
Grain and grain products:											
Wheat	7,721	9,404	6,757	16,428	33,782	47,239	51,647	34,523	35,930	44,599	61,265
Rice, retail packages	874	1,347	1,306	1,792	2,863	3,329	2,127	1,315	3,104	3,886	10,128
Rice in bulk	7,960	9,646	8,235	10,638	31,907	26,344	28,789	31,262	24,546	32,883	26,917
Corn, unmilled	6,510	6,363	8,124	5,828	21,272	28,736	27,975	27,666	27,068	38,763	39,601
Oats, unmilled	201	175	157	161	228	218	310	541	443	579	1,074
Wheat flour	5,326	4,635	5,435	6,249	8,813	2,450	315	687	938	1,034	2,842
Wheat meal, groats	379	483	562	427	452	971	985	1,238	1,625	1,171	2,310
Corn flour	50	151	84	167	159	72	45	130	124	147	233
Groats and cornmeal	135	72	200	121	146	218	336	588	891	1,214	1,444
Puffed rice	634	639	763	829	768	1,081	1,661	2,282	3,157	3,385	4,645
Other malt	1,000	1,305	1,504	1,879	2,963	4,404	4,611	7,143	4,221	5,731	7,856
Macaroni	24	53	32	315	6	72	90	128	88	172	292
Pastry biscuits, sweet	730	1,041	1,131	1,429	2,093	1,889	2,279	4,137	6,530	5,554	8,462
Infant food	0	0	0	0	0	580	2,088	1,739	989	1,094	2,814

--Continued

Table 14--Trinidad and Tobago: Value of food imports--Continued

Commodity	1960	1961	1962	1963	1964	1965	1967	1968	1969
	TTS1,000								
Fruits:									
Apples	670	497	444	439	667	499	575	398	587
Plantains	216	146	205	114	146	79	13	1	6
Grapes	146	155	197	146	192	178	202	159	204
Dried fruit	419	516	448	374	510	456	572	558	819
Orange juice	1	0	0	0	0	0	0	0	2
Vegetables:									
Potatoes	1,325	1,316	1,548	1,648	1,581	1,641	1,421	1,403	1,950
Beans and peas, dried	1,720	1,762	1,734	1,487	1,465	1,206	2,105	2,515	2,621
Carrots	0	0	0	0	0	0	0	0	0
Garlic	194	196	299	413	369	246	709	783	483
Onions	557	621	697	747	593	649	743	746	908
Dasheens and eddoes	0	0	0	0	0	0	0	0	0
Sweetpotatoes	260	251	226	106	213	252	257	249	331
Tannias	1	1	1	1	1	0	1	1	7
Yams	16	25	28	18	27	42	8	8	24
Peas and beans, canned	264	296	287	309	389	0	21	41	9
Tomato paste	0	0	0	0	0	0	0	0	0
Sugar and sugar products:									
Confectionery sugar	502	532	561	538	572	685	626	838	810
Other refined cane sugar	0	0	0	0	0	23	0	0	0
Other refined sugar	0	0	0	0	0	0	0	0	0
Glucose, lactose	0	0	0	0	0	0	0	0	204
Other tropical plants:									
Cocoa powder	503	631	516	512	480	456	371	601	377
Chocolate	364	422	477	496	504	487	605	680	797
Tea	696	649	611	714	623	645	616	806	805
Feeds:									
Bran and pollards	100	90	73	0	0	310	81	175	163
Soybean oilcake	165	243	319	370	622	1,074	1,270	1,799	1,778
Linseed oilcake	237	186	183	203	196	172	208	129	174
Pet foods	0	0	0	0	0	0	0	273	476
Mixed feeds	2,572	2,723	2,521	1,807	1,611	1,960	2,263	2,004	2,807
Other animal feed	3,467	847	1,304	1,289	977	2,320	2,813	3,730	1,543
Other food products:									
Spices and condiments	443	515	505	620	597	705	780	962	530
Soups and broths	0	0	0	0	0	0	0	0	0
Natural yeasts	135	138	139	142	154	0	192	247	200
Infant food, other	0	0	0	0	0	166	0	0	0
Flavoring	381	475	347	393	443	511	583	558	769
Peanut butter	0	0	0	0	0	0	0	0	0

Table 14--Trinidad and Tobago: Value of food imports--Continued

Commodity	1970	1971	1972	1973	1974	1975	1976	1977	1978	1979	1980
	TT\$1,000										
Fruits:											
Apples	784	649	1,125	1,073	1,058	1,963	1,881	2,563	3,210	4,977	6,231
Plantains	2	1	7	32	0	14	42	48	120	212	141
Grapes	281	159	158	337	0	513	461	720	999	1,254	877
Dried fruit	773	807	807	1,257	0	1,712	1,848	3,043	3,116	3,067	5,542
Orange juice	7	29	1	62	184	161	1,336	1,436	6,774	15,683	14,160
Vegetables:											
Potatoes	2,437	2,466	3,530	5,429	5,041	6,169	10,374	9,139	9,118	11,059	19,107
Seas and peas, dried	2,973	993	4,273	5,681	911	9,031	11,869	13,960	16,701	15,282	24,981
Carrots	502	811	743	1,043	1,273	1,237	1,851	2,449	4,116	4,311	6,921
Garlic	385	685	798	1,192	1,103	1,258	1,747	2,761	2,935	3,652	4,845
Onions	1,210	1,012	1,257	1,771	1,859	2,068	2,933	2,740	2,752	3,902	7,970
Dasheens and eddoes	0	0	0	0	0	220	332	566	930	674	1,035
Sweetpotatoes	233	273	333	369	594	405	633	199	710	589	1,216
Tannias	5	5	3	37	26	62	170	233	367	261	248
Yams	31	27	26	86	57	109	108	305	264	286	219
Peas and beans, canned	26	13	31	30	0	0	0	0	0	525	427
Tomato paste	0	0	0	0	629	1,448	1,556	1,212	2,059	1,943	4,191
Sugar and sugar products:											
Confectionery sugar	453	1,333	702	1,237	898	2,399	1,924	4,067	4,318	2,645	3,536
Other refined cane sugar	99	247	60	1,859	0	0	0	2,280	373	4,480	30,874
Other refined sugar	99	0	0	0	5,414	7,349	0	0	0	1,602	4,706
Glucose, lactose	0	0	0	0	641	1,034	978	1,122	4,176	1,469	2,556
Other tropical plants:											
Cocoa powder	880	696	603	957	1,361	1,004	1,999	1,070	3,767	2,344	1,654
Chocolate	1,121	87	1,493	1,463	1,288	1,942	1,854	746	1,138	1,802	2,175
Tea	753	727	759	554	797	1,086	775	830	1,405	3,381	2,245
Feeds:											
Bran and pollards	122	46	94	43	0	0	0	0	0	529	1,159
Soybean oilcake	4,187	2,094	5,665	6,483	9,858	10,371	13,955	17,631	16,860	24,568	23,198
Linseed oilcake	80	112	96	56	0	74	38	103	0	19	0
Pet foods	522	549	814	978	1,288	1,549	1,757	2,162	2,998	3,298	4,799
Mixed feeds	1,745	1,497	1,270	3,429	3,078	4,579	8,743	18,568	7,092	18,247	31,864
Other animal feed	1,793	2,449	3,541	2,750	1,756	1,129	3,047	3,167	15,428	14,087	2,039
Other food products:											
Spices and condiments	487	734	1,090	1,115	1,906	2,533	2,142	2,644	2,905	4,616	2,715
Soups and broths	0	0	0	0	131	492	326	148	879	1,745	1,180
Natural yeasts	211	242	284	321	495	701	806	946	1,167	1,302	1,861
Infant food, other	0	0	0	0	0	0	1,428	1,097	2,503	914	2,144
Flavoring	922	1,190	1,090	1,536	1,491	0	2,115	2,227	1,997	1,614	5,597
Peanut butter	0	0	0	0	539	745	691	22	3	0	57

*U.S. Government Printing Office: 1981--380-932/ERS-1525

END
DATE
FILMED
3-29-83
NTIS