



AgEcon SEARCH
RESEARCH IN AGRICULTURAL & APPLIED ECONOMICS

The World's Largest Open Access Agricultural & Applied Economics Digital Library

This document is discoverable and free to researchers across the globe due to the work of AgEcon Search.

Help ensure our sustainability.

Give to AgEcon Search

AgEcon Search
<http://ageconsearch.umn.edu>
aesearch@umn.edu

*Papers downloaded from **AgEcon Search** may be used for non-commercial purposes and personal study only. No other use, including posting to another Internet site, is permitted without permission from the copyright owner (not AgEcon Search), or as allowed under the provisions of Fair Use, U.S. Copyright Act, Title 17 U.S.C.*



Menu



Economic Research Service

Stay Connected



Statistic:

September 20, 2012



PRINT



PDF



EMAIL

Indicators

by Economic Research Service

Farm, Rural, and Natural Resource Indicators

	2008	2009	2010	2011	2012	Annual percent change			
						2007-08	2008-09	2009-10	2010-11
Cash receipts (\$ bil.)	318.3	283.4	312.3f	365.9f	n.a.	10.3	-11.0	10.2	17.2
Crops	176.8	163.7	170.9f	200.6f	n.a.	17.8	-7.4	4.4	17.4
Livestock	141.5	119.8	141.5f	165.4f	n.a.	2.2	-15.3	18.1	16.9
Direct government payments (\$ bil.)	12.2	12.3	12.2f	10.6f	n.a.	2.5	0.8	-0.8	-13.1
Gross cash income (\$ bil.)	352.0	317.6	345.6f	396.1f	n.a.	10.7	-9.8	8.8	14.6
Net cash income (\$ bil.)	90.4	69.1	91.3f	109.8f	n.a.	16.3	-23.6	32.1	20.3
Net value added (\$ bil.)	136.6	112.1	129.0f	153.7f	n.a.	16.6	-17.9	15.1	19.1
Farm equity (\$ bil.)		1,811.8	1,880.8f	1,944.9f	n.a.	-3.3	1.7	3.8	3.4
Farm debt-asset ratio	12.0	11.9	11.3f	10.4f	n.a.	15.4	-0.8	-5.0	-8.0
Farm household income (\$/farm household)	51,431	52,235	54,162	57,067f	57,762f	-5.5	1.6	3.7	5.4
Farm household income relative to average U.S. household income (%)	116.6	133.5	n.a.	n.a.	n.a.	n.a.	n.a.	n.a.	n.a.
Nonmetro-metro difference in poverty rate (% points) ¹	2.2	2.7	1.6	2.4	n.a.	n.a.	n.a.	n.a.	n.a.
Cropland harvested (million acres)	315	310	315	302p	n.a.	1.0	-1.6	1.6	n.a.
USDA conservation program expenditures (\$ bil.) ^{1,2}	5.2	4.9	5.7	5.9	n.a.	15.6	-6.0	16.1	4.0

Food and Fiber Sector Indicators

U.S. gross domestic product (\$ bil.)	14,369	14,119	14,698f	14,499	15,076	1.9	-2.5	4.2	n.a.
Share of agriculture & related industries in GDP (%) ¹	4.6	4.6	4.6f	4.8f	4.8	n.a.	n.a.	n.a.	n.a.
Share of agriculture in GDP (%) ¹	0.9	0.7	0.9f	0.9f	0.9.	n.a.	n.a.	n.a.	n.a.
Total agricultural imports (\$ bil.) ²	79.3	73.4	79.0	94.5	106.5	13.1	-7.4	7.6	19.6
Total agricultural exports (\$ bil.) ²	114.9	96.3	108.7	137.4	136.5	39.8	-16.2	12.9	26.4
Export share of the volume of U.S. agricultural production (%) ¹	21.7	19.8	21.0f	21.5	n.a.	n.a.	n.a.	n.a.	n.a.
CPI for food (1982-84=100)	214.1	218.0	219.6	227.8	234.3f	5.5	1.8	0.7	3.7
Share of U.S. disposable income spent on food (%)	9.5	9.4	9.4	9.8	n.a.	n.a.	n.a.	n.a.	n.a.
Share of total food expenditures for at-home consumption (%)	53.4	53.4	53.5	54.5	n.a.	n.a.	n.a.	n.a.	n.a.
Farm-to-retail price spread (1982-84=100)	267.0	276.5	269.3	n.a.	n.a.	7.6	3.6	-2.6	n.a.
Total USDA food and nutrition assistance spending (\$ bil.) ²	60.9	79.2	95.4	103.7	n.a.	12.2	30.0	20.5	8.3

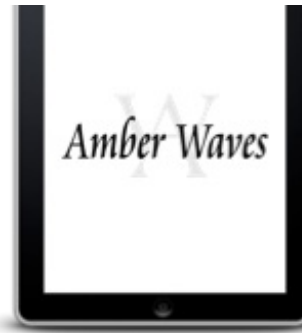
f = Forecast. p = Preliminary, na = Not available. All dollar amounts are in current dollars.

¹The methodology for computing these measures has changed. These statistics are not comparable to previously published statistics.

²Based on October-September fiscal years ending with year indicated.

Sources and computation methodology are available at: <http://ers.usda.gov/amber-waves/about/methodology-notes.aspx>





Amber Waves on Your Tablet

On the go? Stay connected with our *Amber Waves* app for tablets. Subscribe to the quarterly magazine on [iTunes](#) or [Google Play](#).

[ERS Home](#) | [USDA.gov](#) | [Careers](#) | [Site Map](#) | [What's New](#) | [E-Mail Updates](#) | [RSS](#) | [Text Only](#) | [Report Fraud](#)
[FOIA](#) | [Accessibility](#) | [Information Quality](#) | [Privacy Policy & Nondiscrimination Statement](#) | [USA.gov](#) | [White House](#)