



**AgEcon** SEARCH  
RESEARCH IN AGRICULTURAL & APPLIED ECONOMICS

*The World's Largest Open Access Agricultural & Applied Economics Digital Library*

**This document is discoverable and free to researchers across the globe due to the work of AgEcon Search.**

**Help ensure our sustainability.**

Give to AgEcon Search

AgEcon Search

<http://ageconsearch.umn.edu>

[aesearch@umn.edu](mailto:aesearch@umn.edu)

*Papers downloaded from **AgEcon Search** may be used for non-commercial purposes and personal study only. No other use, including posting to another Internet site, is permitted without permission from the copyright owner (not AgEcon Search), or as allowed under the provisions of Fair Use, U.S. Copyright Act, Title 17 U.S.C.*

USDA/FAER-83

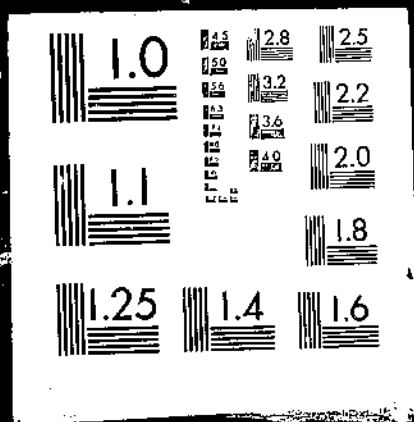
AGRICULTURAL TRADE OF THE PEOPLE'S REPUBLIC OF CHINA, 1935-69. (Foreign Agricultural Economic Report). / Riley H. Kirby. Washington, DC: Economic Research Service. Aug. 1972.

(NAL Call No. A281.97Ag8F)

# 1 OF 2

# USDA

# FAER-83



AGRICULTURAL  
TRADE  
OF THE  
PEOPLE'S REPUBLIC  
OF  
CHINA,  
1935-69.

FOREIGN AGRICULTURAL ECONOMIC REPORT NO. 83  
U.S. DEPARTMENT OF AGRICULTURE / ECONOMIC RESEARCH SERVICE

## ABSTRACT

China's imports of farm products rose abruptly in 1961, reached a peak of \$682 million in 1964, and declined thereafter to \$524 million in 1969, or one-third of the value of all China's imports. A dozen countries supply the bulk of China's agricultural imports, principally wheat, rubber, sugar, and cotton. Foremost among suppliers are Australia, Canada, Malaysia, Singapore, Ceylon, and Cuba.

Farm products worth some \$800 million made up nearly half of China's total exports in 1969. Rice, soybeans, numerous fruits and vegetables, and tea, as well as live animals and various livestock products, are important foreign exchange earners. Twelve countries account for most of China's agricultural exports, but only in four does China have a significant share of the market. Beginning in 1961, the USSR and Eastern Europe were no longer large markets for China. U.S. agricultural exports to China before the suspension of trade in 1950 consisted mainly of cotton and tobacco. U.S. imports included tung oil, silk, hog bristles, and goat and kid skins.

Keywords: China, agricultural trade, agricultural products, statistical data, agricultural exports, agricultural imports.

Note: In tables, n.a. means not applicable, ... means not available, and a dash means none or negligible. All tons in the report are metric.

## CONTENTS

	<u>Page</u>
SUMMARY	vi
INTRODUCTION	1
Purpose of Study	1
Data Sources and Compiling Procedures	1
REVIEW OF CHINA'S TRADE	4
China's Agricultural Trade, 1935-39	5
China's Agricultural Trade, 1950-69	6
U.S. Agricultural Trade with China: Historical and Prospective	8

TABLES

<u>Table</u>		<u>Page</u>
<u>Summary tables:</u>		
1	China: Trade with the world, 1950-69	12
2	China: Value of trade in agricultural products by commodity groups, total and U.S. share, average 1935-39	13
3	China: Imports of selected agricultural products, total and U.S. share, quantity and value, average 1935-39	14
4	China: Imports of selected agricultural products by country of origin, quantity, average 1935-39	15
5	China: Imports of selected agricultural products, quantity for selected periods, 1909-39	15
6	China: Exports of selected agricultural products, total and U.S. share, quantity and value, average 1935-39	16
7	China: Exports of selected agricultural products by destination, quantity, average 1935-39	18
8	China: Exports of selected agricultural products, selected periods, 1909-39	20
9	China: Imports of agricultural products from selected countries, value, 1953-69	23
10	China: Exports of agricultural products to selected countries, value, 1953-69	24
11	China: Imports of selected agricultural products, all sources, value 1959-69 and quantity 1950-69	26
12	China: Exports of selected agricultural products, value 1959-69 and quantity 1950-69	32
13	Selected countries: Exports of agricultural products to China, with comparisons, 1969	40
14	Selected countries: Imports of agricultural products from China, with comparisons, 1969	40
15	China: Imports of principal agricultural products, leading importer, and world total, 1969	41
16	China: Exports of principal agricultural products, leading exporter, and world total, 1969	41
17	Exports of agricultural products from leading countries to all destinations, 1966-69	42

TABLES--Continued

<u>Table</u>	<u>Page</u>
18 United States: Exports of agricultural products to China and other leading countries, with comparisons, 1910-49	44
19 United States: Imports of agricultural products from China and other leading suppliers, with comparisons, 1935-49	45
20 United States: Value of agricultural exports to China, by commodity, average 1930-34 and 1935-39	46
21 United States: Exports of selected agricultural products, total and to China, 1910-1949	46
22 United States: Imports of selected agricultural products, total and from China, average 1930-34 and 1935-39	47
 <u>China: Imports of selected agricultural products by country of origin:</u>	
23 Wheat	48
24 Rice	48
25 Barley	49
26 Corn	49
27 Flour	50
28 Sugar	50
29 Rubber	51
30 Wool	51
31 Cotton	52
32 Sisal	52
 <u>Selected countries: Exports of agricultural products to China:</u>	
33 Argentina	53
34 Australia	54
35 Canada	55
36 Ceylon	56
37 Egypt	57
38 France	58
39 Indonesia	59
40 Malaysia-Singapore	60
41 Pakistan	61
 <u>China: Exports of selected agricultural products by country of destination:</u>	
42 Fresh meat	62
43 Meat preparations	62
44 Eggs in shell	63
45 Eggs not in shell	63



TABLES--Continued

<u>Table</u>		<u>Page</u>
46	Rice	64
47	Corn	66
48	Oranges and tangerines	66
49	Apples	67
50	Pears	67
51	Pulses	68
52	Sugar	69
53	Tea	70
54	Oilcake	70
55	Tobacco	71
56	Peanuts	72
57	Soybeans	73
58	Castorseed	74
59	Rape and mustard seed	74
60	Silk	75
61	Wool	75
62	Cotton	76
63	Cottonseed oil	76
64	Peanut oil	77
65	Rape and mustard oil	77
66	Tung oil	78

Selected countries: Imports of agricultural products from  
China:

67	Ceylon	79
68	Czechoslovakia	80
69-70	France	81
71-72	West Germany	82
73-74	Hong Kong	84
75	Hungary	86
76-77	Italy	87
78-79	Japan	88
80-81	Malaysia-Singapore	89
82-83	Netherlands	90
84	Poland	91
85-86	United Kingdom	92
87	USSR	94

## CHARTS

<u>Figure</u>		<u>Page</u>
1	Value of China's trade	11
2	China's imports of all products, with comparisons	11
3	Imports per capita, China and other countries, 1968	11
4	China's rank as an agricultural importer, 1969	16
5	China's share in its leading markets, 1969	16
6	U.S. agricultural exports to China and the Far East	19

## SUMMARY

The People's Republic of China ranked 19th among world importers of agricultural products in 1969. The value of China's agricultural imports was \$524 million, less than one-tenth of that for either West Germany or the United Kingdom, the two leading agricultural importers.

Wheat accounted for two-fifths of China's agricultural imports in 1969, rubber for another fifth. Sugar and cotton are substantial import items. Of lesser importance are wool, jute, coconut oil, and dates. Tobacco was imported before World War II, mostly from the United States, but none has been reported in recent years. China buys from many sources, but most of its imports come from a dozen countries. Foremost among them are Australia, Canada, Malaysia, Singapore, Ceylon, and Cuba.

Agricultural products, nearly two-thirds of China's total exports in 1935-39, accounted for almost half of the total during the late 1960's, when China was among the top 10 to 14 exporters of farm products. Rice is the leading agricultural export. More than a million tons move out in some years, whereas several times during the 1930's, more than a million tons were imported. Live cattle and hogs are shipped in large numbers to Hong Kong. Meat and preparations, tobacco, pulses, and many fruits and vegetables are among China's exports. Soybeans, tea, silk, eggs, and hog bristles are traditional products, important today as in years past. For several export items, China is a leading world supplier, accounting for 10 percent or more of the world trade in 1969.

Twelve countries take the bulk of China's agricultural exports. Hong Kong and Japan are the largest markets. Malaysia, Singapore, and Ceylon are also substantial outlets within the Far East region. West Germany, France, Italy, and the United Kingdom are the major outlets in Western Europe. While these countries are important as markets for China, only Hong Kong, Ceylon, Malaysia, and Singapore count China as a significant supplier of farm products. In the 1950's, the bulk of China's agricultural exports went to the USSR and Eastern Europe. This trade declined sharply after 1960, particularly with the USSR.

Before U.S. trade with China was suspended in 1950, shipments of U.S. farm products to China accounted for 2 to 4 percent of all U.S. agricultural exports and for 15 percent of China's agricultural imports. China ranked eighth to 11th among leading U.S. destinations. Cotton and tobacco were the main products; wheat and flour were important in some years; a number of fruits and vegetables were of lesser importance.

U.S. imports of farm products from China accounted for 2 to 4 percent of all our agricultural imports and for one-fourth of China's agricultural exports. Tung oil, silk, hog bristles, and goat and kid skins were the principal items of trade. For many products, China supplied one-fifth of U.S. imports; for some, China's share was more than three-fourths.

# AGRICULTURAL TRADE OF THE PEOPLE'S REPUBLIC OF CHINA, 1935-69

by

Riley H. Kirby  
Agricultural Economist  
Foreign Demand and Competition Division

## INTRODUCTION

### Purpose of Study

The purpose of the study was to develop a statistical picture of trade in agricultural products by the People's Republic of China over the past two decades. A resumption of trade between the United States and the People's Republic of China may become possible. To obtain some idea of prospects of trade between the two countries, this study examines the extent of China's trade with the world for the past 20 years, looking at the composition and direction as well as the magnitude of trade. To provide some perspective for this review it also looks at trade patterns for a number of years prior to World War II.

Serious limitations in the data, discussed below, made it impossible to begin all series at 1950. Some data are available for 1970 and a few returns are coming in for 1971. But since the objective here was to present a historical survey against which subsequent reviews of current developments might stand, it was decided to close the series at 1969, the latest year for which nearly complete coverage is possible for the commodities and countries included in the study.

The narrative that accompanies the statistical tables does not attempt a complete analysis and summary. It gives, instead, certain highlights that are intended to serve as an invitation to study the statistical materials.

### Data Sources and Compiling Procedures

The usual procedures for compiling trade data of a country could not be employed because China did not publish customs returns during the period studied. The alternative was to measure China's trade in terms of the exports and imports reported by its trading partners. By this means, it has been possible to describe the development of China's trade in farm products. Despite data problems that were often exasperating, sometimes insoluble, and occasionally serious enough to impair detail, the broad outlines of trade patterns remain coherent.

The method used is not fully satisfactory. It is extremely laborious, requiring reference to the customs returns of each country to determine, for each agricultural product, whether trade occurred with China. A problem arises in measuring the value of trade because what is shown as China's exports is in fact the sum of imports from China of all its trading partners valued c.i.f. in nearly all instances. Thus, China's exports are overvalued since conventionally they would be measured f.o.b. China ports. By the same token, China's imports are undervalued.

A further difficulty is that in terms of quantity as well as value, the exports reported by country A as destined for country B seldom agree with (and often vary sharply from) imports reported by B as having come from A. This problem arises from lags in shipping, transshipments or diversions, and other reasons often unknown and unexplainable. Such discrepancies would doubtless appear if Chinese customs returns were available for comparison. Again, there is no alternative in measuring the trade of nonreporting countries.

China's trade as measured by reports of its trading partners obviously is understated since it does not include exports to or imports from countries that do not publish trade reports. Thus, China's trade with other communist countries of Asia, with East Germany and Romania, and with countries of the Arabian Peninsula is not included in this study. There is no way to estimate the magnitude of this trade.

Time limitations prevented compiling in an orderly fashion the agricultural trade statistics for 80 or more countries for each year in the past two decades. Fortunately, others have done much of this needed work. Over the years, two organizations have compiled data regarding the trade of China and other nonreporting countries of the world. The Bureau of International Commerce (BIC) in the U.S. Department of Commerce has compiled trade of individual Free World countries with individual communist countries year by year. BIC reports show trade of a given country with China in all commodities and commodity groups, and in certain commodity items. The presentation conforms to the Standard International Trade Classification (SITC).

BIC reports were useful in measuring the value of trade in agricultural products. The presentation in those reports did not permit compilation of data according to the definition usually employed by the Foreign Demand and Competition Division of ERS to measure trade of foreign countries in agricultural products. For this study, agricultural products were taken to include (1) food (except fish), beverages, and tobacco, (2) crude animal and vegetable materials (except wood and pulp), and (3) oils and fats. Thus it was possible to develop data for individual Free World countries showing the value of exports to China of all commodities and of agricultural commodities for more than 15 years. Similar series were prepared for imports.

The BIC reports for each year have been summarized in the annual Battle Act Reports made by the Department of State to the Congress on the operations under the Mutual Defense Assistance Control Act of 1951. The values of agricultural exports to and imports from China by all Free World countries combined were developed for the present report from these summary materials, using the same definition as for individual countries. The series for total agricultural

trade with China are not fully comparable with the data for individual countries because certain revisions in the latter were incorporated in the summary materials.

Trade of the USSR and countries of Eastern Europe with China are not shown in the BIC reports. Data for the USSR's trade with China since 1950 (total and agricultural, exports and imports, quantity and value) were compiled from the official Foreign Trade Returns of the USSR. Trade data for Eastern Europe are not readily available and the extent of agricultural trade with China could only be approximated.

Quantities of selected agricultural products exported to or imported from China by East European countries are reported by the Food and Agricultural Organization of the United Nations (FAO). Applying estimated unit values to these quantities, it was possible to approximate the level of agricultural trade of each country with China.

The above components were consolidated in table 1 to derive overall measures of the total and agricultural trade of China since 1953. The same components appear in tables 9 and 10, which show China's agricultural trade by principal countries of origin and destination.

BIC reports were not suitable for compiling time series of data in quantity terms for China's trade in agricultural commodities. While these reports showed some commodities separately, the presentation was predominantly in terms of commodity groups. Quantity totals could be given for certain groups, but the magnitudes of component items were concealed in the totals. For other groups, quantity totals were not appropriate, and only value totals were given.

Tables showing quantities of trade since 1950 were compiled mainly from FAO sources. Most of the data in tables 11 and 12, both quantity and value, are taken from FAO Trade Yearbooks.

These yearbooks were useful for the present study because they show trade in much greater commodity detail than the BIC reports. Unfortunately they do not include all agricultural products. Among those lacking are processed fruits and vegetables (part of SITC 05), most miscellaneous food stuffs (09), hides and skins (21), cotton linters and waste (263.2-.4), wool tops, shoddy, and waste (262.3-.9), and crude materials (29).

Another difficulty with the FAO source relates to the matter of valuation. There is no indication of how the value series are derived for commodities traded by China and other nonreporting countries. But where it was possible to make comparisons, it was found frequently that the FAO value series were not consistent with those of BIC. The FAO value series are given here in tables 11 and 12 to show the relative importance of the various commodities traded by China. The BIC value series, though not comparable, are given in tables 9 and 10 to show the relative importance of the countries that trade with China and to determine the share of agricultural products in total exports and in total imports.

Tables 23 through 32 and 42 through 66, showing commodities traded by origin or destination, were developed with some modification from data given in annual supplements to the FAO Trade Yearbooks. These supplements present data compiled from trading partners of nonreporting countries (not including, of course,

trading partners that are themselves nonreporting). They show trade in quantity terms only. The figure for China's total export of any commodity is the sum of the quantities reported as imported by China's trading partners. The commodity totals shown in these tables are usually, but not always, consistent with those in the Trade Yearbooks.

Tables 33 through 41 and 67 through 87 show agricultural trade of selected countries with China in both value and quantity terms. Both value and quantity data for the USSR were taken from the official returns of that country. For other countries, the quantity series were compiled from the annual supplements to the FAO Trade Yearbooks. The value series for Free World countries were compiled from BIC reports while those for countries of Eastern Europe were derived as explained on page 3.

Tables 2,3,4,6, and 7, showing China's trade during 1935-39, were compiled from the 1937 and 1940 issues of the Trade of China, published in Shanghai. The classification of commodities follows two separate schemes--one for exports and one for imports. Each is peculiarly Chinese and bears no relationship to the Standard International Trade Classification employed by many countries today. To measure total exports and imports of all farm products, special effort was taken to identify all items and regroup them according to today's conventional SITC categories as shown in table 2.

To show China's trade in the 1930's and earlier periods, tables 5 and 8 were compiled from data published in various issues of the International Yearbook of Agricultural Statistics by the International Institute of Agriculture. This effort succeeded only in part. For one thing, data for several commodities were not published in the earlier periods. Also, some products were not shown at all; for example, no table was published on trade in tung oil, a product characteristically Chinese at that time and of major importance among China's exports. Since the Institute's yearbooks showed trade in quantity only, it was not possible to determine the relative importance of different commodities.

There are further problems arising from changes in China's boundaries during these earlier years. Most notable was the question of Manchuria, and adjustments were made in preparing tables 5 and 8 to show China's trade both including and excluding Manchuria.

It should be noted that what is shown as China's trade in tables 2 through 8 is actually the reported seaborne trade only.

#### REVIEW OF CHINA'S TRADE

China's total merchandise trade has fluctuated somewhat and trended slightly upward since the mid-1950's. The upper portion of figure 1 shows approximate values of exports and imports since that time; the general range is between \$1.5 billion and \$2.0 billion each (see also table 1). They are approximate in that they do not represent China's recorded trade. The level of imports shown here is the sum of exports to China from its trading partners at f.o.b. values. Similarly, the export level reflects imports of trading partners from China,

nearly all valued c.i.f. For a conventional comparison of trade, the import level in the chart should be adjusted upward and the export level adjusted downward to make allowance for costs of insurance and freight. Adjusting each by 10 percent reverses the balance shown in the chart and suggests an excess of imports in all years except 1962-64. While an adjustment of 10 percent is arbitrary, the resulting relationship of exports and imports is probably more realistic.

The six smaller charts at the bottom of the page might well be similarly adjusted. This is especially true of the two charts on the right hand side of the page which compare exports with imports. For the remaining four charts, this adjustment is not necessary since it would not change the relationships between the pairs of lines shown. Prominently indicated here is that trade with the Free World has grown and now accounts for most of China's exports and imports. Agricultural exports fell during the early 1960's but are now at the pre-1960 level. Agricultural imports rose sharply in 1961, and they have continued at the higher levels since then--more than double their values during the 1950's.

China's position among some of the leading world traders, in the last 15 years is indicated in figure 2. Every European country except Ireland and Portugal registered larger imports than China in 1969. Other countries that exceeded China include Canada, Argentina, Brazil, Mexico, Venezuela, Hong Kong, India, Japan, the Republic of Korea, and Singapore. All countries of the Middle East and Africa (except South Africa) ranked below China. If a direct comparison of trade is unfavorable to China, the more meaningful comparison of imports per capita ranks China even lower (fig. 3). One should have no illusions about prospects for exports to China. Despite its size and despite (perhaps because of) its large population, China is not a major trading nation. It is not likely to become one until per capita incomes rise substantially, a development that will require tremendous capital investments and long span of time.

#### China's Agricultural Trade, 1935-39

The pattern of China's agricultural trade during the late 1930's (a period when the United States was trading with China, but before the disruptions during and after World War II, and yet not free of regional and internal dislocations) is shown in table 2. At that time, China's world trade in all commodities showed an excess of imports over exports. Agricultural exports were much larger than imports, however. Nearly one-third of the imports were agricultural products consisting largely of cereals, fibers, sugar, and tobacco. Nearly two-thirds of China's exports were agricultural, and they included a wide range of commodities. The United States accounted for large shares of China's trade in farm products--15 percent of the imports and one-fourth of the exports. But China's trade with the United States tended to be concentrated in a relatively few items. The United States supplied nearly 90 percent of China's tobacco imports (table 3). Five items--wheat flour, oranges, tobacco, cotton, and resin--accounted for 85 percent of China's agricultural imports from the United States, but only 35 percent of all imports of farm products. And for these five items combined, the U.S. share of the Chinese market was 37 percent.



Similarly, China's export trade with the United States in the late thirties tended to focus on a relatively few commodities. The 56 items shown in table 6 accounted for 92 percent of China's agricultural exports. Twelve of these items <sup>1/</sup> represented 80 percent of China's agricultural exports to the United States in the late thirties, but only 40 percent of all exports of farm products. The 12 items include all those for which the U.S. share was 35 percent or more. (For eight of the 12 items the U.S. share was 50 percent or more of each).

While the United States was almost the sole supplier of tobacco to China during 1935-39, it ranked second after India as a supplier of cotton (table 4). It ranked second also as a source of wheat and wheat flour; Australia was the leading supplier.

China imported substantial quantities of wheat, rice, flour, sugar, tobacco, and cotton before World War II and of rice, flour, and cotton even before World War I (table 5). In some years during the 1930's, China was second only to the United Kingdom as an importer of flour. Imports of rice exceeded a million tons several times in the same decade, and only in a few years was China out-ranked by any country other than Japan.

Much of China's agricultural exports during 1935-39 found nearby markets in Hong Kong, Korea (Chosen), and Japan (table 7). Great Britain was the principal buyer of certain products, including eggs, pulses, tea, bristles and tung oil. Germany, France, and the Netherlands were important markets for certain commodities.

China was a traditional supplier of a number of farm products entering world trade before World War II. It was a leading world exporter of eggs, soybeans, soybean oil, sesameseed, peanut oil, live hogs, and silk (table 8).

#### China's Agricultural Trade, 1950-69

China ranked 19th among world importers of farm products in 1969 with a level of \$524 million, or less than 10 percent of either of the two leading importers--West Germany and the United Kingdom (fig. 4). Australia and Canada are China's leading suppliers--usually at more than \$100 million each--and their shipments are almost exclusively wheat (table 9). Wheat has been China's principal agricultural import since 1960 (table 11). Imports totaled 6.4 million tons in 1966, but fell to half that in 1969, when they were valued at more than \$200 million. China was the fifth largest importer of wheat in 1969, accounting for 7 percent of the world total (table 15). In 1961, 1962, and 1964, China imported more than a million tons annually of other grains and flour.

Malaysia and Singapore together stood third among China's agricultural suppliers in 1969 with exports, largely rubber, valued at \$102 million. Rubber is second in value of China's agricultural imports. Indonesia and Ceylon are other suppliers of rubber to China. Quantities imported from all sources

<sup>1/</sup> Walnuts, skins of goat, kid, lamb, and sheep, kolinsky furs, marmot, weasel, sesame, silk, wool, bristles, cottonseed oil, peanut oil, and tung oil.

increased through the 1960's, reaching 278,000 tons in 1959, when China took 8 percent of total world imports.

Cotton and sugar are substantial import items, but neither is near wheat or rubber. Pakistan's 1969 exports to China of \$26 million were equally divided between cotton and jute. Imports from Egypt, Sudan, Syria, and Tanzania--mainly cotton--ranged from \$10 to \$20 million in that year. Cotton imports declined after the mid-1960's, and only 83,000 tons entered in 1969. Cuba is the principal sugar supplier; imports were estimated at \$60 million in 1969. Wool, jute, coconut oil, and dates are lesser items, with imports of each valued at less than \$10 million in 1969. China is not a significant importer of wool, but for the other three products, the country was among the six largest importers in 1969.

Twelve countries accounted for virtually all of China's agricultural imports in 1969 (table 13). China is an important outlet for each of them except France and Egypt. Three of the countries--Australia, Malaysia, and Tanzania--found markets in China for 6 percent of their agricultural exports in 1969. The Chinese share of agricultural exports was 10 percent from Pakistan and 13 percent from Ceylon. Six of the 12 countries exported more farm products to China than to the United States, but admittedly, these were not major agricultural exporters. For the entire group of 12 exporters, their agricultural exports to the United States were more than double those to China.

China is a major exporter of agricultural products, ranking among the top 10 to 14 exporting countries in the last half of the 1960's (table 17). Exports, valued at more than \$800 million in recent years, are more varied than imports. Rice heads the list; exports often exceed 1 million tons, and China ranks in third or fourth place among major world suppliers (table 12).

China exports large quantities of fresh meat, mainly to Hong Kong. Live cattle and hogs, sent to the same market, are also significant foreign exchange earners. Other livestock products important among China's exports include silk, meat preparations, eggs, and wool. Not to be forgotten are hog bristles, another traditional product.

Soybeans, tea, tobacco, and pulses are other major exports. No less important is a long list of fruits and vegetables, both fresh and processed.

Many agricultural products important in China's export trade are products in which China is important among world exporters. For half of the 22 items shown in table 16, China ranks among the five largest suppliers and at the same time accounts for at least 5 percent of total world exports of each. For eight of these 11 items (rice, live hogs, silk, eggs in the shell, eggs not in shell, tung oil, honey, and castor beans) China accounted for 10 percent or more of world exports in 1969.

Twelve countries took 90 percent of China's agricultural exports in 1969 (table 14 and fig. 5). Nearby Hong Kong and Japan were the major markets. China was an important supplier of farm products to Malaysia and Singapore and held even larger shares of the markets in Hong Kong and Ceylon. In Japan, the Chinese share was a modest 4 percent. The remaining seven countries, though important to China, could not count China as a significant supplier. Four of

the 12 countries (Hong Kong, Malaysia, Singapore, and Ceylon) imported more farm products from China than from the United States. But for the 12 together, imports from the United States were more than 4 times those from China.

In the 1950's, the bulk of China's agricultural exports went to the USSR and Eastern Europe (table 10). China was then a principal supplier of Russian agricultural imports. After 1960, this trade, particularly with the USSR, declined sharply.

#### U.S. Agricultural Trade with China: Historical and Prospective

American trade with China began in the years before the United States became independent. It never reached the proportions of U.S. trade with industrial nations. In the past 150 years, U.S. exports of all products to China seldom exceeded 2 percent of all U.S. exports, and in most of these years the share was less than 1 percent. On the other hand, the share going to the leading U.S. market was never less than 14 percent, and in 96 of the 150 years it was over 30 percent. Meanwhile, the number 2 U.S. market never took as little as 4 percent of all U.S. exports, and in 123 years the share ranged from 8 to 20 percent.

The Chinese market for U.S. agricultural products was equally modest. For 15 years prior to the 1950 embargo on trade with China, some 2 to 4 percent of U.S. agricultural exports went to that country. After World War II, China's share rose temporarily to 6 percent as the United States extended massive food aid. But since 1950, the share of U.S. agricultural exports going to the Far East has gained steadily despite the cessation of trade with China (fig. 6).

A judgment as to the past importance of China for U.S. agricultural exports depends upon the viewpoint of the observer and the comparisons that he makes. In terms of averages for several 5-year periods during 1910-50, China ranked high as a market for U.S. farm products (table 18). Except for the years of World War II, it ranged from eighth largest to 11th largest, and through most of the period China accounted for 2 to 4 percent of U.S. agricultural exports. Thus, in an array of 80 or 100 countries, China ranked near the top, and among this number of countries a share of 2 to 4 percent is well above average. Of the 18 countries shown to rank above China in at least one of the 5-year periods, only four consistently outranked China in each of the six periods (Canada, Italy, Japan, and the United Kingdom).

On the other hand, during 1927-31 when China ranked most favorably (in eighth position and taking 4 percent of all U.S. agricultural exports), exports to the leading destination were more than six times those to China. The average level of U.S. agricultural exports to the other six countries that exceeded China was nearly double the level going to China. Thus, while China, in eighth position, outranked a long list of countries, it was not at all close to first position in value terms.

Cotton and tobacco were the leading items sold to China from American farms before World War II (table 20). Shipments of wheat and wheat flour varied sharply; they were negligible in some years and as much as 15 percent of the

total value in others. Lesser products included oranges, raisins, and a variety of other fruits and vegetables.

Cotton exports to China reached nearly 500,000 bales per year in the early 1930's, and 6 percent of U.S. exports went to that market. China accounted for one-fifth of U.S. tobacco exports in the late 1920's and early 1930's and took a tenth of U.S. wheat and flour exports in the early 1930's (table 21).

China ranked among the top 12 suppliers of farm products to the United States both before and after World War II, and accounted for 2 to 4 percent of all U.S. agricultural imports (table 19). Seven countries (Argentina, Brazil, Canada, Colombia, Cuba, Malaya, and the Philippines) consistently exceeded China in the three 5-year periods prior to 1950.

Tung oil, raw silk, hog bristles, and goat and kid skins were the principal items imported from China (table 22). Carpet wool, cotton, sesameseed, peanut oil, feathers, and sausage casings were important in some years. Items of lesser value, persistent among imports from China, included shelled walnuts, tea, eggs not in the shell, and cassia and cassia vera. The importance of China as a supplier to the United States during the 1930's is not fully indicated by the Chinese share of all U.S. agricultural imports. Many of the items imported from China were specialty products. China supplied more than three-fourths of U.S. imports of tung oil, bristles, eggs not in shell, sesameseed, and weasel skins. For many of the remaining items, China supplied more than one-fifth of U.S. imports.

If the United States were to supply 15 percent of China's agricultural imports as it did in the late 1930's, this would mean annual sales of \$75 million. On the other hand, if China might come to rank in eighth to 11th place as a destination for U.S. farm products, as it did for many years before World War II, sales would be much higher; for the 5 years 1967-71, U.S. sales to the country in 11th place averaged \$154 million and to the country in eighth position, \$208 million. Finally, if the United States could move 2 to 4 percent of its agricultural exports to China as it did before World War II, they would range from \$130 million to \$270 million (total U.S. agricultural exports averaged \$6.7 billion over the last 5 years). The above may suggest a range of possibilities for market development in China. However, sales of \$200 million to China appear unrealistic when we consider that this would be 40 percent of China's present \$500 million market for agricultural imports. Actual prospects will depend heavily on what political accommodations are made between the two countries. Sales may grow with passing time, but increases will likely depend upon overall growth of China's agricultural imports.

# VALUE OF CHINA'S TRADE

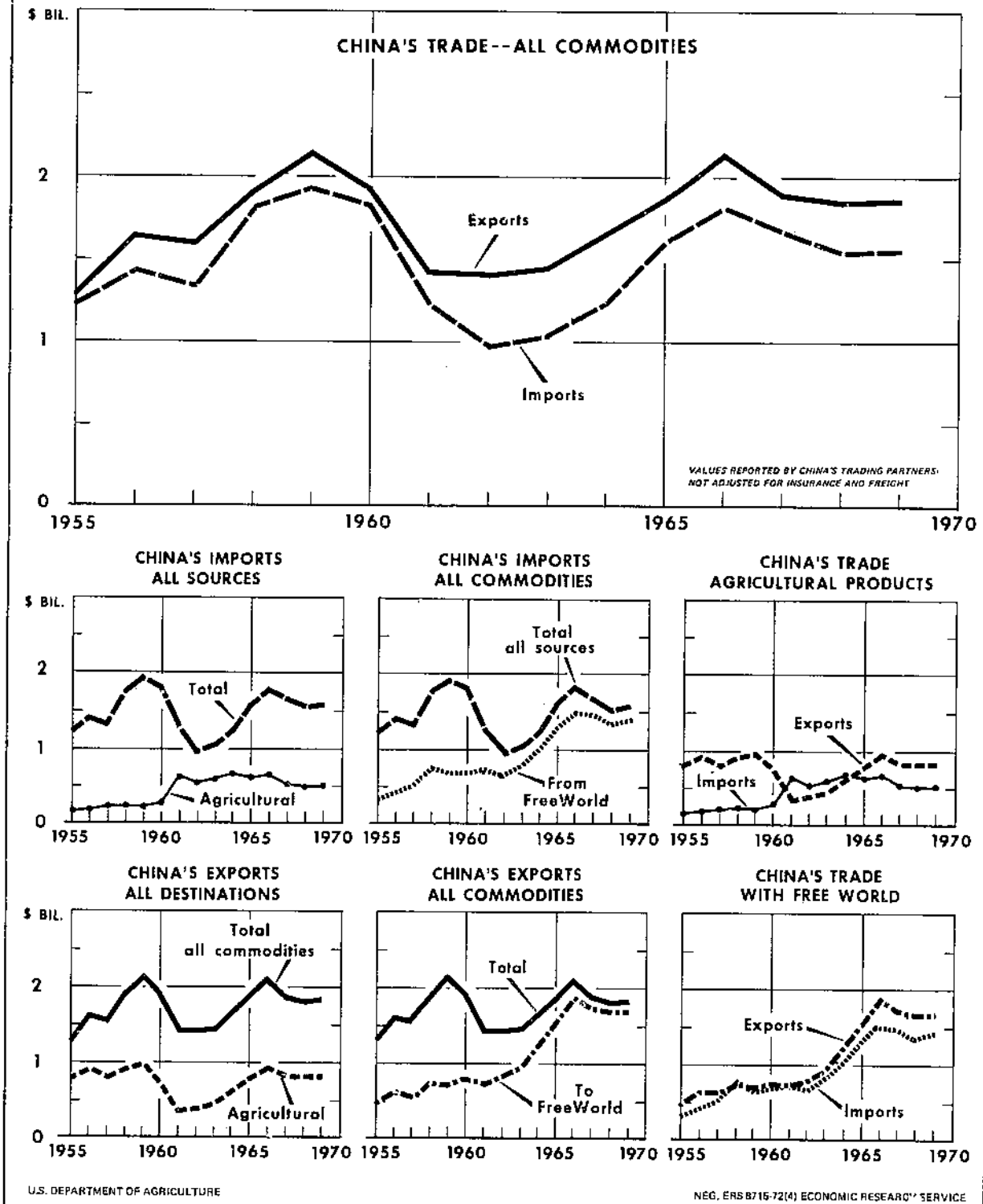


Figure 1

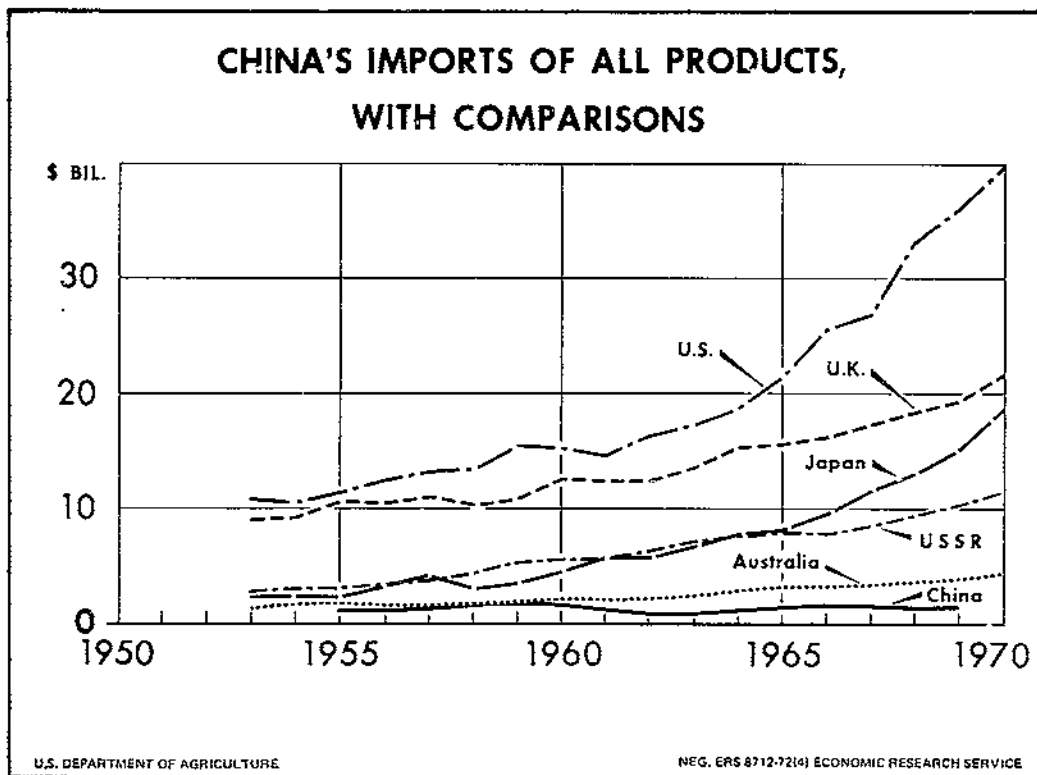


Figure 2

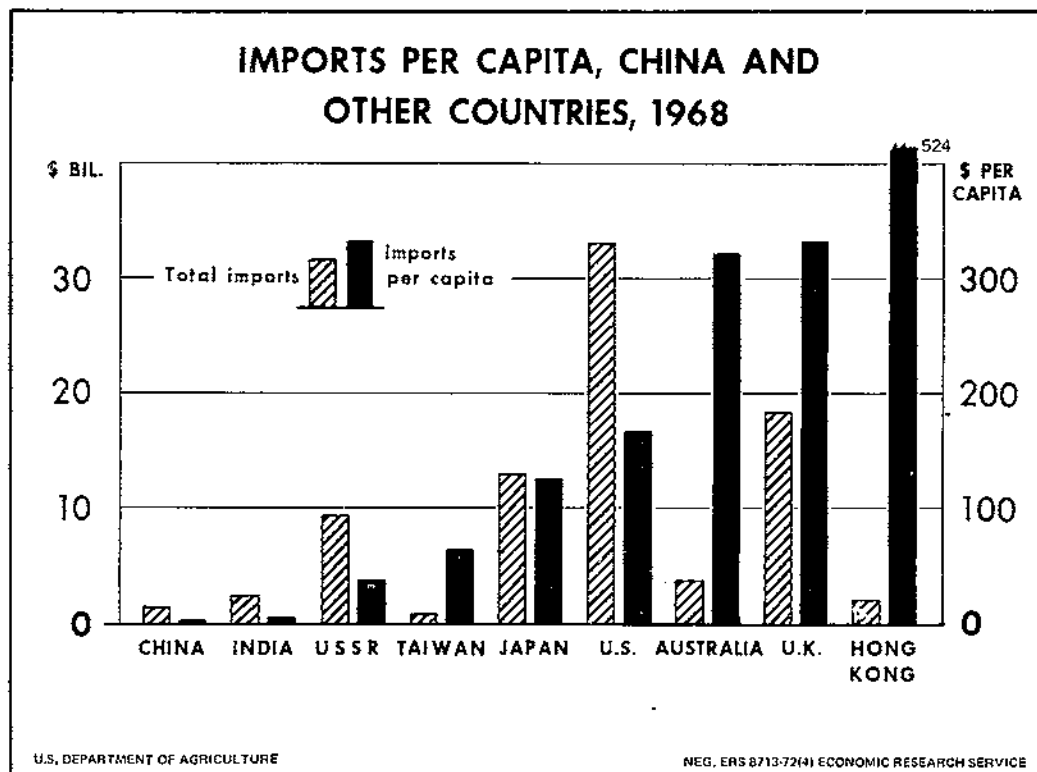


Figure 3

Table 1.--China: Trade with the world, 1950-69

Direction and year	All commodities				Agricultural commodities				Other			
	Total	Free World	USSR	East Europe	Total	Free World	USSR	East Europe	Total	Free World	USSR	East Europe
----- Million dollars -----												
Exports:												
1950	...	535	188	...	...	...	96	...	...	...	...	...
1951	...	525	331	...	...	...	127	...	...	...	...	...
1952	...	368	413	...	...	...	225	...	...	...	...	...
1953	...	433	474	...	...	...	357	...	...	...	...	...
1954	...	380	578	...	591	290	289	12	...	76	...	...
1955	1,294	487	644	163	791	347	394	50	503	140	250	113
1956	1,637	641	764	232	899	408	443	48	738	233	321	184
1957	1,587	624	738	225	793	368	370	55	794	256	368	170
1958	1,926	756	881	289	934	449	407	78	992	307	474	211
1959	2,145	698	1,100	347	970	402	463	105	1,175	296	637	242
1960	1,926	777	847	302	756	410	268	78	1,170	367	579	224
1961	1,424	732	551	141	336	255	49	32	1,088	477	502	109
1962	1,414	796	516	102	363	286	61	16	1,051	510	455	86
1963	1,447	940	413	94	450	390	32	28	997	550	381	66
1964	1,660	1,263	314	83	612	517	65	30	1,048	746	249	53
1965	1,850	1,539	225	86	762	655	88	19	1,088	884	137	67
1966	2,143	1,890	143	110	960	862	64	34	1,183	1,028	79	76
1967	1,885	1,727	57	101	841	793	16	32	1,044	934	41	69
1968	1,823	1,663	37	123	810	763	5	42	1,013	900	32	81
1969	1,848	1,687	29	132	804	765	5	34	1,044	922	24	98
Imports:												
1950	...	452	388	...	...	...	...	...	...	...	...	...
1951	...	446	478	...	...	...	...	...	...	...	...	...
1952	...	272	554	...	...	...	...	...	...	...	...	...
1953	...	287	697	...	...	...	...	...	...	...	...	...
1954	...	294	759	...	...	117	...	7	...	189	...	...
1955	1,238	317	748	173	152	144	1	7	1,086	173	747	166
1956	1,430	434	733	263	163	155	1	7	1,267	279	732	256
1957	1,336	528	544	264	212	211	1	—	1,124	317	543	264
1958	1,814	771	634	409	245	233	8	4	1,569	538	626	405
1959	1,932	651	955	326	217	213	4	—	1,715	438	951	326
1960	1,818	670	816	332	268	264	2	2	1,550	406	814	330
1961	1,262	739	367	156	628	563	65	—	634	176	302	156
1962	975	678	233	64	547	526	21	—	428	152	212	64
1963	1,037	805	187	45	599	588	1	10	438	217	186	35
1964	1,236	1,045	135	56	682	676	—	6	554	369	135	50
1965	1,591	1,307	192	92	630	630	—	—	961	677	192	92
1966	1,805	1,508	175	122	664	664	—	—	1,141	844	175	122
1967	1,656	1,485	50	121	538	538	—	—	1,118	947	50	121
1968	1,532	1,346	59	127	506	506	—	—	1,026	840	59	127
1969	1,551	1,410	28	113	524	524	—	—	1,027	886	28	113

Table 2.--China: Value of trade in agricultural products by commodity groups, total and U.S. share, average 1935-39

Commodity group	Exports		Imports		U.S. share of--	
	Total	To U.S.	Total	From U.S.	China's exports	China's imports
	- - - - Million dollars - - - -				Percent	Percent
Live animals	3.5	—	0.1	—	—	13
Meat	1.1	—	0.1	—	3	13
Dairy products and eggs	15.8	1.4	2.9	0.1	9	5
Cereals	3.4	—	35.1	2.7	—	8
Fruits and vegetables	8.6	0.5	3.1	0.6	6	18
Sugar	0.1	—	8.6	0.1	1	1
Coffee, cocoa, tea, spices	11.0	0.8	1.1	0.1	8	6
Animal feed	2.7	0.1	0.9	—	4	—
Misc. food preparation	1.4	0.1	0.8	0.1	7	17
Beverages	0.4	—	0.9	—	—	—
Unmanufactured tobacco	2.5	—	5.8	5.0	—	87
Hides and skins	7.5	4.6	0.4	0.1	62	36
Oilseeds	8.9	1.3	0.4	—	14	—
Natural rubber	—	—	2.1	—	—	—
Natural fibers	39.6	12.6	20.3	4.0	32	20
Crude materials	18.1	6.1	3.1	0.3	34	10
Oils and fats	21.9	11.0	1.3	0.1	50	10
Total	145.7	38.3	86.8	13.3	26	15
All commodities	229.5	50.8	302.7	55.0	22	18
	- - - - - Percent - - - - -					
Percent agricultural	64	75	29	24	—	—



Table 3.--China: Imports of selected agricultural products, total and U.S. share, quantity and value, average 1935-39

Commodity	Quantity		Value		
	Total	From U.S.	Total	From U.S.	U.S. share
	1,000 m.t.	1,000 m.t.	1,000 dol.	1,000 dol.	Percent
Milk, cond. and evap.	3	—	565	55	10
Eggs in shell	—	—	1,720	—	—
Rice	536	—	17,059	—	—
Wheat	230	34	5,663	702	12
Corn	32	—	873	—	—
Millet	34	—	1,293	—	—
Other grains	42	—	1,070	—	—
Wheat flour	145	38	8,209	1,951	24
Other flour	12	—	554	3	1
Oranges, fresh	2	2	237	190	80
Apples, fresh	3	—	197	23	12
Mushrooms	—	—	210	—	—
Beans and peas	40	—	1,313	1	—
Vegetables	7	—	132	8	6
Sugar	181	1	8,007	36	—
Tea	2	—	310	—	—
Bran	39	—	643	—	—
Tobacco	26	21	5,740	5,027	88
Copra	7	—	335	—	—
Rubber	13	—	2,090	—	—
Wool, sheep	1	—	419	—	—
Wool, other	3	—	2,877	1	—
Cotton	75	16	16,121	3,996	25
Jute	8	—	680	1	—
Ginseng	—	—	741	85	12
Resin	3	3	184	177	96
Linseed oil	—	—	83	7	8
Coconut oil	2	—	204	1	—
Other	n.a.	n.a.	9,281	1,084	12
Total	n.a.	n.a.	86,810	13,348	15

Table 4.--China: Imports of selected agricultural products by country of origin, quantity, average 1935-39

Commodity and origin	Average 1935-39	Commodity and origin	Average 1935-39
	<u>1,000 m.t.</u>		<u>1,000 m.t.</u>
Wheat	<u>230</u>	Tobacco	<u>26</u>
United States	34	United States	21
Argentina	21	British India	2
Australia	199		
Rice	<u>536</u>	Cotton	<u>75</u>
Burma	71	United States	16
Indochina	251	Brazil	12
Korea	12	British India	39
Thailand	190	Burma	2
		Egypt	5
Wheat flour	<u>145</u>		
United States	38		
Australia	66		
Canada	10		
Japan	29		

Table 5.--China: Imports of selected agricultural products, quantity for selected periods, 1909-39

Commodity	China including Manchuria						China excluding Manchuria	
	Average 1909-13	Average 1914-18	Average 1919-21	Average 1925-29	Average 1930-34	Average 1935-39	Average 1930-34	Average 1935-39
	----- 1,000 metric tons -----							
Wheat	—	1	—	159	798	230	798	230
Rice	304	509	90	918	1,079	615	1,055	536
Corn	1	3	1	—	—	32	—	32
Millet	...	...	...	...	...	...	...	34
Other grains	1	1	—	—	1	1	1	1
Flour, wheat	113	40	24	349	508	404	253	145
Beans and peas	...	...	...	...	—	43	—	40
Sugar	...	...	...	747	511	370	449	181
Tobacco	...	...	...	47	153	39	45	26
Rubber	—	—	—	1	4	6	4	6
Wool	...	...	...	—	—	1	—	1
Cotton	9	17	28	138	201	101	190	75

Table 6.--China: Exports of selected agricultural products, total and U.S. share, quantity and value, average 1935-39

Commodity	Quantity		Value		
	Total	To U.S.	Total	To U.S.	U.S. share
	1,000 m.t.	1,000 m.t.	1,000 dol.	1,000 dol.	Percent
Cattle <u>1/</u>	13	—	183	—	—
Swine <u>1/</u>	378	—	2,256	—	—
Poultry <u>1/</u>	4,135	—	844	—	—
Beef	6	—	634	1	—
Eggs in shell	20	—	2,090	2	—
Eggs not in shell	56	3	13,050	1,347	10
Wheat	16	—	351	—	—
Rice	4	—	398	4	1
Millet and sorghum	28	—	620	10	2
Wheat flour	17	—	975	—	—
Vermicelli & macaroni	10	—	961	—	—
Oranges, fresh	20	—	583	—	—
Apples, fresh	1	—	33	—	—
Pears, fresh	5	—	109	—	—
Other fresh fruit	24	1	518	13	2
Walnut kernels	4	2	816	394	48
Melon seed	1	—	108	3	3
Beans and peas	65	—	1,692	8	—
Mushrooms, dried	42	1	189	11	6
Fungus	—	—	183	—	—
Apricot seed	5	—	830	12	1
Garlic	25	—	517	1	—
Tea	36	3	9,056	697	8
Cassia	10	1	632	23	4
Bran	105	—	1,297	—	—
Oilseed cake and meal	88	—	1,388	97	7
Lard	4	—	680	1	—
Gourmet powder	—	—	549	80	14
Tobacco	14	—	2,462	—	—

--Continued

Table 6.--China: Exports of selected agricultural products, total and U.S. share, quantity and value, average 1935-39--Continued

Commodity	Quantity		Value		
	Total	To U.S.	Total	To U.S.	U.S. share
	1,000 m.t.	1,000 m.t.	1,000 dol.	1,000 dol.	Percent
Hides	5	1	2,106	175	8
Skins, goat & sheep <sup>2/3/</sup>	7,895	6,143	3,568	3,007	84
Skins, kolinsky <sup>2/</sup>	6	5	11	11	100
Skins, marmot <sup>2/</sup>	202	105	107	63	59
Skins, weasel <sup>2/</sup>	1,380	1,333	942	913	97
Peanuts in shell	28	—	1,069	6	—
Peanuts shelled	59	—	2,868	8	—
Soybeans	4	—	127	—	—
Linseed	17	4	564	142	25
Cottonseed	54	—	589	—	—
Sesameseed	62	23	3,168	1,104	35
Silk, raw	4	1	16,614	7,983	48
Silk, cocoons & waste	5	1	2,414	478	20
Wool, sheep	11	8	3,437	2,314	67
Wool, goat	1	—	547	7	1
Wool, camel	1	—	634	103	16
Cotton, raw	50	6	11,188	1,266	11
Cotton waste	26	5	1,969	308	16
Ramie	12	—	1,428	1	—
Bristles	4	2	8,136	4,200	52
Intestines	3	1	3,157	833	26
Feathers	4	1	2,091	481	23
Nut galls	4	1	528	64	12
Veg mat. for medicines	1	—	1,940	27	1
Cottonseed oil	10	6	977	634	65
Peanut oil	33	13	3,541	1,369	39
Tung oil	73	36	16,274	8,390	52
Other	n.a.	n.a.	11,730	1,756	15
Total	n.a.	n.a.	145,728	38,347	26

<sup>1/</sup> 1,000 head.

<sup>2/</sup> 1,000 skins.

<sup>3/</sup> Includes kid and lamb.

Table 7.--China: Exports of selected agricultural products  
by destination, quantity, average 1935-39

Commodity and destination	Average 1935-39	Commodity and destination	Average 1935-39
	<u>1,000 m.t.</u>		<u>1,000 m.t.</u>
Cattle <u>1/</u>	<u>13</u>	Walnuts	<u>4.0</u>
Hong Kong	11	United States	1.8
Swine <u>1/</u>	<u>378</u>	Australia	0.5
Hong Kong	289	Canada	1.4
Macao	62	Tea	<u>36</u>
Poultry <u>1/</u>	<u>4,135</u>	United States	3
Hong Kong	2,779	Algeria	1
Macao	1,088	Burma	1
Eggs in shell	<u>20</u>	Germany	1
Germany	4	Great Britain	3
Great Britain	7	Hong Kong	9
Hong Kong	7	Morocco	7
Eggs not in shell	<u>56</u>	USSR	6
United States	3	Bran	<u>105</u>
Germany	8	Japan	80
Great Britain	40	Taiwan	24
Wheat flour	<u>17</u>	Tobacco	<u>14</u>
Hong Kong	2	Hong Kong	2
Kwantung <u>2/</u>	12	Japan	2
Taiwan	2	Kwantung <u>2/</u>	7
Millet and sorghum	<u>28</u>	Peanuts in shell	<u>28</u>
Japan	12	Algeria	2
Korea	15	France	6
Beans and peas	<u>65</u>	Germany	1
British India	5	Great Britain	2
Ceylon	4	Italy	2
Great Britain	11	Japan	1
Hong Kong	5	Netherlands	9
Japan	21		
Malaya-Singapore	2		
Malta	4		

--Continued

Table 7.--China: Exports of selected agricultural products  
by destination, quantity, average 1935-39--Continued

Commodity and destination	Average 1935-39	Commodity and destination	Average 1935-39
	<u>1,000 m.t.</u>		<u>1,000 m.t.</u>
Peanuts, shelled	<u>59</u>	Bristles	<u>4.1</u>
Canada	4	United States	1.6
Denmark	2	Germany	0.6
Egypt	3	Great Britain	0.9
France	5	Hong Kong	0.3
Germany	9	Japan	0.3
Great Britain	2	Feathers	<u>4.4</u>
Hong Kong	5	United States	0.6
Italy	3	Denmark	0.4
Japan	4	Germany	1.1
Netherlands	17	Hong Kong	1.7
Soybeans	<u>4</u>	Sausage casings	<u>2.5</u>
Hong Kong	2	United States	0.4
Kwantung <u>2/</u>	1	France	0.5
Cotton	<u>50</u>	Germany	0.6
United States	6	Netherlands	0.4
Germany	3	Peanut oil	<u>33</u>
Japan	34	United States	13
Korea	2	Canada	3
Kwantung <u>2/</u>	5	Germany	7
Silk	<u>4.1</u>	Hong Kong	5
United States	1.3	Great Britain	1
British India	0.4	Tung oil	<u>73</u>
Burma	0.4	United States	36
France	0.9	France	2
Indochina	0.4	Germany	3
		Great Britain	3
		Hong Kong	24

1/ 1,000 head.

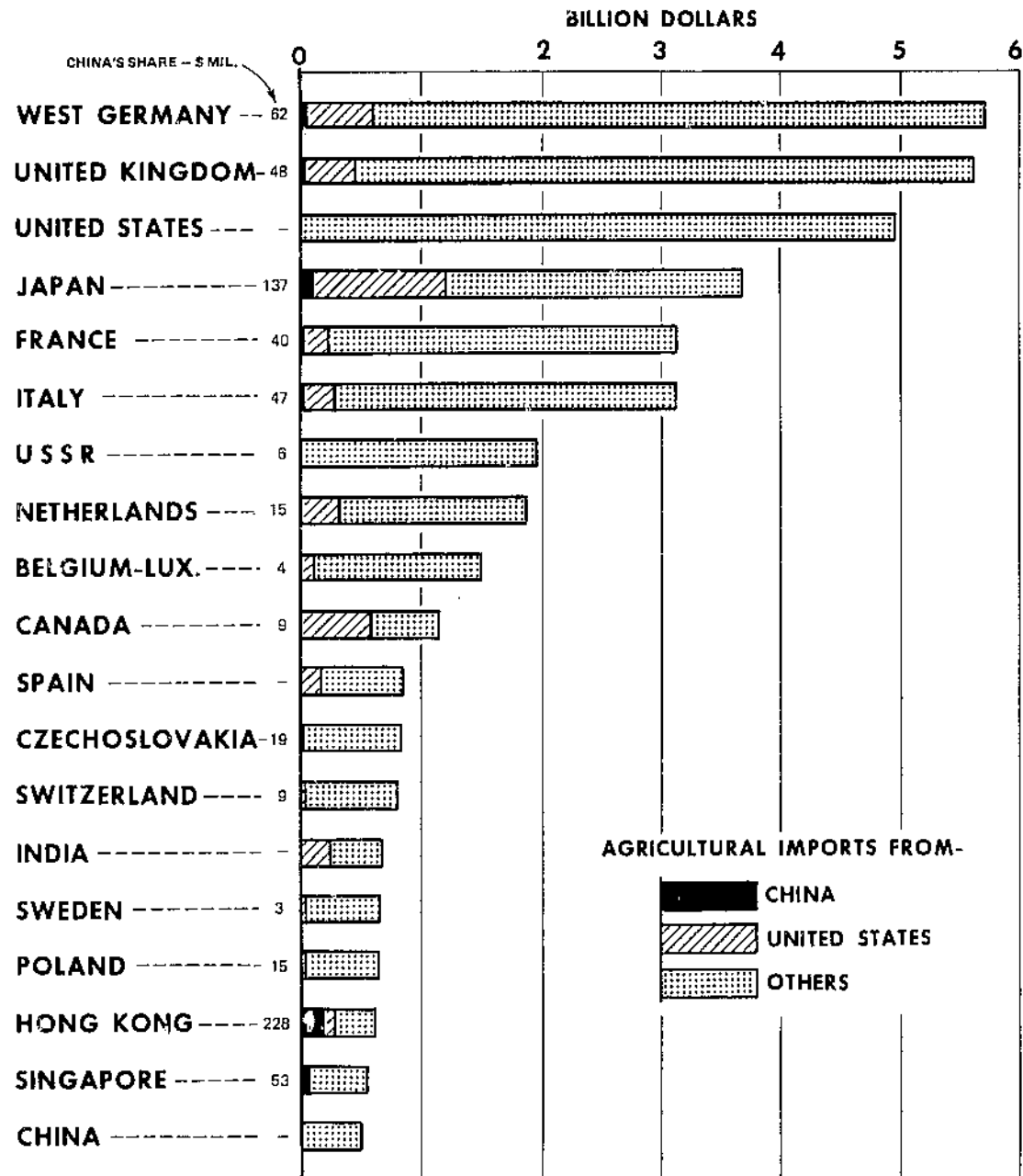
2/ Japanese leased territory at that time

Table 8.--China: Exports of selected agricultural products, selected periods, 1909-39

Commodity	China including Manchuria						China excluding Manchuria	
	Average 1909-13	Average 1914-18	Average 1919-21	Average 1925-29	Average 1930-34	Average 1935-39	Average 1930-34	Average 1935-39
	----- 1,000 metric tons -----							
Cattle <sup>1/</sup>	...	...	...	20	32	27	29	13
Swine <sup>1/</sup>	...	...	...	207	319	391	319	378
Beef	...	...	...	14	12	7	11	6
Eggs in shell	...	...	...	42	28	20	28	20
Eggs not in shell	...	...	...	58	56	56	56	56
Wheat	98	97	389	40	14	28	8	16
Rice	5	2	47	3	6	17	4	12
Barley	14	4	11	—	1	1	1	1
Corn	4	15	31	26	70	154	16	4
Wheat flour	38	41	201	8	18	19	16	17
Oranges and tangerines	...	...	...	...	13	20	12	20
Beans and peas	...	...	...	...	...	<sup>2/</sup> 195	...	<sup>2/</sup> 61
Tea	90	77	30	24	43	36	43	36
Oilseed cake and meal	...	...	...	...	...	<sup>2/</sup> 987	...	<sup>2/</sup> 97
Tobacco	...	...	...	11	9	14	9	14
Peanuts in shell	...	...	...	54	74	<sup>2/</sup> 53	57	<sup>2/</sup> 28
Peanuts shelled	...	...	...	87	145	<sup>2/</sup> 131	124	<sup>2/</sup> 63
Soybeans	...	...	...	1,902	2,708	<sup>1/</sup> 1,921	<sup>3/</sup> 6	5
Linseed	...	...	...	3	10	17	10	17
Cottonseed	...	...	...	65	58	72	51	54
Sesameseed	...	...	...	...	79	74	65	62
Silk (incl. cocoons)	...	...	...	9	5	4	5	4
Wool (sheep)	...	...	...	22	12	13	11	11
Cotton	52	53	44	62	41	51	40	50
Soybean oil	...	...	...	111	107	72	46	—
Peanut oil	...	...	...	32	31	33	31	33

<sup>1/</sup> 1,000 head.  
<sup>2/</sup> Average 1935-38.  
<sup>3/</sup> Average 1934-35.

# CHINA'S RANK AS AN AGRICULTURAL IMPORTER, 1969



U.S. DEPARTMENT OF AGRICULTURE

NEG, ERS 8716-72(4) ECONOMIC RESEARCH SERVICE

Figure 4



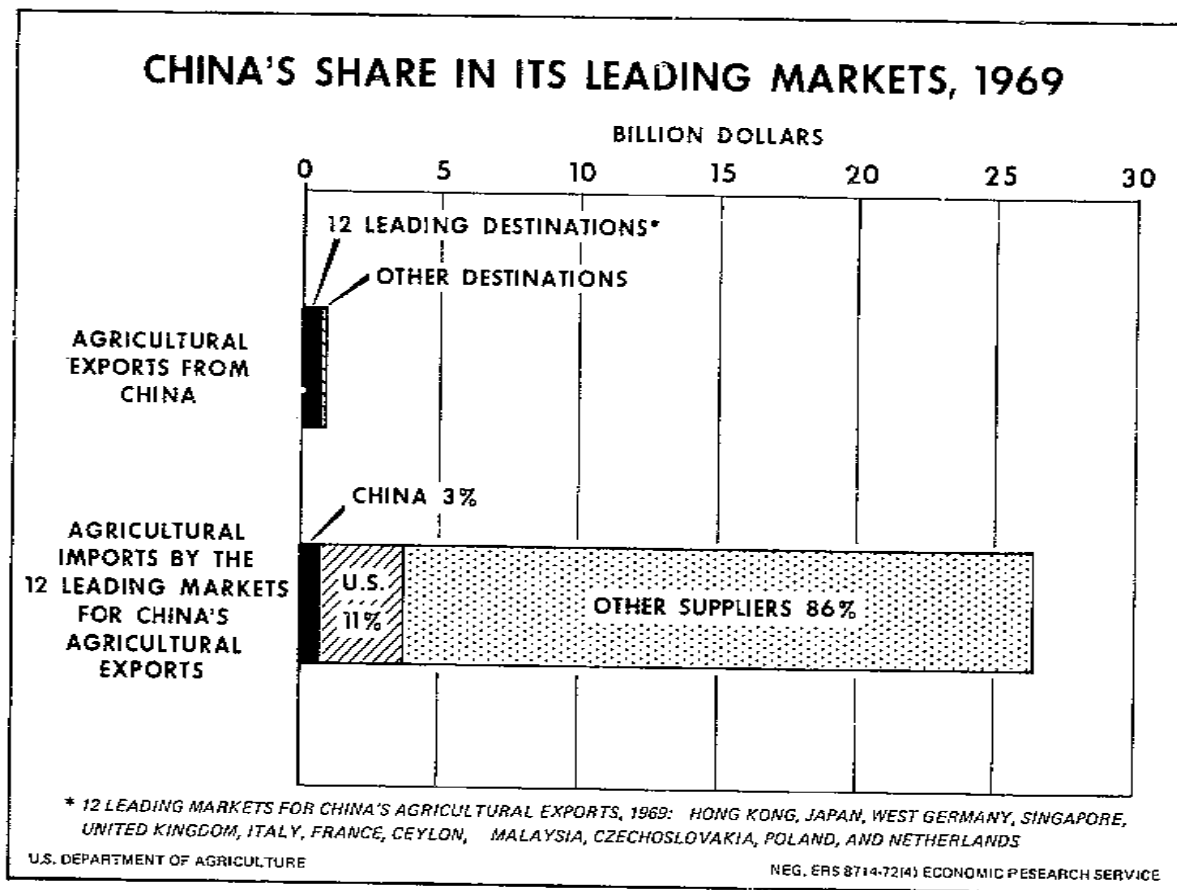


Figure 5

Table 9.—China: Imports of agricultural products from selected countries, value, 1953-69

Calendar year	Total	Argentina	Australia	Canada	Ceylon	Cuba	Egypt	France	India	Indonesia
----- Million dollars -----										
1953	98	--	5	--	51	--	10	--	...	--
1954	124	1	3	--	46	...	11	--	3	2
1955	152	--	6	--	25	--	24	--	6	6
1956	163	--	10	--	38	--	18	6	4	12
1957	212	--	19	--	35	...	38	2	9	26
1958	245	--	18	7	16	4	35	2	5	43
1959	217	--	20	--	16	...	34	2	4	53
1960	268	1	22	--	25	...	44	--	...	35
1961	628	4	155	118	17	91	...	14	--	36
1962	547	26	96	137	28	83	17	32	--	20
1963	599	3	200	97	21	69	16	42	--	7
1964	682	91	152	126	26	51	16	32	--	51
1965	630	83	165	97	36	53	40	1	--	--
1966	664	84	81	170	37	84	20	7	...	4
1967	538	6	187	82	37	75	11	--	--	--
1968	506	1	89	146	32	58	9	28	--	--
1969	524	--	115	111	40	60	9	13	--	--
----- Million dollars -----										
Malaysia	New Zealand	Pakistan	Sudan	Syria	Tanzania	Uganda	United Kingdom	USSR	Other	
1/					2/					
1953	2	...	...	--	--	...	...	9	...	21
1954	6	--	26	--	1	...	...	10	...	15
1955	4	--	32	1	--	...	...	14	1	33
1956	8	--	16	2	2	...	...	14	1	32
1957	24	2	10	2	10	...	2	16	1	16
1958	38	3	8	2	7	...	--	19	8	30
1959	39	7	--	3	--	...	...	...	4	35
1960	26	6	14	9	2	...	5	11	2	66
1961	2	4	9	4	12	...	9	13	65	75
1962	1	3	2	9	4	...	--	3	21	65
1963	5	5	12	12	21	10	11	6	1	61
1964	--	6	37	5	28	6	9	4	--	42
1965	7	7	39	15	17	12	18	4	--	36
1966	45	7	22	11	22	10	3	3	--	54
1967	38	11	34	8	8	8	4	1	--	33
1968	52	6	25	14	8	8	5	--	--	25
1969	102	3	26	18	12	11	1	--	--	3

1/ Includes Singapore; excludes Sabah and Sarawak.

2/ Tanganyika before 1964. No data before 1963.

Table 10.--China: Exports of agricultural products to

Calendar year	Total	Australia	Belgium Luxem- bourg	Canada	Ceylon	Czecho- slovakia	Denmark
----- Million dollars -----							
1953	593	3	7	1	44	...	--
1954	591	2	1	2	32	...	--
1955	791	3	2	2	17	20	--
1956	899	3	5	5	28	20	1
1957	793	2	3	5	18	27	--
1958	934	4	5	4	27	46	3
1959	970	3	7	3	28	52	14
1960	756	4	12	4	24	41	15
1961	336	3	2	2	3	8	11
1962	363	3	3	2	4	7	7
1963	450	4	6	3	18	14	3
1964	612	5	8	4	32	8	6
1965	762	5	10	5	16	4	4
1966	960	5	8	6	32	16	4
1967	841	4	7	8	32	11	2
1968	810	4	7	7	34	14	3
1969	804	4	4	9	38	19	2
----- Million dollars -----							
	India	Indonesia	Italy	Japan	Malaysia 1/	Morocco	
----- Million dollars -----							
1953	3	1	7	25	26	7	
1954	4	2	2	37	21	11	
1955	4	1	3	69	25	19	
1956	5	4	10	52	27	20	
1957	5	2	6	49	32	12	
1958	1	11	11	40	34	15	
1959	1	34	12	16	24	7	
1960	1	12	21	14	28	6	
1961	1	...	8	17	29	7	
1962	1	...	8	29	33	6	
1963	--	...	13	48	48	6	
1964	--	...	19	67	54	11	
1965	--	...	31	136	51	11	
1966	--	...	46	189	75	...	
1967	--	...	46	169	92	...	
1968	--	...	42	147	94	10	
1969	--	...	47	137	83	11	

selected countries, Value, 1953-69

Egypt	Finland	France	Germany	Hong Kong	Hungary	Calendar year
----- Million dollars -----						
1	1	9	32	121	...	1953
--	2	8	33	85	9	1954
1	4	7	42	110	10	1955
4	2	11	48	106	11	1956
12	5	10	36	114	12	1957
16	3	8	52	137	17	1958
12	4	9	57	94	24	1959
8	...	14	68	106	9	1960
...	2	11	21	86	5	1961
5	--	8	21	110	--	1962
7	1	11	31	133	--	1963
9	4	14	40	174	1	1964
10	2	19	56	217	1	1965
25	5	24	64	230	--	1966
17	7	24	60	199	--	1967
13	5	26	63	207	--	1968
5	5	40	62	228	--	1969
----- Million dollars -----						
Netherlands	Poland	Switzerland	UK	USSR	Other	
15	...	14	28	236	12	1953
6	2	7	21	289	15	1954
7	19	12	26	394	2/	1955
...	17	14	23	443	40	1956
8	15	7	26	370	17	1957
12	12	7	34	407	26	1958
13	25	5	37	463	17	1959
12	26	4	38	268	21	1960
6	8	4	24	49	29	1961
5	2	3	22	61	23	1962
6	2	4	32	32	29	1963
9	12	5	43	65	22	1964
15	14	7	54	88	6	1965
19	18	10	57	64	63	1966
19	21	11	49	16	47	1967
16	28	10	47	5	28	1968
15	15	11	48	5	16	1969

1/ Includes Singapore; excludes Sabah and Sarawak.

2/ Sum of countries shown exceeds total by \$6 million.

Table 11.--China: Imports of selected agricultural

Calendar year	Meat, fresh	Milk, evap. or cond.	Milk, dried	Wheat	Rice	Barley	Corn
----- Million dollars -----							
1959	0.1	--	--	0.6	--	--	--
1960	--	0.1	--	--	3.1	--	--
1961	--	--	--	192.8	7.5	59.8	2.8
1962	--	--	0.2	334.5	0.6	34.2	30.0
1963	4.8	0.1	0.5	330.9	12.8	1.6	0.8
1964	--	--	0.1	440.0	8.9	37.5	27.0
1965	--	0.1	--	395.3	14.8	1.4	4.9
1966	--	--	--	476.9	6.5	--	1.4
1967	--	--	0.1	252.0	3.8	--	9.6
1968	--	--	--	388.0	6.0	--	1.4
1969	--	--	--	211.2	1.0	--	...
----- 1,000 metric tons -----							
1950	...	...	...	--	90	--	...
1951	...	...	...	--	20	--	--
1952	...	...	...	--	15	--	--
1953	...	...	...	2	4	--	--
1954	--	--	--	20	--	--	--
1955	--	0.1	--	--	158	--	--
1956	--	--	--	--	87	--	2
1957	--	--	--	--	111	--	25
1958	--	--	--	127	12	--	31
1959	--	--	--	9	--	--	--
1960	--	0.2	--	--	28	--	--
1961	--	--	--	2,622	62	1,094	44
1962	--	--	0.2	4,419	5	487	491
1963	7	0.2	0.8	4,394	97	25	13
1964	--	--	0.1	5,542	76	568	377
1965	--	0.2	--	5,250	112	24	72
1966	--	--	--	6,375	52	--	20
1967	--	--	0.1	3,329	22	--	136
1968	--	--	--	5,194	33	--	20
1969	--	--	--	3,200	5	--	...

products, all sources, value 1959-69 and quantity 1950-69

Rye	Oats	Cereals n.e.s.	Flour	Dates	Pulses	Sugar	Calendar year
----- Million dollars -----							
--	--	--	--	2.6	0.1	0.5	1959
--	--	--	--	1.9	--	39.6	1960
4.1	4.9	--	36.3	1.5	--	132.0	1961
14.3	3.7	1.6	22.7	5.9	3.1	76.6	1962
--	2.4	--	0.1	5.7	1.6	65.6	1963
--	11.4	2.6	6.6	4.9	0.1	52.2	1964
--	3.6	--	1.7	3.5	--	37.2	1965
--	--	--	--	5.0	--	43.8	1966
--	--	--	--	4.7	--	33.2	1967
--	--	--	--	4.6	--	26.0	1968
--	--	--	--	4.3	--	26.5	1969
----- 1,000 metric tons -----							
...	--	--	--	--	...	...	1950
...	--	--	--	--	...	12	1951
...	--	--	--	--	--	32	1952
...	--	--	22	--	--	--	1953
...	--	--	1	--	--	78	1954
4	--	--	1	--	--	94	1955
--	--	--	--	--	--	106	1956
--	--	4	--	--	--	68	1957
--	--	--	--	--	--	221	1958
--	--	--	--	62	1	7	1959
--	--	--	--	39	--	476	1960
100	65	--	361	32	--	1,534	1961
247	47	24	224	63	16	938	1962
--	27	--	1	71	9	511	1963
--	135	29	55	62	--	408	1964
--	42	--	17	35	--	419	1965
--	--	--	--	60	--	620	1966
--	--	--	--	59	--	556	1967
--	--	--	--	59	--	432	1968
--	--	--	--	56	--	441	1969

--Continued

Table 11.--China: Imports of selected agricultural products,

Calendar year	Coffee	Cocoa	Tea	Pepper	Lard	Tobacco
-----Million dollars-----						
1959	0.4	--	...	--	--	--
1960	0.1	1.2	--	--	--	3.0
1961	--	0.3	--	--	0.3	--
1962	--	1.5	--	--	0.6	--
1963	--	0.5	--	--	0.6	5.1
1964	0.1	2.7	1.3	--	0.4	6.0
1965	0.2	5.4	3.5	0.1	--	...
1966	0.7	4.7	1.5	0.5	--	...
1967	0.5	1.1	1.1	1.2	--	...
1968	0.3	0.5	--	0.9	--	...
1969	0.3	--	--	...	--	...
-----1,000 metric tons-----						
1950	...	...	--	...	...	...
1951	...	...	0.1	...	...	3.0
1952	0.5	...	--	0.2	...	--
1953	...	...	--	0.4	--	0.1
1954	0.5	...	--	0.5	--	--
1955	0.2	1	--	0.1	--	--
1956	0.3	--	0.1	0.6	--	14.9
1957	0.8	--	0.1	0.3	--	4.5
1958	0.1	--	--	0.5	--	17.8
1959	0.3	--	--	0.1	--	--
1960	0.1	2	--	0.1	--	1.5
1961	--	--	--	--	1.1	--
1962	--	3	--	--	1.9	--
1963	--	1	--	--	2.0	3.2
1964	0.2	5	1.7	--	1.5	3.6
1965	0.3	13	4.6	0.1	--	...
1966	1.2	10	1.8	0.7	--	...
1967	0.8	2	1.2	1.5	--	...
1968	0.5	1	--	1.1	--	...
1969	0.5	--	--	...	--	...

all sources, value 1959-69 and quantity 1950-69--Continued

Peanuts	Copra	Linseed	Sesame-seed	Rubber	Wool	Calendar year
----- Million dollars -----						
--	1.2	...	--	106.1	15.9	1959
--	0.4	...	--	97.9	37.4	1960
0.9	3.3	--	0.7	57.4	17.8	1961
--	2.4	--	--	53.1	21.8	1962
--	0.9	--	0.1	65.8	28.1	1963
--	1.4	0.2	--	68.5	33.7	1964
--	1.0	--	1.3	71.0	16.4	1965
0.2	1.0	0.6	0.2	75.6	10.1	1966
--	...	--	--	66.4	19.6	1967
2.2	...	--	1.9	85.3	13.3	1968
0.8	...	--	4.5	135.1	9.2	1969
----- 1,000 metric tons -----						
--	1	--	--	71	--	1950
--	--	--	--	74	1	1951
--	--	--	--	24	--	1952
--	--	--	--	61	--	1953
--	5	--	--	63	1	1954
--	13	--	--	35	--	1955
--	37	--	--	71	2	1956
--	25	--	--	151	4	1957
--	11	--	--	169	7	1958
--	6	--	--	156	12	1959
--	2	--	--	119	20	1960
4	24	--	4	93	12	1961
--	18	--	--	96	13	1962
--	6	--	1	120	16	1963
--	9	1	--	141	19	1964
--	6	--	6	150	12	1965
1	6	5	1	165	7	1966
--	...	--	--	149	15	1967
10	...	--	9	213	10	1968
3	...	--	20	278	8	1969

--Continued



Table 11.--China: Imports of selected agricultural products,

Calendar year	Cotton	Jute	Flax	Sisal	Animal oils	Cottonseed oil
----- Million dollars -----						
1959	21.9	1.3	...	...	0.6	--
1960	40.2	2.0	--	1.6	3.2	--
1961	31.5	2.3	--	0.1	2.8	0.6
1962	30.1	1.5	--	0.7	4.5	--
1963	83.3	3.5	--	1.2	3.7	--
1964	61.0	9.8	0.4	3.0	5.5	--
1965	99.0	12.8	0.3	1.7	4.6	--
1966	59.4	11.8	0.6	2.6	3.8	--
1967	47.8	13.7	0.8	1.1	1.2	--
1968	35.0	10.0	--	1.3	2.1	--
1969	46.2	9.3	--	1.4	0.9	--
----- 1,000 metric tons -----						
1950	70	7	...	...	...	--
1951	40	4	...	...	...	--
1952	81	2	...	...	...	--
1953	23	--	...	...	...	--
1954	48	--	...	...	--	--
1955	82	24	--	1	--	--
1956	42	31	--	5	--	--
1957	86	14	--	--	--	--
1958	63	7	--	10	--	--
1959	42	13	--	7	3	--
1960	80	14	--	7	17	--
1961	58	15	--	--	15	2
1962	67	13	--	3	28	--
1963	143	23	--	4	22	--
1964	105	57	0.6	10	30	--
1965	168	61	0.5	7	18	--
1966	107	52	1.0	13	16	--
1967	88	64	1.7	6	5	--
1968	64	57	--	8	13	--
1969	83	48	--	9	5	--

all sources, value 1959-69 and quantity 1950-69--Continued

Peanut oil	Olive oil	Sunflower-seed oil	Linseed oil	Palm oil	Coconut oil	Calendar year
----- Million dollars -----						
0.2	0.4	...	...	--	1.0	1959
--	--	...	--	--	1.1	1960
0.4	--	--	--	--	3.1	1961
0.3	0.3	--	--	--	2.8	1962
--	--	0.6	0.8	--	3.2	1963
--	0.3	--	2.0	--	4.4	1964
--	0.2	0.2	5.1	0.1	3.8	1965
--	--	0.1	--	--	2.2	1966
--	--	--	3.0	0.2	3.2	1967
--	--	--	--	--	3.3	1968
--	--	--	--	--	5.5	1969
----- 1,000 metric tons -----						
--	0.2	...	--	...	4	1950
--	0.3	...	--	...	2	1951
--	--	...	--	...	1	1952
--	--	...	--	...	13	1953
--	--	...	--	...	31	1954
--	--	--	--	...	5	1955
--	--	--	--	0.3	1	1956
--	--	--	--	--	7	1957
--	--	--	--	--	4	1958
1	0.8	--	--	--	3	1959
--	--	--	--	--	4	1960
1	--	--	--	--	13	1961
--	0.4	--	--	0.1	13	1962
--	--	2.0	2	--	13	1963
--	0.5	0.1	6	--	15	1964
--	0.3	0.5	14	0.5	11	1965
--	--	0.2	--	0.1	7	1966
--	--	--	8	1.0	9	1967
--	--	--	--	--	9	1968
--	--	--	--	--	16	1969

Table 12.--China: Exports of selected agricultural

Calendar year	Cattle	Sheep and goats	Swine	Meat, fresh	Meat prep.	Milk, evap. or cond.	Milk, dried	Butter
----- Million dollars -----								
1959	2.7	1.0	17.5	47.3	25.4	...	...	0.5
1960	7.9	1.8	20.0	45.7	11.4	...	...	0.1
1961	1.2	1.0	11.7	15.3	5.9	—	...	—
1962	1.5	—	20.8	8.3	8.4	—	...	—
1963	2.1	—	32.4	19.4	10.2	—	—	0.2
1964	3.7	0.1	37.3	62.0	28.1	—	—	—
1965	7.7	0.1	43.8	93.7	55.5	0.2	0.3	0.5
1966	0.5	0.1	44.3	136.5	52.0	0.8	4.3	0.6
1967	10.6	0.1	36.7	84.7	34.7	0.4	0.9	0.4
1968	11.0	0.1	40.0	89.7	26.4	0.3	0.9	0.3
1969	11.2	0.1	47.9	79.5	27.9	0.2	0.8	0.2
----- 1,000 head -----      ----- 1,000 metric tons -----								
1950	—	...	...	...	...	—	—	—
1951	—	...	300	...	...	—	—	—
1952	—	...	620	...	...	—	—	—
1953	—	...	400	...	...	—	—	—
1954	28	...	473	...	...	—	—	—
1955	108	...	626	...	...	—	—	—
1956	80	...	549	116	12	0.4	0.1	—
1957	88	...	502	57	17	0.1	—	0.1
1958	138	...	772	137	39	—	—	0.4
1959	134	93	692	104	32	1.0	—	0.5
1960	101	149	861	86	15	—	—	0.1
1961	13	98	391	29	6	—	—	—
1962	17	—	786	11	8	—	—	—
1963	24	—	1,286	24	10	—	—	0.2
1964	46	8	1,717	77	27	—	—	—
1965	95	12	1,879	140	44	0.4	0.2	0.4
1966	6	11	1,952	170	47	1.9	1.2	0.6
1967	111	9	1,816	110	33	0.8	0.9	0.3
1968	112	9	1,830	118	25	0.7	0.9	0.3
1969	116	10	1,800	105	27	0.6	0.8	0.2

products, value 1959-69 and quantity 1950-69

Eggs in shell	Eggs not in shell	Wheat	Rice	Barley	Corn	Cereals n.e.s.	Flour	Calendar year
----- Million dollars -----								
12.2	6.0	11.5	182.1	1.7	3.9	1.8	—	1959
11.3	2.4	12.6	130.1	1.0	3.4	3.1	—	1960
8.7	3.6	8.8	54.9	—	1.6	0.1	—	1961
14.4	4.2	6.8	75.6	—	—	—	—	1962
20.0	13.2	8.8	84.8	—	5.6	0.1	0.1	1963
22.4	6.9	9.4	87.7	—	10.1	0.4	—	1964
23.6	12.4	—	84.0	—	12.5	0.5	0.4	1965
31.9	8.7	—	149.8	—	8.9	0.6	0.2	1966
24.6	7.0	—	182.0	0.1	4.8	0.9	1.2	1967
23.3	11.4	—	159.7	—	3.3	1.0	0.1	1968
22.0	10.2	—	124.7	—	...	1.0	0.1	1969
----- 1,000 metric tons -----								
...	...	—	20	...	...	...	...	1950
31	...	5	120	—	200	370	—	1951
30	...	—	192	—	29	93	—	1952
30	...	—	268	—	31	2	—	1953
26	...	—	293	1	—	—	—	1954
30	...	29	624	5	—	1	—	1955
30	22	71	988	6	9	—	—	1956
36	21	2	485	6	12	—	2	1957
48	36	1	1,265	10	16	7	3	1958
23	11	158	1,567	32	83	24	—	1959
20	7	172	1,174	19	71	42	—	1960
15	3	121	444	1	30	2	—	1961
26	5	89	598	—	1	—	—	1962
35	5	110	640	—	110	2	1	1963
40	5	111	784	—	170	8	—	1964
43	9	...	753	—	254	10	4	1965
50	10	...	1,216	1	227	11	2	1966
42	5	...	1,150	1	75	15	13	1967
40	12	...	885	—	51	18	1	1968
39	14	...	712	1	...	19	1	1969

--Continued

Table 12.--China: Exports of selected agricultural

Calendar year	Oranges and tangerines	Other citrus	Bananas	Apples	Grapes	Pears	Raisins
----- Million dollars -----							
1959	10.8	0.6	1.4	...	0.3	...	0.1
1960	8.1	0.3	1.6	...	0.4	...	—
1961	6.7	1.7	1.0	...	0.1	...	—
1962	7.8	0.5	1.2	...	0.3	...	0.1
1963	9.1	0.5	0.9	...	0.5	...	0.2
1964	9.0	0.6	1.7	9.2	0.5	2.0	0.2
1965	8.9	0.8	2.1	10.7	0.6	3.7	0.2
1966	10.2	0.8	3.4	10.3	0.9	4.4	0.3
1967	12.4	0.7	2.8	10.4	0.1	4.7	0.9
1968	13.2	0.9	2.1	7.0	0.5	6.4	0.6
1969	11.5	1.2	1.6	6.9	0.8	6.8	0.4
----- 1,000 metric tons -----							
1950	...	—	—	...	—	...	—
1951	...	—	—	...	—	...	—
1952	—	3	7	—	—	...	—
1953	—	5	9	—	—	...	—
1954	17	5	10	1	—	—	—
1955	57	4	12	30	—	—	—
1956	65	3	20	43	—	1	—
1957	73	3	16	70	1	1	—
1958	87	5	32	97	1	2	—
1959	81	4	15	94	1	1	—
1960	52	2	18	76	1	1	—
1961	29	10	11	36	—	—	—
1962	30	3	13	62	1	—	—
1963	37	3	9	71	1	2	1
1964	39	4	17	81	2	16	1
1965	40	6	19	89	2	29	—
1966	43	7	32	89	3	36	1
1967	56	5	25	91	—	34	2
1968	60	6	19	63	1	49	2
1969	60	9	15	59	2	52	1

products, value 1959-69 and quantity 1950-69--Continued

Potatoes	Pulses	Onions	Sugar	Honey	Coffee	Cocoa beans	Calendar year
----- Million dollars -----							
1.7	18.4	0.2	3.2	...	0.1	0.1	1959
1.4	22.0	0.3	1.3	...	--	0.3	1960
0.6	7.6	0.3	15.7	...	--	--	1961
0.2	8.5	0.4	26.0	...	--	0.1	1962
1.0	7.9	0.4	23.0	...	--	--	1963
2.0	7.8	0.7	51.4	1.6	0.4	0.1	1964
2.7	14.0	1.0	30.6	2.0	0.2	0.9	1965
4.1	20.9	1.5	31.7	3.4	0.7	0.2	1966
3.3	19.5	1.2	22.8	3.6	0.8	--	1967
4.2	15.0	1.3	15.7	4.2	0.4	--	1968
2.8	20.4	1.3	10.2	4.6	0.5	--	1969
----- 1,000 metric tons -----							
...	...	--	--	...	--	--	1950
10	...	--	3	...	--	--	1951
5	20	--	9	...	--	--	1952
16	27	1	13	...	--	--	1953
7	37	--	10	...	--	--	1954
11	119	--	1	...	--	--	1955
17	58	--	1	...	--	--	1956
22	91	1	6	...	--	--	1957
24	122	6	114	...	--	--	1958
20	146	3	38	...	--	--	1959
16	179	5	16	...	--	--	1960
6	61	5	127	...	--	--	1961
2	58	5	287	...	--	--	1962
11	58	7	217	...	--	--	1963
25	63	13	362	5	1	--	1964
35	102	16	390	8	--	2	1965
54	148	24	523	15	1	--	1966
43	129	17	389	16	1	--	1967
58	101	25	244	18	1	--	1968
38	136	23	145	19	1	--	1969

--Continued

Table 12.--China: Exports of selected agricultural

Calendar year	Tea	Pepper and pimento	Bran	Oilseed cake	Meat and fish meal	Lard	Tobacco
----- Million dollars -----							
1959	39.7	...	...	0.3	...	1.1	18.9
1960	37.5	...	0.1	0.6	0.4	0.9	11.6
1961	31.8	...	—	0.4	0.3	0.3	4.9
1962	24.9	...	—	0.4	0.2	0.3	1.6
1963	26.9	...	—	0.6	0.4	0.1	8.4
1964	32.0	1.5	—	1.4	0.9	0.3	2.7
1965	32.4	3.4	—	2.2	1.9	0.6	3.0
1966	36.5	4.1	0.2	2.2	2.4	1.7	6.4
1967	29.3	3.2	0.8	2.1	1.7	0.6	10.1
1968	34.7	4.8	0.6	2.3	1.6	0.7	21.2
1969	30.9	4.5	1.0	2.6	0.8	0.5	26.7
----- 1,000 metric tons -----							
1950	10	...	...	...	...	...	...
1951	10	...	...	...	...	...	1
1952	8	—	...	...	...	...	1
1953	9	—	...	...	...	...	1
1954	13	4	...	4	...	...	1
1955	35	4	...	15	...	6	32
1956	38	8	2	16	...	5	45
1957	44	10	3	19	3	1	54
1958	46	8	6	6	...	3	51
1959	44	4	...	3	...	3	44
1960	39	3	2	8	3	3	23
1961	34	1	—	6	2	1	10
1962	28	1	—	5	2	1	4
1963	28	1	—	9	3	—	14
1964	32	4	—	19	8	1	5
1965	32	8	—	29	13	2	5
1966	37	8	6	26	17	6	8
1967	29	7	12	32	12	2	11
1968	35	11	10	32	13	3	23
1969	32	10	18	37	6	2	27

products, value 1959-69 and quantity 1950-69--Continued

Peanuts	Soybeans	Linseed	Castor seed	Rape and mustard-seed	Sesame-seed	Sunflower-seed	Calendar year
----- Million dollars -----							
14.8	167.9	1.3	1.3	3.2	1.9	2.0	1959
6.8	112.0	1.2	2.2	4.0	1.9	1.0	1960
1.3	42.3	0.2	0.2	0.1	0.5	0.4	1961
1.2	43.5	—	0.2	—	0.2	0.7	1962
1.9	43.5	—	0.6	—	0.3	0.3	1963
8.3	61.2	—	1.4	—	0.1	0.1	1964
11.1	76.8	—	1.6	1.0	0.7	0.6	1965
14.1	71.6	—	6.0	3.6	0.7	0.6	1966
17.3	72.3	—	9.1	2.9	0.4	1.0	1967
12.7	73.2	—	8.0	1.1	0.3	0.5	1968
12.4	56.1	—	4.2	0.2	0.4	0.5	1969
----- 1,000 metric tons -----							
75	...	...	4	4	17	...	1950
63	...	12	5	16	12	...	1951
45	71	8	12	7	30	...	1952
50	153	26	40	36	85	...	1953
37	191	1	19	4	8	...	1954
347	950	19	36	21	18	...	1955
376	970	33	35	15	13	...	1956
250	972	12	9	13	4	...	1957
95	928	7	8	6	11	...	1958
71	1,343	11	11	21	10	22	1959
28	976	10	16	27	9	12	1960
5	335	2	1	1	2	3	1961
5	342	—	2	—	1	6	1962
8	332	—	5	—	2	3	1963
26	498	—	11	—	1	1	1964
46	577	—	15	6	4	5	1965
64	550	—	56	30	3	5	1966
74	565	—	80	23	2	8	1967
58	571	—	54	9	1	4	1968
46	488	—	31	2	2	4	1969

--Continued



Table 12.--China: Exports of selected agricultural

Calendar year	Rubber	Silk	Wool	Cotton	Jute	Flax	Hemp
----- Million dollars -----							
1959	...	...	...	...	...	...	0.6
1960	...	6.8	19.5	32.3	0.2	...	0.5
1961	...	6.9	10.6	9.0	0.1	...	0.5
1962	0.2	5.2	11.3	4.2	—	...	0.1
1963	0.1	7.1	21.5	—	—	1.0	0.1
1964	0.2	9.7	30.5	—	—	1.4	0.1
1965	0.2	15.3	23.6	—	0.2	1.8	0.2
1966	...	30.8	22.7	—	0.6	2.7	0.1
1967	...	29.3	12.7	2.1	0.9	3.7	0.2
1968	...	21.0	15.5	4.4	0.6	4.0	0.2
1969	...	30.4	13.1	0.2	0.3	...	0.4
----- 1,000 metric tons -----							
1950	—	...	...	...	—	—	...
1951	—	...	—	11	—	—	...
1952	—	0.6	—	—	—	—	1
1953	—	1.1	1	—	—	—	1
1954	—	1.2	1	6	1	—	—
1955	1	3.4	18	6	24	3	10
1956	18	3.8	15	4	25	3	12
1957	50	3.4	16	6	9	3	2
1958	55	2.8	14	8	4	3	3
1959	38	5.7	16	92	2	5	4
1960	12	2.3	16	61	1	4	—
1961	3	1.8	9	16	—	2	2
1962	—	1.1	14	8	—	1	1
1963	—	1.2	17	—	—	2	1
1964	—	1.8	23	—	—	3	—
1965	—	3.3	21	—	1	4	1
1966	...	6.0	20	—	3	6	1
1967	...	5.7	12	4	4	8	1
1968	...	4.2	15	8	3	10	1
1969	...	6.2	13	—	2	9	2

products, value 1959-69 and quantity 1950-69--Continued

Soybean oil	Cottonseed oil	Peanut oil	Rape and mustard-seed oil	Linseed oil	Castor oil	Tung oil	Calendar year
----- Million dollars -----							
...	5.0	7.2	4.1	0.1	—	12.4	1959
...	3.9	11.2	2.9	—	0.1	10.5	1960
...	0.3	1.8	0.4	—	—	7.8	1961
...	—	1.1	—	—	—	11.1	1962
0.7	—	0.8	—	—	—	9.1	1963
0.7	—	2.0	—	—	—	10.0	1964
0.9	6.8	2.2	1.1	—	—	9.7	1965
1.2	14.3	9.0	9.4	—	0.6	8.3	1966
0.9	7.1	11.9	5.0	—	3.4	6.4	1967
1.1	7.2	12.8	5.5	—	3.4	3.9	1968
0.9	1.5	4.1	4.5	—	2.5	5.0	1969
----- 1,000 metric tons -----							
3	...	25	3	—	...	...	1950
15	3	16	3	—	..	...	1951
6	4	13	10	0.5	—	...	1952
19	20	22	12	1.1	—	...	1953
5	9	14	1	0.3	—	...	1954
—	3	12	1	0.3	—	...	1955
1	12	11	2	—	—	...	1956
1	8	24	2	0.2	—	...	1957
4	27	22	5	1.3	—	...	1958
—	22	22	22	0.3	1	39	1959
24	19	32	17	—	—	32	1960
1	2	5	2	—	—	16	1961
1	—	3	—	—	—	17	1962
3	—	2	—	—	—	12	1963
2	—	6	—	—	—	17	1964
3	22	5	4	—	—	19	1965
4	50	24	32	—	2	18	1966
3	26	24	17	—	10	15	1967
4	28	28	20	—	9	10	1968
3	6	11	17	—	8	12	1969

Table 13.--Selected countries: Exports of agricultural products to China, with comparisons, 1969

Exporting country <sup>1/</sup>	Exports to China	Exports to U.S.	Exports to world	Share to--	
				China	U.S.
----- Million dollars -----				Percent	Percent
Australia	115	311	2,096	6	15
Canada	111	464	1,342	8	34
Cuba	60	--	660	9	--
Singapore	57	119	690	8	17
Malaysia	45	90	737	6	12
Ceylon	40	26	301	13	9
Pakistan	26	9	266	10	3
Sudan	18	9	244	7	4
France	13	92	2,860	--	3
Syria	12	1	161	7	1
Tanzania	11	15	183	6	8
Egypt	9	1	505	2	--
Total above	517	1,137	10,045	5	11

<sup>1/</sup> Countries shown here accounted for virtually all of China's agricultural imports in 1969.

Table 14.--Selected countries: Imports of agricultural products from China, with comparisons, 1969

Importing country <sup>1/</sup>	Imports from China	Imports from U.S.	Imports from world	Share from--	
				China	U.S.
----- Million dollars -----				Percent	Percent
Hong Kong	228	65	611	37	11
Japan	137	1,068	3,661	4	29
Germany, West	62	547	5,715	1	10
Singapore	53	18	571	9	3
United Kingdom	48	421	5,622	1	8
Italy	47	255	3,109	2	8
France	40	215	3,125	1	7
Ceylon	38	14	152	25	9
Malaysia	30	15	243	12	6
Czechoslovakia	19	4	846	2	--
Poland	15	37	648	2	6
Netherlands	15	341	1,887	1	18
Total above	732	3,000	26,190	3	12

<sup>1/</sup> Countries shown here accounted for more than 90 percent of China's agricultural exports in 1969.

Table 15.--China: Imports of principal agricultural products, leading importer, and world total, 1969

SITC	Item	China			Leading importer		World total
		Value	Rank	Share of world total	Name	Value	
		Million dollars		Percent		Million dollars	Million dollars
041	Wheat	211	5	7	United Kingdom	318	3,082
231.1	Rubber, natural	135	5	8	United States	284	1,670
263.1	Cotton	46	18	2	Japan	414	2,432
061.1-2	Sugar, raw refined basis	26	11	1	United States	638	2,073
264	Jute	9	6	4	United Kingdom	28	212
262.1-2	Wool <u>1/</u>	9	22	1	Japan	388	1,815
422.3	Coconut oil	6	6	4	United States	55	141
052.0	Dates	4	5	8	Czechoslovakia	8	55

1/ Greasy and degreased.

Table 16.--China: Exports of principal agricultural products, leading exporter, and world total, 1969

SITC	Item	China			Leading exporter		World total
		Value	Rank	Share of world total	Name	Value	
		Million dollars		Percent		Million dollars	Million dollars
042	Rice	125	4	10	United States	348	1,193
011	Meat, fresh	80	12	3	Netherlands	438	3,046
221.4	Soybeans	56	2	6	United States	822	914
001.3	Swine	48	2	27	Belgium-Luxembourg	58	178
074.1	Tea	31	4	5	Ceylon	178	570
261	Silk	30	1	34	Korea, Rep. <u>1/</u>	26	89
121	Tobacco, unmanufactured	27	8	2	United States	540	1,310
025.01	Eggs in shell	22	3	10	Netherlands	46	209
054.2	Pulses	20	4	7	United States	53	292
013	Meat, canned	19	9	2	Denmark	160	835
262.1-2	Wool <u>2/</u>	13	11	1	Australia	863	1,639
221.1	Peanuts	12	6	5	Nigeria	100	247
051.1	Oranges <u>3/</u>	12	10	2	Spain	108	521
001.1	Cattle	11	17	1	France	110	812
025.02	Eggs not in shell	10	2	21	Netherlands	11	49
061.1-2	Sugar, raw and refined	10	31	1	Cuba	519	2,081
012	Meat, smoked	8	7	2	Denmark	231	378
051.4	Apples	7	12	2	France	62	355
422.9	Tung oil	5	2	36	Argentina	5	14
061.6	Honey, natural	5	2	14	Mexico	5	33
221.7	Castor beans	4	1	28	Thailand <u>1/</u>	4	15
421.4	Peanut oil	4	6	3	Senegal	36	121

1/ Ranks second after China.

2/ Greasy and degreased.

3/ Including tangerines.

Table 17.--Exports of agricultural products from leading countries to all destinations, 1966-69 (in declining order of value in 1969)

Country	1966	1967	1968	1969
----- Million dollars -----				
United States	6,881	6,380	6,228	5,936
France	1,994	2,008	2,374	2,860
Netherlands	1,814	1,987	2,277	2,622
Australia	2,073	2,257	2,058	2,096
Brazil	1,382	1,271	1,470	1,740
Argentina	1,464	1,313	1,166	1,371
Canada	1,855	1,519	1,458	1,342
Denmark	1,181	1,132	1,090	1,146
Italy	960	997	970	1,107
United Kingdom	1,040	994	1,029	1,063
West Germany	578	690	810	998
Belgium-Luxembourg	642	711	782	946
New Zealand	957	902	860	919
China	960	841	810	804
Mexico	694	614	669	765
Malaysia	552	492	528	737
Singapore	288	463	514	690
South Africa	502	693	782	663
Spain	525	596	553	586
India	611	616	622	570
Egypt	427	401	436	513
Thailand	533	501	479	503
Turkey	428	474	438	461
Colombia	382	388	429	449
Ireland	394	452	424	443

## U.S. AGRICULTURAL EXPORTS TO CHINA AND THE FAR EAST

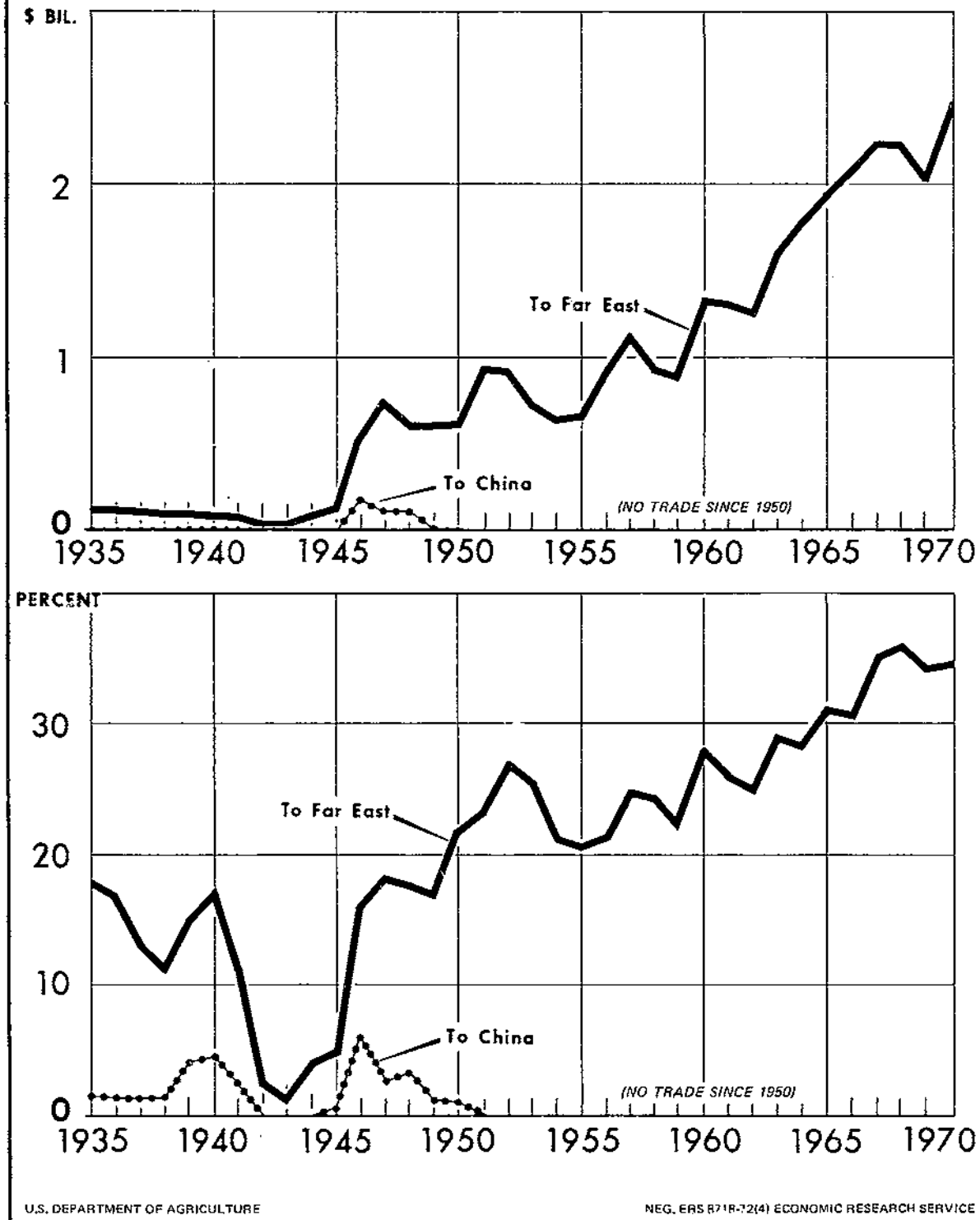


Figure 6

Table 18.--United States: Exports of agricultural products to China and other leading countries, with comparisons, 1910-49 <sup>1/</sup>

Destination and statistical comparisons	Average					
	1910-14 <sup>2/</sup>	1922-26	1927-31	1935-39	1940-44	1945-49
	----- Million dollars -----					
Total to world	1,038	1,954	1,492	747	1,307	3,287
United Kingdom	386	597	388	250	651	446
Germany	210	288	229	43	--	420
Italy	44	119	70	27	14	231
France	84	140	93	49	7	229
Japan	24	118	118	74	8	214
Canada	48	114	108	66	99	187
Belgium	31	60	40	26	2	132
Cuba	--	55	33	19	41	119
Netherlands	48	92	67	30	3	102
USSR	21	28	24	2	262	92
China	10	43	59	13	8	91
India <sup>3/</sup>	--	--	--	6	29	80
Mexico	--	27	19	5	22	56
Venezuela	--	--	--	4	9	47
Algeria	--	--	--	--	9	20
Sweden	--	16	12	14	5	19
Spain	20	40	29	7	10	17
Australia	--	--	--	9	10	16
Egypt	--	--	--	2	18	12
China:						
Rank	11	10	8	11	14	11
Share (Percent)	1	2	4	2	1	3
All countries larger than China: <sup>4/</sup>						
Total:						
Value (Million dollars)	915	1,583	1,072	597	1,184	2,172
Share (Percent)	88	81	72	80	90	66
Average:						
Value (Million dollars)	92	176	153	60	91	217
Share (Percent)	9	9	10	8	7	7
No. 1 destination: <sup>4/</sup>						
Value (Million dollars)	386	597	388	250	651	446
Share (Percent)	37	30	26	33	50	14
All others larger than China: <sup>4/</sup>						
Total:						
Value (Million dollars)	529	986	684	347	532	1,726
Share (Percent)	51	50	46	46	41	52
Average:						
Value (Million dollars)	59	123	114	39	44	192
Share (Percent)	6	6	8	5	3	6

<sup>1/</sup> The list of countries includes all those for which U.S. agricultural exports exceeded the exports to China in one or more of the 5-year periods. Shading indicates exports larger than those to China in the given period.

<sup>2/</sup> Fiscal years.

<sup>3/</sup> Including British India.

<sup>4/</sup> Values and shares include countries to which U.S. agricultural exports exceeded exports to China in the given period.

Table 19.--United States: Imports of agricultural products from China and other leading suppliers, with comparisons, 1935-49 <sup>1/</sup>

Destination and statistical comparisons	Average		
	1935-39	1940-44	1945-49
----- Million dollars -----			
Total from world	1,199	1,511	2,565
Brazil	103	163	410
Cuba	112	189	341
Colombia	46	70	166
Canada	63	152	160
Malaya	109	87	141
Argentina	66	118	123
Philippines	89	33	113
Mexico	26	60	98
Australia	13	109	94
India	29	46	40
Uruguay	9	32	50
China	44	22	49
Ceylon	16	37	42
Indonesia	73	84	40
Japan	111	35	23
China:			
Rank	10	15	12
Share (Percent)	4	1	2
All countries larger than China: <sup>2/</sup>			
Total:			
Value (Million dollars)	772	1,217	1,786
Share (Percent)	64	80	70
Average:			
Value (Million dollars)	86	87	162
Share (Percent)	7	6	6
No. 1 destination: <sup>2/</sup>			
Value (Million dollars)	112	189	410
Share (Percent)	9	12	16
All others larger than China: <sup>2/</sup>			
Total:			
Value (Million dollars)	660	1,028	1,376
Share (Percent)	55	68	54
Average:			
Value (Million dollars)	83	79	138
Share (Percent)	7	5	5

<sup>1/</sup> The list of countries includes all those from which agricultural imports exceeded the imports from China in one or more of the 5-year periods. Shading indicates exports larger than those to China in the given period.

<sup>2/</sup> Values and shares include countries from which U.S. agricultural imports exceeded imports from China in the given period.



Table 20.--United States: Value of agricultural exports to China, by commodity, average 1930-34 and 1935-39

Commodity	Average 1930-34	Average 1935-39
----- 1,000 dollars -----		
Milk and cream, condensed and evaporated	207	43
Wheat	3,146	509
Wheat flour	2,293	796
Oranges	127	110
Lemons	42	27
Raisins	99	102
Other fruits, fresh and prep.	171	104
Vegetables, fresh and prep.	129	84
Tobacco, leaf	10,786	5,420
Tobacco, stems, trimmings, and scrap	556	298
Fur waste, incl. pieces and damaged skins	254	231
Cotton	22,654	4,762
Other	...	1,293
Total agricultural products	...	1/ 13,779

1/ This total varies somewhat from that given in table 18 because the data, taken from different sources, reflect slight differences in both commodity and geographic coverage.

Table 21.--United States: Exports of selected agricultural products, total and to China, quantity, 1910-1949

Period	Wheat	Wheat flour	Oranges	Raisins	Tobacco	Cotton
	1,000 m.t.	1,000 m.t.	1,000 boxes	1,000 m.t.	1,000 m.t.	1,000 bales
Total exports:						
1910-14	1,549	949	1,350	9.6	177	8,840
1925-29	3,052	1,105	3,293	75.4	238	8,576
1930-34	1,173	573	3,690	49.7	217	7,645
1935-39	1,064	263	5,178	58.3	191	5,589
1940-44	628	432	5,090	68.9	129	1,378
1945-49	7,678	2,814	6,198	68.7	233	4,065
Exports to China:						
1910-14	—	23	1	—	3	13
1925-29	14	61	43	2.2	45	199
1930-34	147	58	40	1.0	45	482
1935-39	36	33	36	0.9	22	117
1940-44	10	40	8	0.2	9	22
1945-49	85	47	61	0.2	12	401
	----- Percent -----					
China's share:						
1910-14	—	2	—	—	2	—
1925-29	—	6	1	3	19	2
1930-34	12	10	1	2	21	6
1935-39	3	12	1	2	12	2
1940-44	2	9	—	—	7	2
1945-49	1	2	1	—	5	10

Table 22.--United States: Imports of selected agricultural products, total and from China, average 1930-34 and 1935-39

Commodity	Quantity						Value from China	
	Total		From China		China share		1930-34	1935-39
	1930-34	1935-39	1930-34	1935-39	1930-34	1935-39	1930-34	1935-39
	1,000 metric tons				Percent		1,000 dol.	1,000 dol.
Eggs, not in shell	3.1	2.7	2.9	2.7	95	100	1,556	1,342
Walnuts, shelled	4.0	2.0	1.9	1.4	48	70	628	377
Cassia and cassia vera	3.9	4.4	1.4	2.3	35	52	134	386
Tea	39.9	40.2	3.1	2.6	8	6	855	716
Goat and kid skins	29.2	32.9	4.8	3.7	16	11	2,956	2,219
Lamb, kid, sheep, & goat furs <sup>1/</sup>	6.8	7.6	2.1	2.2	30	29	2,981	2,586
Kolinsky <sup>1/</sup>	0.6	0.7	0.4	0.4	58	56	513	706
Marmot <sup>1/</sup>	0.8	1.0	0.1	0.3	18	36	87	393
Weasel <sup>1/</sup>	1.7	1.9	1.3	1.5	76	80	1,052	1,532
Flaxseed	5.7	8.4	2.2	4.7	38	56	90	209
Sesame seed	25.3	26.5	23.4	24.0	92	91	1,287	1,328
Silk, raw	32.2	26.5	5.5	1.5	17	6	11,700	5,632
Wool, carpet	39.7	62.7	11.2	9.8	28	16	3,562	3,952
Cotton	36.5	31.0	6.7	5.5	18	18	1,452	1,195
Bristles	2.0	2.2	1.5	1.8	78	82	2,269	5,279
Feathers, crude	1.1	2.2	0.7	1.2	61	54	393	721
Sausage casings	5.9	7.1	0.3	0.5	6	7	769	1,156
Cottonseed oil, edible	0.8	54.0	—	6.1	—	11	—	648
Peanut oil, edible	3.3	18.8	2.3	9.0	72	48	256	932
Tea seed oil	—	4.5	—	3.8	—	84	—	634
Tung oil	45.4	55.9	43.6	51.4	96	92	6,021	13,612
Other	—	—	—	—	—	—	—	820
Total	—	—	—	—	—	—	...	<sup>2/</sup> 46,375

<sup>1/</sup> Number in thousands.

<sup>2/</sup> This total varies somewhat from that given in table 19 because the data, taken from different sources, reflect slight differences in both commodity and geographic coverage.

Table 23.--China: Imports of wheat by country of origin, 1955-69

Calendar year	Total	Argentina	Australia	Canada	France	USSR	Other
----- 1,000 metric tons -----							
1955	--	--	--	--	--	--	--
1956	--	--	--	--	--	--	--
1957	--	--	--	--	--	--	--
1958	118	--	2	116	1	--	--
1959	9	--	9	--	--	--	--
1960	--	--	--	--	--	--	--
1961	2,622	--	1,097	1,425	--	101	--
1962	4,419	194	1,953	1,806	362	104	--
1963	4,394	35	2,075	1,471	813	--	--
1964	5,542	1,073	2,543	1,580	346	--	--
1965	5,250	1,404	2,276	1,559	12	--	--
1966	6,375	1,554	2,018	2,695	109	--	2
1967	3,329	--	2,164	1,165	--	--	--
1968	5,194	10	2,416	2,147	621	--	--
1969	3,200	...	1,182	1,676	331	--	11

Table 24.--China: Imports of rice by country of origin, 1955-69

Calendar year	Total	Burma	Cambodia	Egypt	Other
----- 1,000 metric tons -----					
1955	158	157	--	--	1
1956	87	86	--	--	1
1957	111	81	25	--	5
1958	12	10	--	2	--
1959	--	--	--	--	--
1960	28	18	10	--	--
1961	62	58	--	--	4
1962	5	--	--	--	5
1963	97	97	--	--	--
1964	76	11	46	20	--
1965	112	10	38	63	1
1966	52	--	22	30	--
1967	22	--	12	10	--
1968	33	--	33	--	--
1969	5	--	1	4	--

Table 25.--China: Imports of barley by country of origin, 1955-69

Calendar year	Total	Argentina	Australia	Canada	France	Iraq	Other
----- 1,000 metric tons -----							
1955	--	--	--	--	--	--	--
1956	--	--	--	--	--	--	--
1957	--	--	--	--	--	--	--
1958	--	--	--	--	--	--	--
1959	--	--	--	--	--	--	--
1960	--	--	--	--	--	--	--
1961	1,099	--	208	661	230	--	--
1962	487	--	137	203	124	9	14
1963	25	--	--	24	--	1	--
1964	568	32	18	362	154	--	2
1965	24	--	5	--	--	18	1
1966	--	--	--	--	--	--	--
1967	--	--	--	--	--	--	--
1968	--	--	--	--	--	--	--
1969	--	--	--	--	--	--	--

Table 26.--China: Imports of corn by country of origin, 1955-69

Calendar year	Total	Argentina	Bulgaria	Cambodia	South Africa	Zambia	Other
----- 1,000 metric tons -----							
1955	--	--	--	--	--	--	--
1956	2	--	2	--	--	--	--
1957	25	--	6	19	--	--	--
1958	31	--	--	--	31	--	--
1959	--	--	--	--	--	--	--
1960	--	--	--	--	--	--	--
1961	44	33	--	11	--	--	--
1962	491	376	--	35	27	54	--
1963	13	--	--	12	--	--	1
1964	377	240	--	10	126	--	1
1965	72	62	--	10	--	--	--
1966	20	4	--	16	--	--	--
1967	160	111	--	25	--	24	--
1968	20	--	--	20	--	--	--
1969	...	--	...	...	...	...	...

Table 27.--China: Imports of flour by country of origin, 1955-59

Calendar year	Total	Australia	France	West Germany	Italy	USSR	Other
-----1,000 metric tons-----							
1955	1	1	--	--	--	--	--
1956	--	--	--	--	--	--	--
1957	--	--	--	--	--	--	--
1958	1	--	--	--	--	--	--
1959	--	--	--	--	--	--	1
1960	--	--	--	--	--	--	--
1961	361	45	27	186	--	101	2
1962	224	--	32	187	--	4	1
1963	1	--	--	--	--	--	1
1964	55	--	55	--	--	--	1
1965	17	--	--	--	17	--	--
1966	--	--	--	--	--	--	--
1967	--	--	--	--	--	--	--
1968	--	--	--	--	--	--	--
1969	--	--	--	--	--	--	--

Table 28.--China: Imports of sugar by country of origin, 1955-69

Calendar year	Total	Brazil	Cuba	Hungary	Indonesia	Poland	USSR	Other
-----1,000 metric tons-----								
1955	94	--	6	15	23	46	--	4
1956	106	--	--	1	36	33	--	1/ 36
1957	65	--	--	--	21	--	--	2/ 44
1958	221	100	51	--	41	21	9	--
1959	7	--	1	--	--	1	4	1
1960	203	--	203	--	--	--	--	--
1961	1,534	--	1,032	--	--	--	--	--
1962	938	--	938	--	--	--	501	1
1963	511	--	501	--	10	--	--	--
1964	408	--	386	--	21	--	--	1
1965	419	--	398	--	21	--	--	--
1966	620	--	620	--	--	--	--	--
1967	556	--	556	--	--	--	--	--
1968	431	--	431	--	--	--	--	--
1969	445	--	445	--	--	--	--	--

1/ Of which France 26. 2/ Of which India 35.

Table 29.--China: Imports of rubber by country of origin, 1955-69

Calendar year	Total	Burma	Ceylon	Indonesia	West Malaysia	Singapore	Other
-----1,000 metric tons-----							
1955	35	--	35	--	--	--	--
1956	71	7	54	1	9	--	--
1957	151	32	50	36	32	--	1
1958	169	--	23	80	65	--	1
1959	156	--	24	82	50	--	--
1960	119	6	39	44	30	--	--
1961	93	2	19	69	3	--	--
1962	96	--	37	58	1	--	--
1963	120	--	30	80	1	9	--
1964	141	--	33	108	--	--	--
1965	150	--	46	89	1	14	--
1966	165	--	59	13	2	92	--
1967	148	--	59	--	16	72	1
1968	213	--	83	--	61	70	--
1969	278	--	73	--	89	116	--

Table 30.--China: Imports of wool by country of origin, 1955-69

Calendar year	Total	Australia	New Zealand	South Africa	Uruguay	Other
-----1,000 metric tons-----						
1955	--	--	--	--	--	--
1956	2	2	--	--	--	--
1957	4	3	1	--	--	--
1958	3	1	2	1	--	--
1959	12	5	5	1	--	1
1960	20	12	4	3	1	--
1961	12	8	1	--	1	2
1962	13	13	--	--	1	--
1963	16	14	2	--	--	--
1964	19	16	3	--	--	--
1965	12	9	3	--	--	--
1966	7	2	5	--	--	--
1967	15	5	9	--	--	1
1968	10	3	7	--	--	--
1969	8	5	3	--	--	--

Table 31.--China: Imports of cotton by country of origin, 1955-69

Calendar year	Total	Burma	Egypt	Pakis- tan	Sudan	Syria	Tan- zania	Uganda	Other
----- 1,000 metric tons -----									
1955	82	--	24	56	--	--	--	--	2
1956	42	4	14	16	--	2	--	--	6
1957	86	3	27	33	2	15	--	3	3
1958	65	4	32	12	2	11	--	--	4
1959	41	--	32	3	3	--	--	--	3
1960	80	2	42	9	10	4	1	7	5
1961	53	--	11	7	2	18	--	12	3
1962	71	1	41	2	12	5	--	--	10
1963	143	4	38	12	18	32	16	17	6
1964	154	--	29	48	5	46	8	13	5
1965	168	--	29	39	16	28	16	25	15
1966	107	--	20	13	14	38	13	5	4
1967	88	--	10	27	10	16	11	6	8
1968	66	--	9	14	12	11	9	7	4
1969	83	--	6	24	14	18	15	2	4

Table 32.--China: Imports of sisal by country of origin, 1955-69

Calendar year	Total	Brazil	Indonesia	Kenya	Tanzania	Other
----- 1,000 metric tons -----						
1955	1	--	1	--	--	--
1956	5	--	2	1	2	--
1957	--	--	--	--	--	--
1958	10	--	3	3	5	--
1959	7	--	2	3	2	--
1960	7	--	1	3	1	2
1961	1	--	1	--	--	--
1962	3	--	3	--	--	--
1963	4	--	--	2	1	1
1964	10	1	--	3	5	1
1965	7	2	--	2	4	--
1966	13	4	--	2	7	--
1967	6	--	--	3	3	--
1968	8	--	--	3	5	--
1969	9	--	--	3	6	--

Table: 33.--Argentina: Exports of agricultural products to China, value and quantity, 1953-69

Calendar year	Total	Wheat	Corn	Wool <u>1/</u>	Other	Wheat	Corn	Wool <u>2/</u>
	SITC							
	--	041	044	262	--	041	044	262.1 262.2
	- - - - - Million dollars - - - - -					- 1,000 metric tons - -		
1953	—	—	—	—	—	...	...	...
1954	0.9	0.9	—	—	—	19	—	—
1955	—	—	—	—	—	—	—	—
1956	—	—	—	—	—	—	—	—
1957	—	—	—	—	—	—	—	—
1958	—	—	—	—	—	—	—	—
1959	—	—	—	—	—	—	—	0.3
1960	1.4	...	...	...	...	—	—	0.4
1961	3.7	—	1.6	2.1	—	—	33	1.5
1962	25.8	9.7	15.1	0.1	0.9	194	376	0.1
1963	2.9	2.5	—	0.4	—	35	—	0.3
1964	91.3	73.8	13.1	0.2	4.2	1,073	240	0.1
1965	83.3	79.7	3.4	—	0.2	1,404	62	0.1
1966	84.0	83.5	0.2	—	0.3	1,554	4	0.1
1967	6.2	—	6.1	0.1	—	—	111	0.1
1968	0.6	0.6	—	—	—	10	—	—
1969	—	—	—	—	—	—	—	—

1/ Wool and other animal hair.

2/ Sheep and lamb's wool, greasy and degreased.



Table 34.--Australia: Exports of agricultural products to China, value and quantity, 1953-69

Calendar year	Total	Wheat	Barley	Wool 1/	Other	Wheat 2/	Barley 2/	Wool 2/ 3/
	SITC							
	--	044	043	262	--	041	043	262.1 262.2
	- - - - - Million dollars - - - - -					- 1,000 metric tons - -		
1953	5.3	--	--	5.3	--	--	--	--
1954	3.2	--	--	3.0	0.2	--	--	--
1955	6.3	--	--	5.8	0.5	--	--	--
1956	10.0	--	--	10.0	--	--	--	2
1957	19.4	--	--	19.3	0.1	--	--	3
1958	18.0	0.6	--	17.1	0.3	2	--	3
1959	19.9	--	--	19.7	0.2	9	--	5
1960	21.6	--	--	20.8	0.8	--	--	12
1961	155.3	110.7	15.8	25.3	3.5	1,097	209	8
1962	96.3	66.9	--	24.1	5.3	1,953	137	13
1963	199.6	167.7	--	30.9	1.0	2,075	--	14
1964	151.8	119.0	1.0	22.5	9.3	2,543	19	16
1965	165.2	154.0	0.4	8.5	2.3	2,276	5	9
1966	81.1	76.5	--	3.9	0.7	2,018	--	2
1967	187.2	176.5	--	9.8	0.9	2,164	--	5
1968	89.1	84.5	--	4.0	0.6	2,416	--	3
1969	115.0	106.0	--	8.6	0.4	1,182	--	5

1/ Wool and other animal hair.

2/ Year ending June 30 of year indicated as reported by FAO.

3/ Sheep and lamb's wool, greasy and degreased.

Table 35--Canada: Exports of agricultural products to China,  
value and quantity, 1958-69

Calendar year	Total	Wheat	Barley	Other	Wheat	Barley
	SITC					
	--	041	043	--	041	043
	<u>Million dollars</u>			<u>1,000 metric tons</u>		
1958	7.2	7.2	—	—	116	—
1959	—	—	—	—	—	—
1960	—	—	—	—	—	—
1961	118.4	90.4	28.0	—	1,425	661
1962	136.7	124.8	12.0	0.1	1,806	203
1963	96.6	95.3	1.3	—	1,471	24
1964	126.2	108.2	18.0	—	1,580	362
1965	97.0	97.0	—	—	1,559	—
1966	169.7	169.7	—	—	2,695	—
1967	82.5	82.5	—	—	1,165	—
1968	145.9	145.9	—	—	2,147	—
1969	110.8	110.8	—	—	1,676	—

Table 36--Ceylon: Exports of agricultural products to China, value and quantity, 1953-69

Calendar year	Total	Oilseeds	Rubber	Oils and fats	Other	Copra	Rubber	Coconut oil
	SITC							
	--	221	231.1	4	--	221.2	231.1	422.3
	- - - - - Million dollars - - - - -					- 1,000 metric tons - -		
1953	50.7	--	48.3	2.4	--	--	60	7
1954	46.5	--	43.2	3.3	--	--	60	10
1955	25.5	--	24.8	0.7	--	--	35	2
1956	38.3	--	38.2	--	0.1	--	54	--
1957	35.1	--	35.1	--	--	--	50	--
1958	16.3	--	15.4	0.9	--	--	23	3
1959	16.4	0.7	15.6	0.1	--	3	24	--
1960	25.3	--	25.3	--	--	--	39	--
1961	17.4	2.0	12.6	2.8	--	11	19	10
1962	27.9	0.5	24.3	3.1	--	3	37	12
1963	...	--	18.0	3.2	...	--	30	12
1964	25.6	--	19.6	4.4	1.6	--	33	15
1965	36.0	--	26.7	4.4	4.9	--	46	11
1966	37.2	--	34.3	2.1	0.8	--	59	7
1967	31.5	--	28.7	2.8	--	--	59	9
1968	32.5	--	30.2	2.5	--	--	83	8
1969	40.3	--	35.8	4.6	--	--	73	14

Table 37.--Egypt: Exports of agricultural products to China, value and quantity, 1953-69

Calendar year	Total	Rice	Cotton and linters	Other	Rice	Raw cotton
	SITC					
	--	042	263	--	042	263.1
	----- Million dollars -----				----- 1,000 metric tons -----	
1953	10.4	—	10.4	—	—	—
1954	11.3	—	11.3	—	—	11
1955	24.5	—	24.5	—	—	24
1956	17.6	—	17.6	—	—	14
1957	37.6	—	37.6	—	—	27
1958	34.8	0.2	34.7	—	2	32
1959	33.8	—	33.8	—	—	32
1960	44.5	—	44.5	—	—	42
1961	...	...	...	...	...	11
1962	17.3	—	17.3	—	—	41
1963	15.6	—	15.6	—	—	38
1964	16.3	2.9	13.4	—	20	29
1965	40.2	8.9	30.8	0.5	63	29
1966	19.9	—	19.9	—	30	20
1967	11.3	1.9	8.8	0.6	10	10
1968	9.4	—	9.4	—	—	9
1969	9.2	0.6	8.6	—	4	6

Table 38.--France: Exports of agricultural products to China,  
value and quantity, 1953-69

Calendar year	Total	Wheat	Barley	Wheat flour	Wool <u>1/</u>	Other	Wheat	Barley	Wheat flour
	SITC								
	--	041	043	046	262	--	041	043	046
	----- Million dollars -----					----- 1,000 metric tons -----			
1953	0.3	--	--	--	0.3	--	--	--	--
1954	0.1	--	--	--	0.1	--	--	--	--
1955	0.1	--	--	--	0.1	--	--	--	--
1956	6.1	--	--	--	3.6	<u>2/2.5</u>	--	--	--
1957	2.2	--	--	--	2.2	--	--	--	--
1958	2.4	0.1	--	--	2.3	--	1	--	--
1959	1.9	--	--	--	1.9	--	--	--	--
1960	0.5	--	--	--	0.5	--	--	--	--
1961	13.8	--	9.4	1.4	1.5	1.5	--	230	27
1962	31.9	23.1	6.3	2.4	0.1	--	362	124	32
1963	41.5	41.4	--	--	--	0.1	813	--	--
1964	31.7	19.2	7.9	4.2	0.4	--	346	154	55
1965	1.2	0.6	--	--	0.6	--	12	--	--
1966	6.9	5.7	--	--	--	1.2	109	--	--
1967	0.4	--	--	--	--	0.4	--	--	--
1968	28.1	27.2	--	--	--	0.9	621	--	--
1969	13.3	13.2	--	--	--	0.1	331	--	--

1/ Wool and other animal hair.

2/ Of which \$2.4 million was for 26,000 tons of sugar.

Table 39.--Indonesia: Exports of agricultural products to China, value and quantity, 1953-69

Calendar year	Total	Sugar, candy, honey	Oilseeds	Rubber	Other	Sugar, raw basis	Copra	Rubber
	SITC							
	--	061.1 061.2	221	231.1	--	061.1 061.2	221.2	231.1
	- - - - - Million dollars - - - - -					- 1,000 metric tons - -		
1953	—	—	—	—	—	...	...	...
1954	2.3	0.5	0.9	—	0.9	5	5	—
1955	5.8	2.3	2.2	0.3	—	23	13	—
1956	11.7	3.6	6.2	0.9	1.0	36	37	1
1957	26.2	2.1	0.5	22.5	1.1	21	3	36
1958	43.3	3.3	—	39.3	0.7	41	5	80
1959	52.8	—	0.4	51.8	0.6	—	2	82
1960	35.4	—	—	35.3	0.1	—	—	44
1961	36.4	—	1.5	34.8	0.1	—	10	69
1962	19.6	...	0.8	18.8	—	—	14	58
1963	...	...	—	7.0	...	10	2	80
1964	...	...	0.3	51.0	...	21	...	108
1965	...	...	—	—	...	21	...	89
1966	...	...	—	4.1	...	—	...	13
1967	...	...	—	—	...	—	...	—
1968	...	...	—	—	...	—	...	—
1969	...	...	—	—	...	—	...	—

Table 40.--Malaysia and Singapore: Exports of agricultural products to China, value and quantity, 1953-69

Calendar year	Total	Rubber	Coconut oil	Other	Rubber	Coconut oil
	SITC					
	--	231.1	422.3	--	231.1	422.3
	----- Million dollars -----				1,000 metric tons -	
1953	1.9	—	1.9	—	—	—
1954	6.4	—	6.4	—	—	20.1
1955	4.1	—	4.1	—	—	1.5
1956	7.5	5.9	0.1	1.5	9	0.5
1957	24.2	19.4	1.7	3.1	32	6.6
1958	37.7	34.9	0.3	2.5	65	1.0
1959	39.0	37.5	1.0	0.5	50	3.0
1960	26.1	24.0	1.2	0.9	30	3.8
1961	2.5	1.6	0.7	0.2	3	2.7
1962	0.7	0.4	0.1	0.2	1	0.6
1963	5.3	4.8	0.4	0.1	10	1.7
1964	0.3	0.1	—	0.2	—	—
1965	7.2	6.8	—	0.4	15	—
1966	45.4	44.5	0.7	0.2	93	—
1967	37.7	36.3	—	1.4	89	—
1968	51.6	49.2	—	2.4	130	—
1969	101.5	100.8	—	0.7	205	—

Table 41.--Pakistan: Exports of agricultural products to China, value and quantity, 1953-69

Calendar year	Total	Cotton and linters	Jute	Other	Raw cotton	Jute
	SITC					
	--	263	264	--	263.1	264
	----- Million dollars -----				----- 1,000 metric tons -----	
1953	...	...	...	...	...	...
1954	26.1	26.1	—	—	33	—
1955	31.7	26.4	5.3	—	57	24
1956	15.9	10.0	5.9	—	16	31
1957	9.5	6.9	2.5	0.1	33	12
1958	7.5	6.2	1.3	—	12	7
1959	0.5	—	0.5	—	3	3
1960	14.5	10.6	3.9	—	9	14
1961	8.6	4.0	4.5	0.1	7	15
1962	1.6	1.6	—	—	2	—
1963	12.2	7.5	4.7	—	12	20
1964	37.3	23.1	14.2	—	48	50
1965	38.6	21.7	16.9	—	39	60
1966	22.2	7.4	14.8	—	13	52
1967	33.5	14.2	19.1	0.2	27	64
1968	25.4	9.6	15.8	—	14	57
1969	26.4	13.0	13.5	—	24	48



Table 42.--China: Exports of fresh meat by country of destination, 1955-69

Calendar year	Total	Czecho-slovakia	Egypt	France	Hong Kong	Italy	Japan	Poland	United Kingdom	USSR	Other
----- 1,000 metric tons -----											
1955	135	...	--	--	--	--	--	--	--	134	1
1956	116	--	--	--	3	--	--	--	--	112	1
1957	57	8	--	--	4	--	--	--	--	44	1
1958	137	28	9	--	5	--	--	--	--	92	3
1959	104	32	3	--	8	--	--	--	--	60	1
1960	86	40	2	--	9	--	--	6	1	28	--
1961	29	8	6	--	9	--	--	3	--	2	1
1962	11	4	--	--	5	--	--	--	1	--	1
1963	24	8	1	--	8	--	1	--	2	--	4
1964	77	8	2	--	15	--	1	13	1	32	5
1965	140	6	3	--	20	--	1	18	2	87	3
1966	170	19	16	--	28	8	3	20	4	69	3
1967	110	14	6	1	26	9	3	24	5	1	21
1968	118	18	2	2	37	4	7	35	7	--	6
1969	116	25	2	18	36	1	6	17	7	--	6

Table 43.--China: Exports of meat preparations by country of destination, 1955-69

Calendar year	Total	Czecho-slovakia	Egypt	Hong Kong	Japan	Malaysia 1/	Singapore 2/	United Kingdom	USSR	Other
----- 1,000 metric tons -----										
1955	10	...	--	2	--	2/ 1	2/	--	7	--
1956	12	...	--	1	--	--	--	--	11	--
1957	17	1	--	3	--	--	--	--	13	--
1958	42	4	--	5	--	2/ 1	2/	--	32	--
1959	32	4	--	5	--	2/ 2	2/	--	21	--
1960	15	--	--	5	--	2/ 2	2/	--	7	1
1961	6	--	--	3	--	2/ 1	2/	--	1	1
1962	8	2	--	4	--	1	1	--	--	--
1963	10	3	--	4	--	2	1	--	--	--
1964	27	--	--	9	--	3	2	1	11	1
1965	44	--	1	11	--	4	2	3	22	1
1966	47	--	3	11	--	5	2	2	22	2
1967	33	--	2	12	7	5	3	2	--	2
1968	25	--	1	10	3	...	4	1	--	...
1969	27	--	2	12	2	...	3	2	--	...

1/ Includes Sabah and Sarawak, if any.

2/ Singapore included with Malaysia.

Table 44.--China: Exports of eggs in shell by country of destination, 1955-69

Calendar year	Total	Hong Kong	Italy	Macao	Malaysia <sup>1/</sup>	Singapore	USSR	Other
----- Metric tons -----								
1955	30,200	19,250	--	150	<u>2/</u> 4,550	<u>2/</u>	6,250	--
1956	30,250	19,450	--	250	<u>2/</u> 4,800	<u>2/</u>	5,100	650
1957	36,100	22,250	--	750	<u>2/</u> 5,600	<u>2/</u>	7,350	150
1958	47,450	24,100	500	450	<u>2/</u> 6,250	<u>2/</u>	14,950	1,200
1959	22,800	15,200	50	1,350	<u>2/</u> 3,400	<u>2/</u>	2,650	150
1960	19,800	14,800	--	950	<u>2/</u> 2,850	<u>2/</u>	1,200	--
1961	15,050	13,100	100	750	<u>2/</u> 1,100	<u>2/</u>	--	--
1962	25,800	22,950	--	1,100	700	1,050	--	--
1963	34,800	31,600	--	1,300	400	1,450	--	50
1964	40,500	35,600	--	1,450	1,400	1,550	350	150
1965	42,850	35,150	200	1,000	1,650	1,200	3,400	250
1966	50,050	37,500	1,800	1,750	1,800	1,300	5,150	750
1967	41,700	34,200	300	1,150	1,550	1,400	2,550	550
1968	40,500	35,700	950	700	1,500	1,150	--	500
1969	39,000	31,550	1,900	600	...	900	2,500	...

<sup>1/</sup> Includes Sabah and Sarawak, if any.

<sup>2/</sup> Singapore included with Malaysia.

Table 45.--China: Exports of eggs not in shell by country of destination, 1955-69

Calendar year	Total	West Germany	Italy	Netherlands	Switzerland	United Kingdom	USSR	Other
----- Metric tons -----								
1955	15,100	7,900	1,900	--	400	4,100	--	800
1956	21,900	10,200	5,200	500	500	4,200	--	700
1957	20,800	6,000	3,100	--	400	8,500	--	<sup>1/</sup> 2,800
1958	36,000	6,600	5,900	--	200	17,700	4,000	<u>2/</u> 1,600
1959	11,400	4,000	2,100	--	100	2,500	1,900	800
1960	6,800	2,000	2,000	--	--	2,400	200	200
1961	3,129	700	800	--	100	1,313	--	216
1962	4,762	700	2,400	--	100	1,219	--	343
1963	8,985	1,400	3,300	--	100	1,171	1,500	<u>3/</u> 1,514
1964	5,277	1,469	1,818	--	117	230	1,500	143
1965	9,398	2,374	2,630	--	227	681	3,300	186
1966	9,667	2,900	2,800	--	200	2,937	--	830
1967	4,774	1,490	2,124	10	336	188	400	226
1968	11,965	1,250	2,582	2,208	829	4,585	--	511
1969	13,799	1,458	1,230	1,622	2,772	5,022	500	<u>4/</u> 1,195

<sup>1/</sup> Of which Hungary 1,400. <sup>2/</sup> Of which Czechoslovakia 700. <sup>3/</sup> Of which Czechoslovakia 1,400. <sup>4/</sup> Of which Japan 640.

Table 46.--China: Exports of rice by country

Calendar year	Total	Belgium-Luxemburg	Bulgaria	Ceylon	Cuba	Czechoslovakia	West Germany
----- 1,000 metric tons -----							
1952	264	--	--	36	--	--	--
1953	418	--	--	265	--	--	--
1954	518	--	--	218	--	--	--
1955	631	--	--	122	--	27	--
1956	1,035	--	--	246	--	20	--
1957	485	--	--	163	--	17	--
1958	1,247	7	--	249	--	42	5
1959	1,567	23	5	280	--	84	16
1960	1,174	19	10	246	...	67	20
1961	444	4	--	28	82	1	2
1962	578	5	--	28	33	3	3
1963	640	2	--	165	70	--	1
1964	784	4	--	265	131	--	2
1965	753	1	--	115	150	2	--
1966	1,216	2	--	227	130	6	6
1967	1,150	3	--	183	130	2	9
1968	885	8	--	200	130	8	18
1969	712	1	--	221	130	...	6
----- 1,000 metric tons -----							
	Lebanon	Libya	Macau	Malagasy Republic	Malaysia	Singapore	Netherlands
----- 1,000 metric tons -----							
1952	--	--	--	--	--	--	--
1953	--	--	--	--	--	--	--
1954	--	--	--	--	--	--	1
1955	--	--	8	--	2/ 1	2/	--
1956	--	--	12	--	2/11	2/	--
1957	--	--	14	--	2/26	2/	--
1958	--	--	17	--	2/32	2/	8
1959	--	--	18	--	2/22	2/	17
1960	--	--	18	--	2/54	2/	16
1961	--	--	21	--	2/94	2/	3
1962	--	--	21	--	46	53	7
1963	--	--	20	--	108	84	1
1964	1	--	19	--	115	18	5
1965	6	6	18	9	96	37	--
1966	9	16	19	12	108	65	7
1967	10	14	18	--	120	83	2
1968	4	9	14	--	80	78	4
1969	...	12	14	--	91	46	2

of destination, 1952-69

Hong Kong	Hungary	India	Indonesia	Ivory Coast	Japan	Jordan	Calendar year
----- 1,000 metric tons -----							
6	--	150	--	--	--	--	1952
3	--	--	--	--	--	--	1953
--	--	--	--	--	73	--	1954
37	--	--	--	--	133	--	1955
52	--	47	--	--	113	--	1956
64	--	14	2	--	--	--	1957
143	6	--	89	7	86	--	1958
63	25	--	181	--	--	--	1959
76	18	--	104	--	--	--	1960
126	17	--	6	12	--	5	1961
144	--	--	40	14	--	--	1962
111	--	--	71	--	--	2	1963
141	--	--	72	1	--	3	1964
110	--	--	--	1	168	7	1965
116	--	--	--	--	313	8	1966
86	--	--	--	--	203	7	1967
105	--	--	--	--	105	3	1968
87	--	--	--	--	--	1	1969

Pakistan	Poland	Senegal	Syria	United Kingdom	USSR	Other	Calendar year
----- 1,000 metric tons -----							
--	--	--	--	--	72	--	1952
--	--	--	--	--	149	1	1953
--	4	--	--	--	220	2	1954
--	6	--	--	--	293	4	1955
68	6	--	--	--	458	2	1956
--	4	--	--	--	181	--	1957
68	7	4	--	3	453	21	1958
44	63	39	--	2	658	27	1959
4	61	14	--	9	416	22	1960
--	29	9	--	1	2	2	1961
...	--	22	--	1	150	8	1962
--	--	--	--	--	--	5	1963
--	--	--	--	2	--	5	1964
...	--	--	--	16	--	11	1965
100	5	24	--	19	--	24	1966
100	--	72	36	19	--	53	1967
29	--	16	26	24	--	24	1968
--	3	...	22	17	--	59	1969

1/ Includes Sabah and Sarawak, if any. 2/ Singapore included with Malaysia.

Table 47.--China: Exports of corn by country of destination, 1955-69

Calendar year	Total	Albania	Austria	Bulgaria	Egypt	Hong Kong	Japan	Netherlands	United Kingdom	Other
----- 1,000 metric tons -----										
1955	9	--	--	--	--	--	4	1	--	4
1956	12	--	--	--	2	--	10	--	--	--
1957	25	--	--	9	--	3	12	--	--	1
1958	83	--	--	30	15	4	--	7	1	<u>1/</u> 30
1959	71	--	22	5	--	7	1	9	22	5
1960	30	28	--	--	--	1	--	--	--	1
1961	1	--	--	--	--	--	--	--	--	1
1962	110	20	--	--	--	--	88	--	--	2
1963	170	20	--	--	--	--	149	--	--	1
1964	245	...	--	--	--	--	244	--	--	1
1965	146	...	--	--	1	1	145	--	--	--
1966	75	...	--	--	--	1	73	--	--	1
1967	51	...	--	--	--	1	49	--	--	1
1968	...	...	--	--	--	--	--	--	--	...
1969										

1/ Of which Hungary 24,000 tons.

Table 48.--China: Exports of oranges and tangerines by country of destination, 1955-69

Calendar year	Total	Hong Kong	Malaysia <u>1/</u>	Poland	Singapore	USSR	Other
----- 1,000 metric tons -----							
1955	57	18	<u>2/</u> 1	--	<u>2/</u>	38	--
1956	65	14	<u>2/</u> 11	--	<u>2/</u>	40	--
1957	73	20	<u>2/</u> 10	--	<u>2/</u>	43	--
1958	87	17	<u>2/</u> 12	--	<u>2/</u>	57	1
1959	81	16	<u>2/</u> 7	8	<u>2/</u>	48	2
1960	52	15	<u>2/</u> 5	5	<u>2/</u>	27	--
1961	29	14	<u>2/</u> 4	--	<u>2/</u>	11	--
1962	30	12	1	--	2	14	1
1963	37	15	2	--	4	17	--
1964	39	12	1	--	3	23	--
1965	40	18	2	--	4	15	1
1966	43	18	3	--	6	15	1
1967	56	25	5	--	9	17	--
1968	60	28	5	--	11	16	--
1969	60	28	5	--	12	15	--

1/ Includes Sabah and Sarawak, if any.

2/ Singapore included with Malaysia.

Table 49.--China: Exports of apples by country of destination, 1955-69

Calendar year	Total	Czechoslovakia	Finland	Hong Kong	Malaysia 1/	Singapore	Sweden	USSR	Other
----- 1,000 metric tons -----									
1955	30	--	--	3	--	--	--	28	--
1956	43	--	--	5	2/ 1	2/	--	37	--
1957	70	--	--	9	2/ 3	2/	--	58	--
1958	97	--	2	14	2/ 4	2/	--	77	--
1959	94	--	5	13	2/ 3	2/	--	73	--
1960	76	--	--	10	2/ 3	2/	--	63	--
1961	36	--	1	9	2/ 1	2/	--	24	1
1962	62	7	--	9	1	2	--	44	--
1963	71	8	--	13	2	3	--	45	--
1964	81	...	--	14	2	4	--	61	--
1965	89	...	--	20	2	6	--	60	1
1966	87	...	--	26	4	9	--	51	--
1967	91	...	--	22	4	9	1	55	--
1968	63	...	1	30	4	11	2	15	--
1969	59	...	1	40	4	12	1	--	1

1/ Includes Sabah and Sarawak, if any.

2/ Singapore included with Malaysia.

Table 50.--China: Exports of pears by country of destination, 1955-69

Calendar year	Total	Hong Kong	Malaysia 1/	Singapore	Other
----- 1,000 metric tons -----					
1955	--	--	--	--	--
1956	1	--	2/ 1	2/	--
1957	1	--	2/ 1	2/	--
1958	2	--	2/ 2	2/	--
1959	1	--	2/ 1	2/	--
1960	1	--	2/ 1	2/	--
1961	--	--	--	--	--
1962	--	--	--	--	--
1963	2	--	--	2	--
1964	16	14	--	2	--
1965	29	24	1	4	--
1966	36	29	2	6	--
1967	34	27	2	5	--
1968	49	40	3	6	--
1969	52	41	3	8	--

1/ Includes Sabah and Sarawak, if any.

2/ Singapore included with Malaysia.

Table 51 .--China: Exports of pulses by country of destination, 1955-69

Calendar year	Total	Belgium-Luxembourg	Ceylon	Czechoslovakia	Egypt	West Germany	Hong Kong	Italy
----- 1,000 metric tons -----								
1955	119	--	2	--	--	5	25	--
1956	58	--	3	--	--	3	29	--
1957	91	--	--	--	8	4	14	--
1958	122	--	3	--	5	14	16	--
1959	146	1	3	10	5	23	27	--
1960	179	6	4	--	8	30	43	7
1961	61	--	1	--	--	6	15	6
1962	58	1	3	--	--	--	27	3
1963	58	--	--	--	--	4	23	--
1964	63	--	--	--	--	--	19	2
1965	102	--	--	--	--	--	33	21
1966	148	--	--	--	--	7	18	47
1967	129	1	5	--	--	5	16	25
1968	101	2	4	--	10	3	12	12
1969	136	1	...	--	--	5	17	44
----- 1,000 metric tons -----								
	Japan	Malaysia	Netherlands	Singapore	United Kingdom	USSR	Other	
----- 1,000 metric tons -----								
1955	43	2/ 6	6	2/	30	1	2	
1956	9	2/ 3	1	2/	3	5	2	
1957	56	2/ 3	2	2/	--	1	3	
1958	52	2/ 8	6	2/	9	4	5	
1959	53	2/ 5	13	2/	--	--	6	
1960	49	2/ 4	15	2/	9	--	4	
1961	12	2/ 8	2	2/	2	--	9	
1962	17	2	--	2	--	--	3	
1963	26	2	--	2	--	--	1	
1964	37	2	--	2	--	--	1	
1965	45	1	--	1	--	--	1	
1966	58	2	5	3	--	--	8	
1967	40	3	23	6	--	--	5	
1968	41	3	6	5	--	--	3	
1969	40	3	12	4	--	--	10	

1/ Includes Sabah and Sarawak, if any.

2/ Singapore included with Malaysia.

Table 52.--China: Exports of sugar by country of destination, 1955-69

Calendar year	Total	Albania	Burma	Ceylon	Egypt	Hong Kong	Iran
----- 1,000 metric tons -----							
1955	59	--	--	--	--	--	58
1956	1	--	--	--	--	--	--
1957	6	--	--	--	--	1	--
1958	114	--	13	11	18	36	--
1959	38	--	--	--	1	10	--
1960	16	--	--	--	--	9	--
1961	127	8	8	--	--	55	--
1962	284	11	16	11	--	113	--
1963	217	--	--	10	5	106	--
1964	362	--	5	23	11	131	--
1965	390	--	--	22	11	138	--
1966	552	--	--	97	--	210	30
1967	389	--	--	95	2	72	--
1968	244	--	--	11	--	71	--
1969	145	--	--	--	--	53	--
----- 1,000 metric tons -----							
	Kuwait	Malaysia	Mali	Singapore	Sudan	Southern Yemen	Other
		1/					
----- 1,000 metric tons -----							
1955	--	--	--	--	--	--	1
1956	--	--	--	--	--	--	1
1957	--	2/ 2	--	2/	--	--	3
1958	--	2/15	--	2/	--	--	21
1959	--	2/ 4	--	2/	10	--	13
1960	--	2/ 5	--	2/	--	--	2
1961	--	2/54	--	2/	--	--	2
1962	--	84	--	43	--	--	6
1963	--	51	--	40	--	--	5
1964	--	93	4	62	11	7	15
1965	42	73	10	76	--	9	9
1966	44	71	9	60	--	3	28
1967	--	42	2	100	43	--	33
1968	26	44	4	66	--	4	18
1969	11	35	--	32	--	7	7

1/ Includes Sabah and Sarawak, if any.

2/ Singapore included with Malaysia.



Table 53.--China: Exports of tea by country of destination, 1955-69

Calendar year	Total	Egypt	Hong Kong	Libya	Malaysia 1/	Morocco	Poland	Senegal	United Kingdom	USSR	Other
----- Metric tons -----											
1955	34,800	--	4,500	--	2/800	12,500	1,700	--	2,000	10,200	3,100
1956	37,600	200	5,400	--	2/900	12,300	1,800	--	1,000	12,600	3,400
1957	43,500	2,000	5,000	--	2/1,300	9,200	2,600	--	3,200	11,500	8,700
1958	46,100	6,500	4,500	100	2/900	11,500	2,600	--	4,200	13,000	2,800
1959	43,800	5,900	3,200	200	2/900	5,300	3,400	--	3,400	17,300	4,200
1960	39,700	5,500	3,800	200	2/900	6,200	2,300	1,600	5,300	10,200	3,700
1961	34,314	6,400	3,900	500	2/1,300	7,644	1,320	1,681	4,336	3,000	4,233
1962	27,797	6,300	3,372	400	766	4,564	1,727	2,000	1,603	3,100	3,965
1963	28,142	5,700	2,537	100	722	4,495	2,046	1,200	2,691	3,100	5,551
1964	32,424	6,200	2,968	600	874	7,800	1,271	1,585	1,632	3,000	6,494
1965	32,207	7,300	2,914	800	719	6,316	1,187	1,092	3,260	2,000	6,619
1966	37,300	8,773	2,933	1,600	808	8,247	1,100	1,017	1,682	--	11,140
1967	29,400	6,103	2,581	1,713	703	6,811	1,615	770	1,384	--	7,720
1968	34,800	6,414	3,084	2,199	751	7,342	1,300	711	3,160	--	9,839
1969	32,400	754	3,470	1,683	...	7,825	2,375	...	1,757	--	14,536

1/ Includes Sabah and Sarawak, if any.

2/ Singapore included with Malaysia.

Table 54.--China: Exports of oilseed cake and meal by country of destination, 1955-69

Calendar year	Total	France	West Germany	Hong Kong	Japan	Malaysia 1/	Singapore	USSR	Other
----- 1,000 metric tons -----									
1955	15	--	--	--	--	--	--	15	--
1956	16	--	--	--	--	--	--	15	1
1957	19	--	1	--	1	--	--	15	2
1958	6	--	1	1	--	2/ 3	2/	--	1
1959	3	1	1	--	--	--	--	--	1
1960	8	2	--	4	--	--	--	--	2
1961	6	--	--	1	3	--	--	--	2
1962	5	--	--	--	4	--	1	--	--
1963	9	--	--	1	4	--	3	--	1
1964	19	--	--	2	10	1	6	--	--
1965	29	4	1	3	12	2	8	--	--
1966	26	7	3	3	6	3	4	--	--
1967	32	6	2	4	11	5	4	--	--
1968	32	9	1	3	8	6	5	--	--
1969	37	9	--	6	12	...	5	--	5

1/ Includes Sabah and Sarawak, if any.

2/ Singapore included with Malaysia.

Table 55.--China: Exports of tobacco by country of destination, 1955-69

Calendar year	Total	Czecho-slovakia	Egypt	France	West Germany	Hong Kong	Poland	Singapore	USSR	Other
----- 1,000 metric tons -----										
1955	31	3	1	--	--	--	2	--	24	1
1956	45	5	1	--	--	--	3	--	33	3
1957	54	6	1	--	--	--	1	--	44	2
1958	51	5	2	--	--	1	2	--	40	1
1959	44	2	2	--	--	1	2	--	36	1
1960	23	3	2	--	--	1	2	--	15	--
1961	10	3	1	--	--	--	--	--	5	1
1962	4	--	1	--	1	1	--	--	--	1
1963	14	1	11	--	1	--	--	--	--	1
1964	5	1	1	--	1	1	1	--	--	--
1965	5	--	1	1	2	--	--	--	--	1
1966	8	--	2	1	3	--	--	--	--	2
1967	11	--	2	2	4	1	--	--	--	2
1968	23	--	2	1	5	--	--	13	--	2
1969	27	--	2	2	8	1	--	12	--	2

Table 56.--China: Exports of peanuts by country of destination, 1955-69

Calendar year	Total	Canada	Czechoslovakia	France	West Germany	Hong Kong	Hungary	Japan
----- 1,000 metric tons -----								
1955	345	--	55	--	5	4	20	--
1956	376	7	51	2	18	5	16	--
1957	250	4	43	2	14	3	17	3
1958	95	4	9	1	9	1	8	1
1959	71	3	2	--	3	2	7	--
1960	28	2	--	--	1	2	--	--
1961	2	--	--	--	--	--	--	1
1962	3	1	--	--	--	1	--	1
1963	3	--	--	--	--	--	--	2
1964	26	4	--	1	3	2	--	5
1965	46	6	--	1	3	3	--	12
1966	64	7	--	2	4	4	--	15
1967	74	17	--	2	2	4	--	12
1968	58	14	--	2	2	4	--	14
1969	46	15	--	2	1	4	--	11
----- 1,000 metric tons -----								
	Netherlands	Poland	Singapore	Switzerland	United Kingdom	USSR	Yugoslavia	Other
1955	2	31	...	30	--	196	--	2
1956	11	31	...	37	--	180	10	8
1957	15	33	...	2	1	95	12	6
1958	12	2	...	4	--	38	--	6
1959	7	11	...	2	--	33	--	1
1960	3	--	...	--	--	20	--	--
1961	--	--	...	--	--	--	--	--
1962	--	--	...	--	--	--	--	--
1963	--	--	...	--	--	--	--	1
1964	7	--	1	--	1	--	--	2
1965	12	--	1	--	5	--	--	3
1966	17	--	2	--	8	1	--	4
1967	20	--	5	1	7	1	--	3
1968	13	--	2	1	2	--	--	4
1969	4	--	2	1	4	--	--	2

Table 57 --China: Exports of soybeans by country of destination, 1951-69

Calendar year	Total	Belgium-Luxembourg-Bourg	Czechoslovakia	Denmark	Finland	France	West Germany	Hong Kong	Hungary	Italy
----- 1,000 metric tons -----										
1951	500	29	--	75	--	42	217	24	--	26
1952	100	4	--	--	--	--	10	33	--	--
1953	153	8	--	12	8	--	47	8	--	--
1954	190	--	--	--	13	5	--	25	38	--
1955	950	2	30	--	16	9	91	21	28	--
1956	970	--	30	18	16	10	71	7	28	1
1957	972	--	30	--	34	--	13	11	28	--
1958	928	--	30	46	22	12	79	13	53	--
1959	1,343	--	40	119	13	5	226	19	62	21
1960	1,122	--	38	126	4	15	212	12	55	110
1961	335	2	--	88	11	--	40	19	13	7
1962	342	1	--	55	--	1	35	15	--	9
1963	332	--	--	--	10	--	27	15	...	15
1964	498	--	--	27	37	--	45	10	...	24
1965	577	2	--	1	19	5	39	2	...	55
1966	550	--	--	3	41	--	19	12	--	36
1967	565	--	--	--	55	--	13	14	--	33
1968	571	--	--	--	41	--	27	16	--	32
1969	488	--	--	--	40	--	15	16	--	6
----- 1,000 metric tons -----										
	Japan	Malaysia 1/	Netherlands	Norway	Poland	Singapore	United Kingdom	USSR	Yugoslavia	Other
1951	6	2/ 11	54	--	--	2/	1	--	--	15
1952	1	2/ 11	10	--	--	2/	1	--	--	30
1953	24	2/ 7	36	3	--	2/	--	--	--	--
1954	46	2/ 12	13	--	--	2/	--	--	--	38
1955	204	2/ 11	16	--	33	2/	--	484	--	5
1956	166	2/ 11	31	--	28	2/	--	548	5	--
1957	200	2/ 13	6	--	40	2/	--	579	12	6
1958	89	2/ 15	32	--	27	2/	28	478	--	4
1959	--	2/ 14	39	5	48	2/	67	639	22	4
1960	--	2/ 19	28	14	38	2/	99	351	--	--
1961	42	2/ 16	36	3	10	2/	38	10	--	--
1962	165	12	22	--	--	11	16	--	--	--
1963	227	11	13	--	--	13	--	--	--	1
1964	284	11	5	--	--	9	48	--	--	--
1965	376	12	26	--	--	12	12	--	--	16
1966	393	13	--	--	--	10	5	--	--	18
1967	392	13	--	--	--	13	33	--	--	--
1968	417	14	--	--	--	11	12	--	--	1
1969	377	14	--	--	--	14	5	--	--	1

1/ Includes Sabah and Sarawak, if any. 2/ Singapore included with Malaysia.

Table 58.--China: Exports of castorseed by country of destination, 1955-69

Calendar year	Total	France	West Germany	Italy	Japan	United Kingdom	USSR	Other
----- 1,000 metric tons -----								
1955	36	--	--	--	7	--	27	2
1956	35	--	10	--	--	--	24	1
1957	9	--	--	--	--	--	9	--
1958	8	--	--	--	--	--	8	--
1959	11	2	1	1	--	--	6	1
1960	16	2	5	1	--	--	5	3
1961	1	--	--	--	1	--	--	--
1962	2	--	1	--	1	--	--	--
1963	5	1	2	--	1	--	--	1
1964	11	1	2	--	8	--	--	--
1965	15	1	2	--	11	--	--	1
1966	56	12	12	3	19	9	--	1
1967	80	12	17	8	28	14	--	1
1968	54	9	20	3	9	14	--	--
1969	31	2	8	1	19	1	--	--

Table 59.--China: Exports of rape and mustard seed by country of destination, 1955-69

Calendar year	Total	France	West Germany	Italy	Japan	Poland	USSR	Other
----- 1,000 metric tons -----								
1955	21	--	2	--	6	2	10	1
1956	15	--	--	2	4	--	9	--
1957	11	--	--	--	--	--	9	2
1958	6	--	--	3	--	--	3	--
1959	21	--	--	16	--	--	5	--
1960	27	12	--	6	1	--	4	4
1961	1	--	--	--	--	--	--	1
1962	1	--	--	--	1	--	--	--
1963	--	--	--	--	--	--	--	--
1964	--	--	--	--	--	--	--	--
1965	6	--	--	--	6	--	--	--
1966	30	1	--	--	28	--	--	1
1967	23	--	--	4	19	--	--	--
1968	9	--	--	--	9	--	--	--
1969	2	--	--	--	2	--	--	--

Table 60.--China: Exports of silk by country of destination, 1955-69

Calendar year	Total	Egypt	France	West Germany	Hong Kong	Italy	Japan	Switzerland	United Kingdom	USSR	Other
----- Metric tons -----											
1955	3,449	31	78	76	168	49	15	243	--	2,189	600
1956	3,847	23	316	98	284	27	55	335	74	2,342	293
1957	3,424	85	372	96	224	38	46	205	35	2,100	223
1958	3,242	56	264	85	155	76	431	206	103	1,700	166
1959	5,735	29	339	146	54	336	2,648	211	80	1,800	92
1960	2,344	7	301	28	163	253	48	141	62	1,300	41
1961	1,832	15	316	86	83	382	118	165	95	484	88
1962	1,088	28	272	29	89	316	8	170	93	20	63
1963	1,234	35	306	37	95	218	114	163	92	70	104
1964	1,818	24	427	74	45	631	107	261	133	50	66
1965	3,338	53	777	155	62	1,065	561	342	222	50	113
1966	5,989	11	704	145	106	1,808	2,278	432	331	50	124
1967	5,743	7	699	71	69	1,749	2,246	555	207	--	35
1968	4,168	2	611	169	67	1,389	1,248	397	239	--	47
1969	6,205	6	724	207	77	2,287	2,336	371	179	--	18

Table 61.--China: Exports of wool by country of destination, 1955-69

Calendar year	Total	Belgium-Luxembourg	West Germany	Hungary	Japan	Lebanon	Netherlands	United Kingdom	USSR	Other
----- 1,000 metric tons -----										
1955	18	--	--	1	--	--	--	1	14	2
1956	15	--	1	--	--	--	--	--	13	2
1957	16	--	1	1	--	--	--	--	14	--
1958	14	--	1	--	--	--	--	1	12	--
1959	17	1	1	1	--	--	--	1	13	--
1960	16	2	1	--	--	--	--	1	11	1
1961	9	1	1	--	--	--	--	1	6	--
1962	9	2	--	--	--	--	--	2	4	1
1963	17	4	1	--	--	--	--	7	4	1
1964	23	4	1	--	--	--	--	12	4	2
1965	21	3	2	--	1	--	1	11	2	1
1966	20	3	1	--	1	1	1	12	--	1
1967	12	1	--	--	1	2	1	5	--	2
1968	15	1	--	--	2	3	1	8	--	--
1969	13	1	--	--	2	...	1	7	--	2

Table 62.--China: Exports of cotton by country of destination, 1954-69

Calendar year	Total	Bulgaria	Czechoslovakia	West Germany	Hungary	Japan	Poland	USSR	Other
----- 1,000 metric tons -----									
1954	6	2	--	--	--	--	4	--	--
1955	6	2	--	--	--	--	--	--	--
1956	4	1	1	--	1	--	3	--	1
1957	6	--	2	--	2	--	2	--	--
1958	8	1	3	--	1	--	2	--	--
1959	92	2	11	--	4	--	3	72	--
1960	61	1	7	--	2	--	2	47	2
1961	16	--	4	--	1	--	--	11	--
1962	8	--	--	--	--	--	--	8	--
1963	--	--	--	--	--	--	--	--	--
1964	--	--	--	--	--	--	--	--	--
1965	--	--	--	--	--	--	--	--	--
1966	--	--	--	--	--	--	--	--	--
1967	4	--	--	1	--	3	--	--	--
1968	9	--	--	2	--	5	--	--	--
1969	--	--	--	--	--	--	--	--	2

Table 63.--China: Exports of cottonseed oil by country of destination, 1955-69

Calendar year	Total	Czechoslovakia	Egypt	West Germany	Hong Kong	Hungary	Ireland	Netherlands	Poland	Singapore	United Kingdom	Other
----- 1,000 metric tons -----												
1955	3	--	--	--	--	2	--	--	--	--	--	1
1956	12	--	--	--	--	8	1	2	1	--	--	--
1957	8	4	--	--	--	--	--	2	2	--	--	--
1958	27	4	9	4	3	2	1	1	3	--	1	--
1959	22	4	1	2	1	2	2	2	8	--	--	--
1960	19	--	--	--	3	--	1	1	7	--	6	1
1961	1	--	--	--	--	--	--	--	--	--	--	1
1962	--	--	--	--	--	--	--	--	--	--	--	--
1963	--	--	--	--	--	--	--	--	--	--	--	--
1964	--	--	--	--	--	--	--	--	--	--	--	--
1965	22	--	--	--	1	--	--	1	--	1	14	5
1966	50	--	--	1	1	--	2	--	--	1	32	13
1967	26	--	12	--	--	--	--	1	--	1	8	4
1968	28	--	11	6	1	--	--	--	--	2	6	2
1969	6	--	--	1	2	--	--	--	--	1	--	2

Table 64.--China: Exports of peanut oil by country of destination, 1955-69

Calendar year	Total	Belgium: Luxembourg	Burma	Czechoslovakia	West Germany	Hong Kong	Hungary	Malaysia 1/	Netherlands	Singapore	Other
----- 1,000 metric tons -----											
1955	12	--	--	--	--	9	2	2/ 1	--	2/	--
1956	11	--	--	--	--	9	--	2/ 1	--	2/	1
1957	16	--	2	8	1	4	1	2/ 1	--	2/	--
1958	21	--	4	3	5	3	2	2/ 1	2	2/	1
1959	22	1	5	4	6	4	1	2/ 1	1	2/	--
1960	27	4	7	--	7	3	--	2/ 1	1	2/	4
1961	2	--	--	--	--	1	--	--	--	--	1
1962	1	--	--	--	--	--	--	--	--	--	1
1963	--	--	--	--	--	--	--	--	--	--	--
1964	1	--	--	--	--	--	--	--	--	--	1
1965	5	1	--	--	2	1	--	--	1	1	--
1966	24	3	--	--	13	3	--	1	1	1	2
1967	24	1	--	--	10	5	--	1	1	2	4
1968	28	--	--	--	11	9	--	2	1	2	3
1969	11	--	--	--	1	7	--	--	--	2	1

1/ Includes Sabah and Sarawak, if any.

2/ Singapore included with Malaysia.

Table 65.--China: Exports of rape and mustard oil by country of destination, 1955-69

Calendar year	Total	Czechoslovakia	West Germany	Hong Kong	Italy	Netherlands	Malaysia 1/	Singapore	Other
----- 1,000 metric tons -----									
1955	1	--	1	--	--	--	--	--	--
1956	2	--	--	2	--	--	--	--	--
1957	2	2	--	--	--	--	--	--	--
1958	5	3	1	--	--	--	--	--	1
1959	22	7	2	--	5	2	--	--	6
1960	17	--	4	1	5	4	--	--	3
1961	2	--	--	1	--	--	--	--	1
1962	--	--	--	--	--	--	--	--	--
1963	--	--	--	--	--	--	--	--	--
1964	--	--	--	--	--	--	--	--	--
1965	4	--	1	2	--	1	--	--	--
1966	32	--	10	18	--	2	--	--	2
1967	17	--	1	15	--	1	--	--	--
1968	20	--	--	14	--	--	4	1	1
1969	17	--	--	15	--	--	--	1	1

1/ Includes Sabah and Sarawak, if any.



Table 66.--China: Exports of tung oil by country of destination, 1955-69

Calendar year	Total	Australia	West Germany	Hong Kong	Japan	Netherlands	Poland	Sweden	United Kingdom	USSR	Other
----- 1,000 metric tons -----											
1955	35	--	4	6	3	--	2	--	6	12	2
1956	46	1	4	7	4	1	2	1	6	15	5
1957	46	1	4	11	4	1	2	1	5	15	2
1958	50	2	4	7	4	1	2	1	6	19	4
1959	39	1	3	2	2	--	2	1	2	22	4
1960	32	1	4	3	1	1	2	1	4	11	4
1961	16	1	2	2	1	--	--	1	2	4	3
1962	17	1	1	2	2	--	--	1	1	7	2
1963	12	1	1	2	2	1	--	1	1	2	1
1964	17	1	1	2	3	1	--	1	3	2	3
1965	19	1	3	2	3	1	--	1	4	1	3
1966	18	1	2	1	4	1	--	--	3	1	5
1967	15	1	1	--	4	1	--	1	1	3	3
1968	10	1	1	--	4	1	--	--	--	--	3
1969	12	1	--	1	6	1	--	--	1	--	2

Table 67.--Ceylon: Imports of agricultural products from China, value and quantity, 1953-69

Calendar year	Total	Rice	Sugar, candy, honey	Spices	Other	Rice	Sugar, raw basis	Red pepper	
	SITC								
	--	042	06	075	--	042	061.1 061.2	EX 275.1	
	----- Million dollars -----					----- 1,000 metric tons -----			
1953	43.7	42.7	--	0.4	0.6	265	...	...	
1954	31.9	31.1	--	0.5	0.3	218	6	...	
1955	16.6	16.0	--	0.1	0.5	122	--	0.3	
1956	28.0	26.6	--	0.8	0.6	246	--	3.2	
1957	17.5	16.0	--	1.0	0.5	163	--	3.5	
1958	28.6	25.5	1.0	0.9	1.2	249	11	3.9	
1959	27.9	26.7	--	0.5	0.7	280	--	2.1	
1960	24.3	23.2	--	0.4	0.7	246	--	1.4	
1961	3.0	2.6	--	--	0.4	28	--	--	
1962	4.2	2.7	0.7	--	0.8	28	11	--	
1963	18.3	16.2	2.0	--	0.3	165	10	--	
1964	31.5	27.4	4.0	0.1	--	265	23	0.2	
1965	15.6	12.2	1.7	1.0	0.7	115	22	3.2	
1966	32.2	24.7	5.8	1.4	0.3	227	97	3.5	
1967	31.6	22.1	5.8	1.5	2.2	183	95	3.6	
1968	34.4	30.6	0.8	2.2	0.8	200	11	6.5	
1969	38.1	34.9	--	2.4	0.8	221	--	...	

Table 68--Czechoslovakia: Imports of agricultural products from China, value (estimated) and quantity, 1955-69

Calendar year	Total	Meat, fresh	Eggs, dried	Rice	Apples	Tobacco	Peanuts	Soybeans	Rubber	Cotton	Vegetable oils	Other
----- Million dollars -----												
1955	20.3	—	—	3.2	—	1.5	11.8	3.4	—	—	—	0.4
1956	19.8	0.3	—	2.4	—	2.5	9.4	3.4	0.6	0.5	—	0.7
1957	27.1	4.7	0.7	2.1	—	3.0	7.4	3.6	3.2	1.0	—	1.4
1958	45.6	15.6	1.0	5.4	—	2.0	1.9	3.6	4.6	1.5	5.8	4.2
1959	52.0	14.7	0.5	9.8	—	0.9	0.5	4.9	2.6	4.7	5.7	7.7
1960	40.7	21.0	—	7.4	—	1.5	—	4.3	2.3	3.7	—	0.5
1961	8.4	4.3	—	0.1	—	1.4	—	—	—	2.2	—	0.4
1962	6.9	2.7	0.3	0.4	1.4	—	—	—	—	—	0.1	2.0
1963	13.9	6.1	2.8	—	1.8	0.6	—	—	—	—	—	2.6
1964	7.6	6.8	—	—	—	0.6	—	—	—	—	—	0.2
1965	3.9	3.8	—	—	—	—	—	—	—	—	—	0.1
1966	15.7	15.6	—	—	—	—	—	—	—	—	—	0.1
1967	11.2	10.8	—	—	—	—	—	—	—	—	—	0.4
1968	14.0	13.7	—	—	—	—	—	—	—	—	—	0.3
1969	19.2	18.9	—	—	—	—	—	—	—	—	—	0.3
----- 1,000 metric tons -----												
1955	n.a.	...	...	27	—	3	55	30	—	—	—	n.a.
1956	"	—	...	20	—	5	45	30	1	1	—	"
1957	"	8	0.5	17	—	6	35	30	5	2	—	"
1958	"	28	0.7	42	—	5	9	30	7	3	22	"
1959	"	32	0.3	84	—	2	2	40	4	11	23	"
1960	"	40	—	67	—	3	—	38	3	7	—	"
1961	"	8	—	1	—	3	—	—	—	4	—	"
1962	"	4	0.2	3	7	—	—	—	—	—	—	"
1963	"	7	1.4	—	8	1	—	—	—	—	—	"
1964	"	8	...	—	...	1	—	—	—	—	—	"
1965	"	6	...	—	...	—	—	—	—	—	—	"
1966	"	19	...	—	...	—	—	—	—	—	—	"
1967	"	14	...	—	...	—	—	—	—	—	—	"
1968	"	18	...	—	...	—	—	—	—	—	—	"
1969	"	25	...	—	...	—	—	—	—	—	—	"

Table 69.--France: Imports of agricultural products from China, value, 1953-69

Calendar year	Total	Meat	Hides and skins	Oilseeds	Silk	Bristles	Other crude an. mat.	Oils and fats	Other
	SITC								
	--	01	21	22	261	EX 291.92	EX 291	4	--
----- Million dollars -----									
1953	8.7	--	--	0.7	2.7	0.9	0.2	0.7	3.5
1954	7.7	--	--	1.2	2.2	--	1.7	0.8	1.8
1955	6.7	--	--	1.9	2.0	1.6	1.1	--	0.1
1956	10.7	--	0.7	2.2	2.9	1.4	0.9	0.6	2.0
1957	10.4	--	0.6	0.8	3.6	--	0.9	0.3	4.2
1958	7.7	--	0.2	1.4	2.2	1.3	0.8	0.3	1.5
1959	9.1	0.2	0.2	1.0	2.5	0.8	1.7	0.3	2.6
1960	13.9	--	0.3	3.6	2.9	1.6	0.8	0.9	3.8
1961	10.7	--	0.1	--	3.5	1.5	1.5	0.2	3.9
1962	8.2	--	0.2	0.3	3.0	0.9	1.3	0.1	2.4
1963	11.2	0.1	0.6	0.4	4.6	1.4	1.3	0.3	2.5
1964	14.3	0.1	2.3	0.5	5.0	1.4	1.8	0.1	3.1
1965	19.1	0.2	2.0	1.3	6.8	2.1	2.0	0.3	4.4
1966	24.2	0.1	2.1	2.4	9.0	1.9	2.3	0.7	5.7
1967	24.0	0.7	1.3	2.4	9.0	1.9	3.3	1.2	4.2
1968	26.1	1.4	1.4	2.5	8.8	1.6	3.1	2.3	5.0
1969	39.5	12.5	1.9	1.2	10.7	2.6	3.6	1.0	6.0

Table 70.--France: Imports of agricultural products from China, quantity, 1955-69

Calendar year	Meat, fresh	Peanuts	Soybeans	Castor-beans	Silk	Peanut oil	Castor oil
	SITC						
	011	221.1	221.4	221.7	261	421.4	422.5
----- 1,000 metric tons -----							
1955	--	--	9	--	0.1	--	--
1956	--	2	10	--	0.3	--	--
1957	--	2	--	--	0.4	--	--
1958	--	1	12	--	0.3	--	--
1959	--	--	5	2	0.3	--	--
1960	--	--	15	2	0.3	2	--
1961	--	--	--	--	0.3	--	--
1962	--	--	1	--	0.3	--	--
1963	--	--	--	1	0.3	--	--
1964	--	1	--	1	0.4	--	--
1965	--	1	5	1	0.8	--	--
1966	--	2	--	12	0.7	--	2
1967	1	2	--	12	0.7	--	4
1968	2	2	--	9	0.6	--	6
1969	18	2	--	2	0.7	--	4

Table 71.--West Germany: Imports of agricultural

Calendar year	Total	Eggs	Rice	Fruit and vegetables	Sugar, candy, honey	Tobacco and mfrs.	Hides and skins
	SITC						
	--	025	042	05	06	12	21
----- Million dollars -----							
1953	31.7	5.3	--	0.5	--	--	0.2
1954	33.1	7.5	--	1.3	--	--	0.4
1955	42.3	8.3	--	1.7	--	--	1.5
1956	47.5	9.9	--	1.2	--	0.1	2.0
1957	35.5	7.1	--	2.6	--	0.1	2.0
1958	51.6	8.8	0.5	2.5	--	0.1	3.8
1959	56.7	4.7	1.5	3.1	--	0.1	3.3
1960	67.6	3.4	1.6	3.5	--	0.1	2.4
1961	20.9	1.7	0.2	1.2	0.4	0.1	0.4
1962	21.0	1.5	0.4	0.6	0.1	0.3	2.1
1963	30.9	2.9	0.2	2.7	0.2	0.3	5.3
1964	39.6	2.3	0.3	1.7	1.0	0.3	6.9
1965	56.1	4.1	--	3.7	1.1	0.9	9.8
1966	63.6	4.7	0.8	6.8	1.5	1.7	11.4
1967	60.5	2.6	1.2	4.2	1.3	2.6	5.8
1968	62.6	2.2	2.6	7.0	2.0	2.6	6.2
1969	61.5	2.0	0.8	7.7	2.2	4.9	9.3

Table 72.--West Germany: Imports of agricultural

Calendar year	Eggs, not in shell	Rice	Pulses	Honey	Tobacco	Peanuts
	SITC					
	025.02	042	054.2	061.6	121	221.1
----- 1,000 metric tons -----						
1955	8	--	5	...	--	5
1956	10	--	3	...	--	18
1957	6	--	4	...	--	14
1958	7	5	14	...	--	9
1959	4	16	23	...	--	3
1960	2	20	30	...	--	1
1961	1	2	6	2	--	--
1962	1	3	--	1	1	--
1963	1	1	4	1	1	--
1964	1	2	--	4	1	3
1965	2	--	--	5	2	3
1966	3	6	7	7	3	4
1967	1	9	5	6	4	2
1968	1	18	3	9	5	2
1969	1	6	5	9	8	1

products from China, value, 1953-69

Soybeans	Other oilseeds	Total	Bristles	Feathers	Other crude animal material	Oils and fats	Other	Calendar year
SITC								
221.4	EX 221	261	EX 291.96	291.96	EX 291	4	--	
Million dollars								
5.5	8.3	0.2	0.4	3.4	0.1	4.7	3.1	1953
4.0	2.4	0.6	1.3	5.6	0.1	4.6	5.3	1954
--	12.7	0.9	1.8	5.7	0.3	2.4	7.0	1955
7.6	5.2	1.4	1.0	3.6	0.1	3.8	11.6	1956
1.4	3.3	1.2	1.1	4.0	0.1	2.2	10.4	1957
7.2	2.6	0.9	1.0	6.4	0.2	4.5	13.1	1958
19.9	1.3	1.5	1.5	4.2	0.3	3.7	11.6	1959
18.7	1.2	0.4	1.8	2.3	2.9	15.9	13.4	1960
3.9	0.2	1.0	1.4	3.1	3.4	1.2	2.7	1961
3.4	0.5	0.4	1.4	3.1	3.7	0.8	2.7	1962
2.8	0.6	0.5	1.6	4.9	4.3	0.8	3.8	1963
4.5	1.8	0.9	1.6	7.3	5.4	0.9	4.7	1964
4.4	1.9	1.8	2.5	11.0	7.4	2.1	5.4	1965
2.2	3.4	1.9	2.3	9.4	9.1	7.7	0.7	1966
1.4	3.5	2.5	1.7	6.6	9.3	3.7	14.1	1967
2.9	5.1	2.7	--	6.4	13.7	4.9	4.3	1968
1.6	2.6	3.6	2.2	6.2	13.2	0.8	4.4	1969

products from China, quantity, 1955-69

Soybeans	Castor-beans	Silk	Cottonseed oil	Peanut oil	Rape and mustard oil	Tung oil	Calendar year
SITC							
221.4	221.7	261	421.3	421.4	421.7	EX 422.9	
1,000 metric tons							
91	--	0.1	--	--	1	4	1955
71	10	0.1	--	--	--	4	1956
13	--	0.1	--	1	--	4	1957
79	--	0.1	4	5	1	4	1958
226	1	0.1	2	6	2	3	1959
212	5	--	--	7	4	4	1960
40	--	--	--	--	--	2	1961
35	1	--	--	--	--	1	1962
27	2	--	--	--	--	1	1963
45	2	0.1	--	--	--	1	1964
39	2	0.2	--	2	1	3	1965
19	12	0.1	1	13	10	2	1966
13	17	0.2	--	10	1	1	1967
27	20	0.2	6	11	--	1	1968
15	8	0.2	1	1	--	--	1969

Table 75.--Hong Kong: Imports of agricultural products from

Calendar year	Total	Live animals	Meat	Eggs	Rice	Fruits and vegetables	Sugar	Tea
	SITC							
	--	00	01	025	042	05	06	074.1
----- Million dollars -----								
1953	121.4	17.2	2.0	9.4	0.4	26.8	0.3	2.3
1954	84.9	24.8	1.9	9.2	--	19.2	0.1	3.1
1955	110.4	29.8	2.8	7.8	4.6	20.3	0.1	3.6
1956	105.9	25.0	3.9	7.8	7.1	20.5	0.1	3.2
1957	113.5	24.7	5.2	9.9	8.6	25.2	0.2	3.6
1958	136.8	35.1	7.0	9.8	18.0	27.6	3.9	3.5
1959	94.4	24.7	7.8	7.6	7.3	21.4	1.6	2.6
1960	105.7	27.4	7.6	7.5	9.1	21.9	1.5	2.8
1961	85.5	12.5	6.9	6.3	14.3	14.6	7.2	3.0
1962	110.3	24.0	5.1	11.1	18.9	18.3	10.5	2.6
1963	132.8	38.9	6.4	15.5	15.9	21.6	12.1	2.0
1964	174.3	53.2	13.9	16.3	18.6	27.8	19.6	2.3
1965	216.6	68.6	18.7	17.1	16.0	35.9	12.2	2.6
1966	230.4	73.3	22.3	18.2	18.7	38.9	14.1	2.8
1967	199.4	53.9	21.3	16.7	19.4	38.2	5.4	2.2
1968	207.2	49.6	27.2	16.7	22.6	43.0	5.8	2.6
1969	227.5	64.0	29.4	19.0	19.9	44.1	3.1	3.1

Table 74.--Hong Kong: Imports of agricultural products from

Calendar year	Cattle	Swine	Meat, fresh	Meat, prep.	Eggs in shell	Rice	Oranges and tangerines	Other citrus	Bananas	Apples	
	SITC										
	001.1	001.3	001	012 013	025.01	042	051.1	051.2	051.3	051.4	
1,000 head			1,000 metric tons								
1954	28	473	--	...	22	--	12	--	10	1	
1955	65	607	--	2	19	37	18	4	10	3	
1956	62	523	3	1	19	52	14	3	17	5	
1957	51	486	4	3	22	64	20	3	15	9	
1958	106	752	5	5	24	143	17	4	29	14	
1959	98	664	8	5	15	63	16	3	13	13	
1960	71	830	9	5	15	76	15	2	17	10	
1961	12	354	9	3	13	126	14	2	11	9	
1962	15	727	5	4	23	144	12	3	12	9	
1963	22	1,197	8	4	32	111	15	3	9	13	
1964	45	1,626	15	9	36	141	12	4	15	14	
1965	91	1,795	20	11	35	110	18	6	16	20	
1966	--	1,858	28	11	38	116	18	7	27	26	
1967	108	1,733	26	12	34	86	25	5	20	22	
1968	109	1,738	37	10	36	105	28	5	18	30	
1969	114	1,713	36	12	32	87	28	9	14	40	

China, value, 1953-69

Soybeans	Other oilseeds	Silk	Crude animal materials	Veg. mat. for pharmacy	Other crude veg. mat.	Oils and fats	Other	Calendar year
SITC								
221.4	EX 221	261	291	292.4	292.4	4	--	
-----Million dollars-----								
1.1	5.6	5.8	5.8	10.3	4.3	17.7	12.3	1953
3.3	1.0	2.2	1.4	8.6	4.6	2.9	2.6	1954
--	5.2	2.0	2.8	7.3	4.4	6.1	13.6	1955
0.8	2.7	2.3	1.2	5.8	9.4	9.2	6.9	1956
1.3	1.3	2.0	2.3	8.5	7.0	6.2	7.5	1957
1.6	0.6	1.1	2.5	8.1	5.7	4.0	8.2	1958
2.0	0.7	0.4	1.4	6.7	2.9	2.2	4.9	1959
1.2	1.1	0.8	0.4	--	0.5	3.3	20.2	1960
2.1	0.7	0.8	1.1	7.9	2.0	1.8	4.3	1961
1.6	0.5	1.0	0.5	7.1	0.9	1.2	6.0	1962
1.6	0.6	1.2	0.3	7.6	1.1	1.6	6.4	1963
1.1	0.7	0.5	0.3	7.9	0.2	1.1	10.2	1964
0.2	1.2	0.7	4.6	9.3	1.2	1.8	26.5	1965
1.5	1.6	1.2	3.4	14.3	1.1	6.4	12.6	1966
1.7	1.3	0.9	2.0	14.8	0.4	6.4	14.8	1967
1.9	1.4	0.9	0.5	12.7	1.2	7.3	13.8	1968
1.8	1.5	1.1	7.5	12.8	0.4	6.8	20.0	1969

China, quantity, 1954-69

Pears	Pulses	Sugar	Tea	Peanuts	Soybeans	Cottonseed oil	Peanut oil	Rape and mustard oil	Tung oil	Calendar year
SITC										
051.92	054.2	061.1 061.2	074.1	221.1	221.4	421.3	421.4	421.7	EX 422.9	
-----1,000 metric tons-----										
--	20	1	...	4	25	...	...	...	...	1954
--	25	--	4	4	21	--	9	--	6	1955
--	29	--	5	5	7	--	9	2	7	1956
--	14	1	5	3	11	--	4	--	11	1957
--	16	36	4	1	13	3	3	--	7	1958
--	27	10	3	2	19	2	4	--	2	1959
--	43	9	4	2	12	3	3	1	3	1960
--	15	55	4	--	19	--	1	1	2	1961
--	27	113	3	1	15	--	--	--	2	1962
--	23	106	3	--	15	--	--	--	2	1963
14	19	131	3	2	10	--	--	--	2	1964
24	33	138	3	3	2	1	1	2	2	1965
29	18	210	3	4	12	1	3	18	1	1966
27	16	72	3	4	14	--	5	15	--	1967
40	12	71	3	4	16	1	9	14	--	1968
41	17	53	3	4	16	2	7	15	1	1969



Table 75.--Hungary: Imports of agricultural products from China, estimated value and quantity, 1954-69

Calendar year	Total	Meat, fresh	Eggs, dried	Rice	Peanuts	Soybeans	Rubber	Vegetable oil	Other
----- <u>Millicia dollars</u> -----									
1954	8.8	--	--	--	--	4.8	--	--	4.0
1955	9.7	--	0.3	--	0.7	3.2	--	1.2	4.3
1956	11.1	--	1.2	--	0.1	3.2	--	1.8	4.8
1957	12.0	--	2.0	--	--	3.4	2.0	--	4.6
1958	16.6	0.3	0.4	0.8	0.7	6.4	3.1	2.0	2.9
1959	23.8	--	0.2	2.9	0.4	7.8	2.7	2.7	7.1
1960	9.2	--	--	2.0	--	6.2	--	--	1.0
1961	4.5	--	--	2.1	--	1.7	--	--	0.7
1962	0.2	--	--	--	--	--	--	--	0.2
1963	--	--	--	--	--	--	--	--	--
1964	0.9	0.9	--	--	--	--	--	--	--
1965	0.8	0.7	--	--	--	--	--	--	0.1
1966	0.1	--	--	--	--	--	--	--	0.1
1967	--	--	--	--	--	--	--	--	--
1968	--	--	--	--	--	--	--	--	--
1969	--	--	--	--	--	--	--	--	--
----- <u>1,000 metric tons</u> -----									
1954	n.a.	--	--	--	17	38	...	...	n.a.
1955	"	--	0.2	--	20	28	--	4	"
1956	"	--	1.2	--	16	28	--	8	"
1957	"	--	1.4	--	16	28	3	--	"
1958	"	0.5	0.3	6	8	53	5	6	"
1959	"	0.1	0.1	25	7	62	4	12	"
1960	"	--	--	13	--	55	--	--	"
1961	"	--	--	17	--	13	--	--	"
1962	"	--	--	--	--	--	--	--	"
1963	"	--	--	--	--	--	--	--	"
1964	"	1.1	--	--	--	...	--	--	"
1965	"	1.0	--	--	--	...	--	--	"
1966	"	--	--	--	--	...	--	--	"
1967	"	--	--	--	--	--	--	--	"
1968	"	--	--	--	--	--	--	--	"
1969	"	--	--	--	--	--	--	--	"

Table 76.--Italy: Imports of agricultural products from China, value, 1953-69

Calendar year	Total	Meat	Eggs	Fruits and vegetables	Hides and skins	Soybeans	Other oilseeds	Silk	Other
	SITC								
	--	01	025	05	21	221.4	EX 221	261	--
----- Million dollars -----									
1953	7.0	--	0.3	0.1	--	--	2.4	0.6	3.6
1954	1.6	--	0.3	--	--	0.5	0.2	0.3	0.3
1955	3.2	--	1.8	--	--	--	0.2	0.8	0.4
1956	9.9	--	4.1	--	1.0	0.1	1.6	0.6	2.5
1957	5.6	0.1	2.7	--	0.4	--	0.1	1.1	1.2
1958	11.3	0.2	4.1	0.3	1.5	--	1.3	2.6	1.3
1959	11.8	0.1	1.5	0.1	0.9	1.9	2.1	2.8	2.4
1960	20.6	0.2	0.8	0.5	1.0	10.1	2.4	0.6	5.0
1961	8.1	--	0.6	0.5	--	--	0.6	4.1	2.3
1962	7.6	--	1.4	0.3	0.2	0.9	0.1	3.0	1.7
1963	12.8	0.1	2.6	0.1	2.5	1.4	0.1	3.1	2.9
1964	18.8	0.2	1.1	0.3	5.2	2.6	0.1	6.5	2.8
1965	31.4	0.1	1.4	2.0	7.4	6.1	0.2	11.3	2.9
1966	45.8	5.3	2.4	4.5	4.1	3.8	0.7	21.1	3.9
1967	45.9	5.6	1.3	2.4	4.6	3.9	2.0	22.1	4.0
1968	41.9	2.8	1.6	1.2	6.1	3.5	0.7	17.0	9.0
1969	47.1	0.9	1.2	4.2	6.1	--	1.5	27.0	6.2

Table 77.--Italy: Imports of agricultural products from China, quantity, 1955-69

Calendar year	Meat, fresh	Eggs in shell	Eggs not in shell	Pulses	Soybeans	Castor beans	Rape and mustard seed	Silk
	SITC							
	011	025.01	025.02	054.2	221.4	221.7	EX 221.8	261
----- 1,000 metric tons -----								
1955	--	--	2	--	--	--	1	--
1956	--	--	5	--	1	--	2	--
1957	--	--	3	--	--	--	--	--
1958	--	--	6	--	--	--	3	--
1959	--	--	2	--	21	1	16	0.3
1960	--	--	2	7	110	1	6	0.3
1961	--	--	1	6	7	--	--	0.4
1962	--	--	2	3	9	--	--	0.3
1963	--	--	3	--	15	--	--	0.2
1964	--	--	2	2	24	--	--	0.6
1965	--	--	3	21	55	--	--	1.1
1966	8	2	3	47	36	3	--	1.8
1967	9	--	2	25	33	8	4	1.7
1968	4	1	3	12	32	3	--	1.4
1969	1	2	1	44	6	1	--	2.3

Table 78--Japan: Imports of agricultural products from China, value, 1953-69

Calendar year	Total	Meat	Rice	Corn	Fruit and vegetables	Animal feed	Soybeans	Other oilseeds	Silk	Cashmere	Other animal hair	Other fine
	SITC											
	--	01	042	044	05	081	221.4	EX 221	261	EX 262.3	EX 262.3	--
Million dollars												
1953	24.7	--	--	--	2.1	1.7	3.5	6.0	2.2	3.1	0.2	5.9
1954	36.8	--	12.5	--	3.2	--	7.4	2.7	1.1	1.6	0.2	8.1
1955	69.1	--	19.2	--	5.9	--	27.0	4.5	0.9	2.6	0.2	8.8
1956	52.1	--	17.0	0.3	3.5	0.1	20.6	3.3	0.9	3.5	0.3	2.6
1957	49.1	--	--	0.7	9.3	0.3	23.7	1.7	0.9	1.5	0.1	10.9
1958	40.2	0.1	12.8	0.7	7.2	0.1	8.9	0.9	0.5	1.5	0.1	7.4
1959	15.9	0.1	--	--	8.0	--	--	0.4	0.7	2.6	0.2	3.9
1960	13.8	0.1	--	--	5.9	--	--	0.7	0.2	3.1	0.2	3.6
1961	16.8	--	--	--	2.8	0.1	5.0	1.1	0.3	2.9	0.1	4.5
1962	29.4	--	--	--	4.6	0.2	16.5	1.1	0.1	1.6	--	5.3
1963	48.1	0.4	--	5.1	6.1	0.3	23.8	1.4	0.5	1.8	1.1	7.6
1964	67.3	0.6	--	8.8	9.8	0.9	30.5	2.7	0.5	1.8	1.3	10.4
1965	135.5	0.7	26.0	16.0	15.7	2.0	45.3	7.0	3.9	1.9	2.2	14.8
1966	188.6	1.8	51.4	9.5	22.2	3.3	49.2	11.7	13.3	2.0	2.6	21.6
1967	169.2	5.7	34.0	5.3	20.9	3.3	47.6	10.6	18.5	1.6	1.9	19.8
1968	147.3	6.5	19.2	2.9	20.5	3.5	46.1	7.4	11.8	2.5	3.9	23.0
1969	136.8	7.5	--	--	20.9	3.6	42.3	8.1	22.8	2.2	5.6	23.8

Table 79.--Japan: Imports of agricultural products from China, quantity, 1954-69

Calendar year	Meat, fresh	Meat prep.	Rice	Corn	Pulses	Bran	Peanuts	Soybeans	Castor beans	Rape and mustard seed	Sunflower seed	Silk
	SITC											
	011	012 013	042	044	054.2	081.2	221.1	221.4	221.7	EX 221.8	EX 221.8	261
-1,000 metric tons												
1954	--	--	73	--	20	--	--	46	--	--	--	--
1955	--	--	133	--	43	--	--	204	7	6	--	--
1956	--	--	119	4	9	--	--	166	--	4	--	--
1957	--	--	--	10	56	--	3	200	--	--	--	--
1958	--	--	86	12	52	--	--	89	--	--	--	--
1959	--	--	--	--	53	--	--	--	--	--	--	3
1960	--	--	--	1	49	--	--	--	--	1	1	--
1961	--	--	--	--	12	--	1	42	1	--	1	--
1962	--	--	--	--	17	--	1	165	1	1	3	--
1963	1	--	--	88	26	--	2	227	1	--	2	--
1964	1	--	--	149	37	--	5	284	7	--	--	--
1965	1	--	168	244	45	--	12	376	11	6	4	1
1966	3	--	313	145	58	2	15	393	19	28	3	2
1967	3	7	203	73	40	3	12	392	28	19	6	2
1968	7	3	105	49	41	8	14	417	9	9	1	1
1969	6	2	--	--	40	11	11	377	19	2	3	2

USDA/FAER-83

AGRICULTURAL TRADE OF THE PEOPLE'S REPUBLIC OF CHINA, 1935-69. (Foreign Agricultural Economic Report). / Riley H. Kirby. Washington, DC: Economic Research Service, Aug. 1972.

(NAL Call No. A281.97AgBF)

# 2 0 F 2 U S D A FAER-83

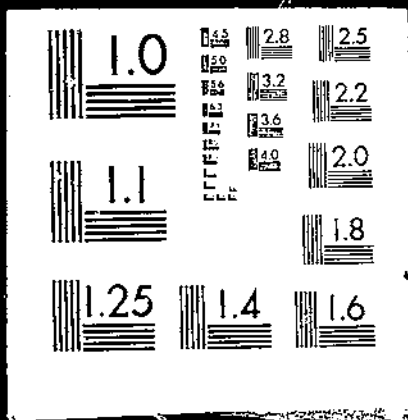


Table 80.--Malaysia and Singapore: Imports of agricultural products from China, value, 1953-69

Calendar year	Total	Meat	Eggs	Rice	Fruit and veg.	Sugar, candy, honey	Animal feed	Soybeans	Crude vegetable material	Oils and fats	Other
	SITC										
	--	01	025	042	05	06	081	221.4	292	4	--
----- Million dollars -----											
1953	26.2	0.5	3.7	--	12.1	0.2	1.7	1.1	3.1	0.3	3.5
1954	20.9	0.2	2.2	--	9.8	0.3	0.2	--	2.8	0.3	5.1
1955	24.9	1.2	2.7	0.1	11.3	--	0.1	1.4	2.8	0.3	5.0
1956	26.9	0.9	2.6	1.2	11.8	--	0.3	1.5	3.7	0.4	4.5
1957	31.7	0.8	2.9	2.3	12.7	0.2	0.6	1.7	4.0	0.3	6.2
1958	34.4	0.7	3.1	2.7	14.5	1.2	1.1	2.0	2.9	0.4	5.8
1959	24.2	0.9	1.9	1.5	9.7	0.3	0.6	1.6	3.7	0.4	3.6
1960	28.1	1.0	1.5	4.2	0.4	--	0.8	2.9	4.2	0.5	13.6
1961	29.4	0.7	0.6	8.3	7.3	3.1	0.3	1.9	3.1	0.3	3.8
1962	32.6	0.9	0.7	9.1	6.9	6.2	0.3	2.3	3.0	0.2	3.0
1963	48.2	1.0	1.0	17.2	8.7	11.4	0.6	2.3	2.8	0.2	3.0
1964	53.6	2.1	1.2	11.2	10.5	17.5	--	1.9	2.9	0.2	6.1
1965	51.3	3.0	1.2	10.2	13.8	7.2	2.6	2.6	3.7	0.8	6.2
1966	75.2	2.9	1.5	17.0	23.9	5.9	5.2	2.9	4.9	1.2	9.8
1967	91.6	5.7	1.5	27.4	22.1	6.6	4.7	3.3	5.7	1.3	13.3
1968	94.2	3.5	1.3	23.7	26.3	5.3	3.6	3.2	6.3	4.1	16.9
1969	83.0	4.9	1.0	14.7	25.0	3.1	2.9	3.5	7.5	2.2	18.2

Table 81.--Malaysia and Singapore: Imports of agricultural products from China, quantity, 1955-69

Calendar year	Meat prep.	Eggs in shells	Rice	Oranges and tangerines	Apples	Pears	Potatoes	Pulses	Onions	Sugar, raw basis	Soybeans
	SITC										
	612 013	025.01	042	051.1	051.4	051.92	054.1	054.2	Ex 054.5	061.1 061.2	221.4
----- 1,000 metric tons -----											
1955	1	5	1	1	--	--	2	6	--	--	11
1956	--	5	11	11	1	1	4	3	--	--	11
1957	--	6	26	10	3	1	8	3	--	2	13
1958	1	6	32	12	4	2	9	8	5	15	15
1959	2	3	22	7	3	1	4	5	1	4	14
1960	2	3	54	5	3	1	3	4	2	5	19
1961	1	1	94	4	1	--	--	8	2	54	16
1962	2	2	99	3	3	--	--	4	2	127	23
1963	3	2	192	6	5	2	2	4	3	91	24
1964	5	3	133	4	6	2	8	4	7	155	20
1965	6	3	133	6	8	5	10	2	9	149	24
1966	7	3	173	9	13	8	27	5	13	131	23
1967	8	3	203	14	13	7	26	9	9	142	26
1968	8	3	158	16	15	9	32	8	12	110	25
1969	8	2	137	17	16	11	19	7	12	67	28

Table 82.--Netherlands: Imports of agricultural products from China, value, 1953-69

Calendar year	Total	Rice	Fruits and veg.	Oilseeds	Wool	Bristles	Other crude an. mat.	Other
	SITC							
	--	042	05	22	262	EX 291.92	EX 291	--
----- Million dollars -----								
1953	15.1	--	0.7	11.7	--	0.1	--	2.6
1954	6.3	--	0.4	3.8	0.1	0.2	--	1.8
1955	6.6	--	0.6	4.4	0.5	0.2	--	0.9
1956	...	...	...	...	...	...	...	...
1957	7.9	--	0.4	4.2	0.3	0.2	--	2.8
1958	12.0	0.9	0.6	5.9	0.1	0.2	0.1	4.2
1959	12.6	1.6	1.2	5.0	0.1	0.3	--	4.4
1960	11.8	1.2	1.3	3.8	--	0.9	--	4.6
1961	6.0	0.2	0.2	3.9	0.3	0.5	0.4	0.5
1962	4.9	0.8	0.2	2.2	0.4	0.3	0.5	0.5
1963	5.9	0.1	0.2	1.5	1.4	0.8	0.4	1.5
1964	8.6	0.6	0.3	2.7	2.1	0.7	0.5	1.7
1965	15.4	--	0.6	7.1	3.0	0.7	1.0	3.0
1966	19.4	1.0	1.4	6.3	2.8	0.6	1.7	5.6
1967	18.6	0.4	3.8	6.0	2.2	0.8	1.5	3.9
1968	16.3	0.9	2.5	4.0	1.0	0.8	2.8	3.7
1969	14.7	0.4	2.8	2.0	1.8	1.2	4.2	2.3

Table 83.--Netherlands: Imports of agricultural products from China, quantity, 1953-69

Calendar year	Rice	Pulses	Peanuts	Soybeans
	SITC			
	042	054.2	221.1	221.4
----- 1,000 metric tons -----				
1953	--	...	...	36
1954	1	5	4	13
1955	--	6	2	16
1956	--	1	11	31
1957	--	2	15	6
1958	8	6	12	32
1959	17	13	7	39
1960	16	15	3	28
1961	3	2	--	36
1962	7	--	--	22
1963	1	--	--	13
1964	5	--	7	5
1965	--	--	12	26
1966	7	5	17	--
1967	2	23	20	--
1968	4	6	13	--
1969	2	12	4	--

Table 84 .--Poland: Imports of agricultural products from China, estimated value and quantity, 1954-69

Calendar year	Total	Meat fresh	Wheat	Rice	Tea	Tobacco	Peanuts	Soybeans	Cotton	Vegetable oil	Other
----- Million dollars -----											
1954	2.3	--	--	0.5	--	--	--	--	1.2	--	0.6
1955	18.7	--	--	0.7	--	1.2	6.5	3.8	1.5	0.6	4.4
1956	17.0	--	2.2	0.7	--	1.5	6.5	3.2	0.8	0.9	1.2
1957	15.4	--	--	0.5	--	0.6	6.9	4.8	1.1	0.9	0.6
1958	12.0	--	--	0.8	--	0.9	0.5	3.2	0.8	1.4	4.4
1959	25.4	--	3.1	7.3	--	0.9	2.3	6.0	1.2	2.6	2.0
1960	25.5	3.4	3.2	6.8	2.2	0.7	--	4.3	1.2	2.5	1.2
1961	7.9	1.7	--	3.5	1.2	--	--	1.2	--	0.2	0.1
1962	1.5	--	--	--	1.5	--	--	--	--	--	--
1963	2.0	--	--	--	2.0	--	--	--	--	--	--
1964	12.2	10.5	--	--	1.3	0.3	--	--	--	--	0.1
1965	14.3	12.2	--	--	1.2	--	--	--	--	0.4	0.5
1966	18.0	16.3	--	--	1.1	--	--	--	--	0.6	--
1967	20.6	18.6	--	--	1.6	--	--	--	--	0.4	--
1968	28.4	26.7	--	--	1.3	--	--	--	--	0.4	--
1969	14.8	12.5	--	--	2.3	--	--	--	--	--	--
----- 1,000 metric tons -----											
1954	n.a.	--	--	4	--	--	--	--	3.9	--	n.a.
1955	"	--	--	6	--	2.5	30	33	3.0	2	"
1956	"	--	32	6	--	3.0	31	28	1.5	3	"
1957	"	--	--	4	--	1.2	33	40	2.2	3	"
1958	"	--	--	7	--	2.0	2	27	1.5	5	"
1959	"	--	42	63	--	2.0	11	48	2.8	11	"
1960	"	6	44	61	2.3	1.5	--	38	2.2	10	"
1961	"	3	--	29	1.3	--	--	10	--	1	"
1962	"	--	--	--	1.7	--	--	--	--	--	"
1963	"	--	--	--	2.0	--	--	--	--	--	"
1964	"	13	--	--	1.3	0.5	--	--	--	--	"
1965	"	18	--	--	1.2	--	--	--	--	1	"
1966	"	20	--	--	1.1	--	--	--	--	2	"
1967	"	24	--	--	1.6	--	--	--	--	1	"
1968	"	35	--	--	1.3	--	--	--	--	1	"
1969	"	17	--	--	2.4	--	--	--	--	--	"



Table 85.--United Kingdom: Imports of agricultural

Calendar	Total	Meat	Eggs	Rice	Fruit and vegetables	Tea	Hides and skins	Soybeans	Other oilseeds
	SITC								
	--	01	025	042	05	074.1	21	221.4	EX 221
----- Million dollars -----									
1953	28.3	--	11.2	--	--	0.2	--	--	0.8
1954	21.1	--	7.7	--	--	--	0.2	--	0.3
1955	26.1	--	3.7	--	0.3	1.3	1.3	--	0.1
1956	22.7	--	2.0	--	0.2	0.8	1.3	0.2	--
1957	25.5	--	7.1	--	0.4	2.3	1.0	--	0.3
1958	34.1	0.7	11.2	0.3	1.8	1.3	0.9	2.6	0.3
1959	37.2	0.7	2.2	0.2	1.0	2.4	0.6	6.0	0.1
1960	37.5	0.8	2.0	0.8	1.4	3.2	0.8	8.9	--
1961	27.4	0.4	1.9	0.8	0.6	2.9	1.2	3.5	--
1962	21.8	0.8	0.8	0.1	0.3	1.3	1.0	1.5	--
1963	32.0	1.2	1.2	--	0.8	1.8	2.8	--	--
1964	42.7	1.2	0.4	0.2	0.9	1.3	2.7	4.9	0.2
1965	53.8	2.5	0.6	2.1	1.8	2.9	3.2	1.4	1.6
1966	57.4	3.7	1.4	2.6	4.1	1.7	3.1	0.6	3.6
1967	49.4	4.2	1.5	2.7	3.4	1.3	1.6	3.7	4.0
1968	46.6	4.2	1.7	3.6	3.7	2.4	3.2	1.4	3.1
1969	48.5	4.5	1.9	2.4	3.0	1.3	2.7	0.6	2.1

Table 86.--United Kingdom: Imports of agricultural

Calendar year	Meat, fresh	Meat prep.	Eggs not in shell	Rice	Pulses	Tea
	SITC					
	011	012 013	025.02	042	054.2	074.1
----- 1,000 metric tons -----						
1955	--	--	4	--	30	2
1956	--	--	4	--	3	1
1957	--	--	8	--	--	3
1958	--	--	18	3	9	4
1959	--	--	2	2	--	3
1960	1	--	2	9	9	5
1961	--	--	1	1	2	4
1962	1	--	1	1	--	2
1963	2	--	1	--	--	3
1964	1	1	--	1	--	2
1965	2	3	1	16	--	3
1966	4	2	3	19	--	2
1967	5	2	--	19	--	1
1968	7	1	5	24	--	3
1969	7	2	5	17	--	2

products from China, value, 1953-69

Silk	Cashmere	Other fine animal hair	Wool 1/	Bristles	Other crude animal material	Oils and Fats	Other	Calendar year
SITC								
261	EX 262.3	EX 262.3	EX 262	EX 291.92	EX 291	4	--	
----- Million dollars -----								
0.1	2/	2/	4.7	1.3	--	--	10.0	1953
0.6	2/	2/	3.5	3.3	0.2	0.2	5.6	1954
0.5	2/	2/	7.2	5.2	0.5	2.9	3.1	1955
0.8	2/	2/	10.0	2.5	--	3.1	1.8	1956
0.6	2/	2/	8.5	3.0	0.1	2.1	0.1	1957
0.6	2/	2/	3.2	4.8	0.1	2.2	2.4	1958
0.6	3.5	0.8	4.2	9.8	0.3	0.9	3.9	1959
0.5	1.6	1.0	1.2	14.4	0.3	2.9	2.3	1960
0.6	4.4	0.3	1.0	7.8	0.4	1.1	1.2	1961
0.5	3.5	0.5	2.3	6.4	0.3	1.0	1.5	1962
0.9	5.0	1.7	5.9	9.2	0.5	1.0	0.0	1963
1.1	5.3	0.9	10.7	9.7	0.4	1.6	1.2	1964
2.0	6.1	2.3	9.2	9.6	0.4	5.8	2.3	1965
2.9	2.8	1.1	9.6	8.6	0.8	9.6	1.2	1966
2.4	--	4.6	3.4	--	8.6	4.1	3.9	1967
2.3	--	3.7	4.0	--	7.7	1.6	3.8	1968
2.8	6.5	1.8	4.1	--	9.1	1.3	4.4	1969

1/ Includes sheep and lamb's wool, greasy and degreased (262.1-262.2) as well as shoddy, carded or combed, tops, and waste (262.6-262.9). For the years 1953-58 includes, if any, cashmere and other fine animal hair (262.3) and coarse animal hair (262.5).

2/ For the years 1953-58, cashmere and other fine animal hair (262.3), if any, are included with wool.

products from China, quantity, 1955-69

Peanuts	Soybeans	Castor-beans	Silk	Wool 1/	Cottonseed oil	Tung oil	Calendar year
SITC							
221.1	221.4	221.7	261	262.1 262.2	421.3	EX 422.9	
----- 1,000 metric tons -----							
--	--	--	--	1	--	6	1955
--	--	--	0.1	--	--	6	1956
1	--	--	--	--	--	5	1957
--	28	--	0.1	1	1	6	1958
--	67	--	0.1	1	--	2	1959
--	99	--	0.1	1	6	4	1960
--	38	--	0.1	1	--	2	1961
--	16	--	0.1	2	--	1	1962
--	--	--	0.1	7	--	1	1963
1	48	--	0.1	12	--	3	1964
5	12	--	0.2	11	14	4	1965
8	5	9	0.3	12	32	3	1966
7	33	14	0.2	5	8	1	1967
2	12	14	0.2	8	6	--	1968
4	5	1	0.2	7	--	1	1969

1/ includes sheep and lamb's wool, greasy or degreased (262.1-262.2).

Table 87.--U S S.R. : Imports of agricultural

Calendar year	Total	Meat, frozen	Meat, prep.	Eggs, in shell	Eggs, dried	Wheat	Rice	Oranges and tangerines	Apples	Fruit, canned	Vegetables	Tea
----- Million dollars -----												
1950	96	1/ 4.8	1/	...	...	...	1.1	—	—	—	—	4.6
1951	127	1/ 4.7	1/	...	...	...	0.5	—	0.1	—	—	10.7
1952	225	1/ 15.5	1/	...	...	...	10.1	2.4	2.0	—	—	19.2
1953	236	1/ 30.6	1/	...	...	...	20.9	2.8	1.7	—	—	12.0
1954	289	1/ 66.4	1/	...	...	...	30.8	5.8	3.8	—	—	8.5
1955	394	61.3	6.2	3.3	—	2.6	41.1	7.3	4.3	1.9	0.1	10.6
1956	443	51.4	10.0	2.7	—	3.8	64.2	7.5	5.8	3.6	1.1	12.5
1957	370	19.5	12.2	4.0	2.9	0.1	25.4	8.6	9.3	4.8	2.1	12.2
1958	407	37.6	26.3	6.5	7.2	—	60.7	9.3	10.9	6.6	3.3	15.6
1959	463	24.9	16.4	1.2	3.6	3.7	82.5	7.5	10.5	6.0	2.9	19.4
1960	268	10.6	6.1	0.5	0.4	3.7	55.1	4.3	9.1	1.5	1.3	13.0
1961	49	0.5	1.1	—	—	—	0.3	1.7	3.5	2.0	1.1	2.7
1962	61	—	—	—	—	—	20.4	2.2	6.3	2.1	1.4	2.8
1963	32	—	—	—	2.6	—	—	2.7	6.5	2.9	1.8	3.0
1964	65	13.3	8.5	—	2.6	—	—	3.6	8.8	3.7	1.4	2.9
1965	88	37.8	16.2	1.5	5.7	—	—	2.4	8.9	0.4	0.3	2.7
1966	64	30.0	16.8	2.4	—	—	—	2.4	7.3	—	—	—
1967	16	0.6	—	1.2	0.6	—	—	2.7	8.1	—	—	—
1968	5	—	—	—	—	—	—	2.5	2.3	—	—	—
1969	5	—	—	1.2	0.9	—	—	2.4	—	—	—	—
1970	6	—	—	—	—	—	—	1.6	—	—	—	—
----- 1,000 metric tons -----												
1950	n.a.	1/ 10	1/	...	...	...	9	—	—	1	22	4
1951	"	1/ 10	1/	...	...	...	4	—	3	1	32	12
1952	"	1/ 33	1/	...	...	...	72	12	12	2	34	21
1953	"	1/ 64	1/	...	...	...	149	14	10	1	30	12
1954	"	1/ 136	1/	...	...	...	220	30	25	3	32	8
1955	"	132	7	6	—	29	293	38	28	4	2	10
1956	"	110	11	5	—	39	458	40	37	9	8	13
1957	"	41	13	7	2	2	181	43	58	11	14	12
1958	"	88	32	15	4	—	453	57	77	18	22	13
1959	"	60	21	3	2	48	658	48	73	16	25	17
1960	"	28	7	1	—	48	416	27	63	4	7	10
1961	"	2	1	—	—	—	2	11	24	5	5	3
1962	"	—	—	—	—	—	150	14	44	5	7	3
1963	"	—	—	—	2	—	—	17	45	8	8	3
1964	"	31	11	—	2	—	—	23	61	4	7	3
1965	"	87	22	3	3	—	—	15	60	—	2	2
1966	"	69	22	5	—	—	—	15	51	—	—	—
1967	"	1	—	3	—	—	—	17	55	—	—	—
1968	"	—	—	—	—	—	—	16	15	—	—	—
1969	"	—	—	2	—	—	—	15	—	—	—	—
1970	"	—	—	—	—	—	—	10	—	—	—	—

products from China, value and quantity, 1950-70

Tobacco	Hides and skins	Peanuts	Soybeans	Rubber	Silk	Wool	Cotton	Bristles	Tung oil	Vegetable oil edible	Other	Calendar year
----- Million dollars -----												
—	0.7	5.7	48.5	...	4.8	11.9	—	7.8	2.6	...	3.5	1950
—	1.2	10.8	52.9	...	10.9	16.2	—	13.4	2.6	...	3.0	1951
22.0	2.0	36.8	53.2	...	12.9	18.5	—	23.6	3.7	...	3.1	1952
24.5	1.9	33.0	55.5	...	19.0	24.4	—	5.2	2.9	...	1.6	1953
29.4	1.7	29.0	55.5	...	19.2	23.0	—	10.4	3.9	...	1.6	1954
21.9	5.2	39.1	47.4	0.7	21.5	23.6	—	13.1	4.3	29.6	48.9	1955
29.9	11.1	35.8	53.5	12.9	23.5	21.4	—	10.1	7.0	25.7	49.5	1956
40.5	9.7	18.9	55.4	37.2	21.3	23.9	—	5.0	6.9	13.2	36.9	1957
31.4	7.1	7.8	50.1	22.0	16.3	21.2	—	7.7	7.9	21.1	30.4	1958
29.7	4.8	7.1	67.4	18.1	17.3	21.9	52.3	11.5	8.8	21.0	13.0	1959
12.4	2.1	4.2	35.6	7.1	12.0	19.3	33.9	6.4	4.3	9.3	15.8	1960
3.7	1.0	—	1.0	—	4.4	10.4	8.0	1.4	1.5	—	4.7	1961
—	1.1	—	—	—	—	7.9	5.9	0.4	2.7	—	7.8	1962
—	0.7	—	—	—	0.5	8.1	—	0.9	0.7	—	1.6	1963
—	5.4	—	—	—	0.5	6.2	—	1.2	0.7	—	5.7	1964
—	1.1	—	—	—	0.5	3.1	—	2.2	0.5	—	3.6	1965
—	—	0.2	—	—	—	—	—	3.3	0.5	—	1.1	1966
—	—	0.2	—	—	—	—	—	1.3	1.2	—	0.1	1967
—	—	—	—	—	—	—	—	—	—	—	0.2	1968
—	—	—	—	—	—	—	—	—	—	—	0.5	1969
—	—	—	—	—	—	—	—	—	0.8	—	3.6	1970
----- 1,000 metric tons -----												
—	...	30	500	...	1	9	—	0.8	5	...	n.e.	1950
—	...	55	536	...	1	9	—	1.2	5	...	"	1951
26	...	187	549	...	2	10	—	2.8	7	...	"	1952
30	...	168	568	...	2	16	—	0.6	6	...	"	1953
35	...	148	542	...	2	14	—	1.7	11	...	"	1954
24	...	198	484	1	2	14	—	2.1	12	92	"	1955
33	...	182	548	17	2	13	—	1.7	15	81	"	1956
44	...	98	579	48	2	14	—	0.7	15	40	"	1957
40	...	38	478	36	2	12	—	1.0	19	68	"	1958
36	...	33	639	24	2	13	72	1.5	22	64	"	1959
15	...	20	351	8	1	11	47	0.8	11	29	"	1960
5	...	—	10	—	—	6	11	0.1	4	—	"	1961
—	...	—	—	—	—	4	8	0.1	7	—	"	1962
—	...	—	—	—	—	4	—	0.1	2	—	"	1963
—	...	—	—	—	—	4	—	0.2	2	—	"	1964
—	...	—	—	—	—	2	—	0.3	1	—	"	1965
—	...	—	—	—	—	—	—	0.4	1	—	"	1966
—	...	—	—	—	—	—	—	0.2	3	—	"	1967
—	...	—	—	—	—	—	—	—	—	—	"	1968
—	...	—	—	—	—	—	—	—	—	—	"	1969
—	...	—	—	—	—	—	—	—	2	—	"	1970

1/ Meat preparations included with frozen meat.

END

DATE

FILMED

7-24-79

NTIS