



AgEcon SEARCH
RESEARCH IN AGRICULTURAL & APPLIED ECONOMICS

The World's Largest Open Access Agricultural & Applied Economics Digital Library

This document is discoverable and free to researchers across the globe due to the work of AgEcon Search.

Help ensure our sustainability.

Give to AgEcon Search

AgEcon Search
<http://ageconsearch.umn.edu>
aesearch@umn.edu

*Papers downloaded from **AgEcon Search** may be used for non-commercial purposes and personal study only. No other use, including posting to another Internet site, is permitted without permission from the copyright owner (not AgEcon Search), or as allowed under the provisions of Fair Use, U.S. Copyright Act, Title 17 U.S.C.*

Agricultural Outlook Forum
U.S. Department of Agriculture

Presented: February 23-24, 2012

Educating to Build a Better Future:
Impact of Climate Change
On Agriculture

Barbara Allen-Diaz

translating research

Transformational Education

civic engagement

FOOD SAFETY

Leadership Development

agriculture

ENERGY

farming

FAMILY WELL-BEING

water conservation

TRUSTED RESOURCE

ENVIRONMENT

HORTICULTURE

Disaster preparedness

Small Business

All 50 states
District of Columbia
U.S. territories

Rural

URBAN

national network

ranching

HEALTHY PEOPLE

4-H youth development

community economic vitality

Local Access

part of Land-grant University System

ONLINE

train the trainer

seminars

ask-an-expert

learning tools

webinars

Educating to Build a Better Future

Impact of Climate Change on Agriculture

Barbara Allen-Diaz
Vice President

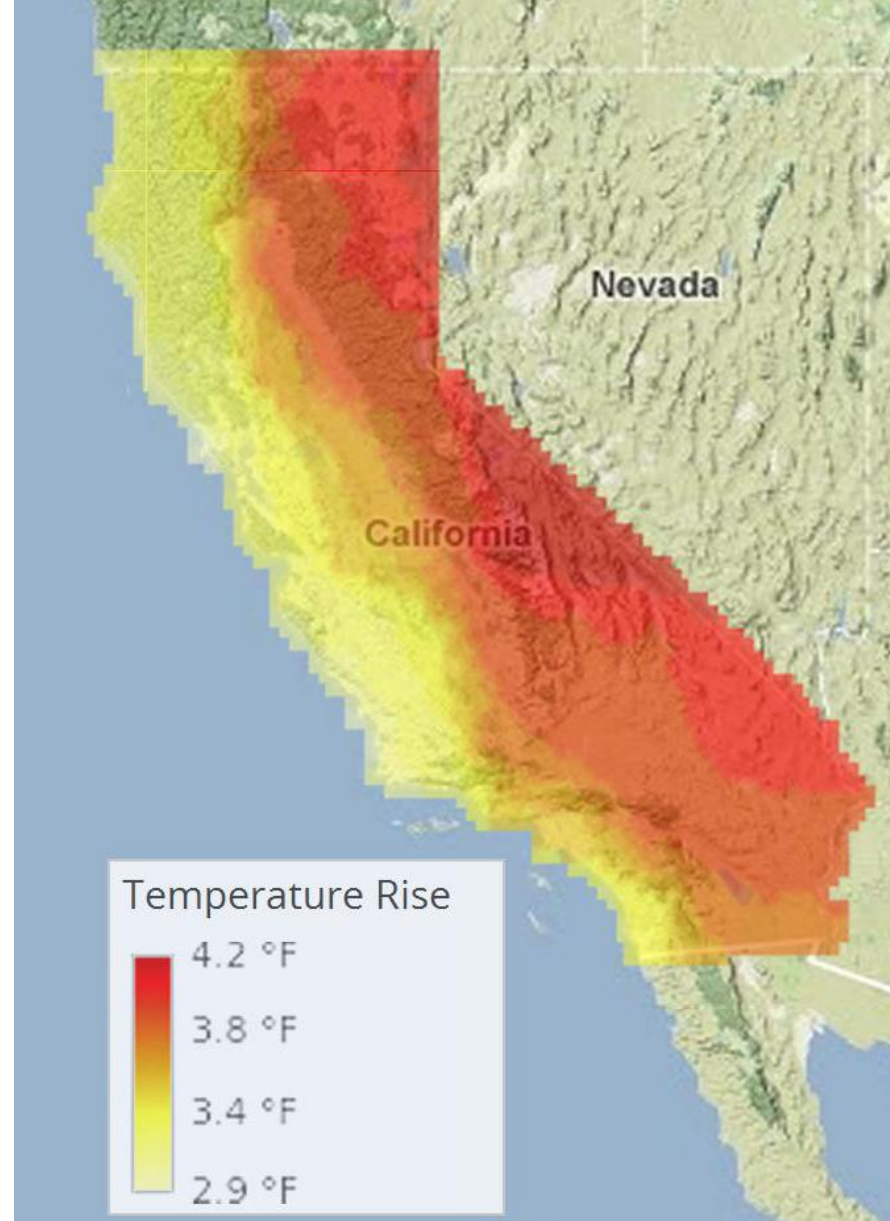
University of California
Agriculture and Natural Resources

**COOPERATIVE
EXTENSION**

HEALTHY FOOD SYSTEMS • HEALTHY ENVIRONMENTS • HEALTHY COMMUNITIES • HEALTHY CALIFORNIANS

Impact of Climate Change on Agriculture

- Global climate change
- Agriculture and climate change
- Examples of Cooperative Extension's impact



University of California
Agriculture and Natural Resources

HEALTHY FOOD SYSTEMS • HEALTHY ENVIRONMENTS • HEALTHY COMMUNITIES • HEALTHY CALIFORNIANS

**COOPERATIVE
EXTENSION**

Who is involved?

- Governments
- Non-profits
- Universities
- Corporations



INTERNATIONAL FOOD POLICY RESEARCH INSTITUTE
sustainable solutions for ending hunger and poverty
 Supported by the CGIAR



COP17/CMP7
UNITED NATIONS
 CLIMATE CHANGE CONFERENCE 2011
 DURBAN, SOUTH AFRICA

IPCC
 INTERGOVERNMENTAL
 PANEL ON
 CLIMATE CHANGE



University of California
 Agriculture and Natural Resources

**COOPERATIVE
 EXTENSION**

Chemistry

Biology

Animal Science

GLOBAL

Physics

REGIONAL

Climate Science

Community Development

Plant Science

Modeling

Mathematics

LOCAL

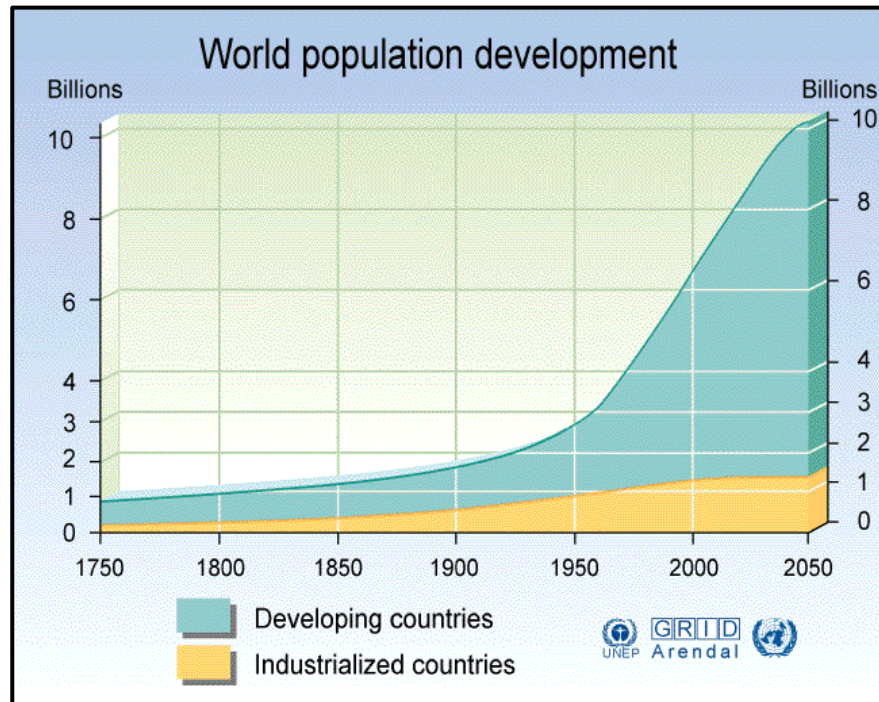
Social Science

Human Health Sciences

Primary Drivers in Climate Change

- increased CO₂
- increased temperature
- increase in extreme events
- altered seasonality of precipitation (more/less winter or summer)
- increased fire frequency and severity
- melting of mountain glaciers/ice caps

The Global Picture



By 2060:

- Population growth will increase by 50%.
- Global food demands are expected to double.

University of California
Agriculture and Natural Resources

COOPERATIVE
EXTENSION

Global Challenges

- Provide safe and abundant food and fiber
- Address poverty and malnutrition
- Ensure energy access and security
- Adapt to climate change and other environmental challenges
- Ensure growth and jobs

Local Challenge

- Sustainable Agriculture in three dimensions
 - Ecological
 - Economic
 - Social and Political

Sustainability

Sound Ecology

Water & air quality protected
Viable wetlands & habitat
Healthy biodiversity

Viable Economy

Investment \$\$ available
Positive affect on local economy
Adequate infrastructure

Natural Resources

- ◆ Soils ◆ Climate ◆ Minerals
- ◆ Topography ◆ Precipitation
- ◆ Flora & Fauna
- ◆ Etc.

Feasible Implementation

Public supports proposal
Adequate resources available
Laws & regulations work or can be changed

Landowner Objectives

Land use patterns and values
Landowner contributions
What is their vision?

Social Equity

All segments of society share wealth
Public has opportunity for input
Rewards fairly distributed

Sustainability

- Agriculture must think globally
 - Consider growing food demand
 - Consider issues related to climate change
 - Recognize the need for a variety of food production systems
- Revisit our models and organizations to assure they are properly aligned with emerging priorities

Agriculture and Climate Change

- Extremely vulnerable
- Increasing temperatures reduce yields, increase weeds and pests
- PPT: increase the likelihood of short-run crop failures and long-run production declines
- threatening global food security

Agriculture and Environment

- invasive species
- increased nitrogen (region specific, surface and groundwater issues)
- fragmentation of ecosystems
- water



Cooperative Extension's role

- Apply discovery generated by local research to improve the lives of the population.
- *Translational research*
- Four examples
 - National and local

Translational Research

- Process of applying discoveries generated through research
- Research aimed at enhancing best management practices in the community
- Principles of partnerships, sharing of data, cooperation, informing others

Four Examples of CE efforts

1. Cal-adapt.com
2. eXtension.org
3. Lake Tahoe
4. Yolo County, CA

cal-adapt

EXPLORING CALIFORNIA'S
CLIMATE CHANGE RESEARCH

The screenshot displays the cal-adapt website interface with a grid of six main sections:

- View Local Profiles:** "QUICKLY EXPLORE CLIMATE PROJECTIONS FOR YOUR LOCAL AREA". Includes a line graph showing temperature trends from 1950 to 2100. The y-axis ranges from 62 F to 74 F. The x-axis shows years 1950, 2000, 2050, and 2100. Multiple colored lines represent different projections.
- Explore Climate Tools:** "INTERACTIVE MAPS & CHARTS". Features four icons: a sun, a snowflake, a water drop, and waves.
- About Cal-Adapt:** Includes a "NEW" badge for "EXTREME HEAT TOOL" with a corresponding map icon, and a "FAQS" section with a question mark icon.
- Access Data:** "ACCESS THE RAW DATA USED IN CAL-ADAPT". Features a download icon and text: "Select and download data in a variety of tabular and GIS formats".
- Resources:** "INFORMATION, ARTICLES & LINKS". Features an icon of books and text: "Find out more about how climate change in California is relevant to your community".
- Community:** "PARTICIPATE IN COMMUNITY BASED TOOLS AND ACTIVITIES". Features an icon of three people and text: "Find out how you can share your thoughts and findings, communicate with experts, and help to collect new data". Includes social media sharing options: "Tweet 0" and "Like 376".

Site developed by:
Geospatial Innovation Facility



Cal-Adapt is a product of the Public
Interest Energy Research (PIER) program

Copyright © 2011 California Energy Commission, All Rights Reserved
State of California, Edmund G. Brown Jr., Governor

University of California
Agriculture and Natural Resources

COOPERATIVE
EXTENSION

HEALTHY FOOD SYSTEMS • HEALTHY ENVIRONMENTS • HEALTHY COMMUNITIES • HEALTHY CALIFORNIANS

Resources

INFORMATION, ARTICLES & LINKS



Find out more about how climate change in California is relevant to your community

Cal-Adapt Resources

Cal-Adapt provides a view of how climate change might affect California. Here you can work with visualization tools, access data, browse journal articles, and participate in community sharing to contribute your own knowledge.

CALIFORNIA CLIMATE STORIES

Rising Temperatures in Agriculture



ANNOUNCEMENTS

Welcome to Cal-Adapt!

2011 June 06

After months of development, this web resource is now open to public use. Within this site you will find a variety of tools and resources that enable you to visualize climate change data throughout California.

[more »](#)

UNDERSTANDING CLIMATE CHANGE

- What is climate change?
- What causes climate change?
- The Golden State at Risk
- What are the different emission scenarios?
- What are the different global climate models?
- What is California doing about climate change?

ABOUT CAL-ADAPT

Cal-Adapt is an online resource designed to provide a view of how climate change might affect California at the local level. Here you can work with visualization tools, access data, and participate in community sharing to contribute your own knowledge.

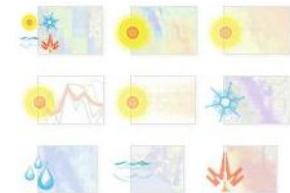
[more »](#)

FEATURED PUBLICATIONS



2009 California Climate Adaptation Strategy

CLIMATE TOOLS



Community

Tools and information to encourage community participation and feedback. Community based features include:

FEEDBACK

Please let us know your thoughts on the site!

ASK A CLIMATE EXPERT (COMING SOON)

Cal-Adapt's "Ask an expert" feature will enable users to submit questions and/or vote for previously submitted questions to be answered by a climate expert. Periodically, we will get an expert to provide their answer to the top requested question related to California climate change.

HISTORIC PHOTO HUNT (COMING SOON)

Cal-Adapt's "Historic Photo Hunt" will give users an opportunity to help scientists monitor changes in the landscape over time.

Community

PARTICIPATE IN COMMUNITY BASED TOOLS AND ACTIVITIES



Find out how you can share your thoughts and findings, communicate with experts, and help to collect new data



0



377

University of California
Agriculture and Natural Resources

HEALTHY FOOD SYSTEMS • HEALTHY ENVIRONMENTS • HEALTHY COMMUNITIES • HEALTHY CALIFORNIANS

COOPERATIVE
EXTENSION

Example 2



Climate, Forests and Woodlands Community of Practice

“Objective, research-based and credible information you can use every day to improve your life.”



University of California
Agriculture and Natural Resources

HEALTHY FOOD SYSTEMS • HEALTHY ENVIRONMENTS • HEALTHY COMMUNITIES • HEALTHY CALIFORNIANS

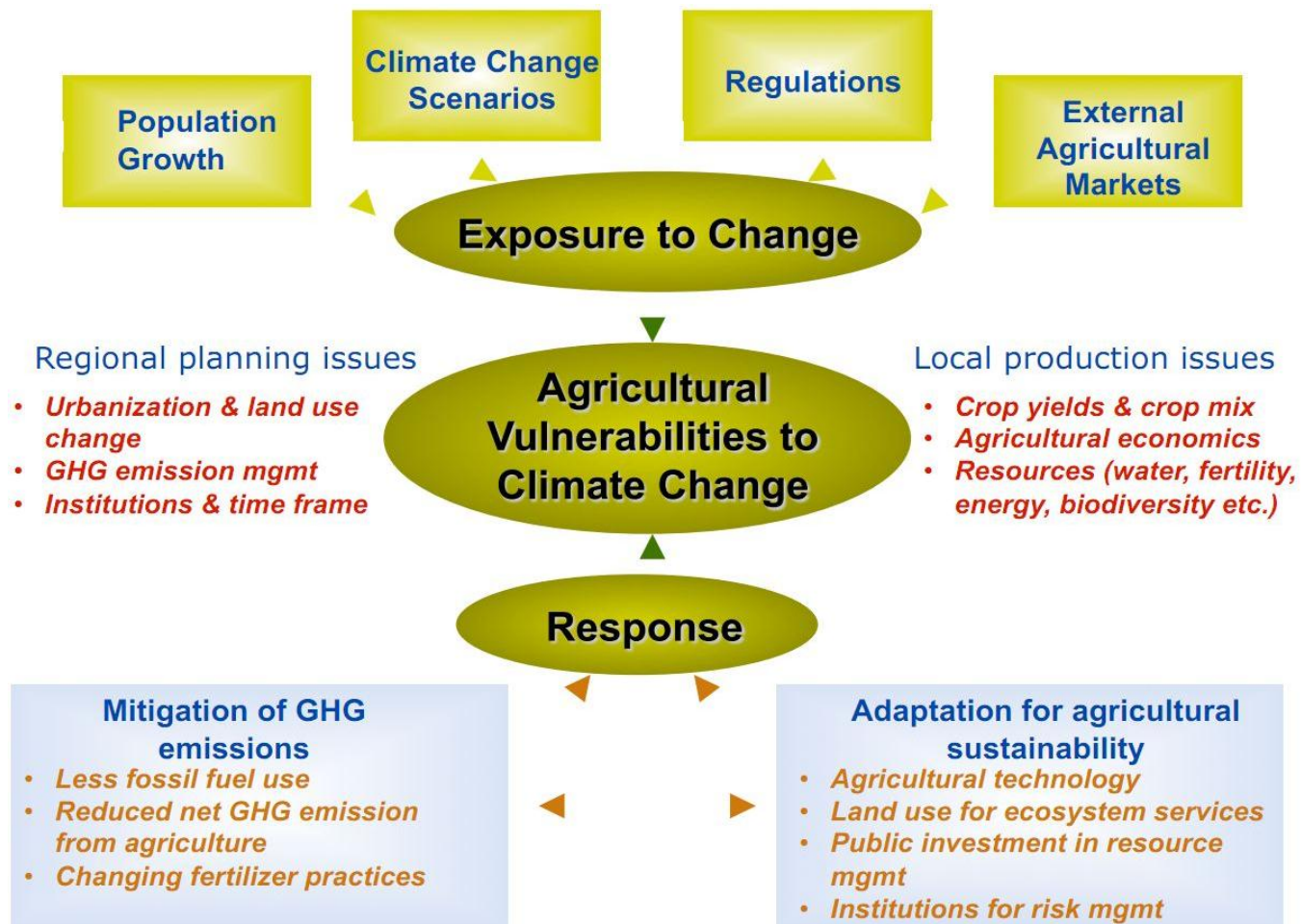
COOPERATIVE
EXTENSION

Extending current science about climate change to management Agencies in the Lake Tahoe Basin – Susie Kocher – UC Cooperative Extension

- About the Tahoe Basin
- What we know about Climate Change
- Developing Partnerships to address Climate Change
- Local Adaptation to Climate Change



Example 4



Work by Drs. Louise Jackson and Tom Tomich, UCCE and UC Davis

Local evaluation and options for mitigation and adaptation: Yolo County, CA

Typical local CE event – 2/1/12

Sharing Strategies and Opportunities for Agriculture in an Era of Climate Change

Time: 8:30am – 2:00pm Light breakfast and lunch provided. Free Parking.

Where: Buehler Alumni and Visitor Center, UC Davis

Hear from local farmers and ranchers about innovative strategies for reducing climate impact while increasing economic viability.

Learn about the results of a UC Davis collaborative study on agriculture and climate change in Yolo County and give your feedback.

University of California
Agriculture and Natural Resources

HEALTHY FOOD SYSTEMS • HEALTHY ENVIRONMENTS • HEALTHY COMMUNITIES • HEALTHY CALIFORNIANS

—COOPERATIVE—
EXTENSION

Climate Change Certainties for Agriculture and us all

- Meeting local and global food demand will require diverse production systems
- Diverse production systems will be key to biological adaptation to climate change, new pests and diseases, and crop adaptations
- The challenges for public policy, resource management and science agencies will grow exponentially and intersect as never before
- Innovation will be key to meeting these challenges.

Summary

Impact of Climate Change on Agriculture

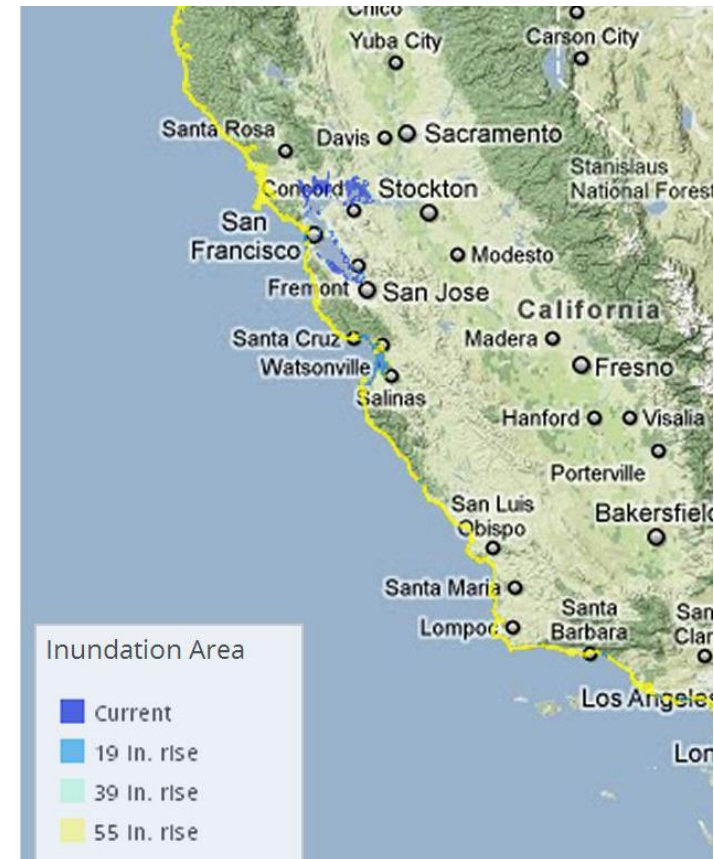
- Global climate change will affect us all
- Agriculture's ability to adapt and be even more productive is critical
- Cooperative Extension is an important part of the solution

University of California
Agriculture and Natural Resources

HEALTHY FOOD SYSTEMS • HEALTHY ENVIRONMENTS • HEALTHY COMMUNITIES • HEALTHY CALIFORNIANS

Sea level rise

Areas vulnerable to a 100-year flood event



**COOPERATIVE
EXTENSION**