



AgEcon SEARCH
RESEARCH IN AGRICULTURAL & APPLIED ECONOMICS

The World's Largest Open Access Agricultural & Applied Economics Digital Library

This document is discoverable and free to researchers across the globe due to the work of AgEcon Search.

Help ensure our sustainability.

Give to AgEcon Search

AgEcon Search

<http://ageconsearch.umn.edu>

aesearch@umn.edu

*Papers downloaded from **AgEcon Search** may be used for non-commercial purposes and personal study only. No other use, including posting to another Internet site, is permitted without permission from the copyright owner (not AgEcon Search), or as allowed under the provisions of Fair Use, U.S. Copyright Act, Title 17 U.S.C.*

No endorsement of AgEcon Search or its fundraising activities by the author(s) of the following work or their employer(s) is intended or implied.

The Impact of Diet Costs on Diet Quality

Silke Thiele

Department of Food Economics and Consumption Studies, University of Kiel, Germany

sthiele@food-econ.uni-kiel.de

Poster prepared for presentation at the Agricultural & Applied Economics Association's 2012 AAEA Annual Meeting, Seattle, Washington, August 12-14, 2012

Copyright 2012 by Silke Thiele. All rights reserved. Readers may make verbatim copies of this document for non-commercial purposes by any means, provided that this copyright notice appears on all such copies.

Impact of Diet Costs on Diet Quality

Introduction

- Establishment of measures improving population's diet quality requires a profound knowledge of factors that are associated with observed food consumption behavior
- According to studies that found an important impact of costs on food choices¹, this study analyses the association between diet quality and diet costs
- The addressed question is: Does a healthier diet cost more than an unhealthy one? If so, by how much?
- These questions could have important implications in the context of social payments for poor households. In Germany, households get a fixed sum of money which covers the minimum subsistence level. When a healthier diet has to be consumed due to illnesses (e.g. allergies, diabetes, AIDS) the amount of money is possibly too low
- Previous studies that have analyzed the costs of a healthy diet came to different results²

Objectives

- Develop a new diet quality index based on the guidelines of the German Nutrition Society (DGE)
- Analyze the association between diet costs and diet quality
- Determine whether and to what extent a healthier diet costs more than an unhealthy one

Data

- German Consumer Panel Survey 2010 considering 190,961 purchases of 300 households
- This scanner data set records quantities and prices for food items at a very detailed level (EAN Code)
- Further data information: (1) socio-demographic household characteristics and (2) several attitude variables of the person who is responsible for the food purchases
- The Consumer Panel Survey is merged with the German Table of Nutrient Content which has information on 130 nutrients

Methods

Estimation approach:

- Consumer's implicit price of diet quality within the framework of a hedonic analysis is measured³
- Based on Lancaster's theory of consumer demand for product characteristics a diet quality index (DQ) is introduced in a food expenditure equation

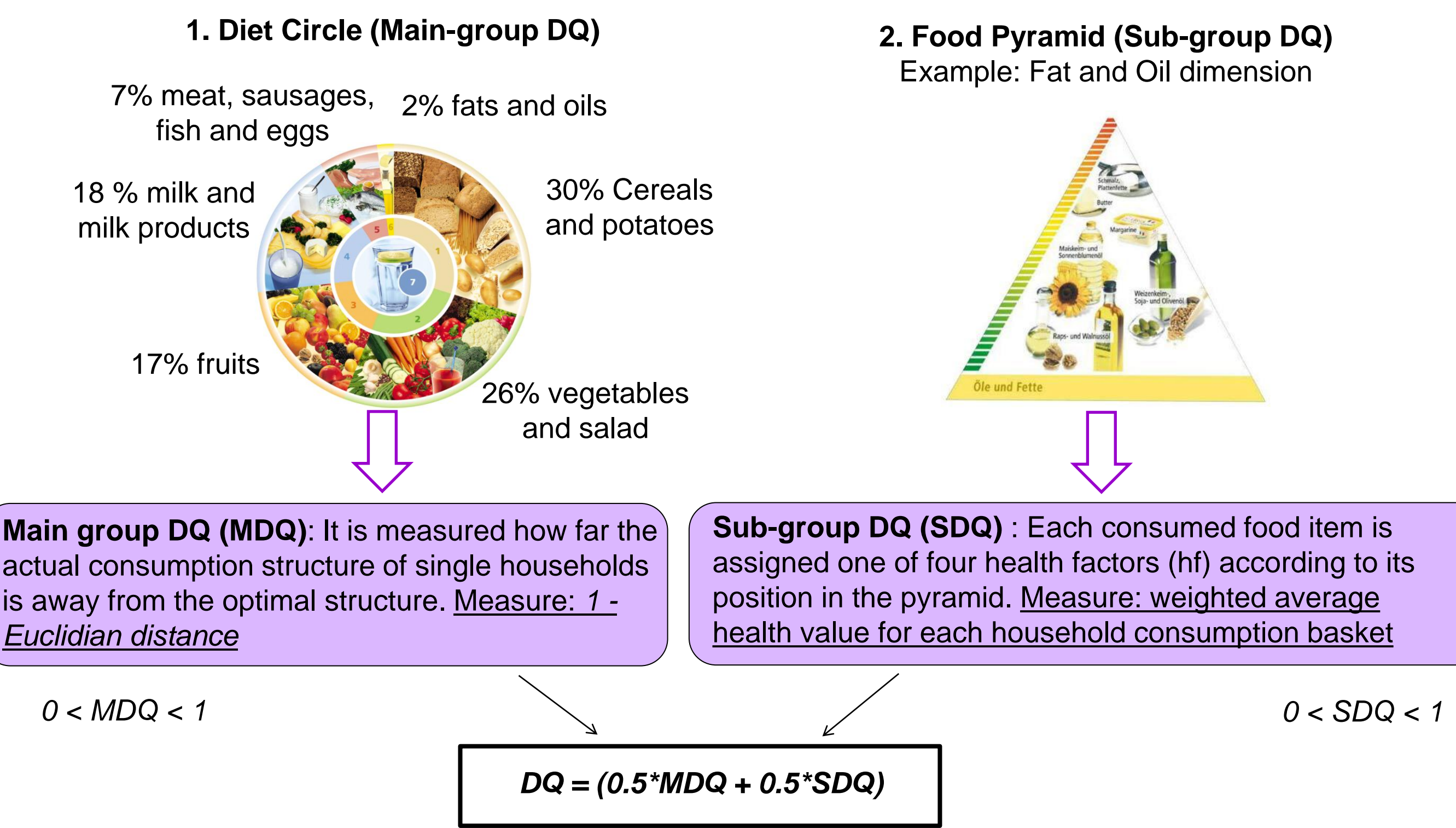
$$EXP = \beta_0 + \beta_1 DQ + \beta_2 X + \beta_3 Y + \mu$$

$EXP =$ Household food expenditure $Y =$ Attitude variables
 $DQ =$ Diet Quality $\mu =$ Residual term
 $X =$ Household characteristics

- To check whether DQ is an endogenous variable a Hausman-Test is conducted.
- The hypotheses that DQ is exogenous can't be rejected, therefore DQ is included as an explanatory variable

Develop a new diet quality (DQ) index:

- The German Nutrition Society (DGE) recommends:
- The diet should be composed of six main food groups. The shares are given in terms of weight (**Diet Circle**)
 - Within the six main food groups healthier items should be consumed more, unhealthy less (**Food Pyramid**)



Results and Conclusion

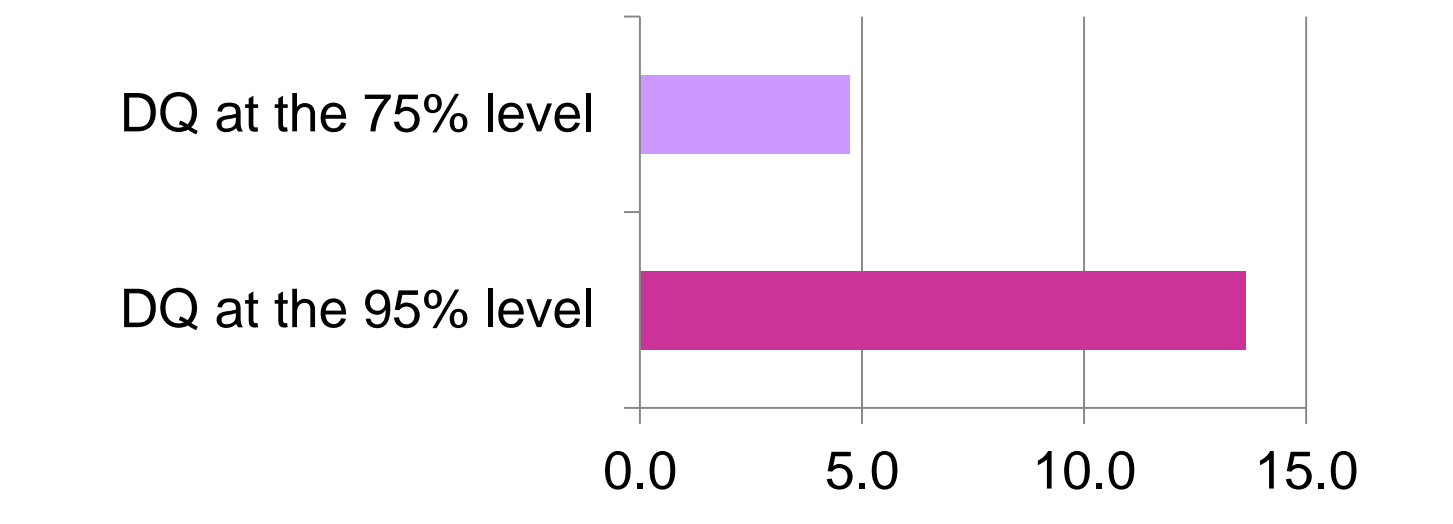
Results of the hedonic regression on food expenditures

Explanatory Variables	Coeff.	t-value
Constant	-103.94	-2.932
Diet Quality	129.26	3.247
Household income per month (€)	0.012	3.268
Number of people in the household	29.98	8.181
Age (head of the household)	1.44	4.880
Price awareness	-7.45	-0.860
Quality awareness	19.49	2.189
R ² (adj.)	0.26	

- The positive and significant coefficient for diet quality imply that consumers are willing to pay to consume a healthier diet according to German food guidelines

Predicted food expenditures with higher adherence to food guidelines

- Additional food expenditures (in %) compared to a reference household (variable values from sample means)



- The additional costs of moving from a medium diet to a diet at the 75% (95%)-percentil is 4,7% (13,6%)
- If this result can be confirmed in further studies, recipients of social payments who have to consume a healthier diet due to illnesses should get additional money of at least 4,7%
- Given that the current social payment food rate for poor individuals in Germany is 128 € per month this amounts to additional support of 6 € per month

References: **1)** Drewnowski, A.; Darmon, N. (2005): Food choices and diet costs: an economic analysis. *The Journal of Nutrition*, 135: 900-904. **2)** Carlson, A.; Lino, M.; Fungwe, T.V.; Guenther, P.M. (2009): Eating a Healthy Diet: Is Cost a Major Factor? USDA Center for Nutrition Policy and Promotion. **3)** Ranney, C.K., McNamara, P.E. (2002): Do Healthier Diets Cost More? Paper presented at the AAEA Meetings in Long Beach, California, July 28-31, 2002. Working Paper 2022-22, Cornell University, Department of Agricultural Economics and Management, Ithaca, New York.