



**AgEcon** SEARCH  
RESEARCH IN AGRICULTURAL & APPLIED ECONOMICS

*The World's Largest Open Access Agricultural & Applied Economics Digital Library*

**This document is discoverable and free to researchers across the globe due to the work of AgEcon Search.**

**Help ensure our sustainability.**

Give to AgEcon Search

AgEcon Search  
<http://ageconsearch.umn.edu>  
[aesearch@umn.edu](mailto:aesearch@umn.edu)

*Papers downloaded from **AgEcon Search** may be used for non-commercial purposes and personal study only. No other use, including posting to another Internet site, is permitted without permission from the copyright owner (not AgEcon Search), or as allowed under the provisions of Fair Use, U.S. Copyright Act, Title 17 U.S.C.*

# **The Cost Efficiency of Dairy Farms in Japan**

**Yasutaka YAMAMOTO\***

## **Abstract**

The purpose of this paper is to analyze the cost efficiency of dairy farms in Japan. The overall cost efficiency measure is decomposed into two components (Fare and Grosskopf, 1985): (1) the weak cost efficiency measure; (2) the scale efficiency measure. Linear programming techniques are used in calculating the efficiency measures for a sample of dairy farms in Japan during the year 1989. The study demonstrates an overall cost inefficiency, which is not due to scale inefficiency, but rather to weak cost inefficiency.

Key words: cost efficiency, dairy, Japan

Contributed Paper for the 44<sup>th</sup> Annual Conference of the Australian Agricultural and Resource Economics Society, Sydney, The University of Sydney, 23-25 January 2000

---

\* Associate Professor, Graduate School of Agriculture, Hokkaido University, Sapporo 060-0809, Japan.

## **1. INTRODUCTION**

Japan's dairy industry faces rapid changes which involve an increase in the pace of technological innovations, alterations in the marketing of milk, and the presence of international organizations, such as the WTO, which influence trade negotiations.

There is a marked difference between dairy farming in Hokkaido, Japan's northernmost island, and dairy farming in the rest of Japan. Dairy farmers in Hokkaido produce more than 40 percent of Japan's milk (43 percent in 1998).

Improvements in resource use and productivity are becoming increasingly important determinants of competitiveness in the more integrated and dynamic market place. The measuring possible improvements in efficiency can provide useful insights into profitability, or even survival, at the farm level.

The purpose of this paper is to estimate the cost efficiency of a cross-section of Hokkaido dairy farms and to investigate the relationship between overall cost efficiency and farm characteristics. The empirical analysis of cost efficiency is based on the deterministic non-parametric approach of Fare and Grosskopf (1985).

The next section contains the theoretical framework of the model, followed by discussion of the data. The empirical results are then presented, including a correlation analysis of the factors related to variations in cost efficiencies among the sample farms. The final section summarizes the paper and ends with some concluding remarks.

## **2. METHODOLOGY**

Linear programming models developed by Fare and Grosskopf (1985) are used to calculate cost efficiency measures for each farm.

From the duality theory, we know that the properties of technology may be analyzed from the primal (input/output) side, or deduced from the dual or cost side. This dual

method affords researchers a wider range of choice in terms of data requirements when calculating efficiencies. This approach can be used to calculate overall efficiency when information on inputs and input prices is not known, as long as all farms face the same input prices. In this paper, this dual approach is used to calculate the measures of cost efficiency.

Let us start with the most restrictive cost frontier that exhibits constant returns to scale (CRS). For the cost approach, suppose that a farm's output is given for each farm. Moreover, assume that the total cost of producing the output for each farm is given and that each farm faces the same input price vector.

The measure of overall cost efficiency defined in this study can be considered as the ratio of the potential or efficient cost using CRS technology to actual cost. The measure of cost efficiency (K) can be calculated by solving the following LP problem (Fare and Grosskopf, 1985):

$$K = \min \quad (1)$$

subject to

$$z M \leq u_i$$

$$z C \leq C_i$$

$$z \leq R_+^k$$

where

$$u_i = (u_i) : \text{ith farm's vector of output } (1 \times 1)$$

$$M = (u_1 \cdot \cdot \cdot u_i \cdot \cdot \cdot u_k)^t : \text{the matrix of output } (k \times 1)$$

$$C = (c_1 \cdot \cdot \cdot c_i \cdot \cdot \cdot c_k)^t : \text{the matrix of total cost } (k \times 1)$$

$z = (z_1 \cdot \cdot \cdot \cdot \cdot \cdot \cdot \cdot z_k) : \text{the intensity vector } (1 \times k)$

$t$  : the notation of transpose vector (matrix)

In Figure 1, four observations are labeled A, B and C. The cost frontier obtained from (1) is given by the ray OH and the c-axis. Only observation B is efficient relative to this frontier. The measure of overall cost efficiency ( $K$ ) applied to observation P is given by the ratio OR'/OP'.

Next, we construct the less restrictive cost frontier that satisfies variable returns to scale (VRS). The measure of weak cost efficiency is equal to the ratio of the potential or efficient cost under the VRS technology to actual cost. The measure of weak cost efficiency ( $W$ ) can be calculated by solving the following LP problem (Fare and Grosskopf, 1985):

$$W = \min \quad (2)$$

subject to

$$z^t M \leq u_i$$

$$z^t C \leq C_i$$

$$z_i = 1$$

$$z^t R = 1$$

Afriat (1972) has shown that restricting the intensity vector to a sum of one permits decreasing, constant and increasing returns to scale.

In Figure 1, the cost frontier obtained from (2) is given by the  $F'A'B'C'D'$  and the c-axis above F. Here, observations A, B' and C' are all efficient. The measure of weak cost efficiency ( $W$ ) applied to observation P' is given by the ratio  $OQ'c/OP'c$ .

Finally, a measure of scale efficiency ( $S$ ) can now be defined as follows,

$$S = W / K \quad (3)$$

In terms of Figure 2, the scale efficiency of observation P' is thus  $OR'c/OQ'c$ . Clearly,  $0 < S \leq 1$ .  $S = 1$  is called scale efficient if and only if the farm belongs to the CRS frontier given by the constraints in (1).

In sum, the measure of overall cost efficiency applied to observation P' is decomposed into as follows,

$$K = W \times S \quad (4)$$

$$(OR'c/OP'c) \quad (OQ'c/OP'c) \quad (OR'c/OQ'c)$$

Therefore, the overall cost efficiency is the product of weak cost efficiency and scale efficiency. Inefficiency is evident for an individual farm if the measure of each of the three efficiencies ( $K$ ,  $W$  or  $S$ ) are less than one.

To calculate the efficiency measures from the sample of farms used in this study, individual linear programming was run for each of the measures described in (1) and (2). Since 239 farms were examined, the results of the analysis are based on 478 linear programming solutions. The data and results of the analysis are presented in the following section.

### 3. DATA

The data used to estimate the various efficiency measures were obtained from *Survey on Production Costs of Milk*, published by the Ministry of Agriculture, Forestry and Fisheries (MAF) of Japan. The major purpose of this data has been to compute the average production costs for use in the formula for pricing raw milk for dairy products. To achieve this objective, data on physical costs and farm characteristics were collected for each farm in the random sample.

The 1989 database is used in the study. In this year, 239 farms were sampled and were analyzed in this study. The milk output for these farms was measured in kg of 3.5% fat content milk.

Eleven input costs (reproduction (insemination); commercial feed; forage crops, grazing and mowing; bedding; light, heat, water, material and fuel; veterinary and medicine; charges and fees; dairy cattle (depreciation); building; agricultural implements; labor) are used. Their average values are listed Table 1, along with those for management characteristics and farmgate prices of compound feed and milk.

### 4. EMPIRICAL RESULTS

#### 4.1 Cost Efficiency Measures

The cost efficiency for each of the 239 Hokkaido dairy farms in the sample were determined by solving the series of two linear programming problems. The linear programming models derive the efficiency of each farm by comparing its observed costs and produced output relative to all other farms.

Table 2 includes the means and coefficients of variations of the three measures of cost efficiency of the sample as a whole, as well as by milk output size. Looking first at the sample as a whole, the overall cost efficiency (K) of farms in our sample is, on

average, approximately 0.71. Recall that a value of unity represents cost efficient production; i.e. actual cost is equal to minimum potential cost (as defined by the best practice in the sample). Thus, for our sample, on average, the farm costs could have been 29% less had they all been operating with overall cost efficiency

The next question is; what is the major cause of this inefficiency? Recall that the product of weak cost efficiency and scale efficiency is overall cost efficiency. Turning to the component measures (W and S), the average level of weak cost efficiency is lower than the average level of scale efficiency (0.74 versus 0.96). Thus, the major loss in overall cost efficiency, on average, is due to weak cost efficiency (W). This general pattern is also confirmed by the milk output size classification.

Table 2 indicates the average level of overall cost efficiency (K) and weak cost efficiency (W) increase with milk output size. Table 2 also shows that the variability in overall cost efficiency (K) and weak cost efficiency (W) are inversely related to milk output size. A possible explanation for this result may be the existence of more homogeneous management practices and the use of technology on larger farms (Weersink, Turvey and Godah 1990, Grisley and Mascarenhas 1985).

#### **4.2 Correlation between Cost Efficiency and Farm Characteristics**

The final set of results concern the correlation between overall cost efficiency and farm characteristics. The Pearson Correlation Coefficient estimates between overall cost efficiency and farm characteristics are shown in Table 3. A positive (negative) sign on the correlation coefficient indicates that a change in that variable has a positive (negative) relationship with overall cost efficiency.

Generally, attention is often given to farm size in the agricultural policy debate. Table 3 suggests that there is a positive relationship between herd size and overall cost efficiency. This finding is statistically significant to a 1% level. Overall cost efficiency is found to increase with herd size, confirming previous results by milk output size classification (Table 2).



Management characteristics and farm technology are also related to overall cost efficiency. Milk production per cow, which is a function of the genetic technology of the cow and feed level and feed quality, has an expected positive relation with the correlation coefficient. Table 3 suggests that there is a positive relationship between milk production per cow and overall cost efficiency. This finding is statistically significant to a 1% level.

Table 3 suggests that there is no relationship between the milk fat percentage and overall cost efficiency. This finding contrasts with that of Weersink, Turvey and Godah (1990) belief that the percentage of milk butterfat variable was related to managerial ability and found that an increase in butterfat had the largest positive impact on overall technical efficiency for Ontario dairy farms.

The estimated correlation coefficient of the variable used with a proxy farming experience indicated that there was a negative but weak relationship between age of a farm manager and overall cost efficiency. This finding is not statistically significant to a 1% level. A possible explanation for the estimated result in this study is that beginning farmers are more knowledgeable about recent technological advances, such as computer information technology, than their older counterparts (Weersink, Turvey and Godah 1990).

Table 3 suggests that there is a negative relationship between the share of farm produced feed and overall cost efficiency. This finding is statistically significant to a 1% level. This finding also contrasts with that of Weersink, Turvey and Godah (1990) who expected that feed could be grown on the farm more cheaply and have higher quality than purchased feed. They found that an increase in the proportion of total feed purchased lowered overall technical efficiency for Ontario dairy farms.

Farm income per cow and milk production per working hour were selected as proxies of profitability and labor productivity in milk production, respectively.

Correlation coefficients between these variables and overall cost efficiencies are statistically significant to a 1% level with the expected positive signs, implying that high profitability and high labor productivity are strongly related to greater efficiency.

## **5. CONCLUSION**

The purpose of this paper is to provide a decomposition of farm-specific measures of overall cost efficiency and to investigate the correlation between overall cost efficiency and farm characteristics. The overall cost efficiency measure is decomposed into two components (Fare and Grosskopf, 1985) : (1) the weak cost efficiency measure;(2) the scale efficiency measure. One advantage of the cost side approach is the ease of acquiring data. Usually, it is difficult for researchers to obtain information on farm-specific data on inputs and input prices. Our efficiency measures do not require farm-specific data on inputs and input prices; they only require farm-specific data on output and total costs, which are usually easy to obtain. Linear programming techniques were used in calculating these efficiency measures for the sample of Hokkaido dairy farms during the year 1989.

The average farm operates at 71 percent efficiency, indicating that substantial improvements in cost efficiency are possible. The major lack of overall cost efficiency is not due to improper scale of operation (scale inefficiency) but due to improper cost allocation (weak cost inefficiency).

The correlation results indicate that higher overall cost efficiency levels are associated with larger herd size, higher milk production per cow, higher farm income per cow, higher milk production per working hour and lower share of farm produced feed.

One disadvantage of the non-parametric approach is its sensitivity to outliers. Incorporation of stochastic elements into the model would relax the assumption that

the entire deviation of a farm from the frontier is due to inefficiency.

Overall cost efficiency also can be decomposed into technical efficiency and allocative efficiency. The role of technical efficiency and allocative efficiency has been omitted from this analysis but can be examined readily with non-parametric methodology, once farm-specific data on inputs and input prices are available.

### ACKNOWLEDGMENTS

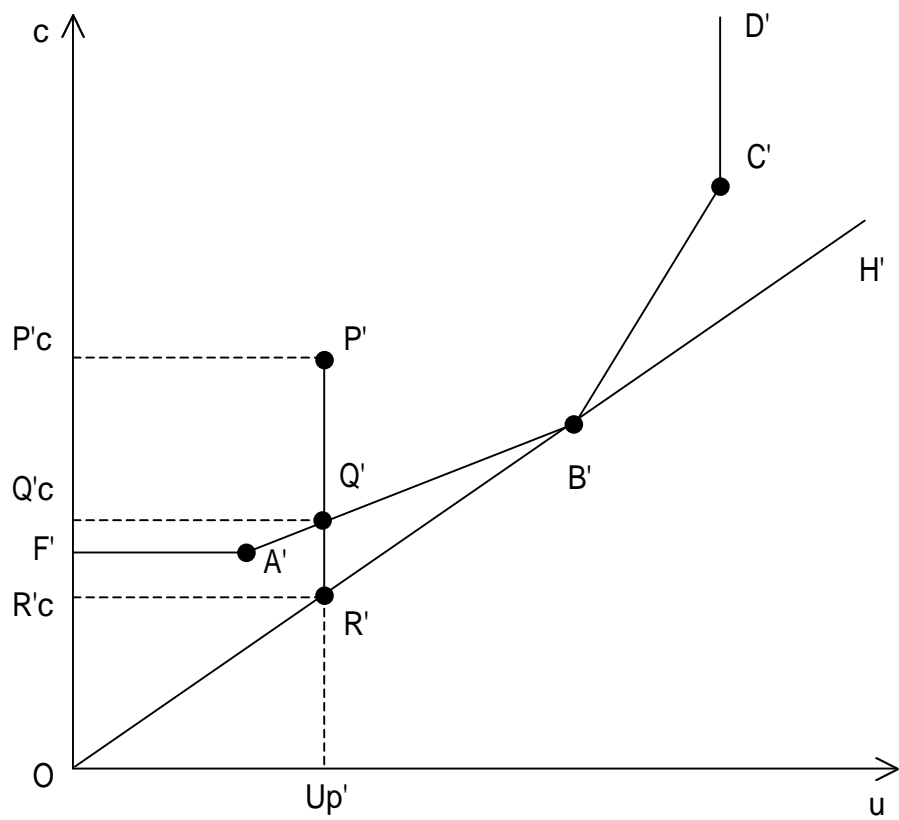
This study was partially supported by the Ministry of Education, Science, Sports and Culture of Japan, Grant-in-Aid. The author expresses appreciation to K. HASHIBA for computational assistance.

### REFERENCES

- Afriat, S. N. 1972, 'Efficiency Estimation of Production Functions', *International Economic Review*, vol.13, pp. 568-598.
- Battese, G. E. and T. J. Coelli 1988, 'Prediction of Firm-Level Technical Efficiencies with a Generalised Frontier Production Function and Panel Data', *Journal of Econometrics*, vol.38, pp.387-399.
- Battese, G. E. 1992, 'Frontier Production Functions and Technical Efficiency: A Survey of Empirical Applications in Agricultural Economics', *Agricultural Economics*, vol. 7, pp.185-208.
- Bauer, P. W. 1990, 'Recent Developments in the Econometric Estimation of Frontiers', *Journal of Econometrics*, vol.46, pp.39-56.
- Bravo-Ureta, B. E. and L. Rieger 1990, 'Alternative Production Frontier Methodologies and Dairy Farm Efficiency', *Journal of Agricultural Economics*, vol.41, pp.215-226.
- Bravo-Ureta, B. E. 1986, 'Technical Efficiency Measures for Dairy Farms Based on a Probabilistic Frontier Function Model', *Canadian Journal of Agricultural Economics*, vol.34, pp.399-415.

- Cho, S. J. 1977, 'Nogyo-seisan niokeru keieisha-nouryoku to keiei-kibo (Estimation of Milk Production Function from Combination of Time-Series and Cross-Section Data)', *Nogyo Keizai Kenkyu (Journal of Rural Economics)*, vol.49, pp.29-37.
- Coelli, T. J. 1995, 'Recent Development in Frontier Modelling and Efficiency Measurment', *Australian Journal of Agricultural Economics*, vol.39, pp.219-245.
- Fare, R., S. Grosskopf and C. A. K. Lovell 1994, *Production Frontiers*, Cambridge University Press, Cambridge.
- Fare, R., S. Grosskopf and C. A. K. Lovell 1985, *The Measurement of Efficiency of Production*, Kluwer-Nijhoff Publishing, Boston.
- Fare, R. and S. Grosskopf 1985, 'A Nonparametric Cost Approach to Scale Efficiency', *Scandinavian Journal of Economics*, vol.87, pp594-604.
- Farrell, M. J. 1957, 'The Measurement of Productive Efficiency', *Journal of the Royal Statistical Society, Series A, General*, vol.120, pp.253-281.
- Forsund, F. R. and L. Hjalmarsson 1979, 'Generalised Farrell Measures of Efficiency: An Application to Milk Processing in Swedish Daily Plants', *Economic Journal*, vol. 89, pp.294-315.
- Grisley, W. and J. Mascarenhas 1985, 'Operating Cost Efficiency on Pennsylvania Dairy Farms', *Northeastern Journal of Agricultural and Resource Economics*, vol.14, pp.88-95.
- Jaforullah, M. and J. Whiteman 1999, 'Scale Efficiency in the New Zealand Dairy Industry: A Non-parametric Approach', *Australian Journal of Agricultural and Resource Economics*, vol.43, pp.523-541.
- Kim, J. H. 1985, 'Kobetu-keiei no gijyutu-kouritu to sono gensen: Hokkaido-toubu-chiiki-rakuno-keiei wo taisho tosite (The Measurement and Sources of Technical Efficiency: An Empirical Analysis of Individual Dairy Farms in East Hokkaido)', *Noringyo Mondai Kenkyu (Journal of Rural Problem)*, vol.21, pp.20-27.
- Kumbhakar, S. C., B. Biswas and D. Bailey 1989, 'A Study of Economic Efficiency of Utah Dairy Farms :A System Approach', *Review of Economics and Statistics*, vol. 71, pp.595-604.
- Neff, D. L., P. Garcia and C. H. Nelson 1993, 'Technical Efficiency: A Comparison of Production Frontier Methods', *Journal of Agricultural Economics*, vol.44, pp.479-489.
- Seiford, L. M. and R. M. Thrall 1990, 'Recent Developments in DEA: The Mathematical Programming Approach to Frontier Analysis', *Journal of*

- Econometrics*, vol.46, pp.7-38.
- Tauer, L. W. and K. P. Belbase 1987, 'Technical Efficiency of New York Dairy Farms', *Northeastern Journal of Agricultural and Resource Economics*, vol.16, pp.10-16.
- Tauer, L. W. 1998, 'Productivity of New York Dairy Farms Measured by Nonparametric Malmquist Indices', *Journal of Agricultural Economics*, vol.49, pp.234-249.
- Weersink, A., C. G. Turvey and A. Godah 1990, 'Decomposition Measures of Technical Efficiency for Ontario Dairy Farms', *Canadian Journal of Agricultural Economics*, vol.38, pp.439-456.



**Figure 1** Cost frontiers and efficiencies

**Table 1** Summary statistics of Hokkaido dairy farms, 1989

---

) Production costs of milk (per farm) <sup>1</sup>	
(Raw milk per 100kg production cost, converted to a milk fat content of 3.5%; Unit=Yen/100kg)	
Reproduction (insemination)	126
Commercial feed	1596
Forage crops, grazing and mowing	2153
Bedding	85
Light, heat, water, material and fuel	148
Veterinary and medicine	166
Charges and fees	69
Dairy cattle (Depreciation)	521
Building	157
Agricultural implements	314
Labor	1689
Total costs	7025
) Management Characteristics (per farm) <sup>1</sup>	
Number of milking cows (cow / farm)	33.6
Milk production per cow ( kg / cow )	7172
Working hours per milk production ( hour / 100kg )	1.71
Working hours per cow ( hours / cow )	122.6
Cultivated land for forage crops per cow ( a / cow )	72.3
Compound feed per cow ( kg / cow )	1705
) Prices (Farmgate price) <sup>2</sup>	
Compound feed Price ( Yen / kg )	49.6
Milk Price ( Yen / kg )	77.2

---

Note:

<sup>1</sup> Survey on production costs of milk , MAFF<sup>2</sup> Commodity price indices in rural areas , MAFF

**Table 2** Average cost efficiency of Hokkaido dairy farms  
by milk output class, 1989

Milk Output Class	Cost Efficiency Measures		
	K (overall)	W (weak)	S (scale)
Total	0.7053 (0.164)	0.7338 (0.143)	0.9591 (0.061)
0 - 99t	0.5325 (0.151)	0.6337 (0.167)	0.8446 (0.091)
100t - 199t	0.6877 (0.127)	0.7188 (0.126)	0.9567 (0.016)
200t - 299t	0.7222 (0.111)	0.7322 (0.110)	0.9862 (0.005)
300 - 400t	0.7760 (0.122)	0.7810 (0.121)	0.9936 (0.006)
400t	0.8006 (0.087)	0.8431 (0.105)	0.9522 (0.043)

Note: Figures in the parentheses are coefficients of variations



**Table 3** Pearson correlation coefficient between overall cost efficiency and farm characteristics of Hokkaido dairy farms, 1989

Variable name	Herd size ( cows )	Milk production per cow ( kg / cow )	Milk fat percentage ( % )	Age of Manger ( years old )	Farm produced feed ( share )	Farm income per cow ( Yen / cow )	Milk production per working hours ( kg / hour )
Personal correlation coefficient	0.5055*	0.6076*	0.0695	-0.1656	-0.3192*	0.8219*	0.7111*

Note: \* indicates significance of 0.01 probability level