



**AgEcon** SEARCH  
RESEARCH IN AGRICULTURAL & APPLIED ECONOMICS

*The World's Largest Open Access Agricultural & Applied Economics Digital Library*

**This document is discoverable and free to researchers across the globe due to the work of AgEcon Search.**

**Help ensure our sustainability.**

Give to AgEcon Search

AgEcon Search

<http://ageconsearch.umn.edu>

[aesearch@umn.edu](mailto:aesearch@umn.edu)

*Papers downloaded from **AgEcon Search** may be used for non-commercial purposes and personal study only. No other use, including posting to another Internet site, is permitted without permission from the copyright owner (not AgEcon Search), or as allowed under the provisions of Fair Use, U.S. Copyright Act, Title 17 U.S.C.*

California Department of Food and Agriculture

Agricultural Commissioners' Crop Reports

# Humboldt County

2002-2004

(Gross crop values  
only 2000-2001)

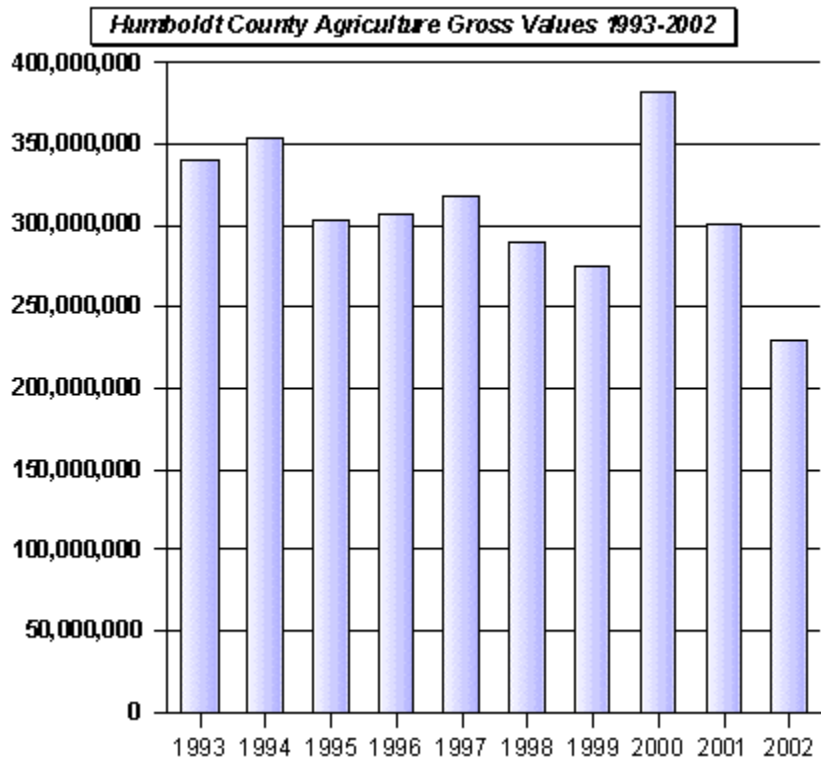
California County Agricultural Commissioners' Reports from the California Department of Food and Agriculture. This collection consists of annual crop and livestock data from each of the 58 California Counties. The collection covers 1915-1981; digitization of the rest of the collection is forthcoming.

This digitization project was funded by the Giannini Foundation of Agricultural Economics,  
<http://giannini.ucop.edu/>.

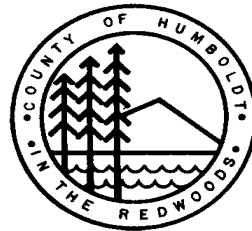
The work was completed by the staff of the Giannini Foundation Library, University of California, Berkeley, <http://are.berkeley.edu/library/>. **Please contact the Library to consult the originals.**

# HUMBOLDT COUNTY AGRICULTURAL GROSS VALUES FOR THE 1993-2002 DECADE

COMMODITY GROUP	1993	1994	1995	1996	1997	1998	1999	2000	2001	2002
Field Crops	7,411,000	7,379,000	7,054,000	7,039,600	8,223,780	8,177,800	8,200,500	7,972,300	8,998,750	8,977,650
Vegetable Crops	1,103,000	872,000	836,000	836,000	897,000	676,000	763,208	814,190	952,000	987,800
Fruit/Nut Crops	100,000	32,000	27,000	27,000	78,000	91,000	111,568	430,246	506,850	683,100
Nursery Stock	20,940,000	20,274,000	18,319,000	18,319,000	22,576,611	23,226,500	25,806,000	32,859,191	33,952,000	35,321,300
Livestock/ Poultry	15,289,000	12,278,000	11,226,000	10,830,537	12,443,189	14,548,760	19,936,281	21,020,200	22,347,800	22,579,750
Livestock/ Poultry Products										
Misc. Products/	27,065,000	30,681,000	30,589,000	34,709,000	36,067,700	39,055,200	38,283,000	33,636,400	42,972,000	31,734,400
Timber	268,010,000	281,780,000	235,529,000	235,529,000	238,011,000	203,494,572	181,487,821	285,232,953	190,571,200	134,963,400
<b>TOTAL</b>	<b>339,918,000</b>	<b>353,296,000</b>	<b>303,580,000</b>	<b>307,290,137</b>	<b>318,297,330</b>	<b>289,269,832</b>	<b>274,588,378</b>	<b>381,965,480</b>	<b>300,198,600</b>	<b>235,247,400</b>



**William (Bill) J. Lyons, Jr., Secretary**  
 California Department of Food and Agriculture  
 and  
**Humboldt County Board of Supervisors**



Jimmy Smith, Chairman, First District  
 Roger Rodoni, Second District  
 John Woolley, Third District  
 Bonnie Neely, Fourth District  
 Jill Geist, Fifth District

I am pleased to present Humboldt County’s Crop and Livestock Report in accordance with Sections 2272 and 2279 of the California Food and Agricultural Code. The following summary represents gross agricultural receipts for the year 2002 but does not reflect production costs or net income to the producers.

The County’s total gross value of agricultural production is \$235,251,400, which is a decrease of 21.66% from last year. Negative economic factors affected our livestock and dairy producer’s gross receipts, however, our greatest decrease is related to the value of harvested timber. Humboldt County, nevertheless, continues to be ranked first in the state for timber production. Most other commodity groups reported gains over last year. Our leading agricultural commodities are ranked as follows.

<b>Timber Production</b> .....	<b>\$</b>	<b>134,963,400</b>
<b>Nursery Stock (cut flowers, ornamental and forest tree production)</b> .....	<b>\$</b>	<b>35,321,300</b>
<b>Milk and Milk Products</b> .....		<b>\$</b>
<b>31,738,400</b>		
<b>Livestock (beef cattle &amp; calves, dairy cows, Sheep &amp; lambs, etc.)</b> .....	<b>\$</b>	<b>22,579,750</b>
<b>Field Crops (alfalfa, silage, range, etc.)</b> .....	<b>\$</b>	<b>8,977,650</b>
<b>Vegetable Crops</b> .....	<b>\$</b>	<b>987,800</b>
<b>Fruit &amp; Nut Crops</b> .....	<b>\$</b>	<b>683,100</b>

A word of personal thanks goes to my office staff, the County’s Agricultural Industry, participating agencies and to those individuals whose expertise and cooperation made this report possible.

Respectfully submitted,

John E. Falkenstrom  
 Agricultural Commissioner

JEF:lp

## FIELD CROPS

ITEM	YR.	HARVEST ACREAGE	PRODUCTION		UNIT	PER UNIT	VALUE TOTAL
			PER ACRE	TOTAL			
Hay (All)	2002	1500	4.00	6,000	Ton	95.00	570,000
	2001	1500	5.00	7,500	Ton	80.00	600,000
Silage (All)	2002	870	27.00	23,490	Ton	35.00	822,150
	2001	850	25.00	21,250	Ton	41.00	871,250
Pasture (All)	2002	19,900			Acre	145.00	2,885,500
	2001	19,500			Acre	145.00	2,827,500
Range	2002	470,000			Acre	10.00	4,700,000
	2001	470,000			Acre	10.00	4,700,000
Includes: Alfalfa, grass, clover, oats			<b>TOTAL:</b>				
						2002	8,977,650
						2001	8,998,750

## VEGETABLE CROPS

ITEM	YEAR	VALUE TOTAL
Vegetable Crops	2002	987,800
	2001	952,000

Includes: Corn, potatoes, pumpkins, tomatoes, squash, cabbage, beans, peppers, mushrooms, alfalfa sprouts, etc.

## FRUIT AND NUT CROPS

ITEM	YEAR	VALUE TOTAL
------	------	----------------

Miscellaneous Fruits and Nuts	2002	683,100
	2001	506,850

**Includes: apples, berries, cherries, chestnuts, figs, peaches, walnuts and grapes (wine/table)**

## NURSERY PRODUCTION

ITEM	YEAR	VALUE TOTAL
------	------	----------------

Cut flowers and decoratives bedding plants, ornamentals and forest nursery tree production	2002	35,321,300
	2001	33,952,000

# LIVESTOCK AND POULTRY PRODUCTS

ITEM	YEAR	PRODUCTION	UNIT	PER UNIT	VALUE TOTAL
Market Milk	2002	2,127,176	CWT	11.24	23,912,000
	2001	1,882,072		14.65	27,572,000
Manufacturing Milk	2002	622,923	CWT	12.33	7,682,000
	2001	961,612		15.90	15,290,000
Wool <sup>1</sup>	2002				144,400
	2001				110,000

<sup>1</sup> Includes: Wool, mohair, apiary products

TOTAL:	2002	31,738,400
	2001	42,972,000

# TIMBER

ITEM	YR.	PRODUCTION	UNIT	VALUE TOTAL
Timber <sup>1</sup> Production (All)	2002	374,042,745	Board Feet	130,556,400
	2001	358,225,000	Board Feet	190,571,200
Biomass & <sup>2</sup> Composting	2002	314,777	Ton	4,407,000

<sup>1</sup> Total includes softwood saw logs and miscellaneous products (Christmas trees, cull logs, fuel wood, pulp chips, hardwood logs, poles and pilings and miscellaneous small saw logs.

<sup>2</sup> Biomass and Composting data were compiled for the first time in 2002.

TOTAL:	2002	134,963,400
	2001	190,571,200

## LIVESTOCK & POULTRY

ITEM	YR.	NO. OF HEAD	TOT. LIVE WT.	UNIT	VALUE PER UNIT	TOTAL
<sup>1</sup> Beef Cattle and Calves	2002	29,000	159,500	CWT	80.50	12,839,750
	2001	28,000	154,000	CWT	82.80	12,751,200
Dairy Cows and Calves (all)	2002	21,800		HEAD		6,104,000
	2001	20,700		HEAD		5,796,000
Sheep and Lambs (all)	2002	6,000	6,000	CWT	61.00	366,000
	2001	5,800	5,210	CWT	67.30	350,600
<sup>2</sup> Misc.	2002					3,270,000
	2001					3,450,000
<b>TOTAL:</b>						
					<b>2002</b>	<b>22,579,750</b>
					<b>2001</b>	<b>22,347,800</b>

<sup>1</sup> Includes: Cows, calves, bulls, steers

<sup>2</sup> Includes: Aquaculture, chickens, turkey, swine, goats, emus, rabbits, etc.



## RECAPITULATION

ITEM	YEAR	
	<u>2002</u>	<u>2001</u>
Field Crops	\$ 8,977,650	\$ 8,998,750
Vegetable Crops	\$ 987,800	\$ 952,000
Fruit & Nut Crops	\$ 683,100	\$ 506,850
Nursery Production	\$ 35,321,300	\$ 33,952,000
Livestock & Poultry	\$ 22,579,750	\$ 22,347,800
Livestock & Poultry Products	\$ 31,738,400	\$ 42,972,000
Timber	\$ 134,963,400	\$ 190,571,200
	<b>GRAND TOTALS</b>	<b>\$300,300,600</b>
	<b>\$ 235,251,400</b>	

**PEST EXCLUSION** involves the systematic inspection of incoming shipments of plant materials and other high risk articles which enter Humboldt County at post offices and other terminals (truck lines, United Parcel, air freight, and commercial vessels, etc.). The primary objective is to prevent the introduction into Humboldt County of plant diseases, insects, nematodes, weeds or vertebrate pests which are or could prove to be detrimental to the local and state agricultural industry and natural environment.

### PEST EXCLUSION

No. Inspections	2002 9,180	METHOD OF CONVEYANCE	2002 No. Rejections 44*
WILD GARLIC (Allium vineale)		UPS/Postal Shipments	1
CERTIFICATION/LABELING VIOLATIONS		UPS/Postal Shipments/FedEx	36
VARIOUS PLANT PESTS		UPS/Postal Shipments/FedEx	2
NOXIOUS WEEDS		UPS/Postal Shipments	5

\* Shipments rejected and/or destroyed.

**PEST DETECTION** activities are focused on the search for pests which are not known to exist in the State or are of limited distribution throughout California. Detection trapping activities are conducted locally for insect pests such as Gypsy Moth and Japanese beetle. In addition, field surveys are continually being conducted throughout Humboldt County in order to locate and identify noxious weeds, plant diseases and vertebrate pests.

### PEST DETECTION

TYPE	INSECT TRAPS	NO. SERVICINGS 2002
Gypsy Moth	200	1,000
Glassy-Winged Sharpshooter	23 (inspections)	
Japanese Beetle	10	50



**HUMBOLDT COUNTY  
2002 SUSTAINABLE AGRICULTURE REPORT**

The implementation of agricultural practices and programs which promote the economic viability of agriculture while minimizing the impacts of these practices and programs on natural resources and the environment is sustainable agriculture. The scope of Humboldt County's biological control programs and organic farming practices are summarized below.

**COUNTY BIOLOGICAL CONTROL**

PEST	AGENT/MECHANISM	2002
<b>TANSY RAGWORT</b> (Senecio jacobaea)	Ragwort flea beetle (Longitarsus jacobaeae)	4 sites
<b>YELLOWSTAR THISTLE</b> (Centaurea solstitialis)	Seed-head weevil (Bangasternus orientalis)	14 sites
	Gall fly (Urophora sirunaseva)	5 sites
	Hairy weevil (Eustenopus villosus)	24 sites
<b>KLAMATH WEED</b> (Hypericum perforatum)	Leaf & root weevil (Chrysolina quadrigemina) (= C. gemellata)	Countywide
<b>BULL THISTLE</b> (Crisium vulgare)	Bull Thistle Gall Fly (Urophora stylata)	9 sites
<b>CANADA THISTLE</b> (Cilsium arvense)	Gall Fly (Urophora cardui)	2 sites
<b>ITALIAN THISTLE</b> (Carduus pycnocephalus)	Seed weevil (Rhinocyllus conicus)	1 site

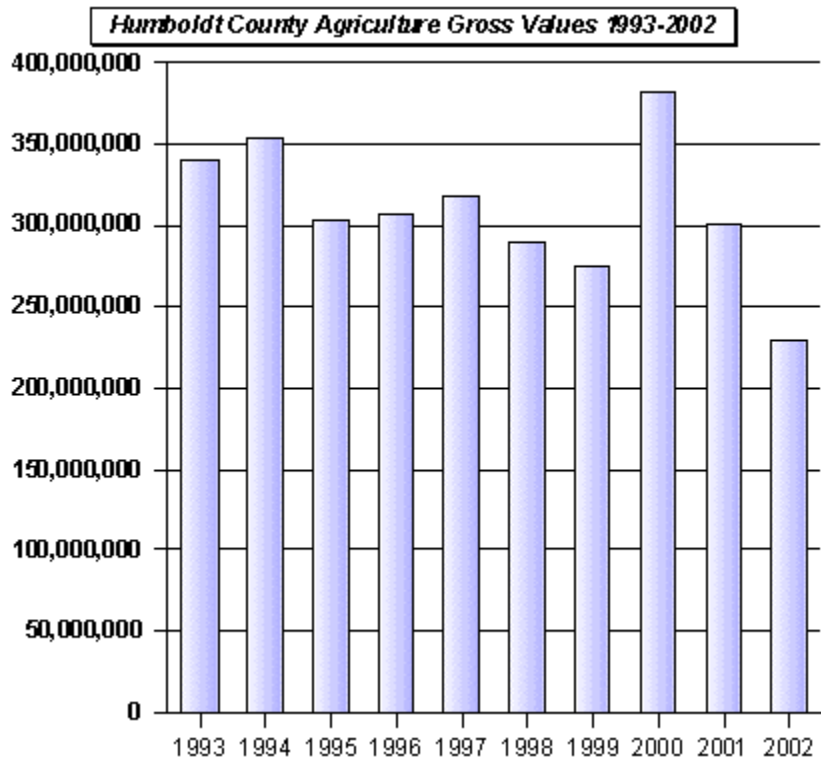
**ORGANIC AND CERTIFIED PRODUCERS**

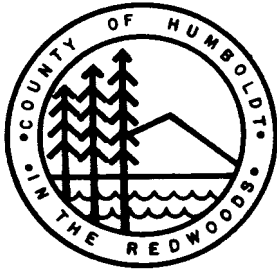
Item	Year	No. Registrants	Est. Acres
Organic Registrants	2002	63	
	2001	58	
Certified Producers	2002	131	291
	2001	138	296
Farmer's Markets	2002	8	
	2001	9	

CROPS: Beans, berries, cabbage, carrots, cherries, corn, cucumbers, garlic, herbs, flowers, lettuce, melons, mushrooms, onions, peaches, peas, potatoes, pumpkins, sprouts, squash, tomatoes, etc.

# HUMBOLDT COUNTY AGRICULTURAL GROSS VALUES FOR THE 1993-2002 DECADE

COMMODITY GROUP	1993	1994	1995	1996	1997	1998	1999	2000	2001	2002
Field Crops	7,411,000	7,379,000	7,054,000	7,039,600	8,223,780	8,177,800	8,200,500	7,972,300	8,998,750	8,977,650
Vegetable Crops	1,103,000	872,000	836,000	836,000	897,000	676,000	763,208	814,190	952,000	987,800
Fruit/Nut Crops	100,000	32,000	27,000	27,000	78,000	91,000	111,568	430,246	506,850	683,100
Nursery Stock	20,940,000	20,274,000	18,319,000	18,319,000	22,576,611	23,226,500	25,806,000	32,859,191	33,952,000	35,321,300
Livestock/ Poultry	15,289,000	12,278,000	11,226,000	10,830,537	12,443,189	14,548,760	19,936,281	21,020,200	22,347,800	22,579,750
Livestock/ Poultry Products										
Misc. Products/	27,065,000	30,681,000	30,589,000	34,709,000	36,067,700	39,055,200	38,283,000	33,636,400	42,972,000	31,734,400
Timber	268,010,000	281,780,000	235,529,000	235,529,000	238,011,000	203,494,572	181,487,821	285,232,953	190,571,200	134,963,400
<b>TOTAL</b>	<b>339,918,000</b>	<b>353,296,000</b>	<b>303,580,000</b>	<b>307,290,137</b>	<b>318,297,330</b>	<b>289,269,832</b>	<b>274,588,378</b>	<b>381,965,480</b>	<b>300,198,600</b>	<b>235,247,400</b>





DEPARTMENT OF AGRICULTURE  
COUNTY OF HUMBOLDT

5630 SOUTH BROADWAY EUREKA, CALIFORNIA 95503  
PHONE (707) 441-5260

**Mr. A. G. Kawamura, Secretary**  
California Department of Food and Agriculture  
and  
**Honorable Board of Supervisors, Humboldt County**

I am pleased to present Humboldt County's Crop and Livestock Report in accordance with Sections 2272 and 2279 of the California Food and Agricultural Code. The following summary represents gross agricultural receipts for the year 2003 but does not reflect production costs or net income to the producers.

Humboldt County recorded a value of \$262,818,000 for its total gross agricultural production in 2003. This represents an increase of \$27,570,600 over 2002 production. Despite some negative economic factors which affected our livestock and dairy producers, these segments both recorded gains this year; however, our greatest increases are related to the value of harvested timber which is up over \$13 million and milk & milk products which are up over \$11 million. Humboldt County continues to be ranked first in the state for timber production. All other commodity groups, except vegetable crops, also reported production gains. Our leading agricultural commodities are ranked as follows:

<i>Timber Production</i> .....	\$	<b>148,024,400</b>
<i>Nursery Stock (cut flowers, ornamental and forest tree production)</i> .....	\$	<b>35,858,600</b>
<i>Milk and Milk Products</i> .....	\$	<b>43,170,300</b>
<i>Livestock (beef cattle &amp; calves, dairy cows, Sheep &amp; lambs, etc.)</i> .....	\$	<b>24,872,700</b>
<i>Field Crops (alfalfa, silage, range, etc.)</i> .....	\$	<b>9,326,000</b>
<i>Vegetable Crops</i> .....	\$	<b>868,000</b>
<i>Fruit &amp; Nut Crops</i> .....	\$	<b>698,000</b>

A word of personal thanks goes to my office staff, the County's Agricultural Industry, participating agencies and to those individuals whose expertise and cooperation made this report possible.

Respectfully submitted,

*John E. Falkenstrom*

John E. Falkenstrom  
Agricultural Commissioner

## *FIELD CROPS*

ITEM	YR.	HARVEST ACREAGE	PRODUCTION		UNIT	PER UNIT	VALUE TOTAL
			PER ACRE	TOTAL			
Hay (All)	2003	1,956	3.60	7,042	Ton	110.00	774,600
	2002	1,500	4.00	6,000	Ton	95.00	570,000
Silage (All)	2003	960	22.00	19,200	Ton	42.00	806,400
	2002	870	27.00	23,490	Ton	35.00	822,150
Pasture(All)	2003	21,000			Acre	145.00	3,045,000
	2002	19,900			Acre	145.00	2,885,500
Range	2003	470,000			Acre	10.00	4,700,000
	2002	470,000			Acre	10.00	4,700,000

Includes: Alfalfa, grass, clover

<b>Totals</b>	<b>2003</b>	<b>9,326,000</b>
	2002	8,977,650

## *VEGETABLE CROPS*

ITEM	YEAR	TOTAL VALUE
Vegetable Crops	2003	868,000
	2002	987,800

Includes: Corn, potatoes, pumpkins, tomatoes, squash, cabbage, beans, peppers, mushrooms, alfalfa sprouts, etc.

## *FRUIT AND NUT CROPS*

ITEM	YEAR	TOTAL VALUE
Miscellaneous Fruits and Nuts	2003	698,000
	2002	683,100

Includes: apples, berries, cherries, chestnuts, figs, peaches, walnuts and grapes (wine/table)

## ***NURSERY PRODUCTION***

<b>ITEM</b>	<b>YEAR</b>	<b>TOTAL VALUE</b>
Cut flowers and decoratives, bedding plants, ornamentals and forest nursery tree production	<b>2003</b>	<b>35,858,600</b>
	2002	35,321,300

## ***TIMBER***

<b>ITEM</b>	<b>YR.</b>	<b>PRODUCTION</b>	<b>UNIT</b>	<b>VALUE TOTAL</b>
Timber <sup>1</sup> Production (All)	<b>2003</b>	<b>383,675,000</b>	<b>Board Feet</b>	<b>142,830,400</b>
	2002	374,042,745	Board Feet	130,556,400
Biomass & <sup>2</sup> Composting	<b>2003</b>	<b>346,255</b>	<b>Ton</b>	<b>5,194,000</b>
	2002	314,777	Ton	4,407,000

<sup>1</sup> Total includes softwood saw logs and miscellaneous products (Christmas trees, cull logs, fuel wood, pulp chips, hardwood logs, poles and pilings and miscellaneous small saw logs).

<sup>2</sup> Biomass and Composting data were compiled for the first time in 2002.

<b>TOTAL:</b>	<b>2003</b>	<b>148,024,400</b>
	<b>2002</b>	<b>134,963,400</b>

## *LIVESTOCK & POULTRY*

ITEM	YR.	NO. OF HEAD	TOT. LIVE WT.	UNIT	VALUE PER UNIT	TOTAL
<sup>1</sup> Beef Cattle and Calves	2003	29,300	161,150	CWT	89.90	14,487,400
	2002	29,000	159,500	CWT	80.50	12,839,750
Dairy Cows and Calves (all)	2003	22,000		HEAD		6,336,000
	2002	21,800		HEAD		6,104,000
Sheep and Lambs (all)	2003	5,800	5,800	CWT	88.00	510,400
	2002	6,000	6,000	CWT	61.00	366,000
<sup>2</sup> Misc.	2003					3,538,900
	2002					3,270,000

<b>TOTAL: 2003</b>	<b>24,872,700</b>
2002	22,579,750

<sup>1</sup> Includes: Cows, calves, bulls, steers

<sup>2</sup> Includes: Aquaculture, chickens, turkey, swine, goats, emus, rabbits, etc.

## *LIVESTOCK & POULTRY PRODUCTS*

ITEM	YEAR	PRODUCTION	UNIT	PER UNIT	VALUE TOTAL
Market Milk	2003	2,833,550	CWT	11.76	33,323,000
	2002	2,127,176	CWT	11.24	23,909,000
Manufacturing Milk	2003	823,763	CWT	11.82	9,737,000
	2002	622,923	CWT	12.33	7,681,000
Wool <sup>1</sup>	2003				110,300
	2002				144,400

<sup>1</sup> Includes: Wool, mohair, apiary products

<b>TOTAL: 2003</b>	<b>43,170,300</b>
2002	31,734,400



## **ORGANIC AND CERTIFIED PRODUCERS**

ITEM	YEAR	NO. REGISTRANTS	EST. ACRES
Organic Registrants	<b>2003</b>	<b>70</b>	
	2002	63	
Certified Producers	<b>2003</b>	<b>133</b>	<b>460*</b>
	2002	131	291
Farmer's Markets	<b>2003</b>	<b>9</b>	
	2002	8	

CROPS: Beans, berries, cabbage, carrots, cherries, corn, cucumbers, garlic, herbs, flowers, lettuce, melons, mushrooms, onions, peaches, peas, potatoes, pumpkins, sprouts, squash, tomatoes, etc.

\*Includes acreage associated with organic hay and silage production.

## **RECAPITULATION**

ITEM	YEAR	
	<u>2003</u>	<u>2002</u>
<b>Field Crops</b>	<b>\$ 9,326,000</b>	\$ 8,977,650
<b>Vegetable Crops</b>	<b>\$ 868,000</b>	\$ 987,800
<b>Fruit &amp; Nut Crops</b>	<b>\$ 698,000</b>	\$ 683,100
<b>Nursery Production</b>	<b>\$ 35,858,600</b>	\$ 35,321,300
<b>Livestock &amp; Poultry</b>	<b>\$ 24,872,700</b>	\$ 22,579,750
<b>Livestock &amp; Poultry Products</b>	<b>\$ 43,170,300</b>	\$ 31,734,400
<b>Timber</b>		
<b>GRAND TOTALS</b>	<b>\$ 262,818,000</b>	<b>\$235,247,400</b>

**HUMBOLDT COUNTY  
2003 SUSTAINABLE AGRICULTURE REPORT**

The implementation of agricultural practices and programs which promote the economic viability of agriculture while minimizing the impacts of these practices and programs on natural resources and the environment is sustainable agriculture. The scope of Humboldt County's biological control programs and organic farming practices are summarized below.

***COUNTY BIOLOGICAL CONTROL***

<b>PEST</b>	<b>AGENT/MECHANISM</b>	<b>2003</b>
<b>TANSY RAGWORT</b> ( <i>Senecio jacobaea</i> )	Ragwort flea beetle ( <i>Longitarsus jacobaeae</i> )	4 sites
<b>YELLOWSTAR THISTLE</b> ( <i>Centaurea solstitialis</i> )	Seed-head weevil ( <i>Bangasternus orientalis</i> )	14 sites
	Gall fly ( <i>Urophora sirunaseva</i> )	5 sites
	Hairy weevil ( <i>Eustenopus villosus</i> )	24 sites
<b>KLAMATH WEED</b> ( <i>Hypericum perforatum</i> )	Leaf & root weevil ( <i>Chrysolina quadrigemina</i> ) (= <i>C. gemellata</i> )	Countywide
<b>BULL THISTLE</b> ( <i>Cirsium vulgare</i> )	Bull Thistle Gall Fly ( <i>Urophora stylata</i> )	9 sites
<b>CANADA THISTLE</b> ( <i>Cirsium arvense</i> )	Gall Fly ( <i>Urophora cardui</i> )	2 sites
<b>ITALIAN THISTLE</b> ( <i>Carduus pycnocephalus</i> )	Seed weevil ( <i>Rhinocyllus conicus</i> )	1 site

**PEST EXCLUSION** involves the systematic inspection of incoming shipments of plant materials and other high risk articles which enter Humboldt County at post offices and other terminals (truck lines, United Parcel, air freight, and commercial vessels, etc.). The primary objective is to prevent the introduction into Humboldt County of plant diseases, insects, nematodes, weeds or vertebrate pests which are or could prove to be detrimental to the local and state agricultural industry and natural environment.

***PEST EXCLUSION***

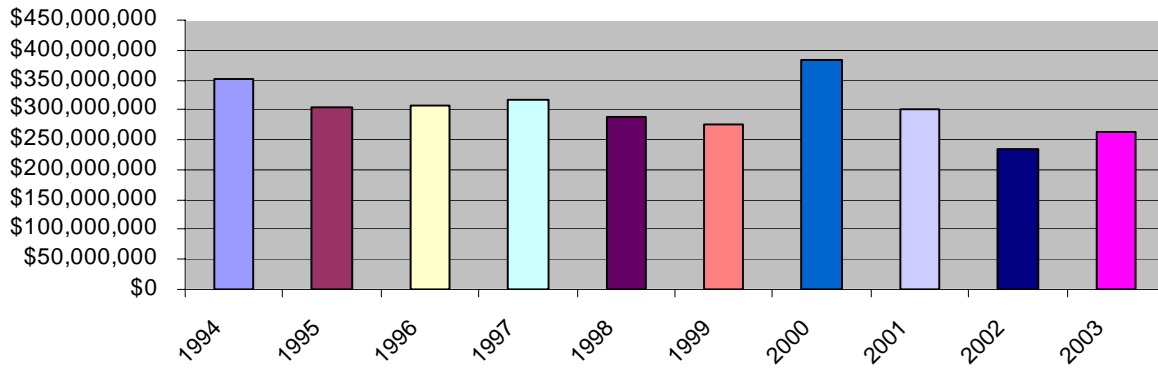
No. Inspections	<b>2003</b>	METHOD OF CONVEYANCE	<b>2003</b> No. Rejections 59*
<b>WILD GARLIC</b> ( <i>Allium vineale</i> )	11,392	UPS/Postal Shipments	1
<b>CERTIFICATION/LABELING VIOLATIONS</b>		UPS/Postal Shipments/FedEx	50
<b>VARIOUS PLANT PESTS</b>		UPS/Postal Shipments/FedEx	5
<b>NOXIOUS WEEDS</b> * Shipments rejected and/or destroyed.		UPS/Postal Shipments	1

**PEST DETECTION** activities are focused on the search for pests which are not known to exist in the State or are of limited distribution throughout California. Detection trapping activities are conducted locally for insect pests such as Gypsy Moth and Japanese beetle. In addition, field surveys are continually being conducted throughout Humboldt County in order to locate and identify noxious weeds, plant diseases and vertebrate pests.

***PEST DETECTION***

TYPE	INSECT TRAPS	NO. SERVICINGS 2003
Gypsy Moth	<b>210</b>	<b>1,260</b>
Glassy-Winged Sharpshooter	<b>117 (inspections)</b>	<b>1,404</b>
Japanese Beetle	<b>24</b>	<b>144</b>

**HUMBOLDT COUNTY AGRICULTURAL GROSS VALUES FOR THE  
1994-2003 DECADE**



	<u>1994</u>	<u>1995</u>	<u>1996</u>	<u>1997</u>	<u>1998</u>	<u>1999</u>	<u>2000</u>	<u>2001</u>	<u>2002</u>	<u>2003</u>
<b>Field Crops</b>	7,379,000	7,054,000	7,039,600	8,223,780	8,177,800	8,200,500	7,972,300	8,998,750	8,977,650	9,326,000
<b>Vegetable Crops</b>	872,000	836,000	836,000	897,000	676,000	763,208	814,190	952,000	987,800	868,000
<b>Fruit/Nut Crops</b>	32,000	27,000	27,000	78,000	91,000	111,567	430,246	506,850	683,100	698,000
<b>Nursery Production</b>	20,274,000	18,319,000	18,319,000	22,576,611	23,226,500	25,806,000	32,859,191	33,952,000	35,321,300	35,858,600
<b>Livestock/Poultry</b>	12,278,000	11,226,000	10,830,537	12,443,189	14,548,760	19,936,281	21,020,200	22,347,800	22,579,750	24,872,700
<b>Livestock/Products</b>	30,681,000	30,589,000	34,709,000	36,067,700	39,055,200	38,283,000	33,636,400	42,972,000	31,734,400	43,170,300
<b>Timber</b>	281,780,000	235,529,000	235,529,000	238,011,000	203,494,572	181,487,821	285,232,953	190,571,200	134,963,400	148,024,400
<b>TOTAL</b>	353,296,000	303,580,000	307,290,137	318,297,280	289,269,832	274,588,377	381,965,480	300,300,600	235,247,400	262,818,000



DEPARTMENT OF AGRICULTURE  
**COUNTY OF HUMBOLDT**

5630 SOUTH BROADWAY EUREKA, CALIFORNIA 95503  
PHONE (707) 441-5260

**A. G. Kawamura, Secretary**

California Department of Food and Agriculture  
and

**Honorable Board of Supervisors, Humboldt County**

**Jill Geist, Chair**

**Bonnie Neely**

**Jimmy Smith**

**Roger Rodoni**

**John Woolley**

I am pleased to present Humboldt County's Crop and Livestock Report in accordance with Sections 2272 and 2279 of the California Food and Agricultural Code. The following summary represents gross agricultural receipts for the year 2004 but does not reflect production costs or net income to the producers.

Humboldt County recorded a value of \$295,296,200 for its total gross agricultural production in 2004. This represents an increase of \$32.5 million over 2003 production. Our greatest increases are related to the value of harvested timber, which is up over \$26 million and nursery production, which is up more than \$5 million. All other commodity groups, except livestock & poultry and field crops, reported production gains. Our leading agricultural commodities are ranked as follows:

<i>Timber Production</i> .....	\$	<i>174,456,900</i>
<i>Milk and Milk Products</i> .....	\$	<i>45,721,000</i>
<i>Nursery Stock (cut flowers, ornamental and forest tree production)</i> .....	\$	<i>40,793,400</i>
<i>Livestock (beef cattle &amp; calves, dairy cows, sheep &amp; lambs, etc.)</i> .....	.\$	<i>23,468,800</i>
<i>Field Crops (alfalfa, silage, range, etc.)</i> .....	\$	<i>9,261,100</i>
<i>Vegetable Crops</i> .....	\$	<i>880,700</i>
<i>Fruit &amp; Nut Crops</i> .....	.\$	<i>714,300</i>

A word of personal thanks goes to my office staff, the County's Agricultural Industry, participating agencies and to all whose expertise and cooperation made this report possible.

Respectfully submitted,

**John E. Falkenstrom**

John E. Falkenstrom  
Acting Agricultural Commissioner

## **FIELD CROPS**

ITEM	YR.	HARVEST ACREAGE	PRODUCTION		UNIT	PER UNIT	VALUE TOTAL
			PER ACRE	TOTAL			
Hay (All)	2004	1,800	3.35	6,030	Ton	115.00	693,450
	2003	1,956	3.60	7,042	Ton	110.00	774,600
Silage (All)	2004	850	20.00	17,000	Ton	42.00	595,000
	2003	960	22.00	19,200	Ton	35.00	806,400
Pasture (All)	2004	21,000			Acre	145.00	3,272,650
	2003	21,000			Acre	145.00	3,045,000
Range	2004	470,000			Acre	10.00	4,700,000
	2003	470,000			Acre	10.00	4,700,000

Includes: Alfalfa, grass, clover

Totals	2004	9,261,100
	2003	9,326,000

## **VEGETABLE CROPS**

ITEM	YEAR	TOTAL VALUE
Vegetable Crops	2004	880,700
	2003	868,000

Includes: Corn, potatoes, pumpkins, tomatoes, squash, cabbage, beans, peppers, mushrooms, alfalfa sprouts, etc.

## **FRUIT AND NUT CROPS**

ITEM	YEAR	TOTAL VALUE
Miscellaneous Fruits and Nuts	2004	714,300
	2003	698,000

Includes: apples, berries, cherries, chestnuts, figs, peaches, walnuts and grapes (wine/table)

## ***NURSERY PRODUCTION***

ITEM	YEAR	TOTAL VALUE
Cut flowers and decoratives, bedding plants, ornamentals and forest nursery tree production	2004	40,793,400
	2003	35,858,600

ITEM	YR.	PRODUCTION	UNIT	VALUE TOTAL
------	-----	------------	------	----------------

### ***TIMBER***

Timber <sup>1</sup> Production (All)	2004	396,500,000	Board Feet	169,122,000
	2003	383,675,000	Board Feet	142,830,400
Biomass & <sup>2</sup> Composting	2004	410,377	Ton	5,334,900
	2003	346,255	Ton	5,194,000

<sup>1</sup> Total includes softwood saw logs and miscellaneous products (Christmas trees, cull logs, fuel wood, pulp chips, hardwood logs, poles and pilings and miscellaneous small saw logs).

<sup>2</sup> Biomass and Composting data were compiled for the first time in 2002.

<b>TOTAL:</b>	2004	174,456,900
	2003	148,024,400

## *LIVESTOCK & POULTRY*

ITEM	YR.	NO. OF HEAD	TOT. LIVE WT.	UNIT	VALUE PER UNIT	TOTAL
<sup>1</sup> Beef Cattle and Calves	2004	27,200	149,600	CWT	88.30	13,209,700
	2003	29,300	161,150	CWT	89.90	14,487,400
Dairy Cows and Calves (all)	2004	20,500		HEAD		6,336,000
	2003	22,000		HEAD		5,904,000
Sheep and Lambs (all)	2004	4,100	4,250	CWT	90.40	384,200
	2003	5,800	5,800	CWT	88.00	510,400
<sup>2</sup> Misc.	2004					3,538,900
	2003					3,538,900

<b>TOTAL:</b>	<b>2004</b>	<b>23,468,800</b>
	2003	24,872,700

<sup>1</sup> Includes: Cows, calves, bulls, steers

<sup>2</sup> Includes: Aquaculture, chickens, turkey, swine, goats, etc.

## *LIVESTOCK & POULTRY PRODUCTS*

ITEM	YEAR	PRODUCTION	UNIT	PER UNIT	VALUE TOTAL
Market Milk	2004	2,050,181	CWT	15.62	32,024,000
	2003	2,833,550	CWT	11.76	33,323,000
Manufacturing Milk	2004	868,561	CWT	15.20	13,202,000
	2002	823,763	CWT	11.82	9,737,000
Misc. <sup>1</sup>	2004				495,000
	2003				110,300

<b>TOTAL:</b>	<b>2004</b>	<b>45,721,000</b>
	2003	43,170,300

<sup>1</sup> Includes: Wool, apiary and dairy goat products



**ORGANIC AND CERTIFIED PRODUCERS**

ITEM	YEAR	NO. REGISTRANTS	EST. ACRES
Organic Registrants	<b>2004</b>	<b>72</b>	
	2003	70	
Certified Producers	<b>2004</b>	<b>142</b>	<b>624*</b>
	2003	133	460*
Farmer's Markets	<b>2004</b>	<b>12</b>	
	2003	9	

CROPS: Beans, berries, cabbage, carrots, cherries, corn, cucumbers, garlic, herbs, flowers, lettuce, melons, mushrooms, onions, peaches, peas, potatoes, pumpkins, sprouts, squash, tomatoes, etc.

\*Includes acreage associated with organic hay, pasture and silage production.

**RECAPITULATION**

ITEM	YEAR	
	<u>2004</u>	<u>2003</u>
Field Crops	\$ 9,261,100	\$ 9,326,000
Vegetable Crops	\$ 880,700	\$ 868,000
Fruit & Nut Crops	\$ 714,300	\$ 698,000
Nursery Production	\$ 40,793,400	\$ 35,858,600
Livestock & Poultry	\$ 23,468,800	\$ 24,872,700
Livestock & Poultry Products	\$ 45,721,000	\$ 43,170,300
Timber	\$174,456,900	\$148,024,400
<b>GRAND TOTALS</b>	<b>\$ 295,296,200</b>	<b>\$ 262,818,000</b>

**HUMBOLDT COUNTY  
2004 SUSTAINABLE AGRICULTURE REPORT**

The implementation of agricultural practices and programs which promote the economic viability of agriculture while minimizing the impacts of these practices and programs on natural resources and the environment is sustainable agriculture. The scope of Humboldt County's biological control programs and organic farming practices are summarized below.

**COUNTY BIOLOGICAL CONTROL**

PEST	AGENT/MECHANISM	2004	2003
<b>TANSY RAGWORT</b> ( <i>Senecio jacobaea</i> )	Ragwort flea beetle ( <i>Longitarsus jacobaeae</i> )	4 sites	4 sites
<b>YELLOWSTAR THISTLE</b> ( <i>Centaurea solstitialis</i> )	Seed-head weevil ( <i>Bangasternus orientalis</i> )	14 sites	14 sites
	Gall fly ( <i>Urophora sirunaseva</i> )	5 sites	5 sites
	Hairy weevil ( <i>Eustenopus villosus</i> )	1 site	24 sites
	Fungus ( <i>Puccinia jaceae</i> var. <i>solstitialis</i> )	2 sites	
<b>KLAMATH WEED</b> ( <i>Hypericum perforatum</i> )	Leaf & root weevil ( <i>Chrysolina quadrigemina</i> ) (= <i>C. gemellata</i> )		Countywide
<b>BULL THISTLE</b> ( <i>Cirsium vulgare</i> )	Bull Thistle Gall Fly ( <i>Urophora stylata</i> )	9 sites	9 sites
<b>CANADA THISTLE</b> ( <i>Cirsium arvense</i> )	Gall Fly ( <i>Urophora cardui</i> )	2 sites	2 sites
<b>ITALIAN THISTLE</b> ( <i>Carduus pycnocephalus</i> )	Seed weevil ( <i>Rhinocyllus conicus</i> )	1 site	1 site



**PEST EXCLUSION** involves the systematic inspection of incoming shipments of plant materials and other high-risk articles, which enter Humboldt County at post offices and other terminals (truck lines, United Parcel, air freight, and commercial vessels, etc.). The primary objective is to prevent the introduction into Humboldt County of plant diseases, insects, nematodes, weeds or vertebrate pests which are or could prove to be detrimental to the local and state agricultural industry and natural environment.

***PEST EXCLUSION***

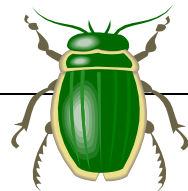
No. Inspections	2004 8,577	METHOD OF CONVEYANCE	No. Rejections	2004 105*
WILD GARLIC (Allium vineale)		UPS/Postal Shipments		0
CERTIFICATION/LABELING VIOLATIONS		UPS/Postal Shipments/FedEx		99
VARIOUS PLANT PESTS		UPS/Postal Shipments/FedEx		6
NOXIOUS WEEDS		UPS/Postal Shipments		0

\* Shipments rejected and/or destroyed.

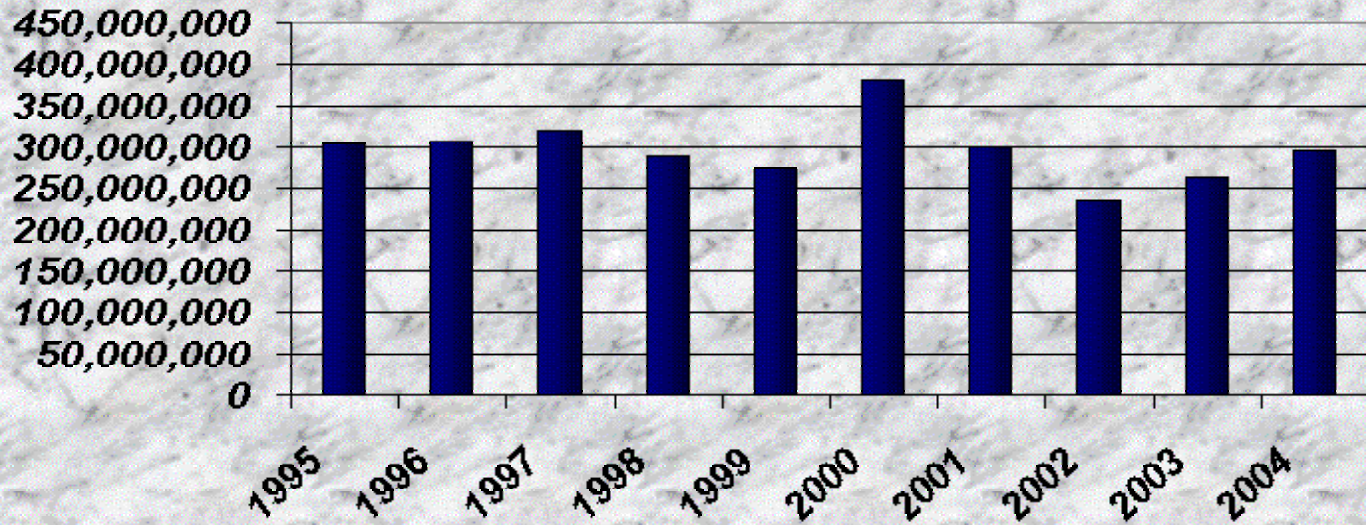
**PEST DETECTION** activities are focused on the search for pests, which are not known to exist in the State, or are of limited distribution throughout California. Detection trapping activities are conducted locally for insect pests such as Gypsy Moth and Japanese beetle. In addition, field surveys are continually being conducted throughout Humboldt County in order to locate and identify noxious weeds, plant diseases and vertebrate pests.

***PEST DETECTION***

TYPE	INSECT TRAPS	NO. SERVICINGS 2004
Gypsy Moth	286	1,260
Glassy-Winged Sharpshooter	117 (inspections)	844
Japanese Beetle	22	85



### Humboldt County Agricultural Gross Values for the 1995-2004 Decade



	<u>1995</u>	<u>1996</u>	<u>1997</u>	<u>1998</u>	<u>1999</u>	<u>2000</u>	<u>2001</u>	<u>2002</u>	<u>2003</u>	<u>2004</u>
Field Crops	7,054,000	7,039,600	8,223,780	8,177,800	8,200,500	7,972,300	8,998,750	8,977,650	9,326,000	9,261,100
Vegetable Crops	836,000	836,000	897,000	676,000	763,208	814,190	952,000	987,800	868,000	880,700
Fruit/Nut Crops	27,000	27,000	78,000	91,000	111,567	430,246	506,850	683,100	698,000	714,300
Nursery Production	18,319,000	18,319,000	22,576,611	23,226,500	25,806,000	32,859,191	33,952,000	35,321,300	35,858,600	40,793,400
Livestock/Poultry	11,226,000	10,830,537	12,443,189	14,548,760	19,936,281	21,020,200	22,347,800	22,579,750	24,872,700	23,468,800
Livestock/Products	30,589,000	34,709,000	36,067,700	39,055,200	38,283,000	33,636,400	42,972,000	31,734,400	43,170,300	45,721,000
Timber	235,529,000	235,529,000	238,011,000	203,494,572	181,487,821	285,232,953	190,571,200	134,963,400	148,024,400	174,456,900
<b>TOTAL</b>	<b>303,580,000</b>	<b>307,290,137</b>	<b>318,297,280</b>	<b>289,269,832</b>	<b>274,588,377</b>	<b>381,965,480</b>	<b>300,300,600</b>	<b>235,247,400</b>	<b>262,818,000</b>	<b>295,296,200</b>