



**AgEcon** SEARCH  
RESEARCH IN AGRICULTURAL & APPLIED ECONOMICS

*The World's Largest Open Access Agricultural & Applied Economics Digital Library*

**This document is discoverable and free to researchers across the globe due to the work of AgEcon Search.**

**Help ensure our sustainability.**

Give to AgEcon Search

AgEcon Search  
<http://ageconsearch.umn.edu>  
[aesearch@umn.edu](mailto:aesearch@umn.edu)

*Papers downloaded from **AgEcon Search** may be used for non-commercial purposes and personal study only. No other use, including posting to another Internet site, is permitted without permission from the copyright owner (not AgEcon Search), or as allowed under the provisions of Fair Use, U.S. Copyright Act, Title 17 U.S.C.*

**Participatory Approach in  
Decision Making Processes  
for Water Resources  
Management in the  
Mediterranean Basin**

Carlo Giupponi, Jaroslav Mysiak and Jacopo Crimi

NOTA DI LAVORO 101.2006

**AUGUST 2006**

NRM – Natural Resources Management

Carlo Giupponi, *Fondazione Eni Enrico Mattei and  
Dipartimento di Produzione Vegetale, Università degli Studi di Milano*  
Jaroslav Mysiak and Jacopo Crimi, *Fondazione Eni Enrico Mattei*

This paper can be downloaded without charge at:

The Fondazione Eni Enrico Mattei Note di Lavoro Series Index:  
<http://www.feem.it/Feem/Pub/Publications/WPapers/default.htm>

Social Science Research Network Electronic Paper Collection:  
<http://ssrn.com/abstract=914481>

# **Participatory Approach in Decision Making Processes for Water Resources Management in the Mediterranean Basin**

## **Summary**

This paper deals with the comparative analysis of different policy options for water resources management in three south-eastern Mediterranean countries. The applied methodology follows a participatory approach throughout its implementation and is supported by the use of three different software packages dealing with water allocation budget, water quality simulation, and Multi Criteria Analysis, respectively. The paper briefly describes the general objectives of the SMART project and then presents the three local case studies, the valuation objectives and the applied methodology - developed as a general replicable framework suitable for implementation in other decision-making processes. All the steps needed for a correct implementation are therefore described. Following the conceptualisation of the problem, the choice of the appropriate indicators as well as the calculation of their weighting and value functions are detailed. The paper concludes with the results of the Multi Criteria and the related Sensitivity Analyses performed, showing how the different policy responses under consideration can be assessed and furthermore compared through case studies thanks to their relative performances. The adopted methodology was found to be an effective operational approach for bridging scientific modelling and policy making by integrating the model outputs in a conceptual framework that can be understood and utilised by non experts, thus showing concrete potential for participatory decision making.

**Keywords:** Scientific Advice, Policy-Making, Participatory Modelling, Decision Support

**JEL classification** Q01, Q25, Q28, Q5

*This paper is based on the work carried out by FEEM for the EU funded project SMART concluded in August 2005 (Sustainable Management of Scarce Resources in the Coastal Zone – Contract No. ICA3-CT-2002-10006) in collaboration with the EU funded Coordination Action Nostrum-Dss (Network on Governance, Science and Technology for Sustainable Water Resource Management in the Mediterranean-The role of Dss tools – Contract No. INCO-CT-2004-509158).*

*Address for correspondence:*

Carlo Giupponi  
Dipartimento di Produzione Vegetale  
Università degli Studi di Milano  
Via Celoria, 2  
20133 Milano  
Italia  
Phone: +39 0250316596  
Fax: +39 0250316575  
Email: carlo.giupponi@unimi.it

## Table of Contents

1.	Introduction -----	3
1.1	Objectives of the SMART project-----	3
1.2	SMART case studies -----	3
1.3	Local issues -----	5
1.4	Objectives of the valuation-----	6
2.	Methodology -----	7
2.1	The conceptual framework-----	7
2.2	The elaboration procedure-----	8
2.3	Comparative Analysis of policy responses -----	9
3.	Application of the methodology-----	13
3.1	Value functions -----	13
3.2	Simos procedure -----	13
3.3	Aggregated performance -----	15
4.	Conclusions -----	17
	References -----	18

# **1. Introduction**

## **1.1 Objectives of the SMART project**

This project focused during its three year duration on the comparative assessment of different policy options for water management in five case studies, one for each of the following Mediterranean countries: Egypt, Jordan, Lebanon, Tunisia and Turkey.

The coastal zones of the Mediterranean are undergoing rapid development with growing and conflicting demands on the natural resources, and at the same time they are subject to an often irreversible degradation of these resources. Water resources and the related land use issues are a key element for the sustainable development of coastal regions. They illustrate the dependency of the usually dynamic and fast growing coastal areas on their resource catchment. This project had to explore methods and tools for long-term policy analysis and strategic decision support for integrated coastal development with special emphasis on water resources and land use, and the resource balance between the coastal region and the inland areas.

The approach is based on a multi-sectoral integration of quantitative and qualitative analysis, combining advanced tools of quantitative systems engineering using numerical simulation models, with methods of environmental, socio-economic and policy impact assessment using rule-based expert systems technology and interactive decision support methods. Water resources modelling including both quantitative and qualitative aspects provided the framework for policy scenarios, exploring different development strategies, the consequences and implications of demographic, socio-economic, and technological development, and the interaction of these driving forces towards long-term sustainability of the coastal regions and their hinterland.

A common methodology for policy design, evaluation, and decision making has been developed and tested in a set of parallel case studies, in each of the participating Mediterranean countries. Lessons from the comparative analysis of these case studies will help to ensure a generic and generally applicable methodology, and at the same time help to foster inter-regional contacts and the exchange of experience.

## **1.2 SMART case studies**

As easily understandable from the title, the project concerns particular coastal zones of the eastern Mediterranean area and more particularly 5 Case Studies (CS) in as many Mediterranean countries: Egypt, Jordan, Lebanon, Tunisia and Turkey. Unfortunately, suitable data for a comprehensive Comparative Analysis were finally available in only 3 out of the 5 CS; these coastal areas and their main characteristics are described qualitatively hereafter.

### *1.2.1 Lebanese Case Study*

The Lebanese CS named “Abou Ali river basin” addresses an area stretching along the northern Lebanese coast covering Tripoli City to the north, the second largest in Lebanon, southward to the town of Batroun. The interested coastline length is about

30km while its width varies between 8-12 km inland. The area typifies the Lebanese coast: it consists of a narrow plain followed inland by a series of foothills, plateau, then rising through steep slopes to the coastal mountain chain. It is crossed by a river (Abou Ali) passing through Tripoli and another minor one (like El-Jawz) near Batroun, with intermittent streams, dendrite drainage and dry wadis. The climate is hot sub-humid at the coast becoming milder inland.

### *1.2.2 Jordan Case Study*

The only coastal area in Jordan is the Gulf of Aqba, name of the CS, populated by 150,000 people, where the shoreline amounts to about 45 km. The region is semi-arid to arid and only about 10% of the total area (90,000 km<sup>3</sup>) receives above 350 mm of rainfall per year. In 2000, the Aqba area was declared a duty free zone in order to attract new investors in trade and industry. This development will increase demand for water for the growing population and future industrial activities. Water supply to the Aqba region is derived from the Red Sea Basin (5.0 MCM groundwater) and the adjacent Dissi aquifer system (20 MCM) plus a great part of treated wastewater.

On the water quality side, seepage from irrigated areas resulting from excess irrigation near the coast of Aqba is already present while the planned industrial activities will soon certainly affect the water discharging in the Gulf of Aqba.

The total area is comparatively small, leading to a high concentration of potentially conflicting economic activities (ie. tourism vs industry) along the coast and thus competition for space in addition to the competition for water.

### *1.2.3 Turkish Case Study*

The Turkish case study focuses on two major and closely related areas in western Anatolia, along the Aegean Sea: the first one is the Gediz River Basin while the second one is the neighbouring city of Izmir. In the basin, water scarcity is a significant problem, evidenced as water shortages due basically to competition for water among various uses. The main use is irrigation with a total command area of 110,000 hectares followed by domestic and fast growing industrial demand in the coastal zone. The second issue investigated is the sustainable management of water resources in the Izmir urban and rural areas where coastal interactions are significant. This problem reflects not only a regional character but also national significance, as Izmir is the third largest city in the country and an important harbour along the Aegean. There are also strong interactions between the basin and the Izmir rural area, as the Izmir metropolitan area consumes a significant portion of the groundwater resources of the Gediz catchment without feeding it back to the basin. There are also two important industrial areas in the zone: the largest is in the Nif Valley immediately east of Izmir in the Kemalpaşa municipality while in the western edge of the city of Manisa an important industrial estate is also growing.

Moreover, the seaward fringe of the Gediz Delta is an important nature reserve and has recently been designated as a Ramsar site to protect rare bird species. Originally, the area received excess water from the Gediz River for much of the year, but since the '90s droughts, with restrictions on irrigation releases, the reserve suffers from water shortages. This setting, coupled with difficulties to establish an appropriate and well

coordinated control over the use of natural resources and pollution, brought in the region environmental degradation, resource depletion and pollution-related damages.

### **1.3 Local issues**

#### *1.3.1 Physical conditions*

Even though the case studies analysed have different settings they are all concerned with similar issues. For instance, water scarcity issues are always significant. The Turkish CS reports that this problem became relevant since the recent '90s droughts, mainly because of competition among different users, while the Jordan CS enhances how this is a structural problem due to the particular location of the gulf of Aqba which already relies on water transported from a distance of over 100 km. In the Lebanon CS, although Tripoli appears to be richly endorsed with freshwater availability, mismanagement and bad quality of the surface water leads to relevant problems of water shortages in term of quality. On the contrary, the occurrence of floods appears to be moderately relevant for two of the case studies, Lebanon and Turkey, while Jordan does not give importance to this issue.

The issues related to groundwater quantity and quality are meaningful for all the CS: for instance in Lebanon the non trustable quality of the surface water locally available leads to the widespread use of private wells while all CS globally signal the non sustainable use of the groundwater resources and the lowering of the water tables.

Concerning the coastal interactions, these are always significant: river Abou-Ali in the Lebanese CS seems to bring more and more sediments, solid and liquid pollution in the years, leading to the building of sandy beaches mixed with debris. The Turkish CS addresses only water quality problems for the bay, while the Jordan CS signals how the return flow of irrigation may affect water quality and the incredibly rich and sensitive coral reef present in the Gulf of Aqba.

#### *1.3.2 Water demand*

Concerning the water demand, the agricultural sector is by far the major water demander in two of the case studies while in Jordan one the main users is the industrial sector. For the first sector, the Lebanon and Turkey CS signal the same scarce attention paid to the drainage systems and to the quality of the return flows leading to surface water contamination and groundwater salinisation. The tourism sector is reported to be relevant for the gulf of Aqba and partially for North Lebanon (also depending on the political stability of the region). Going more into detail, the domestic sector critically threatens the groundwater principally because of the fast growing population which mainly relies on this resource across all the analysed case studies. In addition, a major problem of non return flow is common to the Turkish and Jordan CS, as water is currently abstracted to be transported to another basin. Only for the Lebanon CS the surface water abstraction for domestic purposes appears problematic because of its already mentioned bad quality. The absence of implemented waste collection is

common to Lebanese and Jordan CS areas while only Lebanon reports the absence of diffuse sanitation systems mainly in rural areas. In the Jordan and Turkish CS areas, sanitation instead is not a major problem but other domestic activities contribute to worsening the general situation. Finally, for what concerns the environmental water demand, it is considered particularly important in Turkey and in the Jordan CS areas. The seaward fringe of the Gediz Delta is in fact an important nature reserve and has recently been designated as a Ramsar site to protect rare bird species while the gulf of Aqba is particularly rich in coral reef and needs clean water without sediments.

### *1.3.3 Water supply*

Concerning water supply, the sources are rather different across the case studies. In the Aqba bay all the water is transported from a nearby aquifer; in addition there is also a widespread use of water-saving technologies, with 3,2 MCM of treated wastewater reused annually in the region and an important desalination plant to be built in the near future. In Tripoli's region, the mismanagement of surface water in the area leads to the already mentioned diffusion of private wells affecting the local groundwater reserves and forcing authorities to import the water from other areas, which implies higher costs on the citizen. In the Turkish CS, the source greatly varies according to use: for the domestic and industrial sectors almost all the needs are abstracted from groundwater while the intensive irrigation activities in the basin are mainly supported by three reservoirs and water pumped by cooperatives. Regarding the system chosen to irrigate, most of the farmers from the Turkish CS area prefer flooding methods while irrigation efficiency seems generally to be lacking in all areas, although no major details are provided.

As mentioned earlier, the overall water quality seems to be a concern in both Lebanon and Turkey CS. In the Tripoli area and surroundings water-related diseases recur on an annual basis and almost all water sources (i.e. springs, wells, rivers) are polluted with a high amount of organics, bacteria and other pollutants because of the lack of treatment plants, no control on the flow of pollutants directly into a river or even in wells. In the Turkish case study, it is the unknown ground water quality which appears the major problem as most of the Basin's population relies on it for supply.

Finally, for what concerns the infrastructures, beside the consistent losses due to old networks and bad maintenance noticed in all the CS, all of these areas are concerned with reservoirs and all of them with heavy infrastructures.

## **1.4 Objectives of the valuation**

In all of the case studies analysed, water demand, supply and quality are, as shown, critical issues to which the policy world has to answer with suitable instruments. How can alternative policy responses be considered really effective with respect to one another?

The comparative analysis of the case studies therefore had the following objectives: to identify commonalities and differences and relate them to the specific regional settings; to identify more generally applicable results that are invariant across the case studies; to



organise these findings in terms of a comparative policy assessment (existing and desirable, future ones) and best practice examples – contributions to sustainability.

In order to reach these objectives, the following tasks are described in the SMART Description of Work:

- to organise the individual case study results in a common conceptual framework of common indicators of sustainable coastal zone development and resource management;
- to analyse the individual case studies (and their scenarios) within this framework, by means of simulation models;
- to identify and report common trends and best practice examples, through a comparative analysis.

The methodology presented hereafter has tested a participatory approach taking advantage of the quantitative information available thanks to the indicators provided by simulation models and processed within a multi-criteria analysis Decision Support System. The models were subsequently run to simulate alternative scenarios affected by policy responses that may be implemented to remediate or mitigate the critical issues and inserted again as input in the models to evaluate how well these solutions fit the problem, and with respect to one another.

## **2. Methodology**

### **2.1 The conceptual framework**

The DPSIR conceptual framework (extension of the PSR model developed by OECD) proposed by the European Environmental Agency European Commission (EEA, 1999) to aid the understanding of the cause-effect relationships between the different interacting components of social, economic and environmental issues faced in natural resource management, are nowadays a reference in the sector of environmental studies.

The DPSIR consists of nodes representing different elements of the system: the *Driving forces* represent natural and social processes which lead to environmental problems, e.g. energy, agriculture, industry and waste management. The *Pressure* indicators are the outcomes of the driving forces, which influence the current environmental state. A common expression of this is the use of resources: representing an input for a variety of natural processes and leading to the changes of the environmental condition.

The *State* indicators describe physical, chemical or biological phenomena in the given reference area: for instance they may describe the land uses or their current condition (forest health). The *Impact* indicators refer to the consequence of an environment state change. The result of an impact, such as air pollution, is followed by many effects (global warming, loss of biodiversity) at various temporal and spatial scales (extinction of some animal species).

In a generic decisional context, the perception of the existence of relevant *Impacts* (I) in an area induces decision-makers to develop *Responses* (R) which prevent, compensate, or mitigate the negative outcomes of state changes. Responses may be targeted to

address the *Driving forces*, the *Pressures* or the *State* itself: either the *Driving forces* may be re-organised (prevention, changing behaviour, etc.), *Pressure* mechanisms may be altered (e.g. the introduction of new production systems), or the *State* of the environment may be restored or adapted to reduce its sensitivity to *Pressures*.

In this framework, the evaluation procedure starts with the collection for each of the case studies of relevant *D and P indicators* (e.g. demographic, climatic) which are processed thanks to the 3 simulation tools to produce on the one hand the estimation of different scenarios under different timelines; on the other hand future *State* of the environment can be assessed and finally be summarised as *Impact* indicators (e.g. water quality, availability, efficiency). The policy *Responses* can finally be considered as driving factors which may or can change *D and P* (differently according to the scenarios) as input indicators to the models, thus modifying subsequently *S and I* indicators.

The different policy performances can then be easily compared by a simple weighted Multi Criteria Analysis on Impact indicators, which has the advantage, among others, to be a procedure easily understandable by non-expert users.

## 2.2 The elaboration procedure

As previously mentioned, for the elaboration of the trends and quantitative estimations, the SMART project took advantage of three software packages developed or distributed by partners of the project: *LUC*, *WaterWare* and *Telemac*. These tools have been applied jointly in each of the case studies to support the estimation of future scenarios for water availability and quality in the specific local context. Finally, after processing and organising the information collected, the comparative analysis has been supported by another tool: *Mulino-dss*.

*LUC*<sup>1</sup> - developed by Environmental Systems and Software (ESS), Austria - is a dynamic Land Use Change model based on several components: a set of well-defined land use classes - according to CORINE Land Cover classification (CEC, 1994; Bossard et al, 2000) - and transitional classes for long-term projections; a matrix of a priori transition probabilities; a set of rules, one set for each possible transition, that can modify the a priori probabilities adopting a set of operators that use spatial and temporal aggregate and neighbourhood properties to modify the transition probabilities. *LUC* calculates dynamic development (annual time step) of land use over decades, and estimates regional water use as a function of land use. This estimate is intended as a rough check on the much more detailed *WaterWare* water budget, but with a long-term perspective and change over decades.

*WaterWare*<sup>1</sup>, also developed by ESS, is a river basin scale water resources information system and management model, combining several components and functions. First of all, an information system which includes: time series analysis for hydro-meteorological variables which are used in the various simulation models; an embedded GIS with an associated web-based map server; a hierarchical object data base for river basin objects. Moreover, a simulation system includes: a rainfall-runoff model, an irrigation water

---

<sup>1</sup> <http://www.ess.co.at/WATERWARE>

demand model, a statistical drought assessment model, a water allocation (demand-supply balance model), and a set of water quality models for surface and groundwater. In addition, the system provides a set of interfaces for external models; in the case of SMART, this provides a link to the TELEMAC coastal water quality model.

TELEMAC<sup>2</sup> is developed by the Laboratoire National d'Hydraulique et Environnement (Electricité De France – Direction des études et recherches) and is distributed by SOGREAH. TELEMAC system is a numerical modelling system designed to study environmental processes in free surface transient flows, applicable to seas and coastal domains, estuaries, rivers and lakes. The TELEMAC numerical modelling system is based on a finite element technique, utilising an unstructured triangular mesh with size to be adjusted to represent in detail any important bathymetry or shoreline features such as channels, tidal flats, etc. This technique also allows to refine the mesh locally and therefore to improve the results given by the model, especially in zones of complex geometry such as channels or in zones of discharge points such as dredging points.

To evaluate the overall performance of the policy scenarios simulated with the cited models, the *MULINO-DSS*<sup>3</sup> (mDSS) tool has been used. mDSS is a computerised decision support system that addresses complex decision problems dealt within water resource management. The system is based on the DPSIR framework, which guides problem structuring and exploration, and contributes to a better understanding of the problem's dynamics. Simulation and modelling outcomes in the form of indicators help to analyse the causes and effects of environmental problems/conflicts and to derive the expected outcomes of the courses of actions proposed, i.e. the responses in terms of alternative policy strategies.

## 2.3 Comparative Analysis of policy responses

### 2.3.1 Indicators and conceptual framework

During the SMART project indications for a set of relevant indicators were collected from partners through a guided exercise aimed at analysing the cause-effect relationships that ultimately lead to a certain condition related to the water system, which was perceived to be either acceptable or problematic for each case study. The exercise was also used to provide estimates for the variables that were perceived to be important for characterising the scenarios. The indicators were classified within the DPSIR conceptual framework, following the outline adopted by the EEA Report "Sustainable water use in Europe" (EEA, 2001), where the DPSIR framework constitutes the basis of the analysis of the water resources situation in Europe.

In particular, variables defining scenarios represent both Driving forces (i.e. climatic and population) and Pressures (i.e. water demand and pollution), while sustainability indicators to be used for the comparative analysis are State and Impact indicators. Responses were instead defined on a case-by-case basis, but within common classes:

---

<sup>2</sup> <http://www.telemacsystem.com>

<sup>3</sup> <http://siti.feem.it/mulino/>

water demand management (WDM), water supply management (WSM), water quality management (WQM). Hence, the DPSIR framework allowed to formalise and include all relevant indicators for the SMART project, i.e. variables defining scenarios, inputs and outputs of the models, sustainability indicators, and responses.

The collection of the initial indicators to be used for the Comparative Analysis (CA) has been a long and iterative process; among all the sets of indicators available in International and National databases for characterising sustainable management of water resources, it was necessary to choose the one able to describe crucial Driving Forces and Pressures and which could also represent an input to the two software packages used to assess the quantity and quality of water for each of the case studies.

While indicators representing Driving Forces and Pressures have been transformed into input variables of the models TELEMAC and WaterWare, the model outputs were used to understand the changes in the state of the environment (thus state indicators), especially in terms of water quantity and quality.

Among the whole set of State indicators produced by the two models concerning water availability and quality, summarised performances have to be defined and agreed upon in order to focus the Comparative Analysis on a few indicators which can be calculated in each of the case studies (see Table 1).

These aggregated State indicators are in fact the Impact indicators whose performance value changes each time a different policy Response is set, thus modifying the D and P indicators input to the models.

It is in reaction to the State of the environment assessed here by the software outputs (and thus Impacts) that the policy world may want to develop suitable policy Responses. This can obviously be very different for each of the case studies, and a standardised framework is therefore needed to perform a comparative analysis also across countries.

**Table 1: Criteria for the Comparative Analysis: Sustainability Indicators**

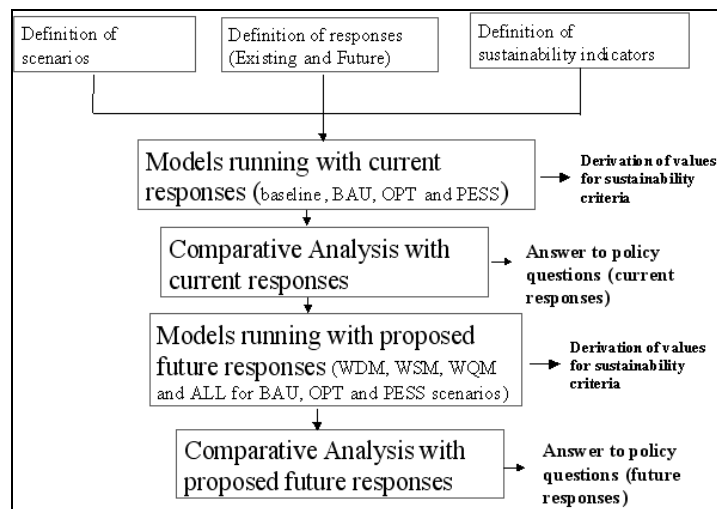
TYPE	INDICATOR	DESCRIPTION	PROPOSED BY:	UNIT	SOURCE
ECONOMIC (Impact)	D/S ratio for agriculture	% of yearly total agricultural demand met by total water supply for the sector	SMART	%	WaterWare
	D/S ratio for industry	% of yearly total industrial demand met by total water supply for the sector	SMART	%	WaterWare
	D/S ratio for tourism	% of yearly total touristic demand met by total water supply for the sector	SMART	%	WaterWare
	Economic efficiency of the system	Value added per unit of water used	SMART	EUR/m <sup>3</sup>	WaterWare
SOCIAL (Impact)	D/S ratio for domestic use	Number of days with restricted domestic supply	SMART	days/year	WaterWare
ENVIRONMENTAL	Global quality of coastal waters	Classes of global quality as reported by the Telemac model	UNEP - MAP	class (I-IV)	Telemac

(State/Impact)	D/S ratio for environmental uses	% of yearly total demand for environmental purposes met by total water available	SMART	%	Waterware
----------------	----------------------------------	--	-------	---	-----------

### 2.3.2 Scenario simulation and comparative analysis

In order to perform a meaningful and informative comparative analysis and answer the above questions, case studies will be compared on the basis of the results of models running with comparable assumptions, i.e. the same scenarios (Baseline, BAU, OPTIMISTIC and PESSIMISTIC) and the same type of responses (WDM, WSM and WQM). The main operative steps to perform the comparative analysis are represented in the graph below.

**Figure 1: Comparative Analysis procedure**



In practice, in each case study the following model runs were performed to derive the values of sustainability indicators:

- 1 run under baseline scenario with current responses
- 3 runs (BAU, OPT and PESS) with current responses and variations depending on the changing forcing variables about climatic and population growth and land use changes (if any)
- 3 runs (BAU, OPT and PESS) with WDM responses
- 3 runs (BAU, OPT and PESS) with WSM responses
- 3 runs (BAU, OPT and PESS) with WQM responses
- 3 runs (BAU, OPT and PESS) with all future possible responses together

According to the above in every case study 16 sets of sustainability indicators' values for each case study were to be analysed in the comparative analysis carried out by means of MULINO-DSS. In practice not all the theoretical combinations were suitable to provide variations in model setting and outputs.

According to the DPSIR framework, SMART scenarios (BAU, optimistic and pessimistic) were defined in terms of D and P indicators. In particular, variables defining scenarios can be classified in four broad categories, i.e. Demography (population growth rate), Climate (precipitation and temperature), Water demand (Urban, Agriculture, Industry, Tourism, Environment) and Water pollution (flow and concentration of pollutants discharged).

Conceptually, scenarios should be distinguished from policy responses. In particular, scenarios include only Driving Forces, i.e. “external” variables - like precipitation patterns, population growth and general economic trends - that are not linked to the implementation of policies explicitly targeting water issues. In the definition of scenarios for SMART, on the other hand, for operational reasons we included some variables – like water demand and pollution – which have a direct link with policy responses. For example, policy responses like the change in cropping patterns, the increase in investments for water conveyance, regulations addressing water pollution problems, etc., can have a direct effect on Pressure indicators such as water demand and pollution.

### 2.3.3 *Participative multi-criteria analysis*

The individual performances of the policy options under consideration were aggregated using the multi-criteria approaches (MCA) implemented in mDss: a simple but robust structure, covering a range of decision-makers’ attitudes and decision-making styles.

MCA has been conducted in a joint SMART – Nostrum-Dss workshop, in which representatives of partners, of the two projects and of the Nostrum-Dss Steering Committee played the role of experts. In particular they provided a contribution in order to weight the various sustainability indicators identified in order to quantify the evaluation criteria.

In fact, not all the criteria identified (*Impact* indicators) in the case studies carry the same weight. The decision rule applied here was the Simple Additive Weighting, i.e. a weighted additive combination of the values of the indicators, previously standardised by means of value functions.

In order to elicit the weights, various methodologies are available but to raise the acceptability of the proposed solutions, a panel of experts may be involved, as was done in this case. The Simos procedure (Simos, 1990a, 1990b; Figueira et al., 2002) was selected as it provides a simple and effective approach for weight elicitation. It is based on a set of coloured cards, one for criteria, provided to each participant. The participants are asked to rank these cards (or criteria) from the least important to the most important. The rank order of a criterion expresses the importance a single participant wants to ascribe to that criterion: the first criterion in the ranking is the least important and the last criterion in the ranking is the most important. If the two criteria are found to be equally important, these are given the same rank position.

In order to allow participants to express strong preference between criteria, another set of cards (white cards) is introduced. The participants are asked to introduce white cards between two successive coloured cards, while the number of white cards is proportional to the difference between the importance of the considered criteria.

Subsequently, the criteria weights are calculated using the rank positions attributed in the previous step: the rank positions are simply divided by the total sum of the positions of the considered criteria, thus providing a vector of weights to be applied to the evaluation criteria, in the form of real values summing up to 1.

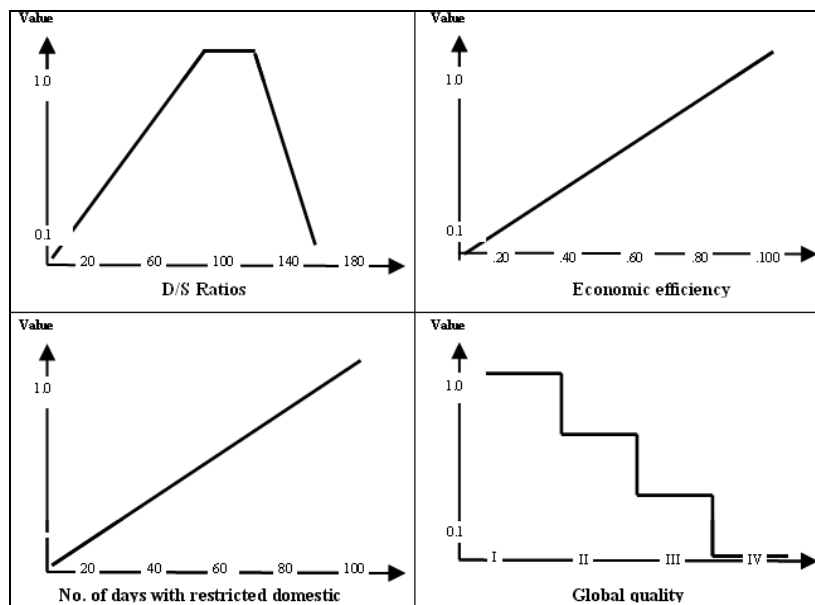
Before performing the MCA with the weighted criteria, it is necessary to attribute them a value function in order to overcome the incoherence related to the unit and magnitude of the criteria. The value function (VF) approach is based on the assumption that the preferential judgements may be substituted by a number of ('value') preserving the preference relations. Value function (VF) translates the performances of the options into value scores, which represent the degree to which a decision objective is matched. In other words, it maps the preference about two options a and b (a is preferred b) in a numerical relation  $u(a) > u(b)$ .

### 3. Application of the methodology

#### 3.1 Value functions

In order to perform a weighted comparative analysis as explained in section 2.2 it is necessary to standardise the chosen indicators. The 4 value functions adopted within this analysis are reported in the following figure.

Figure 2: Value functions for the 4 types of criteria



#### 3.2 Simos procedure

The workshop took place in Venice in June 2005 and involved a panel of 14 experts in water resource management mainly coming from the Mediterranean area.

### 3.2.1 *Separate and Collective elicitation*

During the workshop, the participants were asked to perform the criteria ranking using the Simos methodology twice: first for the groups of macro-criteria (environmental, economic and social criteria groups) separately, and in succession, for all criteria together. The difference between the weights elicited in such a way would give a clue about a cognitive shortcoming, called splitting bias frequently reported in the literature. The existence of the splitting bias means in our case that different weights can be yielded, depending on the way criteria are organised. As expected, the criteria weights differed considerably. When all criteria were considered together, the weights of the economic criteria were generally overestimated and the weights of environmental and social criteria underestimated (Table 3).

**Table 2: Criteria weights elicited by Simos procedure**

Macro-criteria	Decision criteria	Weights elicited separately $w_s$	Weights elicited collectively $w_c$
Economic	D/S ratio for agriculture	0,1	0.17
	D/S ratio for industry	0,06	0.11
	D/S ratio for tourism	0,06	0.09
	Economic efficiency of the system	0,11	0.17
Social	No. of days with restricted domestic supply	0,33	0.22
Environmental	Global quality of coastal waters	0,14	0.09
	D/S ratio for environmental uses	0,19	0.15

### 3.2.2 *Inconsistencies*

As mentioned, a considerable inconsistency was observed between the two exercises of the weight elicitation. The inconsistencies can be generally classified into three classes:

- i. strong inconsistency – the preference between two criteria a and b was opposite. For example, while the criterion a was preferred when considering the criteria groups separately; the criterion b was preferred when all the criteria were handled together. There have been two cases (14%) of strong inconsistency.
- ii. weak inconsistency – the relation between two criteria changed from indifference (a and b equally important) to a preference relation (a is preferred to /dominated by b). There have been three cases (21%) of a weak inconsistency.
- iii. shift in the degree of preference – a relation between two criteria changed from simply preferred to strictly preferred (by inserting one or more white cards between the criteria a and b).

As a result of the above-described inconsistency, the variations of the experts' judgements yielded by the Simos preference elicitation differed considerably. The most constant (robust) judgement of the importance of a criterion, in the case of non-hierarchical criteria arrangement, yielded the only social criterion – the “No. of days with restricted domestic supply”, followed by “economic efficiency” and “D/S agriculture”. The environmental criteria (especially “global quality”) showed the most



varying preference judgements across the experts. In the case the criteria were organised hierarchically, “D/S agriculture” yielded the most stable judgement across the economic criteria, followed by “economic efficiency” and “D/S tourism”. The “D/S industry” did worst. Among the environmental criteria, once again “D/S environment” criterion yielded more stable judgements.

These inconsistencies had no impact on the further comparative analysis across the case studies since only the criteria weights elicited in the hierarchical way (ws in the table 3) were applied to evaluate policy performance.

### 3.2.3 Correlation

Both Spearman's rank correlation and Kendall's tau coefficient have been applied to analyse the relations between the criteria. A significant correlation was revealed only between four pairs of criteria. A negative correlation was revealed between some economic and environmental criteria, meaning that participants who assigned a high rank position (and resulting weight) to economic aspects of the problem, generally tended to see environmental issues as less relevant and vice versa. However, this could not be generalised for all the criteria in these sub-groups, indicating a rather complex preference system hardly reducible to stereotypes such as antagonism between economically and environmentally oriented people.

The only significant correlation of this type was between criteria “D/S tourism” and “D/S environment”. A negative correlation was also found within economic sub-groups, namely between the criteria “D/S industry” and “Economic efficiency”. More complex is the situation between the only social criterion and the other criteria. A significant positive correlation was revealed between “D/S tourism” and “No. of days of restricted domestic use”. On the other hand a negative correlation characterised the relation between “D/S agriculture” and “No. of days”. In the case of the criteria with significant correlation the coefficients varied between 0.34 and 0.41.

The correlations between the experts' judgments of criteria importance give an insight into the within-group variability of experts' preferences. The correlation between the single experts ranges between -.48 (in the case of experts p4 and p13) and 0.9 (experts p12 and p14). Given the small sample size only 18 pairs of experts (out of  $n(n-1)/2 = 91$ ) show a statistically significant correlation. The correlation in order to be statistically significant in our case must exceed 0.52, meaning that only positive correlations are statistically significant. Again, the correlation analysis does not allow a simple conclusion regarding the further differentiation of experts' preferences.

### 3.3 Aggregated performance

The multi-criteria decision functionality implemented in mDss allows the system to model users' preferences and to aggregate the performances of considered options with regard to the decision criteria. All the information collected during the various phases of the analysis are suitable to be inserted in this too; this simplifies the comparative analysis of the indicators as it allows to insert the DPSIR conceptualisation, vary the

parameters of the analysis, rank the options, and perform a sensitivity analysis on the results in a manner that is suitable to communicate intermediate and final results also to the interested parties outside the scientific sphere.

The total performances yielded by applying the additive averaging method based on the VF and weights described earlier are shown in Table 4.

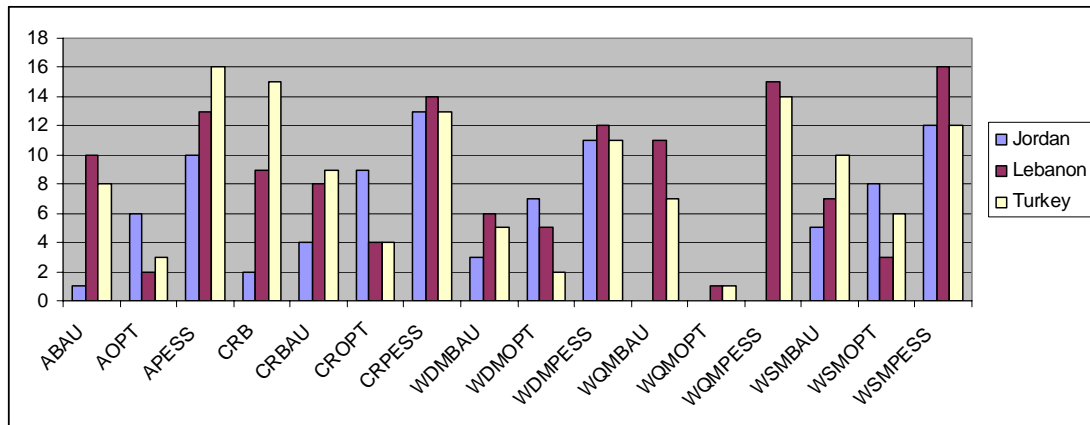
**Table 3: Final results of the CA**

Options	Jordan		Lebanon		Turkey	
	Score	Rank	Score	Rank	Score	Rank
ABAU	<b>0,6653</b>	<b>1</b>	0,5496	10	0,8297	8
AOPT	0,5737	6	<b>0,7723</b>	<b>2</b>	<b>0,896</b>	<b>3</b>
APESS	0,5269	10	0,4262	13	0,6356	16
CRB	<b>0,6563</b>	<b>2</b>	0,5626	9	0,6873	15
CRBAU	0,617	4	0,5642	8	0,7846	9
CROPT	0,5362	9	0,7543	4	0,8704	4
CRPESS	0,4476	13	0,4258	14	0,7285	13
WDMBAU	<b>0,6466</b>	<b>3</b>	0,613	6	0,8363	5
WDMOPT	0,5636	7	0,753	5	<b>0,9092</b>	<b>2</b>
WDMPESS	0,5264	11	0,4279	12	0,7437	11
WQMBAU			0,5242	11	0,8308	7
WQMOPT			<b>0,8283</b>	<b>1</b>	<b>0,9169</b>	<b>1</b>
WQMPESS			0,42	15	0,7266	14
WSMBAU	0,6031	5	0,5802	7	0,771	10
WSMOPT	0,5511	8	<b>0,7678</b>	<b>3</b>	0,8356	6
WSMPESS	0,5025	12	0,4067	16	0,7326	12

The situation in each case study is unique, nevertheless the same preferences – internalised in the value functions applied to transform the expected outcomes of the policy options and the criteria weights – were the same in all case studies. Concerning the correlations between the rankings obtained in each of the case studies, Kendall's tau coefficients (ranged between 0.18 and 0.63) are generally smaller than the Spearman Rank Correlations (0.28 – 0.83). In Lebanon and Turkey the results show higher similarity. This is also the only statistically significant correlation regardless of the type of correlation coefficient used. Both case studies share the same policy option as the best preferred one – WQMOPT. It should be noted that this option could not have been considered in the Jordan case study and thus this comparison is limited to the common policy options. The second best option in Lebanon CS is AOPT, whereas this option is ranked third in Turkey. The second best option in Turkey is WDMOPT which is in position 5 in Lebanon. Likewise, the lowest ranking options are similar, the differences in their rank positions are rather small and in any case do not exceed 6 rank positions. This explains the high correlation between both case studies.

In the Jordan case, the most preferred option is ABAU which ranks very low in other case studies. Similarly, the second best option (CRB) is the second worst in Turkey. The low ranked options on the other hand yield equally poor results in the other cases. Interestingly, the best results in the Jordan CS are related to the BAU scenario, followed by the OPT scenario.

**Figure 3: Final ranking of the options**



## 4. Conclusions

The methodology originally developed for the Comparative Analysis was shown to be fully operational, providing a comprehensive assessment of the different policy options available for each case study. This approach allows to share the whole assessment process of the different policy options also with non-experts of DSS tools (e.g. policy makers). Starting from the conceptualisation in the DPSIR framework, passing through the choice of the criteria, the elicitation of their relative weighting and value functions, the Mulino-DSS tool allows to process all the relevant information and finally to perform an MCA in a transparent and intuitive way.

The data set was limited in size and sub-optimal, as a result of the combination of missing data in the examined CS, therefore the results obtained should be considered only from the methodological viewpoint. Having pointed this out, the final result is a ranking of the preferred policy options for each of the case studies; this comparison moreover allowed a further analysis across CS, highlighting how similar policy responses were preferable in different CS.

Emphasis has been placed on supporting analytical thinking and exploring the problems. Several of the methods implemented allow the decision-maker to focus on various aspects of the decision problem and are useful to guide the decision process.

By simultaneously using a number of different decision methods and by reviewing the possible conclusions of each, decision-makers are enabled to better understand the problems and to explore the trade-offs offered by the various options (Bell et al., 2001). Since the approach is aimed at assisting decision-makers to become more familiar with analytical ways of decision-making, the methods have been kept simple to avoid discouraging inexperienced users.

The adopted methodology therefore represents an operational approach for bridging scientific modelling and policy making, by integrating the model outputs in a conceptual framework that can be understood and utilised by non experts. The methodology shows a concrete potential for participatory decision making since it uses simple methods not requiring hi-tech facilities (i.e. Simos for knowledge elicitation) and computer tools that are freely available through the Internet (i.e. Mulino-DSS).

## References

### Software Packages

- *WaterWare* and *Land Use Change* models developed by Environmental Software and Services, Austria. <http://www.ess.co.at/>
- *Telemac* modelling system developed by the National Hydraulics and Environment Laboratory and is distributed by SOGREAH, France. <http://www.telemacsystem.com/>
- *Mulino-dss* developed by the Mulino consortium (Contract n° EVK1-CT-2000-00082) <http://siti.feem.it/mulino/>

### Bibliography

- Bell, M. L., Hobbs, B. F., Elliott, E. M., Ellis, H. and Robinson, Z., 2001, An evaluation of multi-criteria methods in integrated assessment of climate policy, *Journal of Multi-Criteria Decision Analysis* 10, pp 229-256.
- Bossard, M., Feranec, J., and Otahel, J., 2000, CORINE land cover technical guide – Addendum 2000. Technical guide n°40, European Environment Agency.
- CEC, 1994. CORINE land cover. Technical guide. Luxembourg (Office for Official Publications of European Communities).
- EEA, 1999, Environmental indicators: Typology and Overview. Technical report n°25. European Environmental Agency, Copenhagen.
- EEA, 2001. Sustainable water use in Europe. Environmental issue report No 21. European Environmental Agency, Copenhagen.
- Figueira, J., Roy, B., 2002, Determining the weights of criteria in the ELECTRE type methods with a revised Simos' procedure *European Journal of Operational Research* 139: 317–326
- Giupponi, C., Mysiak, J., Fassio, A., and Cogan, V., 2004, MULINO-DSS: a computer tool for sustainable use of water resources at the catchment scale - *Mathematics and Computers in Simulation*, 64, pp.13-24
- Giupponi, C., Mysiak, J., Fassio, A., and Cogan, V., 2001, MULINO: Multi-sectoral, Integrated and Operational Decision Support System for Sustainable Use of Water Resources at the Catchment Scale - *MODSIM Proceedings*, Canberra, Australia, Vol. 3, p. 1183.
- Mysiak, J., Giupponi, C., and Rosato, P., 2005, Towards the development of a decision support system for water resource management - *Environmental Modelling & Software*, 20 - 2, pp. 203-214
- Simos, J., 1990a, L'évaluation environnementale: Un processus cognitif négocié. Thèse de doctorat, DGF-EPFL, Lausanne.
- Simos, J., 1990b, Evaluer l'impact sur l'environnement: Une approche originale par l'analyse multicritère et la négociation. Presses Polytechniques et Universitaires Romandes, Lausanne.

## NOTE DI LAVORO DELLA FONDAZIONE ENI ENRICO MATTEI

### Fondazione Eni Enrico Mattei Working Paper Series

Our Note di Lavoro are available on the Internet at the following addresses:

<http://www.feem.it/Feem/Pub/Publications/WPapers/default.html>

<http://www.ssrn.com/link/feem.html>

<http://www.repec.org>

<http://agecon.lib.umn.edu>

### NOTE DI LAVORO PUBLISHED IN 2006

SIEV	1.2006	<i>Anna ALBERINI</i> : <u>Determinants and Effects on Property Values of Participation in Voluntary Cleanup Programs: The Case of Colorado</u>
CCMP	2.2006	<i>Valentina BOSETTI, Carlo CARRARO and Marzio GALEOTTI</i> : <u>Stabilisation Targets, Technical Change and the Macroeconomic Costs of Climate Change Control</u>
CCMP	3.2006	<i>Roberto ROSON</i> : <u>Introducing Imperfect Competition in CGE Models: Technical Aspects and Implications</u>
KTHC	4.2006	<i>Sergio VERGALLI</i> : <u>The Role of Community in Migration Dynamics</u>
SIEV	5.2006	<i>Fabio GRAZI, Jeroen C.J.M. van den BERGH and Piet RIETVELD</i> : <u>Modeling Spatial Sustainability: Spatial Welfare Economics versus Ecological Footprint</u>
CCMP	6.2006	<i>Olivier DESCHENES and Michael GREENSTONE</i> : <u>The Economic Impacts of Climate Change: Evidence from Agricultural Profits and Random Fluctuations in Weather</u>
PRCG	7.2006	<i>Michele MORETTO and Paola VALBONESE</i> : <u>Firm Regulation and Profit-Sharing: A Real Option Approach</u>
SIEV	8.2006	<i>Anna ALBERINI and Aline CHIABAI</i> : <u>Discount Rates in Risk v. Money and Money v. Money Tradeoffs</u>
CTN	9.2006	<i>Jon X. EGUIA</i> : <u>United We Vote</u>
CTN	10.2006	<i>Shao CHIN SUNG and Dinko DIMITRO</i> : <u>A Taxonomy of Myopic Stability Concepts for Hedonic Games</u>
NRM	11.2006	<i>Fabio CERINA</i> (lxxviii): <u>Tourism Specialization and Sustainability: A Long-Run Policy Analysis</u>
NRM	12.2006	<i>Valentina BOSETTI, Mariaester CASSINELLI and Alessandro LANZA</i> (lxxviii): <u>Benchmarking in Tourism Destination, Keeping in Mind the Sustainable Paradigm</u>
CCMP	13.2006	<i>Jens HORBACH</i> : <u>Determinants of Environmental Innovation – New Evidence from German Panel Data Sources</u>
KTHC	14.2006	<i>Fabio SABATINI</i> : <u>Social Capital, Public Spending and the Quality of Economic Development: The Case of Italy</u>
KTHC	15.2006	<i>Fabio SABATINI</i> : <u>The Empirics of Social Capital and Economic Development: A Critical Perspective</u>
CSRM	16.2006	<i>Giuseppe DI VITA</i> : <u>Corruption, Exogenous Changes in Incentives and Deterrence</u>
CCMP	17.2006	<i>Rob B. DELLINK and Marjan W. HOFKES</i> : <u>The Timing of National Greenhouse Gas Emission Reductions in the Presence of Other Environmental Policies</u>
IEM	18.2006	<i>Philippe QUIRION</i> : <u>Distributional Impacts of Energy-Efficiency Certificates Vs. Taxes and Standards</u>
CTN	19.2006	<i>Somdeb LAHIRI</i> : <u>A Weak Bargaining Set for Contract Choice Problems</u>
CCMP	20.2006	<i>Massimiliano MAZZANTI and Roberto ZOBOLI</i> : <u>Examining the Factors Influencing Environmental Innovations</u>
SIEV	21.2006	<i>Y. Hossein FARZIN and Ken-ICHI AKAO</i> : <u>Non-pecuniary Work Incentive and Labor Supply</u>
CCMP	22.2006	<i>Marzio GALEOTTI, Matteo MANERA and Alessandro LANZA</i> : <u>On the Robustness of Robustness Checks of the Environmental Kuznets Curve</u>
NRM	23.2006	<i>Y. Hossein FARZIN and Ken-ICHI AKAO</i> : <u>When is it Optimal to Exhaust a Resource in a Finite Time?</u>
NRM	24.2006	<i>Y. Hossein FARZIN and Ken-ICHI AKAO</i> : <u>Non-pecuniary Value of Employment and Natural Resource Extinction</u>
SIEV	25.2006	<i>Lucia VERGANO and Paulo A.L.D. NUNES</i> : <u>Analysis and Evaluation of Ecosystem Resilience: An Economic Perspective</u>
SIEV	26.2006	<i>Danny CAMPBELL, W. George HUTCHINSON and Riccardo SCARPA</i> : <u>Using Discrete Choice Experiments to Derive Individual-Specific WTP Estimates for Landscape Improvements under Agri-Environmental Schemes: Evidence from the Rural Environment Protection Scheme in Ireland</u>
KTHC	27.2006	<i>Vincent M. OTTO, Timo KUOSMANEN and Ekko C. van IERLAND</i> : <u>Estimating Feedback Effect in Technical Change: A Frontier Approach</u>
CCMP	28.2006	<i>Giovanni BELLA</i> : <u>Uniqueness and Indeterminacy of Equilibria in a Model with Polluting Emissions</u>
IEM	29.2006	<i>Alessandro COLOGNI and Matteo MANERA</i> : <u>The Asymmetric Effects of Oil Shocks on Output Growth: A Markov-Switching Analysis for the G-7 Countries</u>
KTHC	30.2006	<i>Fabio SABATINI</i> : <u>Social Capital and Labour Productivity in Italy</u>
ETA	31.2006	<i>Andrea GALLICE</i> (lxxix): <u>Predicting one Shot Play in 2x2 Games Using Beliefs Based on Minimax Regret</u>
IEM	32.2006	<i>Andrea BIGANO and Paul SHEEHAN</i> : <u>Assessing the Risk of Oil Spills in the Mediterranean: the Case of the Route from the Black Sea to Italy</u>
NRM	33.2006	<i>Rinaldo BRAU and Davide CAO</i> (lxxviii): <u>Uncovering the Macrostructure of Tourists' Preferences. A Choice Experiment Analysis of Tourism Demand to Sardinia</u>
CTN	34.2006	<i>Parkash CHANDER and Henry TULKENS</i> : <u>Cooperation, Stability and Self-Enforcement in International Environmental Agreements: A Conceptual Discussion</u>
IEM	35.2006	<i>Valeria COSTANTINI and Salvatore MONNI</i> : <u>Environment, Human Development and Economic Growth</u>
ETA	36.2006	<i>Ariel RUBINSTEIN</i> (lxxix): <u>Instinctive and Cognitive Reasoning: A Study of Response Times</u>

ETA	37.2006	<i>Maria SALGADO</i> (lxxix): <u>Choosing to Have Less Choice</u>
ETA	38.2006	<i>Justina A.V. FISCHER and Benno TORGLER</i> : <u>Does Envy Destroy Social Fundamentals? The Impact of Relative Income Position on Social Capital</u>
ETA	39.2006	<i>Benno TORGLER, Sascha L. SCHMIDT and Bruno S. FREY</i> : <u>Relative Income Position and Performance: An Empirical Panel Analysis</u>
CCMP	40.2006	<i>Alberto GAGO, Xavier LABANDEIRA, Fidel PICOS And Miguel RODRÍGUEZ</i> : <u>Taxing Tourism In Spain: Results and Recommendations</u>
IEM	41.2006	<i>Karl van BIERVLIET, Dirk Le ROY and Paulo A.L.D. NUNES</i> : <u>An Accidental Oil Spill Along the Belgian Coast: Results from a CV Study</u>
CCMP	42.2006	<i>Rolf GOLOMBEK and Michael HOEL</i> : <u>Endogenous Technology and Tradable Emission Quotas</u>
KTHC	43.2006	<i>Giulio CAINELLI and Donato IACOBUCCI</i> : <u>The Role of Agglomeration and Technology in Shaping Firm Strategy and Organization</u>
CCMP	44.2006	<i>Alvaro CALZADILLA, Francesco PAULI and Roberto ROSON</i> : <u>Climate Change and Extreme Events: An Assessment of Economic Implications</u>
SIEV	45.2006	<i>M.E. KRAGT, P.C. ROEBELING and A. RUIJS</i> : <u>Effects of Great Barrier Reef Degradation on Recreational Demand: A Contingent Behaviour Approach</u>
NRM	46.2006	<i>C. GIUPPONI, R. CAMERA, A. FASSIO, A. LASUT, J. MYSLIAK and A. SGOBBI</i> : <u>Network Analysis, Creative System Modelling and DecisionSupport: The NetSyMoD Approach</u>
KTHC	47.2006	<i>Walter F. LALICH</i> (lxxx): <u>Measurement and Spatial Effects of the Immigrant Created Cultural Diversity in Sydney</u>
KTHC	48.2006	<i>Elena PASPALANOVA</i> (lxxx): <u>Cultural Diversity Determining the Memory of a Controversial Social Event</u>
KTHC	49.2006	<i>Ugo GASPARINO, Barbara DEL CORPO and Dino PINELLI</i> (lxxx): <u>Perceived Diversity of Complex Environmental Systems: Multidimensional Measurement and Synthetic Indicators</u>
KTHC	50.2006	<i>Aleksandra HAUKE</i> (lxxx): <u>Impact of Cultural Differences on Knowledge Transfer in British, Hungarian and Polish Enterprises</u>
KTHC	51.2006	<i>Katherine MARQUAND FORSYTH and Vanja M. K. STENIUS</i> (lxxx): <u>The Challenges of Data Comparison and Varied European Concepts of Diversity</u>
KTHC	52.2006	<i>Gianmarco I.P. OTTAVIANO and Giovanni PERI</i> (lxxx): <u>Rethinking the Gains from Immigration: Theory and Evidence from the U.S.</u>
KTHC	53.2006	<i>Monica BARNI</i> (lxxx): <u>From Statistical to Geolinguistic Data: Mapping and Measuring Linguistic Diversity</u>
KTHC	54.2006	<i>Lucia TAJOLI and Lucia DE BENEDICTIS</i> (lxxx): <u>Economic Integration and Similarity in Trade Structures</u>
KTHC	55.2006	<i>Suzanna CHAN</i> (lxxx): <u>“God’s Little Acre” and “Belfast Chinatown”: Diversity and Ethnic Place Identity in Belfast</u>
KTHC	56.2006	<i>Diana PETKOVA</i> (lxxx): <u>Cultural Diversity in People’s Attitudes and Perceptions</u>
KTHC	57.2006	<i>John J. BETANCUR</i> (lxxx): <u>From Outsiders to On-Paper Equals to Cultural Curiosities? The Trajectory of Diversity in the USA</u>
KTHC	58.2006	<i>Kiflemariam HAMDE</i> (lxxx): <u>Cultural Diversity A Glimpse Over the Current Debate in Sweden</u>
KTHC	59.2006	<i>Emilio GREGORI</i> (lxxx): <u>Indicators of Migrants’ Socio-Professional Integration</u>
KTHC	60.2006	<i>Christa-Maria LERM HAYES</i> (lxxx): <u>Unity in Diversity Through Art? Joseph Beuys’ Models of Cultural Dialogue</u>
KTHC	61.2006	<i>Sara VERTOMMEN and Albert MARTENS</i> (lxxx): <u>Ethnic Minorities Rewarded: Ethnostratification on the Wage Market in Belgium</u>
KTHC	62.2006	<i>Nicola GENOVESE and Maria Grazia LA SPADA</i> (lxxx): <u>Diversity and Pluralism: An Economist's View</u>
KTHC	63.2006	<i>Carla BAGNA</i> (lxxx): <u>Italian Schools and New Linguistic Minorities: Nationality Vs. Plurilingualism. Which Ways and Methodologies for Mapping these Contexts?</u>
KTHC	64.2006	<i>Vedran OMANOVIĆ</i> (lxxx): <u>Understanding “Diversity in Organizations” Paradigmatically and Methodologically</u>
KTHC	65.2006	<i>Mila PASPALANOVA</i> (lxxx): <u>Identifying and Assessing the Development of Populations of Undocumented Migrants: The Case of Undocumented Poles and Bulgarians in Brussels</u>
KTHC	66.2006	<i>Roberto ALZETTA</i> (lxxx): <u>Diversities in Diversity: Exploring Moroccan Migrants’ Livelihood in Genoa</u>
KTHC	67.2006	<i>Monika SEDENKOVA and Jiri HORAK</i> (lxxx): <u>Multivariate and Multicriteria Evaluation of Labour Market Situation</u>
KTHC	68.2006	<i>Dirk JACOBS and Andrea REA</i> (lxxx): <u>Construction and Import of Ethnic Categorisations: “Allochthones” in The Netherlands and Belgium</u>
KTHC	69.2006	<i>Eric M. USLANER</i> (lxxx): <u>Does Diversity Drive Down Trust?</u>
KTHC	70.2006	<i>Paula MOTA SANTOS and João BORGES DE SOUSA</i> (lxxx): <u>Visibility &amp; Invisibility of Communities in Urban Systems</u>
ETA	71.2006	<i>Rinaldo BRAU and Matteo LIPPI BRUNI</i> : <u>Eliciting the Demand for Long Term Care Coverage: A Discrete Choice Modelling Analysis</u>
CTN	72.2006	<i>Dinko DIMITROV and Claus-JOCHEN HAAKE</i> : <u>Coalition Formation in Simple Games: The Semistrict Core</u>
CTN	73.2006	<i>Ottorino CHILLEM, Benedetto GUI and Lorenzo ROCCO</i> : <u>On The Economic Value of Repeated Interactions Under Adverse Selection</u>
CTN	74.2006	<i>Sylvain BEAL and Nicolas QUÉROU</i> : <u>Bounded Rationality and Repeated Network Formation</u>
CTN	75.2006	<i>Sophie BADE, Guillaume HAERINGER and Ludovic RENO</i> : <u>Bilateral Commitment</u>
CTN	76.2006	<i>Andranik TANGIAN</i> : <u>Evaluation of Parties and Coalitions After Parliamentary Elections</u>
CTN	77.2006	<i>Rudolf BERGHAMMER, Agnieszka RUSINOWSKA and Harrie de SWART</i> : <u>Applications of Relations and Graphs to Coalition Formation</u>
CTN	78.2006	<i>Paolo PIN</i> : <u>Eight Degrees of Separation</u>
CTN	79.2006	<i>Roland AMANN and Thomas GALL</i> : <u>How (not) to Choose Peers in Studying Groups</u>

CTN	80.2006	<i>Maria MONTERO: <u>Inequity Aversion May Increase Inequity</u></i>
CCMP	81.2006	<i>Vincent M. OTTO, Andreas LÖSCHEL and John REILLY: <u>Directed Technical Change and Climate Policy</u></i>
CSRM	82.2006	<i>Nicoletta FERRO: <u>Riding the Waves of Reforms in Corporate Law, an Overview of Recent Improvements in Italian Corporate Codes of Conduct</u></i>
CTN	83.2006	<i>Siddhartha BANDYOPADHYAY and Mandar OAK: <u>Coalition Governments in a Model of Parliamentary Democracy</u></i>
PRCG	84.2006	<i>Raphaël SOUBEYRAN: <u>Valence Advantages and Public Goods Consumption: Does a Disadvantaged Candidate Choose an Extremist Position?</u></i>
CCMP	85.2006	<i>Eduardo L. GIMÉNEZ and Miguel RODRÍGUEZ: <u>Pigou's Dividend versus Ramsey's Dividend in the Double Dividend Literature</u></i>
CCMP	86.2006	<i>Andrea BIGANO, Jacqueline M. HAMILTON and Richard S.J. TOL: <u>The Impact of Climate Change on Domestic and International Tourism: A Simulation Study</u></i>
KTHC	87.2006	<i>Fabio SABATINI: <u>Educational Qualification, Work Status and Entrepreneurship in Italy an Exploratory Analysis</u></i>
CCMP	88.2006	<i>Richard S.J. TOL: <u>The Polluter Pays Principle and Cost-Benefit Analysis of Climate Change: An Application of Fund</u></i>
CCMP	89.2006	<i>Philippe TULKENS and Henry TULKENS: <u>The White House and The Kyoto Protocol: Double Standards on Uncertainties and Their Consequences</u></i>
SIEV	90.2006	<i>Andrea M. LEITER and Gerald J. PRUCKNER: <u>Proportionality of Willingness to Pay to Small Risk Changes – The Impact of Attitudinal Factors in Scope Tests</u></i>
PRCG	91.2006	<i>Raphaël SOUBEYRAN: <u>When Inertia Generates Political Cycles</u></i>
CCMP	92.2006	<i>Alireza NAGHAVI: <u>Can R&amp;D-Inducing Green Tariffs Replace International Environmental Regulations?</u></i>
CCMP	93.2006	<i>Xavier PAUTREL: <u>Reconsidering The Impact of Environment on Long-Run Growth When Pollution Influences Health and Agents Have Finite-Lifetime</u></i>
CCMP	94.2006	<i>Corrado Di MARIA and Edwin van der WERF: <u>Carbon Leakage Revisited: Unilateral Climate Policy with Directed Technical Change</u></i>
CCMP	95.2006	<i>Paulo A.L.D. NUNES and Chiara M. TRAVISI: <u>Comparing Tax and Tax Reallocations Payments in Financing Rail Noise Abatement Programs: Results from a CE valuation study in Italy</u></i>
CCMP	96.2006	<i>Timo KUOSMANEN and Mika KORTELAINEN: <u>Valuing Environmental Factors in Cost-Benefit Analysis Using Data Envelopment Analysis</u></i>
KTHC	97.2006	<i>Dermot LEAHY and Alireza NAGHAVI: <u>Intellectual Property Rights and Entry into a Foreign Market: FDI vs. Joint Ventures</u></i>
CCMP	98.2006	<i>Inmaculada MARTÍNEZ-ZARZOSO, Aurelia BENGOCHEA-MORANCHO and Rafael MORALES LAGE: <u>The Impact of Population on CO2 Emissions: Evidence from European Countries</u></i>
PRCG	99.2006	<i>Alberto CAVALIERE and Simona SCABROSETTI: <u>Privatization and Efficiency: From Principals and Agents to Political Economy</u></i>
NRM	100.2006	<i>Khaled ABU-ZEID and Sameh AFIFI: <u>Multi-Sectoral Uses of Water &amp; Approaches to DSS in Water Management in the NOSTRUM Partner Countries of the Mediterranean</u></i>
NRM	101.2006	<i>Carlo GIUPPONI, Jaroslav MYSLIAK and Jacopo CRIMI: <u>Participatory Approach in Decision Making Processes for Water Resources Management in the Mediterranean Basin</u></i>

(lxxviii) This paper was presented at the Second International Conference on "Tourism and Sustainable Economic Development - Macro and Micro Economic Issues" jointly organised by CRENoS (Università di Cagliari and Sassari, Italy) and Fondazione Eni Enrico Mattei, Italy, and supported by the World Bank, Chia, Italy, 16-17 September 2005.

(lxxix) This paper was presented at the International Workshop on "Economic Theory and Experimental Economics" jointly organised by SET (Center for advanced Studies in Economic Theory, University of Milano-Bicocca) and Fondazione Eni Enrico Mattei, Italy, Milan, 20-23 November 2005. The Workshop was co-sponsored by CISEPS (Center for Interdisciplinary Studies in Economics and Social Sciences, University of Milan-Bicocca).

(lxxx) This paper was presented at the First EURODIV Conference "Understanding diversity: Mapping and measuring", held in Milan on 26-27 January 2006 and supported by the Marie Curie Series of Conferences "Cultural Diversity in Europe: a Series of Conferences.

#### **2006 SERIES**

<b>CCMP</b>	<i>Climate Change Modelling and Policy</i> (Editor: Marzio Galeotti )
<b>SIEV</b>	<i>Sustainability Indicators and Environmental Valuation</i> (Editor: Anna Alberini)
<b>NRM</b>	<i>Natural Resources Management</i> (Editor: Carlo Giupponi)
<b>KTHC</b>	<i>Knowledge, Technology, Human Capital</i> (Editor: Gianmarco Ottaviano)
<b>IEM</b>	<i>International Energy Markets</i> (Editor: Matteo Manera)
<b>CSRSM</b>	<i>Corporate Social Responsibility and Sustainable Management</i> (Editor: Giulio Sapelli)
<b>PRCG</b>	<i>Privatisation Regulation Corporate Governance</i> (Editor: Bernardo Bortolotti)
<b>ETA</b>	<i>Economic Theory and Applications</i> (Editor: Carlo Carraro)
<b>CTN</b>	<i>Coalition Theory Network</i>