



AgEcon SEARCH
RESEARCH IN AGRICULTURAL & APPLIED ECONOMICS

The World's Largest Open Access Agricultural & Applied Economics Digital Library

This document is discoverable and free to researchers across the globe due to the work of AgEcon Search.

Help ensure our sustainability.

Give to AgEcon Search

AgEcon Search

<http://ageconsearch.umn.edu>

aesearch@umn.edu

*Papers downloaded from **AgEcon Search** may be used for non-commercial purposes and personal study only. No other use, including posting to another Internet site, is permitted without permission from the copyright owner (not AgEcon Search), or as allowed under the provisions of Fair Use, U.S. Copyright Act, Title 17 U.S.C.*



**Overview of Economic Trends in South Carolina's
Council of Governments Regions,
2000-2005**

by

Daniel Eades
Research Associate
E.D.A. University Center for Economic Development
Clemson University, Clemson, South Carolina
www.clemson.edu/uced

UCED is a University Center Program of
The U.S. Department of Commerce
Economic Development Administration (E.D.A.)



Map of South Carolina
Council of Government
Regions

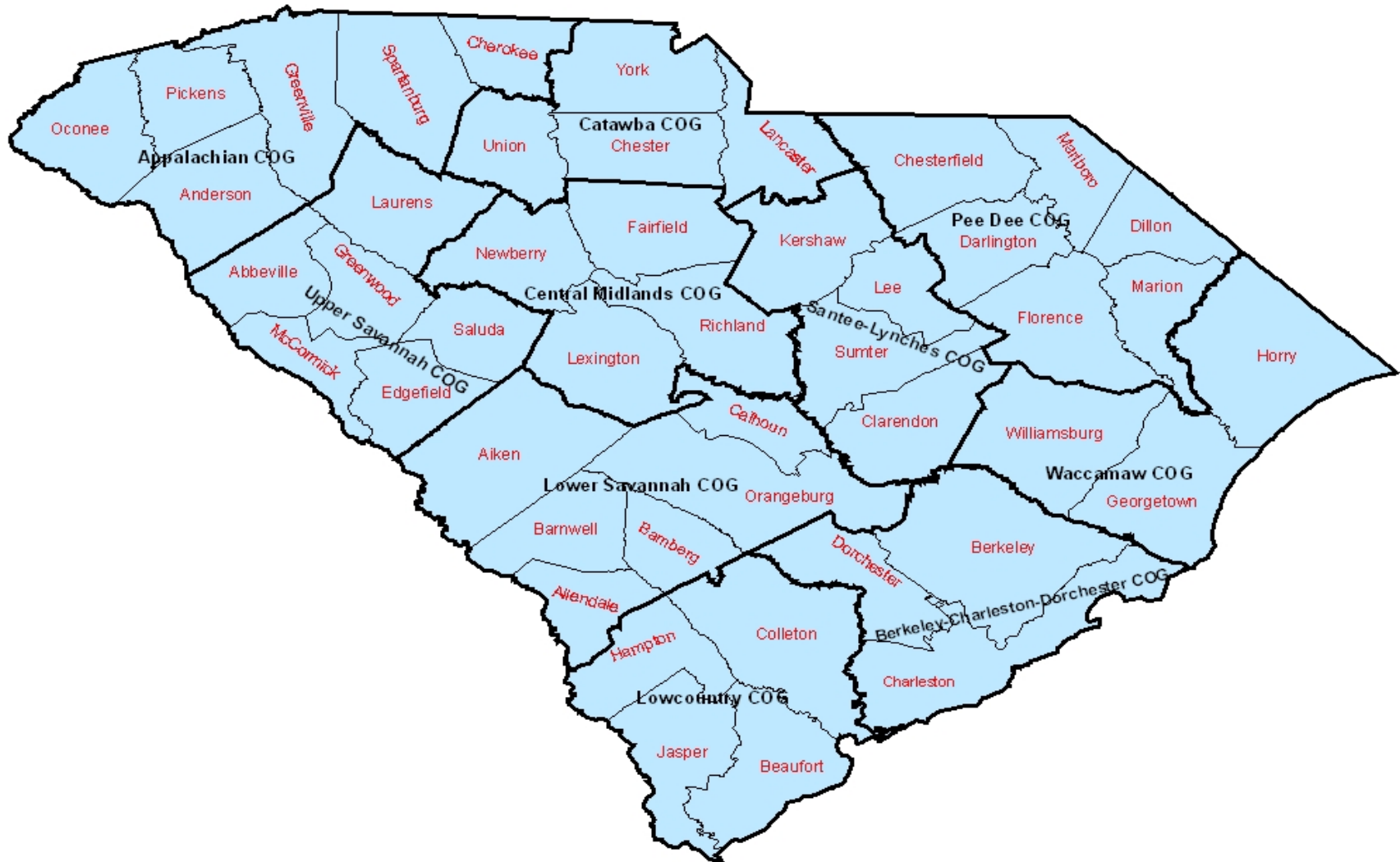
Establishments,
Employment, and
Unemployment Trends for
COGs, 2000-2005

Earnings Per Worker, Per
Capita Income, and
Median Household Income
Trends for COGs,
2000-2004

Patents, Small Business
Innovation Research
(SBIR), and Small
Business Technology
Transfers (SBTT) for
COGs, 2000-2005

County Level Data for
Economic Trends,
2000-2005

SOUTH CAROLINA COUNCIL OF GOVERNMENT REGIONS



A. Overview of Economic Trends in South Carolina's Councils of Governments Regions (COGs): Establishments and Employment, 2000-2005

From 2000 to 2004 the number of private establishments in South Carolina grew from 97,146 to 101,038, an increase of 4.0% (Table A.1). The state growth rate was slightly slower than the national growth rate of 4.5%. Growth in establishments was led by the Berkeley-Charleston-Dorchester (9.8%), Waccamaw (9.3%), and Lowcountry (7.6%) COGs. Additionally, the state and six of the ten COGs reported gains in establishments greater than the national rate of 1.8% for the period of 2003-2004 (Table A.1).

Trends in employment closely followed those exhibited by establishments. Both the nation and South Carolina experienced positive 2000-2005 employment growth of 3.5% and 1.9% respectively (Table A.2). Again, growth in the state was led by the Berkeley-Charleston-Dorchester (8.8%), Lowcountry (13.7%) and Waccamaw (12.6%) regions. The 2004 and 2005 period was a time of stronger employment growth. Nine of the ten COGs had positive growth and eight of the ten COGs outperformed the U.S. employment growth rate of 1.8%.

While the total number of individuals employed increased, employment in the manufacturing sector fell across all geographic areas. Between 2000 and 2005 the state reported a loss of nearly 82,500 manufacturing jobs, a decrease of 24% (Table A.3). National employment in manufacturing fell by 17.6% during the same period. The Appalachian COG, which contains the state's largest share of manufacturing employment, lost nearly 35,000 manufacturing jobs, 26.4% of the region's total, between 2000 and 2005. Other COG regions experiencing large percentage declines in manufacturing employment were Waccamaw (-38.1%), Upper Savannah (-29.5%), Santee-Lynches (-25.7%) and Pee Dee (-25%). Manufacturing job losses continued in the state between 2004 and 2005. However, four COGs (Berkeley-Charleston-Dorchester, Catawba, Central Midlands, and Lowcountry) reported small increases in manufacturing employment during this period.

Heavy losses in manufacturing jobs are a principal cause of the increase in the number of unemployed in South Carolina over the last five years. Between 2000 and 2005 the total number of unemployed persons in the state increased 100% from 70,820 to 141,780 (Table A.4). This is a dramatic increase in unemployed residents compared to the national increase of 33% over the same period. The Appalachian (124.6%), Catawba (119.4%), Santee-Lynches (102.2%), and Upper Savannah (110.6%) COGs all reported percentage increases in unemployed greater than the state. Only two COGs, Waccamaw (-1.3%) and Catawba (-5.6%), reported a decline in the number of unemployed from 2004 to 2005. No COGs were able to achieve the 6.8% decline in the unemployed observed nationally between 2004 and 2005.

South Carolina's unemployment rate, although lower than the U.S average in 2000, rose from 3.6% to 6.8% over the period 2000-2005 (Table A.5). The state rate held constant in 2004 and 2005 at 6.8%, but this rate remained above the national average of 5.1%. In 2005, unemployment rates were above the state average in Pee Dee (9.8%), Santee-Lynches (8.3%), Upper Savannah (7.9%), Catawba (7.6%), and Lower Savannah (7.6%) COG regions. COGs with the lowest unemployment rates included Berkeley-Charleston-Dorchester (5.4%), Central Midlands (5.7%), and Lowcountry (5.3%). Four regional councils (Appalachian, Catawba, Lowcountry, and Waccamaw) experienced decreases in their unemployment rates between 2004 and 2005. No COG regions reported unemployment rates below the national unemployment rate of 5.1% in 2005.

A. Establishments and Employment

| Geographic Area | Year | | | | | | Percent Change | |
|------------------------|-----------------------------------|-------------|-------------|-------------|-------------|-------------|-----------------------|------------------|
| | A.1 Private Establishments | | | | | | | |
| | 2000 | 2001 | 2002 | 2003 | 2004 | 2005 | 2000-2004 | 2003-2004 |
| Appalachian COG | 26344 | 26114 | 26401 | 26434 | 26916 | -- | 2.2% | 1.8% |
| B-C-D COG | 14070 | 14198 | 14660 | 14952 | 15442 | -- | 9.8% | 3.3% |
| Catawba COG | 6093 | 6084 | 6186 | 6264 | 6279 | -- | 3.1% | 0.2% |
| Central Midlands COG | 15213 | 15251 | 15326 | 15480 | 15752 | -- | 3.5% | 1.8% |
| Lowcountry COG | 5981 | 6068 | 6184 | 6301 | 6437 | -- | 7.6% | 2.2% |
| Lower Savannah COG | 5611 | 5593 | 5606 | 5564 | 5632 | -- | 0.4% | 1.2% |
| Pee Dee COG | 6894 | 6845 | 6900 | 6844 | 6838 | -- | -0.8% | -0.1% |
| Santee-Lynches COG | 3824 | 3809 | 3833 | 3826 | 3906 | -- | 2.1% | 2.1% |
| Upper Savannah COG | 3566 | 3458 | 3447 | 3453 | 3432 | -- | -3.8% | -0.6% |
| Waccamaw COG | 9519 | 9573 | 9787 | 9973 | 10404 | -- | 9.3% | 4.3% |
| South Carolina | 97146 | 96993 | 98330 | 99091 | 101038 | -- | 4.0% | 2.0% |
| U.S. | 7070048 | 7095302 | 7200770 | 7254745 | 7387724 | -- | 4.5% | 1.8% |

Source: U.S. Census Bureau, County Business Patterns. Available at: <http://www.census.gov/epcd/cbp/view/cbpview.html>

A. Establishments and Employment

| Geographic Area | Year | | | | | | Percent Change | |
|------------------------|-----------------------|-------------|-------------|-------------|-------------|-------------|-----------------------|------------------|
| | A.2 Employment | | | | | | | |
| | 2000 | 2001 | 2002 | 2003 | 2004 | 2005 | 2000-2005 | 2004-2005 |
| Appalachian COG | 520,210 | 501,300 | 490,100 | 491,520 | 497,170 | 499,700 | -3.9% | 0.5% |
| B-C-D COG | 257,180 | 249,330 | 255,130 | 264,170 | 273,380 | 279,880 | 8.8% | 2.4% |
| Catawba COG | 143,330 | 140,400 | 139,120 | 139,190 | 140,650 | 144,490 | 0.8% | 2.7% |
| Central Midlands COG | 297,440 | 290,820 | 291,680 | 297,380 | 303,270 | 309,810 | 4.2% | 2.2% |
| Lowcountry COG | 82,160 | 80,180 | 82,780 | 85,050 | 87,900 | 93,440 | 13.7% | 6.3% |
| Lower Savannah COG | 130,410 | 126,250 | 126,770 | 128,480 | 130,000 | 133,060 | 2.0% | 2.4% |
| Pee Dee COG | 144,460 | 138,330 | 137,800 | 137,870 | 137,940 | 137,560 | -4.8% | -0.3% |
| Santee-Lynches COG | 88,890 | 85,180 | 84,360 | 86,820 | 87,950 | 89,550 | 0.7% | 1.8% |
| Upper Savannah COG | 98,990 | 95,230 | 92,120 | 92,220 | 93,030 | 94,850 | -4.2% | 2.0% |
| Waccamaw COG | 138,960 | 135,260 | 137,950 | 143,960 | 148,550 | 156,400 | 12.6% | 5.3% |
| South Carolina | 1,902,030 | 1,842,290 | 1,837,770 | 1,866,680 | 1,899,810 | 1,938,740 | 1.9% | 2.0% |
| U.S. | 136,891,000 | 136,933,000 | 136,485,000 | 137,736,000 | 139,252,000 | 141,730,000 | 3.5% | 1.8% |

Source: South Carolina Employment Security Commission: Labor Force and Employment. Available at: <http://www.sces.org/LMI/data/labor-force/lf.asp>

A.3 Manufacturing Employment

| | 2000 | 2001 | 2002 | 2003 | 2004 | 2005 | 2000-2005 | 2004-2005 |
|-----------------------|------------|------------|------------|------------|------------|------------|-----------|-----------|
| Appalachian COG | 131,630 | 125,636 | 108,607 | 103,681 | 99,418 | 96,861 | -26.4% | -2.6% |
| B-C-D COG | 22,701 | 22,458 | 20,830 | 20,439 | 20,817 | 21,086 | -7.1% | 1.3% |
| Catawba COG | 27,699 | 25,880 | 23,388 | 21,667 | 20,842 | 21,116 | -23.8% | 1.3% |
| Central Midlands COG | 34,694 | 33,283 | 30,456 | 28,869 | 28,223 | 28,328 | -18.3% | 0.4% |
| Lowcountry COG | 4,907 | 4,557 | 4,014 | 3,853 | 3,945 | 4,002 | -18.4% | 1.4% |
| Lower Savannah COG | 26,188 | 24,721 | 22,623 | 21,808 | 21,655 | 21,247 | -18.9% | -1.9% |
| Pee Dee COG | 36,625 | 34,104 | 31,745 | 29,885 | 28,832 | 27,467 | -25.0% | -4.7% |
| Santee-Lynches COG | 19,868 | 18,174 | 16,547 | 16,492 | 15,781 | 14,768 | -25.7% | -6.4% |
| Upper Savannah COG | 25,387 | 23,865 | 20,591 | 18,498 | 18,293 | 17,908 | -29.5% | -2.1% |
| Waccamaw COG | 13,728 | 12,160 | 9,865 | 8,777 | 8,640 | 8,497 | -38.1% | -1.7% |
| South Carolina | 345,152 | 326,608 | 290,127 | 275,573 | 267,511 | 262,708 | -23.9% | -1.8% |
| U.S. | 17,263,000 | 16,441,000 | 15,259,000 | 14,510,000 | 14,315,100 | 14,232,000 | -17.6% | -0.6% |

Source: Bureau of Economic Analysis, Regional Economic Information System (REIS): TableCA25 Available at: <http://www.bea.gov/bea/regional/reis/>

A. Establishments and Employment

| Geographic Area | Year | Percent Change |
|-----------------|------|----------------|
|-----------------|------|----------------|

A.4 Unemployment

| | 2000 | 2001 | 2002 | 2003 | 2004 | 2005 | 2000-2005 | 2004-2005 |
|-----------------------|-----------|-----------|-----------|-----------|-----------|-----------|-----------|-----------|
| Appalachian COG | 16,280 | 25,180 | 30,850 | 34,440 | 36,460 | 36,570 | 124.6% | 0.3% |
| B-C-D COG | 8,410 | 10,910 | 12,180 | 14,670 | 15,460 | 16,070 | 91.1% | 3.9% |
| Catawba COG | 5,420 | 8,370 | 10,830 | 12,680 | 12,600 | 11,890 | 119.4% | -5.6% |
| Central Midlands COG | 9,600 | 12,730 | 14,410 | 17,170 | 18,290 | 18,730 | 95.1% | 2.4% |
| Lowcountry COG | 2,850 | 3,650 | 4,210 | 5,060 | 5,260 | 5,270 | 84.9% | 0.2% |
| Lower Savannah COG | 6,200 | 8,530 | 8,950 | 9,940 | 10,180 | 10,880 | 75.5% | 6.9% |
| Pee Dee COG | 7,960 | 10,710 | 11,430 | 14,030 | 14,570 | 15,030 | 88.8% | 3.2% |
| Santee-Lynches COG | 4,030 | 5,730 | 6,370 | 7,000 | 7,280 | 8,150 | 102.2% | 12.0% |
| Upper Savannah COG | 3,870 | 6,530 | 7,760 | 8,060 | 7,960 | 8,150 | 110.6% | 2.4% |
| Waccamaw COG | 6,230 | 8,480 | 9,200 | 10,890 | 11,200 | 11,050 | 77.4% | -1.3% |
| South Carolina | 70,820 | 100,810 | 116,190 | 133,910 | 139,220 | 141,780 | 100.20% | 1.8% |
| U.S. | 5,692,000 | 6,801,000 | 8,378,000 | 8,774,000 | 8,149,000 | 7,591,000 | 33.4% | -6.8% |

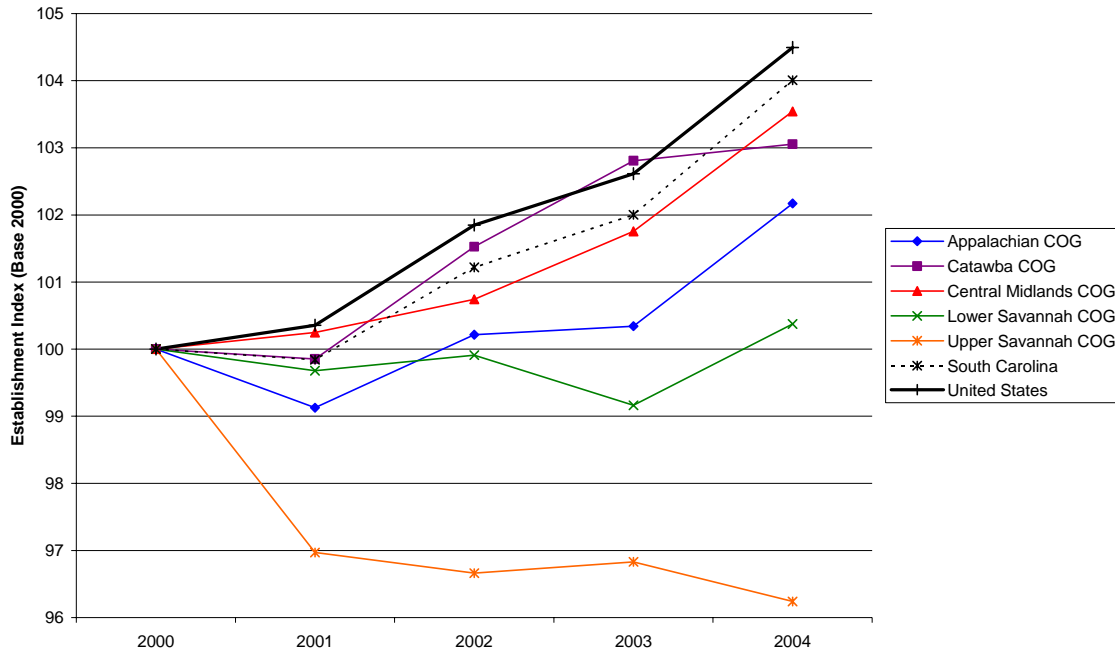
Source: South Carolina Employment Security Commission: Labor Force and Employment. Available at: <http://www.sces.org/LMI/data/labor-force/lf.asp>

A.5 Unemployment Rate

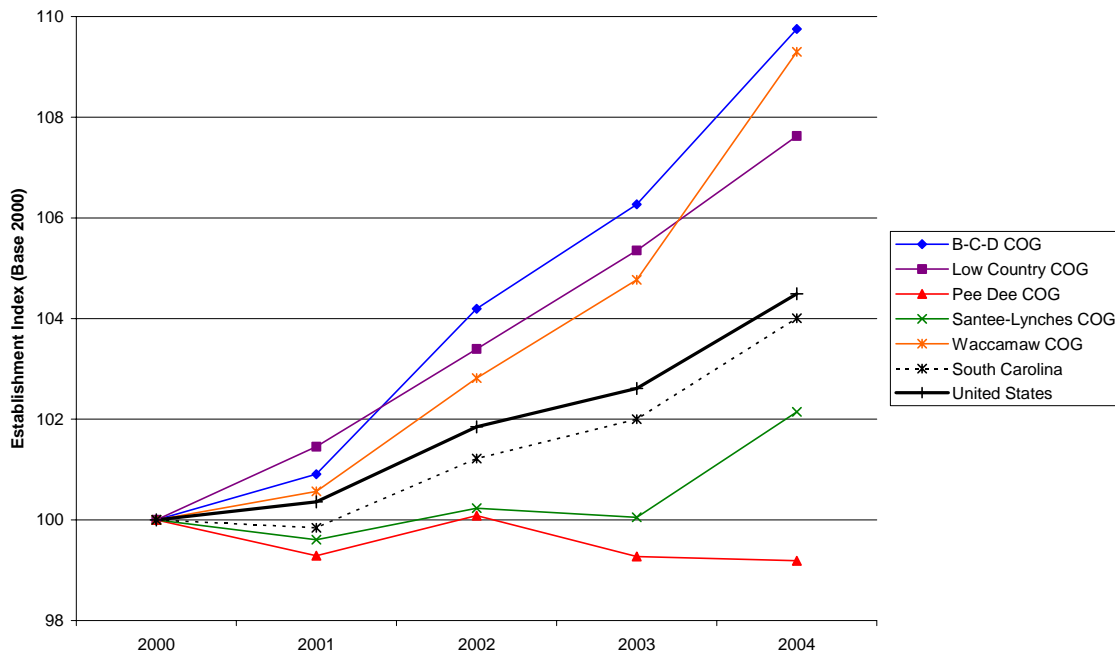
| | 2000 | 2001 | 2002 | 2003 | 2004 | 2005 | 2000-2005 | 2004-2005 |
|-----------------------|-------------|-------------|-------------|-------------|-------------|-------------|------------------|------------------|
| Appalachian COG | 3.0% | 4.8% | 5.9% | 6.5% | 6.8% | 6.8% | 124.7% | -0.2% |
| B-C-D COG | 3.2% | 4.2% | 4.6% | 5.3% | 5.4% | 5.4% | 71.5% | 1.4% |
| Catawba COG | 3.6% | 5.6% | 7.2% | 8.3% | 8.2% | 7.6% | 108.7% | -7.5% |
| Central Midlands COG | 3.1% | 4.2% | 4.7% | 5.5% | 5.7% | 5.7% | 82.3% | 0.2% |
| Lowcountry COG | 3.4% | 4.4% | 4.8% | 5.6% | 5.6% | 5.3% | 59.2% | -5.4% |
| Lower Savannah COG | 4.5% | 6.3% | 6.6% | 7.2% | 7.3% | 7.6% | 66.5% | 4.1% |
| Pee Dee COG | 5.2% | 7.2% | 7.7% | 9.2% | 9.6% | 9.8% | 88.6% | 3.1% |
| Santee-Lynches COG | 4.3% | 6.3% | 7.0% | 7.5% | 7.6% | 8.3% | 92.3% | 9.1% |
| Upper Savannah COG | 3.8% | 6.4% | 7.8% | 8.0% | 7.9% | 7.9% | 110.3% | 0.4% |
| Waccamaw COG | 4.3% | 5.9% | 6.3% | 7.0% | 7.0% | 6.6% | 53.8% | -5.9% |
| South Carolina | 3.6% | 5.2% | 5.9% | 6.7% | 6.8% | 6.8% | 88.9% | 0.0% |
| U.S. | 4.0% | 4.7% | 5.8% | 6.0% | 5.5% | 5.1% | 27.5% | -7.3% |

Source: South Carolina Employment Security Commission: Labor Force and Employment. Available at: <http://www.sces.org/LMI/data/labor-force/lf.asp>

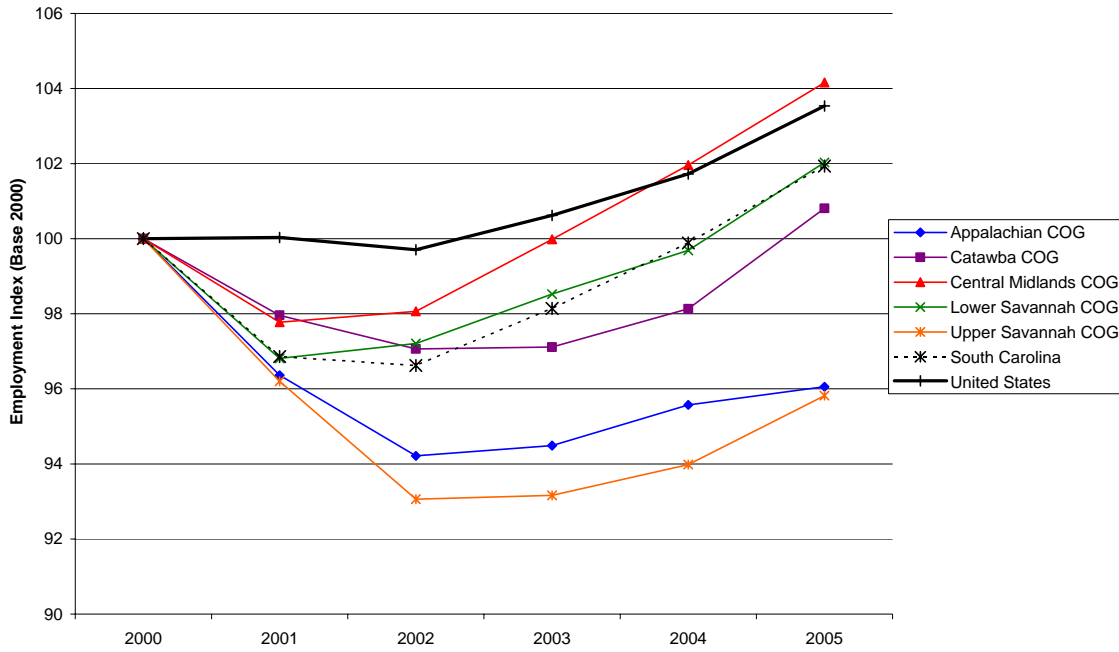
Private Establishment Trends: Regional Councils of Governments, South Carolina, and United States, 2000-2004



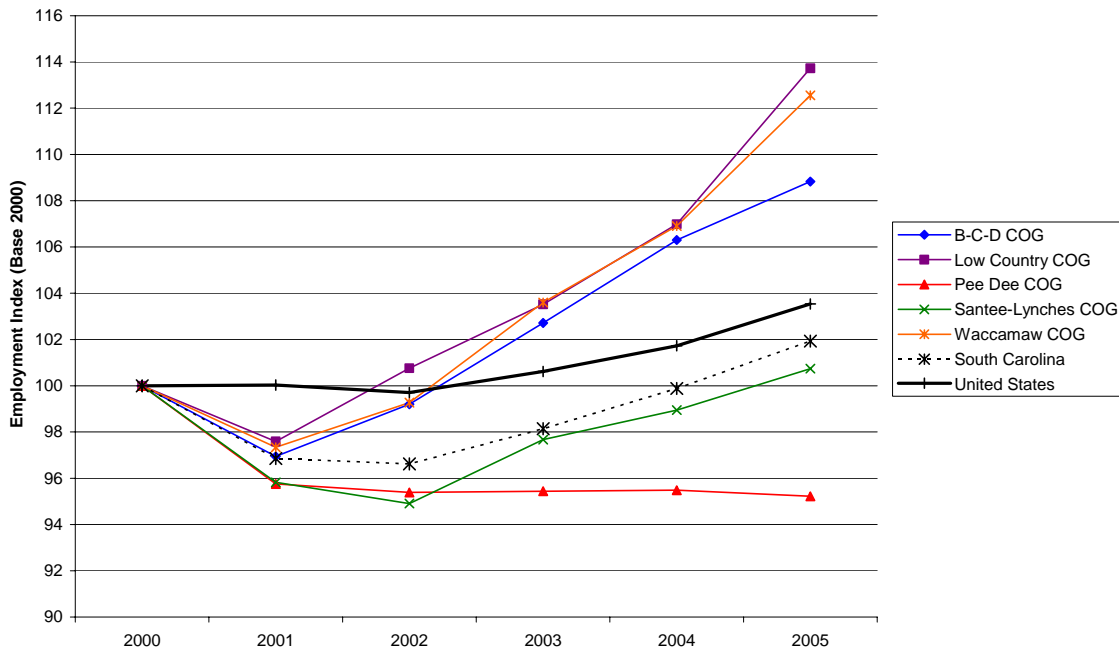
Private Establishment Trends: Regional Councils of Governments, South Carolina, and United States, 2000-2004



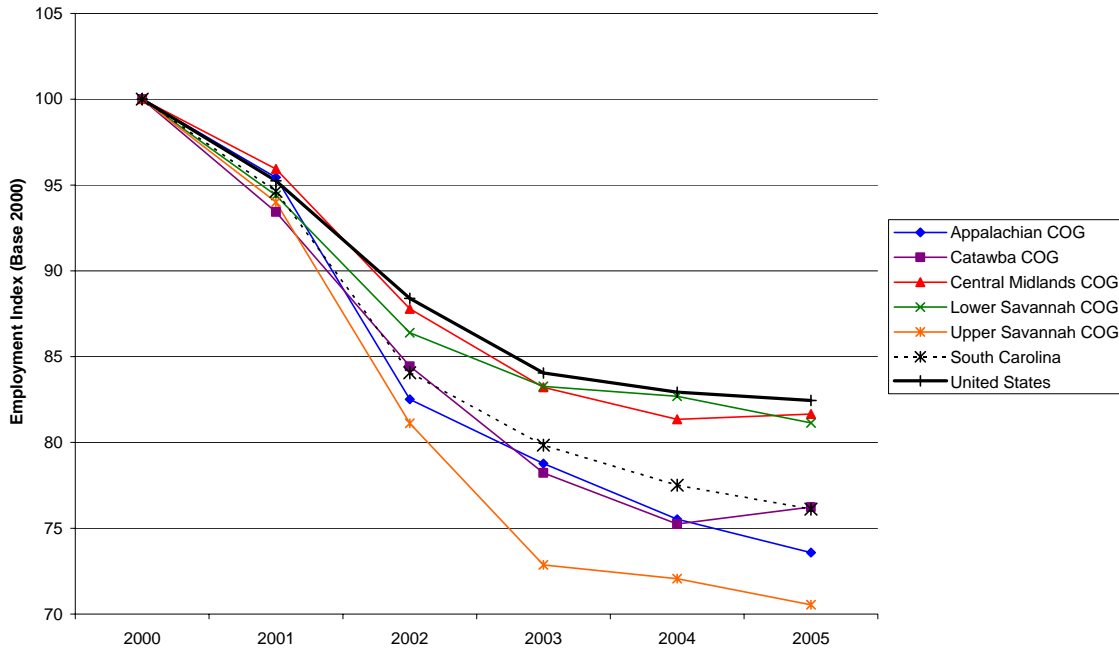
Employment Trends: Regional Councils of Governments, South Carolina, and United States, 2000-2005



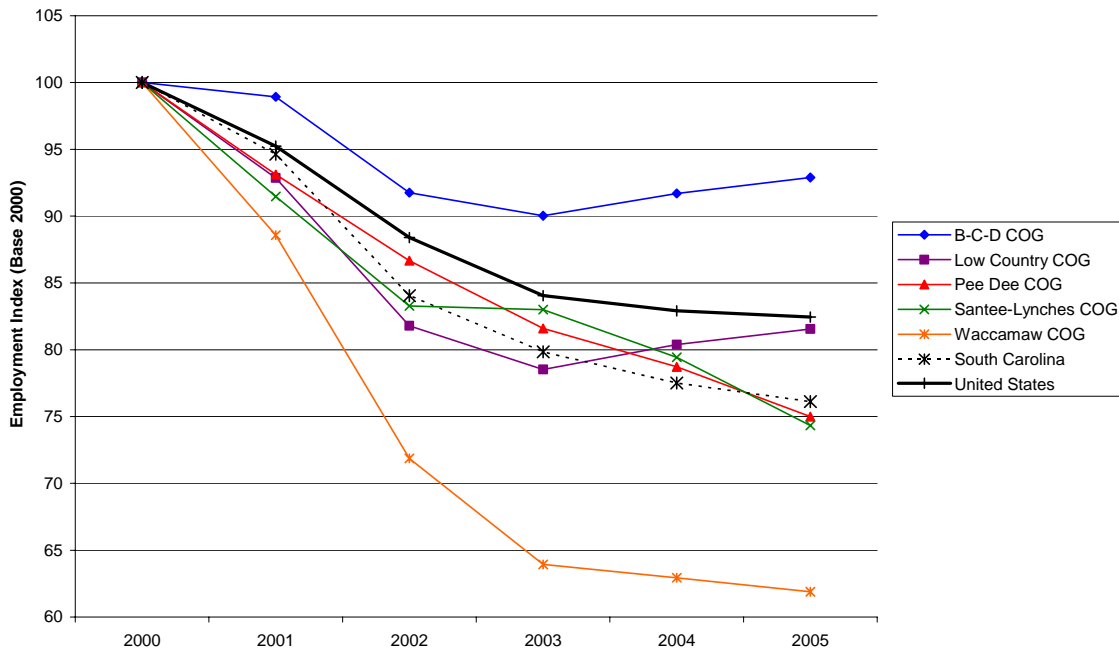
Employment Trends: Regional Councils of Governments, South Carolina, and United States, 2000-2005



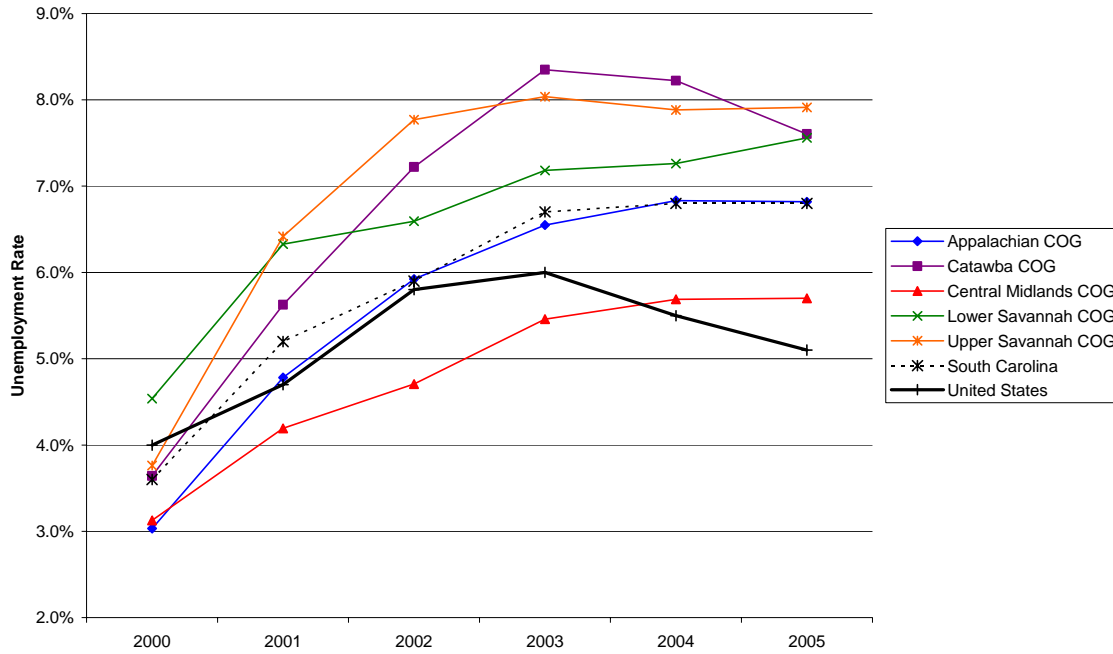
Manufacturing Employment Trends: Regional Councils of Governments, South Carolina, and United States, 2000-2005



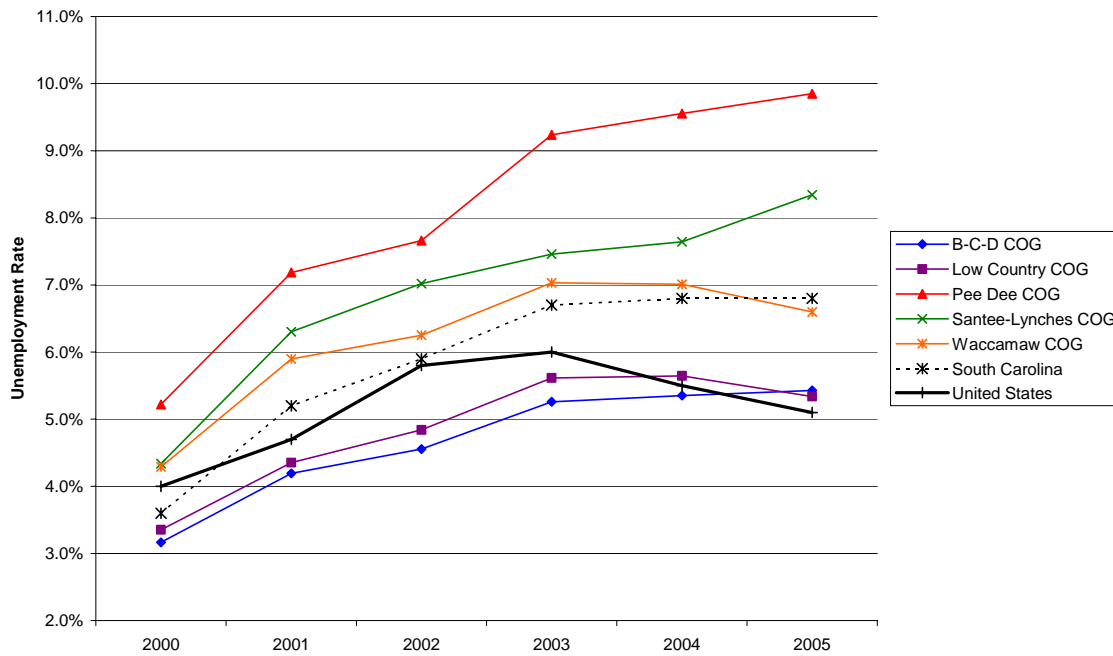
Manufacturing Employment Trends: Regional Councils of Governments, South Carolina, and United States, 2000-2005



Regional Councils of Governments, South Carolina, and United States Unemployment Rates, 2000-2005



Regional Councils of Governments, South Carolina, and United States Unemployment Rates, 2000-2005



B. Overview of Economic Trends in South Carolina's Councils of Governments Regions (COGs): Earnings and Income, 2000-2004

South Carolina's workforce experienced a 13.5% growth in earnings per worker between 2000 and 2004 (\$27,712 to \$31,447). The growth rate at the state level was greater than the national growth rate of 11.7%; however, 2004 state earnings per worker remained below the national average of \$38,798 (Table B.1). COGs with the highest earnings per worker in 2004 included Appalachian (\$33,029), Berkeley-Charleston-Dorchester (\$32,419), Central Midlands (\$32,678), and Lower Savannah (\$33,246). All of South Carolina's COG regions experienced positive growth in earnings per worker from 2000 to 2004. The largest increases were reported for the Berkeley-Charleston-Dorchester (17.2%), Santee-Lynches (15.3%), and Lowcountry (15%) regions.

Increases in earnings per worker translated into increased per capita incomes. The state per capita income grew 11.3%, from \$24,424 in 2000 to \$27,185 in 2004 (Table B.2). Per capita income for the nation grew at 10.7% during the same period. All COG regions experienced positive growth in per capita income between 2000 and 2004. The greatest percentage increases were observed in the Santee-Lynches (15.7%), Berkeley-Charleston-Dorchester (15.1%), and Lowcountry (14.5%) COGs. The highest per capita incomes for 2004 were reported in the Appalachian (\$27,610), Berkeley-Charleston-Dorchester (\$29,120), Central Midlands (\$29,876) and Lowcountry (\$30,846) COGs. Per capita incomes for the state and all COG regions remained below the national average of \$33,050 in 2004.

Changes in median household incomes were mixed across the state. The state (1.9%) and the Berkeley-Charleston-Dorchester (0.9%), Catawba (0.9%), and Pee Dee (0.2%) COGs experienced gains in median household income from 2000 to 2003. Seven COG regions [Appalachian (-0.6%), Central Midlands (-1.7%), Lowcountry (-0.2%), Lower Savannah (-0.7%), Santee-Lynches (-0.2%), Upper Savannah (-3.4%), and Waccamaw (-1.4%)] reported declines in median incomes over the period 2000-2003 (Table B.3). The highest median incomes in 2003 were reported in the Berkeley-Charleston-Dorchester (\$40,788), Catawba (\$40,016) and Central Midlands (\$41,170) regions; however, none of the COGs had median household incomes above the national average of \$43,318. Growth in median incomes over the last single year period (2002-2003) is encouraging. Over 50 percent of the COG regions grew at a rate faster than the national rate of 2.1% for this period.

Transfer payments in South Carolina and most of the COG regions grew at a higher rate between 2000 and 2004 than the national average of 33.7% (Table B.4). The state's growth rate during this period was 39.1%, and five COG regions experienced increases greater than the state average: Appalachian (40.1%), Berkeley-Charleston-Dorchester (40.5%), Catawba (42.5%), Lowcountry (42.8%), and Waccamaw (43.9%). Only the Upper Savannah (28.9%) region reported an increase in transfer payments at a rate lower than the national and state rates. Between 2003 and 2004 all COG regions reported growth in transfer payments of between 8% and 9% compared to the national rate of 6.2%.

South Carolina's poverty rate (13.8%) in 2003 was higher than the national rate of 12.5%; however, the state's rate grew at a slower pace than the rest of the nation between 2000 and 2003 (Table B.5). In addition, the state poverty rate declined in 2003 even as the poverty rate in the nation increased. The Catawba and Appalachian COG regions reported poverty rates of 12.5% and 12.3% in 2003, both equal to, or less than the national rate. With the exception of the Appalachian (1.0%), Catawba (2.7%), and Central Midlands (2.9%) regions, all COGs reduced their poverty rates between 2002 and 2003. Declines in poverty rates were greatest in the Lowcountry (-9.6%) and Waccamaw (-5.1%) COGs from 2002 to 2003.

B. Earnings and Income

| Geographic Area | Year | | | | | | Percent Change | |
|-----------------------|---------------------------------------|-------------|-------------|-------------|-------------|-------------|------------------|------------------|
| | B.2 Per Capita Personal Income | | | | | | | |
| | 2000 | 2001 | 2002 | 2003 | 2004 | 2005 | 2000-2004 | 2003-2004 |
| Appalachian COG | 25,729 | 25,957 | 26,206 | 26,658 | 27,610 | -- | 7.3% | 3.6% |
| B-C-D COG | 25,309 | 26,181 | 26,893 | 27,719 | 29,120 | -- | 15.1% | 5.1% |
| Catawba COG | 23,518 | 24,080 | 24,821 | 25,370 | 26,452 | -- | 12.5% | 4.3% |
| Central Midlands COG | 27,089 | 27,432 | 27,759 | 28,300 | 29,879 | -- | 10.3% | 5.6% |
| Lowcountry COG | 26,946 | 28,350 | 28,333 | 29,162 | 30,846 | -- | 14.5% | 5.8% |
| Lower Savannah COG | 22,207 | 22,982 | 23,489 | 24,012 | 25,043 | -- | 12.8% | 4.3% |
| Pee Dee COG | 21,132 | 21,920 | 22,231 | 22,971 | 24,005 | -- | 13.6% | 4.5% |
| Santee-Lynches COG | 20,519 | 21,131 | 21,735 | 22,503 | 23,742 | -- | 15.7% | 5.5% |
| Upper Savannah COG | 21,276 | 21,748 | 21,529 | 21,734 | 22,974 | -- | 8.0% | 5.7% |
| Waccamaw COG | 22,992 | 23,613 | 23,814 | 24,673 | 25,720 | -- | 11.9% | 4.2% |
| South Carolina | 24,424 | 24,994 | 25,361 | 25,972 | 27,185 | -- | 11.3% | 4.7% |
| U.S. | 29,845 | 30,574 | 30,810 | 31,484 | 33,050 | -- | 10.7% | 5.0% |

Source: Bureau of Economic Analysis, Regional Economic Information System (REIS): TableCA31

Available at: <http://www.bea.gov/bea/regional/reis/>

B.3 Median Household Income

| | 2000 | 2001 | 2002 | 2003 | 2004 | 2005 | 2000-2003 | 2002-2003 |
|-----------------------|-------------|-------------|-------------|-------------|-------------|-------------|------------------|------------------|
| Appalachian COG | 39,604 | 38,737 | 38,596 | 39,355 | -- | -- | -0.6% | 2.0% |
| B-C-D COG | 40,424 | 39,397 | 39,606 | 40,788 | -- | -- | 0.9% | 3.0% |
| Catawba COG | 39,671 | 38,799 | 39,092 | 40,016 | -- | -- | 0.9% | 2.4% |
| Central Midlands COG | 41,889 | 41,028 | 40,801 | 41,170 | -- | -- | -1.7% | 0.9% |
| Lowcountry COG | 39,869 | 38,830 | 38,954 | 39,797 | -- | -- | -0.2% | 2.2% |
| Lower Savannah COG | 33,878 | 32,943 | 33,034 | 33,625 | -- | -- | -0.7% | 1.8% |
| Pee Dee COG | 31,167 | 30,376 | 30,343 | 31,240 | -- | -- | 0.2% | 3.0% |
| Santee-Lynches COG | 33,286 | 32,334 | 32,272 | 33,229 | -- | -- | -0.2% | 3.0% |
| Upper Savannah COG | 34,085 | 33,000 | 32,757 | 32,927 | -- | -- | -3.4% | 0.5% |
| Waccamaw COG | 34,981 | 33,607 | 33,443 | 34,488 | -- | -- | -1.4% | 3.1% |
| South Carolina | 37,283 | 36,953 | 37,442 | 38,003 | -- | -- | 1.9% | 1.5% |
| U.S. | 41,990 | 42,228 | 42,409 | 43,318 | -- | -- | 3.2% | 2.1% |

Source: U.S. Census Bureau, Small Area Income and Poverty Estimates.

Available at: <http://www.census.gov/hhes/www/saipe/tables.html>

B. Earnings and Income

| Geographic Area | Year | | | | | Percent Change | | |
|-----------------------|-----------------------|---------------|---------------|---------------|---------------|----------------|-----------|-----------|
| | B.4 Transfer Payments | | | | | | | |
| | 2000 | 2001 | 2002 | 2003 | 2004 | 2005 | 2000-2004 | 2003-2004 |
| Appalachian COG | 3,474,642 | 3,873,017 | 4,263,895 | 4,478,357 | 4,868,358 | -- | 40.1% | 8.7% |
| B-C-D COG | 1,760,355 | 1,955,829 | 2,145,148 | 2,264,562 | 2,472,433 | -- | 40.5% | 9.2% |
| Catawba COG | 991,425 | 1,110,791 | 1,237,547 | 1,311,576 | 1,412,789 | -- | 42.5% | 7.7% |
| Central Midlands COG | 1,913,541 | 2,115,081 | 2,322,341 | 2,443,159 | 2,666,219 | -- | 39.3% | 9.1% |
| Lowcountry COG | 747,165 | 829,533 | 912,778 | 982,800 | 1,066,831 | -- | 42.8% | 8.6% |
| Lower Savannah COG | 1,198,395 | 1,322,818 | 1,436,734 | 1,509,248 | 1,628,476 | -- | 35.9% | 7.9% |
| Pee Dee COG | 1,434,686 | 1,574,235 | 1,696,993 | 1,783,966 | 1,930,087 | -- | 34.5% | 8.2% |
| Santee-Lynches COG | 794,313 | 881,889 | 964,766 | 1,014,295 | 1,108,770 | -- | 39.6% | 9.3% |
| Upper Savannah COG | 851,460 | 949,625 | 1,000,711 | 1,006,884 | 1,097,736 | -- | 28.9% | 9.0% |
| Waccamaw COG | 1,176,127 | 1,319,568 | 1,451,127 | 1,549,738 | 1,692,650 | -- | 43.9% | 9.2% |
| South Carolina | 14,340,109 | 15,930,385 | 17,430,038 | 18,342,582 | 19,942,345 | -- | 39.1% | 8.7% |
| U.S. | 1,018,106,000 | 1,117,218,000 | 1,219,954,000 | 1,282,540,000 | 1,361,666,000 | -- | 33.7% | 6.2% |

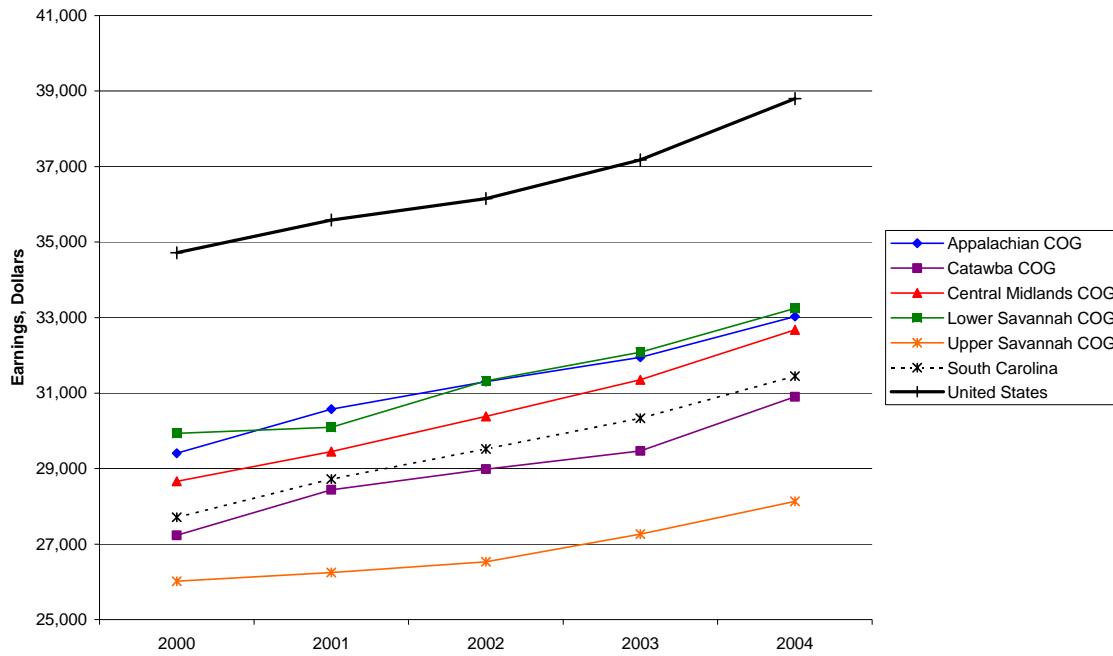
Source: Bureau of Economic Analysis, Regional Economic Information System (REIS): TableCA35
 Available at: <http://www.bea.gov/region/reis>

B.5 Poverty Rate

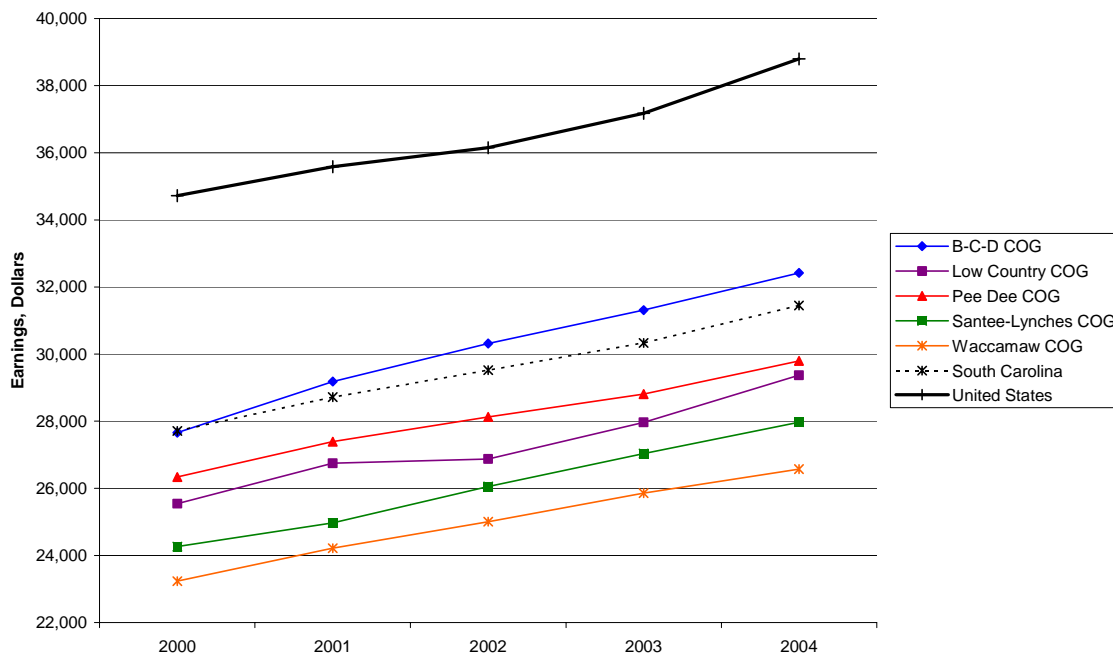
| | 2000 | 2001 | 2002 | 2003 | 2004 | 2005 | 2000-2003 | 2002-2003 |
|-----------------------|-------|-------|-------|-------|------|------|-----------|-----------|
| Appalachian COG | 10.4% | 11.6% | 12.2% | 12.3% | -- | -- | 17.7% | 1.0% |
| B-C-D COG | 12.4% | 13.2% | 13.2% | 13.0% | -- | -- | 4.1% | -1.6% |
| Catawba COG | 10.9% | 11.7% | 12.2% | 12.5% | -- | -- | 15.5% | 2.7% |
| Central Midlands COG | 11.1% | 12.0% | 12.4% | 12.7% | -- | -- | 15.0% | 2.9% |
| Lowcountry COG | 14.2% | 15.9% | 15.7% | 14.2% | -- | -- | -0.3% | -9.6% |
| Lower Savannah COG | 15.9% | 16.9% | 16.9% | 16.6% | -- | -- | 4.2% | -1.9% |
| Pee Dee COG | 17.9% | 18.7% | 18.5% | 17.9% | -- | -- | 0.4% | -2.8% |
| Santee-Lynches COG | 15.6% | 16.7% | 16.8% | 16.3% | -- | -- | 4.5% | -3.2% |
| Upper Savannah COG | 13.4% | 15.0% | 15.3% | 14.6% | -- | -- | 8.4% | -4.6% |
| Waccamaw COG | 14.4% | 15.8% | 15.3% | 14.5% | -- | -- | 0.5% | -5.1% |
| South Carolina | 12.8% | 13.8% | 14.0% | 13.8% | -- | -- | 7.8% | -1.4% |
| U.S. | 11.3% | 11.7% | 12.1% | 12.5% | -- | -- | 10.6% | 3.3% |

Source: U.S. Census Bureau, Small Area Income and Poverty Estimates. Available at: <http://www.census.gov/hhes/www/saipe/tables.html>

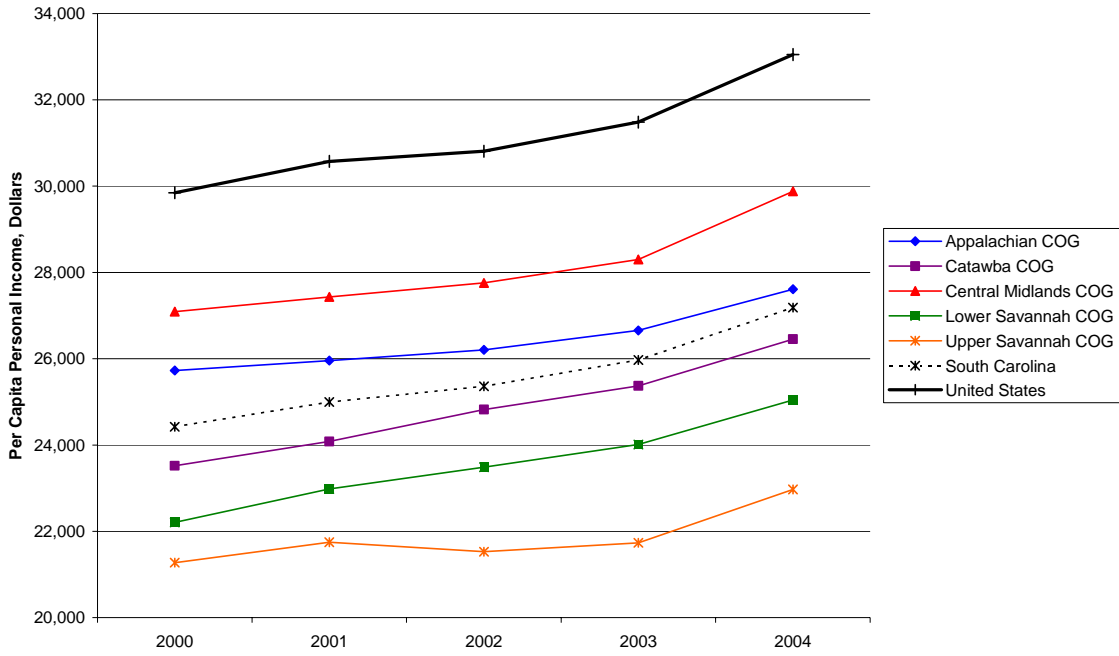
Earnings per Worker: Regional Councils of Governments, South Carolina, and United States, 2000-2004



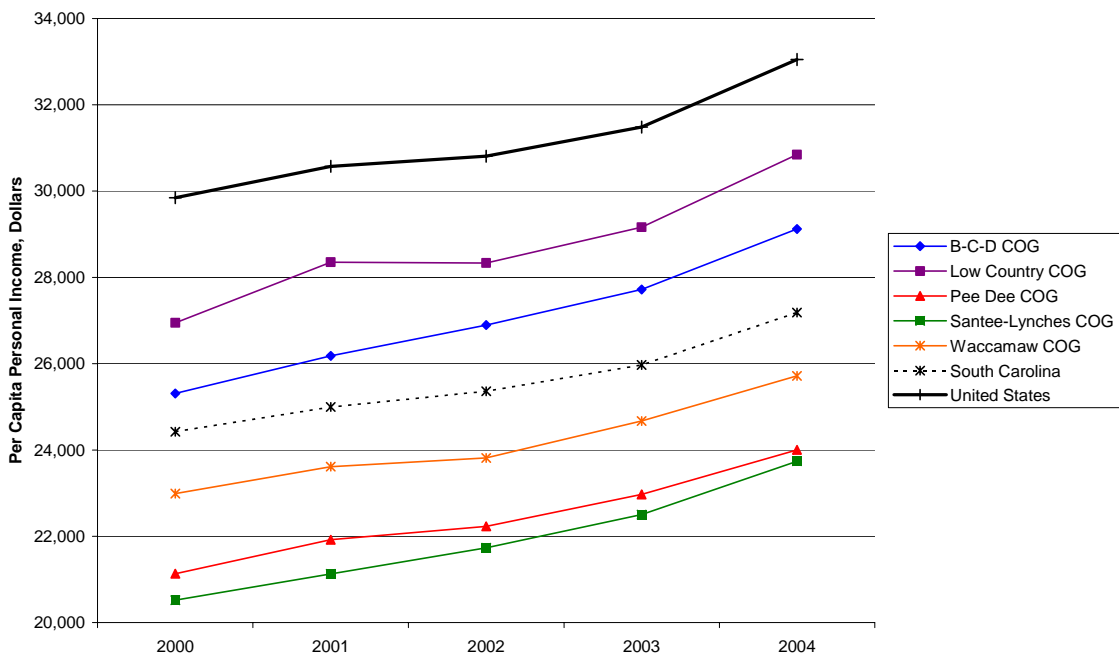
Earnings per Worker: Regional Councils of Governments, South Carolina, and United States, 2000-2004



Per Capita Personal Income: Regional Councils of Governments, South Carolina, and United States, 2000-2004



Per Capita Personal Income: Regional Councils of Governments, South Carolina, and United States, 2000-2004



C. Overview of Economic Trends in South Carolina's Councils of Governments Regions (COGs): Innovative Activity, 2000-2005

Between 2000 and 2005, South Carolina scientists and inventors received 7,771 patents (Table C.1). Much of this innovative activity (4,172 patents) was in the Appalachian COG. The Appalachian COG counties reported 13.5 patents per 10,000 employees in 2005; a number greater than both the state (5.9) and national (11.1) averages of patents per 10,000 employees (Table C.2). The remaining COGs reported between 2 to 4 patents per 10,000 employees. The number of patents decreased between 2000 and 2005 across all geographic areas with the exception of the Waccamaw and Appalachian COG regions. Waccamaw COG increased its total patents from 11 in 2000 to 37 in 2005, and patenting activity in the Appalachian COG region increased from 511 total patents in 2000 to 676 in 2005 (Table C.1).

Innovative activity also may be reflected in funding for Small Business Innovation Research (SBIR) and Small Business Technology Transfer (STTR) Program research award dollars. In 2005 the U.S. average for SBIR and STTR funding was \$14,715 per 1,000 employees. South Carolina received only \$6,042 of funding per 1,000 employees in 2005 (Table C.5). On the other hand, state SBIR and STTR funding has grown significantly (189%) between 2000 and 2005. The COGs receiving the largest dollar amounts per 1,000 employees, averaged over the past 6 years, include Berkeley-Charleston-Dorchester (\$8,916), Central Midlands (\$10,075), and Lowcountry (\$13,531) regions. Readers are encouraged to refer to Tables C.4 and C.5 for more information on SBIR and STTR awards because the funding is highly variable by region and year.

C. Innovative Activity

| Geographic Area | Year | | | | | | Percent Change | |
|----------------------------|-------------|-------------|-------------|-------------|-------------|-------------|------------------|------------------|
| C.1 Patents (Total) | | | | | | | | |
| | 2000 | 2001 | 2002 | 2003 | 2004 | 2005 | 2000-2005 | 2004-2005 |
| Appalachian COG | 511 | 661 | 783 | 815 | 726 | 676 | 32.3% | -6.9% |
| B-C-D COG | 194 | 177 | 219 | 154 | 190 | 121 | -37.6% | -36.3% |
| Catawba COG | 77 | 73 | 93 | 66 | 52 | 52 | -32.5% | 0.0% |
| Central Midlands COG | 146 | 147 | 105 | 125 | 131 | 95 | -34.9% | -27.5% |
| Lowcountry COG | 37 | 30 | 25 | 26 | 30 | 21 | -43.2% | -30.0% |
| Lower Savannah COG | 61 | 50 | 44 | 64 | 37 | 34 | -44.3% | -8.1% |
| Pee Dee COG | 113 | 87 | 72 | 72 | 80 | 69 | -38.9% | -13.8% |
| Santee-Lynches COG | 17 | 20 | 18 | 10 | 18 | 17 | 0.0% | -5.6% |
| Upper Savannah COG | 18 | 12 | 29 | 20 | 23 | 17 | -5.6% | -26.1% |
| Waccamaw COG | 11 | 41 | 41 | 44 | 37 | 37 | 236.4% | 0.0% |
| South Carolina | 1,185 | 1,298 | 1,429 | 1,396 | 1,324 | 1,139 | -3.9% | -14.0% |
| U.S. | 176,082 | 184,046 | 184,418 | 187,047 | 181,319 | 157,740 | -10.4% | -13.0% |

Source: United States Patent and Trademark Office, Patent Electronic Business Center Available at: <http://www.uspto.gov/ebc/index.html>

C.2 Patents per 10,000 Employees

| | | | | | | | | |
|-----------------------|-------------|-------------|-------------|-------------|-------------|-------------|------------------|------------------|
| | 2000 | 2001 | 2002 | 2003 | 2004 | 2005 | 2000-2005 | 2004-2005 |
| Appalachian COG | 9.8 | 13.2 | 16.0 | 16.6 | 14.6 | 13.5 | 37.7% | -7.4% |
| B-C-D COG | 7.5 | 7.1 | 8.6 | 5.8 | 7.0 | 4.3 | -42.7% | -37.8% |
| Catawba COG | 5.4 | 5.2 | 6.7 | 4.7 | 3.7 | 3.6 | -33.0% | -2.7% |
| Central Midlands COG | 4.9 | 5.1 | 3.6 | 4.2 | 4.3 | 3.1 | -37.5% | -29.0% |
| Lowcountry COG | 4.5 | 3.7 | 3.0 | 3.1 | 3.4 | 2.2 | -50.1% | -34.2% |
| Lower Savannah COG | 4.7 | 4.0 | 3.5 | 5.0 | 2.8 | 2.6 | -45.4% | -10.2% |
| Pee Dee COG | 7.8 | 6.3 | 5.2 | 5.2 | 5.8 | 5.0 | -35.9% | -13.5% |
| Santee-Lynches COG | 1.9 | 2.3 | 2.1 | 1.2 | 2.0 | 1.9 | -0.7% | -7.2% |
| Upper Savannah COG | 1.8 | 1.3 | 3.1 | 2.2 | 2.5 | 1.8 | -1.4% | -27.5% |
| Waccamaw COG | 0.8 | 3.0 | 3.0 | 3.1 | 2.5 | 2.4 | 198.9% | -5.0% |
| South Carolina | 6.2 | 7.0 | 7.8 | 7.5 | 7.0 | 5.9 | -5.7% | -15.7% |
| U.S. | 12.9 | 13.4 | 13.5 | 13.6 | 13.0 | 11.1 | -13.5% | -14.5% |

Source: United States Patent and Trademark Office, Patent Electronic Business Center Available at: <http://www.uspto.gov/ebc/index.html>

C. Innovative Activity

| Geographic Area | Year | | | | | |
|--|-----------------|-----------------|-----------------|-----------------|-----------------|-----------------|
| C.3 SBIR/STTR Phase I and II Total Award | | | | | | |
| | 2000 | 2001 | 2002 | 2003 | 2004 | 2005 |
| Appalachian COG | \$499,882 | \$200,000 | \$1,314,405 | \$199,860 | \$1,326,026 | \$569,993 |
| B-C-D COG | \$1,854,724 | \$749,594 | \$4,097,162 | \$1,304,472 | \$1,221,101 | \$4,985,811 |
| Catawba COG | \$0 | \$0 | \$0 | \$99,955 | \$69,588 | \$509,807 |
| Central Midlands COG | \$780,000 | \$1,845,758 | \$1,961,128 | \$5,102,978 | \$4,245,527 | \$4,213,057 |
| Lowcountry COG | \$772,425 | \$3,136,523 | \$139,644 | \$899,878 | \$1,242,614 | \$584,999 |
| Lower Savannah COG | \$69,914 | \$0 | \$0 | \$99,852 | \$0 | \$0 |
| Pee Dee COG | \$0 | \$93,745 | \$0 | \$0 | \$0 | \$0 |
| Santee-Lynches COG | \$0 | \$0 | \$0 | \$0 | \$100,000 | \$750,000 |
| Upper Savannah COG | \$0 | \$273,375 | \$499,998 | \$926,630 | \$185,746 | \$99,622 |
| Waccamaw COG | \$0 | \$0 | \$95,062 | \$0 | \$0 | \$0 |
| South Carolina | \$3,976,945 | \$6,398,970 | \$8,107,399 | \$8,633,625 | \$8,390,602 | \$11,713,289 |
| U.S. | \$1,108,787,548 | \$1,222,097,359 | \$1,591,478,031 | \$1,861,050,297 | \$2,223,301,340 | \$2,085,560,074 |

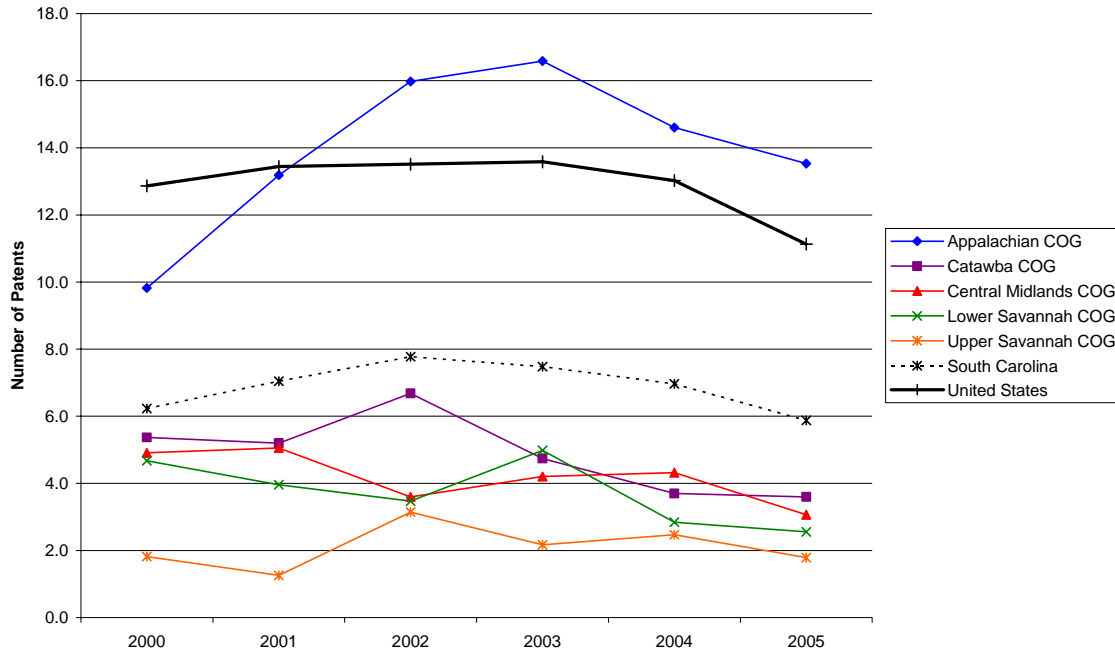
Source: U.S. Small Business Administration, Technology Resources Network Available at: http://tech-net.sba.gov/tech-net/public/dsp_search.cfm

C.4 SBIR/STTR Award per 1,000 Employees

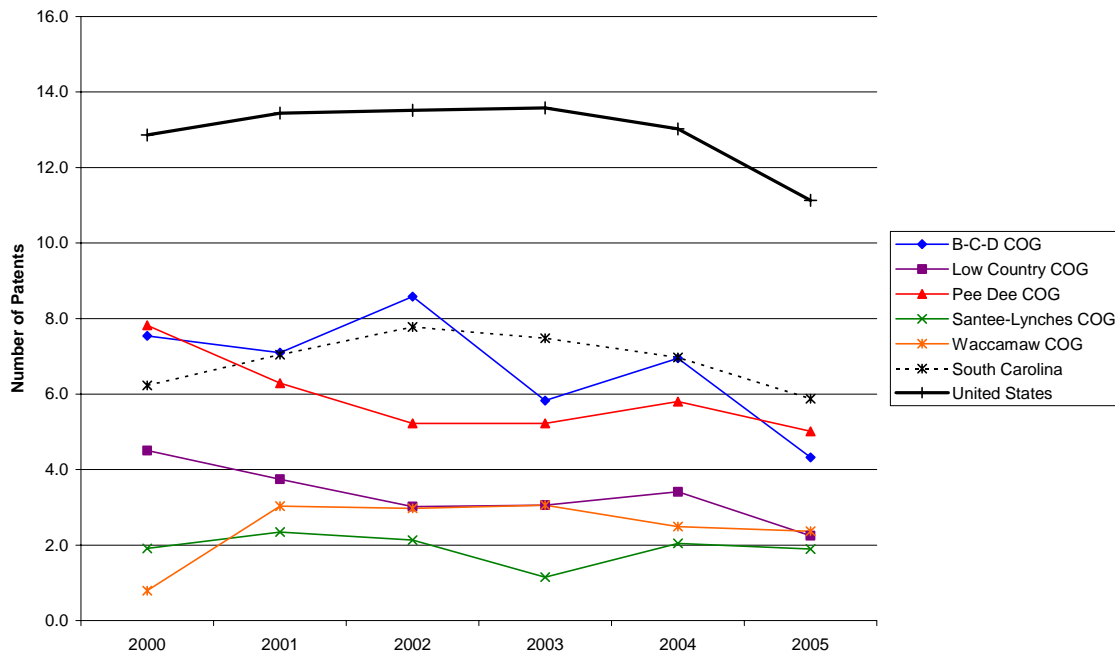
| | 2000 | 2001 | 2002 | 2003 | 2004 | 2005 |
|-----------------------|---------|----------|----------|----------|----------|----------|
| Appalachian COG | \$961 | \$399 | \$2,682 | \$407 | \$2,667 | \$1,141 |
| B-C-D COG | \$7,212 | \$3,006 | \$16,059 | \$4,938 | \$4,467 | \$17,814 |
| Catawba COG | \$0 | \$0 | \$0 | \$718 | \$495 | \$3,528 |
| Central Midlands COG | \$2,622 | \$6,347 | \$6,724 | \$17,160 | \$13,999 | \$13,599 |
| Lowcountry COG | \$9,401 | \$39,119 | \$1,687 | \$10,581 | \$14,137 | \$6,261 |
| Lower Savannah COG | \$536 | \$0 | \$0 | \$777 | \$0 | \$0 |
| Pee Dee COG | \$0 | \$678 | \$0 | \$0 | \$0 | \$0 |
| Santee-Lynches COG | \$0 | \$0 | \$0 | \$0 | \$1,137 | \$8,375 |
| Upper Savannah COG | \$0 | \$2,871 | \$5,428 | \$10,048 | \$1,997 | \$1,050 |
| Waccamaw COG | \$0 | \$0 | \$689 | \$0 | \$0 | \$0 |
| South Carolina | \$2,091 | \$3,473 | \$4,412 | \$4,625 | \$4,417 | \$6,042 |
| U.S. | \$8,100 | \$8,925 | \$11,660 | \$13,512 | \$15,966 | \$14,715 |

Source: U.S. Small Business Administration, Technology Resources Network Available at: http://tech-net.sba.gov/tech-net/public/dsp_search.cfm

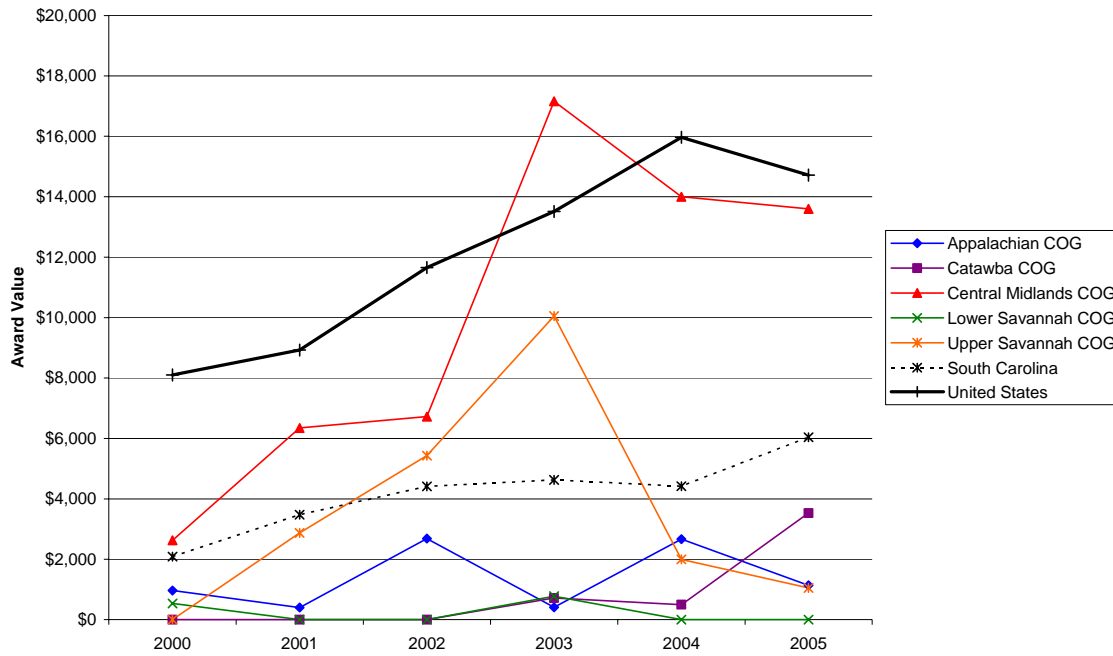
Patents per 10,000 Employees: Regional Councils of Governments, South Carolina, and United States, 2000-2005



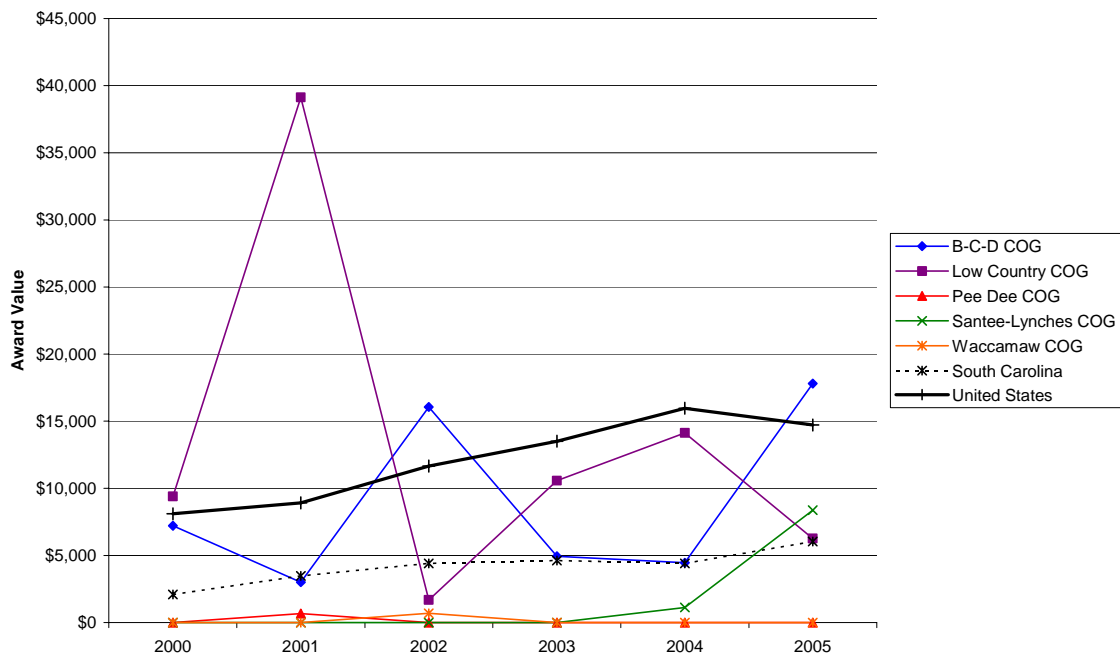
Patents per 10,000 Employees: Regional Councils of Governments, South Carolina, and United States, 2000-2005



SBIR/STTR Phase I and II Awards per 1,000 Employees: Regional Councils of Governments, South Carolina, and United States, 2000-2005



SBIR/STTR Phase I and II Awards per 1,000 Employees: Regional Councils of Governments, South Carolina, and United States, 2000-2005



Private Establishments

| FIPS | | Year | | | | | Percent Change | |
|-------|----------------|---------|---------|---------|---------|---------|----------------|-----------|
| | | 2000 | 2001 | 2002 | 2003 | 2004 | 2000-2004 | 2003-2004 |
| 45001 | Abbeville | 340 | 335 | 340 | 335 | 351 | 3.2% | 4.8% |
| 45003 | Aiken | 2,620 | 2,620 | 2,625 | 2,687 | 2,709 | 3.4% | 0.8% |
| 45005 | Allendale | 157 | 146 | 154 | 160 | 152 | -3.2% | -5.0% |
| 45007 | Anderson | 3,725 | 3,674 | 3,796 | 3,785 | 3,819 | 2.5% | 0.9% |
| 45009 | Bamberg | 303 | 305 | 296 | 290 | 285 | -5.9% | -1.7% |
| 45011 | Barnwell | 391 | 395 | 409 | 382 | 394 | 0.8% | 3.1% |
| 45013 | Beaufort | 4,287 | 4,397 | 4,457 | 4,570 | 4,709 | 9.8% | 3.0% |
| 45015 | Berkeley | 1,805 | 1,858 | 2,065 | 2,120 | 2,214 | 22.7% | 4.4% |
| 45017 | Calhoun | 202 | 198 | 209 | 203 | 206 | 2.0% | 1.5% |
| 45019 | Charleston | 10,486 | 10,520 | 10,719 | 10,926 | 11,242 | 7.2% | 2.9% |
| 45021 | Cherokee | 1,034 | 1,012 | 1,033 | 1,047 | 1,021 | -1.3% | -2.5% |
| 45023 | Chester | 567 | 570 | 567 | 573 | 565 | -0.4% | -1.4% |
| 45025 | Chesterfield | 738 | 731 | 758 | 753 | 755 | 2.3% | 0.3% |
| 45027 | Clarendon | 528 | 509 | 491 | 489 | 501 | -5.1% | 2.5% |
| 45029 | Colleton | 816 | 806 | 830 | 823 | 816 | 0.0% | -0.9% |
| 45031 | Darlington | 1,276 | 1,266 | 1,264 | 1,263 | 1,246 | -2.4% | -1.3% |
| 45033 | Dillon | 541 | 529 | 514 | 504 | 507 | -6.3% | 0.6% |
| 45035 | Dorchester | 1,779 | 1,820 | 1,876 | 1,906 | 1,986 | 11.6% | 4.2% |
| 45037 | Edgefield | 340 | 333 | 337 | 316 | 308 | -9.4% | -2.5% |
| 45039 | Fairfield | 323 | 309 | 335 | 340 | 329 | 1.9% | -3.2% |
| 45041 | Florence | 3,261 | 3,256 | 3,298 | 3,269 | 3,270 | 0.3% | 0.0% |
| 45043 | Georgetown | 1,794 | 1,836 | 1,876 | 1,936 | 1,969 | 9.8% | 1.7% |
| 45045 | Greenville | 11,625 | 11,468 | 11,431 | 11,435 | 11,744 | 1.0% | 2.7% |
| 45047 | Greenwood | 1,594 | 1,528 | 1,514 | 1,534 | 1,534 | -3.8% | 0.0% |
| 45049 | Hampton | 443 | 446 | 430 | 446 | 437 | -1.4% | -2.0% |
| 45051 | Horry | 7,187 | 7,211 | 7,409 | 7,544 | 7,940 | 10.5% | 5.2% |
| 45053 | Jasper | 435 | 419 | 467 | 462 | 475 | 9.2% | 2.8% |
| 45055 | Kershaw | 1,186 | 1,185 | 1,162 | 1,179 | 1,222 | 3.0% | 3.6% |
| 45057 | Lancaster | 1,176 | 1,151 | 1,165 | 1,184 | 1,156 | -1.7% | -2.4% |
| 45059 | Laurens | 915 | 889 | 904 | 909 | 890 | -2.7% | -2.1% |
| 45061 | Lee | 246 | 240 | 231 | 242 | 233 | -5.3% | -3.7% |
| 45063 | Lexington | 4,968 | 4,952 | 5,225 | 5,307 | 5,405 | 8.8% | 1.8% |
| 45067 | Marion | 655 | 647 | 643 | 639 | 655 | 0.0% | 2.5% |
| 45069 | Marlboro | 423 | 416 | 423 | 416 | 405 | -4.3% | -2.6% |
| 45065 | McCormick | 132 | 125 | 126 | 129 | 125 | -5.3% | -3.1% |
| 45071 | Newberry | 731 | 725 | 728 | 710 | 750 | 2.6% | 5.6% |
| 45073 | Oconee | 1,493 | 1,526 | 1,542 | 1,525 | 1,552 | 4.0% | 1.8% |
| 45075 | Orangeburg | 1,938 | 1,929 | 1,913 | 1,842 | 1,886 | -2.7% | 2.4% |
| 45077 | Pickens | 2,184 | 2,168 | 2,174 | 2,175 | 2,228 | 2.0% | 2.4% |
| 45079 | Richland | 9,191 | 9,265 | 9,038 | 9,123 | 9,268 | 0.8% | 1.6% |
| 45081 | Saluda | 245 | 248 | 226 | 230 | 224 | -8.6% | -2.6% |
| 45083 | Spartanburg | 6,283 | 6,266 | 6,425 | 6,467 | 6,552 | 4.3% | 1.3% |
| 45085 | Sumter | 1,864 | 1,875 | 1,949 | 1,916 | 1,950 | 4.6% | 1.8% |
| 45087 | Union | 539 | 511 | 499 | 490 | 481 | -10.8% | -1.8% |
| 45089 | Williamsburg | 538 | 526 | 502 | 493 | 495 | -8.0% | 0.4% |
| 45091 | York | 3,811 | 3,852 | 3,955 | 4,017 | 4,077 | 7.0% | 1.5% |
| | South Carolina | 97146 | 96993 | 98330 | 99091 | 101038 | 4.0% | 2.0% |
| | United States | 7070048 | 7095302 | 7200770 | 7254745 | 7387724 | 4.5% | 1.8% |

Source: U.S. Census Bureau, Business Patterns.
 Available at: <http://www.census.gov/epcd/cbp/view/cbpview.html>

Employment**FIPS**

| | | 2000 | 2001 | 2002 | 2003 | 2004 |
|-------|----------------|-------------|-------------|-------------|-------------|-------------|
| 45001 | Abbeville | 12,010 | 11,450 | 10,900 | 10,780 | 10,980 |
| 45003 | Aiken | 66,360 | 64,780 | 65,800 | 67,720 | 69,760 |
| 45005 | Allendale | 3,530 | 3,400 | 3,250 | 3,130 | 2,970 |
| 45007 | Anderson | 81,180 | 78,430 | 76,840 | 76,130 | 77,460 |
| 45009 | Bamberg | 6,080 | 5,960 | 5,900 | 6,050 | 5,970 |
| 45011 | Barnwell | 9,720 | 9,240 | 8,910 | 8,710 | 8,570 |
| 45013 | Beaufort | 49,890 | 49,110 | 51,530 | 53,730 | 56,420 |
| 45015 | Berkeley | 63,570 | 61,550 | 62,680 | 64,600 | 66,680 |
| 45017 | Calhoun | 6,810 | 6,610 | 6,520 | 6,600 | 6,630 |
| 45019 | Charleston | 147,850 | 142,950 | 146,070 | 150,930 | 155,930 |
| 45021 | Cherokee | 24,460 | 23,590 | 22,300 | 22,350 | 22,950 |
| 45023 | Chester | 15,480 | 14,950 | 14,150 | 14,050 | 14,140 |
| 45025 | Chesterfield | 18,380 | 17,420 | 17,060 | 16,970 | 16,510 |
| 45027 | Clarendon | 12,350 | 11,690 | 11,660 | 11,730 | 11,570 |
| 45029 | Colleton | 15,360 | 14,890 | 14,950 | 15,040 | 15,170 |
| 45031 | Darlington | 30,160 | 29,060 | 29,060 | 28,830 | 28,940 |
| 45033 | Dillon | 12,480 | 11,740 | 11,920 | 12,020 | 11,730 |
| 45035 | Dorchester | 45,760 | 44,830 | 46,380 | 48,640 | 50,770 |
| 45037 | Edgefield | 9,960 | 9,660 | 9,770 | 9,970 | 10,130 |
| 45039 | Fairfield | 10,480 | 10,190 | 10,200 | 10,220 | 10,440 |
| 45041 | Florence | 58,220 | 56,250 | 56,410 | 56,550 | 57,520 |
| 45043 | Georgetown | 24,500 | 24,090 | 24,040 | 24,460 | 25,340 |
| 45045 | Greenville | 201,260 | 193,940 | 189,790 | 190,660 | 193,200 |
| 45047 | Greenwood | 31,210 | 30,260 | 28,820 | 29,010 | 29,580 |
| 45049 | Hampton | 7,970 | 7,560 | 7,540 | 7,310 | 7,020 |
| 45051 | Horry | 100,460 | 97,740 | 100,620 | 105,880 | 109,800 |
| 45053 | Jasper | 8,940 | 8,620 | 8,760 | 8,970 | 9,290 |
| 45055 | Kershaw | 26,020 | 25,440 | 25,380 | 25,910 | 26,540 |
| 45057 | Lancaster | 29,330 | 28,260 | 27,680 | 26,930 | 27,150 |
| 45059 | Laurens | 33,320 | 31,830 | 30,780 | 30,650 | 30,620 |
| 45061 | Lee | 7,720 | 7,560 | 7,510 | 7,620 | 7,560 |
| 45063 | Lexington | 114,810 | 112,630 | 113,090 | 115,750 | 118,820 |
| 45065 | McCormick | 3,470 | 3,320 | 3,230 | 3,190 | 3,100 |
| 45067 | Marion | 14,030 | 12,740 | 12,470 | 12,490 | 12,350 |
| 45069 | Marlboro | 11,190 | 11,120 | 10,880 | 11,010 | 10,890 |
| 45071 | Newberry | 16,180 | 16,040 | 15,780 | 16,490 | 16,220 |
| 45073 | Oconee | 31,220 | 30,280 | 29,520 | 29,620 | 29,400 |
| 45075 | Orangeburg | 37,910 | 36,260 | 36,390 | 36,270 | 36,100 |
| 45077 | Pickens | 56,730 | 54,170 | 52,320 | 52,150 | 52,430 |
| 45079 | Richland | 155,970 | 151,960 | 152,610 | 154,920 | 157,790 |
| 45081 | Saluda | 9,020 | 8,710 | 8,620 | 8,620 | 8,620 |
| 45083 | Spartanburg | 125,360 | 120,890 | 119,330 | 120,610 | 121,730 |
| 45085 | Sumter | 42,800 | 40,490 | 39,810 | 41,560 | 42,280 |
| 45087 | Union | 13,410 | 12,740 | 12,180 | 11,850 | 11,470 |
| 45089 | Williamsburg | 14,000 | 13,430 | 13,290 | 13,620 | 13,410 |
| 45091 | York | 85,110 | 84,450 | 85,110 | 86,360 | 87,890 |
| | South Carolina | 1,902,030 | 1,842,290 | 1,837,770 | 1,866,680 | 1,899,810 |
| | United States | 136,891,000 | 136,933,000 | 136,485,000 | 137,736,000 | 139,252,000 |

Source: South Carolina Employment Security Commission: Labor Force and Employment.

Available at: <http://www.sces.org/LMI/data/labor-force/lf.asp>

Manufacturing Employment

| FIPS | | Year | | | | | | Percent Change | |
|-------|----------------|------------|------------|------------|------------|------------|------------|----------------|-----------|
| | | 2000 | 2001 | 2002 | 2003 | 2004 | 2005 | 2000-2005 | 2004-2005 |
| 45001 | Abbeville | 3,530 | 3,257 | 2,826 | 2,659 | 2,655 | 2,617 | -25.9% | -1.4% |
| 45003 | Aiken | 9,484 | 9,579 | 8,433 | 8,280 | 8,235 | 7,997 | -15.7% | -2.9% |
| 45005 | Allendale | 1,216 | 1,408 | 1,247 | 1,104 | 1,079 | 1,063 | -12.6% | -1.5% |
| 45007 | Anderson | 19,009 | 17,752 | 16,025 | 14,054 | 14,057 | 14,330 | -24.6% | 1.9% |
| 45009 | Bamberg | 1,191 | 1,172 | 1011 | 853 | 861 | 865 | -27.4% | 0.5% |
| 45011 | Barnwell | 3,608 | 3,327 | 2,932 | 2,797 | 2,742 | 2,677 | -25.8% | -2.4% |
| 45013 | Beaufort | 1,083 | 1,009 | 913 | 958 | 1,012 | 976 | -9.9% | -3.6% |
| 45015 | Berkeley | 7,832 | 7,632 | 7,188 | 7,060 | 6,322 | 6,202 | -20.8% | -1.9% |
| 45017 | Calhoun | 1,718 | 1,525 | 1,391 | 1,397 | 1,415 | 1,409 | -18.0% | -0.4% |
| 45019 | Charleston | 9,919 | 9,569 | 8,444 | 8,287 | 9,020 | 9,478 | -4.4% | 5.1% |
| 45021 | Cherokee | 8,870 | 7,988 | 6,807 | 6,545 | 6,227 | 6,274 | -29.3% | 0.8% |
| 45023 | Chester | 5,026 | 5,031 | 4,350 | 4,008 | 3,902 | 4,165 | -17.1% | 6.7% |
| 45025 | Chesterfield | 7,211 | 6,665 | 6,156 | 5,723 | 5,408 | 5,006 | -30.6% | -7.4% |
| 45027 | Clarendon | 1,646 | 1,487 | 1,240 | 1,222 | 1,267 | 1,155 | -29.8% | -8.8% |
| 45029 | Colleton | 2,037 | 1,933 | 1,588 | 1,569 | 1,632 | 1,636 | -19.7% | 0.2% |
| 45031 | Darlington | 6,986 | 6,743 | 6,229 | 5,909 | 5,686 | 5,745 | -17.8% | 1.0% |
| 45033 | Dillon | 3,341 | 2,904 | 2,881 | 2,907 | 3,028 | 2,629 | -21.3% | -13.2% |
| 45035 | Dorchester | 4,950 | 5,257 | 5,198 | 5,092 | 5,475 | 5,406 | 9.2% | -1.3% |
| 45037 | Edgefield | 1,980 | 1,595 | 1,317 | 1,354 | 1,387 | 1,245 | -37.1% | -10.2% |
| 45039 | Fairfield | 2,468 | 1,976 | 1661 | 835 | 741 | 819 | -66.8% | 10.5% |
| 45041 | Florence | 11,552 | 11,043 | 10,187 | 9,351 | 8,794 | 8,703 | -24.7% | -1.0% |
| 45043 | Georgetown | 3,573 | 3,254 | 2,561 | 2,072 | 2,058 | 2,190 | -38.7% | 6.4% |
| 45045 | Greenville | 48,669 | 47,056 | 38,429 | 37,358 | 35,283 | 34,330 | -29.5% | -2.7% |
| 45047 | Greenwood | 10,904 | 10,626 | 9,244 | 8,571 | 8,258 | 7,864 | -27.9% | -4.8% |
| 45049 | Hampton | 1,308 | 1,225 | 1054 | 869 | 815 | 890 | -32.0% | 9.2% |
| 45051 | Horry | 7,006 | 6,154 | 5,017 | 4,485 | 4,335 | 4,145 | -40.8% | -4.4% |
| 45053 | Jasper | 479 | 390 | 459 | 457 | 486 | 500 | 4.4% | 2.9% |
| 45055 | Kershaw | 5,078 | 4,829 | 4,540 | 4,606 | 4,277 | 4,043 | -20.4% | -5.5% |
| 45057 | Lancaster | 6,716 | 6,354 | 5,630 | 4,688 | 4,491 | 4,358 | -35.1% | -3.0% |
| 45059 | Laurens | 6,482 | 6,024 | 5,122 | 3,862 | 4,048 | 4,334 | -33.1% | 7.1% |
| 45061 | Lee | 459 | 394 | 439 | 364 | 380 | 432 | -5.9% | 13.7% |
| 45063 | Lexington | 13,735 | 13,488 | 13,142 | 11,798 | 11,889 | 11,916 | -13.2% | 0.2% |
| 45065 | McCormick | 473 | 405 | 331 | 313 | 281 | 254 | -46.3% | -9.6% |
| 45067 | Marion | 4,480 | 3,541 | 3,151 | 2,899 | 2,838 | 2,316 | -48.3% | -18.4% |
| 45069 | Marlboro | 3,055 | 3,208 | 3,141 | 3,096 | 3,078 | 3,068 | 0.4% | -0.3% |
| 45071 | Newberry | 5,069 | 4,836 | 4,066 | 4,093 | 4,381 | 4,268 | -15.8% | -2.6% |
| 45073 | Oconee | 9,941 | 9,176 | 8,026 | 7,401 | 7,274 | 6,625 | -33.4% | -8.9% |
| 45075 | Orangeburg | 8,971 | 7,710 | 7,609 | 7,377 | 7,323 | 7,236 | -19.3% | -1.2% |
| 45077 | Pickens | 8,853 | 8,001 | 6,976 | 6,766 | 6,149 | 6,115 | -30.9% | -0.6% |
| 45079 | Richland | 13,422 | 12,983 | 11,587 | 12,143 | 11,212 | 11,325 | -15.6% | 1.0% |
| 45081 | Saluda | 2,018 | 1,958 | 1,751 | 1,739 | 1,664 | 1,594 | -21.0% | -4.2% |
| 45083 | Spartanburg | 36,288 | 35,663 | 32,344 | 31,557 | 30,428 | 29,187 | -19.6% | -4.1% |
| 45085 | Sumter | 12,685 | 11,464 | 10,328 | 10,300 | 9,857 | 9,138 | -28.0% | -7.3% |
| 45087 | Union | 3,993 | 3,534 | 3,217 | 3,057 | 2,717 | 2,471 | -38.1% | -9.1% |
| 45089 | Williamsburg | 3,149 | 2,752 | 2,287 | 2,220 | 2,247 | 2,162 | -31.3% | -3.8% |
| 45091 | York | 11,964 | 10,961 | 10,191 | 9,914 | 9,732 | 10,122 | -15.4% | 4.0% |
| | South Carolina | 345,152 | 326,608 | 290,127 | 275,573 | 267,511 | 262,708 | -23.9% | -1.8% |
| | United States | 17,263,000 | 16,441,000 | 15,259,000 | 14,510,000 | 14,315,100 | 14,232,000 | -17.6% | -0.6% |

Source: Bureau of Economic Analysis, Regional Economic Information System (REIS): Table CA25
 Available at: <http://www.bea.gov/bea/regional/reis/>

Unemployment

| FIPS | County | Year | | | | | | Percent Change | |
|-------|----------------|-----------|-----------|-----------|-----------|-----------|-----------|----------------|-----------|
| | | 2000 | 2001 | 2002 | 2003 | 2004 | 2005 | 2000-2005 | 2004-2005 |
| 45001 | Abbeville | 460 | 800 | 920 | 1,040 | 980 | 960 | 108.7% | -2.0% |
| 45003 | Aiken | 2,590 | 3,380 | 3,520 | 3,740 | 4,220 | 4,490 | 73.4% | 6.4% |
| 45005 | Allendale | 190 | 220 | 260 | 300 | 330 | 370 | 94.7% | 12.1% |
| 45007 | Anderson | 2,550 | 4,420 | 5,180 | 5,830 | 5,960 | 6,280 | 146.3% | 5.4% |
| 45009 | Bamberg | 330 | 420 | 430 | 500 | 480 | 590 | 78.8% | 22.9% |
| 45011 | Barnwell | 500 | 690 | 790 | 920 | 920 | 900 | 80.0% | -2.2% |
| 45013 | Beaufort | 1,580 | 1,970 | 2,150 | 2,540 | 2,770 | 2,830 | 79.1% | 2.2% |
| 45015 | Berkeley | 2,100 | 2,820 | 2,940 | 3,710 | 3,920 | 3,900 | 85.7% | -0.5% |
| 45017 | Calhoun | 260 | 420 | 450 | 490 | 480 | 550 | 111.5% | 14.6% |
| 45019 | Charleston | 4,900 | 6,170 | 7,180 | 8,440 | 8,940 | 9,330 | 90.4% | 4.4% |
| 45021 | Cherokee | 1,050 | 1,770 | 2,020 | 2,130 | 2,250 | 2,030 | 93.3% | -9.8% |
| 45023 | Chester | 820 | 1,240 | 1,580 | 1,740 | 1,580 | 1,540 | 87.8% | -2.5% |
| 45025 | Chesterfield | 870 | 1,400 | 1,470 | 1,880 | 1,870 | 1,780 | 104.6% | -4.8% |
| 45027 | Clarendon | 690 | 950 | 970 | 1,100 | 1,130 | 1,260 | 82.6% | 11.5% |
| 45029 | Colleton | 600 | 790 | 970 | 1,190 | 1,200 | 1,220 | 103.3% | 1.7% |
| 45031 | Darlington | 1,510 | 1,930 | 2,170 | 2,580 | 2,590 | 2,770 | 83.4% | 6.9% |
| 45033 | Dillon | 910 | 1,190 | 1,060 | 1,270 | 1,290 | 1,350 | 48.4% | 4.7% |
| 45035 | Dorchester | 1,410 | 1,920 | 2,060 | 2,520 | 2,600 | 2,840 | 101.4% | 9.2% |
| 45037 | Edgefield | 370 | 490 | 520 | 530 | 650 | 830 | 124.3% | 27.7% |
| 45039 | Fairfield | 540 | 930 | 960 | 1,210 | 910 | 920 | 70.4% | 1.1% |
| 45041 | Florence | 2,430 | 3,240 | 3,940 | 4,770 | 5,200 | 5,660 | 132.9% | 8.8% |
| 45043 | Georgetown | 1,370 | 1,920 | 2,150 | 2,640 | 2,640 | 2,480 | 81.0% | -6.1% |
| 45045 | Greenville | 5,290 | 7,550 | 9,610 | 10,930 | 12,050 | 11,610 | 119.5% | -3.7% |
| 45047 | Greenwood | 1,370 | 2,210 | 2,830 | 2,960 | 2,840 | 3,010 | 119.7% | 6.0% |
| 45049 | Hampton | 350 | 500 | 620 | 770 | 750 | 690 | 97.1% | -8.0% |
| 45051 | Horry | 3,730 | 5,040 | 5,420 | 6,220 | 6,680 | 6,730 | 80.4% | 0.7% |
| 45053 | Jasper | 320 | 390 | 470 | 560 | 540 | 530 | 65.6% | -1.9% |
| 45055 | Kershaw | 1,000 | 1,380 | 1,640 | 1,750 | 1,740 | 1,920 | 92.0% | 10.3% |
| 45057 | Lancaster | 1,090 | 1,630 | 1,960 | 2,650 | 2,670 | 2,570 | 135.8% | -3.7% |
| 45059 | Laurens | 1,100 | 2,200 | 2,550 | 2,490 | 2,380 | 2,290 | 108.2% | -3.8% |
| 45061 | Lee | 460 | 570 | 610 | 710 | 730 | 810 | 76.1% | 11.0% |
| 45063 | Lexington | 3,140 | 4,150 | 4,630 | 5,450 | 6,020 | 6,230 | 98.4% | 3.5% |
| 45065 | McCormick | 230 | 350 | 400 | 450 | 390 | 400 | 73.9% | 2.6% |
| 45067 | Marion | 1,420 | 1,780 | 1,560 | 1,870 | 1,970 | 1,970 | 38.7% | 0.0% |
| 45069 | Marlboro | 820 | 1,170 | 1,230 | 1,660 | 1,650 | 1,500 | 82.9% | -9.1% |
| 45071 | Newberry | 720 | 1,060 | 1,240 | 1,310 | 1,280 | 1,250 | 73.6% | -2.3% |
| 45073 | Oconee | 1,120 | 1,730 | 2,120 | 2,390 | 2,350 | 2,780 | 148.2% | 18.3% |
| 45075 | Orangeburg | 2,330 | 3,400 | 3,500 | 3,990 | 3,750 | 3,980 | 70.8% | 6.1% |
| 45077 | Pickens | 1,720 | 2,850 | 3,330 | 3,790 | 3,860 | 3,830 | 122.7% | -0.8% |
| 45079 | Richland | 5,200 | 6,590 | 7,580 | 9,200 | 10,080 | 10,330 | 98.7% | 2.5% |
| 45081 | Saluda | 340 | 480 | 540 | 590 | 720 | 660 | 94.1% | -8.3% |
| 45083 | Spartanburg | 4,550 | 6,860 | 8,590 | 9,370 | 9,990 | 10,040 | 120.7% | 0.5% |
| 45085 | Sumter | 1,880 | 2,830 | 3,150 | 3,440 | 3,680 | 4,160 | 121.3% | 13.0% |
| 45087 | Union | 710 | 1,240 | 1,440 | 1,510 | 1,610 | 1,430 | 101.4% | -11.2% |
| 45089 | Williamsburg | 1,130 | 1,520 | 1,630 | 2,030 | 1,880 | 1,840 | 62.8% | -2.1% |
| 45091 | York | 2,800 | 4,260 | 5,850 | 6,780 | 6,740 | 6,350 | 126.8% | -5.8% |
| | South Carolina | 70,820 | 100,810 | 116,190 | 133,910 | 139,220 | 141,780 | 100.20% | 1.8% |
| | United States | 5,692,000 | 6,801,000 | 8,378,000 | 8,774,000 | 8,149,000 | 7,591,000 | 33.4% | -6.8% |

Source: South Carolina Employment Security Commission: Labor Force and Employment.
 Available at: <http://www.sces.org/LMI/data/labor-force/lf.asp>

Unemployment Rate

| FIPS | County | Year | | | | | | Percent Change | |
|-------|----------------|------|-------|-------|-------|-------|-------|----------------|-----------|
| | | 2000 | 2001 | 2002 | 2003 | 2004 | 2005 | 2000-2005 | 2004-2005 |
| 45001 | Abbeville | 3.7% | 6.6% | 7.8% | 8.8% | 8.2% | 7.8% | 111.1% | -5.0% |
| 45003 | Aiken | 3.8% | 5.0% | 5.1% | 5.2% | 5.7% | 6.0% | 59.2% | 4.8% |
| 45005 | Allendale | 5.1% | 6.1% | 7.3% | 8.7% | 10.0% | 10.9% | 112.4% | 8.5% |
| 45007 | Anderson | 3.0% | 5.3% | 6.3% | 7.1% | 7.1% | 7.5% | 146.5% | 5.1% |
| 45009 | Bamberg | 5.1% | 6.6% | 6.9% | 7.6% | 7.4% | 8.7% | 69.0% | 16.9% |
| 45011 | Barnwell | 4.9% | 6.9% | 8.1% | 9.6% | 9.7% | 9.3% | 89.8% | -4.2% |
| 45013 | Beaufort | 3.1% | 3.9% | 4.0% | 4.5% | 4.7% | 4.5% | 45.2% | -4.7% |
| 45015 | Berkeley | 3.2% | 4.4% | 4.5% | 5.4% | 5.6% | 5.4% | 69.0% | -2.7% |
| 45017 | Calhoun | 3.7% | 5.9% | 6.5% | 6.9% | 6.8% | 7.5% | 104.3% | 11.3% |
| 45019 | Charleston | 3.2% | 4.1% | 4.7% | 5.3% | 5.4% | 5.5% | 72.1% | 1.8% |
| 45021 | Cherokee | 4.1% | 7.0% | 8.3% | 8.7% | 8.9% | 8.0% | 95.2% | -10.0% |
| 45023 | Chester | 5.0% | 7.7% | 10.1% | 11.0% | 10.1% | 9.4% | 86.9% | -6.9% |
| 45025 | Chesterfield | 4.5% | 7.4% | 7.9% | 10.0% | 10.2% | 9.6% | 113.1% | -5.3% |
| 45027 | Clarendon | 5.3% | 7.5% | 7.7% | 8.6% | 8.9% | 9.6% | 82.2% | 8.3% |
| 45029 | Colleton | 3.8% | 5.0% | 6.1% | 7.3% | 7.3% | 7.3% | 94.6% | -0.2% |
| 45031 | Darlington | 4.8% | 6.2% | 6.9% | 8.2% | 8.2% | 8.9% | 86.8% | 8.4% |
| 45033 | Dillon | 6.8% | 9.2% | 8.1% | 9.6% | 9.9% | 9.7% | 42.6% | -2.2% |
| 45035 | Dorchester | 3.0% | 4.1% | 4.3% | 4.9% | 4.9% | 5.2% | 73.3% | 6.4% |
| 45037 | Edgefield | 3.6% | 4.8% | 5.1% | 5.0% | 6.0% | 7.5% | 109.1% | 24.2% |
| 45039 | Fairfield | 4.9% | 8.4% | 8.6% | 10.6% | 8.0% | 7.9% | 62.1% | -0.9% |
| 45041 | Florence | 4.0% | 5.4% | 6.5% | 7.8% | 8.3% | 9.1% | 128.0% | 10.2% |
| 45043 | Georgetown | 5.3% | 7.4% | 8.2% | 9.7% | 9.4% | 8.4% | 57.7% | -11.5% |
| 45045 | Greenville | 2.6% | 3.7% | 4.8% | 5.4% | 5.9% | 5.6% | 118.9% | -4.5% |
| 45047 | Greenwood | 4.2% | 6.8% | 8.9% | 9.3% | 8.8% | 9.1% | 115.4% | 3.4% |
| 45049 | Hampton | 4.2% | 6.2% | 7.6% | 9.5% | 9.7% | 8.6% | 104.3% | -11.0% |
| 45051 | Horry | 3.6% | 4.9% | 5.1% | 5.5% | 5.7% | 5.5% | 54.5% | -3.5% |
| 45053 | Jasper | 3.5% | 4.3% | 5.1% | 5.9% | 5.5% | 5.0% | 45.8% | -8.3% |
| 45055 | Kershaw | 3.7% | 5.1% | 6.1% | 6.3% | 6.2% | 6.6% | 78.8% | 7.5% |
| 45057 | Lancaster | 3.6% | 5.4% | 6.6% | 9.0% | 8.9% | 8.5% | 137.2% | -4.5% |
| 45059 | Laurens | 3.2% | 6.5% | 7.6% | 7.5% | 7.2% | 6.9% | 115.3% | -4.6% |
| 45061 | Lee | 5.6% | 7.0% | 7.5% | 8.5% | 8.8% | 9.5% | 69.7% | 8.3% |
| 45063 | Lexington | 2.7% | 3.6% | 3.9% | 4.5% | 4.8% | 4.9% | 83.4% | 1.3% |
| 45065 | McCormick | 6.2% | 9.6% | 10.9% | 12.4% | 11.2% | 11.0% | 77.8% | -1.1% |
| 45067 | Marion | 9.2% | 12.2% | 11.1% | 13.0% | 13.8% | 13.8% | 50.2% | 0.4% |
| 45069 | Marlboro | 6.8% | 9.5% | 10.2% | 13.1% | 13.2% | 11.7% | 71.1% | -11.2% |
| 45071 | Newberry | 4.3% | 6.2% | 7.3% | 7.4% | 7.3% | 7.0% | 63.6% | -4.7% |
| 45073 | Oconee | 3.5% | 5.4% | 6.7% | 7.5% | 7.4% | 8.6% | 147.1% | 15.6% |
| 45075 | Orangeburg | 5.8% | 8.6% | 8.8% | 9.9% | 9.4% | 9.6% | 65.0% | 1.5% |
| 45077 | Pickens | 2.9% | 5.0% | 6.0% | 6.8% | 6.9% | 6.7% | 128.8% | -1.8% |
| 45079 | Richland | 3.2% | 4.2% | 4.7% | 5.6% | 6.0% | 6.0% | 86.7% | 0.3% |
| 45081 | Saluda | 3.6% | 5.2% | 5.9% | 6.4% | 7.7% | 7.0% | 92.1% | -9.5% |
| 45083 | Spartanburg | 3.5% | 5.4% | 5.9% | 7.2% | 7.6% | 7.7% | 119.1% | 1.2% |
| 45085 | Sumter | 4.2% | 6.5% | 7.3% | 7.6% | 8.0% | 8.8% | 109.8% | 10.3% |
| 45087 | Union | 5.0% | 8.9% | 10.6% | 11.3% | 12.3% | 11.1% | 121.7% | -9.4% |
| 45089 | Williamsburg | 7.5% | 10.2% | 10.9% | 13.0% | 12.3% | 11.4% | 53.2% | -6.9% |
| 45091 | York | 3.2% | 4.8% | 6.4% | 7.3% | 7.1% | 6.6% | 107.2% | -7.0% |
| | South Carolina | 3.6% | 5.2% | 5.9% | 6.7% | 6.8% | 6.8% | 88.9% | 0.0% |
| | United States | 4.0% | 4.7% | 5.8% | 6.0% | 5.5% | 5.1% | 27.5% | -7.3% |

Source: South Carolina Employment Security Commission: Labor Force and Employment.

Earnings per Worker (Dollars*)

| FIPS | County | Year | | | | | Percent Change | |
|-------|----------------|--------|--------|--------|--------|--------|----------------|-----------|
| | | 2000 | 2001 | 2002 | 2003 | 2004 | 2000-2004 | 2003-2004 |
| 45001 | Abbeville | 27,438 | 26,393 | 25,708 | 26,082 | 26,874 | -2.1% | 3.0% |
| 45003 | Aiken | 34,536 | 35,320 | 36,648 | 37,274 | 38,090 | 10.3% | 2.2% |
| 45005 | Allendale | 26,257 | 26,870 | 28,287 | 28,867 | 30,421 | 15.9% | 5.4% |
| 45007 | Anderson | 25,861 | 27,035 | 27,077 | 27,884 | 28,598 | 10.6% | 2.6% |
| 45009 | Bamberg | 20,875 | 21,302 | 22,342 | 22,338 | 23,203 | 11.2% | 3.9% |
| 45011 | Barnwell | 34,369 | 24,610 | 25,038 | 25,916 | 26,729 | -22.2% | 3.1% |
| 45013 | Beaufort | 26,195 | 27,425 | 27,504 | 28,715 | 30,021 | 14.6% | 4.5% |
| 45015 | Berkeley | 28,817 | 29,783 | 30,794 | 32,206 | 33,551 | 16.4% | 4.2% |
| 45017 | Calhoun | 27,435 | 28,560 | 28,850 | 28,848 | 31,499 | 14.8% | 9.2% |
| 45019 | Charleston | 27,884 | 29,601 | 30,885 | 31,806 | 32,839 | 17.8% | 3.2% |
| 45021 | Cherokee | 26,433 | 26,823 | 27,377 | 28,503 | 29,839 | 12.9% | 4.7% |
| 45023 | Chester | 25,861 | 26,206 | 28,341 | 28,912 | 29,755 | 15.1% | 2.9% |
| 45025 | Chesterfield | 25,533 | 26,347 | 26,840 | 27,745 | 27,979 | 9.6% | 0.8% |
| 45027 | Clarendon | 20,366 | 21,559 | 22,154 | 23,110 | 24,350 | 19.6% | 5.4% |
| 45029 | Colleton | 23,104 | 23,828 | 23,846 | 24,412 | 25,853 | 11.9% | 5.9% |
| 45031 | Darlington | 29,047 | 29,990 | 30,761 | 31,870 | 32,767 | 12.8% | 2.8% |
| 45033 | Dillon | 20,474 | 21,414 | 22,407 | 23,318 | 23,992 | 17.2% | 2.9% |
| 45035 | Dorchester | 24,555 | 25,460 | 25,778 | 26,769 | 28,132 | 14.6% | 5.1% |
| 45037 | Edgefield | 23,434 | 23,881 | 24,489 | 25,590 | 26,091 | 11.3% | 2.0% |
| 45039 | Fairfield | 34,326 | 31,570 | 32,734 | 33,322 | 33,775 | -1.6% | 1.4% |
| 45041 | Florence | 27,454 | 28,670 | 29,390 | 29,896 | 31,150 | 13.5% | 4.2% |
| 45043 | Georgetown | 24,001 | 24,780 | 26,313 | 27,155 | 27,956 | 16.5% | 3.0% |
| 45045 | Greenville | 31,124 | 32,421 | 33,139 | 33,704 | 34,625 | 11.2% | 2.7% |
| 45047 | Greenwood | 27,818 | 28,113 | 28,620 | 29,276 | 29,924 | 7.6% | 2.2% |
| 45049 | Hampton | 25,735 | 27,764 | 27,970 | 28,477 | 30,141 | 17.1% | 5.8% |
| 45051 | Horry | 23,127 | 24,180 | 24,802 | 25,682 | 26,360 | 14.0% | 2.6% |
| 45053 | Jasper | 22,088 | 22,990 | 23,959 | 25,045 | 27,381 | 24.0% | 9.3% |
| 45055 | Kershaw | 26,022 | 26,476 | 27,215 | 28,491 | 29,003 | 11.5% | 1.8% |
| 45057 | Lancaster | 26,394 | 27,560 | 27,915 | 28,975 | 29,869 | 13.2% | 3.1% |
| 45059 | Laurens | 25,189 | 25,506 | 25,822 | 26,555 | 27,802 | 10.4% | 4.7% |
| 45061 | Lee | 21,668 | 22,210 | 22,559 | 22,820 | 23,568 | 8.8% | 3.3% |
| 45063 | Lexington | 26,985 | 27,455 | 28,018 | 28,859 | 30,568 | 13.3% | 5.9% |
| 45065 | McCormick | 21,653 | 22,604 | 23,316 | 24,504 | 25,233 | 16.5% | 3.0% |
| 45067 | Marion | 22,320 | 23,037 | 23,577 | 24,123 | 24,754 | 10.9% | 2.6% |
| 45069 | Marlboro | 24,703 | 25,334 | 26,272 | 26,606 | 27,857 | 12.8% | 4.7% |
| 45071 | Newberry | 23,347 | 24,438 | 25,221 | 25,826 | 26,866 | 15.1% | 4.0% |
| 45073 | Oconee | 28,689 | 29,629 | 30,057 | 30,941 | 32,539 | 13.4% | 5.2% |
| 45075 | Orangeburg | 23,578 | 24,704 | 25,942 | 26,918 | 28,413 | 20.5% | 5.6% |
| 45077 | Pickens | 24,284 | 24,716 | 25,679 | 26,512 | 27,216 | 12.1% | 2.7% |
| 45079 | Richland | 29,414 | 30,420 | 31,508 | 32,608 | 33,852 | 15.1% | 3.8% |
| 45081 | Saluda | 20,419 | 21,454 | 21,355 | 22,080 | 23,616 | 15.7% | 7.0% |
| 45083 | Spartanburg | 30,219 | 31,529 | 32,674 | 33,113 | 34,649 | 14.7% | 4.6% |
| 45085 | Sumter | 24,547 | 25,281 | 26,678 | 27,587 | 28,655 | 16.7% | 3.9% |
| 45087 | Union | 23,280 | 24,092 | 24,708 | 25,504 | 26,293 | 12.9% | 3.1% |
| 45089 | Williamsburg | 22,665 | 23,437 | 24,161 | 24,727 | 25,713 | 13.4% | 4.0% |
| 45091 | York | 28,439 | 29,845 | 30,027 | 30,215 | 31,924 | 12.3% | 5.7% |
| | South Carolina | 27,712 | 28,722 | 29,523 | 30,333 | 31,447 | 13.5% | 3.7% |
| | United States | 34,718 | 35,582 | 36,150 | 37,173 | 38,798 | 11.7% | 4.4% |

*Dollar estimates have not been adjusted for inflation

Source: Bureau of Economic Analysis, Regional Economic Information System (REIS): TableCA30

Available at: <http://www.bea.gov/bea/regional/reis/>

Per Capita Personal Income (Dollars*)

| FIPS | County | Year | | | | | Percent Change | |
|-------|----------------|--------|--------|--------|--------|--------|----------------|-----------|
| | | 2000 | 2001 | 2002 | 2003 | 2004 | 2000-2004 | 2003-2004 |
| 45001 | Abbeville | 22,967 | 23,133 | 21,358 | 19,969 | 21,000 | -8.6% | 5.2% |
| 45003 | Aiken | 24,831 | 26,158 | 26,669 | 26,893 | 27,901 | 12.4% | 3.7% |
| 45005 | Allendale | 16,244 | 16,794 | 16,583 | 17,052 | 17,991 | 10.8% | 5.5% |
| 45007 | Anderson | 24,271 | 24,990 | 25,030 | 25,434 | 26,249 | 8.2% | 3.2% |
| 45009 | Bamberg | 17,395 | 17,763 | 18,004 | 18,913 | 19,927 | 14.6% | 5.4% |
| 45011 | Barnwell | 22,216 | 18,685 | 18,850 | 19,158 | 19,809 | -10.8% | 3.4% |
| 45013 | Beaufort | 32,452 | 34,292 | 33,948 | 34,781 | 36,570 | 12.7% | 5.1% |
| 45015 | Berkeley | 20,157 | 21,384 | 22,842 | 24,019 | 25,286 | 25.4% | 5.3% |
| 45017 | Calhoun | 22,219 | 23,186 | 23,510 | 25,145 | 26,842 | 20.8% | 6.7% |
| 45019 | Charleston | 28,720 | 29,498 | 29,827 | 30,608 | 32,088 | 11.7% | 4.8% |
| 45021 | Cherokee | 20,313 | 20,519 | 20,650 | 21,353 | 22,562 | 11.1% | 5.7% |
| 45023 | Chester | 19,941 | 20,836 | 21,696 | 22,138 | 23,415 | 17.4% | 5.8% |
| 45025 | Chesterfield | 19,558 | 20,054 | 20,004 | 20,823 | 21,705 | 11.0% | 4.2% |
| 45027 | Clarendon | 17,902 | 18,630 | 18,621 | 19,568 | 20,692 | 15.6% | 5.7% |
| 45029 | Colleton | 19,103 | 19,783 | 19,804 | 20,355 | 21,662 | 13.4% | 6.4% |
| 45031 | Darlington | 22,115 | 22,887 | 23,109 | 23,621 | 24,558 | 11.0% | 4.0% |
| 45033 | Dillon | 17,965 | 18,526 | 18,499 | 19,428 | 20,342 | 13.2% | 4.7% |
| 45035 | Dorchester | 21,973 | 22,669 | 23,516 | 24,015 | 25,382 | 15.5% | 5.7% |
| 45037 | Edgefield | 18,921 | 19,987 | 20,062 | 20,361 | 21,397 | 13.1% | 5.1% |
| 45039 | Fairfield | 20,045 | 20,689 | 21,024 | 21,414 | 22,524 | 12.4% | 5.2% |
| 45041 | Florence | 23,795 | 24,777 | 25,396 | 26,040 | 27,359 | 15.0% | 5.1% |
| 45043 | Georgetown | 24,254 | 25,778 | 26,165 | 26,944 | 28,103 | 15.9% | 4.3% |
| 45045 | Greenville | 29,689 | 29,263 | 29,233 | 29,744 | 30,814 | 3.8% | 3.6% |
| 45047 | Greenwood | 23,090 | 23,363 | 23,456 | 23,834 | 24,935 | 8.0% | 4.6% |
| 45049 | Hampton | 18,551 | 19,190 | 19,504 | 19,765 | 20,905 | 12.7% | 5.8% |
| 45051 | Horry | 23,933 | 24,156 | 24,326 | 25,118 | 26,170 | 9.3% | 4.2% |
| 45053 | Jasper | 17,693 | 18,129 | 18,813 | 20,250 | 21,833 | 23.4% | 7.8% |
| 45055 | Kershaw | 23,355 | 24,519 | 25,284 | 25,849 | 27,204 | 16.5% | 5.2% |
| 45057 | Lancaster | 20,591 | 20,999 | 20,929 | 21,601 | 22,799 | 10.7% | 5.5% |
| 45059 | Laurens | 20,391 | 20,976 | 20,864 | 21,165 | 22,543 | 10.6% | 6.5% |
| 45061 | Lee | 17,225 | 17,717 | 17,501 | 18,626 | 19,395 | 12.6% | 4.1% |
| 45063 | Lexington | 28,901 | 28,641 | 29,034 | 29,633 | 31,282 | 8.2% | 5.6% |
| 45065 | McCormick | 17,308 | 17,809 | 17,749 | 18,151 | 19,383 | 12.0% | 6.8% |
| 45067 | Marion | 17,948 | 18,448 | 18,859 | 19,826 | 20,391 | 13.6% | 2.9% |
| 45069 | Marlboro | 16,841 | 17,790 | 17,627 | 18,558 | 19,334 | 14.8% | 4.2% |
| 45071 | Newberry | 20,605 | 21,365 | 20,772 | 21,602 | 23,122 | 12.2% | 7.0% |
| 45073 | Oconee | 24,107 | 25,156 | 25,694 | 26,563 | 27,736 | 15.1% | 4.4% |
| 45075 | Orangeburg | 19,711 | 20,737 | 21,434 | 22,171 | 23,181 | 17.6% | 4.6% |
| 45077 | Pickens | 21,068 | 22,256 | 22,799 | 23,304 | 24,135 | 14.6% | 3.6% |
| 45079 | Richland | 27,110 | 27,784 | 28,166 | 28,628 | 30,190 | 11.4% | 5.5% |
| 45081 | Saluda | 20,990 | 21,376 | 21,346 | 22,569 | 24,343 | 16.0% | 7.9% |
| 45083 | Spartanburg | 24,327 | 24,559 | 25,156 | 25,340 | 26,114 | 7.3% | 3.1% |
| 45085 | Sumter | 20,535 | 20,841 | 21,714 | 22,437 | 23,732 | 15.6% | 5.8% |
| 45087 | Union | 20,178 | 21,508 | 22,066 | 22,495 | 23,542 | 16.7% | 4.7% |
| 45089 | Williamsburg | 16,073 | 17,294 | 17,173 | 18,321 | 19,003 | 18.2% | 3.7% |
| 45091 | York | 25,942 | 26,301 | 27,290 | 27,778 | 28,714 | 10.7% | 3.4% |
| | South Carolina | 24,424 | 24,994 | 25,361 | 25,972 | 27,185 | 11.3% | 4.7% |
| | United States | 29,845 | 30,574 | 30,810 | 31,484 | 33,050 | 10.7% | 5.0% |

*Dollar estimates have not been adjusted for inflation; Source: Bureau of Economic Analysis, Regional Economic Information System (REIS): Table CA31, Available at <http://www.bea.gov/bea/regional/reis/>

Median Household Income (Dollars)

| FIPS | County | Year | | | | Percent Change | |
|-------|----------------|--------|--------|--------|--------|----------------|-----------|
| | | 2000 | 2001 | 2002 | 2003 | 2000-2003 | 2002-2003 |
| 45001 | Abbeville | 33,309 | 31,327 | 31,244 | 30,469 | -8.5% | -2.5% |
| 45003 | Aiken | 38,913 | 38,086 | 38,534 | 39,253 | 0.9% | 1.9% |
| 45005 | Allendale | 22,149 | 21,099 | 20,727 | 20,920 | -5.5% | 0.9% |
| 45007 | Anderson | 37,971 | 37,281 | 37,205 | 38,286 | 0.8% | 2.9% |
| 45009 | Bamberg | 25,079 | 24,045 | 24,300 | 24,762 | -1.3% | 1.9% |
| 45011 | Barnwell | 29,417 | 28,494 | 27,607 | 26,456 | -10.1% | -4.2% |
| 45013 | Beaufort | 46,486 | 45,469 | 45,822 | 46,634 | 0.3% | 1.8% |
| 45015 | Berkeley | 40,309 | 39,475 | 40,161 | 42,023 | 4.3% | 4.6% |
| 45017 | Calhoun | 32,942 | 32,174 | 32,247 | 33,712 | 2.3% | 4.5% |
| 45019 | Charleston | 39,815 | 38,610 | 38,458 | 39,233 | -1.5% | 2.0% |
| 45021 | Cherokee | 34,583 | 33,300 | 33,232 | 34,274 | -0.9% | 3.1% |
| 45023 | Chester | 32,537 | 31,684 | 31,715 | 33,017 | 1.5% | 4.1% |
| 45025 | Chesterfield | 30,204 | 29,397 | 29,505 | 30,438 | 0.8% | 3.2% |
| 45027 | Clarendon | 27,318 | 26,268 | 25,896 | 26,721 | -2.2% | 3.2% |
| 45029 | Colleton | 29,768 | 28,861 | 28,919 | 29,711 | -0.2% | 2.7% |
| 45031 | Darlington | 31,369 | 30,698 | 30,776 | 31,347 | -0.1% | 1.9% |
| 45033 | Dillon | 26,573 | 25,832 | 25,552 | 26,751 | 0.7% | 4.7% |
| 45035 | Dorchester | 42,756 | 42,082 | 42,886 | 44,534 | 4.2% | 3.8% |
| 45037 | Edgefield | 34,449 | 34,038 | 34,297 | 34,451 | 0.0% | 0.4% |
| 45039 | Fairfield | 30,425 | 29,521 | 29,960 | 30,857 | 1.4% | 3.0% |
| 45041 | Florence | 34,779 | 34,028 | 34,009 | 34,903 | 0.4% | 2.6% |
| 45043 | Georgetown | 36,396 | 34,714 | 35,008 | 36,458 | 0.2% | 4.1% |
| 45045 | Greenville | 42,544 | 41,996 | 41,658 | 41,984 | -1.3% | 0.8% |
| 45047 | Greenwood | 35,469 | 34,354 | 34,109 | 34,578 | -2.5% | 1.4% |
| 45049 | Hampton | 29,095 | 27,927 | 27,650 | 28,223 | -3.0% | 2.1% |
| 45051 | Horry | 36,317 | 34,923 | 34,654 | 35,606 | -2.0% | 2.7% |
| 45053 | Jasper | 29,228 | 27,910 | 27,117 | 28,555 | -2.3% | 5.3% |
| 45055 | Kershaw | 39,074 | 38,483 | 39,040 | 40,288 | 3.1% | 3.2% |
| 45057 | Lancaster | 34,980 | 33,835 | 33,698 | 34,267 | -2.0% | 1.7% |
| 45059 | Laurens | 33,267 | 32,613 | 32,320 | 32,479 | -2.4% | 0.5% |
| 45061 | Lee | 26,549 | 25,513 | 25,144 | 26,015 | -2.0% | 3.5% |
| 45063 | Lexington | 45,821 | 45,147 | 45,140 | 45,677 | -0.3% | 1.2% |
| 45065 | McCormick | 31,487 | 29,712 | 29,805 | 30,393 | -3.5% | 2.0% |
| 45067 | Marion | 26,403 | 25,309 | 25,008 | 26,232 | -0.6% | 4.9% |
| 45069 | Marlboro | 26,896 | 25,982 | 25,993 | 26,912 | 0.1% | 3.5% |
| 45071 | Newberry | 33,347 | 32,300 | 32,231 | 33,137 | -0.6% | 2.8% |
| 45073 | Oconee | 37,743 | 36,695 | 36,912 | 38,189 | 1.2% | 3.5% |
| 45075 | Orangeburg | 29,940 | 28,828 | 28,624 | 29,386 | -1.9% | 2.7% |
| 45077 | Pickens | 37,615 | 36,861 | 37,054 | 37,795 | 0.5% | 2.0% |
| 45079 | Richland | 40,999 | 40,034 | 39,587 | 39,737 | -3.1% | 0.4% |
| 45081 | Saluda | 34,087 | 32,359 | 31,324 | 31,614 | -7.3% | 0.9% |
| 45083 | Spartanburg | 38,616 | 37,229 | 37,092 | 38,099 | -1.3% | 2.7% |
| 45085 | Sumter | 33,286 | 32,188 | 31,948 | 32,807 | -1.4% | 2.7% |
| 45087 | Union | 31,850 | 30,839 | 30,801 | 31,499 | -1.1% | 2.3% |
| 45089 | Williamsburg | 24,779 | 24,006 | 23,748 | 24,712 | -0.3% | 4.1% |
| 45091 | York | 44,750 | 44,019 | 44,619 | 45,662 | 2.0% | 2.3% |
| | South Carolina | 37,283 | 36,953 | 37,442 | 38,003 | 1.9% | 1.5% |
| | United States | 41,990 | 42,228 | 42,409 | 43,318 | 3.2% | 2.1% |

Source: U.S. Census Bureau, Small Area Income and Poverty Estimates.
 Available at: <http://www.census.gov/hhes/www/saipa/tables.html>

Transfer Payments (Dollars*)

| FIPS | | Year | | | | | Percent Change | |
|-------|----------------|---------------|---------------|---------------|---------------|---------------|----------------|-----------|
| | | 2000 | 2001 | 2002 | 2003 | 2004 | 2000-2004 | 2003-2004 |
| 45001 | Abbeville | 146,518 | 167,870 | 147,047 | 117,905 | 127,459 | - | 8.1% |
| 45003 | Aiken | 528,448 | 585,597 | 640,918 | 677,041 | 736,613 | 39.4% | 8.8% |
| 45005 | Allendale | 51,284 | 54,939 | 59,468 | 62,173 | 67,036 | 30.7% | 7.8% |
| 45007 | Anderson | 599,325 | 670,238 | 738,574 | 774,978 | 837,144 | 39.7% | 8.0% |
| 45009 | Bamberg | 76,685 | 84,190 | 90,342 | 92,646 | 99,391 | | |
| 45011 | Barnwell | 100,440 | 109,397 | 117,135 | 122,362 | 129,503 | 28.9% | 5.8% |
| 45013 | Beaufort | 425,534 | 476,625 | 526,527 | 571,817 | 618,214 | 45.3% | 8.1% |
| 45015 | Berkeley | 372,430 | 422,912 | 472,603 | 504,430 | 551,863 | | |
| 45017 | Calhoun | 52,583 | 57,942 | 63,557 | 67,768 | 74,269 | 41.2% | 9.6% |
| 45019 | Charleston | 1,087,810 | 1,194,867 | 1,298,475 | 1,363,737 | 1,473,615 | 35.5% | 8.1% |
| 45021 | Cherokee | 186,646 | 208,681 | 229,775 | 242,357 | 262,151 | 40.5% | 8.2% |
| 45023 | Chester | 137,742 | 152,479 | 168,402 | 175,648 | 189,201 | 37.4% | 7.7% |
| 45025 | Chesterfield | 173,341 | 188,531 | 203,077 | 214,931 | 232,767 | 34.3% | 8.3% |
| 45027 | Clarendon | 143,749 | 158,919 | 174,505 | 184,791 | 200,164 | | |
| 45029 | Colleton | 170,006 | 185,781 | 202,929 | 215,204 | 233,289 | 37.2% | 8.4% |
| 45031 | Darlington | 282,350 | 310,743 | 335,355 | 349,817 | 373,765 | 32.4% | 6.8% |
| 45033 | Dillon | 143,650 | 155,540 | 164,058 | 171,846 | 184,679 | 28.6% | 7.5% |
| 45035 | Dorchester | 300,115 | 338,050 | 374,070 | 396,395 | 446,955 | 48.9% | 12.8% |
| 45037 | Edgefield | 72,327 | 78,268 | 82,984 | 88,152 | 96,150 | 32.9% | 9.1% |
| 45039 | Fairfield | 95,774 | 106,895 | 115,803 | 122,575 | 130,910 | 36.7% | 6.8% |
| 45041 | Florence | 534,180 | 589,747 | 642,471 | 675,047 | 742,639 | 39.0% | 10.0% |
| 45043 | Georgetown | 271,901 | 308,048 | 338,732 | 363,139 | 391,253 | | |
| 45045 | Greenville | 1,214,543 | 1,346,852 | 1,479,985 | 1,556,845 | 1,705,654 | 40.4% | 9.6% |
| 45047 | Greenwood | 246,409 | 273,402 | 301,995 | 315,708 | 339,520 | 37.8% | 7.5% |
| 45049 | Hampton | 90,109 | 97,814 | 107,318 | 113,148 | 121,302 | 34.6% | 7.2% |
| 45051 | Horry | 736,180 | 829,204 | 916,588 | 983,576 | 1,086,239 | 47.6% | 10.4% |
| 45053 | Jasper | 61,516 | 69,313 | 76,004 | 82,631 | 94,026 | 52.8% | 13.8% |
| 45055 | Kershaw | 185,293 | 206,143 | 225,346 | 238,530 | 264,048 | 42.5% | 10.7% |
| 45057 | Lancaster | 220,044 | 248,899 | 276,059 | 294,747 | 316,714 | 43.9% | 7.5% |
| 45059 | Laurens | 277,202 | 309,621 | 338,931 | 350,818 | 388,947 | 40.3% | 10.9% |
| 45061 | Lee | 86,800 | 95,283 | 102,766 | 107,720 | 117,927 | 35.9% | 9.5% |
| 45063 | Lexington | 614,558 | 687,451 | 759,375 | 810,358 | 890,441 | 44.9% | 9.9% |
| 45065 | McCormick | 44,886 | 49,917 | 54,126 | 55,830 | 59,505 | 32.6% | 6.6% |
| 45067 | Marion | 173,180 | 190,397 | 203,547 | 215,393 | 227,579 | 31.4% | 5.7% |
| 45069 | Marlboro | 127,985 | 139,277 | 148,485 | 156,932 | 168,658 | 31.8% | 7.5% |
| 45071 | Newberry | 142,237 | 156,442 | 170,038 | 177,795 | 192,266 | 35.2% | 8.1% |
| 45073 | Oconee | 255,857 | 287,135 | 318,974 | 337,447 | 368,108 | 43.9% | 9.1% |
| 45075 | Orangeburg | 388,955 | 430,753 | 465,314 | 487,258 | 521,664 | 34.1% | 7.1% |
| 45077 | Pickens | 330,919 | 373,029 | 410,123 | 431,160 | 472,748 | 42.9% | 9.6% |
| 45079 | Richland | 1,060,972 | 1,164,293 | 1,277,125 | 1,332,431 | 1,452,602 | 36.9% | 9.0% |
| 45081 | Saluda | 64,118 | 70,547 | 75,628 | 78,471 | 86,155 | 34.4% | 9.8% |
| 45083 | Spartanburg | 885,352 | 985,081 | 1,084,462 | 1,133,567 | 1,220,549 | 37.9% | 7.7% |
| 45085 | Sumter | 378,471 | 421,544 | 462,149 | 483,254 | 526,631 | 39.1% | 9.0% |
| 45087 | Union | 134,439 | 149,596 | 164,283 | 169,817 | 182,608 | 35.8% | 7.5% |
| 45089 | Williamsburg | 168,046 | 182,316 | 195,807 | 203,023 | 215,158 | 28.0% | 6.0% |
| 45091 | York | 499,200 | 559,817 | 628,803 | 671,364 | 724,266 | 45.1% | 7.9% |
| | South Carolina | 14,340,109 | 15,930,385 | 17,430,038 | 18,342,582 | 19,942,345 | 39.1% | 8.7% |
| | United States | 1,018,106,000 | 1,117,218,000 | 1,219,954,000 | 1,282,540,000 | 1,361,666,000 | 33.7% | 6.2% |

*Dollar estimates have not been adjusted for inflation

Source: Bureau of Economic Analysis, Regional Economic Information System (REIS): TableCA35
 Available at: <http://www.bea.gov/beat/regional/reis/>

Poverty Rate

| FIPS | County | Year | | | | Percent Change | |
|-------|----------------|-------|-------|-------|-------|----------------|-----------|
| | | 2000 | 2001 | 2002 | 2003 | 2000-2003 | 2002-2003 |
| 45001 | Abbeville | 12.1% | 13.5% | 13.7% | 13.6% | 12.4% | -0.7% |
| 45003 | Aiken | 12.1% | 12.8% | 13.1% | 13.5% | 11.6% | 3.1% |
| 45005 | Allendale | 28.8% | 31.2% | 31.3% | 28.4% | -1.4% | -9.3% |
| 45007 | Anderson | 10.5% | 11.7% | 12.2% | 11.9% | 13.3% | -2.5% |
| 45009 | Bamberg | 21.2% | 22.1% | 22.0% | 21.2% | 0.0% | -3.6% |
| 45011 | Barnwell | 17.5% | 18.3% | 17.6% | 17.2% | -1.7% | -2.3% |
| 45013 | Beaufort | 10.3% | 11.6% | 11.3% | 11.1% | 7.8% | -1.8% |
| 45015 | Berkeley | 11.3% | 11.8% | 11.9% | 11.7% | 3.5% | -1.7% |
| 45017 | Calhoun | 15.1% | 16.2% | 14.9% | 14.3% | -5.3% | -4.0% |
| 45019 | Charleston | 13.7% | 14.6% | 14.5% | 14.1% | 2.9% | -2.8% |
| 45021 | Cherokee | 12.9% | 14.5% | 15.2% | 14.8% | 14.7% | -2.6% |
| 45023 | Chester | 14.2% | 15.2% | 15.6% | 15.6% | 9.9% | 0.0% |
| 45025 | Chesterfield | 16.4% | 17.0% | 17.3% | 17.2% | 4.9% | -0.6% |
| 45027 | Clarendon | 20.6% | 22.2% | 22.9% | 21.3% | 3.4% | -7.0% |
| 45029 | Colleton | 19.3% | 20.4% | 19.9% | 18.6% | -3.6% | -6.5% |
| 45031 | Darlington | 17.9% | 18.2% | 18.4% | 18.2% | 1.7% | -1.1% |
| 45033 | Dillon | 21.9% | 22.6% | 21.6% | 20.4% | -6.8% | -5.6% |
| 45035 | Dorchester | 10.1% | 10.9% | 10.8% | 11.2% | 10.9% | 3.7% |
| 45037 | Edgefield | 15.7% | 16.7% | 16.6% | 15.8% | 0.6% | -4.8% |
| 45039 | Fairfield | 15.8% | 17.0% | 16.2% | 15.9% | 0.6% | -1.9% |
| 45041 | Florence | 15.9% | 16.7% | 16.6% | 16.3% | 2.5% | -1.8% |
| 45043 | Georgetown | 14.8% | 15.4% | 15.3% | 14.7% | -0.7% | -3.9% |
| 45045 | Greenville | 9.8% | 10.7% | 11.5% | 12.0% | 22.4% | 4.3% |
| 45047 | Greenwood | 12.5% | 13.6% | 14.0% | 13.9% | 11.2% | -0.7% |
| 45049 | Hampton | 20.0% | 21.5% | 21.6% | 19.4% | -3.0% | -10.2% |
| 45051 | Horry | 12.6% | 14.3% | 13.8% | 13.1% | 4.0% | -5.1% |
| 45053 | Jasper | 22.2% | 27.8% | 28.9% | 19.8% | -10.8% | -31.5% |
| 45055 | Kershaw | 10.9% | 11.6% | 11.5% | 12.0% | 10.1% | 4.3% |
| 45057 | Lancaster | 12.9% | 13.5% | 13.8% | 13.7% | 6.2% | -0.7% |
| 45059 | Laurens | 13.2% | 15.0% | 15.7% | 14.8% | 12.1% | -5.7% |
| 45061 | Lee | 22.7% | 24.4% | 24.0% | 20.5% | -9.7% | -14.6% |
| 45063 | Lexington | 9.0% | 9.8% | 10.2% | 10.5% | 16.7% | 2.9% |
| 45065 | McCormick | 16.5% | 18.0% | 17.3% | 16.1% | -2.4% | -6.9% |
| 45067 | Marion | 21.5% | 23.3% | 22.4% | 20.5% | -4.7% | -8.5% |
| 45069 | Marlboro | 20.0% | 21.0% | 20.5% | 20.2% | 1.0% | -1.5% |
| 45071 | Newberry | 13.5% | 14.6% | 14.4% | 14.6% | 8.1% | 1.1% |
| 45073 | Oconee | 10.1% | 11.2% | 11.7% | 11.7% | 15.8% | 0.0% |
| 45075 | Orangeburg | 19.3% | 20.7% | 20.8% | 19.8% | 2.6% | -4.8% |
| 45077 | Pickens | 10.2% | 11.6% | 11.9% | 11.5% | 12.7% | -3.4% |
| 45079 | Richland | 11.9% | 12.9% | 13.4% | 13.9% | 16.8% | 3.7% |
| 45081 | Saluda | 15.2% | 18.2% | 17.6% | 15.1% | -0.7% | -14.2% |
| 45083 | Spartanburg | 11.0% | 12.2% | 12.7% | 12.9% | 17.3% | 1.6% |
| 45085 | Sumter | 15.2% | 16.3% | 16.5% | 16.3% | 7.2% | -1.2% |
| 45087 | Union | 12.8% | 13.7% | 14.1% | 14.3% | 11.7% | 1.4% |
| 45089 | Williamsburg | 24.0% | 24.6% | 24.0% | 22.9% | -4.6% | -4.6% |
| 45091 | York | 9.1% | 10.0% | 10.7% | 11.3% | 24.2% | 5.6% |
| | South Carolina | 12.8% | 13.8% | 14.0% | 13.8% | 7.8% | -1.4% |
| | United States | 11.3% | 11.7% | 12.1% | 12.5% | 10.6% | 3.3% |

Source: U.S. Census Bureau, Small Area Income and Poverty Estimates.
 Available at: <http://www.census.gov/hhes/www/saipa/tables.html>

Patents per 10,000 Employees

| FIPS | County | Year | | | | | |
|-------|---------------------|------|------|------|------|------|------|
| | | 2000 | 2001 | 2002 | 2003 | 2004 | 2005 |
| 45001 | Abbeville County | 0.8 | 0.0 | 1.8 | 0.9 | 0.9 | 0.9 |
| 45003 | Aiken County | 5.3 | 6.9 | 5.2 | 6.6 | 4.2 | 2.8 |
| 45005 | Allendale County | 0.0 | 0.0 | 0.0 | 3.2 | 0.0 | 0.0 |
| 45007 | Anderson County | 7.5 | 10.3 | 10.3 | 10.2 | 10.5 | 10.1 |
| 45009 | Bamberg County | 0.0 | 5.0 | 1.7 | 3.3 | 5.0 | 1.6 |
| 45011 | Barnwell County | 0.0 | 0.0 | 1.1 | 2.3 | 1.2 | 1.1 |
| 45013 | Beaufort County | 6.0 | 4.9 | 4.7 | 3.2 | 4.8 | 2.6 |
| 45015 | Berkeley County | 2.2 | 2.4 | 3.5 | 1.5 | 3.4 | 1.5 |
| 45017 | Calhoun County | 1.5 | 0.0 | 0.0 | 0.0 | 0.0 | 0.0 |
| 45019 | Charleston County | 10.6 | 9.7 | 11.7 | 8.3 | 9.0 | 6.0 |
| 45021 | Cherokee County | 1.2 | 0.8 | 0.9 | 1.8 | 1.3 | 0.4 |
| 45023 | Chester County | 1.3 | 2.0 | 0.0 | 0.7 | 2.1 | 2.0 |
| 45025 | Chesterfield County | 3.8 | 2.3 | 0.0 | 0.0 | 2.4 | 0.0 |
| 45027 | Clarendon County | 0.0 | 0.9 | 1.7 | 0.0 | 2.6 | 0.8 |
| 45029 | Colleton County | 2.0 | 2.0 | 0.7 | 2.7 | 1.3 | 1.3 |
| 45031 | Darlington County | 7.6 | 7.6 | 7.6 | 5.5 | 8.3 | 3.9 |
| 45033 | Dillon County | 0.8 | 0.0 | 0.0 | 0.0 | 0.9 | 0.8 |
| 45035 | Dorchester County | 5.0 | 5.4 | 5.6 | 3.7 | 5.1 | 2.9 |
| 45037 | Edgefield County | 2.0 | 3.1 | 3.1 | 0.0 | 2.0 | 1.0 |
| 45039 | Fairfield County | 1.0 | 0.0 | 0.0 | 0.0 | 0.0 | 0.0 |
| 45041 | Florence County | 13.9 | 10.7 | 8.5 | 9.5 | 8.9 | 10.1 |
| 45043 | Georgetown County | 1.6 | 5.0 | 3.3 | 7.4 | 3.2 | 2.2 |
| 45045 | Greenville County | 11.5 | 16.9 | 21.4 | 20.4 | 18.1 | 17.4 |
| 45047 | Greenwood County | 3.5 | 0.7 | 4.9 | 4.1 | 4.7 | 3.6 |
| 45049 | Hampton County | 3.8 | 4.0 | 0.0 | 1.4 | 1.4 | 1.4 |
| 45051 | Horry County | 0.7 | 3.0 | 3.2 | 2.4 | 2.5 | 2.7 |
| 45053 | Jasper County | 1.1 | 0.0 | 0.0 | 4.5 | 0.0 | 2.0 |
| 45055 | Kershaw County | 3.1 | 5.5 | 3.9 | 0.8 | 3.8 | 2.2 |
| 45057 | Lancaster County | 1.7 | 1.8 | 2.2 | 1.9 | 2.2 | 0.0 |
| 45059 | Laurens County | 0.9 | 1.3 | 2.3 | 1.0 | 1.0 | 1.3 |
| 45061 | Lee County | 3.9 | 0.0 | 0.0 | 0.0 | 0.0 | 0.0 |
| 45063 | Lexington County | 4.0 | 4.6 | 2.6 | 2.9 | 3.1 | 2.0 |
| 45065 | McCormick County | 2.9 | 6.0 | 0.0 | 3.1 | 6.5 | 0.0 |
| 45067 | Marion County | 0.0 | 0.0 | 0.0 | 0.0 | 0.0 | 0.0 |
| 45069 | Marlboro County | 0.9 | 0.9 | 1.8 | 1.8 | 0.0 | 0.0 |
| 45071 | Newberry County | 3.7 | 2.5 | 4.4 | 1.2 | 0.6 | 0.0 |
| 45073 | Oconee County | 9.9 | 11.2 | 11.2 | 12.2 | 12.6 | 6.4 |
| 45075 | Orangeburg County | 6.6 | 0.6 | 2.2 | 3.9 | 1.1 | 3.2 |
| 45077 | Pickens County | 10.4 | 11.6 | 13.2 | 13.8 | 14.9 | 10.6 |
| 45079 | Richland County | 6.0 | 6.0 | 4.5 | 5.7 | 5.9 | 4.4 |
| 45081 | Saluda County | 0.0 | 1.1 | 3.5 | 3.5 | 1.2 | 0.0 |
| 45083 | Spartanburg County | 10.0 | 12.7 | 16.2 | 19.6 | 14.5 | 15.0 |
| 45085 | Sumter County | 1.4 | 1.2 | 1.5 | 1.9 | 1.2 | 2.3 |
| 45087 | Union County | 1.5 | 0.8 | 0.8 | 0.8 | 0.0 | 0.9 |
| 45089 | Williamsburg County | 0.0 | 0.0 | 0.8 | 0.7 | 1.5 | 0.0 |
| 45091 | York County | 8.0 | 7.6 | 10.1 | 6.8 | 4.9 | 5.3 |
| | South Carolina | 6.2 | 7.0 | 7.8 | 7.5 | 7.0 | 5.9 |
| | United States | 12.9 | 13.4 | 13.5 | 13.6 | 13.0 | 11.1 |

Source: United States Patent and Trademark Office, Patent Electronic Business Center
 Available at: <http://www.uspto.gov/ebc/index.html>

Total Patents per County

| FIPS | County | Year | | | | | |
|-------|---------------------|---------|---------|---------|---------|---------|---------|
| | | 2000 | 2001 | 2002 | 2003 | 2004 | 2005 |
| 45001 | Abbeville County | 1 | 0 | 2 | 1 | 1 | 1 |
| 45003 | Aiken County | 35 | 45 | 34 | 45 | 29 | 20 |
| 45005 | Allendale County | 0 | 0 | 0 | 1 | 0 | 0 |
| 45007 | Anderson County | 61 | 81 | 79 | 78 | 81 | 78 |
| 45009 | Bamberg County | 0 | 3 | 1 | 2 | 3 | 1 |
| 45011 | Barnwell County | 0 | 0 | 1 | 2 | 1 | 1 |
| 45013 | Beaufort County | 30 | 24 | 24 | 17 | 27 | 16 |
| 45015 | Berkeley County | 14 | 15 | 22 | 10 | 23 | 10 |
| 45017 | Calhoun County | 1 | 0 | 0 | 0 | 0 | 0 |
| 45019 | Charleston County | 157 | 138 | 171 | 126 | 141 | 96 |
| 45021 | Cherokee County | 3 | 2 | 2 | 4 | 3 | 1 |
| 45023 | Chester County | 2 | 3 | 0 | 1 | 3 | 3 |
| 45025 | Chesterfield County | 7 | 4 | 0 | 0 | 4 | 0 |
| 45027 | Clarendon County | 0 | 1 | 2 | 0 | 3 | 1 |
| 45029 | Colleton County | 3 | 3 | 1 | 4 | 2 | 2 |
| 45031 | Darlington County | 23 | 22 | 22 | 16 | 24 | 11 |
| 45033 | Dillon County | 1 | 0 | 0 | 0 | 1 | 1 |
| 45035 | Dorchester County | 23 | 24 | 26 | 18 | 26 | 15 |
| 45037 | Edgefield County | 2 | 3 | 3 | 0 | 2 | 1 |
| 45039 | Fairfield County | 1 | 0 | 0 | 0 | 0 | 0 |
| 45041 | Florence County | 81 | 60 | 48 | 54 | 51 | 57 |
| 45043 | Georgetown County | 4 | 12 | 8 | 18 | 8 | 6 |
| 45045 | Greenville County | 232 | 328 | 407 | 389 | 350 | 341 |
| 45047 | Greenwood County | 11 | 2 | 14 | 12 | 14 | 11 |
| 45049 | Hampton County | 3 | 3 | 0 | 1 | 1 | 1 |
| 45051 | Horry County | 7 | 29 | 32 | 25 | 27 | 31 |
| 45053 | Jasper County | 1 | 0 | 0 | 4 | 0 | 2 |
| 45055 | Kershaw County | 8 | 14 | 10 | 2 | 10 | 6 |
| 45057 | Lancaster County | 5 | 5 | 6 | 5 | 6 | 0 |
| 45059 | Laurens County | 3 | 4 | 7 | 3 | 3 | 4 |
| 45061 | Lee County | 3 | 0 | 0 | 0 | 0 | 0 |
| 45063 | Lexington County | 46 | 52 | 29 | 34 | 37 | 24 |
| 45065 | McCormick County | 1 | 2 | 0 | 1 | 2 | 0 |
| 45067 | Marion County | 0 | 0 | 0 | 0 | 0 | 0 |
| 45069 | Marlboro County | 1 | 1 | 2 | 2 | 0 | 0 |
| 45071 | Newberry County | 6 | 4 | 7 | 2 | 1 | 0 |
| 45073 | Oconee County | 31 | 34 | 33 | 36 | 37 | 19 |
| 45075 | Orangeburg County | 25 | 2 | 8 | 14 | 4 | 12 |
| 45077 | Pickens County | 59 | 63 | 69 | 72 | 78 | 56 |
| 45079 | Richland County | 93 | 91 | 69 | 89 | 93 | 71 |
| 45081 | Saluda County | 0 | 1 | 3 | 3 | 1 | 0 |
| 45083 | Spartanburg County | 125 | 153 | 193 | 236 | 177 | 181 |
| 45085 | Sumter County | 6 | 5 | 6 | 8 | 5 | 10 |
| 45087 | Union County | 2 | 1 | 1 | 1 | 0 | 1 |
| 45089 | Williamsburg County | 0 | 0 | 1 | 1 | 2 | 0 |
| 45091 | York County | 68 | 64 | 86 | 59 | 43 | 48 |
| | South Carolina | 1,185 | 1,298 | 1,429 | 1,396 | 1,324 | 1,139 |
| | United States | 176,082 | 184,046 | 184,418 | 187,047 | 181,319 | 157,740 |

Source: United States Patent and Trademark Office, Patent Electronic Business Center

Available at: <http://www.uspto.gov/ebc/index.html>

SBIR and STTR Total Phase I and II Dollar Awards

| FIPS | County | Year | | | | | |
|-------|----------------|-----------------------|-----------------------|-----------------------|-----------------------|-----------------------|-----------------------|
| | | 2000 Total Dollars | 2001 Total Dollars | 2002 Total Dollars | 2003 Total Dollars | 2004 Total Dollars | 2005 Total Dollars |
| 45001 | Abbeville | \$0 | \$0 | \$0 | \$0 | \$0 | \$0 |
| 45003 | Aiken | \$69,914 | \$0 | \$0 | \$99,852 | \$0 | \$0 |
| 45005 | Allendale | \$0 | \$0 | \$0 | \$0 | \$0 | \$0 |
| 45007 | Anderson | \$99,990 | \$200,000 | \$1,314,405 | \$0 | \$826,043 | \$569,993 |
| 45009 | Bamberg | \$0 | \$0 | \$0 | \$0 | \$0 | \$0 |
| 45011 | Barnwell | \$0 | \$0 | \$0 | \$0 | \$0 | \$0 |
| 45013 | Beaufort | \$711,825 | \$3,136,523 | \$139,644 | \$899,878 | \$1,242,614 | \$584,999 |
| 45015 | Berkeley | \$0 | \$0 | \$0 | \$0 | \$0 | \$0 |
| 45017 | Calhoun | \$0 | \$0 | \$0 | \$0 | \$0 | \$0 |
| 45019 | Charleston | \$1,854,724 | \$749,594 | \$4,097,162 | \$1,304,472 | \$1,221,101 | \$4,985,811 |
| 45021 | Cherokee | \$0 | \$0 | \$0 | \$0 | \$0 | \$0 |
| 45023 | Chester | \$0 | \$0 | \$0 | \$0 | \$0 | \$0 |
| 45025 | Chesterfield | \$0 | \$0 | \$0 | \$0 | \$0 | \$0 |
| 45027 | Clarendon | \$0 | \$0 | \$0 | \$0 | \$0 | \$0 |
| 45029 | Colleton | \$0 | \$0 | \$0 | \$0 | \$0 | \$0 |
| 45031 | Darlington | \$0 | \$0 | \$0 | \$0 | \$0 | \$0 |
| 45033 | Dillon | \$0 | \$0 | \$0 | \$0 | \$0 | \$0 |
| 45035 | Dorchester | \$0 | \$0 | \$0 | \$0 | \$0 | \$0 |
| 45037 | Edgefield | \$0 | \$99,975 | \$499,998 | \$0 | \$0 | \$99,622 |
| 45039 | Fairfield | \$0 | \$0 | \$0 | \$0 | \$0 | \$0 |
| 45041 | Florence | \$0 | \$93,745 | \$0 | \$0 | \$0 | \$0 |
| 45043 | Georgetown | \$0 | \$0 | \$95,062 | \$0 | \$0 | \$0 |
| 45045 | Greenville | \$0 | \$0 | \$0 | \$0 | \$0 | \$0 |
| 45047 | Greenwood | \$0 | \$173,400 | \$0 | \$926,630 | \$185,746 | \$0 |
| 45049 | Hampton | \$0 | \$0 | \$0 | \$0 | \$0 | \$0 |
| 45051 | Horry | \$0 | \$0 | \$0 | \$0 | \$0 | \$0 |
| 45053 | Jasper | \$60,600 | \$0 | \$0 | \$0 | \$0 | \$0 |
| 45055 | Kershaw | \$0 | \$0 | \$0 | \$0 | \$100,000 | \$750,000 |
| 45057 | Lancaster | \$0 | \$0 | \$0 | \$0 | \$0 | \$0 |
| 45059 | Laurens | \$0 | \$0 | \$0 | \$0 | \$0 | \$0 |
| 45061 | Lee | \$0 | \$0 | \$0 | \$0 | \$0 | \$0 |
| 45063 | Lexington | \$230,000 | \$1,200,000 | \$0 | \$0 | \$0 | \$0 |
| 45065 | McCormick | \$0 | \$0 | \$0 | \$0 | \$0 | \$0 |
| 45067 | Marion | \$0 | \$0 | \$0 | \$0 | \$0 | \$0 |
| 45069 | Marlboro | \$0 | \$0 | \$0 | \$0 | \$0 | \$0 |
| 45071 | Newberry | \$0 | \$0 | \$0 | \$0 | \$0 | \$0 |
| 45073 | Oconee | \$399,892 | \$0 | \$0 | \$0 | \$0 | \$0 |
| 45075 | Orangeburg | \$0 | \$0 | \$0 | \$0 | \$0 | \$0 |
| 45077 | Pickens | \$0 | \$0 | \$0 | \$199,860 | \$499,983 | \$0 |
| 45079 | Richland | \$550,000 | \$645,758 | \$1,961,128 | \$5,102,978 | \$4,245,527 | \$4,213,057 |
| 45081 | Saluda | \$0 | \$0 | \$0 | \$0 | \$0 | \$0 |
| 45083 | Spartanburg | \$0 | \$0 | \$0 | \$0 | \$0 | \$0 |
| 45085 | Sumter | \$0 | \$0 | \$0 | \$0 | \$0 | \$0 |
| 45087 | Union | \$0 | \$0 | \$0 | \$0 | \$0 | \$0 |
| 45089 | Williamsburg | \$0 | \$0 | \$0 | \$0 | \$0 | \$0 |
| 45091 | York | \$0 | \$0 | \$0 | \$99,955 | \$69,588 | \$509,807 |
| | South Carolina | \$3,976,945 | \$6,398,970 | \$8,107,399 | \$8,633,625 | \$8,390,602 | \$11,713,289 |
| | United States | \$1,108,787,548 | \$1,222,097,359 | \$1,591,478,031 | \$1,861,050,297 | \$2,223,301,340 | \$2,085,560,074 |

Source: U.S. Small Business Administration, Technology Resources Network

Available at: http://tech-net.sba.gov/tech-net/public/dsp_search.cfm

SBIR and STTR Phase I and II Dollar Awards per 1,000 Employees

\$ amount is SBIR \$/1,000 Employees

| FIPS | County | Year | | | | | |
|-------|----------------|----------|----------|----------|----------|----------|----------|
| | | 2000 | 2001 | 2002 | 2003 | 2004 | 2005 |
| 45001 | Abbeville | \$0 | \$0 | \$0 | \$0 | \$0 | \$0 |
| 45003 | Aiken | \$1,054 | \$0 | \$0 | \$1,474 | \$0 | \$0 |
| 45005 | Allendale | \$0 | \$0 | \$0 | \$0 | \$0 | \$0 |
| 45007 | Anderson | \$1,232 | \$2,550 | \$17,106 | \$0 | \$10,664 | \$7,367 |
| 45009 | Bamberg | \$0 | \$0 | \$0 | \$0 | \$0 | \$0 |
| 45011 | Barnwell | \$0 | \$0 | \$0 | \$0 | \$0 | \$0 |
| 45013 | Beaufort | \$14,268 | \$63,867 | \$2,710 | \$16,748 | \$22,024 | \$9,645 |
| 45015 | Berkeley | \$0 | \$0 | \$0 | \$0 | \$0 | \$0 |
| 45017 | Calhoun | \$0 | \$0 | \$0 | \$0 | \$0 | \$0 |
| 45019 | Charleston | \$12,545 | \$5,244 | \$28,049 | \$8,643 | \$7,831 | \$31,232 |
| 45021 | Cherokee | \$0 | \$0 | \$0 | \$0 | \$0 | \$0 |
| 45023 | Chester | \$0 | \$0 | \$0 | \$0 | \$0 | \$0 |
| 45025 | Chesterfield | \$0 | \$0 | \$0 | \$0 | \$0 | \$0 |
| 45027 | Clarendon | \$0 | \$0 | \$0 | \$0 | \$0 | \$0 |
| 45029 | Colleton | \$0 | \$0 | \$0 | \$0 | \$0 | \$0 |
| 45031 | Darlington | \$0 | \$0 | \$0 | \$0 | \$0 | \$0 |
| 45033 | Dillon | \$0 | \$0 | \$0 | \$0 | \$0 | \$0 |
| 45035 | Dorchester | \$0 | \$0 | \$0 | \$0 | \$0 | \$0 |
| 45037 | Edgefield | \$0 | \$10,349 | \$51,177 | \$0 | \$0 | \$9,719 |
| 45039 | Fairfield | \$0 | \$0 | \$0 | \$0 | \$0 | \$0 |
| 45041 | Florence | \$0 | \$1,667 | \$0 | \$0 | \$0 | \$0 |
| 45043 | Georgetown | \$0 | \$0 | \$3,954 | \$0 | \$0 | \$0 |
| 45045 | Greenville | \$0 | \$0 | \$0 | \$0 | \$0 | \$0 |
| 45047 | Greenwood | \$0 | \$5,730 | \$0 | \$31,942 | \$6,279 | \$0 |
| 45049 | Hampton | \$0 | \$0 | \$0 | \$0 | \$0 | \$0 |
| 45051 | Horry | \$0 | \$0 | \$0 | \$0 | \$0 | \$0 |
| 45053 | Jasper | \$6,779 | \$0 | \$0 | \$0 | \$0 | \$0 |
| 45055 | Kershaw | \$0 | \$0 | \$0 | \$0 | \$3,768 | \$27,675 |
| 45057 | Lancaster | \$0 | \$0 | \$0 | \$0 | \$0 | \$0 |
| 45059 | Laurens | \$0 | \$0 | \$0 | \$0 | \$0 | \$0 |
| 45061 | Lee | \$0 | \$0 | \$0 | \$0 | \$0 | \$0 |
| 45063 | Lexington | \$2,003 | \$10,654 | \$0 | \$0 | \$0 | \$0 |
| 45065 | McCormick | \$0 | \$0 | \$0 | \$0 | \$0 | \$0 |
| 45067 | Marion | \$0 | \$0 | \$0 | \$0 | \$0 | \$0 |
| 45069 | Marlboro | \$0 | \$0 | \$0 | \$0 | \$0 | \$0 |
| 45071 | Newberry | \$0 | \$0 | \$0 | \$0 | \$0 | \$0 |
| 45073 | Oconee | \$12,809 | \$0 | \$0 | \$0 | \$0 | \$0 |
| 45075 | Orangeburg | \$0 | \$0 | \$0 | \$0 | \$0 | \$0 |
| 45077 | Pickens | \$0 | \$0 | \$0 | \$3,832 | \$9,536 | \$0 |
| 45079 | Richland | \$3,526 | \$4,250 | \$12,851 | \$32,939 | \$26,906 | \$26,147 |
| 45081 | Saluda | \$0 | \$0 | \$0 | \$0 | \$0 | \$0 |
| 45083 | Spartanburg | \$0 | \$0 | \$0 | \$0 | \$0 | \$0 |
| 45085 | Sumter | \$0 | \$0 | \$0 | \$0 | \$0 | \$0 |
| 45087 | Union | \$0 | \$0 | \$0 | \$0 | \$0 | \$0 |
| 45089 | Williamsburg | \$0 | \$0 | \$0 | \$0 | \$0 | \$0 |
| 45091 | York | \$0 | \$0 | \$0 | \$1,157 | \$792 | \$5,629 |
| | South Carolina | \$2,091 | \$3,473 | \$4,412 | \$4,625 | \$4,417 | \$6,042 |
| | United States | \$8,100 | \$8,925 | \$11,660 | \$13,512 | \$15,966 | \$14,715 |

Source: U.S. Small Business Administration, Technology Resources Network, Available at: http://tech-net.sba.gov/tech-net/public/dsp_search.cfm