



AgEcon SEARCH

RESEARCH IN AGRICULTURAL & APPLIED ECONOMICS

The World's Largest Open Access Agricultural & Applied Economics Digital Library

This document is discoverable and free to researchers across the globe due to the work of AgEcon Search.

Help ensure our sustainability.

Give to AgEcon Search

AgEcon Search

<http://ageconsearch.umn.edu>

aesearch@umn.edu

*Papers downloaded from **AgEcon Search** may be used for non-commercial purposes and personal study only. No other use, including posting to another Internet site, is permitted without permission from the copyright owner (not AgEcon Search), or as allowed under the provisions of Fair Use, U.S. Copyright Act, Title 17 U.S.C.*

No endorsement of AgEcon Search or its fundraising activities by the author(s) of the following work or their employer(s) is intended or implied.

Agricultural Outlook Forum 2011

Promoting Sustainable Agriculture through Regional Food Sheds

Energy Usage in Regional Food Production

Pamela A. Martin, w/

Esther Bowen, Julia Govis, Todd Schuble, and interns

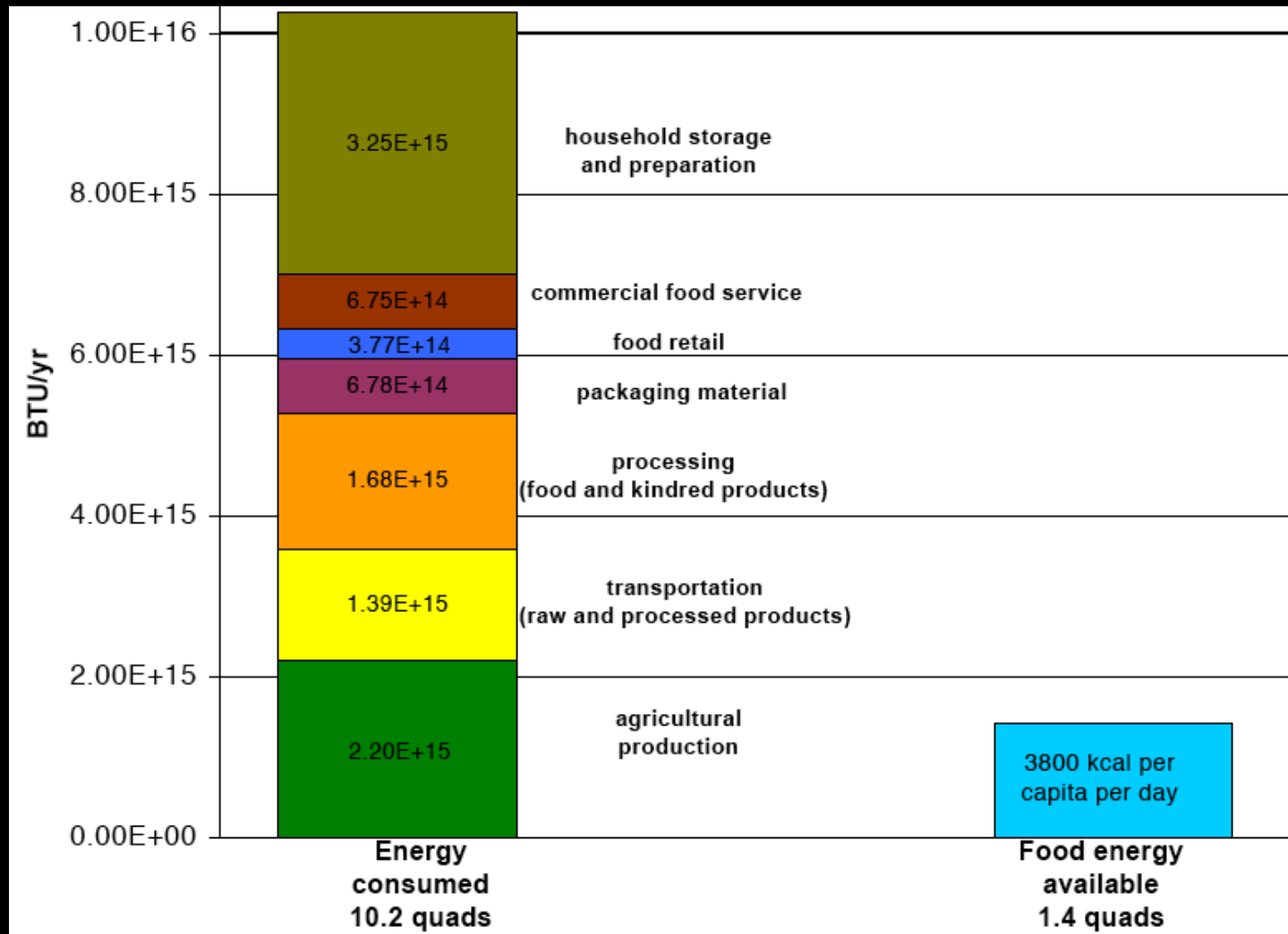
Department of the Geophysical Sciences and the

Environment, Agriculture, and Food Working Group

The University of Chicago

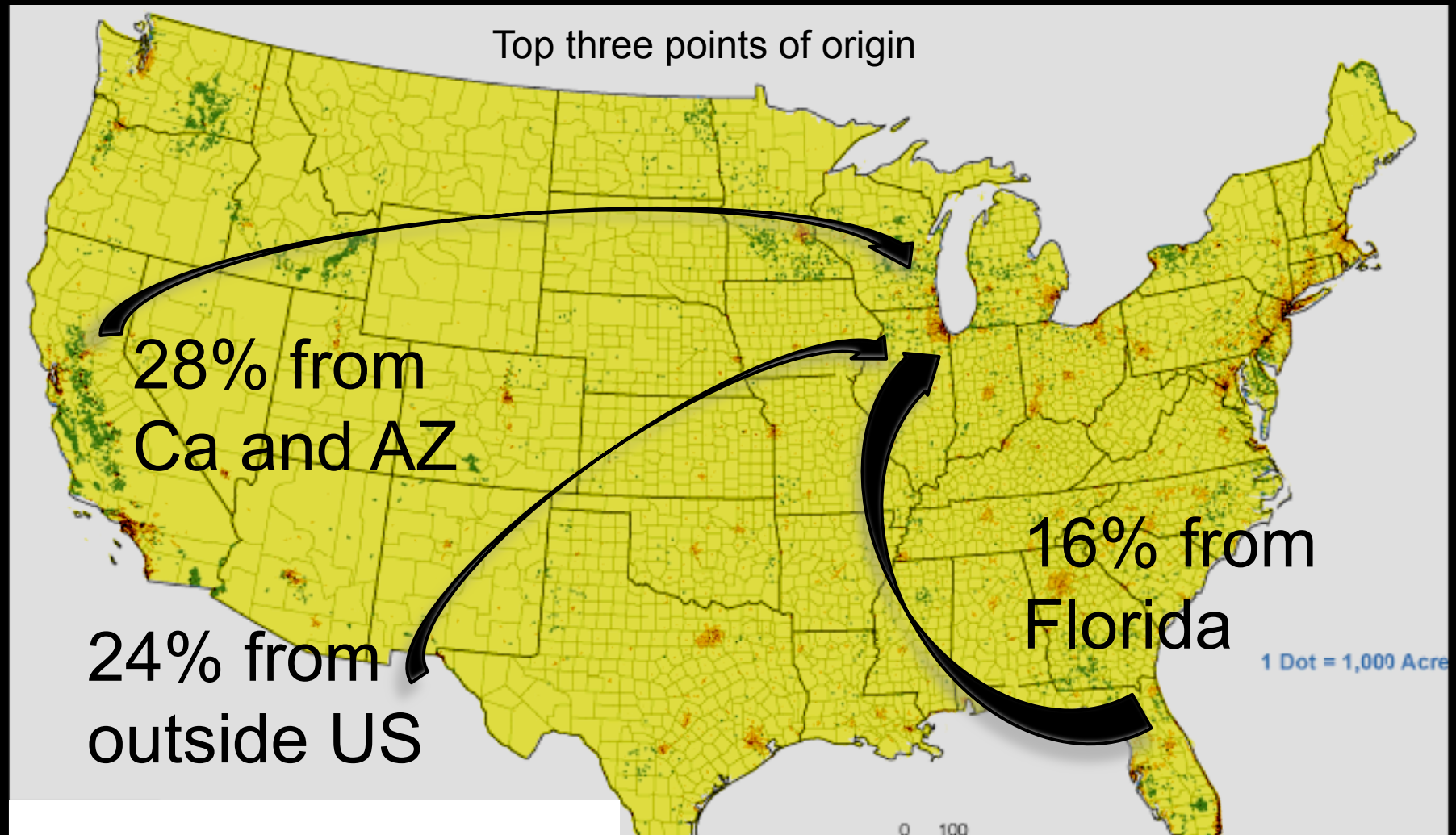


Energy Use in the Food System



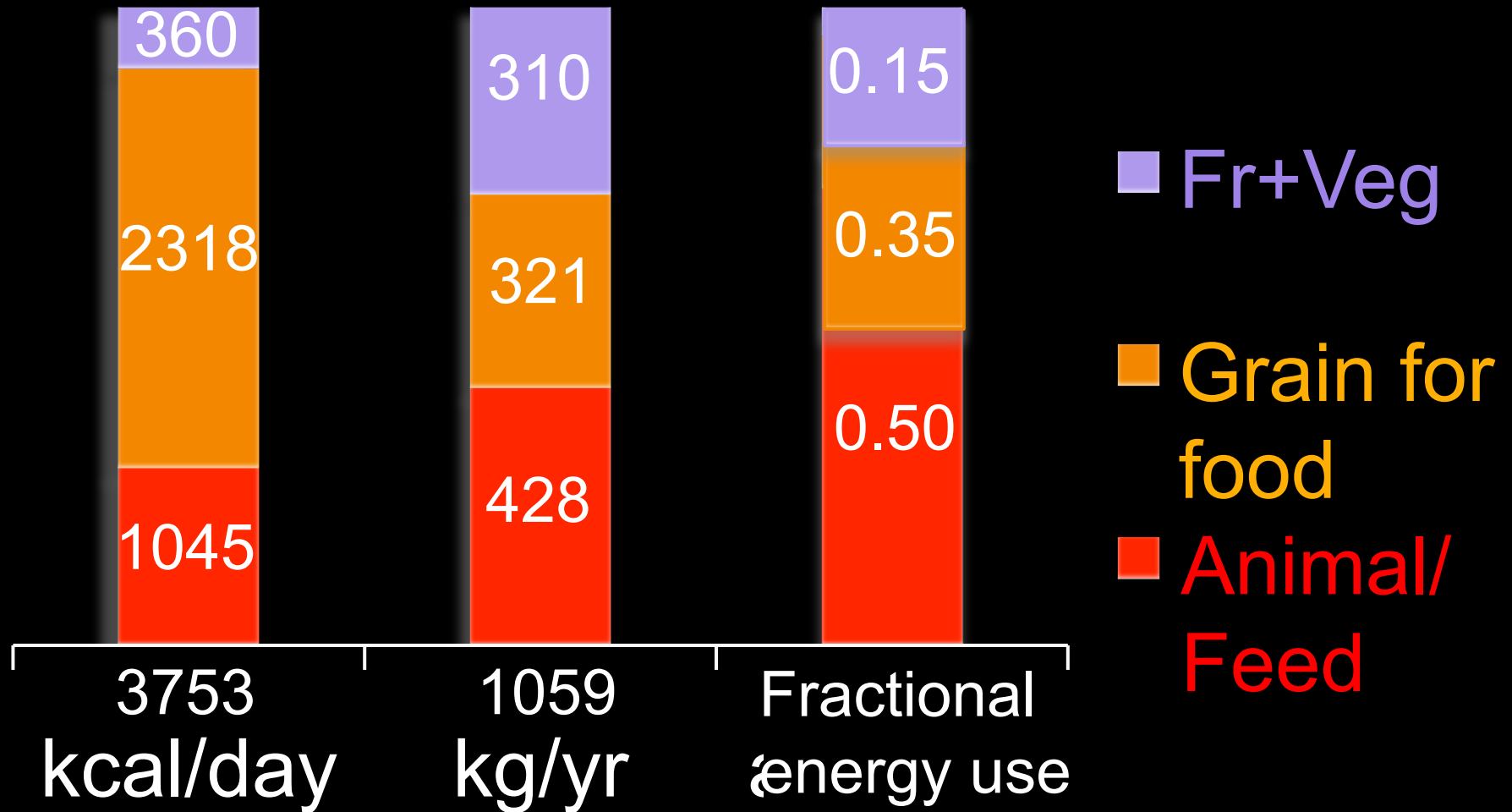
Heller and Keoleian, Report No. CSS00-04 of the Center for Sustainable Systems, School of Natural Resources and Environment, University of Michigan, Ann Arbor, MI

Transportation: distance and mode from producer to consumer



- Calculations by N. Bamberger and J. Archer, summer High School interns (U of Chicago, 2009); Based on food movement data, AMS USDA

Consumption pattern: Per Capita Mean American Diet



Calculated from USDA and FAOSTAT data; Energy after Mattew and Weber 2008

The goal:

Evaluate efficiency and potential
of a regional food system

The Tools:

Whole farm analysis

Foodshed mapping

Life cycle system analysis

Previous work has focused on single crops

INPUTS:

TABLE 11.1
Energy Inputs in Apple Production in the Eastern United States

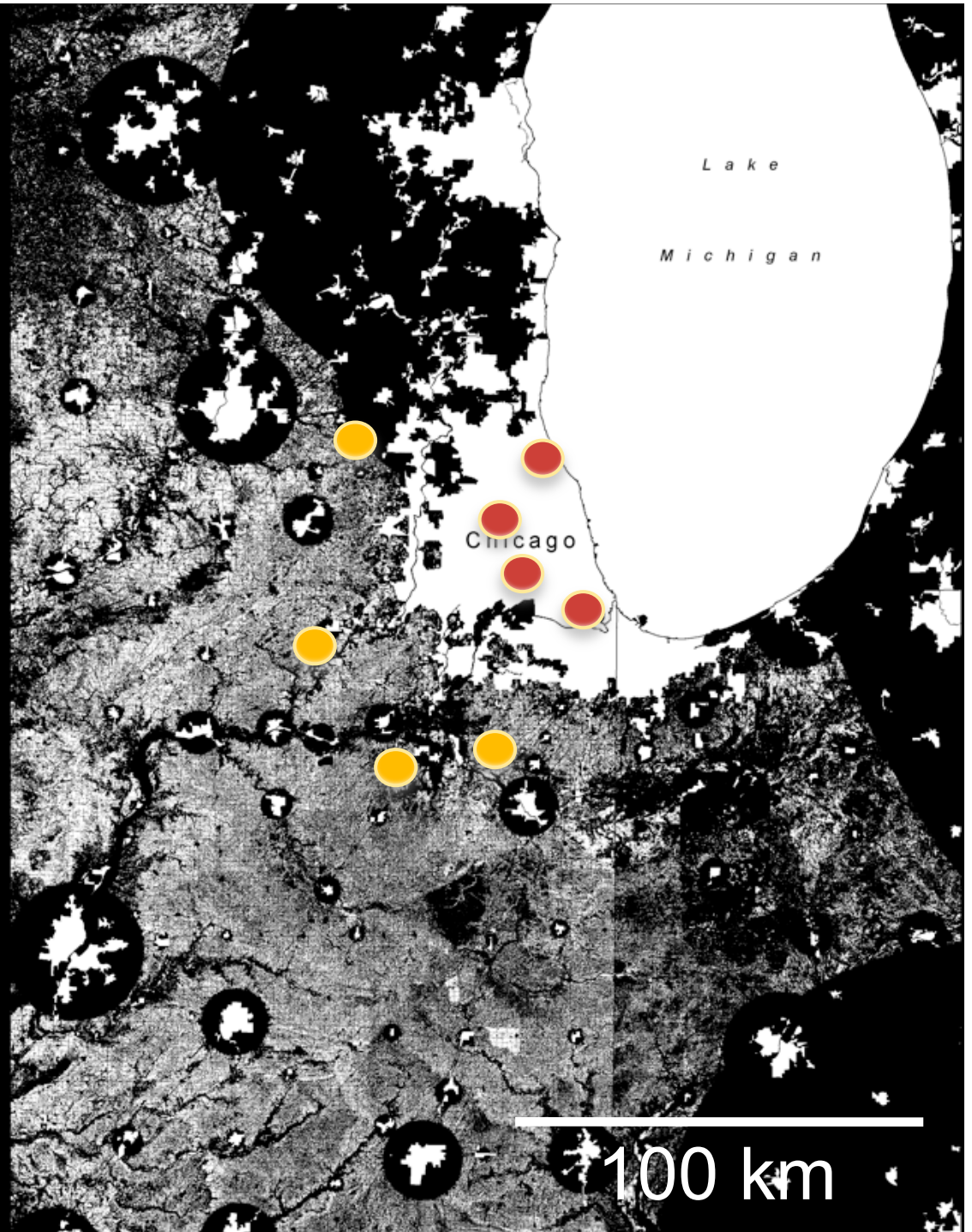
	Quantity/ha	kcal/ha
<i>Inputs</i>		
Labor	385 h	17,150,000
Machinery	88 kg	1,408,000
Diesel	483 L	5,506,000
Gasoline	1346 L	13,406,000
Nitrogen	45 kg	837,000
Phosphorus	114 kg	472,000
Potassium	114 kg	372,000
Insecticides	47 kg	4,700,000
Herbicides	6 kg	600,000
Fungicides	49 kg	4,900,000
Electricity	66 kWh	57,000
Transportation	2974 kg	787,000
Total		50,195,000

OUTPUTS:

Pimentel and Pimental, 1996;2007

Local yields, small farms

- 4 rural farms,
2-20 acres
- 4 urban farms
- Highly diversified
in produce
(40-300 varieties)
- “Sustainable”
practices



Our approach: Whole Farm study

Full “input/output” analysis for energy

INPUTS:

- (1) “Direct” on-farm energy use
- (2) “Indirect” energy: material inputs
- (3) Labor

OUTPUTS:

Itemized production



Output analysis: Calculating yields from diversified, sustainable farms

$$\text{Equivalent land use} = \sum_{i=1}^N \frac{\text{Mass of item } i, \text{ kg yr}^{-1}}{\text{Conventional Yield, kg acre}^{-1} \text{ yr}^{-1}}$$

$$\text{Relative land use} = \frac{\text{Equivalent land use}}{\text{Actual production area}}$$

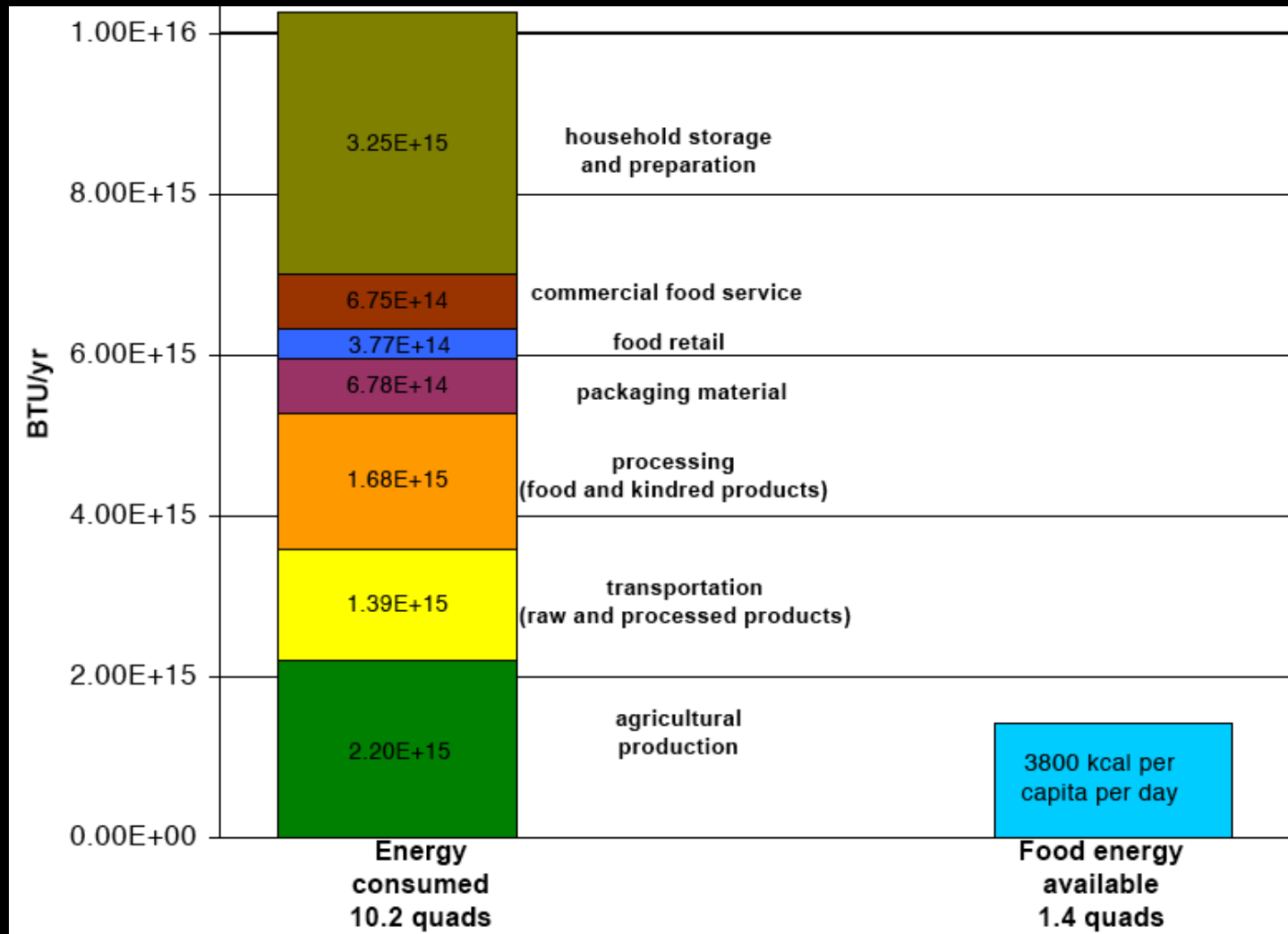
Relative Land Use > 1, diverse farms use more land

Relative Land Use < 1, divers farms use less land

Input –Output analysis: Preliminary results small, diversified vs conventional ag

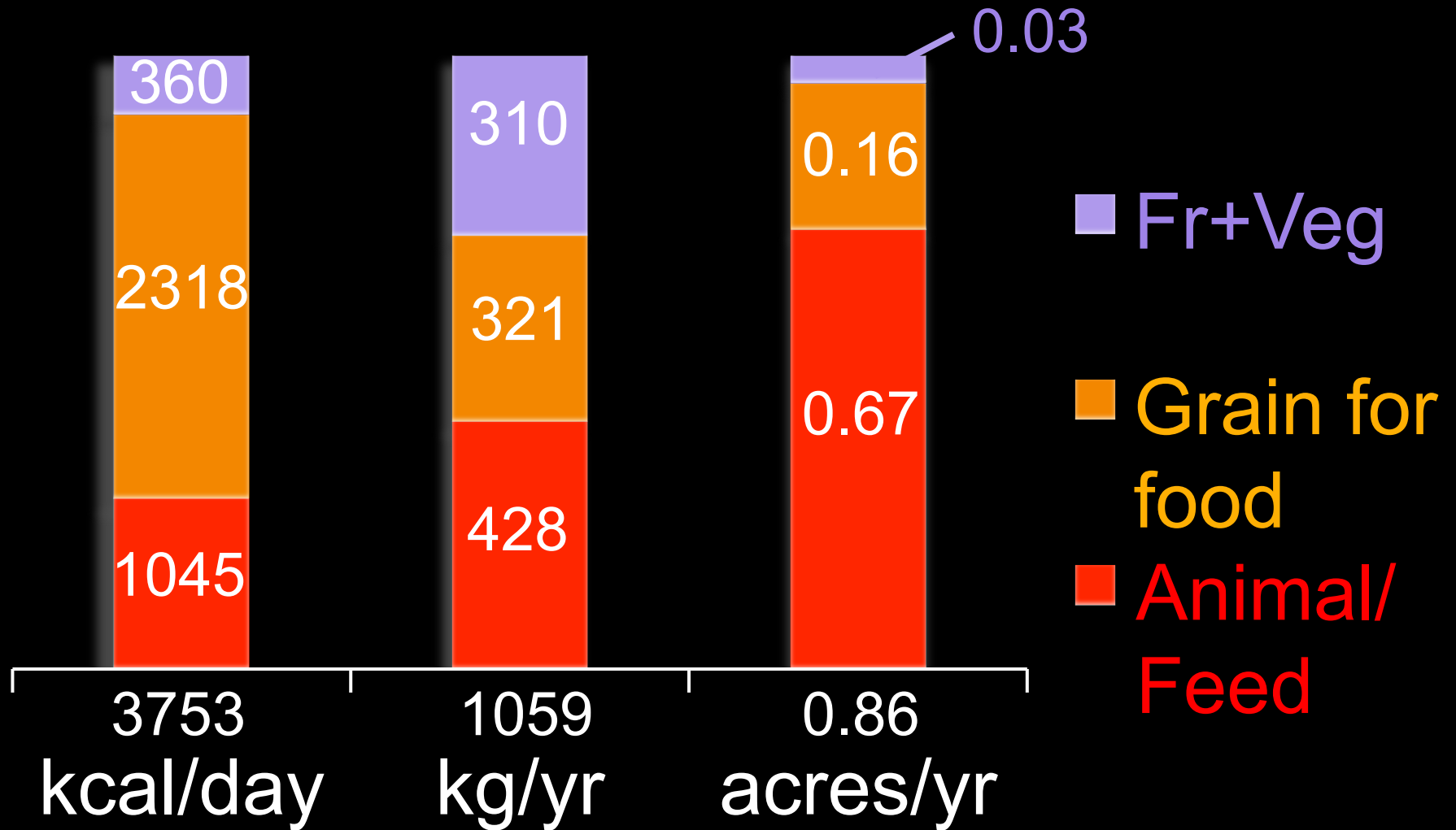
- **Urban Farms:**
 - Land use: 0.5 to 1 acre per acre of conventional
 - Direct energy use: 5 – 15% of conventional
 - Indirect energy use: 25 – 50% of conventional
- **Rural Farms:**
 - Land use: 1.1 -1.8 acre per acre of conventional
 - Direct energy use: 30 – 95% of conventional
 - Indirect energy use: 25 – 70% of conventional

Energy Use in the Food System



Heller and Keoleian, Report No. CSS00-04 of the Center for Sustainable Systems, School of Natural Resources and Environment, University of Michigan, Ann Arbor, MI

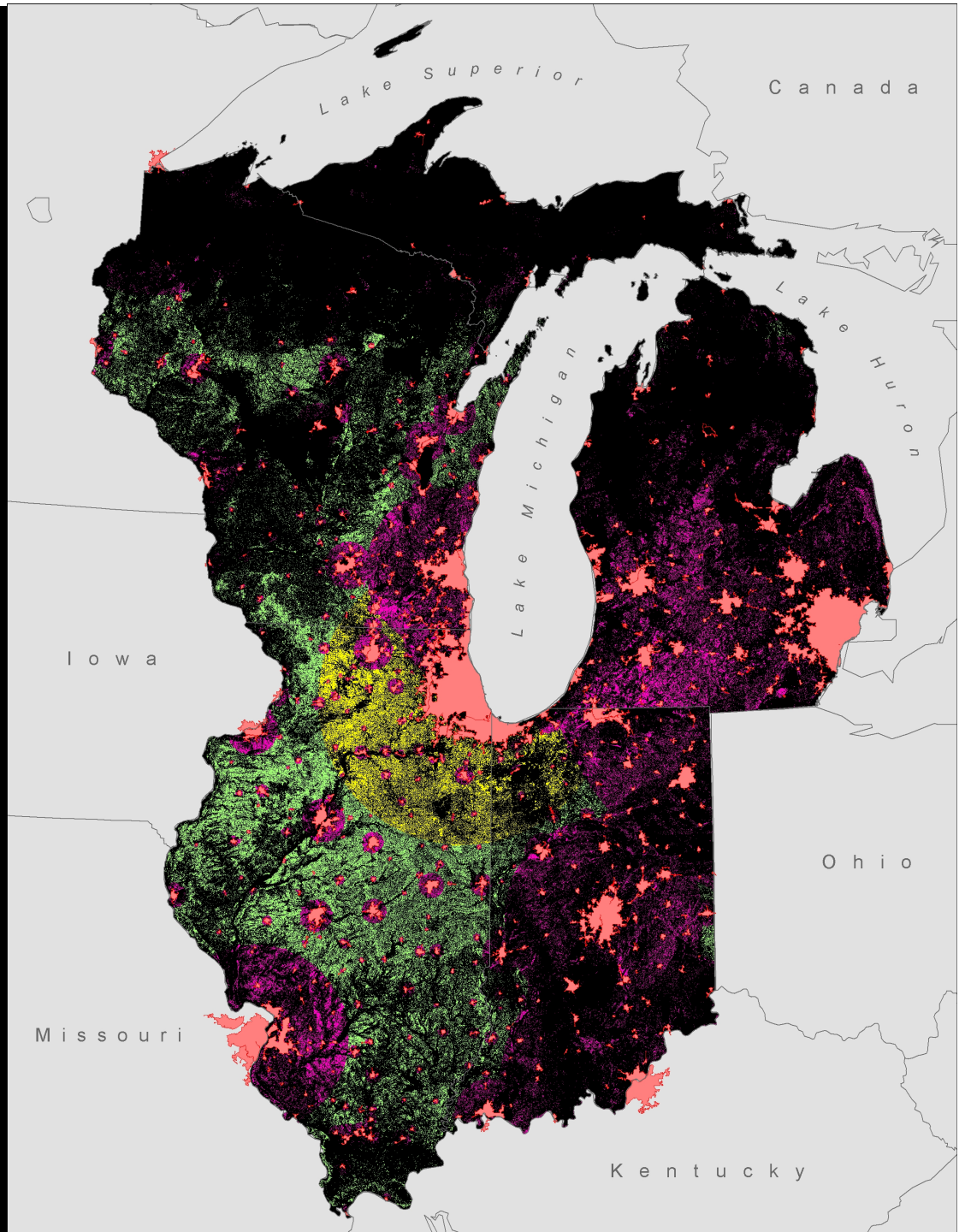
Per Capita Mean American Diet



Calculated from USDA and FAOSTAT data; Land from Martin et al and Eshel et al. 2010

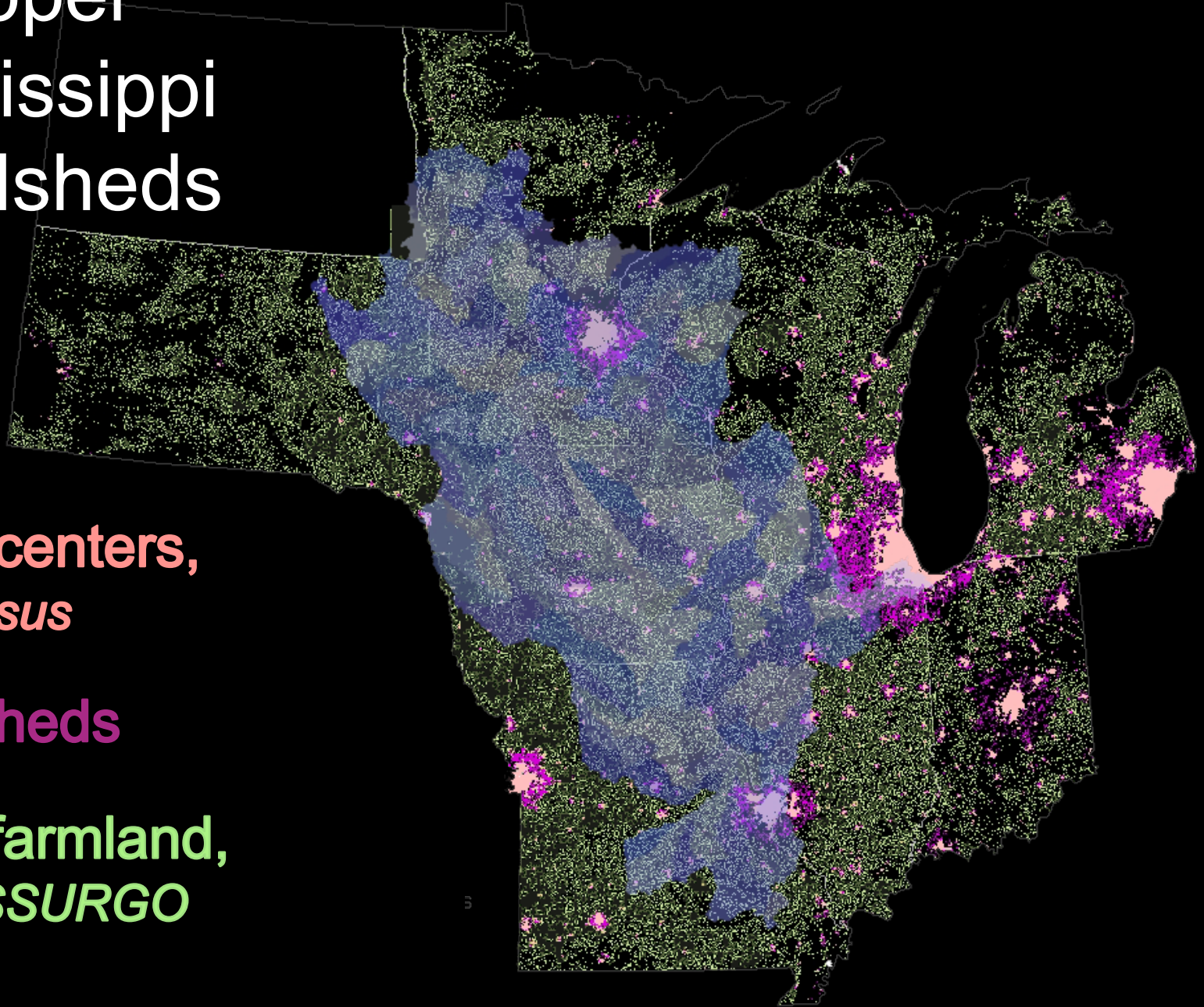
Foodsheds, small to large

- **Chicago Foodshed**
- **Urban centers, *US Census***
- **Prime farmland, *USDA/SSURGO***
- **Secondary foodsheds**

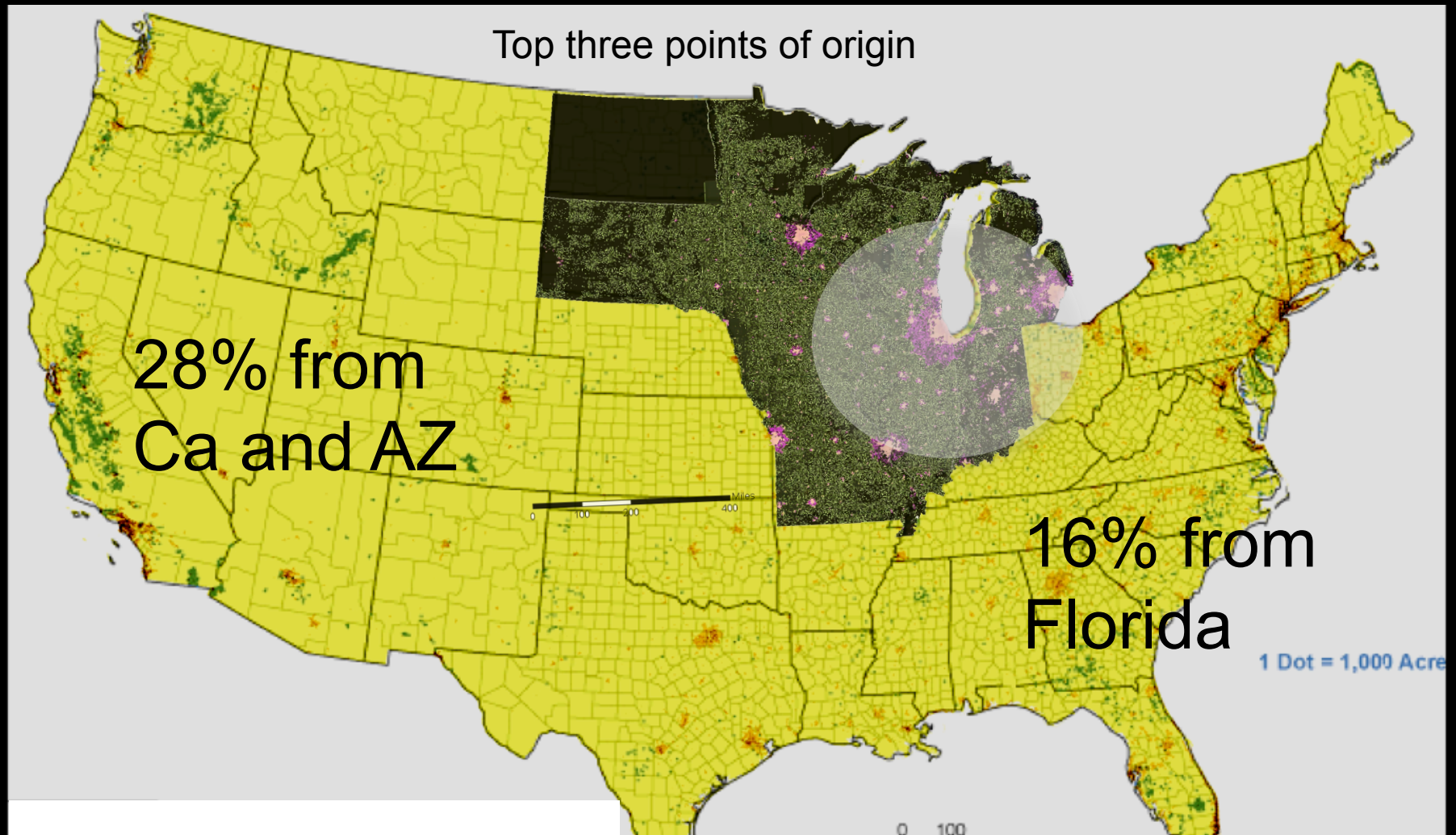


Upper Mississippi Foodsheds

- Urban centers,
US Census
- Foodsheds
- Prime farmland,
USDA/SSURGO

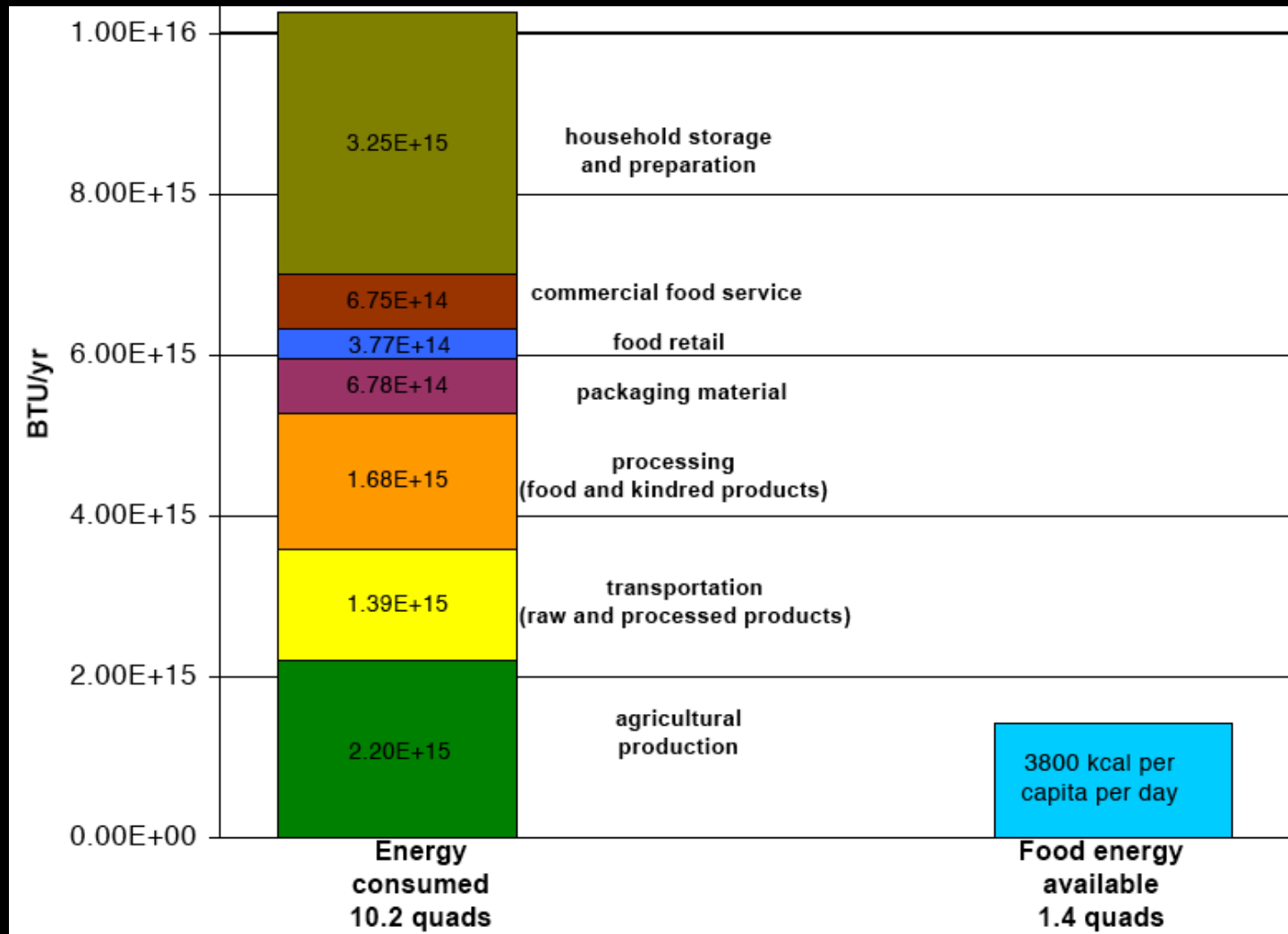


Transportation: Distance and Load



- Calculations by N. Bamberger and J. Archer, summer High School interns (U of Chicago, 2009); Based on food movement data, AMS USDA

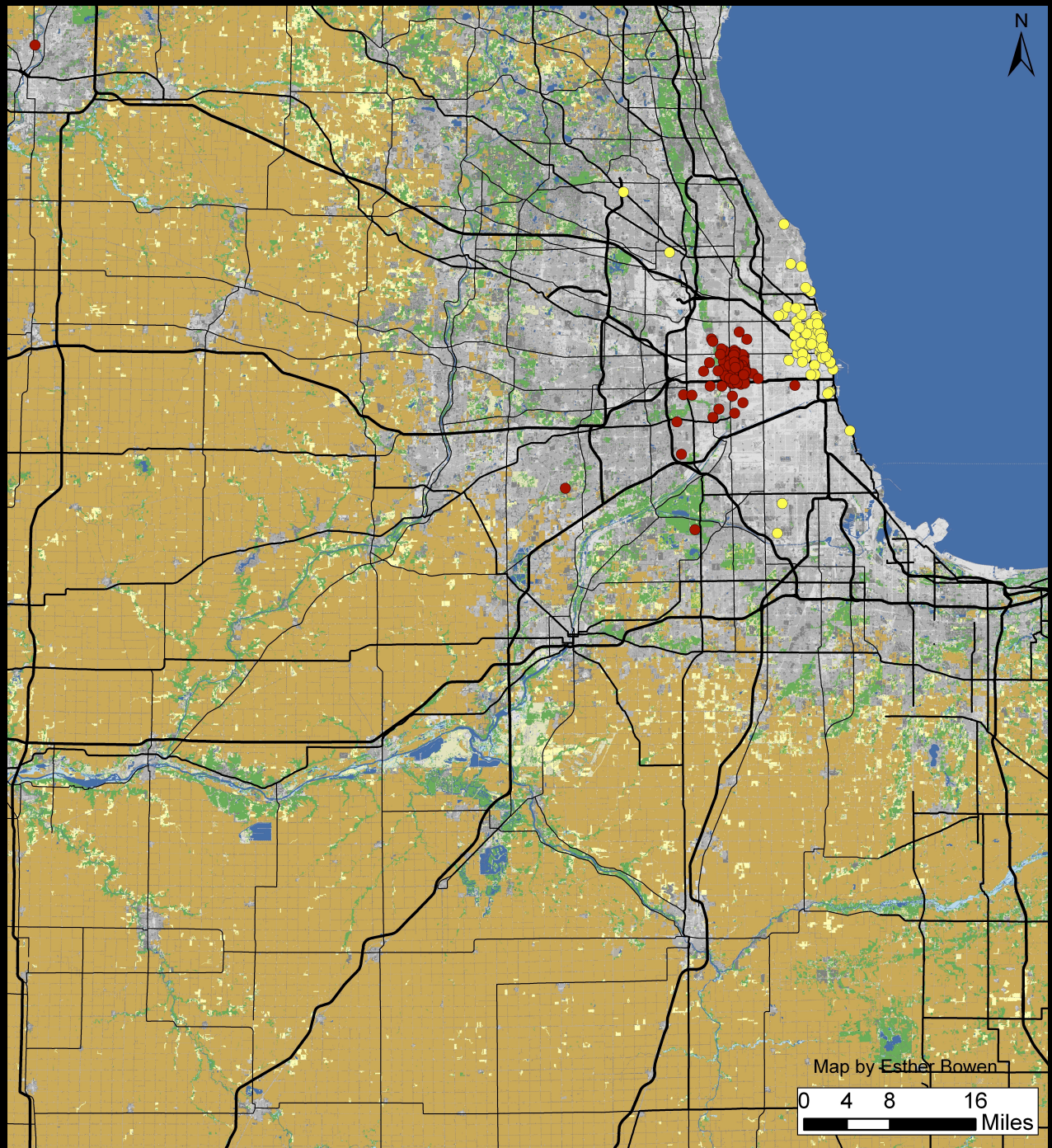
Energy Use in the Food System



Heller and Keoleian, Report No. CSS00-04 of the Center for Sustainable Systems, School of Natural Resources and Environment, University of Michigan, Ann Arbor, MI

Farmers' Market Survey Data

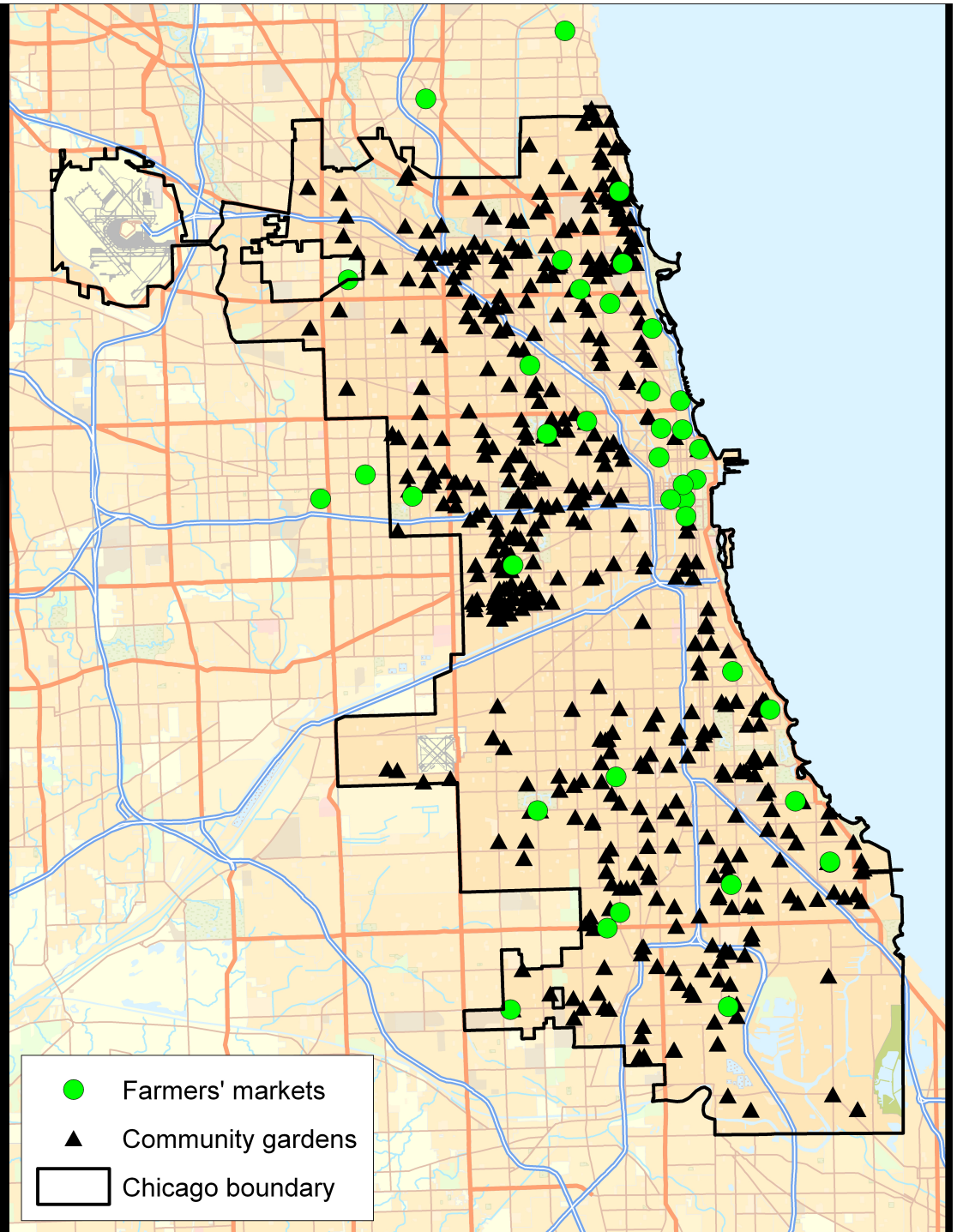
Less than 2 miles
80% walk or bike



Distribution: Fresh from the farm

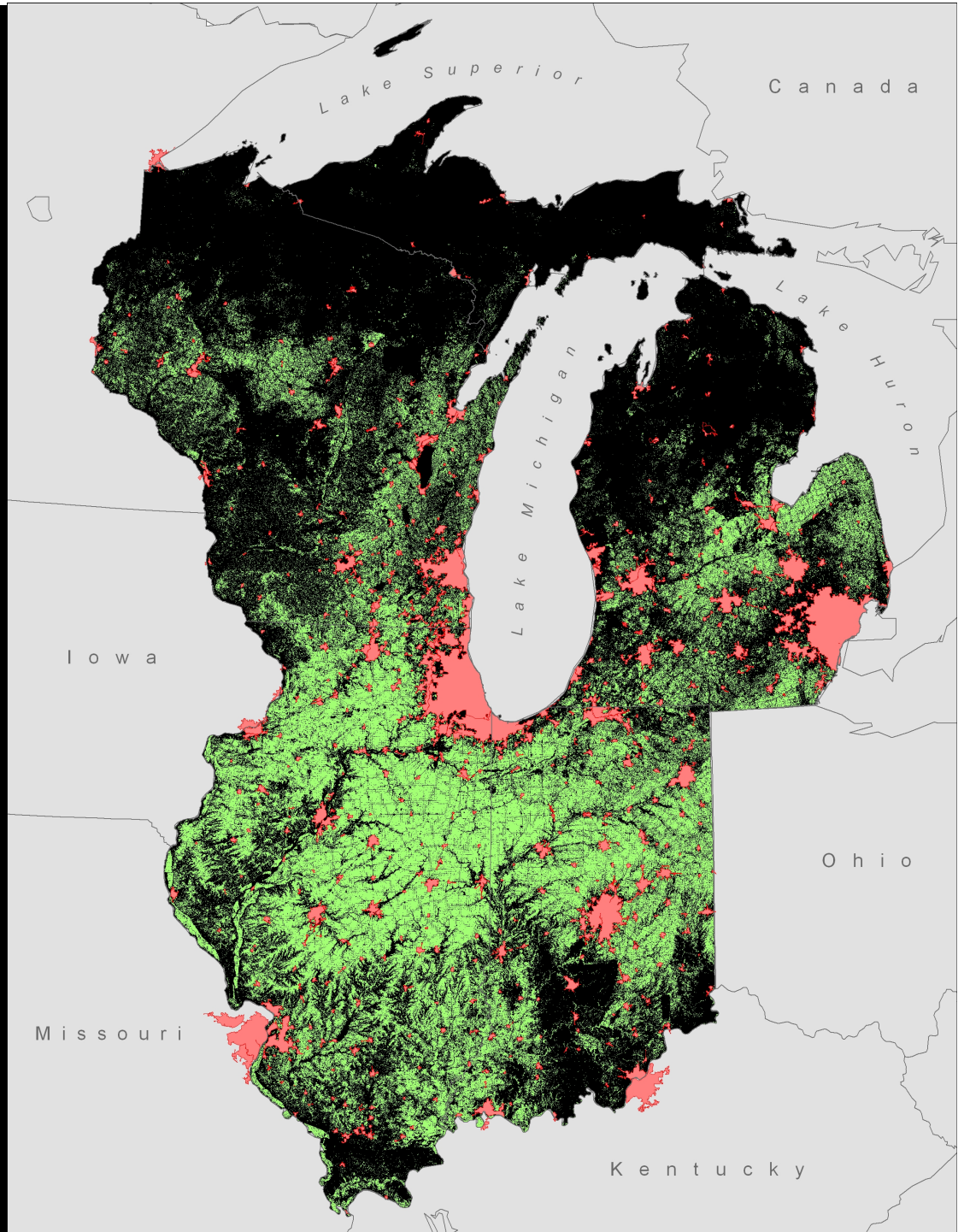
• **Farmers' Markets**

▲ **Community
Gardens**



Cultivated Land surrounding Chicago

- **Urban centers,
US Census
(Chicago = 8.3E6)**
- **42.5E6 acres
USDA/SSURGO**



Increasing the data collection (2011)

- (1) Adding nine farms in three regions of the US**
- (2) Adding self reporting farms in midwest**
- (3) Monitoring water use on two farms**
- (4) Additional economic data**

Challenge: Comparing “apples to apples”

- (1) **Categories of inputs**
- (2) **“Stages” of the Life Cycle**
 - **production/post harvest**
 - **marketing**
 - **delivery**
 - **waste**

TABLE 11.1
Energy Inputs in Appl

Inputs

Labor

Machinery

Diesel

Gasoline

Nitrogen

Phosphorus

Potassium

Insecticides

Herbicides

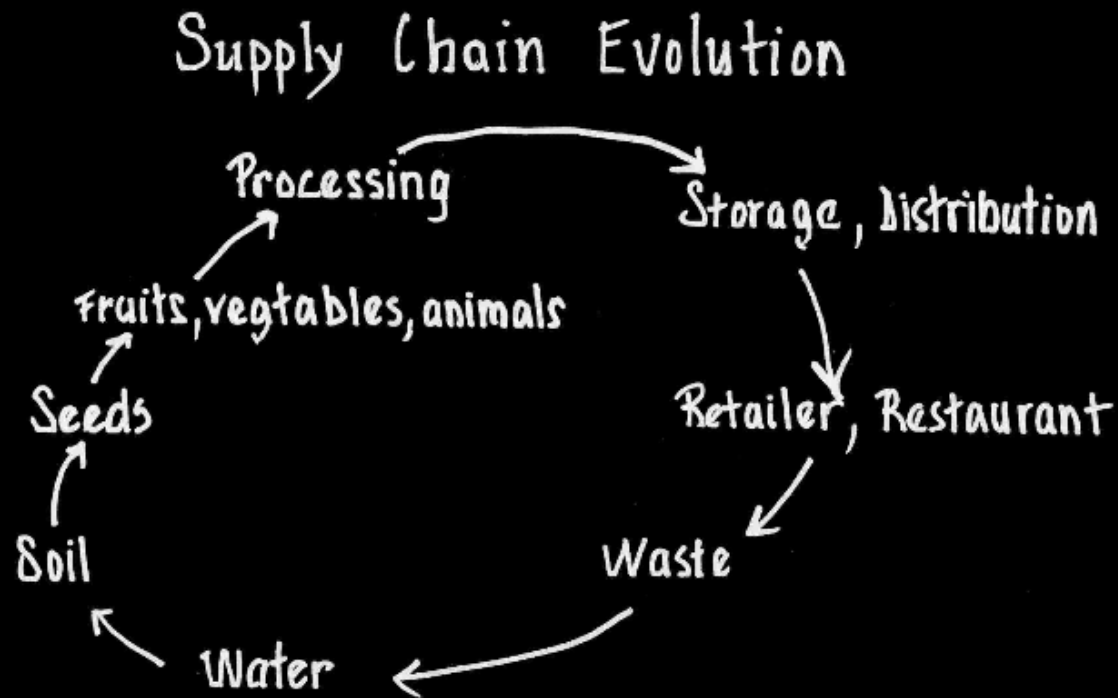
Fungicides

Electricity

Transportation

Total

Energy Use in the Food System



Richard Schneider, formerly of Sysco, Ag Forum 2010 speaker

Acknowledgments

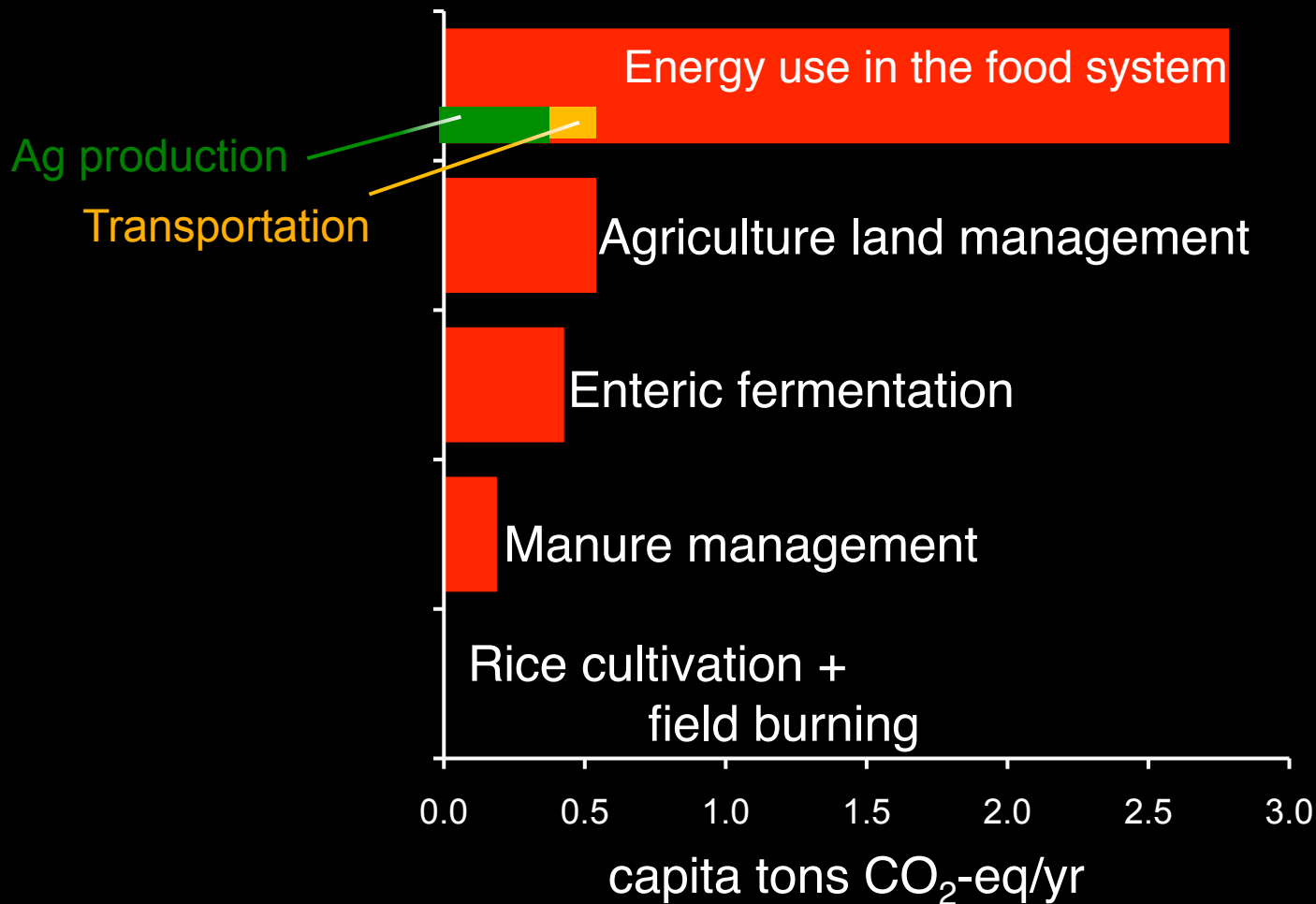


Interns supported by The College and the Program in the Global Environment at The University of Chicago and the Energy Initiative

New partners In 2010:
Bon Appétit Management Foundation
Farm to School



Greenhouse gas emissions associated with the US food system



- Energy use from USDA, 2010; Emissions data from EPA, 2009; import/exptort, FAO 2008

Land requirements for US diet

$$= \frac{\text{Acres for fruit + veg}}{\text{US Population}}$$

$$= \frac{\text{Acres for food grain}}{\text{US Population}}$$

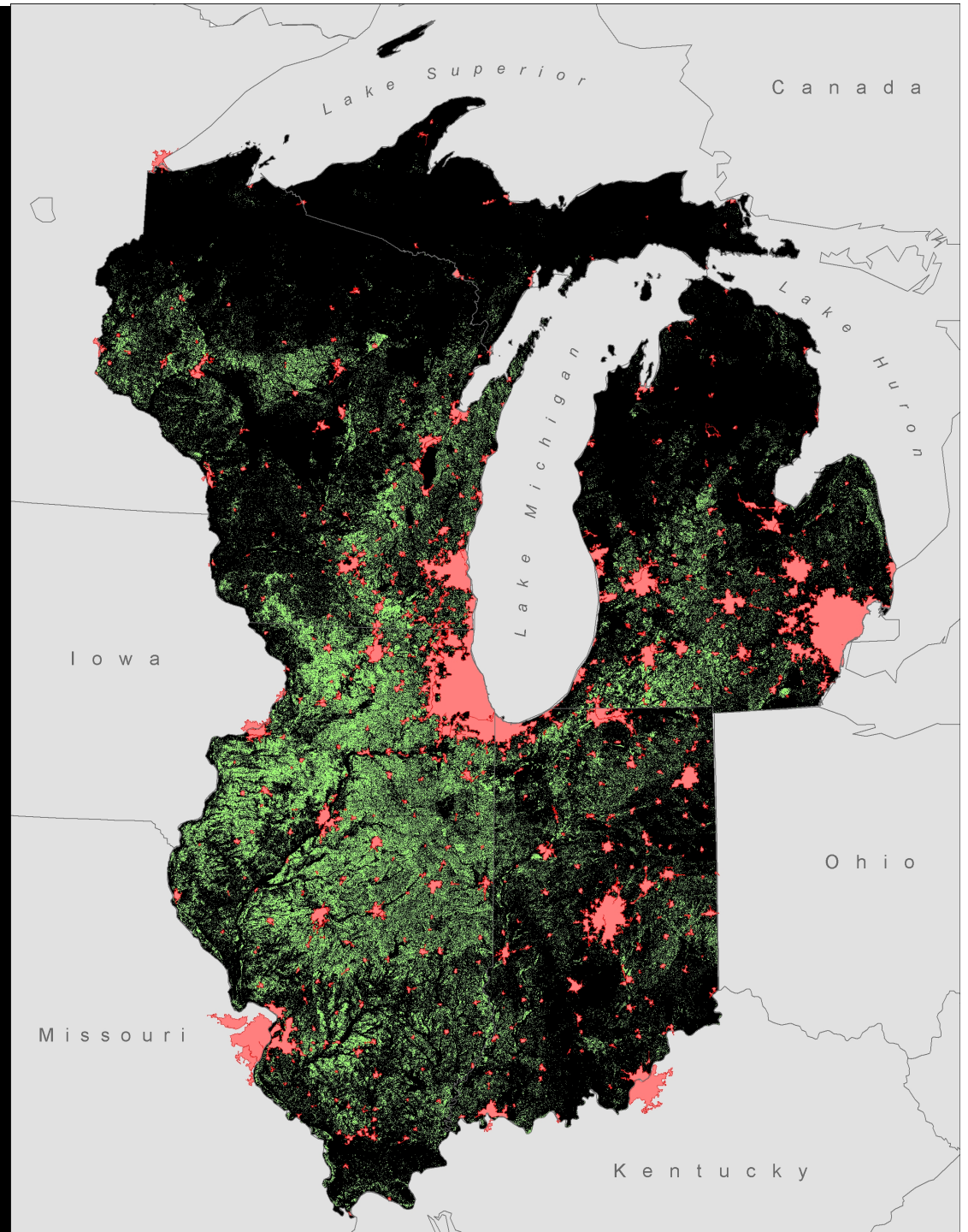
$$= \frac{\text{Acres for feed grain}}{\text{US Population}}$$

Data from USDA food availability, USDA grain yearbook, and FAOSTAT

crop	needed 10 ³ feed acre-eq.
corn	33,365
hay	62,241
soybean	23,461
wheat	16,128
sorghum	1,488
barley	1,173
oats	2,222
total	140,077
weighted mean	

Population and land resources

- **Urban centers,**
US Census
- **Prime farmland,**
USDA/SSURGO



Ultimate destination of farm fresh produce

Sandhill Organics CSA and Market Distribution

