



AgEcon SEARCH
RESEARCH IN AGRICULTURAL & APPLIED ECONOMICS

The World's Largest Open Access Agricultural & Applied Economics Digital Library

This document is discoverable and free to researchers across the globe due to the work of AgEcon Search.

Help ensure our sustainability.

Give to AgEcon Search

AgEcon Search
<http://ageconsearch.umn.edu>
aesearch@umn.edu

*Papers downloaded from **AgEcon Search** may be used for non-commercial purposes and personal study only. No other use, including posting to another Internet site, is permitted without permission from the copyright owner (not AgEcon Search), or as allowed under the provisions of Fair Use, U.S. Copyright Act, Title 17 U.S.C.*

Agricultural Outlook Forum
U.S. Department of Agriculture

Presented: February 24-25, 2011

Sage-Grouse Initiative (SGI)

Tim Griffiths
David Naugle

Sage-Grouse Initiative (SGI)

A STRATEGIC APPROACH TO FARM BILL CONSERVATION PROGRAM DELIVERY



World-class Wildlife

Tim Griffiths
SGI National Coordinator



Rural Ways of Life

David Naugle
SGI Science Advisor

Our Collective Ag and Wildlife Futures

Chief White's vision is to marshal NRCS resources in true partnership fashion to make operational the scale of working lands conservation that we currently only write about in textbooks.



Introducing Conservation Initiatives

Coordinated to identify national priorities, implement solutions and achieve outcomes

- Science based
- Locally led partnerships
- Dedicated resources to accelerate implementation



**Chesapeake
Bay Conservation**



NRCS' Sage-Grouse Initiative

- ◎ Remove threats to sage-grouse and improve sustainability of working ranches
- ◎ Implement enough of the right practices in the right places to benefit populations
- ◎ Assess effectiveness of practices to document outcomes and adapt program delivery



What's Good for Rangelands Is Good for Grouse



Beneficial for both

- Large and intact rangeland
- Rangeland plant diversity
- Healthy rangeland



Negative for both

- Urbanization/subdivision
- Encroached conifer

**Identify and
articulate
shared 'vision'**



75 Years of Trust & Credibility

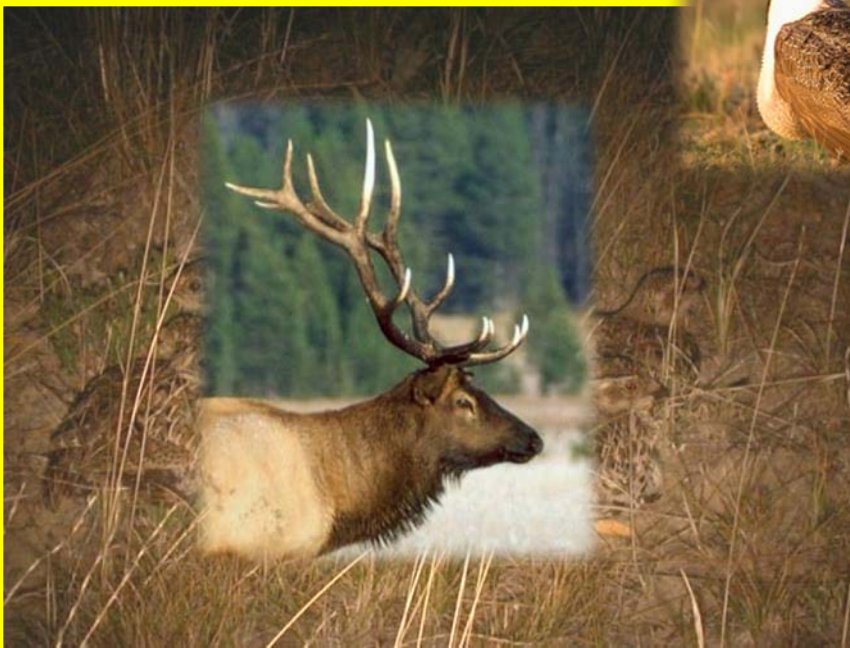
11,500 trained and
dedicated employees

‘SGI simply marshals these
existing resources to further
embrace our original mission’

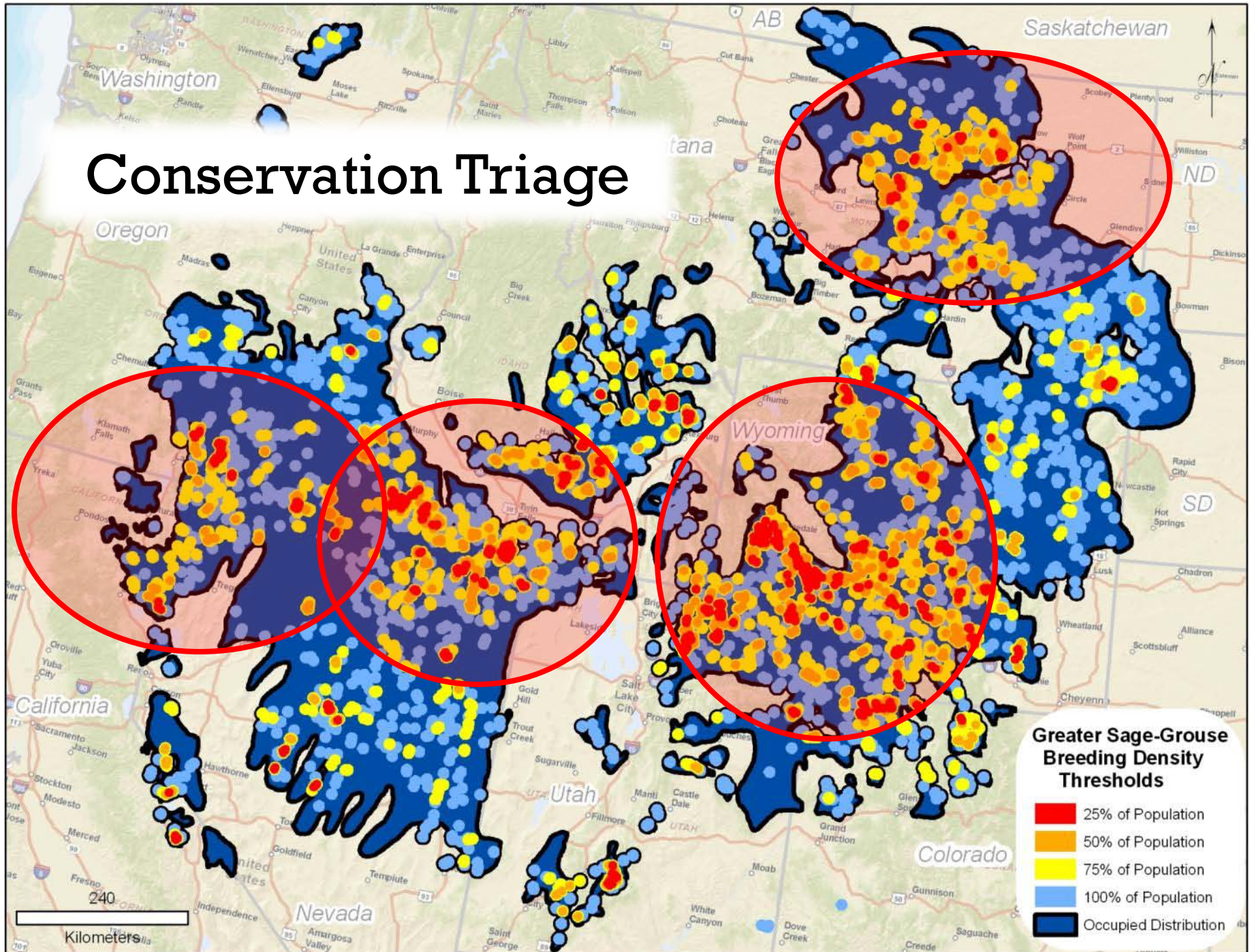


‘Helping People Help the Land’

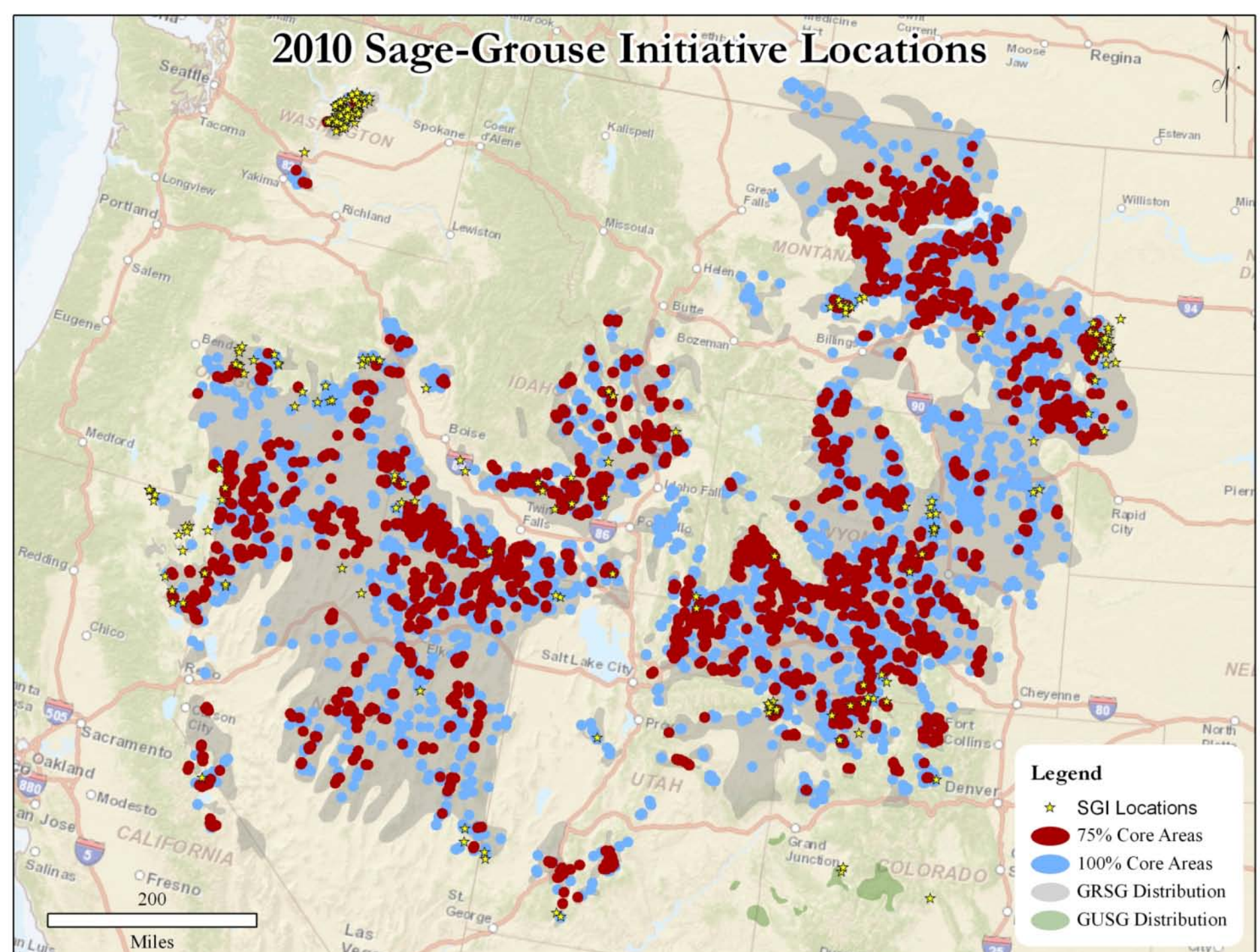
sage-grouse is a landscape 'focal' species



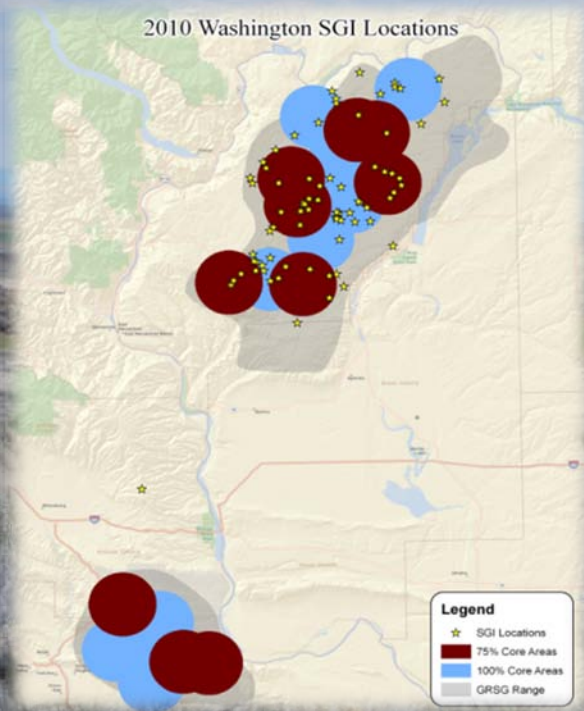
Conservation Triage



2010 Sage-Grouse Initiative Locations



WASHINGTON

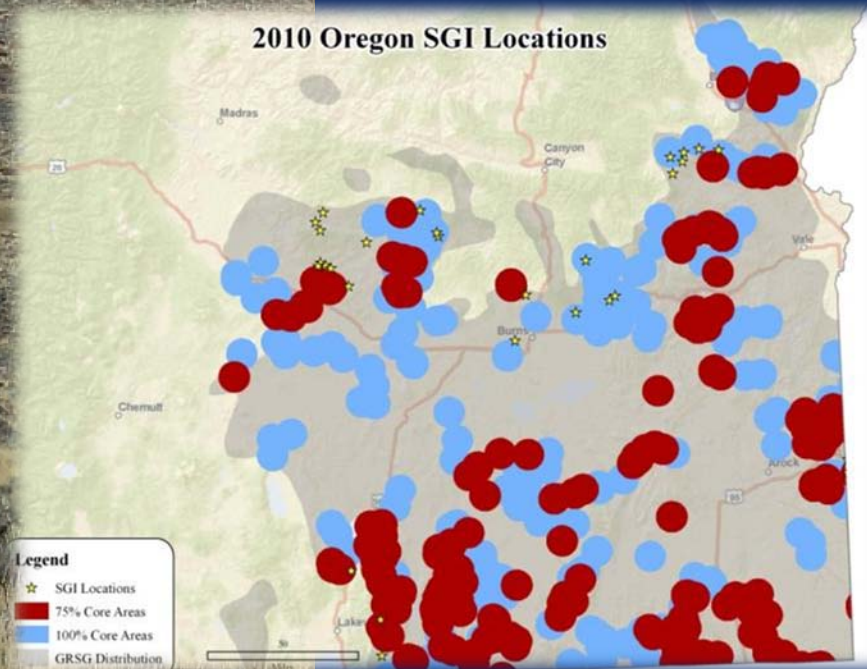


OREGON

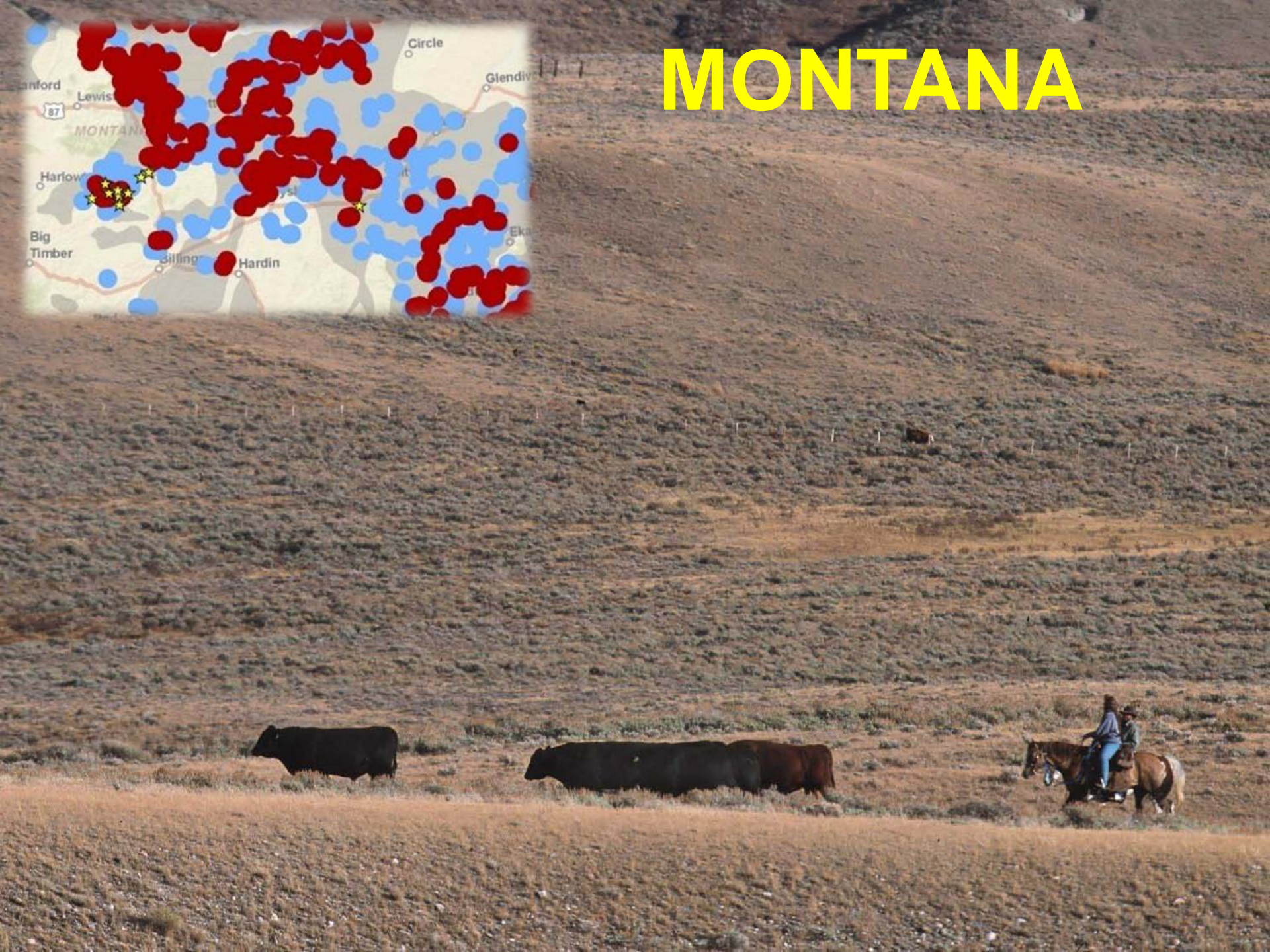
BEFORE



AFTER



MONTANA



Improve Grazing Management

1,000 sq miles



Remove Encroached Conifers

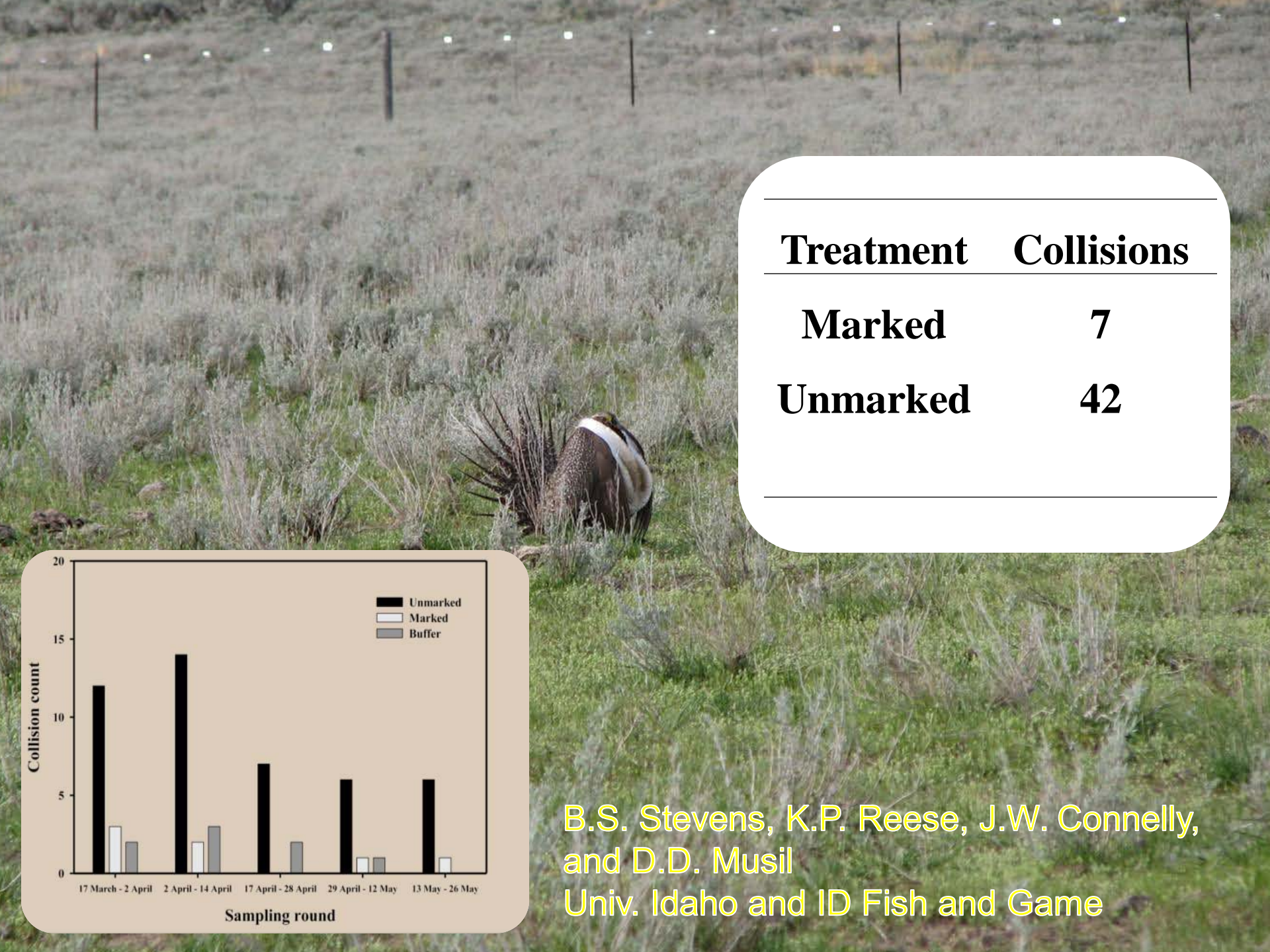
40,000 Ac



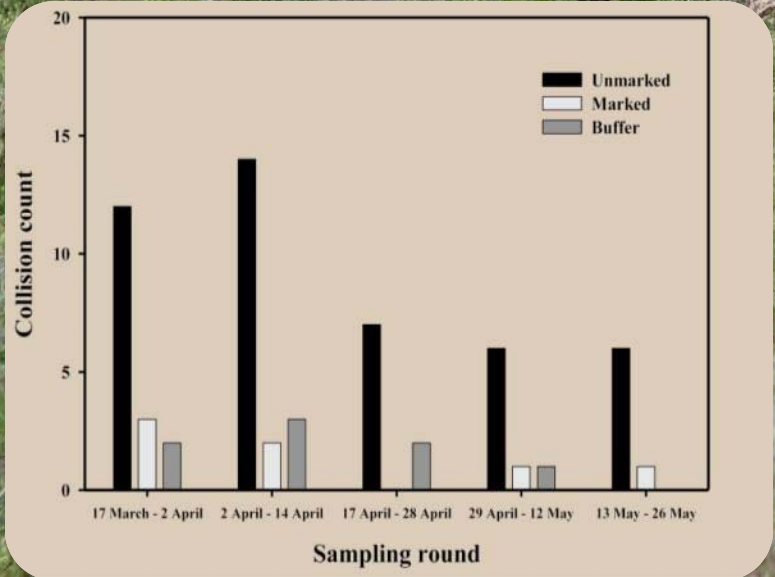
**Mark or Move 'High Risk' Fence
Within 0.25 mi of Leks**

180 miles





Treatment	Collisions
Marked	7
Unmarked	42

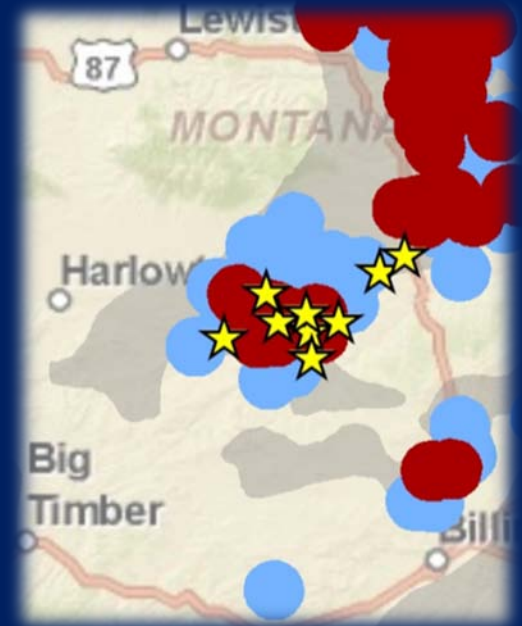


B.S. Stevens, K.P. Reese, J.W. Connelly,
and D.D. Musil
Univ. Idaho and ID Fish and Game

2 inch increase in grass height



8% increase in
nest success



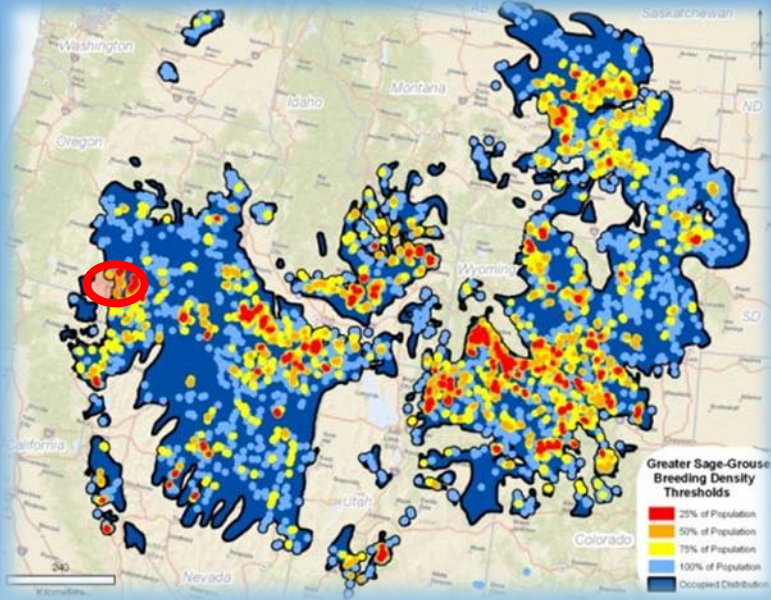
equates to 10% increase in
population growth

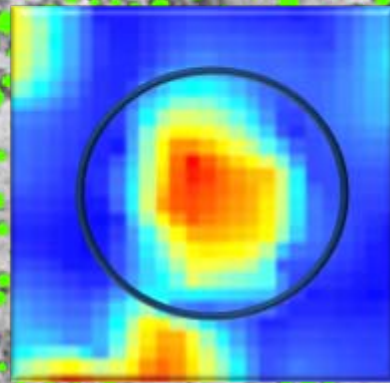
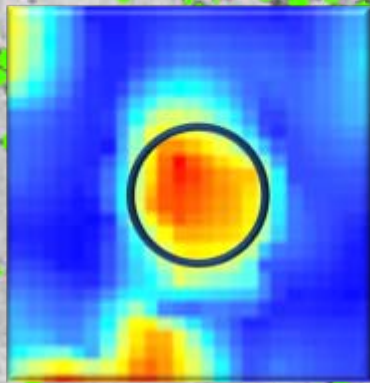
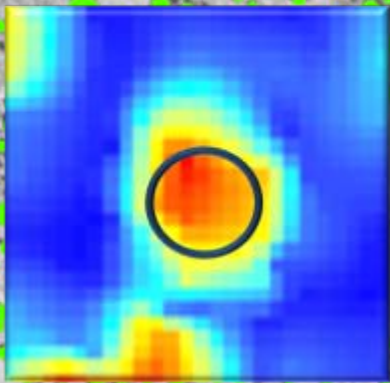
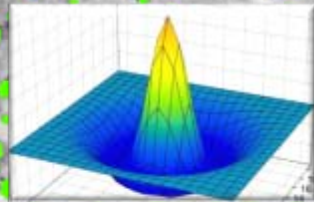
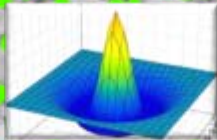
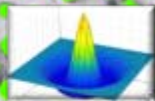
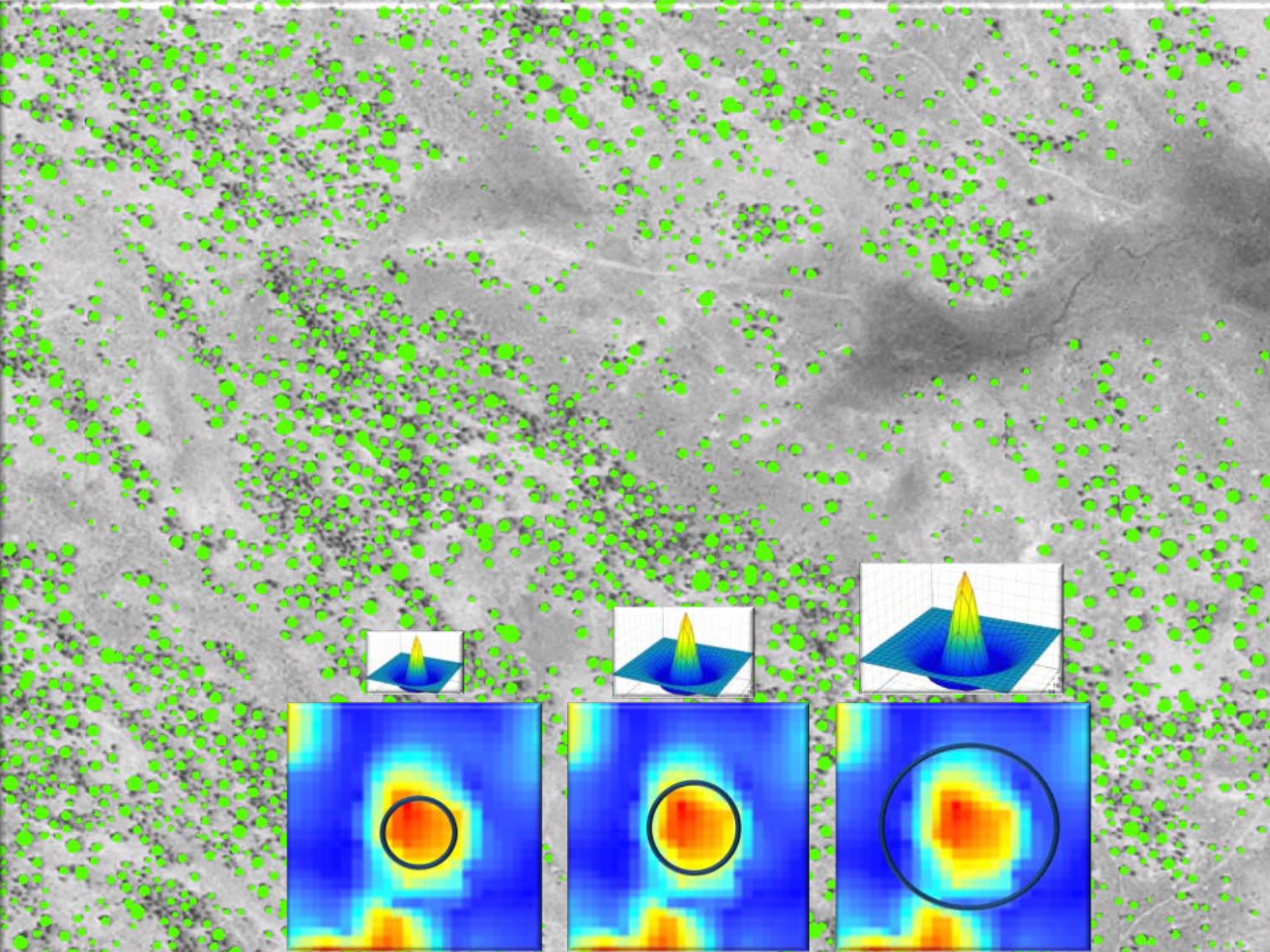


SAGE HEN SUMMIT
ELEV 5,566 FT.



Benefits of Conifer Removal



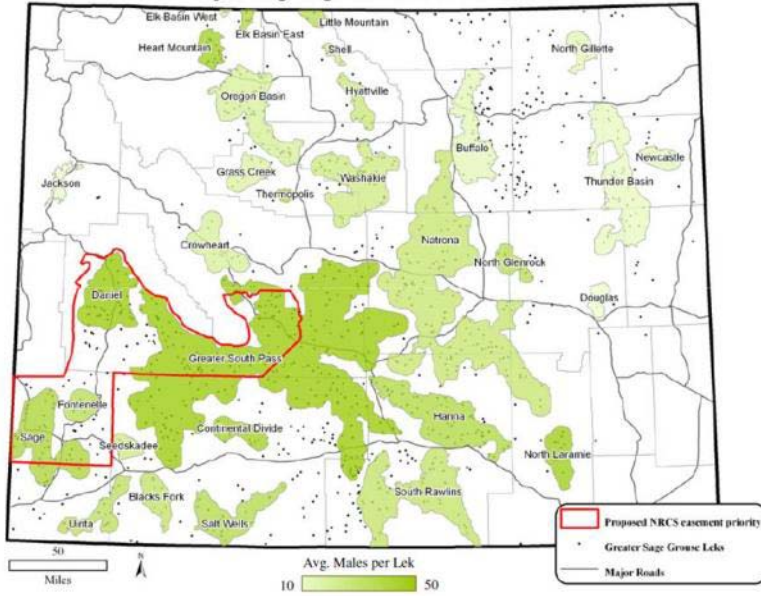


Conference Report

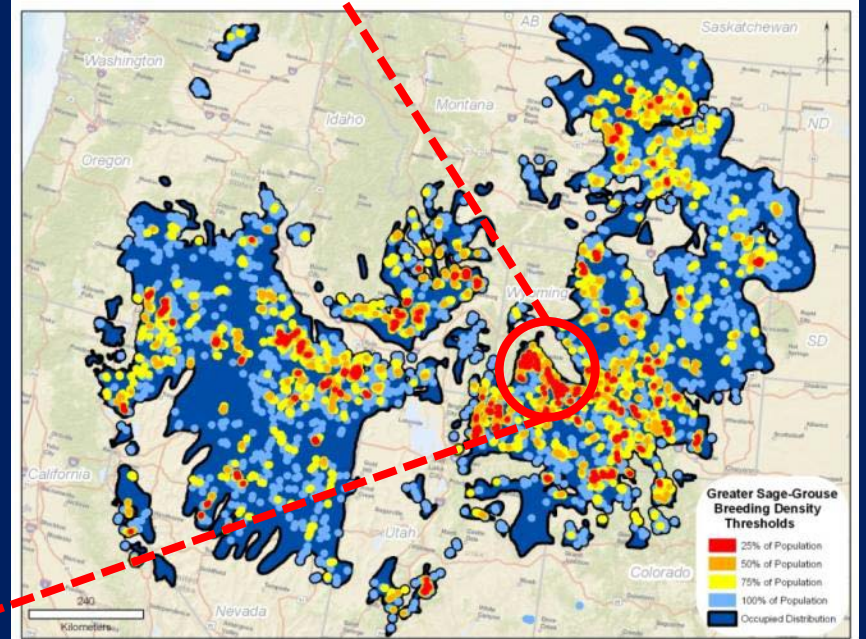
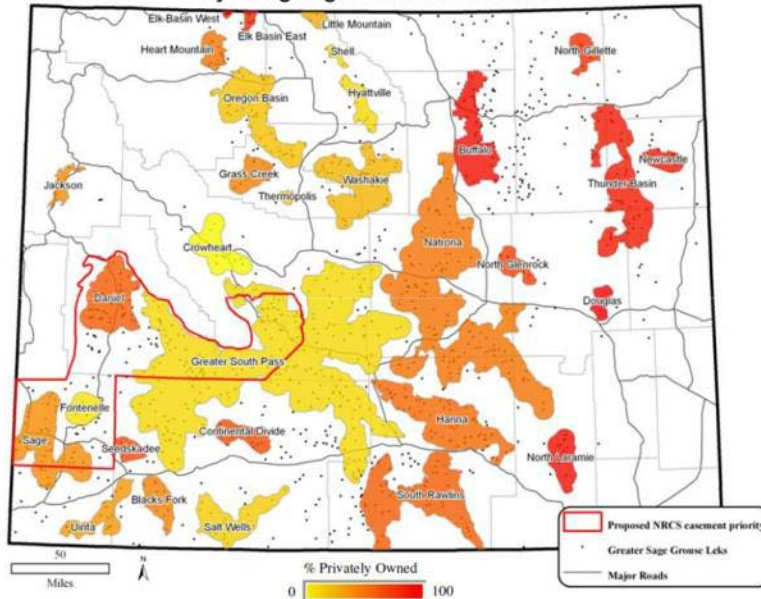
- ◉ *Conditioned 40 practices to ensure benefits to sage-grouse*
- ◉ *Provides ‘**certainty**’ to landowners*
- ◉ *Enables producers to receive ‘credit’ for voluntary conservation*
- ◉ *FWS Report recommendations*



Wyoming Sage-Grouse Core Areas



Wyoming Sage-Grouse Core Areas



Partners rally around SGI

“Don’t tell us what to do; help us do what we need to do...NRCS is doing just that.” Director Bob Budd, Wyoming Wildlife and Natural Resource Trust

“[SGI] has won ranchers' support...for working alongside livestock owners rather than removing land from the grazing system,”

Mike Deering, National Cattlemen's Beef Association



Colorado



Craig

Kremming

-  Sage Grouse Core Area
-  Critical Winter Elk Range
-  Winter Elk Range
-  Year-Long Elk Range

We may have branded SGI with a sage-grouse but our creation now transcends that of a bird and instead embodies our commitment to maintaining rural ways of life and world-class wildlife populations in the West.



NRCS' SGI media inquiries contact
Sylvia.Rainford@wdc.usda.gov
(202)720.2536

Energy Development
and Wildlife Conservation
in Western
North America



Edited by David E. Naugle

**roadmap for
implementing landscape
conservation**

www.wildlifeandenergy.com

rep available today at Forum

