



**AgEcon** SEARCH  
RESEARCH IN AGRICULTURAL & APPLIED ECONOMICS

*The World's Largest Open Access Agricultural & Applied Economics Digital Library*

**This document is discoverable and free to researchers across the globe due to the work of AgEcon Search.**

**Help ensure our sustainability.**

Give to AgEcon Search

AgEcon Search

<http://ageconsearch.umn.edu>

[aesearch@umn.edu](mailto:aesearch@umn.edu)

*Papers downloaded from **AgEcon Search** may be used for non-commercial purposes and personal study only. No other use, including posting to another Internet site, is permitted without permission from the copyright owner (not AgEcon Search), or as allowed under the provisions of Fair Use, U.S. Copyright Act, Title 17 U.S.C.*

*No endorsement of AgEcon Search or its fundraising activities by the author(s) of the following work or their employer(s) is intended or implied.*

SB-560 (1981)

USDA STATISTICAL BULLETINS

UPDATE

MEAT ANIMALS

PRODUCTION

DISPOSITIONS

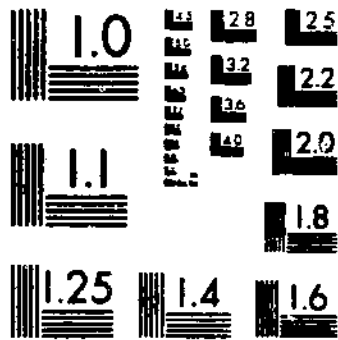
AND INCOME

FINAL ESTIMATES

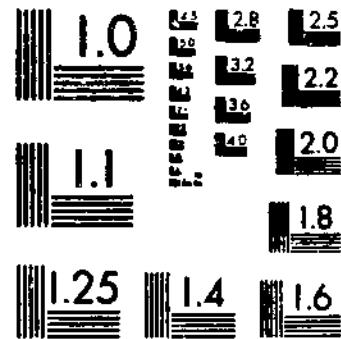
1975-78

1 OF 1

# START



MICROCOPY RESOLUTION TEST CHART  
NATIONAL BUREAU OF STANDARDS-1963-A



MICROCOPY RESOLUTION TEST CHART  
NATIONAL BUREAU OF STANDARDS-1963-A

---

# **MEAT ANIMALS:**

**Production, Disposition, and Income,  
Final Estimates for 1975-78**

MEAT ANIMALS: PRODUCTION, DISPOSITION, AND INCOME, FINAL ESTIMATES FOR 1975-78. Crop Reporting Board, Economics and Statistics Service, U.S. Department of Agriculture, Statistical Bulletin No. 660.

#### ABSTRACT

This publication presents final estimates for farm production, disposition, and income from meat animals for the period 1975-78. Some estimates are slightly revised. This report continues the official series published in Statistical Bulletin No. 598 issued March 1978.

Washington, D.C. 20250

April 1981

## CONTENTS

	<u>PAGE</u>
INTRODUCTION .....	4
DEFINITIONS .....	5
TABLES	
UNITED STATES:	
Meat animals: Production, marketings, and income .....	6
Cattle and calves: Inventory, supply, and disposition .....	6
Hogs and pigs: Inventory, supply, and disposition .....	6
Sheep and lambs: Inventory, supply, and disposition .....	6
Meat animals: Production and marketings .....	7
Cattle and calves: Production and income .....	7
Hogs and pigs: Production and income .....	7
Sheep and lambs: Production and income .....	7
BY STATES:	
Cattle and calves: Inventory, supply, disposition, production, and income .....	8-15
Hogs and pigs: Inventory, supply, disposition, production, and income .....	16-23
Sheep and lambs: Inventory, supply, disposition, production, and income .....	24-31

## INTRODUCTION

Meat animal estimates are published on a current basis for each year. Final estimates for the State and U.S. series resulted from a thorough review of the original survey indications and estimates as well as new data including the 1978 Census of Agriculture. Records relating to market receipts and estimates of commercial and farm slaughter are also considered. Inventory estimates relate to January 1 of each year for cattle and sheep and to December 1 for hogs.

Final estimates of inventory numbers and births were released in Statistical Bulletins No. 648 (hogs), No. 653 (sheep), and No. 655 (cattle). Because production estimates take into account the differences in inventory numbers and weights at the beginning and at the end of the year as well as pounds sold during the year, a revision of the inventory numbers, births, or disposition items generally requires adjustments in production and income estimates.

## DEFINITIONS

INVENTORY, SUPPLY, AND DISPOSITION: Balance sheet estimates; the sum of inventory on hand beginning of year, births, and inshipments equal the sum of marketings, farm slaughter, deaths, and inventory on hand end of year.

INSHIPMENTS: Livestock shipped into States for feeding or breeding. Excludes livestock for immediate slaughter.

MARKETINGS: Includes animals for slaughter market as well as younger animals shipped to other States for feeding or breeding purposes. Excludes interfarm sales within the State and farm slaughter. Number of head marketed includes all custom slaughter but live weight marketings shown in pounds exclude custom slaughter consumed on farms where produced.

FARM SLAUGHTER: Animals slaughtered on farms. Excludes custom slaughter for farmers at commercial establishments.

PRODUCTION: Includes total live weight of livestock marketed, farm slaughter and custom slaughter consumed on farms where produced, minus live weight of inshipments, and any increase or decrease in live weight of inventory.

PRICE: State prices are annual prices computed by weighting monthly estimated prices received by farmers by monthly marketings; U.S. prices are derived by weighting State prices by respective marketings.

CASH RECEIPTS: Receipts from marketings and any sale of farm slaughtered meats. Includes allowance for feeder pig outshipments.

VALUE OF HOME CONSUMPTION: Total value of slaughter on the farm and custom slaughter consumed on farms where produced.



MEAT ANIMALS: PRODUCTION, MARKETINGS AND INCOME, UNITED STATES, 1975-78 1/

YEAR	PRODUCTION	MARKETINGS	VALUE OF PRODUCTION	CASH RECEIPTS	VALUE OF HOME CONSUMPTION	GROSS INCOME
	MILLION POUNDS		MILLION DOLLARS			
1975	58,521	72,984	20,864	25,822	733	26,556
1976	60,291	75,268	21,999	27,174	780	27,953
1977	60,472	77,655	21,783	27,892	754	28,647
1978	60,124	76,883	29,001	37,454	862	38,316

SEE FOOTNOTES AT BOTTOM OF PAGE.

CATTLE AND CALVES:  
INVENTORY, SUPPLY AND DISPOSITION, UNITED STATES, 1975-78 2/

YEAR	INVENTORY JAN. 1	CALVES BORN	INSHIPMENTS	MARKETINGS CATTLE	CALVES	FARM SLAUGHTER CATTLE & CALVES	DEATHS CATTLE	CALVES
	1,000 HEAD							
1975	132,028	50,183	20,065	54,315	12,239	750	2,396	4,596
1976	127,980	47,384	21,238	55,394	12,485	722	1,821	3,369
1977	122,810	45,931	23,333	56,378	12,621	700	2,000	4,000
1978	116,375	43,818	23,695	54,737	11,938	550	1,940	3,860
1979	110,864							

SEE FOOTNOTES AT BOTTOM OF PAGE.

HOGS AND PIGS:  
INVENTORY, SUPPLY AND DISPOSITION, UNITED STATES, 1975-78 2/

YEAR	INVENTORY DEC. 1 PREVIOUS YEAR	PIG CROP	INSHIPMENTS	MARKETINGS	FARM SLAUGHTER	DEATHS
	1,000 HEAD					
1975	54,693	71,186	3,805	73,627	1,193	5,598
1976	49,267	84,395	4,191	75,747	1,181	5,992
1977	54,934	86,162	4,258	80,938	1,144	6,733
1978	56,539	88,512	4,714	81,271	1,086	7,052
1979	60,356					

SEE FOOTNOTES AT BOTTOM OF PAGE.

SHEEP AND LAMBS:  
INVENTORY, SUPPLY AND DISPOSITION, UNITED STATES, 1975-78 2/ 5/

YEAR	INVENTORY JAN. 1	LAMB CROP	INSHIPMENTS	MARKETINGS SHEEP	LAMBS	FARM SLAUGHTER	DEATHS SHEEP	LAMBS
	1,000 HEAD							
1975	14,515	9,857	2,349	1,812	9,039	212	1,078	1,269
1976	13,311	8,888	2,469	1,495	8,120	202	967	1,162
1977	12,722	8,573	2,148	1,450	7,361	198	877	1,137
1978	12,395	7,927	2,148	1,439	6,529	174	885	1,077
1979	12,365							

1/ INCLUDES CATTLE AND CALVES, HOGS, SHEEP AND LAMBS. 2/ BALANCE SHEET ESTIMATES; THE SUM OF INVENTORY BEGINNING OF YEAR, BIRTHS, AND INSHIPMENTS IS EQUAL TO THE SUM OF MARKETINGS, FARM SLAUGHTER, DEATHS AND INVENTORY END OF YEAR FOR INDIVIDUAL STATES. 3/ INCLUDES CUSTOM SLAUGHTER FOR USE ON FARMS WHERE PRODUCTS PRODUCED, STATE OUTSHIPMENTS, BUT EXCLUDES INTERFARM SALES WITHIN THE STATE. 4/ EXCLUDES CUSTOM SLAUGHTER FOR FARMERS AT COMMERCIAL ESTABLISHMENTS. 5/ EXCLUDES HAWAII FOR 1975-78. EXCLUDES ALABAMA, ARKANSAS, DELAWARE, FLORIDA, GEORGIA, MISSISSIPPI, RHODE ISLAND AND SOUTH CAROLINA FOR 1978 WITH A JAN 1, 1978 INVENTORY OF 26,000 HEAD.

MEAT ANIMALS: PRODUCTION AND MARKETINGS, UNITED STATES, 1975-78 (METRIC UNITS)

YEAR	CATTLE & CALVES		HOGS & PIGS		SHEEP & LAMBS		MEAT ANIMALS <u>1/</u>	
	PRODUCTION	MARKETINGS	PRODUCTION	MARKETINGS	PRODUCTION	MARKETINGS	PRODUCTION	MARKETINGS
THOUSAND METRIC TONS								
1975	18 552	24 889	7 636	7 727	356	489	26 545	33 105
1976	18 763	25 927	8 237	7 774	332	440	27 333	34 141
1977	18 462	26 516	8 628	8 307	320	401	27 430	35 224
1978	18 131	26 026	8 830	8 432	312	380	27 272	34 874

SEE FOOTNOTES AT BOTTOM OF PAGE.

CATTLE AND CALVES:  
PRODUCTION AND INCOME, UNITED STATES, 1975-78

YEAR	PRODUCTION		MARKETINGS		AVERAGE PRICE PER 100 POUNDS		VALUE OF PRODUCTION	CASH RECEIPTS	VALUE OF HOME CONSUMPTION	GROSS INCOME
	<u>2/</u>	<u>3/</u>	CATTLE	CALVES	DOLLARS	DOLLARS	MILLION DOLLARS	<u>4/</u>	<u>5/</u>	
1975	40,901	54,871	32.20	27.20	12,805	17,520	458	17,978		
1976	41,398	57,160	33.70	34.10	13,827	19,294	502	19,795		
1977	40,745	58,458	34.40	36.90	13,978	20,225	482	20,708		
1978	39,971	57,456	48.50	59.10	19,553	28,248	565	28,813		

SEE FOOTNOTES AT BOTTOM OF PAGE.

HOGS AND PIGS:  
PRODUCTION AND INCOME, UNITED STATES, 1975-78

YEAR	PRODUCTION		MARKETINGS		AVERAGE PRICE PER 100 POUNDS		VALUE OF PRODUCTION	CASH RECEIPTS	VALUE OF HOME CONSUMPTION	GROSS INCOME
	<u>2/</u>	<u>3/</u>	DOLLARS	DOLLARS	MILLION DOLLARS	MILLION DOLLARS	<u>4/</u>	<u>5/</u>		
1975	16,835	17,035	46.10	7,756	7,916	267	8,184			
1976	18,160	17,138	43.30	7,856	7,488	269	7,756			
1977	19,021	18,314	39.40	7,485	7,281	262	7,543			
1978	19,466	18,589	46.60	9,066	8,753	285	9,038			

SEE FOOTNOTES AT BOTTOM OF PAGE.

SHEEP AND LAMBS:  
PRODUCTION AND INCOME, UNITED STATES, 1975-78 6/

YEAR	PRODUCTION		MARKETINGS		AVERAGE PRICE PER 100 POUNDS		VALUE OF PRODUCTION	CASH RECEIPTS	VALUE OF HOME CONSUMPTION	GROSS INCOME
	<u>2/</u>	<u>3/</u>	SHEEP	LAMBS	DOLLARS	DOLLARS	MILLION DOLLARS	<u>4/</u>	<u>5/</u>	
1975	785	1,077	11.30	42.10	303	386	8	394		
1976	733	970	13.10	46.90	316	393	9	402		
1977	706	883	13.50	51.30	320	386	10	396		
1978	687	838	21.80	62.80	382	453	11	464		

1/ INCLUDES CATTLE AND CALVES, HOGS, SHEEP AND LAMBS. 2/ ADJUSTMENTS MADE FOR CHANGES IN INVENTORY AND FOR INSHIPMENTS. 3/ EXCLUDES CUSTOM SLAUGHTER FOR USE ON FARMS WHERE PRODUCED AND INTERFARM SALES WITHIN THE STATE. 4/ RECEIPTS FROM MARKETINGS AND ANY SALE OF FARM SLAUGHTER. 5/ INCLUDES ALLOWANCE FOR FEEDER PIG OUTSHIPMENTS. 6/ EXCLUDES HAWAII FOR 1975-78. EXCLUDES ALABAMA, ARKANSAS, DELAWARE, FLORIDA, GEORGIA, MISSISSIPPI, RHODE ISLAND AND SOUTH CAROLINA FOR 1978.

CATTLE AND CALVES:  
INVENTORY, SUPPLY AND DISPOSITION 1975 1/

STATE	INVENTORY	CALF	INSHIP-	MARKETINGS		FARM SLAUGHTER	DEATHS		INVENTORY
	JAN 1 1975	CROP	MENTS	2/		3/	CATTLE	CALVES	JAN 1 1976
				CATTLE	CALVES	CATTLE & CALVES	CATTLE	CALVES	
	1000 HD	1000 HD	1000 HD	1000 HD	1000 HD	1000 HD	1000 HD	1000 HD	1000 HD
ALA	2,700	1,230	15	645	300	15	65	70	2,850
ALAS	9.7	3.5	0	0.5	0.3	0.8	1.9	0.9	8.8
ARIZ	1,170	316	924	991	79	3	32	29	1,280
ARK	2,680	1,135	10	755	516	14	40	98	2,389
CALIF	5,200	1,620	1,750	2,904	345	61	88	175	5,800
COLO	3,375	1,020	1,720	2,535	140	10	70	110	3,250
CONN	110	53	6	29	22	1	2	5	110
DEL	33	16	0	7	5	1	1	2	33
FLA	2,950	1,250	64	652	562	15	58	65	2,920
GA	2,420	1,010	1	687	404	25	60	88	2,370
MAV	242	73	2	54	0	2	5	11	248
IDAHO	2,150	770	105	859	202	14	35	100	1,875
ILL	3,200	1,020	780	1,312	128	10	45	105	3,400
IND	2,125	780	180	686	34	20	40	40	2,225
IOWA	7,350	2,150	2,600	4,103	120	12	118	230	7,660
KANS	6,400	1,880	2,160	3,676	53	7	110	150	6,450
KY	3,750	1,500	150	1,032	489	24	65	140	3,450
LA	1,832	890	15	345	394	10	44	64	1,880
MAINE	158	85	1	27	26	2	2	5	140
MD	444	200	14	94	102	3	3	18	440
MASS	107	54	7	32	22	1	2	6	107
MICH	1,580	590	114	500	61	13	50	110	1,650
MINN	4,430	1,594	739	1,798	180	27	98	240	4,430
MISS	3,080	1,220	20	830	490	17	85	98	2,723
MO	6,800	2,800	50	2,075	607	48	95	223	6,680
MONT	3,340	1,680	80	1,069	445	14	40	100	3,150
NEBR	6,900	2,190	1,900	4,014	150	6	88	190	6,550
NEV	657	285	46	175	125	3	14	20	651
N H	71	34	2	17	15	1	1	3	72
N J	117	54	6	29	31	1	2	4	119
N MEX	1,720	590	938	1,397	114	10	32	48	1,859
N Y	1,875	975	24	276	509	21	32	120	1,915
N C	1,150	525	8	238	191	14	25	48	1,170
N DAK	2,635	1,300	52	962	450	12	38	148	2,380
OHIO	2,350	740	274	828	128	13	35	88	2,385
ORLA	6,500	2,443	1,450	3,286	398	19	110	186	6,480
OREG	1,650	665	77	589	210	16	28	59	1,680
PA	1,960	800	99	402	347	20	38	95	1,940
R I	12	6	0.3	3	2.5	0.1	0.2	0.5	12
S C	710	313	18	154	119	11	14	18	725
S DAK	4,950	2,030	477	2,215	470	7	88	218	4,889
TENN	3,300	1,350	29	1,097	284	13	66	118	3,180
TEX	18,600	6,000	2,500	8,091	667	42	380	320	19,680
UTAH	900	390	60	262	111	4	16	30	987
VT	336	187	8	83	78	3	5	16	346
VA	1,809	700	7	467	297	15	29	42	1,675
WASH	1,420	527	155	415	131	74	27	89	1,375
W VA	540	253	4	94	92	26	14	14	588
WIS	4,640	2,100	99	923	944	37	88	288	4,858
WYO	1,690	760	250	788	228	8	24	75	1,680
U S	132,029	50,143	20,045	54,315	12,239	750	2,296	4,596	127,980

1/ BALANCE SHEET ESTIMATES BY STATES; THE SUM OF INVENTORY JAN 1, 1975, CALF CROP AND INSHIPMENTS IS EQUAL TO THE SUM OF MARKETINGS, FARM SLAUGHTER, DEATHS AND INVENTORY JAN 1, 1976.  
 2/ INCLUDES CUSTOM SLAUGHTER FOR USE ON FARMS WHERE PRODUCED, STATE OUTFITMENTS, BUT EXCLUDES INTERFARM SALES WITHIN THE STATE.  
 3/ EXCLUDES CUSTOM SLAUGHTER FOR FARMERS AT COMMERCIAL ESTABLISHMENTS.

CATTLE AND CALVES:  
PRODUCTION AND INCOME 1975

STATE	PRODUCTION 1/	MARKETINGS 2/	AVERAGE PRICE PER 100 POUNDS		VALUE OF PRODUCTION	CASH RECEIPTS 3/	VALUE OF HOME CONSUMPTION	GROSS INCOME
			CATTLE	CALVES				
	1000 LBS	1000 LBS	DOLS	DOLS	1000 DOLS	1000 DOLS	1000 DOLS	1000 DOLS
ALA	733,115	617,300	22.20	21.80	162,084	136,551	11,211	147,742
ALAS	791	876	34.80	35.00	275	305	139	444
AHIZ	587,915	1,044,375	37.30	28.40	215,271	386,215	1,584	387,799
AHP	640,280	416,510	25.90	24.10	168,170	208,130	6,330	214,460
CALIF	1,853,800	3,065,235	36.30	28.20	664,438	1,101,278	53,462	1,154,740
COLOR	1,644,740	2,715,175	39.80	30.40	643,260	1,075,688	11,406	1,087,094
CONN	36,610	35,295	21.90	25.30	6,805	7,422	333	8,155
DEL	9,685	7,840	27.40	33.20	2,695	2,208	466	2,674
FLA	700,120	754,130	25.10	23.30	171,962	185,639	6,544	192,183
GA	505,570	506,450	22.80	24.00	117,241	117,309	6,386	123,695
HAW	54,630	50,160	34.70	34.00	18,961	17,412	1,180	18,592
IDAHO	641,275	942,647	35.20	28.00	230,747	328,534	5,181	331,715
ILL	980,285	1,244,175	38.40	31.40	374,960	443,925	20,320	504,245
IND	655,985	635,000	35.40	29.90	232,009	224,778	19,411	246,189
IOWA	2,601,220	4,212,090	36.80	29.30	954,382	1,548,608	13,678	1,562,286
KANS	2,393,795	3,724,395	29.80	24.40	714,807	1,110,440	7,145	1,117,605
KY	838,300	1,094,930	27.40	27.00	228,431	299,261	10,740	319,021
LA	444,970	453,930	21.60	25.30	113,472	108,067	3,349	109,416
MAINE	31,880	27,812	22.40	24.20	7,208	6,292	925	7,217
MD	110,735	116,127	27.40	33.20	31,616	33,197	1,412	34,609
MASS	35,040	37,820	22.70	23.90	7,976	8,406	488	8,894
MICH	476,385	525,538	33.90	30.40	159,569	175,714	10,235	185,949
MINN	1,469,865	1,866,140	31.10	25.80	455,978	578,661	22,233	600,894
MISS	684,900	847,972	22.10	24.00	155,394	191,389	7,256	198,645
MO	2,072,195	2,100,095	31.10	26.90	638,460	647,317	36,435	683,752
MONT	943,050	1,140,460	29.50	30.00	287,422	339,916	7,613	347,529
NEBR	2,694,990	4,221,670	35.70	30.10	960,911	1,503,496	6,681	1,510,177
NEV	190,220	224,608	31.20	28.70	57,992	68,812	1,056	69,868
N H	20,110	19,178	21.90	24.30	4,449	4,245	390	4,635
N J	28,430	36,000	23.40	34.80	7,333	9,135	842	9,977
N MEX	542,460	1,200,900	39.30	27.40	213,274	464,691	4,794	471,487
N Y	379,730	333,678	22.10	26.20	84,868	74,464	9,039	85,503
N C	260,570	234,039	23.00	27.40	62,207	56,595	5,427	62,022
N DAK	906,530	1,086,844	30.20	29.40	272,863	329,991	6,902	336,893
OHIO	688,720	851,760	35.30	30.10	243,527	301,401	10,721	312,122
ORLA	2,065,120	2,925,275	30.00	27.90	621,314	873,872	18,079	891,951
OREG	499,190	632,044	32.20	25.40	154,603	197,044	10,615	207,659
PA	423,730	449,015	31.30	35.40	134,580	142,495	10,120	152,624
N I	2,910	2,998	22.20	24.50	653	673	35	708
S C	169,900	163,790	22.60	20.90	37,412	36,179	3,033	39,212
S DAK	1,735,370	2,360,800	34.70	28.70	593,846	808,200	7,068	815,268
TENN	974,335	1,048,812	23.50	27.70	231,774	255,170	4,709	259,879
TEX	5,076,150	7,203,200	30.30	24.80	1,527,163	2,166,882	17,836	2,184,718
UTAH	247,720	281,034	27.10	27.20	72,597	76,200	1,954	78,154
VT	92,075	89,241	21.60	23.20	20,027	19,385	609	20,194
VA	463,520	516,066	25.40	29.20	120,135	134,962	7,328	142,290
WASH	416,780	481,220	32.00	27.20	131,585	151,767	21,594	173,363
W VA	140,150	95,430	22.40	27.40	32,406	22,369	6,487	29,056
WIS	1,032,050	1,033,770	24.90	31.40	266,954	268,029	28,761	296,790
WYO	531,330	738,570	31.10	32.50	166,010	230,858	5,955	236,713
U S	40,908,604	54,871,256	32.20	27.20	12,804,719	17,520,174	458,250	17,978,424

1/ ADJUSTMENTS MADE FOR CHANGES IN INVENTORY AND FOR INSHIPMENTS.  
2/ EXCLUDES CUSTOM SLAUGHTER FOR USE ON FARMS WHERE PRODUCED AND INTERFARM SALES WITHIN THE STATE.  
3/ RECEIPTS FROM MARKETINGS AND SALE OF FARM SLAUGHTER.

CATTLE AND CALVES:  
INVENTORY, SUPPLY AND DISPOSITION 1976 1/

STATE	INVENTORY	CALF	INSHIP-	MARKETINGS		FARM SLAUGHTER	DEATHS		INVENTORY
	JAN 1 1976	CROP	MENTS	2/		3/	CATTLE	CALVES	JAN 1 1977
	1000 HD	1000 HD	1000 HD	CATTLE	CALVES	CATTLE & CALVES	CATTLE	CALVES	1000 HD
ALA	2,050	1,050	10	1,091	322	15	57	65	2,360
ALAS	0.6	3.3	0.3	0.5	0.3	0.9	1.8	0.9	8
ARIZ	1,288	315	628	1,042	71	3	20	22	1,868
ARK	2,388	1,110	0	531	339	14	50	70	2,500
CALIF	3,089	1,610	1,770	2,917	410	68	65	170	4,750
COLO	3,250	800	2,000	2,820	150	8	52	65	3,030
CONN	118	53	6	29	23	1	2	4	110
DEL	33	14	0	6	6	1	1	2	31
FLA	2,928	1,178	65	568	649	11	55	52	2,800
GA	2,370	910	20	463	426	16	45	50	2,300
HAW	245	74	1	62	0	2	5	11	240
IDAH0	1,875	730	225	652	152	14	35	75	1,900
ILL	3,408	980	782	1,449	173	10	35	65	3,200
IND	2,228	740	178	851	58	25	30	59	2,125
IOWA	7,509	2,180	2,800	4,468	134	18	70	140	7,650
KANS	6,450	1,670	2,650	4,108	54	6	65	115	6,460
KY	3,450	1,480	140	948	632	15	50	95	3,300
LA	1,880	810	12	516	387	19	40	40	1,700
MAINE	140	62	1	34	27	3	2	4	133
MD	440	165	9	110	121	3	5	15	360
MASS	107	58	7	34	22	1	2	6	104
MICH	1,850	595	105	505	58	12	30	75	1,570
MINN	4,430	1,450	613	1,898	221	29	70	175	4,000
MISS	2,723	1,230	20	560	561	12	60	90	2,678
MO	6,600	2,708	40	2,044	614	40	70	150	6,400
MONY	3,150	1,578	135	1,096	643	14	35	65	2,980
NEBR	6,550	2,028	2,460	4,185	120	5	70	130	6,450
NEV	651	248	44	185	130	5	11	13	611
N H	72	34	2	17	15	1	1	2	72
N J	318	52	6	19	29	1	2	3	114
N MEX	1,650	590	755	1,309	111	10	25	40	1,500
N Y	1,915	945	24	244	623	18	34	65	1,860
N C	1,170	490	9	246	235	23	20	65	1,080
N DAK	2,380	1,190	54	887	410	9	21	62	2,238
OHIO	2,305	780	268	835	153	13	29	70	2,250
OKLA	6,400	2,158	1,415	3,330	345	13	92	115	5,650
OREG	1,800	450	126	456	200	19	24	55	1,520
PA	1,940	798	95	629	317	24	30	65	1,940
R I	12	5	0.3	4.5	2.1	0.1	0.2	0.4	10
S C	788	329	29	186	142	11	9	15	750
S DAK	4,599	1,888	480	2,554	633	4	35	100	3,650
TENN	3,184	1,238	42	879	565	12	44	80	3,000
TEX	13,669	5,860	2,908	7,397	559	30	205	310	13,600
UTAH	987	374	56	299	121	6	15	30	880
VT	344	103	13	101	82	3	4	12	328
VA	1,675	635	9	352	249	10	23	45	1,620
WASH	1,275	509	264	584	126	78	24	55	1,350
W VA	568	253	3	92	107	28	15	20	549
WIS	4,556	2,865	88	987	1,097	26	70	240	4,275
WYD	1,566	795	345	745	220	6	19	40	1,600
U S	187,000	47,304	21,238	95,394	12,485	722	1,821	3,369	122,810

1/ BALANCE SHEET ESTIMATES BY STATES; THE SUM OF INVENTORY JAN 1, 1976, CALF CROP AND INSHIPMENTS IS EQUAL TO THE SUM OF MARKETINGS, FARM SLAUGHTER, DEATHS AND INVENTORY JAN 1, 1977.  
2/ INCLUDES CUSTOM SLAUGHTER FOR USE ON FARMS WHERE PRODUCED, STATE OUTSHIPMENTS, BUT EXCLUDES INTERFARM SALES WITHIN THE STATE.  
3/ EXCLUDES CUSTOM SLAUGHTER FOR FARMS AT COMMERCIAL ESTABLISHMENTS.

CATTLE AND CALVES:  
PRODUCTION AND INCOME 1976

STATE	PRODUCTION 1/	MARKETINGS 2/	AVERAGE PRICE PER 100 POUNDS		VALUE OF PRODUCTION	CASH RECEIPTS 3/	VALUE OF HOME CONSUMPTION	GROSS INCOME
			CATTLE	CALVES				
			1000 LBS	1000 LBS				
ALA	844,955	1,071,520	28.60	29.20	242,107	307,211	14,580	321,701
ALAS	994	916	45.50	35.00	218	403	205	688
ARIZ	634,795	1,113,358	36.70	34.10	232,529	407,761	1,830	409,291
ARK	643,530	577,870	31.00	31.80	206,850	180,101	7,857	187,958
CALIF	1,828,035	3,092,050	35.60	31.70	645,344	1,094,422	57,829	1,152,251
COLO	1,561,770	3,033,900	38.10	34.80	595,377	1,154,301	6,051	1,144,352
CONN	32,975	35,910	25.40	10.00	8,501	9,259	386	9,645
DEL	6,015	7,000	29.30	38.40	1,904	2,164	498	2,662
FLA	615,340	712,640	28.90	30.20	180,429	208,877	4,896	213,773
GA	475,330	519,010	27.00	30.90	133,901	145,854	6,690	152,244
IA	59,100	59,140	31.30	31.00	18,503	16,511	1,064	19,575
IDAHIO	426,950	736,928	35.80	38.10	223,743	265,069	6,819	271,888
ILL	1,027,045	1,617,145	35.60	35.30	367,618	578,609	19,236	598,645
IND	711,614	413,850	34.50	32.50	245,672	286,401	22,127	302,720
IOWA	2,936,630	4,704,540	35.50	36.10	1,062,430	1,470,265	23,358	1,493,617
KANS	2,579,350	4,252,730	34.40	35.40	887,052	1,443,127	7,947	1,478,174
KY	920,820	1,047,950	31.40	34.60	293,795	334,811	9,075	343,886
LA	517,420	603,630	27.60	34.20	153,039	177,582	7,827	185,409
MAINE	35,100	35,790	25.80	30.20	9,151	9,388	1,321	10,499
MD	112,140	138,567	29.30	38.40	37,836	43,148	1,736	44,964
MASS	33,620	40,230	24.00	28.50	8,793	10,912	589	11,071
MICH	488,290	509,120	33.00	35.40	161,558	168,245	11,668	179,933
MINN	1,531,115	2,090,925	31.60	33.40	483,031	664,297	24,939	689,236
MISS	679,430	678,244	26.80	30.80	191,241	191,412	6,274	197,688
MO	2,075,785	2,138,775	33.30	33.60	691,925	712,924	35,915	748,841
MONT	949,890	1,155,250	31.20	36.30	311,273	373,842	4,462	380,764
NEBR	2,822,590	4,435,390	35.50	39.50	1,001,062	1,576,003	4,213	1,582,216
NEV	175,325	234,517	33.20	34.80	58,960	78,894	2,118	80,712
NH	18,930	19,150	25.30	30.10	4,879	4,934	481	5,387
NJ	30,075	27,140	24.80	37.10	8,978	8,164	1,124	9,292
NM	648,020	1,145,760	36.30	32.40	234,598	421,480	4,133	425,613
NY	305,760	330,168	28.40	34.50	86,251	93,198	9,000	102,198
NC	216,490	257,094	26.90	36.40	62,481	72,983	19,639	83,622
ND	848,930	1,008,290	33.20	37.30	293,813	339,619	7,669	347,288
OHIO	703,040	885,640	34.10	41.20	241,306	297,650	12,386	310,030
ORLA	2,063,790	3,091,400	33.00	35.10	682,639	1,023,397	16,131	1,039,528
OREG	498,865	523,062	32.90	31.90	159,035	171,184	13,032	184,216
PA	450,075	455,788	31.90	42.40	144,805	149,666	15,164	164,832
RI	2,790	4,328	25.50	29.00	710	1,113	48	1,133
SC	186,950	173,720	27.60	29.40	52,082	48,971	3,797	52,768
S DAK	1,716,140	2,703,040	36.10	38.60	621,520	979,478	11,047	990,525
TENN	864,545	932,214	29.50	34.60	260,555	281,047	5,482	286,729
TEX	5,072,106	4,794,630	32.90	33.10	1,669,451	2,236,582	15,594	2,252,176
UTAH	265,810	318,684	29.80	35.10	81,242	97,177	4,295	101,472
VT	100,635	110,343	24.90	29.30	25,305	27,790	1,363	29,153
VA	350,510	409,874	27.30	35.60	104,393	119,380	5,923	129,303
WASH	425,320	545,580	33.90	34.50	144,493	185,261	32,384	217,565
WVA	116,290	91,222	28.20	31.70	31,859	24,974	8,984	33,878
WIS	1,001,630	1,140,250	27.40	37.10	287,543	330,934	22,463	353,897
WYO	536,260	722,150	33.90	39.50	184,422	249,386	3,627	282,983
U S	41,398,356	57,160,433	33.70	34.10	13,626,938	19,293,597	501,630	19,795,227

1/ ADJUSTMENTS MADE FOR CHANGES IN INVENTORY AND FOR INSHIPMENTS.  
 2/ EXCLUDES CUSTOM SLAUGHTER FOR USE ON FARMS WHERE PRODUCED AND INTERFARM SALES WITHIN THE STATE.  
 3/ RECEIPTS FROM MARKETINGS AND SALE OF FARM SLAUGHTER.

CATTLE AND CALVES:  
INVENTORY, SUPPLY AND DISPOSITION 1977 1/

STATE	INVENTORY	CALF	INSHIP-	MARKETINGS		FARM SLAUGHTER	DEATHS		INVENTORY
	JAN 1 1977	CROP	MENTS	2/		3/	CATTLE	CALVES	JAN 1 1978
				CATTLE	CALVES	CATTLE & CALVES	CATTLE	CALVES	
	1000 HD	1000 HD	1000 HD	1000 HD	1000 HD	1000 HD	1000 HD	1000 HD	1000 HD
ALA	2,300	1,020	10	881	254	15	50	80	2,130
ALAS	4	3.2	0.1	0.4	0.2	0.6	1	0.8	4.3
ARIZ	1,005	245	847	935	74	4	27	30	1,135
ARK	2,500	1,070	7	833	467	17	50	90	2,180
CALIF	4,750	1,800	1,500	2,651	434	75	80	180	4,430
COLD	3,030	865	2,558	3,015	78	10	85	85	3,180
CONN	110	51	6	30	20	1	2	6	100
DEL	31	14	0	6	5	1	1	2	30
FLA	2,600	1,135	65	842	852	11	60	85	2,350
GA	2,300	850	11	573	504	12	42	55	1,975
MA	240	74	1	64	1	1	5	10	234
GAHO	1,900	720	249	690	170	14	40	45	1,670
ILL	3,200	910	800	1,841	171	8	40	100	2,650
IND	2,125	720	174	815	54	15	30	40	2,025
IOA	7,858	2,140	3,000	4,542	142	14	90	100	7,600
KANS	6,400	1,550	3,055	4,715	63	7	100	120	6,000
KY	3,300	1,000	140	1,043	484	18	55	140	3,120
LA	1,700	730	10	539	363	12	41	40	1,425
MAINE	133	54	4	30	24	2	2	5	132
MD	360	165	10	80	84	3	5	13	350
MASS	104	52	7	35	20	1	2	4	90
MICH	1,470	570	69	558	60	11	40	90	1,470
MINN	4,000	1,390	732	1,919	231	22	60	190	3,700
MISS	2,670	1,150	20	836	727	12	60	75	2,130
MO	6,400	2,600	40	2,895	640	35	90	180	4,000
MONT	2,440	1,530	115	1,097	698	14	34	100	2,480
NEBR	6,450	2,000	2,600	4,201	130	4	60	155	4,500
NEV	411	250	66	170	117	5	11	17	385
NH	72	34	5	18	14	1	1	3	74
NJ	114	52	4	23	25	1	3	5	113
N MEX	1,500	565	1,124	1,424	131	9	40	40	1,550
NY	1,800	930	17	246	648	15	40	98	1,760
NC	1,080	477	6	237	194	14	20	40	1,050
N DAK	2,235	1,130	64	813	484	14	20	70	2,050
OHIO	2,250	790	266	679	237	14	40	105	2,025
OKLA	5,850	2,100	1,623	3,137	244	12	100	100	5,900
OHIO	1,520	650	47	444	220	28	25	60	1,490
PA	1,540	775	95	447	313	40	35	95	1,900
RI	10	5	0.3	2.5	2.1	0.1	0.2	0.4	10
SC	750	306	37	192	174	4	16	22	490
S DAK	3,850	1,670	753	1,697	280	6	40	125	3,925
TENN	3,000	1,230	35	996	397	17	55	110	2,700
TEX	15,600	5,700	2,200	8,104	530	22	200	340	14,500
UTAH	440	373	54	266	106	7	15	45	464
VT	376	174	19	103	72	2	8	20	334
VA	1,820	600	7	343	201	13	30	40	1,620
WASH	1,350	460	199	424	164	71	20	47	1,275
W VA	549	256	3	87	101	20	14	30	550
WIS	4,275	2,010	85	840	1,054	20	85	270	4,180
WYO	1,440	670	320	1,005	146	5	22	55	1,357
U S	122,810	45,931	23,333	56,378	12,621	700	2,000	4,400	116,375

1/ BALANCE SHEET ESTIMATES BY STATES; THE SUM OF INVENTORY JAN 1, 1977, CALF CROP AND INSHIPMENTS IS EQUAL TO THE SUM OF MARKETINGS, FARM SLAUGHTER, DEATHS AND INVENTORY JAN 1, 1978.  
2/ INCLUDES CUSTOM SLAUGHTER FOR USE ON FARMS WHERE PRODUCED, STATE OUTSHIPMENTS, BUT EXCLUDES INTERFARM SALES WITHIN THE STATE.  
3/ EXCLUDES CUSTOM SLAUGHTER FOR FARMERS AT COMMERCIAL ESTABLISHMENTS.

CATTLE AND CALVES:  
PRODUCTION AND INCOME 1977

STATE	PRODUCTION 1/	MARKETINGS 2/	AVERAGE PRICE PER 100 POUNDS		VALUE OF PRODUCTION	CASH RECEIPTS 3/	VALUE OF HOME CONSUMPTION	GROSS INCOME
			CATTLE	CALVES				
	1000 LBS	1000 LBS	DOLS	DOLS	1000 DOLS	1000 DOLS	1000 DOLS	1000 DOLS
ALA	773,485	670,590	28.40	32.10	223,196	250,853	14,840	265,713
ALAS	1,059	630	49.00	35.00	499	298	180	478
ARIZ	540,755	989,250	37.80	37.50	204,235	373,833	2,124	375,957
ARN	712,200	903,320	31.80	34.00	229,487	291,164	12,191	303,355
CALIF	1,693,920	2,839,080	36.00	33.60	608,994	1,020,005	33,850	1,053,855
COLO	1,445,010	3,207,710	36.90	40.70	641,003	1,248,331	10,287	1,258,618
CONN	32,460	36,220	26.00	38.50	8,496	9,862	395	10,257
DEL	8,475	6,820	29.70	38.40	2,581	2,126	505	2,431
FLA	628,410	905,242	29.40	32.60	192,552	276,873	4,600	281,473
GA	471,820	644,270	28.20	32.10	139,344	188,860	5,313	194,173
IAHAW	54,200	59,310	31.70	40.80	17,245	18,837	539	19,376
IDAH0	631,820	795,148	34.60	39.00	232,547	292,563	5,298	297,861
ILL	1,043,858	1,445,975	38.60	38.70	381,722	610,338	16,603	626,941
IND	706,930	803,197	35.40	36.30	250,051	284,441	14,291	298,732
IOWA	2,885,950	4,823,670	37.20	37.80	1,073,678	1,794,965	28,354	1,822,919
KANS	2,701,240	4,982,810	35.00	39.00	944,175	1,744,887	8,539	1,753,366
KY	899,890	1,064,990	31.60	37.00	290,257	343,081	15,290	358,371
LA	467,730	618,290	28.10	36.10	142,372	185,787	6,961	192,748
MAINE	30,880	30,800	25.80	36.30	8,282	6,241	1,243	9,484
MD	89,675	98,307	29.70	38.00	28,217	30,824	1,756	32,580
MASS	30,240	40,790	26.20	38.20	8,901	10,915	476	11,591
MICH	513,715	601,720	32.80	38.80	168,197	197,987	10,588	208,575
MINN	1,368,370	2,050,885	31.60	38.80	434,334	650,551	17,066	667,617
MISS	448,130	849,640	28.60	36.70	205,334	295,220	7,474	302,694
MO	1,953,445	2,195,440	33.50	36.90	657,733	739,640	31,413	770,873
MONT	880,735	1,189,350	33.70	41.40	313,216	412,620	7,464	420,284
NEBR	2,732,946	4,445,530	37.20	40.30	1,018,644	1,655,349	8,547	1,663,896
NEV	171,535	214,437	35.20	37.80	61,462	76,553	2,265	78,818
NH	19,270	19,900	25.80	36.50	5,167	5,300	511	5,841
NJ	28,800	30,440	26.20	37.90	8,487	8,846	1,100	9,946
N MEX	589,680	1,256,880	38.50	36.70	225,703	482,971	4,527	487,498
NY	290,900	340,336	26.20	37.50	84,312	98,666	7,641	106,307
NC	253,110	248,594	26.70	34.80	71,258	69,809	7,750	77,559
N DAK	785,590	954,500	34.20	40.00	271,330	338,257	7,823	344,080
OHIO	639,855	919,635	34.60	42.00	222,891	321,798	15,194	336,992
OHIO	1,998,835	2,825,550	33.20	38.30	670,295	943,479	14,997	958,476
OREG	489,820	499,380	33.00	34.70	164,140	165,878	17,449	183,347
PA	419,435	496,240	32.00	45.70	139,668	191,373	25,402	176,855
RI	2,400	2,538	28.00	37.60	654	690	28	718
SC	142,830	211,020	27.90	31.60	47,976	61,461	3,878	65,339
S DAK	1,615,940	1,806,870	37.50	40.90	609,825	681,384	9,190	690,564
TENN	784,178	940,178	28.20	37.10	221,293	273,134	13,413	280,547
TEX	5,125,780	7,661,690	33.20	34.70	1,887,864	2,547,265	13,131	2,560,396
UTAH	246,220	295,458	32.60	37.60	82,362	94,943	3,750	98,693
VT	99,015	112,295	25.80	35.00	26,154	29,552	991	30,543
VA	420,510	385,346	27.80	37.00	122,639	113,312	5,534	118,846
WASH	400,065	477,843	34.40	37.20	138,230	165,465	31,573	197,038
W VA	122,445	87,910	27.10	34.50	35,222	25,354	10,142	35,538
WIS	919,740	1,033,960	27.66	41.20	277,129	311,153	17,519	328,672
WYO	512,705	887,945	35.90	42.80	186,135	322,639	3,795	326,434
U S	40,744,629	58,458,393	34.40	34.90	13,977,695	20,225,347	482,340	20,707,687

1/ ADJUSTMENTS MADE FOR CHANGES IN INVENTORY AND FOR INSHIPMENTS.  
2/ EXCLUDES CUSTOM SLAUGHTER FOR USE ON FARMS WHERE PRODUCED AND INTERFARM SALES WITHIN THE STATE.  
3/ RECEIPTS FROM MARKETINGS AND SALE OF FARM SLAUGHTER.



CATTLE AND CALVES:  
INVENTORY, SUPPLY AND DISPOSITION 1978 1/

STATE	INVENTORY	CALF	INSHIP-	MARKETINGS		FARM SLAUGHTER	DEATHS		INVENTORY
	JAN 1 1978	CROP	MENTS	2/		3/	CATTLE	CALVES	JAN 1 1979
				CATTLE	CALVES	CATTLE & CALVES	CATTLE	CALVES	
	1000 HD	1000 HD	1000 HD	1000 HD	1000 HD	1000 HD	1000 HD	1000 HD	1000 HD
ALA	2,130	920	10	880	263	7	40	50	1,020
ALAS	8.3	3.2		0.5	0.2	0.7	0.9	0.5	0.7
ARIZ	1,135	285	1,098	1,157	96	2	35	28	1,200
ARK	2,120	1,070	7	694	371	11	41	80	2,300
CALIF	4,430	1,570	1,915	2,602	293	45	85	190	4,700
COLO	3,140	780	2,628	3,299	43	6	70	80	3,090
CONN	108	49	4	30	20	2	2	5	102
DEL	30	13	0	5	4	1	1	2	38
FLA	2,350	1,062	74	478	711	10	50	57	2,100
GA	1,975	760	12	514	484	8	34	57	1,692
IA	234	64	1	66	3	2	4	9	215
IDaho	1,870	710	291	698	141	12	30	70	1,900
ILL	2,950	900	480	1,403	114	8	50	105	2,850
IND	2,025	655	186	935	62	12	27	86	1,750
IOWA	7,800	2,030	2,700	4,846	173	11	90	210	7,200
KANS	6,000	1,650	3,230	4,363	51	6	100	150	6,200
KY	3,120	1,270	75	1,183	490	16	45	131	2,600
LA	1,425	689	1	293	389	9	30	44	1,300
MAINE	132	58	9	33	23	2	2	6	133
MD	350	140	9	84	90	3	5	12	340
MASS	99	50	5	23	19	2	2	6	102
MICH	1,476	510	72	602	80	9	38	61	1,250
MINN	3,700	1,280	662	1,590	151	22	60	100	3,650
MISS	2,130	1,010	20	667	400	8	45	80	1,790
MO	6,000	2,450	40	1,967	440	23	70	220	5,550
MONY	2,680	1,443	205	933	625	13	44	106	2,487
NEBR	4,500	1,960	2,800	4,427	125	3	80	175	4,400
NEV	545	245	40	159	107	5	9	15	570
N H	74	34	4	22	15	1	1	2	71
N J	113	50	5	27	28	1	2	6	104
N MEX	1,550	560	1,000	1,382	136	7	45	40	1,500
N Y	1,760	910	17	245	408	10	30	85	1,711
N C	1,050	468	5	228	195	10	25	30	1,020
N DAK	2,050	1,050	60	601	482	13	25	72	1,967
OHIO	2,025	729	150	810	201	11	32	100	1,750
OKLA	5,900	2,000	977	3,069	257	11	90	180	5,380
OREG	1,490	630	108	358	220	30	25	50	1,540
PA	1,900	770	95	442	364	32	35	90	1,840
R I	10	5	0.3	3.5	2.1	0.1	0.2	0.4	0
S C	640	260	39	192	195	7	8	12	575
S DAK	3,925	1,640	504	1,817	304	4	50	140	3,020
TENN	2,740	1,160	41	954	438	5	51	123	2,360
TEX	14,500	5,300	2,900	7,724	500	14	200	300	13,900
UTAH	864	355	50	269	121	4	28	38	820
VT	336	175	9	97	74	2	4	14	320
VA	1,620	685	12	401	258	13	30	60	1,650
WASH	1,275	491	350	481	143	72	23	52	1,375
W VA	550	250	3	98	124	15	10	21	530
WIS	4,100	1,990	100	754	997	21	73	245	4,100
WYO	1,357	642	410	841	116	4	19	49	1,200
U S	114,375	43,818	23,695	54,737	11,938	98	1,940	3,500	110,004

1/ BALANCE SHEET ESTIMATES BY STATES; THE SUM OF INVENTORY JAN 1, 1978, CALF CROP AND INSHIPMENTS IS EQUAL TO THE SUM OF MARKETINGS, FARM SLAUGHTER, DEATHS AND INVENTORY JAN 1, 1979.

2/ INCLUDES CUSTOM SLAUGHTER FOR USE ON FARMS WHERE PRODUCED, STATE OUTSHIPMENTS, BUT EXCLUDES INTERFARM SALES WITHIN THE STATE.

3/ EXCLUDES CUSTOM SLAUGHTER FOR FARMERS AT COMMERCIAL ESTABLISHMENTS.

CATTLE AND CALVES:  
PRODUCTION AND INCOME 1978

STATE	PRODUCTION	MARKETINGS	AVERAGE PRICE		VALUE	CASH	VALUE OF	GROSS
	1/	2/	PER 100 POUNDS	PER 100 POUNDS	OF	RECEIPTS	HOME	INCOME
			CATTLE	CALVES	PRODUCTION	3/	CONSUMPTION	
	1000 LBS	1000 LBS	DOLS	DOLS	1000 DOLS	1000 DOLS	1000 DOLS	1000 DOLS
ALA	731,995	897,210	43.20	56.00	324,334	398,546	11,146	409,692
ALAS	1,454	696	94.70	37.00	765	367	273	640
ARIZ	673,975	1,229,055	50.80	61.60	345,293	629,007	1,438	630,525
ARK	688,665	742,770	50.50	50.80	347,130	374,427	11,654	386,681
CALIF	1,625,600	2,774,207	48.80	51.00	795,009	1,355,067	29,569	1,384,636
COLO	1,854,170	3,506,160	51.00	63.50	945,584	1,790,389	6,067	1,796,456
CONN	30,925	35,800	46.00	57.00	14,481	14,754	1,472	18,226
DEL	7,149	5,440	40.90	57.60	3,077	2,529	695	3,224
FLA	564,169	724,005	43.30	59.40	288,151	377,051	6,374	383,425
GA	341,560	545,790	42.30	55.70	177,157	250,445	6,037	266,722
IA	53,750	62,300	39.10	40.00	21,004	24,370	1,328	25,698
IDAH0	644,320	795,400	49.90	48.80	325,724	407,097	9,588	416,685
ILL	974,545	1,437,535	48.40	54.50	473,207	694,948	14,969	713,999
IND	640,605	926,365	45.80	56.10	292,661	429,326	14,719	441,044
IOWA	2,942,140	5,117,600	50.90	56.50	1,500,038	2,600,296	26,002	2,632,479
KANS	2,548,498	4,608,160	52.10	60.20	1,354,318	2,402,284	10,774	2,413,058
KY	848,590	1,195,440	46.60	56.00	403,621	549,342	19,498	588,840
LA	391,110	394,390	42.90	59.10	164,444	192,762	6,140	208,922
MAINE	32,109	33,510	43.50	52.00	14,213	14,800	2,249	17,045
MD	101,440	104,332	41.40	57.20	43,356	46,519	2,468	48,984
MASS	27,080	26,560	41.90	57.00	11,713	11,405	1,441	12,846
MICH	502,195	688,375	44.20	61.60	221,997	364,805	11,548	318,358
MINN	1,278,425	1,706,285	43.50	58.20	560,417	745,489	23,788	769,397
MISS	539,330	739,810	42.50	59.40	282,172	351,123	7,717	388,840
MO	1,431,665	2,172,507	46.30	57.20	688,123	1,044,096	38,118	1,094,214
MONT	941,620	1,051,010	51.50	70.30	515,321	582,260	18,105	592,365
NEBR	2,648,420	4,770,530	50.10	60.70	1,447,192	2,399,871	6,812	2,401,683
NEV	173,310	199,507	46.40	61.20	88,511	101,374	3,317	104,693
N H	20,830	24,380	40.40	52.50	8,461	10,075	868	10,943
N J	30,435	35,725	36.70	55.70	12,400	14,489	1,941	16,430
N MEX	587,560	1,224,692	52.90	60.40	315,165	632,165	5,369	637,534
N Y	294,350	338,704	36.40	56.20	125,046	140,961	7,151	148,117
N C	255,370	256,934	39.90	55.00	109,695	110,224	4,730	114,924
N DAK	677,790	731,930	48.40	60.10	343,066	372,445	13,228	385,673
OHIO	548,325	863,935	48.00	60.20	285,184	419,450	17,633	437,083
OKLA	1,941,070	2,840,420	49.60	60.30	980,910	1,420,562	20,082	1,440,644
OREG	467,995	433,210	46.70	53.50	223,457	207,487	26,877	234,364
PA	444,365	478,842	43.90	64.30	213,619	218,965	48,003	266,968
R I	2,517	3,458	44.00	57.60	1,141	1,555	47	1,602
S C	162,665	250,796	42.70	55.00	78,727	117,033	4,034	122,767
S DAK	1,612,700	1,995,140	49.40	64.90	808,685	998,888	12,693	1,011,477
TENN	712,060	922,290	41.00	57.80	297,141	391,050	9,038	390,088
TEX	5,178,490	7,383,800	47.70	60.10	2,483,480	3,511,779	14,224	3,526,003
UTAH	204,430	327,650	47.60	58.70	128,972	168,743	3,674	165,067
VT	93,985	104,485	40.40	56.00	39,028	44,030	1,951	45,981
VA	441,320	461,588	40.60	60.40	194,858	204,931	6,997	211,928
WASH	429,120	512,035	47.40	54.90	204,426	245,467	40,118	285,585
W VA	116,540	110,990	41.10	57.90	52,797	59,156	8,299	67,455
WIS	979,825	978,955	38.90	57.10	416,088	418,214	25,971	441,189
WYO	518,410	740,240	54.70	71.70	290,964	418,503	5,525	418,628
U S	39,971,171	57,455,760	47.50	59.10	19,553,149	28,248,127	948,081	28,813,208

1/ ADJUSTMENTS MADE FOR CHANGES IN INVENTORY AND FOR RESHIPMENTS.  
2/ EXCLUDES CUSTOM SLAUGHTER FOR USE ON FARMS WHERE PRODUCED AND INTERFARM SALES WITHIN THE STATE.  
3/ RECEIPTS FROM MARKETINGS AND SALE OF FARM SLAUGHTER.

HOGS AND PIGS:  
INVENTORY, SUPPLY AND DISPOSITION 1975 1/

STATE	INVENTORY	PIG CROP		INSHIP-	MARKETINGS	FARM	DEATHS	INVENTORY
	DEC 1 1974	DEC - MAY	JUN - NOV	MENTS	2/	3/		DEC 1 1975
	1000 HD	1000 HD	1000 HD	1000 HD	1000 HD	1000 HD	1000 HD	1000 HD
ALA	780	547	552	50	1,119	50	80	680
ALAB	1.2	0.4	0.4	0	0.1	0.9	0.2	0.8
ARIZ	99	83	76	19	170	2	8	97
ARK	270	221	315	11	437	26	52	302
CALIF	124	96	107	36	193	12	20	136
COLO	325	190	215	19	419	10	30	290
CONN	8	5.4	4.4	0	8.7	0.3	0.5	8.3
DEL	48	45	44	7	46	1	7	50
FLA	292	150	141	12	302	13	40	240
GA	1,590	1,030	836	72	1,968	40	180	1,300
HAW	41	36	33	0	60	4	8	56
IDAH0	90	42	35	14	109	4	8	63
ILL	6,500	4,422	3,455	390	9,505	20	642	5,600
IND	4,300	2,385	2,719	579	5,655	18	410	3,900
IOWA	13,400	8,451	8,055	1,000	16,871	35	1,400	12,600
KANS	1,750	1,089	1,191	199	2,442	12	125	1,650
KY	1,100	740	740	115	1,490	75	130	1,000
LA	160	105	98	2	170	20	20	155
MAINE	6.6	4.6	4.6	0	7.6	0.7	0.6	6.9
MD	173	112	139	17	226	7	26	182
MASS	51	43	39	0	78	1	4	50
MICH	715	476	504	35	920	15	95	700
MINN	3,700	2,232	2,353	192	5,067	50	360	3,000
MISS	370	263	203	8	445	45	50	300
MO	3,900	2,372	2,554	8	5,222	62	350	3,200
MONT	204	111	122	37	286	11	12	165
NEBR	3,050	2,014	1,972	340	4,411	15	250	2,700
NEV	11	7	6.5	0.1	14	0.8	0.6	9
N H	9.5	7	7.2	0	14.4	0.3	0.6	8.2
N J	80	33	24	63	106	4	9	81
N MEX	66	39	44	4	89	4	7	53
N Y	115	41	86	2	151	8	15	110
N C	1,890	1,396	1,283	69	2,333	175	230	1,900
N DAK	322	296	250	7	465	19	41	350
OHIO	1,950	1,233	1,299	241	2,794	10	235	1,675
OKLA	310	221	227	19	422	10	45	300
OREG	95	75	79	2	142	5	9	95
PA	590	485	347	8	672	51	87	640
R I	7.8	5.3	5	0	9	0.1	0.7	6.3
S C	480	347	313	0	365	35	60	480
S DAK	1,700	1,242	1,072	44	2,558	10	130	1,400
TENN	880	690	730	20	1,175	95	130	920
TEX	940	542	550	29	1,101	35	65	780
UTAH	64	31	37	2	60	3	4	47
VT	5.1	4.7	3.3	0	7.3	0.5	0.3	5
VA	575	336	476	70	660	57	80	660
WASH	61	43	50	0	75	7	9	63
W VA	35	38	45	6	63	22	9	30
WIS	1,400	1,092	1,159	19	2,360	40	120	1,150
WYO	39	21	18	2	44	2	4	30
U D	58,493	35,530	35,656	3,885	73,627	1,193	5,598	49,267

1/ BALANCE SHEET ESTIMATES BY STATES; THE SUM OF INVENTORY DECEMBER 1, 1974, PIG CROP AND INSHIPMENTS IS EQUAL TO THE SUM OF MARKETINGS, FARM SLAUGHTER, DEATHS AND INVENTORY DECEMBER 1, 1975.  
2/ INCLUDES CUSTOM SLAUGHTER FOR USE ON FARMS WHERE PRODUCED AND STATE DUTSHIPMENTS, BUT EXCLUDES INTERFARM SALES WITHIN THE STATE.  
3/ EXCLUDES CUSTOM SLAUGHTER FOR FARMERS AT COMMERCIAL ESTABLISHMENTS.

HOGS AND PIGS:  
PRODUCTION AND INCOME 1975

STATE	1/ PRODUCTION	2/ MARKETINGS	AVERAGE PRICE PER 100 POUNDS	VALUE OF PRODUCTION 3/	CASH RECEIPTS 4/	VALUE OF HOME CONSUMPTION	GROSS INCOME
	1000 LBS	1000 LBS	DBLS	1000 DBLS	1000 DOLS	1000 DOLS	1000 DOLS
ALA	243,016	234,485	44.60	110,113	107,096	8,028	115,124
ALAB	147	142	41.50	61	76	7	83
ARIZ	37,033	38,072	49.50	18,054	18,781	477	19,258
ARK	47,837	78,221	44.60	40,341	36,179	3,896	40,075
CALIF	46,913	42,626	44.00	20,735	19,237	1,561	20,798
COLOR	95,369	89,427	46.00	43,607	41,093	3,049	45,742
CONN	2,211	1,991	45.00	994	896	65	961
DEL	17,406	17,720	46.90	8,211	8,471	244	8,715
FLA	56,914	60,157	44.70	25,440	26,996	1,546	28,542
GA	416,394	415,190	43.90	182,057	182,425	16,506	198,931
IA	11,194	10,547	58.30	6,526	6,149	515	6,664
IDAH	19,868	22,330	48.70	8,719	10,103	1,234	11,337
ILL	2,317,706	2,437,252	45.60	1,055,512	1,118,193	6,458	1,124,651
IND	1,535,455	1,391,038	46.90	616,109	653,292	6,848	660,140
IOWA	3,947,795	4,061,561	46.20	1,816,340	1,888,300	15,947	1,904,147
KANS	562,405	566,343	45.00	258,799	263,975	6,480	270,455
KY	327,900	294,635	47.20	156,220	141,648	18,833	160,481
LA	43,244	36,246	42.90	18,562	15,583	3,063	18,646
MAINE	2,475	1,739	45.00	1,113	782	276	1,058
MD	43,585	40,292	46.90	21,324	20,052	1,479	21,531
MASS	14,100	16,260	45.00	8,595	8,217	347	8,564
MICH	204,990	206,092	46.00	100,889	99,661	4,212	103,873
MINN	1,091,246	1,153,702	46.30	510,062	542,935	14,996	557,931
MISS	96,308	90,520	45.60	45,259	41,773	8,038	49,811
MO	1,129,429	1,168,773	46.60	537,600	556,155	17,797	573,952
MONT	60,655	62,674	44.50	26,887	27,990	2,099	30,089
NEBR	990,251	1,018,061	47.10	461,556	480,191	6,782	486,973
NEV	3,066	3,006	47.70	1,475	1,446	132	1,580
NH	3,479	3,367	45.00	1,565	1,515	123	1,638
NJ	14,917	21,280	38.60	6,015	8,214	1,351	9,565
N MEX	14,357	19,841	47.80	9,244	9,525	654	10,183
NY	34,676	31,942	45.00	15,616	14,429	1,822	16,251
NC	565,596	496,023	46.40	262,194	231,940	28,501	260,449
N DAK	96,017	86,898	43.70	43,856	39,086	2,927	42,013
OHIO	626,345	644,642	46.70	289,663	303,546	3,367	306,913
OKLA	100,489	95,600	46.50	46,819	43,869	5,348	49,217
OREG	34,489	31,473	45.00	15,503	14,179	1,266	15,445
PA	175,491	141,407	46.10	80,843	65,235	12,061	77,296
R I	2,365	2,266	45.00	1,073	1,020	24	1,044
S C	140,305	128,783	45.00	63,137	57,952	4,890	62,842
S DAK	550,373	583,608	46.50	257,763	274,499	3,371	277,870
TENN	262,454	220,871	45.90	125,270	106,240	16,314	124,562
TEX	271,531	275,901	43.70	118,844	121,036	6,975	128,011
UTAH	14,495	15,476	43.30	6,481	5,886	549	6,395
VT	2,403	1,941	45.00	1,081	873	197	1,070
VA	171,095	141,177	45.50	77,508	64,846	7,988	72,834
WASH	18,267	15,043	45.60	8,390	6,921	1,379	8,300
W VA	20,389	12,987	45.40	9,181	5,955	3,636	9,571
WIS	438,429	451,595	46.00	210,931	217,321	14,184	227,505
WYO	8,452	8,786	43.40	3,919	3,083	612	4,495
U S	16,835,174	17,035,537	46.10	7,755,699	7,916,425	267,156	8,183,583

1/ ADJUSTMENTS MADE FOR CHANGES IN INVENTORY AND FOR INSHIPMENTS.  
2/ EXCLUDES CUSTOM SLAUGHTER FOR USE ON FARMS WHERE PRODUCED AND INTERFARM SALES WITHIN THE STATE.  
3/ INCLUDES ALLOWANCE FOR HIGHER AVERAGE PRICE OF STATE INSHIPMENTS AND OUTSHIPMENTS OF FEEDER PIGS.  
4/ RECEIPTS FROM MARKETINGS AND SALE OF FARM SLAUGHTER. INCLUDES ALLOWANCE FOR HIGHER AVERAGE PRICE OF STATE OUTSHIPMENTS OF FEEDER PIGS.

HOGS AND PIGS:  
INVENTORY, SUPPLY AND DISPOSITION 1976 1/

STATE	INVENTORY	PIG CROP		INSHIP-	MARKETINGS	FARM	DEATHS	INVENTORY
	DEC 1 1975	DEC - MAY	JUN - NOV	MENTS	2/	SLAUGHTER	3/	DEC 1 1976
	1000 HD	1000 HD	1000 HD	1000 HD	1000 HD	1000 HD	1000 HD	1000 HD
ALA	600	540	555	00	1,038	42	113	630
ALAS	0.4	0.6	0.0	0	0.4	0.4	0.2	0.8
AK17	47	44	86	1	158	1	9	94
AKX	307	345	398	7	573	26	56	395
CALIF	138	105	101	16	185	22	72	133
COLO	290	226	229	8	439	7	26	260
CONN	0.1	0.5	0.6	0	10.3	0.7	0.4	0
DEL	40	42	44	7	64	1	0	50
FLA	240	144	195	15	244	9	36	320
GA	1,300	1,084	1,049	102	1,700	75	200	1,400
HAW	94	50	30	0	58	4	6	60
IDAH0	60	31	20	23	84	4	7	45
ILL	5,600	4,463	5,041	446	9,030	20	650	6,400
IND	3,900	3,048	3,149	572	6,107	20	442	4,100
IOWA	12,000	10,434	10,077	1,070	18,331	50	1,500	10,200
KAN	1,650	1,403	1,540	229	2,617	11	150	1,450
KY	1,000	633	867	100	1,500	40	140	1,080
LA	155	97	104	0	170	20	20	150
MAINE	0.9	5.4	9.2	0	7.8	0.8	0.8	7.1
MD	182	128	148	19	252	10	25	190
MASS	50	45	57	0	75	1	6	50
MICH	700	615	626	33	1,030	14	102	720
MINN	3,000	2,644	3,054	252	4,981	50	380	3,600
MISS	300	249	252	4	298	47	55	405
MO	3,200	2,914	3,076	8	5,038	50	360	3,750
MONT	165	126	117	71	270	8	15	188
NEBR	2,700	2,482	2,416	904	4,576	18	290	3,100
NEV	0	0.3	5.9	0.1	11.8	0.0	0.7	4
NH	0.2	0	7.7	0	11.7	0.3	1.9	8.5
NJ	61	20	22	61	98	4	11	75
NMEX	53	64	61	4	103	3	6	73
NY	110	83	94	2	148	8	17	120
NC	1,400	1,440	1,440	67	2,750	155	260	1,440
NDAK	350	300	233	11	506	16	40	330
OHIO	1,675	1,475	1,491	250	2,786	20	225	1,900
OKLA	300	227	252	14	416	12	40	330
OMEG	95	65	87	1	138	5	10	95
PA	600	570	440	0	774	56	100	700
RI	0.5	4.4	4.6	0	0.1	0.1	2.4	8.7
SC	461	348	313	0	579	37	53	470
S DAK	1,400	1,410	1,301	72	2,523	10	140	1,500
TEX	420	442	886	25	1,508	105	140	1,016
TEX	780	688	627	34	1,164	30	70	850
UTAH	47	35	42	2	67	4	4	51
VT	5	4.4	4.5	0	7.0	0.5	0.3	6
VA	660	360	419	126	772	52	90	650
WASH	64	51	46	0	61	10	9	62
WVA	50	45	44	0	61	23	9	55
WIS	1,150	1,244	1,377	20	2,374	37	130	1,250
WYO	30	24	22	2	40	2	4	32
USA	49,267	42,177	42,218	4,191	75,747	1,181	5,992	50,434

1/ BALANCE SHEET ESTIMATES BY STATES; THE SUM OF INVENTORY DECEMBER 1, 1975, PIG CROP AND INSHIPMENTS IS EQUAL TO THE SUM OF MARKETINGS, FARM SLAUGHTER, DEATHS AND INVENTORY DECEMBER 1, 1976.  
2/ INCLUDES CUSTOM SLAUGHTER FOR USE ON FARMS WHERE PRODUCED AND STATE DISSHIPMENTS, BUT EXCLUDES INTERFARM SALES WITHIN THE STATE.  
3/ EXCLUDES CUSTOM SLAUGHTER FOR FARMERS AT COMMERCIAL ESTABLISHMENTS.

HOGS AND PIGS:  
PRODUCTION AND INCOME 1976

STATE	PRODUCTION 1/ 1000 LBS	MARKETINGS 2/ 1000 LBS	AVERAGE PRICE OF 100 POUNDS	VALUE OF PRODUCTION 3/ 1000 DOLS	CASH RECEIPTS 4/ 1000 DOLS	VALUE OF HOME CONSUMPTION	GROSS INCOME
ALA	220,472	211,807	43.80	97,964	94,632	9,666	104,476
ALAB	166	152	60.00	99	91	5	96
ARIZ	36,688	35,616	45.30	16,619	16,150	219	16,369
ARK	124,817	100,819	43.00	55,977	45,944	5,031	50,975
CALIF	44,355	40,894	45.90	20,305	18,854	2,714	21,569
COLOR	99,211	96,251	43.30	42,979	41,745	2,541	44,286
CONN	2,642	2,270	45.00	1,146	1,022	166	1,148
DEL	15,025	14,670	44.20	6,911	6,866	221	7,057
FLA	57,642	96,175	42.40	24,403	19,671	1,202	20,873
GA	424,799	344,935	42.70	180,119	155,936	12,041	167,977
IA	11,593	10,374	64.30	7,454	6,670	594	7,268
IDAHO	16,695	17,140	43.70	7,090	7,510	1,206	8,716
ILL	2,369,718	2,271,460	43.00	1,011,267	978,400	5,659	984,059
IND	1,500,624	1,504,612	44.40	656,133	669,400	4,496	674,098
IOWA	4,446,708	4,318,046	43.00	1,913,134	1,859,990	26,123	1,886,113
KANS	643,220	616,275	44.10	279,756	272,764	5,821	278,585
KY	330,719	299,500	44.10	148,538	136,116	14,821	150,934
LA	41,905	36,500	42.30	17,737	15,496	2,910	18,406
MAINE	2,517	1,831	45.00	1,132	624	315	1,139
MD	47,715	42,865	44.20	21,932	20,003	1,991	21,994
MASS	17,091	17,378	45.00	8,050	7,820	354	8,174
MICH	243,022	231,460	44.70	104,630	103,971	3,943	107,914
MINN	1,165,450	1,068,626	42.60	498,413	462,225	19,596	481,821
MISS	86,592	56,267	43.50	38,775	24,795	7,974	32,769
MO	1,181,563	1,070,425	44.20	535,642	486,773	14,586	501,359
MONT	61,914	58,720	42.80	25,957	25,201	1,678	26,879
NEBR	1,040,112	1,004,425	42.40	434,544	427,161	7,334	434,495
NEV	2,666	2,524	46.90	1,205	1,181	124	1,265
N H	3,057	2,709	45.00	1,375	1,219	123	1,342
N J	16,521	18,040	44.10	5,542	7,973	1,985	9,958
N MEX	26,679	23,375	45.40	12,107	10,622	439	11,061
N Y	37,130	31,222	44.40	16,497	15,696	1,747	15,695
N C	639,446	588,373	44.50	284,974	263,374	23,279	286,653
N DAK	96,772	95,240	42.00	41,812	41,329	2,369	43,698
OHIO	669,026	647,901	43.90	289,760	284,753	4,842	289,395
OKLA	108,010	90,913	43.10	46,630	39,473	4,756	44,231
OREG	32,860	30,244	45.50	14,943	13,763	1,177	14,940
PA	185,459	168,690	44.30	82,186	74,756	6,643	83,401
R I	1,665	1,666	45.00	769	741	26	767
S C	141,700	131,993	42.50	60,222	56,697	4,278	60,975
S DAK	556,779	549,150	42.80	241,578	239,428	7,103	242,531
TENN	352,776	279,963	42.90	156,015	125,177	27,927	152,204
TEX	286,053	264,088	41.50	118,831	112,256	5,331	117,587
UTAH	17,159	13,969	42.90	7,355	5,999	1,270	7,269
VT	2,615	2,094	45.00	1,176	942	205	1,177
VA	171,332	161,797	43.90	75,015	71,183	4,309	79,492
WASH	21,031	16,067	45.80	9,641	7,754	1,759	9,493
W VA	20,890	11,219	44.10	4,199	4,985	4,203	9,186
WIS	463,570	451,209	42.50	214,656	201,284	9,374	210,660
WYO	9,764	8,412	41.40	4,046	3,516	344	3,905
U S	18,160,337	17,137,984	43.30	7,856,375	7,487,676	268,802	7,756,478

- 1/ ADJUSTMENTS MADE FOR CHANGES IN INVENTORY AND FOR INSHIPMENTS.  
2/ EXCLUDES CUSTOM SLAUGHTER FOR USE ON FARMS WHERE PRODUCED AND INTERFARM SALES WITHIN THE STATE.  
3/ INCLUDES ALLOWANCE FOR HIGHER AVERAGE PRICE OF STATE INSHIPMENTS AND OUTSHIPMENTS OF FEEDER PIGS.  
4/ RECEIPTS FROM MARKETINGS AND SALE OF FARM SLAUGHTER. INCLUDES ALLOWANCE FOR HIGHER AVERAGE PRICE OF STATE OUTSHIPMENTS OF FEEDER PIGS.

HOGS AND PIGS:  
INVENTORY, SUPPLY AND DISPOSITION 1977 1/

STATE	INVENTORY	PIG CROP		INSHIP-	MARKETINGS	FARM	DEATHS	INVENTORY
	DEC 1 1976	DEC - MAY	JUN - NOV	MENTS	2/	3/		DEC 1 1977
	1000 HD	1000 HD	1000 HD	1000 HD	1000 HD	1000 HD	1000 HD	1000 HD
ALA	830	536	540	90	956	40	100	650
ALAB	0.4	1	0.7	0	0.5	0.8	0.2	1
AMIT	99	94	87	1	169	2	8	102
ARK	395	308	363	4	609	25	60	400
CALIF	133	105	125	22	185	20	20	160
COLD	280	223	241	14	394	7	37	320
CONN	9	7.5	7	0	12.1	0.6	0.7	9.9
DEL	50	67	55	7	90	1	8	60
FLA	320	261	215	11	377	10	40	320
GA	1,600	1,137	1,138	88	1,938	85	220	1,720
HA	60	39	37	0	63	3	8	62
IDAH	45	43	37	11	69	3	4	60
ILL	6,400	4,618	4,812	494	9,505	19	700	6,180
IND	4,100	2,711	2,476	599	5,436	16	330	4,100
IOWA	14,200	11,043	10,296	1,300	20,279	60	2,000	14,500
KANS	1,850	1,655	1,465	233	3,077	13	133	2,000
KY	1,080	818	966	75	1,544	75	160	1,140
LA	150	110	105	3	166	21	21	160
MAINE	7.1	5.4	5.8	0	9.5	0.8	0.8	7.2
MD	140	133	151	17	255	10	26	200
MASS	50	35	43	0	61	1	6	60
MICH	720	540	482	47	1,001	16	130	640
MINN	3,600	3,105	3,393	219	5,631	51	435	4,000
MISS	405	240	260	9	434	45	70	420
MO	3,750	3,243	3,288	8	6,146	53	390	3,700
MONT	146	143	144	42	285	6	11	211
NEBR	3,100	2,514	2,456	370	5,007	13	270	3,150
NEV	8	7.7	7.5	0.1	12.7	0.9	0.7	9
NH	8.5	4.9	7.9	0	10.4	0.4	1	9.5
NJ	75	26	21	60	86	5	17	74
NMEX	73	48	44	5	99	4	7	60
NY	120	94	107	2	160	9	21	125
NC	1,940	1,542	1,633	85	2,500	120	240	2,300
NDAK	330	248	207	16	416	15	90	320
OHIO	1,900	1,275	1,396	226	2,756	21	270	1,750
OKLA	330	242	252	22	459	12	45	330
OREG	95	79	90	1	149	6	10	100
PA	700	524	488	0	742	66	120	790
RI	8.7	3.9	6.5	0	8.7	0.1	0.8	9.5
SC	470	348	352	0	570	30	50	520
S DAK	1,500	1,409	1,335	65	2,589	10	130	1,580
TENN	1,010	966	973	30	1,524	95	180	1,180
TEX	850	646	661	11	1,163	25	90	890
UTAH	51	46	31	2	80	3	5	42
VT	6	5	5.7	0	8.8	0.5	0.4	7
VA	650	374	355	88	657	55	105	650
WASH	62	57	56	0	88	11	8	66
WVA	55	43	49	6	64	17	10	60
WIS	1,250	1,256	1,474	22	2,445	39	140	1,378
WYO	32	19	22	4	40	2	3	32
U S	54,934	42,460	43,202	4,258	80,939	1,144	4,733	56,539

1/ BALANCE SHEET ESTIMATES BY STATES; THE SUM OF INVENTORY DECEMBER 1, 1976, PIG CROP AND INSHIPMENTS IS EQUAL TO THE SUM OF MARKETINGS, FARM SLAUGHTER, DEATHS AND INVENTORY DECEMBER 1, 1977.  
 2/ INCLUDES CUSTOM SLAUGHTER FOR USE ON FARMS WHERE PRODUCED AND STATE OUTSHIPMENTS, BUT EXCLUDES INTERFARM SALES WITHIN THE STATE.  
 3/ EXCLUDES CUSTOM SLAUGHTER FOR FARMERS AT COMMERCIAL ESTABLISHMENTS.

HOGS AND PIGS:  
PRODUCTION AND INCOME 1977

STATE	PRODUCTION 1/	MARKETINGS 2/	AVERAGE PRICE PER 100 POUNDS	VALUE OF PRODUCTION 3/	CASH RECEIPTS 4/	VALUE OF HOME CONSUMPTION	GROSS INCOME
	1000 LBS	1000 LBS	DOLS	1000 DOLS	1000 DOLS	1000 DOLS	1000 DOLS
ALA	226,412	209,216	38.30	88,968	42,186	7,611	89,797
ALAS	264	244	62.00	166	151	10	161
ARIZ	39,642	34,070	42.00	16,634	15,989	403	16,392
ARK	116,889	101,625	37.80	46,086	40,713	3,946	44,659
CALIF	46,357	34,142	41.00	18,919	15,759	2,913	18,672
COLOR	92,853	71,118	38.70	35,991	31,564	2,485	34,449
CONN	3,153	2,610	37.00	1,166	466	117	1,053
DEL	19,697	14,205	38.40	7,767	7,242	195	7,427
FLA	74,201	72,270	37.90	28,946	27,511	1,668	29,179
GA	461,044	422,044	37.60	172,568	158,774	9,764	168,543
IA	12,554	11,683	60.40	7,928	7,115	436	7,553
INDIAN	17,394	14,150	38.00	6,517	5,397	767	6,184
ILL	2,365,704	2,394,365	34.20	919,257	941,447	5,251	946,738
IND	1,367,164	1,340,623	40.60	566,311	561,519	4,370	565,889
IOWA	5,630,470	4,955,236	39.40	1,971,340	1,965,183	37,992	2,003,175
KANS	734,745	713,795	40.00	292,202	285,667	4,992	290,659
KY	339,047	308,235	39.10	135,298	124,226	10,264	134,490
LA	42,945	33,881	36.60	15,741	12,437	3,222	15,659
MAINE	3,013	2,549	37.00	1,114	854	259	1,113
MD	49,421	43,720	38.90	20,022	18,061	1,752	19,813
MASS	15,632	14,063	37.00	5,857	5,203	291	5,494
MICH	222,264	223,516	40.50	89,748	91,094	5,244	96,343
MINN	1,355,597	1,256,166	39.10	532,746	494,117	22,025	521,142
MISS	186,541	144,088	39.60	42,456	33,631	6,910	42,541
MO	1,309,478	1,265,682	39.70	535,265	517,675	13,887	551,742
MONT	67,341	63,436	37.50	26,497	23,978	1,250	25,228
NEBR	1,046,667	1,042,088	39.40	422,070	426,984	6,656	433,640
NEV	3,125	2,653	41.10	1,297	1,105	124	1,233
NH	2,678	2,293	37.00	972	844	135	983
NJ	16,434	16,030	38.20	4,991	6,123	1,910	8,033
N MEX	20,520	22,117	40.50	8,267	4,994	453	4,451
NY	41,030	35,355	38.00	15,516	13,450	1,967	15,417
NC	409,464	521,407	39.10	238,611	205,418	20,524	225,946
N DAK	91,711	40,296	38.10	35,117	34,773	2,015	36,788
OHIO	607,022	627,064	39.70	237,720	249,194	4,271	253,415
OKLA	104,763	91,414	39.40	41,374	36,276	5,437	41,713
OREG	34,845	31,130	38.10	13,291	11,678	1,080	12,956
PA	196,090	154,220	39.10	77,469	60,317	10,479	71,296
RI	2,572	2,341	37.00	951	874	21	895
SC	148,114	129,126	38.10	56,432	49,198	4,754	53,952
S DAK	546,185	533,250	39.40	221,238	217,055	3,284	220,339
TENN	352,257	274,275	38.90	141,106	111,173	21,064	132,237
TEX	292,290	272,786	38.00	111,297	103,990	5,444	109,634
UTAH	14,064	17,237	38.60	6,959	6,667	704	7,375
VT	3,233	2,476	37.00	1,196	916	166	1,044
VA	145,326	126,139	38.70	56,048	50,340	9,263	59,603
WASH	22,916	14,510	38.30	8,784	7,105	1,432	8,537
W VA	25,657	18,643	38.50	9,827	7,188	2,592	9,780
WIS	509,866	476,275	38.90	207,104	194,466	6,766	201,232
WYO	4,293	4,552	38.30	3,576	3,362	362	3,724
U S	19,020,900	18,313,705	39.40	7,484,651	7,281,364	262,047	7,543,411

- 1/ ADJUSTMENTS MADE FOR CHANGES IN INVENTORY AND FOR INSHIPMENTS.  
2/ INCLUDES CUSTOM SLAUGHTER FROM USE ON FARMS WHERE PRODUCED AND INTERFARM SALES WITHIN THE STATE.  
3/ INCLUDES ALLOWANCE FOR HIGHER AVERAGE PRICE OF STATE INSHIPMENTS AND OUTSHIPMENTS OF FEEDER PIGS.  
4/ RECEIPTS FROM MARKETINGS AND SALE OF FARM SLAUGHTER, INCLUDES ALLOWANCE FOR HIGHER AVERAGE PRICE OF STATE OUTSHIPMENTS OF FEEDER PIGS.



HUGS AND PIGS:  
INVENTORY, SUPPLY AND DISPOSITION 1978 1/

STATE	INVENTORY	PIG CROP		INSHIP-	MARKETINGS	FARM	DEATHS	INVENTORY
	DEC 1 1977	DEC - MAY	JUN - NOV	MENTS	2/	3/		DEC 1 1978
	1000 HD	1000 HD	1000 HD	1000 HD	1000 HD	1000 HD	1000 HD	1000 HD
ALA	850	556	609	40	995	40	120	700
ALAS	1	1.1	1.2	0	1.2	0.8	0.2	1.1
ARIZ	102	96	120	1	164	2	9	148
ARK	400	419	533	11	712	25	76	950
CALIF	160	124	160	20	234	24	20	190
COLD	320	263	266	12	492	4	30	350
CONN	9.9	8.4	6.1	0	14.3	0.2	0.9	9
DEL	60	35	41	6	83	1	8	50
FLA	320	241	245	5	395	12	44	360
GA	1,720	1,126	1,200	67	2,018	87	230	1,800
MAH	62	37	34	0	71	3	5	94
IDAH0	60	64	61	5	86	2	7	95
ILL	6,100	4,615	5,005	567	9,208	19	710	6,550
IND	4,100	2,931	3,055	550	5,940	16	330	4,250
IOWA	14,500	10,218	10,654	1,650	19,822	50	2,050	15,100
KANS	2,000	1,417	1,513	216	2,974	12	160	2,000
KY	1,100	704	994	50	1,528	70	180	1,190
LA	160	75	74	1	155	20	15	120
MAINE	7.2	4.4	7.2	0	6.2	0.9	0.9	9
MD	200	142	161	13	265	10	26	215
MASS	60	36	43	0	71	1	5	60
MICH	640	546	666	43	821	19	130	925
MINN	4,000	3,754	3,391	271	6,315	35	470	4,100
MISS	200	235	281	4	465	30	65	380
MO	3,700	3,067	3,635	8	5,842	98	420	4,100
MONY	211	173	158	50	336	12	22	222
NEBR	3,150	2,564	2,865	350	4,949	20	310	3,450
NEV	9	8.9	7	0.1	13.2	1	0.4	10
N H	9.5	4.1	7.3	0	11.5	0.5	1	9.4
N J	76	20	25	50	89	4	11	67
N ME	60	47	40	4	92	3	6	50
N Y	125	160	117	2	179	8	17	140
N C	2,300	1,668	1,658	49	2,950	115	240	2,350
N DAK	320	255	230	16	423	16	47	335
OHIO	1,750	1,213	1,601	242	2,307	19	320	2,160
OKLA	330	204	235	30	427	12	45	315
OREG	100	72	92	1	141	5	9	110
PA	790	453	526	0	757	62	130	820
R I	9.5	5.5	6	0	10	0.1	1	9.9
S C	520	338	370	0	618	30	55	525
S DAK	1,580	1,395	1,356	99	2,662	8	140	1,420
TENN	1,180	987	1,152	92	1,821	90	200	1,300
TEX	890	415	641	14	1,190	30	90	850
UTAH	42	34	36	2	59	2	4	49
VT	7	6.4	5	0	9.1	0.6	0.4	6.3
VA	650	400	385	109	719	50	105	670
WASH	68	56	56	0	90	11	4	75
W VA	60	40	39	5	68	17	9	50
WIS	1,375	1,404	1,650	33	2,630	35	150	1,650
WYO	32	17	20	6	40	2	3	30
U S	56,539	42,481	46,031	4,714	81,271	1,086	7,052	60,356

- 1/ BALANCE SHEET ESTIMATES BY STATE; THE SUM OF INVENTORY DECEMBER 1, 1977, PIG CROP AND INSHIPMENTS IS EQUAL TO THE SUM OF MARKETINGS, FARM SLAUGHTER, DEATHS AND INVENTORY DECEMBER 1, 1978.  
2/ INCLUDES CUSTOM SLAUGHTER FOR USE ON FARMS WHERE PRODUCED AND STATE OUTSHIPMENTS, BUT EXCLUDES INTERFARM SALES WITHIN THE STATE.  
3/ EXCLUDES CUSTOM SLAUGHTER FOR FARMERS AT COMMERCIAL ESTABLISHMENTS.

HOGS AND PIGS:  
PRODUCTION AND INCOME 1978

STATE	PRODUCTION 1/	MARKETINGS 2/	AVERAGE PRICE PER 100 POUNDS	VALUE OF PRODUCTION 3/	CASH RECEIPTS 4/	VALUE OF HOME CONSUMPTION	GROSS INCOME
	1000 LBS	1000 LBS	DOLS	1000 DOLS	1000 DOLS	1000 DOLS	1000 DOLS
ALA	219,390	215,975	45.10	109,382	99,897	10,824	110,721
ALAB	363	334	67.00	242	224	10	234
ARIZ	92,654	36,529	50.40	21,606	18,520	293	18,813
ARK	153,665	129,664	46.00	74,242	63,335	4,662	67,997
CALIF	60,731	50,796	48.30	29,288	24,602	2,782	27,384
COLOR	111,925	101,939	46.50	52,229	47,756	4,032	51,788
CONN	3,148	3,231	45.00	1,416	1,454	48	1,502
DEL	14,776	15,555	45.80	6,812	7,315	195	7,510
FLA	89,471	80,618	44.00	39,511	35,640	1,774	37,414
GA	489,730	447,716	44.00	214,430	197,108	11,874	208,962
IA	12,810	13,159	60.50	7,750	7,961	512	8,473
IDAH0	23,427	14,350	44.00	10,459	8,110	607	8,717
ILL	2,418,354	2,385,568	46.40	1,109,083	1,099,032	7,251	1,106,283
IND	1,443,235	1,430,176	46.40	659,165	665,662	4,096	669,760
IOWA	4,935,197	4,854,315	47.00	2,295,099	2,284,333	36,660	2,320,993
KANS	606,245	640,855	47.00	318,285	320,908	6,768	327,676
KY	319,542	301,056	46.20	160,654	143,676	15,647	159,523
LA	45,373	30,750	43.30	15,329	13,391	3,724	17,065
MAINE	2,917	1,840	45.00	1,312	824	354	1,102
MD	53,596	48,723	46.10	25,762	23,400	2,077	25,877
MASS	17,211	16,640	45.00	7,744	7,488	304	7,792
MICH	230,931	181,620	47.60	109,644	87,276	6,105	93,383
MINN	1,442,782	1,397,080	46.70	678,070	663,047	17,260	680,307
MISS	104,604	97,060	46.80	49,290	45,837	6,571	52,406
MO	1,285,071	1,214,335	46.80	627,574	594,731	16,803	611,534
MONT	76,422	76,442	44.80	34,025	34,291	1,561	35,872
NEBR	1,152,652	1,043,455	47.10	536,072	511,694	10,833	522,727
NEV	3,345	2,913	49.10	1,640	1,451	169	1,620
NH	3,248	2,600	45.00	1,461	1,170	205	1,375
NJ	15,784	19,145	44.00	5,605	8,424	774	9,198
N MEX	19,793	20,391	47.40	9,487	9,835	371	10,206
NY	44,766	38,712	44.90	20,079	17,402	1,818	19,220
NC	672,256	619,149	46.70	315,725	291,772	22,425	314,597
N DAK	93,177	85,935	45.30	42,974	40,023	3,407	43,430
NDIA	572,442	534,520	47.50	266,198	254,276	5,414	259,690
OKLA	95,216	85,670	46.50	44,169	40,079	5,750	45,829
OHIO	31,550	28,120	46.30	14,607	13,044	1,146	14,190
PA	140,874	156,444	46.50	88,417	72,717	13,434	86,151
RI	2,458	2,714	45.00	1,286	1,223	24	1,249
SC	158,314	142,654	45.10	70,497	64,337	5,501	69,838
S DAK	589,564	585,858	47.40	283,344	283,721	2,730	286,451
TENN	393,911	344,047	46.70	184,506	168,693	14,914	187,607
TEX	303,134	297,395	43.40	132,794	130,433	4,573	135,006
UTAH	14,791	12,440	45.50	6,690	5,880	464	6,344
VT	2,882	2,555	45.00	1,297	1,150	246	1,396
VA	142,707	145,590	45.50	73,681	66,871	9,428	76,499
WASH	23,685	14,658	48.40	11,463	9,030	2,060	11,090
W VA	25,686	20,446	45.40	11,611	9,290	2,919	12,209
WIS	575,824	517,933	45.90	275,270	250,553	4,386	258,941
WY0	8,344	6,328	44.60	3,726	3,788	430	4,218
U S	19,466,200	18,549,486	46.60	9,065,998	8,753,229	285,238	9,038,467

1/ ADJUSTMENTS HAVE FOR CHANGES IN INVENTORY AND FOR INSHIPMENTS.  
2/ EXCLUDES CUSTOM SLAUGHTER FOR USE ON FARMS WHERE PRODUCED AND INTERFARM SALES WITHIN THE STATE.  
3/ INCLUDES ALLOWANCE FOR HIGHER AVERAGE PRICE OF STATE INSHIPMENTS AND OUTSHIPMENTS OF FEEDER PIGS.  
4/ RECEIPTS FROM MARKETINGS AND SALE OF FARM SLAUGHTER. INCLUDES ALLOWANCE FOR HIGHER AVERAGE PRICE OF STATE OUTSHIPMENTS OF FEEDER PIGS.

SHEEP AND LAMBS:  
INVENTORY, SUPPLY AND DISPOSITION 1975 1/

STATE	INVENTORY	LAMB	INSHIP-	MARKETING		FARM	DEATHS		INVENTORY
	JAN 1 1975	CROP	MENTS	2/		SLAUGHTER	SHEEP	LAMBS	JAN 1 1976
				SHEEP	LAMBS	3/			
	1000 HL	1000 HD	1000 HD	1000 HD	1000 HD	1000 HD	1000 HD	1000 HD	1000 HD
ALA	4.4	3	0	0.9	0.9	0.3	0.6	0.9	3.8
ALAS	12.4	1	0.1	0	0	0.5	5.4	0	7.6
ARIZ	510	223	115	20	238	62	25	25	478
ARK	5.5	4	0	1.3	1.5	0.2	0.4	0.8	5.3
CALIF	1,199	799	169	84	780	14	84	67	1,138
COLO	998	480	883	53	1,247	4	50	67	920
CONN	5.5	4.3	0	1.3	2.5	0.3	0.2	0.5	5
DEL	1.7	1.3	0	0.2	0.6	0.1	0.1	0.2	1.8
FLA	4.2	2.7	0	0.6	0.7	0.8	0.3	0.4	4.1
GA	3.5	1.8	0	0.7	0.3	0.4	0.2	0.4	3.3
IDAHO	595	560	41	57	502	5	37	39	526
ILL	229	186	32	37	146	1	21	27	195
IND	183	150	3	18	101	2	15	20	188
IOWA	460	320	98	49	332	2	58	60	388
KANS	220	147	62	35	196	1	14	18	168
KY	40	40	2	11	29	1	2	6	33
LA	15	9	0	2	3	2	2	2	13
MAINE	12	8.8	0	3	3.8	1	1	1	11
MD	17	15	0	1	9	1	1	2	18
MASS	7	5.5	0	0.9	2.9	0.4	0.4	0.7	7.2
MICH	147	108	3	11	81	1	14	13	130
MINN	390	285	27	62	250	2	38	43	315
MISS	7	3.6	0	2	1.6	0.3	0.4	0.5	6.0
MO	177	130	3	29	90	1	12	24	184
MONT	675	471	30	84	331	4	75	58	598
NEBH	240	143	100	57	172	1	13	30	210
NEV	151	110	192	9	252	3	17	19	193
NH	6.7	5.3	0	1.1	3.1	0.3	0.3	0.4	6.6
NJ	14	7.4	0	2.4	3.7	0.6	0.9	1.4	8.6
N MEX	578	400	119	71	280	33	78	78	590
NY	79	57	0	11	38	2	9	10	70
NC	11	8	0	2	4	1	1	1	10
N DAK	276	201	3	49	148	1	25	26	231
OHIO	475	347	17	52	229	8	30	35	458
OKLA	89	40	17	14	58	0	4	9	78
OREG	440	328	40	51	243	6	40	49	428
PA	125	100	0	7	44	3	21	18	150
RI	2.5	1.1	0	0.3	0.5	0.1	0.1	0.1	2.8
SC	1.9	0.9	0	0.2	0.2	0.1	0.2	0.3	1.3
S DAK	792	682	77	122	573	3	42	95	714
TENN	21	14	1	4	10	0	2	3	19
TEX	2,715	1,710	177	412	1,303	17	100	110	2,600
UTAH	497	502	41	74	480	18	84	78	590
VT	4.0	5.7	0	1.1	2.9	0.6	0.3	0.7	6.9
VA	177	147	8	27	117	2	18	22	163
WASH	92	70	9	9	59	3	8	14	78
W VA	120	114	1	25	79	1	8	10	119
WIS	105	82	4	12	62	1	11	9	96
WYO	1,386	789	78	227	848	6	120	92	1,288
U S	14,515	9,857	2,349	1,812	9,639	212	1,078	1,200	13,311

1/ BALANCE SHEET ESTIMATES BY STATES; THE SUM OF INVENTORY JAN 1, 1975, LAMB CROP AND INSHIPMENTS IS EQUAL TO THE SUM OF MARKETING, FARM SLAUGHTER, DEATHS AND INVENTORY JAN 1, 1976.

2/ INCLUDES CUSTOM SLAUGHTER FOR USE ON FARMS WHERE PRODUCED, STATE OUTSHIPMENTS, BUT EXCLUDES INTERFARM SALES WITHIN THE STATE.

3/ EXCLUDES CUSTOM SLAUGHTER FOR FARMERS AT COMMERCIAL ESTABLISHMENTS.

SHEEP AND LAMBS:  
PRODUCTION AND INCOME 1975

STATE	PRODUCTION 1/	MARKETINGS 2/	AVERAGE PRICE PER 100 POUNDS		VALUE OF PRODUCTION	CASH RECEIPTS 3/	VALUE OF HOME CONSUMPTION	GROSS INCOME
			SHEEP	LAMBS				
	1000 LBS	1000 LBS	DOLS	DOLS	1000 DOLS	1000 DOLS	1000 DOLS	1000 DOLS
ALA	135	186	13.00	40.00	50	44	0	56
ALAS	47	30	25.00	35.00		4	0	16
ARIZ	22,245	27,140	6.40	39.30	6,816	9,644	1,485	11,133
ARK	241	275	9.90	30.60	61	53	4	57
CALIF	66,434	44,570	10.40	42.80	27,786	32,944	779	33,724
COLOR	77,708	142,705	10.90	45.00	32,255	41,868	310	62,178
CONN	346	375	24.00	46.70	180	178	22	200
DEL	102	75	11.40	43.40	30	23	5	20
FLA	157	97	9.00	30.00	37	15	22	37
GA	104	44	13.00	40.00	24	13	10	31
IDAHO	47,465	57,415	10.40	41.70	19,439	21,439	277	21,916
ILL	12,444	14,610	9.70	38.90	4,322	5,913	74	5,991
IND	11,078	11,410	11.60	38.20	3,720	3,712	124	3,830
IOWA	24,491	39,947	8.10	43.30	10,360	15,227	139	15,366
KANS	12,433	21,914	7.70	39.50	4,432	7,322	56	7,380
KY	3,111	4,065	10.00	42.30	1,193	1,293	41	1,354
LA	371	393	12.00	41.00	129	103	52	155
MAINE	643	695	22.00	62.00	311	263	79	342
MD	1,147	875	11.40	40.40	394	325	55	380
MASS	372	266	26.00	68.00	199	154	35	193
MICH	7,605	8,797	11.20	43.80	3,179	3,433	58	3,491
MINN	21,524	32,360	10.50	43.10	9,056	11,522	125	11,647
MISS	241	332	11.50	40.00	58	70	14	82
MO	9,256	12,409	8.50	42.60	3,705	4,054	60	4,114
MONT	24,747	41,701	8.70	40.10	10,766	12,446	177	13,145
NEBR	14,133	25,444	8.90	43.90	5,093	8,766	64	8,832
NEV	10,545	23,171	12.00	40.60	4,321	9,169	91	9,260
N H	600	370	22.00	65.00	201	192	25	207
N J	395	517	14.00	36.00	131	146	23	149
N MEX	20,014	26,005	11.20	40.90	7,978	9,444	745	9,788
N Y	3,247	4,372	14.20	37.80	1,140	1,367	60	1,427
N C	434	543	12.00	34.00	163	134	43	179
N DAK	13,901	23,124	7.20	39.30	5,141	5,943	73	6,016
OHIO	24,824	27,080	11.70	42.50	9,647	10,039	359	10,397
ORLA	4,300	6,920	7.30	39.30	1,694	2,162	0	2,162
OREG	24,070	31,506	9.70	40.50	10,132	10,720	510	11,230
PA	5,594	5,912	13.30	42.00	2,302	2,278	134	2,412
R I	97	77	26.00	66.00	38	35	8	43
S C	37	36	12.90	40.00	11	4	5	13
S DAK	56,774	72,392	8.70	42.80	22,421	25,677	172	25,849
TENN	444	1,340	10.80	37.70	364	405	0	405
TEX	148,955	169,160	15.90	41.20	51,160	57,707	900	58,613
UTAH	29,281	45,370	10.10	40.90	12,958	15,630	410	16,040
VT	457	360	22.00	62.00	216	166	51	217
VA	11,770	13,243	10.70	44.10	4,618	4,848	149	4,997
WASH	5,226	6,621	7.40	43.20	2,217	2,724	119	2,840
W VA	4,146	9,605	11.20	41.20	3,020	3,215	64	3,279
WIS	5,914	7,334	7.40	38.50	2,221	2,394	62	2,456
WYO	48,127	69,514	11.10	42.60	16,872	20,218	317	20,535
U S	785,394	1,077,381	11.30	42.10	303,328	345,104	8,470	346,274

- 1/ ADJUSTMENTS MADE FOR CHANGES IN INVENTORY AND FOR INSHIPMENTS.  
2/ EXCLUDES CUSTOM SLAUGHTER FOR USE ON FARMS WHERE PRODUCED AND INTERFARM SALES WITHIN THE STATE.  
3/ RECEIPTS FROM MARKETINGS AND SALE OF FARM SLAUGHTER.  
4/ DECREASE IN INVENTORY AND THE DEATH LOSS OF SHEEP RESULTED IN A DEFICIT IN NUMBER OF POUNDS PRODUCED.

SHEEP AND LAMBS:  
INVENTORY, SUPPLY AND DISPOSITION 1976 1/

STATE	INVENTORY	LAMB	INSHIP-	MARKETING		FARM	DEATHS		INVENTORY
	JAN 1 1976	CROP	MENTS	2/		SLAUGHTER	SHEEP	LAMBS	JAN 1 1977
				SHEEP	LAMBS	3/			
	1000 HL	1000 HC	1000 HU	1000 HD	1000 HO	1000 HO	1000 HD	1000 HD	1000 HO
ALA	3.2	2.6	0	0.7	0.6	0.3	0.4	0.8	3.4
ALAS	7.0	0.6	0	0	0	0.3	1.4	0	8.5
ARIZ	470	203	125	32	199	58	22	21	466
ARK	5.3	3.6	0	1.1	1.4	0.3	0.3	0.7	5.1
CALIF	1,130	738	198	128	685	13	60	67	1,113
COLO	970	465	1,036	76	1,379	6	48	62	630
CONN	5	4.4	0	0.3	2.4	0.4	0.3	0.6	5.4
DEL	1.0	1.4	0	0.2	0.7	0.1	0.1	0.2	1.9
FLA	4.1	2.8	0	0.9	1.1	0.5	0.2	0.3	4.5
GA	3.3	1.6	0	0.4	0	0.4	0.1	0.3	3.7
IDAHO	534	529	42	55	454	7	40	44	503
ILL	195	148	17	25	119	1	15	24	180
IND	180	146	4	42	93	2	11	25	157
INDIA	395	290	93	18	283	4	30	45	388
KANS	165	120	64	5	147	1	9	11	173
KY	33	34	2	7	24	1	2	5	30
LA	13	"	0	2	2	1	1	2	13
MAINE	11	7.7	0	2	2.7	1	1	1	11
MD	14	10	0	2	9	1	1	3	18
MASS	7.2	5.6	0	1.5	3.3	0.3	0.4	0.6	6.7
MICH	138	99	4	6	63	1	11	11	149
MINN	315	237	27	44	197	2	23	38	275
MISS	5.8	3.7	0	1.1	1.5	0.3	0.6	0.6	5.4
MO	154	112	3	14	90	2	11	18	134
MOIT	595	420	10	73	270	4	70	68	570
NEBR	214	110	106	36	164	1	13	22	190
NEV	153	102	114	12	185	3	16	20	133
NH	4.6	5.2	0	1.1	3	0.4	0.3	0.5	6.5
NJ	3.5	6.8	0	1.4	3.3	0.5	0.6	1.3	4.3
NMEX	490	345	102	98	204	35	75	65	560
NY	70	53	3	4	33	3	7	8	69
NC	10	7.4	0	2.1	3.7	0.8	0.7	1.1	9
N DAK	231	163	5	20	101	1	19	22	238
OHIO	455	318	11	42	221	11	25	40	445
OKLA	79	57	17	20	49	0	4	8	72
OREG	420	319	35	38	262	5	37	37	395
PA	120	96	6	19	63	2	13	9	110
RI	2.5	1.1	0	0.7	0.3	0.2	0.1	0.2	2.1
SC	1.3	0.8	0	0.2	0.2	0.1	0.1	0.2	1.3
S LAM	710	694	81	86	603	3	40	90	659
TENN	19	14	1	4	9	0	2	2	17
TEX	2,400	1,400	195	340	1,037	8	140	150	2,520
UTAH	590	433	35	13	319	8	64	74	580
VT	6.9	6	0	1.1	2.8	0.4	0.4	0.9	7.1
VA	163	157	6	14	110	2	16	20	164
WASH	79	70	7	7	48	3	10	13	74
W V	115	103	1	6	66	1	7	14	128
WIS	96	75	5	16	64	1	8	7	86
WYO	1,269	763	90	172	545	4	110	84	1,286
U S	13,311	8,888	2,440	1,495	8,120	202	947	1,142	12,722

1/ BALANCE SHEET ESTIMATES BY STATES; THE SUM OF INVENTORY JAN 1, 1976, LAMB CROP AND INSHIPMENTS IS EQUAL TO THE SUM OF MARKETINGS, FARM SLAUGHTER, DEATHS AND INVENTORY JAN 1, 1977.

2/ INCLUDES CUSTOM SLAUGHTER FOR USE ON FARMS WHERE PRODUCED, STATE OUTSHIPMENTS, BUT EXCLUDES INTERFARM SALES WITHIN THE STATE.

3/ EXCLUDES CUSTOM SLAUGHTER FOR FARMERS AT COMMERCIAL ESTABLISHMENTS.

SHEEP AND LAMBS:  
PRODUCTION AND INCOME 1976

STATE	PRODUCTION 1/	MARKETING 2/	AVERAGE PRICE PER 100 POUNDS		VALUE OF PRODUCTION	CASH RECEIPTS 3/	VALUE OF HOME CONSUMPTION	GROSS INCOME
			SHEEP	LAMBS				
	1000 LBS	1000 LBS	DOLS	DOLS	1000 DOLS	1000 DOLS	1000 DOLS	1000 DOLS
ALA	136	125	14.70	43.40	38	32	9	41
ALAB	67	13	25.00	45.00		4	4	8
ARIZ	19,720	23,420	10.00	49.15	8,283	10,151	1,732	11,003
ARK	289	240	11.00	40.00	80	59	10	69
CALIF	63,015	86,175	13.30	49.20	29,541	33,932	760	34,700
COLO	86,932	146,963	12.00	48.90	41,084	78,678	335	78,413
CONN	319	210	29.00	78.00	102	130	35	165
DEL	111	84	15.00	44.00	30	30	6	36
FLA	202	164	12.00	35.00	92	29	15	44
GA	115	10	16.00	42.00	30	8	27	35
IDAHO	45,437	52,279	13.10	45.50	20,250	21,472	420	21,896
ILL	11,341	16,898	11.70	41.30	4,046	4,887	91	4,948
IND	9,648	13,668	11.30	40.10	3,342	3,908	120	4,028
IOWA	26,302	32,201	11.00	46.20	11,367	14,134	277	14,611
KANS	11,173	14,239	10.00	40.40	5,115	6,523	65	6,588
KY	2,439	3,096	12.00	43.00	1,131	1,150	73	1,229
LA	415	311	14.00	46.00	120	80	40	120
MAINE	467	427	24.00	66.00	270	164	100	270
MD	1,120	974	15.00	44.00	429	366	63	429
MASS	322	393	20.00	72.00	223	209	35	244
MICH	7,308	6,513	13.70	47.80	3,271	2,874	60	2,942
MINN	17,423	24,099	13.20	46.80	8,274	9,874	140	10,014
MISS	210	225	12.00	40.00	61	56	12	60
MO	8,496	10,328	11.30	44.00	3,572	4,140	136	4,278
MONT	27,877	34,377	9.90	43.60	11,039	11,617	223	11,825
NEBR	11,419	22,166	11.00	46.70	5,454	8,744	71	8,835
NEV	7,922	17,594	12.20	43.00	3,886	7,160	99	7,259
N H	409	364	24.00	69.00	223	187	40	227
N J	430	388	19.00	41.00	140	127	31	134
N MEX	16,312	27,278	12.10	45.50	7,123	8,678	696	9,374
N Y	3,330	3,330	16.50	43.70	1,394	1,279	167	1,466
N C	493	541	14.00	38.00	161	150	36	164
N DAK	11,770	11,996	9.60	41.60	4,249	4,190	92	4,282
OHIO	24,910	25,390	13.00	48.00	9,978	9,922	409	10,531
OKLA	4,303	6,023	9.00	45.00	1,823	2,248	0	2,248
OREG	26,741	31,923	12.30	43.20	11,125	12,264	450	12,710
PA	6,667	7,122	13.00	46.70	2,675	2,777	104	2,881
R I	70	100	20.00	70.00	30	32	21	53
S C	47	35	13.00	40.00	13	6	5	13
S DAK	64,283	76,902	12.10	45.70	27,968	31,540	180	31,720
TENN	874	1,250	12.20	43.20	358	494	0	304
TEX	108,703	131,915	16.70	50.30	45,898	53,216	492	53,788
UTAH	27,393	30,238	16.00	43.70	11,632	12,660	325	13,005
VT	460	319	24.00	66.00	231	191	67	219
VA	11,680	11,260	11.00	45.70	4,872	4,823	160	4,991
WASH	4,830	5,886	10.30	49.60	2,363	2,375	134	2,500
W VA	7,833	6,530	11.70	42.20	2,844	2,584	72	2,626
WIS	9,721	7,948	10.70	41.20	2,262	2,713	82	2,799
WYO	47,431	62,983	12.00	45.50	18,336	21,268	212	21,480
U S	732,026	969,672	13.10	46.90	319,241	393,181	9,173	402,274

1/ ADJUSTMENTS MADE FOR CHANGES IN INVENTORY AND FOR IMPROVEMENTS.  
2/ INCLUDES CASH SLAUGHTER FOR USE ON FARMS WHERE PRODUCED AND INTERSTATE SALES WITHIN THE STATE.  
3/ RECEIPTS FROM MARKETING AND SALE OF FARM SLAUGHTER.  
4/ INCREASE IN INVENTORY AND THE DEATH LOSS OF SHEEP RESULTED IN A DEFICIT IN NUMBER OF POUNDS PRODUCED.

SHEEP AND LAMBS:  
INVENTORY, SUPPLY AND DISPOSITION 1977 1/

STATE	INVENTORY	LAMB	INSHIP-	MARKETING		FARM	DEATHS		INVENTORY
	JAN 1 1977	CROP	MENTS	2/		SLAUGHTER	SHEEP	LAMBS	JAN 1 1978
				SHEEP	LAMBS	3/			
	1000 HD	1000 HD	1000 HD	1000 HD	1000 HD	1000 HD	1000 HD	1000 HD	1000 HD
ALA	3.6	2.6	0	0.3	0.6	0.3	0.5	0.8	3.7
ALAS	5.5	1	0	0	0	0.4	0.9	0	6.2
ARIZ	466	187	70	34	169	62	25	33	400
ARK	5.1	4.3	0	0.7	1.7	0.3	0.6	1.2	4.9
CALIF	1,113	700	210	56	704	15	61	66	1,115
COLO	830	452	796	107	1,024	7	42	51	810
CONN	5.4	4.4	0	0.6	2.2	0.6	0.4	0.7	5.1
DEL	1.9	1.3	0	0.5	0.6	0.1	0.1	0.2	1.7
FLA	4.5	2.5	0	1	0.7	0.5	0.4	0.4	4
GA	3.7	1.7	0	0.4	0.2	0.5	0.6	0.5	3.2
IDAHO	903	491	24	74	377	9	36	46	481
ILL	180	139	15	22	101	2	10	22	177
IND	157	127	3	28	81	3	9	25	141
IOWA	366	292	96	32	297	4	35	40	370
KANS	173	126	93	17	145	1	10	14	205
KY	30	28	2	6	18	1	2	5	28
LA	13	9	0	1	3	2	1	2	13
MAINE	11	8	0	1	3	1	1	1	12
MD	18	15	0	2	7	1	1	3	19
MASS	6.7	5.7	0	1.1	3.1	0.4	0.4	0.6	6.4
MICH	169	103	1	13	77	1	12	12	136
MINN	275	214	34	31	193	2	13	29	259
MISS	4.4	3.5	0	1.3	1.6	0.2	0.7	0.6	4.5
MO	134	111	3	12	71	2	11	21	131
MONT	570	375	18	41	242	3	65	60	592
NERR	190	100	146	13	150	1	17	10	237
NEV	133	96	69	7	130	3	10	23	129
N H	6.5	5.7	0	0.6	2.9	0.4	0.3	0.6	7
N J	4.3	7.3	0	0.4	3.5	0.6	0.6	1.3	9.2
N MEX	560	322	174	95	215	33	77	65	571
N Y	69	52	4	6	34	3	7	9	66
N C	9	5.8	0	1.1	3.4	0.7	0.6	1	9
N DAK	234	170	12	29	132	2	20	22	213
OHIO	445	324	6	102	240	3	16	45	370
OKLA	72	54	22	12	44	0	4	7	81
OREG	395	279	35	4	205	5	35	35	425
PA	110	85	0	15	55	2	14	9	100
R I	2.1	1.3	0	0.2	0.7	0.1	0.2	0.2	2
S C	1.3	0.8	0	0.2	0.2	0.1	0.1	0.2	1.3
S DAK	659	653	79	37	509	6	35	50	704
TENN	17	12	1	4	6	0	2	3	19
TEX	2,920	1,450	125	335	1,028	2	130	140	2,460
UTAH	480	426	33	43	304	5	50	78	561
VT	7.1	6.2	0	0.5	2.6	0.4	0.6	1.1	7.9
VA	144	155	4	7	106	2	17	21	172
WASH	74	53	6	1	37	4	5	9	77
W VA	125	111	1	16	71	1	9	17	123
WIS	80	79	7	4	64	1	6	7	82
WYO	1,208	716	51	212	493	5	80	70	1,115
U S	12,722	8,573	2,148	1,450	7,361	198	877	1,137	12,421

1/ BALANCE SHEET ESTIMATES BY STATES; THE SUM OF INVENTORY JAN 1, 1977, LAMB CROP AND INSHIPMENTS IS EQUAL TO THE SUM OF MARKETINGS, FARM SLAUGHTER, DEATHS AND INVENTORY JAN 1, 1978.  
 2/ INCLUDES CUSTOM SLAUGHTER FOR USE ON FARMS WHERE PRODUCED, STATE OUTSHIPMENTS, BUT EXCLUDES INTERFARM SALES WITHIN THE STATE.  
 3/ EXCLUDES CUSTOM SLAUGHTER FOR FARMERS AT COMMERCIAL ESTABLISHMENTS.

SHEEP AND LAMBS:  
PRODUCTION AND INCOME 1977

STATE	PRODUCTION 1/	MARKETINGS 2/	AVERAGE PRICE PER 100 POUNDS		VALUE OF PRODUCTION	CASH RECEIPTS 3/	VALUE OF HOME CONSUMPTION	GROSS INCOME
			SHEEP	LAMBS				
	1000 LBS	1000 LBS	DOLS	DOLS	1000 DOLS	1000 DOLS	1000 DOLS	1000 DOLS
ALA	120	83	14.00	44.00	38	28	9	37
ALAS	47	24	30.00	50.00	1410	7	7	14
ARIZ	15,989	21,440	11.70	51.90	7,014	9,645	1,964	11,669
ARX	232	220	11.90	48.00	92	76	12	88
CALIF	61,439	73,580	10.70	50.10	28,565	34,121	577	38,898
COLO	68,189	128,455	13.80	53.40	35,185	63,887	436	63,823
CUNH	286	242	28.00	72.00	172	127	60	167
DEL	95	111	12.30	48.40	35	32	6	38
FLA	143	150	13.00	40.00	41	31	10	49
GA	44	38	14.00	46.00	13	6	23	29
IDAHN	41,794	47,011	13.90	49.80	19,862	19,950	530	20,480
ILLI	11,224	12,220	11.90	48.90	4,241	4,825	282	4,827
IND	7,940	9,471	11.40	46.10	2,984	3,224	234	3,458
IOWA	26,332	35,365	10.10	52.00	13,217	14,741	386	17,127
KANS	11,931	15,159	10.10	49.20	5,249	6,640	67	6,727
KY	2,111	2,486	10.30	48.60	894	893	78	960
LA	490	293	19.00	50.00	175	111	44	179
MAINE	402	302	25.00	47.00	246	144	167	251
MD	1,033	805	12.30	48.00	417	388	65	373
MASS	431	357	29.00	72.00	255	198	46	244
MICH	7,900	8,638	13.80	51.60	3,852	3,890	74	3,964
MINN	14,591	22,950	14.30	52.70	9,085	10,666	148	10,814
MISS	180	256	14.00	46.00	63	72	10	62
MO	7,907	8,174	11.30	50.70	3,524	3,553	182	3,705
MONT	25,505	27,906	11.50	50.70	10,955	11,923	147	12,070
NEBR	17,725	18,215	11.90	52.40	6,081	6,880	89	6,969
NEV	7,121	12,224	13.10	48.00	3,162	5,899	101	5,790
N H	370	253	26.00	78.00	213	143	46	188
N J	500	272	18.50	43.00	180	107	48	185
N MEX	14,954	27,836	13.30	53.10	7,739	10,469	983	11,422
N Y	3,192	3,423	13.90	48.70	1,422	1,437	104	1,623
N C	495	397	14.00	36.00	148	116	34	182
N DAK	12,703	16,085	10.30	49.50	5,785	4,526	163	6,689
OHIO	24,737	34,442	14.00	49.50	10,746	12,893	98	12,991
OKLA	4,430	5,650	10.00	47.50	1,947	2,144	6	2,144
OREG	23,544	21,520	11.40	49.80	10,775	10,817	823	11,640
PA	5,210	6,181	14.30	45.30	2,293	2,450	103	2,553
R T	80	75	28.00	70.00	45	41	11	52
S C	47	35	14.00	44.00	14	9	8	14
S DAK	57,439	57,467	12.80	52.80	27,143	27,618	433	28,051
TENN	484	960	11.90	45.20	282	294	6	294
TEX	115,995	130,972	10.30	52.20	48,849	54,537	163	54,640
UTAH	27,745	32,495	10.80	50.60	13,843	14,261	222	14,463
VT	442	238	25.00	67.00	232	131	68	199
VA	11,178	10,241	11.80	48.00	4,740	4,624	146	4,770
WASH	4,526	3,961	9.40	50.20	1,979	1,937	198	2,136
W VA	7,915	8,112	11.80	46.80	3,207	3,180	45	3,245
WIS	6,512	6,488	10.60	48.20	2,912	2,945	145	3,088
WYO	54,130	69,038	12.90	52.30	21,988	28,418	318	28,733
U S	766,395	882,643	13.50	51.30	328,323	384,272	9,646	394,238

- 1/ ADJUSTMENTS MADE FOR CHANGES IN INVENTORY AND FOR ISSUES/RETURNS.  
2/ EXCLUDES CUSTOM SLAUGHTER FOR USE ON FARMS WHERE PRODUCED AND INTERFARM SALES WITHIN THE STATE.  
3/ RECEIPTS FROM MARKETINGS AND SALES OF FARM SLAUGHTER.  
4/ DECREASE IN INVENTORY AND THE DEATH LOSS OF SHEEP RESULTED IN A DEFICIT IN NUMBER OF POUNDS PRODUCED.



SHEEP AND LAMBS:  
INVENTORY, SUPPLY AND DISPOSITION 1978 1/

STATE	INVENTORY	LAMB	INSHIP-	MARKETING		FARM	DEATHS		INVENTORY
	JAN 1 1978	CROP	MENTS	2/		SLAUGHTER			JAN 1 1979
				SHEEP	LAMBS	3/	SHEEP	LAMBS	
	1000 HD	1000 MD	1000 HD	1000 MD	1000 MD	1000 MD	1000 MD	1000 MD	1000 MD
ALAS	8.2	0.8	0	0	0	0.6	1.4	0	5
ARIZ	400	191	90	29	138	52	21	16	425
CALIF	1,115	694	266	43	741	14	60	67	1,150
COLO	810	390	732	45	965	6	45	77	795
CONN	5.1	4.5	0	0.7	2.5	0.5	0.3	0.5	5.1
IDAHO	481	421	79	69	364	5	36	41	466
ILL	177	134	14	29	100	2	11	20	167
IND	141	115	1	27	68	2	9	26	125
IOWA	370	259	68	30	210	2	35	40	380
KANS	205	124	88	7	183	1	10	16	220
KY	28	24	2	6	16	1	2	5	22
LA	13	8	0	2	2	1	1	2	13
MAINE	12	9	0	2	3	2	1	1	12
MO	14	17	0	3	9	1	1	3	19
MASS	6.8	5.3	0	1	2.9	0.5	0.4	0.6	6.7
MICH	138	103	1	20	78	1	10	12	121
MINN	256	200	22	33	149	2	12	24	255
MO	131	106	3	14	65	2	11	22	126
MONT	552	375	41	48	261	3	60	56	566
NEBR	237	110	88	43	147	1	10	19	175
NEV	125	96	68	6	121	3	13	19	129
N H	7	6.1	0	1.3	3	0.6	0.5	0.6	6.9
N J	9.2	7.8	0	1.2	4	0.4	0.5	1.3	9.6
N MEX	571	323	110	71	141	33	65	70	604
N Y	66	50	4	7	32	3	7	8	63
N C	9	6.4	0	2.7	3.2	0.6	0.7	1.2	7
N DAK	213	152	19	32	113	1	20	20	198
OHIO	370	244	6	58	190	2	10	30	350
OKLA	61	60	18	11	46	0	5	6	69
OREG	425	290	39	0	189	5	34	36	490
PA	100	74	0	11	44	2	13	9	95
S DAK	704	640	94	79	491	3	45	90	740
TENN	15	11	1	4	5	0	2	3	13
TEX	2,460	1,200	160	192	701	2	140	150	2,415
UTAH	561	423	30	18	284	6	50	60	594
VT	7.9	6.7	0	1.5	3.1	0.8	0.4	0.6	8
VA	172	140	5	22	109	2	16	23	165
WASH	77	60	10	5	44	4	9	10	75
W VA	123	108	1	22	67	1	9	18	115
WIS	82	76	6	1	52	1	8	9	95
WYO	1,115	615	92	198	400	4	80	60	1,080
U S	12,395	7,927	2,148	1,439	4,529	174	685	1,077	12,365

1/ BALANCE SHEET ESTIMATES BY STATES; THE SUM OF INVENTORY JAN 1, 1978, LAMB CROP AND INSHIPMENTS IS EQUAL TO THE SUM OF MARKETING, FARM SLAUGHTER, DEATHS AND INVENTORY JAN 1, 1979.  
 2/ INCLUDES CUSTOM SLAUGHTER FOR USE ON FARMS WHERE PRODUCED, STATE OUTSHIPPMENTS, BUT EXCLUDES INTERFARM SALES WITHIN THE STATE.  
 3/ EXCLUDES CUSTOM SLAUGHTER FOR FARMERS AT COMMERCIAL ESTABLISHMENTS.

SHEEP AND LAMBS:  
PRODUCTION AND INCOME 1974

STATE	PRODUCTION 1/	MARKETINGS 2/	AVERAGE PRICE PER 100 POUNDS		VALUE OF PRODUCTION	CASH RECEIPTS 3/	VALUE OF HOME CONSUMPTION	GROSS INCOME
			SHEEP	LAMBS				
	1000 LBS	1000 LBS	DOLS	DOLS	1000 DOLS	1000 DOLS	1000 DOLS	1000 DOLS
ALAS	47	36	30.00	55.00		11	11	22
ARIZ	19,005	17,302	16.50	62.30	9,610	9,254	2,371	11,625
CALIF	74,629	49,240	16.70	60.90	62,090	50,264	1,049	51,313
COLOR	65,435	116,606	21.00	63.30	40,075	72,603	453	73,056
CONN	325	260	37.00	64.00	235	174	59	233
DELA	36,244	45,270	15.50	60.80				
ILL	11,619	13,719	14.30	55.90	20,220	23,435	375	23,810
IND	7,224	9,009	16.60	54.30	5,427	6,035	335	6,370
IOWA	21,497	25,946	17.30	60.30	3,455	3,676	248	3,922
KANS	13,372	17,154	16.20	60.70	12,334	14,059	219	14,274
KY	1,235	2,566	11.30	52.40	7,569	10,039	88	10,127
LA	425	328	22.50	60.00	822	935	87	1,022
MAINE	472	352	33.00	60.00	140	122	59	161
MD	1,241	1,105	15.60	56.70	411	155	256	411
MASS	406	329	38.00	44.00	564	487	77	564
MICH	9,045	10,277	20.30	62.10	267	215	67	262
MINN	17,453	19,505	20.90	64.00	4,802	5,321	83	5,404
MO	7,874	7,908	16.40	59.90	10,297	10,776	192	10,968
MONT	26,030	30,122	16.20	67.10	4,022	3,987	240	4,227
NEBR	10,464	25,755	17.00	62.70	14,346	16,926	231	17,157
NEV	7,444	11,804	16.40	57.90	6,493	11,407	97	11,504
NH	426	345	35.00	63.00	4,106	6,453	134	6,587
NJ	967	422	27.50	51.00	291	202	80	292
NMEX	14,353	20,217	20.40	67.90	252	184	52	236
NY	3,147	3,363	15.70	62.70	9,923	9,740	1,305	11,045
NC	174	540	20.00	44.50	1,909	1,746	240	1,986
NDAK	11,499	15,212	15.50	61.60	153	176	38	214
OHIO	20,717	23,684	21.20	61.20	6,459	7,527	129	7,656
OKLA	5,001	5,926	13.20	56.50	11,111	11,636	123	11,959
OREG	24,411	19,530	16.70	61.40	2,602	2,777	0	2,777
PA	4,495	5,094	19.40	70.00	13,995	11,995	501	12,496
S DAK	59,087	61,647	17.00	63.00	3,009	2,961	176	3,139
TEX	589	935	17.20	44.70	31,845	34,127	260	34,387
UTAH	97,476	116,940	27.20	67.60	223	268	0	268
VT	29,444	27,940	15.70	59.50	53,357	60,051	104	60,155
VA	542	396	35.00	60.00	16,227	15,639	346	15,987
WA	11,433	12,895	21.00	61.00	342	227	109	336
WASH	4,439	5,404	11.20	62.40	6,553	6,410	183	6,593
WVA	7,402	8,980	20.00	57.20	2,786	3,043	247	3,290
WIS	4,557	5,080	15.10	59.20	3,944	4,154	63	4,221
WYO	47,493	59,728	27.80	67.90	3,457	2,905	204	3,109
U S	584,949	837,541	21.80	62.80	25,731	30,293	330	30,563
U S	584,949	837,541	21.80	62.80	381,621	452,034	11,223	464,158

- 1/ ADJUSTMENTS MADE FOR CHANGES IN INVENTORY AND FOR INSHIPMENTS.  
 2/ EXCLUDES CUSTOM SLAUGHTER FOR USE ON FARMS WHERE PRODUCED AND INTERFARM SALES WITHIN THE STATE.  
 3/ RECEIPTS FROM MARKETINGS AND SALE OF FARM SLAUGHTER.  
 4/ DECREASE IN INVENTORY AND THE DEATHS OF SHEEP RESULTED IN A DEFICIT IN NUMBER OF POUNDS PRODUCED.

**END**