



AgEcon SEARCH
RESEARCH IN AGRICULTURAL & APPLIED ECONOMICS

The World's Largest Open Access Agricultural & Applied Economics Digital Library

This document is discoverable and free to researchers across the globe due to the work of AgEcon Search.

Help ensure our sustainability.

Give to AgEcon Search

AgEcon Search

<http://ageconsearch.umn.edu>

aesearch@umn.edu

*Papers downloaded from **AgEcon Search** may be used for non-commercial purposes and personal study only. No other use, including posting to another Internet site, is permitted without permission from the copyright owner (not AgEcon Search), or as allowed under the provisions of Fair Use, U.S. Copyright Act, Title 17 U.S.C.*

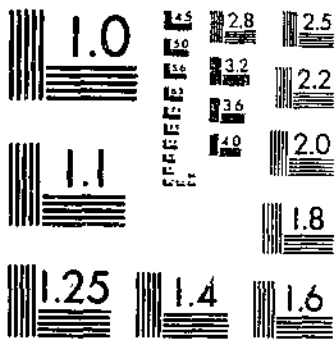
No endorsement of AgEcon Search or its fundraising activities by the author(s) of the following work or their employer(s) is intended or implied.

FSB 589 (1976) - USDA STATISTICAL BULLETINS
CATALOG - FINAL ESTIMATES FOR 1970-75

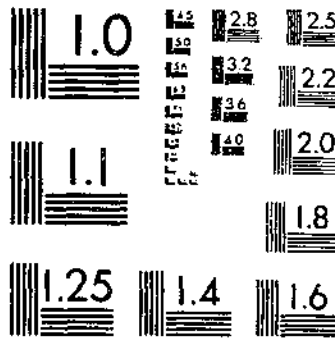
ORDATA

1 OF 1

START



MICROCOPY RESOLUTION TEST CHART
NATIONAL BUREAU OF STANDARDS-1963-A



MICROCOPY RESOLUTION TEST CHART
NATIONAL BUREAU OF STANDARDS 1963-A

R
630.5
US3-13

57

CATTLE

Final Estimates for 1970-75

U. S. DEPARTMENT

OF AGRICULTURE

Los Angeles Public Library



Crop
Reporting
Board

© UPDATA 1981 nd

U.S. Department
of Agriculture
Washington, D.C.
20250

Statistical Bulletin No. 589
January 1978

C O N T E N T S

	<u>PAGE</u>
INTRODUCTION	3
TABLES	
<u>CATTLE AND CALVES:</u> Total and Number by Class, January 1, 1971-75, July 1, 1973-75, Calf Crop and Operations with Cattle, United States, 1970-74	4
Total and Number by Class, by States, January 1, 1971-75	5
Calf Crop, by States, 1970-74	10
Number of Operations with Cattle, by States, 1970-74	11
Value Per Head and Total Value, by States, January 1, 1971-75	12
Total and Number by Class, 34 States, 16 Other States, July 1, 1973-75	13
<u>CATTLE ON FEED:</u> Number on Feed, by States, 39 States, January 1, 1970-71, 50 States, January 1, 1972-75	17
Number on Feed, Placements, Marketed, Other Disappearance, by Quarters, 23 States, 1970-75	18
Number on Feed, by Quarters, by States, 1970-75	19
Number Placed on Feed, by Quarters, by States, 1970-75	20
Number Marketed, by Quarters, by States, 1970-75	21
Other Disappearance, by Quarters, by States, 1974-75	22
Steers and Steer Calves, by Quarters, by States, 1970-75	23
Heifers and Heifer Calves, by Quarters, by States, 1970-75	24
Cows and Others, by Quarters, by States, 1970-75	25
Steers and Steer Calves by Weight Groups, by States, 1970-75	26
Number of Heifers and Heifer Calves by Weight Groups, by States, 1970-75	32
Number on Feed, Placements, Marketed and Other Disappearance, Monthly, by States, 1970-75	38
Number of Feedlots and Number of Fed Cattle Marketed by Feedlot Capacity, by States, 1970-75	42

CATTLE

Final Estimates for 1970-75

INTRODUCTION

This publication presents final cattle and cattle on feed estimates, including some revisions made by the Crop Reporting Board (CRB) for the period 1970-75 and continues the official series published in Statistical Bulletin No. 503 issued December 1972. This series includes inventory estimates for January 1 and July 1, number of operations with cattle, cattle value on January 1, and the cattle on feed for States estimated annually, quarterly and monthly.

Estimates were published on a current basis during 1970-75, based primarily on probability surveys. Information was collected by mail, telephone, and personal interviews. Since all operations with cattle were not included in the sample, estimates are subject to sampling variability. This variability, as measured by the relative standard error, is about 1 percent at the National level for the cattle inventory. This means that chances are approximately 95 out of 100 that a survey estimate will be within 2 percent of the actual number if the same procedures were used to survey all producers. Survey estimates are also subject to nonsampling errors such as omissions, duplications, improper recording and processing data, and mistakes in reporting. These errors cannot be measured directly, but they are minimized through rigid quality controls on the data collection process and a careful review of all reported data for consistency and reasonableness.

Revisions were made only after a thorough review of the original estimates and consideration of new data, including the 1974 Census of Agriculture. Among the other series of check data was a balance sheet approach to total supplies and disappearance based on estimates of births and deaths and actual recorded cattle slaughter, imports and exports for the United States. The general level and trends of all indicators collected during the 1970-75 period also were considered.

Nonprobability survey data from cattle feeders provided the primary indications for cattle on feed and related estimates. Survey procedures were designed to obtain reports from all large feeders and a sample of smaller feeders. Of the total number of cattle estimated on feed for each monthly or quarterly summary, from 60 to 75 percent were actually reported in the survey.

At the National level, revisions were less than 1 percent for all cattle and calves. In the major cattle-producing States, revisions were minor. In the less important cattle States, some changes were necessary in the individual class estimates as far back as 1973. However, these changes had no significant effect on the National totals.

The estimates of average value per head were based on CRB crop and livestock reporters' estimates of average price per head in their localities on January 1 each year. Values per head by classes for each State were weighted together by the estimated number in each class. This weighted average was the basis for the estimated value per head. For the United States, the total value is the sum of the State estimates; and value per head is derived by dividing the total value by the number of head for the United States.

The following changes in the data series took place during the 1970-75 period.

1. July estimates for cattle inventory and classes began in 1973 for 34 States. A composite estimate is made for the remaining 16 States.
2. January 1 estimates of cattle on feed were made for 39 States for 1970 and 1971, expanded to 50 States for January 1, 1972 and later years.
3. Monthly cattle on feed estimates were made for 6 States from January 1970 to October 1971, when Kansas was added to the program.

CATTLE AND CALVES: NUMBER BY CLASS AND CALF CROP, UNITED STATES
JANUARY 1, 1971-75

CLASS	1971	1972	1973	1974	1975
	1000 HEAD				
CATTLE AND CALVES	114578	117662	121539	127788	132028
COWS AND HEIFERS THAT HAVE CALVED	49786	50585	52553	54478	56931
BEEF COWS	37878	38810	40932	43182	45712
MILK COWS	11909	11776	11622	11297	11220
HEIFERS 500 POUNDS AND OVER	16619	17213	17737	16985	19488
FOR BEEF COW REPLACEMENT	6664	6987	7434	8193	8884
FOR MILK COW REPLACEMENT	3843	3828	3872	3941	4087
OTHER HEIFERS	6113	6399	6432	6852	6518
STEERS 500 POUNDS AND OVER	15610	15999	16553	17760	16333
BULLS 500 POUNDS AND OVER	2328	2377	2467	2643	2985
HEIFERS, STEERS, AND BULLS UNDER 500 POUNDS	30235	31688	32229	33922	36291

	1970	1971	1972	1973	1974

CALF CROP	45871	46738	47682	49194	50873
OPERATIONS WITH CATTLE	1935380	1087980	1855330	1861110	1870500

CATTLE AND CALVES: NUMBER BY CLASS, UNITED STATES
JULY 1, 1973-75

CLASS	1973	1974	1975
	1000 HEAD		
CATTLE AND CALVES	131467	139378	140261
COWS AND HEIFERS THAT HAVE CALVED	54037	56960	58053
BEEF COWS	42644	45745	46905
MILK COWS	11393	11215	11148
HEIFERS 500 POUNDS AND OVER	19429	19130	18964
FOR BEEF COW REPLACEMENT	7221	7909	7382
FOR MILK COW REPLACEMENT	1923	3871	3924
OTHER HEIFERS	7285	7350	7658
STEERS 500 POUNDS AND OVER	17850	18423	17323
BULLS 500 POUNDS AND OVER	2647	2913	3068
HEIFERS, STEERS, AND BULLS UNDER 500 POUNDS	18504	41952	42793

CATTLE AND CALVES: TOTAL AND NUMBER BY CLASS
JANUARY 1, 1971-75

STATE	ALL CATTLE AND CALVES					ALL COWS THAT HAVE CALVED				
	1971	1972	1973	1974	1975	1971	1972	1973	1974	1975
	1000 HEAD									
ALA	1973	2050	2112	2240	2700	1035	1071	1115	1170	1330
ALAS	8.8	8.8	8.9	9.2	9.7	4.2	4.2	4.3	4.4	4.4
ARIZ	1289	1295	1420	1390	1170	396	398	395	412	436
ARK	1805	1931	2028	2140	2680	1005	1071	1134	1190	1350
CALIF	4680	4662	4710	5250	5200	1674	1672	1704	1864	1897
COLO	3414	3610	3756	3744	3375	1126	1167	1181	1201	1125
CONN	112	112	113	109	110	64	64	63	60	62
DEL	31	31	31	32	33	17	17	17	17	18
FLA	2060	2130	2237	2490	2950	1220	1266	1336	1494	1670
GA	2002	2042	2062	2103	2420	1003	1033	1054	1065	1190
HAW	249	245	242	240	242	102	102	103	103	103
IDAH0	1815	1888	1888	2026	2150	755	785	819	850	870
ILL	3300	3400	3240	3250	3200	1102	1112	1090	1110	1125
IND	1937	1956	2025	2100	2125	691	693	730	790	802
IOWA	7403	7773	7770	7660	7350	2179	2235	2262	2180	2240
KANS	6497	6757	6800	6990	6400	2061	2111	2204	2200	2125
KY	2859	2916	3033	3215	3750	1393	1435	1500	1549	1725
LA	1630	1728	1763	1745	1832	982	1042	1064	1043	1043
MAINE	135	136	136	136	138	71	71	72	71	72
MD	392	400	408	412	444	203	203	205	203	210
MASS	111	110	111	105	107	67	66	65	62	63
MICH	1560	1576	1576	1550	1580	618	624	618	626	620
MINN	3998	3998	4038	4240	4430	1517	1518	1528	1608	1625
MISS	2254	2322	2415	2610	3000	1317	1351	1396	1420	1584
MO	4989	5238	5550	6330	6800	2260	2418	2580	3040	3070
MONT	3165	3165	3197	3380	3340	1631	1683	1717	1775	1720
NEBR	6457	6780	6865	7410	6900	2183	2241	2262	2409	2530
NEV	639	645	651	664	657	348	351	354	363	352
N H	71	71	70	69	71	39	39	38	37	38
N J	125	125	126	124	117	77	75	73	69	62
N MEX	1556	1509	1615	1615	1720	683	656	710	700	745
N Y	1782	1764	1764	1788	1875	1040	1025	1020	1015	1045
N C	990	1010	1040	1100	1150	496	506	545	580	610
N DAK	2230	2319	2435	2635	2635	1148	1193	1249	1305	1358
OHIO	2072	2113	2134	2150	2350	819	829	833	799	850
OKLA	5085	5441	5660	6020	6500	2258	2303	2417	2505	2835
OREG	1529	1529	1514	1560	1650	741	741	763	790	800
PA	1763	1763	1745	1832	1960	848	839	824	827	862
R I	12	12	12	12	12	8	8	7	7	7
S C	618	643	662	670	710	318	338	345	345	364
S DAK	4322	4408	4496	5000	4950	1908	2003	2060	2225	2290
TENN	2354	2472	2520	2690	3300	1250	1313	1368	1380	1566
TEX	13200	13464	15100	16250	16600	6146	5807	6570	6820	7240
UTAH	832	832	824	832	900	411	410	403	403	428
VT	339	339	339	334	336	211	211	210	204	206
VA	1490	1505	1570	1652	1809	717	739	770	805	839
WASH	1285	1362	1389	1380	1420	538	565	576	590	584
W VA	480	485	490	505	540	256	258	264	269	267
WIS	4158	4241	4283	4400	4640	2103	2145	2138	2108	2155
WYO	1520	1550	1565	1600	1690	747	777	798	816	819
U.S.	114578	117862	121539	127788	132028	49786	50585	52553	54478	56931

CATTLE AND CALVES: NUMBER BY CLASS
JANUARY 1, 1971-75

STATE	BEEF COWS THAT HAVE CALVED					MILK COWS THAT HAVE CALVED				
	1971	1972	1973	1974	1975	1971	1972	1973	1974	1975
	1000 HEAD									
ALA	915	951	1000	1070	1238	120	120	115	100	92
ALAS	2.6	2.6	2.6	2.7	2.8	1.6	1.6	1.7	1.7	1.6
ARIZ	346	348	342	351	372	50	50	53	61	64
ARK	908	975	1038	1098	1259	97	96	96	92	91
CALIF	916	906	915	1054	1097	758	766	789	810	800
COLO	1047	1088	1106	1125	1050	79	79	75	76	75
CONN	6	6	6	7	7	58	58	57	53	55
DEL	4	5	5	5	5	13	13	12	12	13
FLA	1027	1069	1136	1289	1468	193	197	200	205	202
GA	856	887	909	935	1060	147	146	145	130	130
HAW	89	89	90	90	90	13	13	13	13	13
IDAH0	610	634	659	699	721	145	151	160	151	149
ILL	809	826	815	850	876	293	286	275	260	249
IND	457	456	498	566	584	234	237	232	224	218
IOWA	1693	1770	1820	1770	1835	486	465	442	410	405
KANS	1878	1939	2042	2050	1978	183	172	162	150	147
KY	1060	1109	1176	1247	1429	333	326	324	302	296
LA	820	885	910	905	909	162	157	154	138	134
MAINE	10	10	11	12	12	61	61	61	59	60
MD	54	54	59	63	66	149	149	146	140	144
MASS	7	8	8	8	9	60	58	57	54	54
MICH	187	194	196	206	205	431	430	422	420	415
MINN	570	581	602	708	739	947	937	926	900	886
MISS	1141	1189	1249	1285	1458	176	162	147	135	126
MO	1928	2092	2260	2724	2750	332	326	320	316	311
MONT	1595	1648	1685	1746	1692	36	35	32	29	28
NEBR	2011	2072	2094	2248	2374	172	169	168	161	156
NEV	334	337	340	349	330	14	14	14	14	14
N H	4	4	4	5	5	35	35	34	32	33
N J	12	13	14	15	14	65	62	59	54	48
N MEX	651	625	680	670	714	32	31	30	30	31
N Y	96	100	106	115	125	944	925	914	900	920
N C	327	341	386	430	465	169	165	159	150	145
N DAK	1015	1066	1125	1185	1242	133	127	124	120	116
OHIO	375	390	399	387	445	444	439	434	412	405
OKLA	2118	2165	2283	2379	2713	140	138	134	126	122
OREG	645	647	669	698	709	96	94	94	92	91
PA	150	150	146	149	176	698	689	678	678	686
R I	1	1	1	1	1	7	7	6	6	6
S C	255	275	282	288	305	63	63	63	57	59
S DAK	1727	1826	1884	2050	2116	181	177	176	175	174
TENN	970	1048	1124	1157	1349	280	265	244	223	217
TEX	5791	5452	6210	6470	6895	355	355	360	350	345
UTAH	331	331	328	328	349	80	79	75	75	79
VT	16	16	15	15	14	195	195	195	189	192
VA	525	557	593	630	662	192	182	177	175	177
WASH	361	383	391	406	403	177	182	185	184	181
W VA	207	214	221	227	226	49	44	43	42	41
WIS	289	313	313	312	345	1814	1832	1825	1796	1810
WYO	731	762	784	802	806	16	15	14	14	13
U.S.	37878	38810	40932	43182	45712	11909	11776	11622	11297	11220

CATTLE AND CALVES: NUMBER BY CLASS
JANUARY 1, 1971-75

STATE	HEIFERS 500 POUNDS AND OVER									
	BEEF COW REPLACEMENT					MILK COW REPLACEMENT				
	1971	1972	1973	1974	1975	1971	1972	1973	1974	1975
	1000 HEAD									
ALA	178	189	192	211	257	34	38	39	31	30
ALAS	.6	.6	.6	.6	.6	.6	.7	.6	.6	.6
ARIZ	47	47	43	49	41	13	13	13	15	25
ARK	182	197	208	218	252	27	27	28	26	27
CALIF	208	212	211	252	286	242	249	259	284	285
COLO	188	196	206	246	294	27	27	29	30	34
CONN	2	2	2	2	2	21	21	22	20	18
DEL	1	1	1	2	1	3	2	2	3	3
FLA	159	175	206	224	265	30	31	33	37	44
GA	176	181	179	164	184	42	42	44	42	42
HAW	15	15	14	14	15	4	5	4	5	5
IDAH0	116	118	124	140	131	55	58	64	81	82
ILL	129	133	123	130	144	91	88	90	90	93
IND	117	119	130	105	108	77	78	81	80	74
IOWA	249	256	262	268	272	156	152	150	151	147
KANS	299	311	326	350	307	58	58	56	56	58
KY	237	240	249	255	334	89	91	91	93	95
LA	152	161	164	176	183	45	47	44	38	37
MAINE	3	4	4	4	4	24	24	25	24	25
MO	15	16	17	19	19	42	43	45	43	55
MASS	2	2	2	2	2	15	15	16	15	17
MICH	42	44	42	39	47	166	175	177	181	170
MINN	130	132	133	153	199	336	328	327	339	398
MISS	207	221	243	261	336	51	46	43	43	39
MO	290	309	370	512	551	108	104	95	95	109
MONT	272	304	298	355	300	12	11	10	10	10
NEBH	303	304	357	415	350	45	40	41	44	43
NEV	50	53	53	53	54	5	6	6	6	6
N H	1	1	1	1	1	13	14	13	13	12
N J	4	5	5	6	6	16	15	15	15	14
N MEX	118	126	120	102	126	10	10	10	10	9
N Y	29	31	32	34	36	320	310	314	324	345
N C	92	95	96	100	105	51	49	47	47	41
N DAK	161	179	190	224	186	31	30	30	34	24
OHIO	97	97	98	101	113	131	131	132	131	140
OKLA	360	389	414	460	466	43	35	39	40	38
OREG	104	102	107	117	126	32	30	30	29	29
PA	35	33	33	38	49	206	200	205	215	236
R I	0	0	0	0	0	2	2	2	2	2
S C	60	62	65	65	67	15	15	15	13	12
S DAK	251	291	285	345	302	47	45	44	50	50
TENN	186	216	237	236	300	91	82	73	73	67
TEX	845	862	1027	1115	1415	106	108	106	106	115
UTAH	55	53	50	58	65	45	43	41	38	37
VT	3	3	3	4	4	58	60	62	60	62
VA	120	120	125	134	140	71	68	69	66	68
WASH	85	86	92	101	114	56	61	68	76	87
W VA	45	46	46	48	57	14	14	14	13	14
WIS	100	98	99	101	107	662	682	705	700	710
WYU	143	149	149	163	160	4	4	3	3	3
U.S.	6664	6987	7434	8193	8884	3843	3828	3872	3941	4087

CATTLE AND CALVES: NUMBER BY CLASS
JANUARY 1, 1971-75

STATE	OTHER HEIFERS 500 POUNDS AND OVER					STEERS 500 POUNDS AND OVER				
	1971	1972	1973	1974	1975	1971	1972	1973	1974	1975
	1000 HEAD									
ALA	40	44	44	45	54	162	162	158	172	208
ALAS	0.	0.	0.	0.	0.	.8	.8	.8	.6	.6
ARIZ	40	42	42	42	35	455	453	582	531	369
ARK	30	32	33	39	67	80	81	77	68	102
CALIF	169	165	168	189	190	1221	1197	1209	1297	1144
COLO	355	424	416	401	385	747	757	826	900	651
CONN	2	2	2	2	2	2	2	2	3	2
DEL	2	2	2	1	1	2	2	2	2	3
FLA	57	57	54	55	59	140	137	116	110	136
GA	52	53	55	56	65	164	160	148	151	179
HAW	23	23	20	18	19	35	32	30	28	28
IDAHO	69	99	72	71	86	206	199	176	223	290
ILL	324	384	389	350	294	805	816	680	674	640
IND	214	180	203	164	132	368	376	332	361	340
IOWA	788	805	775	797	698	1615	1695	1677	1693	1580
KANS	500	514	524	559	480	1513	1622	1618	1731	1491
KY	75	71	71	74	131	242	244	239	272	319
LA	24	26	25	30	31	50	53	53	44	55
MAINE	4	3	3	3	2	5	5	3	3	2
MD	15	16	16	12	14	42	42	42	44	40
MASS	2	2	2	2	1	2	2	2	2	3
MICH	64	66	60	84	71	250	240	252	222	250
MINN	239	239	266	267	243	589	589	658	678	633
MISS	34	30	35	35	54	67	63	57	48	72
MO	216	225	230	253	245	579	585	595	614	632
MONT	77	82	90	108	140	140	144	163	216	182
NEBR	750	803	803	800	635	1432	1512	1510	1675	1190
NEV	19	17	17	17	16	39	46	52	55	53
NH	2	1	1	1	1	2	3	3	3	2
NJ	5	5	5	5	4	4	5	6	6	7
N MEX	102	91	89	105	84	198	171	179	240	251
NY	42	43	37	38	39	37	39	40	38	36
NC	36	35	33	36	38	70	63	59	57	58
N DAK	52	56	56	78	92	92	92	102	156	166
OHIO	106	111	115	118	122	375	400	399	404	442
OKLA	183	247	238	275	331	507	584	685	900	796
OREG	56	56	42	55	69	134	134	121	101	149
PA	68	73	70	77	77	266	269	255	265	260
RI	0	0	0	0	0	0	0	0	0	0
SC	15	15	17	18	16	37	41	41	42	46
S DAK	194	173	200	250	223	467	386	387	480	421
TENN	61	54	53	65	74	131	148	139	160	200
TEX	695	716	725	868	830	1510	1596	2023	2231	1910
UTAH	25	26	25	26	36	72	73	76	83	81
VT	7	5	5	5	4	3	3	2	2	3
VA	30	30	31	33	49	161	154	152	154	200
WASH	66	75	88	99	85	196	224	225	176	188
W VA	12	12	12	13	14	42	38	36	40	44
WIS	143	139	139	163	139	273	278	284	326	399
WYO	29	30	34	50	41	80	81	79	78	79
U.S.	6113	6399	6432	6852	6518	15610	15999	16553	17760	16333

CATTLE AND CALVES: NUMBER BY CLASS
JANUARY 1, 1971-75

STATE	BULLS 500 POUNDS AND OVER					STEERS, HEIFERS AND BULLS UNDER 500 POUNDS				
	1971	1972	1973	1974	1975	1971	1972	1973	1974	1975
	1000 HEAD									
ALA	43	45	46	49	54	481	501	518	562	762
ALAS	.5	.5	.6	.7	1.0	2.1	2.0	2.0	2.3	2.5
ARIZ	25	25	25	28	26	313	317	320	313	238
ARK	52	59	61	68	91	429	464	487	531	791
CALIF	85	84	80	84	88	1081	1083	1079	1280	1310
COLO	63	65	65	71	71	908	974	1033	895	815
CONN	2	2	2	2	2	19	19	20	20	22
OEL	1	1	1	1	1	5	5	6	6	6
FLA	64	66	69	77	100	390	398	423	493	676
GA	60	63	62	63	68	505	510	520	542	692
HAW	7	7	7	7	7	63	61	64	65	65
IDAHO	38	41	43	45	43	576	588	590	616	648
ILL	49	51	51	52	63	800	816	817	844	841
IND	20	21	23	26	28	450	489	526	574	641
IOWA	93	93	94	94	96	2323	2537	2550	2477	2317
KANS	91	94	100	105	96	1975	2047	1972	1989	1843
KY	51	55	59	65	109	772	780	824	907	1037
LA	52	55	56	56	61	325	344	357	358	422
MAINE	3	3	3	3	3	25	26	26	28	30
MD	8	8	8	9	11	67	72	75	82	95
MASS	2	2	2	2	2	21	21	22	20	19
MICH	22	24	22	23	27	398	403	405	375	395
MINN	49	49	48	55	71	1138	1143	1078	1140	1261
MISS	63	67	70	72	90	515	544	571	731	825
MO	101	105	110	133	156	1435	1492	1570	1683	2037
MONT	83	84	89	105	97	950	857	830	811	891
NEBR	116	120	121	126	124	1628	1760	1771	1941	2028
NEV	18	18	18	18	17	160	154	151	152	159
N H	1	1	1	1	1	13	12	13	13	16
N J	2	2	2	2	3	17	18	20	21	21
N MEX	32	31	34	38	46	413	424	473	420	459
N Y	24	24	23	25	31	290	292	298	314	343
N C	29	30	30	35	37	216	232	230	245	261
N DAK	50	52	54	65	66	696	717	754	773	743
OHIO	41	42	43	43	47	503	503	514	554	636
OKLA	100	102	107	115	129	1634	1781	1760	1725	1905
OREG	43	43	44	42	41	419	423	407	426	436
PA	40	40	40	46	59	300	309	318	364	417
R I	0	0	0	0	0	2	2	3	3	3
S C	22	23	25	25	27	151	149	154	162	178
S DAK	97	100	104	115	109	1358	1410	1416	1535	1555
TENN	52	57	58	60	70	583	602	592	716	1023
TEX	360	342	384	403	510	3538	4033	4265	4707	4580
UTAH	17	17	17	17	18	207	210	212	207	235
VT	5	5	5	5	5	52	52	52	54	52
VA	29	29	31	33	39	362	365	392	427	474
WASH	24	24	25	26	28	320	325	315	312	334
W VA	12	13	13	14	17	99	104	105	108	127
WIS	45	47	47	48	46	832	852	871	954	1084
WYO	41	43	44	45	48	476	466	458	445	540
U.S.	2328	2377	2467	2643	2985	30235	31688	32229	33922	36291

CALF CROP, 1970-74

STATE	1970	1971	1972	1973	1974
1000 HEAD					
ALA	907	942	980	1033	1140
ALAS	3.8	3.6	3.6	3.7	3.7
ARIZ	341	338	327	335	355
ARK	905	959	1007	1030	1150
CALIF	1546	1539	1532	1580	1600
COLO	1044	1081	1110	1120	1080
CONN	60	56	56	54	54
DEL	15	15	15	15	16
FLA	1000	1025	1087	1180	1320
GA	850	893	911	920	940
HAW	77	73	72	72	71
IDAMO	714	740	760	790	810
ILL	1006	1014	1010	1030	1030
IND	666	670	672	710	730
IOWA	2069	2150	2160	2100	2090
KANS	1954	1958	2060	2050	2000
KY	1328	1365	1420	1470	1570
LA	878	894	912	870	860
MAINE	69	66	67	65	64
MD	197	193	193	185	193
MASS	60	60	60	57	55
MICH	581	587	593	581	585
MINN	1473	1502	1472	1480	1525
MISS	1139	1198	1222	1245	1320
MO	2139	2240	2375	2760	2840
MONT	1535	1582	1640	1730	1725
NEBR	2006	2118	2130	2200	2300
NEV	309	309	312	315	300
N H	37	37	36	35	35
N J	70	67	65	61	56
N MEX	635	615	619	610	600
N Y	975	967	969	959	960
N C	446	459	473	507	539
N DAK	1113	1118	1205	1264	1345
OHIO	747	762	750	725	760
OKLA	2084	2123	2187	2220	2415
OREG	692	699	699	730	740
PA	831	831	820	790	780
R I	7.4	6.6	6	6	6
S C	277	302	310	292	298
S DAK	1834	1889	1965	2100	2205
TENN	1151	1188	1225	1215	1305
TEX	5378	5286	5354	5900	6200
UTAH	372	378	378	350	380
VT	196	192	192	186	185
VA	646	660	680	675	720
WASH	513	527	537	547	536
W VA	234	239	244	246	246
WIS	2080	2082	2080	2035	2050
WYO	681	710	729	760	785
U.S.	45871	46738	47682	49194	50873

CATTLE AND CALVES: NUMBER OF OPERATIONS WITH CATTLE 1970-74

STATE	1970	1971	1972	1973	1974
	NUMBER				
ALA	53000	52000	50000	50000	52000
ALAS	160	160	150	140	140
ARIZ	3300	3200	3200	3100	3300
ARK	51000	50000	50000	48000	50000
CALIF	26000	26000	26000	26000	27000
COLO	20000	19500	19500	20000	20000
CONN	2400	2300	2200	2100	2200
DEL	1000	1000	1100	1100	1100
FLA	19000	20000	20000	21000	22000
GA	50000	49000	48000	48000	47000
HAW	1100	1000	970	970	960
IDAHO	20000	20000	19000	19000	20000
ILL	68000	67000	66000	64000	63000
IND	57000	56000	55000	55000	56000
IOWA	105000	100000	96000	92000	93000
KANS	64000	62000	61000	60000	59000
KY	90000	89000	89000	89000	91000
LA	38000	37000	36000	36000	36000
MAINE	3900	3800	3700	3600	3800
MD	9000	8500	8400	8200	8200
MASS	2500	2400	2300	2200	2300
MICH	41000	39000	38000	38000	37000
MINN	80000	77000	75000	73000	75000
MISS	65000	63000	62000	62000	64000
MO	116000	114000	113000	114000	115000
MONT	19500	19000	18500	18500	18000
NEBR	58000	57000	57000	57000	57000
NEV	1700	1600	1600	1600	1600
N H	1800	1700	1600	1500	1700
N J	2700	2500	2500	2400	2500
N MEX	9000	8800	8600	8000	8500
N Y	38000	37000	36000	37000	38000
N C	57000	55000	52000	52000	53000
N DAK	29000	28000	27000	27000	27000
OHIO	64000	62000	59000	57000	59000
OKLA	75000	74000	73000	71000	73000
OREG	21000	22000	22000	22000	22500
PA	52000	50000	48000	49000	51000
R I	320	320	310	300	300
S C	23500	23000	22500	22000	22000
S DAK	39000	38000	37000	36000	36000
TENN	87000	83000	86000	84000	86000
TEX	165000	162000	162000	166000	168000
UTAH	10000	9900	9700	9600	10100
VT	5700	5600	5400	5300	5300
VA	48000	46000	43000	42000	44000
WASH	25000	24500	24000	23500	23000
W VA	20500	19000	19000	19000	20000
WIS	89000	88000	87000	86000	87000
WYO	7300	7200	7100	7000	7000
U.S.	1935380	1887980	1855330	1841110	1870500

ALL CATTLE AND CALVES: VALUE PER HEAD AND TOTAL VALUE
JANUARY 1, 1971-75

STATE	VALUE PER HEAD					TOTAL VALUE				
	1971	1972	1973	1974	1975	1971	1972	1973	1974	1975
	DOLLARS					1000 DOLLARS				
ALA	150	165	205	240	120	295950	338250	432960	537600	324000
ALAS	255	275	280	380	375	2244	2420	2492	3496	3638
ARIZ	165	190	230	275	165	212685	246050	326600	382250	193050
ARK	160	185	220	250	125	288800	357235	446160	535000	335000
CALIF	215	225	265	310	200	1006200	1048950	1248150	1627500	1040000
COLO	180	205	245	300	155	614520	740050	920220	1123200	523125
CONN	275	290	345	410	315	30800	32480	38985	44690	36650
DEL	240	270	280	360	250	7440	8370	8680	11520	8250
FLA	160	180	250	300	145	329600	383400	559250	747000	427750
GA	155	165	205	250	125	310310	336930	422710	525750	302500
MAV	180	185	195	250	245	44820	45325	47190	60000	59290
IDAHO	190	210	260	295	165	344850	396480	490880	597670	354750
ILL	175	205	240	285	165	577500	697000	777600	926250	528000
IND	180	200	230	280	180	348660	391200	465750	588000	382500
IOWA	180	210	250	290	160	1332540	1632330	1942500	2221400	1176000
KANS	170	200	245	275	140	1104490	1351400	1666000	1922250	896000
KY	170	195	235	275	155	486030	568620	712755	884125	581250
LA	165	185	225	265	130	268950	319680	396675	462425	238160
MAINE	235	250	290	380	275	31725	34000	39440	51680	37950
MO	235	255	275	350	235	92120	102000	112200	144200	104340
MASS	270	290	335	420	315	29970	31900	37185	44100	33705
MICH	220	245	285	350	240	343200	386120	449160	542500	379200
MINN	200	230	275	320	175	799600	919540	1110450	1356800	775250
MISS	160	175	225	255	125	360640	406350	543375	665550	375000
MO	175	205	250	285	140	873075	1073790	1387500	1804050	952000
MONT	200	230	285	325	160	633000	727950	911145	1098500	534400
NEBR	185	215	255	295	150	1194545	1457700	1750575	2185950	1035000
NEV	180	205	255	295	165	115020	132225	166005	195880	108405
N H	250	260	320	390	280	17750	18460	22400	26910	19880
N J	295	310	355	425	305	36875	38750	44730	52700	35685
N MEX	170	185	230	270	135	264520	279165	371450	436050	232200
N Y	285	300	350	435	285	507870	529200	617400	777780	534375
N C	155	175	205	250	155	153450	176750	213200	275000	178250
N DAK	195	225	275	325	175	434850	521775	669625	856375	461125
OHIO	195	215	255	310	190	404040	454295	544170	666500	446500
OKLA	165	190	230	265	130	839825	1033790	1301800	1595300	845000
OREG	185	200	265	295	165	282865	305800	401210	460200	272250
PA	265	285	320	395	270	467195	502455	558400	723640	529200
R I	290	305	325	410	305	3480	3660	3900	4920	3660
S C	150	160	205	240	150	92700	102880	135710	160800	106500
S DAK	190	220	275	315	155	821180	969760	1236400	1575000	767250
TENN	165	185	230	265	135	388410	457320	579600	712850	445500
TEX	160	185	230	260	130	2112000	2490840	3473000	4225000	2158000
UTAH	195	210	255	305	160	162240	174720	210120	253760	144000
VT	270	285	350	415	305	91530	96615	118650	138610	102480
VA	175	190	230	275	160	260750	285950	361100	454300	289440
WASH	200	220	270	310	180	257000	299640	375030	427800	255600
W VA	165	180	210	270	155	79200	87300	102900	136350	83700
WIS	255	275	325	390	230	1060290	1166275	1391975	1716000	1067200
WYO	195	230	280	320	165	296400	356500	438200	512000	278850
U.S.	184	208	252	293	159	21112904	24519645	30583562	37477181	20999808

CATTLE AND CALVES: TOTAL AND NUMBER BY CLASS
JULY 1, 1971-75

STATE	ALL CATTLE AND CALVES 1/			ALL COWS THAT HAVE CALVED 2/				
	1973	1974	1975	1971	1972	1973	1974	1975
	1000 HEAD							
ALA	2220	2650	3000	1060	1100	1135	1300	1473
ARIZ	1500	1300	1270	NA 1/	NA 1/	405	410	421
ARK	2307	2585	2850	1046	1088	1132	1250	1380
CALIF	5040	5300	5130	1680	1691	1750	1840	1872
COLO	4000	3855	3470	1143	1180	1190	1190	1093
FLA	2570	2960	3180	1236	1297	1390	1563	1638
GA	2080	2250	2515	1002	1026	1064	1110	1185
IDAHO	2027	2289	2200	758	796	817	872	855
ILL	3055	3200	3450	1108	1112	1100	1170	1155
IND	2025	2150	2200	686	704	740	800	850
IOWA	7700	7790	7400	2200	2240	2200	2220	2295
KANS	7000	6900	6650	2090	2160	2260	2250	2208
KY	3270	3560	3750	1424	1467	1540	1620	1690
LA	1750	1900	2100	1020	1061	1015	1080	1160
MICH	1600	1670	1640	621	621	630	645	640
MINN	4070	4270	4400	1525	1525	1535	1626	1680
MISS	2758	2871	3100	1349	1377	1434	1441	1581
MO	6700	7250	7600	2360	2500	2900	3150	3250
MONT	4070	4360	4200	1680	1710	1749	1820	1722
NEBR	7300	7750	7000	2210	2280	2330	2498	2310
N MEX	2040	2000	1900	689	720	750	730	766
N Y	1773	1860	1941	1034	1023	1002	1022	1054
N DAK	2900	3132	3150	1175	1225	1267	1378	1400
OHIO	2051	2200	2450	819	827	800	837	948
OKLA	5950	6490	6550	2318	2390	2480	2670	2745
OREG	1930	2070	1930	860	860	840	880	820
PA	1737	1866	2000	844	830	813	849	909
S DAK	5539	5800	5650	1980	2056	2138	2288	2300
TENN	2936	3230	3550	1325	1400	1424	1487	1583
TEX	16400	17500	17000	6084	6080	7000	7450	7400
VA	1709	1901	1975	717	746	799	861	883
WASH	1650	1800	1700	566	580	655	645	655
WIS	4260	4470	4750	2130	2162	2123	2129	2209
WYO	2000	2160	2100	769	788	830	870	825
34 STATES	125917	133339	133751	47508	48622	51237	53951	54955
16 OTHER								
STATES 3/	5550	6039	6450	3144	3163	2800	3009	3098
U.S.	131467	139378	140201	50652	51785	54037	56960	58053

1/ DATA SERIES STARTED JULY 1, 1973

2/ DATA SERIES STARTED JULY 1, 1971

3/ STATE ESTIMATES NOT AVAILABLE IN JULY

CATTLE AND CALVES: NUMBER BY CLASS
JULY 1, 1971-75

STATE	BEEF COWS THAT HAVE CALVED 1/					MILK COWS THAT HAVE CALVED 1/				
	1971	1972	1973	1974	1975	1971	1972	1973	1974	1975
	1000 HEAD									
ALA	940	984	1033	1205	1382	120	116	102	95	91
ARIZ	NA 2/	NA 2/	348	349	353	NA 2/	NA 2/	57	61	68
ARK	949	992	1039	1158	1290	97	96	93	92	90
CALIF	917	913	964	1050	1074	763	778	786	790	798
COLO	1064	1105	1114	1112	1019	79	75	76	78	74
FLA	1043	1099	1188	1363	1440	193	198	202	200	198
GA	856	881	928	980	1055	146	145	136	130	130
IDAHO	611	640	659	725	708	147	156	158	147	147
ILL	819	829	834	916	913	289	283	266	254	242
IND	449	469	511	580	635	237	235	229	220	215
IOWA	1726	1787	1775	1813	1893	474	453	425	407	402
KANS	1914	1992	2106	2104	2064	176	168	154	146	144
KY	1094	1142	1230	1323	1403	330	325	310	297	287
LA	861	906	870	943	1024	159	155	145	137	136
MICH	191	195	207	225	230	430	426	423	420	410
MINN	582	593	625	738	802	943	932	910	888	878
MISS	1181	1223	1294	1311	1460	168	154	140	130	121
MO	2031	2177	2583	2836	2947	329	323	317	314	303
MONT	1644	1677	1719	1792	1694	36	33	30	28	28
NEBR	2039	2112	2167	2340	2159	171	168	163	158	151
N MEX	658	690	720	700	734	31	30	30	30	32
N Y	98	103	102	120	140	936	920	900	902	914
N DAK	1045	1099	1146	1260	1285	130	126	121	118	115
OHIO	378	391	379	431	545	441	436	421	406	403
OKLA	2178	2254	2348	2546	2625	140	136	132	124	120
OREG	765	767	747	789	729	95	93	93	91	91
PA	150	147	153	164	210	694	683	660	685	699
S DAK	1800	1880	1963	2114	2126	180	176	175	174	174
TENN	1054	1145	1189	1269	1367	271	255	235	218	216
TEX	5729	5722	6644	7100	7064	355	358	356	350	336
VA	530	569	623	686	710	187	177	176	175	173
WASH	386	397	472	464	474	180	183	183	181	181
WIS	308	330	313	329	395	1822	1832	1810	1800	1814
WYO	753	773	816	856	813	16	15	14	14	12
34 STATES:	36743	37983	40809	43691	44762	10765	10639	10428	10260	10193
16 OTHER:										
STATES 3/:	2070	2109	1835	2054	2143	1074	1054	965	955	955
U.S.	38813	40092	42644	45745	46905	11839	11693	11393	11215	11148

1/ DATA SERIES STARTED JULY 1, 1971

2/ DATA SERIES STARTED JULY 1, 1973

3/ STATE ESTIMATES NOT AVAILABLE IN JULY

CATTLE AND CALVES: NUMBER BY CLASS
JULY 1, 1973-75

STATE	HEIFERS 500 POUNDS AND OVER								
	BEEF COW REPLACEMENT 1/			MILK COW REPLACEMENT 1/			OTHER 1/		
	1973	1974	1975	1973	1974	1975	1973	1974	1975
	1000 HEAD								
ALA	166	217	222	31	32	30	30	45	76
ARIZ	53	47	44	13	14	19	38	31	36
ARK	175	217	214	23	26	26	42	57	55
CALIF	226	239	221	302	281	323	217	196	241
COLO	242	247	153	33	30	28	516	424	486
FLA	206	237	216	36	38	38	41	38	57
GA	130	144	178	46	43	43	52	58	68
IDAHO	101	126	119	71	80	73	80	110	139
ILL	125	134	124	95	96	83	325	320	397
IND	91	99	102	77	75	77	168	172	177
IOWA	230	275	222	150	150	140	1155	1115	940
KANS	294	317	266	63	55	53	532	518	585
KY	196	220	218	77	85	90	65	86	117
LA	133	152	168	26	23	25	35	23	24
MICH	38	40	49	203	187	165	82	84	56
MINN	135	167	163	335	325	348	310	269	290
MISS	218	235	211	41	37	30	33	44	35
MO	402	420	441	74	80	84	261	275	281
MONT	336	327	294	11	9	12	102	135	163
NEBR	346	403	280	41	40	35	897	891	777
N MEX	150	110	110	12	12	13	145	142	114
N Y	34	37	39	320	336	355	34	34	35
N DAK	209	216	170	38	28	25	61	72	92
OHIO	94	104	123	140	136	149	105	114	120
OKLA	333	370	348	39	29	29	250	279	304
OREG	116	120	108	32	30	27	87	103	89
PA	38	45	60	215	226	240	61	61	62
S DAK	415	383	339	61	52	45	277	325	311
TENN	206	226	259	85	80	75	38	45	67
TEX	1050	1220	1100	115	120	100	787	750	870
VA	85	102	103	68	56	53	22	46	60
WASH	66	108	102	66	90	76	99	126	126
WIS	93	98	105	704	697	717	139	143	152
WYO	180	182	155	3	3	3	78	89	111
34 STATES:	6912	7584	7026	3646	3601	3629	7164	7220	7515
16 OTHER 2/									
STATES 2/1	309	325	356	277	270	295	121	130	143
U.S.	7221	7909	7382	3923	3871	3924	7285	7350	7658

1/ DATA SERIES STARTED JULY 1, 1973

2/ STATE ESTIMATES NOT AVAILABLE IN JULY

CATTLE AND CALVES: NUMBER BY CLASS
JULY 1, 1973-75

STATE	STEERS			BULLS			STEERS, HEIFERS AND BULLS UNDER 500 POUNDS 1/		
	500 POUNDS AND OVER 1/			500 POUNDS AND OVER 1/					
	1973	1974	1975	1973	1974	1975	1973	1974	1975
	1000 HEAD								
ALA	70	98	120	52	58	69	736	900	1008
ARIZ	633	533	400	28	25	32	330	240	318
ARK	67	78	105	65	75	75	803	882	995
CALIF	1271	1367	1206	80	84	87	1194	1293	1180
COLO	912	810	659	67	66	62	1040	1088	989
FLA	90	89	153	75	89	102	732	906	976
GA	104	126	146	60	65	70	624	704	825
IDAHO	295	371	330	43	44	42	620	686	642
ILL	580	567	707	50	58	55	780	855	929
IND	306	312	302	30	36	40	613	656	652
IOWA	1825	1860	1665	90	100	104	2050	2070	2034
KANS	1799	1677	1463	112	110	100	1940	1973	1975
KY	203	259	292	77	90	105	1112	1200	1238
LA	21	38	42	60	65	69	460	519	612
MICH	248	267	280	32	33	30	367	414	420
MINN	659	658	656	49	64	75	1047	1161	1188
MISS	33	98	65	80	83	93	919	933	1085
MO	657	812	798	140	145	160	2266	2368	2586
MONT	244	303	360	86	100	101	1542	1666	1548
NEBR	1614	1643	1365	122	130	119	1950	2145	2114
N MEX	320	320	256	43	46	48	620	640	593
N Y	35	40	41	24	28	33	324	363	384
N DAK	145	194	220	64	69	69	1116	1175	1174
OHIO	373	407	419	41	43	54	498	559	637
OKLA	800	860	845	110	121	124	1938	2161	2155
OREG	212	242	207	42	47	46	601	648	633
PA	230	235	250	41	50	53	339	400	426
S DAK	665	667	622	105	110	113	1878	1975	1920
TENN	117	184	227	68	70	82	998	1128	1257
TEX	2198	1930	1650	410	490	490	4840	5540	5390
VA	184	204	205	42	46	49	509	586	622
WASH	238	236	233	31	54	46	495	541	462
WIS	279	358	380	48	49	52	874	996	1135
WYO	168	198	240	48	52	53	693	766	713
34 STATES	17595	18041	16909	2515	2795	2902	36848	40147	40815
16 OTHER STATES 2/	255	382	414	132	118	166	1656	1805	1978
U.S.	17850	18423	17323	2647	2913	3068	38504	41952	42793

1/ DATA SERIES STARTED JULY 1, 1973

2/ STATE ESTIMATES NOT AVAILABLE IN JULY

CATTLE ON FEED: NUMBER ON FEED
 JANUARY 1, 1970-75 1/

STATE	1970	1971	1972	1973	1974	1975
1,000 HEAD						
ARIZ	510	524	539	655	609	319
CALIF	1,031	1,001	1,045	1,181	1,209	688
COLO	795	888	983	1,050	930	755
IDAHO	230	222	265	205	172	185
ILL	755	649	662	585	530	500
IND	349	314	327	276	262	250
IOWA	2,213	1,992	2,112	1,922	1,715	1,200
KANS	892	916	1,100	1,250	1,160	920
MICH	210	225	230	245	220	200
MINN	589	548	537	494	464	380
MO	402	342	373	310	250	200
MONT	115	130	165	160	122	79
NEBR	1,477	1,422	1,550	1,581	1,525	1,160
N MEX	209	165	188	226	232	135
N DAK	63	45	52	47	49	36
OHIO	318	308	320	300	280	290
OKLA	223	236	253	272	292	232
OREG	96	80	82	69	80	68
PA	88	92	91	87	86	83
S DAK	361	339	363	378	381	345
TEX	1,417	1,480	1,781	2,245	2,205	1,327
WASH	155	141	168	180	160	135
WIS	146	150	144	143	136	135
23 STATES	12,644	12,209	13,330	13,861	13,070	9,622
ALA	38	35	34	37	38	42
ARK	16	17	17	18	19	21
FLA	61	57	57	58	55	60
GA	59	59	62	65	63	68
HAW			15	15	16	11
KY	53	48	44	38	39	37
LA	10	9	8	12	10	10
MD	20	20	20	21	21	22
MISS	20	15	17	14	9	10
NEV	47	45	49	50	51	36
N J			5	5	5	5
N Y	15	11	12	14	14	10
N C	43	49	47	45	48	45
S C	15	18	23	26	30	26
TENN	26	29	27	14	11	10
UTAH	57	68	55	53	58	52
VA	35	46	37	39	31	31
W VA			10	11	12	11
WYO	37	35	37	31	39	38
OTHER STATES			6	5	4	3
39 STATES <u>2/</u>	13,190	12,770				
U S			13,912	14,432	13,643	10,170

1/ CATTLE AND CALVES ON FEED ARE ANIMALS BEING FATTENED FOR SLAUGHTER ON GRAIN OR OTHER CONCENTRATES AND ARE EXPECTED TO PRODUCE A CARCASS THAT WILL GRADE GOOD OR BETTER. CATTLE AND CALVES ON FEED ARE INCLUDED IN THE CATTLE AND CALF INVENTORY ESTIMATES BY CLASSES.

2/ 39 STATES IN 1970 AND 1971.

CATTLE ON FEED: NUMBER, PLACEMENTS, MARKETED, OTHER DISAPPEARANCE,
23 STATES, 1970-75 1/

YEAR	NUMBER ON FEED	PLACED ON FEED 2/	FED CATTLE MARKETED 2/	OTHER DISAPPEARANCE 3/
1000 HEAD				
	JANUARY 1	JAN 1-MAR 31	JAN 1-MAR 31	JAN 1-MAR 31
1970	12644	5119	6148	
1971	12209	5734	6231	
1972	13330	5924	6434	
1973	13861	6043	6582	
1974	13070	5788	5998	546
1975	9622	4755	5507	392
	APRIL 1	APR 1-JUN 30	APR 1-JUN 30	APR 1-JUN 30
1970	11615	5242	6219	
1971	11712	5455	6278	
1972	12820	6364	6727	
1973	13322	5693	6283	
1974	12314	4743	6270	738
1975	8478	5549	5024	453
	JULY 1	JUL 1-SEP 30	JUL 1-SEP 30	JUL 1-SEP 30
1970	10638	6088	6302	
1971	10889	6371	6594	
1972	12457	6224	6907	
1973	12732	5280	5958	
1974	10049	4970	5537	325
1975	8550	6027	5019	252
	OCTOBER 1	OCT 1-DEC 31	OCT 1-DEC 31	OCT 1-DEC 31
1970	10424	8000	6215	
1971	10666	8842	6178	
1972	11774	8862	6775	
1973	12054	7491	6475	
1974	9157	6529	5539	525
1975	9306	8354	4950	382

1/ CATTLE AND CALVES ON FEED ARE ANIMALS BEING FATTENED FOR SLAUGHTER MARKET ON GRAIN OR OTHER CONCENTRATES WHICH ARE EXPECTED TO PRODUCE A CARCASS THAT WILL GRADE GOOD OR BETTER.

2/ INCLUDES CATTLE PLACED ON FEED AFTER BEGINNING OF QUARTER AND MARKETED BEFORE END OF QUARTER.

3/ NOT ESTIMATED PRIOR TO 1974.

CATTLE ON FEED: NUMBER ON FEED, BY QUARTERS, 1970-75

STATE	JANUARY 1						APRIL 1					
	1970	1971	1972	1973	1974	1975	1970	1971	1972	1973	1974	1975
	1000 HEAD											
ARIZ	510	524	539	655	609	319	454	497	547	614	558	329
CALIF	1031	1001	1045	1181	1209	688	759	856	1017	1046	962	479
COLO	795	888	983	1050	930	755	748	876	947	946	864	688
IDAHO	230	222	265	205	172	185	222	215	227	192	172	158
ILL	755	649	662	585	530	500	733	601	605	560	500	500
IND	349	314	327	276	263	250	326	280	297	253	245	230
IOWA	2213	1992	2112	1922	1715	1200	2245	2043	2063	1960	1740	1160
KANS	892	916	1100	1250	1160	920	757	780	1050	1230	1080	860
MICH	210	225	230	245	220	200	209	209	211	230	230	180
MINN	589	548	537	494	464	380	570	513	513	467	430	325
MO	402	342	373	310	250	200	365	318	318	270	220	175
MONT	115	130	165	160	122	79	87	120	150	140	114	62
NEBR	1477	1422	1550	1581	1525	1160	1397	1312	1456	1520	1380	960
N MEX	209	165	188	226	232	135	194	163	196	230	235	125
N DAK	63	45	52	47	49	36	53	54	53	50	41	31
OHIO	318	308	320	300	280	290	294	285	288	277	263	240
OKLA	223	236	253	272	292	232	192	242	259	274	289	207
OREG	96	80	82	69	80	68	65	62	59	66	64	60
PA	88	92	91	87	86	83	78	79	81	79	78	74
S DAK	361	339	363	378	381	345	342	342	325	350	360	270
TEX	1417	1480	1781	2245	2205	1327	1243	1563	1854	2259	2219	1122
WASH	155	141	168	180	160	135	142	165	174	180	152	118
WIS	146	150	144	143	136	135	140	137	130	129	118	125
23 STATES	12644	12209	13330	13861	13070	9622	11615	11712	12820	13322	12314	8478

STATE	JULY 1						OCTOBER 1					
	1970	1971	1972	1973	1974	1975	1970	1971	1972	1973	1974	1975
	1000 HEAD											
ARIZ	433	492	542	576	476	380	416	459	544	565	348	397
CALIF	951	1007	1165	1179	961	748	960	1015	1206	1230	965	876
COLO	774	879	1020	950	672	684	830	895	978	925	690	735
IDAHO	202	186	184	182	185	182	185	194	177	160	186	178
ILL	580	458	485	450	410	410	500	445	400	370	350	420
IND	261	238	257	215	195	190	227	234	211	196	180	180
IOWA	1878	1634	1699	1716	1320	1020	1633	1437	1408	1436	1030	950
KANS	731	859	1130	1230	820	960	810	930	1150	1190	900	1150
MICH	150	150	170	185	170	145	130	140	160	160	155	147
MINN	516	439	443	427	365	275	476	400	404	400	320	290
MO	255	227	240	210	170	170	235	254	210	175	155	175
MONT	73	100	130	122	102	60	74	95	105	83	65	44
NEBR	1189	1202	1442	1471	1120	950	1270	1287	1403	1438	1040	1060
N MEX	163	171	212	245	190	120	173	158	195	230	170	130
N DAK	40	39	45	46	46	24	31	30	32	28	35	20
OHIO	208	183	210	208	185	170	174	167	174	162	148	175
OKLA	217	253	298	289	231	187	229	243	272	312	212	239
OREG	52	56	52	53	51	58	70	67	52	60	60	70
PA	53	57	54	58	57	61	53	54	49	53	48	60
S DAK	275	281	275	310	310	260	282	285	285	305	270	265
TEX	1353	1700	2119	2335	1777	1264	1418	1608	2091	2323	1599	1488
WASH	146	166	165	160	141	134	141	162	162	140	133	161
WIS	118	112	120	115	95	98	107	107	106	113	98	96
23 STATES	10638	10889	12457	12732	10049	8550	10424	10666	11774	12054	9157	9306

1/ CATTLE AND CALVES ON FEED ARE ANIMALS BEING FATTENED FOR SLAUGHTER MARKET ON GRAIN OR OTHER CONCENTRATES WHICH ARE EXPECTED TO PRODUCE A CARCASS THAT WILL GRADE GOOD OR BETTER.

CATTLE ON FEED: NUMBER PLACED ON FEED, BY QUARTERS, 1970-75 1/

STATE	JANUARY - MARCH						APRIL - JUNE					
	1970	1971	1972	1973	1974	1975	1970	1971	1972	1973	1974	1975
1000 HEAD												
ARIZ	152	191	224	177	176	196	229	254	243	216	166	254
CALIF	296	372	494	389	384	328	607	590	605	588	585	647
COLO	437	519	529	431	457	444	501	540	643	529	367	493
IDAH0	92	88	74	90	104	57	83	78	68	90	102	114
ILL	249	221	203	245	228	250	134	131	130	125	171	145
IND	99	89	85	82	78	68	67	78	80	67	68	66
IOWA	1000	972	819	926	918	707	747	590	641	545	546	601
KANS	367	401	560	630	521	509	465	528	640	595	398	675
MICH	43	35	34	37	68	42	25	23	32	30	23	45
MINN	173	187	202	237	217	180	128	107	139	146	165	146
MO	131	147	121	100	91	81	72	82	90	68	90	90
MO NT	39	55	40	34	35	28	21	38	40	37	50	35
NEBR	826	874	891	925	797	583	728	832	1037	884	740	735
N MEX	91	87	83	100	83	60	88	78	103	105	57	71
N DAK	20	25	19	21	16	18	11	7	14	15	32	14
OHIO	67	72	68	73	77	65	50	53	62	51	67	55
OKLA	111	147	149	141	163	134	153	163	195	149	91	124
OREG	21	30	28	33	22	29	29	31	27	17	16	31
PA	18	18	20	19	21	19	16	16	20	17	23	23
S DAK	133	157	116	123	180	116	63	85	85	95	136	170
TEX	631	891	1020	1098	1049	724	909	1030	1357	1210	747	884
WASH	73	108	105	94	68	72	83	85	72	76	73	98
WIS	50	48	40	38	35	45	33	36	41	38	30	33
23 STATES	5119	5734	5924	6043	5788	4755	5242	5455	6364	5693	4743	5549

STATE	JULY - SEPTEMBER						OCTOBER - DECEMBER					
	1970	1971	1972	1973	1974	1975	1970	1971	1972	1973	1974	1975
1000 HEAD												
ARIZ	207	194	236	217	117	210	286	277	305	263	219	316
CALIF	537	547	570	516	506	598	496	525	529	477	376	605
COLO	513	565	509	478	485	545	547	622	687	586	534	626
IDAH0	114	132	93	68	90	85	137	177	133	114	109	125
ILL	253	270	198	170	199	235	425	440	395	350	359	400
IND	111	129	99	81	77	97	205	193	163	163	165	190
IOWA	977	866	750	492	453	547	1577	1676	1606	1219	965	1259
KANS	531	556	665	560	610	807	551	665	690	625	605	783
MICH	58	68	70	42	58	79	143	130	130	110	93	108
MINN	192	192	196	154	169	185	343	378	349	308	281	338
MO	160	179	120	80	104	100	261	270	210	175	133	175
MO NT	41	57	47	30	19	20	98	120	115	76	66	61
NEBR	920	982	853	715	659	761	1080	1188	1231	1027	953	1038
N MEX	87	79	99	88	79	73	89	109	129	114	60	157
N DAK	13	13	9	9	12	13	34	42	38	42	27	33
OHIO	93	100	94	64	74	110	209	218	194	194	218	215
OKLA	143	143	140	152	143	174	148	151	161	142	133	157
OREG	48	46	31	39	45	57	52	52	44	45	38	47
PA	36	33	30	26	25	35	62	60	56	58	63	57
S DAK	127	144	136	118	128	159	207	240	239	226	232	260
TEX	789	920	1136	1070	794	994	872	1123	1259	994	742	1226
WASH	94	101	102	72	74	100	84	96	108	105	75	91
WIS	44	55	41	39	50	43	94	90	91	78	83	87
23 STATES	6088	6371	6224	5280	4970	6027	8000	8842	8862	7491	6529	8354

1/ INCLUDES CATTLE PLACED ON FEED AFTER BEGINNING OF QUARTER AND MARKETED BEFORE END OF QUARTER.

CATTLE ON FEED: FED CATTLE MARKETED, BY QUARTERS, 1970-75 1/

STATE	JANUARY - MARCH						APRIL - JUNE					
	1970	1971	1972	1973	1974	1975	1970	1971	1972	1973	1974	1975
	1000 HEAD											
ARIZ	208	218	216	218	201	176	250	259	248	254	220	188
CALIF	568	517	522	524	505	477	415	439	457	455	474	299
COLO	484	531	565	535	485	492	475	537	570	525	514	455
IDAHO	100	95	112	103	90	81	103	107	111	100	68	70
ILL	271	269	260	270	225	215	287	274	250	235	215	205
IND	122	123	115	105	85	76	132	120	120	105	100	95
IOWA	968	921	868	888	832	700	1114	999	1005	789	845	695
KANS	502	537	610	650	570	545	491	449	560	595	605	549
MICH	44	51	53	52	52	58	84	82	73	75	75	75
MINN	192	222	226	264	247	223	182	181	209	186	210	185
MO	168	171	176	140	110	98	182	173	168	128	105	90
MONT	67	65	55	54	34	40	35	58	60	55	54	33
NEBR	906	984	985	986	900	755	936	942	1051	933	945	720
N MEX	106	89	75	96	70	65	99	70	87	90	100	73
N DAK	30	16	18	18	21	20	24	22	22	19	18	17
OHIO	91	95	100	96	82	106	136	155	140	120	131	113
OKLA	142	141	143	139	158	157	128	152	156	134	144	138
OREG	52	48	51	36	36	35	42	37	34	30	27	31
PA	28	31	30	27	27	26	41	38	47	38	38	34
S DAK	152	154	154	151	165	155	130	146	135	135	140	136
TEX	805	808	947	1084	982	874	799	893	1092	1134	1117	689
WASH	86	84	99	94	71	82	79	84	81	96	77	80
WIS	56	61	54	52	50	51	55	61	51	52	48	54
23 STATES	6148	6231	6434	6582	5998	5507	6219	6278	6727	6283	6270	5024

STATE	JULY - SEPTEMBER						OCTOBER - DECEMBER					
	1970	1971	1972	1973	1974	1975	1970	1971	1972	1973	1974	1975
	1000 HEAD											
ARIZ	224	227	234	228	237	183	178	197	194	219	233	182
CALIF	528	539	529	465	455	429	455	495	554	498	568	445
COLO	457	549	551	503	454	484	489	534	615	581	451	407
IDAHO	131	124	100	90	84	84	100	106	105	102	102	95
ILL	333	283	283	250	240	210	276	223	210	190	170	175
IND	145	133	145	100	86	95	118	100	98	96	90	80
IOWA	1222	1063	1041	772	680	680	1218	1001	1092	940	740	650
KANS	452	485	645	600	515	602	445	495	590	655	550	568
MICH	78	78	89	67	70	71	48	40	45	50	45	40
MINN	232	231	235	181	200	164	271	241	259	244	207	190
MO	180	152	150	115	110	80	154	151	110	100	75	70
MONT	40	62	72	69	50	35	42	50	60	37	49	24
NEBR	839	897	892	748	720	640	928	925	1053	940	790	680
N MEX	97	92	116	103	95	60	97	79	98	112	90	72
N DAK	22	22	22	27	21	15	20	20	23	21	24	15
OHIO	127	116	130	110	105	95	75	65	68	76	68	65
OKLA	131	153	166	129	154	116	141	141	161	162	110	104
OREG	30	35	31	32	35	44	42	37	27	25	30	35
PA	36	36	35	31	32	33	23	23	18	25	26	24
S DAK	120	140	126	123	140	130	150	162	146	150	140	140
TEX	724	1012	1154	1082	933	737	810	950	1105	1112	867	767
WASH	99	105	105	92	81	71	84	90	90	85	72	82
WIS	55	60	55	41	40	41	51	53	54	55	42	40
23 STATES	6302	6594	6907	5958	5537	5019	6215	6178	6775	6475	5539	4950

1/ INCLUDES CATTLE PLACED ON FEED AFTER BEGINNING OF QUARTER AND MARKETED BEFORE END OF QUARTER.

CATTLE ON FEED: OTHER DISAPPEARANCE, BY QUARTERS, 1974-75 1/

STATE	JANUARY - MARCH		APRIL - JUNE	
	1974	1975	1974	1975
1000 HEAD				
ARIZ	26	10	28	15
CALIF	126	60	112	79
COLO	38	19	45	42
IDAHO	14	3	21	20
ILL	33	35	46	30
IND	11	12	18	11
IOWA	61	47	121	46
KANS	31	24	53	26
MICH	6	4	8	5
MINN	4	12	20	11
MO	11	8	35	5
MONT	9	5	8	4
NEBR	42	28	55	25
N MEX	10	5	2	3
N DAK	3	3	9	4
OHIO	12	9	14	12
OKLA	8	2	5	6
OREG	2	2	2	2
PA	2	2	6	2
S DAK	36	36	46	44
TEX	53	55	72	53
WASH	5	7	7	2
WIS	3	4	5	6
23 STATES	546	392	738	453

STATE	JULY - SEPTEMBER		OCTOBER - DECEMBER	
	1974	1975	1974	1975
1000 HEAD				
ARIZ	8	10	15	21
CALIF	47	41	85	76
COLO	13	10	18	29
IDAHO	5	5	8	5
ILL	19	15	39	15
IND	6	12	5	5
IOWA	63	17	55	29
KANS	15	15	35	25
MICH	3	6	3	5
MINN	14	6	14	8
MO	9	15	13	20
MONT	6	1	3	1
NEBR	19	11	43	28
N MEX	4	3	5	3
N DAK	2	2	2	2
OHIO	6	10	8	5
OKLA	8	6	3	6
OREG	1	1	0	2
PA	2	3	2	3
S DAK	28	24	17	20
TEX	39	33	147	65
WASH	1	2	1	2
WIS	7	4	4	7
23 STATES	325	252	525	382

1/ INCLUDES DEATH LOSSES, MOVEMENT FROM FEEDLOTS TO PASTURES AND SHIPMENTS TO OTHER FEEDLOTS FOR FURTHER FEEDING.

CATTLE ON FEED: STEERS AND STEER CALVES, BY QUARTERS, 1970-75

STATE	JANUARY 1						APRIL 1					
	1970	1971	1972	1973	1974	1975	1970	1971	1972	1973	1974	1975
	1000 HEAD											
ARIZ	453	488	481	623	585	296	421	432	497	577	536	313
CALIF	956	940	978	1090	1132	633	713	805	965	997	913	442
COLO	464	571	601	683	616	472	408	578	580	618	571	383
IDAHO	161	162	172	148	120	128	158	159	175	138	124	109
ILL	483	441	424	369	334	335	476	385	369	330	320	330
IND	199	201	212	177	155	169	180	168	177	154	152	157
IOWA	1505	1335	1414	1344	1220	824	1638	1470	1422	1332	1235	824
KANS	637	688	825	1013	893	724	537	586	798	959	794	604
MICH	183	200	212	230	198	186	182	188	194	207	203	166
MINN	359	329	343	311	310	262	330	302	328	294	297	228
MO	289	239	246	220	175	148	263	228	210	181	150	122
MONT	75	81	115	109	82	39	51	75	111	94	79	32
NEBR	955	1085	992	964	1033	780	945	886	949	988	961	652
N MEX	124	91	109	124	137	96	117	80	104	129	141	83
N DAK	35	24	26	26	28	22	29	30	27	27	25	21
OHIO	251	240	246	234	216	238	229	222	225	216	213	197
OKLA	160	155	157	176	215	146	132	138	158	181	197	135
OREG	58	50	54	47	53	46	40	41	40	41	43	40
PA	79	82	80	73	69	73	69	69	72	66	63	67
S DAK	231	237	236	234	240	214	233	233	208	228	234	165
TEX	842	874	1155	1433	1450	858	730	913	1112	1462	1570	735
WASH	116	113	129	140	115	111	108	120	129	144	109	94
WIS	111	123	115	110	110	109	104	107	103	106	97	100
23 STATES	8726	8749	9322	9878	9486	6909	8093	8215	8953	9469	9027	5999

STATE	JULY 1						OCTOBER 1					
	1970	1971	1972	1973	1974	1975	1970	1971	1972	1973	1974	1975
	1000 HEAD											
ARIZ	366	460	507	546	457	357	383	418	516	541	327	365
CALIF	884	946	1079	1117	894	663	901	934	1128	1141	905	800
COLO	428	518	639	541	445	353	549	573	578	577	439	380
IDAHO	141	138	132	141	137	124	137	133	135	123	136	121
ILL	365	293	310	261	266	262	335	289	256	226	235	256
IND	161	138	144	127	123	118	159	154	133	110	113	122
IOWA	1333	1142	1171	1165	930	673	1176	1004	970	960	721	655
KANS	489	574	791	922	593	604	590	687	897	952	682	778
MICH	134	135	154	174	154	135	117	132	150	146	144	137
MINN	304	289	300	294	270	190	290	256	266	279	214	199
MO	191	162	163	141	120	119	176	180	145	118	110	115
MONT	44	57	79	80	62	26	49	55	77	61	43	20
NEBR	763	780	892	956	754	580	859	881	870	944	701	636
N MEX	115	85	114	130	114	66	110	87	116	131	114	70
N DAK	19	23	25	27	33	14	17	18	20	17	27	12
OHIO	168	145	170	169	152	137	139	132	144	128	124	152
OKLA	148	142	179	197	143	107	153	145	169	218	129	172
OREG	33	36	36	34	34	40	48	50	38	38	39	43
PA	46	50	47	48	46	56	46	47	43	42	39	54
S DAK	187	205	178	192	205	148	189	208	194	186	173	143
TEX	817	1106	1372	1513	1187	753	850	1085	1401	1621	1103	892
WASH	107	121	124	120	110	99	107	126	130	106	108	121
WIS	90	86	96	93	77	77	86	83	76	89	80	75
23 STATES	7333	7631	8702	8988	7306	5701	7466	7677	8452	8754	6706	6318

CATTLE ON FEED: HEIFERS AND HEIFER CALVES, BY QUARTERS, 1970-75

STATE	JANUARY 1					APRIL 1						
	1970	1971	1972	1973	1974	1975	1970	1971	1972	1973	1974	1975
	1000 HEAD											
ARIZ	56	35	56	31	23	22	32	64	49	36	21	15
CALIF	71	60	63	85	72	52	45	50	50	47	44	29
COLO	328	311	376	361	302	272	338	296	365	324	287	293
IDAHO	64	56	88	47	40	46	60	52	50	48	41	46
ILL	272	208	238	216	196	165	257	216	236	230	180	170
IND	147	110	113	94	105	78	143	109	119	96	87	70
IOWA	706	655	698	576	486	372	606	571	638	626	495	333
KANS	255	228	275	237	267	193	220	194	252	271	281	253
MICH	25	25	18	15	22	12	25	19	17	23	25	12
MINN	228	217	192	182	153	118	239	210	184	172	133	94
MO	113	103	123	87	73	50	102	89	105	86	68	51
MONT	36	41	46	49	34	36	34	44	38	45	33	29
NEBR	520	332	553	612	486	375	451	425	502	525	414	303
N MEX	81	71	77	99	93	38	74	81	90	99	92	40
N DAK	28	20	25	20	20	13	24	24	25	22	15	9
OHIO	67	65	71	63	61	49	65	60	60	58	47	41
OKLA	63	80	94	96	77	86	60	104	99	93	92	72
OREG	36	26	27	20	25	21	24	19	17	22	16	17
PA	5	5	6	7	8	5	5	6	5	6	5	4
S DAK	126	98	123	140	137	128	106	106	114	118	122	103
TEX	573	604	620	808	750	464	509	648	737	791	643	381
WASH	37	28	39	40	43	24	34	45	45	36	43	24
WIS	32	26	28	32	25	23	35	27	24	21	20	23
23 STATES	3869	3404	3947	3917	3498	2642	3488	3459	3821	3795	3204	2412

STATE	JULY 1					OCTOBER 1						
	1970	1971	1972	1973	1974	1975	1970	1971	1972	1973	1974	1975
	1000 HEAD											
ARIZ	66	30	34	29	18	22	29	40	27	23	20	31
CALIF	66	60	85	58	65	82	58	80	74	85	54	73
COLO	345	360	376	407	224	312	277	322	395	342	250	343
IDAHO	57	44	46	35	44	56	44	60	39	32	48	55
ILL	215	165	175	189	144	148	165	156	144	144	115	184
IND	97	98	111	86	69	71	66	78	77	82	62	57
IOWA	544	490	526	548	388	343	455	431	435	473	306	292
KANS	242	285	339	308	226	351	220	241	253	238	213	371
MICH	15	14	14	11	14	10	12	7	10	14	9	10
MINN	211	149	142	132	95	85	185	143	137	120	106	90
MO	84	64	75	67	48	49	59	74	63	56	43	58
MONT	28	42	48	40	39	33	24	39	27	21	21	23
NEBR	422	421	547	510	360	360	410	402	528	488	334	414
N MEX	66	84	97	113	74	53	62	69	78	97	54	59
N DAK	21	16	19	19	13	9	14	12	12	11	8	8
OHIO	40	38	40	37	31	31	35	35	30	32	22	21
OKLA	69	111	119	92	88	80	76	98	103	94	83	67
OREG	18	18	15	18	14	17	21	17	13	21	18	24
PA	3	4	4	4	4	3	3	3	2	4	4	4
S DAK	85	73	94	115	102	109	90	74	88	116	94	119
TEX	534	591	742	817	586	506	566	517	686	697	491	595
WASH	39	45	41	40	31	35	34	36	32	34	25	40
WIS	27	24	23	21	17	20	19	22	29	23	16	19
23 STATES	3274	3226	3712	3696	2694	2785	2924	2956	3282	3247	2396	2937

CATTLE ON FEED: COWS AND OTHERS, BY QUARTERS, 1970-75

STATE	JANUARY 1						APRIL 1					
	1970	1971	1972	1973	1974	1975	1970	1971	1972	1973	1974	1975
1000 HEAD												
ARIZ	1	1	2	1	1	1	1	1	1	1	1	1
CALIF	4	1	4	6	5	3	1	1	2	2	5	8
COLO	3	6	6	6	12	11	2	2	2	4	6	12
IDAHO	5	4	5	10	12	11	4	4	2	6	7	3
ILL	0	0	0	0	0	0	0	0	0	0	0	0
IND	3	3	2	5	3	3	3	3	1	3	6	3
IOWA	2	2	2	2	9	4	1	2	3	2	10	3
KANS	0	0	0	0	0	3	0	0	0	0	5	3
MICH	2	0	0	0	0	2	2	2	0	0	2	2
MINN	2	2	2	1	1	0	1	1	1	1	0	3
MO	0	0	4	3	2	2	0	1	3	3	2	2
MONT	4	8	4	2	6	4	2	1	1	1	2	1
NEBR	2	5	5	5	6	5	1	1	5	7	5	5
N MEX	4	3	2	3	2	1	3	2	2	2	2	2
N DAK	0	1	1	1	1	1	0	0	1	1	1	1
OHIO	0	3	3	3	3	3	0	3	3	3	3	2
OKLA	0	1	2	0	0	0	0	0	2	0	0	0
OREG	2	4	1	2	2	1	1	2	2	3	5	3
PA	4	5	5	7	9	5	4	4	4	7	10	3
S DAK	4	4	4	4	4	3	3	3	3	4	4	2
TEX	2	2	6	4	5	5	4	2	5	6	6	6
WASH	2	0	0	0	2	0	0	0	0	0	0	0
WIS	3	1	1	1	1	3	1	3	3	2	1	2
23 STATES	49	56	61	66	86	71	34	38	46	58	83	67

STATE	JULY 1						OCTOBER 1					
	1970	1971	1972	1973	1974	1975	1970	1971	1972	1973	1974	1975
1000 HEAD												
ARIZ	1	2	1	1	1	1	4	1	1	1	1	1
CALIF	1	1	1	4	2	3	1	1	4	4	6	3
COLO	1	1	5	2	3	19	4	0	5	6	1	12
IDAHO	4	4	6	6	4	2	4	1	3	5	2	2
ILL	0	0	0	0	0	0	0	0	0	0	0	0
IND	3	2	2	2	3	1	2	2	1	4	5	1
IOWA	1	2	2	3	2	4	2	2	3	3	3	3
KANS	0	0	0	0	1	5	0	2	0	0	5	1
MICH	1	1	2	0	2	0	1	1	0	0	2	0
MINN	1	1	1	1	0	0	1	1	1	1	0	1
MO	0	1	2	2	2	2	0	0	2	1	2	2
MONT	1	1	3	2	1	1	1	1	1	1	1	1
NEBR	4	1	3	5	6	10	1	4	5	6	5	10
N MEX	2	2	1	2	2	1	1	2	1	2	2	1
N DAK	0	0	1	0	0	1	0	0	0	0	0	0
OHIO	0	0	0	2	2	2	0	0	0	2	2	2
OKLA	0	0	0	0	0	0	0	0	0	0	0	0
OREG	1	2	1	1	3	1	1	0	1	1	3	3
PA	4	3	3	6	7	2	4	4	4	7	5	2
S DAK	3	3	3	3	3	3	3	3	3	3	3	3
TEX	2	3	5	5	4	5	2	6	4	5	5	1
WASH	0	0	0	0	0	0	0	0	0	0	0	0
WIS	1	2	1	1	1	1	2	2	1	1	2	2
23 STATES	31	32	43	48	49	64	34	33	40	53	55	51

CATTLE ON FEED: NUMBER OF STEERS AND STEER CALVES ON FEED BY WEIGHT GROUPS, BY QUARTERS, 1970

STATE	JANUARY 1					APRIL 1				
	UNDER 500 POUNDS	500-699 POUNDS	700-899 POUNDS	900-1099 POUNDS	1100 POUNDS AND OVER	UNDER 500 POUNDS	500-699 POUNDS	700-899 POUNDS	900-1099 POUNDS	1100 POUNDS AND OVER
	1000 HEAD									
ARIZ	54	131	172	91	5	42	118	135	118	8
CALIF	191	210	276	249	30	86	193	213	207	14
COLO	21	38	129	192	84	7	37	109	164	91
IDAH0	13	30	39	68	11	3	40	46	58	11
ILL	82	145	125	97	34	28	167	143	105	33
IND	30	50	57	42	20	22	57	54	43	4
IOWA	271	421	437	301	75	66	589	426	426	131
KANS	15	79	280	225	38	12	86	217	188	34
MICH	33	60	53	35	2	7	62	64	47	2
MINN	72	82	86	90	29	26	148	73	63	20
MO	29	104	75	72	9	18	90	79	63	13
MONT	11	19	25	16	4	2	19	16	9	5
NEBR	63	131	339	316	106	19	203	250	358	115
N MEX	12	27	52	31	2	6	36	33	41	1
N DAK	11	8	7	8	1	1	12	8	7	1
OHIO	38	98	65	48	2	14	62	96	53	4
OKLA	6	29	71	40	14	16	24	46	38	8
OREG	7	13	17	18	3	2	11	11	14	2
PA	3	14	26	30	6	2	9	19	27	12
S DAK	23	35	67	67	39	12	91	58	51	21
TEX	60	303	268	185	26	44	235	232	189	30
WASH	2	23	42	38	11	0	24	39	37	8
WIS	19	21	30	31	10	9	34	23	25	13
23 STATES	1066	2071	2738	2290	561	444	2347	2390	2331	581

STATE	JULY 1					OCTOBER 1				
	UNDER 500 POUNDS	500-699 POUNDS	700-899 POUNDS	900-1099 POUNDS	1100 POUNDS AND OVER	UNDER 500 POUNDS	500-699 POUNDS	700-899 POUNDS	900-1099 POUNDS	1100 POUNDS AND OVER
	1000 HEAD									
ARIZ	62	91	132	77	4	46	119	130	84	4
CALIF	124	212	300	239	9	171	225	271	216	18
COLO	2	30	178	170	48	5	26	179	262	77
IDAH0	1	20	47	59	14	3	35	40	45	14
ILL	7	55	168	109	26	13	54	107	131	30
IND	8	32	58	55	8	10	24	62	52	11
IOWA	13	147	613	453	107	35	141	353	541	106
KANS	2	88	238	138	23	6	110	264	172	38
MICH	1	18	59	52	4	6	35	29	46	1
MINN	18	70	119	79	18	17	44	90	119	20
MO	2	23	73	82	11	14	28	72	57	5
MONT	0	6	20	17	1	1	3	25	13	7
NEBR	7	84	299	294	79	5	91	367	306	90
N MEX	9	28	47	30	1	10	24	35	39	2
N DAK	0	6	7	6	0	0	2	4	10	1
OHIO	5	30	66	62	5	14	40	42	40	3
OKLA	7	26	64	48	3	4	32	56	53	8
OREG	1	5	13	12	2	2	8	21	15	2
PA	1	5	9	23	8	2	7	14	20	3
S DAK	2	34	86	48	17	2	15	83	62	27
TEX	25	284	294	197	17	45	266	286	220	33
WASH	0	10	50	41	6	1	14	40	39	13
WIS	4	21	33	22	10	10	11	30	32	3
23 STATES	301	1325	2973	2313	421	422	1354	2600	2574	516

CATTLE ON FEED: NUMBER OF STEERS AND STEER CALVES ON FEED BY WEIGHT GROUPS, BY QUARTERS, 1971

STATE	JANUARY 1					APRIL 1				
	UNDER 500	500-699	700-899	900-1099	1100 AND OVER	UNDER 500	500-699	700-899	900-1099	1100 AND OVER
	POUNDS	POUNDS	POUNDS	POUNDS	POUNDS	POUNDS	POUNDS	POUNDS	POUNDS	POUNDS
	1000 HEAD									
ARIZ	64	151	151	117	5	78	108	151	91	4
CALIF	197	244	301	188	10	121	193	258	217	16
COLO	11	40	166	240	114	6	52	185	248	87
IDAHO	8	26	57	58	13	5	32	52	56	14
ILL	66	132	146	84	13	15	108	112	131	19
IND	20	54	75	46	6	11	39	66	47	5
IOWA	280	374	387	227	67	59	515	426	382	88
KANS	18	109	281	226	54	12	128	248	151	47
MICH	24	86	54	32	4	6	58	75	45	4
MINN	56	59	95	89	30	30	115	60	73	24
MO	31	81	58	62	7	11	75	78	55	9
MONT	15	20	21	19	6	1	27	23	20	4
NEBR	87	111	399	383	105	15	215	213	328	115
N MEX	6	27	28	26	4	5	24	33	17	1
N DAK	5	10	4	3	2	2	16	8	3	1
OHIO	34	86	72	46	2	9	60	91	58	4
OKLA	9	42	46	50	8	9	45	48	29	7
OREG	7	13	15	12	3	1	12	14	12	2
PA	5	14	27	25	11	2	8	21	28	10
S DAK	36	36	63	71	31	16	103	44	47	23
TEX	72	248	321	207	26	55	304	308	218	28
WASH	10	15	44	29	15	1	23	51	35	10
WIS	15	22	34	37	15	11	27	30	25	14
23 STATES	1076	2000	2845	2277	551	481	2287	2595	2316	536

STATE	JULY 1					OCTOBER 1				
	UNDER 500	500-699	700-899	900-1099	1100 AND OVER	UNDER 500	500-699	700-899	900-1099	1100 AND OVER
	POUNDS	POUNDS	POUNDS	POUNDS	POUNDS	POUNDS	POUNDS	POUNDS	POUNDS	POUNDS
	1000 HEAD									
ARIZ	129	106	124	97	4	54	130	155	75	4
CALIF	189	237	331	170	19	159	261	271	215	28
COLO	0	67	295	135	21	11	46	201	246	69
IDAHO	1	17	49	52	19	5	31	53	36	8
ILL	6	41	126	102	18	14	41	101	104	29
IND	10	24	56	44	4	18	22	69	40	5
IOWA	23	160	502	377	80	40	171	311	392	90
KANS	6	83	279	170	36	7	103	335	203	39
MICH	1	24	53	53	4	5	37	36	51	3
MINN	15	58	130	72	14	18	41	110	79	8
MO	10	31	74	42	5	14	45	67	49	5
MONT	0	6	17	30	4	1	7	19	23	5
NEBR	4	110	311	296	59	14	98	389	293	87
N MEX	7	22	32	21	3	10	27	26	22	2
N DAK	0	1	12	9	1	0	1	5	11	1
OHIO	4	26	64	48	3	10	28	53	38	3
OKLA	4	33	79	24	2	9	37	59	34	6
OREG	1	7	14	11	3	2	9	22	15	2
PA	2	5	13	21	9	2	7	15	18	5
S DAK	4	29	105	49	18	1	13	98	72	24
TEX	99	298	430	257	22	67	337	356	290	35
WASH	0	11	48	55	7	0	24	47	44	11
WIS	8	14	33	24	7	6	17	22	31	7
23 STATES	523	1410	3177	2159	362	467	1533	2820	2381	476

CATTLE ON FEED: NUMBER OF STEERS AND STEER CALVES ON FEED BY WEIGHT GROUPS, BY QUARTERS, 1972

STATE	JANUARY 1					APRIL 1				
	UNDER	500-	700-	900-	1100	UNDER	500-	700-	900-	1100
	POUNDS	POUNDS	POUNDS	POUNDS	POUNDS AND OVER	POUNDS	POUNDS	POUNDS	POUNDS	POUNDS AND OVER
	1000 HEAD									
ARIZ	125	159	135	58	4	75	129	179	109	5
CALIF	216	254	303	176	29	183	292	305	180	5
COLO	36	65	194	241	65	10	86	196	208	80
IDAHO	17	38	52	55	10	5	40	49	63	18
ILL	59	106	132	106	21	18	107	118	100	26
IND	20	59	65	63	5	12	50	61	50	4
IOWA	212	382	396	353	71	42	498	412	370	100
KANS	17	73	297	272	66	24	160	343	215	56
MICH	7	79	76	49	1	8	58	78	45	5
MINN	82	62	72	110	17	36	128	79	72	13
MO	32	86	67	54	7	15	63	74	50	8
MONT	19	24	18	45	9	2	39	32	12	26
NEBR	60	129	327	377	99	10	247	256	313	123
N MEX	12	35	40	19	3	5	27	39	30	3
N DAK	8	9	4	3	2	2	12	8	4	1
OHIO	30	93	64	57	2	9	61	97	54	4
OKLA	22	61	37	30	7	10	41	55	35	17
OREG	4	17	17	14	2	1	12	14	11	2
PA	6	16	27	25	6	2	8	20	27	15
S DAK	47	45	59	66	19	6	79	44	52	27
TEX	163	335	357	277	23	45	411	367	256	33
WASH	3	18	45	54	9	0	30	49	41	9
WIS	18	23	24	37	13	13	33	26	23	8
23 STATES	1215	2268	2808	2541	490	533	2611	2901	2320	588

STATE	JULY 1					OCTOBER 1				
	UNDER	500-	700-	900-	1100	UNDER	500-	700-	900-	1100
	POUNDS	POUNDS	POUNDS	POUNDS	POUNDS AND OVER	POUNDS	POUNDS	POUNDS	POUNDS	POUNDS AND OVER
	1000 HEAD									
ARIZ	43	132	171	110	1	101	178	149	88	0
CALIF	216	320	313	215	15	256	333	302	216	21
COLO	3	45	249	278	64	37	102	184	191	64
IDAHO	1	22	49	47	13	7	20	43	50	15
ILL	9	43	130	115	13	10	46	69	105	26
IND	6	22	49	55	12	11	25	57	35	5
IOWA	23	152	492	410	94	19	117	310	427	97
KANS	16	206	269	237	63	36	242	314	260	45
MICH	3	28	62	55	6	4	42	50	51	3
MINN	18	60	138	69	15	16	48	120	66	16
MO	6	31	67	54	5	4	28	57	49	7
MONT	0	10	29	29	11	6	15	18	24	14
NEBR	9	116	402	294	71	8	87	270	383	122
N MEX	12	29	38	34	1	17	31	36	30	2
N DAK	0	3	12	9	1	1	2	7	9	1
OHIO	5	24	73	65	3	12	30	50	46	6
OKLA	9	34	75	52	9	12	49	57	38	13
OREG	1	11	15	8	1	2	10	15	7	4
PA	1	3	10	22	11	4	6	12	14	7
S DAK	2	28	86	53	9	2	14	93	75	10
TEX	55	329	576	371	41	42	336	491	476	56
WASH	0	9	57	52	6	3	27	53	42	5
WIS	8	15	33	32	8	7	12	24	25	8
23 STATES	496	1672	3395	2666	473	617	1800	2781	2707	547

CATTLE ON FEED: NUMBER OF STEERS AND STEER CALVES ON FEED BY WEIGHT GROUPS, BY QUARTERS, 1973

STATE	JANUARY 1					APRIL 1				
	UNDER 500	500-699	700-899	900-1099	1100 AND OVER	UNDER 500	500-699	700-899	900-1099	1100 AND OVER
	POUNDS	POUNDS	POUNDS	POUNDS	POUNDS	POUNDS	POUNDS	POUNDS	POUNDS	POUNDS
	1000 HEAD									
ARIZ	105	193	234	91	0	92	127	208	144	6
CALIF	252	299	314	210	15	157	250	356	227	7
COLO	57	134	217	203	72	19	69	167	273	90
IDAH0	15	27	46	48	12	6	23	50	45	14
ILL	48	100	107	81	33	16	106	99	89	20
IND	25	50	55	43	4	14	42	51	43	4
IOWA	188	349	376	323	108	40	453	373	373	93
KANS	30	213	355	324	91	38	269	335	288	29
MICH	10	99	64	50	7	10	60	77	54	6
MINN	65	81	62	78	25	18	109	73	59	35
MO	29	59	68	55	9	11	58	62	45	5
MONT	13	46	24	20	6	5	30	34	19	6
NEBR	29	135	328	347	125	10	257	316	336	69
N MEX	12	33	45	31	3	13	36	32	44	4
N DAK	6	11	4	4	1	2	12	8	4	1
OHIO	28	86	73	42	5	13	52	89	56	6
OKLA	5	53	58	47	13	16	47	67	42	9
OREG	3	14	13	12	5	3	16	12	8	2
PA	4	13	23	25	8	2	7	19	26	12
S DAK	44	58	55	63	14	11	103	53	45	16
TEX	72	387	545	372	57	73	512	497	336	44
WASH	6	28	52	46	8	1	33	48	48	14
WIS	19	20	26	34	11	17	24	29	24	12
23 STATES	1065	2488	3144	2549	632	587	2695	3055	2628	504

STATE	JULY 1					OCTOBER 1				
	UNDER 500	500-699	700-899	900-1099	1100 AND OVER	UNDER 500	500-699	700-899	900-1099	1100 AND OVER
	POUNDS	POUNDS	POUNDS	POUNDS	POUNDS	POUNDS	POUNDS	POUNDS	POUNDS	POUNDS
	1000 HEAD									
ARIZ	115	126	171	133	1	130	162	119	125	5
CALIF	239	326	320	211	21	234	292	338	257	20
COLO	3	37	218	190	93	8	36	145	244	144
IDAH0	1	14	45	65	16	4	14	32	45	28
ILL	5	39	115	89	13	9	23	79	95	20
IND	4	34	42	42	5	7	18	42	35	8
IOWA	23	163	443	408	128	19	105	298	432	106
KANS	18	212	369	277	46	19	162	381	314	76
MICH	2	26	80	61	5	6	31	39	63	7
MINN	12	53	121	88	20	17	31	97	106	28
MO	4	28	59	44	6	5	26	45	39	3
MONT	2	6	23	33	16	5	10	14	20	12
NEBR	10	153	421	296	76	9	104	312	415	104
N MEX	10	33	55	38	2	21	29	34	39	8
N DAK	1	3	12	10	1	2	1	5	7	2
OHIO	7	17	67	71	7	11	26	41	47	3
OKLA	2	33	95	55	12	7	39	72	78	22
OREG	1	7	11	13	2	5	10	14	7	2
PA	1	5	11	21	10	2	6	12	13	9
S DAK	4	40	85	50	13	4	24	84	63	11
TEX	61	409	635	378	30	97	438	470	535	81
WASH	0	7	47	54	12	1	10	37	35	23
WIS	11	17	27	29	9	9	11	24	32	13
23 STATES	536	1788	3472	2648	544	631	1608	2734	3046	735

CATTLE ON FEED: NUMBER OF STEERS AND STEER CALVES ON FEED BY WEIGHT GROUPS, BY QUARTERS, 1974

STATE	JANUARY 1					APRIL 1				
	UNDER 500	500-699	700-899	900-1099	1100 POUNDS AND OVER	UNDER 500	500-699	700-899	900-1099	1100 POUNDS AND OVER
	POUNDS	POUNDS	POUNDS	POUNDS	POUNDS	POUNDS	POUNDS	POUNDS	POUNDS	POUNDS
	1000 HEAD									
ARIZ	118	164	180	121	2	70	130	170	165	1
CALIF	192	282	322	293	43	124	246	283	226	34
COLO	21	51	150	238	156	20	63	154	198	136
IDAHO	10	15	38	37	20	2	20	42	44	16
ILL	43	90	97	77	27	16	93	106	86	19
IND	19	52	40	41	3	15	46	49	37	5
IOWA	85	244	354	366	171	37	358	358	358	124
KANS	36	152	357	259	89	24	175	262	230	103
MICH	28	64	60	36	10	12	64	73	47	7
MINN	43	62	74	84	47	15	95	62	74	51
MO	19	49	56	42	9	15	51	42	36	6
MONT	6	18	19	32	7	0	15	31	17	16
NEBR	31	124	362	382	134	10	201	231	365	154
N MEX	11	37	49	33	7	14	30	42	45	10
N DAK	5	12	4	5	2	0	10	9	4	2
OHIO	32	80	63	32	9	13	51	85	58	6
OKLA	7	36	62	81	29	4	57	59	53	24
OREG	4	16	16	12	5	3	14	14	10	2
PA	3	16	22	22	6	3	6	17	24	13
S DAK	34	43	55	82	26	9	87	61	49	28
TEX	58	305	493	435	159	78	377	487	455	173
WASH	1	23	46	35	10	0	15	46	36	12
WIS	14	21	31	31	13	15	17	24	25	16
23 STATES	820	1956	2950	2776	984	499	2221	2707	2642	958

STATE	JULY 1					OCTOBER 1				
	UNDER 500	500-699	700-899	900-1099	1100 POUNDS AND OVER	UNDER 500	500-699	700-899	900-1099	1100 POUNDS AND OVER
	POUNDS	POUNDS	POUNDS	POUNDS	POUNDS	POUNDS	POUNDS	POUNDS	POUNDS	POUNDS
	1000 HEAD									
ARIZ	9	105	137	183	23	7	62	114	128	16
CALIF	43	230	340	248	33	39	176	316	334	40
COLO	3	29	127	197	89	7	28	151	170	83
IDAHO	1	7	45	57	27	4	14	39	40	39
ILL	11	45	109	82	19	7	54	80	82	12
IND	3	21	50	42	7	8	28	49	25	3
IOWA	9	139	363	307	112	22	65	231	324	79
KANS	2	98	227	204	62	11	141	240	226	64
MICH	3	28	55	54	14	9	30	46	49	10
MINN	5	54	100	73	38	6	24	75	90	19
MO	5	27	54	29	5	3	24	47	34	2
MONT	0	4	20	32	6	0	1	9	20	13
NEBR	2	90	285	287	90	7	63	211	329	91
N MEX	5	29	43	34	3	8	30	33	40	3
N DAK		3	21	8	1	0	2	10	14	1
OHIO	6	21	66	53	6	14	18	42	46	4
OKLA	3	24	50	53	13	3	27	46	40	13
OREG	1	6	6	11	10	1	9	17	7	5
PA	2	5	13	19	7	3	7	12	14	3
S DAK	2	49	76	60	18	2	14	79	64	14
TEX	83	297	368	356	83	66	232	353	364	88
WASH	0	9	43	44	14	0	7	49	38	14
WIS	9	14	24	22	8	7	14	23	27	9
23 STATES	207	1334	2622	2455	688	234	1070	2272	2505	625

CATTLE ON FEED: NUMBER OF STEERS AND STEER CALVES ON FEED BY WEIGHT GROUPS, BY QUARTERS, 1975

STATE	JANUARY 1					APRIL 1				
	UNDER 500	500-699	700-899	900-1099	1100 POUNDS AND OVER	UNDER 500	500-699	700-899	900-1099	1100 POUNDS AND OVER
	1000 HEAD									
ARIZ	9	68	139	77	3	31	93	119	65	5
CALIF	39	122	198	232	42	37	117	163	114	82
COLO	34	30	98	229	81	8	50	111	132	82
IDAHO	9	26	32	37	24	2	17	41	35	14
ILL	44	90	107	77	17	23	106	96	89	16
IND	23	63	43	31	9	13	54	54	31	5
IOWA	74	190	255	223	82	33	247	255	239	50
KANS	15	114	234	263	98	6	175	194	183	46
MICH	19	56	52	48	11	10	42	55	51	8
MINN	31	47	73	77	34	14	62	64	68	20
MO	18	34	56	37	3	5	38	44	31	4
MONT	6	9	9	10	5	0	8	12	8	4
NEBR	31	101	258	304	86	7	117	202	235	91
N MEX	5	19	36	32	4	6	23	20	29	5
N DAK	4	5	4	8	1	1	11	5	4	0
OHIO	24	76	79	55	4	14	53	73	53	4
OKLA	9	36	45	47	9	3	42	50	35	5
OREG	9	11	16	7	3	2	12	16	9	1
PA	4	12	29	22	6	4	9	22	24	8
S DAK	39	36	56	62	21	10	56	43	48	8
TEX	34	180	240	301	103	29	199	301	169	37
WASH	0	15	41	47	8	0	16	29	39	10
WIS	13	25	33	27	11	9	24	30	25	12
23 STATES	493	1365	2133	2253	665	267	1571	1999	1716	446

STATE	JULY 1					OCTOBER 1				
	UNDER 500	500-699	700-899	900-1099	1100 POUNDS AND OVER	UNDER 500	500-699	700-899	900-1099	1100 POUNDS AND OVER
	1000 HEAD									
ARIZ	41	111	129	75	1	30	115	139	77	4
CALIF	35	166	269	178	15	120	218	242	190	30
COLO	7	14	152	152	28	3	40	120	195	22
IDAHO	0	9	45	49	21	1	15	42	48	15
ILL	5	42	110	89	16	13	64	89	77	13
IND	7	29	40	36	6	11	28	46	35	2
IOWA	7	114	276	215	61	6	118	236	249	46
KANS	7	119	214	237	27	14	229	323	190	22
MICH	4	34	47	45	5	8	32	52	41	4
MINN	6	49	76	48	11	10	32	71	70	16
MO	4	27	51	32	5	6	26	50	30	3
MONT	0	1	10	12	3	0	1	8	9	2
NEBR	6	75	215	209	75	6	95	305	185	45
N MEX	7	17	18	20	4	8	23	21	17	1
N DAK	0	3	8	3	0	0	1	3	8	0
OHIO	7	22	55	51	2	9	50	62	26	5
OKLA	14	21	41	29	2	12	64	64	29	3
OREG	0	5	17	13	5	1	9	18	11	4
PA	2	7	17	24	6	2	10	20	15	7
S DAK	2	30	62	44	10	1	13	73	49	7
TEX	15	158	324	233	23	45	259	374	196	18
WASH	0	12	39	43	5	0	12	56	41	12
WIS	6	13	31	21	6	8	16	20	25	6
23 STATES	182	1078	2246	1858	337	314	1470	2434	1813	287

CATTLE ON FEED: NUMBER OF HEIFERS AND HEIFER CALVES ON FEED BY WEIGHT GROUPS,
BY QUARTERS, 1970

STATE	JANUARY 1				APRIL 1			
	UNDER 500 POUNDS	500- 699 POUNDS	700- 899 POUNDS	900 AND OVER POUNDS	UNDER 500 POUNDS	500- 699 POUNDS	700- 899 POUNDS	900 AND OVER POUNDS
	1000 HEAD							
ARIZ	14	28	12	2	6	10	14	2
CALIF	7	23	32	9	3	15	23	4
COLO	25	76	140	87	23	101	139	75
IDAHO	17	13	26	8	3	32	16	9
ILL	73	109	71	19	21	134	87	15
IND	35	94	51	7	19	76	41	7
IOWA	198	240	198	70	61	321	170	54
KANS	14	95	116	30	13	87	98	22
MICH	9	8	7	1	2	13	8	2
MINN	96	64	45	23	33	146	46	14
MO	32	48	27	6	13	57	26	6
MONT	10	8	13	5	1	19	11	3
NEBR	80	135	209	96	28	176	159	88
N MEX	17	28	30	6	12	36	21	5
N DAK	13	5	5	5	1	13	8	2
OHIO	24	30	10	3	8	38	18	1
OKLA	8	25	26	4	6	27	25	2
OREG	9	11	13	3	3	10	8	3
PA	2	2	1	0	1	2	1	1
S DAK	47	20	24	35	12	59	20	15
TEX	200	279	81	13	135	259	100	15
WASH	3	8	19	7	1	13	15	5
WIS	9	9	10	4	5	17	10	3
23 STATES	942	1318	1166	443	410	1661	1064	353

STATE	JULY 1				OCTOBER 1			
	UNDER 500 POUNDS	500- 699 POUNDS	700- 899 POUNDS	900 AND OVER POUNDS	UNDER 500 POUNDS	500- 699 POUNDS	700- 899 POUNDS	900 AND OVER POUNDS
	1000 HEAD							
ARIZ	33	17	15	1	6	12	11	0
CALIF	4	22	31	9	6	21	23	8
COLO	5	94	187	59	8	63	138	68
IDAHO	0	11	41	5	1	15	19	9
ILL	9	58	127	21	13	53	73	26
IND	5	29	57	6	3	19	33	11
IOWA	5	180	288	71	27	118	219	91
KANS	3	102	118	19	4	91	93	32
MICH	0	4	10	1	2	6	4	0
MINN	6	87	93	25	7	44	91	43
MO	2	18	38	6	8	20	27	4
MONT	0	6	19	3	0	6	10	8
NEBR	6	118	246	52	8	93	223	86
N MEX	9	24	32	1	11	23	23	5
N DAK	1	5	12	3	0	2	8	4
OHIO	2	14	22	2	3	12	19	1
OKLA	10	31	26	2	14	34	25	3
OREG	1	7	7	3	3	6	10	2
PA	1	1	1	0	0	1	2	0
S DAK	2	36	38	9	1	16	55	18
TEX	142	252	125	15	217	238	99	12
WASH	0	13	20	6	1	10	18	5
WIS	1	9	14	3	1	4	11	3
23 STATES	247	1138	1567	322	344	907	1234	439

CATTLE ON FEED: NUMBER OF HEIFERS AND HEIFER CALVES ON FEED BY WEIGHT GROUPS,
BY QUARTERS, 1971

STATE	JANUARY 1				APRIL 1			
	UNDER 500	500-699	700-899	900 POUNDS AND OVER	UNDER 500	500-699	700-899	900 POUNDS AND OVER
	POUNDS	POUNDS	POUNDS	POUNDS	POUNDS	POUNDS	POUNDS	POUNDS
	1000 HEAD							
ARIZ	9	15	9	2	31	20	12	1
CALIF	5	20	27	8	5	19	17	9
COLO	34	81	134	62	12	113	124	47
IDAHO	10	20	17	9	6	22	20	4
ILL	64	75	50	19	17	99	87	13
IND	25	55	26	4	10	60	35	4
IOWA	170	210	210	65	51	263	200	57
KANS	8	93	92	35	10	100	66	18
MICH	9	10	6	0	1	10	7	1
MINN	74	54	56	33	32	130	29	19
MO	32	45	21	5	13	45	26	5
MONT	10	11	15	5	2	23	13	6
NEBR	46	68	168	50	22	170	171	62
N MEX	18	30	20	3	20	33	25	3
N DAK	6	6	4	4	2	14	6	2
OHIO	18	29	16	2	5	31	22	2
OKLA	20	31	23	6	26	44	30	4
OREG	5	8	11	2	2	8	7	2
PA	1	2	2	0	1	2	2	1
S DAK	25	24	28	21	16	51	23	16
TEX	213	296	83	12	225	281	136	6
WASH	4	9	12	3	4	18	18	5
WIS	5	11	7	3	4	14	6	3
23 STATES	811	1203	1037	353	517	1570	1082	290

STATE	JULY 1				OCTOBER 1			
	UNDER 500	500-699	700-899	900 POUNDS AND OVER	UNDER 500	500-699	700-899	900 POUNDS AND OVER
	POUNDS	POUNDS	POUNDS	POUNDS	POUNDS	POUNDS	POUNDS	POUNDS
	1000 HEAD							
ARIZ	8	10	11	1	5	19	15	1
CALIF	6	22	26	6	14	30	23	13
COLO	11	86	213	50	7	106	132	77
IDAHO	1	12	23	8	3	26	23	8
ILL	7	46	97	15	19	61	61	15
IND	5	29	57	7	16	16	37	9
IOWA	10	127	299	54	34	155	172	70
KANS	17	117	123	28	5	121	91	24
MICH	1	5	8	0	1	3	2	1
MINN	7	60	70	12	14	52	66	11
MO	4	25	31	4	11	24	35	4
MONT	0	6	29	7	2	8	18	11
NEBR	8	114	244	55	14	124	194	70
N MEX	8	39	35	2	13	25	27	4
N DAK	0	3	11	2	0	2	6	4
OHIO	1	15	21	1	7	10	17	1
OKLA	10	46	47	8	15	42	35	6
OREG	1	4	10	3	2	5	8	2
PA	0	1	3	0	0	1	1	1
S DAK	3	27	33	10	2	13	35	24
TEX	178	248	159	6	197	190	115	15
WASH	0	10	27	8	0	9	21	6
WIS	1	10	9	4	1	7	11	3
23 STATES	287	1062	1586	291	382	1049	1145	380

CATTLE ON FEED: NUMBER OF HEIFERS AND HEIFER CALVES ON FEED BY WEIGHT GROUPS,
BY QUARTERS, 1972

STATE	JANUARY 1				APRIL 1			
	UNDER 500	500-699	700-899	900 AND OVER	UNDER 500	500-699	700-899	900 AND OVER
	1000 HEAD							
ARIZ	37	12	6	1	9	12	26	2
CALIF	6	22	26	9	5	18	20	7
COLO	41	79	169	87	18	135	141	71
IDAH0	15	25	36	12	5	21	18	6
ILL	52	93	74	19	19	116	82	19
IND	22	48	35	8	12	50	49	8
IOWA	174	216	237	69	51	325	198	64
KANS	11	110	110	44	10	109	108	25
MICH	6	10	1	1	2	10	4	1
MINN	61	56	52	23	29	103	41	11
MO	32	53	31	7	14	54	31	6
MONT	10	12	15	9	3	19	12	4
NEBR	63	155	243	72	30	196	196	80
N MEX	28	34	14	1	21	45	20	4
N DAK	9	9	5	2	3	14	5	3
OHIO	18	33	16	4	5	30	23	2
OKLA	13	43	34	4	10	42	34	13
OREG	4	11	8	4	2	10	4	1
PA	1	2	2	1	1	2	2	0
S DAK	31	31	37	24	11	47	38	18
TEX	266	250	98	6	273	346	111	7
WASH	2	13	16	8	0	15	25	5
WIS	8	10	5	5	5	11	5	3
23 STATES	930	1327	1270	420	538	1730	1193	360

STATE	JULY 1				OCTOBER 1			
	UNDER 500	500-699	700-899	900 AND OVER	UNDER 500	500-699	700-899	900 AND OVER
	1000 HEAD							
ARIZ	6	13	14	1	3	13	10	1
CALIF	18	31	26	10	14	20	30	10
COLO	8	135	173	60	18	93	145	139
IDAH0	2	14	22	8	4	12	15	8
ILL	5	46	108	16	10	40	71	23
IND	8	26	70	7	7	23	40	7
IOWA	16	147	289	74	22	109	213	91
KANS	3	129	163	44	8	95	94	56
MICH	1	4	7	2	0	5	5	0
MINN	16	41	72	13	16	37	69	15
MO	4	23	37	11	4	23	30	6
MONT	0	8	28	12	1	5	11	10
NEBR	11	159	317	60	5	132	248	143
N MEX	21	42	28	6	22	32	22	2
N DAK	0	4	10	5	0	2	4	6
OHIO	2	14	22	2	3	8	17	2
OKLA	8	44	55	12	13	41	35	14
OREG	0	7	5	3	1	4	6	2
PA	1	1	1	1	0	1	1	0
S DAK	1	45	40	8	2	17	51	18
TEX	285	285	157	15	219	302	144	21
WASH	0	10	23	8	1	13	15	3
WIS	2	9	10	2	3	5	16	5
23 STATES	418	1237	1677	380	376	1032	1292	582

CATTLE ON FEED: NUMBER OF HEIFERS AND HEIFER CALVES ON FEED BY WEIGHT GROUPS,
BY QUARTERS, 1973

STATE	JANUARY 1				APRIL 1			
	UNDER 500	500- 699	700- 899	900 POUNDS AND OVER	UNDER 500	500- 699	700- 899	900 POUNDS AND OVER
	1000 HEAD							
ARIZ	3	13	15	0	21	8	6	1
CALIF	15	27	28	15	6	12	22	7
COLO	42	105	140	74	29	93	131	71
IDAHO	9	17	14	7	6	20	16	6
ILL	43	80	71	22	21	115	76	18
IND	19	43	29	3	13	41	36	6
IOWA	156	184	167	69	50	319	194	63
KANS	12	73	105	47	11	122	111	27
MICH	4	7	4	0	2	12	7	2
MINN	60	58	40	24	19	88	46	19
MO	19	33	28	7	8	43	29	6
MONT	8	22	14	5	2	19	18	6
NEBR	43	178	269	122	26	205	210	84
N MEX	34	47	17	1	34	41	17	7
N DAK	8	6	3	3	1	14	5	2
OHIO	17	25	18	3	7	35	15	1
OKLA	13	46	27	10	10	36	37	10
OREG	2	8	7	3	2	10	5	5
PA	3	2	1	1	1	2	2	1
S DAK	38	31	40	31	12	25	53	28
TEX	323	323	121	41	253	403	127	8
WASH	1	18	16	5	1	12	19	4
WIS	9	8	10	5	3	8	6	4
23 STATES	881	1354	1184	498	538	1683	1188	386

STATE	JULY 1				OCTOBER 1			
	UNDER 500	500- 699	700- 899	900 POUNDS AND OVER	UNDER 500	500- 699	700- 899	900 POUNDS AND OVER
	1000 HEAD							
ARIZ	18	6	4	1	13	5	4	1
CALIF	9	20	22	7	16	29	26	14
COLO	5	121	210	71	8	72	137	125
IDAHO	0	7	21	7	2	9	15	6
ILL	3	59	112	15	8	45	68	23
IND	3	34	43	6	7	19	43	13
IOWA	11	192	268	77	14	95	246	118
KANS	6	130	123	49	5	83	98	52
MICH	0	3	6	2	3	3	7	1
MINN	5	52	58	17	10	30	54	26
MO	3	24	37	3	3	14	31	8
MONT	0	8	23	9	1	6	6	8
NEBR	10	158	245	97	15	107	259	107
N MEX	27	49	33	4	19	35	34	9
N DAK	1	5	11	2	1	2	4	4
OHIO	1	10	25	1	2	8	17	5
OKLA	8	40	33	11	8	31	35	20
OREG	0	7	7	4	3	10	6	2
PA	0	1	2	1	1	1	2	0
S DAK	3	51	47	14	2	24	59	31
TEX	245	351	204	17	223	244	202	28
WASH	0	10	21	9	1	11	15	7
WIS	3	5	9	4	2	5	10	6
23 STATES	361	1343	1564	428	367	888	1378	614

CATTLE ON FEED: NUMBER OF HEIFERS AND HEIFER CALVES ON FEED BY WEIGHT GROUPS,
BY QUARTERS, 1974

STATE	JANUARY 1				APRIL 1			
	UNDER 500	500- 699	700- 899	900 POUNDS AND OVER	UNDER 500	500- 699	700- 899	900 POUNDS AND OVER
	POUNDS	POUNDS	POUNDS	POUNDS	POUNDS	POUNDS	POUNDS	POUNDS
	1000 HEAD							
ARIZ	13	5	4	1	8	6	6	1
CALIF	20	25	19	8	3	16	20	5
COLO	27	65	103	107	17	74	129	67
IDAHO	9	9	15	7	1	17	14	9
ILL	39	76	61	20	14	90	56	20
IND	23	40	35	7	8	38	38	3
IOWA	87	127	185	67	45	237	134	79
KANS	16	75	114	62	8	104	93	76
MICH	4	12	5	1	2	14	8	1
MINN	43	35	41	34	16	57	43	17
MO	18	24	22	9	10	31	22	5
MONT	4	9	15	6	0	15	11	7
NEBR	39	107	238	102	21	141	161	91
N MEX	24	35	30	4	17	37	29	9
N DAK	5	7	5	3	0	9	4	2
OHIO	20	26	11	4	5	25	15	2
OKLA	7	31	26	13	7	37	39	9
OREG	3	9	7	6	1	8	5	2
PA	2	3	2	1	1	2	2	0
S DAK	29	26	37	45	10	61	32	19
TEX	255	255	195	45	200	289	135	19
WASH	1	14	21	7	0	11	22	10
WIS	6	6	7	6	4	7	6	3
23 STATES	694	1021	1198	585	398	1326	1024	456

STATE	JULY 1				OCTOBER 1			
	UNDER 500	500- 699	700- 899	900 POUNDS AND OVER	UNDER 500	500- 699	700- 899	900 POUNDS AND OVER
	POUNDS	POUNDS	POUNDS	POUNDS	POUNDS	POUNDS	POUNDS	POUNDS
	1000 HEAD							
ARIZ	4	6	7	1	4	3	12	1
CALIF	1	22	31	11	3	10	25	16
COLO	7	51	115	51	9	46	123	72
IDAHO	0	9	24	11	1	11	24	12
ILL	9	47	72	16	7	40	52	16
IND	3	23	37	6	7	24	26	5
IOWA	4	120	210	54	6	49	156	95
KANS	1	76	107	42	5	62	110	36
MICH	0	4	7	3	0	2	5	2
MINN	3	34	43	15	2	24	52	28
MO	3	18	24	3	2	14	22	5
MONT	0	7	19	13	2	1	9	9
NEBR	4	68	216	72	3	104	154	73
N MEX	4	29	32	9	3	16	26	9
N DAK	1	3	9	1	0	1	4	3
OHIO	1	10	19	1	3	4	11	4
OKLA	2	28	47	11	6	32	33	12
OREG	1	4	5	4	1	9	7	1
PA	0	1	2	1	0	1	2	1
S DAK	3	39	49	11	2	17	60	15
TEX	158	199	199	30	103	197	147	44
WASH	0	6	16	9	0	3	14	8
WIS	1	4	9	3	3	6	5	2
23 STATES	209	808	1299	378	172	676	1079	469

CATTLE ON FEED: NUMBER OF HEIFERS AND HEIFER CALVES ON FEED BY WEIGHT GROUPS,
BY QUARTERS, 1975

STATE	JANUARY 1				APRIL 1			
	UNDER 500	500-699	700-899	900 POUNDS AND OVER	UNDER 500	500-699	700-899	900 POUNDS AND OVER
	1000 HEAD							
ARIZ	8	7	6	1	2	8	4	1
CALIF	10	10	22	10	2	10	12	5
COLO	32	46	119	75	18	104	98	73
IDAHO	8	12	16	10	4	21	14	7
ILL	45	53	49	18	19	85	51	15
IND	18	28	26	6	9	39	18	4
IOWA	63	108	130	71	30	167	103	33
KANS	11	57	83	42	16	80	96	61
MICH	3	4	4	1	1	6	4	1
MINN	24	38	34	22	16	44	25	9
MO	9	18	19	4	4	27	16	4
MONT	4	8	16	8	0	10	14	5
NEBR	30	86	169	90	24	100	103	76
N MEX	5	11	16	6	5	20	11	4
N DAK	3	2	3	5	1	5	2	1
OHIO	13	20	13	3	4	25	11	1
OKLA	3	37	40	6	2	25	37	8
OREG	5	5	8	3	1	6	8	2
PA	1	1	2	1	1	1	1	1
S DAK	29	28	49	22	11	47	34	11
TEX	121	190	125	28	65	198	110	8
WASH	4	6	12	6	0	6	12	6
WIS	4	6	10	3	5	7	6	5
23 STATES	449	781	971	441	240	1041	790	341

STATE	JULY 1				OCTOBER 1			
	UNDER 500	500-699	700-899	900 POUNDS AND OVER	UNDER 500	500-699	700-899	900 POUNDS AND OVER
	1000 HEAD							
ARIZ	4	9	7	2	7	11	12	1
CALIF	2	27	43	10	6	18	31	18
COLO	16	75	162	59	18	117	123	85
IDAHO	1	13	29	13	2	16	25	12
ILL	9	56	73	10	12	62	74	16
IND	5	27	35	4	8	24	22	3
IOWA	17	110	175	41	9	82	146	55
KANS	19	114	180	38	23	163	137	48
MICH	2	3	4	1	1	4	4	1
MINN	5	32	38	10	4	29	46	11
MO	2	17	26	4	6	21	27	4
MONT	0	5	18	10	0	5	9	9
NEBR	11	126	158	65	12	141	199	62
N MEX	3	28	21	1	9	20	21	9
N DAK	0	3	5	1	0	2	5	1
OHIO	2	11	16	2	2	6	12	1
OKLA	7	34	31	8	9	25	27	6
OREG	0	5	7	5	1	10	9	4
PA	0	1	2	0	0	1	3	0
S DAK	4	40	55	10	2	38	57	22
TEX	91	243	147	25	101	250	214	30
WASH	1	11	17	6	1	12	17	10
WIS	1	8	7	4	3	5	9	2
23 STATES	202	998	1256	329	236	1062	1229	410

CATTLE ON FEED: NUMBER, PLACED AND MARKETED,
MONTHLY, JANUARY-JUNE, 1970-72

STATE	NUMBER ON FEED			PLACED			MARKETED		
	1970	1971	1972	1970	1971	1972	1970	1971	1972
1,000 HEAD									
JAN 1									
ARIZ	510	524	539	53	67	73	63	74	72
CALIF	1,031	1,001	1,045	89	95	187	195	192	195
COLO	795	888	983	132	199	162	142	154	175
IOWA	2,213	1,992	2,112	432	460	405	370	359	298
KANS			1,100			220			220
NEBR	1,477	1,422	1,550	286	376	375	314	339	320
TEX	1,417	1,480	1,781	238	346	363	251	251	322
6 STATES	7,443	7,307	8,010	1,230	1,543	1,565	1,335	1,369	1,382
7 STATES			9,110			1,785			1,602
DURING JAN									
ARIZ		517	540	55	67	83	63	61	75
CALIF		904	1,037	73	121	141	169	147	162
COLO		933	970	148	157	185	157	187	190
IOWA		2,093	2,219	231	156	148	302	287	287
KANS			1,100			150			200
NEBR		1,459	1,605	273	234	235	285	300	322
TEX		1,575	1,822	144	236	323	253	231	301
6 STATES		7,481	8,193	924	971	1,115	1,229	1,213	1,337
7 STATES			9,293			1,265			1,537
DURING FEB									
ARIZ	492	523	548	44	57	68	82	83	69
CALIF	829	878	1,016	134	156	166	204	178	165
COLO	776	903	965	157	163	182	185	190	200
IOWA	2,204	1,962	2,080	337	356	266	296	275	283
KANS			1,050			190			190
NEBR	1,437	1,393	1,518	267	264	281	307	345	343
TEX	1,295	1,580	1,844	249	309	334	301	326	324
6 STATES	7,033	7,239	7,971	1,188	1,305	1,297	1,375	1,397	1,384
7 STATES			9,021			1,487			1,574
DURING MAR									
ARIZ	454	497	547	72	72	74	86	88	71
CALIF	759	856	1,017	205	180	198	159	137	147
COLO	748	876	947	133	182	191	163	172	182
IOWA	2,245	2,043	2,063	292	221	224	334	281	284
KANS			1,050			210			180
NEBR	1,397	1,312	1,456	225	227	244	310	322	325
TEX	1,243	1,563	1,854	190	321	351	291	314	357
6 STATES	6,846	7,147	7,884	1,117	1,203	1,282	1,343	1,314	1,366
7 STATES			8,934			1,492			1,546
DURING APR									
ARIZ	440	481	550	90	98	81	82	81	85
CALIF	805	899	1,068	241	223	225	122	145	161
COLO	718	886	956	205	200	258	163	174	194
IOWA	2,203	1,983	2,003	182	135	182	378	352	366
KANS			1,080			260			190
NEBR	1,312	1,217	1,375	214	329	390	302	307	402
TEX	1,142	1,570	1,848	402	393	557	252	280	360
6 STATES	6,620	7,036	7,800	1,334	1,378	1,693	1,299	1,339	1,568
7 STATES			8,880			1,953			1,758
DURING MAY									
ARIZ	448	498	546	67	84	88	82	90	92
CALIF	924	977	1,132	161	187	182	134	157	149
COLO	760	912	1,020	163	158	194	149	191	194
IOWA	2,007	1,766	1,819	273	234	235	402	366	355
KANS			1,150			170			190
NEBR	1,224	1,239	1,363	289	276	403	324	313	324
TEX	1,292	1,683	2,045	317	316	449	256	299	375
6 STATES	6,655	7,075	7,925	1,270	1,255	1,551	1,347	1,416	1,489
7 STATES			9,075			1,721			1,679
DURING JUN									

CATTLE ON FEED: NUMBER, PLACED AND MARKETED,
MONTHLY, JULY-DECEMBER, 1970-72

STATE	NUMBER ON FEED			PLACED			MARKETED		
	1970	1971	1972	1970	1971	1972	1970	1971	1972
1,000 HEAD									
	<u>JUL 1</u>			<u>DURING JUL</u>			<u>DURING JUL</u>		
ARIZ	433	492	542	70	62	80	81	79	79
CALIF	951	1,007	1,165	148	167	170	153	159	150
COLO	774	879	1,020	147	141	127	142	170	158
IOWA	1,878	1,634	1,699	244	213	162	393	360	300
KANS			1,130			170			170
NEBR	1,189	1,202	1,442	267	215	198	280	290	254
TEX	1,353	1,700	2,119	273	266	370	238	324	369
6 STATES	6,578	6,914	7,987	1,149	1,064	1,107	1,287	1,382	1,310
7 STATES			9,117			1,277			1,480
	<u>AUG 1</u>			<u>DURING AUG</u>			<u>DURING AUG</u>		
ARIZ	422	475	543	64	57	72	73	77	79
CALIF	946	1,015	1,185	182	175	186	176	179	194
COLO	779	850	989	157	167	148	157	191	197
IOWA	1,729	1,487	1,561	352	296	78	418	336	363
KANS			1,130			225			225
NEBR	1,176	1,127	1,386	282	314	259	272	297	318
TEX	1,388	1,642	2,120	256	298	381	234	351	406
6 STATES	6,440	6,596	7,784	1,293	1,307	1,324	1,330	1,431	1,557
7 STATES			8,914			1,549			1,782
	<u>SEP 1</u>			<u>DURING SEP</u>			<u>DURING SEP</u>		
ARIZ	413	455	536	73	75	84	70	71	76
CALIF	952	1,011	1,177	207	205	214	199	201	185
COLO	779	826	940	209	257	234	158	188	196
IOWA	1,663	1,447	1,476	381	357	310	411	367	378
KANS			1,130			270			250
NEBR	1,186	1,144	1,327	371	453	396	287	310	320
TEX	1,410	1,589	2,095	260	356	385	252	337	389
6 STATES	6,403	6,472	7,551	1,501	1,703	1,623	1,377	1,474	1,544
7 STATES			8,681			1,893			1,794
	<u>OCT 1</u>			<u>DURING OCT</u>			<u>DURING OCT</u>		
ARIZ	416	459	544	130	119	126	60	66	73
CALIF	960	1,015	1,206	256	246	278	178	193	208
COLO	830	895	978	251	273	317	175	194	225
IOWA	1,633	1,437	1,408	463	529	486	418	322	332
KANS		930	1,150		283	300		190	220
NEBR	1,270	1,287	1,403	410	492	550	316	365	376
TEX	1,418	1,608	2,091	394	495	581	288	357	406
6 STATES	6,527	6,701	7,630	1,904	2,154	2,338	1,435	1,437	1,620
7 STATES		7,631	8,780		2,437	2,638		1,627	1,840
	<u>NOV 1</u>			<u>DURING NOV</u>			<u>DURING NOV</u>		
ARIZ	486	512	597	93	84	102	48	72	65
CALIF	1,038	1,068	1,276	149	159	141	118	150	177
COLO	906	974	1,070	137	163	191	177	178	201
IOWA	1,678	1,644	1,562	550	593	493	385	339	366
KANS		1,023	1,230		217	200		150	200
NEBR	1,364	1,474	1,577	331	374	367	287	311	346
TEX	1,524	1,746	2,266	266	316	339	286	334	380
6 STATES	6,996	7,418	8,348	1,526	1,689	1,633	1,301	1,384	1,535
7 STATES		8,441	9,578		1,906	1,833		1,534	1,735
	<u>DEC 1</u>			<u>DURING DEC</u>			<u>DURING DEC</u>		
ARIZ	531	524	634	63	74	77	70	59	56
CALIF	1,069	1,077	1,240	91	120	110	159	152	169
COLO	866	959	1,060	159	186	179	137	162	189
IOWA	1,843	1,898	1,689	564	554	627	415	340	394
KANS		1,090	1,230		165	190		155	170
NEBR	1,408	1,537	1,598	339	322	314	325	309	331
TEX	1,504	1,728	2,225	212	312	339	236	259	319
6 STATES	7,221	7,723	8,446	1,428	1,568	1,646	1,342	1,281	1,458
7 STATES		8,813	9,676		1,733	1,836		1,436	1,628

CATTLE ON FEED: NUMBER, PLACED, MARKETED AND OTHER DISAPPEARANCE 1/
MONTHLY, JANUARY-JUNE, 1973-75

STATE	NUMBER ON FEED			PLACED			MARKETED			OTHER DISAPPEARANCE		
	1973	1974	1975	1973	1974	1975	1973	1974	1975	1973	1974	1975
1,000 HEAD												
	<u>JAN 1</u>			<u>DURING JAN</u>			<u>DURING JAN</u>			<u>DURING JAN</u>		
ARIZ	655	609	319	71	78	47	68	58	56		9	2
CALIF	1,181	1,209	688	148	166	105	192	176	187		52	21
COLO	1,050	930	755	175	194	117	180	165	152		14	10
IOWA	1,922	1,715	1,200	471	474	315	352	332	250		22	15
KANS	1,250	1,160	920	230	213	160	220	170	190		8	10
NEBR	1,581	1,525	1,160	411	362	193	355	325	255		12	18
TEX	2,245	2,205	1,327	324	481	212	354	332	282		14	20
7 STATES	9,884	9,353	6,369	1,830	1,968	1,149	1,721	1,558	1,372		131	96
	<u>FEB 1</u>			<u>DURING FEB</u>			<u>DURING FEB</u>			<u>DURING FEB</u>		
ARIZ	658	620	308	55	55	54	71	71	54		7	4
CALIF	1,137	1,147	585	115	112	69	157	162	158		33	20
COLO	1,045	945	710	95	144	141	160	135	162		15	4
IOWA	2,041	1,835	1,250	201	198	172	287	270	230		23	12
KANS	1,260	1,195	880	180	118	100	210	175	175		8	5
NEBR	1,637	1,550	1,080	226	191	136	315	265	250		16	6
TEX	2,215	2,340	1,237	310	252	134	341	262	287		12	8
7 STATES	9,993	9,632	6,050	1,183	1,070	806	1,541	1,340	1,316		114	59
	<u>MAR 1</u>			<u>DURING MAR</u>			<u>DURING MAR</u>			<u>DURING MAR</u>		
ARIZ	643	597	304	50	43	95	79	72	66		10	4
CALIF	1,095	1,064	476	126	106	154	175	167	132		41	19
COLO	980	939	685	161	119	186	195	185	178		9	5
IOWA	1,955	1,740	1,180	254	246	220	249	230	220		16	20
KANS	1,230	1,130	800	220	190	249	220	225	180		15	9
NEBR	1,548	1,460	960	288	244	254	316	310	250		14	4
TEX	2,184	2,318	1,076	464	316	378	389	388	305		27	27
7 STATES	9,635	9,248	5,481	1,563	1,264	1,536	1,623	1,577	1,331		132	88
	<u>APR 1</u>			<u>DURING APR</u>			<u>DURING APR</u>			<u>DURING APR</u>		
ARIZ	614	558	329	45	60	77	81	76	65		8	6
CALIF	1,046	962	479	115	123	154	139	166	94		28	35
COLO	946	864	688	144	140	171	170	180	168		20	6
IOWA	1,960	1,740	1,160	199	243	216	216	275	210		48	16
KANS	1,230	1,080	860	175	169	250	195	220	205		9	5
NEBR	1,520	1,380	960	251	330	275	286	320	275		20	10
TEX	2,259	2,219	1,122	257	276	234	353	392	258		31	33
7 STATES	9,575	8,803	5,598	1,186	1,341	1,377	1,440	1,629	1,275		164	111
	<u>MAY 1</u>			<u>DURING MAY</u>			<u>DURING MAY</u>			<u>DURING MAY</u>		
ARIZ	578	534	335	90	58	96	87	70	62		9	4
CALIF	1,022	891	504	253	258	251	166	146	104		43	27
COLO	920	804	685	195	127	175	185	169	150		20	26
IOWA	1,943	1,660	1,150	176	185	202	282	290	225		45	17
KANS	1,210	1,020	900	220	138	245	220	185	170		23	15
NEBR	1,485	1,370	950	359	270	275	345	330	245		30	10
TEX	2,163	2,072	1,065	492	242	288	403	361	216		23	9
7 STATES	9,321	8,351	5,589	1,785	1,278	1,532	1,688	1,551	1,172		193	108
	<u>JUN 1</u>			<u>DURING JUN</u>			<u>DURING JUN</u>			<u>DURING JUN</u>		
ARIZ	581	513	365	81	48	81	86	74	61		11	5
CALIF	1,109	960	624	220	204	242	150	162	101		41	17
COLO	930	742	684	190	100	147	170	165	137		5	10
IOWA	1,837	1,510	1,110	170	118	183	291	280	260		28	13
KANS	1,210	950	960	200	91	180	180	200	174		21	6
NEBR	1,499	1,280	970	274	140	185	302	295	200		5	5
TEX	2,252	1,930	1,128	461	229	362	378	364	215		18	11
7 STATES	9,418	7,885	5,841	1,596	930	1,380	1,557	1,540	1,148		129	67

1/ NOT ESTIMATED PRIOR TO 1974.

CATTLE ON FEED: NUMBER, PLACED, MARKETED AND OTHER DISAPPEARANCE 1/,
MONTHLY, JULY-DECEMBER, 1973-75

STATE	NUMBER ON FEED			PLACED			MARKETED			OTHER DISAPPEARANCE		
	1973	1974	1975	1973	1974	1975	1973	1974	1975	1973	1974	1975
1,000 HEAD												
	<u>JUL 1</u>			<u>DURING JUL</u>			<u>DURING JUL</u>			<u>DURING JUL</u>		
ARIZ	576	476	380	58	43	55	86	84	61		4	3
CALIF	1,179	961	748	150	179	164	165	147	133		17	14
COLO	950	672	684	123	161	145	163	135	165		8	4
IOWA	1,716	1,320	1,020	117	130	117	225	210	210		30	7
KANS	1,230	820	960	160	244	207	220	185	157		4	5
NEBR	1,471	1,120	950	169	191	155	250	270	220		11	5
TEX	2,335	1,777	1,264	356	357	298	389	326	218		13	13
7 STATES	9,457	7,146	6,006	1,133	1,305	1,141	1,498	1,357	1,164		87	51
	<u>AUG 1</u>			<u>DURING AUG</u>			<u>DURING AUG</u>			<u>DURING AUG</u>		
ARIZ	548	431	371	78	46	51	70	73	60		3	4
CALIF	1,164	976	765	205	176	160	143	137	129		11	11
COLO	910	690	660	140	150	165	170	162	154		3	4
IOWA	1,608	1,210	920	212	157	174	255	250	190		17	4
KANS	1,170	875	1,005	200	199	240	180	160	220		9	5
NEBR	1,390	1,030	880	268	206	213	238	220	210		6	3
TEX	2,302	1,795	1,331	366	276	270	354	299	250		12	12
7 STATES	9,092	7,007	5,932	1,469	1,210	1,273	1,410	1,301	1,213		61	43
	<u>SEP 1</u>			<u>DURING SEP</u>			<u>DURING SEP</u>			<u>DURING SEP</u>		
ARIZ	556	401	358	81	28	104	72	80	62		1	3
CALIF	1,226	1,004	785	161	151	274	157	171	167		19	16
COLO	880	675	667	215	174	235	170	157	165		2	2
IOWA	1,565	1,100	900	163	166	256	292	220	200		16	6
KANS	1,190	905	1,020	200	167	360	200	170	225		2	5
NEBR	1,420	1,010	880	278	262	393	260	230	210		2	3
TEX	2,314	1,760	1,339	348	161	426	339	308	269		14	8
7 STATES	9,151	6,855	5,949	1,446	1,109	2,048	1,490	1,336	1,298		56	43
	<u>OCT 1</u>			<u>DURING OCT</u>			<u>DURING OCT</u>			<u>DURING OCT</u>		
ARIZ	565	348	397	116	108	141	88	103	65		4	7
CALIF	1,230	965	876	214	175	227	192	197	164		20	19
COLO	925	690	735	296	233	291	221	174	162		4	9
IOWA	1,436	1,030	950	363	354	380	315	240	195		24	5
KANS	1,190	900	1,150	270	270	300	230	190	215		10	5
NEBR	1,438	1,040	1,060	461	394	401	350	285	235		14	6
TEX	2,323	1,599	1,488	413	308	562	377	328	271		25	18
7 STATES	9,107	6,572	6,656	2,133	1,842	2,302	1,773	1,517	1,307		101	69
	<u>NOV 1</u>			<u>DURING NOV</u>			<u>DURING NOV</u>			<u>DURING NOV</u>		
ARIZ	593	349	466	75	66	98	76	75	56		6	7
CALIF	1,252	923	920	159	198	205	161	166	150		31	33
COLO	1,000	745	855	163	169	169	190	137	125		7	9
IOWA	1,484	1,120	1,130	404	281	495	300	250	215		11	10
KANS	1,230	970	1,230	190	147	265	235	180	168		7	7
NEBR	1,549	1,135	1,220	351	318	383	290	255	215		8	8
TEX	2,359	1,554	1,761	305	238	343	387	275	261		89	20
7 STATES	9,467	6,796	7,582	1,647	1,327	1,958	1,639	1,338	1,190		159	94
	<u>DEC 1</u>			<u>DURING DEC</u>			<u>DURING DEC</u>			<u>DURING DEC</u>		
ARIZ	592	334	501	72	45	77	55	55	61		5	7
CALIF	1,250	834	942	104	93	173	145	205	131		34	24
COLO	973	770	890	127	132	166	170	140	120		7	11
IOWA	1,588	1,140	1,400	452	330	384	325	250	240		20	14
KANS	1,185	930	1,320	165	188	218	190	180	185		18	13
NEBR	1,610	1,190	1,380	215	241	254	300	250	230		21	14
TEX	2,277	1,428	1,823	276	196	321	348	264	235		33	27
7 STATES	9,475	6,626	8,256	1,411	1,225	1,593	1,533	1,344	1,202		138	110

1/ NOT ESTIMATED PRIOR TO 1974.

NUMBER OF CATTLE FEEDLOTS AND FED CATTLE MARKETED--BY SIZE OF FEEDLOT CAPACITY
BY STATES - 1970 AND 71 1/

STATE AND YEAR	: UNDER 1,000 HEAD :		: 1,000 HEAD AND OVER FEEDLOT CAPACITY :							
	: FEEDLOT CAPACITY :		: 1,000 - 1,999 :		: 2,000 - 3,999 :		: 4,000 - 7,999 :		: 8,000 - 15,999 :	
	LOTS	CATTLE	LOTS	CATTLE	LOTS	CATTLE	LOTS	CATTLE	LOTS	CATTLE
	: MARKETED:	: MARKETED:	: MARKETED:	: MARKETED:	: MARKETED:	: MARKETED:	: MARKETED:	: MARKETED:	: MARKETED:	: MARKETED:
	(NO.)	1,000 HEAD	(NO.)	1,000 HEAD	(NO.)	1,000 HEAD	(NO.)	1,000 HEAD	(NO.)	1,000 HEAD
1970										
ARIZ	8	2	7	6	8	23	13	76	11	145
CALIF	153	19	67	15	76	85	52	180	47	544
COLO	654	288	82	110	37	125	30	237	22	326
IDAHO	546	60	36	45	23	59	19	94	7	67
ILL	19,452	1,064	36	40	6	17	*6	*46		
IND	13,473	451	20	32	4	11	3	23		
IOWA	41,829	4,062	88	150	57	140	21	105	5	65
KANS	8,868	495	31	52	35	107	25	212	21	311
MICH	1,673	210	19	20	8	24				
MINN	18,162	822	33	45	5	10				
MO	15,466	617	18	20	*16	*47				
MONT	424	34	39	20	21	44	13	37	4	49
NEBR	18,400	1,636	295	440	126	406	63	432	20	309
N MEX	23	5	10	16	9	22	12	71	9	139
N DAK	1,079	63	13	14	*8	*19				
OHIO	9,472	391	*28	*38						
OKLA	753	50	15	29	14	56	7	59	7	127
OREG	319	37	14	15	15	20	3	13	*5	*81
PA	5,997	119	*3	*9						
S DAK	9,049	438	37	35	*11	*25			3	54
TEX	1,300	98	60	53	44	112	36	281	39	727
WASH	262	43	6	7	11	43	6	48	7	207
WIS	7,793	205	*7	*12						
23 STATES 2/	175,155	11,209	960	1,208	530	1,367	315	1,932	208	3,158
1971										
ARIZ	8	2	6	8	8	22	12	58	12	196
CALIF	139	13	65	26	77	88	51	198	47	528
COLO	622	240	101	135	48	155	32	269	20	302
IDAHO	525	40	34	45	26	65	15	80	9	89
ILL	17,943	942	44	52	8	20	*5	*35		
IND	12,476	406	19	37	*5	*33				
IOWA	38,830	3,574	90	140	55	125	20	90	5	55
KANS	7,872	494	35	38	21	65	28	225	25	434
MICH	1,671	200	20	24	9	27				
MINN	15,960	819	35	44	5	12				
MO	13,965	568	20	30	11	27	*4	*22		
MONT	387	35	46	18	22	50	*18	*132		
NEBR	17,800	1,684	300	465	128	435	65	470	19	305
N MEX	22	3	9	9	10	21	11	63	12	131
N DAK	983	58	10	11	*7	*11				
OHIO	8,972	385	25	31	*3	*15				
OKLA	651	52	13	16	16	79	9	64	7	172
OREG	366	34	14	17	*15	*45			*5	*61
PA	5,997	119	*3	*9						
S DAK	9,049	458	33	46	13	28			5	70
TEX	1,300	99	47	49	49	117	44	304	34	697
WASH	253	51	4	5	7	34	7	57	3	69
WIS	7,293	222	*7	*13						
23 STATES 2/	163,084	10,498	978	1,260	537	1,423	323	2,063	207	3,137

SEE FOOTNOTES ON PAGE 47.

NUMBER OF CATTLE FEEDLOTS AND FED CATTLE MARKETED--BY SIZE OF FEEDLOT
CAPACITY, BY STATES - 1970 - 71 1/

STATE AND YEAR	1,000 HEAD AND OVER FEEDLOT CAPACITY						TOTAL ALL FEED LOTS	
	16,000 - 31,999		32,000 AND OVER		TOTAL		LOTS	CATTLE
	LOTS	CATTLE	LOTS	CATTLE	LOTS	CATTLE	LOTS	CATTLE
	MARKETED	MARKETED	MARKETED	MARKETED	MARKETED	MARKETED	MARKETED	MARKETED
	NUMBER	1,000 HEAD	NUMBER	1,000 HEAD	NUMBER	1,000 HEAD	NUMBER	1,000 HEAD
1970								
ARIZ	8	254	6	354	53	858	61	860
CALIF	20	603	10	520	272	1,947	425	1,966
COLO	*13	*819			184	1,617	838	1,905
IDAHO	4	109			89	374	635	434
ILL					48	103	19,500	1,167
IND					27	66	13,500	517
IOWA					171	460	42,000	4,522
KANS	16	493	4	220	132	1,395	9,000	1,890
MICH					27	44	1,700	254
MINN					38	55	18,200	877
MO					34	67	15,500	684
MONT					77	150	501	184
NEBR	7	216	3	170	514	1,973	18,914	3,609
N MEX	*5	*146			45	394	68	399
N DAK					21	33	1,100	96
OHIO					28	38	9,500	429
OKLA	*4	*221			47	492	800	542
OREG					37	129	356	166
PA					3	9	6,000	128
S DAK					51	114	9,100	552
TEX	33	915	15	952	227	3,040	1,527	3,138
WASH					30	305	292	348
WIS					7	12	7,800	217
23 STATES 2/	107	3,203	42	2,807	2,162	13,675	177,317	24,884
1971								
ARIZ	10	298	5	317	53	899	61	901
CALIF	21	617	10	520	271	1,977	410	1,990
COLO	*16	*1,050			217	1,911	839	2,151
IDAHO	4	113			88	392	613	432
ILL					57	107	18,000	1,049
IND					24	70	12,500	476
IOWA					170	410	39,000	3,984
KANS	15	495	4	215	128	1,472	8,000	1,966
MICH					29	51	1,700	251
MINN					40	56	16,000	875
MO					35	79	14,000	647
MONT					86	200	473	235
NEBR	7	224	3	165	522	2,064	18,322	3,748
N MEX	*4	*103			46	327	68	330
N DAK					17	22	1,000	80
OHIO					28	46	9,000	431
OKLA	*4	*204			49	535	700	587
OREG					34	123	400	157
PA					3	9	6,000	128
S DAK					51	144	9,100	602
TEX	34	1,277	17	1,120	225	3,564	1,525	3,663
WASH	4	147			25	312	278	363
WIS					7	13	7,300	235
23 STATES	116	3,899	44	3,001	2,205	14,783	165,289	25,281

SEE FOOTNOTES ON PAGE 47.

NUMBER OF CATTLE FEEDLOTS AND FED CATTLE MARKETED--BY SIZE OF FEEDLOT CAPACITY
BY STATES - 1972 AND 73 1/

STATE AND YEAR	: UNDER 1,000 HEAD :		: 1,000 HEAD AND OVER FEEDLOT CAPACITY :								
	: FEEDLOT CAPACITY :		: 1,000 - 1,999 :		: 2,000 - 3,999 :		: 4,000 - 7,999 :		: 8,000 - 15,999 :		
	: LOTS	: CATTLE	: LOTS	: CATTLE	: LOTS	: CATTLE	: LOTS	: CATTLE	: LOTS	: CATTLE	
: (NO.)	: 1,000 HEAD	: (NO.)	: 1,000 HEAD	: (NO.)	: 1,000 HEAD	: (NO.)	: 1,000 HEAD	: (NO.)	: 1,000 HEAD	: (NO.)	: 1,000 HEAD
1972											
ARIZ	7	2	5	5	7	18	8	43	8	120	
CALIF	42	8	18	23	18	47	32	227	40	526	
COLO	621	183	67	118	49	163	36	301	23	441	
IDAHO	525	37	34	40	26	52	15	68	9	118	
ILL	16,440	886	49	65	6	19	*5	*33			
IND	11,476	408	19	37	*5	*33					
IOWA	35,830	3,576	89	140	56	135	19	90	6	65	
KANS	7,369	489	36	52	17	55	26	241	31	580	
NICH	1,675	200	16	24	9	27					
MINN	13,965	877	29	37	6	15					
MO	12,974	556	15	20	*11	*28					
MONT	317	26	36	31	17	33	14	86	*5	*71	
NEBR	16,629	1,606	305	505	140	510	66	510	20	345	
N MEX	19	7	6	7	11	20	8	61	12	158	
N DAK	1,082	60	14	13	*4	*12					
OHIO	8,972	376	25	32	*3	*30					
OKLA	459	47	8	12	9	35	7	92	11	145	
OREG	420	25	13	12	8	24	6	20	*3	*62	
PA	5,997	121	*3	*9							
S DAK	9,046	429	39	31	8	15	3	11	4	75	
TEX	1,300	98	53	57	38	112	39	308	38	558	
WASH	227	45			*9	*31	8	53	4	65	
WIS	7,090	193	*10	*21							
23 STATES 2/	152,482	10,255	888	1,283	451	1,353	297	2,178	214	3,286	
1973											
ARIZ	3	1	5	5	6	8	7	33	8	89	
CALIF	42	9	18	11	18	35	32	168	40	501	
COLO	426	165	66	97	51	192	25	255	18	316	
IDAHO	492	36	26	25	22	39	15	59	9	110	
ILL	14,943	837	47	54	5	17	*5	*37			
IND	10,977	364	18	22	*5	*20					
IOWA	33,830	2,958	91	135	55	130	18	86	6	80	
KANS	6,363	401	24	49	26	91	26	226	34	625	
MICH	1,667	184	21	30	12	30					
MINN	11,757	813	35	44	8	18					
MO	12,980	446	7	9	10	16	3	12			
MONT	236	42	31	16	20	23	11	61	*7	*73	
NEBR	16,600	1,407	310	450	139	445	64	435	24	340	
N MEX	8	3	6	2	11	19	10	61	12	143	
N DAK	980	50	15	25	*5	*10					
OHIO	8,472	342	25	31	*3	*29					
OKLA	408	41	8	8	9	34	10	65	8	138	
OREG	474	16	8	6	10	30	4	18	*4	*53	
PA	5,997	112	*3	*9							
S DAK	9,137	376	40	50	16	32	3	17	4	84	
TEX	1,300	99	50	47	37	74	36	210	44	625	
WASH	165	34			*6	*28	7	53	3	60	
WIS	7,087	174	10	17	3	9					
23 STATES 2/	144,344	8,910	865	1,138	471	1,287	279	1,806	219	3,200	

SEE FOOTNOTES ON PAGE 47.

NUMBER OF CATTLE FEEDLOTS AND FED CATTLE MARKETED--BY SIZE OF FEEDLOT
CAPACITY, BY STATES - 1972-73 1/

STATE AND YEAR	1,000 HEAD AND OVER FEEDLOT CAPACITY						TOTAL ALL FEED LOTS	
	16,000 - 31,999		32,000 AND OVER		TOTAL		TOTAL ALL FEED LOTS	CATTLE MARKETED
	LOTS (NO.)	CATTLE MARKETED 1,000 HEAD	LOTS (NO.)	CATTLE MARKETED 1,000 HEAD	LOTS (NO.)	CATTLE MARKETED 1,000 HEAD		
1972								
ARIZ	9	210	9	494	46	890	53	892
CALIF	21	625	10	606	139	2,054	181	2,062
COLO	11	362	5	733	191	2,118	812	2,301
IDAHO	4	113			88	391	613	428
ILL					60	117	16,500	1,003
IND					24	70	11,500	478
IOWA					170	430	36,000	4,006
KANS	16	637	5	351	131	1,916	7,500	2,405
MICH					25	51	1,700	251
MINN					35	52	14,000	929
MO					26	48	13,000	604
MONT					72	221	389	247
NEBR	8	270	4	235	543	2,375	17,172	3,981
N MEX	6	123			43	369	62	376
N DAK					18	25	1,100	85
OHIO					28	62	9,000	438
OKLA	*6	*295			41	579	500	626
OREG					30	118	450	143
PA					3	9	6,000	130
S DAK					54	132	9,100	561
TEX	38	1,420	24	1,755	230	4,210	1,530	4,308
WASH	4	181			25	330	252	375
WIS					10	21	7,100	214
23 STATES 2/	123	4,193	59	4,295	2,032	16,588	154,514	26,843
1973								
ARIZ	10	237	9	546	45	918	48	919
CALIF	21	593	10	625	139	1,933	181	1,942
COLO	19	525	4	594	183	1,979	609	2,144
IDAHO	4	126			76	359	568	395
ILL					57	108	15,000	945
IND					23	42	11,000	406
IOWA					170	431	34,000	3,389
KANS	20	658	7	450	137	2,099	6,500	2,500
MICH					33	60	1,700	244
MINN					43	62	11,800	875
MO					20	37	13,000	483
MONT					69	173	305	215
NEBR	9	310	4	220	550	2,200	17,150	3,607
N MEX	7	173			46	398	54	401
N DAK					20	35	1,000	85
OHIO					28	60	8,500	402
OKLA	*7	*278			42	523	450	564
OREG					26	107	500	123
PA					3	9	6,000	121
S DAK					63	183	9,200	559
TEX	35	1,136	31	2,221	233	4,313	1,533	4,412
WASH	*5	*192			21	333	186	367
WIS					13	26	7,100	200
23 STATES 2/	137	4,124	69	4,833	2,040	16,388	146,384	25,298

SEE FOOTNOTES ON PAGE 47.

NUMBER OF CATTLE FEEDLOTS AND FED CATTLE MARKETED--BY SIZE OF FEEDLOT CAPACITY
BY STATES - 1974-75 1/

STATE AND YEAR	: UNDER 1,000 HEAD :		: 1,000 HEAD AND OVER FEEDLOT CAPACITY :								
	: FEEDLOT CAPACITY :		: 1,000-1,999 :		: 2,000-3,999 :		: 4,000-7,999 :		: 8,000-15,999 :		
	LOTS	CATTLE	LOTS	CATTLE	LOTS	CATTLE	LOTS	CATTLE	LOTS	CATTLE	
(NO.)	: MARKETED :	(NO.)	: MARKETED :	(NO.)	: MARKETED :	(NO.)	: MARKETED :	(NO.)	: MARKETED :	(NO.)	: MARKETED :
1974											
ARIZ	6	1	4	5	7	12	5	44	7	67	
CALIF	28	13	15	12	21	38	31	143	35	526	
COLO	425	140	64	105	59	161	25	206	20	223	
IDAHO	502	11	22	17	23	36	11	40	7	53	
ILL	14,445	755	45	47	5	15	*5	*33			
IND	10,477	336	18	15	*5	*10					
IOWA	33,807	2,710	91	123	75	118	21	74	6	72	
KANS	5,960	400	22	27	27	77	26	183	35	554	
MICH	1,663	177	25	30	12	35					
MINN	10,970	795	37	41	10	17	3	11			
MO	11,979	348	15	30	*6	*22					
MONT	211	26	26	14	21	20	12	53	*6	*74	
NEBR	14,910	1,330	210	350	160	347	50	357	26	415	
N MEX	7	1	5	4	9	10	10	55	10	121	
N DAK	880	53	15	13	*5	*18					
OHIO	8,175	328	22	30	*3	*28					
OKLA	358	36	8	12	9	30	10	54	8	135	
OREG	524	24	6	5	10	18	5	18	*5	*63	
PA	5,997	114	*3	*9							
S DAK	9,123	382	48	50	16	30	8	31	*5	*92	
TEX	1,001	85	40	31	21	48	30	189	39	544	
WASH	165	33			*4	*6	7	38	6	41	
WIS	7,084	149	12	19	4	12					
23 STATES 2/	138,697	8,247	753	984	505	1,065	262	1,536	213	2,884	
1975											
ARIZ	3	1	8	7	8	13	6	26	8	61	
CALIF	28	7	17	11	19	40	26	137	33	372	
COLO	344	140	63	85	63	192	25	187	21	261	
IDAHO	504	13	17	21	20	41	8	37	8	93	
ILL	14,450	720	40	42	5	13	*5	*30			
IND	10,475	316	20	20	*5	*10					
IOWA	32,835	2,334	75	98	65	90	19	-59	6	64	
KANS	6,169	282	15	15	18	44	40	260	25	443	
MICH	1,613	183	25	28	12	33					
MINN	10,531	698	36	38	10	16	3	10			
MO	9,965	300	21	14	10	11	*4	*13			
MONT	102	23	13	8	19	20	13	49	*5	*32	
NEBR	14,700	1,130	170	283	110	280	51	270	30	383	
N MEX	5	1			*12	*7	7	40	15	146	
N DAK	882	27	*15	*17			*3	*23			
OHIO	8,175	322	22	29	*3	*28					
OKLA	314	18	8	6	9	23	7	29	10	125	
OREG	527	33	5	3	9	16	5	23	*4	*70	
PA	5,997	113	3	4							
S DAK	9,132	338	40	46	16	30	7	36	*5	*111	
TEX	921	50	26	22	21	51	27	134	37	485	
WASH	160	42			*4	*9	7	44	6	42	
WIS	7,087	155	7	17	6	14					
23 STATES 2/	134,919	7,246	647	813	440	953	262	1,386	211	2,620	

SEE FOOTNOTES ON PAGE 47.

NUMBER OF CATTLE FEEDLOTS AND FED CATTLE MARKETED--BY SIZE OF FEEDLOT CAPACITY,
BY STATES - 1974-75 1/

STATE AND YEAR	1,000 HEAD AND OVER FEEDLOT CAPACITY						TOTAL ALL FEEDLOTS	
	16,000-31,999		32,000 AND OVER		TOTAL		LOTS	CATTLE MARKETED
	LOTS	CATTLE MARKETED	LOTS	CATTLE MARKETED	LOTS	CATTLE MARKETED		
(NO.)	1,000 HEAD	(NO.)	1,000 HEAD	(NO.)	1,000 HEAD	(NO.)	1,000 HEAD	
1974								
ARIZ	9	216	9	546	41	890	47	891
CALIF	27	639	10	631	139	1,989	167	2,002
COLO	14	494	6	575	188	1,764	613	1,904
IDAHO	9	187			72	333	574	344
ILL					55	95	14,500	850
IND					23	25	10,500	361
IOWA					193	387	34,000	3,097
KANS	23	665	7	334	140	1,840	6,100	2,240
MICH					37	65	1,700	242
MINN					50	69	11,020	864
MO					21	52	12,000	400
MONT					65	161	276	187
NEBR	9	282	5	274	460	2,025	15,370	3,355
N MEX	7	164			41	354	48	355
N DAK					20	31	900	84
OHIO					25	58	8,200	386
OKLA	*7	*299			42	530	400	566
OREG					26	104	550	128
PA					3	9	6,000	123
S DAK					77	203	9,200	585
TEX	38	1,142	31	1,860	199	3,814	1,200	3,899
WASH	*4	*183			21	268	186	301
WIS					16	31	7,100	180
23 STATES 2/	148	4,172	73	4,456	1,954	15,097	140,651	23,344
1975								
ARIZ	9	208	9	413	48	728	51	729
CALIF	25	578	11	505	131	1,643	159	1,650
COLO	15	375	6	598	193	1,698	537	1,838
IDAHO	6	125			59	317	563	330
ILL					50	85	14,500	805
IND					25	30	10,500	346
IOWA					165	311	33,000	2,645
KANS	26	812	7	408	131	1,982	6,300	2,264
MICH					37	61	1,650	244
MINN					49	64	10,580	762
MO					35	38	10,000	338
MONT					50	109	152	132
NEBR	9	240	4	209	374	1,665	15,074	2,795
N MEX	*5	*76			39	269	44	270
N DAK					18	40	900	67
OHIO					25	57	8,200	379
OKLA	*7	*314			41	497	355	515
OREG					23	112	550	145
PA					3	4	6,000	117
S DAK					68	223	9,200	561
TEX	43	1,319	25	1,006	179	3,017	1,100	3,067
WASH	4	178			21	273	181	315
WIS					13	31	7,100	186
23 STATES 2/	151	4,216	66	3,266	1,777	13,254	136,696	20,500

1/ NUMBER OF FEEDLOTS WITH 1,000 HEAD OR MORE CAPACITY IS NUMBER OF LOTS OPERATING ANYTIME DURING YEAR. NUMBER UNDER 1,000 HEAD CAPACITY IS NUMBER AT END OF YEAR. 2/ THE 23 STATE TOTALS SHOW ACTUAL NUMBER OF FEEDLOTS AND NUMBER OF ANIMALS MARKETED IN EACH SIZE GROUP. THE SUM OF NUMBERS SHOWN BY STATES UNDER A SPECIFIED SIZE GROUP MAY NOT ADD TO 23 STATE TOTALS FOR THAT SIZE GROUP, SINCE FOR SOME STATES SIZE GROUPS ARE COMBINED TO AVOID DISCLOSING INDIVIDUAL OPERATIONS. * LOTS AND MARKETINGS FROM LARGER SIZE GROUPS ARE INCLUDED TO AVOID DISCLOSING INDIVIDUAL OPERATIONS.

END