



**AgEcon** SEARCH  
RESEARCH IN AGRICULTURAL & APPLIED ECONOMICS

*The World's Largest Open Access Agricultural & Applied Economics Digital Library*

**This document is discoverable and free to researchers across the globe due to the work of AgEcon Search.**

**Help ensure our sustainability.**

Give to AgEcon Search

AgEcon Search

<http://ageconsearch.umn.edu>

[aesearch@umn.edu](mailto:aesearch@umn.edu)

*Papers downloaded from **AgEcon Search** may be used for non-commercial purposes and personal study only. No other use, including posting to another Internet site, is permitted without permission from the copyright owner (not AgEcon Search), or as allowed under the provisions of Fair Use, U.S. Copyright Act, Title 17 U.S.C.*

*No endorsement of AgEcon Search or its fundraising activities by the author(s) of the following work or their employer(s) is intended or implied.*

58 (1977)

POTATOES AND SWEET POTATOES

1969-75

PRODUCTION

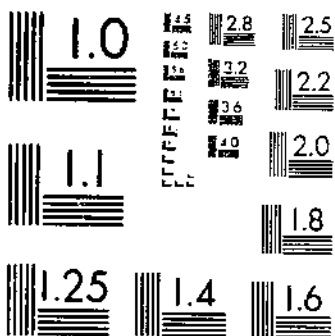
DISPOSITION

VALUE

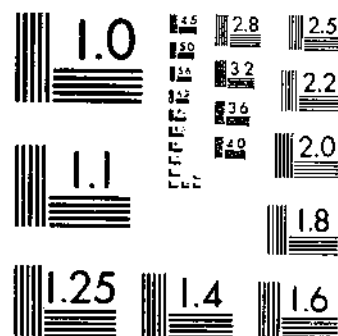
UPDATA

1 OF 1

# START



MICROCOPY RESOLUTION TEST CHART  
NATIONAL BUREAU OF STANDARDS - 1963-A



MICROCOPY RESOLUTION TEST CHART  
NATIONAL BUREAU OF STANDARDS-1963-A

Z630.5 U53-13 51

---

# POTATOES AND SWEETPOTATOES

1969-75 Production, Disposition, Value,  
Stocks & Utilization

U. S. DEPOSITORY

DEC 30 1977

Los Angeles Public Library



Crop  
Reporting  
Board

Statistical Reporting  
Service

U.S. Department  
of Agriculture  
Washington, D.C.  
20250

Statistical Bulletin 583

© UPDATA 1981

C O N T E N T S

	<u>PAGE</u>	
Comments	3	
 <u>POTATOES:</u>		
Area, yield, production, farm disposition, price and value, United States, 1955-1975	4	Total stocks held by growers and local dealers 1969, 1970 27 1971, 1972 28 1973, 1974 29 1975 30
Area, yield and production by seasonal groups		
1969, 1970	5	
1971, 1972	6	Utilization of the 1969-75 crops, United States 31
1973, 1974	7	
1975	8	
Production, farm disposition, price and value by seasonal groups		
1969	9	Number of potato chip plants and quantity used for chip- ping by area and United States 1969, 1970, 1971, 1972, 1973, 1974, 1975 32
1970	10	
1971	11	Area, yield, production, farm disposition, price, value and stocks, Alaska, 1969-1975 33
1972	12	
1973	13	
1974	14	
1975	15	<u>SWEETPOTATOES:</u>
Area, yield and production, by States		Area, yield, production, farm disposition, price and value, United States, 1955-1975 34
1969, 1970	16	
1971, 1972	17	
1973, 1974	18	Area, yield and production, by States
1975	19	1969, 1970, 1971, 1972 35 1973, 1974, 1975 36
Production, farm disposition, price and value by States		
1969	20	Production, farm disposition, price and value by States
1970	21	1969, 1970, 1971, 1972 37 1973, 1974, 1975 38
1971	22	
1972	23	
1973	24	
1974	25	
1975	26	

December 1977

## POTATOES AND SWEETPOTATOES

1969 through 1975  
Production, Disposition, Value, Stocks, and Utilization

This publication presents estimates of acreage, yield per acre, production, farm disposition, season average price, utilization of sales, and stocks for the crops of 1969 through 1975.

These estimates are based on information from crop reporters, State farm censuses, rail and truck shipments and unloads, and Federal-State inspection data. Estimates also reflect a review of the 1974 Census of Agriculture.

Price estimates represent average returns to growers for all uses and methods of sale. These prices are applied to production to compute value of production, and to the quantity sold to compute value of sales. The difference between value of production and value of sales is accounted for by a value placed on that used for seed, feed, home use, shrinkage and loss. The United States season average price is derived by weighting State prices by quantities sold.

Potato production data for each State except Alaska has been classified by seasonal groups according to the period or periods when the largest supplies are usually harvested. State estimates of acreage, yield per acre, production, farm disposition, price and value are the combined seasonal estimates. Utilization estimates by States are not provided. No seasonal classification is made for Alaska. The four seasonal groups used in this report are:

<u>Season</u>	<u>Usual Time of Harvest</u>
Winter	January, February, March
Spring	April, May, June
Summer	July, August, September
Fall	October, November, December

These seasons are not fixed dates but are approximations since some harvest may occur before or after the specified season. Generally, the marketing season closely follows the harvesting season except for the fall crop where marketing from storage may extend through July of the following year.

Data on potatoes for earlier years are in the following publications: "Potatoes", Statistical Bulletin No. 251 for 1866-1953; "Potatoes, Sweetpotatoes", Statistical Bulletin No. 291 for 1954-1958; "Potatoes, Sweetpotatoes", Statistical Bulletin No. 409 for 1959-1963; and "Potatoes and Sweetpotatoes", Statistical Bulletin No. 490 for 1964-1968. Similar data for sweetpotatoes may be located in "Sweetpotatoes", Statistical Bulletin No. 237 for 1868-1953. Since 1954, sweetpotatoes have been included in the same publication as potatoes.

POTATOES: AREA, YIELD, PRODUCTION, FARM DISPOSITION,  
SEASON AVERAGE PRICE RECEIVED BY FARMERS, AND VALUE, UNITED STATES 1955-75

YEAR	ACREAGE		YIELD PER HARVESTED ACRE	PRODUCTION:	FARM DISPOSITION				PRICE PER CWT	VALUE OF --		
	PLANTED	HARVESTED			USED ON FARMS WHERE GROWN					SOLD 1/	PRODUCTION:	SALES
					FOR SEED	FEED, SHRINKAGE AND LOSS	FOR HOUSEHOLD USE					
	1,000 ACRES		CWT		1,000 CWT			DOLLARS	1,000 DOLLARS			
1955	1,451.8	1,405.0	162	2/227,696	6,964	16,022	11,488	193,222	1.77	405,439	342,742	
1956	1,391.6	1,371.0	179	245,792	6,752	19,487	9,312	210,241	2.02	493,014	425,338	
1957	1,403.6	1,359.4	178	2/242,522	7,577	14,514	8,176	212,255	1.91	467,865	405,355	
1958	1,460.8	1,428.4	187	2/266,897	7,086	19,173	7,279	233,359	1.31	349,674	306,301	
1959	1,353.6	1,330.7	184	2/245,272	7,093	15,755	5,913	216,511	2.27	555,889	491,632	
1960	1,399.8	1,386.2	185	257,104	7,560	15,911	5,310	228,323	2.00	513,426	456,807	
1961	1,511.0	1,480.2	198	2/293,166	7,191	20,879	4,773	260,323	1.36	399,653	354,287	
1962	1,377.9	1,347.1	197	264,810	5,955	16,967	3,955	237,933	1.67	441,063	396,487	
1963	1,337.4	1,323.0	205	2/271,158	5,911	16,600	3,400	245,247	1.78	482,554	436,563	
1964	1,311.3	1,271.9	190	241,076	7,249	12,205	2,776	218,846	3.50	846,017	765,592	
1965	1,418.4	1,383.1	210	291,109	6,398	19,608	2,512	262,591	2.53	730,527	665,268	
1966	1,497.6	1,462.6	210	3/307,242	7,952	31,128	2,202	265,960	2.04	622,581	541,564	
1967	1,499.1	1,459.9	209	3/305,766	7,301	25,315	2,005	271,145	1.87	567,557	506,187	
1968	1,414.5	1,383.3	214	295,401	6,851	21,039	1,768	265,743	2.23	657,202	593,897	

YEAR	ACREAGE		YIELD PER HARVESTED ACRE	PRODUCTION:	TOTAL USED FOR SEED 4/	FARM DISPOSITION			PRICE PER CWT	VALUE OF --		
	PLANTED	HARVESTED				USED ON FARMS WHERE GROWN				SOLD 1/	PRODUCTION:	SALES
						FOR SEED, FEED, AND HOUSEHOLD USE:	SHRINKAGE AND LOSS					
	1,000 ACRES		CWT		1,000 CWT			DOLLARS	1,000 DOLLARS			
1969	1,457.6	1,415.5	221	312,578	24,492	9,959	22,657	279,962	2.24	697,845	626,657	
1970	1,449.5	1,421.0	229	325,716	24,555	9,957	23,850	291,909	2.21	715,123	645,748	
1971	1,432.1	1,391.0	230	319,329	22,290	8,927	27,909	282,493	1.90	602,907	537,208	
1972	1,301.1	1,255.6	236	296,359	23,556	7,913	19,996	268,450	3.02	895,903	809,718	
1973	1,329.8	1,306.6	230	300,013	25,257	6,516	18,376	275,121	4.90	1,471,942	1,347,913	
1974	1,421.6	1,391.6	246	342,395	23,855	6,522	32,496	303,377	4.01	1,354,928	1,215,175	
1975	1,303.6	1,264.0	255	322,254	25,643	6,612	22,181	293,461	4.48	1,444,608	1,314,710	

1/ CONSISTS OF POTATOES SOLD FOR ALL PURPOSES INCLUDING FOOD, SEED, PROCESSING AND LIVESTOCK FEED.

2/ INCLUDES THE FOLLOWING QUANTITIES NOT HARVESTED OR NOT MARKETED BECAUSE OF LOW PRICES AND EXCLUDED IN COMPUTING VALUE (1,000 CWT): 1955, N C 135; KANS 4; VA 67; KY 18; TEX 215; IDAHO 84; WASH 494; OREG 130; 1957, FLA 534; 1958, FLA 395; VA 136; WASH 403; 1959, FLA 248; 1961, N C 48; 1963, FLA 13; ALA 320.

3/ DOES NOT INCLUDE THE FOLLOWING QUANTITIES NOT HARVESTED BECAUSE OF ECONOMIC CONDITIONS (1,000 CWT) ALA, 1966, 310; 1967, 78.

4/ INCLUDES SEED PURCHASED AND SEED USED ON FARMS WHERE GROWN.

POTATOES: AREA, YIELD AND PRODUCTION BY SEASONAL GROUPS, 1969 AND 1970 CROPS

SEASON AND STATE	CROP OF 1969				CROP OF 1970			
	AREA	YIELD	PRODUC-	AREA	YIELD	PRODUC-		
	PLANTED	HAR- VESTED	PER HAR- VESTED	PLANTED	HAR- VESTED	PER HAR- VESTED	PRODUC-	
	1,000 ACRES	CWT	1,000 CWT	1,000 ACRES	CWT	1,000 CWT		
WINTER: CALIF	8.8	8.8	210	1,848	8.5	8.5	230	1,955
FLA	12.2	11.0	180	1,980	11.0	10.3	158	1,627
TOTAL WINTER	21.0	19.8	193	3,828	19.5	18.8	191	3,582
SPRING: ALA	10.3	9.8	120	1,176	7.9	7.9	130	1,027
ARIZ	12.8	12.8	230	2,944	11.3	11.3	240	2,712
ARK	1.8	1.8	70	126	1.4	1.4	65	91
CALIF	43.6	41.0	355	14,555	38.2	38.2	380	14,516
FLA - HASTINGS	26.5	26.3	185	4,866	24.7	24.5	165	4,043
- OTHER	3.2	3.1	135	418	2.0	1.9	140	266
LA	3.5	3.3	78	257	2.7	2.6	83	216
MISS	2.5	2.5	100	250	2.5	2.5	95	238
N C	12.4	12.4	145	1,798	12.4	12.4	143	1,774
TEX	8.5	8.1	111	903	8.4	8.0	128	1,024
TOTAL SPRING	125.1	121.1	225	27,293	111.5	110.7	234	25,907
SUMMER: ALA	8.4	8.4	128	1,075	8.8	8.8	125	1,100
CALIF	13.2	13.2	348	4,598	11.1	11.1	341	3,785
COLO	12.4	12.0	225	2,700	13.8	13.3	220	2,926
DEL	8.0	8.0	210	1,680	7.2	7.2	210	1,512
ILL	2.0	2.0	170	340	2.2	2.2	160	352
IND	1.3	1.2	180	216	1.3	1.3	190	247
IOWA	3.2	2.5	185	462	2.8	2.7	190	513
KANS	1.4	1.2	90	108	1.3	1.2	100	120
KY	2.7	2.7	73	197	2.5	2.5	66	165
MD	2.3	2.3	165	380	2.2	2.2	161	355
MICH	11.0	10.8	170	1,836	10.2	10.0	180	1,800
MINN	8.0	7.9	250	1,975	7.9	7.8	250	1,950
MO	1.1	1.0	110	110	.8	.7	110	77
NEBR	2.5	2.2	180	396	2.8	2.5	165	413
N J	14.4	14.0	230	3,220	13.0	13.0	260	3,380
N MEX	3.1	2.9	165	479	2.7	2.5	230	575
N C	3.0	3.0	125	375	2.9	2.9	110	319
OHIO	3.8	3.6	160	576	3.5	3.3	170	561
TENN	3.8	3.8	93	353	3.8	3.8	95	361
TEX	19.6	19.1	185	3,534	18.5	18.3	195	3,569
VA	32.2	31.6	124	3,918	32.5	31.5	127	3,990
W VA	4.9	4.9	75	368	4.4	4.4	75	330
TOTAL SUMMER	162.3	158.3	183	28,896	156.2	153.2	185	28,400
FALL: CALIF	29.4	28.9	280	8,092	29.7	29.7	320	9,504
COLO	40.0	37.0	235	8,695	37.5	37.0	270	9,990
CONN	5.0	4.8	225	1,080	3.8	3.8	230	874
IDAHO - 10 SW CO	30.0	30.0	320	9,600	34.0	34.0	300	10,200
- OTHER	290.0	287.0	210	60,270	296.0	293.0	220	64,460
IND	6.3	6.0	270	1,620	6.0	5.9	280	1,652
MAINE	161.0	156.0	225	35,100	153.0	150.0	238	35,700
MASS	5.2	5.1	190	969	5.1	5.1	205	1,046
MICH	36.5	34.0	230	7,820	36.0	35.0	250	8,750
MINN	99.0	90.0	150	13,500	95.0	88.0	130	11,440
MONT	7.5	7.0	205	1,435	7.8	7.5	205	1,538
NEBR	6.0	5.8	220	1,276	5.3	5.0	210	1,050
N H	.9	.9	210	189	.8	.8	260	208
N Y - LONG ISLAND	34.2	34.2	254	8,685	31.0	31.0	268	8,293
- UPSTATE	36.0	35.5	235	8,342	35.0	33.4	260	8,684
N DAK	116.0	114.0	145	16,530	121.0	117.0	150	17,550
OHIO	12.7	11.0	200	2,200	12.0	11.7	230	2,691
OREG - MALHEUR CO	15.5	15.5	295	4,572	21.5	21.0	275	5,775
- OTHER	32.7	31.2	280	8,736	33.0	32.6	290	9,454
PA	36.0	35.5	210	7,455	35.0	34.5	240	8,280
R I	5.2	4.9	235	1,152	5.1	5.1	245	1,250
S DAK	5.8	5.7	115	656	7.7	7.5	95	713
UTAH	7.2	6.9	190	1,311	6.0	5.9	170	1,003
VT	1.3	1.3	195	254	1.2	1.2	200	240
WASH	72.0	71.7	416	29,796	87.0	87.0	386	33,590
WIS	54.0	53.0	234	12,410	53.0	52.0	251	13,028
WYO	3.8	3.4	240	816	3.8	3.6	240	864
TOTAL FALL	1,149.2	1,116.3	226	252,561	1,162.3	1,138.3	235	267,827
U S	1,457.6	1,415.5	221	312,578	1,449.5	1,421.0	229	325,716



POTATOES: AREA, YIELD, AND PRODUCTION BY SEASONAL GROUPS, 1971 AND 1972 CROPS

SEASON AND STATE	CROP OF 1971				CROP OF 1972			
	AREA	YIELD		PRODUCTION	AREA	YIELD		PRODUCTION
	PLANTED:	HAR-VESTED:	PER HAR-VESTED:		PLANTED:	HAR-VESTED:	PER HAR-VESTED:	
	1,000 ACRES	CWT	1,000 CWT		1,000 ACRES	CWT	1,000 CWT	
WINTER: CALIF	7.1	7.1	220	1,562	5.7	5.7	170	969
FLA	10.9	10.9	140	1,526	10.4	9.7	140	1,358
TOTAL WINTER	18.0	18.0	172	3,088	16.1	15.4	151	2,327
SPRING: ALA	8.7	8.7	115	1,001	9.0	9.0	155	1,395
ARIZ	10.1	10.1	280	2,828	8.0	8.0	300	2,400
ARK 1/	1.4	1.4	65	91	1.4	1.4	65	91
CALIF	39.9	36.2	370	13,394	31.2	31.2	355	11,076
FLA - HASTINGS	23.1	23.0	132	3,036	21.3	21.1	142	2,996
- OTHER	2.4	2.4	125	300	2.0	1.8	140	252
LA	3.1	2.9	70	203	2.8	2.7	75	203
MISS	2.0	2.0	90	180	2.0	2.0	85	170
N C	12.2	11.8	146	1,726	11.2	11.0	146	1,606
TEX	9.2	8.8	102	899	8.0	7.6	108	822
TOTAL SPRING	112.1	107.3	220	23,658	96.9	95.8	219	21,011
SUMMER: ALA	8.7	8.5	93	791	8.0	8.0	130	1,040
CALIF	10.3	10.3	337	3,469	7.3	7.3	354	2,584
COLO	12.0	11.6	255	2,958	8.0	7.6	275	2,090
DEL	7.2	7.0	200	1,400	6.8	6.5	190	1,235
ILL	2.2	2.2	155	341	2.4	2.3	200	460
IND	1.4	1.4	200	280	1.3	1.1	150	165
IOWA	2.8	2.8	205	574	2.8	2.7	220	594
KANS 1/	1.4	1.3	95	124	1.1	1.0	95	95
KY 1/	2.5	2.5	67	168	2.3	2.3	65	150
MD	2.2	2.2	170	375	2.1	2.1	167	351
MICH	9.8	9.6	140	1,344	9.0	8.8	200	1,760
MINN	7.7	7.5	250	1,875	7.3	7.2	250	1,800
MO 1/	.8	.7	120	84	.7	.6	110	66
NEBR	2.9	2.6	155	403	2.8	2.5	170	425
N J	12.5	11.9	250	2,975	11.1	10.8	195	2,106
N MEX	2.6	2.4	200	480	3.2	3.2	275	880
N C	2.9	2.9	115	334	3.1	3.1	120	372
OHIO	3.3	3.1	170	527	2.9	2.6	170	442
TERN	4.1	4.1	95	390	3.9	3.9	95	371
TEX	16.3	16.0	150	2,400	14.6	14.3	165	2,360
VA	31.7	31.0	139	4,318	31.6	29.3	141	4,131
W VA	3.8	3.8	70	266	3.2	3.2	70	224
TOTAL SUMMER	149.1	145.4	178	25,876	135.5	130.4	182	23,701
FALL: CALIF	29.2	29.0	280	8,120	23.5	23.5	315	7,403
COLO	32.0	31.5	240	7,560	31.5	31.0	255	7,905
CONN	3.7	3.7	230	851	3.2	2.9	210	609
IDAHO - 10 SW CO	33.0	31.0	310	9,610	27.0	27.0	335	9,045
- OTHER	295.0	288.0	235	67,680	275.0	273.0	250	68,250
IND	6.2	6.1	280	1,708	6.6	5.8	225	1,305
MAINE	145.0	145.0	260	37,700	135.0	128.0	260	33,280
MASS	4.8	4.8	210	1,008	4.5	4.0	160	640
MICH	36.0	35.5	230	8,165	34.0	31.5	250	7,875
MINN	96.0	90.0	165	14,850	82.0	78.0	170	13,260
MONT	8.0	7.8	180	1,404	7.7	7.5	220	1,650
NEBR	5.3	5.0	210	1,050	4.7	4.4	220	968
N H	.7	.7	270	189	.8	.8	220	176
N Y - LONG ISLAND	31.5	31.5	230	7,245	27.0	27.0	207	5,585
- UPSTATE	34.7	34.5	230	7,935	33.0	25.5	195	4,973
N DAK	140.0	129.0	155	19,995	122.0	120.0	145	17,400
OHIO	11.7	11.5	215	2,473	12.0	11.0	215	2,365
OREG - MALHEUR CO	18.5	18.5	295	5,458	12.0	12.0	330	3,960
- OTHER	29.8	29.0	285	8,265	28.8	28.7	365	10,476
PA	36.5	35.5	220	7,810	34.0	30.0	170	5,100
R I	5.2	5.2	240	1,248	4.9	4.9	185	907
S DAK	8.2	7.8	135	1,053	6.6	5.9	125	738
UTAH	5.4	5.3	160	848	4.3	4.3	235	1,011
VT	1.2	1.2	220	264	1.2	1.2	190	228
WASH	78.0	78.0	386	30,110	75.0	75.0	418	31,365
WIS	52.5	51.5	256	13,183	50.5	45.5	253	11,530
WYO	3.8	3.7	250	925	5.8	5.6	235	1,316
TOTAL FALL	1,152.9	1,120.3	238	266,707	1,052.6	1,014.0	246	249,320
U S	1,432.1	1,391.0	230	319,329	1,301.1	1,255.6	236	296,359

1/ 1972 LAST YEAR OF ESTIMATE.

POTATOES: AREA, YIELD AND PRODUCTION BY SEASONAL GROUPS 1973 AND 1974

SEASON AND STATE	CROP OF 1973				CROP OF 1974			
	AREA		YIELD	PRODUCTION	AREA		YIELD	PRODUCTION
	PLANTED	HAR-VESTED	PER HAR-VESTED ACRE		PLANTED	HAR-VESTED	PER HAR-VESTED ACRE	
	1,000 ACRES		CWT	1,000 CWT	1,000 ACRES		CWT	1,000 CWT
WINTER: CALIF	4.9	4.9	220	1,078	4.4	4.4	265	1,166
FLA	9.1	9.1	195	1,775	9.5	9.3	190	1,767
TOTAL WINTER	14.0	14.0	204	2,853	13.9	13.7	214	2,933
SPRING: ALA	11.0	11.0	118	1,298	12.5	12.5	145	1,813
ARIZ	9.9	9.9	210	2,079	8.6	8.6	260	2,236
CALIF	34.7	34.7	325	11,278	35.5	35.5	385	13,668
FLA - HASTINGS	19.0	19.0	180	3,420	19.0	18.8	175	3,290
- OTHER	2.1	2.1	150	315	2.8	2.8	170	476
LA	2.7	2.3	83	191	3.0	2.8	90	252
MISS	1.8	1.8	85	153	1.6	1.6	95	152
N C	11.4	11.2	155	1,736	13.1	13.0	165	2,145
TEX	7.1	6.7	125	838	7.8	7.4	130	962
TOTAL SPRING	99.7	98.7	216	21,308	103.9	103.0	243	24,994
SUMMER: ALA	8.0	8.0	125	1,000	10.5	10.5	145	1,523
CALIF	9.5	9.5	320	3,040	9.9	9.9	350	3,465
COLO	6.7	6.5	220	1,430	6.7	6.6	275	1,815
DEL	7.0	6.8	195	1,326	7.0	6.8	205	1,394
ILL	2.2	2.1	155	326	2.7	2.1	150	315
IND	1.9	1.6	130	208	1.9	1.9	185	352
IOWA	2.7	2.4	175	420	3.0	2.9	200	580
MD	2.0	2.0	160	320	2.0	2.0	150	300
MICH	8.4	8.0	140	1,120	8.7	8.4	190	1,596
MINN	7.5	7.4	250	1,850	8.6	8.5	250	2,125
NEBR	2.7	2.4	170	408	2.8	2.6	150	390
N J	9.6	9.3	185	1,721	9.0	9.0	270	2,430
N MEX	3.2	3.2	260	832	4.5	4.2	200	840
N C	3.3	3.0	120	360	4.7	4.5	125	563
OHIO	2.6	2.3	160	368	2.4	2.2	200	440
TENN	4.2	4.2	80	336	5.0	5.0	90	450
TEX	12.3	12.0	245	2,940	10.5	10.2	220	2,244
VA	31.9	31.0	105	3,255	30.5	30.0	135	4,050
W VA	3.0	3.0	71	213	3.3	3.3	77	254
TOTAL SUMMER	128.7	124.7	172	21,473	133.7	130.6	192	25,126
FALL: CALIF	20.5	20.5	305	6,253	20.7	20.7	310	6,417
COLO	31.0	30.5	270	8,235	34.5	34.0	260	8,840
CONN	2.7	2.6	220	572	2.6	2.6	230	598
IDAHO - 10 SW CO	36.0	36.0	320	11,520	39.0	39.0	295	11,505
- OTHER	289.0	287.0	235	67,445	306.0	303.0	230	69,690
IND	6.1	5.9	225	1,328	6.2	5.7	210	1,197
MAINE	138.0	137.0	210	28,770	142.0	140.0	260	36,600
MASS	4.4	4.0	160	640	4.4	4.4	200	880
MICH	33.0	32.0	235	7,520	35.0	34.0	245	8,330
MINN	86.0	82.0	160	13,120	90.0	85.0	180	15,300
MONT	7.0	6.8	215	1,462	7.2	7.0	250	1,750
NEBR	4.7	4.4	230	1,012	5.2	4.8	240	1,152
NEV 1/					8.5	8.5	375	3,188
N H	.7	.6	170	102	.7	.7	205	144
N Y - LONG ISLAND	25.0	25.0	215	5,375	27.0	27.0	250	6,750
- UPSTATE	29.0	29.0	230	6,670	28.4	26.8	260	6,968
N DAK	133.0	132.0	145	19,140	139.0	135.0	170	22,950
OHIO	11.1	10.8	200	2,160	12.7	12.5	210	2,625
OREG - MALHEUR CO	14.5	13.5	370	4,995	12.9	12.8	305	3,904
- OTHER	29.5	28.4	385	10,934	37.8	37.2	365	13,578
PA	31.0	30.0	210	6,300	33.0	32.0	230	7,360
R I	4.3	4.3	185	796	4.4	4.4	235	1,034
S DAK	5.8	5.7	135	770	5.6	5.3	70	371
UTAH	5.1	5.0	220	1,100	6.4	6.3	235	1,481
VT	1.1	1.1	150	155	1.1	1.1	220	242
WASH	84.0	82.0	430	35,260	100.0	98.0	420	41,160
WIS	48.5	47.0	245	11,515	53.0	50.0	280	14,000
WYO	6.4	6.1	200	1,220	6.8	6.5	235	1,528
TOTAL FALL	1,087.4	1,069.2	238	254,379	1,170.1	1,144.3	253	289,342
U S	1,329.8	1,306.6	230	300,013	1,421.6	1,391.6	246	342,395

1/ 1974 FIRST YEAR ESTIMATE.

POTATOES: AREA, YIELD, AND PRODUCTION BY SEASONAL GROUPS, 1975 CROP

SEASON AND STATE	CROP OF 1975			
	AREA		YIELD	PRODUCTION
	PLANTED	HARVESTED	PER HARVESTED ACRE	
	1,000 ACRES		CWT	1,000 CWT
WINTER: CALIF	4.9	4.9	215	1,054
FLA	9.5	9.4	195	1,833
TOTAL WINTER	14.4	14.3	202	2,887
SPRING: ALA	10.6	10.6	130	1,378
ARIZ	6.2	6.2	245	1,519
CALIF	27.6	27.6	380	10,488
FLA - HASTINGS	16.2	16.2	195	3,159
- OTHER	1.9	1.9	185	352
LA	3.1	2.6	70	182
MISS	1.6	1.5	90	135
N C	12.2	12.0	160	1,920
TEX	5.6	5.5	150	825
TOTAL SPRING	85.0	84.1	237	19,958
SUMMER: ALA	9.0	9.0	150	1,350
CALIF	8.4	8.4	370	3,108
COLO	7.4	7.2	260	1,872
DEL	6.5	6.0	175	1,050
ILL	2.9	2.8	190	532
IND	1.7	1.7	180	306
IOWA	2.8	2.7	200	540
MD	1.8	1.8	170	306
MICH	7.7	7.4	190	1,406
MINN	8.2	8.1	260	2,106
NEBR	2.7	2.5	160	400
N J	7.4	7.0	195	1,365
N MEX	3.7	3.5	200	700
N C	4.4	4.0	115	460
OHIO	2.2	2.0	170	340
TENN	5.0	5.0	85	425
TEX	8.7	8.6	250	2,150
VA	27.0	25.0	96	2,400
W VA	2.8	2.8	72	202
TOTAL SUMMER	120.3	115.5	182	21,018
FALL: CALIF	19.0	19.0	335	6,365
COLO	33.0	32.5	265	8,613
CONN	2.5	2.4	230	552
IDAHO - 10 SW CO	33.0	33.0	320	10,560
- OTHER	292.0	289.0	235	67,915
IND	6.3	6.0	240	1,440
MAINE	122.0	122.0	220	26,840
MASS	4.1	3.9	205	800
MICH	30.0	29.0	230	6,670
MINN	70.0	57.0	170	9,690
MONT	7.7	7.6	230	1,748
NEBR	5.2	5.0	245	1,225
NEV	12.5	12.5	330	4,125
N H	.4	.4	230	92
N Y - LONG ISLAND	23.5	23.3	260	6,058
- UPSTATE	25.0	24.0	255	6,120
N DAK	116.0	110.0	160	17,600
OHIO	12.0	11.5	230	2,645
OREG - MALHEUR CO	10.3	10.2	350	3,570
- OTHER	46.1	45.3	460	20,838
PA	31.0	29.0	235	6,815
R I	4.2	4.2	235	987
S DAK	5.2	5.2	115	598
UTAH	5.9	5.8	260	1,508
VT	1.0	1.0	235	235
WASH	107.0	105.0	460	48,300
WIS	52.0	49.5	300	14,850
WYO	7.0	6.8	240	1,632
TOTAL FALL	1,083.9	1,050.1	265	278,391
U S	1,303.6	1,264.0	255	322,254

POTATOES: PRODUCTION, FARM DISPOSITION, SEASON AVERAGE PRICE RECEIVED  
BY FARMERS, AND VALUE, BY SEASONAL GROUPS, 1969 CROP

SEASON AND STATE	PRODUCTION	TOTAL USED FOR SEED 1/	FARM DISPOSITION			PRICE PER CWT	VALUE OF --		
			USED ON FARMS WHERE GROWN				SOLD 2/	PRODUCTION	SALES
			FOR SEED, FEED, AND HOUSEHOLD USE	SHRINKAGE AND LOSS	1,000 CWT				
WINTER:						DOLLARS			
CALIF	1,848	145	1	83	1,764	2.93	5,415	5,169	
FLA	1,980	286	1	6	1,973	3.80	7,524	7,497	
TOTAL WINTER	3,828	431	2	89	3,737	3.39	12,939	12,666	
SPRING:									
ALA	1,176	107	1	18	1,157	2.92	3,434	3,378	
ARIZ	2,944	164	5	29	2,910	2.90	8,538	8,439	
ARK	126	32	46	3	77	3.50	441	270	
CALIF	14,555	642	2	291	14,262	2.41	35,078	34,371	
FLA - HASTINGS	4,866	519	1	15	4,850	2.80	13,625	13,580	
- OTHER	418	38	2	2	414	3.20	1,338	1,325	
LA	257	22	10	13	234	1.85	475	433	
MISS	250	23	29	5	216	3.50	875	756	
H C	1,798	166	53	52	1,683	2.48	4,459	4,174	
TEX	903	98	32	12	859	4.18	3,775	3,591	
TOTAL SPRING	27,293	1,791	191	440	26,662	2.64	72,038	70,317	
SUMMER:									
ALA	1,075	110	27	32	1,016	2.53	2,720	2,570	
CALIF	4,598	205	37	132	4,429	2.18	10,024	9,655	
COLO	2,700	235	88	340	2,272	2.10	5,670	4,771	
DEL	1,680	108	5	81	1,594	2.20	3,696	3,507	
ILL	340	35	17	11	312	2.40	816	749	
IND	216	21	3	11	202	3.65	788	737	
IOWA	462	34	31	39	392	2.60	1,201	1,019	
KANS	108	12	22	4	82	2.80	302	230	
KY	197	21	141	8	48	3.70	729	178	
MD	380	28	12	10	358	2.21	840	791	
MICH	1,836	204	128	119	1,589	3.02	5,545	4,799	
MINN	1,975	119	4	75	1,896	2.38	4,701	4,512	
MO	110	7	18	3	89	2.75	303	245	
NEBR	396	34	17	36	343	2.32	919	796	
N J	3,220	234	47	129	3,044	2.42	7,792	7,366	
N MEX	479	43	10	31	438	2.38	1,140	1,042	
N C	375	30	112	12	251	3.14	1,178	788	
OHIO	576	53	55	18	503	2.55	1,469	1,283	
TENN	353	34	51	11	291	3.85	1,359	1,120	
TEX	3,534	241	6	124	3,404	3.34	11,804	11,369	
VA	3,918	370	163	137	3,618	2.55	9,991	9,226	
W VA	368	41	197	14	157	2.75	1,012	432	
TOTAL SUMMER	28,896	2,219	1,191	1,377	26,328	2.55	73,999	67,185	
FALL:									
CALIF	8,092	594	91	324	7,677	2.88	23,305	22,110	
COLO	8,695	675	977	1,348	6,370	1.82	15,825	11,593	
CONN	1,080	68	3	76	1,001	2.80	3,024	2,803	
IDAHO	69,870	5,462	1,465	7,480	60,925	2.02	141,137	123,069	
IND	1,620	102	21	58	1,541	2.63	4,261	4,053	
MAINE	35,100	3,580	2,485	2,527	30,088	2.20	77,220	66,194	
MASS	969	87	11	82	876	2.70	2,616	2,365	
MICH	7,820	612	269	360	7,191	2.66	20,801	19,128	
MINN	13,500	1,378	607	783	12,110	1.61	21,735	19,497	
MONT	1,435	121	140	179	1,116	3.77	5,410	4,207	
NEBR	1,276	74	53	130	1,093	1.69	2,156	1,847	
N H	189	13	9	13	167	2.90	548	484	
N Y - LONG ISLAND	8,685	558	47	564	8,074	2.29	19,889	18,489	
- UPSTATE	8,342	770	306	501	7,535	3.30	27,529	24,866	
N DAK	16,530	1,694	714	1,488	14,328	1.61	26,613	23,068	
OHIO	2,200	180	47	132	2,021	2.43	5,346	4,911	
OREG - MALHEUR CO	4,572	344	2	503	4,067	1.78	8,138	7,239	
- OTHER	8,736	528	110	917	7,709	2.13	18,608	16,420	
PA	7,455	630	285	492	6,678	3.19	23,781	21,303	
R I	1,152	82	8	113	1,031	2.60	2,995	2,681	
S DAK	656	85	40	79	537	2.13	1,397	1,144	
UTAH	1,311	93	71	164	1,076	2.60	3,409	2,798	
VT	254	19	17	20	217	2.90	737	629	
WASH	29,796	1,444	129	1,481	28,186	1.59	47,376	44,816	
WIS	12,410	797	643	843	10,924	2.68	33,959	29,276	
WYO	816	61	25	94	697	2.15	1,754	1,499	
TOTAL FALL	252,561	20,051	8,575	20,751	223,235	2.13	538,869	476,489	
U S	312,578	24,492	9,959	22,657	279,962	2.24	697,845	626,657	

1/ INCLUDES SEED PURCHASED AND SEED USED ON FARMS WHERE GROWN. 2/ CONSISTS OF POTATOES SOLD FOR ALL PURPOSES INCLUDING FOOD, SEED, PROCESSING AND LIVESTOCK FEED.

POTATOES: PRODUCTION, FARM DISPOSITION, SEASON AVERAGE PRICE RECEIVED  
BY FARMERS AND VALUE, BY SEASONAL GROUPS, 1970 CROP

SEASON AND STATE	PRODUCTION:	TOTAL USED FOR SEED 1/	FARM DISPOSITION				PRICE PER CWT	VALUE OF --	
			USED ON FARMS WHERE GROWN		SOLD 2/	PRICE		PRODUCTION:	SALES
			FOR SEED, FEED, AND HOUSEHOLD USE	SHRINKAGE AND LOSS					
WINTER: CALIF	1,955	121	1	88	1,866	2.97	5,806	5,542	
FLA	1,627	290	1	8	1,618	5.02	8,168	8,122	
TOTAL WINTER	3,582	411	2	96	3,484	3.92	13,974	13,664	
SPRING: ALA	1,027	126	1	15	1,011	4.09	4,200	4,135	
ARIZ	2,712	346	4	27	2,681	3.13	8,489	8,392	
ARK	91	12	40	2	49	4.60	419	225	
CALIF	14,516	670	1	290	14,225	3.09	44,854	43,955	
FLA - HASTINGS	4,043	462	1	15	4,027	3.40	13,746	13,692	
- OTHER	266	42	2	2	262	4.29	1,141	1,124	
LA	216	25	8	11	197	2.50	540	493	
MISS	238	18	28	5	205	3.25	774	666	
N C	1,774	163	62	53	1,659	3.18	5,641	5,276	
TEX	1,024	109	32	13	979	4.96	5,079	4,856	
TOTAL SPRING	25,907	1,773	179	433	25,295	3.27	84,883	82,814	
SUMMER: ALA	1,100	113	25	33	1,042	3.80	4,180	3,960	
CALIF	3,785	201	50	99	3,636	3.35	12,680	12,181	
COLO	2,926	204	147	436	2,343	2.00	5,852	4,686	
DEL	1,512	108	5	57	1,450	2.38	3,599	3,451	
ILL	352	35	17	11	324	2.85	1,003	923	
IND	247	24	3	10	234	4.00	988	936	
IOWA	513	34	28	25	460	2.55	1,308	1,173	
KANS	120	13	23	4	93	3.00	360	279	
KY	165	21	122	6	37	4.40	726	163	
MD	355	28	12	9	334	2.40	852	802	
MICH	1,800	186	80	126	1,594	2.86	5,148	4,559	
MINN	1,950	123	3	59	1,888	3.17	6,182	5,985	
MO	77	7	9	2	66	2.90	223	191	
NEBR	413	30	29	32	352	2.26	933	796	
N J	3,380	225	49	118	3,213	2.67	9,025	8,579	
N MEX	575	42	11	34	530	2.61	1,501	1,383	
N C	319	30	97	9	213	3.20	1,021	682	
OHIO	561	50	41	22	498	2.35	1,318	1,170	
TENN	361	37	48	11	302	4.30	1,552	1,299	
TEX	3,569	212	5	136	3,428	3.82	13,634	13,095	
VA	3,990	362	157	128	3,705	3.34	13,327	12,375	
W VA	330	36	188	14	128	3.10	1,023	397	
TOTAL SUMMER	28,400	2,121	1,149	1,381	25,870	3.06	86,435	79,065	
FALL: CALIF	9,504	584	60	475	8,969	2.48	23,570	22,243	
COLO	9,990	576	473	1,638	7,879	1.25	12,488	9,849	
CONN	874	63	3	26	845	2.80	2,447	2,366	
IDAHO	74,660	5,758	1,989	7,144	65,527	1.93	144,094	125,467	
IND	1,652	133	12	71	1,569	2.52	4,163	3,954	
MAINE	35,700	3,451	2,391	2,499	30,810	1.98	70,686	61,004	
MASS	1,046	74	11	47	988	2.69	2,814	2,658	
MICH	8,750	648	271	831	7,648	2.69	23,538	20,573	
MINN	11,440	1,344	586	835	10,019	1.58	18,075	15,830	
MONT	1,538	124	155	138	1,245	2.83	4,353	3,523	
NEBR	1,050	80	60	126	864	1.66	1,743	1,434	
N H	208	11	11	11	186	2.90	603	539	
N Y - LONG ISLAND	8,293	589	44	416	7,833	2.33	19,323	18,251	
- UPSTATE	8,684	763	296	573	7,815	2.88	25,010	22,507	
N DAK	17,550	2,030	919	1,755	14,876	1.67	29,309	24,843	
OHIO	2,691	181	56	135	2,500	2.38	6,405	5,950	
OREG - MALHEUR CO	5,775	296	3	578	5,194	1.90	10,973	9,869	
- OTHER	9,454	477	114	756	8,584	1.71	16,166	14,679	
PA	8,280	621	249	662	7,389	2.65	21,942	19,528	
R I	1,250	83	8	19	1,223	2.71	3,388	3,314	
S OAK	713	115	41	77	595	2.10	1,497	1,250	
UTAH	1,003	81	49	90	864	2.38	2,387	2,056	
VT	240	19	14	10	216	2.80	672	605	
WASH	33,590	1,326	151	2,033	31,406	1.51	50,721	47,423	
WIS	13,028	762	633	877	11,518	2.43	31,658	27,989	
WYO	864	61	28	118	718	2.09	1,806	1,501	
TOTAL FALL	267,827	20,250	8,627	21,940	237,260	1.98	529,831	470,205	
U S	325,716	24,555	9,957	23,850	291,909	2.21	715,123	645,748	

1/ INCLUDES SEED PURCHASED AND SEED USED ON FARMS WHERE GROWN. 2/ CONSISTS OF POTATOES SOLD FOR ALL PURPOSES INCLUDING FOOD, SEED, PROCESSING AND LIVESTOCK FEED.

POTATOES: PRODUCTION, FARM DISPOSITION, SEASON AVERAGE PRICE RECEIVED BY FARMERS,  
AND VALUE, BY SEASONAL GROUPS, 1971 CROP

SEASON AND STATE	PRODUCTION	FARM DISPOSITION				PRICE PER CWT	VALUE OF --	
		TOTAL USED	USED ON FARMS WHERE GROWN:				PRODUCTION	SALES
		SEED 1/	FOR SEED, FEED, AND HOUSEHOLD USE:	SHRINKAGE AND LOSS	2/			
		1,000 CWT			DOLLARS	1,000 DOLLARS		
WINTER: CALIF	1,562	97		78	1,484	2.90	4,530	4,304
FLA	1,526	297	1	8	1,517	4.60	7,020	6,978
TOTAL WINTER	3,088	394	1	86	3,001	3.76	11,550	11,282
SPRING: ALA	1,001	131	1	15	985	3.65	3,654	3,595
ARIZ	2,828	116	4	57	2,767	2.74	7,749	7,582
ARK	91	13	45	2	44	4.20	382	185
CALIF	13,394	530	1	268	13,125	1.96	26,252	25,725
FLA - HASTINGS	3,036	439	1	12	3,023	3.70	11,233	11,185
- OTHER	300	39	2	2	296	3.95	1,185	1,169
LA	203	22	8	10	185	2.60	528	481
MISS	180	18	30	3	147	3.00	540	441
N C	1,726	150	65	52	1,609	2.27	3,918	3,652
TEX	899	98	33	14	852	4.40	3,956	3,749
TOTAL SPRING	23,658	1,556	190	435	23,033	2.51	59,397	57,764
SUMMER: ALA	791	108	23	28	740	2.41	1,906	1,783
CALIF	3,469	144	38	65	3,366	2.13	7,389	7,170
COLO	2,958	128	202	370	2,386	1.90	5,620	4,533
DEL	1,400	102	6	56	1,338	2.55	3,570	3,412
ILL	341	38	16	12	313	2.30	784	720
IND	290	21	5	8	267	3.05	854	814
IOWA	574	34	31	29	514	1.70	976	874
KANS	124	10	22	4	98	2.25	279	221
KY	168	20	129	7	32	4.05	680	130
MO	375	28	13	9	353	2.40	900	847
MICH	1,344	180	78	47	1,219	2.91	3,911	3,547
MINN	1,875	124	3	56	1,816	2.00	3,750	3,632
MO	84	7	9	2	73	3.00	252	219
NEBR	403	34	29	38	336	1.87	754	628
N J	2,975	200	41	119	2,815	2.45	7,289	6,897
N MEX	480	51	13	29	438	2.75	1,320	1,205
N C	334	32	100	11	223	2.54	848	566
OHIO	527	42	36	22	469	2.32	1,223	1,088
TENN	390	35	49	14	327	4.15	1,619	1,357
TEX	2,400	190	5	96	2,299	3.00	7,200	6,897
VA	4,318	375	143	151	4,024	2.51	10,838	10,100
W VA	266	30	173	12	81	3.70	984	300
TOTAL SUMMER	25,876	1,933	1,164	1,185	23,527	2.42	62,946	56,940
FALL: CALIF	8,120	470	73	568	7,479	2.46	19,975	18,398
COLO	7,560	583	469	832	6,259	1.44	10,886	9,013
CONN	851	54	3	28	820	2.80	2,383	2,296
IDAHO	77,290	5,423	1,830	7,100	68,360	1.60	123,376	109,376
IND	1,708	162	10	89	1,609	2.55	4,355	4,103
MAINE	37,700	2,787	1,640	3,657	32,403	1.70	64,090	55,085
MASS	1,008	81	11	76	921	2.50	2,520	2,303
MICH	8,165	595	373	808	6,984	2.39	19,514	16,692
MINN	14,850	1,148	624	2,525	11,701	1.30	19,305	15,211
MOHNT	1,404	119	142	154	1,108	3.15	4,423	3,490
NEBR	1,050	71	44	126	880	1.63	1,712	1,434
N H	189	14	10	9	170	2.55	482	434
N Y - LONG ISLAND	7,245	505	21	435	6,789	2.26	16,374	15,343
- UPSTATE	7,935	743	273	500	7,162	3.11	24,678	22,274
N DAK	19,995	1,769	761	3,599	15,635	1.23	24,594	19,231
OHIO	2,473	186	47	141	2,285	2.33	5,762	5,324
OREG - MALHEUR CO	5,458	192	2	546	4,910	1.67	9,115	8,200
- OTHER	8,265	461	101	694	7,470	1.77	14,629	13,222
PA	7,810	578	252	1,015	6,543	2.72	21,243	17,797
R I	1,248	78	7	50	1,191	2.60	3,245	3,097
S DAK	1,053	106	43	190	820	1.60	1,685	1,312
UTAH	848	69	53	85	710	1.96	1,662	1,392
VT	264	18	13	11	240	2.40	634	576
WASH	30,110	1,395	118	1,888	28,104	1.40	42,154	39,346
WIS	13,183	707	602	924	11,657	2.13	28,080	24,829
WYO	925	99	50	153	722	2.00	1,850	1,444
TOTAL FALL	266,707	18,407	7,572	26,203	232,932	1.77	469,014	411,222
U S	319,329	22,290	8,927	27,909	282,493	1.90	602,907	537,208

1/ INCLUDES SEED PURCHASED AND SEED USED ON FARMS WHERE GROWN. 2/ CONSISTS OF POTATOES SOLD FOR ALL PURPOSES INCLUDING FOOD, SEED, PROCESSING AND LIVESTOCK FEED.

POTATOES: PRODUCTION, FARM DISPOSITION, SEASON AVERAGE PRICE RECEIVED BY FARMERS,  
AND VALUE, BY SEASONAL GROUPS, 1972 CROP

SEASON AND STATE	PRODUCTION	FARM DISPOSITION				PRICE PER CWT	VALUE OF --	
		TOTAL USED FOR SEED 1/	USED ON FARMS WHERE GROWN:		SOLD 2/		PRODUCTION	SALES
		FOR SEED 1/	FOR SEED, FEED, AND HOUSEHOLD USE:	SHRINKAGE AND LOSS				
WINTER: CALIF	969	83		48	921	2.75	2,665	2,533
FLA	1,358	264		7	1,351	3.95	5,364	5,336
TOTAL WINTER	2,327	347		55	2,272	3.46	8,029	7,869
SPRING: ALA	1,395	165	1	27	1,367	2.65	3,697	3,623
ARIZ	2,400	149	4	48	2,348	2.85	6,840	6,692
ARK 3/	91	13	48	2	41	4.20	382	172
CALIF	11,076	590	1	222	10,853	2.75	30,459	29,846
FLA - HASTINGS	2,996	380	1	12	2,983	3.25	9,737	9,695
- OTHER	252	42	1	2	249	3.30	832	822
LA	203	22	8	11	184	2.65	538	488
MISS	170	16	28	4	138	3.20	544	442
N C	1,606	153	65	49	1,492	3.48	5,589	5,192
TEX	922	87	32	14	776	3.88	3,189	3,011
TOTAL SPRING	21,011	1,617	189	391	20,431	2.94	61,807	59,983
SUMMER: ALA	1,040	108	21	42	977	3.40	3,536	3,322
CALIF	2,584	176	37	53	2,494	4.07	10,517	10,151
COLO	2,090	124	12	125	1,953	2.35	4,912	4,590
DEL	1,235	105	5	56	1,174	3.45	4,261	4,050
ILL	460	35	14	16	430	2.70	1,242	1,161
IND	165	30	7	6	152	4.40	726	669
IOWA	594	35	30	30	534	2.80	1,663	1,495
KANS 3/	95	9	21	3	71	3.25	309	231
KY 3/	150	21	131	6	13	3.95	593	51
MO	351	27	11	9	331	3.47	1,218	1,149
MICH	1,760	160	77	88	1,595	2.85	5,016	4,546
MINN	1,800	113	2	27	1,771	3.20	5,760	5,667
MO 3/	66	7	8	2	56	4.50	297	252
NEBR	425	31	22	43	360	2.85	1,211	1,026
N J	2,106	173	20	74	2,012	3.60	7,582	7,243
N MEX	880	51	15	53	812	3.35	2,948	2,720
N C	372	34	118	13	241	3.22	1,198	776
OHIO	442	43	28	27	387	2.85	1,260	1,103
TENN	371	42	47	15	309	4.40	1,632	1,360
TEX	2,360	160	4	94	2,262	4.70	11,092	10,631
VA	4,131	379	144	124	3,863	3.63	14,996	14,023
N VA	224	27	161	11	52	4.85	1,086	252
TOTAL SUMMER	23,701	1,890	935	917	21,849	3.50	83,055	76,468
FALL: CALIF	7,403	410	75	555	6,773	3.25	24,060	22,012
COLO	7,905	620	541	764	6,600	3.05	24,110	20,130
CONN	609	54	6	12	591	4.40	2,680	2,600
IDAHO	77,295	5,850	1,513	6,783	68,999	2.45	189,373	169,048
IND	1,305	122	11	91	1,203	3.40	4,437	4,090
MAINE	33,280	3,160	1,943	2,465	28,872	4.10	136,448	118,375
MASS	640	79	13	29	598	3.90	2,496	2,332
MICH	7,875	594	226	718	6,931	3.85	30,319	26,684
MINN	13,260	1,247	459	809	11,992	2.80	37,128	33,578
MONT	1,650	109	110	83	1,457	5.05	8,333	7,358
NEBR	968	71	51	97	820	3.05	2,952	2,501
N H	176	14	10	7	159	4.25	748	676
N Y - LONG ISLAND	5,585	478	14	232	5,339	3.57	19,938	19,060
- UPSTATE	4,973	667	174	323	4,476	4.45	22,130	19,918
N DAK	17,400	1,862	551	1,189	15,660	2.75	47,850	43,065
OHIO	2,365	178	34	177	2,154	4.10	9,697	8,831
OREG - MALHEUR CO	3,950	247	3	396	3,561	1.95	7,722	6,944
- OTHER	10,476	531	90	838	9,548	3.05	31,952	29,121
PA	5,100	589	202	209	4,689	4.20	21,420	19,694
R I	907	77	5	14	888	3.00	2,721	2,664
S DAK	738	67	32	52	654	2.40	1,771	1,570
UTAH	1,011	92	38	81	892	3.20	3,235	2,854
VT	228	20	14	9	205	4.50	1,026	923
WASH	31,365	1,655	88	1,777	29,500	2.09	65,553	61,655
WIS	11,530	800	520	726	10,284	3.57	41,162	36,714
WYG	1,316	109	66	197	1,053	2.85	3,751	3,001
TOTAL FALL	249,320	19,702	6,789	18,633	223,898	2.97	743,012	665,398
U S	296,359	23,556	7,913	19,996	268,450	3.02	895,903	809,718

1/ INCLUDES SEED PURCHASED AND SEED USED ON FARMS WHERE GROWN. 2/ CONSISTS OF POTATOES SOLD FOR ALL PURPOSES INCLUDING FOOD, SEED, PROCESSING AND LIVESTOCK FEED. 3/ LAST YEAR OF ESTIMATE.

POTATOES: PRODUCTION, FARM DISPOSITION, SEASON AVERAGE PRICE RECEIVED BY FARMERS,  
AND VALUE, BY SEASONAL GROUPS, 1973 CROP

SEASON AND STATE	PRODUCTION	FARM DISPOSITION				PRICE PER CWT	VALUE OF --	
		TOTAL USED	USED ON FARMS WHERE GROWN:		SOLD		PRODUCTION	SALES
		FOR SEED	FOR SEED, FEED, AND HOUSEHOLD USE:	SHRINKAGE AND LOSS				
1/	1/	1,000 CWT	1,000 CWT	1,000 CWT	DOLLARS	1,000 DOLLARS		
WINTER: CALIF	1,078	75		54	1,024	4.20	4,528	4,301
FLA	1,775	276		10	1,765	6.35	11,271	11,208
TOTAL WINTER	2,853	351		64	2,789	5.56	15,799	15,509
SPRING: ALA	1,298	188	1	20	1,277	9.15	11,877	11,685
ARIZ	2,079	129	4	42	2,033	5.05	10,499	10,267
CALIF	11,278	604	1	225	11,051	5.80	65,412	64,096
FLA - HASTINGS	3,420	380	2	18	3,400	5.05	17,271	17,170
- OTHER	315	56	1	3	311	5.50	1,733	1,711
LA	191	24	6	10	173	6.15	1,175	1,064
MISS	153	14	25	4	124	3.20	490	397
N C	1,736	176	66	52	1,618	8.50	14,756	13,753
TEX	838	96	31	14	793	7.30	6,117	5,789
TOTAL SPRING	21,308	1,667	139	389	20,780	6.06	129,330	125,932
SUMMER: ALA	1,000	142	19	35	946	9.85	9,850	9,318
CALIF	3,040	183	27	61	2,952	6.10	18,544	18,007
COLO	1,430	131	9	78	1,343	3.05	4,362	4,096
DEL	1,326	105	4	53	1,269	7.15	9,481	9,073
ILL	326	43	14	10	302	4.00	1,304	1,208
IND	208	29	9	8	191	8.45	1,758	1,614
IOWA	420	39	29	21	370	4.50	1,890	1,665
MD	320	27	7	8	305	7.20	2,304	2,196
MICH	1,120	174	82	34	1,004	5.95	6,664	5,974
MINN	1,850	138	1	65	1,784	3.95	7,308	7,047
NEBR	408	35	22	27	359	3.00	1,224	1,077
N J	1,721	162	18	60	1,643	5.65	9,724	9,283
N MEX	832	72	8	50	774	3.40	2,829	2,632
N C	360	48	96	11	253	7.85	2,826	1,986
OHIO	368	36	22	22	324	5.75	2,116	1,863
TENN	336	50	45	12	279	8.25	2,772	2,302
TEX	2,940	137	4	103	2,833	7.40	21,756	20,964
VA	3,255	366	133	98	3,024	8.40	21,342	25,402
W VA	213	31	153	10	50	6.20	1,321	310
TOTAL SUMMER	21,473	1,948	702	766	20,005	6.30	135,375	126,017
FALL: CALIF	6,253	414	70	594	5,589	5.25	32,828	29,342
COLO	8,235	690	535	685	7,015	5.45	44,881	38,232
CONN	572	57	6	11	555	6.50	3,718	3,608
IDAHO	78,965	6,314	1,028	6,317	71,620	3.85	304,015	275,737
IND	1,328	118	11	64	1,253	5.50	7,304	6,892
MAINE	28,770	3,195	1,784	1,726	25,260	7.25	208,583	183,135
MASS	640	84	13	26	601	4.90	3,336	2,945
MICH	7,520	648	158	338	7,024	6.15	46,248	43,196
MINN	13,120	1,305	261	695	12,164	3.95	51,824	48,048
MONT	1,462	115	117	64	1,281	10.60	15,790	13,835
NEBR	1,012	83	60	61	891	4.35	4,402	3,876
N H	102	12	6	4	92	7.20	734	662
N Y - LONG ISLAND	5,375	513	11	290	5,074	5.75	30,906	29,176
- UPSTATE	6,670	710	230	367	6,073	6.30	42,021	38,260
N DAK	19,410	1,946	404	1,340	17,396	4.60	88,044	80,022
OHIO	2,160	226	27	97	2,036	6.60	14,256	13,438
OREG - MALHEUR CO	4,995	232	3	500	4,492	2.25	11,239	10,107
- OTHER	10,934	832	62	720	10,152	4.60	50,296	46,699
PA	8,300	620	204	309	5,787	6.15	38,745	35,590
R I	796	84	4	12	780	4.10	3,264	3,198
S DAK	770	62	34	74	662	3.15	2,426	2,085
UTAH	1,100	128	29	88	983	3.30	3,630	3,244
VT	165	20	11	8	146	8.50	1,403	1,241
WASH	35,260	1,850	71	2,045	33,144	2.90	102,254	96,118
WIS	11,515	917	460	600	10,455	6.40	73,696	66,912
WYO	1,220	116	76	122	1,022	4.75	5,795	4,855
TOTAL FALL	254,379	21,291	5,675	17,157	231,547	4.67	1,191,438	1,080,455
U S	300,013	25,257	6,516	18,376	275,121	4.90	1,471,942	1,347,913

1/ INCLUDES SEED PURCHASED AND SEED USED ON FARMS WHERE GROWN. 2/ CONSISTS OF POTATOES SOLD FOR ALL PURPOSES INCLUDING FOOD, SEED, PROCESSING AND LIVESTOCK FEED.



POTATOES: PRODUCTION, FARM DISPOSITION, SEASON AVERAGE PRICE RECEIVED BY FARMERS,  
AND VALUE, BY SEASONAL GROUPS, 1974 CROP

SEASON AND STATE	PRODUCTION	TOTAL	FARM DISPOSITION				PRICE	VALUE OF --	
		USED FOR SEED 1/	USED ON FARMS WHERE GROWN: FOR SEED, FEED, AND HOUSEHOLD USE: 2/	SHRINKAGE AND LOSS	SOLD 2/	PER CWT	PRODUCTION	SALES	
			1,000 CWT			DOLLARS	1,000 DOLLARS		
WINTER: CALIF	1,166	83		58	1,108	7.30	8,512	8,088	
FLA	1,767	276		10	1,757	10.20	18,023	17,921	
TOTAL WINTER	2,933	359		68	2,865	9.08	26,535	26,009	
SPRING: ALA	1,813	159	1	27	1,785	9.75	17,677	17,404	
ARIZ	2,236	93	4	45	2,187	5.25	11,739	11,482	
CALIF	13,668	489	1	273	13,394	6.55	89,525	87,731	
FLA - HASTINGS	3,290	324	2	13	3,275	6.10	20,059	19,978	
- OTHER	476	38	1	4	471	9.75	4,641	4,592	
LA	252	25	8	13	231	7.00	1,764	1,617	
MISS	152	14	26	3	123	9.30	1,414	1,144	
N C	2,145	165	61	64	2,020	5.80	12,441	11,716	
TEX	962	69	30	14	918	11.30	10,871	10,373	
TOTAL SPRING	24,994	1,356	134	456	24,404	6.80	170,141	166,037	
SUMMER: ALA	1,523	122	19	53	1,451	6.70	10,204	9,722	
CALIF	3,465	155	16	69	3,380	5.25	18,191	17,745	
COLO	1,815	141	9	100	1,706	3.00	5,445	5,118	
DEL	1,394	98	4	53	1,337	5.00	6,970	6,685	
ILL	315	46	15	10	290	4.25	1,339	1,233	
IND	352	29	13	12	327	5.80	2,042	1,897	
IOWA	580	36	26	29	525	3.85	2,233	2,021	
MD	300	24	7	7	286	5.10	1,530	1,459	
MICH	1,596	150	72	64	1,460	4.40	7,022	6,424	
MINN	2,125	131	2	104	2,019	4.30	9,138	8,682	
NEBR	390	32	17	32	341	2.80	1,092	955	
N J	2,430	133	31	85	2,314	4.20	10,206	9,719	
N MEX	840	59	7	50	783	2.95	2,478	2,310	
N C	563	45	89	20	454	5.95	3,350	2,701	
OHIO	440	33	13	21	406	4.95	2,178	2,010	
TENN	450	55	44	16	390	7.80	3,510	3,042	
TEX	2,244	113	3	90	2,151	8.20	18,401	17,638	
VA	4,050	329	121	142	3,787	5.20	21,060	19,692	
W VA	254	27	143	13	98	5.80	1,473	568	
TOTAL SUMMER	25,126	1,758	651	970	23,505	5.09	127,862	119,621	
FALL: CALIF	6,417	380	62	770	5,585	4.85	31,122	27,087	
COLO	8,840	660	505	760	7,575	2.40	21,216	18,180	
CONN	598	46	6	30	562	3.50	2,093	1,967	
IDAHO	81,195	6,013	1,040	6,550	73,605	3.80	308,541	279,699	
IND	1,197	126	9	61	1,127	4.75	5,686	5,353	
MAINE	36,400	2,745	1,310	5,508	29,582	2.90	105,560	85,788	
MASS	680	82	15	88	777	3.50	3,080	2,720	
MICH	8,330	555	200	625	7,505	4.10	34,153	30,771	
MINN	15,300	1,015	611	2,876	11,813	3.05	46,665	36,030	
MONT	1,750	123	158	254	1,338	4.95	8,663	6,623	
NEBR	1,152	91	77	141	934	4.20	4,838	3,923	
NEV 3/	3,188	250		383	2,805	2.55	8,129	7,153	
N H	144	8	7	8	129	3.50	504	452	
N Y - LONG ISLAND	6,750	494	10	439	6,301	2.95	19,913	18,588	
- UPSTATE	6,968	650	202	976	5,790	4.65	32,401	26,924	
N DAK	22,950	1,740	567	4,934	17,449	3.15	72,293	54,964	
OHIO	2,625	210	31	365	2,229	4.25	11,156	9,473	
OREG - MALHEUR CO	3,904	185	4	390	3,510	3.65	14,250	12,812	
- OTHER	13,578	968	84	815	12,679	3.95	53,633	50,082	
PA	7,360	589	218	957	6,185	3.90	28,704	24,122	
R I	1,034	76	2	5	1,027	4.00	4,136	4,108	
S DAK	371	64	11	30	330	3.40	1,261	1,122	
UTAH	1,481	130	18	131	1,332	3.80	5,628	5,062	
VT	242	19	10	19	213	3.50	847	746	
WASH	41,160	2,151	166	2,717	38,277	3.65	150,234	139,711	
WIS	14,000	879	340	1,020	12,640	3.65	51,100	46,136	
WYO	1,528	133	74	150	1,304	3.00	4,584	3,912	
TOTAL FALL	289,342	20,382	5,737	31,002	252,603	3.58	1,030,390	903,508	
U S	342,395	23,855	6,522	32,496	303,377	4.01	1,354,928	1,215,175	

1/ INCLUDES SEED PURCHASED AND SEED USED ON FARMS WHERE GROWN. 2/ CONSISTS OF POTATOES SOLD FOR ALL PURPOSES INCLUDING FOOD, SEED, PROCESSING AND LIVESTOCK FEED. 3/ FIRST YEAR OF ESTIMATE.

POTATOES: PRODUCTION, FARM DISPOSITION, SEASON AVERAGE PRICE RECEIVED BY FARMERS,  
AND VALUE, BY SEASONAL GROUPS, 1975 CROP

SEASON AND STATE	PRODUCTION	FARM DISPOSITION				PRICE PER CWT	VALUE OF --	
		TOTAL USED	USED ON FARMS WHERE GROWN:		SOLD		PRODUCTION	SALES
		SEED	FOR SEED, FEED, AND HOUSEHOLD USE:	SHRINKAGE AND LOSS				
	1/	1,000 CWT			DOLLARS			
WINTER: CALIF	1,054	88		53	1,001	5.55	5,850	5,566
FLA	1,833	273		13	1,820	5.22	9,568	9,500
TOTAL WINTER	2,887	361		66	2,821	5.34	15,418	15,056
SPRING: ALA	1,378	173	1	21	1,356	8.48	11,685	11,499
ARIZ	1,519	102	4	30	1,485	6.00	9,114	8,910
CALIF	10,488	592	1	210	10,277	6.35	66,599	65,259
FLA - HASTINGS	3,159	390	2	13	3,144	4.32	13,647	13,582
- OTHER	352	60	1	3	348	4.54	1,598	1,580
LA	182	23	8	9	165	4.50	819	743
MISS	135	14	26	3	106	8.50	1,148	901
N C	1,920	177	61	58	1,801	6.80	13,056	12,247
TEX	825	90	29	12	784	5.81	4,793	4,555
TOTAL SPRING	19,958	1,621	133	359	19,466	6.13	122,459	119,276
SUMMER: ALA	1,350	115	18	54	1,278	8.20	11,070	10,480
CALIF	3,108	157	16	62	3,030	5.50	17,094	16,665
COLO	1,872	144	9	113	1,750	3.20	5,990	5,600
DEL	1,050	90	4	47	999	5.80	6,090	5,794
ILL	532	45	14	17	501	4.10	2,181	2,054
IND	306	22	7	13	286	6.75	2,066	1,931
IOWA	540	36	24	27	489	4.90	2,646	2,396
MO	306	25	7	9	290	5.90	1,805	1,711
MICH	1,406	154	96	45	1,265	5.35	7,522	6,768
MINN	2,106	130	10	53	2,043	4.85	10,214	9,909
NEBR	400	28	17	32	351	3.80	1,520	1,334
N J	1,365	144	7	55	1,303	5.95	8,122	7,753
N MEX	700	51	6	42	652	2.70	1,890	1,760
N C	460	48	90	16	354	6.40	2,944	2,266
OHIO	340	32	7	10	323	5.50	1,870	1,777
TENN	425	52	44	15	366	7.50	3,188	2,745
TEX	2,150	127	4	75	2,071	7.90	16,985	16,361
VA	2,400	363	120	84	2,196	6.20	14,880	13,615
W VA	202	30	128	9	65	7.05	1,424	458
TOTAL SUMMER	21,018	1,793	628	778	19,612	5.68	119,501	111,377
FALL: CALIF	6,365	370	64	477	5,824	5.80	36,917	33,779
COLO	8,613	759	543	763	7,307	3.95	34,021	28,863
CONN	552	40	6	67	479	6.00	3,312	2,874
IDAHO	78,475	7,030	1,247	6,670	70,558	3.75	294,281	264,593
IND	1,440	126	10	72	1,358	6.25	9,000	8,488
MAINE	26,840	2,668	1,499	2,174	23,167	6.05	162,382	140,160
MASS	800	63	32	90	678	5.00	4,000	3,390
MICH	6,670	634	200	534	5,936	5.60	37,352	33,242
MINN	9,690	994	251	631	8,808	4.20	40,698	36,994
MONT	1,748	136	140	131	1,477	6.60	11,537	9,748
NEBR	1,225	85	62	154	1,009	4.70	5,758	4,742
NEV	4,125	280		495	3,630	3.15	12,994	11,435
N H	92	7	5	5	82	7.00	644	574
N Y - LONG ISLAND	6,058	456	12	412	5,634	5.60	33,925	31,550
- UPSTATE	6,120	629	191	459	5,470	6.95	42,534	38,017
N DAK	17,600	1,798	528	1,672	15,400	4.20	73,920	64,680
OHIO	2,645	216	28	241	2,376	5.65	14,944	13,424
OREG - MALHEUR CO	3,570	200	4	357	3,209	2.55	9,104	8,183
- OTHER	20,838	1,096	64	1,146	19,628	3.30	68,765	64,772
PA	6,815	522	204	506	6,105	5.75	39,186	35,104
R I	987	76	10	25	952	4.50	4,442	4,284
S DAK	598	76	16	18	564	3.40	2,033	1,918
UTAH	1,508	117	28	181	1,299	3.70	5,580	4,806
VT	235	21	9	17	209	6.50	1,528	1,359
WASH	48,300	2,406	290	2,771	45,239	3.15	152,145	142,503
WIS	14,850	930	329	750	13,772	5.40	80,190	74,369
WYO	1,632	133	80	160	1,392	3.70	6,038	5,150
TOTAL FALL	276,391	21,868	5,851	20,978	251,562	4.25	1,187,230	1,069,001
U S	322,254	25,643	6,612	22,181	293,461	4.48	1,444,608	1,314,710

1/ INCLUDES SEED PURCHASED AND SEED USED ON FARMS WHERE GROWN. 2/ CONSISTS OF POTATOES SOLD FOR ALL PURPOSES INCLUDING FOOD, SEED, PROCESSING AND LIVESTOCK FEED.

POTATOES: AREA, YIELD AND PRODUCTION BY STATES, 1969 AND 1970 CROPS

STATE	CROP OF 1969				CROP OF 1970			
	AREA		YIELD PER HARVESTED ACRE 1/	PRODUCTION	AREA		YIELD PER HARVESTED ACRE 1/	PRODUCTION
	PLANTED	HARVESTED			PLANTED	HARVESTED		
	1,000 ACRES		CWT	1,000 CWT	1,000 ACRES	CWT	1,000 CWT	
ALA	18.7	18.2	124	2,251	16.7	16.7	127	2,127
ARIZ	12.8	12.8	230	2,944	11.3	11.3	240	2,712
ARK	1.8	1.8	70	126	1.4	1.4	65	91
CALIF	95.0	91.9	317	29,093	87.5	87.5	340	29,760
COLO	52.4	49.0	233	11,395	51.3	50.3	257	12,916
CONN	5.0	4.8	225	1,080	3.8	3.8	230	874
DEL	8.0	8.0	210	1,680	7.2	7.2	210	1,512
FLA	41.9	40.4	180	7,264	37.7	36.7	162	5,936
IDAHO	320.0	317.0	220	69,870	330.0	327.0	228	74,660
ILL	2.0	2.0	170	340	2.2	2.2	160	352
IND	7.6	7.2	255	1,836	7.3	7.2	264	1,899
IOWA	3.2	2.5	185	462	2.8	2.7	190	513
KANS	1.4	1.2	90	108	1.3	1.2	700	120
KY	2.7	2.7	73	197	2.5	2.5	66	165
LA	3.5	3.3	78	257	2.7	2.6	83	216
MAINE	161.0	156.0	225	35,100	153.0	150.0	238	35,700
MD	2.3	2.3	165	380	2.2	2.2	161	355
MASS	5.2	5.1	190	969	5.1	5.1	205	1,046
MICH	47.5	44.8	216	9,656	46.2	45.0	234	10,550
MINN	107.0	97.9	158	15,475	102.9	95.8	140	13,390
MISS	2.5	2.5	100	250	2.5	2.5	95	238
MO	1.1	1.0	110	110	.8	.7	110	77
MONT	7.5	7.0	205	1,435	7.8	7.5	205	1,538
NEBR	8.5	8.0	209	1,672	8.1	7.5	195	1,463
N H	.9	.9	210	189	.8	.8	260	208
N J	14.4	14.0	230	3,220	13.0	13.0	260	3,380
N MEX	3.1	2.9	165	479	2.7	2.5	230	575
N Y	70.2	69.7	244	17,027	66.0	64.4	264	16,977
N C	15.4	15.4	141	2,173	15.3	15.3	137	2,093
N DAK	116.0	114.0	145	16,530	121.0	117.0	150	17,550
OHIO	16.5	14.6	190	2,776	15.5	15.0	217	3,252
OREG	48.2	46.7	285	13,308	54.5	53.6	284	15,229
PA	36.0	35.5	210	7,455	35.0	34.5	240	8,280
R I	5.2	4.9	235	1,152	5.1	5.1	245	1,250
S DAK	5.8	5.7	115	656	7.7	7.5	95	713
TENN	3.8	3.8	93	353	3.8	3.8	95	361
TEX	28.1	27.2	163	4,437	26.9	26.3	175	4,593
UTAH	7.2	6.9	190	1,311	6.0	5.9	170	1,003
VT	1.3	1.3	195	254	1.2	1.2	200	240
VA	32.2	31.6	124	3,918	32.5	31.5	127	3,990
WASH	72.0	71.7	416	29,796	87.0	87.0	386	33,590
W VA	4.9	4.9	75	368	4.4	4.4	75	330
WIS	54.0	53.0	234	12,410	53.0	52.0	251	13,028
WYO	3.8	3.4	240	816	3.8	3.6	240	864
U S	1,457.6	1,415.5	221	312,578	1,449.5	1,421.0	229	325,716

1/ YIELD PER ACRE IN STATES HAVING TWO OR MORE SEASONAL GROUPS IS DERIVED BY DIVIDING THE TOTAL PRODUCTION BY THE TOTAL HARVESTED ACREAGE.

POTATOES: AREA, YIELD AND PRODUCTION BY STATES, 1971 AND 1972 CROPS

STATE	CROP OF 1971				CROP OF 1972			
	AREA		YIELD PER HARVESTED ACRE 1/	PRODUCTION	AREA		YIELD PER HARVESTED ACRE 1/	PRODUCTION
	PLANTED	HARVESTED			PLANTED	HARVESTED		
	1,000 ACRES		CWT	1,000 CWT	1,000 ACRES		CWT	1,000 CWT
ALA	17.4	17.2	104	1,792	17.0	17.0	143	2,435
ARIZ	10.1	10.1	280	2,828	8.0	8.0	300	2,400
ARK 2/	1.4	1.4	65	91	1.4	1.4	65	91
CALIF	86.5	82.6	321	26,545	67.7	67.7	325	22,032
COLO	44.0	43.1	244	10,518	39.5	38.6	259	9,995
CONN	3.7	3.7	230	851	3.2	2.9	210	609
DEL	7.2	7.0	200	1,400	6.8	6.5	190	1,235
FLA	36.4	36.3	134	4,862	33.7	32.6	141	4,606
IDAHO	329.0	319.0	242	77,290	302.0	300.0	258	77,295
ILL	2.2	2.2	155	341	2.4	2.3	200	460
IND	7.6	7.5	265	1,988	7.9	6.9	213	1,470
IOWA	2.8	2.8	205	574	2.8	2.7	220	594
KANS 2/	1.4	1.3	95	124	1.1	1.0	95	95
KY 2/	2.5	2.5	67	168	2.3	2.3	65	150
LA	3.1	2.9	70	203	2.8	2.7	75	203
MAINE	145.0	145.0	260	37,700	135.0	128.0	260	33,280
MD	2.2	2.2	170	375	2.1	2.1	167	351
MASS	4.8	4.8	210	1,008	4.5	4.0	160	640
MICH	45.8	45.1	211	9,509	43.0	40.3	239	9,635
MINN	103.7	97.6	172	16,725	89.3	85.2	177	15,060
MISS	2.0	2.0	90	180	2.0	2.0	85	170
MO 2/	.8	.7	120	84	.7	.6	110	66
MONT	8.0	7.8	180	1,404	7.7	7.5	220	1,650
NEBR	8.2	7.6	191	1,453	7.5	6.9	202	1,393
N H	.7	.7	270	189	.8	.8	220	176
N J	12.5	11.9	250	2,975	11.1	10.8	195	2,106
N MEX	2.6	2.4	200	480	3.2	3.2	275	880
N Y	66.2	66.0	230	15,180	60.0	52.5	201	10,558
N C	15.1	14.7	140	2,060	14.3	14.1	140	1,978
N DAK	140.0	129.0	155	19,995	122.0	120.0	145	17,400
OHIO	15.0	14.6	205	3,000	14.9	13.6	206	2,807
OREG	48.3	47.5	289	13,723	40.8	40.7	355	14,436
PA	36.5	35.5	220	7,810	34.0	30.0	170	5,100
R I	5.2	5.2	240	1,248	4.9	4.9	185	907
S DAK	8.2	7.8	135	1,053	6.6	5.9	125	738
TENN	4.1	4.1	95	390	3.9	3.9	95	371
TEX	25.5	24.8	133	3,299	22.6	21.9	145	3,182
UTAH	5.4	5.3	160	848	4.3	4.3	235	1,011
VT	1.2	1.2	220	264	1.2	1.2	190	228
VA	31.7	31.0	139	4,318	31.6	29.3	141	4,131
WASH	78.0	78.0	386	30,110	75.0	75.0	418	31,365
W VA	3.8	3.8	70	266	3.2	3.2	70	224
WIS	52.5	51.5	256	13,183	50.5	45.5	253	11,530
WYO	3.8	3.7	250	925	5.8	5.6	235	1,316
U S	1,432.1	1,391.0	230	319,329	1,301.1	1,255.6	236	296,359

1/ YIELD PER ACRE IN STATES HAVING TWO OR MORE SEASONAL GROUPS IS DERIVED BY DIVIDING THE TOTAL PRODUCTION BY THE TOTAL HARVESTED ACREAGE. 2/ 1972 LAST YEAR OF ESTIMATE.

POTATOES: AREA, YIELD AND PRODUCTION BY STATES, 1973 AND 1974 CROPS

STATE	CROP OF 1973				CROP OF 1974			
	AREA		YIELD PER HARVESTED ACRE 1/	PRODUCTION	AREA		YIELD PER HARVESTED ACRE 1/	PRODUCTION
	PLANTED	HARVESTED			PLANTED	HARVESTED		
	1,000 ACRES		CWT	1,000 CWT	1,000 ACRES		CWT	1,000 CWT
ALA	19.0	19.0	121	2,298	23.0	23.0	145	3,336
ARIZ	9.9	9.9	210	2,079	8.6	8.6	260	2,236
CALIF	69.6	69.6	311	21,649	70.5	70.5	351	24,716
COLO	37.7	37.0	261	9,655	41.2	40.6	262	10,655
CONN	2.7	2.6	220	572	2.6	2.6	230	598
DEL	7.0	6.8	195	1,326	7.0	6.8	205	1,394
FLA	30.2	30.2	182	5,510	31.3	30.9	179	5,533
IDAHO	325.0	323.0	244	78,965	345.0	342.0	237	81,195
ILL	2.2	2.1	155	326	2.7	2.1	150	315
IND	8.0	7.5	205	1,536	8.1	7.6	204	1,549
IOWA	2.7	2.4	175	420	3.0	2.9	200	580
LA	2.7	2.3	83	191	3.0	2.8	90	252
MAINE	138.0	137.0	210	28,770	142.0	140.0	260	36,400
MD	2.0	2.0	160	320	2.0	2.0	150	300
MASS	4.4	4.0	160	640	4.4	4.4	200	880
MICH	41.4	40.0	216	8,640	43.7	42.4	234	9,926
MINN	93.5	89.4	167	14,970	98.6	93.5	186	17,425
MISS	1.8	1.8	85	153	1.6	1.6	95	152
MONT	7.0	6.8	215	1,462	7.2	7.0	250	1,750
NEBR	7.4	6.8	209	1,420	8.0	7.4	208	1,542
NEV 2/					8.5	8.5	375	3,188
N H	.7	.6	170	102	.7	.7	205	144
N J	9.6	9.3	185	1,721	9.0	9.0	270	2,430
N MEX	3.2	3.2	260	832	4.5	4.2	200	840
N Y	54.0	54.0	223	12,045	55.4	53.8	255	13,718
N C	14.7	14.2	148	2,096	17.8	17.5	155	2,708
N DAK	133.0	132.0	145	19,740	139.0	135.0	170	22,950
OHIO	13.7	13.1	193	2,528	15.1	14.7	209	3,065
OREG	44.0	41.9	380	15,929	50.7	50.0	350	17,482
PA	31.0	30.0	210	6,300	33.0	32.0	230	7,360
R I	4.3	4.3	185	796	4.4	4.4	235	1,034
S DAK	5.8	5.7	135	770	5.6	5.3	70	371
TENN	4.2	4.2	80	336	5.0	5.0	90	450
TEX	19.4	18.7	202	3,778	18.3	17.6	182	3,206
UTAH	5.1	5.0	220	1,100	6.4	6.3	235	1,481
VT	1.1	1.1	150	165	1.1	1.1	220	242
VA	31.9	31.0	105	3,255	30.5	30.0	135	4,050
WASH	84.0	82.0	430	35,260	100.0	98.0	420	41,160
W VA	3.0	3.0	71	213	3.3	3.3	77	254
WIS	48.5	47.0	245	11,515	53.0	50.0	280	14,000
WYO	6.4	6.1	200	1,220	6.8	6.5	235	1,528
U S	1,329.8	1,306.6	230	300,013	1,421.6	1,391.6	246	342,395

1/ YIELD PER ACRE IN STATES HAVING TWO OR MORE SEASONAL GROUPS IS DERIVED BY DIVIDING THE TOTAL PRODUCTION BY THE TOTAL HARVESTED ACREAGE. 2/ 1974 FIRST YEAR OF ESTIMATE.

POTATOES: AREA, YIELD AND PRODUCTION BY STATES, 1975 CROP

STATE	CROP OF 1975			
	AREA		YIELD PER HARVESTED ACRE 1/	PRODUCTION
	PLANTED	HARVESTED		
	1,000 ACRES		CWT	1,000 CWT
ALA	19.6	19.6	139	2,728
ARIZ	6.2	6.2	245	1,519
CALIF	59.9	59.9	351	21,015
COLO	40.4	39.7	264	10,485
CONN	2.5	2.4	230	552
DEL	6.5	6.0	175	1,050
FLA	27.6	27.5	194	5,344
IDAHO	325.0	322.0	244	78,475
ILL	2.9	2.8	190	532
IND	8.9	7.7	227	1,746
IOWA	2.8	2.7	200	540
LA	3.1	2.6	70	182
MAINE	122.0	122.0	220	26,840
MD	1.8	1.8	170	306
MASS	4.1	3.9	205	800
MICH	37.7	36.4	222	8,076
MINN	78.2	65.1	181	11,796
MISS	1.6	1.5	90	135
MONT	7.7	7.6	230	1,748
NEBR	7.9	7.5	217	1,625
NEV	12.5	12.5	330	4,125
N H	.4	.4	230	92
N J	7.4	7.0	195	1,365
N MEX	3.7	3.5	200	700
N Y	48.5	47.3	257	12,178
N C	16.6	16.0	149	2,380
N DAK	116.0	110.0	160	17,600
OHIO	14.2	13.5	221	2,985
OREG	56.4	55.5	440	24,408
PA	31.0	29.0	235	6,815
R I	4.2	4.2	235	987
S DAK	5.2	5.2	115	598
TENN	5.0	5.0	85	425
TEX	14.3	14.1	211	2,975
UTAH	5.9	5.8	260	1,508
VT	1.0	1.0	235	235
VA	27.0	25.0	96	2,400
WASH	107.0	105.0	460	48,300
W VA	2.8	2.8	72	202
WIS	52.0	49.5	300	14,850
WYO	7.0	6.8	240	1,632
U S	1,303.6	1,264.0	255	322,254

1/ YIELD PER ACRE IN STATES HAVING TWO OR MORE SEASONAL GROUPS IS DERIVED BY DIVIDING THE TOTAL PRODUCTION BY THE TOTAL HARVESTED ACREAGE.

POTATOES: PRODUCTION, FARM DISPOSITION, SEASON AVERAGE PRICE RECEIVED BY FARMERS,  
AND VALUE, BY STATES, 1969 CROP

STATE	PRODUCTION	TOTAL USED FOR SEED 1/	FARM DISPOSITION			PRICE PER CWT	VALUE OF --		
			USED ON FARMS WHERE GROWN:				SOLD 2/	PRODUCTION	SALES
			FOR SEED	SHRINKAGE	AND FEED, AND HOUSEHOLD USE				
		1,000 CWT				DOLLARS	1,000 DOLLARS		
ALA	2,251	217	28	50	2,173	2.74	6,154	5,948	
ARIZ	2,944	164	5	29	2,910	2.90	8,538	8,439	
ARK	126	12	46	3	77	3.50	441	270	
CALIF	29,093	1,586	131	830	28,132	2.53	73,822	71,305	
COLO	11,395	910	1,065	1,688	8,642	1.89	21,495	16,364	
CONN	1,080	68	3	76	1,001	2.80	3,024	2,803	
DEL	1,680	108	5	81	1,594	2.20	3,696	3,507	
FLA	7,264	843	4	23	7,237	3.10	22,487	22,402	
IDAHO	69,870	5,462	1,465	7,480	60,925	2.02	141,137	123,069	
ILL	340	35	17	11	312	2.40	816	749	
IND	1,836	123	24	69	1,743	2.75	5,049	4,790	
IOWA	462	34	31	39	392	2.60	1,201	1,019	
KANS	108	12	22	4	82	2.80	302	230	
KY	197	21	141	8	48	3.70	729	178	
LA	257	22	10	13	234	1.85	475	433	
MAINE	35,100	3,580	2,485	2,527	30,088	2.20	77,220	66,194	
MD	380	28	12	10	358	2.21	840	791	
MASS	969	87	11	82	876	2.70	2,616	2,365	
MICH	9,656	816	397	479	8,780	2.73	26,346	23,927	
MINN	15,475	1,497	611	858	14,006	1.71	26,436	24,009	
MISS	250	23	29	5	216	3.50	875	756	
MO	110	7	18	3	89	2.75	303	245	
MONT	1,435	121	140	179	1,116	3.77	5,410	4,207	
NEBR	1,672	108	70	166	1,436	1.84	3,075	2,643	
N H	189	13	9	13	167	2.90	548	484	
N J	3,220	234	47	129	3,044	2.42	7,792	7,366	
N MEX	479	43	10	31	438	2.38	1,140	1,042	
N Y	17,027	1,328	353	1,065	15,609	2.78	47,418	43,355	
N C	2,173	196	175	64	1,934	2.57	5,637	4,962	
N DAK	16,530	1,694	714	1,488	14,328	1.61	26,613	23,068	
OHIO	2,776	233	102	150	2,524	2.45	6,815	6,194	
OREG	13,308	872	112	1,420	11,776	2.01	26,746	23,659	
PA	7,455	630	285	492	6,678	3.19	23,781	21,303	
R I	1,152	82	8	113	1,031	2.60	2,995	2,681	
S DAK	656	85	40	79	537	2.13	1,397	1,144	
TENN	353	34	51	11	291	3.85	1,359	1,120	
TEX	4,437	339	38	136	4,263	3.51	15,579	14,960	
UTAH	1,311	93	71	164	1,076	2.60	3,409	2,798	
VT	254	19	17	20	217	2.90	737	629	
VA	3,918	370	163	137	3,618	2.55	9,991	9,226	
WASH	29,796	1,444	129	1,481	28,186	1.59	47,376	44,816	
W VA	358	41	197	14	157	2.75	1,012	432	
WIS	12,410	797	643	843	10,924	2.68	33,259	29,276	
WYO	816	61	25	94	697	2.15	1,754	1,499	
U S	312,578	24,492	9,959	22,657	279,962	2.24	697,845	626,657	

1/ INCLUDES SEED PURCHASED AND SEED USED ON FARMS WHERE GROWN. 2/ CONSISTS OF POTATOES SOLD FOR ALL PURPOSES INCLUDING FOOD, SEED, PROCESSING AND LIVESTOCK FEED.

POTATOES: PRODUCTION, FARM DISPOSITION, SEASON AVERAGE PRICE RECEIVED BY FARMERS,  
AND VALUE, BY STATES, 1970 CROP

STATE	PRODUCTION:	TOTAL	FARM DISPOSITION			PRICE PER CWT	VALUE OF --	
		USED FOR SEED 1/	USED ON FARMS WHERE GROWN:		SOLD 2/		PRODUCTION:	SALES
			FOR SEED, FEED, AND HOUSEHOLD USE:	SHRINKAGE AND LOSS			1,000 CWT	1,000 DOLLARS
ALA	2,127	239	26	48	2,053	3.94	8,380	8,095
ARIZ	2,712	146	4	27	2,681	3.13	8,489	8,392
ARK	91	12	40	2	49	4.60	419	225
CALIF	29,760	1,576	112	952	28,696	2.92	86,910	83,921
COLO	12,916	780	620	2,074	10,222	1.42	18,340	14,535
CONN	874	63	3	26	845	2.80	2,447	2,366
DEL	1,512	108	5	57	1,450	2.38	3,599	3,451
FLA	5,936	794	4	25	5,907	3.88	23,055	22,938
IDAHO	74,660	5,758	1,989	7,144	65,527	1.93	144,094	126,467
ILL	352	35	17	11	324	2.85	1,003	923
IND	1,899	157	15	81	1,803	2.71	5,151	4,890
IOWA	513	34	28	25	460	2.55	1,308	1,173
KANS	120	13	23	4	93	3.00	360	279
KY	165	21	122	6	37	4.40	726	163
LA	216	25	8	11	197	2.50	540	493
MAINE	35,700	3,451	2,391	2,499	30,810	1.98	70,686	61,004
MD	355	28	12	9	334	2.40	852	802
MASS	1,046	74	11	47	988	2.69	2,814	2,658
MICH	10,550	834	351	957	9,242	2.72	28,686	25,132
MINN	13,390	1,467	589	894	11,907	1.83	24,257	21,815
MISS	238	18	28	5	205	3.25	774	666
MO	77	7	9	2	66	2.90	223	191
MONT	1,538	124	155	138	1,245	2.83	4,353	3,523
NEBR	1,463	110	89	158	1,216	1.83	2,676	2,230
N H	208	11	11	11	186	2.90	603	539
N J	3,380	225	49	118	3,213	2.67	9,025	8,579
N MEX	575	42	11	34	530	2.61	1,501	1,383
N Y	16,977	1,352	340	989	15,648	2.60	44,333	40,758
N C	2,093	193	159	62	1,872	3.18	6,662	5,958
N DAK	17,550	2,030	919	1,755	14,876	1.67	29,309	24,843
OHIO	3,252	231	97	157	2,998	2.37	7,723	7,120
OREG	15,229	773	117	1,334	13,778	1.78	27,139	24,548
PA	8,280	621	249	662	7,369	2.65	21,942	19,528
R I	1,250	83	8	19	1,223	2.71	3,388	3,314
S OAK	713	115	41	77	595	2.10	1,497	1,250
TENN	361	37	48	11	302	4.30	1,552	1,299
TEX	4,593	321	37	149	4,407	4.07	18,713	17,951
UTAH	1,003	81	49	90	864	2.38	2,387	2,056
VT	240	19	14	10	216	2.80	672	605
VA	3,990	362	157	128	3,705	3.34	13,327	12,375
WASH	33,590	1,326	151	2,033	31,406	1.51	50,721	47,423
W VA	330	36	188	14	128	3.10	1,023	397
WIS	13,028	762	633	877	11,518	2.43	31,658	27,989
WYO	864	61	28	118	718	2.09	1,806	1,501
U S	325,716	24,555	9,957	23,850	291,909	2.21	715,123	645,748

1/ INCLUDES SEED PURCHASED AND SEED USED ON FARMS WHERE GROWN. 2/ CONSISTS OF POTATOES SOLD FOR ALL PURPOSES INCLUDING FOOD, SEED, PROCESSING AND LIVESTOCK FEED.



POTATOES: PRODUCTION, FARM DISPOSITION, SEASON AVERAGE PRICE RECEIVED BY FARMERS,  
AND VALUE, BY STATES, 1971 CROP

STATE	PRODUCTION:	TOTAL USED FOR SEED 1/	FARM DISPOSITION			PRICE PER CWT	VALUE OF --	
			USED ON FARMS WHERE GROWN: FOR SEED, FEED, AND HOUSEHOLD USE:	SHRINKAGE:	SOLD 2/		PRODUCTION:	SALES
			1,000 CWT			DOLLARS	1,000 DOLLARS	
ALA	1,792	239	24	43	1,725	3.12	5,560	5,378
ARIZ	2,828	116	4	57	2,767	2.74	7,749	7,582
ARK	91	13	45	2	44	4.20	382	185
CALIF	26,545	1,241	112	979	25,454	2.18	58,146	55,597
COLD	10,518	711	671	1,202	8,645	1.57	16,506	13,546
CONN	851	54	3	28	820	2.80	2,383	2,296
DEL	1,400	102	6	56	1,338	2.55	3,570	3,412
FLA	4,862	775	4	22	4,836	4.00	19,438	19,332
IDAHO	77,290	5,423	1,830	7,100	68,360	1.60	123,664	109,376
ILL	341	38	16	12	313	2.30	784	720
IND	1,988	183	15	97	1,876	2.62	5,209	4,917
IOWA	574	34	31	29	514	1.70	976	874
KANS	124	10	22	4	98	2.25	279	221
KY	168	20	129	7	32	4.05	680	130
LA	203	22	8	10	185	2.60	528	481
MAINE	37,700	2,781	1,640	3,657	32,403	1.70	64,090	55,085
MD	375	28	13	9	353	2.40	900	847
MASS	1,008	81	11	76	921	2.50	2,520	2,303
MICH	9,509	775	451	855	8,203	2.47	23,425	20,239
MINN	16,725	1,272	627	2,581	13,517	1.39	23,055	18,843
MISS	180	18	30	3	147	3.00	540	441
MO	84	7	9	2	73	3.00	252	219
MONT	1,404	119	142	154	1,108	3.15	4,423	3,490
NEBR	1,453	105	73	164	1,216	1.70	2,466	2,062
N H	189	14	10	9	170	2.55	482	434
N J	2,975	200	41	119	2,815	2.45	7,289	6,897
N MEX	480	51	13	29	438	2.75	1,320	1,205
N Y	15,180	1,248	294	935	13,951	2.70	41,052	37,617
N C	2,060	182	165	63	1,832	2.30	4,766	4,218
N DAK	19,995	1,769	761	3,599	15,635	1.23	24,594	19,231
OHIO	3,000	228	83	163	2,754	2.33	6,985	6,412
OREG	13,723	653	103	1,240	12,380	1.73	23,744	21,422
PA	7,810	578	252	1,015	6,543	2.72	21,243	17,797
R I	1,248	78	7	50	1,191	2.60	3,245	3,097
S DAK	1,053	106	43	190	820	1.60	1,685	1,312
TENN	390	35	49	14	327	4.15	1,619	1,357
TEX	3,299	288	38	110	3,151	3.38	11,156	10,646
UTAH	848	69	53	85	710	1.96	1,662	1,392
VT	264	18	13	11	240	2.40	634	576
VA	4,318	375	143	151	4,024	2.51	10,838	10,100
WASH	30,110	1,395	118	1,888	28,104	1.40	42,154	39,346
W VA	266	30	173	12	81	3.70	984	300
WIS	13,183	707	602	924	11,657	2.13	29,080	24,829
WYO	925	99	50	153	722	2.00	1,850	1,444
U S	319,329	22,290	8,927	27,909	282,493	1.90	602,907	537,208

1/ INCLUDES SEED PURCHASED AND SEED USED ON FARMS WHERE GROWN. 2/ CONSISTS OF POTATOES SOLD FOR ALL PURPOSES INCLUDING FOOD, SEED, PROCESSING AND LIVESTOCK FEED.

POTATOES: PRODUCTION, FARM DISPOSITION, SEASON AVERAGE PRICE RECEIVED BY FARMERS,  
AND VALUE, BY STATES, 1972 CROP

STATE	PRODUCTION:	TOTAL	FARM DISPOSITION			PRICE	VALUE OF --	
		USED FOR SEED 1/	USED ON FARMS WHERE GROWN:	FOR SEED, FEED, AND HOUSEHOLD USE	SHRINKAGE AND LOSS	SOLD 2/	PER CWT	PRODUCTION: SALES
			1,000 CWT			DOLLARS	1,000 DOLLARS	
ALA	2,435	273	22	69	2,344	2.96	7,233	6,945
ARIZ	2,400	149	4	48	2,348	2.85	6,840	6,692
ARK 3/	91	13	48	2	41	4.20	382	172
CALIF	22,032	1,259	113	878	21,041	3.07	67,701	64,542
COLO	9,995	744	553	889	8,553	2.89	29,022	24,720
CONN	609	54	6	12	591	4.40	2,680	2,600
DEL	1,235	105	5	56	1,174	3.45	4,261	4,050
FLA	4,606	686	2	21	4,583	3.46	15,933	15,853
IDAHO	77,295	5,850	1,513	6,783	68,999	2.45	189,373	169,048
ILL	460	35	14	16	430	2.70	1,242	1,161
IND	1,470	152	18	97	1,355	3.51	5,163	4,759
IOWA	594	35	30	30	534	2.80	1,663	1,495
KANS 3/	95	9	21	3	71	3.25	309	231
KY 3/	150	21	131	6	13	3.95	593	51
LA	203	22	8	11	184	2.65	538	488
MAINE	33,280	3,160	1,943	2,465	28,872	4.10	136,448	118,375
MD	351	27	11	9	331	3.47	1,218	1,149
MASS	640	79	13	29	598	3.90	2,496	2,332
MICH	9,635	754	303	806	8,526	3.66	35,335	31,230
MINN	15,060	1,360	461	836	13,763	2.85	42,888	39,245
MISS	170	16	28	4	138	3.20	544	442
MO 3/	66	7	8	2	56	4.50	297	252
MONT	1,650	109	110	83	1,457	5.15	8,333	7,358
NEBR	1,393	102	73	140	1,180	2.99	4,163	3,527
N H	176	14	10	7	159	4.25	748	676
N J	2,106	173	20	74	2,012	3.60	7,582	7,243
N MEX	880	51	15	53	812	3.35	2,948	2,720
N Y	10,558	1,145	188	555	9,815	3.97	42,068	38,978
N C	1,978	187	183	62	1,733	3.44	6,787	5,968
N DAK	17,400	1,862	551	1,189	15,660	2.75	47,850	43,065
OHIO	2,807	221	62	204	2,541	3.91	10,957	9,934
OREG	14,436	778	93	1,234	13,109	2.75	39,674	36,065
PA	5,100	589	202	209	4,689	4.20	21,420	19,694
R I	907	77	5	14	888	3.00	2,721	2,664
S OAK	738	67	32	52	654	2.40	1,771	1,570
TENN	371	42	47	15	309	4.40	1,632	1,360
TEX	3,182	247	36	108	3,038	4.49	14,281	13,642
UTAH	1,011	92	38	81	892	3.20	3,235	2,854
VT	228	20	14	9	205	4.50	1,026	923
VA	4,131	379	144	124	3,863	3.63	14,996	14,023
WASH	31,365	1,655	88	1,777	29,500	2.09	65,553	61,655
W VA	224	27	161	11	52	4.85	1,086	252
WIS	11,530	800	520	726	10,284	3.57	41,162	36,714
WYO	1,316	109	66	197	1,053	2.85	3,751	3,001
U S	296,359	23,556	7,913	19,996	268,450	3.02	895,903	809,718

1/ INCLUDES SEED PURCHASED AND SEED USED ON FARMS WHERE GROWN. 2/ CONSISTS OF POTATOES SOLD FOR ALL PURPOSES INCLUDING FOOD, SEED, PROCESSING AND LIVESTOCK FEED. 3/ LAST YEAR OF ESTIMATE.

POTATOES: PRODUCTION, FARM DISPOSITION, SEASON AVERAGE PRICE RECEIVED BY FARMERS,  
AND VALUE, BY STATES, 1973 CROP

STATE	PRODUCTION:	TOTAL	FARM DISPOSITION			PRICE PER CWT	VALUE OF --	
		USED FOR SEED 1/	USED ON FARMS WHERE GROWN: FOR SEED, FEED, AND HOUSEHOLD USE:	SHRINKAGE AND LOSS	SOLD 2/		PRODUCTION:	SALES
		1,000 CWT			DOLLARS		1,000 DOLLARS	
ALA	2,298	330	20	55	2,223	9.45	21,727	21,003
ARIZ	2,079	129	4	42	2,033	5.05	10,499	10,267
CALIF	21,649	1,276	98	935	20,616	5.61	121,312	115,746
COLO	9,665	821	544	763	8,358	5.06	49,243	42,328
CONN	572	57	6	11	555	6.50	3,718	3,608
DEL	1,326	105	4	53	1,269	7.15	9,481	9,073
FLA	5,510	712	3	31	5,476	5.49	30,275	30,089
IDAHO	78,965	6,314	1,028	6,317	71,620	3.85	304,015	275,737
ILL	326	43	14	10	302	4.00	1,304	1,208
IND	1,536	147	20	72	1,444	5.89	9,062	8,506
IOWA	420	39	29	21	370	4.50	1,890	1,665
LA	191	24	8	10	173	6.15	1,175	1,064
MAINE	28,770	3,195	1,784	1,726	25,260	7.25	208,583	183,135
MD	320	27	7	8	305	7.20	2,304	2,196
MASS	640	84	13	26	601	4.90	3,136	2,945
MICH	8,640	822	240	372	8,028	6.13	52,912	49,172
MINN	14,970	1,443	262	760	13,948	3.95	59,132	55,095
MISS	153	14	25	4	124	3.20	490	397
MONT	1,462	115	117	64	1,281	10.80	15,790	13,835
NEBR	1,420	118	82	88	1,250	3.96	5,626	4,953
N H	102	12	6	4	92	7.20	734	662
N J	1,721	162	18	60	1,643	5.65	9,724	9,283
N MEX	832	72	8	50	774	3.40	2,829	2,632
N Y	12,045	1,223	241	657	11,147	6.05	72,927	67,436
N C	2,096	224	162	63	1,871	8.41	17,582	15,739
N DAK	19,140	1,946	404	1,340	17,396	4.60	88,044	80,022
OHIO	2,528	262	49	119	2,360	6.48	16,372	15,301
OREG	15,929	1,064	65	1,220	14,644	3.88	61,535	56,806
PA	6,300	620	204	309	5,787	6.15	38,745	35,590
R I	796	84	4	12	780	4.10	3,264	3,198
S DAK	770	62	34	74	662	3.15	2,426	2,085
TENN	336	50	45	12	279	8.25	2,772	2,302
TEX	3,778	233	35	117	3,626	7.38	27,873	26,753
UTAH	1,100	128	29	88	983	3.30	3,630	3,244
VT	165	20	11	8	146	8.50	1,403	1,241
VA	3,255	366	133	98	3,024	8.40	27,342	25,402
WASH	35,260	1,850	71	2,045	33,144	2.90	102,254	96,118
W VA	213	31	153	10	50	6.20	1,321	310
WIS	11,515	917	460	600	10,455	6.40	73,696	66,912
WYO	1,220	116	76	122	1,022	4.75	5,795	4,855
U S	300,013	25,257	6,516	18,376	275,121	4.90	1,471,942	1,347,913

1/ INCLUDES SEED PURCHASED AND SEED USED ON FARMS WHERE GROWN. 2/ CONSISTS OF POTATOES SOLD FOR ALL PURPOSES INCLUDING FOOD, SEED, PROCESSING AND LIVESTOCK FEED.

POTATOES: PRODUCTION, FARM DISPOSITION, SEASON AVERAGE PRICE RECEIVED BY FARMERS,  
AND VALUE, BY STATES, 1974 CROP

STATE	PRODUCTION	TOTAL USED FOR SEED 1/	FARM DISPOSITION			PRICE PER CWT	VALUE OF --	
			USED ON FARMS WHERE GROWN: FOR SEED, FEED, AND HOUSEHOLD USE:	SHRINKAGE AND LOSS	SOLD 2/		PRODUCTION	SALES
			1,000 CWT			DOLLARS	1,000 DOLLARS	
ALA	3,336	281	20	80	3,236	8.38	27,881	27,126
ARIZ	2,236	93	4	45	2,187	5.25	11,739	11,482
CALIF	24,716	1,087	79	1,170	23,467	5.99	147,350	140,651
COLO	10,655	801	514	860	9,281	2.51	26,661	23,298
CONN	598	46	6	30	562	3.50	2,093	1,967
DEL	1,394	98	4	53	1,337	5.00	6,970	6,685
ALA	5,533	638	3	27	5,503	7.72	42,733	42,491
IDAHO	81,195	6,013	1,040	6,550	73,605	3.80	308,541	279,699
ILL	315	46	15	70	290	4.25	1,339	1,233
IND	1,549	155	22	13	1,454	4.99	7,728	7,250
IOWA	580	36	26	29	525	3.85	2,233	2,021
LA	252	25	8	13	231	7.00	1,764	1,617
MAINE	36,400	2,745	1,310	5,508	29,582	2.90	105,560	85,788
MD	300	24	7	7	286	5.10	1,530	1,459
MASS	880	82	15	88	777	3.50	3,080	2,720
MICH	9,926	705	272	689	8,965	4.15	41,175	37,195
MINN	17,425	1,146	613	2,980	13,832	3.23	55,803	44,712
MISS	152	14	26	3	123	9.30	1,414	1,144
MOHT	1,750	123	158	254	1,338	4.95	8,663	6,523
NEBR	1,542	123	94	173	1,275	3.83	5,930	4,878
NEV 3/	3,188	250		383	2,805	2.55	8,129	7,153
N H	144	8	7	8	129	3.50	504	452
N J	2,430	133	31	85	2,314	4.20	10,206	9,719
N MEX	840	59	7	50	783	2.95	2,478	2,310
N Y	13,718	1,144	212	1,415	12,091	3.76	52,314	45,512
N C	2,708	210	150	84	2,474	5.83	15,791	14,417
N DAK	22,950	1,740	567	4,934	17,449	3.15	72,293	54,964
OHIO	3,065	243	44	386	2,635	4.36	13,334	11,483
OREG	17,482	1,153	88	1,205	16,189	3.88	67,883	62,894
PA	7,360	589	218	957	6,185	3.90	28,704	24,122
R I	1,034	76	2	5	1,027	4.00	4,136	4,108
S DAK	371	64	11	30	330	3.40	1,261	1,122
TENN	450	55	44	16	390	7.80	3,510	3,042
TEX	3,206	182	33	104	3,069	9.13	29,272	28,011
UTAH	1,481	130	18	131	1,332	3.80	5,628	5,062
VT	242	19	10	19	213	3.50	847	746
VA	4,050	329	121	142	3,787	5.20	21,060	19,692
WASH	41,160	2,151	166	2,717	38,277	3.65	150,234	139,711
W VA	254	27	143	13	98	5.80	1,473	568
WIS	14,000	879	340	1,020	12,640	3.65	51,100	46,136
WYO	1,528	133	74	150	1,304	3.00	4,584	3,912
U S	342,395	23,855	6,522	32,496	303,377	4.01	1,354,928	1,215,175

1/ INCLUDES SEED PURCHASED AND SEED USED ON FARMS WHERE GROWN. 2/ CONSISTS OF POTATOES SOLD FOR ALL PURPOSES INCLUDING FOOD, SEED, PROCESSING AND LIVESTOCK FEED. 3/ FIRST YEAR OF ESTIMATE.

POTATOES: PRODUCTION, FARM DISPOSITION, SEASON AVERAGE PRICE RECEIVED BY FARMERS,  
AND VALUE, BY STATES, 1975 CROP

STATE	PRODUCTION	FARM DISPOSITION				PRICE PER CWT	VALUE OF --	
		TOTAL USED	USED ON FARMS WHERE GROWN:				PRODUCTION	SALES
		FOR SEED 1/	FOR SEED, FEED, AND HOUSEHOLD USE:	SHRINKAGE AND LOSS	SOLD 2/			
		1,000 CWT			DOLLARS	1,000 DOLLARS		
ALA	2,728	288	19	75	2,634	8.34	22,755	21,979
ARIZ	1,519	102	4	30	1,485	6.00	9,114	8,910
CALIF	21,015	1,207	81	802	20,132	6.02	126,460	121,259
COLO	10,485	903	552	876	9,057	3.81	40,011	34,463
CONN	552	40	6	67	479	6.00	3,312	2,874
DEL	1,050	90	4	47	999	5.80	6,090	5,794
FLA	5,344	723	3	29	5,312	4.64	24,813	24,662
IDAHO	78,475	7,030	1,247	6,670	70,558	3.75	294,281	264,593
ILL	532	45	14	17	501	4.10	2,181	2,054
IND	1,746	148	17	85	1,644	6.34	11,066	10,419
IOWA	540	36	24	27	489	4.90	2,646	2,396
LA	182	23	8	9	165	4.50	819	743
MAINE	26,840	2,668	1,499	2,174	23,167	6.05	162,382	140,160
MD	306	25	7	9	290	5.90	1,805	1,711
MASS	800	63	32	90	678	5.00	4,000	3,390
MICH	8,076	788	296	579	7,201	5.56	44,874	40,010
MINN	11,796	1,124	261	684	10,851	4.32	50,912	46,903
MISS	135	14	26	3	106	8.50	1,148	901
MONT	1,748	136	140	131	1,477	6.60	11,537	9,748
NEBR	1,625	113	79	186	1,360	4.47	7,278	6,076
NEV	4,125	280		495	3,630	3.15	12,994	11,435
N H	92	7	5	5	82	7.00	644	574
N J	1,365	144	7	55	1,303	5.95	8,122	7,753
N MEX	700	51	6	42	652	2.70	1,890	1,760
N Y	12,178	1,085	203	871	11,104	6.27	76,459	69,567
N C	2,380	225	151	74	2,155	6.73	16,000	14,513
N DAK	17,600	1,798	528	1,672	15,400	4.20	73,920	64,680
OHIO	2,985	248	35	251	2,699	5.63	16,814	15,201
OREG	24,408	1,296	68	1,503	22,837	3.20	77,869	72,955
PA	6,815	522	204	506	6,105	5.75	39,186	35,104
R I	987	76	10	25	952	4.50	4,442	4,284
S DAK	598	76	16	18	564	3.40	2,033	1,918
TENN	425	52	44	15	366	7.50	3,188	2,745
TEX	2,975	217	33	87	2,855	7.33	21,778	20,916
UTAH	1,508	117	28	181	1,299	3.70	5,580	4,806
VT	235	21	9	17	209	6.50	1,528	1,359
VA	2,400	363	120	84	2,196	6.20	14,880	13,615
WASH	48,300	2,406	290	2,771	45,239	3.15	152,145	142,503
W VA	202	30	128	9	65	7.05	1,424	458
WIS	14,850	930	328	750	13,772	5.40	80,190	74,369
WYO	1,632	133	80	160	1,392	3.70	6,038	5,150
U S	322,254	25,643	6,612	22,181	293,461	4.48	1,444,608	1,314,710

1/ INCLUDES SEED PURCHASED AND SEED USED ON FARMS WHERE GROWN. 2/ CONSISTS OF POTATOES SOLD FOR ALL PURPOSES INCLUDING FOOD, SEED, PROCESSING AND LIVESTOCK FEED.

POTATOES: TOTAL STOCKS HELD BY GROWERS AND LOCAL DEALERS ON DEC 1, JAN 1, FEB 1, AND MAR 1, IN THE 24 FALL STATES, CROPS OF 1969 AND 1970 1/

STATE	CROP OF 1969				CROP OF 1970			
	DEC 1	JAN 1	FEB 1	MAR 1	DEC 1	JAN 1	FEB 1	MAR 1
	1,000 CWT				1,000 CWT			
CALIF	5,600	4,650	3,600	2,650	5,850	4,550	3,450	2,600
COLO	5,850	4,850	3,750	3,050	7,000	5,700	4,350	3,300
CONN	660	480	280	110	500	330	210	90
IDAHO	48,700	42,500	35,500	29,500	53,500	47,500	40,500	34,000
IND	530	190	130	2/	390	210	130	2/
MAINE	28,700	26,000	22,500	19,200	29,300	27,000	23,500	19,900
MASS	460	340	220	2/	540	410	260	2/
MICH	4,700	3,600	2,800	1,950	5,250	4,100	3,150	2,300
MINN	10,200	8,550	7,000	5,150	9,200	7,700	6,300	4,600
MONT	1,300	1,250	1,200	1,100	1,400	1,350	1,300	1,200
NEBR	750	600	450	350	800	650	500	350
N H	105	80	60	2/	110	90	70	2/
N Y - LONG ISLAND	4,100	2,800	1,800	950	3,600	2,450	1,500	800
- UPSTATE	4,050	3,250	2,350	1,650	4,650	3,600	2,700	1,900
N DAK	11,500	9,900	8,100	6,100	13,300	11,200	9,200	7,100
OHIO	600	300	120	2/	1,250	850	500	300
OREG	7,000	5,800	4,450	3,500	7,150	6,100	4,950	3,600
PA	4,650	3,750	2,550	1,500	4,650	3,900	2,750	1,800
R I	230	130	50	2/	250	130	50	2/
S DAK	360	270	170	2/	430	320	200	2/
UTAH	850	640	470	340	570	450	300	240
VT	185	150	110	2/	155	140	110	2/
WASH	15,300	13,100	10,300	7,800	18,500	16,000	12,500	9,700
WIS	5,850	4,550	3,300	2,150	6,200	4,900	3,500	2,400
WYO	570	410	250	120	600	400	250	150
OTHER STATES				450				450
TOTAL 24 FALL STATES	162,800	138,140	111,510	87,620	175,145	150,030	122,230	96,780

1/ TOTAL STOCKS CONSIST OF "PRODUCTION LESS TOTAL DISAPPEARANCE TO DATE". 2/ INCLUDED IN "OTHER STATES".

POTATOES: TOTAL STOCKS HELD BY GROWERS AND LOCAL DEALERS ON DEC 1, JAN 1, FEB 1, MAR 1, AND APR 1, IN THE 24 FALL STATES, CROPS OF 1971 AND 1972 1/

STATE	CROP OF 1971				CROP OF 1972				
	DEC 1	JAN 1	FEB 1	MAR 1	DEC 1	JAN 1	FEB 1	MAR 1	APR 1 4/
	1,000 CWT				1,000 CWT				
CALIF	5,600	4,650	3,650	2,750	4,300	3,400	2,500	1,900	1,150
COLO	5,500	4,750	3,900	3,050	5,500	4,700	3,700	2,850	1,950
CONN	500	330	200	2/	3/350	2/	2/	2/	2/
IDAHO	55,500	49,000	41,500	34,500	55,000	49,000	41,000	34,500	27,000
IND	400	230	120	2/	250	125	2/	2/	2/
MAINE	30,600	27,900	24,800	21,000	25,300	22,100	18,500	15,300	11,400
MASS	500	345	265	2/	370	2/	2/	2/	2/
MICH	4,500	3,700	2,800	1,800	4,700	3,750	2,800	1,900	1,100
MINN	12,200	10,500	8,300	6,700	10,300	8,250	6,000	4,150	2,400
MONT	1,300	1,250	1,200	1,100	1,550	1,500	1,450	1,350	850
NEBR	750	650	500	400	590	500	390	310	210
N H	110	90	70	2/	90	2/	2/	2/	2/
N Y - LONG ISLAND	3,250	2,400	1,700	1,000	2,200	1,600	1,000	500	5/
- UPSTATE	4,200	3,300	2,500	1,800	2,200	1,500	1,150	750	700
N DAK	14,500	12,500	10,200	8,000	12,000	9,900	7,600	5,600	3,300
OHIO	1,200	700	350	2/	900	600	2/	2/	2/
OREG	6,300	5,300	4,300	3,200	6,650	5,550	4,500	3,500	2,200
PA	4,200	3,300	2,400	1,500	2,900	2,100	1,450	850	450
R I	270	200	150	2/	3/	2/	2/	2/	2/
S DAK	720	630	530	2/	410	310	160	2/	2/
UTAH	550	410	270	200	690	520	350	190	80
VT	190	150	120	2/	185	2/	2/	2/	2/
WASH	16,450	13,500	10,350	7,500	15,800	13,400	10,300	7,100	4,200
WIS	6,500	5,200	3,900	2,700	5,300	4,200	2,900	1,700	800
WYO	600	450	300	180	1,030	720	530	300	150
OTHER STATES				1,105		695	1,030	630	310
TOTAL 24 FALL STATES	176,390	151,435	124,375	98,485	158,565	134,420	107,310	83,380	58,250

1/ TOTAL STOCKS CONSIST OF "PRODUCTION LESS TOTAL DISAPPEARANCE TO DATE". 2/ INCLUDED IN "OTHER STATES". 3/ R I STOCKS INCLUDED IN CONN. 4/ APR 1 STOCKS NOT ESTIMATED PRIOR TO 1973. 5/ INCLUDED IN UPSTATE, N Y.

POTATOES: TOTAL STOCKS HELD BY GROWERS AND LOCAL DEALERS ON DEC 1, JAN 1,  
FEB 1, MAR 1, AND APR 1, IN THE 24 FALL STATES, CROPS OF 1973 AND 1974 <sup>1/</sup>

STATE	CROP OF 1973					CROP OF 1974				
	DEC 1	JAN 1	FEB 1	MAR 1	APR 1	DEC 1	JAN 1	FEB 1	MAR 1	APR 1
	1,000 CWT					1,000 CWT				
CALIF	3,500	2,850	2,000	1,400	820	3,950	3,200	2,350	1,800	1,300
COLO	5,550	4,550	3,350	2,500	1,700	6,300	5,350	4,300	3,400	2,350
CONN	3/202	2/	2/	2/	2/	3/470	3/235	120	2/	2/
IDAHO	55,500	49,000	41,000	33,500	26,000	58,000	52,500	46,500	40,000	32,000
IND	230	130	90	70	2/	235	145	75	2/	2/
MAINE	21,300	18,500	15,500	12,900	9,300	29,100	25,800	21,500	17,100	13,000
MASS	345	2/	2/	2/	2/	515	330	185	2/	2/
MICH	4,300	3,300	2,500	1,700	900	4,500	3,400	2,500	1,800	1,200
MINN	9,500	7,900	6,000	4,100	2,300	11,700	10,500	8,100	5,300	3,200
MONT	1,400	1,350	1,300	1,200	800	1,500	1,450	1,430	1,400	1,200
NEBR	640	550	440	310	200	750	600	475	375	225
N H	50	2/	2/	2/	2/	80	65	2/	2/	2/
N Y - LONG ISLAND	1,900	1,500	900	500	200	3,000	2,100	1,200	600	200
- UPSTATE	3,100	2,400	1,700	1,000	600	4,200	3,300	2,400	1,600	900
N DAK	13,000	10,600	8,250	5,500	3,200	16,700	13,800	10,250	7,400	4,750
OHIO	850	600	350	200	100	1,100	800	550	300	150
OREG	6,950	5,850	4,670	3,400	2,445	9,300	7,600	6,260	4,920	3,375
PA	3,300	2,450	1,600	1,050	500	4,150	3,300	2,365	1,568	767
R I	3/	2/	2/	2/	2/	3/	3/	2/	2/	2/
S DAK	450	350	160	2/	2/	320	300	170	140	2/
UTAH	800	580	400	230	2/	1,040	820	570	240	100
VT	120	2/	2/	2/	2/	150	120	2/	2/	2/
WASH	18,600	15,600	12,600	9,100	5,500	22,500	20,500	16,800	12,800	8,900
WIS	5,500	4,600	3,200	2,100	900	7,100	5,900	4,500	2,600	1,700
WYO	750	530	330	170	2/	1,275	980	670	430	290
OTHER STATES		475	275	235	405			155	343	298
TOTAL 24 FALL STATES	157,837	133,665	106,615	81,165	55,870	187,935	163,095	133,425	104,116	75,905

<sup>1/</sup> TOTAL STOCKS CONSIST OF "PRODUCTION LESS TOTAL DISAPPEARANCE TO DATE". <sup>2/</sup> INCLUDED IN "OTHER STATES".  
<sup>3/</sup> R I STOCKS INCLUDED IN CONN.



POTATOES: TOTAL STOCKS HELD BY GROWERS AND LOCAL DEALERS ON DEC 1, JAN 1,  
FEB 1, MAR 1, AND APR 1, IN THE 24 FALL STATES, CROP OF 1975 1/

STATE	CROP OF 1975				
	DEC 1	JAN 1	FEB 1	MAR 1	APR 1
	1,000 CWT				
CALIF	4,400	3,400	2,450	1,950	1,300
COLO	6,150	5,050	3,850	3,000	1,950
CONN	240	3/145	2/	2/	2/
IDAHO	63,000	56,500	50,000	43,000	34,000
IND	360	220	130	95	60
MAINE	21,400	19,000	16,400	13,700	9,400
MASS	455	335	165	2/	2/
MICH	3,800	2,900	1,900	1,300	800
MINN	8,000	6,400	5,400	3,700	1,900
MONT	1,610	1,570	1,500	1,470	1,190
NEBR	950	820	640	480	240
N H	60	50	2/	2/	2/
N Y - LONG ISLAND	2,750	2,000	1,250	700	240
- UPSTATE	3,300	2,600	1,900	1,300	900
N DAK	12,800	10,400	7,900	5,400	2,500
OHIO	1,000	700	450	250	150
OREG	13,500	11,800	9,800	7,300	4,150
PA	3,660	2,780	1,870	1,300	650
R I	130	3/	2/	2/	2/
S DAK	440	310	190	100	70
UTAH	1,160	810	570	300	170
VT	150	100	2/	2/	2/
WASH	27,900	24,100	19,900	15,000	10,000
WIS	7,500	6,200	4,500	3,000	1,600
WYO	1,250	950	750	520	300
OTHER STATES			170	185	70
TOTAL 24 FALL STATES	185,965	159,140	131,685	104,050	71,640

1/ TOTAL STOCKS CONSIST OF "PRODUCTION LESS TOTAL DISAPPEARANCE TO DATE". 2/ INCLUDED IN "OTHER STATES". 3/ R I STOCKS INCLUDED IN CONN.

POTATOES: UTILIZATION OF THE 1969-1975 CROPS, U S

UTILIZATION ITEMS	1969 CROP	1970 CROP	1971 CROP	1972 CROP	1973 CROP	1974 CROP	1975 CROP
	1,000 CWT						
A. SALES							
1. TABLE STOCK	127,586	129,480	120,251	111,717	107,550	125,624	114,355
2. FOR PROCESSING							
A. CHIPS AND SHOESTRING	35,459	35,861	35,376	34,578	34,485	32,777	34,107
B. DEHYDRATION	25,483	26,053	27,021	27,450	31,407	34,660	33,821
C. FROZEN FRENCH FRIES	44,654	54,478	54,667	56,126	60,349	69,206	70,641
D. OTHER FROZEN PRODUCTS	6,899	7,381	8,884	7,901	9,564	9,218	9,334
E. CANNED POTATOES	2,066	2,367	2,556	2,118	2,664	2,561	1,946
F. OTHER CANNED PRODUCTS: (HASH, STEWS, SOUPS)	1,750	1,870	2,014	2,183	2,544	2,052	2,075
G. STARCH AND FLOUR	8,801	8,564	7,792	3,363	2,731	3,683	2,182
TOTAL	125,112	136,574	138,310	133,719	143,744	154,157	154,106
3. OTHER SALES							
A. LIVESTOCK FEED	9,620	8,301	7,184	5,025	3,707	4,154	4,300
B. SEED	17,644	17,554	16,748	17,989	20,120	19,442	20,697
TOTAL	27,264	25,855	23,932	23,014	23,837	23,596	24,997
TOTAL SALES	279,962	291,909	282,493	268,450	275,121	303,377	293,461
B. NONSALES							
1. SEED USED ON FARMS							
WHERE GROWN	6,848	7,001	5,542	5,567	5,137	4,413	4,946
2. HOUSEHOLD USE	1,544	1,395	1,335	1,252	925	864	829
3. FEED	1,567	1,561	2,050	1,094	454	1,245	837
4. SHRINKAGE AND LOSS	22,657	23,850	27,909	19,996	18,376	32,496	22,181
TOTAL NON-SALES	32,616	33,807	36,836	27,909	24,892	39,018	28,793
TOTAL PRODUCTION	312,578	325,716	319,329	296,359	300,013	342,395	322,254

POTATOES: NUMBER OF POTATO CHIP PLANTS AND QUANTITY USED FOR CHIPPING BY AREAS AND U S AND QUANTITY USED FOR SHOESTRING POTATOES, U S, JULY 1 - JUNE 30, 1969 - 1975 CROPS

AREA	: JUL 1, : : 1969 : PLANTS: TO		: JUL 1, : : 1970 : PLANTS: TO		: JUL 1, : : 1971 : PLANTS: TO		: JUL 1, : : 1972 : PLANTS: TO		: JUL 1, : : 1973 : PLANTS: TO		: JUL 1, : : 1974 : PLANTS: TO		: JUL 1, : : 1975 : PLANTS: TO	
	NUMBER	1,000 CWT	NUMBER	1,000 CWT	NUMBER	1,000 CWT	NUMBER	1,000 CWT	NUMBER	1,000 CWT	NUMBER	1,000 CWT	NUMBER	1,000 CWT
NEW ENGLAND: ME, N H, VT, MASS, R I, CONN	21	1,759	21	1,841	21	1,982	19	2,063	18	2,070	18	1,902	18	1,795
EASTERN: DEL, MD, N J, N Y, PA, VA, D C	69	8,457	66	8,199	64	8,097	58	7,437	55	8,000	51	7,045	46	7,497
NORTH CENTRAL: MICH, OHIO, W VA	53	4,458	48	4,187	46	4,642	42	4,223	36	3,746	36	3,822	36	3,923
MID-CENTRAL: KANS, MO, NEBR	19	1,764	18	1,772	19	1,887	19	1,975	17	1,896	15	1,767	15	2,061
MIDWEST: ILL, IND, IOWA, MINN, S D, N D, WIS	45	5,431	42	5,459	38	5,531	35	4,971	34	4,831	33	4,288	34	4,761
SOUTHEAST: ALA, FLA, GA, KY, LA, MISS, N C, S C, TENN	28	4,808	29	4,910	30	4,984	31	5,218	32	5,053	29	4,687	26	4,986
SOUTHWEST: ARK, TEX, OKLA	22	2,398	17	2,412	17	2,292	14	2,293	13	2,734	11	2,182	9	2,272
ROCKY MOUNTAINS: COLO, IDAHO, MONT, N MEX, UTAH, WYO	18	1,265	16	1,163	17	1,173	16	1,237	12	1,204	12	1,233	8	1,385
WEST COAST: ARIZ, CALIF, NEV, OREG, WASH, HAW	20	4,681	21	4,340	20	1/4,524	27	4,371	25	4,387	23	5,274	21	4,626
TOTAL	295	35,061	278	34,283	272	35,112	261	33,788	242	33,921	228	32,200	213	33,306
SHOESTRINGS		1,060		774		679		759		778		780		801
TOTAL USED FOR CHIPS AND SHOESTRINGS		36,121		35,057		35,791		34,547		34,699		32,980		34,107

1/ EXCLUDES HAWAII.

POTATOES, ALASKA: AREA, YIELD, PRODUCTION, FARM DISPOSITION, SEASON AVERAGE PRICE RECEIVED BY FARMERS, AND VALUE, 1969 - 1975 CROPS

CROP YEAR	AREA			YIELD PER ACRE	PRODUCTION	FARM DISPOSITION					VALUE OF --	
	PLANTED	HARVESTED	ACRES			TOTAL USED FOR SEED 1/	USED ON FARM WHERE GROWN	FOR SEED 2/	SHRINKAGE AND LOSS	SOLD	PRICE PER CWT.	PRODUCTION
	ACRES		CWT		1,000 CWT				DOLLARS		1,000 DOLLARS	
1969	690	620	115	71.3	8.1	7.4	7.8	56.1	5.30	378	297	
1970	720	610	175	106.8	7.4	8.4	25.6	72.8	6.60	705	480	
1971	690	630	175	110.3	6.4	6.9	31.0	72.4	7.00	772	507	
1972	600	550	180	99.0	6.5	6.5	23.2	69.3	9.50	941	658	
1973	520	500	205	102.5	6.1	5.6	14.4	82.5	11.50	1,179	949	
1974	580	570	159	90.5	5.5	4.7	14.5	71.3	12.40	1,122	884	
1975	550	530	205	108.7	5.3	10.8	19.6	78.3	12.00	1,304	940	

1/ INCLUDES SEED PURCHASED AND SEED USED ON FARMS WHERE GROWN.

2/ CONSISTS OF POTATOES SOLD FOR ALL PURPOSES INCLUDING FOOD, SEED, PROCESSING AND LIVESTOCK FEED.

POTATOES, ALASKA: TOTAL STOCKS HELD BY GROWERS AND LOCAL DEALERS ON DEC 1, JAN 1, FEB 1, MAR 1, APR 1, MAY 1, AND JUNE 1, 1969 - 1975 CROPS 1/

CROP YEAR	DEC 1 CURRENT YEAR	JAN 1 FOLLOWING YEAR	FEB 1 FOLLOWING YEAR	MAR 1 FOLLOWING YEAR	APR 1 FOLLOWING YEAR	MAY 1 FOLLOWING YEAR	JUN 1 FOLLOWING YEAR
	1,000 CWT						
1969	48.8	38.5	32.8	26.6	22.0	19.7	3.5
1970	75.5	66.1	56.2	46.9	35.0	23.9	13.2
1971	83.2	72.0	63.1	54.8	43.3	31.5	17.7
1972	73.0	64.0	52.0	43.5	34.0	17.5	11.0
1973	84.8	77.1	66.9	60.6	50.1	34.1	16.6
1974	65.9	55.6	50.4	45.2	36.6	28.5	15.5
1975	74.2	64.4	54.6	49.7	40.9	31.6	16.8

1/ TOTAL STOCKS CONSIST OF "PRODUCTION LESS TOTAL DISAPPEARANCE TO DATE".

SWEETPOTATOES: AREA, YIELD, PRODUCTION, FARM DISPOSITION,  
SEASON AVERAGE PRICE RECEIVED BY FARMERS, AND VALUE, UNITED STATES, 1955-75

YEAR	ACREAGE		YIELD PER HARVESTED ACRE	PRODUCTION:	FARM DISPOSITION				PRICE PER CWT	VALUE OF --		
	PLANTED	HARVESTED			USED ON FARMS WHERE GROWN					SOLD	PRODUCTION:	SALES
					FOR SEED	FEED, SHRINKAGE AND LOSS	FOR HOUSEHOLD USE					
	1,000 ACRES		CWT		1,000 CWT			DOLLARS	1,000 DOLLARS			
1955	352.0	341.6	63	21,608	673	3,996	4,404	12,535	3.27	72,392	40,947	
1956	281.2	275.8	63	17,381	653	2,506	3,302	10,902	4.01	70,757	43,734	
1957	280.1	273.8	66	18,057	661	3,317	2,959	11,120	4.18	75,964	46,449	
1958	260.7	255.5	69	17,571	692	2,398	2,498	11,983	3.76	67,933	45,021	
1959	266.8	256.6	74	18,865	545	3,332	2,102	12,886	3.25	62,253	41,957	
1960	193.8	190.7	78	14,858	519	1,899	1,711	10,729	4.09	61,358	43,835	
1961	187.4	183.1	79	14,415	591	1,713	1,471	10,640	4.30	61,924	45,759	
1962	207.9	202.6	85	17,120	537	2,512	1,386	12,685	3.54	61,488	44,903	
1963	177.7	170.8	84	14,356	479	1,805	1,049	11,023	4.03	57,835	44,447	
1964	155.6	151.2	86	12,969	579	1,386	843	10,161	5.09	65,980	51,711	
1965	171.8	168.1	92	15,469	598	1,969	738	12,164	4.22	65,472	51,308	
1966	158.6	154.4	89	13,669	541	1,570	632	10,926	4.56	62,554	49,831	
1967	144.1	139.5	97	13,486	574	1,312	572	11,028	4.48	60,412	49,436	
1968	142.5	135.2	99	13,378	624	1,236	489	11,029	4.89	65,562	53,934	

34

YEAR	ACREAGE		YIELD PER HARVESTED ACRE	PRODUCTION:	TOTAL USED FOR SEED <sup>1/</sup>	FARM DISPOSITION			PRICE PER CWT	VALUE OF --		
	PLANTED	HARVESTED				USED ON FARM WHERE GROWN:				SOLD	PRODUCTION:	SALES
						FOR SEED, FEED, AND HOUSEHOLD USE:	SHRINKAGE AND LOSS					
	1,000 ACRES		CWT		1,000 CWT			DOLLARS	1,000 DOLLARS			
1969	141.7	136.4	103	14,070	771	1,642	821	11,607	4.18	59,346	48,568	
1970	132.5	127.3	103	13,164	685	1,520	701	10,943	4.38	57,760	47,947	
1971	118.6	112.6	102	11,494	680	1,309	562	9,623	5.22	60,127	50,245	
1972	115.7	113.3	107	12,170	707	1,223	546	10,401	5.73	69,969	59,631	
1973	116.0	111.6	109	12,156	805	1,323	648	10,185	7.32	89,163	74,548	
1974	121.9	118.1	113	13,339	808	1,298	696	11,345	7.34	98,228	83,236	
1975	120.3	116.9	113	13,225	726	1,317	662	11,246	8.58	113,394	96,442	

<sup>1/</sup> INCLUDES SEED PURCHASED AND SEED USED ON FARMS WHERE GROWN.

SWEETPOTATOES: AREA, YIELD AND PRODUCTION BY STATES, 1969-72 CROPS

STATE	AREA		YIELD	PRODUCTION	AREA		YIELD	PRODUCTION
	PLANTED	HARVESTED	PER HARVESTED ACRE		PLANTED	HARVESTED	PER HARVESTED ACRE	
	1,000 ACRES		CWT	1,000 CWT	1,000 ACRES		CWT	1,000 CWT
	<u>1969</u>				<u>1970</u>			
ALA	5.3	5.3	88	466	4.8	4.8	83	398
ARK	1.9	1.9	75	142	1.7	1.7	80	136
CALIF	8.3	8.3	105	872	5.7	5.7	115	656
GA	8.0	7.5	80	600	7.5	7.0	85	595
LA	45.0	43.0	95	4,085	46.0	42.0	90	3,780
MD	2.7	2.5	130	325	2.1	2.1	140	294
MISS	10.0	10.0	85	850	11.0	11.0	90	990
N J	2.6	2.6	95	247	1.8	1.8	100	180
N C	26.0	26.0	135	3,510	24.0	24.0	150	3,600
S C	3.8	3.8	100	380	2.5	2.5	75	188
TENN	2.8	2.8	105	294	2.8	2.8	95	266
TEX	13.0	12.0	65	780	13.5	13.0	80	1,040
VA	12.3	10.7	142	1,519	9.1	8.9	117	1,041
U S	141.7	136.4	103	14,070	132.5	127.3	103	13,164
	<u>1971</u>				<u>1972</u>			
ALA	5.0	5.0	85	425	4.8	4.8	85	408
ARK	1.6	1.6	80	128	1.5	1.5	85	128
CALIF	5.7	5.7	110	627	5.8	5.8	130	754
GA	7.2	7.0	100	700	7.7	7.2	88	634
LA	40.0	35.0	85	2,975	34.0	33.0	100	3,300
MD	2.1	2.0	150	300	2.0	1.9	155	295
MISS	10.0	10.0	95	950	10.0	10.0	85	850
N J	1.5	1.5	115	173	1.5	1.5	105	158
N C	23.0	23.0	135	3,105	24.0	24.0	150	3,600
S C	2.0	2.0	75	150	2.0	2.0	90	180
TENN	2.3	2.3	90	207	2.3	2.3	90	207
TEX	11.0	10.5	75	788	13.0	12.5	65	813
VA	7.2	7.0	138	966	7.1	6.8	124	843
U S	118.6	112.6	102	11,494	115.7	113.3	107	12,170

SWEETPOTATOES: AREA, YIELD AND PRODUCTION, BY STATES, 1973-75 CROPS

STATE	AREA		YIELD PER HARVESTED ACRE	PRODUCTION	AREA		YIELD PER HARVESTED ACRE	PRODUCTION
	PLANTED	HARVESTED			PLANTED	HARVESTED		
	1,000 ACRES		CWT	1,000 CWT	1,000 ACRES		CWT	1,000 CWT
	<u>1973</u>				<u>1974</u>			
ALA	4.5	4.5	85	383	5.5	5.5	100	550
ARK	1.5	1.5	75	113	1.7	1.7	75	128
CALIF	6.4	6.4	145	928	6.7	6.7	165	1,106
GA	6.6	6.2	95	589	6.9	6.5	120	780
LA	36.0	33.0	90	2,970	34.0	33.0	105	3,465
MD	1.9	1.8	160	288	1.9	1.8	160	288
MISS	9.5	9.5	100	950	9.0	9.0	90	810
N J	1.6	1.6	105	168	2.0	2.0	120	240
N C	25.0	25.0	135	3,375	30.0	29.0	125	3,625
S C	2.0	2.0	80	160	2.5	2.5	91	228
TENN	3.2	3.2	95	304	3.0	3.0	90	270
TEX	10.0	9.5	90	855	11.0	10.0	85	850
VA	7.8	7.4	145	1,073	7.7	7.4	135	999
U S	116.0	111.6	109	12,156	121.9	118.1	113	13,339
	<u>1975</u>							
ALA	5.8	5.8	90	522				
ARK	1.5	1.5	80	120				
CALIF	7.3	7.3	140	1,022				
GA	6.4	6.0	125	750				
LA	31.0	30.0	85	2,550				
MD	1.9	1.8	170	306				
MISS	9.5	9.5	95	903				
N J	2.2	2.2	110	242				
N C	32.0	31.0	135	4,185				
S C	2.3	2.3	87	200				
TENN	3.0	3.0	100	300				
TEX	10.5	10.0	115	1,150				
VA	6.9	6.5	150	975				
U S	120.3	116.9	113	13,225				

SWEETPOTATOES: PRODUCTION, FARM DISPOSITION, SEASON AVERAGE PRICE RECEIVED  
BY FARMERS, AND VALUE, BY STATES

STATE	PRODUCTION	TOTAL USED FOR SEED 1/ 1,000 CWT	FARM DISPOSITION			PRICE PER CWT DOLLARS	VALUE OF --		
			USED ON FARMS WHERE GROWN:				SOLD	PRODUCTION	SALES
			FOR SEED	SHRINKAGE FOR FEED, AND HOUSEHOLD USE:	AND LOSS				
<b>1969</b>									
ALA	466	15	96	42	328	5.18	2,414	1,699	
ARK	142	5	39	8	95	5.22	741	496	
CALIF	872	29	30	61	781	7.18	6,261	5,608	
GA	600	28	66	45	489	6.98	4,188	3,413	
LA	4,085	322	366	123	3,596	3.03	12,378	10,896	
MD	325	8	13	11	301	3.20	1,040	963	
MISS	850	61	113	42	695	5.05	4,293	3,510	
N J	247	7	8	22	217	5.10	1,260	1,107	
N C	3,510	144	562	228	2,720	3.91	13,724	10,635	
S C	380	10	85	42	253	5.71	2,170	1,445	
TENN	294	11	58	21	215	5.60	1,646	1,204	
TEX	780	81	104	54	622	6.46	5,039	4,018	
VA	1,519	50	102	122	1,295	2.76	4,192	3,574	
U S	14,070	771	1,642	821	11,607	4.18	59,346	48,568	
<b>1970</b>									
ALA	398	16	86	26	286	6.35	2,527	1,816	
ARK	136	5	38	9	89	4.51	613	401	
CALIF	656	29	23	43	590	11.10	7,282	6,549	
GA	595	22	61	36	498	6.68	3,975	3,327	
LA	3,780	280	365	189	3,226	2.36	8,921	7,613	
MD	294	8	12	12	270	3.85	1,132	1,040	
MISS	990	55	140	54	796	4.94	4,891	3,932	
N J	180	6	11	18	151	6.60	1,188	997	
N C	3,600	138	529	180	2,891	4.15	14,940	11,998	
S C	188	8	43	11	134	5.63	1,058	754	
TENN	266	9	57	11	198	5.62	1,495	1,113	
TEX	1,040	66	97	70	873	5.89	6,126	5,142	
VA	1,041	43	58	42	941	3.47	3,612	3,265	
U S	13,164	685	1,520	701	10,943	4.38	57,760	47,947	
<b>1971</b>									
ALA	425	17	78	23	324	5.96	2,533	1,931	
ARK	128	5	37	8	83	4.83	618	401	
CALIF	627	29	25	41	561	11.60	7,273	6,508	
GA	700	24	75	56	569	6.90	4,830	3,926	
LA	2,975	238	278	119	2,578	3.85	11,454	9,925	
MD	300	8	13	12	275	4.75	1,425	1,306	
MISS	950	55	117	57	776	4.88	4,636	3,787	
N J	173	6	6	15	152	7.10	1,228	1,079	
N C	3,105	144	405	124	2,576	4.62	14,345	11,901	
S C	150	8	31	9	110	6.83	1,025	751	
TENN	207	9	61	11	135	5.92	1,225	799	
TEX	788	91	121	48	619	7.00	5,516	4,333	
VA	966	46	62	39	865	4.16	4,019	3,598	
U S	11,494	680	1,309	562	9,623	5.22	60,127	50,245	
<b>1972</b>									
ALA	408	16	74	29	305	6.75	2,754	2,059	
ARK	128	5	37	8	83	7.45	954	618	
CALIF	754	32	29	41	684	11.30	8,520	7,729	
GA	634	20	61	39	534	7.85	4,977	4,192	
LA	3,300	252	304	106	2,890	4.05	13,365	11,705	
MD	295	8	11	12	272	5.25	1,549	1,428	
MISS	850	57	108	30	712	5.65	4,803	4,023	
N J	158	10	10	12	136	9.70	1,533	1,319	
N C	3,600	150	347	137	3,116	5.25	18,900	16,359	
S C	180	8	30	14	136	8.25	1,485	1,122	
TENN	207	13	55	13	139	6.15	1,273	855	
TEX	813	70	85	73	655	7.25	5,894	4,749	
VA	843	66	72	32	739	4.70	3,962	3,473	
U S	12,170	707	1,223	546	10,401	5.73	69,969	59,631	

1/ INCLUDES SEED PURCHASED AND SEED USED ON FARMS WHERE GROWN.



SWEETPOTATOES: PRODUCTION, FARM DISPOSITION, SEASON AVERAGE PRICE RECEIVED BY FARMERS AND VALUE, BY STATES

STATE	PRODUCTION	TOTAL	FARM DISPOSITION			PRICE PER CWT	VALUE OF --	
		USED FOR SEED 1/	USED ON FARMS WHERE GROWN FOR SEED, FEED, AND HOUSEHOLD USE	SHRINKAGE AND LOSS	SOLD		PRODUCTION	SALES
			1,000 CWT			DOLLARS	1,000 DOLLARS	
1973								
ALA	383	20	81	29	273	9.35	3,581	2,553
ARK	113	5	35	7	71	8.20	927	582
CALIF	928	34	31	51	846	10.80	10,022	9,137
GA	589	21	56	48	485	10.40	6,126	5,044
LA	2,970	272	273	143	2,554	4.95	14,702	12,642
MD	288	8	11	12	265	8.00	2,304	2,120
MISS	950	54	120	45	785	8.30	7,885	6,516
N J	168	11	10	27	131	11.70	1,966	1,533
N C	3,375	180	453	169	2,753	6.40	21,600	17,619
S C	160	10	31	10	119	10.40	1,664	1,238
TENN	304	14	51	19	234	8.95	2,721	2,094
TEX	855	99	97	47	711	9.85	8,422	7,003
VA	1,073	77	74	41	958	6.75	7,243	6,467
U S	12,156	805	1,323	648	10,185	7.32	89,163	74,548
1974								
ALA	550	23	103	44	403	9.20	5,060	3,708
ARK	128	5	35	8	85	7.20	922	612
CALIF	1,106	37	33	40	1,033	10.70	11,834	11,053
GA	780	16	66	41	673	10.40	8,112	6,999
LA	3,465	217	247	107	3,111	4.60	15,939	14,311
MD	288	10	13	12	263	7.55	2,174	1,986
MISS	810	62	112	54	644	8.60	6,966	5,538
N J	240	12	10	19	211	11.50	2,760	2,427
N C	3,625	256	436	236	2,953	6.60	23,925	19,490
S C	228	12	40	17	171	9.85	2,246	1,684
TENN	270	17	53	19	198	8.45	2,282	1,673
TEX	850	75	79	59	712	10.90	9,265	7,761
VA	999	66	71	40	888	6.75	6,743	5,994
U S	13,339	808	1,298	696	11,345	7.34	98,228	83,236
1975								
ALA	522	22	74	57	391	11.20	5,846	4,379
ARK	120	5	32	8	80	8.90	1,068	712
CALIF	1,022	38	34	43	945	12.00	12,264	11,340
GA	750	16	59	43	648	12.40	9,300	8,035
LA	2,550	180	210	107	2,233	5.25	13,388	11,723
MD	306	11	14	12	280	9.15	2,800	2,562
MISS	903	48	111	63	729	9.30	8,398	6,780
N J	242	12	13	12	217	12.50	3,025	2,713
N C	4,185	214	516	176	3,493	7.25	30,341	25,324
S C	200	10	32	9	159	10.70	2,140	1,701
TENN	300	15	52	22	226	8.55	2,565	1,932
TEX	1,150	77	94	75	981	12.70	14,605	12,459
VA	975	78	76	35	864	7.85	7,654	6,782
U S	13,225	726	1,317	662	11,246	8.58	113,394	96,442

1/ INCLUDES SEED PURCHASED AND SEED USED ON FARMS WHERE GROWN.

**END**