



**AgEcon** SEARCH  
RESEARCH IN AGRICULTURAL & APPLIED ECONOMICS

*The World's Largest Open Access Agricultural & Applied Economics Digital Library*

**This document is discoverable and free to researchers across the globe due to the work of AgEcon Search.**

**Help ensure our sustainability.**

Give to AgEcon Search

AgEcon Search

<http://ageconsearch.umn.edu>

[aesearch@umn.edu](mailto:aesearch@umn.edu)

*Papers downloaded from **AgEcon Search** may be used for non-commercial purposes and personal study only. No other use, including posting to another Internet site, is permitted without permission from the copyright owner (not AgEcon Search), or as allowed under the provisions of Fair Use, U.S. Copyright Act, Title 17 U.S.C.*

*No endorsement of AgEcon Search or its fundraising activities by the author(s) of the following work or their employer(s) is intended or implied.*

SB 508 (1973)

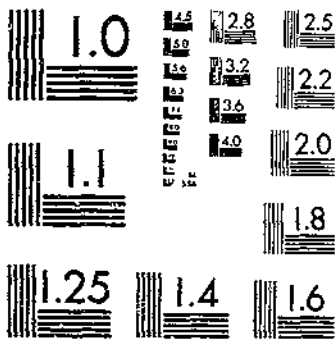
USDA STATISTICAL BULLETINS

UPDATA

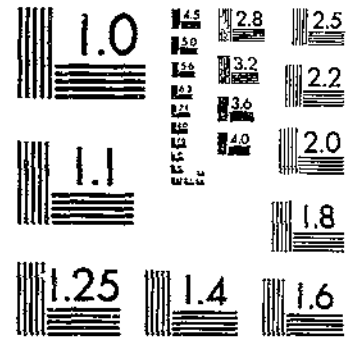
STOCKS OF GRAIN, OILSEEDS, AND HAY, REVISED ESTIMATES BY STATES

1 OF 1

# START



MICROCOPY RESOLUTION TEST CHART  
NATIONAL BUREAU OF STANDARDS-1963-A



MICROCOPY RESOLUTION TEST CHART  
NATIONAL BUREAU OF STANDARDS-1963-A

R  
630.5  
U53-18

#508

Sci



# stocks of grain, oilseeds, and hay

REVISED ESTIMATES  
BY STATES, 1964-70

REFERENCE  
DO NOT LOAN

▪ Farm and Off-Farm Stocks

DEPOSITOR

FEB 22 1973

Los Angeles Public Library

Statistical Bulletin No. 508

January 1973

CROP REPORTING BOARD

STATISTICAL REPORTING SERVICE • U.S. DEPARTMENT OF AGRICULTURE • WASHINGTON, D.C.

CONTENTS

UNITED STATES		BY STATES	
	PAGE		PAGE
ALL WHEAT	4	ALL WHEAT	9
DURUM WHEAT	4	RYE	13
RYE	5	CORN	17
CORN	5	OATS	21
OATS	6	BARLEY	25
BARLEY	6	SORGHUM	29
SORGHUM	7	FLAXSEED	33
FLAXSEED	7	SOYBEANS	35
SOYBEANS	8	ALL HAY	39
ALL HAY	8		

## STOCKS OF GRAIN, OILSEEDS, AND HAY

### Revised Estimates by States, 1964-70 Farm and Off-Farm Stocks

Estimates of farm, off-farm, and total stocks of corn, all wheat, durum wheat, oats, barley, rye, flaxseed, soybeans, and sorghum grain and of farm stocks of hay have been revised in conformance with revised production estimates for the crop seasons 1964 through 1970. All stocks data are obtained on a position basis, without regard to ownership.

For the United States, stocks for each quarterly date are shown in chronological order for farm and off-farm positions. Stocks located in off-farm storages are published under the classifications of Commodity Credit Corporation, and mills, elevators, and warehouses. The category of mills, elevators, and warehouses covers all off-farm storages not otherwise designated, including terminals and oilseed processing plants.

Stocks of grains owned by the Commodity Credit Corporation (CCC), and stored in various positions, are included in the data for the position. CCC owns additional quantities of grains held in its own bins or in storages under its control. These stocks are reported under the heading of Commodity Credit Corporation.

Quarterly and periodic estimates of farm stocks are made by the Crop Reporting Board in the form of percentages of production; that is, the quantities of each commodity on farms as a percentage of the previous season's production. These percentages are converted to quantities by applying them to the appropriate estimated production.

The presentation of the off-farm stocks data is similar to the quarterly reports, inasmuch as these tables are largely a reissue of the latest revised quarterly tables. When publication of stock data for any commodity, by States, might disclose operations of an individual firm, an asterisk (\*) is substituted in the table for the data. The sum of such undisclosed data is indicated at the bottom of each column.

A blank in the farm stocks column of the tables indicates States in which production and farm stocks are not included in the estimating program of the Crop Reporting Board, or in which stocks amount to less than 0.1 percent of production. It is also used in the off-farm columns to indicate less than 500 bushels.

TABLE 1 ALL WHEAT - STOCKS BY POSITIONS, UNITED STATES, QUARTERLY, 1964-70

YEAR	QUARTER	ON FARMS	COMMODITY CREDIT CORPORATION 1/	OFF FARMS MILLS, ELEVATORS AND WAREHOUSES 2/	TOTAL OFF FARMS	TOTAL ALL POSITIONS
1,000 BUSHELS						
1964	OCTOBER 1	503,656	12,586	1,293,069	1,305,655	1,809,311
1965	JANUARY 1	389,672	11,134	1,048,487	1,059,621	1,449,293
	APRIL 1	263,450	10,577	871,180	881,757	1,145,207
	JULY 1	132,515	11,049	673,691	684,740	817,255
	OCTOBER 1	558,314	10,818	1,134,884	1,145,702	1,704,016
1966	JANUARY 1	405,337	10,650	920,026	930,676	1,336,013
	APRIL 1	255,593	10,467	651,276	661,743	917,376
	JULY 1	130,774	9,521	394,878	404,399	535,173
	OCTOBER 1	537,841	7,661	888,690	896,351	1,434,192
1967	JANUARY 1	406,879	3,926	636,651	640,577	1,047,456
	APRIL 1	237,852	1,539	459,831	461,370	699,222
	JULY 1	144,890	997	278,528	279,525	424,415
	OCTOBER 1	601,522	969	953,698	954,667	1,556,189
1968	JANUARY 1	505,227	761	703,729	704,490	1,209,717
	APRIL 1	361,015	751	476,339	477,090	838,105
	JULY 1	229,548	749	308,251	309,000	538,548
	OCTOBER 1	727,772	756	950,789	951,545	1,679,317
1969	JANUARY 1	576,932	758	763,660	764,418	1,341,350
	APRIL 1	460,476	759	648,221	648,980	1,109,456
	JULY 1	325,906	790	489,964	490,754	816,660
	OCTOBER 1	752,200	913	1,119,311	1,120,224	1,872,424
1970	JANUARY 1	609,443	941	922,434	923,375	1,532,818
	APRIL 1	456,499	944	739,803	740,747	1,197,246
	JULY 1	306,902	1,219	576,561	577,780	884,682

SEE FOOTNOTES ON PAGE 8.

DURUM WHEAT - STOCKS BY POSITIONS, UNITED STATES, QUARTERLY, 1964-70 3/

YEAR	QUARTER	ON FARMS	COMMODITY CREDIT CORPORATION 1/	OFF FARMS MILLS, ELEVATORS AND WAREHOUSES 2/	TOTAL OFF FARMS	TOTAL ALL POSITIONS
1,000 BUSHELS						
1964	JANUARY 1	46,968	4,226	28,134	32,360	79,328
	APRIL 1	10,846	1,879	48,735	50,614	61,460
	JULY 1	1,791	1,664	37,514	39,178	40,969
	OCTOBER 1	57,043	1,665	45,670	47,335	104,378
1965	JANUARY 1	47,873	1,665	44,835	46,500	94,373
	APRIL 1	39,921	1,665	40,548	42,213	82,134
	JULY 1	19,519	1,805	46,444	48,249	67,768
	OCTOBER 1	75,997	1,931	46,450	48,387	124,384
1966	JANUARY 1	57,608	1,911	40,491	42,402	100,010
	APRIL 1	48,953	1,898	32,396	34,294	83,287
	JULY 1	24,029	1,686	28,702	30,388	54,417
	OCTOBER 1	61,896	1,123	32,683	33,806	95,702
1967	JANUARY 1	39,769	315	24,027	24,342	64,111
	APRIL 1	28,617	281	16,365	16,646	45,263
	JULY 1	18,349	151	10,379	10,530	28,879
	OCTOBER 1	58,269	151	19,324	19,475	77,744
1968	JANUARY 1	49,015	170	14,168	14,338	63,353
	APRIL 1	32,891	170	13,216	13,386	46,277
	JULY 1	18,181	170	5,973	6,143	24,324
	OCTOBER 1	90,938	169	18,282	18,451	109,389
1969	JANUARY 1	64,949	138	20,892	21,030	85,979
	APRIL 1	50,724	138	17,291	17,429	68,153
	JULY 1	29,626	154	11,428	11,582	41,208
	OCTOBER 1	167,938	172	23,015	23,187	131,125
1970	JANUARY 1	92,460	156	20,129	20,285	112,745
	APRIL 1	81,498	157	16,284	16,441	97,939
	JULY 1	63,140	161	17,423	17,584	80,724

SEE FOOTNOTES ON PAGE 8.

TABLE 3. RYE - STOCKS BY POSITIONS, UNITED STATES, QUARTERLY, 1965-70

YEAR	QUARTER	ON FARMS	COMMODITY CREDIT CORPORATION 1/	OFF FARMS MILLS, ELEVATORS AND WAREHOUSES 2/	TOTAL OFF FARMS	TOTAL ALL POSITIONS
1,000 BUSHELS						
1964	OCTOBER 1	17,741	111	11,384	11,495	29,236
1965	JANUARY 1	11,340	69	9,574	9,643	20,983
	APRIL 1	9,216	68	8,082	8,150	17,366
	JULY 1	2,438	167	10,048	10,215	12,653
	OCTOBER 1	18,223	582	17,240	17,822	36,045
1966	JANUARY 1	13,136	585	15,092	15,677	28,813
	APRIL 1	9,938	585	14,284	14,869	24,807
	JULY 1	3,949	612	14,444	15,056	19,005
	OCTOBER 1	15,536	683	21,505	22,188	37,724
1967	JANUARY 1	9,552	605	18,216	18,821	28,373
	APRIL 1	7,532	559	16,197	16,756	24,288
	JULY 1	3,580	323	14,574	15,097	18,677
	OCTOBER 1	12,240	474	20,524	20,998	33,238
1968	JANUARY 1	8,652	425	18,585	19,010	27,662
	APRIL 1	6,756	426	15,981	16,407	23,163
	JULY 1	3,724	419	13,869	14,288	18,012
	OCTOBER 1	13,250	419	17,895	18,314	31,564
1969	JANUARY 1	8,770	419	15,006	15,425	24,195
	APRIL 1	5,841	419	13,678	14,097	19,938
	JULY 1	1,990	418	13,549	13,967	15,957
	OCTOBER 1	15,598	412	21,534	21,946	37,544
1970	JANUARY 1	10,610	413	18,316	18,729	29,339
	APRIL 1	7,321	413	16,568	16,981	24,302
	JULY 1	2,766	421	17,912	18,333	21,099

SEE FOOTNOTES ON PAGE 8.

TABLE 4. CORN - STOCKS BY POSITIONS, UNITED STATES, QUARTERLY, 1965-70

YEAR	QUARTER	ON FARMS	COMMODITY CREDIT CORPORATION 1/	OFF FARMS MILLS, ELEVATORS AND WAREHOUSES 2/	TOTAL OFF FARMS	TOTAL ALL POSITIONS
1,000 BUSHELS						
1965	JANUARY 1	2,737,489	418,165	719,227	1,137,392	3,874,881
	APRIL 1	1,266,476	384,223	554,540	938,763	2,805,239
	JULY 1	1,243,125	330,348	319,984	650,332	1,893,457
	OCTOBER 1	581,498	307,608	257,985	565,593	1,147,091
1966	JANUARY 1	3,066,601	296,291	657,184	956,475	4,053,076
	APRIL 1	2,129,392	262,073	478,469	740,542	2,869,934
	JULY 1	1,327,409	184,728	274,556	459,284	1,786,692
	OCTOBER 1	531,157	134,369	176,169	310,538	841,695
1967	JANUARY 1	2,928,817	108,491	670,128	778,619	3,707,436
	APRIL 1	2,063,306	98,279	572,811	671,090	2,734,396
	JULY 1	1,348,923	57,690	307,993	405,683	1,754,606
	OCTOBER 1	572,233	97,571	156,504	254,075	826,308
1968	JANUARY 1	3,453,956	97,846	768,215	866,061	4,320,017
	APRIL 1	2,433,095	97,870	712,076	809,946	3,243,041
	JULY 1	1,670,424	97,735	432,793	530,578	2,201,002
	OCTOBER 1	768,195	103,312	277,181	380,493	1,168,688
1969	JANUARY 1	3,310,694	149,156	308,765	957,921	4,268,615
	APRIL 1	2,244,312	148,952	669,173	818,165	3,062,477
	JULY 1	1,458,287	145,982	436,615	582,597	2,080,881
	OCTOBER 1	722,270	143,319	242,806	386,125	1,118,395
1970	JANUARY 1	3,268,890	144,243	848,894	993,137	4,262,027
	APRIL 1	2,263,432	135,285	632,542	767,827	3,031,259
	JULY 1	1,425,733	117,822	401,740	519,562	1,945,295
	OCTOBER 1	575,630	111,267	318,306	429,593	1,005,223

SEE FOOTNOTES ON PAGE 8.



TABLE 5. OATS - STOCKS BY POSITIONS, UNITED STATES, QUARTERLY, 1965-70

YEAR	QUARTER	ON FARMS	COMMODITY CREDIT CORPORATION 1/	OFF FARMS MILLS, ELEVATORS AND WAREHOUSES 2/	TOTAL OFF FARMS	TOTAL ALL POSITIONS
1,000 BUSHEL						
1965	JANUARY 1	604,469	5,757	82,017	87,774	692,243
	APRIL 1	385,534	5,544	65,506	71,050	460,584
	JULY 1	213,738	6,520	56,250	62,770	276,508
	OCTOBER 1	782,038	9,403	129,210	138,613	920,651
1966	JANUARY 1	661,263	9,406	93,199	102,605	763,868
	APRIL 1	449,217	9,388	77,870	87,258	536,475
	JULY 1	241,215	9,353	66,107	75,460	316,675
	OCTOBER 1	678,804	9,636	146,614	156,250	835,054
1967	JANUARY 1	557,581	7,232	97,878	105,110	662,691
	APRIL 1	355,033	6,864	81,031	87,895	442,928
	JULY 1	159,294	6,664	64,682	71,346	270,640
	OCTOBER 1	650,631	6,674	128,996	135,670	786,301
1968	JANUARY 1	552,694	6,668	97,710	104,378	656,472
	APRIL 1	363,866	6,665	76,869	83,534	447,400
	JULY 1	207,722	6,668	59,843	66,511	274,233
	OCTOBER 1	791,680	6,658	147,997	154,655	946,335
1969	JANUARY 1	668,396	6,656	116,571	123,227	791,623
	APRIL 1	448,085	6,650	102,727	109,377	557,462
	JULY 1	278,688	6,664	93,285	99,949	378,637
	OCTOBER 1	847,091	7,884	185,844	193,728	1,040,819
1970	JANUARY 1	735,845	7,965	153,021	160,986	896,831
	APRIL 1	541,049	7,914	136,730	144,644	685,693
	JULY 1	352,783	8,032	137,780	145,812	498,595
	OCTOBER 1	859,136	11,318	234,974	246,292	1,105,428

SEE FOOTNOTES ON PAGE 8.

TABLE 6. BARLEY - STOCKS BY POSITIONS, UNITED STATES, QUARTERLY, 1965-70

YEAR	QUARTER	ON FARMS	COMMODITY CREDIT CORPORATION 1/	OFF FARMS MILLS, ELEVATORS AND WAREHOUSES 2/	TOTAL OFF FARMS	TOTAL ALL POSITIONS
1,000 BUSHEL						
1965	OCTOBER 1	247,182	13,075	135,605	148,680	395,862
	JANUARY 1	180,785	8,457	111,396	119,853	300,638
	APRIL 1	101,466	7,615	90,219	97,834	199,300
	JULY 1	38,376	6,503	54,643	61,146	99,522
	OCTOBER 1	244,187	6,384	137,146	143,530	387,717
1966	JANUARY 1	184,763	6,058	110,240	116,298	301,061
	APRIL 1	99,291	5,769	88,192	93,961	193,242
	JULY 1	46,208	5,232	53,399	58,631	104,839
	OCTOBER 1	246,672	5,118	134,880	139,998	386,670
1967	JANUARY 1	177,746	4,786	110,440	115,226	292,972
	APRIL 1	113,764	4,523	87,717	92,240	206,004
	JULY 1	56,467	4,240	60,558	64,798	121,265
	OCTOBER 1	232,905	4,030	144,870	148,900	381,805
1968	JANUARY 1	184,651	3,902	114,637	118,539	303,190
	APRIL 1	128,747	3,946	85,320	89,266	218,013
	JULY 1	71,241	3,944	62,200	66,144	137,385
	OCTOBER 1	305,574	3,931	147,208	151,139	457,113
1969	JANUARY 1	250,262	3,916	119,982	123,898	374,160
	APRIL 1	185,706	3,917	95,117	99,034	284,740
	JULY 1	116,056	3,927	80,682	84,609	200,665
	OCTOBER 1	313,280	4,991	185,803	190,794	504,074
1970	JANUARY 1	217,850	4,915	157,236	162,151	380,001
	APRIL 1	197,072	4,906	128,693	133,599	330,671
	JULY 1	135,246	4,892	95,414	100,306	235,552

SEE FOOTNOTES ON PAGE 8.

TABLE 7. SORGHUMS - STOCKS BY POSITIONS, UNITED STATES, QUARTERLY, 1965-70

YEAR	QUARTER	ON FARMS	COMMODITY CREDIT CORPORATION 1/	OFF FARMS MILLS, ELEVATORS AND WAREHOUSES 2/	TOTAL OFF FARMS	TOTAL ALL POSITIONS
1,000 BUSHELS						
1965	JANUARY 1	154,259	4,549	793,040	797,589	951,848
	APRIL 1	98,010	4,544	665,349	669,893	767,903
	JULY 1	61,565	4,709	590,968	595,677	657,242
	OCTOBER 1	47,442	4,705	513,388	518,093	565,535
1966	JANUARY 1	212,919	4,703	760,439	765,142	978,061
	APRIL 1	133,589	4,721	585,835	590,556	724,145
	JULY 1	71,345	4,784	456,737	461,521	532,866
	OCTOBER 1	50,614	4,722	335,865	340,587	391,201
1967	JANUARY 1	234,170	4,632	582,240	586,872	821,042
	APRIL 1	133,178	4,624	388,688	393,312	526,490
	JULY 1	81,981	4,606	248,947	253,553	335,534
	OCTOBER 1	44,414	4,598	194,888	199,486	243,900
1968	JANUARY 1	212,743	4,572	514,769	519,341	732,084
	APRIL 1	141,921	4,586	370,321	374,907	516,828
	JULY 1	90,536	4,587	272,821	277,408	367,944
	OCTOBER 1	57,463	4,586	226,362	230,948	288,411
1969	JANUARY 1	217,904	4,600	513,764	523,364	741,268
	APRIL 1	127,380	4,598	408,768	413,366	540,746
	JULY 1	81,981	4,593	297,909	302,491	384,478
	OCTOBER 1	51,513	4,583	230,457	235,040	286,953
1970	JANUARY 1	164,644	4,581	498,925	503,506	688,150
	APRIL 1	117,505	4,577	381,318	385,895	503,400
	JULY 1	67,649	5,230	273,688	278,918	346,567
	OCTOBER 1	38,726	5,258	199,977	205,235	243,961

TABLE 8. FLAXSEED - STOCKS BY POSITIONS, UNITED STATES, QUARTERLY, 1965-70

YEAR	QUARTER	ON FARMS	COMMODITY CREDIT CORPORATION 1/	OFF FARMS MILLS, ELEVATORS AND WAREHOUSES 2/	TOTAL OFF FARMS	TOTAL ALL POSITIONS
1,000 BUSHELS						
1964	OCTOBER 1	12,720	2	18,398	18,400	31,120
1965	JANUARY 1	8,571		14,645	14,645	23,216
	APRIL 1	6,540		10,994	10,994	17,534
	JULY 1	2,467		8,460	8,460	10,927
	OCTOBER 1	20,488		14,879	14,879	35,367
1966	JANUARY 1	13,953		18,812	18,812	32,765
	APRIL 1	10,809		15,828	15,828	26,637
	JULY 1	3,449		11,870	11,870	15,319
	OCTOBER 1	9,838	4	18,852	18,856	28,694
1967	JANUARY 1	7,508		14,300	14,300	21,808
	APRIL 1	5,523		13,369	13,369	18,892
	JULY 1	1,399		7,855	7,855	9,254
	OCTOBER 1	8,796		14,549	14,549	23,345
1968	JANUARY 1	6,785		11,424	11,424	18,209
	APRIL 1	4,324		9,027	9,027	13,351
	JULY 1	1,304		5,664	5,664	6,968
	OCTOBER 1	14,764		12,442	12,442	27,206
1969	JANUARY 1	9,041		12,449	12,449	21,490
	APRIL 1	5,978		9,945	9,945	15,923
	JULY 1	2,085		7,706	7,706	9,791
	OCTOBER 1	18,320		20,918	20,918	39,238
1970	JANUARY 1	12,967		18,693	18,693	31,660
	APRIL 1	10,429		17,491	17,491	27,920
	JULY 1	4,481		17,343	17,343	21,824
	OCTOBER 1	15,103		28,270	28,270	43,373

SEE FOOTNOTES ON PAGE 8.

TABLE 9. SOYBEANS - STOCKS BY POSITIONS, UNITED STATES, QUARTERLY, 1965-70

YEAR	QUARTER	ON FARMS	COMMODITY CREDIT CORPORATION 1/	OFF FARMS MILLS, ELEVATORS AND WAREHOUSES 2/	TOTAL OFF FARMS	TOTAL ALL POSITIONS
1,000 BUSHELS						
1964	JANUARY 1	260,422	15	297,495	297,510	557,932
	APRIL 1	190,607	14	185,811	185,825	376,432
	JULY 1	72,599	14	98,202	98,216	170,815
	SEPTEMBER 1	15,144	22	16,745	16,767	31,911
1965	JANUARY 1	190,728	9	334,811	334,820	525,548
	APRIL 1	58,002		249,035	249,035	347,037
	JULY 1	22,982		108,465	108,465	131,447
	SEPTEMBER 1	7,568		22,131	22,131	29,699
1966	JANUARY 1	284,312		334,554	334,554	618,866
	APRIL 1	149,747		225,888	225,888	375,635
	JULY 1	19,155		114,867	114,867	134,022
	SEPTEMBER 1	4,412		31,227	31,227	35,639
1967	JANUARY 1	344,354		377,041	377,041	721,435
	APRIL 1	217,411		240,500	240,500	457,911
	JULY 1	84,611		114,170	114,170	198,781
	SEPTEMBER 1	41,626		48,511	48,511	90,137
1968	JANUARY 1	350,816		432,333	432,333	783,149
	APRIL 1	225,842		301,182	301,182	537,024
	JULY 1	120,742		164,389	164,389	285,131
	SEPTEMBER 1	60,709	29	105,589	105,618	166,327
1969	JANUARY 1	410,168	4,179	546,150	550,329	960,497
	APRIL 1	270,930	4,158	448,185	452,343	729,273
	JULY 1	141,360	4,092	312,723	316,815	458,175
	SEPTEMBER 1	70,551	5,326	249,666	254,992	325,543
1970	JANUARY 1	372,069	15,462	667,963	683,425	1,055,494
	APRIL 1	209,236	14,506	510,495	525,001	734,237
	JULY 1	78,711	13,413	311,263	324,676	403,387
	SEPTEMBER 1	40,580	8,738	180,518	189,256	229,836
1971	JANUARY 1	391,958	4,562	548,450	553,012	944,970
	APRIL 1	247,480	2,411	366,652	369,063	616,543
	JULY 1	90,594	259	190,573	190,832	281,426
	SEPTEMBER 1	20,554	2	78,223	78,225	98,779

TABLE 10. ALL HAY STOCKS ON FARMS, UNITED STATES, QUARTERLY, 1965-70

QUARTERLY	1965	1966	1967	1968	1969	1970
1,000 TONS						
JANUARY 1	79,077	88,609	84,881	88,460	89,678	87,960
MAY 1	16,568	22,720	21,938	24,929	23,664	24,056

- 1/ OWNED BY COMMODITY CREDIT CORPORATION AND STORED IN BINS OR OTHER STORAGES OWNED OR CONTROLLED BY 'C C C'. OTHER 'C C C' OWNED GRAIN IS INCLUDED IN THE ESTIMATES BY POSITION.
- 2/ ALL OF FARM STORAGES NOT OTHERWISE DESIGNATED, INCLUDING FLOUR MILLS, TERMINAL ELEVATORS AND PROCESSING PLANTS.
- 3/ DURUM WHEAT INCLUDED IN ALL WHEAT.
- 4/ SOYBEANS ESTIMATES PRIOR TO 1965 ARE FOR OCTOBER 1 INSTEAD OF SEPTEMBER 1.

TABLE 11. ALL WHEAT - STOCKS BY POSITIONS, BY STATES, QUARTERLY, OCTOBER 1, 1964-69

STATE	1964			1965			1966		
	ON FARMS	OFF FARMS 1/	TOTAL ALL POSITIONS	ON FARMS	OFF FARMS 1/	TOTAL ALL POSITIONS	ON FARMS	OFF FARMS 1/	TOTAL ALL POSITIONS
1,000 BUSHELS									
N ENG		2,289	2,289		1,937	1,937		*	*
N Y	3,045	27,915	30,960	2,190	33,585	35,775	2,611	20,154	22,765
N J	485	722	1,207	351	385	736	400	439	839
PA	6,236	8,639	14,875	4,958	9,354	14,352	5,472	7,510	12,982
OHIO	8,329	35,653	43,982	7,246	27,277	34,523	8,766	37,239	46,005
IND	7,578	14,295	21,873	5,431	10,443	15,874	5,800	14,901	20,701
ILL	8,329	30,533	38,862	7,384	24,751	32,135	9,761	32,156	41,917
MICH	15,070	18,741	33,811	8,469	11,779	20,248	9,754	18,092	27,846
WISC	865	18,365	19,250	757	19,176	19,933	593	22,576	23,169
MINN	10,071	90,136	100,207	13,855	87,048	100,903	13,189	53,084	66,273
ICWA	278	8,382	8,660	126	9,201	9,327	223	7,637	7,860
KC	7,092	33,533	40,625	5,871	29,452	35,323	5,348	26,970	32,318
N DAK	137,476	82,413	219,889	177,915	79,319	257,234	149,308	56,978	206,286
S DAK	35,276	41,552	76,828	35,388	40,537	75,925	35,366	29,438	64,804
NEBR	35,170	54,837	130,007	34,906	57,085	91,989	50,050	47,200	97,250
KANS	58,458	377,026	435,484	61,460	318,649	380,109	58,020	176,014	234,034
DEL	34	63	97	33	149	182	35	70	105
MD	694	7,949	8,643	675	7,270	7,945	580	6,110	6,690
VA	1,247	3,859	5,106	1,148	3,085	4,233	1,349	2,829	4,178
N VA	267	19	306	328	*	*	327	*	*
N C	2,714	3,426	6,142	1,479	2,598	4,077	2,079	2,465	4,544
S C	344	891	1,235	242	788	1,030	198	469	667
GA	581	890	1,471	548	528	1,076	488	589	1,077
FLA	43	2	45	58	*	*	39	*	*
KY	1,229	4,095	5,324	1,183	3,100	4,283	1,272	3,441	4,713
TENN	755	5,196	5,951	700	4,718	5,418	717	4,944	5,661
ALA	160	1,849	2,009	121	1,442	1,563	99	1,563	1,662
MISS	210	1,441	1,651	105	1,004	1,109	301	722	1,023
ARK	552	3,393	3,945	448	1,797	2,445	881	1,174	2,055
LA	198	14,069	14,267	95	9,962	10,057	123	12,617	12,740
OKLA	12,561	87,040	99,601	21,267	91,005	112,272	14,805	63,340	78,145
TEXAS	4,543	107,751	112,294	5,347	91,771	97,118	4,355	66,683	71,042
MCNT	75,002	23,084	98,086	89,548	21,366	110,914	87,731	24,122	111,853
IDAHO	15,107	18,388	33,495	20,149	17,846	37,995	11,101	16,107	27,208
WYO	2,217	1,731	3,948	1,577	1,405	2,982	1,241	1,051	2,292
CALIF	14,341	23,402	37,743	12,481	14,370	26,851	20,829	21,860	42,689
N MEX	305	3,004	3,309	394	3,681	4,075	329	1,483	1,812
ARIZ	79	338	417	82	420	502	74	*	*
UTAH	2,662	7,124	9,786	2,694	6,892	9,586	2,138	7,095	9,233
NEV	656	33	689	607	59	666	524	*	*
WASH	18,445	76,172	88,617	16,349	70,993	87,342	20,549	78,674	99,223
OREG	12,597	21,238	33,835	12,780	22,957	35,737	9,968	24,045	34,013
CALIF	2,315	10,175	12,490	1,329	6,414	7,743	1,044	4,789	5,833
UNALL*					106	492		721	1,685
U S	503,656	1,305,655	1,809,311	558,314	1,145,702	1,704,016	537,841	896,351	1,434,192
1967									
N ENG		18	18		10	10		9	9
N Y	3,257	18,584	21,841	2,918	17,219	20,137	2,710	19,820	22,530
N J	390	474	864	376	282	658	320	645	965
PA	7,430	7,611	15,041	4,680	6,732	11,412	4,473	6,884	11,357
OHIO	8,236	41,562	49,798	8,522	33,312	41,834	6,570	31,871	38,441
IND	6,408	14,640	21,048	5,471	10,885	16,356	4,524	13,317	17,841
ILL	10,074	41,062	51,136	9,217	32,386	41,603	5,805	29,894	35,699
MICH	12,096	21,481	33,577	11,513	15,724	27,237	9,040	15,121	24,161
WISC	886	12,873	13,759	864	11,881	12,745	531	14,936	15,467
MINN	22,981	26,563	59,544	23,767	34,725	58,492	19,480	37,097	56,557
ICWA	215	5,164	5,379	292	4,772	5,064	295	4,579	4,874
KC	7,680	25,148	32,828	7,524	30,829	38,353	7,068	29,536	36,604
N DAK	166,748	58,245	224,993	225,592	55,412	280,994	241,698	47,134	288,832
S DAK	60,591	24,173	84,764	66,912	23,605	90,517	63,902	24,482	88,384
NEBR	39,801	61,590	101,391	59,926	67,747	127,673	55,094	93,021	148,115
KANS	50,973	208,757	259,730	63,382	213,298	276,680	79,383	325,107	404,490
DEL	71	55	126	38	*	*	49	110	159
MD	639	8,266	8,905	480	2,521	3,001	734	2,843	3,577
VA	2,224	3,744	5,968	2,058	3,614	5,672	2,284	3,632	5,916
N VA	533	*	317	317	*	*	305	*	*
N C	2,667	2,807	5,474	3,518	4,035	7,553	2,661	2,599	5,260
S C	534	1,504	2,038	816	1,120	1,934	603	801	1,404
GA	715	1,152	1,867	1,221	730	1,951	555	833	1,392
FLA	48	*	73	73	*	*	53	*	*
KY	2,199	2,643	4,842	2,050	2,745	4,795	1,954	3,057	5,011
TENN	1,147	6,957	8,104	1,376	6,680	8,056	924	5,000	5,924
ALA	215	1,612	1,827	305	1,582	1,887	429	*	*
MISS	223	1,256	1,479	419	605	1,024	141	588	729
ARK	1,036	3,453	4,489	678	3,593	4,271	928	2,102	3,030
LA	364	12,850	13,214	232	14,066	14,298	61	10,110	10,171
OKLA	11,530	67,179	78,709	17,388	84,916	102,304	20,706	120,151	140,857
TEXAS	6,386	63,497	69,883	6,732	80,056	86,788	5,508	85,308	90,816
MCNT	94,117	27,354	121,471	112,023	27,670	139,693	124,693	24,301	148,994
IDAHO	15,239	19,231	34,470	19,100	19,788	38,888	16,973	16,699	33,672
WYO	4,560	1,783	6,343	3,758	1,863	5,621	3,228	2,026	5,254
CALIF	18,288	22,200	40,488	23,287	21,670	44,957	27,853	24,660	52,513
N MEX	434	1,547	1,981	982	3,038	4,020	649	2,935	3,584
ARIZ	123	1,061	1,184	189	467	656	362	746	1,108
UTAH	3,708	8,250	11,958	3,788	7,801	11,589	2,628	5,982	8,610
NEV	1,026	*	568	568	*	*	574	*	*
WASH	23,929	78,764	102,693	22,764	81,054	104,418	21,283	80,785	102,068
OREG	9,121	24,283	33,404	10,302	21,650	31,952	11,801	24,824	36,625
CALIF	2,680	5,184	7,864	2,366	7,328	9,694	3,384	5,308	8,692
UNALL*		180	1,787		266	1,262		1,571	2,932
U S	954,667	1,556,189	2,510,856	727,772	951,545	1,679,317	752,200	1,120,224	1,872,424

TABLE 12. ALL WHEAT - STOCKS BY POSITIONS, BY STATES, QUARTERLY, JANUARY 1, 1965-70

STATE	ON FARMS	OFF FARMS 1/	TOTAL ALL POSITIONS	ON FARMS	OFF FARMS 1/	TOTAL ALL POSITIONS	ON FARMS	OFF FARMS 1/	TOTAL ALL POSITIONS
	1965			1966			1967		
1,000 BUSHELS									
N ENG		2,576	2,576		1,113	1,113		*	*
V Y	2,664	29,922	32,586	1,369	35,712	37,081	1,835	23,437	25,272
N J	242	698	900	257	347	604	112	257	369
PA	4,454	6,987	11,441	3,856	6,167	10,023	3,888	5,012	8,900
OHIO	5,090	24,730	29,820	4,428	16,413	20,841	5,536	22,430	27,966
IND	4,736	9,989	14,725	2,896	6,727	9,623	3,346	8,586	11,932
ILL	5,900	20,399	26,299	4,544	19,000	23,544	7,321	21,255	28,576
MICH	13,910	13,364	27,274	5,823	9,036	14,859	8,230	13,618	21,848
WISC	720	15,996	16,716	504	18,321	18,825	404	15,927	15,931
MINN	7,386	83,325	90,711	10,622	86,235	96,857	8,793	38,505	47,298
IOWA	111	6,477	6,588	21	7,266	7,267	89	4,073	4,162
MO	3,073	25,832	28,905	3,262	24,831	28,093	2,880	19,337	22,217
N DAK	116,326	75,362	191,688	138,774	75,327	214,101	116,984	42,433	159,417
S DAK	31,400	38,519	69,919	30,596	38,207	68,803	31,830	22,136	53,966
NEBR	33,060	69,117	102,177	23,998	45,405	69,403	40,040	38,517	78,557
KANS	39,668	323,991	363,659	42,549	252,468	295,017	44,015	133,175	177,190
DEL	13	63	76	13	21	34	14	40	54
MD	326	6,877	7,203	232	3,505	3,737	312	5,207	5,519
VA	868	2,167	3,035	780	1,769	2,569	719	2,017	2,736
N VA	226	*	*	276	*	*	264	7	271
N C	1,761	1,858	3,619	1,183	1,701	2,884	1,287	1,997	2,884
S C	115	594	709	69	390	459	66	295	361
GA	291	572	863	183	431	614	176	595	771
FLA	26	2	28	17	*	*	19	*	*
KY	563	2,716	3,279	484	1,970	2,454	694	2,227	2,921
TEAN	330	4,045	4,375	288	4,014	4,302	202	4,041	4,243
ALA	80	*	*	54	*	*	50	765	815
MISS	63	484	547	63	250	313	241	*	*
ARK	276	2,391	2,667	231	1,279	1,510	352	620	972
LA	50	6,452	6,502	32	5,855	5,887	46	5,206	5,252
CALA	5,314	60,600	65,914	11,298	69,049	80,347	7,896	47,940	55,836
TEXAS	1,298	87,307	88,605	1,528	71,349	72,877	2,180	43,846	46,026
MCNT	59,064	18,633	77,697	68,478	17,348	85,826	69,786	16,712	86,498
ICAWO	11,222	12,688	23,910	12,473	11,053	23,526	8,421	11,273	19,694
WYO	1,928	4,015	2,943	1,445	960	2,405	695	955	1,650
CCLD	13,298	13,932	27,230	8,915	12,930	21,845	14,624	17,050	31,674
N MEX	139	2,647	2,986	197	2,642	2,839	141	1,361	1,502
ARIZ	48	365	413	35	283	318	46	4	40
UTAH	2,068	4,460	6,548	1,684	5,543	7,227	1,723	5,032	6,755
NEV	88	32	120	467	*	*	393	9	402
WASH	10,899	54,966	65,865	11,808	52,869	64,677	13,402	46,290	59,692
OREG	9,311	17,141	26,452	9,088	13,330	25,418	7,156	14,639	21,795
CALIF	1,247	8,818	10,065	517	5,250	5,767	671	9,590	10,261
UNALL*		1,352	1,658		1,310	2,124		965	1,271
U S	389,672	1,059,621	1,449,293	405,337	930,676	1,336,013	406,879	640,577	1,047,456
1968									
N ENG		28	28		10	10		9	9
V Y	2,533	26,453	28,986	2,594	19,007	21,561	2,218	17,187	19,405
N J	254	434	688	256	206	462	213	247	460
PA	6,221	4,918	11,139	3,840	4,769	8,609	3,408	5,288	8,696
OHIO	6,177	27,453	33,630	5,382	24,539	29,921	3,865	20,272	24,137
IND	3,423	8,044	11,477	2,736	6,399	9,135	2,958	9,037	11,995
ILL	8,635	30,779	39,414	6,697	21,184	27,841	3,070	21,488	25,358
MICH	10,483	15,802	26,285	8,856	12,700	21,556	5,876	11,993	17,869
WISC	648	8,936	9,584	680	15,952	16,232	472	11,420	11,892
MINN	18,249	31,282	49,531	18,674	31,940	50,614	15,875	32,049	47,924
IOWA	132	3,358	3,490	175	3,162	3,337	291	3,505	3,756
MO	6,144	22,670	28,814	5,148	22,939	28,087	3,240	23,767	27,007
N DAK	150,436	40,694	191,130	180,466	40,996	221,462	212,527	40,773	253,300
S DAK	54,880	19,058	73,938	61,664	22,582	84,246	59,641	19,604	79,245
NEBR	36,340	48,959	85,299	46,173	65,606	111,779	50,920	92,927	143,847
KANS	37,675	162,574	200,249	45,635	186,682	232,317	61,064	280,179	341,243
DEL	24	25	49	15	*	*	16	*	*
MD	523	3,379	3,902	360	1,694	2,054	259	2,768	3,027
VA	1,722	2,169	3,891	1,513	1,759	3,272	1,570	1,789	3,359
N VA	340	*	*	223	*	*	231	*	*
N C	1,630	2,494	4,124	2,145	2,609	4,754	1,996	1,818	3,814
S C	208	539	747	281	426	707	201	521	722
GA	488	803	1,291	763	580	1,343	395	695	1,094
FLA	29	*	*	34	*	*	32	*	*
KY	1,414	2,058	3,472	1,327	2,016	3,343	747	1,724	2,471
TEAN	573	5,297	5,870	612	3,788	4,400	491	3,712	4,203
ALA	94	1,435	1,529	97	1,243	1,340	151	*	*
MISS	167	420	587	251	220	471	82	*	*
ARK	377	2,491	2,868	271	2,895	3,166	286	1,667	1,953
LA	78	4,760	4,838	63	5,015	5,078	18	5,430	5,448
CALA	8,425	54,877	63,302	12,420	68,955	81,375	12,180	101,074	113,254
TEXAS	1,863	46,566	48,429	3,366	56,922	60,288	2,066	65,420	67,486
MCNT	85,778	19,721	105,499	98,178	22,447	120,625	97,759	20,667	118,426
ICAWO	12,981	11,850	24,831	13,097	13,021	26,118	10,728	21,448	21,448
WYO	3,800	1,210	5,010	3,340	1,555	4,895	2,891	1,453	4,344
CCLD	13,267	16,800	30,067	18,780	16,290	35,070	22,785	19,010	41,799
N MEX	197	1,772	1,969	666	2,567	3,233	305	3,347	3,652
ARIZ	74	643	717	108	247	355	204	387	591
UTAH	2,966	5,491	8,457	2,185	5,237	7,422	1,752	4,871	6,623
NEV	570	*	*	252	*	*	306	*	*
WASH	17,092	48,301	65,393	17,590	56,205	73,795	15,076	60,350	75,426
OREG	7,167	16,425	23,592	9,125	16,045	25,170	9,441	21,191	30,632
CALIF	1,340	3,393	4,733	974	4,270	5,244	1,077	3,483	4,560
UNALL*		129	1,068		139	663		1,525	2,343
U S	509,227	709,490	1,209,717	576,932	764,418	1,341,350	609,443	923,375	1,532,816

SEE FOOTNOTES ON PAGE 39.

TABLE 13. ALL WHEAT - STOCKS BY POSITIONS, BY STATES, QUARTERLY, APRIL 1, 1965-70

STATE	ON FARMS	OFF FARMS 1/	TOTAL ALL POSITIONS	ON FARMS	OFF FARMS 1/	TOTAL ALL POSITIONS	ON FARMS	OFF FARMS 1/	TOTAL ALL POSITIONS
	1965			1966			1967		
	1,000 BUSHEL								
N ENG		1,770	1,770					681	681
N Y	761	17,692	18,653	411	18,120	18,531	1,058	10,799	11,857
N J	215	585	800	108	324	432	88	240	328
PA	2,079	4,637	6,716	1,714	5,032	6,746	1,872	3,485	5,357
OHIO	1,851	16,613	18,464	1,610	10,651	12,261	1,845	14,808	16,653
IND	1,184	5,851	7,035	1,086	3,516	4,602	1,562	4,591	6,153
ILL	2,776	13,551	16,327	852	12,336	13,188	1,525	14,711	16,236
WICH	5,023	11,362	16,385	2,647	8,835	11,482	2,896	9,453	12,349
WISC	473	17,687	18,160	265	19,153	19,418	315	12,609	12,924
MINN	6,450	83,380	89,870	6,927	73,145	80,072	5,312	30,924	36,236
IOWA	42	5,706	5,748	13	6,799	6,812	45	4,440	4,485
MO	1,655	20,549	22,204	1,142	20,820	21,962	823	18,853	19,676
N DAK	93,685	73,312	166,977	110,307	68,776	179,083	81,581	34,739	116,320
S DAK	23,647	37,698	61,345	20,275	36,476	56,751	19,255	15,168	34,423
NEBR	22,509	56,998	79,507	14,180	32,080	46,260	20,020	28,394	48,414
KANS	25,054	279,195	304,249	16,547	163,120	179,667	26,009	97,325	123,334
DEL	7	45	52	7	8	15	7	29	36
MD	82	4,850	4,932	169	5,583	5,752	179	3,348	3,527
VA	434	1,864	2,298	459	1,276	1,735	405	3,250	3,655
VA	128	9	137	138	6	144	116	*	*
N C	660	1,655	2,315	345	1,294	1,639	248	1,391	1,639
S C	69	302	371	52	380	432	33	*	*
GA	112	445	557	55	270	325	59	353	412
FLA	4	5	9	*	*	*	6	*	*
KY	256	1,032	1,288	215	1,173	1,388	289	1,085	1,374
TENN	189	3,019	3,208	165	2,717	2,882	157	1,614	1,771
ALA	32	802	834	27	*	*	8	*	*
MISS	21	424	445	29	*	*	30	*	*
ARK	138	1,183	1,321	93	275	368	117	*	*
LA	8	4,899	4,897	5	5,481	5,486	8	2,536	2,544
OKLA	4,348	47,675	52,023	3,987	32,927	36,914	3,948	32,347	36,295
TEXAS	974	74,823	75,797	1,146	48,635	49,781	1,090	33,368	34,458
MCNT	42,188	13,427	55,615	46,354	15,271	61,625	40,875	10,681	51,556
ICAHO	5,180	6,593	11,773	7,196	5,077	12,273	4,211	5,379	9,590
WYO	1,301	798	2,099	972	452	1,424	348	593	941
COLO	7,040	9,230	16,270	2,575	10,350	12,925	8,420	13,740	22,160
N MEX	28	183	211	98	121	219	94	*	*
ARIZ	16	2,412	2,428	18	1,439	1,457	9	865	874
UTAH	887	2,316	3,203	673	3,432	4,105	1,247	3,864	4,611
NEV	44	14	58	75	*	*	70	*	*
WASH	5,869	34,943	40,812	8,175	28,978	37,153	8,488	31,566	40,054
OREG	5,477	14,705	20,182	4,240	12,027	16,287	2,811	10,548	13,359
CALIF	534	7,128	7,662	221	3,601	3,822	373	2,514	2,887
UNALL*					1,787	1,918	1,579	2,053	2,053
U S	263,450	881,757	1,145,207	255,593	661,743	917,336	237,852	461,370	699,222
STATE	1968			1969			1970		
	1,000 BUSHEL								
	ON FARMS	OFF FARMS 1/	TOTAL ALL POSITIONS	ON FARMS	OFF FARMS 1/	TOTAL ALL POSITIONS	ON FARMS	OFF FARMS 1/	TOTAL ALL POSITIONS
N ENG		17	17		10	10		10	10
N Y	1,538	*	*	1,824	13,737	15,561	1,047	14,875	15,922
N J	117	231	348	151	183	334	95	240	335
PA	3,289	3,566	6,849	1,680	3,842	5,522	1,598	4,165	5,763
OHIO	3,346	18,887	22,233	2,243	15,779	18,022	1,159	11,932	13,091
IND	1,602	4,392	6,194	1,197	4,132	5,329	1,044	5,149	6,193
ILL	2,159	17,852	20,011	2,560	14,966	17,526	726	12,812	13,538
WICH	4,032	11,550	15,582	5,018	10,390	15,408	2,034	9,443	11,477
WISC	432	13,451	13,883	457	16,305	16,802	389	12,277	12,666
MINN	14,532	30,638	45,170	14,939	32,156	47,095	13,827	33,395	47,222
IOWA	50	3,279	3,329	78	2,729	2,807	103	3,412	3,515
MO	2,560	18,314	20,874	2,376	20,319	22,695	1,767	19,418	21,185
N DAK	115,999	21,446	147,445	150,388	35,390	185,778	181,273	38,246	219,519
S DAK	46,552	14,712	61,264	55,760	20,114	75,874	46,861	18,497	65,358
NEBR	27,687	33,913	61,600	38,314	62,351	100,665	43,407	81,888	125,295
KANS	24,378	99,783	124,161	32,958	163,618	196,576	33,585	230,387	263,972
DEL	18	48	66	8	*	*	12	*	*
MD	232	3,488	3,720	120	1,584	1,704	86	*	*
VA	861	1,665	2,526	726	1,780	2,506	785	803	1,588
VA	200	*	*	124	*	*	102	*	*
N C	889	1,907	2,796	1,287	2,052	3,339	832	1,604	2,436
S C	134	261	395	56	291	347	57	401	458
GA	195	610	805	458	376	834	266	850	1,116
FLA	10	*	*	11	*	*	11	*	*
KY	353	981	1,334	663	1,145	1,808	259	789	1,048
TENN	176	1,934	2,110	382	2,304	2,686	231	2,205	2,436
ALA	40	894	934	42	*	*	50	*	*
MISS	56	*	*	124	*	*	35	*	*
ARK	283	388	671	136	1,690	1,834	179	767	946
LA	13	3,531	3,544	11	4,911	4,922	3	5,031	5,034
OKLA	3,104	35,100	38,204	8,694	62,532	71,226	4,872	76,116	80,988
TEXAS	1,064	31,121	32,185	2,525	54,747	57,272	1,721	55,549	57,270
MCNT	69,899	12,178	81,277	88,108	15,648	103,756	74,816	14,146	88,962
ICAHO	7,902	5,050	12,952	7,640	8,628	16,268	7,147	5,648	12,795
WYO	2,833	697	3,230	2,756	1,378	4,134	2,264	1,273	3,537
COLO	10,757	11,800	22,557	15,775	13,860	29,635	18,568	17,380	35,948
N MEX	158	198	356	491	144	635	191	2,287	2,478
ARIZ	41	990	1,031	41	2,491	2,532	113	277	390
UTAH	1,234	3,666	4,902	728	3,250	3,978	1,001	3,983	4,984
NEV	228	*	*	63	*	*	77	*	*
WASH	7,976	25,158	33,134	11,382	36,766	48,148	7,981	35,788	43,769
OREG	4,561	11,549	16,110	7,653	13,492	21,145	5,310	14,008	19,318
CALIF	609	3,005	3,614	487	2,775	3,262	615	2,761	3,376
UNALL*		18,640	20,672		1,107	1,481		2,935	3,308
U S	361,815	477,090	838,105	460,476	648,980	1,109,456	456,499	740,747	1,197,246

SEE FOOTNOTES ON PAGE 39.

(C) UPDATA 1981

TABLE 14. ALL WHEAT - STOCKS BY POSITIONS, BY STATES, QUARTERLY, JULY 1, 1965-70

STATE	1965			1966			1967		
	ON FARMS	OFF FARMS 1/	TOTAL ALL POSITIONS	ON FARMS	OFF FARMS 1/	TOTAL ALL POSITIONS	ON FARMS	OFF FARMS 1/	TOTAL ALL POSITIONS
	1,000 BUSHELS								
K ENG		1,896	1,896		*	*		*	*
N Y	304	15,786	16,090	274	13,539	13,813	353	9,646	6,959
N J	54	433	487	27	*	*	56	*	*
PA	891	1,659	2,550	714	3,983	4,697	864	1,327	2,191
OHIO	694	1,830	2,524	403	2,552	2,955	923	3,537	4,460
IND	474	1,424	1,898	362	456	818	669	1,137	1,806
ILL	347	2,414	2,961	114	5,552	5,666	610	8,793	9,403
MICH	2,125	3,154	5,279	662	3,177	3,839	1,219	3,455	4,674
WISC	185	15,829	20,014	177	15,000	15,177	113	9,229	9,342
MINN	3,357	79,896	83,253	1,847	57,715	59,562	3,114	23,640	26,754
ICWA	28	4,214	6,242	8	5,944	5,952	15	3,715	3,330
MO	473	20,208	20,681	326	9,560	9,886	411	12,992	13,403
N DAK	48,343	80,020	128,363	53,375	53,816	107,191	50,796	28,978	79,774
S DAK	12,017	38,080	50,097	11,428	28,704	40,132	12,968	13,388	26,356
NEBR	11,254	46,246	57,500	7,636	17,073	24,709	14,014	17,706	31,720
KANS	13,571	223,189	236,760	10,637	88,378	99,015	17,006	64,733	81,739
DEL	1	13	14	1	33	34	1	*	*
MD	61	3,774	3,835	84	3,194	3,278	67	1,195	1,262
VA	271	*	*	230	1,957	2,187	180	356	536
W VA	51	5	56	40	*	*	63	4	67
N C	103	441	624	173	490	663	74	422	496
S C	34	60	54	17	*	*	25	*	*
GA	45	*	*	37	*	*	39	*	*
FLA		*	*		*	*		*	*
KY	51	228	279	54	219	273	58	82	140
TENN	71	825	896	82	365	447	90	166	276
ALA	5	*	*	7	*	*	3	*	*
MISS	8	*	*	21	*	*	12	*	*
ARK	69	952	1,021	46	243	289	59	*	*
LA		3,005	3,005		1,394	1,394		3,143	3,143
OKLA	1,449	32,736	34,185	1,994	15,160	17,154	1,974	17,850	19,824
TEXAS	519	55,443	55,962	764	25,328	26,092	363	14,523	14,886
KENT	21,563	11,115	32,678	27,391	9,907	37,298	25,920	8,529	34,449
ICAHQ	2,590	930	3,520	3,358	1,740	5,098	1,914	1,340	3,254
WY	868	301	1,169	473	*	*	248	308	556
CCLO	4,693	4,100	8,793	991	5,240	6,231	7,091	7,210	14,301
N MEX	14	2,467	2,481	49	1,161	1,210	47	487	534
FRIZ	5	*	*	2	*	*	2	*	*
UTAH	470	1,240	1,710	471	1,513	1,984	891	2,180	3,071
NEV	9	2	11	9	*	*	9	*	*
WASH	3,773	12,360	16,133	4,956	18,302	23,298	1,787	10,103	11,890
OREG	1,506	7,021	8,527	1,420	8,042	9,462	767	5,780	6,547
CALIF	89	3,898	3,987	74	3,089	3,163	75	2,048	2,123
UNALL*		1,346	1,680		1,573	2,206		1,903	2,109
U S	132,515	664,740	817,255	130,774	404,399	535,173	144,890	279,525	424,415
		1968		1969			1970		
N ENG		9	9	10	10	9	9		
N Y	905	11,205	12,110	584	11,722	12,306	493	13,812	14,305
N J	49	*	*	75	*	*	36	*	*
PA	1,555	1,669	3,224	780	1,795	2,575	692	2,206	2,898
OHIO	1,802	6,649	7,851	1,121	6,263	7,384	386	5,226	5,612
IND	487	1,598	2,285	342	1,736	2,078	522	2,917	3,435
ILL	720	11,328	12,048	512	7,720	8,232	484	3,393	3,877
MICH	2,016	5,404	7,420	2,362	4,900	7,262	1,356	5,846	7,202
WISC	216	8,499	8,715	276	11,334	11,610	21	4,095	6,116
MINN	9,125	26,140	35,265	12,223	27,999	40,222	10,242	19,047	29,289
ICWA	17	2,383	2,400	29	3,026	3,055	29	2,941	2,970
MO	1,024	11,661	12,685	1,188	15,183	16,371	1,178	17,641	18,819
N DAK	81,562	26,910	108,472	103,123	32,413	135,536	116,682	31,337	148,019
S DAK	29,557	13,747	43,304	49,200	19,391	68,591	39,193	19,732	58,925
NEBR	15,574	20,409	43,983	26,525	58,703	85,228	30,886	76,245	107,131
KANS	14,405	77,556	91,961	20,262	126,043	146,325	19,846	196,323	216,169
DEL	6	30	36	4	*	*	4	*	*
MD	87	1,486	1,573	20	1,414	1,434	43	1,410	1,453
VA	502	451	953	303	354	657	284	249	535
W VA	111	*	*	60	*	*	46	*	*
N C	185	937	1,122	300	1,052	1,352	249	549	798
S C	45	50	95	28	84	212	29	29	29
GA	130	429	559	122	301	423	53	53	53
FLA		*	*		*	*		*	*
KY	110	146	264	181	215	396	86	66	152
TENN	132	844	976	229	1,176	1,405	144	1,381	1,525
ALA	5	*	*	8	51	59	10	*	*
MISS	11	5	16	42	*	*	12	*	*
ARK	94	*	*	68	383	451	71	626	697
LA		*	*	2	3,039	3,041		4,142	4,142
OKLA	887	15,424	16,311	1,865	49,782	51,645	1,218	56,447	57,665
TEXAS	264	12,076	12,342	1,262	32,110	33,372	689	42,910	43,599
KENT	46,463	7,672	54,135	71,745	12,732	84,477	58,855	13,609	72,524
ICAHQ	3,951	2,382	6,333	5,457	4,264	9,721	4,467	2,144	6,611
WY	1,098	561	1,659	1,921	1,443	3,364	2,072	1,108	3,180
CCLO	9,323	7,650	16,973	12,395	12,840	25,235	8,862	12,480	21,342
N MEX	79	988	1,067	351	2,386	2,737	76	2,152	2,228
ARIZ	2	3	5	5	6	11	45	4	49
UTAH	494	2,595	3,089	364	2,006	2,370	501	2,467	2,968
NEV	57	*	*	6	*	*	15	*	*
WASH	3,988	12,460	16,448	7,760	24,473	32,233	3,547	20,671	24,218
OREG	2,117	5,778	7,895	2,649	9,186	11,835	3,245	9,658	12,903
CALIF	183	2,126	2,309	139	2,023	2,162	231	1,514	1,745
UNALL*		2,340	2,656		1,096	1,283		809	932
U S	229,548	309,000	538,548	325,906	490,754	516,050	306,002	577,780	684,682

TABLE 15. RYE - STOCKS BY POSITIONS, BY STATES, QUARTERLY, OCTOBER 1, 1964-69

STATE	1964			1965			1966		
	ON FARMS	OFF FARMS 1/	TOTAL ALL POSITIONS	ON FARMS	OFF FARMS 1/	TOTAL ALL POSITIONS	ON FARMS	OFF FARMS 1/	TOTAL ALL POSITIONS
	1,000 BUSHELS								
N ENG	*	*	*	*	*	*	*	3	3
N Y	227	*	*	296	426	722	179	1,224	1,403
N J	137	19	156	161	14	175	102	4	106
PA	362	326	688	319	189	508	342	137	479
OHIO	282	84	366	334	97	431	345	71	416
IND	374	60	434	328	75	403	345	87	432
ILL	176	*	*	199	1,693	1,852	219	2,194	2,367
MICH	557	99	656	492	121	613	443	280	723
MISC	265	785	1,050	227	1,720	1,955	153	1,919	2,072
MINN	517	2,956	3,493	714	5,163	5,877	402	7,273	7,675
IOWA	46	*	*	34	*	*	32	*	*
MO	313	184	499	230	163	393	292	169	461
N DAK	6,393	1,704	8,099	7,890	3,704	11,594	5,037	4,192	9,229
S DAK	2,244	575	2,819	2,200	1,275	3,475	2,760	1,761	4,521
NEBR	1,346	368	1,714	949	425	1,374	1,279	624	1,903
KANS	564	857	1,421	416	724	1,140	299	545	844
DEL	154	25	179	117	5	122	121	15	136
MD	204	7	211	203	*	*	232	6	238
VA	229	26	255	237	13	250	201	7	208
N VA	*	*	*	*	*	*	*	*	*
N C	266	54	320	172	37	209	259	41	300
S C	308	113	421	246	52	298	216	25	241
GA	468	88	556	357	11	368	329	40	365
FLA	*	*	*	*	*	*	*	*	*
KY	46	432	478	66	446	512	54	326	380
TENN	49	51	100	47	*	*	46	*	*
ALA	5	5	5	*	*	*	*	*	*
ARK	*	*	*	*	6	6	*	4	4
LA	*	*	*	*	*	*	*	*	*
OKLA	432	32	464	493	17	510	351	27	378
TEXAS	261	42	303	195	29	224	218	18	236
MONT	324	59	383	320	112	432	103	112	215
ICAHO	92	18	110	114	13	127	135	26	161
WYO	171	11	182	224	15	239	173	12	185
COLO	194	70	264	125	40	165	286	155	441
N MEX	*	*	*	*	*	*	*	2	2
ARIZ	*	*	*	*	*	*	*	*	*
NEV	*	*	*	*	*	*	*	*	*
WASH	523	644	1,167	149	829	978	400	590	990
OREG	197	197	394	369	151	520	189	159	348
UNALL*	1,600	1,600	2,049	2,89	289	573	180	180	258
U S	17,741	11,495	29,236	18,223	17,822	36,045	15,536	22,188	37,724
	1967			1968			1969		
N ENG	*	*	*	1	1	1	230	451	681
N Y	191	*	*	162	*	*	102	5	107
N J	68	*	*	84	2	86	260	58	318
PA	374	152	526	299	49	348	262	34	296
OHIO	110	42	152	131	17	148	231	74	305
IND	205	63	268	200	25	225	173	703	876
ILL	206	1,846	2,052	236	1,223	1,459	448	247	695
MICH	456	122	578	575	62	637	196	2,331	2,527
MISC	224	1,195	1,419	229	1,649	1,878	885	7,588	8,473
MINN	648	7,622	8,270	725	5,896	6,621	63	*	*
IOWA	46	*	*	46	*	*	158	139	297
MO	150	161	311	135	141	274	4,140	3,263	7,403
N DAK	3,499	4,179	7,678	3,767	3,901	7,668	2,851	3,511	6,362
S DAK	2,494	2,860	5,354	2,621	2,875	5,496	1,434	823	2,259
NEBR	660	387	1,047	884	428	1,312	392	723	1,115
KANS	182	528	710	205	418	623	108	20	128
DEL	117	6	123	64	64	64	161	7	168
MD	182	7	189	79	2	81	278	5	283
VA	294	12	306	235	8	243	*	*	*
N VA	*	*	*	*	*	*	*	*	*
N C	169	56	225	268	174	442	166	21	187
S C	272	95	367	249	136	385	303	135	438
GA	546	96	642	715	148	863	1,129	387	1,516
FLA	*	*	*	*	*	*	*	*	*
KY	27	*	*	18	274	292	17	334	351
TENN	29	*	*	29	*	*	35	7	42
ALA	*	*	*	*	*	*	*	*	*
ARK	6	*	6	*	8	8	*	*	*
LA	*	*	*	*	*	*	*	*	*
OKLA	291	*	*	320	2	322	392	5	397
TEXAS	53	24	77	280	28	308	144	62	206
MONT	76	116	192	72	106	178	151	112	263
ICAHO	96	7	103	50	9	59	58	8	66
WYO	137	17	154	148	24	172	149	28	177
COLO	173	35	208	172	23	195	257	80	337
N MEX	*	*	*	*	*	*	*	*	*
ARIZ	*	*	*	*	*	*	*	*	*
NEV	*	*	*	*	*	*	*	*	*
WASH	123	287	410	86	131	217	267	607	874
OREG	144	82	226	166	40	206	156	21	177
UNALL*	995	995	1,545	514	514	751	157	157	220
U S	12,240	20,998	33,238	13,250	18,314	31,564	15,598	21,946	37,544

SEE FOOTNOTES ON PAGE 39.



TABLE 16. RYE - STOCKS BY POSITIONS, BY STATES, QUARTERLY, JANUARY 1, 1965-70

STATE	ON FARMS	OFF FARMS 1/	TOTAL ALL POSITIONS	ON FARMS	OFF FARMS 1/	TOTAL ALL POSITIONS	ON FARMS	OFF FARMS 1/	TOTAL ALL POSITIONS
	1965			1966			1967		
1,000 BUSHELS									
N ENG	*	*	*	*	*	*	*	*	*
N Y	108	*	*	189	*	*	104	*	*
N J	31	2	35	46	2	48	72	*	*
PA	161	302	463	232	118	350	215	107	322
OHIO	130	59	189	153	31	184	183	33	216
IND	97	46	143	97	53	150	98	46	142
ILL	44	*	*	74	1,503	1,577	91	*	*
MICH	264	45	309	256	139	395	246	67	313
MISC	167	601	768	132	*	*	100	1,511	1,611
MINN	293	2,218	2,511	983	4,589	5,072	295	6,374	6,669
ICWA	22	*	*	17	*	*	16	*	*
MO	157	162	319	121	122	243	116	148	264
N DAK	5,052	1,350	6,402	7,283	3,215	10,498	3,660	3,817	7,677
S DAK	2,013	376	2,389	1,892	1,164	3,056	1,897	1,657	3,554
NEBR	918	303	1,221	732	350	1,082	914	414	1,328
KANS	423	898	1,321	257	671	928	197	555	752
DEL	14	3	17	4	*	*	12	*	*
MD	65	7	72	14	3	17	24	2	26
VA	86	14	100	44	4	48	39	5	44
N VA	*	*	*	*	*	*	*	*	*
N C	106	25	131	74	9	83	44	10	54
S C	84	34	118	24	15	39	43	4	47
GA	28	4	32	15	*	*	10	2	12
KY	15	242	257	23	440	463	17	420	437
TENN	17	20	37	16	*	*	11	*	*
ALA		4	4		*	*		*	*
ARK					*	*		*	*
LA					*	*		*	*
OKLA	184	17	201	138	2	140	144	*	*
TEXAS	54	53	107	32	48	80	33	31	64
MCNT	180	55	235	180	126	306	76	108	184
ICAMD	64	8	72	80	10	90	95	10	105
WYO	90	36	126	140	33	173	113	22	135
CCLO	132	75	207	97	30	127	197	73	270
N MEX									
ARIZ		2	2		*	*		*	*
UTAH		*	*		*	*		*	*
NEV					*	*		*	*
ASH	224	57	892	60	493	553	195	454	645
UREG	57	5	203	231	77	308	95	28	123
UNALL*		1,908	2,082		2,430	2,803		2,925	3,375
U S	11,340	9,643	20,983	13,136	15,677	28,813	9,552	18,821	28,373
1968									
1969									
1970									
N ENG	*	*	*	97	*	*	148	*	*
N Y	128	*	*	32	1	33	25	1	26
N J	49	1	50	173	*	*	134	48	182
PA	257	150	407	97	1	98	101	28	129
OHIO	83	6	89	97	32	115	84	70	154
IND	96	45	141	83	1,243	1,296	58	880	938
ILL	53	*	*	53	47	356	291	257	548
MICH	301	118	419	309	67	366	291	1,931	2,065
MISC	160	1,032	1,192	152	1,746	1,908	134	6,078	6,758
MINN	466	7,487	7,953	572	3,720	4,292	680	31	6,758
ICWA	20	*	*	23	*	*	31	*	*
MO	41	121	162	33	139	172	37	133	170
N DAK	3,294	3,765	7,059	3,223	3,580	6,803	3,881	2,913	6,794
S DAK	2,120	2,292	4,412	2,086	2,696	4,782	2,495	3,360	5,855
NEBR	528	304	832	528	377	905	821	622	1,443
KANS	93	494	587	102	379	481	157	664	821
DEL	19	*	*	10	*	*	13	*	*
MD	55	3	58	21	21	21	27	2	29
VA	118	1	119	74	*	*	35	*	35
N VA	*	*	*	*	*	*	*	*	*
N C	40	25	65	95	4	99	70	89	159
S C	25	55	80	146	142	288	99	*	*
GA	62	70	132	155	34	189	388	103	491
KY	9	350	359	7	272	279	7	207	214
TENN	10	*	*	9	*	*	9	*	*
ALA		*	*		*	*		*	*
ARK		1	1		*	*		*	*
LA					*	*		*	*
OKLA	151	3	154	177	7	184	157	2	159
TEXAS	18	11	29	79	14	93	58	13	71
MCNT	52	112	164	45	66	111	92	79	171
ICAMD	67	11	78	35	*	*	41	5	46
WYO	98	15	113	95	27	122	96	14	110
CCLO	86	42	128	87	12	99	188	73	261
N MEX					*	*		*	*
ARIZ					*	*		*	*
UTAH					*	*		*	*
NEV					*	*		*	*
ASH	81	69	150	52	158	210	162	474	636
UREG	72	46	118	110	46	156	91	12	103
UNALL*		2,381	2,611		682	1,093		671	971
U S	8,652	19,010	27,662	8,770	15,425	24,195	10,610	18,729	29,339

SEE FOOTNOTES ON PAGE 39.

TABLE 17. RYE - STOCKS BY POSITIONS, BY STATES, QUARTERLY, APRIL 1, 1965-70

STATE	1965			1966			1967		
	ON FARMS	OFF FARMS 1/	TOTAL ALL POSITIONS	ON FARMS	OFF FARMS 1/	TOTAL ALL POSITIONS	ON FARMS	OFF FARMS 1/	TOTAL ALL POSITIONS
1,000 BUSHELS									
N ENG		*	*						
N Y	74			153	*	*	83	*	*
N J	13			12	2	14	41		*
PA	106	200	306	178	90	268	143	78	221
CHIC	74	35	109	100	15	115	131	23	154
IND	52	22	74	45	41	86	65	26	91
ILL	15			52	996	1,048	30		
MICH	151	35	186	138	54	192	167		
WISC	98	566	664	95	2,532	2,627	69	76	243
MINN	179	1,888	2,067	357	5,494	5,851	188	1,481	1,550
ICWA	12			8			8	5,937	6,125
MO	110	169	279	63	127	190	55	174	229
N DAK	4,949	1,225	6,164	5,705	2,294	7,999	3,664	3,621	7,285
S DAK	1,650	353	2,003	1,672	714	2,386	1,639	1,457	3,096
NEBR	612	253	865	534	310	844	518	639	1,156
KANS	282	794	1,076	168	657	825	120	492	612
DEL	8	3	11	3			6		
MD	29	2	31	12			15		
VA	34			29	8	37	23		17
* VA									
N C	69	9	78	32			40		43
S C	28			5	7	12	19	9	28
GA	19	10	29	8			5		5
KY	5	177	182	12	278	290	9	151	160
TENN	12			7			7		
ALA									
MISS									
ARK									
LA									
OKLA	119	20	139	89	5	94	88	21	109
TEXAS	16	17	33	16	39	55	27	30	57
MCNT	144	50	194	120	92	212	44	99	143
ICAHO	16	12	30	23	7	30	27	3	30
WYO	54			84	10	94	63	21	84
CCLO	79	45	124	48	30	78	74	39	113
N MEX									
ARIZ		2	2						
UTAH									
NEV									
WASH	134	524	658	42	360	402	115	215	330
OREG	71	83	154	128	71	199	47	10	57
UNALL*		1,666	1,908		630	941		2,150	2,350
U S	9,216	8,150	17,366	9,938	14,869	24,807	7,532	16,756	24,288
-----									
	1968			1969			1970		
N ENG		1	1						
N Y	77	253	330	55	*	*	101	*	*
N J	22	1	23	9	1	10	12		*
PA	167	69	236	76			74	49	123
CHIC	55	3	58	65	1	66	44	19	63
IND	68	25	91	42	34	76	53	64	117
ILL	29	1,543	1,572	32	987	1,019	29	580	609
MICH	164	32	196	150	16	166	202	166	368
WISC	124	1,241	1,365	124	1,769	1,893	101	1,986	2,087
MINN	344	6,314	6,658	439	3,631	4,070	454	5,739	6,193
ICWA	9			11			15	102	117
MO	27	118	145	15	137	152	18	140	158
N DAK	3,088	3,463	6,551	2,344	3,345	5,689	3,105	2,618	5,723
S DAK	1,746	1,968	3,714	1,604	2,475	4,079	1,782	3,122	4,904
NEBR	264	351	615	198	351	549	385	565	950
KANS	53	446	499	51	375	426	123	708	831
DEL	9			3		3	4		
MD	18			5		5	7	2	9
VA	54	7	61	29	1	30	22		
* VA									
N C	25	20	45	42	3	45	32	2	34
S C	20	55	75	134	110	244	39	69	108
GA	37	42	79	78	45	123	212	97	309
KY	4	112	116	3	62	65	2	112	114
TENN	5			5			5		
ALA									
MISS									
ARK									
LA									
OKLA	73		73	75			118		
TEXAS	7	10	17	26	10	36	30	13	49
MCAT	29	83	112	27	91	118	59	89	148
ICAHO	19	8	27	10	4	14	12	5	17
WYO	59	9	68	57	12	69	35	8	43
CCLO	61	43	104	67	12	79	125	54	179
N MEX									
ARIZ									
UTAH									
NEV									
ASHN	56	62	118	26	173	199	84	406	490
OREG	43	25	68	39	20	59	31	8	39
UNALL*		105	146		412	634		258	520
U S	6,756	16,407	23,163	5,841	14,097	19,938	7,321	16,981	24,302

SEE FOOTNOTES ON PAGE 39.

TABLE 18. RYE - STOCKS BY POSITIONS, BY STATES, QUARTERLY, JULY 1, 1965-70

STATE	1965			1966			1967		
	ON FARMS	OFF FARMS 1/	TOTAL ALL POSITIONS	ON FARMS	OFF FARMS 1/	TOTAL ALL POSITIONS	ON FARMS	OFF FARMS 1/	TOTAL ALL POSITIONS
1,000 BUSHELS									
N ENG		*	*		*	*		*	*
N Y	35	*	*	102	79	181	29	461	490
N J	3	*	*	6	*	*	14	*	*
PA	37	117	154	92	27	119	77	53	130
CHIC	39	17	56	57	11	68	78	17	95
IND	26	16	42	19	26	45	33	13	46
ILL	5	1,773	1,773	29	*	*	16	*	*
MICH	104	40	144	69	25	94	108	19	127
WISC	61	*	*	57	*	*	37	702	739
MINN	114	1,700	1,814	168	4,422	4,590	80	4,931	5,011
ICWA	2	*	*	2	*	*	2	*	*
MO	52	117	169	38	174	212	20	*	*
N DAK	1,340	3,266	4,606	2,428	4,001	6,429	2,155	3,780	5,935
S DAK	231	657	1,088	308	1,392	1,700	302	1,836	2,138
NEBR	163	192	355	218	236	454	365	256	621
KANS	121	553	674	109	580	689	51	481	532
DEL	2	*	*	1	*	*	4	*	*
MD	6	2	8	6	*	*	7	*	*
VA	17	4	21	2	*	*	4	*	*
W VA		*	*		*	*		*	*
N C	37	*	*	21	1	22	16	*	16
S C	6	*	*	2	3	5	5	*	*
GA	9	28	37	4	*	*	2	*	*
KY	2	194	196	4	249	253	4	299	303
TENN	4	*	*	3	*	*	3	*	*
ALA		*	*		*	*		*	*
ARK		*	*		*	*		*	*
LA		*	*		*	*		*	*
OKLA	54	11	65	69	*	*	48	20	68
TEXAS	5	10	15	4	32	36	5	*	*
MONT	54	77	131	40	110	150	20	88	108
ICAHQ	9	9	18	11	5	16	14	*	*
WYO	18	*	*	14	6	20	12	7	18
COLC	26	45	71	13	19	32	30	22	52
N MEX		*	*		*	*		*	*
ARIZ		*	*		*	*		*	*
UTAH		*	*		*	*		*	*
NEV		*	*		*	*		*	*
WASH	45	369	414	12	299	311	18	118	136
OREG	10	21	31	41	63	104	16	22	38
UNALL*		802	571		3,296	3,471		1,972	2,070
U S	2,638	10,215	12,853	3,949	15,056	19,005	3,580	15,097	18,677
-----									
	1968			1969			1970		
N ENG		1	1						
N Y	38	*	*	26	*	*	43	*	*
N J	10		10	6		6	9		
PA	106	98	204	31	*	*	39	*	*
OHIO	28	2	30	26	1	27	28	11	39
IND	14	13	27	27	57	84	34	32	66
ILL	18	1,424	1,442	13	*	*	17	*	*
MICH	100	47	147	97	11	108	78	72	150
WISC	76	922	998	85	1,704	1,789	56	1,901	1,957
MINN	243	4,743	5,006	191	4,144	4,335	340	6,238	6,578
ICWA	2	*	*	4	*	*	4	*	*
MO	10	*	*	6	133	139	7	164	171
N DAK	2,059	3,544	5,603	753	2,916	3,669	1,035	2,915	3,950
S DAK	624	1,733	2,357	321	2,683	3,004	499	3,915	4,414
NEBR	119	283	402	119	326	445	180	451	631
KANS	36	493	529	20	310	330	56	729	785
DEL	1	*	*	1	2	3	2	*	*
MD	4	*	*	3	*	3	3	*	*
VA	29	*	*	12	2	14	13	*	13
W VA		*	*		*	*		*	*
N C	16	1	17	21		21	13	3	16
S C	12	61	73	61	106	167	20	72	92
GA	12	20	32	31	44	75	88	85	173
KY	1	245	246	1	*	*	1	*	*
TENN	2	*	*	2	*	*	3	*	*
ALA		*	*		*	*		*	*
ARK		*	*		*	*		*	*
LA		*	*		*	*		*	*
OKLA	42		42	48	4	52	69	3	72
TEXAS	4	8	12	11	8	19	14	11	25
MONT	10	58	68	11	77	88	3	82	85
ICAHQ	10	5	15	5	*	*	2	*	*
WYO	10	7	17	10	5	15	7	8	15
COLO	29	20	49	31	5	36	40	28	68
N MEX		*	*		*	*		*	*
ARIZ		*	*		*	*		*	*
UTAH		*	*		*	*		*	*
NEV		*	*		*	*		*	*
WASH	42	24	66	11	138	149	42	472	514
OREG	17	20	37	6	11	17	21	5	26
UNALL*		496	552		1,280	1,362		1,136	1,259
U S	3,724	14,288	18,012	1,990	13,967	15,957	2,766	18,333	21,099

SEE FOOTNOTES ON PAGE 39.



TABLE 19. CORN - STOCKS BY POSITIONS, BY STATES, QUARTERLY, JANUARY 1, 1965-70

STATE	ON FARMS	OFF FARMS 1/	TOTAL ALL POSITIONS	ON FARMS	OFF FARMS 1/	TOTAL ALL POSITIONS	ON FARMS	OFF FARMS 1/	TOTAL ALL POSITIONS
	1965			1966			1967		
1,000 BUSHELS									
N ENG	203	465	465	207	697	697	222	610	610
N Y	8,588	10,840	19,428	9,254	7,323	16,577	10,742		
A J	2,424	287	2,711	2,368	331	2,699	1,950	379	2,329
PA	39,442	3,272	42,714	45,166	4,117	49,283	28,318	3,491	31,809
OHIO	126,331	51,109	177,440	137,858	54,417	192,275	154,375	55,427	209,806
IND	204,365	58,339	262,704	265,136	64,608	329,744	235,573	60,436	296,009
ILL	488,558	261,344	749,902	597,375	214,159	811,534	517,307	185,106	702,413
MICH	65,732	14,360	80,092	61,432	13,788	75,220	62,383	12,515	74,898
MISC	79,187	11,110	90,293	98,865	8,706	107,571	116,098	11,820	127,918
MINN	250,807	56,495	347,302	242,804	78,766	321,570	276,651	46,421	323,072
IGWA	732,054	321,491	1,064,045	781,926	226,456	1,008,382	757,466	136,128	892,594
KC	100,318	36,434	136,752	156,608	37,469	194,077	111,030	45,475	156,505
N CAK	5,415	1,757	7,172	6,382	1,412	7,994	6,962	1,074	8,036
S CAK	82,824	33,383	116,209	87,475	29,517	116,992	98,723	16,066	114,789
NEBR	286,751	137,131	423,882	301,956	114,331	416,287	311,600	74,236	385,836
KANS	23,400	27,838	51,238	33,453	31,487	64,940	28,647	32,730	61,377
DEL	5,587	2,309	7,896	5,224	2,912	8,136	2,939	4,150	7,089
MD	12,783	7,056	19,839	13,680	7,732	21,412	7,457	7,812	15,269
VA	14,843	2,411	17,254	20,491	2,453	22,944	11,144	2,468	13,612
VA	1,947		1,885				1,354		
N C	41,633	8,019	49,652	36,848	9,494	46,342	25,948	9,009	34,957
S C	10,208	2,388	12,596	11,138	2,605	13,743	8,190	2,334	10,524
GA	28,997	5,720	34,717	32,541	7,486	40,027	28,840	7,088	35,928
FLA	2,888	700	3,588	6,195	626	6,821	5,403	684	6,087
KY	34,910	6,550	41,460	48,495	6,592	55,087	44,212	8,784	52,996
TENN	25,684	5,056	30,940	28,829	4,103	32,932	22,764	5,500	28,264
ALA	18,829	2,654	20,883	22,349	2,735	25,084	14,824	3,108	17,932
MISS	15,487	1,169	16,656	11,389	1,380	12,769	9,333	1,044	10,377
ARK	1,818		1,922	3,822	157	2,079	1,159	177	1,336
LA	3,410	6,330	9,740	6,72	9,072	13,494	2,854	14,809	17,663
OKLA	706	460	1,166	672	299	971	342	309	651
TEXAS	7,281	4,548	11,829	5,811	2,733	8,544	6,842	3,736	10,579
MCNT	130	31	161	101	34	135	192	47	239
ICAHN	1,073	217	1,290	975	254	1,229	818	153	971
YO	798	52	850	700	28	728	855	27	882
CCLC	7,022	1,830	8,852	9,815	2,890	12,705	9,834	5,750	15,584
N MEX	426	42	468	527	20	547	437	41	478
ARIZ	397	82	479	392	100	492	479		
UTAH	143		135				112		
NEV									
ASH	839	511	1,350	759	235	994	831	873	1,704
DREG	596	209	805	565	136	701	488	251	739
CALIF	2,457	2,431	4,888	3,076	3,582	6,658	3,312	7,243	10,555
UNALL*		1,062	4,970		433	2,453		11,308	23,995
U S	2,737,489	1,137,392	3,874,881	3,096,601	956,475	4,053,076	2,928,817	778,619	3,707,436
1968									
1969									
1970									
N ENG		875	875	15,954	380	380	17,017	605	605
N Y	20,254			2,352	363	2,715	3,550	434	3,984
A J	4,752	362	5,114	48,762	2,251	51,013	57,288	4,270	61,558
PA	64,838	4,240	69,078	156,255	50,346	212,601	147,163	61,460	208,623
OHIO	161,255	54,333	215,588	258,396	73,490	331,886	263,340	76,620	340,160
IND	300,894	61,511	362,365	544,752	225,639	770,391	573,734	230,571	804,305
ILL	684,391	211,112	895,503	68,250	14,260	82,510	67,704	14,765	82,469
MICH	65,219	13,493	78,712	136,637	12,549	149,186	12,680	10,282	22,962
MISC	114,493	14,141	128,634	350,560	69,355	419,915	335,917	61,430	397,347
MINN	298,953	58,777	357,730	181,168	203,280	1,021,448	869,723	202,879	1,072,602
IGWA	838,382	170,969	1,009,351	159,584	42,226	199,810	102,816	33,754	136,570
KC	125,303	35,713	161,016	5,498	1,170	6,668	6,373	1,294	7,667
N CAK	4,078	1,244	5,322	105,928	14,278	120,206	103,224	16,003	119,227
S CAK	86,514	15,688	102,202	351,328	95,378	446,706	425,594	124,284	549,878
NEBR	327,065	81,818	408,883	406,888	59,498	100,184	36,264	56,195	92,459
KANS	30,274	29,599	69,873	40,688	59,498	100,184	36,264	56,195	92,459
DEL	5,853	6,936	12,789	3,036	5,065	8,701	8,424	5,714	14,138
MD	18,547	8,024	26,571	11,819	8,694	20,513	17,357	10,781	28,138
VA	24,075	2,691	26,766	19,860	2,535	22,395	20,513	3,897	24,410
VA	2,437		1,947				2,505		
N C	45,131	13,814	58,945	38,822	10,713	49,535	44,425	8,811	53,236
S C	15,547	3,373	18,920	12,590	3,183	15,773	12,267	3,188	15,455
GA	48,648	10,518	59,166	30,674	5,590	36,224	28,382	5,271	33,653
FLA	10,373	1,071	11,444	6,486	888	7,374	5,101	726	5,827
KY	61,670	8,392	70,062	41,347	8,571	49,918	44,387	10,286	54,673
TENN	27,718	7,717	31,435	19,503	3,062	22,565	16,045	2,765	18,810
ALA	24,929	4,854	27,783	13,564	1,679	15,245	11,223	1,905	13,128
MISS	9,349			7,765	489	8,254	5,699	972	6,671
ARK	1,562	164	1,726	1,108	112	1,220	929	123	1,052
LA	3,034	14,906	17,940	4,337	4,578	8,915	1,880	9,420	11,300
OKLA	708	383	1,091	2,080	583	2,663	484	550	1,034
TEXAS	6,903	4,471	11,374	9,900	7,653	17,553	788	12,249	13,037
MCNT	309	46	355	180	60	240	263	20	283
ICAHN	1,069	330	1,399	1,200	79	1,279	1,523	250	1,773
YO	980	57	1,037	1,650	23	1,673	1,755	38	1,793
CCLC	11,956	6,690	18,646	13,423	7,210	20,633	16,500	6,610	23,110
N MEX	696			1,001			823	124	947
ARIZ	389			272		132	404	194	464
UTAH								345	345
NEV									
ASH	642	215	877	776	290	1,066	1,412	620	2,032
DREG	351	172	523	323	141	464	454	314	768
CALIF	4,435	6,053	10,488	3,887	6,532	10,399	3,094	6,411	9,505
UNALL*		7,309	40,434		9,038	27,990		6,507	26,029
U S	3,453,956	866,061	4,320,017	3,310,694	957,921	4,268,615	3,268,890	993,137	4,262,027

TABLE 20. CCRN - STOCKS BY POSITIONS, BY STATES, QUARTERLY, APRIL 1, 1965-70

STATE	QR FARMS	OFF FARMS 1/	TOTAL ALL POSITIONS	ON FARMS	OFF FARMS 1/	TOTAL ALL POSITIONS	ON FARMS	OFF FARMS 1/	TOTAL ALL POSITIONS
	1965			1966			1967		
1,000 BUSHELS									
N ENG	107	430	430	110	667	667	113	579	579
N Y	5,564	5,512	11,076	5,502	3,240	8,742	7,975	*	*
N J	1,818	293	2,111	1,869	482	2,351	1,146	322	1,468
PA	25,584	2,557	28,141	31,226	3,078	34,304	18,440	2,432	20,872
OHIO	84,221	38,539	122,760	92,658	42,118	134,776	99,431	49,428	148,859
IND	121,342	43,378	164,720	167,920	39,630	207,550	158,402	47,471	205,873
ILL	281,291	201,225	482,516	358,425	151,556	509,981	347,698	134,314	482,012
MICH	44,438	11,740	56,178	40,653	11,348	52,001	44,424	10,362	54,786
WISC	52,789	11,119	63,908	60,351	10,087	78,438	76,415	17,264	93,683
MINN	178,409	85,871	264,280	182,756	75,044	257,800	225,419	59,619	285,038
IOWA	573,568	287,860	861,428	610,880	191,059	801,939	577,115	117,234	694,353
MO	58,648	28,952	87,600	90,436	26,186	116,622	72,806	38,973	111,779
N DAK	4,218	1,512	5,730	5,366	1,371	6,737	4,832	1,073	5,905
S DAK	63,527	30,648	94,175	66,297	26,204	92,501	66,950	16,468	83,418
NEBR	225,304	112,482	337,786	237,073	87,632	324,705	229,600	75,089	304,689
KANS	14,508	23,117	37,625	18,585	21,822	40,407	18,501	29,154	47,655
DEL	1,479	2,027	3,506	2,517	2,951	5,468	1,350	3,725	5,075
MD	8,256	4,732	10,988	8,418	5,772	14,190	3,336	5,531	8,867
VA	8,701	1,651	10,352	10,414	2,509	12,923	5,474	2,820	8,294
W VA	931	*	754	*	*	699	*	*	*
N C	26,421	6,467	32,888	27,636	6,356	33,992	15,086	6,500	21,586
S C	5,808	1,245	7,053	5,967	1,708	7,675	3,931	1,572	5,503
GA	15,658	3,075	18,733	22,156	4,671	26,827	18,408	4,888	23,296
FLA	674	393	1,067	2,633	470	3,103	3,396	505	3,901
KY	19,783	5,349	25,132	27,505	5,667	33,172	26,007	7,650	33,657
TENN	15,029	3,634	18,663	15,523	3,013	18,536	13,179	4,089	17,268
ALA	11,225	2,435	13,660	10,971	2,723	13,694	7,412	2,818	10,230
MISS	6,433	1,050	7,483	4,633	1,581	6,214	3,701	1,737	5,438
ARK	808	*	943	943	147	1,090	464	123	587
LA	1,240	9,030	10,270	1,401	4,110	5,511	1,223	11,571	12,794
OKLA	274	335	609	371	232	603	130	282	412
TEXAS	4,228	3,108	7,336	2,518	2,103	4,621	3,231	3,134	6,365
MONT	35	25	60	34	35	69	64	25	89
IDAHO	596	202	798	420	194	614	305	137	442
WYO	359	28	387	266	15	281	466	27	473
COLO	2,809	1,291	4,100	3,681	1,340	5,021	4,282	2,890	7,172
N MEX	191	18	209	234	29	263	207	30	237
ARIZ	142	70	212	224	100	324	205	*	*
UTAH	53	439	492	63	*	*	48	*	*
NEV	*	*	*	*	*	*	*	*	*
WASH	357	731	1,128	414	116	530	290	175	465
OREG	294	204	498	287	167	454	163	172	335
CALIF	1,316	1,401	2,717	1,282	2,499	3,781	994	4,709	5,703
UNALL*		548	2,287		510	1,327		6,198	15,125
U S	1,466,476	538,763	2,005,239	2,129,372	740,542	2,869,934	2,063,306	671,090	2,734,396
1968									
N ENG		1,098	1,098		675	675		692	692
N Y	12,659	*	*	9,738	*	*	10,829	*	*
N J	3,168	301	3,469	1,664	290	2,054	2,636	450	3,086
PA	49,439	4,866	54,305	29,484	3,722	31,756	40,484	3,403	43,887
OHIO	107,503	61,395	168,898	96,729	44,376	141,105	98,913	44,083	142,996
IND	171,255	43,756	215,011	137,533	56,925	194,458	143,220	55,599	198,819
ILL	426,342	200,807	627,149	317,772	203,803	521,575	326,435	167,310	493,745
MICH	45,370	11,015	56,385	46,800	11,444	58,244	45,458	11,313	56,771
WISC	84,809	18,349	103,158	99,978	13,224	113,202	80,967	9,180	90,147
MINN	249,127	57,182	306,309	294,619	63,243	357,862	262,436	52,740	315,176
IOWA	660,842	148,067	808,909	609,080	178,296	787,376	642,839	166,736	809,575
MO	60,903	34,537	95,440	98,206	33,189	131,395	67,932	29,602	97,534
N DAK	2,681	900	3,581	3,881	946	4,827	4,224	962	5,186
S DAK	59,823	14,721	74,544	72,075	13,696	85,771	77,418	19,199	92,199
NEBR	253,642	171,763	425,405	269,770	82,021	351,791	308,339	96,792	405,131
KANS	20,903	30,401	51,304	26,536	42,639	69,175	21,949	38,278	60,227
DEL	2,156	6,039	8,195	6,94	4,032	4,726	2,246	4,747	6,993
MD	12,940	10,883	23,823	5,111	6,386	11,497	7,100	6,598	13,698
VA	13,808	2,902	16,710	10,088	2,789	12,877	10,256	2,780	13,036
W VA	1,434	*	1,248	*	*	1,531	*	*	*
N C	36,735	10,592	47,327	25,862	7,635	33,517	25,261	6,916	32,177
S C	8,169	2,374	10,543	7,018	2,384	9,402	6,557	1,818	8,375
GA	32,744	6,002	38,746	18,780	3,980	22,760	16,695	4,405	21,100
FLA	5,532	730	6,262	2,994	502	3,496	1,913	730	2,643
KY	35,507	8,641	44,148	20,335	6,727	27,062	24,740	6,597	31,337
TENN	17,555	3,663	21,218	10,949	2,390	13,339	8,948	2,092	11,040
ALA	12,676	2,880	15,556	6,399	1,864	8,263	4,748	1,544	6,297
MISS	5,292	1,347	6,639	4,518	767	5,285	2,367	1,021	3,388
ARK	781	173	954	481	132	613	480	324	804
LA	1,036	16,150	17,186	1,807	5,898	7,705	716	6,547	7,263
OKLA	216	250	466	870	463	1,333	226	566	792
TEXAS	2,426	4,736	7,162	3,647	6,098	9,745	3,152	9,611	12,763
MONT	95	28	123	60	31	91	88	15	103
IDAHO	481	275	756	669	88	757	857	132	989
WYO	770	21	791	990	20	1,010	909	22	931
COLO	5,535	4,010	9,545	5,993	5,450	11,443	8,250	5,970	14,220
N MEX	344	*	*	539	*	*	412	122	534
ARIZ	194	*	*	136	91	227	135	580	715
UTAH		403	403		*	*	236	*	236
NEV	*	*	*	*	*	*	*	*	*
WASH	215	120	335	252	109	361	600	535	1,135
OREG	140	179	319	108	136	244	189	225	414
CALIF	1,848	3,299	5,147	879	4,345	5,224	977	3,405	4,382
UNALL*		7,111	21,742		8,709	20,234		8,363	20,723
U S	2,433,095	807,946	3,241,041	2,244,312	818,165	3,062,477	2,263,432	767,827	3,031,259

TABLE 21. CORN - STOCKS BY POSITIONS, BY STATES, QUARTERLY, JULY 1, 1965-70

STATE	ON FARMS	OFF FARMS 1/	TOTAL ALL POSITIONS	ON FARMS	OFF FARMS 1/	TOTAL ALL POSITIONS	ON FARMS	OFF FARMS 1/	TOTAL ALL POSITIONS
	1965			1966			1967		
1,000 BUSHELS									
N ENG	42	429	429	42	498	498	41	550	550
N Y	2,298	2,373	4,671	2,876	1,632	4,508	4,720	3,298	8,018
N J	1,263	286	1,549	789	302	1,091	731	265	996
PA	14,924	1,692	16,616	17,286	1,745	19,031	10,537	1,908	12,445
CHIG	46,121	21,852	67,973	54,239	22,350	76,589	60,182	29,067	89,249
IND	73,444	29,334	102,778	110,474	24,398	134,872	113,725	28,454	142,179
ILL	148,048	114,175	262,223	183,808	67,212	251,020	195,050	64,931	259,981
MICH	24,997	8,801	33,798	24,392	7,856	32,248	27,411	6,946	34,357
WISC	29,562	6,986	36,548	39,058	6,864	45,922	48,497	8,394	56,891
MINN	155,138	68,666	223,804	133,151	47,635	180,786	150,279	32,826	183,105
ICWA	422,629	219,830	642,459	423,543	127,799	551,342	414,804	76,879	493,683
MO	33,954	23,003	56,957	55,144	20,727	75,871	47,324	24,945	72,269
Y DAK	2,679	1,337	4,016	3,336	1,139	4,475	2,621	865	3,486
S DAK	42,619	26,438	69,257	42,356	17,911	60,267	49,929	13,774	63,703
NEBR	176,147	80,619	256,766	149,730	42,484	192,214	157,440	56,509	213,949
KANS	8,424	18,309	26,733	11,151	16,815	27,966	11,936	18,809	30,745
DEL	246	579	825	299	1,460	1,759	238	1,660	1,898
MD	1,904	1,913	3,817	4,560	2,066	6,626	981	2,155	3,136
VA	4,095	818	4,913	4,031	1,521	5,552	2,742	1,342	3,884
W VA	564	*	*	522	56	578	429	*	*
N C	12,810	4,231	17,041	12,897	3,689	16,586	6,035	3,095	9,130
S C	2,464	577	3,041	2,785	788	3,573	1,638	773	2,411
GA	6,959	1,239	8,198	11,770	2,370	14,140	7,977	2,477	10,454
FLA	481	257	738	1,704	327	2,031	1,544	347	1,891
KY	9,891	2,905	12,796	15,200	3,288	18,488	12,353	4,838	17,191
TENN	8,767	1,989	10,756	8,870	2,324	11,194	8,786	2,535	11,321
ALA	4,345	1,344	5,689	6,095	2,209	8,304	3,854	1,878	5,732
MISS	3,097	621	3,718	2,703	505	3,208	1,931	615	2,546
ARK	471	*	*	568	108	676	255	210	465
LA	558	5,063	5,621	573	5,276	5,849	680	6,425	7,105
OKLA	137	164	301	150	178	328	16	158	174
TEXAS	1,527	1,439	2,966	1,162	1,061	2,223	1,045	1,648	2,693
MCNT	12	5	17	10	19	29	13	21	34
ICAFU	205	81	290	210	149	359	125	75	200
WYO	239	19	253	84	17	101	237	16	253
CCLC	1,170	1,020	2,190	1,091	1,325	2,416	2,319	2,290	4,609
N MEX	120	22	142	117	12	129	109	29	138
ARIZ	57	46	103	84	*	*	89	56	145
UTAH	17	283	300	11	*	*	13	*	*
NEV		*	*		5	5		*	*
WASH	243	40	283	207	100	307	174	34	208
OREG	82	97	179	135	120	255	65	125	190
CALIF	351	729	1,080	256	2,620	2,876	248	2,089	2,337
UNALL*		326	1,361		324	419		372	814
U S	1,243,125	650,332	1,893,457	1,327,409	459,284	1,786,693	1,348,922	405,683	1,754,606
1968									
1969									
1970									
N ENG		648	648		425	425		710	710
N Y	9,367			5,180	*	*	5,525	*	*
N J	2,028	250	2,278	543	208	751	1,130	420	1,550
PA	33,230	1,625	34,855	16,443	1,278	17,721	25,971	2,371	28,342
OHIO	69,109	38,546	107,655	62,006	24,795	86,801	53,075	25,409	78,484
IND	129,599	41,935	171,534	83,354	39,629	122,983	83,160	34,494	117,654
ILL	258,049	109,758	367,807	163,426	107,839	271,265	168,163	94,583	262,746
MICH	29,301	10,140	39,441	29,250	8,963	38,213	24,100	9,277	33,377
WISC	48,059	12,035	60,094	63,319	6,450	69,769	45,830	6,658	52,488
MINN	181,507	35,383	216,890	220,032	48,405	268,437	195,952	37,573	233,525
ICWA	503,029	110,712	613,741	445,447	151,571	597,018	415,654	126,946	542,600
MO	60,630	21,820	82,450	66,289	25,425	91,714	34,884	21,404	56,288
N DAK	1,676	832	2,508	3,234	907	4,141	2,223	745	2,968
S DAK	47,859	13,330	61,189	46,958	13,598	60,556	54,193	12,612	66,805
NEBR	166,894	57,035	223,929	213,306	70,266	283,572	234,511	69,084	303,595
KANS	12,974	21,538	34,512	15,921	37,059	52,980	12,406	29,854	42,260
DEL	462	2,537	2,999	260	1,932	2,192	562	2,213	2,775
MD	5,607	4,874	10,481	3,514	2,181	5,695	4,734	2,937	7,671
VA	8,497	4,017	12,514	5,990	1,222	7,212	5,128	1,671	6,799
W VA	1,075	*	*	632	48	880	939	*	*
N C	16,793	6,456	23,249	8,088	3,006	11,094	11,324	3,416	14,740
S C	4,743	1,281	6,024	2,890	1,231	4,121	3,173	978	4,151
GA	12,162	3,200	15,362	7,512	2,272	9,784	10,017	2,452	12,469
FLA	2,997	333	3,330	832	228	1,060	638	379	1,017
KY	19,622	4,423	24,105	14,234	3,013	17,247	13,825	2,709	16,534
TENN	10,625	2,196	12,821	6,159	1,930	8,089	4,937	1,998	6,935
ALA	6,760	2,182	8,942	3,072	1,581	4,653	2,806	1,069	3,875
MISS	2,646	*	*	2,541	1,348	3,889	1,403	*	*
ARK	312	235	547	230	252	482	279	320	599
LA	444	8,005	8,449	795	7,065	7,860	358	6,966	7,324
OKLA	96	187	283	454	298	752	153	264	417
TEXAS	746	2,301	3,047	1,303	3,989	5,292	1,051	5,767	6,818
MCNT	24	26	50	15	14	29	28	18	46
ICAFU	267	129	396	354	55	409	405	74	479
WYO	350	20	370	396	15	411	399	18	417
COLO	1,993	2,770	4,763	3,356	2,990	6,346	5,711	2,435	8,146
N MEX	200	*	*	330	*	*	235	76	311
ARIZ	101	33	134	65	44	109	65	72	137
UTAH		*	*		*	*		208	208
NEV		*	*		*	*		*	*
WASH	116	76	192	97	70	167	177	64	241
OREG	105	159	264	81	113	194	106	94	200
CALIF	370	1,586	1,956	176	2,427	2,603	163	2,028	2,191
UNALL*		7,905	21,193		8,455	13,965		9,307	17,174
U S	1,670,424	530,578	2,201,002	1,498,284	582,597	2,080,881	1,425,733	519,562	1,945,295

TABLE 22. CERN - STOCKS BY POSITIONS, BY STATES, QUARTERLY, OCTOBER 1, 1965-70

STATE	ON FARMS	OFF FARMS 1/	TOTAL ALL POSITIONS	ON FARMS	OFF FARMS 1/	TOTAL ALL POSITIONS	ON FARMS	OFF FARMS 1/	TOTAL ALL POSITIONS
	1965			1966			1967		
1,000 BUSHELS									
N ENG	17	222	222	14	443	443	17	340	340
N Y	968	772	1,740	1,125	859	1,984	2,116	1,515	3,631
N J	178	8	186	312	87	399	72	36	109
PA	5,330	859	6,189	8,364	793	9,157	3,951	955	4,906
OHIO	12,032	8,921	20,953	15,820	11,070	26,890	18,316	10,888	29,204
IND	12,773	18,576	31,349	26,514	15,866	42,380	28,431	17,642	46,073
ILL	25,908	91,346	117,254	41,357	41,770	83,127	33,922	33,110	67,032
MICH	10,184	6,585	16,769	6,776	4,494	11,270	7,562	4,643	12,205
WISC	13,725	5,683	19,408	14,647	6,052	20,699	20,574	3,886	24,460
MINN	93,083	66,162	159,245	70,492	32,077	102,569	85,386	20,987	106,373
ICWA	218,862	195,404	414,266	179,181	83,151	262,342	180,350	60,674	241,024
MO	15,434	18,197	33,631	24,263	21,135	45,398	16,381	14,562	30,923
N DAK	1,482	1,165	2,647	1,450	848	2,298	1,147	816	1,963
S DAK	28,145	26,916	55,061	23,020	14,092	37,112	29,504	12,772	42,276
NEBR	122,893	99,923	222,816	89,838	47,464	137,302	121,360	46,917	168,337
KANS	2,808	16,607	19,415	5,576	13,426	19,002	5,966	12,002	17,978
DEL	41	7	48	149	41	190	40	20	60
MD	408	*	*	1,228	1,978	3,206	196	*	*
VA	1,280	63	1,343	1,680	217	1,897	782	78	860
W VA	282	*	*	247	13	260	248	*	*
N C	3,203	306	3,509	2,764	459	3,223	2,112	322	2,434
S C	880	93	973	995	65	1,060	737	40	777
GA	2,320	75	2,395	2,769	209	2,978	1,534	241	1,775
FLA	96	*	*	310	*	*	309	*	*
KY	2,327	858	3,185	5,067	1,291	6,358	4,226	1,368	5,594
TENN	2,087	297	2,384	2,883	1,244	4,127	2,995	728	3,723
ALA	1,629	168	1,797	1,625	804	2,429	1,482	850	2,332
MISS	1,430	158	1,588	1,158	292	1,450	1,126	*	*
ARK	168	80	248	218	64	282	162	379	541
LA	186	2,328	2,514	159	6,065	6,224	136	3,330	3,466
OKLA	88	94	182	106	174	280	8	134	142
TEXAS	235	469	724	291	359	650	285	261	546
MCNT	5	21	26	2	24	26	6	20	26
ICAHO	75	53	128	90	104	194	69	44	113
WYO	160	11	171	56	17	73	18	18	36
COLO	585	520	1,105	409	1,970	2,379	535	1,110	1,645
N MEX	55	5	60	41	7	48	55	3	58
ARIZ	23	*	*	28	*	*	27	21	48
UTAH	6	*	*	7	113	120	5	*	*
NEV	*	*	*	*	*	*	*	*	*
WASH	66	127	193	35	73	108	58	56	114
OREG	41	90	131	81	147	228	24	106	130
CALIF		929	929		1,003	1,003		1,307	1,307
UNALL*		1,475	2,250		178	516		1,854	3,738
U S	581,498	565,593	1,147,091	531,157	310,538	841,695	572,233	254,075	826,308
-----									
	1968			1969			1970		
N ENG		460	460	400	400	400	670	670	670
N Y	4,557	*	*	2,072	*	*	2,431	*	*
N J	760	196	956	72	60	132	377	32	409
PA	17,020	1,083	18,103	6,237	604	7,041	9,166	2,664	11,830
OHIO	25,596	16,097	41,693	21,082	11,187	32,269	18,094	12,429	30,523
IND	25,457	27,846	53,303	14,587	24,427	39,014	16,170	21,612	37,782
ILL	56,098	67,783	123,881	36,317	69,124	105,441	29,676	78,722	108,398
MICH	13,233	6,944	20,177	10,725	5,663	16,388	7,738	4,624	12,362
WISC	22,616	3,616	26,232	29,993	3,726	33,719	16,604	6,401	23,005
MINN	117,446	29,281	146,727	137,986	30,491	168,477	97,976	35,634	133,610
ICWA	276,173	110,578	386,751	254,541	108,611	363,152	170,163	111,501	281,664
MO	22,231	16,187	38,418	22,096	17,956	40,052	11,934	21,475	33,409
N DAK	1,341	740	2,081	2,987	789	3,776	1,630	752	2,382
S DAK	30,372	12,091	42,463	27,301	12,526	39,827	30,967	12,513	43,480
NEBR	133,496	54,178	187,674	138,022	59,341	197,363	134,627	63,561	198,188
KANS	5,046	16,456	21,502	7,961	22,964	30,925	8,112	25,347	33,459
DEL	154	*	*	87	9	96	42	*	42
MD	2,372	*	*	799	164	963	1,578	898	2,476
VA	3,541	192	3,733	1,891	123	2,014	1,880	256	2,136
W VA	717	*	*	416	15	431	522	*	*
N C	4,723	2,576	7,299	3,235	500	3,735	3,484	902	4,386
S C	1,054	874	1,928	1,032	187	1,219	635	181	816
GA	4,678	1,079	5,757	1,565	532	2,097	2,226	788	3,014
FLA	922	*	*	249	*	*	255	82	337
KY	9,344	527	9,871	3,728	496	4,224	3,638	1,180	4,818
TENN	3,465	371	3,836	2,053	322	2,375	1,851	903	2,754
ALA	2,113	750	2,863	1,152	576	1,728	863	935	1,798
MISS	1,411	*	*	1,271	422	1,693	614	*	*
ARK	208	103	311	146	103	249	108	193	301
LA	148	2,610	2,758	398	5,175	5,573	224	11,346	11,570
OKLA	72	158	230	38	371	409	48	393	441
TEXAS	280	1,124	1,404	912	2,682	3,594	263	3,725	3,988
MCNT	5	25	30	3	11	14	13	13	26
ICAHO	160	42	202	98	38	136	119	16	135
WYO	84	11	95	198	22	220	239	40	279
COLO	1,107	1,600	2,707	1,199	1,740	2,939	952	1,580	2,532
N MEX	96	*	*	132	*	*	94	59	153
ARIZ	31	*	*	22	13	35	22	40	62
UTAH	*	*	*	*	*	*	*	68	68
NEV	*	*	*	*	*	*	*	*	*
WASH	33	111	144	29	97	126	35	92	127
OREG	35	110	145	38	101	139	60	180	240
CALIF		596	596		518	518		954	954
UNALL*		4,098	14,358		3,839	6,292		6,832	10,399
U S	380,195	380,493	1,168,688	732,270	386,125	1,118,395	575,630	429,593	1,005,223

TABLE 23. OATS - STOCKS BY POSITIONS, BY STATES, QUARTERLY, OCTOBER 1, 1964-69

STATE	ON FARMS	OFF FARMS 1/	TOTAL ALL POSITIONS	ON FARMS	OFF FARMS 1/	TOTAL ALL POSITIONS	ON FARMS	OFF FARMS 1/	TOTAL ALL POSITIONS
	1964			1965			1966		
1,000 BUSHELS									
N ENG	2,255	238	238	1,944	344	344	1,807	452	452
N Y	21,549	4,162	25,711	19,125	4,102	23,227	17,898	4,855	22,753
N J	431	70	501	310	76	386	271	85	356
PA	20,725	1,209	21,934	20,324	948	21,272	13,243	692	13,935
OHIO	25,461	10,093	35,554	24,095	10,305	34,400	22,701	12,130	34,831
IND	13,446	2,380	15,826	13,279	2,737	16,016	12,301	3,350	15,651
ILL	39,841	7,925	47,766	35,578	5,941	41,519	37,006	8,735	45,741
MICH	27,741	1,741	29,482	23,824	1,827	25,651	20,313	2,404	22,717
WISC	86,995	4,354	91,389	99,034	3,955	107,989	85,033	9,437	94,470
MINN	128,133	23,653	151,786	150,621	26,436	177,057	127,228	34,611	161,839
ICHA	86,790	15,354	102,144	81,859	17,632	99,491	84,424	17,017	101,441
MO	8,928	2,610	11,538	5,821	2,906	8,727	7,380	4,719	12,099
N DAK	97,518	9,794	107,312	111,340	14,028	125,368	91,423	15,753	107,176
S DAK	84,181	11,980	96,161	105,214	16,036	121,250	83,054	17,720	100,774
NEBR	16,529	2,223	18,752	29,199	3,261	26,460	19,982	2,255	22,237
KANS	6,965	896	7,861	5,642	980	6,622	4,696	882	5,578
DEL	109	9	118	84	11	95	88	2	90
MD	924	221	1,145	761	194	955	692	166	858
VA	1,271	219	1,490	1,547	248	1,795	1,460	256	1,716
W VA	608	*	*	457	*	*	341	*	*
N C	3,213	586	3,799	3,445	857	4,302	3,995	947	4,942
S C	3,361	695	4,056	2,052	353	2,405	1,647	577	2,224
GA	2,772	835	3,607	1,908	643	2,551	1,597	654	2,251
FLA	144	*	167	132	*	132	129	261	261
KY	640	376	1,016	391	179	570	406	274	680
TENN	1,166	984	2,150	872	517	1,389	1,127	633	1,760
ALA	936	221	1,157	644	178	822	562	365	927
MISS	1,152	715	1,867	683	466	1,149	1,231	889	2,120
ARK	953	916	1,869	621	492	1,113	1,193	625	1,818
LA	891	408	1,299	462	149	611	554	131	685
OKLA	4,785	1,004	5,789	5,236	1,248	6,484	4,828	2,902	7,730
TEXAS	12,431	2,112	14,543	11,756	2,090	13,846	7,938	2,564	10,502
MCNT	10,256	487	10,743	11,526	725	12,251	8,739	1,034	5,773
ICAHU	2,882	1,856	4,738	3,151	2,599	5,750	2,055	1,470	3,525
WYO	3,421	96	3,517	4,452	263	4,715	3,325	175	3,504
COLC	2,064	300	2,364	2,698	830	3,528	1,970	560	2,530
N MEX	57	20	117	89	26	115	95	19	114
ARIZ	110	18	128	90	48	138	60	29	89
UTAH	823	108	931	953	169	1,122	741	202	943
NEV	132	17	149	153	23	176	81	*	*
WASH	1,830	2,413	4,243	1,755	2,775	4,530	1,788	2,127	3,915
OREG	3,457	5,300	8,757	3,870	4,851	8,721	2,588	3,112	5,700
CALIF	891	1,607	2,498	964	2,085	3,049	807	1,264	2,071
UNALL*		71	823		80	744		47	469
U S	728,807	120,316	849,123	782,038	138,613	920,651	678,804	156,250	835,054
1967									
N ENG	1,394	456	456	1,582	283	283	1,436	500	500
N Y	19,149	3,991	19,160	18,396	5,425	23,821	14,371	4,008	18,379
N J	292	94	386	279	62	341	223	126	349
PA	15,498	863	16,361	20,160	1,022	21,182	15,724	994	16,718
OHIO	16,880	7,553	24,433	29,175	12,318	41,493	25,389	13,810	39,199
IND	9,601	2,258	11,859	15,164	3,431	18,595	13,705	3,773	17,478
ILL	29,378	4,950	34,328	34,927	6,033	40,960	29,589	9,124	38,713
MICH	19,099	1,871	20,970	27,552	3,899	31,451	24,003	3,593	27,596
WISC	92,172	8,179	100,351	86,985	10,639	97,624	85,767	15,611	101,378
MINN	128,930	33,155	162,085	169,712	35,583	205,295	173,814	48,651	222,265
ICHA	78,055	19,556	97,611	84,084	20,011	104,095	77,887	19,768	97,655
MO	6,662	3,055	9,717	6,998	2,939	9,937	3,766	1,135	4,901
N DAK	75,256	15,362	90,620	113,743	16,032	129,775	168,986	22,109	191,095
S DAK	98,865	18,208	117,073	112,429	16,613	129,042	119,465	18,899	138,364
NEBR	17,228	3,435	20,663	11,867	3,008	14,875	21,964	2,510	24,474
KANS	4,695	1,223	5,918	5,609	1,246	6,855	4,128	2,628	6,756
DEL	79	5	84	48	7	55	95	8	103
MD	696	86	782	861	194	1,055	844	206	1,050
VA	1,433	257	1,690	1,784	267	2,051	1,054	216	1,270
W VA	394	*	618	*	*	515	*	*	*
N C	3,201	679	3,880	3,787	1,241	5,028	3,630	1,111	4,741
S C	1,674	370	2,044	1,430	461	1,891	1,694	634	2,328
GA	1,411	324	1,735	1,310	373	1,683	1,539	580	2,119
FLA	122	*	149	149	225	215	215	189	364
KY	319	74	393	508	119	627	556	272	828
TENN	992	342	1,334	793	480	1,273	918	404	1,322
ALA	535	97	632	502	177	679	704	266	970
MISS	957	465	1,422	767	355	1,122	595	692	1,287
ARK	980	292	1,272	1,009	980	1,989	998	1,737	2,735
LA	518	115	633	308	214	522	271	225	496
OKLA	3,019	581	3,600	4,651	1,209	5,860	5,818	1,863	7,681
TEXAS	4,035	2,231	6,266	10,307	3,088	13,395	13,239	5,093	16,332
MCNT	7,770	597	8,367	9,806	700	10,506	17,446	1,360	18,806
ICAHU	1,637	725	2,362	2,694	1,412	4,106	3,422	2,527	5,949
WYO	4,262	281	4,543	2,970	164	3,134	3,401	220	3,621
COLC	1,801	670	2,471	1,754	660	2,414	3,008	800	3,808
N MEX		20	20		13	13		8	8
ARIZ		21	21		22	22		11	11
UTAH	1,077	106	1,183	778	138	916	867	208	1,075
NEV	38	*	68	*	*	115	*	*	*
WASH	999	1,029	2,028	1,311	1,175	2,486	2,088	2,654	4,742
OREG	1,955	1,239	3,194	2,855	1,732	4,587	3,293	4,083	7,376
CALIF	1,551	598	2,149	1,950	800	2,750	745	1,406	1,891
UNALL*		257	811		54	740		16	646
U S	650,631	135,670	786,301	791,680	154,655	946,335	847,091	193,728	1,040,819



TABLE 24. GATS - STOCKS BY POSITIONS, BY STATES, QUARTERLY, JANUARY 1, 1965-70

STATE	UN FARMS	OFF FARMS 1/	TOTAL ALL POSITIONS	UN FARMS	OFF FARMS 1/	TOTAL ALL POSITIONS	UN FARMS	OFF FARMS 1/	TOTAL ALL POSITIONS
	1965			1966			1967		
1,000 BUSHELS									
N ENG	1,594	409	409	1,277	375	375	1,254	316	316
N Y	15,623	4,834	20,457	15,672	3,127	18,799	12,953	9,155	18,108
N J	286	96	382	210	80	290	203	83	286
PA	16,480	642	17,122	15,917	739	16,656	10,013	522	10,535
OHIO	20,440	5,293	25,733	19,344	6,147	25,491	17,026	7,050	24,076
IND	11,261	1,309	12,570	11,007	1,754	12,761	10,649	1,996	12,645
ILL	35,288	4,519	39,807	31,968	4,860	36,828	31,564	5,642	37,206
MICH	21,234	989	22,223	19,519	1,048	20,567	14,368	1,111	15,479
WISC	71,461	4,882	76,343	83,887	3,920	87,807	69,849	4,718	74,567
MILAN	108,201	15,291	123,492	130,974	19,549	150,523	103,718	24,721	128,439
ICWA	76,646	11,293	87,939	87,414	10,996	98,410	74,806	9,907	84,713
MO	6,808	1,902	8,710	4,829	2,491	7,320	6,298	2,868	9,166
N DAK	80,558	7,460	88,018	90,132	12,655	102,787	68,167	12,223	80,390
S DAK	75,620	9,588	85,208	97,121	13,976	111,097	77,014	13,118	90,132
NEBR	13,364	1,508	14,872	19,991	2,411	22,402	18,462	1,746	20,208
KANS	5,590	849	6,439	4,461	774	5,235	3,913	719	4,632
DEL	55	18	73	36	3	39	37	14	51
MD	568	133	701	550	119	669	476	84	560
VA	924	184	1,088	1,232	191	1,423	1,297	185	1,482
W VA	410	*	*	365	*	268	*	*	*
N C	2,183	510	2,693	2,079	459	2,538	2,873	466	3,339
S C	1,897	483	2,380	1,322	284	1,606	1,366	284	1,650
GA	1,415	480	1,895	812	300	1,112	1,169	290	1,459
FLA	47	*	*	84	*	88	88	87	175
KY	418	223	641	284	130	414	297	208	505
TENN	666	781	1,447	608	406	1,014	805	691	1,496
ALA	510	123	633	252	183	435	295	142	437
MISS	730	820	1,550	410	383	793	855	485	1,340
ARK	520	232	752	380	93	473	628	117	745
LA	470	*	267	107	374	481	234	151	385
OKLA	3,605	725	4,330	3,441	830	4,271	3,536	650	4,186
TEXAS	8,505	1,679	10,184	6,376	1,677	8,053	5,821	2,068	7,889
NEAR	9,316	384	9,700	9,989	827	10,816	7,768	760	8,528
ICAHU	2,247	1,664	3,911	2,416	2,024	4,440	1,209	1,254	2,463
NYO	2,380	116	2,496	3,695	246	3,941	2,412	129	2,541
CCLU	1,849	310	2,159	2,070	740	2,810	1,443	580	2,023
N MEX	43	18	61	67	15	82	67	15	82
ARIZ	44	55	99	36	59	95	102	24	44
UTAH	647	90	737	874	216	1,090	632	108	740
NEV	88	17	105	117	13	130	50	*	*
WASH	1,251	2,162	3,413	1,229	2,760	3,989	1,323	1,504	2,827
OREG	2,662	4,005	6,667	2,919	4,152	7,071	1,811	1,995	3,806
CALIF	545	1,227	1,772	680	4,431	2,111	538	904	1,442
UNALL*		491	1,418		48	497		24	342
U S	604,469	87,774	692,243	661,263	102,605	763,868	557,581	105,110	662,691
-----									
	1968			1969			1970		
N ENG	886	345	345	1,048	273	273	693	452	452
N Y	13,385	5,112	18,497	15,120	5,676	20,796	11,871	2,452	14,323
N J	215	69	284	212	95	307	151	60	211
PA	11,718	571	12,289	15,372	611	15,983	12,464	530	12,994
OHIO	12,849	4,739	17,588	23,057	8,350	31,407	18,498	9,519	28,017
IND	8,154	1,581	9,735	13,326	2,625	15,951	11,043	2,609	13,652
ILL	24,116	2,946	27,062	28,940	4,603	33,543	24,872	6,974	31,846
MICH	15,424	1,278	16,704	22,512	2,360	24,872	19,418	2,481	21,899
WISC	75,024	7,020	82,044	73,195	9,459	82,654	73,216	15,207	88,423
MILAN	117,924	26,791	144,715	153,925	28,396	182,321	162,167	41,783	203,950
ICWA	68,932	13,525	82,457	74,505	15,043	89,548	67,565	14,345	81,910
MO	5,552	2,520	8,072	5,448	2,618	8,066	2,917	2,351	5,268
N DAK	59,940	12,346	72,286	91,869	13,987	105,856	153,624	21,135	174,759
S DAK	90,268	13,493	103,761	95,459	13,103	108,562	108,505	16,220	124,725
NEBR	15,758	2,218	17,976	10,208	2,396	12,604	17,571	1,551	19,122
KANS	3,883	546	4,429	4,651	991	5,642	334	2,064	2,398
DEL	53	6	59	32	10	42	72		
MD	576	106	682	689	150	839	658	86	744
VA	1,297	195	1,492	1,401	220	1,621	968	189	1,157
W VA	338	11	349	508	*	*	423	8	431
N C	2,352	404	2,756	2,439	524	2,963	2,838	516	3,354
S C	670	185	855	943	1,261	318	959	346	1,305
GA	571	106	677	840	440	1,280	1,259	242	1,501
FLA	81	94	175	99	109	208	143	46	189
KY	236	67	303	323	93	416	370	120	490
TENN	830	399	1,229	677	754	1,431	814	485	1,299
ALA	178	100	278	223	172	395	366	370	736
MISS	495	296	791	495	483	978	307	551	858
ARK	356	52	408	459	358	817	499	746	1,245
LA	219	92	311	158	169	327	139	145	284
OKLA	2,594	487	3,081	3,366	909	4,275	4,055	1,155	5,210
TEXAS	1,852	1,593	3,445	7,929	2,445	10,374	9,166	4,792	13,958
NEAR	6,475	670	7,145	8,652	897	9,549	15,507	1,178	16,685
ICAHU	1,309	607	1,916	1,770	847	2,617	2,211	2,154	4,365
NYO	3,128	224	3,352	2,481	207	2,688	2,964	206	3,170
CCLU	1,331	630	1,961	1,376	635	2,011	2,148	1,115	3,263
N MEX	*	*	*	*	*	*	*	*	*
ARIZ	29	29	29	31	31	31	24	24	24
UTAH	790	93	883	599	124	723	554	189	743
NEV	33	*	*	44	*	*	82	*	*
WASH	749	644	1,393	1,012	928	1,940	1,587	2,467	4,054
OREG	827	1,182	2,009	2,039	1,350	3,389	2,150	3,487	5,637
CALIF	724	787	1,511	975	414	1,389	497	608	1,105
UNALL*		19	52		54	606		9	163
U S	552,094	104,378	656,472	668,396	123,227	791,623	735,845	160,986	896,831

SEE FOOTNOTES ON PAGE 39.

TABLE 25. OATS - STOCKS BY POSITIONS, BY STATES, QUARTERLY, APRIL 1, 1965-70

STATE	ON FARMS	OFF FARMS 1/	TOTAL ALL POSITIONS	ON FARMS	OFF FARMS 1/	TOTAL ALL POSITIONS	ON FARMS	OFF FARMS 1/	TOTAL ALL POSITIONS
	1965			1966			1967		
1,000 BUSHELS									
N ENG	673	290	290	529	234	234	621	267	267
N Y	7,811	2,455	10,266	8,500	2,190	10,690	6,830	3,211	10,041
N J	129	95	224	87	47	134	106	57	163
PA	9,489	563	10,052	9,060	562	9,622	6,137	438	6,575
OHIO	10,399	4,395	14,794	9,163	4,685	13,848	6,680	4,996	13,676
IND	6,051	1,222	7,273	4,892	1,531	6,423	5,324	1,482	6,806
ILL	20,490	3,616	24,106	17,531	3,835	21,366	17,414	4,544	21,958
MICH	12,329	957	13,286	10,046	1,348	11,394	7,432	1,084	8,516
WISC	41,426	4,303	45,729	50,099	6,242	56,341	41,504	7,474	48,978
MINN	69,761	12,092	81,853	96,594	17,749	114,343	70,528	21,640	92,168
ICWA	56,357	7,283	63,640	51,425	8,510	59,935	48,090	8,356	56,446
MO	4,687	1,964	6,651	2,844	1,653	4,497	3,444	1,912	5,356
S DAK	52,967	7,752	60,719	74,227	12,460	86,687	53,731	10,652	64,383
N DAK	53,505	9,237	62,742	71,684	11,675	83,359	49,833	12,406	62,239
NEBR	11,605	1,221	12,826	13,821	1,447	15,268	11,944	1,006	12,952
KANS	3,291	574	3,865	2,362	539	2,901	2,167	679	2,846
DEL	27	9	36	18	2	20	22	7	25
MD	304	75	379	381	279	660	227	99	326
VA	508	160	668	629	117	746	622	88	710
W VA	251	*	206	206	9	215	131	*	*
N C	1,455	374	1,829	1,307	314	1,621	1,472	393	1,865
S C	1,355	216	1,571	1,571	593	1,600	753	482	1,211
GA	679	575	1,254	325	224	549	506	176	682
FLA	18	85	103	21	*	*	22	43	65
KY	283	366	649	213	71	284	218	145	363
TENN	428	438	866	385	269	654	460	246	706
ALA	221	142	363	133	150	283	140	184	324
MISS	245	553	822	246	93	339	222	100	322
ARK	217	103	320	207	50	257	314	58	372
LA	275	*	103	103	105	208	123	155	278
OKLA	1,967	627	2,594	2,399	529	2,923	2,108	617	2,725
TEXAS	4,580	1,202	5,782	4,782	1,270	6,052	3,704	1,311	5,015
MCAT	5,726	333	6,059	6,243	827	7,070	5,079	502	5,581
IDAHO	1,465	1,401	2,866	1,733	1,597	3,330	756	603	1,359
WYO	1,836	119	1,955	1,755	159	2,385	1,664	110	1,774
COLC	2,017	317	2,334	1,035	590	1,625	805	390	1,195
N MEX	28	15	43	33	33	50	36	9	45
ARIZ	18	29	47	18	45	63	12	17	29
UTAH	402	76	478	580	174	754	346	80	426
NEV	53	*	54	54	*	*	18	*	*
WASH	549	1,865	2,414	562	1,444	2,006	787	850	1,637
OREG	1,609	2,596	4,205	1,586	2,875	4,461	880	1,115	1,995
CALIF	124	1,029	1,153	340	1,095	1,435	90	243	333
UNALL*	326		905		86	161		29	178
U S	389,534	71,050	460,584	449,217	87,258	536,475	355,033	87,895	442,928
1968									
N ENG	472	189	189	570	245	245	598	361	361
N Y	6,692	3,369	10,061	8,064	5,090	13,154	7,081	3,034	10,115
N J	86	58	144	108	96	204	94	58	152
PA	7,371	533	7,904	9,828	549	10,377	7,095	539	7,634
OHIO	7,054	3,496	10,550	13,174	6,595	19,771	9,430	6,009	15,439
IND	3,683	1,077	4,760	6,204	2,047	8,251	5,902	1,665	7,567
ILL	12,716	1,600	14,316	14,969	4,654	19,623	14,151	4,152	18,303
MICH	8,570	1,359	9,929	13,104	2,536	15,640	10,788	2,583	13,371
WISC	47,158	6,707	53,865	47,736	10,278	58,014	46,021	14,107	60,128
MINN	88,050	23,648	111,698	114,457	28,029	142,486	141,181	45,374	186,555
ICWA	42,575	8,184	50,759	47,896	10,633	58,529	41,290	10,797	52,087
MO	2,733	1,492	4,225	2,408	1,612	4,018	3,150	2,994	3,150
S DAK	41,292	11,814	53,106	66,714	13,584	80,298	121,363	21,180	142,543
N DAK	65,952	12,532	77,084	67,882	12,309	80,191	86,585	14,990	101,575
NEBR	11,766	1,158	12,924	7,911	1,650	9,561	12,202	1,798	14,000
KANS	2,029	633	2,662	2,599	733	3,332	1,769	673	2,442
DEL	16	5	21	10	17	27	24	*	*
MD	156	116	272	266	145	411	284	153	439
VA	649	144	793	713	178	891	516	153	669
W VA	215	8	223	313	*	*	206	*	*
N C	1,502	297	1,799	1,541	375	1,916	1,518	417	1,935
S C	368	101	469	517	187	704	384	285	669
GA	336	122	458	504	175	679	490	143	633
FLA	16	78	94	20	36	56	107	*	*
KY	129	56	185	157	88	245	206	*	*
TENN	466	232	698	387	582	969	355	190	545
ALA	95	104	199	134	90	224	141	109	250
MISS	182	70	252	136	114	250	96	223	319
ARK	134	42	176	321	103	424	333	133	466
LA	115	70	185	70	157	227	62	110	172
OKLA	1,446	375	1,821	1,958	624	2,582	2,556	714	3,270
TEXAS	1,125	1,433	2,558	5,154	1,829	6,983	5,856	3,875	9,731
MCAT	4,144	468	4,612	5,686	557	6,243	12,512	1,070	13,582
IDAHO	774	430	1,204	1,077	602	1,679	1,579	1,768	3,347
WYO	1,564	175	1,739	1,632	101	1,733	1,872	124	1,996
COLC	861	505	1,366	971	490	1,461	1,484	490	1,974
N MEX	*	*	*	*	*	*	*	18	18
ARIZ	28	*	32	32	32	32	9	9	9
UTAH	395	57	452	299	138	437	333	135	468
NEV	5	*	8	8	*	*	33	*	*
WASH	500	538	1,038	713	709	1,422	1,086	2,220	3,306
OREG	564	907	1,471	1,224	1,035	2,259	1,613	2,920	4,533
CALIF	310	302	612	650	312	962	207	457	664
UNALL*	22		27		61	382		258	834
U S	363,866	83,534	447,400	448,085	109,377	557,462	541,049	144,644	685,693

TABLE 26. OATS - STOCKS BY POSITIONS, BY STATES, QUARTERLY, JULY 1, 1965-70

STATE	1965			1966			1967		
	ON FARMS	OFF FARMS 1/	TOTAL ALL POSITIONS	ON FARMS	OFF FARMS 1/	TOTAL ALL POSITIONS	ON FARMS	OFF FARMS 1/	TOTAL ALL POSITIONS
	1,000 BUSHELS								
N ENG	284	241	241	151	215	215	176	180	180
N Y	3,771	1,109	4,880	3,719	1,155	4,874	3,297	2,131	5,428
N J	92	45	137	68	41	109	58	48	106
PA	4,744	390	5,134	3,918	390	4,308	2,584	347	2,931
JMID	4,662	2,275	6,937	4,412	2,388	6,800	4,340	2,154	6,494
IND	2,689	825	3,514	2,621	712	3,333	3,305	870	4,175
ILL	7,968	2,396	10,364	8,250	2,105	10,355	9,796	2,039	11,835
MICH	5,822	538	6,360	4,880	883	5,563	3,716	516	4,232
MISC	19,678	2,155	21,833	24,467	3,796	28,263	20,246	3,308	23,554
MINN	42,711	12,176	54,887	44,204	19,840	64,044	33,190	21,462	54,652
ICWA	30,433	5,030	35,463	27,286	4,188	33,467	29,922	4,867	34,789
MO	2,790	1,793	4,583	1,580	1,123	2,711	2,263	1,346	3,605
N DAK	38,159	12,637	50,796	45,550	14,745	60,341	32,078	12,645	44,723
S DAK	30,076	11,301	41,377	43,936	13,172	57,108	33,222	13,375	46,597
NEBR	5,979	888	6,867	9,378	1,375	10,753	8,254	725	8,979
KANS	1,650	421	2,071	1,378	332	1,710	1,264	358	1,622
DEL	8	4	12	4	2	6	4	*	*
MD	172	63	235	141	44	205	102	78	180
VA	231	123	354	315	76	391	351	82	433
N VA	114	9	123	113	9	122	74	6	80
N C	303	146	449	356	66	422	420	164	584
S C	271	56	327	274	32	306	241	26	267
GA	339	69	408	203	84	287	234	48	282
FLA	5	93	98		*	*		22	22
KY	148	67	215	98	40	138	40	95	135
TENN	131	319	450	183	264	447	322	212	534
ALA	85	91	176	84	86	170	84	49	133
MISS	58	66	124	109	69	178	171	20	191
ARK	108	42	150	35	8	43	188	33	221
LA	49	97	146	31	*	*	37	105	142
OKLA	1,114	359	1,473	1,456	325	1,821	1,428	465	1,893
TEXAS	2,617	697	3,314	2,989	980	3,977	2,470	1,138	3,608
MCNT	3,077	424	3,501	4,803	749	5,552	2,913	460	3,373
ICAHN	684	729	1,413	998	566	1,564	484	248	732
WYO	476	58	534	1,247	62	1,309	651	64	715
CCLC	647	190	837	776	420	1,196	611	200	811
N MEX	9	11	20	18	21	39	8	3	11
ARIZ	2	30	32	4	20	24	1	9	10
UTAH	108	39	147	245	100	345	198	29	227
NEV	9	8	17	9	*	*	3	*	*
WASH	244	1,788	2,032	176	896	1,072	215	855	1,070
OREG	596	2,089	2,685	571	1,187	1,758	311	357	668
CALIF	25	883	908	85	937	1,022	22	142	164
UNALL*					176	176		5	12
U S	213,738	62,770	276,508	241,215	75,460	316,675	199,294	71,346	270,640
	1968			1969			1970		
N ENG	76	126	126	304	125	125	264	315	315
N Y	2,900	2,187	5,087	4,284	3,163	7,447	3,124	7,917	11,041
N J	43	36	79	77	39	116	61	42	103
PA	3,780	431	4,211	5,292	422	5,714	3,452	385	3,837
JMID	2,771	1,832	4,603	6,588	4,440	11,078	4,352	4,289	8,641
IND	1,710	635	2,345	3,217	1,971	5,588	3,046	946	3,992
ILL	6,139	998	7,137	7,983	3,264	11,247	6,861	5,472	12,333
MICH	4,163	443	4,606	6,720	1,500	8,220	4,046	2,109	6,155
MISC	24,851	6,536	31,387	27,581	11,086	38,667	23,011	8,986	31,997
MINN	44,025	19,818	63,843	69,069	28,902	97,971	110,655	45,485	156,140
ICWA	25,343	5,461	30,804	28,738	7,620	36,358	21,583	9,236	30,819
MO	1,623	880	2,503	1,859	1,324	3,183	796	2,133	2,929
N DAK	28,638	11,053	39,691	48,122	16,577	64,699	34,493	28,476	112,969
S DAK	44,059	10,792	54,851	68,790	12,347	81,137	58,089	15,187	73,276
NEBR	7,354	742	8,096	5,232	981	6,213	6,053	1,054	9,107
KANS	1,275	426	1,701	1,710	510	2,220	1,057	659	1,691
DEL	3	1	4	2	8	10	6	*	*
MD	96	73	169	157	77	234	157	166	323
VA	432	89	521	408	98	506	258	49	307
N VA	123	7	130	164	6	170	114	*	*
N C	490	120	610	578	171	749	462	100	562
S C	84	50	134	183	60	243	224	145	369
GA	101	36	137	151	58	209	210	146	356
FLA		133	133	2	*	*	4	166	170
KY	27	65	92	55	45	100	41	38	79
TENN	243	146	389	194	275	469	167	680	847
ALA	48	114	162	56	106	162	63	*	*
MISS	132	9	141	62	113	175	38	220	258
ARK	67	4	71	184	40	224	111	12	123
LA	35	*	*	26	140	166	8	264	272
OKLA	1,020	194	1,214	1,224	307	1,531	1,587	508	2,095
TEXAS	662	1,006	1,668	2,973	1,682	4,655	3,564	3,163	6,727
MCNT	3,004	305	3,309	3,131	601	3,732	8,811	1,585	10,396
ICAHN	476	205	681	500	356	856	737	1,125	1,862
WYO	782	62	844	1,142	50	1,192	780	70	850
CCLC	653	260	913	755	350	1,105	1,172	350	1,522
N MEX		*	*	*	10	10	18	18	18
ARIZ		*	*	*	39	39	21	21	21
UTAH	203	39	242	130	54	184	171	93	264
NEV		*	*	*	2	*	8	*	*
WASH	150	487	637	460	524	984	459	1,769	2,228
OREG	263	468	731	453	665	1,118	672	2,168	2,840
CALIF	78	116	194	130	270	400	41	231	272
UNALL*		126	161		123	127		34	225
U S	207,722	66,511	274,233	278,688	99,949	378,637	352,783	145,812	498,595

TABLE 27. BARLEY - STOCKS BY POSITIONS, BY STATES, QUARTERLY, OCTOBER 1, 1964-69

STATE	GN FARMS	OFF FARMS /	TOTAL ALL POSITIONS	GN FARMS	OFF FARMS /	TOTAL ALL POSITIONS	GN FARMS	OFF FARMS /	TOTAL ALL POSITIONS
	1964			1965			1966		
1,000 BUSHELS									
N EAG		34	34		39	39		24	24
N Y	383	1,609	1,992	315	1,329	1,644	357	2,593	2,950
N J	515	225	740	223	201	424	520	355	875
PA	4,047	711	4,758	4,553	648	5,201	5,248	933	6,181
OHIO	398	65	463	447	45	492	419	55	474
IND	282	30	312	245	38	283	212	33	245
ILL	414	*	*	495	*	*	470	*	*
MICH	855	*	*	547	*	*	450	*	*
MISC	800	20,471	21,271	650	22,900	23,550	785	20,570	21,355
MINN	14,936	22,558	37,494	19,730	22,040	41,770	18,026	21,609	39,635
ICWA	151	290	441	138	*	*	108	*	*
MO	631	1,794	2,425	464	884	1,348	292	613	905
N DAK	82,362	15,983	98,345	82,118	12,649	94,767	79,570	10,898	90,468
S DAK	5,712	2,808	8,520	6,313	2,850	9,163	5,928	2,358	8,286
NEBR	1,704	397	2,101	1,299	261	1,560	864	109	973
KANS	5,380	2,982	8,362	2,450	1,401	3,851	2,912	1,288	4,200
DEL	187	193	380	215	242	457	187	192	379
MD	1,884	511	2,395	1,361	724	2,085	1,410	843	2,275
VA	2,376	226	2,602	2,554	235	2,789	2,805	503	3,308
W VA	208	*	206	206	*	257	257	*	257
N C	1,526	377	1,903	1,293	262	1,555	1,615	230	1,845
S C	394	159	553	318	55	373	330	33	363
GA	304	83	387	238	18	256	135	14	145
FLA									
KY	561	193	754	186	149	635	720	189	909
TENN	326	140	466	309	83	392	205	89	294
ALA		*	*	*	*	*	*	*	*
MISS		*	*	*	*	*	*	*	*
ARK	35	6	41	21	9	30	33	10	43
LA		*	*	*	*	*	*	*	*
OKLA	5,632	5,500	11,132	4,495	2,474	6,969	4,176	4,389	8,565
TEXAS	1,276	1,421	2,697	782	625	1,407	1,238	1,015	2,253
NEWT	44,723	9,188	53,911	42,543	7,490	50,033	52,758	9,670	62,428
IOAHO	11,558	5,393	16,951	13,204	9,499	22,703	10,311	10,323	20,634
WYO	4,592	251	4,843	5,106	288	5,394	2,744	381	3,125
COLO	5,047	4,460	9,507	8,124	3,720	11,844	6,660	3,220	9,880
N MEX	144	20	164	192	53	245	189	93	282
ARIZ	4,074	2,804	6,878	2,534	3,296	5,830	2,580	2,538	5,118
UTAH	3,601	1,879	5,480	4,614	2,754	7,368	4,891	3,504	8,395
NEV	250	54	304	518	53	571	414	*	*
WASH	6,152	15,024	21,176	3,853	14,681	18,534	4,586	13,879	18,465
OREG	7,003	7,816	14,819	7,638	6,950	14,588	8,069	8,544	16,613
CALIF	26,719	18,716	45,435	23,596	20,647	44,243	24,198	15,396	39,594
UNALL*	4,309	5,826	10,135	3,938	5,324	9,262	3,483	5,182	8,665
U S	247,182	148,680	395,862	244,187	143,530	387,717	246,672	139,998	386,670
1967									
N ENG		11	11		4	4		9	9
N Y	301	2,419	2,720	405	2,081	2,486	378	2,234	2,612
N J	393	101	494	561	251	812	345	176	521
PA	6,336	772	7,108	5,406	1,516	6,922	5,441	928	6,369
OHIO	344	64	408	553	53	606	504	32	536
IND	205	51	256	226	24	250	171	16	187
ILL	350	*	405	405	*	405	206	*	206
MICH	840	*	794	757	1,551	660	600	*	600
MISC	840	21,657	22,497	1,374	20,060	21,434	608	28,041	28,649
MINN	25,835	24,742	50,577	46,503	23,338	69,841	38,224	32,364	70,588
IOWA	132		191	251	442	151	417		568
MO	491	892	1,383	400	725	1,125	348	1,494	1,842
N DAK	74,029	18,445	92,474	113,765	20,763	134,528	113,112	31,184	144,302
S DAK	9,155	2,890	12,045	16,468	3,735	20,203	12,401	4,388	16,789
NEBR	726	219	945	912	220	1,132	1,360	159	1,519
KANS	1,145	1,423	2,568	2,368	1,835	4,203	3,082	2,053	5,135
DEL	268	88	356	139	103	242	164	100	264
MD	1,853	1,138	2,991	1,946	1,205	3,151	2,299	1,558	3,857
VA	2,513	373	2,886	2,433	976	3,409	2,365	842	3,207
W VA	357	*	272	272	*	333	333	*	333
N C	1,441	191	1,632	1,911	553	2,464	1,544	401	1,945
S C	297	69	366	382	62	444	324	29	353
GA	98	32	130	114	14	128	120	11	131
FLA									
KY	559	59	618	501	183	684	585	187	772
TENN	102	74	176	242	*	*	292	43	335
ALA		*	*	*	*	*	*	*	*
MISS		*	*	*	*	*	*	*	*
ARK	29	4	33	14	*	*	8	*	*
LA		*	*	*	*	*	*	*	*
OKLA	2,850	1,755	4,605	5,441	4,995	10,436	5,859	7,451	13,310
TEXAS	405	348	753	802	1,480	2,282	798	2,928	3,726
NEWT	36,652	8,271	44,923	40,171	6,834	47,005	57,727	8,931	66,658
IOAHO	12,183	11,212	23,395	12,960	11,100	24,060	16,926	13,321	30,247
WYO	4,196	391	4,587	5,634	361	5,995	4,015	484	4,503
COLO	6,810	3,680	10,490	8,501	3,550	12,051	6,629	3,380	12,009
N MEX	220	102	322	185	91	276	175	159	334
ARIZ	2,880	5,090	7,970	2,184	5,971	8,155	3,578	4,433	8,011
UTAH	4,184	2,427	6,611	5,661	2,800	8,461	4,895	1,880	6,775
NEV	493	*	495	495	*	580	580	*	580
WASH	2,373	9,564	11,937	2,570	7,919	10,489	5,034	13,157	18,191
OREG	3,804	4,475	8,279	4,185	4,959	9,144	7,374	9,164	16,538
CALIF	25,636	22,302	47,938	18,900	18,945	37,845	12,655	14,054	27,109
UNALL*	3,589	5,321	8,910	3,425	4,853	8,278	4,386	6,173	10,561
U S	232,905	148,900	381,805	305,974	151,139	457,113	313,280	190,794	504,074

TABLE 28. BARLEY - STOCKS BY POSITIONS, BY STATES, QUARTERLY, JANUARY 1, 1965-70

STATE	1965			1966			1967		
	ON FARMS	OFF FARMS 1/	TOTAL ALL POSITIONS	ON FARMS	OFF FARMS 1/	TOTAL ALL POSITIONS	ON FARMS	OFF FARMS 1/	TOTAL ALL POSITIONS
1,000 BUSHELS									
N ENG		22	22		21	21		18	18
N Y	229	3,546	3,775	217	3,213	3,430	274	3,481	3,755
N J	337	114	451	102	125	227	223	201	424
PA	3,199	423	3,622	3,378	457	3,835	3,800	512	4,312
OHIO	272	44	316	310	62	372	264	123	387
IND	173	41	214	171	35	206	154	35	189
ILL	342	*	*	369	1,514	1,883	291	*	*
MICH	693	247	940	404	*	*	335	422	757
WISC	534	24,263	24,797	481	19,600	20,081	482	18,824	19,308
MINN	13,147	19,859	32,826	12,461	19,666	32,127	12,157	19,256	31,413
IOWA	118	229	347	108	*	*	85	*	*
MO	360	1,480	1,840	204	965	1,169	177	990	1,167
N DAK	61,134	10,575	72,109	64,522	11,026	75,548	60,795	11,421	72,216
S DAK	5,040	2,559	7,599	5,018	2,265	7,283	5,113	2,274	7,387
NEBR	1,409	401	1,810	1,088	173	1,261	672	125	797
KANS	4,365	2,093	6,461	1,792	864	2,656	1,957	1,103	3,060
DEL	75	127	202	52	142	194	75	102	177
MD	1,188	227	1,415	1,121	341	1,462	1,094	352	1,448
VA	1,616	127	1,743	1,672	163	1,835	1,851	288	2,139
W VA	144	*	120	*	*	*	189	*	*
N C	1,094	165	1,259	934	80	1,014	837	55	892
S C	212	71	283	125	26	151	209	32	241
GA	138	47	185	99	6	105	104	18	122
FLA									
KY	467	81	548	340	55	395	590	135	725
TENN	212	149	361	168	50	218	128	*	*
ALA								*	*
MISS								*	*
ARK								*	*
LA	18	7	25	11	*	*	16	*	*
OKLA	4,183	3,916	8,079	2,967	1,475	4,442	2,784	3,305	6,089
TEXAS	616	863	1,479	432	861	1,293	440	881	1,321
MONT	36,772	6,913	43,685	32,032	8,389	40,421	43,224	8,689	51,913
ICAHO	7,430	3,416	10,846	11,736	6,817	18,553	8,437	7,131	15,568
WYO	3,246	193	3,439	4,515	322	4,837	1,818	235	2,053
COLO	3,618	3,940	7,558	6,608	4,010	10,618	4,541	3,930	8,871
N MEX	115	28	143	92	65	157	83	50	133
ARIZ	1,689	1,999	3,688	1,689	2,002	3,691	1,400	1,677	3,077
UTAH	2,598	1,304	3,902	3,642	2,135	5,777	3,869	1,546	5,415
NEV	125	44	169	173	23	196	166	*	*
WASH	3,516	8,833	12,349	1,927	10,621	12,548	3,249	10,073	13,322
OREG	5,093	5,744	10,837	5,092	5,291	10,383	4,034	5,608	9,642
CALIF	15,268	13,248	28,516	18,591	12,847	31,438	11,427	9,586	21,013
UNALL*		2,312	2,798		591	1,234		2,746	3,621
U S	180,785	119,853	300,638	184,763	116,298	301,061	177,746	115,226	292,972
-----									
1968									
N ENG		8	8		4	4		9	9
N Y	211	4,283	4,494	308	4,235	4,543	310	2,912	3,222
N J	242	125	367	248	157	405	188	137	325
PA	4,455	581	5,036	3,604	1,200	4,804	4,150	459	4,609
OHIO	253	38	291	430	69	499	414	17	431
IND	167	21	188	182	27	209	153	15	168
ILL	219	*	267	*	*	*	129	*	*
MICH	336	412	748	595	457	1,052	480	*	*
WISC	630	19,848	20,478	916	18,580	19,496	419	27,233	27,652
MINN	23,004	21,015	44,019	40,923	19,751	60,674	35,038	30,216	65,254
IOWA	103	315	418	150	305	455	120	402	522
MO	173	851	1,024	180	866	1,026	158	1,194	1,354
N DAK	65,421	14,668	80,089	99,812	18,099	117,911	100,346	29,294	129,640
S DAK	6,801	2,571	9,372	14,936	3,512	18,448	11,558	4,232	15,790
NEBR	525	128	653	728	258	986	1,047	180	1,227
KANS	1,015	1,018	2,033	1,739	2,200	3,939	2,076	1,565	3,641
DEL	75	36	111	46	58	104	109	296	405
MD	1,560	452	2,012	1,523	985	2,508	1,254	911	2,165
VA	1,942	249	2,191	1,852	*	*	2,019	321	2,340
W VA	259	*	220	*	*	*	276	*	*
N C	859	89	948	1,274	272	1,546	1,144	195	1,339
S C	125	24	149	174	23	197	180	10	190
GA	50	*	57	57	25	82	68	*	*
FLA									
KY	408	64	472	379	171	550	390	126	516
TENN	74	14	88	132	46	178	127	25	152
ALA								*	*
MISS								*	*
ARK								*	*
LA	14	*	5	5	5	3	3	*	3
OKLA	1,710	1,166	2,876	3,627	3,967	7,594	4,725	4,810	9,535
TEXAS	203	332	535	547	953	1,500	60	1,721	1,781
MONT	28,507	5,849	34,356	29,915	5,498	35,413	5,026	6,712	11,738
ICAHO	10,368	6,903	17,271	12,150	6,683	18,833	13,400	9,682	23,082
WYO	3,835	353	4,188	4,670	380	5,050	3,445	345	3,790
COLO	6,129	3,790	9,919	7,066	3,380	10,446	4,808	5,700	10,508
N MEX	155	*	132	132	210	342	114	114	230
ARIZ	960	3,784	4,744	1,156	3,342	4,498	2,045	2,273	4,318
UTAH	4,095	1,712	5,807	3,490	1,512	5,002	4,194	1,910	6,106
NEV	394	*	180	180	*	*	290	*	*
WASH	1,614	5,618	7,232	2,035	6,377	8,412	3,691	8,535	12,226
OREG	2,680	3,751	6,431	3,139	4,343	7,482	5,793	6,498	12,291
CALIF	15,080	15,146	30,226	11,475	12,512	23,987	8,099	10,867	18,966
UNALL*		3,325	4,416		3,461	5,980		3,233	4,476
U S	184,651	118,539	303,190	250,262	123,898	374,160	217,850	162,151	380,001

TABLE 29. BARLEY - STOCKS BY POSITIONS, BY STATES, QUARTERLY, APRIL 1, 1965-70

STATE	ON FARMS	OFF FARMS 1/	TOTAL ALL POSITIONS	ON FARMS	OFF FARMS 1/	TOTAL ALL POSITIONS	ON FARMS	OFF FARMS 1/	TOTAL ALL POSITIONS
	1965			1966			1967		
1,000 BUSHELS									
N ENG									
N Y	103	1,635	1,738	103	1,270	1,373	127	1,520	1,647
N J	158	70	228	42	92	134	149	105	254
PA	1,501	304	1,805	1,909	325	2,234	2,172	792	2,464
OHIO	126	47	173	144	44	188	142	83	225
IND	104	18	122	86	28	114	67	25	92
ILL	249	*	*	207	*	*	137	*	*
MICH	315	*	*	135	*	*	159	*	*
WISC	307	22,270	22,577	286	21,104	21,390	275	16,117	16,392
MINN	6,878	19,592	26,470	7,528	18,409	25,937	8,384	18,884	27,268
ICMA	60	160	220	51	*	*	40	*	*
MO	216	1,698	1,914	148	531	679	97	968	1,065
N DAK	35,662	11,123	46,785	43,014	11,509	54,523	44,702	11,570	56,272
S DAK	2,912	2,611	5,523	3,157	2,225	5,382	2,445	2,260	4,705
NEBR	819	413	1,232	300	149	449	317	182	499
KANS	2,436	2,337	4,773	878	695	1,573	665	1,298	2,163
DEL	22	49	71	26	68	94	22	36	58
MD	532	120	652	480	209	689	431	190	621
VA	760	91	851	836	*	*	954	220	1,174
N VA	80	*	*	62	*	*	81	*	*
N C	720	139	859	527	93	620	449	29	478
S C	96	22	118	42	3	45	87	14	103
GA	55	21	76	40	*	*	14	*	*
KY	218	30	248	146	19	165	295	87	382
TENN	106	66	172	60	42	102	51	56	107
ALA	*	*	*	*	*	*	*	*	*
MISS	*	*	*	*	*	*	*	*	*
ARK	11	8	19	5	4	9	8	4	12
LA	*	*	*	*	*	*	*	*	*
OKLA	1,592	2,453	4,045	1,259	954	2,213	1,740	1,690	3,430
TEXAS	484	586	1,070	216	305	521	275	484	759
MCNT	22,858	5,826	28,684	15,015	6,766	21,781	27,968	6,416	34,384
IDAHO	5,366	2,077	7,443	5,868	3,159	9,027	6,093	3,850	9,943
WYO	1,663	233	1,896	1,989	225	2,214	1,544	217	1,761
COLO	2,000	2,681	5,681	3,358	3,820	7,178	2,148	4,600	6,748
N MEX	36	21	57	46	48	94	38	44	82
ARIZ	994	738	1,732	1,056	1,103	2,159	590	743	1,333
UTAH	1,181	649	1,850	1,862	1,007	2,869	1,387	845	2,232
NEV	44	31	75	86	10	96	83	*	*
WASH	1,099	5,950	7,049	593	6,706	7,299	1,529	7,332	8,861
OREG	2,069	3,956	6,065	2,716	3,082	5,798	2,522	3,793	6,315
CALIF	7,634	6,801	14,435	5,005	7,361	12,366	5,377	5,497	10,874
UNALL*		1,927	2,571	2,596	3,927		2,780		3,294
U S	101,466	57,834	199,300	99,281	93,961	193,242	113,764	92,240	206,004
1968									
N ENG									
N Y	120	6	6	202	6	6	193	4	4
N J	131	78	209	119	172	291	63	93	156
PA	2,772	294	3,066	1,982	610	2,592	2,213	343	2,556
OHIO	116	71	187	238	40	278	226	20	246
IND	108	13	121	120	17	137	63	*	*
ILL	122	*	*	184	*	*	88	*	*
MICH	210	156	366	318	*	*	300	*	*
WISC	462	17,730	18,192	601	15,384	15,985	203	24,229	24,432
MINN	14,156	18,197	32,353	34,877	17,570	52,447	31,534	28,896	60,430
IOWA	48	*	*	74	*	*	82	*	*
MO	154	561	715	120	801	921	79	1,225	1,304
N DAK	55,091	11,715	66,806	89,080	17,378	106,458	84,838	28,563	113,401
S DAK	5,886	2,429	8,315	10,532	3,305	13,837	10,114	3,990	14,104
NEBR	376	108	484	566	181	747	734	150	884
KANS	454	1,030	1,484	666	1,087	1,753	818	925	1,743
DEL	21	36	57	18	37	55	22	89	111
MD	878	349	1,227	635	545	1,180	627	845	1,272
VA	914	120	1,034	1,005	*	*	923	260	1,183
N VA	155	*	*	160	*	*	194	*	*
N C	499	90	589	733	202	935	429	136	565
S C	73	16	89	104	16	120	43	10	53
GA	22	*	*	23	12	35	20	*	*
KY	113	38	151	182	137	319	195	56	261
TENN	33	*	*	69	43	112	52	14	66
ALA	*	*	*	*	*	*	*	*	*
MISS	*	*	*	*	*	*	*	*	*
ARK	7	*	*	4	*	*	2	*	*
LA	*	*	*	*	*	*	*	*	*
OKLA	808	773	1,581	1,330	2,543	3,873	2,268	2,273	4,541
TEXAS	122	276	398	328	735	1,063	319	874	1,193
MCNT	19,251	4,305	23,556	16,667	4,111	20,778	34,636	5,761	40,397
IDAHO	6,221	4,167	10,388	8,640	3,662	12,302	9,168	5,522	14,690
WYO	2,166	296	2,464	2,843	225	3,068	2,584	304	2,888
COLO	4,086	4,890	8,976	3,091	4,625	7,716	2,589	5,085	7,674
N MEX	106	*	*	97	85	182	87	163	250
ARIZ	600	1,887	2,487	642	1,429	2,071	1,125	1,164	2,289
UTAH	2,006	1,180	3,186	1,551	935	2,486	1,943	1,537	3,480
NEV	197	*	*	90	*	*	116	*	*
WASH	759	3,444	4,403	1,392	5,115	6,507	2,181	5,768	7,949
OREG	1,210	2,299	3,509	1,360	3,879	5,239	2,458	4,242	6,700
CALIF	8,294	8,158	16,452	5,063	7,992	13,055	3,543	6,519	10,062
UNALL*		2,705	3,395	3,484	5,315		3,304		4,169
U S	128,747	89,266	218,013	185,706	99,034	284,740	197,072	133,599	330,671

TABLE 30. BARLEY - STOCKS BY POSITIONS, BY STATES, QUARTERLY, JULY 1, 1965-70

STATE	ON FARMS	OFF FARMS 1/	TOTAL ALL POSITIONS	ON FARMS	OFF FARMS 1/	TOTAL ALL POSITIONS	ON FARMS	OFF FARMS 1/	TOTAL ALL POSITIONS
	1965			1966			1967		
1,000 BUSHEL									
N ENG		23	23		4	4		6	6
N Y	57	1,350	1,407	40	1,042	1,082	57	1,208	1,265
N J	30	40	70	23			74	29	103
PA	588	388	976	734	399	1,133	814	169	983
OHIO	66	35	101	76	15	91	65	40	105
IND	58	28	86	29	14	43	24	19	43
ILL	93	801	894	90			43	*	*
MICH	151	*	*	81	*	*	88	*	*
MISC	107	15,182	15,289	91	15,707	15,798	138	14,480	14,618
MINN	2,751	14,060	16,811	4,932	13,805	18,737	3,563	15,591	19,154
ICWA	10	*	*	9	*	*	7	188	195
MO	126	1,213	1,339	46	562	608	27	551	578
N DAK	10,133	8,152	24,285	22,485	8,062	30,547	22,351	7,751	30,102
S DAK	1,456	2,601	4,057	1,457	2,109	3,566	1,260	2,116	3,376
NEBR	541	255	836	189	108	297	125	148	273
KANS	1,523	1,006	2,529	512	461	973	455	1,237	1,692
DEL	7	6	13	9	9	18	7	3	10
MD	164	161	325	200	150	350	137	81	218
VA	238	41	279	325	25	350	337	21	358
W VA	30	*	*	34	*	*	41	*	*
N C	144	71	215	168	12	180	105	16	121
S C	34	*	*	13	*	*	35	*	35
GA	14	3	17	10	*	*	7	*	*
KY	78	8	86	49	9	58	129	13	142
TENN	65	12	77	34	57	91	32	*	*
ALA								*	*
ARK	2	7	9	1	*	*	2	2	4
LA									
OKLA	735	567	1,302	899	325	1,224	1,274	853	2,129
TEXAS	220	253	473	135	229	364	220	164	384
MCNT	7,454	4,954	12,408	8,507	3,343	9,850	17,798	4,019	21,817
IOAHO	1,445	793	2,238	1,956	823	2,779	1,875	1,421	3,296
WYO	990	82	1,072	1,183	84	1,267	892	118	1,008
COLLO	952	2,090	3,042	1,516	1,000	2,516	1,504	3,180	4,684
N MEX	25	6	31	27	24	51	26	46	72
ARIZ	397	*	*	317	381	698	221	57	278
UTAH	472	265	737	1,052	375	1,427	1,022	351	1,373
NEV	31	7	38	60	*	*	33	*	*
WASH	330	3,351	3,681	222	3,703	3,925	669	5,040	5,709
OREG	477	1,266	1,743	339	1,681	2,020	672	1,796	2,468
CALIF	382	1,517	1,899	358	1,976	2,334	336	2,178	2,514
UNALL*		512	1,134		2,137	2,445		1,908	2,152
U S	38,376	61,146	99,522	46,208	58,631	104,839	56,467	64,798	121,265
1968									
N ENG		2	2					5	5
N Y	60	1,634	1,654	106	1,542	1,648	103	919	1,022
N J	60	*	*	43	62	105	42	75	117
PA	1,089	408	1,497	721	154	875	830	308	1,138
OHIO	40	47	87	154	15	169	105		105
IND	35	10	45	53	4	57	34	*	36*
ILL	52	1,046	1,098	64	*	*	36	*	36*
MICH	84	*	*	132	*	*	156	*	156*
MISC	231	16,253	16,484	315	16,768	17,083	135		135
MINN	9,202	17,569	26,771	26,972	18,391	45,363	27,712	27,418	55,130
IOAHO	9	228	237	18	256	274	17	386	403
MO	58	453	511	60	471	531	40	1,073	1,113
N DAK	36,154	9,713	45,867	40,102	23,451	63,553	65,681	21,216	86,897
S DAK	3,008	2,224	5,232	7,660	3,381	11,041	7,826	4,091	11,917
NEBR	263	100	363	323	153	476	408	115	523
KANS	216	642	858	259	755	1,014	566	884	1,450
DEL	5	15	20	5	5	10	5	9	14
MD	488	268	756	296	*	*	314	115	429
VA	457	51	508	397	*	*	280	56	344
W VA	103	*	*	80	*	*	121	*	*
N C	69	41	110	207	76	283	86	27	113
S C	13	*	13	35	*	*	29	4	33
GA	4	*	*	9	16	25	8	*	*
KY	60	27	87	76	33	109	78	25	103
TENN	9	*	*	42	*	*	37	*	*
ALA									
ARK	1	*	*	*	*	*	1	*	*
LA									
OKLA	380	326	706	484	1,031	1,515	1,418	1,574	2,994
TEXAS	81	151	232	109	415	524	200	514	714
MCNT	11,847	2,727	14,574	8,974	3,285	12,259	18,337	4,007	22,344
IOAHO	1,814	1,478	3,292	3,240	1,144	4,384	3,879	2,045	5,924
WYO	1,263	196	1,459	1,675	120	1,795	2,067	132	2,199
COLLO	1,816	3,490	5,306	1,104	3,660	4,764	740	3,730	4,470
N MEX	49	*	*	40	43	83	44	124	168
ARIZ	120	341	461	128	241	369	204	63	267
UTAH	919	321	1,240	931	398	1,329	1,166	578	1,744
NEV	49	*	*	27	*	*	35	*	*
WASH	237	2,046	2,283	428	2,491	2,919	839	3,008	3,847
OREG	519	1,132	1,651	314	812	1,126	1,404	2,093	3,497
CALIF	377	2,880	3,257	473	2,823	3,296	253	2,064	2,317
UNALL*		325	684		2,613	3,686		2,542	2,744
U S	71,241	66,144	137,385	116,056	84,609	200,665	135,246	100,306	235,552
1969									
N ENG									
N Y									
N J									
PA									
OHIO									
IND									
ILL									
MICH									
MISC									
MINN									
IOAHO									
MO									
N DAK									
S DAK									
NEBR									
KANS									
DEL									
MD									
VA									
W VA									
N C									
S C									
GA									
KY									
TENN									
ALA									
ARK									
LA									
OKLA									
TEXAS									
MCNT									
IOAHO									
WYO									
COLLO									
N MEX									
ARIZ									
UTAH									
NEV									
WASH									
OREG									
CALIF									
UNALL*									
U S									

SEE FOOTNOTES ON PAGE 39

TABLE 31. SORGHUMS - STOCKS BY POSITIONS, BY STATES, QUARTERLY, JANUARY 1, 1965-70

STATE	ON FARMS	OFF FARMS 1/	TOTAL ALL POSITIONS	ON FARMS	OFF FARMS 1/	TOTAL ALL POSITIONS	ON FARMS	OFF FARMS 1/	TOTAL ALL POSITIONS
	1965			1966			1967		
1,000 BUSHELS									
N ENG	*	*	*	4	4	8		10	10
N Y	*	*	*	10	10	20		*	*
N J	*	*	*	*	*	*		*	*
PA	*	*	*	4	4	8		*	*
OHIO	40	40	80	39	39	78		41	41
IND	252	27	279	258	57	315	358	72	430
ILL	212	171	383	260	190	450	181	421	602
MICH	*	*	*	*	*	*		*	*
WISC	13	13	26	*	*	*		9	9
MIAN	20	20	40	67	67	134		21	21
ICWA	1,085	4,232	5,317	1,562	1,808	3,370	1,440	1,805	3,245
MO	2,822	14,851	17,673	6,021	13,492	19,513	3,998	12,347	16,345
S DAK	5,917	1,503	7,420	8,161	1,744	9,905	8,818	1,681	10,499
NEBR	76,314	146,388	222,702	98,413	140,374	238,787	123,585	126,737	250,322
KANS	35,463	93,151	128,614	52,982	106,631	159,613	53,048	98,521	151,569
DEL	*	*	*	*	*	*		*	*
MD	*	*	*	*	*	*		*	*
VA	132	*	*	235	1	236	203	*	*
N C	1,010	260	1,270	1,089	168	1,257	634	318	952
S C	80	8	88	90	14	104	74	6	80
GA	246	5	251	332	1	333	242	37	279
FLA	*	*	*	*	*	*		*	*
KY	215	27	242	182	36	218	225	65	290
TEAN	287	69	356	180	121	301	156	327	483
ALA	95	70	165	95	*	*	105	317	422
MISS	96	57	153	95	*	*	98	*	*
ARK	234	482	716	608	361	969	590	209	799
LA	14	1,549	1,563	35	349	384	179	461	640
OKLA	4,215	15,857	20,072	4,803	18,513	23,316	4,259	9,933	14,192
TEXAS	15,095	478,844	493,939	23,524	451,024	474,548	21,819	299,789	321,608
ICAHJ	*	46	46	*	39	39		62	62
NYO	10	10	20	9	9	18		23	23
CCLO	4,605	*	4,605	5,591	7,710	13,301	2,827	7,070	9,897
N MEX	1,196	6,458	7,654	1,374	6,858	8,232	2,550	6,649	9,199
ARIZ	2,322	5,266	7,588	3,237	6,767	10,004	4,655	7,259	11,914
UTAH	*	550	550	*	272	272		496	496
NEV	*	784	784	*	*	*		*	*
WASH	10	10	20	15	15	30		62	62
OREG	57	57	114	60	60	120		69	69
CALIF	2,352	23,416	25,768	3,792	7,812	11,604	4,126	11,308	15,434
UNALL*	18	18	36	592	782	1,374		747	1,048
U S	154,259	757,589	951,848	212,919	765,142	978,061	234,170	586,872	821,042
1968									
N ENG	10	10	20	*	*	*		*	*
N Y	2	2	4	4	4	8		*	*
N J	*	*	*	*	*	*		*	*
PA	*	*	*	*	*	*		*	*
OHIO	53	53	106	53	53	106		27	27
IND	358	30	388	330	123	453	243	4	247
ILL	297	*	297	450	422	872	555	51	606
MICH	*	*	*	*	10	10		*	*
WISC	36	36	72	*	*	*		*	*
MIAN	30	30	60	12	12	24		36	36
ICWA	1,287	1,660	2,947	1,386	1,262	2,648	2,059	1,090	3,149
MO	4,028	9,567	13,595	4,562	8,595	13,157	4,644	7,859	12,503
S DAK	5,782	1,913	7,695	6,305	1,648	7,953	6,791	1,741	8,532
NEBR	91,049	56,549	147,598	83,810	95,635	179,445	70,734	107,681	178,415
KANS	49,305	87,212	136,517	62,084	89,753	151,837	53,040	103,929	156,969
DEL	*	*	*	*	*	*		*	*
MD	*	*	*	*	*	*		*	*
VA	300	*	300	288	288	576	365	2	367
N C	1,311	342	1,653	1,053	203	1,256	1,299	201	1,500
S C	196	33	229	139	20	159	257	12	269
GA	466	*	466	336	*	*	673	*	673
FLA	*	*	*	*	*	*		*	*
KY	342	143	485	291	70	361	277	24	301
TEAN	406	116	522	393	81	474	416	67	483
ALA	98	54	152	112	22	134	318	34	352
MISS	80	*	80	280	100	380	786	97	883
ARK	808	357	1,165	759	114	873	1,302	82	1,384
LA	315	446	761	476	*	*	504	585	1,089
OKLA	9,605	10,580	20,185	8,320	10,043	18,363	7,247	8,882	16,129
TEXAS	27,479	275,644	303,123	30,670	286,549	317,219	21,686	244,687	266,373
ICAHJ	14	14	28	19	19	38		*	*
NYO	18	18	36	12	12	24		3	3
CCLO	6,633	7,380	14,013	6,290	3,905	10,195	4,234	5,380	9,614
N MEX	3,639	8,835	12,474	2,712	7,125	9,837	1,995	7,547	9,542
ARIZ	3,985	8,799	12,784	3,413	7,669	11,082	2,363	6,983	9,346
UTAH	*	*	*	135	135	270		142	142
NEV	*	*	*	*	*	*		*	*
WASH	32	32	64	*	*	*		*	*
OREG	62	62	124	50	50	100		15	15
CALIF	4,134	8,621	12,755	3,465	8,737	12,202	2,856	6,249	9,105
UNALL*	803	1,946	2,749	1,213	2,025	3,238		100	343
U S	212,743	519,341	732,084	217,904	523,364	741,268	184,644	503,506	688,150

SEE FOOTNOTES ON PAGE 39.



TABLE 32. SORGHUMS - STOCKS BY POSITIONS, BY STATES, QUARTERLY, APRIL 1, 1965-70

STATE	ON FARMS	OFF FARMS 1/	TOTAL ALL POSITIONS	ON FARMS	OFF FARMS 1/	TOTAL ALL POSITIONS	ON FARMS	OFF FARMS 1/	TOTAL ALL POSITIONS
	1965			1966			1967		
	1,000 BUSHELS								
A ENG.	.	.	.	.	.	.	.	2	2
N Y	.	.	.	.	10	10	.	.	.
N J	.	.	.	.	.	.	.	.	.
PA	.	5	5	.	.	.	.	.	.
CHIC	.	30	30	.	18	18	.	29	29
IND	126	28	154	140	56	196	138	40	178
ILL	118	145	263	165	203	368	76	212	290
MICH	.	.	.	.	.	.	.	.	.
WISC	.	14	14	.	45	45	.	108	108
MINN	.	15	15	.	32	32	.	14	14
ICWA	651	2,935	3,586	812	1,629	2,441	936	1,032	1,968
MO	1,411	13,136	14,547	2,810	10,075	12,885	1,764	7,225	8,989
S DAK	3,688	1,309	4,997	5,363	1,713	7,076	5,436	1,669	7,105
NEBR	58,144	124,536	182,680	74,114	119,391	193,505	79,549	96,277	175,826
KANS	21,672	63,744	85,416	27,885	78,639	106,524	23,732	54,363	78,095
DEL	.	.	.	.	.	.	.	.	.
MD	.	.	.	.	.	.	.	6	6
VA	38	.	.	88	1	89	68	33	101
W VA	.	.	.	.	.	.	.	.	.
N C	539	199	738	458	220	718	432	299	731
S C	45	3	48	38	3	41	36	.	.
GA	101	2	103	138	3	141	137	51	188
FLA	.	.	.	.	.	.	.	.	.
KY	115	13	128	98	28	126	101	36	137
TENN	144	65	209	95	124	219	97	185	282
ALA	38	.	.	41	.	.	44	202	246
MISS	35	.	.	30	.	.	44	.	.
ARK	54	482	536	156	345	501	153	120	273
LA	3	875	878	10	515	525	51	958	1,009
OKLA	1,827	11,537	13,364	3,493	11,817	15,310	3,042	6,725	9,767
TEXAS	4,313	417,876	422,191	11,762	343,515	355,277	10,909	202,156	213,065
ICAWO	.	64	64	.	51	51	.	81	81
WYO	.	5	5	.	6	6	.	28	28
CCLO	2,303	3,570	5,873	2,112	4,330	6,442	1,975	3,990	5,969
N MEX	736	5,100	5,836	937	5,020	5,957	1,275	4,755	6,030
ARIZ	929	4,632	5,561	1,619	5,475	7,094	1,802	4,114	5,916
UTAH	.	699	699	.	.	.	.	422	422
NEV	.	.	.	.	.	.	.	.	.
WASH	.	.	.	.	16	16	.	50	50
OREG	.	61	61	.	84	84	.	51	51
CALIF	980	17,841	18,821	1,185	6,597	7,782	1,375	7,177	8,552
UNALL*	.	970	1,081	.	595	666	.	902	982
U S	98,010	665,893	767,903	133,589	590,556	724,145	133,178	393,312	526,490
	1968			1969			1970		
A ENG.	.	2	2	.	.	.	.	.	.
N Y	.	.	.	.	.	.	.	.	.
N J	.	.	.	.	.	.	.	.	.
PA	.	4	4	.	.	.	.	.	.
OHIO	.	31	31	.	41	41	.	14	14
IND	163	12	175	132	68	200	77	36	113
ILL	178	.	.	243	53	296	214	21	235
MICH	.	.	.	.	.	.	.	.	.
WISC	.	.	.	.	.	.	.	22	22
MINN	.	.	.	.	.	.	.	64	64
ICWA	796	1,418	2,214	756	1,456	2,212	1,287	804	2,091
MO	2,014	8,347	10,361	2,138	7,981	9,719	2,256	6,461	8,717
S DAK	3,956	1,592	5,548	4,231	1,422	5,653	4,410	1,369	5,779
NEBR	76,820	82,429	159,249	61,132	82,433	143,565	49,735	78,890	128,625
KANS	29,882	55,142	85,024	32,665	60,590	93,255	32,921	81,704	114,625
DEL	.	.	.	.	.	.	.	.	.
MD	.	.	.	.	.	.	.	.	.
VA	140	2	122	115	.	115	146	6	152
W VA	.	.	.	.	.	.	.	.	.
N C	805	303	1,108	398	179	577	416	172	588
S C	56	6	62	46	12	58	94	6	102
GA	233	.	.	162	.	.	224	.	.
FLA	.	.	.	.	.	.	.	.	.
KY	87	29	116	62	59	121	70	16	86
TENN	231	58	289	207	53	260	173	53	226
ALA	42	.	.	56	.	.	87	.	.
MISS	20	.	.	89	.	.	133	.	.
ARK	303	217	520	226	44	270	352	268	620
LA	90	420	510	136	337	473	144	310	454
OKLA	2,838	7,300	10,138	4,160	6,491	11,151	5,100	6,994	12,094
TEXAS	13,739	194,384	208,123	13,631	233,021	246,652	12,392	187,580	199,972
ICAWO	.	22	22	.	.	.	.	.	.
WYO	.	13	13	.	9	9	.	3	3
CCLO	4,462	4,630	9,092	3,145	3,260	6,405	3,222	3,540	6,766
N MEX	1,915	5,557	7,472	1,130	5,361	6,491	1,283	5,550	6,833
ARIZ	1,793	6,352	8,145	1,365	4,726	6,091	1,575	5,289	6,864
UTAH	.	.	.	.	113	113	.	146	146
NEV	.	.	.	.	.	.	.	.	.
WASH	.	.	.	.	.	.	.	.	.
OREG	.	69	69	.	80	80	.	55	55
CALIF	1,378	5,298	6,676	1,155	5,303	6,458	1,190	6,153	7,343
UNALL*	.	897	1,081	.	152	459	.	105	493
U S	141,921	374,907	516,828	127,380	413,366	540,746	117,505	385,895	503,400

SEE FOOTNOTES ON PAGE 39.

TABLE 33. SORGHUMS - STOCKS BY POSITIONS, BY STATES, QUARTERLY, JULY 1, 1965-70

STATE	ON FARMS	OFF FARMS 1/	TOTAL ALL POSITIONS	ON FARMS	OFF FARMS 1/	TOTAL ALL POSITIONS	ON FARMS	OFF FARMS 1/	TOTAL ALL POSITIONS
	1965			1966			1967		
1,000 BUSHEL									
N ENG									
N Y		10	10		3	3			
N J									
PA		1	1						
CHIC		11	11		13	13			
IND	50	13	63	56	4	60	55	11	11
ILL	35	136	171	57	166	223	31	15	70
MICH		3	3					105	136
MISC					15	15			
MINN		6	6		24	24			
ICWA	260	1,633	1,893	375	1,425	1,800	528	16	16
MO	1,223	10,292	11,515	1,070	8,909	9,979	1,529	5,023	2,046
S DAK	2,075	1,035	3,110	3,264	1,488	4,752	3,141	1,294	6,552
NEBR	40,883	124,889	165,772	42,524	114,303	156,827	49,718	68,613	118,331
KANS	11,821	62,626	74,447	13,943	54,148	68,091	13,960	35,367	49,327
DEL									
PC									
VA	8	4	12	44		44			
N C	213	105	318	138	64	202	27		
S C	15	2	17	11		11		111	190
GA	24			26		15			
FLA									
KY	34	11	45	50	21	71	50	12	62
TENN	54	75	129	33	153	186	31	111	142
ALA	9	155	164	12					
MISS	19	152	171	1					
ARK	16	356	372	47	697	698	10	124	134
LA		617	617		290	337	66	423	489
CALA	843	11,011	11,854	2,620	7,625	10,245	4,420	910	915
TEXAS	2,156	361,987	364,143	4,411	259,929	264,340	7,792	3,972	5,392
ICAWO		39	39		41	41			
WYO		2	2		5	5			
CCLC	614	1,800	2,414	1,118	2,030	3,148	1,508	2,900	4,408
N MEX	460	3,283	3,743	312	3,197	3,509	638	2,839	3,477
ARIZ	557	3,345	3,902	996	3,329	4,325	1,051	1,862	2,913
UTAH		341	341		87	87		485	485
NEV									
WASH									
OREG		46	46		23	23			
CALIF	196	11,270	11,466	237	2,720	2,957	275	80	80
UNALL*		421	445		65	103		3,614	3,689
U S	61,565	595,677	657,242	71,345	461,521	532,866	81,981	253,553	335,534
-----									
	1968			1969			1970		
N ENG									
N Y								1	1
N J									
PA		8	8						
CHIC		19	19		22	22		16	16
IND	65	17	82	66	46	112	28		
ILL	66			72	70	142	68	62	130
MICH									
MISC									
MINN		11	11		16	16		327	327
ICWA	515	1,503	2,018	403	1,301	1,704	721	521	1,242
MO	1,582	5,455	7,037	1,426	6,601	8,027	663	4,362	5,025
S DAK	2,663	1,392	4,055	2,323	1,096	3,419	2,646	1,539	4,185
NEBR	56,996	72,706	129,702	49,300	75,912	125,212	28,736	68,753	97,489
KANS	14,941	37,779	52,720	17,966	39,734	57,700	18,290	46,454	64,744
DEL									
MD									
VA	60	1	61	58		58	84		84
N C	230	132	362	152	48	200	104	35	139
S C	20			16			30		
GA	47			45			45		45
FLA									
KY	46	20	66	33	29	62	35	22	57
TENN	84	35	119	52	130	182	43	25	68
ALA	11			10			29		
MISS	8			72			24		
ARK	141	308	449	123	124	247	176	110	286
LA	9	117	126	14	116	130	63	63	63
CALA	1,548	4,754	6,302	2,080	3,139	5,219	3,221	4,361	7,582
TEXAS	6,870	139,613	146,483	5,112	162,136	167,248	9,294	137,945	147,239
ICAWO									
WYO		13	13		6	6		3	3
CCLC	2,412	2,940	5,352	1,348	3,120	4,468	1,411	2,160	3,571
N MEX	1,149	3,667	4,816	452	3,417	3,869	713	3,481	4,194
ARIZ	797	3,545	4,342	683	1,752	2,435	1,050	1,725	2,775
UTAH		286	286		145	145		247	247
NEV									
WASH									
OREG		71	71		72	72		44	44
CALIF	276	2,657	3,133	231	3,363	3,594	238	6,325	6,563
UNALL*		159	311		96	189		337	448
U S	90,536	277,408	367,944	81,987	302,491	384,478	67,649	278,918	346,567

SEE FOOTNOTES ON PAGE 39.

TABLE 34. SORGHUMS - STOCKS BY POSITIONS, BY STATES, QUARTERLY, OCTOBER 1, 1965-70

STATE	1965			1966			1967		
	ON FARMS	OFF FARMS 1/	TOTAL ALL POSITIONS	ON FARMS	OFF FARMS 1/	TOTAL ALL POSITIONS	ON FARMS	OFF FARMS 1/	TOTAL ALL POSITIONS
1,000 BUSHELS									
W ENG		2	2	*	*	*	*	*	*
N Y		6	6	*	*	*	*	*	*
N J				*	*	*	*	*	*
PA		2	2	*	*	*	*	*	*
OHIO		7	7	6	6	6	7	7	7
IND	10	2	12	11	*	*	11	*	*
ILL	12	45	57	24	119	143	3	34	37
MICH		*	*					*	*
MISC		*	*		28	28		*	*
MINN		24	24		20	20		15	15
ICWA	195	341	536	197	695	892	144	944	1,088
MO	376	7,667	8,043	535	3,761	4,296	588	4,123	4,711
S OAK	768	980	1,748	1,242	1,105	2,387	1,933	1,096	3,029
NEBR	35,432	109,985	145,417	36,449	96,493	132,942	31,251	68,360	99,611
KANS	7,881	51,299	59,180	6,711	35,319	42,290	6,980	21,595	28,575
NE					*	*		*	*
VA	4	2	6	3	*	*	3	*	*
N C	79	5	84	92	8	100	36	*	*
S C	3		3	3		3	3	7	10
GA	4	*	*	5	*	*		*	*
FLA					*	*		*	*
KY	11	13	24	28	3	31	20	*	*
TENN	35	*	*	7	72	79	12	*	*
ALA	2	*	*	3	*	*	2	*	*
MISS	5	71	76	1	14	15	5	*	*
ARK	6	*	*	16	91	107	22	139	161
LA		431	421		302	302		*	*
OKLA	492	9,540	10,032	873	5,405	6,278	406	1,985	2,391
TEXAS	1,078	325,705	326,783	2,941	186,143	189,084	1,558	94,211	95,769
ICAHG		*	*		19	19		26	26
WYO		3	3		3	3		3	3
COLO	307	1,580	1,887	435	1,580	2,015	283	1,330	1,613
N MEX	276	2,772	3,048	250	2,191	2,441	398	1,709	2,107
ARIZ	464	1,676	2,140	498	1,248	1,746	751	892	1,643
UTAH		244	244		154	154		*	*
NEV		*	*		*	*		*	*
WASH					*	*		*	*
OREG		24	24		43	43		49	49
CALIF		5,183	5,183		5,612	5,612		2,236	2,236
UNALL*		484	533		153	175		725	819
U S	47,442	518,093	565,535	50,614	340,587	391,201	44,414	199,486	243,900
1968									
A ENG		*	*		*	*		*	*
N Y					*	*		*	*
N J					*	*		*	*
PA		8	8					12	12
OHIO		*	*		12	12		11	11
IND	13	*	*	13	34	47		23	32
ILL	7	4	11	18	59	77		9	9
MICH		*	*		*	*		*	*
MISC		*	*		*	*		*	*
MINN		9	9		18	18		9	9
ICWA	23	1,080	1,103	202	1,074	1,276	103	488	591
MO	43	5,764	5,807	285	4,045	4,330	265	3,501	3,766
S OAK	1,522	1,119	2,641	1,493	1,166	2,659	1,764	1,331	3,095
NEBR	42,127	71,465	113,622	36,482	71,915	108,397	22,104	58,329	80,433
KANS		25,391	25,391	8,166	24,210	32,376	7,316	28,060	35,346
NE		*	*		*	*		*	*
VA	20	*	*	12	*	*	11	*	11
N C	46	8	54	47	4	51	39	32	71
S C	11			2	3	5	13	*	*
GA	7	3	10		*	*		*	*
FLA					*	*		*	*
KY	23	8	31	8	6	14	4	6	10
TENN	28	8	36	7	40	47	9	*	*
ALA	1	*	*		3	3	5	*	*
MISS	6	*	*		11	11	6	*	6
ARK	40	133	173	21	28	49	35	90	125
LA		*	*		37	37		*	*
OKLA	774	2,451	3,225	520	1,944	2,464	805	2,043	2,848
TEXAS	3,435	115,121	118,556	3,408	124,454	127,862	4,647	99,943	104,590
ICAHG		*	*		5	5		3	3
WYO		9	9		5	5		3	3
COLO	603	1,160	1,763	562	935	1,497	706	1,070	1,776
N MEX	786	2,814	3,580	226	1,997	2,223	214	1,811	2,025
ARIZ	498	1,660	2,158	427	674	1,101	656	1,325	1,981
UTAH		25	25		23	23		298	298
NEV		*	*		*	*		*	*
WASH					*	*		*	*
OREG		65	65		16	16		20	20
CALIF		2,433	2,433		2,263	2,263		6,043	6,043
UNALL*		180	231		78	92		828	870
U S	57,463	230,948	288,411	51,913	235,040	286,953	38,726	205,235	243,961
1969									
A ENG		*	*		*	*		*	*
N Y					*	*		*	*
N J					*	*		*	*
PA		8	8					12	12
OHIO		*	*		12	12		11	11
IND	13	*	*	13	34	47		23	32
ILL	7	4	11	18	59	77		9	9
MICH		*	*		*	*		*	*
MISC		*	*		*	*		*	*
MINN		9	9		18	18		9	9
ICWA	23	1,080	1,103	202	1,074	1,276	103	488	591
MO	43	5,764	5,807	285	4,045	4,330	265	3,501	3,766
S OAK	1,522	1,119	2,641	1,493	1,166	2,659	1,764	1,331	3,095
NEBR	42,127	71,465	113,622	36,482	71,915	108,397	22,104	58,329	80,433
KANS		25,391	25,391	8,166	24,210	32,376	7,316	28,060	35,346
NE		*	*		*	*		*	*
VA	20	*	*	12	*	*	11	*	11
N C	46	8	54	47	4	51	39	32	71
S C	11			2	3	5	13	*	*
GA	7	3	10		*	*		*	*
FLA					*	*		*	*
KY	23	8	31	8	6	14	4	6	10
TENN	28	8	36	7	40	47	9	*	*
ALA	1	*	*		3	3	5	*	*
MISS	6	*	*		11	11	6	*	6
ARK	40	133	173	21	28	49	35	90	125
LA		*	*		37	37		*	*
OKLA	774	2,451	3,225	520	1,944	2,464	805	2,043	2,848
TEXAS	3,435	115,121	118,556	3,408	124,454	127,862	4,647	99,943	104,590
ICAHG		*	*		5	5		3	3
WYO		9	9		5	5		3	3
COLO	603	1,160	1,763	562	935	1,497	706	1,070	1,776
N MEX	786	2,814	3,580	226	1,997	2,223	214	1,811	2,025
ARIZ	498	1,660	2,158	427	674	1,101	656	1,325	1,981
UTAH		25	25		23	23		298	298
NEV		*	*		*	*		*	*
WASH					*	*		*	*
OREG		65	65		16	16		20	20
CALIF		2,433	2,433		2,263	2,263		6,043	6,043
UNALL*		180	231		78	92		828	870
U S	57,463	230,948	288,411	51,913	235,040	286,953	38,726	205,235	243,961

SEE FOOTNOTES ON PAGE 39.

TABLE 35. FLAXSEED - STOCKS BY POSITIONS, BY STATES, QUARTERLY, OCTOBER 1, 1964-69

STATE	ON FARMS	OFF FARMS 1/	TOTAL ALL POSITIONS	ON FARMS	OFF FARMS 1/	TOTAL ALL POSITIONS	ON FARMS	OFF FARMS 1/	TOTAL ALL POSITIONS
	1964			1965			1966		
1,000 BUSHELS									
N Y									
N J									
OHIO		*	*		*	*		*	*
WISC	43	2,698	2,741	41	1,521	1,562			
MINN	2,125	8,340	10,465	3,108	8,106	11,214	1,190	8,043	9,233
IOWA	22	13	35	60	*	*	17	7	24
N DAK	8,736	4,881	13,617	14,670	2,760	17,430	6,866	7,273	14,139
S DAK	1,612	2,047	3,659	2,390	2,289	4,679	1,612	2,498	4,110
NEBR		*	*		*	*		*	*
VA		*	*		*	*		*	*
TEXAS									
MCNT	37		37	19		19	21		21
NEV	134	17	151	200	25	225	132	38	170
CALIF	11	153	164		119	119		*	*
UNALL*		251	251		59	119		997	997
U S	12,720	18,400	31,120	20,488	14,879	35,367	9,838	18,856	28,694
1967									
1968									
1969									
N Y									
N J									
OHIO		*	*		*	*		*	*
WISC					1,612	1,612		1,530	1,530
MINN	1,286	7,195	8,481	2,073	5,130	7,203	2,794	8,460	11,254
IOWA	12	*	*	11	*	*	6	*	6
N DAK	5,347	3,764	9,111	9,702	2,823	12,525	11,618	6,628	18,246
S DAK	2,109	1,825	3,934	2,883	2,713	5,596	3,716	3,922	7,638
NEBR		*	*		*	*		*	*
VA		*	*		*	*		*	*
TENN					*	*		*	*
TEXAS	6	*	*	37	*	*	39	*	39
MCNT	36	20	56	58	22	80	149	41	190
NEV		*	*		*	*		*	*
CALIF		*	*		*	*		77	77
UNALL*		1,745	1,745		142	190		260	260
U S	8,796	14,549	23,345	14,764	12,442	27,206	18,320	20,918	39,238

SEE FOOTNOTES ON PAGE 39.

TABLE 36. FLAXSEED - STOCKS BY POSITIONS, BY STATES, QUARTERLY, JANUARY 1, 1965-70

STATE	ON FARMS	OFF FARMS 1/	TOTAL ALL POSITIONS	ON FARMS	OFF FARMS 1/	TOTAL ALL POSITIONS	ON FARMS	OFF FARMS 1/	TOTAL ALL POSITIONS
	1965			1966			1967		
1,000 BUSHELS									
N Y									
N J									
OHIO		*	*		*	*		*	*
WISC	34			34				1,691	1,691
MINN	1,340	7,431	8,771	1,927	7,433	9,360	998	7,117	8,115
IOWA	15	6	21	40	*	*	11	*	*
N DAK	5,779	3,889	9,668	9,584	7,017	16,601	4,885	3,288	8,173
S DAK	1,336	1,430	2,766	2,230	2,300	4,530	1,504	1,309	2,813
NEBR		*	*		*	*		*	*
TEXAS							14		14
MCNT	67	9	76	138	29	167	96	24	120
CALIF		31	31		*	*		*	*
UNALL*		1,849	1,883		2,033	2,107		871	882
U S	8,571	14,645	23,216	13,953	18,817	32,765	7,508	14,300	21,808
1968									
1969									
1970									
N Y									
N J									
OHIO		*	*		*	*		*	*
WISC					999	999		1,061	1,061
MINN	1,135	5,769	6,904	1,520	5,191	6,711	1,746	7,891	9,637
IOWA	8	*	*	8	*	*	4	*	*
N DAK	4,034	3,050	7,084	5,267	3,517	8,784	8,297	5,293	13,590
S DAK	1,582	1,320	2,902	2,201	2,344	4,545	2,810	3,925	6,735
NEBR		*	*		*	*		*	*
TEXAS									
MCNT	26	23	49	45	15	60	110	51	161
CALIF		*	*		*	*		*	*
UNALL*		1,262	1,270		383	391		472	476
U S	6,785	11,424	18,209	9,041	12,449	21,490	12,967	18,693	31,660

SEE FOOTNOTES ON PAGE 39

TABLE 37. FLAXSEED - STOCKS BY POSITIONS, BY STATES, QUARTERLY, APRIL 1, 1965-70

STATE	ON FARMS	OFF FARMS 1/	TOTAL ALL POSITIONS	ON FARMS	OFF FARMS 1/	TOTAL ALL POSITIONS	ON FARMS	OFF FARMS 1/	TOTAL ALL POSITIONS
	1965			1966			1967		
1,000 BUSHELS									
A ENG									
N Y									
N J					*	*			
OHIO		*	*		*	*		*	*
IAD					*	*		*	*
WISC	18	*	*	16	*	*			
MINN	1,109	5,982	7,091	1,181	6,438	7,619	768	4,559	4,555
ICWA	7		7	20	*	*	6	*	*
N DAK	4,166	2,573	6,739	7,433	5,857	13,290	3,301	1,624	4,925
S DAK	1,198	1,080	2,278	2,071	1,670	3,741	1,397	565	1,962
NEBR									
TEXAS									
MCNT	42	4	46	68	20	108	51	9	60
GREG									
CALIF		2	2						
UNALL*		1,353	1,371		1,843	1,879		384	390
U.S.	6,240	10,994	17,234	10,009	15,828	26,637	5,523	13,369	18,892
1968									
1969									
1970									
N ENG									
N Y									*
N J					*	*		*	*
OHIO		*	*		*	*		*	*
IAD									
WISC		1,790	1,790		1,273	1,273		1,078	1,078
MINN	605	3,905	4,510	829	3,729	4,558	1,280	8,119	9,399
ICWA	4	*	*	4	*	*	2	*	*
N DAK	2,251	2,201	4,452	3,604	2,611	6,215	6,822	4,459	11,281
S DAK	1,450	837	2,287	1,518	2,172	3,690	2,266	3,610	5,876
NEBR									*
TEXAS									
MCNT	14	18	32	23	25	48	59	19	78
GREG		*	*						*
CALIF		*	*		*	*		*	*
UNALL*		276	280		135	139		206	208
U.S.	4,324	9,027	13,351	5,978	9,945	15,923	10,429	17,491	27,920

SEE FOOTNOTES ON PAGE 39.

TABLE 38. FLAXSEED - STOCKS BY POSITIONS, BY STATES, QUARTERLY, JULY 1, 1965-70

STATE	ON FARMS	OFF FARMS 1/	TOTAL ALL POSITIONS	ON FARMS	OFF FARMS 1/	TOTAL ALL POSITIONS	ON FARMS	OFF FARMS 1/	TOTAL ALL POSITIONS
	1965			1966			1967		
1,000 BUSHELS									
N Y									
N J		*	*		*	*		*	*
OHIO				5	*	*		*	*
WISC	5	631	636						
MINN	462	4,467	4,869	457	3,228	3,725	192	2,903	3,095
ICWA	1	*	*	2	*	*	1	*	*
N DAK	1,613	2,190	3,803	2,347	6,281	8,628	858	1,162	2,040
S DAK	369	975	1,344	558	1,761	2,319	322	469	791
NEBR									
TEXAS									
MCNT	17	4	21	40	18	58	26	7	33
GREG		*	*					*	*
CALIF		*	*					*	*
UNALL*		253	254		582	587		3,294	3,295
U.S.	2,467	8,460	10,927	3,449	11,870	15,319	1,399	7,855	9,254
1968									
1969									
1970									
N Y		*	*		*	*		*	*
N J		*	*		*	*		*	*
OHIO									
WISC		1,749	1,749		1,047	1,047	698	1,073	1,073
MINN	265	2,335	2,600	415	2,627	3,042		7,337	8,035
ICWA		*	*	1	*	*		*	*
N DAK	572	558	1,530	901	2,070	2,971	2,581	5,305	7,886
S DAK	461	594	1,055	759	1,951	2,710	1,178	3,603	4,781
NEBR								*	*
TEXAS									
MCNT	6	10	16	9	5	14	24	16	40
GREG		*	*		*	*		*	*
CALIF		*	*					*	*
UNALL*		18	18		6	6		9	9
U.S.	1,304	5,664	6,968	2,085	7,706	9,791	4,481	17,343	21,824

SEE FOOTNOTES ON PAGE 39.

TABLE 39. SOYBEANS - STOCKS BY POSITIONS, BY STATES, QUARTERLY, JANUARY 1, 1965-70

STATE	ON FARMS	OFF FARMS 1/	TOTAL ALL POSITIONS	ON FARMS	OFF FARMS 1/	TOTAL ALL POSITIONS	ON FARMS	OFF FARMS 1/	TOTAL ALL POSITIONS
	1965			1966			1967		
1,000 BUSHELS									
N Y	20	*	*	23	*	*	30	*	*
A J	144	*	*	392	*	*	102	*	*
PA	52	665	717	131	*	*	215	19	121
CHIO	9,855	20,699	30,554	16,025	18,876	34,901	20,397	21,655	42,052
IND	18,755	19,253	38,008	26,528	19,228	45,756	28,534	19,963	48,497
ILL	45,872	70,384	116,256	63,943	65,449	129,392	65,767	51,240	117,007
MICH	2,303	1,030	3,413	4,646	2,448	7,094	4,752	3,037	7,789
WISC	839	*	*	1,854	1,978	3,832	2,405	*	*
MINN	22,816	24,187	47,003	32,800	20,916	53,716	48,326	27,613	75,939
IOWA	44,856	55,837	100,695	65,572	50,925	116,497	84,008	58,729	142,737
MO	8,429	22,666	31,095	14,279	20,197	34,476	12,585	27,360	39,945
N DAK	640	472	1,112	2,205	1,039	3,244	2,708	1,620	4,328
S DAK	1,331	566	1,897	2,491	845	3,336	3,668	1,527	5,195
NEBR	3,912	4,442	8,354	8,178	5,181	13,359	10,330	4,586	18,916
KANS	2,311	8,664	11,175	5,500	9,695	15,195	5,364	9,322	14,686
DEL	142	*	*	348	*	*	239	*	*
MD	186	*	*	618	*	*	433	*	*
VA	1,340	*	*	1,627	*	*	1,970	*	*
N C	3,521	4,150	7,671	3,686	5,804	9,490	7,846	5,464	13,310
S C	5,240	5,942	11,182	6,770	7,657	14,427	7,735	8,824	16,559
GA	930	1,037	1,967	1,457	1,315	2,772	2,700	4,068	6,768
FLA	136	*	*	142	*	*	216	*	*
KY	996	3,686	4,682	1,345	3,328	4,673	1,550	3,454	5,004
PENN	876	16,379	17,255	2,236	16,793	19,029	2,561	17,906	20,467
ALA	1,047	*	*	1,104	*	*	1,372	3,528	4,900
MISS	8,107	13,097	21,204	11,505	17,357	28,862	12,669	25,858	38,527
ARK	5,309	31,451	36,760	7,633	41,902	49,535	11,743	49,791	61,534
LA	454	9,337	9,791	602	8,505	9,107	3,484	10,781	14,265
OKLA	101	351	452	301	505	806	486	621	1,107
TEXAS	131	1,857	1,988	171	2,934	3,105	195	3,650	3,849
N MEX	*	*	*	*	*	*	*	*	*
ARIZ	*	*	*	*	*	*	*	*	*
UTAH	*	*	*	*	*	*	*	*	*
NEV	*	*	*	*	*	*	*	*	*
CALIF	*	*	*	*	*	*	*	*	*
UNALL*	*	*	*	*	*	*	*	*	*
U S	190,728	18,468	22,317	284,312	11,677	16,262	344,394	12,425	17,933
		334,820	525,548		334,554	618,866		377,041	721,435
1968									
1969									
1970									
N Y	46	*	*	66	*	*	62	*	*
A J	135	*	*	140	*	*	200	27	227
PA	160	*	*	153	*	*	450	*	*
CHIO	17,087	19,116	36,183	21,983	26,586	48,569	18,982	31,019	50,002
IND	24,140	23,278	47,418	36,355	27,399	63,754	30,726	36,177	66,903
ILL	68,923	65,737	134,660	77,657	97,561	175,218	80,087	133,313	213,400
MICH	4,683	1,759	6,442	5,176	2,050	7,226	3,839	2,907	6,746
WISC	2,004	1,648	3,652	1,932	1,294	3,226	1,871	2,649	4,520
MINN	46,916	29,651	76,567	49,773	45,124	94,897	50,250	56,789	107,019
IOWA	86,559	68,400	154,959	112,110	105,239	217,349	95,648	144,146	239,794
MO	15,061	27,686	42,747	22,564	35,005	57,569	16,065	41,874	57,939
N DAK	2,074	876	2,950	2,332	1,104	3,436	1,530	1,014	2,544
S DAK	2,869	908	3,777	2,573	717	3,290	2,274	1,298	3,572
NEBR	10,381	8,837	19,218	10,107	12,851	22,958	9,958	21,263	31,221
KANS	4,455	10,142	14,617	6,460	15,354	21,814	3,919	20,065	23,984
DEL	456	*	*	415	*	*	317	3,376	3,693
MD	426	*	*	418	5,420	5,838	486	6,363	6,851
VA	3,047	*	*	2,474	5,879	8,353	3,379	4,457	7,836
N C	7,936	6,434	14,370	4,593	4,087	8,680	5,753	6,685	12,438
S C	8,708	9,889	18,597	5,076	5,074	10,144	6,750	8,180	14,930
GA	4,375	5,787	10,162	1,968	8,295	10,263	3,366	8,530	11,096
FLA	280	346	626	343	*	*	423	*	*
KY	1,956	*	*	2,005	4,473	6,478	2,772	4,054	6,826
PENN	1,812	20,403	22,215	2,415	16,571	18,986	4,050	18,596	22,646
ALA	1,794	5,194	6,990	1,815	3,307	5,122	2,126	4,108	6,234
MISS	18,216	24,890	43,106	18,000	29,273	47,273	11,154	21,568	32,722
ARK	12,845	61,012	73,857	13,695	58,692	72,387	11,088	57,245	68,333
LA	3,004	13,310	16,314	6,204	14,970	21,174	3,626	20,131	23,757
OKLA	151	827	978	614	782	1,396	475	921	1,396
TEXAS	335	7,719	8,054	758	13,845	14,603	440	19,901	20,341
N MEX	*	*	*	*	*	*	*	*	*
ARIZ	*	*	*	*	*	*	*	*	*
UTAH	*	*	*	*	*	*	*	*	*
NEV	*	*	*	*	*	*	*	*	*
CALIF	*	*	*	*	*	*	*	*	*
UNALL*	*	*	*	*	*	*	*	*	*
U S	350,816	18,464	24,690	410,168	9,377	10,494	372,069	6,789	7,724
		432,333	783,149		550,329	960,497		683,425	1,055,494

SEE FOOTNOTES ON PAGE 39.

TABLE NO. SOYBEANS - STOCKS BY POSITIONS, BY STATES, QUARTERLY, APRIL 1, 1965-70

STATE	ON FARMS	GFF FARMS 1/	TOTAL ALL POSITIONS	ON FARMS	OFF FARMS 1/	TOTAL ALL POSITIONS	ON FARMS	OFF FARMS 1/	TOTAL ALL POSITIONS
	1965			1966			1967		
1,000 BUSHELS									
N Y	11	*	*	11	*	*	15	*	*
A J	117	*	*	174	*	*	68	*	*
PA	32	438	471	77	*	*	58	*	*
OHIO	4,517	15,144	19,661	8,012	14,713	22,725	14,398	16,567	30,965
IND	9,378	12,295	21,673	15,274	11,496	26,770	13,901	11,453	25,354
ILL	18,636	59,247	77,883	30,195	50,832	81,027	36,894	37,101	73,995
MICH	1,117	993	2,110	2,614	2,328	4,942	3,456	2,120	5,576
WISC	549	*	*	912	3,377	4,289	1,480	530	2,010
MINN	14,260	23,590	37,850	19,328	19,017	38,345	37,050	21,891	58,941
IOWA	25,460	41,605	67,065	35,308	32,023	67,331	58,953	42,199	101,152
MO	6,182	19,230	25,412	10,312	10,403	20,715	5,873	15,238	21,111
N DAK	501	304	805	1,203	649	1,852	1,752	1,090	2,842
S DAK	748	345	1,093	2,151	544	2,695	2,630	814	3,444
NEBR	2,761	3,564	6,325	5,234	3,014	8,248	8,352	6,212	14,564
KANS	1,156	6,007	7,163	2,567	6,314	8,881	3,714	5,590	9,304
DEL	114	*	*	139	*	*	102	*	*
MD	152	*	*	245	*	*	375	*	*
VA	402	*	*	636	*	*	1,117	*	*
W VA	*	*	*	*	*	*	*	*	*
A C	1,280	2,915	4,195	2,328	3,585	5,913	4,384	3,740	8,144
S C	1,310	3,499	4,809	3,216	4,484	7,700	3,094	5,541	8,635
GA	372	*	*	942	*	*	2,077	3,719	5,796
FLA	34	*	*	71	*	*	130	*	*
KY	443	3,099	3,542	850	2,455	3,305	543	1,675	2,218
TENN	539	11,197	11,736	860	13,014	13,874	1,814	9,447	11,261
ALA	228	*	*	226	*	*	480	*	*
MISS	3,439	6,934	10,373	2,958	11,411	14,369	8,024	15,097	23,121
ARK	3,982	18,466	22,448	3,435	21,817	25,252	4,194	25,993	30,187
LA	182	3,732	3,914	267	4,290	4,557	2,178	5,334	7,512
OKLA	50	109	159	138	119	257	172	272	444
TEXAS	49	1,268	1,317	64	1,258	1,322	133	1,929	2,062
IDAHO	*	*	*	*	*	*	*	*	*
N MEX	*	*	*	*	*	*	*	*	*
ARIZ	*	*	*	*	*	*	*	*	*
UTAH	*	*	*	*	*	*	*	*	*
NEV	*	*	*	*	*	*	*	*	*
WASH	*	*	*	*	*	*	*	*	*
CALIF	*	*	*	*	*	*	*	*	*
UNALL*	*	*	*	*	*	*	*	*	*
U S	98,002	15,054	17,033	149,747	8,745	11,266	217,411	6,928	9,273
	249,035	347,037		225,888	375,635		240,500	457,911	
1968									
1969									
1970									
N Y	23	*	*	33	*	*	34	*	*
A J	67	7	74	76	3	79	100	*	*
PA	71	109	180	79	*	*	128	712	840
OHIO	13,051	14,440	27,491	16,310	23,958	40,268	11,682	29,105	40,787
IND	12,780	14,948	27,725	20,774	19,979	40,753	11,655	24,686	36,341
ILL	46,570	48,167	94,737	46,174	83,774	129,948	32,035	114,185	146,220
MICH	2,647	1,603	4,250	2,648	2,226	4,874	2,094	2,924	5,018
WISC	1,230	1,971	3,201	1,159	1,942	3,101	1,122	3,539	4,661
MINN	41,314	23,595	64,909	42,662	40,179	82,841	41,250	49,732	90,982
IOWA	67,805	51,193	118,998	88,976	90,024	179,000	69,079	122,678	191,757
MO	7,531	25,930	33,461	15,385	29,775	45,160	9,639	31,683	41,322
N DAK	1,697	550	2,347	1,833	880	2,713	1,020	708	1,728
S DAK	2,625	522	3,147	2,100	550	2,650	1,750	892	2,642
NEBR	7,214	5,194	12,408	6,248	10,750	16,998	5,726	15,171	20,897
KANS	2,599	5,933	8,532	3,828	12,903	16,731	2,352	12,402	14,754
DEL	114	*	*	148	*	*	136	*	*
MD	320	*	*	261	3,107	3,368	326	*	*
VA	1,400	*	*	990	*	*	1,314	*	*
W VA	*	*	*	*	*	*	*	*	*
A C	4,105	3,882	7,987	2,381	2,309	4,690	1,611	4,355	5,966
S C	4,942	5,493	10,435	2,860	3,972	6,832	2,700	4,122	6,822
GA	2,750	4,728	7,478	853	5,950	6,803	1,326	5,785	7,111
FLA	168	*	*	240	*	*	211	*	*
KY	1,630	*	*	1,257	*	*	1,008	*	*
TENN	1,115	14,217	15,332	1,932	10,299	12,231	1,485	12,514	13,999
ALA	770	1,455	2,225	1,089	3,588	4,677	425	2,634	3,059
MISS	5,566	18,450	24,016	3,998	20,122	24,060	2,282	9,770	12,052
ARK	3,670	36,721	40,391	8,217	41,614	49,831	5,544	33,977	39,521
LA	1,802	7,228	9,030	3,877	16,899	20,576	824	12,561	13,385
OKLA	132	338	470	225	491	716	158	347	505
TEXAS	134	4,677	4,811	337	13,565	13,902	220	13,652	13,872
IDAHO	*	*	*	*	*	*	*	*	*
N MEX	*	*	*	*	*	*	*	*	*
ARIZ	*	*	*	*	*	*	*	*	*
UTAH	*	*	*	*	*	*	*	*	*
NEV	*	*	*	*	*	*	*	*	*
WASH	*	*	*	*	*	*	*	*	*
CALIF	*	*	*	*	*	*	*	*	*
UNALL*	*	*	*	*	*	*	*	*	*
J S	235,842	9,734	13,389	276,930	13,684	16,471	209,236	16,867	19,996
	301,182	537,024		452,343	729,273		525,001	734,237	

SEE FOOTNOTES ON PAGE 39.

TABLE 41. SOYBEANS - STOCKS BY POSITIONS, BY STATES, QUARTERLY, JULY 1, 1965-70

STATE	ON FARMS	OFF FARMS 1/	TOTAL ALL POSITIONS	ON FARMS	OFF FARMS 1/	TOTAL ALL POSITIONS	ON FARMS	OFF FARMS 1/	TOTAL ALL POSITIONS
	1965			1966			1967		
1,000 BUSHELS									
NY	2	*	*	2	*	*	3	*	*
NJ	8	*	8	39	*	*	20	*	*
PA	8	71	79	27	*	*	14	*	*
OHIO	411	6,327	6,738	501	5,167	5,668	3,899	6,892	10,791
IND	2,009	5,539	7,548	2,010	6,226	8,236	4,390	6,560	10,950
ILL	3,584	26,338	29,922	1,776	30,834	32,610	9,624	16,848	26,472
MICH	335	457	792	145	705	850	594	656	1,250
WISC	22	*	*	61	*	*	444	502	946
MINN	2,852	9,454	12,306	2,929	9,224	12,153	16,914	12,683	29,597
IOWA	9,699	21,145	30,844	5,044	17,859	22,903	33,898	24,897	58,795
MO	1,124	5,606	6,730	793	4,825	5,618	2,937	6,982	9,919
NEBR	42	100	142	80	95	175	1,062	811	1,873
NEB	125	61	186	453	323	776	1,038	483	1,521
NEBR	633	1,333	1,966	1,472	1,075	2,547	3,297	3,666	6,963
KANS	289	1,719	2,008	367	3,120	3,487	928	3,387	4,315
DEL	25	*	*	17	*	*	51	*	*
MD	17	*	*	82	*	*	144	*	*
VA	67	*	*	106	*	*	131	*	*
WVA	*	*	*	*	*	*	*	*	*
NC	160	1,546	1,706	679	1,597	2,276	577	1,663	2,240
SC	218	990	1,208	762	1,023	1,785	1,064	2,060	3,124
GA	155	*	*	171	*	*	415	1,739	2,154
FLA	*	*	*	*	*	*	86	*	*
KY	111	1,651	1,762	142	1,972	2,114	155	955	1,110
TENN	202	3,950	4,152	344	7,332	7,676	747	2,887	3,634
ALA	91	*	*	75	*	*	137	*	*
MISS	123	2,790	2,913	164	3,470	3,634	845	3,825	4,670
ARK	597	*	*	763	*	*	839	*	*
LA	45	5,001	5,046	67	4,398	4,465	218	2,410	2,628
OKLA	20	80	100	63	8	71	57	*	*
TEXAS	8	*	*	21	*	*	83	847	930
ICAHO	*	*	*	*	*	*	*	*	*
N MEX	*	*	*	*	*	*	*	*	*
ARIZ	*	*	*	*	*	*	*	*	*
NEV	*	*	*	*	*	*	*	*	*
CALIF	*	*	*	*	*	*	*	*	*
URALL*	*	*	*	*	*	*	*	*	*
U S	22,962	108,465	131,447	19,155	15,614	16,978	84,611	13,417	14,899
					114,867	134,022		114,170	198,781
-----									
	1968			1969			1970		
NY	5	*	*	7	*	*	6	*	*
NJ	10	*	*	54	*	*	29	*	*
PA	18	47	65	26	4	30	38	581	619
OHIO	4,765	9,509	14,278	6,382	14,352	20,734	2,921	11,750	14,671
IND	3,905	8,914	12,819	7,271	13,747	21,018	3,708	14,506	18,214
ILL	15,834	27,731	43,565	17,840	59,553	77,393	6,865	70,891	77,756
MICH	356	727	1,083	602	534	1,136	349	458	807
WISC	422	576	998	696	474	1,170	595	2,265	2,864
MINN	28,710	18,196	46,906	29,864	36,428	66,292	22,500	33,344	55,844
IOWA	44,722	37,958	82,680	56,724	82,964	141,688	30,111	95,799	125,910
MO	4,142	5,398	13,540	6,667	19,680	26,347	3,213	16,315	19,528
NEBR	754	397	1,151	800	540	1,340	510	458	968
NEB	1,465	284	1,749	1,208	479	1,687	700	279	979
NEBR	4,399	3,745	8,144	3,124	8,351	11,475	2,490	13,444	15,934
KANS	742	2,155	2,897	1,196	6,420	7,616	588	7,531	8,119
DEL	38	*	*	30	*	*	45	*	*
MD	80	*	*	52	*	*	98	2,241	2,339
VA	412	*	*	141	*	*	282	*	*
WVA	*	*	*	*	*	*	*	*	*
NC	1,368	1,943	3,311	595	*	*	345	*	*
SC	2,354	1,972	4,326	585	1,723	2,308	338	2,032	2,370
GA	750	1,843	2,593	131	1,818	1,949	153	3,568	3,721
FLA	28	*	*	34	*	*	21	*	*
KY	272	*	*	236	*	*	88	*	*
TENN	976	6,001	6,977	966	4,905	5,871	270	6,031	6,301
ALA	321	*	*	303	956	1,259	99	*	*
MISS	1,771	5,223	6,994	1,688	9,118	10,806	761	4,078	4,839
ARK	1,376	*	*	1,370	21,760	23,130	1,386	12,513	13,899
LA	601	4,121	4,722	582	11,370	11,952	66	8,540	8,606
OKLA	75	*	*	102	*	*	59	109	168
TEXAS	67	2,456	2,523	84	10,434	10,518	73	9,432	9,505
ICAHO	*	*	*	*	*	*	*	*	*
N MEX	*	*	*	*	*	*	*	*	*
ARIZ	*	*	*	*	*	*	*	*	*
NEV	*	*	*	*	*	*	*	*	*
CALIF	*	*	*	*	*	*	*	*	*
URALL*	*	*	*	*	*	*	*	*	*
U S	120,742	21,193	23,782	141,360	11,205	12,456	78,711	8,511	9,426
		164,389	285,131		316,815	458,175		324,676	403,387

SEE FOOTNOTES ON PAGE 39.



TABLE 42. SOYBEANS - STOCKS BY POSITIONS, BY STATES, QUARTERLY, SEPTEMBER 1, 1965-70 2/

STATE	1965			1966			1967		
	ON FARMS	OFF FARMS 1/	TOTAL ALL POSITIONS	ON FARMS	OFF FARMS 1/	TOTAL ALL POSITIONS	ON FARMS	OFF FARMS 1/	TOTAL ALL POSITIONS
1,000 BUSHELS									
A Y	1		1	1			1		
A J	1		1	2		2	2		2
PA	5			8			7		
CHIC	205	1,076	1,281	250	1,743	1,993	900	1,963	2,863
IND	335	1,486	1,821	322	1,605	1,927	1,244	2,129	3,373
ILL	717	5,278	5,995	355	8,307	8,662	2,406	7,883	10,289
MICH	74	23	97	10	5	15	86	87	173
MISC	11			30			222	45	267
MINN	1,141	1,466	2,607	410	1,430	1,840	11,276	6,721	17,997
ICWA	4,243	5,061	9,304	1,261	4,707	5,968	19,160	12,381	31,541
MO	112	1,109	1,221	357	1,375	1,732	839	2,943	3,782
N DAK	2f	7	35	40	4	44	372	329	701
S DAK	62	19	81	85	23	108	692	186	878
NEBR	115	234	349	164	249	413	2,198	1,500	3,698
KANS	58	419	477	92	1,123	1,215	514	1,631	2,147
DEL	6			10					
MD	10			33					
VA	34			28					
A C	80			78				563	563
S C	116	232	348	334	681	1,020		895	895
GA	31			86			104	20	124
FLA							9		9
KY				35	605	640	23		
TENN	135			172	2,403	2,575	213	1,260	1,473
ALA	14			20			14		
MISS	25	365	390	99			422	723	1,145
ARK				76			419		
LA		1,170	1,170		1,167	1,167		1,675	1,675
OKLA	4	4	8	3			14		
TEXAS	5			6			23		
N MEX									
ARIZ									
UTAH									
WASH		457	457						
CALIF									
UNALL*		3,724	4,057		5,800	6,278		5,577	6,078
U S	7,568	22,132	29,700	4,412	31,227	35,639	41,162	48,511	89,673
-----									
	1968			1969			1970		
A Y	3			4			2		
A J	2		2	11		11	21		21
PA	12			16			15		
CHIC	2,008	4,378	6,386	1,276	8,829	10,105	730	3,291	4,021
IND	1,065	6,609	7,754	1,558	9,986	11,544	1,060	5,720	6,780
ILL	3,726	19,139	22,865	4,198	52,524	56,722	1,602	37,789	39,391
MICH	204	168	372	361	482	843	93	97	190
MISC	176	109	285	425	97	522	262	890	1,152
MINN	18,406	17,084	35,490	24,175	34,790	58,965	15,000	23,339	38,339
ICWA	25,968	32,688	58,656	32,031	81,562	113,593	17,713	68,543	86,256
MO	1,506	6,569	8,075	2,564	17,025	19,589	1,205	7,164	8,369
N DAK	490	200	690	50	455	505	272	120	392
S DAK	794	186	980	735	319	1,054	408	98	506
NEBR	2,111	2,195	4,306	1,654	7,944	9,598	996	7,907	8,903
KANS	93	880	973	359	3,935	4,294	196	3,172	3,368
DEL	15			18			18		
MD	11			5			7	752	755
VA	41			35			47		
N C	274	697	971	85			138		
S C	1,412	557	1,969	65	781	846	113	739	852
GA	313			66			31		
FLA							4		
KY	33			59			25		
TENN	279			121			54	1,584	1,638
ALA	51	138	189	24			28		
MISS	759	1,582	2,341	281	2,485	2,766	101	462	563
ARK	367			274	11,539	11,813	370	3,308	3,678
LA	30	998	1,028	39	4,840	4,879		9,351	9,351
OKLA	26	72	98	20	115	135	40	7	47
TEXAS	34	2,382	2,416	42	9,083	9,125	29	7,319	7,348
N MEX									
ARIZ									
UTAH									
WASH									
CALIF									
UNALL*		8,907	9,981		8,201	8,634		7,604	7,912
U S	60,409	105,618	166,327	70,551	254,992	325,543	40,580	189,256	229,836

SEE FOOTNOTES ON PAGE 39.

TABLE 43. ALL HAY - STOCKS ON FARMS, BY STATES, JANUARY 1 AND MAY 1, 1965-70

STATE	JANUARY 1						MAY 1					
	1965	1966	1967	1968	1969	1970	1965	1966	1967	1968	1969	1970
	1,000 TONS											
MAINE	304	246	356	295	255	227	65	51	128	89	87	63
N. H.	109	117	147	153	128	109	16	25	51	58	43	27
VT.	605	544	752	734	654	602	82	79	254	255	168	137
MASS.	140	157	205	187	167	158	22	28	61	55	46	35
R. I.	14	15	16	17	13	13	2	2	3	4	2	2
CONN.	116	129	142	160	125	123	28	25	42	45	32	24
N. Y.	2,873	3,242	3,958	4,046	3,592	3,420	396	608	1,222	1,349	1,129	855
N. J.	152	189	210	253	194	193	34	40	64	100	78	54
PA.	2,208	2,203	2,090	2,744	2,778	2,696	491	569	582	1,049	980	871
OHIO	2,083	2,133	2,183	1,832	2,154	1,857	359	413	473	360	581	406
IND.	1,535	1,880	1,632	1,323	1,541	1,526	336	496	432	321	354	382
ILL.	3,111	3,280	2,806	2,970	2,843	2,569	778	1,108	849	1,028	889	834
MICH.	2,285	2,151	2,131	1,894	2,099	2,028	653	563	687	663	754	697
WIS.	5,812	6,214	6,638	7,226	8,023	8,584	1,388	1,687	1,924	2,374	3,036	2,937
MINN.	4,590	5,716	5,331	5,430	5,058	5,166	685	1,208	1,194	1,041	1,208	1,351
IOWA	5,946	5,919	6,740	6,055	6,040	6,059	1,565	1,925	2,299	2,189	1,848	2,092
MO.	3,916	4,741	4,407	4,401	5,021	4,617	753	1,339	1,188	1,241	1,255	1,140
N. DAK.	3,557	3,921	3,847	3,565	3,500	3,707	736	1,039	1,132	912	936	905
S. DAK.	4,567	4,699	4,254	4,323	4,768	5,082	942	1,188	1,144	1,179	1,128	1,271
NEBR.	4,641	5,297	4,874	5,284	4,864	5,772	1,004	1,342	1,300	1,453	973	1,649
KANS.	2,995	4,197	3,099	3,750	3,588	3,579	695	1,215	652	1,004	755	1,125
DEL.	27	38	35	44	36	36	5	11	9	10	7	10
MD.	351	356	338	434	351	372	58	89	64	172	130	110
VA.	997	1,134	959	1,180	1,415	1,259	175	264	230	291	354	285
W. VA.	520	574	451	711	693	703	73	81	60	201	228	151
N. C.	559	557	496	473	417	452	147	159	142	118	115	119
S. C.	293	346	328	309	310	303	82	95	90	86	80	80
GA.	587	549	597	610	551	709	145	129	158	105	123	175
FLA.	164	162	169	219	216	227	14	21	24	44	26	27
KY.	1,873	2,318	2,120	2,378	2,204	2,273	253	580	606	565	638	413
TENN.	1,308	1,462	1,422	1,312	1,177	1,288	265	421	462	324	318	330
ALA.	571	615	566	595	530	613	117	126	130	124	111	123
MISS.	729	747	713	788	809	800	169	141	143	104	146	100
ARK.	617	847	801	983	1,054	742	62	157	163	138	178	116
LA.	527	503	429	507	488	388	73	42	85	42	72	65
OKLA.	1,626	2,049	1,751	2,336	2,348	2,009	356	519	355	449	382	390
TEXAS	1,981	2,765	2,438	2,189	2,862	2,080	552	774	609	604	1,126	423
MONT.	3,143	3,899	3,363	3,594	3,855	3,700	507	918	495	966	504	771
IDAHO	2,168	2,310	1,967	2,711	2,191	2,424	350	552	437	743	438	671
WYO.	1,532	1,499	1,486	1,713	1,466	156	274	335	241	497	312	296
COLO.	1,631	2,208	1,947	1,856	2,135	2,251	316	605	480	437	462	571
N. MEX.	374	414	497	340	499	408	62	122	111	104	120	129
ARIZ.	376	468	428	325	411	329	155	140	68	146	141	132
UTAH	846	1,147	872	1,174	1,102	1,064	215	278	204	402	279	313
NEV.	657	590	560	566	523	675	164	169	88	210	79	114
WASH.	1,305	1,321	1,515	1,257	1,279	1,448	218	236	293	285	202	400
OREG.	1,457	1,399	1,587	1,707	1,570	1,607	196	284	257	455	326	390
CALIF.	1,299	1,342	1,228	1,507	1,790	1,557	535	522	253	538	485	495
U. S.	79,077	88,609	84,881	88,460	89,687	87,960	16,568	22,720	21,938	24,929	23,664	24,056

- INDICATES FOR ON FARMS THAT EITHER PRODUCTION AND STOCKS NOT ESTIMATED, OR STOCKS LESS THAN ONE-TENTH OF ONE PERCENT OF PRODUCTION; INDICATES FOR OFF-FARM STOCKS THAT STOCKS LESS THAN 500 BUSHELLS.

\* INCLUDED IN UNALLOCATED OR OTHER STATES TO AVOID DISCLOSING INDIVIDUAL OPERATIONS.

1/ INCLUDES STOCKS AT MILLS, ELEVATORS, WAREHOUSES, TERMINALS, PROCESSORS AND THOSE OWNED BY COMMODITY CREDIT CORPORATION WHICH ARE IN BINS AND OTHER STORAGES UNDER CCC CONTROL.

2/ SOYBEANS ESTIMATES PRIOR TO 1965 ARE FOR OCTOBER 1 INSTEAD OF SEPTEMBER 1.

UNITED STATES DEPARTMENT OF AGRICULTURE  
WASHINGTON, D. C. 20250

OFFICIAL BUSINESS  
PENALTY FOR PRIVATE USE, \$300

POSTAGE AND FEES PAID  
U.S. DEPARTMENT OF  
AGRICULTURE



AGR 101  
FIRST-CLASS MAIL

END