



AgEcon SEARCH
RESEARCH IN AGRICULTURAL & APPLIED ECONOMICS

The World's Largest Open Access Agricultural & Applied Economics Digital Library

This document is discoverable and free to researchers across the globe due to the work of AgEcon Search.

Help ensure our sustainability.

Give to AgEcon Search

AgEcon Search

<http://ageconsearch.umn.edu>

aesearch@umn.edu

*Papers downloaded from **AgEcon Search** may be used for non-commercial purposes and personal study only. No other use, including posting to another Internet site, is permitted without permission from the copyright owner (not AgEcon Search), or as allowed under the provisions of Fair Use, U.S. Copyright Act, Title 17 U.S.C.*

No endorsement of AgEcon Search or its fundraising activities by the author(s) of the following work or their employer(s) is intended or implied.

SB 450 (1970)

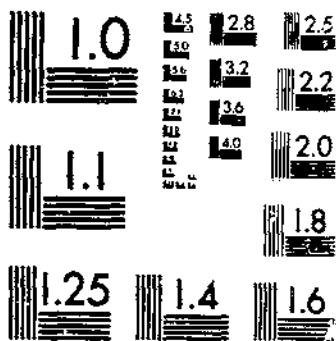
ANNUAL REPORT ON TOBACCO STATISTICS, 1969.

USDA STATISTICAL BULLETINS

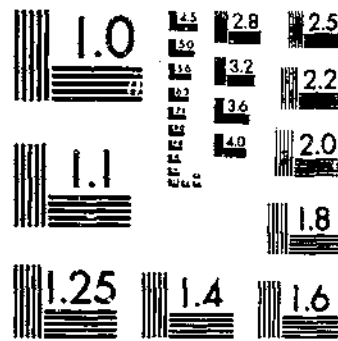
UPDATA

1 OF 1

START



MICROCOPY RESOLUTION TEST CHART
NATIONAL BUREAU OF STANDARDS-1963-A



MICROCOPY RESOLUTION TEST CHART
NATIONAL BUREAU OF STANDARDS-1963-A

1R
630.5
453-13
450

Statistical Bulletin No. 450



REFERENCE
DO NOT LOAN

Indexed by subject
in master index

ANNUAL REPORT ON TOBACCO STATISTICS 1969

DEPOSITORY

JUN 11 1970

Los Angeles Public Library



U. S. DEPARTMENT OF AGRICULTURE
CONSUMER AND MARKETING SERVICE
WASHINGTON, D.C. APRIL 1970

BRIEF CLASSIFICATION OF LEAF TOBACCO

(Covering classes and types)

CLASS 1, FLUE-CURED TYPES

- Type 11: Old Belt flue-cured; produced principally in the Piedmont sections of Virginia and North Carolina.
- Type 12: Eastern North Carolina flue-cured; produced principally in the coastal sections of North Carolina, north of the South River.
- Type 13: South Carolina flue-cured; produced principally in the coastal sections of South Carolina, and the southeastern counties of North Carolina, south of the South River.
- Type 14: Georgia and Florida flue-cured; produced principally in southern Georgia and northern Florida.

CLASS 2, FIRE-CURED TYPES

- Type 21: Virginia fire-cured; produced in the Piedmont and mountain sections of Virginia.
- Type 22: Tennessee-Kentucky fire-cured, eastern district, Clarksville, Springfield, and Hopkinsville; produced principally in a section east of the Tennessee River, in southern Kentucky and northern Tennessee.
- Type 23: Kentucky-Tennessee fire-cured, western district, Mayfield, and Murray; produced principally in a section between the Tennessee, Ohio, and Mississippi rivers in western Kentucky and northwestern Tennessee.

CLASS 3, AIR-CURED TYPES

LIGHT AIR-CURED (CLASS 3a)

- Type 31: Burley; produced principally in Kentucky, Tennessee, Ohio, Indiana, West Virginia, Virginia, North Carolina, and Missouri.
- Type 32: Southern Maryland; produced principally in five counties of southern Maryland--Prince Georges, Anne Arundel, Calvert, Charles, and St. Marys.

DARK AIR-CURED (CLASS 3b)

- Type 35: One Sucker; produced in north-central Tennessee and south-central Kentucky.
- Type 36: Green River; produced in the northern part of Kentucky in the territory adjacent to Owensboro and Henderson.
- Type 37: Virginia sun-cured; produced principally in central Virginia, north of the James River.

CLASS 4, CIGAR-FILLER TYPES

- Type 41: Pennsylvania Seedleaf; produced principally in Lancaster County, Pa., and the adjoining counties.
- Type 42-44: Ohio filler; produced principally in the Miami Valley section of Ohio and extending into Indiana.
- Type 46: Puerto Rican sun-grown, including primed (Deshojado) and stalk-cut (Mata); produced on the Island of Puerto Rico

CLASS 5, CIGAR-BINDER TYPES

- Type 51: Connecticut Broadleaf; produced in the Connecticut Valley sections of Connecticut and Massachusetts.
- Type 52: Connecticut Havana Seed; produced in the Connecticut and Housatonic Valley sections of Connecticut and Massachusetts.
- Type 53: New York and Pennsylvania Havana Seed; produced in the Big Flats and Onondaga sections of New York, and extending into Pennsylvania.
- Type 54: Southern Wisconsin; produced in Wisconsin, south and east of the Wisconsin River.
- Type 55: Northern Wisconsin; produced in Wisconsin, north and west of the Wisconsin River, and in eastern Minnesota.

CLASS 6, CIGAR-WRAPPER TYPES

- Type 61: Connecticut Shade; produced in the Connecticut Valley sections of Connecticut and Massachusetts.
- Type 62: Georgia and Florida Shade; produced in southwestern Georgia and north-central Florida.

MISCELLANEOUS TYPES OF DOMESTIC TOBACCO

- Type 72: Louisiana Perique.
- Type 73: All domestic types of tobacco not otherwise classified.

FOREIGN TYPES

- Type 81: Cuba.
- Type 82: Indonesia.
- Type 83: Philippine Islands.
- Type 84: Brazil.
- Type 85: Colombia.
- Type 86: Dominican Republic.
- Type 87: Paraguay.
- Type 88: Mexico.
- Type 89: All foreign-grown cigar-leaf.
- Type 90: Foreign-grown cigarette and smoking tobacco (Turkish and other).

This is the thirty-fourth in a series of annual reports on tobacco statistics prepared by the Tobacco Division of the Consumer and Marketing Service and authorized and requested by Congress in 1935 under the Tobacco Stocks and Standards Act. Data covering longer periods may be found in the report for 1947.

For sale by the Superintendent of Documents, U. S. Government Printing Office
Washington, D. C. 20402

CONTENTS

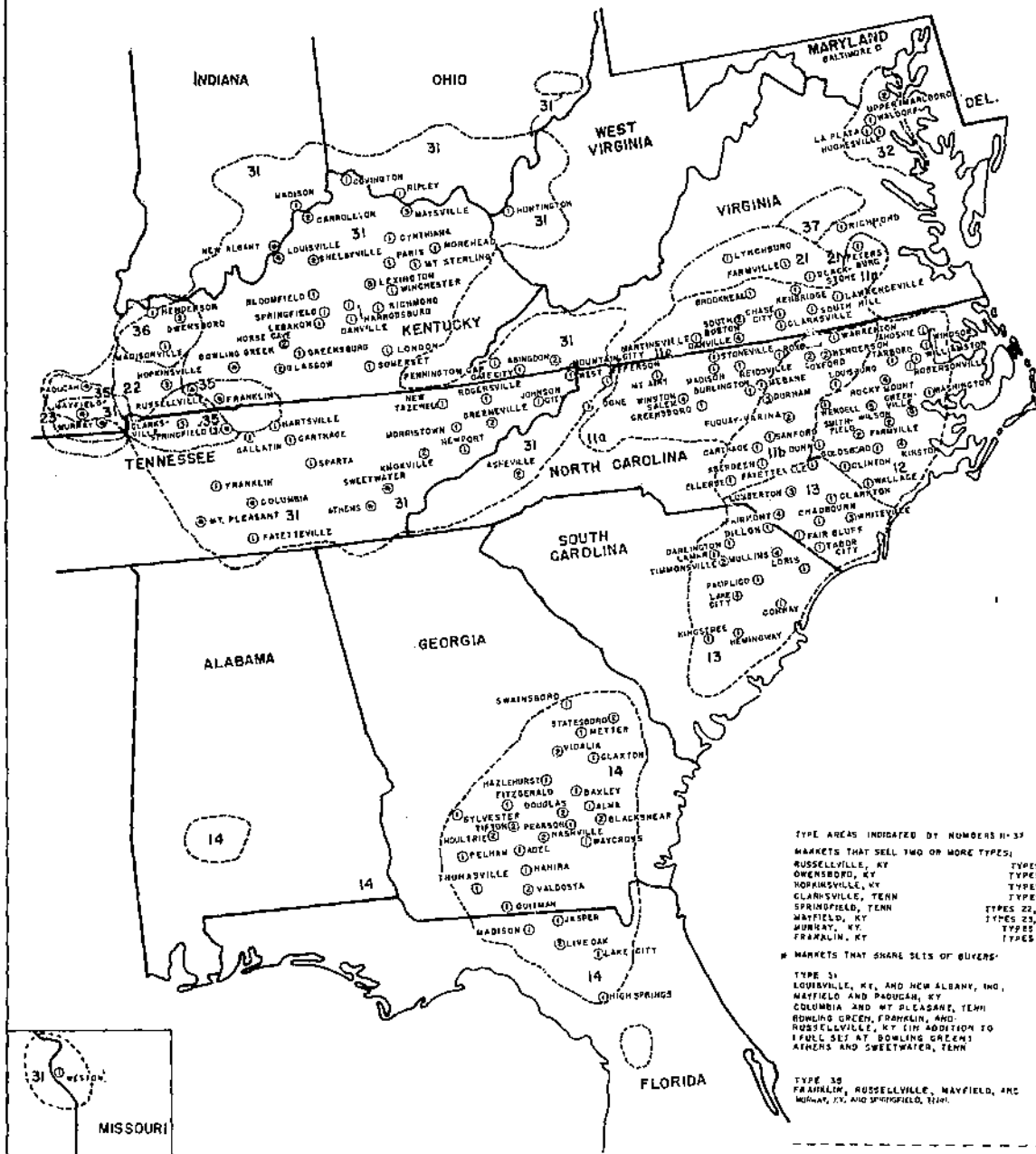
	Page
Map.....	5
Table A.--Net sales and receipts under Government loan program.....	6
Charts:	
Total carryover stocks.....	6
Domestic Consumption of tobacco.....	7
Leaf tobacco disappearance in U. S.	7
 LEAF PRODUCTION, DISAPPEARANCE, PRICE, AND CROP VALUE:	
Table 1.--Acreage, yield per acre, production, stocks, supply, total disappearance, exports, domestic use, average price per pound to growers, and crop value of different types of tobacco in the United States and Puerto Rico, by crop years.....	8
Table 2.--Cash receipts from tobacco compared with total cash receipts from all farm commodities, selected States and United States, by calendar years.....	15
Table 3.--Applicable loan level per pound of tobacco, by class or type of tobacco.....	15
Table 4.--Acreage, yield per acre, production, price per pound, and crop value of tobacco in the United States, by States.....	16
 AUCTION MARKETS AND RELATED DATA:	
Table 5.--Sales and average prices of tobacco sold at auction in the United States; loan receipts, number of markets, number of warehouses, and sets of buyers.....	18
Table 6.--Marketing quota referendums, by kinds of tobacco.....	19
Table 7.--Number of allotments and acreages allotted, by states and kinds of tobacco for which marketing quotas were in effect.....	20
 STOCKS OF LEAF TOBACCO:	
Table 8.--Stocks of leaf tobacco, by types, on a farm-sales-weight equivalent basis, owned by dealers and manufacturers in the United States and Puerto Rico, by quarters.....	22
Table 9.--Stocks of foreign-grown cigar leaf, and cigarette and smoking tobacco, by types, on a farm-sales-weight equivalent basis, owned by dealers and manufacturers in the United States, by quarters.....	27
Table 10.--Total stocks of leaf tobacco, as reported and on a farm-sales-weight equivalent basis, for domestic types and unstemmed basis for foreign-grown tobacco, owned by dealers and manufacturers in and United States and Puerto Rico, by quarters.....	27
Table 11.--Factors for adjusting stocks reported by dealers and manufacturers to a farm-sales-weight equivalent, by types of tobacco.....	28
Table 12.--Boghead dimensions and weights, by class or type of tobacco.....	28
 MANUFACTURED PRODUCTS, TAX RATES, CONSUMPTION, AND REVENUE DERIVED:	
Table 13.--Estimated utilization of flue-cured, burley, and Maryland tobaccos in cigarettes and other products.....	29
Table 14.--Estimated leaf used by domestic manufacturers in cigarettes, by types of tobacco.....	29
Table 15.--Estimated leaf used per 1,000 cigarettes by domestic manufacturers, by types of tobacco.....	29
Table 16.--Cigars, cigarettes, chewing tobacco, smoking tobacco, and snuff manufactured and removed tax-paid and tax-free, in the United States, by calendar years.....	30
Table 17.--Large cigars removed tax-paid for domestic consumption, by calendar years.....	31
Table 18.--Rates of Federal tax on tobacco products in the United States.....	32
Table 19.--Receipts from Federal taxes on tobacco products in the United States, by types of product, fiscal years.....	32
Table 20.--Estimated total expenditures for tobacco products, by type of product, calendar years.....	32
Table 21.--Wholesale cigarette price revisions, 1940 to date.....	33
Table 22.--Tobacco products: Consumption per capita, 18 years and over, in the United States, by calendar years.....	33

	Page
STATE TAX RATES AND RECEIPTS FROM STATE TAXES	
Table 23.--State tax rates on cigarettes and other tobacco products in the United States.....	34
Table 24.--Receipts from State taxes on tobacco products in the United States.....	36
EXPORTS AND IMPORTS:	
Table 25.--United States exports to principal importing countries, by types, crop years.....	37
Table 26.--Exports of unmanufactured tobacco from the United States, quantity and value, by types, calendar years.....	40
Table 27.--Exports of unmanufactured tobacco from the United States, to principal importing countries, calendar years.....	40
Table 28.--United States exports of cigarettes, by countries, calendar years.....	41
Table 29.--United States exports of tobacco products, calendar years.....	42
Table 30.--United States imports of tobacco products, calendar years.....	42
Table 31.--United States imports of unmanufactured tobacco for consumption, by countries, calendar years....	43
Table 32.--United States imports of unmanufactured tobacco for consumption, quantity and value, fiscal years.....	44
Table 33.--Tariff rates on different kinds of tobacco and tobacco products imported into the United States, under the Tariff Act of 1930 and subsequent Trade Agreements.....	45
Table 34.--Receipts from import duties on tobacco and tobacco products in the United States, fiscal years...	46
Table 35.--Import duties on tobacco in selected foreign countries importing from the United States.....	46
Table 36.--Import duties on unmanufactured tobacco, members of the European Common Market.....	48
FOREIGN:	
Table 37.--Acreage and production of tobacco in specified countries.....	49
Table 38.--Production of flue-cured tobacco in specified countries.....	50
Table 39.--Production of burley tobacco in specified countries.....	50
INDEX.....	51

TOBACCO

AUCTION MARKETS AND PRODUCING AREAS

(CIGAR LEAF PRODUCING AREAS NOT SHOWN)



TYPE AREAS INDICATED BY NUMBERS 11-37

MARKETS THAT SELL TWO OR MORE TYPES:

RUSSELLVILLE, KY	TYPES 31 AND 35
OWENSBORO, KY	TYPES 31 AND 36
HOPKINSVILLE, KY	TYPES 22 AND 31
CLARKSVILLE, TENN	TYPES 22 AND 31
SPRINGFIELD, TENN	TYPES 22, 31, AND 35
WAYFIELD, KY	TYPES 23, 31, AND 35
MURKAY, KY	TYPES 23 AND 35
FRANKLIN, KY	TYPES 31 AND 33

MARKETS THAT SHARE SLOTS OF BUYERS:

TYPE 31	
LOUISVILLE, KY, AND NEW ALBANY, IND.	2 SETS
WAYFIELD AND PADUCAH, KY	1 SET
COLUMBIA AND MT PLEASANT, TENN	1 SET
BOWLING GREEN, FRANKLIN, AND RUSSELLVILLE, KY (IN ADDITION TO FULL SET AT BOWLING GREEN)	2 SETS
ATHERS AND SWEETWATER, TENN	1 SET

TYPE 35

FRANKLIN, RUSSELLVILLE, WAYFIELD, AND MURKAY, KY, AND SPRINGFIELD, TENN.	2 SETS
--	--------

ALL MARKETS ARE OFFICIALLY INSPECTED.
 FRANKFORD IS NOT AN AUCTION CENTER, IT IS A WAREHOUSE MARKET.

SMALL NUMBERS WITHIN CIRCLES REPRESENT NUMBER OF SETS OF BUYERS.

TABLE A.--Net sales and receipts under Government loan program, 1969 and 1968 crops

Type	1969 crop 1/					1968 crop				
	Net sales	Value	Average price	Loan receipts		Net sales	Value	Average price	Loan receipts	
				Deliveries (green weight)	Percentage of net auction sales				Deliveries (green weight)	Percentage of net auction sales
1,000 lb.	1,000 dol.	Cents	1,000 lb.	Percent	1,000 lb.	1,000 dol.	Cents	1,000 lb.	Percent	
11(a)...	224,370	160,302	71.45	24,169	10.8	192,062	124,452	64.80	36,030	18.8
11(b)...	111,647	79,847	71.52	14,924	13.4	106,604	68,416	64.18	26,949	25.3
12.....	313,143	226,984	72.49	37,255	11.9	287,010	194,193	67.66	24,333	8.5
13.....	254,828	185,413	72.76	13,289	5.2	255,974	171,151	66.86	29,466	11.5
14.....	146,716	107,683	73.40	7,950	5.4	153,996	105,287	68.37	12,001	7.8
11-14	1,050,703	760,230	72.35	97,587	9.3	995,645	663,499	66.64	128,779	12.9
21.....	6,667	3,539	53.08	104	1.6	6,044	2,836	46.92	154	2.5
22.....	25,594	12,392	48.42	1,699	6.6	25,426	13,093	51.49	402	1.6
23.....	7,963	3,764	47.26	162	2.0	6,907	3,451	49.97	3	0.1
21-23	40,224	19,695	48.96	1,965	4.9	38,377	19,380	50.50	559	1.4
31.....	593,739	412,886	69.54	158,540	26.7	560,802	413,159	73.67	56,192	10.0
32 2/...						32,333	22,354	69.14	3/	
35.....	13,124	5,338	40.67	3,690	28.1	12,552	6,208	49.46	334	2.7
36.....	5,107	2,011	39.37	1,088	21.3	5,596	2,387	42.66	317	5.7
37 4/...	1,343	709	52.82	1	0.1	1,198	637	53.20	1	0.1
35-37	19,575	8,058	41.16	4,779	24.4	19,345	9,232	47.72	652	3.4

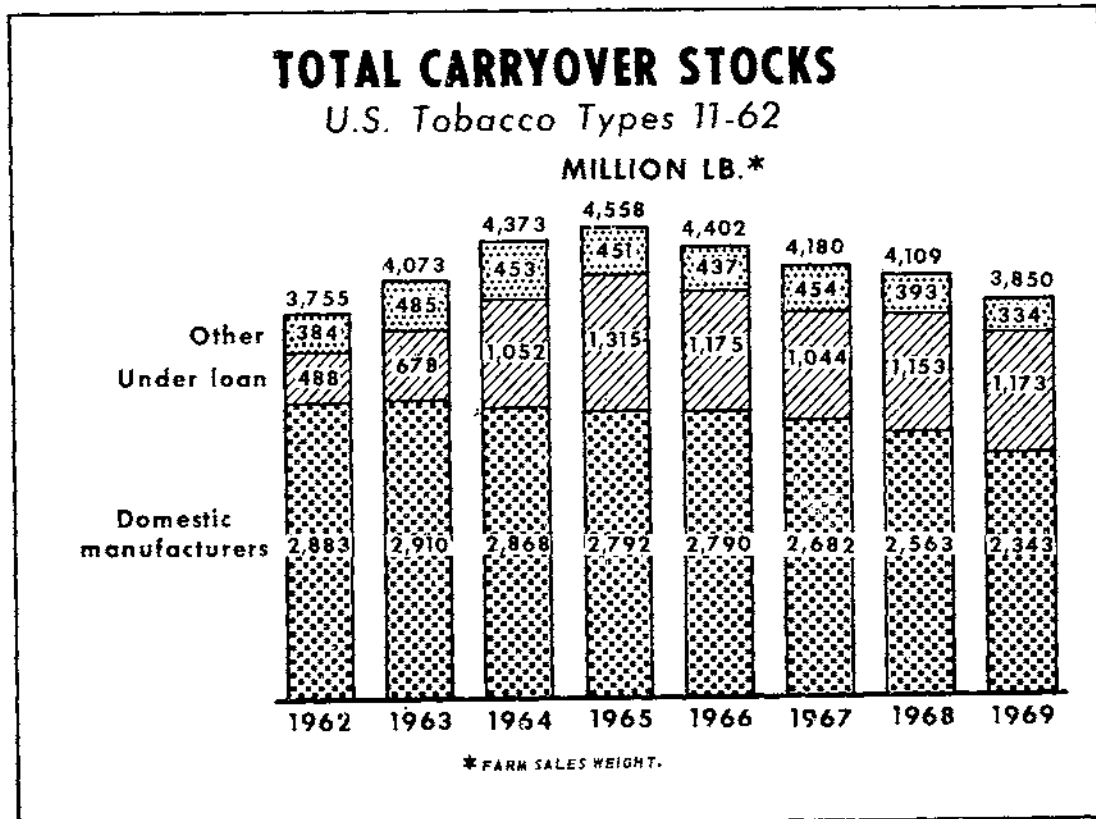
1/ 1969 crop figures subject to revision.

2/ 1969 crop figures not available at time of publication.

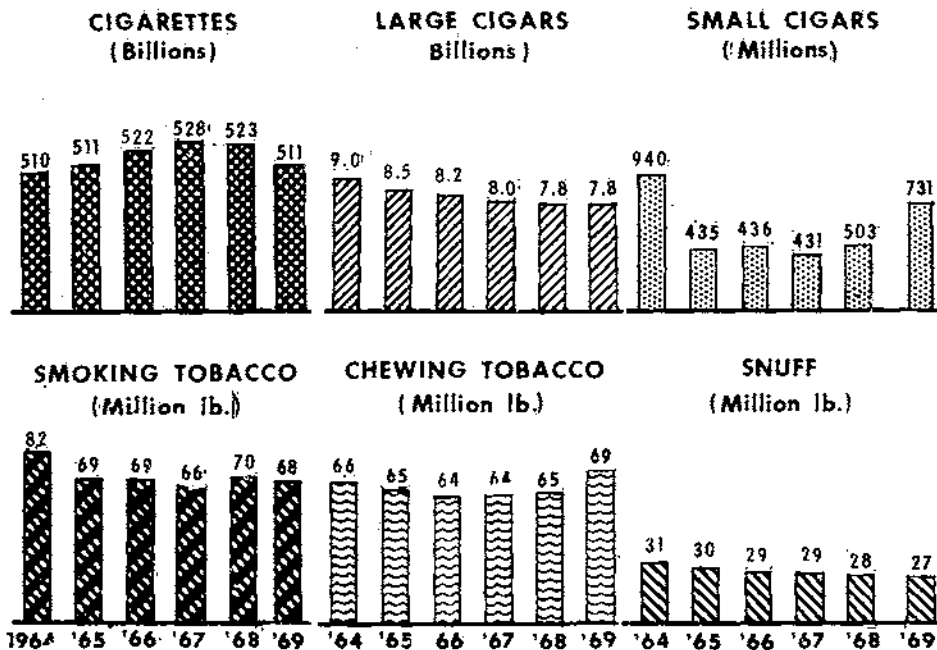
3/ Price support not in effect because growers disapproved quotas.

4/ Includes type 37 sold on type 21 markets.

Source: Compiled from records of the Tobacco Division, Consumer and Marketing Service.



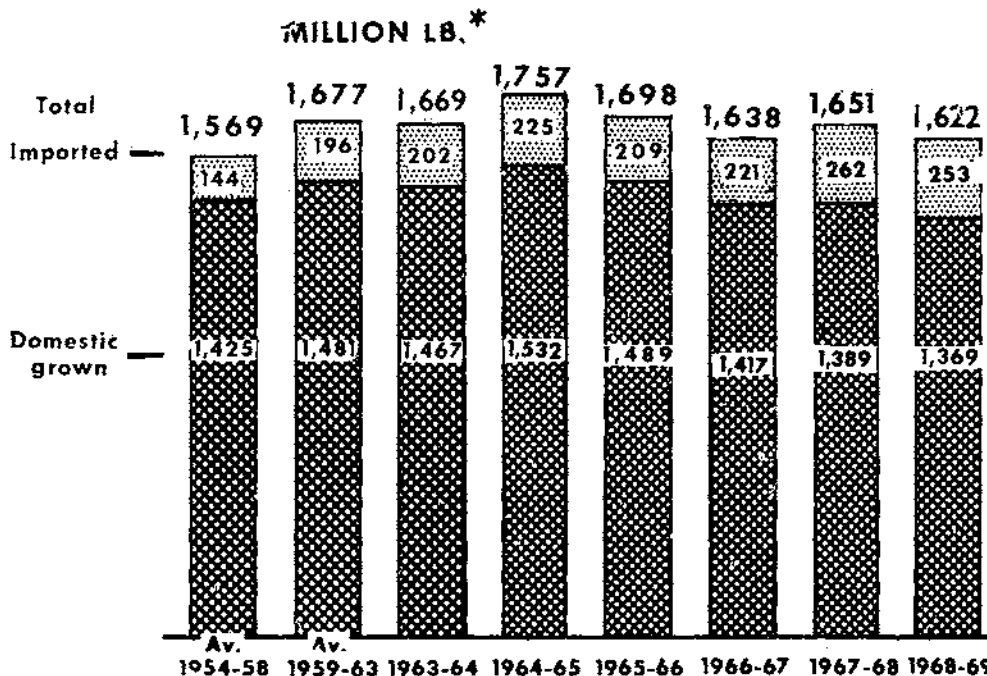
DOMESTIC CONSUMPTION OF TOBACCO



U.S. DEPARTMENT OF AGRICULTURE

NEG. C & MS 244-70 (4) CONSUMER AND MARKETING SERVICE

LEAF TOBACCO DISAPPEARANCE IN U. S.



U.S. DEPARTMENT OF AGRICULTURE

NEG. C & MS 245-70 (4) CONSUMER AND MARKETING SERVICE

* FARM-SALES WEIGHT.

TABLE 1.--Acreage, yield per acre, production, stocks, supply, total disappearance, exports, domestic use, average price per pound to growers, and crop value of different types of tobacco in the United States and Puerto Rico, by crop years, averages, 1949-53 to 1954-58, annual, 1959-1969 1/

(Farm-sales-weight basis)

TYPES 11-62, TOTAL U.S. AND PUERTO RICO

Crop year	Acreage	Yield per acre	Production	Stocks	Supply	Disappearance			Average price per pound to growers	Crop value
						Total	Exports	Domestic		
	Acres	Pounds	1,000 pounds	1,000 pounds	1,000 pounds	1,000 pounds	1,000 pounds	1,000 pounds	Cents	1,000 dollars
1949-53	1,718,500	1,256	2,158,507	3,310,210	5,468,717	2,039,898	530,704	1,509,195	49.9	1,077,429
1954-58	1,375,200	1,477	2,031,111	4,097,355	6,128,466	1,982,129	556,680	1,425,449	54.1	1,099,495
1959	1,178,950	1,548	1,824,440	3,961,824	5,786,264	1,953,620	503,842	1,449,778	57.9	1,056,875
1960	1,169,710	1,685	1,971,355	3,832,644	5,803,999	2,057,377	566,616	1,490,761	60.5	1,192,843
1961	1,201,010	1,742	2,091,773	3,746,622	5,838,395	3,083,218	590,154	1,493,064	63.4	1,326,044
1962	1,252,230	1,877	2,350,130	3,755,177	6,105,307	2,032,239	529,975	1,502,264	58.6	1,377,171
1963	1,205,420	1,971	2,375,559	4,073,068	6,448,627	2,075,444	608,661	1,466,783	57.4	1,364,939
1964	1,108,370	2,044	2,265,628	4,373,183	6,638,811	2,080,931	548,413	1,532,518	58.8	1,332,899
1965	993,650	1,882	1,870,783	4,537,880	6,428,363	2,026,645	537,345	1,489,300	64.8	1,211,733
1966	982,670	1,932	1,898,753	4,401,718	6,300,471	2,120,650	703,347	1,417,303	66.2	1,256,584
1967	967,140	2,032	1,965,423	4,179,821	6,145,244	2,036,253	647,608	1,388,645	67.1	1,319,180
1968 2/	886,020	1,955	1,731,924	4,108,991	5,840,915	1,991,266	622,636	1,368,630	68.8	1,191,030
1969 2/	925,525	1,954	1,808,059	3,849,649	5,657,708					

TYPES 11-14, TOTAL FLUE-CURED

1949-53	1,027,400	1,257	1,292,406	1,632,589	2,924,995	1,217,020	443,331	773,689	51.5	666,625
1954-58	842,060	1,509	1,255,205	2,209,885	3,465,090	1,196,159	466,206	729,953	54.1	675,201
1959	693,350	1,559	1,080,719	2,210,373	3,291,092	1,185,022	419,213	765,809	58.3	629,796
1960	691,760	1,808	1,250,635	2,106,070	3,356,705	1,266,559	474,630	791,929	60.4	755,943
1961	698,470	1,801	1,257,891	2,090,146	3,348,037	1,266,975	485,452	781,523	64.3	808,203
1962	729,800	1,930	1,408,448	2,081,062	3,489,510	1,207,940	430,940	777,000	60.1	846,123
1963	694,470	1,975	1,371,462	2,281,570	3,653,032	1,266,654	498,368	768,286	58.0	795,270
1964	627,570	2,211	1,387,804	2,386,378	3,774,182	1,218,829	444,063	774,766	58.5	811,806
1965	562,300	1,883	1,058,970	2,555,353	3,614,323	1,175,488	423,116	752,372	64.6	684,354
1966	607,000	1,825	1,107,861	2,438,835	3,546,696	1,274,172	587,116	687,056	66.9	741,578
1967	610,260	2,048 1/2	1,250,000	2,272,524	3,522,524	1,220,989	533,261	687,728	64.9	810,818
1968 2/	533,020	1,868 3/4	995,645	2,301,535	3,297,180	1,197,067	525,285	671,782	65.6	653,475
1969 2/	575,830	1,825 3/4	1,050,703	2,100,113	3,150,816					

TYPES 21-23, TOTAL FIRE-CURED

1949-53	51,660	1,149	59,417	152,652	212,069	64,204	30,603	33,601	34.5	20,373
1954-58	42,980	1,364	58,354	137,520	195,874	60,801	29,387	31,414	37.3	21,714
1959	35,200	1,508	53,088	121,782	174,870	51,493	24,016	27,477	38.2	20,262
1960	33,200	1,369	45,444	123,377	168,821	55,079	27,211	27,868	42.5	19,326
1961	33,400	1,499	53,064	113,742	166,806	57,601	34,898	22,703	40.0	21,214
1962	36,100	1,500	54,155	109,205	163,360	49,906	24,758	25,148	38.7	20,963
1963	34,300	1,630	55,923	113,454	169,377	51,088	28,313	22,775	36.8	20,573
1964	32,100	1,716	55,070	118,289	173,359	53,021	27,289	25,732	41.4	22,777
1965	30,850	1,497	46,180	120,338	166,518	53,822	32,857	20,965	42.9	19,795
1966	26,950	1,772	47,742	112,696	160,438	54,313	31,003	23,310	42.1	20,078
1967	22,700	1,604	36,417	106,125	142,542	52,001	33,785	18,216	45.2	16,448
1968 2/	22,790	1,689	38,502	90,541	129,043	46,521	24,299	22,222	50.5	19,441
1969 2/	23,860	1,740	41,515	82,522	124,037					

TYPE 21, VIRGINIA FIRE-CURED

1949-53	10,040	1,195	11,989	25,188	37,177	11,251	5,125	6,126	36.0	4,324
1954-58	8,260	1,221	9,966	25,189	35,155	10,705	5,297	5,408	36.2	3,593
1959	7,600	1,320	10,032	22,537	32,569	10,393	5,396	4,997	37.6	3,772
1960	7,300	1,220	8,906	22,176	31,082	10,144	6,183	3,961	39.4	3,509
1961	7,500	1,300	9,750	20,938	30,688	10,835	5,347	5,488	38.8	3,783
1962	7,600	1,255	9,538	19,853	29,391	9,155	5,102	4,053	38.8	3,701
1963	6,600	940	6,204	20,236	26,440	9,654	6,551	3,103	35.5	2,202
1964	7,300	1,245	9,088	16,786	25,874	10,286	6,310	3,976	43.1	3,917
1965	7,600	1,260	9,576	15,586	25,164	8,271	5,298	2,973	39.9	3,821
1966	6,000	1,255	7,530	16,893	24,423	9,584	7,339	2,245	41.2	3,102
1967	5,400	1,290	6,966	14,839	21,805	10,070	6,677	3,393	40.9	2,849
1968 2/	4,900	1,205	5,904	11,735	17,639	7,788	4,676	3,112	46.9	2,769
1969 2/	4,900	1,300	6,370	9,851	16,221					

See footnotes at end of table.

TABLE 1.--Acreage, yield per acre, production, stocks, supply, total disappearance, exports, domestic use, average price per pound to growers, and crop value of different types of tobacco in the United States and Puerto Rico, by crop years, averages, 1949-53 to 1954-58, annual, 1959-1969 1/2--Continued

(Farm-sales-weight basis)

Crop year	Acreage	Yield per acre	Production	Stocks	Supply	Disappearance			Average price per pound to growers	Crop value
						Total	Exports	Domestic		
			1,000 pounds	1,000 pounds	1,000 pounds	1,000 pounds	1,000 pounds	1,000 pounds	Cents	dollars
1949-53	41,620	1,138	47,428	127,465	174,893	52,953	25,478	27,475	34.1	16,049
1954-58	34,720	1,397	48,388	112,331	160,719	50,096	24,090	26,006	37.5	18,121
1959	27,600	1,560	43,056	99,245	142,301	41,100	18,620	22,480	38.3	16,490
1960	25,900	1,411	36,538	101,201	137,739	44,935	21,028	23,907	43.3	15,817
1961	27,900	1,552	43,314	92,804	136,118	46,766	29,551	17,215	40.2	17,431
1962	28,500	1,566	44,617	89,352	133,969	40,751	19,656	21,095	38.7	17,262
1963	27,700	1,795	49,719	93,218	142,937	41,434	21,762	19,672	36.9	18,371
1964	24,800	1,854	45,982	101,503	147,485	42,735	20,979	21,756	41.0	18,860
1965	23,250	1,574	36,604	104,750	141,354	45,551	27,559	17,992	43.6	15,974
1966	20,950	1,919	40,212	95,803	136,015	44,729	23,664	21,065	42.2	16,976
1967	17,300	1,702	29,451	91,286	120,737	41,931	27,108	14,823	46.2	13,599
1968 2/	17,890	1,822	32,598	78,806	111,404	38,733	19,623	19,110	51.1	16,672
1969 2/	18,960	1,854	35,145	72,671	107,816					

TYPE 22, KENTUCKY AND TENNESSEE FIRE-CURED (EASTERN DISTRICT)

1949-53	29,780	1,188	35,427	93,540	128,967	36,459			35.5	12,506
1954-58	25,040	1,455	36,306	89,269	125,575	37,236			38.8	14,090
1959	20,200	1,591	32,143	81,631	113,774	31,369			39.0	12,535
1960	19,000	1,426	27,094	82,405	109,499	35,489			43.9	11,903
1961	20,300	1,582	32,123	74,010	106,133	33,975			40.7	13,075
1962	20,500	1,573	32,245	72,158	104,403	30,989			39.7	12,790
1963	19,800	1,828	36,196	73,414	109,610	29,895			37.6	13,614
1964	17,800	1,872	33,324	79,715	113,039	31,093			42.0	14,009
1965	16,700	1,570	26,216	81,946	108,162	33,843			44.7	11,724
1966	15,400	1,936	29,818	74,319	104,137	32,707			42.9	12,798
1967	13,200	1,745	23,035	71,430	94,465	31,240			46.9	10,796
1968 2/	13,700	1,849	25,329	63,225	88,554	29,625			51.5	13,037
1969 2/	14,300	1,874	26,795	58,929	85,724					

TYPE 23, KENTUCKY AND TENNESSEE FIRE-CURED (WESTERN DISTRICT)

1949-53	11,820	1,017	11,981	33,731	45,712	16,415			29.9	3,528
1954-58	9,680	1,240	12,082	23,062	35,144	12,860			33.9	4,031
1959	7,400	1,475	10,913	17,614	28,527	9,731			36.2	3,955
1960	6,900	1,369	9,444	18,796	28,240	9,446			41.4	3,914
1961	7,600	1,472	11,191	18,794	29,985	12,791			38.9	4,356
1962	8,000	1,546	12,372	17,194	29,566	9,762			36.1	4,472
1963	7,900	1,712	13,523	19,804	33,327	11,539			35.2	4,757
1964	7,000	1,808	12,658	21,788	34,446	11,642			38.3	4,851
1965	6,550	1,586	10,388	22,804	33,192	11,708			40.9	4,250
1966	5,550	1,873	10,394	21,484	31,878	12,022			40.2	4,178
1967	4,100	1,565	6,416	19,856	26,272	10,691			43.7	2,803
1968 2/	4,190	1,735	7,269	15,581	22,850	9,108			50.0	3,635
1969 2/	4,660	1,792	8,350	13,742	22,092					

TYPE 31, BURLEY

1949-53	439,000	1,316	578,439	1,036,095	1,614,534	533,663	33,190	500,473	49.6	287,531
1954-58	329,000	1,579	519,524	1,282,516	1,802,516	514,314	31,764	482,550	59.7	306,369
1959	301,000	1,669	502,306	1,224,251	1,726,557	535,128	36,347	498,781	60.6	304,402
1960	295,700	1,639	484,713	1,191,429	1,676,142	548,805	41,327	507,478	64.3	311,500
1961	318,900	1,820	580,335	1,127,337	1,707,672	570,253	45,171	525,082	66.5	386,094
1962	338,600	1,993	674,854	1,137,419	1,812,273	584,377	53,461	530,916	58.6	395,448
1963	338,500	2,231	755,146	1,227,896	1,983,042	570,874	57,424	513,450	59.2	446,706
1964	306,600	2,022	619,794	1,412,168	2,031,962	616,252	55,654	560,598	60.3	373,759
1965	277,100	2,116	586,299	1,415,710	2,002,009	606,665	57,128	549,537	67.0	392,717
1966	240,700	2,437	586,672	1,395,344	1,982,016	600,477	56,388	544,089	66.9	392,459
1967	237,700	2,274	540,635	1,381,539	1,922,174	598,069	53,376	544,693	71.8	388,167
1968 2/	237,550	2,372	563,367	1,324,105	1,887,472	570,997	54,923	516,074	73.7	415,133
1969 2/	237,650	2,450	582,150	1,316,475	1,898,625					

See footnotes at end of table.

TABLE 1.--Acreage, yield per acre, production, stocks, supply, total disappearance, exports, domestic use, average price per pound to growers, and crop value of different types of tobacco in the United States and Puerto Rico, by crop years, averages, 1949-53 to 1954-58, annual, 1959-1969 U--Continued

(Para-sales-weight basis)

TYPE 32, MARYLAND

Crop year	Acreage	Yield per acre	Production	Stocks	Supply	Disappearance			Average price per pound to growers	Crop value
						Total	Exports	Domestic		
			1,000 pounds	1,000 pounds	1,000 pounds	1,000 pounds	1,000 pounds	1,000 pounds	Cents	1,000 dollars
1949-53	49,600	823	40,721	64,666	105,387	36,185	7,649	28,536	48.9	19,911
1954-58	42,300	868	36,274	79,488	115,762	37,202	12,382	24,820	50.0	17,848
1959	40,000	780	31,200	72,034	103,234	32,325	11,935	20,390	61.6	19,219
1960	37,500	925	34,688	70,909	105,597	35,567	12,014	23,553	63.8	22,131
1961	40,000	970	38,800	70,030	108,830	32,651	11,909	20,742	62.0	24,065
1962	41,000	990	40,590	76,179	116,769	30,724	11,179	19,545	55.8	22,649
1963	34,500	1,000	34,500	86,045	120,545	30,986	12,479	18,507	43.2	14,904
1964	39,000	1,085	42,315	89,559	131,874	32,942	9,577	23,365	62.0	26,235
1965	33,500	1,150	38,525	98,932	137,457	37,716	10,972	26,744	65.5	25,234
1966	35,000	1,030	36,050	99,741	135,791	40,209	16,479	23,730	48.6	17,520
1967	31,500	1,030	32,445	95,582	128,027	36,046	15,733	20,313	62.4	20,246
1968 2/	30,000	1,065	31,950	91,981	123,931	48,685	10,351	38,334	69.8	22,301
1969 2/	30,000	1,050	31,500	75,246	106,746					

TYPES 35-37, TOTAL DARK AIR-CURED

1949-53	27,980	1,127	31,381	76,422	107,803	31,121	7,999	23,122	28.9	9,140
1954-58	20,780	1,338	27,915	80,589	108,504	29,371	8,384	20,987	34.7	9,563
1959	15,300	1,407	21,531	68,550	90,081	23,908	5,790	18,118	34.5	7,433
1960	14,800	1,353	20,031	66,173	86,204	24,003	5,034	18,969	37.5	7,503
1961	15,600	1,460	22,779	62,201	84,980	24,638	4,934	19,704	38.0	8,661
1962	16,100	1,540	24,788	60,342	85,130	21,843	3,302	18,541	36.3	8,995
1963	15,300	1,654	25,301	63,287	88,588	23,241	3,481	19,760	33.2	8,412
1964	14,100	1,735	24,468	65,347	89,815	23,608	4,355	19,253	37.3	9,133
1965	13,100	1,566	20,511	66,207	86,718	21,768	3,921	17,847	37.2	7,638
1966	12,100	1,880	22,754	64,950	87,704	23,048	4,741	18,307	37.6	8,560
1967	10,700	1,569	16,785	64,656	81,441	19,340	3,318	16,022	41.2	6,913
1968 2/	10,950	1,757	19,240	62,101	81,341	18,484	2,302	16,182	47.8	9,197
1969 2/	11,300	1,782	20,140	62,857	82,997					

TYPES 35-36, TOTAL KENTUCKY AND TENNESSEE DARK AIR-CURED

1949-53	24,320	1,144	27,766	72,413	100,179	27,535	7,409	20,126	28.4	7,957
1954-58	17,660	1,403	24,977	75,923	100,900	26,676	7,813	18,863	34.9	8,612
1959	13,200	1,466	19,347	63,604	82,951	22,001	5,506	16,495	34.5	6,682
1960	13,000	1,403	18,240	60,950	79,190	22,025	4,709	17,316	37.4	6,824
1961	13,500	1,525	20,585	57,165	77,750	22,512	4,653	17,859	37.8	7,788
1962	13,900	1,619	22,500	55,238	77,738	19,548	3,034	16,514	36.2	8,139
1963	13,800	1,751	24,161	58,190	82,351	21,169	3,136	18,033	33.3	8,054
1964	12,400	1,828	22,666	61,182	83,848	21,960	4,013	17,937	37.0	8,391
1965	11,300	1,639	18,522	61,888	80,410	19,768	3,642	16,126	37.0	6,858
1966	10,700	1,987	21,263	60,642	81,905	21,406	4,354	17,052	37.3	7,929
1967	9,500	1,629	15,477	60,499	75,976	17,798	2,966	14,832	40.8	6,322
1968 2/	9,850	1,831	18,036	58,178	76,214	17,148	2,056	15,092	47.4	8,556
1969 2/	10,200	1,850	18,875	59,066	77,941					

TYPE 35, ONE SUCKER

1949-53	15,760	1,172	18,427	41,176	59,603	17,055	5,091	11,964	28.9	5,361
1954-58	11,580	1,438	16,717	48,384	65,101	17,295	5,846	11,449	35.8	5,935
1959	9,000	1,559	14,034	42,794	56,828	15,781	4,342	11,439	34.7	4,876
1960	8,700	1,405	12,220	42,047	53,267	15,383	3,972	11,411	38.4	4,693
1961	9,000	1,512	13,610	37,884	51,494	16,248	3,628	12,620	39.1	5,326
1962	9,200	1,623	14,933	35,246	50,179	12,833	2,399	10,434	36.7	5,483
1963	9,200	1,771	16,295	37,346	53,641	14,306	2,263	12,043	33.0	5,380
1964	8,100	1,856	15,034	39,335	54,369	14,775	2,808	11,967	37.8	5,662
1965	7,500	1,585	11,891	39,594	51,485	13,538	2,910	10,628	37.5	4,464
1966	7,200	1,976	14,228	37,947	52,175	14,823	3,310	11,513	37.8	5,375
1967	6,500	1,608	10,452	37,352	47,804	11,370	2,387	8,983	42.3	4,418
1968 2/	6,750	1,873	12,642	36,434	49,076	10,428	1,477	8,951	49.5	6,253
1969 2/	7,100	1,873	13,295	38,648	51,943					

See footnotes at end of table.

TABLE 1.--Acreage, yield per acre, production, stocks, supply, total disappearance, exports, domestic use, average price per pound to growers, and crop value of different types of tobacco in the United States and Puerto Rico, by crop years, averages, 1949-53 to 1954-58, annual, 1959-1969 /--Continued

(Farm-sales-weight basis)

Crop year	Acreage	Yield per acre	Production	Stocks	Supply	Disappearance			Average price per pound to growers	Crop value
						Total	Exports	Domestic		
						1,000 pounds	1,000 pounds	1,000 pounds		
1949-53	8,560	1,092	9,339	31,236	40,575	10,480	2,319	8,161	27.6	2,596
1954-58	6,080	1,331	8,260	27,539	35,799	9,381	1,967	7,414	33.0	2,677
1959	4,200	1,265	5,313	20,810	26,123	6,220	1,164	5,056	34.0	1,806
1960	4,300	1,400	6,020	19,903	25,923	6,642	737	5,905	35.4	2,131
1961	4,500	1,550	6,975	19,281	26,256	6,264	1,025	5,239	35.3	2,462
1962	4,700	1,610	7,567	19,992	27,559	6,715	635	6,080	35.1	2,656
1963	4,600	1,710	7,866	20,844	28,710	6,863	873	5,990	34.0	2,674
1964	4,300	1,775	7,632	21,847	29,479	7,185	1,215	5,970	35.5	2,709
1965	3,800	1,745	6,631	22,294	28,925	6,230	732	5,498	36.1	2,394
1966	3,500	2,010	7,035	22,695	29,730	6,583	1,044	5,539	36.3	2,554
1967	3,000	1,675	5,025	23,147	28,172	6,428	579	5,849	37.9	1,904
1968 2/	3,100	1,740	5,394	21,744	27,138	6,720	579	6,141	42.7	2,303
1969 2/	3,100	1,800	5,580	20,418	25,998					

TYPE 37, VIRGINIA SUN-CURED

1949-53	3,560	1,022	3,615	4,009	7,624	3,586	590	2,996	32.7	1,183
1954-58	3,120	1,043	2,938	4,666	7,604	2,695	571	2,124	32.8	950
1959	2,100	1,040	2,184	4,946	7,130	1,907	284	1,623	34.4	751
1960	1,800	995	1,791	5,223	7,014	1,978	325	1,653	37.9	679
1961	2,100	1,045	2,194	5,036	7,230	2,126	281	1,845	39.8	873
1962	2,200	1,040	2,288	5,104	7,392	2,295	268	2,027	37.4	856
1963	1,500	760	1,140	5,097	6,237	2,072	345	1,727	31.4	358
1964	1,700	1,060	1,802	4,165	5,967	1,648	332	1,316	41.2	742
1965	1,800	1,105	1,989	4,319	6,308	2,000	279	1,721	39.2	780
1966	1,400	1,065	1,491	4,308	5,799	1,642	386	1,256	42.3	631
1967	1,200	1,090	1,308	4,157	5,465	1,542	352	1,190	45.2	591
1968 2/	1,100	1,095	1,204	3,923	5,127	1,336	246	1,090	53.2	641
1969 2/	1,100	1,150	1,265	3,791	5,056					

TYPES 41-62, TOTAL CONTINENTAL CIGAR TOBACCO (INCLUDES PUERTO RICAN)

1949-53	122,900	1,270	156,143	347,786	503,929	157,705	7,932	149,773	47.3	73,849
1954-58	98,100	1,364	133,839	306,881	440,720	144,282	8,557	135,725	51.4	68,801
1959	94,100	1,441	135,596	264,834	400,430	125,744	6,541	119,203	55.9	75,763
1960	96,570	1,404	135,844	274,686	410,530	127,364	6,408	120,964	56.3	76,440
1961	92,640	1,499	138,904	283,166	422,070	131,100	7,790	123,310	56.0	77,816
1962	90,630	1,625	147,295	290,970	438,265	127,449	6,335	131,114	56.3	82,993
1963	88,350	1,508	133,227	300,816	434,043	132,601	8,595	124,006	59.4	79,074
1964	89,000	1,530	136,177	301,442	437,619	136,279	7,476	128,803	65.5	89,189
1965	76,800	1,562	119,998	301,340	421,338	131,186	9,351	121,835	68.3	81,995
1966	60,920	1,603	97,674	290,152	387,826	128,431	7,620	120,811	78.2	76,389
1967	54,280	1,642	89,141	259,395	348,536	109,808	8,135	101,673	85.7	76,394
1968 2/	51,710	1,609	83,220	238,728	321,948	109,512	5,476	104,036	85.9	71,483
1969 2/	46,885	1,750	82,051	212,436	294,487					

TYPES 41-46, TOTAL CIGAR FILLER

1949-53	74,900	1,161	86,960	196,313	283,273	88,160	1,132	87,028	25.7	22,347
1954-58	63,460	1,274	80,869	182,285	263,154	83,917	580	83,337	26.1	21,147
1959	61,200	1,446	88,478	163,792	252,270	81,326	569	80,757	31.2	27,617
1960	63,800	1,361	86,800	170,944	257,744	81,998	214	81,784	29.8	25,886
1961	62,600	1,467	91,834	175,746	267,580	82,921	146	82,775	30.4	27,914
1962	62,700	1,644	103,055	184,659	287,714	89,490	252	89,238	28.8	29,730
1963	61,900	1,463	90,586	198,224	288,810	80,117	685	79,432	28.5	25,773
1964	61,500	1,456	89,554	208,693	298,247	89,223	545	88,678	31.3	28,034
1965	47,700	1,528	72,894	209,024	281,918	86,142	1,784	84,358	26.0	18,923
1966	35,200	1,608	56,595	195,776	252,371	84,093	1,495	82,598	26.7	15,090
1967	30,900	1,707	52,745	168,278	221,023	65,067	645	64,422	29.1	15,357
1968 2/	29,000	1,666	48,325	155,956	204,281	62,443	855	61,588	30.6	14,780
1969 2/	26,825	1,827	49,005	141,838	190,843					

See footnotes at end of table.

TABLE 1.--Acreage, yield per acre, production, stocks, supply, total disappearance, exports, domestic use, average price per pound to growers, and crop value of different types of tobacco in the United States and Puerto Rico, by crop years, averages, 1949-53 to 1954-58, annual, 1959-1969 1/2--Continued

(Farm-sales-weight basis)

Crop year	Acreage	Yield per acre	Production	Stocks	Supply	Disappearance			Average price per pound to growers	Crop value
						Total	Exports	Domestic		
	Acres	Pounds	1,000 pounds	1,000 pounds	1,000 pounds	1,000 pounds	1,000 pounds	1,000 pounds	Cents	dollars
1949-53	31,420	1,544	48,481	119,909	168,390	48,534	500	48,034	24.9	11,961
1954-58	29,340	1,602	47,020	106,290	153,310	47,304	199	47,105	24.9	11,782
1959	31,000	1,725	53,475	104,285	157,760	48,035	89	47,946	31.5	16,845
1960	31,000	1,700	52,700	109,725	162,425	47,562	114	47,448	28.0	14,756
1961	31,000	1,725	53,475	114,863	168,338	45,396	70	45,326	27.0	14,438
1962	30,000	2,000	60,000	122,942	182,942	54,971	252	54,719	23.5	14,100
1963	28,000	1,850	51,800	127,971	179,771	41,633	489	41,144	21.0	10,878
1964	27,000	1,700	45,900	138,138	184,038	54,618	545	54,073	27.0	12,393
1965	27,000	1,900	51,300	129,420	180,720	52,973	1,784	51,189	24.0	12,312
1966	23,000	1,675	38,525	127,747	166,272	53,981	1,489	52,492	25.0	9,631
1967	21,000	1,825	38,325	112,291	150,616	41,920	645	41,275	28.0	10,731
1968 2/	21,000	1,775	37,275	108,696	145,971	40,896	855	40,041	30.0	11,182
1969 2/	20,000	1,900	38,000	105,075	143,075					
TYPES 42-44, MIAMI VALLEY (OHIO) FILLER										
1949-53	6,020	1,476	8,879	28,188	37,067	9,231	--	9,231	22.3	1,991
1954-58	3,900	1,436	5,789	22,792	28,581	7,192	--	7,192	22.7	1,297
1959	3,900	1,770	6,903	17,121	24,024	6,563	--	6,563	27.3	1,885
1960	4,300	1,535	6,600	17,461	24,061	6,429	--	6,429	28.1	1,855
1961	4,600	1,665	7,659	17,632	25,291	5,137	--	5,137	28.3	2,167
1962	4,200	1,775	7,455	20,154	27,609	6,548	--	6,548	28.2	2,102
1963	3,900	1,740	6,786	21,061	27,847	8,648	--	8,648	27.1	1,839
1964	3,700	1,555	5,754	19,163	24,917	7,947	--	7,947	26.7	1,536
1965	3,700	1,465	5,420	16,970	22,390	6,145	--	6,145	26.2	1,420
1966	3,200	1,885	6,032	16,245	22,277	6,757	--	6,757	28.0	1,689
1967	2,300	1,580	3,634	15,520	19,154	6,244	--	6,244	29.0	1,054
1968 2/	2,050	1,670	3,424	12,910	16,334	5,395	--	5,395	31.0	1,061
1969 2/	1,700	1,650	2,805	10,939	13,744					
TYPE 46, PUERTO RICAN FILLER 4/										
1949-53	35,980	822	29,600	48,216	77,816	30,395	632	29,764	28.0	8,395
1954-58	29,360	968	28,060	53,203	81,263	29,421	381	29,040	28.8	8,069
1959	26,300	1,068	28,100	42,386	70,486	26,728	480	26,248	31.6	8,887
1960	28,500	965	27,500	43,758	71,258	28,007	100	27,907	33.7	9,275
1961	27,000	1,137	30,700	43,251	73,951	32,388	76	32,312	36.8	11,309
1962	28,500	1,249	35,600	41,563	77,163	27,971	--	27,971	38.0	13,528
1963	30,000	1,067	32,000	49,192	81,192	29,800	196	29,604	40.8	13,056
1964	30,800	1,231	37,900	51,392	89,292	26,658	--	26,658	37.2	14,105
1965	17,000	951	16,174	62,634	78,808	27,024	--	27,024	32.1	5,191
1966	9,000	1,338	12,038	51,784	63,822	23,355	6	23,349	31.3	3,770
1967	7,600	1,419	10,786	40,467	51,253	16,903	--	16,903	33.1	3,572
1968 2/	5,950	1,282	7,626	34,350	41,976	16,152	--	16,152	33.3	2,537
1969 2/	5,125	1,600	8,200	25,824	34,024					
TYPES 51-55, TOTAL CIGAR BINDER										
1949-53	34,360	1,566	53,739	132,174	185,913	54,419	3,026	51,393	38.8	20,663
1954-58	21,580	1,689	36,034	106,128	142,162	43,855	3,115	40,740	37.4	13,470
1959	18,900	1,511	28,567	80,733	109,300	29,451	2,125	27,326	36.3	10,364
1960	18,350	1,511	27,735	79,849	107,584	27,592	2,745	24,847	32.9	9,133
1961	16,640	1,678	27,920	79,992	107,912	26,952	1,754	25,198	31.8	8,866
1962	14,730	1,691	24,915	80,960	105,875	28,416	1,167	27,249	33.3	8,295
1963	13,550	1,767	23,945	77,459	101,404	30,804	1,585	29,219	35.0	8,378
1964	13,700	1,862	25,503	70,600	96,103	25,344	2,627	22,717	37.3	9,502
1965	13,500	1,793	24,206	70,759	94,965	25,057	2,451	22,606	32.7	7,938
1966	11,120	1,804	20,061	69,908	89,969	23,549	1,899	21,650	36.7	7,365
1967	9,780	1,924	18,819	66,420	85,239	25,509	2,555	22,695	37.1	6,987
1968 2/	9,260	1,817	16,827	59,989	76,816	27,565	753	26,812	41.0	6,898
1969 2/	9,010	1,834	16,525	49,251	65,776					

See footnotes at end of table.

TABLE 1.--Acreage, yield per acre, production, stocks, supply, total disappearance, exports, domestic use, average price per pound to growers, and crop value of different types of tobacco in the United States and Puerto Rico, by crop years, averages, 1949-53 to 1954-58, annual, 1959-1969 1/2--Continued

(Farm-sales-weight basis)

TYPE 51, CONNECTICUT VALLEY BROADLEAF

Crop year	Acreage	Yield per acre	Production	Stocks	Supply	Disappearance			Average price per pound to growers	Crop value
						Total	Exports	Domestic		
	Acres	Pounds	1,000 pounds	1,000 pounds	1,000 pounds	1,000 pounds	1,000 pounds	1,000 pounds	Cents	1,000 dollars
1949-53	9,100	1,638	14,889	28,961	43,850	15,845	874	12,971	52.9	7,871
1954-58	4,960	1,722	8,332	28,752	37,084	10,677	627	10,050	52.9	4,380
1959	2,800	1,620	4,536	20,041	24,577	4,177	226	3,951	45.0	2,041
1960	2,100	1,730	3,633	20,400	24,033	4,655	303	4,352	44.0	1,599
1961	1,700	1,800	3,060	19,378	22,438	3,595	148	3,447	43.3	1,325
1962	1,500	1,920	2,880	18,843	21,723	6,231	162	6,069	53.5	1,541
1963	1,800	2,050	3,690	15,492	19,182	4,611	256	4,355	51.0	1,882
1964	1,900	1,975	3,752	14,571	18,323	3,644	1,943	1,701	50.0	1,876
1965	1,900	1,830	3,477	14,679	18,156	4,247	2,136	2,111	46.5	1,617
1966	1,300	2,075	2,698	13,909	16,607	4,761	1,648	3,113	52.0	1,403
1967	1,100	1,785	1,964	11,846	13,810	5,348	2,170	3,178	55.0	1,080
1968 2/	1,200	1,735	2,082	8,462	10,544	4,312	359	3,953	60.0	1,249
1969 2/	1,200	1,850	2,220	6,232	8,452					

TYPE 52, CONNECTICUT VALLEY HAVANA SEED

1949-53	7,200	1,748	12,557	24,741	37,298	11,660	1,640	10,020	45.6	5,661
1954-58	3,480	1,955	6,534	21,065	27,599	8,489	1,086	7,401	43.1	2,700
1959	1,700	1,865	3,170	14,526	17,696	4,873	714	4,159	41.2	1,305
1960	1,650	1,947	3,213	12,823	16,036	4,199	1,798	2,401	42.5	1,366
1961	1,240	1,932	2,396	11,837	14,233	3,279	1,091	2,188	40.6	973
1962	1,130	2,140	2,418	10,954	13,372	3,277	735	2,542	42.5	1,028
1963	1,050	2,168	2,276	10,095	12,371	4,101	1,301	2,800	41.6	947
1964	900	2,118	1,906	8,270	10,176	3,585	120	3,465	43.8	835
1965	700	2,125	1,488	6,591	8,079	2,667	--	2,667	44.5	662
1966	520	2,200	1,144	5,412	6,556	2,013	--	2,013	49.5	566
1967	380	1,915	728	4,543	5,271	2,520	--	2,520	53.0	386
1968 2/	360	1,950	702	2,751	3,453	752	--	752	58.0	407
1969 2/	410	1,951	800	2,701	3,501					

TYPE 54, SOUTHERN WISCONSIN

1949-53	7,040	1,474	10,344	37,623	47,967	12,207	320	11,887	23.1	2,396
1954-58	4,660	1,612	7,503	25,171	32,674	9,421	361	9,060	27.8	2,115
1959	5,800	1,595	9,251	20,906	30,157	7,957	300	7,657	29.5	2,711
1960	5,700	1,510	8,607	22,200	30,807	7,473	200	7,273	28.0	2,410
1961	5,400	1,670	9,018	23,334	32,352	9,010	100	8,910	28.7	2,588
1962	4,900	1,770	8,679	23,342	32,015	7,721	50	7,671	29.3	2,541
1963	4,600	1,800	8,280	24,294	32,574	9,654	0	9,648	30.0	2,484
1964	4,600	1,890	8,694	22,920	31,614	8,942	--	8,942	32.2	2,799
1965	4,700	1,805	8,484	22,672	31,156	8,733	--	8,733	29.7	2,520
1966	3,900	1,895	7,390	22,423	29,813	9,112	--	9,112	34.3	2,535
1967	3,800	1,905	7,239	20,701	27,940	8,071	--	8,071	34.4	2,490
1968 2/	3,700	1,990	7,363	19,869	27,232	7,641	--	7,641	36.8	2,710
1969 2/	3,700	1,900	7,030	19,591	26,621					

TYPE 55, NORTHERN WISCONSIN

1949-53	10,600	1,444	15,358	38,972	54,330	16,036	193	15,843	30.2	4,601
1954-58	8,480	1,795	13,666	30,538	44,204	14,977	1,039	13,938	31.4	4,275
1959	8,600	1,350	11,610	25,260	36,870	12,444	885	11,559	37.1	4,307
1960	8,900	1,380	12,282	26,426	36,708	11,265	444	10,821	30.6	3,758
1961	8,300	1,620	13,446	25,443	38,889	11,068	415	10,653	29.6	3,980
1962	7,200	1,520	10,944	27,821	38,765	11,187	220	10,967	29.1	3,185
1963	6,100	1,590	9,699	27,578	37,277	12,432	22	12,416	31.6	3,065
1964	6,300	1,770	11,151	24,839	35,990	9,173	564	8,609	35.8	3,992
1965	6,200	1,735	10,757	26,817	37,574	9,410	315	9,095	28.9	3,109
1966	5,400	1,635	8,829	28,164	36,993	7,663	251	7,412	32.4	2,861
1967	4,500	1,975	8,888	29,330	38,218	9,311	385	8,926	34.1	3,031
1968 2/	4,000	1,670	6,680	23,907	35,587	14,860	394	14,466	37.9	2,532
1969 2/	3,700	1,750	6,475	20,727	27,202					

See footnotes at end of table.

TABLE 1.--Acreage, yield per acre, production, stocks, supply, total disappearance, exports, domestic use, average price per pound to growers, and crop value of different types of tobacco in the United States and Puerto Rico, by crop years, averages, 1949-53 to 1954-58, annual, 1959-1969 1/--Continued

(Farm-sales-weight basis)

Crop year	TYPES 61-62, TOTAL CIGAR WRAPPER									
	Acreage	Yield per acre	Production	Stocks	Supply	Disappearance			Average price per pound to growers	Crop value
						Total	Exports	Domestic		
	Acres	Pounds	1,000 pounds	1,000 pounds	1,000 pounds	1,000 pounds	1,000 pounds	1,000 pounds	Cents	1,000 dollars
1949-53	13,660	1,133	15,443	19,299	34,742	15,126	3,773	11,353	199.6	30,840
1954-58	13,040	1,298	16,936	18,468	35,404	16,510	4,863	11,647	202.0	34,183
1959	14,000	1,325	18,551	20,309	38,860	14,967	3,847	11,120	204.0	37,782
1960	14,600	1,460	21,309	23,893	45,202	17,774	3,441	14,333	194.0	41,421
1961	13,400	1,429	19,150	27,428	46,578	21,227	5,890	15,337	214.0	41,036
1962	13,200	1,464	19,325	25,351	44,676	19,543	4,916	14,627	233.0	44,968
1963	12,900	1,449	18,696	25,133	43,829	21,680	6,325	15,355	240.0	44,923
1964	13,800	1,530	21,120	22,149	43,269	21,712	4,304	17,408	245.0	51,653
1965	15,600	1,468	22,898	21,557	44,455	19,987	5,116	14,871	241.0	55,164
1966	14,600	1,440	21,018	24,468	45,486	20,789	4,226	16,563	257.0	53,934
1967	13,600	1,292	17,577	24,697	42,274	19,491	4,935	14,556	308.0	54,050
1968 2/	13,450	1,343	18,068	22,783	40,851	19,504	3,868	15,636	275.7	49,805
1969 2/	11,050	1,495	16,521	21,347	37,868					

TYPE 61, CONNECTICUT VALLEY SHADE-GROWN

1949-53	8,620	1,108	9,512	12,517	22,029	9,650			206.0	19,589
1954-58	7,960	1,283	10,202	11,510	21,712	9,889			212.0	21,592
1959	8,200	1,307	10,717	12,970	23,687	7,498	2,485	5,013	210.0	22,506
1960	8,400	1,425	11,970	16,189	28,159	11,229	2,470	8,759	190.0	22,743
1961	7,700	1,342	10,336	16,930	27,266	12,068	3,300	8,768	235.0	24,289
1962	7,900	1,505	11,891	15,198	27,089	11,043	2,798	8,245	250.0	29,728
1963	7,800	1,538	11,994	16,046	28,040	14,108	4,071	10,037	260.0	31,184
1964	8,400	1,605	13,478	13,932	27,410	13,152	3,093	10,059	250.0	33,694
1965	9,300	1,567	14,576	14,258	28,834	12,551	3,262	9,289	250.0	36,440
1966	8,800	1,555	13,682	16,283	29,965	13,953	3,483	10,470	295.0	40,362
1967	8,500	1,124	9,553	16,012	25,565	12,844	3,287	9,557	360.0	34,391
1968 2/	8,400	1,215	10,210	12,721	22,931	10,789	1,729	9,060	280.0	28,588
1969 2/	6,100	1,435	8,755	12,142	20,897					

TYPE 62, GEORGIA-FLORIDA SHADE-GROWN

1949-53	5,040	1,172	5,931	6,782	12,713	5,476			190.0	11,251
1954-58	5,080	1,327	6,733	6,958	13,691	6,621			187.0	12,591
1959	5,800	1,351	7,834	7,339	15,173	7,469	1,362	6,107	195.0	15,276
1960	6,200	1,506	9,339	7,704	17,043	6,545	971	5,574	200.0	18,678
1961	5,700	1,546	8,814	10,498	19,312	9,159	2,590	6,569	190.0	16,747
1962	5,300	1,403	7,434	10,153	17,587	8,500	2,118	6,382	205.0	15,240
1963	5,100	1,314	6,702	9,087	15,789	7,572	2,254	5,318	205.0	13,739
1964	5,400	1,415	7,642	8,217	15,859	8,560	1,211	7,349	235.0	17,959
1965	6,300	1,321	8,322	7,299	15,621	7,436	1,854	5,582	225.0	18,724
1966	5,800	1,265	7,336	8,185	15,521	6,836	743	6,093	185.0	13,572
1967	5,100	1,573	8,024	8,685	16,709	6,647	1,648	4,999	245.0	19,659
1968 2/	5,050	1,556	7,858	10,062	17,920	8,715	2,139	6,576	270.0	21,217
1969 2/	4,950	1,569	7,766	9,205	16,971					

1/ This table is on a crop-year basis for 12 months beginning as follows: types 11-14 and 61-62, July 1; all other types, October 1. Disappearance for any crop year is the sum of the stocks at the beginning of the year plus the current crop minus stocks remaining at the end of the crop year. Exports are on a farm-sales-weight basis. Domestic disappearance is total disappearance minus exports, and includes leaf used by manufacturers in the United States, losses or wastage, and differences which may result from errors in estimates and conversions of weights.

2/ Preliminary.

3/ Producers' sales substituted for production.

4/ Puerto Rican type 46 production is that which is planted in the fall of the crop year shown and harvested the following spring.

Production and price statistics (except Puerto Rican) compiled from reports of the Agricultural Estimates Division, SRS (Puerto Rican from reports of the Bureau of Agricultural Economics of Puerto Rico); stocks from reports of the Tobacco Division, C&MS; and exports from reports of the Bureau of the Census, U. S. Department of Commerce.

TABLE 2.--Cash receipts from tobacco compared with total cash receipts from all farm commodities, by states, average 1962-66, annual 1967-69

State	(Calendar year basis)											
	Average 1962-66			1967			1968 1/			1969 1/		
	Cash receipts		Tobacco	Cash receipts		Tobacco	Cash receipts		Tobacco	Cash receipts		Tobacco
	Total	Tobacco	as per-centage of total	Total	Tobacco	as per-centage of total	Total	Tobacco	as per-centage of total	Total	Tobacco	as per-centage of total
Mil. dol.	Mil. dol.	Pct.	Mil. dol.	Mil. dol.	Pct.	Mil. dol.	Mil. dol.	Pct.	Mil. dol.	Mil. dol.	Pct.	
North Carolina	1,197	530	46.3	1,295	535	41.3	1,239	444	35.8	1,394	515	37.0
Kentucky	685	270	39.4	824	343	41.6	825	282	34.2	882	295	33.4
South Carolina	394	97	24.6	408	107	26.2	374	81	21.7	398	100	25.0
Virginia	496	90	18.1	511	83	16.3	520	76	14.6	564	93	16.6
Tennessee	578	84	14.5	604	83	13.7	623	82	13.1	678	83	12.2
Georgia	902	80	8.9	1,028	101	9.8	1,039	77	7.4	1,123	75	6.7
Connecticut	152	25	16.4	160	30	19.0	162	27	16.6	168	21	12.4
Maryland	308	23	7.5	330	18	5.3	347	20	5.8	379	22	5.9
Florida	962	27	2.8	1,129	32	2.8	1,233	30	2.5	1,335	31	2.3
Pennsylvania	825	13	4.8	895	10	1.1	933	11	1.1	990	11	1.1
Massachusetts	162	9	5.6	157	11	6.7	161	10	6.1	170	8	4.8
Wisconsin	1,221	6	0.5	1,403	5	.4	1,459	6	.4	1,558	5	0.3
Ohio	1,119	13	1.2	1,211	16	1.3	1,224	13	1.0	1,270	13	1.0
Indiana	1,280	8	0.6	1,356	12	.9	1,352	10	.8	1,500	10	0.7
West Virginia	101	2	2.0	96	3	3.2	100	2	2.5	107	2	2.3
Missouri	1,217	3	0.2	1,317	3	0.2	1,402	4	.2	1,508	4	0.2
Total:												
Tobacco States 2/	12,693	1,280	10.1	13,857	1,392	10.0	14,281	1,176	8.2	15,357	1,289	8.4
All States 3/	38,726	1,280	3.3	42,693	1,392	3.3	44,386	1,176	2.6	47,431	1,289	2.7

1/ Subject to revision.

2/ Includes relatively small receipts from tobacco for a few States not shown separately.

3/ Includes Alaska and Hawaii.

Detail may not add to totals because of rounding. Percent may not be accurate to 0.1 in last place because of method of machine computations.

Compiled from reports and records of the Economic and Statistical Analysis Division, ERS.

TABLE 3.--Applicable loan level per pound of tobacco, as of beginning of marketing year, by class or type of tobacco, 1959-70

Beginning marketing year 1/	Loan level										
	Flue-cured types 11-14	Burley type 31	Maryland type 32	Fire-cured type 21	Fire-cured types 22-23	Dark air-cured types 35-36	Virginia sun-cured type 37	Cigar filler type 41	Puerto Rican filler type 46	Cigar & binder types 42-44 and 51-52	Cigar binder types 53-55
	Cents	Cents	Cents	Cents	Cents	Cents	Cents	Cents	Cents	Cents	Cents
1959	55.5	57.2	2/	38.8	38.8	34.5	34.5	2/	29.7	28.6	39.6
1960	55.5	57.2	50.8	38.8	38.8	34.5	34.5	2/	29.7	28.6	39.6
1961	55.5	57.2	50.8	38.8	38.8	34.5	34.5	2/	29.7	28.6	39.6
1962	56.1	57.8	51.3	39.2	39.2	34.8	34.8	2/	30.0	28.9	40.0
1963	56.6	58.3	51.8	39.6	39.6	35.2	35.2	2/	30.3	29.2	40.4
1964	57.2	58.9	52.3	40.0	40.0	35.5	35.5	2/	30.6	29.5	40.8
1965	57.7	59.5	52.8	40.4	40.4	35.9	35.9	2/	30.9	29.7	41.2
1966	58.8	60.6	53.8	41.1	41.1	36.6	36.6	2/	31.5	30.3	42.0
1967	59.9	61.8	2/	41.9	41.9	37.3	37.3	2/	32.1	30.9	42.8
1968	61.6	63.5	2/	43.1	43.1	38.3	38.3	2/	33.0	31.7	44.0
1969	63.8	65.8	2/	44.6	44.6	39.7	39.7	2/	34.2	32.9	45.5
1970	66.6	68.6	2/	46.6	46.6	41.4	41.4	2/	35.6	34.3	47.5

Legislation approved February 20, 1960, provided that price supports for the 1960 crop be the same as for 1959, and that for subsequent crops they be adjusted according to the percentage change between (1) the 1959 parity index and (2) the average of the parity indexes for the three calendar years just preceding the year for which the supports are being determined.

1/ The marketing year begins as of July 1 for flue-cured and cigar wrapper, and as of October 1 for all other types.

2/ Announced "no support." Growers disapproved quotes.

Compiled from records of ASCS.

TABLE 4.--Acreage, yield per acre, production, price per pound, and crop value of tobacco in the United States, by States and by years 1959-1969

TOTAL, IN THE UNITED STATES					INDIANA TOTAL, TYPE 31						
Year	Acreage	Yield per acre	Production	Price per pound	Crop value	Year	Acreage	Yield per acre	Production	Price per pound	Crop value
	Acres	Pounds	1,000 lb.	Cents	1,000 dol.		Acres	Pounds	1,000 lb.	Cents	1,000 dol.
1959	1,152,780	1,558	1,796,415	58.3	1,048,043	1959	6,900	1,750	12,075	61.5	7,426
1960	1,141,530	1,703	1,944,175	60.9	1,183,802	1960	7,000	1,565	10,955	60.8	6,661
1961	1,174,390	1,755	2,061,392	63.8	1,314,961	1961	7,600	1,900	14,440	65.8	9,473
1962	1,224,080	1,891	2,314,782	58.9	1,363,822	1962	7,900	2,120	16,748	54.5	9,128
1963	1,175,720	1,994	2,343,799	57.7	1,352,053	1963	8,100	2,205	17,860	54.6	9,752
1964	1,077,810	2,067	2,227,932	59.2	1,317,943	1964	7,400	1,940	14,356	58.7	8,427
1965	976,900	1,898	1,854,568	65.1	1,266,649	1965	6,700	2,215	14,840	64.5	9,572
1966	977,200	1,933	1,888,497	66.4	1,253,505	1966	5,900	2,520	14,868	64.6	9,605
1967	959,800	2,050	1,967,911	66.9	1,315,694	1967	5,800	2,385	13,833	70.0	9,683
1968 1/	880,280	1,943	1,710,362	69.5	1,188,622	1968 1/	5,800	2,285	13,253	73.7	9,767
1969 1/	920,640	1,958	1,802,611	71.1	1,282,137	1969 1/	5,900	2,500	14,750	70.0	10,325

ALABAMA TOTAL, TYPE 14					KENTUCKY, ALL TYPES						
Year	Acreage	Yield per acre	Production	Price per pound	Crop value	Year	Acreage	Yield per acre	Production	Price per pound	Crop value
	Acres	Pounds	1,000 lb.	Cents	1,000 dol.		Acres	Pounds	1,000 lb.	Cents	1,000 dol.
1959	450	1,250	562	55.9	314	1959	222,300	1,604	356,505	59.0	210,412
1960	460	1,530	704	53.8	379	1960	219,500	1,600	351,279	61.9	217,542
1961	470	1,531	721	59.3	428	1961	235,100	1,767	415,349	64.3	266,999
1962	500	1,720	860	51.0	439	1962	248,900	1,983	493,515	56.4	278,310
1963	470	1,670	785	52.1	409	1963	248,400	2,268	563,384	58.0	326,540
1964	470	1,565	736	54.5	401	1964	225,100	2,003	450,797	58.5	263,823
1965	500	1,595	798	62.0	495	1965	203,400	2,106	428,305	64.5	276,301
1966	600	1,635	981	67.5	662	1966	176,900	2,497	441,671	64.3	284,026
1967	560	1,800	1,008	65.5	660	1967	173,000	2,312	400,060	70.1	280,406
1968 1/	520	1,700	884	58.5	517	1968 1/	172,500	2,400	413,945	71.9	297,674
1969 1/	530	1,500	795	67.0	533	1969 1/	173,500	2,477	429,700	67.7	290,836

CONNECTICUT, ALL TYPES					LOUISIANA TOTAL, TYPE 72						
Year	Acreage	Yield per acre	Production	Price per pound	Crop value	Year	Acreage	Yield per acre	Production	Price per pound	Crop value
	Acres	Pounds	1,000 lb.	Cents	1,000 dol.		Acres	Pounds	1,000 lb.	Cents	1,000 dol.
1959	9,400	1,408	13,236	147.0	19,454	1959	130	575	75	73.0	55
1960	8,750	1,514	13,244	143.0	18,879	1960	320	1,000	320	73.0	234
1961	7,840	1,457	11,422	176.0	20,091	1961	380	840	319	71.0	226
1962	7,530	1,574	11,854	193.0	22,926	1962	350	720	252	71.0	179
1963	7,800	1,667	13,004	193.0	25,139	1963	300	800	240	71.0	170
1964	8,100	1,702	13,783	192.0	26,525	1964	240	850	204	73.0	149
1965	8,700	1,627	14,153	200.0	28,307	1965	280	925	259	74.0	192
1966	7,800	1,646	12,838	244.0	31,316	1966	220	475	104	73.0	76
1967	7,400	1,219	9,020	294.0	26,482	1967	230	500	115	75.0	86
1968 1/	7,300	1,296	9,463	231.6	21,916	1968 1/	210	800	168	77.0	129
1969 1/	5,500	1,537	8,455	231.0	19,525	1969 1/	240	550	132	78.0	103

FLORIDA, ALL TYPES					MARYLAND TOTAL, TYPE 32						
Year	Acreage	Yield per acre	Production	Price per pound	Crop value	Year	Acreage	Yield per acre	Production	Price per pound	Crop value
	Acres	Pounds	1,000 lb.	Cents	1,000 dol.		Acres	Pounds	1,000 lb.	Cents	1,000 dol.
1959	18,500	1,379	25,508	92.2	23,525	1959	40,000	780	31,200	61.6	19,219
1960	18,700	1,570	29,361	92.9	27,290	1960	37,500	925	34,688	63.8	22,131
1961	18,500	1,775	32,830	87.9	28,862	1961	40,000	970	38,800	62.0	24,056
1962	18,800	1,843	34,648	80.5	27,894	1962	41,000	990	40,590	55.8	22,649
1963	17,900	1,731	30,978	81.6	25,276	1963	34,500	1,000	34,500	43.2	14,904
1964	16,700	1,690	28,230	94.9	26,800	1964	39,000	1,085	42,315	62.0	26,235
1965	15,500	1,691	26,214	105.0	27,536	1965	33,500	1,150	38,525	65.5	25,234
1966	17,000	1,576	26,797	94.0	25,188	1966	35,000	1,020	35,700	49.0	17,493
1967	16,700	1,892	31,590	103.0	32,652	1967	31,500	1,030	32,445	63.0	20,440
1968 1/	15,300	1,730	26,470	115.0	30,453	1968 1/	30,000	1,065	31,950	69.8	22,301
1969 1/	15,650	1,663	26,028	119.0	30,999	1969 1/	30,000	1,050	31,500	--	21,987

GEORGIA, ALL TYPES					MASSACHUSETTS, ALL TYPES						
Year	Acreage	Yield per acre	Production	Price per pound	Crop value	Year	Acreage	Yield per acre	Production	Price per pound	Crop value
	Acres	Pounds	1,000 lb.	Cents	1,000 dol.		Acres	Pounds	1,000 lb.	Cents	1,000 dol.
1959	70,200	1,518	106,596	60.3	64,281	1959	3,300	1,572	5,187	123.0	6,398
1960	71,300	1,839	131,139	59.0	77,335	1960	3,400	1,639	5,572	123.0	6,829
1961	71,700	1,924	137,949	60.8	83,858	1961	2,800	1,561	4,370	149.0	6,496
1962	75,300	1,965	147,944	58.8	86,984	1962	3,000	1,768	5,335	176.0	9,371
1963	71,700	2,013	144,316	59.6	85,988	1963	2,850	1,721	4,956	179.0	8,874
1964	64,800	1,920	124,395	62.1	77,244	1964	3,100	1,727	5,353	185.0	9,880
1965	56,200	2,031	114,145	62.3	79,092	1965	3,200	1,684	5,388	193.2	10,412
1966	62,500	1,572	98,255	72.7	71,417	1966	2,820	1,662	4,686	235.1	11,015
1967	72,400	2,076	150,294	67.2	101,007	1967	2,580	1,250	3,225	291.0	9,375
1968 1/	57,350	1,878	107,731	71.8	77,305	1968 1/	2,660	1,327	3,531	235.9	8,328
1969 1/	60,600	1,615	97,890	77.1	75,483	1969 1/	2,210	1,502	3,320	235.0	7,804

See footnotes at end of table.

TABLE 4.--Acreage, yield per acre, production, price per pound, and crop value of tobacco in the United States, by States and by years 1959-69--Continued

MISSOURI TOTAL, TYPE 31						TENNESSEE, ALL TYPES					
Year	Acreage	Yield per acre	Production	Price per pound	Crop value	Year	Acreage	Yield per acre	Production	Price per pound	Crop value
	Acres	Pounds	1,000 lb.	Cents	1,000 dol.		Acres	Pounds	1,000 lb.	Cents	1,000 dol.
1959	3,000	1,560	4,680	58.7	2,747	1959	77,500	1,681	130,278	54.4	70,898
1960	2,900	1,625	4,712	63.1	2,973	1960	73,900	1,561	115,336	60.7	70,004
1961	3,100	1,535	4,758	63.5	3,021	1961	80,300	1,808	145,215	61.5	89,379
1962	3,200	1,955	6,256	59.2	3,704	1962	84,500	1,758	148,587	56.6	84,043
1963	3,300	1,960	6,468	59.7	3,871	1963	84,100	1,902	159,936	55.3	88,385
1964	3,000	1,950	5,850	56.8	3,323	1964	73,600	1,979	149,624	57.7	86,357
1965	2,600	1,815	4,719	62.3	2,940	1965	69,150	1,998	131,276	65.0	85,336
1966	2,200	2,395	5,269	66.2	3,488	1966	61,250	2,076	127,166	63.6	80,824
1967	2,100	2,215	4,652	67.6	3,145	1967	57,800	1,908	110,258	67.7	74,686
1968 1/2	2,200	2,470	5,434	72.3	3,929	1968 1/2	58,740	2,072	121,691	69.9	85,101
1969 1/2	2,100	2,450	5,145	70.0	3,602	1969 1/2	59,160	2,100	124,245	65.3	81,096

NORTH CAROLINA, ALL TYPES						VIRGINIA, ALL TYPES					
Year	Acreage	Yield per acre	Production	Price per pound	Crop value	Year	Acreage	Yield per acre	Production	Price per pound	Crop value
	Acres	Pounds	1,000 lb.	Cents	1,000 dol.		Acres	Pounds	1,000 lb.	Cents	1,000 dol.
1959	468,300	1,544	723,130	57.9	418,401	1959	90,800	1,588	144,191	53.6	77,241
1960	467,000	1,838	858,300	61.1	524,747	1960	89,300	1,596	142,550	58.7	83,639
1961	473,400	1,804	853,951	65.1	555,814	1961	91,400	1,616	147,686	62.0	91,510
1962	494,000	1,896	936,845	60.2	564,015	1962	95,400	1,760	167,927	60.1	100,885
1963	471,500	2,006	945,795	58.1	549,195	1963	89,000	1,726	153,620	53.3	81,931
1964	425,700	2,280	970,450	57.9	561,929	1964	82,900	2,076	172,083	58.7	100,966
1965	383,900	1,845	708,117	64.2	454,955	1965	75,200	1,801	135,442	62.8	85,022
1966	417,400	1,868	779,688	64.2	518,972	1966	72,800	1,791	130,387	62.2	81,055
1967	403,200	2,070	834,675	64.1	534,846	1967	70,100	1,883	131,986	63.1	83,278
1968 1/2	358,400	1,862	667,375	66.6	444,481	1968 1/2	66,600	2,100	112,682	65.9	74,229
1969 1/2	385,400	1,858	716,123	72.0	515,410	1969 1/2	72,900	1,822	132,835	70.3	93,371

OHIO, ALL TYPES						WEST VIRGINIA TOTAL, TYPE 31					
Year	Acreage	Yield per acre	Production	Price per pound	Crop value	Year	Acreage	Yield per acre	Production	Price per pound	Crop value
	Acres	Pounds	1,000 lb.	Cents	1,000 dol.		Acres	Pounds	1,000 lb.	Cents	1,000 dol.
1959	13,100	1,668	21,853	51.8	11,318	1959	2,500	1,615	4,038	60.0	2,423
1960	13,400	1,576	21,114	52.6	11,100	1960	2,500	1,485	3,712	63.6	2,361
1961	14,500	1,573	22,806	52.9	12,073	1961	2,600	1,245	3,237	63.9	2,068
1962	14,800	1,933	28,602	50.0	14,304	1962	2,800	1,765	4,942	59.0	2,916
1963	14,300	2,107	30,134	48.6	14,657	1963	2,800	2,010	5,628	55.0	3,095
1964	13,200	1,760	23,234	49.3	11,465	1964	2,600	1,745	4,537	54.9	2,491
1965	12,300	1,863	22,921	55.2	12,656	1965	2,300	1,790	4,117	65.7	2,705
1966	10,600	2,157	22,867	55.5	12,699	1966	1,900	1,840	3,496	64.5	2,255
1967	9,700	2,171	21,061	63.3	13,323	1967	1,900	1,850	3,515	70.6	2,482
1968 1/2	9,450	1,987	18,779	66.0	12,393	1968 1/2	1,950	1,695	3,305	73.0	2,413
1969 1/2	9,100	2,179	19,825	63.6	12,614	1969 1/2	1,950	1,900	3,705	68.0	2,519

PENNSYLVANIA TOTAL, TYPE 41						WISCONSIN TOTAL					
Year	Acreage	Yield per acre	Production	Price per pound	Crop value	Year	Acreage	Yield per acre	Production	Price per pound	Crop value
	Acres	Pounds	1,000 lb.	Cents	1,000 dol.		Acres	Pounds	1,000 lb.	Cents	1,000 dol.
1959	31,000	1,725	53,475	31.5	16,845	1959	14,400	1,449	20,861	33.6	7,018
1960	31,000	1,700	52,700	28.0	14,756	1960	14,600	1,431	20,889	29.5	6,168
1961	31,000	1,725	53,475	27.0	14,438	1961	13,700	1,640	22,464	29.2	6,568
1962	30,000	2,000	60,000	23.5	14,100	1962	12,100	1,621	19,617	29.2	5,726
1963	28,000	1,850	51,800	21.0	10,878	1963	10,700	1,680	17,979	30.9	5,549
1964	27,000	1,700	45,900	27.0	12,393	1964	10,900	1,821	19,845	34.2	6,791
1965	27,000	1,900	51,300	24.0	12,312	1965	10,900	1,765	19,241	29.3	5,629
1966	23,000	1,675	38,525	25.0	9,631	1966	9,300	1,744	16,219	33.3	5,396
1967	21,000	1,825	38,325	28.0	10,731	1967	8,300	1,943	16,127	34.2	5,521
1968 1/2	21,000	1,775	37,275	30.0	11,182	1968 1/2	7,700	1,824	14,043	37.3	5,242
1969 1/2	20,000	1,900	38,000	--	11,400	1969 1/2	7,400	1,825	13,505	--	5,041

SOUTH CAROLINA TOTAL, TYPE 13					
Year	Acreage	Yield per acre	Production	Price per pound	Crop value
	Acres	Pounds	1,000 lb.	Cents	1,000 dol.
1959	81,000	1,765	142,965	63.0	90,068
1960	80,000	1,845	147,600	61.5	90,774
1961	80,000	1,895	151,600	65.7	99,601
1962	84,000	2,265	190,260	51.1	116,249
1963	80,000	2,030	162,400	60.0	97,440
1964	72,000	2,170	156,240	60.0	93,744
1965	65,600	2,055	134,808	65.3	88,030
1966	69,000	1,845	127,305	69.1	87,968
1967	75,500	2,195	165,722	64.5	106,891
1968 1/2	62,600	1,955	122,383	66.4	81,262
1969 1/2	68,500	1,995	136,658	72.8	99,487

1/2 Preliminary. Season average prices for 1969 crop sales were used if sufficient sales data were available, but most or all of the 1969 crop was evaluated using 1968 crop season average prices. Sufficient sales data were available to estimate a season average price for most of the States' 1969 production, but 1968 season average prices were used for some types in evaluating production and calculating an average price for all tobacco.

Acres for U. S. totals rounded to hundreds. Average yield computed on actual acres.

Compiled from reports of the Agricultural Estimates Division, SRS.

TABLE 5.--Sales and average prices of tobacco sold at auction in the United States; loan receipts, number of markets, number of warehouses, and sets of buyers, crops of 1964-69 1/

Type and year	Producer sales	Average price	Loan receipts	Markets	Warehouses	Buyers
	1,000 lb.	Dollars	1,000 lb.	Number	Number	Sets
Flue-cured						
Types 11-14						
1964.....	1,378,892	58.52	285,582	93	430	144
1965.....	1,058,318	64.65	71,493	93	416	144
1966.....	1,106,320	66.90	74,574	93	401	144
1967.....	1,247,482	64.17	282,077	93	416	144
1968.....	995,645	66.64	128,779	93	434	144
1969.....	1,050,703	72.35	97,587	93	423	144
Virginia Fire-cured						
Type 21						
1964.....	9,091	43.09	268	3	7	4
1965.....	9,564	39.86	1,046	3	7	3
1966.....	7,549	61.24	621	3	7	3
1967.....	6,989	40.90	658	3	7	3
1968.....	6,044	46.92	154	3	7	3
1969.....	6,667	53.08	104	3	7	3
Eastern District Fire-cured						
Type 22						
1964.....	33,359	42.01	4,612	3	23	6
1965.....	26,267	44.68	1,789	3	21	6
1966.....	30,100	42.93	5,427	3	21	6
1967.....	23,190	46.85	760	3	20	6
1968.....	25,426	51.49	402	3	20	6
1969.....	25,594	48.42	1,699	3	18	3
Western District Fire-cured						
Type 23						
1964.....	12,070	38.32	2,602	2	7	2
1965.....	10,179	40.96	506	2	7	2
1966.....	10,086	40.16	902	2	7	2
1967.....	6,057	43.68	63	2	7	2
1968.....	6,907	49.97	3	2	7	2
1969.....	7,963	47.26	162	2	7	2
Burley						
Type 31						
1964.....	617,950	60.31	110,431	61	421	71
1965.....	585,971	66.99	42,228	61	421	71
1966.....	584,722	66.90	62,534	61	416	71
1967.....	537,073	71.78	64,168	61	410	71
1968.....	560,802	73.87	56,192	61	398	71
1969.....	593,739	69.54	158,540	61	390	71
Maryland						
Type 32						
1964.....	44,865	61.05	4,156	4	13	5
1965.....	38,838	65.25	2,686	4	13	5
1966.....	34,632	49.03	--	4	13	5
1967.....	33,010	62.67	--	4	13	5
1968.....	32,333	69.14	--	4	13	5
1969 2/.....				4	13	5
One Sucker						
Type 35						
1964.....	14,804	37.84	1,531	5	27	2
1965.....	11,844	37.57	1,443	5	27	2
1966.....	14,239	37.77	2,344	5	27	2
1967.....	10,399	42.31	924	5	27	2
1968.....	12,552	49.46	334	5	25	2
1969.....	13,124	40.67	3,690	5	24	2
Green River						
Type 36						
1964.....	7,659	35.50	2,129	3	16	2
1965.....	6,634	36.05	1,734	3	15	2
1966.....	7,073	36.30	2,329	3	15	2
1967.....	5,040	37.92	475	3	15	2
1968.....	5,596	42.66	317	3	15	2
1969.....	5,107	39.37	1,088	3	15	2
Virginia Sun-cured						
Type 37						
1964.....	1,789	41.15	16	1	1	1
1965.....	1,992	39.22	75	1	1	1
1966.....	1,479	42.34	26	1	1	1
1967.....	1,291	45.18	25	1	1	1
1968.....	1,198	53.20	1	1	1	1
1969.....	1,343	52.82	1	1	1	1

1/ Includes country and hogshead sales where applicable. 2/ Not available.

TABLE 6.--Marketing quota referendums, for crops covered since 1940, by kinds of tobacco 1/

Kind of tobacco and date of referendum	Crops covered	Percentage of votes cast--			Kind of tobacco and date of referendum	Crops covered	Percentage of votes cast--		
		for 3 years	for 1 year	against quotas			for 3 years	for 1 year	against quotas
Blue-cured (11-14):					Fire-cured (21-24): 4/--Cont'd:				
July 20, 1940	: 1941, 1942, and 1943	: 86.1	: 1.8	: 12.1	: Feb. 16 thru 20, 1970	: 1970, 1971, and 1972	: 93.8	: --	: 6.2
July 24, 1943	: 1944, 1945, and 1946	: 87.6	: 3.1	: 9.3					
July 12, 1946	: 1947, 1948, and 1949	: 97.1	: 1.2	: 1.7	Dark air-cured (35-36): 4/				
July 23, 1949	: 1950, 1951, and 1952	: 97.7	: .9	: 1.4	: Nov. 23, 1940	: 1941, 1942, and 1943	: 84.2	: 2.2	: 13.6
July 19, 1952	: 1953, 1954, and 1955	: 97.8	: 1.0	: 1.2	: Nov. 20, 1945	: 1946, 1947, and 1948	: 96.1	: 1.5	: 2.4
July 23, 1955	: 1956, 1957, and 1958	: 95.5	: 1.8	: 2.7	: Nov. 27, 1948	: 1949, 1950, and 1951	: 96.1	: 1.5	: 2.4
Dec. 15, 1958	: 1959, 1960, and 1961	: 95.4	: --	: 4.6	: Dec. 7, 1951	: 1952, 1953, and 1954	: 97.4	: 1.5	: 1.1
Dec. 12, 1961	: 1962, 1963, and 1964	: 98.1	: --	: 1.9	: Dec. 14, 1954	: 1955, 1956, and 1957	: 95.9	: 1.2	: 2.9
Dec. 15, 1964	: 1965, 1966, and 1967	: 96.5	: --	: 3.5	: Feb. 18, 1958	: 1958, 1959, and 1960	: 96.6	: --	: 3.4
May 4, 1965 2/	: 1965, 1966, and 1967	: 73.6	: --	: 26.4	: Feb. 24, 1961	: 1961, 1962, and 1963	: 98.7	: --	: 1.3
July 18, 1967	: 1968, 1969, and 1970	: 96.5	: --	: 3.5	: Feb. 28, 1964	: 1964, 1965, and 1966	: 97.8	: --	: 2.2
					: Feb. 13 thru 17, 1967	: 1967, 1968, and 1969	: 93.1	: --	: 6.9
					: Feb. 16 thru 20, 1970	: 1970, 1971, and 1972	: 93.2	: --	: 6.8
Burley (31)					Virginia sun-cured (37):				
Nov. 21, 1940	: 1941, 1942, and 1943	: 76.5	: 3.1	: 20.4	: Dec. 15, 1949	: 1950, 1951, and 1952	: 85.1	: 6.4	: 8.5
Oct. 23, 1943	: 1944, 1945, and 1946	: 92.8	: 2.1	: 5.1	: Nov. 22, 1952	: 1953, 1954, and 1955	: 97.1	: 2.0	: 0.9
Oct. 25, 1946	: 1947, 1948, and 1949	: 95.9	: 1.7	: 2.4	: Dec. 29, 1955	: 1956, 1957, and 1958	: 98.0	: --	: 2.0
Nov. 26, 1949	: 1950, 1951, and 1952	: 92.3	: 3.5	: 4.2	: Feb. 24, 1959	: 1959, 1960, and 1961	: 97.9	: --	: 2.1
Nov. 22, 1952	: 1953, 1954, and 1955	: 97.0	: 1.3	: 1.7	: Feb. 20, 1962	: 1962, 1963, and 1964	: 98.5	: --	: 1.5
Apr. 28, 1955 3/	: 1955	: --	: 96.0	: 4.0	: Feb. 25, 1965	: 1965, 1966, and 1967	: 97.5	: --	: 2.5
Dec. 29, 1955	: 1956, 1957, and 1958	: 95.3	: --	: 4.7	: Feb. 26 thru Mar. 1, 1968	: 1968, 1969, and 1970	: 93.4	: --	: 6.6
Feb. 24, 1959	: 1959, 1960, and 1961	: 98.7	: --	: 1.3					
Feb. 20, 1962	: 1962, 1963, and 1964	: 99.2	: --	: .8					
Feb. 25, 1965	: 1965, 1966, and 1967	: 99.0	: --	: 1.0					
Mar. 10, 1966 2/	: 1966, 1967, and 1968	: 57.0	: --	: 43.0	Cigar filler (41):				
Feb. 27 thru Mar. 3, 1967 2/	: 1967, 1968, and 1969	: 58.8	: --	: 41.2	: Dec. 20, 1950	: 1951, 1952, and 1953	: 11.8	: 9.8	: 78.4
Feb. 26 thru Mar. 1, 1968	: 1968, 1969, and 1970	: 97.0	: --	: 3.0	: Dec. 7, 1951	: 1952, 1953, and 1954	: 21.4	: 12.1	: 66.5
					: Oct. 29, 1952	: 1953, 1954, and 1955	: 26.3	: 12.1	: 61.6
					: Oct. 29, 1953	: 1954, 1955, and 1956	: 17.4	: 7.0	: 75.6
					: Dec. 17, 1954	: 1955, 1956, and 1957	: 8.4	: 3.8	: 87.8
Maryland (32)					: Dec. 29, 1955	: 1956, 1957, and 1958	: 11.3	: --	: 88.7
Dec. 20, 1950	: 1951, 1952, and 1953	: 18.1	: 19.1	: 62.8	: Feb. 24, 1959	: 1959, 1960, and 1961	: 7.9	: --	: 92.1
Dec. 7, 1951	: 1952, 1953, and 1954	: 15.5	: 13.1	: 71.4	: Feb. 20, 1962	: 1962, 1963, and 1964	: 13.8	: --	: 85.2
Oct. 29, 1952	: 1953, 1954, and 1955	: 64.5	: 9.6	: 25.9	: Feb. 18, 1965	: 1965, 1966, and 1967	: 11.8	: --	: 88.2
Oct. 29, 1953	: 1954, 1955, and 1956	: 51.3	: 12.8	: 35.9	: Feb. 19 thru 23, 1968	: 1968, 1969, and 1970	: 19.1	: --	: 60.9
Dec. 17, 1954	: 1955, 1956, and 1957	: 43.7	: 7.4	: 48.9					
Dec. 29, 1955	: 1956, 1957, and 1958	: 81.0	: --	: 19.0					
Feb. 24, 1959	: 1959, 1960, and 1961	: 64.2	: --	: 35.8	Cigar filler and binder (42-44 and 53-55):				
Feb. 2, 1960	: 1960, 1961, and 1962	: 77.8	: --	: 22.2	: Feb. 13, 1957	: 1957, 1958, and 1959	: 94.1	: --	: 5.9
Feb. 14, 1963	: 1963, 1964, and 1965	: 83.8	: --	: 16.2	: Feb. 11, 1960	: 1960, 1961, and 1962	: 95.4	: --	: 4.6
Feb. 25, 1966	: 1966, 1967, and 1968	: 41.5	: --	: 58.5	: Feb. 26, 1963	: 1963, 1964, and 1965	: 89.6	: --	: 10.4
Feb. 20 thru 24, 1967	: 1967, 1968, and 1969	: 61.0	: --	: 39.0	: Feb. 10, 1966	: 1966, 1967, and 1968	: 91.3	: --	: 8.7
Feb. 19 thru 23, 1968	: 1968, 1969, and 1970	: 56.2	: --	: 43.8	: Feb. 24 thru 27, 1969	: 1969, 1970, and 1971	: 84.6	: --	: 15.4
Fire-cured (21-24): 4/									
Nov. 23, 1940	: 1941, 1942, and 1943	: 86.3	: 2.1	: 11.6					
Oct. 20, 1945	: 1946, 1947, and 1948	: 90.8	: 2.8	: 6.4	Cigar binder (51-52):				
Nov. 27, 1948	: 1949, 1950, and 1951	: 94.7	: 2.5	: 2.8	: Feb. 13, 1957	: 1957, 1958, and 1959	: 98.0	: --	: 2.0
Dec. 7, 1951	: 1952, 1953, and 1954	: 96.5	: 1.8	: 1.7	: Feb. 11, 1960	: 1960, 1961, and 1962	: 89.7	: --	: 10.3
Dec. 14, 1954	: 1955, 1956, and 1957	: 95.6	: 1.8	: 2.6	: Feb. 26, 1963	: 1963, 1964, and 1965	: 96.0	: --	: 4.0
Feb. 18, 1958	: 1958, 1959, and 1960	: 96.0	: --	: 4.0	: Feb. 10, 1966	: 1966, 1967, and 1968	: 96.6	: --	: 3.4
Feb. 24, 1961	: 1961, 1962, and 1963	: 98.0	: --	: 2.0	: Feb. 24 thru 27, 1969	: 1969, 1970, and 1971	: 92.0	: --	: 8.0
Feb. 28, 1964	: 1964, 1965, and 1966	: 94.7	: --	: 5.3					
Feb. 13 thru 17, 1967	: 1967, 1968, and 1969	: 93.5	: --	: 6.5					

1/ A two-thirds majority of farmers voting is required to place marketing quotas in effect. Legislation approved in August 1955 required that voting be for a 3-year period only. For record of crops covered for the years 1938, 1939, and 1940, see previous editions of this publication. 2/ Special referendum on acreage-poundage program. 3/ Redetermined quotas for Burley for the 1955 crop. 4/ Fire-cured (21-24) and dark air-cured (35-36): referendums for both kind combined for the crops of 1938 and 1939; quotas for the 1943 crop terminated August 14, 1943; and quotas were not in effect for the crops of 1944 and 1945.

TABLE 7.--Number of allotments and acreages allotted, by States and kinds of tobacco for which marketing quotas were in effect, 1964-69

Kind of tobacco and State	1964		1965		1966		1967		1968		1969	
	Allotments	Acreage allotted	Allotments	Acreage allotted	Allotments	Acreage allotted	Allotments	Acreage allotted	Allotments	Acreage allotted	Allotments	Acreage allotted
	Number	Acrea	Number	Acrea	Number	Acrea	Number	Acrea	Number	Acrea	Number	Acrea
Flue-cured (11-14)												
Alabama.....	253	502	259	593	256	591	258	589	268	594	267	593
Florida.....	6,922	13,600	6,806	12,924	6,855	12,932	6,971	12,922	6,991	12,952	6,927	12,950
Georgia.....	25,889	64,930	25,262	61,737	25,400	61,752	25,674	61,858	25,737	61,886	25,691	61,947
North Carolina...	117,102	421,045	114,550	400,080	114,283	400,065	115,145	400,505	115,169	400,808	115,482	400,795
South Carolina...	25,252	74,132	23,702	70,455	23,569	70,454	24,552	70,506	24,491	70,541	24,398	70,581
Virginia.....	22,657	64,031	22,083	60,859	22,050	60,871	21,875	60,937	21,722	61,005	21,576	61,003
Total.....	198,075	638,240	192,662	606,648	192,413	606,665	194,475	607,316	194,378	607,796	194,381	607,869
Burley (31)												
Alabama.....	41	30	35	27	32	23	30	22	28	22	27	21
Arkansas.....	79	54	73	49	63	39	63	39	61	38	62	39
Georgia.....	216	91	209	83	179	69	178	69	177	66	167	64
Illinois.....	12	5	6	3	6	3	5	2	5	2	5	2
Indiana.....	9,683	7,906	9,483	7,172	9,399	6,325	9,345	6,324	9,323	6,326	9,349	6,321
Kansas.....	53	85	49	75	49	65	44	61	45	62	46	63
Kentucky.....	142,855	204,256	141,404	184,792	140,202	159,438	138,441	159,492	136,337	159,553	135,621	159,436
Missouri.....	1,651	3,193	1,580	2,867	1,515	2,440	1,497	2,433	1,490	2,427	1,482	2,419
North Carolina...	18,156	10,586	18,124	9,775	17,868	8,822	17,779	8,831	17,541	8,833	17,411	8,849
Ohio.....	10,798	10,110	10,535	9,140	10,372	7,979	10,230	7,963	10,068	7,954	9,948	7,936
Pennsylvania.....	2	2	2	1	2	1	2	1	1	1	--	--
South Carolina...	9	4	10	4	6	3	5	2	5	2	5	2
Tennessee.....	93,081	65,063	92,344	59,528	91,423	53,062	89,518	53,029	88,823	53,032	87,980	52,947
Texas.....	2	1/	2	1	--	--	--	--	--	--	--	--
Virginia.....	17,381	11,230	17,045	10,402	16,976	9,278	16,547	9,276	16,493	9,271	16,434	9,289
West Virginia....	4,614	2,941	4,515	2,682	4,445	2,400	4,402	2,380	4,355	2,375	4,338	2,372
Total.....	298,633	315,698	295,416	286,601	292,537	249,944	288,086	249,926	284,752	249,966	282,875	249,761
Maryland (32)												
Delaware.....	1	1/	1	1/	2/	2/	2/	2/	2/	2/	2/	2/
Maryland.....	6,667	47,276	6,205	39,380	2/	2/	2/	2/	2/	2/	2/	2/
Virginia.....	92	22	68	16	2/	2/	2/	2/	2/	2/	2/	2/
Total.....	6,760	47,298	6,274	39,396	2/	2/	2/	2/	2/	2/	2/	2/
Fire-cured (21-23)												
Illinois.....	1	1/	--	--	--	--	--	--	--	--	--	--
Kentucky.....	9,107	13,877	8,851	12,456	8,747	12,430	8,599	12,516	8,525	12,486	8,312	12,680
Tennessee.....	8,795	15,617	8,654	14,033	8,479	14,015	8,440	14,136	8,423	14,239	8,225	14,315
Virginia.....	7,281	9,145	6,811	9,244	6,630	9,354	6,557	9,381	6,463	9,392	6,335	10,302
Total.....	25,184	38,639	24,316	35,733	23,856	35,798	23,596	36,033	23,411	36,117	22,872	37,297

Dark air-cured (35-36)	:	:	:	:	:	:	:	:	:	:	:	:	:					
Indiana	:	116	35	:	92	30	:	80	29	:	75	28	:	71	27	:	73	26
Kentucky	:	19,491	12,057	:	18,797	10,824	:	18,498	10,830	:	18,165	10,805	:	17,949	10,767	:	17,617	10,732
Tennessee	:	4,818	2,040	:	4,702	1,833	:	4,667	1,835	:	4,618	1,834	:	4,585	1,832	:	4,488	1,829
Total	:	24,425	14,132	:	23,591	12,687	:	23,245	12,694	:	22,858	12,668	:	22,605	12,626	:	22,178	12,607
Virginia sun-cured (37)	:	:	:	:	:	:	:	:	:	:	:	:	:	:	:	:	:	:
Virginia	:	2,282	3,472	:	1,952	3,224	:	1,579	2,990	:	1,506	2,824	:	1,415	2,662	:	1,345	2,549
Cigar filler and binder (42-44 and 53-55)	:	:	:	:	:	:	:	:	:	:	:	:	:	:	:	:	:	:
Illinois	:	3	4	:	2	3	:	2	3	:	1	2	:	1	2	:	1	2
Indiana	:	2	1	:	2	1	:	2	1	:	2	1	:	2	1	:	2	1
Iowa	:	1	7	:	1	7	:	1	7	:	1	7	:	1	7	:	1	7
Minnesota	:	121	169	:	79	152	:	69	147	:	65	134	:	67	128	:	65	116
New York	:	71	35	:	13	19	:	12	17	:	12	15	:	11	13	:	11	9
Ohio	:	1,586	4,585	:	1,455	4,707	:	1,416	4,776	:	1,402	4,740	:	1,394	4,652	:	1,368	4,501
Pennsylvania	:	122	176	:	51	162	:	47	160	:	45	146	:	45	138	:	38	124
Wisconsin	:	6,185	15,347	:	5,659	15,212	:	5,367	15,072	:	5,248	14,660	:	5,047	14,426	:	4,879	14,095
Total	:	8,091	20,324	:	7,262	20,263	:	6,916	20,184	:	6,776	19,705	:	6,568	19,367	:	6,365	18,855
Cigar binder (51-52)	:	:	:	:	:	:	:	:	:	:	:	:	:	:	:	:	:	:
Connecticut	:	1,294	4,492	:	1,214	3,834	:	572	3,221	:	542	3,203	:	521	3,178	:	510	4,560
Massachusetts	:	946	2,189	:	899	1,714	:	315	1,201	:	284	1,117	:	264	1,024	:	234	1,394
New York	:	1	1/	:	--	--	:	--	--	:	--	--	:	--	--	:	--	--
Vermont	:	1	3	:	1	2	:	1	2	:	--	--	:	--	--	:	--	--
Total	:	2,242	6,684	:	2,114	5,551	:	888	4,425	:	826	4,320	:	785	4,202	:	744	5,924
Grand total	:	565,692	1,084,489	:	553,587	1,010,103	:	434	932,701	:	538,123	932,793	:	533,180	932,736	:	530,760	934,892

1/ Less than 0.5 acres.
 2/ Quotas disapproved by growers.

Detail of acreage may not add to totals because of rounding.

Compiled from records of ASCS.

TABLE 8.--Stocks of leaf tobacco, by types, on a farm-sales-weight equivalent basis, owned by dealers and manufacturers in the United States and Puerto Rico, by quarters, 1965-69

Quarter and year	TYPES 11-14--FLUE-CURED			TYPE 21 - VIRGINIA FIRE-CURED			TYPE 22--TENNESSEE AND KENTUCKY FIRE-CURED		
	Held by trade	Under loan	Total farm-sales-weight: equivalent	Held by trade	Under loan	Total farm-sales-weight: equivalent	Held by trade	Under loan	Total farm-sales-weight: equivalent
	1,000 lb.	1,000 lb.	1,000 lb.	1,000 lb.	1,000 lb.	1,000 lb.	1,000 lb.	1,000 lb.	1,000 lb.
January 1:									
1965	2,071,189	970,485	3,041,674	14,956	4,312	19,268	45,228	25,782	71,010
1966	2,017,884	924,112	2,941,996	14,352	3,604	17,956	49,211	19,882	69,093
1967	2,017,439	802,145	2,819,584	13,310	2,941	16,251	50,101	16,793	66,894
1968	1,928,015	915,619	2,843,634	11,877	2,691	14,568	43,956	18,990	62,946
1969	1,749,582	862,239	2,611,821	10,539	2,804	13,343	42,427	14,496	56,923
April 1:									
1965	1,869,366	953,638	2,823,004	17,174	4,306	21,480	66,409	27,569	93,978
1966	1,812,690	866,833	2,679,523	16,688	4,362	21,050	66,616	21,431	88,047
1967	1,837,188	737,159	2,574,347	14,591	3,270	17,861	63,150	21,027	84,177
1968	1,768,982	819,352	2,588,334	13,360	3,129	16,489	62,861	17,913	80,774
1969	1,540,534	847,430	2,387,964	11,776	2,541	14,317	61,246	13,998	75,244
July 1:									
1965	1,636,814	918,539	2,555,353	15,627	3,406	19,033	63,991	26,188	90,179
1966	1,602,431	836,404	2,438,835	15,192	3,937	19,129	62,391	19,673	82,064
1967	1,587,150	685,374	2,272,524	13,791	2,734	16,525	57,235	20,893	78,128
1968	1,528,180	773,355	2,301,535	11,556	2,906	14,462	55,195	16,683	71,878
1969	1,299,595	800,518	2,100,113	9,973	2,258	12,231	56,746	8,472	65,218
October 1:									
1965	1,966,741	931,449	2,898,190	12,241	3,347	15,588	60,250	21,696	81,946
1966	1,949,915	786,498	2,736,413	13,373	3,520	16,893	56,580	17,739	74,319
1967	1,888,205	732,754	2,620,959	12,149	2,690	14,839	51,646	19,784	71,430
1968	1,802,106	825,796	2,627,902	8,917	2,818	11,735	47,800	15,425	63,225
1969	1,711,592	780,960	2,492,552	7,965	1,886	9,851	51,357	7,572	58,929
January 1:									
1965	8,242	10,558	18,800	68,246	40,652	109,078	1,362,861	317,400	1,680,261
1966	9,167	9,167	18,334	72,730	32,653	105,383	1,369,153	287,162	1,656,315
1967	11,384	8,233	19,617	74,795	27,967	102,762	1,295,071	274,968	1,570,039
1968	10,304	7,154	17,458	66,137	28,835	94,972	1,347,893	317,875	1,665,768
1969	8,302	5,432	13,734	61,268	22,732	84,000	1,274,303	332,582	1,606,885
April 1:									
1965	13,784	11,709	25,493	97,367	43,584	140,951	1,384,659	325,285	1,709,944
1966	17,218	9,218	26,436	100,522	35,011	135,533	1,408,730	285,998	1,694,728
1967	16,992	8,954	25,946	94,733	33,251	127,984	1,372,997	303,791	1,676,788
1968	15,213	6,271	21,484	91,434	27,313	118,747	1,297,273	328,528	1,625,801
1969	12,414	4,182	16,596	85,436	20,721	106,157	1,250,023	357,874	1,607,897
July 1:									
1965	13,339	11,200	24,539	92,957	40,794	133,751	1,261,367	322,993	1,584,360
1966	15,552	8,497	24,049	92,135	32,107	125,242	1,292,028	270,862	1,562,890
1967	14,755	8,120	22,875	85,781	31,747	117,528	1,245,384	280,761	1,526,145
1968	12,412	6,261	18,673	79,163	25,850	105,013	1,153,605	326,477	1,480,082
1969	11,372	3,651	15,023	78,091	14,381	92,472	1,114,415	348,305	1,462,720
October 1:									
1965	12,232	10,572	22,804	84,723	35,615	120,338	1,099,292	316,418	1,415,710
1966	13,236	8,248	21,484	83,189	29,507	112,696	1,133,452	261,892	1,395,344
1967	12,336	7,520	19,856	76,131	29,994	106,125	1,104,829	276,710	1,381,539
1968	9,527	6,054	15,581	66,244	24,297	90,541	1,002,387	321,718	1,324,105
1969	9,687	4,055	13,742	69,009	13,513	82,522	975,631	340,844	1,316,475
January 1:									
1965	13,339	11,200	24,539	92,957	40,794	133,751	1,261,367	322,993	1,584,360
1966	15,552	8,497	24,049	92,135	32,107	125,242	1,292,028	270,862	1,562,890
1967	14,755	8,120	22,875	85,781	31,747	117,528	1,245,384	280,761	1,526,145
1968	12,412	6,261	18,673	79,163	25,850	105,013	1,153,605	326,477	1,480,082
1969	11,372	3,651	15,023	78,091	14,381	92,472	1,114,415	348,305	1,462,720

TABLE 8. --Stocks of leaf tobacco, by types, on a farm-sales-weight equivalent basis, owned by dealers and manufacturers in the United States and Puerto Rico, by quarters, 1965-69--Continued

Quarter and year	TYPE 32--SOUTHERN MARYLAND			TYPE 35--ONE SUCKER			TYPE 36--GREEN RIVER		
	Held by trade	Under loan	Total farm-sales-weight: equivalent	Held by trade	Under loan	Total farm-sales-weight: equivalent	Held by trade	Under loan	Total farm-sales-weight: equivalent
	1,000 lb.	1,000 lb.	1,000 lb.	1,000 lb.	1,000 lb.	1,000 lb.	1,000 lb.	1,000 lb.	1,000 lb.
January 1:									
1965	65,799	16,191	81,990	27,006	13,639	40,645	14,320	7,136	21,456
1966	69,960	20,186	90,146	27,046	12,641	39,687	15,769	7,473	23,242
1967	68,170	21,513	89,683	26,620	11,681	38,301	14,562	8,687	23,249
1968	68,195	18,081	86,276	25,858	12,518	38,376	13,966	9,112	23,078
1969	74,519	7,061	81,520	29,975	8,436	38,411	14,129	7,686	21,815
April 1:									
1965	58,814	16,052	74,866	30,755	14,638	45,393	18,761	8,179	26,940
1966	61,458	20,016	81,474	30,869	13,484	44,353	16,715	8,522	25,237
1967	61,033	21,182	82,215	30,815	13,448	44,263	16,529	9,769	26,298
1968	61,422	17,138	78,560	31,819	9,962	41,781	15,288	9,228	24,516
1969	68,541	1,416	69,957	36,675	8,171	44,846	16,405	7,267	23,672
July 1:									
1965	84,332	19,321	103,653	28,554	14,074	42,628	16,551	7,644	24,195
1966	85,907	22,299	108,206	30,209	12,119	42,328	15,678	8,075	23,753
1967	83,764	20,199	103,963	28,160	12,241	40,401	15,036	9,293	24,329
1968	84,252	12,883	97,135	29,691	9,383	39,074	14,484	8,545	23,029
1969	83,700	--	83,700	32,663	8,019	40,682	14,564	7,232	21,796
October 1:									
1965	78,715	20,217	98,932	25,868	13,726	39,594	14,689	7,605	22,294
1966	77,211	22,530	99,741	26,274	12,673	37,947	14,730	7,965	22,695
1967	77,021	18,561	95,582	25,304	12,048	37,352	13,861	9,286	23,147
1968	82,658	9,323	91,981	27,707	8,727	36,434	13,381	8,363	21,744
1969	75,246	--	75,246	30,869	7,779	38,648	13,187	7,231	20,418
TYPE 37--VIRGINIA SUN-CURED				TYPES 35-37--TOTAL DARK AIR-CURED			TYPE 41--PENNSYLVANIA SEEDLEAF		
January 1:									
1965	4,461	--	4,461	45,787	20,775	66,562	125,611	--	125,611
1966	4,613	--	4,613	47,428	20,114	67,542	112,423	--	112,423
1967	4,614	--	4,614	45,796	20,368	66,164	112,276	--	112,276
1968	4,461	--	4,461	44,285	21,630	65,915	100,298	--	100,298
1969	4,341	--	4,341	48,445	16,122	64,567	96,573	--	96,573
April 1:									
1965	5,235	--	5,235	54,751	22,817	77,568	152,366	--	152,366
1966	5,243	37	5,280	52,827	22,043	74,870	142,760	--	142,760
1967	5,004	--	5,004	52,348	23,217	75,565	138,280	--	138,280
1968	4,771	--	4,771	51,878	19,190	71,068	129,836	--	129,836
1969	4,535	--	4,535	57,615	15,438	73,053	122,254	--	122,254
July 1:									
1965	4,750	--	4,750	49,855	21,718	71,573	143,369	--	143,369
1966	4,817	37	4,854	50,704	20,231	70,935	137,122	--	137,122
1967	4,657	--	4,657	47,853	21,534	69,387	123,246	--	123,246
1968	4,385	--	4,385	48,560	17,928	66,488	120,025	--	120,025
1969	4,209	--	4,209	51,436	15,251	66,687	115,218	--	115,218
October 1:									
1965	4,319	--	4,319	44,876	21,331	66,207	129,420	--	129,420
1966	4,271	37	4,308	45,275	19,675	64,950	127,747	--	127,747
1967	4,120	37	4,157	43,285	21,371	64,656	112,291	--	112,291
1968	3,923	--	3,923	45,011	17,090	62,101	108,696	--	108,696
1969	3,791	--	3,791	47,847	15,010	62,857	105,075	--	105,075

TABLE 8. --Stocks of leaf tobacco, by types, on a farm-sales-weight equivalent basis, owned by dealers and manufacturers in the United States and Puerto Rico, by quarters, 1965-69--Continued

Quarter and year	TYPES 42-44--OHIO			TYPES 41-44--TOTAL CONTINENTAL GROWN FILLER			TYPE 46--PUERTO RICAN--CONTINENTAL UNITED STATES		
	Held by trade	Under loan	Total farm-sales-weight: equivalent	Held by trade	Under loan	Total farm-sales-weight: equivalent	Held by trade	Under loan	Total farm-sales-weight: equivalent
	1,000 lb.	1,000 lb.	1,000 lb.	1,000 lb.	1,000 lb.	1,000 lb.	1,000 lb.	1,000 lb.	1,000 lb.
January 1:									
1965	16,469	315	16,784	142,080	315	142,395	17,385	--	17,385
1966	15,389	--	15,389	127,803	--	127,803	17,291	--	17,291
1967	15,385	164	15,549	127,661	164	127,825	14,571	--	14,571
1968	14,037	140	14,177	114,335	140	114,475	15,196	--	15,196
1969	11,417	--	11,417	107,990	--	107,990	9,591	--	9,591
April 1:									
1965	20,040	79	20,919	173,206	79	173,285	17,565	--	17,565
1966	19,077	167	19,244	161,837	167	162,004	16,202	--	16,202
1967	18,114	87	18,201	156,394	87	156,481	12,956	--	12,956
1968	15,052	270	15,322	144,888	270	145,158	13,592	--	13,592
1969	13,578	96	13,674	135,832	96	135,928	10,799	--	10,799
July 1:									
1965	18,527	--	18,527	161,896	--	161,896	16,724	--	16,724
1966	17,559	164	17,723	154,681	164	154,845	15,488	--	15,488
1967	17,651	161	17,812	140,897	161	141,058	11,320	--	11,320
1968	14,088	388	14,476	134,113	388	134,501	12,142	--	12,142
1969	11,658	96	11,954	127,076	96	127,172	9,448	--	9,448
October 1:									
1965	16,970	--	16,970	146,390	--	146,390	16,793	--	16,793
1966	16,081	164	16,245	143,828	164	143,992	15,091	--	15,091
1967	15,339	161	15,520	127,650	161	127,811	9,822	--	9,822
1968	12,910	--	12,910	121,606	--	121,606	10,026	--	10,026
1969	10,939	--	10,939	116,014	--	116,014	8,785	--	8,785
TYPE 46--PUERTO RICAN--PUERTO RICO									
January 1:									
1965	27,884	--	27,884	45,269	--	45,269	187,349	315	187,664
1966	39,100	--	39,100	56,391	--	56,391	184,194	--	184,194
1967	31,959	1,722	33,681	46,530	1,722	48,252	174,191	1,886	176,077
1968	20,385	1,563	21,948	35,581	1,563	37,144	149,916	1,703	151,619
1969	18,482	1,475	19,957	28,073	1,475	29,548	136,063	1,475	137,538
April 1:									
1965	40,188	--	40,188	57,573	--	57,573	230,959	79	231,038
1966	43,091	--	43,091	59,293	--	59,293	221,130	167	221,297
1967	35,452	1,905	37,357	48,408	1,905	50,313	205,794	--	205,794
1968	21,371	1,596	22,967	34,963	1,596	36,559	179,851	1,866	181,717
1969	17,885	1,475	19,360	28,648	1,475	30,159	164,516	1,571	166,087
July 1:									
1965	53,758	--	53,758	70,482	--	70,482	232,378	--	232,378
1966	44,072	--	44,072	59,360	--	59,360	214,241	164	214,405
1967	30,324	8,996	39,320	41,644	8,996	50,640	182,541	9,157	191,698
1968	23,889	2,562	26,451	36,031	2,562	38,593	170,144	2,950	173,094
1969	19,264	2,339	21,603	28,712	2,339	31,051	155,788	2,435	158,223
October 1:									
1965	45,841	--	45,841	62,634	--	62,634	209,024	--	209,024
1966	36,693	--	36,693	51,784	--	51,784	195,612	164	195,776
1967	29,164	1,481	30,645	38,986	1,481	40,467	166,636	1,642	168,278
1968	22,845	1,479	24,324	32,871	1,479	34,350	154,477	1,479	155,956
1969	15,564	1,475	17,039	24,349	1,475	25,824	140,383	1,475	141,858
TYPE 46--PUERTO RICAN--CONTINENTAL UNITED STATES AND PUERTO RICO									
TYPES 41-46--TOTAL CIGAR FILLER									

TABLE 8. --Stocks of leaf tobacco, by types, on a farm-sales-weight equivalent basis, owned by dealers and manufacturers in the United States and Puerto Rico, by quarters, 1965-69--Continued

Quarter and year	TYPE 51--CONNECTICUT BROADLEAF			TYPE 52--CONNECTICUT HAVANA SEED			TYPE 54--SOUTHERN WISCONSIN		
	Held by trade	Under loan	Total farm-sales-weight: equivalent	Held by trade	Under loan	Total farm-sales-weight: equivalent	Held by trade	Under loan	Total farm-sales-weight: equivalent
	1,000 lb.	1,000 lb.	1,000 lb.	1,000 lb.	1,000 lb.	1,000 lb.	1,000 lb.	1,000 lb.	1,000 lb.
January 1:									
1965	13,520	232	13,752	4,823	4,302	9,125	21,341	225	21,566
1966	13,115	551	13,666	4,315	3,081	7,396	20,066	--	20,066
1967	12,607	1,384	13,991	3,568	2,450	6,018	19,803	573	20,376
1968	8,050	969	9,019	2,642	2,036	4,678	17,761	707	18,468
1969	6,633	378	7,011	1,713	1,033	2,746	18,465	244	18,709
April 1:									
1965	14,840	244	15,084	4,345	2,941	7,286	28,074	225	28,299
1966	14,693	1,104	15,797	3,632	2,939	6,571	25,755	635	26,390
1967	13,075	1,260	14,335	3,134	2,338	5,472	24,888	612	25,500
1968	10,501	792	11,293	2,340	1,889	4,229	22,713	802	23,515
1969	7,573	377	7,950	2,030	1,028	3,058	23,245	244	23,489
July 1:									
1965	14,953	238	15,191	4,078	2,839	6,917	25,468	225	25,693
1966	13,625	1,113	14,738	3,393	2,492	5,885	23,530	573	24,103
1967	12,642	1,312	13,954	2,621	2,208	4,829	22,763	713	22,976
1968	8,772	734	9,506	1,937	993	2,930	21,661	244	21,905
1969	6,605	361	6,966	1,852	996	2,848	21,584	249	21,833
October 1:									
1965	14,451	228	14,679	3,876	2,715	6,591	22,447	225	22,672
1966	12,850	1,059	13,909	3,097	2,315	5,412	21,850	573	22,423
1967	10,774	1,072	11,846	2,346	2,197	4,543	19,988	713	20,701
1968	7,957	505	8,462	1,758	993	2,751	19,625	244	19,869
1969	5,810	422	6,232	1,670	1,031	2,701	19,563	28	19,591
	TYPE 55--NORTHERN WISCONSIN			TYPES 51-55--TOTAL CIGAR BINDER					
January 1:									
1965	27,592	1,246	23,838	62,276	6,005	68,281			
1966	24,657	299	24,956	62,153	3,931	66,084			
1967	24,319	3,030	27,349	60,297	7,437	67,734			
1968	23,177	5,912	29,089	51,630	9,624	61,254			
1969	23,150	1,436	24,586	49,961	3,091	53,052			
April 1:									
1965	27,924	1,687	29,611	75,183	5,097	80,280			
1966	29,334	3,415	32,749	73,414	8,093	81,507			
1967	26,545	5,809	32,354	67,642	10,019	77,661			
1968	26,102	7,918	34,020	61,656	11,401	73,057			
1969	26,342	722	27,064	59,190	2,271	61,561			
July 1:									
1965	26,678	837	27,515	71,177	4,139	75,316			
1966	26,837	3,195	30,032	67,385	7,373	74,758			
1967	24,643	6,092	30,735	62,169	10,325	72,494			
1968	23,411	8,046	31,457	55,781	10,017	65,798			
1969	23,318	751	24,069	53,359	2,377	55,736			
October 1:									
1965	25,981	836	26,817	66,755	4,004	70,759			
1966	24,969	3,195	28,164	62,766	7,142	69,908			
1967	23,418	5,912	29,330	56,526	9,894	66,420			
1968	23,808	5,099	28,907	53,148	6,841	59,989			
1969	20,703	24	20,727	47,746	1,505	49,251			

TABLE 8. --Stocks of leaf tobacco, by types, on a farm-sales-weight equivalent basis, owned by dealers and manufacturers in the United States and Puerto Rico, by quarters, 1965-69--Continued

Quarter and year	TYPE 61--CONNECTICUT SHADE-GROWN			TYPE 62--GEORGIA AND FLORIDA SHADE GROWN			TYPES 61-62--TOTAL CIGAR WRAPPER		
	Held by trade	Under loan	Total farm-sales-weight: equivalent	Held by trade	Under loan	Total farm-sales-weight: equivalent	Held by trade	Under loan	Total farm-sales-weight: equivalent
January 1:	1,000 lb.	1,000 lb.	1,000 lb.	1,000 lb.	1,000 lb.	1,000 lb.	1,000 lb.	1,000 lb.	1,000 lb.
1965	18,830	--	18,830	10,158	--	10,158	28,988	--	28,988
1966	19,555	--	19,555	10,943	--	10,943	30,498	--	30,498
1967	20,690	--	20,690	10,116	--	10,116	30,806	--	30,806
1968	19,897	--	19,897	11,651	--	11,651	31,548	--	31,548
1969	17,145	--	17,145	11,147	--	11,147	28,292	--	28,292
April 1:									
1965	17,114	--	17,114	8,208	--	8,208	25,322	--	25,322
1966	18,825	--	18,825	10,323	--	10,323	29,148	--	29,148
1967	17,955	--	17,955	9,873	--	9,873	27,828	--	27,828
1968	15,862	--	15,862	11,125	--	11,125	26,987	--	26,987
1969	16,039	--	16,039	10,310	--	10,310	26,349	--	26,349
July 1:									
1965	14,258	--	14,258	7,299	--	7,299	21,557	--	21,557
1966	16,283	--	16,283	8,185	--	8,185	24,468	--	24,468
1967	16,012	--	16,012	8,685	--	8,685	24,697	--	24,697
1968	12,721	--	12,721	10,062	--	10,062	22,783	--	22,783
1969	12,142	--	12,142	9,205	--	9,205	21,347	--	21,347
October 1:									
1965	19,236	--	19,236	10,055	--	10,055	29,291	--	29,291
1966	20,491	--	20,491	10,476	--	10,476	30,967	--	30,967
1967	18,634	--	18,634	10,895	--	10,895	29,529	--	29,529
1968	16,267	--	16,267	10,688	--	10,688	26,955	--	26,955
1969	14,929	--	14,929	11,382	--	11,382	26,311	--	26,311
<hr/>									
	TYPE 72--PERIQUE			TYPE 73--OTHER MISCELLANEOUS DOMESTIC ^{1/}			TYPES 72-73--TOTAL MISCELLANEOUS DOMESTIC ^{2/}		
January 1:									
1965	630	--	630	2,483	--	2,483	3,113	--	3,113
1966	698	--	698	3,495	--	3,495	4,193	--	4,193
1967	674	--	674	4,704	--	4,704	5,378	--	5,378
1968	583	--	583	2,999	--	2,999	3,582	--	3,582
1969	488	--	488	3,725	--	3,725	4,213	--	4,213
April 1:									
1965	857	--	857	2,502	--	2,502	3,359	--	3,359
1966	1,027	--	1,027	4,051	--	4,051	5,078	--	5,078
1967	871	--	871	6,035	--	6,035	6,906	--	6,906
1968	754	--	754	4,059	--	4,059	4,813	--	4,813
1969	682	--	682	3,369	--	3,369	4,051	--	4,051
July 1:									
1965	782	--	782	3,164	--	3,164	3,946	--	3,946
1966	863	--	863	4,666	--	4,666	5,529	--	5,529
1967	821	--	821	4,458	--	4,458	5,279	--	5,279
1968	706	--	706	5,477	--	5,477	6,183	--	6,183
1969	607	--	607	4,195	--	4,195	4,802	--	4,802
October 1:									
1965	797	--	797	3,558	--	3,558	4,355	--	4,355
1966	828	--	828	4,522	--	4,522	5,350	--	5,350
1967	745	--	745	4,001	--	4,001	4,746	--	4,746
1968	636	--	636	3,841	--	3,841	4,477	--	4,477
1969	561	--	561	4,185	--	4,185	4,746	--	4,746

^{1/} Type 73 is defined as all domestic types of tobacco not otherwise classified, but the bulk of the stocks reported in this type consists of cuttings, clippings, and trimmings. This is the result, in most instances, of the inability of reporters to designate cuttings, clippings, and trimmings in the "B" group of the types to which they properly belong.

^{2/} Prior to January 1, 1963, includes also types 31V and 70 (both low nicotine) and 77 (domestic aromatic).

Compiled from quarterly Tobacco Stocks Reports, Tobacco Division, GMS.

TABLE 9. --Stocks of foreign-grown cigar leaf, and cigarette and smoking tobacco, by types, on a farm-sales-weight equivalent basis, owned by dealers and manufacturers in the United States, by quarters, 1965-69.

	Cigar leaf types										Cigarette leaf type 90
	81 Cuba	82 Indonesia	83 Philip- pines	84 Brazil	85 Colombia	86 Dominican Republic	87 Paraguay	88 Mexico 1/	89 Other 1/	81-89 Total	
	1,000 lb.	1,000 lb.	1,000 lb.	1,000 lb.	1,000 lb.	1,000 lb.	1,000 lb.	1,000 lb.	1,000 lb.	1,000 lb.	1,000 lb.
Jan. 1:											
1965 :	14,465	7,129	28,037	11,995	17,726	23,460	3,485		7,581	113,878	284,584
1966 :	9,212	6,918	47,586	15,587	15,745	15,786	4,784		10,852	126,470	289,255
1967 :	5,382	5,113	38,384	12,803	11,073	9,757	2,412		11,300	96,224	328,516
1968 :	3,213	4,572	28,239	8,446	9,301	9,464	2,780		11,881	77,896	403,337
1969 :	1,997	3,585	40,022	9,189	9,642	11,263	3,976	4,412	6,862	90,948	416,477
Apr. 1:											
1965 :	12,936	7,038	36,560	16,573	18,461	22,972	4,138		7,737	126,415	304,385
1966 :	7,844	6,629	47,170	15,284	15,883	15,031	4,305		10,601	122,747	352,963
1967 :	4,835	5,606	33,606	12,851	9,702	11,266	1,700		11,499	91,065	392,043
1968 :	2,892	4,995	26,697	10,145	8,883	16,810	2,266		10,434	83,122	459,448
1969 :	1,664	3,046	42,696	8,868	7,414	14,299	4,171	3,453	8,087	93,898	408,160
July 1:											
1965 :	11,941	8,419	41,713	17,157	19,700	20,186	4,143		8,737	131,996	316,898
1966 :	6,779	5,989	45,281	14,033	13,826	12,286	4,118		11,414	113,726	365,028
1967 :	4,168	4,991	31,321	12,547	13,889	11,510	2,014		11,270	91,710	404,522
1968 :	2,547	3,702	36,935	10,200	11,388	19,387	1,920		11,787	97,866	441,833
1969 :	1,527	3,314	41,905	9,006	10,173	12,281	4,195	2,758	8,069	93,228	451,246
Oct. 1:											
1965 :	10,533	7,667	42,660	16,281	17,137	18,166	4,065		11,328	127,837	282,660
1966 :	5,953	5,586	42,486	13,180	12,198	11,589	3,286		12,271	106,549	324,582
1967 :	3,632	5,037	30,068	10,622	10,963	10,155	2,297		12,097	84,871	372,149
1968 :	2,199	3,766	35,637	9,533	12,128	14,418	3,250	4,444	5,543	90,918	402,542
1969 :	1,364	3,025	40,197	8,023	11,226	10,041	8,138	4,350	9,711	96,075	423,025

1/ Separate reporting of Mexican stocks was not required until October 1968. In previous quarters Mexican totals were included as other foreign-grown cigar-leaf. Other Foreign Grown leaf is now Type 89.

TABLE 10.--Total stocks of leaf tobacco, as reported and on a farm-sales-weight equivalent basis, owned by dealers and manufacturers in the United States and Puerto Rico, by quarters, 1965-69

Quarter and year	TYPES 11-90			Quarter and year	TYPES 11-90		
	Unstemmed reported	Stemmed reported	Farm-sales- weight equivalent		Unstemmed reported	Stemmed reported	Farm-sales- weight equivalent
	1,000 lb.	1,000 lb.	1,000 lb.		1,000 lb.	1,000 lb.	1,000 lb.
Jan. 1:				July 1:			
1965 :	2,254,500	2,150,636	5,666,073	1965 :	2,152,426	1,936,285	5,230,781
1966 :	2,148,384	2,172,732	5,582,076	1966 :	2,011,800	1,954,238	5,104,022
1967 :	1,999,819	2,131,744	5,352,967	1967 :	1,890,976	1,893,602	4,879,947
1968 :	2,193,251	2,073,947	5,485,801	1968 :	1,982,606	1,806,898	4,857,809
1969 :	2,099,802	1,933,277	5,179,313	1969 :	1,940,832	1,652,874	4,590,274
April 1:				Oct. 1:			
1965 :	2,219,454	2,135,141	5,597,132	1965 :	2,163,545	1,989,896	5,323,303
1966 :	2,086,198	2,150,504	5,478,868	1966 :	2,009,830	1,982,752	5,142,276
1967 :	1,993,954	2,126,976	5,339,196	1967 :	1,902,622	1,963,985	4,994,854
1968 :	2,114,465	2,016,211	5,311,654	1968 :	2,025,872	1,829,089	4,937,467
1969 :	2,038,018	1,863,025	5,005,136	1969 :	1,973,043	1,754,191	4,770,898

Compiled from quarterly Tobacco Stocks Reports, Tobacco Division, C&MS

TABLE 11.--Factors for adjusting stocks reported by dealers and manufacturers to a farm-sales-weight equivalent, by types of tobacco

		Auction Market Areas (Types 11-37) 1/				
Type name	Type number	Factors to multiply by to convert -				
		Stemmed stocks to -		Unstemmed stocks to -		
		Unstemmed equivalent	Farm-sales weight equivalent	Farm-sales-weight equivalent From packed weight 1/		
Flue-cured.....	11-14	1.295	1.450	1.12		
Virginia fire-cured.....	21	1.299	1.598	1.23		
Tennessee and Kentucky fire-cured.....	22-23	1.324	2/ 1.471	1.04		
Burley.....	31	1.345	1.506	1.12		
Southern Maryland.....	32	1.373	1.400	1.02		
One Sucker.....	35	1.413	1.554	1.10		
Green River.....	36	1.389	1.570	1.13		
Virginia sun-cured.....	37	1.326	1.538	1.16		
Miscellaneous domestic.....	72-73	1.333	1.493	1.12		
Domestic-Grown Cigar Leaf (Types 41-62)						
				Sweated weight 3/	Marked weight 3/	Farm-sales weight 3/
Pennsylvania Seedleaf.....	41	1.444	1.718	1.19	1.05	1.00
Ohio.....	42-44	1.454	1.730	1.19	1.05	1.00
Puerto Rican.....	46	1.314	1.551	1.18	1.16	1.00
Connecticut Broadleaf.....	51	1.375	1.622	1.18	1.04	1.00
Connecticut Havana Seed.....	52	1.386	1.635	1.18	1.04	1.00
Southern Wisconsin.....	54	1.383	1.687	1.22	1.06	1.00
Northern Wisconsin.....	55	1.404	1.713	1.22	1.06	1.00
Connecticut Shade.....	61	1.245	1.419	1.14	1.10	1.00
Georgia and Florida Shade.....	62	1.235	1.408	1.14	1.10	1.00
Imported Leaf (Types 81-90)						
Cigar leaf.....	81-88	1.400	1.624		1.16	
Cigarette and smoking tobacco.....	90	1.333	1.466		1.10	

1/ Types 11-37 are reported on the basis of packed weight.

2/ Farm-sales-weight equivalent based on unstemmed sweated weight factor.

3/ The instructions for reporting unstemmed cigar-leaf of the domestic types require that dealers and manufacturers indicate the weight basis on which the tobacco is reported, namely, farm-sales-weight, marked weight, or sweated weight. The stocks are converted to the farm-sales-weight equivalent on the basis of average factors reflecting the percentage reported each quarter in each of these three categories.

TABLE 12.--Hogshead dimensions and weights, by class or type of tobacco

Class or type of tobacco	Diameter	Length	Average weight	
			Net Pounds	Tare Pounds
	Inches	Inches		
Flue-cured.....	48	48	950	135
Burley.....	48	54	960	145
Maryland.....	47	52	750	140
Virginia fire-cured.....	48	54	1,350	150
Kentucky and Tennessee fire-cured.....	48	58	1,425	180
Dark air-cured.....	48	54	1,250	175

Note: These figures are weights and dimensions of hogsheads that are usually purchased by the trade in "knocked down" form and are assembled as used. Some manufacturers use the so-called patented or collapsible hogsheads, usually 47 x 54, the tare weight of which is 115 pounds, or a case measuring 30 x 30 x 40" with a tare weight of 90-100 pounds.

TABLE 13.--Estimated utilization of flue-cured, burley, and Maryland tobaccos in cigarettes and other products, averages 1939-58, annual 1956-57 to 1968-69 (July-June basis)

Year beginning July	(Farm-sales-weight)								
	Flue-cured			Burley 1/			Maryland 1/		
	Ciga- rettes	Other 2/ products	Total	Ciga- rettes	Other 2/ products	Total	Ciga- rettes	Other 2/ products	Total
Mill. lb.	Mill. lb.	Mill. lb.	Mill. lb.	Mill. lb.	Mill. lb.	Mill. lb.	Mill. lb.	Mill. lb.	Mill. lb.
1939-43.....	445	67	512	243	125	368	23	3	26
1944-48.....	637	50	687	381	96	477	24	3	27
1949-53.....	731	42	773	424	77	501	24	4	28
1954-58.....	692	38	730	421	62	483	19	5	25
1956.....	669	35	704	424	58	482	17	4	21
1957.....	698	39	737	419	59	478	18	7	25
1958.....	698	38	736	424	59	483	18	6	24
1959.....	728	38	766	441	58	499	15	5	20
1960.....	753	39	792	450	58	508	18	6	24
1961.....	743	39	782	467	58	525	15	6	21
1962.....	738	39	777	474	57	531	13	6	19
1963.....	725	43	768	452	61	513	12	6	18
1964.....	733	42	775	496	65	561	16	7	23
1965.....	712	40	752	489	61	550	20	7	27
1966.....	647	40	687	484	60	544	17	7	24
1967.....	645	42	688	484	61	545	13	7	20
1968.....	630	43	673	456	60	516	31	7	38
1969.....									

1/ Marketing year domestic disappearance substituted for burley and Maryland. 2/ Smoking and chewing tobacco and cigars; includes also exports of partially processed and shredded tobacco, classified as "bulk smoking"

TABLE 14.--Estimated leaf used by domestic manufacturers in cigarettes, by types of tobacco, averages 1939-58, annual 1956-57 to 1968-69 (July-June basis)

Year beginning July	(Farm-sales-weight)									
	Flue-cured		Burley 1/		Maryland 1/		Imported		Total leaf used	Production of cigarettes
	Quantity	Percent	Quantity	Percent	Quantity	Percent	Quantity	Percent		
Mill. lb.	Pct. of total	Mill. lb.	Pct. of total	Mill. lb.	Pct. of total	Mill. lb.	Pct. of total	Mill. lb.	Billions	
1939-43.....	445	58.2	243	31.8	23	3.0	54	7.0	763	244.1
1944-48.....	637	57.6	381	34.5	24	2.2	63	5.7	1,105	360.6
1949-53.....	731	58.0	424	33.6	24	1.9	82	6.5	1,261	412.6
1954-58.....	692	56.1	421	34.1	19	1.5	102	8.3	1,234	437.4
1956.....	669	55.4	424	35.1	17	1.4	98	8.1	1,208	433.9
1957.....	698	56.3	419	33.8	18	1.4	105	8.5	1,240	449.1
1958.....	698	55.3	424	33.6	18	1.4	122	9.7	1,262	479.5
1959.....	728	55.5	441	33.6	15	1.1	129	9.8	1,313	506.1
1960.....	753	55.5	450	33.2	18	1.3	136	10.0	1,357	518.0
1961.....	743	54.4	467	34.2	15	1.1	141	10.3	1,366	529.9
1962.....	738	54.0	474	34.7	13	1.0	141	10.3	1,366	543.7
1963.....	725	54.6	453	34.1	12	0.9	138	10.4	1,328	536.0
1964.....	733	52.6	496	35.6	16	1.2	148	10.6	1,393	562.4
1965.....	712	51.9	489	35.6	20	1.5	151	11.0	1,372	562.7
1966.....	647	49.4	484	36.9	17	1.3	163	12.4	1,310	572.8
1967.....	645	48.4	484	36.3	13	1.0	192	14.4	1,334	576.7
1968.....	630	48.7	456	35.2	31	2.4	178	13.7	1,295	573.0
1969.....										

1/ Burley and Maryland marketing year substituted

TABLE 15.--Estimated leaf used per 1000 cigarettes by domestic manufacturers, by types of tobacco, averages 1939-58, annual 1956-57 to 1968-69 (July-June basis)

Year beginning July	(Farm-sales-weight)						
	Domestic types				Imported	Total	Cigarettes per pound of leaf
	Flue-cured	Burley	Maryland	Total domestic			
Pounds	Pounds	Pounds	Pounds	Pounds	Pounds	Number	
1939-43.....	1.82	1.00	.09	2.91	.22	3.13	319
1944-48.....	1.76	1.06	.07	2.89	.17	3.06	327
1949-53.....	1.77	1.03	.06	2.86	.20	3.06	327
1954-58.....	1.58	.96	.05	2.59	.23	2.82	355
1956.....	1.54	.98	.04	2.56	.22	2.78	360
1957.....	1.55	.94	.04	2.53	.23	2.76	362
1958.....	1.46	.88	.04	2.38	.25	2.63	380
1959.....	1.44	.87	.03	2.34	.25	2.59	386
1960.....	1.46	.87	.03	2.36	.26	2.62	382
1961.....	1.40	.88	.03	2.31	.27	2.58	388
1962.....	1.36	.87	.02	2.25	.26	2.51	398
1963.....	1.35	.85	.02	2.22	.26	2.48	404
1964.....	1.31	.88	.03	2.21	.26	2.48	404
1965.....	1.26	.87	.04	2.17	.27	2.44	410
1966.....	1.13	.85	.03	2.01	.28	2.29	437
1967.....	1.13	.85	.02	2.00	.34	2.34	428
1968.....	1.10	.80	.05	1.95	.31	2.26	442
1969.....							

Source for tables on this page: estimates of Tobacco Division, C&MS.

TABLE 16.--Cigars, cigarettes, chewing tobacco, smoking tobacco, and snuff manufactured and removed tax-paid and tax-free, in the United States, by calendar years, averages 1944-58, annual 1959-69

Year	MANUFACTURED														Total chewing, smoking, and snuff tobacco 2/
	Cigars				Cigarettes		Chewing tobacco 2/					Smoking tobacco 2/	Snuff 2/		
	Domestic factories	Large Bonded ware- houses	Total	Small	Large	Small 1/	Plug	Twist	Fine-cut	Scrap	Total chewing				
Millions	Millions	Millions	Millions	Millions	Millions	Mil. lb.	Mil. lb.	Mil. lb.	Mil. lb.	Mil. lb.	Mil. lb.	Mil. lb.	Mil. lb.		
1944-48 average.....	5,444.8	120.7	5,565.5	96.5	22.4	352,459.0	53.2	6.0	3.8	46.2	109.2	125.4	41.0	275.6	
1949-53 average.....	5,637.2	179.6	5,816.8	69.4	.9	410,867.3	39.8	5.0	2.8	38.8	86.5	100.1	39.7	226.2	
1954-58 average.....	5,898.2	230.7	6,128.9	80.5	.4	430,159.6	33.5	4.3	2.9	35.0	75.7	76.3	37.3	189.4	
1959.....	6,608.4	249.0	6,857.4	530.1	.2	489,864.8	28.5	3.6	3.0	33.0	68.1	73.2	34.3	175.7	
1960.....	6,768.1	223.3	6,991.4	148.7	.1	506,944.2	26.4	3.4	3.1	32.0	64.9	73.8	34.6	173.3	
1961.....	6,454.5	187.8	6,642.3	158.2	(3)	528,332.4	26.0	3.3	3.2	32.7	65.2	74.2	33.8	173.2	
1962.....	6,597.7	85.5	6,683.2	164.0	(3)	535,495.7	26.0	2.9	3.3	32.5	64.7	70.9	33.2	168.8	
1963.....	6,652.7	63.1	6,715.8	281.5	(3)	550,558.3	24.9	2.9	3.3	34.0	65.1	70.4	31.8	167.5	
1964.....	8,727.9	9.1	8,737.0	973.9	(3)	539,907.8	25.9	2.8	3.5	34.0	66.2	82.4	31.4	180.1	
1965.....	7,899.5	--	7,899.5	440.7	.1	556,806.1	24.7	2.9	3.7	33.9	65.1	71.8	29.7	166.6	
1966.....	7,165.3	--	7,165.3	445.3	(3)	567,264.5	24.3	2.7	3.9	34.3	65.2	67.3	29.5	162.0	
1967.....	6,858.9	--	6,858.9	433.9	.3	576,182.6	23.7	2.6	4.1	34.0	64.4	64.8	29.3	158.5	
1968.....	7,184.2	--	7,184.2	523.3	.8	579,492.9	22.9	2.6	4.3	35.7	65.4	66.3	27.1	158.8	
1969.....	6,937.1	--	6,937.1	743.2	1.0	557,646.6	23.3	2.5	4.5	39.5	69.8	63.9	27.6	161.3	
REMOVED TAX-PAID															
1959.....	6,469.7	247.0	6,716.7	481.6	.2	453,680.8	28.1	2.8	3.0	32.8	66.7	71.2	33.6	171.7	
1960.....	6,510.9	216.9	6,727.8	141.9	.1	470,135.5	26.0	2.8	3.1	31.9	63.8	71.3	34.7	169.8	
1961.....	6,371.8	186.4	6,558.2	146.1	(3)	488,119.2	25.8	2.8	3.2	32.6	64.4	71.4	33.7	169.5	
1962.....	6,355.1	86.9	6,442.0	155.8	(3)	494,462.9	25.3	2.6	3.3	32.6	63.8	68.3	33.1	165.2	
1963.....	6,564.9	57.3	6,622.2	264.2	(3)	509,588.0	24.7	2.6	3.3	33.9	64.5	68.1	31.9	164.5	
1964.....	8,106.1	16.3	8,122.4	939.7	(3)	497,446.9	25.4	2.6	3.5	34.0	65.5	79.0	31.3	175.8	
1965.....	7,577.9	--	7,577.9	434.7	(3)	511,464.4	24.0	2.5	3.7	33.7	63.9	67.3	29.5	160.6	
1966.....	7,075.5	--	7,075.5	435.7	(3)	522,533.1	24.1	2.5	3.9	33.6	64.2	65.3	29.5	159.0	
1967.....	6,846.4	--	6,846.4	430.7	.2	527,800.3	23.4	2.4	4.1	34.3	64.3	62.7	28.9	155.9	
1968.....	6,758.9	--	6,758.9	503.5	.7	523,007.1	23.0	2.4	4.3	35.7	65.4	64.1	27.7	157.1	
1969.....	6,745.1	--	6,745.1	731.0	1.1	510,530.0	23.0	2.5	4.5	39.3	69.3	62.6	26.9	158.8	
REMOVED TAX-FREE															
1959.....	102.6	--	102.6	23.9	(3)	35,828.3	.4	.8	--	(3)	1.2	1.9	(3)	3.2	
1960.....	105.1	--	105.1	16.8	(3)	36,997.7	.3	.5	--	.1	.9	2.3	(3)	3.2	
1961.....	117.6	--	117.6	6.8	--	39,549.7	.3	.5	--	(3)	.8	2.5	(3)	3.3	
1962.....	126.0	--	126.0	7.1	--	41,069.9	.3	.3	--	.1	.7	2.6	(3)	3.3	
1963.....	142.6	--	142.6	8.2	--	41,088.5	.2	.3	--	(3)	.5	2.2	(3)	2.8	
1964.....	193.1	--	193.1	34.1	--	42,644.6	.3	.3	--	(3)	.6	3.4	(3)	4.0	
1965.....	180.2	--	180.2	23.1	(3)	44,235.5	.3	.3	--	(3)	.6	3.0	(3)	3.6	
1966.....	193.1	--	193.1	16.9	--	46,111.4	.2	.3	(3)	.1	.6	1.5	(3)	2.1	
1967.....	196.6	--	196.6	10.1	(4)	48,970.4	.4	.1	(3)	.1	.6	2.0	(3)	2.7	
1968.....	168.7	--	168.7	7.3	(4)	53,844.5	.3	.1	(3)	.1	.5	1.9	(3)	2.4	
1969.....	169.6	--	169.6	10.8	(4)	47,264.0	.1	(3)	(3)	.1	.2	1.6	(3)	1.8	

1/ "King-size" cigarettes included in this category.

2/ Federal excise tax removed from these products January 1, 1966. Data now collected by Consumer and Marketing Service, USDA.

Totals are not exactly comparable to previous Internal Revenue Service figures.

3/ Less than 50,000.

4/ Subject to revision.

Detail may not add to total because of rounding.

Compiled from reports of the Internal Revenue Service and Tobacco Division, C&MS, U. S. Department of Agriculture.

TABLE 17.--Large cigars removed tax-paid for domestic consumption, by calendar years 1960-69

Classification and year	Class A	Class B	Class C	Class D	Class E	Class F	Class G	Total
Domestic manufacture: 1/	Thousands	Thousands	Thousands	Thousands	Thousands	Thousands	Thousands	Thousands
1960.....	17,132	315,075	2,627,878	1,151,030	2,140,926	181,573	77,280	6,510,894
1961.....	20,495	332,854	2,586,509	1,028,875	2,159,102	165,860	78,096	6,371,791
1962.....	20,679	344,613	2,543,518	958,068	2,233,774	135,226	119,230	6,355,106
1963.....	24,839	375,449	2,724,119	898,545	2,259,906	166,290	135,804	6,564,952
1964.....	165,515	559,060	3,581,907	1,025,203	2,446,592	163,619	164,196	8,106,093
1965.....	137,652	594,183	3,367,123	870,872	2,256,311	181,004	170,723	7,577,869
1966.....	121,738	569,220	3,111,248	793,538	2,110,398	198,011	171,334	7,075,486
1967.....	120,798	600,803	2,963,057	811,009	1,948,092	225,432	177,187	6,846,377
1968.....	125,905	380,419	3,044,688	1,008,442	1,769,450	254,741	175,268	6,758,893
1969 4/.....	155,552	258,233	2,782,453	1,356,404	1,756,898	258,427	177,095	6,745,052
Bonded warehouses: 1/								
1960.....	--	57	8,667	9,352	56,155	59,539	83,086	216,856
1961.....	--	60	7,804	7,273	40,505	48,318	82,475	186,435
1962.....	--	87	1,549	1,708	17,416	20,424	45,691	86,875
1963.....	--	92	--	--	13,310	11,121	32,802	57,325
1964.....	--	14	--	--	4,404	3,980	7,873	16,271
1965.....	--	--	--	--	--	--	--	--
1966.....	--	--	--	--	--	--	--	--
1967.....	--	--	--	--	--	--	--	--
1968.....	--	--	--	--	--	--	--	--
1969.....	--	--	--	--	--	--	--	--
Imported: Cuba:								
1960.....	--	--	--	--	417	332	21,287	22,026
1961.....	--	--	2	--	460	346	11,972	12,680
1962.....	--	--	--	--	(3)	1	3	4
1963.....	--	--	--	--	--	--	6	6
1964.....	--	--	--	--	--	--	--	--
1965.....	--	--	--	--	--	--	--	--
1966.....	--	--	--	--	--	--	--	--
1967.....	--	--	--	--	--	--	--	--
1968.....	--	--	--	--	--	--	--	--
1969.....	--	--	--	--	--	--	--	--
Imported: Other countries:								
1960.....	26	14	3,849	725	1,967	242	538	7,361
1961.....	10	26	4,774	571	3,680	463	3,093	12,617
1962.....	121	52	10,521	963	4,682	554	5,339	22,231
1963.....	1	5	10,544	635	4,682	613	4,908	21,389
1964.....	102	95	11,813	696	7,354	821	6,893	27,774
1965.....	4	11	7,188	454	6,860	795	7,889	23,201
1966.....	(3)	3	6,815	680	7,413	1,127	7,991	24,029
1967.....	1	1	7,288	753	6,486	842	10,658	26,028
1968.....	20	308	6,778	835	11,265	2,094	10,789	32,098
1969 4/.....	5	--	5,733	586	6,368	1,943	9,354	23,989
Puerto Rican manufacture: 2/								
1960.....	--	440	60,196	186	136,589	80	54	197,545
1961.....	--	592	98,146	626	188,599	62,654	3,195	353,812
1962.....	--	154	105,587	1,050	254,600	114,673	6,581	482,644
1963.....	(3)	259	120,154	13,536	295,913	91,168	4,561	525,592
1964.....	(3)	240	189,318	2,980	491,726	119,345	5,454	809,063
1965.....	--	28	177,994	817	621,659	104,959	7,354	912,811
1966.....	--	536	342,901	2,902	627,754	94,045	6,779	1,074,917
1967.....	--	348	334,400	3,783	662,859	89,892	8,017	1,099,300
1968.....	--	672	316,470	18,176	616,527	77,498	6,565	1,035,908
1969 4/.....	10	341	303,063	44,661	637,619	85,949	6,560	1,078,203
Total:								
1960.....	17,158	315,586	2,700,590	1,161,293	2,336,054	241,756	182,245	6,954,682
1961.....	20,505	333,532	2,697,235	1,037,345	2,392,346	277,641	178,731	6,937,335
1962.....	20,800	344,905	2,661,175	961,789	2,510,472	270,876	176,843	6,946,860
1963.....	24,840	375,806	2,854,817	912,716	2,573,812	249,192	178,080	7,169,264
1964.....	165,617	559,409	3,783,038	1,028,879	2,950,076	287,765	184,416	8,959,202
1965.....	137,656	594,222	3,552,305	872,143	2,884,830	286,758	185,966	8,513,881
1966.....	121,738	569,759	3,460,964	797,120	2,745,565	293,183	186,104	8,174,432
1967.....	120,799	601,151	3,306,745	815,545	2,617,437	316,165	195,862	7,971,705
1968.....	125,905	381,399	3,367,937	1,027,454	2,397,241	334,332	192,631	7,826,899
1969 4/.....	155,567	258,574	3,091,249	1,401,651	2,400,875	346,319	193,009	7,847,244

1/ Tax-paid removals from domestic factories and bonded warehouses.

2/ Quantities represented by collections.

3/ Less than 500.

4/ Subject to revision.

TABLE 18.--Rates of Federal tax on tobacco products in the United States

Product	Rate of tax
Cigars weighing more than 3 pounds per 1,000, if manufactured or imported to retail at -	1,000 dol.
(A) Not more than 2-1/2 cents each	2.50
(B) More than 2-1/2 and not more than 4 cents each	3.00
(C) More than 4 and not more than 6 cents each	4.00
(D) More than 6 and not more than 8 cents each	7.00
(E) More than 8 and not more than 15 cents each	10.00
(F) More than 15 and not more than 20 cents each	15.00
(G) More than 20 cents each	20.00
Weighting not more than 3 pounds per 1,000	.75
Cigarettes weighing more than 3 pounds per 1,000	1/ 8.40
Weighting not more than 3 pounds per 1,000	4.00
Cigarette papers (in books or sets of more than 25)	2/ .005
Cigarette tubes	2/ .01

1/ Except that if more than 6-1/2 inches in length, they shall be taxable at the rate prescribed for cigarettes weighing not more than 3 pounds per 1,000, counting each 2-3/4 inches, or fraction thereof, of the length of each as one cigarette (Revenue Act of May 10, 1934).

2/ Rate for each 50 or fraction thereof; except that if papers or tubes measure more than 6-1/2 inches in length they shall be taxable at the rate prescribed, counting each 2-3/4 inches, or fraction thereof, of the length of each as one paper or tube (Revenue Act of May 10, 1934).

TABLE 19.--Receipts from Federal taxes on tobacco products in the United States, by type of product, fiscal years, 1964-65--1968-69 1/

Product	Federal tax receipts for year (July-June basis)				
	1964-65	1965-66	1966-67	1967-68	1968-69
	1,000 dol.	1,000 dol.	1,000 dol.	1,000 dol.	1,000 dol.
Cigars (large)	2/ 60,593	2/ 57,333	2/ 55,433	2/ 54,594	2/ 53,991
Cigars (small)	330	328	303	342	443
Cigarettes (large)	1/	1/	1	5	5
Cigarettes (small)	2,069,695	2,006,498	2,023,090	2,066,154	2,082,101
Chewing, smoking tobacco, and snuff	16,716	8,684	4/	4/	4/
Cigarette papers and tubes	654	634	639	614	669
Tobacco materials--Violations	1	1	1	9	5/
Imported tobacco products, cigarette papers and tubes, and tobacco materials (Customs)	6/ 605	6/ 477	6/ 401	6/ 550	6/ 580
Miscellaneous tax collections	--	--	1	8	87
Total	2,148,594	2,073,956	2,079,869	2,122,277	2,137,877

1/ For rates of tax on tobacco products, see table 24. 2/ Includes prepayment as follows: Cigars (large)--1964-65 \$45,890; 1965-66, \$20,504; 1966-67, \$19,262; 1967-68, \$22,114; and 1968-69, \$345,282; Cigarettes (small)--1967-68, \$1,428; and 1968-69, \$552. 3/ Less than \$500. 4/ Tax repealed effective January 1, 1966 (Public Law 89-44).

5/ Included in miscellaneous tax collections. 6/ Collected by Customs beginning October 1, 1961. Prior to October 1, 1961, customs collections were included in the applicable classes of tobacco tax.

Detail may not add to total because of rounding. Compiled from reports of the Internal Revenue Service.

TABLE 20.--Estimated total expenditures for tobacco products, by type of product, calendar years, 1946-49 1/

Year	Cigars				Year	Cigarettes			
	(large and small)	(large and small)	and smoking tobacco and snuff	Total all products		(large and small)	(large and small)	and smoking tobacco and snuff	Total all products
	Mil. dol.	Mil. dol.	Mil. dol.	Mil. dol.		Mil. dol.	Mil. dol.	Mil. dol.	Mil. dol.
1946	542	2,656	280	3,478	1958	584	5,341	257	6,182
1947	547	3,044	278	3,869	1959	629	5,854	281	6,764
1948	548	3,307	288	4,143	1960	649	6,244	294	7,187
1949	520	3,437	289	4,246	1961	631	6,538	303	7,472
1950	514	3,586	292	4,392	1962	634	6,675	299	7,608
1951	526	3,876	283	4,685	1963	649	7,055	300	8,004
1952	545	4,246	282	5,073	1964	765	7,024	324	8,113
1953	560	4,436	268	5,264	1965	734	7,609	308	8,651
1954	552	4,292	260	5,104	1966	718	8,113	309	9,140
1955	550	4,409	258	5,217	1967	706	8,572	304	9,582
1956	556	4,681	244	5,481	1968	703	9,094	315	10,112
1957	562	5,072	243	5,877	1969	710	9,280	335	10,325

1/ Compiled from the Tobacco Situation, Economic Research Service.

TABLE 21.--Wholesale cigarette price revisions, 1940 to date 1/

Approximate date of change	Net price per 1,000				Net price per 1,000 excluding Federal excise tax			
	Standard	King size	Filter tips	100 millimeter	Standard	King size	Filter tips	100 millimeter
	Dollars	Dollars	Dollars	Dollars	Dollars	Dollars	Dollars	Dollars
July 1, 1940.....	5.88	--	--	--	2.63	--	--	--
November 1, 1942...	6.13	--	--	--	2.63	--	--	--
April 25, 1946....	6.38	--	--	--	2.88	--	--	--
October 7, 1946....	6.64	--	--	--	3.14	--	--	--
July 22, 1948.....	7.00	--	--	--	3.50	--	--	--
July 29, 1950.....	7.20	7.24	--	--	3.70	3.74	--	--
November 1, 1951...	7.71	7.75	--	--	3.71	3.75	--	--
February 26, 1953..	8.10	8.19-8.40	--	--	4.10	4.19-4.40	--	--
March 1953.....	--	--	9.00	--	--	--	5.00	--
April 15, 1955....	--	8.55	--	--	--	4.55	--	--
June 17, 1957....	8.45	8.89	--	--	4.45	4.89	--	--
April and May 1963	8.80	9.00	--	--	4.80	5.00	--	--
March 1966.....	9.00	9.20	9.20	--	5.00	5.20	5.20	--
June 1967.....	9.25	9.45	9.45	9.95	5.25	5.45	5.45	5.95
November 1968....	9.45	9.45	9.45	9.95	5.45	5.45	5.45	5.95
May 1969.....	9.80	9.80	9.80	10.30	5.80	5.80	5.80	6.30

1/ Includes leading brands. A 2% discount is made for cash payment.

TABLE 22.--Consumption per capita of tobacco products in the United States (including overseas forces) for specified periods 1/

Year	Per capita 18 years and over			Per male 18 years and over				Per person 18 years and over
	Cigarettes 2/		All tobacco products 2/	Large cigars and cigarillos 2/	Smoking tobacco 3/	Chewing tobacco 3/	Snuff 3/	
	Number	Pounds	Pounds	Number	Pounds	Pounds	Pounds	Pounds
Average 1925-29.....	1,285	3.56	9.68	177.4	4.10	4.15	5.03	0.52
Average 1930-34.....	1,389	3.82	8.80	125.2	2.96	4.40	3.15	.46
Average 1935-39.....	1,779	4.81	9.22	120.9	2.89	4.39	2.48	.42
Average 1940-44.....	2,558	6.97	10.88	118.9	2.87	3.67	2.34	.43
Average 1945-49.....	3,459	9.38	12.46	113.7	2.74	2.35	2.01	.41
Average 1950-54.....	3,695	9.98	12.61	112.4	2.63	1.78	1.58	.36
Average 1955-59.....	3,806	9.39	11.71	115.8	2.48	1.34	1.30	.32
1960.....	4,171	9.64	11.82	124.7	2.42	1.30	1.13	.30
1961.....	4,266	9.84	12.00	122.9	2.43	1.30	1.13	.29
1962.....	4,265	9.69	11.80	121.9	2.40	1.24	1.10	.28
1963.....	4,345	9.70	11.78	124.6	2.39	1.22	1.11	.27
1964.....	4,194	9.21	11.53	154.3	2.69	1.42	1.11	.26
1965.....	4,258	9.37	11.51	143.8	2.57	1.19	1.07	.24
1966.....	4,287	9.08	11.12	136.1	2.41	1.13	1.05	.23
1967.....	4,280	8.86	10.80	130.7	2.28	1.08	1.04	.23
1968 1/.....	4,186	8.69	10.59	126.5	2.15	1.11	1.05	.21
1969 1/.....	3,993	8.20	10.10	125.0	2.18	1.08	1.09	.20

- 1/ Includes Alaska and Hawaii for all years.
- 2/ Unstemmed processing-weight equivalent.
- 3/ Finished-product weight.
- 4/ Preliminary.

Compiled from the Tobacco Situation, Economic Research Service.

TABLE 23.--State tax rates on cigarettes and other tobacco products in the United States, as of January 1, 1970

CIGARETTES							
State	Rate of tax per standard package of 20 ¹ / ₂	Date of present rate	Year tax enacted	State	Rate of tax per standard package of 20 ¹ / ₂	Date of present rate	Year tax enacted
Alabama	12	1969	1927	Nebraska	8	1965	1947
Alaska ² / ₁	8	1961	1949	Nevada	10	1969	1947
Arizona	10	1968	1933	New Hampshire ³ / ₁	7	1967	1939
Arkansas	12.25	1969	1924	New Jersey	14	1968	1948
California	10	1967	1959	New Mexico	12	1968	1943
Colorado	5	1965	1964	New York	12	1968	1939
Connecticut	16	1969	1935	North Carolina ⁴ / ₁	2	1969	1969
Delaware	11	1969	1949	North Dakota	11	1969	1925
Florida	15	1968	1943	Ohio	10	1969	1931
Georgia	8	1964	1923	Oklahoma	13	1968	1933
Hawaii ² / ₁ ³ / ₁	8	1965	1939	Oregon	4	1966	1966
Idaho	7	1963	1945	Pennsylvania ⁵ / ₁	18	1970	1935
Illinois	12	1969	1941	Rhode Island	13	1968	1939
Indiana	6	1965	1947	South Carolina	6	1969	1923
Iowa	10	1967	1921	South Dakota	12	1969	1923
Kansas	8	1965	1927	Tennessee	13	1969	1925
Kentucky	2.5	1960	1936	Texas	15.5	1969	1931
Louisiana	8	1948	1926	Utah	8	1963	1923
Maine	12	1961	1941	Vermont	12	1969	1937
Maryland	6	1969	1958	Virginia	2.5	1966	1960
Massachusetts	12	1969	1939	Washington	11	1965	1935
Michigan	7	1962	1947	West Virginia	7	1968	1947
Minnesota	13	1969	1947	Wisconsin	14	1969	1939
Mississippi	9	1964	1930	Wyoming	8	1967	1951
Missouri	9	1969	1956	District of Columbia	4	1969	1949
Montana	8	1957	1947				

OTHER TOBACCO PRODUCTS

State	Product and rate of tax
Alabama	Cigars, retailing for-- (a) 3-1/3 cents each or less, \$1.50 per thousand. (b) More than 3-1/3 and not more than 5 cents each, \$3 per thousand. (c) More than 5 and not more than 8 cents each, \$4.50 per thousand. (d) More than 8 and not more than 10 cents each, \$7.50 per thousand. (e) More than 10 and not more than 20 cents each, \$15 per thousand. (f) More than 20 cents each, \$20.25 per thousand. Small cigars, 2 cents for each 10 or fraction thereof. Smoking tobacco: Rate of tax ranging from 2 cents per 1-1/8 ounces or less to 3 cents per ounce for over 4 ounces. Chewing tobacco: 3/4 cents per ounce or fraction thereof. Snuff: Rate of tax ranging from 1/2 cent per 5/8 ounces or less to 1 cent per ounce for over 6 ounces.
Arizona	Cigars, retailing for-- (a) 5 cents each or less, 1 cent for each 3 cigars. (b) More than 5 cents, 1 cent each. Small cigars, 2 cents for each 20 or fraction thereof. Smoking and chewing tobacco and snuff: 1 cent per ounce or major fraction thereof. Plug tobacco: 1/4 cent per ounce or fraction thereof.
Arkansas	All other products: 15 percent of wholesale price.
Connecticut	Small cigars, 4 mills each.
Georgia	Cigars, retailing for-- (a) 3-1/3 cents each or less, \$1.50 per thousand. (b) More than 3-1/3 and not more than 5 cents each, \$3 per thousand. (c) More than 5 and not more than 8 cents each, \$4 per thousand. (d) More than 8 and not more than 10 cents each, \$7.50 per thousand. (e) More than 10 and not more than 20 cents each, \$15 per thousand. (f) More than 20 cents each, \$20 per thousand. Small cigars, 2 mills each.
Hawaii	All other products: 40 percent of wholesale price.
Iowa	All other products: 10 percent of wholesale price.
Louisiana	Cigars, retailing for-- (a) 5 cents each or less, \$3.20 per thousand. (b) More than 5 and not more than 8 cents each, \$4.80 per thousand. (c) More than 8 and not more than 15 cents each, \$8 per thousand. (d) More than 15 and not more than 20 cents each, \$32 per thousand. (e) More than 20 cents each, \$40 per thousand. Small cigars, \$1.20 per thousand. Smoking tobacco, (next page).

See footnotes at end of table.

TABLE 23.--State tax rates on cigarettes and other tobacco products in the United States, as of January 1, 1970--Continued

OTHER TOBACCO PRODUCTS--Continued

State	Product and rate of tax
Louisiana - Continued...	Smoking tobacco, retailing for-- (a) Not more than 5 cents per package, 1 cent. (b) More than 5 and not more than 10 cents per package, 2 cents. (c) More than 10 and not more than 13 cents per package, 3 cents. (d) More than 13 and not more than 15 cents per package, 4 cents. (e) More than 15 cents per package, 4 cents plus 1-1/3 cents for each 5 cents or fraction thereof of selling price in excess of 15 cents.
Minnesota.....	All other products: 10 percent of wholesale price.
Mississippi.....	Cigars, cheroots, and stogies, retailing for-- (a) 3-1/3 cents each or less, \$1.80 per thousand. (b) More than 3-1/3 and not more than 5 cents each, \$3.60 per thousand. (c) More than 5 and not more than 8 cents each, \$5.40 per thousand. (d) More than 8 and not more than 10 cents each, \$9 per thousand. (e) More than 10 and not more than 20 cents each, \$18 per thousand. (f) More than 20 cents each, \$25.20 per thousand. Smoking tobacco: 1-1/8 cents for each 5 cents or fraction thereof of retail price. Snuff and chewing tobacco: 9/16 cent for each 5 cents or fraction thereof of retail price.
Montana.....	All other products: 12.5 percent of wholesale price.
New Hampshire.....	All other products: 30 percent of retail selling price.
North Dakota.....	All other products: 11 percent of wholesale price.
Oklahoma.....	Cigars, cheroots, stogies, etc., Weighing more than three pounds per thousand, \$30 per thousand. Small cigars, 6.5 mills each. Smoking tobacco: 40 percent of wholesale price. Chewing tobacco: 30 percent of wholesale price.
Rhode Island.....	All other products: 25 percent of wholesale price.
South Carolina.....	Cigars, cheroots, stogies, etc., retailing for-- (a) 5 cents each or less, \$1 per thousand. (b) More than 5 cents each, \$10 per thousand. Small cigars, 1 cent for each 10 or fraction thereof. Smoking tobacco: 30 percent of wholesale price. Snuff and chewing tobacco: 5 percent of wholesale price.
Tennessee.....	Cigars, cheroots, stogies, etc., retailing for-- (a) 3-1/3 cents each or less, \$1 per thousand. (b) More than 3-1/3 and not more than 5 cents each, \$2 per thousand. (c) More than 5 and not more than 9 cents each, \$3 per thousand. (d) More than 9 and not more than 10 cents each, \$5 per thousand. (e) More than 10 and not more than 20 cents each, \$10.50 per thousand. (f) More than 20 cents each, \$13.50 per thousand. Small cigars, 1 cent for each 10 or fraction thereof. Manufactured tobacco and snuff: 6 percent of wholesale price.
Texas.....	Small cigars, 1 cent for each 10 or fraction thereof. Cigars weighing more than three pounds per thousand-- (a) Retailing for not more than 3-1/3 cents each, \$7.50 per thousand. (b) Retailing for over 3-1/3 cents each, with a factory list price of less than \$170 per thousand and containing no sheet wrapper, binder, or filler, \$12 per thousand. (c) Retailing for over 3-1/3 cents each, with a factory list price of \$170 per thousand or more and containing no sheet wrapper, binder, or filler, \$15 per thousand. (d) Retailing for over 3-1/3 cents each and containing any sheet wrapper, binder, or filler, \$15 per thousand.
Utah.....	All other products: 25 percent of wholesale price.
Vermont.....	All other products: 20 percent of wholesale price.
Washington.....	All other products: 30 percent of wholesale price.

1/ Some States impose varying tax rates for cigarettes of other quantities, sizes, weights, etc. Some cities also levy taxes on cigarettes.

2/ Alaska became a state January 3, 1959; Hawaii July 4, 1960.

3/ Hawaii: 40 percent of wholesale price. New Hampshire: 30 percent of retail selling price. Tax per pack approximated.

4/ Effective October 1, 1969.

5/ Effective January 15, 1970.

Compiled from Reports of Proceedings of the Annual Meetings of the National Tobacco Tax Association and brought to date from Tax Administrators News, monthly publication of the Federation of Tax Administrators.

TABLE 24.--Receipts from State taxes on tobacco products in the United States, by States, fiscal years, 1964-65--1968-69 1/

State	Receipts for year (July-June basis)				
	1964-65	1965-66	1966-67	1967-68	1968-69 2/
	1,000 dollars	1,000 dollars	1,000 dollars	1,000 dollars	1,000 dollars
Alabama 3/	20,194	23,287	23,144	30,226	31,079
Alaska	2,244	2,621	3,665	2,522	2,630
Arizona	4,281	12,098	12,441	14,518	18,922
Arkansas	11,904	14,537	15,045	15,311	16,668
California	74,515	74,309	75,505	209,719	237,792
Colorado	7,629	11,401	11,475	11,735	11,943
Connecticut	24,103	31,827	32,392	32,536	34,066
Delaware	3,992	5,367	5,478	5,834	6,338
Florida	17,470	18,673	19,716	30,884	48,881
Georgia	35,443	36,220	37,615	37,576	39,384
Hawaii	2,609	3,719	4,669	4,973	5,398
Idaho	4,382	4,340	4,535	4,606	4,701
Illinois	59,128	98,396	102,993	124,819	127,649
Indiana	26,967	37,081	37,650	38,538	38,932
Iowa	15,309	23,648	24,128	29,390	29,605
Kansas	16,503	17,496	17,544	17,532	18,115
Kentucky	9,590	10,050	10,460	10,739	11,110
Louisiana	31,142	32,358	32,911	32,870	33,128
Maine	8,011	10,460	10,428	12,424	13,150
Maryland	23,652	24,257	25,047	25,578	26,177
Massachusetts	48,607	59,012	66,495	68,342	70,098
Michigan	73,979	76,587	77,940	79,812	80,790
Minnesota	30,882	31,314	32,693	32,526	34,073
Mississippi	17,680	18,160	18,638	18,792	19,148
Missouri	22,821	23,996	24,369	23,247	24,927
Montana	6,321	6,162	6,262	6,172	6,163
Nebraska	9,402	11,909	12,196	11,923	11,906
Nevada	4,348	5,444	5,366	5,665	5,970
New Hampshire	5,626	8,199	9,249	12,418	12,241
New Jersey	71,851	77,434	97,067	99,575	117,469
New Mexico	7,509	7,614	7,475	7,710	9,906
New York 3/	127,012	216,252	218,453	226,318	257,773
North Carolina	--	--	--	--	--
North Dakota	4,624	5,149	4,930	4,879	4,780
Ohio	66,181	67,403	68,145	88,653	92,019
Oklahoma	21,559	24,548	24,446	24,962	37,336
Oregon	--	--	12,087	9,454	12,249
Pennsylvania	106,782	109,976	112,808	152,645	169,576
Rhode Island	9,431	9,674	9,967	9,925	14,271
South Carolina	12,863	13,266	13,695	13,732	13,906
South Dakota	4,022	5,446	5,250	5,211	5,202
Tennessee	28,556	29,272	30,565	33,265	36,586
Texas 3/	110,306	130,847	133,411	135,831	139,403
Utah	5,169	5,166	5,101	5,136	5,367
Vermont	4,137	5,246	5,248	5,183	5,823
Virginia	15,938	15,795	13,225	13,204	13,495
Washington	22,818	29,444	33,832	35,602	37,515
West Virginia	11,446	11,494	13,518	14,847	13,543
Wisconsin	34,997	42,679	44,000	45,532	45,936
Wyoming	1,765	1,687	1,692	3,123	3,199
Total State	1,283,600	1,541,320	1,614,851	1,886,014	2,056,338
Total State and local governments	1,386,000	1,646,320	1,726,269	1,991,125	4/
District of Columbia	3,743	4,455	5,110	5,111	4,844
Number of States using tax	48	48	49	49	49

1/ Does not include locally imposed and collected tax receipts, or locally imposed tax amounts collected by the State and returned to local governments. Totals for several of the States include related license taxes.

2/ Preliminary.

3/ Fiscal year for Alabama ends on September 30, for Texas on August 31, and for New York on March 31.

4/ Not available.

Compiled from reports of the Bureau of the Census, U.S. Department of Commerce; data for the District of Columbia from the Office of the Collector of Taxes.

TABLE 25.--United States exports of tobacco to principal importing countries, by types, crop years, annual 1963-64--1968-69

Importing country	FLUE-CURED, TYPES 11-14					
	Exports for crop year (declared weight)					
	1963-64	1964-65	1965-66	1966-67	1967-68	1968-69
	1,000 lb.	1,000 lb.	1,000 lb.	1,000 lb.	1,000 lb.	1,000 lb.
Canada.....	493	1,083	1,323	1,334	1,301	1,007
Mexico.....	1,080	781	433	79	1	569
Jamaica.....	1,293	1,184	1,262	1,490	1,559	1,204
Chile.....	717	1,067	1,918	2,219	378	1,545
Uruguay.....	1,939	1,308	310	1,296	657	741
Sweden.....	10,209	8,088	7,474	10,033	6,425	6,916
Norway.....	3,535	3,288	3,647	6,865	7,164	3,223
Finland.....	6,266	3,891	2,814	4,629	3,493	3,610
Denmark.....	11,028	11,347	7,940	14,128	11,875	11,627
United Kingdom.....	132,470	112,556	79,607	119,096	120,885	96,635
Ireland (Eire).....	14,623	10,030	6,924	16,259	10,708	11,110
Netherlands.....	24,070	19,306	23,149	22,025	27,145	24,049
Belgium and Luxembourg.....	14,594	11,868	11,229	16,451	14,166	13,473
France.....	1,177	1,794	1,378	2,809	2,962	3,454
Germany, West.....	75,847	69,019	65,612	106,289	67,488	89,967
Germany, East.....	665	640	486	2,110	670	1,328
Austria.....	3,294	3,159	679	3,717	3,497	1,173
Switzerland.....	3,758	4,602	5,283	8,169	9,167	11,783
Spain.....	1,906	2,132	1,657	4,197	3,040	4,187
Portugal.....	2,531	1,735	1,399	1,713	1,870	2,222
Italy.....	2,010	4,760	1,502	1,791	4,055	4,704
India.....	1,434	570	0	1,518	394	446
Pakistan.....	909	1,144	654	477	3,887	0
Thailand.....	7,575	10,812	12,240	17,808	17,659	20,740
Vietnam, South.....	5,692	6,358	8,270	12,795	9,883	11,538
Malaysia.....	3,888	6,589	6,500	4,609	6,418	6,887
Singapore.....	826	1,183	1,183	2,338	2,536	2,272
Philippines.....	19	951	765	5,416	5,645	5,894
Hong Kong.....	6,161	7,455	4,376	4,317	4,545	3,408
Taiwan (Formosa).....	2,153	4,487	3,422	4,650	12,113	6,860
Japan.....	33,088	27,038	42,037	40,504	34,993	31,106
Australia.....	16,897	14,183	14,377	17,277	10,075	14,788
New Zealand.....	7,837	2,850	3,640	4,862	4,348	3,743
United Arab Republic (Egypt).....	12,116	4,868	14,266	3,412	716	850
Congo (Kinshasa).....	1,269	1,939	4,222	3,314	826	1,365
Other Countries.....	12,484	8,684	7,507	11,573	12,821	12,307
Total.....	422,853	372,743	349,485	481,569	427,365	417,731

BURLEY, TYPE 31

Mexico.....	3,946	3,918	2,277	627	0	0
Sweden.....	5,179	3,345	4,535	3,392	4,039	2,413
Norway.....	638	582	766	1,114	1,004	584
Denmark.....	1,494	1,871	2,150	2,867	3,587	2,270
United Kingdom.....	125	224	228	123	107	72
Netherlands.....	2,142	2,193	1,637	2,954	2,085	2,650
Belgium and Luxembourg.....	1,273	1,263	2,129	966	2,210	1,950
France.....	386	507	528	524	620	973
Germany, West.....	9,164	9,868	10,852	12,133	10,139	12,972
Austria.....	842	736	435	590	782	38
Switzerland.....	821	1,270	1,715	2,595	2,497	4,057
Finland.....	2,078	1,157	1,040	1,651	937	1,137
Portugal.....	3,889	1,686	1,582	1,563	3,316	2,063
Italy.....	3,895	6,748	518	3,013	657	3,802
Philippines, Republic of.....	0	172	1,195	991	1,714	3,264
Australia.....	528	686	1,367	955	850	520
United Arab Republic (Egypt).....	5,263	2,917	4,589	0	0	0
Other countries.....	7,428	7,925	9,737	10,368	8,658	6,918
Total.....	49,091	47,068	47,680	46,826	43,202	45,683

DARK VIRGINIA, TYPES 21 and 37

Sweden.....	644	409	434	890	377	315
Norway.....	2,246	1,411	1,677	2,299	2,888	1,439
United Kingdom.....	982	1,366	364	548	623	517
Netherlands.....	16	67	27	45	139	123
Germany, West.....	710	513	456	703	882	580
Austria.....	153	398	448	303	34	40
Switzerland.....	324	188	283	318	187	191
Other countries.....	531	1,159	845	1,174	584	797
Total.....	5,606	5,511	4,534	6,280	5,714	4,022

See footnotes at end of table.

TABLE 25.--United States exports of tobacco to principal importing countries, by types, crop years, Annual 1963-64--1968-69--Continued

KENTUCKY AND TENNESSEE FIRE-CURED, TYPES 22 AND 23

Importing country	Exports for crop year (declared weight) 1/					
	1963-64	1964-65	1965-66	1966-67	1967-68	1968-69 2/
	1,000 lb.	1,000 lb.	1,000 lb.	1,000 lb.	1,000 lb.	1,000 lb.
Sweden.....	1,062	585	996	1,380	1,319	755
Denmark.....	450	294	433	345	288	309
United Kingdom.....	98	74	69	68	35	47
Ireland (Eire).....	185	232	233	104	132	188
Netherlands.....	6,029	5,680	10,153	9,526	12,349	7,336
Belgium and Luxembourg.....	1,102	1,167	1,661	1,841	1,389	1,521
France.....	3,721	3,013	3,052	1,902	1,498	3,253
Germany, West.....	497	476	386	255	658	558
Switzerland.....	1,630	882	1,414	1,323	1,868	1,172
Italy.....	775	819	376	862	234	4
Indonesia, Republic of.....	210	154	94	132	138	92
Congo (Kinshasa).....	540	1,849	2,167	922	1,431	502
Other countries.....	1,942	2,168	2,242	1,176	2,004	1,637
Total.....	18,241	17,393	23,276	19,836	23,343	17,374

MARYLAND, TYPE 32

Netherlands.....	754	704	492	104	149	53
Belgium and Luxembourg.....	1,254	827	973	1,117	1,394	884
France.....	584	287	240	0	0	0
Germany, West.....	867	643	1,309	1,631	2,290	2,788
Switzerland.....	6,296	5,836	5,761	9,837	9,343	4,513
Spain.....	382	350	536	714	386	221
Portugal.....	1,094	37	441	1,571	1,095	1,159
Other countries.....	745	507	777	841	442	317
Total.....	11,976	9,191	10,529	15,815	15,099	9,935

ONE SUCKER, TYPE 35

Trinidad and Tobago.....	22	28	15	5	0	6
United Kingdom.....	24	48	1	0	0	23
Belgium and Luxembourg.....	275	133	374	336	555	6
Vietnam, South.....	0	211	5	172	0	526
New Guinea.....	0	9	26	44	7	2
Other countries.....	114	357	338	665	199	225
Total.....	435	786	759	1,222	761	788

GREEN RIVER, TYPE 36

United Kingdom.....	210	243	200	199	164	161
Belgium and Luxembourg.....	65	16	4	5	32	0
Congo (Kinshasa).....	113	365	94	41	78	127
Other countries.....	340	389	313	626	209	196
Total.....	728	1,013	611	871	483	484

CIGAR FILLER, TYPES 41-46

Canada.....	113	212	445	438	281	384
France.....	248	58	417	178	272	262
United Kingdom.....	0	7	124	55	0	0
Vietnam, South.....	228	100	545	619	0	115
Other countries.....	23	110	62	45	23	2
Total.....	612	487	1,593	1,335	576	763

CIGAR BINDER, TYPES 51-55

Canada.....	4	11	177	40	34	2
Denmark.....	35	68	49	2	26	0
Netherlands.....	2	0	49	161	270	75
Belgium and Luxembourg.....	44	18	21	24	1	8
Germany, West.....	360	410	734	271	520	182
Germany, East.....	0	366	86	270	0	40
Spain.....	682	1,212	902	716	1,224	189
Canary Islands.....	73	134	74	129	141	113
Other countries.....	215	127	97	82	65	62
Total.....	1,415	2,346	2,189	1,695	2,281	671

See footnotes at end of table.

TABLE 25.--United States exports of tobacco to principal importing countries, by types, crop years, annual 1963-64--1968-69--Continued

Importing country	CIGAR WRAPPERS, TYPES 61-62					
	Exports for crop year (declared weight) 1/					
	1963-64	1964-65	1965-66	1966-67	1968-6	1968-69 2/
	1,000 lb.	1,000 lb.	1,000 lb.	1,000 lb.	1,000 lb.	1,000 lb.
Canada.....	754	901	878	605	608	456
Brazil.....	5	5	6	26	4	11
Netherlands.....	184	99	140	43	67	4
Belgium and Luxembourg.....	120	42	34	32	33	199
Germany, West.....	2,442	1,147	1,615	1,199	1,700	917
Germany, East.....	707	353	702	537	173	128
Canary Islands.....	419	332	321	278	524	475
Other countries.....	1,016	963	872	1,053	1,297	1,264
Total.....	5,647	3,842	4,568	3,773	4,406	3,454

TOTAL CIGAR LEAF, TYPES 41-62						
Canada.....	871	1,124	1,500	1,083	923	861
Brazil.....	5	5	6	26	4	8
Sweden.....	113	79	3	3	0	0
Denmark.....	47	124	49	2	26	8
Netherlands.....	186	138	198	206	337	75
Belgium and Luxembourg.....	179	60	57	57	35	214
France.....	254	87	438	207	296	299
Germany, West.....	2,802	1,556	2,350	1,471	2,220	997
Germany, East.....	707	720	788	807	173	83
Spain.....	846	1,277	909	724	1,224	190
Vietnam, South.....	231	100	545	619	154	352
Canary Islands.....	502	466	395	444	664	463
Other countries.....	931	939	1,112	1,155	1,207	651
Total.....	7,674	6,675	8,350	6,804	7,263	4,201

PERIQUE, TYPE 72						
Norway.....	33	31	35	41	28	31
United Kingdom.....	43	74	65	17	40	32
Australia.....	67	47	39	38	30	47
Other countries.....	61	230	224	156	87	50
Total.....	204	382	363	252	185	160

BLACK FAT						
West Indies 3/.....	72	108	109	101	98	101
Netherland Antilles.....	32	20	32	19	25	11
Canary Islands and Spanish Africa, n.e.s.....	136	151	10	352	308	31
Cameroon.....	230	238	355	191	442	240
Ghana.....	751	515	533	685	84	0
Nigeria.....	1,585	2,025	2,041	1,418	528	178
Other countries.....	734	776	1,018	1,082	1,563	604
Total.....	3,540	3,833	4,098	3,848	3,048	1,165

STEMS, TRIMMINGS, AND SCRAP						
Sweden.....	2,662	3,420	412	4,033	4,044	1,785
Denmark.....	1,198	911	2,648	2,743	3,527	2,167
United Kingdom.....	9,741	7,243	14,655	27,472	31,808	24,996
Netherlands.....	794	1,376	1,282	1,241	1,213	1,996
Germany, West.....	71	728	2,094	1,095	3,646	3,285
Canary Islands and Spanish Africa n.e.s.....	316	49	21	17	23	35
Malaysia.....	0	0	39	499	674	2,172
Japan.....	0	396	0	0	942	8,069
Australia.....	0	159	582	1,281	1,703	1,592
Other countries.....	1,666	3,992	7,102	5,884	8,778	7,313
Total.....	16,448	18,275	28,835	44,265	56,358	53,410

1/ Based on July-June crop year for flue-cured and cigar wrapper, and October-September crop year for all other types.

2/ Subject to revision.

3/ Includes Bahamas, Jamaica, Leeward and Windward Islands, Barbados, and Trinidad and Tobago.

Foreign Agricultural Service. Compiled from publications of the Bureau of the Census, U. S. Department of Commerce.

TABLE 26.--Exports of unmanufactured tobacco from the United States; quantity and value, by types, calendar years, annual 1964-69

Type	Quantity (declared weight)					
	1964	1965	1966	1967	1968	1969 1/
	1,000 lb.	1,000 lb.	1,000 lb.	1,000 lb.	1,000 lb.	1,000 lb.
Flue-cured, types 11-14.....	395,586	350,942	422,624	427,435	443,538	429,618
Burley, type 31.....	53,011	45,295	45,705	45,266	42,793	51,988
Southern Maryland, type 32.....	12,320	10,116	10,612	15,073	13,786	10,415
Virginia dark, types 21 and 37.....	4,560	6,128	6,340	4,615	5,002	4,383
Kentucky and Tennessee fire-cured, types 22 and 23.....	20,849	21,620	17,021	21,659	20,529	21,143
One sucker, type 35.....	642	904	563	1,029	1,042	435
Green River, type 35.....	1,211	623	479	858	518	440
Ciger leaf.....	7,426	7,173	8,254	6,446	7,324	3,702
Black fat.....	3,658	3,935	3,496	4,109	2,548	1,126
Perique.....	192	424	447	163	206	114
Stems, trimmings, and scrap.....	15,029	20,914	35,621	44,908	61,516	53,740
Total declared weight.....	514,484	468,074	551,162	571,561	598,800	577,103
Total farm-sales-weight.....	588,535	528,083	624,657	641,311	664,921	657,046

	Value					
	1,000 dol.	1,000 dol.	1,000 dol.	1,000 dol.	1,000 dol.	1,000 dol.
	1,000 dol.	1,000 dol.	1,000 dol.	1,000 dol.	1,000 dol.	1,000 dol.
Flue-cured, types 11-14.....	325,370	298,725	380,129	403,099	426,579	444,767
Burley, type 31.....	42,289	34,315	39,272	39,090	40,874	51,062
Southern Maryland, type 32.....	9,631	7,930	8,494	12,275	11,582	8,872
Virginia dark, types 21 and 37.....	3,074	4,300	4,111	2,949	3,243	3,205
Kentucky and Tennessee fire-cured, types 22 and 23.....	10,546	11,354	9,067	11,559	11,362	12,633
One sucker, type 35.....	304	413	242	428	463	224
Green River, type 35.....	604	385	288	503	311	268
Ciger leaf.....	13,983	16,708	17,083	13,446	14,308	7,250
Black fat.....	3,195	3,457	3,183	3,374	2,043	920
Perique.....	197	386	384	151	202	117
Stems, trimmings, and scrap.....	3,691	4,713	9,269	11,385	13,432	10,252
Total.....	412,884	382,687	481,522	498,259	524,398	539,571

1/ Subject to revision. Detail may not add to total because of rounding.
Foreign Agricultural Service. Compiled from publications of the Bureau of the Census, U. S. Department of Commerce.

TABLE 27.--Exports of unmanufactured tobacco from the United States, to principal importing countries, calendar years, annual 1964-69

Country of destination	Total quantity (declared weight)					
	1964	1965	1966	1967	1968	1969 1/
	1,000 lb.	1,000 lb.	1,000 lb.	1,000 lb.	1,000 lb.	1,000 lb.
Sweden.....	20,771	5,927	22,758	19,337	16,915	13,900
Norway.....	7,248	5,959	9,347	8,441	9,652	7,174
Denmark.....	12,296	15,143	17,883	16,377	19,213	19,113
United Kingdom.....	125,169	92,854	129,868	137,553	146,698	134,198
Ireland (Eire).....	11,176	10,640	13,469	14,260	15,025	10,501
Netherlands.....	33,060	37,163	28,774	40,531	44,034	33,564
Belgium and Luxembourg.....	17,461	18,844	17,462	17,483	20,129	17,442
France.....	7,170	5,782	8,631	6,282	6,876	8,628
Germany, West.....	85,455	80,873	98,730	114,274	88,635	101,794
Austria.....	4,305	4,198	5,302	3,494	3,475	3,604
Switzerland.....	15,043	12,597	16,871	21,380	24,829	26,352
Portugal.....	7,958	3,724	3,822	5,523	4,645	6,333
Italy.....	9,464	8,414	3,682	7,063	5,016	19,546
India.....	570	0	356	1,174	407	451
Pakistan.....	828	1,901	477	2,000	1,990	0
Thailand (Siam).....	11,058	11,847	17,747	23,170	28,859	24,260
Philippines, Republic of.....	861	817	4,497	4,929	7,932	10,137
Hong Kong.....	8,134	7,514	4,667	5,888	5,624	4,204
Japan.....	34,899	36,611	42,118	27,039	48,762	40,935
Australia.....	14,164	19,667	16,484	13,323	19,712	20,169
New Zealand.....	3,851	2,991	5,285	3,782	5,938	2,461
Other countries.....	83,543	84,608	82,932	78,258	74,434	72,337
Total.....	514,484	468,074	551,162	571,561	598,800	577,103

1/ Subject to revision. Detail may not add to totals because of rounding.
Foreign Agricultural Service. Compiled from publications of the Bureau of the Census, U. S. Department of Commerce.

TABLE 28.--United States exports of cigarettes, by countries, calendar years 1964-69

Country	Exports for year					
	1964	1965	1966	1967	1968	1969 1/
	Millions	Millions	Millions	Millions	Millions	Millions
Canada.....	243.3	311.4	259.6	329.4	315.7	264.7
Mexico.....	101.5	111.3	190.0	295.4	419.6	321.1
Panama, Republic of, and Canal Zone.....	852.6	651.4	624.2	759.3	1,033.3	1,275.0
Bermuda.....	107.8	98.4	103.8	108.7	117.0	100.1
Bahamas.....	180.7	197.1	209.3	230.4	255.9	207.7
Netherland Antilles.....	1,135.0	1,291.7	1,286.2	1,472.2	1,412.1	1,356.0
Ecuador.....	569.2	712.4	625.6	561.7	374.1	373.0
Peru.....	597.5	503.1	365.1	101.1	2.3	7.2
Paraguay.....	683.5	966.5	1,269.7	1,423.2	1,671.5	741.8
Uruguay.....	369.2	205.0	189.3	95.4	160.6	402.6
Argentina.....	101.8	112.5	163.8	39.3	92.3	116.3
Iceland.....	231.6	214.6	263.5	294.8	263.2	221.7
Sweden.....	706.7	445.5	372.3	278.3	257.9	171.5
Norway.....	241.5	219.0	264.8	238.3	217.8	229.4
Denmark.....	512.7	398.9	477.7	520.0	369.2	365.3
Finland.....	137.6	152.1	180.6	210.0	211.9	240.4
United Kingdom.....	347.2	283.6	329.1	353.2	415.0	370.7
Netherlands.....	617.2	503.3	606.5	476.5	593.7	447.3
Belgium and Luxembourg.....	720.1	511.2	398.9	593.9	993.4	959.5
France.....	1,339.3	1,034.6	968.7	719.7	479.5	324.6
Germany, West.....	542.6	522.8	653.4	720.5	724.2	453.0
Austria.....	112.6	99.7	77.1	66.4	45.2	22.7
Switzerland.....	342.7	483.0	538.5	538.3	1,171.4	1,116.8
Poland.....	97.9	133.1	100.0	131.9	136.1	107.4
Spain.....	2,252.4	1,823.6	1,944.1	1,704.3	1,924.0	1,188.4
Portugal.....	76.1	160.4	275.9	332.8	90.3	81.2
Gibraltar.....	778.3	200.8	83.9	62.6	36.5	20.5
Italy.....	708.7	643.9	622.4	714.7	693.9	639.3
Yugoslavia.....	134.1	189.0	338.0	348.2	434.6	552.3
Greece.....	117.3	135.2	148.3	173.8	157.1	132.9
Lebanon.....	550.2	630.4	498.4	639.9	647.3	569.5
Israel.....	242.2	246.3	171.6	182.3	308.1	369.7
Kuwait.....	1,425.0	1,123.3	1,177.7	1,090.1	1,371.0	1,193.1
Arabia Peninsula States.....	123.3	250.6	271.4	145.5	157.4	234.9
State of Bahrain.....	187.5	90.8	97.1	96.9	97.2	98.4
Afghanistan.....	35.2	28.5	54.9	47.0	49.1	59.1
Malaya, Malaysia, and Singapore.....	1,117.6	1,268.4	792.9	764.0	786.5	695.5
Philippines.....	37.6	61.7	136.3	224.5	308.8	249.2
Hong Kong.....	2,561.0	2,648.1	2,362.4	2,450.4	2,667.8	2,684.9
Japan.....	529.3	295.1	404.2	501.8	402.5	698.7
Nansei and Nanpo Islands.....	38.1	47.0	55.0	86.1	77.4	130.8
Australia.....	533.7	468.6	451.6	524.1	447.8	321.0
French Pacific Islands.....	40.8	59.6	50.1	56.9	73.9	78.6
Trust Territory Pacific Islands.....	72.1	71.7	66.6	86.8	75.7	83.2
Morocco.....	289.9	291.1	381.1	556.7	351.2	331.6
Libya.....	135.4	138.7	196.0	200.0	248.0	229.4
United Arab Republic (Egypt region).....	102.1	98.2	103.4	98.2	164.7	149.7
Canary Islands and Spanish Africa.....	605.7	532.7	592.3	589.9	506.5	607.0
Liberia.....	326.0	219.2	271.7	201.1	241.2	218.1
Republic of South Africa.....	79.9	80.8	69.3	67.8	95.9	72.6
Other countries.....	1,158.9	1,084.3	1,337.8	1,146.8	2,313.6	3,084.2
Total.....	25,144.2	23,050.2	23,452.1	23,651.1	26,460.9	24,969.6
Declared value, 1,000 dollars.....	114,595	105,297	110,482	116,207	134,220	129,144

1/ Subject to revision.

2/ If any, included in other.

Foreign Agricultural Service. Compiled from publications of the Bureau of the Census, U. S. Department of Commerce.

TABLE 29.--United States exports of tobacco products, calendar years, annual 1964-69

Product	Exports for year					
	1964	1965	1966	1967	1968	1969 1/
	Millions	Millions	Millions	Millions	Millions	Millions
Cigarettes.....	25,144	23,050	23,458	23,651	26,461	24,970
	Thousands	Thousands	Thousands	Thousands	Thousands	Thousands
Cigars, cheroots, and cigarillos.....	44,338	55,249	73,204	76,241	66,207	85,463
	1,000 lb.	1,000 lb.	1,000 lb.	1,000 lb.	1,000 lb.	1,000 lb.
Chewing tobacco and snuff.....	412	389	515	318	210	33
Smoking tobacco:						
In packages.....	1,419	953	929	1,324	1,838	1,054
In bulk.....	12,328	13,580	14,884	15,946	21,516	20,270
	1,000 dol.	1,000 dol.	1,000 dol.	1,000 dol.	1,000 dol.	1,000 dol.
Declared value.....	131,621	122,936	129,815	137,035	161,624	155,549

1/ Subject to revision.

Foreign Agricultural Service. Compiled from publications of the Bureau of the Census, U. S. Department of Commerce.

TABLE 30.--United States imports of tobacco products for consumption, by countries, calendar years, 1964-69

Product and country from which imported	Imports for year					
	1964	1965	1966	1967	1968	1969 1/
	1,000 pcs.	1,000 pcs.	1,000 pcs.	1,000 pcs.	1,000 pcs.	1,000 pcs.
Cigarettes:						
United Kingdom.....	4,344	4,478	4,029	7,235	12,011	18,184
Other countries.....	5,764	4,031	4,291	4,835	5,745	5,733
Total.....	10,108	8,509	8,320	12,070	17,756	23,917
	1,000 lb.	1,000 lb.	1,000 lb.	1,000 lb.	1,000 lb.	1,000 lb.
Cigars, cheroots, and cigarillos						
Philippines, Republic of.....	239	161	182	165	181	162
Other countries.....	174	192	215	266	398	457
Total.....	413	353	397	431	579	619
All other products: 2/						
United Kingdom.....	285	262	267	273	360	320
Netherlands.....	2,348	1,904	2,556	2,764	4,083	3,925
Other countries.....	352	328	446	630	1,072	1,496
Total.....	2,995	2,494	3,269	3,667	5,515	5,741
	1,000 dol.	1,000 dol.	1,000 dol.	1,000 dol.	1,000 dol.	1,000 dol.
Declared value.....	5,487	5,247	6,573	7,379	10,621	11,952

1/ Subject to revision.

2/ Practically all smoking tobacco, but includes all other manufactured tobacco products not specifically provided for.

Foreign Agricultural Service. Compiled from publications of the Bureau of the Census, U. S. Department of Commerce.

TABLE 31.-- United States imports of unmanufactured tobacco for consumption, by countries, calendar years, annual 1964-1969

Kind of tobacco and country from which imported	Imports for year (calendar year basis) declared weight					
	1964	1965	1966	1967	1968	1969 1/
	1,000 lb.	1,000 lb.	1,000 lb.	1,000 lb.	1,000 lb.	1,000 lb.
Cigarette leaf:						
Flue-cured and burley	431	268	960	1,622	2,037	4,486
Other cigarette leaf:						
Yugoslavia	10,219	12,862	11,412	13,160	16,029	14,627
Greece	30,935	36,049	36,580	37,599	41,376	29,231
Turkey	72,267	83,590	84,292	92,763	98,097	94,210
Other countries	4,931	5,401	4,787	7,550	7,142	3,259
Total	118,352	137,902	137,071	151,072	162,644	143,327
Scrap:						
Canada	387	393	299	892	488	902
Cyprus	0	2	3	0	14	16
Greece	0	2/	20	61	1,617	801
Turkey	972	1,314	1,550	3,348	6,599	8,177
Yugoslavia	0	13	9	0	0	0
Lebanon	92	0	58	265	758	1,098
Syria	33	10	0	0	0	0
India	143	652	169	317	382	112
Korea	0	0	0	0	0	187
Total	1,627	2,384	2,108	4,883	9,858	11,293
Total cigarette leaf	120,610	140,554	140,139	157,577	174,539	159,105
Cigar leaf:						
Cigar wrapper:						
Cameroon	40	75	88	82	269	263
Indonesia	10	10	8	19	56	11
Honduras	47	61	126	101	146	216
Nicaragua	0	3	6	19	123	109
Ecuador	1	16	33	78	125	63
Mexico	9	14	28	45	23	35
Other countries	121	68	34	180	66	92
Total	228	247	323	524	808	789
Cigar filler:						
Unstemmed:						
Indonesia	229	68	159	1	11	60
Cuba	1,474	559	211	346	72	0
Dominican Republic	418	387	370	713	238	219
Honduras	105	133	207	279	273	238
Colombia	279	86	547	467	640	142
Brazil	313	153	326	214	479	402
Paraguay	89	320	162	25	149	351
Mexico	576	589	742	201	303	222
Other countries	37	178	309	824	849	691
Total	3,520	2,473	3,033	3,070	3,014	2,325
Stemmed:						
Indonesia	6	0	0	28	52	27
Cuba	505	176	163	132	174	102
Dominican Republic	303	417	344	516	609	567
Honduras	205	258	313	287	576	751
Colombia	44	52	77	76	40	43
Brazil	523	439	322	335	283	277
Mexico	273	375	595	595	598	554
Other countries	485	150	130	214	210	136
Total	2,344	1,867	1,944	2,183	2,542	2,457
Scrap:						
Indonesia	2,133	1,281	923	1,311	1,290	1,554
Philippines	14,091	14,078	17,089	16,731	19,089	22,789
Cuba	2,306	1,636	1,367	655	229	110
Dominican Republic	9,309	7,586	3,287	4,181	6,125	5,662
Colombia	8,000	5,451	3,870	3,218	3,793	4,654
Brazil	3,768	3,575	3,470	3,076	4,147	3,685
Paraguay	636	935	1,415	1,768	1,089	1,973
Mexico	262	859	1,196	1,058	1,329	1,543
Other countries 3/	774	1,164	889	1,348	1,884	1,977
Total	41,279	36,565	33,506	33,346	38,975	43,947

TABLE 31.--United States imports of unmanufactured tobacco for consumption, by countries, calendar years, annual 1964-1969

Kind of tobacco and country from which imported	Imports for year (calendar year basis) declared weight					
	1964	1965	1966	1967	1968	1969 1/
	1,000 lb.	1,000 lb.	1,000 lb.	1,000 lb.	1,000 lb.	1,000 lb.
Total cigar leaf:						
Indonesia.....	2,378	1,359	1,090	1,179	1,408	1,652
Philippines.....	14,445	14,110	17,230	17,012	19,239	22,890
Cuba.....	4,371	2,402	1,742	1,133	475	212
Dominican Republic.....	10,030	8,390	4,001	5,414	6,973	6,409
Honduras.....	403	574	724	819	1,193	1,480
Colombia.....	8,323	5,589	4,493	3,761	4,474	4,839
Brazil.....	4,604	4,173	4,120	3,646	4,927	5,340
Paraguay.....	725	1,312	1,577	1,793	1,238	2,324
Mexico.....	1,120	1,837	2,561	1,899	2,254	2,354
Other countries.....	974	1,419	1,277	2,466	3,160	2,018
Total.....	47,373	41,163	38,815	39,122	45,341	49,518
Total imports 4/ (declared weight).....	167,781	181,706	178,945	196,700	219,878	208,623
Total imports 4/ (farm-sales-weight).....	207,836	220,561	215,789	235,647	264,169	254,429
	Value (Calendar year basis)					
	1,000 dol.	1,000 dol.	1,000 dol.	1,000 dol.	1,000 dol.	1,000 dol.
Cigarette leaf.....	82,917	105,779	106,640	107,906	115,639	99,738
Cigar leaf:						
Cigar wrapper.....	1,163	1,429	1,540	1,836	3,434	3,068
Cigar filler:						
Unstemmed.....	2,559	1,787	1,949	2,466	2,099	2,115
Stemmed.....	2,799	2,414	2,482	2,639	3,401	3,176
Scrap.....	20,280	18,323	16,210	13,895	17,034	19,233
Total cigar leaf.....	26,801	24,003	20,181	20,836	25,968	27,592
Total imports 4/.....	109,718	129,782	126,821	128,742	141,607	127,330

TABLE 32.--United States imports of unmanufactured tobacco for consumption, fiscal years, annual 1963-64--1968-69

Kind of tobacco	1963-64	1964-65	1965-66	1966-67	1967-68	1968-69
	1,000 lb.	1,000 lb.	1,000 lb.	1,000 lb.	1,000 lb.	1,000 lb.
Cigarette leaf.....	125,507	134,205	136,640	147,569	171,991	160,957
Cigar leaf:						
Cigar wrapper.....	226	228	295	485	524	835
Cigar filler:						
Unstemmed.....	2,624	3,203	2,694	2,876	3,383	2,650
Stemmed.....	1,963	2,183	1,898	2,103	2,342	2,509
Scrap.....	35,286	43,047	31,931	31,651	38,174	41,758
Total cigar leaf.....	40,099	48,661	36,816	37,115	44,421	47,752
Total imports 4/ (declared weight).....	165,606	182,866	173,458	184,684	218,414	208,709
Total imports 4/ (farm-sales-weight).....	202,027	225,435	208,956	221,377	262,088	253,461
	Value (July--June basis)					
	1,000 dol.	1,000 dol.	1,000 dol.	1,000 dol.	1,000 dol.	1,000 dol.
Cigarette leaf.....	79,580	97,368	104,513	106,405	117,462	103,247
Cigar leaf:						
Cigar wrapper.....	1,118	228	1,583	1,720	2,426	3,461
Cigar filler:						
Unstemmed.....	2,115	3,203	1,800	2,065	2,470	2,097
Stemmed.....	2,520	2,183	2,422	2,540	3,015	3,383
Scrap.....	17,473	21,520	14,867	12,962	17,423	18,197
Total cigar leaf.....	23,226	27,134	20,672	19,287	25,334	27,138
Total imports 4/.....	103,015	125,048	125,626	126,084	142,796	130,385

1/ Subject to revision. 2/ Less than 500 pounds. 3/ Does not include imports in this classification from Turkey, Greece, Lebanon, Syria, Cyprus, Yugoslavia, Canada, India, Korea. 4/ Does not include stems.

TABLE 33. --Tariff rates on selective items of tobacco and tobacco products imported into the United States under the Tariff Act of 1930 and subsequent Trade Agreements 1/

Kinds of tobacco imported	TSUS Item	Rate per lb.: Rate per pound entered on and after Jan. 1, 2/ 3/				
		Rate per lb. of 1930	1969	1970	1971	1972
	Number	Dollars	Dollars	Dollars	Dollars	Dollars
Leaf tobacco, from two or more countries, (when mixed or packed together):						
Not stemmed.....	170.01	2.275	2.275	2.275		
Stemmed.....	170.05	2.925	2.925	2.925		
Wrapper tobacco (whether or not mixed or packed with filler tobacco):						
Not stemmed.....	170.10	2.275	.909	.909		
Stemmed.....	170.15	2.925	1.548	1.548		
Filler tobacco (whether or not mixed or packed with wrapper tobacco):						
When mixed or packed with over 35% of wrapper tobacco:						
Not stemmed.....	170.20	2.275	.909	.909		
If product of Philippines: 4/						
Within tariff-rate quota.....	170.22		Free	Free		
Other.....	170.23		.819	.819		
Stemmed.....	170.25	2.925	1.548	1.548		
If product of Philippines: 4/						
Within tariff-rate quota.....	170.26		Free	Free		
Other.....	170.27		1.548	1.548		
When not mixed or packed with wrapper tobacco, or when mixed or packed with 35% or less of wrapper tobacco:						
Cigarette leaf:						
Not stemmed:						
Leaf, oriental or Turkish type, not over 8.5 inches in length.....	170.28	.35	.12	.12	.115	.115
Plus-cured and burley.....	170.32	.35	.1275	.1275		
If product of Philippines: 4/						
Within tariff-rate quota.....	170.33		Free	Free		
Other.....	170.34		.1275	.1275		
Stemmed.....	170.35	.50	.48	.47	.46	.45
If product of Philippines: 4/						
Within tariff-rate quota.....	170.36		Free	Free		
Other.....	170.37		.48	.47	.46	.45
Other, including cigar leaf:						
Not stemmed.....	170.40	.35	.161	.161		
If product of Philippines: 4/						
Within tariff-rate quota.....	170.42		Free	Free		
Other.....	170.43		.126	.126		
Stemmed.....	170.45	.50	.23	.23		
If product of Philippines: 4/						
Within tariff-rate quota.....	170.47		Free	Free		
Other.....	170.48		.18	.18		
Tobacco Stems:						
Not cut, ground, or pulverized.....	170.50	Free	Free	Free		
Cut, ground, or pulverized.....	170.55	.55	.55	.55		
Scrap tobacco.....	170.60	.35	.161	.161		
If product of Philippines: 4/						
Within tariff-rate quota.....	170.62		Free	Free		
Other.....	170.63		.126	.126		
Cigarettes.....	170.65	4.50 lb. + 25% ad val.	1.06 lb. + 5% ad val.	1.06 lb. + 5% ad val.		
Cigars and Cheroots:						
Cigars each valued 15 cents or over.....	170.66	4.50 lb. + 25% ad val.	1.52 lb. + 8% ad val.	1.33 lb. + 7% ad val.	1.14 lb. + 6% ad val.	.95 lb. + 5% ad val.
If product of Philippines: 4/						
Within tariff-rate quota.....	170.68		Free	Free		
Other.....	170.69		1.27 lb. + 8% ad val.	1.27 lb. + 7% ad val.		
Other cigars.....	170.72	4.50 lb. + 25% ad val.	1.91 lb. + 10.5% ad val.	1.91 lb. + 10.5% ad val.		
If product of Philippines: 4/						
Within tariff-rate quota.....	170.74		Free	Free		
Other.....	170.75		1.27 lb. + 8.5% ad val.	1.27 lb. + 8.5% ad val.		
Snuff and snuff flour.....	170.78	.55	.17	.17	.13	.11
Tobacco wind, or not wind, not specially provided for.....	170.80	.55	.175	.175		

1/ Consult official tariff schedules for a complete listing of rates. 2/ Staged rates as the result of the Kennedy round, other items unchanged. 3/ Section 5 of the Trade Agreement Extension Act of 1951 requires imports from most Communist Countries to enter at the 1930 rates. 4/ The Philippine Trade Agreement Revision Act of 1955 eliminated the absolute quotas of 200 million cigars and 6-1/2 million pounds of scrap and filler tobacco. Specified amounts are admitted duty free each year, through 1973, with the excess entering at regular or preferential rates. The duty free quotas for 1969-1970 are 2.6 million pounds of scrap and filler and 80 million cigars. For 1971-73 they are 1.3 million pounds and 40 million cigars.

Foreign Agricultural Service. Compiled from U. S. Tariff Commission, U. S. Department of Commerce.

TABLE 34.--Receipts from import duties on tobacco and tobacco products in the United States, fiscal years, 1957-58--1968-69 1/

Year (July-June basis)	Receipts from--			Total receipts	Drawback	Net receipts
	Leaf tobacco (Paragraph 601)	Scrap, etc. (Paragraph 603)	Tobacco products (Paragraphs 604 and 605)			
	Dollars	Dollars	Dollars			
1957-58.....	15,403,335	1,765,744	964,766	18,133,845	684,840	17,445,005
1958-59.....	17,060,032	2,453,789	1,010,181	20,524,002	731,804	19,742,198
1959-60.....	17,283,894	2,645,925	821,985	20,751,804	719,350	20,032,454
1960-61.....	17,998,873	2,399,644	740,254	21,138,771	564,682	20,574,089
1961-62.....	18,336,953	2,842,136	834,975	22,014,064	689,993	21,324,071
1962-63.....	17,416,798	2,631,432	423,203	20,471,433	864,485	19,606,948
1963-64.....	16,549,893	4,477,791	951,149	21,978,833	1,145,972	20,832,861
1964-65.....	19,000,469	5,888,738	995,530	25,884,737	762,640	25,122,097
1965-66.....	18,301,655	4,856,361	1,108,360	24,266,376	844,659	23,421,717
1966-67.....	19,681,494	4,559,104	1,250,186	25,489,784	851,616	24,638,168
1967-68.....	22,492,474	6,777,305	1,733,729	31,003,508	886,779	30,116,729
1968-69.....	20,470,729	8,394,637	2,133,098	30,998,474	894,987	30,103,487

For details of tariff rates and items included in Paragraphs of Tariff Act, see table 33.

Foreign Agricultural Service. Compiled from data furnished by the Bureau of the Census, U. S. Department of Commerce.

TABLE 35.--Import duties on tobacco in selected foreign countries importing from the United States as of December 1969

UNITED KINGDOM		Full rate of duty in--1/	
Description	Foreign unit	Approximate U. S. currency per pound	
Tobacco, unmanufactured:			
Containing 10 lb. or more of moisture in every 100 lb. weight thereof--			
Unstripped.....	£ 5 0s. 10d. per lb.	Dollars 12.10	
Stripped.....	£ 5 1s. 10d. per lb.	12.22	
IRELAND (EIRE)			
Tobacco, unmanufactured:			
Containing 10 lb. or more of moisture in every 100 lb. weight thereof--			
Unstripped or unstemmed.....	£ 4 8s. 4d. per lb.	10.60	
Stripped.....	£ 4 8s. 4.5d. per lb.	10.605	
SWEDEN, NORWAY, AND DENMARK			
Unmanufactured tobacco.....	Free	--	
FINLAND			
Unmanufactured tobacco.....	0.45 markkaa per kilo	0.11	
AUSTRIA 2/			
Unmanufactured tobacco, unstemmed.....	750 schillings per 100 kilos	0.13	
SWITZERLAND			
Tobacco, unmanufactured:			
With guaranty as to use--			
For the manufacture of cigars:			
Kentucky--Dark Virginia--Bright Virginia.....	30 francs per 100 kilos	0.03	
For the manufacture of pipe tobacco.....	300 francs per 100 kilos	0.31	
For the manufacture of cigarettes and cigarette tobacco:	945 francs per 100 kilos	0.99	
For the manufacture of roll and chewing tobacco, and snuff.....	160 francs per 100 kilos	0.17	

See footnotes at end of table.

TABLE 35.--Import duties on tobacco in selected foreign countries importing from the United States as of December 1969--Continued

SPAIN 2/		
Description	Full rate of duty in--1/	
	Foreign unit	Approximate U. S. currency per pound
		Dollars
Unmanufactured tobacco.....	Free	--
PORTUGAL		
Leaf tobacco.....	51.35 paper escudos per kilo	0.81
INDIA		
Unmanufactured tobacco.....	40 rupees per kilo	2.42
THAILAND (SIAM) 2/		
Unmanufactured tobacco.....	25.0 Baht per kilo (or 40% ad valorem, whichever is higher)	0.54 or ad valorem rate
PHILIPPINES, REPUBLIC OF 3/		
Leaf tobacco:		
Unstemmed:		
1. Wrapper.....	10.00 pesos per kilo (legal weight)	1.16
2. Other (flue-cured).....	100% ad valorem	100% ad valorem
Stemmed:		
1. Wrapper.....	12.00 pesos per kilo (legal weight)	1.39
2. Other.....	100% ad valorem	100% ad valorem
HONG KONG		
Unmanufactured tobacco.....	8.00 Hong Kong dollars per lb.	1.32
JAPAN 2/		
Unmanufactured tobacco.....	Free	
AUSTRALIA		
Unmanufactured tobacco.....		
Imported for use with Australian leaf in manufacturing smoking tobacco and cigarettes within the mixing regulations 4/		
1. Smoking tobacco (not fine-cut).....	0.50 Australian dollars per lb.	0.56
2. Cigarettes (including fine-cut smoking).....	0.716 Australian dollars per lb.	0.80
Imported for use in manufacturing smoking tobacco and cigarettes without regard to the mixing regulations:		
1. Smoking tobacco (not fine-cut).....	0.65 Australian dollars per lb.	0.73
2. Cigarettes (including fine-cut smoking).....	0.86 Australian dollars per lb.	0.96
Imported for use in manufacturing cigars, snuff, and other tobacco products.....	0.25 Australian dollars per lb.	0.28
NEW ZEALAND		
Tobacco, unmanufactured, entered to be manufactured in New Zealand in any bonded tobacco factory licensed under the Tobacco Act, 1908, for manufacturing purposes only:		
Into tobacco, cigarettes, or snuff.....	0.33 New Zealand dollars per lb.	0.37
Into cigars.....	Free	Free

See footnotes at end of table.

TABLE 35.--Import duties on tobacco in selected foreign countries importing from the United States as of December 1969--Continued

UNITED ARAB REPUBLIC (EGYPT)

Description	Full rate of duty in--1/	
	Foreign unit	Approximate U. S. currency per pound
Tobacco in leaves.....	6.1 Egyptian pounds per kilo	Dollars 6.36

FORMER BRITISH WEST AFRICA

Tobacco, unmanufactured:		
Gambia.....	£ 0 3s. 3d. per lb.	0.39
Ghana.....	1.67 cedis per lb.	1.64
Nigeria		
For cigarette manufacture.....	£ 0 15s. 3d. per lb.	2.13
For other uses.....	£ 1 0s. 0d. per lb.	2.80
Sierra Leone.....	0.40 leones per lb.	0.48

1/ Rates and conversions current at publication and are subject to change. Some countries impose additional duties to those shown here.

2/ Government monopoly.

3/ Under Republic Act 698, as amended by Republic Act 1194, the importation of leaf tobacco (excepting cigar wrapper tobacco for cigars or chewing tobacco) is limited to the amount which, added to total Philippine production, will be sufficient to assure the output of a quantity of manufactured products not less than the output of the previous fiscal year. The rates shown are the full rate. The United States is currently paying 90% of the full rate.

4/ In order to qualify for this rate a manufacturer must purchase and hold stocks of Australian tobacco sufficient to assure that the amount is adequate to meet the specified mixing percentages for production of Australian products for the entire year.

TABLE 36.--Import duties on unmanufactured tobacco, European Economic Community, as of January 1970

Country	Unmanufactured tobacco 1/ from non-member countries 2/								
	Base period Duty Jan. 1, 1957			Rates Nov. 1, 1962			Rates Jan. 1, 1967		
	Approximate rate	Equivalent in U. S.	Approximate rate	Minimum charge	Maximum charge	Approximate rate	Minimum charge	Maximum charge	
	on ad	valorem	on ad	per lb.	per lb.	on ad	per lb.	per lb.	
	basis		basis		basis		basis		
	Percent	Dollars	Percent	Dollars	Dollars	Percent	Dollars	Dollars	
Belgium-Luxembourg...	10	0.038	16	0.066	0.083	20	0.097	0.119	
Netherlands.....	10	0.038	16	0.066	0.083	20	0.097	0.119	
West Germany.....	29	0.194	28.6	0.182	0.195	28.4	0.161	0.187	
France.....	0	0	9	0.0394	0.57	16.8	0.08	0.10	
Italy.....	0	0	9	0.0394	0.57	16.8	0.08	0.10	
	Rates Jan. 1, 1968 3/			Rates Jan. 1, 1970 4/			Ultimate Rate 4/		
	Percent	Dollars	Dollars	Percent	Dollars	Dollars	Percent	Dollars	Dollars
Belgium-Luxembourg...	28	0.132	0.172	25	0.129	0.159	23	0.127	0.15
Netherlands.....	28	0.132	0.172	25	0.129	0.159	23	0.127	0.15
West Germany.....	28	0.132	0.172	25	0.129	0.159	23	0.127	0.15
France.....	28	0.132	0.172	25	0.129	0.159	23	0.127	0.15
Italy.....	28	0.132	0.172	25	0.129	0.159	23	0.127	0.15

1/ Unmanufactured, stemmed, or unstemmed tobacco valued at less than \$1.27 per lb., (cigarette tobacco or ordinary tobacco). The EEC established a separate tariff rate for tobacco valued at \$1.27 and over per pound. U. S. cigar wrapper tobaccos fall in this category. The rate set for this new tariff item is 15 percent ad valorem with a maximum charge of 31.8 cents per pound.

2/ Effective January 1, 1968 the internal rate between member countries was reduced to zero.

3/ EEC countries raised external duties to 28 percent on January 1, 1968 pursuant to EEC-Greece Association Agreement.

4/ The ultimate uniform common external rate which was agreed upon in the "Kennedy Round" negotiations. The scheduled reductions or alignments to reach the ultimate rate are as follows: 40 percent of the reduction--July 1, 1968; 20 percent of the reduction--Jan. 1, 1970; 20 percent of the reduction--Jan. 1, 1971, 20 percent of the reduction Jan. 1, 1972.

Note: Greece became an associate member in November 1962 and Turkey in December 1964. Tobacco from these countries moves in the EEC at the same duty as that of full members except that Turkey has an allotment of 17,615 metric tons. Tobacco above this quota is subject to the external duty.

TABLE 37.--Acreage and production of tobacco in specified countries, calendar years, average 1960-64, annual 1966-69

Continent and country	Acreage harvested					Production (farm-gate weight basis)				
	Average	1966	1967	1968 ¹	1969 ¹	Average	1966	1967	1968 ¹	1969 ¹
	1960-64	1,000 acres	1,000 acres	1,000 acres	1,000 acres	1,000 lb.	1,000 lb.	1,000 lb.	1,000 lb.	1,000 lb.
North America:										
Canada	121	130	141	135	132	196,295	234,182	213,096	218,807	237,340
Mexico	91	63	58	58	87	96,364	92,152	103,087	101,412	136,906
United States	1,159	974	960	880	923	2,178,400	1,886,819	1,967,911	1,712,299	1,799,447
Cuba	113	--	--	--	--	87,000	--	--	--	--
Dominican Republic	63	49	46	37	44	61,729	44,092	45,565	36,155	46,297
South America:										
Argentina	109	118	139	138	146	106,262	98,564	136,855	135,834	107,454
Brazil	481	398	644	535	471	336,211	298,748	336,211	319,226	334,793
Colombia	45	67	57	56	59	76,950	97,554	93,696	91,490	96,980
Paraguay	28	22	27	32	32	30,731	19,290	30,864	44,092	44,000
Europe:										
Belgium	3	2	1	1	1	6,024	4,189	3,430	4,050	4,079
France	55	51	49	50	48	92,090	106,504	104,714	117,018	110,230
Germany, West	11	8	9	9	9	22,158	20,807	18,755	16,011	18,300
Greece	301	310	313	268	268	218,741	216,703	251,644	194,368	178,919
Italy	117	134	133	128	115	125,595	163,022	191,657	163,425	167,285
Spain	45	31	43	34	43	63,492	42,694	66,506	55,596	55,115
Bulgaria	276	290	252	--	--	211,393	292,114	260,792	--	--
Yugoslavia	108	156	145	141	124	119,269	119,269	119,710	96,561	92,593
Africa:										
Algeria	38	53	53	53	53	15,421	30,000	29,500	30,000	30,000
Rhodesia	219	207	115	105	115	226,233	249,432	206,000	132,180	137,300
Zambia	22	22	14	16	14	18,894	16,875	11,916	14,748	12,038
Malawi	131	148	111	82	79	35,492	41,047	39,460	32,035	26,522
Republic of South Africa	86	68	75	76	105	60,985	48,800	59,900	84,300	84,500
Asia:										
Iran	52	64	49	45	46	26,137	44,379	49,077	43,166	49,824
Iraq	33	38	45	45	44	20,639	25,050	29,378	30,000	29,000
Lebanon	12	16	17	16	16	9,795	13,889	13,669	14,771	14,771
Syria	28	40	51	52	52	15,055	19,621	25,500	26,000	26,000
Turkey	487	704	734	679	566	278,771	361,989	402,763	356,325	321,100
Burma	118	118	140	179	142	88,212	75,264	93,184	119,048	94,797
China--Mainland	1,603	--	--	--	--	1,399,820	--	--	--	--
Taiwan	20	19	25	28	27	38,439	33,188	39,099	45,512	44,092
India	1,016	919	1,046	1,046	1,019	736,399	656,309	779,106	812,836	765,437
Pakistan	209	253	286	295	288	212,912	302,848	373,000	410,000	400,000
Vietnam, South	22	18	21	21	22	16,709	15,212	17,394	17,500	18,000
Cambodia	25	43	43	44	44	13,257	23,148	23,150	24,000	24,000
Laos	9	15	18	16	17	4,069	6,600	8,818	8,377	8,500
Indonesia	439	451	480	533	530	159,569	194,000	209,400	231,500	220,500
Japan	166	215	213	203	187	333,382	435,347	460,375	426,365	389,328
South Korea	56	106	92	96	105	76,291	158,590	145,540	153,654	176,368
Philippines	243	224	223	288	257	152,708	152,669	143,277	294,159	171,606
Thailand	129	141	142	154	159	64,750	81,598	81,591	87,014	89,252
Oceania:										
Australia	27	23	22	23	23	26,856	25,895	27,905	24,721	33,500
New Zealand	5	5	5	5	5	8,302	6,823	5,516	6,154	7,000
Estimated world total ^{2/}	9,294	9,759	10,207	10,008	9,713	8,909,876	9,635,506	10,350,972	9,945,662	9,893,515

^{1/} Preliminary. ^{2/} Total includes data for countries not listed.

Foreign Agricultural Service. Official estimates of foreign countries, reports from U. S. Foreign Service officers, results of office research, and other information.

UPDATA 1981

TABLE 38.--Production of flue-cured tobacco in specified countries, calendar years, annual 1964-1969 1/

Continent and country	1964	1965	1966	1967	1968 1/	1969 1/
	1,000 lb.	1,000 lb.	1,000 lb.	1,000 lb.	1,000 lb.	1,000 lb.
North America:						
Canada.....	143,197	159,185	223,756	204,267	211,274	230,000
Mexico.....	14,412	11,905	9,921	10,582	12,787	15,159
United States.....	1,387,804	1,058,970	1,107,861	1,263,159	981,541	1,057,991
South America:						
Argentina.....	19,114	24,345	31,085	35,404	50,895	49,590
Brazil.....	103,030	197,382	99,306	131,923	125,703	168,112
Venezuela.....	12,000	12,800	14,000	13,951	15,163	16,500
Europe:						
Germany, West.....	1,557	1,027	1,475	1,579	1,526	1,600
Italy.....	25,435	21,537	34,646	25,280	20,432	22,110
Asia:						
India.....	252,206	209,000	172,400	203,374	208,555	235,451
Pakistan.....	26,950	28,000	44,000	76,900	81,500	85,000
Indonesia.....	19,840	39,680	44,090	34,171	16,535	15,500
Japan.....	297,233	253,959	272,592	290,696	286,640	256,022
South Korea.....	89,614	96,274	119,059	103,845	110,960	134,326
Taiwan.....	49,315	35,537	32,788	38,599	44,962	43,592
Thailand.....	23,111	30,553	31,593	36,029	41,182	43,496
Africa:						
Rhodesia, Zambia, and Malawi.....	327,030	250,023	261,470	214,164	147,903	149,183
Republic of South Africa.....	32,303	31,800	23,800	23,700	47,000	47,300
Oceania:						
Australia.....	34,342	25,111	25,870	27,785	24,571	33,300
New Zealand.....	8,990	9,514	6,695	5,416	5,991	6,800
Estimated world total 2/	3,782,053	3,469,449	3,531,472	3,946,212	3,659,813	3,770,680

1/ Preliminary.

2/ Total includes data for countries not listed.

Foreign Agricultural Service. Official estimates of foreign countries, reports from U. S. Foreign Service officers, results of office research, and other information.

TABLE 39.--Production of burley tobacco in specified countries, calendar years, annual 1964-69 1/

Continent and country	1964	1965	1966	1967	1968	1969
	1,000 lb.	1,000 lb.	1,000 lb.	1,000 lb.	1,000 lb.	1,000 lb.
North America:						
Canada.....	5,317	3,982	5,492	4,650	3,074	3,310
United States.....	619,794	586,299	586,672	540,635	563,367	573,905
Mexico.....	13,227	13,228	15,432	22,046	15,432	15,873
South America:						
Brazil.....	4,918	7,520	6,239	6,349	15,218	22,114
Venezuela.....	5,043	5,525	6,877	7,213	8,455	9,000
Europe:						
Germany, West.....	9,381	8,989	10,028	7,627	6,249	7,400
Greece.....	7,937	9,418	13,184	21,396	20,778	25,258
Italy.....	35,403	33,757	33,151	46,788	55,876	57,174
Spain.....	33,228	43,735	19,059	43,126	38,881	38,360
Asia:						
India.....	4,000	5,000	5,000	6,000	6,000	5,000
Japan.....	28,411	30,805	28,356	26,252	20,291	19,837
South Korea.....	11,599	18,510	29,447	33,356	35,110	33,510
Africa:						
Morocco.....	3,704	4,427	2,685	3,131	2,191	3,307
Malagasy Republic.....	800	1,102	1,084	3,968	3,321	3,320
Malawi.....	4,699	5,766	5,335	5,874	6,673	7,632
Rhodesia.....	2,528	6,025	4,322	5,000	4,000	5,000
Estimated world total 2/	822,208	808,314	798,835	810,601	837,209	866,546

1/ Preliminary.

2/ Total includes data for countries not listed.

Foreign Agricultural Service. Official estimates of foreign countries, reports from U. S. Foreign Service officers, results of office research, and other information.

INDEX

	Page		Page
Acresage:		Markets:	
by class or type.....	8 - 14 :	auction (map).....	5
by states.....	16 & 17 :	auction.....	18
foreign countries.....	49 :		
		Prices:	
Allotments:		by type on total production.....	8 - 14
number and acresage.....	20 - 21 :	by type on auction markets.....	8 & 18
		by states on total production.....	16 - 17
Auction markets:		cigarettes, wholesale	33
map.....	5 :		
number.....	18 :	Production:	
sets of buyers.....	5 & 18 :	by type.....	8 - 14
prices.....	6 & 18 :	by states.....	16 - 17
warehouses.....	18 :	foreign burley by countries.....	50
		foreign flue-cured by countries.....	50
Buyers:		foreign, all types by countries.....	49
auction markets.....	5 & 18 :		
		Products:	
Consumption:		consumption, domestic.....	7
domestic.....	7 :	consumption, per capita.....	33
per capita.....	33 :	expenditures, consumer.....	32
		exports.....	41 - 42
Crop value:		imports.....	42
by type.....	8 - 14 :	manufactured.....	30 - 31
by state.....	16 - 17 :	removals.....	30 - 31
Disappearance:		Receipts:	
chart.....	7 :	cash, by states, tobacco and other commodities... 15	
total and domestic, crop year.....	8 - 14 :	import duties.....	46
		leaf under loan, crop years.....	6 & 18
Exports:		taxes, Federal.....	32
as part of disappearance.....	8 - 14 :	taxes, State.....	36
leaf, by types, countries, crop years.....	37 - 39 :		
leaf, by types, calendar years.....	40 :	Referendums:	
leaf, value by types, calendar years.....	40 :	marketing quota.....	19
leaf, by countries, calendar years.....	40 :		
cigarettes by countries.....	41 :	Removals:	
cigars and products, quantity and value.....	42 :	cigars by classes.....	31
		products, tax paid.....	30
Hogshead:		products, tax free.....	30
dimensions and weights.....	28 :		
		Sales:	
Imports:		auction.....	6 & 18
leaf, by types and countries, calendar years.....	43 - 44 :		
leaf, quantity and value, calendar years.....	44 :	Stocks:	
leaf, quantity and value, fiscal years.....	44 :	by crop year.....	8 - 14
products, by countries.....	42 :	by quarter, domestic types.....	22 - 26
		by quarter, foreign types.....	27
Leaf:		by quarter, all types.....	27
disappearance.....	8 - 14 :		
exports.....	37 - 39 :	Tariff:	
imports.....	43 - 44 :	common market countries.....	48
production, U. S.	8 - 16 :	foreign rates, selected countries.....	46 - 48
production, foreign.....	49 - 50 :	U. S. rates.....	45
stocks.....	22 - 27 :	U. S. receipts from.....	46
used in cigarettes.....	29 :		
		Taxes:	
Loan levels:		rates, Federal.....	32
by types.....	15 :	rates, State.....	34 - 35
		receipts, Federal.....	32
Loan receipts:		receipts, State.....	36
deliveries and percentage of net auction sales....	6 & 18 :		
		Yield:	
Map:		domestic types by class.....	8 - 14
auction markets.....	5 :	domestic types by states.....	16 - 17

U.S. DEPARTMENT OF AGRICULTURE
Consumer and Marketing Service
Washington, D.C. 20250

- - -
Official Business

Penalty for Private Use \$300.00



POSTAGE & FEES PAID
United States Department of Agriculture

* U. S. GOVERNMENT PRINTING OFFICE : 1970 394-233 (G&S-201)

END