



AgEcon SEARCH

RESEARCH IN AGRICULTURAL & APPLIED ECONOMICS

The World's Largest Open Access Agricultural & Applied Economics Digital Library

This document is discoverable and free to researchers across the globe due to the work of AgEcon Search.

Help ensure our sustainability.

Give to AgEcon Search

AgEcon Search

<http://ageconsearch.umn.edu>

aesearch@umn.edu

*Papers downloaded from **AgEcon Search** may be used for non-commercial purposes and personal study only. No other use, including posting to another Internet site, is permitted without permission from the copyright owner (not AgEcon Search), or as allowed under the provisions of Fair Use, U.S. Copyright Act, Title 17 U.S.C.*

No endorsement of AgEcon Search or its fundraising activities by the author(s) of the following work or their employer(s) is intended or implied.

58 442 (1969)

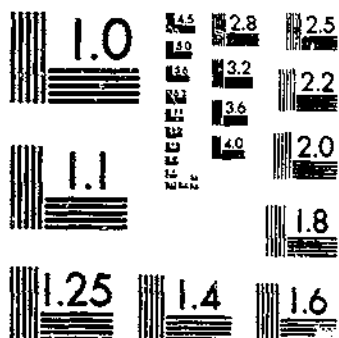
USDA STATISTICAL BULLETINS

UPDATA

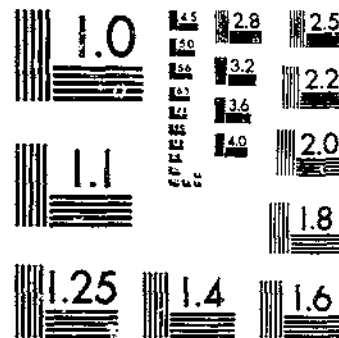
FLOWERS AND FOLIAGE PLANTS: PRODUCTION AND SALES IN SELECTED STATES, 1956-68

1 OF 1

START



MICROCOPY RESOLUTION TEST CHART
NATIONAL BUREAU OF STANDARDS-1963-A

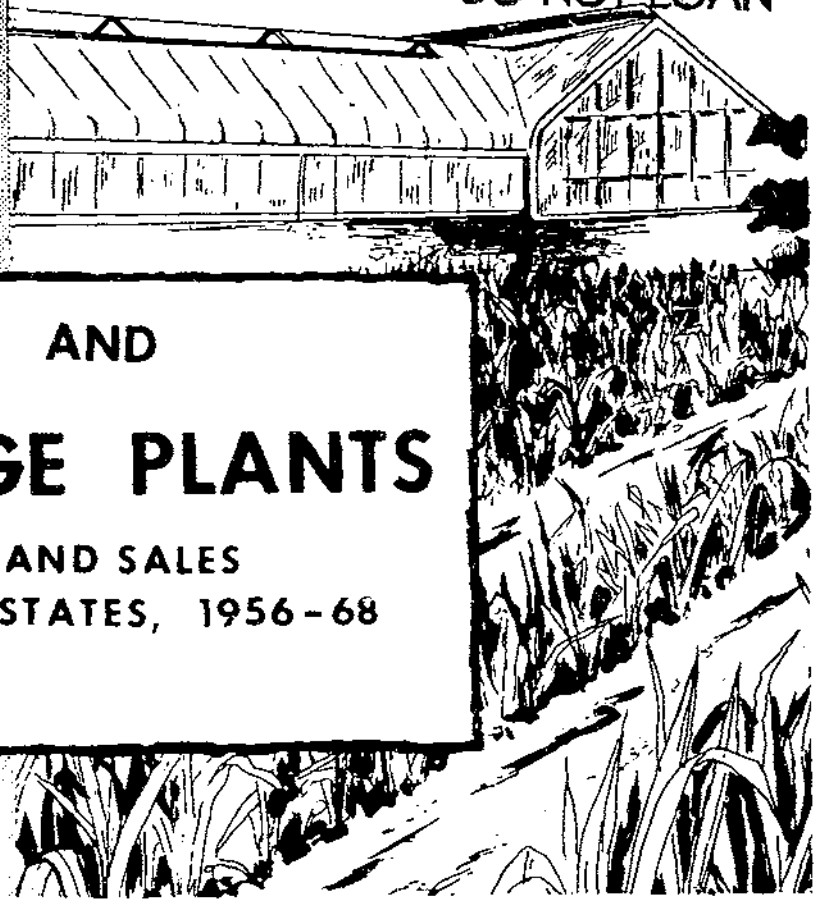


MICROCOPY RESOLUTION TEST CHART
NATIONAL BUREAU OF STANDARDS-1963-A

R 63015 453-13

442

REFERENCE
DO NOT LOAN



FLOWERS AND FOLIAGE PLANTS

PRODUCTION AND SALES
IN SELECTED STATES, 1956-68

DEPOSITORY

JUL 15

Los Angeles Public Library

- CARNATIONS
- CHRYSANTHEMUMS
- GLADIOLI
- ROSES
- FOLIAGE PLANTS

Statistical Bulletin No. 442

UNITED STATES DEPARTMENT OF AGRICULTURE
Statistical Reporting Service
Crop Reporting Board

CONTENTS

	<u>Page</u>
Summary	3
Charts - States and Commodities Included in Survey	4
Tables	
Flower and Foliage Plants-23 States	5
Carnations	6
Standard Chrysanthemums	11
Pompon Chrysanthemums	16
Gladioli	25
Roses	20
Potted Chrysanthemums	30
Foliage Plants	33

Washington, D. C. 20250

June 1969

FLOWERS AND FOLIAGE PLANTS

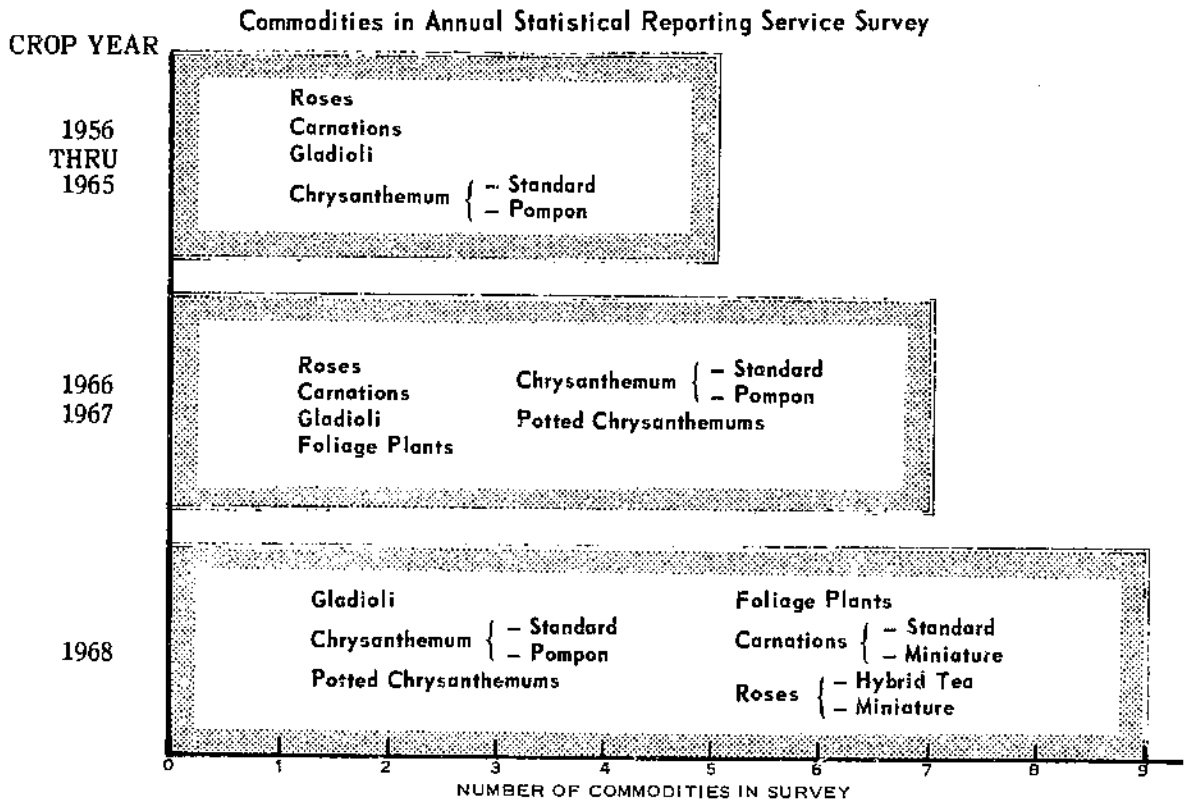
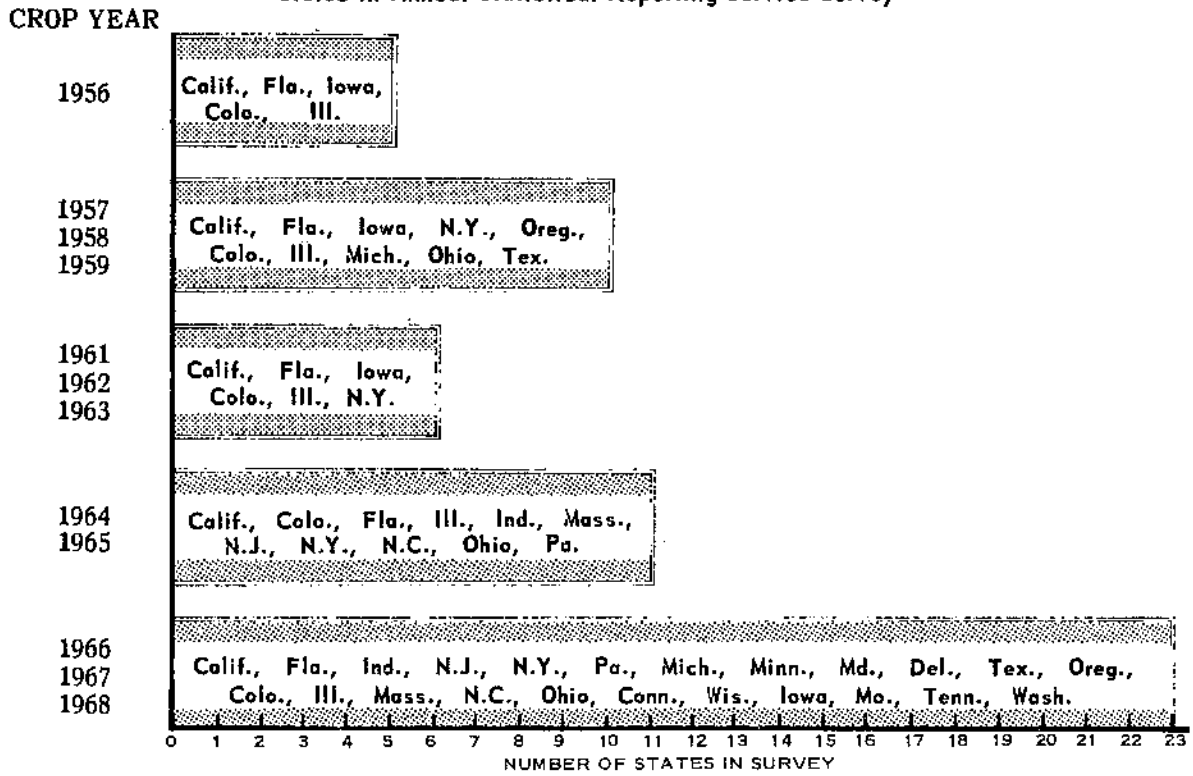
PRODUCTION AND SALES IN SELECTED STATES, 1956-68

SUMMARY

This bulletin contains all series of commercial floriculture estimates of the Crop Reporting Board. These estimates are based on annual reports from flower and foliage plant growers. Figures for 1959 are based on a tabulation of preliminary data from the U. S. Census of Agriculture for Horticultural Specialities. No survey was conducted for the 1960 crop year. Annual estimates are published in May each year in Flowers and Foliage Plants.

The estimates relate to sales by commercial producers. A commercial producer is defined as one who produces and sells \$2,000 or more of cut flowers; nursery products; bulbs; seeds; and bedding, vegetable, flowering, and foliage plants in one year. Only commercial producers growing any of the four cut flowers (carnations, chrysanthemums, gladioli, or roses), potted chrysanthemums, or foliage plants are included in this report. All value figures, except for foliage plants, are on a "gross wholesale" basis and deductions have not been made for selling commissions and transportation costs. For each State, total sales, except for foliage plants, are converted to their equivalent wholesale value using the reported average wholesale prices. Foliage plant sales are on a "net sales" basis and are derived for each State by subtracting the cost of plant materials purchased from other growers from the gross value of sales. The published average price is derived from unrounded totals. Sales times average price does not necessarily equal the published wholesale value.

COMMERCIAL FLORICULTURE 1/
States in Annual Statistical Reporting Service Survey



1/ No survey for crop year 1960.

Table 1.--Flower and Foliage Plants: Production and Sales, 1966-68, in 23 States

Commodity and crop year	Producers	Plants in production	Blooms sold	Percentage of sales at wholesale	Wholesale price	Value of sales at wholesale 1/
	Number	1,000 plants	1,000 blooms	Percent	Cents	1,000 dollars
Carnations						
1966	2,183	52,824	531,856	94	7.1	37,625
1967	2,055	54,342	551,426	94	7.3	40,174
1968	2,015	56,177	630,103	95	7.1	44,898
Standard Chrysanthemums						
1966	2,984	105,279	133,688	91	17.4	23,320
1967	2,756	109,778	133,312	91	18.3	24,416
1968	2,600	112,095	132,378	93	20.0	26,617
Pompon Chrysanthemums						
1966	2,988	119,686	2/28,433	91	78.0	22,158
1967	2,738	115,078	2/27,560	90	80.0	22,845
1968	2,661	126,333	2/30,451	92	84.0	25,586
Roses						
1966	376	15,147	363,172	97	11.2	40,739
1967	376	15,625	363,144	97	11.7	42,331
1968	371	16,784	407,797	97	12.0	49,127

Commodity and crop year	Producers	Acres in production	Dozen spikes sold	Percentage of sales at wholesale	Wholesale price	Value of sales at wholesale 1/
	Number	Acres	1,000 dozen	Percent	Cents	1,000 dollars
Gladioli						
1966	581	13,387	28,619	97	66.0	18,860
1967	541	12,667	25,748	97	69.0	17,753
1968	490	12,889	27,948	97	75.0	20,981

Commodity and crop year	Producers	Pots in production	Pots sold	Percentage of sales at wholesale	Wholesale price	Value of sales at wholesale 1/
	Number	1,000 pots	1,000 pots	Percent	Dollars	1,000 dollars
Potted Chrysanthemums						
1966	1,545	11,799	11,070	91	1.43	15,875
1967	1,538	13,372	12,897	92	1.41	18,176
1968	1,542	13,956	13,386	93	1.46	19,562

Commodity and crop year	Producers	Square ft. in production	Percentage of sales at wholesale	Net Value 3/ of sales
	Number	1,000 sq. ft.	Percent	1,000 dollars
Foliage Plants for Indoor or Patio Use				
1966	1,039	32,381	91	23,988
1967	1,014	31,606	91	26,079
1968	939	31,287	93	26,412

1/ Equivalent wholesale value for all sales. 2/ Bunches sold. 3/ Gross value of sales less cost of plant material purchased from growers for growing-on.

Table 2.--Carnations: Number of producers, plants in production, sales, price, wholesale value, beginning of series thru 1968, in selected States

State and crop year	Producers	Plants in production	Blooms sold	Percentage of sales at wholesale	Wholesale price	Value of sales at wholesale
	Number	1,000 plants	1,000 blooms	Percent	Cents	1,000 dollars
Massachusetts						
1964	160	4,854	34,860	90	7.6	2,641
1965	158	4,831	37,180	91	7.7	2,849
1966	150	4,939	38,225	92	8.1	3,100
1967	140	4,710	34,580	91	8.8	3,054
1968	129	4,488	37,010	93	8.1	2,988
Connecticut						
1966	69	1,031	7,931	71	9.7	770
1967	65	854	8,268	79	8.2	680
1968	64	812	10,294	77	8.1	833
New York-Upstate						
1957	207	1,113	8,390	77	7.4	621
1958	208	1,074	7,995	74	7.5	600
1959	210	1,183	7,765	73	8.1	627
1960	--	--	--	--	--	--
1961	221	958	7,063	60	7.0	567
1962	206	940	7,195	69	7.2	520
1963	190	821	6,356	66	7.8	496
1964	173	839	6,235	63	7.6	471
1965	155	711	6,233	67	7.2	448
1966	162	690	5,262	62	8.0	419
1967	148	616	4,442	64	9.0	399
1968	174	527	5,107	57	7.2	367
New York-Long Island						
1957	107	3,575	20,467	95	6.7	1,371
1958	100	3,491	21,195	96	6.5	1,378
1959	98	3,215	19,858	94	6.5	1,291
1960	--	--	--	--	--	--
1961	97	2,789	17,118	92	6.4	1,094
1962	90	2,566	17,019	90	6.4	1,035
1963	81	2,261	15,146	86	7.1	1,078
1964	77	2,005	14,356	88	6.3	899
1965	64	1,646	13,317	91	6.5	865
1966	63	1,602	12,547	90	7.3	909
1967	55	1,302	10,775	90	7.0	759
1968	51	1,015	11,064	87	6.9	759
New Jersey						
1964	142	1,425	10,145	76	7.9	800
1965	138	1,337	10,037	77	7.8	786
1966	133	1,313	10,082	80	8.0	805
1967	119	1,173	8,969	80	8.8	790
1968	104	1,191	10,647	82	7.4	790

1/ Equivalent wholesale value of all sales.

Table 2.--Carnations: Number of producers, plants in production, sales, price, wholesale value, beginning of series thru 1968, in selected States--Con.

State and crop year	Producers	Plants in production	Blooms sold	Percentage of sales at wholesale	Wholesale price	Value of sales at wholesale
	Number	1,000 plants	1,000 blooms	Percent	Cents	1,000 dollars
Pennsylvania						
1964	333	4,396	35,450	85	8.0	2,843
1965	324	4,421	36,785	87	8.6	3,159
1966	297	4,149	34,253	88	9.0	3,074
1967	277	4,693	35,600	87	9.3	3,292
1968	284	4,149	38,898	88	9.0	3,491
Ohio						
1964	268	2,026	16,148	80	9.0	1,457
1965	268	2,033	16,629	75	9.6	1,603
1966	260	2,038	17,364	79	9.4	1,631
1967	234	1,939	16,671	78	10.0	1,665
1968	204	1,926	17,036	70	10.3	1,760
Indiana						
1964	102	758	6,621	76	9.7	645
1965	101	631	4,861	75	10.8	524
1966	91	540	3,892	71	12.0	467
1967	75	472	3,198	71	11.4	354
1968	70	482	3,092	81	12.1	375
Illinois						
1956	223	2,523	22,660	87	7.0	1,586
1957	212	2,394	20,169	88	7.0	1,412
1958	224	2,367	20,587	89	6.8	1,400
1959	200	2,349	18,118	88	7.1	1,279
1960	--	--	--	--	--	--
1961	176	1,971	15,715	84	6.6	1,044
1962	167	1,731	14,998	86	6.3	950
1963	157	1,711	15,141	86	6.7	1,015
1964	159	1,561	13,676	86	6.5	894
1965	137	1,482	11,878	86	7.0	825
1966	108	1,229	10,296	84	7.6	778
1967	101	1,067	9,635	84	7.3	701
1968	95	949	8,560	83	8.0	685
Michigan						
1957	167	509	4,811	66	8.4	404
1958	171	586	4,179	52	8.8	368
1959	--	--	--	--	--	--
1960	--	--	--	--	--	--
1961	--	--	--	--	--	--
1962	--	--	--	--	--	--
1963	--	--	--	--	--	--
1964	--	--	--	--	--	--
1965	--	--	--	--	--	--
1966	75	399	2,834	57	11.0	312
1967	69	290	2,565	44	11.2	266
1968	68	303	2,934	54	10.2	298

1/ Equivalent wholesale value of all sales.

Table 2.--Carnations: Number of producers, plants in production, sales, price, wholesale value, beginning of series thru 1968, in selected States--Con.

State and crop year	Producers	Plants in production	Blooms sold	Percentage of sales at wholesale	Wholesale price	Value of sales at wholesale
	Number	1,000 plants	1,000 blooms	Percent	Cents	1,000 dollars
Wisconsin						
1966	89	368	3,106	76	11.1	346
1967	93	354	2,920	79	9.8	285
1968	86	367	2,936	88	12.6	370
Minnesota						
1966	62	260	1,946	60	11.2	218
1967	58	218	1,829	61	11.7	214
1968	51	184	1,844	78	11.9	219
Iowa						
1956	77	394	3,630	62	9.2	334
1957	77	444	3,552	68	9.4	334
1958	83	437	3,398	65	8.5	289
1959	84	387	2,837	65	10.4	296
1960	--	--	--	--	--	--
1961	77	366	2,132	63	10.3	220
1962	71	270	1,754	53	10.8	190
1963	--	--	--	--	--	--
1964	--	--	--	--	--	--
1965	--	--	--	--	--	--
1966	52	156	1,374	53	11.8	162
1967	50	132	1,072	40	13.0	139
1968	45	105	957	31	14.8	142
Missouri						
1966	49	905	5,236	75	9.5	497
1967	49	973	6,166	81	9.0	556
1968	46	770	5,461	80	7.2	396
Delaware						
1966	8	37	411	30	7.9	33
1967	7	43	277	26	10.8	30
1968	8	34	361	20	8.4	30
Maryland						
1966	31	490	4,122	77	10.3	426
1967	32	482	3,738	72	10.7	401
1968	30	524	3,721	73	9.7	363
North Carolina						
1964	37	949	7,902	92	9.3	735
1965	35	1,019	7,767	92	9.0	697
1966	39	939	7,986	91	8.8	703
1967	39	934	8,472	92	9.6	814
1968	32	1,010	9,139	94	10.8	988

1/ Equivalent wholesale value of all sales.

Table 2.--Carnations: Number of producers, plants in production, sales, price, wholesale value, beginning of series thru 1968, in selected States--Con.

State and crop year	Producers	Plants in production	Blooms sold	Percentage of sales at wholesale	Wholesale price	Value of sales at wholesale
	Number	1,000 plants	1,000 blooms	Percent	Cents	1,000 dollars
Florida						
1956	4/	4/	4/	4/	4/	4/
1957	4/	4/	4/	4/	4/	4/
1958	4/	4/	4/	4/	4/	4/
1959	6	70	568	99	9.6	54
1960	--	--	--	--	--	--
1961	4	3/	3/	3/	3/	3/
1962	3/	3/	3/	3/	3/	3/
1963	3/	3/	3/	3/	3/	3/
1964	3/	3/	3/	3/	3/	3/
1965	3/	3/	3/	3/	3/	3/
1966 2/	2/	2/	2/	2/	2/	2/
1967 2/	2/	2/	2/	2/	2/	2/
1968 2/	2/	2/	2/	2/	2/	2/
Tennessee						
1966 2/	10	1,231	8,839	96	7.3	643
1967 2/	12	1,258	8,600	95	8.3	713
1968 2/	11	1,429	10,427	99	4.4	464
Texas						
1966	8	47	140	4	11.2	16
1967	6	23	111	15	7.6	8
1968	8	29	145	38	9.3	13
Colorado						
1956	114	5,875	53,811	99	8.8	4,735
1957	122	6,264	58,553	99	8.7	5,094
1958	122	6,556	66,598	100	8.3	5,528
1959	130	7,222	73,570	99	8.0	5,926
1960	--	--	--	--	--	--
1961	133	7,490	78,978	99	7.8	6,186
1962	133	7,701	84,402	99	8.1	6,797
1963	142	8,187	95,349	97	7.5	7,187
1964	147	8,584	99,136	99	7.4	7,357
1965	141	8,619	96,042	97	8.0	7,723
1966	149	9,954	109,493	99	8.0	8,794
1967	148	10,297	116,597	98	8.4	9,838
1968	152	10,632	126,852	99	8.6	10,866

1/ Equivalent wholesale value of all sales.

2/ Florida combined with Tennessee to avoid disclosure of individual operations.

3/ Florida not published to avoid disclosure of individual operations.

4/ Florida no commercial production.

Table 2.--Carnations: Number of producers, plants in production, sales, price, wholesale value, beginning of series thru 1968, in selected States--Con.

State and crop year	Producers	Plants in production	Blooms sold	Percentage of sales at wholesale	Wholesale price	Value of sales at wholesale
	Number	1,000 plants	1,000 blooms	Percent	Cents	1,000 dollars
Washington						
1966	26	117	976	80	11.1	110
1967	26	141	992	74	11.6	115
1968	24	83	723	74	11.7	85
Oregon						
1966	20	131	1,142	85	9.7	110
1967	16	141	1,078	86	8.5	92
1968	16	164	1,418	67	10.4	148
California						
1956	157	9,264	99,950	99	4.2	4,198
1957	153	9,300	102,468	100	4.7	4,816
1958	180	10,393	114,251	100	4.8	5,484
1959	189	12,940	134,271	100	4.7	6,368
1960	--	--	--	--	--	--
1961	169	12,360	135,040	99	5.0	6,693
1962	174	13,335	152,288	99	4.9	7,518
1963	211	15,836	180,142	99	5.1	9,156
1964	205	15,689	188,819	100	5.0	9,428
1965	188	16,333	198,460	99	5.3	10,498
1966	232	20,259	244,399	99	5.4	13,302
1967	236	22,230	264,871	99	5.7	14,999
1968	263	25,004	321,477	99	5.7	18,468

1/ Equivalent wholesale value of all sales.

Table 3.--Standard Chrysanthemums: Number of producers, plants in production, sales, price, wholesale value, beginning of series thru 1968, in selected States

State and crop year	Producers	Plants in production	Blooms sold	Percentage of sales at wholesale	Wholesale price	Value of sales at wholesale 1/
	Number	1,000 plants	1,000 blooms	Percent	Cents	1,000 dollars
Massachusetts						
1964	191	2,814	3,205	87	20.3	650
1965	183	3,115	3,390	89	21.8	740
1966	181	3,239	3,440	89	24.7	849
1967	169	3,925	4,155	92	24.0	997
1968	153	3,483	3,803	92	24.2	920
Connecticut						
1966	96	1,323	1,562	74	27.0	421
1967	87	1,323	1,700	76	23.8	404
1968	80	1,166	1,385	78	26.9	373
New York-Upstate						
1957	317	2,228	2,803	81	23.3	653
1958	323	2,555	3,178	76	22.9	728
1959	320	3,075	3,626	81	22.9	830
1960	--	--	--	--	--	--
1961	343	3,536	4,322	58	21.4	926
1962	325	2,802	3,574	75	21.6	773
1963	301	2,918	3,475	74	22.9	795
1964	295	2,815	3,686	76	23.0	848
1965	268	2,813	3,616	75	23.4	846
1966	292	2,947	3,591	79	24.7	888
1967	269	2,864	3,457	77	25.9	895
1968	245	2,647	3,025	74	27.8	841
New York-Long Island						
1957	106	1,099	1,681	89	23.6	397
1958	98	1,029	1,688	95	22.0	371
1959	115	1,365	2,123	87	21.7	460
1960	--	--	--	--	--	--
1961	121	1,443	2,540	91	20.4	517
1962	107	1,209	2,280	86	19.9	455
1963	100	1,243	2,192	89	21.9	480
1964	96	1,294	2,411	89	22.5	543
1965	89	1,488	2,560	87	24.0	614
1966	90	1,936	2,900	89	24.9	723
1967	83	1,846	2,818	89	24.9	701
1968	73	1,921	2,748	92	27.4	753
New Jersey						
1964	205	1,815	2,897	73	18.5	535
1965	195	1,888	3,207	77	20.0	643
1966	204	1,865	3,023	78	21.9	662
1967	182	1,632	2,514	77	22.5	566
1968	149	1,586	2,310	80	25.4	587

1/ Equivalent wholesale value for all sales.

Table 3.--Standard Chrysanthemums: Number of producers, plants in production, sales, price, wholesale value, beginning of series thru 1968, in selected States--Con.

State and crop year	Producers	Plants in production	Blooms sold	Percentage of sales at wholesale	Wholesale price	Value of sales at wholesale
	Number	1,000 plants	1,000 blooms	Percent	Cents	1,000 dollars
Pennsylvania						
1964	433	5,976	7,614	71	21.5	1,635
1965	407	5,756	7,434	70	22.9	1,703
1966	381	5,670	7,062	70	23.0	1,625
1967	341	5,606	6,836	70	24.8	1,697
1968	338	5,774	6,861	74	25.5	1,750
Ohio						
1964	382	10,712	12,114	87	21.4	2,597
1965	380	12,061	13,009	87	20.9	2,717
1966	361	12,585	12,410	87	21.7	2,694
1967	332	12,492	12,856	88	21.2	2,723
1968	313	12,543	12,265	87	23.5	2,882
Indiana						
1964	175	2,944	3,266	74	26.2	854
1965	165	3,411	3,641	74	25.8	938
1966	158	2,926	3,255	79	26.7	867
1967	134	3,112	3,245	80	29.6	961
1968	129	3,263	3,311	82	31.8	1,053
Illinois						
1956	295	4,202	5,170	88	20.5	1,060
1957	291	4,792	5,280	84	22.1	1,167
1958	308	5,269	5,715	84	21.7	1,240
1959	281	5,148	5,625	84	21.8	1,224
1960	--	--	--	--	--	--
1961	273	5,049	5,128	79	21.1	1,083
1962	252	4,546	4,981	79	21.6	1,078
1963	229	4,344	4,620	79	21.7	1,002
1964	230	4,530	4,614	77	21.9	1,012
1965	208	4,904	4,972	78	22.6	1,125
1966	167	4,564	4,609	80	23.0	1,059
1967	147	3,726	3,730	82	26.1	974
1968	137	3,712	3,728	86	26.5	988
Michigan						
1957	227	774	1,166	63	24.8	289
1958	237	917	1,280	53	22.6	289
1959	--	--	--	--	--	--
1960	--	--	--	--	--	--
1961	--	--	--	--	--	--
1962	--	--	--	--	--	--
1963	--	--	--	--	--	--
1964	--	--	--	--	--	--
1965	--	--	--	--	--	--
1966	133	1,136	1,513	75	23.7	357
1967	114	1,108	1,265	74	27.3	345
1968	115	1,094	1,214	70	28.6	347

1/ Equivalent wholesale value for all sales.

Table 3.--Standard Chrysanthemums: Number of producers, plants in production, sales, price, wholesale value, beginning of series thru 1968, in selected States--Con.

State and crop year	Producers	Plants in production	Blooms sold	Percentage of sales at wholesale	Wholesale price	Value of sales at wholesale 1/
	Number	1,000 plants	1,000 blooms	Percent	Cents	1,000 dollars
Wisconsin						
1966	132	1,394	1,411	72	30.7	433
1967	138	1,259	1,392	69	28.4	395
1968	122	1,122	1,218	78	33.0	402
Minnesota						
1966	118	1,061	1,300	57	23.1	300
1967	103	1,230	1,328	80	24.2	321
1968	97	1,263	1,274	78	28.2	359
Iowa						
1956	94	226	370	37	26.8	99
1957	98	336	509	62	24.0	122
1958	108	351	516	59	23.1	119
1959	109	547	786	69	21.9	172
1960	--	--	--	--	--	--
1961	99	472	581	67	24.4	142
1962	98	422	573	54	25.3	145
1963	--	--	--	--	--	--
1964	--	--	--	--	--	--
1965	--	--	--	--	--	--
1966	83	629	803	69	29.3	235
1967	73	536	613	66	30.2	185
1968	71	685	802	70	28.2	226
Missouri						
1966	97	3,941	3,985	84	21.1	842
1967	88	3,920	3,955	90	22.0	872
1968	78	3,705	3,451	93	23.8	821
Delaware						
1966	12	162	284	54	12.0	34
1967	12	133	158	52	23.9	38
1968	12	153	214	33	27.4	59
Maryland						
1966	56	1,478	1,993	84	24.5	489
1967	52	1,546	2,146	78	24.1	534
1968	50	1,752	1,972	79	28.2	556
North Carolina						
1964	65	2,545	3,780	86	17.7	667
1965	61	3,260	4,927	88	18.4	904
1966	61	3,445	5,039	93	17.9	902
1967	64	3,401	5,400	93	20.9	1,126
1968	59	3,899	5,683	93	20.8	1,182

1/ Equivalent wholesale value for all sales.

Table 3.--Standard Chrysanthemums: Number of producers, plants in production, sales, price, wholesale value, beginning of series thru 1968, in selected States--Con.

State and crop year	Producers	Plants in production	Blooms sold	Percentage of sales at wholesale	Wholesale price	Value of sales at wholesale 1/
	Number	1,000 plants	1,000 blooms	Percent	Cents	1,000 dollars
Florida						
1956	15	819	1,223	99	16.8	205
1957	15	578	754	100	18.4	139
1958	12	888	1,235	91	15.6	193
1959	24	1,452	2,199	91	14.1	310
1960	--	--	--	--	--	--
1961	15	3,174	3,737	98	14.6	546
1962	18	5,043	4,524	97	15.7	712
1963	23	4,644	5,100	96	16.4	837
1964	23	7,383	6,649	85	14.1	940
1965	20	5,885	6,017	81	15.9	959
1966	27	8,549	9,289	98	15.6	1,444
1967	28	9,040	9,137	83	17.6	1,604
1968	32	10,342	10,192	100	17.7	1,804
Tennessee						
1966	20	1,124	1,938	80	17.9	347
1967	21	1,468	2,256	91	18.5	417
1968	14	1,197	1,998	98	19.6	391
Texas						
1966	33	1,023	988	89	22.2	220
1967	42	1,227	1,153	88	22.9	263
1968	37	1,192	1,084	90	24.9	270
Colorado						
1956	32	328	434	93	22.1	96
1957	30	363	384	94	26.0	100
1958	22	393	482	97	22.4	108
1959	27	424	598	93	21.0	126
1960	--	--	--	--	--	--
1961	22	297	359	86	22.6	81
1962	18	122	160	69	22.3	36
1963	22	219	335	63	23.4	78
1964	20	256	345	72	24.4	84
1965	20	261	345	78	25.0	86
1966	19	317	398	70	29.4	117
1967	20	350	371	63	26.3	97
1968	21	447	512	72	28.3	145

1/ Equivalent wholesale value for all sales.

Table 3.--Standard Chrysanthemums: Number of producers, plants in production, sales, price, wholesale value, beginning of series thru 1968, in selected States--Con.

State and crop year	Producers	Plants in production	Blooms sold	Percentage of sales at wholesale	Wholesale price	Value of sales at wholesale ^{1/}
	Number	1,000 plants	1,000 blooms	Percent	Cents	1,000 dollars
Washington						
1966	54	752	1,024	87	22.5	253
1967	54	586	1,005	67	24.5	247
1968	49	522	794	88	28.4	255
Oregon						
1966	38	157	213	62	23.6	50
1967	29	108	163	77	23.5	38
1968	30	135	167	74	24.8	42
California						
1956	158	12,521	24,266	100	10.3	2,499
1957	150	12,171	25,598	100	11.2	2,867
1958	139	14,581	27,987	100	10.1	2,827
1959	153	22,538	36,579	100	11.9	4,335
1960	--	--	--	--	--	--
1961	153	25,594	38,708	100	12.0	4,660
1962	151	28,931	43,413	99	11.0	4,784
1963	189	36,038	52,747	99	11.3	5,975
1964	166	32,538	46,395	98	11.8	5,480
1965	154	34,801	50,904	100	12.2	6,195
1966	171	43,056	61,653	100	12.2	7,509
1967	174	47,340	61,658	100	13.0	8,016
1968	196	48,492	62,367	100	15.5	9,641

^{1/} Equivalent wholesale value for all sales.

Table 4.--Pompon Chrysanthemums: Number of producers, plants in production, sales, price, wholesale value, beginning of series thru 1968, in selected States

State and crop year	Producers	Plants in production	Bunches sold	Percentage of sales at wholesale	Wholesale price	Value of sales at wholesale
	Number	1,000 plants	1,000 bunches	Percent	Dollars	1,000 dollars
Massachusetts						
1964	236	2,160	586	66	1.05	615
1965	233	2,268	593	71	1.12	661
1966	216	2,221	579	64	1.08	625
1967	208	2,343	570	67	1.15	656
1968	192	2,109	572	65	1.27	727
Connecticut						
1966	103	1,345	322	69	1.25	403
1967	103	1,607	358	72	1.31	470
1968	96	1,500	350	71	1.33	465
New York-Upstate						
1957	353	2,651	816	70	.90	734
1958	370	3,029	880	66	.84	739
1959	370	2,757	884	68	.96	850
1960	--	--	--	--	--	--
1961	385	3,172	933	62	.92	858
1962	339	2,822	828	67	.92	762
1963	319	2,784	869	64	.91	793
1964	303	2,874	782	63	.98	765
1965	284	2,646	747	62	1.05	785
1966	309	2,718	839	68	1.06	884
1967	284	2,570	744	68	1.11	828
1968	253	2,407	671	60	1.14	765
New York-Long Island						
1957	139	1,861	683	87	.66	451
1958	132	1,750	652	89	.61	398
1959	146	2,207	784	91	.72	562
1960	--	--	--	--	--	--
1961	143	2,146	743	85	.62	459
1962	137	2,281	795	85	.60	476
1963	115	1,730	605	84	.67	404
1964	108	1,742	648	83	.83	535
1965	99	1,651	580	85	.86	499
1966	101	1,641	614	82	.86	526
1967	95	1,639	598	81	.86	513
1968	87	1,439	505	82	.90	455
New Jersey						
1964	209	2,097	608	74	.85	517
1965	195	1,949	626	71	.92	577
1966	201	1,773	577	73	.86	495
1967	183	1,454	523	71	.98	515
1968	147	1,300	445	74	1.01	447

1/ Equivalent wholesale value for all sales.

Table 4.--Pompon Chrysanthemums: Number of producers, plants in production, sales, price, wholesale value, beginning of series thru 1968, in selected States--Con.

State and crop year	Producers	Plants in production	Bunches sold	Percentage of sales at wholesale	Wholesale price	Value of sales at wholesale
	Number	1,000 plants	1,000 bunches	Percent	Dollars	1,000 dollars
Pennsylvania						
1964	426	5,647	2,027	78	.87	1,755
1965	386	5,755	2,131	83	.82	1,744
1966	366	5,467	2,118	81	.83	1,765
1967	339	5,285	2,094	81	.85	1,775
1968	331	5,870	2,125	85	.82	1,743
Ohio						
1964	363	4,225	1,143	81	.92	1,057
1965	364	5,334	1,336	81	.94	1,260
1966	355	4,704	1,245	81	.94	1,175
1967	296	4,615	1,318	75	1.00	1,319
1968	292	3,895	1,132	77	1.07	1,213
Indiana						
1964	170	1,271	363	71	1.05	382
1965	153	1,872	551	80	.81	444
1966	142	1,242	389	79	1.20	467
1967	115	1,327	376	79	1.11	420
1968	118	1,219	361	79	1.26	453
Illinois						
1956	298	4,224	1,236	82	.83	1,025
1957	285	4,468	1,147	79	.94	1,078
1958	300	4,772	1,209	79	.89	1,076
1959	296	4,626	1,095	79	1.00	1,090
1960	--	--	--	--	--	--
1961	270	4,774	974	78	.97	946
1962	251	4,318	916	79	.95	874
1963	235	4,303	918	74	.91	833
1964	234	4,031	891	72	.99	879
1965	213	3,460	753	71	1.00	749
1966	165	3,165	733	77	.98	717
1967	150	2,921	652	77	1.13	736
1968	135	2,795	623	76	1.24	774
Michigan						
1957	249	1,685	558	62	.85	474
1958	251	1,661	519	59	.79	410
1959	--	--	--	--	--	--
1960	--	--	--	--	--	--
1961	--	--	--	--	--	--
1962	--	--	--	--	--	--
1963	--	--	--	--	--	--
1964	--	--	--	--	--	--
1965	--	--	--	--	--	--
1966	129	943	304	62	1.02	309
1967	113	1,007	304	61	1.09	335
1968	119	904	297	66	1.40	417
Wisconsin						
1966	127	893	263	50	1.20	317
1967	132	1,117	275	59	1.25	346
1968	130	1,009	251	69	1.61	405

1/ Equivalent wholesale value for all sales.

Table 4.--Pompon Chrysanthemums: Number of producers, plants in production, sales, price, wholesale value, beginning of series thru 1968, in selected States --Con.

State and crop year	Producers	Plants in production	Bunches sold	Percentage of sales at wholesale	Wholesale price	Value of sales at wholesale
	Number	1,000 plants	1,000 bunches	Percent	Dollars	1,000 dollars
Minnesota						
1966	116	1,109	369	55	1.06	390
1967	108	1,205	437	46	1.08	475
1968	105	1,136	466	66	1.29	595
Iowa						
1956	111	467	181	50	1.08	195
1957	106	571	199	57	1.10	219
1958	115	628	194	69	1.05	204
1959	121	826	260	60	1.05	274
1960	--	--	--	--	--	--
1961	109	663	208	68	1.15	239
1962	104	703	246	54	1.13	278
1963	--	--	--	--	--	--
1964	--	--	--	--	--	--
1965	--	--	--	--	--	--
1966	99	662	232	63	1.28	296
1967	74	450	144	56	1.27	183
1968	76	547	180	63	1.28	230
Missouri						
1966	74	878	276	67	1.03	285
1967	71	1,187	320	82	.94	303
1968	62	880	301	83	1.03	310
Delaware						
1966	12	180	59	44	.67	39
1967	12	170	45	31	1.20	50
1968	12	163	65	23	1.11	72
Maryland						
1966	58	805	283	67	1.14	323
1967	55	1,018	301	78	1.13	340
1968	53	841	259	76	1.14	295
North Carolina						
1964	57	3,013	738	96	.72	532
1965	54	3,069	821	97	.80	653
1966	46	2,570	796	97	.90	717
1967	49	2,687	820	98	.91	748
1968	40	2,908	837	98	.84	701
Florida						
1956	45	14,504	5,277	93	.75	3,937
1957	44	22,144	7,474	95	.70	5,232
1958	42	21,735	7,172	95	.77	5,522
1959	51	24,783	7,637	99	.68	5,159
1960	--	--	--	--	--	--
1961	45	36,602	8,405	97	.70	5,891
1962	43	39,644	8,816	95	.71	6,250
1963	46	46,040	10,407	97	.74	7,656
1964	43	48,750	9,425	95	.68	6,426
1965	40	51,982	10,174	97	.68	6,965
1966	46	66,741	11,771	99	.70	8,241
1967	46	62,668	11,391	98	.77	8,778
1968	50	70,160	12,521	100	.77	9,591

1/ Equivalent wholesale value for all sales.

Table 4.--Pompon Chrysanthemums: Number of producers, plants in production, sales, price, wholesale value, beginning of series thru 1968, in selected States--Con.

State and crop year	Producers	Plants in production	Bunches sold	Percentage of sales at wholesale	Wholesale price	Value of sales at wholesale 1/
	Number	1,000 plants	1,000 bunches	Percent	Dollars	1,000 dollars
Tennessee						
1966	8	58	19	87	1.05	20
1967	5	44	14	78	1.12	16
1968	7	66	20	66	1.34	26
Texas						
1966	16	174	63	56	.58	36
1967	15	125	32	85	.91	29
1968	21	505	116	94	.74	86
Colorado						
1956	38	746	203	95	1.15	234
1957	36	746	207	94	1.15	238
1958	32	572	164	96	1.20	197
1959	35	466	150	92	1.31	195
1960	--	--	--	--	--	--
1961	29	480	126	87	1.28	161
1962	26	550	118	87	1.26	149
1963	26	550	134	82	1.21	162
1964	27	621	127	82	1.32	167
1965	27	578	114	80	1.25	143
1966	26	618	147	70	1.20	177
1967	24	674	168	70	1.11	186
1968	22	709	155	72	1.27	197
Washington						
1966	55	883	252	88	.94	248
1967	56	692	193	74	1.03	199
1968	56	953	258	83	1.11	288
Oregon						
1966	44	402	102	79	1.12	114
1967	37	286	92	83	1.06	98
1968	39	308	100	75	1.01	101
California						
1956	208	10,224	3,680	99	.33	1,218
1957	205	8,813	2,912	99	.38	1,107
1958	214	9,427	2,928	99	.35	1,025
1959	226	12,495	3,936	98	.43	1,678
1960	--	--	--	--	--	--
1961	177	10,921	3,302	99	.50	1,646
1962	171	11,339	3,469	99	.49	1,713
1963	186	13,482	4,204	98	.52	2,200
1964	176	12,719	4,789	99	.48	2,311
1965	148	13,952	5,373	100	.54	2,907
1966	174	18,494	6,081	100	.59	3,589
1967	168	17,987	5,791	99	.60	3,527
1968	218	22,710	7,841	99	.67	5,230

1/ Equivalent wholesale value for all sales.

Table 5.--Roses: Number of producers, plants in production, sales, price, wholesale value, beginning of series thru 1968, in selected States

State and crop year	Producers	Plants in production	Blossoms sold	Percentage of sales at wholesale	Wholesale price	Value of sales at wholesale 1/
	Number	1,000 plants	1,000 blossoms	Percent	Cents	1,000 dollars
Massachusetts						
1964	15	492	14,387	99	10.1	1,453
1965	15	540	14,224	99	11.4	1,615
1966	14	655	19,839	99	11.2	2,225
1967	14	697	19,403	99	12.0	2,319
1968	14	721	21,539	99	13.0	2,810
Connecticut						
1966	7	797	21,603	98	11.2	2,426
1967	7	813	18,894	100	12.0	2,262
1968	7	844	21,977	99	11.9	2,605
New York-Upstate						
1957	30	953	19,142	97	9.2	1,761
1958	28	1,031	18,728	98	9.9	1,854
1959	31	1,035	21,673	98	9.2	2,001
1960	--	--	--	--	--	--
1961	23	911	18,380	80	9.1	1,679
1962	21	828	16,144	95	9.7	1,566
1963	23	789	16,576	99	10.0	1,651
1964	20	799	17,292	99	10.3	1,782
1965	15	804	16,231	100	11.5	1,866
1966	19	818	16,530	99	13.0	2,148
1967	15	727	14,515	97	14.1	2,039
1968	14	733	15,298	97	14.7	2,250
New York-Long Island						
1957	15	789	14,002	98	8.8	1,232
1958	15	762	14,451	99	8.9	1,286
1959	17	743	14,611	99	9.1	1,336
1960	--	--	--	--	--	--
1961	13	709	14,543	99	8.6	1,249
1962	13	876	13,622	96	9.1	1,237
1963	12	686	14,533	99	9.1	1,326
1964	12	701	13,221	99	10.5	1,383
1965	12	673	12,645	99	11.4	1,444
1966	14	778	15,804	100	11.2	1,763
1967	12	660	14,441	98	11.7	1,685
1968	11	539	14,361	99	12.0	1,723
New Jersey						
1964	15	506	13,101	96	8.6	1,124
1965	16	461	11,510	99	9.7	1,110
1966	15	490	11,797	90	10.8	1,276
1967	17	508	12,341	88	10.9	1,345
1968	16	529	12,604	99	11.8	1,493

1/ Equivalent wholesale value for all sales.

Table 5.--Roses: Number of producers, plants in production, sales, price, wholesale value, beginning of series thru 1968, in selected States--Con.

State and crop year	Producers	Plants in production	Blooms sold	Percentage of sales at wholesale	Wholesale price	Value of sales at wholesale 1/
	Number	1,000 plants	1,000 blooms	Percent	Cents	1,000 dollars
Pennsylvania						
1964	39	1,745	45,993	98	10.1	4,661
1965	39	1,755	44,482	98	10.7	4,752
1966	39	1,733	41,906	98	12.4	5,213
1967	38	1,693	43,150	98	12.1	5,226
1968	40	1,739	43,061	95	14.4	6,199
Ohio						
1964	24	490	10,733	94	10.9	1,168
1965	27	492	11,129	89	11.9	1,322
1966	27	499	10,458	92	13.9	1,451
1967	22	554	11,236	93	13.8	1,548
1968	22	596	11,953	84	15.6	1,864
Indiana						
1964	28	1,267	26,970	97	11.5	3,110
1965	24	1,276	28,461	98	13.2	3,753
1966	22	1,168	24,573	98	14.6	3,586
1967	21	1,128	22,461	98	15.9	3,563
1968	21	1,093	23,648	99	17.1	4,039
Illinois						
1956	44	2,248	52,550	99	7.4	3,889
1957	40	2,142	45,714	97	8.1	3,703
1958	43	2,022	44,506	97	8.0	3,560
1959	40	1,908	43,341	98	8.1	3,490
1960	--	--	--	--	--	--
1961	31	1,654	32,474	97	9.0	2,929
1962	30	1,474	31,055	97	9.2	2,850
1963	29	1,538	34,321	97	9.0	3,074
1964	26	1,378	33,262	98	9.0	3,041
1965	28	1,374	31,961	98	10.4	3,320
1966	25	1,303	31,386	98	10.7	3,369
1967	22	1,243	30,053	97	11.5	3,465
1968	21	1,226	30,081	90	12.2	3,675
Michigan						
1957	21	572	11,355	98	9.7	1,099
1958	18	573	10,951	96	10.3	1,128
1959	--	--	--	--	--	--
1960	--	--	--	--	--	--
1961	--	--	--	--	--	--
1962	--	--	--	--	--	--
1963	--	--	--	--	--	--
1964	--	--	--	--	--	--
1965	--	--	--	--	--	--
1966	16	563	10,746	98	14.2	1,526
1967	19	554	10,468	97	16.7	1,743
1968	21	586	11,760	95	16.2	1,903

1/ Equivalent wholesale value for all sales.

Table 5.--Roses: Number of producers, plants in production sales, price, wholesale value, beginning of series thru 1968, in selected States--Con.

State and crop year	Producers	Plants in production	Blooms sold	Percentage of sales at wholesale	Wholesale price	Value of sales at wholesale 1/
	Number	1,000 plants	1,000 blooms	Percent	Cents	1,000 dollars
Wisconsin						
1966	10	151	3,562	98	14.9	530
1967	13	156	3,503	97	15.7	549
1968	9	164	3,689	97	16.7	617
Minnesota						
1966	22	334	7,121	88	13.5	961
1967	22	334	7,211	87	13.2	951
1968	21	369	7,296	75	13.2	960
Iowa						
1956	14	178	3,316	74	10.9	361
1957	15	312	5,217	85	8.9	464
1958	16	309	5,040	94	8.8	444
1959	17	258	4,412	89	9.3	411
1960	--	--	--	--	--	--
1961	15	268	4,943	88	7.8	386
1962	15	261	4,978	86	7.7	386
1963	--	--	--	--	--	--
1964	--	--	--	--	--	--
1965	--	--	--	--	--	--
1966	11	220	3,755	91	14.2	533
1967	11	231	3,621	78	13.2	478
1968	12	199	3,736	79	13.9	519
Missouri						
1966	14	193	3,811	97	12.6	480
1967	10	165	3,277	97	13.6	445
1968	6	129	2,615	96	16.1	421
Delaware 2/						
1966	--	--	--	--	--	--
1967	--	--	--	--	--	--
1968	--	--	--	--	--	--
Maryland						
1966	9	72	1,707	93	10.7	183
1967	9	91	2,386	91	10.2	244
1968	9	91	2,289	93	10.5	239
North Carolina						
1964	10	58	1,508	73	11.5	174
1965	11	59	1,668	76	8.8	147
1966	14	63	1,897	73	11.9	225
1967	16	61	1,718	74	13.9	239
1968	12	81	2,139	76	14.3	306

1/ Equivalent wholesale value for all sales.

2/ Production negligible.

Table 5.--Roses: Number of producers, plants in production, sales, price, wholesale value, beginning of series thru 1968, in selected States--Con.

State and crop year	Producers	Plants in production	Blooms sold	Percentage of sales at wholesale	Wholesale price	Value of sales at wholesale
	Number	1,000 plants	1,000 blooms	Percent	Cents	1,000 dollars
Florida						
1956 2/	--	--	--	--	--	--
1957 2/	--	--	--	--	--	--
1958 2/	--	--	--	--	--	--
1959	11	55	1,146	99	9.9	114
1960 2/	--	--	--	--	--	--
1961	12	73	1,683	92	6.7	113
1962	17	297	6,145	88	5.3	324
1963	16	450	12,361	95	5.5	682
1964	13	248	7,867	95	5.2	408
1965	10	199	5,870	95	5.8	342
1966	10	180	5,618	93	7.8	439
1967	9	184	5,384	95	9.0	486
1968	13	177	5,122	94	10.1	516
Tennessee						
1966	4	173	3,172	84	18.9	599
1967	5	189	3,568	85	18.4	656
1968	5	192	3,591	89	10.4	373
Texas 3/						
1966	5	3	121	99	6.7	8
1967	16	22	556	84	4.7	26
1968	13	20	913	77	3.4	31
Colorado						
1956	18	217	3,627	96	10.8	392
1957	17	186	3,183	95	10.5	334
1958	16	154	2,732	97	10.7	292
1959	17	138	2,427	93	12.3	300
1960	--	--	--	--	--	--
1961	15	143	2,437	91	11.4	278
1962	12	133	2,719	95	11.0	299
1963	13	124	2,180	91	11.7	255
1964	13	140	3,582	95	10.2	367
1965	13	147	3,942	96	10.2	401
1966	16	168	3,862	94	12.4	478
1967	15	208	3,633	96	13.6	495
1968	15	278	6,747	97	12.9	870

1/ Equivalent wholesale value for all sales.

2/ Florida data not published to avoid disclosure of individual operations.

3/ Texas data for 1956, 1957, 1958 and 1960 not published to avoid disclosure of individual operations.

Table 5.--Roses: Number of producers, plants in production, sales, prices, wholesale value, beginning of series thru 1968, in selected States--Con.

State and crop year	Producers	Plants in production	Blooms sold	Percentage of sales at wholesale	Wholesale price	Value of sales at wholesale
	Number	1,000 plants	1,000 blooms	Percent	Cents	1,000 dollars
Washington						
1966	10	326	6,701	100	12.9	878
1967	9	221	5,563	99	12.5	696
1968	9	264	6,053	100	13.9	839
Oregon						
1966	8	378	10,662	91	10.5	1,115
1967	4	478	12,128	88	10.3	1,251
1968	4	433	15,138	87	10.8	1,631
California						
1956	44	2,651	67,450	100	6.1	4,114
1957	41	2,693	67,414	100	6.2	4,180
1958	39	2,749	67,789	100	6.3	4,406
1959	43	2,852	73,987	100	6.7	4,929
1960	--	--	--	--	--	--
1961	42	2,994	73,599	100	6.7	4,966
1962	42	3,307	79,325	100	6.9	5,502
1963	45	3,452	80,825	99	7.3	5,875
1964	43	3,586	86,603	99	7.7	6,627
1965	41	3,770	94,450	100	8.4	7,890
1966	45	4,082	106,541	100	8.8	9,327
1967	50	4,708	113,634	100	9.4	10,620
1968	56	5,781	142,187	100	9.3	13,244

1/ Equivalent wholesale value for all sales.

Table 6.--Gladioli: Number of producers, acres in production, sales, price, wholesale value, beginning of series thru 1968, in selected States

State and crop year	Producers	Acres in production	Dozen spikes sold	Percentage of sales at wholesale	Wholesale price	Value of sales at wholesale 1/
	Number	Acres	1,000 dozen	Percent	Cents	1,000 dollars
Massachusetts						
1964	35	54	63	84	.85	53
1965	34	58	66	82	.81	53
1966	30	53	57	86	1.02	58
1967	30	40	61	87	.90	55
1968	25	54	71	95	1.22	86
Connecticut						
1966	17	41	36	92	.95	34
1967	15	24	21	78	.92	20
1968	14	17	11	75	.89	10
New York-Upstate						
1957	110	472	681	93	.54	368
1958	102	490	526	92	.60	316
1959	114	630	773	87	.45	350
1960	--	--	--	--	--	--
1961	92	540	800	93	.38	301
1962	88	439	906	95	.39	353
1963	83	579	932	95	.40	369
1964	65	540	629	86	.59	372
1965	57	453	693	96	.49	342
1966	58	311	348	89	.72	249
1967	53	291	393	93	.80	315
1968	44	177	358	92	.88	315
New York-Long Island						
1957	25	40	82	87	.53	43
1958	27	48	78	92	.53	41
1959	33	42	68	69	.59	40
1960	--	--	--	--	--	--
1961	28	27	61	66	.53	32
1962	28	20	44	53	.47	22
1963	24	20	33	49	.35	12
1964	18	10	32	62	.46	15
1965	16	9	20	69	.40	8
1966	14	8	12	78	.52	6
1967	13	4	8	73	.43	4
1968	13	10	20	71	.45	9
New Jersey						
1964	52	630	1,621	99	.56	907
1965	56	744	1,716	98	.60	1,026
1966	50	601	1,587	99	.68	1,084
1967	44	551	1,483	98	.65	960
1968	36	511	1,400	99	.73	1,019

1/ Equivalent wholesale value for all sales.

Table 6.--Gladioli: Number of producers, acres in production, sales, price, wholesale value, beginning of series thru 1968, in selected States--Con.

State and crop year	Producers	Acres in production	Dozen spikes sold	Percentage: of sales at wholesale	Wholesale price	Value of sales at wholesale 1/ 1,000 dollars
	Number	Acres	1,000 dozen	Percent	Cents	
Pennsylvania						
1964	80	119	132	82	.74	97
1965	69	111	162	86	.71	116
1966	63	102	144	78	.87	125
1967	56	90	121	87	.90	109
1968	53	70	109	85	.93	101
Ohio						
1964	44	165	269	93	.65	175
1965	41	163	254	94	.64	164
1966	35	164	181	93	.84	152
1967	36	145	166	87	.92	153
1968	31	152	143	91	.94	135
Indiana						
1964	25	144	115	90	.56	64
1965	23	131	103	93	.54	56
1966	19	167	146	96	.76	111
1967	17	152	132	98	.88	117
1968	17	150	160	92	.81	129
Illinois						
1956	109	657	973	92	.34	330
1957	117	970	1,054	98	.36	379
1958	105	1,070	1,088	98	.33	359
1959	94	1,002	1,200	97	.37	444
1960	--	--	--	--	--	--
1961	85	1,021	1,058	98	.37	394
1962	77	1,055	1,173	97	.37	431
1963	65	1,089	1,189	99	.40	479
1964	61	1,036	1,094	98	.42	458
1965	58	1,049	1,014	97	.43	440
1966	43	973	915	99	.52	477
1967	42	888	994	98	.52	513
1968	40	853	966	99	.53	513
Michigan						
1957	76	174	167	89	.43	72
1958	65	180	136	92	.40	54
1959	--	--	--	--	--	--
1960	--	--	--	--	--	--
1961	--	--	--	--	--	--
1962	--	--	--	--	--	--
1963	--	--	--	--	--	--
1964	--	--	--	--	--	--
1965	--	--	--	--	--	--
1966	33	430	448	95	.62	278
1967	32	257	148	93	.34	50
1968	33	360	460	96	.68	311

1/ Equivalent wholesale value for all sales.

Table 6.--Gladioli: Number of producers, acres in production, sales, price, wholesale value, beginning of series thru 1968, in selected States--Con.

State and crop year	Producers	Acres in production	Dozen spikes sold	Percentage:		Value of sales at wholesale 1/ 1,000 dollars
				of sales at wholesale	Wholesale price	
	Number	Acres	1,000 dozen	Percent	Cents	
Wisconsin						
1966	20	18	57	74	.49	28
1967	23	23	19	89	.82	15
1968	14	25	21	99	1.05	22
Minnesota						
1966	27	89	76	76	.73	55
1967	23	118	77	82	.88	67
1968	20	88	90	93	.53	47
Iowa						
1956	65	58	74	72	.70	52
1957	53	68	73	78	.78	57
1958	51	72	54	72	.73	39
1959	38	78	63	73	.78	49
1960	--	--	--	--	--	--
1961	32	109	56	74	.92	52
1962	29	79	48	83	1.01	49
1963	--	--	--	--	--	--
1964	--	--	--	--	--	--
1965	--	--	--	--	--	--
1966	17	64	48	93	1.12	54
1967	13	62	43	93	1.16	50
1968	11	46	43	95	1.20	52
Missouri						
1966	9	3	4	67	1.11	4
1967	9	3	5	81	1.20	5
1968	6	5	5	94	.80	4
Delaware 2/						
1966	2/	2/	2/	2/	2/	2/
1967	2/	2/	2/	2/	2/	2/
1968	2/	2/	2/	2/	2/	2/
Maryland 2/						
1966	12	49	133	88	.77	102
1967	13	46	133	96	.74	99
1968	12	39	141	89	.84	118
North Carolina						
1964	35	938	2,232	97	.55	1,219
1965	34	1,072	2,391	89	.60	1,433
1966	38	1,143	2,566	94	.62	1,591
1967	33	848	2,048	97	.78	1,592
1968	27	800	2,265	98	.79	1,798

1/ Equivalent wholesale value for all sales.

2/ Delaware combined with Maryland to avoid disclosure of individual operations.

Table 6.--Gladioli: Number of producers, acres in production, sales, price, wholesale value, beginning of series thru 1968, in selected States--Con.

State and crop year	Producers	Acres in production	Dozen spikes sold	Percentage: of sales at wholesale	Wholesale price	Value of sales at wholesale 1/ 1,000 dollars
	Number	Acres	1,000 dozen	Percent	Cents	
Florida						
1956	72	8,000	14,560	90	.53	7,775
1957	62	8,000	16,471	90	.55	9,059
1958	57	7,500	12,989	85	.57	7,664
1959	53	7,520	15,091	99	.53	7,982
1960	--	--	--	--	--	--
1961	45	7,300	16,314	92	.52	8,443
1962	36	7,310	16,480	95	.57	9,410
1963	29	7,770	16,004	95	.61	9,793
1964	27	7,535	16,157	95	.58	9,431
1965	25	7,489	15,871	98	.59	9,427
1966	28	8,085	17,858	98	.66	11,706
1967	28	8,071	16,258	96	.67	10,841
1968	28	8,364	17,905	96	.71	12,713
Tennessee 2/						
1966	2/	2/	2/	2/	2/	2/
1967	2/	2/	2/	2/	2/	2/
1968	2/	2/	2/	2/	2/	2/
Texas						
1966	10	33	29	99	.92	27
1967	9	22	26	77	1.00	26
1968	8	15	22	80	.98	22
Colorado						
1956	11	25	43	96	.56	24
1957	12	94	97	96	.55	53
1958	11	53	79	100	.47	37
1959	14	65	96	92	.63	61
1960	--	--	--	--	--	--
1961	8	39	34	93	.72	25
1962	8	26	18	91	.88	16
1963	10	19	17	88	.82	14
1964	8	12	14	88	.71	10
1965	6	10	16	91	.83	13
1966	6	20	35	99	.89	31
1967	5	16	29	99	.86	25
1968	4	12	32	100	.98	31

1/ Equivalent wholesale value for all sales.

2/ Production negligible.

Table 6.--Gladioli: Number of producers, acres in production, sales, price, wholesale value, beginning of series thru 1968, in selected States--Con.

State and crop year	Producers	Acres in production	Dozen spikes sold	Percentage:		Value of sales at wholesale 1/ 1,000 dollars
				of sales at wholesale	Wholesale price	
	Number	Acres	1,000 dozen	Percent	Cents	
Washington						
1966	11	37	69	98	.45	39
1967	11	56	35	84	1.00	36
1968	13	116	30	98	.90	27
Oregon						
1966	14	33	35	98	1.04	36
1967	12	30	32	98	1.17	38
1968	14	45	36	91	1.24	46
California						
1956	76	660	2,308	99	.54	1,249
1957	68	594	2,120	100	.55	1,166
1958	61	630	2,164	100	.56	1,212
1959	79	731	2,489	100	.55	1,377
1960	--	--	--	--	--	--
1961	50	686	2,367	100	.60	1,416
1962	52	770	2,542	100	.63	1,595
1963	50	796	2,823	100	.64	1,803
1964	37	734	2,831	99	.62	1,747
1965	34	904	3,456	100	.65	2,236
1966	27	963	3,835	100	.68	2,613
1967	24	930	3,516	100	.76	2,663
1968	27	980	3,660	100	.95	3,473

1/ Equivalent wholesale value for all sales.

Table 7.--Potted Chrysanthemums: Number of producers, plants in production, sales, price, wholesale value, beginning of series thru 1968, in selected States

State and crop year	Producers	Pots in production	Pots sold	Percentage: of sales at wholesale	Wholesale price	Value of sales at wholesale 1/ 1,000 dollars
	Number	1,000 pots	1,000 pots	Percent	Dollars	
Massachusetts						
1966	84	240	235	85	1.56	367
1967	78	232	229	80	1.59	365
1968	67	277	274	91	1.49	409
Connecticut						
1966	45	207	207	91	1.68	348
1967	46	233	221	94	1.79	396
1968	43	250	245	96	1.82	447
New York-Upstate						
1966	180	436	422	84	1.42	601
1967	158	406	396	89	1.49	588
1968	154	441	420	89	1.53	641
New York-Long Island						
1966	37	170	148	95	1.62	240
1967	34	148	143	95	1.54	220
1968	37	179	174	96	1.66	288
New Jersey						
1966	75	229	215	92	1.55	334
1967	66	277	272	94	1.57	429
1968	63	193	186	92	1.82	339
Pennsylvania						
1966	169	484	420	81	1.39	582
1967	211	603	587	78	1.38	808
1968	220	584	546	84	1.43	780
Ohio						
1966	184	979	932	93	1.31	1,223
1967	201	1,059	1,018	92	1.39	1,415
1968	195	1,058	1,033	91	1.50	1,550
Indiana						
1966	57	306	288	90	1.74	503
1967	45	278	273	90	1.85	505
1968	41	315	301	89	1.98	595
Illinois						
1966	65	511	503	92	1.72	868
1967	64	572	575	94	1.67	961
1968	65	613	602	92	1.74	1,050

1/ Equivalent wholesale value of all sales.

Table 7.--Potted Chrysanthemums: Number of producers, plants in production, sales, price, wholesale value, beginning of series thru 1968, in selected States--Con.

State and crop year	Producers	Pots in production	Pots sold	Percentage: of sales at wholesale	Wholesale price	Value of sales at wholesale 1/ 1,000 dollars
	Number	1,000 pots	1,000 pots	Percent	Dollars	1,000 dollars
Michigan						
1966	111	659	581	90	1.68	977
1967	97	707	688	93	1.57	1,081
1968	109	638	621	89	1.59	985
Wisconsin						
1966	76	538	513	81	1.69	866
1967	78	541	529	87	1.50	792
1968	88	497	479	92	1.69	811
Minnesota						
1966	83	367	348	75	1.59	552
1967	75	358	348	62	1.71	595
1968	84	407	393	82	1.76	689
Iowa						
1966	54	420	412	90	1.60	658
1967	51	467	456	90	1.64	748
1968	53	426	414	90	1.60	662
Missouri						
1966	55	460	361	81	1.62	586
1967	48	458	376	90	1.55	582
1968	48	433	421	91	1.57	659
Delaware						
1966	6	17	16	90	1.20	19
1967	5	17	16	90	1.22	20
1968	6	13	12	82	1.45	18
Maryland						
1966	31	196	190	94	1.54	292
1967	31	213	208	93	1.62	338
1968	32	217	211	95	1.72	363
North Carolina						
1966	38	698	679	91	1.62	1,100
1967	40	733	671	96	1.78	1,197
1968	30	779	726	98	1.80	1,309
Florida						
1966	8	1,188	1,112	100	1.08	1,200
1967	10	1,366	1,366	100	1.08	1,474
1968	12	1,527	1,443	100	1.05	1,518

1/ Equivalent wholesale value of all sales.

Table 7.--Potted Chrysanthemums: Number of producers, plants in production, sales, price, wholesale value, beginning of series thru 1968, in selected States--Con.

State and crop year	Producers	Pots in production	Pots sold	Percentage of sales at wholesale	Wholesale price	Value of sales at wholesale
	Number	1,000 pots	1,000 pots	Percent	Dollars	1,000 dollars
Tennessee						
1966	21	258	246	83	1.57	386
1967	21	312	299	86	1.68	504
1968	18	329	311	88	1.74	540
Texas						
1966	69	982	918	93	1.30	1,195
1967	76	1,224	1,157	86	1.33	1,543
1968	72	1,393	1,321	96	1.39	1,831
Colorado						
1966	20	219	199	86	1.41	280
1967	18	222	202	88	1.46	294
1968	19	217	192	88	1.53	294
Washington						
1966	36	342	332	97	1.45	479
1967	38	347	329	90	1.56	512
1968	34	415	394	94	1.63	641
Oregon						
1966	19	363	339	97	1.27	432
1967	18	392	376	99	1.21	450
1968	19	404	376	79	1.36	513
California						
1966	22	1,530	1,454	97	1.23	1,787
1967	29	2,207	2,162	100	1.09	2,359
1968	33	2,351	2,291	99	1.15	2,630

1/ Equivalent wholesale value of all sales.

Table 8.--Foliage Plants for Indoor or Patio Use: Number of producers, square feet in production, net value of sales, beginning of series thru 1968, in selected States

State and crop year	Producers	Square ft. in production	Percentage of sales at wholesale	Net value of sales ^{1/}
	Number	1,000 sq. ft.	Percent	1,000 dollars
Massachusetts				
1966	37	172	66	680
1967	42	201	65	809
1968	28	246	53	1,071
Connecticut				
1966	33	77	75	173
1967	27	58	82	157
1968	23	54	85	145
New York-Upstate				
1966	90	249	86	514
1967	77	264	82	468
1968	53	158	82	305
New York-Long Island				
1966	34	375	96	687
1967	34	346	97	750
1968	29	389	96	1,041
New Jersey				
1966	47	303	97	1,158
1967	43	321	97	1,111
1968	40	145	94	403
Pennsylvania				
1966	69	327	82	919
1967	79	362	81	1,061
1968	81	312	86	1,020
Ohio				
1966	89	362	94	1,511
1967	91	439	95	1,982
1968	79	322	94	1,597
Indiana				
1966	30	70	90	226
1967	31	76	92	346
1968 ^{2/}	^{2/}	^{2/}	^{2/}	^{2/}
Illinois				
1966	27	96	75	356
1967	26	69	84	295
1968	26	70	72	335
Michigan				
1966	33	271	92	684
1967	32	189	89	487
1968	35	150	91	529

^{1/} Gross value of sales less cost of plant material purchased from other growers for growing on.

^{2/} Indiana combined with Colorado in 1968 to avoid disclosure of individual operations.

Table 8.--Foliage Plants for Indoor or Patio Use: Number of producers, square feet in production, net value of sales, beginning of series thru 1968, in selected States--Con.

State and crop year	Producers	Square ft. in production	Percentage of sales at wholesale	Net value of sales ^{1/}
	Number	1,000 sq. ft.	Percent	1,000 dollars
Wisconsin				
1966	39	54	15	54
1967	45	75	64	183
1968	35	50	86	125
Minnesota				
1966	43	72	30	237
1967	38	54	38	181
1968	35	68	62	236
Iowa				
1966	25	19	61	49
1967	19	19	52	48
1968	23	38	56	53
Missouri				
1966	43	95	50	115
1967	41	90	75	156
1968	30	45	44	68
Delaware				
1966 2/	--	--	--	--
1967	--	--	--	--
1968	--	--	--	--
Maryland				
1966 2/	21	154	74	349
1967	18	96	79	357
1968	13	87	89	357
North Carolina				
1966	10	16	66	34
1967	10	10	36	25
1968	14	12	31	39
Florida				
1966	142	25,760	98	11,678
1967	141	26,074	98	13,265
1968	154	26,357	99	14,357
Tennessee				
1966	10	21	88	39
1967	9	21	91	35
1968	6	12	99	29
Texas				
1966	103	1,448	75	851
1967	106	882	78	808
1968	109	1,088	77	869
Colorado				
1966	9	28	97	82
1967	9	25	99	125
1968 3/	32	98	95	475

^{1/} Gross value of sales less cost of plant material purchased from other growers for growing on.

^{2/} Delaware combined with Maryland to avoid disclosure of individual operations.

^{3/} Indiana combined with Colorado in 1968 to avoid disclosure of individual operations.

Table 8.--Foliage Plants for Indoor or Patio Use: Number of producers, square feet in production, net value of sales, beginning of series thru 1968, in selected States--Con.

State and crop year	Producers	Square ft. in production	Percentage of sales at wholesale	Net value of sales ^{1/}
	Number	1,000 sq. ft.	Percent	1,000 dollars
Washington				
1966	30	183	86	334
1967	28	190	74	238
1968	25	115	91	187
Oregon				
1966	20	47	92	91
1967	18	49	96	105
1968	17	66	96	143
California				
1966	55	2,182	89	3,167
1967	50	1,696	98	3,087
1968	52	1,405	95	3,028

^{1/} Gross value of sales less cost of plant material purchased from other growers for growing on.

UNITED STATES DEPARTMENT OF AGRICULTURE
STATISTICAL REPORTING SERVICE
WASHINGTON, D. C. 20250

OFFICIAL BUSINESS



POSTAGE & FEES PAID
United States Department of Agriculture

END